



**Australian Government**

**Department of Infrastructure, Transport,  
Regional Development, Communications and the Arts**  
Bureau of Infrastructure and Transport Research Economics

STATISTICAL REPORT



## Aviation

**Domestic airline on time performance  
February 2023**

© Commonwealth of Australia 2023

ISSN: 1832-0759

### **Ownership of intellectual property rights in this publication**

Unless otherwise noted, copyright (and any other intellectual property rights, if any) in this publication is owned by the Commonwealth of Australia (referred to below as the Commonwealth).

### **Disclaimer**

The material contained in this publication is made available on the understanding that the Commonwealth is not providing professional advice, and that users exercise their own skill and care with respect to its use, and seek independent advice if necessary.

The Commonwealth makes no representations or warranties as to the contents or accuracy of the information contained in this publication. To the extent permitted by law, the Commonwealth disclaims liability to any person or organisation in respect of anything done, or omitted to be done, in reliance upon information contained in this publication.

### **Creative Commons licence**

With the exception of (a) the Coat of Arms; and (b) the Department of Infrastructure, Transport, Regional Development, Communications and the Arts' photos and graphics, copyright in this publication is licensed under a Creative Commons Attribution 3.0 Australia Licence.

Creative Commons Attribution 3.0 Australia Licence is a standard form licence agreement that allows you to copy, communicate and adapt this publication provided that you attribute the work to the Commonwealth and abide by the other licence terms. A summary of the licence terms is available from <http://creativecommons.org/licenses/by/3.0/au/deed.en>. The full licence terms are available from <http://creativecommons.org/licenses/by/3.0/au/legalcode>.

### **Use of the Coat of Arms**

The Department of the Prime Minister and Cabinet sets the terms under which the Coat of Arms is used. Please refer to the Department's Commonwealth Coat of Arms and Government branding web page <http://www.dpmmc.gov.au/guidelines/index.cfm#brand> and, in particular, the Guidelines on the use of the Commonwealth Coat of Arms publication.

An appropriate citation for this report is:

Bureau of Infrastructure and Transport Research Economics (BITRE), 2023, Domestic airline on time performance, Statistical Report, BITRE, Canberra ACT.

### **Contact us**

This publication is available in PDF format. All other rights are reserved, including in relation to any Departmental logos or trade marks which may exist. For enquiries regarding the licence and any use of this publication, please contact:

Bureau of Infrastructure and Transport Research Economics (BITRE)  
Department of Infrastructure, Transport, Regional Development, Communications and the Arts  
GPO Box 501, Canberra ACT 2601, Australia  
Telephone: (international) +61 2 6274 7210  
Fax: (international) +61 2 6274 6855  
Email: [bitre@infrastructure.gov.au](mailto:bitre@infrastructure.gov.au)  
Website: [www.bitre.gov.au](http://www.bitre.gov.au)

### **Inquiries**

Should you require additional information about the statistics contained in this publication:

Telephone (02) 6274 6135

Electronic mail: [AVSTATS@infrastructure.gov.au](mailto:AVSTATS@infrastructure.gov.au)

Web site: <http://www.bitre.gov.au/statistics/aviation/otphome.aspx>

# Foreword

The Bureau of Infrastructure and Transport Research Economics (BITRE) monitors the punctuality and reliability of major domestic airlines operating between Australian airports. The purpose of this is to allow for evaluation of overall industry and individual airline performance, so that consumers of air travel can make informed decisions.

The following domestic airlines currently report this information monthly to the BITRE: Jetstar, Qantas, QantasLink, Rex Airlines, Virgin Australia and Virgin Australia Regional Airlines.

Information presented in this report is for Australian domestic routes for which the passenger load averaged 8,000 or more passengers per month over the previous six months and where two or more airlines operated in competition on those routes. In order to present data for more routes during the period impacted by COVID-19, the passenger load restriction was not applied between March 2020 and January 2023. From February 2023, the passenger load restriction was reinstated due to the continued recovery of passenger numbers. Data are presented for 58 routes in February 2023. Over time, routes which meet these criteria change as airline networks and traffic levels vary. Participating airlines report their overall monthly network performance where this is possible.

Total industry figures encompass all services operated by reporting airlines only. These airlines collectively carried over 95 per cent of total domestic passengers (regular public transport only) in 2019.

The method of capturing on time performance varies between airlines utilising different recording systems. Jetstar and Qantas jet aircraft use Aircraft Communication Addressing and Reporting System (ACARS) to electronically measure on time performance. Rex Airlines, Virgin Australia, Virgin Australia Regional Airlines and the Qantas non-jet fleet record on time performance manually using records from pilots, gate agents and/or ground crews.

After initial data is collected, aggregate reports are reviewed by participating airlines prior to publication.

Reports and detailed time series data in Microsoft Excel spreadsheet format are available from the BITRE website at: <http://www.bitre.gov.au/statistics/aviation/otphome.aspx>



# Contents

	Page
Industry performance .....	1
Individual routes .....	9
Airports.....	22
Definitions .....	28
Airlines and Reporting .....	29

# Industry performance

For February 2023, on time performance over all routes operated by participating airlines (Jetstar, Qantas, QantasLink, Rex Airlines, Virgin Australia and Virgin Australia Regional Airlines) averaged 73.0 per cent for on time arrivals and 73.7 per cent for on time departures. The cancellation rate for the month was 3.9 per cent. The equivalent figures for February 2022 were 83.6 per cent for on time arrivals, 82.7 per cent for on time departures and 3.6 per cent for cancellations.

This month's on time arrivals figure was significantly lower than the long term average performance for all routes (81.6 per cent) and the on time departures figure was also significantly lower than the long term average (82.7 per cent). The rate of cancellations was higher than the long term average of 2.1 per cent.

The Qantas network (Qantas and QantasLink combined operations) recorded 78.1 per cent for on time arrivals while the Virgin Australia network (Virgin Australia and Virgin Australia Regional Airlines combined operations) recorded 73.5 per cent. Qantas achieved the highest on time arrivals among the major domestic airlines at 73.7 per cent followed by Virgin Australia at 73.6 per cent and Jetstar at 62.3 per cent. Of the regional airlines, QantasLink recorded 80.9 per cent for on time arrivals, followed by Virgin Australia Regional Airlines at 70.8 per cent and Rex Airlines at 68.3 per cent.

The Qantas network recorded 78.3 per cent for on time departures while the Virgin Australia network recorded 74.6 per cent. Virgin Australia achieved the highest level of on time departures among the major domestic airlines for February 2023 at 74.9 per cent, followed by Qantas at 74.3 per cent and Jetstar at 61.2 per cent. Of the regional airlines, QantasLink recorded 80.9 per cent for on time departures, followed by Rex Airlines at 71.3 per cent and Virgin Australia Regional Airlines at 68.8 per cent.

Jetstar recorded the highest percentage of cancellations at 6.4 per cent during the month, followed by Qantas at 4.4 per cent, QantasLink at 3.7 per cent, Virgin Australia at 3.5 per cent, Virgin Australia Regional Airlines at 2.2 per cent, and Rex Airlines at 1.7 per cent.

Airlines' on time performance varies across the routes they serve. Individual route data by specific airline for 58 routes are shown on pages 9-21.

Of the 58 routes which met the criteria for on time performance reporting in February 2023, the Adelaide-Canberra route had the highest percentage of on time arrivals (92.2 per cent), while the Cairns-Townsville route had the highest percentage of on time departures (91.1 per cent). The Mildura-Melbourne route had the lowest percentage of on time arrivals (54.5 per cent), while the Sydney-Perth route had the lowest percentage of on time departures (58.6 per cent).

Cancellations were highest on the Canberra-Sydney route at 11.8 per cent followed by the Sydney-Canberra route at 11.2 per cent, the Melbourne-Sydney route at 10.9 per cent, the Sydney-Melbourne route at 10.8 per cent and the Brisbane-Sydney route at 7.5 per cent.

Emerald Airport recorded the highest percentage of on time arrivals (88.5 per cent) and the highest percentage of on time departures (88.5 per cent). Mildura Airport recorded the lowest percentage of on time arrivals (62.7 per cent) and Ballina Airport recorded the lowest percentage of on time departures (60.7 per cent). These figures only refer to reported routes and do not cover all flights at these airports.

Table 1 On time performance for February 2023 — Total Industry

	<i>Sectors</i>		<i>Arrivals On Time</i>		<i>Departures On Time</i>		<i>Cancellations</i>	
	<i>Scheduled</i>	<i>Flown</i>	<i>No.</i>	<i>%</i>	<i>No.</i>	<i>%</i>	<i>No.</i>	<i>%</i>
Jetstar	6,213	5,818	3,626	62.3	3,559	61.2	395	6.4
Qantas - all QF designated services	17,576	16,874	13,177	78.1	13,217	78.3	702	4.0
Rex Airlines	6,197	6,091	4,161	68.3	4,340	71.3	106	1.7
Virgin Australia - all VA designated services	10,805	10,437	7,672	73.5	7,785	74.6	368	3.4
All Airlines	40,791	39,220	28,636	73.0	28,901	73.7	1,571	3.9
Individual operating entities								
Qantas	6,867	6,563	4,838	73.7	4,874	74.3	304	4.4
QantasLink	10,709	10,311	8,339	80.9	8,343	80.9	398	3.7
Virgin Australia	10,340	9,982	7,350	73.6	7,472	74.9	358	3.5
Virgin Australia Regional Airlines	465	455	322	70.8	313	68.8	10	2.2

Total airline network data (including routes not shown in this report).

Airlines’ on time performance varies across the routes they serve. Individual route data by specific airline are shown on page 9 and onwards.

Table 2 Top ten routes for on time performance for February 2023 (participating airlines only)

<i>Arrivals</i>		<i>Departures</i>	
<i>Route</i>	<i>On Time (%)</i>	<i>Route</i>	<i>On Time (%)</i>
Adelaide-Canberra	92.2	Cairns-Townsville	91.1
Townsville-Cairns	91.8	Townsville-Cairns	91.0
Cairns-Townsville	91.1	Newcastle-Brisbane	90.5
Emerald-Brisbane	90.8	Adelaide-Canberra	90.4
Brisbane-Hobart	90.4	Canberra-Brisbane	89.5
Canberra-Brisbane	89.5	Brisbane-Hobart	89.4
Brisbane-Emerald	88.5	Emerald-Brisbane	88.5
Newcastle-Brisbane	88.0	Perth-Newman	87.3
Canberra-Adelaide	87.0	Canberra-Adelaide	87.0
Perth-Broome	86.9	Brisbane-Emerald	86.9

Table 3 Top ten airports for on time performance for February 2023 (participating airlines and reported routes only)

<i>Arrivals</i>		<i>Departures</i>	
<i>Airport</i>	<i>On Time (%)</i>	<i>Airport</i>	<i>On Time (%)</i>
Emerald	88.5	Emerald	88.5
Townsville	87.0	Townsville	85.8
Broome	86.9	Gladstone	85.3
Mount Isa	83.3	Port Lincoln	85.2
Port Lincoln	83.3	Mount Isa	85.0
Gladstone	82.5	Karratha	83.3
Karratha	82.4	Newcastle	83.1
Newman	81.3	Albury	82.4
Alice Springs	81.3	Canberra	80.2
Port Hedland	81.2	Wagga Wagga	78.8



## Total industry on time performance

Figure 1 On time performance (by month from February 2020)—Total Industry

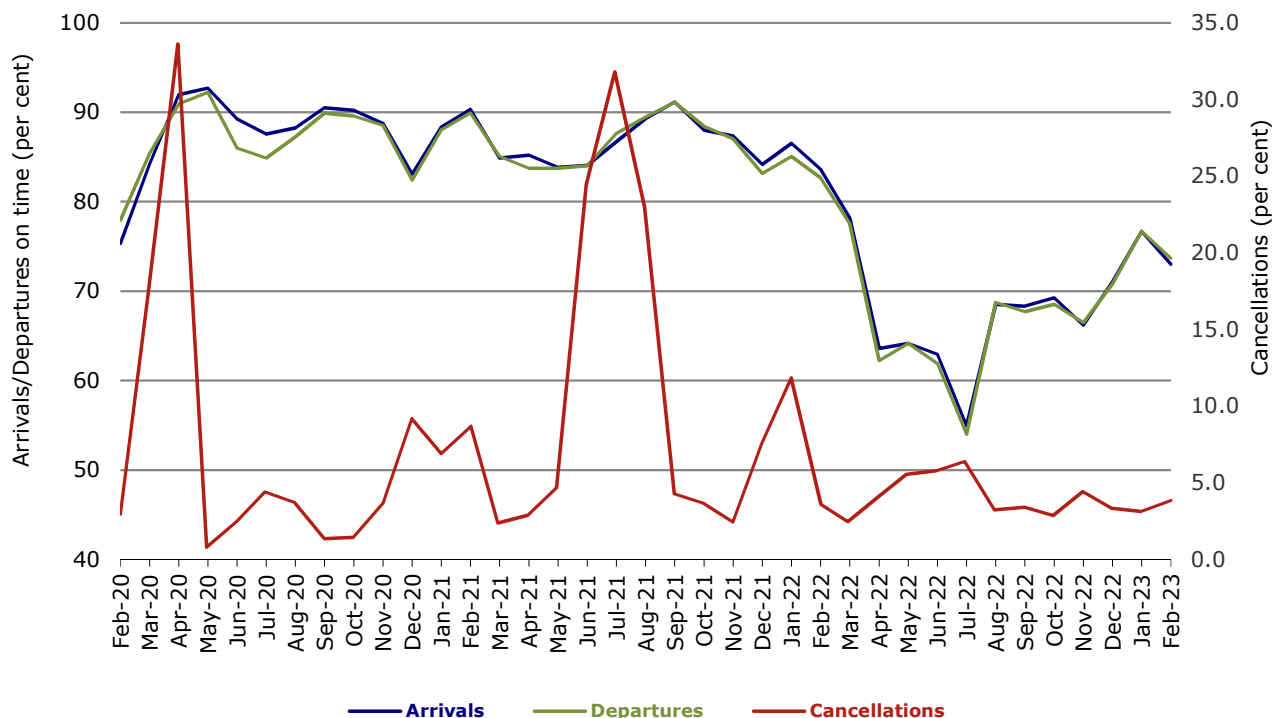


Figure 2 Arrivals on time (by month from February 2022)

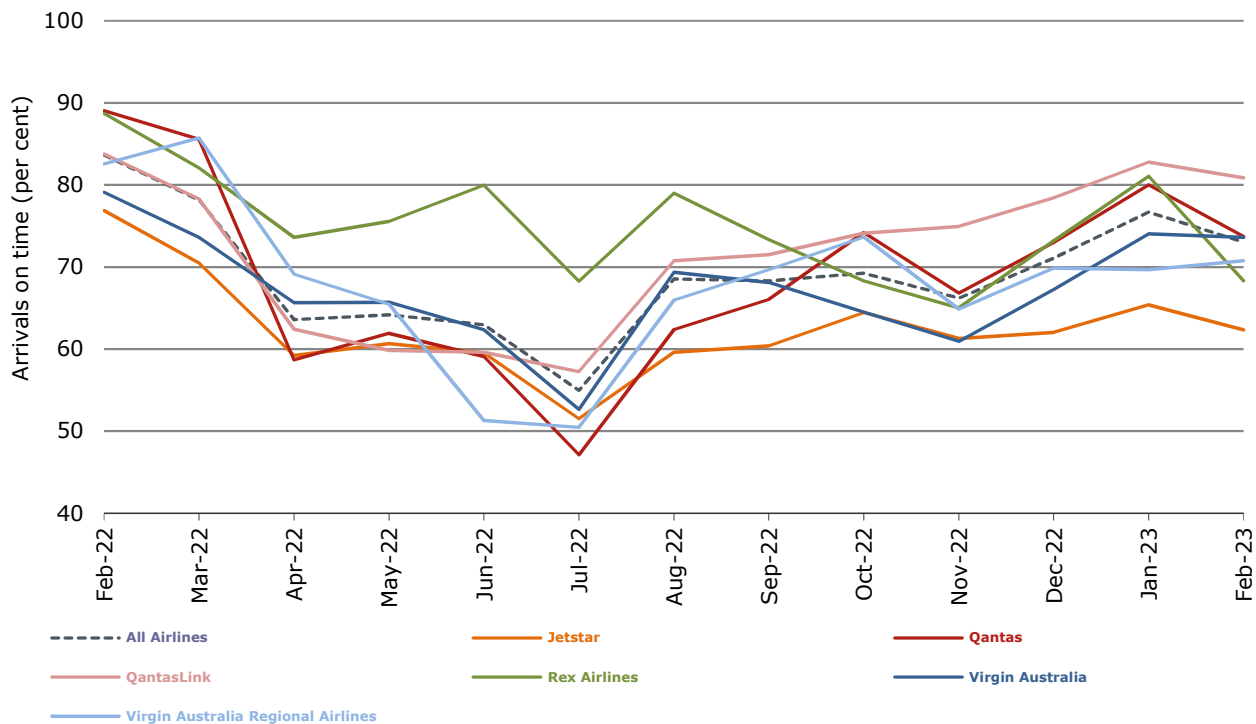


Figure 3 Departures on time (by month from February 2022)

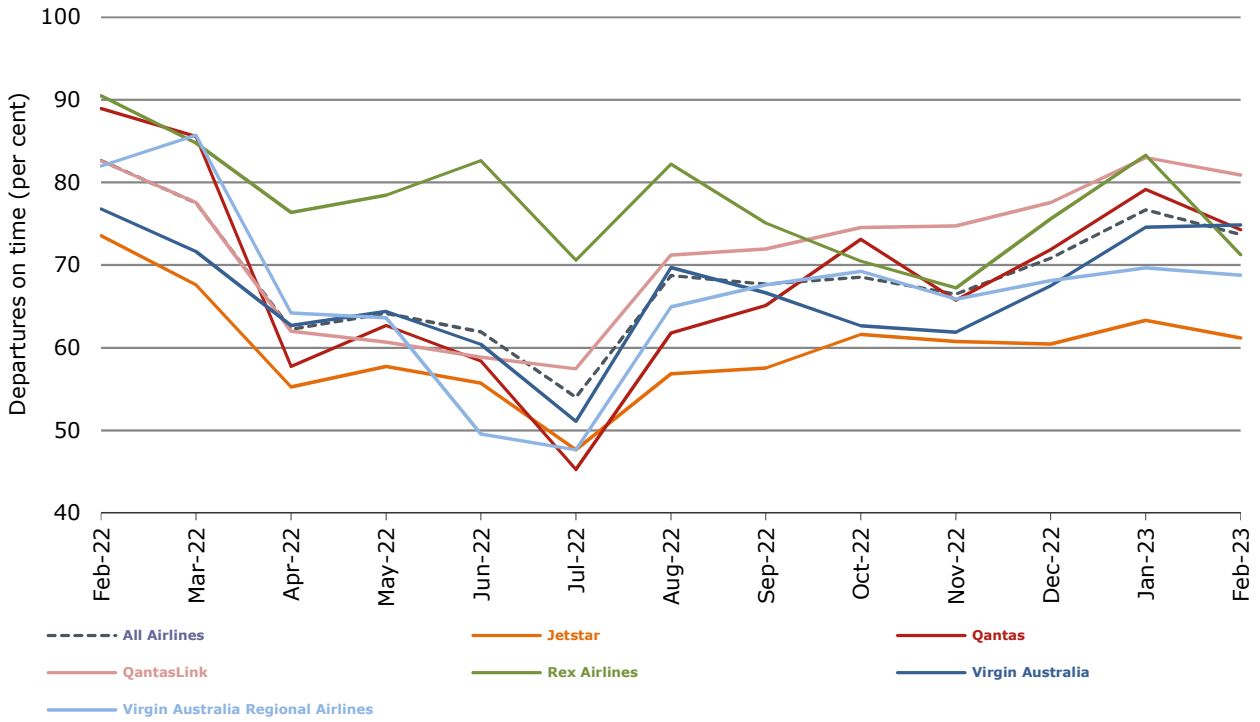
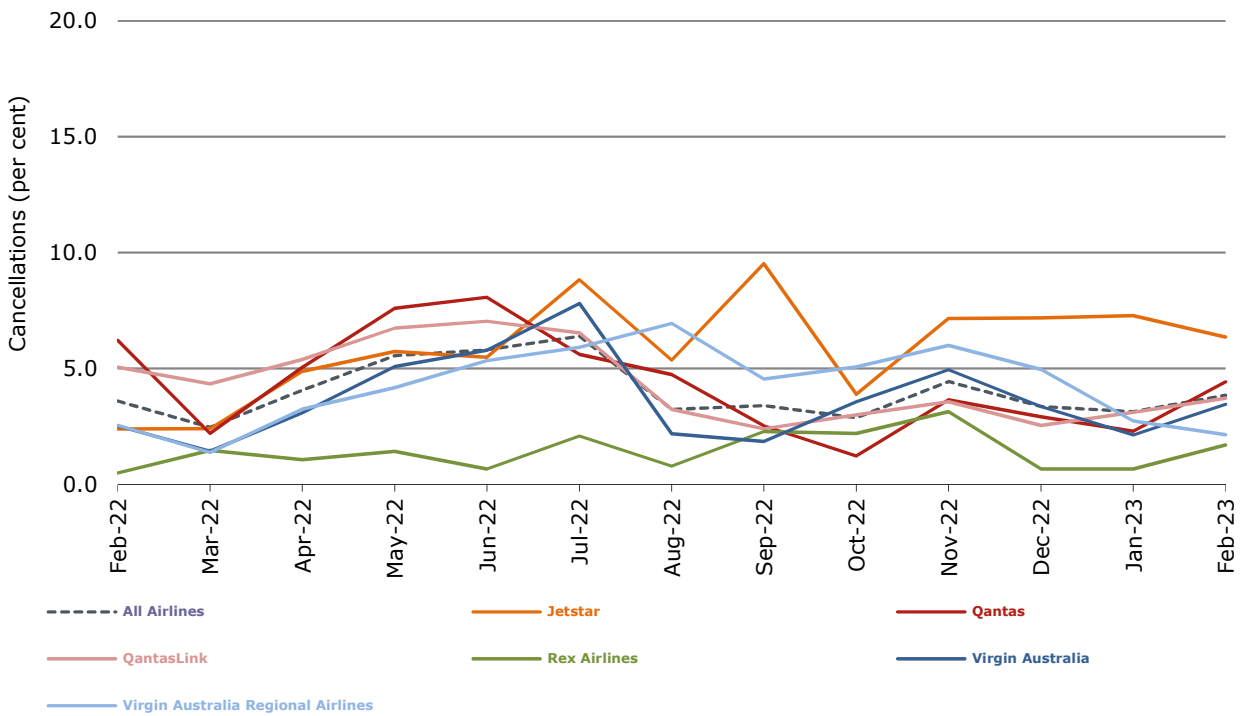


Figure 4 Cancellations (by month from February 2022)



## Major domestic airlines on time performance

Figure 5 On time performance (by month from February 2020)—Jetstar

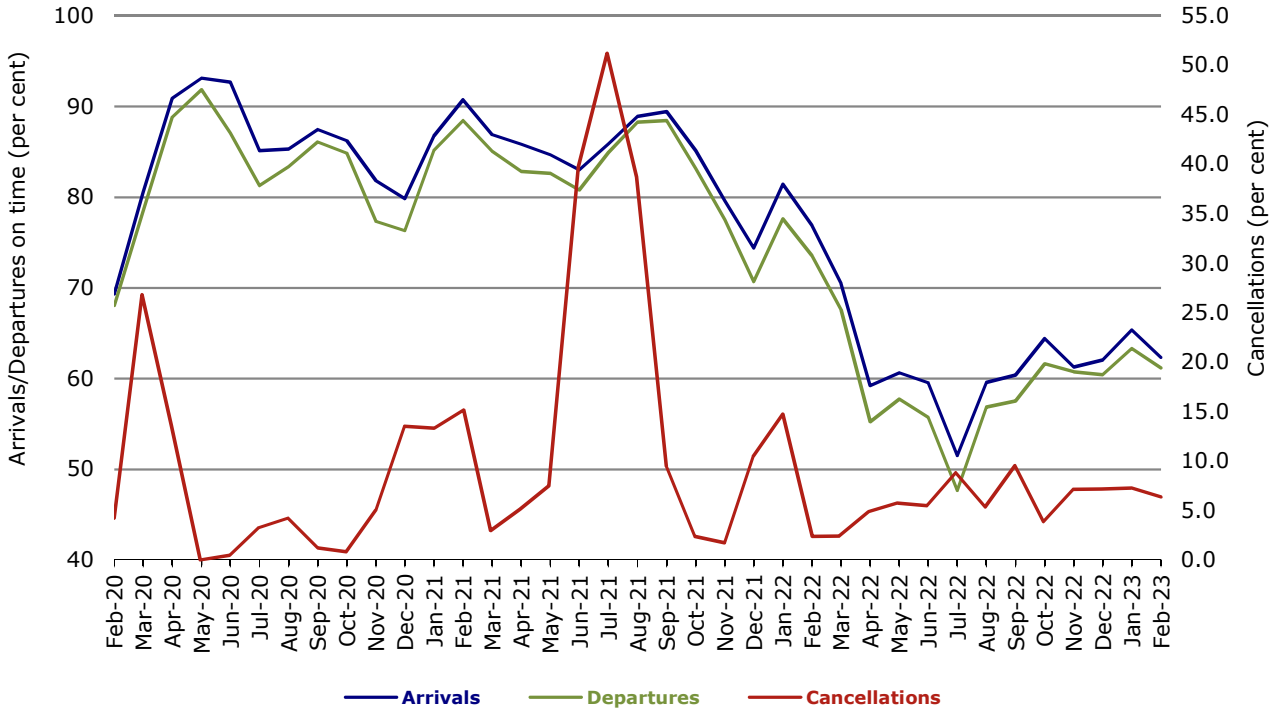


Figure 6 On time performance (by month from February 2020)—Qantas

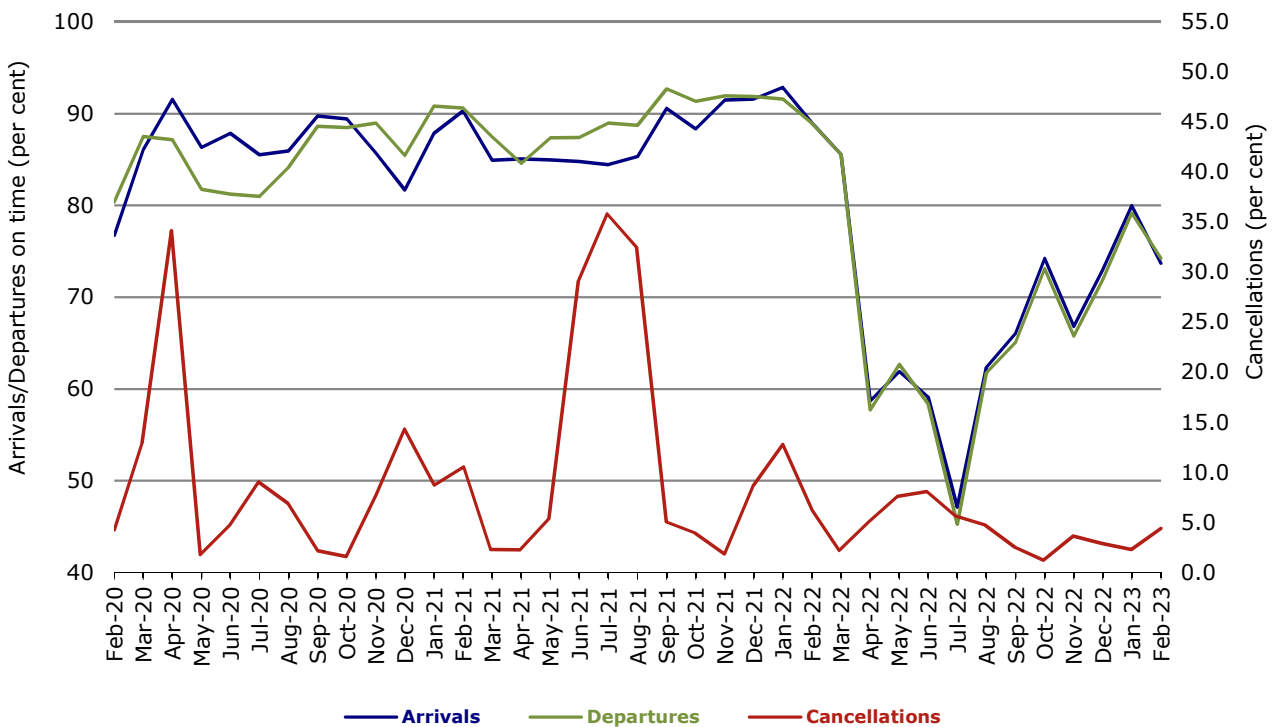
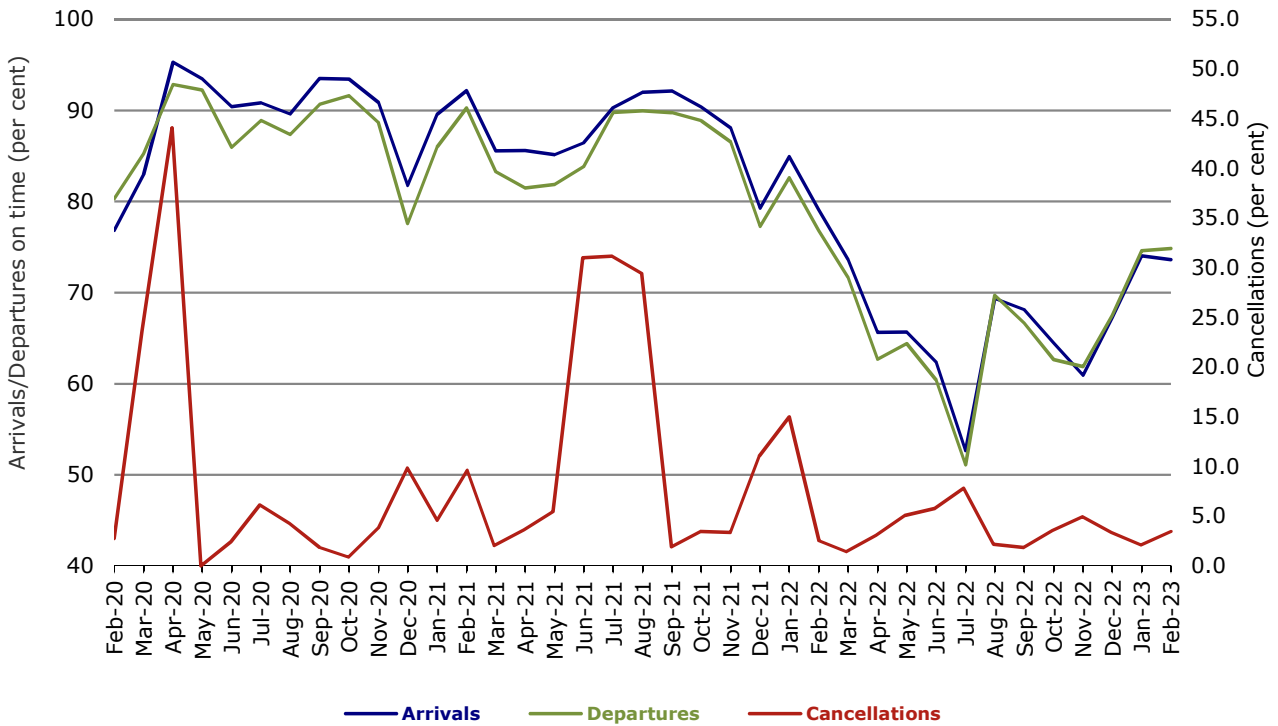


Figure 7 On time performance (by month from February 2020)—Virgin Australia



## Major regional airlines on time performance

Figure 8 On time performance (by month from February 2020)—QantasLink

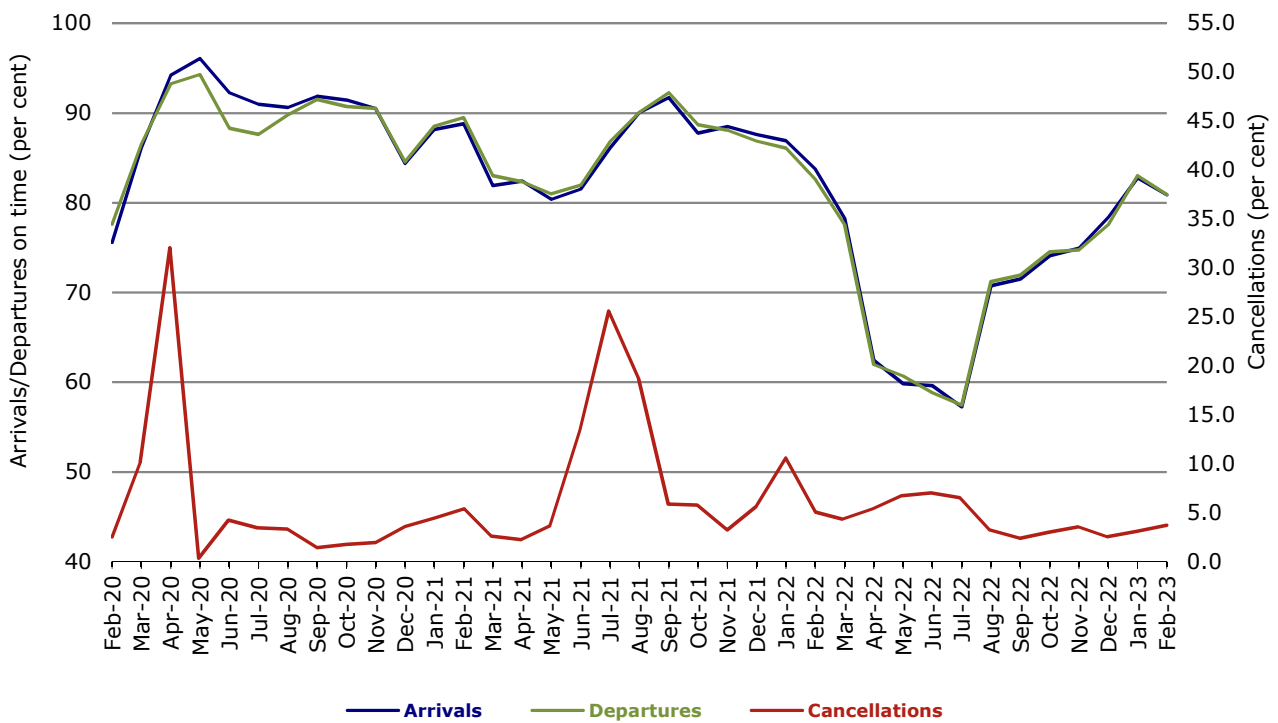


Figure 9 On time performance (by month from February 2020)—Rex Airlines

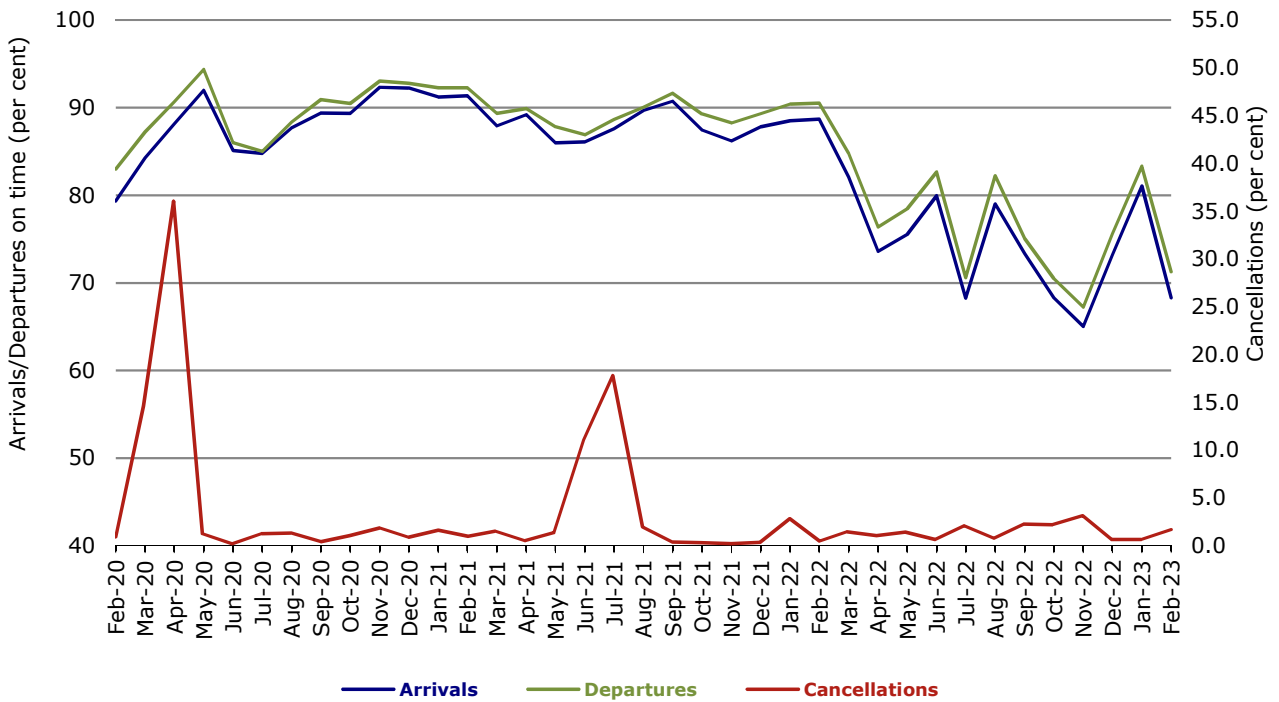
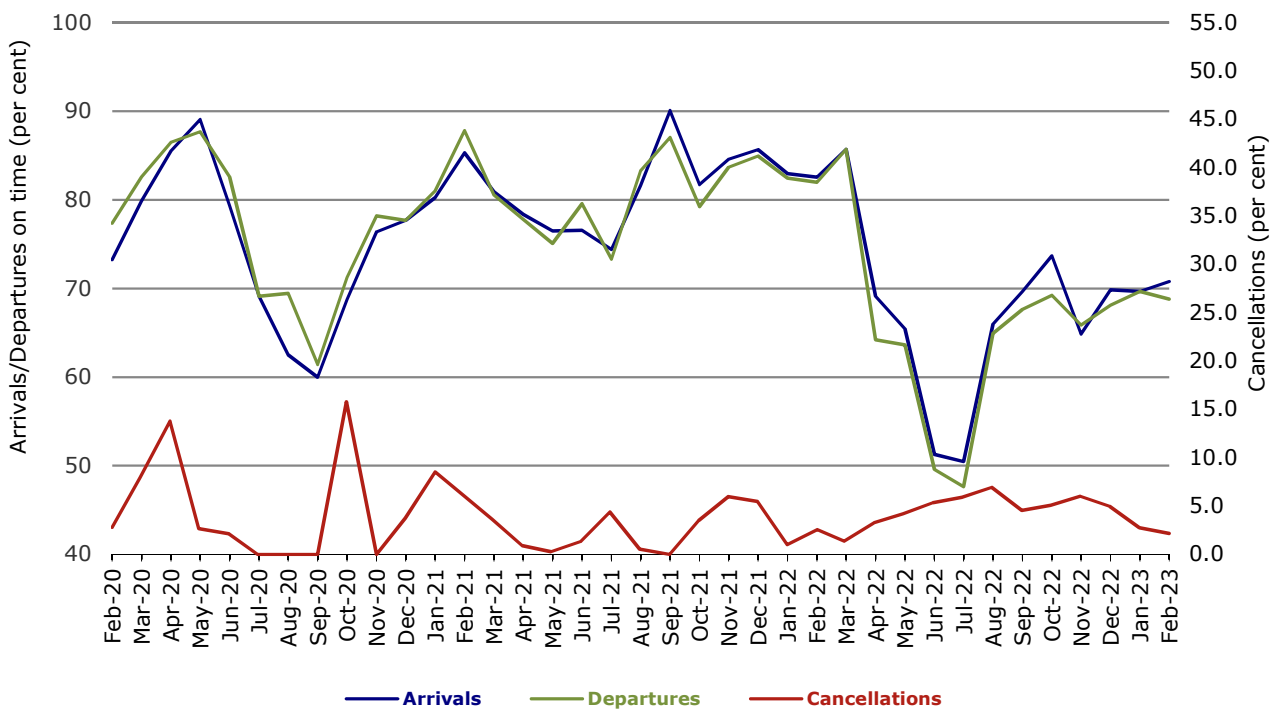


Figure 10 On time performance (by month from February 2020)—Virgin Australia Regional Airlines



## Individual routes

On time performance is reported for all routes where the passenger load averages over 8000 passengers per month over the previous six months, and where two or more airlines operate in competition on those routes. In order to present data for more routes during the period impacted by COVID-19, the passenger load restriction was not applied between March 2020 and January 2023. There are now 58 routes for which data are presented.

	Sectors		Arrivals On Time		Departures On Time		Cancellations	
	Sched.	Flown	No.	%	No.	%	No.	%
<b>Adelaide-Alice Springs</b>								
QantasLink	40	40	34	85.0	35	87.5	0	0.0
Virgin Australia	8	8	5	62.5	6	75.0	0	0.0
All Airlines	48	48	39	81.3	41	85.4	0	0.0
<b>Adelaide-Brisbane</b>								
Jetstar	28	25	17	68.0	21	84.0	3	10.7
Qantas	8	8	7	87.5	7	87.5	0	0.0
QantasLink	135	135	104	77.0	113	83.7	0	0.0
Virgin Australia	128	125	107	85.6	97	77.6	3	2.3
All Airlines	299	293	235	80.2	238	81.2	6	2.0
<b>Adelaide-Canberra</b>								
QantasLink	92	92	89	96.7	88	95.7	0	0.0
Virgin Australia	24	23	17	73.9	16	69.6	1	4.2
All Airlines	116	115	106	92.2	104	90.4	1	0.9
<b>Adelaide-Gold Coast</b>								
Jetstar	24	23	21	91.3	22	95.7	1	4.2
Virgin Australia	28	28	14	50.0	13	46.4	0	0.0
All Airlines	52	51	35	68.6	35	68.6	1	1.9
<b>Adelaide-Melbourne</b>								
Jetstar	103	99	66	66.7	63	63.6	4	3.9
Qantas	203	196	136	69.4	140	71.4	7	3.4
QantasLink	12	12	11	91.7	11	91.7	0	0.0
Rex Airlines	52	52	41	78.8	43	82.7	0	0.0
Virgin Australia	244	241	197	81.7	199	82.6	3	1.2
All Airlines	614	600	451	75.2	456	76.0	14	2.3
<b>Adelaide-Perth</b>								
Jetstar	24	22	20	90.9	17	77.3	2	8.3
Qantas	84	84	75	89.3	69	82.1	0	0.0
Virgin Australia	22	22	10	45.5	10	45.5	0	0.0
Virgin Australia Regional Airlines	30	29	10	34.5	5	17.2	1	3.3
All Airlines	160	157	115	73.2	101	64.3	3	1.9
<b>Adelaide-Port Lincoln</b>								
QantasLink	120	120	109	90.8	106	88.3	0	0.0
Rex Airlines	138	137	105	76.6	108	78.8	1	0.7
All Airlines	258	257	214	83.3	214	83.3	1	0.4
<b>Adelaide-Sydney</b>								
Jetstar	100	89	55	61.8	58	65.2	11	11.0
Qantas	195	189	140	74.1	144	76.2	6	3.1
Virgin Australia	140	138	106	76.8	108	78.3	2	1.4
All Airlines	435	416	301	72.4	310	74.5	19	4.4

	Sectors		Arrivals On Time		Departures On Time		Cancellations	
	Sched.	Flown	No.	%	No.	%	No.	%
<b>Albury-Sydney</b>								
QantasLink	89	85	77	90.6	74	87.1	4	4.5
Rex Airlines	120	114	86	75.4	90	78.9	6	5.0
All Airlines	209	199	163	81.9	164	82.4	10	4.8
<b>Alice Springs-Adelaide</b>								
QantasLink	40	40	23	57.5	25	62.5	0	0.0
Virgin Australia	8	8	6	75.0	5	62.5	0	0.0
All Airlines	48	48	29	60.4	30	62.5	0	0.0
<b>Armidale-Sydney</b>								
QantasLink	94	86	66	76.7	66	76.7	8	8.5
Rex Airlines	73	72	37	51.4	45	62.5	1	1.4
All Airlines	167	158	103	65.2	111	70.3	9	5.4
<b>Ballina-Sydney</b>								
Jetstar	69	68	34	50.0	36	52.9	1	1.4
QantasLink	84	79	55	69.6	57	72.2	5	6.0
Virgin Australia	44	44	22	50.0	23	52.3	0	0.0
All Airlines	197	191	111	58.1	116	60.7	6	3.0
<b>Brisbane-Adelaide</b>								
Jetstar	29	25	14	56.0	14	56.0	4	13.8
Qantas	10	10	8	80.0	8	80.0	0	0.0
QantasLink	135	135	100	74.1	107	79.3	0	0.0
Virgin Australia	128	126	107	84.9	93	73.8	2	1.6
All Airlines	302	296	229	77.4	222	75.0	6	2.0
<b>Brisbane-Cairns</b>								
Jetstar	72	69	44	63.8	41	59.4	3	4.2
Qantas	76	76	64	84.2	62	81.6	0	0.0
QantasLink	28	26	18	69.2	18	69.2	2	7.1
Virgin Australia	116	116	87	75.0	90	77.6	0	0.0
All Airlines	292	287	213	74.2	211	73.5	5	1.7
<b>Brisbane-Canberra</b>								
Jetstar	29	29	28	96.6	28	96.6	0	0.0
Qantas	24	23	19	82.6	19	82.6	1	4.2
QantasLink	118	113	90	79.6	94	83.2	5	4.2
Virgin Australia	100	95	86	90.5	82	86.3	5	5.0
All Airlines	271	260	223	85.8	223	85.8	11	4.1
<b>Brisbane-Darwin</b>								
Jetstar	16	15	11	73.3	12	80.0	1	6.3
QantasLink	40	40	27	67.5	18	45.0	0	0.0
Virgin Australia	28	28	21	75.0	22	78.6	0	0.0
All Airlines	84	83	59	71.1	52	62.7	1	1.2
<b>Brisbane-Emerald</b>								
QantasLink	108	106	95	89.6	94	88.7	2	1.9
Virgin Australia	24	24	20	83.3	19	79.2	0	0.0
All Airlines	132	130	115	88.5	113	86.9	2	1.5
<b>Brisbane-Gladstone</b>								
QantasLink	131	123	105	85.4	103	83.7	8	6.1
Virgin Australia	48	48	36	75.0	37	77.1	0	0.0
All Airlines	179	171	141	82.5	140	81.9	8	4.5

	Sectors		Arrivals On Time		Departures On Time		Cancellations	
	Sched.	Flown	No.	%	No.	%	No.	%
<b>Brisbane-Hamilton Island</b>								
Qantas	16	16	12	75.0	12	75.0	0	0.0
Virgin Australia	28	28	20	71.4	19	67.9	0	0.0
All Airlines	44	44	32	72.7	31	70.5	0	0.0
<b>Brisbane-Hobart</b>								
Jetstar	28	28	24	85.7	23	82.1	0	0.0
QantasLink	20	20	18	90.0	19	95.0	0	0.0
Virgin Australia	46	46	43	93.5	42	91.3	0	0.0
All Airlines	94	94	85	90.4	84	89.4	0	0.0
<b>Brisbane-Launceston</b>								
Jetstar	28	28	18	64.3	19	67.9	0	0.0
Virgin Australia	24	24	23	95.8	21	87.5	0	0.0
All Airlines	52	52	41	78.8	40	76.9	0	0.0
<b>Brisbane-Mackay</b>								
Jetstar	28	28	18	64.3	16	57.1	0	0.0
Qantas	100	100	85	85.0	84	84.0	0	0.0
QantasLink	8	8	6	75.0	7	87.5	0	0.0
Virgin Australia	128	126	63	50.0	77	61.1	2	1.6
All Airlines	264	262	172	65.6	184	70.2	2	0.8
<b>Brisbane-Melbourne</b>								
Jetstar	139	124	92	74.2	86	69.4	15	10.8
Qantas	313	303	243	80.2	240	79.2	10	3.2
Rex Airlines	58	56	44	78.6	43	76.8	2	3.4
Virgin Australia	363	352	257	73.0	255	72.4	11	3.0
All Airlines	873	835	636	76.2	624	74.7	38	4.4
<b>Brisbane-Mount Isa</b>								
Qantas	44	44	40	90.9	39	88.6	0	0.0
QantasLink	4	4	3	75.0	3	75.0	0	0.0
Virgin Australia	12	12	7	58.3	8	66.7	0	0.0
All Airlines	60	60	50	83.3	50	83.3	0	0.0
<b>Brisbane-Newcastle</b>								
Jetstar	49	48	42	87.5	41	85.4	1	2.0
QantasLink	128	122	111	91.0	104	85.2	6	4.7
Virgin Australia	77	75	58	77.3	61	81.3	2	2.6
All Airlines	254	245	211	86.1	206	84.1	9	3.5
<b>Brisbane-Perth</b>								
Jetstar	20	20	14	70.0	8	40.0	0	0.0
Qantas	135	134	119	88.8	96	71.6	1	0.7
Virgin Australia	108	107	81	75.7	61	57.0	1	0.9
All Airlines	263	261	214	82.0	165	63.2	2	0.8
<b>Brisbane-Proserpine</b>								
Jetstar	28	28	18	64.3	18	64.3	0	0.0
QantasLink	20	20	17	85.0	18	90.0	0	0.0
Virgin Australia	28	28	23	82.1	23	82.1	0	0.0
All Airlines	76	76	58	76.3	59	77.6	0	0.0
<b>Brisbane-Rockhampton</b>								
QantasLink	156	153	131	85.6	127	83.0	3	1.9
Virgin Australia	121	121	58	47.9	82	67.8	0	0.0
All Airlines	277	274	189	69.0	209	76.3	3	1.1



	Sectors		Arrivals On Time		Departures On Time		Cancellations	
	Sched.	Flown	No.	%	No.	%	No.	%
<b>Brisbane-Sydney</b>								
Jetstar	172	143	101	70.6	99	69.2	29	16.9
Qantas	471	442	360	81.4	367	83.0	29	6.2
Rex Airlines	129	124	97	78.2	103	83.1	5	3.9
Virgin Australia	430	403	283	70.2	297	73.7	27	6.3
All Airlines	1 202	1 112	841	75.6	866	77.9	90	7.5
<b>Brisbane-Townsville</b>								
Jetstar	44	42	37	88.1	41	97.6	2	4.5
Qantas	67	67	55	82.1	51	76.1	0	0.0
QantasLink	36	36	32	88.9	31	86.1	0	0.0
Virgin Australia	128	128	108	84.4	109	85.2	0	0.0
All Airlines	275	273	232	85.0	232	85.0	2	0.7
<b>Broome-Perth</b>								
QantasLink	68	66	52	78.8	53	80.3	2	2.9
Virgin Australia	16	13	10	76.9	7	53.8	3	18.8
Virgin Australia Regional Airlines	29	28	24	85.7	24	85.7	1	3.4
All Airlines	113	107	86	80.4	84	78.5	6	5.3
<b>Cairns-Brisbane</b>								
Jetstar	72	70	43	61.4	48	68.6	2	2.8
Qantas	75	75	70	93.3	69	92.0	0	0.0
QantasLink	28	26	21	80.8	21	80.8	2	7.1
Virgin Australia	116	116	97	83.6	88	75.9	0	0.0
All Airlines	291	287	231	80.5	226	78.7	4	1.4
<b>Cairns-Melbourne</b>								
Jetstar	62	59	39	66.1	37	62.7	3	4.8
Qantas	24	24	19	79.2	17	70.8	0	0.0
Virgin Australia	44	44	30	68.2	27	61.4	0	0.0
All Airlines	130	127	88	69.3	81	63.8	3	2.3
<b>Cairns-Sydney</b>								
Jetstar	59	53	34	64.2	36	67.9	6	10.2
Qantas	28	28	9	32.1	11	39.3	0	0.0
Virgin Australia	57	56	42	75.0	45	80.4	1	1.8
All Airlines	144	137	85	62.0	92	67.2	7	4.9
<b>Cairns-Townsville</b>								
QantasLink	128	124	113	91.1	113	91.1	4	3.1
Rex Airlines	12	11	10	90.9	10	90.9	1	8.3
All Airlines	140	135	123	91.1	123	91.1	5	3.6
<b>Canberra-Adelaide</b>								
QantasLink	92	92	83	90.2	84	91.3	0	0.0
Virgin Australia	24	23	17	73.9	16	69.6	1	4.2
All Airlines	116	115	100	87.0	100	87.0	1	0.9
<b>Canberra-Brisbane</b>								
Jetstar	28	28	26	92.9	26	92.9	0	0.0
Qantas	23	22	18	81.8	20	90.9	1	4.3
QantasLink	118	111	97	87.4	96	86.5	7	5.9
Virgin Australia	100	95	88	92.6	87	91.6	5	5.0
All Airlines	269	256	229	89.5	229	89.5	13	4.8
<b>Canberra-Gold Coast</b>								
Jetstar	16	16	8	50.0	6	37.5	0	0.0
Virgin Australia	28	27	22	81.5	21	77.8	1	3.6
All Airlines	44	43	30	69.8	27	62.8	1	2.3

	Sectors		Arrivals On Time		Departures On Time		Cancellations	
	Sched.	Flown	No.	%	No.	%	No.	%
<b>Canberra-Melbourne</b>								
Jetstar	28	28	14	50.0	11	39.3	0	0.0
QantasLink	216	209	176	84.2	181	86.6	7	3.2
Rex Airlines	28	28	23	82.1	22	78.6	0	0.0
Virgin Australia	108	108	86	79.6	86	79.6	0	0.0
All Airlines	380	373	299	80.2	300	80.4	7	1.8
<b>Canberra-Sydney</b>								
QantasLink	436	381	265	69.6	278	73.0	55	12.6
Virgin Australia	236	212	166	78.3	173	81.6	24	10.2
All Airlines	672	593	431	72.7	451	76.1	79	11.8
<b>Coffs Harbour-Sydney</b>								
QantasLink	104	102	76	74.5	78	76.5	2	1.9
Rex Airlines	120	117	71	60.7	80	68.4	3	2.5
All Airlines	224	219	147	67.1	158	72.1	5	2.2
<b>Darwin-Brisbane</b>								
Jetstar	16	15	10	66.7	12	80.0	1	6.3
QantasLink	40	40	35	87.5	37	92.5	0	0.0
Virgin Australia	28	28	25	89.3	20	71.4	0	0.0
All Airlines	84	83	70	84.3	69	83.1	1	1.2
<b>Darwin-Melbourne</b>								
Jetstar	20	20	11	55.0	9	45.0	0	0.0
Qantas	24	24	23	95.8	24	100.0	0	0.0
Virgin Australia	17	16	14	87.5	12	75.0	1	5.9
All Airlines	61	60	48	80.0	45	75.0	1	1.6
<b>Darwin-Perth</b>								
Qantas	20	20	19	95.0	17	85.0	0	0.0
QantasLink	8	8	5	62.5	4	50.0	0	0.0
Virgin Australia	8	8	6	75.0	6	75.0	0	0.0
Virgin Australia Regional Airlines	8	8	6	75.0	6	75.0	0	0.0
All Airlines	44	44	36	81.8	33	75.0	0	0.0
<b>Dubbo-Sydney</b>								
QantasLink	96	92	81	88.0	75	81.5	4	4.2
Rex Airlines	122	121	76	62.8	87	71.9	1	0.8
All Airlines	218	213	157	73.7	162	76.1	5	2.3
<b>Emerald-Brisbane</b>								
QantasLink	108	106	95	89.6	92	86.8	2	1.9
Virgin Australia	24	24	23	95.8	23	95.8	0	0.0
All Airlines	132	130	118	90.8	115	88.5	2	1.5
<b>Gladstone-Brisbane</b>								
QantasLink	130	122	108	88.5	109	89.3	8	6.2
Virgin Australia	48	48	25	52.1	36	75.0	0	0.0
All Airlines	178	170	133	78.2	145	85.3	8	4.5
<b>Gold Coast-Adelaide</b>								
Jetstar	24	23	20	87.0	18	78.3	1	4.2
Virgin Australia	28	28	14	50.0	13	46.4	0	0.0
All Airlines	52	51	34	66.7	31	60.8	1	1.9
<b>Gold Coast-Canberra</b>								
Jetstar	16	16	5	31.3	5	31.3	0	0.0
Virgin Australia	28	27	24	88.9	24	88.9	1	3.6
All Airlines	44	43	29	67.4	29	67.4	1	2.3

	Sectors		Arrivals On Time		Departures On Time		Cancellations	
	Sched.	Flown	No.	%	No.	%	No.	%
<b>Gold Coast-Melbourne</b>								
Jetstar	171	159	100	62.9	103	64.8	12	7.0
Qantas	20	20	15	75.0	13	65.0	0	0.0
QantasLink	8	8	4	50.0	5	62.5	0	0.0
Rex Airlines	28	28	20	71.4	19	67.9	0	0.0
Virgin Australia	250	241	184	76.3	181	75.1	9	3.6
All Airlines	477	456	323	70.8	321	70.4	21	4.4
<b>Gold Coast-Sydney</b>								
Jetstar	213	198	112	56.6	116	58.6	15	7.0
Qantas	96	96	59	61.5	72	75.0	0	0.0
QantasLink	16	10	6	60.0	7	70.0	6	37.5
Rex Airlines	28	28	23	82.1	23	82.1	0	0.0
Virgin Australia	266	260	182	70.0	184	70.8	6	2.3
All Airlines	619	592	382	64.5	402	67.9	27	4.4
<b>Hamilton Island-Brisbane</b>								
Qantas	16	16	12	75.0	12	75.0	0	0.0
Virgin Australia	28	28	19	67.9	19	67.9	0	0.0
All Airlines	44	44	31	70.5	31	70.5	0	0.0
<b>Hamilton Island-Sydney</b>								
Jetstar	20	20	12	60.0	13	65.0	0	0.0
Qantas	28	28	18	64.3	16	57.1	0	0.0
Virgin Australia	28	28	15	53.6	20	71.4	0	0.0
All Airlines	76	76	45	59.2	49	64.5	0	0.0
<b>Hobart-Brisbane</b>								
Jetstar	28	28	25	89.3	22	78.6	0	0.0
QantasLink	20	20	16	80.0	16	80.0	0	0.0
Virgin Australia	46	46	39	84.8	40	87.0	0	0.0
All Airlines	94	94	80	85.1	78	83.0	0	0.0
<b>Hobart-Melbourne</b>								
Jetstar	160	155	78	50.3	74	47.7	5	3.1
Qantas	13	13	11	84.6	10	76.9	0	0.0
QantasLink	71	69	53	76.8	52	75.4	2	2.8
Virgin Australia	127	127	76	59.8	83	65.4	0	0.0
All Airlines	371	364	218	59.9	219	60.2	7	1.9
<b>Hobart-Sydney</b>								
Jetstar	82	78	50	64.1	51	65.4	4	4.9
Qantas	16	16	13	81.3	12	75.0	0	0.0
QantasLink	63	57	41	71.9	37	64.9	6	9.5
Virgin Australia	72	72	52	72.2	51	70.8	0	0.0
All Airlines	233	223	156	70.0	151	67.7	10	4.3
<b>Kalgoorlie-Perth</b>								
Qantas	25	24	16	66.7	12	50.0	1	4.0
QantasLink	43	42	31	73.8	31	73.8	1	2.3
Virgin Australia	36	36	21	58.3	25	69.4	0	0.0
Virgin Australia Regional Airlines	36	36	26	72.2	25	69.4	0	0.0
All Airlines	140	138	94	68.1	93	67.4	2	1.4
<b>Karratha-Perth</b>								
Qantas	21	19	17	89.5	17	89.5	2	9.5
QantasLink	107	107	85	79.4	89	83.2	0	0.0
Virgin Australia	21	21	17	81.0	21	100.0	0	0.0
Virgin Australia Regional Airlines	27	27	18	66.7	18	66.7	0	0.0
All Airlines	176	174	137	78.7	145	83.3	2	1.1

	Sectors		Arrivals On Time		Departures On Time		Cancellations	
	Sched.	Flown	No.	%	No.	%	No.	%
<b>Launceston-Brisbane</b>								
Jetstar	29	28	15	53.6	11	39.3	1	3.4
Virgin Australia	24	24	21	87.5	21	87.5	0	0.0
All Airlines	53	52	36	69.2	32	61.5	1	1.9
<b>Launceston-Melbourne</b>								
Jetstar	85	84	41	48.8	35	41.7	1	1.2
QantasLink	93	87	59	67.8	57	65.5	6	6.5
Virgin Australia	85	85	72	84.7	71	83.5	0	0.0
All Airlines	263	256	172	67.2	163	63.7	7	2.7
<b>Launceston-Sydney</b>								
Jetstar	41	39	19	48.7	17	43.6	2	4.9
QantasLink	28	25	20	80.0	19	76.0	3	10.7
Virgin Australia	28	28	19	67.9	20	71.4	0	0.0
All Airlines	97	92	58	63.0	56	60.9	5	5.2
<b>Mackay-Brisbane</b>								
Jetstar	28	28	19	67.9	14	50.0	0	0.0
Qantas	100	99	85	85.9	83	83.8	1	1.0
QantasLink	12	12	12	100.0	10	83.3	0	0.0
Virgin Australia	128	125	70	56.0	73	58.4	3	2.3
All Airlines	268	264	186	70.5	180	68.2	4	1.5
<b>Melbourne-Adelaide</b>								
Jetstar	103	99	69	69.7	70	70.7	4	3.9
Qantas	202	195	141	72.3	140	71.8	7	3.5
QantasLink	12	12	6	50.0	10	83.3	0	0.0
Rex Airlines	52	52	43	82.7	45	86.5	0	0.0
Virgin Australia	244	242	174	71.9	194	80.2	2	0.8
All Airlines	613	600	433	72.2	459	76.5	13	2.1
<b>Melbourne-Brisbane</b>								
Jetstar	141	126	76	60.3	79	62.7	15	10.6
Qantas	312	302	237	78.5	246	81.5	10	3.2
Rex Airlines	58	56	46	82.1	46	82.1	2	3.4
Virgin Australia	361	348	266	76.4	274	78.7	13	3.6
All Airlines	872	832	625	75.1	645	77.5	40	4.6
<b>Melbourne-Cairns</b>								
Jetstar	62	59	33	55.9	35	59.3	3	4.8
Qantas	24	24	19	79.2	18	75.0	0	0.0
Virgin Australia	44	44	36	81.8	34	77.3	0	0.0
All Airlines	130	127	88	69.3	87	68.5	3	2.3
<b>Melbourne-Canberra</b>								
Jetstar	28	28	14	50.0	15	53.6	0	0.0
QantasLink	216	209	185	88.5	186	89.0	7	3.2
Rex Airlines	28	28	23	82.1	25	89.3	0	0.0
Virgin Australia	108	108	86	79.6	86	79.6	0	0.0
All Airlines	380	373	308	82.6	312	83.6	7	1.8
<b>Melbourne-Darwin</b>								
Jetstar	20	20	13	65.0	11	55.0	0	0.0
Qantas	24	24	21	87.5	21	87.5	0	0.0
Virgin Australia	16	16	12	75.0	15	93.8	0	0.0
All Airlines	60	60	46	76.7	47	78.3	0	0.0

	Sectors		Arrivals On Time		Departures On Time		Cancellations	
	Sched.	Flown	No.	%	No.	%	No.	%
<b>Melbourne-Gold Coast</b>								
Jetstar	172	161	98	60.9	93	57.8	11	6.4
Qantas	20	20	18	90.0	18	90.0	0	0.0
QantasLink	8	8	5	62.5	6	75.0	0	0.0
Rex Airlines	28	28	21	75.0	24	85.7	0	0.0
Virgin Australia	249	240	183	76.3	186	77.5	9	3.6
All Airlines	477	457	325	71.1	327	71.6	20	4.2
<b>Melbourne-Hobart</b>								
Jetstar	160	155	77	49.7	76	49.0	5	3.1
Qantas	13	13	11	84.6	11	84.6	0	0.0
QantasLink	71	70	54	77.1	53	75.7	1	1.4
Virgin Australia	127	127	90	70.9	92	72.4	0	0.0
All Airlines	371	365	232	63.6	232	63.6	6	1.6
<b>Melbourne-Launceston</b>								
Jetstar	85	84	49	58.3	45	53.6	1	1.2
QantasLink	94	89	62	69.7	69	77.5	5	5.3
Virgin Australia	85	85	62	72.9	65	76.5	0	0.0
All Airlines	264	258	173	67.1	179	69.4	6	2.3
<b>Melbourne-Mildura</b>								
QantasLink	88	85	63	74.1	63	74.1	3	3.4
Rex Airlines	93	92	48	52.2	52	56.5	1	1.1
All Airlines	181	177	111	62.7	115	65.0	4	2.2
<b>Melbourne-Newcastle</b>								
Jetstar	46	45	25	55.6	25	55.6	1	2.2
QantasLink	48	44	30	68.2	31	70.5	4	8.3
Virgin Australia	28	28	24	85.7	23	82.1	0	0.0
All Airlines	122	117	79	67.5	79	67.5	5	4.1
<b>Melbourne-Perth</b>								
Jetstar	62	59	37	62.7	33	55.9	3	4.8
Qantas	188	187	128	68.4	133	71.1	1	0.5
Virgin Australia	141	140	107	76.4	95	67.9	1	0.7
All Airlines	391	386	272	70.5	261	67.6	5	1.3
<b>Melbourne-Sunshine Coast</b>								
Jetstar	62	61	34	55.7	35	57.4	1	1.6
Qantas	12	12	11	91.7	10	83.3	0	0.0
QantasLink	16	16	14	87.5	15	93.8	0	0.0
Virgin Australia	72	71	53	74.6	56	78.9	1	1.4
All Airlines	162	160	112	70.0	116	72.5	2	1.2
<b>Melbourne-Sydney</b>								
Jetstar	358	297	148	49.8	141	47.5	61	17.0
Qantas	807	715	482	67.4	544	76.1	92	11.4
Rex Airlines	169	164	144	87.8	148	90.2	5	3.0
Virgin Australia	744	676	457	67.6	526	77.8	68	9.1
All Airlines	2 078	1 852	1 231	66.5	1 359	73.4	226	10.9
<b>Mildura-Melbourne</b>								
QantasLink	89	86	46	53.5	59	68.6	3	3.4
Rex Airlines	92	90	50	55.6	59	65.6	2	2.2
All Airlines	181	176	96	54.5	118	67.0	5	2.8

	Sectors		Arrivals On Time		Departures On Time		Cancellations	
	Sched.	Flown	No.	%	No.	%	No.	%
<b>Mount Isa-Brisbane</b>								
Qantas	44	44	38	86.4	38	86.4	0	0.0
QantasLink	4	4	3	75.0	3	75.0	0	0.0
Virgin Australia	12	12	6	50.0	10	83.3	0	0.0
All Airlines	60	60	47	78.3	51	85.0	0	0.0
<b>Newcastle-Brisbane</b>								
Jetstar	49	48	42	87.5	42	87.5	1	2.0
QantasLink	128	119	109	91.6	110	92.4	9	7.0
Virgin Australia	77	75	62	82.7	67	89.3	2	2.6
All Airlines	254	242	213	88.0	219	90.5	12	4.7
<b>Newcastle-Melbourne</b>								
Jetstar	46	45	27	60.0	23	51.1	1	2.2
QantasLink	47	45	33	73.3	36	80.0	2	4.3
Virgin Australia	28	28	20	71.4	21	75.0	0	0.0
All Airlines	121	118	80	67.8	80	67.8	3	2.5
<b>Newman-Perth</b>								
Qantas	12	12	9	75.0	8	66.7	0	0.0
QantasLink	88	85	67	78.8	67	78.8	3	3.4
Virgin Australia	20	20	13	65.0	14	70.0	0	0.0
Virgin Australia Regional Airlines	32	32	26	81.3	26	81.3	0	0.0
All Airlines	152	149	115	77.2	115	77.2	3	2.0
<b>Perth-Adelaide</b>								
Jetstar	24	22	13	59.1	12	54.5	2	8.3
Qantas	85	85	68	80.0	73	85.9	0	0.0
Virgin Australia	22	22	15	68.2	18	81.8	0	0.0
Virgin Australia Regional Airlines	30	29	16	55.2	19	65.5	1	3.3
All Airlines	161	158	112	70.9	122	77.2	3	1.9
<b>Perth-Brisbane</b>								
Jetstar	21	19	9	47.4	10	52.6	2	9.5
Qantas	135	133	97	72.9	104	78.2	2	1.5
Virgin Australia	104	101	68	67.3	57	56.4	3	2.9
All Airlines	260	253	174	68.8	171	67.6	7	2.7
<b>Perth-Broome</b>								
QantasLink	67	66	60	90.9	58	87.9	1	1.5
Virgin Australia	16	13	9	69.2	8	61.5	3	18.8
Virgin Australia Regional Airlines	29	28	24	85.7	21	75.0	1	3.4
All Airlines	112	107	93	86.9	87	81.3	5	4.5
<b>Perth-Darwin</b>								
Qantas	20	20	17	85.0	15	75.0	0	0.0
QantasLink	8	8	6	75.0	7	87.5	0	0.0
Virgin Australia	8	8	6	75.0	6	75.0	0	0.0
Virgin Australia Regional Airlines	8	8	6	75.0	5	62.5	0	0.0
All Airlines	44	44	35	79.5	33	75.0	0	0.0
<b>Perth-Kalgoorlie</b>								
Qantas	25	24	19	79.2	19	79.2	1	4.0
QantasLink	43	42	30	71.4	32	76.2	1	2.3
Virgin Australia	36	36	28	77.8	31	86.1	0	0.0
Virgin Australia Regional Airlines	36	36	25	69.4	29	80.6	0	0.0
All Airlines	140	138	102	73.9	111	80.4	2	1.4

	Sectors		Arrivals On Time		Departures On Time		Cancellations	
	Sched.	Flown	No.	%	No.	%	No.	%
<b>Perth-Karratha</b>								
Qantas	21	19	19	100.0	18	94.7	2	9.5
QantasLink	109	109	89	81.7	90	82.6	0	0.0
Virgin Australia	21	21	20	95.2	18	85.7	0	0.0
Virgin Australia Regional Airlines	27	27	17	63.0	18	66.7	0	0.0
All Airlines	178	176	145	82.4	144	81.8	2	1.1
<b>Perth-Melbourne</b>								
Jetstar	61	57	24	42.1	14	24.6	4	6.6
Qantas	190	188	138	73.4	135	71.8	2	1.1
Virgin Australia	148	146	100	68.5	102	69.9	2	1.4
All Airlines	399	391	262	67.0	251	64.2	8	2.0
<b>Perth-Newman</b>								
Qantas	12	12	8	66.7	8	66.7	0	0.0
QantasLink	89	86	72	83.7	76	88.4	3	3.4
Virgin Australia	20	20	16	80.0	18	90.0	0	0.0
Virgin Australia Regional Airlines	32	32	26	81.3	29	90.6	0	0.0
All Airlines	153	150	122	81.3	131	87.3	3	2.0
<b>Perth-Port Hedland</b>								
Qantas	36	36	30	83.3	31	86.1	0	0.0
QantasLink	81	81	67	82.7	67	82.7	0	0.0
Virgin Australia	17	17	14	82.4	12	70.6	0	0.0
Virgin Australia Regional Airlines	31	31	23	74.2	22	71.0	0	0.0
All Airlines	165	165	134	81.2	132	80.0	0	0.0
<b>Perth-Sydney</b>								
Jetstar	38	36	19	52.8	12	33.3	2	5.3
Qantas	185	183	120	65.6	128	69.9	2	1.1
Virgin Australia	129	123	88	71.5	78	63.4	6	4.7
All Airlines	352	342	227	66.4	218	63.7	10	2.8
<b>Port Hedland-Perth</b>								
Qantas	36	36	22	61.1	23	63.9	0	0.0
QantasLink	80	80	55	68.8	54	67.5	0	0.0
Virgin Australia	17	17	4	23.5	7	41.2	0	0.0
Virgin Australia Regional Airlines	31	31	19	61.3	16	51.6	0	0.0
All Airlines	164	164	100	61.0	100	61.0	0	0.0
<b>Port Lincoln-Adelaide</b>								
QantasLink	120	120	113	94.2	113	94.2	0	0.0
Rex Airlines	137	136	104	76.5	105	77.2	1	0.7
All Airlines	257	256	217	84.8	218	85.2	1	0.4
<b>Port Macquarie-Sydney</b>								
QantasLink	100	96	71	74.0	76	79.2	4	4.0
Rex Airlines	93	92	54	58.7	66	71.7	1	1.1
All Airlines	193	188	125	66.5	142	75.5	5	2.6
<b>Proserpine-Brisbane</b>								
Jetstar	28	28	18	64.3	17	60.7	0	0.0
QantasLink	20	20	16	80.0	16	80.0	0	0.0
Virgin Australia	28	28	17	60.7	18	64.3	0	0.0
All Airlines	76	76	51	67.1	51	67.1	0	0.0
<b>Rockhampton-Brisbane</b>								
QantasLink	156	149	120	80.5	120	80.5	7	4.5
Virgin Australia	121	121	63	52.1	80	66.1	0	0.0
All Airlines	277	270	183	67.8	200	74.1	7	2.5

	Sectors		Arrivals On Time		Departures On Time		Cancellations	
	Sched.	Flown	No.	%	No.	%	No.	%
<b>Sunshine Coast-Melbourne</b>								
Jetstar	62	60	30	50.0	36	60.0	2	3.2
Qantas	12	12	11	91.7	9	75.0	0	0.0
QantasLink	16	16	12	75.0	13	81.3	0	0.0
Virgin Australia	72	70	52	74.3	54	77.1	2	2.8
All Airlines	162	158	105	66.5	112	70.9	4	2.5
<b>Sunshine Coast-Sydney</b>								
Jetstar	77	74	29	39.2	42	56.8	3	3.9
Qantas	12	12	9	75.0	10	83.3	0	0.0
QantasLink	67	65	46	70.8	52	80.0	2	3.0
Virgin Australia	56	56	35	62.5	44	78.6	0	0.0
All Airlines	212	207	119	57.5	148	71.5	5	2.4
<b>Sydney-Adelaide</b>								
Jetstar	100	89	55	61.8	54	60.7	11	11.0
Qantas	196	192	139	72.4	134	69.8	4	2.0
Virgin Australia	140	137	94	68.6	91	66.4	3	2.1
All Airlines	436	418	288	68.9	279	66.7	18	4.1
<b>Sydney-Albury</b>								
QantasLink	89	86	70	81.4	67	77.9	3	3.4
Rex Airlines	117	111	76	68.5	77	69.4	6	5.1
All Airlines	206	197	146	74.1	144	73.1	9	4.4
<b>Sydney-Armidale</b>								
QantasLink	94	87	65	74.7	64	73.6	7	7.4
Rex Airlines	73	72	46	63.9	43	59.7	1	1.4
All Airlines	167	159	111	69.8	107	67.3	8	4.8
<b>Sydney-Ballina</b>								
Jetstar	69	68	52	76.5	51	75.0	1	1.4
QantasLink	84	80	58	72.5	52	65.0	4	4.8
Virgin Australia	44	44	26	59.1	27	61.4	0	0.0
All Airlines	197	192	136	70.8	130	67.7	5	2.5
<b>Sydney-Brisbane</b>								
Jetstar	172	144	91	63.2	98	68.1	28	16.3
Qantas	477	450	288	64.0	291	64.7	27	5.7
Rex Airlines	129	124	95	76.6	101	81.5	5	3.9
Virgin Australia	435	410	299	72.9	304	74.1	25	5.7
All Airlines	1 213	1 128	773	68.5	794	70.4	85	7.0
<b>Sydney-Cairns</b>								
Jetstar	59	53	38	71.7	36	67.9	6	10.2
Qantas	28	28	11	39.3	9	32.1	0	0.0
Virgin Australia	56	56	49	87.5	46	82.1	0	0.0
All Airlines	143	137	98	71.5	91	66.4	6	4.2
<b>Sydney-Canberra</b>								
QantasLink	436	383	270	70.5	266	69.5	53	12.2
Virgin Australia	232	210	182	86.7	169	80.5	22	9.5
All Airlines	668	593	452	76.2	435	73.4	75	11.2
<b>Sydney-Coffs Harbour</b>								
QantasLink	104	102	72	70.6	76	74.5	2	1.9
Rex Airlines	120	117	88	75.2	75	64.1	3	2.5
All Airlines	224	219	160	73.1	151	68.9	5	2.2



	Sectors		Arrivals On Time		Departures On Time		Cancellations	
	Sched.	Flown	No.	%	No.	%	No.	%
<b>Sydney-Dubbo</b>								
QantasLink	96	93	72	77.4	64	68.8	3	3.1
Rex Airlines	125	125	83	66.4	80	64.0	0	0.0
All Airlines	221	218	155	71.1	144	66.1	3	1.4
<b>Sydney-Gold Coast</b>								
Jetstar	212	196	122	62.2	121	61.7	16	7.5
Qantas	96	96	72	75.0	69	71.9	0	0.0
QantasLink	16	10	6	60.0	8	80.0	6	37.5
Rex Airlines	28	28	23	82.1	25	89.3	0	0.0
Virgin Australia	266	260	177	68.1	186	71.5	6	2.3
All Airlines	618	590	400	67.8	409	69.3	28	4.5
<b>Sydney-Hamilton Island</b>								
Jetstar	20	20	17	85.0	14	70.0	0	0.0
Qantas	28	28	17	60.7	17	60.7	0	0.0
Virgin Australia	28	28	24	85.7	23	82.1	0	0.0
All Airlines	76	76	58	76.3	54	71.1	0	0.0
<b>Sydney-Hobart</b>								
Jetstar	82	78	50	64.1	49	62.8	4	4.9
Qantas	16	16	13	81.3	12	75.0	0	0.0
QantasLink	65	59	39	66.1	38	64.4	6	9.2
Virgin Australia	72	72	55	76.4	54	75.0	0	0.0
All Airlines	235	225	157	69.8	153	68.0	10	4.3
<b>Sydney-Launceston</b>								
Jetstar	40	39	19	48.7	21	53.8	1	2.5
QantasLink	28	26	20	76.9	20	76.9	2	7.1
Virgin Australia	28	28	22	78.6	22	78.6	0	0.0
All Airlines	96	93	61	65.6	63	67.7	3	3.1
<b>Sydney-Melbourne</b>								
Jetstar	357	299	171	57.2	165	55.2	58	16.2
Qantas	807	716	483	67.5	491	68.6	91	11.3
Rex Airlines	169	164	134	81.7	140	85.4	5	3.0
Virgin Australia	735	666	498	74.8	510	76.6	69	9.4
All Airlines	2 068	1 845	1 286	69.7	1 306	70.8	223	10.8
<b>Sydney-Perth</b>								
Jetstar	37	36	23	63.9	20	55.6	1	2.7
Qantas	188	186	120	64.5	109	58.6	2	1.1
Virgin Australia	133	126	91	72.2	75	59.5	7	5.3
All Airlines	358	348	234	67.2	204	58.6	10	2.8
<b>Sydney-Port Macquarie</b>								
QantasLink	101	97	70	72.2	64	66.0	4	4.0
Rex Airlines	93	92	68	73.9	67	72.8	1	1.1
All Airlines	194	189	138	73.0	131	69.3	5	2.6
<b>Sydney-Sunshine Coast</b>								
Jetstar	76	75	49	65.3	54	72.0	1	1.3
Qantas	11	11	10	90.9	10	90.9	0	0.0
QantasLink	68	66	40	60.6	40	60.6	2	2.9
Virgin Australia	56	56	40	71.4	42	75.0	0	0.0
All Airlines	211	208	139	66.8	146	70.2	3	1.4
<b>Sydney-Wagga Wagga</b>								
QantasLink	96	90	74	82.2	72	80.0	6	6.3
Rex Airlines	123	117	85	72.6	87	74.4	6	4.9
All Airlines	219	207	159	76.8	159	76.8	12	5.5

	<i>Sectors</i>		<i>Arrivals On Time</i>		<i>Departures On Time</i>		<i>Cancellations</i>	
	<i>Sched.</i>	<i>Flown</i>	<i>No.</i>	<i>%</i>	<i>No.</i>	<i>%</i>	<i>No.</i>	<i>%</i>
<b>Townsville-Brisbane</b>								
Jetstar	44	42	36	85.7	35	83.3	2	4.5
Qantas	68	68	58	85.3	56	82.4	0	0.0
QantasLink	36	36	28	77.8	28	77.8	0	0.0
Virgin Australia	128	128	113	88.3	109	85.2	0	0.0
All Airlines	276	274	235	85.8	228	83.2	2	0.7
<b>Townsville-Cairns</b>								
QantasLink	128	123	112	91.1	111	90.2	5	3.9
Rex Airlines	12	11	11	100.0	11	100.0	1	8.3
All Airlines	140	134	123	91.8	122	91.0	6	4.3
<b>Wagga Wagga-Sydney</b>								
QantasLink	96	90	82	91.1	80	88.9	6	6.3
Rex Airlines	118	113	69	61.1	80	70.8	5	4.2
All Airlines	214	203	151	74.4	160	78.8	11	5.1

# Airports

The following data reports by airport against flights operated on published routes only. This month, 8 major city airports and 28 regional city airports are covered.

Airport	Arrivals			Departures		
	Sectors	On Time		Sectors	On Time	
	Flown	No.	%	Flown	No.	%
<b>Adelaide</b>						
Jetstar	258	171	66.3	258	181	70.2
Qantas	482	356	73.9	477	360	75.5
QantasLink	399	325	81.5	399	353	88.5
Rex Airlines	188	147	78.2	189	151	79.9
Virgin Australia	586	427	72.9	585	449	76.8
Virgin Australia Regional Airlines	29	16	55.2	29	5	17.2
All Airlines	1,942	1,442	74.3	1,937	1,499	77.4

Relates to services to and from Alice Springs, Brisbane, Canberra, Gold Coast, Melbourne, Perth, Port Lincoln and Sydney only.

<b>Albury</b>						
QantasLink	86	70	81.4	85	74	87.1
Rex Airlines	111	76	68.5	114	90	78.9
All Airlines	197	146	74.1	199	164	82.4

Relates to services to and from Sydney only.

<b>Alice Springs</b>						
QantasLink	40	34	85.0	40	25	62.5
Virgin Australia	8	5	62.5	8	5	62.5
All Airlines	48	39	81.3	48	30	62.5

Relates to services to and from Adelaide only.

<b>Armidale</b>						
QantasLink	87	65	74.7	86	66	76.7
Rex Airlines	72	46	63.9	72	45	62.5
All Airlines	159	111	69.8	158	111	70.3

Relates to services to and from Sydney only.

<b>Ballina</b>						
Jetstar	68	52	76.5	68	36	52.9
QantasLink	80	58	72.5	79	57	72.2
Virgin Australia	44	26	59.1	44	23	52.3
All Airlines	192	136	70.8	191	116	60.7

Relates to services to and from Sydney only.

<b>Brisbane</b>						
Jetstar	629	427	67.9	627	446	71.1
Qantas	1,217	910	74.8	1,215	978	80.5
QantasLink	900	764	84.9	906	743	82.0
Rex Airlines	180	141	78.3	180	146	81.1
Virgin Australia	1,882	1,408	74.8	1,887	1,398	74.1
All Airlines	4,808	3,650	75.9	4,815	3,711	77.1

Relates to services to and from Adelaide, Cairns, Canberra, Darwin, Emerald, Gladstone, Hamilton Island, Hobart, Launceston, Mackay, Melbourne, Mount Isa, Newcastle, Perth, Proserpine, Rockhampton, Sydney and Townsville only.

Airport	Arrivals			Departures		
	Sectors	On Time		Sectors	On Time	
	Flown	No.	%	Flown	No.	%
<b>Broome</b>						
QantasLink	66	60	90.9	66	53	80.3
Virgin Australia	13	9	69.2	13	7	53.8
Virgin Australia Regional Airlines	28	24	85.7	28	24	85.7
All Airlines	107	93	86.9	107	84	78.5
Relates to services to and from Perth only.						
<b>Cairns</b>						
Jetstar	181	115	63.5	182	121	66.5
Qantas	128	94	73.4	127	97	76.4
QantasLink	149	130	87.2	150	134	89.3
Rex Airlines	11	11	100.0	11	10	90.9
Virgin Australia	216	172	79.6	216	160	74.1
All Airlines	685	522	76.2	686	522	76.1
Relates to services to and from Brisbane, Melbourne, Sydney and Townsville only.						
<b>Canberra</b>						
Jetstar	73	47	64.4	72	43	59.7
Qantas	23	19	82.6	22	20	90.9
QantasLink	797	634	79.5	793	639	80.6
Rex Airlines	28	23	82.1	28	22	78.6
Virgin Australia	463	395	85.3	465	383	82.4
All Airlines	1,384	1,118	80.8	1,380	1,107	80.2
Relates to services to and from Adelaide, Brisbane, Gold Coast, Melbourne and Sydney only.						
<b>Coffs Harbour</b>						
QantasLink	102	72	70.6	102	78	76.5
Rex Airlines	117	88	75.2	117	80	68.4
All Airlines	219	160	73.1	219	158	72.1
Relates to services to and from Sydney only.						
<b>Darwin</b>						
Jetstar	35	24	68.6	35	21	60.0
Qantas	44	38	86.4	44	41	93.2
QantasLink	48	33	68.8	48	41	85.4
Virgin Australia	52	39	75.0	52	38	73.1
Virgin Australia Regional Airlines	8	6	75.0	8	6	75.0
All Airlines	187	140	74.9	187	147	78.6
Relates to services to and from Brisbane, Melbourne, Perth and Sydney only.						
<b>Dubbo</b>						
QantasLink	93	72	77.4	92	75	81.5
Rex Airlines	125	83	66.4	121	87	71.9
All Airlines	218	155	71.1	213	162	76.1
Relates to services to and from Sydney only.						
<b>Emerald</b>						
QantasLink	106	95	89.6	106	92	86.8
Virgin Australia	24	20	83.3	24	23	95.8
All Airlines	130	115	88.5	130	115	88.5
Relates to services to and from Brisbane only.						

Airport	Arrivals			Departures		
	Sectors Flown	On Time		Sectors Flown	On Time	
		No.	%		No.	%
<b>Gladstone</b>						
QantasLink	123	105	85.4	122	109	89.3
Virgin Australia	48	36	75.0	48	36	75.0
All Airlines	171	141	82.5	170	145	85.3
Relates to services to and from Brisbane only.						
<b>Gold Coast</b>						
Jetstar	396	249	62.9	396	242	61.1
Qantas	116	90	77.6	116	85	73.3
QantasLink	18	11	61.1	18	12	66.7
Rex Airlines	56	44	78.6	56	42	75.0
Virgin Australia	555	396	71.4	556	402	72.3
All Airlines	1,141	790	69.2	1,142	783	68.6
Relates to services to and from Adelaide, Canberra, Melbourne and Sydney only.						
<b>Hamilton Island</b>						
Jetstar	20	17	85.0	20	13	65.0
Qantas	44	29	65.9	44	28	63.6
Virgin Australia	56	44	78.6	56	39	69.6
All Airlines	120	90	75.0	120	80	66.7
Relates to services to and from Brisbane and Sydney only.						
<b>Hobart</b>						
Jetstar	261	151	57.9	261	147	56.3
Qantas	29	24	82.8	29	22	75.9
QantasLink	149	111	74.5	146	105	71.9
Virgin Australia	245	188	76.7	245	174	71.0
All Airlines	684	474	69.3	681	448	65.8
Relates to services to and from Brisbane, Melbourne and Sydney only.						
<b>Kalgoorlie</b>						
Qantas	24	19	79.2	24	12	50.0
QantasLink	42	30	71.4	42	31	73.8
Virgin Australia	36	28	77.8	36	25	69.4
Virgin Australia Regional Airlines	36	25	69.4	36	25	69.4
All Airlines	138	102	73.9	138	93	67.4
Relates to services to and from Perth only.						
<b>Karratha</b>						
Qantas	19	19	100.0	19	17	89.5
QantasLink	109	89	81.7	107	89	83.2
Virgin Australia	21	20	95.2	21	21	100.0
Virgin Australia Regional Airlines	27	17	63.0	27	18	66.7
All Airlines	176	145	82.4	174	145	83.3
Relates to services to and from Perth only.						
<b>Launceston</b>						
Jetstar	151	86	57.0	151	63	41.7
QantasLink	115	82	71.3	112	76	67.9
Virgin Australia	137	107	78.1	137	112	81.8
All Airlines	403	275	68.2	400	251	62.8
Relates to services to and from Brisbane, Melbourne and Sydney only.						

Airport	Arrivals			Departures		
	Sectors Flown	On Time		Sectors Flown	On Time	
		No.	%		No.	%
<b>Mackay</b>						
Jetstar	28	18	64.3	28	14	50.0
Qantas	100	85	85.0	99	83	83.8
QantasLink	8	6	75.0	12	10	83.3
Virgin Australia	126	63	50.0	125	73	58.4
All Airlines	262	172	65.6	264	180	68.2

Relates to services to and from Brisbane only.

### Melbourne

Jetstar	1,189	693	58.3	1,194	658	55.1
Qantas	1,496	1,079	72.1	1,492	1,141	76.5
QantasLink	532	394	74.1	533	433	81.2
Rex Airlines	418	312	74.6	420	340	81.0
Virgin Australia	2,124	1,586	74.7	2,125	1,646	77.5
All Airlines	5,759	4,064	70.6	5,764	4,218	73.2

Relates to services to and from Adelaide, Brisbane, Cairns, Canberra, Darwin, Gold Coast, Hobart, Launceston, Mildura, Newcastle, Perth, Sunshine Coast and Sydney only.

### Mildura

QantasLink	85	63	74.1	86	59	68.6
Rex Airlines	92	48	52.2	90	59	65.6
All Airlines	177	111	62.7	176	118	67.0

Relates to services to and from Melbourne only.

### Mount Isa

Qantas	44	40	90.9	44	38	86.4
QantasLink	4	3	75.0	4	3	75.0
Virgin Australia	12	7	58.3	12	10	83.3
All Airlines	60	50	83.3	60	51	85.0

Relates to services to and from Brisbane only.

### Newcastle

Jetstar	93	67	72.0	93	65	69.9
QantasLink	166	141	84.9	164	146	89.0
Virgin Australia	103	82	79.6	103	88	85.4
All Airlines	362	290	80.1	360	299	83.1

Relates to services to and from Brisbane and Melbourne only.

### Newman

Qantas	12	8	66.7	12	8	66.7
QantasLink	86	72	83.7	85	67	78.8
Virgin Australia	20	16	80.0	20	14	70.0
Virgin Australia Regional Airlines	32	26	81.3	32	26	81.3
All Airlines	150	122	81.3	149	115	77.2

Relates to services to and from Perth only.

### Perth

Jetstar	137	94	68.6	134	48	35.8
Qantas	702	525	74.8	700	531	75.9
QantasLink	388	295	76.0	392	330	84.2
Virgin Australia	510	360	70.6	507	348	68.6
Virgin Australia Regional Airlines	191	129	67.5	191	143	74.9
All Airlines	1,928	1,403	72.8	1,924	1,400	72.8

Relates to services to and from Adelaide, Brisbane, Broome, Darwin, Kalgoorlie, Karratha, Melbourne, Newman, Port Hedland and Sydney only.

Airport	Arrivals			Departures		
	Sectors	On Time		Sectors	On Time	
	Flown	No.	%	Flown	No.	%
<b>Port Hedland</b>						
Qantas	36	30	83.3	36	23	63.9
QantasLink	81	67	82.7	80	54	67.5
Virgin Australia	17	14	82.4	17	7	41.2
Virgin Australia Regional Airlines	31	23	74.2	31	16	51.6
All Airlines	165	134	81.2	164	100	61.0
Relates to services to and from Perth only.						
<b>Port Lincoln</b>						
QantasLink	120	109	90.8	120	113	94.2
Rex Airlines	137	105	76.6	136	105	77.2
All Airlines	257	214	83.3	256	218	85.2
Relates to services to and from Adelaide only.						
<b>Port Macquarie</b>						
QantasLink	97	70	72.2	96	76	79.2
Rex Airlines	92	68	73.9	92	66	71.7
All Airlines	189	138	73.0	188	142	75.5
Relates to services to and from Sydney only.						
<b>Proserpine</b>						
Jetstar	28	18	64.3	28	17	60.7
QantasLink	20	17	85.0	20	16	80.0
Virgin Australia	28	23	82.1	28	18	64.3
All Airlines	76	58	76.3	76	51	67.1
Relates to services to and from Brisbane only.						
<b>Rockhampton</b>						
QantasLink	153	131	85.6	149	120	80.5
Virgin Australia	121	58	47.9	121	80	66.1
All Airlines	274	189	69.0	270	200	74.1
Relates to services to and from Brisbane only.						
<b>Sunshine Coast</b>						
Jetstar	136	83	61.0	134	78	58.2
Qantas	23	21	91.3	24	19	79.2
QantasLink	82	54	65.9	81	65	80.2
Virgin Australia	127	93	73.2	126	98	77.8
All Airlines	368	251	68.2	365	260	71.2
Relates to services to and from Melbourne and Sydney only.						
<b>Sydney</b>						
Jetstar	1,095	613	56.0	1,097	683	62.3
Qantas	1,709	1,210	70.8	1,723	1,142	66.3
QantasLink	1,168	886	75.9	1,179	831	70.5
Rex Airlines	945	657	69.5	950	695	73.2
Virgin Australia	2,096	1,467	70.0	2,093	1,549	74.0
All Airlines	7,013	4,833	68.9	7,042	4,900	69.6

Relates to services to and from Adelaide, Albury, Armidale, Ballina, Brisbane, Cairns, Canberra, Coffs Harbour, Darwin, Dubbo, Gold Coast, Hamilton Island, Hobart, Launceston, Melbourne, Perth, Port Macquarie, Sunshine Coast and Wagga Wagga only.

<i>Airport</i>	<i>Arrivals</i>			<i>Departures</i>		
	<i>Sectors</i>	<i>On Time</i>		<i>Sectors</i>	<i>On Time</i>	
	<i>Flown</i>	<i>No.</i>	<i>%</i>	<i>Flown</i>	<i>No.</i>	<i>%</i>
<b>Townsville</b>						
Jetstar	42	37	88.1	42	35	83.3
Qantas	67	55	82.1	68	56	82.4
QantasLink	160	145	90.6	159	139	87.4
Rex Airlines	11	10	90.9	11	11	100.0
Virgin Australia	128	108	84.4	128	109	85.2
All Airlines	408	355	87.0	408	350	85.8

Relates to services to and from Brisbane and Cairns only.

**Wagga Wagga**

QantasLink	90	74	82.2	90	80	88.9
Rex Airlines	117	85	72.6	113	80	70.8
All Airlines	207	159	76.8	203	160	78.8

Relates to services to and from Sydney only.



## Definitions

---

On time arrival	A flight arrival is counted as "on time" if it arrived at the gate before 15 minutes after the scheduled arrival time shown in the carriers' schedule. Neither diverted nor cancelled flights count as on time.
On time departure	A flight departure is counted as "on time" if it departs the gate before 15 minutes after the scheduled departure time shown in the carriers' schedule.
Cancellation	A flight removed from service within 7 days of scheduled departure is regarded as a cancellation.
On time departure percentage	The percentage of on time departures is measured against the number of departures <i>operated</i> on any particular sector.
On time arrival percentage	The percentage of on time arrivals is measured against the number of arrivals <i>operated</i> on any particular sector.
Cancellation percentage	The percentage of cancellations is measured against the number of services <i>scheduled</i> on any particular sector.

---

## Airlines and Reporting

Data has been gathered since November 2003, although some airlines commenced reporting at a later date, including Jetstar which first reported in May 2004, MacAir in July 2005, Tigerair Australia in April 2008 and Virgin Australia Regional Airlines in May 2013. MacAir ceased operations in February 2009 and data was not received for December 2008 onwards. Tigerair Australia ceased operations in March 2020 and data was not received for that month.

Virgin Blue was rebranded as Virgin Australia in May 2011 and Tiger Airways was rebranded as Tigerair Australia in July 2013 and time series data in Microsoft Excel spread sheet format on the BITRE website have been revised to reflect these changes. With effect from July 2021, Regional Express is reported as Rex Airlines.

Services operated by Skywest on behalf of Virgin Australia using ATR/F100 aircraft commenced in November 2011 and were shown separately as Virgin Australia – ATR/F100 Operations. Virgin Australia Regional Airlines commenced operations in May 2013. It was formed after the acquisition of Skywest by Virgin Australia and represented a combination of operations previously reported under Skywest and Virgin Australia – ATR/F100 Operations. In February 2016, Virgin Australia transferred their ATR fleet from Virgin Australia Regional Airlines to Virgin Australia.