



**Australian Government**

**Department of Infrastructure, Transport,  
Regional Development, Communications and the Arts**  
Bureau of Infrastructure and Transport Research Economics

STATISTICAL REPORT



## Aviation

**Domestic airline on time performance  
February 2025**

The Department of Infrastructure, Transport, Regional Development, Communications and the Arts acknowledges the Traditional Custodians of Country of the land on which we work and live.

We recognise and respect the continuing connections to land, waters and communities.

We pay our respects to them and their cultures and to their Elders both past and present and to all Aboriginal and Torres Strait Islander people.

---

© Commonwealth of Australia 2025

ISSN: 1832-0759

BITRE reference: 2025-033

### **Ownership of intellectual property rights in this publication**

Unless otherwise noted, copyright (and any other intellectual property rights, if any) in this publication is owned by the Commonwealth of Australia (referred to below as the Commonwealth).

### **Disclaimer**

The material contained in this publication is made available on the understanding that the Commonwealth is not providing professional advice, and that users exercise their own skill and care with respect to its use, and seek independent advice if necessary.

The Commonwealth makes no representations or warranties as to the contents or accuracy of the information contained in this publication. To the extent permitted by law, the Commonwealth disclaims liability to any person or organisation in respect of anything done, or omitted to be done, in reliance upon information contained in this publication.

### **Creative Commons licence**

With the exception of (a) the Coat of Arms; and (b) the Department of Infrastructure, Transport, Regional Development, Communications and the Arts' photos and graphics, copyright in this publication is licensed under a Creative Commons Attribution 3.0 Australia Licence.

Creative Commons Attribution 3.0 Australia Licence is a standard form licence agreement that allows you to copy, communicate and adapt this publication provided that you attribute the work to the Commonwealth and abide by the other licence terms. A summary of the licence terms is available from <http://creativecommons.org/licenses/by/3.0/au/deed.en>. The full licence terms are available from <http://creativecommons.org/licenses/by/3.0/au/legalcode>.

### **Use of the Coat of Arms**

The Department of the Prime Minister and Cabinet sets the terms under which the Coat of Arms is used. Please refer to the Department's Commonwealth Coat of Arms and Government branding web page <http://www.dpmc.gov.au/guidelines/index.cfm#brand> and, in particular, the Guidelines on the use of the Commonwealth Coat of Arms publication.

An appropriate citation for this report is:

Bureau of Infrastructure and Transport Research Economics (BITRE), 2025, Domestic airline on time performance, Statistical Report, BITRE, Canberra ACT.

### **Contact us**

All other rights are reserved, including in relation to any Departmental logos or trade marks which may exist. For enquiries regarding the licence and any use of this publication, please contact:

Bureau of Infrastructure and Transport Research Economics (BITRE)  
Department of Infrastructure, Transport, Regional Development, Communications and the Arts  
GPO Box 501, Canberra ACT 2601, Australia  
Telephone: (international) +61 2 6136 8687  
Email: [bitre@infrastructure.gov.au](mailto:bitre@infrastructure.gov.au)  
Website: [www.bitre.gov.au](http://www.bitre.gov.au)

### **Inquiries**

Should you require additional information about the statistics contained in this publication:

Telephone (02) 6136 7250

Electronic mail: [AVSTATS@infrastructure.gov.au](mailto:AVSTATS@infrastructure.gov.au)

Web site: <http://www.bitre.gov.au/statistics/aviation/otphome.aspx>

# Foreword

The Bureau of Infrastructure and Transport Research Economics (BITRE) monitors the punctuality and reliability of major domestic airlines operating between Australian airports. The purpose of this is to allow for evaluation of overall industry and individual airline performance, so that consumers of air travel can make informed decisions.

The following domestic airlines currently report this information monthly to the BITRE: Hinterland, Jetstar, Qantas, QantasLink, Rex Airlines, Skytrans, Virgin Australia and Virgin Australia Regional Airlines.

Information presented in this report is for Australian domestic routes for which the passenger load averaged 8,000 or more passengers per month over the previous six months and where two or more airlines operated in competition on those routes. In order to present data for more routes during the period impacted by COVID-19, the passenger load restriction was not applied between March 2020 and January 2023. From February 2023, the passenger load restriction was reinstated due to the continued recovery of passenger numbers. Data are presented for 59 routes in February 2025. Over time, routes which meet these criteria change as airline networks and traffic levels vary. Participating airlines report their overall monthly network performance where this is possible.

Total industry figures encompass all services operated by reporting airlines only. These airlines collectively carried over 98 per cent of total domestic passengers (regular public transport only) in 2023.

The method of capturing on time performance varies between airlines utilising different recording systems. Jetstar and Qantas jet aircraft use Aircraft Communication Addressing and Reporting System (ACARS) to electronically measure on time performance. Rex Airlines, Virgin Australia, Virgin Australia Regional Airlines and the Qantas non-jet fleet record on time performance manually using records from pilots, gate agents and/or ground crews.

After initial data is collected, aggregate reports are reviewed by participating airlines prior to publication.

Reports and detailed time series data in Microsoft Excel spreadsheet format are available from the BITRE website at: <http://www.bitre.gov.au/statistics/aviation/otphome.aspx>



# Contents

	Page
Industry performance .....	1
Individual routes .....	10
Airports.....	22
Definitions .....	28
Airlines and Reporting .....	29

# Industry performance

For February 2025, on time performance over all routes operated by participating airlines (Hinterland, Jetstar, Qantas, QantasLink, Rex Airlines, Skytrans, Virgin Australia and Virgin Australia Regional Airlines) averaged 80.3 per cent for on time arrivals and 80.5 per cent for on time departures. The cancellation rate for the month was 2.6 per cent. The equivalent figures for February 2024 were 73.0 per cent for on time arrivals, 74.5 per cent for on time departures and 4.0 per cent for cancellations.

This month's on time arrivals figure was lower than the long term average performance for all routes (80.7 per cent) and the on time departures figure was also lower than the long term average (81.8 per cent). The rate of cancellations was higher than the long term average of 2.2 per cent.

The Virgin Australia network (Virgin Australia and Virgin Australia Regional Airlines combined operations) recorded 81.9 per cent for on time arrivals while the Qantas network (Qantas and QantasLink combined operations) recorded 81.3 per cent. Skytrans achieved the highest on time arrivals at 86.5 per cent, followed by Qantas at 82.2 per cent, Virgin Australia and Hinterland at 82.0 per cent, QantasLink at 80.7 per cent, Rex Airlines at 77.0 per cent, Jetstar at 76.1 per cent and Virgin Australia Regional Airlines at 75.5 per cent.

The Virgin Australia network recorded 82.7 per cent for on time departures while the Qantas network recorded 81.2 per cent. Hinterland achieved the highest level of on time departures for February 2025 at 88.1 per cent, followed by Skytrans at 86.5 per cent, Virgin Australia at 82.9 per cent, Qantas at 82.3 per cent, QantasLink at 80.5 per cent, Rex Airlines at 80.1 per cent, Virgin Australia Regional Airlines at 73.6 per cent and Jetstar at 73.5 per cent.

Skytrans recorded the highest percentage of cancellations at 8.9 per cent during the month, followed by QantasLink at 4.1 per cent, Qantas at 2.8 per cent, Virgin Australia Regional Airlines at 2.7 per cent, Hinterland and Rex Airlines at 1.7 per cent, Jetstar at 1.6 per cent and Virgin Australia at 1.5 per cent.

Airlines' on time performance varies across the routes they serve. Individual route data by specific airline for 59 routes are shown on pages 10-21.

Of the 59 routes which met the criteria for on time performance reporting in February 2025, the Ayers Rock-Melbourne and Melbourne-Ayers Rock routes had the highest percentage of on time arrivals (96.6 per cent), while the Gladstone-Brisbane route had the highest percentage of on time departures (94.0 per cent). The Port Hedland-Perth route had the lowest percentage of on time arrivals (53.9 per cent) and the lowest percentage of on time departures (55.2 per cent).

Cancellations were highest on the Port Hedland-Perth route at 12.2 per cent, followed by the Perth-Port Hedland route at 11.1 per cent, the Proserpine-Brisbane route at 9.2 per cent, the Brisbane-Proserpine route at 6.7 per cent, the Canberra-Sydney route at 6.3 per cent and the Canberra-Melbourne route at 5.6 per cent.

Ayers Rock Airport recorded the highest percentage of on time arrivals (96.6 per cent), while Gladstone Airport had the highest percentage of on time departures (94.0 per cent). Broome Airport recorded the lowest percentage of on time arrivals (68.8 per cent), while Port Hedland Airport had the lowest percentage of on time departures (55.2 per cent). These figures only refer to reported routes and do not cover all flights at these airports.

Table 1 On time performance for February 2025 — Total Industry

	<i>Sectors</i>		<i>Arrivals On Time</i>		<i>Departures On Time</i>		<i>Cancellations</i>	
	<i>Scheduled</i>	<i>Flown</i>	<i>No.</i>	<i>%</i>	<i>No.</i>	<i>%</i>	<i>No.</i>	<i>%</i>
Hinterland	1,210	1,189	975	82.0	1,048	88.1	21	1.7
Jetstar	6,570	6,465	4,921	76.1	4,754	73.5	105	1.6
Qantas - all QF designated services	17,537	16,910	13,744	81.3	13,733	81.2	627	3.6
Rex Airlines	3,987	3,919	3,019	77.0	3,138	80.1	68	1.7
Skytrans	766	698	604	86.5	604	86.5	68	8.9
Virgin Australia - all VA designated services	10,809	10,645	8,716	81.9	8,801	82.7	164	1.5
All Airlines	40,879	39,826	31,979	80.3	32,078	80.5	1,053	2.6
Individual operating entities								
Qantas	7,009	6,810	5,596	82.2	5,603	82.3	199	2.8
QantasLink	10,528	10,100	8,148	80.7	8,130	80.5	428	4.1
Virgin Australia	10,587	10,429	8,553	82.0	8,642	82.9	158	1.5
Virgin Australia Regional Airlines	222	216	163	75.5	159	73.6	6	2.7

Total airline network data (including routes not shown in this report).

Airlines’ on time performance varies across the routes they serve. Individual route data by specific airline are shown on page 10 and onwards.

Table 2 Top ten routes for on time performance for February 2025 (participating airlines only)

<i>Arrivals</i>		<i>Departures</i>	
<i>Route</i>	<i>On Time (%)</i>	<i>Route</i>	<i>On Time (%)</i>
Ayers Rock-Melbourne	96.6	Gladstone-Brisbane	94.0
Melbourne-Ayers Rock	96.6	Ayers Rock-Melbourne	93.1
Adelaide-Gold Coast	92.9	Emerald-Brisbane	93.1
Gold Coast-Canberra	92.5	Mount Isa-Brisbane	92.9
Emerald-Brisbane	92.3	Gold Coast-Canberra	90.0
Gladstone-Brisbane	91.9	Brisbane-Gladstone	89.9
Brisbane-Emerald	91.5	Adelaide-Gold Coast	89.3
Brisbane-Gladstone	90.6	Perth-Newman	88.5
Brisbane-Darwin	90.3	Melbourne-Darwin	87.9
Darwin-Perth	90.2	Darwin-Perth	87.8

Table 3 Top ten airports for on time performance for February 2025 (participating airlines and reported routes only)

<i>Arrivals</i>		<i>Departures</i>	
<i>Airport</i>	<i>On Time (%)</i>	<i>Airport</i>	<i>On Time (%)</i>
Ayers Rock	96.6	Gladstone	94.0
Emerald	91.5	Ayers Rock	93.1
Gladstone	90.6	Emerald	93.1
Alice Springs	88.6	Mount Isa	92.9
Newman	86.6	Port Lincoln	87.0
Darwin	86.0	Rockhampton	84.8
Port Lincoln	85.7	Devonport	84.8
Wagga Wagga	85.5	Alice Springs	84.1
Devonport	84.9	Coffs Harbour	83.8
Coffs Harbour	84.8	Darwin	83.2



## Total industry on time performance

Figure 1 On time performance (by month from Feb 2022)—Total Industry

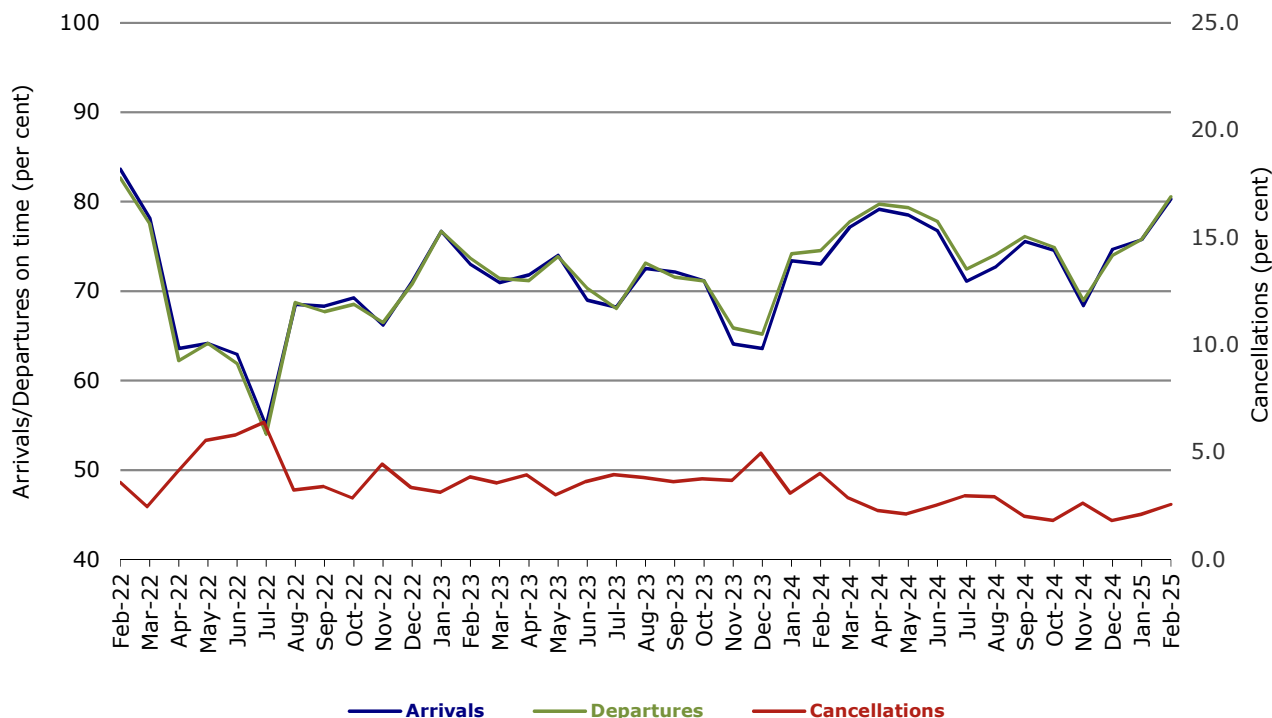


Figure 2 Arrivals on time (by month from Feb 2024)

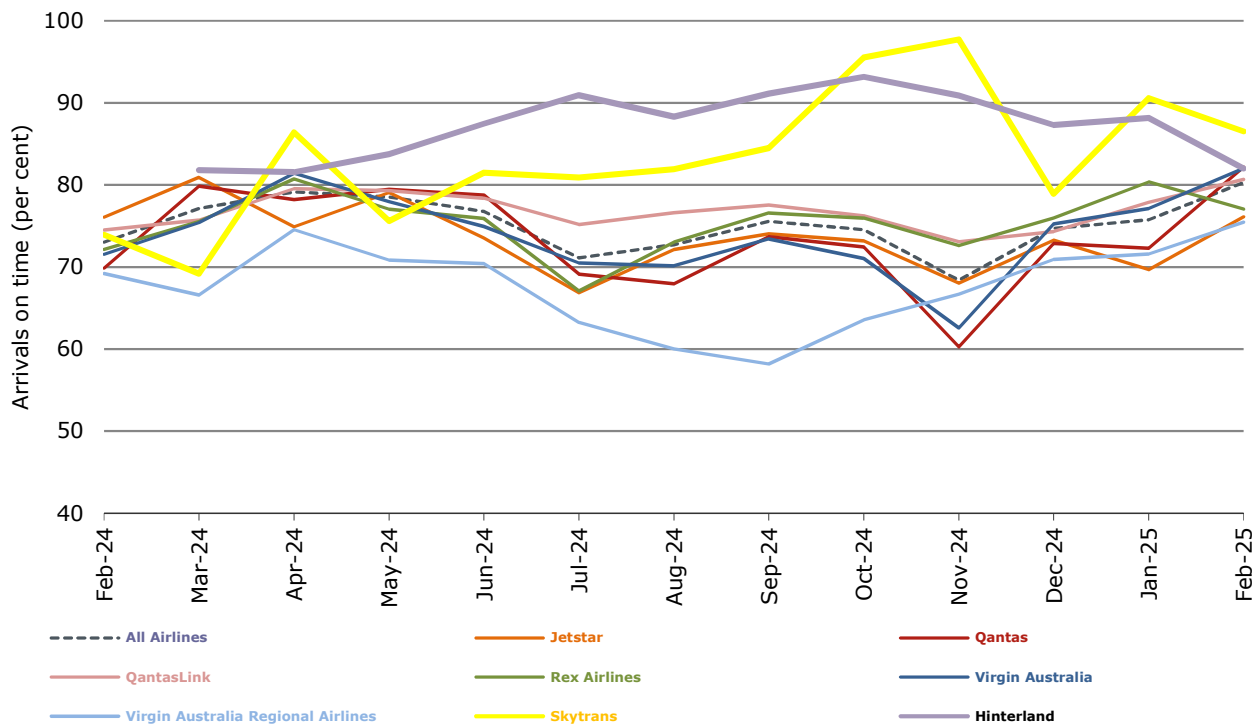


Figure 3 Departures on time (by month from Feb 2024)

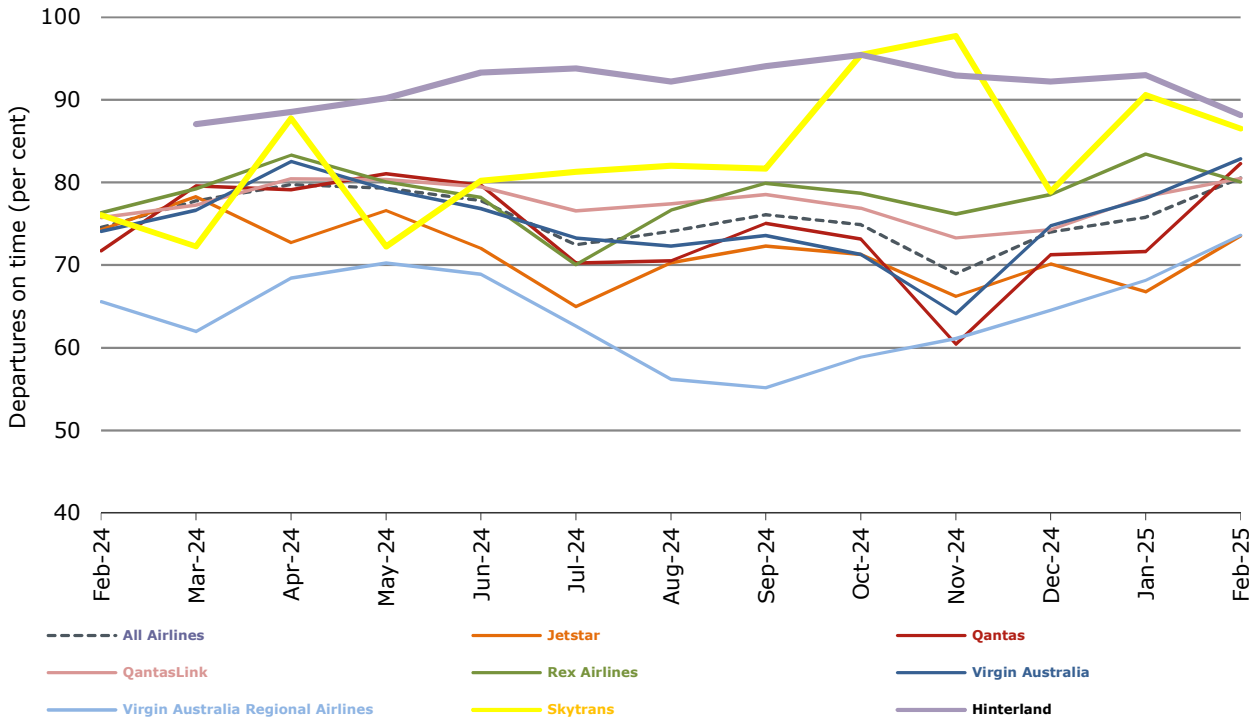
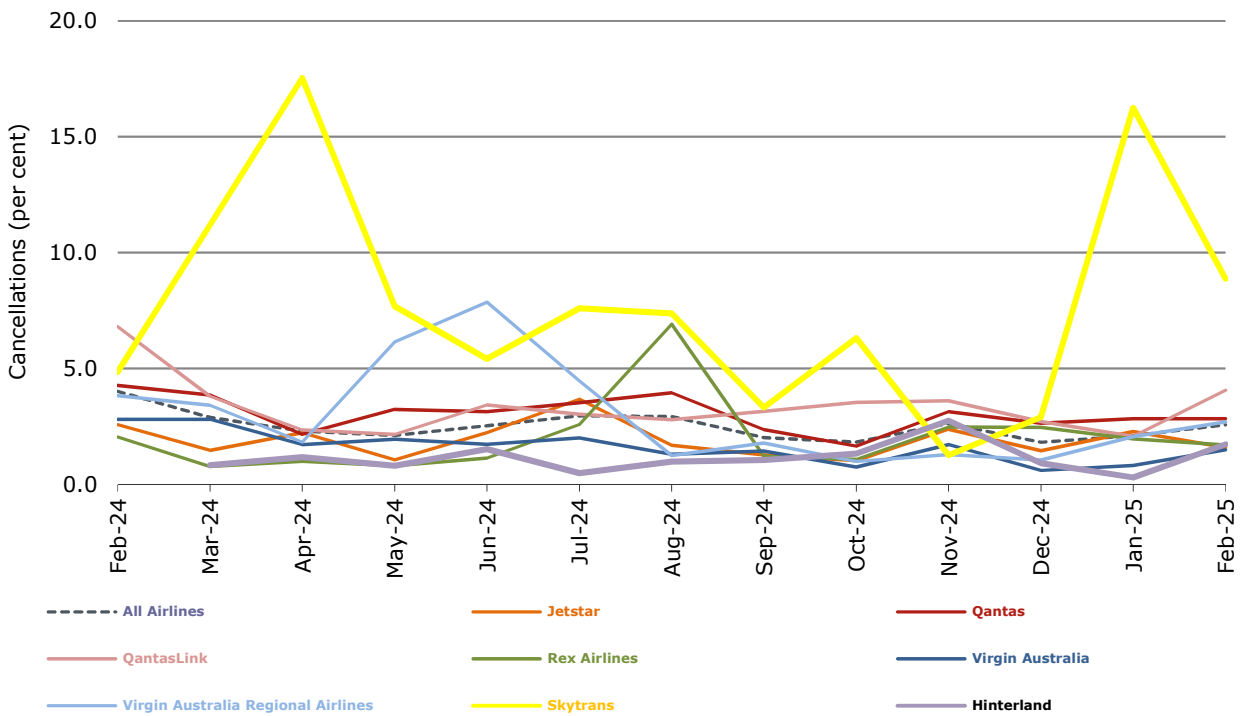


Figure 4 Cancellations (by month from Feb 2024)



## Airlines on time performance

Figure 5 On time performance (by month from Feb 2022)—Jetstar

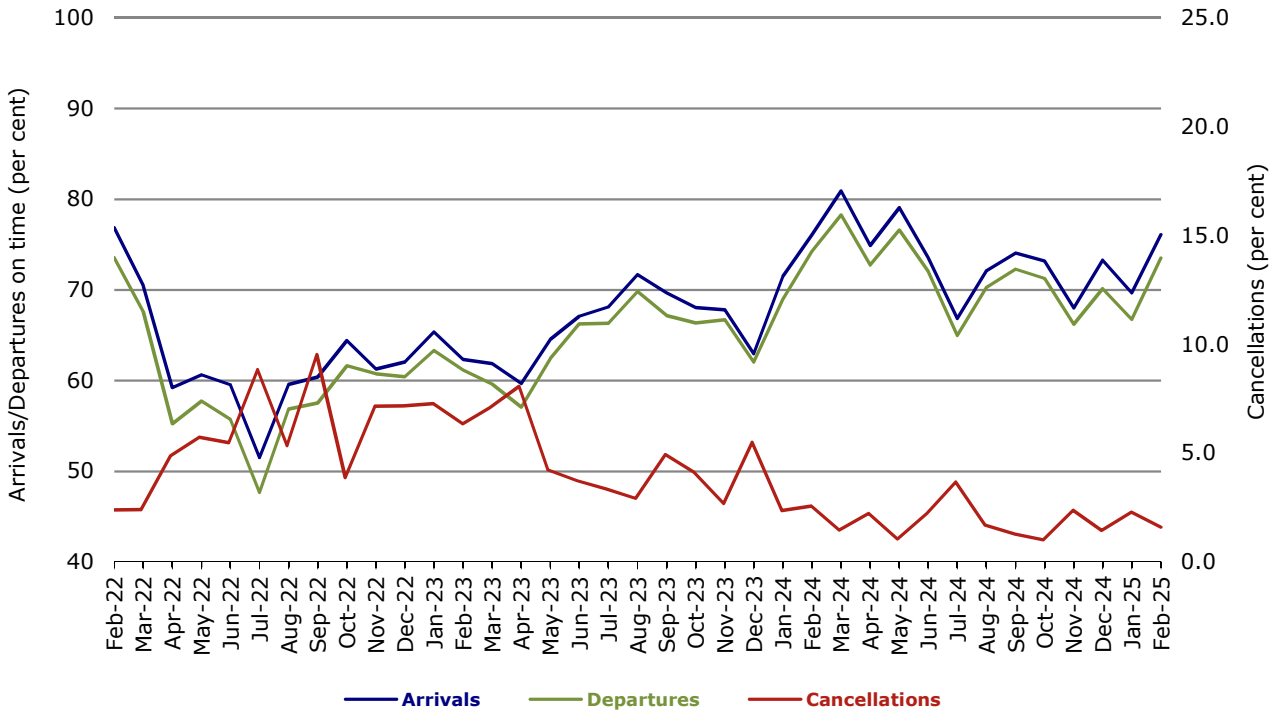


Figure 6 On time performance (by month from Feb 2022)—Qantas

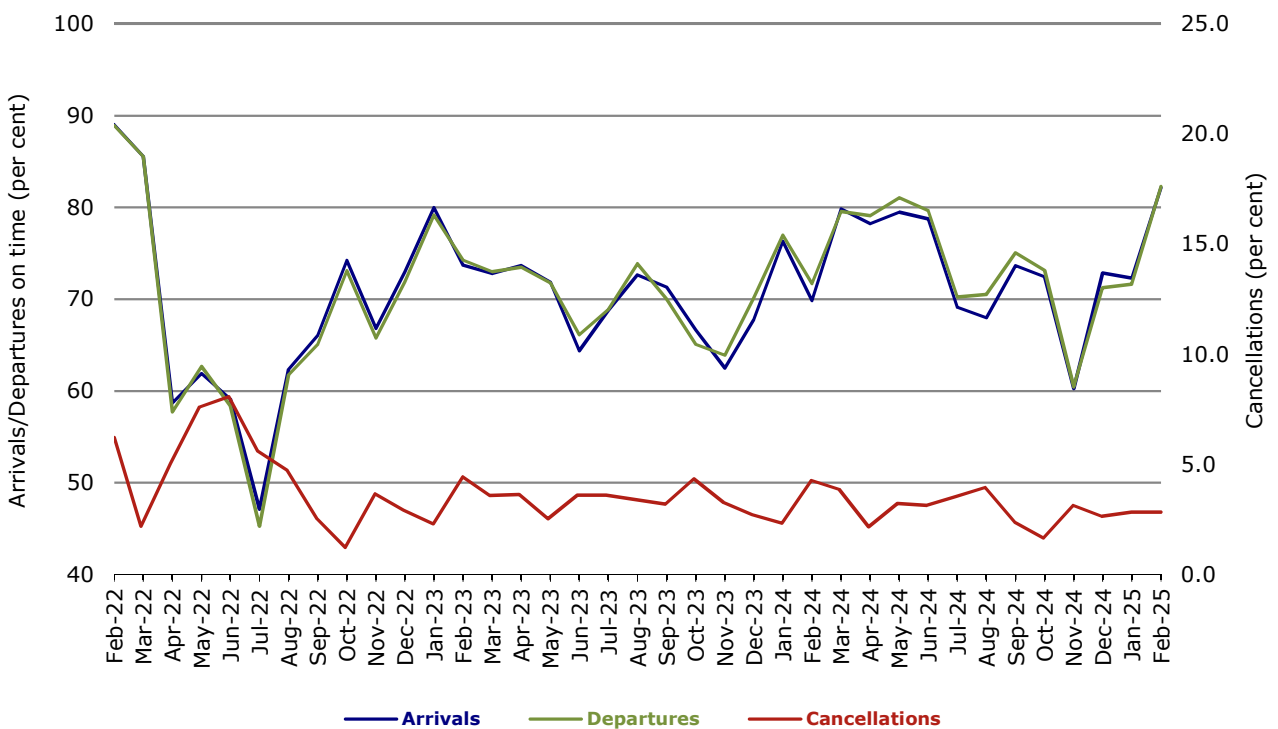


Figure 7 On time performance (by month from Feb 2022)—Virgin Australia

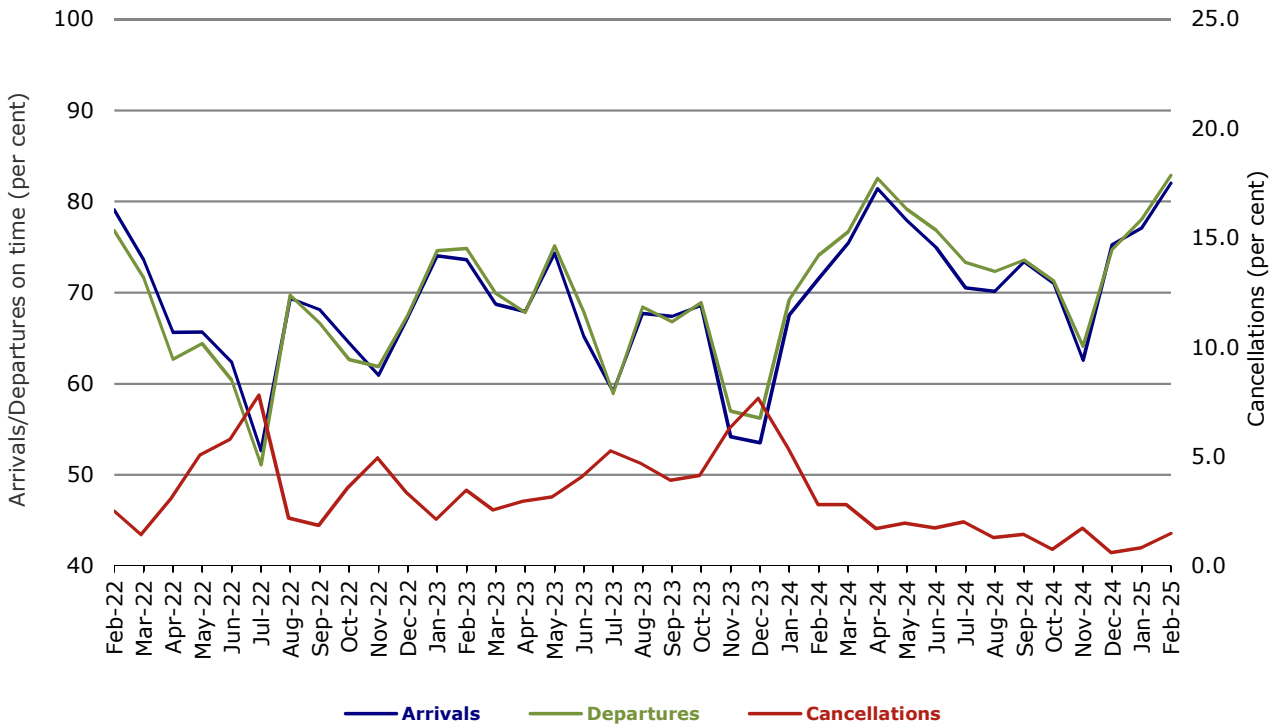


Figure 8 On time performance (by month from Feb 2022)—QantasLink

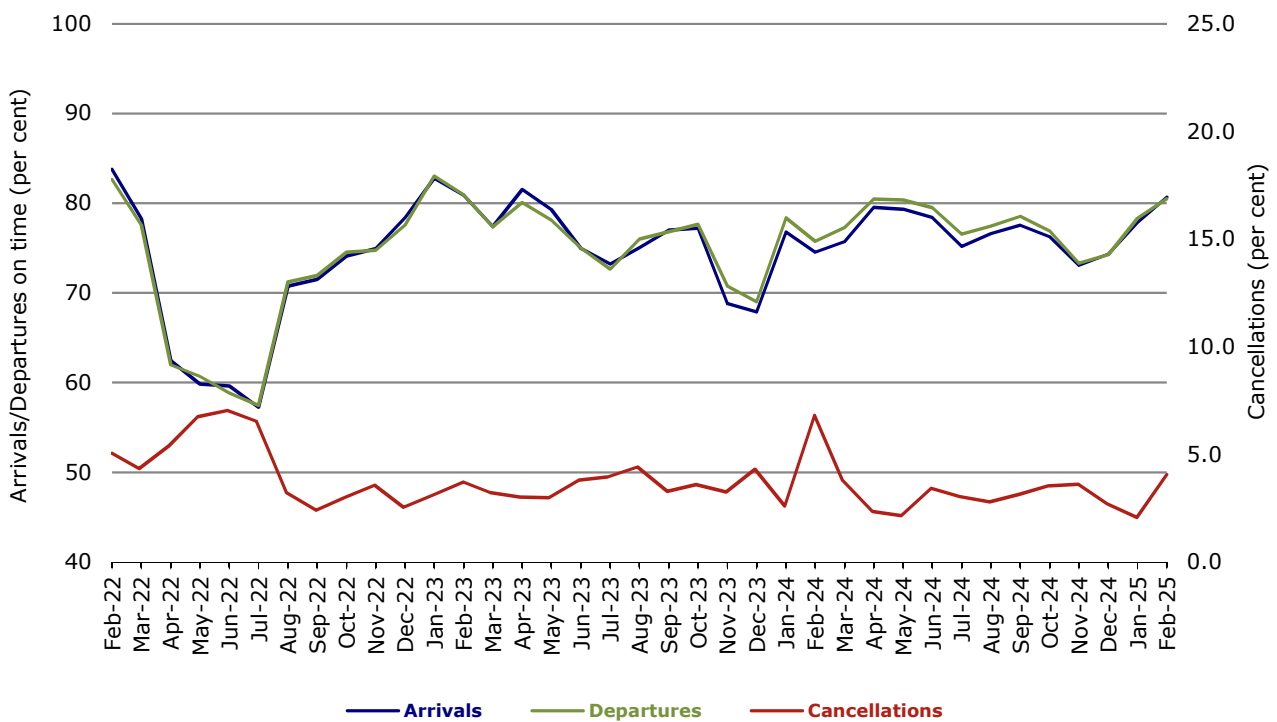


Figure 9 On time performance (by month from Feb 2022)—Rex Airlines

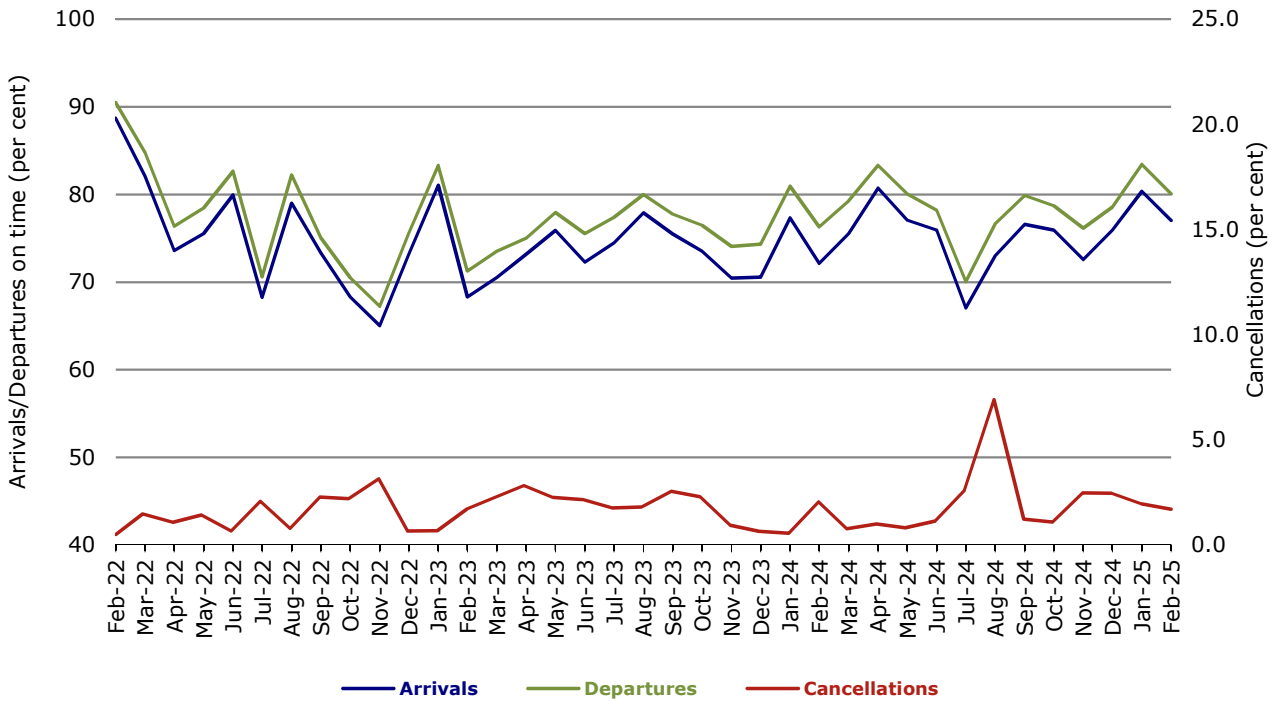


Figure 10 On time performance (by month from Feb 2022)—Virgin Australia Regional Airlines

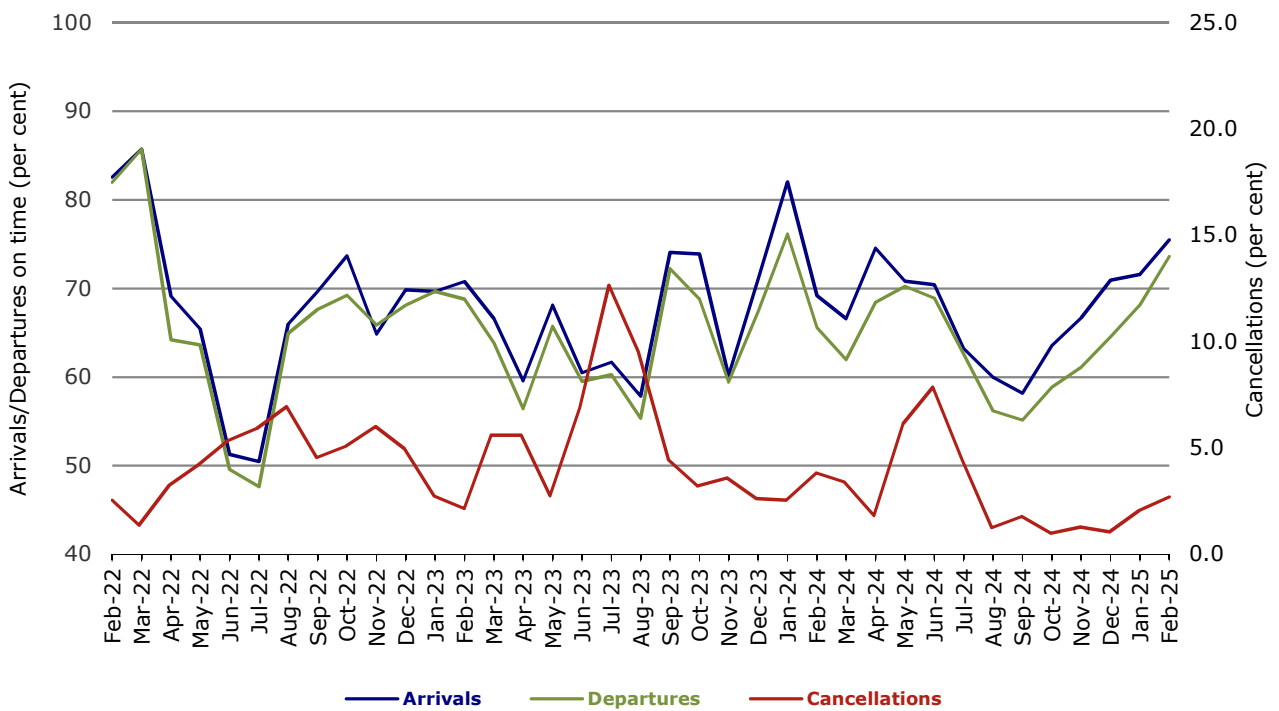
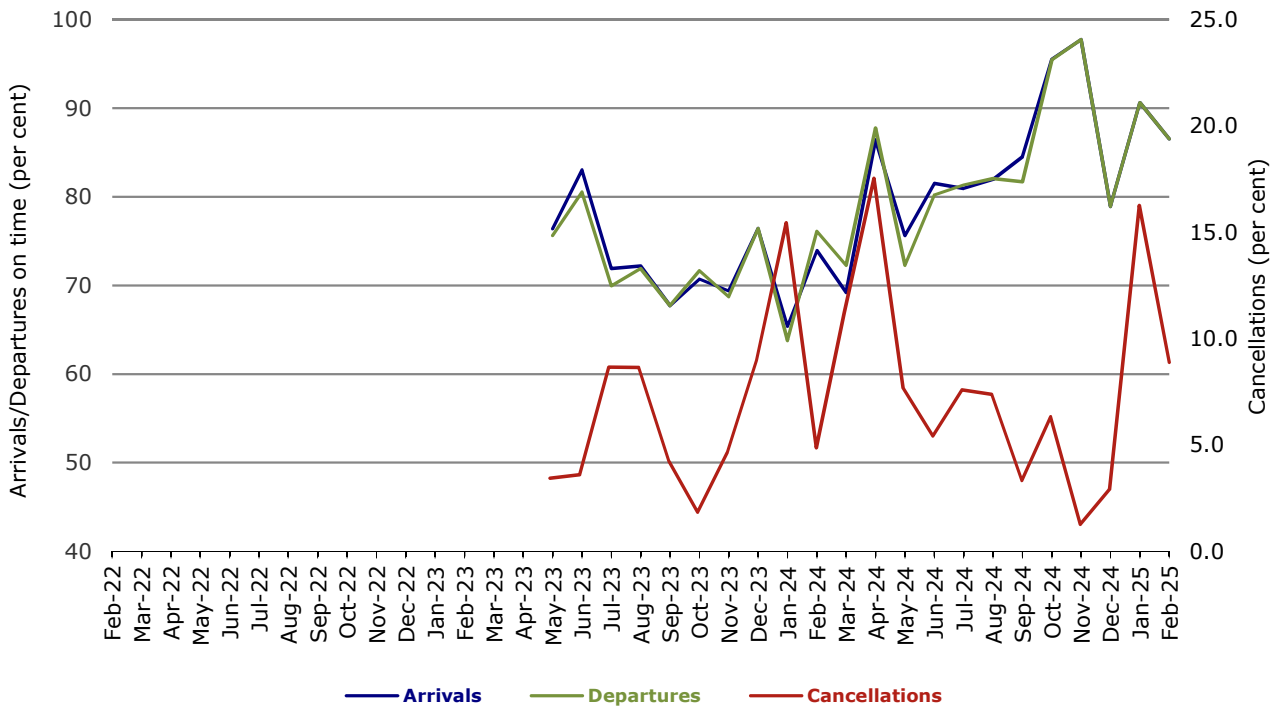
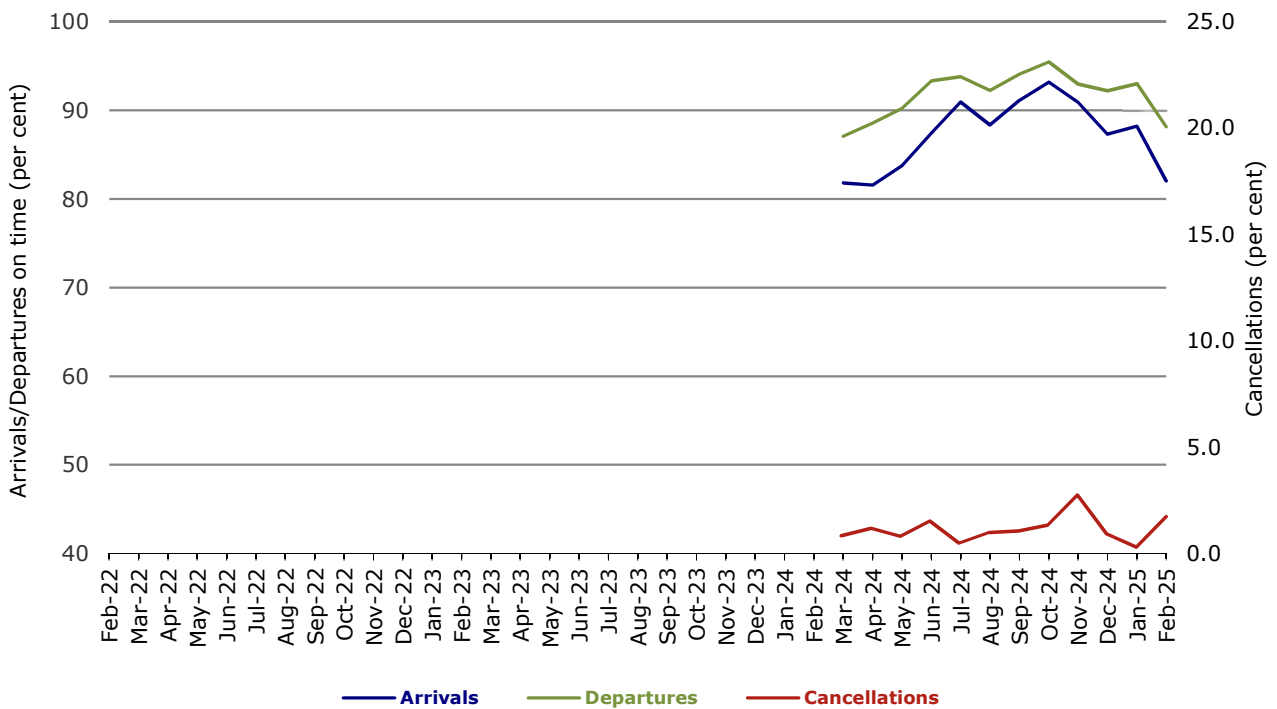


Figure 11 On time performance (by month from Feb 2022)—Skytrans



Note: Skytrans data included from May 2023

Figure 12 On time performance (by month from Feb 2022)—Hinterland



Note: Hinterland data included from March 2024

## Individual routes

On time performance is reported for all routes where the passenger load averages over 8,000 passengers per month over the previous six months, and where two or more airlines operate in competition on those routes. There are now 59 routes for which data are presented.

	Sectors		Arrivals On Time		Departures On Time		Cancellations	
	Sched.	Flown	No.	%	No.	%	No.	%
<b>Adelaide-Alice Springs</b>								
QantasLink	32	32	29	90.6	27	84.4	0	0.0
Virgin Australia	12	12	10	83.3	10	83.3	0	0.0
All Airlines	44	44	39	88.6	37	84.1	0	0.0
<b>Adelaide-Brisbane</b>								
Jetstar	32	32	23	71.9	19	59.4	0	0.0
QantasLink	164	161	132	82.0	132	82.0	3	1.8
Virgin Australia	109	109	101	92.7	99	90.8	0	0.0
All Airlines	305	302	256	84.8	250	82.8	3	1.0
<b>Adelaide-Canberra</b>								
QantasLink	84	84	71	84.5	71	84.5	0	0.0
Virgin Australia	16	16	13	81.3	13	81.3	0	0.0
All Airlines	100	100	84	84.0	84	84.0	0	0.0
<b>Adelaide-Gold Coast</b>								
Jetstar	28	28	26	92.9	26	92.9	0	0.0
Virgin Australia	28	28	26	92.9	24	85.7	0	0.0
All Airlines	56	56	52	92.9	50	89.3	0	0.0
<b>Adelaide-Melbourne</b>								
Jetstar	127	126	107	84.9	99	78.6	1	0.8
Qantas	230	223	189	84.8	186	83.4	7	3.0
Virgin Australia	243	242	197	81.4	192	79.3	1	0.4
All Airlines	600	591	493	83.4	477	80.7	9	1.5
<b>Adelaide-Perth</b>								
Jetstar	16	16	10	62.5	11	68.8	0	0.0
Qantas	88	87	79	90.8	83	95.4	1	1.1
Virgin Australia	64	64	46	71.9	47	73.4	0	0.0
Virgin Australia Regional Airlines	4	4	2	50.0	3	75.0	0	0.0
All Airlines	172	171	137	80.1	144	84.2	1	0.6
<b>Adelaide-Port Lincoln</b>								
QantasLink	94	93	83	89.2	80	86.0	1	1.1
Rex Airlines	141	138	115	83.3	116	84.1	3	2.1
All Airlines	235	231	198	85.7	196	84.8	4	1.7
<b>Adelaide-Sydney</b>								
Jetstar	112	108	75	69.4	74	68.5	4	3.6
Qantas	227	222	202	91.0	197	88.7	5	2.2
Virgin Australia	146	145	124	85.5	120	82.8	1	0.7
All Airlines	485	475	401	84.4	391	82.3	10	2.1
<b>Albury-Sydney</b>								
QantasLink	86	84	66	78.6	60	71.4	2	2.3
Rex Airlines	64	63	49	77.8	51	81.0	1	1.6
All Airlines	150	147	115	78.2	111	75.5	3	2.0

	Sectors		Arrivals On Time		Departures On Time		Cancellations	
	Sched.	Flown	No.	%	No.	%	No.	%
<b>Alice Springs-Adelaide</b>								
QantasLink	32	32	30	93.8	29	90.6	0	0.0
Virgin Australia	12	12	8	66.7	8	66.7	0	0.0
All Airlines	44	44	38	86.4	37	84.1	0	0.0
<b>Ayers Rock-Melbourne</b>								
Jetstar	17	17	17	100.0	16	94.1	0	0.0
Virgin Australia	12	12	11	91.7	11	91.7	0	0.0
All Airlines	29	29	28	96.6	27	93.1	0	0.0
<b>Ballina-Sydney</b>								
Jetstar	72	72	60	83.3	61	84.7	0	0.0
QantasLink	36	36	25	69.4	28	77.8	0	0.0
Virgin Australia	36	36	31	86.1	29	80.6	0	0.0
All Airlines	144	144	116	80.6	118	81.9	0	0.0
<b>Brisbane-Adelaide</b>								
Jetstar	32	32	22	68.8	20	62.5	0	0.0
QantasLink	165	162	133	82.1	130	80.2	3	1.8
Virgin Australia	109	109	99	90.8	90	82.6	0	0.0
All Airlines	306	303	254	83.8	240	79.2	3	1.0
<b>Brisbane-Cairns</b>								
Jetstar	73	73	44	60.3	43	58.9	0	0.0
Qantas	25	25	23	92.0	23	92.0	0	0.0
QantasLink	122	119	85	71.4	83	69.7	3	2.5
Virgin Australia	125	124	104	83.9	95	76.6	1	0.8
All Airlines	345	341	256	75.1	244	71.6	4	1.2
<b>Brisbane-Canberra</b>								
Jetstar	28	28	18	64.3	19	67.9	0	0.0
QantasLink	144	140	118	84.3	118	84.3	4	2.8
Virgin Australia	98	94	73	77.7	68	72.3	4	4.1
All Airlines	270	262	209	79.8	205	78.2	8	3.0
<b>Brisbane-Darwin</b>								
Jetstar	16	16	11	68.8	8	50.0	0	0.0
Qantas	28	28	28	100.0	25	89.3	0	0.0
Virgin Australia	28	28	26	92.9	25	89.3	0	0.0
All Airlines	72	72	65	90.3	58	80.6	0	0.0
<b>Brisbane-Emerald</b>								
QantasLink	108	106	97	91.5	90	84.9	2	1.9
Virgin Australia	24	24	22	91.7	21	87.5	0	0.0
All Airlines	132	130	119	91.5	111	85.4	2	1.5
<b>Brisbane-Gladstone</b>								
QantasLink	120	117	106	90.6	104	88.9	3	2.5
Virgin Australia	32	32	29	90.6	30	93.8	0	0.0
All Airlines	152	149	135	90.6	134	89.9	3	2.0
<b>Brisbane-Hamilton Island</b>								
QantasLink	20	19	15	78.9	16	84.2	1	5.0
Virgin Australia	29	28	21	75.0	22	78.6	1	3.4
All Airlines	49	47	36	76.6	38	80.9	2	4.1



	Sectors		Arrivals On Time		Departures On Time		Cancellations	
	Sched.	Flown	No.	%	No.	%	No.	%
<b>Brisbane-Hobart</b>								
Jetstar	28	28	22	78.6	23	82.1	0	0.0
QantasLink	16	16	13	81.3	12	75.0	0	0.0
Virgin Australia	36	36	28	77.8	26	72.2	0	0.0
All Airlines	80	80	63	78.8	61	76.3	0	0.0
<b>Brisbane-Launceston</b>								
Jetstar	20	20	12	60.0	9	45.0	0	0.0
Virgin Australia	16	16	13	81.3	13	81.3	0	0.0
All Airlines	36	36	25	69.4	22	61.1	0	0.0
<b>Brisbane-Mackay</b>								
Jetstar	28	27	13	48.1	13	48.1	1	3.6
Qantas	92	88	75	85.2	73	83.0	4	4.3
QantasLink	16	14	11	78.6	11	78.6	2	12.5
Virgin Australia	116	112	91	81.3	79	70.5	4	3.4
All Airlines	252	241	190	78.8	176	73.0	11	4.4
<b>Brisbane-Melbourne</b>								
Jetstar	112	110	84	76.4	80	72.7	2	1.8
Qantas	309	301	243	80.7	244	81.1	8	2.6
QantasLink	54	52	41	78.8	41	78.8	2	3.7
Virgin Australia	362	358	269	75.1	281	78.5	4	1.1
All Airlines	837	821	637	77.6	646	78.7	16	1.9
<b>Brisbane-Mount Isa</b>								
QantasLink	88	88	71	80.7	69	78.4	0	0.0
Virgin Australia	12	12	11	91.7	10	83.3	0	0.0
All Airlines	100	100	82	82.0	79	79.0	0	0.0
<b>Brisbane-Newcastle</b>								
Jetstar	48	47	36	76.6	35	74.5	1	2.1
QantasLink	78	78	66	84.6	66	84.6	0	0.0
Virgin Australia	72	72	53	73.6	53	73.6	0	0.0
All Airlines	198	197	155	78.7	154	78.2	1	0.5
<b>Brisbane-Perth</b>								
Jetstar	24	24	17	70.8	12	50.0	0	0.0
Qantas	152	150	127	84.7	131	87.3	2	1.3
Virgin Australia	120	118	94	79.7	93	78.8	2	1.7
All Airlines	296	292	238	81.5	236	80.8	4	1.4
<b>Brisbane-Proserpine</b>								
Jetstar	29	27	19	70.4	20	74.1	2	6.9
QantasLink	16	15	10	66.7	10	66.7	1	6.3
Virgin Australia	30	28	26	92.9	26	92.9	2	6.7
All Airlines	75	70	55	78.6	56	80.0	5	6.7
<b>Brisbane-Rockhampton</b>								
QantasLink	165	163	134	82.2	143	87.7	2	1.2
Virgin Australia	143	143	100	69.9	111	77.6	0	0.0
All Airlines	308	306	234	76.5	254	83.0	2	0.6
<b>Brisbane-Sydney</b>								
Jetstar	182	176	111	63.1	119	67.6	6	3.3
Qantas	476	462	382	82.7	394	85.3	14	2.9
QantasLink	13	12	9	75.0	12	100.0	1	7.7
Virgin Australia	427	417	330	79.1	351	84.2	10	2.3
All Airlines	1 098	1 067	832	78.0	876	82.1	31	2.8

	Sectors		Arrivals On Time		Departures On Time		Cancellations	
	Sched.	Flown	No.	%	No.	%	No.	%
<b>Brisbane-Townsville</b>								
Jetstar	55	54	31	57.4	26	48.1	1	1.8
Qantas	24	22	20	90.9	19	86.4	2	8.3
QantasLink	132	126	105	83.3	107	84.9	6	4.5
Virgin Australia	121	118	85	72.0	93	78.8	3	2.5
All Airlines	332	320	241	75.3	245	76.6	12	3.6
<b>Broome-Perth</b>								
QantasLink	68	66	31	47.0	34	51.5	2	2.9
Virgin Australia	35	35	27	77.1	28	80.0	0	0.0
Virgin Australia Regional Airlines	13	13	11	84.6	9	69.2	0	0.0
All Airlines	116	114	69	60.5	71	62.3	2	1.7
<b>Cairns-Brisbane</b>								
Jetstar	73	73	49	67.1	49	67.1	0	0.0
Qantas	25	25	23	92.0	23	92.0	0	0.0
QantasLink	122	119	83	69.7	77	64.7	3	2.5
Virgin Australia	126	126	100	79.4	92	73.0	0	0.0
All Airlines	346	343	255	74.3	241	70.3	3	0.9
<b>Cairns-Melbourne</b>								
Jetstar	64	63	50	79.4	46	73.0	1	1.6
Qantas	28	27	26	96.3	24	88.9	1	3.6
Virgin Australia	39	38	36	94.7	37	97.4	1	2.6
All Airlines	131	128	112	87.5	107	83.6	3	2.3
<b>Cairns-Sydney</b>								
Jetstar	71	71	59	83.1	60	84.5	0	0.0
Qantas	32	32	28	87.5	28	87.5	0	0.0
Virgin Australia	56	56	47	83.9	46	82.1	0	0.0
All Airlines	159	159	134	84.3	134	84.3	0	0.0
<b>Canberra-Adelaide</b>								
QantasLink	84	84	71	84.5	69	82.1	0	0.0
Virgin Australia	16	16	14	87.5	14	87.5	0	0.0
All Airlines	100	100	85	85.0	83	83.0	0	0.0
<b>Canberra-Brisbane</b>								
Jetstar	28	27	18	66.7	17	63.0	1	3.6
QantasLink	144	137	106	77.4	107	78.1	7	4.9
Virgin Australia	98	94	79	84.0	77	81.9	4	4.1
All Airlines	270	258	203	78.7	201	77.9	12	4.4
<b>Canberra-Gold Coast</b>								
Jetstar	12	12	9	75.0	8	66.7	0	0.0
Virgin Australia	28	28	26	92.9	26	92.9	0	0.0
All Airlines	40	40	35	87.5	34	85.0	0	0.0
<b>Canberra-Melbourne</b>								
Jetstar	28	28	22	78.6	22	78.6	0	0.0
Qantas	53	52	49	94.2	44	84.6	1	1.9
QantasLink	124	112	82	73.2	75	67.0	12	9.7
Virgin Australia	116	111	104	93.7	104	93.7	5	4.3
All Airlines	321	303	257	84.8	245	80.9	18	5.6
<b>Canberra-Sydney</b>								
Qantas	40	39	36	92.3	35	89.7	1	2.5
QantasLink	370	339	257	75.8	257	75.8	31	8.4
Virgin Australia	230	222	191	86.0	187	84.2	8	3.5
All Airlines	640	600	484	80.7	479	79.8	40	6.3

	Sectors		Arrivals On Time		Departures On Time		Cancellations	
	Sched.	Flown	No.	%	No.	%	No.	%
<b>Coffs Harbour-Sydney</b>								
Qantas	47	47	40	85.1	41	87.2	0	0.0
QantasLink	27	25	23	92.0	23	92.0	2	7.4
Rex Airlines	71	70	50	71.4	55	78.6	1	1.4
All Airlines	145	142	113	79.6	119	83.8	3	2.1
<b>Darwin-Brisbane</b>								
Jetstar	16	16	12	75.0	12	75.0	0	0.0
Qantas	28	28	18	64.3	24	85.7	0	0.0
Virgin Australia	29	28	23	82.1	24	85.7	1	3.4
All Airlines	73	72	53	73.6	60	83.3	1	1.4
<b>Darwin-Melbourne</b>								
Jetstar	18	16	14	87.5	12	75.0	2	11.1
Qantas	28	28	26	92.9	24	85.7	0	0.0
Virgin Australia	16	16	10	62.5	12	75.0	0	0.0
All Airlines	62	60	50	83.3	48	80.0	2	3.2
<b>Darwin-Perth</b>								
Qantas	28	28	28	100.0	28	100.0	0	0.0
Virgin Australia Regional Airlines	13	13	9	69.2	8	61.5	0	0.0
All Airlines	41	41	37	90.2	36	87.8	0	0.0
<b>Devonport-Melbourne</b>								
QantasLink	88	86	70	81.4	71	82.6	2	2.3
Rex Airlines	40	39	34	87.2	35	89.7	1	2.5
All Airlines	128	125	104	83.2	106	84.8	3	2.3
<b>Dubbo-Sydney</b>								
QantasLink	99	97	79	81.4	78	80.4	2	2.0
Rex Airlines	94	88	71	80.7	72	81.8	6	6.4
All Airlines	193	185	150	81.1	150	81.1	8	4.1
<b>Emerald-Brisbane</b>								
QantasLink	108	106	98	92.5	98	92.5	2	1.9
Virgin Australia	24	24	22	91.7	23	95.8	0	0.0
All Airlines	132	130	120	92.3	121	93.1	2	1.5
<b>Gladstone-Brisbane</b>								
QantasLink	120	117	106	90.6	108	92.3	3	2.5
Virgin Australia	32	32	31	96.9	32	100.0	0	0.0
All Airlines	152	149	137	91.9	140	94.0	3	2.0
<b>Gold Coast-Adelaide</b>								
Jetstar	28	28	25	89.3	24	85.7	0	0.0
Virgin Australia	28	28	23	82.1	23	82.1	0	0.0
All Airlines	56	56	48	85.7	47	83.9	0	0.0
<b>Gold Coast-Canberra</b>								
Jetstar	12	12	10	83.3	10	83.3	0	0.0
Virgin Australia	28	28	27	96.4	26	92.9	0	0.0
All Airlines	40	40	37	92.5	36	90.0	0	0.0

	Sectors		Arrivals On Time		Departures On Time		Cancellations	
	Sched.	Flown	No.	%	No.	%	No.	%
<b>Gold Coast-Melbourne</b>								
Jetstar	188	185	144	77.8	135	73.0	3	1.6
Qantas	38	37	30	81.1	28	75.7	1	2.6
Virgin Australia	230	228	191	83.8	188	82.5	2	0.9
All Airlines	456	450	365	81.1	351	78.0	6	1.3
<b>Gold Coast-Sydney</b>								
Jetstar	176	175	144	82.3	144	82.3	1	0.6
Qantas	84	84	57	67.9	56	66.7	0	0.0
Virgin Australia	263	260	211	81.2	213	81.9	3	1.1
All Airlines	523	519	412	79.4	413	79.6	4	0.8
<b>Hamilton Island-Brisbane</b>								
QantasLink	20	19	16	84.2	16	84.2	1	5.0
Virgin Australia	28	27	21	77.8	21	77.8	1	3.6
All Airlines	48	46	37	80.4	37	80.4	2	4.2
<b>Hamilton Island-Sydney</b>								
Jetstar	16	16	13	81.3	13	81.3	0	0.0
Qantas	29	27	22	81.5	20	74.1	2	6.9
Virgin Australia	29	28	15	53.6	15	53.6	1	3.4
All Airlines	74	71	50	70.4	48	67.6	3	4.1
<b>Hobart-Brisbane</b>								
Jetstar	28	28	15	53.6	17	60.7	0	0.0
QantasLink	16	16	10	62.5	9	56.3	0	0.0
Virgin Australia	36	36	27	75.0	28	77.8	0	0.0
All Airlines	80	80	52	65.0	54	67.5	0	0.0
<b>Hobart-Melbourne</b>								
Jetstar	150	150	88	58.7	91	60.7	0	0.0
Qantas	43	42	34	81.0	33	78.6	1	2.3
QantasLink	66	63	46	73.0	45	71.4	3	4.5
Virgin Australia	112	112	97	86.6	95	84.8	0	0.0
All Airlines	371	367	265	72.2	264	71.9	4	1.1
<b>Hobart-Sydney</b>								
Jetstar	80	78	56	71.8	57	73.1	2	2.5
Qantas	20	20	16	80.0	17	85.0	0	0.0
QantasLink	60	54	43	79.6	41	75.9	6	10.0
Virgin Australia	73	72	56	77.8	59	81.9	1	1.4
All Airlines	233	224	171	76.3	174	77.7	9	3.9
<b>Kalgoorlie-Perth</b>								
Qantas	12	12	12	100.0	10	83.3	0	0.0
QantasLink	60	57	42	73.7	39	68.4	3	5.0
Virgin Australia	75	72	46	63.9	50	69.4	3	4.0
Virgin Australia Regional Airlines	21	20	12	60.0	13	65.0	1	4.8
All Airlines	168	161	112	69.6	112	69.6	7	4.2
<b>Karratha-Perth</b>								
Qantas	7	7	5	71.4	6	85.7	0	0.0
QantasLink	142	136	95	69.9	103	75.7	6	4.2
Virgin Australia	59	57	40	70.2	46	80.7	2	3.4
Virgin Australia Regional Airlines	13	12	10	83.3	10	83.3	1	7.7
All Airlines	221	212	150	70.8	165	77.8	9	4.1
<b>Launceston-Brisbane</b>								
Jetstar	21	21	9	42.9	12	57.1	0	0.0
Virgin Australia	16	16	13	81.3	12	75.0	0	0.0
All Airlines	37	37	22	59.5	24	64.9	0	0.0

	Sectors		Arrivals On Time		Departures On Time		Cancellations	
	Sched.	Flown	No.	%	No.	%	No.	%
<b>Launceston-Melbourne</b>								
Jetstar	100	100	70	70.0	71	71.0	0	0.0
QantasLink	54	53	40	75.5	40	75.5	1	1.9
Virgin Australia	84	84	74	88.1	70	83.3	0	0.0
All Airlines	238	237	184	77.6	181	76.4	1	0.4
<b>Launceston-Sydney</b>								
Jetstar	28	28	23	82.1	22	78.6	0	0.0
QantasLink	28	27	24	88.9	21	77.8	1	3.6
Virgin Australia	28	28	18	64.3	17	60.7	0	0.0
All Airlines	84	83	65	78.3	60	72.3	1	1.2
<b>Mackay-Brisbane</b>								
Jetstar	28	27	13	48.1	11	40.7	1	3.6
Qantas	92	87	77	88.5	78	89.7	5	5.4
QantasLink	20	17	12	70.6	14	82.4	3	15.0
Virgin Australia	116	111	87	78.4	86	77.5	5	4.3
All Airlines	256	242	189	78.1	189	78.1	14	5.5
<b>Melbourne-Adelaide</b>								
Jetstar	127	126	107	84.9	105	83.3	1	0.8
Qantas	230	227	196	86.3	188	82.8	3	1.3
Virgin Australia	243	243	185	76.1	207	85.2	0	0.0
All Airlines	600	596	488	81.9	500	83.9	4	0.7
<b>Melbourne-Ayers Rock</b>								
Jetstar	17	17	17	100.0	15	88.2	0	0.0
Virgin Australia	12	12	11	91.7	9	75.0	0	0.0
All Airlines	29	29	28	96.6	24	82.8	0	0.0
<b>Melbourne-Brisbane</b>								
Jetstar	113	111	74	66.7	72	64.9	2	1.8
Qantas	309	296	238	80.4	232	78.4	13	4.2
QantasLink	54	52	42	80.8	40	76.9	2	3.7
Virgin Australia	373	367	300	81.7	313	85.3	6	1.6
All Airlines	849	826	654	79.2	657	79.5	23	2.7
<b>Melbourne-Cairns</b>								
Jetstar	65	63	49	77.8	46	73.0	2	3.1
Qantas	27	27	24	88.9	27	100.0	0	0.0
Virgin Australia	39	39	38	97.4	37	94.9	0	0.0
All Airlines	131	129	111	86.0	110	85.3	2	1.5
<b>Melbourne-Canberra</b>								
Jetstar	28	28	25	89.3	24	85.7	0	0.0
Qantas	53	53	44	83.0	43	81.1	0	0.0
QantasLink	124	116	84	72.4	85	73.3	8	6.5
Virgin Australia	116	112	104	92.9	103	92.0	4	3.4
All Airlines	321	309	257	83.2	255	82.5	12	3.7
<b>Melbourne-Darwin</b>								
Jetstar	16	15	13	86.7	13	86.7	1	6.3
Qantas	28	28	25	89.3	25	89.3	0	0.0
Virgin Australia	15	15	13	86.7	13	86.7	0	0.0
All Airlines	59	58	51	87.9	51	87.9	1	1.7
<b>Melbourne-Devonport</b>								
QantasLink	88	87	71	81.6	74	85.1	1	1.1
Rex Airlines	40	39	36	92.3	36	92.3	1	2.5
All Airlines	128	126	107	84.9	110	87.3	2	1.6

	Sectors		Arrivals On Time		Departures On Time		Cancellations	
	Sched.	Flown	No.	%	No.	%	No.	%
<b>Melbourne-Gold Coast</b>								
Jetstar	188	186	138	74.2	135	72.6	2	1.1
Qantas	38	37	33	89.2	32	86.5	1	2.6
Virgin Australia	230	230	199	86.5	201	87.4	0	0.0
All Airlines	456	453	370	81.7	368	81.2	3	0.7
<b>Melbourne-Hobart</b>								
Jetstar	150	150	115	76.7	112	74.7	0	0.0
Qantas	43	42	38	90.5	38	90.5	1	2.3
QantasLink	66	63	50	79.4	49	77.8	3	4.5
Virgin Australia	112	112	98	87.5	98	87.5	0	0.0
All Airlines	371	367	301	82.0	297	80.9	4	1.1
<b>Melbourne-Launceston</b>								
Jetstar	100	100	81	81.0	78	78.0	0	0.0
QantasLink	54	53	39	73.6	38	71.7	1	1.9
Virgin Australia	84	84	75	89.3	74	88.1	0	0.0
All Airlines	238	237	195	82.3	190	80.2	1	0.4
<b>Melbourne-Mildura</b>								
QantasLink	74	73	48	65.8	49	67.1	1	1.4
Rex Airlines	96	95	79	83.2	80	84.2	1	1.0
All Airlines	170	168	127	75.6	129	76.8	2	1.2
<b>Melbourne-Newcastle</b>								
Jetstar	52	52	36	69.2	35	67.3	0	0.0
QantasLink	48	47	28	59.6	28	59.6	1	2.1
Virgin Australia	40	40	36	90.0	31	77.5	0	0.0
All Airlines	140	139	100	71.9	94	67.6	1	0.7
<b>Melbourne-Perth</b>								
Jetstar	69	67	59	88.1	62	92.5	2	2.9
Qantas	180	179	122	68.2	125	69.8	1	0.6
Virgin Australia	194	194	152	78.4	159	82.0	0	0.0
All Airlines	443	440	333	75.7	346	78.6	3	0.7
<b>Melbourne-Sunshine Coast</b>								
Jetstar	65	65	50	76.9	48	73.8	0	0.0
Qantas	27	27	21	77.8	24	88.9	0	0.0
Virgin Australia	67	67	60	89.6	61	91.0	0	0.0
All Airlines	159	159	131	82.4	133	83.6	0	0.0
<b>Melbourne-Sydney</b>								
Jetstar	410	402	308	76.6	299	74.4	8	2.0
Qantas	788	744	566	76.1	609	81.9	44	5.6
Virgin Australia	686	668	518	77.5	565	84.6	18	2.6
All Airlines	1 884	1 814	1 392	76.7	1 473	81.2	70	3.7
<b>Mildura-Melbourne</b>								
QantasLink	74	72	51	70.8	53	73.6	2	2.7
Rex Airlines	96	95	74	77.9	80	84.2	1	1.0
All Airlines	170	167	125	74.9	133	79.6	3	1.8
<b>Mount Isa-Brisbane</b>								
QantasLink	88	86	76	88.4	81	94.2	2	2.3
Virgin Australia	12	12	9	75.0	10	83.3	0	0.0
All Airlines	100	98	85	86.7	91	92.9	2	2.0

	Sectors		Arrivals On Time		Departures On Time		Cancellations	
	Sched.	Flown	No.	%	No.	%	No.	%
<b>Newcastle-Brisbane</b>								
Jetstar	50	47	39	83.0	36	76.6	3	6.0
QantasLink	78	78	67	85.9	69	88.5	0	0.0
Virgin Australia	72	72	55	76.4	57	79.2	0	0.0
All Airlines	200	197	161	81.7	162	82.2	3	1.5
<b>Newcastle-Melbourne</b>								
Jetstar	52	52	37	71.2	33	63.5	0	0.0
QantasLink	48	48	41	85.4	43	89.6	0	0.0
Virgin Australia	40	40	36	90.0	37	92.5	0	0.0
All Airlines	140	140	114	81.4	113	80.7	0	0.0
<b>Newman-Perth</b>								
Qantas	8	8	8	100.0	8	100.0	0	0.0
QantasLink	101	96	65	67.7	65	67.7	5	5.0
Virgin Australia	40	40	25	62.5	28	70.0	0	0.0
Virgin Australia Regional Airlines	12	12	7	58.3	8	66.7	0	0.0
All Airlines	161	156	105	67.3	109	69.9	5	3.1
<b>Perth-Adelaide</b>								
Jetstar	16	16	12	75.0	10	62.5	0	0.0
Qantas	88	87	80	92.0	80	92.0	1	1.1
Virgin Australia	64	64	47	73.4	51	79.7	0	0.0
Virgin Australia Regional Airlines	4	4	3	75.0	3	75.0	0	0.0
All Airlines	172	171	142	83.0	144	84.2	1	0.6
<b>Perth-Brisbane</b>								
Jetstar	25	24	14	58.3	14	58.3	1	4.0
Qantas	152	150	132	88.0	129	86.0	2	1.3
Virgin Australia	117	116	85	73.3	86	74.1	1	0.9
All Airlines	294	290	231	79.7	229	79.0	4	1.4
<b>Perth-Broome</b>								
QantasLink	67	64	36	56.3	45	70.3	3	4.5
Virgin Australia	35	35	30	85.7	29	82.9	0	0.0
Virgin Australia Regional Airlines	13	13	11	84.6	10	76.9	0	0.0
All Airlines	115	112	77	68.8	84	75.0	3	2.6
<b>Perth-Darwin</b>								
Qantas	28	28	23	82.1	23	82.1	0	0.0
Virgin Australia Regional Airlines	13	13	8	61.5	10	76.9	0	0.0
All Airlines	41	41	31	75.6	33	80.5	0	0.0
<b>Perth-Kalgoorlie</b>								
Qantas	12	12	10	83.3	11	91.7	0	0.0
QantasLink	60	57	39	68.4	40	70.2	3	5.0
Virgin Australia	75	72	50	69.4	60	83.3	3	4.0
Virgin Australia Regional Airlines	21	20	14	70.0	15	75.0	1	4.8
All Airlines	168	161	113	70.2	126	78.3	7	4.2
<b>Perth-Karratha</b>								
Qantas	7	7	6	85.7	6	85.7	0	0.0
QantasLink	144	138	101	73.2	112	81.2	6	4.2
Virgin Australia	59	57	48	84.2	51	89.5	2	3.4
Virgin Australia Regional Airlines	13	12	11	91.7	10	83.3	1	7.7
All Airlines	223	214	166	77.6	179	83.6	9	4.0
<b>Perth-Melbourne</b>								
Jetstar	68	64	58	90.6	54	84.4	4	5.9
Qantas	181	179	142	79.3	130	72.6	2	1.1
Virgin Australia	206	205	166	81.0	167	81.5	1	0.5
All Airlines	455	448	366	81.7	351	78.3	7	1.5

	Sectors		Arrivals On Time		Departures On Time		Cancellations	
	Sched.	Flown	No.	%	No.	%	No.	%
<b>Perth-Newman</b>								
Qantas	8	8	8	100.0	8	100.0	0	0.0
QantasLink	98	97	81	83.5	83	85.6	1	1.0
Virgin Australia	40	40	37	92.5	38	95.0	0	0.0
Virgin Australia Regional Airlines	12	12	10	83.3	10	83.3	0	0.0
All Airlines	158	157	136	86.6	139	88.5	1	0.6
<b>Perth-Port Hedland</b>								
QantasLink	134	118	89	75.4	97	82.2	16	11.9
Virgin Australia	45	41	31	75.6	33	80.5	4	8.9
Virgin Australia Regional Airlines	11	10	9	90.0	9	90.0	1	9.1
All Airlines	190	169	129	76.3	139	82.2	21	11.1
<b>Perth-Sydney</b>								
Jetstar	45	43	34	79.1	27	62.8	2	4.4
Qantas	188	184	146	79.3	139	75.5	4	2.1
Virgin Australia	160	160	139	86.9	133	83.1	0	0.0
All Airlines	393	387	319	82.4	299	77.3	6	1.5
<b>Port Hedland-Perth</b>								
QantasLink	132	114	65	57.0	63	55.3	18	13.6
Virgin Australia	45	41	17	41.5	21	51.2	4	8.9
Virgin Australia Regional Airlines	11	10	7	70.0	7	70.0	1	9.1
All Airlines	188	165	89	53.9	91	55.2	23	12.2
<b>Port Lincoln-Adelaide</b>								
QantasLink	95	94	88	93.6	86	91.5	1	1.1
Rex Airlines	141	137	116	84.7	115	83.9	4	2.8
All Airlines	236	231	204	88.3	201	87.0	5	2.1
<b>Port Macquarie-Sydney</b>								
QantasLink	96	91	73	80.2	77	84.6	5	5.2
Rex Airlines	49	46	36	78.3	37	80.4	3	6.1
All Airlines	145	137	109	79.6	114	83.2	8	5.5
<b>Proserpine-Brisbane</b>								
Jetstar	30	26	16	61.5	15	57.7	4	13.3
QantasLink	16	15	9	60.0	9	60.0	1	6.3
Virgin Australia	30	28	23	82.1	22	78.6	2	6.7
All Airlines	76	69	48	69.6	46	66.7	7	9.2
<b>Rockhampton-Brisbane</b>								
QantasLink	165	160	142	88.8	140	87.5	5	3.0
Virgin Australia	143	143	107	74.8	117	81.8	0	0.0
All Airlines	308	303	249	82.2	257	84.8	5	1.6
<b>Sunshine Coast-Melbourne</b>								
Jetstar	65	65	48	73.8	42	64.6	0	0.0
Qantas	28	28	18	64.3	19	67.9	0	0.0
Virgin Australia	67	67	63	94.0	61	91.0	0	0.0
All Airlines	160	160	129	80.6	122	76.3	0	0.0
<b>Sunshine Coast-Sydney</b>								
Jetstar	84	83	62	74.7	59	71.1	1	1.2
Qantas	52	52	42	80.8	42	80.8	0	0.0
Virgin Australia	56	56	41	73.2	47	83.9	0	0.0
All Airlines	192	191	145	75.9	148	77.5	1	0.5



	Sectors		Arrivals On Time		Departures On Time		Cancellations	
	Sched.	Flown	No.	%	No.	%	No.	%
<b>Sydney-Adelaide</b>								
Jetstar	112	107	70	65.4	68	63.6	5	4.5
Qantas	228	223	198	88.8	193	86.5	5	2.2
Virgin Australia	146	146	121	82.9	119	81.5	0	0.0
All Airlines	486	476	389	81.7	380	79.8	10	2.1
<b>Sydney-Albury</b>								
QantasLink	86	85	62	72.9	58	68.2	1	1.2
Rex Airlines	63	62	50	80.6	49	79.0	1	1.6
All Airlines	149	147	112	76.2	107	72.8	2	1.3
<b>Sydney-Ballina</b>								
Jetstar	72	72	63	87.5	65	90.3	0	0.0
QantasLink	36	36	30	83.3	31	86.1	0	0.0
Virgin Australia	36	36	29	80.6	30	83.3	0	0.0
All Airlines	144	144	122	84.7	126	87.5	0	0.0
<b>Sydney-Brisbane</b>								
Jetstar	184	178	122	68.5	117	65.7	6	3.3
Qantas	482	466	378	81.1	375	80.5	16	3.3
QantasLink	13	12	7	58.3	7	58.3	1	7.7
Virgin Australia	420	411	352	85.6	352	85.6	9	2.1
All Airlines	1 099	1 067	859	80.5	851	79.8	32	2.9
<b>Sydney-Cairns</b>								
Jetstar	72	72	57	79.2	58	80.6	0	0.0
Qantas	32	32	29	90.6	27	84.4	0	0.0
Virgin Australia	56	56	51	91.1	52	92.9	0	0.0
All Airlines	160	160	137	85.6	137	85.6	0	0.0
<b>Sydney-Canberra</b>								
Qantas	40	39	35	89.7	35	89.7	1	2.5
QantasLink	370	344	262	76.2	264	76.7	26	7.0
Virgin Australia	230	222	196	88.3	186	83.8	8	3.5
All Airlines	640	605	493	81.5	485	80.2	35	5.5
<b>Sydney-Coffs Harbour</b>								
Qantas	47	47	41	87.2	41	87.2	0	0.0
QantasLink	28	26	22	84.6	21	80.8	2	7.1
Rex Airlines	73	72	60	83.3	57	79.2	1	1.4
All Airlines	148	145	123	84.8	119	82.1	3	2.0
<b>Sydney-Dubbo</b>								
QantasLink	99	97	81	83.5	77	79.4	2	2.0
Rex Airlines	92	87	71	81.6	67	77.0	5	5.4
All Airlines	191	184	152	82.6	144	78.3	7	3.7
<b>Sydney-Gold Coast</b>								
Jetstar	175	172	150	87.2	144	83.7	3	1.7
Qantas	83	83	60	72.3	60	72.3	0	0.0
Virgin Australia	263	260	225	86.5	229	88.1	3	1.1
All Airlines	521	515	435	84.5	433	84.1	6	1.2
<b>Sydney-Hamilton Island</b>								
Jetstar	16	16	13	81.3	14	87.5	0	0.0
Qantas	27	26	21	80.8	21	80.8	1	3.7
Virgin Australia	28	28	20	71.4	24	85.7	0	0.0
All Airlines	71	70	54	77.1	59	84.3	1	1.4

	Sectors		Arrivals On Time		Departures On Time		Cancellations	
	Sched.	Flown	No.	%	No.	%	No.	%
<b>Sydney-Hobart</b>								
Jetstar	79	78	64	82.1	65	83.3	1	1.3
Qantas	19	19	15	78.9	11	57.9	0	0.0
QantasLink	60	55	46	83.6	40	72.7	5	8.3
Virgin Australia	73	72	63	87.5	66	91.7	1	1.4
All Airlines	231	224	188	83.9	182	81.3	7	3.0
<b>Sydney-Launceston</b>								
Jetstar	28	28	23	82.1	19	67.9	0	0.0
QantasLink	28	28	17	60.7	14	50.0	0	0.0
Virgin Australia	28	28	24	85.7	21	75.0	0	0.0
All Airlines	84	84	64	76.2	54	64.3	0	0.0
<b>Sydney-Melbourne</b>								
Jetstar	411	402	307	76.4	281	69.9	9	2.2
Qantas	785	740	609	82.3	606	81.9	45	5.7
Virgin Australia	681	663	568	85.7	547	82.5	18	2.6
All Airlines	1 877	1 805	1 484	82.2	1 434	79.4	72	3.8
<b>Sydney-Perth</b>								
Jetstar	45	44	34	77.3	32	72.7	1	2.2
Qantas	188	186	123	66.1	138	74.2	2	1.1
Virgin Australia	172	172	145	84.3	145	84.3	0	0.0
All Airlines	405	402	302	75.1	315	78.4	3	0.7
<b>Sydney-Port Macquarie</b>								
QantasLink	95	91	68	74.7	65	71.4	4	4.2
Rex Airlines	47	44	36	81.8	34	77.3	3	6.4
All Airlines	142	135	104	77.0	99	73.3	7	4.9
<b>Sydney-Sunshine Coast</b>								
Jetstar	84	83	64	77.1	61	73.5	1	1.2
Qantas	52	52	40	76.9	38	73.1	0	0.0
Virgin Australia	56	56	48	85.7	49	87.5	0	0.0
All Airlines	192	191	152	79.6	148	77.5	1	0.5
<b>Sydney-Wagga Wagga</b>								
QantasLink	98	96	88	91.7	86	89.6	2	2.0
Rex Airlines	77	76	59	77.6	56	73.7	1	1.3
All Airlines	175	172	147	85.5	142	82.6	3	1.7
<b>Townsville-Brisbane</b>								
Jetstar	57	54	29	53.7	27	50.0	3	5.3
Qantas	24	22	19	86.4	19	86.4	2	8.3
QantasLink	132	126	113	89.7	114	90.5	6	4.5
Virgin Australia	121	117	91	77.8	95	81.2	4	3.3
All Airlines	334	319	252	79.0	255	79.9	15	4.5
<b>Wagga Wagga-Sydney</b>								
QantasLink	98	94	88	93.6	84	89.4	4	4.1
Rex Airlines	75	73	49	67.1	54	74.0	2	2.7
All Airlines	173	167	137	82.0	138	82.6	6	3.5

## Airports

The following data reports by airport against flights operated on published routes only. This month, 8 major city airports and 28 regional city airports are covered.

Airport	Arrivals			Departures		
	Sectors	On Time		Sectors	On Time	
	Flown	No.	%	Flown	No.	%
<b>Adelaide</b>						
Jetstar	309	236	76.4	310	229	73.9
Qantas	537	474	88.3	532	466	87.6
QantasLink	372	322	86.6	370	310	83.8
Rex Airlines	137	116	84.7	138	116	84.1
Virgin Australia	618	497	80.4	616	505	82.0
Virgin Australia Regional Airlines	4	3	75.0	4	3	75.0
All Airlines	1,977	1,648	83.4	1,970	1,629	82.7

Relates to services to and from Alice Springs, Brisbane, Canberra, Gold Coast, Melbourne, Perth, Port Lincoln and Sydney only.

### Albury

QantasLink	85	62	72.9	84	60	71.4
Rex Airlines	62	50	80.6	63	51	81.0
All Airlines	147	112	76.2	147	111	75.5

Relates to services to and from Sydney only.

### Alice Springs

QantasLink	32	29	90.6	32	29	90.6
Virgin Australia	12	10	83.3	12	8	66.7
All Airlines	44	39	88.6	44	37	84.1

Relates to services to and from Adelaide only.

### Ayers Rock

Jetstar	17	17	100.0	17	16	94.1
Virgin Australia	12	11	91.7	12	11	91.7
All Airlines	29	28	96.6	29	27	93.1

Relates to services to and from Melbourne only.

### Ballina

Jetstar	72	63	87.5	72	61	84.7
QantasLink	36	30	83.3	36	28	77.8
Virgin Australia	36	29	80.6	36	29	80.6
All Airlines	144	122	84.7	144	118	81.9

Relates to services to and from Sydney only.

### Brisbane

Jetstar	664	433	65.2	662	427	64.5
Qantas	1,074	885	82.4	1,076	909	84.5
QantasLink	1,221	1,019	83.5	1,227	1,012	82.5
Virgin Australia	1,869	1,526	81.6	1,869	1,487	79.6
All Airlines	4,828	3,863	80.0	4,834	3,835	79.3

Relates to services to and from Adelaide, Cairns, Canberra, Darwin, Emerald, Gladstone, Hamilton Island, Hobart, Launceston, Mackay, Melbourne, Mount Isa, Newcastle, Perth, Proserpine, Rockhampton, Sydney and Townsville only.

Airport	Arrivals			Departures		
	Sectors	On Time		Sectors	On Time	
	Flown	No.	%	Flown	No.	%
<b>Broome</b>						
QantasLink	64	36	56.3	66	34	51.5
Virgin Australia	35	30	85.7	35	28	80.0
Virgin Australia Regional Airlines	13	11	84.6	13	9	69.2
All Airlines	112	77	68.8	114	71	62.3
Relates to services to and from Perth only.						
<b>Cairns</b>						
Jetstar	208	150	72.1	207	155	74.9
Qantas	84	76	90.5	84	75	89.3
QantasLink	119	85	71.4	119	77	64.7
Virgin Australia	219	193	88.1	220	175	79.5
All Airlines	630	504	80.0	630	482	76.5
Relates to services to and from Brisbane, Melbourne and Sydney only.						
<b>Canberra</b>						
Jetstar	68	53	77.9	67	47	70.1
Qantas	92	79	85.9	91	79	86.8
QantasLink	684	535	78.2	672	508	75.6
Virgin Australia	472	413	87.5	471	408	86.6
All Airlines	1,316	1,080	82.1	1,301	1,042	80.1
Relates to services to and from Adelaide, Brisbane, Gold Coast, Melbourne and Sydney only.						
<b>Coffs Harbour</b>						
Qantas	47	41	87.2	47	41	87.2
QantasLink	26	22	84.6	25	23	92.0
Rex Airlines	72	60	83.3	70	55	78.6
All Airlines	145	123	84.8	142	119	83.8
Relates to services to and from Sydney only.						
<b>Darwin</b>						
Jetstar	31	24	77.4	32	24	75.0
Qantas	84	76	90.5	84	76	90.5
Virgin Australia	43	39	90.7	44	36	81.8
Virgin Australia Regional Airlines	13	8	61.5	13	8	61.5
All Airlines	171	147	86.0	173	144	83.2
Relates to services to and from Brisbane, Melbourne and Perth only.						
<b>Devonport</b>						
QantasLink	87	71	81.6	86	71	82.6
Rex Airlines	39	36	92.3	39	35	89.7
All Airlines	126	107	84.9	125	106	84.8
Relates to services to and from Melbourne only.						
<b>Dubbo</b>						
QantasLink	97	81	83.5	97	78	80.4
Rex Airlines	87	71	81.6	88	72	81.8
All Airlines	184	152	82.6	185	150	81.1
Relates to services to and from Sydney only.						
<b>Emerald</b>						
QantasLink	106	97	91.5	106	98	92.5
Virgin Australia	24	22	91.7	24	23	95.8
All Airlines	130	119	91.5	130	121	93.1
Relates to services to and from Brisbane only.						

Airport	Arrivals			Departures		
	Sectors Flown	On Time		Sectors Flown	On Time	
		No.	%		No.	%
<b>Gladstone</b>						
QantasLink	117	106	90.6	117	108	92.3
Virgin Australia	32	29	90.6	32	32	100.0
All Airlines	149	135	90.6	149	140	94.0
Relates to services to and from Brisbane only.						
<b>Gold Coast</b>						
Jetstar	398	323	81.2	400	313	78.3
Qantas	120	93	77.5	121	84	69.4
Virgin Australia	546	476	87.2	544	450	82.7
All Airlines	1,064	892	83.8	1,065	847	79.5
Relates to services to and from Adelaide, Canberra, Melbourne and Sydney only.						
<b>Hamilton Island</b>						
Jetstar	16	13	81.3	16	13	81.3
Qantas	26	21	80.8	27	20	74.1
QantasLink	19	15	78.9	19	16	84.2
Virgin Australia	56	41	73.2	55	36	65.5
All Airlines	117	90	76.9	117	85	72.6
Relates to services to and from Brisbane and Sydney only.						
<b>Hobart</b>						
Jetstar	256	201	78.5	256	165	64.5
Qantas	61	53	86.9	62	50	80.6
QantasLink	134	109	81.3	133	95	71.4
Virgin Australia	220	189	85.9	220	182	82.7
All Airlines	671	552	82.3	671	492	73.3
Relates to services to and from Brisbane, Melbourne and Sydney only.						
<b>Kalgoorlie</b>						
Qantas	12	10	83.3	12	10	83.3
QantasLink	57	39	68.4	57	39	68.4
Virgin Australia	72	50	69.4	72	50	69.4
Virgin Australia Regional Airlines	20	14	70.0	20	13	65.0
All Airlines	161	113	70.2	161	112	69.6
Relates to services to and from Perth only.						
<b>Karratha</b>						
Qantas	7	6	85.7	7	6	85.7
QantasLink	138	101	73.2	136	103	75.7
Virgin Australia	57	48	84.2	57	46	80.7
Virgin Australia Regional Airlines	12	11	91.7	12	10	83.3
All Airlines	214	166	77.6	212	165	77.8
Relates to services to and from Perth only.						
<b>Launceston</b>						
Jetstar	148	116	78.4	149	105	70.5
QantasLink	81	56	69.1	80	61	76.3
Virgin Australia	128	112	87.5	128	99	77.3
All Airlines	357	284	79.6	357	265	74.2
Relates to services to and from Brisbane, Melbourne and Sydney only.						

Airport	Arrivals			Departures		
	Sectors Flown	On Time		Sectors Flown	On Time	
		No.	%		No.	%
<b>Mackay</b>						
Jetstar	27	13	48.1	27	11	40.7
Qantas	88	75	85.2	87	78	89.7
QantasLink	14	11	78.6	17	14	82.4
Virgin Australia	112	91	81.3	111	86	77.5
All Airlines	241	190	78.8	242	189	78.1

Relates to services to and from Brisbane only.

### Melbourne

Jetstar	1,378	1,046	75.9	1,382	1,044	75.5
Qantas	1,657	1,366	82.4	1,660	1,343	80.9
QantasLink	486	371	76.3	491	363	73.9
Rex Airlines	134	108	80.6	134	116	86.6
Virgin Australia	2,176	1,822	83.7	2,183	1,871	85.7
All Airlines	5,831	4,713	80.8	5,850	4,737	81.0

Relates to services to and from Adelaide, Ayers Rock, Brisbane, Cairns, Canberra, Darwin, Devonport, Gold Coast, Hobart, Launceston, Mildura, Newcastle, Perth, Sunshine Coast and Sydney only.

### Mildura

QantasLink	73	48	65.8	72	53	73.6
Rex Airlines	95	79	83.2	95	80	84.2
All Airlines	168	127	75.6	167	133	79.6

Relates to services to and from Melbourne only.

### Mount Isa

QantasLink	88	71	80.7	86	81	94.2
Virgin Australia	12	11	91.7	12	10	83.3
All Airlines	100	82	82.0	98	91	92.9

Relates to services to and from Brisbane only.

### Newcastle

Jetstar	99	72	72.7	99	69	69.7
QantasLink	125	94	75.2	126	112	88.9
Virgin Australia	112	89	79.5	112	94	83.9
All Airlines	336	255	75.9	337	275	81.6

Relates to services to and from Brisbane and Melbourne only.

### Newman

Qantas	8	8	100.0	8	8	100.0
QantasLink	97	81	83.5	96	65	67.7
Virgin Australia	40	37	92.5	40	28	70.0
Virgin Australia Regional Airlines	12	10	83.3	12	8	66.7
All Airlines	157	136	86.6	156	109	69.9

Relates to services to and from Perth only.

Airport	Arrivals			Departures		
	Sectors	On Time		Sectors	On Time	
	Flown	No.	%	Flown	No.	%
<b>Perth</b>						
Jetstar	151	120	79.5	147	105	71.4
Qantas	657	504	76.7	655	526	80.3
QantasLink	469	298	63.5	474	377	79.5
Virgin Australia	793	592	74.7	790	648	82.0
Virgin Australia Regional Airlines	84	58	69.0	84	67	79.8
All Airlines	2,154	1,572	73.0	2,150	1,723	80.1
Relates to services to and from Adelaide, Brisbane, Broome, Darwin, Kalgoorlie, Karratha, Melbourne, Newman, Port Hedland and Sydney only.						
<b>Port Hedland</b>						
QantasLink	118	89	75.4	114	63	55.3
Virgin Australia	41	31	75.6	41	21	51.2
Virgin Australia Regional Airlines	10	9	90.0	10	7	70.0
All Airlines	169	129	76.3	165	91	55.2
Relates to services to and from Perth only.						
<b>Port Lincoln</b>						
QantasLink	93	83	89.2	94	86	91.5
Rex Airlines	138	115	83.3	137	115	83.9
All Airlines	231	198	85.7	231	201	87.0
Relates to services to and from Adelaide only.						
<b>Port Macquarie</b>						
QantasLink	91	68	74.7	91	77	84.6
Rex Airlines	44	36	81.8	46	37	80.4
All Airlines	135	104	77.0	137	114	83.2
Relates to services to and from Sydney only.						
<b>Proserpine</b>						
Jetstar	27	19	70.4	26	15	57.7
QantasLink	15	10	66.7	15	9	60.0
Virgin Australia	28	26	92.9	28	22	78.6
All Airlines	70	55	78.6	69	46	66.7
Relates to services to and from Brisbane only.						
<b>Rockhampton</b>						
QantasLink	163	134	82.2	160	140	87.5
Virgin Australia	143	100	69.9	143	117	81.8
All Airlines	306	234	76.5	303	257	84.8
Relates to services to and from Brisbane only.						
<b>Sunshine Coast</b>						
Jetstar	148	114	77.0	148	101	68.2
Qantas	79	61	77.2	80	61	76.3
Virgin Australia	123	108	87.8	123	108	87.8
All Airlines	350	283	80.9	351	270	76.9
Relates to services to and from Melbourne and Sydney only.						

Airport	Arrivals			Departures		
	Sectors Flown	On Time		Sectors Flown	On Time	
		No.	%		No.	%
<b>Sydney</b>						
Jetstar	1,252	945	75.5	1,252	924	73.8
Qantas	1,913	1,537	80.3	1,913	1,545	80.8
QantasLink	859	687	80.0	870	663	76.2
Rex Airlines	340	255	75.0	341	263	77.1
Virgin Australia	2,148	1,721	80.1	2,150	1,820	84.7
All Airlines	6,512	5,145	79.0	6,526	5,215	79.9

Relates to services to and from Adelaide, Albury, Ballina, Brisbane, Cairns, Canberra, Coffs Harbour, Dubbo, Gold Coast, Hamilton Island, Hobart, Launceston, Melbourne, Perth, Port Macquarie, Sunshine Coast and Wagga Wagga only.

#### Townsville

Jetstar	54	31	57.4	54	27	50.0
Qantas	22	20	90.9	22	19	86.4
QantasLink	126	105	83.3	126	114	90.5
Virgin Australia	118	85	72.0	117	95	81.2
All Airlines	320	241	75.3	319	255	79.9

Relates to services to and from Brisbane only.

#### Wagga Wagga

QantasLink	96	88	91.7	94	84	89.4
Rex Airlines	76	59	77.6	73	54	74.0
All Airlines	172	147	85.5	167	138	82.6

Relates to services to and from Sydney only.



## Definitions

---

On time arrival	A flight arrival is counted as "on time" if it arrived at the gate before 15 minutes after the scheduled arrival time shown in the carriers' schedule. Neither diverted nor cancelled flights count as on time.
On time departure	A flight departure is counted as "on time" if it departs the gate before 15 minutes after the scheduled departure time shown in the carriers' schedule.
Cancellation	A flight removed from service within 7 days of scheduled departure is regarded as a cancellation.
On time departure percentage	The percentage of on time departures is measured against the number of departures <i>operated</i> on any particular sector.
On time arrival percentage	The percentage of on time arrivals is measured against the number of arrivals <i>operated</i> on any particular sector.
Cancellation percentage	The percentage of cancellations is measured against the number of services <i>scheduled</i> on any particular sector.

---

## Airlines and Reporting

Data has been gathered since November 2003, although some airlines commenced reporting at a later date, including Jetstar which first reported in May 2004, Tigerair Australia in April 2008, Virgin Australia Regional Airlines in May 2013, Skytrans in May 2023, Bonza in November 2023 and Hinterland in March 2024. Tigerair Australia ceased operations in March 2020 and data was not received for that month. Bonza ceased operations at the end of April 2024 and data was not received for that month.

Virgin Blue was rebranded as Virgin Australia in May 2011 and Tiger Airways was rebranded as Tigerair Australia in August 2013 and time series data in Microsoft Excel spread sheet format on the BITRE website have been revised to reflect these changes. With effect from August 2021, Regional Express is reported as Rex Airlines. Between March 2021 and July 2024 Rex Airlines operated on capital city routes to Sydney, Melbourne, Brisbane, Adelaide and Gold Coast.

Services operated by Skywest on behalf of Virgin Australia using ATR/F100 aircraft commenced in November 2011 and were shown separately as Virgin Australia – ATR/F100 Operations. Virgin Australia Regional Airlines commenced operations in May 2013. It was formed after the acquisition of Skywest by Virgin Australia and represented a combination of operations previously reported under Skywest and Virgin Australia – ATR/F100 Operations. In February 2016, Virgin Australia transferred their ATR fleet from Virgin Australia Regional Airlines to Virgin Australia.