



**Australian Government**

**Department of Infrastructure, Transport,  
Regional Development, Communications and the Arts**  
Bureau of Infrastructure and Transport Research Economics

STATISTICAL REPORT



## Aviation

**Domestic airline on time performance  
January 2023**

© Commonwealth of Australia 2023

ISSN: 1832-0759

### **Ownership of intellectual property rights in this publication**

Unless otherwise noted, copyright (and any other intellectual property rights, if any) in this publication is owned by the Commonwealth of Australia (referred to below as the Commonwealth).

### **Disclaimer**

The material contained in this publication is made available on the understanding that the Commonwealth is not providing professional advice, and that users exercise their own skill and care with respect to its use, and seek independent advice if necessary.

The Commonwealth makes no representations or warranties as to the contents or accuracy of the information contained in this publication. To the extent permitted by law, the Commonwealth disclaims liability to any person or organisation in respect of anything done, or omitted to be done, in reliance upon information contained in this publication.

### **Creative Commons licence**

With the exception of (a) the Coat of Arms; and (b) the Department of Infrastructure, Transport, Regional Development, Communications and the Arts' photos and graphics, copyright in this publication is licensed under a Creative Commons Attribution 3.0 Australia Licence.

Creative Commons Attribution 3.0 Australia Licence is a standard form licence agreement that allows you to copy, communicate and adapt this publication provided that you attribute the work to the Commonwealth and abide by the other licence terms. A summary of the licence terms is available from <http://creativecommons.org/licenses/by/3.0/au/deed.en>. The full licence terms are available from <http://creativecommons.org/licenses/by/3.0/au/legalcode>.

### **Use of the Coat of Arms**

The Department of the Prime Minister and Cabinet sets the terms under which the Coat of Arms is used. Please refer to the Department's Commonwealth Coat of Arms and Government branding web page <http://www.dpmmc.gov.au/guidelines/index.cfm#brand> and, in particular, the Guidelines on the use of the Commonwealth Coat of Arms publication.

An appropriate citation for this report is:

Bureau of Infrastructure and Transport Research Economics (BITRE), 2023, Domestic airline on time performance, Statistical Report, BITRE, Canberra ACT.

### **Contact us**

This publication is available in PDF format. All other rights are reserved, including in relation to any Departmental logos or trade marks which may exist. For enquiries regarding the licence and any use of this publication, please contact:

Bureau of Infrastructure and Transport Research Economics (BITRE)  
Department of Infrastructure, Transport, Regional Development, Communications and the Arts  
GPO Box 501, Canberra ACT 2601, Australia  
Telephone: (international) +61 2 6274 7210  
Fax: (international) +61 2 6274 6855  
Email: [bitre@infrastructure.gov.au](mailto:bitre@infrastructure.gov.au)  
Website: [www.bitre.gov.au](http://www.bitre.gov.au)

### **Inquiries**

Should you require additional information about the statistics contained in this publication:

Telephone (02) 6274 6135

Electronic mail: [AVSTATS@infrastructure.gov.au](mailto:AVSTATS@infrastructure.gov.au)

Web site: <http://www.bitre.gov.au/statistics/aviation/otphome.aspx>

# Foreword

The Bureau of Infrastructure and Transport Research Economics (BITRE) monitors the punctuality and reliability of major domestic airlines operating between Australian airports. The purpose of this is to allow for evaluation of overall industry and individual airline performance, so that consumers of air travel can make informed decisions.

The following domestic airlines currently report this information monthly to the BITRE: Jetstar, Qantas, QantasLink, Rex Airlines, Virgin Australia and Virgin Australia Regional Airlines.

Information presented in this report is for Australian domestic routes for which the passenger load averaged 8,000 or more passengers per month over the previous six months and where two or more airlines operated in competition on those routes. In order to present data for more routes during the period impacted by COVID-19, the passenger load restriction is not being applied. Data are presented for 60 routes in January 2023. Over time, routes which meet these criteria change as airline networks and traffic levels vary.

Participating airlines report their overall monthly network performance where this is possible.

Total industry figures encompass all services operated by reporting airlines only. These airlines collectively carried over 95 per cent of total domestic passengers (regular public transport only) in 2019.

The method of capturing on time performance varies between airlines utilising different recording systems. Jetstar and Qantas jet aircraft use Aircraft Communication Addressing and Reporting System (ACARS) to electronically measure on time performance. Rex Airlines, Virgin Australia, Virgin Australia Regional Airlines and the Qantas non-jet fleet record on time performance manually using records from pilots, gate agents and/or ground crews.

After initial data is collected, aggregate reports are reviewed by participating airlines prior to publication.

Reports and detailed time series data in Microsoft Excel spreadsheet format are available from the BITRE website at: <http://www.bitre.gov.au/statistics/aviation/otphome.aspx>



# Contents

	Page
Industry performance .....	1
Individual routes .....	9
Airports.....	22
Definitions .....	28
Airlines and Reporting .....	29

# Industry performance

For January 2023, on time performance over all routes operated by participating airlines (Jetstar, Qantas, QantasLink, Rex Airlines, Virgin Australia and Virgin Australia Regional Airlines) averaged 76.7 per cent for on time arrivals and 76.7 per cent for on time departures. The cancellation rate for the month was 3.1 per cent. The equivalent figures for January 2022 were 86.5 per cent for on time arrivals, 85.0 per cent for on time departures and 11.8 per cent for cancellations.

This month's on time arrivals figure was significantly lower than the long term average performance for all routes (81.6 per cent) and the on time departures figure was also significantly lower than the long term average (82.8 per cent). The rate of cancellations was higher than the long term average of 2.1 per cent.

The Qantas network (Qantas and QantasLink combined operations) recorded 81.7 per cent for on time arrivals while the Virgin Australia network (Virgin Australia and Virgin Australia Regional Airlines combined operations) recorded 73.8 per cent. Qantas achieved the highest on time arrivals among the major domestic airlines at 80.0 per cent followed by Virgin Australia at 74.0 per cent and Jetstar at 65.4 per cent. Of the regional airlines, QantasLink recorded 82.8 per cent for on time arrivals, followed by Rex Airlines at 81.1 per cent and Virgin Australia Regional Airlines at 69.7 per cent.

The Qantas network recorded 81.5 per cent for on time departures while the Virgin Australia network recorded 74.4 per cent. Qantas achieved the highest level of on time departures among the major domestic airlines for January 2023 at 79.2 per cent, followed by Virgin Australia at 74.6 per cent and Jetstar at 63.3 per cent. Of the regional airlines, Rex Airlines recorded 83.3 per cent for on time departures, followed by QantasLink at 83.0 per cent and Virgin Australia Regional Airlines at 69.7 per cent.

Jetstar recorded the highest percentage of cancellations at 7.3 per cent during the month, followed by QantasLink at 3.1 per cent, Virgin Australia Regional Airlines at 2.7 per cent, Qantas at 2.3 per cent, Virgin Australia at 2.1 per cent, and Rex Airlines at 0.7 per cent.

Airlines' on time performance varies across the routes they serve. Individual route data by specific airline for 60 routes are shown on pages 9-21.

Of the 60 routes which met the criteria for on time performance reporting in January 2023, the Adelaide-Port Lincoln route had the highest percentage of on time arrivals (93.2 per cent) and the highest percentage of on time departures (94.6 per cent). The Perth-Darwin route had the lowest percentage of on time arrivals (52.8 per cent), while the Launceston-Brisbane route had the lowest percentage of on time departures (50.9 per cent).

Cancellations were highest on the Proserpine-Brisbane route at 10.1 per cent followed by the Brisbane-Proserpine route at 10.0 per cent, the Broome-Perth route at 8.1 per cent, the Perth-Broome route at 7.3 per cent and the Sydney-Melbourne route at 7.2 per cent.

Port Lincoln Airport recorded the highest percentage of on time arrivals (93.2 per cent) and the highest percentage of on time departures (92.8 per cent). Darwin Airport recorded the lowest percentage of on time arrivals (62.0 per cent) and Broome Airport recorded the lowest percentage of on time departures (60.5 per cent). These figures only refer to reported routes and do not cover all flights at these airports.

Table 1 On time performance for January 2023 — Total Industry

	Sectors		Arrivals On Time		Departures On Time		Cancellations	
	Scheduled	Flown	No.	%	No.	%	No.	%
Jetstar	7,708	7,147	4,673	65.4	4,526	63.3	561	7.3
Qantas - all QF designated services	18,740	18,217	14,877	81.7	14,840	81.5	523	2.8
Rex Airlines	5,475	5,438	4,408	81.1	4,531	83.3	37	0.7
Virgin Australia - all VA designated services	12,049	11,789	8,702	73.8	8,767	74.4	260	2.2
All Airlines	43,972	42,591	32,660	76.7	32,664	76.7	1,381	3.1
Individual operating entities								
Qantas	7,515	7,342	5,873	80.0	5,812	79.2	173	2.3
QantasLink	11,225	10,875	9,004	82.8	9,028	83.0	350	3.1
Virgin Australia	11,466	11,222	8,307	74.0	8,372	74.6	244	2.1
Virgin Australia Regional Airlines	583	567	395	69.7	395	69.7	16	2.7

Total airline network data (including routes not shown in this report).

Airlines' on time performance varies across the routes they serve. Individual route data by specific airline are shown on page 9 and onwards.

Table 2 Top ten routes for on time performance for January 2023 (participating airlines only)

Arrivals		Departures	
Route	On Time (%)	Route	On Time (%)
Adelaide-Port Lincoln	93.2	Adelaide-Port Lincoln	94.6
Port Lincoln-Adelaide	92.8	Brisbane-Hamilton Island	93.5
Cairns-Townsville	91.9	Port Lincoln-Adelaide	92.8
Sydney-Dubbo	90.0	Dubbo-Sydney	92.1
Townsville-Cairns	89.9	Cairns-Townsville	91.9
Dubbo-Sydney	89.8	Adelaide-Canberra	89.5
Adelaide-Canberra	89.5	Wagga Wagga-Sydney	89.4
Sydney-Port Macquarie	89.1	Townsville-Cairns	86.8
Brisbane-Hamilton Island	87.1	Coffs Harbour-Sydney	86.7
Sydney-Coffs Harbour	86.9	Albury-Sydney	86.4

Table 3 Top ten airports for on time performance for January 2023 (participating airlines and reported routes only)

Arrivals		Departures	
Airport	On Time (%)	Airport	On Time (%)
Port Lincoln	93.2	Port Lincoln	92.8
Dubbo	90.0	Dubbo	92.1
Port Macquarie	89.1	Wagga Wagga	89.4
Coffs Harbour	86.9	Coffs Harbour	86.7
Albury	86.5	Albury	86.4
Armidale	85.4	Port Macquarie	86.1
Townsville	83.7	Mount Isa	85.7
Emerald	83.0	Armidale	84.4
Mount Isa	82.8	Townsville	82.6
Wagga Wagga	82.8	Kalgoorlie	82.3



## Total industry on time performance

Figure 1 On time performance (by month from January 2020)—Total Industry

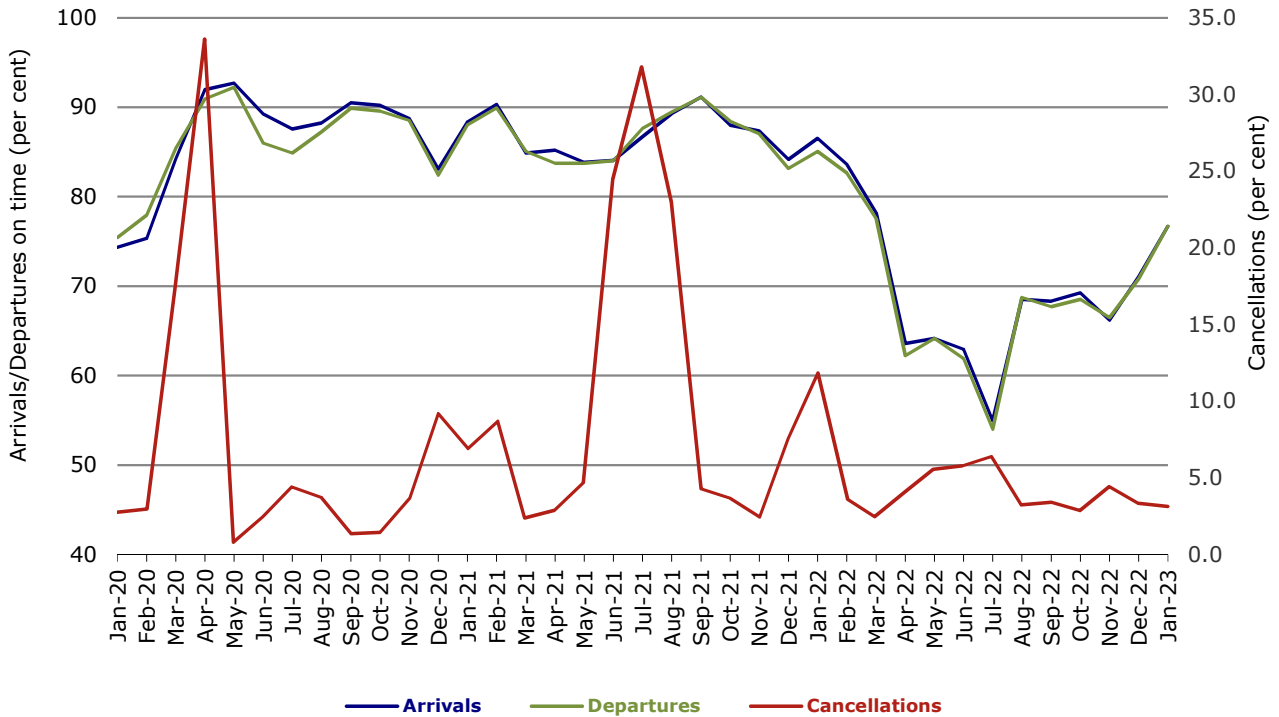


Figure 2 Arrivals on time (by month from January 2022)

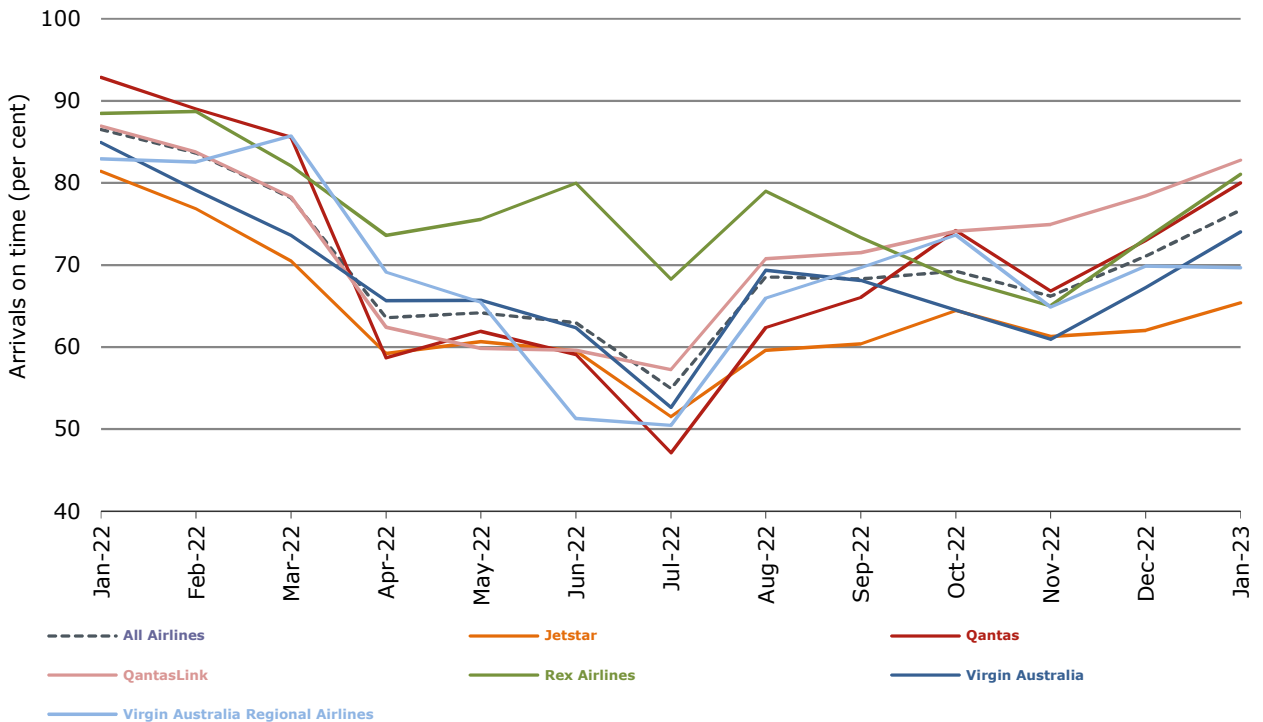


Figure 3 Departures on time (by month from January 2022)

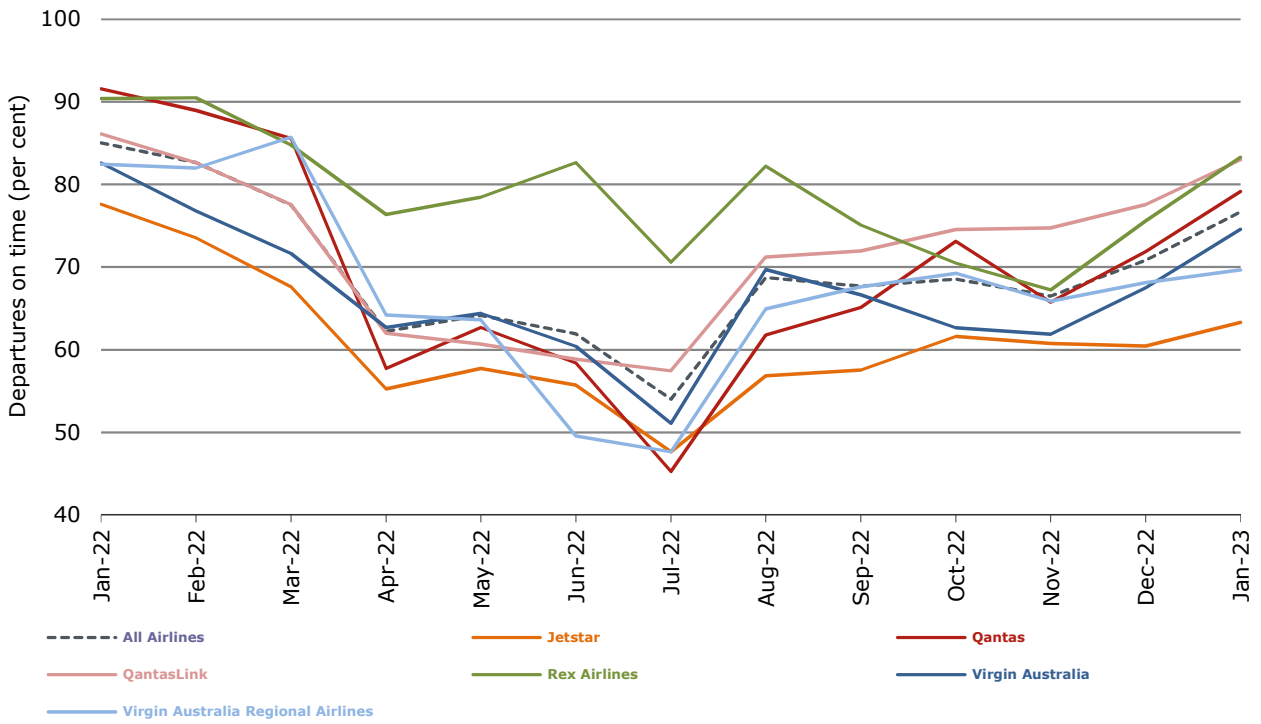
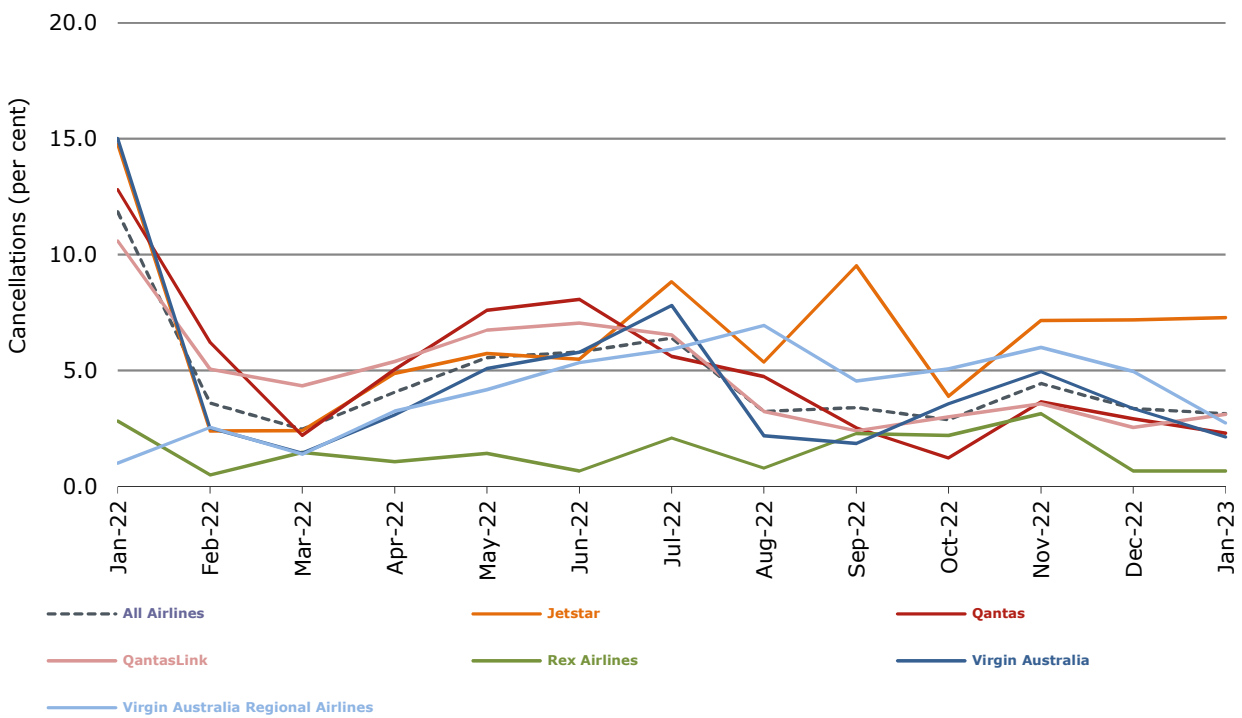


Figure 4 Cancellations (by month from January 2022)



## Major domestic airlines on time performance

Figure 5 On time performance (by month from January 2020)—Jetstar

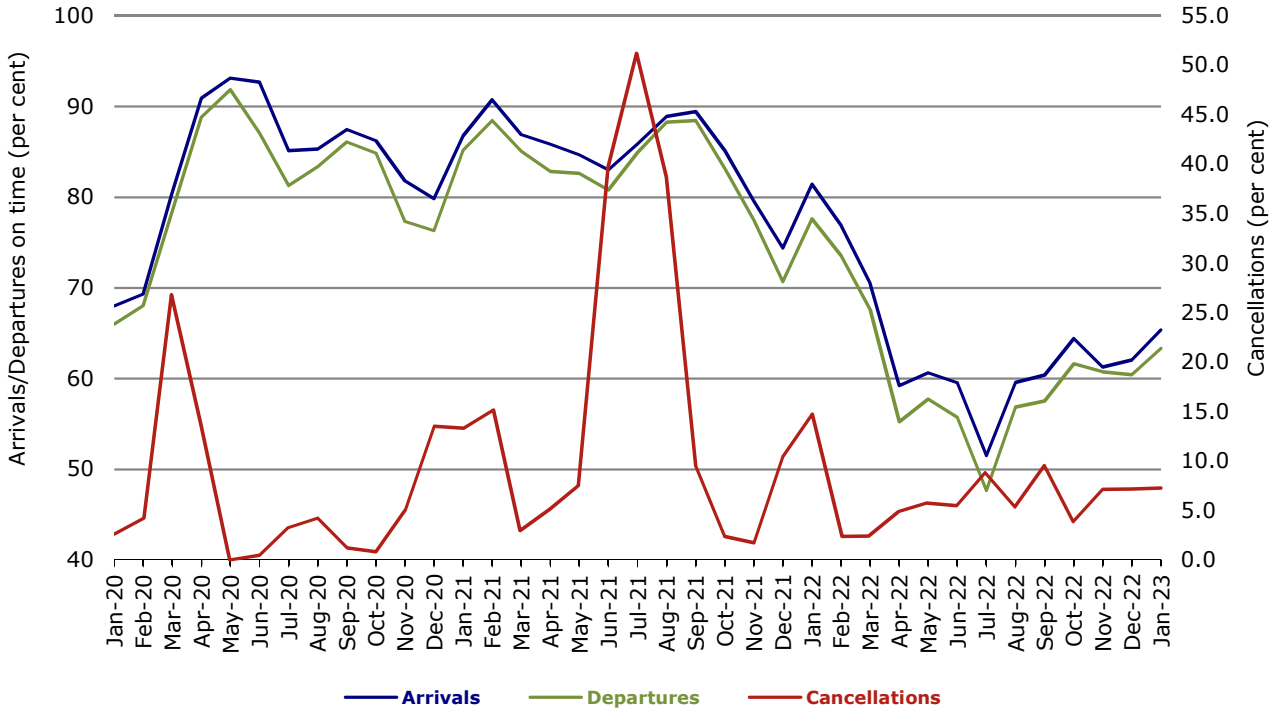


Figure 6 On time performance (by month from January 2020)—Qantas

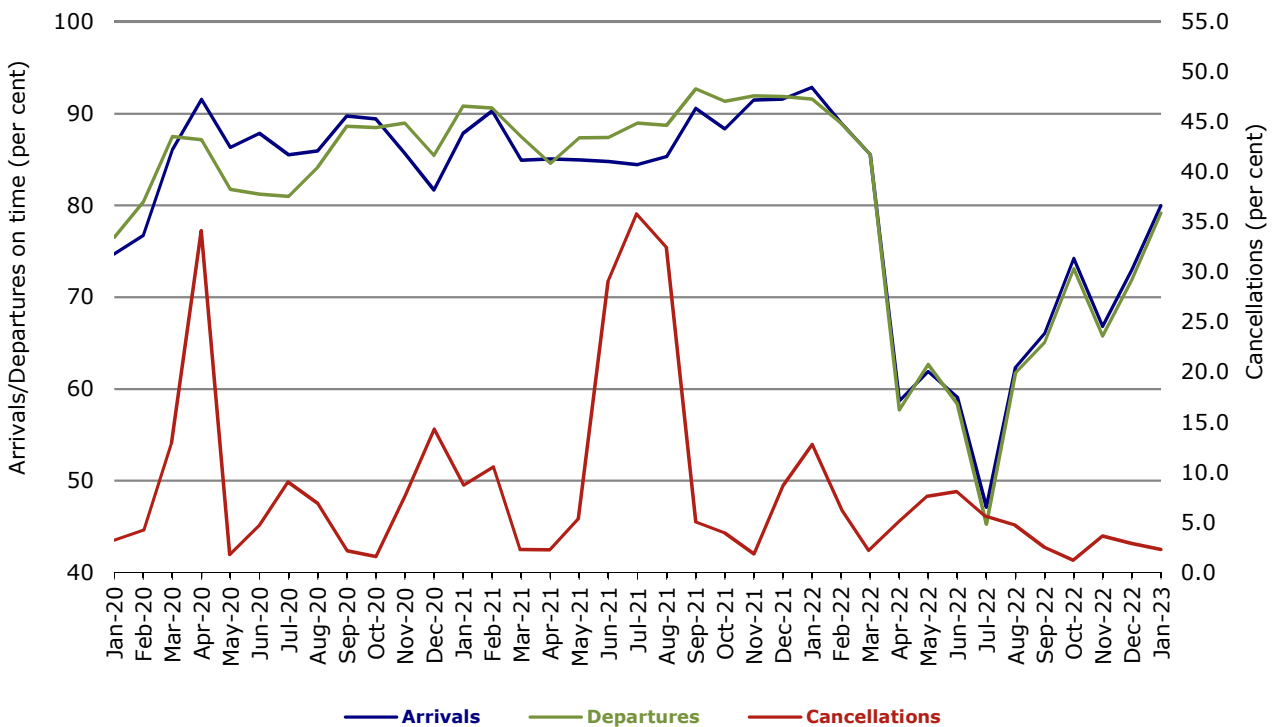
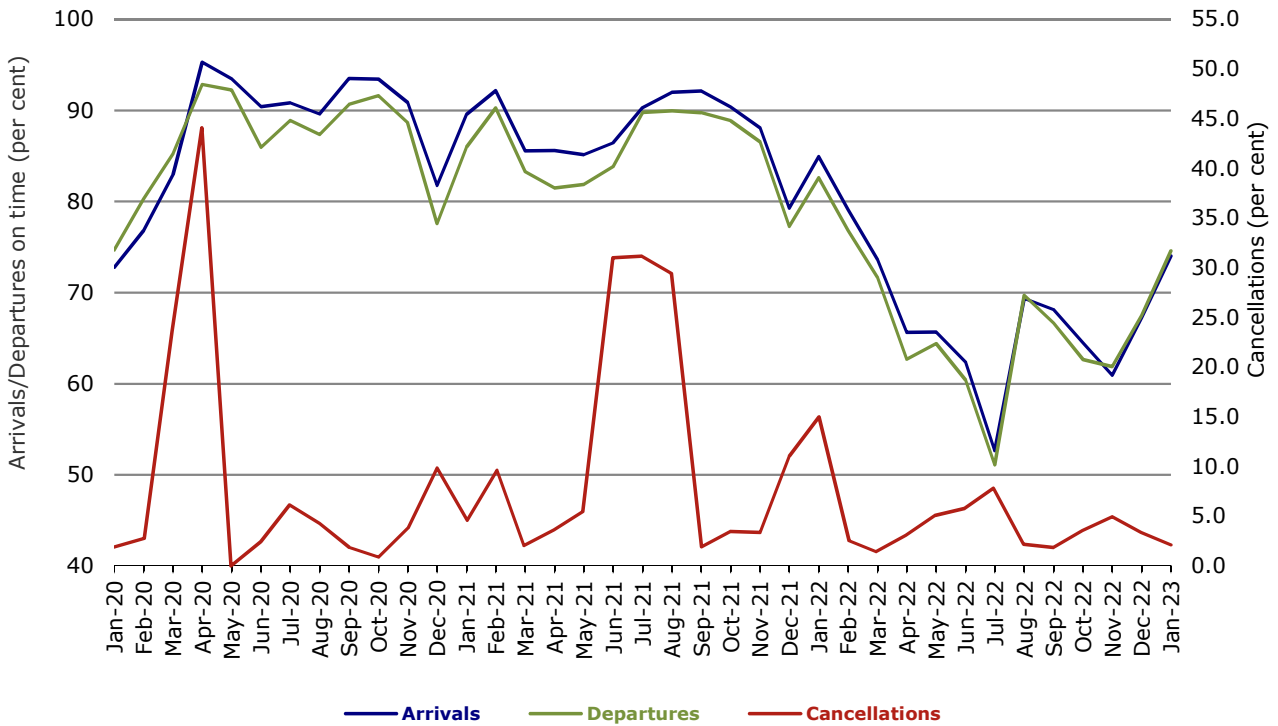


Figure 7 On time performance (by month from January 2020)—Virgin Australia



## Major regional airlines on time performance

Figure 8 On time performance (by month from January 2020)—QantasLink

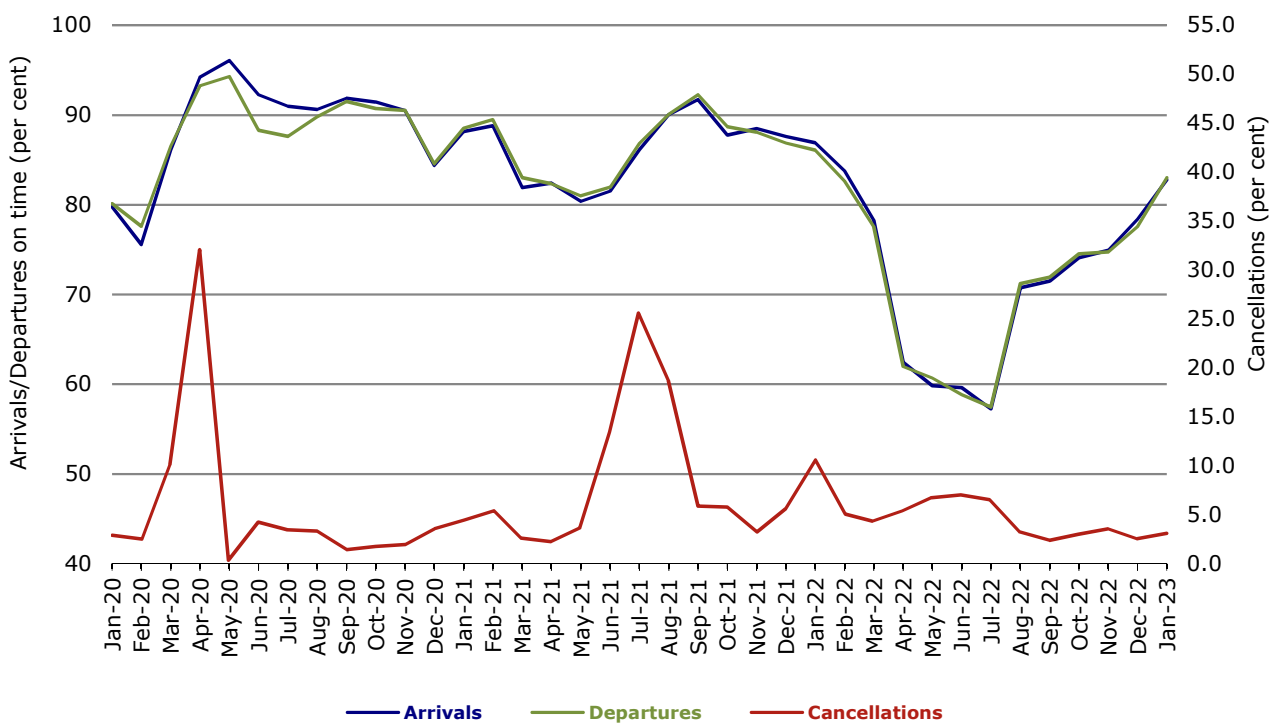


Figure 9 On time performance (by month from January 2020)—Rex Airlines

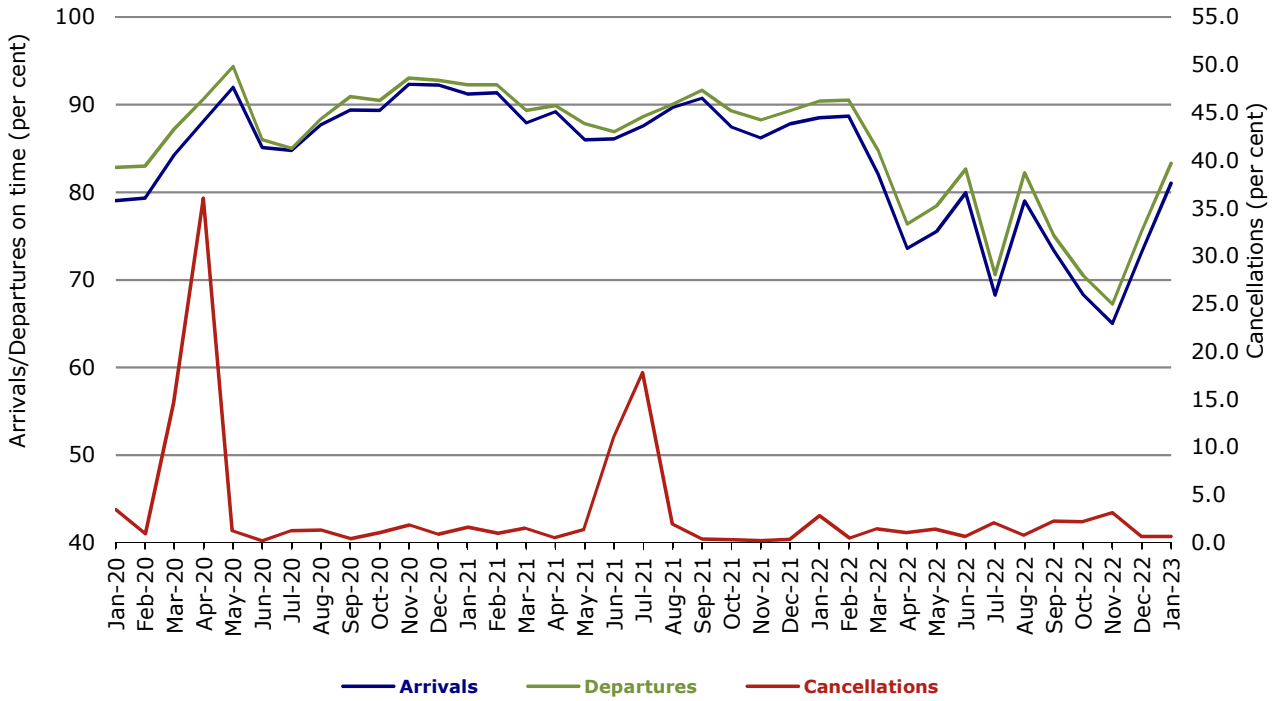
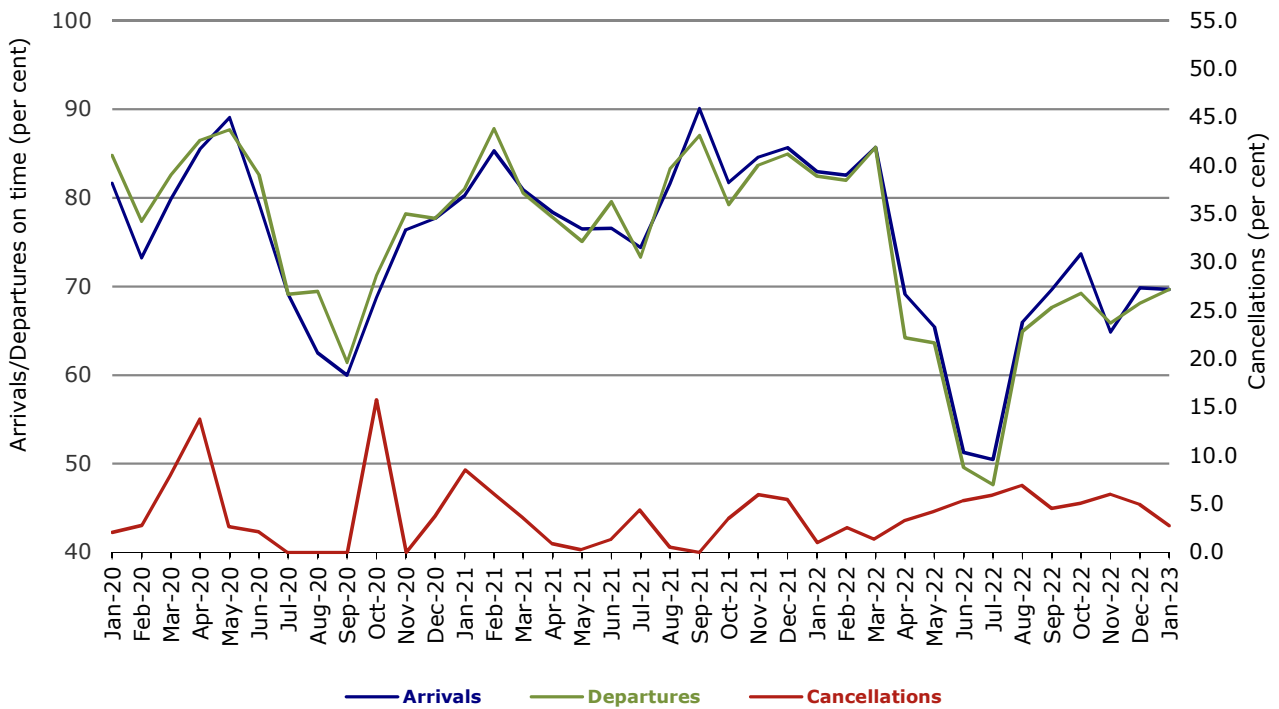


Figure 10 On time performance (by month from January 2020)—Virgin Australia Regional Airlines



## Individual routes

On time performance is reported for all routes where the passenger load averages over 8,000 passengers per month over the previous six months, and where two or more airlines operate in competition on those routes. In order to present data for more routes during the period impacted by COVID-19, the passenger load restriction is not being applied. There are now 60 routes for which data are presented.

	<i>Sectors</i>		<i>Arrivals On Time</i>		<i>Departures On Time</i>		<i>Cancellations</i>	
	<i>Sched.</i>	<i>Flown</i>	<i>No.</i>	<i>%</i>	<i>No.</i>	<i>%</i>	<i>No.</i>	<i>%</i>
<b>Adelaide-Alice Springs</b>								
QantasLink	38	38	29	76.3	32	84.2	0	0.0
Virgin Australia	9	9	7	77.8	8	88.9	0	0.0
All Airlines	47	47	36	76.6	40	85.1	0	0.0
<b>Adelaide-Brisbane</b>								
Jetstar	32	30	21	70.0	20	66.7	2	6.3
Qantas	9	9	8	88.9	8	88.9	0	0.0
QantasLink	152	152	119	78.3	105	69.1	0	0.0
Virgin Australia	140	136	105	77.2	102	75.0	4	2.9
All Airlines	333	327	253	77.4	235	71.9	6	1.8
<b>Adelaide-Canberra</b>								
QantasLink	57	57	54	94.7	55	96.5	0	0.0
Virgin Australia	19	19	14	73.7	13	68.4	0	0.0
All Airlines	76	76	68	89.5	68	89.5	0	0.0
<b>Adelaide-Gold Coast</b>								
Jetstar	31	31	25	80.6	25	80.6	0	0.0
Virgin Australia	43	42	38	90.5	36	85.7	1	2.3
All Airlines	74	73	63	86.3	61	83.6	1	1.4
<b>Adelaide-Melbourne</b>								
Jetstar	111	103	64	62.1	54	52.4	8	7.2
Qantas	227	222	172	77.5	177	79.7	5	2.2
QantasLink	13	12	10	83.3	12	100.0	1	7.7
Rex Airlines	57	57	49	86.0	49	86.0	0	0.0
Virgin Australia	273	269	224	83.3	202	75.1	4	1.5
All Airlines	681	663	519	78.3	494	74.5	18	2.6
<b>Adelaide-Perth</b>								
Jetstar	31	29	28	96.6	26	89.7	2	6.5
Qantas	108	108	96	88.9	93	86.1	0	0.0
Virgin Australia	21	21	11	52.4	12	57.1	0	0.0
Virgin Australia Regional Airlines	45	42	25	59.5	19	45.2	3	6.7
All Airlines	205	200	160	80.0	150	75.0	5	2.4
<b>Adelaide-Port Lincoln</b>								
QantasLink	138	134	128	95.5	126	94.0	4	2.9
Rex Airlines	151	146	133	91.1	139	95.2	5	3.3
All Airlines	289	280	261	93.2	265	94.6	9	3.1
<b>Adelaide-Sydney</b>								
Jetstar	122	108	87	80.6	91	84.3	14	11.5
Qantas	195	194	159	82.0	141	72.7	1	0.5
Virgin Australia	141	138	104	75.4	104	75.4	3	2.1
All Airlines	458	440	350	79.5	336	76.4	18	3.9

	Sectors		Arrivals On Time		Departures On Time		Cancellations	
	Sched.	Flown	No.	%	No.	%	No.	%
<b>Albury-Sydney</b>								
QantasLink	93	89	78	87.6	78	87.6	4	4.3
Rex Airlines	82	80	67	83.8	68	85.0	2	2.4
All Airlines	175	169	145	85.8	146	86.4	6	3.4
<b>Alice Springs-Adelaide</b>								
QantasLink	39	38	26	68.4	25	65.8	1	2.6
Virgin Australia	9	9	7	77.8	6	66.7	0	0.0
All Airlines	48	47	33	70.2	31	66.0	1	2.1
<b>Armidale-Sydney</b>								
QantasLink	97	90	73	81.1	77	85.6	7	7.2
Rex Airlines	38	38	30	78.9	31	81.6	0	0.0
All Airlines	135	128	103	80.5	108	84.4	7	5.2
<b>Ballina-Sydney</b>								
Jetstar	91	90	62	68.9	71	78.9	1	1.1
QantasLink	97	92	78	84.8	78	84.8	5	5.2
Virgin Australia	52	52	35	67.3	32	61.5	0	0.0
All Airlines	240	234	175	74.8	181	77.4	6	2.5
<b>Brisbane-Adelaide</b>								
Jetstar	32	30	17	56.7	18	60.0	2	6.3
Qantas	9	9	7	77.8	7	77.8	0	0.0
QantasLink	153	153	100	65.4	116	75.8	0	0.0
Virgin Australia	140	136	100	73.5	100	73.5	4	2.9
All Airlines	334	328	224	68.3	241	73.5	6	1.8
<b>Brisbane-Cairns</b>								
Jetstar	89	85	63	74.1	60	70.6	4	4.5
Qantas	119	119	116	97.5	114	95.8	0	0.0
QantasLink	4	4	4	100.0	3	75.0	0	0.0
Virgin Australia	136	135	98	72.6	100	74.1	1	0.7
All Airlines	348	343	281	81.9	277	80.8	5	1.4
<b>Brisbane-Canberra</b>								
Jetstar	30	30	27	90.0	27	90.0	0	0.0
Qantas	26	26	26	100.0	25	96.2	0	0.0
QantasLink	115	114	86	75.4	97	85.1	1	0.9
Virgin Australia	94	93	75	80.6	70	75.3	1	1.1
All Airlines	265	263	214	81.4	219	83.3	2	0.8
<b>Brisbane-Darwin</b>								
Jetstar	24	24	19	79.2	15	62.5	0	0.0
Qantas	6	6	5	83.3	5	83.3	0	0.0
QantasLink	42	42	24	57.1	15	35.7	0	0.0
Virgin Australia	40	40	30	75.0	31	77.5	0	0.0
All Airlines	112	112	78	69.6	66	58.9	0	0.0
<b>Brisbane-Emerald</b>								
QantasLink	117	114	98	86.0	100	87.7	3	2.6
Virgin Australia	27	27	19	70.4	18	66.7	0	0.0
All Airlines	144	141	117	83.0	118	83.7	3	2.1
<b>Brisbane-Gladstone</b>								
QantasLink	137	129	103	79.8	99	76.7	8	5.8
Virgin Australia	48	46	28	60.9	30	65.2	2	4.2
All Airlines	185	175	131	74.9	129	73.7	10	5.4

	Sectors		Arrivals On Time		Departures On Time		Cancellations	
	Sched.	Flown	No.	%	No.	%	No.	%
<b>Brisbane-Hamilton Island</b>								
Qantas	22	22	21	95.5	21	95.5	0	0.0
Virgin Australia	40	40	33	82.5	37	92.5	0	0.0
All Airlines	62	62	54	87.1	58	93.5	0	0.0
<b>Brisbane-Hobart</b>								
Jetstar	31	31	24	77.4	22	71.0	0	0.0
QantasLink	30	30	29	96.7	28	93.3	0	0.0
Virgin Australia	58	57	44	77.2	45	78.9	1	1.7
All Airlines	119	118	97	82.2	95	80.5	1	0.8
<b>Brisbane-Launceston</b>								
Jetstar	31	31	15	48.4	16	51.6	0	0.0
Virgin Australia	25	24	17	70.8	17	70.8	1	4.0
All Airlines	56	55	32	58.2	33	60.0	1	1.8
<b>Brisbane-Mackay</b>								
Jetstar	30	30	25	83.3	23	76.7	0	0.0
Qantas	110	109	97	89.0	98	89.9	1	0.9
QantasLink	8	8	6	75.0	7	87.5	0	0.0
Virgin Australia	134	131	65	49.6	77	58.8	3	2.2
All Airlines	282	278	193	69.4	205	73.7	4	1.4
<b>Brisbane-Melbourne</b>								
Jetstar	164	142	98	69.0	91	64.1	22	13.4
Qantas	337	332	271	81.6	287	86.4	5	1.5
Rex Airlines	64	64	46	71.9	49	76.6	0	0.0
Virgin Australia	403	393	259	65.9	269	68.4	10	2.5
All Airlines	968	931	674	72.4	696	74.8	37	3.8
<b>Brisbane-Mount Isa</b>								
Qantas	25	25	25	100.0	25	100.0	0	0.0
QantasLink	29	27	22	81.5	21	77.8	2	6.9
Virgin Australia	12	12	6	50.0	7	58.3	0	0.0
All Airlines	66	64	53	82.8	53	82.8	2	3.0
<b>Brisbane-Newcastle</b>								
Jetstar	60	60	48	80.0	47	78.3	0	0.0
QantasLink	113	103	84	81.6	83	80.6	10	8.8
Virgin Australia	84	82	49	59.8	51	62.2	2	2.4
All Airlines	257	245	181	73.9	181	73.9	12	4.7
<b>Brisbane-Perth</b>								
Jetstar	25	24	20	83.3	12	50.0	1	4.0
Qantas	168	167	140	83.8	137	82.0	1	0.6
Virgin Australia	136	133	90	67.7	93	69.9	3	2.2
All Airlines	329	324	250	77.2	242	74.7	5	1.5
<b>Brisbane-Proserpine</b>								
Jetstar	37	33	26	78.8	25	75.8	4	10.8
QantasLink	24	22	19	86.4	19	86.4	2	8.3
Virgin Australia	49	44	36	81.8	37	84.1	5	10.2
All Airlines	110	99	81	81.8	81	81.8	11	10.0
<b>Brisbane-Rockhampton</b>								
QantasLink	173	168	145	86.3	155	92.3	5	2.9
Virgin Australia	136	135	61	45.2	77	57.0	1	0.7
All Airlines	309	303	206	68.0	232	76.6	6	1.9



	Sectors		Arrivals On Time		Departures On Time		Cancellations	
	Sched.	Flown	No.	%	No.	%	No.	%
<b>Brisbane-Sydney</b>								
Jetstar	170	145	99	68.3	95	65.5	25	14.7
Qantas	443	429	357	83.2	367	85.5	14	3.2
Rex Airlines	144	143	111	77.6	112	78.3	1	0.7
Virgin Australia	418	405	266	65.7	270	66.7	13	3.1
All Airlines	1 175	1 122	833	74.2	844	75.2	53	4.5
<b>Brisbane-Townsville</b>								
Jetstar	50	49	40	81.6	40	81.6	1	2.0
Qantas	102	102	95	93.1	92	90.2	0	0.0
QantasLink	18	18	14	77.8	14	77.8	0	0.0
Virgin Australia	138	126	85	67.5	82	65.1	12	8.7
All Airlines	308	295	234	79.3	228	77.3	13	4.2
<b>Broome-Perth</b>								
QantasLink	80	73	50	68.5	50	68.5	7	8.8
Virgin Australia	11	10	3	30.0	2	20.0	1	9.1
Virgin Australia Regional Airlines	33	31	21	67.7	17	54.8	2	6.1
All Airlines	124	114	74	64.9	69	60.5	10	8.1
<b>Cairns-Brisbane</b>								
Jetstar	89	86	54	62.8	60	69.8	3	3.4
Qantas	118	118	111	94.1	112	94.9	0	0.0
QantasLink	5	5	4	80.0	5	100.0	0	0.0
Virgin Australia	136	135	105	77.8	97	71.9	1	0.7
All Airlines	348	344	274	79.7	274	79.7	4	1.1
<b>Cairns-Melbourne</b>								
Jetstar	95	91	52	57.1	47	51.6	4	4.2
Qantas	42	42	36	85.7	36	85.7	0	0.0
Virgin Australia	49	49	35	71.4	33	67.3	0	0.0
All Airlines	186	182	123	67.6	116	63.7	4	2.2
<b>Cairns-Sydney</b>								
Jetstar	95	88	71	80.7	59	67.0	7	7.4
Qantas	62	62	45	72.6	48	77.4	0	0.0
Virgin Australia	81	81	63	77.8	64	79.0	0	0.0
All Airlines	238	231	179	77.5	171	74.0	7	2.9
<b>Cairns-Townsville</b>								
QantasLink	153	148	136	91.9	137	92.6	5	3.3
Rex Airlines	13	12	11	91.7	10	83.3	1	7.7
All Airlines	166	160	147	91.9	147	91.9	6	3.6
<b>Canberra-Adelaide</b>								
QantasLink	56	56	46	82.1	49	87.5	0	0.0
Virgin Australia	19	19	13	68.4	15	78.9	0	0.0
All Airlines	75	75	59	78.7	64	85.3	0	0.0
<b>Canberra-Brisbane</b>								
Jetstar	31	31	24	77.4	24	77.4	0	0.0
Qantas	26	26	26	100.0	26	100.0	0	0.0
QantasLink	115	114	103	90.4	103	90.4	1	0.9
Virgin Australia	94	92	70	76.1	70	76.1	2	2.1
All Airlines	266	263	223	84.8	223	84.8	3	1.1
<b>Canberra-Gold Coast</b>								
Jetstar	17	17	10	58.8	9	52.9	0	0.0
Virgin Australia	45	45	37	82.2	38	84.4	0	0.0
All Airlines	62	62	47	75.8	47	75.8	0	0.0

	Sectors		Arrivals On Time		Departures On Time		Cancellations	
	Sched.	Flown	No.	%	No.	%	No.	%
<b>Canberra-Melbourne</b>								
Jetstar	31	29	12	41.4	9	31.0	2	6.5
QantasLink	194	187	146	78.1	149	79.7	7	3.6
Rex Airlines	31	31	25	80.6	25	80.6	0	0.0
Virgin Australia	105	105	79	75.2	80	76.2	0	0.0
All Airlines	361	352	262	74.4	263	74.7	9	2.5
<b>Canberra-Sydney</b>								
QantasLink	303	269	213	79.2	220	81.8	34	11.2
Virgin Australia	212	209	179	85.6	173	82.8	3	1.4
All Airlines	515	478	392	82.0	393	82.2	37	7.2
<b>Coffs Harbour-Sydney</b>								
QantasLink	114	114	93	81.6	99	86.8	0	0.0
Rex Airlines	90	89	69	77.5	77	86.5	1	1.1
All Airlines	204	203	162	79.8	176	86.7	1	0.5
<b>Darwin-Brisbane</b>								
Jetstar	23	23	11	47.8	13	56.5	0	0.0
Qantas	6	5	4	80.0	4	80.0	1	16.7
QantasLink	42	42	37	88.1	41	97.6	0	0.0
Virgin Australia	39	39	30	76.9	28	71.8	0	0.0
All Airlines	110	109	82	75.2	86	78.9	1	0.9
<b>Darwin-Melbourne</b>								
Jetstar	24	24	7	29.2	9	37.5	0	0.0
Qantas	26	26	24	92.3	25	96.2	0	0.0
Virgin Australia	20	19	11	57.9	8	42.1	1	5.0
All Airlines	70	69	42	60.9	42	60.9	1	1.4
<b>Darwin-Perth</b>								
Qantas	21	21	16	76.2	15	71.4	0	0.0
QantasLink	10	10	3	30.0	2	20.0	0	0.0
Virgin Australia	2	2	2	100.0	2	100.0	0	0.0
Virgin Australia Regional Airlines	20	20	14	70.0	11	55.0	0	0.0
All Airlines	53	53	35	66.0	30	56.6	0	0.0
<b>Darwin-Sydney</b>								
Jetstar	24	24	15	62.5	11	45.8	0	0.0
Qantas	31	31	23	74.2	25	80.6	0	0.0
Virgin Australia	7	7	6	85.7	5	71.4	0	0.0
All Airlines	62	62	44	71.0	41	66.1	0	0.0
<b>Dubbo-Sydney</b>								
QantasLink	105	101	94	93.1	93	92.1	4	3.8
Rex Airlines	76	76	65	85.5	70	92.1	0	0.0
All Airlines	181	177	159	89.8	163	92.1	4	2.2
<b>Emerald-Brisbane</b>								
QantasLink	117	114	95	83.3	95	83.3	3	2.6
Virgin Australia	27	27	18	66.7	19	70.4	0	0.0
All Airlines	144	141	113	80.1	114	80.9	3	2.1
<b>Gladstone-Brisbane</b>								
QantasLink	137	129	108	83.7	107	82.9	8	5.8
Virgin Australia	48	46	21	45.7	31	67.4	2	4.2
All Airlines	185	175	129	73.7	138	78.9	10	5.4

	Sectors		Arrivals On Time		Departures On Time		Cancellations	
	Sched.	Flown	No.	%	No.	%	No.	%
<b>Gold Coast-Adelaide</b>								
Jetstar	31	31	23	74.2	22	71.0	0	0.0
Virgin Australia	43	42	34	81.0	34	81.0	1	2.3
All Airlines	74	73	57	78.1	56	76.7	1	1.4
<b>Gold Coast-Canberra</b>								
Jetstar	17	17	10	58.8	8	47.1	0	0.0
Virgin Australia	45	45	37	82.2	35	77.8	0	0.0
All Airlines	62	62	47	75.8	43	69.4	0	0.0
<b>Gold Coast-Melbourne</b>								
Jetstar	227	202	120	59.4	118	58.4	25	11.0
Qantas	76	76	58	76.3	57	75.0	0	0.0
QantasLink	9	9	7	77.8	7	77.8	0	0.0
Rex Airlines	32	32	28	87.5	25	78.1	0	0.0
Virgin Australia	328	328	270	82.3	271	82.6	0	0.0
All Airlines	672	647	483	74.7	478	73.9	25	3.7
<b>Gold Coast-Sydney</b>								
Jetstar	294	266	187	70.3	196	73.7	28	9.5
Qantas	99	99	67	67.7	79	79.8	0	0.0
QantasLink	35	34	24	70.6	27	79.4	1	2.9
Rex Airlines	31	31	28	90.3	27	87.1	0	0.0
Virgin Australia	320	314	233	74.2	239	76.1	6	1.9
All Airlines	779	744	539	72.4	568	76.3	35	4.5
<b>Hamilton Island-Brisbane</b>								
Qantas	22	22	18	81.8	16	72.7	0	0.0
Virgin Australia	40	40	30	75.0	28	70.0	0	0.0
All Airlines	62	62	48	77.4	44	71.0	0	0.0
<b>Hamilton Island-Sydney</b>								
Jetstar	26	26	7	26.9	7	26.9	0	0.0
Qantas	31	31	22	71.0	21	67.7	0	0.0
Virgin Australia	31	31	23	74.2	23	74.2	0	0.0
All Airlines	88	88	52	59.1	51	58.0	0	0.0
<b>Hobart-Brisbane</b>								
Jetstar	31	31	21	67.7	21	67.7	0	0.0
QantasLink	30	30	22	73.3	23	76.7	0	0.0
Virgin Australia	58	57	37	64.9	38	66.7	1	1.7
All Airlines	119	118	80	67.8	82	69.5	1	0.8
<b>Hobart-Melbourne</b>								
Jetstar	211	188	104	55.3	94	50.0	23	10.9
Qantas	28	27	20	74.1	20	74.1	1	3.6
QantasLink	95	93	71	76.3	72	77.4	2	2.1
Virgin Australia	141	140	86	61.4	95	67.9	1	0.7
All Airlines	475	448	281	62.7	281	62.7	27	5.7
<b>Hobart-Sydney</b>								
Jetstar	94	92	71	77.2	69	75.0	2	2.1
Qantas	36	36	29	80.6	26	72.2	0	0.0
QantasLink	47	47	30	63.8	32	68.1	0	0.0
Virgin Australia	79	77	45	58.4	52	67.5	2	2.5
All Airlines	256	252	175	69.4	179	71.0	4	1.6

	Sectors		Arrivals On Time		Departures On Time		Cancellations	
	Sched.	Flown	No.	%	No.	%	No.	%
<b>Kalgoorlie-Perth</b>								
Qantas	27	27	26	96.3	26	96.3	0	0.0
QantasLink	46	45	36	80.0	35	77.8	1	2.2
Virgin Australia	27	26	16	61.5	19	73.1	1	3.7
Virgin Australia Regional Airlines	43	43	32	74.4	36	83.7	0	0.0
All Airlines	143	141	110	78.0	116	82.3	2	1.4
<b>Karratha-Perth</b>								
Qantas	27	26	21	80.8	22	84.6	1	3.7
QantasLink	109	109	87	79.8	87	79.8	0	0.0
Virgin Australia	23	23	20	87.0	21	91.3	0	0.0
Virgin Australia Regional Airlines	30	30	21	70.0	22	73.3	0	0.0
All Airlines	189	188	149	79.3	152	80.9	1	0.5
<b>Launceston-Brisbane</b>								
Jetstar	31	31	14	45.2	10	32.3	0	0.0
Virgin Australia	25	24	17	70.8	18	75.0	1	4.0
All Airlines	56	55	31	56.4	28	50.9	1	1.8
<b>Launceston-Melbourne</b>								
Jetstar	151	138	78	56.5	67	48.6	13	8.6
QantasLink	117	110	91	82.7	89	80.9	7	6.0
Virgin Australia	97	97	79	81.4	81	83.5	0	0.0
All Airlines	365	345	248	71.9	237	68.7	20	5.5
<b>Launceston-Sydney</b>								
Jetstar	72	70	52	74.3	53	75.7	2	2.8
QantasLink	31	30	27	90.0	26	86.7	1	3.2
Virgin Australia	31	31	20	64.5	27	87.1	0	0.0
All Airlines	134	131	99	75.6	106	80.9	3	2.2
<b>Mackay-Brisbane</b>								
Jetstar	31	31	21	67.7	22	71.0	0	0.0
Qantas	110	109	96	88.1	94	86.2	1	0.9
QantasLink	12	12	9	75.0	9	75.0	0	0.0
Virgin Australia	135	131	74	56.5	76	58.0	4	3.0
All Airlines	288	283	200	70.7	201	71.0	5	1.7
<b>Melbourne-Adelaide</b>								
Jetstar	111	103	54	52.4	54	52.4	8	7.2
Qantas	228	226	186	82.3	186	82.3	2	0.9
QantasLink	13	12	5	41.7	10	83.3	1	7.7
Rex Airlines	58	58	47	81.0	48	82.8	0	0.0
Virgin Australia	274	270	195	72.2	214	79.3	4	1.5
All Airlines	684	669	487	72.8	512	76.5	15	2.2
<b>Melbourne-Brisbane</b>								
Jetstar	163	141	72	51.1	67	47.5	22	13.5
Qantas	336	330	274	83.0	265	80.3	6	1.8
Rex Airlines	64	64	48	75.0	53	82.8	0	0.0
Virgin Australia	403	393	283	72.0	302	76.8	10	2.5
All Airlines	966	928	677	73.0	687	74.0	38	3.9
<b>Melbourne-Cairns</b>								
Jetstar	95	91	58	63.7	52	57.1	4	4.2
Qantas	42	42	36	85.7	35	83.3	0	0.0
Virgin Australia	49	49	40	81.6	42	85.7	0	0.0
All Airlines	186	182	134	73.6	129	70.9	4	2.2

	Sectors		Arrivals On Time		Departures On Time		Cancellations	
	Sched.	Flown	No.	%	No.	%	No.	%
<b>Melbourne-Canberra</b>								
Jetstar	31	29	10	34.5	10	34.5	2	6.5
QantasLink	193	188	155	82.4	161	85.6	5	2.6
Rex Airlines	31	31	26	83.9	25	80.6	0	0.0
Virgin Australia	105	105	75	71.4	82	78.1	0	0.0
All Airlines	360	353	266	75.4	278	78.8	7	1.9
<b>Melbourne-Darwin</b>								
Jetstar	25	25	11	44.0	10	40.0	0	0.0
Qantas	25	25	17	68.0	14	56.0	0	0.0
Virgin Australia	20	20	10	50.0	13	65.0	0	0.0
All Airlines	70	70	38	54.3	37	52.9	0	0.0
<b>Melbourne-Gold Coast</b>								
Jetstar	227	202	99	49.0	97	48.0	25	11.0
Qantas	75	75	62	82.7	60	80.0	0	0.0
QantasLink	9	9	7	77.8	8	88.9	0	0.0
Rex Airlines	32	32	30	93.8	31	96.9	0	0.0
Virgin Australia	328	328	273	83.2	268	81.7	0	0.0
All Airlines	671	646	471	72.9	464	71.8	25	3.7
<b>Melbourne-Hobart</b>								
Jetstar	211	190	96	50.5	97	51.1	21	10.0
Qantas	28	27	22	81.5	22	81.5	1	3.6
QantasLink	95	93	75	80.6	74	79.6	2	2.1
Virgin Australia	141	140	104	74.3	108	77.1	1	0.7
All Airlines	475	450	297	66.0	301	66.9	25	5.3
<b>Melbourne-Launceston</b>								
Jetstar	148	135	77	57.0	79	58.5	13	8.8
QantasLink	117	111	93	83.8	96	86.5	6	5.1
Virgin Australia	97	97	71	73.2	72	74.2	0	0.0
All Airlines	362	343	241	70.3	247	72.0	19	5.2
<b>Melbourne-Mildura</b>								
QantasLink	96	92	68	73.9	70	76.1	4	4.2
Rex Airlines	59	59	46	78.0	52	88.1	0	0.0
All Airlines	155	151	114	75.5	122	80.8	4	2.6
<b>Melbourne-Newcastle</b>								
Jetstar	60	59	36	61.0	39	66.1	1	1.7
QantasLink	53	53	41	77.4	45	84.9	0	0.0
Virgin Australia	31	31	21	67.7	24	77.4	0	0.0
All Airlines	144	143	98	68.5	108	75.5	1	0.7
<b>Melbourne-Perth</b>								
Jetstar	75	68	35	51.5	35	51.5	7	9.3
Qantas	238	237	162	68.4	171	72.2	1	0.4
Virgin Australia	192	190	153	80.5	144	75.8	2	1.0
All Airlines	505	495	350	70.7	350	70.7	10	2.0
<b>Melbourne-Sunshine Coast</b>								
Jetstar	73	68	47	69.1	50	73.5	5	6.8
Qantas	32	30	25	83.3	25	83.3	2	6.3
QantasLink	32	32	23	71.9	26	81.3	0	0.0
Virgin Australia	111	111	86	77.5	87	78.4	0	0.0
All Airlines	248	241	181	75.1	188	78.0	7	2.8

	Sectors		Arrivals On Time		Departures On Time		Cancellations	
	Sched.	Flown	No.	%	No.	%	No.	%
<b>Melbourne-Sydney</b>								
Jetstar	401	344	216	62.8	214	62.2	57	14.2
Qantas	651	605	467	77.2	500	82.6	46	7.1
Rex Airlines	195	191	163	85.3	170	89.0	4	2.1
Virgin Australia	736	701	546	77.9	594	84.7	35	4.8
All Airlines	1 983	1 841	1 392	75.6	1 478	80.3	142	7.2
<b>Mildura-Melbourne</b>								
QantasLink	96	92	51	55.4	63	68.5	4	4.2
Rex Airlines	58	58	44	75.9	52	89.7	0	0.0
All Airlines	154	150	95	63.3	115	76.7	4	2.6
<b>Mount Isa-Brisbane</b>								
Qantas	25	25	24	96.0	24	96.0	0	0.0
QantasLink	29	26	20	76.9	22	84.6	3	10.3
Virgin Australia	12	12	3	25.0	8	66.7	0	0.0
All Airlines	66	63	47	74.6	54	85.7	3	4.5
<b>Newcastle-Brisbane</b>								
Jetstar	60	60	45	75.0	46	76.7	0	0.0
QantasLink	111	101	91	90.1	88	87.1	10	9.0
Virgin Australia	83	81	54	66.7	56	69.1	2	2.4
All Airlines	254	242	190	78.5	190	78.5	12	4.7
<b>Newcastle-Melbourne</b>								
Jetstar	61	60	41	68.3	39	65.0	1	1.6
QantasLink	53	52	34	65.4	40	76.9	1	1.9
Virgin Australia	31	31	16	51.6	18	58.1	0	0.0
All Airlines	145	143	91	63.6	97	67.8	2	1.4
<b>Newman-Perth</b>								
Qantas	14	13	10	76.9	10	76.9	1	7.1
QantasLink	96	93	61	65.6	67	72.0	3	3.1
Virgin Australia	18	17	9	52.9	9	52.9	1	5.6
Virgin Australia Regional Airlines	36	36	24	66.7	24	66.7	0	0.0
All Airlines	164	159	104	65.4	110	69.2	5	3.0
<b>Perth-Adelaide</b>								
Jetstar	32	30	22	73.3	25	83.3	2	6.3
Qantas	108	108	87	80.6	81	75.0	0	0.0
Virgin Australia	21	21	17	81.0	16	76.2	0	0.0
Virgin Australia Regional Airlines	45	42	25	59.5	28	66.7	3	6.7
All Airlines	206	201	151	75.1	150	74.6	5	2.4
<b>Perth-Brisbane</b>								
Jetstar	25	23	12	52.2	13	56.5	2	8.0
Qantas	166	165	149	90.3	139	84.2	1	0.6
Virgin Australia	138	135	116	85.9	89	65.9	3	2.2
All Airlines	329	323	277	85.8	241	74.6	6	1.8
<b>Perth-Broome</b>								
QantasLink	79	73	57	78.1	54	74.0	6	7.6
Virgin Australia	11	10	4	40.0	4	40.0	1	9.1
Virgin Australia Regional Airlines	33	31	24	77.4	22	71.0	2	6.1
All Airlines	123	114	85	74.6	80	70.2	9	7.3

	Sectors		Arrivals On Time		Departures On Time		Cancellations	
	Sched.	Flown	No.	%	No.	%	No.	%
<b>Perth-Darwin</b>								
Qantas	21	21	14	66.7	15	71.4	0	0.0
QantasLink	10	10	3	30.0	6	60.0	0	0.0
Virgin Australia	2	2	0	0.0	0	0.0	0	0.0
Virgin Australia Regional Airlines	20	20	11	55.0	11	55.0	0	0.0
All Airlines	53	53	28	52.8	32	60.4	0	0.0
<b>Perth-Kalgoorlie</b>								
Qantas	27	27	26	96.3	26	96.3	0	0.0
QantasLink	46	45	34	75.6	35	77.8	1	2.2
Virgin Australia	27	26	20	76.9	19	73.1	1	3.7
Virgin Australia Regional Airlines	43	43	34	79.1	39	90.7	0	0.0
All Airlines	143	141	114	80.9	119	84.4	2	1.4
<b>Perth-Karratha</b>								
Qantas	27	26	24	92.3	26	100.0	1	3.7
QantasLink	115	115	85	73.9	84	73.0	0	0.0
Virgin Australia	23	23	22	95.7	22	95.7	0	0.0
Virgin Australia Regional Airlines	30	30	25	83.3	27	90.0	0	0.0
All Airlines	195	194	156	80.4	159	82.0	1	0.5
<b>Perth-Melbourne</b>								
Jetstar	76	67	21	31.3	11	16.4	9	11.8
Qantas	237	234	171	73.1	143	61.1	3	1.3
Virgin Australia	198	196	143	73.0	141	71.9	2	1.0
All Airlines	511	497	335	67.4	295	59.4	14	2.7
<b>Perth-Newman</b>								
Qantas	14	13	11	84.6	12	92.3	1	7.1
QantasLink	95	93	70	75.3	69	74.2	2	2.1
Virgin Australia	18	18	14	77.8	15	83.3	0	0.0
Virgin Australia Regional Airlines	36	36	26	72.2	28	77.8	0	0.0
All Airlines	163	160	121	75.6	124	77.5	3	1.8
<b>Perth-Port Hedland</b>								
Qantas	35	35	21	60.0	22	62.9	0	0.0
QantasLink	88	88	75	85.2	75	85.2	0	0.0
Virgin Australia	11	11	11	100.0	10	90.9	0	0.0
Virgin Australia Regional Airlines	39	37	29	78.4	29	78.4	2	5.1
All Airlines	173	171	136	79.5	136	79.5	2	1.2
<b>Perth-Sydney</b>								
Jetstar	44	42	27	64.3	14	33.3	2	4.5
Qantas	196	195	144	73.8	129	66.2	1	0.5
Virgin Australia	151	151	126	83.4	110	72.8	0	0.0
All Airlines	391	388	297	76.5	253	65.2	3	0.8
<b>Port Hedland-Perth</b>								
Qantas	35	33	22	66.7	22	66.7	2	5.7
QantasLink	90	88	64	72.7	63	71.6	2	2.2
Virgin Australia	11	11	8	72.7	8	72.7	0	0.0
Virgin Australia Regional Airlines	39	37	23	62.2	25	67.6	2	5.1
All Airlines	175	169	117	69.2	118	69.8	6	3.4
<b>Port Lincoln-Adelaide</b>								
QantasLink	137	133	126	94.7	126	94.7	4	2.9
Rex Airlines	151	146	133	91.1	133	91.1	5	3.3
All Airlines	288	279	259	92.8	259	92.8	9	3.1

	Sectors		Arrivals On Time		Departures On Time		Cancellations	
	Sched.	Flown	No.	%	No.	%	No.	%
<b>Port Macquarie-Sydney</b>								
QantasLink	109	108	93	86.1	92	85.2	1	0.9
Rex Airlines	73	72	61	84.7	63	87.5	1	1.4
All Airlines	182	180	154	85.6	155	86.1	2	1.1
<b>Proserpine-Brisbane</b>								
Jetstar	36	32	22	68.8	22	68.8	4	11.1
QantasLink	24	22	16	72.7	17	77.3	2	8.3
Virgin Australia	49	44	33	75.0	33	75.0	5	10.2
All Airlines	109	98	71	72.4	72	73.5	11	10.1
<b>Rockhampton-Brisbane</b>								
QantasLink	172	166	147	88.6	148	89.2	6	3.5
Virgin Australia	135	134	74	55.2	83	61.9	1	0.7
All Airlines	307	300	221	73.7	231	77.0	7	2.3
<b>Sunshine Coast-Melbourne</b>								
Jetstar	73	68	45	66.2	44	64.7	5	6.8
Qantas	32	30	22	73.3	22	73.3	2	6.3
QantasLink	32	31	22	71.0	21	67.7	1	3.1
Virgin Australia	111	111	77	69.4	86	77.5	0	0.0
All Airlines	248	240	166	69.2	173	72.1	8	3.2
<b>Sunshine Coast-Sydney</b>								
Jetstar	100	89	54	60.7	63	70.8	11	11.0
Qantas	48	46	39	84.8	38	82.6	2	4.2
QantasLink	66	64	54	84.4	54	84.4	2	3.0
Virgin Australia	83	83	64	77.1	71	85.5	0	0.0
All Airlines	297	282	211	74.8	226	80.1	15	5.1
<b>Sydney-Adelaide</b>								
Jetstar	121	109	87	79.8	83	76.1	12	9.9
Qantas	195	194	148	76.3	142	73.2	1	0.5
Virgin Australia	141	138	109	79.0	99	71.7	3	2.1
All Airlines	457	441	344	78.0	324	73.5	16	3.5
<b>Sydney-Albury</b>								
QantasLink	94	91	82	90.1	76	83.5	3	3.2
Rex Airlines	81	80	66	82.5	63	78.8	1	1.2
All Airlines	175	171	148	86.5	139	81.3	4	2.3
<b>Sydney-Armidale</b>								
QantasLink	98	92	79	85.9	72	78.3	6	6.1
Rex Airlines	38	38	32	84.2	32	84.2	0	0.0
All Airlines	136	130	111	85.4	104	80.0	6	4.4
<b>Sydney-Ballina</b>								
Jetstar	91	90	78	86.7	75	83.3	1	1.1
QantasLink	98	92	79	85.9	69	75.0	6	6.1
Virgin Australia	52	52	35	67.3	37	71.2	0	0.0
All Airlines	241	234	192	82.1	181	77.4	7	2.9
<b>Sydney-Brisbane</b>								
Jetstar	171	145	96	66.2	91	62.8	26	15.2
Qantas	448	433	319	73.7	311	71.8	15	3.3
Rex Airlines	143	142	104	73.2	114	80.3	1	0.7
Virgin Australia	417	406	303	74.6	304	74.9	11	2.6
All Airlines	1 179	1 126	822	73.0	820	72.8	53	4.5



	Sectors		Arrivals On Time		Departures On Time		Cancellations	
	Sched.	Flown	No.	%	No.	%	No.	%
<b>Sydney-Cairns</b>								
Jetstar	93	88	65	73.9	64	72.7	5	5.4
Qantas	62	62	45	72.6	43	69.4	0	0.0
Virgin Australia	80	80	66	82.5	62	77.5	0	0.0
All Airlines	235	230	176	76.5	169	73.5	5	2.1
<b>Sydney-Canberra</b>								
QantasLink	302	274	220	80.3	219	79.9	28	9.3
Virgin Australia	212	209	177	84.7	164	78.5	3	1.4
All Airlines	514	483	397	82.2	383	79.3	31	6.0
<b>Sydney-Coffs Harbour</b>								
QantasLink	115	115	99	86.1	96	83.5	0	0.0
Rex Airlines	91	91	80	87.9	79	86.8	0	0.0
All Airlines	206	206	179	86.9	175	85.0	0	0.0
<b>Sydney-Darwin</b>								
Jetstar	24	24	14	58.3	11	45.8	0	0.0
Qantas	31	31	24	77.4	22	71.0	0	0.0
Virgin Australia	7	7	2	28.6	2	28.6	0	0.0
All Airlines	62	62	40	64.5	35	56.5	0	0.0
<b>Sydney-Dubbo</b>								
QantasLink	106	103	91	88.3	81	78.6	3	2.8
Rex Airlines	87	87	80	92.0	74	85.1	0	0.0
All Airlines	193	190	171	90.0	155	81.6	3	1.6
<b>Sydney-Gold Coast</b>								
Jetstar	293	267	191	71.5	191	71.5	26	8.9
Qantas	99	99	82	82.8	81	81.8	0	0.0
QantasLink	35	34	29	85.3	30	88.2	1	2.9
Rex Airlines	32	32	28	87.5	29	90.6	0	0.0
Virgin Australia	319	314	234	74.5	240	76.4	5	1.6
All Airlines	778	746	564	75.6	571	76.5	32	4.1
<b>Sydney-Hamilton Island</b>								
Jetstar	26	26	15	57.7	13	50.0	0	0.0
Qantas	31	31	27	87.1	27	87.1	0	0.0
Virgin Australia	31	31	25	80.6	25	80.6	0	0.0
All Airlines	88	88	67	76.1	65	73.9	0	0.0
<b>Sydney-Hobart</b>								
Jetstar	94	92	78	84.8	69	75.0	2	2.1
Qantas	36	36	33	91.7	32	88.9	0	0.0
QantasLink	48	48	36	75.0	29	60.4	0	0.0
Virgin Australia	79	78	69	88.5	67	85.9	1	1.3
All Airlines	257	254	216	85.0	197	77.6	3	1.2
<b>Sydney-Launceston</b>								
Jetstar	73	73	54	74.0	54	74.0	0	0.0
QantasLink	31	31	29	93.5	28	90.3	0	0.0
Virgin Australia	31	31	27	87.1	25	80.6	0	0.0
All Airlines	135	135	110	81.5	107	79.3	0	0.0
<b>Sydney-Melbourne</b>								
Jetstar	397	343	224	65.3	204	59.5	54	13.6
Qantas	652	607	474	78.1	457	75.3	45	6.9
Rex Airlines	195	191	173	90.6	170	89.0	4	2.1
Virgin Australia	727	688	529	76.9	507	73.7	39	5.4
All Airlines	1 971	1 829	1 400	76.5	1 338	73.2	142	7.2

	<i>Sectors</i>		<i>Arrivals On Time</i>		<i>Departures On Time</i>		<i>Cancellations</i>	
	<i>Sched.</i>	<i>Flown</i>	<i>No.</i>	<i>%</i>	<i>No.</i>	<i>%</i>	<i>No.</i>	<i>%</i>
<b>Sydney-Perth</b>								
Jetstar	45	44	31	70.5	25	56.8	1	2.2
Qantas	199	197	105	53.3	112	56.9	2	1.0
Virgin Australia	162	162	128	79.0	119	73.5	0	0.0
All Airlines	406	403	264	65.5	256	63.5	3	0.7
<b>Sydney-Port Macquarie</b>								
QantasLink	110	109	95	87.2	91	83.5	1	0.9
Rex Airlines	75	74	68	91.9	66	89.2	1	1.3
All Airlines	185	183	163	89.1	157	85.8	2	1.1
<b>Sydney-Sunshine Coast</b>								
Jetstar	100	90	68	75.6	71	78.9	10	10.0
Qantas	48	46	39	84.8	35	76.1	2	4.2
QantasLink	67	66	51	77.3	53	80.3	1	1.5
Virgin Australia	83	83	70	84.3	70	84.3	0	0.0
All Airlines	298	285	228	80.0	229	80.4	13	4.4
<b>Sydney-Wagga Wagga</b>								
QantasLink	99	95	80	84.2	81	85.3	4	4.0
Rex Airlines	81	79	64	81.0	62	78.5	2	2.5
All Airlines	180	174	144	82.8	143	82.2	6	3.3
<b>Townsville-Brisbane</b>								
Jetstar	50	49	39	79.6	41	83.7	1	2.0
Qantas	101	100	93	93.0	93	93.0	1	1.0
QantasLink	18	18	10	55.6	12	66.7	0	0.0
Virgin Australia	137	123	85	69.1	87	70.7	14	10.2
All Airlines	306	290	227	78.3	233	80.3	16	5.2
<b>Townsville-Cairns</b>								
QantasLink	153	147	133	90.5	128	87.1	6	3.9
Rex Airlines	13	12	10	83.3	10	83.3	1	7.7
All Airlines	166	159	143	89.9	138	86.8	7	4.2
<b>Wagga Wagga-Sydney</b>								
QantasLink	98	92	83	90.2	82	89.1	6	6.1
Rex Airlines	80	78	62	79.5	70	89.7	2	2.5
All Airlines	178	170	145	85.3	152	89.4	8	4.5

# Airports

The following data reports by airport against flights operated on published routes only. This month, 8 major city airports and 28 regional city airports are covered.

Airport	Arrivals			Departures		
	Sectors	On Time		Sectors	On Time	
	Flown	No.	%	Flown	No.	%
<b>Adelaide</b>						
Jetstar	303	203	67.0	301	216	71.8
Qantas	537	428	79.7	533	419	78.6
QantasLink	392	303	77.3	393	330	84.0
Rex Airlines	204	180	88.2	203	188	92.6
Virgin Australia	635	475	74.8	634	477	75.2
Virgin Australia Regional Airlines	42	25	59.5	42	19	45.2
All Airlines	2,113	1,614	76.4	2,106	1,649	78.3
Relates to services to and from Alice Springs, Brisbane, Canberra, Gold Coast, Melbourne, Perth, Port Lincoln and Sydney only.						
<b>Albury</b>						
QantasLink	91	82	90.1	89	78	87.6
Rex Airlines	80	66	82.5	80	68	85.0
All Airlines	171	148	86.5	169	146	86.4
Relates to services to and from Sydney only.						
<b>Alice Springs</b>						
QantasLink	38	29	76.3	38	25	65.8
Virgin Australia	9	7	77.8	9	6	66.7
All Airlines	47	36	76.6	47	31	66.0
Relates to services to and from Adelaide only.						
<b>Armidale</b>						
QantasLink	92	79	85.9	90	77	85.6
Rex Airlines	38	32	84.2	38	31	81.6
All Airlines	130	111	85.4	128	108	84.4
Relates to services to and from Sydney only.						
<b>Ballina</b>						
Jetstar	90	78	86.7	90	71	78.9
QantasLink	92	79	85.9	92	78	84.8
Virgin Australia	52	35	67.3	52	32	61.5
All Airlines	234	192	82.1	234	181	77.4
Relates to services to and from Sydney only.						
<b>Brisbane</b>						
Jetstar	713	452	63.4	714	491	68.8
Qantas	1,342	1,122	83.6	1,346	1,178	87.5
QantasLink	931	781	83.9	932	757	81.2
Rex Airlines	206	152	73.8	207	161	77.8
Virgin Australia	2,055	1,458	70.9	2,059	1,411	68.5
All Airlines	5,247	3,965	75.6	5,258	3,998	76.0
Relates to services to and from Adelaide, Cairns, Canberra, Darwin, Emerald, Gladstone, Hamilton Island, Hobart, Launceston, Mackay, Melbourne, Mount Isa, Newcastle, Perth, Proserpine, Rockhampton, Sydney and Townsville only.						

Airport	Arrivals			Departures		
	Sectors	On Time		Sectors	On Time	
	Flown	No.	%	Flown	No.	%
<b>Broome</b>						
QantasLink	73	57	78.1	73	50	68.5
Virgin Australia	10	4	40.0	10	2	20.0
Virgin Australia Regional Airlines	31	24	77.4	31	17	54.8
All Airlines	114	85	74.6	114	69	60.5
Relates to services to and from Perth only.						
<b>Cairns</b>						
Jetstar	264	186	70.5	265	166	62.6
Qantas	223	197	88.3	222	196	88.3
QantasLink	151	137	90.7	153	142	92.8
Rex Airlines	12	10	83.3	12	10	83.3
Virgin Australia	264	204	77.3	265	194	73.2
All Airlines	914	734	80.3	917	708	77.2
Relates to services to and from Brisbane, Melbourne, Sydney and Townsville only.						
<b>Canberra</b>						
Jetstar	76	47	61.8	77	42	54.5
Qantas	26	26	100.0	26	26	100.0
QantasLink	633	515	81.4	626	521	83.2
Rex Airlines	31	26	83.9	31	25	80.6
Virgin Australia	471	378	80.3	470	376	80.0
All Airlines	1,237	992	80.2	1,230	990	80.5
Relates to services to and from Adelaide, Brisbane, Gold Coast, Melbourne and Sydney only.						
<b>Coffs Harbour</b>						
QantasLink	115	99	86.1	114	99	86.8
Rex Airlines	91	80	87.9	89	77	86.5
All Airlines	206	179	86.9	203	176	86.7
Relates to services to and from Sydney only.						
<b>Darwin</b>						
Jetstar	73	44	60.3	71	33	46.5
Qantas	83	60	72.3	83	69	83.1
QantasLink	52	27	51.9	52	43	82.7
Virgin Australia	69	42	60.9	67	43	64.2
Virgin Australia Regional Airlines	20	11	55.0	20	11	55.0
All Airlines	297	184	62.0	293	199	67.9
Relates to services to and from Brisbane, Melbourne, Perth and Sydney only.						
<b>Dubbo</b>						
QantasLink	103	91	88.3	101	93	92.1
Rex Airlines	87	80	92.0	76	70	92.1
All Airlines	190	171	90.0	177	163	92.1
Relates to services to and from Sydney only.						
<b>Emerald</b>						
QantasLink	114	98	86.0	114	95	83.3
Virgin Australia	27	19	70.4	27	19	70.4
All Airlines	141	117	83.0	141	114	80.9
Relates to services to and from Brisbane only.						

Airport	Arrivals			Departures		
	Sectors	On Time		Sectors	On Time	
	Flown	No.	%	Flown	No.	%
<b>Gladstone</b>						
QantasLink	129	103	79.8	129	107	82.9
Virgin Australia	46	28	60.9	46	31	67.4
All Airlines	175	131	74.9	175	138	78.9
Relates to services to and from Brisbane only.						
<b>Gold Coast</b>						
Jetstar	517	325	62.9	516	344	66.7
Qantas	174	144	82.8	175	136	77.7
QantasLink	43	36	83.7	43	34	79.1
Rex Airlines	64	58	90.6	63	52	82.5
Virgin Australia	729	582	79.8	729	579	79.4
All Airlines	1,527	1,145	75.0	1,526	1,145	75.0
Relates to services to and from Adelaide, Canberra, Melbourne and Sydney only.						
<b>Hamilton Island</b>						
Jetstar	26	15	57.7	26	7	26.9
Qantas	53	48	90.6	53	37	69.8
Virgin Australia	71	58	81.7	71	51	71.8
All Airlines	150	121	80.7	150	95	63.3
Relates to services to and from Brisbane and Sydney only.						
<b>Hobart</b>						
Jetstar	313	198	63.3	311	184	59.2
Qantas	63	55	87.3	63	46	73.0
QantasLink	171	140	81.9	170	127	74.7
Virgin Australia	275	217	78.9	274	185	67.5
All Airlines	822	610	74.2	818	542	66.3
Relates to services to and from Brisbane, Melbourne and Sydney only.						
<b>Kalgoorlie</b>						
Qantas	27	26	96.3	27	26	96.3
QantasLink	45	34	75.6	45	35	77.8
Virgin Australia	26	20	76.9	26	19	73.1
Virgin Australia Regional Airlines	43	34	79.1	43	36	83.7
All Airlines	141	114	80.9	141	116	82.3
Relates to services to and from Perth only.						
<b>Karratha</b>						
Qantas	26	24	92.3	26	22	84.6
QantasLink	115	85	73.9	109	87	79.8
Virgin Australia	23	22	95.7	23	21	91.3
Virgin Australia Regional Airlines	30	25	83.3	30	22	73.3
All Airlines	194	156	80.4	188	152	80.9
Relates to services to and from Perth only.						
<b>Launceston</b>						
Jetstar	239	146	61.1	239	130	54.4
QantasLink	142	122	85.9	140	115	82.1
Virgin Australia	152	115	75.7	152	126	82.9
All Airlines	533	383	71.9	531	371	69.9
Relates to services to and from Brisbane, Melbourne and Sydney only.						

Airport	Arrivals			Departures		
	Sectors Flown	On Time		Sectors Flown	On Time	
		No.	%		No.	%
<b>Mackay</b>						
Jetstar	30	25	83.3	31	22	71.0
Qantas	109	97	89.0	109	94	86.2
QantasLink	8	6	75.0	12	9	75.0
Virgin Australia	131	65	49.6	131	76	58.0
All Airlines	278	193	69.4	283	201	71.0

Relates to services to and from Brisbane only.

### Melbourne

Jetstar	1,455	866	59.5	1,455	804	55.3
Qantas	1,596	1,248	78.2	1,597	1,278	80.0
QantasLink	586	432	73.7	590	490	83.1
Rex Airlines	433	365	84.3	435	379	87.1
Virgin Australia	2,426	1,808	74.5	2,435	1,950	80.1
All Airlines	6,496	4,719	72.6	6,512	4,901	75.3

Relates to services to and from Adelaide, Brisbane, Cairns, Canberra, Darwin, Gold Coast, Hobart, Launceston, Mildura, Newcastle, Perth, Sunshine Coast and Sydney only.

### Mildura

QantasLink	92	68	73.9	92	63	68.5
Rex Airlines	59	46	78.0	58	52	89.7
All Airlines	151	114	75.5	150	115	76.7

Relates to services to and from Melbourne only.

### Mount Isa

Qantas	25	25	100.0	25	24	96.0
QantasLink	27	22	81.5	26	22	84.6
Virgin Australia	12	6	50.0	12	8	66.7
All Airlines	64	53	82.8	63	54	85.7

Relates to services to and from Brisbane only.

### Newcastle

Jetstar	119	84	70.6	120	85	70.8
QantasLink	156	125	80.1	153	128	83.7
Virgin Australia	113	70	61.9	112	74	66.1
All Airlines	388	279	71.9	385	287	74.5

Relates to services to and from Brisbane and Melbourne only.

### Newman

Qantas	13	11	84.6	13	10	76.9
QantasLink	93	70	75.3	93	67	72.0
Virgin Australia	18	14	77.8	17	9	52.9
Virgin Australia Regional Airlines	36	26	72.2	36	24	66.7
All Airlines	160	121	75.6	159	110	69.2

Relates to services to and from Perth only.

### Perth

Jetstar	165	114	69.1	162	63	38.9
Qantas	829	598	72.1	824	593	72.0
QantasLink	418	301	72.0	424	323	76.2
Virgin Australia	595	440	73.9	593	426	71.8
Virgin Australia Regional Airlines	239	160	66.9	239	184	77.0
All Airlines	2,246	1,613	71.8	2,242	1,589	70.9

Relates to services to and from Adelaide, Brisbane, Broome, Darwin, Kalgoorlie, Karratha, Melbourne, Newman, Port Hedland and Sydney only.

Airport	Arrivals			Departures		
	Sectors	On Time		Sectors	On Time	
	Flown	No.	%	Flown	No.	%
<b>Port Hedland</b>						
Qantas	35	21	60.0	33	22	66.7
QantasLink	88	75	85.2	88	63	71.6
Virgin Australia	11	11	100.0	11	8	72.7
Virgin Australia Regional Airlines	37	29	78.4	37	25	67.6
All Airlines	171	136	79.5	169	118	69.8
Relates to services to and from Perth only.						
<b>Port Lincoln</b>						
QantasLink	134	128	95.5	133	126	94.7
Rex Airlines	146	133	91.1	146	133	91.1
All Airlines	280	261	93.2	279	259	92.8
Relates to services to and from Adelaide only.						
<b>Port Macquarie</b>						
QantasLink	109	95	87.2	108	92	85.2
Rex Airlines	74	68	91.9	72	63	87.5
All Airlines	183	163	89.1	180	155	86.1
Relates to services to and from Sydney only.						
<b>Proserpine</b>						
Jetstar	33	26	78.8	32	22	68.8
QantasLink	22	19	86.4	22	17	77.3
Virgin Australia	44	36	81.8	44	33	75.0
All Airlines	99	81	81.8	98	72	73.5
Relates to services to and from Brisbane only.						
<b>Rockhampton</b>						
QantasLink	168	145	86.3	166	148	89.2
Virgin Australia	135	61	45.2	134	83	61.9
All Airlines	303	206	68.0	300	231	77.0
Relates to services to and from Brisbane only.						
<b>Sunshine Coast</b>						
Jetstar	158	115	72.8	157	107	68.2
Qantas	76	64	84.2	76	60	78.9
QantasLink	98	74	75.5	95	75	78.9
Virgin Australia	194	156	80.4	194	157	80.9
All Airlines	526	409	77.8	522	399	76.4
Relates to services to and from Melbourne and Sydney only.						
<b>Sydney</b>						
Jetstar	1,384	948	68.5	1,391	951	68.4
Qantas	1,728	1,352	78.2	1,736	1,262	72.7
QantasLink	1,130	940	83.2	1,150	925	80.4
Rex Airlines	798	656	82.2	814	689	84.6
Virgin Australia	2,280	1,710	75.0	2,279	1,721	75.5
All Airlines	7,320	5,606	76.6	7,370	5,548	75.3

Relates to services to and from Adelaide, Albury, Armidale, Ballina, Brisbane, Cairns, Canberra, Coffs Harbour, Darwin, Dubbo, Gold Coast, Hamilton Island, Hobart, Launceston, Melbourne, Perth, Port Macquarie, Sunshine Coast and Wagga Wagga only.

<i>Airport</i>	<i>Arrivals</i>			<i>Departures</i>		
	<i>Sectors</i>	<i>On Time</i>		<i>Sectors</i>	<i>On Time</i>	
	<i>Flown</i>	<i>No.</i>	<i>%</i>	<i>Flown</i>	<i>No.</i>	<i>%</i>
<b>Townsville</b>						
Jetstar	49	40	81.6	49	41	83.7
Qantas	102	95	93.1	100	93	93.0
QantasLink	166	150	90.4	165	140	84.8
Rex Airlines	12	11	91.7	12	10	83.3
Virgin Australia	126	85	67.5	123	87	70.7
All Airlines	455	381	83.7	449	371	82.6

Relates to services to and from Brisbane and Cairns only.

**Wagga Wagga**

QantasLink	95	80	84.2	92	82	89.1
Rex Airlines	79	64	81.0	78	70	89.7
All Airlines	174	144	82.8	170	152	89.4

Relates to services to and from Sydney only.



## Definitions

---

On time arrival	A flight arrival is counted as "on time" if it arrived at the gate before 15 minutes after the scheduled arrival time shown in the carriers' schedule. Neither diverted nor cancelled flights count as on time.
On time departure	A flight departure is counted as "on time" if it departs the gate before 15 minutes after the scheduled departure time shown in the carriers' schedule.
Cancellation	A flight removed from service within 7 days of scheduled departure is regarded as a cancellation.
On time departure percentage	The percentage of on time departures is measured against the number of departures <i>operated</i> on any particular sector.
On time arrival percentage	The percentage of on time arrivals is measured against the number of arrivals <i>operated</i> on any particular sector.
Cancellation percentage	The percentage of cancellations is measured against the number of services <i>scheduled</i> on any particular sector.

---

## Airlines and Reporting

Data has been gathered since November 2003, although some airlines commenced reporting at a later date, including Jetstar which first reported in May 2004, MacAir in July 2005, Tigerair Australia in April 2008 and Virgin Australia Regional Airlines in May 2013. MacAir ceased operations in February 2009 and data was not received for December 2008 onwards. Tigerair Australia ceased operations in March 2020 and data was not received for that month.

Virgin Blue was rebranded as Virgin Australia in May 2011 and Tiger Airways was rebranded as Tigerair Australia in July 2013 and time series data in Microsoft Excel spread sheet format on the BITRE website have been revised to reflect these changes. With effect from July 2021, Regional Express is reported as Rex Airlines.

Services operated by Skywest on behalf of Virgin Australia using ATR/F100 aircraft commenced in November 2011 and were shown separately as Virgin Australia – ATR/F100 Operations. Virgin Australia Regional Airlines commenced operations in May 2013. It was formed after the acquisition of Skywest by Virgin Australia and represented a combination of operations previously reported under Skywest and Virgin Australia – ATR/F100 Operations. In January 2016, Virgin Australia transferred their ATR fleet from Virgin Australia Regional Airlines to Virgin Australia.