



**Australian Government**

**Department of Infrastructure, Transport,  
Regional Development, Communications and the Arts**  
Bureau of Infrastructure and Transport Research Economics

STATISTICAL REPORT



## Aviation

**Domestic airline on time performance  
January 2025**

The Department of Infrastructure, Transport, Regional Development, Communications and the Arts acknowledges the Traditional Custodians of Country of the land on which we work and live.

We recognise and respect the continuing connections to land, waters and communities.

We pay our respects to them and their cultures and to their Elders both past and present and to all Aboriginal and Torres Strait Islander people.

---

© Commonwealth of Australia 2025

ISSN: 1832-0759

BITRE reference: 2025-023

### **Ownership of intellectual property rights in this publication**

Unless otherwise noted, copyright (and any other intellectual property rights, if any) in this publication is owned by the Commonwealth of Australia (referred to below as the Commonwealth).

### **Disclaimer**

The material contained in this publication is made available on the understanding that the Commonwealth is not providing professional advice, and that users exercise their own skill and care with respect to its use, and seek independent advice if necessary.

The Commonwealth makes no representations or warranties as to the contents or accuracy of the information contained in this publication. To the extent permitted by law, the Commonwealth disclaims liability to any person or organisation in respect of anything done, or omitted to be done, in reliance upon information contained in this publication.

### **Creative Commons licence**

With the exception of (a) the Coat of Arms; and (b) the Department of Infrastructure, Transport, Regional Development, Communications and the Arts' photos and graphics, copyright in this publication is licensed under a Creative Commons Attribution 3.0 Australia Licence.

Creative Commons Attribution 3.0 Australia Licence is a standard form licence agreement that allows you to copy, communicate and adapt this publication provided that you attribute the work to the Commonwealth and abide by the other licence terms. A summary of the licence terms is available from <http://creativecommons.org/licenses/by/3.0/au/deed.en>. The full licence terms are available from <http://creativecommons.org/licenses/by/3.0/au/legalcode>.

### **Use of the Coat of Arms**

The Department of the Prime Minister and Cabinet sets the terms under which the Coat of Arms is used. Please refer to the Department's Commonwealth Coat of Arms and Government branding web page <http://www.dpmc.gov.au/guidelines/index.cfm#brand> and, in particular, the Guidelines on the use of the Commonwealth Coat of Arms publication.

An appropriate citation for this report is:

Bureau of Infrastructure and Transport Research Economics (BITRE), 2025, Domestic airline on time performance, Statistical Report, BITRE, Canberra ACT.

### **Contact us**

All other rights are reserved, including in relation to any Departmental logos or trade marks which may exist. For enquiries regarding the licence and any use of this publication, please contact:

Bureau of Infrastructure and Transport Research Economics (BITRE)  
Department of Infrastructure, Transport, Regional Development, Communications and the Arts  
GPO Box 501, Canberra ACT 2601, Australia  
Telephone: (international) +61 2 6136 8687  
Email: [bitre@infrastructure.gov.au](mailto:bitre@infrastructure.gov.au)  
Website: [www.bitre.gov.au](http://www.bitre.gov.au)

### **Inquiries**

Should you require additional information about the statistics contained in this publication:

Telephone (02) 6136 7250

Electronic mail: [AVSTATS@infrastructure.gov.au](mailto:AVSTATS@infrastructure.gov.au)

Web site: <http://www.bitre.gov.au/statistics/aviation/otphome.aspx>

# Foreword

The Bureau of Infrastructure and Transport Research Economics (BITRE) monitors the punctuality and reliability of major domestic airlines operating between Australian airports. The purpose of this is to allow for evaluation of overall industry and individual airline performance, so that consumers of air travel can make informed decisions.

The following domestic airlines currently report this information monthly to the BITRE: Hinterland, Jetstar, Qantas, QantasLink, Rex Airlines, Skytrans, Virgin Australia and Virgin Australia Regional Airlines.

Information presented in this report is for Australian domestic routes for which the passenger load averaged 8,000 or more passengers per month over the previous six months and where two or more airlines operated in competition on those routes. In order to present data for more routes during the period impacted by COVID-19, the passenger load restriction was not applied between March 2020 and January 2023. From February 2023, the passenger load restriction was reinstated due to the continued recovery of passenger numbers. Data are presented for 59 routes in January 2025. Over time, routes which meet these criteria change as airline networks and traffic levels vary. Participating airlines report their overall monthly network performance where this is possible.

Total industry figures encompass all services operated by reporting airlines only. These airlines collectively carried over 98 per cent of total domestic passengers (regular public transport only) in 2023.

The method of capturing on time performance varies between airlines utilising different recording systems. Jetstar and Qantas jet aircraft use Aircraft Communication Addressing and Reporting System (ACARS) to electronically measure on time performance. Rex Airlines, Virgin Australia, Virgin Australia Regional Airlines and the Qantas non-jet fleet record on time performance manually using records from pilots, gate agents and/or ground crews.

After initial data is collected, aggregate reports are reviewed by participating airlines prior to publication.

Reports and detailed time series data in Microsoft Excel spreadsheet format are available from the BITRE website at: <http://www.bitre.gov.au/statistics/aviation/otphome.aspx>



# Contents

	Page
Industry performance .....	1
Individual routes .....	10
Airports.....	22
Definitions .....	28
Airlines and Reporting .....	29

# Industry performance

For January 2025, on time performance over all routes operated by participating airlines (Hinterland, Jetstar, Qantas, QantasLink, Rex Airlines, Skytrans, Virgin Australia and Virgin Australia Regional Airlines) averaged 75.8 per cent for on time arrivals and 75.8 per cent for on time departures. The cancellation rate for the month was 2.1 per cent. The equivalent figures for January 2024 were 73.4 per cent for on time arrivals, 74.2 per cent for on time departures and 3.1 per cent for cancellations.

This month's on time arrivals figure was lower than the long term average performance for all routes (80.7 per cent) and the on time departures figure was also lower than the long term average (81.8 per cent). The rate of cancellations was lower than the long term average of 2.2 per cent.

The Virgin Australia network (Virgin Australia and Virgin Australia Regional Airlines combined operations) recorded 76.9 per cent for on time arrivals while the Qantas network (Qantas and QantasLink combined operations) recorded 75.6 per cent. Skytrans achieved the highest on time arrivals at 90.6 per cent, followed by Hinterland at 88.2 per cent, Rex Airlines at 80.4 per cent, QantasLink at 77.9 per cent, Virgin Australia at 77.1 per cent, Qantas at 72.3 per cent, Virgin Australia Regional Airlines at 71.6 per cent and Jetstar at 69.7 per cent.

The Virgin Australia network recorded 77.7 per cent for on time departures while the Qantas network recorded 75.6 per cent. Hinterland achieved the highest level of on time departures for January 2025 at 93.0 per cent, followed by Skytrans at 90.6 per cent, Rex Airlines at 83.4 per cent, QantasLink at 78.3 per cent, Virgin Australia at 78.0 per cent, Qantas at 71.6 per cent, Virgin Australia Regional Airlines at 68.2 per cent and Jetstar at 66.8 per cent.

Skytrans recorded the highest percentage of cancellations at 16.3 per cent during the month, followed by Qantas at 2.8 per cent, Jetstar at 2.3 per cent, QantasLink and Virgin Australia Regional Airlines both at 2.1 per cent, Rex Airlines at 2.0 per cent, Virgin Australia at 0.8 per cent and Hinterland at 0.3 per cent.

Airlines' on time performance varies across the routes they serve. Individual route data by specific airline for 59 routes are shown on pages 10-21.

Of the 59 routes which met the criteria for on time performance reporting in January 2025, the Adelaide-Gold Coast route had the highest percentage of on time arrivals (93.0 per cent) and the highest percentage of on time departures (97.7 per cent). The Proserpine-Brisbane route had the lowest percentage of on time arrivals (52.6 per cent), while the Launceston-Brisbane route had the lowest percentage of on time departures (53.1 per cent).

Cancellations were highest on the Canberra-Sydney route at 6.1 per cent, followed by the Sydney-Canberra route at 5.3 per cent, the Broome-Perth route at 5.1 per cent, the Sydney-Port Macquarie route at 4.9 per cent and the Adelaide-Sydney and Sydney-Adelaide routes at 4.8 per cent.

Port Lincoln Airport recorded the highest percentage of on time arrivals (89.5 per cent) and the highest percentage of on time departures (90.5 per cent). Proserpine Airport recorded the lowest percentage of on time arrivals (63.2 per cent), while Broome Airport had the lowest percentage of on time departures (53.6 per cent). These figures only refer to reported routes and do not cover all flights at these airports.

Table 1 On time performance for January 2025 — Total Industry

	<i>Sectors</i>		<i>Arrivals On Time</i>		<i>Departures On Time</i>		<i>Cancellations</i>	
	<i>Scheduled</i>	<i>Flown</i>	<i>No.</i>	<i>%</i>	<i>No.</i>	<i>%</i>	<i>No.</i>	<i>%</i>
Hinterland	1,332	1,328	1,171	88.2	1,235	93.0	4	0.3
Jetstar	9,144	8,935	6,227	69.7	5,965	66.8	209	2.3
Qantas - all QF designated services	17,580	17,161	12,977	75.6	12,977	75.6	419	2.4
Rex Airlines	3,721	3,648	2,932	80.4	3,044	83.4	73	2.0
Skytrans	800	670	607	90.6	607	90.6	130	16.3
Virgin Australia - all VA designated services	12,116	12,011	9,240	76.9	9,336	77.7	105	0.9
All Airlines	44,693	43,753	33,154	75.8	33,164	75.8	940	2.1
Individual operating entities								
Qantas	7,133	6,931	5,011	72.3	4,965	71.6	202	2.8
QantasLink	10,447	10,230	7,966	77.9	8,012	78.3	217	2.1
Virgin Australia	11,728	11,631	8,968	77.1	9,077	78.0	97	0.8
Virgin Australia Regional Airlines	388	380	272	71.6	259	68.2	8	2.1

Total airline network data (including routes not shown in this report).

Airlines’ on time performance varies across the routes they serve. Individual route data by specific airline are shown on page 10 and onwards.

Table 2 Top ten routes for on time performance for January 2025 (participating airlines only)

<i>Arrivals</i>		<i>Departures</i>	
<i>Route</i>	<i>On Time (%)</i>	<i>Route</i>	<i>On Time (%)</i>
Adelaide-Gold Coast	93.0	Adelaide-Gold Coast	97.7
Port Lincoln-Adelaide	90.9	Townsville-Cairns	90.9
Townsville-Cairns	90.9	Port Lincoln-Adelaide	90.5
Adelaide-Port Lincoln	89.5	Adelaide-Port Lincoln	89.5
Adelaide-Alice Springs	88.9	Devonport-Melbourne	89.3
Darwin-Perth	88.5	Melbourne-Devonport	87.9
Gold Coast-Adelaide	87.2	Sydney-Ballina	87.0
Sydney-Ballina	86.4	Darwin-Perth	86.5
Melbourne-Devonport	86.3	Perth-Newman	86.5
Perth-Newman	86.0	Gladstone-Brisbane	86.3

Table 3 Top ten airports for on time performance for January 2025 (participating airlines and reported routes only)

<i>Arrivals</i>		<i>Departures</i>	
<i>Airport</i>	<i>On Time (%)</i>	<i>Airport</i>	<i>On Time (%)</i>
Port Lincoln	89.5	Port Lincoln	90.5
Alice Springs	88.9	Devonport	89.3
Ballina	86.4	Gladstone	86.3
Devonport	86.3	Albury	84.6
Newman	86.0	Ballina	84.2
Wagga Wagga	85.9	Emerald	83.6
Emerald	81.3	Wagga Wagga	83.6
Karratha	81.1	Newman	81.6
Port Macquarie	80.0	Coffs Harbour	81.0
Gladstone	79.5	Port Macquarie	80.5



## Total industry on time performance

Figure 1 On time performance (by month from Jan 2022)—Total Industry

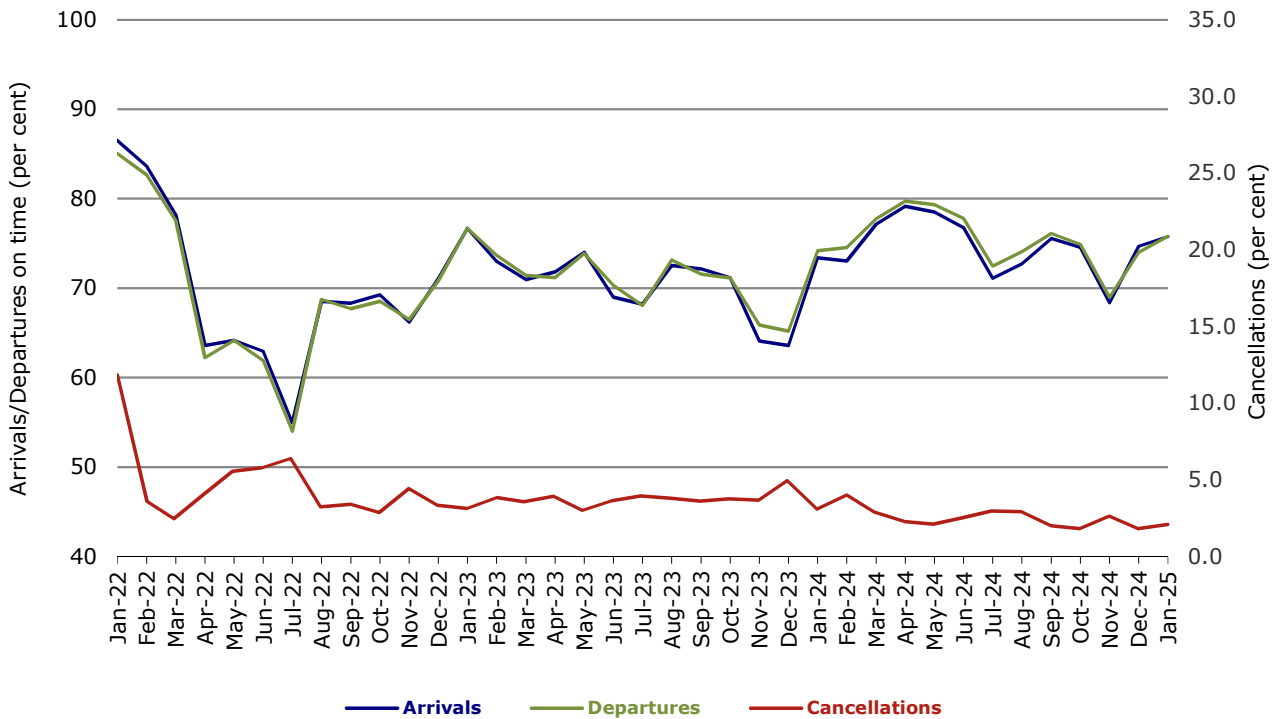


Figure 2 Arrivals on time (by month from Jan 2024)

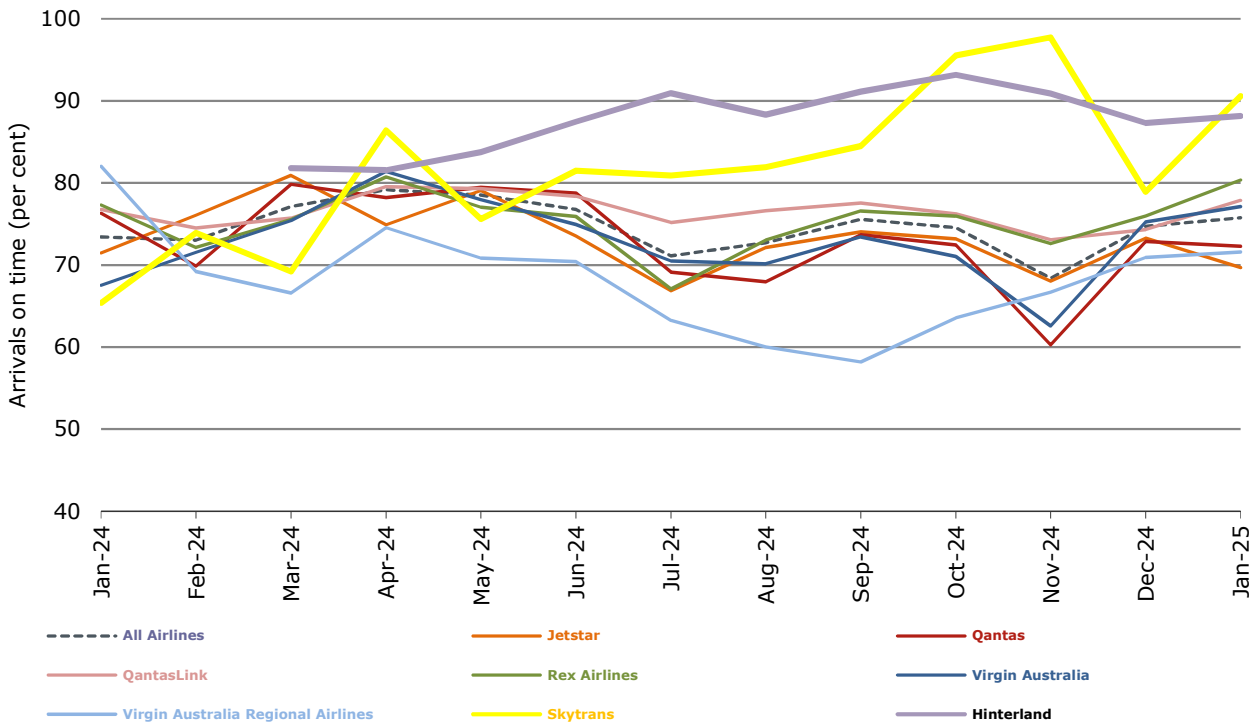


Figure 3 Departures on time (by month from Jan 2024)

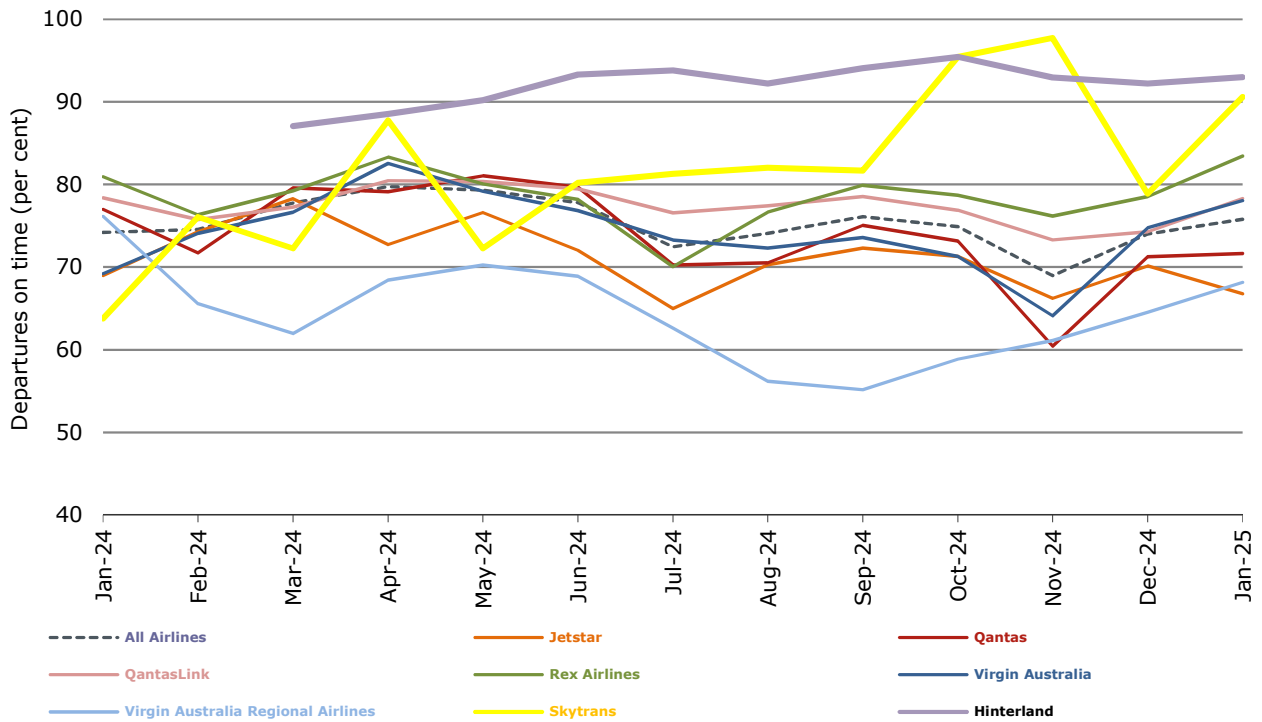
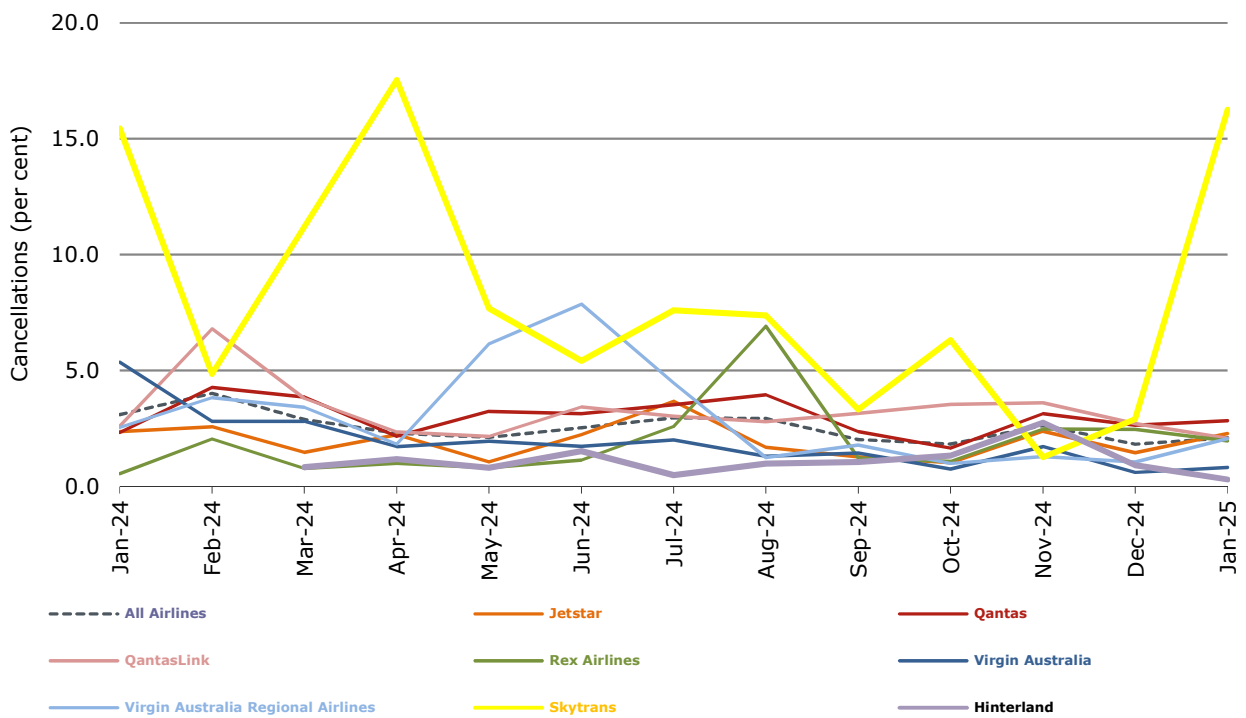


Figure 4 Cancellations (by month from Jan 2024)



## Airlines on time performance

Figure 5 On time performance (by month from Jan 2022)—Jetstar

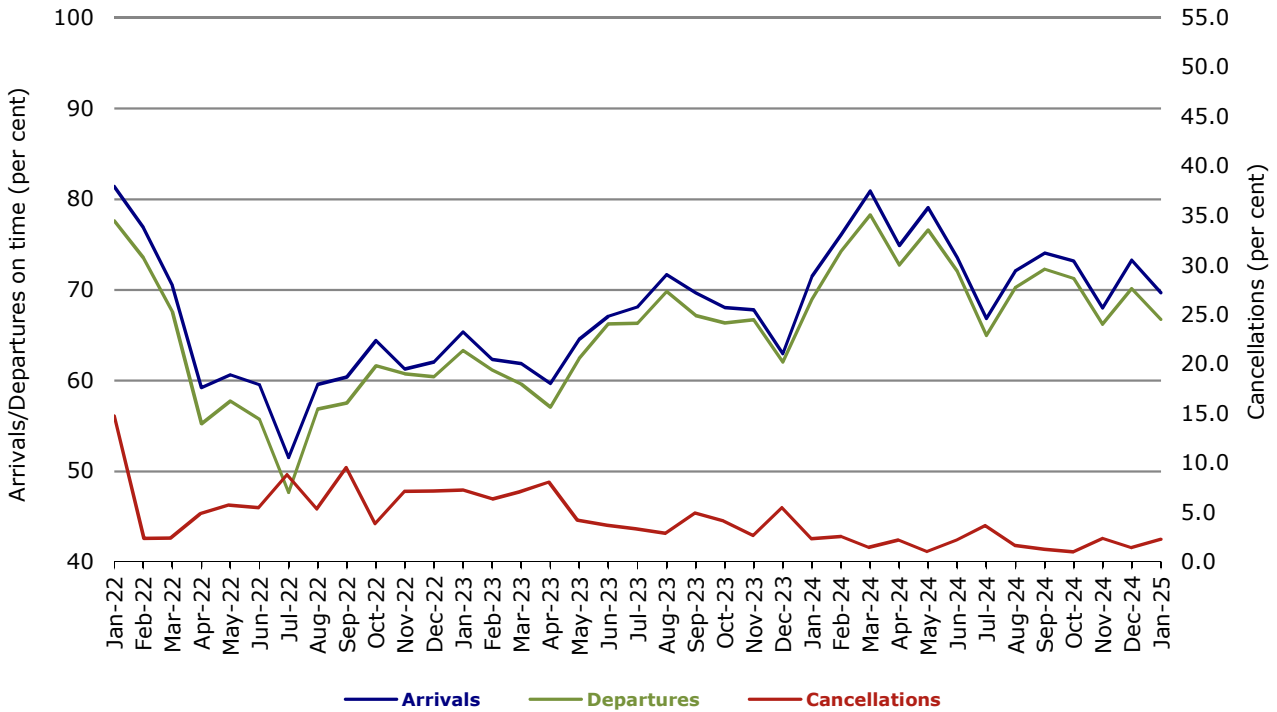


Figure 6 On time performance (by month from Jan 2022)—Qantas

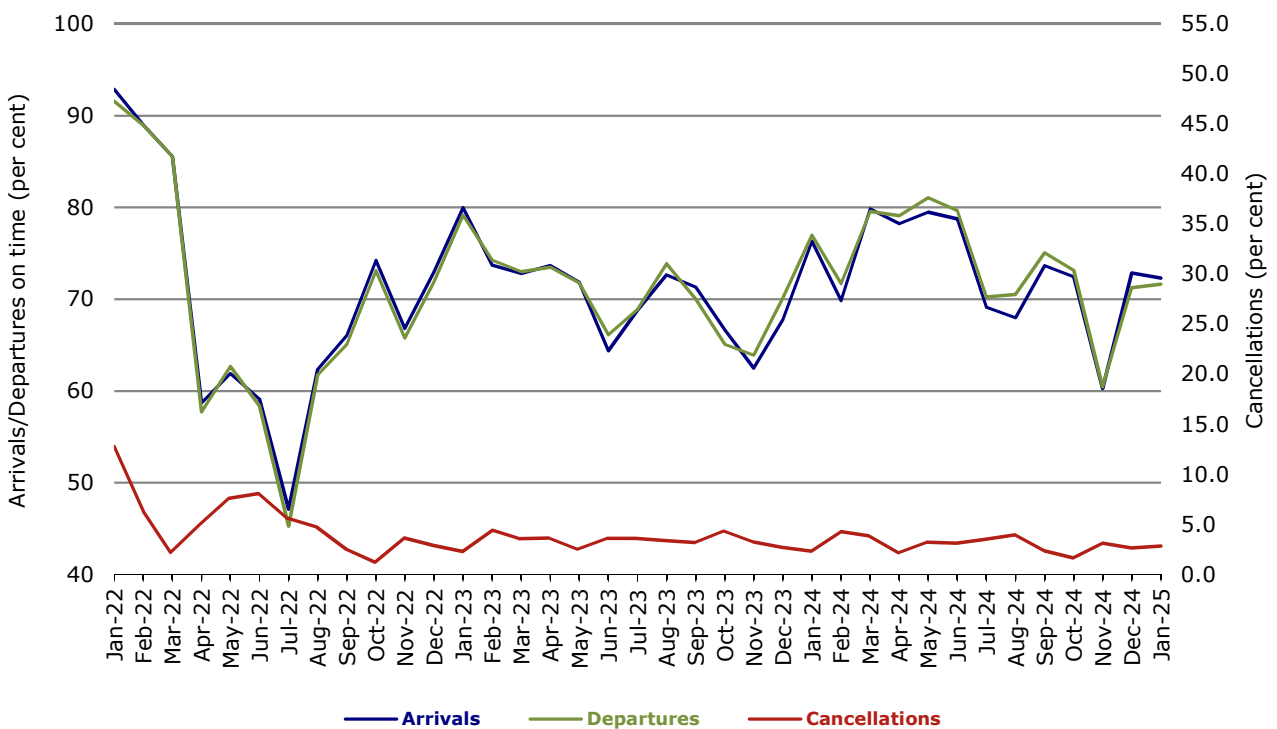


Figure 7 On time performance (by month from Jan 2022)—Virgin Australia

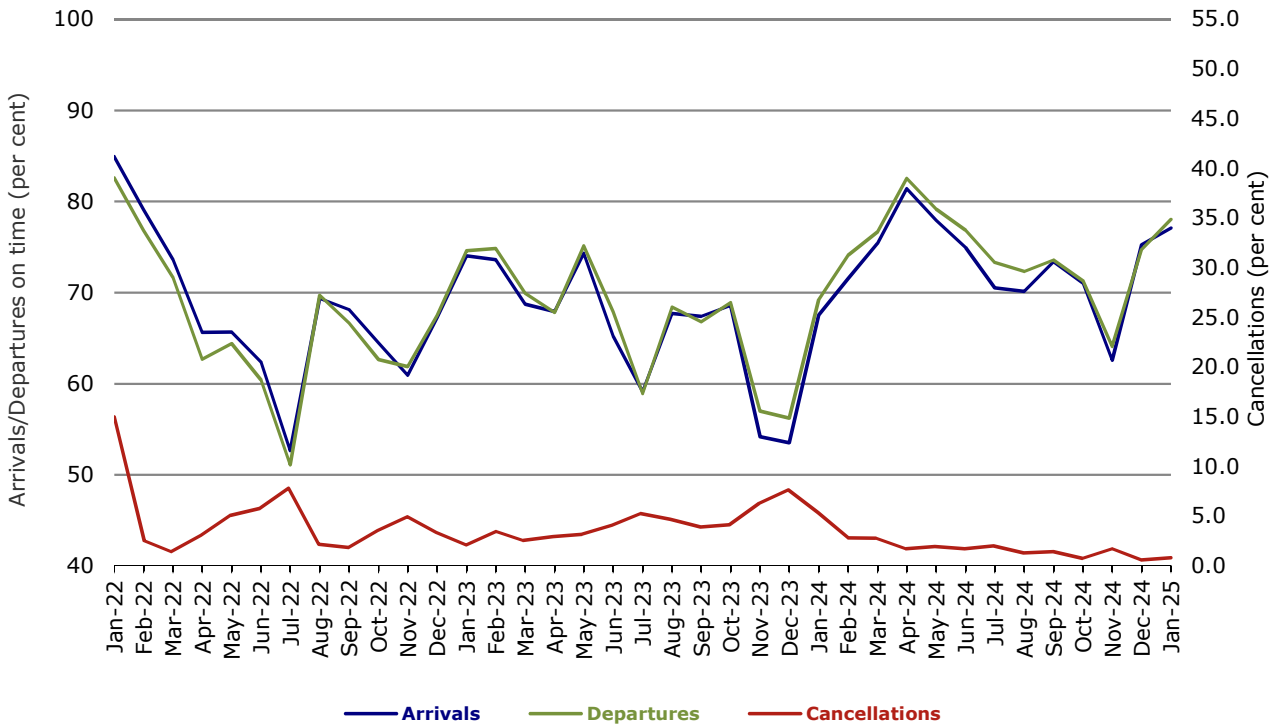


Figure 8 On time performance (by month from Jan 2022)—QantasLink

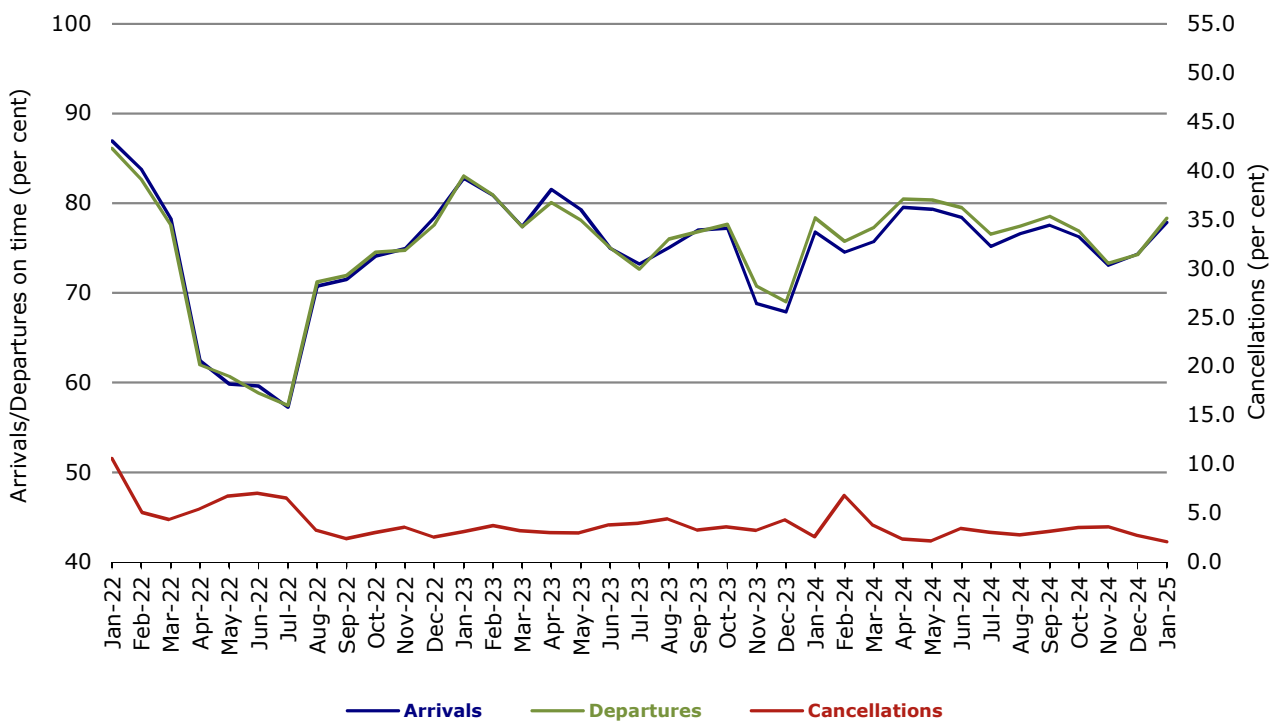


Figure 9 On time performance (by month from Jan 2022)—Rex Airlines

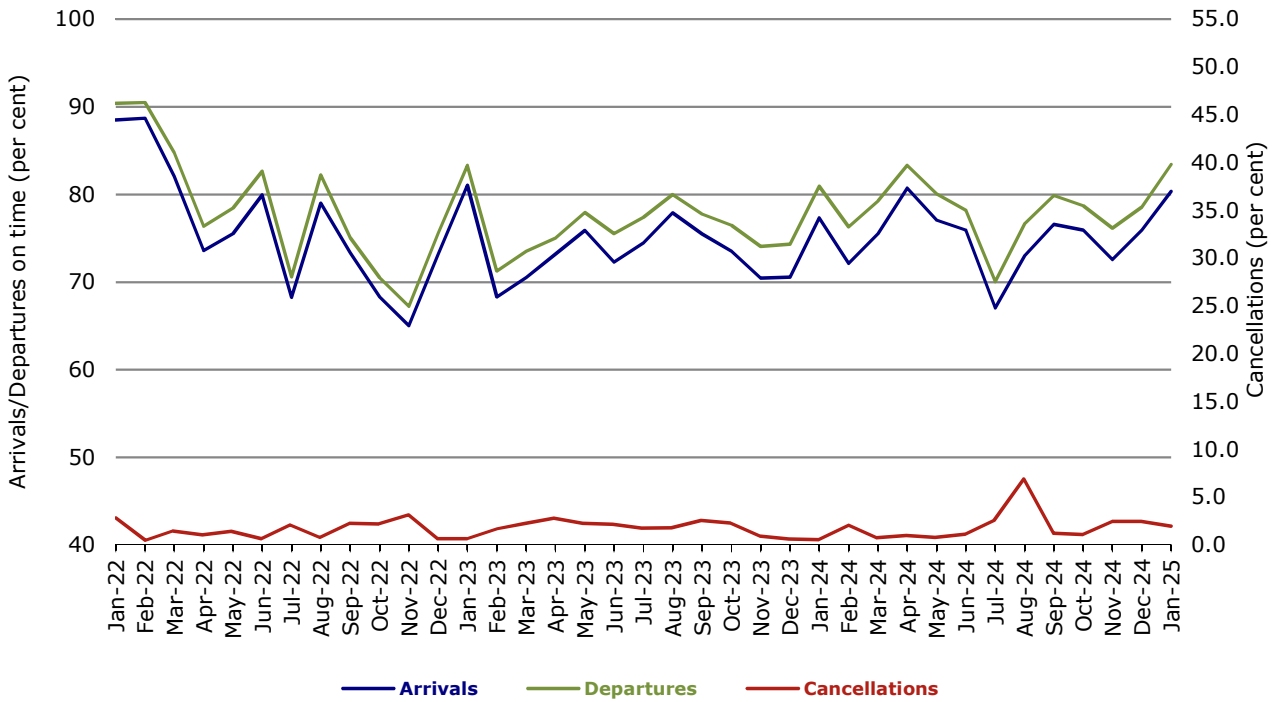


Figure 10 On time performance (by month from Jan 2022)—Virgin Australia Regional Airlines

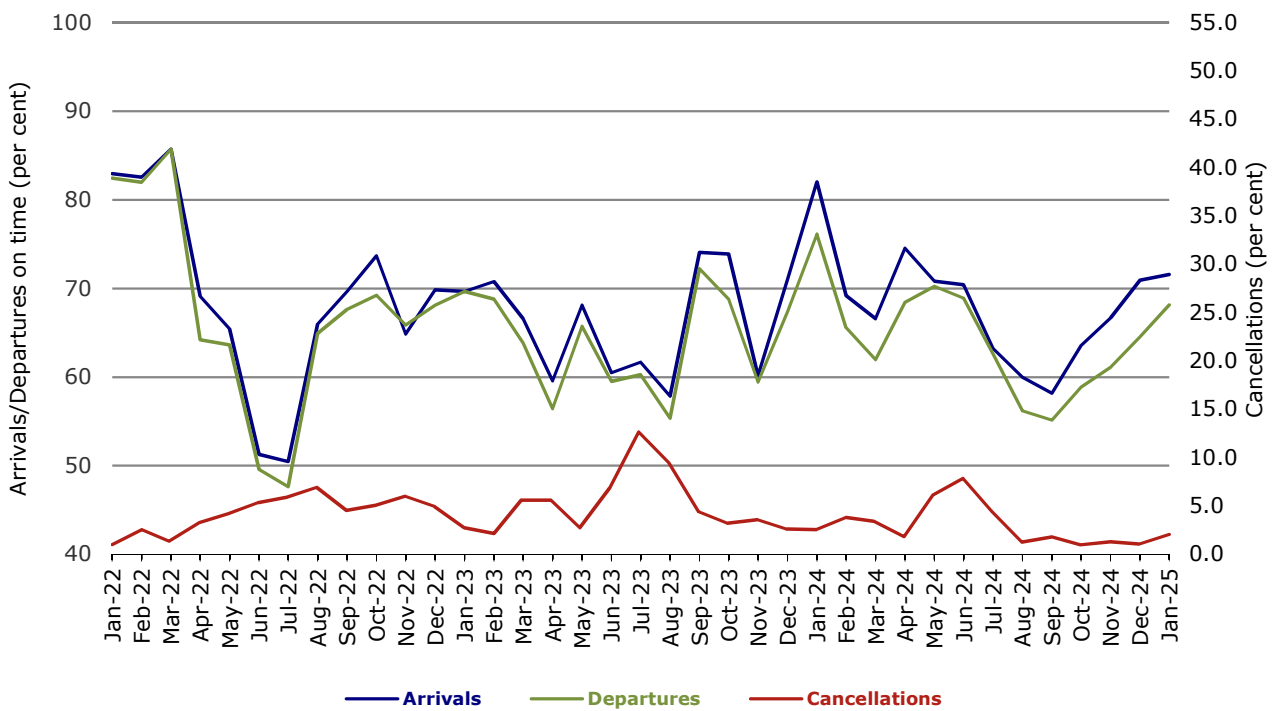
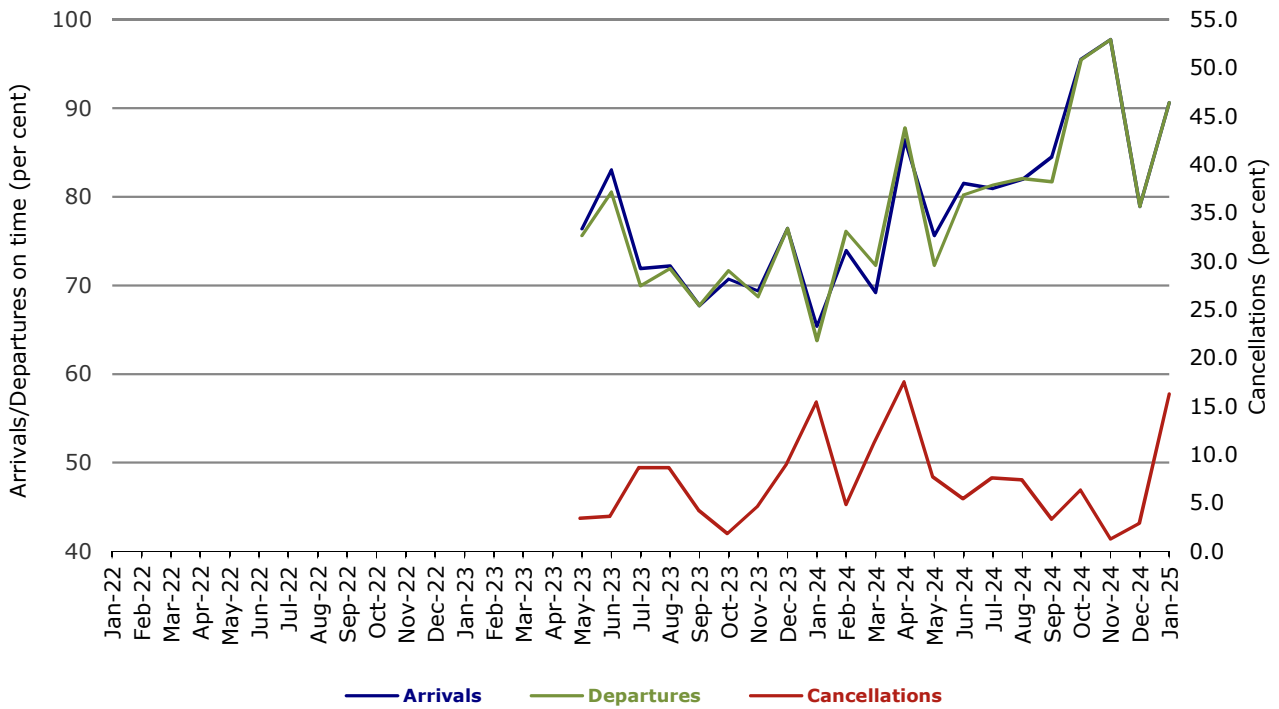
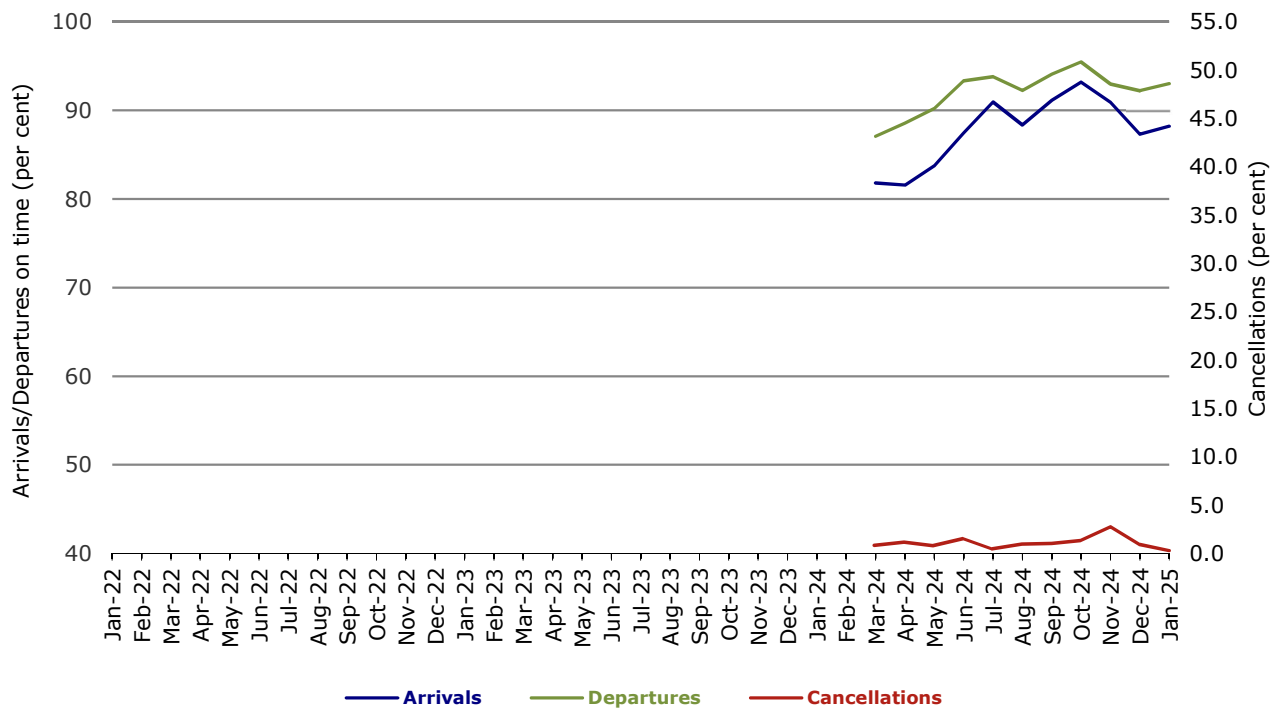


Figure 11 On time performance (by month from Jan 2022)—Skytrans



Note: Skytrans data included from May 2023

Figure 12 On time performance (by month from Jan 2022)—Hinterland



Note: Hinterland data included from March 2024

## Individual routes

On time performance is reported for all routes where the passenger load averages over 8,000 passengers per month over the previous six months, and where two or more airlines operate in competition on those routes. There are now 59 routes for which data are presented.

	Sectors		Arrivals On Time		Departures On Time		Cancellations	
	Sched.	Flown	No.	%	No.	%	No.	%
<b>Adelaide-Alice Springs</b>								
QantasLink	32	31	27	87.1	27	87.1	1	3.1
Virgin Australia	14	14	13	92.9	11	78.6	0	0.0
All Airlines	46	45	40	88.9	38	84.4	1	2.2
<b>Adelaide-Brisbane</b>								
Jetstar	39	39	19	48.7	19	48.7	0	0.0
QantasLink	161	161	127	78.9	125	77.6	0	0.0
Virgin Australia	132	132	117	88.6	117	88.6	0	0.0
All Airlines	332	332	263	79.2	261	78.6	0	0.0
<b>Adelaide-Canberra</b>								
QantasLink	64	64	52	81.3	53	82.8	0	0.0
Virgin Australia	18	18	9	50.0	9	50.0	0	0.0
All Airlines	82	82	61	74.4	62	75.6	0	0.0
<b>Adelaide-Gold Coast</b>								
Jetstar	31	31	28	90.3	30	96.8	0	0.0
QantasLink	9	9	8	88.9	8	88.9	0	0.0
Virgin Australia	46	46	44	95.7	46	100.0	0	0.0
All Airlines	86	86	80	93.0	84	97.7	0	0.0
<b>Adelaide-Melbourne</b>								
Jetstar	150	148	103	69.6	98	66.2	2	1.3
Qantas	244	240	182	75.8	174	72.5	4	1.6
Virgin Australia	261	260	216	83.1	210	80.8	1	0.4
All Airlines	655	648	501	77.3	482	74.4	7	1.1
<b>Adelaide-Perth</b>								
Jetstar	31	31	21	67.7	14	45.2	0	0.0
Qantas	90	87	75	86.2	74	85.1	3	3.3
Virgin Australia	65	65	40	61.5	41	63.1	0	0.0
Virgin Australia Regional Airlines	21	21	9	42.9	5	23.8	0	0.0
All Airlines	207	204	145	71.1	134	65.7	3	1.4
<b>Adelaide-Port Lincoln</b>								
QantasLink	118	118	109	92.4	107	90.7	0	0.0
Rex Airlines	144	138	120	87.0	122	88.4	6	4.2
All Airlines	262	256	229	89.5	229	89.5	6	2.3
<b>Adelaide-Sydney</b>								
Jetstar	151	141	99	70.2	107	75.9	10	6.6
Qantas	230	217	150	69.1	156	71.9	13	5.7
Virgin Australia	161	158	125	79.1	128	81.0	3	1.9
All Airlines	542	516	374	72.5	391	75.8	26	4.8
<b>Albury-Sydney</b>								
QantasLink	97	95	78	82.1	76	80.0	2	2.1
Rex Airlines	41	41	34	82.9	39	95.1	0	0.0
All Airlines	138	136	112	82.4	115	84.6	2	1.4

	Sectors		Arrivals On Time		Departures On Time		Cancellations	
	Sched.	Flown	No.	%	No.	%	No.	%
<b>Alice Springs-Adelaide</b>								
QantasLink	32	30	26	86.7	25	83.3	2	6.3
Virgin Australia	14	14	7	50.0	7	50.0	0	0.0
All Airlines	46	44	33	75.0	32	72.7	2	4.3
<b>Ballina-Sydney</b>								
Jetstar	91	91	76	83.5	76	83.5	0	0.0
QantasLink	40	40	33	82.5	35	87.5	0	0.0
Virgin Australia	46	46	38	82.6	38	82.6	0	0.0
All Airlines	177	177	147	83.1	149	84.2	0	0.0
<b>Brisbane-Adelaide</b>								
Jetstar	38	38	22	57.9	18	47.4	0	0.0
QantasLink	160	158	128	81.0	117	74.1	2	1.3
Virgin Australia	132	131	115	87.8	108	82.4	1	0.8
All Airlines	330	327	265	81.0	243	74.3	3	0.9
<b>Brisbane-Cairns</b>								
Jetstar	100	100	52	52.0	51	51.0	0	0.0
Qantas	13	13	12	92.3	12	92.3	0	0.0
QantasLink	150	149	72	48.3	90	60.4	1	0.7
Virgin Australia	135	135	101	74.8	105	77.8	0	0.0
All Airlines	398	397	237	59.7	258	65.0	1	0.3
<b>Brisbane-Canberra</b>								
Jetstar	30	30	17	56.7	17	56.7	0	0.0
QantasLink	125	123	92	74.8	88	71.5	2	1.6
Virgin Australia	88	88	70	79.5	67	76.1	0	0.0
All Airlines	243	241	179	74.3	172	71.4	2	0.8
<b>Brisbane-Darwin</b>								
Jetstar	25	25	16	64.0	15	60.0	0	0.0
Qantas	31	31	27	87.1	25	80.6	0	0.0
Virgin Australia	31	31	22	71.0	22	71.0	0	0.0
All Airlines	87	87	65	74.7	62	71.3	0	0.0
<b>Brisbane-Emerald</b>								
QantasLink	104	101	85	84.2	82	81.2	3	2.9
Virgin Australia	27	27	19	70.4	19	70.4	0	0.0
All Airlines	131	128	104	81.3	101	78.9	3	2.3
<b>Brisbane-Gladstone</b>								
QantasLink	114	111	88	79.3	87	78.4	3	2.6
Virgin Australia	35	35	28	80.0	30	85.7	0	0.0
All Airlines	149	146	116	79.5	117	80.1	3	2.0
<b>Brisbane-Hamilton Island</b>								
QantasLink	29	29	20	69.0	20	69.0	0	0.0
Virgin Australia	39	39	34	87.2	35	89.7	0	0.0
All Airlines	68	68	54	79.4	55	80.9	0	0.0
<b>Brisbane-Hobart</b>								
Jetstar	44	43	34	79.1	37	86.0	1	2.3
QantasLink	24	24	15	62.5	11	45.8	0	0.0
Virgin Australia	56	56	41	73.2	44	78.6	0	0.0
All Airlines	124	123	90	73.2	92	74.8	1	0.8



	Sectors		Arrivals On Time		Departures On Time		Cancellations	
	Sched.	Flown	No.	%	No.	%	No.	%
<b>Brisbane-Launceston</b>								
Jetstar	30	30	16	53.3	17	56.7	0	0.0
QantasLink	11	11	8	72.7	8	72.7	0	0.0
Virgin Australia	24	24	18	75.0	18	75.0	0	0.0
All Airlines	65	65	42	64.6	43	66.2	0	0.0
<b>Brisbane-Mackay</b>								
Jetstar	32	31	14	45.2	12	38.7	1	3.1
Qantas	88	87	66	75.9	64	73.6	1	1.1
QantasLink	19	18	9	50.0	10	55.6	1	5.3
Virgin Australia	134	133	101	75.9	95	71.4	1	0.7
All Airlines	273	269	190	70.6	181	67.3	4	1.5
<b>Brisbane-Melbourne</b>								
Jetstar	209	205	145	70.7	130	63.4	4	1.9
Qantas	298	295	210	71.2	214	72.5	3	1.0
QantasLink	64	61	35	57.4	38	62.3	3	4.7
Virgin Australia	405	404	307	76.0	308	76.2	1	0.2
All Airlines	976	965	697	72.2	690	71.5	11	1.1
<b>Brisbane-Mount Isa</b>								
QantasLink	77	77	47	61.0	42	54.5	0	0.0
Virgin Australia	14	14	12	85.7	11	78.6	0	0.0
All Airlines	91	91	59	64.8	53	58.2	0	0.0
<b>Brisbane-Newcastle</b>								
Jetstar	62	60	41	68.3	42	70.0	2	3.2
QantasLink	72	69	55	79.7	56	81.2	3	4.2
Virgin Australia	60	60	33	55.0	36	60.0	0	0.0
All Airlines	194	189	129	68.3	134	70.9	5	2.6
<b>Brisbane-Perth</b>								
Jetstar	30	30	19	63.3	13	43.3	0	0.0
Qantas	171	170	125	73.5	127	74.7	1	0.6
Virgin Australia	135	135	81	60.0	64	47.4	0	0.0
All Airlines	336	335	225	67.2	204	60.9	1	0.3
<b>Brisbane-Proserpine</b>								
Jetstar	45	44	29	65.9	32	72.7	1	2.2
QantasLink	18	17	10	58.8	12	70.6	1	5.6
Virgin Australia	35	34	21	61.8	20	58.8	1	2.9
All Airlines	98	95	60	63.2	64	67.4	3	3.1
<b>Brisbane-Rockhampton</b>								
QantasLink	153	149	117	78.5	117	78.5	4	2.6
Virgin Australia	135	135	88	65.2	88	65.2	0	0.0
All Airlines	288	284	205	72.2	205	72.2	4	1.4
<b>Brisbane-Sydney</b>								
Jetstar	237	223	139	62.3	138	61.9	14	5.9
Qantas	453	441	329	74.6	338	76.6	12	2.6
Virgin Australia	410	404	292	72.3	308	76.2	6	1.5
All Airlines	1 100	1 068	760	71.2	784	73.4	32	2.9
<b>Brisbane-Townsville</b>								
Jetstar	61	61	27	44.3	27	44.3	0	0.0
Qantas	4	4	3	75.0	3	75.0	0	0.0
QantasLink	138	137	76	55.5	84	61.3	1	0.7
Virgin Australia	143	143	90	62.9	101	70.6	0	0.0
All Airlines	346	345	196	56.8	215	62.3	1	0.3

	Sectors		Arrivals On Time		Departures On Time		Cancellations	
	Sched.	Flown	No.	%	No.	%	No.	%
<b>Broome-Perth</b>								
QantasLink	75	69	32	46.4	39	56.5	6	8.0
Virgin Australia	17	17	9	52.9	8	47.1	0	0.0
Virgin Australia Regional Airlines	26	26	18	69.2	13	50.0	0	0.0
All Airlines	118	112	59	52.7	60	53.6	6	5.1
<b>Cairns-Brisbane</b>								
Jetstar	100	100	66	66.0	62	62.0	0	0.0
Qantas	13	13	8	61.5	7	53.8	0	0.0
QantasLink	151	150	80	53.3	73	48.7	1	0.7
Virgin Australia	136	135	96	71.1	75	55.6	1	0.7
All Airlines	400	398	250	62.8	217	54.5	2	0.5
<b>Cairns-Melbourne</b>								
Jetstar	93	91	68	74.7	63	69.2	2	2.2
Qantas	31	30	20	66.7	19	63.3	1	3.2
Virgin Australia	81	81	68	84.0	71	87.7	0	0.0
All Airlines	205	202	156	77.2	153	75.7	3	1.5
<b>Cairns-Sydney</b>								
Jetstar	115	114	80	70.2	78	68.4	1	0.9
Qantas	44	44	34	77.3	32	72.7	0	0.0
Virgin Australia	88	86	67	77.9	68	79.1	2	2.3
All Airlines	247	244	181	74.2	178	73.0	3	1.2
<b>Cairns-Townsville</b>								
QantasLink	121	121	98	81.0	97	80.2	0	0.0
Rex Airlines	13	12	8	66.7	8	66.7	1	7.7
All Airlines	134	133	106	79.7	105	78.9	1	0.7
<b>Canberra-Adelaide</b>								
QantasLink	64	63	53	84.1	53	84.1	1	1.6
Virgin Australia	18	18	13	72.2	11	61.1	0	0.0
All Airlines	82	81	66	81.5	64	79.0	1	1.2
<b>Canberra-Brisbane</b>								
Jetstar	31	30	18	60.0	14	46.7	1	3.2
QantasLink	125	123	92	74.8	96	78.0	2	1.6
Virgin Australia	88	88	71	80.7	69	78.4	0	0.0
All Airlines	244	241	181	75.1	179	74.3	3	1.2
<b>Canberra-Gold Coast</b>								
Jetstar	18	18	13	72.2	12	66.7	0	0.0
Virgin Australia	31	31	28	90.3	28	90.3	0	0.0
All Airlines	49	49	41	83.7	40	81.6	0	0.0
<b>Canberra-Melbourne</b>								
Jetstar	32	32	23	71.9	22	68.8	0	0.0
Qantas	40	37	33	89.2	28	75.7	3	7.5
QantasLink	84	81	57	70.4	52	64.2	3	3.6
Virgin Australia	119	117	103	88.0	102	87.2	2	1.7
All Airlines	275	267	216	80.9	204	76.4	8	2.9
<b>Canberra-Sydney</b>								
Qantas	106	97	84	86.6	84	86.6	9	8.5
QantasLink	104	99	74	74.7	77	77.8	5	4.8
Virgin Australia	184	174	153	87.9	155	89.1	10	5.4
All Airlines	394	370	311	84.1	316	85.4	24	6.1

	Sectors		Arrivals On Time		Departures On Time		Cancellations	
	Sched.	Flown	No.	%	No.	%	No.	%
<b>Coffs Harbour-Sydney</b>								
Qantas	54	51	40	78.4	43	84.3	3	5.6
QantasLink	31	31	28	90.3	28	90.3	0	0.0
Rex Airlines	74	71	52	73.2	53	74.6	3	4.1
All Airlines	159	153	120	78.4	124	81.0	6	3.8
<b>Darwin-Brisbane</b>								
Jetstar	25	25	14	56.0	13	52.0	0	0.0
Qantas	31	31	18	58.1	19	61.3	0	0.0
Virgin Australia	32	31	22	71.0	17	54.8	1	3.1
All Airlines	88	87	54	62.1	49	56.3	1	1.1
<b>Darwin-Melbourne</b>								
Jetstar	29	29	23	79.3	18	62.1	0	0.0
Qantas	24	24	23	95.8	20	83.3	0	0.0
Virgin Australia	23	23	17	73.9	19	82.6	0	0.0
All Airlines	76	76	63	82.9	57	75.0	0	0.0
<b>Darwin-Perth</b>								
Qantas	31	31	29	93.5	28	90.3	0	0.0
Virgin Australia Regional Airlines	22	21	17	81.0	17	81.0	1	4.5
All Airlines	53	52	46	88.5	45	86.5	1	1.9
<b>Devonport-Melbourne</b>								
QantasLink	90	88	72	81.8	78	88.6	2	2.2
Rex Airlines	38	34	31	91.2	31	91.2	4	10.5
All Airlines	128	122	103	84.4	109	89.3	6	4.7
<b>Dubbo-Sydney</b>								
QantasLink	105	102	86	84.3	85	83.3	3	2.9
Rex Airlines	63	61	42	68.9	45	73.8	2	3.2
All Airlines	168	163	128	78.5	130	79.8	5	3.0
<b>Emerald-Brisbane</b>								
QantasLink	104	101	85	84.2	86	85.1	3	2.9
Virgin Australia	27	27	21	77.8	21	77.8	0	0.0
All Airlines	131	128	106	82.8	107	83.6	3	2.3
<b>Gladstone-Brisbane</b>								
QantasLink	113	111	87	78.4	94	84.7	2	1.8
Virgin Australia	36	35	31	88.6	32	91.4	1	2.8
All Airlines	149	146	118	80.8	126	86.3	3	2.0
<b>Gold Coast-Adelaide</b>								
Jetstar	31	31	28	90.3	26	83.9	0	0.0
QantasLink	9	9	6	66.7	7	77.8	0	0.0
Virgin Australia	46	46	41	89.1	39	84.8	0	0.0
All Airlines	86	86	75	87.2	72	83.7	0	0.0
<b>Gold Coast-Canberra</b>								
Jetstar	18	18	12	66.7	13	72.2	0	0.0
Virgin Australia	31	31	26	83.9	25	80.6	0	0.0
All Airlines	49	49	38	77.6	38	77.6	0	0.0

	Sectors		Arrivals On Time		Departures On Time		Cancellations	
	Sched.	Flown	No.	%	No.	%	No.	%
<b>Gold Coast-Melbourne</b>								
Jetstar	283	273	193	70.7	175	64.1	10	3.5
Qantas	64	64	36	56.3	27	42.2	0	0.0
Virgin Australia	334	333	247	74.2	224	67.3	1	0.3
All Airlines	681	670	476	71.0	426	63.6	11	1.6
<b>Gold Coast-Sydney</b>								
Jetstar	275	266	192	72.2	187	70.3	9	3.3
Qantas	123	123	81	65.9	80	65.0	0	0.0
Virgin Australia	345	341	246	72.1	238	69.8	4	1.2
All Airlines	743	730	519	71.1	505	69.2	13	1.7
<b>Hamilton Island-Brisbane</b>								
QantasLink	29	29	19	65.5	19	65.5	0	0.0
Virgin Australia	39	39	32	82.1	34	87.2	0	0.0
All Airlines	68	68	51	75.0	53	77.9	0	0.0
<b>Hamilton Island-Sydney</b>								
Jetstar	18	18	12	66.7	12	66.7	0	0.0
Qantas	31	31	21	67.7	18	58.1	0	0.0
Virgin Australia	31	31	10	32.3	13	41.9	0	0.0
All Airlines	80	80	43	53.8	43	53.8	0	0.0
<b>Hobart-Brisbane</b>								
Jetstar	44	43	24	55.8	22	51.2	1	2.3
QantasLink	23	23	10	43.5	11	47.8	0	0.0
Virgin Australia	58	56	37	66.1	32	57.1	2	3.4
All Airlines	125	122	71	58.2	65	53.3	3	2.4
<b>Hobart-Melbourne</b>								
Jetstar	237	236	140	59.3	136	57.6	1	0.4
Qantas	49	49	35	71.4	34	69.4	0	0.0
QantasLink	70	67	45	67.2	42	62.7	3	4.3
Virgin Australia	126	126	106	84.1	101	80.2	0	0.0
All Airlines	482	478	326	68.2	313	65.5	4	0.8
<b>Hobart-Sydney</b>								
Jetstar	118	118	75	63.6	69	58.5	0	0.0
Qantas	15	14	9	64.3	10	71.4	1	6.7
QantasLink	74	71	43	60.6	38	53.5	3	4.1
Virgin Australia	80	79	61	77.2	64	81.0	1	1.3
All Airlines	287	282	188	66.7	181	64.2	5	1.7
<b>Kalgoorlie-Perth</b>								
Qantas	13	13	13	100.0	13	100.0	0	0.0
QantasLink	66	63	44	69.8	44	69.8	3	4.5
Virgin Australia	67	67	53	79.1	58	86.6	0	0.0
Virgin Australia Regional Airlines	35	33	24	72.7	23	69.7	2	5.7
All Airlines	181	176	134	76.1	138	78.4	5	2.8
<b>Karratha-Perth</b>								
QantasLink	161	152	108	71.1	119	78.3	9	5.6
Virgin Australia	49	48	37	77.1	42	87.5	1	2.0
Virgin Australia Regional Airlines	29	28	24	85.7	22	78.6	1	3.4
All Airlines	239	228	169	74.1	183	80.3	11	4.6
<b>Launceston-Brisbane</b>								
Jetstar	31	29	13	44.8	13	44.8	2	6.5
QantasLink	11	11	7	63.6	7	63.6	0	0.0
Virgin Australia	24	24	15	62.5	14	58.3	0	0.0
All Airlines	66	64	35	54.7	34	53.1	2	3.0

	Sectors		Arrivals On Time		Departures On Time		Cancellations	
	Sched.	Flown	No.	%	No.	%	No.	%
<b>Launceston-Melbourne</b>								
Jetstar	166	165	104	63.0	100	60.6	1	0.6
QantasLink	67	64	42	65.6	33	51.6	3	4.5
Virgin Australia	93	93	85	91.4	79	84.9	0	0.0
All Airlines	326	322	231	71.7	212	65.8	4	1.2
<b>Launceston-Sydney</b>								
Jetstar	60	58	45	77.6	44	75.9	2	3.3
QantasLink	31	31	23	74.2	19	61.3	0	0.0
Virgin Australia	31	31	14	45.2	17	54.8	0	0.0
All Airlines	122	120	82	68.3	80	66.7	2	1.6
<b>Mackay-Brisbane</b>								
Jetstar	32	31	12	38.7	11	35.5	1	3.1
Qantas	88	87	67	77.0	67	77.0	1	1.1
QantasLink	22	22	14	63.6	16	72.7	0	0.0
Virgin Australia	134	132	104	78.8	103	78.0	2	1.5
All Airlines	276	272	197	72.4	197	72.4	4	1.4
<b>Melbourne-Adelaide</b>								
Jetstar	150	149	101	67.8	96	64.4	1	0.7
Qantas	244	240	171	71.3	163	67.9	4	1.6
Virgin Australia	262	262	197	75.2	212	80.9	0	0.0
All Airlines	656	651	469	72.0	471	72.4	5	0.8
<b>Melbourne-Brisbane</b>								
Jetstar	210	206	124	60.2	122	59.2	4	1.9
Qantas	294	287	209	72.8	206	71.8	7	2.4
QantasLink	62	59	32	54.2	32	54.2	3	4.8
Virgin Australia	410	410	301	73.4	338	82.4	0	0.0
All Airlines	976	962	666	69.2	698	72.6	14	1.4
<b>Melbourne-Cairns</b>								
Jetstar	93	91	65	71.4	60	65.9	2	2.2
Qantas	31	30	24	80.0	25	83.3	1	3.2
Virgin Australia	81	81	76	93.8	71	87.7	0	0.0
All Airlines	205	202	165	81.7	156	77.2	3	1.5
<b>Melbourne-Canberra</b>								
Jetstar	32	32	24	75.0	23	71.9	0	0.0
Qantas	40	38	26	68.4	27	71.1	2	5.0
QantasLink	84	82	47	57.3	50	61.0	2	2.4
Virgin Australia	119	119	101	84.9	100	84.0	0	0.0
All Airlines	275	271	198	73.1	200	73.8	4	1.5
<b>Melbourne-Darwin</b>								
Jetstar	29	29	26	89.7	19	65.5	0	0.0
Qantas	24	24	18	75.0	17	70.8	0	0.0
Virgin Australia	23	23	19	82.6	17	73.9	0	0.0
All Airlines	76	76	63	82.9	53	69.7	0	0.0
<b>Melbourne-Devonport</b>								
QantasLink	91	91	76	83.5	79	86.8	0	0.0
Rex Airlines	37	33	31	93.9	30	90.9	4	10.8
All Airlines	128	124	107	86.3	109	87.9	4	3.1
<b>Melbourne-Gold Coast</b>								
Jetstar	284	273	175	64.1	175	64.1	11	3.9
Qantas	64	64	40	62.5	41	64.1	0	0.0
Virgin Australia	334	334	263	78.7	275	82.3	0	0.0
All Airlines	682	671	478	71.2	491	73.2	11	1.6

	Sectors		Arrivals On Time		Departures On Time		Cancellations	
	Sched.	Flown	No.	%	No.	%	No.	%
<b>Melbourne-Hobart</b>								
Jetstar	237	236	162	68.6	165	69.9	1	0.4
Qantas	49	49	39	79.6	38	77.6	0	0.0
QantasLink	71	69	48	69.6	52	75.4	2	2.8
Virgin Australia	126	126	105	83.3	106	84.1	0	0.0
All Airlines	483	480	354	73.8	361	75.2	3	0.6
<b>Melbourne-Launceston</b>								
Jetstar	166	165	105	63.6	103	62.4	1	0.6
QantasLink	66	64	40	62.5	45	70.3	2	3.0
Virgin Australia	94	93	76	81.7	79	84.9	1	1.1
All Airlines	326	322	221	68.6	227	70.5	4	1.2
<b>Melbourne-Mildura</b>								
QantasLink	82	81	54	66.7	58	71.6	1	1.2
Rex Airlines	76	76	64	84.2	65	85.5	0	0.0
All Airlines	158	157	118	75.2	123	78.3	1	0.6
<b>Melbourne-Newcastle</b>								
Jetstar	61	61	39	63.9	34	55.7	0	0.0
QantasLink	31	31	22	71.0	19	61.3	0	0.0
Virgin Australia	41	41	38	92.7	36	87.8	0	0.0
All Airlines	133	133	99	74.4	89	66.9	0	0.0
<b>Melbourne-Perth</b>								
Jetstar	90	89	71	79.8	63	70.8	1	1.1
Qantas	210	208	135	64.9	131	63.0	2	1.0
Virgin Australia	238	236	184	78.0	183	77.5	2	0.8
All Airlines	538	533	390	73.2	377	70.7	5	0.9
<b>Melbourne-Sunshine Coast</b>								
Jetstar	84	84	57	67.9	60	71.4	0	0.0
Qantas	51	51	32	62.7	32	62.7	0	0.0
Virgin Australia	107	107	100	93.5	97	90.7	0	0.0
All Airlines	242	242	189	78.1	189	78.1	0	0.0
<b>Melbourne-Sydney</b>								
Jetstar	540	519	350	67.4	328	63.2	21	3.9
Qantas	660	623	410	65.8	464	74.5	37	5.6
Virgin Australia	694	683	499	73.1	574	84.0	11	1.6
All Airlines	1 894	1 825	1 259	69.0	1 366	74.8	69	3.6
<b>Mildura-Melbourne</b>								
QantasLink	82	80	61	76.3	58	72.5	2	2.4
Rex Airlines	75	75	59	78.7	61	81.3	0	0.0
All Airlines	157	155	120	77.4	119	76.8	2	1.3
<b>Mount Isa-Brisbane</b>								
QantasLink	77	77	46	59.7	56	72.7	0	0.0
Virgin Australia	14	14	10	71.4	10	71.4	0	0.0
All Airlines	91	91	56	61.5	66	72.5	0	0.0
<b>Newcastle-Brisbane</b>								
Jetstar	64	59	39	66.1	37	62.7	5	7.8
QantasLink	72	71	53	74.6	56	78.9	1	1.4
Virgin Australia	59	59	35	59.3	37	62.7	0	0.0
All Airlines	195	189	127	67.2	130	68.8	6	3.1

	Sectors		Arrivals On Time		Departures On Time		Cancellations	
	Sched.	Flown	No.	%	No.	%	No.	%
<b>Newcastle-Melbourne</b>								
Jetstar	63	60	35	58.3	35	58.3	3	4.8
QantasLink	31	31	25	80.6	25	80.6	0	0.0
Virgin Australia	41	41	37	90.2	37	90.2	0	0.0
All Airlines	135	132	97	73.5	97	73.5	3	2.2
<b>Newman-Perth</b>								
Qantas	8	7	6	85.7	6	85.7	1	12.5
QantasLink	110	109	85	78.0	92	84.4	1	0.9
Virgin Australia	42	42	28	66.7	33	78.6	0	0.0
Virgin Australia Regional Airlines	16	16	11	68.8	11	68.8	0	0.0
All Airlines	176	174	130	74.7	142	81.6	2	1.1
<b>Perth-Adelaide</b>								
Jetstar	31	31	19	61.3	23	74.2	0	0.0
Qantas	90	87	72	82.8	73	83.9	3	3.3
Virgin Australia	65	65	49	75.4	55	84.6	0	0.0
Virgin Australia Regional Airlines	21	21	12	57.1	14	66.7	0	0.0
All Airlines	207	204	152	74.5	165	80.9	3	1.4
<b>Perth-Brisbane</b>								
Jetstar	30	30	8	26.7	14	46.7	0	0.0
Qantas	171	171	135	78.9	137	80.1	0	0.0
Virgin Australia	141	140	81	57.9	92	65.7	1	0.7
All Airlines	342	341	224	65.7	243	71.3	1	0.3
<b>Perth-Broome</b>								
QantasLink	76	74	54	73.0	53	71.6	2	2.6
Virgin Australia	17	17	10	58.8	9	52.9	0	0.0
Virgin Australia Regional Airlines	26	26	20	76.9	16	61.5	0	0.0
All Airlines	119	117	84	71.8	78	66.7	2	1.7
<b>Perth-Darwin</b>								
Qantas	31	31	20	64.5	20	64.5	0	0.0
Virgin Australia Regional Airlines	22	21	8	38.1	8	38.1	1	4.5
All Airlines	53	52	28	53.8	28	53.8	1	1.9
<b>Perth-Kalgoorlie</b>								
Qantas	13	13	12	92.3	13	100.0	0	0.0
QantasLink	65	62	46	74.2	46	74.2	3	4.6
Virgin Australia	67	67	56	83.6	63	94.0	0	0.0
Virgin Australia Regional Airlines	35	33	18	54.5	23	69.7	2	5.7
All Airlines	180	175	132	75.4	145	82.9	5	2.8
<b>Perth-Karratha</b>								
QantasLink	159	152	120	78.9	124	81.6	7	4.4
Virgin Australia	49	48	41	85.4	43	89.6	1	2.0
Virgin Australia Regional Airlines	29	28	24	85.7	23	82.1	1	3.4
All Airlines	237	228	185	81.1	190	83.3	9	3.8
<b>Perth-Melbourne</b>								
Jetstar	91	89	67	75.3	64	71.9	2	2.2
Qantas	210	205	152	74.1	134	65.4	5	2.4
Virgin Australia	260	260	198	76.2	195	75.0	0	0.0
All Airlines	561	554	417	75.3	393	70.9	7	1.2
<b>Perth-Newman</b>								
Qantas	8	8	7	87.5	7	87.5	0	0.0
QantasLink	112	112	94	83.9	93	83.0	0	0.0
Virgin Australia	42	42	39	92.9	38	90.5	0	0.0
Virgin Australia Regional Airlines	16	16	13	81.3	16	100.0	0	0.0
All Airlines	178	178	153	86.0	154	86.5	0	0.0

	Sectors		Arrivals On Time		Departures On Time		Cancellations	
	Sched.	Flown	No.	%	No.	%	No.	%
<b>Perth-Port Hedland</b>								
QantasLink	133	132	101	76.5	107	81.1	1	0.8
Virgin Australia	42	41	32	78.0	31	75.6	1	2.4
Virgin Australia Regional Airlines	14	14	10	71.4	9	64.3	0	0.0
All Airlines	189	187	143	76.5	147	78.6	2	1.1
<b>Perth-Sydney</b>								
Jetstar	63	60	51	85.0	48	80.0	3	4.8
Qantas	207	203	134	66.0	140	69.0	4	1.9
Virgin Australia	177	177	143	80.8	144	81.4	0	0.0
All Airlines	447	440	328	74.5	332	75.5	7	1.6
<b>Port Hedland-Perth</b>								
QantasLink	132	129	82	63.6	86	66.7	3	2.3
Virgin Australia	42	40	27	67.5	29	72.5	2	4.8
Virgin Australia Regional Airlines	14	14	8	57.1	6	42.9	0	0.0
All Airlines	188	183	117	63.9	121	66.1	5	2.7
<b>Port Lincoln-Adelaide</b>								
QantasLink	117	116	106	91.4	106	91.4	1	0.9
Rex Airlines	143	137	124	90.5	123	89.8	6	4.2
All Airlines	260	253	230	90.9	229	90.5	7	2.7
<b>Port Macquarie-Sydney</b>								
QantasLink	101	101	84	83.2	85	84.2	0	0.0
Rex Airlines	38	32	20	62.5	22	68.8	6	15.8
All Airlines	139	133	104	78.2	107	80.5	6	4.3
<b>Proserpine-Brisbane</b>								
Jetstar	45	44	25	56.8	26	59.1	1	2.2
QantasLink	18	17	9	52.9	11	64.7	1	5.6
Virgin Australia	35	34	16	47.1	15	44.1	1	2.9
All Airlines	98	95	50	52.6	52	54.7	3	3.1
<b>Rockhampton-Brisbane</b>								
QantasLink	150	146	116	79.5	121	82.9	4	2.7
Virgin Australia	135	134	78	58.2	97	72.4	1	0.7
All Airlines	285	280	194	69.3	218	77.9	5	1.8
<b>Sunshine Coast-Melbourne</b>								
Jetstar	84	84	55	65.5	50	59.5	0	0.0
Qantas	52	52	34	65.4	29	55.8	0	0.0
Virgin Australia	107	107	98	91.6	95	88.8	0	0.0
All Airlines	243	243	187	77.0	174	71.6	0	0.0
<b>Sunshine Coast-Sydney</b>								
Jetstar	120	117	79	67.5	80	68.4	3	2.5
Qantas	62	61	41	67.2	38	62.3	1	1.6
Virgin Australia	62	62	36	58.1	43	69.4	0	0.0
All Airlines	244	240	156	65.0	161	67.1	4	1.6
<b>Sydney-Adelaide</b>								
Jetstar	152	141	107	75.9	97	68.8	11	7.2
Qantas	230	216	160	74.1	160	74.1	14	6.1
Virgin Australia	161	160	137	85.6	129	80.6	1	0.6
All Airlines	543	517	404	78.1	386	74.7	26	4.8



	Sectors		Arrivals On Time		Departures On Time		Cancellations	
	Sched.	Flown	No.	%	No.	%	No.	%
<b>Sydney-Albury</b>								
QantasLink	98	96	84	87.5	81	84.4	2	2.0
Rex Airlines	41	41	24	58.5	31	75.6	0	0.0
All Airlines	139	137	108	78.8	112	81.8	2	1.4
<b>Sydney-Ballina</b>								
Jetstar	91	91	78	85.7	79	86.8	0	0.0
QantasLink	40	40	36	90.0	34	85.0	0	0.0
Virgin Australia	46	46	39	84.8	41	89.1	0	0.0
All Airlines	177	177	153	86.4	154	87.0	0	0.0
<b>Sydney-Brisbane</b>								
Jetstar	236	223	139	62.3	130	58.3	13	5.5
Qantas	456	442	288	65.2	285	64.5	14	3.1
Virgin Australia	402	394	308	78.2	309	78.4	8	2.0
All Airlines	1 094	1 059	735	69.4	724	68.4	35	3.2
<b>Sydney-Cairns</b>								
Jetstar	115	114	89	78.1	82	71.9	1	0.9
Qantas	44	44	32	72.7	32	72.7	0	0.0
Virgin Australia	88	88	78	88.6	76	86.4	0	0.0
All Airlines	247	246	199	80.9	190	77.2	1	0.4
<b>Sydney-Canberra</b>								
Qantas	105	97	79	81.4	75	77.3	8	7.6
QantasLink	105	102	78	76.5	75	73.5	3	2.9
Virgin Australia	184	174	159	91.4	149	85.6	10	5.4
All Airlines	394	373	316	84.7	299	80.2	21	5.3
<b>Sydney-Coffs Harbour</b>								
Qantas	54	51	37	72.5	37	72.5	3	5.6
QantasLink	32	32	26	81.3	26	81.3	0	0.0
Rex Airlines	74	71	58	81.7	56	78.9	3	4.1
All Airlines	160	154	121	78.6	119	77.3	6	3.8
<b>Sydney-Dubbo</b>								
QantasLink	106	103	83	80.6	83	80.6	3	2.8
Rex Airlines	54	53	40	75.5	39	73.6	1	1.9
All Airlines	160	156	123	78.8	122	78.2	4	2.5
<b>Sydney-Gold Coast</b>								
Jetstar	277	268	200	74.6	195	72.8	9	3.2
Qantas	123	123	92	74.8	91	74.0	0	0.0
Virgin Australia	344	340	260	76.5	273	80.3	4	1.2
All Airlines	744	731	552	75.5	559	76.5	13	1.7
<b>Sydney-Hamilton Island</b>								
Jetstar	18	18	15	83.3	14	77.8	0	0.0
Qantas	31	31	27	87.1	19	61.3	0	0.0
Virgin Australia	31	31	21	67.7	25	80.6	0	0.0
All Airlines	80	80	63	78.8	58	72.5	0	0.0
<b>Sydney-Hobart</b>								
Jetstar	118	118	90	76.3	88	74.6	0	0.0
Qantas	16	15	10	66.7	8	53.3	1	6.3
QantasLink	74	73	45	61.6	36	49.3	1	1.4
Virgin Australia	80	79	69	87.3	68	86.1	1	1.3
All Airlines	288	285	214	75.1	200	70.2	3	1.0

	Sectors		Arrivals On Time		Departures On Time		Cancellations	
	Sched.	Flown	No.	%	No.	%	No.	%
<b>Sydney-Launceston</b>								
Jetstar	59	58	44	75.9	43	74.1	1	1.7
QantasLink	31	30	19	63.3	13	43.3	1	3.2
Virgin Australia	31	31	26	83.9	25	80.6	0	0.0
All Airlines	121	119	89	74.8	81	68.1	2	1.7
<b>Sydney-Melbourne</b>								
Jetstar	542	521	365	70.1	328	63.0	21	3.9
Qantas	659	624	452	72.4	421	67.5	35	5.3
Virgin Australia	679	670	527	78.7	517	77.2	9	1.3
All Airlines	1 880	1 815	1 344	74.0	1 266	69.8	65	3.5
<b>Sydney-Perth</b>								
Jetstar	61	61	50	82.0	41	67.2	0	0.0
Qantas	208	206	138	67.0	138	67.0	2	1.0
Virgin Australia	198	197	160	81.2	148	75.1	1	0.5
All Airlines	467	464	348	75.0	327	70.5	3	0.6
<b>Sydney-Port Macquarie</b>								
QantasLink	102	101	84	83.2	84	83.2	1	1.0
Rex Airlines	40	34	24	70.6	24	70.6	6	15.0
All Airlines	142	135	108	80.0	108	80.0	7	4.9
<b>Sydney-Sunshine Coast</b>								
Jetstar	119	117	84	71.8	86	73.5	2	1.7
Qantas	63	62	42	67.7	43	69.4	1	1.6
Virgin Australia	62	62	48	77.4	52	83.9	0	0.0
All Airlines	244	241	174	72.2	181	75.1	3	1.2
<b>Sydney-Wagga Wagga</b>								
QantasLink	102	100	88	88.0	86	86.0	2	2.0
Rex Airlines	42	42	34	81.0	31	73.8	0	0.0
All Airlines	144	142	122	85.9	117	82.4	2	1.4
<b>Townsville-Brisbane</b>								
Jetstar	61	61	27	44.3	26	42.6	0	0.0
Qantas	4	4	4	100.0	2	50.0	0	0.0
QantasLink	136	134	93	69.4	96	71.6	2	1.5
Virgin Australia	143	143	104	72.7	107	74.8	0	0.0
All Airlines	344	342	228	66.7	231	67.5	2	0.6
<b>Townsville-Cairns</b>								
QantasLink	121	120	110	91.7	110	91.7	1	0.8
Rex Airlines	13	12	10	83.3	10	83.3	1	7.7
All Airlines	134	132	120	90.9	120	90.9	2	1.5
<b>Wagga Wagga-Sydney</b>								
QantasLink	102	99	82	82.8	85	85.9	3	2.9
Rex Airlines	41	41	26	63.4	32	78.0	0	0.0
All Airlines	143	140	108	77.1	117	83.6	3	2.1

## Airports

The following data reports by airport against flights operated on published routes only. This month, 8 major city airports and 28 regional city airports are covered.

Airport	Arrivals			Departures		
	Sectors	On Time		Sectors	On Time	
	Flown	No.	%	Flown	No.	%
<b>Adelaide</b>						
Jetstar	390	277	71.0	390	268	68.7
Qantas	543	403	74.2	544	404	74.3
QantasLink	376	319	84.8	383	320	83.6
Rex Airlines	137	124	90.5	138	122	88.4
Virgin Australia	696	559	80.3	693	562	81.1
Virgin Australia Regional Airlines	21	12	57.1	21	5	23.8
All Airlines	2,163	1,694	78.3	2,169	1,681	77.5

Relates to services to and from Alice Springs, Brisbane, Canberra, Gold Coast, Melbourne, Perth, Port Lincoln and Sydney only.

### Albury

QantasLink	96	84	87.5	95	76	80.0
Rex Airlines	41	24	58.5	41	39	95.1
All Airlines	137	108	78.8	136	115	84.6

Relates to services to and from Sydney only.

### Alice Springs

QantasLink	31	27	87.1	30	25	83.3
Virgin Australia	14	13	92.9	14	7	50.0
All Airlines	45	40	88.9	44	32	72.7

Relates to services to and from Adelaide only.

### Ballina

Jetstar	91	78	85.7	91	76	83.5
QantasLink	40	36	90.0	40	35	87.5
Virgin Australia	46	39	84.8	46	38	82.6
All Airlines	177	153	86.4	177	149	84.2

Relates to services to and from Sydney only.

### Brisbane

Jetstar	920	528	57.4	920	549	59.7
Qantas	1,035	729	70.4	1,041	783	75.2
QantasLink	1,235	870	70.4	1,234	862	69.9
Virgin Australia	2,027	1,479	73.0	2,028	1,479	72.9
All Airlines	5,217	3,606	69.1	5,223	3,673	70.3

Relates to services to and from Adelaide, Cairns, Canberra, Darwin, Emerald, Gladstone, Hamilton Island, Hobart, Launceston, Mackay, Melbourne, Mount Isa, Newcastle, Perth, Proserpine, Rockhampton, Sydney and Townsville only.

### Broome

QantasLink	74	54	73.0	69	39	56.5
Virgin Australia	17	10	58.8	17	8	47.1
Virgin Australia Regional Airlines	26	20	76.9	26	13	50.0
All Airlines	117	84	71.8	112	60	53.6

Relates to services to and from Perth only.

Airport	Arrivals			Departures		
	Sectors Flown	On Time		Sectors Flown	On Time	
		No.	%		No.	%
<b>Cairns</b>						
Jetstar	305	206	67.5	305	203	66.6
Qantas	87	68	78.2	87	58	66.7
QantasLink	269	182	67.7	271	170	62.7
Rex Airlines	12	10	83.3	12	8	66.7
Virgin Australia	304	255	83.9	302	214	70.9
All Airlines	977	721	73.8	977	653	66.8
Relates to services to and from Brisbane, Melbourne, Sydney and Townsville only.						
<b>Canberra</b>						
Jetstar	80	53	66.3	80	48	60.0
Qantas	135	105	77.8	134	112	83.6
QantasLink	371	269	72.5	366	278	76.0
Virgin Australia	430	365	84.9	428	365	85.3
All Airlines	1,016	792	78.0	1,008	803	79.7
Relates to services to and from Adelaide, Brisbane, Gold Coast, Melbourne and Sydney only.						
<b>Coffs Harbour</b>						
Qantas	51	37	72.5	51	43	84.3
QantasLink	32	26	81.3	31	28	90.3
Rex Airlines	71	58	81.7	71	53	74.6
All Airlines	154	121	78.6	153	124	81.0
Relates to services to and from Sydney only.						
<b>Darwin</b>						
Jetstar	54	42	77.8	54	31	57.4
Qantas	86	65	75.6	86	67	77.9
Virgin Australia	54	41	75.9	54	36	66.7
Virgin Australia Regional Airlines	21	8	38.1	21	17	81.0
All Airlines	215	156	72.6	215	151	70.2
Relates to services to and from Brisbane, Melbourne and Perth only.						
<b>Devonport</b>						
QantasLink	91	76	83.5	88	78	88.6
Rex Airlines	33	31	93.9	34	31	91.2
All Airlines	124	107	86.3	122	109	89.3
Relates to services to and from Melbourne only.						
<b>Dubbo</b>						
QantasLink	103	83	80.6	102	85	83.3
Rex Airlines	53	40	75.5	61	45	73.8
All Airlines	156	123	78.8	163	130	79.8
Relates to services to and from Sydney only.						
<b>Emerald</b>						
QantasLink	101	85	84.2	101	86	85.1
Virgin Australia	27	19	70.4	27	21	77.8
All Airlines	128	104	81.3	128	107	83.6
Relates to services to and from Brisbane only.						

Airport	Arrivals			Departures		
	Sectors	On Time		Sectors	On Time	
	Flown	No.	%	Flown	No.	%
<b>Gladstone</b>						
QantasLink	111	88	79.3	111	94	84.7
Virgin Australia	35	28	80.0	35	32	91.4
All Airlines	146	116	79.5	146	126	86.3
Relates to services to and from Brisbane only.						
<b>Gold Coast</b>						
Jetstar	590	416	70.5	588	401	68.2
Qantas	187	132	70.6	187	107	57.2
QantasLink	9	8	88.9	9	7	77.8
Virgin Australia	751	595	79.2	751	526	70.0
All Airlines	1,537	1,151	74.9	1,535	1,041	67.8
Relates to services to and from Adelaide, Canberra, Melbourne and Sydney only.						
<b>Hamilton Island</b>						
Jetstar	18	15	83.3	18	12	66.7
Qantas	31	27	87.1	31	18	58.1
QantasLink	29	20	69.0	29	19	65.5
Virgin Australia	70	55	78.6	70	47	67.1
All Airlines	148	117	79.1	148	96	64.9
Relates to services to and from Brisbane and Sydney only.						
<b>Hobart</b>						
Jetstar	397	286	72.0	397	227	57.2
Qantas	64	49	76.6	63	44	69.8
QantasLink	166	108	65.1	161	91	56.5
Virgin Australia	261	215	82.4	261	197	75.5
All Airlines	888	658	74.1	882	559	63.4
Relates to services to and from Brisbane, Melbourne and Sydney only.						
<b>Kalgoorlie</b>						
Qantas	13	12	92.3	13	13	100.0
QantasLink	62	46	74.2	63	44	69.8
Virgin Australia	67	56	83.6	67	58	86.6
Virgin Australia Regional Airlines	33	18	54.5	33	23	69.7
All Airlines	175	132	75.4	176	138	78.4
Relates to services to and from Perth only.						
<b>Karratha</b>						
QantasLink	152	120	78.9	152	119	78.3
Virgin Australia	48	41	85.4	48	42	87.5
Virgin Australia Regional Airlines	28	24	85.7	28	22	78.6
All Airlines	228	185	81.1	228	183	80.3
Relates to services to and from Perth only.						
<b>Launceston</b>						
Jetstar	253	165	65.2	252	157	62.3
QantasLink	105	67	63.8	106	59	55.7
Virgin Australia	148	120	81.1	148	110	74.3
All Airlines	506	352	69.6	506	326	64.4
Relates to services to and from Brisbane, Melbourne and Sydney only.						

Airport	Arrivals			Departures		
	Sectors Flown	On Time		Sectors Flown	On Time	
		No.	%		No.	%
<b>Mackay</b>						
Jetstar	31	14	45.2	31	11	35.5
Qantas	87	66	75.9	87	67	77.0
QantasLink	18	9	50.0	22	16	72.7
Virgin Australia	133	101	75.9	132	103	78.0
All Airlines	269	190	70.6	272	197	72.4

Relates to services to and from Brisbane only.

### Melbourne

Jetstar	1,933	1,321	68.3	1,934	1,248	64.5
Qantas	1,620	1,177	72.7	1,614	1,144	70.9
QantasLink	472	337	71.4	477	335	70.2
Rex Airlines	109	90	82.6	109	95	87.2
Virgin Australia	2,515	2,009	79.9	2,515	2,088	83.0
All Airlines	6,649	4,934	74.2	6,649	4,910	73.8

Relates to services to and from Adelaide, Brisbane, Cairns, Canberra, Darwin, Devonport, Gold Coast, Hobart, Launceston, Mildura, Newcastle, Perth, Sunshine Coast and Sydney only.

### Mildura

QantasLink	81	54	66.7	80	58	72.5
Rex Airlines	76	64	84.2	75	61	81.3
All Airlines	157	118	75.2	155	119	76.8

Relates to services to and from Melbourne only.

### Mount Isa

QantasLink	77	47	61.0	77	56	72.7
Virgin Australia	14	12	85.7	14	10	71.4
All Airlines	91	59	64.8	91	66	72.5

Relates to services to and from Brisbane only.

### Newcastle

Jetstar	121	80	66.1	119	72	60.5
QantasLink	100	77	77.0	102	81	79.4
Virgin Australia	101	71	70.3	100	74	74.0
All Airlines	322	228	70.8	321	227	70.7

Relates to services to and from Brisbane and Melbourne only.

### Newman

Qantas	8	7	87.5	7	6	85.7
QantasLink	112	94	83.9	109	92	84.4
Virgin Australia	42	39	92.9	42	33	78.6
Virgin Australia Regional Airlines	16	13	81.3	16	11	68.8
All Airlines	178	153	86.0	174	142	81.6

Relates to services to and from Perth only.

Airport	Arrivals			Departures		
	Sectors	On Time		Sectors	On Time	
	Flown	No.	%	Flown	No.	%
<b>Perth</b>						
Jetstar	211	161	76.3	210	149	71.0
Qantas	722	521	72.2	718	524	73.0
QantasLink	522	351	67.2	532	423	79.5
Virgin Australia	847	619	73.1	857	670	78.2
Virgin Australia Regional Airlines	159	111	69.8	159	109	68.6
All Airlines	2,461	1,763	71.6	2,476	1,875	75.7
Relates to services to and from Adelaide, Brisbane, Broome, Darwin, Kalgoorlie, Karratha, Melbourne, Newman, Port Hedland and Sydney only.						
<b>Port Hedland</b>						
QantasLink	132	101	76.5	129	86	66.7
Virgin Australia	41	32	78.0	40	29	72.5
Virgin Australia Regional Airlines	14	10	71.4	14	6	42.9
All Airlines	187	143	76.5	183	121	66.1
Relates to services to and from Perth only.						
<b>Port Lincoln</b>						
QantasLink	118	109	92.4	116	106	91.4
Rex Airlines	138	120	87.0	137	123	89.8
All Airlines	256	229	89.5	253	229	90.5
Relates to services to and from Adelaide only.						
<b>Port Macquarie</b>						
QantasLink	101	84	83.2	101	85	84.2
Rex Airlines	34	24	70.6	32	22	68.8
All Airlines	135	108	80.0	133	107	80.5
Relates to services to and from Sydney only.						
<b>Proserpine</b>						
Jetstar	44	29	65.9	44	26	59.1
QantasLink	17	10	58.8	17	11	64.7
Virgin Australia	34	21	61.8	34	15	44.1
All Airlines	95	60	63.2	95	52	54.7
Relates to services to and from Brisbane only.						
<b>Rockhampton</b>						
QantasLink	149	117	78.5	146	121	82.9
Virgin Australia	135	88	65.2	134	97	72.4
All Airlines	284	205	72.2	280	218	77.9
Relates to services to and from Brisbane only.						
<b>Sunshine Coast</b>						
Jetstar	201	141	70.1	201	130	64.7
Qantas	113	74	65.5	113	67	59.3
Virgin Australia	169	148	87.6	169	138	81.7
All Airlines	483	363	75.2	483	335	69.4
Relates to services to and from Melbourne and Sydney only.						

Airport	Arrivals			Departures		
	Sectors Flown	On Time		Sectors Flown	On Time	
		No.	%		No.	%
<b>Sydney</b>						
Jetstar	1,725	1,198	69.4	1,730	1,183	68.4
Qantas	1,905	1,333	70.0	1,911	1,309	68.5
QantasLink	669	531	79.4	677	518	76.5
Rex Airlines	246	174	70.7	241	181	75.1
Virgin Australia	2,272	1,684	74.1	2,272	1,812	79.8
All Airlines	6,817	4,920	72.2	6,831	5,003	73.2

Relates to services to and from Adelaide, Albury, Ballina, Brisbane, Cairns, Canberra, Coffs Harbour, Dubbo, Gold Coast, Hamilton Island, Hobart, Launceston, Melbourne, Perth, Port Macquarie, Sunshine Coast and Wagga Wagga only.

#### Townsville

Jetstar	61	27	44.3	61	26	42.6
Qantas	4	3	75.0	4	2	50.0
QantasLink	258	174	67.4	254	206	81.1
Rex Airlines	12	8	66.7	12	10	83.3
Virgin Australia	143	90	62.9	143	107	74.8
All Airlines	478	302	63.2	474	351	74.1

Relates to services to and from Brisbane and Cairns only.

#### Wagga Wagga

QantasLink	100	88	88.0	99	85	85.9
Rex Airlines	42	34	81.0	41	32	78.0
All Airlines	142	122	85.9	140	117	83.6

Relates to services to and from Sydney only.



## Definitions

---

On time arrival	A flight arrival is counted as "on time" if it arrived at the gate before 15 minutes after the scheduled arrival time shown in the carriers' schedule. Neither diverted nor cancelled flights count as on time.
On time departure	A flight departure is counted as "on time" if it departs the gate before 15 minutes after the scheduled departure time shown in the carriers' schedule.
Cancellation	A flight removed from service within 7 days of scheduled departure is regarded as a cancellation.
On time departure percentage	The percentage of on time departures is measured against the number of departures <i>operated</i> on any particular sector.
On time arrival percentage	The percentage of on time arrivals is measured against the number of arrivals <i>operated</i> on any particular sector.
Cancellation percentage	The percentage of cancellations is measured against the number of services <i>scheduled</i> on any particular sector.

---

## Airlines and Reporting

Data has been gathered since November 2003, although some airlines commenced reporting at a later date, including Jetstar which first reported in May 2004, Tigerair Australia in April 2008, Virgin Australia Regional Airlines in May 2013, Skytrans in May 2023, Bonza in November 2023 and Hinterland in March 2024. Tigerair Australia ceased operations in March 2020 and data was not received for that month. Bonza ceased operations at the end of April 2024 and data was not received for that month.

Virgin Blue was rebranded as Virgin Australia in May 2011 and Tiger Airways was rebranded as Tigerair Australia in August 2013 and time series data in Microsoft Excel spread sheet format on the BITRE website have been revised to reflect these changes. With effect from August 2021, Regional Express is reported as Rex Airlines.

Services operated by Skywest on behalf of Virgin Australia using ATR/F100 aircraft commenced in November 2011 and were shown separately as Virgin Australia – ATR/F100 Operations. Virgin Australia Regional Airlines commenced operations in May 2013. It was formed after the acquisition of Skywest by Virgin Australia and represented a combination of operations previously reported under Skywest and Virgin Australia – ATR/F100 Operations. In February 2016, Virgin Australia transferred their ATR fleet from Virgin Australia Regional Airlines to Virgin Australia.