



Australian Government

**Department of Infrastructure, Transport,
Regional Development, Communications and the Arts**
Bureau of Infrastructure and Transport Research Economics

STATISTICAL REPORT



Aviation

**Domestic airline on time performance
July 2024**

The Department of Infrastructure, Transport, Regional Development, Communications and the Arts acknowledges the Traditional Custodians of Country of the land on which we work and live.

We recognise and respect the continuing connections to land, waters and communities.

We pay our respects to them and their cultures and to their Elders both past and present and to all Aboriginal and Torres Strait Islander people.

© Commonwealth of Australia 2024

ISSN: 1832-0759

Ownership of intellectual property rights in this publication

Unless otherwise noted, copyright (and any other intellectual property rights, if any) in this publication is owned by the Commonwealth of Australia (referred to below as the Commonwealth).

Disclaimer

The material contained in this publication is made available on the understanding that the Commonwealth is not providing professional advice, and that users exercise their own skill and care with respect to its use, and seek independent advice if necessary.

The Commonwealth makes no representations or warranties as to the contents or accuracy of the information contained in this publication. To the extent permitted by law, the Commonwealth disclaims liability to any person or organisation in respect of anything done, or omitted to be done, in reliance upon information contained in this publication.

Creative Commons licence

With the exception of (a) the Coat of Arms; and (b) the Department of Infrastructure, Transport, Regional Development, Communications and the Arts' photos and graphics, copyright in this publication is licensed under a Creative Commons Attribution 3.0 Australia Licence.

Creative Commons Attribution 3.0 Australia Licence is a standard form licence agreement that allows you to copy, communicate and adapt this publication provided that you attribute the work to the Commonwealth and abide by the other licence terms. A summary of the licence terms is available from <http://creativecommons.org/licenses/by/3.0/au/deed.en>. The full licence terms are available from <http://creativecommons.org/licenses/by/3.0/au/legalcode>.

Use of the Coat of Arms

The Department of the Prime Minister and Cabinet sets the terms under which the Coat of Arms is used. Please refer to the Department's Commonwealth Coat of Arms and Government branding web page <http://www.dpmmc.gov.au/guidelines/index.cfm#brand> and, in particular, the Guidelines on the use of the Commonwealth Coat of Arms publication.

An appropriate citation for this report is:

Bureau of Infrastructure and Transport Research Economics (BITRE), 2024, Domestic airline on time performance, Statistical Report, BITRE, Canberra ACT.

Contact us

All other rights are reserved, including in relation to any Departmental logos or trade marks which may exist. For enquiries regarding the licence and any use of this publication, please contact:

Bureau of Infrastructure and Transport Research Economics (BITRE)
Department of Infrastructure, Transport, Regional Development, Communications and the Arts
GPO Box 501, Canberra ACT 2601, Australia
Telephone: (international) +61 2 6136 8687
Email: bitre@infrastructure.gov.au
Website: www.bitre.gov.au

Inquiries

Should you require additional information about the statistics contained in this publication:

Telephone (02) 6136 7250

Electronic mail: AVSTATS@infrastructure.gov.au

Web site: <http://www.bitre.gov.au/statistics/aviation/otphome.aspx>

Foreword

The Bureau of Infrastructure and Transport Research Economics (BITRE) monitors the punctuality and reliability of major domestic airlines operating between Australian airports. The purpose of this is to allow for evaluation of overall industry and individual airline performance, so that consumers of air travel can make informed decisions.

The following domestic airlines currently report this information monthly to the BITRE: Hinterland, Jetstar, Qantas, QantasLink, Rex Airlines, Skytrans, Virgin Australia and Virgin Australia Regional Airlines. Hinterland has joined from March 2024.

Information presented in this report is for Australian domestic routes for which the passenger load averaged 8,000 or more passengers per month over the previous six months and where two or more airlines operated in competition on those routes. In order to present data for more routes during the period impacted by COVID-19, the passenger load restriction was not applied between March 2020 and January 2023. From February 2023, the passenger load restriction was reinstated due to the continued recovery of passenger numbers. Data are presented for 59 routes in July 2024. Over time, routes which meet these criteria change as airline networks and traffic levels vary. Participating airlines report their overall monthly network performance where this is possible.

Total industry figures encompass all services operated by reporting airlines only. These airlines collectively carried over 98 per cent of total domestic passengers (regular public transport only) in 2023.

The method of capturing on time performance varies between airlines utilising different recording systems. Jetstar and Qantas jet aircraft use Aircraft Communication Addressing and Reporting System (ACARS) to electronically measure on time performance. Rex Airlines, Virgin Australia, Virgin Australia Regional Airlines and the Qantas non-jet fleet record on time performance manually using records from pilots, gate agents and/or ground crews.

After initial data is collected, aggregate reports are reviewed by participating airlines prior to publication.

Reports and detailed time series data in Microsoft Excel spreadsheet format are available from the BITRE website at: <http://www.bitre.gov.au/statistics/aviation/otphome.aspx>

Contents

	Page
Industry performance	1
Individual routes	10
Airports.....	22
Definitions	28
Airlines and Reporting	29

Industry performance

For July 2024, on time performance over all routes operated by participating airlines (Hinterland, Jetstar, Qantas, QantasLink, Rex Airlines, Skytrans, Virgin Australia and Virgin Australia Regional Airlines) averaged 71.1 per cent for on time arrivals and 72.5 per cent for on time departures. The cancellation rate for the month was 3.0 per cent. The equivalent figures for July 2023 were 68.2 per cent for on time arrivals, 68.1 per cent for on time departures and 4.0 per cent for cancellations.

The worldwide Windows computer outage caused by CrowdStrike software caused flight delays and cancellations for some Australian flights on the 19th of July. Rex Airlines entered voluntary administration on the evening of 30th July, cancelling its flights between capital cities on 31st July.

This month's on time arrivals figure was lower than the long term average performance for all routes (80.9 per cent) and the on time departures figure was also lower than the long term average (82.0 per cent). The rate of cancellations was higher than the long term average of 2.2 per cent.

The Qantas network (Qantas and QantasLink combined operations) recorded 72.8 per cent for on time arrivals while the Virgin Australia network (Virgin Australia and Virgin Australia Regional Airlines combined operations) recorded 70.3 per cent. Hinterland achieved the highest on time arrivals at 90.9 per cent, followed by Skytrans at 80.9 per cent, QantasLink at 75.2 per cent, Virgin Australia at 70.5 per cent, Qantas at 69.1 per cent, Rex Airlines at 67.1 per cent, Jetstar at 66.9 per cent and Virgin Australia Regional Airlines at 63.2 per cent.

The Qantas network recorded 74.1 per cent for on time departures while the Virgin Australia network recorded 73.0 per cent. Hinterland achieved the highest level of on time departures for July 2024 at 93.8 per cent, followed by Skytrans at 81.3 per cent, QantasLink at 76.6 per cent, Virgin Australia at 73.3 per cent, Qantas at 70.2 per cent, Rex Airlines at 70.0 per cent, Jetstar at 65.0 per cent and Virgin Australia Regional Airlines at 62.6 per cent.

Skytrans recorded the highest percentage of cancellations at 7.6 per cent during the month, followed by Virgin Australia Regional Airlines at 4.5 per cent, Jetstar at 3.7 per cent, Qantas at 3.5 per cent, QantasLink at 3.0 per cent, Rex Airlines at 2.6 per cent, Virgin Australia at 2.0 per cent and Hinterland at 0.5 per cent.

Airlines' on time performance varies across the routes they serve. Individual route data by specific airline for 59 routes are shown on pages 10-21.

Of the 59 routes which met the criteria for on time performance reporting in July 2024, the Cairns-Townsville route had the highest percentage of on time arrivals (88.6 per cent), while the Townsville-Cairns route had the highest percentage of on time departures (91.0 per cent). The Darwin-Perth route had the lowest percentage of on time arrivals (36.4 per cent), while the Darwin-Brisbane route had the lowest percentage of on time departures (40.6 per cent).

Cancellations were highest on the Melbourne-Sydney route at 8.8 per cent, followed by the Sydney-Melbourne route at 8.7 per cent, the Kalgoorlie-Perth and Perth-Kalgoorlie routes at 7.5 per cent, the Canberra-Sydney route at 7.1 per cent and the Launceston-Melbourne route at 6.3 per cent.

Alice Springs Airport recorded the highest percentage of on time arrivals (86.8 per cent), while Emerald Airport had the highest percentage of on time departures (81.4 per cent). Mildura Airport recorded the lowest percentage of on time arrivals (58.1 per cent), while Darwin Airport had the lowest percentage of on time departures (45.5 per cent). These figures only refer to reported routes and do not cover all flights at these airports.

Table 1 On time performance for July 2024 – Total Industry

	<i>Sectors</i>		<i>Arrivals On Time</i>		<i>Departures On Time</i>		<i>Cancellations</i>	
	<i>Scheduled</i>	<i>Flown</i>	<i>No.</i>	<i>%</i>	<i>No.</i>	<i>%</i>	<i>No.</i>	<i>%</i>
Hinterland	1,230	1,224	1,113	90.9	1,148	93.8	6	0.5
Jetstar	8,128	7,829	5,235	66.9	5,087	65.0	299	3.7
Qantas - all QF designated services	20,522	19,859	14,455	72.8	14,706	74.1	663	3.2
Rex Airlines	6,152	5,993	4,020	67.1	4,198	70.0	159	2.6
Skytrans	1,106	1,022	827	80.9	831	81.3	84	7.6
Virgin Australia - all VA designated services	12,313	12,057	8,478	70.3	8,802	73.0	256	2.1
All Airlines	49,451	47,984	34,128	71.1	34,772	72.5	1,467	3.0
Individual operating entities								
Qantas	8,163	7,875	5,444	69.1	5,532	70.2	288	3.5
QantasLink	12,359	11,984	9,011	75.2	9,174	76.6	375	3.0
Virgin Australia	11,977	11,736	8,275	70.5	8,601	73.3	241	2.0
Virgin Australia Regional Airlines	336	321	203	63.2	201	62.6	15	4.5

Total airline network data (including routes not shown in this report).

Airlines’ on time performance varies across the routes they serve. Individual route data by specific airline are shown on page 10 and onwards.

Table 2 Top ten routes for on time performance for July 2024 (participating airlines only)

<i>Arrivals</i>		<i>Departures</i>	
<i>Route</i>	<i>On Time (%)</i>	<i>Route</i>	<i>On Time (%)</i>
Cairns-Townsville	88.6	Townsville-Cairns	91.0
Townsville-Cairns	87.2	Perth-Newman	86.9
Emerald-Brisbane	87.0	Brisbane-Mount Isa	86.8
Adelaide-Alice Springs	86.8	Adelaide-Alice Springs	85.3
Perth-Newman	86.3	Brisbane-Emerald	84.5
Perth-Brisbane	86.0	Cairns-Townsville	82.9
Brisbane-Adelaide	83.4	Adelaide-Port Lincoln	82.4
Adelaide-Brisbane	82.0	Sydney-Ballina	82.1
Sydney-Ballina	81.5	Canberra-Sydney	81.4
Brisbane-Hobart	81.5	Emerald-Brisbane	81.4

Table 3 Top ten airports for on time performance for July 2024 (participating airlines and reported routes only)

<i>Arrivals</i>		<i>Departures</i>	
<i>Airport</i>	<i>On Time (%)</i>	<i>Airport</i>	<i>On Time (%)</i>
Alice Springs	86.8	Emerald	81.4
Newman	86.3	Newman	80.8
Ballina	81.5	Port Lincoln	79.7
Port Hedland	81.3	Alice Springs	79.4
Mount Isa	80.9	Ballina	77.2
Karratha	80.8	Gladstone	75.7
Emerald	80.1	Adelaide	75.2
Port Lincoln	80.0	Mount Isa	75.0
Broome	79.1	Albury	73.8
Port Macquarie	78.9	Canberra	73.4

Total industry on time performance

Figure 1 On time performance (by month from Jul 2021)—Total Industry

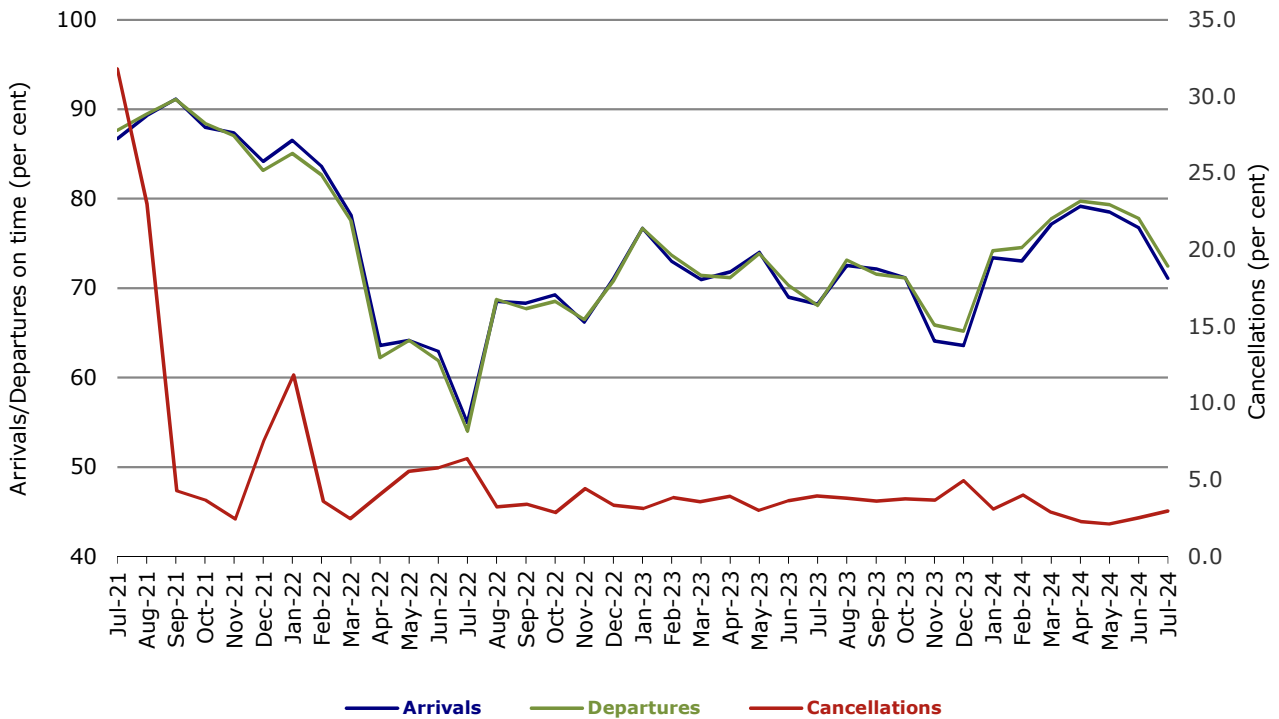


Figure 2 Arrivals on time (by month from Jul 2023)

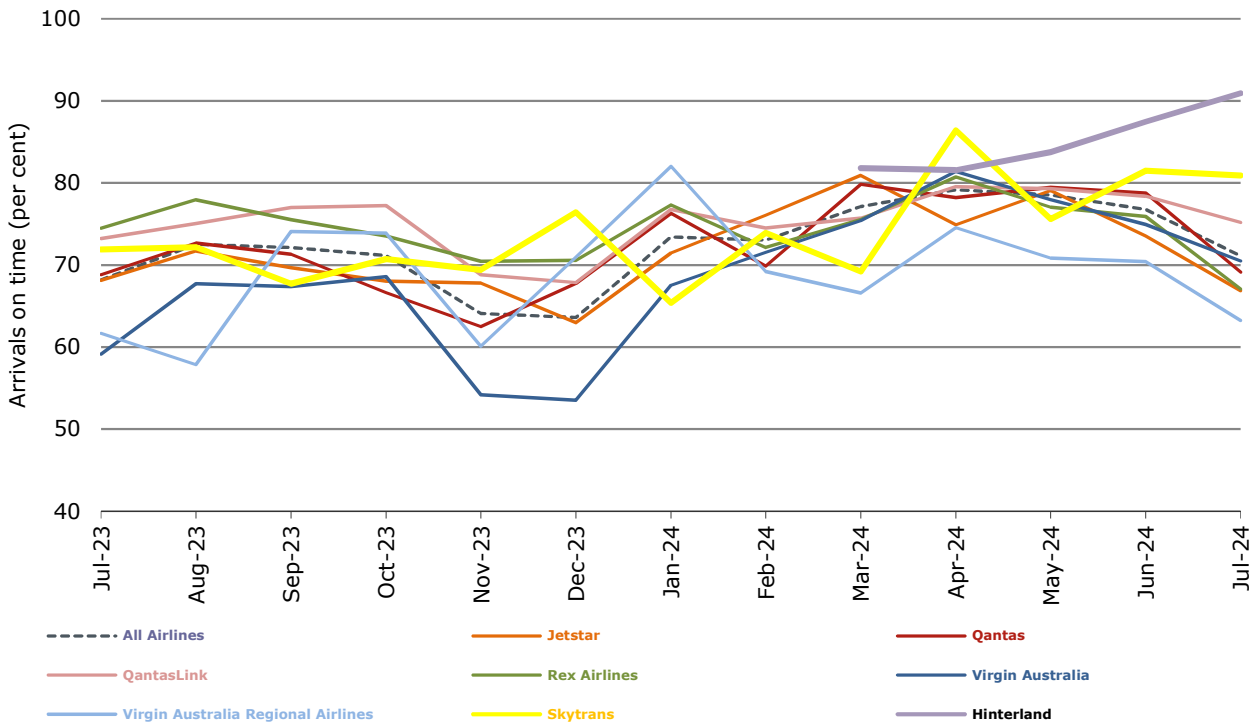


Figure 3 Departures on time (by month from Jul 2023)

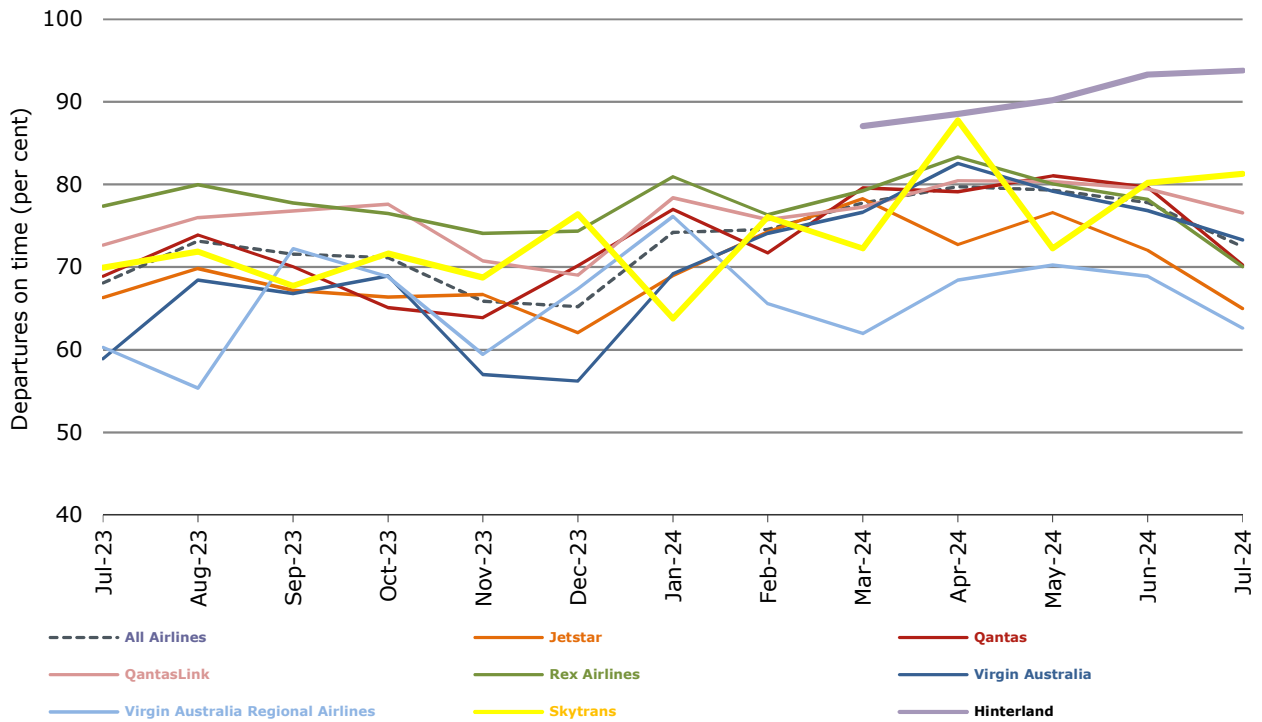
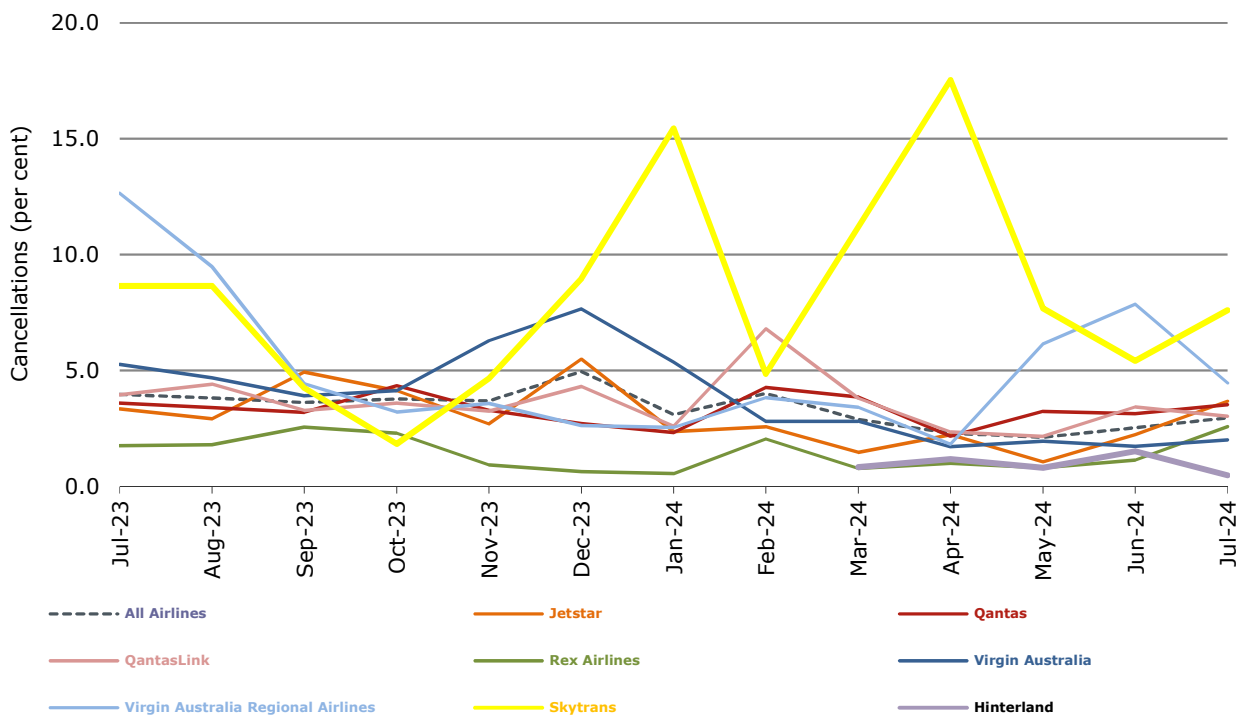


Figure 4 Cancellations (by month from Jul 2023)



Airlines on time performance

Figure 5 On time performance (by month from Jul 2021)—Jetstar

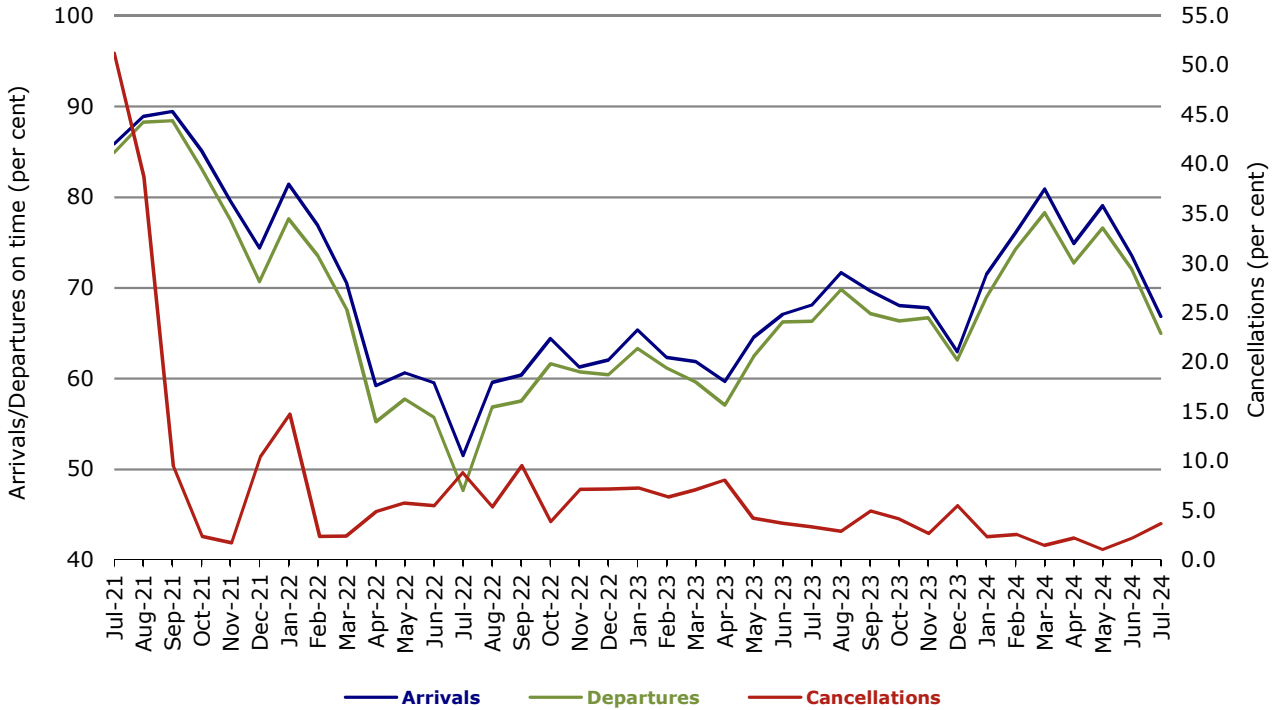


Figure 6 On time performance (by month from Jul 2021)—Qantas

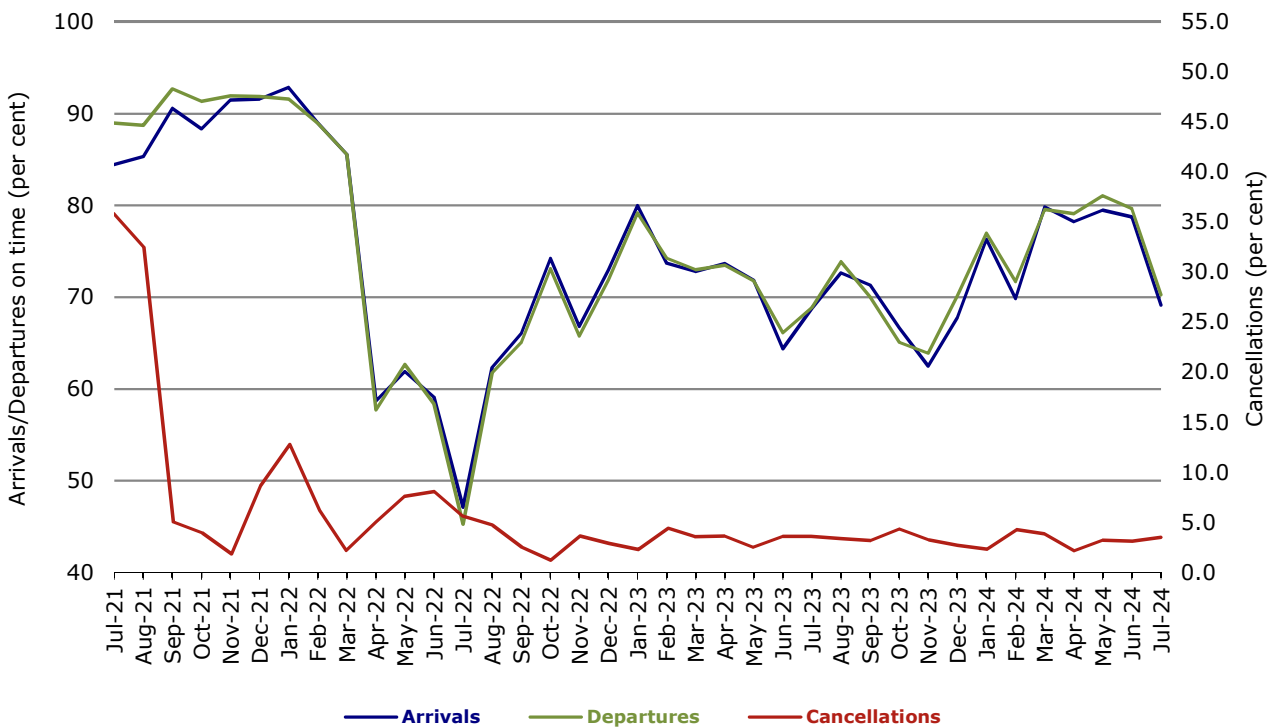


Figure 7 On time performance (by month from Jul 2021)—Virgin Australia

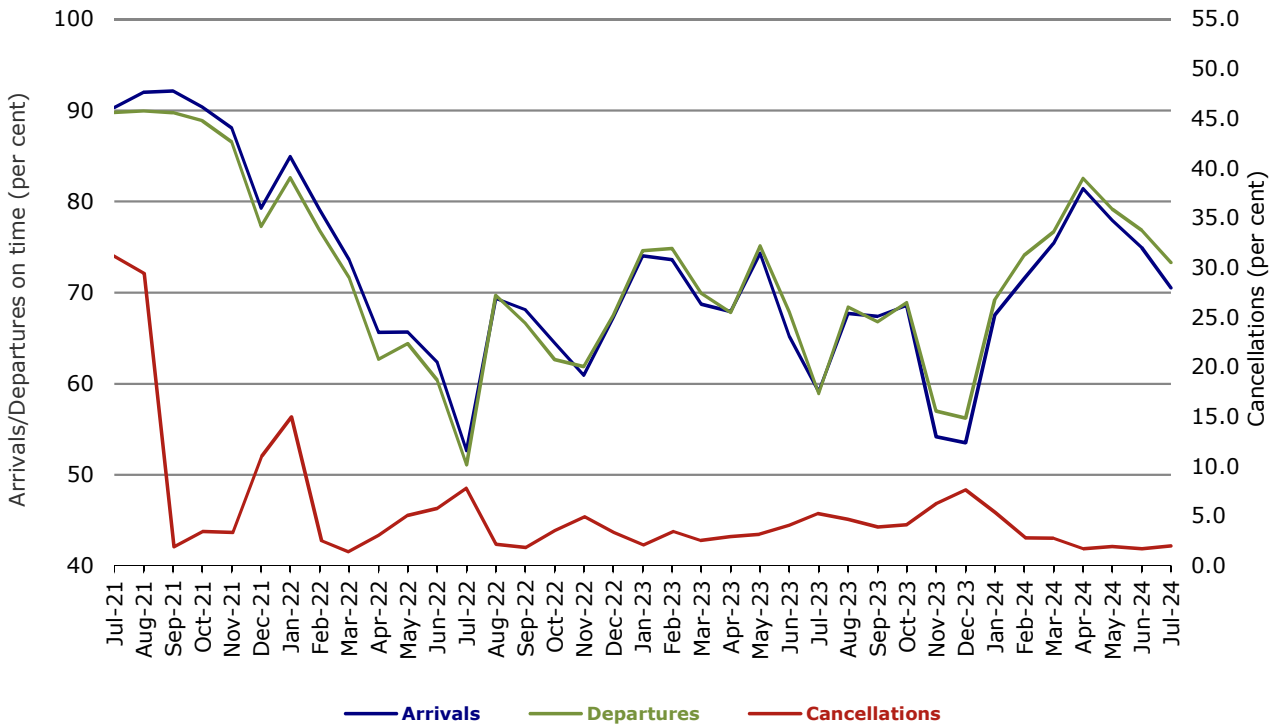


Figure 8 On time performance (by month from Jul 2021)—QantasLink

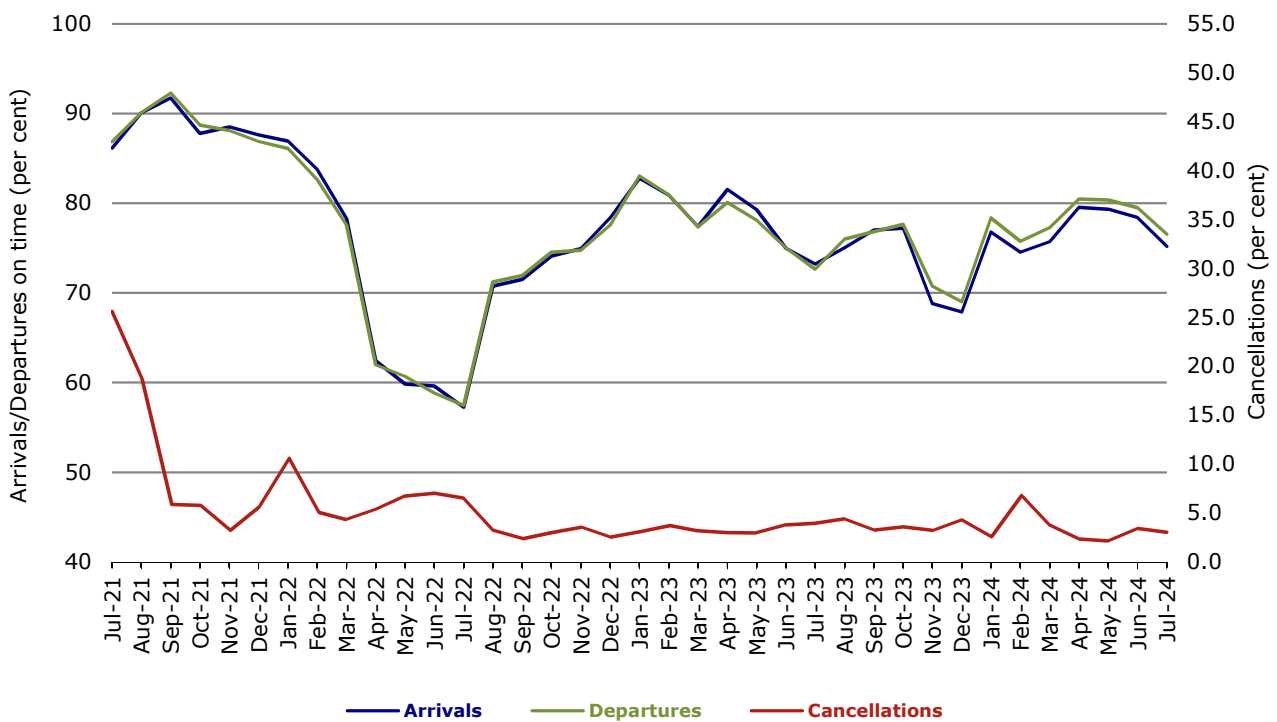


Figure 9 On time performance (by month from Jul 2021)—Rex Airlines

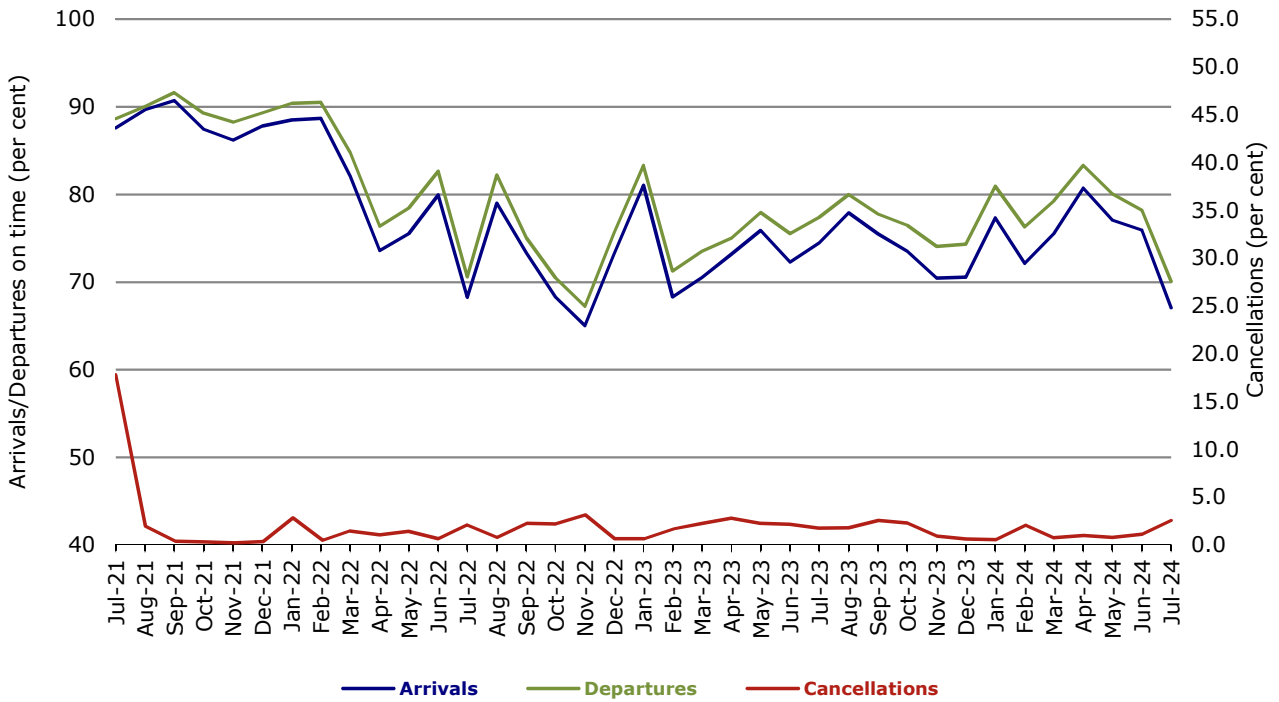


Figure 10 On time performance (by month from Jul 2021)—Virgin Australia Regional Airlines

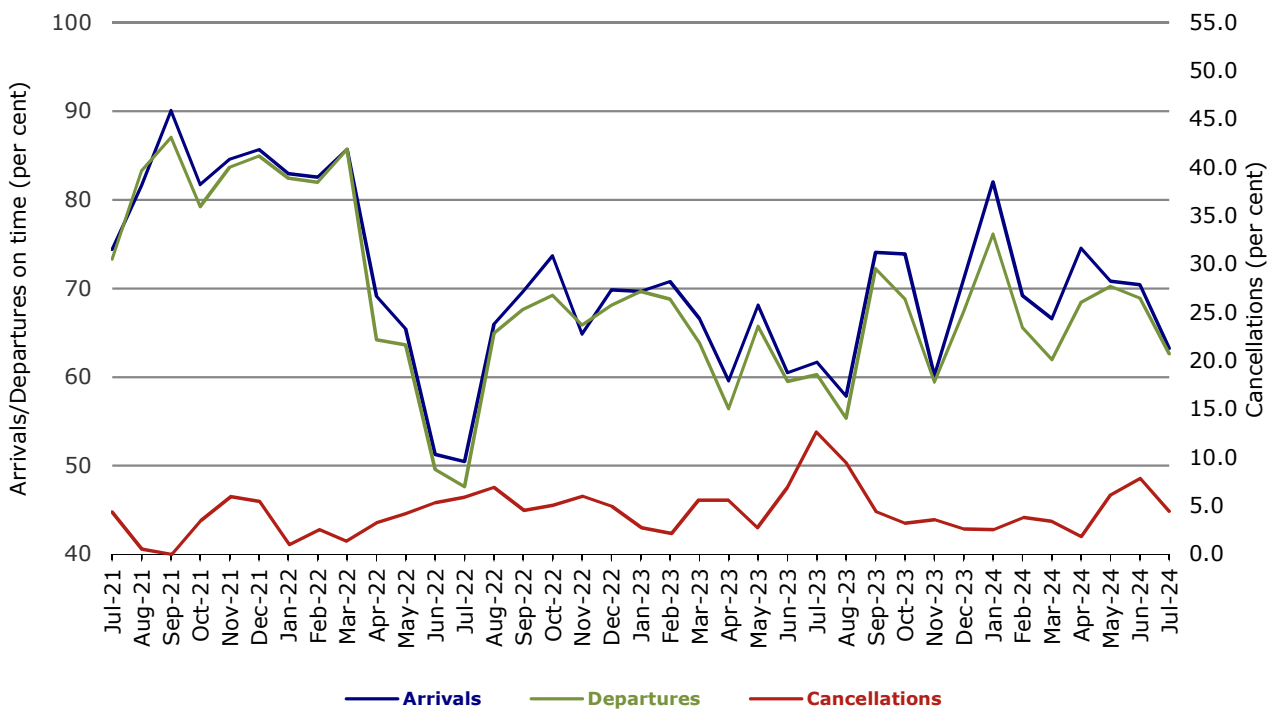
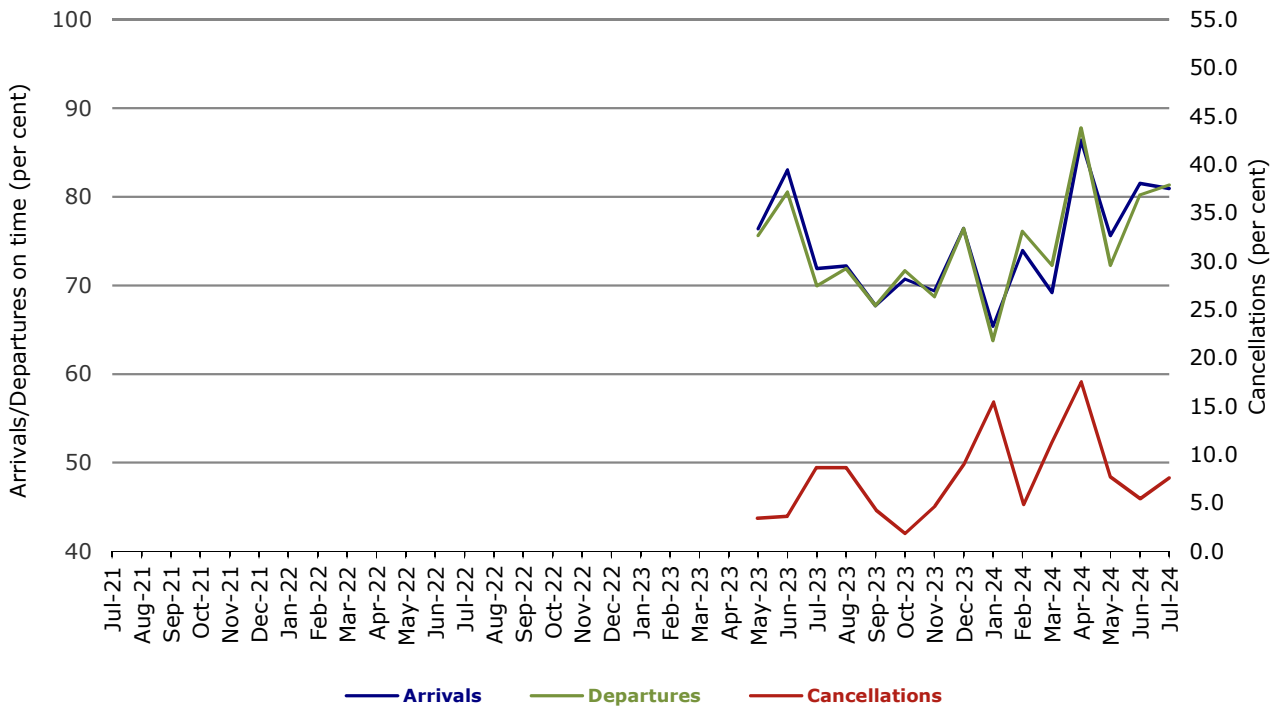
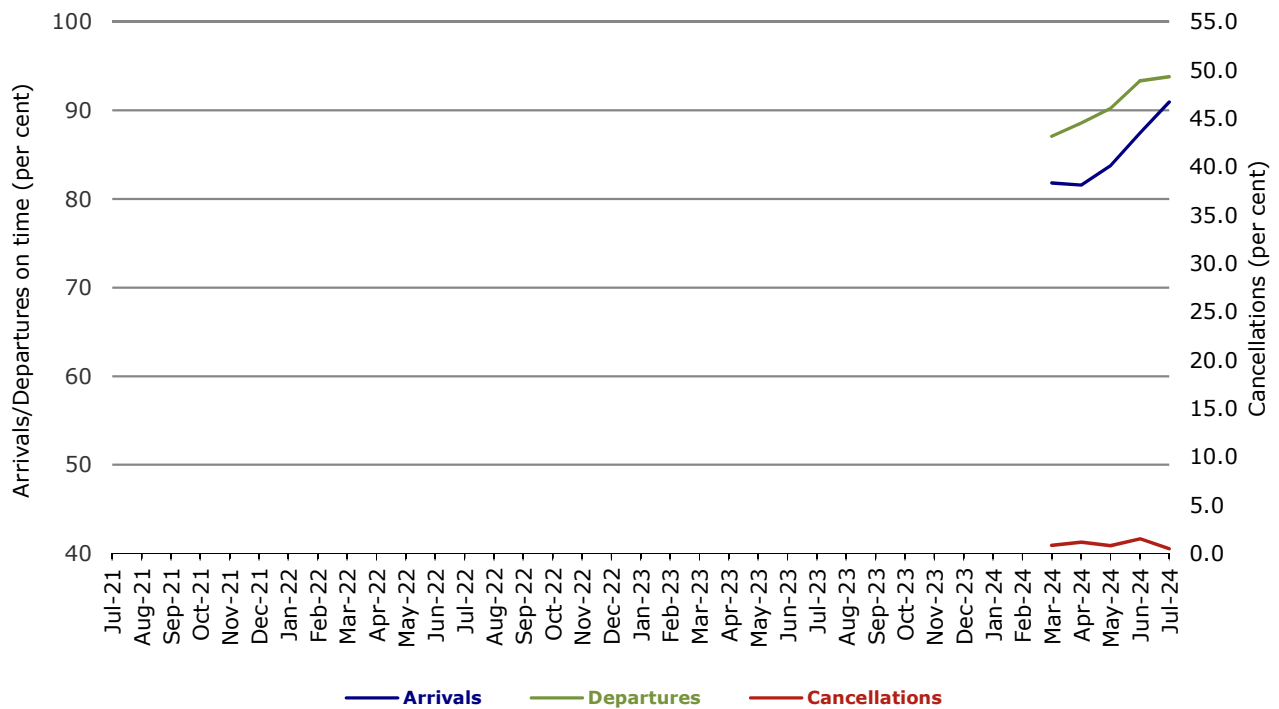


Figure 11 On time performance (by month from Jul 2021)—Skytrans



Note: Skytrans data included from May 2023

Figure 12 On time performance (by month from Jul 2021)—Hinterland



Note: Hinterland data included from March 2024

Individual routes

On time performance is reported for all routes where the passenger load averages over 8,000 passengers per month over the previous six months, and where two or more airlines operate in competition on those routes. In order to present data for more routes during the period impacted by COVID-19, the passenger load restriction is not being applied. There are now 59 routes for which data are presented.

	Sectors		Arrivals On Time		Departures On Time		Cancellations	
	Sched.	Flown	No.	%	No.	%	No.	%
Adelaide-Alice Springs								
QantasLink	54	54	46	85.2	44	81.5	0	0.0
Virgin Australia	14	14	13	92.9	14	100.0	0	0.0
All Airlines	68	68	59	86.8	58	85.3	0	0.0
Adelaide-Brisbane								
Jetstar	35	34	24	70.6	25	73.5	1	2.9
QantasLink	152	151	129	85.4	127	84.1	1	0.7
Rex Airlines	30	29	28	96.6	27	93.1	1	3.3
Virgin Australia	130	130	101	77.7	97	74.6	0	0.0
All Airlines	347	344	282	82.0	276	80.2	3	0.9
Adelaide-Canberra								
QantasLink	85	84	63	75.0	66	78.6	1	1.2
Virgin Australia	17	16	16	100.0	15	93.8	1	5.9
All Airlines	102	100	79	79.0	81	81.0	2	2.0
Adelaide-Gold Coast								
Jetstar	31	30	24	80.0	27	90.0	1	3.2
QantasLink	9	9	7	77.8	6	66.7	0	0.0
Virgin Australia	31	31	24	77.4	22	71.0	0	0.0
All Airlines	71	70	55	78.6	55	78.6	1	1.4
Adelaide-Melbourne								
Jetstar	105	101	60	59.4	67	66.3	4	3.8
Qantas	257	257	163	63.4	158	61.5	0	0.0
QantasLink	14	13	8	61.5	9	69.2	1	7.1
Rex Airlines	62	60	46	76.7	51	85.0	2	3.2
Virgin Australia	245	243	165	67.9	172	70.8	2	0.8
All Airlines	683	674	442	65.6	457	67.8	9	1.3
Adelaide-Perth								
Jetstar	31	29	22	75.9	24	82.8	2	6.5
Qantas	94	94	78	83.0	79	84.0	0	0.0
Rex Airlines	13	13	6	46.2	7	53.8	0	0.0
Virgin Australia	47	47	29	61.7	34	72.3	0	0.0
Virgin Australia Regional Airlines	28	26	9	34.6	11	42.3	2	7.1
All Airlines	213	209	144	68.9	155	74.2	4	1.9
Adelaide-Port Lincoln								
QantasLink	143	140	132	94.3	135	96.4	3	2.1
Rex Airlines	158	150	100	66.7	104	69.3	8	5.1
All Airlines	301	290	232	80.0	239	82.4	11	3.7
Adelaide-Sydney								
Jetstar	143	131	80	61.1	87	66.4	12	8.4
Qantas	245	232	175	75.4	175	75.4	13	5.3
Rex Airlines	31	30	23	76.7	24	80.0	1	3.2
Virgin Australia	171	168	122	72.6	134	79.8	3	1.8
All Airlines	590	561	400	71.3	420	74.9	29	4.9

	Sectors		Arrivals On Time		Departures On Time		Cancellations	
	Sched.	Flown	No.	%	No.	%	No.	%
Albury-Sydney								
QantasLink	111	111	71	64.0	81	73.0	0	0.0
Rex Airlines	85	84	55	65.5	63	75.0	1	1.2
All Airlines	196	195	126	64.6	144	73.8	1	0.5
Alice Springs-Adelaide								
QantasLink	54	54	45	83.3	46	85.2	0	0.0
Virgin Australia	14	14	10	71.4	8	57.1	0	0.0
All Airlines	68	68	55	80.9	54	79.4	0	0.0
Ballina-Sydney								
Jetstar	83	80	54	67.5	52	65.0	3	3.6
QantasLink	58	57	54	94.7	55	96.5	1	1.7
Virgin Australia	47	47	29	61.7	35	74.5	0	0.0
All Airlines	188	184	137	74.5	142	77.2	4	2.1
Brisbane-Adelaide								
Jetstar	35	34	23	67.6	15	44.1	1	2.9
QantasLink	152	151	128	84.8	125	82.8	1	0.7
Rex Airlines	30	29	26	89.7	27	93.1	1	3.3
Virgin Australia	130	130	110	84.6	102	78.5	0	0.0
All Airlines	347	344	287	83.4	269	78.2	3	0.9
Brisbane-Cairns								
Jetstar	99	98	68	69.4	74	75.5	1	1.0
Qantas	71	71	47	66.2	52	73.2	0	0.0
QantasLink	107	107	45	42.1	56	52.3	0	0.0
Rex Airlines	10	9	5	55.6	6	66.7	1	10.0
Virgin Australia	161	161	112	69.6	126	78.3	0	0.0
All Airlines	448	446	277	62.1	314	70.4	2	0.4
Brisbane-Canberra								
Jetstar	31	31	25	80.6	23	74.2	0	0.0
QantasLink	149	148	113	76.4	108	73.0	1	0.7
Virgin Australia	115	115	82	71.3	78	67.8	0	0.0
All Airlines	295	294	220	74.8	209	71.1	1	0.3
Brisbane-Darwin								
Jetstar	31	30	21	70.0	28	93.3	1	3.2
Qantas	25	25	12	48.0	14	56.0	0	0.0
QantasLink	25	25	9	36.0	19	76.0	0	0.0
Virgin Australia	52	52	28	53.8	30	57.7	0	0.0
All Airlines	133	132	70	53.0	91	68.9	1	0.8
Brisbane-Emerald								
QantasLink	140	134	112	83.6	118	88.1	6	4.3
Virgin Australia	27	27	17	63.0	18	66.7	0	0.0
All Airlines	167	161	129	80.1	136	84.5	6	3.6
Brisbane-Gladstone								
QantasLink	140	137	98	71.5	108	78.8	3	2.1
Virgin Australia	36	36	23	63.9	21	58.3	0	0.0
All Airlines	176	173	121	69.9	129	74.6	3	1.7
Brisbane-Hamilton Island								
QantasLink	26	26	14	53.8	18	69.2	0	0.0
Virgin Australia	32	32	27	84.4	27	84.4	0	0.0
All Airlines	58	58	41	70.7	45	77.6	0	0.0
Brisbane-Hobart								
Jetstar	25	25	19	76.0	18	72.0	0	0.0
QantasLink	17	17	13	76.5	12	70.6	0	0.0
Virgin Australia	39	39	34	87.2	33	84.6	0	0.0
All Airlines	81	81	66	81.5	63	77.8	0	0.0

	Sectors		Arrivals On Time		Departures On Time		Cancellations	
	Sched.	Flown	No.	%	No.	%	No.	%
Brisbane-Launceston								
Jetstar	24	24	19	79.2	15	62.5	0	0.0
Virgin Australia	17	17	13	76.5	13	76.5	0	0.0
All Airlines	41	41	32	78.0	28	68.3	0	0.0
Brisbane-Mackay								
Jetstar	31	30	13	43.3	14	46.7	1	3.2
Qantas	112	111	82	73.9	84	75.7	1	0.9
QantasLink	8	8	6	75.0	7	87.5	0	0.0
Virgin Australia	144	144	96	66.7	100	69.4	0	0.0
All Airlines	295	293	197	67.2	205	70.0	2	0.7
Brisbane-Melbourne								
Jetstar	170	156	85	54.5	74	47.4	14	8.2
Qantas	383	374	267	71.4	268	71.7	9	2.3
QantasLink	23	20	8	40.0	6	30.0	3	13.0
Rex Airlines	58	56	33	58.9	34	60.7	2	3.4
Virgin Australia	390	389	271	69.7	288	74.0	1	0.3
All Airlines	1 024	995	664	66.7	670	67.3	29	2.8
Brisbane-Mount Isa								
Qantas	50	50	44	88.0	43	86.0	0	0.0
QantasLink	4	4	4	100.0	4	100.0	0	0.0
Virgin Australia	14	14	7	50.0	12	85.7	0	0.0
All Airlines	68	68	55	80.9	59	86.8	0	0.0
Brisbane-Newcastle								
Jetstar	59	58	37	63.8	39	67.2	1	1.7
QantasLink	85	85	59	69.4	63	74.1	0	0.0
Virgin Australia	85	85	41	48.2	46	54.1	0	0.0
All Airlines	229	228	137	60.1	148	64.9	1	0.4
Brisbane-Perth								
Jetstar	29	27	19	70.4	8	29.6	2	6.9
Qantas	154	154	113	73.4	119	77.3	0	0.0
Virgin Australia	127	126	98	77.8	91	72.2	1	0.8
All Airlines	310	307	230	74.9	218	71.0	3	1.0
Brisbane-Proserpine								
Jetstar	31	31	18	58.1	21	67.7	0	0.0
QantasLink	17	17	13	76.5	8	47.1	0	0.0
Virgin Australia	35	35	23	65.7	27	77.1	0	0.0
All Airlines	83	83	54	65.1	56	67.5	0	0.0
Brisbane-Rockhampton								
QantasLink	197	195	155	79.5	154	79.0	2	1.0
Virgin Australia	166	166	76	45.8	103	62.0	0	0.0
All Airlines	363	361	231	64.0	257	71.2	2	0.6
Brisbane-Sydney								
Jetstar	209	200	134	67.0	137	68.5	9	4.3
Qantas	554	539	403	74.8	411	76.3	15	2.7
Rex Airlines	155	150	115	76.7	120	80.0	5	3.2
Virgin Australia	468	456	325	71.3	367	80.5	12	2.6
All Airlines	1 386	1 345	977	72.6	1 035	77.0	41	3.0
Brisbane-Townsville								
Jetstar	63	61	34	55.7	42	68.9	2	3.2
Qantas	23	23	19	82.6	18	78.3	0	0.0
QantasLink	159	159	96	60.4	118	74.2	0	0.0
Virgin Australia	144	144	83	57.6	97	67.4	0	0.0
All Airlines	389	387	232	59.9	275	71.1	2	0.5

	Sectors		Arrivals On Time		Departures On Time		Cancellations	
	Sched.	Flown	No.	%	No.	%	No.	%
Broome-Perth								
QantasLink	84	83	47	56.6	55	66.3	1	1.2
Virgin Australia	42	42	31	73.8	30	71.4	0	0.0
Virgin Australia Regional Airlines	12	12	2	16.7	1	8.3	0	0.0
All Airlines	138	137	80	58.4	86	62.8	1	0.7
Cairns-Brisbane								
Jetstar	99	98	79	80.6	71	72.4	1	1.0
Qantas	71	71	50	70.4	41	57.7	0	0.0
QantasLink	107	106	57	53.8	52	49.1	1	0.9
Rex Airlines	9	9	9	100.0	8	88.9	0	0.0
Virgin Australia	161	161	126	78.3	97	60.2	0	0.0
All Airlines	447	445	321	72.1	269	60.4	2	0.4
Cairns-Melbourne								
Jetstar	120	118	70	59.3	63	53.4	2	1.7
Qantas	31	31	16	51.6	12	38.7	0	0.0
Virgin Australia	85	85	54	63.5	48	56.5	0	0.0
All Airlines	236	234	140	59.8	123	52.6	2	0.8
Cairns-Sydney								
Jetstar	124	122	97	79.5	88	72.1	2	1.6
Qantas	45	45	28	62.2	27	60.0	0	0.0
QantasLink	19	19	16	84.2	17	89.5	0	0.0
Virgin Australia	94	94	73	77.7	76	80.9	0	0.0
All Airlines	282	280	214	76.4	208	74.3	2	0.7
Cairns-Townsville								
QantasLink	146	145	129	89.0	120	82.8	1	0.7
Rex Airlines	13	13	11	84.6	11	84.6	0	0.0
All Airlines	159	158	140	88.6	131	82.9	1	0.6
Canberra-Adelaide								
QantasLink	85	83	64	77.1	60	72.3	2	2.4
Virgin Australia	17	16	15	93.8	15	93.8	1	5.9
All Airlines	102	99	79	79.8	75	75.8	3	2.9
Canberra-Brisbane								
Jetstar	32	31	24	77.4	24	77.4	1	3.1
QantasLink	149	146	91	62.3	96	65.8	3	2.0
Virgin Australia	115	115	79	68.7	81	70.4	0	0.0
All Airlines	296	292	194	66.4	201	68.8	4	1.4
Canberra-Gold Coast								
Jetstar	18	17	10	58.8	10	58.8	1	5.6
Virgin Australia	31	31	18	58.1	19	61.3	0	0.0
All Airlines	49	48	28	58.3	29	60.4	1	2.0
Canberra-Melbourne								
Jetstar	31	31	21	67.7	20	64.5	0	0.0
Qantas	13	13	7	53.8	9	69.2	0	0.0
QantasLink	187	175	111	63.4	115	65.7	12	6.4
Rex Airlines	31	30	16	53.3	16	53.3	1	3.2
Virgin Australia	120	120	74	61.7	76	63.3	0	0.0
All Airlines	382	369	229	62.1	236	64.0	13	3.4
Canberra-Sydney								
Qantas	46	44	34	77.3	36	81.8	2	4.3
QantasLink	382	351	269	76.6	279	79.5	31	8.1
Virgin Australia	262	246	195	79.3	207	84.1	16	6.1
All Airlines	690	641	498	77.7	522	81.4	49	7.1
Coffs Harbour-Sydney								
QantasLink	116	116	90	77.6	88	75.9	0	0.0
Rex Airlines	92	90	55	61.1	62	68.9	2	2.2
All Airlines	208	206	145	70.4	150	72.8	2	1.0

	Sectors		Arrivals On Time		Departures On Time		Cancellations	
	Sched.	Flown	No.	%	No.	%	No.	%
Darwin-Brisbane								
Jetstar	30	29	20	69.0	16	55.2	1	3.3
Qantas	25	25	11	44.0	4	16.0	0	0.0
QantasLink	27	27	9	33.3	8	29.6	0	0.0
Virgin Australia	52	52	30	57.7	26	50.0	0	0.0
All Airlines	134	133	70	52.6	54	40.6	1	0.7
Darwin-Melbourne								
Jetstar	31	29	22	75.9	20	69.0	2	6.5
Qantas	31	31	18	58.1	12	38.7	0	0.0
Virgin Australia	32	31	11	35.5	13	41.9	1	3.1
All Airlines	94	91	51	56.0	45	49.5	3	3.2
Darwin-Perth								
QantasLink	46	43	16	37.2	19	44.2	3	6.5
Virgin Australia Regional Airlines	23	23	8	34.8	14	60.9	0	0.0
All Airlines	69	66	24	36.4	33	50.0	3	4.3
Devonport-Melbourne								
QantasLink	120	118	81	68.6	83	70.3	2	1.7
Rex Airlines	50	48	28	58.3	31	64.6	2	4.0
All Airlines	170	166	109	65.7	114	68.7	4	2.4
Dubbo-Sydney								
QantasLink	116	111	81	73.0	90	81.1	5	4.3
Rex Airlines	128	122	61	50.0	72	59.0	6	4.7
All Airlines	244	233	142	60.9	162	69.5	11	4.5
Emerald-Brisbane								
QantasLink	140	134	120	89.6	112	83.6	6	4.3
Virgin Australia	27	27	20	74.1	19	70.4	0	0.0
All Airlines	167	161	140	87.0	131	81.4	6	3.6
Gladstone-Brisbane								
QantasLink	140	137	105	76.6	106	77.4	3	2.1
Virgin Australia	36	36	24	66.7	25	69.4	0	0.0
All Airlines	176	173	129	74.6	131	75.7	3	1.7
Gold Coast-Adelaide								
Jetstar	31	30	28	93.3	28	93.3	1	3.2
QantasLink	9	9	5	55.6	5	55.6	0	0.0
Virgin Australia	31	31	22	71.0	18	58.1	0	0.0
All Airlines	71	70	55	78.6	51	72.9	1	1.4
Gold Coast-Canberra								
Jetstar	16	16	13	81.3	11	68.8	0	0.0
Virgin Australia	31	31	17	54.8	16	51.6	0	0.0
All Airlines	47	47	30	63.8	27	57.4	0	0.0
Gold Coast-Melbourne								
Jetstar	241	227	159	70.0	154	67.8	14	5.8
Qantas	41	41	23	56.1	20	48.8	0	0.0
Rex Airlines	31	30	13	43.3	20	66.7	1	3.2
Virgin Australia	236	236	140	59.3	121	51.3	0	0.0
All Airlines	549	534	335	62.7	315	59.0	15	2.7
Gold Coast-Sydney								
Jetstar	289	276	226	81.9	225	81.5	13	4.5
Qantas	103	103	75	72.8	72	69.9	0	0.0
Rex Airlines	28	27	22	81.5	19	70.4	1	3.6
Virgin Australia	322	318	212	66.7	215	67.6	4	1.2
All Airlines	742	724	535	73.9	531	73.3	18	2.4

	Sectors		Arrivals On Time		Departures On Time		Cancellations	
	Sched.	Flown	No.	%	No.	%	No.	%
Hamilton Island-Brisbane								
QantasLink	26	26	12	46.2	11	42.3	0	0.0
Virgin Australia	32	32	26	81.3	26	81.3	0	0.0
All Airlines	58	58	38	65.5	37	63.8	0	0.0
Hamilton Island-Sydney								
Jetstar	20	20	10	50.0	8	40.0	0	0.0
Qantas	31	31	14	45.2	14	45.2	0	0.0
Virgin Australia	31	31	18	58.1	19	61.3	0	0.0
All Airlines	82	82	42	51.2	41	50.0	0	0.0
Hobart-Brisbane								
Jetstar	26	26	18	69.2	16	61.5	0	0.0
QantasLink	17	17	13	76.5	12	70.6	0	0.0
Virgin Australia	39	39	27	69.2	31	79.5	0	0.0
All Airlines	82	82	58	70.7	59	72.0	0	0.0
Hobart-Melbourne								
Jetstar	168	164	101	61.6	97	59.1	4	2.4
QantasLink	112	98	57	58.2	62	63.3	14	12.5
Rex Airlines	31	30	23	76.7	23	76.7	1	3.2
Virgin Australia	122	122	95	77.9	90	73.8	0	0.0
All Airlines	433	414	276	66.7	272	65.7	19	4.4
Hobart-Sydney								
Jetstar	74	73	47	64.4	44	60.3	1	1.4
Qantas	75	75	61	81.3	62	82.7	0	0.0
QantasLink	10	10	9	90.0	9	90.0	0	0.0
Virgin Australia	78	78	59	75.6	65	83.3	0	0.0
All Airlines	237	236	176	74.6	180	76.3	1	0.4
Kalgoorlie-Perth								
Qantas	18	17	13	76.5	12	70.6	1	5.6
QantasLink	73	67	44	65.7	52	77.6	6	8.2
Virgin Australia	86	79	46	58.2	46	58.2	7	8.1
Virgin Australia Regional Airlines	24	23	13	56.5	11	47.8	1	4.2
All Airlines	201	186	116	62.4	121	65.1	15	7.5
Karratha-Perth								
Qantas	5	5	5	100.0	5	100.0	0	0.0
QantasLink	153	146	88	60.3	95	65.1	7	4.6
Virgin Australia	74	72	49	68.1	60	83.3	2	2.7
Virgin Australia Regional Airlines	13	12	8	66.7	7	58.3	1	7.7
All Airlines	245	235	150	63.8	167	71.1	10	4.1
Launceston-Brisbane								
Jetstar	25	24	11	45.8	14	58.3	1	4.0
Virgin Australia	17	17	13	76.5	12	70.6	0	0.0
All Airlines	42	41	24	58.5	26	63.4	1	2.4
Launceston-Melbourne								
Jetstar	83	81	40	49.4	36	44.4	2	2.4
QantasLink	97	82	53	64.6	51	62.2	15	15.5
Virgin Australia	92	92	70	76.1	73	79.3	0	0.0
All Airlines	272	255	163	63.9	160	62.7	17	6.3
Launceston-Sydney								
Jetstar	46	45	25	55.6	25	55.6	1	2.2
QantasLink	25	24	21	87.5	21	87.5	1	4.0
Virgin Australia	31	31	17	54.8	24	77.4	0	0.0
All Airlines	102	100	63	63.0	70	70.0	2	2.0

	Sectors		Arrivals On Time		Departures On Time		Cancellations	
	Sched.	Flown	No.	%	No.	%	No.	%
Mackay-Brisbane								
Jetstar	31	30	12	40.0	13	43.3	1	3.2
Qantas	112	110	84	76.4	76	69.1	2	1.8
QantasLink	13	13	11	84.6	8	61.5	0	0.0
Virgin Australia	144	144	110	76.4	101	70.1	0	0.0
All Airlines	300	297	217	73.1	198	66.7	3	1.0
Melbourne-Adelaide								
Jetstar	105	102	72	70.6	71	69.6	3	2.9
Qantas	257	256	156	60.9	172	67.2	1	0.4
QantasLink	14	14	12	85.7	11	78.6	0	0.0
Rex Airlines	62	60	45	75.0	50	83.3	2	3.2
Virgin Australia	246	244	171	70.1	186	76.2	2	0.8
All Airlines	684	676	456	67.5	490	72.5	8	1.2
Melbourne-Brisbane								
Jetstar	170	159	65	40.9	73	45.9	11	6.5
Qantas	381	372	234	62.9	252	67.7	9	2.4
QantasLink	23	20	9	45.0	13	65.0	3	13.0
Rex Airlines	58	56	37	66.1	40	71.4	2	3.4
Virgin Australia	394	393	262	66.7	297	75.6	1	0.3
All Airlines	1 026	1 000	607	60.7	675	67.5	26	2.5
Melbourne-Cairns								
Jetstar	120	119	72	60.5	65	54.6	1	0.8
Qantas	31	31	14	45.2	20	64.5	0	0.0
Virgin Australia	85	85	66	77.6	70	82.4	0	0.0
All Airlines	236	235	152	64.7	155	66.0	1	0.4
Melbourne-Canberra								
Jetstar	31	31	21	67.7	20	64.5	0	0.0
Qantas	13	13	8	61.5	9	69.2	0	0.0
QantasLink	187	174	123	70.7	123	70.7	13	7.0
Rex Airlines	31	30	16	53.3	15	50.0	1	3.2
Virgin Australia	120	120	75	62.5	84	70.0	0	0.0
All Airlines	382	368	243	66.0	251	68.2	14	3.7
Melbourne-Darwin								
Jetstar	31	29	24	82.8	23	79.3	2	6.5
Qantas	31	31	21	67.7	16	51.6	0	0.0
Virgin Australia	31	31	20	64.5	21	67.7	0	0.0
All Airlines	93	91	65	71.4	60	65.9	2	2.2
Melbourne-Devonport								
QantasLink	119	118	80	67.8	84	71.2	1	0.8
Rex Airlines	50	48	35	72.9	36	75.0	2	4.0
All Airlines	169	166	115	69.3	120	72.3	3	1.8
Melbourne-Gold Coast								
Jetstar	240	229	151	65.9	143	62.4	11	4.6
Qantas	41	41	29	70.7	29	70.7	0	0.0
Rex Airlines	31	30	21	70.0	26	86.7	1	3.2
Virgin Australia	237	237	159	67.1	169	71.3	0	0.0
All Airlines	549	537	360	67.0	367	68.3	12	2.2
Melbourne-Hobart								
Jetstar	167	164	110	67.1	114	69.5	3	1.8
QantasLink	112	100	51	51.0	54	54.0	12	10.7
Rex Airlines	31	30	23	76.7	24	80.0	1	3.2
Virgin Australia	122	122	86	70.5	95	77.9	0	0.0
All Airlines	432	416	270	64.9	287	69.0	16	3.7
Melbourne-Launceston								
Jetstar	83	81	39	48.1	44	54.3	2	2.4
QantasLink	97	85	48	56.5	50	58.8	12	12.4
Virgin Australia	92	92	66	71.7	71	77.2	0	0.0
All Airlines	272	258	153	59.3	165	64.0	14	5.1

	Sectors		Arrivals On Time		Departures On Time		Cancellations	
	Sched.	Flown	No.	%	No.	%	No.	%
Melbourne-Mildura								
QantasLink	112	108	67	62.0	72	66.7	4	3.6
Rex Airlines	104	102	55	53.9	55	53.9	2	1.9
All Airlines	216	210	122	58.1	127	60.5	6	2.8
Melbourne-Newcastle								
Jetstar	62	61	44	72.1	43	70.5	1	1.6
QantasLink	54	54	33	61.1	41	75.9	0	0.0
Virgin Australia	43	43	28	65.1	35	81.4	0	0.0
All Airlines	159	158	105	66.5	119	75.3	1	0.6
Melbourne-Perth								
Jetstar	88	83	64	77.1	59	71.1	5	5.7
Qantas	209	205	130	63.4	143	69.8	4	1.9
Rex Airlines	22	21	15	71.4	15	71.4	1	4.5
Virgin Australia	214	211	153	72.5	148	70.1	3	1.4
All Airlines	533	520	362	69.6	365	70.2	13	2.4
Melbourne-Sunshine Coast								
Jetstar	80	80	56	70.0	56	70.0	0	0.0
Qantas	33	33	18	54.5	20	60.6	0	0.0
Virgin Australia	66	66	52	78.8	49	74.2	0	0.0
All Airlines	179	179	126	70.4	125	69.8	0	0.0
Melbourne-Sydney								
Jetstar	446	412	283	68.7	289	70.1	34	7.6
Qantas	943	842	582	69.1	666	79.1	101	10.7
Rex Airlines	214	204	158	77.5	167	81.9	10	4.7
Virgin Australia	749	688	472	68.6	560	81.4	61	8.1
All Airlines	2 352	2 146	1 495	69.7	1 682	78.4	206	8.8
Mildura-Melbourne								
QantasLink	112	108	72	66.7	65	60.2	4	3.6
Rex Airlines	104	102	45	44.1	45	44.1	2	1.9
All Airlines	216	210	117	55.7	110	52.4	6	2.8
Mount Isa-Brisbane								
Qantas	50	50	41	82.0	40	80.0	0	0.0
QantasLink	4	4	3	75.0	3	75.0	0	0.0
Virgin Australia	14	14	9	64.3	8	57.1	0	0.0
All Airlines	68	68	53	77.9	51	75.0	0	0.0
Newcastle-Brisbane								
Jetstar	59	58	41	70.7	39	67.2	1	1.7
QantasLink	85	84	59	70.2	65	77.4	1	1.2
Virgin Australia	85	85	48	56.5	53	62.4	0	0.0
All Airlines	229	227	148	65.2	157	69.2	2	0.9
Newcastle-Melbourne								
Jetstar	62	61	41	67.2	37	60.7	1	1.6
QantasLink	53	53	45	84.9	47	88.7	0	0.0
Virgin Australia	44	43	31	72.1	30	69.8	1	2.3
All Airlines	159	157	117	74.5	114	72.6	2	1.3
Newman-Perth								
Qantas	20	20	18	90.0	18	90.0	0	0.0
QantasLink	105	103	59	57.3	80	77.7	2	1.9
Virgin Australia	46	46	31	67.4	36	78.3	0	0.0
Virgin Australia Regional Airlines	14	13	12	92.3	13	100.0	1	7.1
All Airlines	185	182	120	65.9	147	80.8	3	1.6
Perth-Adelaide								
Jetstar	31	29	24	82.8	20	69.0	2	6.5
Qantas	94	94	75	79.8	69	73.4	0	0.0
Rex Airlines	13	13	7	53.8	8	61.5	0	0.0
Virgin Australia	46	46	38	82.6	39	84.8	0	0.0
Virgin Australia Regional Airlines	28	26	16	61.5	12	46.2	2	7.1
All Airlines	212	208	160	76.9	148	71.2	4	1.9

	Sectors		Arrivals On Time		Departures On Time		Cancellations	
	Sched.	Flown	No.	%	No.	%	No.	%
Perth-Brisbane								
Jetstar	28	26	15	57.7	10	38.5	2	7.1
Qantas	155	155	132	85.2	122	78.7	0	0.0
Virgin Australia	126	126	117	92.9	88	69.8	0	0.0
All Airlines	309	307	264	86.0	220	71.7	2	0.6
Perth-Broome								
QantasLink	85	85	64	75.3	54	63.5	0	0.0
Virgin Australia	42	42	35	83.3	32	76.2	0	0.0
Virgin Australia Regional Airlines	12	12	11	91.7	8	66.7	0	0.0
All Airlines	139	139	110	79.1	94	67.6	0	0.0
Perth-Darwin								
QantasLink	48	45	23	51.1	31	68.9	3	6.3
Virgin Australia Regional Airlines	23	23	13	56.5	12	52.2	0	0.0
All Airlines	71	68	36	52.9	43	63.2	3	4.2
Perth-Kalgoorlie								
Qantas	18	17	13	76.5	15	88.2	1	5.6
QantasLink	73	67	52	77.6	53	79.1	6	8.2
Virgin Australia	86	79	59	74.7	66	83.5	7	8.1
Virgin Australia Regional Airlines	24	23	15	65.2	16	69.6	1	4.2
All Airlines	201	186	139	74.7	150	80.6	15	7.5
Perth-Karratha								
Qantas	5	5	5	100.0	5	100.0	0	0.0
QantasLink	154	150	122	81.3	114	76.0	4	2.6
Virgin Australia	75	73	58	79.5	62	84.9	2	2.7
Virgin Australia Regional Airlines	13	12	9	75.0	9	75.0	1	7.7
All Airlines	247	240	194	80.8	190	79.2	7	2.8
Perth-Melbourne								
Jetstar	89	83	62	74.7	51	61.4	6	6.7
Qantas	209	203	156	76.8	150	73.9	6	2.9
Rex Airlines	22	22	17	77.3	18	81.8	0	0.0
Virgin Australia	224	221	182	82.4	170	76.9	3	1.3
All Airlines	544	529	417	78.8	389	73.5	15	2.8
Perth-Newman								
Qantas	20	20	20	100.0	20	100.0	0	0.0
QantasLink	105	104	85	81.7	85	81.7	1	1.0
Virgin Australia	46	46	40	87.0	42	91.3	0	0.0
Virgin Australia Regional Airlines	14	13	13	100.0	12	92.3	1	7.1
All Airlines	185	183	158	86.3	159	86.9	2	1.1
Perth-Port Hedland								
QantasLink	151	148	119	80.4	114	77.0	3	2.0
Virgin Australia	32	28	23	82.1	24	85.7	4	12.5
Virgin Australia Regional Airlines	27	27	23	85.2	22	81.5	0	0.0
All Airlines	210	203	165	81.3	160	78.8	7	3.3
Perth-Sydney								
Jetstar	59	56	31	55.4	26	46.4	3	5.1
Qantas	203	202	142	70.3	125	61.9	1	0.5
Virgin Australia	158	154	131	85.1	110	71.4	4	2.5
All Airlines	420	412	304	73.8	261	63.3	8	1.9

	Sectors		Arrivals On Time		Departures On Time		Cancellations	
	Sched.	Flown	No.	%	No.	%	No.	%
Port Hedland-Perth								
QantasLink	148	145	76	52.4	101	69.7	3	2.0
Virgin Australia	32	28	14	50.0	19	67.9	4	12.5
Virgin Australia Regional Airlines	27	27	14	51.9	17	63.0	0	0.0
All Airlines	207	200	104	52.0	137	68.5	7	3.4
Port Lincoln-Adelaide								
QantasLink	143	140	130	92.9	130	92.9	3	2.1
Rex Airlines	158	150	104	69.3	101	67.3	8	5.1
All Airlines	301	290	234	80.7	231	79.7	11	3.7
Port Macquarie-Sydney								
QantasLink	116	112	82	73.2	84	75.0	4	3.4
Rex Airlines	52	49	32	65.3	34	69.4	3	5.8
All Airlines	168	161	114	70.8	118	73.3	7	4.2
Proserpine-Brisbane								
Jetstar	32	32	15	46.9	15	46.9	0	0.0
QantasLink	17	17	12	70.6	9	52.9	0	0.0
Virgin Australia	35	35	21	60.0	16	45.7	0	0.0
All Airlines	84	84	48	57.1	40	47.6	0	0.0
Rockhampton-Brisbane								
QantasLink	197	192	149	77.6	151	78.6	5	2.5
Virgin Australia	166	165	81	49.1	88	53.3	1	0.6
All Airlines	363	357	230	64.4	239	66.9	6	1.7
Sunshine Coast-Melbourne								
Jetstar	80	80	52	65.0	42	52.5	0	0.0
Qantas	33	33	14	42.4	6	18.2	0	0.0
Virgin Australia	66	66	49	74.2	41	62.1	0	0.0
All Airlines	179	179	115	64.2	89	49.7	0	0.0
Sunshine Coast-Sydney								
Jetstar	91	85	61	71.8	59	69.4	6	6.6
Qantas	58	58	36	62.1	36	62.1	0	0.0
Virgin Australia	69	69	33	47.8	51	73.9	0	0.0
All Airlines	218	212	130	61.3	146	68.9	6	2.8
Sydney-Adelaide								
Jetstar	143	131	83	63.4	76	58.0	12	8.4
Qantas	244	235	180	76.6	174	74.0	9	3.7
Rex Airlines	31	30	20	66.7	18	60.0	1	3.2
Virgin Australia	171	168	119	70.8	119	70.8	3	1.8
All Airlines	589	564	402	71.3	387	68.6	25	4.2
Sydney-Albury								
QantasLink	111	111	84	75.7	80	72.1	0	0.0
Rex Airlines	85	84	61	72.6	62	73.8	1	1.2
All Airlines	196	195	145	74.4	142	72.8	1	0.5
Sydney-Ballina								
Jetstar	82	80	63	78.8	62	77.5	2	2.4
QantasLink	58	57	54	94.7	51	89.5	1	1.7
Virgin Australia	47	47	33	70.2	38	80.9	0	0.0
All Airlines	187	184	150	81.5	151	82.1	3	1.6
Sydney-Brisbane								
Jetstar	210	201	123	61.2	126	62.7	9	4.3
Qantas	554	544	337	61.9	374	68.8	10	1.8
Rex Airlines	155	150	114	76.0	124	82.7	5	3.2
Virgin Australia	464	453	350	77.3	371	81.9	11	2.4
All Airlines	1 383	1 348	924	68.5	995	73.8	35	2.5

	Sectors		Arrivals On Time		Departures On Time		Cancellations	
	Sched.	Flown	No.	%	No.	%	No.	%
Sydney-Cairns								
Jetstar	124	123	76	61.8	81	65.9	1	0.8
Qantas	45	45	30	66.7	36	80.0	0	0.0
QantasLink	19	19	14	73.7	14	73.7	0	0.0
Virgin Australia	94	94	80	85.1	80	85.1	0	0.0
All Airlines	282	281	200	71.2	211	75.1	1	0.4
Sydney-Canberra								
Qantas	46	44	36	81.8	38	86.4	2	4.3
QantasLink	381	358	290	81.0	289	80.7	23	6.0
Virgin Australia	262	245	195	79.6	182	74.3	17	6.5
All Airlines	689	647	521	80.5	509	78.7	42	6.1
Sydney-Coffs Harbour								
QantasLink	116	116	85	73.3	74	63.8	0	0.0
Rex Airlines	92	91	62	68.1	53	58.2	1	1.1
All Airlines	208	207	147	71.0	127	61.4	1	0.5
Sydney-Dubbo								
QantasLink	116	111	94	84.7	86	77.5	5	4.3
Rex Airlines	130	124	66	53.2	58	46.8	6	4.6
All Airlines	246	235	160	68.1	144	61.3	11	4.5
Sydney-Gold Coast								
Jetstar	287	277	200	72.2	200	72.2	10	3.5
Qantas	103	103	81	78.6	74	71.8	0	0.0
Rex Airlines	28	27	20	74.1	21	77.8	1	3.6
Virgin Australia	322	320	227	70.9	242	75.6	2	0.6
All Airlines	740	727	528	72.6	537	73.9	13	1.8
Sydney-Hamilton Island								
Jetstar	19	19	13	68.4	14	73.7	0	0.0
Qantas	31	31	15	48.4	19	61.3	0	0.0
Virgin Australia	31	31	23	74.2	23	74.2	0	0.0
All Airlines	81	81	51	63.0	56	69.1	0	0.0
Sydney-Hobart								
Jetstar	74	73	52	71.2	52	71.2	1	1.4
Qantas	75	75	60	80.0	55	73.3	0	0.0
QantasLink	10	9	9	100.0	9	100.0	1	10.0
Virgin Australia	78	78	69	88.5	68	87.2	0	0.0
All Airlines	237	235	190	80.9	184	78.3	2	0.8
Sydney-Launceston								
Jetstar	46	45	31	68.9	27	60.0	1	2.2
QantasLink	24	23	19	82.6	20	87.0	1	4.2
Virgin Australia	31	31	27	87.1	20	64.5	0	0.0
All Airlines	101	99	77	77.8	67	67.7	2	2.0
Sydney-Melbourne								
Jetstar	447	415	291	70.1	281	67.7	32	7.2
Qantas	948	848	585	69.0	586	69.1	100	10.5
Rex Airlines	214	204	154	75.5	161	78.9	10	4.7
Virgin Australia	741	678	473	69.8	507	74.8	63	8.5
All Airlines	2 350	2 145	1 503	70.1	1 535	71.6	205	8.7
Sydney-Perth								
Jetstar	59	57	38	66.7	32	56.1	2	3.4
Qantas	202	201	135	67.2	120	59.7	1	0.5
Virgin Australia	172	171	119	69.6	135	78.9	1	0.6
All Airlines	433	429	292	68.1	287	66.9	4	0.9
Sydney-Port Macquarie								
QantasLink	116	111	92	82.9	87	78.4	5	4.3
Rex Airlines	52	50	35	70.0	33	66.0	2	3.8
All Airlines	168	161	127	78.9	120	74.5	7	4.2

	Sectors		Arrivals On Time		Departures On Time		Cancellations	
	Sched.	Flown	No.	%	No.	%	No.	%
Sydney-Sunshine Coast								
Jetstar	90	87	70	80.5	69	79.3	3	3.3
Qantas	58	58	40	69.0	32	55.2	0	0.0
Virgin Australia	69	69	52	75.4	56	81.2	0	0.0
All Airlines	217	214	162	75.7	157	73.4	3	1.4
Sydney-Wagga Wagga								
QantasLink	116	112	91	81.3	91	81.3	4	3.4
Rex Airlines	93	92	60	65.2	58	63.0	1	1.1
All Airlines	209	204	151	74.0	149	73.0	5	2.4
Townsville-Brisbane								
Jetstar	63	61	29	47.5	28	45.9	2	3.2
Qantas	23	23	18	78.3	15	65.2	0	0.0
QantasLink	159	159	105	66.0	95	59.7	0	0.0
Virgin Australia	143	143	90	62.9	79	55.2	0	0.0
All Airlines	388	386	242	62.7	217	56.2	2	0.5
Townsville-Cairns								
QantasLink	146	143	125	87.4	130	90.9	3	2.1
Rex Airlines	13	13	11	84.6	12	92.3	0	0.0
All Airlines	159	156	136	87.2	142	91.0	3	1.9
Wagga Wagga-Sydney								
QantasLink	116	110	88	80.0	83	75.5	6	5.2
Rex Airlines	94	91	58	63.7	64	70.3	3	3.2
All Airlines	210	201	146	72.6	147	73.1	9	4.3

Airports

The following data reports by airport against flights operated on published routes only. This month, 8 major city airports and 28 regional city airports are covered.

Airport	Arrivals			Departures		
	Sectors	On Time		Sectors	On Time	
	Flown	No.	%	Flown	No.	%
Adelaide						
Jetstar	326	230	70.6	325	230	70.8
Qantas	585	411	70.3	583	412	70.7
QantasLink	451	384	85.1	451	387	85.8
Rex Airlines	282	202	71.6	282	213	75.5
Virgin Australia	649	485	74.7	649	488	75.2
Virgin Australia Regional Airlines	26	16	61.5	26	11	42.3
All Airlines	2,319	1,728	74.5	2,316	1,741	75.2

Relates to services to and from Alice Springs, Brisbane, Canberra, Gold Coast, Melbourne, Perth, Port Lincoln and Sydney only.

Albury

QantasLink	111	84	75.7	111	81	73.0
Rex Airlines	84	61	72.6	84	63	75.0
All Airlines	195	145	74.4	195	144	73.8

Relates to services to and from Sydney only.

Alice Springs

QantasLink	54	46	85.2	54	46	85.2
Virgin Australia	14	13	92.9	14	8	57.1
All Airlines	68	59	86.8	68	54	79.4

Relates to services to and from Adelaide only.

Ballina

Jetstar	80	63	78.8	80	52	65.0
QantasLink	57	54	94.7	57	55	96.5
Virgin Australia	47	33	70.2	47	35	74.5
All Airlines	184	150	81.5	184	142	77.2

Relates to services to and from Sydney only.

Brisbane

Jetstar	809	476	58.8	805	508	63.1
Qantas	1,350	907	67.2	1,347	1,009	74.9
QantasLink	1,233	884	71.7	1,233	924	74.9
Rex Airlines	244	188	77.0	244	187	76.6
Virgin Australia	2,167	1,534	70.8	2,168	1,579	72.8
All Airlines	5,803	3,989	68.7	5,797	4,207	72.6

Relates to services to and from Adelaide, Cairns, Canberra, Darwin, Emerald, Gladstone, Hamilton Island, Hobart, Launceston, Mackay, Melbourne, Mount Isa, Newcastle, Perth, Proserpine, Rockhampton, Sydney and Townsville only.

Broome

QantasLink	85	64	75.3	83	55	66.3
Virgin Australia	42	35	83.3	42	30	71.4
Virgin Australia Regional Airlines	12	11	91.7	12	1	8.3
All Airlines	139	110	79.1	137	86	62.8

Relates to services to and from Perth only.

Airport	Arrivals			Departures		
	Sectors Flown	On Time		Sectors Flown	On Time	
		No.	%		No.	%
Cairns						
Jetstar	340	216	63.5	338	222	65.7
Qantas	147	91	61.9	147	80	54.4
QantasLink	269	184	68.4	270	189	70.0
Rex Airlines	22	16	72.7	22	19	86.4
Virgin Australia	340	258	75.9	340	221	65.0
All Airlines	1,118	765	68.4	1,117	731	65.4
Relates to services to and from Brisbane, Melbourne, Sydney and Townsville only.						
Canberra						
Jetstar	78	59	75.6	79	54	68.4
Qantas	57	44	77.2	57	45	78.9
QantasLink	764	589	77.1	755	550	72.8
Rex Airlines	30	16	53.3	30	16	53.3
Virgin Australia	527	385	73.1	528	398	75.4
All Airlines	1,456	1,093	75.1	1,449	1,063	73.4
Relates to services to and from Adelaide, Brisbane, Gold Coast, Melbourne and Sydney only.						
Coffs Harbour						
QantasLink	116	85	73.3	116	88	75.9
Rex Airlines	91	62	68.1	90	62	68.9
All Airlines	207	147	71.0	206	150	72.8
Relates to services to and from Sydney only.						
Darwin						
Jetstar	59	45	76.3	58	36	62.1
Qantas	56	33	58.9	56	16	28.6
QantasLink	70	32	45.7	70	27	38.6
Virgin Australia	83	48	57.8	83	39	47.0
Virgin Australia Regional Airlines	23	13	56.5	23	14	60.9
All Airlines	291	171	58.8	290	132	45.5
Relates to services to and from Brisbane, Melbourne and Perth only.						
Devonport						
QantasLink	118	80	67.8	118	83	70.3
Rex Airlines	48	35	72.9	48	31	64.6
All Airlines	166	115	69.3	166	114	68.7
Relates to services to and from Melbourne only.						
Dubbo						
QantasLink	111	94	84.7	111	90	81.1
Rex Airlines	124	66	53.2	122	72	59.0
All Airlines	235	160	68.1	233	162	69.5
Relates to services to and from Sydney only.						
Emerald						
QantasLink	134	112	83.6	134	112	83.6
Virgin Australia	27	17	63.0	27	19	70.4
All Airlines	161	129	80.1	161	131	81.4
Relates to services to and from Brisbane only.						

Airport	Arrivals			Departures		
	Sectors	On Time		Sectors	On Time	
	Flown	No.	%	Flown	No.	%
Gladstone						
QantasLink	137	98	71.5	137	106	77.4
Virgin Australia	36	23	63.9	36	25	69.4
All Airlines	173	121	69.9	173	131	75.7
Relates to services to and from Brisbane only.						
Gold Coast						
Jetstar	553	385	69.6	549	418	76.1
Qantas	144	110	76.4	144	92	63.9
QantasLink	9	7	77.8	9	5	55.6
Rex Airlines	57	41	71.9	57	39	68.4
Virgin Australia	619	428	69.1	616	370	60.1
All Airlines	1,382	971	70.3	1,375	924	67.2
Relates to services to and from Adelaide, Canberra, Melbourne and Sydney only.						
Hamilton Island						
Jetstar	19	13	68.4	20	8	40.0
Qantas	31	15	48.4	31	14	45.2
QantasLink	26	14	53.8	26	11	42.3
Virgin Australia	63	50	79.4	63	45	71.4
All Airlines	139	92	66.2	140	78	55.7
Relates to services to and from Brisbane and Sydney only.						
Hobart						
Jetstar	262	181	69.1	263	157	59.7
Qantas	75	60	80.0	75	62	82.7
QantasLink	126	73	57.9	125	83	66.4
Rex Airlines	30	23	76.7	30	23	76.7
Virgin Australia	239	189	79.1	239	186	77.8
All Airlines	732	526	71.9	732	511	69.8
Relates to services to and from Brisbane, Melbourne and Sydney only.						
Kalgoorlie						
Qantas	17	13	76.5	17	12	70.6
QantasLink	67	52	77.6	67	52	77.6
Virgin Australia	79	59	74.7	79	46	58.2
Virgin Australia Regional Airlines	23	15	65.2	23	11	47.8
All Airlines	186	139	74.7	186	121	65.1
Relates to services to and from Perth only.						
Karratha						
Qantas	5	5	100.0	5	5	100.0
QantasLink	150	122	81.3	146	95	65.1
Virgin Australia	73	58	79.5	72	60	83.3
Virgin Australia Regional Airlines	12	9	75.0	12	7	58.3
All Airlines	240	194	80.8	235	167	71.1
Relates to services to and from Perth only.						
Launceston						
Jetstar	150	89	59.3	150	75	50.0
QantasLink	108	67	62.0	106	72	67.9
Virgin Australia	140	106	75.7	140	109	77.9
All Airlines	398	262	65.8	396	256	64.6
Relates to services to and from Brisbane, Melbourne and Sydney only.						

Airport	Arrivals			Departures		
	Sectors	On Time		Sectors	On Time	
	Flown	No.	%	Flown	No.	%
Mackay						
Jetstar	30	13	43.3	30	13	43.3
Qantas	111	82	73.9	110	76	69.1
QantasLink	8	6	75.0	13	8	61.5
Virgin Australia	144	96	66.7	144	101	70.1
All Airlines	293	197	67.2	297	198	66.7

Relates to services to and from Brisbane only.

Melbourne

Jetstar	1,546	1,004	64.9	1,550	1,000	64.5
Qantas	1,831	1,249	68.2	1,824	1,327	72.8
QantasLink	667	435	65.2	673	448	66.6
Rex Airlines	582	375	64.4	581	428	73.7
Virgin Australia	2,326	1,615	69.4	2,332	1,785	76.5
All Airlines	6,952	4,678	67.3	6,960	4,988	71.7

Relates to services to and from Adelaide, Brisbane, Cairns, Canberra, Darwin, Devonport, Gold Coast, Hobart, Launceston, Mildura, Newcastle, Perth, Sunshine Coast and Sydney only.

Mildura

QantasLink	108	67	62.0	108	65	60.2
Rex Airlines	102	55	53.9	102	45	44.1
All Airlines	210	122	58.1	210	110	52.4

Relates to services to and from Melbourne only.

Mount Isa

Qantas	50	44	88.0	50	40	80.0
QantasLink	4	4	100.0	4	3	75.0
Virgin Australia	14	7	50.0	14	8	57.1
All Airlines	68	55	80.9	68	51	75.0

Relates to services to and from Brisbane only.

Newcastle

Jetstar	119	81	68.1	119	76	63.9
QantasLink	139	92	66.2	137	112	81.8
Virgin Australia	128	69	53.9	128	83	64.8
All Airlines	386	242	62.7	384	271	70.6

Relates to services to and from Brisbane and Melbourne only.

Newman

Qantas	20	20	100.0	20	18	90.0
QantasLink	104	85	81.7	103	80	77.7
Virgin Australia	46	40	87.0	46	36	78.3
Virgin Australia Regional Airlines	13	13	100.0	13	13	100.0
All Airlines	183	158	86.3	182	147	80.8

Relates to services to and from Perth only.

Airport	Arrivals			Departures		
	Sectors	On Time		Sectors	On Time	
	Flown	No.	%	Flown	No.	%
Perth						
Jetstar	196	143	73.0	194	107	55.2
Qantas	696	492	70.7	696	506	72.7
QantasLink	587	330	56.2	599	451	75.3
Rex Airlines	34	21	61.8	35	26	74.3
Virgin Australia	822	570	69.3	815	633	77.7
Virgin Australia Regional Airlines	136	66	48.5	136	91	66.9
All Airlines	2,471	1,622	65.6	2,475	1,814	73.3
Relates to services to and from Adelaide, Brisbane, Broome, Darwin, Kalgoorlie, Karratha, Melbourne, Newman, Port Hedland and Sydney only.						
Port Hedland						
QantasLink	148	119	80.4	145	101	69.7
Virgin Australia	28	23	82.1	28	19	67.9
Virgin Australia Regional Airlines	27	23	85.2	27	17	63.0
All Airlines	203	165	81.3	200	137	68.5
Relates to services to and from Perth only.						
Port Lincoln						
QantasLink	140	132	94.3	140	130	92.9
Rex Airlines	150	100	66.7	150	101	67.3
All Airlines	290	232	80.0	290	231	79.7
Relates to services to and from Adelaide only.						
Port Macquarie						
QantasLink	111	92	82.9	112	84	75.0
Rex Airlines	50	35	70.0	49	34	69.4
All Airlines	161	127	78.9	161	118	73.3
Relates to services to and from Sydney only.						
Proserpine						
Jetstar	31	18	58.1	32	15	46.9
QantasLink	17	13	76.5	17	9	52.9
Virgin Australia	35	23	65.7	35	16	45.7
All Airlines	83	54	65.1	84	40	47.6
Relates to services to and from Brisbane only.						
Rockhampton						
QantasLink	195	155	79.5	192	151	78.6
Virgin Australia	166	76	45.8	165	88	53.3
All Airlines	361	231	64.0	357	239	66.9
Relates to services to and from Brisbane only.						
Sunshine Coast						
Jetstar	167	126	75.4	165	101	61.2
Qantas	91	58	63.7	91	42	46.2
Virgin Australia	135	104	77.0	135	92	68.1
All Airlines	393	288	73.3	391	235	60.1
Relates to services to and from Melbourne and Sydney only.						

Airport	Arrivals			Departures		
	Sectors	On Time		Sectors	On Time	
	Flown	No.	%	Flown	No.	%
Sydney						
Jetstar	1,500	1,048	69.9	1,508	1,020	67.6
Qantas	2,171	1,550	71.4	2,184	1,508	69.0
QantasLink	1,021	781	76.5	1,027	801	78.0
Rex Airlines	847	579	68.4	852	588	69.0
Virgin Australia	2,380	1,686	70.8	2,385	1,841	77.2
All Airlines	7,919	5,644	71.3	7,956	5,758	72.4

Relates to services to and from Adelaide, Albury, Ballina, Brisbane, Cairns, Canberra, Coffs Harbour, Dubbo, Gold Coast, Hamilton Island, Hobart, Launceston, Melbourne, Perth, Port Macquarie, Sunshine Coast and Wagga Wagga only.

Townsville

Jetstar	61	34	55.7	61	28	45.9
Qantas	23	19	82.6	23	15	65.2
QantasLink	304	225	74.0	302	225	74.5
Rex Airlines	13	11	84.6	13	12	92.3
Virgin Australia	144	83	57.6	143	79	55.2
All Airlines	545	372	68.3	542	359	66.2

Relates to services to and from Brisbane and Cairns only.

Wagga Wagga

QantasLink	112	91	81.3	110	83	75.5
Rex Airlines	92	60	65.2	91	64	70.3
All Airlines	204	151	74.0	201	147	73.1

Relates to services to and from Sydney only.

Definitions

On time arrival	A flight arrival is counted as "on time" if it arrived at the gate before 15 minutes after the scheduled arrival time shown in the carriers' schedule. Neither diverted nor cancelled flights count as on time.
On time departure	A flight departure is counted as "on time" if it departs the gate before 15 minutes after the scheduled departure time shown in the carriers' schedule.
Cancellation	A flight removed from service within 7 days of scheduled departure is regarded as a cancellation.
On time departure percentage	The percentage of on time departures is measured against the number of departures <i>operated</i> on any particular sector.
On time arrival percentage	The percentage of on time arrivals is measured against the number of arrivals <i>operated</i> on any particular sector.
Cancellation percentage	The percentage of cancellations is measured against the number of services <i>scheduled</i> on any particular sector.

Airlines and Reporting

Data has been gathered since November 2003, although some airlines commenced reporting at a later date, including Jetstar which first reported in May 2004, Tigerair Australia in April 2008, Virgin Australia Regional Airlines in May 2013, Skytrans in May 2023, Bonza in November 2023 and Hinterland in March 2024. Tigerair Australia ceased operations in March 2020 and data was not received for that month. Bonza ceased operations at the end of April 2024 and data was not received for that month.

Virgin Blue was rebranded as Virgin Australia in May 2011 and Tiger Airways was rebranded as Tigerair Australia in August 2013 and time series data in Microsoft Excel spread sheet format on the BITRE website have been revised to reflect these changes. With effect from August 2021, Regional Express is reported as Rex Airlines.

Services operated by Skywest on behalf of Virgin Australia using ATR/F100 aircraft commenced in November 2011 and were shown separately as Virgin Australia – ATR/F100 Operations. Virgin Australia Regional Airlines commenced operations in May 2013. It was formed after the acquisition of Skywest by Virgin Australia and represented a combination of operations previously reported under Skywest and Virgin Australia – ATR/F100 Operations. In February 2016, Virgin Australia transferred their ATR fleet from Virgin Australia Regional Airlines to Virgin Australia.