



Australian Government

**Department of Infrastructure, Transport,
Regional Development, Communications and the Arts**
Bureau of Infrastructure and Transport Research Economics

STATISTICAL REPORT



Aviation

**Domestic airline on time performance
June 2024**

The Department of Infrastructure, Transport, Regional Development, Communications and the Arts acknowledges the Traditional Custodians of Country of the land on which we work and live.

We recognise and respect the continuing connections to land, waters and communities.

We pay our respects to them and their cultures and to their Elders both past and present and to all Aboriginal and Torres Strait Islander people.

© Commonwealth of Australia 2024

ISSN: 1832-0759

Ownership of intellectual property rights in this publication

Unless otherwise noted, copyright (and any other intellectual property rights, if any) in this publication is owned by the Commonwealth of Australia (referred to below as the Commonwealth).

Disclaimer

The material contained in this publication is made available on the understanding that the Commonwealth is not providing professional advice, and that users exercise their own skill and care with respect to its use, and seek independent advice if necessary.

The Commonwealth makes no representations or warranties as to the contents or accuracy of the information contained in this publication. To the extent permitted by law, the Commonwealth disclaims liability to any person or organisation in respect of anything done, or omitted to be done, in reliance upon information contained in this publication.

Creative Commons licence

With the exception of (a) the Coat of Arms; and (b) the Department of Infrastructure, Transport, Regional Development, Communications and the Arts' photos and graphics, copyright in this publication is licensed under a Creative Commons Attribution 3.0 Australia Licence.

Creative Commons Attribution 3.0 Australia Licence is a standard form licence agreement that allows you to copy, communicate and adapt this publication provided that you attribute the work to the Commonwealth and abide by the other licence terms. A summary of the licence terms is available from <http://creativecommons.org/licenses/by/3.0/au/deed.en>. The full licence terms are available from <http://creativecommons.org/licenses/by/3.0/au/legalcode>.

Use of the Coat of Arms

The Department of the Prime Minister and Cabinet sets the terms under which the Coat of Arms is used. Please refer to the Department's Commonwealth Coat of Arms and Government branding web page <http://www.dpmmc.gov.au/guidelines/index.cfm#brand> and, in particular, the Guidelines on the use of the Commonwealth Coat of Arms publication.

An appropriate citation for this report is:

Bureau of Infrastructure and Transport Research Economics (BITRE), 2024, Domestic airline on time performance, Statistical Report, BITRE, Canberra ACT.

Contact us

All other rights are reserved, including in relation to any Departmental logos or trade marks which may exist. For enquiries regarding the licence and any use of this publication, please contact:

Bureau of Infrastructure and Transport Research Economics (BITRE)
Department of Infrastructure, Transport, Regional Development, Communications and the Arts
GPO Box 501, Canberra ACT 2601, Australia
Telephone: (international) +61 2 6136 8687
Email: bitre@infrastructure.gov.au
Website: www.bitre.gov.au

Inquiries

Should you require additional information about the statistics contained in this publication:

Telephone (02) 6136 7250

Electronic mail: AVSTATS@infrastructure.gov.au

Web site: <http://www.bitre.gov.au/statistics/aviation/otphome.aspx>

Foreword

The Bureau of Infrastructure and Transport Research Economics (BITRE) monitors the punctuality and reliability of major domestic airlines operating between Australian airports. The purpose of this is to allow for evaluation of overall industry and individual airline performance, so that consumers of air travel can make informed decisions.

The following domestic airlines currently report this information monthly to the BITRE: Hinterland, Jetstar, Qantas, QantasLink, Rex Airlines, Skytrans, Virgin Australia and Virgin Australia Regional Airlines. Hinterland has joined from March 2024.

Information presented in this report is for Australian domestic routes for which the passenger load averaged 8,000 or more passengers per month over the previous six months and where two or more airlines operated in competition on those routes. In order to present data for more routes during the period impacted by COVID-19, the passenger load restriction was not applied between March 2020 and January 2023. From February 2023, the passenger load restriction was reinstated due to the continued recovery of passenger numbers. Data are presented for 59 routes in June 2024. Over time, routes which meet these criteria change as airline networks and traffic levels vary. Participating airlines report their overall monthly network performance where this is possible.

Total industry figures encompass all services operated by reporting airlines only. These airlines collectively carried over 98 per cent of total domestic passengers (regular public transport only) in 2023.

The method of capturing on time performance varies between airlines utilising different recording systems. Jetstar and Qantas jet aircraft use Aircraft Communication Addressing and Reporting System (ACARS) to electronically measure on time performance. Rex Airlines, Virgin Australia, Virgin Australia Regional Airlines and the Qantas non-jet fleet record on time performance manually using records from pilots, gate agents and/or ground crews.

After initial data is collected, aggregate reports are reviewed by participating airlines prior to publication.

Reports and detailed time series data in Microsoft Excel spreadsheet format are available from the BITRE website at: <http://www.bitre.gov.au/statistics/aviation/otphome.aspx>

Contents

	Page
Industry performance	1
Individual routes	10
Airports.....	22
Definitions	28
Airlines and Reporting	29

Industry performance

For June 2024, on time performance over all routes operated by participating airlines (Hinterland, Jetstar, Qantas, QantasLink, Rex Airlines, Skytrans, Virgin Australia and Virgin Australia Regional Airlines) averaged 76.8 per cent for on time arrivals and 77.8 per cent for on time departures. The cancellation rate for the month was 2.5 per cent. The equivalent figures for June 2023 were 69.0 per cent for on time arrivals, 70.3 per cent for on time departures and 3.6 per cent for cancellations.

This month's on time arrivals figure was lower than the long term average performance for all routes (80.9 per cent) and the on time departures figure was also lower than the long term average (82.1 per cent). The rate of cancellations was higher than the long term average of 2.2 per cent.

The Qantas network (Qantas and QantasLink combined operations) recorded 78.5 per cent for on time arrivals while the Virgin Australia network (Virgin Australia and Virgin Australia Regional Airlines combined operations) recorded 74.8 per cent. Hinterland achieved the highest on time arrivals at 87.4 per cent, followed by Skytrans at 81.5 per cent, Qantas at 78.8 per cent, QantasLink at 78.4 per cent, Rex Airlines at 75.9 per cent, Virgin Australia at 75.0 per cent, Jetstar at 73.6 per cent and Virgin Australia Regional Airlines at 70.4 per cent.

The Qantas network recorded 79.6 per cent for on time departures while the Virgin Australia network recorded 76.6 per cent. Hinterland achieved the highest level of on time departures for June 2024 at 93.3 per cent, followed by Skytrans at 80.2 per cent, Qantas at 79.7 per cent, QantasLink at 79.5 per cent, Rex Airlines at 78.2 per cent, Virgin Australia at 76.8 per cent, Jetstar at 72.0 per cent and Virgin Australia Regional Airlines at 68.9 per cent.

Virgin Australia Regional Airlines recorded the highest percentage of cancellations at 7.9 per cent during the month, followed by Skytrans at 5.4 per cent, QantasLink at 3.4 per cent, Qantas at 3.1 per cent, Jetstar at 2.2 per cent, Virgin Australia at 1.7 per cent, Hinterland at 1.5 per cent and Rex Airlines at 1.1 per cent.

Airlines' on time performance varies across the routes they serve. Individual route data by specific airline for 59 routes are shown on pages 10-21.

Of the 59 routes which met the criteria for on time performance reporting in June 2024, the Cairns-Townsville route had the highest percentage of on time arrivals (93.7 per cent), and the highest percentage of on time departures (92.3 per cent). The Darwin-Perth route had the lowest percentage of on time arrivals (58.6 per cent), while the Darwin-Brisbane route had the lowest percentage of on time departures (53.9 per cent).

Cancellations were highest on the Darwin-Perth route at 10.3 per cent, followed by the Perth-Darwin route at 9.0 per cent, the Kalgoorlie-Perth and Perth-Kalgoorlie routes at 8.3 per cent, the Townsville-Cairns route at 7.9 per cent and the Cairns-Townsville route at 6.6 per cent.

Wagga Wagga Airport recorded the highest percentage of on time arrivals (89.4 per cent), while Port Lincoln Airport had the highest percentage of on time departures (90.2 per cent). Rockhampton Airport recorded the lowest percentage of on time arrivals (64.9 per cent), while Darwin Airport had the lowest percentage of on time departures (58.3 per cent). These figures only refer to reported routes and do not cover all flights at these airports.

Table 1 On time performance for June 2024 — Total Industry

	<i>Sectors</i>		<i>Arrivals On Time</i>		<i>Departures On Time</i>		<i>Cancellations</i>	
	<i>Scheduled</i>	<i>Flown</i>	<i>No.</i>	<i>%</i>	<i>No.</i>	<i>%</i>	<i>No.</i>	<i>%</i>
Hinterland	987	972	850	87.4	907	93.3	15	1.5
Jetstar	6,849	6,696	4,925	73.6	4,823	72.0	153	2.2
Qantas - all QF designated services	19,311	18,671	14,663	78.5	14,855	79.6	640	3.3
Rex Airlines	5,766	5,700	4,328	75.9	4,458	78.2	66	1.1
Skytrans	977	924	753	81.5	741	80.2	53	5.4
Virgin Australia - all VA designated services	11,318	11,100	8,305	74.8	8,503	76.6	218	1.9
All Airlines	45,208	44,063	33,824	76.8	34,287	77.8	1,145	2.5
Individual operating entities								
Qantas	7,665	7,424	5,847	78.8	5,915	79.7	241	3.1
QantasLink	11,646	11,247	8,816	78.4	8,940	79.5	399	3.4
Virgin Australia	10,962	10,772	8,074	75.0	8,277	76.8	190	1.7
Virgin Australia Regional Airlines	356	328	231	70.4	226	68.9	28	7.9

Total airline network data (including routes not shown in this report).

Airlines’ on time performance varies across the routes they serve. Individual route data by specific airline are shown on page 10 and onwards.

Table 2 Top ten routes for on time performance for June 2024 (participating airlines only)

<i>Arrivals</i>		<i>Departures</i>	
<i>Route</i>	<i>On Time (%)</i>	<i>Route</i>	<i>On Time (%)</i>
Cairns-Townsville	93.7	Cairns-Townsville	92.3
Adelaide-Gold Coast	91.2	Sydney-Ballina	91.4
Sydney-Wagga Wagga	89.4	Port Lincoln-Adelaide	90.2
Adelaide-Port Lincoln	89.4	Adelaide-Gold Coast	89.5
Port Lincoln-Adelaide	89.4	Adelaide-Port Lincoln	89.4
Sydney-Ballina	89.4	Melbourne-Sunshine Coast	88.6
Adelaide-Canberra	89.4	Sydney-Hamilton Island	88.3
Canberra-Adelaide	87.2	Adelaide-Canberra	88.3
Brisbane-Launceston	86.8	Canberra-Adelaide	87.2
Adelaide-Brisbane	86.7	Perth-Newman	86.9

Table 3 Top ten airports for on time performance for June 2024 (participating airlines and reported routes only)

<i>Arrivals</i>		<i>Departures</i>	
<i>Airport</i>	<i>On Time (%)</i>	<i>Airport</i>	<i>On Time (%)</i>
Wagga Wagga	89.4	Port Lincoln	90.2
Port Lincoln	89.4	Wagga Wagga	85.4
Ballina	89.4	Ballina	82.7
Newman	86.3	Adelaide	82.2
Port Hedland	82.4	Newman	81.8
Coffs Harbour	82.0	Sydney	80.4
Broome	81.7	Port Macquarie	79.5
Emerald	80.7	Albury	79.2
Port Macquarie	80.6	Emerald	78.5
Albury	80.4	Melbourne	78.5

Total industry on time performance

Figure 1 On time performance (by month from Jun 2021)—Total Industry

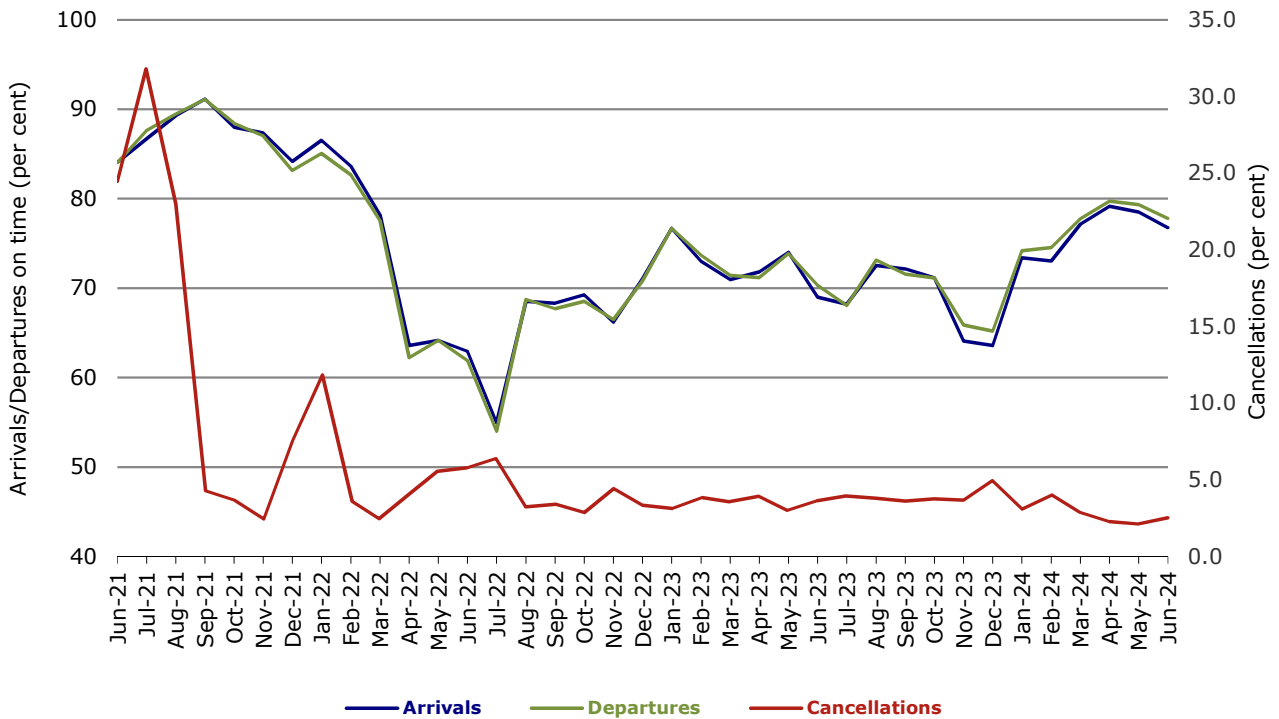


Figure 2 Arrivals on time (by month from Jun 2023)

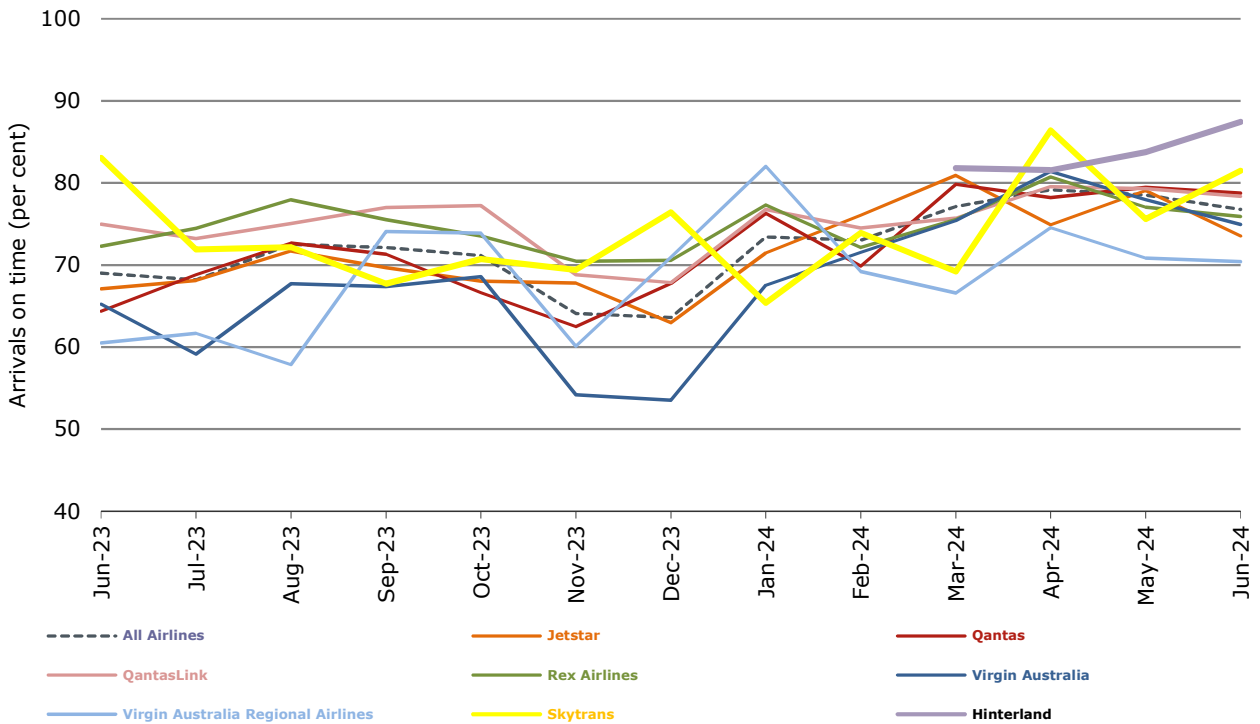


Figure 3 Departures on time (by month from Jun 2023)

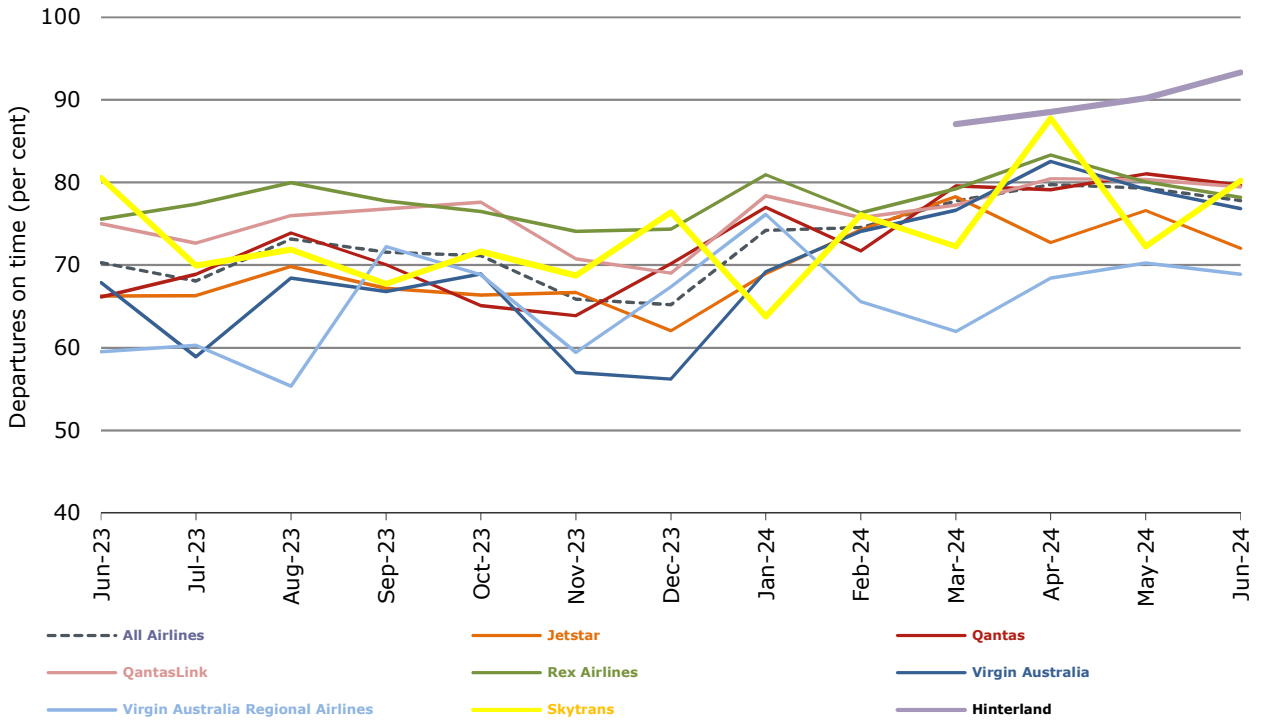
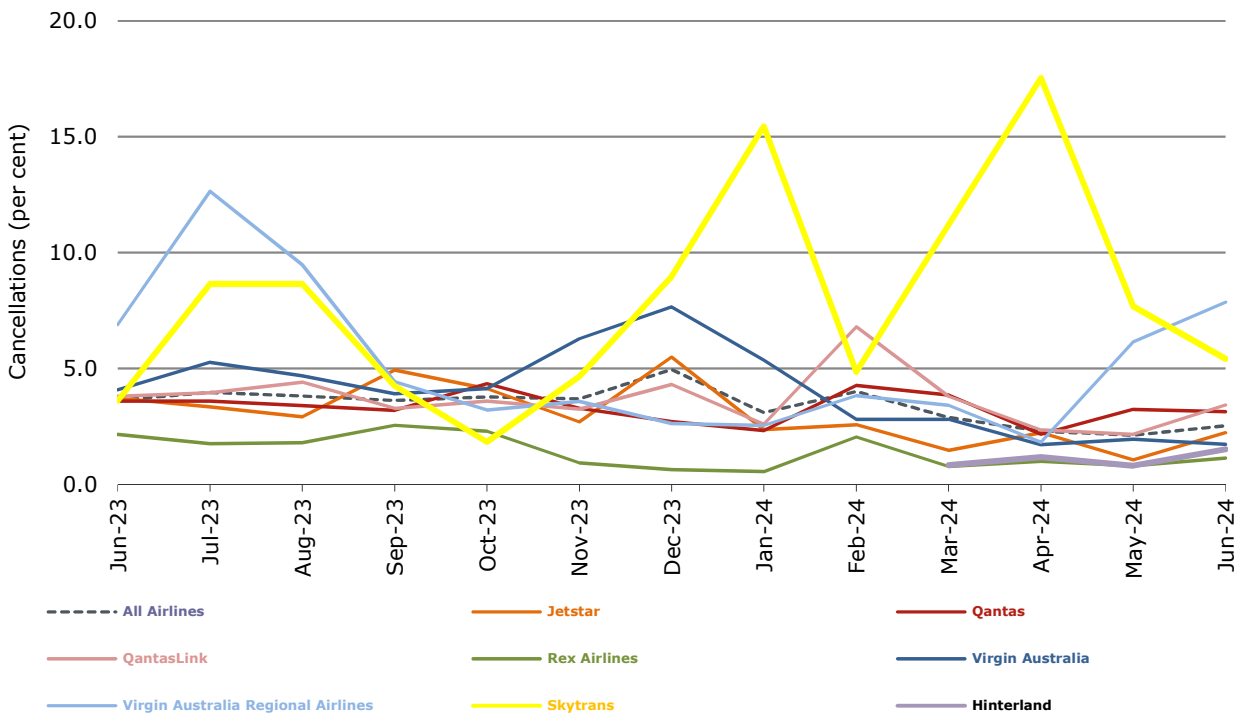


Figure 4 Cancellations (by month from Jun 2023)



Airlines on time performance

Figure 5 On time performance (by month from Jun 2021)—Jetstar

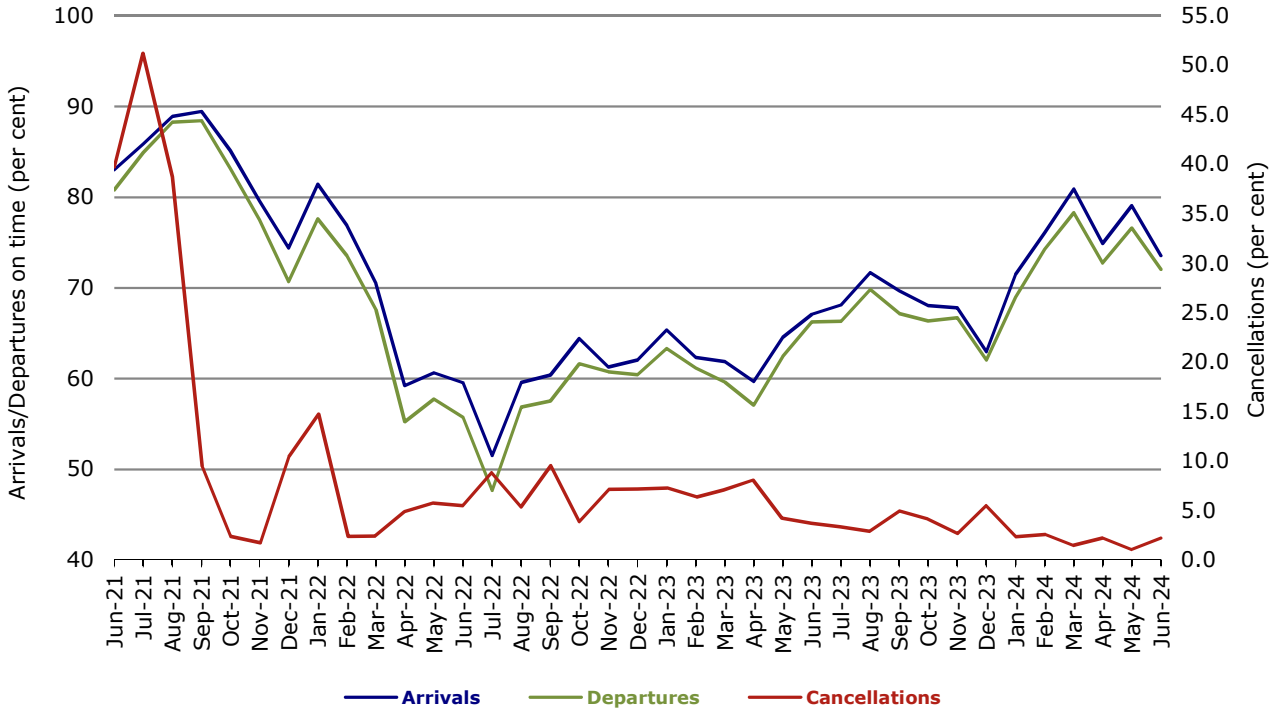


Figure 6 On time performance (by month from Jun 2021)—Qantas

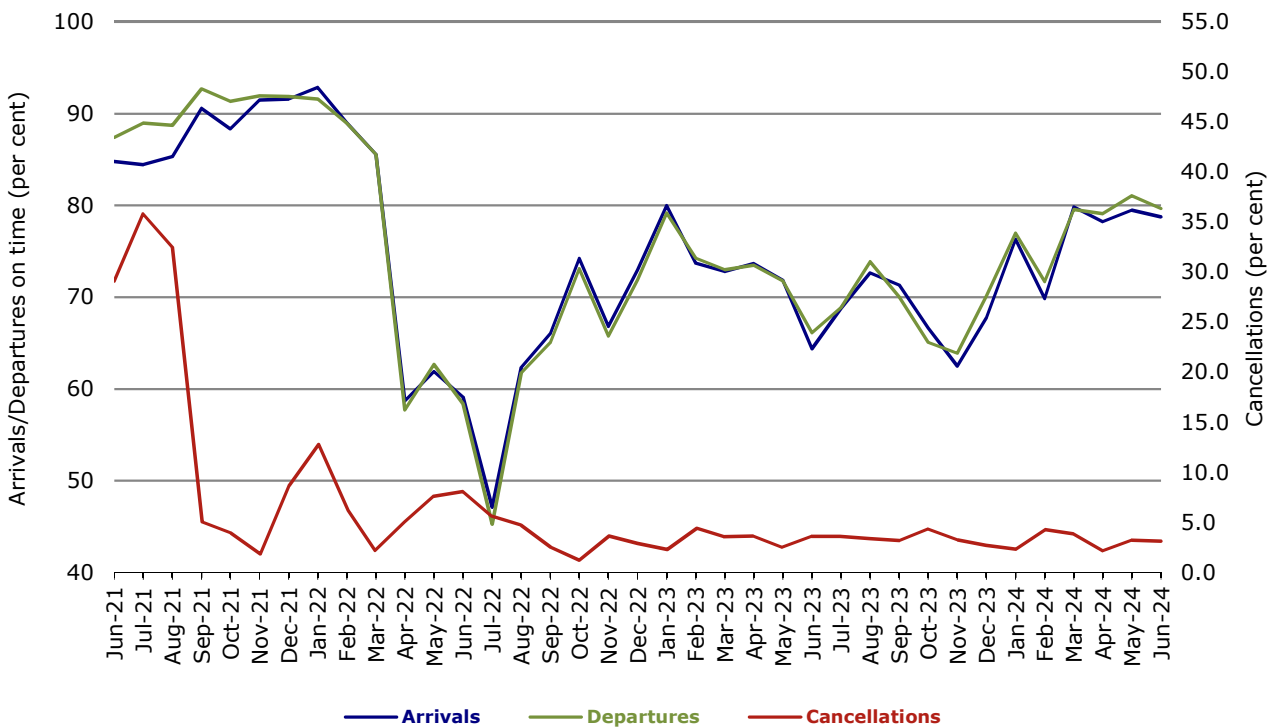


Figure 7 On time performance (by month from Jun 2021)—Virgin Australia

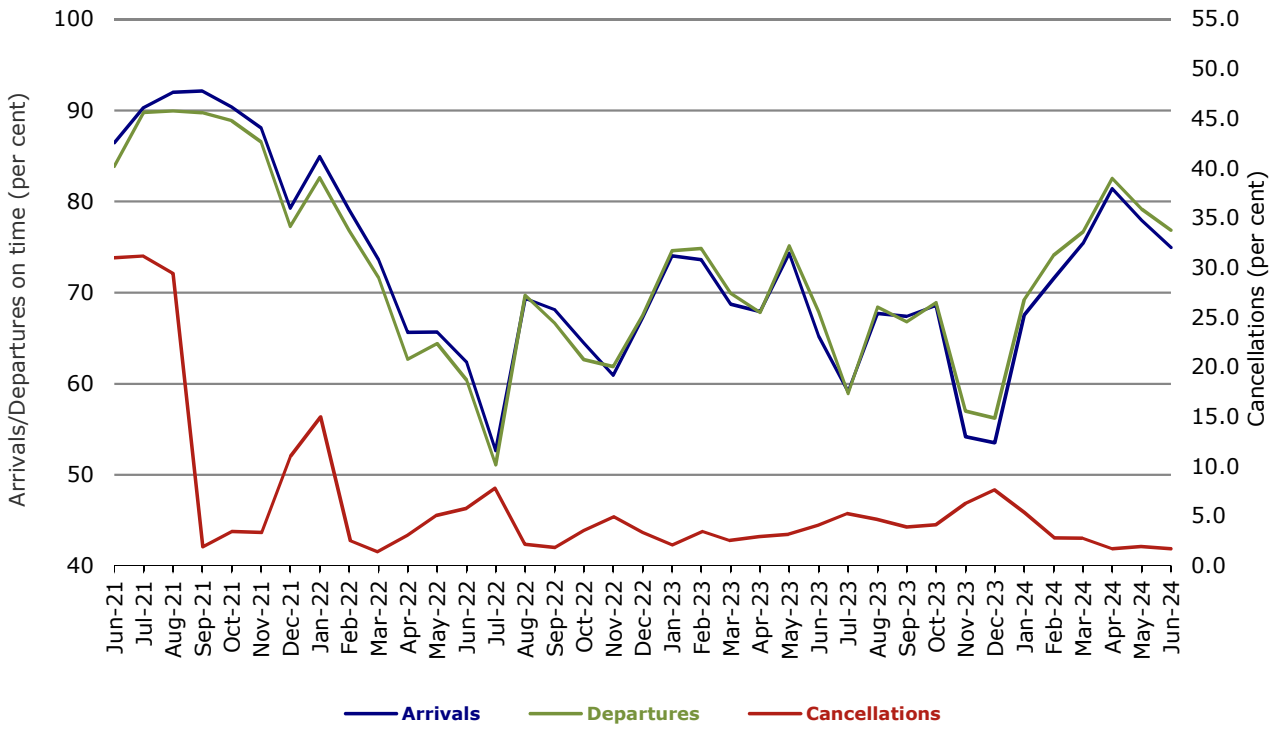


Figure 8 On time performance (by month from Jun 2021)—QantasLink

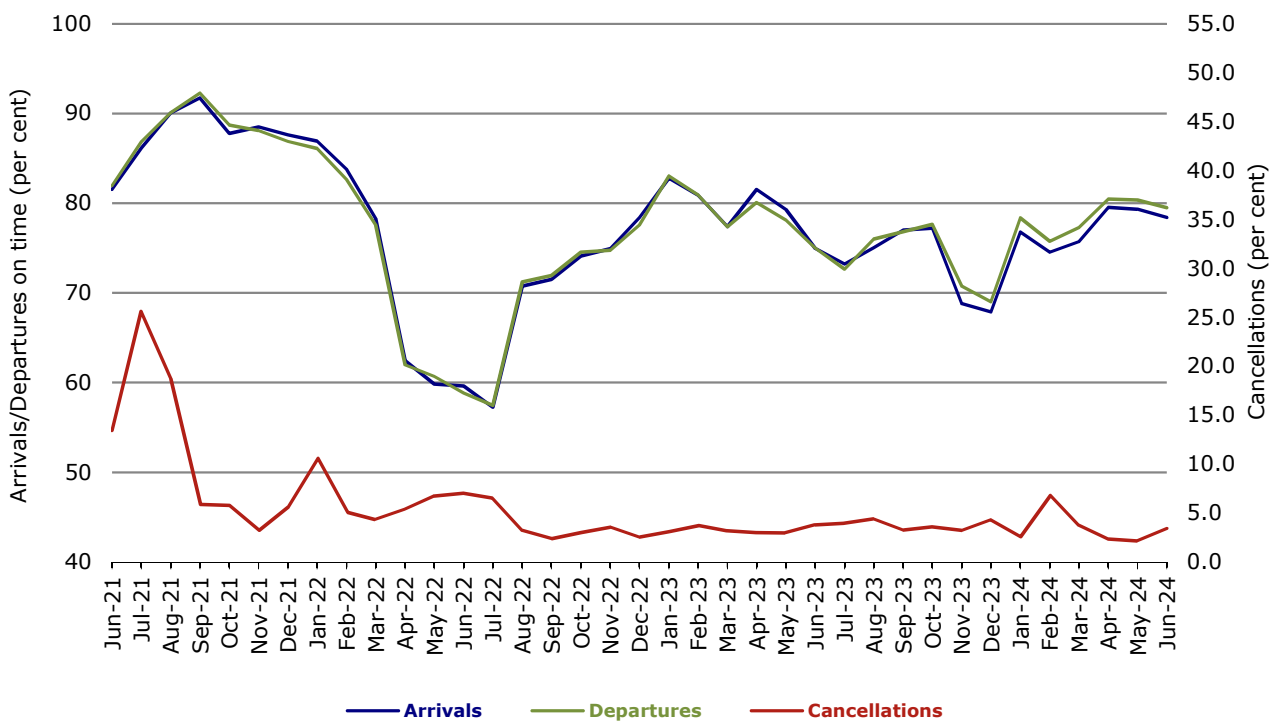


Figure 9 On time performance (by month from Jun 2021)—Rex Airlines

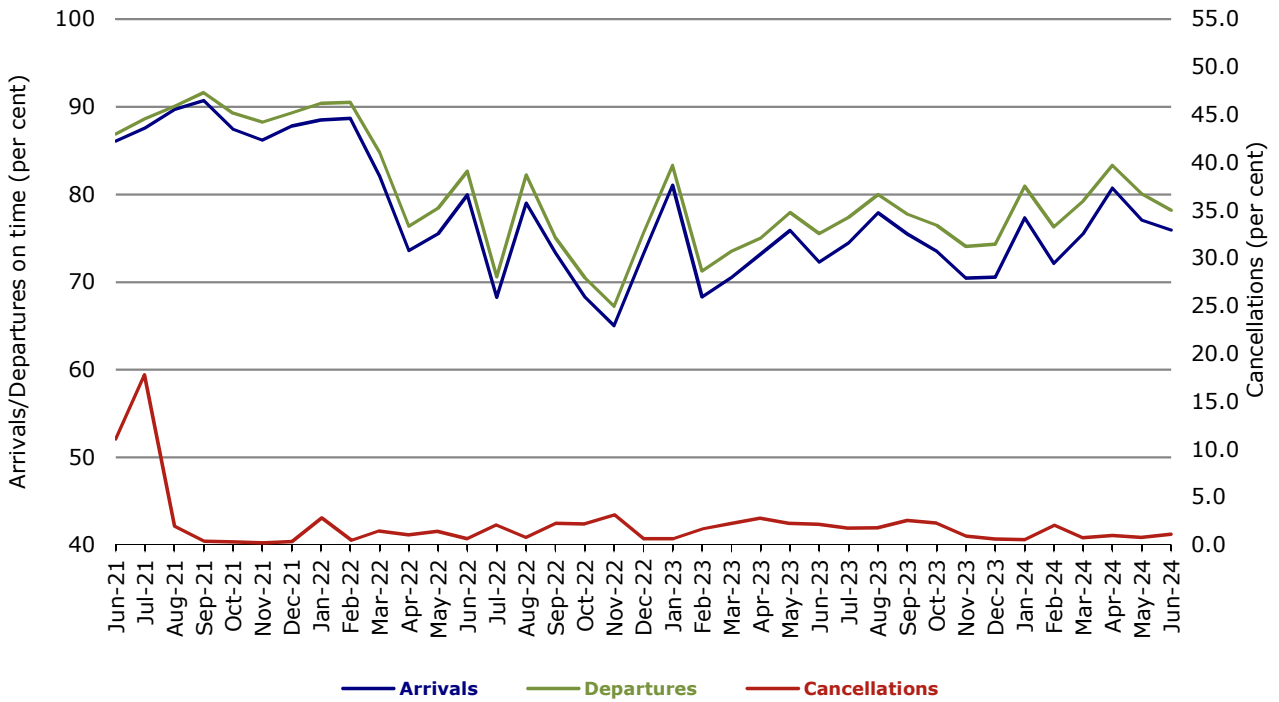


Figure 10 On time performance (by month from Jun 2021)—Virgin Australia Regional Airlines

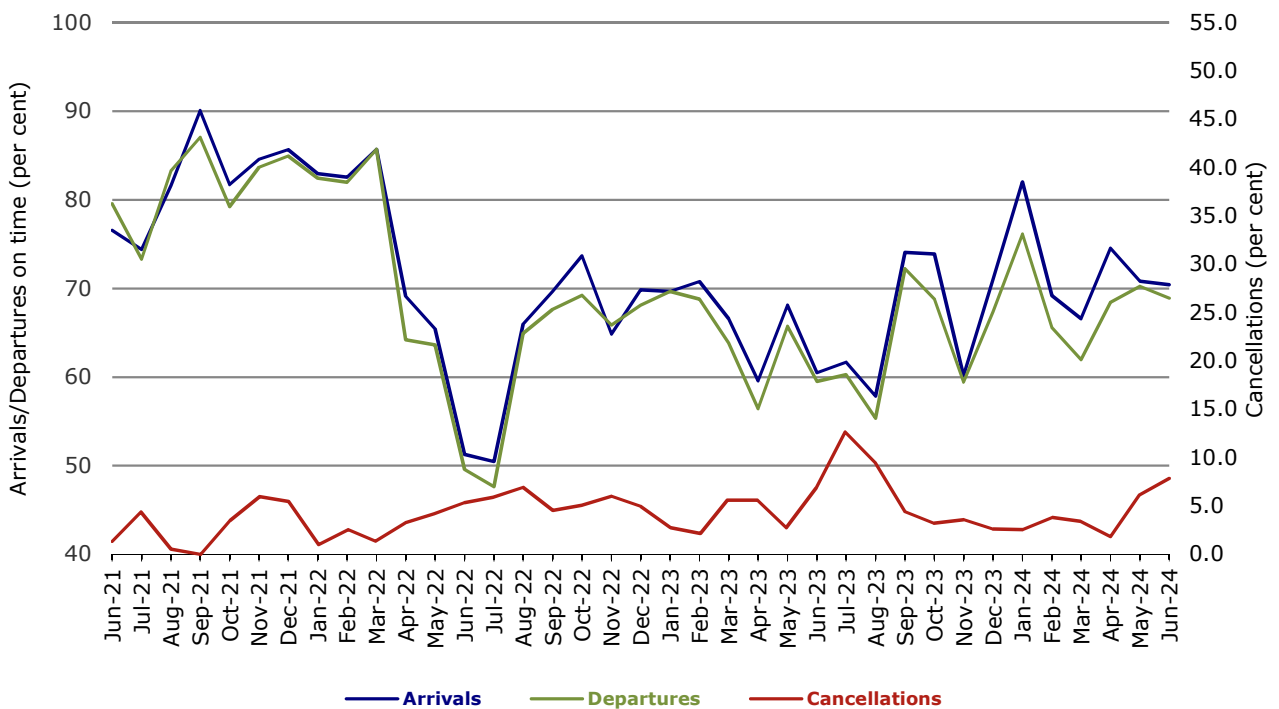
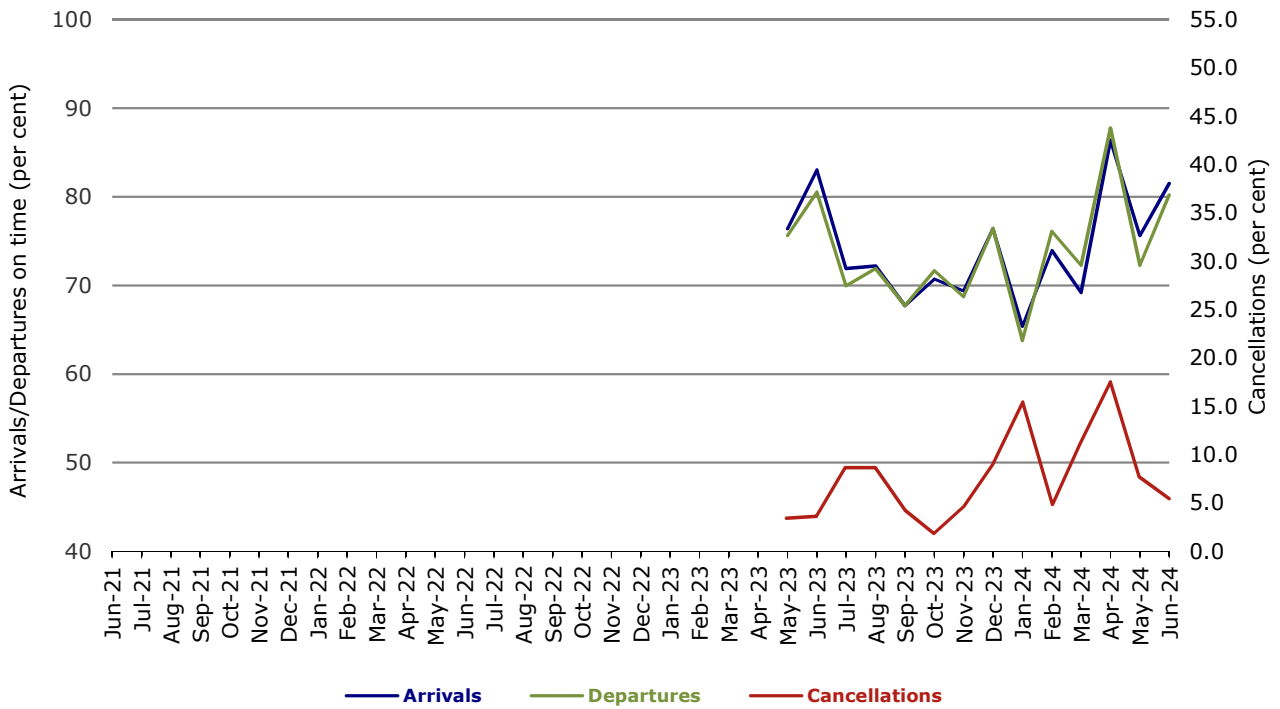
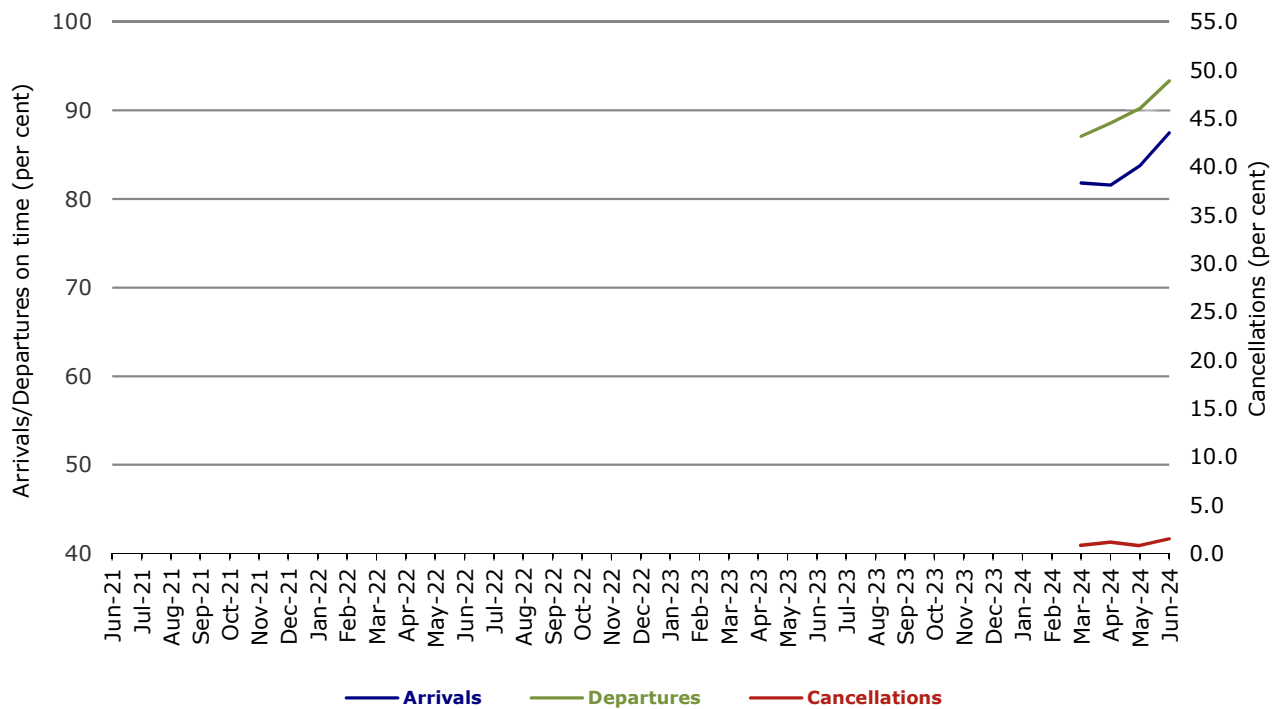


Figure 11 On time performance (by month from Jun 2021)—Skytrans



Note: Skytrans data included from May 2023

Figure 12 On time performance (by month from Jun 2021)—Hinterland



Note: Hinterland data included from March 2024

Individual routes

On time performance is reported for all routes where the passenger load averages over 8,000 passengers per month over the previous six months, and where two or more airlines operate in competition on those routes. In order to present data for more routes during the period impacted by COVID-19, the passenger load restriction is not being applied. There are now 59 routes for which data are presented.

	<i>Sectors</i>		<i>Arrivals On Time</i>		<i>Departures On Time</i>		<i>Cancellations</i>	
	<i>Sched.</i>	<i>Flown</i>	<i>No.</i>	<i>%</i>	<i>No.</i>	<i>%</i>	<i>No.</i>	<i>%</i>
Adelaide-Alice Springs								
QantasLink	44	44	38	86.4	39	88.6	0	0.0
Virgin Australia	12	12	7	58.3	8	66.7	0	0.0
All Airlines	56	56	45	80.4	47	83.9	0	0.0
Adelaide-Brisbane								
Jetstar	36	36	28	77.8	29	80.6	0	0.0
QantasLink	149	148	122	82.4	119	80.4	1	0.7
Rex Airlines	30	30	29	96.7	27	90.0	0	0.0
Virgin Australia	117	117	108	92.3	101	86.3	0	0.0
All Airlines	332	331	287	86.7	276	83.4	1	0.3
Adelaide-Canberra								
QantasLink	80	78	69	88.5	69	88.5	2	2.5
Virgin Australia	16	16	15	93.8	14	87.5	0	0.0
All Airlines	96	94	84	89.4	83	88.3	2	2.1
Adelaide-Gold Coast								
Jetstar	27	27	25	92.6	26	96.3	0	0.0
Virgin Australia	30	30	27	90.0	25	83.3	0	0.0
All Airlines	57	57	52	91.2	51	89.5	0	0.0
Adelaide-Melbourne								
Jetstar	111	109	78	71.6	76	69.7	2	1.8
Qantas	252	249	208	83.5	200	80.3	3	1.2
QantasLink	13	13	13	100.0	11	84.6	0	0.0
Rex Airlines	60	60	55	91.7	55	91.7	0	0.0
Virgin Australia	229	228	176	77.2	179	78.5	1	0.4
All Airlines	665	659	530	80.4	521	79.1	6	0.9
Adelaide-Perth								
Jetstar	30	28	21	75.0	24	85.7	2	6.7
Qantas	89	88	79	89.8	77	87.5	1	1.1
Virgin Australia	30	29	18	62.1	20	69.0	1	3.3
Virgin Australia Regional Airlines	35	31	17	54.8	18	58.1	4	11.4
All Airlines	184	176	135	76.7	139	79.0	8	4.3
Adelaide-Port Lincoln								
QantasLink	135	133	124	93.2	122	91.7	2	1.5
Rex Airlines	134	132	113	85.6	115	87.1	2	1.5
All Airlines	269	265	237	89.4	237	89.4	4	1.5
Adelaide-Sydney								
Jetstar	140	129	96	74.4	93	72.1	11	7.9
Qantas	232	229	200	87.3	191	83.4	3	1.3
Rex Airlines	30	30	23	76.7	21	70.0	0	0.0
Virgin Australia	163	160	124	77.5	137	85.6	3	1.8
All Airlines	565	548	443	80.8	442	80.7	17	3.0

	Sectors		Arrivals On Time		Departures On Time		Cancellations	
	Sched.	Flown	No.	%	No.	%	No.	%
Albury-Sydney								
QantasLink	105	104	73	70.2	80	76.9	1	1.0
Rex Airlines	79	79	62	78.5	65	82.3	0	0.0
All Airlines	184	183	135	73.8	145	79.2	1	0.5
Alice Springs-Adelaide								
QantasLink	44	44	36	81.8	38	86.4	0	0.0
Virgin Australia	12	12	3	25.0	5	41.7	0	0.0
All Airlines	56	56	39	69.6	43	76.8	0	0.0
Ballina-Sydney								
Jetstar	57	57	45	78.9	44	77.2	0	0.0
QantasLink	54	53	44	83.0	45	84.9	1	1.9
Virgin Australia	41	40	34	85.0	35	87.5	1	2.4
All Airlines	152	150	123	82.0	124	82.7	2	1.3
Brisbane-Adelaide								
Jetstar	35	35	23	65.7	19	54.3	0	0.0
QantasLink	149	147	111	75.5	115	78.2	2	1.3
Rex Airlines	30	30	29	96.7	29	96.7	0	0.0
Virgin Australia	117	117	99	84.6	100	85.5	0	0.0
All Airlines	331	329	262	79.6	263	79.9	2	0.6
Brisbane-Cairns								
Jetstar	95	95	78	82.1	76	80.0	0	0.0
Qantas	73	73	56	76.7	60	82.2	0	0.0
QantasLink	97	96	43	44.8	53	55.2	1	1.0
Rex Airlines	8	8	6	75.0	7	87.5	0	0.0
Virgin Australia	165	165	123	74.5	124	75.2	0	0.0
All Airlines	438	437	306	70.0	320	73.2	1	0.2
Brisbane-Canberra								
Jetstar	29	29	27	93.1	26	89.7	0	0.0
QantasLink	147	145	112	77.2	111	76.6	2	1.4
Virgin Australia	104	102	80	78.4	73	71.6	2	1.9
All Airlines	280	276	219	79.3	210	76.1	4	1.4
Brisbane-Darwin								
Jetstar	24	24	21	87.5	23	95.8	0	0.0
Qantas	21	21	14	66.7	15	71.4	0	0.0
QantasLink	27	27	10	37.0	18	66.7	0	0.0
Virgin Australia	57	55	40	72.7	43	78.2	2	3.5
All Airlines	129	127	85	66.9	99	78.0	2	1.6
Brisbane-Emerald								
QantasLink	125	120	103	85.8	106	88.3	5	4.0
Virgin Australia	25	25	14	56.0	12	48.0	0	0.0
All Airlines	150	145	117	80.7	118	81.4	5	3.3
Brisbane-Gladstone								
QantasLink	130	126	89	70.6	99	78.6	4	3.1
Virgin Australia	34	34	21	61.8	23	67.6	0	0.0
All Airlines	164	160	110	68.8	122	76.3	4	2.4
Brisbane-Hamilton Island								
QantasLink	25	24	16	66.7	20	83.3	1	4.0
Virgin Australia	34	34	26	76.5	29	85.3	0	0.0
All Airlines	59	58	42	72.4	49	84.5	1	1.7
Brisbane-Hobart								
Jetstar	25	25	19	76.0	21	84.0	0	0.0
QantasLink	18	18	15	83.3	12	66.7	0	0.0
Virgin Australia	43	43	38	88.4	38	88.4	0	0.0
All Airlines	86	86	72	83.7	71	82.6	0	0.0

	Sectors		Arrivals On Time		Departures On Time		Cancellations	
	Sched.	Flown	No.	%	No.	%	No.	%
Brisbane-Launceston								
Jetstar	23	23	20	87.0	18	78.3	0	0.0
Virgin Australia	15	15	13	86.7	14	93.3	0	0.0
All Airlines	38	38	33	86.8	32	84.2	0	0.0
Brisbane-Mackay								
Jetstar	31	30	12	40.0	17	56.7	1	3.2
Qantas	102	102	81	79.4	84	82.4	0	0.0
QantasLink	8	8	8	100.0	8	100.0	0	0.0
Virgin Australia	131	130	84	64.6	87	66.9	1	0.8
All Airlines	272	270	185	68.5	196	72.6	2	0.7
Brisbane-Melbourne								
Jetstar	170	166	103	62.0	99	59.6	4	2.4
Qantas	366	356	281	78.9	282	79.2	10	2.7
QantasLink	33	30	11	36.7	14	46.7	3	9.1
Rex Airlines	55	55	44	80.0	43	78.2	0	0.0
Virgin Australia	361	358	250	69.8	264	73.7	3	0.8
All Airlines	985	965	689	71.4	702	72.7	20	2.0
Brisbane-Mount Isa								
Qantas	45	45	37	82.2	37	82.2	0	0.0
QantasLink	5	5	5	100.0	5	100.0	0	0.0
Virgin Australia	12	12	6	50.0	8	66.7	0	0.0
All Airlines	62	62	48	77.4	50	80.6	0	0.0
Brisbane-Newcastle								
Jetstar	49	49	37	75.5	39	79.6	0	0.0
QantasLink	80	80	61	76.3	62	77.5	0	0.0
Virgin Australia	80	80	40	50.0	52	65.0	0	0.0
All Airlines	209	209	138	66.0	153	73.2	0	0.0
Brisbane-Perth								
Jetstar	23	23	13	56.5	8	34.8	0	0.0
Qantas	148	146	101	69.2	127	87.0	2	1.4
Virgin Australia	114	112	78	69.6	84	75.0	2	1.8
All Airlines	285	281	192	68.3	219	77.9	4	1.4
Brisbane-Proserpine								
Jetstar	23	23	15	65.2	18	78.3	0	0.0
QantasLink	18	18	14	77.8	13	72.2	0	0.0
Virgin Australia	34	34	25	73.5	28	82.4	0	0.0
All Airlines	75	75	54	72.0	59	78.7	0	0.0
Brisbane-Rockhampton								
QantasLink	180	174	141	81.0	135	77.6	6	3.3
Virgin Australia	155	154	72	46.8	97	63.0	1	0.6
All Airlines	335	328	213	64.9	232	70.7	7	2.1
Brisbane-Sydney								
Jetstar	173	166	142	85.5	138	83.1	7	4.0
Qantas	516	503	418	83.1	430	85.5	13	2.5
Rex Airlines	149	149	120	80.5	125	83.9	0	0.0
Virgin Australia	430	419	311	74.2	338	80.7	11	2.6
All Airlines	1 268	1 237	991	80.1	1 031	83.3	31	2.4
Brisbane-Townsville								
Jetstar	55	55	38	69.1	43	78.2	0	0.0
Qantas	25	25	21	84.0	22	88.0	0	0.0
QantasLink	134	133	88	66.2	96	72.2	1	0.7
Virgin Australia	134	134	88	65.7	97	72.4	0	0.0
All Airlines	348	347	235	67.7	258	74.4	1	0.3

	Sectors		Arrivals On Time		Departures On Time		Cancellations	
	Sched.	Flown	No.	%	No.	%	No.	%
Broome-Perth								
QantasLink	85	81	55	67.9	60	74.1	4	4.7
Virgin Australia	39	38	28	73.7	25	65.8	1	2.6
Virgin Australia Regional Airlines	11	10	4	40.0	0	0.0	1	9.1
All Airlines	135	129	87	67.4	85	65.9	6	4.4
Cairns-Brisbane								
Jetstar	95	95	80	84.2	77	81.1	0	0.0
Qantas	72	72	59	81.9	55	76.4	0	0.0
QantasLink	97	96	48	50.0	46	47.9	1	1.0
Rex Airlines	8	8	7	87.5	8	100.0	0	0.0
Virgin Australia	165	165	128	77.6	103	62.4	0	0.0
All Airlines	437	436	322	73.9	289	66.3	1	0.2
Cairns-Melbourne								
Jetstar	71	70	52	74.3	48	68.6	1	1.4
Qantas	30	30	20	66.7	14	46.7	0	0.0
Virgin Australia	74	74	42	56.8	40	54.1	0	0.0
All Airlines	175	174	114	65.5	102	58.6	1	0.6
Cairns-Sydney								
Jetstar	92	91	65	71.4	60	65.9	1	1.1
Qantas	43	43	26	60.5	24	55.8	0	0.0
Virgin Australia	74	73	52	71.2	53	72.6	1	1.4
All Airlines	209	207	143	69.1	137	66.2	2	1.0
Cairns-Townsville								
QantasLink	139	129	122	94.6	120	93.0	10	7.2
Rex Airlines	13	13	11	84.6	11	84.6	0	0.0
All Airlines	152	142	133	93.7	131	92.3	10	6.6
Canberra-Adelaide								
QantasLink	80	78	66	84.6	67	85.9	2	2.5
Virgin Australia	16	16	16	100.0	15	93.8	0	0.0
All Airlines	96	94	82	87.2	82	87.2	2	2.1
Canberra-Brisbane								
Jetstar	30	30	25	83.3	27	90.0	0	0.0
QantasLink	148	145	105	72.4	107	73.8	3	2.0
Virgin Australia	104	101	72	71.3	67	66.3	3	2.9
All Airlines	282	276	202	73.2	201	72.8	6	2.1
Canberra-Gold Coast								
Jetstar	23	23	15	65.2	16	69.6	0	0.0
Virgin Australia	30	30	19	63.3	19	63.3	0	0.0
All Airlines	53	53	34	64.2	35	66.0	0	0.0
Canberra-Melbourne								
Jetstar	22	22	15	68.2	13	59.1	0	0.0
QantasLink	223	206	147	71.4	143	69.4	17	7.6
Rex Airlines	30	30	23	76.7	24	80.0	0	0.0
Virgin Australia	123	123	79	64.2	78	63.4	0	0.0
All Airlines	398	381	264	69.3	258	67.7	17	4.3
Canberra-Sydney								
Qantas	45	43	36	83.7	39	90.7	2	4.4
QantasLink	356	328	260	79.3	256	78.0	28	7.9
Virgin Australia	239	230	175	76.1	173	75.2	9	3.8
All Airlines	640	601	471	78.4	468	77.9	39	6.1
Coffs Harbour-Sydney								
QantasLink	110	108	84	77.8	76	70.4	2	1.8
Rex Airlines	90	90	74	82.2	76	84.4	0	0.0
All Airlines	200	198	158	79.8	152	76.8	2	1.0

	Sectors		Arrivals On Time		Departures On Time		Cancellations	
	Sched.	Flown	No.	%	No.	%	No.	%
Darwin-Brisbane								
Jetstar	24	24	21	87.5	19	79.2	0	0.0
Qantas	20	20	15	75.0	12	60.0	0	0.0
QantasLink	28	28	8	28.6	8	28.6	0	0.0
Virgin Australia	58	56	42	75.0	30	53.6	2	3.4
All Airlines	130	128	86	67.2	69	53.9	2	1.5
Darwin-Melbourne								
Jetstar	26	24	22	91.7	20	83.3	2	7.7
Qantas	30	30	22	73.3	17	56.7	0	0.0
Virgin Australia	31	31	17	54.8	16	51.6	0	0.0
All Airlines	87	85	61	71.8	53	62.4	2	2.3
Darwin-Perth								
QantasLink	48	43	22	51.2	25	58.1	5	10.4
Virgin Australia Regional Airlines	30	27	19	70.4	18	66.7	3	10.0
All Airlines	78	70	41	58.6	43	61.4	8	10.3
Devonport-Melbourne								
QantasLink	114	112	92	82.1	96	85.7	2	1.8
Rex Airlines	36	36	22	61.1	23	63.9	0	0.0
All Airlines	150	148	114	77.0	119	80.4	2	1.3
Dubbo-Sydney								
QantasLink	110	104	79	76.0	82	78.8	6	5.5
Rex Airlines	123	118	70	59.3	73	61.9	5	4.1
All Airlines	233	222	149	67.1	155	69.8	11	4.7
Emerald-Brisbane								
QantasLink	125	119	102	85.7	97	81.5	6	4.8
Virgin Australia	25	25	18	72.0	16	64.0	0	0.0
All Airlines	150	144	120	83.3	113	78.5	6	4.0
Gladstone-Brisbane								
QantasLink	130	127	96	75.6	100	78.7	3	2.3
Virgin Australia	34	34	24	70.6	22	64.7	0	0.0
All Airlines	164	161	120	74.5	122	75.8	3	1.8
Gold Coast-Adelaide								
Jetstar	27	27	23	85.2	24	88.9	0	0.0
Virgin Australia	30	30	14	46.7	16	53.3	0	0.0
All Airlines	57	57	37	64.9	40	70.2	0	0.0
Gold Coast-Canberra								
Jetstar	23	23	16	69.6	15	65.2	0	0.0
Virgin Australia	30	30	17	56.7	18	60.0	0	0.0
All Airlines	53	53	33	62.3	33	62.3	0	0.0
Gold Coast-Melbourne								
Jetstar	179	178	132	74.2	134	75.3	1	0.6
Qantas	34	34	26	76.5	20	58.8	0	0.0
Rex Airlines	30	30	20	66.7	22	73.3	0	0.0
Virgin Australia	222	222	151	68.0	142	64.0	0	0.0
All Airlines	465	464	329	70.9	318	68.5	1	0.2
Gold Coast-Sydney								
Jetstar	233	229	196	85.6	192	83.8	4	1.7
Qantas	90	90	73	81.1	73	81.1	0	0.0
Rex Airlines	25	24	18	75.0	17	70.8	1	4.0
Virgin Australia	293	290	211	72.8	213	73.4	3	1.0
All Airlines	641	633	498	78.7	495	78.2	8	1.2

	Sectors		Arrivals On Time		Departures On Time		Cancellations	
	Sched.	Flown	No.	%	No.	%	No.	%
Hamilton Island-Brisbane								
QantasLink	25	23	15	65.2	17	73.9	2	8.0
Virgin Australia	34	34	27	79.4	23	67.6	0	0.0
All Airlines	59	57	42	73.7	40	70.2	2	3.4
Hamilton Island-Sydney								
Jetstar	15	15	8	53.3	9	60.0	0	0.0
Qantas	30	30	19	63.3	16	53.3	0	0.0
Virgin Australia	16	16	10	62.5	10	62.5	0	0.0
All Airlines	61	61	37	60.7	35	57.4	0	0.0
Hobart-Brisbane								
Jetstar	24	24	19	79.2	17	70.8	0	0.0
QantasLink	18	18	14	77.8	14	77.8	0	0.0
Virgin Australia	43	43	34	79.1	32	74.4	0	0.0
All Airlines	85	85	67	78.8	63	74.1	0	0.0
Hobart-Melbourne								
Jetstar	118	118	80	67.8	74	62.7	0	0.0
QantasLink	115	107	79	73.8	75	70.1	8	7.0
Rex Airlines	30	30	25	83.3	26	86.7	0	0.0
Virgin Australia	117	117	98	83.8	97	82.9	0	0.0
All Airlines	380	372	282	75.8	272	73.1	8	2.1
Hobart-Sydney								
Jetstar	64	62	52	83.9	51	82.3	2	3.1
Qantas	72	71	62	87.3	62	87.3	1	1.4
QantasLink	8	7	6	85.7	5	71.4	1	12.5
Virgin Australia	66	66	55	83.3	55	83.3	0	0.0
All Airlines	210	206	175	85.0	173	84.0	4	1.9
Kalgoorlie-Perth								
Qantas	17	16	12	75.0	12	75.0	1	5.9
QantasLink	66	56	36	64.3	41	73.2	10	15.2
Virgin Australia	73	70	45	64.3	46	65.7	3	4.1
Virgin Australia Regional Airlines	24	23	20	87.0	20	87.0	1	4.2
All Airlines	180	165	113	68.5	119	72.1	15	8.3
Karratha-Perth								
Qantas	4	4	4	100.0	4	100.0	0	0.0
QantasLink	138	137	84	61.3	89	65.0	1	0.7
Virgin Australia	59	57	44	77.2	49	86.0	2	3.4
Virgin Australia Regional Airlines	17	16	13	81.3	13	81.3	1	5.9
All Airlines	218	214	145	67.8	155	72.4	4	1.8
Launceston-Brisbane								
Jetstar	24	23	12	52.2	14	60.9	1	4.2
Virgin Australia	15	15	12	80.0	10	66.7	0	0.0
All Airlines	39	38	24	63.2	24	63.2	1	2.6
Launceston-Melbourne								
Jetstar	66	63	35	55.6	30	47.6	3	4.5
QantasLink	94	81	69	85.2	68	84.0	13	13.8
Virgin Australia	89	86	73	84.9	68	79.1	3	3.4
All Airlines	249	230	177	77.0	166	72.2	19	7.6
Launceston-Sydney								
Jetstar	30	29	18	62.1	16	55.2	1	3.3
QantasLink	30	28	23	82.1	23	82.1	2	6.7
Virgin Australia	29	28	19	67.9	21	75.0	1	3.4
All Airlines	89	85	60	70.6	60	70.6	4	4.5

	Sectors		Arrivals On Time		Departures On Time		Cancellations	
	Sched.	Flown	No.	%	No.	%	No.	%
Mackay-Brisbane								
Jetstar	31	30	16	53.3	12	40.0	1	3.2
Qantas	103	103	83	80.6	78	75.7	0	0.0
QantasLink	12	11	10	90.9	10	90.9	1	8.3
Virgin Australia	131	129	97	75.2	89	69.0	2	1.5
All Airlines	277	273	206	75.5	189	69.2	4	1.4
Melbourne-Adelaide								
Jetstar	111	109	80	73.4	76	69.7	2	1.8
Qantas	252	248	197	79.4	198	79.8	4	1.6
QantasLink	13	12	12	100.0	12	100.0	1	7.7
Rex Airlines	60	60	49	81.7	51	85.0	0	0.0
Virgin Australia	229	228	181	79.4	183	80.3	1	0.4
All Airlines	665	657	519	79.0	520	79.1	8	1.2
Melbourne-Brisbane								
Jetstar	170	167	95	56.9	104	62.3	3	1.8
Qantas	366	357	286	80.1	283	79.3	9	2.5
QantasLink	33	30	18	60.0	20	66.7	3	9.1
Rex Airlines	55	55	47	85.5	49	89.1	0	0.0
Virgin Australia	365	363	269	74.1	298	82.1	2	0.5
All Airlines	989	972	715	73.6	754	77.6	17	1.7
Melbourne-Cairns								
Jetstar	71	71	46	64.8	49	69.0	0	0.0
Qantas	30	30	15	50.0	19	63.3	0	0.0
Virgin Australia	74	74	60	81.1	67	90.5	0	0.0
All Airlines	175	175	121	69.1	135	77.1	0	0.0
Melbourne-Canberra								
Jetstar	22	22	16	72.7	14	63.6	0	0.0
QantasLink	222	204	137	67.2	134	65.7	18	8.1
Rex Airlines	30	30	23	76.7	25	83.3	0	0.0
Virgin Australia	123	123	87	70.7	94	76.4	0	0.0
All Airlines	397	379	263	69.4	267	70.4	18	4.5
Melbourne-Darwin								
Jetstar	25	24	19	79.2	22	91.7	1	4.0
Qantas	30	30	22	73.3	20	66.7	0	0.0
Virgin Australia	31	31	25	80.6	26	83.9	0	0.0
All Airlines	86	85	66	77.6	68	80.0	1	1.2
Melbourne-Devonport								
QantasLink	114	113	96	85.0	95	84.1	1	0.9
Rex Airlines	37	37	27	73.0	27	73.0	0	0.0
All Airlines	151	150	123	82.0	122	81.3	1	0.7
Melbourne-Gold Coast								
Jetstar	179	178	126	70.8	120	67.4	1	0.6
Qantas	34	34	31	91.2	28	82.4	0	0.0
Rex Airlines	30	30	24	80.0	26	86.7	0	0.0
Virgin Australia	222	222	177	79.7	177	79.7	0	0.0
All Airlines	465	464	358	77.2	351	75.6	1	0.2
Melbourne-Hobart								
Jetstar	118	118	79	66.9	78	66.1	0	0.0
QantasLink	115	107	66	61.7	70	65.4	8	7.0
Rex Airlines	30	30	25	83.3	25	83.3	0	0.0
Virgin Australia	117	117	90	76.9	93	79.5	0	0.0
All Airlines	380	372	260	69.9	266	71.5	8	2.1
Melbourne-Launceston								
Jetstar	65	63	32	50.8	32	50.8	2	3.1
QantasLink	94	82	67	81.7	70	85.4	12	12.8
Virgin Australia	90	88	70	79.5	68	77.3	2	2.2
All Airlines	249	233	169	72.5	170	73.0	16	6.4

	Sectors		Arrivals On Time		Departures On Time		Cancellations	
	Sched.	Flown	No.	%	No.	%	No.	%
Melbourne-Mildura								
QantasLink	104	104	81	77.9	86	82.7	0	0.0
Rex Airlines	90	90	72	80.0	74	82.2	0	0.0
All Airlines	194	194	153	78.9	160	82.5	0	0.0
Melbourne-Newcastle								
Jetstar	52	52	41	78.8	42	80.8	0	0.0
QantasLink	50	48	31	64.6	34	70.8	2	4.0
Virgin Australia	43	43	30	69.8	34	79.1	0	0.0
All Airlines	145	143	102	71.3	110	76.9	2	1.4
Melbourne-Perth								
Jetstar	65	63	45	71.4	45	71.4	2	3.1
Qantas	196	190	128	67.4	149	78.4	6	3.1
Virgin Australia	185	180	130	72.2	137	76.1	5	2.7
All Airlines	446	433	303	70.0	331	76.4	13	2.9
Melbourne-Sunshine Coast								
Jetstar	71	70	58	82.9	63	90.0	1	1.4
Qantas	31	31	23	74.2	28	90.3	0	0.0
Virgin Australia	65	65	54	83.1	56	86.2	0	0.0
All Airlines	167	166	135	81.3	147	88.6	1	0.6
Melbourne-Sydney								
Jetstar	433	411	316	76.9	291	70.8	22	5.1
Qantas	897	824	655	79.5	689	83.6	73	8.1
Rex Airlines	196	192	167	87.0	170	88.5	4	2.0
Virgin Australia	694	660	511	77.4	557	84.4	34	4.9
All Airlines	2 220	2 087	1 649	79.0	1 707	81.8	133	6.0
Mildura-Melbourne								
QantasLink	104	104	81	77.9	75	72.1	0	0.0
Rex Airlines	90	90	57	63.3	63	70.0	0	0.0
All Airlines	194	194	138	71.1	138	71.1	0	0.0
Mount Isa-Brisbane								
Qantas	45	44	34	77.3	32	72.7	1	2.2
QantasLink	5	5	3	60.0	3	60.0	0	0.0
Virgin Australia	12	12	7	58.3	7	58.3	0	0.0
All Airlines	62	61	44	72.1	42	68.9	1	1.6
Newcastle-Brisbane								
Jetstar	50	50	34	68.0	34	68.0	0	0.0
QantasLink	80	78	63	80.8	68	87.2	2	2.5
Virgin Australia	80	80	51	63.8	56	70.0	0	0.0
All Airlines	210	208	148	71.2	158	76.0	2	1.0
Newcastle-Melbourne								
Jetstar	54	53	39	73.6	38	71.7	1	1.9
QantasLink	50	49	39	79.6	42	85.7	1	2.0
Virgin Australia	43	43	27	62.8	30	69.8	0	0.0
All Airlines	147	145	105	72.4	110	75.9	2	1.4
Newman-Perth								
Qantas	16	16	15	93.8	15	93.8	0	0.0
QantasLink	94	91	54	59.3	72	79.1	3	3.2
Virgin Australia	38	38	30	78.9	32	84.2	0	0.0
Virgin Australia Regional Airlines	15	14	13	92.9	11	78.6	1	6.7
All Airlines	163	159	112	70.4	130	81.8	4	2.5
Perth-Adelaide								
Jetstar	30	28	23	82.1	21	75.0	2	6.7
Qantas	89	88	74	84.1	74	84.1	1	1.1
Virgin Australia	30	30	21	70.0	25	83.3	0	0.0
Virgin Australia Regional Airlines	35	31	23	74.2	20	64.5	4	11.4
All Airlines	184	177	141	79.7	140	79.1	7	3.8

	Sectors		Arrivals On Time		Departures On Time		Cancellations	
	Sched.	Flown	No.	%	No.	%	No.	%
Perth-Brisbane								
Jetstar	24	24	14	58.3	8	33.3	0	0.0
Qantas	148	146	126	86.3	114	78.1	2	1.4
Virgin Australia	116	115	101	87.8	76	66.1	1	0.9
All Airlines	288	285	241	84.6	198	69.5	3	1.0
Perth-Broome								
QantasLink	85	83	66	79.5	56	67.5	2	2.4
Virgin Australia	38	38	33	86.8	31	81.6	0	0.0
Virgin Australia Regional Airlines	11	10	8	80.0	5	50.0	1	9.1
All Airlines	134	131	107	81.7	92	70.2	3	2.2
Perth-Darwin								
QantasLink	48	44	29	65.9	32	72.7	4	8.3
Virgin Australia Regional Airlines	30	27	17	63.0	18	66.7	3	10.0
All Airlines	78	71	46	64.8	50	70.4	7	9.0
Perth-Kalgoorlie								
Qantas	17	16	14	87.5	14	87.5	1	5.9
QantasLink	66	56	40	71.4	42	75.0	10	15.2
Virgin Australia	74	71	56	78.9	59	83.1	3	4.1
Virgin Australia Regional Airlines	24	23	22	95.7	22	95.7	1	4.2
All Airlines	181	166	132	79.5	137	82.5	15	8.3
Perth-Karratha								
Qantas	4	4	4	100.0	4	100.0	0	0.0
QantasLink	139	138	101	73.2	96	69.6	1	0.7
Virgin Australia	59	57	47	82.5	54	94.7	2	3.4
Virgin Australia Regional Airlines	17	16	12	75.0	14	87.5	1	5.9
All Airlines	219	215	164	76.3	168	78.1	4	1.8
Perth-Melbourne								
Jetstar	66	62	49	79.0	39	62.9	4	6.1
Qantas	196	190	161	84.7	150	78.9	6	3.1
Virgin Australia	198	194	159	82.0	165	85.1	4	2.0
All Airlines	460	446	369	82.7	354	79.4	14	3.0
Perth-Newman								
Qantas	16	16	15	93.8	15	93.8	0	0.0
QantasLink	94	92	76	82.6	77	83.7	2	2.1
Virgin Australia	38	38	34	89.5	34	89.5	0	0.0
Virgin Australia Regional Airlines	15	14	13	92.9	13	92.9	1	6.7
All Airlines	163	160	138	86.3	139	86.9	3	1.8
Perth-Port Hedland								
QantasLink	137	134	110	82.1	115	85.8	3	2.2
Virgin Australia	34	33	28	84.8	27	81.8	1	2.9
Virgin Australia Regional Airlines	20	20	16	80.0	17	85.0	0	0.0
All Airlines	191	187	154	82.4	159	85.0	4	2.1
Perth-Sydney								
Jetstar	54	51	24	47.1	15	29.4	3	5.6
Qantas	195	190	142	74.7	128	67.4	5	2.6
Virgin Australia	127	121	104	86.0	81	66.9	6	4.7
All Airlines	376	362	270	74.6	224	61.9	14	3.7
Port Hedland-Perth								
QantasLink	134	131	87	66.4	97	74.0	3	2.2
Virgin Australia	34	33	22	66.7	23	69.7	1	2.9
Virgin Australia Regional Airlines	20	20	8	40.0	10	50.0	0	0.0
All Airlines	188	184	117	63.6	130	70.7	4	2.1

	Sectors		Arrivals On Time		Departures On Time		Cancellations	
	Sched.	Flown	No.	%	No.	%	No.	%
Port Lincoln-Adelaide								
QantasLink	135	133	123	92.5	123	92.5	2	1.5
Rex Airlines	134	132	114	86.4	116	87.9	2	1.5
All Airlines	269	265	237	89.4	239	90.2	4	1.5
Port Macquarie-Sydney								
QantasLink	109	106	87	82.1	89	84.0	3	2.8
Rex Airlines	50	50	32	64.0	35	70.0	0	0.0
All Airlines	159	156	119	76.3	124	79.5	3	1.9
Proserpine-Brisbane								
Jetstar	23	23	14	60.9	13	56.5	0	0.0
QantasLink	18	18	17	94.4	14	77.8	0	0.0
Virgin Australia	35	34	22	64.7	21	61.8	1	2.9
All Airlines	76	75	53	70.7	48	64.0	1	1.3
Rockhampton-Brisbane								
QantasLink	180	173	142	82.1	143	82.7	7	3.9
Virgin Australia	155	153	83	54.2	84	54.9	2	1.3
All Airlines	335	326	225	69.0	227	69.6	9	2.7
Sunshine Coast-Melbourne								
Jetstar	72	71	53	74.6	48	67.6	1	1.4
Qantas	31	31	20	64.5	18	58.1	0	0.0
Virgin Australia	65	65	54	83.1	50	76.9	0	0.0
All Airlines	168	167	127	76.0	116	69.5	1	0.6
Sunshine Coast-Sydney								
Jetstar	62	60	41	68.3	44	73.3	2	3.2
Qantas	55	55	46	83.6	44	80.0	0	0.0
Virgin Australia	62	62	35	56.5	45	72.6	0	0.0
All Airlines	179	177	122	68.9	133	75.1	2	1.1
Sydney-Adelaide								
Jetstar	139	130	93	71.5	95	73.1	9	6.5
Qantas	232	230	188	81.7	194	84.3	2	0.9
Rex Airlines	30	30	18	60.0	21	70.0	0	0.0
Virgin Australia	163	159	123	77.4	140	88.1	4	2.5
All Airlines	564	549	422	76.9	450	82.0	15	2.7
Sydney-Albury								
QantasLink	105	104	87	83.7	89	85.6	1	1.0
Rex Airlines	80	80	61	76.3	62	77.5	0	0.0
All Airlines	185	184	148	80.4	151	82.1	1	0.5
Sydney-Ballina								
Jetstar	57	57	50	87.7	50	87.7	0	0.0
QantasLink	54	54	49	90.7	50	92.6	0	0.0
Virgin Australia	40	40	36	90.0	38	95.0	0	0.0
All Airlines	151	151	135	89.4	138	91.4	0	0.0
Sydney-Brisbane								
Jetstar	172	165	131	79.4	127	77.0	7	4.1
Qantas	520	506	384	75.9	411	81.2	14	2.7
Rex Airlines	150	149	121	81.2	129	86.6	1	0.7
Virgin Australia	425	412	341	82.8	349	84.7	13	3.1
All Airlines	1 267	1 232	977	79.3	1 016	82.5	35	2.8
Sydney-Cairns								
Jetstar	92	91	59	64.8	66	72.5	1	1.1
Qantas	43	43	26	60.5	31	72.1	0	0.0
Virgin Australia	74	74	62	83.8	63	85.1	0	0.0
All Airlines	209	208	147	70.7	160	76.9	1	0.5

	Sectors		Arrivals On Time		Departures On Time		Cancellations	
	Sched.	Flown	No.	%	No.	%	No.	%
Sydney-Canberra								
Qantas	45	43	38	88.4	40	93.0	2	4.4
QantasLink	356	335	276	82.4	278	83.0	21	5.9
Virgin Australia	239	230	185	80.4	177	77.0	9	3.8
All Airlines	640	608	499	82.1	495	81.4	32	5.0
Sydney-Coffs Harbour								
QantasLink	110	109	83	76.1	75	68.8	1	0.9
Rex Airlines	91	91	81	89.0	75	82.4	0	0.0
All Airlines	201	200	164	82.0	150	75.0	1	0.5
Sydney-Dubbo								
QantasLink	110	104	90	86.5	86	82.7	6	5.5
Rex Airlines	127	123	71	57.7	65	52.8	4	3.1
All Airlines	237	227	161	70.9	151	66.5	10	4.2
Sydney-Gold Coast								
Jetstar	233	229	188	82.1	189	82.5	4	1.7
Qantas	89	89	69	77.5	63	70.8	0	0.0
Rex Airlines	25	24	18	75.0	18	75.0	1	4.0
Virgin Australia	293	290	217	74.8	239	82.4	3	1.0
All Airlines	640	632	492	77.8	509	80.5	8	1.3
Sydney-Hamilton Island								
Jetstar	15	15	11	73.3	13	86.7	0	0.0
Qantas	29	29	18	62.1	25	86.2	0	0.0
Virgin Australia	16	16	11	68.8	15	93.8	0	0.0
All Airlines	60	60	40	66.7	53	88.3	0	0.0
Sydney-Hobart								
Jetstar	63	63	50	79.4	53	84.1	0	0.0
Qantas	72	72	56	77.8	53	73.6	0	0.0
QantasLink	8	7	4	57.1	5	71.4	1	12.5
Virgin Australia	66	66	54	81.8	58	87.9	0	0.0
All Airlines	209	208	164	78.8	169	81.3	1	0.5
Sydney-Launceston								
Jetstar	29	29	21	72.4	22	75.9	0	0.0
QantasLink	30	28	19	67.9	20	71.4	2	6.7
Virgin Australia	29	28	21	75.0	17	60.7	1	3.4
All Airlines	88	85	61	71.8	59	69.4	3	3.4
Sydney-Melbourne								
Jetstar	431	410	306	74.6	305	74.4	21	4.9
Qantas	898	826	676	81.8	685	82.9	72	8.0
Rex Airlines	196	192	155	80.7	156	81.3	4	2.0
Virgin Australia	683	651	506	77.7	541	83.1	32	4.7
All Airlines	2 208	2 079	1 643	79.0	1 687	81.1	129	5.8
Sydney-Perth								
Jetstar	52	51	30	58.8	32	62.7	1	1.9
Qantas	195	190	136	71.6	138	72.6	5	2.6
Virgin Australia	140	136	100	73.5	116	85.3	4	2.9
All Airlines	387	377	266	70.6	286	75.9	10	2.6
Sydney-Port Macquarie								
QantasLink	109	106	89	84.0	86	81.1	3	2.8
Rex Airlines	49	49	36	73.5	35	71.4	0	0.0
All Airlines	158	155	125	80.6	121	78.1	3	1.9
Sydney-Sunshine Coast								
Jetstar	62	61	51	83.6	50	82.0	1	1.6
Qantas	54	54	42	77.8	40	74.1	0	0.0
Virgin Australia	62	62	46	74.2	47	75.8	0	0.0
All Airlines	178	177	139	78.5	137	77.4	1	0.6

	Sectors		Arrivals On Time		Departures On Time		Cancellations	
	Sched.	Flown	No.	%	No.	%	No.	%
Sydney-Wagga Wagga								
QantasLink	110	107	99	92.5	91	85.0	3	2.7
Rex Airlines	92	92	79	85.9	72	78.3	0	0.0
All Airlines	202	199	178	89.4	163	81.9	3	1.5
Townsville-Brisbane								
Jetstar	55	55	36	65.5	34	61.8	0	0.0
Qantas	24	24	20	83.3	19	79.2	0	0.0
QantasLink	133	131	89	67.9	88	67.2	2	1.5
Virgin Australia	134	134	99	73.9	82	61.2	0	0.0
All Airlines	346	344	244	70.9	223	64.8	2	0.6
Townsville-Cairns								
QantasLink	139	127	107	84.3	106	83.5	12	8.6
Rex Airlines	13	13	11	84.6	11	84.6	0	0.0
All Airlines	152	140	118	84.3	117	83.6	12	7.9
Wagga Wagga-Sydney								
QantasLink	110	107	96	89.7	93	86.9	3	2.7
Rex Airlines	92	92	71	77.2	77	83.7	0	0.0
All Airlines	202	199	167	83.9	170	85.4	3	1.5

Airports

The following data reports by airport against flights operated on published routes only. This month, 8 major city airports and 28 regional city airports are covered.

Airport	Arrivals			Departures		
	Sectors	On Time		Sectors	On Time	
	Flown	No.	%	Flown	No.	%
Adelaide						
Jetstar	329	242	73.6	329	248	75.4
Qantas	566	459	81.1	566	468	82.7
QantasLink	414	348	84.1	416	360	86.5
Rex Airlines	252	210	83.3	252	218	86.5
Virgin Australia	592	457	77.2	592	484	81.8
Virgin Australia Regional Airlines	31	23	74.2	31	18	58.1
All Airlines	2,184	1,739	79.6	2,186	1,796	82.2

Relates to services to and from Alice Springs, Brisbane, Canberra, Gold Coast, Melbourne, Perth, Port Lincoln and Sydney only.

Albury						
QantasLink	104	87	83.7	104	80	76.9
Rex Airlines	80	61	76.3	79	65	82.3
All Airlines	184	148	80.4	183	145	79.2

Relates to services to and from Sydney only.

Alice Springs						
QantasLink	44	38	86.4	44	38	86.4
Virgin Australia	12	7	58.3	12	5	41.7
All Airlines	56	45	80.4	56	43	76.8

Relates to services to and from Adelaide only.

Ballina						
Jetstar	57	50	87.7	57	44	77.2
QantasLink	54	49	90.7	53	45	84.9
Virgin Australia	40	36	90.0	40	35	87.5
All Airlines	151	135	89.4	150	124	82.7

Relates to services to and from Sydney only.

Brisbane						
Jetstar	746	525	70.4	743	545	73.4
Qantas	1,272	1,007	79.2	1,271	1,057	83.2
QantasLink	1,150	852	74.1	1,151	867	75.3
Rex Airlines	242	204	84.3	242	204	84.3
Virgin Australia	2,022	1,535	75.9	2,023	1,511	74.7
All Airlines	5,432	4,123	75.9	5,430	4,184	77.1

Relates to services to and from Adelaide, Cairns, Canberra, Darwin, Emerald, Gladstone, Hamilton Island, Hobart, Launceston, Mackay, Melbourne, Mount Isa, Newcastle, Perth, Proserpine, Rockhampton, Sydney and Townsville only.

Broome						
QantasLink	83	66	79.5	81	60	74.1
Virgin Australia	38	33	86.8	38	25	65.8
Virgin Australia Regional Airlines	10	8	80.0	10	0	0.0
All Airlines	131	107	81.7	129	85	65.9

Relates to services to and from Perth only.

Airport	Arrivals			Departures		
	Sectors Flown	On Time		Sectors Flown	On Time	
		No.	%		No.	%
Cairns						
Jetstar	257	183	71.2	256	185	72.3
Qantas	146	97	66.4	145	93	64.1
QantasLink	223	150	67.3	225	166	73.8
Rex Airlines	21	17	81.0	21	19	90.5
Virgin Australia	313	245	78.3	312	196	62.8
All Airlines	960	692	72.1	959	659	68.7
Relates to services to and from Brisbane, Melbourne, Sydney and Townsville only.						
Canberra						
Jetstar	74	59	79.7	75	56	74.7
Qantas	43	38	88.4	43	39	90.7
QantasLink	762	594	78.0	757	573	75.7
Rex Airlines	30	23	76.7	30	24	80.0
Virgin Australia	501	384	76.6	500	352	70.4
All Airlines	1,410	1,098	77.9	1,405	1,044	74.3
Relates to services to and from Adelaide, Brisbane, Gold Coast, Melbourne and Sydney only.						
Coffs Harbour						
QantasLink	109	83	76.1	108	76	70.4
Rex Airlines	91	81	89.0	90	76	84.4
All Airlines	200	164	82.0	198	152	76.8
Relates to services to and from Sydney only.						
Darwin						
Jetstar	48	40	83.3	48	39	81.3
Qantas	51	36	70.6	50	29	58.0
QantasLink	71	39	54.9	71	33	46.5
Virgin Australia	86	65	75.6	87	46	52.9
Virgin Australia Regional Airlines	27	17	63.0	27	18	66.7
All Airlines	283	197	69.6	283	165	58.3
Relates to services to and from Brisbane, Melbourne and Perth only.						
Devonport						
QantasLink	113	96	85.0	112	96	85.7
Rex Airlines	37	27	73.0	36	23	63.9
All Airlines	150	123	82.0	148	119	80.4
Relates to services to and from Melbourne only.						
Dubbo						
QantasLink	104	90	86.5	104	82	78.8
Rex Airlines	123	71	57.7	118	73	61.9
All Airlines	227	161	70.9	222	155	69.8
Relates to services to and from Sydney only.						
Emerald						
QantasLink	120	103	85.8	119	97	81.5
Virgin Australia	25	14	56.0	25	16	64.0
All Airlines	145	117	80.7	144	113	78.5
Relates to services to and from Brisbane only.						

Airport	Arrivals			Departures		
	Sectors	On Time		Sectors	On Time	
	Flown	No.	%	Flown	No.	%
Gladstone						
QantasLink	126	89	70.6	127	100	78.7
Virgin Australia	34	21	61.8	34	22	64.7
All Airlines	160	110	68.8	161	122	75.8
Relates to services to and from Brisbane only.						
Gold Coast						
Jetstar	457	354	77.5	457	365	79.9
Qantas	123	100	81.3	124	93	75.0
Rex Airlines	54	42	77.8	54	39	72.2
Virgin Australia	572	440	76.9	572	389	68.0
All Airlines	1,206	936	77.6	1,207	886	73.4
Relates to services to and from Adelaide, Canberra, Melbourne and Sydney only.						
Hamilton Island						
Jetstar	15	11	73.3	15	9	60.0
Qantas	29	18	62.1	30	16	53.3
QantasLink	24	16	66.7	23	17	73.9
Virgin Australia	50	37	74.0	50	33	66.0
All Airlines	118	82	69.5	118	75	63.6
Relates to services to and from Brisbane and Sydney only.						
Hobart						
Jetstar	206	148	71.8	204	142	69.6
Qantas	72	56	77.8	71	62	87.3
QantasLink	132	85	64.4	132	94	71.2
Rex Airlines	30	25	83.3	30	26	86.7
Virgin Australia	226	182	80.5	226	184	81.4
All Airlines	666	496	74.5	663	508	76.6
Relates to services to and from Brisbane, Melbourne and Sydney only.						
Kalgoorlie						
Qantas	16	14	87.5	16	12	75.0
QantasLink	56	40	71.4	56	41	73.2
Virgin Australia	71	56	78.9	70	46	65.7
Virgin Australia Regional Airlines	23	22	95.7	23	20	87.0
All Airlines	166	132	79.5	165	119	72.1
Relates to services to and from Perth only.						
Karratha						
Qantas	4	4	100.0	4	4	100.0
QantasLink	138	101	73.2	137	89	65.0
Virgin Australia	57	47	82.5	57	49	86.0
Virgin Australia Regional Airlines	16	12	75.0	16	13	81.3
All Airlines	215	164	76.3	214	155	72.4
Relates to services to and from Perth only.						
Launceston						
Jetstar	115	73	63.5	115	60	52.2
QantasLink	110	86	78.2	109	91	83.5
Virgin Australia	131	104	79.4	129	99	76.7
All Airlines	356	263	73.9	353	250	70.8
Relates to services to and from Brisbane, Melbourne and Sydney only.						

Airport	Arrivals			Departures		
	Sectors Flown	On Time		Sectors Flown	On Time	
		No.	%		No.	%
Mackay						
Jetstar	30	12	40.0	30	12	40.0
Qantas	102	81	79.4	103	78	75.7
QantasLink	8	8	100.0	11	10	90.9
Virgin Australia	130	84	64.6	129	89	69.0
All Airlines	270	185	68.5	273	189	69.2

Relates to services to and from Brisbane only.

Melbourne

Jetstar	1,346	964	71.6	1,348	936	69.4
Qantas	1,746	1,414	81.0	1,744	1,414	81.1
QantasLink	702	531	75.6	700	521	74.4
Rex Airlines	523	401	76.7	524	447	85.3
Virgin Australia	2,192	1,632	74.5	2,194	1,790	81.6
All Airlines	6,509	4,942	75.9	6,510	5,108	78.5

Relates to services to and from Adelaide, Brisbane, Cairns, Canberra, Darwin, Devonport, Gold Coast, Hobart, Launceston, Mildura, Newcastle, Perth, Sunshine Coast and Sydney only.

Mildura

QantasLink	104	81	77.9	104	75	72.1
Rex Airlines	90	72	80.0	90	63	70.0
All Airlines	194	153	78.9	194	138	71.1

Relates to services to and from Melbourne only.

Mount Isa

Qantas	45	37	82.2	44	32	72.7
QantasLink	5	5	100.0	5	3	60.0
Virgin Australia	12	6	50.0	12	7	58.3
All Airlines	62	48	77.4	61	42	68.9

Relates to services to and from Brisbane only.

Newcastle

Jetstar	101	78	77.2	103	72	69.9
QantasLink	128	92	71.9	127	110	86.6
Virgin Australia	123	70	56.9	123	86	69.9
All Airlines	352	240	68.2	353	268	75.9

Relates to services to and from Brisbane and Melbourne only.

Newman

Qantas	16	15	93.8	16	15	93.8
QantasLink	92	76	82.6	91	72	79.1
Virgin Australia	38	34	89.5	38	32	84.2
Virgin Australia Regional Airlines	14	13	92.9	14	11	78.6
All Airlines	160	138	86.3	159	130	81.8

Relates to services to and from Perth only.

Airport	Arrivals			Departures		
	Sectors	On Time		Sectors	On Time	
	Flown	No.	%	Flown	No.	%
Perth						
Jetstar	165	109	66.1	165	83	50.3
Qantas	650	475	73.1	650	499	76.8
QantasLink	539	338	62.7	547	418	76.4
Virgin Australia	693	495	71.4	697	552	79.2
Virgin Australia Regional Airlines	141	94	66.7	141	109	77.3
All Airlines	2,188	1,511	69.1	2,200	1,661	75.5
Relates to services to and from Adelaide, Brisbane, Broome, Darwin, Kalgoorlie, Karratha, Melbourne, Newman, Port Hedland and Sydney only.						
Port Hedland						
QantasLink	134	110	82.1	131	97	74.0
Virgin Australia	33	28	84.8	33	23	69.7
Virgin Australia Regional Airlines	20	16	80.0	20	10	50.0
All Airlines	187	154	82.4	184	130	70.7
Relates to services to and from Perth only.						
Port Lincoln						
QantasLink	133	124	93.2	133	123	92.5
Rex Airlines	132	113	85.6	132	116	87.9
All Airlines	265	237	89.4	265	239	90.2
Relates to services to and from Adelaide only.						
Port Macquarie						
QantasLink	106	89	84.0	106	89	84.0
Rex Airlines	49	36	73.5	50	35	70.0
All Airlines	155	125	80.6	156	124	79.5
Relates to services to and from Sydney only.						
Proserpine						
Jetstar	23	15	65.2	23	13	56.5
QantasLink	18	14	77.8	18	14	77.8
Virgin Australia	34	25	73.5	34	21	61.8
All Airlines	75	54	72.0	75	48	64.0
Relates to services to and from Brisbane only.						
Rockhampton						
QantasLink	174	141	81.0	173	143	82.7
Virgin Australia	154	72	46.8	153	84	54.9
All Airlines	328	213	64.9	326	227	69.6
Relates to services to and from Brisbane only.						
Sunshine Coast						
Jetstar	131	109	83.2	131	92	70.2
Qantas	85	65	76.5	86	62	72.1
Virgin Australia	127	100	78.7	127	95	74.8
All Airlines	343	274	79.9	344	249	72.4
Relates to services to and from Melbourne and Sydney only.						

Airport	Arrivals			Departures		
	Sectors	On Time		Sectors	On Time	
	Flown	No.	%	Flown	No.	%
Sydney						
Jetstar	1,300	1,003	77.2	1,301	1,002	77.0
Qantas	2,078	1,677	80.7	2,082	1,680	80.7
QantasLink	945	752	79.6	954	780	81.8
Rex Airlines	824	637	77.3	830	633	76.3
Virgin Australia	2,165	1,641	75.8	2,164	1,800	83.2
All Airlines	7,312	5,710	78.1	7,331	5,895	80.4

Relates to services to and from Adelaide, Albury, Ballina, Brisbane, Cairns, Canberra, Coffs Harbour, Dubbo, Gold Coast, Hamilton Island, Hobart, Launceston, Melbourne, Perth, Port Macquarie, Sunshine Coast and Wagga Wagga only.

Townsville

Jetstar	55	38	69.1	55	34	61.8
Qantas	25	21	84.0	24	19	79.2
QantasLink	262	210	80.2	258	194	75.2
Rex Airlines	13	11	84.6	13	11	84.6
Virgin Australia	134	88	65.7	134	82	61.2
All Airlines	489	368	75.3	484	340	70.2

Relates to services to and from Brisbane and Cairns only.

Wagga Wagga

QantasLink	107	99	92.5	107	93	86.9
Rex Airlines	92	79	85.9	92	77	83.7
All Airlines	199	178	89.4	199	170	85.4

Relates to services to and from Sydney only.

Definitions

On time arrival	A flight arrival is counted as "on time" if it arrived at the gate before 15 minutes after the scheduled arrival time shown in the carriers' schedule. Neither diverted nor cancelled flights count as on time.
On time departure	A flight departure is counted as "on time" if it departs the gate before 15 minutes after the scheduled departure time shown in the carriers' schedule.
Cancellation	A flight removed from service within 7 days of scheduled departure is regarded as a cancellation.
On time departure percentage	The percentage of on time departures is measured against the number of departures <i>operated</i> on any particular sector.
On time arrival percentage	The percentage of on time arrivals is measured against the number of arrivals <i>operated</i> on any particular sector.
Cancellation percentage	The percentage of cancellations is measured against the number of services <i>scheduled</i> on any particular sector.

Airlines and Reporting

Data has been gathered since November 2003, although some airlines commenced reporting at a later date, including Jetstar which first reported in May 2004, Tigerair Australia in April 2008, Virgin Australia Regional Airlines in May 2013, Skytrans in May 2023 and Bonza in November 2023. Tigerair Australia ceased operations in March 2020 and data was not received for that month. Bonza ceased operations at the end of April 2024 and data was not received for that month.

Virgin Blue was rebranded as Virgin Australia in May 2011 and Tiger Airways was rebranded as Tigerair Australia in August 2013 and time series data in Microsoft Excel spread sheet format on the BITRE website have been revised to reflect these changes. With effect from August 2021, Regional Express is reported as Rex Airlines.

Services operated by Skywest on behalf of Virgin Australia using ATR/F100 aircraft commenced in November 2011 and were shown separately as Virgin Australia – ATR/F100 Operations. Virgin Australia Regional Airlines commenced operations in May 2013. It was formed after the acquisition of Skywest by Virgin Australia and represented a combination of operations previously reported under Skywest and Virgin Australia – ATR/F100 Operations. In February 2016, Virgin Australia transferred their ATR fleet from Virgin Australia Regional Airlines to Virgin Australia.