



Australian Government

**Department of Infrastructure, Transport,
Regional Development, Communications and the Arts**
Bureau of Infrastructure and Transport Research Economics

STATISTICAL REPORT



Aviation

**Domestic airline on time performance
March 2023**

© Commonwealth of Australia 2023

ISSN: 1832-0759

Ownership of intellectual property rights in this publication

Unless otherwise noted, copyright (and any other intellectual property rights, if any) in this publication is owned by the Commonwealth of Australia (referred to below as the Commonwealth).

Disclaimer

The material contained in this publication is made available on the understanding that the Commonwealth is not providing professional advice, and that users exercise their own skill and care with respect to its use, and seek independent advice if necessary.

The Commonwealth makes no representations or warranties as to the contents or accuracy of the information contained in this publication. To the extent permitted by law, the Commonwealth disclaims liability to any person or organisation in respect of anything done, or omitted to be done, in reliance upon information contained in this publication.

Creative Commons licence

With the exception of (a) the Coat of Arms; and (b) the Department of Infrastructure, Transport, Regional Development, Communications and the Arts' photos and graphics, copyright in this publication is licensed under a Creative Commons Attribution 3.0 Australia Licence.

Creative Commons Attribution 3.0 Australia Licence is a standard form licence agreement that allows you to copy, communicate and adapt this publication provided that you attribute the work to the Commonwealth and abide by the other licence terms. A summary of the licence terms is available from <http://creativecommons.org/licenses/by/3.0/au/deed.en>. The full licence terms are available from <http://creativecommons.org/licenses/by/3.0/au/legalcode>.

Use of the Coat of Arms

The Department of the Prime Minister and Cabinet sets the terms under which the Coat of Arms is used. Please refer to the Department's Commonwealth Coat of Arms and Government branding web page <http://www.dpmmc.gov.au/guidelines/index.cfm#brand> and, in particular, the Guidelines on the use of the Commonwealth Coat of Arms publication.

An appropriate citation for this report is:

Bureau of Infrastructure and Transport Research Economics (BITRE), 2023, Domestic airline on time performance, Statistical Report, BITRE, Canberra ACT.

Contact us

This publication is available in PDF format. All other rights are reserved, including in relation to any Departmental logos or trade marks which may exist. For enquiries regarding the licence and any use of this publication, please contact:

Bureau of Infrastructure and Transport Research Economics (BITRE)
Department of Infrastructure, Transport, Regional Development, Communications and the Arts
GPO Box 501, Canberra ACT 2601, Australia
Telephone: (international) +61 2 6274 7210
Fax: (international) +61 2 6274 6855
Email: bitre@infrastructure.gov.au
Website: www.bitre.gov.au

Inquiries

Should you require additional information about the statistics contained in this publication:

Telephone (02) 6274 6135

Electronic mail: AVSTATS@infrastructure.gov.au

Web site: <http://www.bitre.gov.au/statistics/aviation/otphome.aspx>

Foreword

The Bureau of Infrastructure and Transport Research Economics (BITRE) monitors the punctuality and reliability of major domestic airlines operating between Australian airports. The purpose of this is to allow for evaluation of overall industry and individual airline performance, so that consumers of air travel can make informed decisions.

The following domestic airlines currently report this information monthly to the BITRE: Jetstar, Qantas, QantasLink, Rex Airlines, Virgin Australia and Virgin Australia Regional Airlines.

Information presented in this report is for Australian domestic routes for which the passenger load averaged 8,000 or more passengers per month over the previous six months and where two or more airlines operated in competition on those routes. In order to present data for more routes during the period impacted by COVID-19, the passenger load restriction was not applied between March 2020 and January 2023. From February 2023, the passenger load restriction was reinstated due to the continued recovery of passenger numbers. Data are presented for 59 routes in March 2023. Over time, routes which meet these criteria change as airline networks and traffic levels vary. Participating airlines report their overall monthly network performance where this is possible.

Total industry figures encompass all services operated by reporting airlines only. These airlines collectively carried over 95 per cent of total domestic passengers (regular public transport only) in 2019.

The method of capturing on time performance varies between airlines utilising different recording systems. Jetstar and Qantas jet aircraft use Aircraft Communication Addressing and Reporting System (ACARS) to electronically measure on time performance. Rex Airlines, Virgin Australia, Virgin Australia Regional Airlines and the Qantas non-jet fleet record on time performance manually using records from pilots, gate agents and/or ground crews.

After initial data is collected, aggregate reports are reviewed by participating airlines prior to publication.

Reports and detailed time series data in Microsoft Excel spreadsheet format are available from the BITRE website at: <http://www.bitre.gov.au/statistics/aviation/otphome.aspx>

Contents

	Page
Industry performance	1
Individual routes	9
Airports.....	22
Definitions	28
Airlines and Reporting	29

Industry performance

For March 2023, on time performance over all routes operated by participating airlines (Jetstar, Qantas, QantasLink, Rex Airlines, Virgin Australia and Virgin Australia Regional Airlines) averaged 71.0 per cent for on time arrivals and 71.4 per cent for on time departures. The cancellation rate for the month was 3.6 per cent. The equivalent figures for March 2022 were 78.2 per cent for on time arrivals, 77.5 per cent for on time departures and 2.5 per cent for cancellations.

This month's on time arrivals figure was significantly lower than the long term average performance for all routes (81.5 per cent) and the on time departures figure was also significantly lower than the long term average (82.7 per cent). The rate of cancellations was higher than the long term average of 2.1 per cent.

The Qantas network (Qantas and QantasLink combined operations) recorded 75.6 per cent for on time arrivals while the Virgin Australia network (Virgin Australia and Virgin Australia Regional Airlines combined operations) recorded 68.6 per cent. Qantas achieved the highest on time arrivals among the major domestic airlines at 72.8 per cent followed by Virgin Australia at 68.7 per cent and Jetstar at 61.9 per cent. Of the regional airlines, QantasLink recorded 77.4 per cent for on time arrivals, followed by Rex Airlines at 70.5 per cent and Virgin Australia Regional Airlines at 66.6 per cent.

The Qantas network recorded 75.7 per cent for on time departures while the Virgin Australia network recorded 69.7 per cent. Qantas achieved the highest level of on time departures among the major domestic airlines for March 2023 at 73.0 per cent, followed by Virgin Australia at 69.9 per cent and Jetstar at 59.6 per cent. Of the regional airlines, QantasLink recorded 77.4 per cent for on time departures, followed by Rex Airlines at 73.5 per cent and Virgin Australia Regional Airlines at 63.8 per cent.

Jetstar recorded the highest percentage of cancellations at 7.1 per cent during the month, followed by Virgin Australia Regional Airlines at 5.6 per cent, Qantas at 3.6 per cent, QantasLink at 3.2 per cent, Virgin Australia at 2.6 per cent, and Rex Airlines at 2.3 per cent.

Airlines' on time performance varies across the routes they serve. Individual route data by specific airline for 59 routes are shown on pages 9-21.

Of the 59 routes which met the criteria for on time performance reporting in March 2023, the Cairns-Townsville route had the highest percentage of both on time arrivals (92.8 per cent), and on time departures (92.1 per cent). The Sunshine Coast-Sydney route had the lowest percentage of on time arrivals (49.1 per cent), while the Hamilton Island-Sydney route had the lowest percentage of on time departures (50.6 per cent).

Cancellations were highest on the Melbourne-Sydney route at 9.1 per cent followed by the Sydney-Melbourne route at 8.6 per cent, the Canberra-Sydney route at 7.7 per cent, and the Newcastle-Brisbane and Sydney-Canberra routes both at 7.2 per cent.

Mount Isa Airport recorded the highest percentage of on time arrivals (87.5 per cent) and Proserpine Airport recorded the highest percentage of on time departures (82.8 per cent). Mildura Airport recorded the lowest percentage of on time arrivals (64.1 per cent) and Port Hedland Airport recorded the lowest percentage of on time departures (57.1 per cent). These figures only refer to reported routes and do not cover all flights at these airports.

Table 1 On time performance for March 2023 — Total Industry

	Sectors		Arrivals On Time		Departures On Time		Cancellations	
	Scheduled	Flown	No.	%	No.	%	No.	%
Jetstar	6,943	6,451	3,992	61.9	3,847	59.6	492	7.1
Qantas - all QF designated services	19,988	19,315	14,602	75.6	14,616	75.7	673	3.4
Rex Airlines	7,147	6,986	4,927	70.5	5,136	73.5	161	2.3
Virgin Australia - all VA designated services	12,284	11,953	8,203	68.6	8,327	69.7	331	2.7
All Airlines	46,362	44,705	31,724	71.0	31,926	71.4	1,657	3.6
Individual operating entities								
Qantas	7,790	7,510	5,467	72.8	5,483	73.0	280	3.6
QantasLink	12,198	11,805	9,135	77.4	9,133	77.4	393	3.2
Virgin Australia	11,748	11,447	7,866	68.7	8,004	69.9	301	2.6
Virgin Australia Regional Airlines	536	506	337	66.6	323	63.8	30	5.6

Total airline network data (including routes not shown in this report).

Airlines’ on time performance varies across the routes they serve. Individual route data by specific airline are shown on page 9 and onwards.

Table 2 Top ten routes for on time performance for March 2023 (participating airlines only)

Arrivals		Departures	
Route	On Time (%)	Route	On Time (%)
Cairns-Townsville	92.8	Cairns-Townsville	92.1
Townsville-Cairns	91.4	Townsville-Cairns	92.1
Brisbane-Mount Isa	87.5	Adelaide-Alice Springs	89.8
Adelaide-Canberra	86.6	Adelaide-Canberra	88.2
Brisbane-Hobart	86.3	Canberra-Adelaide	87.4
Brisbane-Proserpine	84.9	Brisbane-Mount Isa	85.9
Canberra-Brisbane	84.4	Brisbane-Hamilton Island	85.5
Brisbane-Hamilton Island	83.6	Brisbane-Proserpine	83.9
Darwin-Melbourne	83.1	Brisbane-Hobart	83.3
Sydney-Armidale	82.2	Proserpine-Brisbane	82.8

Table 3 Top ten airports for on time performance for March 2023 (participating airlines and reported routes only)

Arrivals		Departures	
Airport	On Time (%)	Airport	On Time (%)
Mount Isa	87.5	Proserpine	82.8
Proserpine	84.9	Townsville	81.6
Townsville	82.3	Mount Isa	81.3
Armidale	82.2	Wagga Wagga	80.7
Alice Springs	81.4	Armidale	80.6
Newman	79.1	Coffs Harbour	79.3
Emerald	79.1	Albury	78.8
Coffs Harbour	78.6	Gladstone	77.4
Canberra	76.8	Dubbo	76.3
Karratha	76.8	Canberra	76.2

Total industry on time performance

Figure 1 On time performance (by month from March 2020)—Total Industry

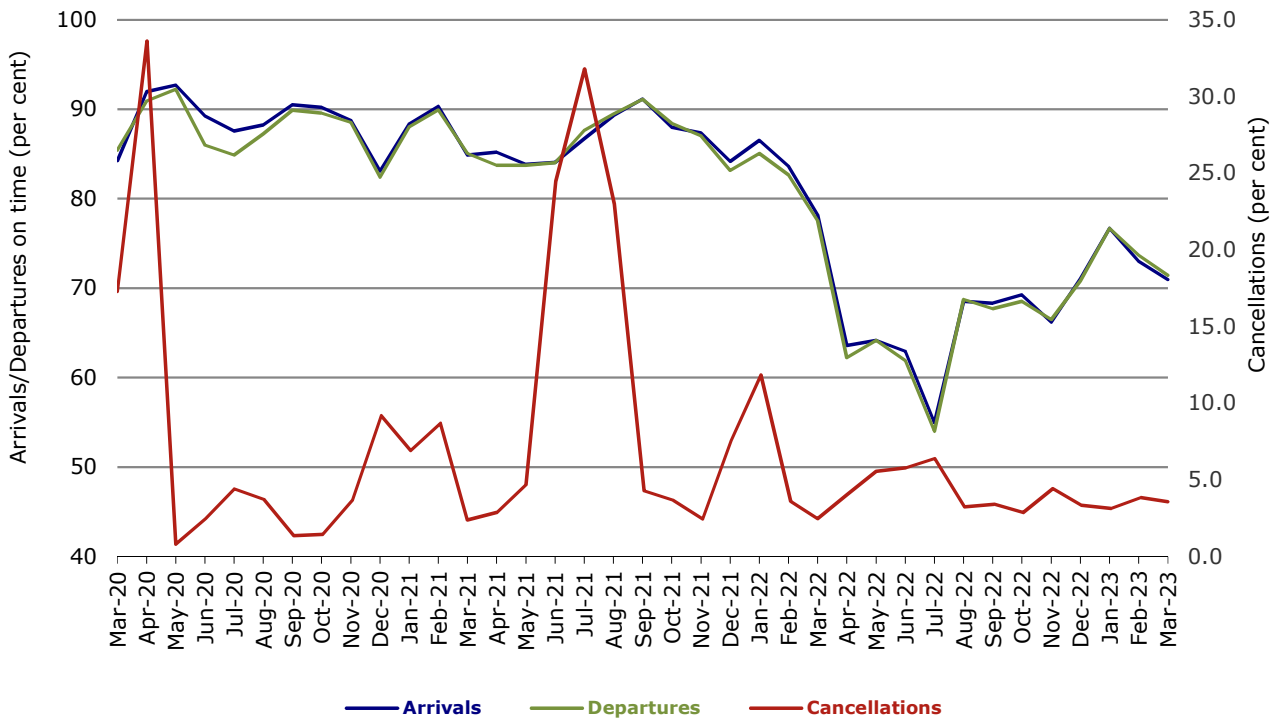


Figure 2 Arrivals on time (by month from March 2022)

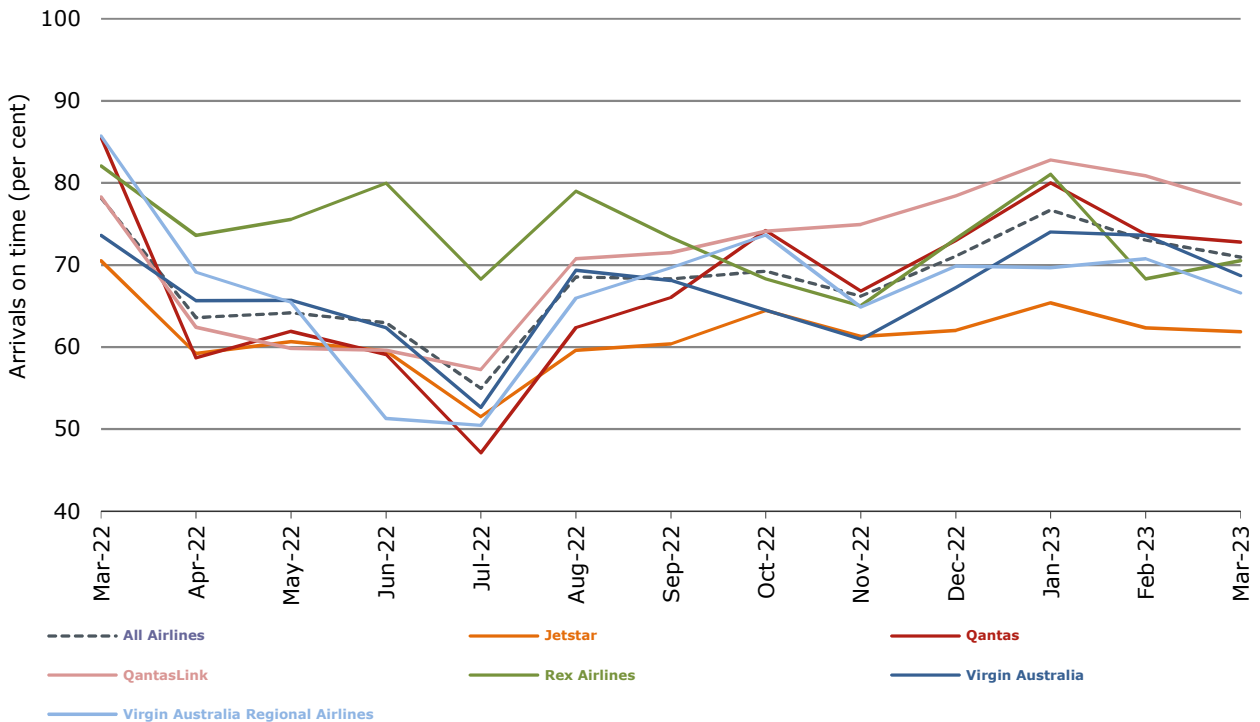


Figure 3 Departures on time (by month from March 2022)

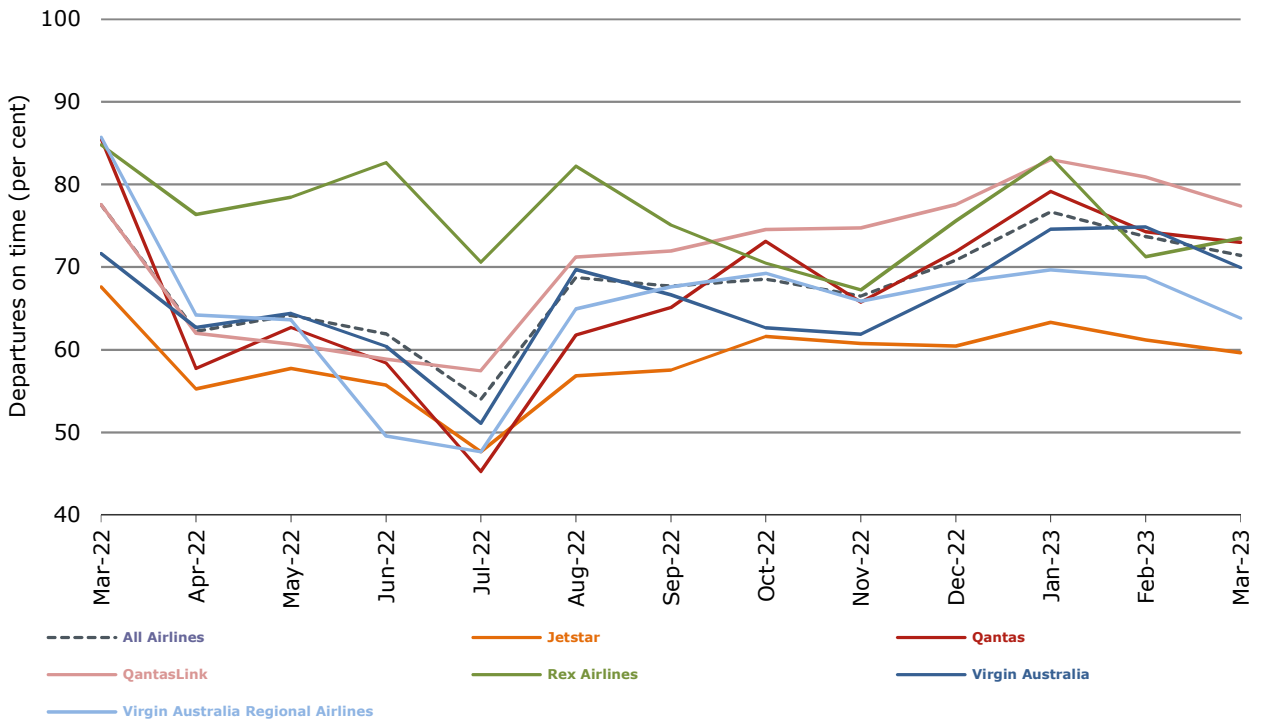
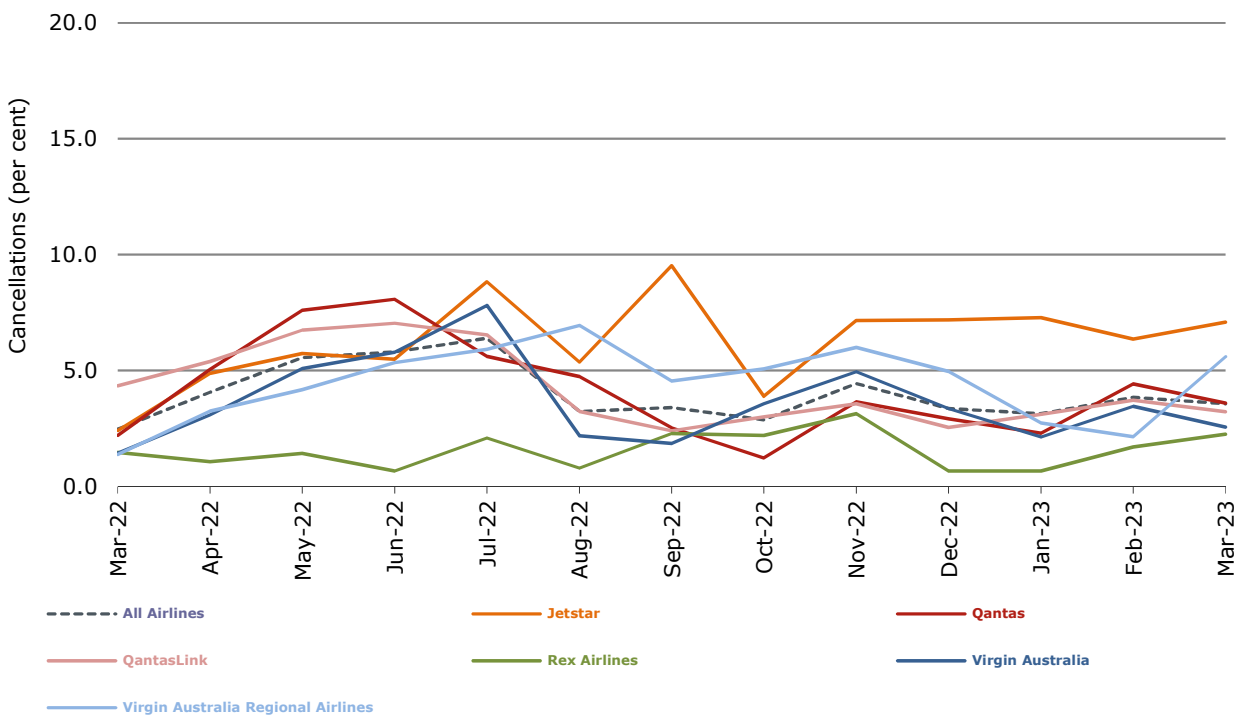


Figure 4 Cancellations (by month from March 2022)



Major domestic airlines on time performance

Figure 5 On time performance (by month from March 2020)—Jetstar

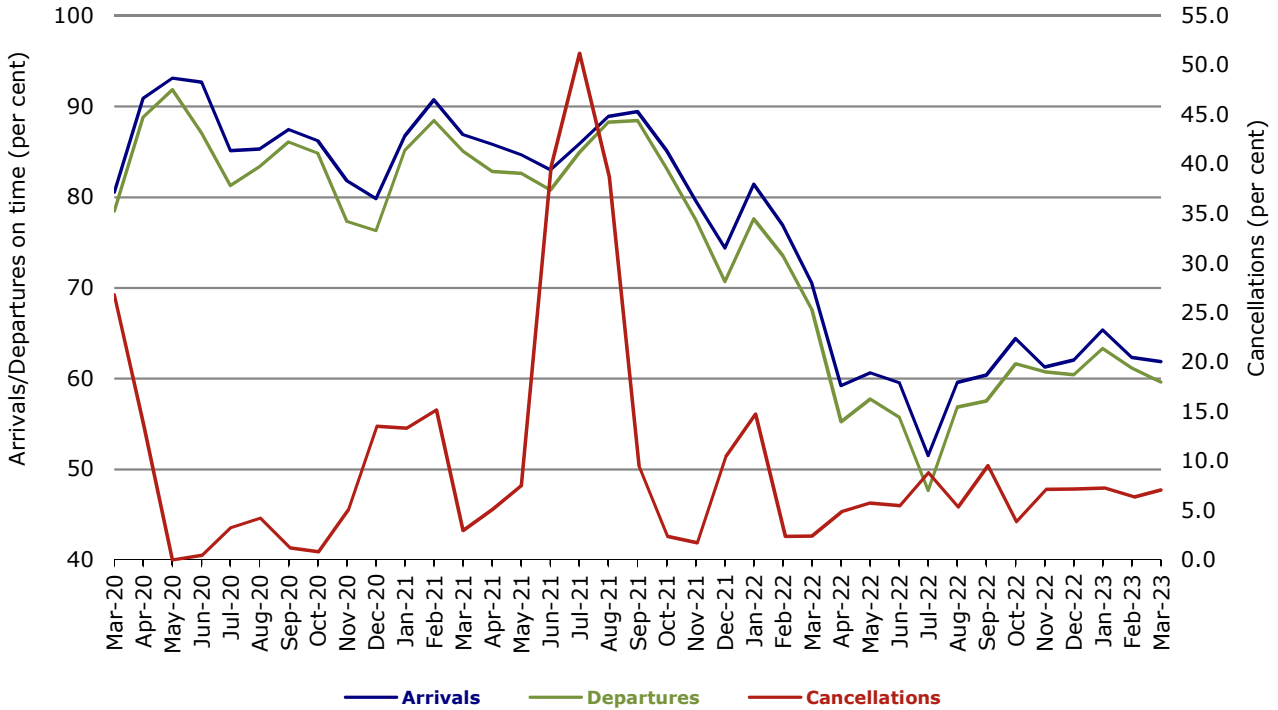


Figure 6 On time performance (by month from March 2020)—Qantas

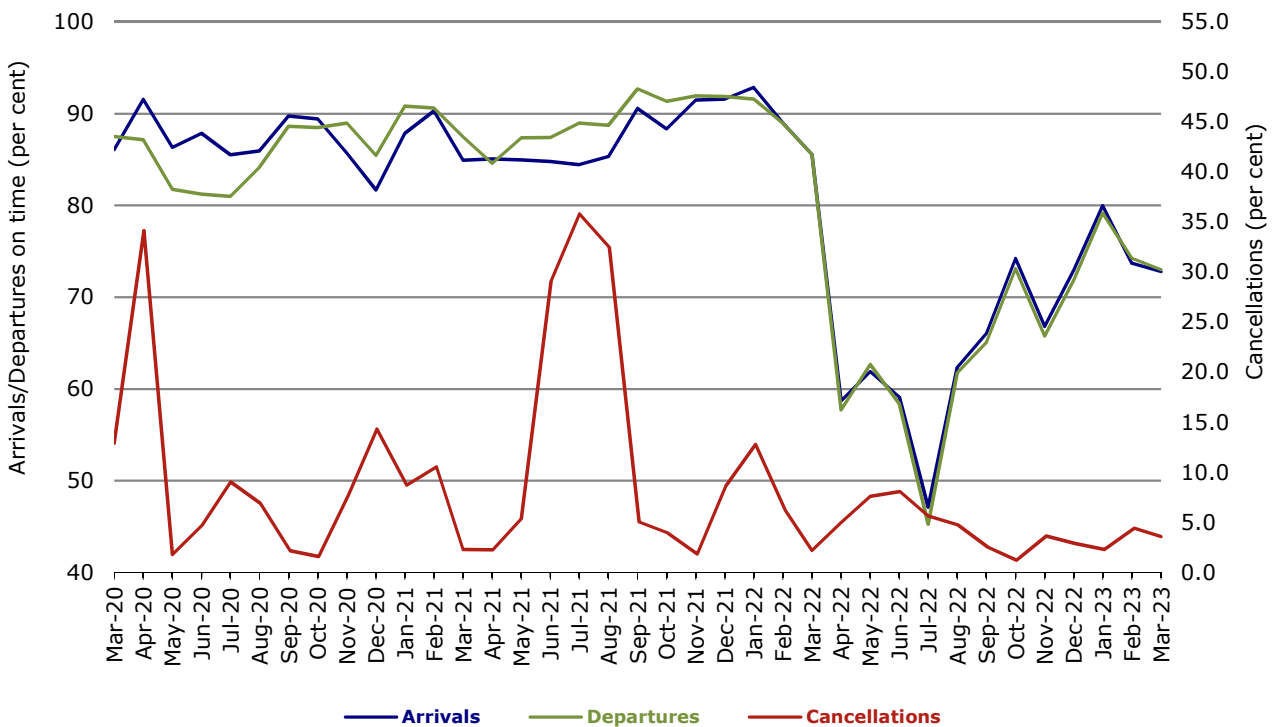
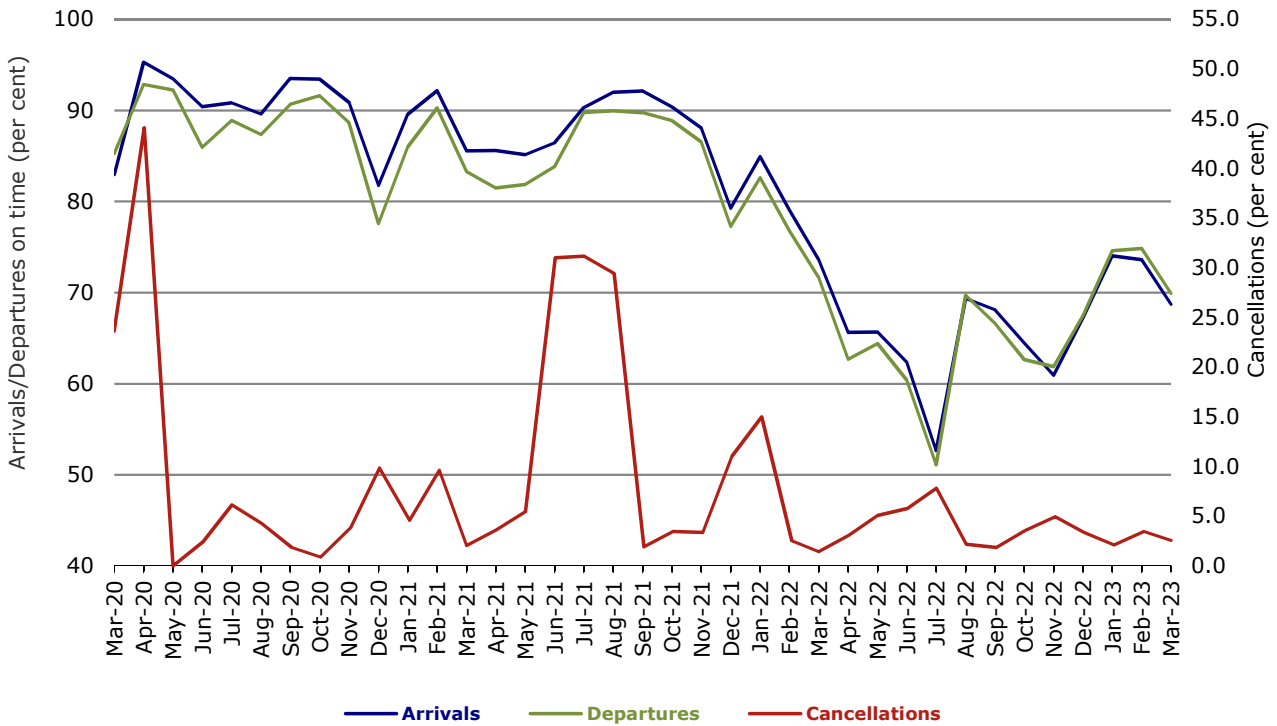


Figure 7 On time performance (by month from March 2020)—Virgin Australia



Major regional airlines on time performance

Figure 8 On time performance (by month from March 2020)—QantasLink

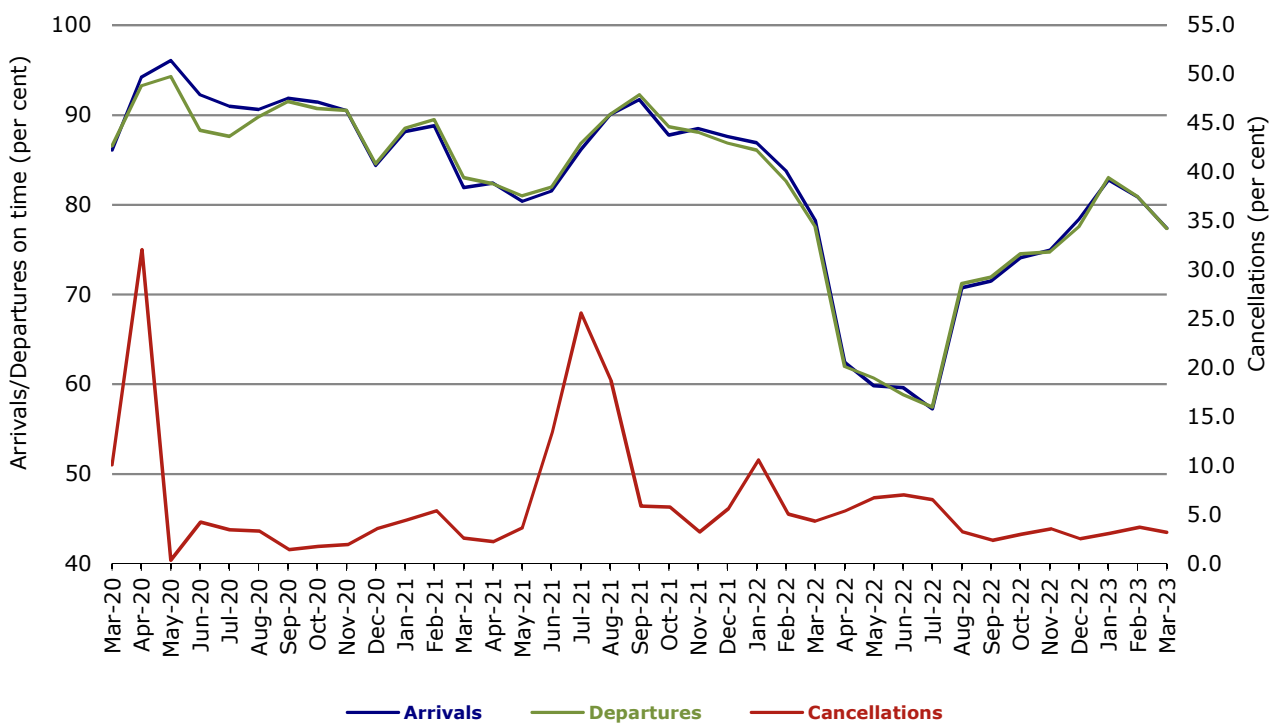


Figure 9 On time performance (by month from March 2020)—Rex Airlines

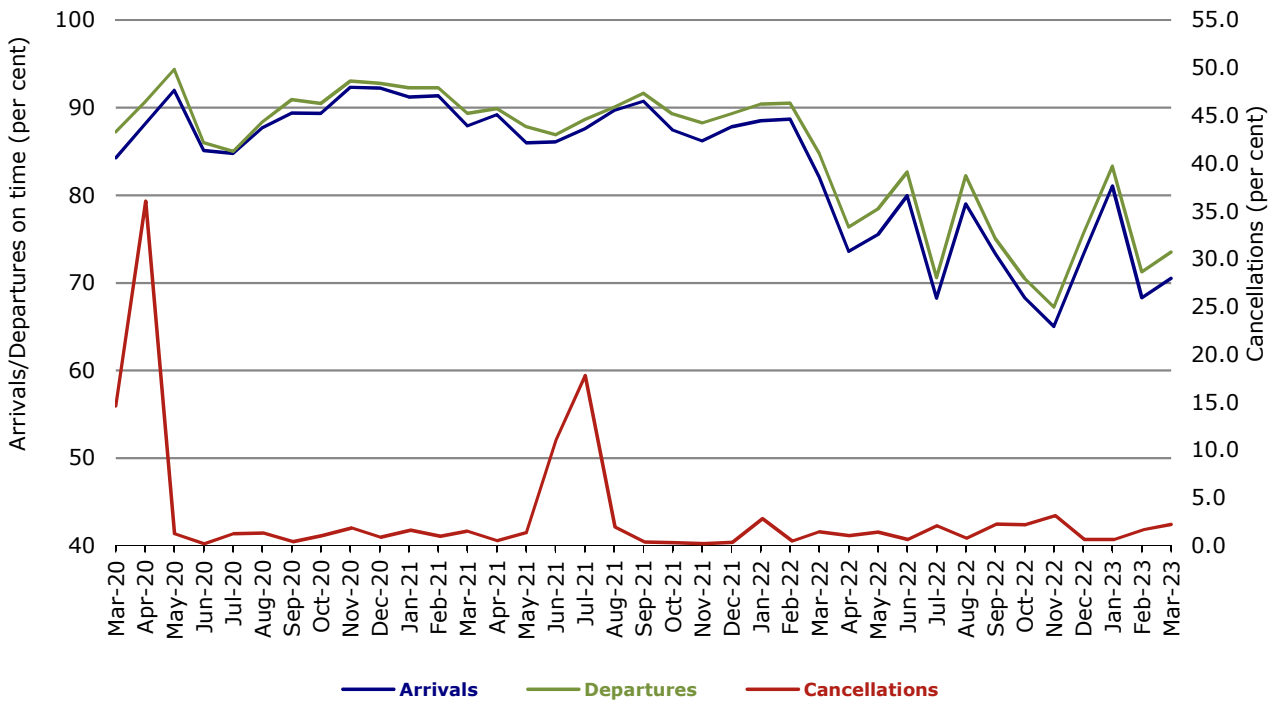
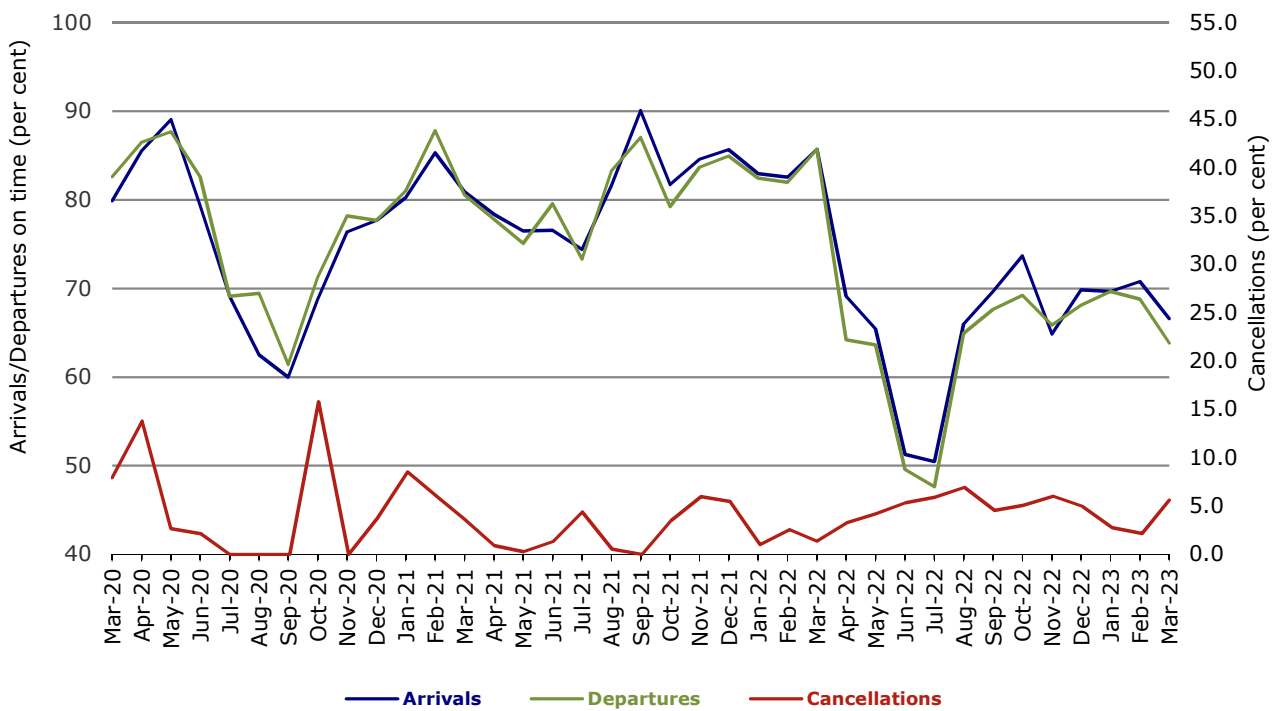


Figure 10 On time performance (by month from March 2020)—Virgin Australia Regional Airlines



Individual routes

On time performance is reported for all routes where the passenger load averages over 8,000 passengers per month over the previous six months, and where two or more airlines operate in competition on those routes. In order to present data for more routes during the period impacted by COVID-19, the passenger load restriction is not being applied. There are now 59 routes for which data are presented.

	<i>Sectors</i>		<i>Arrivals On Time</i>		<i>Departures On Time</i>		<i>Cancellations</i>	
	<i>Sched.</i>	<i>Flown</i>	<i>No.</i>	<i>%</i>	<i>No.</i>	<i>%</i>	<i>No.</i>	<i>%</i>
Adelaide-Alice Springs								
QantasLink	48	48	40	83.3	44	91.7	0	0.0
Virgin Australia	11	11	8	72.7	9	81.8	0	0.0
All Airlines	59	59	48	81.4	53	89.8	0	0.0
Adelaide-Brisbane								
Jetstar	32	27	23	85.2	22	81.5	5	15.6
Qantas	8	8	8	100.0	7	87.5	0	0.0
QantasLink	140	138	103	74.6	95	68.8	2	1.4
Virgin Australia	141	138	99	71.7	92	66.7	3	2.1
All Airlines	321	311	233	74.9	216	69.5	10	3.1
Adelaide-Canberra								
QantasLink	104	104	94	90.4	96	92.3	0	0.0
Virgin Australia	26	23	16	69.6	16	69.6	3	11.5
All Airlines	130	127	110	86.6	112	88.2	3	2.3
Adelaide-Gold Coast								
Jetstar	30	29	24	82.8	24	82.8	1	3.3
Virgin Australia	34	34	20	58.8	20	58.8	0	0.0
All Airlines	64	63	44	69.8	44	69.8	1	1.6
Adelaide-Melbourne								
Jetstar	118	111	73	65.8	69	62.2	7	5.9
Qantas	245	235	176	74.9	182	77.4	10	4.1
QantasLink	13	13	9	69.2	12	92.3	0	0.0
Rex Airlines	58	57	47	82.5	42	73.7	1	1.7
Virgin Australia	276	274	194	70.8	193	70.4	2	0.7
All Airlines	710	690	499	72.3	498	72.2	20	2.8
Adelaide-Perth								
Jetstar	27	27	24	88.9	24	88.9	0	0.0
Qantas	94	94	79	84.0	72	76.6	0	0.0
Virgin Australia	28	28	13	46.4	14	50.0	0	0.0
Virgin Australia Regional Airlines	34	31	10	32.3	8	25.8	3	8.8
All Airlines	183	180	126	70.0	118	65.6	3	1.6
Adelaide-Port Lincoln								
QantasLink	134	132	117	88.6	116	87.9	2	1.5
Rex Airlines	174	166	89	53.6	98	59.0	8	4.6
All Airlines	308	298	206	69.1	214	71.8	10	3.2
Adelaide-Sydney								
Jetstar	109	94	51	54.3	54	57.4	15	13.8
Qantas	222	220	160	72.7	145	65.9	2	0.9
Virgin Australia	164	162	109	67.3	96	59.3	2	1.2
All Airlines	495	476	320	67.2	295	62.0	19	3.8

	Sectors		Arrivals On Time		Departures On Time		Cancellations	
	Sched.	Flown	No.	%	No.	%	No.	%
Albury-Sydney								
QantasLink	112	112	91	81.3	87	77.7	0	0.0
Rex Airlines	135	129	94	72.9	103	79.8	6	4.4
All Airlines	247	241	185	76.8	190	78.8	6	2.4
Alice Springs-Adelaide								
QantasLink	48	48	32	66.7	32	66.7	0	0.0
Virgin Australia	11	11	9	81.8	8	72.7	0	0.0
All Airlines	59	59	41	69.5	40	67.8	0	0.0
Armidale-Sydney								
QantasLink	106	100	89	89.0	90	90.0	6	5.7
Rex Airlines	78	75	45	60.0	51	68.0	3	3.8
All Airlines	184	175	134	76.6	141	80.6	9	4.9
Ballina-Sydney								
Jetstar	75	74	35	47.3	39	52.7	1	1.3
QantasLink	89	86	60	69.8	61	70.9	3	3.4
Virgin Australia	55	54	39	72.2	37	68.5	1	1.8
All Airlines	219	214	134	62.6	137	64.0	5	2.3
Brisbane-Adelaide								
Jetstar	32	27	20	74.1	19	70.4	5	15.6
Qantas	9	9	8	88.9	9	100.0	0	0.0
QantasLink	140	139	94	67.6	109	78.4	1	0.7
Virgin Australia	142	138	93	67.4	84	60.9	4	2.8
All Airlines	323	313	215	68.7	221	70.6	10	3.1
Brisbane-Cairns								
Jetstar	77	74	47	63.5	41	55.4	3	3.9
Qantas	70	70	57	81.4	54	77.1	0	0.0
QantasLink	56	56	45	80.4	37	66.1	0	0.0
Virgin Australia	133	133	90	67.7	81	60.9	0	0.0
All Airlines	336	333	239	71.8	213	64.0	3	0.9
Brisbane-Canberra								
Jetstar	31	31	24	77.4	24	77.4	0	0.0
Qantas	20	18	17	94.4	16	88.9	2	10.0
QantasLink	136	135	108	80.0	113	83.7	1	0.7
Virgin Australia	111	109	83	76.1	80	73.4	2	1.8
All Airlines	298	293	232	79.2	233	79.5	5	1.7
Brisbane-Darwin								
Jetstar	19	16	13	81.3	11	68.8	3	15.8
QantasLink	35	35	22	62.9	11	31.4	0	0.0
Virgin Australia	31	31	27	87.1	23	74.2	0	0.0
All Airlines	85	82	62	75.6	45	54.9	3	3.5
Brisbane-Emerald								
QantasLink	122	121	95	78.5	97	80.2	1	0.8
Virgin Australia	27	27	22	81.5	21	77.8	0	0.0
All Airlines	149	148	117	79.1	118	79.7	1	0.7
Brisbane-Gladstone								
QantasLink	148	140	112	80.0	112	80.0	8	5.4
Virgin Australia	54	53	36	67.9	37	69.8	1	1.9
All Airlines	202	193	148	76.7	149	77.2	9	4.5

	Sectors		Arrivals On Time		Departures On Time		Cancellations	
	Sched.	Flown	No.	%	No.	%	No.	%
Brisbane-Hamilton Island								
Qantas	18	18	16	88.9	16	88.9	0	0.0
Virgin Australia	37	37	30	81.1	31	83.8	0	0.0
All Airlines	55	55	46	83.6	47	85.5	0	0.0
Brisbane-Hobart								
Jetstar	29	29	26	89.7	23	79.3	0	0.0
QantasLink	23	23	21	91.3	21	91.3	0	0.0
Virgin Australia	50	50	41	82.0	41	82.0	0	0.0
All Airlines	102	102	88	86.3	85	83.3	0	0.0
Brisbane-Launceston								
Jetstar	25	24	18	75.0	18	75.0	1	4.0
Virgin Australia	26	25	19	76.0	20	80.0	1	3.8
All Airlines	51	49	37	75.5	38	77.6	2	3.9
Brisbane-Mackay								
Jetstar	31	31	19	61.3	17	54.8	0	0.0
Qantas	110	110	94	85.5	89	80.9	0	0.0
QantasLink	11	10	8	80.0	9	90.0	1	9.1
Virgin Australia	143	143	81	56.6	84	58.7	0	0.0
All Airlines	295	294	202	68.7	199	67.7	1	0.3
Brisbane-Melbourne								
Jetstar	159	142	97	68.3	86	60.6	17	10.7
Qantas	356	349	258	73.9	264	75.6	7	2.0
Rex Airlines	64	63	44	69.8	43	68.3	1	1.6
Virgin Australia	413	403	273	67.7	280	69.5	10	2.4
All Airlines	992	957	672	70.2	673	70.3	35	3.5
Brisbane-Mount Isa								
Qantas	50	50	47	94.0	46	92.0	0	0.0
Virgin Australia	14	14	9	64.3	9	64.3	0	0.0
All Airlines	64	64	56	87.5	55	85.9	0	0.0
Brisbane-Newcastle								
Jetstar	60	59	54	91.5	52	88.1	1	1.7
QantasLink	141	127	100	78.7	98	77.2	14	9.9
Virgin Australia	88	85	47	55.3	52	61.2	3	3.4
All Airlines	289	271	201	74.2	202	74.5	18	6.2
Brisbane-Perth								
Jetstar	23	23	18	78.3	15	65.2	0	0.0
Qantas	146	146	114	78.1	100	68.5	0	0.0
Virgin Australia	119	119	85	71.4	67	56.3	0	0.0
All Airlines	288	288	217	75.3	182	63.2	0	0.0
Brisbane-Proserpine								
Jetstar	31	31	20	64.5	19	61.3	0	0.0
QantasLink	25	25	24	96.0	24	96.0	0	0.0
Virgin Australia	37	37	35	94.6	35	94.6	0	0.0
All Airlines	93	93	79	84.9	78	83.9	0	0.0
Brisbane-Rockhampton								
QantasLink	177	168	143	85.1	137	81.5	9	5.1
Virgin Australia	143	142	81	57.0	98	69.0	1	0.7
All Airlines	320	310	224	72.3	235	75.8	10	3.1

	Sectors		Arrivals On Time		Departures On Time		Cancellations	
	Sched.	Flown	No.	%	No.	%	No.	%
Brisbane-Sydney								
Jetstar	189	170	108	63.5	109	64.1	19	10.1
Qantas	540	508	392	77.2	412	81.1	32	5.9
Rex Airlines	145	142	95	66.9	99	69.7	3	2.1
Virgin Australia	471	448	301	67.2	330	73.7	23	4.9
All Airlines	1 345	1 268	896	70.7	950	74.9	77	5.7
Brisbane-Townsville								
Jetstar	51	50	40	80.0	39	78.0	1	2.0
Qantas	75	75	62	82.7	53	70.7	0	0.0
QantasLink	40	40	36	90.0	34	85.0	0	0.0
Virgin Australia	142	140	97	69.3	100	71.4	2	1.4
All Airlines	308	305	235	77.0	226	74.1	3	1.0
Broome-Perth								
QantasLink	76	75	58	77.3	58	77.3	1	1.3
Virgin Australia	10	10	3	30.0	1	10.0	0	0.0
Virgin Australia Regional Airlines	39	36	26	72.2	22	61.1	3	7.7
All Airlines	125	121	87	71.9	81	66.9	4	3.2
Cairns-Brisbane								
Jetstar	77	75	42	56.0	47	62.7	2	2.6
Qantas	70	70	59	84.3	59	84.3	0	0.0
QantasLink	56	56	33	58.9	34	60.7	0	0.0
Virgin Australia	133	133	101	75.9	99	74.4	0	0.0
All Airlines	336	334	235	70.4	239	71.6	2	0.6
Cairns-Melbourne								
Jetstar	75	71	49	69.0	46	64.8	4	5.3
Qantas	28	27	21	77.8	19	70.4	1	3.6
Virgin Australia	51	51	28	54.9	25	49.0	0	0.0
All Airlines	154	149	98	65.8	90	60.4	5	3.2
Cairns-Sydney								
Jetstar	81	71	41	57.7	45	63.4	10	12.3
Qantas	33	33	14	42.4	15	45.5	0	0.0
Virgin Australia	77	76	48	63.2	56	73.7	1	1.3
All Airlines	191	180	103	57.2	116	64.4	11	5.8
Cairns-Townsville								
QantasLink	146	141	133	94.3	132	93.6	5	3.4
Rex Airlines	13	11	8	72.7	8	72.7	2	15.4
All Airlines	159	152	141	92.8	140	92.1	7	4.4
Canberra-Adelaide								
QantasLink	104	104	87	83.7	95	91.3	0	0.0
Virgin Australia	26	23	16	69.6	16	69.6	3	11.5
All Airlines	130	127	103	81.1	111	87.4	3	2.3
Canberra-Brisbane								
Jetstar	31	31	19	61.3	17	54.8	0	0.0
Qantas	20	18	17	94.4	17	94.4	2	10.0
QantasLink	137	136	118	86.8	116	85.3	1	0.7
Virgin Australia	111	109	94	86.2	90	82.6	2	1.8
All Airlines	299	294	248	84.4	240	81.6	5	1.7
Canberra-Gold Coast								
Jetstar	20	20	11	55.0	7	35.0	0	0.0
Virgin Australia	31	31	24	77.4	23	74.2	0	0.0
All Airlines	51	51	35	68.6	30	58.8	0	0.0

	Sectors		Arrivals On Time		Departures On Time		Cancellations	
	Sched.	Flown	No.	%	No.	%	No.	%
Canberra-Melbourne								
Jetstar	31	30	19	63.3	14	46.7	1	3.2
QantasLink	252	235	162	68.9	170	72.3	17	6.7
Rex Airlines	31	31	19	61.3	19	61.3	0	0.0
Virgin Australia	119	116	84	72.4	78	67.2	3	2.5
All Airlines	433	412	284	68.9	281	68.2	21	4.8
Canberra-Sydney								
QantasLink	483	432	313	72.5	339	78.5	51	10.6
Virgin Australia	254	248	189	76.2	190	76.6	6	2.4
All Airlines	737	680	502	73.8	529	77.8	57	7.7
Coffs Harbour-Sydney								
QantasLink	118	116	84	72.4	91	78.4	2	1.7
Rex Airlines	136	135	93	68.9	108	80.0	1	0.7
All Airlines	254	251	177	70.5	199	79.3	3	1.2
Darwin-Brisbane								
Jetstar	19	17	6	35.3	9	52.9	2	10.5
QantasLink	35	35	30	85.7	32	91.4	0	0.0
Virgin Australia	31	31	23	74.2	19	61.3	0	0.0
All Airlines	85	83	59	71.1	60	72.3	2	2.4
Darwin-Melbourne								
Jetstar	26	23	15	65.2	16	69.6	3	11.5
Qantas	27	26	26	100.0	24	92.3	1	3.7
Virgin Australia	22	22	18	81.8	18	81.8	0	0.0
All Airlines	75	71	59	83.1	58	81.7	4	5.3
Darwin-Perth								
Qantas	19	19	17	89.5	14	73.7	0	0.0
QantasLink	12	12	7	58.3	6	50.0	0	0.0
Virgin Australia	9	9	6	66.7	7	77.8	0	0.0
Virgin Australia Regional Airlines	13	12	7	58.3	6	50.0	1	7.7
All Airlines	53	52	37	71.2	33	63.5	1	1.9
Dubbo-Sydney								
QantasLink	113	110	93	84.5	90	81.8	3	2.7
Rex Airlines	131	131	81	61.8	94	71.8	0	0.0
All Airlines	244	241	174	72.2	184	76.3	3	1.2
Emerald-Brisbane								
QantasLink	121	119	87	73.1	85	71.4	2	1.7
Virgin Australia	27	27	24	88.9	24	88.9	0	0.0
All Airlines	148	146	111	76.0	109	74.7	2	1.4
Gladstone-Brisbane								
QantasLink	146	137	112	81.8	110	80.3	9	6.2
Virgin Australia	54	53	27	50.9	37	69.8	1	1.9
All Airlines	200	190	139	73.2	147	77.4	10	5.0
Gold Coast-Adelaide								
Jetstar	30	29	26	89.7	22	75.9	1	3.3
Virgin Australia	34	34	15	44.1	16	47.1	0	0.0
All Airlines	64	63	41	65.1	38	60.3	1	1.6
Gold Coast-Canberra								
Jetstar	20	20	9	45.0	4	20.0	0	0.0
Virgin Australia	31	31	24	77.4	24	77.4	0	0.0
All Airlines	51	51	33	64.7	28	54.9	0	0.0

	Sectors		Arrivals On Time		Departures On Time		Cancellations	
	Sched.	Flown	No.	%	No.	%	No.	%
Gold Coast-Melbourne								
Jetstar	176	163	102	62.6	103	63.2	13	7.4
Qantas	25	25	12	48.0	12	48.0	0	0.0
QantasLink	6	6	3	50.0	3	50.0	0	0.0
Rex Airlines	31	31	23	74.2	23	74.2	0	0.0
Virgin Australia	275	267	192	71.9	180	67.4	8	2.9
All Airlines	513	492	332	67.5	321	65.2	21	4.1
Gold Coast-Sydney								
Jetstar	232	202	105	52.0	108	53.5	30	12.9
Qantas	103	102	67	65.7	76	74.5	1	1.0
QantasLink	15	15	12	80.0	13	86.7	0	0.0
Rex Airlines	31	31	22	71.0	20	64.5	0	0.0
Virgin Australia	291	284	208	73.2	211	74.3	7	2.4
All Airlines	672	634	414	65.3	428	67.5	38	5.7
Hamilton Island-Brisbane								
Qantas	17	17	15	88.2	15	88.2	0	0.0
Virgin Australia	37	37	28	75.7	25	67.6	0	0.0
All Airlines	54	54	43	79.6	40	74.1	0	0.0
Hamilton Island-Sydney								
Jetstar	24	24	10	41.7	9	37.5	0	0.0
Qantas	31	30	16	53.3	13	43.3	1	3.2
Virgin Australia	31	31	16	51.6	21	67.7	0	0.0
All Airlines	86	85	42	49.4	43	50.6	1	1.2
Hobart-Brisbane								
Jetstar	29	29	26	89.7	26	89.7	0	0.0
QantasLink	24	22	18	81.8	17	77.3	2	8.3
Virgin Australia	50	50	32	64.0	36	72.0	0	0.0
All Airlines	103	101	76	75.2	79	78.2	2	1.9
Hobart-Melbourne								
Jetstar	158	153	92	60.1	86	56.2	5	3.2
Qantas	8	8	5	62.5	6	75.0	0	0.0
QantasLink	87	81	55	67.9	54	66.7	6	6.9
Virgin Australia	141	139	87	62.6	97	69.8	2	1.4
All Airlines	394	381	239	62.7	243	63.8	13	3.3
Hobart-Sydney								
Jetstar	87	83	53	63.9	51	61.4	4	4.6
Qantas	11	11	10	90.9	9	81.8	0	0.0
QantasLink	78	78	47	60.3	51	65.4	0	0.0
Virgin Australia	79	78	49	62.8	54	69.2	1	1.3
All Airlines	255	250	159	63.6	165	66.0	5	2.0
Kalgoorlie-Perth								
Qantas	30	29	21	72.4	18	62.1	1	3.3
QantasLink	47	46	31	67.4	27	58.7	1	2.1
Virgin Australia	38	38	22	57.9	23	60.5	0	0.0
Virgin Australia Regional Airlines	43	41	27	65.9	23	56.1	2	4.7
All Airlines	158	154	101	65.6	91	59.1	4	2.5
Karratha-Perth								
Qantas	23	22	15	68.2	13	59.1	1	4.3
QantasLink	123	122	82	67.2	78	63.9	1	0.8
Virgin Australia	26	26	22	84.6	22	84.6	0	0.0
Virgin Australia Regional Airlines	28	27	17	63.0	16	59.3	1	3.6
All Airlines	200	197	136	69.0	129	65.5	3	1.5

	Sectors		Arrivals On Time		Departures On Time		Cancellations	
	Sched.	Flown	No.	%	No.	%	No.	%
Launceston-Brisbane								
Jetstar	27	25	15	60.0	11	44.0	2	7.4
Virgin Australia	26	25	15	60.0	16	64.0	1	3.8
All Airlines	53	50	30	60.0	27	54.0	3	5.7
Launceston-Melbourne								
Jetstar	81	80	35	43.8	32	40.0	1	1.2
QantasLink	121	115	77	67.0	75	65.2	6	5.0
Virgin Australia	110	110	82	74.5	84	76.4	0	0.0
All Airlines	312	305	194	63.6	191	62.6	7	2.2
Launceston-Sydney								
Jetstar	42	40	15	37.5	13	32.5	2	4.8
QantasLink	31	31	21	67.7	17	54.8	0	0.0
Virgin Australia	31	31	21	67.7	23	74.2	0	0.0
All Airlines	104	102	57	55.9	53	52.0	2	1.9
Mackay-Brisbane								
Jetstar	32	30	14	46.7	14	46.7	2	6.3
Qantas	110	106	84	79.2	80	75.5	4	3.6
QantasLink	16	15	11	73.3	14	93.3	1	6.3
Virgin Australia	143	142	75	52.8	85	59.9	1	0.7
All Airlines	301	293	184	62.8	193	65.9	8	2.7
Melbourne-Adelaide								
Jetstar	118	114	74	64.9	75	65.8	4	3.4
Qantas	245	235	173	73.6	172	73.2	10	4.1
QantasLink	13	13	7	53.8	11	84.6	0	0.0
Rex Airlines	58	58	37	63.8	41	70.7	0	0.0
Virgin Australia	277	274	175	63.9	203	74.1	3	1.1
All Airlines	711	694	466	67.1	502	72.3	17	2.4
Melbourne-Brisbane								
Jetstar	159	142	78	54.9	79	55.6	17	10.7
Qantas	358	351	257	73.2	260	74.1	7	2.0
Rex Airlines	64	64	47	73.4	48	75.0	0	0.0
Virgin Australia	414	404	285	70.5	290	71.8	10	2.4
All Airlines	995	961	667	69.4	677	70.4	34	3.4
Melbourne-Cairns								
Jetstar	75	72	46	63.9	42	58.3	3	4.0
Qantas	28	28	22	78.6	21	75.0	0	0.0
Virgin Australia	51	51	34	66.7	33	64.7	0	0.0
All Airlines	154	151	102	67.5	96	63.6	3	1.9
Melbourne-Canberra								
Jetstar	31	30	18	60.0	18	60.0	1	3.2
QantasLink	252	236	181	76.7	180	76.3	16	6.3
Rex Airlines	31	31	20	64.5	21	67.7	0	0.0
Virgin Australia	119	117	78	66.7	76	65.0	2	1.7
All Airlines	433	414	297	71.7	295	71.3	19	4.4
Melbourne-Darwin								
Jetstar	25	23	18	78.3	15	65.2	2	8.0
Qantas	28	28	19	67.9	15	53.6	0	0.0
Virgin Australia	23	23	15	65.2	12	52.2	0	0.0
All Airlines	76	74	52	70.3	42	56.8	2	2.6

	Sectors		Arrivals On Time		Departures On Time		Cancellations	
	Sched.	Flown	No.	%	No.	%	No.	%
Melbourne-Gold Coast								
Jetstar	177	164	97	59.1	94	57.3	13	7.3
Qantas	24	24	21	87.5	20	83.3	0	0.0
QantasLink	6	6	3	50.0	3	50.0	0	0.0
Rex Airlines	31	31	25	80.6	27	87.1	0	0.0
Virgin Australia	275	267	195	73.0	197	73.8	8	2.9
All Airlines	513	492	341	69.3	341	69.3	21	4.1
Melbourne-Hobart								
Jetstar	161	156	91	58.3	84	53.8	5	3.1
Qantas	9	9	3	33.3	2	22.2	0	0.0
QantasLink	86	81	53	65.4	51	63.0	5	5.8
Virgin Australia	141	140	99	70.7	99	70.7	1	0.7
All Airlines	397	386	246	63.7	236	61.1	11	2.8
Melbourne-Launceston								
Jetstar	80	79	46	58.2	42	53.2	1	1.3
QantasLink	121	114	81	71.1	81	71.1	7	5.8
Virgin Australia	110	110	73	66.4	74	67.3	0	0.0
All Airlines	311	303	200	66.0	197	65.0	8	2.6
Melbourne-Mildura								
QantasLink	121	121	81	66.9	77	63.6	0	0.0
Rex Airlines	112	110	67	60.9	74	67.3	2	1.8
All Airlines	233	231	148	64.1	151	65.4	2	0.9
Melbourne-Newcastle								
Jetstar	49	48	32	66.7	33	68.8	1	2.0
QantasLink	54	50	30	60.0	31	62.0	4	7.4
Virgin Australia	43	41	28	68.3	30	73.2	2	4.7
All Airlines	146	139	90	64.7	94	67.6	7	4.8
Melbourne-Perth								
Jetstar	67	61	39	63.9	43	70.5	6	9.0
Qantas	210	210	118	56.2	143	68.1	0	0.0
Virgin Australia	173	172	112	65.1	116	67.4	1	0.6
All Airlines	450	443	269	60.7	302	68.2	7	1.6
Melbourne-Sunshine Coast								
Jetstar	64	64	46	71.9	49	76.6	0	0.0
Qantas	17	17	13	76.5	13	76.5	0	0.0
QantasLink	14	14	13	92.9	13	92.9	0	0.0
Virgin Australia	82	82	61	74.4	62	75.6	0	0.0
All Airlines	177	177	133	75.1	137	77.4	0	0.0
Melbourne-Sydney								
Jetstar	413	348	209	60.1	198	56.9	65	15.7
Qantas	910	829	593	71.5	637	76.8	81	8.9
Rex Airlines	189	179	133	74.3	140	78.2	10	5.3
Virgin Australia	832	774	506	65.4	572	73.9	58	7.0
All Airlines	2 344	2 130	1 441	67.7	1 547	72.6	214	9.1
Mildura-Melbourne								
QantasLink	121	121	64	52.9	74	61.2	0	0.0
Rex Airlines	111	109	67	61.5	69	63.3	2	1.8
All Airlines	232	230	131	57.0	143	62.2	2	0.9

	Sectors		Arrivals On Time		Departures On Time		Cancellations	
	Sched.	Flown	No.	%	No.	%	No.	%
Mount Isa-Brisbane								
Qantas	50	50	43	86.0	42	84.0	0	0.0
Virgin Australia	14	14	3	21.4	10	71.4	0	0.0
All Airlines	64	64	46	71.9	52	81.3	0	0.0
Newcastle-Brisbane								
Jetstar	60	59	49	83.1	50	84.7	1	1.7
QantasLink	142	126	108	85.7	103	81.7	16	11.3
Virgin Australia	88	84	46	54.8	54	64.3	4	4.5
All Airlines	290	269	203	75.5	207	77.0	21	7.2
Newcastle-Melbourne								
Jetstar	52	49	32	65.3	28	57.1	3	5.8
QantasLink	54	52	33	63.5	40	76.9	2	3.7
Virgin Australia	43	41	20	48.8	22	53.7	2	4.7
All Airlines	149	142	85	59.9	90	63.4	7	4.7
Newman-Perth								
Qantas	20	20	14	70.0	13	65.0	0	0.0
QantasLink	95	93	67	72.0	68	73.1	2	2.1
Virgin Australia	26	25	18	72.0	17	68.0	1	3.8
Virgin Australia Regional Airlines	34	31	22	71.0	23	74.2	3	8.8
All Airlines	175	169	121	71.6	121	71.6	6	3.4
Perth-Adelaide								
Jetstar	27	27	23	85.2	20	74.1	0	0.0
Qantas	94	94	74	78.7	63	67.0	0	0.0
Virgin Australia	28	28	18	64.3	19	67.9	0	0.0
Virgin Australia Regional Airlines	33	31	20	64.5	20	64.5	2	6.1
All Airlines	182	180	135	75.0	122	67.8	2	1.1
Perth-Brisbane								
Jetstar	24	22	12	54.5	12	54.5	2	8.3
Qantas	148	147	117	79.6	107	72.8	1	0.7
Virgin Australia	115	114	82	71.9	66	57.9	1	0.9
All Airlines	287	283	211	74.6	185	65.4	4	1.4
Perth-Broome								
QantasLink	76	75	64	85.3	62	82.7	1	1.3
Virgin Australia	10	10	2	20.0	2	20.0	0	0.0
Virgin Australia Regional Airlines	39	36	26	72.2	24	66.7	3	7.7
All Airlines	125	121	92	76.0	88	72.7	4	3.2
Perth-Darwin								
Qantas	19	19	15	78.9	15	78.9	0	0.0
QantasLink	12	12	10	83.3	10	83.3	0	0.0
Virgin Australia	9	9	6	66.7	7	77.8	0	0.0
Virgin Australia Regional Airlines	13	13	8	61.5	6	46.2	0	0.0
All Airlines	53	53	39	73.6	38	71.7	0	0.0
Perth-Kalgoorlie								
Qantas	30	29	23	79.3	24	82.8	1	3.3
QantasLink	47	46	37	80.4	38	82.6	1	2.1
Virgin Australia	38	38	27	71.1	28	73.7	0	0.0
Virgin Australia Regional Airlines	43	41	29	70.7	30	73.2	2	4.7
All Airlines	158	154	116	75.3	120	77.9	4	2.5

	Sectors		Arrivals On Time		Departures On Time		Cancellations	
	Sched.	Flown	No.	%	No.	%	No.	%
Perth-Karratha								
Qantas	23	22	19	86.4	20	90.9	1	4.3
QantasLink	123	123	93	75.6	93	75.6	0	0.0
Virgin Australia	26	26	24	92.3	23	88.5	0	0.0
Virgin Australia Regional Airlines	28	27	16	59.3	16	59.3	1	3.6
All Airlines	200	198	152	76.8	152	76.8	2	1.0
Perth-Melbourne								
Jetstar	67	60	38	63.3	27	45.0	7	10.4
Qantas	215	213	168	78.9	155	72.8	2	0.9
Virgin Australia	186	184	135	73.4	121	65.8	2	1.1
All Airlines	468	457	341	74.6	303	66.3	11	2.4
Perth-Newman								
Qantas	20	20	18	90.0	17	85.0	0	0.0
QantasLink	95	95	75	78.9	78	82.1	0	0.0
Virgin Australia	26	25	20	80.0	20	80.0	1	3.8
Virgin Australia Regional Airlines	33	32	23	71.9	24	75.0	1	3.0
All Airlines	174	172	136	79.1	139	80.8	2	1.1
Perth-Port Hedland								
Qantas	38	37	31	83.8	30	81.1	1	2.6
QantasLink	95	94	68	72.3	76	80.9	1	1.1
Virgin Australia	19	19	16	84.2	15	78.9	0	0.0
Virgin Australia Regional Airlines	35	33	22	66.7	23	69.7	2	5.7
All Airlines	187	183	137	74.9	144	78.7	4	2.1
Perth-Sydney								
Jetstar	46	45	23	51.1	10	22.2	1	2.2
Qantas	211	209	161	77.0	144	68.9	2	0.9
Virgin Australia	142	138	110	79.7	85	61.6	4	2.8
All Airlines	399	392	294	75.0	239	61.0	7	1.8
Port Hedland-Perth								
Qantas	38	37	28	75.7	22	59.5	1	2.6
QantasLink	94	93	60	64.5	59	63.4	1	1.1
Virgin Australia	19	19	8	42.1	8	42.1	0	0.0
Virgin Australia Regional Airlines	35	33	16	48.5	15	45.5	2	5.7
All Airlines	186	182	112	61.5	104	57.1	4	2.2
Port Lincoln-Adelaide								
QantasLink	134	132	118	89.4	118	89.4	2	1.5
Rex Airlines	174	165	101	61.2	99	60.0	9	5.2
All Airlines	308	297	219	73.7	217	73.1	11	3.6
Port Macquarie-Sydney								
QantasLink	113	112	83	74.1	80	71.4	1	0.9
Rex Airlines	110	105	71	67.6	79	75.2	5	4.5
All Airlines	223	217	154	71.0	159	73.3	6	2.7
Proserpine-Brisbane								
Jetstar	31	31	17	54.8	18	58.1	0	0.0
QantasLink	25	25	22	88.0	24	96.0	0	0.0
Virgin Australia	37	37	30	81.1	35	94.6	0	0.0
All Airlines	93	93	69	74.2	77	82.8	0	0.0
Rockhampton-Brisbane								
QantasLink	177	169	136	80.5	136	80.5	8	4.5
Virgin Australia	143	141	85	60.3	98	69.5	2	1.4
All Airlines	320	310	221	71.3	234	75.5	10	3.1

	Sectors		Arrivals On Time		Departures On Time		Cancellations	
	Sched.	Flown	No.	%	No.	%	No.	%
Sunshine Coast-Melbourne								
Jetstar	64	64	39	60.9	42	65.6	0	0.0
Qantas	17	17	10	58.8	9	52.9	0	0.0
QantasLink	14	14	12	85.7	8	57.1	0	0.0
Virgin Australia	82	82	47	57.3	49	59.8	0	0.0
All Airlines	177	177	108	61.0	108	61.0	0	0.0
Sunshine Coast-Sydney								
Jetstar	88	76	35	46.1	41	53.9	12	13.6
Qantas	19	19	9	47.4	10	52.6	0	0.0
QantasLink	64	61	37	60.7	45	73.8	3	4.7
Virgin Australia	76	76	33	43.4	42	55.3	0	0.0
All Airlines	247	232	114	49.1	138	59.5	15	6.1
Sydney-Adelaide								
Jetstar	108	94	49	52.1	51	54.3	14	13.0
Qantas	222	219	141	64.4	160	73.1	3	1.4
Virgin Australia	164	163	93	57.1	97	59.5	1	0.6
All Airlines	494	476	283	59.5	308	64.7	18	3.6
Sydney-Albury								
QantasLink	112	112	84	75.0	84	75.0	0	0.0
Rex Airlines	137	131	98	74.8	101	77.1	6	4.4
All Airlines	249	243	182	74.9	185	76.1	6	2.4
Sydney-Armidale								
QantasLink	106	100	86	86.0	79	79.0	6	5.7
Rex Airlines	76	74	57	77.0	57	77.0	2	2.6
All Airlines	182	174	143	82.2	136	78.2	8	4.4
Sydney-Ballina								
Jetstar	75	74	49	66.2	49	66.2	1	1.3
QantasLink	91	89	65	73.0	58	65.2	2	2.2
Virgin Australia	55	54	42	77.8	42	77.8	1	1.8
All Airlines	221	217	156	71.9	149	68.7	4	1.8
Sydney-Brisbane								
Jetstar	187	169	102	60.4	101	59.8	18	9.6
Qantas	543	510	362	71.0	367	72.0	33	6.1
Rex Airlines	146	142	97	68.3	104	73.2	4	2.7
Virgin Australia	476	452	325	71.9	331	73.2	24	5.0
All Airlines	1 352	1 273	886	69.6	903	70.9	79	5.8
Sydney-Cairns								
Jetstar	81	71	46	64.8	40	56.3	10	12.3
Qantas	32	32	15	46.9	17	53.1	0	0.0
Virgin Australia	76	76	64	84.2	60	78.9	0	0.0
All Airlines	189	179	125	69.8	117	65.4	10	5.3
Sydney-Canberra								
QantasLink	485	438	336	76.7	329	75.1	47	9.7
Virgin Australia	254	248	199	80.2	179	72.2	6	2.4
All Airlines	739	686	535	78.0	508	74.1	53	7.2
Sydney-Coffs Harbour								
QantasLink	118	116	87	75.0	90	77.6	2	1.7
Rex Airlines	136	136	111	81.6	106	77.9	0	0.0
All Airlines	254	252	198	78.6	196	77.8	2	0.8

	Sectors		Arrivals On Time		Departures On Time		Cancellations	
	Sched.	Flown	No.	%	No.	%	No.	%
Sydney-Dubbo								
QantasLink	114	112	87	77.7	79	70.5	2	1.8
Rex Airlines	136	136	100	73.5	96	70.6	0	0.0
All Airlines	250	248	187	75.4	175	70.6	2	0.8
Sydney-Gold Coast								
Jetstar	230	205	106	51.7	100	48.8	25	10.9
Qantas	103	102	73	71.6	66	64.7	1	1.0
QantasLink	15	15	13	86.7	13	86.7	0	0.0
Rex Airlines	31	31	19	61.3	20	64.5	0	0.0
Virgin Australia	292	285	201	70.5	204	71.6	7	2.4
All Airlines	671	638	412	64.6	403	63.2	33	4.9
Sydney-Hamilton Island								
Jetstar	25	25	11	44.0	11	44.0	0	0.0
Qantas	31	30	15	50.0	14	46.7	1	3.2
Virgin Australia	31	31	26	83.9	23	74.2	0	0.0
All Airlines	87	86	52	60.5	48	55.8	1	1.1
Sydney-Hobart								
Jetstar	85	82	53	64.6	53	64.6	3	3.5
Qantas	11	11	10	90.9	9	81.8	0	0.0
QantasLink	78	78	53	67.9	54	69.2	0	0.0
Virgin Australia	79	78	58	74.4	62	79.5	1	1.3
All Airlines	253	249	174	69.9	178	71.5	4	1.6
Sydney-Launceston								
Jetstar	41	39	19	48.7	22	56.4	2	4.9
QantasLink	31	31	20	64.5	21	67.7	0	0.0
Virgin Australia	31	31	24	77.4	24	77.4	0	0.0
All Airlines	103	101	63	62.4	67	66.3	2	1.9
Sydney-Melbourne								
Jetstar	413	348	212	60.9	196	56.3	65	15.7
Qantas	911	844	566	67.1	603	71.4	67	7.4
Rex Airlines	189	179	124	69.3	128	71.5	10	5.3
Virgin Australia	822	764	517	67.7	542	70.9	58	7.1
All Airlines	2 335	2 135	1 419	66.5	1 469	68.8	200	8.6
Sydney-Perth								
Jetstar	46	45	22	48.9	20	44.4	1	2.2
Qantas	210	209	116	55.5	136	65.1	1	0.5
Virgin Australia	148	144	97	67.4	96	66.7	4	2.7
All Airlines	404	398	235	59.0	252	63.3	6	1.5
Sydney-Port Macquarie								
QantasLink	113	113	79	69.9	71	62.8	0	0.0
Rex Airlines	112	106	85	80.2	87	82.1	6	5.4
All Airlines	225	219	164	74.9	158	72.1	6	2.7
Sydney-Sunshine Coast								
Jetstar	87	77	49	63.6	54	70.1	10	11.5
Qantas	20	20	11	55.0	11	55.0	0	0.0
QantasLink	62	59	37	62.7	37	62.7	3	4.8
Virgin Australia	76	76	43	56.6	49	64.5	0	0.0
All Airlines	245	232	140	60.3	151	65.1	13	5.3
Sydney-Wagga Wagga								
QantasLink	108	104	81	77.9	75	72.1	4	3.7
Rex Airlines	141	137	103	75.2	107	78.1	4	2.8
All Airlines	249	241	184	76.3	182	75.5	8	3.2

	<i>Sectors</i>		<i>Arrivals On Time</i>		<i>Departures On Time</i>		<i>Cancellations</i>	
	<i>Sched.</i>	<i>Flown</i>	<i>No.</i>	<i>%</i>	<i>No.</i>	<i>%</i>	<i>No.</i>	<i>%</i>
Townsville-Brisbane								
Jetstar	52	50	32	64.0	38	76.0	2	3.8
Qantas	75	75	68	90.7	68	90.7	0	0.0
QantasLink	40	40	24	60.0	32	80.0	0	0.0
Virgin Australia	142	140	94	67.1	95	67.9	2	1.4
All Airlines	309	305	218	71.5	233	76.4	4	1.3
Townsville-Cairns								
QantasLink	146	140	130	92.9	131	93.6	6	4.1
Rex Airlines	13	11	8	72.7	8	72.7	2	15.4
All Airlines	159	151	138	91.4	139	92.1	8	5.0
Wagga Wagga-Sydney								
QantasLink	108	102	88	86.3	83	81.4	6	5.6
Rex Airlines	142	136	98	72.1	109	80.1	6	4.2
All Airlines	250	238	186	78.2	192	80.7	12	4.8

Airports

The following data reports by airport against flights operated on published routes only. This month, 8 major city airports and 28 regional city airports are covered.

Airport	Arrivals			Departures		
	Sectors	On Time		Sectors	On Time	
	Flown	No.	%	Flown	No.	%
Adelaide						
Jetstar	291	192	66.0	288	193	67.0
Qantas	557	396	71.1	557	406	72.9
QantasLink	436	338	77.5	435	363	83.4
Rex Airlines	223	138	61.9	223	140	62.8
Virgin Australia	671	419	62.4	670	440	65.7
Virgin Australia Regional Airlines	31	20	64.5	31	8	25.8
All Airlines	2,209	1,503	68.0	2,204	1,550	70.3

Relates to services to and from Alice Springs, Brisbane, Canberra, Gold Coast, Melbourne, Perth, Port Lincoln and Sydney only.

Albury

QantasLink	112	84	75.0	112	87	77.7
Rex Airlines	131	98	74.8	129	103	79.8
All Airlines	243	182	74.9	241	190	78.8

Relates to services to and from Sydney only.

Alice Springs

QantasLink	48	40	83.3	48	32	66.7
Virgin Australia	11	8	72.7	11	8	72.7
All Airlines	59	48	81.4	59	40	67.8

Relates to services to and from Adelaide only.

Armidale

QantasLink	100	86	86.0	100	90	90.0
Rex Airlines	74	57	77.0	75	51	68.0
All Airlines	174	143	82.2	175	141	80.6

Relates to services to and from Sydney only.

Ballina

Jetstar	74	49	66.2	74	39	52.7
QantasLink	89	65	73.0	86	61	70.9
Virgin Australia	54	42	77.8	54	37	68.5
All Airlines	217	156	71.9	214	137	64.0

Relates to services to and from Sydney only.

Brisbane

Jetstar	707	435	61.5	707	473	66.9
Qantas	1,352	1,030	76.2	1,353	1,059	78.3
QantasLink	1,018	802	78.8	1,019	802	78.7
Rex Airlines	206	144	69.9	205	142	69.3
Virgin Australia	2,131	1,468	68.9	2,134	1,473	69.0
All Airlines	5,414	3,879	71.6	5,418	3,949	72.9

Relates to services to and from Adelaide, Cairns, Canberra, Darwin, Emerald, Gladstone, Hamilton Island, Hobart, Launceston, Mackay, Melbourne, Mount Isa, Newcastle, Perth, Proserpine, Rockhampton, Sydney and Townsville only.

Airport	Arrivals			Departures		
	Sectors	On Time		Sectors	On Time	
	Flown	No.	%	Flown	No.	%
Broome						
QantasLink	75	64	85.3	75	58	77.3
Virgin Australia	10	2	20.0	10	1	10.0
Virgin Australia Regional Airlines	36	26	72.2	36	22	61.1
All Airlines	121	92	76.0	121	81	66.9
Relates to services to and from Perth only.						
Cairns						
Jetstar	217	139	64.1	217	138	63.6
Qantas	130	94	72.3	130	93	71.5
QantasLink	196	175	89.3	197	166	84.3
Rex Airlines	11	8	72.7	11	8	72.7
Virgin Australia	260	188	72.3	260	180	69.2
All Airlines	814	604	74.2	815	585	71.8
Relates to services to and from Brisbane, Melbourne, Sydney and Townsville only.						
Canberra						
Jetstar	81	51	63.0	81	38	46.9
Qantas	18	17	94.4	18	17	94.4
QantasLink	913	719	78.8	907	720	79.4
Rex Airlines	31	20	64.5	31	19	61.3
Virgin Australia	528	400	75.8	527	397	75.3
All Airlines	1,571	1,207	76.8	1,564	1,191	76.2
Relates to services to and from Adelaide, Brisbane, Gold Coast, Melbourne and Sydney only.						
Coffs Harbour						
QantasLink	116	87	75.0	116	91	78.4
Rex Airlines	136	111	81.6	135	108	80.0
All Airlines	252	198	78.6	251	199	79.3
Relates to services to and from Sydney only.						
Darwin						
Jetstar	39	31	79.5	40	25	62.5
Qantas	47	34	72.3	45	38	84.4
QantasLink	47	32	68.1	47	38	80.9
Virgin Australia	63	48	76.2	62	44	71.0
Virgin Australia Regional Airlines	13	8	61.5	12	6	50.0
All Airlines	209	153	73.2	206	151	73.3
Relates to services to and from Brisbane, Melbourne, Perth and Sydney only.						
Dubbo						
QantasLink	112	87	77.7	110	90	81.8
Rex Airlines	136	100	73.5	131	94	71.8
All Airlines	248	187	75.4	241	184	76.3
Relates to services to and from Sydney only.						
Emerald						
QantasLink	121	95	78.5	119	85	71.4
Virgin Australia	27	22	81.5	27	24	88.9
All Airlines	148	117	79.1	146	109	74.7
Relates to services to and from Brisbane only.						

Airport	Arrivals			Departures		
	Sectors	On Time		Sectors	On Time	
	Flown	No.	%	Flown	No.	%
Gladstone						
QantasLink	140	112	80.0	137	110	80.3
Virgin Australia	53	36	67.9	53	37	69.8
All Airlines	193	148	76.7	190	147	77.4
Relates to services to and from Brisbane only.						
Gold Coast						
Jetstar	418	238	56.9	414	237	57.2
Qantas	126	94	74.6	127	88	69.3
QantasLink	21	16	76.2	21	16	76.2
Rex Airlines	62	44	71.0	62	43	69.4
Virgin Australia	617	440	71.3	616	431	70.0
All Airlines	1,244	832	66.9	1,240	815	65.7
Relates to services to and from Adelaide, Canberra, Melbourne and Sydney only.						
Hamilton Island						
Jetstar	25	11	44.0	24	9	37.5
Qantas	48	31	64.6	47	28	59.6
Virgin Australia	68	56	82.4	68	46	67.6
All Airlines	141	98	69.5	139	83	59.7
Relates to services to and from Brisbane and Sydney only.						
Hobart						
Jetstar	267	170	63.7	265	163	61.5
Qantas	20	13	65.0	19	15	78.9
QantasLink	182	127	69.8	181	122	67.4
Virgin Australia	268	198	73.9	267	187	70.0
All Airlines	737	508	68.9	732	487	66.5
Relates to services to and from Brisbane, Melbourne and Sydney only.						
Kalgoorlie						
Qantas	29	23	79.3	29	18	62.1
QantasLink	46	37	80.4	46	27	58.7
Virgin Australia	38	27	71.1	38	23	60.5
Virgin Australia Regional Airlines	41	29	70.7	41	23	56.1
All Airlines	154	116	75.3	154	91	59.1
Relates to services to and from Perth only.						
Karratha						
Qantas	22	19	86.4	22	13	59.1
QantasLink	123	93	75.6	122	78	63.9
Virgin Australia	26	24	92.3	26	22	84.6
Virgin Australia Regional Airlines	27	16	59.3	27	16	59.3
All Airlines	198	152	76.8	197	129	65.5
Relates to services to and from Perth only.						
Launceston						
Jetstar	142	83	58.5	145	56	38.6
QantasLink	145	101	69.7	146	92	63.0
Virgin Australia	166	116	69.9	166	123	74.1
All Airlines	453	300	66.2	457	271	59.3
Relates to services to and from Brisbane, Melbourne and Sydney only.						

Airport	Arrivals			Departures		
	Sectors	On Time		Sectors	On Time	
	Flown	No.	%	Flown	No.	%
Mackay						
Jetstar	31	19	61.3	30	14	46.7
Qantas	110	94	85.5	106	80	75.5
QantasLink	10	8	80.0	15	14	93.3
Virgin Australia	143	81	56.6	142	85	59.9
All Airlines	294	202	68.7	293	193	65.9

Relates to services to and from Brisbane only.

Melbourne

Jetstar	1,294	803	62.1	1,301	772	59.3
Qantas	1,744	1,242	71.2	1,731	1,283	74.1
QantasLink	637	415	65.1	635	447	70.4
Rex Airlines	470	324	68.9	473	351	74.2
Virgin Australia	2,453	1,677	68.4	2,455	1,764	71.9
All Airlines	6,598	4,461	67.6	6,595	4,617	70.0

Relates to services to and from Adelaide, Brisbane, Cairns, Canberra, Darwin, Gold Coast, Hobart, Launceston, Mildura, Newcastle, Perth, Sunshine Coast and Sydney only.

Mildura

QantasLink	121	81	66.9	121	74	61.2
Rex Airlines	110	67	60.9	109	69	63.3
All Airlines	231	148	64.1	230	143	62.2

Relates to services to and from Melbourne only.

Mount Isa

Qantas	50	47	94.0	50	42	84.0
Virgin Australia	14	9	64.3	14	10	71.4
All Airlines	64	56	87.5	64	52	81.3

Relates to services to and from Brisbane only.

Newcastle

Jetstar	107	86	80.4	108	78	72.2
QantasLink	177	130	73.4	178	143	80.3
Virgin Australia	126	75	59.5	125	76	60.8
All Airlines	410	291	71.0	411	297	72.3

Relates to services to and from Brisbane and Melbourne only.

Newman

Qantas	20	18	90.0	20	13	65.0
QantasLink	95	75	78.9	93	68	73.1
Virgin Australia	25	20	80.0	25	17	68.0
Virgin Australia Regional Airlines	32	23	71.9	31	23	74.2
All Airlines	172	136	79.1	169	121	71.6

Relates to services to and from Perth only.

Perth

Jetstar	156	103	66.0	154	69	44.8
Qantas	786	522	66.4	790	575	72.8
QantasLink	441	305	69.2	445	357	80.2
Virgin Australia	590	386	65.4	591	386	65.3
Virgin Australia Regional Airlines	211	125	59.2	213	143	67.1
All Airlines	2,184	1,441	66.0	2,193	1,530	69.8

Relates to services to and from Adelaide, Brisbane, Broome, Darwin, Kalgoorlie, Karratha, Melbourne, Newman, Port Hedland and Sydney only.

Airport	Arrivals			Departures		
	Sectors	On Time		Sectors	On Time	
	Flown	No.	%	Flown	No.	%
Port Hedland						
Qantas	37	31	83.8	37	22	59.5
QantasLink	94	68	72.3	93	59	63.4
Virgin Australia	19	16	84.2	19	8	42.1
Virgin Australia Regional Airlines	33	22	66.7	33	15	45.5
All Airlines	183	137	74.9	182	104	57.1
Relates to services to and from Perth only.						
Port Lincoln						
QantasLink	132	117	88.6	132	118	89.4
Rex Airlines	166	89	53.6	165	99	60.0
All Airlines	298	206	69.1	297	217	73.1
Relates to services to and from Adelaide only.						
Port Macquarie						
QantasLink	113	79	69.9	112	80	71.4
Rex Airlines	106	85	80.2	105	79	75.2
All Airlines	219	164	74.9	217	159	73.3
Relates to services to and from Sydney only.						
Proserpine						
Jetstar	31	20	64.5	31	18	58.1
QantasLink	25	24	96.0	25	24	96.0
Virgin Australia	37	35	94.6	37	35	94.6
All Airlines	93	79	84.9	93	77	82.8
Relates to services to and from Brisbane only.						
Rockhampton						
QantasLink	168	143	85.1	169	136	80.5
Virgin Australia	142	81	57.0	141	98	69.5
All Airlines	310	224	72.3	310	234	75.5
Relates to services to and from Brisbane only.						
Sunshine Coast						
Jetstar	141	95	67.4	140	83	59.3
Qantas	37	24	64.9	36	19	52.8
QantasLink	73	50	68.5	75	53	70.7
Virgin Australia	158	104	65.8	158	91	57.6
All Airlines	409	273	66.7	409	246	60.1
Relates to services to and from Melbourne and Sydney only.						
Sydney						
Jetstar	1,227	685	55.8	1,229	697	56.7
Qantas	1,961	1,422	72.5	1,977	1,383	70.0
QantasLink	1,355	1,018	75.1	1,367	990	72.4
Rex Airlines	1,063	732	68.9	1,072	806	75.2
Virgin Australia	2,400	1,629	67.9	2,402	1,709	71.1
All Airlines	8,006	5,486	68.5	8,047	5,585	69.4

Relates to services to and from Adelaide, Albury, Armidale, Ballina, Brisbane, Cairns, Canberra, Coffs Harbour, Darwin, Dubbo, Gold Coast, Hamilton Island, Hobart, Launceston, Melbourne, Perth, Port Macquarie, Sunshine Coast and Wagga Wagga only.

<i>Airport</i>	<i>Arrivals</i>			<i>Departures</i>		
	<i>Sectors</i>	<i>On Time</i>		<i>Sectors</i>	<i>On Time</i>	
	<i>Flown</i>	<i>No.</i>	<i>%</i>	<i>Flown</i>	<i>No.</i>	<i>%</i>
Townsville						
Jetstar	50	40	80.0	50	38	76.0
Qantas	75	62	82.7	75	68	90.7
QantasLink	181	169	93.4	180	163	90.6
Rex Airlines	11	8	72.7	11	8	72.7
Virgin Australia	140	97	69.3	140	95	67.9
All Airlines	457	376	82.3	456	372	81.6

Relates to services to and from Brisbane and Cairns only.

Wagga Wagga

QantasLink	104	81	77.9	102	83	81.4
Rex Airlines	137	103	75.2	136	109	80.1
All Airlines	241	184	76.3	238	192	80.7

Relates to services to and from Sydney only.

Definitions

On time arrival	A flight arrival is counted as "on time" if it arrived at the gate before 15 minutes after the scheduled arrival time shown in the carriers' schedule. Neither diverted nor cancelled flights count as on time.
On time departure	A flight departure is counted as "on time" if it departs the gate before 15 minutes after the scheduled departure time shown in the carriers' schedule.
Cancellation	A flight removed from service within 7 days of scheduled departure is regarded as a cancellation.
On time departure percentage	The percentage of on time departures is measured against the number of departures <i>operated</i> on any particular sector.
On time arrival percentage	The percentage of on time arrivals is measured against the number of arrivals <i>operated</i> on any particular sector.
Cancellation percentage	The percentage of cancellations is measured against the number of services <i>scheduled</i> on any particular sector.

Airlines and Reporting

Data has been gathered since November 2003, although some airlines commenced reporting at a later date, including Jetstar which first reported in May 2004, MacAir in July 2005, Tigerair Australia in April 2008 and Virgin Australia Regional Airlines in May 2013. MacAir ceased operations in February 2009 and data was not received for December 2008 onwards. Tigerair Australia ceased operations in March 2020 and data was not received for that month.

Virgin Blue was rebranded as Virgin Australia in May 2011 and Tiger Airways was rebranded as Tigerair Australia in July 2013 and time series data in Microsoft Excel spread sheet format on the BITRE website have been revised to reflect these changes. With effect from July 2021, Regional Express is reported as Rex Airlines.

Services operated by Skywest on behalf of Virgin Australia using ATR/F100 aircraft commenced in November 2011 and were shown separately as Virgin Australia – ATR/F100 Operations. Virgin Australia Regional Airlines commenced operations in May 2013. It was formed after the acquisition of Skywest by Virgin Australia and represented a combination of operations previously reported under Skywest and Virgin Australia – ATR/F100 Operations. In February 2016, Virgin Australia transferred their ATR fleet from Virgin Australia Regional Airlines to Virgin Australia.