



Australian Government

**Department of Infrastructure, Transport,
Regional Development, Communications and the Arts**
Bureau of Infrastructure and Transport Research Economics

STATISTICAL REPORT



Aviation

**Domestic airline on time performance
May 2024**

The Department of Infrastructure, Transport, Regional Development, Communications and the Arts acknowledges the Traditional Custodians of Country of the land on which we work and live.

We recognise and respect the continuing connections to land, waters and communities.

We pay our respects to them and their cultures and to their Elders both past and present and to all Aboriginal and Torres Strait Islander people.

© Commonwealth of Australia 2024

ISSN: 1832-0759

Ownership of intellectual property rights in this publication

Unless otherwise noted, copyright (and any other intellectual property rights, if any) in this publication is owned by the Commonwealth of Australia (referred to below as the Commonwealth).

Disclaimer

The material contained in this publication is made available on the understanding that the Commonwealth is not providing professional advice, and that users exercise their own skill and care with respect to its use, and seek independent advice if necessary.

The Commonwealth makes no representations or warranties as to the contents or accuracy of the information contained in this publication. To the extent permitted by law, the Commonwealth disclaims liability to any person or organisation in respect of anything done, or omitted to be done, in reliance upon information contained in this publication.

Creative Commons licence

With the exception of (a) the Coat of Arms; and (b) the Department of Infrastructure, Transport, Regional Development, Communications and the Arts' photos and graphics, copyright in this publication is licensed under a Creative Commons Attribution 3.0 Australia Licence.

Creative Commons Attribution 3.0 Australia Licence is a standard form licence agreement that allows you to copy, communicate and adapt this publication provided that you attribute the work to the Commonwealth and abide by the other licence terms. A summary of the licence terms is available from <http://creativecommons.org/licenses/by/3.0/au/deed.en>. The full licence terms are available from <http://creativecommons.org/licenses/by/3.0/au/legalcode>.

Use of the Coat of Arms

The Department of the Prime Minister and Cabinet sets the terms under which the Coat of Arms is used. Please refer to the Department's Commonwealth Coat of Arms and Government branding web page <http://www.dpmmc.gov.au/guidelines/index.cfm#brand> and, in particular, the Guidelines on the use of the Commonwealth Coat of Arms publication.

An appropriate citation for this report is:

Bureau of Infrastructure and Transport Research Economics (BITRE), 2024, Domestic airline on time performance, Statistical Report, BITRE, Canberra ACT.

Contact us

All other rights are reserved, including in relation to any Departmental logos or trade marks which may exist. For enquiries regarding the licence and any use of this publication, please contact:

Bureau of Infrastructure and Transport Research Economics (BITRE)
Department of Infrastructure, Transport, Regional Development, Communications and the Arts
GPO Box 501, Canberra ACT 2601, Australia
Telephone: (international) +61 2 6136 8687
Email: bitre@infrastructure.gov.au
Website: www.bitre.gov.au

Inquiries

Should you require additional information about the statistics contained in this publication:

Telephone (02) 6136 7250

Electronic mail: AVSTATS@infrastructure.gov.au

Web site: <http://www.bitre.gov.au/statistics/aviation/otphome.aspx>

Foreword

The Bureau of Infrastructure and Transport Research Economics (BITRE) monitors the punctuality and reliability of major domestic airlines operating between Australian airports. The purpose of this is to allow for evaluation of overall industry and individual airline performance, so that consumers of air travel can make informed decisions.

The following domestic airlines currently report this information monthly to the BITRE: Hinterland, Jetstar, Qantas, QantasLink, Rex Airlines, Skytrans, Virgin Australia and Virgin Australia Regional Airlines. Hinterland has joined from March 2024.

Information presented in this report is for Australian domestic routes for which the passenger load averaged 8,000 or more passengers per month over the previous six months and where two or more airlines operated in competition on those routes. In order to present data for more routes during the period impacted by COVID-19, the passenger load restriction was not applied between March 2020 and January 2023. From February 2023, the passenger load restriction was reinstated due to the continued recovery of passenger numbers. Data are presented for 59 routes in May 2024. Over time, routes which meet these criteria change as airline networks and traffic levels vary. Participating airlines report their overall monthly network performance where this is possible.

Total industry figures encompass all services operated by reporting airlines only. These airlines collectively carried over 98 per cent of total domestic passengers (regular public transport only) in 2023.

The method of capturing on time performance varies between airlines utilising different recording systems. Jetstar and Qantas jet aircraft use Aircraft Communication Addressing and Reporting System (ACARS) to electronically measure on time performance. Rex Airlines, Virgin Australia, Virgin Australia Regional Airlines and the Qantas non-jet fleet record on time performance manually using records from pilots, gate agents and/or ground crews.

After initial data is collected, aggregate reports are reviewed by participating airlines prior to publication.

Reports and detailed time series data in Microsoft Excel spreadsheet format are available from the BITRE website at: <http://www.bitre.gov.au/statistics/aviation/otphome.aspx>

Contents

	Page
Industry performance	1
Individual routes	10
Airports.....	22
Definitions	28
Airlines and Reporting	29

Industry performance

For May 2024, on time performance over all routes operated by participating airlines (Hinterland, Jetstar, Qantas, QantasLink, Rex Airlines, Skytrans, Virgin Australia and Virgin Australia Regional Airlines) averaged 78.6 per cent for on time arrivals and 79.6 per cent for on time departures. The cancellation rate for the month was 2.1 per cent. The equivalent figures for May 2023 were 74.0 per cent for on time arrivals, 73.9 per cent for on time departures and 3.0 per cent for cancellations.

This month's on time arrivals figure was lower than the long term average performance for all routes (80.9 per cent) and the on time departures figure was also lower than the long term average (82.1 per cent). The rate of cancellations was lower than the long term average of 2.2 per cent.

The Qantas network (Qantas and QantasLink combined operations) recorded 79.4 per cent for on time arrivals while the Virgin Australia network (Virgin Australia and Virgin Australia Regional Airlines combined operations) recorded 77.7 per cent. Hinterland achieved the highest on time arrivals at 83.8 per cent, followed by Qantas at 79.5 per cent, QantasLink at 79.3 per cent, Jetstar at 79.1 per cent, Virgin Australia at 77.9 per cent, Rex Airlines at 77.1 per cent, Skytrans at 75.6 per cent and Virgin Australia Regional Airlines at 70.8 per cent.

The Qantas network recorded 80.6 per cent for on time departures while the Virgin Australia network recorded 78.9 per cent. Hinterland achieved the highest level of on time departures for May 2024 at 90.2 per cent, followed by Qantas at 81.1 per cent, QantasLink at 80.4 per cent, Rex Airlines at 80.1 per cent, Virgin Australia at 79.2 per cent, Jetstar at 76.6 per cent, Skytrans at 72.2 per cent and Virgin Australia Regional Airlines at 70.2 per cent.

Skytrans recorded the highest percentage of cancellations at 7.7 per cent during the month, followed by Virgin Australia Regional Airlines at 6.1 per cent, Qantas at 3.2 per cent, QantasLink at 2.2 per cent, Virgin Australia at 2.0 per cent, Jetstar at 1.1 per cent and Rex Airlines and Hinterland both at 0.8 per cent.

Airlines' on time performance varies across the routes they serve. Individual route data by specific airline for 59 routes are shown on pages 10-21.

Of the 59 routes which met the criteria for on time performance reporting in May 2024, the Townsville-Cairns route had the highest percentage of on time arrivals (94.8 per cent), and the highest percentage of on time departures (95.5 per cent). The Darwin-Perth route had the lowest percentage of on time arrivals (44.6 per cent), while the Hamilton Island-Sydney route had the lowest percentage of on time departures (41.9 per cent).

Cancellations were highest on the Melbourne-Sydney route at 6.5 per cent, followed by the Sydney-Melbourne route at 6.3 per cent, the Kalgoorlie-Perth and Canberra-Melbourne routes at 5.1 per cent, the Canberra-Sydney route at 5.0 per cent and the Townsville-Cairns route at 4.9 per cent.

Port Lincoln Airport recorded the highest percentage of on time arrivals (92.1 per cent), and the highest percentage of on time departures (91.3 per cent). Gladstone Airport recorded the lowest percentage of on time arrivals (64.1 per cent), while Darwin Airport had the lowest percentage of on time departures (51.9 per cent). These figures only refer to reported routes and do not cover all flights at these airports.

Table 1 On time performance for May 2024 – Total Industry

	<i>Sectors</i>		<i>Arrivals On Time</i>		<i>Departures On Time</i>		<i>Cancellations</i>	
	<i>Scheduled</i>	<i>Flown</i>	<i>No.</i>	<i>%</i>	<i>No.</i>	<i>%</i>	<i>No.</i>	<i>%</i>
Hinterland	1,111	1,102	923	83.8	994	90.2	9	0.8
Jetstar	6,683	6,612	5,229	79.1	5,064	76.6	71	1.1
Qantas - all QF designated services	20,479	19,950	15,834	79.4	16,085	80.6	529	2.6
Rex Airlines	6,024	5,975	4,604	77.1	4,783	80.1	49	0.8
Skytrans	1,093	1,009	763	75.6	729	72.2	84	7.7
Virgin Australia - all VA designated services	11,953	11,704	9,099	77.7	9,237	78.9	249	2.1
All Airlines	47,343	46,352	36,452	78.6	36,892	79.6	991	2.1
Individual operating entities								
Qantas	8,040	7,780	6,183	79.5	6,306	81.1	260	3.2
QantasLink	12,439	12,170	9,651	79.3	9,779	80.4	269	2.2
Virgin Australia	11,595	11,368	8,861	77.9	9,001	79.2	227	2.0
Virgin Australia Regional Airlines	358	336	238	70.8	236	70.2	22	6.1

Total airline network data (including routes not shown in this report).

Airlines’ on time performance varies across the routes they serve. Individual route data by specific airline are shown on page 10 and onwards.

Table 2 Top ten routes for on time performance for May 2024 (participating airlines only)

<i>Arrivals</i>		<i>Departures</i>	
<i>Route</i>	<i>On Time (%)</i>	<i>Route</i>	<i>On Time (%)</i>
Townsville-Cairns	94.8	Townsville-Cairns	95.5
Adelaide-Port Lincoln	92.1	Adelaide-Port Lincoln	91.4
Brisbane-Perth	91.8	Port Lincoln-Adelaide	91.3
Emerald-Brisbane	91.7	Sydney-Ballina	90.4
Sydney-Ballina	90.4	Adelaide-Canberra	90.3
Port Lincoln-Adelaide	90.0	Emerald-Brisbane	89.1
Brisbane-Emerald	89.7	Cairns-Townsville	89.0
Canberra-Adelaide	89.3	Perth-Newman	88.8
Mount Isa-Brisbane	89.1	Perth-Adelaide	87.6
Cairns-Townsville	89.0	Brisbane-Emerald	87.2

Table 3 Top ten airports for on time performance for May 2024 (participating airlines and reported routes only)

<i>Arrivals</i>		<i>Departures</i>	
<i>Airport</i>	<i>On Time (%)</i>	<i>Airport</i>	<i>On Time (%)</i>
Port Lincoln	92.1	Port Lincoln	91.3
Ballina	90.4	Emerald	89.1
Emerald	89.7	Ballina	84.7
Newman	87.6	Adelaide	84.5
Mount Isa	85.9	Wagga Wagga	84.1
Albury	85.2	Perth	82.7
Adelaide	84.5	Melbourne	82.2
Wagga Wagga	84.2	Newman	81.9
Canberra	82.3	Port Macquarie	81.8
Port Hedland	81.5	Newcastle	80.7

Total industry on time performance

Figure 1 On time performance (by month from May 2021)—Total Industry

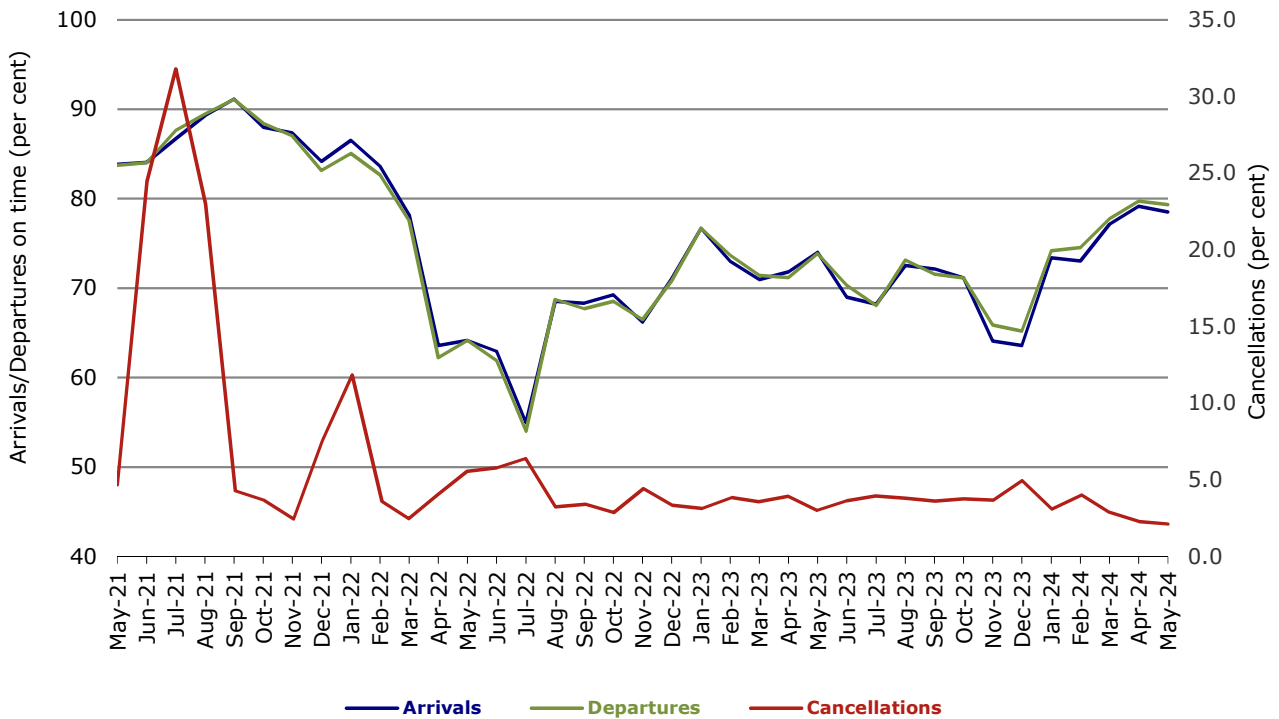


Figure 2 Arrivals on time (by month from May 2023)

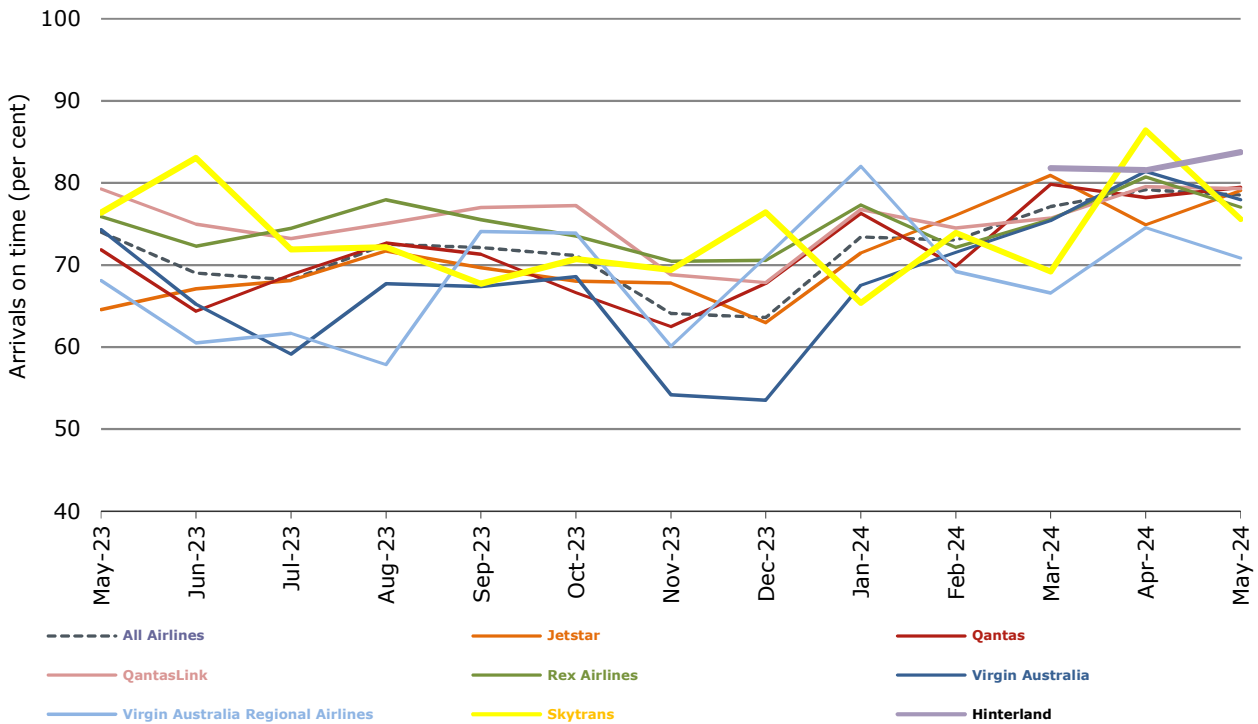


Figure 3 Departures on time (by month from May 2023)

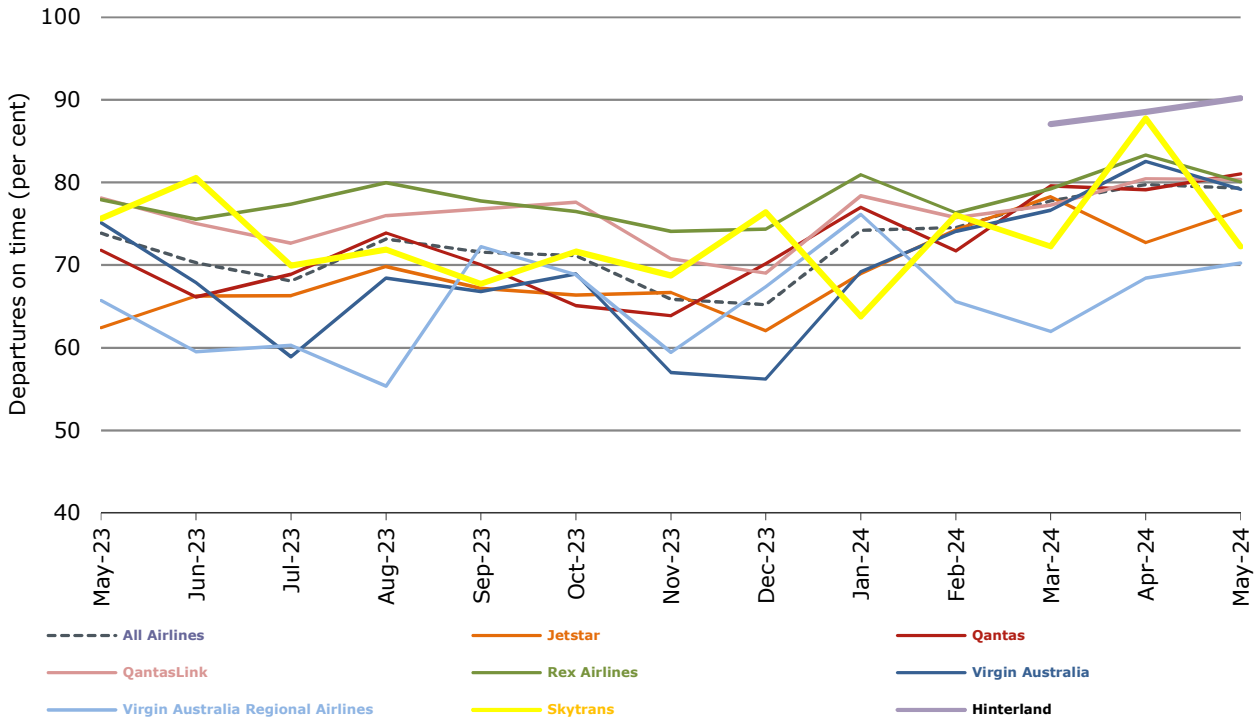
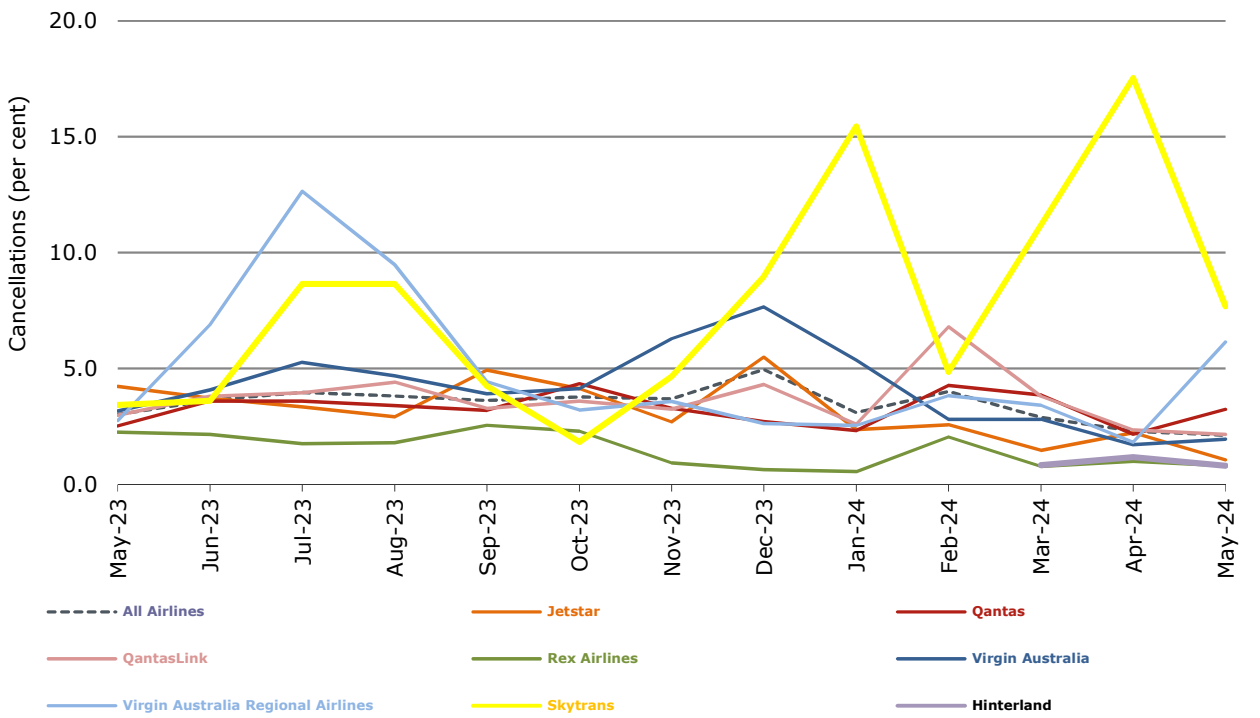


Figure 4 Cancellations (by month from May 2023)



Airlines on time performance

Figure 5 On time performance (by month from May 2021)—Jetstar

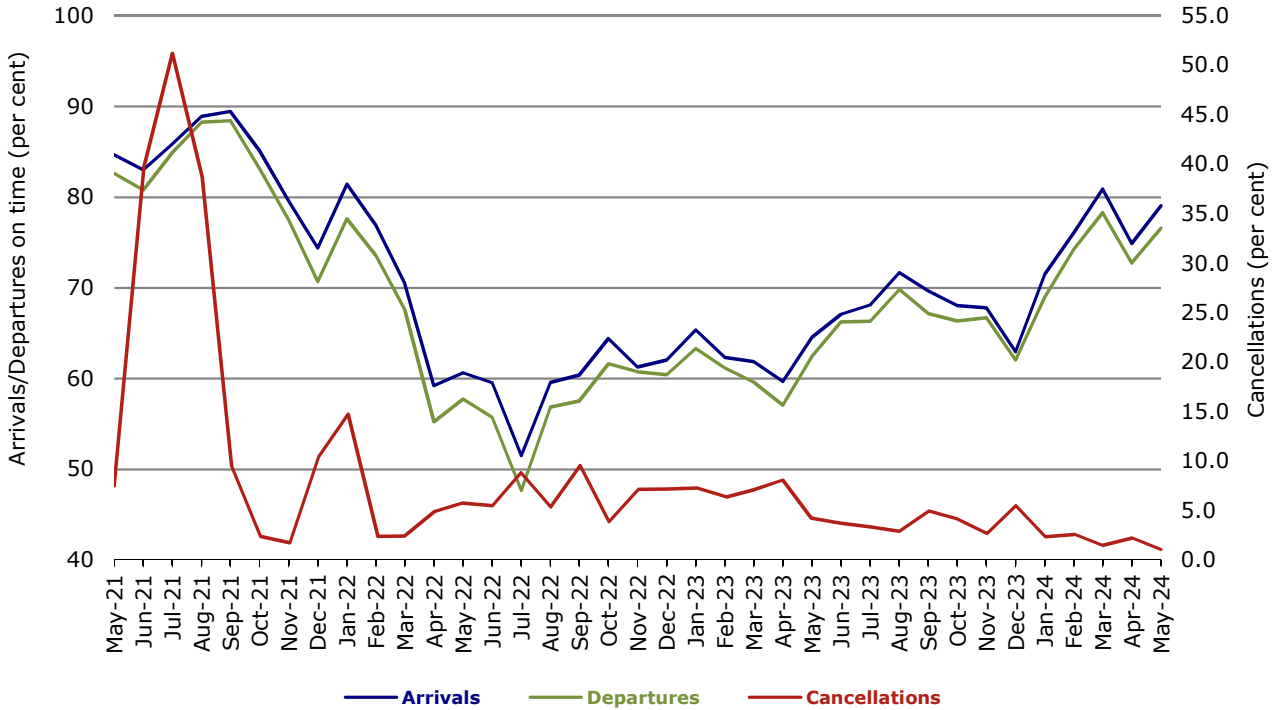


Figure 6 On time performance (by month from May 2021)—Qantas

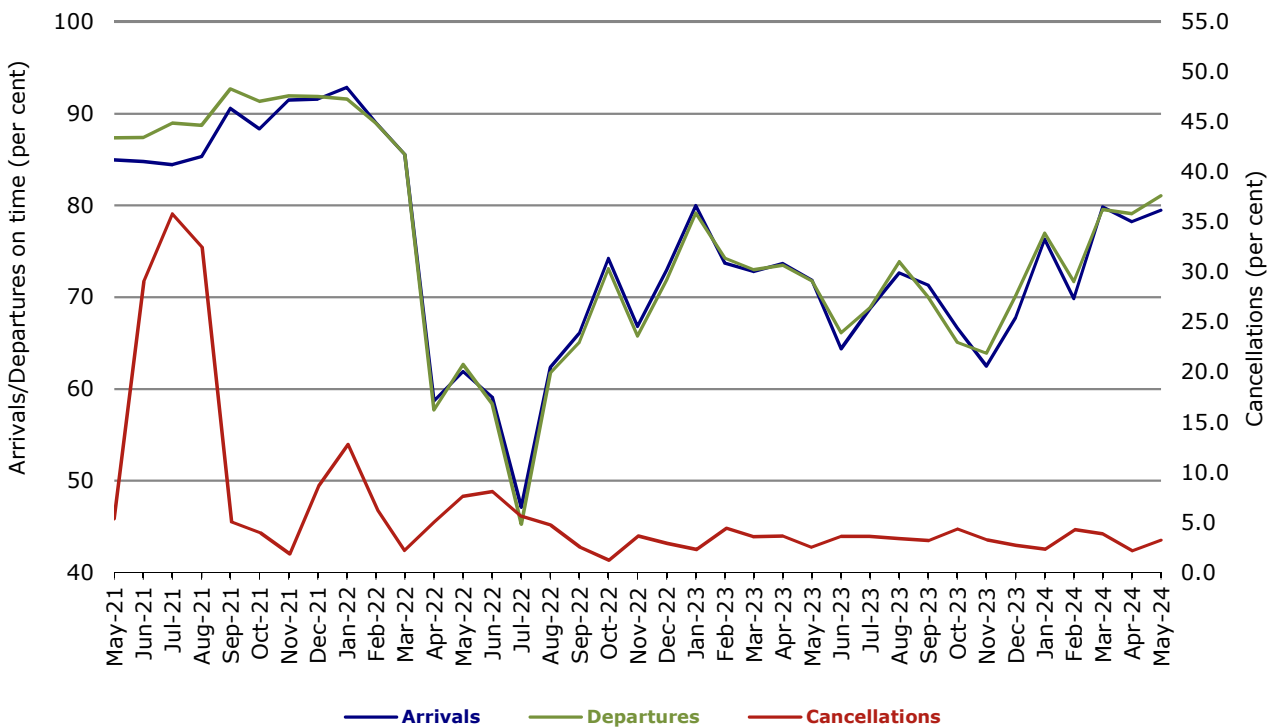


Figure 7 On time performance (by month from May 2021)—Virgin Australia

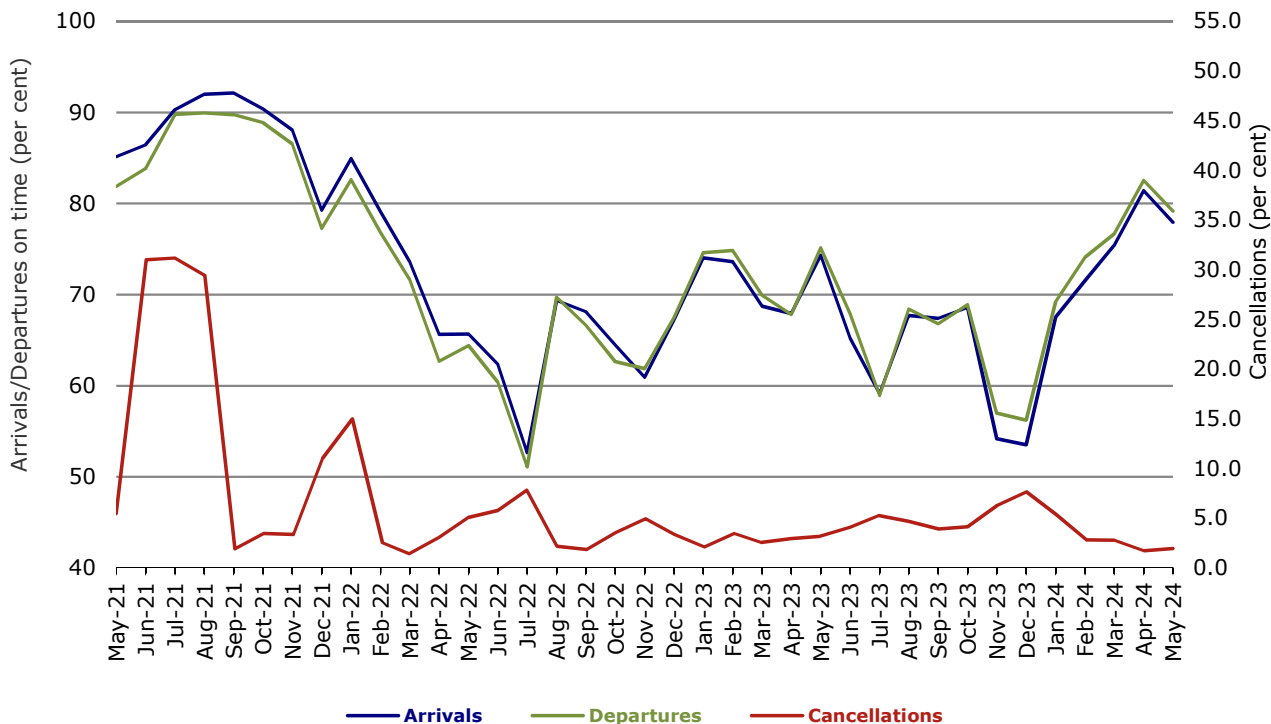


Figure 8 On time performance (by month from May 2021)—QantasLink

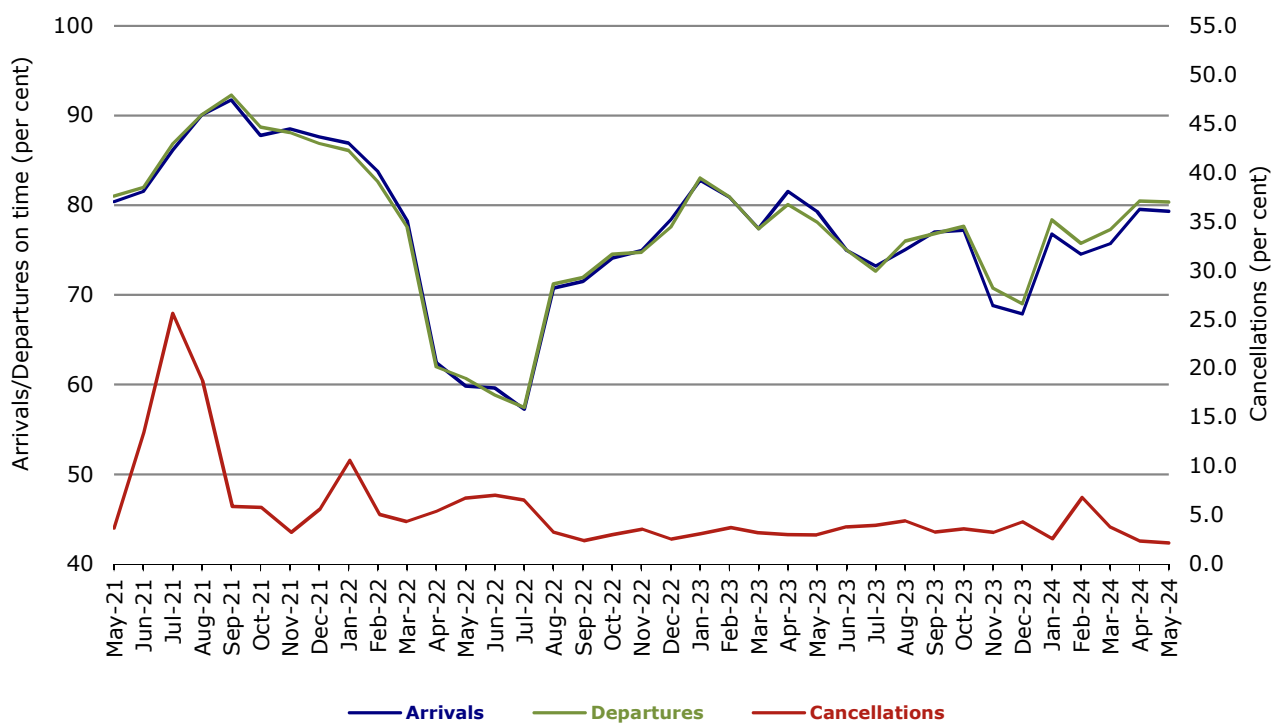


Figure 9 On time performance (by month from May 2021)—Rex Airlines

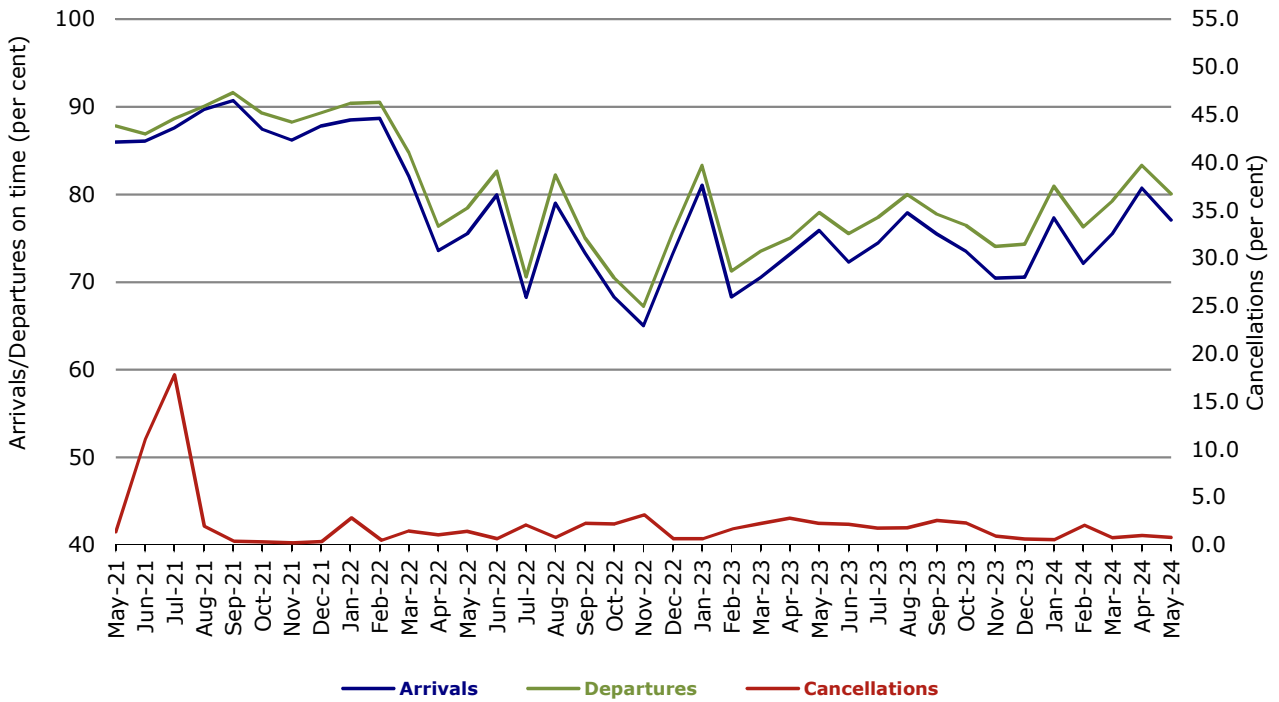


Figure 10 On time performance (by month from May 2021)—Virgin Australia Regional Airlines

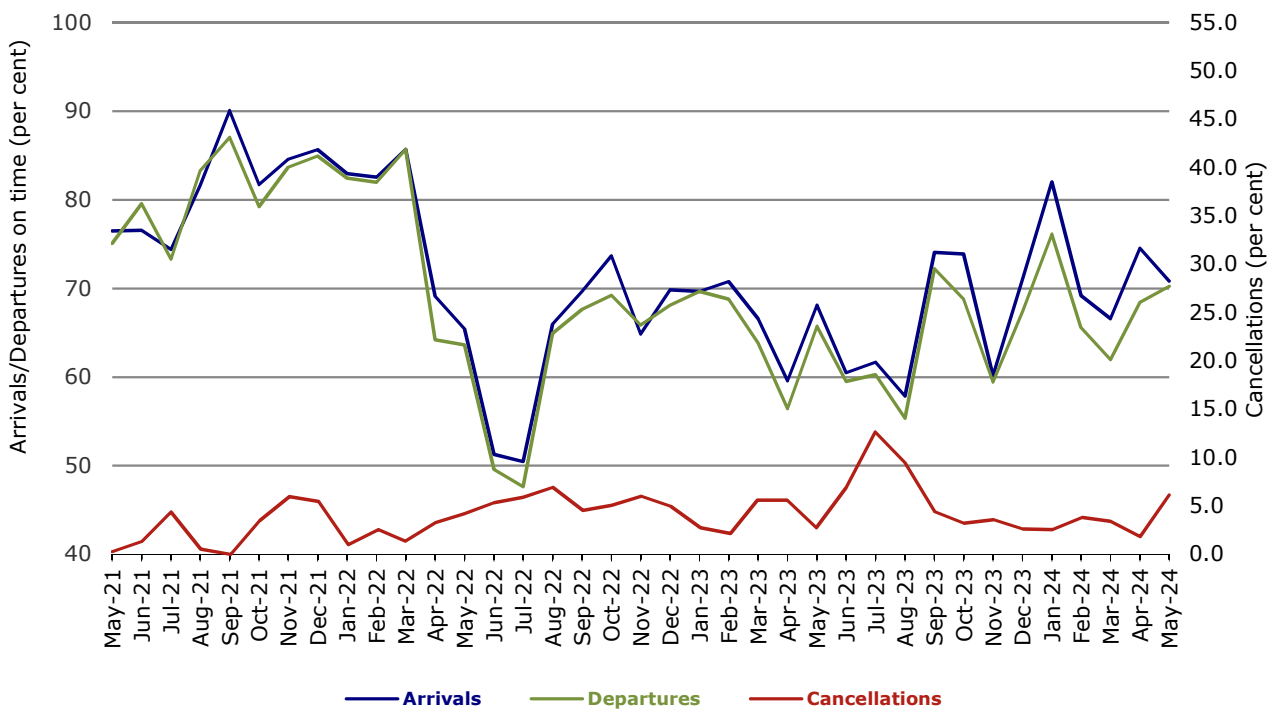
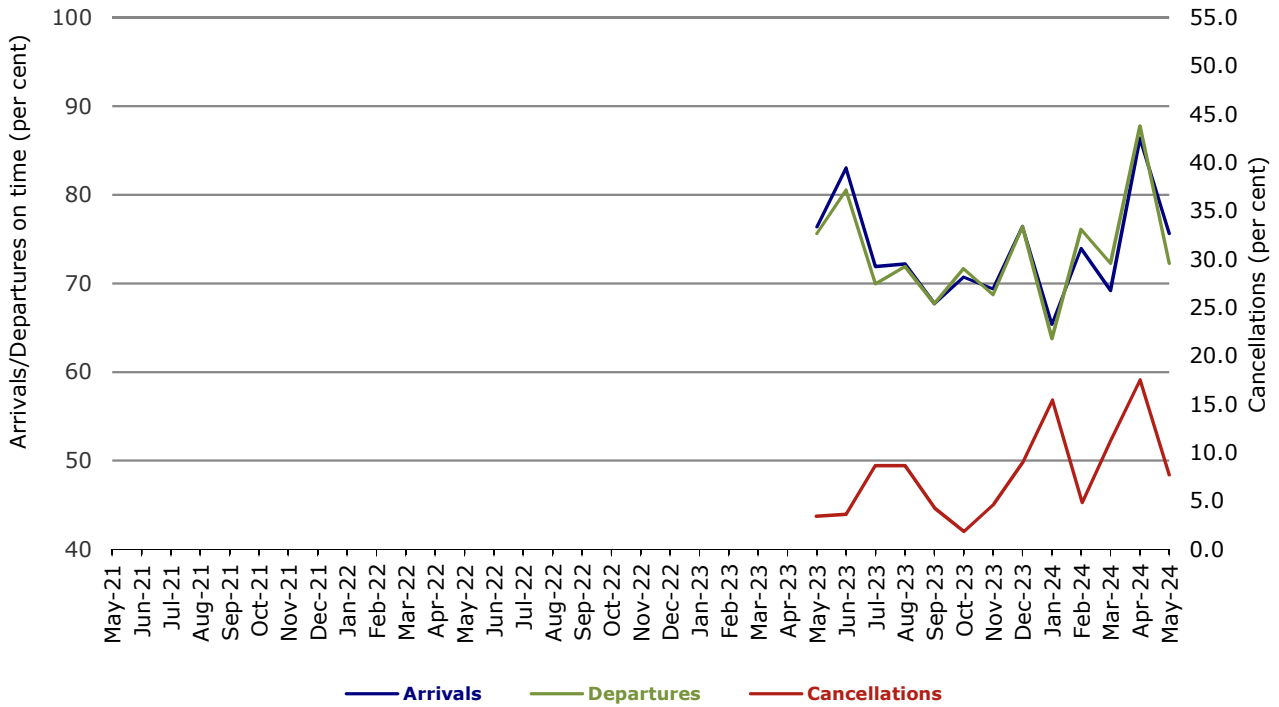
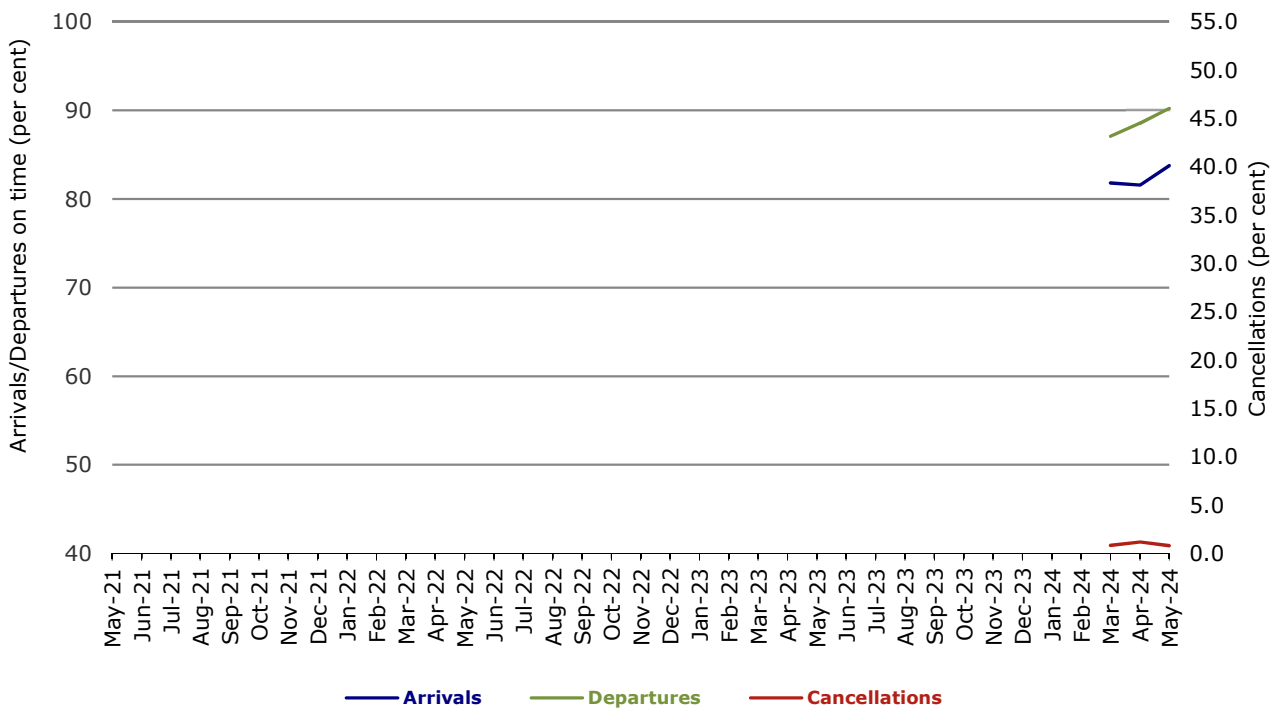


Figure 11 On time performance (by month from May 2021)—Skytrans



Note: Skytrans data included from May 2023

Figure 12 On time performance (by month from May 2021)—Hinterland



Note: Hinterland data included from March 2024

Individual routes

On time performance is reported for all routes where the passenger load averages over 8,000 passengers per month over the previous six months, and where two or more airlines operate in competition on those routes. In order to present data for more routes during the period impacted by COVID-19, the passenger load restriction is not being applied. There are now 59 routes for which data are presented.

	<i>Sectors</i>		<i>Arrivals On Time</i>		<i>Departures On Time</i>		<i>Cancellations</i>	
	<i>Sched.</i>	<i>Flown</i>	<i>No.</i>	<i>%</i>	<i>No.</i>	<i>%</i>	<i>No.</i>	<i>%</i>
Adelaide-Alice Springs								
QantasLink	48	48	42	87.5	43	89.6	0	0.0
Virgin Australia	14	14	7	50.0	8	57.1	0	0.0
All Airlines	62	62	49	79.0	51	82.3	0	0.0
Adelaide-Brisbane								
Jetstar	35	35	30	85.7	31	88.6	0	0.0
QantasLink	157	157	130	82.8	134	85.4	0	0.0
Rex Airlines	31	30	29	96.7	29	96.7	1	3.2
Virgin Australia	131	124	110	88.7	106	85.5	7	5.3
All Airlines	354	346	299	86.4	300	86.7	8	2.3
Adelaide-Canberra								
QantasLink	85	85	74	87.1	77	90.6	0	0.0
Virgin Australia	18	18	16	88.9	16	88.9	0	0.0
All Airlines	103	103	90	87.4	93	90.3	0	0.0
Adelaide-Gold Coast								
Jetstar	27	27	25	92.6	24	88.9	0	0.0
Virgin Australia	31	31	19	61.3	21	67.7	0	0.0
All Airlines	58	58	44	75.9	45	77.6	0	0.0
Adelaide-Melbourne								
Jetstar	111	111	95	85.6	93	83.8	0	0.0
Qantas	268	263	222	84.4	223	84.8	5	1.9
QantasLink	13	12	11	91.7	10	83.3	1	7.7
Rex Airlines	62	62	48	77.4	52	83.9	0	0.0
Virgin Australia	253	249	201	80.7	207	83.1	4	1.6
All Airlines	707	697	577	82.8	585	83.9	10	1.4
Adelaide-Perth								
Jetstar	31	30	28	93.3	26	86.7	1	3.2
Qantas	93	93	81	87.1	77	82.8	0	0.0
Virgin Australia	38	38	31	81.6	19	50.0	0	0.0
Virgin Australia Regional Airlines	35	32	20	62.5	10	31.3	3	8.6
All Airlines	197	193	160	82.9	132	68.4	4	2.0
Adelaide-Port Lincoln								
QantasLink	143	138	133	96.4	128	92.8	5	3.5
Rex Airlines	153	152	134	88.2	137	90.1	1	0.7
All Airlines	296	290	267	92.1	265	91.4	6	2.0
Adelaide-Sydney								
Jetstar	140	136	110	80.9	109	80.1	4	2.9
Qantas	245	243	197	81.1	216	88.9	2	0.8
Rex Airlines	31	31	28	90.3	26	83.9	0	0.0
Virgin Australia	180	176	128	72.7	150	85.2	4	2.2
All Airlines	596	586	463	79.0	501	85.5	10	1.7

	Sectors		Arrivals On Time		Departures On Time		Cancellations	
	Sched.	Flown	No.	%	No.	%	No.	%
Albury-Sydney								
QantasLink	112	111	75	67.6	89	80.2	1	0.9
Rex Airlines	85	84	59	70.2	67	79.8	1	1.2
All Airlines	197	195	134	68.7	156	80.0	2	1.0
Alice Springs-Adelaide								
QantasLink	48	48	42	87.5	40	83.3	0	0.0
Virgin Australia	14	14	7	50.0	7	50.0	0	0.0
All Airlines	62	62	49	79.0	47	75.8	0	0.0
Ballina-Sydney								
Jetstar	62	62	49	79.0	49	79.0	0	0.0
QantasLink	58	55	49	89.1	49	89.1	3	5.2
Virgin Australia	40	40	34	85.0	35	87.5	0	0.0
All Airlines	160	157	132	84.1	133	84.7	3	1.9
Brisbane-Adelaide								
Jetstar	35	35	29	82.9	26	74.3	0	0.0
QantasLink	157	157	136	86.6	123	78.3	0	0.0
Rex Airlines	31	30	29	96.7	29	96.7	1	3.2
Virgin Australia	131	126	115	91.3	112	88.9	5	3.8
All Airlines	354	348	309	88.8	290	83.3	6	1.7
Brisbane-Cairns								
Jetstar	93	93	78	83.9	80	86.0	0	0.0
Qantas	74	74	59	79.7	63	85.1	0	0.0
QantasLink	104	104	45	43.3	65	62.5	0	0.0
Rex Airlines	9	8	7	87.5	7	87.5	1	11.1
Virgin Australia	173	172	129	75.0	143	83.1	1	0.6
All Airlines	453	451	318	70.5	358	79.4	2	0.4
Brisbane-Canberra								
Jetstar	31	31	31	100.0	31	100.0	0	0.0
QantasLink	155	152	125	82.2	124	81.6	3	1.9
Virgin Australia	112	112	85	75.9	76	67.9	0	0.0
All Airlines	298	295	241	81.7	231	78.3	3	1.0
Brisbane-Darwin								
Jetstar	18	18	16	88.9	17	94.4	0	0.0
Qantas	9	9	6	66.7	6	66.7	0	0.0
QantasLink	31	31	5	16.1	23	74.2	0	0.0
Virgin Australia	43	43	26	60.5	29	67.4	0	0.0
All Airlines	101	101	53	52.5	75	74.3	0	0.0
Brisbane-Emerald								
QantasLink	134	129	120	93.0	116	89.9	5	3.7
Virgin Australia	27	27	20	74.1	20	74.1	0	0.0
All Airlines	161	156	140	89.7	136	87.2	5	3.1
Brisbane-Gladstone								
QantasLink	139	136	88	64.7	104	76.5	3	2.2
Virgin Australia	36	34	21	61.8	23	67.6	2	5.6
All Airlines	175	170	109	64.1	127	74.7	5	2.9
Brisbane-Hamilton Island								
QantasLink	27	26	15	57.7	19	73.1	1	3.7
Virgin Australia	31	31	26	83.9	26	83.9	0	0.0
All Airlines	58	57	41	71.9	45	78.9	1	1.7
Brisbane-Hobart								
Jetstar	21	21	18	85.7	18	85.7	0	0.0
QantasLink	17	17	15	88.2	12	70.6	0	0.0
Virgin Australia	40	39	27	69.2	28	71.8	1	2.5
All Airlines	78	77	60	77.9	58	75.3	1	1.3

	Sectors		Arrivals On Time		Departures On Time		Cancellations	
	Sched.	Flown	No.	%	No.	%	No.	%
Brisbane-Launceston								
Jetstar	19	19	14	73.7	16	84.2	0	0.0
Virgin Australia	12	12	12	100.0	11	91.7	0	0.0
All Airlines	31	31	26	83.9	27	87.1	0	0.0
Brisbane-Mackay								
Jetstar	31	31	18	58.1	18	58.1	0	0.0
Qantas	111	111	93	83.8	90	81.1	0	0.0
QantasLink	10	10	9	90.0	9	90.0	0	0.0
Virgin Australia	139	139	96	69.1	96	69.1	0	0.0
All Airlines	291	291	216	74.2	213	73.2	0	0.0
Brisbane-Melbourne								
Jetstar	154	154	115	74.7	97	63.0	0	0.0
Qantas	392	377	319	84.6	301	79.8	15	3.8
QantasLink	35	30	15	50.0	15	50.0	5	14.3
Rex Airlines	58	58	46	79.3	48	82.8	0	0.0
Virgin Australia	396	390	313	80.3	311	79.7	6	1.5
All Airlines	1 035	1 009	808	80.1	772	76.5	26	2.5
Brisbane-Mount Isa								
Qantas	50	50	46	92.0	44	88.0	0	0.0
Virgin Australia	14	14	9	64.3	10	71.4	0	0.0
All Airlines	64	64	55	85.9	54	84.4	0	0.0
Brisbane-Newcastle								
Jetstar	52	51	41	80.4	44	86.3	1	1.9
QantasLink	85	83	64	77.1	69	83.1	2	2.4
Virgin Australia	85	84	62	73.8	65	77.4	1	1.2
All Airlines	222	218	167	76.6	178	81.7	4	1.8
Brisbane-Perth								
Jetstar	23	23	19	82.6	13	56.5	0	0.0
Qantas	157	157	147	93.6	126	80.3	0	0.0
Virgin Australia	113	113	103	91.2	79	69.9	0	0.0
All Airlines	293	293	269	91.8	218	74.4	0	0.0
Brisbane-Proserpine								
Jetstar	22	22	13	59.1	16	72.7	0	0.0
QantasLink	17	17	16	94.1	15	88.2	0	0.0
Virgin Australia	31	31	19	61.3	19	61.3	0	0.0
All Airlines	70	70	48	68.6	50	71.4	0	0.0
Brisbane-Rockhampton								
QantasLink	201	198	166	83.8	164	82.8	3	1.5
Virgin Australia	169	169	105	62.1	127	75.1	0	0.0
All Airlines	370	367	271	73.8	291	79.3	3	0.8
Brisbane-Sydney								
Jetstar	172	168	138	82.1	139	82.7	4	2.3
Qantas	553	539	447	82.9	454	84.2	14	2.5
Rex Airlines	152	152	125	82.2	129	84.9	0	0.0
Virgin Australia	491	476	367	77.1	389	81.7	15	3.1
All Airlines	1 368	1 335	1 077	80.7	1 111	83.2	33	2.4
Brisbane-Townsville								
Jetstar	55	55	43	78.2	46	83.6	0	0.0
Qantas	16	16	14	87.5	14	87.5	0	0.0
QantasLink	136	135	91	67.4	104	77.0	1	0.7
Virgin Australia	143	143	90	62.9	103	72.0	0	0.0
All Airlines	350	349	238	68.2	267	76.5	1	0.3

	Sectors		Arrivals On Time		Departures On Time		Cancellations	
	Sched.	Flown	No.	%	No.	%	No.	%
Broome-Perth								
QantasLink	91	90	60	66.7	63	70.0	1	1.1
Virgin Australia	45	45	36	80.0	38	84.4	0	0.0
Virgin Australia Regional Airlines	9	9	7	77.8	2	22.2	0	0.0
All Airlines	145	144	103	71.5	103	71.5	1	0.7
Cairns-Brisbane								
Jetstar	93	93	81	87.1	76	81.7	0	0.0
Qantas	74	74	65	87.8	61	82.4	0	0.0
QantasLink	104	104	63	60.6	53	51.0	0	0.0
Rex Airlines	9	9	8	88.9	8	88.9	0	0.0
Virgin Australia	173	172	143	83.1	113	65.7	1	0.6
All Airlines	453	452	360	79.6	311	68.8	1	0.2
Cairns-Melbourne								
Jetstar	62	62	56	90.3	50	80.6	0	0.0
Qantas	31	31	24	77.4	17	54.8	0	0.0
Virgin Australia	62	62	50	80.6	40	64.5	0	0.0
All Airlines	155	155	130	83.9	107	69.0	0	0.0
Cairns-Sydney								
Jetstar	85	85	69	81.2	68	80.0	0	0.0
Qantas	31	31	17	54.8	11	35.5	0	0.0
Virgin Australia	79	79	67	84.8	64	81.0	0	0.0
All Airlines	195	195	153	78.5	143	73.3	0	0.0
Cairns-Townsville								
QantasLink	147	143	127	88.8	127	88.8	4	2.7
Rex Airlines	13	12	11	91.7	11	91.7	1	7.7
All Airlines	160	155	138	89.0	138	89.0	5	3.1
Canberra-Adelaide								
QantasLink	85	85	75	88.2	72	84.7	0	0.0
Virgin Australia	18	18	17	94.4	16	88.9	0	0.0
All Airlines	103	103	92	89.3	88	85.4	0	0.0
Canberra-Brisbane								
Jetstar	31	31	31	100.0	31	100.0	0	0.0
QantasLink	155	151	109	72.2	120	79.5	4	2.6
Virgin Australia	112	112	76	67.9	82	73.2	0	0.0
All Airlines	298	294	216	73.5	233	79.3	4	1.3
Canberra-Gold Coast								
Jetstar	19	18	14	77.8	15	83.3	1	5.3
Virgin Australia	31	31	21	67.7	24	77.4	0	0.0
All Airlines	50	49	35	71.4	39	79.6	1	2.0
Canberra-Melbourne								
Jetstar	22	22	14	63.6	13	59.1	0	0.0
QantasLink	246	224	156	69.6	151	67.4	22	8.9
Rex Airlines	31	31	22	71.0	23	74.2	0	0.0
Virgin Australia	133	133	101	75.9	105	78.9	0	0.0
All Airlines	432	410	293	71.5	292	71.2	22	5.1
Canberra-Sydney								
Qantas	55	55	44	80.0	46	83.6	0	0.0
QantasLink	378	359	269	74.9	293	81.6	19	5.0
Virgin Australia	262	246	192	78.0	202	82.1	16	6.1
All Airlines	695	660	505	76.5	541	82.0	35	5.0
Coffs Harbour-Sydney								
QantasLink	116	115	101	87.8	95	82.6	1	0.9
Rex Airlines	93	93	57	61.3	67	72.0	0	0.0
All Airlines	209	208	158	76.0	162	77.9	1	0.5

	Sectors		Arrivals On Time		Departures On Time		Cancellations	
	Sched.	Flown	No.	%	No.	%	No.	%
Darwin-Brisbane								
Jetstar	17	17	17	100.0	14	82.4	0	0.0
Qantas	8	8	6	75.0	5	62.5	0	0.0
QantasLink	31	31	11	35.5	4	12.9	0	0.0
Virgin Australia	42	42	33	78.6	19	45.2	0	0.0
All Airlines	98	98	67	68.4	42	42.9	0	0.0
Darwin-Melbourne								
Jetstar	21	21	18	85.7	13	61.9	0	0.0
Qantas	31	30	27	90.0	22	73.3	1	3.2
Virgin Australia	32	32	23	71.9	18	56.3	0	0.0
All Airlines	84	83	68	81.9	53	63.9	1	1.2
Darwin-Perth								
QantasLink	31	31	13	41.9	13	41.9	0	0.0
Virgin Australia Regional Airlines	26	25	12	48.0	15	60.0	1	3.8
All Airlines	57	56	25	44.6	28	50.0	1	1.8
Devonport-Melbourne								
QantasLink	119	119	94	79.0	95	79.8	0	0.0
Rex Airlines	34	34	30	88.2	31	91.2	0	0.0
All Airlines	153	153	124	81.0	126	82.4	0	0.0
Dubbo-Sydney								
QantasLink	116	114	92	80.7	99	86.8	2	1.7
Rex Airlines	132	129	87	67.4	94	72.9	3	2.3
All Airlines	248	243	179	73.7	193	79.4	5	2.0
Emerald-Brisbane								
QantasLink	134	129	120	93.0	120	93.0	5	3.7
Virgin Australia	27	27	23	85.2	19	70.4	0	0.0
All Airlines	161	156	143	91.7	139	89.1	5	3.1
Gladstone-Brisbane								
QantasLink	139	135	97	71.9	96	71.1	4	2.9
Virgin Australia	35	33	25	75.8	23	69.7	2	5.7
All Airlines	174	168	122	72.6	119	70.8	6	3.4
Gold Coast-Adelaide								
Jetstar	27	27	25	92.6	25	92.6	0	0.0
Virgin Australia	31	31	17	54.8	18	58.1	0	0.0
All Airlines	58	58	42	72.4	43	74.1	0	0.0
Gold Coast-Canberra								
Jetstar	19	19	16	84.2	14	73.7	0	0.0
Virgin Australia	31	31	23	74.2	23	74.2	0	0.0
All Airlines	50	50	39	78.0	37	74.0	0	0.0
Gold Coast-Melbourne								
Jetstar	154	151	124	82.1	111	73.5	3	1.9
Qantas	31	31	25	80.6	25	80.6	0	0.0
Rex Airlines	31	31	20	64.5	24	77.4	0	0.0
Virgin Australia	225	225	174	77.3	150	66.7	0	0.0
All Airlines	441	438	343	78.3	310	70.8	3	0.7
Gold Coast-Sydney								
Jetstar	238	238	204	85.7	202	84.9	0	0.0
Qantas	93	93	72	77.4	71	76.3	0	0.0
Rex Airlines	30	30	29	96.7	28	93.3	0	0.0
Virgin Australia	296	292	210	71.9	223	76.4	4	1.4
All Airlines	657	653	515	78.9	524	80.2	4	0.6
Hamilton Island-Brisbane								
QantasLink	27	26	13	50.0	14	53.8	1	3.7
Virgin Australia	31	31	25	80.6	23	74.2	0	0.0
All Airlines	58	57	38	66.7	37	64.9	1	1.7

	Sectors		Arrivals On Time		Departures On Time		Cancellations	
	Sched.	Flown	No.	%	No.	%	No.	%
Hamilton Island-Sydney								
Jetstar	14	14	5	35.7	6	42.9	0	0.0
Qantas	31	31	16	51.6	12	38.7	0	0.0
Virgin Australia	17	17	9	52.9	8	47.1	0	0.0
All Airlines	62	62	30	48.4	26	41.9	0	0.0
Hobart-Brisbane								
Jetstar	22	22	19	86.4	18	81.8	0	0.0
QantasLink	17	17	15	88.2	15	88.2	0	0.0
Virgin Australia	40	39	23	59.0	24	61.5	1	2.5
All Airlines	79	78	57	73.1	57	73.1	1	1.3
Hobart-Melbourne								
Jetstar	116	116	87	75.0	76	65.5	0	0.0
QantasLink	120	116	90	77.6	93	80.2	4	3.3
Rex Airlines	31	31	30	96.8	29	93.5	0	0.0
Virgin Australia	119	119	94	79.0	93	78.2	0	0.0
All Airlines	386	382	301	78.8	291	76.2	4	1.0
Hobart-Sydney								
Jetstar	62	62	48	77.4	49	79.0	0	0.0
Qantas	75	75	58	77.3	66	88.0	0	0.0
QantasLink	10	9	8	88.9	8	88.9	1	10.0
Virgin Australia	69	69	48	69.6	50	72.5	0	0.0
All Airlines	216	215	162	75.3	173	80.5	1	0.5
Kalgoorlie-Perth								
Qantas	21	19	18	94.7	15	78.9	2	9.5
QantasLink	64	61	41	67.2	43	70.5	3	4.7
Virgin Australia	81	78	60	76.9	59	75.6	3	3.7
Virgin Australia Regional Airlines	29	27	21	77.8	21	77.8	2	6.9
All Airlines	195	185	140	75.7	138	74.6	10	5.1
Karratha-Perth								
Qantas	2	2	2	100.0	2	100.0	0	0.0
QantasLink	152	148	94	63.5	90	60.8	4	2.6
Virgin Australia	65	65	59	90.8	60	92.3	0	0.0
Virgin Australia Regional Airlines	16	15	12	80.0	12	80.0	1	6.3
All Airlines	235	230	167	72.6	164	71.3	5	2.1
Launceston-Brisbane								
Jetstar	18	18	8	44.4	11	61.1	0	0.0
Virgin Australia	12	12	11	91.7	11	91.7	0	0.0
All Airlines	30	30	19	63.3	22	73.3	0	0.0
Launceston-Melbourne								
Jetstar	70	70	43	61.4	37	52.9	0	0.0
QantasLink	98	94	87	92.6	81	86.2	4	4.1
Virgin Australia	92	92	73	79.3	71	77.2	0	0.0
All Airlines	260	256	203	79.3	189	73.8	4	1.5
Launceston-Sydney								
Jetstar	31	31	19	61.3	20	64.5	0	0.0
QantasLink	31	30	27	90.0	27	90.0	1	3.2
Virgin Australia	23	23	16	69.6	20	87.0	0	0.0
All Airlines	85	84	62	73.8	67	79.8	1	1.2
Mackay-Brisbane								
Jetstar	31	31	17	54.8	15	48.4	0	0.0
Qantas	111	110	94	85.5	89	80.9	1	0.9
QantasLink	14	13	11	84.6	10	76.9	1	7.1
Virgin Australia	139	139	111	79.9	106	76.3	0	0.0
All Airlines	295	293	233	79.5	220	75.1	2	0.7

	Sectors		Arrivals On Time		Departures On Time		Cancellations	
	Sched.	Flown	No.	%	No.	%	No.	%
Melbourne-Adelaide								
Jetstar	111	111	99	89.2	93	83.8	0	0.0
Qantas	268	265	226	85.3	230	86.8	3	1.1
QantasLink	13	13	13	100.0	11	84.6	0	0.0
Rex Airlines	62	62	56	90.3	56	90.3	0	0.0
Virgin Australia	254	251	204	81.3	206	82.1	3	1.2
All Airlines	708	702	598	85.2	596	84.9	6	0.8
Melbourne-Brisbane								
Jetstar	154	154	93	60.4	104	67.5	0	0.0
Qantas	391	379	308	81.3	316	83.4	12	3.1
QantasLink	35	30	21	70.0	21	70.0	5	14.3
Rex Airlines	58	58	49	84.5	51	87.9	0	0.0
Virgin Australia	395	391	304	77.7	328	83.9	4	1.0
All Airlines	1 033	1 012	775	76.6	820	81.0	21	2.0
Melbourne-Cairns								
Jetstar	62	62	54	87.1	54	87.1	0	0.0
Qantas	31	31	19	61.3	24	77.4	0	0.0
Virgin Australia	62	62	48	77.4	56	90.3	0	0.0
All Airlines	155	155	121	78.1	134	86.5	0	0.0
Melbourne-Canberra								
Jetstar	22	22	17	77.3	15	68.2	0	0.0
QantasLink	246	226	172	76.1	172	76.1	20	8.1
Rex Airlines	31	31	22	71.0	24	77.4	0	0.0
Virgin Australia	133	133	110	82.7	114	85.7	0	0.0
All Airlines	432	412	321	77.9	325	78.9	20	4.6
Melbourne-Darwin								
Jetstar	22	22	20	90.9	19	86.4	0	0.0
Qantas	31	31	24	77.4	27	87.1	0	0.0
Virgin Australia	33	33	25	75.8	26	78.8	0	0.0
All Airlines	86	86	69	80.2	72	83.7	0	0.0
Melbourne-Devonport								
QantasLink	120	120	95	79.2	97	80.8	0	0.0
Rex Airlines	34	34	34	100.0	34	100.0	0	0.0
All Airlines	154	154	129	83.8	131	85.1	0	0.0
Melbourne-Gold Coast								
Jetstar	153	151	105	69.5	96	63.6	2	1.3
Qantas	31	31	31	100.0	31	100.0	0	0.0
Rex Airlines	31	31	24	77.4	27	87.1	0	0.0
Virgin Australia	224	224	182	81.3	189	84.4	0	0.0
All Airlines	439	437	342	78.3	343	78.5	2	0.5
Melbourne-Hobart								
Jetstar	115	115	86	74.8	87	75.7	0	0.0
QantasLink	118	115	80	69.6	82	71.3	3	2.5
Rex Airlines	31	31	28	90.3	27	87.1	0	0.0
Virgin Australia	120	120	86	71.7	95	79.2	0	0.0
All Airlines	384	381	280	73.5	291	76.4	3	0.8
Melbourne-Launceston								
Jetstar	71	71	43	60.6	43	60.6	0	0.0
QantasLink	99	95	79	83.2	76	80.0	4	4.0
Virgin Australia	92	92	74	80.4	77	83.7	0	0.0
All Airlines	262	258	196	76.0	196	76.0	4	1.5
Melbourne-Mildura								
QantasLink	112	112	91	81.3	88	78.6	0	0.0
Rex Airlines	93	93	66	71.0	70	75.3	0	0.0
All Airlines	205	205	157	76.6	158	77.1	0	0.0

	Sectors		Arrivals On Time		Departures On Time		Cancellations	
	Sched.	Flown	No.	%	No.	%	No.	%
Melbourne-Newcastle								
Jetstar	54	53	42	79.2	42	79.2	1	1.9
QantasLink	54	52	29	55.8	37	71.2	2	3.7
Virgin Australia	44	43	34	79.1	38	88.4	1	2.3
All Airlines	152	148	105	70.9	117	79.1	4	2.6
Melbourne-Perth								
Jetstar	63	61	56	91.8	45	73.8	2	3.2
Qantas	209	207	177	85.5	163	78.7	2	1.0
Virgin Australia	200	199	177	88.9	154	77.4	1	0.5
All Airlines	472	467	410	87.8	362	77.5	5	1.1
Melbourne-Sunshine Coast								
Jetstar	68	68	55	80.9	56	82.4	0	0.0
Qantas	31	31	21	67.7	21	67.7	0	0.0
Virgin Australia	62	62	50	80.6	51	82.3	0	0.0
All Airlines	161	161	126	78.3	128	79.5	0	0.0
Melbourne-Sydney								
Jetstar	413	401	319	79.6	321	80.0	12	2.9
Qantas	975	884	705	79.8	787	89.0	91	9.3
Rex Airlines	211	208	167	80.3	182	87.5	3	1.4
Virgin Australia	774	725	545	75.2	626	86.3	49	6.3
All Airlines	2 373	2 218	1 736	78.3	1 916	86.4	155	6.5
Mildura-Melbourne								
QantasLink	112	112	84	75.0	78	69.6	0	0.0
Rex Airlines	93	93	53	57.0	58	62.4	0	0.0
All Airlines	205	205	137	66.8	136	66.3	0	0.0
Mount Isa-Brisbane								
Qantas	50	50	46	92.0	40	80.0	0	0.0
Virgin Australia	14	14	11	78.6	10	71.4	0	0.0
All Airlines	64	64	57	89.1	50	78.1	0	0.0
Newcastle-Brisbane								
Jetstar	53	52	38	73.1	41	78.8	1	1.9
QantasLink	85	83	62	74.7	68	81.9	2	2.4
Virgin Australia	85	84	68	81.0	71	84.5	1	1.2
All Airlines	223	219	168	76.7	180	82.2	4	1.8
Newcastle-Melbourne								
Jetstar	54	53	44	83.0	39	73.6	1	1.9
QantasLink	54	52	41	78.8	45	86.5	2	3.7
Virgin Australia	44	43	34	79.1	32	74.4	1	2.3
All Airlines	152	148	119	80.4	116	78.4	4	2.6
Newman-Perth								
Qantas	17	17	16	94.1	16	94.1	0	0.0
QantasLink	105	103	66	64.1	84	81.6	2	1.9
Virgin Australia	43	42	28	66.7	32	76.2	1	2.3
Virgin Australia Regional Airlines	15	15	13	86.7	13	86.7	0	0.0
All Airlines	180	177	123	69.5	145	81.9	3	1.7
Perth-Adelaide								
Jetstar	31	30	24	80.0	27	90.0	1	3.2
Qantas	93	93	70	75.3	81	87.1	0	0.0
Virgin Australia	38	38	22	57.9	36	94.7	0	0.0
Virgin Australia Regional Airlines	35	32	17	53.1	25	78.1	3	8.6
All Airlines	197	193	133	68.9	169	87.6	4	2.0

	Sectors		Arrivals On Time		Departures On Time		Cancellations	
	Sched.	Flown	No.	%	No.	%	No.	%
Perth-Brisbane								
Jetstar	23	22	11	50.0	15	68.2	1	4.3
Qantas	157	157	106	67.5	137	87.3	0	0.0
Virgin Australia	114	114	91	79.8	97	85.1	0	0.0
All Airlines	294	293	208	71.0	249	85.0	1	0.3
Perth-Broome								
QantasLink	90	90	63	70.0	61	67.8	0	0.0
Virgin Australia	45	45	40	88.9	39	86.7	0	0.0
Virgin Australia Regional Airlines	9	9	8	88.9	7	77.8	0	0.0
All Airlines	144	144	111	77.1	107	74.3	0	0.0
Perth-Darwin								
QantasLink	32	32	21	65.6	24	75.0	0	0.0
Virgin Australia Regional Airlines	26	25	15	60.0	15	60.0	1	3.8
All Airlines	58	57	36	63.2	39	68.4	1	1.7
Perth-Kalgoorlie								
Qantas	21	20	20	100.0	20	100.0	1	4.8
QantasLink	64	62	43	69.4	46	74.2	2	3.1
Virgin Australia	80	78	67	85.9	72	92.3	2	2.5
Virgin Australia Regional Airlines	29	27	20	74.1	23	85.2	2	6.9
All Airlines	194	187	150	80.2	161	86.1	7	3.6
Perth-Karratha								
Qantas	2	2	2	100.0	2	100.0	0	0.0
QantasLink	153	152	111	73.0	111	73.0	1	0.7
Virgin Australia	65	65	56	86.2	63	96.9	0	0.0
Virgin Australia Regional Airlines	16	15	11	73.3	12	80.0	1	6.3
All Airlines	236	234	180	76.9	188	80.3	2	0.8
Perth-Melbourne								
Jetstar	63	61	52	85.2	51	83.6	2	3.2
Qantas	208	204	155	76.0	175	85.8	4	1.9
Virgin Australia	219	218	162	74.3	193	88.5	1	0.5
All Airlines	490	483	369	76.4	419	86.7	7	1.4
Perth-Newman								
Qantas	17	17	15	88.2	15	88.2	0	0.0
QantasLink	105	103	88	85.4	88	85.4	2	1.9
Virgin Australia	43	43	40	93.0	42	97.7	0	0.0
Virgin Australia Regional Airlines	15	15	13	86.7	13	86.7	0	0.0
All Airlines	180	178	156	87.6	158	88.8	2	1.1
Perth-Port Hedland								
QantasLink	147	147	115	78.2	120	81.6	0	0.0
Virgin Australia	37	36	32	88.9	34	94.4	1	2.7
Virgin Australia Regional Airlines	24	22	20	90.9	20	90.9	2	8.3
All Airlines	208	205	167	81.5	174	84.9	3	1.4
Perth-Sydney								
Jetstar	54	51	26	51.0	30	58.8	3	5.6
Qantas	206	205	113	55.1	162	79.0	1	0.5
Virgin Australia	134	134	105	78.4	100	74.6	0	0.0
All Airlines	394	390	244	62.6	292	74.9	4	1.0
Port Hedland-Perth								
QantasLink	147	146	73	50.0	88	60.3	1	0.7
Virgin Australia	37	36	16	44.4	20	55.6	1	2.7
Virgin Australia Regional Airlines	24	22	14	63.6	11	50.0	2	8.3
All Airlines	208	204	103	50.5	119	58.3	4	1.9

	Sectors		Arrivals On Time		Departures On Time		Cancellations	
	Sched.	Flown	No.	%	No.	%	No.	%
Port Lincoln-Adelaide								
QantasLink	143	137	129	94.2	128	93.4	6	4.2
Rex Airlines	153	152	131	86.2	136	89.5	1	0.7
All Airlines	296	289	260	90.0	264	91.3	7	2.4
Port Macquarie-Sydney								
QantasLink	116	116	93	80.2	97	83.6	0	0.0
Rex Airlines	54	54	37	68.5	42	77.8	0	0.0
All Airlines	170	170	130	76.5	139	81.8	0	0.0
Proserpine-Brisbane								
Jetstar	22	22	12	54.5	11	50.0	0	0.0
QantasLink	17	17	17	100.0	12	70.6	0	0.0
Virgin Australia	31	31	19	61.3	16	51.6	0	0.0
All Airlines	70	70	48	68.6	39	55.7	0	0.0
Rockhampton-Brisbane								
QantasLink	201	197	166	84.3	165	83.8	4	2.0
Virgin Australia	169	169	121	71.6	123	72.8	0	0.0
All Airlines	370	366	287	78.4	288	78.7	4	1.1
Sunshine Coast-Melbourne								
Jetstar	68	68	54	79.4	47	69.1	0	0.0
Qantas	31	31	20	64.5	18	58.1	0	0.0
Virgin Australia	62	62	53	85.5	48	77.4	0	0.0
All Airlines	161	161	127	78.9	113	70.2	0	0.0
Sunshine Coast-Sydney								
Jetstar	76	75	49	65.3	55	73.3	1	1.3
Qantas	58	58	42	72.4	46	79.3	0	0.0
Virgin Australia	62	62	36	58.1	46	74.2	0	0.0
All Airlines	196	195	127	65.1	147	75.4	1	0.5
Sydney-Adelaide								
Jetstar	140	137	115	83.9	101	73.7	3	2.1
Qantas	245	243	211	86.8	194	79.8	2	0.8
Rex Airlines	31	31	26	83.9	26	83.9	0	0.0
Virgin Australia	180	176	145	82.4	142	80.7	4	2.2
All Airlines	596	587	497	84.7	463	78.9	9	1.5
Sydney-Albury								
QantasLink	112	112	95	84.8	91	81.3	0	0.0
Rex Airlines	85	84	72	85.7	69	82.1	1	1.2
All Airlines	197	196	167	85.2	160	81.6	1	0.5
Sydney-Ballina								
Jetstar	62	62	57	91.9	56	90.3	0	0.0
QantasLink	57	55	49	89.1	49	89.1	2	3.5
Virgin Australia	40	40	36	90.0	37	92.5	0	0.0
All Airlines	159	157	142	90.4	142	90.4	2	1.3
Sydney-Brisbane								
Jetstar	171	167	135	80.8	131	78.4	4	2.3
Qantas	551	536	401	74.8	426	79.5	15	2.7
Rex Airlines	152	152	123	80.9	131	86.2	0	0.0
Virgin Australia	488	471	386	82.0	396	84.1	17	3.5
All Airlines	1 362	1 326	1 045	78.8	1 084	81.7	36	2.6
Sydney-Cairns								
Jetstar	85	85	68	80.0	69	81.2	0	0.0
Qantas	31	31	14	45.2	22	71.0	0	0.0
Virgin Australia	79	79	67	84.8	67	84.8	0	0.0
All Airlines	195	195	149	76.4	158	81.0	0	0.0

	Sectors		Arrivals On Time		Departures On Time		Cancellations	
	Sched.	Flown	No.	%	No.	%	No.	%
Sydney-Canberra								
Qantas	55	55	49	89.1	50	90.9	0	0.0
QantasLink	378	363	304	83.7	302	83.2	15	4.0
Virgin Australia	262	245	209	85.3	195	79.6	17	6.5
All Airlines	695	663	562	84.8	547	82.5	32	4.6
Sydney-Coffs Harbour								
QantasLink	116	116	95	81.9	90	77.6	0	0.0
Rex Airlines	92	92	73	79.3	70	76.1	0	0.0
All Airlines	208	208	168	80.8	160	76.9	0	0.0
Sydney-Dubbo								
QantasLink	116	114	99	86.8	94	82.5	2	1.7
Rex Airlines	135	132	92	69.7	89	67.4	3	2.2
All Airlines	251	246	191	77.6	183	74.4	5	2.0
Sydney-Gold Coast								
Jetstar	238	238	191	80.3	188	79.0	0	0.0
Qantas	93	93	66	71.0	64	68.8	0	0.0
Rex Airlines	30	30	27	90.0	28	93.3	0	0.0
Virgin Australia	296	294	228	77.6	236	80.3	2	0.7
All Airlines	657	655	512	78.2	516	78.8	2	0.3
Sydney-Hamilton Island								
Jetstar	14	14	11	78.6	12	85.7	0	0.0
Qantas	30	30	12	40.0	22	73.3	0	0.0
Virgin Australia	17	17	13	76.5	15	88.2	0	0.0
All Airlines	61	61	36	59.0	49	80.3	0	0.0
Sydney-Hobart								
Jetstar	62	62	51	82.3	52	83.9	0	0.0
Qantas	75	75	58	77.3	50	66.7	0	0.0
QantasLink	9	7	6	85.7	6	85.7	2	22.2
Virgin Australia	69	69	54	78.3	57	82.6	0	0.0
All Airlines	215	213	169	79.3	165	77.5	2	0.9
Sydney-Launceston								
Jetstar	31	31	24	77.4	23	74.2	0	0.0
QantasLink	31	30	26	86.7	27	90.0	1	3.2
Virgin Australia	23	23	20	87.0	18	78.3	0	0.0
All Airlines	85	84	70	83.3	68	81.0	1	1.2
Sydney-Melbourne								
Jetstar	413	401	324	80.8	301	75.1	12	2.9
Qantas	979	892	723	81.1	709	79.5	87	8.9
Rex Airlines	211	208	170	81.7	168	80.8	3	1.4
Virgin Australia	764	716	561	78.4	555	77.5	48	6.3
All Airlines	2 367	2 217	1 778	80.2	1 733	78.2	150	6.3
Sydney-Perth								
Jetstar	53	52	46	88.5	27	51.9	1	1.9
Qantas	205	204	180	88.2	150	73.5	1	0.5
Virgin Australia	146	146	128	87.7	101	69.2	0	0.0
All Airlines	404	402	354	88.1	278	69.2	2	0.5
Sydney-Port Macquarie								
QantasLink	116	116	96	82.8	95	81.9	0	0.0
Rex Airlines	55	55	41	74.5	41	74.5	0	0.0
All Airlines	171	171	137	80.1	136	79.5	0	0.0
Sydney-Sunshine Coast								
Jetstar	75	75	58	77.3	57	76.0	0	0.0
Qantas	59	59	42	71.2	41	69.5	0	0.0
Virgin Australia	62	62	48	77.4	49	79.0	0	0.0
All Airlines	196	196	148	75.5	147	75.0	0	0.0

	Sectors		Arrivals On Time		Departures On Time		Cancellations	
	Sched.	Flown	No.	%	No.	%	No.	%
Sydney-Wagga Wagga								
QantasLink	116	115	105	91.3	98	85.2	1	0.9
Rex Airlines	94	94	71	75.5	69	73.4	0	0.0
All Airlines	210	209	176	84.2	167	79.9	1	0.5
Townsville-Brisbane								
Jetstar	55	55	42	76.4	40	72.7	0	0.0
Qantas	16	16	13	81.3	13	81.3	0	0.0
QantasLink	136	136	95	69.9	94	69.1	0	0.0
Virgin Australia	143	143	109	76.2	89	62.2	0	0.0
All Airlines	350	350	259	74.0	236	67.4	0	0.0
Townsville-Cairns								
QantasLink	149	142	135	95.1	136	95.8	7	4.7
Rex Airlines	13	12	11	91.7	11	91.7	1	7.7
All Airlines	162	154	146	94.8	147	95.5	8	4.9
Wagga Wagga-Sydney								
QantasLink	116	114	107	93.9	105	92.1	2	1.7
Rex Airlines	94	94	61	64.9	70	74.5	0	0.0
All Airlines	210	208	168	80.8	175	84.1	2	1.0

Airports

The following data reports by airport against flights operated on published routes only. This month, 8 major city airports and 28 regional city airports are covered.

Airport	Arrivals			Departures		
	Sectors	On Time		Sectors	On Time	
	Flown	No.	%	Flown	No.	%
Adelaide						
Jetstar	340	292	85.9	339	283	83.5
Qantas	601	507	84.4	599	516	86.1
QantasLink	440	395	89.8	440	392	89.1
Rex Airlines	275	242	88.0	275	244	88.7
Virgin Australia	654	527	80.6	650	527	81.1
Virgin Australia Regional Airlines	32	17	53.1	32	10	31.3
All Airlines	2,342	1,980	84.5	2,335	1,972	84.5

Relates to services to and from Alice Springs, Brisbane, Canberra, Gold Coast, Melbourne, Perth, Port Lincoln and Sydney only.

Albury

QantasLink	112	95	84.8	111	89	80.2
Rex Airlines	84	72	85.7	84	67	79.8
All Airlines	196	167	85.2	195	156	80.0

Relates to services to and from Sydney only.

Alice Springs

QantasLink	48	42	87.5	48	40	83.3
Virgin Australia	14	7	50.0	14	7	50.0
All Airlines	62	49	79.0	62	47	75.8

Relates to services to and from Adelaide only.

Ballina

Jetstar	62	57	91.9	62	49	79.0
QantasLink	55	49	89.1	55	49	89.1
Virgin Australia	40	36	90.0	40	35	87.5
All Airlines	157	142	90.4	157	133	84.7

Relates to services to and from Sydney only.

Brisbane

Jetstar	719	534	74.3	721	561	77.8
Qantas	1,330	1,039	78.1	1,333	1,098	82.4
QantasLink	1,226	930	75.9	1,225	962	78.5
Rex Airlines	249	209	83.9	248	213	85.9
Virgin Australia	2,148	1,689	78.6	2,155	1,667	77.4
All Airlines	5,672	4,401	77.6	5,682	4,501	79.2

Relates to services to and from Adelaide, Cairns, Canberra, Darwin, Emerald, Gladstone, Hamilton Island, Hobart, Launceston, Mackay, Melbourne, Mount Isa, Newcastle, Perth, Proserpine, Rockhampton, Sydney and Townsville only.

Broome

QantasLink	90	63	70.0	90	63	70.0
Virgin Australia	45	40	88.9	45	38	84.4
Virgin Australia Regional Airlines	9	8	88.9	9	2	22.2
All Airlines	144	111	77.1	144	103	71.5

Relates to services to and from Perth only.

Airport	Arrivals			Departures		
	Sectors	On Time		Sectors	On Time	
	Flown	No.	%	Flown	No.	%
Cairns						
Jetstar	240	200	83.3	240	194	80.8
Qantas	136	92	67.6	136	89	65.4
QantasLink	246	180	73.2	247	180	72.9
Rex Airlines	20	18	90.0	21	19	90.5
Virgin Australia	313	244	78.0	313	217	69.3
All Airlines	955	734	76.9	957	699	73.0
Relates to services to and from Brisbane, Melbourne, Sydney and Townsville only.						
Canberra						
Jetstar	72	64	88.9	71	59	83.1
Qantas	55	49	89.1	55	46	83.6
QantasLink	826	675	81.7	819	636	77.7
Rex Airlines	31	22	71.0	31	23	74.2
Virgin Australia	539	443	82.2	540	429	79.4
All Airlines	1,523	1,253	82.3	1,516	1,193	78.7
Relates to services to and from Adelaide, Brisbane, Gold Coast, Melbourne and Sydney only.						
Coffs Harbour						
QantasLink	116	95	81.9	115	95	82.6
Rex Airlines	92	73	79.3	93	67	72.0
All Airlines	208	168	80.8	208	162	77.9
Relates to services to and from Sydney only.						
Darwin						
Jetstar	40	36	90.0	38	27	71.1
Qantas	40	30	75.0	38	27	71.1
QantasLink	63	26	41.3	62	17	27.4
Virgin Australia	76	51	67.1	74	37	50.0
Virgin Australia Regional Airlines	25	15	60.0	25	15	60.0
All Airlines	244	158	64.8	237	123	51.9
Relates to services to and from Brisbane, Melbourne and Perth only.						
Devonport						
QantasLink	120	95	79.2	119	95	79.8
Rex Airlines	34	34	100.0	34	31	91.2
All Airlines	154	129	83.8	153	126	82.4
Relates to services to and from Melbourne only.						
Dubbo						
QantasLink	114	99	86.8	114	99	86.8
Rex Airlines	132	92	69.7	129	94	72.9
All Airlines	246	191	77.6	243	193	79.4
Relates to services to and from Sydney only.						
Emerald						
QantasLink	129	120	93.0	129	120	93.0
Virgin Australia	27	20	74.1	27	19	70.4
All Airlines	156	140	89.7	156	139	89.1
Relates to services to and from Brisbane only.						

Airport	Arrivals			Departures		
	Sectors	On Time		Sectors	On Time	
	Flown	No.	%	Flown	No.	%
Gladstone						
QantasLink	136	88	64.7	135	96	71.1
Virgin Australia	34	21	61.8	33	23	69.7
All Airlines	170	109	64.1	168	119	70.8
Relates to services to and from Brisbane only.						
Gold Coast						
Jetstar	434	335	77.2	435	352	80.9
Qantas	124	97	78.2	124	96	77.4
Rex Airlines	61	51	83.6	61	52	85.2
Virgin Australia	580	450	77.6	579	414	71.5
All Airlines	1,199	933	77.8	1,199	914	76.2
Relates to services to and from Adelaide, Canberra, Melbourne and Sydney only.						
Hamilton Island						
Jetstar	14	11	78.6	14	6	42.9
Qantas	30	12	40.0	31	12	38.7
QantasLink	26	15	57.7	26	14	53.8
Virgin Australia	48	39	81.3	48	31	64.6
All Airlines	118	77	65.3	119	63	52.9
Relates to services to and from Brisbane and Sydney only.						
Hobart						
Jetstar	198	155	78.3	200	143	71.5
Qantas	75	58	77.3	75	66	88.0
QantasLink	139	101	72.7	142	116	81.7
Rex Airlines	31	28	90.3	31	29	93.5
Virgin Australia	228	167	73.2	227	167	73.6
All Airlines	671	509	75.9	675	521	77.2
Relates to services to and from Brisbane, Melbourne and Sydney only.						
Kalgoorlie						
Qantas	20	20	100.0	19	15	78.9
QantasLink	62	43	69.4	61	43	70.5
Virgin Australia	78	67	85.9	78	59	75.6
Virgin Australia Regional Airlines	27	20	74.1	27	21	77.8
All Airlines	187	150	80.2	185	138	74.6
Relates to services to and from Perth only.						
Karratha						
Qantas	2	2	100.0	2	2	100.0
QantasLink	152	111	73.0	148	90	60.8
Virgin Australia	65	56	86.2	65	60	92.3
Virgin Australia Regional Airlines	15	11	73.3	15	12	80.0
All Airlines	234	180	76.9	230	164	71.3
Relates to services to and from Perth only.						
Launceston						
Jetstar	121	81	66.9	119	68	57.1
QantasLink	125	105	84.0	124	108	87.1
Virgin Australia	127	106	83.5	127	102	80.3
All Airlines	373	292	78.3	370	278	75.1
Relates to services to and from Brisbane, Melbourne and Sydney only.						

Airport	Arrivals			Departures		
	Sectors	On Time		Sectors	On Time	
	Flown	No.	%	Flown	No.	%
Mackay						
Jetstar	31	18	58.1	31	15	48.4
Qantas	111	93	83.8	110	89	80.9
QantasLink	10	9	90.0	13	10	76.9
Virgin Australia	139	96	69.1	139	106	76.3
All Airlines	291	216	74.2	293	220	75.1

Relates to services to and from Brisbane only.

Melbourne

Jetstar	1,290	1,026	79.5	1,291	975	75.5
Qantas	1,859	1,515	81.5	1,859	1,599	86.0
QantasLink	759	578	76.2	763	584	76.5
Rex Airlines	548	419	76.5	548	471	85.9
Virgin Australia	2,341	1,839	78.6	2,335	1,960	83.9
All Airlines	6,797	5,377	79.1	6,796	5,589	82.2

Relates to services to and from Adelaide, Brisbane, Cairns, Canberra, Darwin, Devonport, Gold Coast, Hobart, Launceston, Mildura, Newcastle, Perth, Sunshine Coast and Sydney only.

Mildura

QantasLink	112	91	81.3	112	78	69.6
Rex Airlines	93	66	71.0	93	58	62.4
All Airlines	205	157	76.6	205	136	66.3

Relates to services to and from Melbourne only.

Mount Isa

Qantas	50	46	92.0	50	40	80.0
Virgin Australia	14	9	64.3	14	10	71.4
All Airlines	64	55	85.9	64	50	78.1

Relates to services to and from Brisbane only.

Newcastle

Jetstar	104	83	79.8	105	80	76.2
QantasLink	135	93	68.9	135	113	83.7
Virgin Australia	127	96	75.6	127	103	81.1
All Airlines	366	272	74.3	367	296	80.7

Relates to services to and from Brisbane and Melbourne only.

Newman

Qantas	17	15	88.2	17	16	94.1
QantasLink	103	88	85.4	103	84	81.6
Virgin Australia	43	40	93.0	42	32	76.2
Virgin Australia Regional Airlines	15	13	86.7	15	13	86.7
All Airlines	178	156	87.6	177	145	81.9

Relates to services to and from Perth only.

Airport	Arrivals			Departures		
	Sectors	On Time		Sectors	On Time	
	Flown	No.	%	Flown	No.	%
Perth						
Jetstar	166	149	89.8	164	123	75.0
Qantas	699	621	88.8	698	592	84.8
QantasLink	579	347	59.9	586	450	76.8
Virgin Australia	762	638	83.7	771	676	87.7
Virgin Australia Regional Airlines	145	99	68.3	145	115	79.3
All Airlines	2,351	1,854	78.9	2,364	1,956	82.7
Relates to services to and from Adelaide, Brisbane, Broome, Darwin, Kalgoorlie, Karratha, Melbourne, Newman, Port Hedland and Sydney only.						
Port Hedland						
QantasLink	147	115	78.2	146	88	60.3
Virgin Australia	36	32	88.9	36	20	55.6
Virgin Australia Regional Airlines	22	20	90.9	22	11	50.0
All Airlines	205	167	81.5	204	119	58.3
Relates to services to and from Perth only.						
Port Lincoln						
QantasLink	138	133	96.4	137	128	93.4
Rex Airlines	152	134	88.2	152	136	89.5
All Airlines	290	267	92.1	289	264	91.3
Relates to services to and from Adelaide only.						
Port Macquarie						
QantasLink	116	96	82.8	116	97	83.6
Rex Airlines	55	41	74.5	54	42	77.8
All Airlines	171	137	80.1	170	139	81.8
Relates to services to and from Sydney only.						
Proserpine						
Jetstar	22	13	59.1	22	11	50.0
QantasLink	17	16	94.1	17	12	70.6
Virgin Australia	31	19	61.3	31	16	51.6
All Airlines	70	48	68.6	70	39	55.7
Relates to services to and from Brisbane only.						
Rockhampton						
QantasLink	198	166	83.8	197	165	83.8
Virgin Australia	169	105	62.1	169	123	72.8
All Airlines	367	271	73.8	366	288	78.7
Relates to services to and from Brisbane only.						
Sunshine Coast						
Jetstar	143	113	79.0	143	102	71.3
Qantas	90	63	70.0	89	64	71.9
Virgin Australia	124	98	79.0	124	94	75.8
All Airlines	357	274	76.8	356	260	73.0
Relates to services to and from Melbourne and Sydney only.						

Airport	Arrivals			Departures		
	Sectors	On Time		Sectors	On Time	
	Flown	No.	%	Flown	No.	%
Sydney						
Jetstar	1,323	1,036	78.3	1,324	1,017	76.8
Qantas	2,214	1,711	77.3	2,218	1,728	77.9
QantasLink	1,023	821	80.3	1,028	852	82.9
Rex Airlines	875	650	74.3	878	691	78.7
Virgin Australia	2,339	1,757	75.1	2,338	1,868	79.9
All Airlines	7,774	5,975	76.9	7,786	6,156	79.1

Relates to services to and from Adelaide, Albury, Ballina, Brisbane, Cairns, Canberra, Coffs Harbour, Dubbo, Gold Coast, Hamilton Island, Hobart, Launceston, Melbourne, Perth, Port Macquarie, Sunshine Coast and Wagga Wagga only.

Townsville

Jetstar	55	43	78.2	55	40	72.7
Qantas	16	14	87.5	16	13	81.3
QantasLink	278	218	78.4	278	230	82.7
Rex Airlines	12	11	91.7	12	11	91.7
Virgin Australia	143	90	62.9	143	89	62.2
All Airlines	504	376	74.6	504	383	76.0

Relates to services to and from Brisbane and Cairns only.

Wagga Wagga

QantasLink	115	105	91.3	114	105	92.1
Rex Airlines	94	71	75.5	94	70	74.5
All Airlines	209	176	84.2	208	175	84.1

Relates to services to and from Sydney only.

Definitions

On time arrival	A flight arrival is counted as "on time" if it arrived at the gate before 15 minutes after the scheduled arrival time shown in the carriers' schedule. Neither diverted nor cancelled flights count as on time.
On time departure	A flight departure is counted as "on time" if it departs the gate before 15 minutes after the scheduled departure time shown in the carriers' schedule.
Cancellation	A flight removed from service within 7 days of scheduled departure is regarded as a cancellation.
On time departure percentage	The percentage of on time departures is measured against the number of departures <i>operated</i> on any particular sector.
On time arrival percentage	The percentage of on time arrivals is measured against the number of arrivals <i>operated</i> on any particular sector.
Cancellation percentage	The percentage of cancellations is measured against the number of services <i>scheduled</i> on any particular sector.

Airlines and Reporting

Data has been gathered since November 2003, although some airlines commenced reporting at a later date, including Jetstar which first reported in May 2004, Tigerair Australia in April 2008, Virgin Australia Regional Airlines in May 2013, Skytrans in May 2024 and Bonza in November 2024. Tigerair Australia ceased operations in March 2020 and data was not received for that month. Bonza ceased operations at the end of April 2024 and data was not received for that month.

Virgin Blue was rebranded as Virgin Australia in May 2011 and Tiger Airways was rebranded as Tigerair Australia in August 2013 and time series data in Microsoft Excel spread sheet format on the BITRE website have been revised to reflect these changes. With effect from August 2021, Regional Express is reported as Rex Airlines.

Services operated by Skywest on behalf of Virgin Australia using ATR/F100 aircraft commenced in November 2011 and were shown separately as Virgin Australia – ATR/F100 Operations. Virgin Australia Regional Airlines commenced operations in May 2013. It was formed after the acquisition of Skywest by Virgin Australia and represented a combination of operations previously reported under Skywest and Virgin Australia – ATR/F100 Operations. In February 2016, Virgin Australia transferred their ATR fleet from Virgin Australia Regional Airlines to Virgin Australia.