



**Australian Government**

**Department of Infrastructure, Transport,  
Regional Development, Communications and the Arts**  
Bureau of Infrastructure and Transport Research Economics

STATISTICAL REPORT



## Aviation

**Domestic airline on time performance  
November 2024**

The Department of Infrastructure, Transport, Regional Development, Communications and the Arts acknowledges the Traditional Custodians of Country of the land on which we work and live.

We recognise and respect the continuing connections to land, waters and communities.

We pay our respects to them and their cultures and to their Elders both past and present and to all Aboriginal and Torres Strait Islander people.

---

© Commonwealth of Australia 2024

ISSN: 1832-0759

BITRE reference: 2024-1222

### **Ownership of intellectual property rights in this publication**

Unless otherwise noted, copyright (and any other intellectual property rights, if any) in this publication is owned by the Commonwealth of Australia (referred to below as the Commonwealth).

### **Disclaimer**

The material contained in this publication is made available on the understanding that the Commonwealth is not providing professional advice, and that users exercise their own skill and care with respect to its use, and seek independent advice if necessary.

The Commonwealth makes no representations or warranties as to the contents or accuracy of the information contained in this publication. To the extent permitted by law, the Commonwealth disclaims liability to any person or organisation in respect of anything done, or omitted to be done, in reliance upon information contained in this publication.

### **Creative Commons licence**

With the exception of (a) the Coat of Arms; and (b) the Department of Infrastructure, Transport, Regional Development, Communications and the Arts' photos and graphics, copyright in this publication is licensed under a Creative Commons Attribution 3.0 Australia Licence.

Creative Commons Attribution 3.0 Australia Licence is a standard form licence agreement that allows you to copy, communicate and adapt this publication provided that you attribute the work to the Commonwealth and abide by the other licence terms. A summary of the licence terms is available from <http://creativecommons.org/licenses/by/3.0/au/deed.en>. The full licence terms are available from <http://creativecommons.org/licenses/by/3.0/au/legalcode>.

### **Use of the Coat of Arms**

The Department of the Prime Minister and Cabinet sets the terms under which the Coat of Arms is used. Please refer to the Department's Commonwealth Coat of Arms and Government branding web page <http://www.dpmc.gov.au/guidelines/index.cfm#brand> and, in particular, the Guidelines on the use of the Commonwealth Coat of Arms publication.

An appropriate citation for this report is:

Bureau of Infrastructure and Transport Research Economics (BITRE), 2024, Domestic airline on time performance, Statistical Report, BITRE, Canberra ACT.

### **Contact us**

All other rights are reserved, including in relation to any Departmental logos or trade marks which may exist. For enquiries regarding the licence and any use of this publication, please contact:

Bureau of Infrastructure and Transport Research Economics (BITRE)  
Department of Infrastructure, Transport, Regional Development, Communications and the Arts  
GPO Box 501, Canberra ACT 2601, Australia  
Telephone: (international) +61 2 6136 8687  
Email: [bitre@infrastructure.gov.au](mailto:bitre@infrastructure.gov.au)  
Website: [www.bitre.gov.au](http://www.bitre.gov.au)

### **Inquiries**

Should you require additional information about the statistics contained in this publication:

Telephone (02) 6136 7250

Electronic mail: [AVSTATS@infrastructure.gov.au](mailto:AVSTATS@infrastructure.gov.au)

Web site: <http://www.bitre.gov.au/statistics/aviation/otphome.aspx>

# Foreword

The Bureau of Infrastructure and Transport Research Economics (BITRE) monitors the punctuality and reliability of major domestic airlines operating between Australian airports. The purpose of this is to allow for evaluation of overall industry and individual airline performance, so that consumers of air travel can make informed decisions.

The following domestic airlines currently report this information monthly to the BITRE: Hinterland, Jetstar, Qantas, QantasLink, Rex Airlines, Skytrans, Virgin Australia and Virgin Australia Regional Airlines.

Information presented in this report is for Australian domestic routes for which the passenger load averaged 8,000 or more passengers per month over the previous six months and where two or more airlines operated in competition on those routes. In order to present data for more routes during the period impacted by COVID-19, the passenger load restriction was not applied between March 2020 and January 2023. From February 2023, the passenger load restriction was reinstated due to the continued recovery of passenger numbers. Data are presented for 59 routes in November 2024. Over time, routes which meet these criteria change as airline networks and traffic levels vary. Participating airlines report their overall monthly network performance where this is possible.

Total industry figures encompass all services operated by reporting airlines only. These airlines collectively carried over 98 per cent of total domestic passengers (regular public transport only) in 2023.

The method of capturing on time performance varies between airlines utilising different recording systems. Jetstar and Qantas jet aircraft use Aircraft Communication Addressing and Reporting System (ACARS) to electronically measure on time performance. Rex Airlines, Virgin Australia, Virgin Australia Regional Airlines and the Qantas non-jet fleet record on time performance manually using records from pilots, gate agents and/or ground crews.

After initial data is collected, aggregate reports are reviewed by participating airlines prior to publication.

Reports and detailed time series data in Microsoft Excel spreadsheet format are available from the BITRE website at: <http://www.bitre.gov.au/statistics/aviation/otphome.aspx>



# Contents

	Page
Industry performance .....	1
Individual routes .....	10
Airports.....	22
Definitions .....	28
Airlines and Reporting .....	29

# Industry performance

For November 2024, on time performance over all routes operated by participating airlines (Hinterland, Jetstar, Qantas, QantasLink, Rex Airlines, Skytrans, Virgin Australia and Virgin Australia Regional Airlines) averaged 68.4 per cent for on time arrivals and 69.0 per cent for on time departures. The cancellation rate for the month was 2.6 per cent. The equivalent figures for November 2023 were 64.1 per cent for on time arrivals, 65.9 per cent for on time departures and 3.7 per cent for cancellations.

This month's on time arrivals figure was lower than the long term average performance for all routes (80.7 per cent) and the on time departures figure was also lower than the long term average (81.9 per cent). The rate of cancellations was higher than the long term average of 2.2 per cent.

The Qantas network (Qantas and QantasLink combined operations) recorded 68.0 per cent for on time arrivals while the Virgin Australia network (Virgin Australia and Virgin Australia Regional Airlines combined operations) recorded 62.7 per cent. Skytrans achieved the highest on time arrivals at 97.7 per cent, followed by Hinterland at 90.9 per cent, QantasLink at 73.1 per cent, Rex Airlines at 72.6 per cent, Jetstar at 68.0 per cent, Virgin Australia Regional Airlines at 66.7 per cent, Virgin Australia at 62.6 per cent and Qantas at 60.3 per cent.

The Qantas network recorded 68.2 per cent for on time departures while the Virgin Australia network recorded 64.0 per cent. Skytrans achieved the highest level of on time departures for November 2024 at 97.7 per cent, followed by Hinterland at 93.0 per cent, Rex Airlines at 76.2 per cent, QantasLink at 73.3 per cent, Jetstar at 66.2 per cent, Virgin Australia at 64.1 per cent, Virgin Australia Regional Airlines at 61.1 per cent and Qantas at 60.4 per cent.

QantasLink recorded the highest percentage of cancellations at 3.6 per cent during the month, followed by Qantas at 3.1 per cent, Hinterland at 2.8 per cent, Rex Airlines at 2.5 per cent, Jetstar at 2.4 per cent, Virgin Australia at 1.7 per cent and Virgin Australia Regional Airlines and Skytrans both at 1.3 per cent.

Airlines' on time performance varies across the routes they serve. Individual route data by specific airline for 59 routes are shown on pages 10-21.

Of the 59 routes which met the criteria for on time performance reporting in November 2024, the Townsville-Cairns route had the highest percentage of on time arrivals (90.1 per cent), while the Adelaide-Gold Coast route had the highest percentage of on time departures (91.8 per cent). The Brisbane-Perth route had the lowest percentage of on time arrivals (40.9 per cent), while the Launceston-Brisbane had the lowest percentage of on time departures (32.5 per cent).

Cancellations were highest on the Melbourne-Sydney route at 5.3 per cent, followed by the Sydney-Melbourne route at 5.2 per cent, the Port Macquarie-Sydney route at 4.8 per cent, the Sydney-Dubbo and Dubbo-Sydney routes at 4.6 per cent and the Sydney-Adelaide route at 4.5 per cent.

Devonport Airport recorded the highest percentage of on time arrivals (84.7 per cent), while Port Lincoln Airport had the highest percentage of on time departures (85.0 per cent). Perth Airport recorded the lowest percentage of on time arrivals (54.8 per cent), while Broome Airport had the lowest percentage of on time departures (50.0 per cent). These figures only refer to reported routes and do not cover all flights at these airports.

Table 1 On time performance for November 2024 – Total Industry

	<i>Sectors</i>		<i>Arrivals On Time</i>		<i>Departures On Time</i>		<i>Cancellations</i>	
	<i>Scheduled</i>	<i>Flown</i>	<i>No.</i>	<i>%</i>	<i>No.</i>	<i>%</i>	<i>No.</i>	<i>%</i>
Hinterland	1,344	1,307	1,188	90.9	1,215	93.0	37	2.8
Jetstar	7,072	6,904	4,697	68.0	4,572	66.2	168	2.4
Qantas - all QF designated services	19,082	18,429	12,538	68.0	12,574	68.2	653	3.4
Rex Airlines	4,474	4,363	3,167	72.6	3,323	76.2	111	2.5
Skytrans	1,027	1,014	991	97.7	991	97.7	13	1.3
Virgin Australia - all VA designated services	12,213	12,004	7,524	62.7	7,686	64.0	209	1.7
All Airlines	45,212	44,021	30,105	68.4	30,361	69.0	1,191	2.6
Individual operating entities								
Qantas	7,498	7,263	4,378	60.3	4,389	60.4	235	3.1
QantasLink	11,584	11,166	8,160	73.1	8,185	73.3	418	3.6
Virgin Australia	11,903	11,698	7,320	62.6	7,499	64.1	205	1.7
Virgin Australia Regional Airlines	310	306	204	66.7	187	61.1	4	1.3

Total airline network data (including routes not shown in this report).

Airlines’ on time performance varies across the routes they serve. Individual route data by specific airline are shown on page 10 and onwards.

Table 2 Top ten routes for on time performance for November 2024 (participating airlines only)

<i>Arrivals</i>		<i>Departures</i>	
<i>Route</i>	<i>On Time (%)</i>	<i>Route</i>	<i>On Time (%)</i>
Townsville-Cairns	90.1	Adelaide-Gold Coast	91.8
Gold Coast-Canberra	88.4	Townsville-Cairns	90.1
Adelaide-Gold Coast	86.9	Melbourne-Mildura	85.6
Melbourne-Devonport	84.7	Port Lincoln-Adelaide	85.0
Port Lincoln-Adelaide	83.9	Melbourne-Devonport	84.7
Canberra-Adelaide	83.2	Adelaide-Port Lincoln	84.6
Adelaide-Port Lincoln	83.0	Gold Coast-Adelaide	83.6
Devonport-Melbourne	82.6	Mildura-Melbourne	83.5
Melbourne-Mildura	82.0	Wagga Wagga-Sydney	83.4
Cairns-Townsville	82.0	Devonport-Melbourne	83.3

Table 3 Top ten airports for on time performance for November 2024 (participating airlines and reported routes only)

<i>Arrivals</i>		<i>Departures</i>	
<i>Airport</i>	<i>On Time (%)</i>	<i>Airport</i>	<i>On Time (%)</i>
Devonport	84.7	Port Lincoln	85.0
Port Lincoln	83.0	Mildura	83.5
Mildura	82.0	Wagga Wagga	83.4
Emerald	77.4	Devonport	83.3
Port Hedland	76.8	Emerald	81.8
Wagga Wagga	76.6	Gladstone	79.2
Ballina	76.2	Townsville	77.8
Kalgoorlie	76.0	Port Macquarie	76.7
Darwin	75.1	Kalgoorlie	72.5
Newman	74.1	Ballina	72.2



## Total industry on time performance

Figure 1 On time performance (by month from Nov 2021)—Total Industry

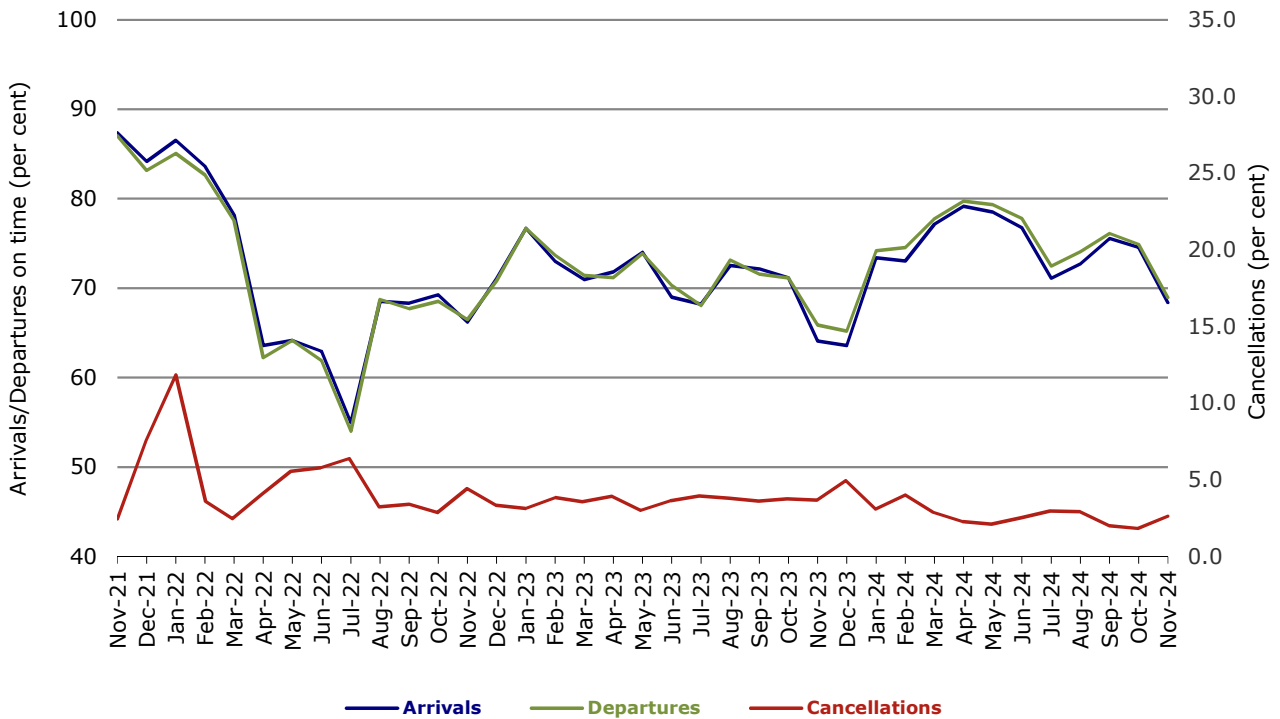


Figure 2 Arrivals on time (by month from Nov 2023)

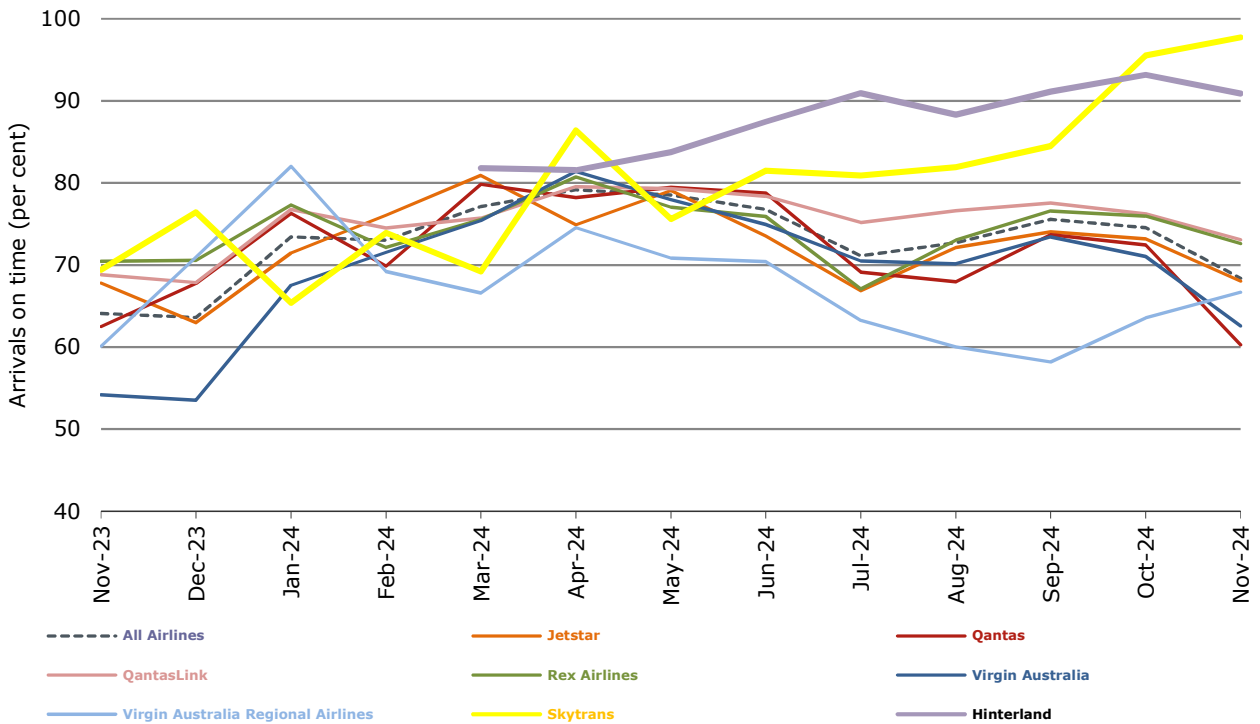


Figure 3 Departures on time (by month from Nov 2023)

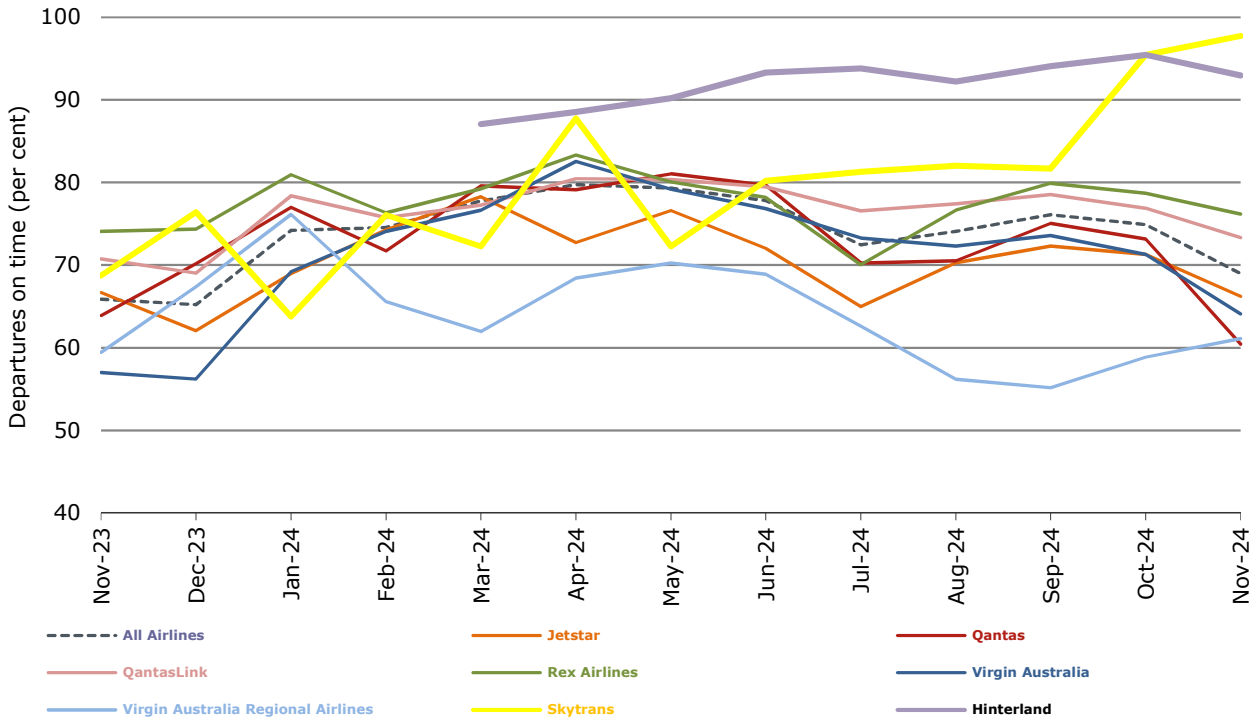
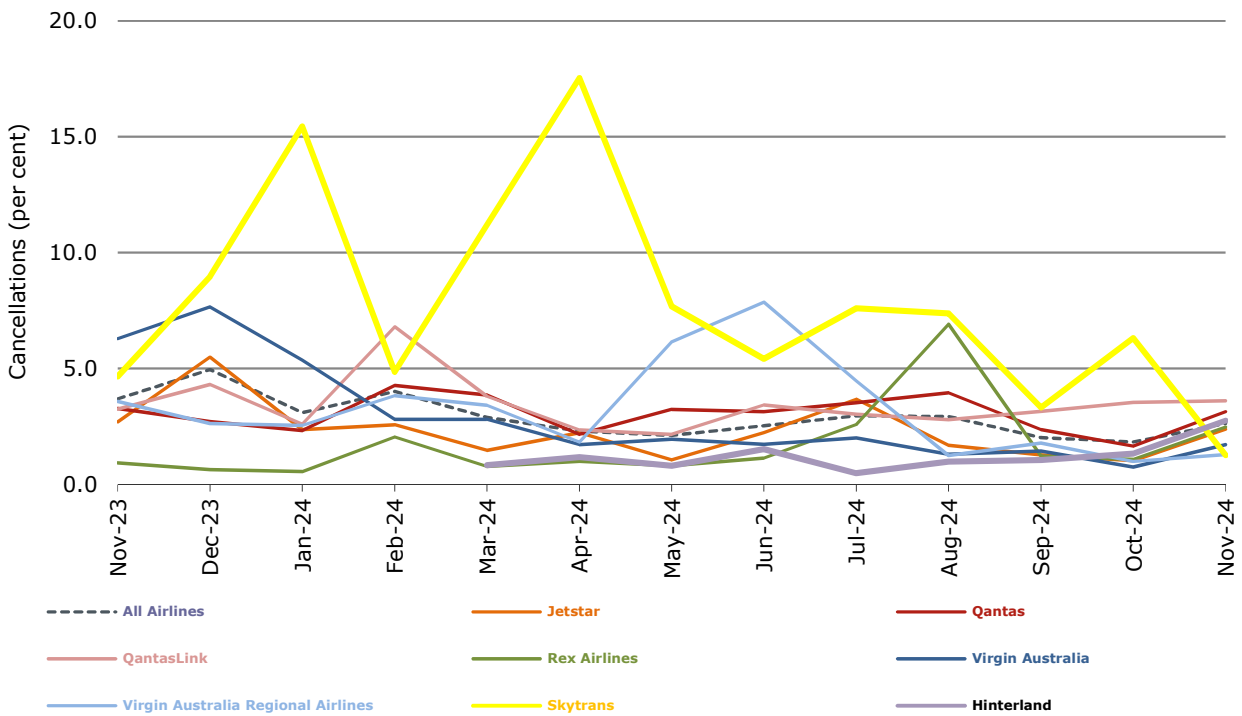


Figure 4 Cancellations (by month from Nov 2023)



## Airlines on time performance

Figure 5 On time performance (by month from Nov 2021)—Jetstar

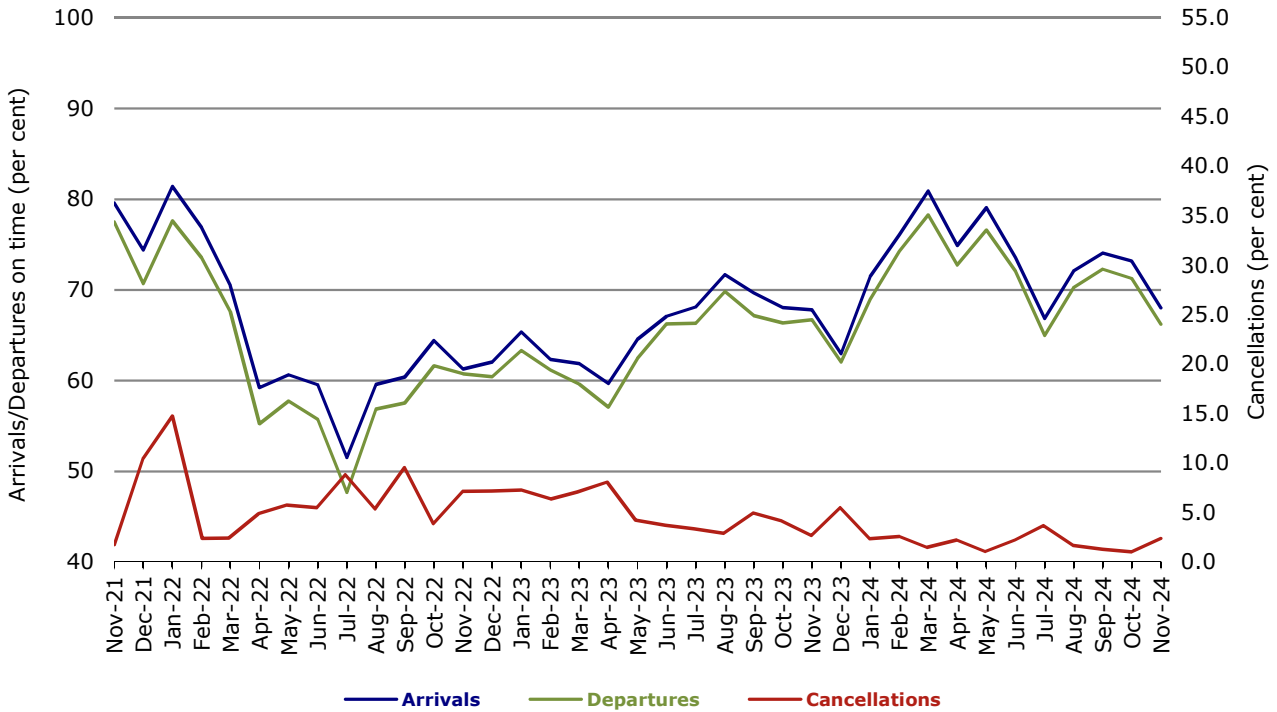


Figure 6 On time performance (by month from Nov 2021)—Qantas

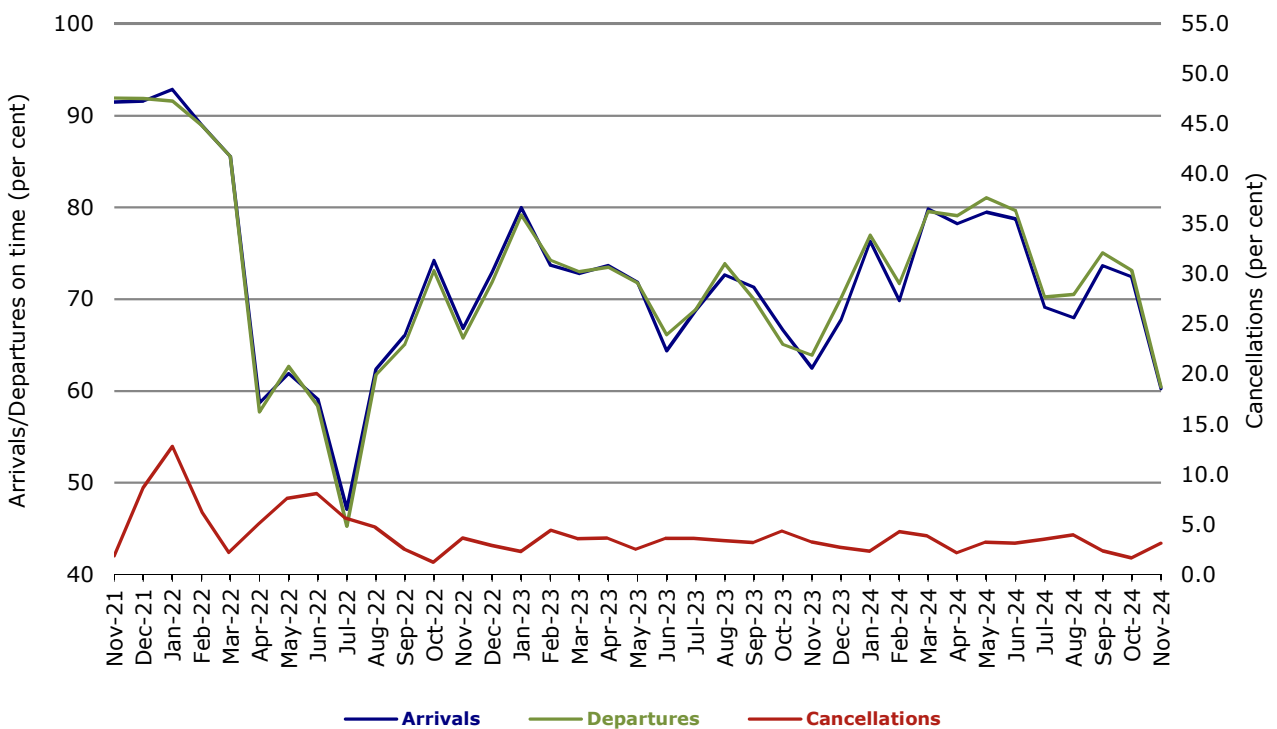


Figure 7 On time performance (by month from Nov 2021)—Virgin Australia

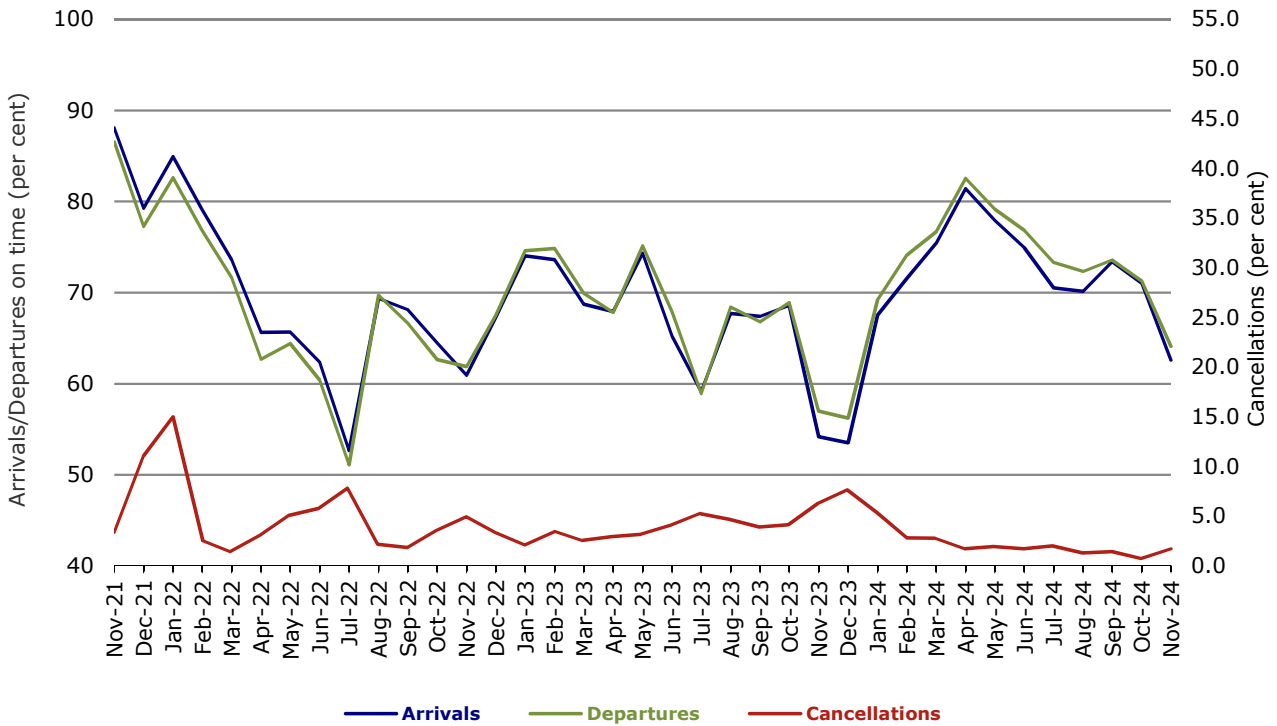


Figure 8 On time performance (by month from Nov 2021)—QantasLink

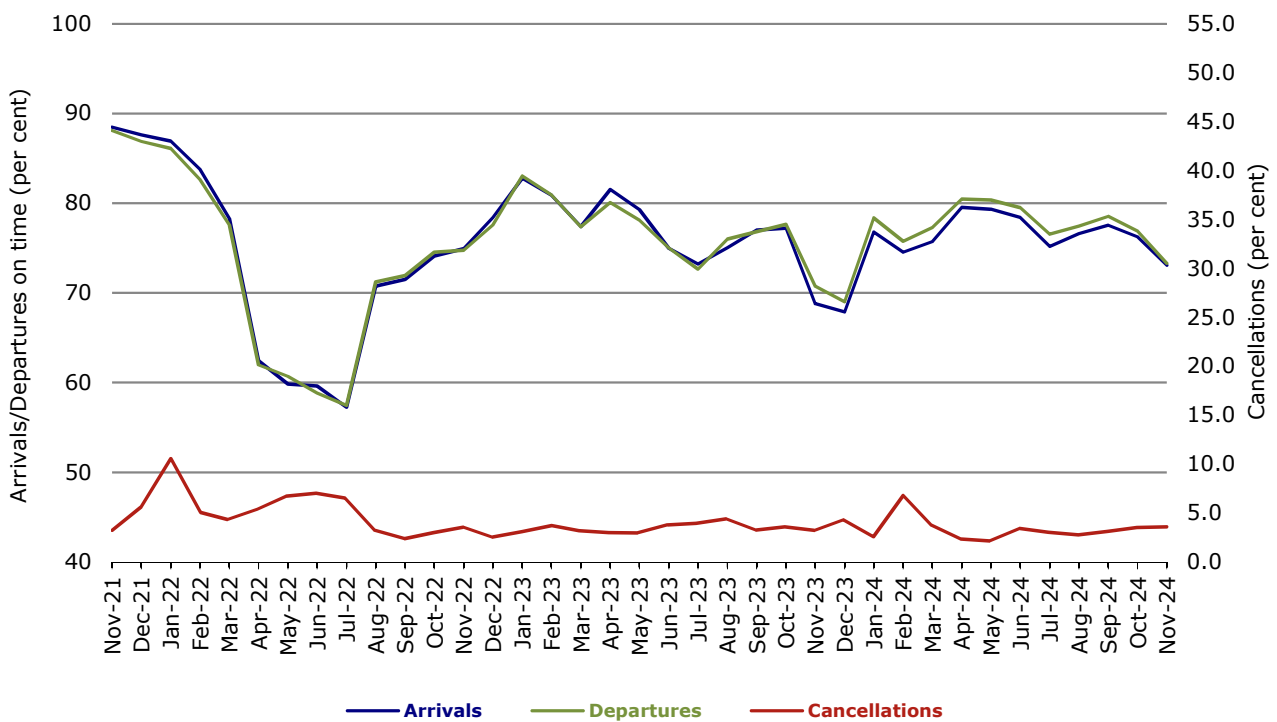


Figure 9 On time performance (by month from Nov 2021)—Rex Airlines

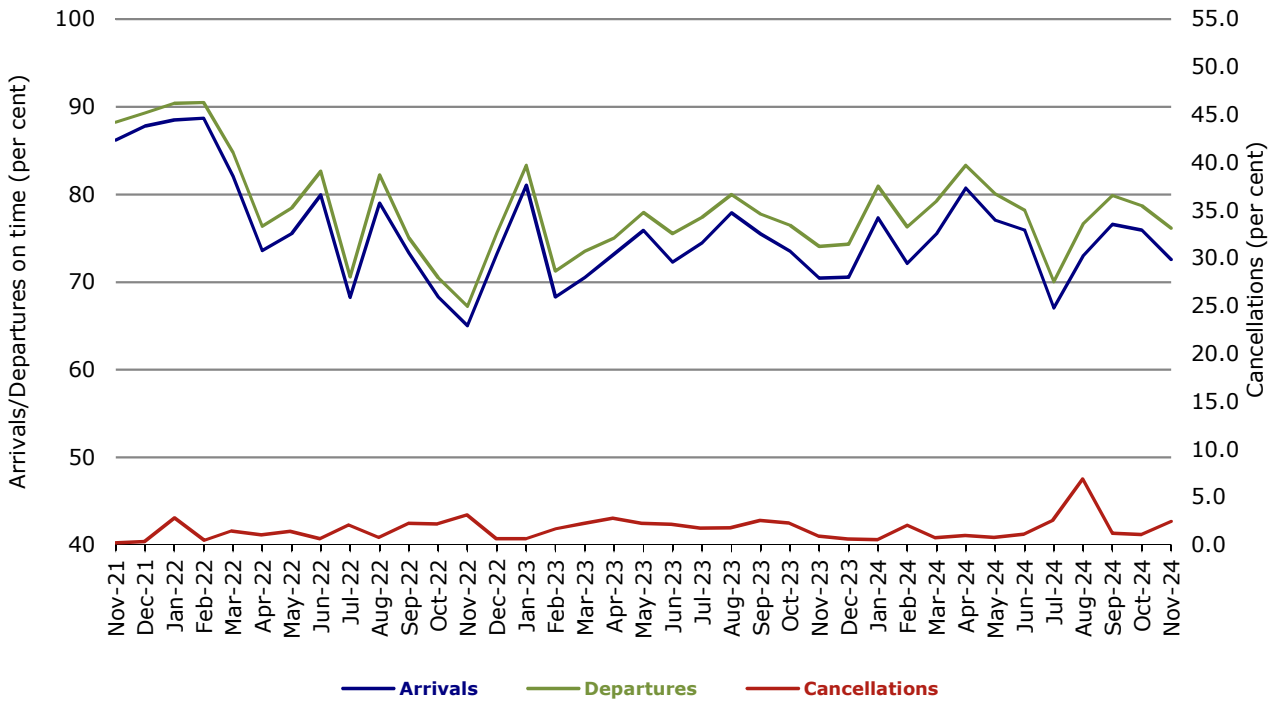


Figure 10 On time performance (by month from Nov 2021)—Virgin Australia Regional Airlines

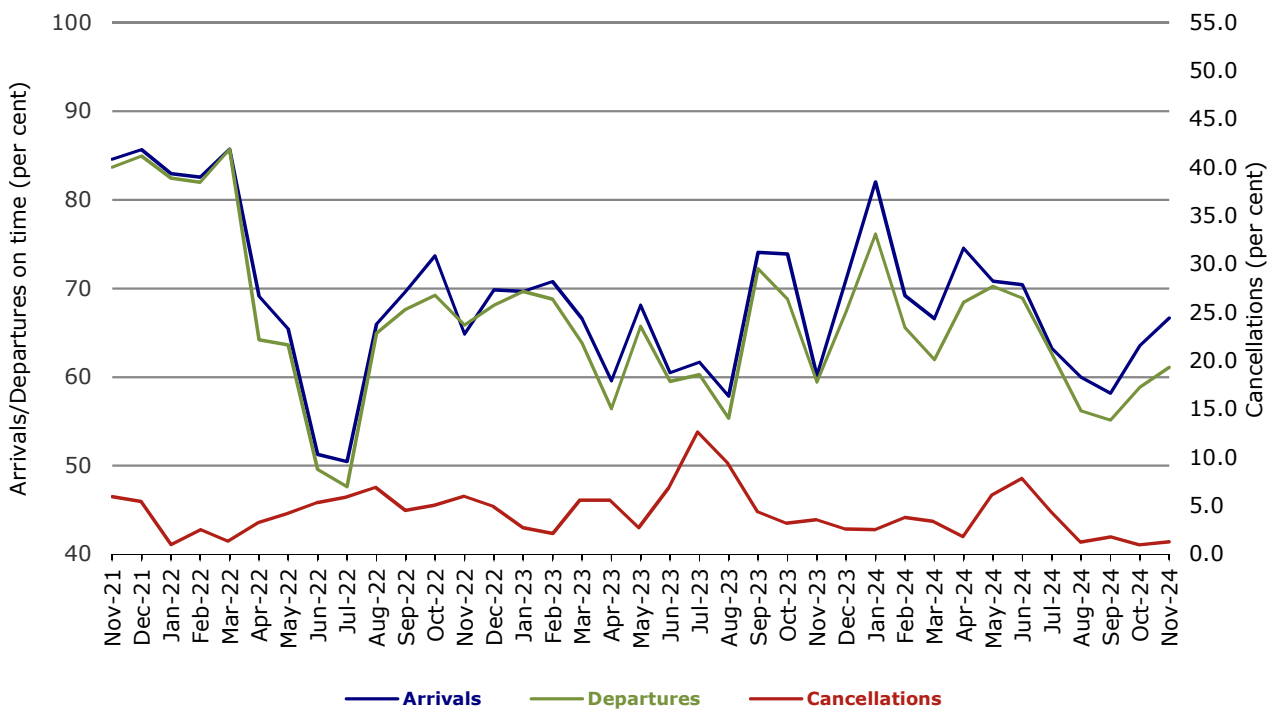
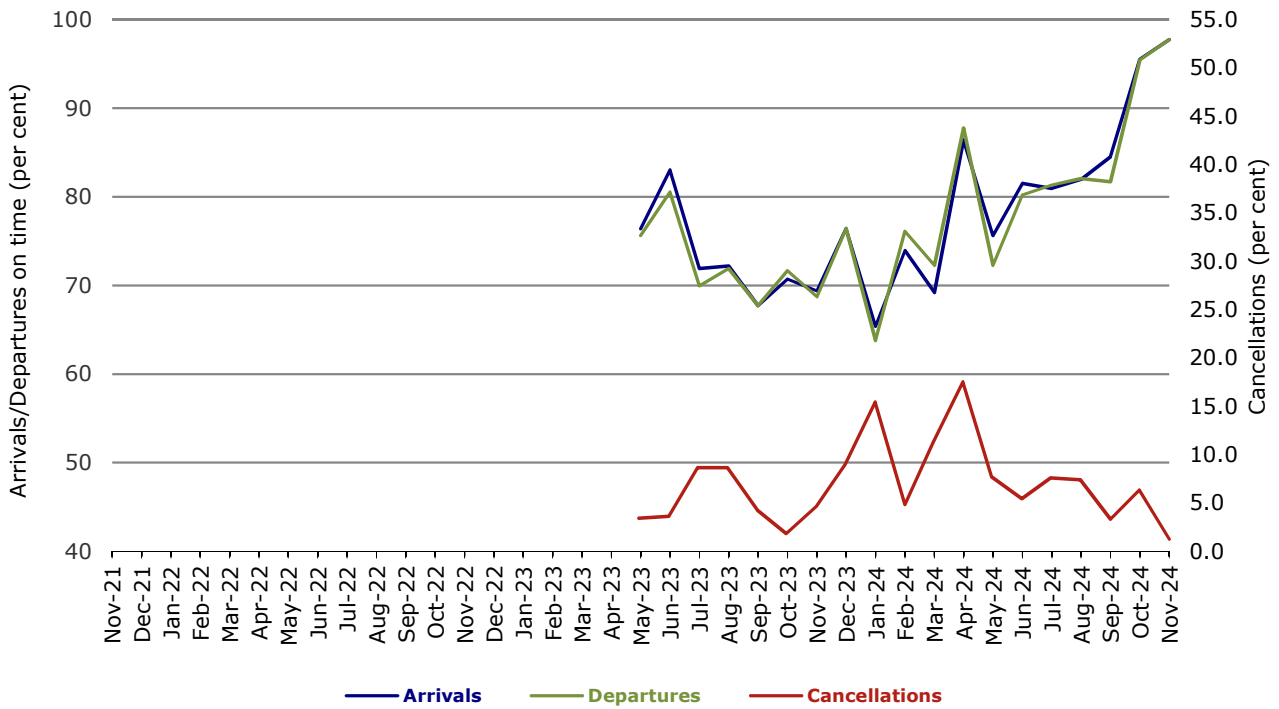
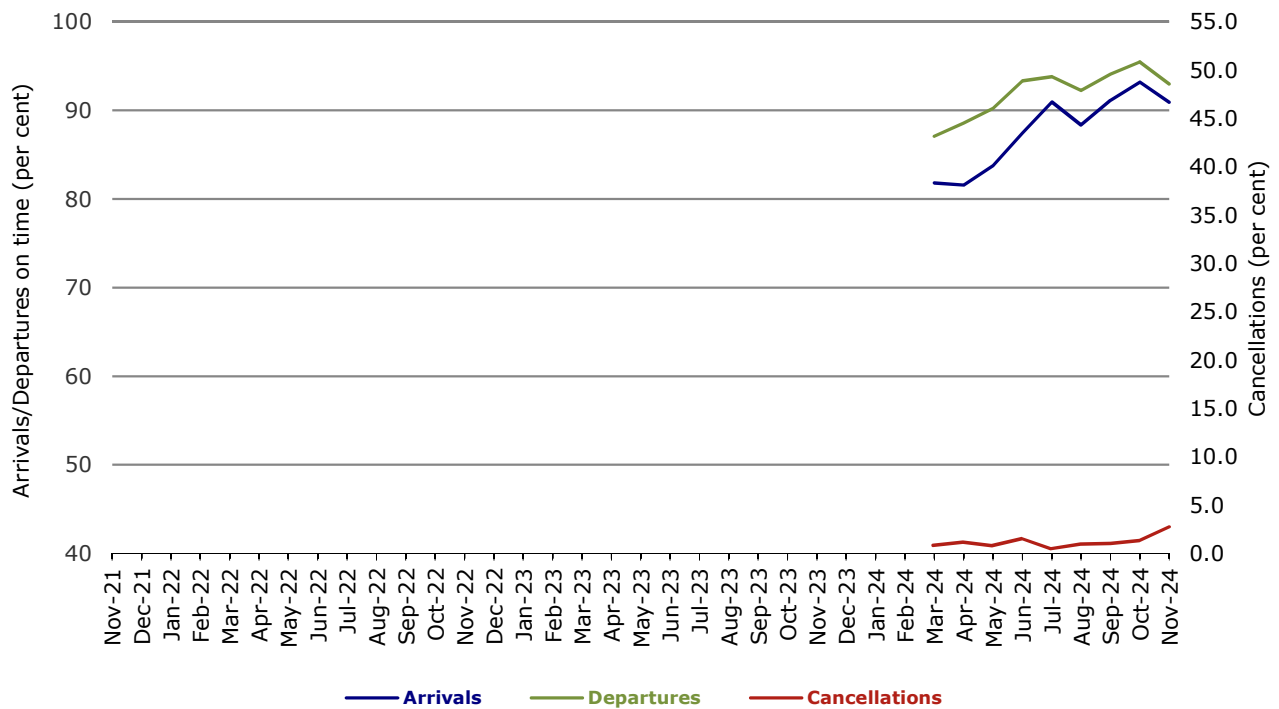


Figure 11 On time performance (by month from Nov 2021)—Skytrans



Note: Skytrans data included from May 2023

Figure 12 On time performance (by month from Nov 2021)—Hinterland



Note: Hinterland data included from March 2024

## Individual routes

On time performance is reported for all routes where the passenger load averages over 8,000 passengers per month over the previous six months, and where two or more airlines operate in competition on those routes. There are now 59 routes for which data are presented.

	<i>Sectors</i>		<i>Arrivals On Time</i>		<i>Departures On Time</i>		<i>Cancellations</i>	
	<i>Sched.</i>	<i>Flown</i>	<i>No.</i>	<i>%</i>	<i>No.</i>	<i>%</i>	<i>No.</i>	<i>%</i>
<b>Adelaide-Alice Springs</b>								
QantasLink	39	38	27	71.1	27	71.1	1	2.6
Virgin Australia	13	13	9	69.2	8	61.5	0	0.0
All Airlines	52	51	36	70.6	35	68.6	1	1.9
<b>Adelaide-Brisbane</b>								
Jetstar	34	34	28	82.4	31	91.2	0	0.0
QantasLink	171	170	132	77.6	129	75.9	1	0.6
Virgin Australia	127	126	90	71.4	80	63.5	1	0.8
All Airlines	332	330	250	75.8	240	72.7	2	0.6
<b>Adelaide-Canberra</b>								
QantasLink	91	91	69	75.8	74	81.3	0	0.0
Virgin Australia	17	17	9	52.9	9	52.9	0	0.0
All Airlines	108	108	78	72.2	83	76.9	0	0.0
<b>Adelaide-Gold Coast</b>								
Jetstar	30	30	24	80.0	28	93.3	0	0.0
Virgin Australia	32	31	29	93.5	28	90.3	1	3.1
All Airlines	62	61	53	86.9	56	91.8	1	1.6
<b>Adelaide-Melbourne</b>								
Jetstar	90	89	54	60.7	47	52.8	1	1.1
Qantas	258	253	184	72.7	172	68.0	5	1.9
QantasLink	1	1	1	100.0	1	100.0	0	0.0
Virgin Australia	281	276	182	65.9	177	64.1	5	1.8
All Airlines	630	619	421	68.0	397	64.1	11	1.7
<b>Adelaide-Perth</b>								
Jetstar	30	30	19	63.3	20	66.7	0	0.0
Qantas	89	89	66	74.2	69	77.5	0	0.0
Virgin Australia	59	59	25	42.4	28	47.5	0	0.0
Virgin Australia Regional Airlines	14	14	3	21.4	3	21.4	0	0.0
All Airlines	192	192	113	58.9	120	62.5	0	0.0
<b>Adelaide-Port Lincoln</b>								
QantasLink	115	114	104	91.2	104	91.2	1	0.9
Rex Airlines	146	139	106	76.3	110	79.1	7	4.8
All Airlines	261	253	210	83.0	214	84.6	8	3.1
<b>Adelaide-Sydney</b>								
Jetstar	131	123	86	69.9	84	68.3	8	6.1
Qantas	240	229	146	63.8	143	62.4	11	4.6
Virgin Australia	167	164	105	64.0	99	60.4	3	1.8
All Airlines	538	516	337	65.3	326	63.2	22	4.1
<b>Albury-Sydney</b>								
QantasLink	99	97	69	71.1	64	66.0	2	2.0
Rex Airlines	69	68	47	69.1	50	73.5	1	1.4
All Airlines	168	165	116	70.3	114	69.1	3	1.8

	Sectors		Arrivals On Time		Departures On Time		Cancellations	
	Sched.	Flown	No.	%	No.	%	No.	%
<b>Alice Springs-Adelaide</b>								
QantasLink	39	38	25	65.8	25	65.8	1	2.6
Virgin Australia	13	13	5	38.5	4	30.8	0	0.0
All Airlines	52	51	30	58.8	29	56.9	1	1.9
<b>Ballina-Sydney</b>								
Jetstar	78	77	57	74.0	57	74.0	1	1.3
QantasLink	45	41	29	70.7	31	75.6	4	8.9
Virgin Australia	52	51	36	70.6	34	66.7	1	1.9
All Airlines	175	169	122	72.2	122	72.2	6	3.4
<b>Brisbane-Adelaide</b>								
Jetstar	34	34	26	76.5	24	70.6	0	0.0
QantasLink	171	168	112	66.7	107	63.7	3	1.8
Virgin Australia	127	126	75	59.5	72	57.1	1	0.8
All Airlines	332	328	213	64.9	203	61.9	4	1.2
<b>Brisbane-Cairns</b>								
Jetstar	86	86	68	79.1	65	75.6	0	0.0
Qantas	16	16	14	87.5	13	81.3	0	0.0
QantasLink	148	145	82	56.6	75	51.7	3	2.0
Virgin Australia	142	142	81	57.0	76	53.5	0	0.0
All Airlines	392	389	245	63.0	229	58.9	3	0.8
<b>Brisbane-Canberra</b>								
Jetstar	30	30	16	53.3	18	60.0	0	0.0
QantasLink	151	145	97	66.9	96	66.2	6	4.0
Virgin Australia	109	109	64	58.7	67	61.5	0	0.0
All Airlines	290	284	177	62.3	181	63.7	6	2.1
<b>Brisbane-Darwin</b>								
Jetstar	18	17	13	76.5	13	76.5	1	5.6
Qantas	29	29	24	82.8	21	72.4	0	0.0
Virgin Australia	30	29	20	69.0	21	72.4	1	3.3
All Airlines	77	75	57	76.0	55	73.3	2	2.6
<b>Brisbane-Emerald</b>								
QantasLink	113	108	86	79.6	82	75.9	5	4.4
Virgin Australia	25	25	17	68.0	16	64.0	0	0.0
All Airlines	138	133	103	77.4	98	73.7	5	3.6
<b>Brisbane-Gladstone</b>								
QantasLink	125	119	86	72.3	80	67.2	6	4.8
Virgin Australia	35	34	21	61.8	22	64.7	1	2.9
All Airlines	160	153	107	69.9	102	66.7	7	4.4
<b>Brisbane-Hamilton Island</b>								
QantasLink	26	26	20	76.9	14	53.8	0	0.0
Virgin Australia	31	31	21	67.7	20	64.5	0	0.0
All Airlines	57	57	41	71.9	34	59.6	0	0.0
<b>Brisbane-Hobart</b>								
Jetstar	22	22	18	81.8	18	81.8	0	0.0
QantasLink	18	18	12	66.7	12	66.7	0	0.0
Virgin Australia	52	52	32	61.5	28	53.8	0	0.0
All Airlines	92	92	62	67.4	58	63.0	0	0.0
<b>Brisbane-Launceston</b>								
Jetstar	22	22	11	50.0	9	40.9	0	0.0
Virgin Australia	18	18	10	55.6	10	55.6	0	0.0
All Airlines	40	40	21	52.5	19	47.5	0	0.0



	Sectors		Arrivals On Time		Departures On Time		Cancellations	
	Sched.	Flown	No.	%	No.	%	No.	%
<b>Brisbane-Mackay</b>								
Jetstar	30	30	12	40.0	13	43.3	0	0.0
Qantas	96	96	61	63.5	60	62.5	0	0.0
QantasLink	19	19	11	57.9	12	63.2	0	0.0
Virgin Australia	134	133	101	75.9	86	64.7	1	0.7
All Airlines	279	278	185	66.5	171	61.5	1	0.4
<b>Brisbane-Melbourne</b>								
Jetstar	120	117	84	71.8	82	70.1	3	2.5
Qantas	363	355	201	56.6	214	60.3	8	2.2
QantasLink	21	20	1	5.0	2	10.0	1	4.8
Virgin Australia	433	424	221	52.1	248	58.5	9	2.1
All Airlines	937	916	507	55.3	546	59.6	21	2.2
<b>Brisbane-Mount Isa</b>								
QantasLink	83	82	53	64.6	54	65.9	1	1.2
Virgin Australia	13	13	9	69.2	9	69.2	0	0.0
All Airlines	96	95	62	65.3	63	66.3	1	1.0
<b>Brisbane-Newcastle</b>								
Jetstar	54	52	34	65.4	34	65.4	2	3.7
QantasLink	81	80	58	72.5	59	73.8	1	1.2
Virgin Australia	80	78	31	39.7	31	39.7	2	2.5
All Airlines	215	210	123	58.6	124	59.0	5	2.3
<b>Brisbane-Perth</b>								
Jetstar	26	26	10	38.5	13	50.0	0	0.0
Qantas	162	161	84	52.2	107	66.5	1	0.6
Virgin Australia	133	131	36	27.5	55	42.0	2	1.5
All Airlines	321	318	130	40.9	175	55.0	3	0.9
<b>Brisbane-Proserpine</b>								
Jetstar	30	30	18	60.0	20	66.7	0	0.0
QantasLink	16	15	12	80.0	10	66.7	1	6.3
Virgin Australia	32	32	18	56.3	20	62.5	0	0.0
All Airlines	78	77	48	62.3	50	64.9	1	1.3
<b>Brisbane-Rockhampton</b>								
QantasLink	173	169	127	75.1	124	73.4	4	2.3
Virgin Australia	154	153	92	60.1	100	65.4	1	0.6
All Airlines	327	322	219	68.0	224	69.6	5	1.5
<b>Brisbane-Sydney</b>								
Jetstar	209	196	118	60.2	117	59.7	13	6.2
Qantas	506	492	289	58.7	307	62.4	14	2.8
Virgin Australia	478	467	231	49.5	251	53.7	11	2.3
All Airlines	1 193	1 155	638	55.2	675	58.4	38	3.2
<b>Brisbane-Townsville</b>								
Jetstar	52	52	38	73.1	37	71.2	0	0.0
Qantas	20	20	17	85.0	15	75.0	0	0.0
QantasLink	144	143	90	62.9	97	67.8	1	0.7
Virgin Australia	140	136	76	55.9	74	54.4	4	2.9
All Airlines	356	351	221	63.0	223	63.5	5	1.4
<b>Broome-Perth</b>								
QantasLink	72	72	32	44.4	39	54.2	0	0.0
Virgin Australia	29	29	13	44.8	16	55.2	0	0.0
Virgin Australia Regional Airlines	21	21	8	38.1	6	28.6	0	0.0
All Airlines	122	122	53	43.4	61	50.0	0	0.0

	Sectors		Arrivals On Time		Departures On Time		Cancellations	
	Sched.	Flown	No.	%	No.	%	No.	%
<b>Cairns-Brisbane</b>								
Jetstar	86	86	70	81.4	70	81.4	0	0.0
Qantas	16	16	15	93.8	14	87.5	0	0.0
QantasLink	148	145	73	50.3	82	56.6	3	2.0
Virgin Australia	142	142	81	57.0	80	56.3	0	0.0
All Airlines	392	389	239	61.4	246	63.2	3	0.8
<b>Cairns-Melbourne</b>								
Jetstar	91	90	52	57.8	49	54.4	1	1.1
Qantas	30	30	15	50.0	16	53.3	0	0.0
Virgin Australia	63	63	48	76.2	49	77.8	0	0.0
All Airlines	184	183	115	62.8	114	62.3	1	0.5
<b>Cairns-Sydney</b>								
Jetstar	82	80	61	76.3	55	68.8	2	2.4
Qantas	35	34	17	50.0	20	58.8	1	2.9
Virgin Australia	75	75	54	72.0	53	70.7	0	0.0
All Airlines	192	189	132	69.8	128	67.7	3	1.6
<b>Cairns-Townsville</b>								
QantasLink	123	122	98	80.3	99	81.1	1	0.8
Rex Airlines	12	11	11	100.0	11	100.0	1	8.3
All Airlines	135	133	109	82.0	110	82.7	2	1.5
<b>Canberra-Adelaide</b>								
QantasLink	90	90	76	84.4	72	80.0	0	0.0
Virgin Australia	17	17	13	76.5	11	64.7	0	0.0
All Airlines	107	107	89	83.2	83	77.6	0	0.0
<b>Canberra-Brisbane</b>								
Jetstar	30	30	12	40.0	13	43.3	0	0.0
QantasLink	150	142	95	66.9	89	62.7	8	5.3
Virgin Australia	109	109	75	68.8	75	68.8	0	0.0
All Airlines	289	281	182	64.8	177	63.0	8	2.8
<b>Canberra-Gold Coast</b>								
Jetstar	13	13	10	76.9	10	76.9	0	0.0
Virgin Australia	30	30	24	80.0	23	76.7	0	0.0
All Airlines	43	43	34	79.1	33	76.7	0	0.0
<b>Canberra-Melbourne</b>								
Jetstar	30	30	23	76.7	22	73.3	0	0.0
Qantas	53	52	35	67.3	28	53.8	1	1.9
QantasLink	138	126	54	42.9	60	47.6	12	8.7
Virgin Australia	125	125	98	78.4	90	72.0	0	0.0
All Airlines	346	333	210	63.1	200	60.1	13	3.8
<b>Canberra-Sydney</b>								
Qantas	27	26	16	61.5	17	65.4	1	3.7
QantasLink	418	401	285	71.1	285	71.1	17	4.1
Virgin Australia	246	239	194	81.2	196	82.0	7	2.8
All Airlines	691	666	495	74.3	498	74.8	25	3.6
<b>Coffs Harbour-Sydney</b>								
QantasLink	109	104	72	69.2	71	68.3	5	4.6
Rex Airlines	76	76	41	53.9	44	57.9	0	0.0
All Airlines	185	180	113	62.8	115	63.9	5	2.7
<b>Darwin-Brisbane</b>								
Jetstar	18	17	12	70.6	12	70.6	1	5.6
Qantas	30	30	18	60.0	23	76.7	0	0.0
Virgin Australia	30	29	12	41.4	9	31.0	1	3.3
All Airlines	78	76	42	55.3	44	57.9	2	2.6

	Sectors		Arrivals On Time		Departures On Time		Cancellations	
	Sched.	Flown	No.	%	No.	%	No.	%
<b>Darwin-Melbourne</b>								
Jetstar	23	22	17	77.3	11	50.0	1	4.3
Qantas	30	30	27	90.0	24	80.0	0	0.0
Virgin Australia	26	24	15	62.5	13	54.2	2	7.7
All Airlines	79	76	59	77.6	48	63.2	3	3.8
<b>Darwin-Perth</b>								
Qantas	30	30	20	66.7	20	66.7	0	0.0
QantasLink	2	2	2	100.0	2	100.0	0	0.0
Virgin Australia Regional Airlines	18	18	12	66.7	12	66.7	0	0.0
All Airlines	50	50	34	68.0	34	68.0	0	0.0
<b>Devonport-Melbourne</b>								
QantasLink	99	95	81	85.3	79	83.2	4	4.0
Rex Airlines	50	49	38	77.6	41	83.7	1	2.0
All Airlines	149	144	119	82.6	120	83.3	5	3.4
<b>Dubbo-Sydney</b>								
QantasLink	112	104	84	80.8	81	77.9	8	7.1
Rex Airlines	126	123	75	61.0	80	65.0	3	2.4
All Airlines	238	227	159	70.0	161	70.9	11	4.6
<b>Emerald-Brisbane</b>								
QantasLink	112	107	88	82.2	89	83.2	5	4.5
Virgin Australia	25	25	18	72.0	19	76.0	0	0.0
All Airlines	137	132	106	80.3	108	81.8	5	3.6
<b>Gladstone-Brisbane</b>								
QantasLink	126	120	92	76.7	97	80.8	6	4.8
Virgin Australia	35	34	21	61.8	25	73.5	1	2.9
All Airlines	161	154	113	73.4	122	79.2	7	4.3
<b>Gold Coast-Adelaide</b>								
Jetstar	30	30	26	86.7	26	86.7	0	0.0
Virgin Australia	32	31	23	74.2	25	80.6	1	3.1
All Airlines	62	61	49	80.3	51	83.6	1	1.6
<b>Gold Coast-Canberra</b>								
Jetstar	13	13	12	92.3	10	76.9	0	0.0
Virgin Australia	30	30	26	86.7	25	83.3	0	0.0
All Airlines	43	43	38	88.4	35	81.4	0	0.0
<b>Gold Coast-Melbourne</b>								
Jetstar	190	186	132	71.0	125	67.2	4	2.1
Qantas	36	36	23	63.9	18	50.0	0	0.0
Virgin Australia	261	257	165	64.2	150	58.4	4	1.5
All Airlines	487	479	320	66.8	293	61.2	8	1.6
<b>Gold Coast-Sydney</b>								
Jetstar	227	219	148	67.6	144	65.8	8	3.5
Qantas	90	89	53	59.6	50	56.2	1	1.1
Virgin Australia	304	295	178	60.3	166	56.3	9	3.0
All Airlines	621	603	379	62.9	360	59.7	18	2.9
<b>Hamilton Island-Brisbane</b>								
QantasLink	26	26	19	73.1	19	73.1	0	0.0
Virgin Australia	31	31	18	58.1	16	51.6	0	0.0
All Airlines	57	57	37	64.9	35	61.4	0	0.0
<b>Hamilton Island-Sydney</b>								
Jetstar	17	17	10	58.8	9	52.9	0	0.0
Qantas	29	28	15	53.6	15	53.6	1	3.4
Virgin Australia	24	24	8	33.3	11	45.8	0	0.0
All Airlines	70	69	33	47.8	35	50.7	1	1.4

	Sectors		Arrivals On Time		Departures On Time		Cancellations	
	Sched.	Flown	No.	%	No.	%	No.	%
<b>Hobart-Brisbane</b>								
Jetstar	22	22	12	54.5	14	63.6	0	0.0
QantasLink	18	18	6	33.3	4	22.2	0	0.0
Virgin Australia	52	52	31	59.6	31	59.6	0	0.0
All Airlines	92	92	49	53.3	49	53.3	0	0.0
<b>Hobart-Melbourne</b>								
Jetstar	145	141	65	46.1	67	47.5	4	2.8
Qantas	31	30	16	53.3	14	46.7	1	3.2
QantasLink	84	77	38	49.4	39	50.6	7	8.3
Virgin Australia	117	117	93	79.5	93	79.5	0	0.0
All Airlines	377	365	212	58.1	213	58.4	12	3.2
<b>Hobart-Sydney</b>								
Jetstar	80	79	47	59.5	46	58.2	1	1.3
Qantas	52	51	35	68.6	34	66.7	1	1.9
QantasLink	32	27	11	40.7	10	37.0	5	15.6
Virgin Australia	76	75	54	72.0	56	74.7	1	1.3
All Airlines	240	232	147	63.4	146	62.9	8	3.3
<b>Kalgoorlie-Perth</b>								
Qantas	12	12	10	83.3	10	83.3	0	0.0
QantasLink	60	55	40	72.7	39	70.9	5	8.3
Virgin Australia	79	79	51	64.6	57	72.2	0	0.0
Virgin Australia Regional Airlines	22	21	15	71.4	15	71.4	1	4.5
All Airlines	173	167	116	69.5	121	72.5	6	3.5
<b>Karratha-Perth</b>								
QantasLink	152	148	84	56.8	100	67.6	4	2.6
Virgin Australia	51	49	39	79.6	42	85.7	2	3.9
Virgin Australia Regional Airlines	24	23	14	60.9	14	60.9	1	4.2
All Airlines	227	220	137	62.3	156	70.9	7	3.1
<b>Launceston-Brisbane</b>								
Jetstar	22	22	8	36.4	7	31.8	0	0.0
Virgin Australia	18	18	9	50.0	6	33.3	0	0.0
All Airlines	40	40	17	42.5	13	32.5	0	0.0
<b>Launceston-Melbourne</b>								
Jetstar	73	73	37	50.7	35	47.9	0	0.0
QantasLink	56	54	26	48.1	25	46.3	2	3.6
Virgin Australia	91	89	66	74.2	63	70.8	2	2.2
All Airlines	220	216	129	59.7	123	56.9	4	1.8
<b>Launceston-Sydney</b>								
Jetstar	40	39	32	82.1	32	82.1	1	2.5
QantasLink	30	28	19	67.9	16	57.1	2	6.7
Virgin Australia	30	30	10	33.3	10	33.3	0	0.0
All Airlines	100	97	61	62.9	58	59.8	3	3.0
<b>Mackay-Brisbane</b>								
Jetstar	30	30	11	36.7	12	40.0	0	0.0
Qantas	97	96	70	72.9	70	72.9	1	1.0
QantasLink	23	23	17	73.9	17	73.9	0	0.0
Virgin Australia	134	133	102	76.7	104	78.2	1	0.7
All Airlines	284	282	200	70.9	203	72.0	2	0.7
<b>Melbourne-Adelaide</b>								
Jetstar	90	89	54	60.7	56	62.9	1	1.1
Qantas	259	256	168	65.6	154	60.2	3	1.2
QantasLink	1	1	1	100.0	1	100.0	0	0.0
Virgin Australia	281	277	147	53.1	180	65.0	4	1.4
All Airlines	631	623	370	59.4	391	62.8	8	1.3

	Sectors		Arrivals On Time		Departures On Time		Cancellations	
	Sched.	Flown	No.	%	No.	%	No.	%
<b>Melbourne-Brisbane</b>								
Jetstar	120	117	64	54.7	64	54.7	3	2.5
Qantas	366	357	225	63.0	209	58.5	9	2.5
QantasLink	21	20	6	30.0	9	45.0	1	4.8
Virgin Australia	442	430	238	55.3	286	66.5	12	2.7
All Airlines	949	924	533	57.7	568	61.5	25	2.6
<b>Melbourne-Cairns</b>								
Jetstar	91	89	56	62.9	57	64.0	2	2.2
Qantas	30	30	21	70.0	23	76.7	0	0.0
Virgin Australia	63	63	61	96.8	58	92.1	0	0.0
All Airlines	184	182	138	75.8	138	75.8	2	1.1
<b>Melbourne-Canberra</b>								
Jetstar	30	30	26	86.7	25	83.3	0	0.0
Qantas	57	56	39	69.6	38	67.9	1	1.8
QantasLink	139	128	49	38.3	56	43.8	11	7.9
Virgin Australia	125	125	87	69.6	82	65.6	0	0.0
All Airlines	351	339	201	59.3	201	59.3	12	3.4
<b>Melbourne-Darwin</b>								
Jetstar	23	22	16	72.7	19	86.4	1	4.3
Qantas	30	30	22	73.3	19	63.3	0	0.0
Virgin Australia	25	24	16	66.7	17	70.8	1	4.0
All Airlines	78	76	54	71.1	55	72.4	2	2.6
<b>Melbourne-Devonport</b>								
QantasLink	98	95	80	84.2	80	84.2	3	3.1
Rex Airlines	49	49	42	85.7	42	85.7	0	0.0
All Airlines	147	144	122	84.7	122	84.7	3	2.0
<b>Melbourne-Gold Coast</b>								
Jetstar	189	185	110	59.5	110	59.5	4	2.1
Qantas	35	35	25	71.4	24	68.6	0	0.0
Virgin Australia	259	257	166	64.6	161	62.6	2	0.8
All Airlines	483	477	301	63.1	295	61.8	6	1.2
<b>Melbourne-Hobart</b>								
Jetstar	144	141	85	60.3	86	61.0	3	2.1
Qantas	32	31	19	61.3	12	38.7	1	3.1
QantasLink	83	76	31	40.8	30	39.5	7	8.4
Virgin Australia	119	117	86	73.5	84	71.8	2	1.7
All Airlines	378	365	221	60.5	212	58.1	13	3.4
<b>Melbourne-Launceston</b>								
Jetstar	73	73	42	57.5	37	50.7	0	0.0
QantasLink	57	54	21	38.9	23	42.6	3	5.3
Virgin Australia	91	89	61	68.5	60	67.4	2	2.2
All Airlines	221	216	124	57.4	120	55.6	5	2.3
<b>Melbourne-Mildura</b>								
QantasLink	98	96	82	85.4	85	88.5	2	2.0
Rex Airlines	98	98	77	78.6	81	82.7	0	0.0
All Airlines	196	194	159	82.0	166	85.6	2	1.0
<b>Melbourne-Newcastle</b>								
Jetstar	56	55	43	78.2	38	69.1	1	1.8
QantasLink	51	50	26	52.0	21	42.0	1	2.0
Virgin Australia	43	43	30	69.8	29	67.4	0	0.0
All Airlines	150	148	99	66.9	88	59.5	2	1.3

	Sectors		Arrivals On Time		Departures On Time		Cancellations	
	Sched.	Flown	No.	%	No.	%	No.	%
<b>Melbourne-Perth</b>								
Jetstar	78	75	53	70.7	48	64.0	3	3.8
Qantas	200	197	115	58.4	115	58.4	3	1.5
Virgin Australia	220	219	124	56.6	135	61.6	1	0.5
All Airlines	498	491	292	59.5	298	60.7	7	1.4
<b>Melbourne-Sunshine Coast</b>								
Jetstar	78	77	45	58.4	47	61.0	1	1.3
Qantas	29	29	22	75.9	19	65.5	0	0.0
Virgin Australia	81	81	61	75.3	60	74.1	0	0.0
All Airlines	188	187	128	68.4	126	67.4	1	0.5
<b>Melbourne-Sydney</b>								
Jetstar	392	372	246	66.1	240	64.5	20	5.1
Qantas	876	817	476	58.3	529	64.7	59	6.7
Virgin Australia	780	751	437	58.2	492	65.5	29	3.7
All Airlines	2 048	1 940	1 159	59.7	1 261	65.0	108	5.3
<b>Mildura-Melbourne</b>								
QantasLink	98	96	84	87.5	84	87.5	2	2.0
Rex Airlines	99	98	72	73.5	78	79.6	1	1.0
All Airlines	197	194	156	80.4	162	83.5	3	1.5
<b>Mount Isa-Brisbane</b>								
QantasLink	83	82	46	56.1	50	61.0	1	1.2
Virgin Australia	13	13	9	69.2	8	61.5	0	0.0
All Airlines	96	95	55	57.9	58	61.1	1	1.0
<b>Newcastle-Brisbane</b>								
Jetstar	55	53	38	71.7	33	62.3	2	3.6
QantasLink	81	80	54	67.5	62	77.5	1	1.2
Virgin Australia	81	79	44	55.7	43	54.4	2	2.5
All Airlines	217	212	136	64.2	138	65.1	5	2.3
<b>Newcastle-Melbourne</b>								
Jetstar	57	55	44	80.0	39	70.9	2	3.5
QantasLink	51	50	35	70.0	41	82.0	1	2.0
Virgin Australia	43	43	28	65.1	29	67.4	0	0.0
All Airlines	151	148	107	72.3	109	73.6	3	2.0
<b>Newman-Perth</b>								
Qantas	8	8	7	87.5	7	87.5	0	0.0
QantasLink	104	104	58	55.8	65	62.5	0	0.0
Virgin Australia	38	38	17	44.7	25	65.8	0	0.0
Virgin Australia Regional Airlines	16	16	9	56.3	11	68.8	0	0.0
All Airlines	166	166	91	54.8	108	65.1	0	0.0
<b>Perth-Adelaide</b>								
Jetstar	30	30	22	73.3	26	86.7	0	0.0
Qantas	89	89	68	76.4	70	78.7	0	0.0
Virgin Australia	59	59	38	64.4	44	74.6	0	0.0
Virgin Australia Regional Airlines	14	14	7	50.0	8	57.1	0	0.0
All Airlines	192	192	135	70.3	148	77.1	0	0.0
<b>Perth-Brisbane</b>								
Jetstar	28	26	7	26.9	7	26.9	2	7.1
Qantas	160	159	116	73.0	99	62.3	1	0.6
Virgin Australia	133	132	65	49.2	69	52.3	1	0.8
All Airlines	321	317	188	59.3	175	55.2	4	1.2

	Sectors		Arrivals On Time		Departures On Time		Cancellations	
	Sched.	Flown	No.	%	No.	%	No.	%
<b>Perth-Broome</b>								
QantasLink	72	72	43	59.7	47	65.3	0	0.0
Virgin Australia	29	29	18	62.1	18	62.1	0	0.0
Virgin Australia Regional Airlines	21	21	17	81.0	11	52.4	0	0.0
All Airlines	122	122	78	63.9	76	62.3	0	0.0
<b>Perth-Darwin</b>								
Qantas	30	30	24	80.0	23	76.7	0	0.0
QantasLink	2	2	2	100.0	2	100.0	0	0.0
Virgin Australia Regional Airlines	18	18	14	77.8	13	72.2	0	0.0
All Airlines	50	50	40	80.0	38	76.0	0	0.0
<b>Perth-Kalgoorlie</b>								
Qantas	12	12	12	100.0	12	100.0	0	0.0
QantasLink	60	55	41	74.5	40	72.7	5	8.3
Virgin Australia	79	79	58	73.4	63	79.7	0	0.0
Virgin Australia Regional Airlines	22	21	16	76.2	17	81.0	1	4.5
All Airlines	173	167	127	76.0	132	79.0	6	3.5
<b>Perth-Karratha</b>								
QantasLink	154	152	106	69.7	117	77.0	2	1.3
Virgin Australia	51	50	42	84.0	43	86.0	1	2.0
Virgin Australia Regional Airlines	24	23	16	69.6	14	60.9	1	4.2
All Airlines	229	225	164	72.9	174	77.3	4	1.7
<b>Perth-Melbourne</b>								
Jetstar	80	74	49	66.2	43	58.1	6	7.5
Qantas	200	196	129	65.8	115	58.7	4	2.0
Virgin Australia	234	232	155	66.8	157	67.7	2	0.9
All Airlines	514	502	333	66.3	315	62.7	12	2.3
<b>Perth-Newman</b>								
Qantas	8	8	7	87.5	7	87.5	0	0.0
QantasLink	104	104	75	72.1	80	76.9	0	0.0
Virgin Australia	38	38	27	71.1	29	76.3	0	0.0
Virgin Australia Regional Airlines	16	16	14	87.5	15	93.8	0	0.0
All Airlines	166	166	123	74.1	131	78.9	0	0.0
<b>Perth-Port Hedland</b>								
QantasLink	129	128	98	76.6	101	78.9	1	0.8
Virgin Australia	44	43	34	79.1	31	72.1	1	2.3
Virgin Australia Regional Airlines	14	14	10	71.4	9	64.3	0	0.0
All Airlines	187	185	142	76.8	141	76.2	2	1.1
<b>Perth-Sydney</b>								
Jetstar	56	56	39	69.6	33	58.9	0	0.0
Qantas	194	192	113	58.9	101	52.6	2	1.0
Virgin Australia	160	158	118	74.7	105	66.5	2	1.3
All Airlines	410	406	270	66.5	239	58.9	4	1.0
<b>Port Hedland-Perth</b>								
QantasLink	130	127	82	64.6	83	65.4	3	2.3
Virgin Australia	44	43	27	62.8	28	65.1	1	2.3
Virgin Australia Regional Airlines	14	14	8	57.1	6	42.9	0	0.0
All Airlines	188	184	117	63.6	117	63.6	4	2.1
<b>Port Lincoln-Adelaide</b>								
QantasLink	115	115	105	91.3	106	92.2	0	0.0
Rex Airlines	147	139	108	77.7	110	79.1	8	5.4
All Airlines	262	254	213	83.9	216	85.0	8	3.1
<b>Port Macquarie-Sydney</b>								
QantasLink	111	104	79	76.0	83	79.8	7	6.3
Rex Airlines	78	76	55	72.4	55	72.4	2	2.6
All Airlines	189	180	134	74.4	138	76.7	9	4.8

	Sectors		Arrivals On Time		Departures On Time		Cancellations	
	Sched.	Flown	No.	%	No.	%	No.	%
<b>Proserpine-Brisbane</b>								
Jetstar	30	30	20	66.7	18	60.0	0	0.0
QantasLink	17	15	13	86.7	12	80.0	2	11.8
Virgin Australia	32	32	14	43.8	14	43.8	0	0.0
All Airlines	79	77	47	61.0	44	57.1	2	2.5
<b>Rockhampton-Brisbane</b>								
QantasLink	175	169	109	64.5	120	71.0	6	3.4
Virgin Australia	155	154	88	57.1	103	66.9	1	0.6
All Airlines	330	323	197	61.0	223	69.0	7	2.1
<b>Sunshine Coast-Melbourne</b>								
Jetstar	78	77	47	61.0	36	46.8	1	1.3
Qantas	30	29	18	62.1	14	48.3	1	3.3
Virgin Australia	81	81	56	69.1	55	67.9	0	0.0
All Airlines	189	187	121	64.7	105	56.1	2	1.1
<b>Sunshine Coast-Sydney</b>								
Jetstar	110	106	79	74.5	77	72.6	4	3.6
Qantas	56	56	37	66.1	32	57.1	0	0.0
Virgin Australia	61	61	30	49.2	35	57.4	0	0.0
All Airlines	227	223	146	65.5	144	64.6	4	1.8
<b>Sydney-Adelaide</b>								
Jetstar	131	122	81	66.4	82	67.2	9	6.9
Qantas	239	226	129	57.1	136	60.2	13	5.4
Virgin Australia	167	165	99	60.0	101	61.2	2	1.2
All Airlines	537	513	309	60.2	319	62.2	24	4.5
<b>Sydney-Albury</b>								
QantasLink	99	97	71	73.2	69	71.1	2	2.0
Rex Airlines	69	68	48	70.6	48	70.6	1	1.4
All Airlines	168	165	119	72.1	117	70.9	3	1.8
<b>Sydney-Ballina</b>								
Jetstar	78	77	66	85.7	62	80.5	1	1.3
QantasLink	45	44	32	72.7	30	68.2	1	2.2
Virgin Australia	52	51	33	64.7	34	66.7	1	1.9
All Airlines	175	172	131	76.2	126	73.3	3	1.7
<b>Sydney-Brisbane</b>								
Jetstar	205	196	116	59.2	113	57.7	9	4.4
Qantas	509	496	252	50.8	270	54.4	13	2.6
Virgin Australia	470	458	294	64.2	293	64.0	12	2.6
All Airlines	1 184	1 150	662	57.6	676	58.8	34	2.9
<b>Sydney-Cairns</b>								
Jetstar	82	81	65	80.2	66	81.5	1	1.2
Qantas	35	34	23	67.6	19	55.9	1	2.9
Virgin Australia	75	75	58	77.3	57	76.0	0	0.0
All Airlines	192	190	146	76.8	142	74.7	2	1.0
<b>Sydney-Canberra</b>								
Qantas	24	23	14	60.9	14	60.9	1	4.2
QantasLink	417	401	302	75.3	300	74.8	16	3.8
Virgin Australia	246	239	195	81.6	192	80.3	7	2.8
All Airlines	687	663	511	77.1	506	76.3	24	3.5
<b>Sydney-Coffs Harbour</b>								
QantasLink	111	107	74	69.2	64	59.8	4	3.6
Rex Airlines	75	75	49	65.3	47	62.7	0	0.0
All Airlines	186	182	123	67.6	111	61.0	4	2.2



	Sectors		Arrivals On Time		Departures On Time		Cancellations	
	Sched.	Flown	No.	%	No.	%	No.	%
<b>Sydney-Dubbo</b>								
QantasLink	112	104	77	74.0	76	73.1	8	7.1
Rex Airlines	125	122	78	63.9	76	62.3	3	2.4
All Airlines	237	226	155	68.6	152	67.3	11	4.6
<b>Sydney-Gold Coast</b>								
Jetstar	229	220	166	75.5	160	72.7	9	3.9
Qantas	89	88	48	54.5	46	52.3	1	1.1
Virgin Australia	305	297	169	56.9	184	62.0	8	2.6
All Airlines	623	605	383	63.3	390	64.5	18	2.9
<b>Sydney-Hamilton Island</b>								
Jetstar	17	17	13	76.5	13	76.5	0	0.0
Qantas	30	29	17	58.6	13	44.8	1	3.3
Virgin Australia	24	24	12	50.0	14	58.3	0	0.0
All Airlines	71	70	42	60.0	40	57.1	1	1.4
<b>Sydney-Hobart</b>								
Jetstar	80	79	60	75.9	61	77.2	1	1.3
Qantas	53	51	37	72.5	29	56.9	2	3.8
QantasLink	32	27	13	48.1	10	37.0	5	15.6
Virgin Australia	76	75	59	78.7	57	76.0	1	1.3
All Airlines	241	232	169	72.8	157	67.7	9	3.7
<b>Sydney-Launceston</b>								
Jetstar	40	39	34	87.2	34	87.2	1	2.5
QantasLink	30	27	10	37.0	10	37.0	3	10.0
Virgin Australia	30	30	13	43.3	14	46.7	0	0.0
All Airlines	100	96	57	59.4	58	60.4	4	4.0
<b>Sydney-Melbourne</b>								
Jetstar	391	373	251	67.3	241	64.6	18	4.6
Qantas	884	824	448	54.4	447	54.2	60	6.8
Virgin Australia	775	746	461	61.8	461	61.8	29	3.7
All Airlines	2 050	1 943	1 160	59.7	1 149	59.1	107	5.2
<b>Sydney-Perth</b>								
Jetstar	56	56	37	66.1	41	73.2	0	0.0
Qantas	196	193	66	34.2	92	47.7	3	1.5
Virgin Australia	172	170	90	52.9	100	58.8	2	1.2
All Airlines	424	419	193	46.1	233	55.6	5	1.2
<b>Sydney-Port Macquarie</b>								
QantasLink	111	106	79	74.5	73	68.9	5	4.5
Rex Airlines	77	75	55	73.3	57	76.0	2	2.6
All Airlines	188	181	134	74.0	130	71.8	7	3.7
<b>Sydney-Sunshine Coast</b>								
Jetstar	109	106	84	79.2	80	75.5	3	2.8
Qantas	55	54	26	48.1	27	50.0	1	1.8
Virgin Australia	60	60	35	58.3	41	68.3	0	0.0
All Airlines	224	220	145	65.9	148	67.3	4	1.8
<b>Sydney-Wagga Wagga</b>								
QantasLink	109	104	75	72.1	84	80.8	5	4.6
Rex Airlines	85	84	69	82.1	68	81.0	1	1.2
All Airlines	194	188	144	76.6	152	80.9	6	3.1
<b>Townsville-Brisbane</b>								
Jetstar	53	53	39	73.6	39	73.6	0	0.0
Qantas	20	19	15	78.9	15	78.9	1	5.0
QantasLink	144	142	109	76.8	112	78.9	2	1.4
Virgin Australia	140	136	91	66.9	90	66.2	4	2.9
All Airlines	357	350	254	72.6	256	73.1	7	2.0

	<i>Sectors</i>		<i>Arrivals On Time</i>		<i>Departures On Time</i>		<i>Cancellations</i>	
	<i>Sched.</i>	<i>Flown</i>	<i>No.</i>	<i>%</i>	<i>No.</i>	<i>%</i>	<i>No.</i>	<i>%</i>
<b>Townsville-Cairns</b>								
QantasLink	124	120	108	90.0	108	90.0	4	3.2
Rex Airlines	12	11	10	90.9	10	90.9	1	8.3
All Airlines	136	131	118	90.1	118	90.1	5	3.7
<b>Wagga Wagga-Sydney</b>								
QantasLink	109	103	89	86.4	87	84.5	6	5.5
Rex Airlines	85	84	62	73.8	69	82.1	1	1.2
All Airlines	194	187	151	80.7	156	83.4	7	3.6

## Airports

The following data reports by airport against flights operated on published routes only. This month, 8 major city airports and 28 regional city airports are covered.

Airport	Arrivals			Departures		
	Sectors	On Time		Sectors	On Time	
	Flown	No.	%	Flown	No.	%
<b>Adelaide</b>						
Jetstar	305	209	68.5	306	210	68.6
Qantas	571	365	63.9	571	384	67.3
QantasLink	412	319	77.4	414	335	80.9
Rex Airlines	139	108	77.7	139	110	79.1
Virgin Australia	688	400	58.1	686	429	62.5
Virgin Australia Regional Airlines	14	7	50.0	14	3	21.4
All Airlines	2,129	1,408	66.1	2,130	1,471	69.1

Relates to services to and from Alice Springs, Brisbane, Canberra, Gold Coast, Melbourne, Perth, Port Lincoln and Sydney only.

### Albury

QantasLink	97	71	73.2	97	64	66.0
Rex Airlines	68	48	70.6	68	50	73.5
All Airlines	165	119	72.1	165	114	69.1

Relates to services to and from Sydney only.

### Alice Springs

QantasLink	38	27	71.1	38	25	65.8
Virgin Australia	13	9	69.2	13	4	30.8
All Airlines	51	36	70.6	51	29	56.9

Relates to services to and from Adelaide only.

### Ballina

Jetstar	77	66	85.7	77	57	74.0
QantasLink	44	32	72.7	41	31	75.6
Virgin Australia	51	33	64.7	51	34	66.7
All Airlines	172	131	76.2	169	122	72.2

Relates to services to and from Sydney only.

### Brisbane

Jetstar	716	437	61.0	714	463	64.8
Qantas	1,173	711	60.6	1,169	737	63.0
QantasLink	1,259	859	68.2	1,257	824	65.6
Virgin Australia	2,133	1,300	60.9	2,133	1,206	56.5
All Airlines	5,281	3,307	62.6	5,273	3,230	61.3

Relates to services to and from Adelaide, Cairns, Canberra, Darwin, Emerald, Gladstone, Hamilton Island, Hobart, Launceston, Mackay, Melbourne, Mount Isa, Newcastle, Perth, Proserpine, Rockhampton, Sydney and Townsville only.

### Broome

QantasLink	72	43	59.7	72	39	54.2
Virgin Australia	29	18	62.1	29	16	55.2
Virgin Australia Regional Airlines	21	17	81.0	21	6	28.6
All Airlines	122	78	63.9	122	61	50.0

Relates to services to and from Perth only.

Airport	Arrivals			Departures		
	Sectors	On Time		Sectors	On Time	
	Flown	No.	%	Flown	No.	%
<b>Cairns</b>						
Jetstar	256	189	73.8	256	174	68.0
Qantas	80	58	72.5	80	50	62.5
QantasLink	265	190	71.7	267	181	67.8
Rex Airlines	11	10	90.9	11	11	100.0
Virgin Australia	280	200	71.4	280	182	65.0
All Airlines	892	647	72.5	894	598	66.9
Relates to services to and from Brisbane, Melbourne, Sydney and Townsville only.						
<b>Canberra</b>						
Jetstar	73	54	74.0	73	45	61.6
Qantas	79	53	67.1	78	45	57.7
QantasLink	765	517	67.6	759	506	66.7
Virgin Australia	520	381	73.3	520	395	76.0
All Airlines	1,437	1,005	69.9	1,430	991	69.3
Relates to services to and from Adelaide, Brisbane, Gold Coast, Melbourne and Sydney only.						
<b>Coffs Harbour</b>						
QantasLink	107	74	69.2	104	71	68.3
Rex Airlines	75	49	65.3	76	44	57.9
All Airlines	182	123	67.6	180	115	63.9
Relates to services to and from Sydney only.						
<b>Darwin</b>						
Jetstar	39	29	74.4	39	23	59.0
Qantas	89	70	78.7	90	67	74.4
QantasLink	2	2	100.0	2	2	100.0
Virgin Australia	53	36	67.9	53	22	41.5
Virgin Australia Regional Airlines	18	14	77.8	18	12	66.7
All Airlines	201	151	75.1	202	126	62.4
Relates to services to and from Brisbane, Melbourne and Perth only.						
<b>Devonport</b>						
QantasLink	95	80	84.2	95	79	83.2
Rex Airlines	49	42	85.7	49	41	83.7
All Airlines	144	122	84.7	144	120	83.3
Relates to services to and from Melbourne only.						
<b>Dubbo</b>						
QantasLink	104	77	74.0	104	81	77.9
Rex Airlines	122	78	63.9	123	80	65.0
All Airlines	226	155	68.6	227	161	70.9
Relates to services to and from Sydney only.						
<b>Emerald</b>						
QantasLink	108	86	79.6	107	89	83.2
Virgin Australia	25	17	68.0	25	19	76.0
All Airlines	133	103	77.4	132	108	81.8
Relates to services to and from Brisbane only.						

Airport	Arrivals			Departures		
	Sectors	On Time		Sectors	On Time	
	Flown	No.	%	Flown	No.	%
<b>Gladstone</b>						
QantasLink	119	86	72.3	120	97	80.8
Virgin Australia	34	21	61.8	34	25	73.5
All Airlines	153	107	69.9	154	122	79.2
Relates to services to and from Brisbane only.						
<b>Gold Coast</b>						
Jetstar	448	310	69.2	448	305	68.1
Qantas	123	73	59.3	125	68	54.4
Virgin Australia	615	388	63.1	613	366	59.7
All Airlines	1,186	771	65.0	1,186	739	62.3
Relates to services to and from Adelaide, Canberra, Melbourne and Sydney only.						
<b>Hamilton Island</b>						
Jetstar	17	13	76.5	17	9	52.9
Qantas	29	17	58.6	28	15	53.6
QantasLink	26	20	76.9	26	19	73.1
Virgin Australia	55	33	60.0	55	27	49.1
All Airlines	127	83	65.4	126	70	55.6
Relates to services to and from Brisbane and Sydney only.						
<b>Hobart</b>						
Jetstar	242	163	67.4	242	127	52.5
Qantas	82	56	68.3	81	48	59.3
QantasLink	121	56	46.3	122	53	43.4
Virgin Australia	244	177	72.5	244	180	73.8
All Airlines	689	452	65.6	689	408	59.2
Relates to services to and from Brisbane, Melbourne and Sydney only.						
<b>Kalgoorlie</b>						
Qantas	12	12	100.0	12	10	83.3
QantasLink	55	41	74.5	55	39	70.9
Virgin Australia	79	58	73.4	79	57	72.2
Virgin Australia Regional Airlines	21	16	76.2	21	15	71.4
All Airlines	167	127	76.0	167	121	72.5
Relates to services to and from Perth only.						
<b>Karratha</b>						
QantasLink	152	106	69.7	148	100	67.6
Virgin Australia	50	42	84.0	49	42	85.7
Virgin Australia Regional Airlines	23	16	69.6	23	14	60.9
All Airlines	225	164	72.9	220	156	70.9
Relates to services to and from Perth only.						
<b>Launceston</b>						
Jetstar	134	87	64.9	134	74	55.2
QantasLink	81	31	38.3	82	41	50.0
Virgin Australia	137	84	61.3	137	79	57.7
All Airlines	352	202	57.4	353	194	55.0
Relates to services to and from Brisbane, Melbourne and Sydney only.						

Airport	Arrivals			Departures		
	Sectors	On Time		Sectors	On Time	
	Flown	No.	%	Flown	No.	%
<b>Mackay</b>						
Jetstar	30	12	40.0	30	12	40.0
Qantas	96	61	63.5	96	70	72.9
QantasLink	19	11	57.9	23	17	73.9
Virgin Australia	133	101	75.9	133	104	78.2
All Airlines	278	185	66.5	282	203	72.0

Relates to services to and from Brisbane only.

### Melbourne

Jetstar	1,327	855	64.4	1,325	827	62.4
Qantas	1,835	1,096	59.7	1,838	1,142	62.1
QantasLink	519	320	61.7	520	305	58.7
Rex Airlines	147	110	74.8	147	123	83.7
Virgin Australia	2,477	1,588	64.1	2,476	1,644	66.4
All Airlines	6,305	3,969	63.0	6,306	4,041	64.1

Relates to services to and from Adelaide, Brisbane, Cairns, Canberra, Darwin, Devonport, Gold Coast, Hobart, Launceston, Mildura, Newcastle, Perth, Sunshine Coast and Sydney only.

### Mildura

QantasLink	96	82	85.4	96	84	87.5
Rex Airlines	98	77	78.6	98	78	79.6
All Airlines	194	159	82.0	194	162	83.5

Relates to services to and from Melbourne only.

### Mount Isa

QantasLink	82	53	64.6	82	50	61.0
Virgin Australia	13	9	69.2	13	8	61.5
All Airlines	95	62	65.3	95	58	61.1

Relates to services to and from Brisbane only.

### Newcastle

Jetstar	107	77	72.0	108	72	66.7
QantasLink	130	84	64.6	130	103	79.2
Virgin Australia	121	61	50.4	122	72	59.0
All Airlines	358	222	62.0	360	247	68.6

Relates to services to and from Brisbane and Melbourne only.

### Newman

Qantas	8	7	87.5	8	7	87.5
QantasLink	104	75	72.1	104	65	62.5
Virgin Australia	38	27	71.1	38	25	65.8
Virgin Australia Regional Airlines	16	14	87.5	16	11	68.8
All Airlines	166	123	74.1	166	108	65.1

Relates to services to and from Perth only.

Airport	Arrivals			Departures		
	Sectors	On Time		Sectors	On Time	
	Flown	No.	%	Flown	No.	%
<b>Perth</b>						
Jetstar	187	119	63.6	186	109	58.6
Qantas	690	368	53.3	686	427	62.2
QantasLink	508	298	58.7	513	387	75.4
Virgin Australia	817	422	51.7	820	559	68.2
Virgin Australia Regional Airlines	127	69	54.3	127	87	68.5
All Airlines	2,329	1,276	54.8	2,332	1,569	67.3
Relates to services to and from Adelaide, Brisbane, Broome, Darwin, Kalgoorlie, Karratha, Melbourne, Newman, Port Hedland and Sydney only.						
<b>Port Hedland</b>						
QantasLink	128	98	76.6	127	83	65.4
Virgin Australia	43	34	79.1	43	28	65.1
Virgin Australia Regional Airlines	14	10	71.4	14	6	42.9
All Airlines	185	142	76.8	184	117	63.6
Relates to services to and from Perth only.						
<b>Port Lincoln</b>						
QantasLink	114	104	91.2	115	106	92.2
Rex Airlines	139	106	76.3	139	110	79.1
All Airlines	253	210	83.0	254	216	85.0
Relates to services to and from Adelaide only.						
<b>Port Macquarie</b>						
QantasLink	106	79	74.5	104	83	79.8
Rex Airlines	75	55	73.3	76	55	72.4
All Airlines	181	134	74.0	180	138	76.7
Relates to services to and from Sydney only.						
<b>Proserpine</b>						
Jetstar	30	18	60.0	30	18	60.0
QantasLink	15	12	80.0	15	12	80.0
Virgin Australia	32	18	56.3	32	14	43.8
All Airlines	77	48	62.3	77	44	57.1
Relates to services to and from Brisbane only.						
<b>Rockhampton</b>						
QantasLink	169	127	75.1	169	120	71.0
Virgin Australia	153	92	60.1	154	103	66.9
All Airlines	322	219	68.0	323	223	69.0
Relates to services to and from Brisbane only.						
<b>Sunshine Coast</b>						
Jetstar	183	129	70.5	183	113	61.7
Qantas	83	48	57.8	85	46	54.1
Virgin Australia	141	96	68.1	142	90	63.4
All Airlines	407	273	67.1	410	249	60.7
Relates to services to and from Melbourne and Sydney only.						

Airport	Arrivals			Departures		
	Sectors	On Time		Sectors	On Time	
	Flown	No.	%	Flown	No.	%
<b>Sydney</b>						
Jetstar	1,364	923	67.7	1,366	953	69.8
Qantas	2,014	1,197	59.4	2,018	1,093	54.2
QantasLink	1,009	737	73.0	1,017	716	70.4
Rex Airlines	427	280	65.6	424	296	69.8
Virgin Australia	2,390	1,455	60.9	2,390	1,548	64.8
All Airlines	7,204	4,592	63.7	7,215	4,606	63.8

Relates to services to and from Adelaide, Albury, Ballina, Brisbane, Cairns, Canberra, Coffs Harbour, Dubbo, Gold Coast, Hamilton Island, Hobart, Launceston, Melbourne, Perth, Port Macquarie, Sunshine Coast and Wagga Wagga only.

#### Townsville

Jetstar	52	38	73.1	53	39	73.6
Qantas	20	17	85.0	19	15	78.9
QantasLink	265	188	70.9	262	220	84.0
Rex Airlines	11	11	100.0	11	10	90.9
Virgin Australia	136	76	55.9	136	90	66.2
All Airlines	484	330	68.2	481	374	77.8

Relates to services to and from Brisbane and Cairns only.

#### Wagga Wagga

QantasLink	104	75	72.1	103	87	84.5
Rex Airlines	84	69	82.1	84	69	82.1
All Airlines	188	144	76.6	187	156	83.4

Relates to services to and from Sydney only.



## Definitions

---

On time arrival	A flight arrival is counted as "on time" if it arrived at the gate before 15 minutes after the scheduled arrival time shown in the carriers' schedule. Neither diverted nor cancelled flights count as on time.
On time departure	A flight departure is counted as "on time" if it departs the gate before 15 minutes after the scheduled departure time shown in the carriers' schedule.
Cancellation	A flight removed from service within 7 days of scheduled departure is regarded as a cancellation.
On time departure percentage	The percentage of on time departures is measured against the number of departures <i>operated</i> on any particular sector.
On time arrival percentage	The percentage of on time arrivals is measured against the number of arrivals <i>operated</i> on any particular sector.
Cancellation percentage	The percentage of cancellations is measured against the number of services <i>scheduled</i> on any particular sector.

---

## Airlines and Reporting

Data has been gathered since November 2003, although some airlines commenced reporting at a later date, including Jetstar which first reported in May 2004, Tigerair Australia in April 2008, Virgin Australia Regional Airlines in May 2013, Skytrans in May 2023, Bonza in November 2023 and Hinterland in March 2024. Tigerair Australia ceased operations in March 2020 and data was not received for that month. Bonza ceased operations at the end of April 2024 and data was not received for that month.

Virgin Blue was rebranded as Virgin Australia in May 2011 and Tiger Airways was rebranded as Tigerair Australia in August 2013 and time series data in Microsoft Excel spread sheet format on the BITRE website have been revised to reflect these changes. With effect from August 2021, Regional Express is reported as Rex Airlines.

Services operated by Skywest on behalf of Virgin Australia using ATR/F100 aircraft commenced in November 2011 and were shown separately as Virgin Australia – ATR/F100 Operations. Virgin Australia Regional Airlines commenced operations in May 2013. It was formed after the acquisition of Skywest by Virgin Australia and represented a combination of operations previously reported under Skywest and Virgin Australia – ATR/F100 Operations. In February 2016, Virgin Australia transferred their ATR fleet from Virgin Australia Regional Airlines to Virgin Australia.