



Australian Government

**Department of Infrastructure, Transport,
Regional Development, Communications and the Arts**
Bureau of Infrastructure and Transport Research Economics

STATISTICAL REPORT



Aviation

**Domestic airline on time performance
October 2022**

© Commonwealth of Australia 2022

ISSN: 1832-0759

Ownership of intellectual property rights in this publication

Unless otherwise noted, copyright (and any other intellectual property rights, if any) in this publication is owned by the Commonwealth of Australia (referred to below as the Commonwealth).

Disclaimer

The material contained in this publication is made available on the understanding that the Commonwealth is not providing professional advice, and that users exercise their own skill and care with respect to its use, and seek independent advice if necessary.

The Commonwealth makes no representations or warranties as to the contents or accuracy of the information contained in this publication. To the extent permitted by law, the Commonwealth disclaims liability to any person or organisation in respect of anything done, or omitted to be done, in reliance upon information contained in this publication.

Creative Commons licence

With the exception of (a) the Coat of Arms; and (b) the Department of Infrastructure, Transport, Regional Development, Communications and the Arts' photos and graphics, copyright in this publication is licensed under a Creative Commons Attribution 3.0 Australia Licence.

Creative Commons Attribution 3.0 Australia Licence is a standard form licence agreement that allows you to copy, communicate and adapt this publication provided that you attribute the work to the Commonwealth and abide by the other licence terms. A summary of the licence terms is available from <http://creativecommons.org/licenses/by/3.0/au/deed.en>. The full licence terms are available from <http://creativecommons.org/licenses/by/3.0/au/legalcode>.

Use of the Coat of Arms

The Department of the Prime Minister and Cabinet sets the terms under which the Coat of Arms is used. Please refer to the Department's Commonwealth Coat of Arms and Government branding web page <http://www.dpmc.gov.au/guidelines/index.cfm#brand> and, in particular, the Guidelines on the use of the Commonwealth Coat of Arms publication.

An appropriate citation for this report is:

Bureau of Infrastructure and Transport Research Economics (BITRE), 2022, Domestic airline on time performance, Statistical Report, BITRE, Canberra ACT.

Contact us

This publication is available in PDF format. All other rights are reserved, including in relation to any Departmental logos or trade marks which may exist. For enquiries regarding the licence and any use of this publication, please contact:

Bureau of Infrastructure and Transport Research Economics (BITRE)
Department of Infrastructure, Transport, Regional Development, Communications and the Arts
GPO Box 501, Canberra ACT 2601, Australia
Telephone: (international) +61 2 6274 7210
Fax: (international) +61 2 6274 6855
Email: bitre@infrastructure.gov.au
Website: www.bitre.gov.au

Inquiries

Should you require additional information about the statistics contained in this publication:

Telephone (02) 6274 7790 or Facsimile (02) 6274 7727

Electronic mail: AVSTATS@infrastructure.gov.au

Web site: <http://www.bitre.gov.au/statistics/aviation/otphome.aspx>

Foreword

The Bureau of Infrastructure and Transport Research Economics (BITRE) monitors the punctuality and reliability of major domestic airlines operating between Australian airports. The purpose of this is to allow for evaluation of overall industry and individual airline performance, so that consumers of air travel can make informed decisions.

The following domestic airlines currently report this information monthly to the BITRE: Jetstar, Qantas, QantasLink, Rex Airlines, Virgin Australia and Virgin Australia Regional Airlines.

Data has been gathered since November 2003, although some airlines commenced reporting at a later date, including Jetstar which first reported in May 2004, MacAir in July 2005, Tigerair Australia in April 2008 and Virgin Australia Regional Airlines in May 2013. MacAir ceased operations in February 2009 and data was not received for December 2008 onwards. Tigerair Australia ceased operations in March 2020 and data was not received for that month.

Virgin Blue was rebranded as Virgin Australia in May 2011 and Tiger Airways was rebranded as Tigerair Australia in July 2013 and time series data in Microsoft Excel spread sheet format on the BITRE website have been revised to reflect these changes. With effect from July 2021, Regional Express is reported as Rex Airlines.

Services operated by Skywest on behalf of Virgin Australia using ATR/F100 aircraft commenced in November 2011 and were shown separately as Virgin Australia – ATR/F100 Operations. Virgin Australia Regional Airlines commenced operations in May 2013. It was formed after the acquisition of Skywest by Virgin Australia and represented a combination of operations previously reported under Skywest and Virgin Australia – ATR/F100 Operations. In January 2016, Virgin Australia transferred their ATR fleet from Virgin Australia Regional Airlines to Virgin Australia.

Information presented in this report is for Australian domestic routes for which the passenger load averaged 8,000 or more passengers per month over the previous six months and where two or more airlines operated in competition on those routes. In order to present data for more routes during the period impacted by COVID-19, the passenger load restriction is not being applied. Data are presented for 61 routes in October 2022. Over time, routes which meet these criteria change as airline networks and traffic levels vary.

Participating airlines report their overall monthly network performance where this is possible.

Total industry figures encompass all services operated by reporting airlines only. These airlines collectively carried over 95 per cent of total domestic passengers (regular public transport only) in 2019.

The method of capturing on time performance varies between airlines utilising different recording systems. Jetstar and Qantas jet aircraft use Aircraft Communication Addressing and Reporting System (ACARS) to electronically measure on time performance. Rex Airlines, Virgin Australia, Virgin Australia Regional Airlines and the Qantas non-jet fleet record on time performance manually using records from pilots, gate agents and/or ground crews.

After initial data is collected, aggregate reports are reviewed by participating airlines prior to publication.

Reports and detailed time series data in Microsoft Excel spreadsheet format are available from the BITRE website at: <http://www.bitre.gov.au/statistics/aviation/otphome.aspx>

Contents

	Page
Industry performance	1
Individual routes	9
Airports	22
Definitions	28

Industry performance

For October 2022, on time performance over all routes operated by participating airlines (Jetstar, Qantas, QantasLink, Rex Airlines, Virgin Australia and Virgin Australia Regional Airlines) averaged 69.3 per cent for on time arrivals and 68.5 per cent for on time departures. The cancellation rate for the month was 2.9 per cent. The equivalent figures for October 2021 were 88.0 per cent for on time arrivals, 88.4 per cent for on time departures and 3.7 per cent for cancellations.

This month's on time arrivals figure was significantly lower than the long term average performance for all routes (81.8 per cent) and the on time departures figure was also significantly lower than the long term average (82.9 per cent). The rate of cancellations was higher than the long term average of 2.1 per cent.

The Qantas network (Qantas and QantasLink combined operations) recorded 74.2 per cent for on time arrivals while the Virgin Australia network (Virgin Australia and Virgin Australia Regional Airlines combined operations) recorded 64.9 per cent. Qantas achieved the highest on time arrivals among the major domestic airlines at 74.2 per cent followed by Virgin Australia at 64.5 per cent and Jetstar at 64.4 per cent. Of the regional airlines, QantasLink recorded 74.1 per cent for on time arrivals, followed by Virgin Australia Regional Airlines at 73.7 per cent and Rex Airlines at 68.3 per cent.

The Qantas network recorded 73.9 per cent for on time departures while the Virgin Australia network recorded 63.0 per cent. Qantas achieved the highest level of on time departures among the major domestic airlines for October 2022 at 73.1 per cent, followed by Virgin Australia at 62.6 per cent and Jetstar at 61.6 per cent. Of the regional airlines, QantasLink recorded 74.5 per cent for on time departures, followed by Rex Airlines at 70.5 per cent and Virgin Australia Regional Airlines at 69.2 per cent.

Virgin Australia Regional Airlines recorded the highest percentage of cancellations at 5.1 per cent during the month, followed by Jetstar at 3.9 per cent, Virgin Australia at 3.6 per cent, QantasLink at 3.0 per cent, Rex Airlines at 2.2 per cent and Qantas at 1.2 per cent.

Airlines' on time performance varies across the routes they serve. Individual route data by specific airline for 61 routes are shown on pages 9-21.

Of the 61 routes which met the criteria for on time performance reporting in October 2022, the Cairns-Townsville route had the highest percentage of on time arrivals (89.1 per cent) and the Adelaide-Alice Springs route recorded the highest percentage of on time departures (91.1 per cent). The Launceston-Sydney route had the lowest percentage of on time arrivals (39.3 per cent) and the lowest percentage of on time departures (also 39.3 per cent).

Cancellations were highest on the Armidale-Sydney route at 6.1 per cent followed by the Melbourne-Sydney route at 5.8 per cent, the Sydney-Melbourne route at 5.6 per cent, the Melbourne-Gold Coast route at 4.8 per cent and the Gold Coast-Sydney and Newcastle-Melbourne routes at 4.7 per cent.

Broome Airport recorded the highest percentage of on time arrivals (87.3 per cent) and Mount Isa Airport recorded the highest percentage of on time departures (84.4 per cent). Mildura Airport recorded the lowest percentage of on time arrivals (57.6 per cent) and Sunshine Coast Airport recorded the lowest percentage of on time departures (49.9 per cent). These figures only refer to reported routes and do not cover all flights at these airports.

Table 1 On time performance for October 2022 — Total Industry

	<i>Sectors</i>		<i>Arrivals On Time</i>		<i>Departures On Time</i>		<i>Cancellations</i>	
	<i>Scheduled</i>	<i>Flown</i>	<i>No.</i>	<i>%</i>	<i>No.</i>	<i>%</i>	<i>No.</i>	<i>%</i>
Jetstar	6,693	6,433	4,145	64.4	3,964	61.6	260	3.9
Qantas - all QF designated services	18,028	17,624	13,070	74.2	13,028	73.9	404	2.2
Rex Airlines	6,673	6,526	4,458	68.3	4,600	70.5	147	2.2
Virgin Australia - all VA designated services	11,818	11,387	7,392	64.9	7,169	63.0	431	3.6
All Airlines	43,212	41,970	29,065	69.3	28,761	68.5	1,242	2.9
Individual operating entities								
Qantas	7,728	7,633	5,665	74.2	5,580	73.1	95	1.2
QantasLink	10,300	9,991	7,405	74.1	7,448	74.5	309	3.0
Virgin Australia	11,246	10,844	6,992	64.5	6,793	62.6	402	3.6
Virgin Australia Regional Airlines	572	543	400	73.7	376	69.2	29	5.1

Total airline network data (including routes not shown in this report).

Airlines' on time performance varies across the routes they serve. Individual route data by specific airline are shown on page 9 and onwards.

Table 2 Top ten routes for on time performance for October 2022 (participating airlines only)

<i>Arrivals</i>		<i>Departures</i>	
<i>Route</i>	<i>On Time (%)</i>	<i>Route</i>	<i>On Time (%)</i>
Cairns-Townsville	89.1	Adelaide-Alice Springs	91.1
Perth-Broome	87.3	Cairns-Townsville	89.1
Brisbane-Mount Isa	86.2	Brisbane-Mount Isa	86.2
Perth-Newman	84.7	Adelaide-Gold Coast	85.3
Brisbane-Hamilton Island	82.8	Brisbane-Emerald	84.6
Mount Isa-Brisbane	82.8	Mount Isa-Brisbane	84.4
Townsville-Cairns	82.4	Perth-Newman	84.0
Adelaide-Brisbane	81.8	Perth-Darwin	81.5
Perth-Darwin	81.5	Brisbane-Rockhampton	80.8
Perth-Karratha	81.5	Townsville-Cairns	80.4

Table 3 Top ten airports for on time performance for October 2022 (participating airlines and reported routes only)

<i>Arrivals</i>		<i>Departures</i>	
<i>Airport</i>	<i>On Time (%)</i>	<i>Airport</i>	<i>On Time (%)</i>
Broome	87.3	Mount Isa	84.4
Mount Isa	86.2	Newman	79.8
Newman	84.7	Emerald	79.7
Townsville	82.0	Port Lincoln	76.6
Karratha	81.5	Cairns	76.1
Emerald	81.1	Gladstone	75.8
Proserpine	80.4	Townsville	75.6
Kalgoorlie	80.0	Canberra	74.9
Alice Springs	78.6	Port Macquarie	73.4
Port Hedland	78.4	Rockhampton	73.4

Total industry on time performance

Figure 1 On time performance (by month from October 2019)—Total Industry

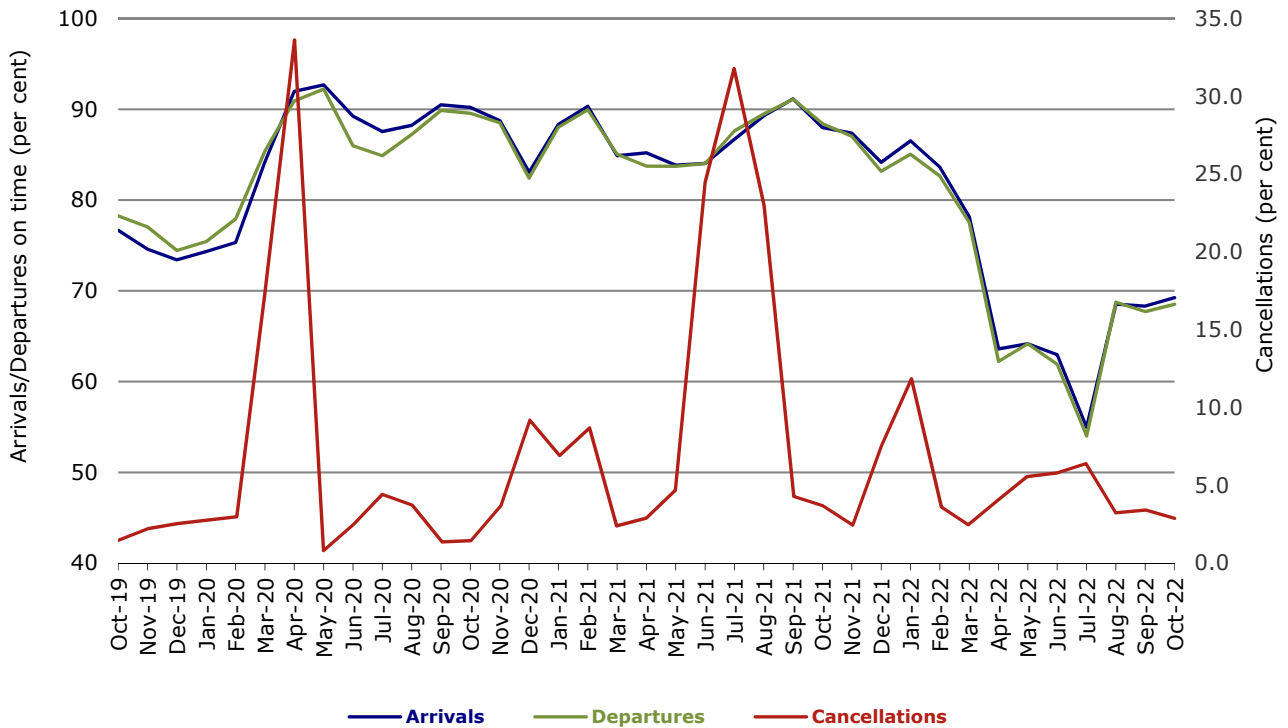


Figure 2 Arrivals on time (by month from October 2021)

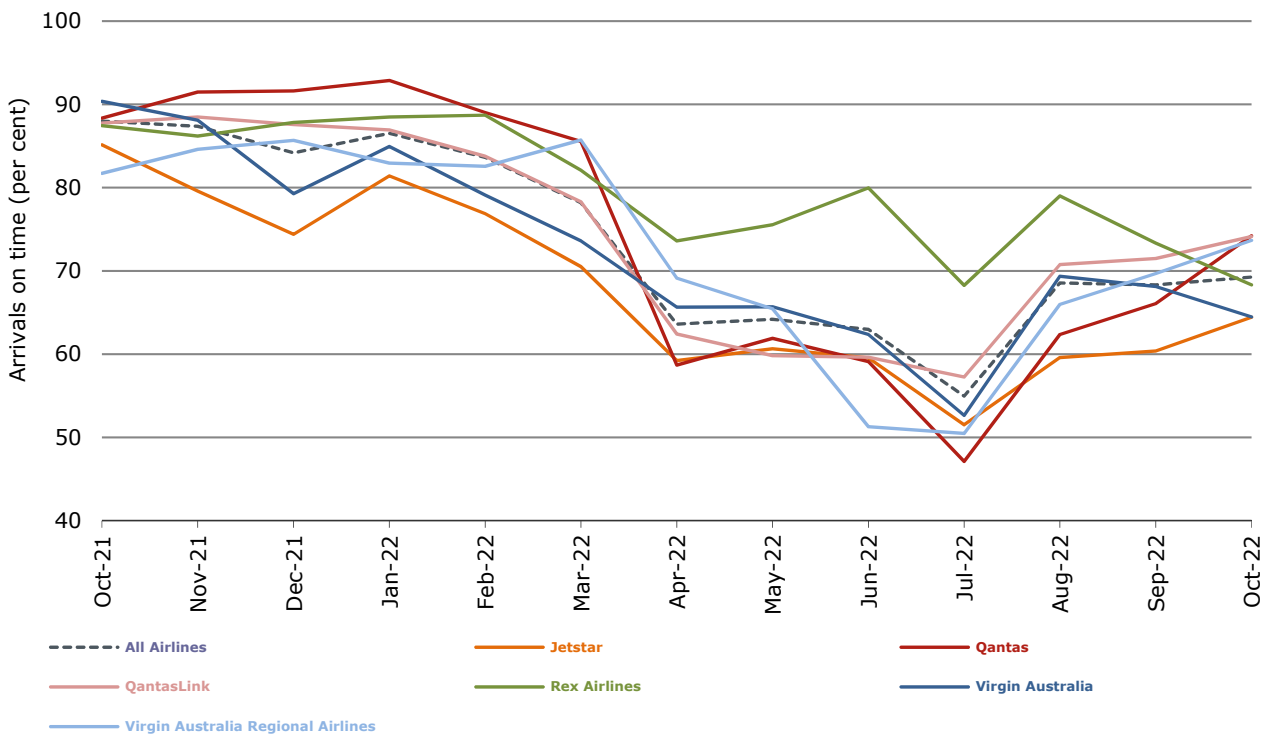


Figure 3 Departures on time (by month from October 2021)

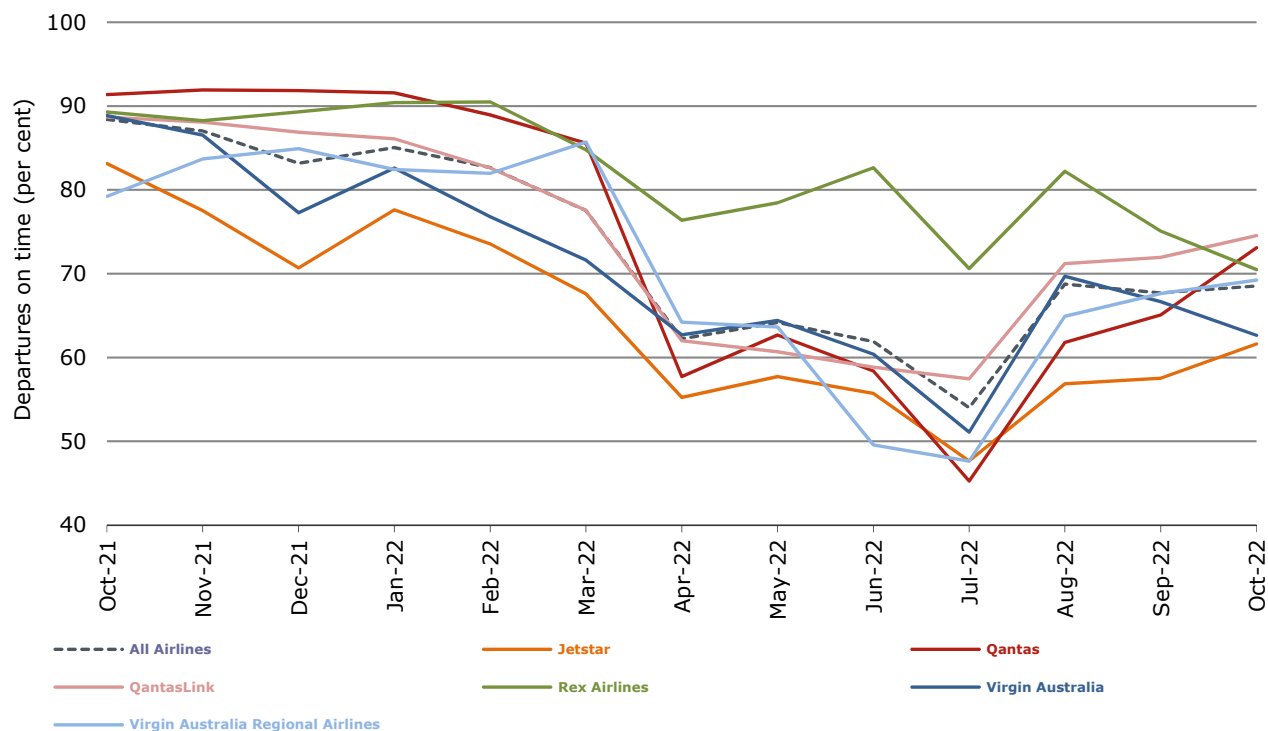
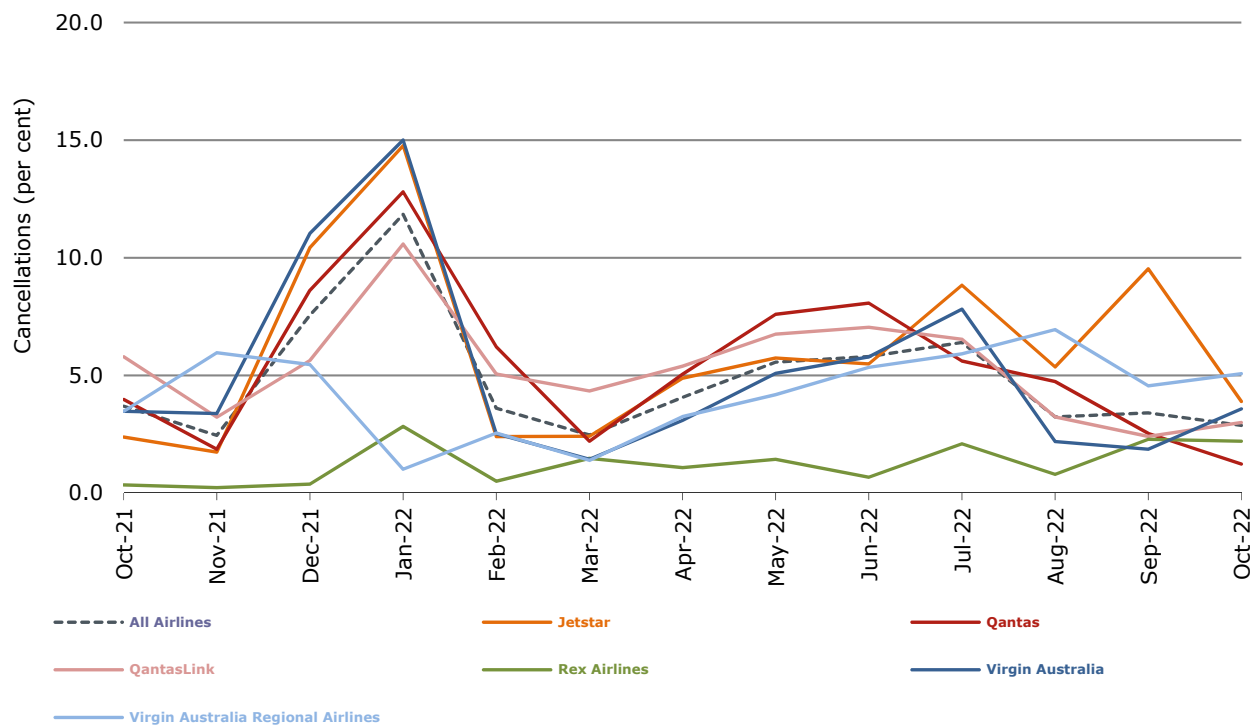


Figure 4 Cancellations (by month from October 2021)



Major domestic airlines on time performance

Figure 5 On time performance (by month from October 2019)—Jetstar

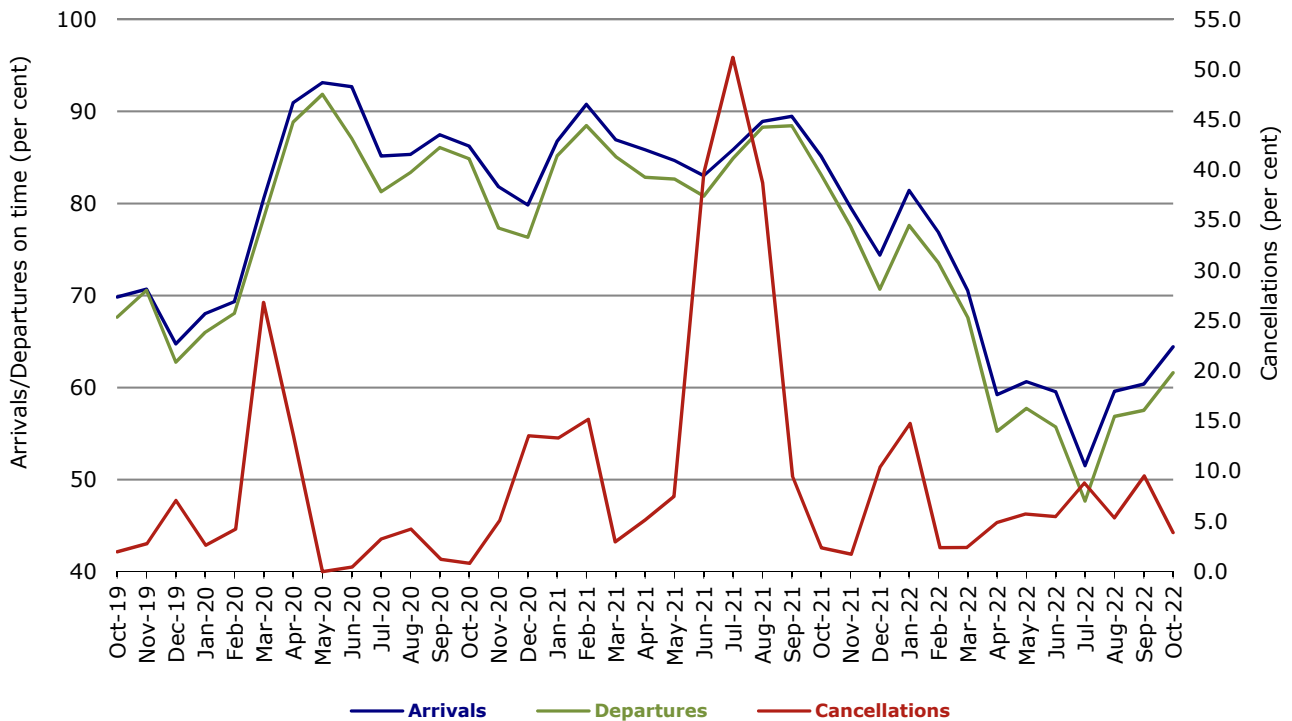


Figure 6 On time performance (by month from October 2019)—Qantas

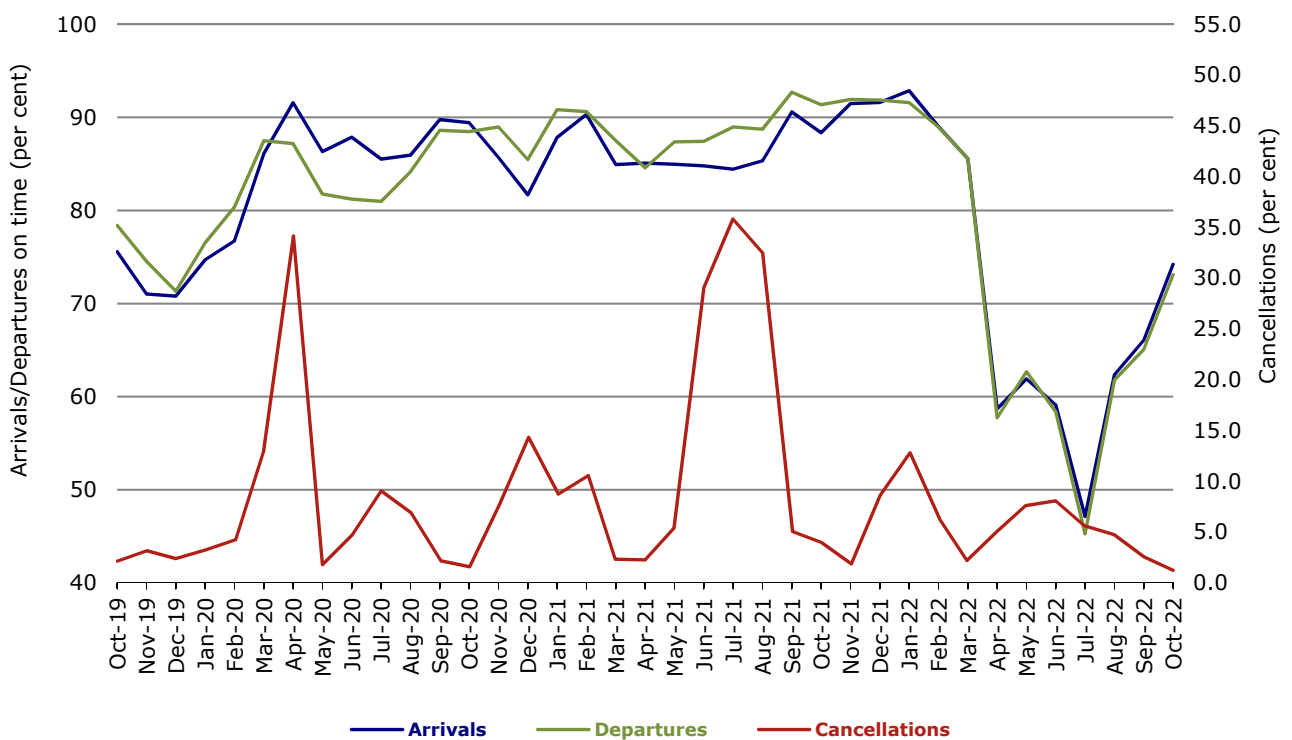
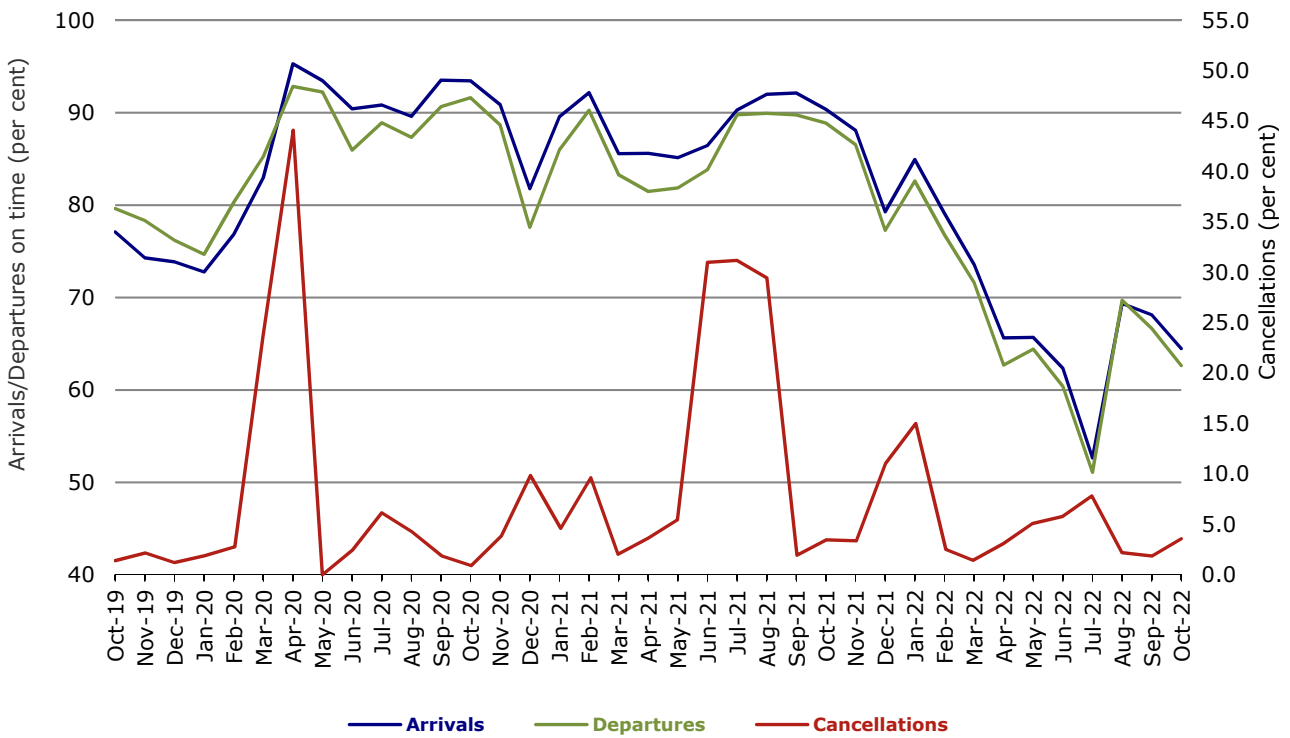


Figure 7 On time performance (by month from October 2019)—Virgin Australia



Major regional airlines on time performance

Figure 8 On time performance (by month from October 2019)—QantasLink

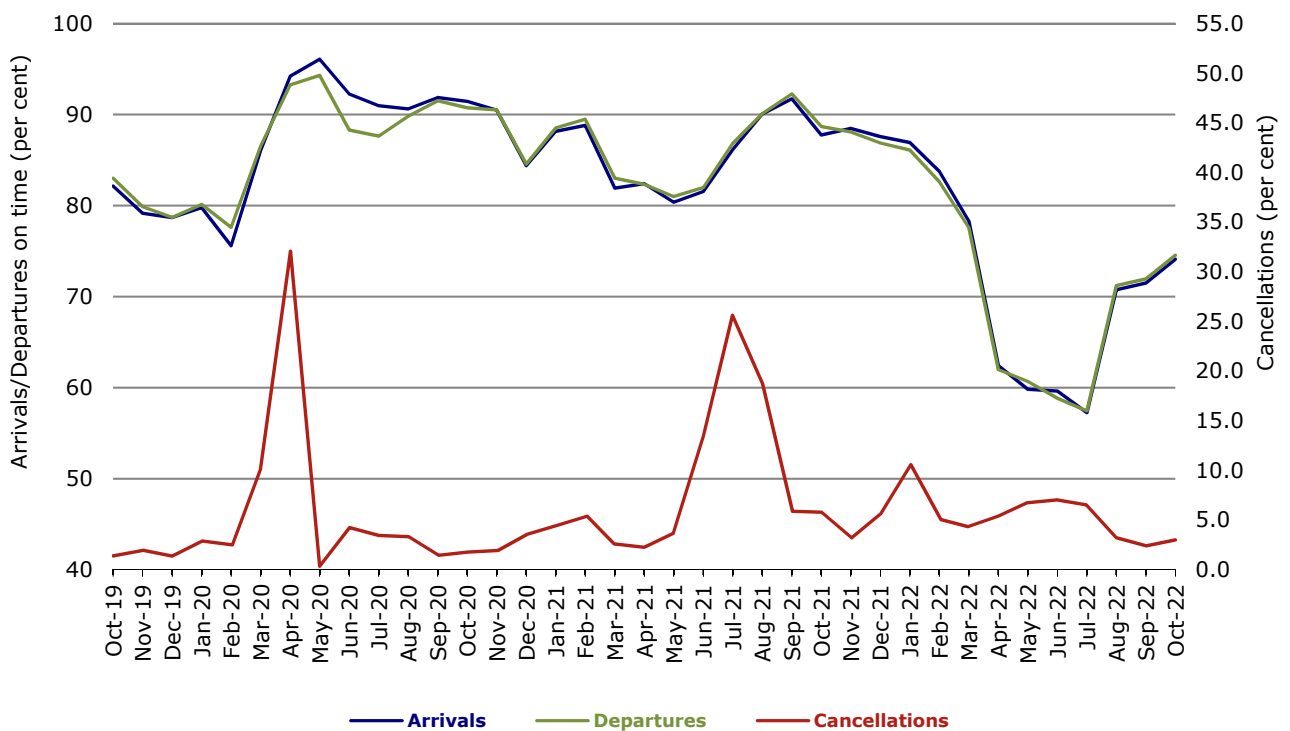


Figure 9 On time performance (by month from October 2019)—Rex Airlines

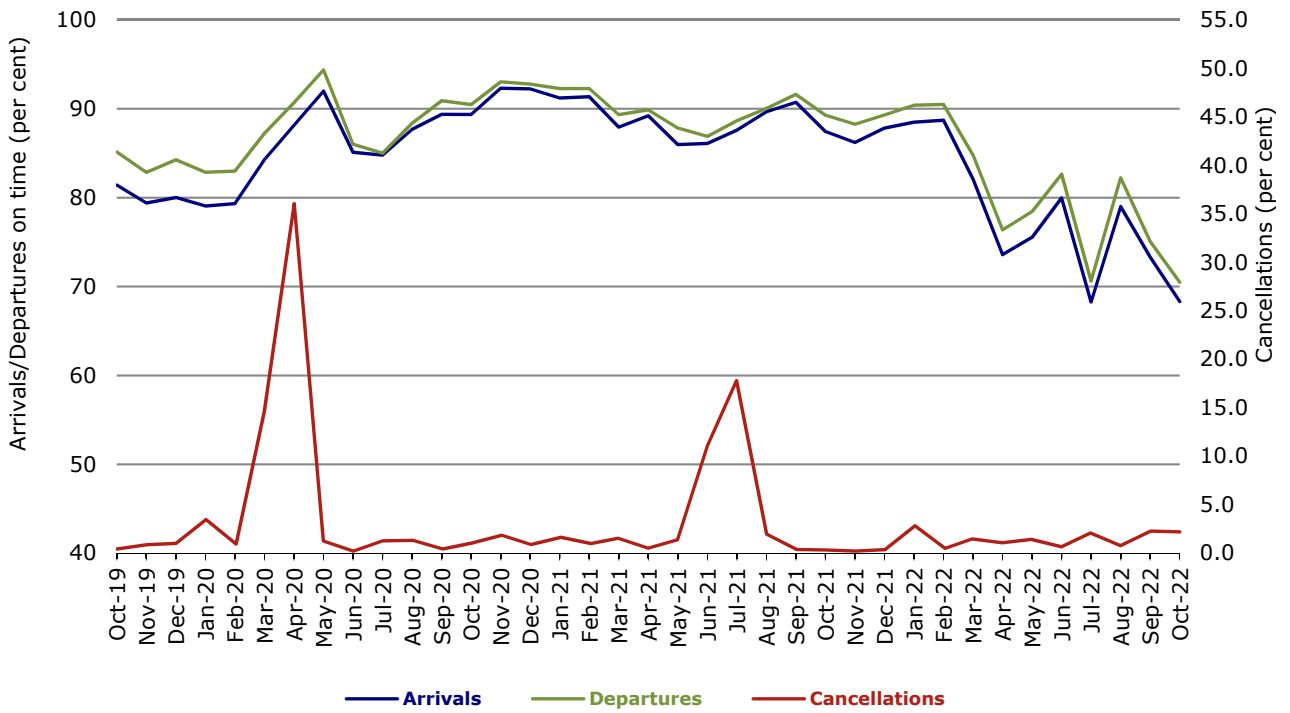
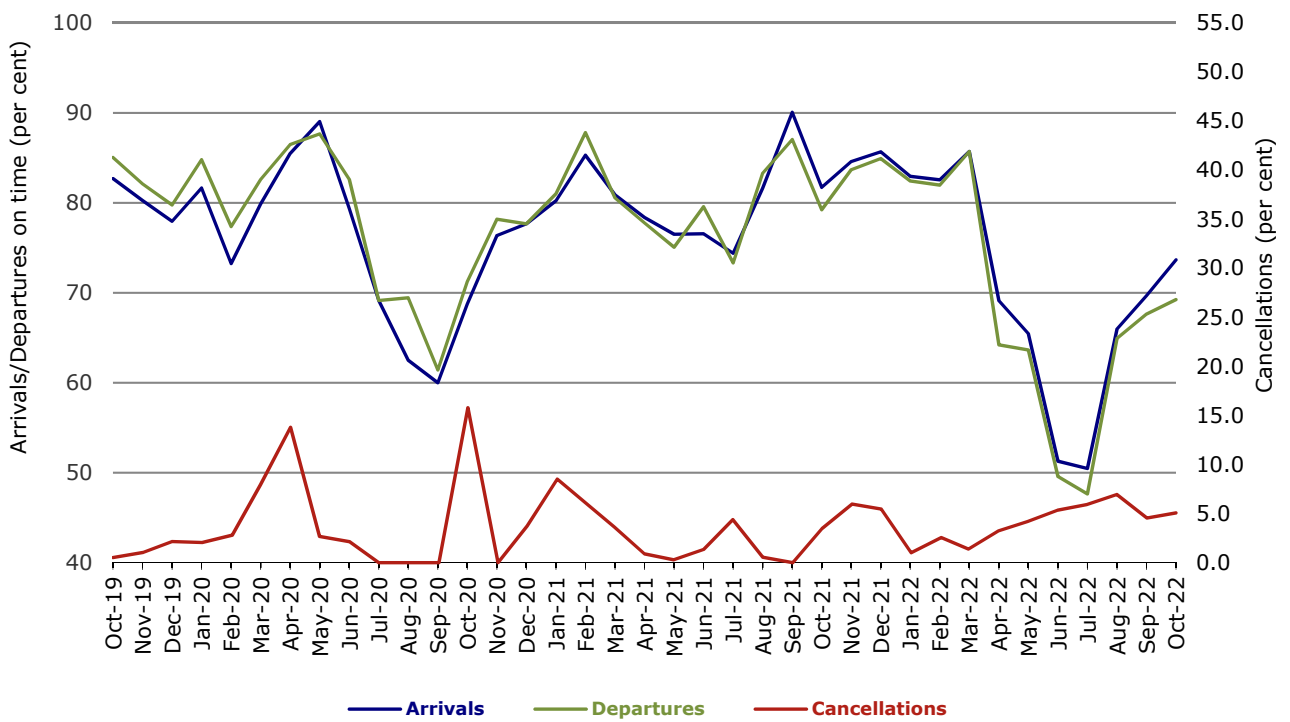


Figure 10 On time performance (by month from October 2019)—Virgin Australia Regional Airlines



Individual routes

On time performance is reported for all routes where the passenger load averages over 8,000 passengers per month over the previous six months, and where two or more airlines operate in competition on those routes. In order to present data for more routes during the period impacted by COVID-19, the passenger load restriction is not being applied. There are now 61 routes for which data are presented.

	Sectors		Arrivals On Time		Departures On Time		Cancellations	
	Sched.	Flown	No.	%	No.	%	No.	%
Adelaide-Alice Springs								
QantasLink	43	43	33	76.7	40	93.0	0	0.0
Virgin Australia	13	13	11	84.6	11	84.6	0	0.0
All Airlines	56	56	44	78.6	51	91.1	0	0.0
Adelaide-Brisbane								
Jetstar	34	32	26	81.3	28	87.5	2	5.9
Qantas	86	86	70	81.4	65	75.6	0	0.0
Virgin Australia	135	129	106	82.2	95	73.6	6	4.4
All Airlines	255	247	202	81.8	188	76.1	8	3.1
Adelaide-Canberra								
QantasLink	70	70	56	80.0	59	84.3	0	0.0
Virgin Australia	17	17	7	41.2	6	35.3	0	0.0
All Airlines	87	87	63	72.4	65	74.7	0	0.0
Adelaide-Gold Coast								
Jetstar	30	30	25	83.3	27	90.0	0	0.0
Virgin Australia	38	38	30	78.9	31	81.6	0	0.0
All Airlines	68	68	55	80.9	58	85.3	0	0.0
Adelaide-Melbourne								
Jetstar	88	84	64	76.2	60	71.4	4	4.5
Qantas	231	230	187	81.3	170	73.9	1	0.4
QantasLink	12	10	6	60.0	6	60.0	2	16.7
Rex Airlines	57	57	46	80.7	44	77.2	0	0.0
Virgin Australia	263	259	161	62.2	146	56.4	4	1.5
All Airlines	651	640	464	72.5	426	66.6	11	1.7
Adelaide-Perth								
Jetstar	26	26	20	76.9	19	73.1	0	0.0
Qantas	92	92	70	76.1	67	72.8	0	0.0
Virgin Australia	22	22	12	54.5	14	63.6	0	0.0
Virgin Australia Regional Airlines	45	41	18	43.9	16	39.0	4	8.9
All Airlines	185	181	120	66.3	116	64.1	4	2.2
Adelaide-Port Lincoln								
QantasLink	125	116	102	87.9	99	85.3	9	7.2
Rex Airlines	175	175	121	69.1	131	74.9	0	0.0
All Airlines	300	291	223	76.6	230	79.0	9	3.0
Adelaide-Sydney								
Jetstar	90	90	64	71.1	62	68.9	0	0.0
Qantas	224	223	151	67.7	144	64.6	1	0.4
Virgin Australia	139	131	44	33.6	46	35.1	8	5.8
All Airlines	453	444	259	58.3	252	56.8	9	2.0
Albury-Sydney								
QantasLink	84	84	55	65.5	57	67.9	0	0.0
Rex Airlines	121	119	83	69.7	83	69.7	2	1.7
All Airlines	205	203	138	68.0	140	69.0	2	1.0

	Sectors		Arrivals On Time		Departures On Time		Cancellations	
	Sched.	Flown	No.	%	No.	%	No.	%
Alice Springs-Adelaide								
QantasLink	44	44	33	75.0	32	72.7	0	0.0
Virgin Australia	13	13	9	69.2	9	69.2	0	0.0
All Airlines	57	57	42	73.7	41	71.9	0	0.0
Armidale-Sydney								
QantasLink	87	84	71	84.5	64	76.2	3	3.4
Rex Airlines	77	70	36	51.4	39	55.7	7	9.1
All Airlines	164	154	107	69.5	103	66.9	10	6.1
Ballina-Sydney								
Jetstar	74	73	35	47.9	31	42.5	1	1.4
QantasLink	76	75	41	54.7	45	60.0	1	1.3
Virgin Australia	46	45	29	64.4	31	68.9	1	2.2
All Airlines	196	193	105	54.4	107	55.4	3	1.5
Brisbane-Adelaide								
Jetstar	34	31	19	61.3	16	51.6	3	8.8
Qantas	86	86	78	90.7	77	89.5	0	0.0
Virgin Australia	136	130	102	78.5	84	64.6	6	4.4
All Airlines	256	247	199	80.6	177	71.7	9	3.5
Brisbane-Cairns								
Jetstar	86	83	57	68.7	54	65.1	3	3.5
Qantas	116	116	102	87.9	96	82.8	0	0.0
QantasLink	21	21	14	66.7	13	61.9	0	0.0
Virgin Australia	135	134	108	80.6	86	64.2	1	0.7
All Airlines	358	354	281	79.4	249	70.3	4	1.1
Brisbane-Canberra								
Jetstar	31	31	24	77.4	22	71.0	0	0.0
QantasLink	146	140	97	69.3	96	68.6	6	4.1
Virgin Australia	88	86	66	76.7	55	64.0	2	2.3
All Airlines	265	257	187	72.8	173	67.3	8	3.0
Brisbane-Darwin								
Jetstar	23	22	15	68.2	14	63.6	1	4.3
Qantas	39	39	36	92.3	35	89.7	0	0.0
Virgin Australia	40	40	29	72.5	18	45.0	0	0.0
All Airlines	102	101	80	79.2	67	66.3	1	1.0
Brisbane-Emerald								
QantasLink	117	117	97	82.9	102	87.2	0	0.0
Virgin Australia	26	26	19	73.1	19	73.1	0	0.0
All Airlines	143	143	116	81.1	121	84.6	0	0.0
Brisbane-Gladstone								
QantasLink	106	104	69	66.3	73	70.2	2	1.9
Virgin Australia	52	50	30	60.0	33	66.0	2	3.8
All Airlines	158	154	99	64.3	106	68.8	4	2.5
Brisbane-Hamilton Island								
Qantas	26	26	26	100.0	25	96.2	0	0.0
Virgin Australia	40	38	27	71.1	23	60.5	2	5.0
All Airlines	66	64	53	82.8	48	75.0	2	3.0
Brisbane-Hobart								
Jetstar	22	22	17	77.3	16	72.7	0	0.0
QantasLink	14	14	13	92.9	11	78.6	0	0.0
Virgin Australia	53	52	37	71.2	35	67.3	1	1.9
All Airlines	89	88	67	76.1	62	70.5	1	1.1

	<i>Sectors</i>		<i>Arrivals On Time</i>		<i>Departures On Time</i>		<i>Cancellations</i>	
	<i>Sched.</i>	<i>Flown</i>	<i>No.</i>	<i>%</i>	<i>No.</i>	<i>%</i>	<i>No.</i>	<i>%</i>
Brisbane-Launceston								
Jetstar	22	22	17	77.3	15	68.2	0	0.0
Virgin Australia	27	27	20	74.1	20	74.1	0	0.0
All Airlines	49	49	37	75.5	35	71.4	0	0.0
Brisbane-Mackay								
Jetstar	29	29	20	69.0	19	65.5	0	0.0
Qantas	104	103	84	81.6	78	75.7	1	1.0
QantasLink	9	9	8	88.9	8	88.9	0	0.0
Virgin Australia	127	126	95	75.4	87	69.0	1	0.8
All Airlines	269	267	207	77.5	192	71.9	2	0.7
Brisbane-Melbourne								
Jetstar	147	141	102	72.3	86	61.0	6	4.1
Qantas	325	323	251	77.7	228	70.6	2	0.6
Rex Airlines	57	57	43	75.4	41	71.9	0	0.0
Virgin Australia	352	342	166	48.5	163	47.7	10	2.8
All Airlines	881	863	562	65.1	518	60.0	18	2.0
Brisbane-Mount Isa								
Qantas	32	32	31	96.9	31	96.9	0	0.0
QantasLink	20	20	15	75.0	14	70.0	0	0.0
Virgin Australia	13	13	10	76.9	11	84.6	0	0.0
All Airlines	65	65	56	86.2	56	86.2	0	0.0
Brisbane-Newcastle								
Jetstar	57	55	48	87.3	47	85.5	2	3.5
QantasLink	130	124	83	66.9	84	67.7	6	4.6
Virgin Australia	82	82	55	67.1	60	73.2	0	0.0
All Airlines	269	261	186	71.3	191	73.2	8	3.0
Brisbane-Perth								
Jetstar	19	19	6	31.6	7	36.8	0	0.0
Qantas	151	149	93	62.4	111	74.5	2	1.3
Virgin Australia	105	100	67	67.0	57	57.0	5	4.8
All Airlines	275	268	166	61.9	175	65.3	7	2.5
Brisbane-Proserpine								
Jetstar	34	34	27	79.4	25	73.5	0	0.0
QantasLink	22	22	17	77.3	18	81.8	0	0.0
Virgin Australia	41	41	34	82.9	32	78.0	0	0.0
All Airlines	97	97	78	80.4	75	77.3	0	0.0
Brisbane-Rockhampton								
QantasLink	112	110	97	88.2	95	86.4	2	1.8
Virgin Australia	130	130	76	58.5	99	76.2	0	0.0
All Airlines	242	240	173	72.1	194	80.8	2	0.8
Brisbane-Sydney								
Jetstar	147	134	78	58.2	77	57.5	13	8.8
Qantas	492	484	408	84.3	410	84.7	8	1.6
Rex Airlines	103	102	66	64.7	68	66.7	1	1.0
Virgin Australia	446	416	226	54.3	231	55.5	30	6.7
All Airlines	1,188	1,136	778	68.5	786	69.2	52	4.4
Brisbane-Townsville								
Jetstar	55	55	39	70.9	37	67.3	0	0.0
Qantas	107	107	97	90.7	97	90.7	0	0.0
QantasLink	21	21	16	76.2	18	85.7	0	0.0
Virgin Australia	131	126	91	72.2	74	58.7	5	3.8
All Airlines	314	309	243	78.6	226	73.1	5	1.6

	<i>Sectors</i>		<i>Arrivals On Time</i>		<i>Departures On Time</i>		<i>Cancellations</i>	
	<i>Sched.</i>	<i>Flown</i>	<i>No.</i>	<i>%</i>	<i>No.</i>	<i>%</i>	<i>No.</i>	<i>%</i>
Broome-Perth								
Qantas	11	11	7	63.6	5	45.5	0	0.0
QantasLink	80	79	56	70.9	52	65.8	1	1.3
Virgin Australia	14	13	11	84.6	9	69.2	1	7.1
Virgin Australia Regional Airlines	43	39	31	79.5	26	66.7	4	9.3
All Airlines	148	142	105	73.9	92	64.8	6	4.1
Cairns-Brisbane								
Jetstar	87	85	41	48.2	51	60.0	2	2.3
Qantas	116	115	106	92.2	108	93.9	1	0.9
QantasLink	21	21	7	33.3	11	52.4	0	0.0
Virgin Australia	135	134	115	85.8	110	82.1	1	0.7
All Airlines	359	355	269	75.8	280	78.9	4	1.1
Cairns-Gold Coast								
Jetstar	31	31	20	64.5	20	64.5	0	0.0
Virgin Australia	4	4	2	50.0	3	75.0	0	0.0
All Airlines	35	35	22	62.9	23	65.7	0	0.0
Cairns-Melbourne								
Jetstar	104	102	75	73.5	61	59.8	2	1.9
Qantas	51	51	28	54.9	35	68.6	0	0.0
Virgin Australia	85	83	57	68.7	57	68.7	2	2.4
All Airlines	240	236	160	67.8	153	64.8	4	1.7
Cairns-Sydney								
Jetstar	104	99	73	73.7	68	68.7	5	4.8
Qantas	68	68	45	66.2	54	79.4	0	0.0
Virgin Australia	84	82	67	81.7	69	84.1	2	2.4
All Airlines	256	249	185	74.3	191	76.7	7	2.7
Cairns-Townsville								
QantasLink	132	129	115	89.1	115	89.1	3	2.3
Rex Airlines	18	18	16	88.9	16	88.9	0	0.0
All Airlines	150	147	131	89.1	131	89.1	3	2.0
Canberra-Adelaide								
QantasLink	70	69	49	71.0	51	73.9	1	1.4
Virgin Australia	17	17	6	35.3	8	47.1	0	0.0
All Airlines	87	86	55	64.0	59	68.6	1	1.1
Canberra-Brisbane								
Jetstar	31	31	23	74.2	21	67.7	0	0.0
QantasLink	146	139	102	73.4	101	72.7	7	4.8
Virgin Australia	88	88	65	73.9	66	75.0	0	0.0
All Airlines	265	258	190	73.6	188	72.9	7	2.6
Canberra-Gold Coast								
Jetstar	18	18	4	22.2	6	33.3	0	0.0
QantasLink	3	3	1	33.3	1	33.3	0	0.0
Virgin Australia	31	31	24	77.4	25	80.6	0	0.0
All Airlines	52	52	29	55.8	32	61.5	0	0.0
Canberra-Melbourne								
Jetstar	31	30	21	70.0	19	63.3	1	3.2
Qantas	8	7	7	100.0	6	85.7	1	12.5
QantasLink	206	200	158	79.0	161	80.5	6	2.9
Rex Airlines	31	31	17	54.8	23	74.2	0	0.0
Virgin Australia	114	113	71	62.8	73	64.6	1	0.9
All Airlines	390	381	274	71.9	282	74.0	9	2.3

	Sectors		Arrivals On Time		Departures On Time		Cancellations	
	Sched.	Flown	No.	%	No.	%	No.	%
Canberra-Sydney								
QantasLink	366	354	282	79.7	280	79.1	12	3.3
Virgin Australia	248	244	191	78.3	189	77.5	4	1.6
All Airlines	614	598	473	79.1	469	78.4	16	2.6
Coffs Harbour-Sydney								
QantasLink	109	107	76	71.0	78	72.9	2	1.8
Rex Airlines	121	120	63	52.5	66	55.0	1	0.8
All Airlines	230	227	139	61.2	144	63.4	3	1.3
Darwin-Brisbane								
Jetstar	24	23	13	56.5	13	56.5	1	4.2
Qantas	39	39	22	56.4	30	76.9	0	0.0
Virgin Australia	40	40	22	55.0	21	52.5	0	0.0
All Airlines	103	102	57	55.9	64	62.7	1	1.0
Darwin-Melbourne								
Jetstar	25	25	10	40.0	9	36.0	0	0.0
Qantas	28	28	23	82.1	20	71.4	0	0.0
Virgin Australia	32	32	17	53.1	14	43.8	0	0.0
All Airlines	85	85	50	58.8	43	50.6	0	0.0
Darwin-Perth								
Qantas	12	12	9	75.0	10	83.3	0	0.0
QantasLink	19	19	9	47.4	7	36.8	0	0.0
Virgin Australia	7	7	6	85.7	5	71.4	0	0.0
Virgin Australia Regional Airlines	16	16	13	81.3	12	75.0	0	0.0
All Airlines	54	54	37	68.5	34	63.0	0	0.0
Darwin-Sydney								
Jetstar	26	24	12	50.0	6	25.0	2	7.7
Qantas	53	53	26	49.1	31	58.5	0	0.0
Virgin Australia	30	30	17	56.7	16	53.3	0	0.0
All Airlines	109	107	55	51.4	53	49.5	2	1.8
Dubbo-Sydney								
QantasLink	106	103	84	81.6	79	76.7	3	2.8
Rex Airlines	120	119	79	66.4	83	69.7	1	0.8
All Airlines	226	222	163	73.4	162	73.0	4	1.8
Emerald-Brisbane								
QantasLink	117	117	93	79.5	93	79.5	0	0.0
Virgin Australia	26	26	21	80.8	21	80.8	0	0.0
All Airlines	143	143	114	79.7	114	79.7	0	0.0
Gladstone-Brisbane								
QantasLink	105	103	77	74.8	86	83.5	2	1.9
Virgin Australia	52	50	18	36.0	30	60.0	2	3.8
All Airlines	157	153	95	62.1	116	75.8	4	2.5
Gold Coast-Adelaide								
Jetstar	30	30	24	80.0	24	80.0	0	0.0
Virgin Australia	38	38	21	55.3	23	60.5	0	0.0
All Airlines	68	68	45	66.2	47	69.1	0	0.0
Gold Coast-Cairns								
Jetstar	31	30	23	76.7	24	80.0	1	3.2
Virgin Australia	4	4	3	75.0	3	75.0	0	0.0
All Airlines	35	34	26	76.5	27	79.4	1	2.9

	<i>Sectors</i>		<i>Arrivals On Time</i>		<i>Departures On Time</i>		<i>Cancellations</i>	
	<i>Sched.</i>	<i>Flown</i>	<i>No.</i>	<i>%</i>	<i>No.</i>	<i>%</i>	<i>No.</i>	<i>%</i>
Gold Coast-Canberra								
Jetstar	18	18	10	55.6	8	44.4	0	0.0
QantasLink	3	3	1	33.3	1	33.3	0	0.0
Virgin Australia	31	31	20	64.5	21	67.7	0	0.0
All Airlines	52	52	31	59.6	30	57.7	0	0.0
Gold Coast-Melbourne								
Jetstar	207	194	117	60.3	110	56.7	13	6.3
Qantas	35	35	28	80.0	21	60.0	0	0.0
QantasLink	34	33	19	57.6	15	45.5	1	2.9
Rex Airlines	35	35	21	60.0	22	62.9	0	0.0
Virgin Australia	279	266	179	67.3	149	56.0	13	4.7
All Airlines	590	563	364	64.7	317	56.3	27	4.6
Gold Coast-Sydney								
Jetstar	234	215	148	68.8	145	67.4	19	8.1
Qantas	74	74	49	66.2	52	70.3	0	0.0
QantasLink	44	42	26	61.9	25	59.5	2	4.5
Rex Airlines	32	32	20	62.5	17	53.1	0	0.0
Virgin Australia	316	304	179	58.9	174	57.2	12	3.8
All Airlines	700	667	422	63.3	413	61.9	33	4.7
Hamilton Island-Brisbane								
Qantas	26	26	21	80.8	22	84.6	0	0.0
Virgin Australia	40	38	24	63.2	24	63.2	2	5.0
All Airlines	66	64	45	70.3	46	71.9	2	3.0
Hamilton Island-Sydney								
Jetstar	25	25	9	36.0	9	36.0	0	0.0
Qantas	35	35	21	60.0	25	71.4	0	0.0
Virgin Australia	31	30	18	60.0	19	63.3	1	3.2
All Airlines	91	90	48	53.3	53	58.9	1	1.1
Hobart-Brisbane								
Jetstar	21	21	13	61.9	14	66.7	0	0.0
QantasLink	14	14	9	64.3	9	64.3	0	0.0
Virgin Australia	53	52	31	59.6	32	61.5	1	1.9
All Airlines	88	87	53	60.9	55	63.2	1	1.1
Hobart-Melbourne								
Jetstar	111	110	76	69.1	81	73.6	1	0.9
Qantas	11	11	8	72.7	6	54.5	0	0.0
QantasLink	90	88	47	53.4	49	55.7	2	2.2
Virgin Australia	138	135	68	50.4	78	57.8	3	2.2
All Airlines	350	344	199	57.8	214	62.2	6	1.7
Hobart-Sydney								
Jetstar	72	71	44	62.0	50	70.4	1	1.4
Qantas	32	32	19	59.4	20	62.5	0	0.0
QantasLink	51	47	21	44.7	32	68.1	4	7.8
Virgin Australia	63	61	33	54.1	39	63.9	2	3.2
All Airlines	218	211	117	55.5	141	66.8	7	3.2
Kalgoorlie-Perth								
Qantas	18	17	10	58.8	9	52.9	1	5.6
QantasLink	48	48	37	77.1	31	64.6	0	0.0
Virgin Australia	29	29	18	62.1	19	65.5	0	0.0
Virgin Australia Regional Airlines	35	35	24	68.6	23	65.7	0	0.0
All Airlines	130	129	89	69.0	82	63.6	1	0.8

	<i>Sectors</i>		<i>Arrivals On Time</i>		<i>Departures On Time</i>		<i>Cancellations</i>	
	<i>Sched.</i>	<i>Flown</i>	<i>No.</i>	<i>%</i>	<i>No.</i>	<i>%</i>	<i>No.</i>	<i>%</i>
Karratha-Perth								
Qantas	24	23	22	95.7	19	82.6	1	4.2
QantasLink	115	114	86	75.4	69	60.5	1	0.9
Virgin Australia	26	26	22	84.6	21	80.8	0	0.0
Virgin Australia Regional Airlines	26	26	22	84.6	19	73.1	0	0.0
All Airlines	191	189	152	80.4	128	67.7	2	1.0
Launceston-Brisbane								
Jetstar	22	22	11	50.0	13	59.1	0	0.0
Virgin Australia	27	27	17	63.0	16	59.3	0	0.0
All Airlines	49	49	28	57.1	29	59.2	0	0.0
Launceston-Melbourne								
Jetstar	75	74	46	62.2	41	55.4	1	1.3
QantasLink	71	66	40	60.6	45	68.2	5	7.0
Virgin Australia	124	120	70	58.3	82	68.3	4	3.2
All Airlines	270	260	156	60.0	168	64.6	10	3.7
Launceston-Sydney								
Jetstar	39	38	14	36.8	14	36.8	1	2.6
QantasLink	16	16	7	43.8	6	37.5	0	0.0
Virgin Australia	31	30	12	40.0	13	43.3	1	3.2
All Airlines	86	84	33	39.3	33	39.3	2	2.3
Mackay-Brisbane								
Jetstar	29	29	17	58.6	19	65.5	0	0.0
Qantas	104	104	66	63.5	70	67.3	0	0.0
QantasLink	13	13	12	92.3	12	92.3	0	0.0
Virgin Australia	127	126	96	76.2	91	72.2	1	0.8
All Airlines	273	272	191	70.2	192	70.6	1	0.4
Melbourne-Adelaide								
Jetstar	88	85	70	82.4	67	78.8	3	3.4
Qantas	229	228	172	75.4	170	74.6	1	0.4
QantasLink	12	11	7	63.6	6	54.5	1	8.3
Rex Airlines	57	57	35	61.4	37	64.9	0	0.0
Virgin Australia	261	259	167	64.5	170	65.6	2	0.8
All Airlines	647	640	451	70.5	450	70.3	7	1.1
Melbourne-Brisbane								
Jetstar	150	144	77	53.5	86	59.7	6	4.0
Qantas	324	320	252	78.8	231	72.2	4	1.2
Rex Airlines	56	56	43	76.8	44	78.6	0	0.0
Virgin Australia	351	338	205	60.7	208	61.5	13	3.7
All Airlines	881	858	577	67.2	569	66.3	23	2.6
Melbourne-Cairns								
Jetstar	103	102	69	67.6	60	58.8	1	1.0
Qantas	52	52	42	80.8	36	69.2	0	0.0
Virgin Australia	85	83	66	79.5	60	72.3	2	2.4
All Airlines	240	237	177	74.7	156	65.8	3	1.3
Melbourne-Canberra								
Jetstar	31	30	20	66.7	20	66.7	1	3.2
Qantas	8	7	6	85.7	4	57.1	1	12.5
QantasLink	205	200	149	74.5	154	77.0	5	2.4
Rex Airlines	31	31	22	71.0	23	74.2	0	0.0
Virgin Australia	114	114	75	65.8	71	62.3	0	0.0
All Airlines	389	382	272	71.2	272	71.2	7	1.8

	Sectors		Arrivals On Time		Departures On Time		Cancellations	
	Sched.	Flown	No.	%	No.	%	No.	%
Melbourne-Darwin								
Jetstar	26	26	15	57.7	18	69.2	0	0.0
Qantas	28	28	21	75.0	22	78.6	0	0.0
Virgin Australia	31	31	16	51.6	15	48.4	0	0.0
All Airlines	85	85	52	61.2	55	64.7	0	0.0
Melbourne-Gold Coast								
Jetstar	204	190	117	61.6	116	61.1	14	6.9
Qantas	34	34	32	94.1	31	91.2	0	0.0
QantasLink	34	33	24	72.7	24	72.7	1	2.9
Rex Airlines	35	35	24	68.6	25	71.4	0	0.0
Virgin Australia	278	265	167	63.0	164	61.9	13	4.7
All Airlines	585	557	364	65.4	360	64.6	28	4.8
Melbourne-Hobart								
Jetstar	111	110	80	72.7	75	68.2	1	0.9
Qantas	11	11	9	81.8	8	72.7	0	0.0
QantasLink	90	89	51	57.3	45	50.6	1	1.1
Virgin Australia	138	135	76	56.3	75	55.6	3	2.2
All Airlines	350	345	216	62.6	203	58.8	5	1.4
Melbourne-Launceston								
Jetstar	74	73	45	61.6	44	60.3	1	1.4
QantasLink	73	68	43	63.2	42	61.8	5	6.8
Virgin Australia	124	121	62	51.2	68	56.2	3	2.4
All Airlines	271	262	150	57.3	154	58.8	9	3.3
Melbourne-Mildura								
QantasLink	111	109	61	56.0	69	63.3	2	1.8
Rex Airlines	109	108	64	59.3	67	62.0	1	0.9
All Airlines	220	217	125	57.6	136	62.7	3	1.4
Melbourne-Newcastle								
Jetstar	45	45	27	60.0	29	64.4	0	0.0
QantasLink	52	51	30	58.8	37	72.5	1	1.9
Virgin Australia	32	31	22	71.0	23	74.2	1	3.1
All Airlines	129	127	79	62.2	89	70.1	2	1.6
Melbourne-Perth								
Jetstar	77	75	49	65.3	41	54.7	2	2.6
Qantas	171	171	99	57.9	98	57.3	0	0.0
Virgin Australia	154	145	105	72.4	78	53.8	9	5.8
All Airlines	402	391	253	64.7	217	55.5	11	2.7
Melbourne-Sunshine Coast								
Jetstar	67	67	42	62.7	44	65.7	0	0.0
Qantas	11	11	8	72.7	8	72.7	0	0.0
QantasLink	33	33	19	57.6	19	57.6	0	0.0
Virgin Australia	105	99	70	70.7	67	67.7	6	5.7
All Airlines	216	210	139	66.2	138	65.7	6	2.8
Melbourne-Sydney								
Jetstar	345	306	191	62.4	173	56.5	39	11.3
Qantas	753	724	545	75.3	573	79.1	29	3.9
Rex Airlines	153	150	121	80.7	118	78.7	3	2.0
Virgin Australia	732	687	412	60.0	422	61.4	45	6.1
All Airlines	1,983	1,867	1,269	68.0	1,286	68.9	116	5.8

	Sectors		Arrivals On Time		Departures On Time		Cancellations	
	Sched.	Flown	No.	%	No.	%	No.	%
Mildura-Melbourne								
QantasLink	112	109	65	59.6	67	61.5	3	2.7
Rex Airlines	109	108	66	61.1	68	63.0	1	0.9
All Airlines	221	217	131	60.4	135	62.2	4	1.8
Mount Isa-Brisbane								
Qantas	32	32	30	93.8	29	90.6	0	0.0
QantasLink	20	19	15	78.9	15	78.9	1	5.0
Virgin Australia	13	13	8	61.5	10	76.9	0	0.0
All Airlines	65	64	53	82.8	54	84.4	1	1.5
Newcastle-Brisbane								
Jetstar	55	54	46	85.2	46	85.2	1	1.8
QantasLink	131	125	90	72.0	92	73.6	6	4.6
Virgin Australia	82	81	61	75.3	63	77.8	1	1.2
All Airlines	268	260	197	75.8	201	77.3	8	3.0
Newcastle-Melbourne								
Jetstar	45	42	27	64.3	23	54.8	3	6.7
QantasLink	52	50	28	56.0	28	56.0	2	3.8
Virgin Australia	32	31	14	45.2	17	54.8	1	3.1
All Airlines	129	123	69	56.1	68	55.3	6	4.7
Newman-Perth								
Qantas	18	18	15	83.3	15	83.3	0	0.0
QantasLink	95	92	68	73.9	71	77.2	3	3.2
Virgin Australia	21	21	20	95.2	19	90.5	0	0.0
Virgin Australia Regional Airlines	34	32	26	81.3	25	78.1	2	5.9
All Airlines	168	163	129	79.1	130	79.8	5	3.0
Perth-Adelaide								
Jetstar	27	26	14	53.8	8	30.8	1	3.7
Qantas	93	93	63	67.7	57	61.3	0	0.0
Virgin Australia	22	22	16	72.7	15	68.2	0	0.0
Virgin Australia Regional Airlines	42	38	22	57.9	24	63.2	4	9.5
All Airlines	184	179	115	64.2	104	58.1	5	2.7
Perth-Brisbane								
Jetstar	19	18	2	11.1	1	5.6	1	5.3
Qantas	150	149	115	77.2	100	67.1	1	0.7
Virgin Australia	105	100	77	77.0	60	60.0	5	4.8
All Airlines	274	267	194	72.7	161	60.3	7	2.6
Perth-Broome								
Qantas	11	11	11	100.0	10	90.9	0	0.0
QantasLink	80	79	69	87.3	63	79.7	1	1.3
Virgin Australia	14	13	12	92.3	9	69.2	1	7.1
Virgin Australia Regional Airlines	43	39	32	82.1	29	74.4	4	9.3
All Airlines	148	142	124	87.3	111	78.2	6	4.1
Perth-Darwin								
Qantas	12	12	11	91.7	11	91.7	0	0.0
QantasLink	19	19	14	73.7	14	73.7	0	0.0
Virgin Australia	7	7	6	85.7	6	85.7	0	0.0
Virgin Australia Regional Airlines	16	16	13	81.3	13	81.3	0	0.0
All Airlines	54	54	44	81.5	44	81.5	0	0.0

	Sectors		Arrivals On Time		Departures On Time		Cancellations	
	Sched.	Flown	No.	%	No.	%	No.	%
Perth-Kalgoorlie								
Qantas	18	18	15	83.3	12	66.7	0	0.0
QantasLink	47	47	38	80.9	38	80.9	0	0.0
Virgin Australia	29	29	24	82.8	25	86.2	0	0.0
Virgin Australia Regional Airlines	36	36	27	75.0	28	77.8	0	0.0
All Airlines	130	130	104	80.0	103	79.2	0	0.0
Perth-Karratha								
Qantas	24	23	23	100.0	23	100.0	1	4.2
QantasLink	115	114	88	77.2	83	72.8	1	0.9
Virgin Australia	26	26	22	84.6	23	88.5	0	0.0
Virgin Australia Regional Airlines	26	26	21	80.8	21	80.8	0	0.0
All Airlines	191	189	154	81.5	150	79.4	2	1.0
Perth-Melbourne								
Jetstar	75	71	33	46.5	25	35.2	4	5.3
Qantas	174	173	122	70.5	118	68.2	1	0.6
Virgin Australia	153	142	110	77.5	96	67.6	11	7.2
All Airlines	402	386	265	68.7	239	61.9	16	4.0
Perth-Newman								
Qantas	18	18	16	88.9	15	83.3	0	0.0
QantasLink	95	92	74	80.4	74	80.4	3	3.2
Virgin Australia	21	21	21	100.0	21	100.0	0	0.0
Virgin Australia Regional Airlines	34	32	27	84.4	27	84.4	2	5.9
All Airlines	168	163	138	84.7	137	84.0	5	3.0
Perth-Port Hedland								
Qantas	42	41	37	90.2	35	85.4	1	2.4
QantasLink	81	79	58	73.4	61	77.2	2	2.5
Virgin Australia	10	10	7	70.0	8	80.0	0	0.0
Virgin Australia Regional Airlines	41	41	32	78.0	31	75.6	0	0.0
All Airlines	174	171	134	78.4	135	78.9	3	1.7
Perth-Sydney								
Jetstar	43	41	12	29.3	5	12.2	2	4.7
Qantas	173	173	127	73.4	103	59.5	0	0.0
Virgin Australia	152	146	126	86.3	103	70.5	6	3.9
All Airlines	368	360	265	73.6	211	58.6	8	2.2
Port Hedland-Perth								
Qantas	42	41	34	82.9	27	65.9	1	2.4
QantasLink	82	80	53	66.3	46	57.5	2	2.4
Virgin Australia	11	11	9	81.8	4	36.4	0	0.0
Virgin Australia Regional Airlines	41	41	30	73.2	29	70.7	0	0.0
All Airlines	176	173	126	72.8	106	61.3	3	1.7
Port Lincoln-Adelaide								
QantasLink	125	116	104	89.7	104	89.7	9	7.2
Rex Airlines	175	175	110	62.9	119	68.0	0	0.0
All Airlines	300	291	214	73.5	223	76.6	9	3.0
Port Macquarie-Sydney								
QantasLink	101	97	78	80.4	80	82.5	4	4.0
Rex Airlines	98	95	39	41.1	61	64.2	3	3.1
All Airlines	199	192	117	60.9	141	73.4	7	3.5

	Sectors		Arrivals On Time		Departures On Time		Cancellations	
	Sched.	Flown	No.	%	No.	%	No.	%
Proserpine-Brisbane								
Jetstar	35	35	28	80.0	23	65.7	0	0.0
QantasLink	22	22	13	59.1	15	68.2	0	0.0
Virgin Australia	41	41	28	68.3	29	70.7	0	0.0
All Airlines	98	98	69	70.4	67	68.4	0	0.0
Rockhampton-Brisbane								
QantasLink	112	107	66	61.7	75	70.1	5	4.5
Virgin Australia	130	130	86	66.2	99	76.2	0	0.0
All Airlines	242	237	152	64.1	174	73.4	5	2.1
Sunshine Coast-Melbourne								
Jetstar	67	67	30	44.8	31	46.3	0	0.0
Qantas	11	11	5	45.5	3	27.3	0	0.0
QantasLink	33	32	14	43.8	11	34.4	1	3.0
Virgin Australia	105	99	59	59.6	60	60.6	6	5.7
All Airlines	216	209	108	51.7	105	50.2	7	3.2
Sunshine Coast-Sydney								
Jetstar	91	88	31	35.2	33	37.5	3	3.3
Qantas	55	55	32	58.2	31	56.4	0	0.0
QantasLink	4	4	3	75.0	3	75.0	0	0.0
Virgin Australia	92	85	32	37.6	48	56.5	7	7.6
All Airlines	242	232	98	42.2	115	49.6	10	4.1
Sydney-Adelaide								
Jetstar	90	90	62	68.9	60	66.7	0	0.0
Qantas	225	225	142	63.1	163	72.4	0	0.0
Virgin Australia	139	132	69	52.3	73	55.3	7	5.0
All Airlines	454	447	273	61.1	296	66.2	7	1.5
Sydney-Albury								
QantasLink	84	84	64	76.2	62	73.8	0	0.0
Rex Airlines	122	120	69	57.5	66	55.0	2	1.6
All Airlines	206	204	133	65.2	128	62.7	2	1.0
Sydney-Armidale								
QantasLink	87	87	69	79.3	67	77.0	0	0.0
Rex Airlines	73	70	43	61.4	40	57.1	3	4.1
All Airlines	160	157	112	71.3	107	68.2	3	1.9
Sydney-Ballina								
Jetstar	74	73	39	53.4	40	54.8	1	1.4
QantasLink	75	74	45	60.8	53	71.6	1	1.3
Virgin Australia	46	45	31	68.9	32	71.1	1	2.2
All Airlines	195	192	115	59.9	125	65.1	3	1.5
Sydney-Brisbane								
Jetstar	147	134	89	66.4	79	59.0	13	8.8
Qantas	493	484	348	71.9	336	69.4	9	1.8
Rex Airlines	103	103	68	66.0	68	66.0	0	0.0
Virgin Australia	445	414	286	69.1	287	69.3	31	7.0
All Airlines	1,188	1,135	791	69.7	770	67.8	53	4.5
Sydney-Cairns								
Jetstar	103	100	66	66.0	63	63.0	3	2.9
Qantas	67	67	54	80.6	47	70.1	0	0.0
Virgin Australia	83	82	72	87.8	50	61.0	1	1.2
All Airlines	253	249	192	77.1	160	64.3	4	1.6

	<i>Sectors</i>		<i>Arrivals On Time</i>		<i>Departures On Time</i>		<i>Cancellations</i>	
	<i>Sched.</i>	<i>Flown</i>	<i>No.</i>	<i>%</i>	<i>No.</i>	<i>%</i>	<i>No.</i>	<i>%</i>
Sydney-Canberra								
QantasLink	369	355	271	76.3	274	77.2	14	3.8
Virgin Australia	248	243	191	78.6	178	73.3	5	2.0
All Airlines	617	598	462	77.3	452	75.6	19	3.1
Sydney-Coffs Harbour								
QantasLink	109	109	78	71.6	66	60.6	0	0.0
Rex Airlines	122	121	74	61.2	70	57.9	1	0.8
All Airlines	231	230	152	66.1	136	59.1	1	0.4
Sydney-Darwin								
Jetstar	25	25	15	60.0	17	68.0	0	0.0
Qantas	53	53	34	64.2	33	62.3	0	0.0
Virgin Australia	31	31	21	67.7	21	67.7	0	0.0
All Airlines	109	109	70	64.2	71	65.1	0	0.0
Sydney-Dubbo								
QantasLink	106	103	70	68.0	77	74.8	3	2.8
Rex Airlines	126	125	70	56.0	72	57.6	1	0.8
All Airlines	232	228	140	61.4	149	65.4	4	1.7
Sydney-Gold Coast								
Jetstar	234	216	146	67.6	148	68.5	18	7.7
Qantas	74	74	53	71.6	52	70.3	0	0.0
QantasLink	44	42	29	69.0	29	69.0	2	4.5
Rex Airlines	32	32	26	81.3	26	81.3	0	0.0
Virgin Australia	318	306	169	55.2	182	59.5	12	3.8
All Airlines	702	670	423	63.1	437	65.2	32	4.6
Sydney-Hamilton Island								
Jetstar	25	25	16	64.0	12	48.0	0	0.0
Qantas	34	34	23	67.6	19	55.9	0	0.0
Virgin Australia	31	31	22	71.0	20	64.5	0	0.0
All Airlines	90	90	61	67.8	51	56.7	0	0.0
Sydney-Hobart								
Jetstar	72	71	55	77.5	51	71.8	1	1.4
Qantas	32	32	26	81.3	25	78.1	0	0.0
QantasLink	51	49	33	67.3	31	63.3	2	3.9
Virgin Australia	63	61	47	77.0	47	77.0	2	3.2
All Airlines	218	213	161	75.6	154	72.3	5	2.3
Sydney-Launceston								
Jetstar	39	39	26	66.7	23	59.0	0	0.0
QantasLink	16	16	10	62.5	11	68.8	0	0.0
Virgin Australia	31	30	18	60.0	13	43.3	1	3.2
All Airlines	86	85	54	63.5	47	55.3	1	1.2
Sydney-Melbourne								
Jetstar	341	306	195	63.7	172	56.2	35	10.3
Qantas	748	722	541	74.9	540	74.8	26	3.5
Rex Airlines	152	149	93	62.4	106	71.1	3	2.0
Virgin Australia	731	685	372	54.3	347	50.7	46	6.3
All Airlines	1,972	1,862	1,201	64.5	1,165	62.6	110	5.6
Sydney-Perth								
Jetstar	41	41	19	46.3	19	46.3	0	0.0
Qantas	175	175	68	38.9	85	48.6	0	0.0
Virgin Australia	154	146	75	51.4	64	43.8	8	5.2
All Airlines	370	362	162	44.8	168	46.4	8	2.2

	<i>Sectors</i>		<i>Arrivals On Time</i>		<i>Departures On Time</i>		<i>Cancellations</i>	
	<i>Sched.</i>	<i>Flown</i>	<i>No.</i>	<i>%</i>	<i>No.</i>	<i>%</i>	<i>No.</i>	<i>%</i>
Sydney-Port Macquarie								
QantasLink	102	99	73	73.7	66	66.7	3	2.9
Rex Airlines	100	96	58	60.4	62	64.6	4	4.0
All Airlines	202	195	131	67.2	128	65.6	7	3.5
Sydney-Sunshine Coast								
Jetstar	90	88	53	60.2	51	58.0	2	2.2
Qantas	54	54	33	61.1	35	64.8	0	0.0
QantasLink	5	5	4	80.0	3	60.0	0	0.0
Virgin Australia	92	85	53	62.4	54	63.5	7	7.6
All Airlines	241	232	143	61.6	143	61.6	9	3.7
Sydney-Wagga Wagga								
QantasLink	70	70	52	74.3	56	80.0	0	0.0
Rex Airlines	125	120	76	63.3	76	63.3	5	4.0
All Airlines	195	190	128	67.4	132	69.5	5	2.6
Townsville-Brisbane								
Jetstar	54	54	31	57.4	31	57.4	0	0.0
Qantas	106	106	78	73.6	91	85.8	0	0.0
QantasLink	21	21	9	42.9	15	71.4	0	0.0
Virgin Australia	131	126	91	72.2	88	69.8	5	3.8
All Airlines	312	307	209	68.1	225	73.3	5	1.6
Townsville-Cairns								
QantasLink	132	130	107	82.3	104	80.0	2	1.5
Rex Airlines	18	18	15	83.3	15	83.3	0	0.0
All Airlines	150	148	122	82.4	119	80.4	2	1.3
Wagga Wagga-Sydney								
QantasLink	70	70	53	75.7	56	80.0	0	0.0
Rex Airlines	127	122	77	63.1	82	67.2	5	3.9
All Airlines	197	192	130	67.7	138	71.9	5	2.5

Airports

The following data reports by airport against flights operated on published routes only. This month, 8 major city airports and 28 regional city airports are covered.

Airport	Arrivals			Departures		
	Sectors	On Time		Sectors	On Time	
	Flown	No.	%	Flown	No.	%
Adelaide						
Jetstar	262	189	72.1	262	196	74.8
Qantas	632	455	72.0	631	446	70.7
QantasLink	240	193	80.4	239	204	85.4
Rex Airlines	232	145	62.5	232	175	75.4
Virgin Australia	611	390	63.8	609	349	57.3
Virgin Australia Regional Airlines	38	22	57.9	41	16	39.0
All Airlines	2,015	1,394	69.2	2,014	1,386	68.8
Relates to services to and from Alice Springs, Brisbane, Canberra, Gold Coast, Melbourne, Perth, Port Lincoln and Sydney only.						
Albury						
QantasLink	84	64	76.2	84	57	67.9
Rex Airlines	120	69	57.5	119	83	69.7
All Airlines	204	133	65.2	203	140	69.0
Relates to services to and from Sydney only.						
Alice Springs						
QantasLink	43	33	76.7	44	32	72.7
Virgin Australia	13	11	84.6	13	9	69.2
All Airlines	56	44	78.6	57	41	71.9
Relates to services to and from Adelaide only.						
Armidale						
QantasLink	87	69	79.3	84	64	76.2
Rex Airlines	70	43	61.4	70	39	55.7
All Airlines	157	112	71.3	154	103	66.9
Relates to services to and from Sydney only.						
Ballina						
Jetstar	73	39	53.4	73	31	42.5
QantasLink	74	45	60.8	75	45	60.0
Virgin Australia	45	31	68.9	45	31	68.9
All Airlines	192	115	59.9	193	107	55.4
Relates to services to and from Sydney only.						
Brisbane						
Jetstar	682	417	61.1	678	435	64.2
Qantas	1,461	1,108	75.8	1,465	1,188	81.1
QantasLink	701	493	70.3	702	532	75.8
Rex Airlines	159	111	69.8	159	109	68.6
Virgin Australia	1,953	1,357	69.5	1,959	1,187	60.6
All Airlines	4,956	3,486	70.3	4,963	3,451	69.5
Relates to services to and from Adelaide, Cairns, Canberra, Darwin, Emerald, Gladstone, Hamilton Island, Hobart, Launceston, Mackay, Melbourne, Mount Isa, Newcastle, Perth, Proserpine, Rockhampton, Sydney and Townsville only.						

Airport	Arrivals			Departures		
	Sectors Flown	On Time		Sectors Flown	On Time	
		No.	%		No.	%
Broome						
Qantas	11	11	100.0	11	5	45.5
QantasLink	79	69	87.3	79	52	65.8
Virgin Australia	13	12	92.3	13	9	69.2
Virgin Australia Regional Airlines	39	32	82.1	39	26	66.7
All Airlines	142	124	87.3	142	92	64.8
Relates to services to and from Perth only.						
Cairns						
Jetstar	315	215	68.3	317	200	63.1
Qantas	235	198	84.3	234	197	84.2
QantasLink	151	121	80.1	150	126	84.0
Rex Airlines	18	15	83.3	18	16	88.9
Virgin Australia	303	249	82.2	303	239	78.9
All Airlines	1,022	798	78.1	1,022	778	76.1
Relates to services to and from Brisbane, Gold Coast, Melbourne, Sydney and Townsville only.						
Canberra						
Jetstar	79	54	68.4	79	46	58.2
Qantas	7	6	85.7	7	6	85.7
QantasLink	768	574	74.7	765	594	77.6
Rex Airlines	31	22	71.0	31	23	74.2
Virgin Australia	491	359	73.1	493	361	73.2
All Airlines	1,376	1,015	73.8	1,375	1,030	74.9
Relates to services to and from Adelaide, Brisbane, Gold Coast, Melbourne and Sydney only.						
Coffs Harbour						
QantasLink	109	78	71.6	107	78	72.9
Rex Airlines	121	74	61.2	120	66	55.0
All Airlines	230	152	66.1	227	144	63.4
Relates to services to and from Sydney only.						
Darwin						
Jetstar	73	45	61.6	72	28	38.9
Qantas	132	102	77.3	132	91	68.9
QantasLink	19	14	73.7	19	7	36.8
Virgin Australia	109	72	66.1	109	56	51.4
Virgin Australia Regional Airlines	16	13	81.3	16	12	75.0
All Airlines	349	246	70.5	348	194	55.7
Relates to services to and from Brisbane, Melbourne, Perth and Sydney only.						
Dubbo						
QantasLink	103	70	68.0	103	79	76.7
Rex Airlines	125	70	56.0	119	83	69.7
All Airlines	228	140	61.4	222	162	73.0
Relates to services to and from Sydney only.						
Emerald						
QantasLink	117	97	82.9	117	93	79.5
Virgin Australia	26	19	73.1	26	21	80.8
All Airlines	143	116	81.1	143	114	79.7
Relates to services to and from Brisbane only.						

Airport	Arrivals			Departures		
	Sectors Flown	On Time		Sectors Flown	On Time	
		No.	%		No.	%
Gladstone						
QantasLink	104	69	66.3	103	86	83.5
Virgin Australia	50	30	60.0	50	30	60.0
All Airlines	154	99	64.3	153	116	75.8
Relates to services to and from Brisbane only.						
Gold Coast						
Jetstar	485	312	64.3	487	311	63.9
Qantas	108	85	78.7	109	73	67.0
QantasLink	78	54	69.2	78	41	52.6
Rex Airlines	67	50	74.6	67	39	58.2
Virgin Australia	644	392	60.9	643	370	57.5
All Airlines	1,382	893	64.6	1,384	834	60.3
Relates to services to and from Adelaide, Cairns, Canberra, Melbourne and Sydney only.						
Hamilton Island						
Jetstar	25	16	64.0	25	9	36.0
Qantas	60	49	81.7	61	47	77.0
Virgin Australia	69	49	71.0	68	43	63.2
All Airlines	154	114	74.0	154	99	64.3
Relates to services to and from Brisbane and Sydney only.						
Hobart						
Jetstar	203	152	74.9	202	145	71.8
Qantas	43	35	81.4	43	26	60.5
QantasLink	152	97	63.8	149	90	60.4
Virgin Australia	248	160	64.5	248	149	60.1
All Airlines	646	444	68.7	642	410	63.9
Relates to services to and from Brisbane, Melbourne and Sydney only.						
Kalgoorlie						
Qantas	18	15	83.3	17	9	52.9
QantasLink	47	38	80.9	48	31	64.6
Virgin Australia	29	24	82.8	29	19	65.5
Virgin Australia Regional Airlines	36	27	75.0	35	23	65.7
All Airlines	130	104	80.0	129	82	63.6
Relates to services to and from Perth only.						
Karratha						
Qantas	23	23	100.0	23	19	82.6
QantasLink	114	88	77.2	114	69	60.5
Virgin Australia	26	22	84.6	26	21	80.8
Virgin Australia Regional Airlines	26	21	80.8	26	19	73.1
All Airlines	189	154	81.5	189	128	67.7
Relates to services to and from Perth only.						
Launceston						
Jetstar	134	88	65.7	134	68	50.7
QantasLink	84	53	63.1	82	51	62.2
Virgin Australia	178	100	56.2	177	111	62.7
All Airlines	396	241	60.9	393	230	58.5
Relates to services to and from Brisbane, Melbourne and Sydney only.						

Airport	Arrivals			Departures		
	Sectors	On Time		Sectors	On Time	
	Flown	No.	%	Flown	No.	%
Mackay						
Jetstar	29	20	69.0	29	19	65.5
Qantas	103	84	81.6	104	70	67.3
QantasLink	9	8	88.9	13	12	92.3
Virgin Australia	126	95	75.4	126	91	72.2
All Airlines	267	207	77.5	272	192	70.6

Relates to services to and from Brisbane only.

Melbourne

Jetstar	1,246	796	63.9	1,253	773	61.7
Qantas	1,591	1,200	75.4	1,586	1,181	74.5
QantasLink	588	377	64.1	594	396	66.7
Rex Airlines	437	286	65.4	437	314	71.9
Virgin Australia	2,307	1,344	58.3	2,308	1,421	61.6
All Airlines	6,169	4,003	64.9	6,178	4,085	66.1

Relates to services to and from Adelaide, Brisbane, Cairns, Canberra, Darwin, Gold Coast, Hobart, Launceston, Mildura, Newcastle, Perth, Sunshine Coast and Sydney only.

Mildura

QantasLink	109	61	56.0	109	67	61.5
Rex Airlines	108	64	59.3	108	68	63.0
All Airlines	217	125	57.6	217	135	62.2

Relates to services to and from Melbourne only.

Mount Isa

Qantas	32	31	96.9	32	29	90.6
QantasLink	20	15	75.0	19	15	78.9
Virgin Australia	13	10	76.9	13	10	76.9
All Airlines	65	56	86.2	64	54	84.4

Relates to services to and from Brisbane only.

Newcastle

Jetstar	100	75	75.0	96	69	71.9
QantasLink	175	113	64.6	175	120	68.6
Virgin Australia	113	77	68.1	112	80	71.4
All Airlines	388	265	68.3	383	269	70.2

Relates to services to and from Brisbane and Melbourne only.

Newman

Qantas	18	16	88.9	18	15	83.3
QantasLink	92	74	80.4	92	71	77.2
Virgin Australia	21	21	100.0	21	19	90.5
Virgin Australia Regional Airlines	32	27	84.4	32	25	78.1
All Airlines	163	138	84.7	163	130	79.8

Relates to services to and from Perth only.

Perth

Jetstar	161	94	58.4	156	39	25.0
Qantas	709	427	60.2	711	484	68.1
QantasLink	432	309	71.5	430	333	77.4
Virgin Australia	520	345	66.3	516	366	70.9
Virgin Australia Regional Airlines	230	164	71.3	228	173	75.9
All Airlines	2,052	1,339	65.3	2,041	1,395	68.3

Relates to services to and from Adelaide, Brisbane, Broome, Darwin, Kalgoorlie, Karratha, Melbourne, Newman, Port Hedland and Sydney only.

Airport	Arrivals			Departures		
	Sectors Flown	On Time		Sectors Flown	On Time	
		No.	%		No.	%
Port Hedland						
Qantas	41	37	90.2	41	27	65.9
QantasLink	79	58	73.4	80	46	57.5
Virgin Australia	10	7	70.0	11	4	36.4
Virgin Australia Regional Airlines	41	32	78.0	41	29	70.7
All Airlines	171	134	78.4	173	106	61.3
Relates to services to and from Perth only.						
Port Lincoln						
QantasLink	116	102	87.9	116	104	89.7
Rex Airlines	175	121	69.1	175	119	68.0
All Airlines	291	223	76.6	291	223	76.6
Relates to services to and from Adelaide only.						
Port Macquarie						
QantasLink	99	73	73.7	97	80	82.5
Rex Airlines	96	58	60.4	95	61	64.2
All Airlines	195	131	67.2	192	141	73.4
Relates to services to and from Sydney only.						
Proserpine						
Jetstar	34	27	79.4	35	23	65.7
QantasLink	22	17	77.3	22	15	68.2
Virgin Australia	41	34	82.9	41	29	70.7
All Airlines	97	78	80.4	98	67	68.4
Relates to services to and from Brisbane only.						
Rockhampton						
QantasLink	110	97	88.2	107	75	70.1
Virgin Australia	130	76	58.5	130	99	76.2
All Airlines	240	173	72.1	237	174	73.4
Relates to services to and from Brisbane only.						
Sunshine Coast						
Jetstar	155	95	61.3	155	64	41.3
Qantas	65	41	63.1	66	34	51.5
QantasLink	38	23	60.5	36	14	38.9
Virgin Australia	184	123	66.8	184	108	58.7
All Airlines	442	282	63.8	441	220	49.9
Relates to services to and from Melbourne and Sydney only.						
Sydney						
Jetstar	1,204	711	59.1	1,208	735	60.8
Qantas	1,921	1,423	74.1	1,920	1,335	69.5
QantasLink	1,083	797	73.6	1,093	795	72.7
Rex Airlines	929	584	62.9	936	586	62.6
Virgin Australia	2,291	1,386	60.5	2,291	1,368	59.7
All Airlines	7,428	4,901	66.0	7,448	4,819	64.7

Relates to services to and from Adelaide, Albury, Armidale, Ballina, Brisbane, Cairns, Canberra, Coffs Harbour, Darwin, Dubbo, Gold Coast, Hamilton Island, Hobart, Launceston, Melbourne, Perth, Port Macquarie, Sunshine Coast and Wagga Wagga only.

<i>Airport</i>	<i>Arrivals</i>			<i>Departures</i>		
	<i>Sectors Flown</i>	<i>On Time</i>		<i>Sectors Flown</i>	<i>On Time</i>	
		<i>No.</i>	<i>%</i>		<i>No.</i>	<i>%</i>
Townsville						
Jetstar	55	39	70.9	54	31	57.4
Qantas	107	97	90.7	106	91	85.8
QantasLink	150	131	87.3	151	119	78.8
Rex Airlines	18	16	88.9	18	15	83.3
Virgin Australia	126	91	72.2	126	88	69.8
All Airlines	456	374	82.0	455	344	75.6

Relates to services to and from Brisbane and Cairns only.

Wagga Wagga

QantasLink	70	52	74.3	70	56	80.0
Rex Airlines	120	76	63.3	122	82	67.2
All Airlines	190	128	67.4	192	138	71.9

Relates to services to and from Sydney only.

Definitions

On time arrival	A flight arrival is counted as "on time" if it arrived at the gate before 15 minutes after the scheduled arrival time shown in the carriers' schedule. Neither diverted nor cancelled flights count as on time.
On time departure	A flight departure is counted as "on time" if it departs the gate before 15 minutes after the scheduled departure time shown in the carriers' schedule.
Cancellation	A flight removed from service within 7 days of scheduled departure is regarded as a cancellation.
On time departure percentage	The percentage of on time departures is measured against the number of departures <i>operated</i> on any particular sector.
On time arrival percentage	The percentage of on time arrivals is measured against the number of arrivals <i>operated</i> on any particular sector.
Cancellation percentage	The percentage of cancellations is measured against the number of services <i>scheduled</i> on any particular sector.
