



Australian Government

**Department of Infrastructure, Transport,
Regional Development, Communications and the Arts**
Bureau of Infrastructure and Transport Research Economics

STATISTICAL REPORT



Aviation

**Domestic airline on time performance
September 2022**

© Commonwealth of Australia 2022

ISSN: 1832-0759

Ownership of intellectual property rights in this publication

Unless otherwise noted, copyright (and any other intellectual property rights, if any) in this publication is owned by the Commonwealth of Australia (referred to below as the Commonwealth).

Disclaimer

The material contained in this publication is made available on the understanding that the Commonwealth is not providing professional advice, and that users exercise their own skill and care with respect to its use, and seek independent advice if necessary.

The Commonwealth makes no representations or warranties as to the contents or accuracy of the information contained in this publication. To the extent permitted by law, the Commonwealth disclaims liability to any person or organisation in respect of anything done, or omitted to be done, in reliance upon information contained in this publication.

Creative Commons licence

With the exception of (a) the Coat of Arms; and (b) the Department of Infrastructure, Transport, Regional Development, Communications and the Arts' photos and graphics, copyright in this publication is licensed under a Creative Commons Attribution 3.0 Australia Licence.

Creative Commons Attribution 3.0 Australia Licence is a standard form licence agreement that allows you to copy, communicate and adapt this publication provided that you attribute the work to the Commonwealth and abide by the other licence terms. A summary of the licence terms is available from <http://creativecommons.org/licenses/by/3.0/au/deed.en>. The full licence terms are available from <http://creativecommons.org/licenses/by/3.0/au/legalcode>.

Use of the Coat of Arms

The Department of the Prime Minister and Cabinet sets the terms under which the Coat of Arms is used. Please refer to the Department's Commonwealth Coat of Arms and Government branding web page <http://www.dpmc.gov.au/guidelines/index.cfm#brand> and, in particular, the Guidelines on the use of the Commonwealth Coat of Arms publication.

An appropriate citation for this report is:

Bureau of Infrastructure and Transport Research Economics (BITRE), 2022, Domestic airline on time performance, Statistical Report, BITRE, Canberra ACT.

Contact us

This publication is available in PDF format. All other rights are reserved, including in relation to any Departmental logos or trade marks which may exist. For enquiries regarding the licence and any use of this publication, please contact:

Bureau of Infrastructure and Transport Research Economics (BITRE)
Department of Infrastructure, Transport, Regional Development, Communications and the Arts
GPO Box 501, Canberra ACT 2601, Australia
Telephone: (international) +61 2 6274 7210
Fax: (international) +61 2 6274 6855
Email: bitre@infrastructure.gov.au
Website: www.bitre.gov.au

Inquiries

Should you require additional information about the statistics contained in this publication:

Telephone (02) 6274 7790 or Facsimile (02) 6274 7727

Electronic mail: AVSTATS@infrastructure.gov.au

Web site: <http://www.bitre.gov.au/statistics/aviation/otphome.aspx>

Foreword

The Bureau of Infrastructure and Transport Research Economics (BITRE) monitors the punctuality and reliability of major domestic airlines operating between Australian airports. The purpose of this is to allow for evaluation of overall industry and individual airline performance, so that consumers of air travel can make informed decisions.

The following domestic airlines currently report this information monthly to the BITRE: Jetstar, Qantas, QantasLink, Rex Airlines, Virgin Australia and Virgin Australia Regional Airlines.

Data has been gathered since November 2003, although some airlines commenced reporting at a later date, including Jetstar which first reported in May 2004, MacAir in July 2005, Tigerair Australia in April 2008 and Virgin Australia Regional Airlines in May 2013. MacAir ceased operations in February 2009 and data was not received for December 2008 onwards. Tigerair Australia ceased operations in March 2020 and data was not received for that month.

Virgin Blue was rebranded as Virgin Australia in May 2011 and Tiger Airways was rebranded as Tigerair Australia in July 2013 and time series data in Microsoft Excel spreadsheet format on the BITRE website have been revised to reflect these changes. With effect from July 2021, Regional Express is reported as Rex Airlines.

Services operated by Skywest on behalf of Virgin Australia using ATR/F100 aircraft commenced in November 2011 and were shown separately as Virgin Australia – ATR/F100 Operations. Virgin Australia Regional Airlines commenced operations in May 2013. It was formed after the acquisition of Skywest by Virgin Australia and represented a combination of operations previously reported under Skywest and Virgin Australia – ATR/F100 Operations. In January 2016, Virgin Australia transferred their ATR fleet from Virgin Australia Regional Airlines to Virgin Australia.

Information presented in this report is for Australian domestic routes for which the passenger load averaged 8 000 or more passengers per month over the previous six months and where two or more airlines operated in competition on those routes. In order to present data for more routes during the period impacted by COVID-19, the passenger load restriction is not being applied. Data are presented for 61 routes in September 2022. Over time, routes which meet these criteria change as airline networks and traffic levels vary.

Participating airlines report their overall monthly network performance where this is possible.

Total industry figures encompass all services operated by reporting airlines only. These airlines collectively carried over 95 per cent of total domestic passengers (regular public transport only) in 2019.

The method of capturing on time performance varies between airlines utilising different recording systems. Jetstar and Qantas jet aircraft use Aircraft Communication Addressing and Reporting System (ACARS) to electronically measure on time performance. Rex Airlines, Virgin Australia, Virgin Australia Regional Airlines and the Qantas non-jet fleet record on time performance manually using records from pilots, gate agents and/or ground crews.

After initial data is collected, aggregate reports are reviewed by participating airlines prior to publication.

Reports and detailed time series data in Microsoft Excel spreadsheet format are available from the BITRE website at: <http://www.bitre.gov.au/statistics/aviation/otphome.aspx>

Contents

	Page
Industry performance	1
Individual routes	9
Airports	22
Definitions	28

Industry performance

For September 2022, on time performance over all routes operated by participating airlines (Jetstar, Qantas, QantasLink, Rex Airlines, Virgin Australia and Virgin Australia Regional Airlines) averaged 68.3 per cent for on time arrivals and 67.7 per cent for on time departures. The cancellation rate for the month was 3.4 per cent. This month's figures were impacted by weather related events and COVID-19 related issues. The equivalent figures for September 2021 were 91.1 per cent for both on time arrivals and on time departures and 4.3 per cent for cancellations.

This month's on time arrivals figure was significantly lower than the long term average performance for all routes (81.8 per cent) and the on time departures figure was also significantly lower than the long term average (83.0 per cent). The rate of cancellations was higher than the long term average of 2.1 per cent.

The Qantas network (Qantas and QantasLink combined operations) recorded 69.2 per cent for on time arrivals while the Virgin Australia network (Virgin Australia and Virgin Australia Regional Airlines combined operations) recorded 68.2 per cent. Virgin Australia achieved the highest on time arrivals among the major domestic airlines at 68.1 per cent followed by Qantas at 66.1 per cent and Jetstar at 60.4 per cent. Of the regional airlines, Rex Airlines recorded 73.3 per cent for on time arrivals, followed by QantasLink at 71.5 per cent and Virgin Australia Regional Airlines at 69.7 per cent.

The Qantas network recorded 69.0 per cent for on time departures while the Virgin Australia network recorded 66.7 per cent. Virgin Australia achieved the highest level of on time departures among the major domestic airlines for September 2022 at 66.7 per cent, followed by Qantas at 65.1 per cent and Jetstar at 57.5 per cent. Of the regional airlines, Rex Airlines recorded 75.1 per cent for on time departures, followed by QantasLink at 71.9 per cent and Virgin Australia Regional Airlines at 67.6 per cent.

Jetstar recorded the highest percentage of cancellations (at 9.5 per cent) during the month, followed by Virgin Australia Regional Airlines (at 4.6 per cent), Qantas (at 2.5 per cent), QantasLink (at 2.4 per cent), Rex Airlines (at 2.3 per cent) and Virgin Australia (at 1.9 per cent).

Airlines' on time performance varies across the routes they serve. Individual route data by specific airline for 61 routes are shown on pages 9-21.

Of the 61 routes which met the criteria for on time performance reporting in September 2022, the Brisbane-Hamilton Island route had the highest percentage of on time arrivals (89.7 per cent) and the Cairns-Townsville route recorded the highest percentage of on time departures (87.2 per cent). The Gold Coast-Canberra route had the lowest percentage of on time arrivals (36.2 per cent) and the lowest percentage of on time departures (also 36.2 per cent).

Cancellations were highest on the Melbourne-Sydney route at 7.6 per cent followed by the Sydney-Melbourne route at 7.4 per cent, the Gold Coast-Sydney route at 6.7 per cent, the Adelaide-Port Lincoln route at 6.6 per cent and the Sydney-Hobart route at 6.5 per cent.

Emerald Airport recorded the highest percentage of on time arrivals (84.0 per cent) and the highest percentage of on time departures (81.0 per cent). Ballina Airport recorded the lowest percentage of on time arrivals (49.4 per cent) and Karratha Airport recorded the lowest percentage of on time departures (48.2 per cent). These figures only refer to reported routes and do not cover all flights at these airports.

Table 1 On time performance for September 2022 — Total Industry

	<i>Sectors</i>		<i>Arrivals On Time</i>		<i>Departures On Time</i>		<i>Cancellations</i>	
	<i>Scheduled</i>	<i>Flown</i>	<i>No.</i>	<i>%</i>	<i>No.</i>	<i>%</i>	<i>No.</i>	<i>%</i>
Jetstar	6 571	5 945	3 590	60.4	3 420	57.5	626	9.5
Qantas - all QF designated services	17 757	17 320	11 980	69.2	11 952	69.0	437	2.5
Rex Airlines	6 800	6 645	4 873	73.3	4 989	75.1	155	2.3
Virgin Australia - all VA designated services	11 224	10 999	7 502	68.2	7 338	66.7	225	2.0
All Airlines	42 352	40 909	27 945	68.3	27 699	67.7	1 443	3.4
Individual operating entities								
Qantas	7 607	7 414	4 898	66.1	4 825	65.1	193	2.5
QantasLink	10 150	9 906	7 082	71.5	7 127	71.9	244	2.4
Virgin Australia	10 609	10 412	7 093	68.1	6 941	66.7	197	1.9
Virgin Australia Regional Airlines	615	587	409	69.7	397	67.6	28	4.6

Total airline network data (including routes not shown in this report).

Airlines' on time performance varies across the routes they serve. Individual route data by specific airline are shown on page 9 and onwards.

Table 2 Top ten routes for on time performance for September 2022 (participating airlines only)

<i>Arrivals</i>		<i>Departures</i>	
<i>Route</i>	<i>On Time (%)</i>	<i>Route</i>	<i>On Time (%)</i>
Brisbane-Hamilton Island	89.7	Cairns-Townsville	87.2
Cairns-Townsville	87.9	Brisbane-Emerald	86.1
Brisbane-Emerald	84.0	Brisbane-Hamilton Island	84.5
Emerald-Brisbane	81.7	Adelaide-Alice Springs	83.6
Perth-Newman	80.7	Perth-Newman	82.0
Adelaide-Alice Springs	80.0	Emerald-Brisbane	81.0
Adelaide-Brisbane	79.8	Perth-Port Hedland	80.7
Perth-Port Hedland	79.5	Brisbane-Mount Isa	80.0
Townsville-Cairns	79.2	Perth-Kalgoorlie	78.6
Brisbane-Adelaide	79.0	Port Lincoln-Adelaide	78.2

Table 3 Top ten airports for on time performance for September 2022 (participating airlines and reported routes only)

<i>Arrivals</i>		<i>Departures</i>	
<i>Airport</i>	<i>On Time (%)</i>	<i>Airport</i>	<i>On Time (%)</i>
Emerald	84.0	Emerald	81.0
Hamilton Island	82.5	Port Lincoln	78.2
Newman	80.7	Port Macquarie	76.8
Alice Springs	80.0	Wagga Wagga	76.2
Port Hedland	79.5	Gladstone	75.7
Armidale	78.1	Dubbo	75.2
Kalgoorlie	77.9	Armidale	74.7
Gladstone	77.0	Port Hedland	74.0
Broome	76.8	Newman	71.2
Port Lincoln	74.3	Coffs Harbour	70.7

Total industry on time performance

Figure 1 On time performance (by month from September 2019)—Total Industry

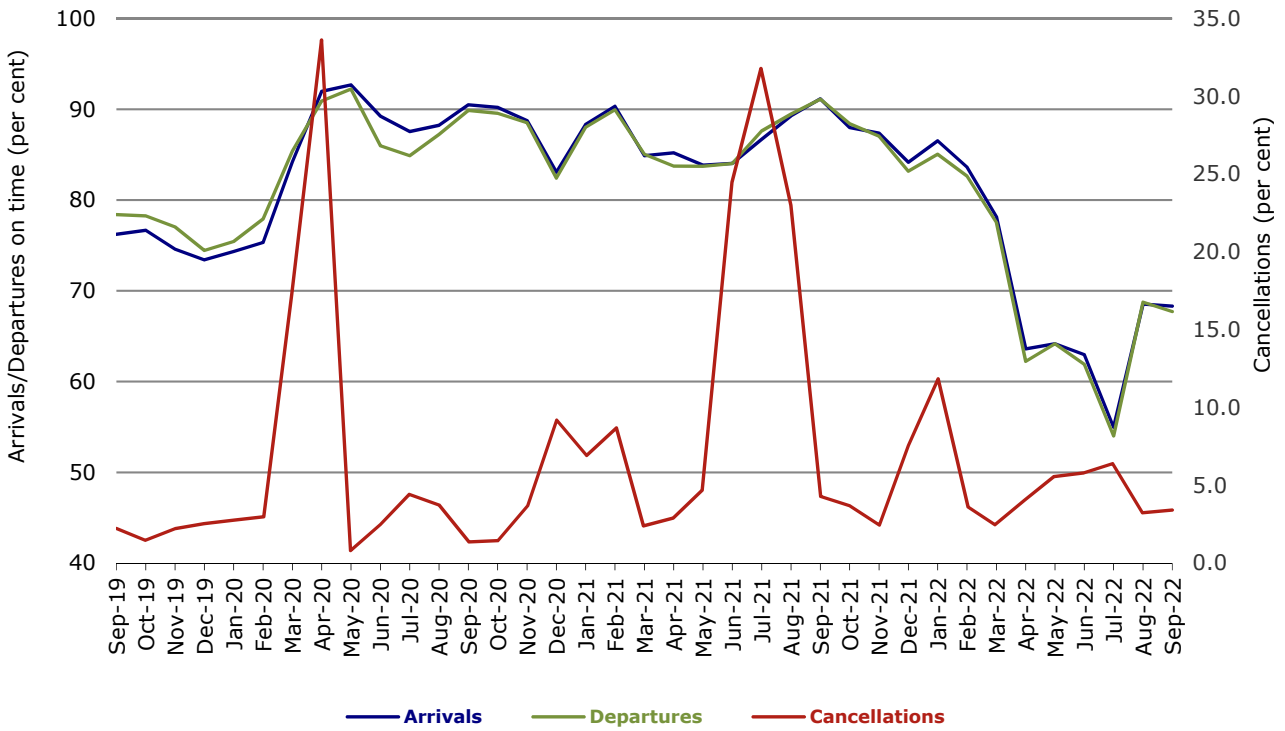


Figure 2 Arrivals on time (by month from September 2021)

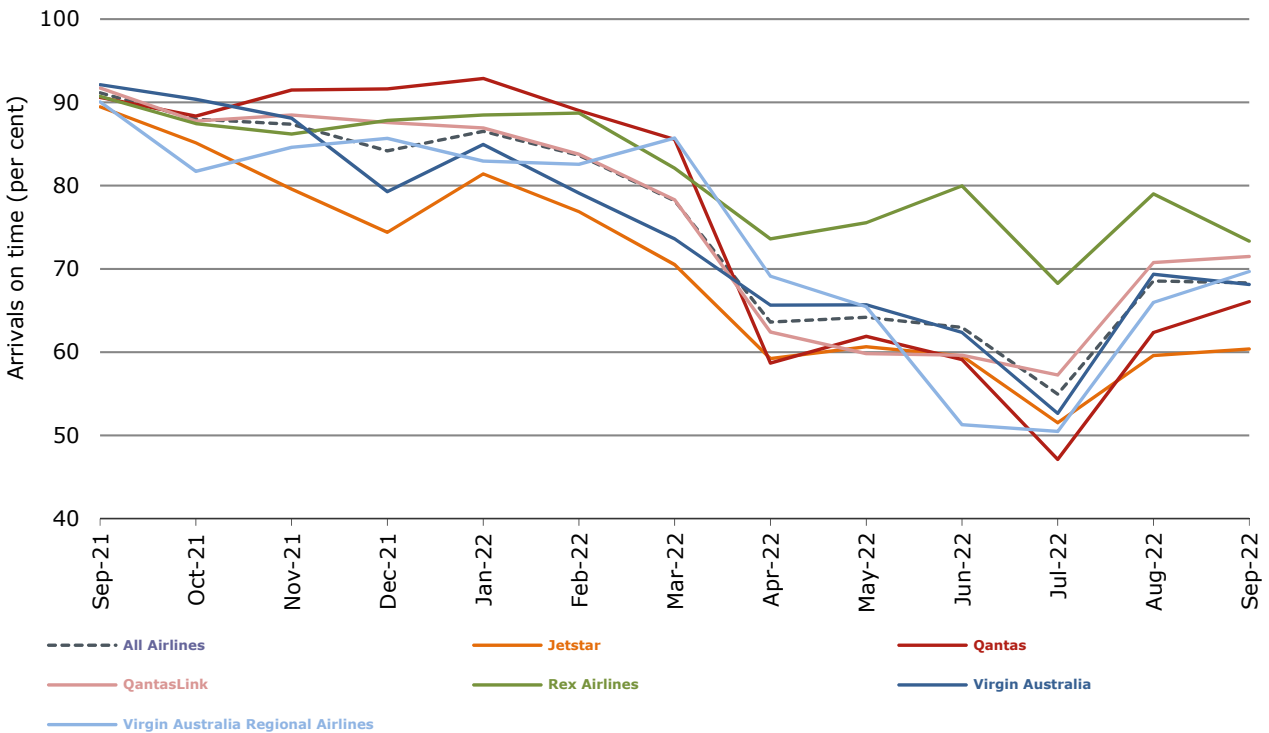


Figure 3 Departures on time (by month from September 2021)

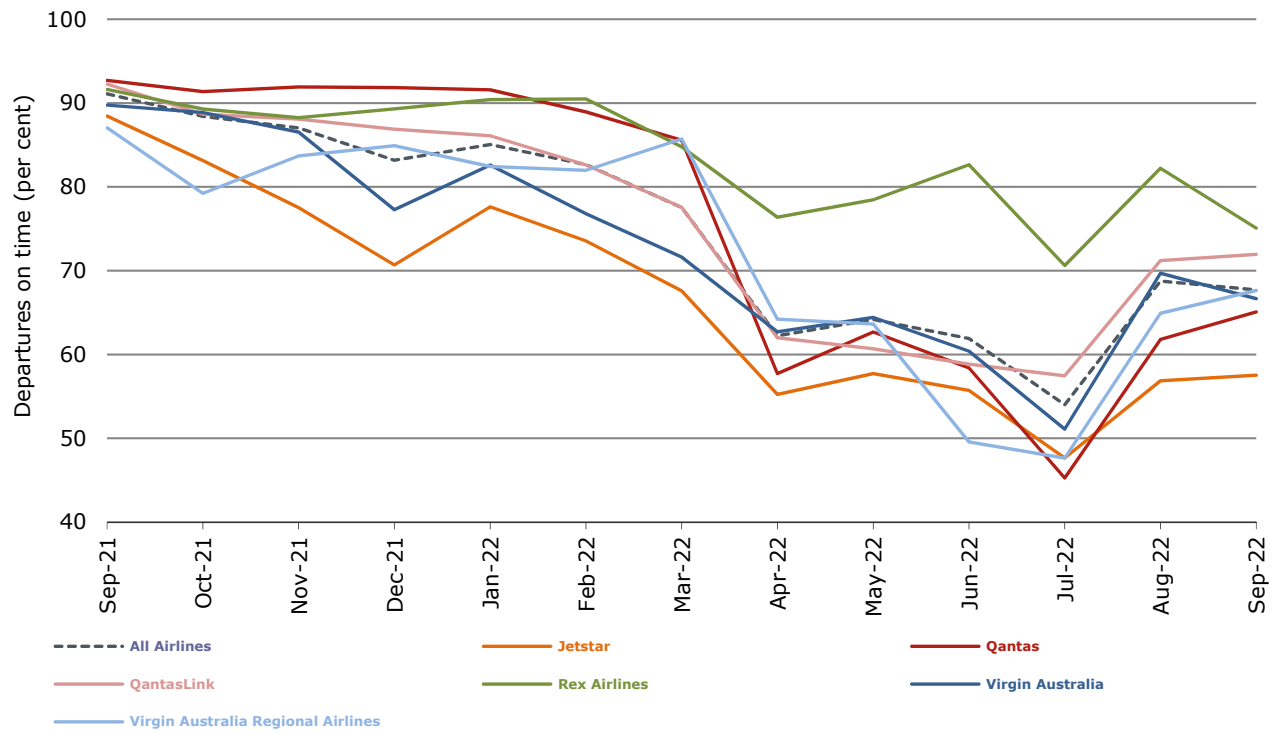
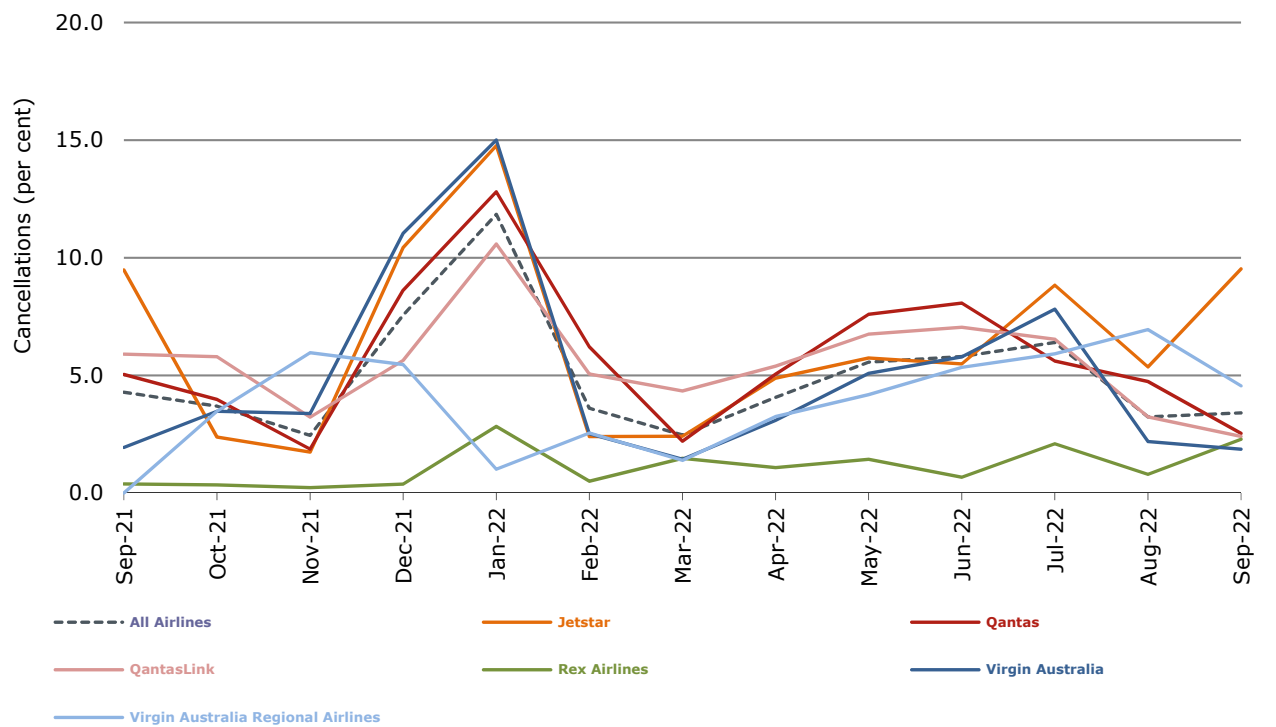


Figure 4 Cancellations (by month from September 2021)



Major domestic airlines on time performance

Figure 5 On time performance (by month from September 2019)—Jetstar

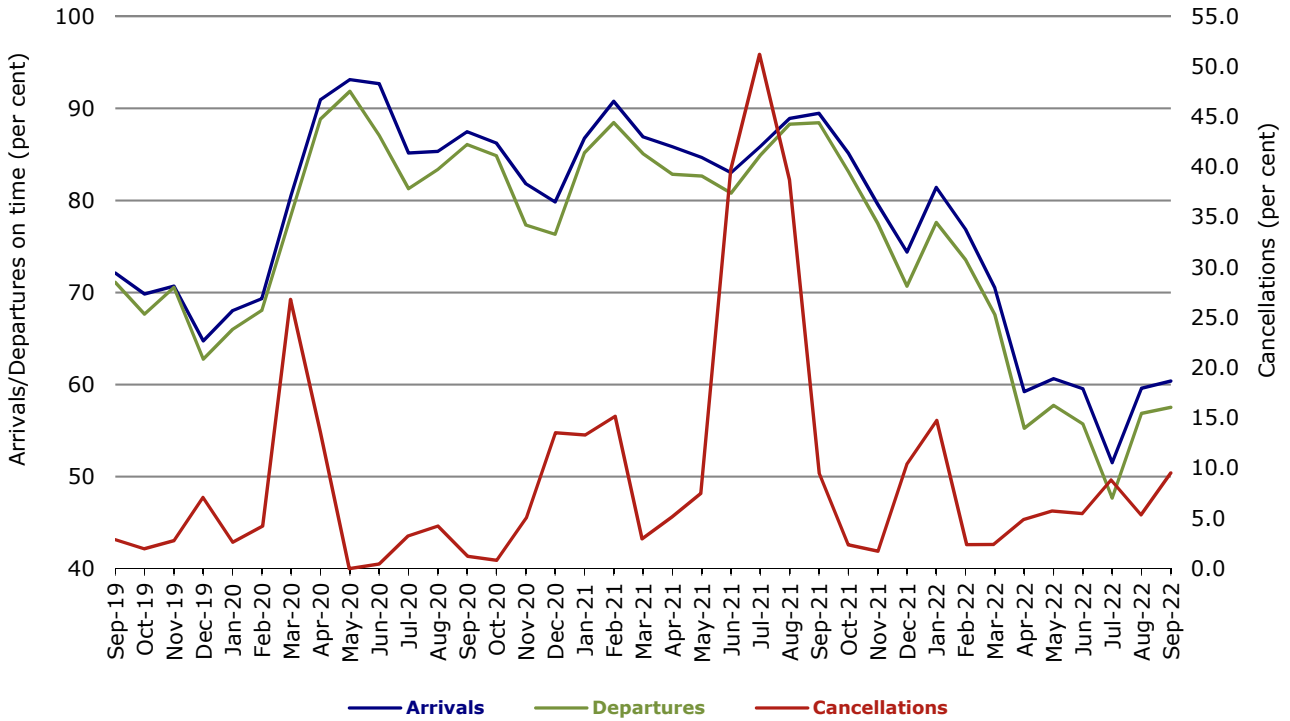


Figure 6 On time performance (by month from September 2019)—Qantas

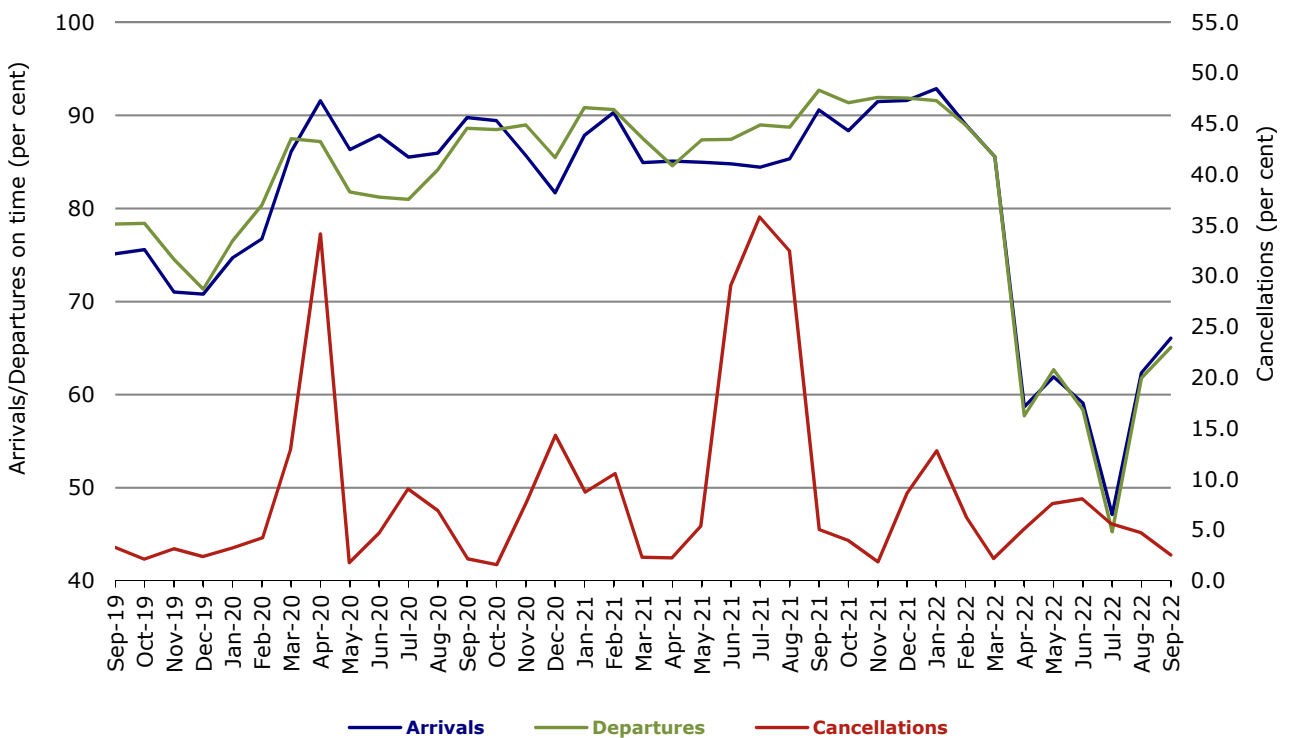
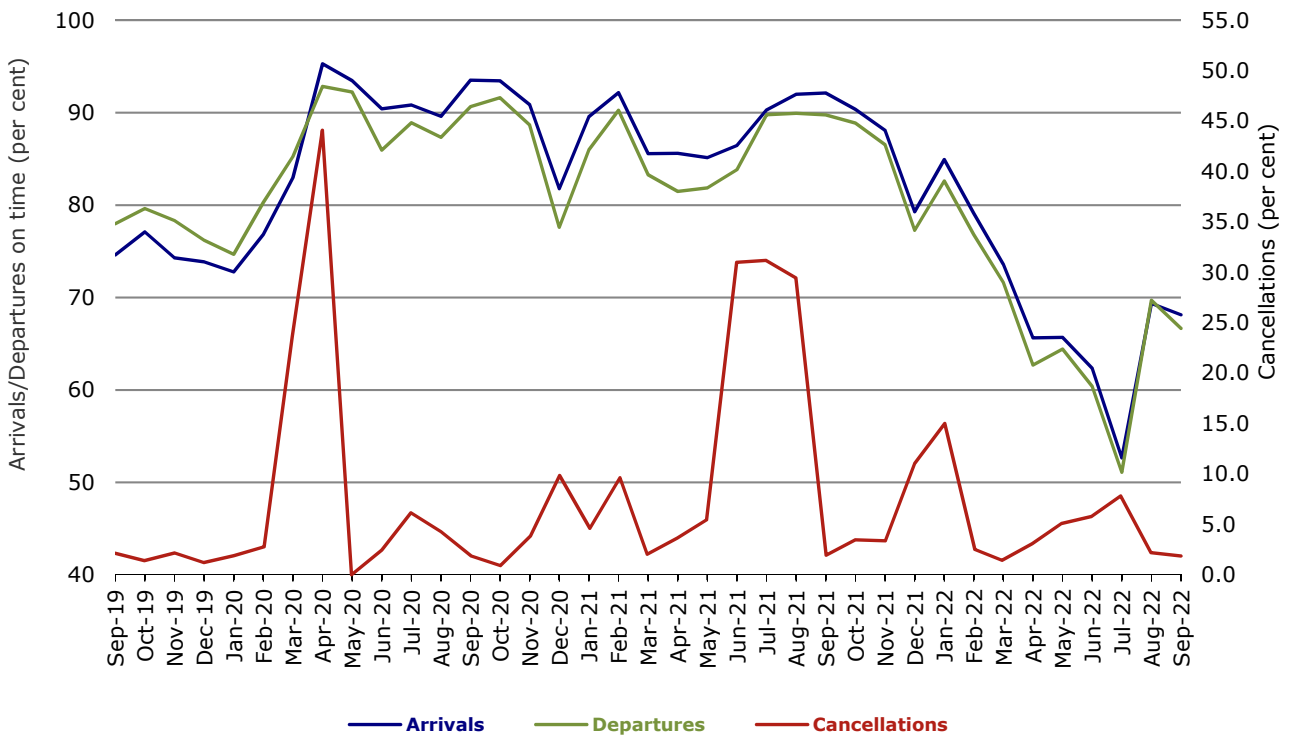


Figure 7 On time performance (by month from September 2019)—Virgin Australia



Major regional airlines on time performance

Figure 8 On time performance (by month from September 2019)—QantasLink

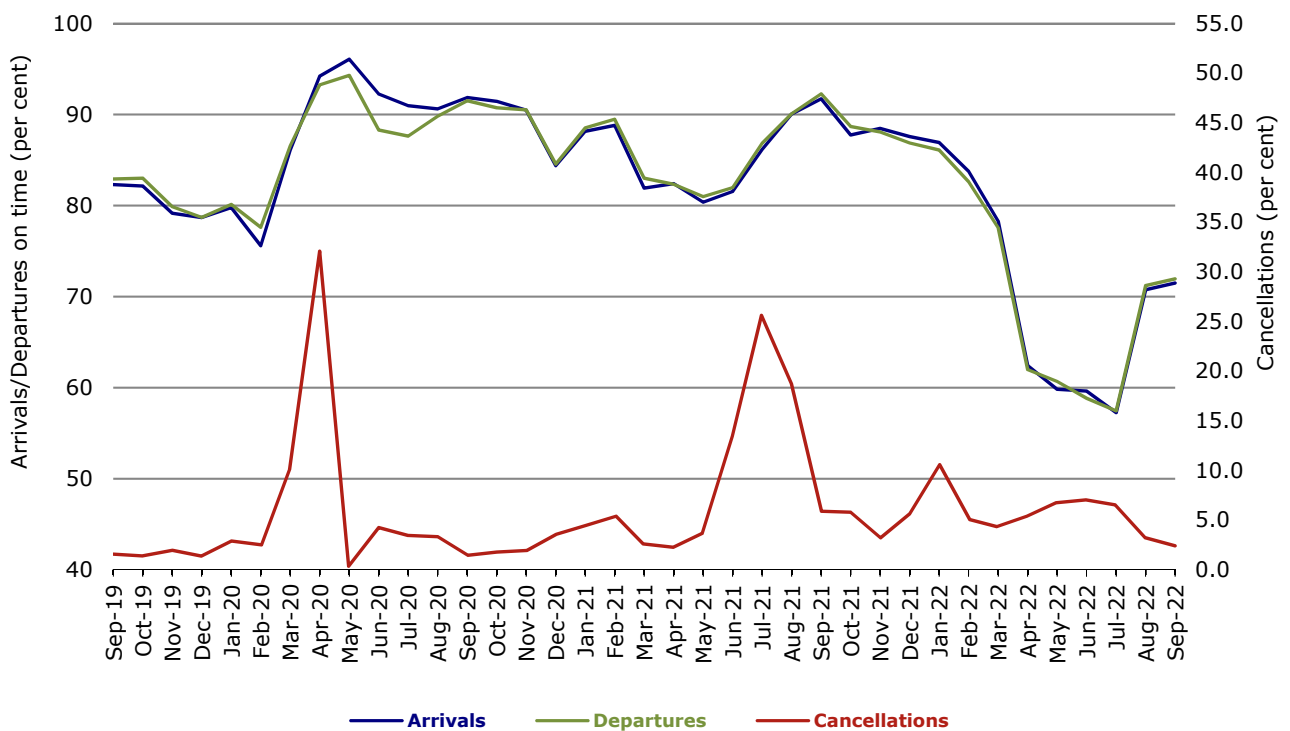


Figure 9 On time performance (by month from September 2019)—Rex Airlines

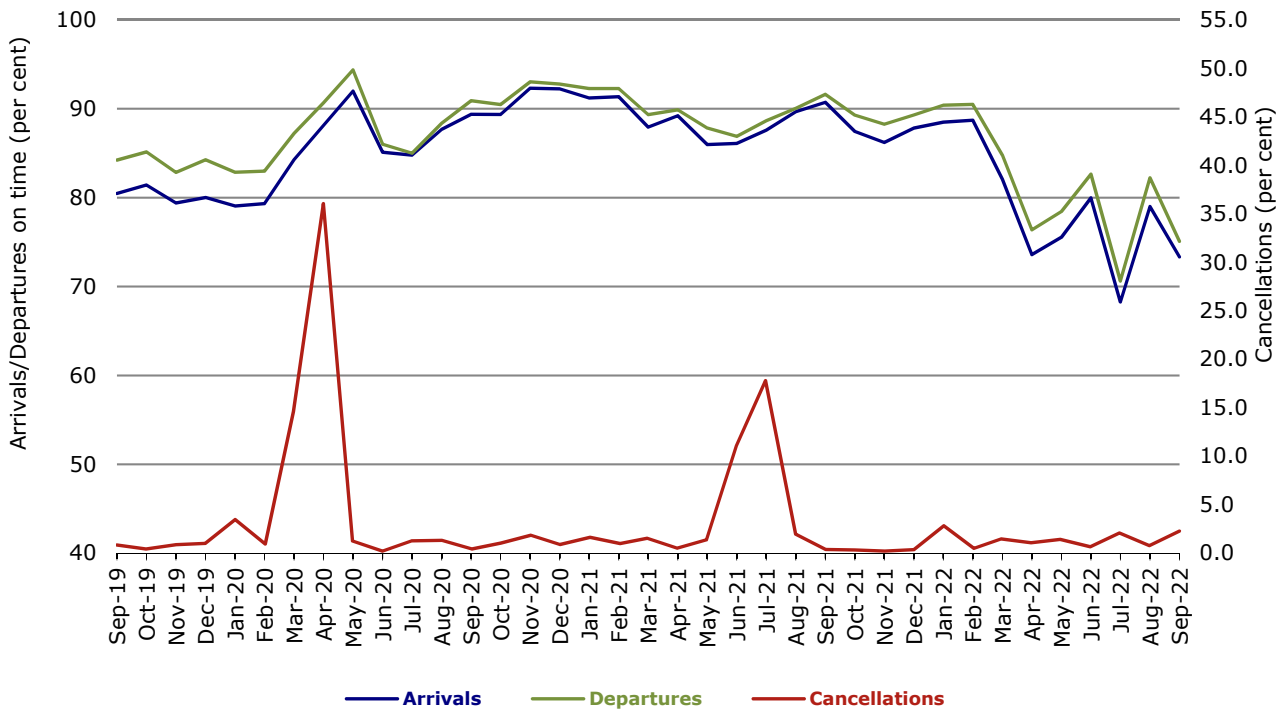
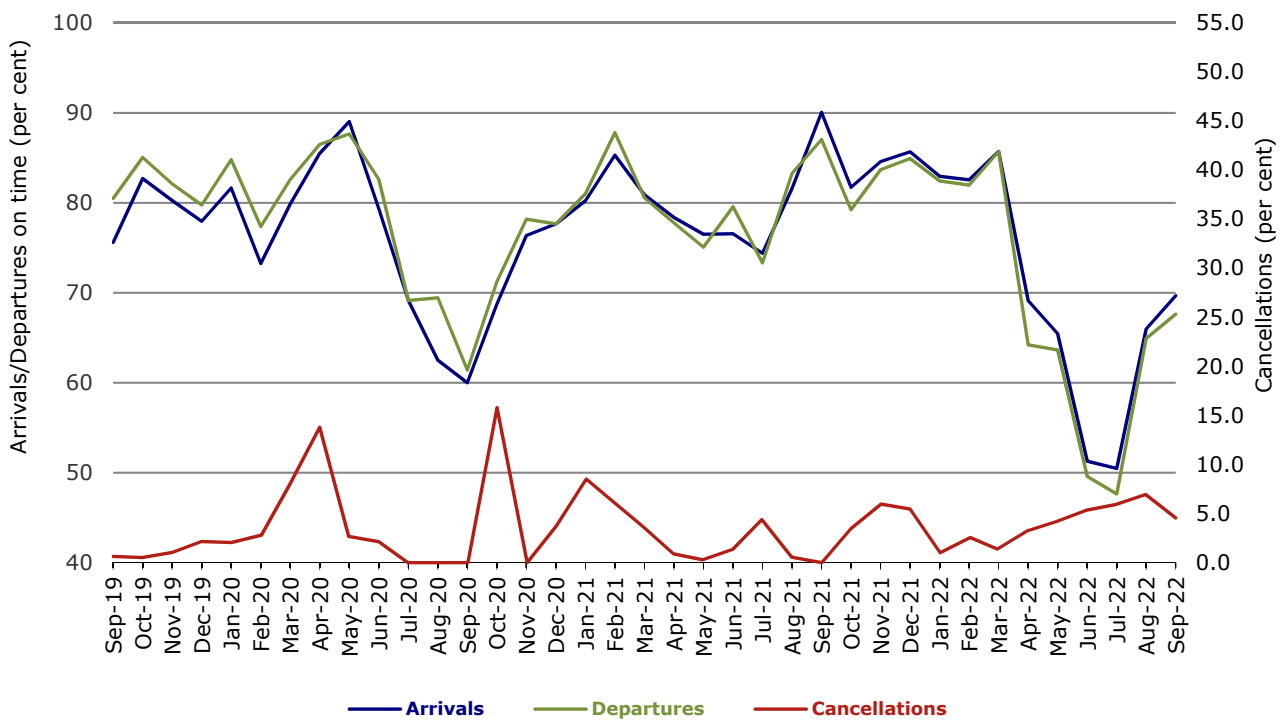


Figure 10 On time performance (by month from September 2019) Virgin Australia Regional Airlines



Individual routes

On time performance is reported for all routes where the passenger load averages over 8000 passengers per month over the previous six months, and where two or more airlines operate in competition on those routes. In order to present data for more routes during the period impacted by COVID-19, the passenger load restriction is not being applied. There are now 61 routes for which data are presented.

	Sectors		Arrivals On Time		Departures On Time		Cancellations	
	Sched.	Flown	No.	%	No.	%	No.	%
Adelaide-Alice Springs								
QantasLink	43	42	34	81.0	36	85.7	1	2.3
Virgin Australia	13	13	10	76.9	10	76.9	0	0.0
All Airlines	56	55	44	80.0	46	83.6	1	1.8
Adelaide-Brisbane								
Jetstar	32	30	23	76.7	23	76.7	2	6.3
Qantas	86	85	67	78.8	59	69.4	1	1.2
Virgin Australia	105	103	84	81.6	82	79.6	2	1.9
All Airlines	223	218	174	79.8	164	75.2	5	2.2
Adelaide-Canberra								
QantasLink	69	68	53	77.9	58	85.3	1	1.4
Virgin Australia	18	18	10	55.6	9	50.0	0	0.0
All Airlines	87	86	63	73.3	67	77.9	1	1.1
Adelaide-Gold Coast								
Jetstar	24	23	11	47.8	12	52.2	1	4.2
Virgin Australia	30	30	27	90.0	26	86.7	0	0.0
All Airlines	54	53	38	71.7	38	71.7	1	1.9
Adelaide-Melbourne								
Jetstar	89	82	62	75.6	58	70.7	7	7.9
Qantas	223	216	161	74.5	153	70.8	7	3.1
QantasLink	13	12	11	91.7	12	100.0	1	7.7
Rex Airlines	56	56	49	87.5	49	87.5	0	0.0
Virgin Australia	257	255	188	73.7	181	71.0	2	0.8
All Airlines	638	621	471	75.8	453	72.9	17	2.7
Adelaide-Perth								
Jetstar	24	24	16	66.7	17	70.8	0	0.0
Qantas	94	94	68	72.3	68	72.3	0	0.0
Virgin Australia	22	21	10	47.6	9	42.9	1	4.5
Virgin Australia Regional Airlines	40	35	26	74.3	17	48.6	5	12.5
All Airlines	180	174	120	69.0	111	63.8	6	3.3
Adelaide-Port Lincoln								
QantasLink	126	122	105	86.1	103	84.4	4	3.2
Rex Airlines	178	162	106	65.4	112	69.1	16	9.0
All Airlines	304	284	211	74.3	215	75.7	20	6.6
Adelaide-Sydney								
Jetstar	65	54	37	68.5	42	77.8	11	16.9
Qantas	220	215	124	57.7	125	58.1	5	2.3
Virgin Australia	123	120	58	48.3	67	55.8	3	2.4
All Airlines	408	389	219	56.3	234	60.2	19	4.7
Albury-Sydney								
QantasLink	84	84	56	66.7	55	65.5	0	0.0
Rex Airlines	131	127	88	69.3	93	73.2	4	3.1
All Airlines	215	211	144	68.2	148	70.1	4	1.9

	Sectors		Arrivals On Time		Departures On Time		Cancellations	
	Sched.	Flown	No.	%	No.	%	No.	%
Alice Springs-Adelaide								
QantasLink	43	42	26	61.9	28	66.7	1	2.3
Virgin Australia	13	13	7	53.8	7	53.8	0	0.0
All Airlines	56	55	33	60.0	35	63.6	1	1.8
Armidale-Sydney								
QantasLink	92	88	71	80.7	74	84.1	4	4.3
Rex Airlines	77	74	38	51.4	47	63.5	3	3.9
All Airlines	169	162	109	67.3	121	74.7	7	4.1
Ballina-Sydney								
Jetstar	59	56	21	37.5	20	35.7	3	5.1
QantasLink	77	76	32	42.1	42	55.3	1	1.3
Virgin Australia	45	43	25	58.1	25	58.1	2	4.4
All Airlines	181	175	78	44.6	87	49.7	6	3.3
Brisbane-Adelaide								
Jetstar	32	30	16	53.3	14	46.7	2	6.3
Qantas	86	85	72	84.7	73	85.9	1	1.2
Virgin Australia	105	104	85	81.7	70	67.3	1	1.0
All Airlines	223	219	173	79.0	157	71.7	4	1.8
Brisbane-Cairns								
Jetstar	85	80	39	48.8	37	46.3	5	5.9
Qantas	109	109	84	77.1	78	71.6	0	0.0
QantasLink	22	22	8	36.4	11	50.0	0	0.0
Virgin Australia	138	138	109	79.0	106	76.8	0	0.0
All Airlines	354	349	240	68.8	232	66.5	5	1.4
Brisbane-Canberra								
Jetstar	30	30	25	83.3	18	60.0	0	0.0
QantasLink	147	147	103	70.1	96	65.3	0	0.0
Virgin Australia	87	86	59	68.6	54	62.8	1	1.1
All Airlines	264	263	187	71.1	168	63.9	1	0.4
Brisbane-Darwin								
Jetstar	18	18	11	61.1	7	38.9	0	0.0
Qantas	44	44	41	93.2	40	90.9	0	0.0
Virgin Australia	37	37	26	70.3	23	62.2	0	0.0
All Airlines	99	99	78	78.8	70	70.7	0	0.0
Brisbane-Emerald								
QantasLink	118	118	102	86.4	106	89.8	0	0.0
Virgin Australia	26	26	19	73.1	18	69.2	0	0.0
All Airlines	144	144	121	84.0	124	86.1	0	0.0
Brisbane-Gladstone								
QantasLink	101	100	77	77.0	76	76.0	1	1.0
Virgin Australia	52	52	40	76.9	42	80.8	0	0.0
All Airlines	153	152	117	77.0	118	77.6	1	0.7
Brisbane-Hamilton Island								
Qantas	19	19	16	84.2	16	84.2	0	0.0
Virgin Australia	39	39	36	92.3	33	84.6	0	0.0
All Airlines	58	58	52	89.7	49	84.5	0	0.0
Brisbane-Hobart								
Jetstar	21	21	15	71.4	15	71.4	0	0.0
QantasLink	14	14	5	35.7	5	35.7	0	0.0
Virgin Australia	45	44	31	70.5	28	63.6	1	2.2
All Airlines	80	79	51	64.6	48	60.8	1	1.3

	Sectors		Arrivals On Time		Departures On Time		Cancellations	
	Sched.	Flown	No.	%	No.	%	No.	%
Brisbane-Launceston								
Jetstar	20	20	13	65.0	12	60.0	0	0.0
Virgin Australia	26	26	22	84.6	19	73.1	0	0.0
All Airlines	46	46	35	76.1	31	67.4	0	0.0
Brisbane-Mackay								
Jetstar	27	26	14	53.8	14	53.8	1	3.7
Qantas	104	104	74	71.2	71	68.3	0	0.0
QantasLink	8	8	5	62.5	7	87.5	0	0.0
Virgin Australia	119	116	72	62.1	75	64.7	3	2.5
All Airlines	258	254	165	65.0	167	65.7	4	1.6
Brisbane-Melbourne								
Jetstar	131	108	67	62.0	59	54.6	23	17.6
Qantas	325	318	212	66.7	202	63.5	7	2.2
Rex Airlines	56	56	51	91.1	47	83.9	0	0.0
Virgin Australia	326	319	185	58.0	174	54.5	7	2.1
All Airlines	838	801	515	64.3	482	60.2	37	4.4
Brisbane-Mount Isa								
Qantas	35	35	27	77.1	30	85.7	0	0.0
QantasLink	17	17	11	64.7	11	64.7	0	0.0
Virgin Australia	13	13	7	53.8	11	84.6	0	0.0
All Airlines	65	65	45	69.2	52	80.0	0	0.0
Brisbane-Newcastle								
Jetstar	44	44	32	72.7	30	68.2	0	0.0
QantasLink	123	119	80	67.2	82	68.9	4	3.3
Virgin Australia	82	81	64	79.0	68	84.0	1	1.2
All Airlines	249	244	176	72.1	180	73.8	5	2.0
Brisbane-Perth								
Jetstar	18	17	3	17.6	6	35.3	1	5.6
Qantas	148	144	92	63.9	111	77.1	4	2.7
Virgin Australia	105	104	81	77.9	66	63.5	1	1.0
All Airlines	271	265	176	66.4	183	69.1	6	2.2
Brisbane-Proserpine								
Jetstar	37	36	22	61.1	23	63.9	1	2.7
QantasLink	24	24	10	41.7	18	75.0	0	0.0
Virgin Australia	34	34	30	88.2	30	88.2	0	0.0
All Airlines	95	94	62	66.0	71	75.5	1	1.1
Brisbane-Rockhampton								
QantasLink	109	107	77	72.0	72	67.3	2	1.8
Virgin Australia	112	112	48	42.9	73	65.2	0	0.0
All Airlines	221	219	125	57.1	145	66.2	2	0.9
Brisbane-Sydney								
Jetstar	146	115	64	55.7	63	54.8	31	21.2
Qantas	484	471	335	71.1	352	74.7	13	2.7
Rex Airlines	106	105	81	77.1	83	79.0	1	0.9
Virgin Australia	421	405	266	65.7	272	67.2	16	3.8
All Airlines	1 157	1 096	746	68.1	770	70.3	61	5.3
Brisbane-Townsville								
Jetstar	49	47	30	63.8	29	61.7	2	4.1
Qantas	105	105	74	70.5	71	67.6	0	0.0
QantasLink	21	21	12	57.1	15	71.4	0	0.0
Virgin Australia	120	117	68	58.1	64	54.7	3	2.5
All Airlines	295	290	184	63.4	179	61.7	5	1.7

	Sectors		Arrivals On Time		Departures On Time		Cancellations	
	Sched.	Flown	No.	%	No.	%	No.	%
Broome-Perth								
Qantas	21	21	17	81.0	15	71.4	0	0.0
QantasLink	74	74	53	71.6	47	63.5	0	0.0
Virgin Australia	15	15	5	33.3	3	20.0	0	0.0
Virgin Australia Regional Airlines	54	52	31	59.6	25	48.1	2	3.7
All Airlines	164	162	106	65.4	90	55.6	2	1.2
Cairns-Brisbane								
Jetstar	83	78	44	56.4	45	57.7	5	6.0
Qantas	109	108	87	80.6	90	83.3	1	0.9
QantasLink	22	22	3	13.6	8	36.4	0	0.0
Virgin Australia	138	138	108	78.3	100	72.5	0	0.0
All Airlines	352	346	242	69.9	243	70.2	6	1.7
Cairns-Gold Coast								
Jetstar	41	40	18	45.0	19	47.5	1	2.4
Virgin Australia	12	12	11	91.7	11	91.7	0	0.0
All Airlines	53	52	29	55.8	30	57.7	1	1.9
Cairns-Melbourne								
Jetstar	116	113	77	68.1	72	63.7	3	2.6
Qantas	55	55	32	58.2	38	69.1	0	0.0
Virgin Australia	75	75	45	60.0	50	66.7	0	0.0
All Airlines	246	243	154	63.4	160	65.8	3	1.2
Cairns-Sydney								
Jetstar	96	87	54	62.1	55	63.2	9	9.4
Qantas	65	63	33	52.4	41	65.1	2	3.1
Virgin Australia	70	68	45	66.2	47	69.1	2	2.9
All Airlines	231	218	132	60.6	143	65.6	13	5.6
Cairns-Townsville								
QantasLink	129	126	110	87.3	109	86.5	3	2.3
Rex Airlines	23	23	21	91.3	21	91.3	0	0.0
All Airlines	152	149	131	87.9	130	87.2	3	2.0
Canberra-Adelaide								
QantasLink	69	68	47	69.1	46	67.6	1	1.4
Virgin Australia	18	18	6	33.3	7	38.9	0	0.0
All Airlines	87	86	53	61.6	53	61.6	1	1.1
Canberra-Brisbane								
Jetstar	30	30	20	66.7	18	60.0	0	0.0
QantasLink	146	142	95	66.9	85	59.9	4	2.7
Virgin Australia	87	86	59	68.6	52	60.5	1	1.1
All Airlines	263	258	174	67.4	155	60.1	5	1.9
Canberra-Gold Coast								
Jetstar	10	9	1	11.1	1	11.1	1	10.0
QantasLink	8	8	5	62.5	4	50.0	0	0.0
Virgin Australia	30	30	18	60.0	18	60.0	0	0.0
All Airlines	48	47	24	51.1	23	48.9	1	2.1
Canberra-Melbourne								
Jetstar	30	28	18	64.3	16	57.1	2	6.7
Qantas	9	9	7	77.8	6	66.7	0	0.0
QantasLink	203	200	148	74.0	143	71.5	3	1.5
Rex Airlines	30	30	22	73.3	24	80.0	0	0.0
Virgin Australia	104	104	63	60.6	52	50.0	0	0.0
All Airlines	376	371	258	69.5	241	65.0	5	1.3

	<i>Sectors</i>		<i>Arrivals On Time</i>		<i>Departures On Time</i>		<i>Cancellations</i>	
	<i>Sched.</i>	<i>Flown</i>	<i>No.</i>	<i>%</i>	<i>No.</i>	<i>%</i>	<i>No.</i>	<i>%</i>
Canberra-Sydney								
QantasLink	364	346	260	75.1	272	78.6	18	4.9
Virgin Australia	252	248	192	77.4	192	77.4	4	1.6
All Airlines	616	594	452	76.1	464	78.1	22	3.6
Coffs Harbour-Sydney								
QantasLink	107	105	79	75.2	85	81.0	2	1.9
Rex Airlines	129	127	75	59.1	79	62.2	2	1.6
All Airlines	236	232	154	66.4	164	70.7	4	1.7
Darwin-Brisbane								
Jetstar	18	18	7	38.9	10	55.6	0	0.0
Qantas	44	44	22	50.0	32	72.7	0	0.0
Virgin Australia	38	38	19	50.0	12	31.6	0	0.0
All Airlines	100	100	48	48.0	54	54.0	0	0.0
Darwin-Melbourne								
Jetstar	26	24	10	41.7	8	33.3	2	7.7
Qantas	27	27	12	44.4	16	59.3	0	0.0
Virgin Australia	31	29	14	48.3	13	44.8	2	6.5
All Airlines	84	80	36	45.0	37	46.3	4	4.8
Darwin-Perth								
Qantas	18	18	10	55.6	9	50.0	0	0.0
QantasLink	13	13	3	23.1	3	23.1	0	0.0
Virgin Australia	10	10	6	60.0	6	60.0	0	0.0
Virgin Australia Regional Airlines	19	19	14	73.7	11	57.9	0	0.0
All Airlines	60	60	33	55.0	29	48.3	0	0.0
Darwin-Sydney								
Jetstar	19	18	5	27.8	2	11.1	1	5.3
Qantas	56	55	19	34.5	24	43.6	1	1.8
Virgin Australia	30	30	25	83.3	23	76.7	0	0.0
All Airlines	105	103	49	47.6	49	47.6	2	1.9
Dubbo-Sydney								
QantasLink	103	101	88	87.1	83	82.2	2	1.9
Rex Airlines	130	129	86	66.7	90	69.8	1	0.8
All Airlines	233	230	174	75.7	173	75.2	3	1.3
Emerald-Brisbane								
QantasLink	118	116	95	81.9	95	81.9	2	1.7
Virgin Australia	26	26	21	80.8	20	76.9	0	0.0
All Airlines	144	142	116	81.7	115	81.0	2	1.4
Gladstone-Brisbane								
QantasLink	102	100	75	75.0	75	75.0	2	2.0
Virgin Australia	52	52	22	42.3	40	76.9	0	0.0
All Airlines	154	152	97	63.8	115	75.7	2	1.3
Gold Coast-Adelaide								
Jetstar	24	23	11	47.8	8	34.8	1	4.2
Virgin Australia	30	29	21	72.4	23	79.3	1	3.3
All Airlines	54	52	32	61.5	31	59.6	2	3.7
Gold Coast-Cairns								
Jetstar	39	38	22	57.9	26	68.4	1	2.6
Virgin Australia	13	13	12	92.3	11	84.6	0	0.0
All Airlines	52	51	34	66.7	37	72.5	1	1.9

	Sectors		Arrivals On Time		Departures On Time		Cancellations	
	Sched.	Flown	No.	%	No.	%	No.	%
Gold Coast-Canberra								
Jetstar	10	9	2	22.2	1	11.1	1	10.0
QantasLink	8	8	3	37.5	4	50.0	0	0.0
Virgin Australia	30	30	12	40.0	12	40.0	0	0.0
All Airlines	48	47	17	36.2	17	36.2	1	2.1
Gold Coast-Melbourne								
Jetstar	236	205	121	59.0	114	55.6	31	13.1
Qantas	31	30	24	80.0	20	66.7	1	3.2
QantasLink	35	35	24	68.6	22	62.9	0	0.0
Rex Airlines	33	33	18	54.5	20	60.6	0	0.0
Virgin Australia	268	266	193	72.6	172	64.7	2	0.7
All Airlines	603	569	380	66.8	348	61.2	34	5.6
Gold Coast-Sydney								
Jetstar	204	172	97	56.4	95	55.2	32	15.7
Qantas	71	70	36	51.4	40	57.1	1	1.4
QantasLink	35	34	19	55.9	15	44.1	1	2.9
Rex Airlines	31	31	26	83.9	24	77.4	0	0.0
Virgin Australia	304	295	190	64.4	187	63.4	9	3.0
All Airlines	645	602	368	61.1	361	60.0	43	6.7
Hamilton Island-Brisbane								
Qantas	19	19	10	52.6	9	47.4	0	0.0
Virgin Australia	40	39	31	79.5	30	76.9	1	2.5
All Airlines	59	58	41	70.7	39	67.2	1	1.7
Hamilton Island-Sydney								
Jetstar	20	18	10	55.6	9	50.0	2	10.0
Qantas	32	32	20	62.5	22	68.8	0	0.0
Virgin Australia	30	28	17	60.7	21	75.0	2	6.7
All Airlines	82	78	47	60.3	52	66.7	4	4.9
Hobart-Brisbane								
Jetstar	21	21	8	38.1	8	38.1	0	0.0
QantasLink	14	14	7	50.0	5	35.7	0	0.0
Virgin Australia	45	44	21	47.7	19	43.2	1	2.2
All Airlines	80	79	36	45.6	32	40.5	1	1.3
Hobart-Melbourne								
Jetstar	110	105	73	69.5	71	67.6	5	4.5
Qantas	8	8	3	37.5	5	62.5	0	0.0
QantasLink	88	87	52	59.8	52	59.8	1	1.1
Virgin Australia	112	112	57	50.9	62	55.4	0	0.0
All Airlines	318	312	185	59.3	190	60.9	6	1.9
Hobart-Sydney								
Jetstar	72	60	32	53.3	38	63.3	12	16.7
Qantas	30	30	20	66.7	19	63.3	0	0.0
QantasLink	51	50	32	64.0	40	80.0	1	2.0
Virgin Australia	64	64	40	62.5	47	73.4	0	0.0
All Airlines	217	204	124	60.8	144	70.6	13	6.0
Kalgoorlie-Perth								
Qantas	24	24	16	66.7	8	33.3	0	0.0
QantasLink	47	46	32	69.6	30	65.2	1	2.1
Virgin Australia	27	26	13	50.0	15	57.7	1	3.7
Virgin Australia Regional Airlines	37	37	23	62.2	22	59.5	0	0.0
All Airlines	135	133	84	63.2	75	56.4	2	1.5

	Sectors		Arrivals On Time		Departures On Time		Cancellations	
	Sched.	Flown	No.	%	No.	%	No.	%
Karratha-Perth								
Qantas	26	24	15	62.5	12	50.0	2	7.7
QantasLink	117	116	71	61.2	57	49.1	1	0.9
Virgin Australia	18	18	8	44.4	8	44.4	0	0.0
Virgin Australia Regional Airlines	36	35	19	54.3	16	45.7	1	2.8
All Airlines	197	193	113	58.5	93	48.2	4	2.0
Launceston-Brisbane								
Jetstar	20	20	8	40.0	9	45.0	0	0.0
Virgin Australia	26	26	24	92.3	22	84.6	0	0.0
All Airlines	46	46	32	69.6	31	67.4	0	0.0
Launceston-Melbourne								
Jetstar	71	66	47	71.2	44	66.7	5	7.0
QantasLink	64	63	39	61.9	40	63.5	1	1.6
Virgin Australia	94	94	68	72.3	74	78.7	0	0.0
All Airlines	229	223	154	69.1	158	70.9	6	2.6
Launceston-Sydney								
Jetstar	34	31	13	41.9	10	32.3	3	8.8
QantasLink	14	14	12	85.7	12	85.7	0	0.0
Virgin Australia	30	29	21	72.4	22	75.9	1	3.3
All Airlines	78	74	46	62.2	44	59.5	4	5.1
Mackay-Brisbane								
Jetstar	27	26	8	30.8	9	34.6	1	3.7
Qantas	104	104	61	58.7	66	63.5	0	0.0
QantasLink	14	12	8	66.7	8	66.7	2	14.3
Virgin Australia	119	116	79	68.1	73	62.9	3	2.5
All Airlines	264	258	156	60.5	156	60.5	6	2.3
Melbourne-Adelaide								
Jetstar	89	82	65	79.3	59	72.0	7	7.9
Qantas	224	221	147	66.5	142	64.3	3	1.3
QantasLink	13	12	12	100.0	10	83.3	1	7.7
Rex Airlines	56	56	50	89.3	50	89.3	0	0.0
Virgin Australia	256	254	176	69.3	179	70.5	2	0.8
All Airlines	638	625	450	72.0	440	70.4	13	2.0
Melbourne-Brisbane								
Jetstar	131	109	63	57.8	61	56.0	22	16.8
Qantas	324	319	239	74.9	210	65.8	5	1.5
Rex Airlines	56	56	51	91.1	51	91.1	0	0.0
Virgin Australia	325	319	221	69.3	207	64.9	6	1.8
All Airlines	836	803	574	71.5	529	65.9	33	3.9
Melbourne-Cairns								
Jetstar	116	114	76	66.7	66	57.9	2	1.7
Qantas	55	55	42	76.4	43	78.2	0	0.0
Virgin Australia	74	74	64	86.5	56	75.7	0	0.0
All Airlines	245	243	182	74.9	165	67.9	2	0.8
Melbourne-Canberra								
Jetstar	31	28	18	64.3	16	57.1	3	9.7
Qantas	9	9	7	77.8	7	77.8	0	0.0
QantasLink	203	202	156	77.2	157	77.7	1	0.5
Rex Airlines	30	30	24	80.0	27	90.0	0	0.0
Virgin Australia	104	104	72	69.2	73	70.2	0	0.0
All Airlines	377	373	277	74.3	280	75.1	4	1.1

	Sectors		Arrivals On Time		Departures On Time		Cancellations	
	Sched.	Flown	No.	%	No.	%	No.	%
Melbourne-Darwin								
Jetstar	25	24	11	45.8	13	54.2	1	4.0
Qantas	27	27	20	74.1	15	55.6	0	0.0
Virgin Australia	29	29	17	58.6	16	55.2	0	0.0
All Airlines	81	80	48	60.0	44	55.0	1	1.2
Melbourne-Gold Coast								
Jetstar	236	206	124	60.2	132	64.1	30	12.7
Qantas	31	30	28	93.3	28	93.3	1	3.2
QantasLink	35	35	24	68.6	26	74.3	0	0.0
Rex Airlines	33	33	25	75.8	26	78.8	0	0.0
Virgin Australia	269	268	197	73.5	182	67.9	1	0.4
All Airlines	604	572	398	69.6	394	68.9	32	5.3
Melbourne-Hobart								
Jetstar	110	105	74	70.5	66	62.9	5	4.5
Qantas	8	8	5	62.5	5	62.5	0	0.0
QantasLink	88	88	50	56.8	47	53.4	0	0.0
Virgin Australia	112	112	69	61.6	73	65.2	0	0.0
All Airlines	318	313	198	63.3	191	61.0	5	1.6
Melbourne-Launceston								
Jetstar	71	66	48	72.7	49	74.2	5	7.0
QantasLink	64	64	39	60.9	40	62.5	0	0.0
Virgin Australia	94	94	56	59.6	62	66.0	0	0.0
All Airlines	229	224	143	63.8	151	67.4	5	2.2
Melbourne-Mildura								
QantasLink	112	108	61	56.5	68	63.0	4	3.6
Rex Airlines	109	108	69	63.9	72	66.7	1	0.9
All Airlines	221	216	130	60.2	140	64.8	5	2.3
Melbourne-Newcastle								
Jetstar	45	45	27	60.0	30	66.7	0	0.0
QantasLink	50	49	30	61.2	33	67.3	1	2.0
Virgin Australia	26	26	16	61.5	18	69.2	0	0.0
All Airlines	121	120	73	60.8	81	67.5	1	0.8
Melbourne-Perth								
Jetstar	71	64	51	79.7	41	64.1	7	9.9
Qantas	169	169	89	52.7	88	52.1	0	0.0
Virgin Australia	159	157	129	82.2	100	63.7	2	1.3
All Airlines	399	390	269	69.0	229	58.7	9	2.3
Melbourne-Sunshine Coast								
Jetstar	74	73	51	69.9	49	67.1	1	1.4
Qantas	8	8	7	87.5	6	75.0	0	0.0
QantasLink	32	32	15	46.9	21	65.6	0	0.0
Virgin Australia	100	100	70	70.0	65	65.0	0	0.0
All Airlines	214	213	143	67.1	141	66.2	1	0.5
Melbourne-Sydney								
Jetstar	404	335	198	59.1	180	53.7	69	17.1
Qantas	716	662	460	69.5	469	70.8	54	7.5
Rex Airlines	147	145	135	93.1	139	95.9	2	1.4
Virgin Australia	725	698	467	66.9	506	72.5	27	3.7
All Airlines	1 992	1 840	1 260	68.5	1 294	70.3	152	7.6
Mildura-Melbourne								
QantasLink	112	108	65	60.2	68	63.0	4	3.6
Rex Airlines	108	108	74	68.5	78	72.2	0	0.0
All Airlines	220	216	139	64.4	146	67.6	4	1.8

	Sectors		Arrivals On Time		Departures On Time		Cancellations	
	Sched.	Flown	No.	%	No.	%	No.	%
Mount Isa-Brisbane								
Qantas	35	35	25	71.4	23	65.7	0	0.0
QantasLink	16	15	11	73.3	11	73.3	1	6.3
Virgin Australia	13	13	6	46.2	5	38.5	0	0.0
All Airlines	64	63	42	66.7	39	61.9	1	1.6
Newcastle-Brisbane								
Jetstar	44	44	30	68.2	28	63.6	0	0.0
QantasLink	126	122	86	70.5	88	72.1	4	3.2
Virgin Australia	82	82	67	81.7	70	85.4	0	0.0
All Airlines	252	248	183	73.8	186	75.0	4	1.6
Newcastle-Melbourne								
Jetstar	45	45	26	57.8	21	46.7	0	0.0
QantasLink	51	50	33	66.0	29	58.0	1	2.0
Virgin Australia	26	26	10	38.5	14	53.8	0	0.0
All Airlines	122	121	69	57.0	64	52.9	1	0.8
Newman-Perth								
Qantas	26	25	21	84.0	21	84.0	1	3.8
QantasLink	84	82	49	59.8	51	62.2	2	2.4
Virgin Australia	21	21	14	66.7	14	66.7	0	0.0
Virgin Australia Regional Airlines	35	35	28	80.0	30	85.7	0	0.0
All Airlines	166	163	112	68.7	116	71.2	3	1.8
Perth-Adelaide								
Jetstar	26	24	4	16.7	3	12.5	2	7.7
Qantas	94	94	56	59.6	56	59.6	0	0.0
Virgin Australia	22	21	11	52.4	11	52.4	1	4.5
Virgin Australia Regional Airlines	40	36	28	77.8	27	75.0	4	10.0
All Airlines	182	175	99	56.6	97	55.4	7	3.8
Perth-Brisbane								
Jetstar	18	17	0	0.0	0	0.0	1	5.6
Qantas	148	148	113	76.4	92	62.2	0	0.0
Virgin Australia	102	101	85	84.2	68	67.3	1	1.0
All Airlines	268	266	198	74.4	160	60.2	2	0.7
Perth-Broome								
Qantas	21	21	18	85.7	17	81.0	0	0.0
QantasLink	75	75	64	85.3	54	72.0	0	0.0
Virgin Australia	15	15	8	53.3	5	33.3	0	0.0
Virgin Australia Regional Airlines	54	53	36	67.9	36	67.9	1	1.9
All Airlines	165	164	126	76.8	112	68.3	1	0.6
Perth-Darwin								
Qantas	18	18	12	66.7	13	72.2	0	0.0
QantasLink	13	13	6	46.2	5	38.5	0	0.0
Virgin Australia	10	10	7	70.0	9	90.0	0	0.0
Virgin Australia Regional Airlines	19	19	13	68.4	11	57.9	0	0.0
All Airlines	60	60	38	63.3	38	63.3	0	0.0
Perth-Kalgoorlie								
Qantas	24	24	17	70.8	17	70.8	0	0.0
QantasLink	45	44	38	86.4	38	86.4	1	2.2
Virgin Australia	27	26	23	88.5	23	88.5	1	3.7
Virgin Australia Regional Airlines	37	37	24	64.9	25	67.6	0	0.0
All Airlines	133	131	102	77.9	103	78.6	2	1.5

	Sectors		Arrivals On Time		Departures On Time		Cancellations	
	Sched.	Flown	No.	%	No.	%	No.	%
Perth-Karratha								
Qantas	26	24	19	79.2	17	70.8	2	7.7
QantasLink	116	116	72	62.1	81	69.8	0	0.0
Virgin Australia	18	18	12	66.7	14	77.8	0	0.0
Virgin Australia Regional Airlines	34	33	18	54.5	25	75.8	1	2.9
All Airlines	194	191	121	63.4	137	71.7	3	1.5
Perth-Melbourne								
Jetstar	72	63	33	52.4	23	36.5	9	12.5
Qantas	170	169	98	58.0	106	62.7	1	0.6
Virgin Australia	165	163	122	74.8	114	69.9	2	1.2
All Airlines	407	395	253	64.1	243	61.5	12	2.9
Perth-Newman								
Qantas	26	26	24	92.3	24	92.3	0	0.0
QantasLink	81	79	59	74.7	59	74.7	2	2.5
Virgin Australia	21	21	18	85.7	17	81.0	0	0.0
Virgin Australia Regional Airlines	35	35	29	82.9	32	91.4	0	0.0
All Airlines	163	161	130	80.7	132	82.0	2	1.2
Perth-Port Hedland								
Qantas	40	40	30	75.0	28	70.0	0	0.0
QantasLink	83	81	64	79.0	65	80.2	2	2.4
Virgin Australia	11	10	10	100.0	10	100.0	1	9.1
Virgin Australia Regional Airlines	40	40	32	80.0	35	87.5	0	0.0
All Airlines	174	171	136	79.5	138	80.7	3	1.7
Perth-Sydney								
Jetstar	36	28	14	50.0	8	28.6	8	22.2
Qantas	168	165	102	61.8	88	53.3	3	1.8
Virgin Australia	135	130	103	79.2	69	53.1	5	3.7
All Airlines	339	323	219	67.8	165	51.1	16	4.7
Port Hedland-Perth								
Qantas	40	39	26	66.7	26	66.7	1	2.5
QantasLink	85	83	66	79.5	63	75.9	2	2.4
Virgin Australia	12	11	7	63.6	7	63.6	1	8.3
Virgin Australia Regional Airlines	40	40	31	77.5	32	80.0	0	0.0
All Airlines	177	173	130	75.1	128	74.0	4	2.3
Port Lincoln-Adelaide								
QantasLink	126	122	108	88.5	109	89.3	4	3.2
Rex Airlines	177	162	110	67.9	113	69.8	15	8.5
All Airlines	303	284	218	76.8	222	78.2	19	6.3
Port Macquarie-Sydney								
QantasLink	95	94	70	74.5	74	78.7	1	1.1
Rex Airlines	106	100	50	50.0	75	75.0	6	5.7
All Airlines	201	194	120	61.9	149	76.8	7	3.5
Proserpine-Brisbane								
Jetstar	38	37	18	48.6	18	48.6	1	2.6
QantasLink	24	23	8	34.8	9	39.1	1	4.2
Virgin Australia	35	35	28	80.0	26	74.3	0	0.0
All Airlines	97	95	54	56.8	53	55.8	2	2.1
Rockhampton-Brisbane								
QantasLink	107	105	36	34.3	43	41.0	2	1.9
Virgin Australia	112	112	70	62.5	71	63.4	0	0.0
All Airlines	219	217	106	48.8	114	52.5	2	0.9

	<i>Sectors</i>		<i>Arrivals On Time</i>		<i>Departures On Time</i>		<i>Cancellations</i>	
	<i>Sched.</i>	<i>Flown</i>	<i>No.</i>	<i>%</i>	<i>No.</i>	<i>%</i>	<i>No.</i>	<i>%</i>
Sunshine Coast-Melbourne								
Jetstar	73	71	43	60.6	45	63.4	2	2.7
Qantas	8	8	3	37.5	4	50.0	0	0.0
QantasLink	33	33	13	39.4	11	33.3	0	0.0
Virgin Australia	100	99	49	49.5	63	63.6	1	1.0
All Airlines	214	211	108	51.2	123	58.3	3	1.4
Sunshine Coast-Sydney								
Jetstar	79	73	30	41.1	34	46.6	6	7.6
Qantas	55	54	30	55.6	31	57.4	1	1.8
Virgin Australia	87	87	43	49.4	62	71.3	0	0.0
All Airlines	221	214	103	48.1	127	59.3	7	3.2
Sydney-Adelaide								
Jetstar	65	54	33	61.1	27	50.0	11	16.9
Qantas	220	215	132	61.4	143	66.5	5	2.3
Virgin Australia	124	121	61	50.4	67	55.4	3	2.4
All Airlines	409	390	226	57.9	237	60.8	19	4.6
Sydney-Albury								
QantasLink	85	85	67	78.8	63	74.1	0	0.0
Rex Airlines	132	129	87	67.4	80	62.0	3	2.3
All Airlines	217	214	154	72.0	143	66.8	3	1.4
Sydney-Armidale								
QantasLink	90	88	76	86.4	64	72.7	2	2.2
Rex Airlines	75	72	49	68.1	51	70.8	3	4.0
All Airlines	165	160	125	78.1	115	71.9	5	3.0
Sydney-Ballina								
Jetstar	59	56	29	51.8	30	53.6	3	5.1
QantasLink	77	76	29	38.2	49	64.5	1	1.3
Virgin Australia	45	44	29	65.9	30	68.2	1	2.2
All Airlines	181	176	87	49.4	109	61.9	5	2.8
Sydney-Brisbane								
Jetstar	147	115	64	55.7	58	50.4	32	21.8
Qantas	486	472	277	58.7	264	55.9	14	2.9
Rex Airlines	106	105	72	68.6	82	78.1	1	0.9
Virgin Australia	426	410	305	74.4	295	72.0	16	3.8
All Airlines	1 165	1 102	718	65.2	699	63.4	63	5.4
Sydney-Cairns								
Jetstar	94	86	51	59.3	45	52.3	8	8.5
Qantas	65	63	43	68.3	35	55.6	2	3.1
Virgin Australia	70	68	57	83.8	47	69.1	2	2.9
All Airlines	229	217	151	69.6	127	58.5	12	5.2
Sydney-Canberra								
QantasLink	364	348	269	77.3	262	75.3	16	4.4
Virgin Australia	252	247	195	78.9	179	72.5	5	2.0
All Airlines	616	595	464	78.0	441	74.1	21	3.4
Sydney-Coffs Harbour								
QantasLink	107	105	79	75.2	69	65.7	2	1.9
Rex Airlines	129	127	80	63.0	71	55.9	2	1.6
All Airlines	236	232	159	68.5	140	60.3	4	1.7
Sydney-Darwin								
Jetstar	19	18	6	33.3	9	50.0	1	5.3
Qantas	56	55	34	61.8	33	60.0	1	1.8
Virgin Australia	29	29	27	93.1	25	86.2	0	0.0
All Airlines	104	102	67	65.7	67	65.7	2	1.9

	Sectors		Arrivals On Time		Departures On Time		Cancellations	
	Sched.	Flown	No.	%	No.	%	No.	%
Sydney-Dubbo								
QantasLink	103	101	75	74.3	73	72.3	2	1.9
Rex Airlines	135	134	86	64.2	80	59.7	1	0.7
All Airlines	238	235	161	68.5	153	65.1	3	1.3
Sydney-Gold Coast								
Jetstar	203	172	100	58.1	94	54.7	31	15.3
Qantas	71	70	45	64.3	41	58.6	1	1.4
QantasLink	35	35	22	62.9	22	62.9	0	0.0
Rex Airlines	31	31	28	90.3	29	93.5	0	0.0
Virgin Australia	304	295	182	61.7	200	67.8	9	3.0
All Airlines	644	603	377	62.5	386	64.0	41	6.4
Sydney-Hamilton Island								
Jetstar	20	18	13	72.2	10	55.6	2	10.0
Qantas	32	32	23	71.9	12	37.5	0	0.0
Virgin Australia	30	29	25	86.2	23	79.3	1	3.3
All Airlines	82	79	61	77.2	45	57.0	3	3.7
Sydney-Hobart								
Jetstar	72	60	45	75.0	38	63.3	12	16.7
Qantas	30	30	25	83.3	23	76.7	0	0.0
QantasLink	51	49	27	55.1	27	55.1	2	3.9
Virgin Australia	64	64	54	84.4	55	85.9	0	0.0
All Airlines	217	203	151	74.4	143	70.4	14	6.5
Sydney-Launceston								
Jetstar	34	31	20	64.5	14	45.2	3	8.8
QantasLink	14	14	12	85.7	12	85.7	0	0.0
Virgin Australia	30	29	23	79.3	22	75.9	1	3.3
All Airlines	78	74	55	74.3	48	64.9	4	5.1
Sydney-Melbourne								
Jetstar	403	334	207	62.0	191	57.2	69	17.1
Qantas	714	665	448	67.4	428	64.4	49	6.9
Rex Airlines	146	144	111	77.1	115	79.9	2	1.4
Virgin Australia	717	691	424	61.4	397	57.5	26	3.6
All Airlines	1 980	1 834	1 190	64.9	1 131	61.7	146	7.4
Sydney-Perth								
Jetstar	34	28	16	57.1	13	46.4	6	17.6
Qantas	168	166	70	42.2	79	47.6	2	1.2
Virgin Australia	134	130	89	68.5	77	59.2	4	3.0
All Airlines	336	324	175	54.0	169	52.2	12	3.6
Sydney-Port Macquarie								
QantasLink	95	95	79	83.2	73	76.8	0	0.0
Rex Airlines	106	101	64	63.4	62	61.4	5	4.7
All Airlines	201	196	143	73.0	135	68.9	5	2.5
Sydney-Sunshine Coast								
Jetstar	77	72	41	56.9	37	51.4	5	6.5
Qantas	55	55	30	54.5	32	58.2	0	0.0
Virgin Australia	87	87	65	74.7	63	72.4	0	0.0
All Airlines	219	214	136	63.6	132	61.7	5	2.3
Sydney-Wagga Wagga								
QantasLink	70	70	49	70.0	50	71.4	0	0.0
Rex Airlines	136	132	95	72.0	96	72.7	4	2.9
All Airlines	206	202	144	71.3	146	72.3	4	1.9

	<i>Sectors</i>		<i>Arrivals On Time</i>		<i>Departures On Time</i>		<i>Cancellations</i>	
	<i>Sched.</i>	<i>Flown</i>	<i>No.</i>	<i>%</i>	<i>No.</i>	<i>%</i>	<i>No.</i>	<i>%</i>
Townsville-Brisbane								
Jetstar	50	48	33	68.8	31	64.6	2	4.0
Qantas	105	105	61	58.1	63	60.0	0	0.0
QantasLink	21	21	3	14.3	8	38.1	0	0.0
Virgin Australia	120	116	80	69.0	71	61.2	4	3.3
All Airlines	296	290	177	61.0	173	59.7	6	2.0
Townsville-Cairns								
QantasLink	129	126	95	75.4	93	73.8	3	2.3
Rex Airlines	23	23	23	100.0	23	100.0	0	0.0
All Airlines	152	149	118	79.2	116	77.9	3	2.0
Wagga Wagga-Sydney								
QantasLink	70	70	58	82.9	55	78.6	0	0.0
Rex Airlines	137	132	99	75.0	99	75.0	5	3.6
All Airlines	207	202	157	77.7	154	76.2	5	2.4

Airports

The following data reports by airport against flights operated on published routes only. This month, 8 major city airports and 28 regional city airports are covered.

Airport	Arrivals			Departures		
	Sectors Flown	On Time No.	%	Sectors Flown	On Time No.	%
Adelaide						
Jetstar	213	129	60.6	213	152	71.4
Qantas	615	407	66.2	610	405	66.4
QantasLink	244	193	79.1	244	209	85.7
Rex Airlines	218	160	73.4	218	161	73.9
Virgin Australia	560	367	65.5	560	384	68.6
Virgin Australia Regional Airlines	36	28	77.8	35	17	48.6
All Airlines	1 886	1 284	68.1	1 880	1 328	70.6
Relates to services to and from Alice Springs, Brisbane, Canberra, Gold Coast, Melbourne, Perth, Port Lincoln and Sydney only.						
Albury						
QantasLink	85	67	78.8	84	55	65.5
Rex Airlines	129	87	67.4	127	93	73.2
All Airlines	214	154	72.0	211	148	70.1
Relates to services to and from Sydney only.						
Alice Springs						
QantasLink	42	34	81.0	42	28	66.7
Virgin Australia	13	10	76.9	13	7	53.8
All Airlines	55	44	80.0	55	35	63.6
Relates to services to and from Adelaide only.						
Armidale						
QantasLink	88	76	86.4	88	74	84.1
Rex Airlines	72	49	68.1	74	47	63.5
All Airlines	160	125	78.1	162	121	74.7
Relates to services to and from Sydney only.						
Ballina						
Jetstar	56	29	51.8	56	20	35.7
QantasLink	76	29	38.2	76	42	55.3
Virgin Australia	44	29	65.9	43	25	58.1
All Airlines	176	87	49.4	175	87	49.7
Relates to services to and from Sydney only.						
Brisbane						
Jetstar	593	326	55.0	592	327	55.2
Qantas	1 439	962	66.9	1 434	1 044	72.8
QantasLink	692	427	61.7	697	499	71.6
Rex Airlines	161	123	76.4	161	130	80.7
Virgin Australia	1 856	1 330	71.7	1 853	1 226	66.2
All Airlines	4 741	3 168	66.8	4 737	3 226	68.1
Relates to services to and from Adelaide, Cairns, Canberra, Darwin, Emerald, Gladstone, Hamilton Island, Hobart, Launceston, Mackay, Melbourne, Mount Isa, Newcastle, Perth, Proserpine, Rockhampton, Sydney and Townsville only.						

Airport	Arrivals			Departures		
	Sectors Flown	On Time		Sectors Flown	On Time	
		No.	%		No.	%
Broome						
Qantas	21	18	85.7	21	15	71.4
QantasLink	75	64	85.3	74	47	63.5
Virgin Australia	15	8	53.3	15	3	20.0
Virgin Australia Regional Airlines	53	36	67.9	52	25	48.1
All Airlines	164	126	76.8	162	90	55.6
Relates to services to and from Perth only.						
Cairns						
Jetstar	318	188	59.1	318	191	60.1
Qantas	227	169	74.4	226	169	74.8
QantasLink	148	103	69.6	148	117	79.1
Rex Airlines	23	23	100.0	23	21	91.3
Virgin Australia	293	242	82.6	293	208	71.0
All Airlines	1 009	725	71.9	1 008	706	70.0
Relates to services to and from Brisbane, Gold Coast, Melbourne, Sydney and Townsville only.						
Canberra						
Jetstar	67	45	67.2	67	35	52.2
Qantas	9	7	77.8	9	6	66.7
QantasLink	773	584	75.5	764	550	72.0
Rex Airlines	30	24	80.0	30	24	80.0
Virgin Australia	485	348	71.8	486	321	66.0
All Airlines	1 364	1 008	73.9	1 356	936	69.0
Relates to services to and from Adelaide, Brisbane, Gold Coast, Melbourne and Sydney only.						
Coffs Harbour						
QantasLink	105	79	75.2	105	85	81.0
Rex Airlines	127	80	63.0	127	79	62.2
All Airlines	232	159	68.5	232	164	70.7
Relates to services to and from Sydney only.						
Darwin						
Jetstar	60	28	46.7	60	20	33.3
Qantas	144	107	74.3	144	81	56.3
QantasLink	13	6	46.2	13	3	23.1
Virgin Australia	105	77	73.3	107	54	50.5
Virgin Australia Regional Airlines	19	13	68.4	19	11	57.9
All Airlines	341	231	67.7	343	169	49.3
Relates to services to and from Brisbane, Melbourne, Perth and Sydney only.						
Dubbo						
QantasLink	101	75	74.3	101	83	82.2
Rex Airlines	134	86	64.2	129	90	69.8
All Airlines	235	161	68.5	230	173	75.2
Relates to services to and from Sydney only.						
Emerald						
QantasLink	118	102	86.4	116	95	81.9
Virgin Australia	26	19	73.1	26	20	76.9
All Airlines	144	121	84.0	142	115	81.0
Relates to services to and from Brisbane only.						

Airport	Arrivals			Departures		
	Sectors Flown	On Time		Sectors Flown	On Time	
		No.	%		No.	%
Gladstone						
QantasLink	100	77	77.0	100	75	75.0
Virgin Australia	52	40	76.9	52	40	76.9
All Airlines	152	117	77.0	152	115	75.7
Relates to services to and from Brisbane only.						
Gold Coast						
Jetstar	450	254	56.4	447	244	54.6
Qantas	100	73	73.0	100	60	60.0
QantasLink	78	51	65.4	77	41	53.2
Rex Airlines	64	53	82.8	64	44	68.8
Virgin Australia	635	435	68.5	633	405	64.0
All Airlines	1 327	866	65.3	1 321	794	60.1
Relates to services to and from Adelaide, Cairns, Canberra, Melbourne and Sydney only.						
Hamilton Island						
Jetstar	18	13	72.2	18	9	50.0
Qantas	51	39	76.5	51	31	60.8
Virgin Australia	68	61	89.7	67	51	76.1
All Airlines	137	113	82.5	136	91	66.9
Relates to services to and from Brisbane and Sydney only.						
Hobart						
Jetstar	186	134	72.0	186	117	62.9
Qantas	38	30	78.9	38	24	63.2
QantasLink	151	82	54.3	151	97	64.2
Virgin Australia	220	154	70.0	220	128	58.2
All Airlines	595	400	67.2	595	366	61.5
Relates to services to and from Brisbane, Melbourne and Sydney only.						
Kalgoorlie						
Qantas	24	17	70.8	24	8	33.3
QantasLink	44	38	86.4	46	30	65.2
Virgin Australia	26	23	88.5	26	15	57.7
Virgin Australia Regional Airlines	37	24	64.9	37	22	59.5
All Airlines	131	102	77.9	133	75	56.4
Relates to services to and from Perth only.						
Karratha						
Qantas	24	19	79.2	24	12	50.0
QantasLink	116	72	62.1	116	57	49.1
Virgin Australia	18	12	66.7	18	8	44.4
Virgin Australia Regional Airlines	33	18	54.5	35	16	45.7
All Airlines	191	121	63.4	193	93	48.2
Relates to services to and from Perth only.						
Launceston						
Jetstar	117	81	69.2	117	63	53.8
QantasLink	78	51	65.4	77	52	67.5
Virgin Australia	149	101	67.8	149	118	79.2
All Airlines	344	233	67.7	343	233	67.9
Relates to services to and from Brisbane, Melbourne and Sydney only.						

Airport	Arrivals			Departures		
	Sectors	On Time		Sectors	On Time	
	Flown	No.	%	Flown	No.	%
Mackay						
Jetstar	26	14	53.8	26	9	34.6
Qantas	104	74	71.2	104	66	63.5
QantasLink	8	5	62.5	12	8	66.7
Virgin Australia	116	72	62.1	116	73	62.9
All Airlines	254	165	65.0	258	156	60.5

Relates to services to and from Brisbane only.

Melbourne

Jetstar	1 244	784	63.0	1 251	762	60.9
Qantas	1 505	1 000	66.4	1 508	1 013	67.2
QantasLink	588	385	65.5	590	402	68.1
Rex Airlines	427	325	76.1	428	365	85.3
Virgin Australia	2 233	1 418	63.5	2 235	1 537	68.8
All Airlines	5 997	3 912	65.2	6 012	4 079	67.8

Relates to services to and from Adelaide, Brisbane, Cairns, Canberra, Darwin, Gold Coast, Hobart, Launceston, Mildura, Newcastle, Perth, Sunshine Coast and Sydney only.

Mildura

QantasLink	108	61	56.5	108	68	63.0
Rex Airlines	108	69	63.9	108	78	72.2
All Airlines	216	130	60.2	216	146	67.6

Relates to services to and from Melbourne only.

Mount Isa

Qantas	35	27	77.1	35	23	65.7
QantasLink	17	11	64.7	15	11	73.3
Virgin Australia	13	7	53.8	13	5	38.5
All Airlines	65	45	69.2	63	39	61.9

Relates to services to and from Brisbane only.

Newcastle

Jetstar	89	59	66.3	89	49	55.1
QantasLink	168	110	65.5	172	117	68.0
Virgin Australia	107	80	74.8	108	84	77.8
All Airlines	364	249	68.4	369	250	67.8

Relates to services to and from Brisbane and Melbourne only.

Newman

Qantas	26	24	92.3	25	21	84.0
QantasLink	79	59	74.7	82	51	62.2
Virgin Australia	21	18	85.7	21	14	66.7
Virgin Australia Regional Airlines	35	29	82.9	35	30	85.7
All Airlines	161	130	80.7	163	116	71.2

Relates to services to and from Perth only.

Perth

Jetstar	133	86	64.7	132	34	25.8
Qantas	724	424	58.6	729	458	62.8
QantasLink	414	274	66.2	408	302	74.0
Virgin Australia	513	362	70.6	515	340	66.0
Virgin Australia Regional Airlines	253	172	68.0	253	191	75.5
All Airlines	2 037	1 318	64.7	2 037	1 325	65.0

Relates to services to and from Adelaide, Brisbane, Broome, Darwin, Kalgoorlie, Karratha, Melbourne, Newman, Port Hedland and Sydney only.

Airport	Arrivals			Departures		
	Sectors Flown	On Time		Sectors Flown	On Time	
		No.	%		No.	%
Port Hedland						
Qantas	40	30	75.0	39	26	66.7
QantasLink	81	64	79.0	83	63	75.9
Virgin Australia	10	10	100.0	11	7	63.6
Virgin Australia Regional Airlines	40	32	80.0	40	32	80.0
All Airlines	171	136	79.5	173	128	74.0
Relates to services to and from Perth only.						
Port Lincoln						
QantasLink	122	105	86.1	122	109	89.3
Rex Airlines	162	106	65.4	162	113	69.8
All Airlines	284	211	74.3	284	222	78.2
Relates to services to and from Adelaide only.						
Port Macquarie						
QantasLink	95	79	83.2	94	74	78.7
Rex Airlines	101	64	63.4	100	75	75.0
All Airlines	196	143	73.0	194	149	76.8
Relates to services to and from Sydney only.						
Proserpine						
Jetstar	36	22	61.1	37	18	48.6
QantasLink	24	10	41.7	23	9	39.1
Virgin Australia	34	30	88.2	35	26	74.3
All Airlines	94	62	66.0	95	53	55.8
Relates to services to and from Brisbane only.						
Rockhampton						
QantasLink	107	77	72.0	105	43	41.0
Virgin Australia	112	48	42.9	112	71	63.4
All Airlines	219	125	57.1	217	114	52.5
Relates to services to and from Brisbane only.						
Sunshine Coast						
Jetstar	145	92	63.4	144	79	54.9
Qantas	63	37	58.7	62	35	56.5
QantasLink	32	15	46.9	33	11	33.3
Virgin Australia	187	135	72.2	186	125	67.2
All Airlines	427	279	65.3	425	250	58.8
Relates to services to and from Melbourne and Sydney only.						
Sydney						
Jetstar	1 047	575	54.9	1 044	566	54.2
Qantas	1 817	1 179	64.9	1 823	1 090	59.8
QantasLink	1 062	777	73.2	1 066	764	71.7
Rex Airlines	970	678	69.9	975	666	68.3
Virgin Australia	2 245	1 492	66.5	2 244	1 480	66.0
All Airlines	7 141	4 701	65.8	7 152	4 566	63.8

Relates to services to and from Adelaide, Albury, Armidale, Ballina, Brisbane, Cairns, Canberra, Coffs Harbour, Darwin, Dubbo, Gold Coast, Hamilton Island, Hobart, Launceston, Melbourne, Perth, Port Macquarie, Sunshine Coast and Wagga Wagga only.

<i>Airport</i>	<i>Arrivals</i>			<i>Departures</i>		
	<i>Sectors</i>	<i>On Time</i>		<i>Sectors</i>	<i>On Time</i>	
	<i>Flown</i>	<i>No.</i>	<i>%</i>	<i>Flown</i>	<i>No.</i>	<i>%</i>
Townsville						
Jetstar	47	30	63.8	48	31	64.6
Qantas	105	74	70.5	105	63	60.0
QantasLink	147	122	83.0	147	101	68.7
Rex Airlines	23	21	91.3	23	23	100.0
Virgin Australia	117	68	58.1	116	71	61.2
All Airlines	439	315	71.8	439	289	65.8

Relates to services to and from Brisbane and Cairns only.

Wagga Wagga

QantasLink	70	49	70.0	70	55	78.6
Rex Airlines	132	95	72.0	132	99	75.0
All Airlines	202	144	71.3	202	154	76.2

Relates to services to and from Sydney only.

Definitions

On time arrival	A flight arrival is counted as "on time" if it arrived at the gate before 15 minutes after the scheduled arrival time shown in the carriers' schedule. Neither diverted nor cancelled flights count as on time.
On time departure	A flight departure is counted as "on time" if it departs the gate before 15 minutes after the scheduled departure time shown in the carriers' schedule.
Cancellation	A flight removed from service within 7 days of scheduled departure is regarded as a cancellation.
On time departure percentage	The percentage of on time departures is measured against the number of departures <i>operated</i> on any particular sector.
On time arrival percentage	The percentage of on time arrivals is measured against the number of arrivals <i>operated</i> on any particular sector.
Cancellation percentage	The percentage of cancellations is measured against the number of services <i>scheduled</i> on any particular sector.
