



Australian Government

**Department of Infrastructure, Transport,
Regional Development, Communications and the Arts**
Bureau of Infrastructure and Transport Research Economics

STATISTICAL REPORT



Aviation

**Domestic airline on time performance
September 2024**

The Department of Infrastructure, Transport, Regional Development, Communications and the Arts acknowledges the Traditional Custodians of Country of the land on which we work and live.

We recognise and respect the continuing connections to land, waters and communities.

We pay our respects to them and their cultures and to their Elders both past and present and to all Aboriginal and Torres Strait Islander people.

© Commonwealth of Australia 2024

ISSN: 1832-0759

BITRE reference: 2024-1197

Ownership of intellectual property rights in this publication

Unless otherwise noted, copyright (and any other intellectual property rights, if any) in this publication is owned by the Commonwealth of Australia (referred to below as the Commonwealth).

Disclaimer

The material contained in this publication is made available on the understanding that the Commonwealth is not providing professional advice, and that users exercise their own skill and care with respect to its use, and seek independent advice if necessary.

The Commonwealth makes no representations or warranties as to the contents or accuracy of the information contained in this publication. To the extent permitted by law, the Commonwealth disclaims liability to any person or organisation in respect of anything done, or omitted to be done, in reliance upon information contained in this publication.

Creative Commons licence

With the exception of (a) the Coat of Arms; and (b) the Department of Infrastructure, Transport, Regional Development, Communications and the Arts' photos and graphics, copyright in this publication is licensed under a Creative Commons Attribution 3.0 Australia Licence.

Creative Commons Attribution 3.0 Australia Licence is a standard form licence agreement that allows you to copy, communicate and adapt this publication provided that you attribute the work to the Commonwealth and abide by the other licence terms. A summary of the licence terms is available from <http://creativecommons.org/licenses/by/3.0/au/deed.en>. The full licence terms are available from <http://creativecommons.org/licenses/by/3.0/au/legalcode>.

Use of the Coat of Arms

The Department of the Prime Minister and Cabinet sets the terms under which the Coat of Arms is used. Please refer to the Department's Commonwealth Coat of Arms and Government branding web page <http://www.dpmc.gov.au/guidelines/index.cfm#brand> and, in particular, the Guidelines on the use of the Commonwealth Coat of Arms publication.

An appropriate citation for this report is:

Bureau of Infrastructure and Transport Research Economics (BITRE), 2024, Domestic airline on time performance, Statistical Report, BITRE, Canberra ACT.

Contact us

All other rights are reserved, including in relation to any Departmental logos or trade marks which may exist. For enquiries regarding the licence and any use of this publication, please contact:

Bureau of Infrastructure and Transport Research Economics (BITRE)
Department of Infrastructure, Transport, Regional Development, Communications and the Arts
GPO Box 501, Canberra ACT 2601, Australia
Telephone: (international) +61 2 6136 8687
Email: bitre@infrastructure.gov.au
Website: www.bitre.gov.au

Inquiries

Should you require additional information about the statistics contained in this publication:

Telephone (02) 6136 7250

Electronic mail: AVSTATS@infrastructure.gov.au

Web site: <http://www.bitre.gov.au/statistics/aviation/otphome.aspx>

Foreword

The Bureau of Infrastructure and Transport Research Economics (BITRE) monitors the punctuality and reliability of major domestic airlines operating between Australian airports. The purpose of this is to allow for evaluation of overall industry and individual airline performance, so that consumers of air travel can make informed decisions.

The following domestic airlines currently report this information monthly to the BITRE: Hinterland, Jetstar, Qantas, QantasLink, Rex Airlines, Skytrans, Virgin Australia and Virgin Australia Regional Airlines.

Information presented in this report is for Australian domestic routes for which the passenger load averaged 8,000 or more passengers per month over the previous six months and where two or more airlines operated in competition on those routes. In order to present data for more routes during the period impacted by COVID-19, the passenger load restriction was not applied between March 2020 and January 2023. From February 2023, the passenger load restriction was reinstated due to the continued recovery of passenger numbers. Data are presented for 59 routes in September 2024. Over time, routes which meet these criteria change as airline networks and traffic levels vary. Participating airlines report their overall monthly network performance where this is possible.

Total industry figures encompass all services operated by reporting airlines only. These airlines collectively carried over 98 per cent of total domestic passengers (regular public transport only) in 2023.

The method of capturing on time performance varies between airlines utilising different recording systems. Jetstar and Qantas jet aircraft use Aircraft Communication Addressing and Reporting System (ACARS) to electronically measure on time performance. Rex Airlines, Virgin Australia, Virgin Australia Regional Airlines and the Qantas non-jet fleet record on time performance manually using records from pilots, gate agents and/or ground crews.

After initial data is collected, aggregate reports are reviewed by participating airlines prior to publication.

Reports and detailed time series data in Microsoft Excel spreadsheet format are available from the BITRE website at: <http://www.bitre.gov.au/statistics/aviation/otphome.aspx>

Contents

	Page
Industry performance	1
Individual routes	10
Airports.....	22
Definitions	28
Airlines and Reporting	29

Industry performance

For September 2024, on time performance over all routes operated by participating airlines (Hinterland, Jetstar, Qantas, QantasLink, Rex Airlines, Skytrans, Virgin Australia and Virgin Australia Regional Airlines) averaged 75.5 per cent for on time arrivals and 76.1 per cent for on time departures. The cancellation rate for the month was 2.0 per cent. The equivalent figures for September 2023 were 72.1 per cent for on time arrivals, 71.6 per cent for on time departures and 3.6 per cent for cancellations.

This month's on time arrivals figure was lower than the long term average performance for all routes (80.8 per cent) and the on time departures figure was also lower than the long term average (81.9 per cent). The rate of cancellations was lower than the long term average of 2.2 per cent.

The Qantas network (Qantas and QantasLink combined operations) recorded 76.0 per cent for on time arrivals while the Virgin Australia network (Virgin Australia and Virgin Australia Regional Airlines combined operations) recorded 73.0 per cent. Hinterland achieved the highest on time arrivals at 91.1 per cent, followed by Skytrans at 84.5 per cent, QantasLink at 77.5 per cent, Rex Airlines at 76.6 per cent, Jetstar at 74.0 per cent, Qantas at 73.7 per cent, Virgin Australia at 73.4 per cent and Virgin Australia Regional Airlines at 58.2 per cent.

The Qantas network recorded 77.1 per cent for on time departures while the Virgin Australia network recorded 73.1 per cent. Hinterland achieved the highest level of on time departures for September 2024 at 94.1 per cent, followed by Skytrans at 81.7 per cent, Rex Airlines at 79.9 per cent, QantasLink at 78.5 per cent, Qantas at 75.0 per cent, Virgin Australia at 73.6 per cent, Jetstar at 72.3 per cent and Virgin Australia Regional Airlines at 55.2 per cent.

Skytrans recorded the highest percentage of cancellations at 3.3 per cent during the month, followed by QantasLink at 3.2 per cent, Qantas at 2.4 per cent, Virgin Australia Regional Airlines at 1.8 per cent, Virgin Australia at 1.4 per cent, Jetstar at 1.3 per cent, Rex Airlines at 1.2 per cent and Hinterland at 1.1 per cent.

Airlines' on time performance varies across the routes they serve. Individual route data by specific airline for 59 routes are shown on pages 10-21.

Of the 59 routes which met the criteria for on time performance reporting in September 2024, the Townsville-Cairns route had the highest percentage of on time arrivals (90.7 per cent), while the Port Lincoln-Adelaide route had the highest percentage of on time departures (89.0 per cent). The Launceston-Brisbane route had the lowest percentage of on time arrivals (43.2 per cent), while the Hamilton Island-Sydney route and the lowest percentage of on time departures (51.9 per cent).

Cancellations were highest on the Emerald-Brisbane route at 8.9 per cent, followed by the Brisbane-Emerald route at 7.7 per cent, the Canberra-Sydney route at 7.0 per cent, the Sydney-Canberra route at 6.0 per cent and the Melbourne-Sydney and Ballina-Sydney routes both at 5.1 per cent.

Port Lincoln Airport recorded the highest percentage of on time arrivals (87.9 per cent) and the highest percentage of on time departures (89.0 per cent). Rockhampton Airport recorded the lowest percentage of on time arrivals (60.3 per cent), while Broome Airport had the lowest percentage of on time departures (56.5 per cent). These figures only refer to reported routes and do not cover all flights at these airports.

Table 1 On time performance for September 2024 — Total Industry

	<i>Sectors</i>		<i>Arrivals On Time</i>		<i>Departures On Time</i>		<i>Cancellations</i>	
	<i>Scheduled</i>	<i>Flown</i>	<i>No.</i>	<i>%</i>	<i>No.</i>	<i>%</i>	<i>No.</i>	<i>%</i>
Hinterland	1,331	1,317	1,200	91.1	1,239	94.1	14	1.1
Jetstar	7,742	7,643	5,659	74.0	5,526	72.3	99	1.3
Qantas - all QF designated services	19,701	19,142	14,543	76.0	14,761	77.1	559	2.8
Rex Airlines	4,490	4,435	3,397	76.6	3,543	79.9	55	1.2
Skytrans	1,022	988	835	84.5	807	81.7	34	3.3
Virgin Australia - all VA designated services	12,080	11,905	8,688	73.0	8,700	73.1	175	1.4
All Airlines	46,366	45,430	34,322	75.5	34,576	76.1	936	2.0
Individual operating entities								
Qantas	7,950	7,762	5,719	73.7	5,825	75.0	188	2.4
QantasLink	11,751	11,380	8,824	77.5	8,936	78.5	371	3.2
Virgin Australia	11,744	11,575	8,496	73.4	8,518	73.6	169	1.4
Virgin Australia Regional Airlines	336	330	192	58.2	182	55.2	6	1.8

Total airline network data (including routes not shown in this report).

Airlines’ on time performance varies across the routes they serve. Individual route data by specific airline are shown on page 10 and onwards.

Table 2 Top ten routes for on time performance for September 2024 (participating airlines only)

<i>Arrivals</i>		<i>Departures</i>	
<i>Route</i>	<i>On Time (%)</i>	<i>Route</i>	<i>On Time (%)</i>
Townsville-Cairns	90.7	Port Lincoln-Adelaide	89.0
Adelaide-Port Lincoln	87.9	Adelaide-Port Lincoln	88.3
Port Lincoln-Adelaide	87.2	Townsville-Cairns	88.1
Gold Coast-Canberra	87.0	Wagga Wagga-Sydney	88.0
Wagga Wagga-Sydney	86.9	Cairns-Townsville	86.7
Cairns-Townsville	86.7	Sydney-Hamilton Island	86.1
Canberra-Adelaide	86.4	Canberra-Adelaide	85.5
Adelaide-Canberra	84.8	Perth-Port Hedland	85.2
Melbourne-Devonport	84.8	Perth-Newman	85.0
Adelaide-Alice Springs	84.4	Sydney-Hobart	84.6

Table 3 Top ten airports for on time performance for September 2024 (participating airlines and reported routes only)

<i>Arrivals</i>		<i>Departures</i>	
<i>Airport</i>	<i>On Time (%)</i>	<i>Airport</i>	<i>On Time (%)</i>
Port Lincoln	87.9	Port Lincoln	89.0
Devonport	84.8	Wagga Wagga	88.0
Alice Springs	84.4	Devonport	84.0
Wagga Wagga	84.3	Dubbo	82.8
Port Macquarie	83.7	Newman	82.6
Newman	82.6	Albury	80.6
Port Hedland	82.5	Emerald	79.9
Karratha	82.4	Newcastle	79.7
Mount Isa	81.0	Alice Springs	79.7
Proserpine	79.8	Mildura	79.6

Total industry on time performance

Figure 1 On time performance (by month from Sep 2021)—Total Industry

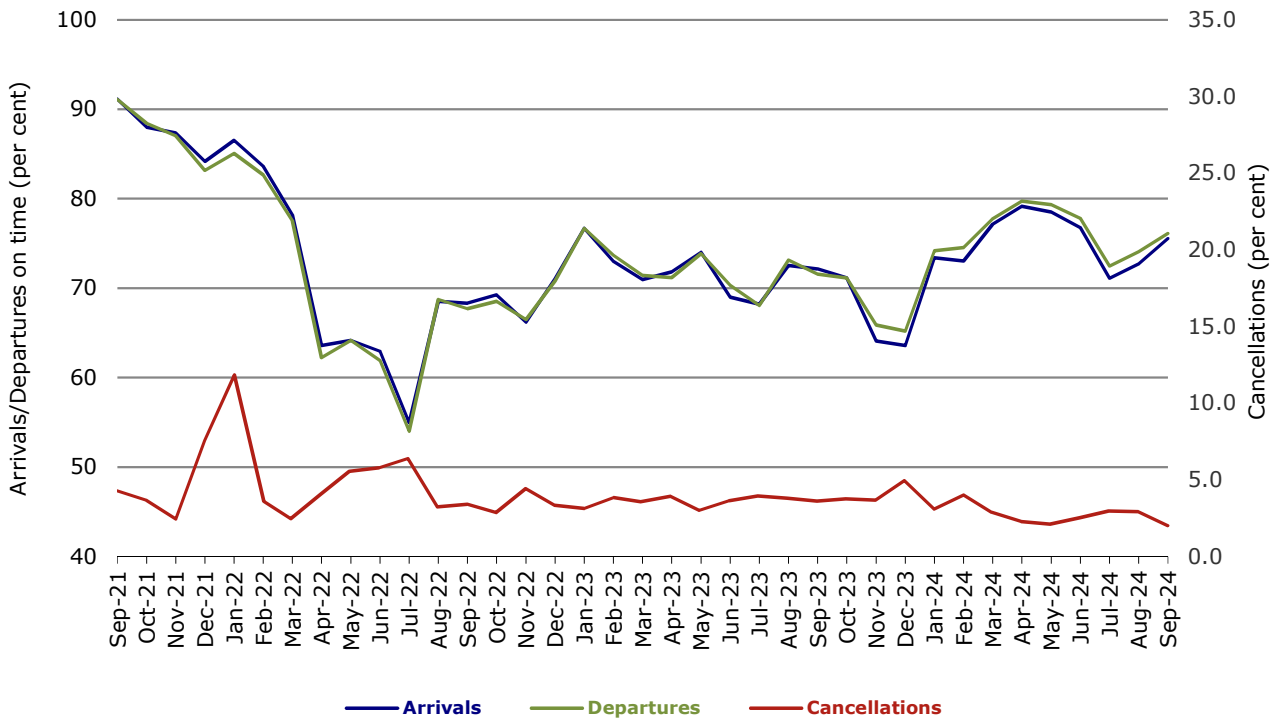


Figure 2 Arrivals on time (by month from Sep 2023)

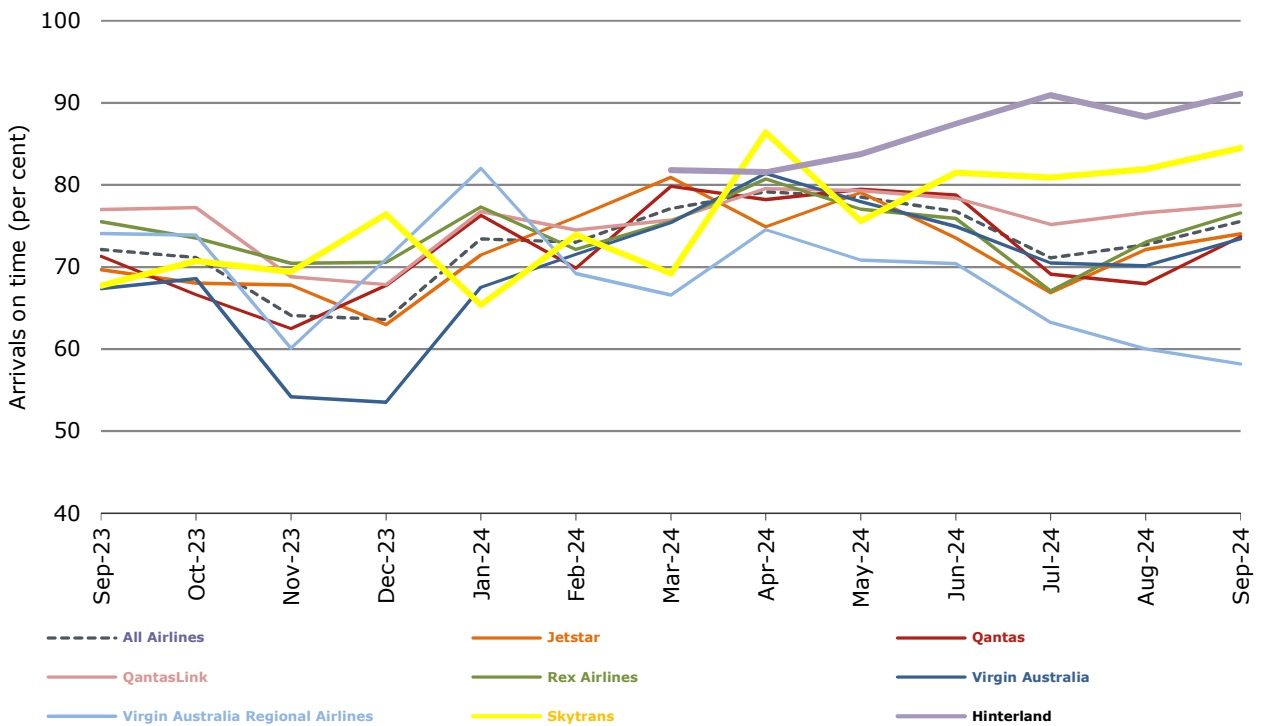


Figure 3 Departures on time (by month from Sep 2023)

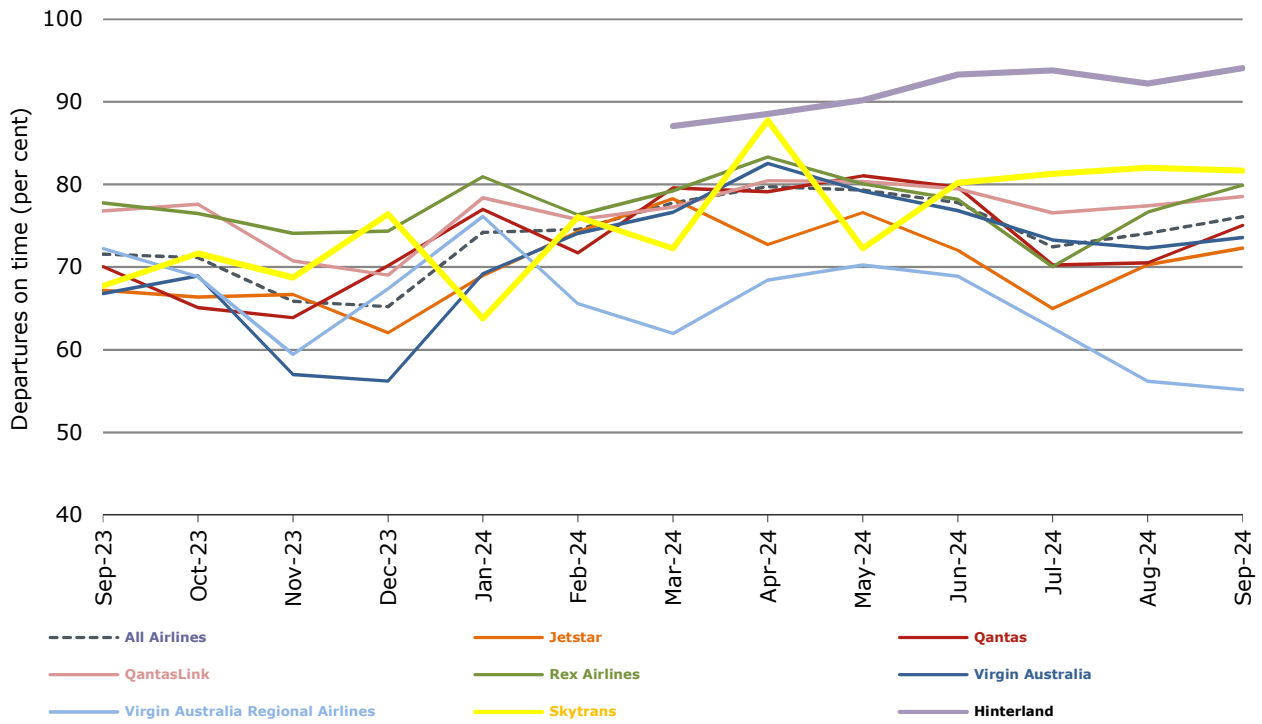
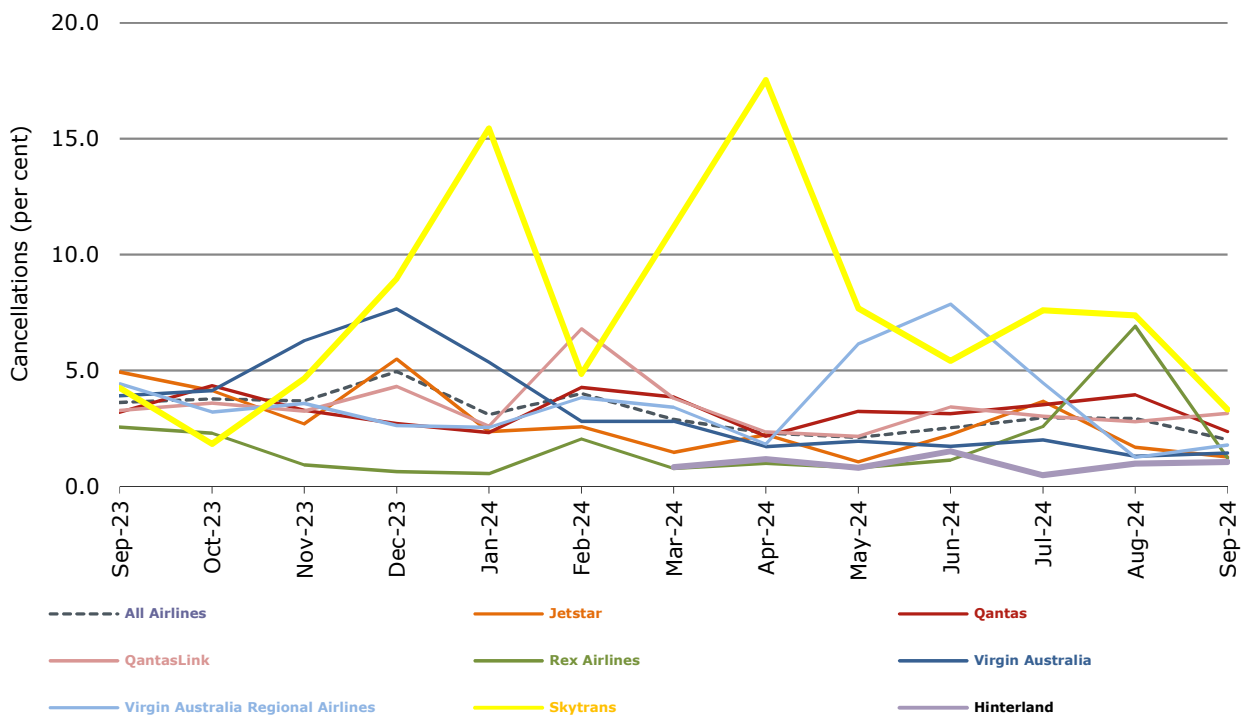


Figure 4 Cancellations (by month from Sep 2023)



Airlines on time performance

Figure 5 On time performance (by month from Sep 2021)—Jetstar

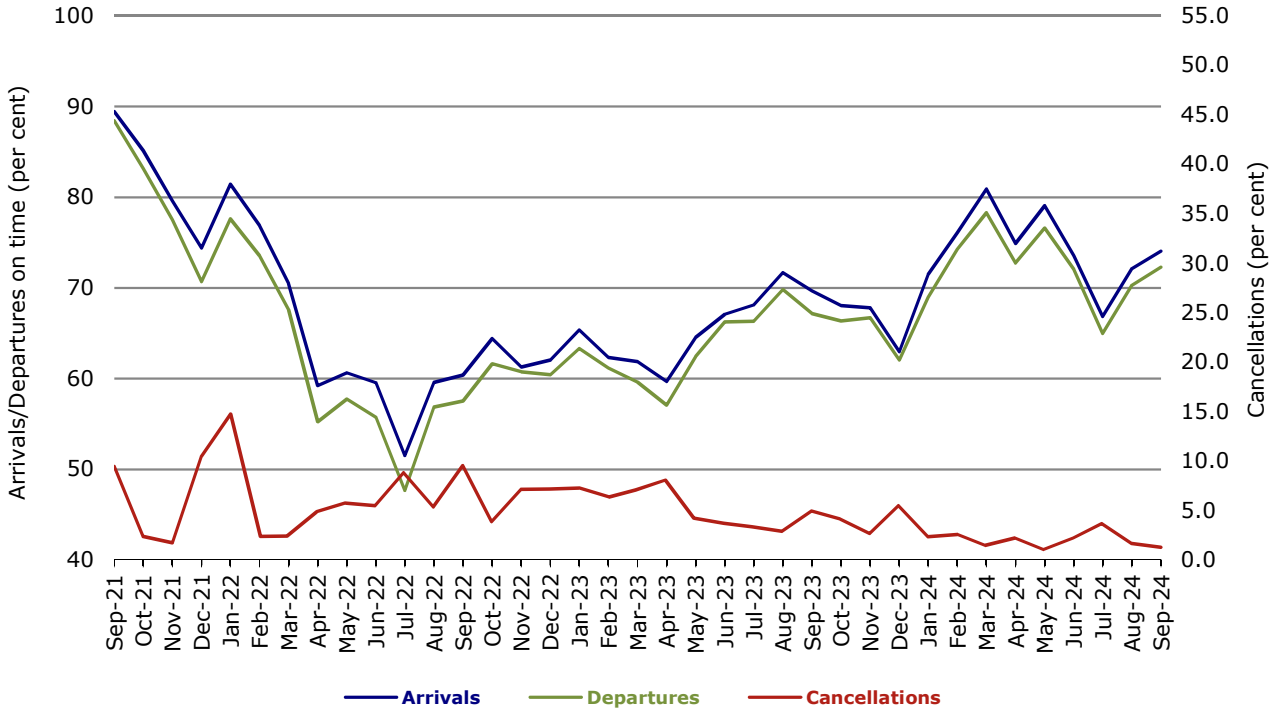


Figure 6 On time performance (by month from Sep 2021)—Qantas

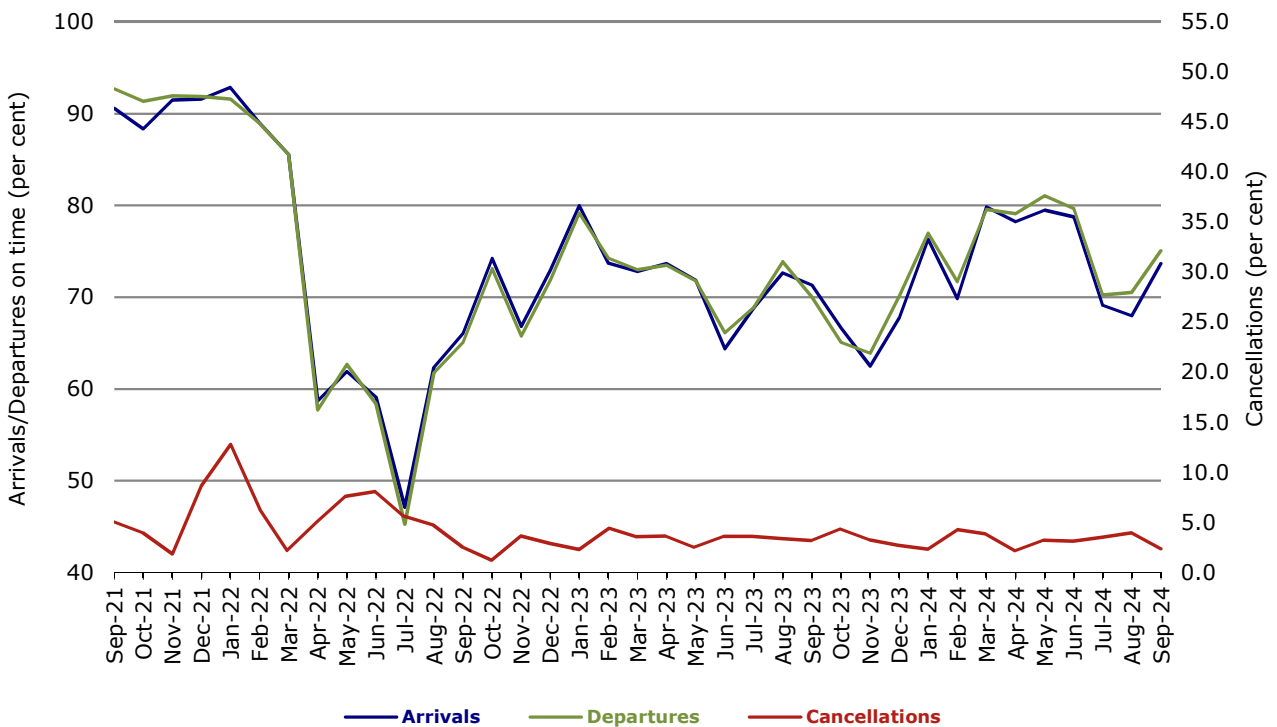


Figure 7 On time performance (by month from Sep 2021)—Virgin Australia

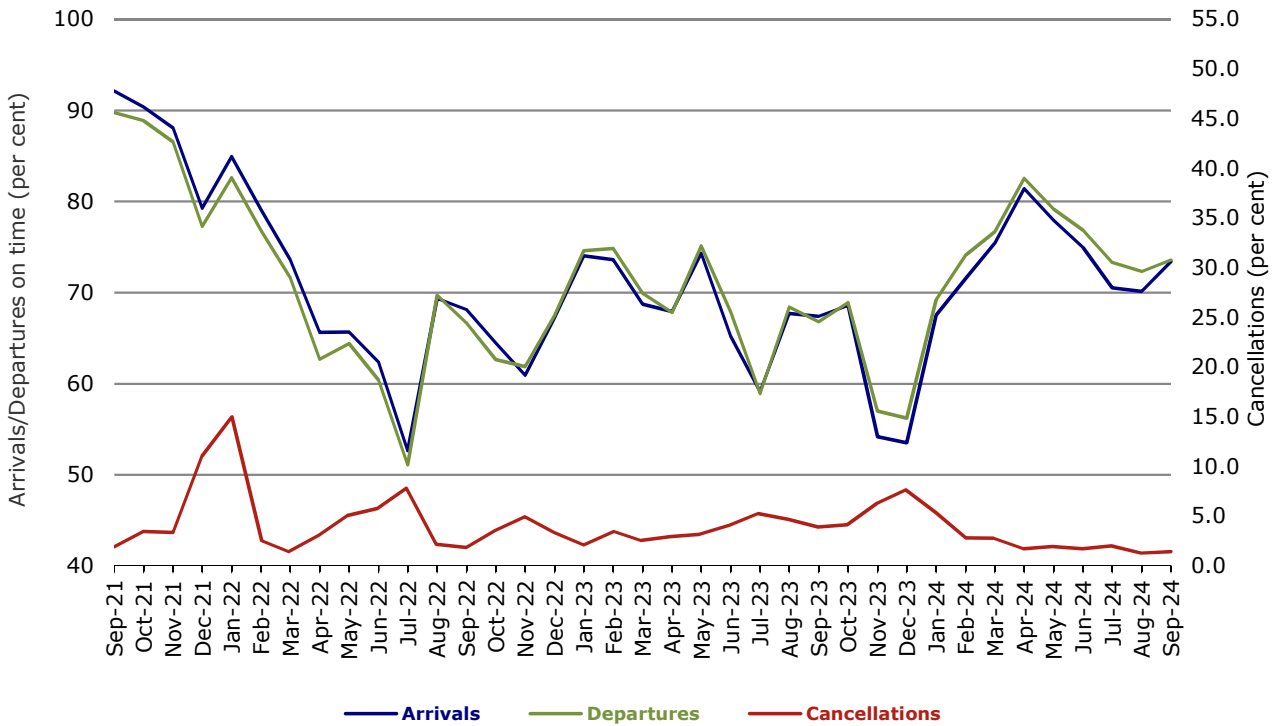


Figure 8 On time performance (by month from Sep 2021)—QantasLink

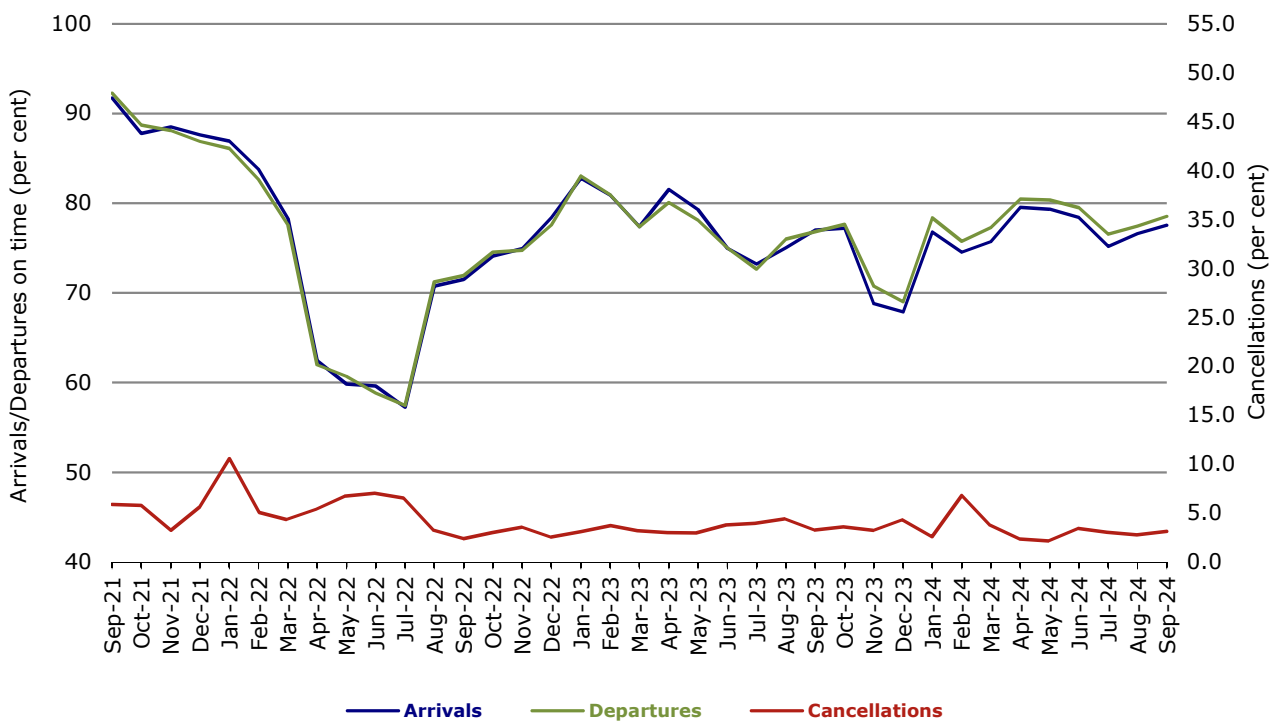


Figure 9 On time performance (by month from Sep 2021)—Rex Airlines

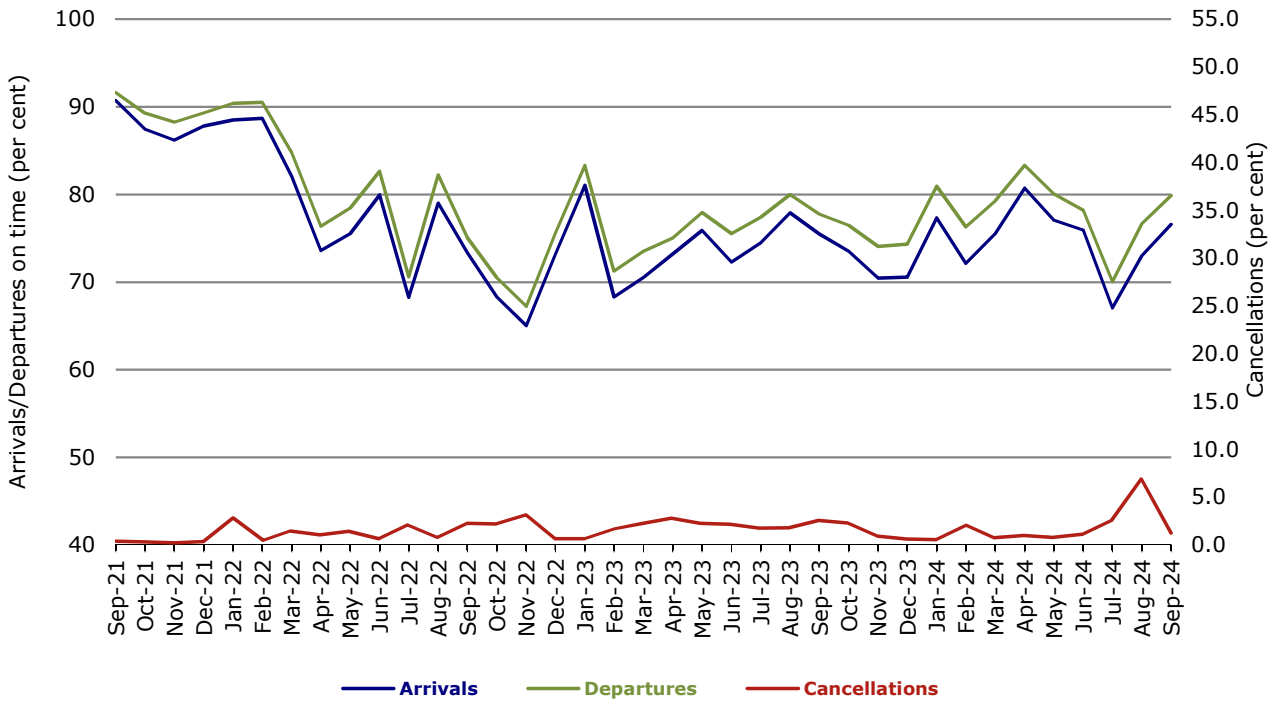


Figure 10 On time performance (by month from Sep 2021)—Virgin Australia Regional Airlines

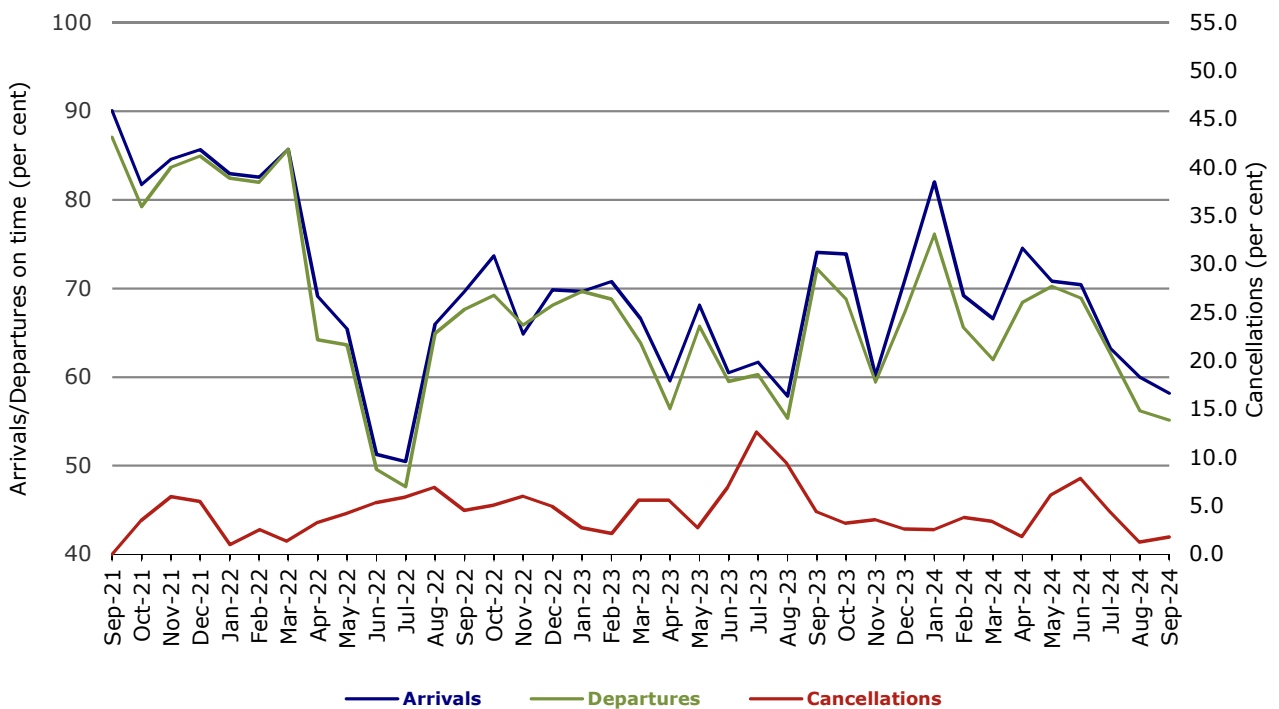
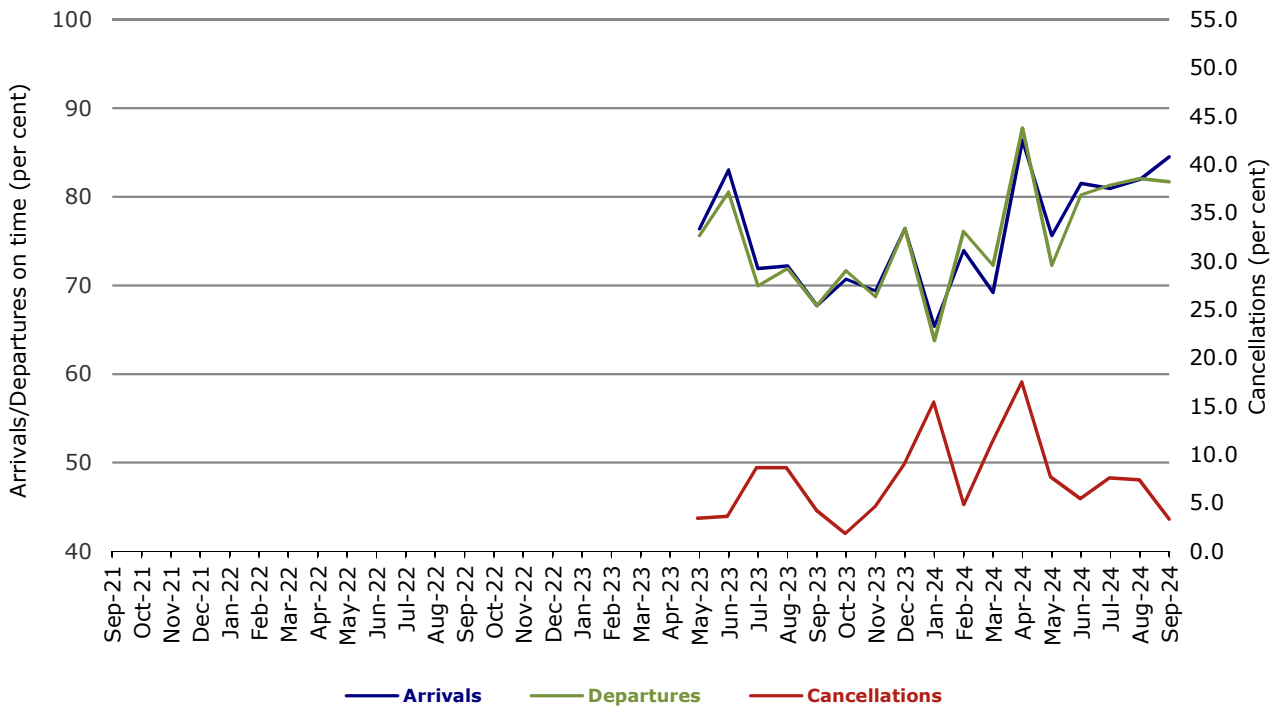
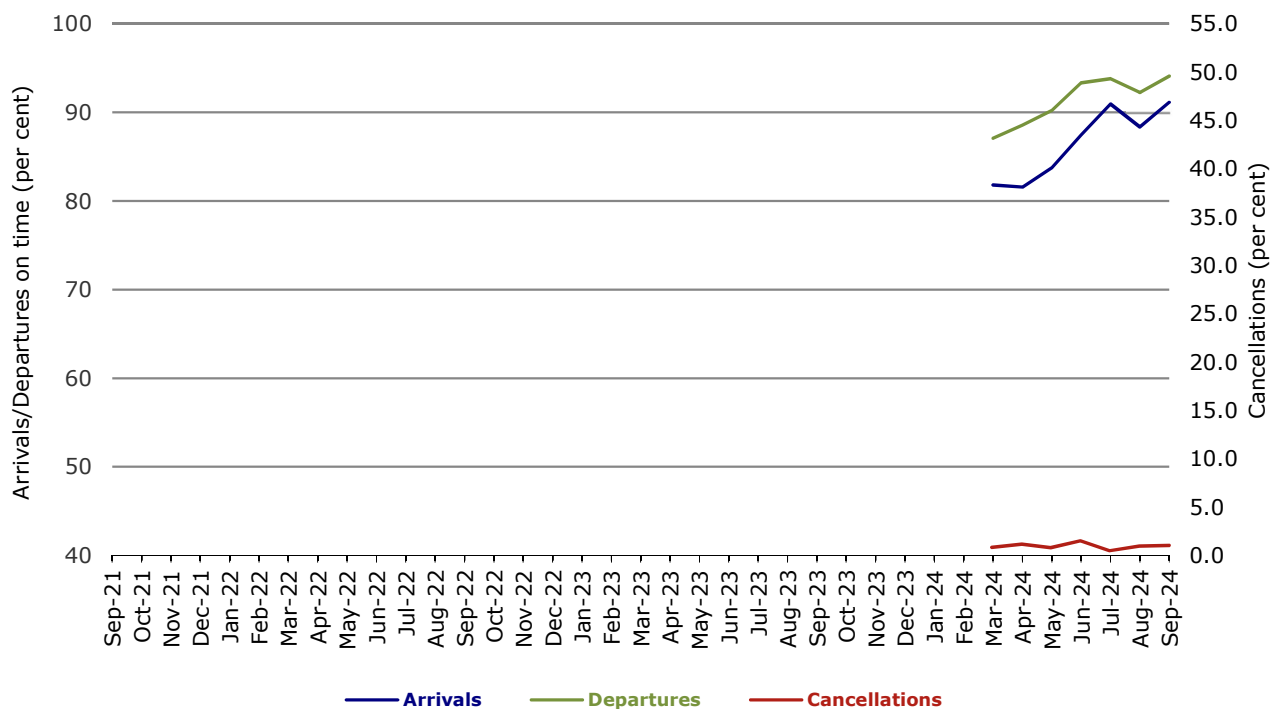


Figure 11 On time performance (by month from Sep 2021)—Skytrans



Note: Skytrans data included from May 2023

Figure 12 On time performance (by month from Sep 2021)—Hinterland



Note: Hinterland data included from March 2024

Individual routes

On time performance is reported for all routes where the passenger load averages over 8,000 passengers per month over the previous six months, and where two or more airlines operate in competition on those routes. There are now 59 routes for which data are presented.

	Sectors		Arrivals On Time		Departures On Time		Cancellations	
	Sched.	Flown	No.	%	No.	%	No.	%
Adelaide-Alice Springs								
QantasLink	51	51	44	86.3	43	84.3	0	0.0
Virgin Australia	13	13	10	76.9	9	69.2	0	0.0
All Airlines	64	64	54	84.4	52	81.3	0	0.0
Adelaide-Brisbane								
Jetstar	39	39	33	84.6	34	87.2	0	0.0
QantasLink	145	142	111	78.2	116	81.7	3	2.1
Virgin Australia	127	122	86	70.5	86	70.5	5	3.9
All Airlines	311	303	230	75.9	236	77.9	8	2.6
Adelaide-Canberra								
QantasLink	94	94	79	84.0	78	83.0	0	0.0
Virgin Australia	18	18	16	88.9	15	83.3	0	0.0
All Airlines	112	112	95	84.8	93	83.0	0	0.0
Adelaide-Gold Coast								
Jetstar	30	30	22	73.3	25	83.3	0	0.0
Virgin Australia	32	32	28	87.5	26	81.3	0	0.0
All Airlines	62	62	50	80.6	51	82.3	0	0.0
Adelaide-Melbourne								
Jetstar	114	113	81	71.7	76	67.3	1	0.9
Qantas	259	253	196	77.5	184	72.7	6	2.3
QantasLink	13	13	9	69.2	8	61.5	0	0.0
Virgin Australia	257	254	185	72.8	182	71.7	3	1.2
All Airlines	643	633	471	74.4	450	71.1	10	1.6
Adelaide-Perth								
Jetstar	30	30	18	60.0	17	56.7	0	0.0
Qantas	91	91	68	74.7	71	78.0	0	0.0
Virgin Australia	40	39	26	66.7	24	61.5	1	2.5
Virgin Australia Regional Airlines	35	35	18	51.4	10	28.6	0	0.0
All Airlines	196	195	130	66.7	122	62.6	1	0.5
Adelaide-Port Lincoln								
QantasLink	137	134	125	93.3	123	91.8	3	2.2
Rex Airlines	152	148	123	83.1	126	85.1	4	2.6
All Airlines	289	282	248	87.9	249	88.3	7	2.4
Adelaide-Sydney								
Jetstar	127	119	90	75.6	86	72.3	8	6.3
Qantas	243	235	190	80.9	189	80.4	8	3.3
Virgin Australia	178	177	139	78.5	134	75.7	1	0.6
All Airlines	548	531	419	78.9	409	77.0	17	3.1
Albury-Sydney								
QantasLink	102	100	71	71.0	71	71.0	2	2.0
Rex Airlines	81	80	70	87.5	74	92.5	1	1.2
All Airlines	183	180	141	78.3	145	80.6	3	1.6

	Sectors		Arrivals On Time		Departures On Time		Cancellations	
	Sched.	Flown	No.	%	No.	%	No.	%
Alice Springs-Adelaide								
QantasLink	51	51	40	78.4	43	84.3	0	0.0
Virgin Australia	13	13	8	61.5	8	61.5	0	0.0
All Airlines	64	64	48	75.0	51	79.7	0	0.0
Ballina-Sydney								
Jetstar	73	72	50	69.4	48	66.7	1	1.4
QantasLink	55	49	41	83.7	40	81.6	6	10.9
Virgin Australia	49	47	28	59.6	28	59.6	2	4.1
All Airlines	177	168	119	70.8	116	69.0	9	5.1
Brisbane-Adelaide								
Jetstar	39	39	32	82.1	30	76.9	0	0.0
QantasLink	145	143	102	71.3	92	64.3	2	1.4
Virgin Australia	129	124	102	82.3	85	68.5	5	3.9
All Airlines	313	306	236	77.1	207	67.6	7	2.2
Brisbane-Cairns								
Jetstar	99	99	77	77.8	73	73.7	0	0.0
Qantas	69	69	54	78.3	55	79.7	0	0.0
QantasLink	99	97	42	43.3	43	44.3	2	2.0
Virgin Australia	153	153	111	72.5	109	71.2	0	0.0
All Airlines	420	418	284	67.9	280	67.0	2	0.5
Brisbane-Canberra								
Jetstar	30	30	27	90.0	28	93.3	0	0.0
Qantas	4	4	3	75.0	3	75.0	0	0.0
QantasLink	144	136	95	69.9	95	69.9	8	5.6
Virgin Australia	110	108	83	76.9	79	73.1	2	1.8
All Airlines	288	278	208	74.8	205	73.7	10	3.5
Brisbane-Darwin								
Jetstar	31	31	24	77.4	28	90.3	0	0.0
Qantas	14	14	10	71.4	8	57.1	0	0.0
QantasLink	37	35	23	65.7	24	68.6	2	5.4
Virgin Australia	38	38	23	60.5	15	39.5	0	0.0
All Airlines	120	118	80	67.8	75	63.6	2	1.7
Brisbane-Emerald								
QantasLink	130	119	96	80.7	99	83.2	11	8.5
Virgin Australia	26	25	16	64.0	16	64.0	1	3.8
All Airlines	156	144	112	77.8	115	79.9	12	7.7
Brisbane-Gladstone								
QantasLink	133	126	90	71.4	96	76.2	7	5.3
Virgin Australia	35	35	18	51.4	14	40.0	0	0.0
All Airlines	168	161	108	67.1	110	68.3	7	4.2
Brisbane-Hamilton Island								
QantasLink	28	28	14	50.0	16	57.1	0	0.0
Virgin Australia	36	36	32	88.9	28	77.8	0	0.0
All Airlines	64	64	46	71.9	44	68.8	0	0.0
Brisbane-Hobart								
Jetstar	26	26	24	92.3	24	92.3	0	0.0
QantasLink	18	17	13	76.5	14	82.4	1	5.6
Virgin Australia	43	43	29	67.4	32	74.4	0	0.0
All Airlines	87	86	66	76.7	70	81.4	1	1.1
Brisbane-Launceston								
Jetstar	26	26	17	65.4	18	69.2	0	0.0
Virgin Australia	18	18	13	72.2	14	77.8	0	0.0
All Airlines	44	44	30	68.2	32	72.7	0	0.0

	Sectors		Arrivals On Time		Departures On Time		Cancellations	
	Sched.	Flown	No.	%	No.	%	No.	%
Brisbane-Mackay								
Jetstar	30	30	18	60.0	18	60.0	0	0.0
Qantas	95	94	81	86.2	75	79.8	1	1.1
QantasLink	30	23	10	43.5	11	47.8	7	23.3
Virgin Australia	134	134	85	63.4	81	60.4	0	0.0
All Airlines	289	281	194	69.0	185	65.8	8	2.8
Brisbane-Melbourne								
Jetstar	163	161	102	63.4	94	58.4	2	1.2
Qantas	330	325	234	72.0	245	75.4	5	1.5
QantasLink	80	74	23	31.1	35	47.3	6	7.5
Virgin Australia	426	424	271	63.9	299	70.5	2	0.5
All Airlines	999	984	630	64.0	673	68.4	15	1.5
Brisbane-Mount Isa								
Qantas	46	46	40	87.0	40	87.0	0	0.0
QantasLink	4	4	4	100.0	4	100.0	0	0.0
Virgin Australia	13	13	7	53.8	7	53.8	0	0.0
All Airlines	63	63	51	81.0	51	81.0	0	0.0
Brisbane-Newcastle								
Jetstar	55	55	51	92.7	48	87.3	0	0.0
QantasLink	80	76	53	69.7	55	72.4	4	5.0
Virgin Australia	82	82	49	59.8	46	56.1	0	0.0
All Airlines	217	213	153	71.8	149	70.0	4	1.8
Brisbane-Perth								
Jetstar	28	28	21	75.0	13	46.4	0	0.0
Qantas	150	149	121	81.2	113	75.8	1	0.7
Virgin Australia	125	125	105	84.0	69	55.2	0	0.0
All Airlines	303	302	247	81.8	195	64.6	1	0.3
Brisbane-Proserpine								
Jetstar	30	30	24	80.0	23	76.7	0	0.0
QantasLink	18	18	15	83.3	13	72.2	0	0.0
Virgin Australia	36	36	28	77.8	24	66.7	0	0.0
All Airlines	84	84	67	79.8	60	71.4	0	0.0
Brisbane-Rockhampton								
QantasLink	180	175	116	66.3	108	61.7	5	2.8
Virgin Australia	159	155	83	53.5	89	57.4	4	2.5
All Airlines	339	330	199	60.3	197	59.7	9	2.7
Brisbane-Sydney								
Jetstar	194	188	139	73.9	143	76.1	6	3.1
Qantas	542	534	400	74.9	417	78.1	8	1.5
Virgin Australia	471	460	357	77.6	359	78.0	11	2.3
All Airlines	1 207	1 182	896	75.8	919	77.7	25	2.1
Brisbane-Townsville								
Jetstar	60	60	51	85.0	49	81.7	0	0.0
Qantas	26	26	21	80.8	21	80.8	0	0.0
QantasLink	151	146	84	57.5	78	53.4	5	3.3
Virgin Australia	132	132	89	67.4	80	60.6	0	0.0
All Airlines	369	364	245	67.3	228	62.6	5	1.4
Broome-Perth								
Qantas	1	1	1	100.0	0	0.0	0	0.0
QantasLink	86	86	60	69.8	61	70.9	0	0.0
Virgin Australia	37	37	21	56.8	16	43.2	0	0.0
Virgin Australia Regional Airlines	14	14	6	42.9	1	7.1	0	0.0
All Airlines	138	138	88	63.8	78	56.5	0	0.0

	Sectors		Arrivals On Time		Departures On Time		Cancellations	
	Sched.	Flown	No.	%	No.	%	No.	%
Cairns-Brisbane								
Jetstar	99	99	82	82.8	84	84.8	0	0.0
Qantas	69	69	56	81.2	50	72.5	0	0.0
QantasLink	99	93	46	49.5	49	52.7	6	6.1
Virgin Australia	153	153	111	72.5	102	66.7	0	0.0
All Airlines	420	414	295	71.3	285	68.8	6	1.4
Cairns-Melbourne								
Jetstar	119	119	92	77.3	76	63.9	0	0.0
Qantas	30	30	21	70.0	12	40.0	0	0.0
Virgin Australia	78	78	60	76.9	58	74.4	0	0.0
All Airlines	227	227	173	76.2	146	64.3	0	0.0
Cairns-Sydney								
Jetstar	119	119	96	80.7	86	72.3	0	0.0
Qantas	40	40	23	57.5	23	57.5	0	0.0
QantasLink	15	15	13	86.7	11	73.3	0	0.0
Virgin Australia	77	77	62	80.5	62	80.5	0	0.0
All Airlines	251	251	194	77.3	182	72.5	0	0.0
Cairns-Townsville								
QantasLink	140	138	120	87.0	119	86.2	2	1.4
Rex Airlines	13	12	10	83.3	11	91.7	1	7.7
All Airlines	153	150	130	86.7	130	86.7	3	2.0
Canberra-Adelaide								
QantasLink	95	94	81	86.2	78	83.0	1	1.1
Virgin Australia	16	16	14	87.5	16	100.0	0	0.0
All Airlines	111	110	95	86.4	94	85.5	1	0.9
Canberra-Brisbane								
Jetstar	30	30	23	76.7	23	76.7	0	0.0
Qantas	4	4	4	100.0	3	75.0	0	0.0
QantasLink	143	135	88	65.2	93	68.9	8	5.6
Virgin Australia	112	110	90	81.8	91	82.7	2	1.8
All Airlines	289	279	205	73.5	210	75.3	10	3.5
Canberra-Gold Coast								
Jetstar	16	16	12	75.0	13	81.3	0	0.0
Virgin Australia	30	30	26	86.7	22	73.3	0	0.0
All Airlines	46	46	38	82.6	35	76.1	0	0.0
Canberra-Melbourne								
Jetstar	30	30	22	73.3	24	80.0	0	0.0
Qantas	10	10	7	70.0	7	70.0	0	0.0
QantasLink	199	188	132	70.2	136	72.3	11	5.5
Virgin Australia	120	120	95	79.2	94	78.3	0	0.0
All Airlines	359	348	256	73.6	261	75.0	11	3.1
Canberra-Sydney								
Qantas	63	62	50	80.6	54	87.1	1	1.6
QantasLink	338	307	247	80.5	242	78.8	31	9.2
Virgin Australia	246	233	205	88.0	205	88.0	13	5.3
All Airlines	647	602	502	83.4	501	83.2	45	7.0
Coffs Harbour-Sydney								
QantasLink	108	105	78	74.3	79	75.2	3	2.8
Rex Airlines	89	89	68	76.4	72	80.9	0	0.0
All Airlines	197	194	146	75.3	151	77.8	3	1.5

	Sectors		Arrivals On Time		Departures On Time		Cancellations	
	Sched.	Flown	No.	%	No.	%	No.	%
Darwin-Brisbane								
Jetstar	31	31	22	71.0	21	67.7	0	0.0
Qantas	13	13	11	84.6	6	46.2	0	0.0
QantasLink	37	35	12	34.3	18	51.4	2	5.4
Virgin Australia	39	39	25	64.1	20	51.3	0	0.0
All Airlines	120	118	70	59.3	65	55.1	2	1.7
Darwin-Melbourne								
Jetstar	30	30	22	73.3	19	63.3	0	0.0
Qantas	30	30	21	70.0	17	56.7	0	0.0
Virgin Australia	30	30	16	53.3	17	56.7	0	0.0
All Airlines	90	90	59	65.6	53	58.9	0	0.0
Darwin-Perth								
Qantas	6	6	4	66.7	3	50.0	0	0.0
QantasLink	42	42	23	54.8	28	66.7	0	0.0
Virgin Australia Regional Airlines	18	18	9	50.0	6	33.3	0	0.0
All Airlines	66	66	36	54.5	37	56.1	0	0.0
Devonport-Melbourne								
QantasLink	116	113	89	78.8	93	82.3	3	2.6
Rex Airlines	39	37	30	81.1	33	89.2	2	5.1
All Airlines	155	150	119	79.3	126	84.0	5	3.2
Dubbo-Sydney								
QantasLink	106	103	85	82.5	88	85.4	3	2.8
Rex Airlines	125	124	90	72.6	100	80.6	1	0.8
All Airlines	231	227	175	77.1	188	82.8	4	1.7
Emerald-Brisbane								
QantasLink	132	119	97	81.5	97	81.5	13	9.8
Virgin Australia	26	25	18	72.0	18	72.0	1	3.8
All Airlines	158	144	115	79.9	115	79.9	14	8.9
Gladstone-Brisbane								
QantasLink	133	125	94	75.2	100	80.0	8	6.0
Virgin Australia	35	35	19	54.3	20	57.1	0	0.0
All Airlines	168	160	113	70.6	120	75.0	8	4.8
Gold Coast-Adelaide								
Jetstar	29	29	24	82.8	23	79.3	0	0.0
Virgin Australia	32	32	21	65.6	23	71.9	0	0.0
All Airlines	61	61	45	73.8	46	75.4	0	0.0
Gold Coast-Canberra								
Jetstar	16	16	13	81.3	12	75.0	0	0.0
Virgin Australia	30	30	27	90.0	25	83.3	0	0.0
All Airlines	46	46	40	87.0	37	80.4	0	0.0
Gold Coast-Melbourne								
Jetstar	218	217	151	69.6	149	68.7	1	0.5
Qantas	34	34	24	70.6	20	58.8	0	0.0
Virgin Australia	230	229	149	65.1	140	61.1	1	0.4
All Airlines	482	480	324	67.5	309	64.4	2	0.4
Gold Coast-Sydney								
Jetstar	258	255	215	84.3	213	83.5	3	1.2
Qantas	91	91	71	78.0	71	78.0	0	0.0
Virgin Australia	297	297	227	76.4	223	75.1	0	0.0
All Airlines	646	643	513	79.8	507	78.8	3	0.5
Hamilton Island-Brisbane								
QantasLink	28	28	10	35.7	12	42.9	0	0.0
Virgin Australia	36	36	30	83.3	29	80.6	0	0.0
All Airlines	64	64	40	62.5	41	64.1	0	0.0

	Sectors		Arrivals On Time		Departures On Time		Cancellations	
	Sched.	Flown	No.	%	No.	%	No.	%
Hamilton Island-Sydney								
Jetstar	19	19	12	63.2	9	47.4	0	0.0
Qantas	30	30	17	56.7	15	50.0	0	0.0
Virgin Australia	30	30	17	56.7	17	56.7	0	0.0
All Airlines	79	79	46	58.2	41	51.9	0	0.0
Hobart-Brisbane								
Jetstar	26	26	23	88.5	18	69.2	0	0.0
QantasLink	18	17	10	58.8	11	64.7	1	5.6
Virgin Australia	43	43	24	55.8	25	58.1	0	0.0
All Airlines	87	86	57	66.3	54	62.8	1	1.1
Hobart-Melbourne								
Jetstar	145	145	89	61.4	84	57.9	0	0.0
Qantas	48	47	39	83.0	40	85.1	1	2.1
QantasLink	51	49	27	55.1	26	53.1	2	3.9
Virgin Australia	114	114	92	80.7	88	77.2	0	0.0
All Airlines	358	355	247	69.6	238	67.0	3	0.8
Hobart-Sydney								
Jetstar	71	70	59	84.3	54	77.1	1	1.4
Qantas	74	74	59	79.7	57	77.0	0	0.0
QantasLink	7	7	4	57.1	4	57.1	0	0.0
Virgin Australia	77	75	57	76.0	57	76.0	2	2.6
All Airlines	229	226	179	79.2	172	76.1	3	1.3
Kalgoorlie-Perth								
Qantas	19	19	18	94.7	16	84.2	0	0.0
QantasLink	63	63	45	71.4	45	71.4	0	0.0
Virgin Australia	77	75	52	69.3	55	73.3	2	2.6
Virgin Australia Regional Airlines	24	22	13	59.1	13	59.1	2	8.3
All Airlines	183	179	128	71.5	129	72.1	4	2.2
Karratha-Perth								
Qantas	16	16	15	93.8	15	93.8	0	0.0
QantasLink	130	129	95	73.6	98	76.0	1	0.8
Virgin Australia	67	66	49	74.2	53	80.3	1	1.5
Virgin Australia Regional Airlines	14	14	7	50.0	4	28.6	0	0.0
All Airlines	227	225	166	73.8	170	75.6	2	0.9
Launceston-Brisbane								
Jetstar	26	26	6	23.1	10	38.5	0	0.0
Virgin Australia	18	18	13	72.2	13	72.2	0	0.0
All Airlines	44	44	19	43.2	23	52.3	0	0.0
Launceston-Melbourne								
Jetstar	86	86	55	64.0	53	61.6	0	0.0
QantasLink	94	84	71	84.5	73	86.9	10	10.6
Virgin Australia	89	89	66	74.2	68	76.4	0	0.0
All Airlines	269	259	192	74.1	194	74.9	10	3.7
Launceston-Sydney								
Jetstar	41	41	30	73.2	28	68.3	0	0.0
QantasLink	28	26	20	76.9	21	80.8	2	7.1
Virgin Australia	30	30	18	60.0	20	66.7	0	0.0
All Airlines	99	97	68	70.1	69	71.1	2	2.0
Mackay-Brisbane								
Jetstar	30	30	17	56.7	16	53.3	0	0.0
Qantas	94	93	69	74.2	70	75.3	1	1.1
QantasLink	32	27	11	40.7	14	51.9	5	15.6
Virgin Australia	134	134	101	75.4	91	67.9	0	0.0
All Airlines	290	284	198	69.7	191	67.3	6	2.1

	Sectors		Arrivals On Time		Departures On Time		Cancellations	
	Sched.	Flown	No.	%	No.	%	No.	%
Melbourne-Adelaide								
Jetstar	114	113	82	72.6	84	74.3	1	0.9
Qantas	260	255	176	69.0	188	73.7	5	1.9
QantasLink	13	13	11	84.6	11	84.6	0	0.0
Virgin Australia	255	253	163	64.4	180	71.1	2	0.8
All Airlines	642	634	432	68.1	463	73.0	8	1.2
Melbourne-Brisbane								
Jetstar	162	161	86	53.4	92	57.1	1	0.6
Qantas	329	326	225	69.0	221	67.8	3	0.9
QantasLink	81	76	33	43.4	43	56.6	5	6.2
Virgin Australia	431	430	303	70.5	322	74.9	1	0.2
All Airlines	1 003	993	647	65.2	678	68.3	10	1.0
Melbourne-Cairns								
Jetstar	120	120	83	69.2	84	70.0	0	0.0
Qantas	30	30	17	56.7	25	83.3	0	0.0
Virgin Australia	78	78	61	78.2	70	89.7	0	0.0
All Airlines	228	228	161	70.6	179	78.5	0	0.0
Melbourne-Canberra								
Jetstar	30	30	23	76.7	22	73.3	0	0.0
Qantas	10	10	7	70.0	6	60.0	0	0.0
QantasLink	198	185	137	74.1	140	75.7	13	6.6
Virgin Australia	120	120	95	79.2	94	78.3	0	0.0
All Airlines	358	345	262	75.9	262	75.9	13	3.6
Melbourne-Darwin								
Jetstar	30	30	24	80.0	21	70.0	0	0.0
Qantas	30	30	22	73.3	16	53.3	0	0.0
Virgin Australia	30	30	21	70.0	16	53.3	0	0.0
All Airlines	90	90	67	74.4	53	58.9	0	0.0
Melbourne-Devonport								
QantasLink	116	114	95	83.3	94	82.5	2	1.7
Rex Airlines	39	37	33	89.2	33	89.2	2	5.1
All Airlines	155	151	128	84.8	127	84.1	4	2.6
Melbourne-Gold Coast								
Jetstar	218	217	153	70.5	145	66.8	1	0.5
Qantas	34	34	30	88.2	27	79.4	0	0.0
Virgin Australia	230	230	168	73.0	165	71.7	0	0.0
All Airlines	482	481	351	73.0	337	70.1	1	0.2
Melbourne-Hobart								
Jetstar	145	145	96	66.2	99	68.3	0	0.0
Qantas	49	49	38	77.6	37	75.5	0	0.0
QantasLink	50	49	29	59.2	32	65.3	1	2.0
Virgin Australia	114	114	76	66.7	80	70.2	0	0.0
All Airlines	358	357	239	66.9	248	69.5	1	0.3
Melbourne-Launceston								
Jetstar	86	86	53	61.6	55	64.0	0	0.0
QantasLink	95	87	66	75.9	66	75.9	8	8.4
Virgin Australia	90	89	63	70.8	66	74.2	1	1.1
All Airlines	271	262	182	69.5	187	71.4	9	3.3
Melbourne-Mildura								
QantasLink	107	106	72	67.9	79	74.5	1	0.9
Rex Airlines	102	102	92	90.2	93	91.2	0	0.0
All Airlines	209	208	164	78.8	172	82.7	1	0.5

	Sectors		Arrivals On Time		Departures On Time		Cancellations	
	Sched.	Flown	No.	%	No.	%	No.	%
Melbourne-Newcastle								
Jetstar	60	59	45	76.3	44	74.6	1	1.7
QantasLink	51	51	32	62.7	38	74.5	0	0.0
Virgin Australia	43	43	38	88.4	38	88.4	0	0.0
All Airlines	154	153	115	75.2	120	78.4	1	0.6
Melbourne-Perth								
Jetstar	80	79	48	60.8	51	64.6	1	1.3
Qantas	203	201	136	67.7	141	70.1	2	1.0
Virgin Australia	214	211	153	72.5	160	75.8	3	1.4
All Airlines	497	491	337	68.6	352	71.7	6	1.2
Melbourne-Sunshine Coast								
Jetstar	77	77	65	84.4	62	80.5	0	0.0
Qantas	33	33	21	63.6	29	87.9	0	0.0
Virgin Australia	68	68	57	83.8	53	77.9	0	0.0
All Airlines	178	178	143	80.3	144	80.9	0	0.0
Melbourne-Sydney								
Jetstar	435	420	316	75.2	293	69.8	15	3.4
Qantas	928	864	654	75.7	691	80.0	64	6.9
Virgin Australia	780	750	562	74.9	606	80.8	30	3.8
All Airlines	2 143	2 034	1 532	75.3	1 590	78.2	109	5.1
Mildura-Melbourne								
QantasLink	107	105	76	72.4	71	67.6	2	1.9
Rex Airlines	101	101	90	89.1	93	92.1	0	0.0
All Airlines	208	206	166	80.6	164	79.6	2	1.0
Mount Isa-Brisbane								
Qantas	47	47	38	80.9	36	76.6	0	0.0
QantasLink	4	4	2	50.0	4	100.0	0	0.0
Virgin Australia	13	13	8	61.5	7	53.8	0	0.0
All Airlines	64	64	48	75.0	47	73.4	0	0.0
Newcastle-Brisbane								
Jetstar	55	55	46	83.6	49	89.1	0	0.0
QantasLink	81	76	55	72.4	62	81.6	5	6.2
Virgin Australia	81	81	52	64.2	55	67.9	0	0.0
All Airlines	217	212	153	72.2	166	78.3	5	2.3
Newcastle-Melbourne								
Jetstar	60	59	38	64.4	41	69.5	1	1.7
QantasLink	51	51	47	92.2	47	92.2	0	0.0
Virgin Australia	43	43	36	83.7	37	86.0	0	0.0
All Airlines	154	153	121	79.1	125	81.7	1	0.6
Newman-Perth								
Qantas	17	17	16	94.1	16	94.1	0	0.0
QantasLink	96	95	66	69.5	77	81.1	1	1.0
Virgin Australia	44	44	33	75.0	37	84.1	0	0.0
Virgin Australia Regional Airlines	11	11	8	72.7	8	72.7	0	0.0
All Airlines	168	167	123	73.7	138	82.6	1	0.6
Perth-Adelaide								
Jetstar	30	29	16	55.2	19	65.5	1	3.3
Qantas	91	91	59	64.8	64	70.3	0	0.0
Virgin Australia	41	41	29	70.7	33	80.5	0	0.0
Virgin Australia Regional Airlines	35	35	15	42.9	22	62.9	0	0.0
All Airlines	197	196	119	60.7	138	70.4	1	0.5

	Sectors		Arrivals On Time		Departures On Time		Cancellations	
	Sched.	Flown	No.	%	No.	%	No.	%
Perth-Brisbane								
Jetstar	28	28	12	42.9	13	46.4	0	0.0
Qantas	149	148	99	66.9	118	79.7	1	0.7
Virgin Australia	121	120	85	70.8	72	60.0	1	0.8
All Airlines	298	296	196	66.2	203	68.6	2	0.7
Perth-Broome								
Qantas	1	1	1	100.0	1	100.0	0	0.0
QantasLink	86	86	69	80.2	66	76.7	0	0.0
Virgin Australia	37	37	25	67.6	21	56.8	0	0.0
Virgin Australia Regional Airlines	14	14	11	78.6	10	71.4	0	0.0
All Airlines	138	138	106	76.8	98	71.0	0	0.0
Perth-Darwin								
Qantas	6	6	6	100.0	6	100.0	0	0.0
QantasLink	42	42	32	76.2	32	76.2	0	0.0
Virgin Australia Regional Airlines	18	18	8	44.4	8	44.4	0	0.0
All Airlines	66	66	46	69.7	46	69.7	0	0.0
Perth-Kalgoorlie								
Qantas	19	19	18	94.7	18	94.7	0	0.0
QantasLink	63	63	47	74.6	49	77.8	0	0.0
Virgin Australia	77	75	61	81.3	64	85.3	2	2.6
Virgin Australia Regional Airlines	24	22	13	59.1	14	63.6	2	8.3
All Airlines	183	179	139	77.7	145	81.0	4	2.2
Perth-Karratha								
Qantas	16	16	15	93.8	15	93.8	0	0.0
QantasLink	132	131	115	87.8	116	88.5	1	0.8
Virgin Australia	67	66	51	77.3	52	78.8	1	1.5
Virgin Australia Regional Airlines	14	14	6	42.9	8	57.1	0	0.0
All Airlines	229	227	187	82.4	191	84.1	2	0.9
Perth-Melbourne								
Jetstar	80	78	50	64.1	34	43.6	2	2.5
Qantas	204	201	148	73.6	136	67.7	3	1.5
Virgin Australia	225	222	175	78.8	162	73.0	3	1.3
All Airlines	509	501	373	74.5	332	66.3	8	1.6
Perth-Newman								
Qantas	17	17	16	94.1	15	88.2	0	0.0
QantasLink	96	95	76	80.0	80	84.2	1	1.0
Virgin Australia	44	44	37	84.1	38	86.4	0	0.0
Virgin Australia Regional Airlines	11	11	9	81.8	9	81.8	0	0.0
All Airlines	168	167	138	82.6	142	85.0	1	0.6
Perth-Port Hedland								
QantasLink	135	135	120	88.9	119	88.1	0	0.0
Virgin Australia	29	28	20	71.4	23	82.1	1	3.4
Virgin Australia Regional Airlines	26	26	16	61.5	19	73.1	0	0.0
All Airlines	190	189	156	82.5	161	85.2	1	0.5
Perth-Sydney								
Jetstar	55	55	33	60.0	30	54.5	0	0.0
Qantas	195	194	140	72.2	122	62.9	1	0.5
Virgin Australia	153	153	132	86.3	93	60.8	0	0.0
All Airlines	403	402	305	75.9	245	60.9	1	0.2
Port Hedland-Perth								
QantasLink	135	135	89	65.9	103	76.3	0	0.0
Virgin Australia	29	28	16	57.1	16	57.1	1	3.4
Virgin Australia Regional Airlines	26	26	13	50.0	11	42.3	0	0.0
All Airlines	190	189	118	62.4	130	68.8	1	0.5

	Sectors		Arrivals On Time		Departures On Time		Cancellations	
	Sched.	Flown	No.	%	No.	%	No.	%
Port Lincoln-Adelaide								
QantasLink	137	133	121	91.0	123	92.5	4	2.9
Rex Airlines	152	148	124	83.8	127	85.8	4	2.6
All Airlines	289	281	245	87.2	250	89.0	8	2.8
Port Macquarie-Sydney								
QantasLink	102	101	72	71.3	78	77.2	1	1.0
Rex Airlines	51	51	34	66.7	36	70.6	0	0.0
All Airlines	153	152	106	69.7	114	75.0	1	0.7
Proserpine-Brisbane								
Jetstar	30	30	21	70.0	22	73.3	0	0.0
QantasLink	18	18	16	88.9	15	83.3	0	0.0
Virgin Australia	36	36	24	66.7	24	66.7	0	0.0
All Airlines	84	84	61	72.6	61	72.6	0	0.0
Rockhampton-Brisbane								
QantasLink	184	174	125	71.8	131	75.3	10	5.4
Virgin Australia	158	154	76	49.4	87	56.5	4	2.5
All Airlines	342	328	201	61.3	218	66.5	14	4.1
Sunshine Coast-Melbourne								
Jetstar	77	77	58	75.3	57	74.0	0	0.0
Qantas	33	33	18	54.5	15	45.5	0	0.0
Virgin Australia	68	68	52	76.5	51	75.0	0	0.0
All Airlines	178	178	128	71.9	123	69.1	0	0.0
Sunshine Coast-Sydney								
Jetstar	86	85	62	72.9	64	75.3	1	1.2
Qantas	55	55	40	72.7	37	67.3	0	0.0
Virgin Australia	63	63	31	49.2	45	71.4	0	0.0
All Airlines	204	203	133	65.5	146	71.9	1	0.5
Sydney-Adelaide								
Jetstar	127	119	88	73.9	88	73.9	8	6.3
Qantas	244	237	194	81.9	193	81.4	7	2.9
Virgin Australia	178	177	127	71.8	143	80.8	1	0.6
All Airlines	549	533	409	76.7	424	79.5	16	2.9
Sydney-Albury								
QantasLink	102	101	73	72.3	77	76.2	1	1.0
Rex Airlines	81	80	68	85.0	68	85.0	1	1.2
All Airlines	183	181	141	77.9	145	80.1	2	1.1
Sydney-Ballina								
Jetstar	71	71	59	83.1	60	84.5	0	0.0
QantasLink	54	51	42	82.4	45	88.2	3	5.6
Virgin Australia	49	47	31	66.0	35	74.5	2	4.1
All Airlines	174	169	132	78.1	140	82.8	5	2.9
Sydney-Brisbane								
Jetstar	194	189	131	69.3	132	69.8	5	2.6
Qantas	544	535	378	70.7	396	74.0	9	1.7
Virgin Australia	468	456	358	78.5	371	81.4	12	2.6
All Airlines	1 206	1 180	867	73.5	899	76.2	26	2.2
Sydney-Cairns								
Jetstar	118	118	94	79.7	93	78.8	0	0.0
Qantas	40	40	27	67.5	28	70.0	0	0.0
QantasLink	15	15	13	86.7	12	80.0	0	0.0
Virgin Australia	77	77	65	84.4	60	77.9	0	0.0
All Airlines	250	250	199	79.6	193	77.2	0	0.0

	Sectors		Arrivals On Time		Departures On Time		Cancellations	
	Sched.	Flown	No.	%	No.	%	No.	%
Sydney-Canberra								
Qantas	63	62	52	83.9	56	90.3	1	1.6
QantasLink	338	313	237	75.7	241	77.0	25	7.4
Virgin Australia	245	232	208	89.7	202	87.1	13	5.3
All Airlines	646	607	497	81.9	499	82.2	39	6.0
Sydney-Coffs Harbour								
QantasLink	108	105	79	75.2	75	71.4	3	2.8
Rex Airlines	89	89	74	83.1	72	80.9	0	0.0
All Airlines	197	194	153	78.9	147	75.8	3	1.5
Sydney-Dubbo								
QantasLink	106	103	85	82.5	82	79.6	3	2.8
Rex Airlines	128	128	88	68.8	87	68.0	0	0.0
All Airlines	234	231	173	74.9	169	73.2	3	1.3
Sydney-Gold Coast								
Jetstar	258	256	205	80.1	204	79.7	2	0.8
Qantas	91	91	76	83.5	65	71.4	0	0.0
Virgin Australia	297	297	212	71.4	225	75.8	0	0.0
All Airlines	646	644	493	76.6	494	76.7	2	0.3
Sydney-Hamilton Island								
Jetstar	19	19	17	89.5	18	94.7	0	0.0
Qantas	30	30	18	60.0	23	76.7	0	0.0
Virgin Australia	30	30	27	90.0	27	90.0	0	0.0
All Airlines	79	79	62	78.5	68	86.1	0	0.0
Sydney-Hobart								
Jetstar	71	70	57	81.4	63	90.0	1	1.4
Qantas	75	75	59	78.7	59	78.7	0	0.0
QantasLink	7	6	4	66.7	5	83.3	1	14.3
Virgin Australia	77	76	63	82.9	65	85.5	1	1.3
All Airlines	230	227	183	80.6	192	84.6	3	1.3
Sydney-Launceston								
Jetstar	41	41	31	75.6	31	75.6	0	0.0
QantasLink	28	26	19	73.1	20	76.9	2	7.1
Virgin Australia	30	30	24	80.0	22	73.3	0	0.0
All Airlines	99	97	74	76.3	73	75.3	2	2.0
Sydney-Melbourne								
Jetstar	438	421	324	77.0	329	78.1	17	3.9
Qantas	932	877	631	71.9	695	79.2	55	5.9
Virgin Australia	769	739	532	72.0	584	79.0	30	3.9
All Airlines	2 139	2 037	1 487	73.0	1 608	78.9	102	4.8
Sydney-Perth								
Jetstar	55	55	41	74.5	39	70.9	0	0.0
Qantas	195	194	132	68.0	137	70.6	1	0.5
Virgin Australia	167	167	122	73.1	117	70.1	0	0.0
All Airlines	417	416	295	70.9	293	70.4	1	0.2
Sydney-Port Macquarie								
QantasLink	103	102	88	86.3	85	83.3	1	1.0
Rex Airlines	51	51	40	78.4	40	78.4	0	0.0
All Airlines	154	153	128	83.7	125	81.7	1	0.6
Sydney-Sunshine Coast								
Jetstar	86	85	72	84.7	69	81.2	1	1.2
Qantas	56	56	35	62.5	34	60.7	0	0.0
Virgin Australia	63	63	47	74.6	47	74.6	0	0.0
All Airlines	205	204	154	75.5	150	73.5	1	0.5

	<i>Sectors</i>		<i>Arrivals On Time</i>		<i>Departures On Time</i>		<i>Cancellations</i>	
	<i>Sched.</i>	<i>Flown</i>	<i>No.</i>	<i>%</i>	<i>No.</i>	<i>%</i>	<i>No.</i>	<i>%</i>
Sydney-Wagga Wagga								
QantasLink	104	101	84	83.2	81	80.2	3	2.9
Rex Airlines	90	90	77	85.6	75	83.3	0	0.0
All Airlines	194	191	161	84.3	156	81.7	3	1.5
Townsville-Brisbane								
Jetstar	60	60	44	73.3	48	80.0	0	0.0
Qantas	25	25	19	76.0	20	80.0	0	0.0
QantasLink	151	145	76	52.4	85	58.6	6	4.0
Virgin Australia	132	131	90	68.7	87	66.4	1	0.8
All Airlines	368	361	229	63.4	240	66.5	7	1.9
Townsville-Cairns								
QantasLink	140	139	126	90.6	122	87.8	1	0.7
Rex Airlines	13	12	11	91.7	11	91.7	1	7.7
All Airlines	153	151	137	90.7	133	88.1	2	1.3
Wagga Wagga-Sydney								
QantasLink	104	101	92	91.1	91	90.1	3	2.9
Rex Airlines	90	90	74	82.2	77	85.6	0	0.0
All Airlines	194	191	166	86.9	168	88.0	3	1.5

Airports

The following data reports by airport against flights operated on published routes only. This month, 8 major city airports and 28 regional city airports are covered.

Airport	Arrivals			Departures		
	Sectors	On Time		Sectors	On Time	
	Flown	No.	%	Flown	No.	%
Adelaide						
Jetstar	329	242	73.6	331	238	71.9
Qantas	583	429	73.6	579	444	76.7
QantasLink	434	355	81.8	434	368	84.8
Rex Airlines	148	124	83.8	148	126	85.1
Virgin Australia	656	464	70.7	655	476	72.7
Virgin Australia Regional Airlines	35	15	42.9	35	10	28.6
All Airlines	2,185	1,629	74.6	2,182	1,662	76.2

Relates to services to and from Alice Springs, Brisbane, Canberra, Gold Coast, Melbourne, Perth, Port Lincoln and Sydney only.

Albury

QantasLink	101	73	72.3	100	71	71.0
Rex Airlines	80	68	85.0	80	74	92.5
All Airlines	181	141	77.9	180	145	80.6

Relates to services to and from Sydney only.

Alice Springs

QantasLink	51	44	86.3	51	43	84.3
Virgin Australia	13	10	76.9	13	8	61.5
All Airlines	64	54	84.4	64	51	79.7

Relates to services to and from Adelaide only.

Ballina

Jetstar	71	59	83.1	72	48	66.7
QantasLink	51	42	82.4	49	40	81.6
Virgin Australia	47	31	66.0	47	28	59.6
All Airlines	169	132	78.1	168	116	69.0

Relates to services to and from Sydney only.

Brisbane

Jetstar	804	546	67.9	803	589	73.3
Qantas	1,260	899	71.3	1,261	977	77.5
QantasLink	1,214	786	64.7	1,217	783	64.3
Virgin Australia	2,136	1,513	70.8	2,141	1,446	67.5
All Airlines	5,414	3,744	69.2	5,422	3,795	70.0

Relates to services to and from Adelaide, Cairns, Canberra, Darwin, Emerald, Gladstone, Hamilton Island, Hobart, Launceston, Mackay, Melbourne, Mount Isa, Newcastle, Perth, Proserpine, Rockhampton, Sydney and Townsville only.

Broome

Qantas	1	1	100.0	1	0	0.0
QantasLink	86	69	80.2	86	61	70.9
Virgin Australia	37	25	67.6	37	16	43.2
Virgin Australia Regional Airlines	14	11	78.6	14	1	7.1
All Airlines	138	106	76.8	138	78	56.5

Relates to services to and from Perth only.

Airport	Arrivals			Departures		
	Sectors	On Time		Sectors	On Time	
	Flown	No.	%	Flown	No.	%
Cairns						
Jetstar	337	254	75.4	337	246	73.0
Qantas	139	98	70.5	139	85	61.2
QantasLink	251	181	72.1	246	179	72.8
Rex Airlines	12	11	91.7	12	11	91.7
Virgin Australia	308	237	76.9	308	222	72.1
All Airlines	1,047	781	74.6	1,042	743	71.3
Relates to services to and from Brisbane, Melbourne, Sydney and Townsville only.						
Canberra						
Jetstar	76	63	82.9	76	60	78.9
Qantas	76	62	81.6	76	64	84.2
QantasLink	728	548	75.3	724	549	75.8
Virgin Australia	508	429	84.4	509	428	84.1
All Airlines	1,388	1,102	79.4	1,385	1,101	79.5
Relates to services to and from Adelaide, Brisbane, Gold Coast, Melbourne and Sydney only.						
Coffs Harbour						
QantasLink	105	79	75.2	105	79	75.2
Rex Airlines	89	74	83.1	89	72	80.9
All Airlines	194	153	78.9	194	151	77.8
Relates to services to and from Sydney only.						
Darwin						
Jetstar	61	48	78.7	61	40	65.6
Qantas	50	38	76.0	49	26	53.1
QantasLink	77	55	71.4	77	46	59.7
Virgin Australia	68	44	64.7	69	37	53.6
Virgin Australia Regional Airlines	18	8	44.4	18	6	33.3
All Airlines	274	193	70.4	274	155	56.6
Relates to services to and from Brisbane, Melbourne and Perth only.						
Devonport						
QantasLink	114	95	83.3	113	93	82.3
Rex Airlines	37	33	89.2	37	33	89.2
All Airlines	151	128	84.8	150	126	84.0
Relates to services to and from Melbourne only.						
Dubbo						
QantasLink	103	85	82.5	103	88	85.4
Rex Airlines	128	88	68.8	124	100	80.6
All Airlines	231	173	74.9	227	188	82.8
Relates to services to and from Sydney only.						
Emerald						
QantasLink	119	96	80.7	119	97	81.5
Virgin Australia	25	16	64.0	25	18	72.0
All Airlines	144	112	77.8	144	115	79.9
Relates to services to and from Brisbane only.						

Airport	Arrivals			Departures		
	Sectors	On Time		Sectors	On Time	
	Flown	No.	%	Flown	No.	%
Gladstone						
QantasLink	126	90	71.4	125	100	80.0
Virgin Australia	35	18	51.4	35	20	57.1
All Airlines	161	108	67.1	160	120	75.0
Relates to services to and from Brisbane only.						
Gold Coast						
Jetstar	519	392	75.5	517	397	76.8
Qantas	125	106	84.8	125	91	72.8
Virgin Australia	589	434	73.7	588	411	69.9
All Airlines	1,233	932	75.6	1,230	899	73.1
Relates to services to and from Adelaide, Canberra, Melbourne and Sydney only.						
Hamilton Island						
Jetstar	19	17	89.5	19	9	47.4
Qantas	30	18	60.0	30	15	50.0
QantasLink	28	14	50.0	28	12	42.9
Virgin Australia	66	59	89.4	66	46	69.7
All Airlines	143	108	75.5	143	82	57.3
Relates to services to and from Brisbane and Sydney only.						
Hobart						
Jetstar	241	177	73.4	241	156	64.7
Qantas	124	97	78.2	121	97	80.2
QantasLink	72	46	63.9	73	41	56.2
Virgin Australia	233	168	72.1	232	170	73.3
All Airlines	670	488	72.8	667	464	69.6
Relates to services to and from Brisbane, Melbourne and Sydney only.						
Kalgoorlie						
Qantas	19	18	94.7	19	16	84.2
QantasLink	63	47	74.6	63	45	71.4
Virgin Australia	75	61	81.3	75	55	73.3
Virgin Australia Regional Airlines	22	13	59.1	22	13	59.1
All Airlines	179	139	77.7	179	129	72.1
Relates to services to and from Perth only.						
Karratha						
Qantas	16	15	93.8	16	15	93.8
QantasLink	131	115	87.8	129	98	76.0
Virgin Australia	66	51	77.3	66	53	80.3
Virgin Australia Regional Airlines	14	6	42.9	14	4	28.6
All Airlines	227	187	82.4	225	170	75.6
Relates to services to and from Perth only.						
Launceston						
Jetstar	153	101	66.0	153	91	59.5
QantasLink	113	85	75.2	110	94	85.5
Virgin Australia	137	100	73.0	137	101	73.7
All Airlines	403	286	71.0	400	286	71.5
Relates to services to and from Brisbane, Melbourne and Sydney only.						

Airport	Arrivals			Departures		
	Sectors	On Time		Sectors	On Time	
	Flown	No.	%	Flown	No.	%
Mackay						
Jetstar	30	18	60.0	30	16	53.3
Qantas	94	81	86.2	93	70	75.3
QantasLink	23	10	43.5	27	14	51.9
Virgin Australia	134	85	63.4	134	91	67.9
All Airlines	281	194	69.0	284	191	67.3

Relates to services to and from Brisbane only.

Melbourne

Jetstar	1,536	1,084	70.6	1,537	1,052	68.4
Qantas	1,840	1,339	72.8	1,832	1,381	75.4
QantasLink	677	474	70.0	681	503	73.9
Rex Airlines	138	120	87.0	139	126	90.6
Virgin Australia	2,410	1,729	71.7	2,416	1,850	76.6
All Airlines	6,601	4,746	71.9	6,605	4,912	74.4

Relates to services to and from Adelaide, Brisbane, Cairns, Canberra, Darwin, Devonport, Gold Coast, Hobart, Launceston, Mildura, Newcastle, Perth, Sunshine Coast and Sydney only.

Mildura

QantasLink	106	72	67.9	105	71	67.6
Rex Airlines	102	92	90.2	101	93	92.1
All Airlines	208	164	78.8	206	164	79.6

Relates to services to and from Melbourne only.

Mount Isa

Qantas	46	40	87.0	47	36	76.6
QantasLink	4	4	100.0	4	4	100.0
Virgin Australia	13	7	53.8	13	7	53.8
All Airlines	63	51	81.0	64	47	73.4

Relates to services to and from Brisbane only.

Newcastle

Jetstar	114	96	84.2	114	90	78.9
QantasLink	127	85	66.9	127	109	85.8
Virgin Australia	125	87	69.6	124	92	74.2
All Airlines	366	268	73.2	365	291	79.7

Relates to services to and from Brisbane and Melbourne only.

Newman

Qantas	17	16	94.1	17	16	94.1
QantasLink	95	76	80.0	95	77	81.1
Virgin Australia	44	37	84.1	44	37	84.1
Virgin Australia Regional Airlines	11	9	81.8	11	8	72.7
All Airlines	167	138	82.6	167	138	82.6

Relates to services to and from Perth only.

Airport	Arrivals			Departures		
	Sectors	On Time		Sectors	On Time	
	Flown	No.	%	Flown	No.	%
Perth						
Jetstar	192	128	66.7	190	96	50.5
Qantas	694	511	73.6	693	495	71.4
QantasLink	550	378	68.7	552	462	83.7
Virgin Australia	792	577	72.9	786	558	71.0
Virgin Australia Regional Airlines	140	74	52.9	140	90	64.3
All Airlines	2,368	1,668	70.4	2,361	1,701	72.0
Relates to services to and from Adelaide, Brisbane, Broome, Darwin, Kalgoorlie, Karratha, Melbourne, Newman, Port Hedland and Sydney only.						
Port Hedland						
QantasLink	135	120	88.9	135	103	76.3
Virgin Australia	28	20	71.4	28	16	57.1
Virgin Australia Regional Airlines	26	16	61.5	26	11	42.3
All Airlines	189	156	82.5	189	130	68.8
Relates to services to and from Perth only.						
Port Lincoln						
QantasLink	134	125	93.3	133	123	92.5
Rex Airlines	148	123	83.1	148	127	85.8
All Airlines	282	248	87.9	281	250	89.0
Relates to services to and from Adelaide only.						
Port Macquarie						
QantasLink	102	88	86.3	101	78	77.2
Rex Airlines	51	40	78.4	51	36	70.6
All Airlines	153	128	83.7	152	114	75.0
Relates to services to and from Sydney only.						
Proserpine						
Jetstar	30	24	80.0	30	22	73.3
QantasLink	18	15	83.3	18	15	83.3
Virgin Australia	36	28	77.8	36	24	66.7
All Airlines	84	67	79.8	84	61	72.6
Relates to services to and from Brisbane only.						
Rockhampton						
QantasLink	175	116	66.3	174	131	75.3
Virgin Australia	155	83	53.5	154	87	56.5
All Airlines	330	199	60.3	328	218	66.5
Relates to services to and from Brisbane only.						
Sunshine Coast						
Jetstar	162	137	84.6	162	121	74.7
Qantas	89	56	62.9	88	52	59.1
Virgin Australia	131	104	79.4	131	96	73.3
All Airlines	382	297	77.7	381	269	70.6
Relates to services to and from Melbourne and Sydney only.						

Airport	Arrivals			Departures		
	Sectors	On Time		Sectors	On Time	
	Flown	No.	%	Flown	No.	%
Sydney						
Jetstar	1,443	1,102	76.4	1,444	1,126	78.0
Qantas	2,179	1,644	75.4	2,197	1,686	76.7
QantasLink	914	723	79.1	923	723	78.3
Rex Airlines	434	336	77.4	438	342	78.1
Virgin Australia	2,392	1,835	76.7	2,391	1,898	79.4
All Airlines	7,362	5,640	76.6	7,393	5,775	78.1

Relates to services to and from Adelaide, Albury, Ballina, Brisbane, Cairns, Canberra, Coffs Harbour, Dubbo, Gold Coast, Hamilton Island, Hobart, Launceston, Melbourne, Perth, Port Macquarie, Sunshine Coast and Wagga Wagga only.

Townsville

Jetstar	60	51	85.0	60	48	80.0
Qantas	26	21	80.8	25	20	80.0
QantasLink	284	204	71.8	284	207	72.9
Rex Airlines	12	10	83.3	12	11	91.7
Virgin Australia	132	89	67.4	131	87	66.4
All Airlines	514	375	73.0	512	373	72.9

Relates to services to and from Brisbane and Cairns only.

Wagga Wagga

QantasLink	101	84	83.2	101	91	90.1
Rex Airlines	90	77	85.6	90	77	85.6
All Airlines	191	161	84.3	191	168	88.0

Relates to services to and from Sydney only.

Definitions

On time arrival	A flight arrival is counted as "on time" if it arrived at the gate before 15 minutes after the scheduled arrival time shown in the carriers' schedule. Neither diverted nor cancelled flights count as on time.
On time departure	A flight departure is counted as "on time" if it departs the gate before 15 minutes after the scheduled departure time shown in the carriers' schedule.
Cancellation	A flight removed from service within 7 days of scheduled departure is regarded as a cancellation.
On time departure percentage	The percentage of on time departures is measured against the number of departures <i>operated</i> on any particular sector.
On time arrival percentage	The percentage of on time arrivals is measured against the number of arrivals <i>operated</i> on any particular sector.
Cancellation percentage	The percentage of cancellations is measured against the number of services <i>scheduled</i> on any particular sector.

Airlines and Reporting

Data has been gathered since November 2003, although some airlines commenced reporting at a later date, including Jetstar which first reported in May 2004, Tigerair Australia in April 2008, Virgin Australia Regional Airlines in May 2013, Skytrans in May 2023, Bonza in November 2023 and Hinterland in March 2024. Tigerair Australia ceased operations in March 2020 and data was not received for that month. Bonza ceased operations at the end of April 2024 and data was not received for that month.

Virgin Blue was rebranded as Virgin Australia in May 2011 and Tiger Airways was rebranded as Tigerair Australia in August 2013 and time series data in Microsoft Excel spread sheet format on the BITRE website have been revised to reflect these changes. With effect from August 2021, Regional Express is reported as Rex Airlines.

Services operated by Skywest on behalf of Virgin Australia using ATR/F100 aircraft commenced in November 2011 and were shown separately as Virgin Australia – ATR/F100 Operations. Virgin Australia Regional Airlines commenced operations in May 2013. It was formed after the acquisition of Skywest by Virgin Australia and represented a combination of operations previously reported under Skywest and Virgin Australia – ATR/F100 Operations. In February 2016, Virgin Australia transferred their ATR fleet from Virgin Australia Regional Airlines to Virgin Australia.