



Australian Government

**Department of Infrastructure, Transport,
Regional Development, Communications and the Arts**
Bureau of Infrastructure and Transport Research Economics

STATISTICAL REPORT



bitre

Aviation

**Domestic aviation activity
February 2023**

© Commonwealth of Australia 2023

ISSN: 1832 - 1968

Ownership of intellectual property rights in this publication

Unless otherwise noted, copyright (and any other intellectual property rights, if any) in this publication is owned by the Commonwealth of Australia (referred to below as the Commonwealth).

Disclaimer

The material contained in this publication is made available on the understanding that the Commonwealth is not providing professional advice, and that users exercise their own skill and care with respect to its use, and seek independent advice if necessary.

The Commonwealth makes no representations or warranties as to the contents or accuracy of the information contained in this publication. To the extent permitted by law, the Commonwealth disclaims liability to any person or organisation in respect of anything done, or omitted to be done, in reliance upon information contained in this publication.

Creative Commons licence

With the exception of (a) the Coat of Arms; and (b) the Department of Infrastructure, Transport, Regional Development, Communications and the Arts' photos and graphics, copyright in this publication is licensed under a Creative Commons Attribution 3.0 Australia Licence.

Creative Commons Attribution 3.0 Australia Licence is a standard form licence agreement that allows you to copy, communicate and adapt this publication provided that you attribute the work to the Commonwealth and abide by the other licence terms. A summary of the licence terms is available from <http://creativecommons.org/licenses/by/3.0/au/deed.en>.

The full licence terms are available from <http://creativecommons.org/licenses/by/3.0/au/legalcode>.

Use of the Coat of Arms

The Department of the Prime Minister and Cabinet sets the terms under which the Coat of Arms is used. Please refer to the Department's Commonwealth Coat of Arms and Government branding web page <http://www.dpmc.gov.au/guidelines/index.cfm#brand> and, in particular, the Guidelines on the use of the Commonwealth Coat of Arms publication.

An appropriate citation for this report is:

Bureau of Infrastructure and Transport Research Economics (BITRE), 2023, Domestic aviation activity, Statistical Report, BITRE, Canberra ACT.

Contact us

This publication is available in PDF format. All other rights are reserved, including in relation to any Departmental logos or trade marks which may exist. For enquiries regarding the licence and any use of this publication, please contact:

Bureau of Infrastructure and Transport Research Economics (BITRE)
Department of Infrastructure, Transport, Regional Development, Communications and the Arts
GPO Box 501, Canberra ACT 2601, Australia
Telephone: (international) +61 2 6274 7210
Fax: (international) +61 2 6274 6855
Email: bitre@infrastructure.gov.au
Website: www.bitre.gov.au

Inquiries

Should you require additional information about the statistics contained in this publication:

Nebojsa Pavlovic

Telephone (02) 6274 6817

Electronic mail: AVSTATS@infrastructure.gov.au

Nebojsa.Pavlovic@infrastructure.gov.au

Web site: <http://www.bitre.gov.au/statistics/aviation/domestic.aspx>

FOREWORD

This report provides an overview of domestic (including charter) commercial aviation activity in Australia for the month of February 2023.

The data covers revenue passengers carried by Australian-registered operators of scheduled regular public transport services over Australian flight stages and fixed-wing charter operators. These estimates include passengers carried between domestic airports on international flights operated by these carriers. The passengers carried refer to traffic on board by stages.

Estimates of passengers and aircraft movements for charter aviation are included in this publication, where BITRE confidentiality standards are met.

Individual routes shown are restricted to those with an average exceeding 8,000 passengers per month over the previous six months where two or more airlines operate in competition. However, for the period from November 2021 through to December 2022, the major airlines (Qantas Group, Virgin Australia and Rex Airlines) agreed to publication of the top 35 routes based on pre-COVID activity (December 2019) whether or not they were meeting the above criteria. From January 2023, the passenger load and dual competition requirements were reinstated due to the continued recovery of passenger numbers.

Information on the total network for the month of February 2023 and on the Regular Public Transport (RPT) network for the month of February 2023 is presented on page 2, with estimates for the year ended February 2023 presented on page 3.

Detailed information on individual routes can be found in the RPT summary pages 4-13 of this publication.

The top ten airports in terms of RPT passenger movements are shown on page 14.

Data on domestic RPT cargo movements at the top five cargo airports are provided on page 15. The table includes cargo carried on passenger flights operated by the Qantas group (including Jetstar), Virgin Australia, Air North and Skippers as well as the cargo carried by dedicated freighter aircraft operated by Qantas Freight and Toll.

The long-term trends for the top ten competitive RPT routes are presented graphically on pages 16-25.

Domestic RPT passenger movements at regional airports are shown on pages 26-27.

Tables providing estimates of domestic charter aviation activity are shown on page 28. BITRE confidentiality standards restrict publication of detailed estimates for individual Australian airports, with the exception of Perth Airport.

A list of definitions can be found on page 29.

This report was prepared by the Aviation Statistics Section of the Bureau of Infrastructure and Transport Research Economics with data provided by airlines.

Estimates are included where data were not available and data presented in this publication may contain revisions to previously published data.

Where figures have been rounded, discrepancies may occur between sums of component items and totals, and in percentage changes which are derived from figures prior to rounding.

CONTENTS

Highlights	1
Total network.....	2
RPT network	2
Top competitive routes.....	4
Top ten airports – passenger movements.....	14
Top five airports – cargo movements.....	15
Top ten routes	16
1. Melbourne – Sydney	16
2. Brisbane – Sydney.....	17
3. Brisbane – Melbourne	18
4. Gold Coast – Sydney	19
5. Adelaide – Melbourne	20
6. Gold Coast – Melbourne	21
7. Melbourne – Perth	22
8. Adelaide – Sydney	23
9. Perth – Sydney	24
10. Hobart – Melbourne	25
Top fifty regional airports	26
Domestic charter activity.....	28
Definitions	29

This page is intentionally left blank.

HIGHLIGHTS

The domestic aviation industry continued to recover in February 2023. Revenue passenger numbers were 63.9 per cent higher than February 2022 levels but still 8.4 per cent below pre-COVID February 2020.

There were 4.31 million passengers carried on Australian domestic commercial aviation (including charter operations) in February 2023, compared to 2.70 million in February 2022 and 4.60 million in pre-COVID February 2020.

For the month of February 2023, there were 45,986 RPT aircraft trips, compared to 32,346 in February 2022 and 48,410 in pre-COVID February 2020.

4.00 million passengers were carried on RPT flights in February 2023, compared to 2.44 million reported in February 2022 and 4.37 million reported in pre-COVID February 2020.

For the year ending February 2023 there were 53.68 million RPT passengers, an increase of 112.4 per cent on the year ending February 2022 and a decrease of 12.4 per cent on the year ending February 2020.

RPT revenue passenger kilometres (RPKs) performed were 4.63 billion for the month, compared with 2.51 billion in February 2022.

Capacity, measured by available seat kilometres (ASKs), increased to 5.99 billion in February 2023 compared to 3.66 billion in February 2022.

The industry wide load factor (RPKs/ASKs) increased from 68.4 per cent in February 2022 to 77.2 per cent in February 2023. The highest load factor (88.2 per cent) was recorded on the Adelaide – Gold Coast route while the lowest load factor (52.6 per cent) was recorded on the Sydney – Wagga Wagga route.

For the month of February 2023, Melbourne – Sydney was Australia's busiest RPT route with 573,180 passengers, followed by Brisbane – Sydney with 298,719 passengers and Brisbane – Melbourne with 229,893 passengers.

Sydney was Australia's busiest domestic airport with 1.73 million passenger movements in February 2023, followed by Melbourne with 1.65 million passenger movements and Brisbane with 1.14 million passenger movements.

Total cargo movements at Australian airports on domestic RPT flights were 25,751 tonnes in February 2023, a decrease of 29.0 per cent compared with February 2022.

In February 2023, there were 1.65 million domestic passenger movements through regional airports, compared to 1.14 million in February 2022 and 1.73 million in pre-COVID February 2020. Most regional airports for which data is available for publishing recorded large increases in February 2023 compared to February 2022.

Fixed-wing charter operators carried 307,603 passengers in February 2023, compared to 260,052 in February 2022 and 232,236 in pre-COVID February 2020. Perth Airport accounted for 36.6 per cent of all charter passengers in Australia.

TOTAL NETWORK

Summary of monthly commercial aviation activity

	Feb 2022	Feb 2023	% Change
Total passengers carried (millions)	2.70	4.31	59.5
Aircraft trips (000s)	37.3	51.2	37.2

Note: Regular Public Transport and charter aviation activity
Helicopter, joy flights and sightseeing charter flights not included.

RPT NETWORK

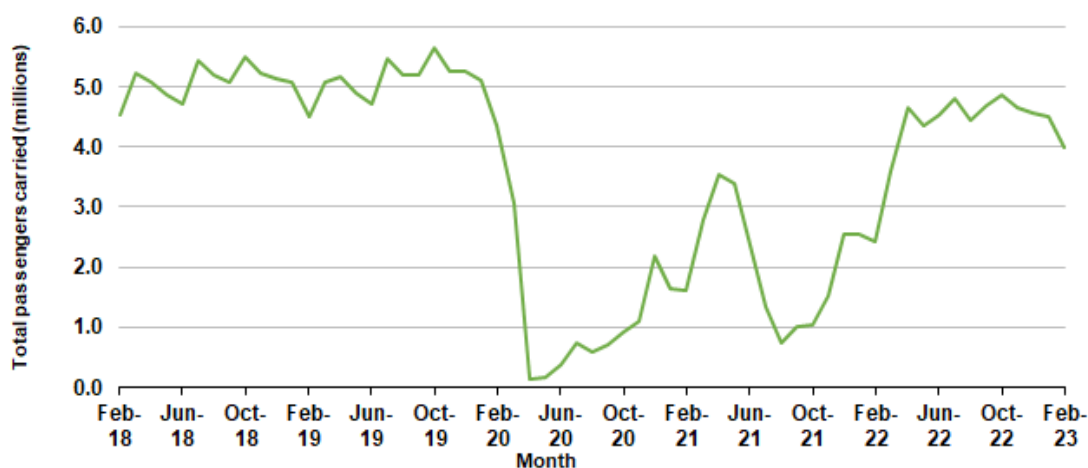
Summary of monthly RPT activity

	Feb 2022	Feb 2023	% Change
Total passengers carried (millions)	2.44	4.00	63.9
Revenue passenger kilometres (billions)	2.51	4.63	84.7
Available seats (millions)	3.58	5.33	48.8
Available seat kilometres (billions)	3.66	5.99	63.7
Load factor %	68.4	77.2	8.8 *
Aircraft trips (000s)	32.3	46.0	42.2

* percentage point difference

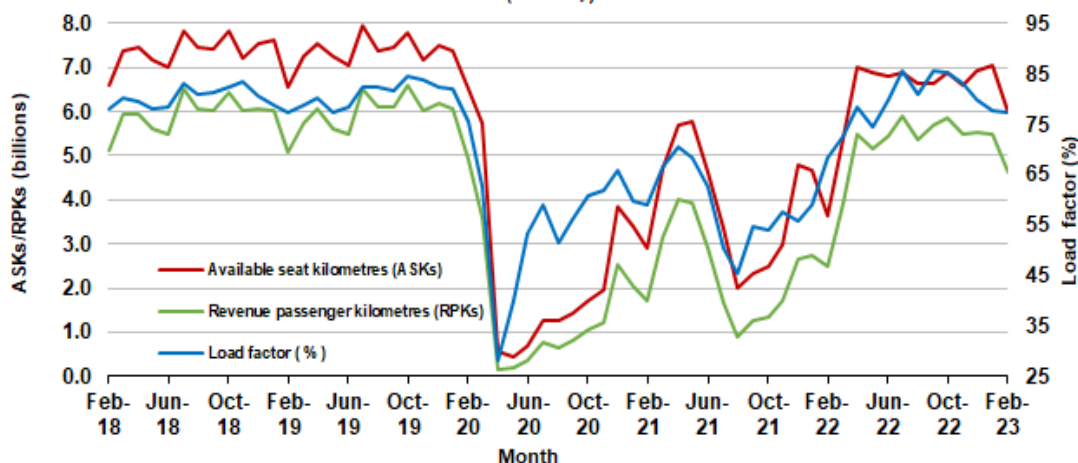
Domestic RPT passenger traffic

(monthly)



RPT Network utilisation

(monthly)



TOTAL NETWORK

Summary of annual commercial aviation activity

	YE Feb 2022	YE Feb 2023	% Change
Total passengers carried (millions)	28.64	57.40	100.4
Aircraft trips (000s)	447.9	651.1	45.4

Note: Regular Public Transport and charter aviation activity
Helicopter, joy flights and sightseeing charter flights not included.

RPT NETWORK

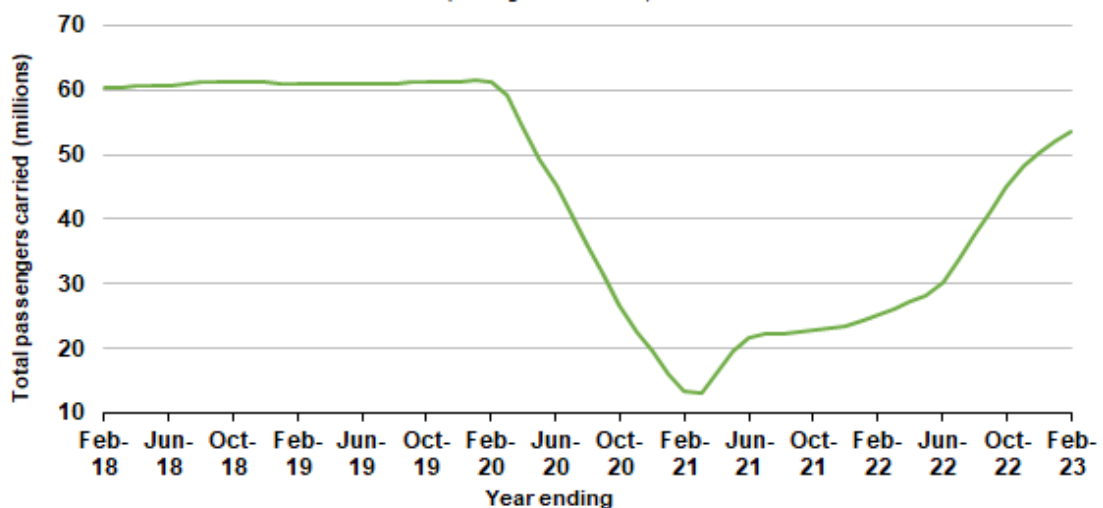
Summary of annual RPT activity

	YE Feb 2022	YE Feb 2023	% Change
Total passengers carried (millions)	25.28	53.68	112.4
Revenue passenger kilometres (billions)	28.86	64.00	121.8
Available seats (millions)	41.64	68.94	65.6
Available seat kilometres (billions)	47.02	79.76	69.6
Load factor %	61.4	80.2	18.9 *
Aircraft trips (000s)	384.7	583.9	51.8

* percentage point difference

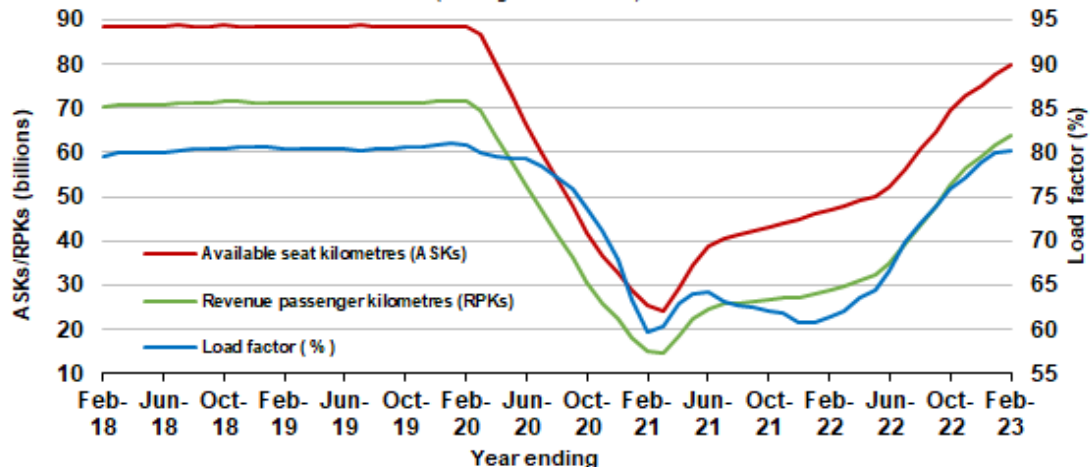
Domestic RPT passenger traffic

(moving annual totals)



RPT Network utilisation

(moving annual totals)



TOP COMPETITIVE ROUTES

Table 1: Passengers carried (000s) — annual activity

	City-Pair	YE Feb 2022	YE Feb 2023	% Change
1	Melbourne - Sydney	2,584.5	7,412.3	186.8
2	Brisbane - Sydney	1,250.3	3,883.1	210.6
3	Brisbane - Melbourne	945.6	2,990.5	216.2
4	Gold Coast - Sydney	947.0	2,557.9	170.1
5	Gold Coast - Melbourne	952.4	2,468.3	159.2
6	Adelaide - Melbourne	724.6	2,312.1	219.1
7	Melbourne - Perth	254.9	1,649.9	547.4
8	Adelaide - Sydney	603.5	1,530.2	153.6
9	Perth - Sydney	304.1	1,360.8	347.5
10	Hobart - Melbourne	475.3	1,313.0	176.3
11	Brisbane - Cairns	1,001.7	1,190.4	18.8
12	Cairns - Sydney	314.5	942.7	199.8
13	Canberra - Melbourne	312.9	915.6	192.6
14	Brisbane - Perth	260.8	885.3	239.4
15	Brisbane - Townsville	681.6	853.8	25.3
16	Cairns - Melbourne	353.8	822.3	132.4
17	Launceston - Melbourne	314.1	774.9	146.7
18	Melbourne - Sunshine Coast	313.5	771.3	146.0
19	Sunshine Coast - Sydney	278.7	765.4	174.6
20	Adelaide - Brisbane	442.2	763.7	72.7
21	Brisbane - Mackay	534.7	737.6	38.0
22	Hobart - Sydney	306.6	695.6	126.8
23	Brisbane - Canberra	291.8	620.0	112.5
24	Canberra - Sydney	178.2	584.1	227.7
25	Adelaide - Perth	..	583.8	NA
26	Ballina - Sydney	393.5	549.2	39.6
27	Karratha - Perth	435.3	538.4	23.7
28	Perth - Port Hedland	376.3	494.3	31.4
29	Brisbane - Newcastle	208.7	480.6	130.3
30	Brisbane - Rockhampton	360.7	466.7	29.4
31	Melbourne - Newcastle	184.8	423.4	129.1
32	Broome - Perth	380.8	407.1	6.9
33	Newman - Perth	323.4	375.7	16.2
34	Brisbane - Darwin	257.7	338.3	31.3
35	Kalgoorlie - Perth	262.6	333.1	26.9
36	Launceston - Sydney	143.0	315.0	120.3
37	Darwin - Melbourne	..	309.0	NA
38	Brisbane - Hobart	258.8	302.0	16.7
39	Brisbane - Proserpine	252.1	293.5	16.4
40	Hamilton Island - Sydney	109.1	262.6	140.6
41	Adelaide - Gold Coast	137.9	237.3	72.2
42	Coffs Harbour - Sydney	122.7	214.0	74.4
43	Brisbane - Gladstone	141.0	203.7	44.5
44	Adelaide - Darwin	..	196.2	NA
45	Adelaide - Port Lincoln	142.1	178.3	25.5
46	Brisbane - Launceston	142.9	177.0	23.9
47	Brisbane - Hamilton Island	195.7	174.3	-10.9
48	Brisbane - Emerald	136.0	169.3	24.5
49	Darwin - Perth	..	168.3	NA
50	Adelaide - Canberra	..	165.1	NA

continued

Table 1: (continued) Passengers carried (000s) — annual activity

	City-Pair	YE Feb 2022	YE Feb 2023	% Change
51	Albury - Sydney	..	159.0	NA
52	Dubbo - Sydney	74.4	156.0	109.8
53	Port Macquarie - Sydney	..	152.5	NA
54	Canberra - Gold Coast	82.8	152.5	84.2
55	Melbourne - Mildura	..	145.8	NA
56	Sydney - Wagga Wagga	..	144.2	NA
57	Brisbane - Mount Isa	..	141.1	NA
58	Devonport - Melbourne	..	106.5	NA
59	Brisbane - Moranbah	..	102.7	NA
	Total domestic network	25,275.3	53,683.5	112.4

.. Data not available for release.

Table 2: Passengers carried (000s) — monthly activity

	City-Pair	Feb 2022	Feb 2023	% Change
1	Melbourne - Sydney	328.0	573.2	74.7
2	Brisbane - Sydney	181.9	298.7	64.2
3	Brisbane - Melbourne	144.7	229.9	58.9
4	Gold Coast - Sydney	129.1	173.9	34.6
5	Adelaide - Melbourne	97.6	168.4	72.5
6	Gold Coast - Melbourne	138.7	151.8	9.4
7	Melbourne - Perth	17.7	133.3	651.8
8	Adelaide - Sydney	68.4	120.0	75.3
9	Perth - Sydney	12.2	111.7	818.1
10	Hobart - Melbourne	61.4	104.4	70.1
11	Brisbane - Cairns	54.0	80.8	49.7
12	Canberra - Melbourne	41.0	74.2	81.2
13	Brisbane - Perth	10.2	71.1	597.9
14	Brisbane - Townsville	42.6	60.5	42.1
15	Launceston - Melbourne	38.7	59.9	54.8
16	Hobart - Sydney	37.3	58.5	56.6
17	Adelaide - Brisbane	33.0	55.2	67.0
18	Brisbane - Mackay	36.2	54.6	51.0
19	Sunshine Coast - Sydney	34.7	51.4	48.1
20	Adelaide - Perth	..	47.6	NA
21	Canberra - Sydney	21.6	47.1	117.7
22	Cairns - Sydney	26.1	45.8	75.3
23	Melbourne - Sunshine Coast	44.5	43.7	-1.8
24	Brisbane - Canberra	30.7	42.3	37.8
25	Ballina - Sydney	31.9	41.6	30.6
26	Cairns - Melbourne	30.1	40.6	34.9
27	Karratha - Perth	30.6	39.5	29.2
28	Perth - Port Hedland	29.7	37.7	26.9
29	Brisbane - Rockhampton	25.0	36.6	46.5
30	Brisbane - Newcastle	22.7	36.0	58.6
31	Melbourne - Newcastle	21.3	29.5	38.6
32	Newman - Perth	24.5	28.5	16.4
33	Kalgoorlie - Perth	19.2	26.7	39.1
34	Launceston - Sydney	17.4	24.9	42.8
35	Brisbane - Hobart	17.9	24.8	38.4
36	Brisbane - Darwin	14.2	18.9	33.2
37	Broome - Perth	13.7	18.2	33.0
38	Brisbane - Proserpine	17.1	18.1	5.8
39	Hamilton Island - Sydney	15.4	17.9	16.5
40	Coffs Harbour - Sydney	13.0	16.7	28.1
41	Adelaide - Gold Coast	11.0	16.1	45.8
42	Darwin - Melbourne	..	15.1	NA
43	Brisbane - Gladstone	10.5	15.1	43.3
44	Adelaide - Canberra	..	14.0	NA
45	Brisbane - Emerald	8.9	13.9	56.2
46	Adelaide - Port Lincoln	11.0	13.8	25.8
47	Brisbane - Launceston	8.3	13.7	64.2
48	Dubbo - Sydney	8.4	12.6	49.5
49	Adelaide - Darwin	..	12.1	NA
50	Port Macquarie - Sydney	..	12.0	NA

continued

Table 2: (continued) Passengers carried (000s) — monthly activity

	City-Pair	Feb 2022	Feb 2023	% Change
51	Albury - Sydney	..	11.3	NA
52	Canberra - Gold Coast	8.0	11.3	40.1
53	Sydney - Wagga Wagga	..	11.1	NA
54	Melbourne - Mildura	..	11.0	NA
55	Brisbane - Hamilton Island	12.0	10.5	-12.5
56	Darwin - Perth	..	10.3	NA
57	Brisbane - Mount Isa	..	10.1	NA
58	Devonport - Melbourne	..	9.0	NA
59	Brisbane - Moranbah	..	8.8	NA
	Total domestic network	2,439.7	3,997.5	63.9

.. Data not available for release.

Table 3: Available seats (000s) — monthly activity

	City-Pair	Feb 2022	Feb 2023	% Change
1	Melbourne - Sydney	452.9	720.7	59.1
2	Brisbane - Sydney	239.7	395.4	65.0
3	Brisbane - Melbourne	200.3	296.4	48.0
4	Gold Coast - Sydney	157.2	209.0	32.9
5	Adelaide - Melbourne	131.6	207.9	58.0
6	Gold Coast - Melbourne	167.6	181.6	8.3
7	Melbourne - Perth	27.2	156.1	474.6
8	Adelaide - Sydney	97.3	147.4	51.4
9	Perth - Sydney	20.5	131.7	543.7
10	Hobart - Melbourne	77.2	127.1	64.6
11	Brisbane - Cairns	76.5	96.9	26.6
12	Canberra - Melbourne	63.5	104.0	63.6
13	Brisbane - Perth	16.1	89.2	453.6
14	Brisbane - Townsville	60.8	84.2	38.4
15	Launceston - Melbourne	48.9	76.5	56.5
16	Hobart - Sydney	52.2	72.3	38.5
17	Adelaide - Brisbane	44.7	73.4	64.0
18	Brisbane - Mackay	54.2	77.7	43.3
19	Sunshine Coast - Sydney	44.9	65.5	45.8
20	Adelaide - Perth	..	55.3	NA
21	Canberra - Sydney	40.8	71.9	76.2
22	Cairns - Sydney	33.6	54.1	61.1
23	Melbourne - Sunshine Coast	58.4	56.3	-3.7
24	Brisbane - Canberra	51.9	70.9	36.5
25	Ballina - Sydney	39.8	51.8	30.2
26	Cairns - Melbourne	37.5	49.2	31.0
27	Karratha - Perth	61.1	58.0	-5.0
28	Perth - Port Hedland	51.3	49.5	-3.5
29	Brisbane - Rockhampton	36.6	51.5	40.6
30	Brisbane - Newcastle	29.9	55.2	84.9
31	Melbourne - Newcastle	27.1	37.3	37.6
32	Newman - Perth	52.3	47.1	-10.0
33	Kalgoorlie - Perth	36.9	41.2	11.7
34	Launceston - Sydney	22.8	29.8	30.8
35	Brisbane - Hobart	24.5	31.3	27.7
36	Brisbane - Darwin	20.2	23.2	14.9
37	Broome - Perth	32.7	29.9	-8.3
38	Brisbane - Proserpine	21.6	22.7	4.9
39	Hamilton Island - Sydney	22.6	26.2	16.1
40	Coffs Harbour - Sydney	21.2	23.0	8.3
41	Adelaide - Gold Coast	14.0	18.2	29.8
42	Darwin - Melbourne	..	21.4	NA
43	Brisbane - Gladstone	20.1	27.1	34.9
44	Adelaide - Canberra	..	25.9	NA
45	Brisbane - Emerald	16.1	20.1	24.9
46	Adelaide - Port Lincoln	17.1	21.0	22.6
47	Brisbane - Launceston	12.8	18.6	45.6
48	Dubbo - Sydney	14.7	22.1	49.6
49	Adelaide - Darwin	..	21.5	NA
50	Port Macquarie - Sydney	..	20.5	NA

continued

Table 3: (continued) Available seats (000s) — monthly activity

	City-Pair	Feb 2022	Feb 2023	% Change
51	Albury - Sydney	..	20.2	NA
52	Canberra - Gold Coast	10.2	15.3	49.3
53	Sydney - Wagga Wagga	..	21.2	NA
54	Melbourne - Mildura	..	14.8	NA
55	Brisbane - Hamilton Island	17.1	15.2	-11.0
56	Darwin - Perth	..	14.9	NA
57	Brisbane - Mount Isa	..	18.1	NA
58	Devonport - Melbourne	..	13.7	NA
59	Brisbane - Moranbah	..	15.0	NA
	Total domestic network	3,579.1	5,325.8	48.8

.. Data not available for release.

Table 4: Load factors (%) — monthly activity

	City-Pair	Feb 2022	Feb 2023	% Point diff
1	Melbourne - Sydney	72.5	79.6	7.1
2	Brisbane - Sydney	75.9	75.5	-0.4
3	Brisbane - Melbourne	72.2	77.6	5.4
4	Gold Coast - Sydney	82.1	83.2	1.1
5	Adelaide - Melbourne	74.2	81.0	6.8
6	Gold Coast - Melbourne	82.8	83.6	0.8
7	Melbourne - Perth	65.3	85.4	20.1
8	Adelaide - Sydney	70.3	81.4	11.1
9	Perth - Sydney	59.5	84.8	25.3
10	Hobart - Melbourne	79.5	82.2	2.7
11	Brisbane - Cairns	70.6	83.5	12.9
12	Canberra - Melbourne	64.5	71.4	6.9
13	Brisbane - Perth	63.3	79.8	16.5
14	Brisbane - Townsville	70.0	71.9	1.9
15	Launceston - Melbourne	79.2	78.3	-0.9
16	Hobart - Sydney	71.6	80.9	9.3
17	Adelaide - Brisbane	73.8	75.1	1.3
18	Brisbane - Mackay	66.7	70.3	3.6
19	Sunshine Coast - Sydney	77.3	78.5	1.2
20	Adelaide - Perth	..	86.1	NA
21	Canberra - Sydney	53.0	65.5	12.5
22	Cairns - Sydney	77.8	84.6	6.8
23	Melbourne - Sunshine Coast	76.2	77.7	1.5
24	Brisbane - Canberra	59.1	59.7	0.6
25	Ballina - Sydney	80.1	80.3	0.2
26	Cairns - Melbourne	80.2	82.6	2.4
27	Karratha - Perth	50.1	68.1	18.0
28	Perth - Port Hedland	57.9	76.2	18.3
29	Brisbane - Rockhampton	68.2	71.1	2.9
30	Brisbane - Newcastle	76.0	65.2	-10.8
31	Melbourne - Newcastle	78.5	79.1	0.6
32	Newman - Perth	46.8	60.5	13.7
33	Kalgoorlie - Perth	52.0	64.7	12.7
34	Launceston - Sydney	76.4	83.4	7.0
35	Brisbane - Hobart	73.2	79.3	6.1
36	Brisbane - Darwin	69.9	81.1	11.2
37	Broome - Perth	41.9	60.8	18.9
38	Brisbane - Proserpine	79.1	79.8	0.7
39	Hamilton Island - Sydney	68.0	68.2	0.2
40	Coffs Harbour - Sydney	61.3	72.5	11.2
41	Adelaide - Gold Coast	78.5	88.2	9.7
42	Darwin - Melbourne	..	70.6	NA
43	Brisbane - Gladstone	52.4	55.7	3.3
44	Adelaide - Canberra	..	54.0	NA
45	Brisbane - Emerald	55.3	69.2	13.9
46	Adelaide - Port Lincoln	64.0	65.7	1.7
47	Brisbane - Launceston	65.2	73.5	8.3
48	Dubbo - Sydney	57.3	57.3	0.0
49	Adelaide - Darwin	..	56.1	NA
50	Port Macquarie - Sydney	..	58.7	NA

continued

Table 4: (continued) Load factors (%) — monthly activity

	City-Pair	Feb 2022	Feb 2023	% Point diff
51	Albury - Sydney	..	56.3	NA
52	Canberra - Gold Coast	78.5	73.7	-4.8
53	Sydney - Wagga Wagga	..	52.6	NA
54	Melbourne - Mildura	..	74.8	NA
55	Brisbane - Hamilton Island	69.9	68.7	-1.2
56	Darwin - Perth	..	69.4	NA
57	Brisbane - Mount Isa	..	55.7	NA
58	Devonport - Melbourne	..	65.8	NA
59	Brisbane - Moranbah	..	58.8	NA
	Total domestic network	68.4	77.2	8.8

.. Data not available for release.

Table 5: Aircraft trips ^(a) — monthly activity

	City-Pair	Feb 2022	Feb 2023	% Change
1	Melbourne - Sydney	2,772	4,112	48.3
2	Brisbane - Sydney	1,523	2,430	59.6
3	Brisbane - Melbourne	1,228	1,785	45.4
4	Gold Coast - Sydney	909	1,212	33.3
5	Adelaide - Melbourne	821	1,283	56.3
6	Gold Coast - Melbourne	882	987	11.9
7	Melbourne - Perth	250	909	263.6
8	Adelaide - Sydney	594	899	51.3
9	Perth - Sydney	137	705	414.6
10	Hobart - Melbourne	492	735	49.4
11	Brisbane - Cairns	532	631	18.6
12	Canberra - Melbourne	466	747	60.3
13	Brisbane - Perth	89	515	478.7
14	Brisbane - Townsville	406	578	42.4
15	Launceston - Melbourne	425	654	53.9
16	Hobart - Sydney	280	448	60.0
17	Adelaide - Brisbane	281	608	116.4
18	Brisbane - Mackay	367	574	56.4
19	Sunshine Coast - Sydney	252	416	65.1
20	Adelaide - Perth	..	319	NA
21	Canberra - Sydney	603	1,198	98.7
22	Cairns - Sydney	189	272	43.9
23	Melbourne - Sunshine Coast	319	318	-0.3
24	Brisbane - Canberra	359	515	43.5
25	Ballina - Sydney	333	382	14.7
26	Cairns - Melbourne	208	258	24.0
27	Karratha - Perth	370	355	-4.1
28	Perth - Port Hedland	335	330	-1.5
29	Brisbane - Rockhampton	369	571	54.7
30	Brisbane - Newcastle	276	487	76.4
31	Melbourne - Newcastle	166	235	41.6
32	Newman - Perth	326	303	-7.1
33	Kalgoorlie - Perth	256	284	10.9
34	Launceston - Sydney	138	186	34.8
35	Brisbane - Hobart	150	188	25.3
36	Brisbane - Darwin	142	198	39.4
37	Broome - Perth	202	222	9.9
38	Brisbane - Proserpine	145	152	4.8
39	Hamilton Island - Sydney	128	151	18.0
40	Coffs Harbour - Sydney	348	439	26.1
41	Adelaide - Gold Coast	84	102	21.4
42	Darwin - Melbourne	..	121	NA
43	Brisbane - Gladstone	244	341	39.8
44	Adelaide - Canberra	..	231	NA
45	Brisbane - Emerald	239	302	26.4
46	Adelaide - Port Lincoln	430	513	19.3
47	Brisbane - Launceston	76	104	36.8
48	Dubbo - Sydney	337	431	27.9
49	Adelaide - Darwin	..	168	NA
50	Port Macquarie - Sydney	..	378	NA

continued

Table 5: (continued) Aircraft trips — monthly activity

	City-Pair	Feb 2022	Feb 2023	% Change
51	Albury - Sydney	..	395	NA
52	Canberra - Gold Coast	67	86	28.4
53	Sydney - Wagga Wagga	..	412	NA
54	Melbourne - Mildura	..	354	NA
55	Brisbane - Hamilton Island	98	89	-9.2
56	Darwin - Perth	..	88	NA
57	Brisbane - Mount Isa	..	160	NA
58	Devonport - Melbourne	..	304	NA
59	Brisbane - Moranbah	..	199	NA
	Total domestic network	32,346	45,986	42.2

(a) Includes RPT cargo flights.

.. Data not available for release.

TOP TEN AIRPORTS – PASSENGER MOVEMENTS

Table 6: Top ten airports, RPT passenger movements (000s) - monthly activity

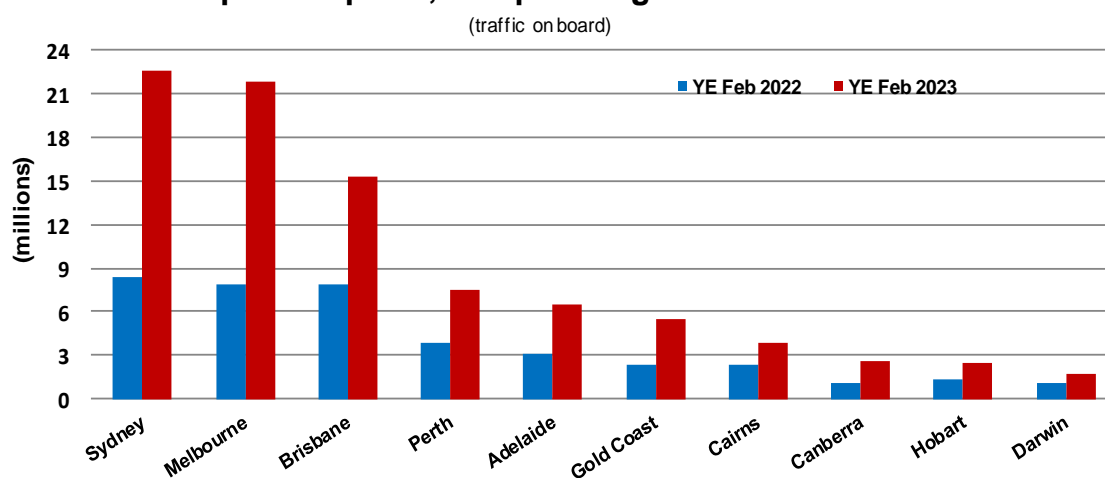
Airport	Feb 2022	Feb 2023	% Change	% of Total
1 Sydney	1,011.8	1,731.9	71.2	21.7
2 Melbourne	1,007.0	1,654.3	64.3	20.7
3 Brisbane	710.6	1,141.5	60.6	14.3
4 Perth	204.4	590.3	188.8	7.4
5 Adelaide	277.3	506.0	82.5	6.3
6 Gold Coast	303.0	378.4	24.9	4.7
7 Cairns	148.9	229.3	54.1	2.9
8 Hobart	130.6	209.9	60.7	2.6
9 Canberra	112.9	199.7	76.8	2.5
10 Townsville	76.0	108.2	42.4	1.4
Total top ten airports	3,982.5	6,749.6	69.5	84.4
Total domestic network	4,879.4	7,995.0	63.9	100.0

Table 7: Top ten airports, RPT passenger movements (000s) - annual activity

Airport	YE Feb 2022	YE Feb 2023	% Change	% of Total
1 Sydney	8,368.8	22,623.8	170.3	21.1
2 Melbourne	7,841.9	21,895.5	179.2	20.4
3 Brisbane	7,918.3	15,351.1	93.9	14.3
4 Perth	3,802.4	7,511.5	97.5	7.0
5 Adelaide	3,144.6	6,551.0	108.3	6.1
6 Gold Coast	2,374.4	5,534.7	133.1	5.2
7 Cairns	2,383.6	3,840.4	61.1	3.6
8 Canberra	1,047.0	2,609.9	149.3	2.4
9 Hobart	1,319.5	2,460.4	86.5	2.3
10 Darwin	1,097.7	1,687.0	53.7	1.6
Total top ten airports	39,298.3	90,065.3	129.2	83.9
Total domestic network	50,550.5	107,366.9	112.4	100.0

Note: Airport passenger movement numbers are the sum of passenger arrivals and departures at each airport.

Top ten airports, RPT passenger movements



TOP FIVE AIRPORTS – CARGO MOVEMENTS

Table 8: Top five airports, domestic RPT cargo movements (000s tonnes) - monthly activity

Airport	Feb 2022	Feb 2023	% Change	% of Total
1 Melbourne	9.1	6.9	-24.2	26.8
2 Sydney	8.4	5.7	-31.9	22.2
3 Brisbane	6.0	4.5	-25.1	17.5
4 Perth	3.1	2.7	-14.4	10.3
5 Adelaide	2.3	1.4	-37.8	5.5
Total top five airports	28.9	21.2	-26.6	82.4
Total domestic network	36.3	25.8	-29.0	100.0

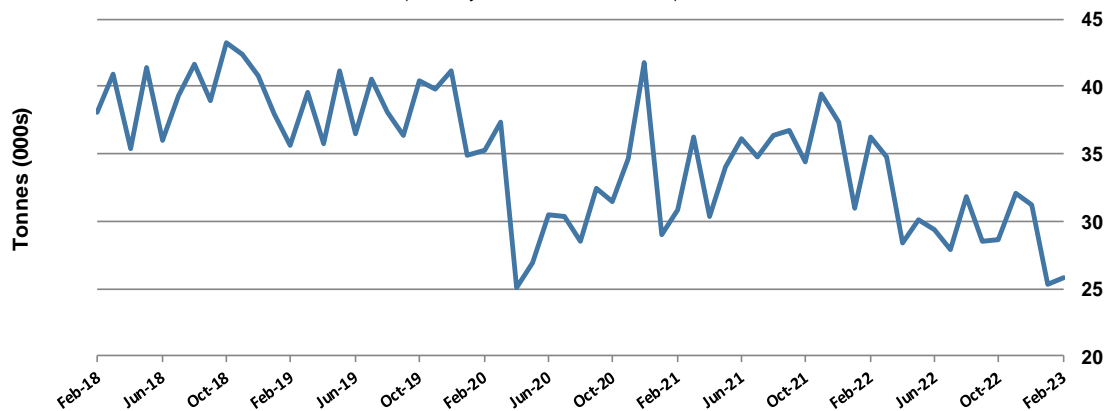
Table 9: Top five airports, domestic RPT cargo movements (000s tonnes) - annual activity

Airport	YE Feb 2022	YE Feb 2023	% Change	% of Total
1 Melbourne	108.1	92.9	-14.1	26.2
2 Sydney	99.3	78.1	-21.3	22.1
3 Brisbane	68.8	60.7	-11.8	17.2
4 Perth	38.9	35.5	-8.8	10.0
5 Adelaide	26.4	21.1	-20.3	6.0
Total top five airports	341.6	288.3	-15.6	81.5
Total domestic network	423.0	353.9	-16.3	100.0

Note: Airport cargo tonnes are the sum of cargo tonnes on arrivals and departures at each airport.

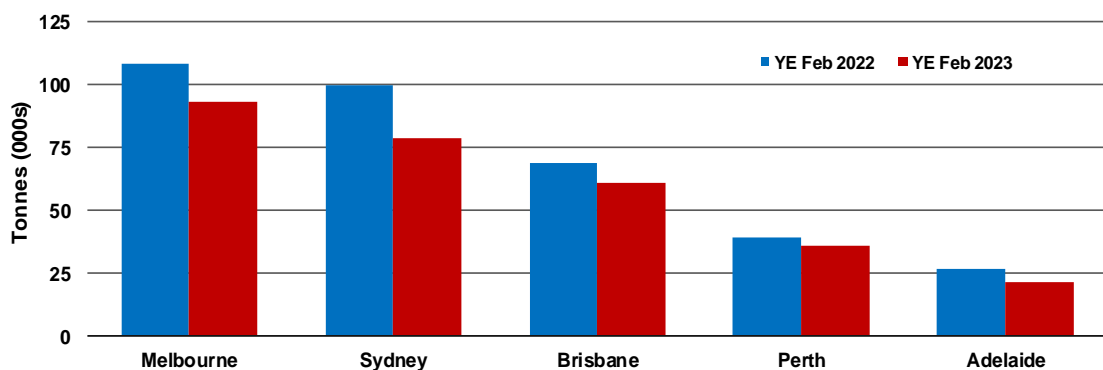
Total domestic network - cargo movement

(monthly totals - traffic on board)



Top five airports, cargo movements

(Domestic cargo traffic - traffic on board)



Note: Airport cargo tonnes are the sum of cargo tonnes on arrivals and departures at each airport.

TOP TEN ROUTES

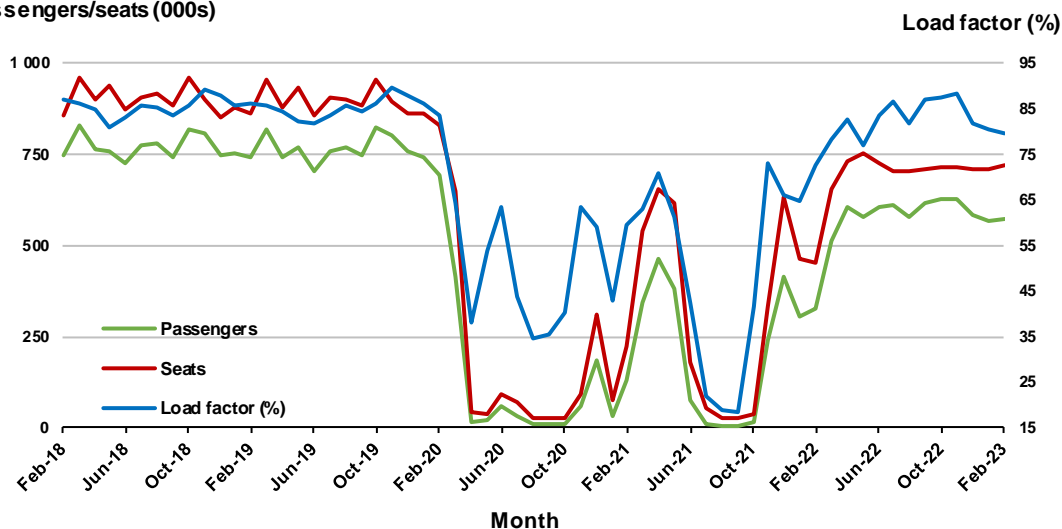
1. Melbourne - Sydney

Monthly data

	Feb 2022	Feb 2023	% Change
Passengers carried (000s)	328.0	573.2	74.7
Seats (000s)	452.9	720.7	59.1
Load factor %	72.5	79.6	7.1 *
Aircraft trips	2,772	4,112	48.3

* percentage point difference

Passengers/seats (000s)

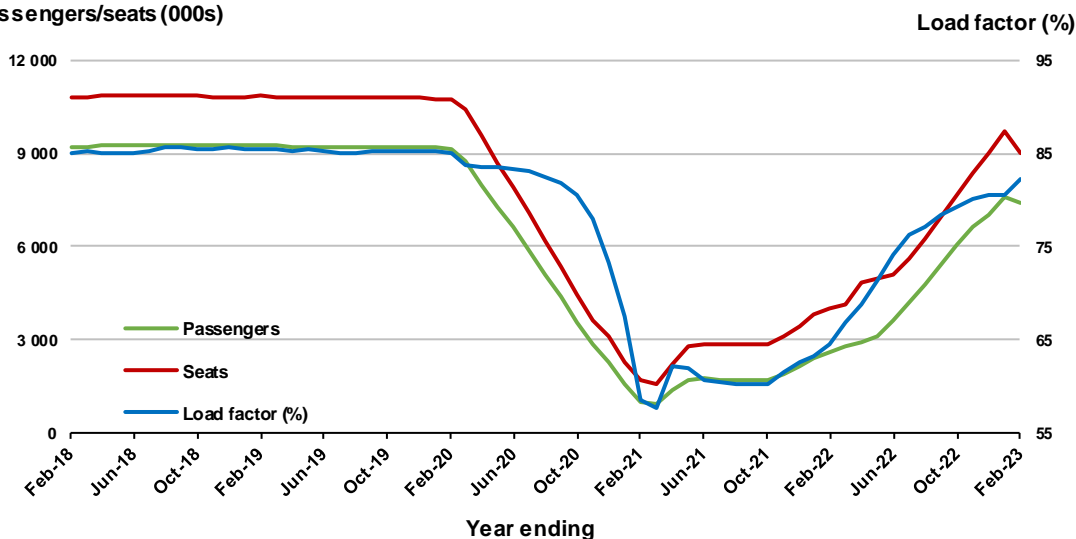


Moving annual data

	YE Feb 2022	YE Feb 2023	% Change
Passengers carried (000s)	2,584.5	7,412.3	186.8
Seats (000s)	4,014.6	9,005.5	124.3
Load factor %	64.4	82.3	17.9 *
Aircraft trips	25,122	52,199	107.8

* percentage point difference

Passengers/seats (000s)

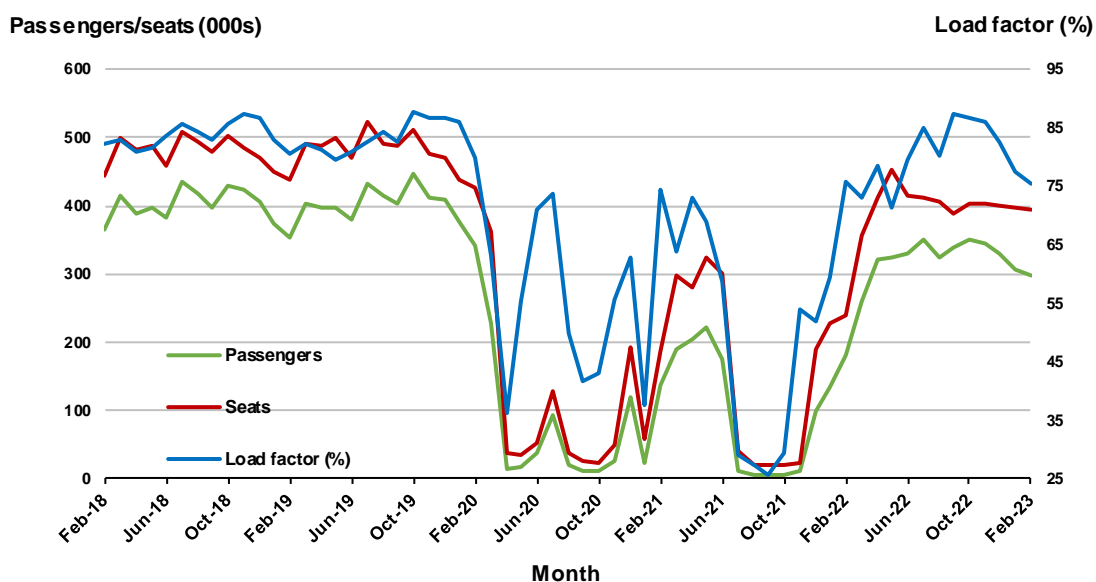


2. Brisbane - Sydney

Monthly data

	Feb 2022	Feb 2023	% Change
Passengers carried (000s)	181.9	298.7	64.2
Seats (000s)	239.7	395.4	65.0
Load factor %	75.9	75.5	-0.4 *
Aircraft trips	1,523	2,430	59.6

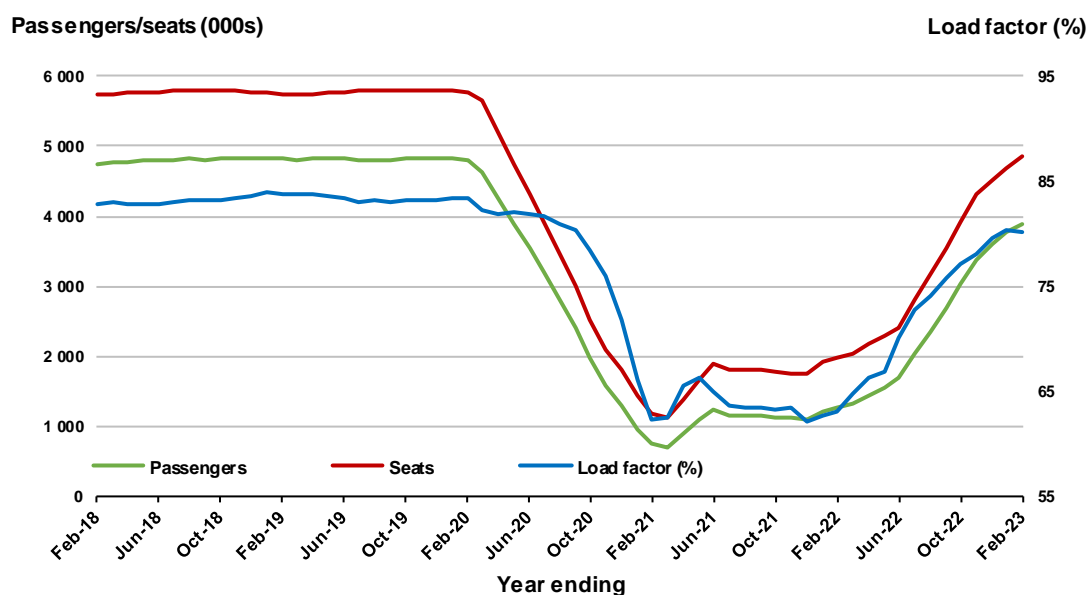
* percentage point difference



Moving annual data

	YE Feb 2022	YE Feb 2023	% Change
Passengers carried (000s)	1,250.3	3,883.1	210.6
Seats (000s)	1,982.0	4,843.2	144.4
Load factor %	63.1	80.2	17.1 *
Aircraft trips	13,532	29,770	120.0

* percentage point difference

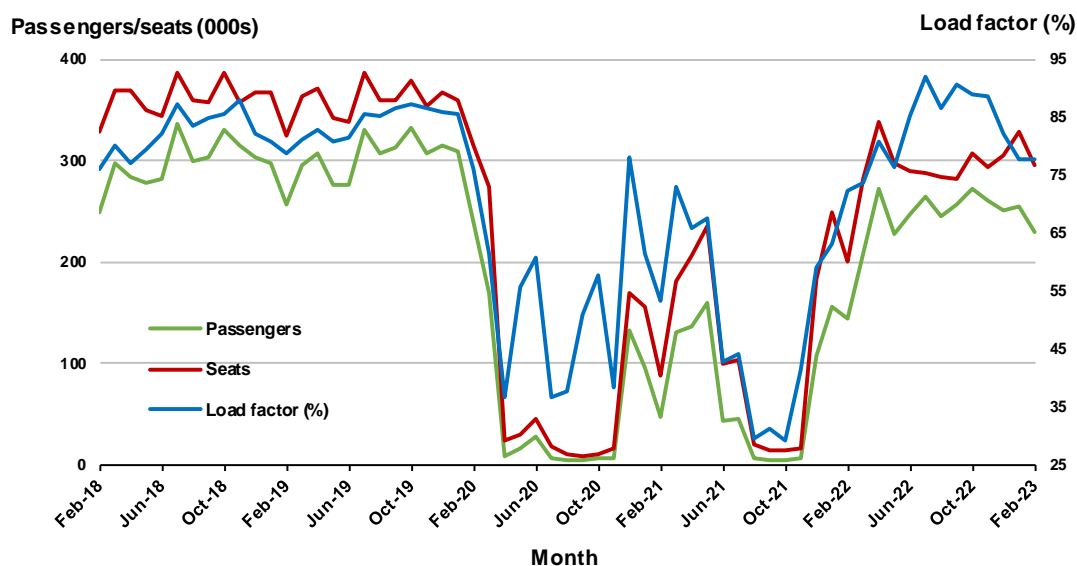


3. Brisbane - Melbourne

Monthly data

	Feb 2022	Feb 2023	% Change
Passengers carried (000s)	144.7	229.9	58.9
Seats (000s)	200.3	296.4	48.0
Load factor %	72.2	77.6	5.4 *
Aircraft trips	1,228	1,785	45.4

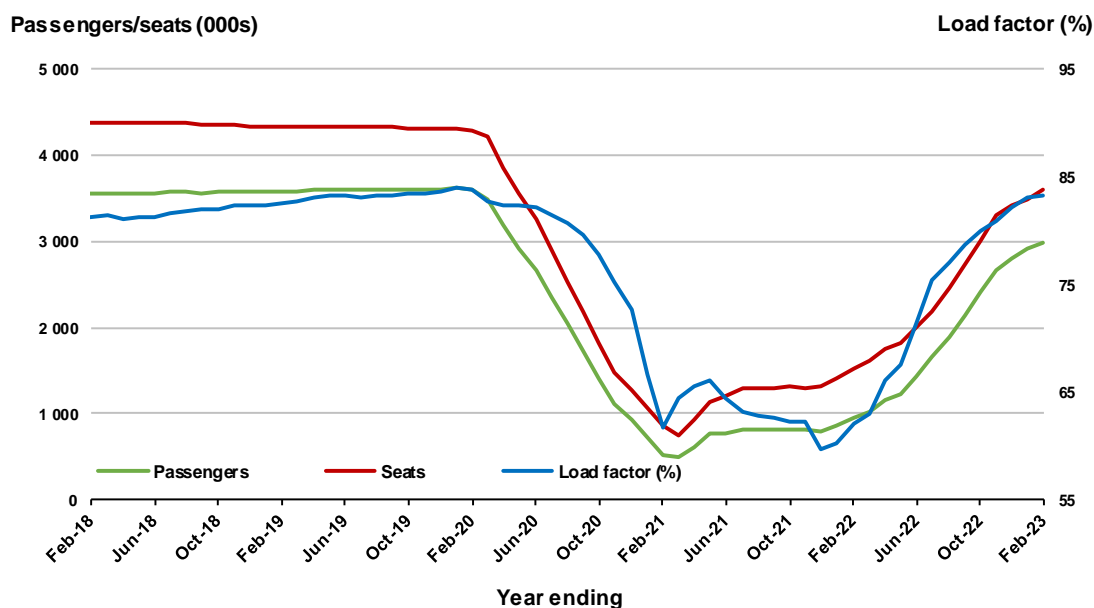
* percentage point difference



Moving annual data

	YE Feb 2022	YE Feb 2023	% Change
Passengers carried (000s)	945.6	2,990.5	216.2
Seats (000s)	1,521.5	3,592.4	136.1
Load factor %	62.1	83.2	21.1 *
Aircraft trips	10,104	21,921	117.0

* percentage point difference



4. Gold Coast - Sydney ^(a)

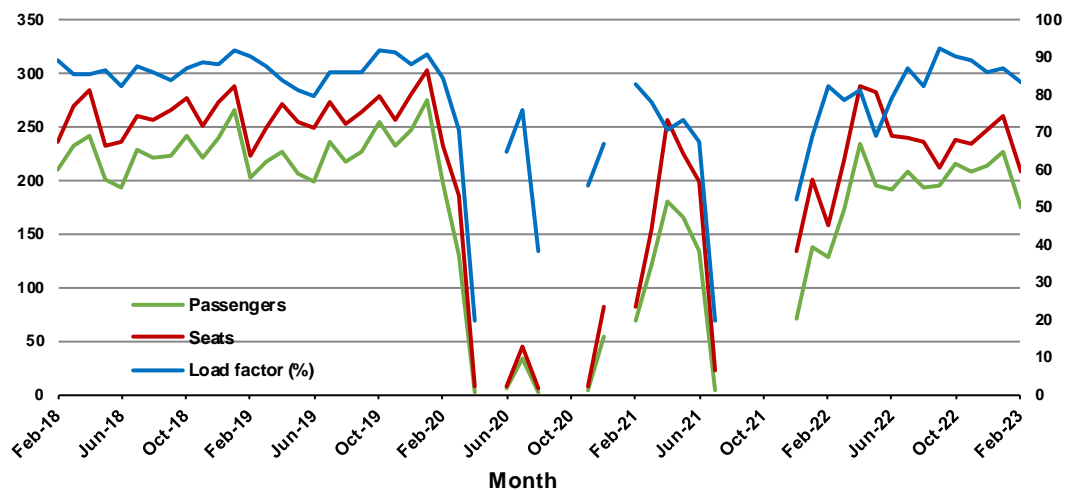
Monthly data

	Feb 2022	Feb 2023	% Change
Passengers carried (000s)	129.1	173.9	34.6
Seats (000s)	157.2	209.0	32.9
Load factor %	82.1	83.2	1.1 *
Aircraft trips	909	1,212	33.3

* percentage point difference

Passengers/seats (000s)

Load factor (%)



(a) May, September and October 2020 and January and August to November 2021 data not available for release.

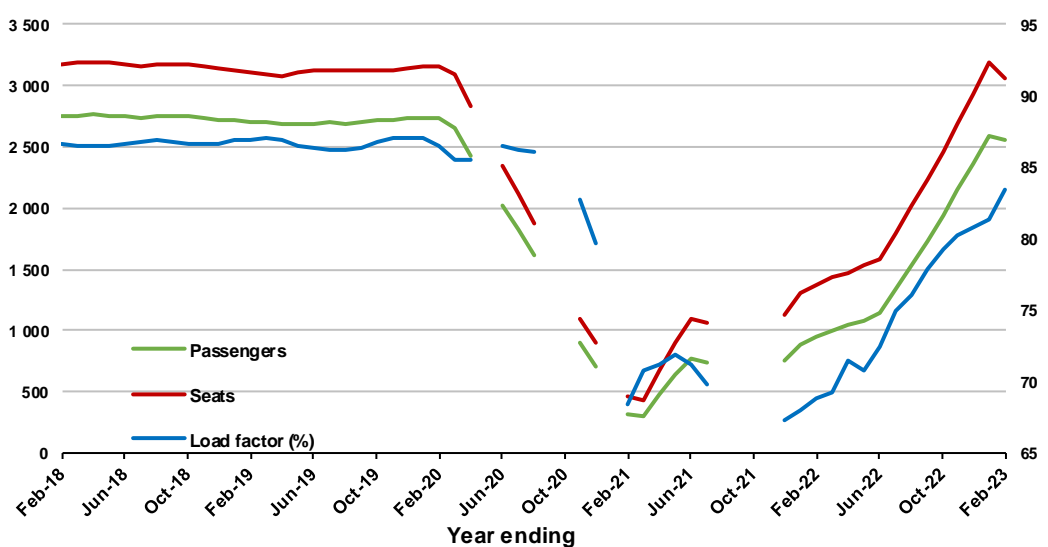
Moving annual data

	YE Feb 2022	YE Feb 2023	% Change
Passengers carried (000s)	947.0	2,557.9	170.1
Seats (000s)	1,377.4	3,064.2	122.5
Load factor %	68.8	83.5	14.7 *
Aircraft trips	7,990	17,783	122.6

* percentage point difference

Passengers/seats (000s)

Load factor (%)



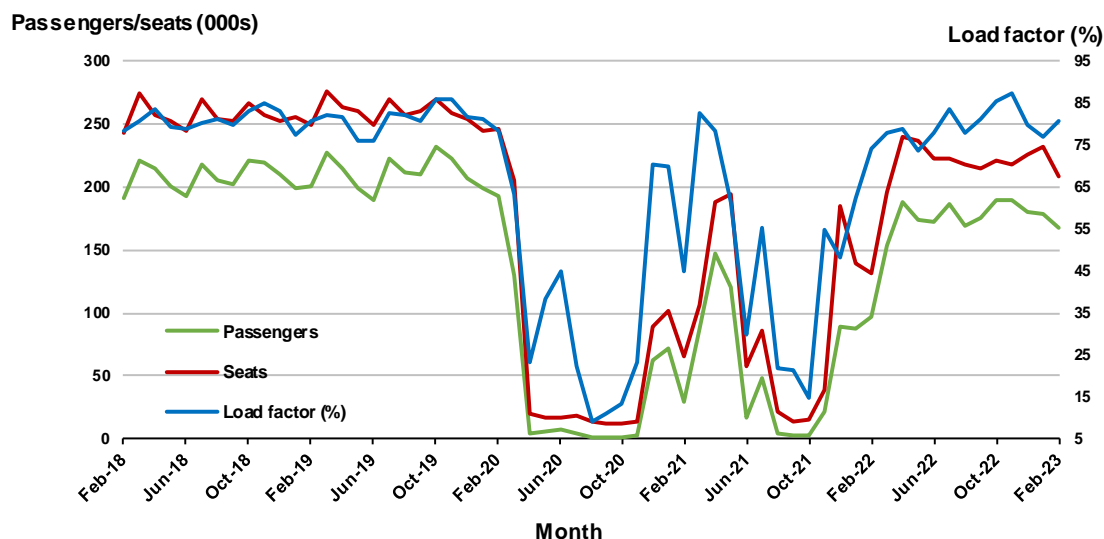
(a) May, September and October 2020 and January and August to November 2021 moving annual totals not available for release.

5. Adelaide - Melbourne

Monthly data

	Feb 2022	Feb 2023	% Change
Passengers carried (000s)	97.6	168.4	72.5
Seats (000s)	131.6	207.9	58.0
Load factor %	74.2	81.0	6.8 *
Aircraft trips	821	1,283	56.3

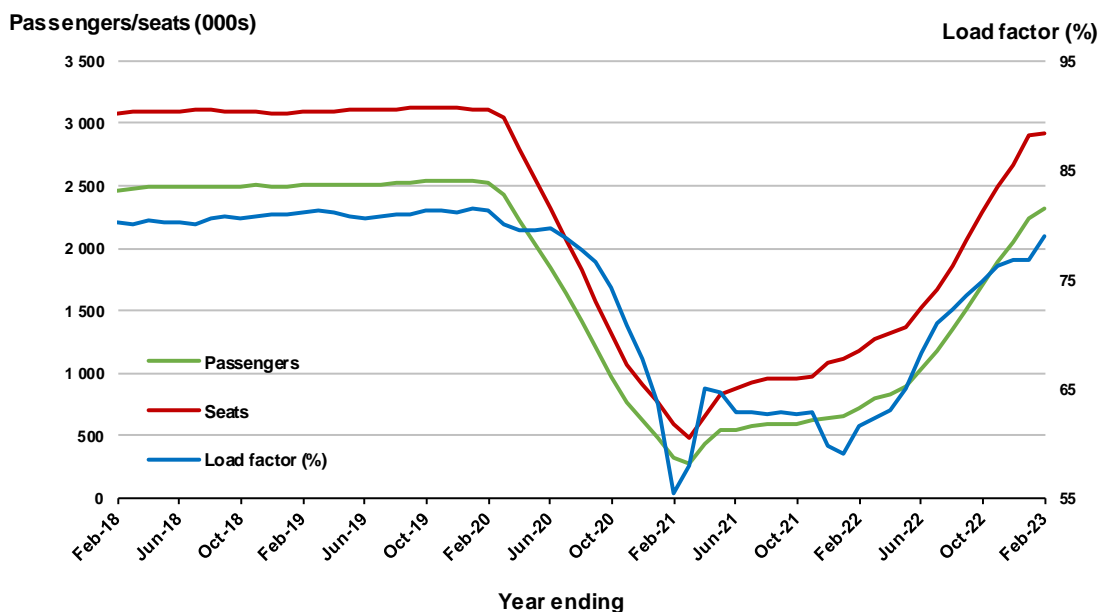
* percentage point difference



Moving annual data

	YE Feb 2022	YE Feb 2023	% Change
Passengers carried (000s)	724.6	2,312.1	219.1
Seats (000s)	1,177.5	2,928.1	148.7
Load factor %	61.5	79.0	17.4 *
Aircraft trips	7,762	17,938	131.1

* percentage point difference



6. Gold Coast - Melbourne ^(a)

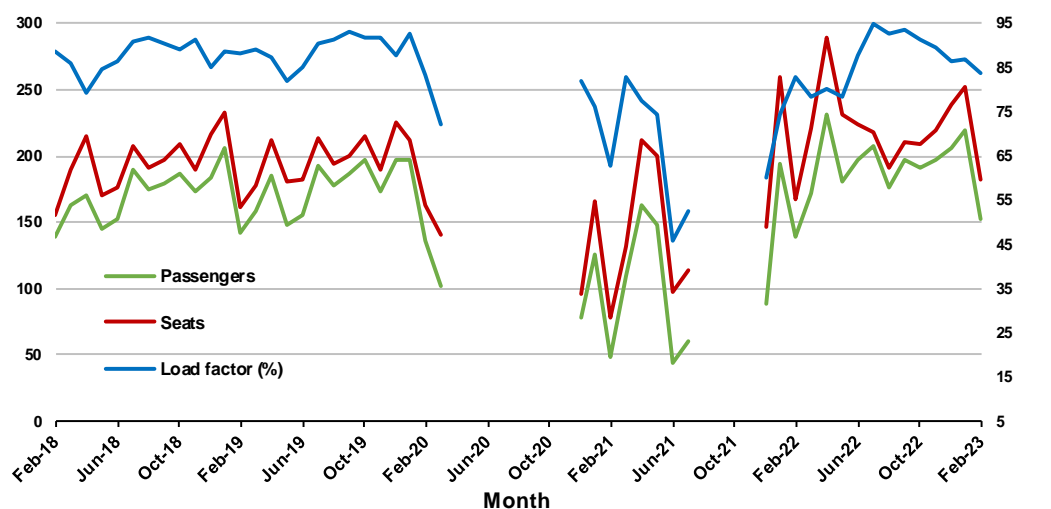
Monthly data

	Feb 2022	Feb 2023	% Change
Passengers carried (000s)	138.7	151.8	9.4
Seats (000s)	167.6	181.6	8.3
Load factor %	82.8	83.6	0.8 *
Aircraft trips	882	987	11.9

* percentage point difference

Passengers/seats (000s)

Load factor (%)



(a) April to November 2020 and August to November 2021 data not available for release.

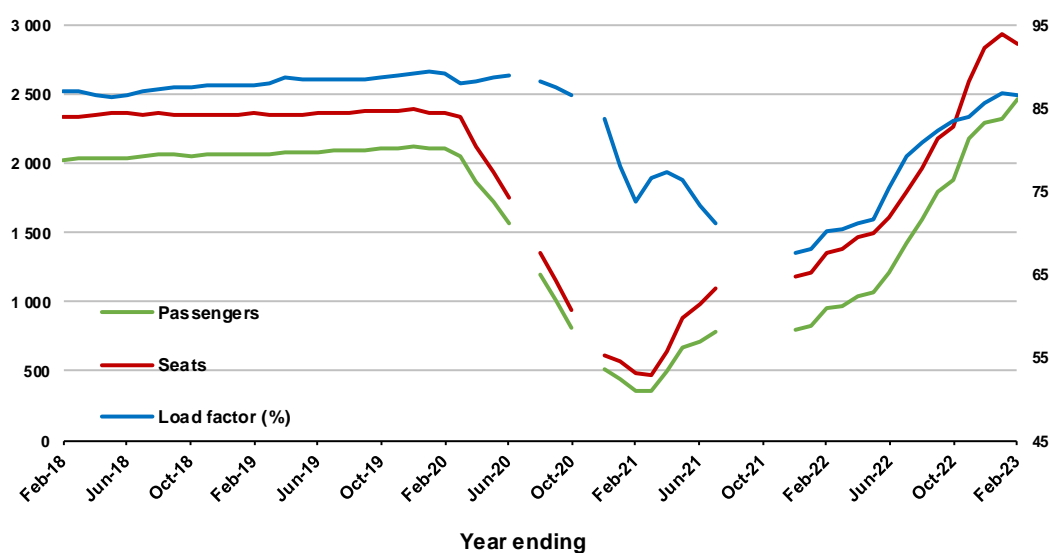
Moving annual data

	YE Feb 2022	YE Feb 2023	% Change
Passengers carried (000s)	952.4	2,468.3	159.2
Seats (000s)	1,359.2	2,854.0	110.0
Load factor %	70.1	86.5	16.4 *
Aircraft trips	7,227	15,749	117.9

* percentage point difference

Passengers/seats (000s)

Load factor (%)



(a) April to November 2020 and August to November 2021 moving annual totals are not available for release.

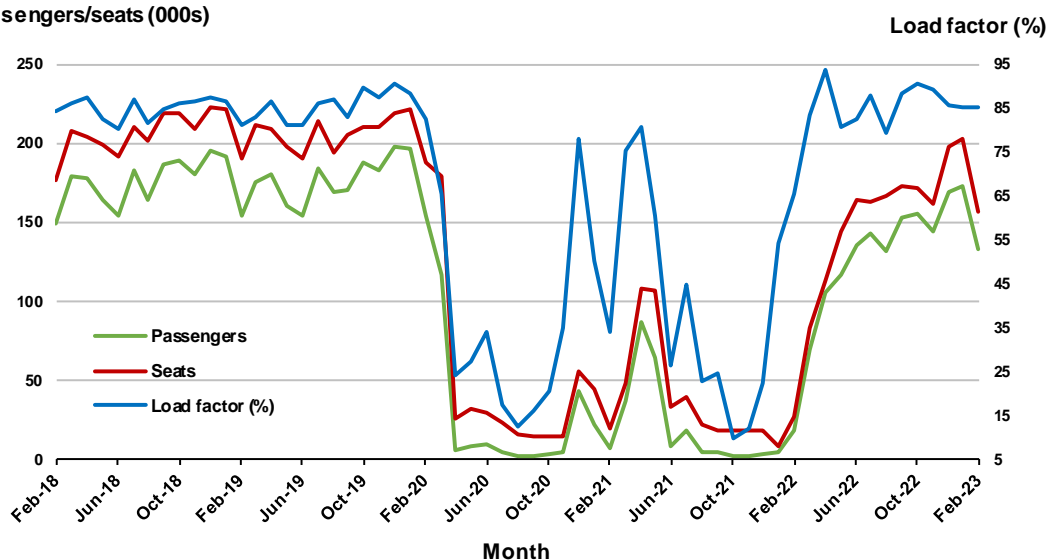
7. Melbourne - Perth

Monthly data

	Feb 2022	Feb 2023	% Change
Passengers carried (000s)	17.7	133.3	651.8
Seats (000s)	27.2	156.1	474.6
Load factor %	65.3	85.4	20.1 *
Aircraft trips	250	909	263.6

* percentage point difference

Passengers/seats (000s)

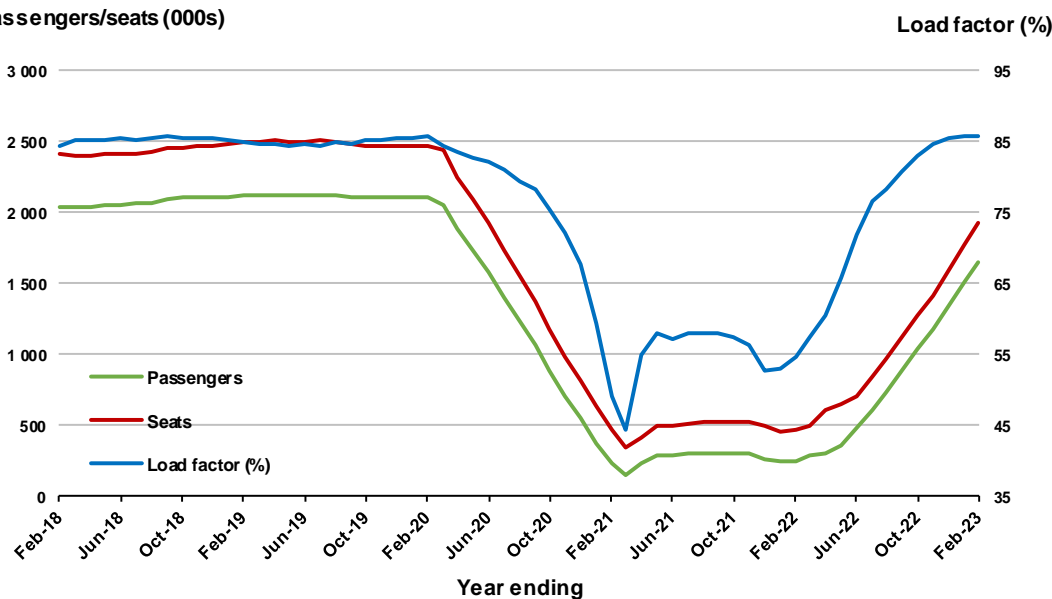


Moving annual data

	YE Feb 2022	YE Feb 2023	% Change
Passengers carried (000s)	254.9	1,649.9	547.4
Seats (000s)	466.9	1,925.8	312.5
Load factor %	54.6	85.7	31.1 *
Aircraft trips	3,648	10,950	200.2

* percentage point difference

Passengers/seats (000s)



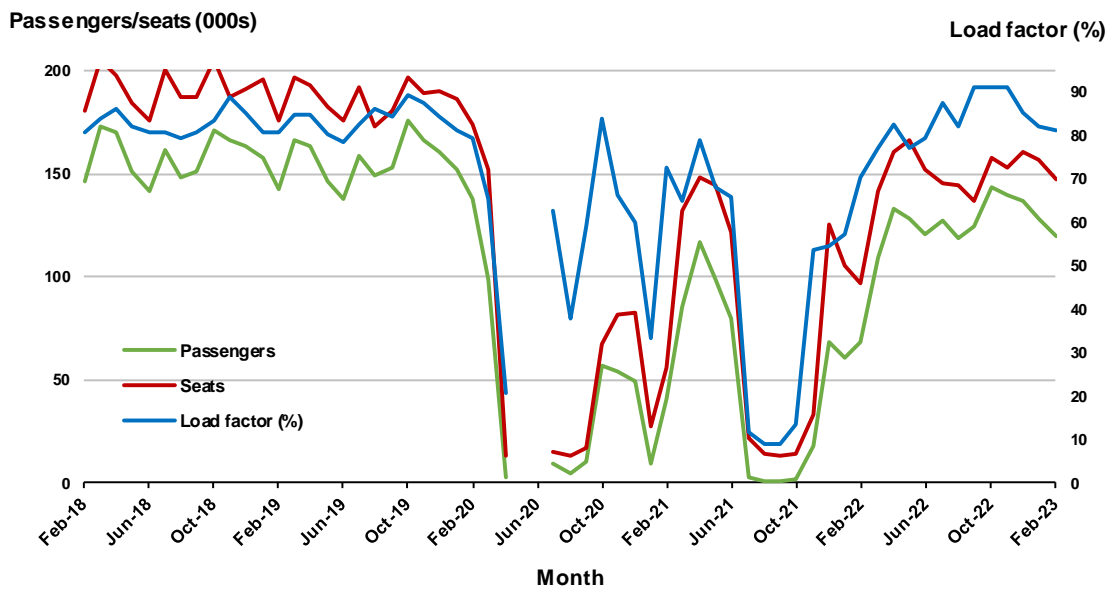
8. Adelaide - Sydney ^(a)

Monthly data

	Feb 2022	Feb 2023	% Change
Passengers carried (000s)	68.4	120.0	75.3
Seats (000s)	97.3	147.4	51.4
Load factor %	70.3	81.4	11.1 *
Aircraft trips	594	899	51.3

.. Data not available for release.

* percentage point difference



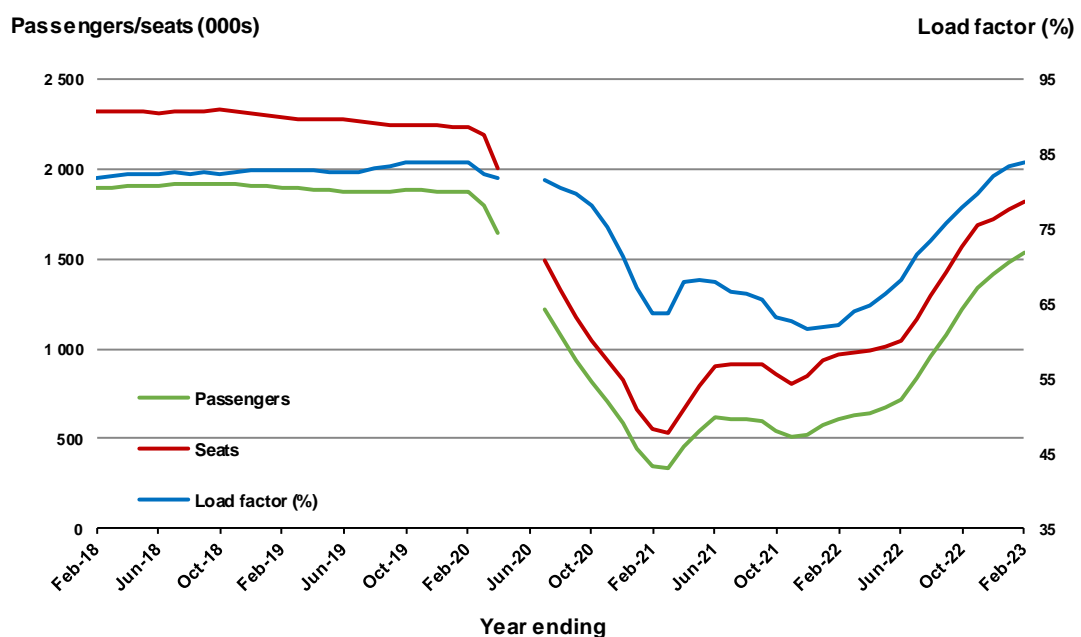
(a) May and June 2020 data not available for release.

Moving annual data

	YE Feb 2022	YE Feb 2023	% Change
Passengers carried (000s)	603.5	1,530.2	153.6
Seats (000s)	971.0	1,822.1	87.7
Load factor %	62.2	84.0	21.8 *
Aircraft trips	6,060	11,151	84.0

.. Data not available for release.

* percentage point difference



(a) May and June 2020 moving annual totals are not available for release.

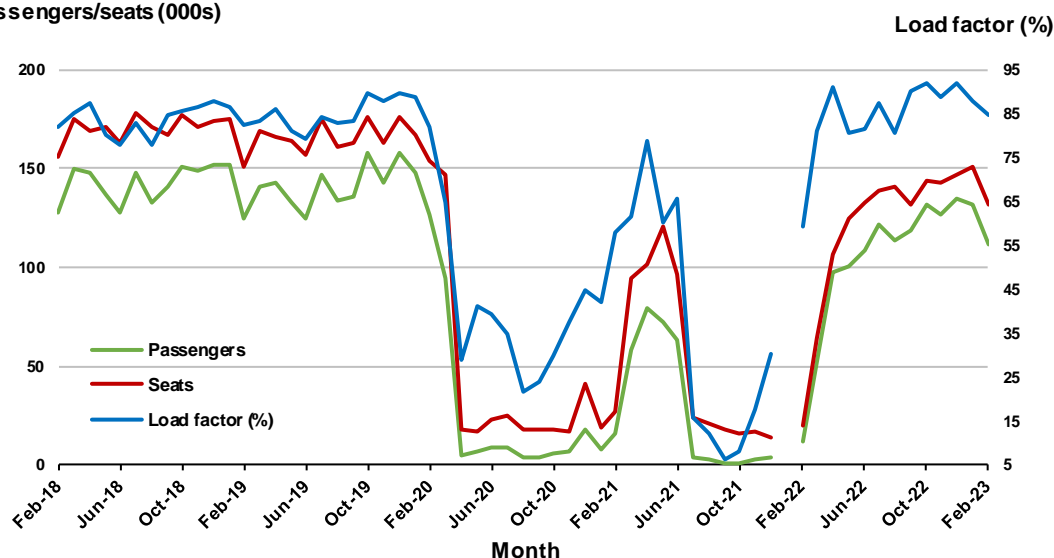
9. Perth - Sydney ^(a)

Monthly data

	Feb 2022	Feb 2023	% Change
Passengers carried (000s)	12.2	111.7	818.1
Seats (000s)	20.5	131.7	543.7
Load factor %	59.5	84.8	25.3 *
Aircraft trips	137	705	414.6

* percentage point difference

Passengers/seats (000s)



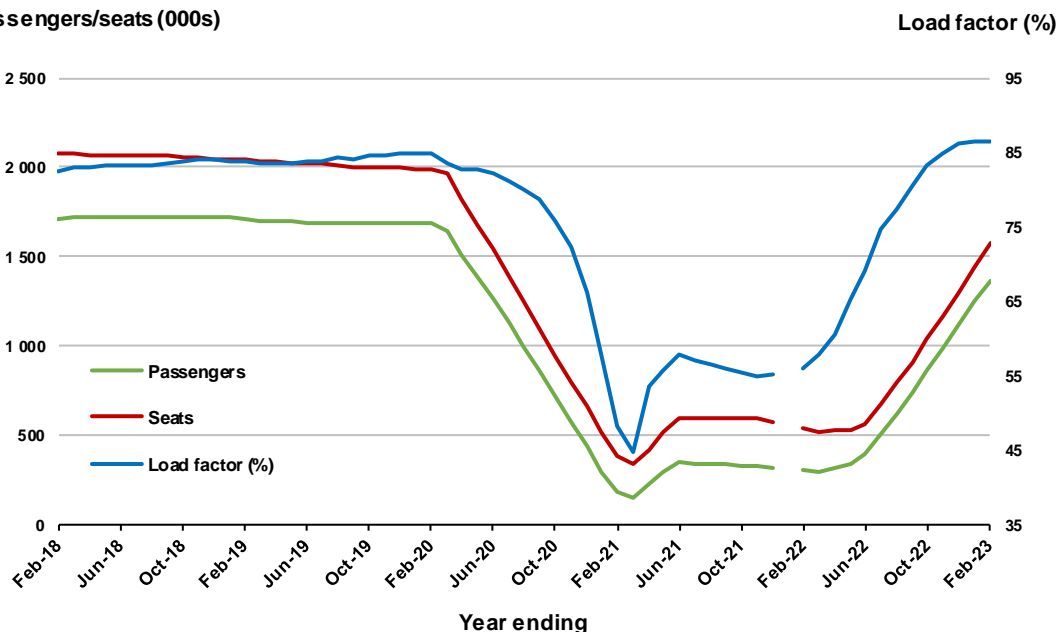
(a) January 2022 data not available for release

Moving annual data

	YE Feb 2022	YE Feb 2023	% Change
Passengers carried (000s)	304.1	1,360.8	347.5
Seats (000s)	543.9	1,575.6	189.7
Load factor %	55.9	86.4	30.5 *
Aircraft trips	3,020	8,273	173.9

* percentage point difference

Passengers/seats (000s)



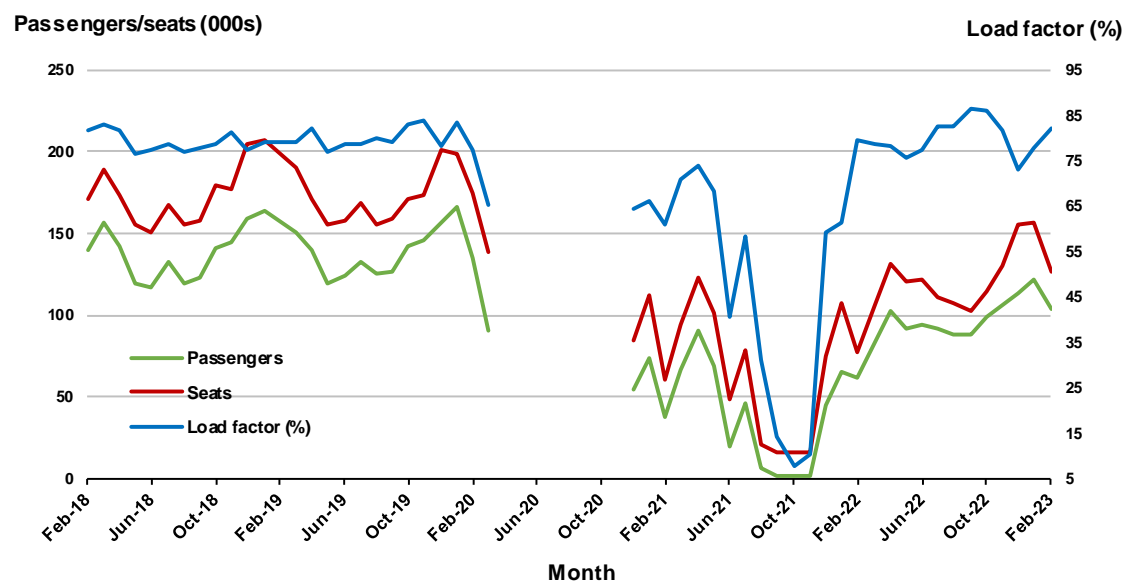
(a) January 2022 moving annual totals are not available for release.

10. Hobart - Melbourne ^(a)

Monthly data

	Feb 2022	Feb 2023	% Change
Passengers carried (000s)	61.4	104.4	70.1
Seats (000s)	77.2	127.1	64.6
Load factor %	79.5	82.2	2.7 *
Aircraft trips	492	735	49.4

* percentage point difference

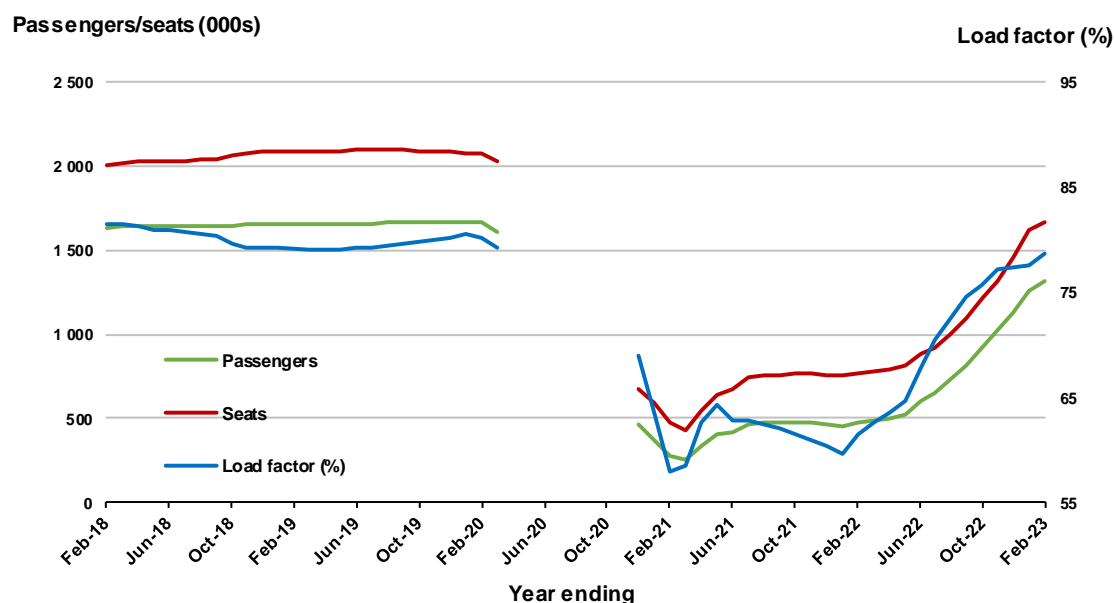


(a) April to November 2020 data are not available for release.

Moving annual data

	YE Feb 2022	YE Feb 2023	% Change
Passengers carried (000s)	475.3	1,313.0	176.3
Seats (000s)	772.6	1,669.6	116.1
Load factor %	61.5	78.6	17.1 *
Aircraft trips	4,830	10,132	109.8

* percentage point difference



(a) April to November 2020 moving annual totals are not available for release.

TOP FIFTY REGIONAL AIRPORTS

Table 10: Top fifty regional airports (000s) — passenger movements, monthly

Airport	Feb 2022	Feb 2023	% Change
1 Cairns	148.9	229.3	54.1
2 Hobart	130.6	209.9	60.7
3 Townsville	76.0	108.2	42.4
4 Launceston	66.1	106.7	61.4
5 Darwin	67.4	87.2	29.4
6 Newcastle	54.3	78.5	44.7
7 Mackay	42.8	64.1	49.7
8 Ballina	41.8	49.0	17.0
9 Karratha	30.8	39.6	28.7
10 Rockhampton	27.1	39.6	46.4
11 Port Hedland	29.8	37.7	26.2
12 Hamilton Island	32.6	31.8	-2.7
13 Proserpine	27.1	29.7	9.6
14 Newman	24.6	28.6	16.3
15 Kalgoorlie	19.2	26.7	39.1
16 Alice Springs	13.8	20.8	50.8
17 Coffs Harbour	15.9	20.5	29.3
18 Broome	14.7	20.3	38.4
19 Paraburdoo	14.5	17.4	19.4
20 Mount Isa	13.0	16.8	28.9
21 Ayers Rock	4.0	15.8	293.1
22 Albury	10.1	15.5	53.2
23 Dubbo	11.8	15.2	28.6
24 Gladstone	10.5	15.1	43.8
25 Mildura	9.3	15.1	62.2
26 Emerald	9.7	14.7	51.6
27 Wagga Wagga	8.2	14.0	71.9
28 Port Lincoln	11.0	13.8	25.8
29 Port Macquarie	7.8	13.7	76.1
30 Tamworth	6.1	11.2	81.8
31 Hervey Bay	6.5	10.4	58.5
32 Bundaberg	5.5	9.5	74.9
33 Devonport	5.3	9.0	69.2
34 Moranbah	6.4	8.8	37.1
35 Armidale	5.3	8.5	61.5
36 Olympic Dam	6.5	8.2	25.5
37 Orange	5.3	7.9	49.5
38 Kununurra	3.9	7.3	87.9
39 Burnie	3.6	6.3	77.9
40 Geraldton	5.3	6.1	15.6
41 Gove	3.8	6.0	55.9
42 Weipa	4.4	6.0	34.2
43 Mount Gambier	3.7	5.9	57.9
44 Thursday Island	4.8	5.8	21.0
45 Griffith	3.6	5.7	58.3
46 Merimbula	..	5.5	NA
47 Norfolk Island	4.8	5.4	13.5
48 King Island	4.4	5.2	19.4
49 Learmonth	2.8	4.9	75.6
50 Albany	3.7	4.8	30.9
Total top 50 regional airports	1,069.2	1,543.8	44.4
Total regional airports	1,144.9	1,646.6	43.8
Total domestic network	4,879.4	7,995.0	63.9

Note: Airport passenger movement numbers are the sum of passenger arrivals and departures at each airport.

Regional airports are defined as airports which are, according to Australian Statistical Geography

Standard (ASGS), not based in Major Cities.

.. Data not available for release.

Table 11: Top fifty regional airports (000s) — passenger movements, annual

Airport	YE Feb 2022	YE Feb 2023	% Change
1 Cairns	2,383.6	3,840.4	61.1
2 Hobart	1,319.5	2,460.4	86.5
3 Darwin	1,097.7	1,687.0	53.7
4 Townsville	1,108.7	1,597.2	44.1
5 Launceston	651.3	1,263.8	94.0
6 Newcastle	484.5	1,078.8	122.6
7 Mackay	645.2	869.0	34.7
8 Ballina	530.2	635.3	19.8
9 Hamilton Island	345.5	515.9	49.3
10 Rockhampton	398.5	510.2	28.0
11 Karratha	437.5	510.0	16.6
12 Port Hedland	377.8	465.9	23.3
13 Proserpine	327.7	464.5	41.7
14 Broome	417.3	442.8	6.1
15 Alice Springs	246.1	359.5	46.1
16 Newman	324.4	352.9	8.8
17 Kalgoorlie	263.0	315.4	19.9
18 Coffs Harbour	156.9	284.7	81.4
19 Ayers Rock	70.5	232.5	229.7
20 Mount Isa	186.2	229.1	23.1
21 Albury	86.1	221.0	156.8
22 Paraburdoo	195.8	215.5	10.1
23 Gladstone	141.4	204.1	44.4
24 Dubbo	105.6	191.8	81.6
25 Mildura	84.9	191.7	125.7
26 Wagga Wagga	72.9	185.4	154.3
27 Emerald	145.9	179.4	22.9
28 Port Lincoln	142.1	178.4	25.5
29 Port Macquarie	73.3	176.1	140.3
30 Tamworth	62.4	143.9	130.4
31 Hervey Bay	59.7	132.8	122.3
32 Kununurra	105.8	127.8	20.8
33 Bundaberg	73.8	109.7	48.7
34 Devonport	41.9	106.7	154.5
35 Armidale	46.3	105.8	128.6
36 Moranbah	84.4	102.8	21.8
37 Learmonth	93.3	99.7	6.9
38 Thursday Island	90.9	99.7	9.7
39 Orange	44.3	96.4	117.7
40 Olympic Dam	89.8	93.7	4.3
41 Gove	54.9	87.0	58.6
42 Weipa	75.2	86.9	15.6
43 Geraldton	78.4	81.2	3.6
44 Burnie	28.8	79.8	176.9
45 Mount Gambier	42.9	77.7	81.3
46 Griffith	31.8	74.1	133.0
47 Norfolk Island	50.4	71.3	41.5
48 Merimbula	35.4	69.7	96.8
49 Cloncurry	54.1	60.4	11.5
50 King Island	44.2	59.7	35.0
Total top 50 regional airports	14,108.9	21,825.4	54.7
Total regional airports	15,134.6	23,176.8	53.1
Total domestic network	50,550.5	107,366.9	112.4

Note: Airport passenger movement numbers are the sum of passenger arrivals and departures at each airport. Regional airports are defined as airports which are, according to Australian Statistical Geography Standard (ASGS), not based in Major Cities.

DOMESTIC CHARTER ACTIVITY

Table 12: Charter passengers carried and aircraft trips - monthly activity

	Feb 2022	Feb 2023	% Change
Total domestic charter passengers	260,052	307,603	18.3
Total domestic charter aircraft trips	4,996	5,255	5.2

Note: Helicopter, joyflights and sightseeing charter flights not included.

Table 13: Charter passengers carried and aircraft trips - annual activity

	YE Feb 2022	YE Feb 2023	% Change
Total domestic charter passengers	3,363,963	3,714,734	10.4
Total domestic charter aircraft trips	63,180	67,228	6.4

Note: Helicopter, joyflights and sightseeing charter flights not included.

Table 14: Domestic airports - charter activity - monthly

	Feb 2022	Feb 2023	% Change
Total domestic charter passenger movements	520,104	615,206	18.3
Total domestic charter aircraft movements	9,992	10,510	5.2
Perth airport charter passenger movements	194,203	225,204	16.0
Perth airport charter aircraft movements	3,448	3,497	1.4

Note: Helicopter, joyflights and sightseeing charter flights not included.

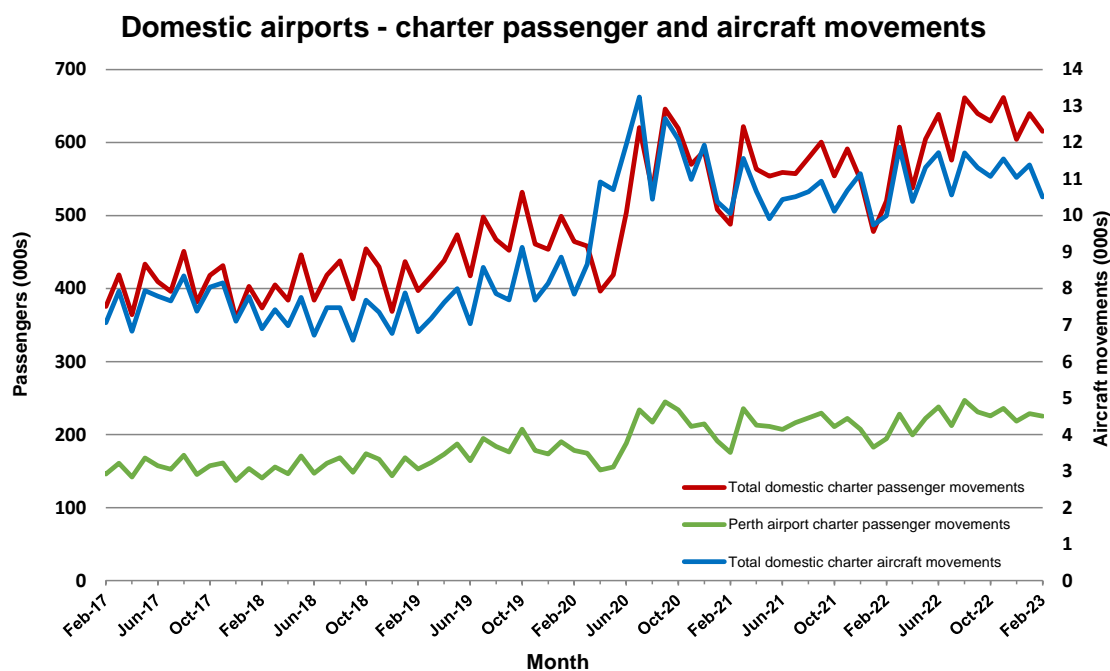
Charter passenger and aircraft movement numbers are the sum of arrivals and departures at each airport.

Table 15: Domestic airports - charter activity - annual

	YE Feb 2022	YE Feb 2023	% Change
Total domestic charter passenger movements	6,727,926	7,429,468	10.4
Total domestic charter aircraft movements	126,360	134,456	6.4
Perth airport charter passenger movements	2,552,277	2,711,433	6.2
Perth airport charter aircraft movements	43,440	44,852	3.3

Note: Helicopter, joyflights and sightseeing charter flights not included.

Charter passenger and aircraft movement numbers are the sum of arrivals and departures at each airport.



DEFINITIONS

Aircraft Trips	The number of flight stages. A return flight counts as two aircraft trips.
Airport Movements	Airport movements (passenger and cargo) are measured once on arrival and once on departure. Each domestic trip generates two movements at airports. For example, a trip from Melbourne to Sydney will be counted twice, as a departure at Melbourne and as an arrival at Sydney. At the national level, the sum of all domestic airport traffic will therefore be equal to twice the number of trips undertaken.
Available Seat Kilometres (ASKs)	Calculated by multiplying the number of seats available on each flight stage, by the distance in kilometres between the ports. The distances used are Great Circle Distances.
City-Pair	The ports shown make up the city-pair route. Passenger movements shown for a city pair reflect total traffic in both directions.
Flight Stage	The operation of an aircraft from take-off to landing.
Load Factor	The total revenue passenger kilometres performed as a percentage of the total available seat kilometres.
Passengers Carried	Revenue passengers carried.
Regular Public Transport Services (RPT)	All air service operations in which aircraft are available for the transport of members of the public and are conducted in accordance with fixed schedules. It does not include charter or other non-scheduled operations.
Revenue Passengers	All passengers paying any fare. Frequent flyer redemption travellers are regarded as revenue passengers.
Revenue Passenger Kilometres (RPKs)	Calculated by multiplying the number of revenue passengers travelling on each flight stage, by the distance in kilometres between the ports. The distances used are Great Circle Distances.
Traffic on board by stages	The total of all traffic (revenue passengers) on each flight stage between two directly connected airports.
..	Not available for confidentiality or other reasons.
NA	Not applicable.