



**Australian Government**

**Department of Infrastructure, Transport,  
Regional Development, Communications and the Arts**  
Bureau of Infrastructure and Transport Research Economics

STATISTICAL REPORT



bitre

Aviation

**Domestic aviation activity  
2022-23**

The Department of Infrastructure, Transport, Regional Development, Communications and the Arts acknowledges the Traditional Custodians of Country of the land on which we work and live.

We recognise and respect the continuing connections to land, waters and communities.

We pay our respects to them and their cultures and to their Elders both past and present and to all Aboriginal and Torres Strait Islander people.

---

© Commonwealth of Australia 2024

ISSN: 1832 - 1968

### **Ownership of intellectual property rights in this publication**

Unless otherwise noted, copyright (and any other intellectual property rights, if any) in this publication is owned by the Commonwealth of Australia (referred to below as the Commonwealth).

### **Disclaimer**

The material contained in this publication is made available on the understanding that the Commonwealth is not providing professional advice, and that users exercise their own skill and care with respect to its use, and seek independent advice if necessary.

The Commonwealth makes no representations or warranties as to the contents or accuracy of the information contained in this publication. To the extent permitted by law, the Commonwealth disclaims liability to any person or organisation in respect of anything done, or omitted to be done, in reliance upon information contained in this publication.

### **Creative Commons licence**

With the exception of (a) the Coat of Arms; and (b) the Department of Infrastructure, Transport, Regional Development, Communications and the Arts' photos and graphics, copyright in this publication is licensed under a Creative Commons Attribution 3.0 Australia Licence.

Creative Commons Attribution 3.0 Australia Licence is a standard form licence agreement that allows you to copy, communicate and adapt this publication provided that you attribute the work to the Commonwealth and abide by the other licence terms. A summary of the licence terms is available from <http://creativecommons.org/licenses/by/3.0/au/deed.en>.

The full licence terms are available from <http://creativecommons.org/licenses/by/3.0/au/legalcode>.

### **Use of the Coat of Arms**

The Department of the Prime Minister and Cabinet sets the terms under which the Coat of Arms is used. Please refer to the Department's Commonwealth Coat of Arms and Government branding web page <http://www.dpmc.gov.au/guidelines/index.cfm#brand> and, in particular, the Guidelines on the use of the Commonwealth Coat of Arms publication.

An appropriate citation for this report is:

Bureau of Infrastructure and Transport Research Economics (BITRE), 2024, Domestic aviation activity, Statistical Report, BITRE, Canberra ACT.

### **Contact us**

This publication is available in PDF format. All other rights are reserved, including in relation to any Departmental logos or trade marks which may exist. For enquiries regarding the licence and any use of this publication, please contact:

Bureau of Infrastructure and Transport Research Economics (BITRE)  
Department of Infrastructure, Transport, Regional Development, Communications and the Arts  
GPO Box 501, Canberra ACT 2601, Australia

### **Inquiries**

Telephone: +61 2 6136 8541  
Email: [AVSTATS@infrastructure.gov.au](mailto:AVSTATS@infrastructure.gov.au)  
Website: [www.bitre.gov.au/statistics/aviation](http://www.bitre.gov.au/statistics/aviation)

## FOREWORD

This report provides an overview of domestic (including charter) commercial aviation activity in Australia for the year ending June 2023.

The data covers revenue passengers carried by Australian-registered operators of scheduled regular public transport services over Australian flight stages and fixed-wing charter operators. These estimates include passengers carried between domestic airports on international flights operated by these carriers. The passengers carried refer to traffic on board by stages.

Estimates of passengers and aircraft movements for charter aviation are included in this publication, where BITRE confidentiality standards are met.

Individual routes shown are restricted to those with an average exceeding 8,000 passengers per month over the previous six months where two or more airlines operate in competition. In November 2021 the major airlines (Qantas Group, Virgin Australia and Rex Airlines) agreed to publication of the top 35 routes based on pre-COVID activity (December 2019) whether or not they were meeting the above criteria. From January 2023, the passenger load and dual competition requirements were reinstated due to the continued recovery of passenger numbers.

Information on both the total network and the Regular Public Transport (RPT) network for the year ending June 2023 is presented on page 2.

Detailed information on the 63 individual routes can be found in the RPT summary pages on pages 3-10.

The top ten airports in terms of RPT passenger movements are shown on page 11.

Data on domestic RPT cargo movements at the top five cargo airports are provided on page 12. The table includes cargo carried on passenger flights operated by the Qantas group (including Jetstar), Virgin Australia, Air North and Skippers as well as the cargo carried by dedicated freighter aircraft operated by Qantas Freight and Team Global Express (formerly Toll Priority).

The long-term trends for the top twenty competitive RPT routes are presented graphically on pages 13–22.

Domestic RPT passenger movements at the top 50 regional airports are presented on page 23

Tables providing estimates of domestic charter aviation activity are shown on page 24. BITRE confidentiality standards restrict publication of detailed airport-level estimates for any Australian airport, with the exception of Perth Airport.

A list of definitions can be found on page 25.

This report was prepared by the Aviation Statistics Section of the Bureau of Infrastructure and Transport Research Economics with data provided by airlines.

Estimates are included where data were not available and data presented in this publication may contain revisions to previously published data.

Where figures have been rounded, discrepancies may occur between sums of component items and totals, and in percentage changes which are derived from figures prior to rounding.

## CONTENTS

<b>Highlights .....</b>	<b>1</b>
<b>RPT network.....</b>	<b>2</b>
<b>Top competitive routes.....</b>	<b>3</b>
<b>Top ten airports – passenger movements .....</b>	<b>11</b>
<b>Top five airports – cargo movements.....</b>	<b>12</b>
<b>Top twenty routes .....</b>	<b>13</b>
1. Melbourne – Sydney .....	13
2. Brisbane – Sydney.....	13
3. Brisbane – Melbourne .....	14
4. Gold Coast – Sydney.....	14
5. Gold Coast – Melbourne .....	15
6. Adelaide – Melbourne.....	15
7. Melbourne – Perth .....	16
8. Adelaide – Sydney.....	16
9. Perth – Sydney .....	17
10. Hobart – Melbourne .....	17
11. Brisbane – Cairns .....	18
12. Brisbane – Perth.....	18
13. Canberra – Melbourne.....	19
14. Cairns – Sydney .....	19
15. Brisbane – Townsville .....	20
16. Cairns – Melbourne .....	20
17. Adelaide – Brisbane.....	21
18. Launceston – Melbourne .....	21
19. Brisbane – Mackay .....	22
20. Sunshine Coast – Sydney .....	22
<b>Top fifty regional airports.....</b>	<b>23</b>
<b>Domestic charter activity.....</b>	<b>24</b>
<b>Definitions .....</b>	<b>25</b>

This page is intentionally left blank.

## HIGHLIGHTS

There were 59.11 million passengers carried on Australian domestic commercial aviation (including charter operations) in the year ending June 2023, an increase of 75.0 per cent compared with the year ending June 2022.

In the year ending June 2023 there were 595,279 RPT aircraft trips compared to 419,060 in the previous year, an increase of 42.1 per cent.

55.30 million passengers were carried on RPT flights in the year ending June 2023, an increase of 82.2 per cent compared with the year ending June 2022

RPT revenue passenger kilometres (RPKs) performed were 66.23 billion, an increase of 89.8 per cent compared with the year ending June 2022.

Capacity, measured by available seat kilometres (ASKs), increased by 56.1 per cent compared with the year ending June 2022, to a total of 81.76 billion.

The industry wide load factor (RPKs/ASKs) increased from 66.6 per cent in the year ending June 2022 to 81.0 per cent in the year ending June 2023.

In the year ending June 2023, most published routes recorded large increases in the number of passengers carried compared with the year ending June 2022.

For the year ending June 2023, Melbourne – Sydney remained Australia's busiest RPT route with 7.31 million passengers, an increase of 101.5 per cent compared with the previous calendar year. It was followed by Brisbane – Sydney with 4.04 million passengers (up 138.9 per cent) and Brisbane – Melbourne with 3.12 million passengers (up 118.5 per cent).

In the year ending June 2023, Sydney was Australia's busiest domestic airport with 23.33 million passenger movements, up 118.2 per cent compared with the year ending June 2022, followed by Melbourne with 22.49 million passenger movements (up 104.8 per cent) and Brisbane with 15.81 million passenger movements (up 71.1 per cent).

Total cargo movements at Australian airports on domestic RPT flights were 343,854 tonnes in the year ending June 2023, a decrease of 15.9 per cent compared to the year ending June 2022.

In the year ending June 2023, the number of domestic aviation passengers travelling through regional airports was 23.67 million, up 43.6 per cent compared to the year ending June 2022.

Fixed-wing charter operators carried 3.81 million passengers in the year ending June 2023, an increase of 11.6 per cent compared with the year ending June 2022. Perth airport accounted for 37.1 per cent of all charter passengers in Australia.

## TOTAL NETWORK

### Summary of annual commercial aviation activity

	YE Jun 2022	YE Jun 2023	% Change
Total passengers carried (millions)	33.77	59.11	75.0
Aircraft trips (000s)	483.6	662.4	37.0

Note: Regular Public Transport and charter aviation activity, Helicopter, joyflights and sightseeing charter flights not included.

## RPT NETWORK

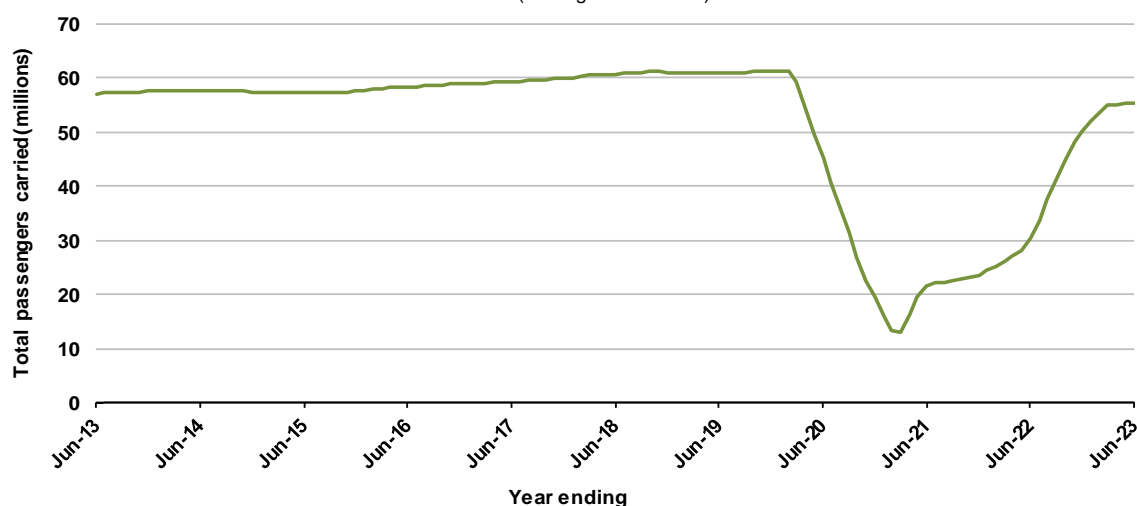
### Summary of annual RPT activity

	YE Jun 2022	YE Jun 2023	% Change
Total passengers carried (millions)	30.36	55.30	82.2
Revenue passenger kilometres (billions)	34.89	66.23	89.8
Available seats (millions)	46.32	70.29	51.7
Available seat kilometres (billions)	52.38	81.76	56.1
Load factor %	66.6	81.0	14.4 *
Aircraft trips (000s)	419.1	595.3	42.1

\* percentage point difference

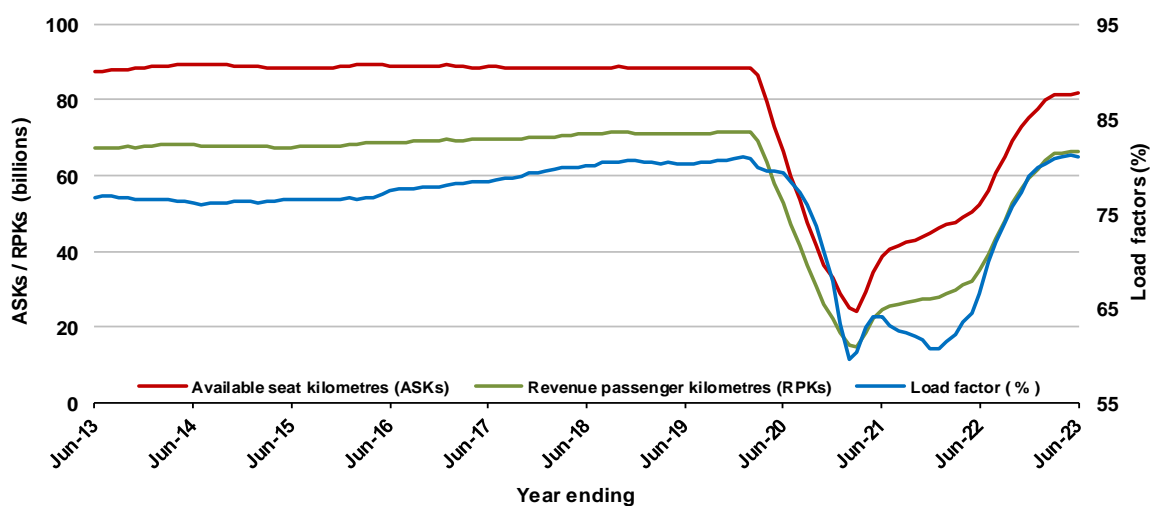
### Domestic RPT passenger traffic

(moving annual totals)



### RPT Network utilisation

(moving annual totals)





## TOP COMPETITIVE ROUTES

**Table 1: Passengers carried (000s) — annual activity**

	City-Pair	YE Jun 2022	YE Jun 2023	% Change
1	Melbourne - Sydney	3,625.1	7,306.2	101.5
2	Brisbane - Sydney	1,692.3	4,043.7	138.9
3	Brisbane - Melbourne	1,429.8	3,124.3	118.5
4	Gold Coast - Sydney	1,140.8	2,407.9	111.1
5	Gold Coast - Melbourne	1,217.0	2,236.0	83.7
6	Adelaide - Melbourne	1,040.0	2,206.8	112.2
7	Melbourne - Perth	485.7	1,813.6	273.4
8	Adelaide - Sydney	713.5	1,604.8	124.9
9	Perth - Sydney	388.7	1,496.8	285.1
10	Hobart - Melbourne	601.1	1,233.6	105.2
11	Brisbane - Cairns	1,021.8	1,213.4	18.8
12	Brisbane - Perth	345.5	982.5	184.4
13	Canberra - Melbourne	451.7	968.3	114.4
14	Cairns - Sydney	361.3	884.8	144.9
15	Brisbane - Townsville	702.4	860.0	22.4
16	Cairns - Melbourne	452.8	803.4	77.5
17	Adelaide - Brisbane	469.2	795.3	69.5
18	Launceston - Melbourne	373.0	770.3	106.5
19	Brisbane - Mackay	565.8	739.2	30.6
20	Sunshine Coast - Sydney	328.6	737.1	124.3
21	Hobart - Sydney	334.6	708.7	111.8
22	Melbourne - Sunshine Coast	415.9	703.7	69.2
23	Adelaide - Perth	304.0	633.5	108.4
24	Brisbane - Canberra	320.8	630.6	96.5
25	Canberra - Sydney	266.1	594.2	123.3
26	Karratha - Perth	454.3	529.9	16.6
27	Ballina - Sydney	386.7	525.7	35.9
28	Brisbane - Newcastle	229.2	492.6	115.0
29	Brisbane - Rockhampton	372.1	481.0	29.3
30	Perth - Port Hedland	408.3	475.9	16.6
31	Melbourne - Newcastle	240.9	392.7	63.0
32	Broome - Perth	380.5	368.3	-3.2
33	Newman - Perth	325.6	364.7	12.0
34	Kalgoorlie - Perth	274.6	338.3	23.2
35	Brisbane - Darwin	280.2	323.7	15.6
36	Launceston - Sydney	146.9	303.9	106.8
37	Brisbane - Hobart	278.8	299.0	7.2
38	Darwin - Melbourne	202.9	280.4	38.2
39	Brisbane - Proserpine	275.0	280.1	1.9
40	Hamilton Island - Sydney	110.5	247.4	123.9
41	Adelaide - Gold Coast	147.7	242.6	64.3
42	Coffs Harbour - Sydney	131.3	218.2	66.2
43	Adelaide - Darwin	..	213.3	NA
44	Brisbane - Gladstone	155.2	204.8	31.9
45	Adelaide - Canberra	78.6	183.8	133.8
46	Brisbane - Emerald	135.8	179.0	31.9
47	Adelaide - Port Lincoln	148.5	178.6	20.2
48	Darwin - Perth	138.9	175.2	26.2
49	Brisbane - Hamilton Island	194.3	167.5	-13.8
50	Dubbo - Sydney	83.5	165.7	98.4

(continued)

**Table 1: (continued) Passengers carried (000s) — annual activity**

	<b>City-Pair</b>	<b>YE Jun 2022</b>	<b>YE Jun 2023</b>	<b>% Change</b>
51	Albury - Sydney	80.1	165.5	106.6
52	Canberra - Gold Coast	79.9	165.4	106.9
53	Brisbane - Launceston	162.8	163.2	0.2
54	Port Macquarie - Sydney	76.4	161.7	111.6
55	Adelaide - Cairns	..	157.5	NA
56	Melbourne - Mildura	86.2	153.4	77.9
57	Sydney - Wagga Wagga	74.3	150.3	102.2
58	Brisbane - Mount Isa	115.0	142.5	23.9
59	Brisbane - Bundaberg	..	112.7	NA
60	Adelaide - Alice Springs	75.8	111.8	47.6
61	Brisbane - Moranbah	..	106.5	NA
62	Armidale - Sydney	52.1	104.1	99.9
63	Devonport - Melbourne	..	80.7	NA
	<b>Total domestic network</b>	<b>30,356.2</b>	<b>55,295.8</b>	<b>82.2</b>

.. Data not available for release.

**Table 2: Available seats (000s) — annual activity**

	<b>City-Pair</b>	<b>YE Jun 2022</b>	<b>YE Jun 2023</b>	<b>% Change</b>
1	Melbourne - Sydney	4,890.1	8,837.5	80.7
2	Brisbane - Sydney	2,418.0	4,989.6	106.4
3	Brisbane - Melbourne	2,004.8	3,754.1	87.3
4	Gold Coast - Sydney	1,574.7	2,798.6	77.7
5	Gold Coast - Melbourne	1,614.1	2,504.0	55.1
6	Adelaide - Melbourne	1,525.0	2,719.1	78.3
7	Melbourne - Perth	708.8	2,156.1	204.2
8	Adelaide - Sydney	1,045.8	1,899.7	81.6
9	Perth - Sydney	562.3	1,753.2	211.8
10	Hobart - Melbourne	886.5	1,519.4	71.4
11	Brisbane - Cairns	1,402.1	1,365.0	-2.6
12	Brisbane - Perth	495.2	1,159.0	134.1
13	Canberra - Melbourne	744.8	1,337.4	79.6
14	Cairns - Sydney	552.1	997.7	80.7
15	Brisbane - Townsville	1,050.1	1,093.8	4.2
16	Cairns - Melbourne	629.5	909.7	44.5
17	Adelaide - Brisbane	704.4	968.3	37.5
18	Launceston - Melbourne	572.1	981.1	71.5
19	Brisbane - Mackay	888.7	985.6	10.9
20	Sunshine Coast - Sydney	550.3	940.9	71.0
21	Hobart - Sydney	534.5	884.8	65.6
22	Melbourne - Sunshine Coast	622.2	835.8	34.3
23	Adelaide - Perth	445.5	741.8	66.5
24	Brisbane - Canberra	527.9	903.1	71.1
25	Canberra - Sydney	479.1	891.4	86.1
26	Karratha - Perth	738.4	723.9	-2.0
27	Ballina - Sydney	589.5	653.9	10.9
28	Brisbane - Newcastle	363.7	694.5	91.0
29	Brisbane - Rockhampton	576.4	633.4	9.9
30	Perth - Port Hedland	642.3	634.6	-1.2
31	Melbourne - Newcastle	376.5	485.8	29.0
32	Broome - Perth	557.5	479.0	-14.1
33	Newman - Perth	652.6	604.9	-7.3
34	Kalgoorlie - Perth	454.5	494.5	8.8
35	Brisbane - Darwin	419.0	386.0	-7.9
36	Launceston - Sydney	264.5	363.0	37.3
37	Brisbane - Hobart	407.3	370.2	-9.1
38	Darwin - Melbourne	311.9	347.2	11.3
39	Brisbane - Proserpine	377.7	345.2	-8.6
40	Hamilton Island - Sydney	190.1	340.9	79.4
41	Adelaide - Gold Coast	228.9	273.6	19.5
42	Coffs Harbour - Sydney	219.8	293.6	33.6
43	Adelaide - Darwin	..	292.0	NA
44	Brisbane - Gladstone	275.7	335.8	21.8
45	Adelaide - Canberra	167.2	280.8	67.9
46	Brisbane - Emerald	236.9	259.3	9.5
47	Adelaide - Port Lincoln	232.8	272.7	17.1
48	Darwin - Perth	230.7	225.9	-2.1
49	Brisbane - Hamilton Island	316.1	239.7	-24.2
50	Dubbo - Sydney	149.4	281.8	88.6

(continued)

**Table 2: (continued) Available seats (000s) — annual activity**

	<b>City-Pair</b>	<b>YE Jun 2022</b>	<b>YE Jun 2023</b>	<b>% Change</b>
51	Albury - Sydney	147.6	258.4	75.1
52	Canberra - Gold Coast	129.1	202.8	57.0
53	Brisbane - Launceston	243.4	201.7	-17.2
54	Port Macquarie - Sydney	144.0	261.3	81.5
55	Adelaide - Cairns	..	189.9	NA
56	Melbourne - Mildura	133.8	214.2	60.1
57	Sydney - Wagga Wagga	134.8	251.6	86.7
58	Brisbane - Mount Isa	214.5	225.3	5.0
59	Brisbane - Bundaberg	..	177.3	NA
60	Adelaide - Alice Springs	143.2	156.4	9.3
61	Brisbane - Moranbah	..	200.9	NA
62	Armidale - Sydney	100.9	190.5	88.8
63	Devonport - Melbourne	..	117.9	NA
	<b>Total domestic network</b>	<b>46,323.7</b>	<b>70,286.8</b>	<b>51.7</b>

.. Data not available for release.

**Table 3: Load factors (%) — annual activity**

	<b>City-Pair</b>	<b>YE Jun 2022</b>	<b>YE Jun 2023</b>	<b>% Change</b>
1	Melbourne - Sydney	74.1	82.7	8.5
2	Brisbane - Sydney	70.0	81.0	11.1
3	Brisbane - Melbourne	71.3	83.2	11.9
4	Gold Coast - Sydney	72.4	86.0	13.6
5	Gold Coast - Melbourne	75.4	89.3	13.9
6	Adelaide - Melbourne	68.2	81.2	13.0
7	Melbourne - Perth	71.9	84.1	12.2
8	Adelaide - Sydney	68.2	84.5	16.3
9	Perth - Sydney	69.1	85.4	16.2
10	Hobart - Melbourne	67.8	81.2	13.4
11	Brisbane - Cairns	72.9	88.9	16.0
12	Brisbane - Perth	69.8	84.8	15.0
13	Canberra - Melbourne	60.7	72.4	11.8
14	Cairns - Sydney	65.4	88.7	23.2
15	Brisbane - Townsville	66.9	78.6	11.7
16	Cairns - Melbourne	71.9	88.3	16.4
17	Adelaide - Brisbane	66.6	82.1	15.5
18	Launceston - Melbourne	65.2	78.5	13.3
19	Brisbane - Mackay	63.7	75.0	11.3
20	Sunshine Coast - Sydney	59.7	78.3	18.6
21	Hobart - Sydney	62.6	80.1	17.5
22	Melbourne - Sunshine Coast	66.8	84.3	17.5
23	Adelaide - Perth	68.2	85.4	17.2
24	Brisbane - Canberra	60.8	69.8	9.1
25	Canberra - Sydney	55.5	66.7	11.1
26	Karratha - Perth	61.5	73.2	11.7
27	Ballina - Sydney	65.6	80.4	14.8
28	Brisbane - Newcastle	63.0	70.9	7.9
29	Brisbane - Rockhampton	64.6	75.9	11.4
30	Perth - Port Hedland	63.6	75.0	11.4
31	Melbourne - Newcastle	64.0	80.8	16.9
32	Broome - Perth	68.2	76.9	8.6
33	Newman - Perth	49.9	60.3	10.4
34	Kalgoorlie - Perth	60.4	68.4	8.0
35	Brisbane - Darwin	66.9	83.9	17.0
36	Launceston - Sydney	55.6	83.7	28.1
37	Brisbane - Hobart	68.5	80.8	12.3
38	Darwin - Melbourne	65.0	80.8	15.7
39	Brisbane - Proserpine	72.8	81.1	8.4
40	Hamilton Island - Sydney	58.1	72.6	14.4
41	Adelaide - Gold Coast	64.5	88.7	24.2
42	Coffs Harbour - Sydney	59.7	74.3	14.6
43	Adelaide - Darwin	..	73.1	NA
44	Brisbane - Gladstone	56.3	61.0	4.7
45	Adelaide - Canberra	47.0	65.5	18.4
46	Brisbane - Emerald	57.3	69.0	11.7
47	Adelaide - Port Lincoln	63.8	65.5	1.7
48	Darwin - Perth	60.2	77.6	17.4
49	Brisbane - Hamilton Island	61.5	69.9	8.4
50	Dubbo - Sydney	55.9	58.8	2.9

(continued)

**Table 3: (continued) Load factors (%) — annual activity**

	<b>City-Pair</b>	<b>YE Jun 2022</b>	<b>YE Jun 2023</b>	<b>% Change</b>
51	Albury - Sydney	54.3	64.1	9.8
52	Canberra - Gold Coast	61.9	81.5	19.7
53	Brisbane - Launceston	66.9	80.9	14.0
54	Port Macquarie - Sydney	53.1	61.9	8.8
55	Adelaide - Cairns	..	82.9	NA
56	Melbourne - Mildura	64.5	71.6	7.2
57	Sydney - Wagga Wagga	55.1	59.7	4.6
58	Brisbane - Mount Isa	53.6	63.2	9.6
59	Brisbane - Bundaberg	..	63.6	NA
60	Adelaide - Alice Springs	52.9	71.5	18.6
61	Brisbane - Moranbah	..	53.0	NA
62	Armidale - Sydney	51.6	54.6	3.0
63	Devonport - Melbourne	..	68.5	NA
	<b>Total domestic network</b>	<b>66.6</b>	<b>81.0</b>	<b>14.4</b>

.. Data not available for release.

**Table 4: Aircraft trips <sup>(a)</sup> — annual activity**

	<b>City-Pair</b>	<b>YE Jun 2022</b>	<b>YE Jun 2023</b>	<b>% Change</b>
1	Melbourne - Sydney	30,055	50,883	69.3
2	Brisbane - Sydney	16,063	30,647	90.8
3	Brisbane - Melbourne	12,926	22,864	76.9
4	Gold Coast - Sydney	9,221	16,177	75.4
5	Gold Coast - Melbourne	8,707	13,791	58.4
6	Adelaide - Melbourne	9,739	16,686	71.3
7	Melbourne - Perth	4,624	12,027	160.1
8	Adelaide - Sydney	6,596	11,627	76.3
9	Perth - Sydney	3,091	9,188	197.3
10	Hobart - Melbourne	5,511	8,983	63.0
11	Brisbane - Cairns	9,029	9,069	0.4
12	Brisbane - Perth	2,788	6,681	139.6
13	Canberra - Melbourne	5,464	9,604	75.8
14	Cairns - Sydney	2,918	5,165	77.0
15	Brisbane - Townsville	6,664	7,665	15.0
16	Cairns - Melbourne	3,242	4,735	46.1
17	Adelaide - Brisbane	4,488	7,196	60.3
18	Launceston - Melbourne	5,281	8,268	56.6
19	Brisbane - Mackay	5,836	7,069	21.1
20	Sunshine Coast - Sydney	3,065	5,441	77.5
21	Hobart - Sydney	3,174	5,395	70.0
22	Melbourne - Sunshine Coast	3,556	4,721	32.8
23	Adelaide - Perth	3,001	4,312	43.7
24	Brisbane - Canberra	3,734	6,689	79.1
25	Canberra - Sydney	7,888	14,741	86.9
26	Karratha - Perth	4,588	4,574	-0.3
27	Ballina - Sydney	4,408	4,858	10.2
28	Brisbane - Newcastle	3,073	6,155	100.3
29	Brisbane - Rockhampton	5,664	7,083	25.1
30	Perth - Port Hedland	4,324	4,161	-3.8
31	Melbourne - Newcastle	2,273	3,111	36.9
32	Broome - Perth	3,398	3,232	-4.9
33	Newman - Perth	4,046	3,879	-4.1
34	Kalgoorlie - Perth	3,229	3,491	8.1
35	Brisbane - Darwin	2,623	2,744	4.6
36	Launceston - Sydney	1,553	2,249	44.8
37	Brisbane - Hobart	2,469	2,256	-8.6
38	Darwin - Melbourne	1,656	2,010	21.4
39	Brisbane - Proserpine	2,407	2,278	-5.4
40	Hamilton Island - Sydney	1,076	1,942	80.5
41	Adelaide - Gold Coast	1,341	1,555	16.0
42	Coffs Harbour - Sydney	3,630	5,550	52.9
43	Adelaide - Darwin	..	2,189	NA
44	Brisbane - Gladstone	3,395	4,100	20.8
45	Adelaide - Canberra	1,255	2,512	100.2
46	Brisbane - Emerald	3,488	3,864	10.8
47	Adelaide - Port Lincoln	5,946	6,704	12.7
48	Darwin - Perth	1,402	1,304	-7.0
49	Brisbane - Hamilton Island	1,811	1,398	-22.8
50	Dubbo - Sydney	3,399	5,422	59.5

(continued)

**Table 4: (continued) Aircraft trips <sup>(a)</sup> — annual activity**

	<b>City-Pair</b>	<b>YE Jun 2022</b>	<b>YE Jun 2023</b>	<b>% Change</b>
51	Albury - Sydney	2,754	5,015	82.1
52	Canberra - Gold Coast	842	1,175	39.5
53	Brisbane - Launceston	1,404	1,147	-18.3
54	Port Macquarie - Sydney	3,118	4,803	54.0
55	Adelaide - Cairns	..	1,062	NA
56	Melbourne - Mildura	3,056	4,945	61.8
57	Sydney - Wagga Wagga	2,512	4,882	94.3
58	Brisbane - Mount Isa	2,016	2,051	1.7
59	Brisbane - Bundaberg	..	2,708	NA
60	Adelaide - Alice Springs	1,503	1,851	23.2
61	Brisbane - Moranbah	..	2,667	NA
62	Armidale - Sydney	2,294	3,771	64.4
63	Devonport - Melbourne	..	2,623	NA
	<b>Total domestic network</b>	<b>419,060</b>	<b>595,279</b>	<b>42.1</b>

(a) Includes RPT Cargo flights.

.. Data not available for release.



## TOP TEN AIRPORTS – PASSENGER MOVEMENTS

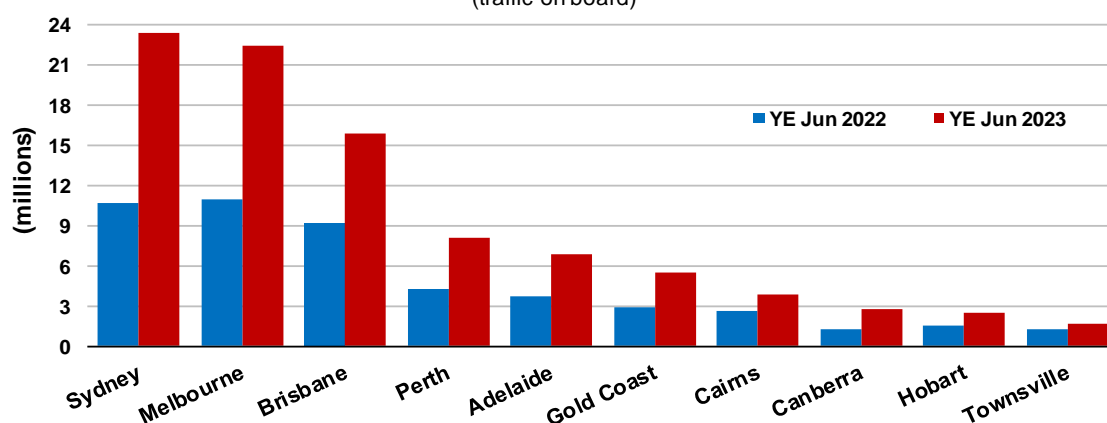
Table 5: Top ten airports, RPT passenger movements (000s) — annual activity

Airport	YE Jun 2022	YE Jun 2023	% Change	% of Total
1 Sydney	10,689.6	23,327.6	118.2	21.1
2 Melbourne	10,985.5	22,494.3	104.8	20.3
3 Brisbane	9,242.3	15,814.8	71.1	14.3
4 Perth	4,289.3	8,098.9	88.8	7.3
5 Adelaide	3,700.2	6,828.6	84.5	6.2
6 Gold Coast	2,914.5	5,425.7	86.2	4.9
7 Cairns	2,605.9	3,905.5	49.9	3.5
8 Canberra	1,286.2	2,713.2	111.0	2.5
9 Hobart	1,503.8	2,499.9	66.2	2.3
10 Townsville	1,201.5	1,650.1	37.3	1.5
<b>Total top ten airports</b>	<b>48,418.8</b>	<b>92,758.6</b>	<b>91.6</b>	<b>79.8</b>
<b>Total domestic network</b>	<b>60,712.5</b>	<b>110,591.7</b>	<b>82.2</b>	<b>100.0</b>

Note: Airport passenger movement numbers are the sum of passenger arrivals and departures at each airport.

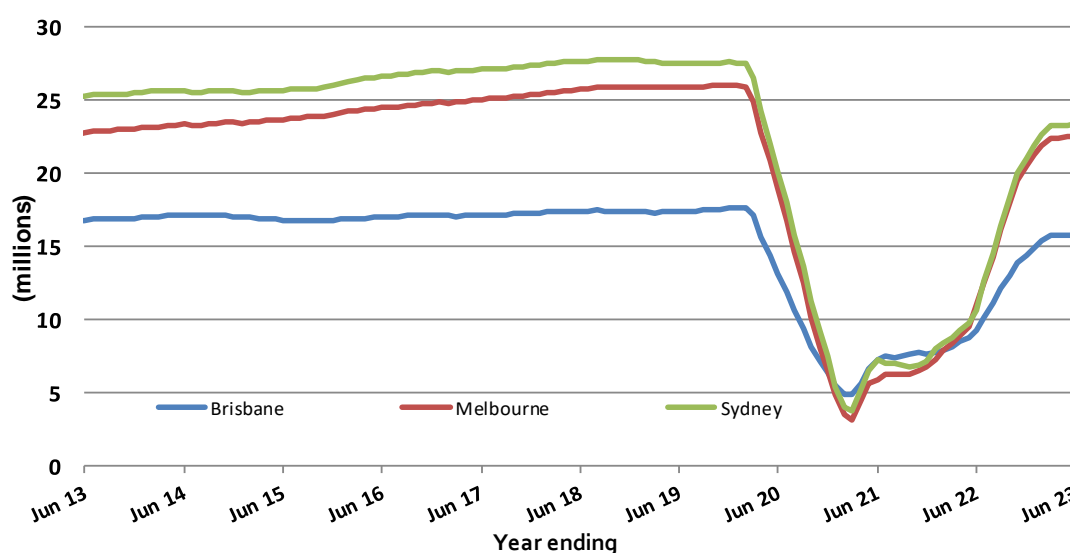
### Top ten airports, RPT passenger movements

(traffic on board)



### Top three airports, domestic passenger movements

(moving annual totals - traffic on board)



## TOP FIVE AIRPORTS – CARGO MOVEMENTS

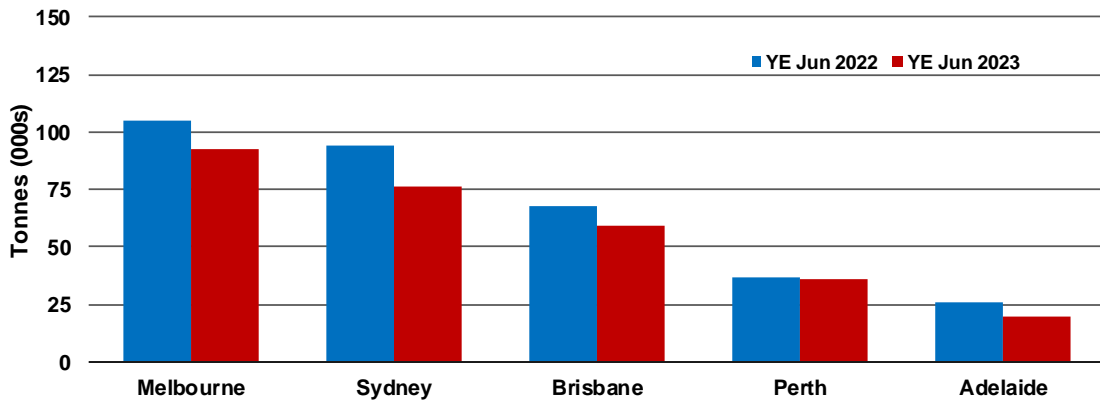
Table 6: Top five airports, domestic RPT cargo movements (000s tonnes) - annual activity

Airport	YE Jun 2022	YE Jun 2023	% Change	% of Total
1 Melbourne	105.1	92.8	-11.7	27.0
2 Sydney	94.2	76.5	-18.8	22.2
3 Brisbane	67.5	59.5	-11.9	17.3
4 Perth	37.0	35.8	-3.3	10.4
5 Adelaide	26.1	19.4	-25.8	5.6
<b>Total top five airports</b>	<b>330.0</b>	<b>283.9</b>	<b>-14.0</b>	<b>82.6</b>
<b>Total domestic network</b>	<b>409.0</b>	<b>343.9</b>	<b>-15.9</b>	<b>100.0</b>

Note: Airport cargo tonnes are the sum of cargo tonnes on arrivals and departures at each airport.

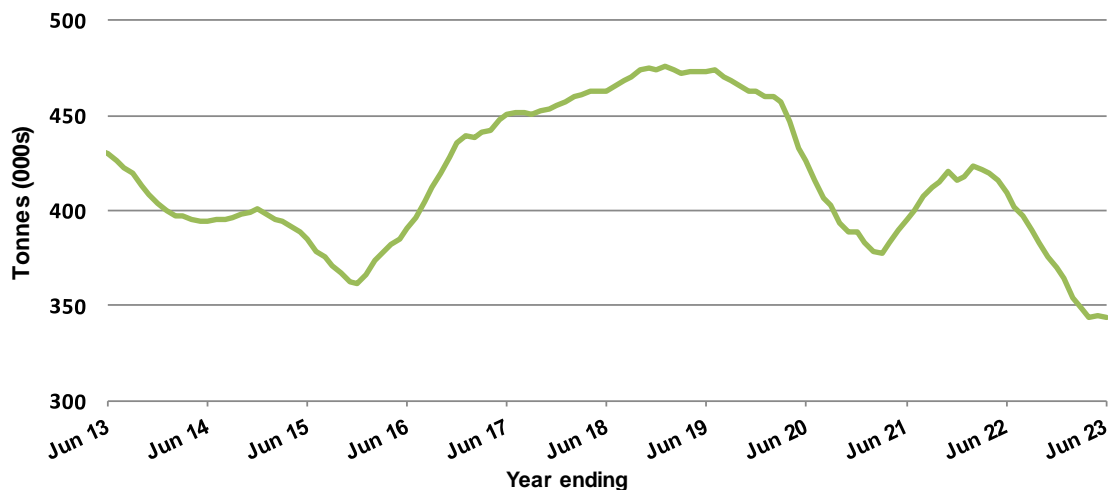
### Top five airports, cargo movements

(Domestic cargo traffic - traffic on board)



### Total domestic network - cargo movements

(moving annual totals - traffic on board)



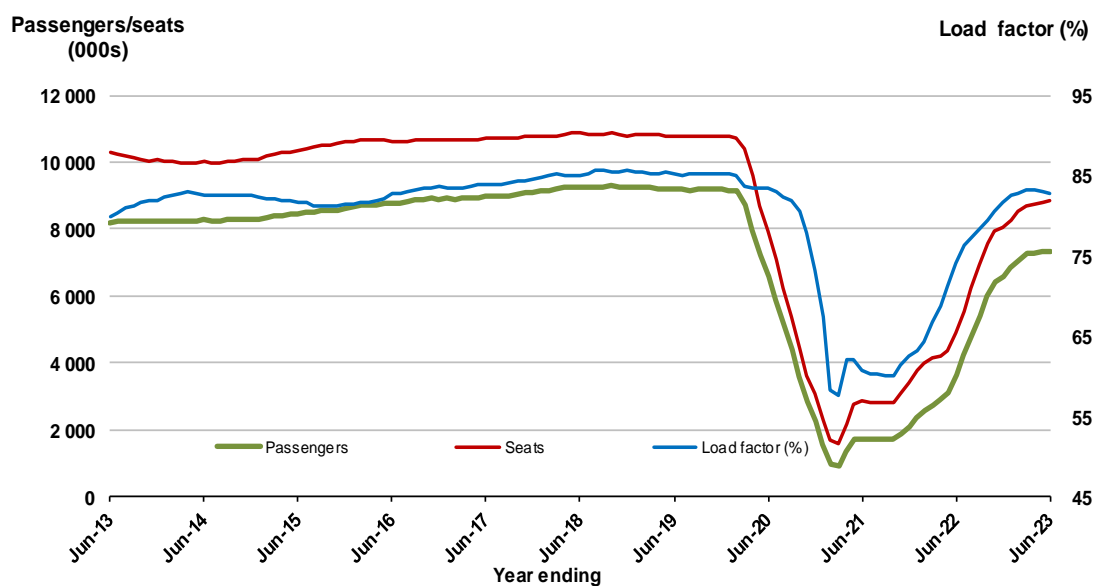
## TOP TWENTY ROUTES

### 1. Melbourne - Sydney

#### Moving annual data

	YE Jun 2022	YE Jun 2023	% Change
Passengers carried (000s)	3,625.1	7,306.2	101.5
Seats (000s)	4,890.1	8,837.5	80.7
Load factor %	74.1	82.7	8.5*
Aircraft trips	30,055	50,883	69.3

\* percentage point difference

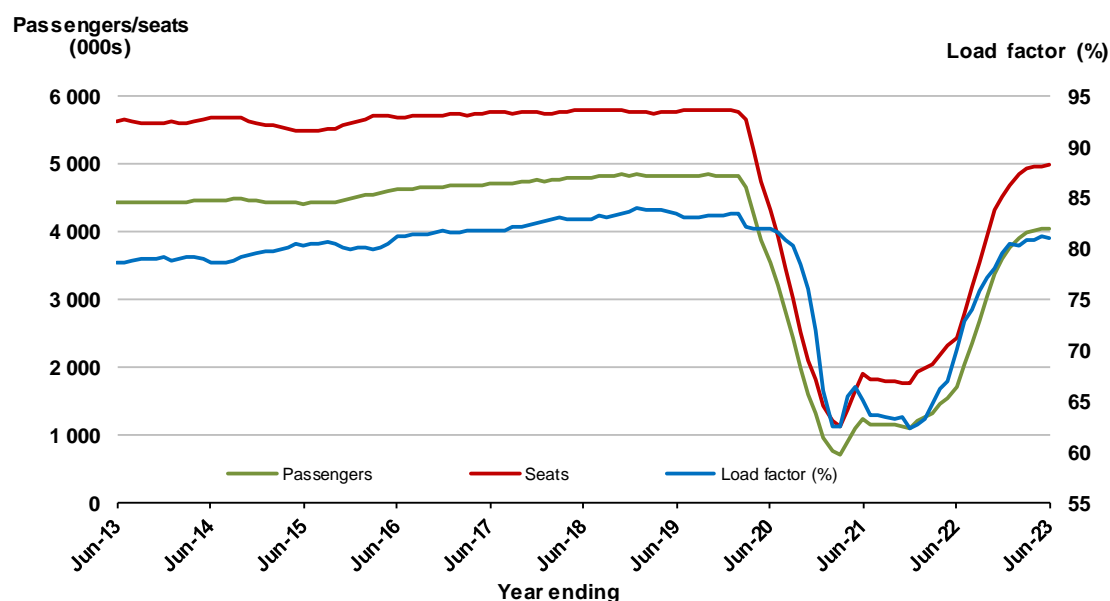


### 2. Brisbane - Sydney

#### Moving annual data

	YE Jun 2022	YE Jun 2023	% Change
Passengers carried (000s)	1,692.3	4,043.7	138.9
Seats (000s)	2,418.0	4,989.6	106.4
Load factor %	70.0	81.0	11.1*
Aircraft trips	16,063	30,647	90.8

\* percentage point difference

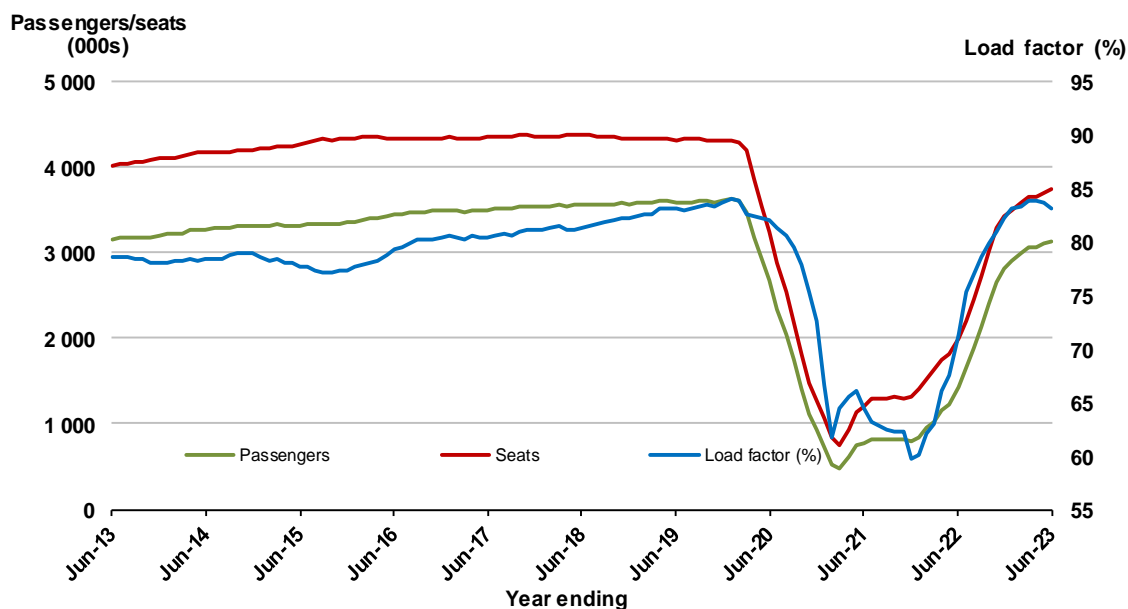


### 3. Brisbane - Melbourne

#### Moving annual data

	YE Jun 2022	YE Jun 2023	% Change
Passengers carried (000s)	1,429.8	3,124.3	118.5
Seats (000s)	2,004.8	3,754.1	87.3
Load factor %	71.3	83.2	11.9 *
Aircraft trips	12,926	22,864	76.9

\* percentage point difference

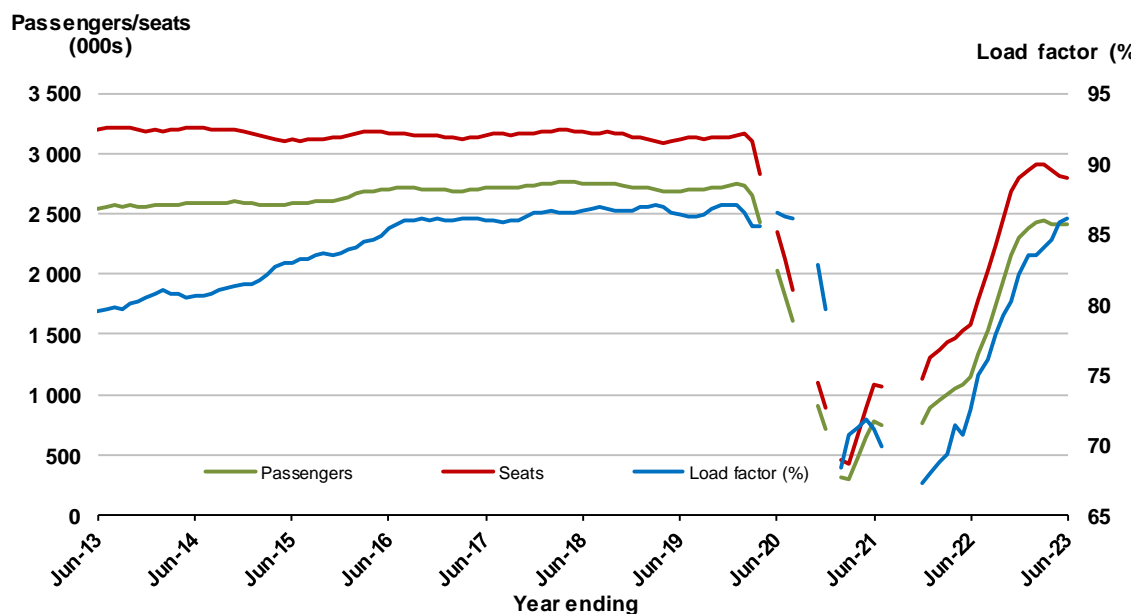


### 4. Gold Coast - Sydney (a)

#### Moving annual data

	YE Jun 2022	YE Jun 2023	% Change
Passengers carried (000s)	1,140.8	2,407.9	111.1
Seats (000s)	1,574.7	2,798.6	77.7
Load factor %	72.4	86.0	13.6
Aircraft trips	9,221	16,177	75.4

\* percentage point difference



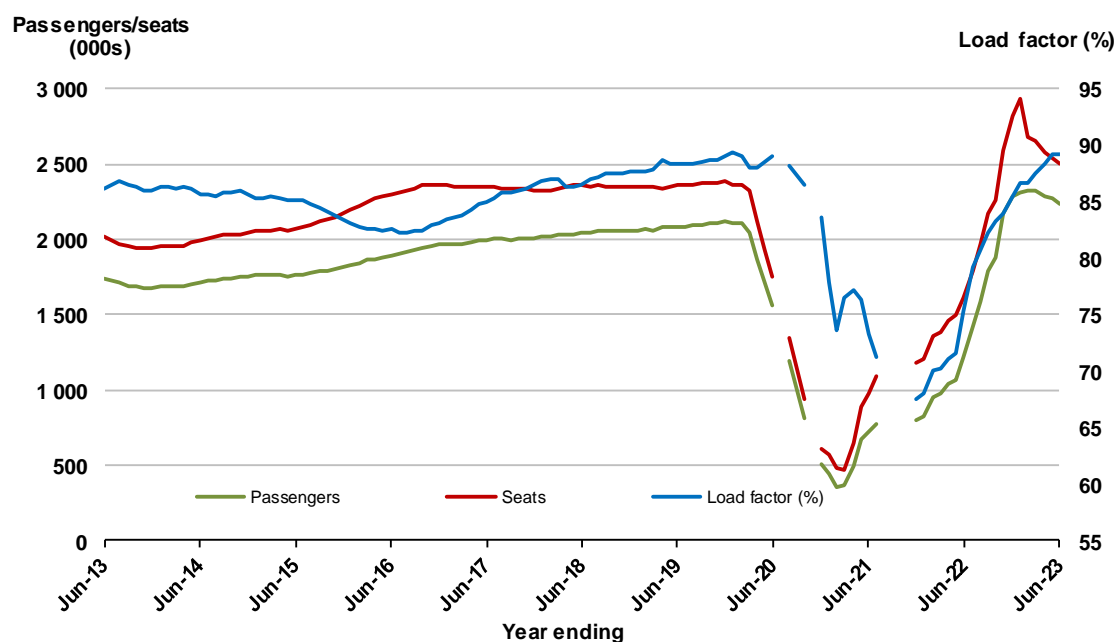
(a) May, September and October 2020 and January and August to November 2021 moving annual totals not available for release.

## 5. Gold Coast - Melbourne <sup>(a)</sup>

### Moving annual data

	YE Jun 2022	YE Jun 2023	% Change
Passengers carried (000s)	1,217.0	2,236.0	83.7
Seats (000s)	1,614.1	2,504.0	55.1
Load factor %	75.4	89.3	13.9 *
Aircraft trips	8,707	13,791	58.4

\* percentage point difference



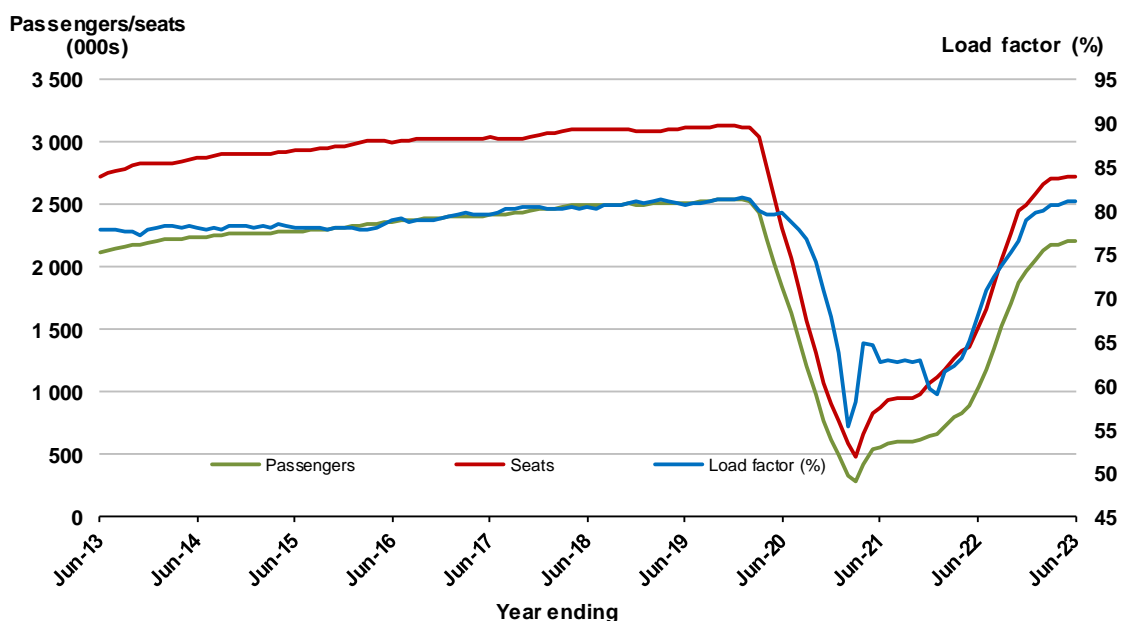
(a) July and November 2020 and August to November 2021 moving annuals are not available for release.

## 6. Adelaide - Melbourne

### Moving annual data

	YE Jun 2022	YE Jun 2023	% Change
Passengers carried (000s)	1,040.0	2,206.8	112.2
Seats (000s)	1,525.0	2,719.1	78.3
Load factor %	68.2	81.2	13.0 *
Aircraft trips	9,739	16,686	71.3

\* percentage point difference

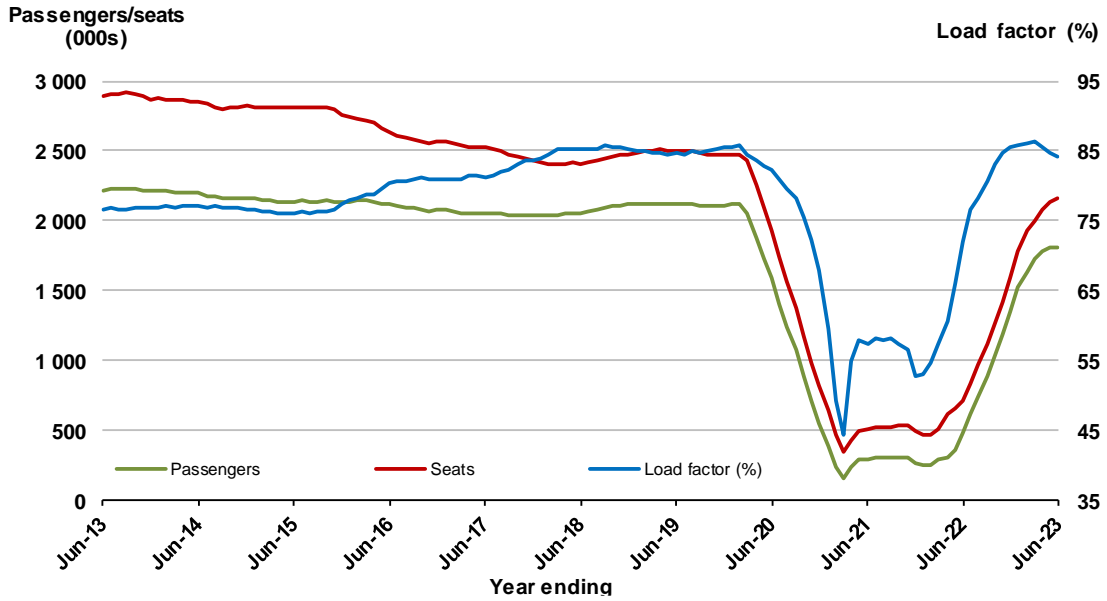


## 7. Melbourne - Perth

### Moving annual data

	YE Jun 2022	YE Jun 2023	% Change
Passengers carried (000s)	485.7	1,813.6	273.4
Seats (000s)	708.8	2,156.1	204.2
Load factor %	71.9	84.1	12.2 *
Aircraft trips	4,624	12,027	160.1

\* percentage point difference

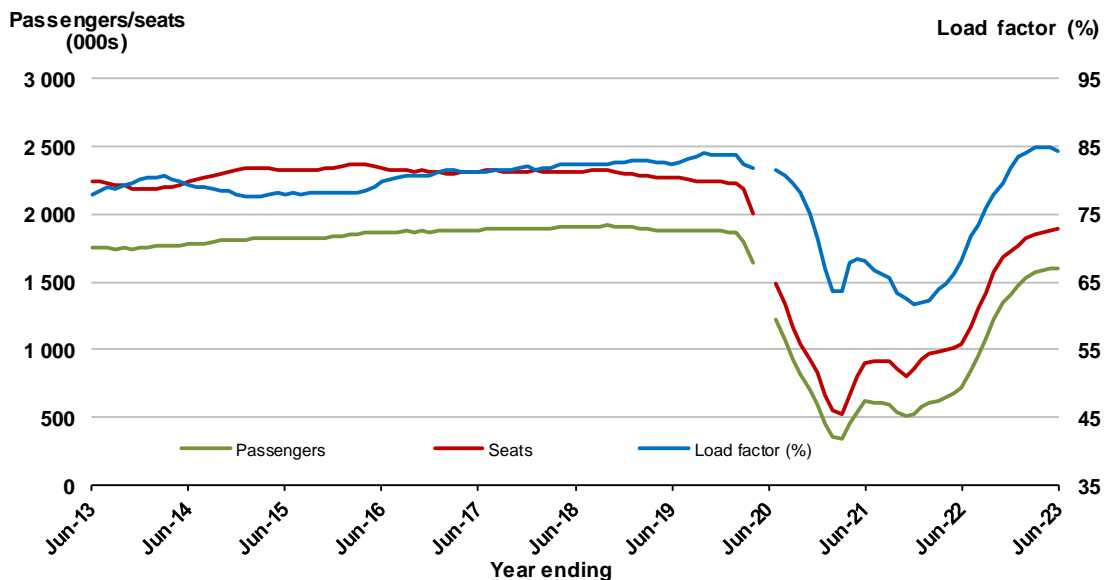


## 8. Adelaide - Sydney <sup>(a)</sup>

### Moving annual data

	YE Jun 2022	YE Jun 2023	% Change
Passengers carried (000s)	713.5	1,604.8	124.9
Seats (000s)	1,045.8	1,899.7	81.6
Load factor %	68.2	84.5	16.3 *
Aircraft trips	6,596	11,627	76.3

\* percentage point difference



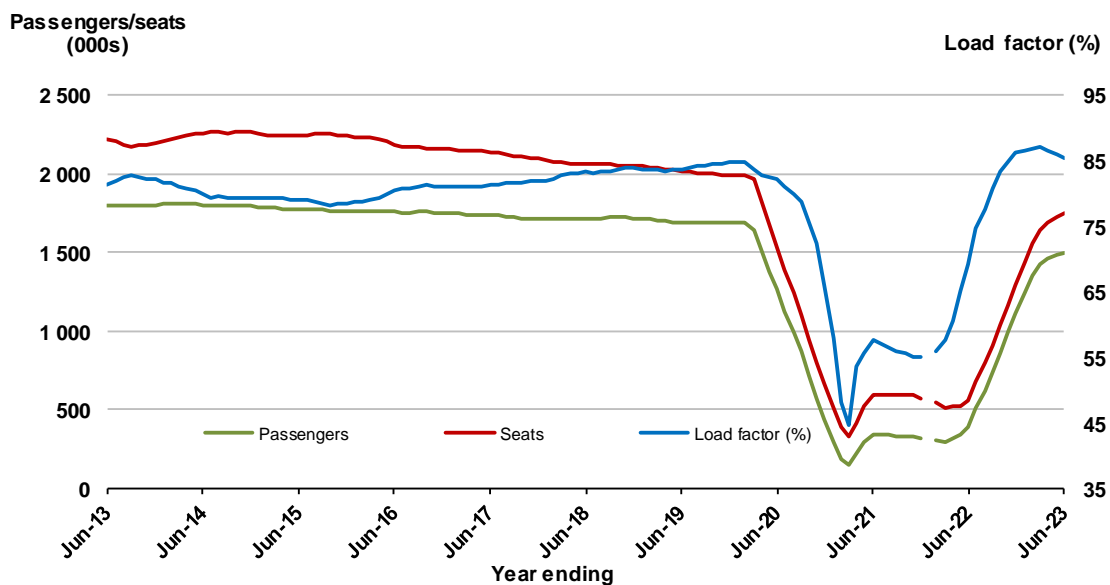
(a) May and June 2020 moving annuals are not available for release.

## 9. Perth - Sydney <sup>(a)</sup>

### Moving annual data

	YE Jun 2022	YE Jun 2023	% Change
Passengers carried (000s)	388.7	1,496.8	285.1
Seats (000s)	562.3	1,753.2	211.8
Load factor %	69.1	85.4	16.2 *
Aircraft trips	3,091	9,188	197.3

\* percentage point difference



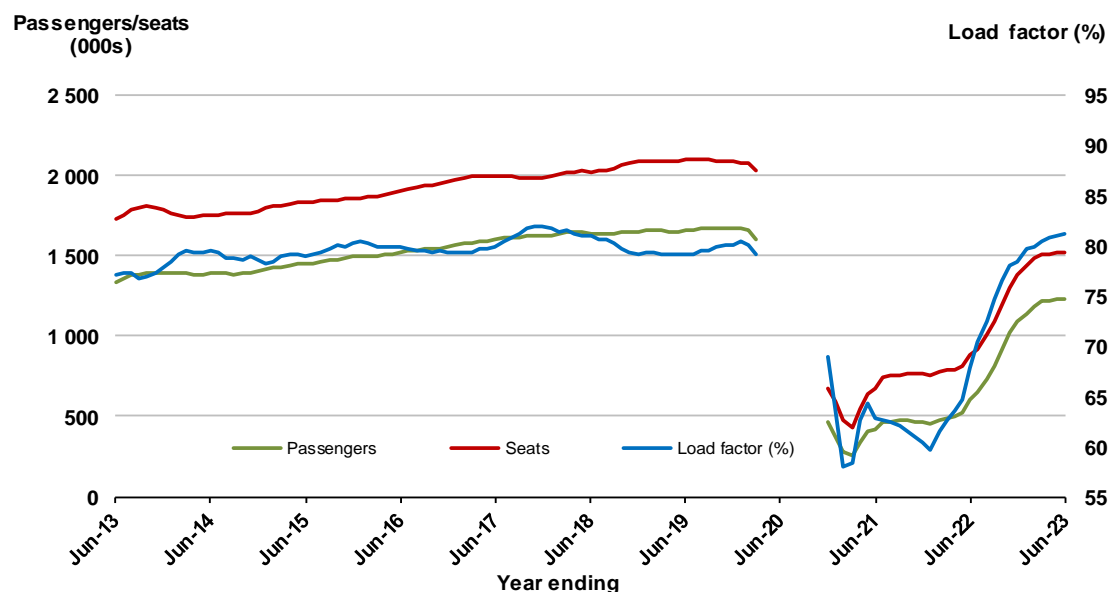
(a) January 2022 moving annuals are not available for release.

## 10. Hobart - Melbourne <sup>(a)</sup>

### Moving annual data

	YE Jun 2022	YE Jun 2023	% Change
Passengers carried (000s)	601.1	1,233.6	105.2
Seats (000s)	886.5	1,519.4	71.4
Load factor %	67.8	81.2	13.4 *
Aircraft trips	5,511	8,983	63.0

\* percentage point difference



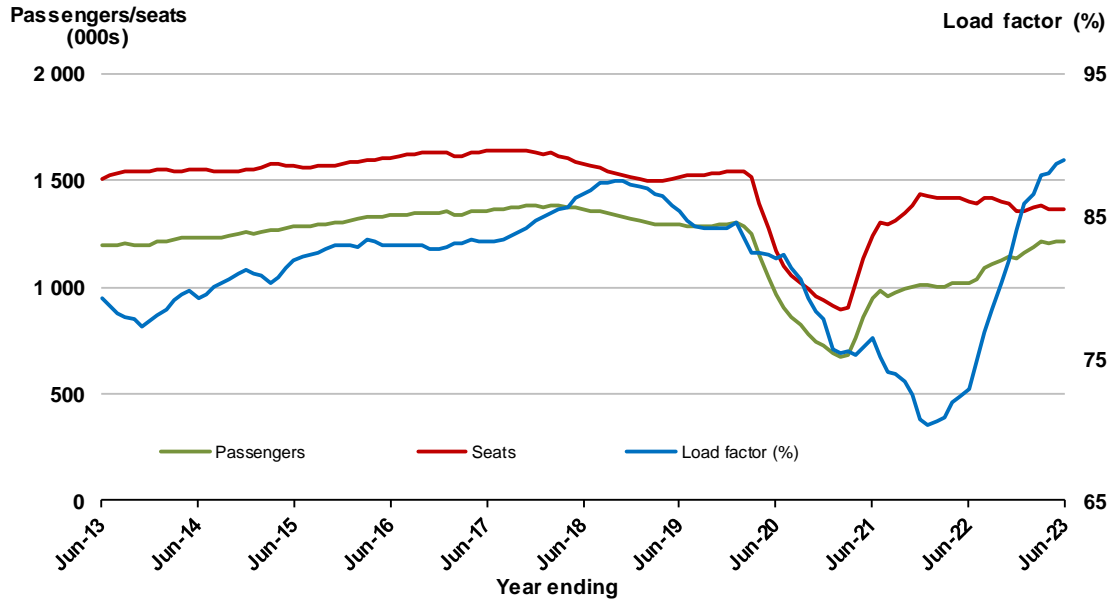
(a) April to November 2020 moving annuals are not available for release.

## 11. Brisbane - Cairns

### Moving annual data

	YE Jun 2022	YE Jun 2023	% Change
Passengers carried (000s)	1,021.8	1,213.4	18.8
Seats (000s)	1,402.1	1,365.0	-2.6
Load factor %	72.9	88.9	16.0*
Aircraft trips	9,029	9,069	0.4

\* percentage point difference



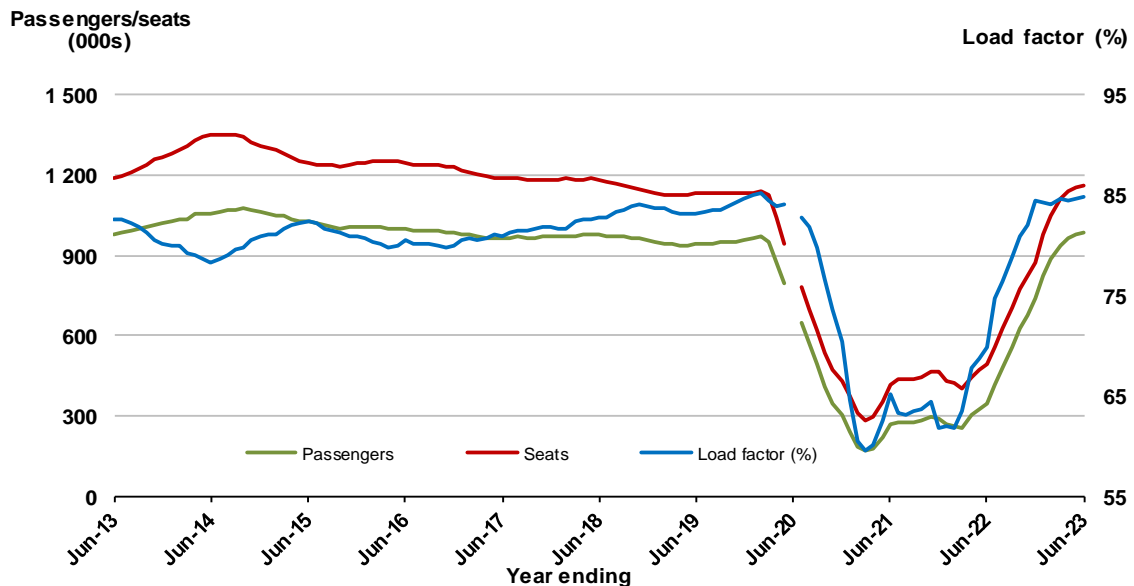
(a) January 2022 moving annual totals are not available for release.

## 12. Brisbane - Perth <sup>(a)</sup>

### Moving annual data

	YE Jun 2022	YE Jun 2023	% Change
Passengers carried (000s)	345.5	982.5	184.4
Seats (000s)	495.2	1,159.0	134.1
Load factor %	69.8	84.8	15.0
Aircraft trips	2,788	6,681	139.6

\* percentage point difference



(a) June 2020 moving annuals are not available for release.

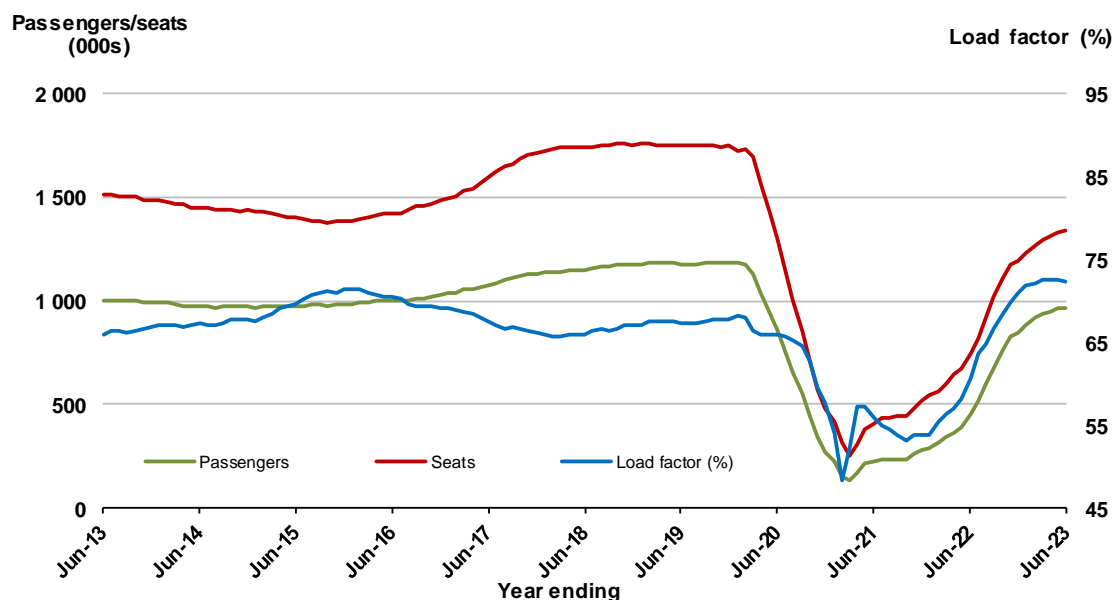


## 13. Canberra - Melbourne

### Moving annual data

	YE Jun 2022	YE Jun 2023	% Change
Passengers carried (000s)	451.7	968.3	114.4
Seats (000s)	744.8	1,337.4	79.6
Load factor %	60.7	72.4	11.8*
Aircraft trips	5,464	9,604	75.8

\* percentage point difference

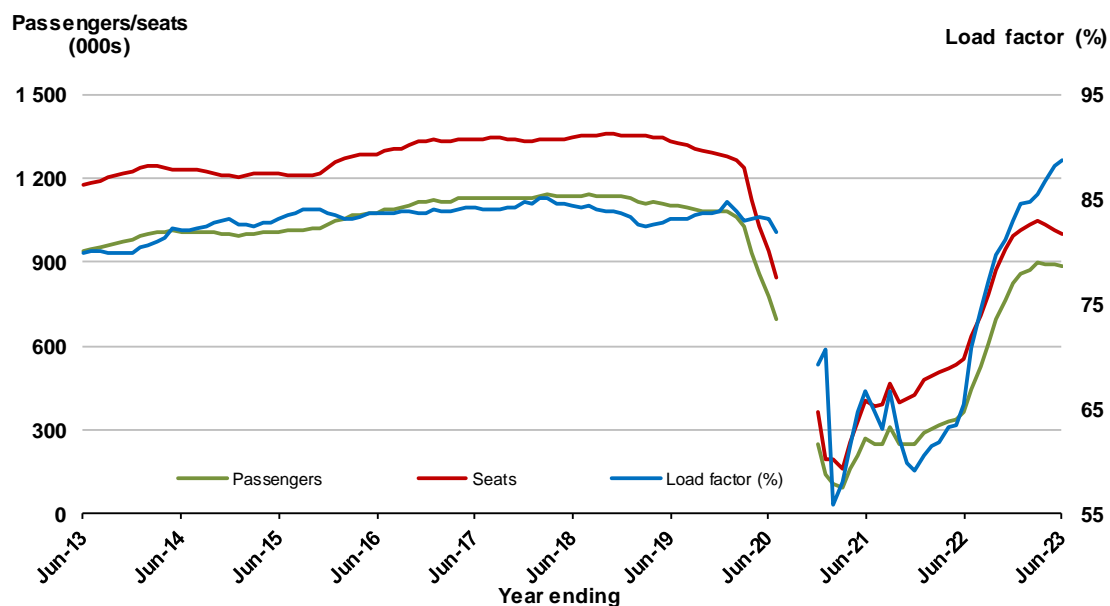


## 14. Cairns - Sydney <sup>(a)</sup>

### Moving annual data

	YE Jun 2022	YE Jun 2023	% Change
Passengers carried (000s)	361.3	884.8	144.9
Seats (000s)	552.1	997.7	80.7
Load factor %	65.4	88.7	23.2*
Aircraft trips	2,918	5,165	77.0

\* percentage point difference



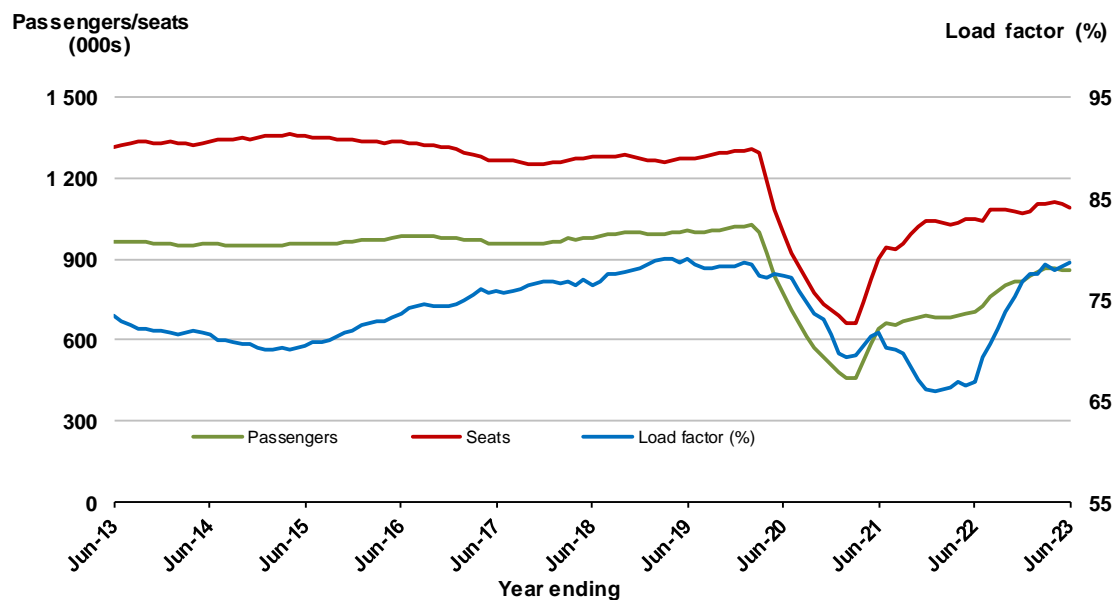
(a) August to November 2020 moving annuals are not available for release.

## 15. Brisbane - Townsville

### Moving annual data

	YE Jun 2022	YE Jun 2023	% Change
Passengers carried (000s)	702.4	860.0	22.4
Seats (000s)	1,050.1	1,093.8	4.2
Load factor %	66.9	78.6	11.7 *
Aircraft trips	6,664	7,665	15.0

\* percentage point difference

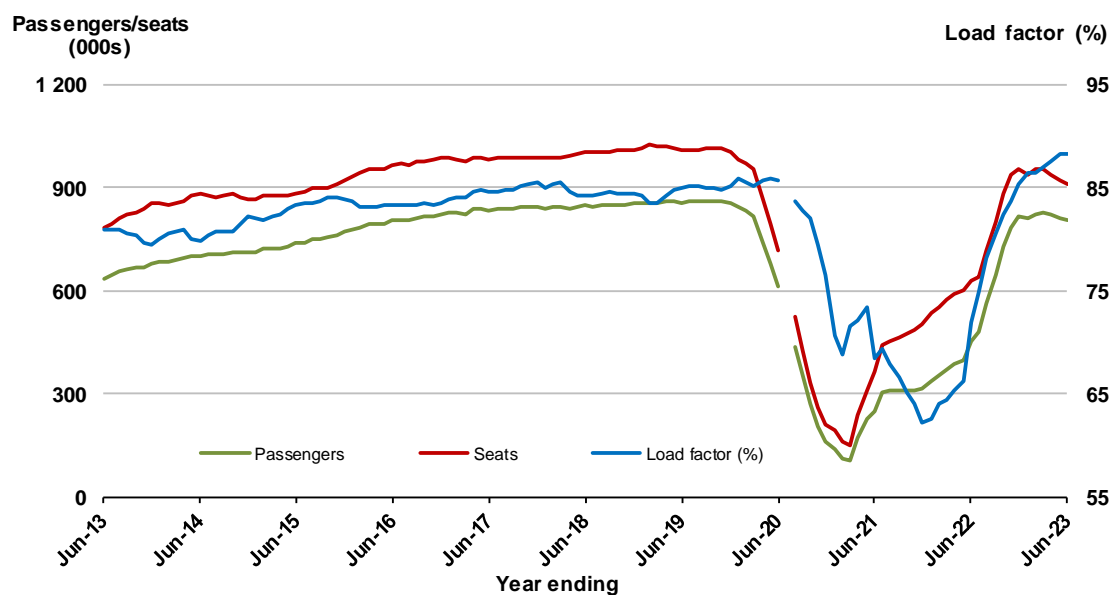


## 16. Cairns - Melbourne <sup>(a)</sup>

### Moving annual data

	YE Jun 2022	YE Jun 2023	% Change
Passengers carried (000s)	452.8	803.4	77.5
Seats (000s)	629.5	909.7	44.5
Load factor %	71.9	88.3	16.4 *
Aircraft trips	3,242	4,735	46.1

\* percentage point difference



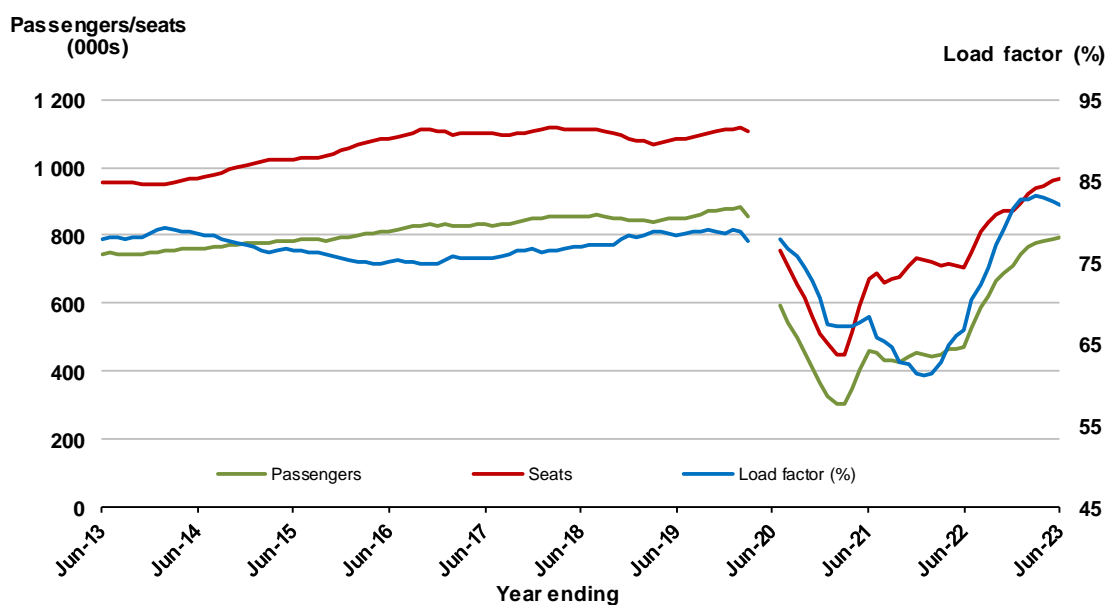
(a) June 2020 moving annuals are not available for release

## 17. Adelaide - Brisbane <sup>(a)</sup>

### Moving annual data

	YE Jun 2022	YE Jun 2023	% Change
Passengers carried (000s)	469.2	795.3	69.5
Seats (000s)	704.4	968.3	37.5
Load factor %	66.6	82.1	15.5 *
Aircraft trips	4,488	7,196	60.3

\* percentage point difference



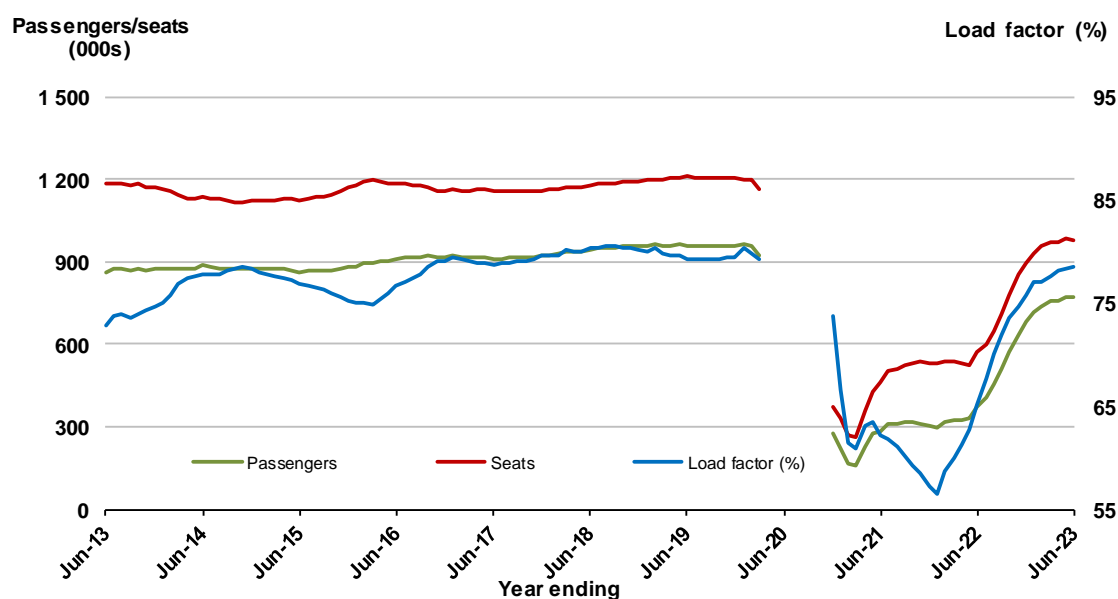
(a) April to June 2020 moving annuals are not available for release.

## 18. Launceston - Melbourne <sup>(a)</sup>

### Moving annual data

	YE Jun 2022	YE Jun 2023	% Change
Passengers carried (000s)	373.0	770.3	106.5
Seats (000s)	572.1	981.1	71.5
Load factor %	65.2	78.5	13.3 *
Aircraft trips	5,281	8,268	56.6

\* percentage point difference



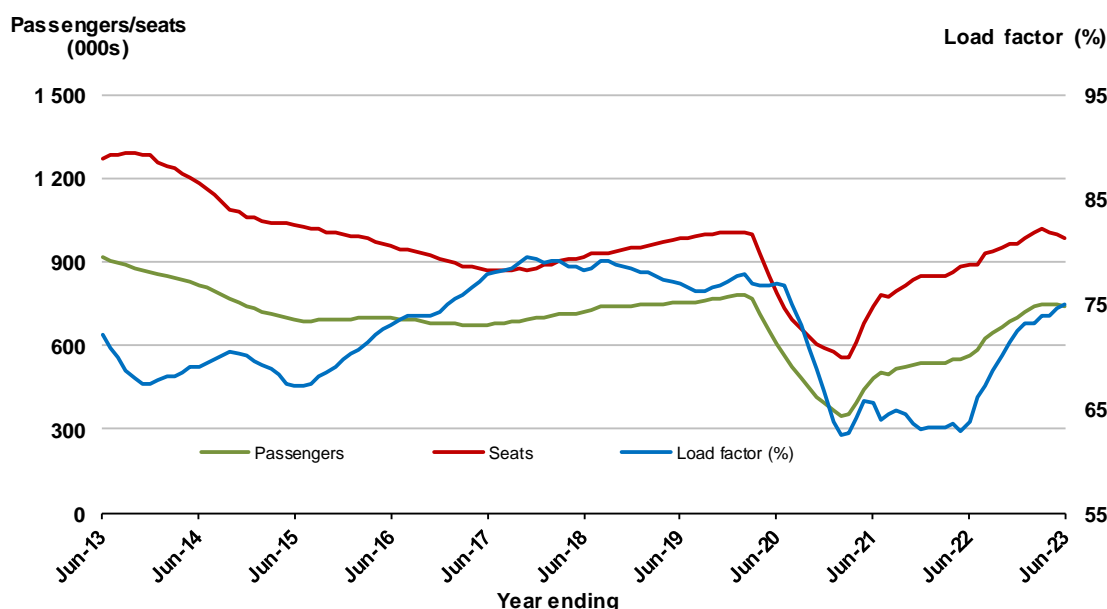
(a) April to November 2020 moving annuals are not available for release.

## 19. Brisbane - Mackay

### Moving annual data

	YE Jun 2022	YE Jun 2023	% Change
Passengers carried (000s)	565.8	739.2	30.6
Seats (000s)	888.7	985.6	10.9
Load factor %	63.7	75.0	11.3 *
Aircraft trips	5,836	7,069	21.1

\* percentage point difference

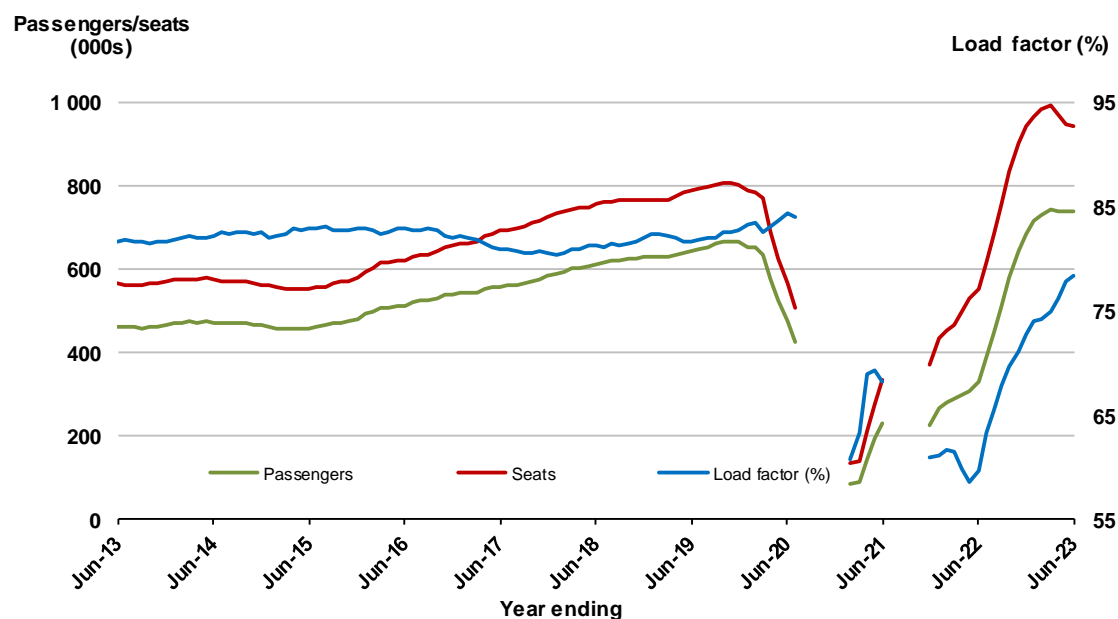


## 20. Sunshine Coast- Sydney <sup>(a)</sup>

### Moving annual data

	YE Jun 2022	YE Jun 2023	% Change
Passengers carried (000s)	328.6	737.1	124.3
Seats (000s)	550.3	940.9	71.0
Load factor %	59.7	78.3	18.6 *
Aircraft trips	3,065	5,441	77.5

\* percentage point difference



(a) August 2020 to January 2021 and August to November 2021 moving annuals are not available for release.

## TOP FIFTY REGIONAL AIRPORTS

**Table 7: Top fifty regional airports (000s) — passenger movements, annual**

	<b>Airport</b>	<b>YE Jun 2022</b>	<b>YE Jun 2023</b>	<b>% Change</b>
1	Cairns	2 605.9	3 905.5	49.9
2	Hobart	1 503.8	2 499.9	66.2
3	Townsville	1 201.5	1 650.1	37.3
4	Darwin	1 248.8	1 636.3	31.0
5	Launceston	743.1	1 294.0	74.1
6	Newcastle	574.1	1 090.4	89.9
7	Mackay	682.3	890.2	30.5
8	Ballina	527.4	632.6	19.9
9	Rockhampton	411.0	557.6	35.7
10	Karratha	456.9	531.7	16.4
11	Hamilton Island	361.8	500.2	38.3
12	Proserpine	370.7	477.8	28.9
13	Port Hedland	409.7	477.0	16.4
14	Broome	424.9	440.8	3.8
15	Newman	327.0	365.8	11.9
16	Alice Springs	248.9	363.6	46.1
17	Kalgoorlie	274.8	338.9	23.3
18	Coffs Harbour	180.2	285.9	58.7
19	Ayers Rock	93.5	245.7	162.7
20	Albury	109.3	236.6	116.5
21	Mount Isa	196.0	230.7	17.7
22	Paraburdoo	198.8	226.0	13.7
23	Mildura	105.8	207.8	96.5
24	Gladstone	155.4	207.2	33.3
25	Dubbo	112.5	199.5	77.3
26	Wagga Wagga	89.5	194.7	117.5
27	Port Macquarie	88.8	193.2	117.6
28	Emerald	145.8	189.5	30.0
29	Port Lincoln	148.6	178.7	20.2
30	Tamworth	71.8	153.7	114.2
31	Hervey Bay	76.5	137.3	79.5
32	Kununurra	110.8	131.9	19.1
33	Devonport	46.5	119.6	157.0
34	Bundaberg	82.1	117.2	42.8
35	Armidale	56.5	110.7	96.0
36	Moranbah	89.2	106.6	19.5
37	Learmonth	94.4	103.5	9.7
38	Thursday Island	92.8	102.7	10.7
39	Orange	51.3	100.1	95.2
40	Olympic Dam	90.4	98.1	8.6
41	Gove	61.2	88.0	43.9
42	Weipa	78.4	84.9	8.2
43	Burnie	41.7	82.7	98.2
44	Geraldton	80.4	82.2	2.2
45	Mount Gambier	51.7	76.7	48.4
46	Griffith	38.6	76.3	97.8
47	Merimbula	35.0	75.0	114.5
48	Norfolk Island	50.5	70.2	38.9
49	Broken Hill	27.8	61.7	121.7
50	Albany	51.4	61.1	18.9
<b>Total top 50 regional airports</b>		<b>15,375.4</b>	<b>22,288.2</b>	<b>45.0</b>
<b>Total regional airports</b>		<b>16,484.8</b>	<b>23,666.5</b>	<b>43.6</b>
<b>Total domestic network</b>		<b>60,712.5</b>	<b>110,591.7</b>	<b>82.2</b>

Note: Airport passenger movement numbers are the sum of passenger arrivals and departures at each airport. Regional airports are defined as airports which are, according to the Australian Bureau of Statistics "The Australian Statistical Geography Standard (ASGS)", not based in Major Urban areas.

## DOMESTIC CHARTER ACTIVITY

**Table 8: Charter passengers carried and aircraft trips - annual activity**

	YE Jun 2022	YE Jun 2023	% Change
Total domestic charter passengers	3,415,373	3,811,412	11.6
Total domestic charter aircraft trips	64,538	67,162	4.1

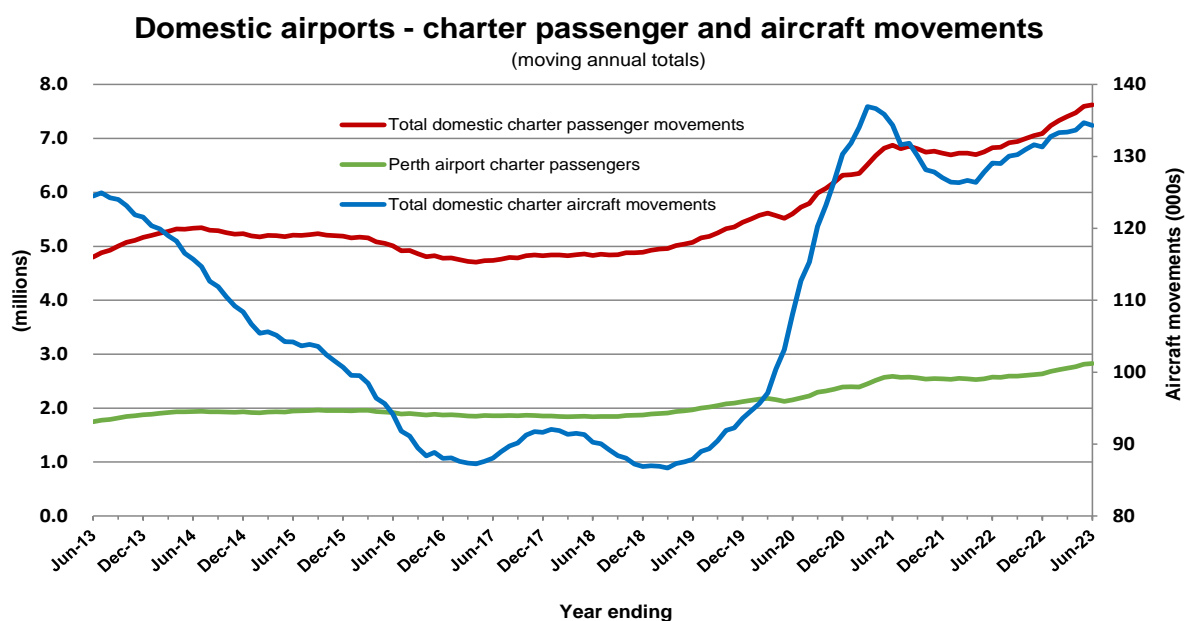
Note: Helicopter, joyflights and sightseeing charter flights not included.

**Table 9: Domestic airports - charter activity - annual activity**

	YE Jun 2022	YE Jun 2023	% Change
Total domestic charter passenger movements	6,830,746	7,622,824	11.6
Total domestic charter aircraft movements	129,076	134,324	4.1
Perth airport charter passenger movements	2,573,303	2,827,932	9.9
Perth airport charter aircraft movements	44,443	45,110	1.5

Note: Helicopter, joyflights and sightseeing charter flights not included.

Charter passenger and aircraft movement numbers are the sum of arrivals and departures at each airport.



## DEFINITIONS

Aircraft Trips	The number of flight stages. A return flight counts as two aircraft trips.
Airport Movements	Airport movements (passenger and cargo) are measured once on arrival and once on departure. Each domestic trip generates two movements at airports. For example, a trip from Melbourne to Sydney will be counted twice, as a departure at Melbourne and as an arrival at Sydney. At the national level, the sum of all domestic airport traffic will therefore be equal to twice the number of trips undertaken.
Available Seat Kilometres (ASKs)	Calculated by multiplying the number of seats available on each flight stage, by the distance in kilometres between the ports. The distances used are Great Circle Distances.
City-Pair	The ports shown make up the city-pair route. Passenger movements shown for a city pair reflect total traffic in both directions.
Flight Stage	The operation of an aircraft from take-off to landing.
Load Factor	The total revenue passenger kilometres performed as a percentage of the total available seat kilometres.
Passengers Carried	Revenue passengers carried.
Regular Public Transport Services (RPT)	All air service operations in which aircraft are available for the transport of members of the public and are conducted in accordance with fixed schedules. It does not include charter or other non-scheduled operations.
Revenue Passengers	All passengers paying any fare. Frequent flyer redemption travellers are regarded as revenue passengers.
Revenue Passenger Kilometres (RPKs)	Calculated by multiplying the number of revenue passengers travelling on each flight stage, by the distance in kilometres between the ports. The distances used are Great Circle Distances.
Traffic on board by stages	The total of all traffic (revenue passengers) on each flight stage between two directly connected airports.
..	Not available for confidentiality or other reasons.
NA	Not applicable.