



Australian Government

**Department of Infrastructure, Transport,
Regional Development, Communications and the Arts**
Bureau of Infrastructure and Transport Research Economics

STATISTICAL REPORT



bitre

Aviation

**Domestic aviation activity
2023-24**

The Department of Infrastructure, Transport, Regional Development, Communications and the Arts acknowledges the Traditional Custodians of Country of the land on which we work and live.

We recognise and respect the continuing connections to land, waters and communities.

We pay our respects to them and their cultures and to their Elders both past and present and to all Aboriginal and Torres Strait Islander people.

© Commonwealth of Australia 2024

ISSN: 1832 - 1968

Ownership of intellectual property rights in this publication

Unless otherwise noted, copyright (and any other intellectual property rights, if any) in this publication is owned by the Commonwealth of Australia (referred to below as the Commonwealth).

Disclaimer

The material contained in this publication is made available on the understanding that the Commonwealth is not providing professional advice, and that users exercise their own skill and care with respect to its use, and seek independent advice if necessary.

The Commonwealth makes no representations or warranties as to the contents or accuracy of the information contained in this publication. To the extent permitted by law, the Commonwealth disclaims liability to any person or organisation in respect of anything done, or omitted to be done, in reliance upon information contained in this publication.

Creative Commons licence

With the exception of (a) the Coat of Arms; and (b) the Department of Infrastructure, Transport, Regional Development, Communications and the Arts' photos and graphics, copyright in this publication is licensed under a Creative Commons Attribution 3.0 Australia Licence.

Creative Commons Attribution 3.0 Australia Licence is a standard form licence agreement that allows you to copy, communicate and adapt this publication provided that you attribute the work to the Commonwealth and abide by the other licence terms. A summary of the licence terms is available from <http://creativecommons.org/licenses/by/3.0/au/deed.en>.

The full licence terms are available from <http://creativecommons.org/licenses/by/3.0/au/legalcode>.

Use of the Coat of Arms

The Department of the Prime Minister and Cabinet sets the terms under which the Coat of Arms is used. Please refer to the Department's Commonwealth Coat of Arms and Government branding web page <http://www.dpmc.gov.au/guidelines/index.cfm#brand> and, in particular, the Guidelines on the use of the Commonwealth Coat of Arms publication.

An appropriate citation for this report is:

Bureau of Infrastructure and Transport Research Economics (BITRE), 2024, Domestic aviation activity, Statistical Report, BITRE, Canberra ACT.

Contact us

This publication is available in PDF format. All other rights are reserved, including in relation to any Departmental logos or trade marks which may exist. For enquiries regarding the licence and any use of this publication, please contact:

Bureau of Infrastructure and Transport Research Economics (BITRE)
Department of Infrastructure, Transport, Regional Development, Communications and the Arts
GPO Box 501, Canberra ACT 2601, Australia

Inquiries

Email: AVSTATS@infrastructure.gov.au

Website: www.bitre.gov.au/statistics/aviation

Inquiries: nebojsa.pavlovic@infrastructure.gov.au 02 6136 8282

FOREWORD

This report provides an overview of domestic (including charter) commercial aviation activity in Australia for the year ending June 2024.

The data covers revenue passengers carried by Australian-registered operators of scheduled regular public transport services over Australian flight stages and fixed-wing charter operators. These estimates include passengers carried between domestic airports on international flights operated by these carriers. The passengers carried refer to traffic on board by stages.

Estimates of passengers and aircraft movements for charter aviation are included in this publication, where BITRE confidentiality standards are met.

Individual routes shown are restricted to those with an average exceeding 8,000 passengers per month over the previous six months where two or more airlines operate in competition. In November 2021 the major airlines (Qantas Group, Virgin Australia and Rex Airlines) agreed to publication of the top 35 routes based on pre-COVID activity (December 2019) whether or not they were meeting the above criteria. From January 2023, the passenger load and dual competition requirements were reinstated due to the continued recovery of passenger numbers.

Information on both the total network and the Regular Public Transport (RPT) network for the year ending June 2024 is presented on page 2.

Detailed information on the 61 individual routes can be found in the RPT summary pages on pages 3-10.

The top ten airports in terms of RPT passenger movements are shown on page 11.

Data on domestic RPT cargo movements at the top five cargo airports are provided on page 12. The table includes cargo carried on passenger flights operated by the Qantas group (including Jetstar), Virgin Australia, Air North and Skippers as well as the cargo carried by dedicated freighter aircraft operated by Qantas Freight and Team Global Express (formerly Toll Priority).

The long-term trends for the top twenty competitive RPT routes are presented graphically on pages 13–22.

Domestic RPT passenger movements at the top 50 regional airports are presented on page 23

Tables providing estimates of domestic charter aviation activity are shown on page 24. BITRE confidentiality standards restrict publication of detailed airport-level estimates for any Australian airport, with the exception of Perth Airport.

A list of definitions can be found on page 25.

This report was prepared by the Aviation Statistics Section of the Bureau of Infrastructure and Transport Research Economics with data provided by airlines.

Estimates are included where data were not available and data presented in this publication may contain revisions to previously published data.

Where figures have been rounded, discrepancies may occur between sums of component items and totals, and in percentage changes which are derived from figures prior to rounding.

CONTENTS

Highlights	1
RPT network.....	2
Top competitive routes.....	3
Top ten airports – passenger movements	11
Top five airports – cargo movements.....	12
Top twenty routes	13
1. Melbourne – Sydney	13
2. Brisbane – Sydney.....	13
3. Brisbane – Melbourne	14
4. Gold Coast – Sydney.....	14
5. Adelaide – Melbourne.....	15
6. Gold Coast – Melbourne.....	15
7. Melbourne – Perth	16
8. Adelaide – Sydney.....	16
9. Perth – Sydney	17
10. Hobart – Melbourne	17
11. Brisbane – Cairns	18
12. Brisbane – Perth.....	18
13. Canberra – Melbourne.....	19
14. Cairns – Sydney	19
15. Brisbane – Townsville	20
16. Adelaide – Brisbane.....	20
17. Launceston – Melbourne	21
18. Cairns – Melbourne	21
19. Melbourne – Sunshine Coast.....	22
20. Sunshine Coast – Sydney	22
Top fifty regional airports.....	23
Domestic charter activity.....	24
Definitions	25

This page is intentionally left blank.

HIGHLIGHTS

There were 62.87 million passengers carried on Australian domestic commercial aviation (including charter operations) in the year ending June 2024, an increase of 6.4 per cent compared with the year ending June 2023. This is also a decrease of 1.0 per cent on pre-COVID year ending June 2019.

58.63 million passengers were carried on RPT flights in the year ending June 2024, an increase of 6.0 per cent compared with the year ending June 2023.

In the year ending June 2024 there were 617.4 thousand RPT aircraft trips compared to 595.3 thousand trips in the previous year, an increase of 3.7 per cent.

RPT revenue passenger kilometres (RPKs) performed were 69.98 billion, an increase of 5.7 per cent compared with the year ending June 2023.

Capacity, measured by available seat kilometres (ASKs), increased by 6.3 per cent compared with the year ending June 2023, to a total of 86.92 billion.

The industry wide load factor (RPKs/ASKs) decreased from 81.0 per cent in the year ending June 2023 to 80.5 per cent in the year ending June 2024.

In the year ending June 2024, 46 out of 61 published routes recorded increases in the number of passengers carried compared with the year ending June 2023.

For the year ending June 2024, Melbourne – Sydney remained Australia's busiest RPT route with 7.92 million passengers, an increase of 8.3 per cent compared with the previous year. It was followed by Brisbane – Sydney with 4.33 million passengers (up 7.0 per cent) and Brisbane – Melbourne with 3.39 million passengers (up 8.5 per cent).

In the year ending June 2024, Sydney was Australia's busiest domestic airport with 24.78 million passenger movements, up 6.2 per cent compared with the year ending June 2023 followed by Melbourne with 24.06 million passenger movements (up 7.0 per cent) and Brisbane with 16.67 million passenger movements (up 5.4 per cent).

Total cargo movements at Australian airports on domestic RPT flights were 324.9 thousand tonnes in the year ending June 2024, a decrease of 5.5 per cent compared to the year ending June 2023.

In the year ending June 2024, the number of domestic aviation passengers travelling through regional airports was 24.81 million, up 4.8 per cent compared to the year ending June 2023.

Fixed-wing charter operators carried 4.24 million passengers in the year ending June 2024, an increase of 11.3 per cent compared with the year ending June 2023. Perth airport accounted for 37.2 per cent of all charter passengers in Australia.

TOTAL NETWORK

Summary of annual commercial aviation activity

	YE Jun 2023	YE Jun 2024	% Change
Total passengers carried (millions)	59.11	62.87	6.4
Aircraft trips (000s)	662.4	689.9	4.1

Note: Regular Public Transport and charter aviation activity, Helicopter, joyflights and sightseeing charter flights not included.

RPT NETWORK

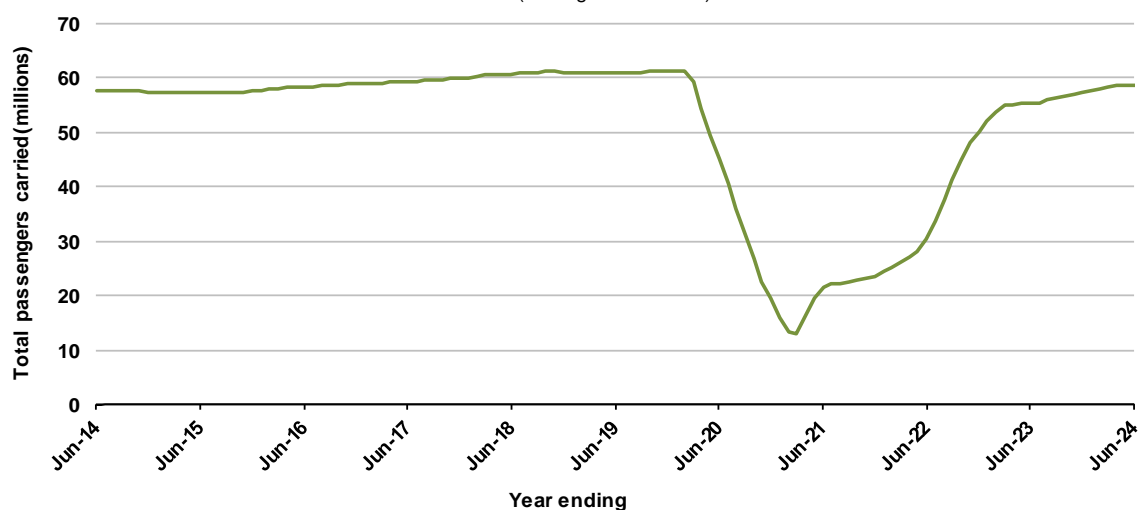
Summary of annual RPT activity

	YE Jun 2023	YE Jun 2024	% Change
Total passengers carried (millions)	55.30	58.63	6.0
Revenue passenger kilometres (billions)	66.23	69.98	5.7
Available seats (millions)	70.29	74.73	6.3
Available seat kilometres (billions)	81.76	86.92	6.3
Load factor %	81.0	80.5	-0.5 *
Aircraft trips (000s)	595.3	617.4	3.7

* percentage point difference

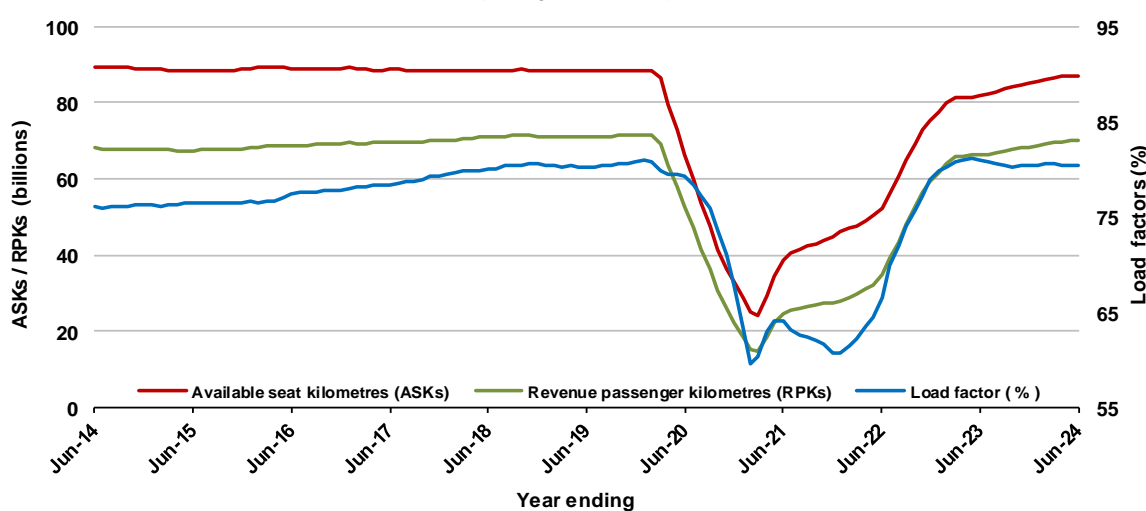
Domestic RPT passenger traffic

(moving annual totals)



RPT Network utilisation

(moving annual totals)



TOP COMPETITIVE ROUTES

Table 1: Passengers carried (000s) — annual activity

	City-Pair	YE Jun 2023	YE Jun 2024	% Change
1	Melbourne - Sydney	7,314.0	7,920.0	8.3
2	Brisbane - Sydney	4,043.7	4,325.1	7.0
3	Brisbane - Melbourne	3,124.3	3,389.9	8.5
4	Gold Coast - Sydney	2,407.9	2,518.6	4.6
5	Adelaide - Melbourne	2,206.8	2,332.0	5.7
6	Gold Coast - Melbourne	2,240.8	2,236.2	-0.2
7	Melbourne - Perth	1,813.6	1,976.9	9.0
8	Adelaide - Sydney	1,604.8	1,844.0	14.9
9	Perth - Sydney	1,496.8	1,610.6	7.6
10	Hobart - Melbourne	1,233.6	1,337.2	8.4
11	Brisbane - Cairns	1,213.4	1,279.3	5.4
12	Brisbane - Perth	982.5	1,034.4	5.3
13	Canberra - Melbourne	968.3	1,020.1	5.4
14	Cairns - Sydney	884.8	910.8	2.9
15	Brisbane - Townsville	860.0	888.9	3.4
16	Adelaide - Brisbane	795.3	863.7	8.6
17	Launceston - Melbourne	770.3	853.1	10.8
18	Cairns - Melbourne	803.4	821.6	2.3
19	Melbourne - Sunshine Coast	703.7	779.3	10.7
20	Sunshine Coast - Sydney	737.1	772.8	4.8
21	Hobart - Sydney	708.7	765.5	8.0
22	Brisbane - Mackay	739.2	737.2	-0.3
23	Adelaide - Perth	633.5	673.6	6.3
24	Brisbane - Canberra	630.6	630.5	0.0
25	Canberra - Sydney	594.2	618.3	4.0
26	Karratha - Perth	529.9	572.9	8.1
27	Brisbane - Rockhampton	481.0	537.2	11.7
28	Ballina - Sydney	525.7	517.5	-1.5
29	Brisbane - Newcastle	492.6	499.9	1.5
30	Perth - Port Hedland	475.9	472.6	-0.7
31	Melbourne - Newcastle	392.7	440.1	12.1
32	Newman - Perth	364.7	371.6	1.9
33	Kalgoorlie - Perth	338.3	361.3	6.8
34	Broome - Perth	368.3	360.2	-2.2
35	Launceston - Sydney	303.9	339.5	11.7
36	Brisbane - Darwin	323.7	315.7	-2.5
37	Brisbane - Hobart	299.0	292.7	-2.1
38	Darwin - Melbourne	280.4	284.7	1.5
39	Adelaide - Gold Coast	242.6	272.7	12.4
40	Brisbane - Proserpine	280.1	270.8	-3.3
41	Hamilton Island - Sydney	247.4	240.9	-2.6
42	Brisbane - Gladstone	204.8	219.6	7.3
43	Coffs Harbour - Sydney	218.2	208.6	-4.4
44	Adelaide - Canberra	183.8	187.4	1.9
45	Canberra - Gold Coast	165.4	185.7	12.3
46	Brisbane - Emerald	179.0	184.5	3.1
47	Dubbo - Sydney	165.7	177.9	7.4
48	Melbourne - Mildura	153.4	174.3	13.6
49	Darwin - Perth	175.2	173.9	-0.8
50	Adelaide - Port Lincoln	178.6	171.7	-3.9

(continued)

Table 1: (continued) Passengers carried (000s) — annual activity

	City-Pair	YE Jun 2023	YE Jun 2024	% Change
51	Port Macquarie - Sydney	161.7	167.4	3.6
52	Albury - Sydney	165.5	165.1	-0.3
53	Brisbane - Hamilton Island	167.5	162.4	-3.0
54	Sydney - Wagga Wagga	150.3	157.1	4.6
55	Brisbane - Launceston	163.2	148.7	-8.9
56	Brisbane - Mount Isa	142.5	143.0	0.3
57	Brisbane - Bundaberg	112.7	136.1	20.7
58	Devonport - Melbourne	119.4	121.5	1.8
59	Adelaide - Alice Springs	111.8	113.0	1.0
60	Brisbane - Moranbah	106.5	111.0	4.2
61	Geraldton - Perth	..	104.7	NA
	Total domestic network	55,295.8	58,627.9	6.0

.. Data not available for release.

Table 2: Available seats (000s) — annual activity

	City-Pair	YE Jun 2023	YE Jun 2024	% Change
1	Melbourne - Sydney	8,845.5	9,641.6	9.0
2	Brisbane - Sydney	4,989.6	5,277.3	5.8
3	Brisbane - Melbourne	3,754.1	4,111.7	9.5
4	Gold Coast - Sydney	2,798.6	2,947.4	5.3
5	Adelaide - Melbourne	2,719.1	2,825.6	3.9
6	Gold Coast - Melbourne	2,734.3	2,533.5	-7.3
7	Melbourne - Perth	2,156.1	2,380.3	10.4
8	Adelaide - Sydney	1,899.7	2,302.4	21.2
9	Perth - Sydney	1,753.2	1,885.0	7.5
10	Hobart - Melbourne	1,519.4	1,653.7	8.8
11	Brisbane - Cairns	1,365.0	1,513.0	10.8
12	Brisbane - Perth	1,159.0	1,222.1	5.4
13	Canberra - Melbourne	1,337.4	1,416.0	5.9
14	Cairns - Sydney	997.7	1,060.2	6.3
15	Brisbane - Townsville	1,093.8	1,093.4	0.0
16	Adelaide - Brisbane	968.3	1,087.7	12.3
17	Launceston - Melbourne	981.1	1,087.0	10.8
18	Cairns - Melbourne	909.7	950.2	4.5
19	Melbourne - Sunshine Coast	835.8	902.5	8.0
20	Sunshine Coast - Sydney	940.9	938.2	-0.3
21	Hobart - Sydney	884.8	955.7	8.0
22	Brisbane - Mackay	985.6	940.4	-4.6
23	Adelaide - Perth	741.8	826.9	11.5
24	Brisbane - Canberra	903.1	851.9	-5.7
25	Canberra - Sydney	891.4	963.9	8.1
26	Karratha - Perth	723.9	833.6	15.2
27	Brisbane - Rockhampton	633.4	686.5	8.4
28	Ballina - Sydney	653.9	628.1	-3.9
29	Brisbane - Newcastle	694.5	641.8	-7.6
30	Perth - Port Hedland	634.6	740.3	16.7
31	Melbourne - Newcastle	485.8	554.7	14.2
32	Newman - Perth	604.9	641.9	6.1
33	Kalgoorlie - Perth	494.5	618.9	25.1
34	Broome - Perth	479.0	474.1	-1.0
35	Launceston - Sydney	363.0	416.8	14.8
36	Brisbane - Darwin	386.0	379.9	-1.6
37	Brisbane - Hobart	370.2	348.8	-5.8
38	Darwin - Melbourne	347.2	340.9	-1.8
39	Adelaide - Gold Coast	273.6	309.5	13.1
40	Brisbane - Proserpine	345.2	324.5	-6.0
41	Hamilton Island - Sydney	340.9	331.2	-2.8
42	Brisbane - Gladstone	335.8	334.5	-0.4
43	Coffs Harbour - Sydney	293.6	270.9	-7.7
44	Adelaide - Canberra	280.8	275.9	-1.7
45	Canberra - Gold Coast	202.8	217.3	7.2
46	Brisbane - Emerald	259.3	267.8	3.3
47	Dubbo - Sydney	281.8	279.9	-0.7
48	Melbourne - Mildura	214.2	240.5	12.3
49	Darwin - Perth	225.9	238.5	5.6
50	Adelaide - Port Lincoln	272.7	269.8	-1.1

(continued)

Table 2: (continued) Available seats (000s) — annual activity

	City-Pair	YE Jun 2023	YE Jun 2024	% Change
51	Port Macquarie - Sydney	261.3	247.3	-5.4
52	Albury - Sydney	258.4	238.6	-7.7
53	Brisbane - Hamilton Island	239.7	231.4	-3.5
54	Sydney - Wagga Wagga	251.6	248.8	-1.1
55	Brisbane - Launceston	201.7	179.2	-11.2
56	Brisbane - Mount Isa	225.3	235.7	4.6
57	Brisbane - Bundaberg	177.3	212.1	19.6
58	Devonport - Melbourne	167.6	171.0	2.1
59	Adelaide - Alice Springs	156.4	163.8	4.7
60	Brisbane - Moranbah	200.9	197.0	-2.0
61	Geraldton - Perth	..	218.4	NA
	Total domestic network	70,286.8	74,732.3	6.3

.. Data not available for release.

Table 3: Load factors (%) — annual activity

	City-Pair	YE Jun 2023	YE Jun 2024	% Change
1	Melbourne - Sydney	82.7	82.2	-0.5
2	Brisbane - Sydney	81.0	82.0	0.9
3	Brisbane - Melbourne	83.2	82.4	-0.8
4	Gold Coast - Sydney	86.0	85.5	-0.6
5	Adelaide - Melbourne	81.2	82.5	1.4
6	Gold Coast - Melbourne	89.3	88.3	-1.0
7	Melbourne - Perth	84.1	83.1	-1.1
8	Adelaide - Sydney	84.5	80.1	-4.4
9	Perth - Sydney	85.4	85.4	0.1
10	Hobart - Melbourne	81.2	80.9	-0.3
11	Brisbane - Cairns	88.9	84.6	-4.3
12	Brisbane - Perth	84.8	84.6	-0.1
13	Canberra - Melbourne	72.4	72.0	-0.4
14	Cairns - Sydney	88.7	85.9	-2.8
15	Brisbane - Townsville	78.6	81.3	2.7
16	Adelaide - Brisbane	82.1	79.4	-2.7
17	Launceston - Melbourne	78.5	78.5	0.0
18	Cairns - Melbourne	88.3	86.5	-1.9
19	Melbourne - Sunshine Coast	84.3	86.5	2.2
20	Sunshine Coast - Sydney	78.3	82.4	4.0
21	Hobart - Sydney	80.1	80.1	0.0
22	Brisbane - Mackay	75.0	78.4	3.4
23	Adelaide - Perth	85.4	81.5	-3.9
24	Brisbane - Canberra	69.8	74.0	4.2
25	Canberra - Sydney	66.7	64.1	-2.5
26	Karratha - Perth	73.2	68.7	-4.5
27	Brisbane - Rockhampton	75.9	78.3	2.3
28	Ballina - Sydney	80.4	82.4	2.0
29	Brisbane - Newcastle	70.9	77.9	7.0
30	Perth - Port Hedland	75.0	63.8	-11.2
31	Melbourne - Newcastle	80.8	79.3	-1.5
32	Newman - Perth	60.3	57.9	-2.4
33	Kalgoorlie - Perth	68.4	58.4	-10.0
34	Broome - Perth	76.9	76.0	-0.9
35	Launceston - Sydney	83.7	81.5	-2.2
36	Brisbane - Darwin	83.9	83.1	-0.8
37	Brisbane - Hobart	80.8	83.9	3.1
38	Darwin - Melbourne	80.8	83.5	2.7
39	Adelaide - Gold Coast	88.7	88.1	-0.6
40	Brisbane - Proserpine	81.1	83.5	2.3
41	Hamilton Island - Sydney	72.6	72.7	0.2
42	Brisbane - Gladstone	61.0	65.6	4.7
43	Coffs Harbour - Sydney	74.3	77.0	2.7
44	Adelaide - Canberra	65.5	67.9	2.4
45	Canberra - Gold Coast	81.5	85.4	3.9
46	Brisbane - Emerald	69.0	68.9	-0.1
47	Dubbo - Sydney	58.8	63.6	4.8
48	Melbourne - Mildura	71.6	72.5	0.8
49	Darwin - Perth	77.6	72.9	-4.7
50	Adelaide - Port Lincoln	65.5	63.6	-1.8

(continued)

Table 3: (continued) Load factors (%) — annual activity

	City-Pair	YE Jun 2023	YE Jun 2024	% Change
51	Port Macquarie - Sydney	61.9	67.7	5.8
52	Albury - Sydney	64.1	69.2	5.1
53	Brisbane - Hamilton Island	69.9	70.2	0.3
54	Sydney - Wagga Wagga	59.7	63.2	3.4
55	Brisbane - Launceston	80.9	83.0	2.0
56	Brisbane - Mount Isa	63.2	60.7	-2.6
57	Brisbane - Bundaberg	63.6	64.2	0.6
58	Devonport - Melbourne	68.5	71.1	2.6
59	Adelaide - Alice Springs	71.5	69.0	-2.5
60	Brisbane - Moranbah	53.0	56.4	3.3
61	Geraldton - Perth	..	47.9	NA
	Total domestic network	81.0	80.5	-0.5

.. Data not available for release.

Table 4: Aircraft trips ^(a) — annual activity

	City-Pair	YE Jun 2023	YE Jun 2024	% Change
1	Melbourne - Sydney	50,911	55,820	9.6
2	Brisbane - Sydney	30,647	32,310	5.4
3	Brisbane - Melbourne	22,864	24,727	8.1
4	Gold Coast - Sydney	16,177	16,733	3.4
5	Adelaide - Melbourne	16,686	17,232	3.3
6	Gold Coast - Melbourne	13,809	13,810	0.0
7	Melbourne - Perth	12,027	13,207	9.8
8	Adelaide - Sydney	11,627	13,984	20.3
9	Perth - Sydney	9,188	9,818	6.9
10	Hobart - Melbourne	8,983	9,817	9.3
11	Brisbane - Cairns	9,069	10,284	13.4
12	Brisbane - Perth	6,681	7,084	6.0
13	Canberra - Melbourne	9,604	9,969	3.8
14	Cairns - Sydney	5,165	5,483	6.2
15	Brisbane - Townsville	7,665	8,205	7.0
16	Adelaide - Brisbane	7,196	8,565	19.0
17	Launceston - Melbourne	8,268	8,800	6.4
18	Cairns - Melbourne	4,735	4,886	3.2
19	Melbourne - Sunshine Coast	4,721	4,880	3.4
20	Sunshine Coast - Sydney	5,441	5,234	-3.8
21	Hobart - Sydney	5,395	5,765	6.9
22	Brisbane - Mackay	7,069	7,592	7.4
23	Adelaide - Perth	4,312	4,676	8.4
24	Brisbane - Canberra	6,689	6,871	2.7
25	Canberra - Sydney	14,741	14,883	1.0
26	Karratha - Perth	4,574	5,003	9.4
27	Brisbane - Rockhampton	7,083	7,950	12.2
28	Ballina - Sydney	4,858	4,412	-9.2
29	Brisbane - Newcastle	6,155	5,755	-6.5
30	Perth - Port Hedland	4,161	4,571	9.9
31	Melbourne - Newcastle	3,111	3,568	14.7
32	Newman - Perth	3,879	3,988	2.8
33	Kalgoorlie - Perth	3,491	4,071	16.6
34	Broome - Perth	3,232	3,071	-5.0
35	Launceston - Sydney	2,249	2,599	15.6
36	Brisbane - Darwin	2,744	2,713	-1.1
37	Brisbane - Hobart	2,256	2,219	-1.6
38	Darwin - Melbourne	2,010	2,121	5.5
39	Adelaide - Gold Coast	1,555	1,602	3.0
40	Brisbane - Proserpine	2,278	2,151	-5.6
41	Hamilton Island - Sydney	1,942	1,876	-3.4
42	Brisbane - Gladstone	4,100	4,072	-0.7
43	Coffs Harbour - Sydney	5,550	4,808	-13.4
44	Adelaide - Canberra	2,512	2,556	1.8
45	Canberra - Gold Coast	1,175	1,217	3.6
46	Brisbane - Emerald	3,864	3,986	3.2
47	Dubbo - Sydney	5,422	5,264	-2.9
48	Melbourne - Mildura	4,945	5,033	1.8
49	Darwin - Perth	1,304	1,389	6.5
50	Adelaide - Port Lincoln	6,704	6,562	-2.1

(continued)

Table 4: (continued) Aircraft trips ^(a) — annual activity

	City-Pair	YE Jun 2023	YE Jun 2024	% Change
51	Port Macquarie - Sydney	4,803	4,235	-11.8
52	Albury - Sydney	5,015	4,420	-11.9
53	Brisbane - Hamilton Island	1,398	1,472	5.3
54	Sydney - Wagga Wagga	4,882	4,472	-8.4
55	Brisbane - Launceston	1,147	1,048	-8.6
56	Brisbane - Mount Isa	2,051	2,043	-0.4
57	Brisbane - Bundaberg	2,708	3,435	26.8
58	Devonport - Melbourne	3,783	3,736	-1.2
59	Adelaide - Alice Springs	1,851	1,929	4.2
60	Brisbane - Moranbah	2,667	2,620	-1.8
61	Geraldton - Perth	..	2,307	NA
	Total domestic network	595,279	617,446	3.7

(a) Includes RPT Cargo flights.

.. Data not available for release.

TOP TEN AIRPORTS – PASSENGER MOVEMENTS

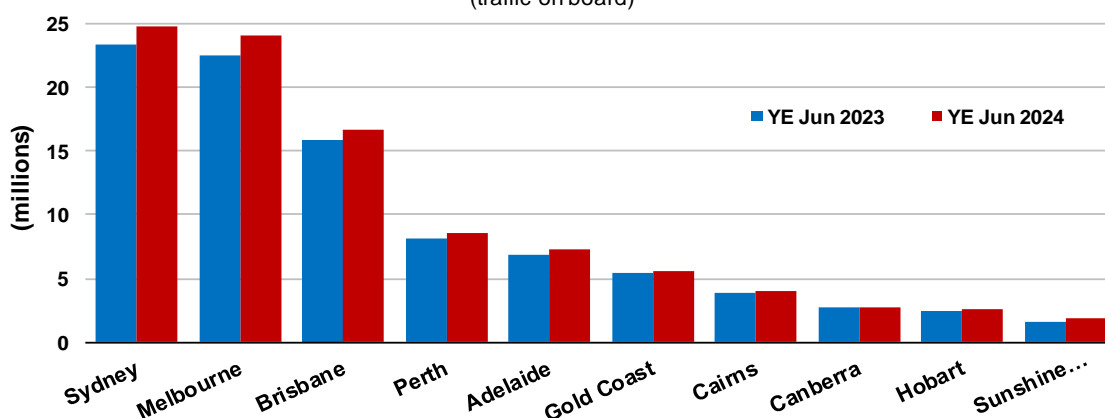
Table 5: Top ten airports, RPT passenger movements (000s) — annual activity

Airport	YE Jun 2023	YE Jun 2024	% Change	% of Total
1 Sydney	23,327.6	24,777.2	6.2	21.1
2 Melbourne	22,494.3	24,061.5	7.0	20.5
3 Brisbane	15,814.8	16,665.5	5.4	14.2
4 Perth	8,098.9	8,598.1	6.2	7.3
5 Adelaide	6,828.6	7,298.2	6.9	6.2
6 Gold Coast	5,425.7	5,620.4	3.6	4.8
7 Cairns	3,905.5	4,052.6	3.8	3.5
8 Canberra	2,713.2	2,795.1	3.0	2.4
9 Hobart	2,499.9	2,651.7	6.1	2.3
10 Sunshine Coast	1,624.6	1,895.6	16.7	1.6
Total top ten airports	92,733.1	98,415.7	6.1	83.9
Total domestic network	110,591.7	117,255.9	6.0	100.0

Note: Airport passenger movement numbers are the sum of passenger arrivals and departures at each airport.

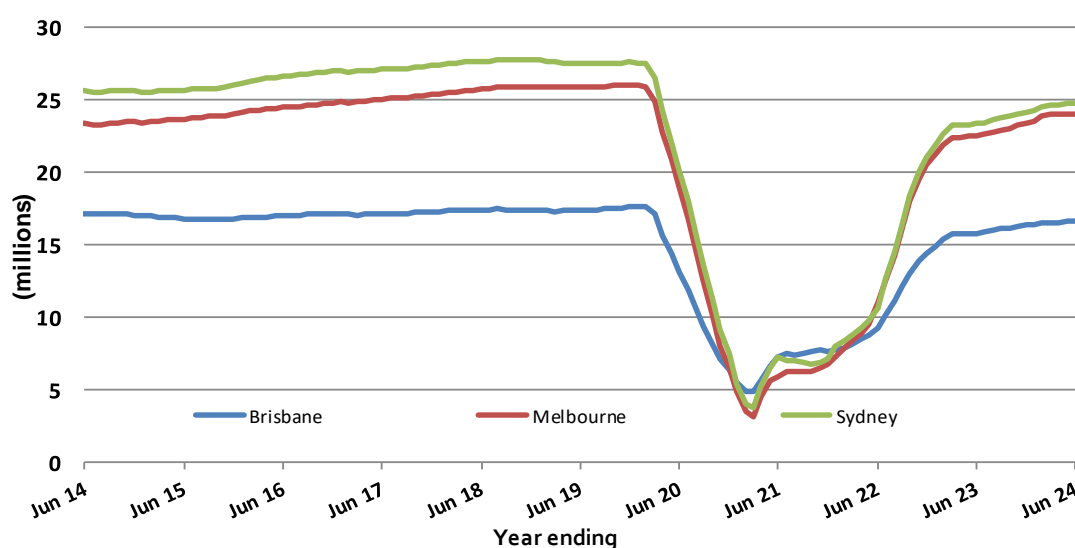
Top ten airports, RPT passenger movements

(traffic on board)



Top three airports, domestic passenger movements

(moving annual totals - traffic on board)



TOP FIVE AIRPORTS – CARGO MOVEMENTS

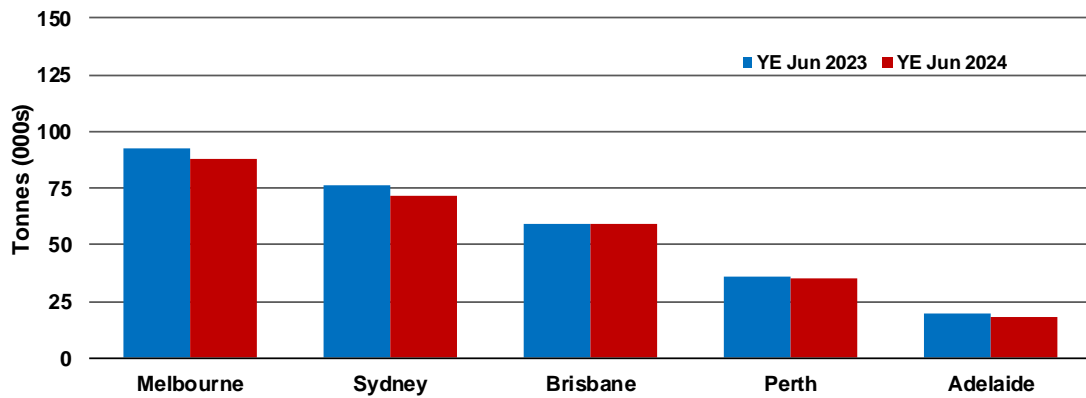
Table 6: Top five airports, domestic RPT cargo movements (000s tonnes) - annual activity

Airport	YE Jun 2023	YE Jun 2024	% Change	% of Total
1 Melbourne	92.8	88.0	-5.2	27.1
2 Sydney	76.5	71.6	-6.4	22.0
3 Brisbane	59.5	59.1	-0.7	18.2
4 Perth	35.8	35.1	-1.9	10.8
5 Adelaide	19.4	18.4	-5.2	5.7
Total top five airports	283.9	272.1	-4.2	83.8
Total domestic network	343.9	324.9	-5.5	100.0

Note: Airport cargo tonnes are the sum of cargo tonnes on arrivals and departures at each airport.

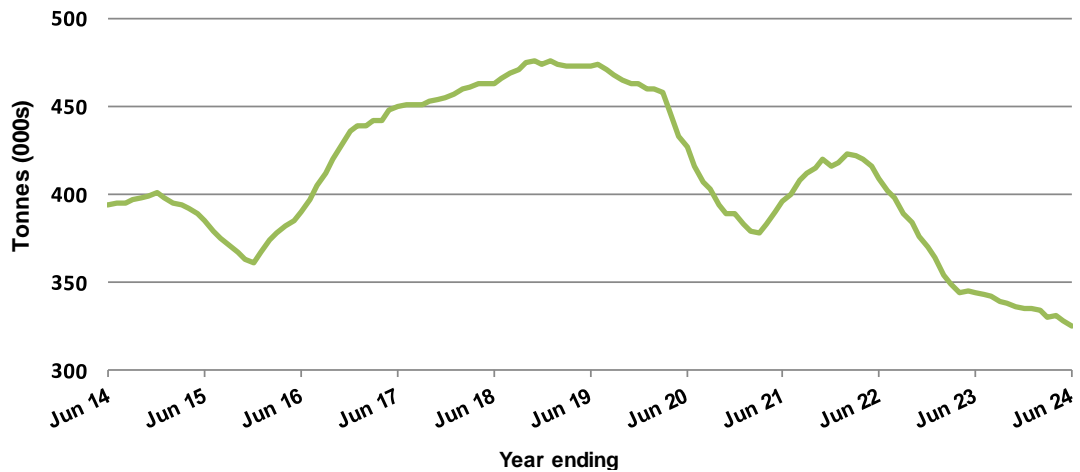
Top five airports, cargo movements

(Domestic cargo traffic - traffic on board)



Total domestic network - cargo movements

(moving annual totals - traffic on board)



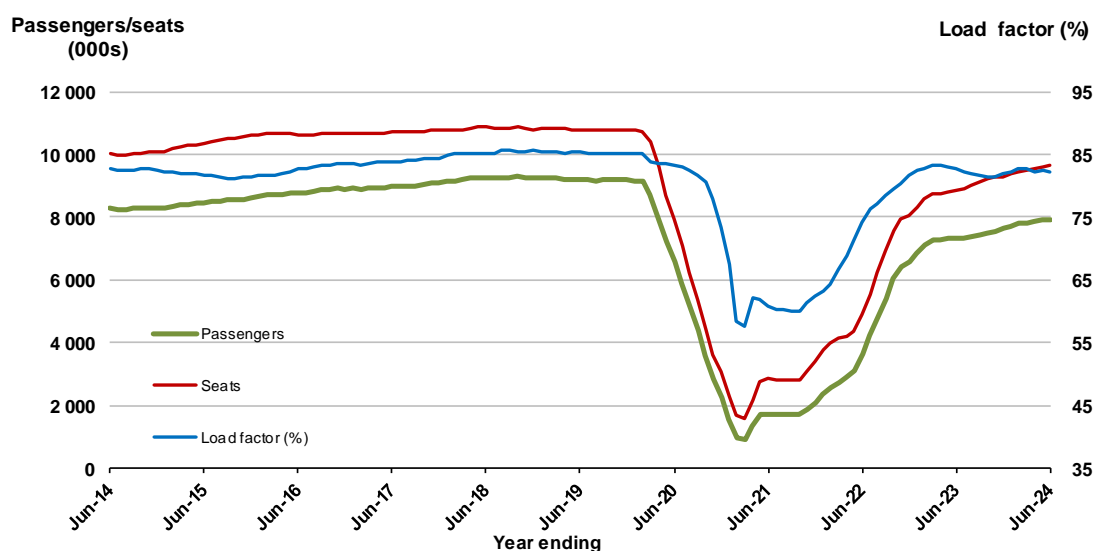
TOP TWENTY ROUTES

1. Melbourne - Sydney

Moving annual data

	YE Jun 2023	YE Jun 2024	% Change
Passengers carried (000s)	7,314.0	7,920.0	8.3
Seats (000s)	8,845.5	9,641.6	9.0
Load factor %	82.7	82.2	-0.5*
Aircraft trips	50,911	55,820	9.6

* percentage point difference

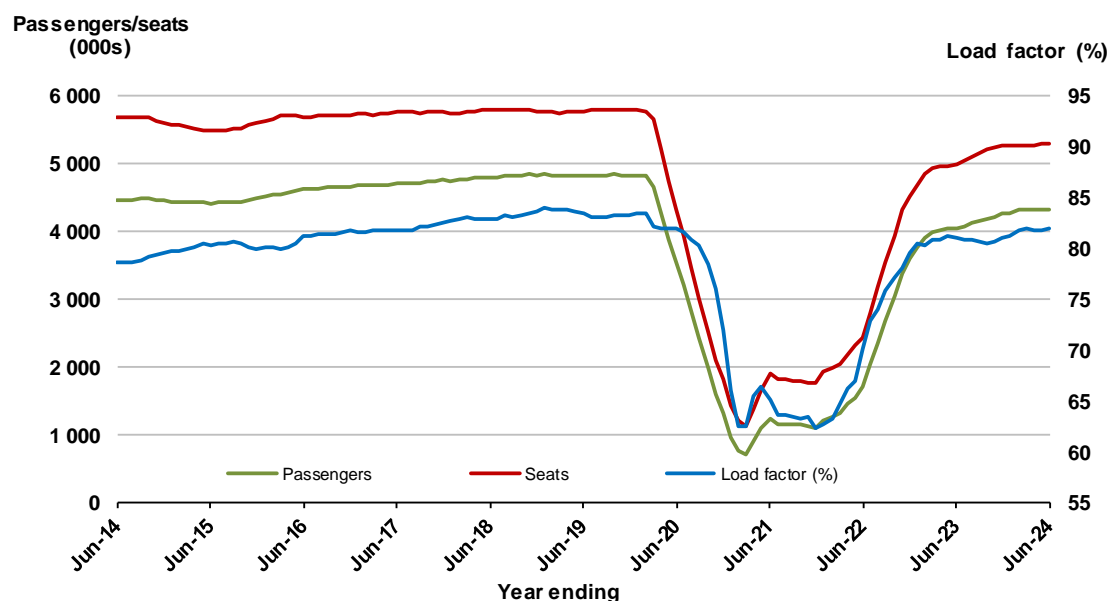


2. Brisbane - Sydney

Moving annual data

	YE Jun 2023	YE Jun 2024	% Change
Passengers carried (000s)	4,043.7	4,325.1	7.0
Seats (000s)	4,989.6	5,277.3	5.8
Load factor %	81.0	82.0	0.9*
Aircraft trips	30,647	32,310	5.4

* percentage point difference

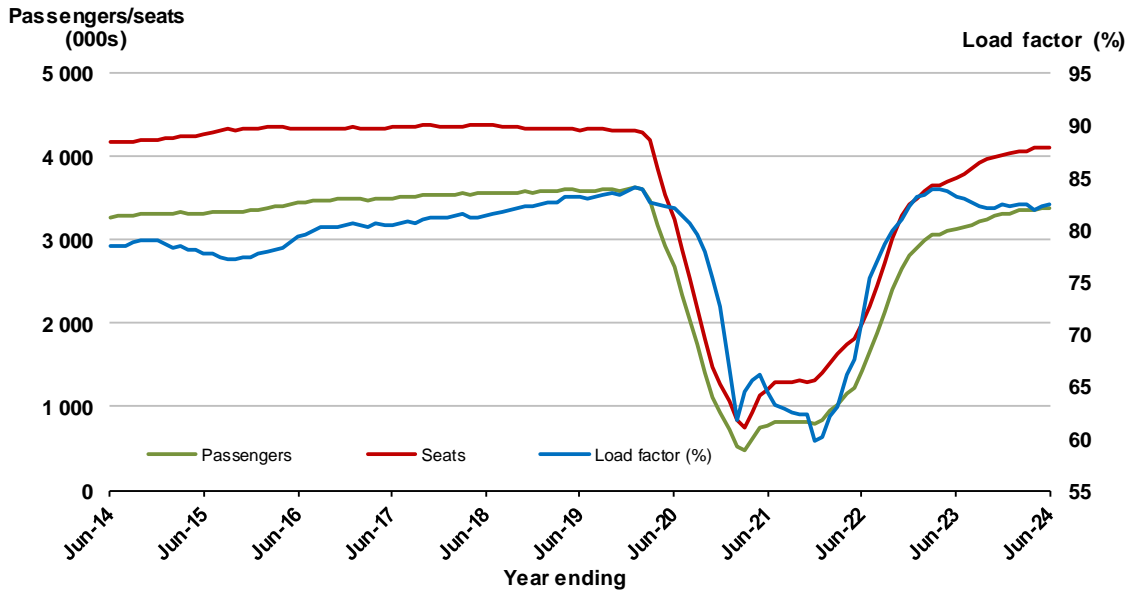


3. Brisbane - Melbourne

Moving annual data

	YE Jun 2023	YE Jun 2024	% Change
Passengers carried (000s)	3,124.3	3,389.9	8.5
Seats (000s)	3,754.1	4,111.7	9.5
Load factor %	83.2	82.4	-0.8 *
Aircraft trips	22,864	24,727	8.1

* percentage point difference

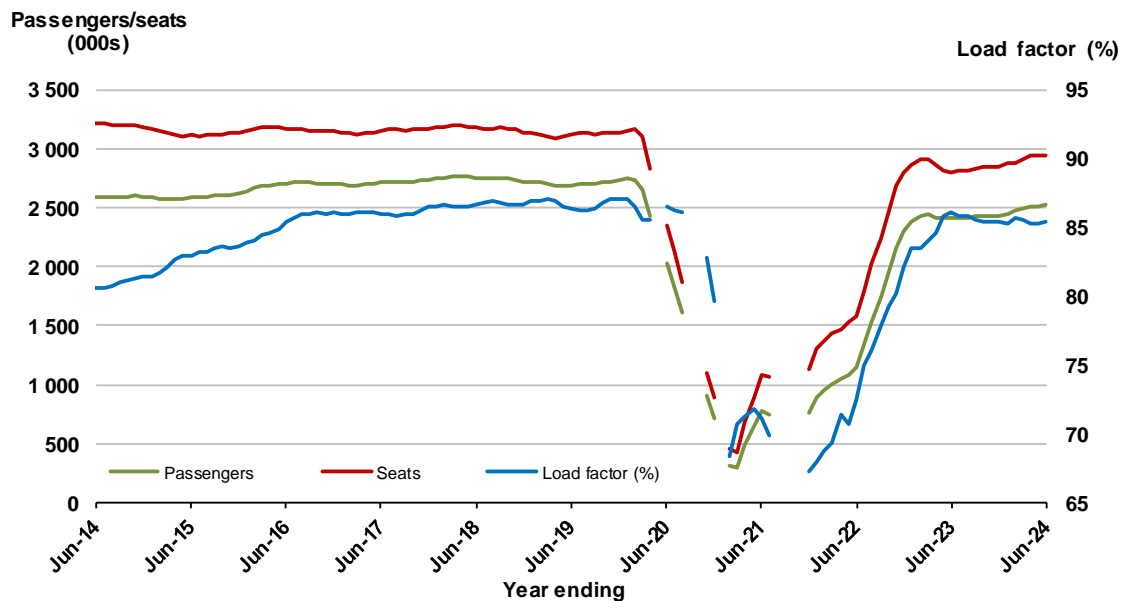


4. Gold Coast - Sydney (a)

Moving annual data

	YE Jun 2023	YE Jun 2024	% Change
Passengers carried (000s)	2,407.9	2,518.6	4.6
Seats (000s)	2,798.6	2,947.4	5.3
Load factor %	86.0	85.5	-0.6 *
Aircraft trips	16,177	16,733	3.4

* percentage point difference



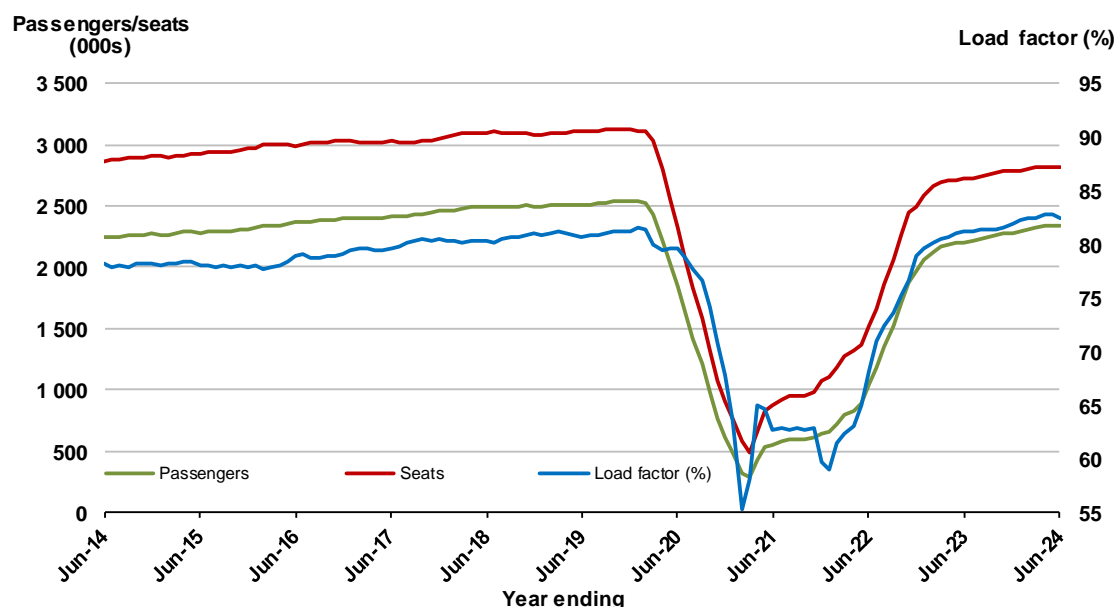
(a) May, September and October 2020 and January and August to November 2021 moving annual totals not available for release.

5. Adelaide - Melbourne

Moving annual data

	YE Jun 2023	YE Jun 2024	% Change
Passengers carried (000s)	2,206.8	2,332.0	5.7
Seats (000s)	2,719.1	2,825.6	3.9
Load factor %	81.2	82.5	1.4 *
Aircraft trips	16,686	17,232	3.3

* percentage point difference

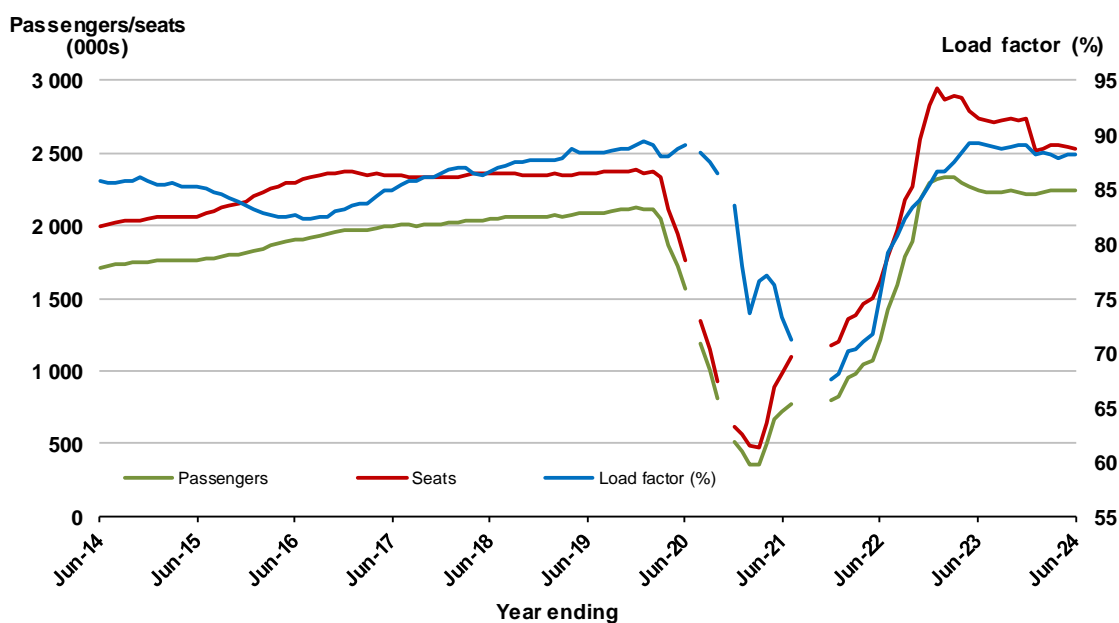


6. Gold Coast - Melbourne ^(a)

Moving annual data

	YE Jun 2023	YE Jun 2024	% Change
Passengers carried (000s)	2,240.8	2,236.2	-0.2
Seats (000s)	2,734.3	2,533.5	-7.3
Load factor %	89.3	88.3	-1.0 *
Aircraft trips	13,809	13,810	0.0

* percentage point difference



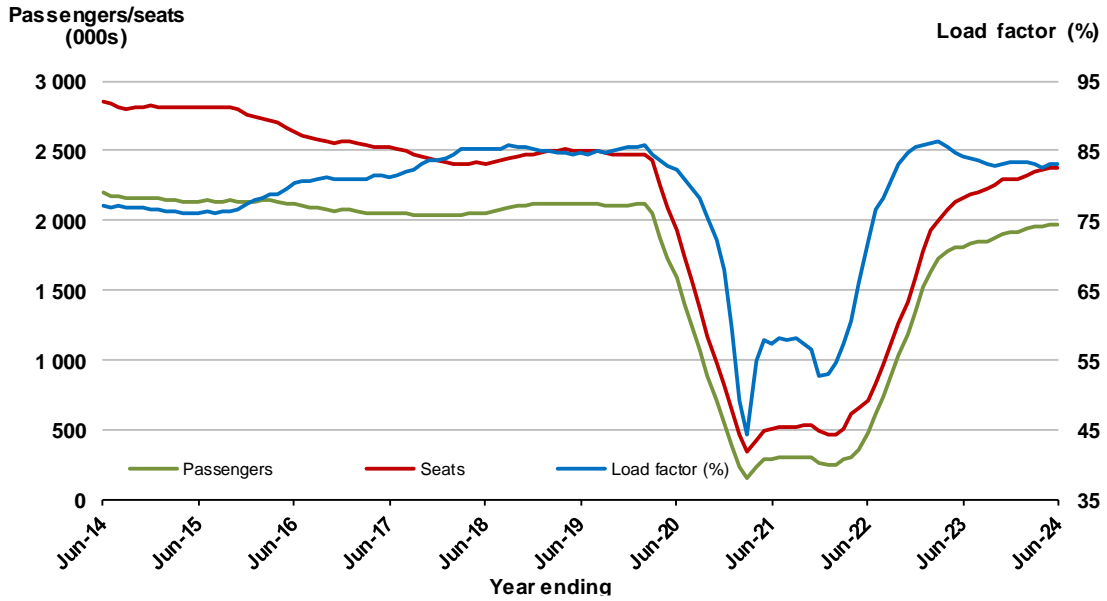
(a) July and November 2020 and August to November 2021 moving annuals are not available for release.

7. Melbourne - Perth

Moving annual data

	YE Jun 2023	YE Jun 2024	% Change
Passengers carried (000s)	1,813.6	1,976.9	9.0
Seats (000s)	2,156.1	2,380.3	10.4
Load factor %	84.1	83.1	-1.1 *
Aircraft trips	12,027	13,207	9.8

* percentage point difference

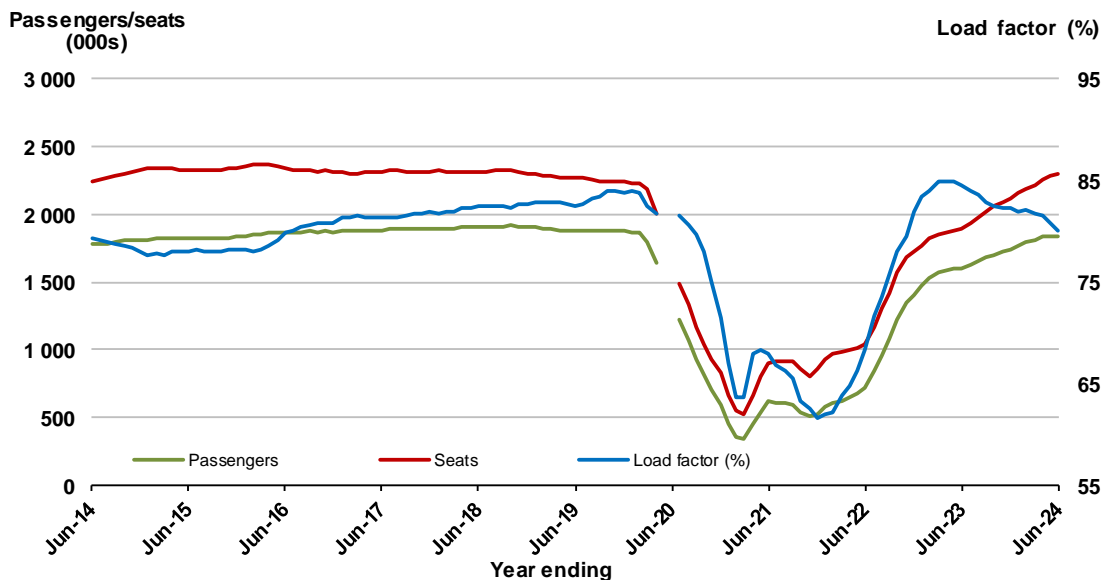


8. Adelaide - Sydney ^(a)

Moving annual data

	YE Jun 2023	YE Jun 2024	% Change
Passengers carried (000s)	1,604.8	1,844.0	14.9
Seats (000s)	1,899.7	2,302.4	21.2
Load factor %	84.5	80.1	-4.4 *
Aircraft trips	11,627	13,984	20.3

* percentage point difference



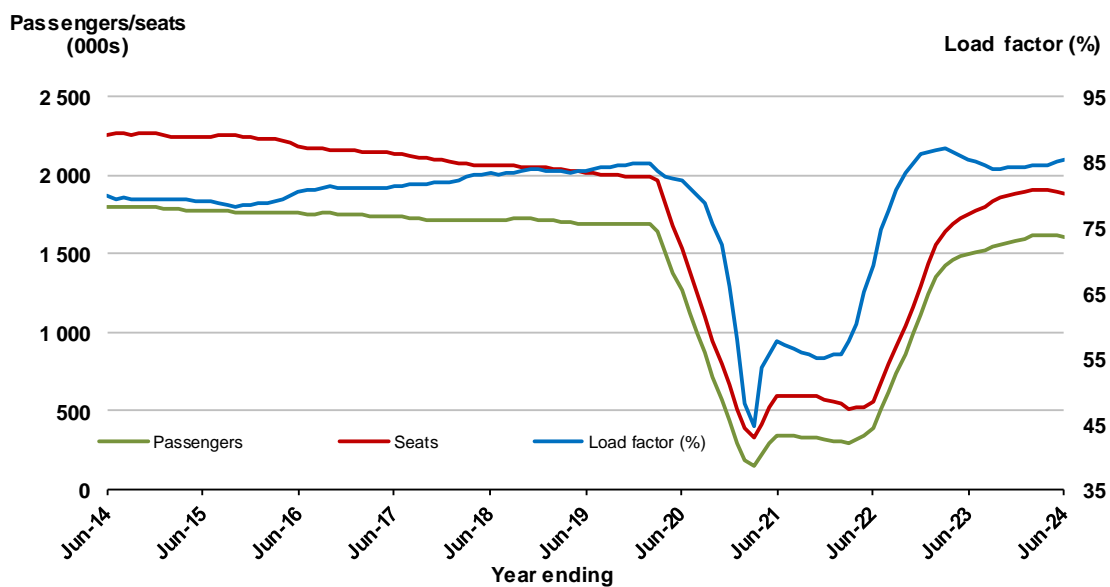
(a) May and June 2020 moving annuals are not available for release.

9. Perth - Sydney

Moving annual data

	YE Jun 2023	YE Jun 2024	% Change
Passengers carried (000s)	1,496.8	1,610.6	7.6
Seats (000s)	1,753.2	1,885.0	7.5
Load factor %	85.4	85.4	0.1 *
Aircraft trips	9,188	9,818	6.9

* percentage point difference

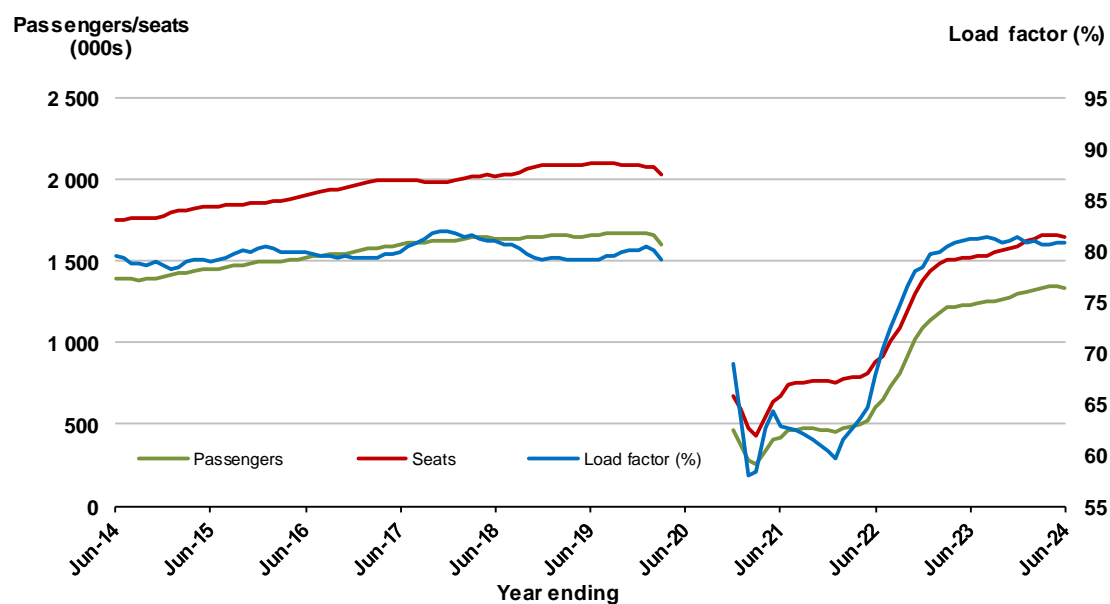


10. Hobart - Melbourne ^(a)

Moving annual data

	YE Jun 2023	YE Jun 2024	% Change
Passengers carried (000s)	1,233.6	1,337.2	8.4
Seats (000s)	1,519.4	1,653.7	8.8
Load factor %	81.2	80.9	-0.3 *
Aircraft trips	8,983	9,817	9.3

* percentage point difference



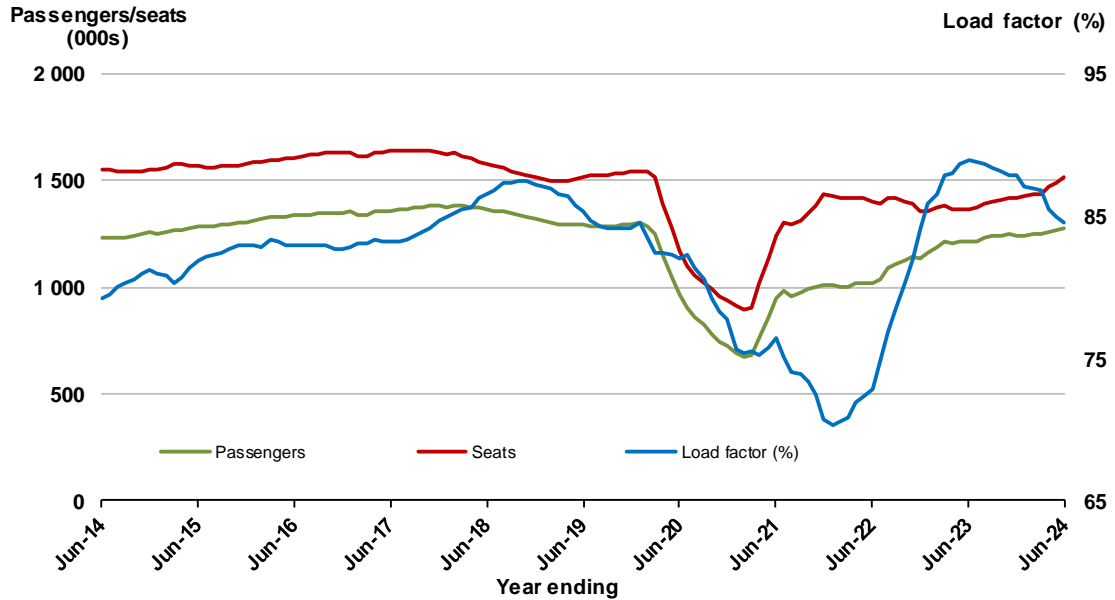
(a) April to November 2020 moving annuals are not available for release.

11. Brisbane - Cairns

Moving annual data

	YE Jun 2023	YE Jun 2024	% Change
Passengers carried (000s)	1,213.4	1,279.3	5.4
Seats (000s)	1,365.0	1,513.0	10.8
Load factor %	88.9	84.6	-4.3
Aircraft trips	9,069	10,284	13.4

* percentage point difference

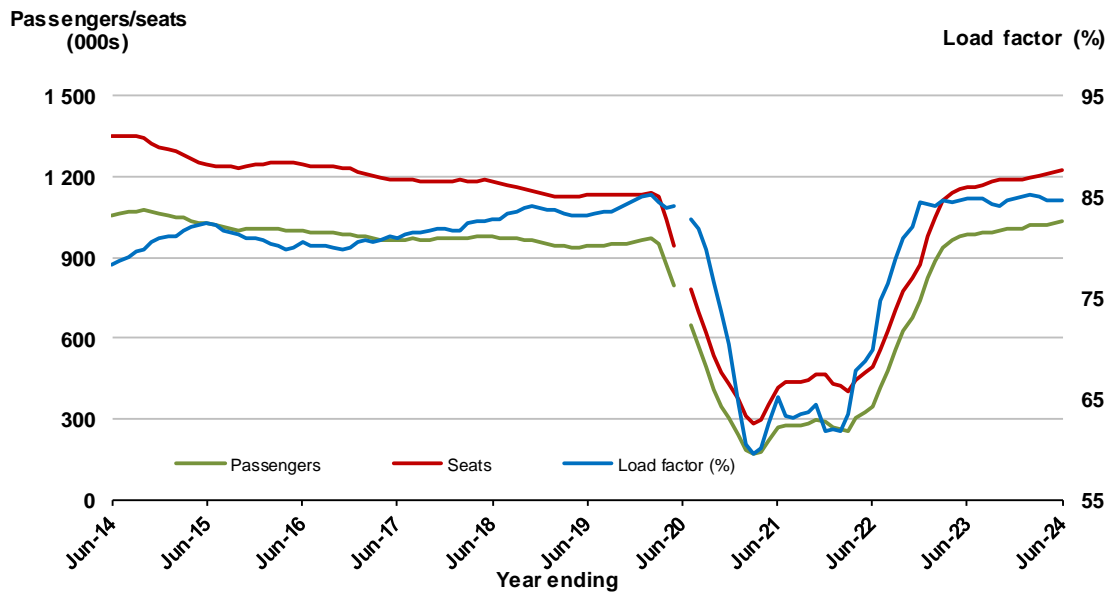


12. Brisbane - Perth (a)

Moving annual data

	YE Jun 2023	YE Jun 2024	% Change
Passengers carried (000s)	982.5	1,034.4	5.3
Seats (000s)	1,159.0	1,222.1	5.4
Load factor %	84.8	84.6	-0.1
Aircraft trips	6,681	7,084	6.0

* percentage point difference



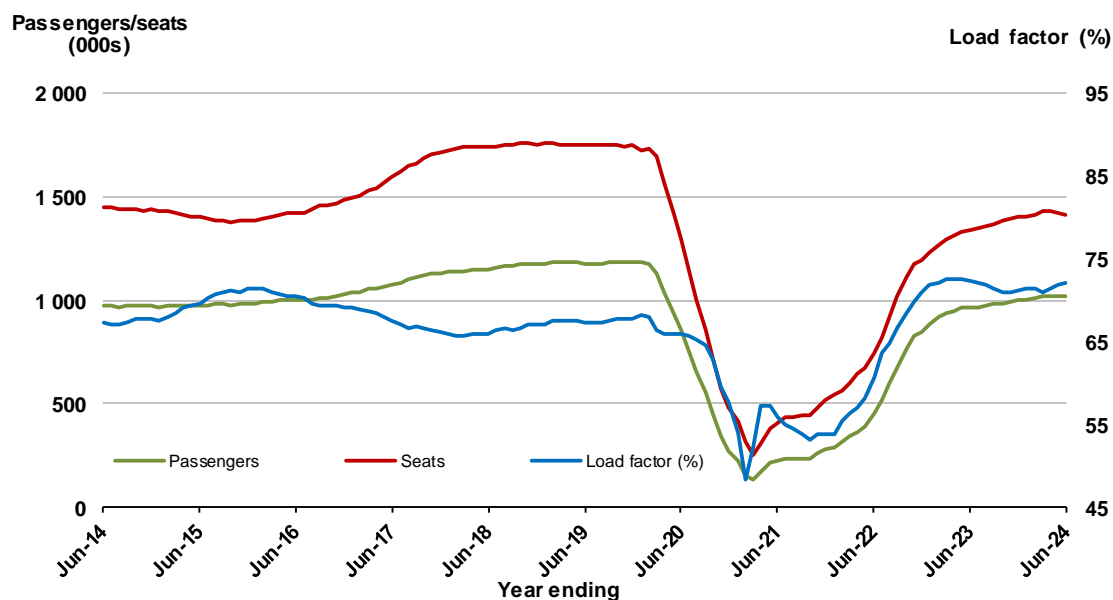
(a) June 2020 moving annuals are not available for release.

13. Canberra - Melbourne

Moving annual data

	YE Jun 2023	YE Jun 2024	% Change
Passengers carried (000s)	968.3	1,020.1	5.4
Seats (000s)	1,337.4	1,416.0	5.9
Load factor %	72.4	72.0	-0.4 *
Aircraft trips	9,604	9,969	3.8

* percentage point difference

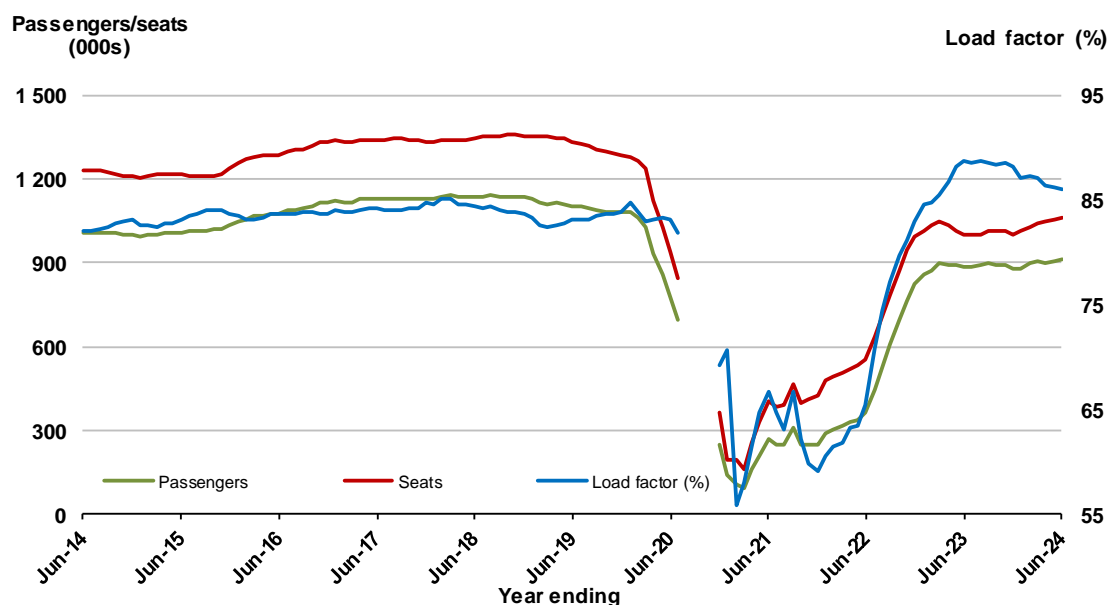


14. Cairns - Sydney (a)

Moving annual data

	YE Jun 2023	YE Jun 2024	% Change
Passengers carried (000s)	884.8	910.8	2.9
Seats (000s)	997.7	1,060.2	6.3
Load factor %	88.7	85.9	-2.8 *
Aircraft trips	5,165	5,483	6.2

* percentage point difference



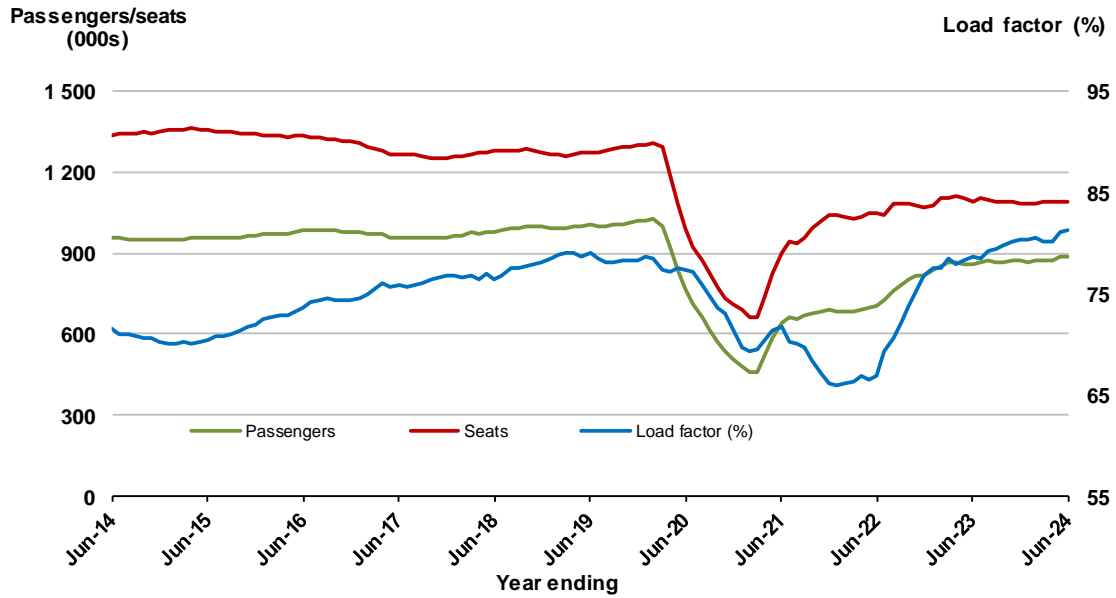
(a) August to November 2020 moving annuals are not available for release.

15. Brisbane - Townsville

Moving annual data

	YE Jun 2023	YE Jun 2024	% Change
Passengers carried (000s)	860.0	888.9	3.4
Seats (000s)	1,093.8	1,093.4	0.0
Load factor %	78.6	81.3	2.7 *
Aircraft trips	7,665	8,205	7.0

* percentage point difference

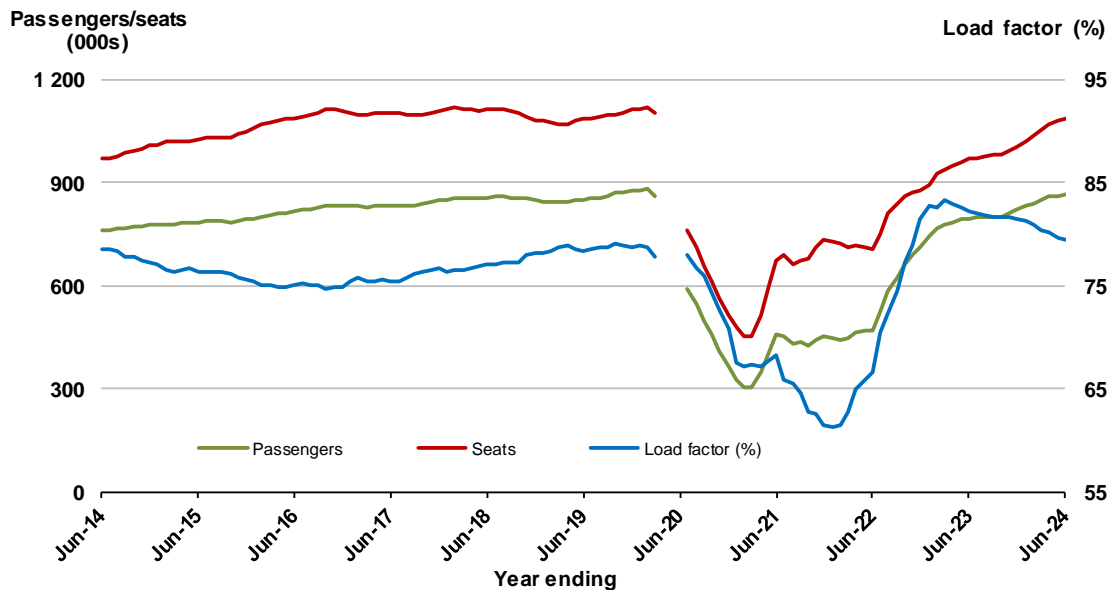


16. Adelaide - Brisbane (a)

Moving annual data

	YE Jun 2023	YE Jun 2024	% Change
Passengers carried (000s)	795.3	863.7	8.6
Seats (000s)	968.3	1,087.7	12.3
Load factor %	82.1	79.4	-2.7 *
Aircraft trips	7,196	8,565	19.0

* percentage point difference



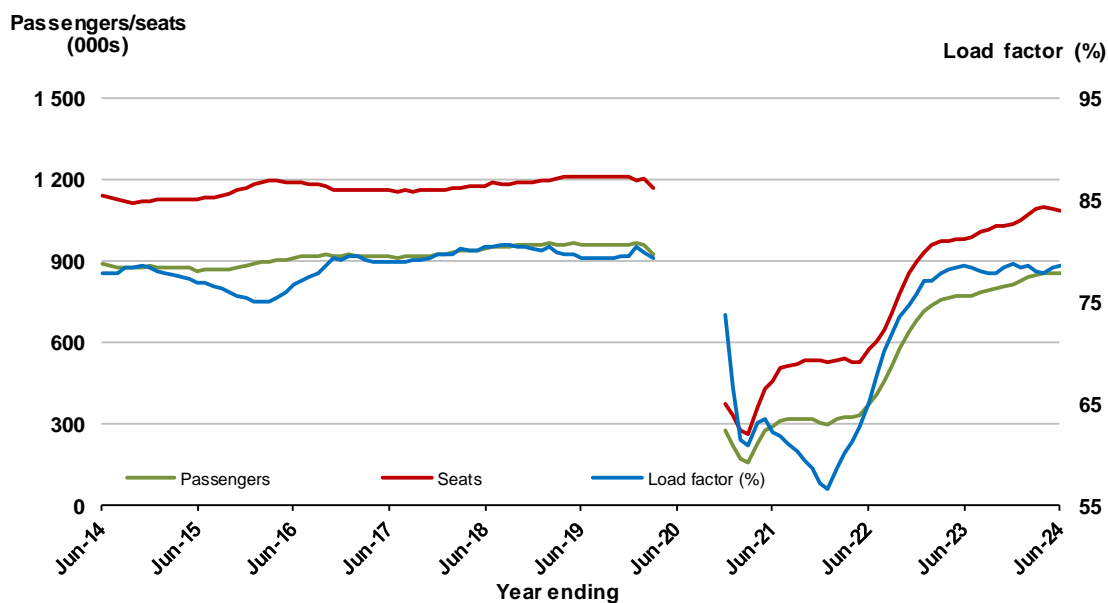
(a) April to June 2020 moving annuals are not available for release

17. Launceston - Melbourne ^(a)

Moving annual data

	YE Jun 2023	YE Jun 2024	% Change
Passengers carried (000s)	770.3	853.1	10.8
Seats (000s)	981.1	1,087.0	10.8
Load factor %	78.5	78.5	0.0 *
Aircraft trips	8,268	8,800	6.4

* percentage point difference



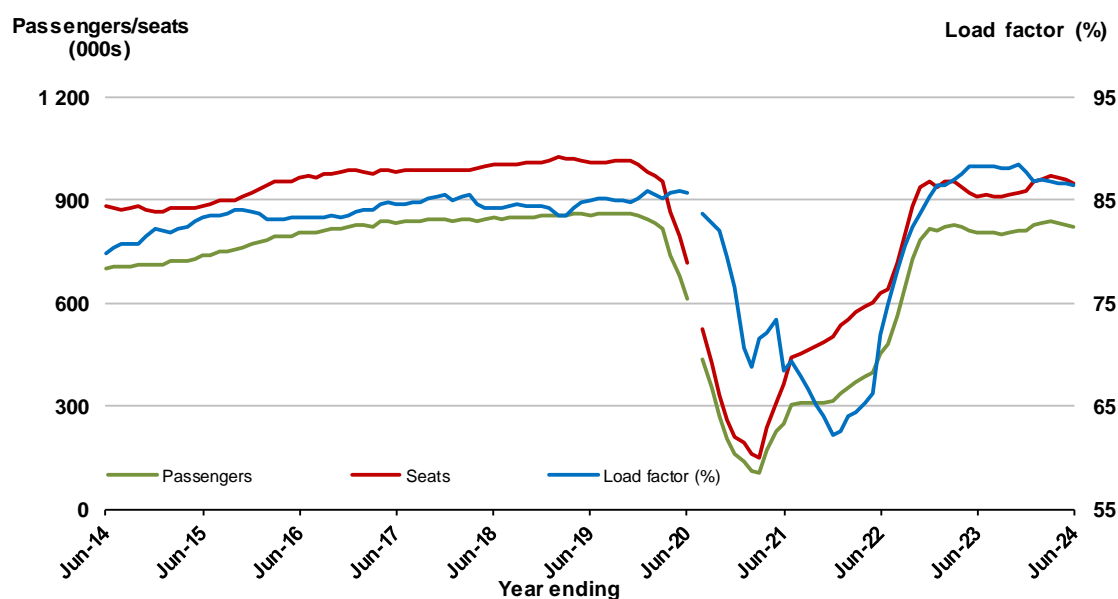
(a) April to November 2020 moving annuals are not available for release.

18. Cairns - Melbourne ^(a)

Moving annual data

	YE Jun 2023	YE Jun 2024	% Change
Passengers carried (000s)	803.4	821.6	2.3
Seats (000s)	909.7	950.2	4.5
Load factor %	88.3	86.5	-1.9 *
Aircraft trips	4,735	4,886	3.2

* percentage point difference



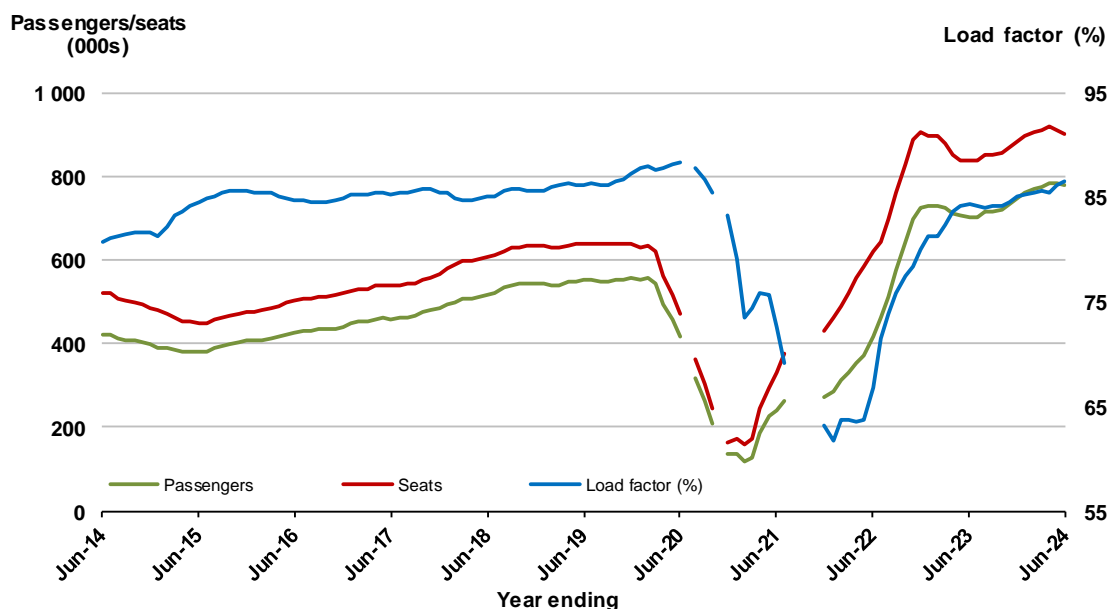
(a) April 2020 moving annuals are not available for release.

19. Melbourne - Sunshine Coast ^(a)

Moving annual data

	YE Jun 2023	YE Jun 2024	% Change
Passengers carried (000s)	703.7	779.3	10.7
Seats (000s)	835.8	902.5	8.0
Load factor %	84.3	86.5	2.2 *
Aircraft trips	4,721	4,880	3.4

* percentage point difference



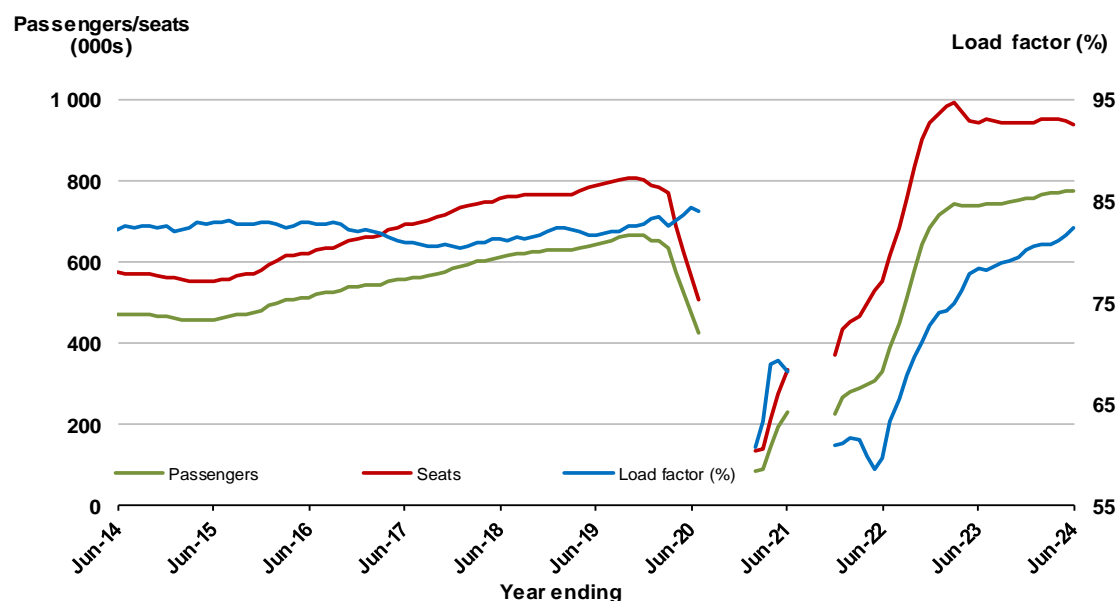
(a) July and November 2020 and August to November 2021 moving annuals are not available for release.

20. Sunshine Coast- Sydney ^(a)

Moving annual data

	YE Jun 2023	YE Jun 2024	% Change
Passengers carried (000s)	737.1	772.8	4.8
Seats (000s)	940.9	938.2	-0.3
Load factor %	78.3	82.4	4.0 *
Aircraft trips	5,441	5,234	-3.8

* percentage point difference



(a) August 2020 to January 2021 and August to November 2021 moving annuals are not available for release.

TOP FIFTY REGIONAL AIRPORTS

Table 7: Top fifty regional airports (000s) — passenger movements, annual

	Airport	YE Jun 2023	YE Jun 2024	% Change
1	Cairns	3 905.5	4 052.6	3.8
2	Hobart	2 499.9	2 651.7	6.1
3	Townsville	1 650.1	1 671.7	1.3
4	Darwin	1 636.3	1 593.6	-2.6
5	Launceston	1 294.0	1 413.0	9.2
6	Newcastle	1 090.4	1 201.2	10.2
7	Mackay	890.2	911.7	2.4
8	Rockhampton	557.6	656.2	17.7
9	Ballina	632.6	620.3	-2.0
10	Karratha	531.7	582.5	9.5
11	Proserpine	477.8	506.5	6.0
12	Hamilton Island	500.2	489.7	-2.1
13	Port Hedland	477.0	485.1	1.7
14	Broome	440.8	439.5	-0.3
15	Newman	365.8	372.2	1.7
16	Alice Springs	363.6	367.5	1.1
17	Kalgoorlie	338.9	361.9	6.8
18	Ayers Rock	245.7	283.6	15.4
19	Albury	236.6	276.5	16.9
20	Coffs Harbour	285.9	266.8	-6.7
21	Paraburdoo	226.0	263.4	16.5
22	Gladstone	207.2	240.2	15.9
23	Mount Isa	230.7	232.3	0.7
24	Mildura	207.8	231.9	11.6
25	Port Macquarie	193.2	228.0	18.0
26	Dubbo	199.5	213.7	7.2
27	Wagga Wagga	194.7	201.8	3.6
28	Emerald	189.5	195.9	3.4
29	Tamworth	153.7	173.3	12.7
30	Port Lincoln	178.7	171.7	-3.9
31	Bundaberg	117.2	165.3	41.0
32	Hervey Bay	137.3	154.7	12.7
33	Kununurra	131.9	139.4	5.7
34	Devonport	119.6	121.7	1.8
35	Moranbah	106.6	111.1	4.2
36	Thursday Island	102.7	110.3	7.3
37	Geraldton	82.2	110.0	33.9
38	Orange	100.1	109.3	9.2
39	Armidale	110.7	107.3	-3.1
40	Olympic Dam	98.1	103.6	5.5
41	Learmonth	103.5	103.1	-0.4
42	Gove	88.0	92.4	5.0
43	Weipa	84.9	90.0	6.0
44	Toowoomba Wellcamp	52.1	84.7	62.5
45	Burnie	82.7	80.7	-2.4
46	Mount Gambier	76.7	72.9	-5.0
47	Merimbula	75.0	70.2	-6.4
48	Norfolk Island	70.2	70.0	-0.2
49	Griffith	76.3	69.3	-9.2
50	Busselton	51.0	65.3	28.0
	Total top 50 regional airpo	22,268.6	23,386.9	5.0
	Total regional airports	23,674.8	24,811.0	4.8
	Total domestic network	110,591.7	117,255.9	6.0

Note: Airport passenger movement numbers are the sum of passenger arrivals and departures at each airport. Regional airports are defined as airports which are, according to the Australian Bureau of Statistics "The Australian Statistical Geography Standard (ASGS)", not based in Major Urban areas.

DOMESTIC CHARTER ACTIVITY

Table 8: Charter passengers carried and aircraft trips - annual activity

	YE Jun 2023	YE Jun 2024	% Change
Total domestic charter passengers	3,811,412	4,243,997	11.3
Total domestic charter aircraft trips	67,162	72,411	7.8

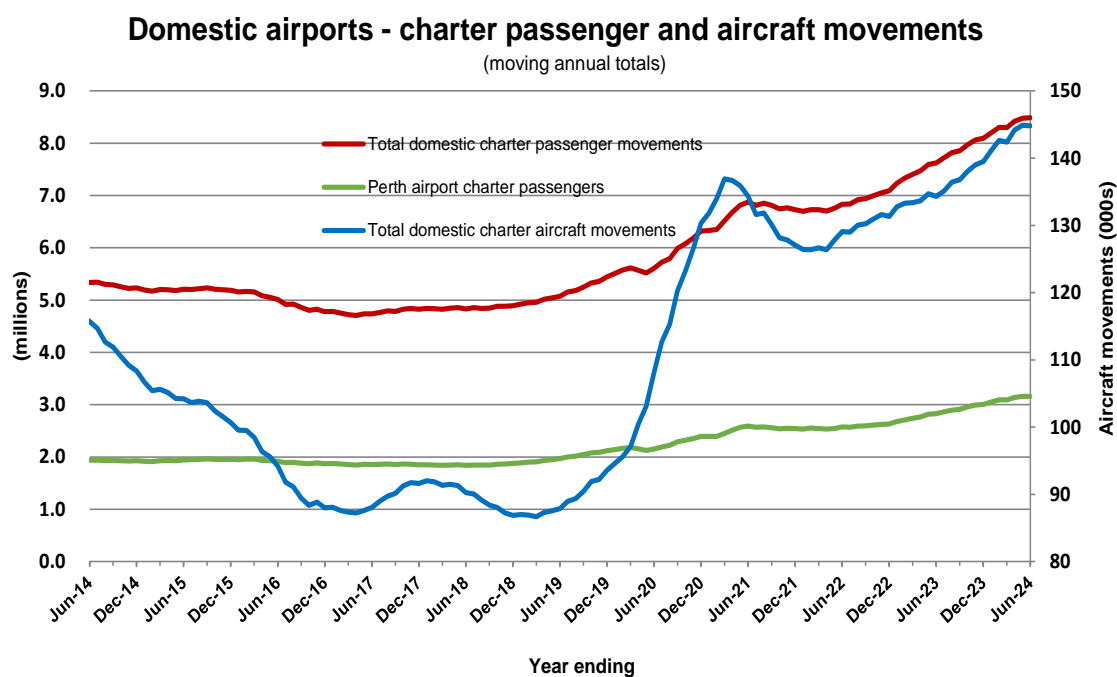
Note: Helicopter, joyflights and sightseeing charter flights not included.

Table 9: Domestic airports - charter activity - annual activity

	YE Jun 2023	YE Jun 2024	% Change
Total domestic charter passenger movements	7,622,824	8,487,994	11.3
Total domestic charter aircraft movements	134,324	144,822	7.8
Perth airport charter passenger movements	2,827,932	3,158,682	11.7
Perth airport charter aircraft movements	45,110	48,401	7.3

Note: Helicopter, joyflights and sightseeing charter flights not included.

Charter passenger and aircraft movement numbers are the sum of arrivals and departures at each airport.



DEFINITIONS

Aircraft Trips	The number of flight stages. A return flight counts as two aircraft trips.
Airport Movements	Airport movements (passenger and cargo) are measured once on arrival and once on departure. Each domestic trip generates two movements at airports. For example, a trip from Melbourne to Sydney will be counted twice, as a departure at Melbourne and as an arrival at Sydney. At the national level, the sum of all domestic airport traffic will therefore be equal to twice the number of trips undertaken.
Available Seat Kilometres (ASKs)	Calculated by multiplying the number of seats available on each flight stage, by the distance in kilometres between the ports. The distances used are Great Circle Distances.
City-Pair	The ports shown make up the city-pair route. Passenger movements shown for a city pair reflect total traffic in both directions.
Flight Stage	The operation of an aircraft from take-off to landing.
Load Factor	The total revenue passenger kilometres performed as a percentage of the total available seat kilometres.
Passengers Carried	Revenue passengers carried.
Regular Public Transport Services (RPT)	All air service operations in which aircraft are available for the transport of members of the public and are conducted in accordance with fixed schedules. It does not include charter or other non-scheduled operations.
Revenue Passengers	All passengers paying any fare. Frequent flyer redemption travellers are regarded as revenue passengers.
Revenue Passenger Kilometres (RPKs)	Calculated by multiplying the number of revenue passengers travelling on each flight stage, by the distance in kilometres between the ports. The distances used are Great Circle Distances.
Traffic on board by stages	The total of all traffic (revenue passengers) on each flight stage between two directly connected airports.
..	Not available for confidentiality or other reasons.
NA	Not applicable.