



Australian Government

**Department of Infrastructure, Transport,
Regional Development, Communications and the Arts**
Bureau of Infrastructure and Transport Research Economics

STATISTICAL REPORT



Aviation

**Domestic aviation activity
February 2024**

The Department of Infrastructure, Transport, Regional Development, Communications and the Arts acknowledges the Traditional Custodians of Country of the land on which we work and live.

We recognise and respect the continuing connections to land, waters and communities.

We pay our respects to them and their cultures and to their Elders both past and present and to all Aboriginal and Torres Strait Islander people.

© Commonwealth of Australia 2024

ISSN: 1832 - 1968

Ownership of intellectual property rights in this publication

Unless otherwise noted, copyright (and any other intellectual property rights, if any) in this publication is owned by the Commonwealth of Australia (referred to below as the Commonwealth).

Disclaimer

The material contained in this publication is made available on the understanding that the Commonwealth is not providing professional advice, and that users exercise their own skill and care with respect to its use, and seek independent advice if necessary.

The Commonwealth makes no representations or warranties as to the contents or accuracy of the information contained in this publication. To the extent permitted by law, the Commonwealth disclaims liability to any person or organisation in respect of anything done, or omitted to be done, in reliance upon information contained in this publication.

Creative Commons licence

With the exception of (a) the Coat of Arms; and (b) the Department of Infrastructure, Transport, Regional Development, Communications and the Arts' photos and graphics, copyright in this publication is licensed under a Creative Commons Attribution 3.0 Australia Licence.

Creative Commons Attribution 3.0 Australia Licence is a standard form licence agreement that allows you to copy, communicate and adapt this publication provided that you attribute the work to the Commonwealth and abide by the other licence terms. A summary of the licence terms is available from <http://creativecommons.org/licenses/by/3.0/au/deed.en>.

The full licence terms are available from <http://creativecommons.org/licenses/by/3.0/au/legalcode>.

Use of the Coat of Arms

The Department of the Prime Minister and Cabinet sets the terms under which the Coat of Arms is used. Please refer to the Department's Commonwealth Coat of Arms and Government branding web page <http://www.dpmc.gov.au/guidelines/index.cfm#brand> and, in particular, the Guidelines on the use of the Commonwealth Coat of Arms publication.

An appropriate citation for this report is:

Bureau of Infrastructure and Transport Research Economics (BITRE), 2024, Domestic aviation activity, Statistical Report, BITRE, Canberra ACT.

Contact us

This publication is available in PDF format. All other rights are reserved, including in relation to any Departmental logos or trade marks which may exist. For enquiries regarding the licence and any use of this publication, please contact:

Bureau of Infrastructure and Transport Research Economics (BITRE)
Department of Infrastructure, Transport, Regional Development, Communications and the Arts
GPO Box 501, Canberra ACT 2601, Australia

Email: bitre@infrastructure.gov.au

Website: www.bitre.gov.au

Inquiries

Nebojsa.Pavlovic@infrastructure.gov.au (02) 6136 8282

FOREWORD

This report provides an overview of domestic (including charter) commercial aviation activity in Australia for the month of February 2024.

The data covers revenue passengers carried by Australian-registered operators of scheduled regular public transport services over Australian flight stages and fixed-wing charter operators. These estimates include passengers carried between domestic airports on international flights operated by these carriers. The passengers carried refer to traffic on board by stages.

Estimates of passengers and aircraft movements for charter aviation are included in this publication, where BITRE confidentiality standards are met.

Individual routes shown are restricted to those with an average exceeding 8,000 passengers per month over the previous six months where two or more airlines operate in competition. However, for the period from December 2021 through to December 2022, the major airlines (Qantas Group, Virgin Australia and Rex Airlines) agreed to publication of the top 35 routes based on pre-COVID activity (December 2019) whether or not they were meeting the above criteria. From January 2023, the passenger load and dual competition requirements were reinstated due to the continued recovery of passenger numbers.

Information on the total network for the month of February 2024 and on the Regular Public Transport (RPT) network for the month of February 2024 is presented on page 2, with estimates for the year ended February 2024 presented on page 3.

Detailed information on individual routes can be found in the RPT summary pages 4-13 of this publication. For the month of February 2024, there are 61 individual routes published.

The top ten airports in terms of RPT passenger movements are shown on page 14.

Data on domestic RPT cargo movements at the top five cargo airports are provided on page 15. The table includes cargo carried on passenger flights operated by the Qantas group (including Jetstar), Virgin Australia, Air North and Skippers as well as the cargo carried by dedicated freighter aircraft operated by Qantas Freight and Team Global Express (formerly Toll).

The long-term trends for the top ten competitive RPT routes are presented graphically on pages 16-25.

Domestic RPT passenger movements at regional airports are shown on pages 26-27.

Tables providing estimates of domestic charter aviation activity are shown on page 28. BITRE confidentiality standards restrict publication of detailed estimates for individual Australian airports, with the exception of Perth Airport.

A list of definitions can be found on page 29.

This report was prepared by the Aviation Statistics Section of the Bureau of Infrastructure and Transport Research Economics with data provided by airlines.

Estimates are included where data were not available and data presented in this publication may contain revisions to previously published data.

Where figures have been rounded, discrepancies may occur between sums of component items and totals, and in percentage changes which are derived from figures prior to rounding.

CONTENTS

Highlights	1
Total network.....	2
RPT network	2
Top competitive routes.....	4
Top ten airports – passenger movements.....	14
Top five airports – cargo movements.....	15
Top ten routes	16
1. Melbourne – Sydney	16
2. Brisbane – Sydney.....	17
3. Brisbane – Melbourne	18
4. Gold Coast – Sydney	19
5. Adelaide – Melbourne	20
6. Gold Coast - Melbourne	21
7. Melbourne – Perth	22
8. Adelaide – Sydney	23
9. Perth – Sydney	24
10. Hobart – Melbourne	25
Top fifty regional airports	26
Domestic charter activity.....	28
Definitions	29

This page is intentionally left blank.

HIGHLIGHTS

It should be noted that February 2024 contained 29 days compared to 28 days in February 2023. The extra day equates to an increase of around 3.6 per cent in activity levels.

There were 4.93 million passengers carried on Australian domestic commercial aviation (including charter operations) in February 2024, an increase of 14.4 per cent on February 2023.

4.57 million passengers were carried on RPT flights in February 2024, an increase of 14.2 per cent compared to February 2023.

For the month of February 2024, there were 48.7 thousand RPT aircraft trips, up 5.9 per cent compared to February 2023.

For the year ending February 2024 there were 58.14 million RPT passengers, an increase of 8.3 per cent on the year ending February 2023.

RPT revenue passenger kilometres (RPKs) performed were 5.29 billion for the month, compared with 4.63 billion in February 2023 (up 14.2 per cent).

Capacity, measured by available seat kilometres (ASKs), increased to 6.56 billion in February 2024 compared to 6.00 billion in February 2023 (up 9.3 per cent).

The industry wide load factor (RPKs/ASKs) increased from 77.2 per cent in February 2023 to 80.6 per cent in February 2024. The highest load factor (89.1 per cent) was recorded on the Perth – Sydney route while the lowest load factor (47.4 per cent) was recorded on the Geraldton – Perth route.

For the month of February 2024, Melbourne – Sydney was Australia's busiest RPT route with 681.7 thousand passengers, followed by Brisbane – Sydney with 345.3 thousand passengers and Brisbane – Melbourne with 259.7 thousand passengers.

Sydney was Australia's busiest domestic airport with 1.99 million passenger movements in February 2024, followed by Melbourne with 1.94 million passenger movements and Brisbane with 1.27 million passenger movements.

Total cargo movements at Australian airports on domestic RPT flights were 25.6 thousand tonnes in February 2024, a decrease of 0.5 per cent compared with February 2023.

In February 2024, there were 1.85 million domestic passenger movements through regional airports, compared to 1.65 million in February 2023, an increase of 12.1 per cent. Out of the top 50 regional airports, the strongest increase was recorded at Toowoomba Wellcamp Airport (up 171.4 per cent on February 2023), while the largest decrease was recorded at Port Hedland Airport (down 4.9 per cent on February 2023).

Fixed-wing charter operators carried 359.9 thousand passengers in February 2024, an increase of 17.0 per cent compared with February 2023. Perth Airport accounted for 37.2 per cent of all charter passengers in Australia.

TOTAL NETWORK

Summary of monthly commercial aviation activity

	Feb 2023	Feb 2024	% Change
Total passengers carried (millions)	4.31	4.93	14.4
Aircraft trips (000s)	51.3	54.8	6.8

Note: Regular Public Transport and charter aviation activity
Helicopter, joy flights and sightseeing charter flights not included.

RPT NETWORK

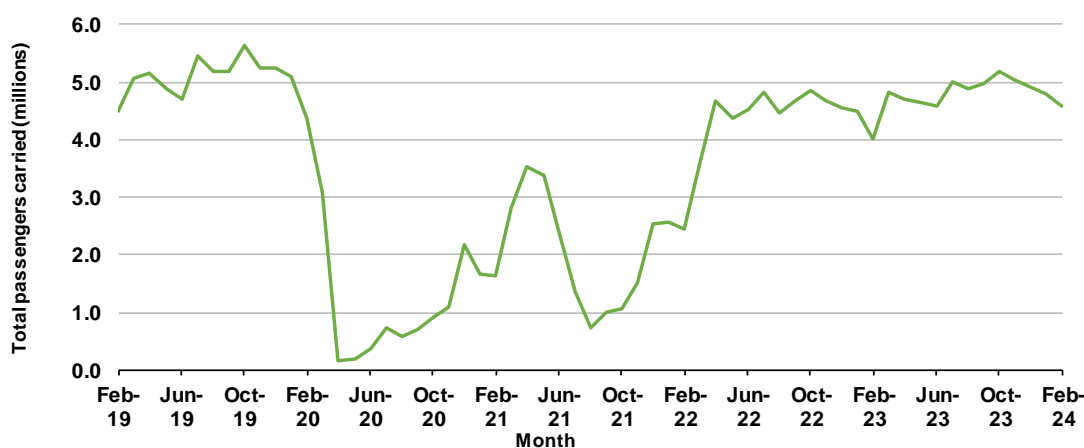
Summary of monthly RPT activity

	Feb 2023	Feb 2024	% Change
Total passengers carried (millions)	4.00	4.57	14.2
Revenue passenger kilometres (billions)	4.63	5.29	14.2
Available seats (millions)	5.33	5.81	9.0
Available seat kilometres (billions)	6.00	6.56	9.3
Load factor %	77.2	80.6	3.4 *
Aircraft trips (000s)	46.0	48.7	5.9

* percentage point difference

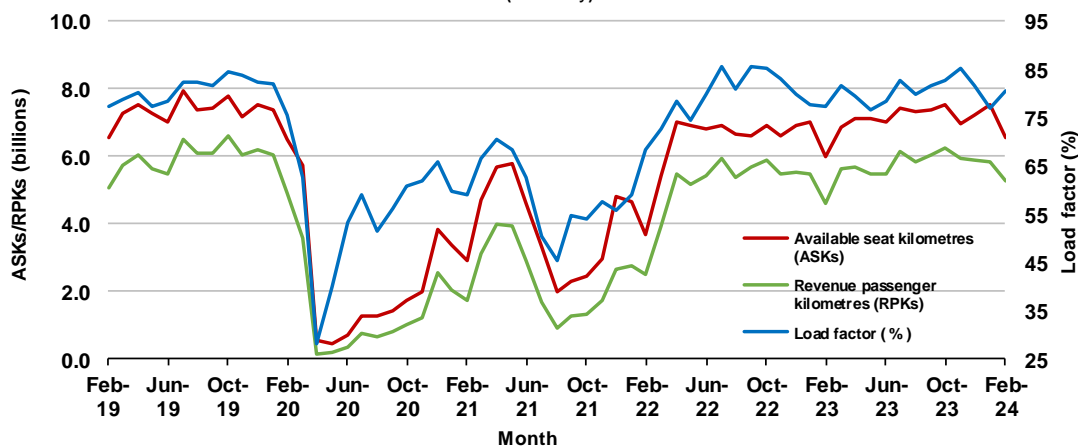
Domestic RPT passenger traffic

(monthly)



RPT Network utilisation

(monthly)



TOTAL NETWORK

Summary of annual commercial aviation activity

	YE Feb 2023	YE Feb 2024	% Change
Total passengers carried (millions)	57.36	62.29	8.6
Aircraft trips (000s)	650.6	688.1	5.8

Note: Regular Public Transport and charter aviation activity
Helicopter, joy flights and sightseeing charter flights not included.

RPT NETWORK

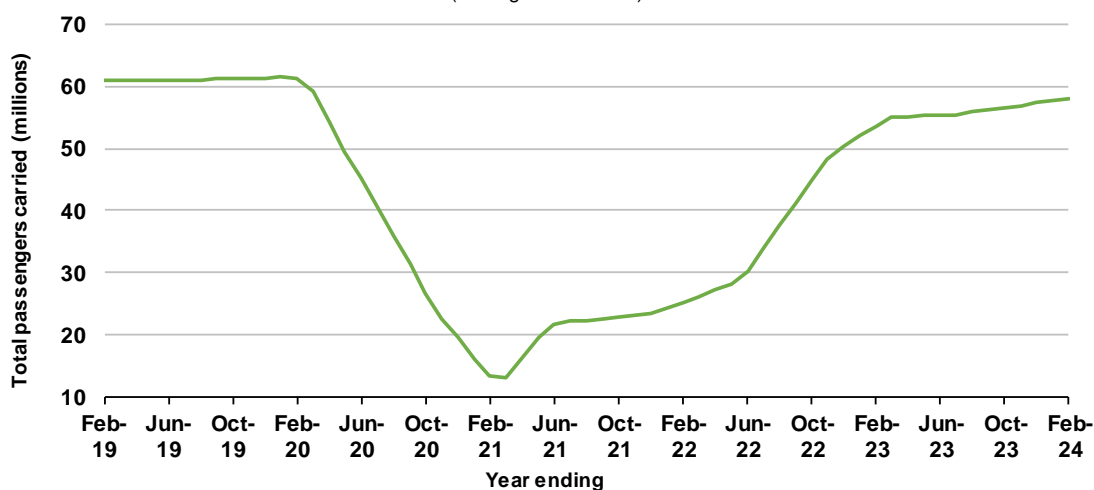
Summary of annual RPT activity

	YE Feb 2023	YE Feb 2024	% Change
Total passengers carried (millions)	53.70	58.14	8.3
Revenue passenger kilometres (billions)	64.02	69.41	8.4
Available seats (millions)	68.96	74.05	7.4
Available seat kilometres (billions)	79.78	86.08	7.9
Load factor %	80.2	80.6	0.4 *
Aircraft trips (000s)	584.0	616.8	5.6

* percentage point difference

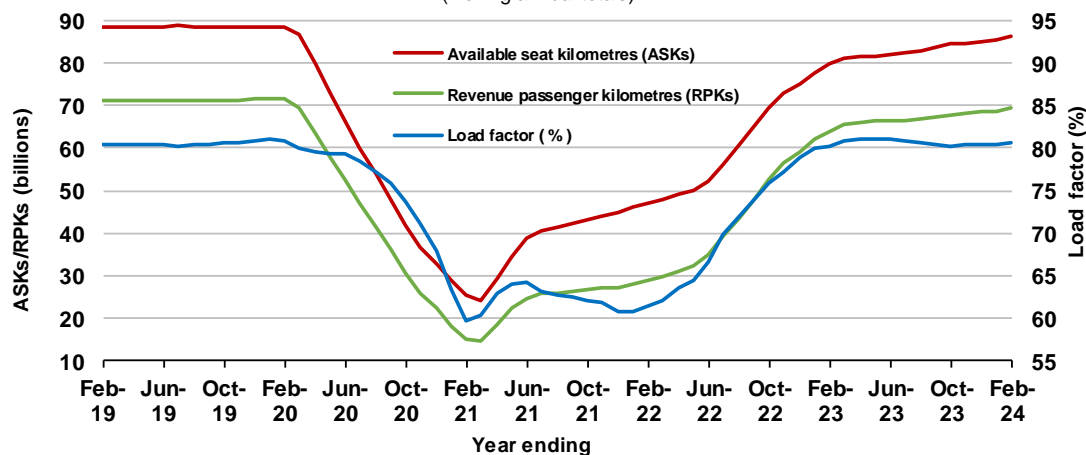
Domestic RPT passenger traffic

(moving annual totals)



RPT Network utilisation

(moving annual totals)



TOP COMPETITIVE ROUTES

Table 1: Passengers carried (000s) — annual activity

	City-Pair	YE Feb 2023	YE Feb 2024	% Change
1	Melbourne - Sydney	7 092.1	7 810.4	10.1
2	Brisbane - Sydney	3 883.1	4 306.0	10.9
3	Brisbane - Melbourne	2 990.5	3 351.4	12.1
4	Gold Coast - Sydney	2 431.7	2 472.9	1.7
5	Adelaide - Melbourne	2 127.6	2 315.4	8.8
6	Gold Coast - Melbourne	2 334.3	2 230.0	-4.5
7	Melbourne - Perth	1 632.2	1 940.8	18.9
8	Adelaide - Sydney	1 530.2	1 798.7	17.5
9	Perth - Sydney	1 348.6	1 614.1	19.7
10	Hobart - Melbourne	1 186.0	1 325.2	11.7
11	Brisbane - Cairns	1 190.4	1 248.4	4.9
12	Brisbane - Perth	885.3	1 018.2	15.0
13	Canberra - Melbourne	915.6	1 011.0	10.4
14	Cairns - Sydney	874.0	897.3	2.7
15	Brisbane - Townsville	853.8	873.2	2.3
16	Adelaide - Brisbane	763.7	840.4	10.0
17	Launceston - Melbourne	736.2	839.9	14.1
18	Cairns - Melbourne	822.9	834.4	1.4
19	Melbourne - Sunshine Coast	727.8	771.5	6.0
20	Sunshine Coast - Sydney	730.7	766.1	4.8
21	Hobart - Sydney	695.6	751.8	8.1
22	Brisbane - Mackay	737.6	726.8	-1.5
23	Adelaide - Perth	583.8	663.7	13.7
24	Brisbane - Canberra	620.0	633.7	2.2
25	Canberra - Sydney	584.1	608.7	4.2
26	Karratha - Perth	507.8	553.1	8.9
27	Ballina - Sydney	517.4	528.1	2.1
28	Brisbane - Rockhampton	466.7	514.9	10.3
29	Brisbane - Newcastle	480.6	502.9	4.6
30	Perth - Port Hedland	464.6	476.8	2.6
31	Melbourne - Newcastle	402.0	427.2	6.2
32	Newman - Perth	351.2	369.2	5.1
33	Kalgoorlie - Perth	315.0	363.2	15.3
34	Broome - Perth	369.8	362.6	-1.9
35	Launceston - Sydney	297.5	332.4	11.7
36	Brisbane - Darwin	338.3	322.0	-4.8
37	Brisbane - Hobart	302.0	296.4	-1.9
38	Darwin - Melbourne	309.0	285.0	-7.7
39	Brisbane - Proserpine	293.5	275.4	-6.2
40	Adelaide - Gold Coast	237.3	267.4	12.6
41	Hamilton Island - Sydney	247.2	244.4	-1.1
42	Brisbane - Gladstone	203.7	217.0	6.6
43	Coffs Harbour - Sydney	214.0	213.2	-0.4
44	Adelaide - Canberra	165.1	195.3	18.2
45	Brisbane - Emerald	178.1	185.3	4.0
46	Dubbo - Sydney	156.0	179.4	15.0
47	Canberra - Gold Coast	152.5	177.4	16.4
48	Adelaide - Port Lincoln	178.3	174.2	-2.3
49	Melbourne - Mildura	145.8	172.9	18.6
50	Darwin - Perth	168.3	171.0	1.6

continued

Table 1: (continued) Passengers carried (000s) — annual activity

	City-Pair	YE Feb 2023	YE Feb 2024	% Change
51	Port Macquarie - Sydney	152.5	167.7	10.0
52	Albury - Sydney	159.0	167.0	5.0
53	Brisbane - Hamilton Island	174.3	164.0	-5.9
54	Sydney - Wagga Wagga	144.2	154.8	7.3
55	Brisbane - Launceston	177.0	148.8	-15.9
56	Brisbane - Mount Isa	141.1	143.4	1.6
57	Brisbane - Bundaberg	109.4	131.5	20.2
58	Devonport - Melbourne	106.5	121.4	13.9
59	Adelaide - Alice Springs	104.9	118.6	13.0
60	Brisbane - Moranbah	102.7	110.9	8.0
61	Geraldton - Perth	..	33.6	NA
	Total domestic network	53 699.1	58 138.9	8.3

.. Data not available for release.

Table 2: Passengers carried (000s) — monthly activity

	City-Pair	Feb 2023	Feb 2024	% Change
1	Melbourne - Sydney	573.2	681.7	18.9
2	Brisbane - Sydney	298.7	345.3	15.6
3	Brisbane - Melbourne	229.9	259.7	13.0
4	Gold Coast - Sydney	173.9	197.5	13.6
5	Adelaide - Melbourne	168.4	190.9	13.3
6	Gold Coast - Melbourne	151.8	167.9	10.6
7	Melbourne - Perth	133.3	159.7	19.8
8	Adelaide - Sydney	120.0	146.2	21.9
9	Perth - Sydney	111.7	127.6	14.2
10	Hobart - Melbourne	104.4	120.4	15.3
11	Brisbane - Cairns	80.8	89.1	10.2
12	Canberra - Melbourne	74.2	83.9	13.0
13	Brisbane - Perth	71.1	79.6	11.9
14	Launceston - Melbourne	59.9	76.4	27.6
15	Hobart - Sydney	58.5	65.8	12.5
16	Adelaide - Brisbane	55.2	65.4	18.6
17	Brisbane - Townsville	60.5	64.9	7.2
18	Cairns - Sydney	45.8	62.9	37.4
19	Sunshine Coast - Sydney	51.4	58.8	14.3
20	Brisbane - Mackay	54.6	57.1	4.5
21	Adelaide - Perth	47.6	54.4	14.4
22	Melbourne - Sunshine Coast	44.7	54.1	21.1
23	Canberra - Sydney	47.1	49.8	5.8
24	Cairns - Melbourne	40.6	49.7	22.2
25	Brisbane - Canberra	42.3	47.3	11.9
26	Karratha - Perth	39.5	43.0	8.7
27	Ballina - Sydney	41.6	41.7	0.1
28	Brisbane - Rockhampton	36.6	41.2	12.7
29	Brisbane - Newcastle	36.0	39.0	8.4
30	Melbourne - Newcastle	29.5	35.4	19.9
31	Perth - Port Hedland	37.7	34.4	-8.8
32	Kalgoorlie - Perth	26.7	28.1	5.3
33	Launceston - Sydney	24.9	27.8	11.8
34	Newman - Perth	28.5	27.7	-2.8
35	Brisbane - Hobart	24.8	22.5	-9.3
36	Adelaide - Gold Coast	16.1	20.4	27.2
37	Brisbane - Darwin	18.9	19.8	5.2
38	Hamilton Island - Sydney	17.9	19.3	7.9
39	Brisbane - Proserpine	18.1	18.4	1.8
40	Brisbane - Gladstone	15.1	17.9	18.3
41	Broome - Perth	18.2	17.6	-3.3
42	Coffs Harbour - Sydney	16.7	15.8	-5.5
43	Adelaide - Canberra	14.0	14.9	6.3
44	Brisbane - Emerald	13.9	14.9	7.0
45	Adelaide - Port Lincoln	13.8	14.7	6.5
46	Darwin - Melbourne	15.1	14.5	-3.8
47	Melbourne - Mildura	11.0	14.1	27.7
48	Dubbo - Sydney	12.6	13.3	5.0
49	Canberra - Gold Coast	11.3	13.2	16.8
50	Port Macquarie - Sydney	12.0	12.7	5.3

continued

Table 2: (continued) Passengers carried (000s) — monthly activity

	City-Pair	Feb 2023	Feb 2024	% Change
51	Albury - Sydney	11.3	12.2	7.1
52	Sydney - Wagga Wagga	11.1	11.7	5.0
53	Brisbane - Hamilton Island	10.5	11.4	9.2
54	Brisbane - Bundaberg	9.5	10.8	14.4
55	Brisbane - Launceston	13.7	10.8	-21.4
56	Darwin - Perth	10.3	10.3	-0.2
57	Brisbane - Mount Isa	10.1	10.1	0.0
58	Brisbane - Moranbah	8.8	9.9	12.8
59	Devonport - Melbourne	9.0	9.8	8.7
60	Geraldton - Perth	..	8.2	NA
61	Adelaide - Alice Springs	6.9	7.9	15.6
	Total domestic network	4 002.0	4 569.5	14.2

.. Data not available for release.

Table 3: Available seats (000s) — monthly activity

	City-Pair	Feb 2023	Feb 2024	% Change
1	Melbourne - Sydney	720.7	800.7	11.1
2	Brisbane - Sydney	395.4	409.7	3.6
3	Brisbane - Melbourne	296.4	319.7	7.9
4	Gold Coast - Sydney	209.0	222.2	6.3
5	Adelaide - Melbourne	207.9	229.4	10.3
6	Gold Coast - Melbourne	181.6	195.0	7.4
7	Melbourne - Perth	156.1	184.2	18.0
8	Adelaide - Sydney	147.4	172.7	17.2
9	Perth - Sydney	131.7	143.2	8.7
10	Hobart - Melbourne	127.1	143.4	12.9
11	Brisbane - Cairns	96.9	108.4	11.9
12	Canberra - Melbourne	104.0	117.6	13.1
13	Brisbane - Perth	89.2	94.5	6.0
14	Launceston - Melbourne	76.5	96.3	26.0
15	Hobart - Sydney	72.3	77.2	6.8
16	Adelaide - Brisbane	73.4	88.9	21.1
17	Brisbane - Townsville	84.2	85.2	1.3
18	Cairns - Sydney	54.1	72.4	33.9
19	Sunshine Coast - Sydney	65.5	73.3	11.9
20	Brisbane - Mackay	77.7	76.0	-2.2
21	Adelaide - Perth	55.3	67.8	22.6
22	Melbourne - Sunshine Coast	57.4	66.6	16.1
23	Canberra - Sydney	71.9	77.9	8.3
24	Cairns - Melbourne	49.2	57.0	15.9
25	Brisbane - Canberra	70.9	69.9	-1.4
26	Karratha - Perth	58.0	63.9	10.1
27	Ballina - Sydney	51.8	48.1	-7.2
28	Brisbane - Rockhampton	51.5	55.6	7.9
29	Brisbane - Newcastle	55.2	50.7	-8.2
30	Melbourne - Newcastle	37.3	46.4	24.1
31	Perth - Port Hedland	49.5	53.4	8.0
32	Kalgoorlie - Perth	41.2	50.2	21.8
33	Launceston - Sydney	29.8	32.8	9.9
34	Newman - Perth	47.1	47.0	-0.2
35	Brisbane - Hobart	31.3	25.8	-17.5
36	Adelaide - Gold Coast	18.2	23.6	29.4
37	Brisbane - Darwin	23.2	26.1	12.5
38	Hamilton Island - Sydney	26.2	26.0	-1.0
39	Brisbane - Proserpine	22.7	21.0	-7.4
40	Brisbane - Gladstone	27.1	26.1	-3.5
41	Broome - Perth	29.9	27.0	-9.6
42	Coffs Harbour - Sydney	23.0	20.6	-10.5
43	Adelaide - Canberra	25.9	21.5	-16.9
44	Brisbane - Emerald	20.1	21.9	9.2
45	Adelaide - Port Lincoln	21.0	21.8	3.6
46	Darwin - Melbourne	21.4	16.9	-21.2
47	Melbourne - Mildura	14.8	19.6	32.7
48	Dubbo - Sydney	22.1	21.9	-0.8
49	Canberra - Gold Coast	15.3	16.6	8.8
50	Port Macquarie - Sydney	20.5	19.2	-6.3

continued

Table 3: (continued) Available seats (000s) — monthly activity

	City-Pair	Feb 2023	Feb 2024	% Change
51	Albury - Sydney	20.2	18.5	-8.5
52	Sydney - Wagga Wagga	21.2	18.7	-11.7
53	Brisbane - Hamilton Island	15.2	15.5	1.9
54	Brisbane - Bundaberg	17.0	18.3	7.6
55	Brisbane - Launceston	18.6	13.5	-27.5
56	Darwin - Perth	14.9	14.1	-5.3
57	Brisbane - Mount Isa	18.1	19.1	5.0
58	Brisbane - Moranbah	15.0	16.7	11.5
59	Devonport - Melbourne	13.7	14.2	3.4
60	Geraldton - Perth	..	17.3	NA
61	Adelaide - Alice Springs	10.5	12.2	15.9
	Total domestic network	5 332.1	5 813.0	9.0

.. Data not available for release.

Table 4: Load factors (%) — monthly activity

	City-Pair	Feb 2023	Feb 2024	% Point diff
1	Melbourne - Sydney	79.6	85.2	5.6
2	Brisbane - Sydney	75.5	84.3	8.8
3	Brisbane - Melbourne	77.6	81.2	3.6
4	Gold Coast - Sydney	83.2	88.9	5.7
5	Adelaide - Melbourne	81.0	83.2	2.2
6	Gold Coast - Melbourne	83.6	86.1	2.5
7	Melbourne - Perth	85.4	86.7	1.3
8	Adelaide - Sydney	81.4	84.7	3.3
9	Perth - Sydney	84.8	89.1	4.3
10	Hobart - Melbourne	82.2	83.9	1.7
11	Brisbane - Cairns	83.5	82.2	-1.3
12	Canberra - Melbourne	71.4	71.3	-0.1
13	Brisbane - Perth	79.8	84.2	4.4
14	Launceston - Melbourne	78.3	79.3	1.0
15	Hobart - Sydney	80.9	85.3	4.4
16	Adelaide - Brisbane	75.1	73.6	-1.5
17	Brisbane - Townsville	71.9	76.1	4.2
18	Cairns - Sydney	84.6	86.8	2.2
19	Sunshine Coast - Sydney	78.5	80.1	1.6
20	Brisbane - Mackay	70.3	75.2	4.9
21	Adelaide - Perth	86.1	80.3	-5.8
22	Melbourne - Sunshine Coast	77.7	81.2	3.5
23	Canberra - Sydney	65.5	64.0	-1.5
24	Cairns - Melbourne	82.6	87.1	4.5
25	Brisbane - Canberra	59.7	67.8	8.1
26	Karratha - Perth	68.1	67.3	-0.8
27	Ballina - Sydney	80.3	86.6	6.3
28	Brisbane - Rockhampton	71.1	74.2	3.1
29	Brisbane - Newcastle	65.2	77.0	11.8
30	Melbourne - Newcastle	79.1	76.4	-2.7
31	Perth - Port Hedland	76.2	64.4	-11.8
32	Kalgoorlie - Perth	64.7	55.9	-8.8
33	Launceston - Sydney	83.4	85.0	1.6
34	Newman - Perth	60.5	59.0	-1.5
35	Brisbane - Hobart	79.3	87.2	7.9
36	Adelaide - Gold Coast	88.2	86.7	-1.5
37	Brisbane - Darwin	81.1	75.8	-5.3
38	Hamilton Island - Sydney	68.2	74.3	6.1
39	Brisbane - Proserpine	79.8	87.7	7.9
40	Brisbane - Gladstone	55.7	68.3	12.6
41	Broome - Perth	60.8	65.1	4.3
42	Coffs Harbour - Sydney	72.5	76.6	4.1
43	Adelaide - Canberra	54.0	69.2	15.2
44	Brisbane - Emerald	69.2	67.8	-1.4
45	Adelaide - Port Lincoln	65.7	67.5	1.8
46	Darwin - Melbourne	70.6	86.1	15.5
47	Melbourne - Mildura	74.8	72.0	-2.8
48	Dubbo - Sydney	57.3	60.6	3.3
49	Canberra - Gold Coast	73.7	79.2	5.5
50	Port Macquarie - Sydney	58.7	65.9	7.2

continued

Table 4: (continued) Load factors (%) — monthly activity

	City-Pair	Feb 2023	Feb 2024	% Point diff
51	Albury - Sydney	56.3	65.8	9.5
52	Sydney - Wagga Wagga	52.6	62.6	10.0
53	Brisbane - Hamilton Island	68.7	73.7	5.0
54	Brisbane - Bundaberg	55.8	59.3	3.5
55	Brisbane - Launceston	73.5	79.6	6.1
56	Darwin - Perth	69.4	73.1	3.7
57	Brisbane - Mount Isa	55.7	53.0	-2.7
58	Brisbane - Moranbah	58.8	59.5	0.7
59	Devonport - Melbourne	65.8	69.2	3.4
60	Geraldton - Perth	..	47.4	NA
61	Adelaide - Alice Springs	65.5	65.3	-0.2
	Total domestic network	77.2	80.6	3.4

.. Data not available for release.

Table 5: Aircraft trips ^(a) — monthly activity

	City-Pair	Feb 2023	Feb 2024	% Change
1	Melbourne - Sydney	4 112	4 641	12.9
2	Brisbane - Sydney	2 430	2 512	3.4
3	Brisbane - Melbourne	1 785	1 906	6.8
4	Gold Coast - Sydney	1 212	1 237	2.1
5	Adelaide - Melbourne	1 283	1 389	8.3
6	Gold Coast - Melbourne	987	1 069	8.3
7	Melbourne - Perth	909	1 051	15.6
8	Adelaide - Sydney	899	1 063	18.2
9	Perth - Sydney	705	731	3.7
10	Hobart - Melbourne	735	825	12.2
11	Brisbane - Cairns	631	752	19.2
12	Canberra - Melbourne	747	843	12.9
13	Brisbane - Perth	515	559	8.5
14	Launceston - Melbourne	654	770	17.7
15	Hobart - Sydney	448	470	4.9
16	Adelaide - Brisbane	608	680	11.8
17	Brisbane - Townsville	578	620	7.3
18	Cairns - Sydney	272	378	39.0
19	Sunshine Coast - Sydney	416	411	-1.2
20	Brisbane - Mackay	574	647	12.7
21	Adelaide - Perth	319	388	21.6
22	Melbourne - Sunshine Coast	324	356	9.9
23	Canberra - Sydney	1 198	1 222	2.0
24	Cairns - Melbourne	258	291	12.8
25	Brisbane - Canberra	515	553	7.4
26	Karratha - Perth	355	392	10.4
27	Ballina - Sydney	382	332	-13.1
28	Brisbane - Rockhampton	571	645	13.0
29	Brisbane - Newcastle	487	472	-3.1
30	Melbourne - Newcastle	235	297	26.4
31	Perth - Port Hedland	330	336	1.8
32	Kalgoorlie - Perth	284	321	13.0
33	Launceston - Sydney	186	204	9.7
34	Newman - Perth	303	294	-3.0
35	Brisbane - Hobart	188	168	-10.6
36	Adelaide - Gold Coast	102	116	13.7
37	Brisbane - Darwin	198	217	9.6
38	Hamilton Island - Sydney	151	147	-2.6
39	Brisbane - Proserpine	152	142	-6.6
40	Brisbane - Gladstone	341	328	-3.8
41	Broome - Perth	222	185	-16.7
42	Coffs Harbour - Sydney	439	364	-17.1
43	Adelaide - Canberra	231	198	-14.3
44	Brisbane - Emerald	302	329	8.9
45	Adelaide - Port Lincoln	513	530	3.3
46	Darwin - Melbourne	121	120	-0.8
47	Melbourne - Mildura	354	409	15.5
48	Dubbo - Sydney	431	416	-3.5
49	Canberra - Gold Coast	86	93	8.1
50	Port Macquarie - Sydney	378	338	-10.6

continued

Table 5: (continued) Aircraft trips ^(a) — monthly activity

	City-Pair	Feb 2023	Feb 2024	% Change
51	Albury - Sydney	395	334	-15.4
52	Sydney - Wagga Wagga	412	335	-18.7
53	Brisbane - Hamilton Island	89	108	21.3
54	Brisbane - Bundaberg	275	297	8.0
55	Brisbane - Launceston	104	80	-23.1
56	Darwin - Perth	88	92	4.5
57	Brisbane - Mount Isa	160	163	1.9
58	Brisbane - Moranbah	199	223	12.1
59	Devonport - Melbourne	304	314	3.3
60	Geraldton - Perth	..	194	NA
61	Adelaide - Alice Springs	136	147	8.1
	Total domestic network	46 020	48 746	5.9

(a) Includes RPT cargo flights.

.. Data not available for release.

TOP TEN AIRPORTS – PASSENGER MOVEMENTS

Table 6: Top ten airports, RPT passenger movements (000s) - monthly activity

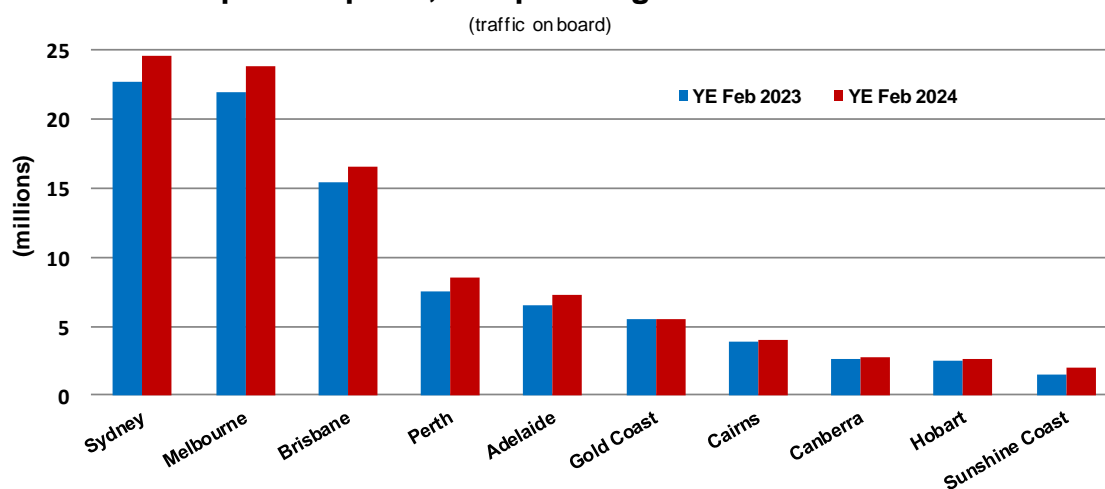
Airport	Feb 2023	Feb 2024	% Change	% of Total
1 Sydney	1 731.9	1 994.8	15.2	21.8
2 Melbourne	1 654.3	1 942.5	17.4	21.3
3 Brisbane	1 141.5	1 271.7	11.4	13.9
4 Perth	590.3	648.3	9.8	7.1
5 Adelaide	506.0	579.1	14.5	6.3
6 Gold Coast	378.4	426.8	12.8	4.7
7 Cairns	229.3	273.8	19.4	3.0
8 Hobart	209.9	231.8	10.5	2.5
9 Canberra	199.7	220.4	10.4	2.4
10 Sunshine Coast	104.5	143.1	36.9	1.6
Total top ten airports	6 745.9	7 732.3	14.6	84.6
Total domestic network	8 003.9	9 139.0	14.2	100.0

Table 7: Top ten airports, RPT passenger movements (000s) - annual activity

Airport	YE Feb 2023	YE Feb 2024	% Change	% of Total
1 Sydney	22 630.6	24 542.1	8.4	21.1
2 Melbourne	21 900.2	23 845.3	8.9	20.5
3 Brisbane	15 351.1	16 502.8	7.5	14.2
4 Perth	7 511.5	8 493.5	13.1	7.3
5 Adelaide	6 551.0	7 237.8	10.5	6.2
6 Gold Coast	5 541.5	5 526.2	-0.3	4.8
7 Cairns	3 844.5	4 029.3	4.8	3.5
8 Canberra	2 609.9	2 783.6	6.7	2.4
9 Hobart	2 460.4	2 629.7	6.9	2.3
10 Sunshine Coast	1 547.8	1 935.6	25.1	1.7
Total top ten airports	89 948.4	97 525.8	8.4	83.9
Total domestic network	107 398.2	116 277.9	8.3	100.0

Note: Airport passenger movement numbers are the sum of passenger arrivals and departures at each airport.

Top ten airports, RPT passenger movements



TOP FIVE AIRPORTS – CARGO MOVEMENTS

Table 8: Top five airports, domestic RPT cargo movements (000s tonnes) - monthly activity

Airport	Feb 2023	Feb 2024	% Change	% of Total
1 Melbourne	6.9	7.0	0.8	27.2
2 Sydney	5.7	5.4	-5.1	21.2
3 Brisbane	4.5	4.8	7.0	18.9
4 Perth	2.7	2.9	8.1	11.2
5 Adelaide	1.4	1.4	-0.4	5.5
Total top five airports	21.2	21.5	1.3	83.9
Total domestic network	25.8	25.6	-0.5	100.0

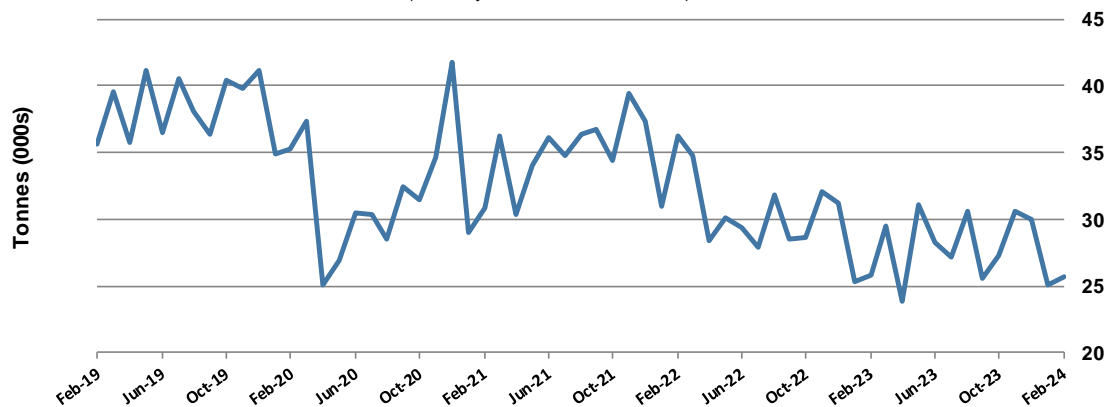
Table 9: Top five airports, domestic RPT cargo movements (000s tonnes) - annual activity

Airport	YE Feb 2023	YE Feb 2024	% Change	% of Total
1 Melbourne	92.9	90.1	-3.0	26.9
2 Sydney	78.1	75.2	-3.8	22.5
3 Brisbane	60.7	59.6	-1.7	17.8
4 Perth	35.5	34.8	-1.9	10.4
5 Adelaide	21.1	18.9	-10.3	5.6
Total top five airports	288.3	278.7	-3.3	83.3
Total domestic network	353.9	334.6	-5.5	100.0

Note: Airport cargo tonnes are the sum of cargo tonnes on arrivals and departures at each airport.

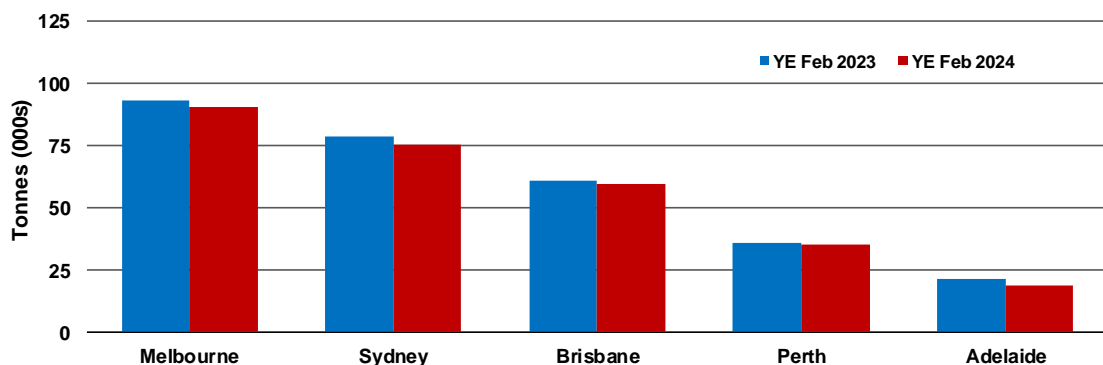
Total domestic network - cargo movement

(monthly totals - traffic on board)



Top five airports, cargo movements

(Domestic cargo traffic - traffic on board)



Note: Airport cargo tonnes are the sum of cargo tonnes on arrivals and departures at each airport.

TOP TEN ROUTES

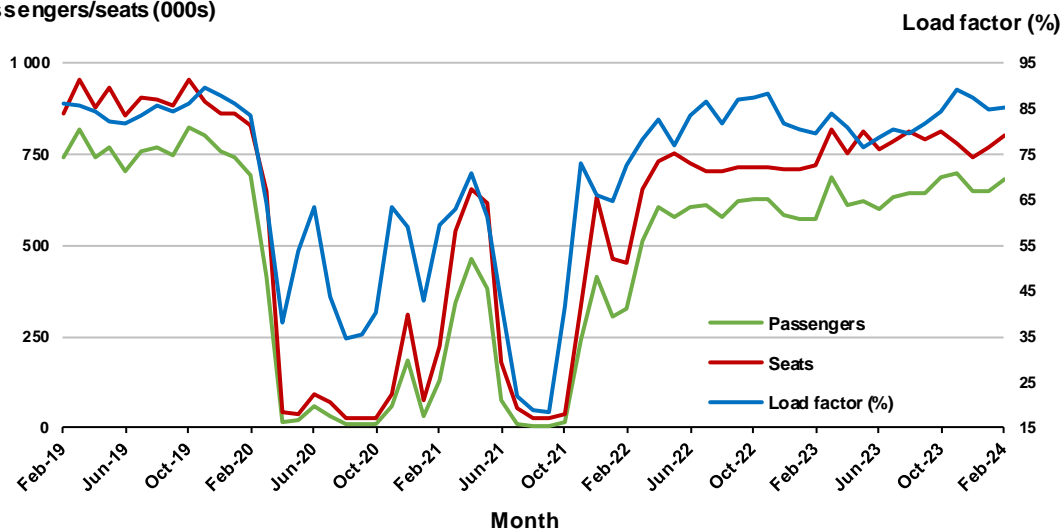
1. Melbourne - Sydney

Monthly data

	Feb 2023	Feb 2024	% Change
Passengers carried (000s)	573.2	681.7	18.9
Seats (000s)	720.7	800.7	11.1
Load factor %	79.6	85.2	5.6 *
Aircraft trips	4 112	4 641	12.9

* percentage point difference

Passengers/seats (000s)

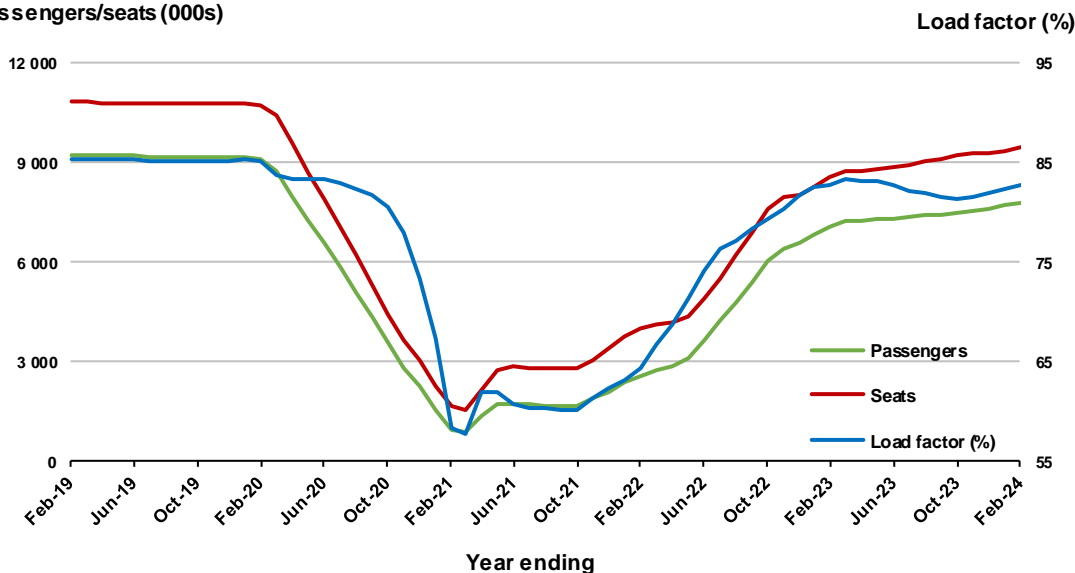


Moving annual data

	YE Feb 2023	YE Feb 2024	% Change
Passengers carried (000s)	7 092.1	7 810.4	10.1
Seats (000s)	8 560.7	9 439.5	10.3
Load factor %	82.8	82.8	-0.1 *
Aircraft trips	49 455	54 795	10.8

* percentage point difference

Passengers/seats (000s)

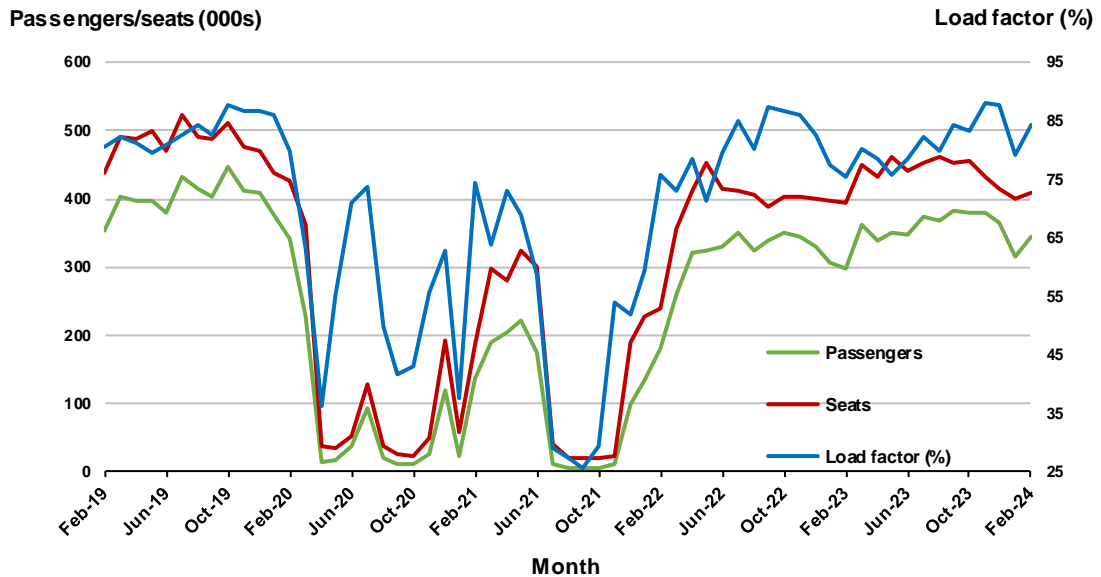


2. Brisbane - Sydney

Monthly data

	Feb 2023	Feb 2024	% Change
Passengers carried (000s)	298.7	345.3	15.6
Seats (000s)	395.4	409.7	3.6
Load factor %	75.5	84.3	8.8 *
Aircraft trips	2 430	2 512	3.4

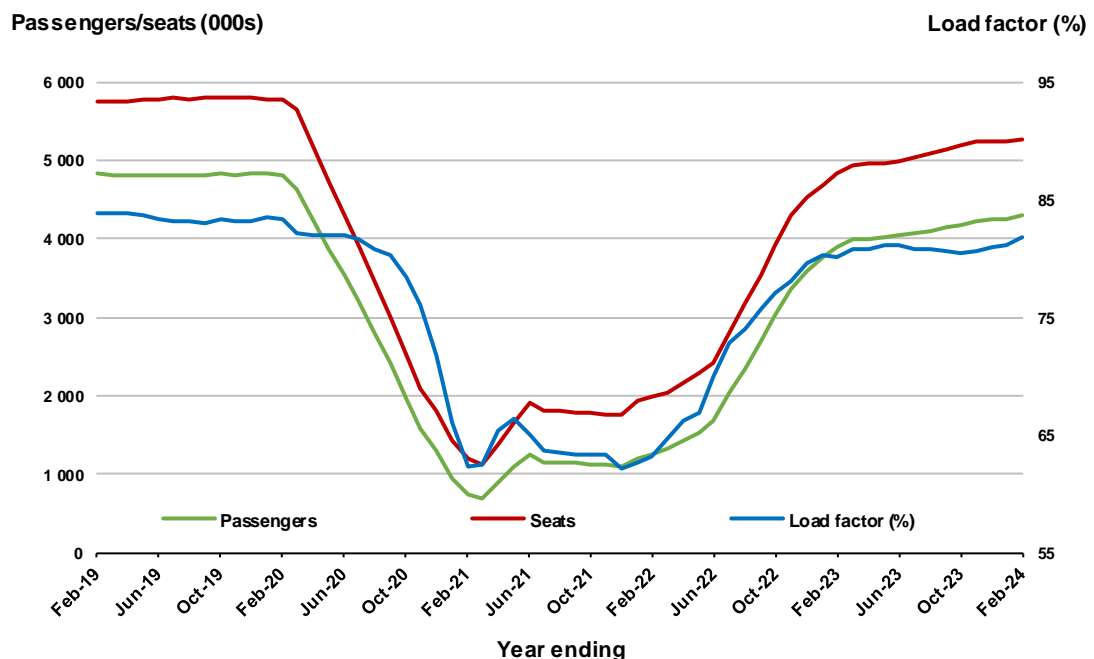
* percentage point difference



Moving annual data

	YE Feb 2023	YE Feb 2024	% Change
Passengers carried (000s)	3 883.1	4 306.0	10.9
Seats (000s)	4 843.2	5 264.4	8.7
Load factor %	80.2	81.8	1.6 *
Aircraft trips	29 770	32 374	8.7

* percentage point difference

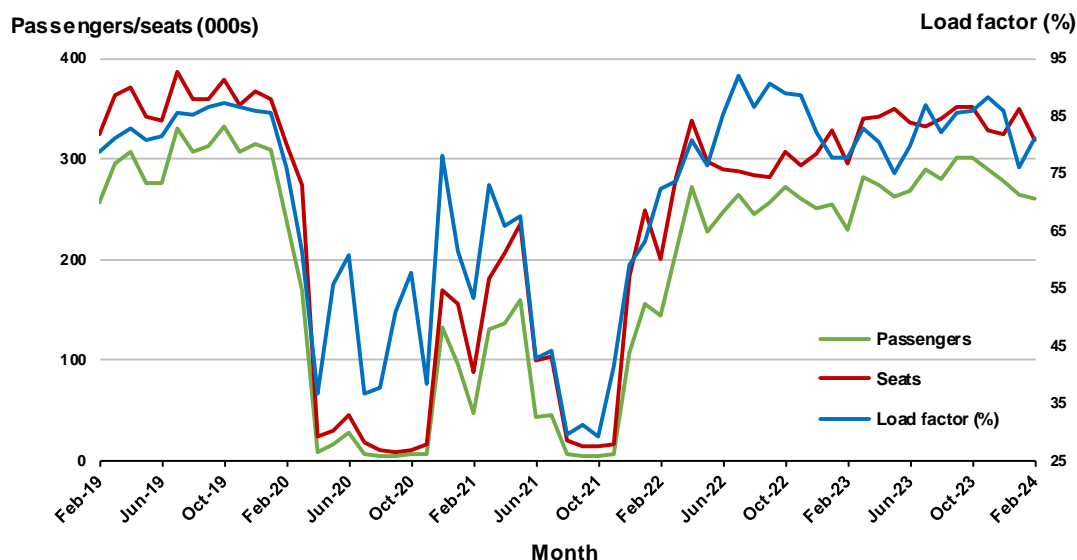


3. Brisbane - Melbourne

Monthly data

	Feb 2023	Feb 2024	% Change
Passengers carried (000s)	229.9	259.7	13.0
Seats (000s)	296.4	319.7	7.9
Load factor %	77.6	81.2	3.6 *
Aircraft trips	1 785	1 906	6.8

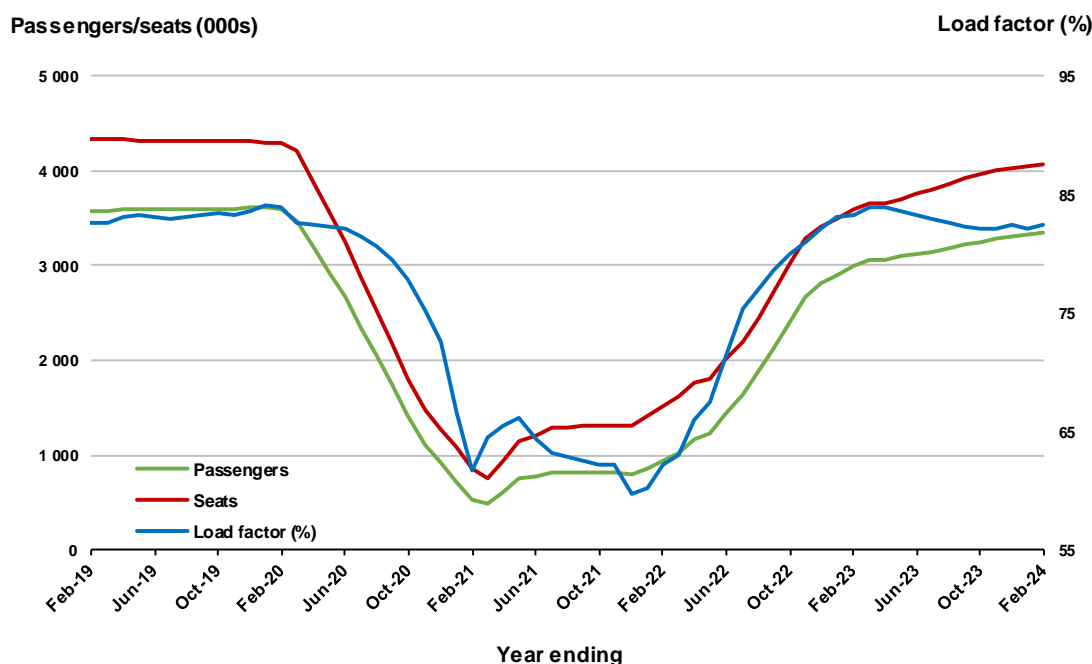
* percentage point difference



Moving annual data

	YE Feb 2023	YE Feb 2024	% Change
Passengers carried (000s)	2 990.5	3 351.4	12.1
Seats (000s)	3 592.4	4 064.7	13.1
Load factor %	83.2	82.4	-0.8 *
Aircraft trips	21 921	24 544	12.0

* percentage point difference



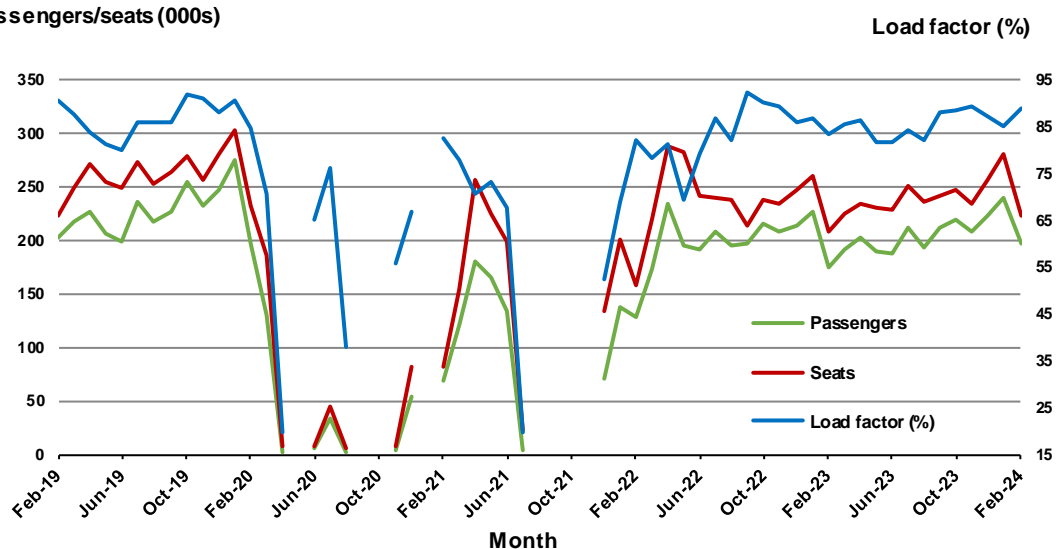
4. Gold Coast - Sydney ^(a)

Monthly data

	Feb 2023	Feb 2024	% Change
Passengers carried (000s)	173.9	197.5	13.6
Seats (000s)	209.0	222.2	6.3
Load factor %	83.2	88.9	5.7 *
Aircraft trips	1 212	1 237	2.1

* percentage point difference

Passengers/seats (000s)



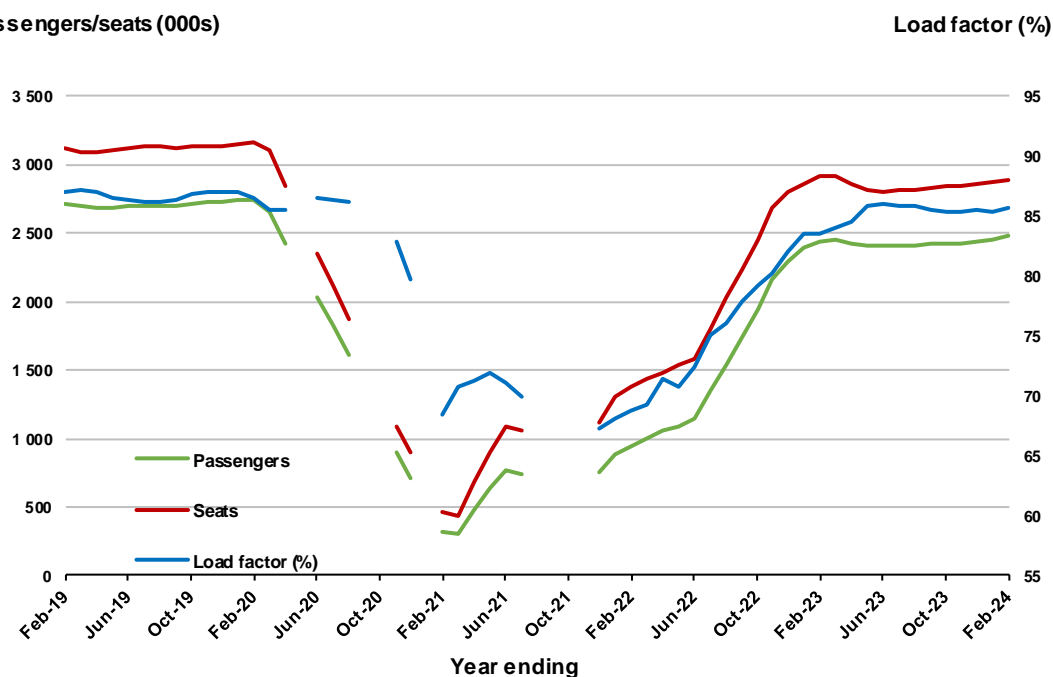
(a) May, September and October 2020 and January and August to November 2021 data not available for release.

Moving annual data

	YE Feb 2023	YE Feb 2024	% Change
Passengers carried (000s)	2 431.7	2 472.9	1.7
Seats (000s)	2 912.0	2 884.5	-0.9
Load factor %	83.5	85.7	2.2 *
Aircraft trips	16 889	16 477	-2.4

* percentage point difference

Passengers/seats (000s)



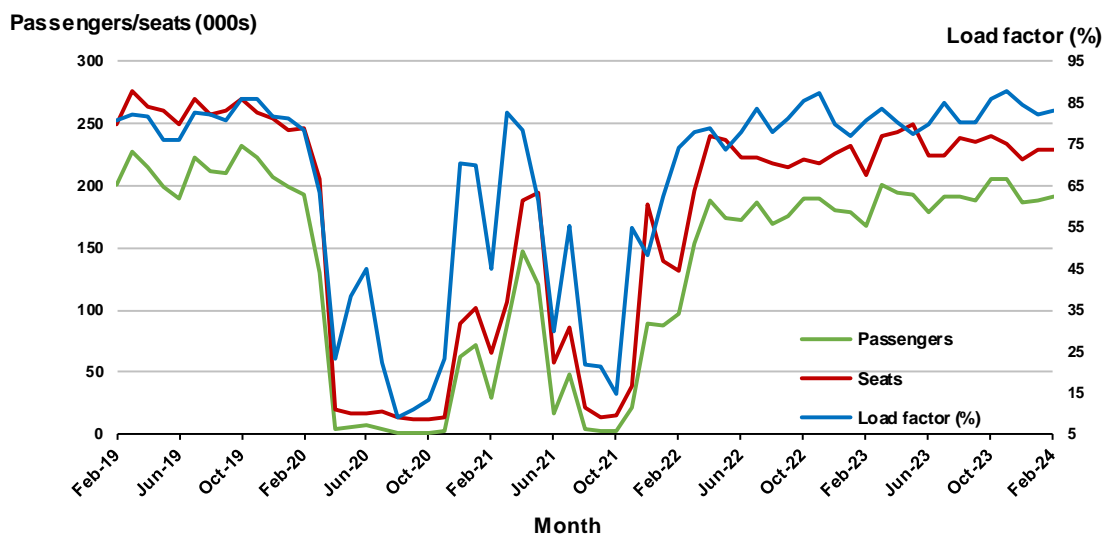
(a) May, September and October 2020 and January and August to November 2021 moving annual totals not available for release.

5. Adelaide - Melbourne

Monthly data

	Feb 2023	Feb 2024	% Change
Passengers carried (000s)	168.4	190.9	13.3
Seats (000s)	207.9	229.4	10.3
Load factor %	81.0	83.2	2.2 *
Aircraft trips	1 283	1 389	8.3

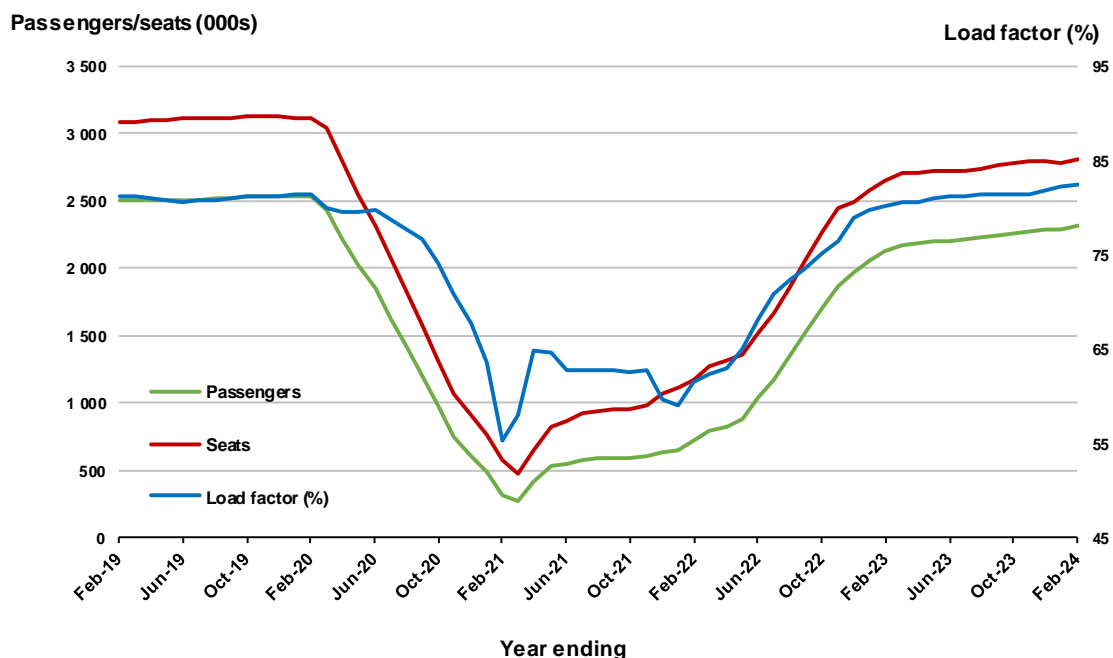
* percentage point difference



Moving annual data

	YE Feb 2023	YE Feb 2024	% Change
Passengers carried (000s)	2 127.6	2 315.4	8.8
Seats (000s)	2 657.1	2 807.6	5.7
Load factor %	80.1	82.5	2.4 *
Aircraft trips	16 257	17 220	5.9

* percentage point difference

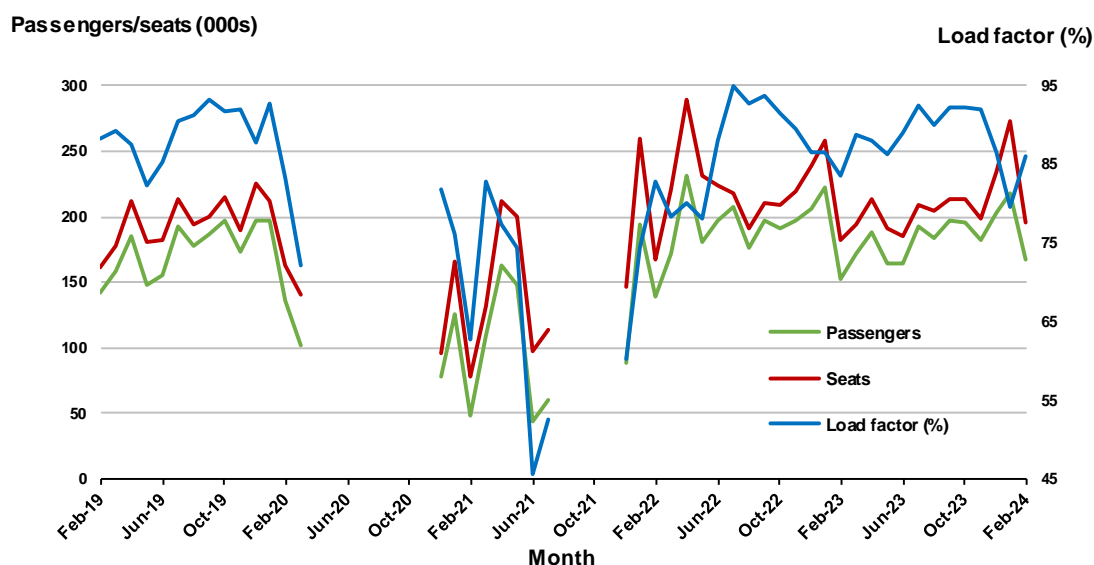


6. Gold Coast - Melbourne ^(a)

Monthly data

	Feb 2023	Feb 2024	% Change
Passengers carried (000s)	151.8	167.9	10.6
Seats (000s)	181.6	195.0	7.4
Load factor %	83.6	86.1	2.5 *
Aircraft trips	987	1 069	8.3

* percentage point difference

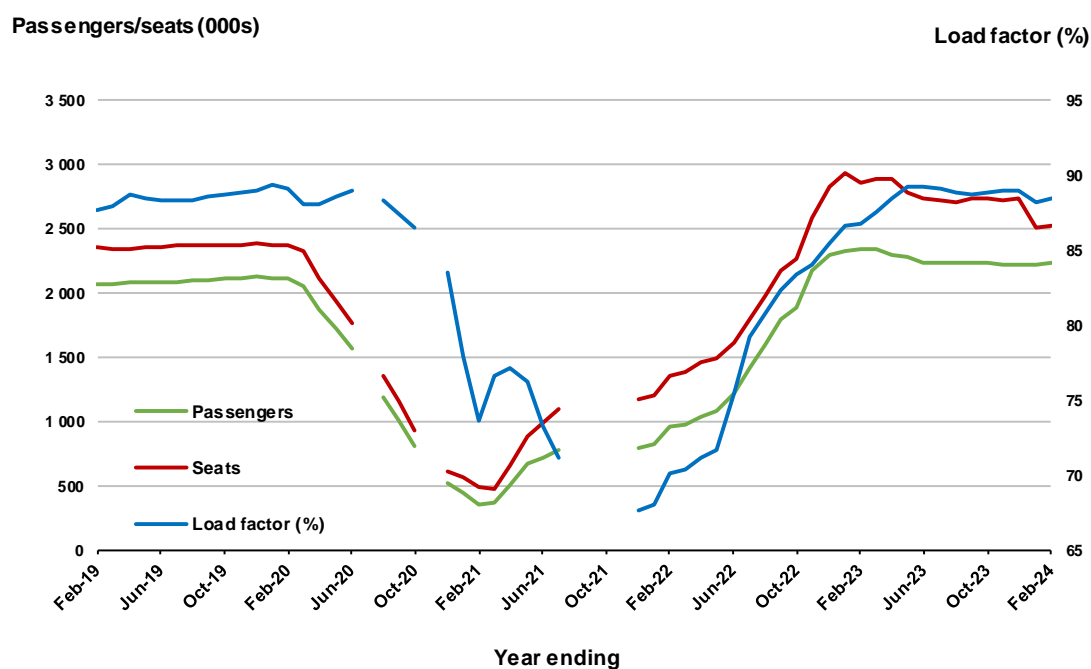


(a) April to November 2020 and August to November 2021 moving annuals are not available for release.

Moving annual data

	YE Feb 2023	YE Feb 2024	% Change
Passengers carried (000s)	2 334.3	2 230.0	-4.5
Seats (000s)	2 860.0	2 522.4	-11.8
Load factor %	86.7	88.4	1.7 *
Aircraft trips	14 885	13 715	-7.9

* percentage point difference



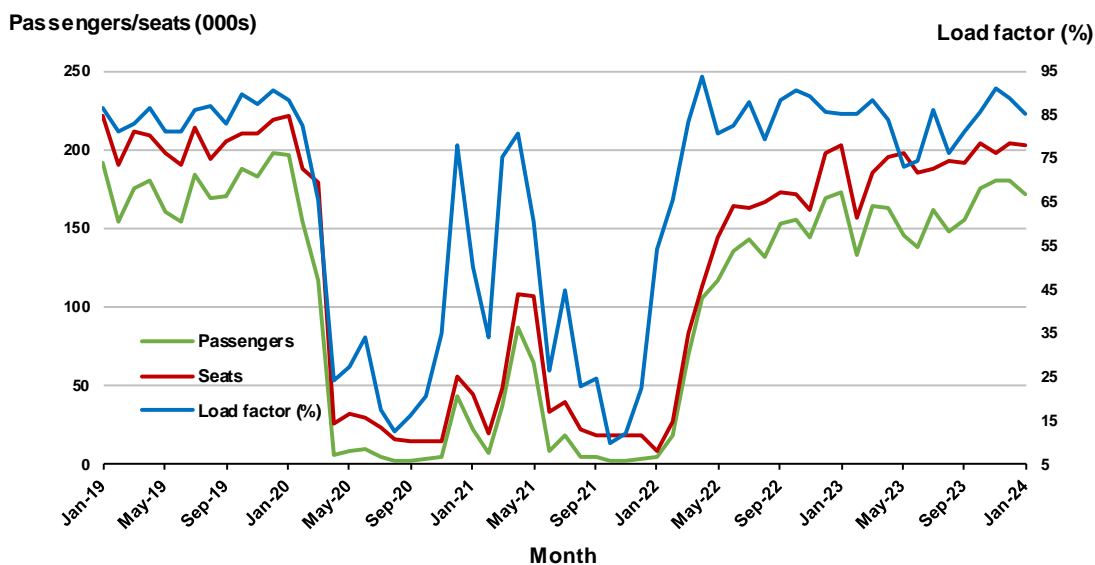
(a) July and November 2020 and August to November 2021 moving annuals are not available for release.

7. Melbourne - Perth

Monthly data

	Feb 2023	Feb 2024	% Change
Passengers carried (000s)	133.3	159.7	19.8
Seats (000s)	156.1	184.2	18.0
Load factor %	85.4	86.7	1.3 *
Aircraft trips	909	1 051	15.6

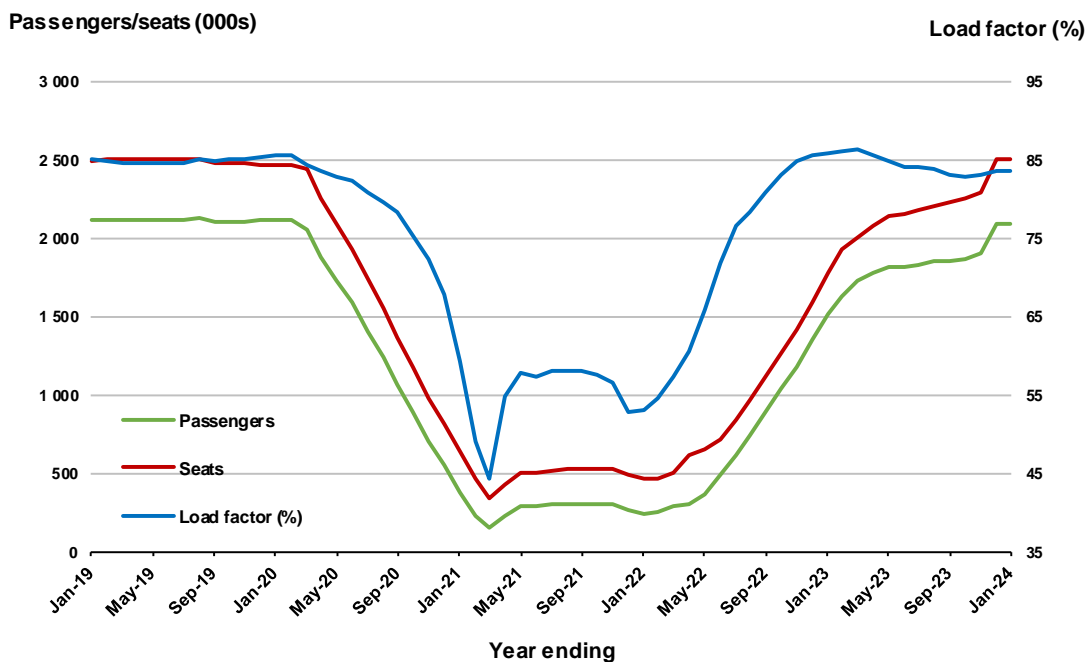
* percentage point difference



Moving annual data

	YE Feb 2023	YE Feb 2024	% Change
Passengers carried (000s)	1 632.2	1 940.8	18.9
Seats (000s)	1 925.8	2 327.2	20.8
Load factor %	86.0	83.4	-2.6 *
Aircraft trips	10 700	12 994	21.4

* percentage point difference



8. Adelaide - Sydney ^(a)

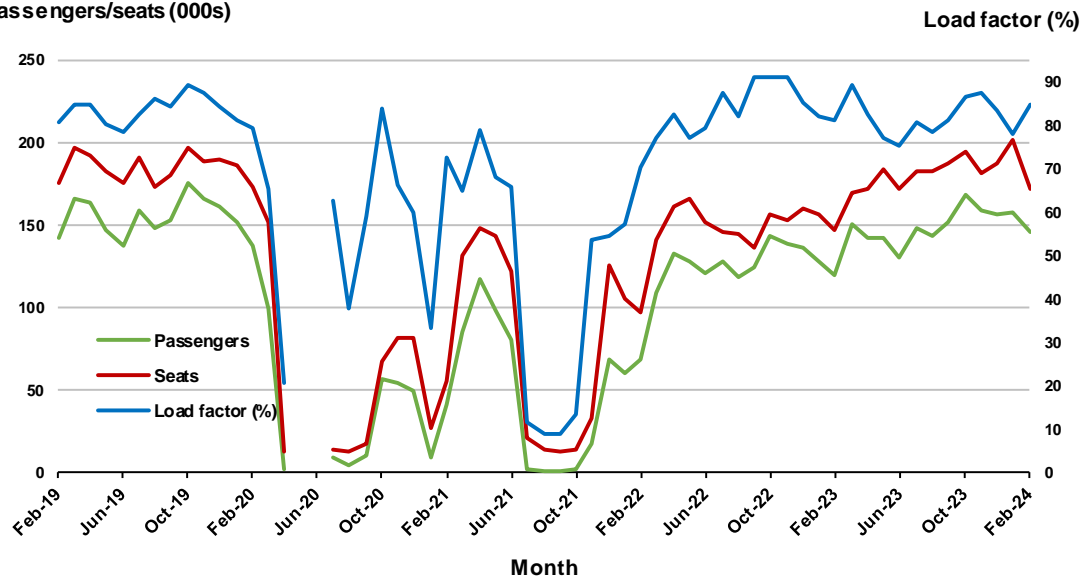
Monthly data

	Feb 2023	Feb 2024	% Change
Passengers carried (000s)	120.0	146.2	21.9
Seats (000s)	147.4	172.7	17.2
Load factor %	81.4	84.7	3.3 *
Aircraft trips	899	1 063	18.2

.. Data not available for release.

* percentage point difference

Passengers/seats (000s)



(a) May and June 2020 data not available for release.

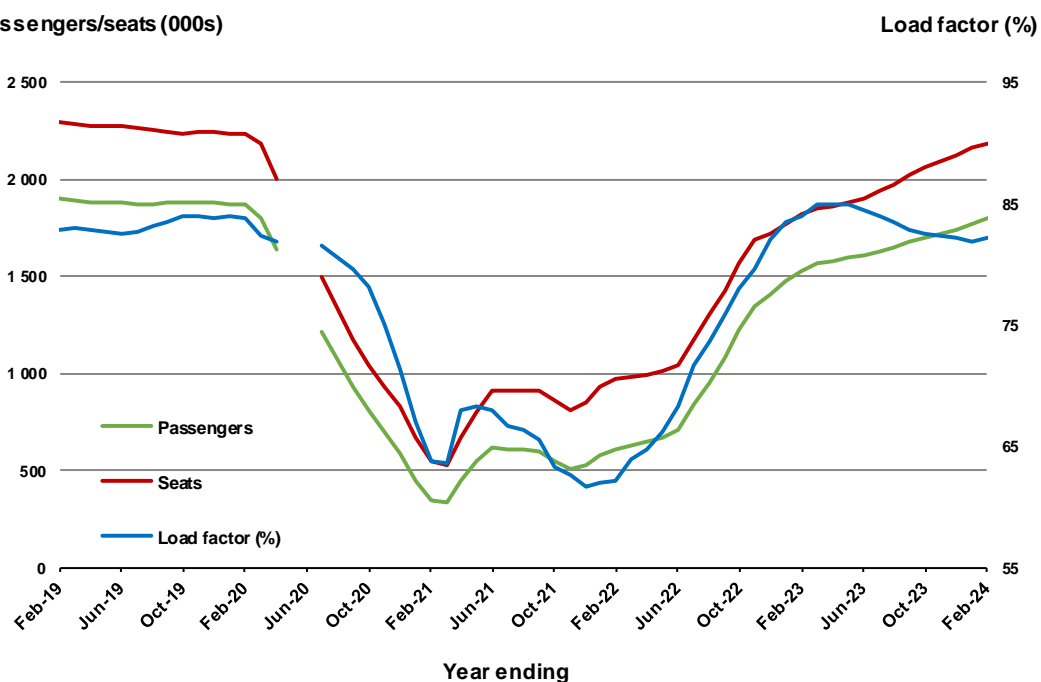
Moving annual data

	YE Feb 2023	YE Feb 2024	% Change
Passengers carried (000s)	1 530.2	1 798.7	17.5
Seats (000s)	1 822.1	2 189.4	20.2
Load factor %	84.0	82.2	-1.8 *
Aircraft trips	11 151	13 391	20.1

.. Data not available for release.

* percentage point difference

Passengers/seats (000s)



(a) May and June 2020 moving annual totals are not available for release.

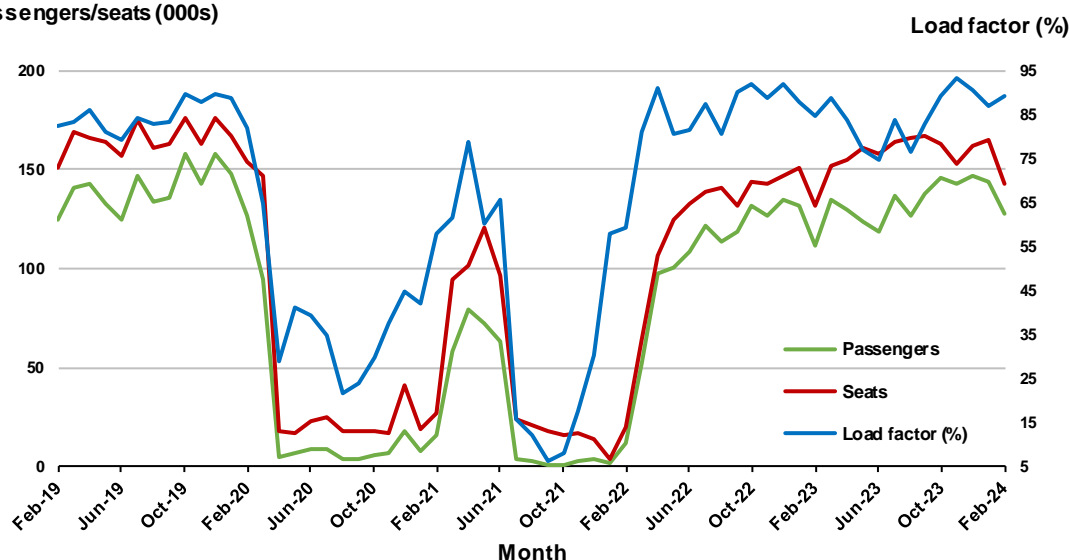
9. Perth - Sydney

Monthly data

	Feb 2023	Feb 2024	% Change
Passengers carried (000s)	111.7	127.6	14.2
Seats (000s)	131.7	143.2	8.7
Load factor %	84.8	89.1	4.3 *
Aircraft trips	705	731	3.7

* percentage point difference

Passengers/seats (000s)

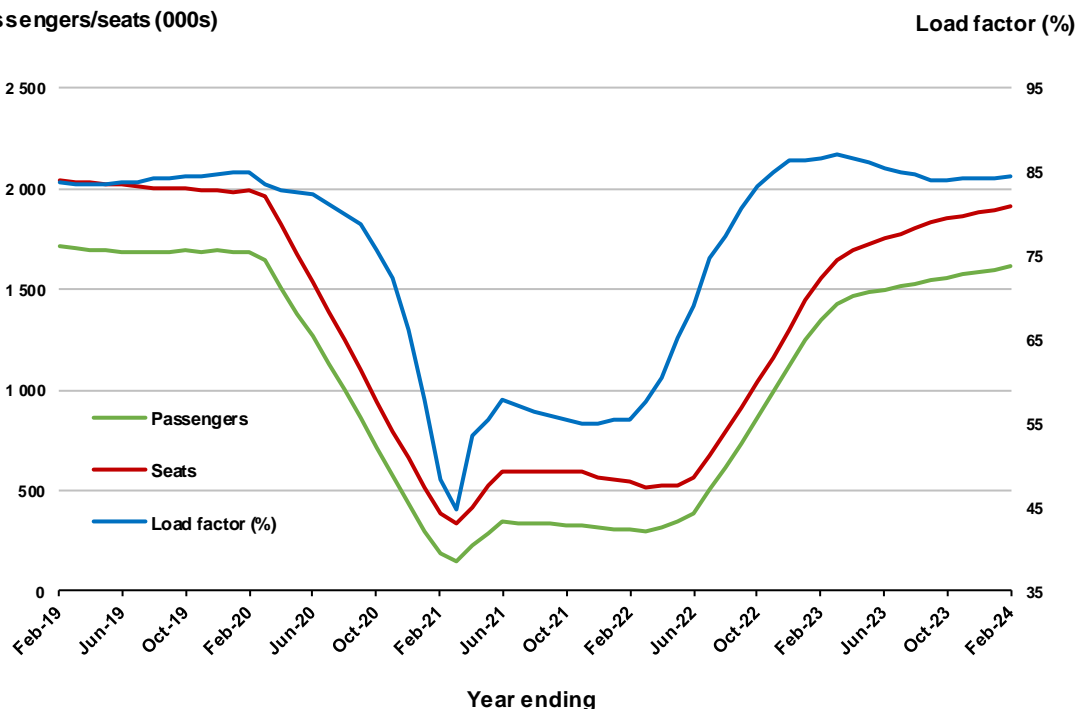


Moving annual data

	YE Feb 2023	YE Feb 2024	% Change
Passengers carried (000s)	1 348.6	1 614.1	19.7
Seats (000s)	1 555.1	1 909.3	22.8
Load factor %	86.7	84.5	-2.2 *
Aircraft trips	8 136	9 863	21.2

* percentage point difference

Passengers/seats (000s)

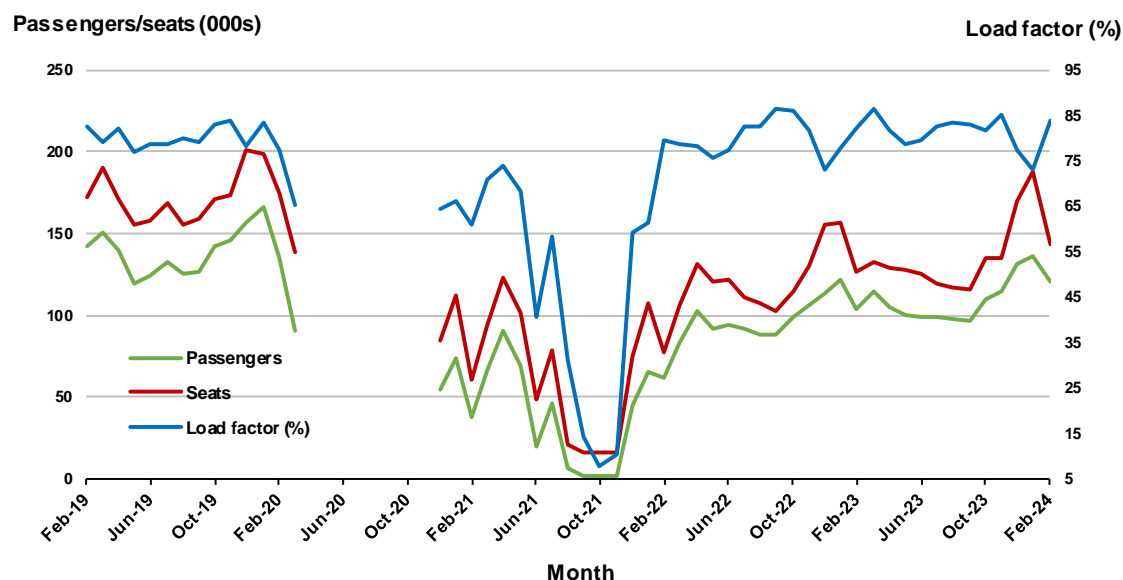


10. Hobart - Melbourne ^(a)

Monthly data

	Feb 2023	Feb 2024	% Change
Passengers carried (000s)	104.4	120.4	15.3
Seats (000s)	127.1	143.4	12.9
Load factor %	82.2	83.9	1.7 *
Aircraft trips	735	825	12.2

* percentage point difference

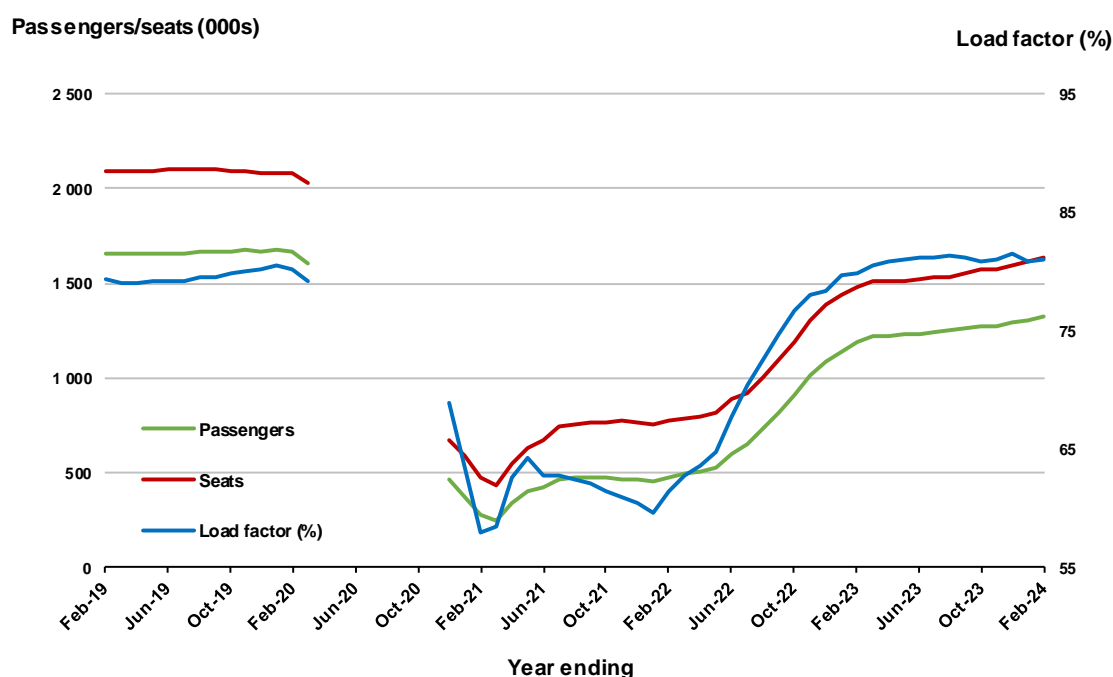


(a) April to November 2020 data not available for release.

Moving annual data

	YE Feb 2023	YE Feb 2024	% Change
Passengers carried (000s)	1 186.0	1 325.2	11.7
Seats (000s)	1 485.3	1 636.5	10.2
Load factor %	79.9	81.0	1.1 *
Aircraft trips	9 000	9 515	5.7

* percentage point difference



(a) April to November 2020 moving annual totals are not available for release.

TOP FIFTY REGIONAL AIRPORTS

Table 10: Top fifty regional airports (000s) — passenger movements, monthly

Airport	Feb 2023	Feb 2024	% Change
1 Cairns	229.3	273.8	19.4
2 Hobart	209.9	231.8	10.5
3 Launceston	106.7	123.7	15.9
4 Townsville	109.3	120.4	10.1
5 Darwin	87.2	94.5	8.4
6 Newcastle	78.5	94.2	20.0
7 Mackay	65.2	70.2	7.6
8 Rockhampton	39.9	50.0	25.2
9 Ballina	49.0	49.6	1.3
10 Karratha	39.6	43.8	10.5
11 Port Hedland	37.7	35.9	-4.9
12 Hamilton Island	31.8	35.8	12.7
13 Proserpine	31.0	35.3	13.8
14 Kalgoorlie	26.7	28.1	5.3
15 Newman	28.6	27.7	-3.0
16 Alice Springs	20.8	25.6	23.0
17 Albury	15.5	22.3	43.9
18 Broome	20.3	20.3	-0.2
19 Coffs Harbour	20.5	20.2	-1.7
20 Gladstone	15.1	19.8	30.6
21 Ayers Rock	15.8	18.8	19.2
22 Port Macquarie	13.7	18.5	35.4
23 Paraburdoo	17.4	18.3	5.1
24 Mildura	15.1	18.2	20.6
25 Mount Isa	16.8	17.3	3.0
26 Dubbo	15.2	16.4	8.3
27 Emerald	14.7	15.7	6.8
28 Wagga Wagga	14.0	15.4	10.0
29 Port Lincoln	13.8	14.7	6.5
30 Bundaberg	9.5	13.6	41.9
31 Tamworth	11.2	13.5	21.1
32 Hervey Bay	10.4	10.7	3.3
33 Moranbah	8.8	9.9	12.8
34 Devonport	9.0	9.8	8.4
35 Orange	7.9	8.9	13.0
36 Geraldton	6.1	8.6	40.6
37 Olympic Dam	8.2	8.5	3.2
38 Armidale	8.5	8.2	-3.8
39 Kununurra	7.3	7.6	3.9
40 Thursday Island	5.8	7.1	21.8
41 Burnie	6.3	6.8	7.0
42 Weipa	6.0	6.7	12.5
43 Toowoomba Wellcamp	2.5	6.7	171.4
44 Gove	6.0	6.4	6.3
45 Mount Gambier	5.9	6.2	4.9
46 Norfolk Island	5.4	6.0	9.4
47 Merimbula	5.5	5.5	1.0
48 Albany	4.8	5.5	14.0
49 Busselton	3.7	5.3	43.9
50 Roma	4.8	5.2	9.6
Total top 50 regional airports	1 542.8	1 742.8	13.0
Total regional airports	1 653.5	1 853.0	12.1
Total domestic network	8 003.9	9 139.0	14.2

Note: Airport passenger movement numbers are the sum of passenger arrivals and departures at each airport. Regional airports are defined as airports which are, according to Australian Statistical Geography Standard (ASGS), not based in Major Cities.

Table 11: Top fifty regional airports (000s) — passenger movements, annual

Airport	YE Feb 2023	YE Feb 2024	% Change
1 Cairns	3 844.5	4 029.3	4.8
2 Hobart	2 460.4	2 629.7	6.9
3 Townsville	1 598.3	1 699.2	6.3
4 Darwin	1 687.0	1 612.7	-4.4
5 Launceston	1 263.8	1 388.8	9.9
6 Newcastle	1 078.8	1 184.3	9.8
7 Mackay	870.2	913.0	4.9
8 Rockhampton	510.6	649.8	27.3
9 Ballina	635.3	632.9	-0.4
10 Karratha	510.0	559.5	9.7
11 Proserpine	465.7	521.4	11.9
12 Hamilton Island	515.9	495.8	-3.9
13 Port Hedland	465.9	485.2	4.1
14 Broome	442.8	437.2	-1.3
15 Newman	352.9	369.6	4.7
16 Kalgoorlie	315.4	363.7	15.3
17 Alice Springs	359.5	363.1	1.0
18 Coffs Harbour	284.7	280.9	-1.3
19 Albury	221.0	273.0	23.5
20 Ayers Rock	232.5	268.0	15.3
21 Paraburdoo	215.5	251.4	16.7
22 Gladstone	204.1	234.5	14.9
23 Mildura	191.7	231.6	20.9
24 Mount Isa	229.1	230.9	0.8
25 Port Macquarie	176.1	228.4	29.7
26 Dubbo	191.8	214.3	11.7
27 Wagga Wagga	185.4	199.9	7.9
28 Emerald	179.4	196.3	9.4
29 Port Lincoln	178.4	174.3	-2.3
30 Tamworth	143.9	172.3	19.8
31 Bundaberg	109.7	159.5	45.3
32 Hervey Bay	132.8	149.8	12.8
33 Kununurra	127.8	139.6	9.3
34 Devonport	106.7	121.6	14.0
35 Moranbah	102.8	111.1	8.1
36 Armidale	105.8	110.8	4.7
37 Thursday Island	99.7	108.2	8.6
38 Orange	96.4	106.7	10.7
39 Learmonth	99.7	104.2	4.5
40 Olympic Dam	93.7	103.8	10.8
41 Geraldton	81.2	100.8	24.1
42 Gove	87.0	89.7	3.1
43 Weipa	86.9	88.1	1.3
44 Toowoomba Wellcamp	49.3	85.8	74.1
45 Burnie	79.8	82.6	3.5
46 Mount Gambier	77.7	73.0	-6.1
47 Griffith	74.1	72.3	-2.5
48 Merimbula	69.7	71.5	2.6
49 Norfolk Island	71.3	69.0	-3.2
50 Roma	57.0	64.6	13.3
Total top 50 regional airports	21 819.7	23 303.6	6.8
Total regional airports	23 184.7	24 715.2	6.6
Total domestic network	107 398.2	116 277.9	8.3

Note: Airport passenger movement numbers are the sum of passenger arrivals and departures at each airport. Regional airports are defined as airports which are, according to Australian Statistical Geography Standard (ASGS), not based in Major Cities.

DOMESTIC CHARTER ACTIVITY

Table 12: Charter passengers carried and aircraft trips - monthly activity (000s)

	Feb 2023	Feb 2024	% Change
Total domestic charter passengers	307.6	359.9	17.0
Total domestic charter aircraft trips	5.3	6.0	14.4

Note: Helicopter, joyflights and sightseeing charter flights not included.

Table 13: Charter passengers carried and aircraft trips - annual activity (000s)

	YE Feb 2023	YE Feb 2024	% Change
Total domestic charter passengers	3 665.9	4 150.0	13.2
Total domestic charter aircraft trips	66.7	71.3	7.0

Note: Helicopter, joyflights and sightseeing charter flights not included.

Table 14: Domestic airports - charter activity - monthly (000s)

	Feb 2023	Feb 2024	% Change
Total domestic charter passenger movements	615.2	719.8	17.0
Total domestic charter aircraft movements	10.5	12.0	14.4
Perth airport charter passenger movements	225.2	267.6	18.8
Perth airport charter aircraft movements	3.5	4.0	14.7

Note: Helicopter, joyflights and sightseeing charter flights not included.

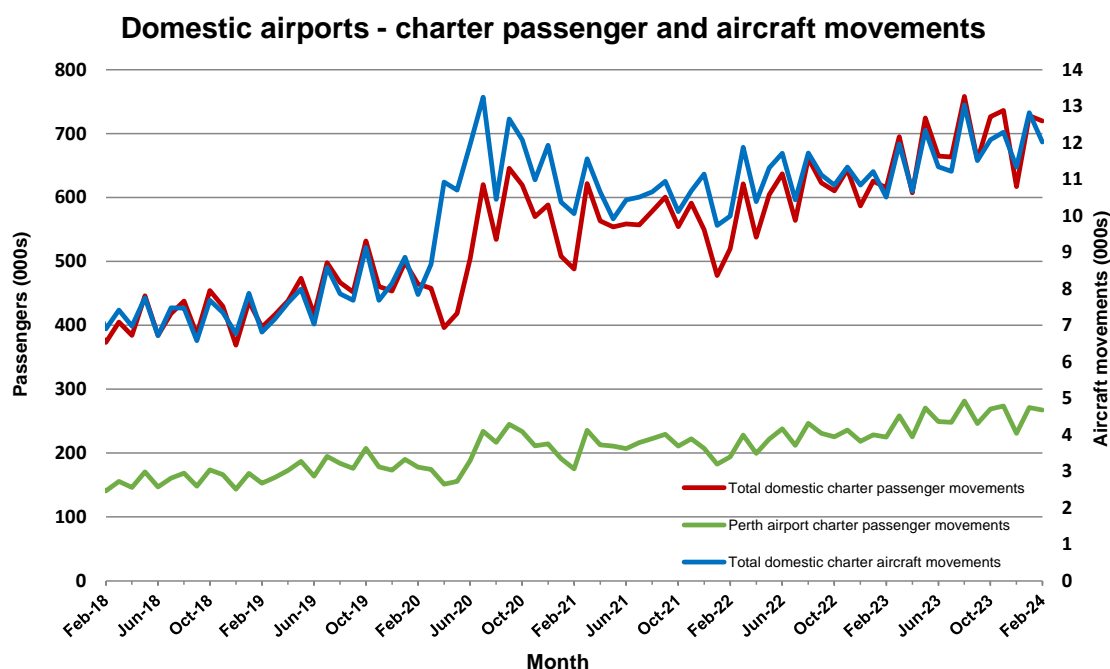
Charter passenger and aircraft movement numbers are the sum of arrivals and departures at each airport.

Table 15: Domestic airports - charter activity - annual (000s)

	YE Feb 2023	YE Feb 2024	% Change
Total domestic charter passenger movements	7 331.7	8 300.1	13.2
Total domestic charter aircraft movements	133.3	142.6	7.0
Perth airport charter passenger movements	2 711.4	3 091.9	14.0
Perth airport charter aircraft movements	44.9	48.2	7.4

Note: Helicopter, joyflights and sightseeing charter flights not included.

Charter passenger and aircraft movement numbers are the sum of arrivals and departures at each airport.



DEFINITIONS

Aircraft Trips	The number of flight stages. A return flight counts as two aircraft trips.
Airport Movements	Airport movements (passenger and cargo) are measured once on arrival and once on departure. Each domestic trip generates two movements at airports. For example, a trip from Melbourne to Sydney will be counted twice, as a departure at Melbourne and as an arrival at Sydney. At the national level, the sum of all domestic airport traffic will therefore be equal to twice the number of trips undertaken.
Available Seat Kilometres (ASKs)	Calculated by multiplying the number of seats available on each flight stage, by the distance in kilometres between the ports. The distances used are Great Circle Distances.
City-Pair	The ports shown make up the city-pair route. Passenger movements shown for a city pair reflect total traffic in both directions.
Flight Stage	The operation of an aircraft from take-off to landing.
Load Factor	The total revenue passenger kilometres performed as a percentage of the total available seat kilometres.
Passengers Carried	Revenue passengers carried.
Regular Public Transport Services (RPT)	All air service operations in which aircraft are available for the transport of members of the public and are conducted in accordance with fixed schedules. It does not include charter or other non-scheduled operations.
Revenue Passengers	All passengers paying any fare. Frequent flyer redemption travellers are regarded as revenue passengers.
Revenue Passenger Kilometres (RPKs)	Calculated by multiplying the number of revenue passengers travelling on each flight stage, by the distance in kilometres between the ports. The distances used are Great Circle Distances.
Traffic on board by stages (TOB)	The total of all traffic (revenue passengers) on each flight stage between two directly connected airports.
..	Not available for confidentiality or other reasons.
NA	Not applicable.