



**Australian Government**

**Department of Infrastructure, Transport, Regional Development and Communications**

Bureau of Infrastructure and Transport Research Economics

STATISTICAL REPORT



# Aviation

Domestic airline on time performance 2021

© Commonwealth of Australia 2022

ISSN: 1832-0759

### **Ownership of intellectual property rights in this publication**

Unless otherwise noted, copyright (and any other intellectual property rights, if any) in this publication is owned by the Commonwealth of Australia (referred to below as the Commonwealth).

### **Disclaimer**

The material contained in this publication is made available on the understanding that the Commonwealth is not providing professional advice, and that users exercise their own skill and care with respect to its use, and seek independent advice if necessary.

The Commonwealth makes no representations or warranties as to the contents or accuracy of the information contained in this publication. To the extent permitted by law, the Commonwealth disclaims liability to any person or organisation in respect of anything done, or omitted to be done, in reliance upon information contained in this publication.

### **Creative Commons licence**

With the exception of (a) the Coat of Arms; and (b) the Department of Infrastructure, Transport, Regional Development and Communications' photos and graphics, copyright in this publication is licensed under a Creative Commons Attribution 3.0 Australia Licence.

Creative Commons Attribution 3.0 Australia Licence is a standard form licence agreement that allows you to copy, communicate and adapt this publication provided that you attribute the work to the Commonwealth and abide by the other licence terms. A summary of the licence terms is available from <http://creativecommons.org/licenses/by/3.0/au/deed.en>. The full licence terms are available from <http://creativecommons.org/licenses/by/3.0/au/legalcode>.

### **Use of the Coat of Arms**

The Department of the Prime Minister and Cabinet sets the terms under which the Coat of Arms is used. Please refer to the Department's Commonwealth Coat of Arms and Government branding web page <http://www.dpmc.gov.au/guidelines/index.cfm#brand> and, in particular, the Guidelines on the use of the Commonwealth Coat of Arms publication.

An appropriate citation for this report is:

Bureau of Infrastructure and Transport Research Economics (BITRE), 2022, Domestic airline on time performance, Statistical Report, BITRE, Canberra ACT.

### **Contact us**

This publication is available in PDF format. All other rights are reserved, including in relation to any Departmental logos or trade marks which may exist. For enquiries regarding the licence and any use of this publication, please contact:

Bureau of Infrastructure and Transport Research Economics (BITRE)  
Department of Infrastructure, Transport, Regional Development and Communications  
GPO Box 501, Canberra ACT 2601, Australia  
Telephone: (international) +61 2 6274 7210  
Fax: (international) +61 2 6274 6855  
Email: [bitre@infrastructure.gov.au](mailto:bitre@infrastructure.gov.au)  
Website: [www.bitre.gov.au](http://www.bitre.gov.au)

### **Inquiries**

Should you require additional information about the statistics contained in this publication:

Telephone (02) 6274 7790 or Facsimile (02) 6274 7727

Electronic mail: [AVSTATS@infrastructure.gov.au](mailto:AVSTATS@infrastructure.gov.au)

Web site: <http://www.bitre.gov.au/statistics/aviation/otphome.aspx>

# Foreword

The Bureau of Infrastructure and Transport Research Economics (BITRE) monitors the punctuality and reliability of major domestic airlines operating between Australian airports. The purpose of this is to allow for evaluation of overall industry and individual airline performance, so that consumers of air travel can make informed decisions.

The following domestic airlines currently report this information monthly to the BITRE: Jetstar, Qantas, QantasLink, Rex Airlines, Virgin Australia and Virgin Australia Regional Airlines.

Data has been gathered since November 2003, although some airlines commenced reporting at a later date, including Jetstar which first reported in May 2004, MacAir in July 2005, Tigerair Australia in April 2008 and Virgin Australia Regional Airlines in May 2013. MacAir ceased operations in February 2009 and data was not received for December 2008 onwards. Tigerair Australia ceased operations in March 2020 and data was not received for that month.

Virgin Blue was rebranded as Virgin Australia in May 2011 and Tiger Airways was rebranded as Tigerair Australia in July 2013 and time series data in Microsoft Excel spreadsheet format on the BITRE website have been revised to reflect these changes. With effect from July 2021, Regional Express is reported as Rex Airlines.

Services operated by Skywest on behalf of Virgin Australia using ATR/F100 aircraft commenced in November 2011 and were shown separately as Virgin Australia – ATR/F100 Operations. Virgin Australia Regional Airlines commenced operations in May 2013. It was formed after the acquisition of Skywest by Virgin Australia and represented a combination of operations previously reported under Skywest and Virgin Australia – ATR/F100 Operations. In January 2016, Virgin Australia transferred their ATR fleet from Virgin Australia Regional Airlines to Virgin Australia.

Information presented in this report is for Australian domestic routes for which the passenger load averaged 8 000 or more passengers per month over the previous six months and where two or more airlines operated in competition on those routes. In order to present data for more routes during the period impacted by COVID-19, the passenger load restriction is not being applied. Data are presented for 58 routes - 47 of these routes cover the whole 12 months of 2021 while 11 of these routes cover only some months of 2021. Over time, routes which meet these criteria change as airline networks and traffic levels vary.

Participating airlines report their overall monthly network performance where this is possible.

Total industry figures encompass all services operated by reporting airlines only. These airlines collectively carried over 95 per cent of total domestic passengers (regular public transport only) in 2019.

The method of capturing on time performance varies between airlines utilising different recording systems. Jetstar and Qantas jet aircraft use Aircraft Communication Addressing and Reporting System (ACARS) to electronically measure on time performance. Rex Airlines, Virgin Australia, Virgin Australia Regional Airlines and the Qantas non-jet fleet record on time performance manually using records from pilots, gate agents and/or ground crews.

After initial data is collected, aggregate reports are reviewed by participating airlines prior to publication.

Reports and detailed time series data in Microsoft Excel spreadsheet format are available from the BITRE website at: <http://www.bitre.gov.au/statistics/aviation/otphome.aspx>



# Contents

|                            | Page |
|----------------------------|------|
| Industry performance ..... | 1    |
| Individual routes .....    | 8    |
| Airports.....              | 21   |
| Definitions .....          | 27   |



# Industry performance

For the year ended December 2021, on time performance over all routes operated by participating airlines (Jetstar, Qantas, QantasLink, Rex Airlines, Virgin Australia and Virgin Australia Regional Airlines) averaged 86.2 per cent for on time arrivals and 85.9 per cent for on time departures. The cancellation rate for the year was 10.6 per cent. The equivalent figures for 2020 were 81.9 per cent for on time arrivals, 82.5 per cent for on time departures and 7.2 per cent for cancellations.

This year's on time arrivals figure was higher than the long term average performance for all routes (82.3 per cent) and the on time departures figure was also higher than the long term average (83.6 per cent). The rate of cancellations was higher than the long term average of 2.0 per cent.

The Virgin Australia network (Virgin Australia and Virgin Australia Regional Airlines combined operations) recorded 86.5 per cent for on time arrivals while the Qantas network (Qantas and QantasLink combined operations) recorded 86.0 per cent. Qantas achieved the highest on time arrivals among the major domestic airlines at 87.0 per cent followed by Virgin Australia at 86.8 per cent and Jetstar at 84.6 per cent. Of the regional airlines, Rex Airlines recorded 88.0 per cent for on time arrivals, followed by QantasLink at 85.4 per cent and Virgin Australia Regional Airlines at 81.2 per cent.

The Qantas network recorded 86.9 per cent for on time departures while the Virgin Australia network recorded 84.2 per cent. Qantas achieved the highest level of on time departures among the major domestic airlines for 2021 at 88.8 per cent, followed by Virgin Australia at 84.4 per cent and Jetstar at 82.4 per cent. Of the regional airlines, Rex Airlines recorded 89.2 per cent for on time departures, followed by QantasLink at 85.7 per cent and Virgin Australia Regional Airlines at 80.9 per cent.

Jetstar recorded the highest percentage of cancellations (at 16.9 per cent) during the year, followed by Qantas (at 12.5 per cent), Virgin Australia (at 12.1 per cent), QantasLink (at 8.1 per cent), Rex Airlines (at 3.8 per cent) and Virgin Australia Regional Airlines (at 3.3 per cent).

Airlines' on time performance varies across the routes they serve. Individual route data by specific airline for 58 routes are shown on pages 8-20.

Of the 47 routes which met the criteria for on time performance reporting for all 12 months in 2021, the Emerald-Brisbane route had the highest percentage of on time arrivals (93.2 per cent) and the Brisbane-Mount Isa route had the highest percentage of on time departures (94.9 per cent). The Perth-Melbourne route had the lowest percentage of on time arrivals (71.3 per cent) and the Darwin-Brisbane route had the lowest percentage of on time departures (68.1 per cent).

Cancellations were highest on the Brisbane-Melbourne route at 26.8 per cent, followed by the Melbourne-Brisbane route at 26.6 per cent, the Melbourne-Perth route at 25.1 per cent, the Perth-Melbourne route at 25.0 per cent and the Sydney-Melbourne and Melbourne-Sydney

routes at 23.5 per cent. COVID-19 related travel restrictions and other requirements continued to impact the cancellation rate.

Of the airports with on time performance reporting for all 12 months in 2021, Emerald Airport recorded the highest percentage of on time arrivals (92.9 per cent) and the highest percentage of on time departures (92.6 per cent). Armidale Airport recorded the lowest percentage of on time arrivals (79.8 per cent) and Darwin Airport and Alice Springs Airport recorded the lowest percentage of on time departures (both at 72.7 per cent). These figures only refer to reported routes and do not cover all flights at these airports.



Table 1 On time performance for the year ended December 2021 — Total Industry

|   | <i>Sectors</i>   |              | <i>Arrivals On Time</i> |          | <i>Departures On Time</i> |          | <i>Cancellations</i> |          |
|---|------------------|--------------|-------------------------|----------|---------------------------|----------|----------------------|----------|
|   | <i>Scheduled</i> | <i>Flown</i> | <i>No.</i>              | <i>%</i> | <i>No.</i>                | <i>%</i> | <i>No.</i>           | <i>%</i> |
| Jetstar                                       | 54 237           | 45 069       | 38 121                  | 84.6     | 37 118                    | 82.4     | 9 168                | 16.9     |
| Qantas - all QF designated services           | 147 680          | 133 151      | 114 568                 | 86.0     | 115 764                   | 86.9     | 14 529               | 9.8      |
| Rex Airlines                                  | 42 853           | 41 244       | 36 297                  | 88.0     | 36 805                    | 89.2     | 1 609                | 3.8      |
| Virgin Australia - all VA designated services | 72 482           | 64 069       | 55 416                  | 86.5     | 53 922                    | 84.2     | 8 413                | 11.6     |
| All Airlines                                  | 317 252          | 283 533      | 244 402                 | 86.2     | 243 609                   | 85.9     | 33 719               | 10.6     |
| Individual operating entities                 |                  |              |                         |          |                           |          |                      |          |
| Qantas  | 59 309           | 51 896       | 45 169                  | 87.0     | 46 102                    | 88.8     | 7 413                | 12.5     |
| QantasLink                                    | 88 371           | 81 255       | 69 399                  | 85.4     | 69 662                    | 85.7     | 7 116                | 8.1      |
| Virgin Australia                              | 68 357           | 60 079       | 52 176                  | 86.8     | 50 694                    | 84.4     | 8 278                | 12.1     |
| Virgin Australia Regional Airlines            | 4 125            | 3 990        | 3 240                   | 81.2     | 3 228                     | 80.9     | 135                  | 3.3      |

Total airline network data (including routes not shown in this report).

Airlines' on time performance varies across the routes they serve. Individual route data by specific airline are shown on pages 8-20.

Table 2 Top ten routes for on time performance for the year ended December 2021 (routes for participating airlines only and with published data for the 12 month period)

| <i>Arrivals</i>    |                    | <i>Departures</i>        |                    |
|--------------------|--------------------|--------------------------|--------------------|
| <i>Route</i>       | <i>On Time (%)</i> | <i>Route</i>             | <i>On Time (%)</i> |
| Emerald-Brisbane   | 93.2               | Brisbane-Mount Isa       | 94.9               |
| Brisbane-Emerald   | 92.9               | Brisbane-Gladstone       | 94.0               |
| Brisbane-Gladstone | 92.0               | Brisbane-Hamilton Island | 93.2               |
| Townsville-Cairns  | 91.8               | Brisbane-Emerald         | 92.9               |
| Mount Isa-Brisbane | 91.5               | Emerald-Brisbane         | 92.6               |
| Sydney-Albury      | 91.5               | Perth-Newman             | 91.7               |
| Albury-Sydney      | 91.1               | Perth-Port Hedland       | 91.4               |
| Perth-Newman       | 90.8               | Wagga Wagga-Sydney       | 90.7               |
| Mackay-Brisbane    | 90.8               | Gladstone-Brisbane       | 90.6               |
| Cairns-Townsville  | 90.8               | Perth-Darwin             | 90.4               |

Table 3 Top ten airports for on time performance for the year ended December 2021 (airports for participating airlines and reported routes only and with published data for the 12 month period)

| <i>Arrivals</i> |                    | <i>Departures</i> |                    |
|-----------------|--------------------|-------------------|--------------------|
| <i>Airport</i>  | <i>On Time (%)</i> | <i>Airport</i>    | <i>On Time (%)</i> |
| Emerald         | 92.9               | Emerald           | 92.6               |
| Gladstone       | 92.0               | Wagga Wagga       | 90.7               |
| Albury          | 91.5               | Gladstone         | 90.6               |
| Newman          | 90.8               | Albury            | 90.0               |
| Mount Isa       | 90.1               | Mount Isa         | 89.6               |
| Wagga Wagga     | 89.8               | Mackay            | 88.7               |
| Dubbo           | 89.6               | Adelaide          | 88.6               |
| Mackay          | 88.7               | Dubbo             | 88.2               |
| Hamilton Island | 88.6               | Cairns            | 87.7               |
| Port Lincoln    | 88.5               | Brisbane          | 87.5               |

## Total industry on time performance

Figure 1 On time performance (by month from December 2016)—Total Industry

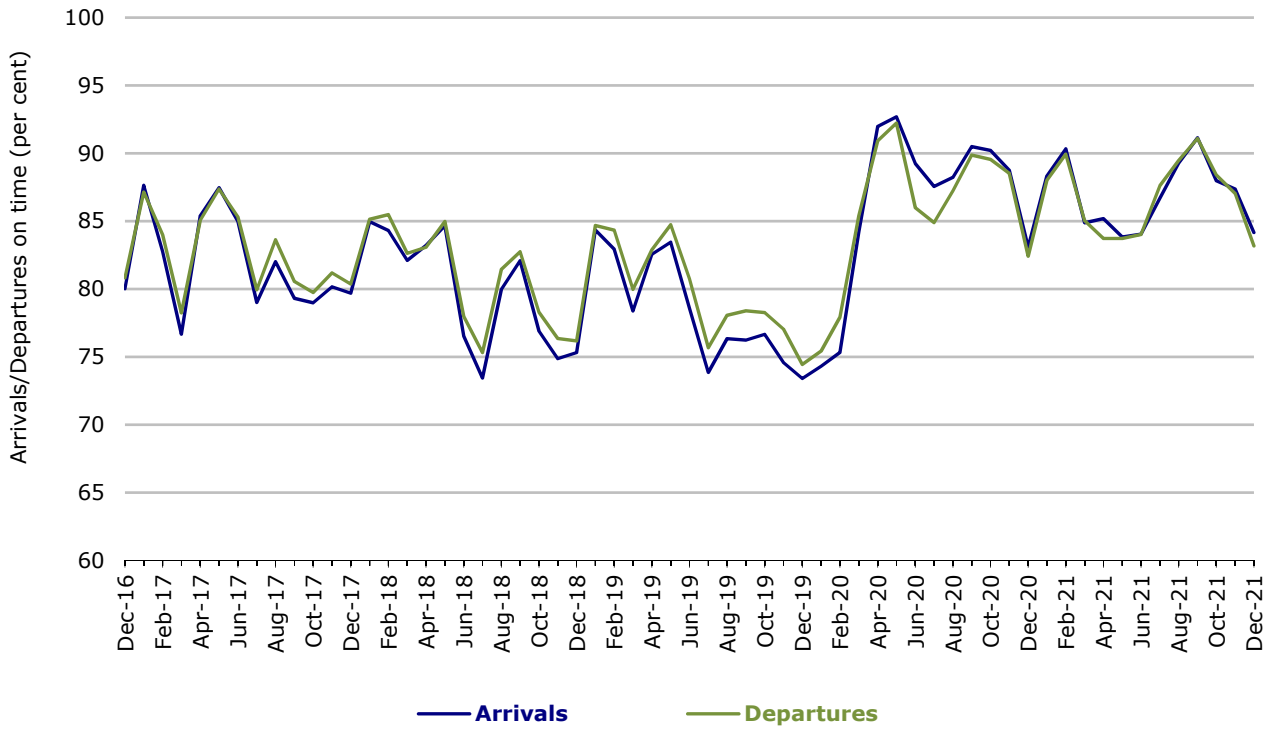
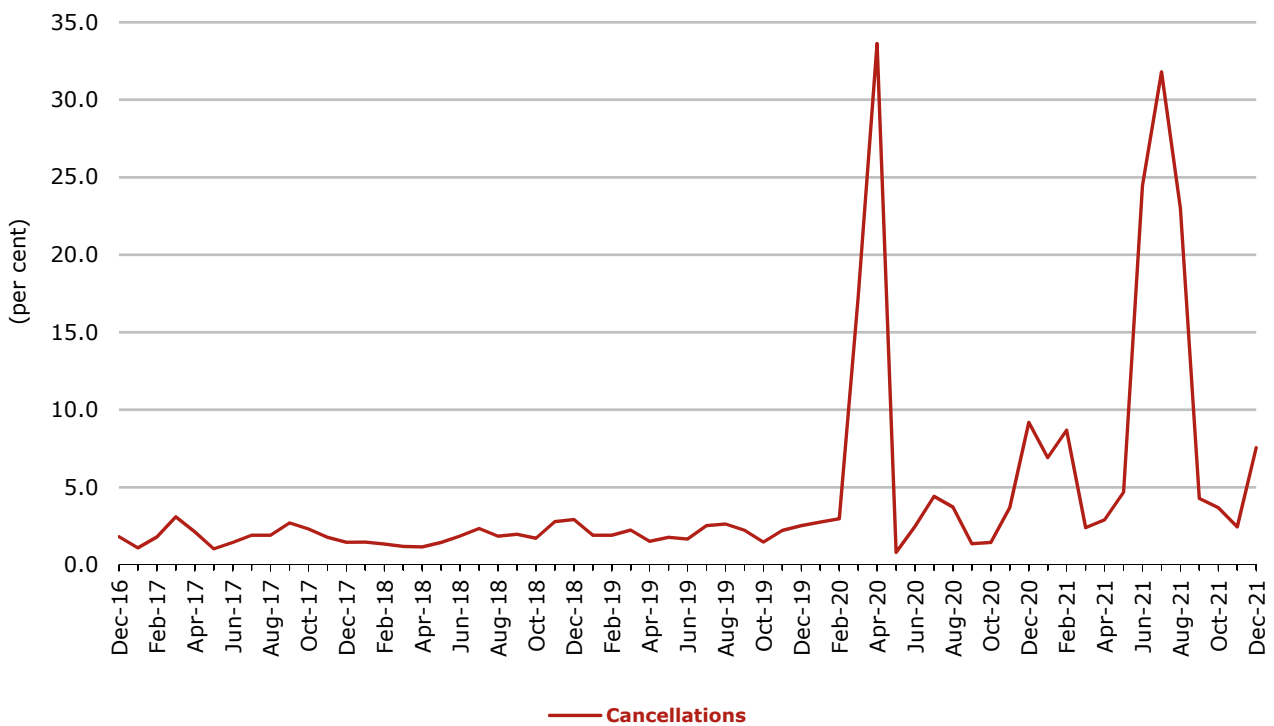


Figure 2 Cancellations (by month from December 2016)—Total Industry



## Major domestic airlines on time performance

Figure 3 On time performance (by month from December 2016)—Jetstar

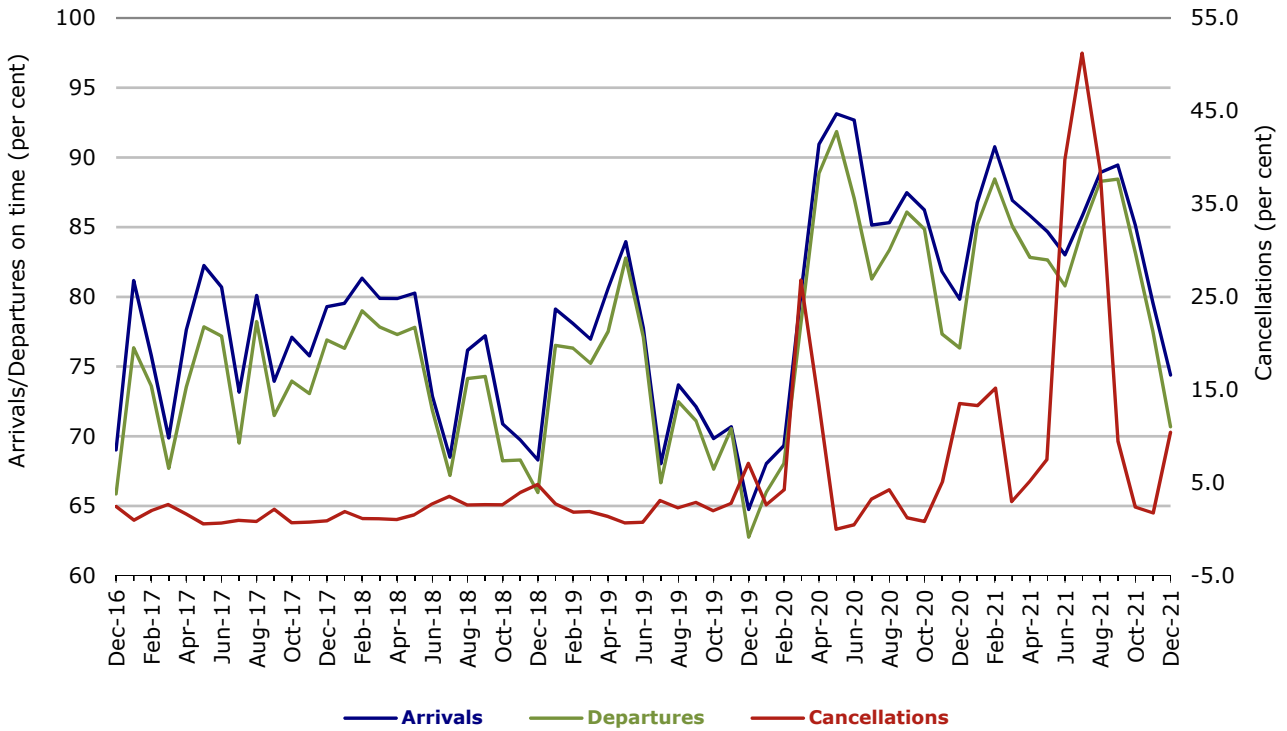


Figure 4 On time performance (by month from December 2016)—Qantas

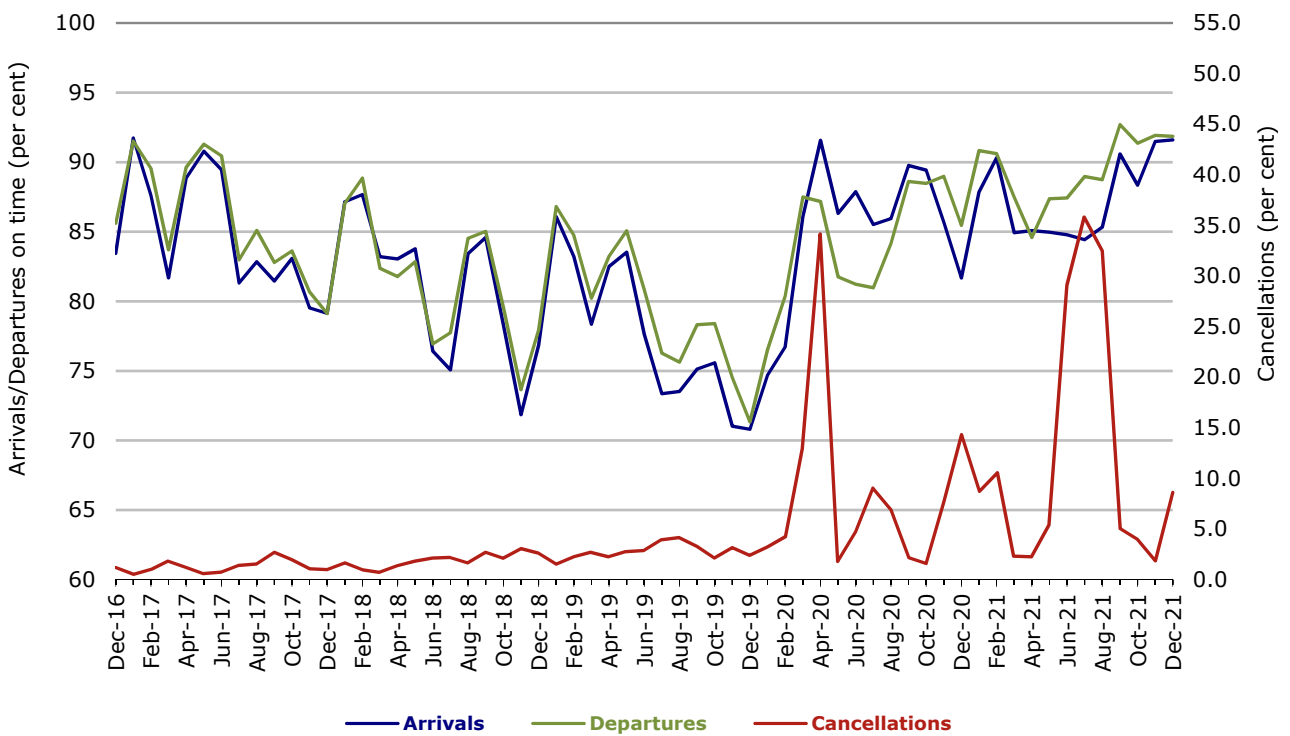
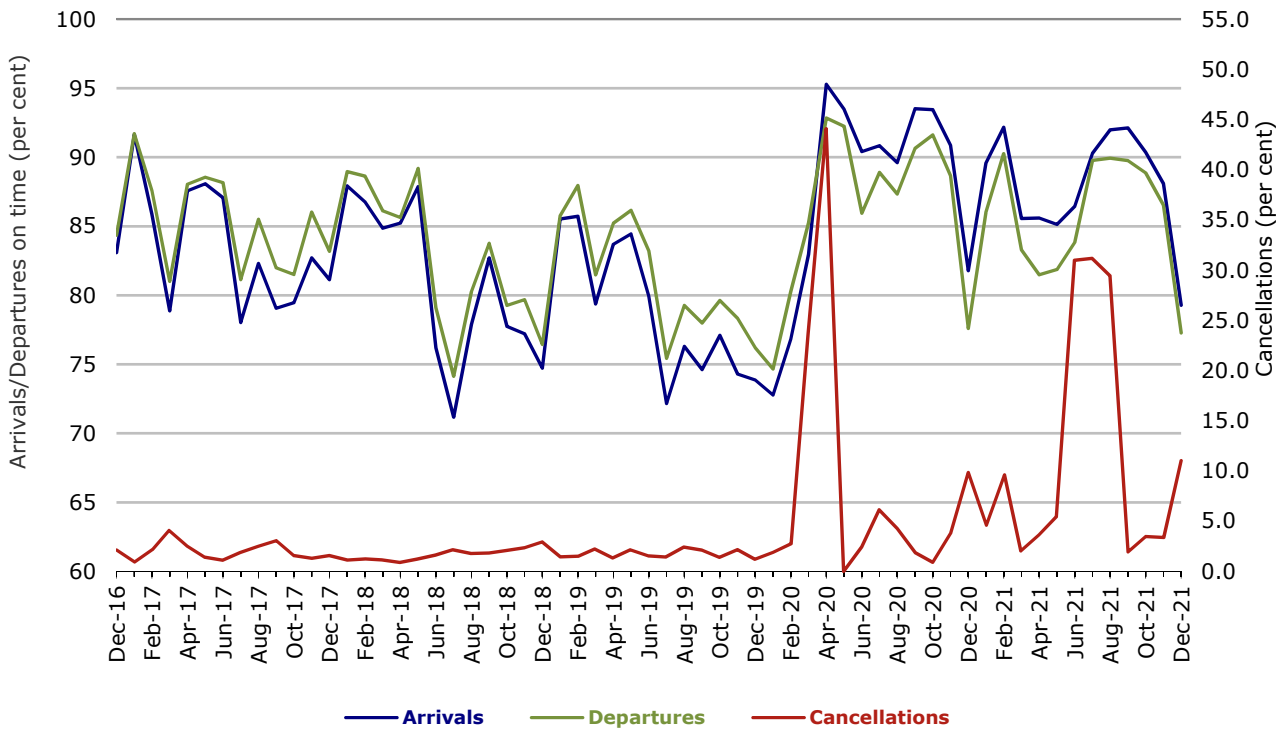


Figure 5 On time performance (by month from December 2016)—Virgin Australia



## Major regional airlines on time performance

Figure 6 On time performance (by month from December 2016)—QantasLink

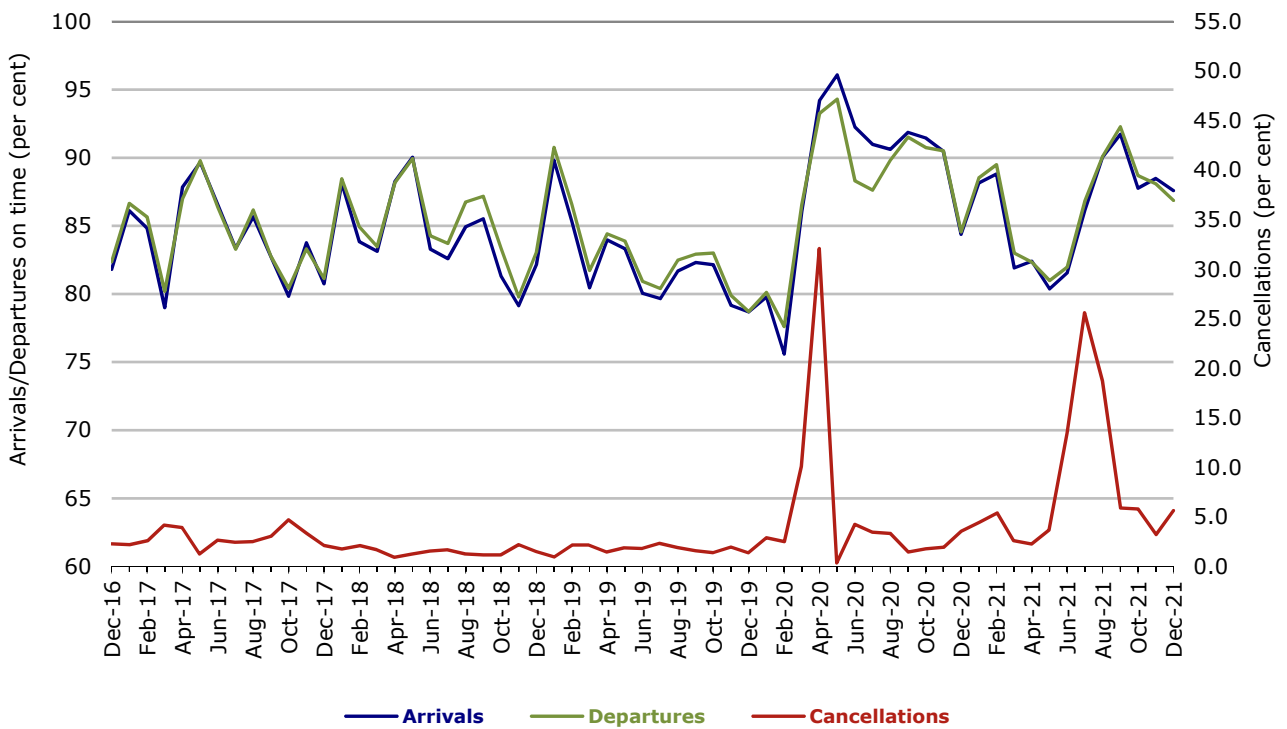
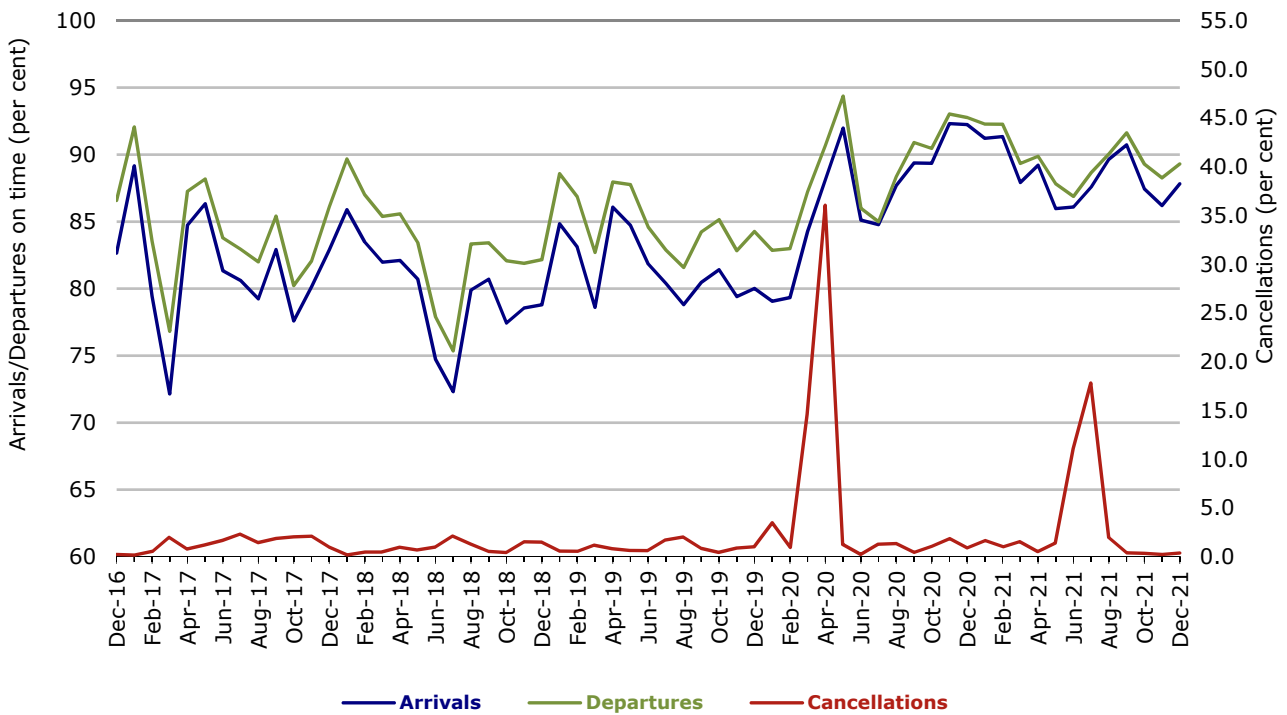
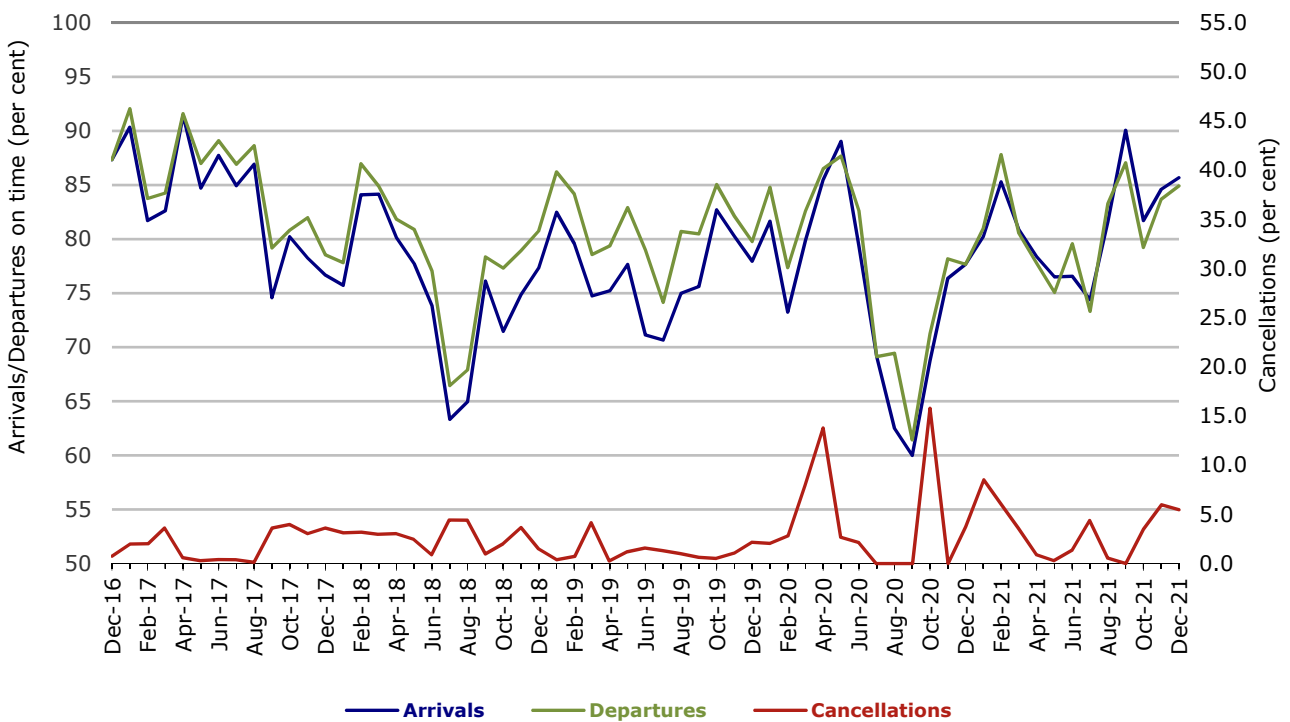


Figure 7 On time performance (by month from December 2016)—Rex Airlines



With effect from July 2021, Regional Express is reported as Rex Airlines

Figure 8 On time performance (by month from December 2016) Virgin Australia Regional Airlines



## Individual routes

On time performance is reported for all routes where the passenger load averages over 8000 passengers per month over the previous six months, and where two or more airlines operate in competition on those routes. In order to present data for more routes during the period impacted by COVID-19, the passenger load restriction is not being applied. Data are presented below for 58 routes - 47 of these routes cover the whole 12 months of 2021 while 11 of these routes cover only some months of 2021.

|   | Sectors |       | Arrivals<br>On Time |      | Departures<br>On Time |      | Cancellations |      |
|---|---------|-------|---------------------|------|-----------------------|------|---------------|------|
|   | Sched.  | Flown | No.                 | %    | No.                   | %    | No.           | %    |
| <b>Adelaide-Alice Springs</b>   |         |       |                     |      |                       |      |               |      |
| Qantas  | 268     | 259   | 230                 | 88.8 | 238                   | 91.9 | 9             | 3.4  |
| QantasLink  | 139     | 124   | 83                  | 66.9 | 92                    | 74.2 | 15            | 10.8 |
| Virgin Australia  | 161     | 161   | 135                 | 83.9 | 141                   | 87.6 | 0             | 0.0  |
| All Airlines  | 568     | 544   | 448                 | 82.4 | 471                   | 86.6 | 24            | 4.2  |
| <b>Adelaide-Brisbane</b>  |         |       |                     |      |                       |      |               |      |
| Jetstar   | 361     | 309   | 273                 | 88.3 | 270                   | 87.4 | 52            | 14.4 |
| Qantas  | 999     | 936   | 855                 | 91.3 | 851                   | 90.9 | 63            | 6.3  |
| Virgin Australia  | 1 011   | 889   | 803                 | 90.3 | 762                   | 85.7 | 122           | 12.1 |
| All Airlines  | 2 371   | 2 134 | 1 931               | 90.5 | 1 883                 | 88.2 | 237           | 10.0 |
| <b>Adelaide-Canberra</b>  |         |       |                     |      |                       |      |               |      |
| Qantas  | 334     | 308   | 268                 | 87.0 | 266                   | 86.4 | 26            | 7.8  |
| QantasLink  | 15      | 15    | 11                  | 73.3 | 12                    | 80.0 | 0             | 0.0  |
| Virgin Australia  | 223     | 216   | 201                 | 93.1 | 197                   | 91.2 | 7             | 3.1  |
| All Airlines  | 572     | 539   | 480                 | 89.1 | 475                   | 88.1 | 33            | 5.8  |
| <b>Adelaide-Gold Coast</b> (January 2021 to September 2021 and December 2021) |         |       |                     |      |                       |      |               |      |
| Jetstar   | 271     | 241   | 218                 | 90.5 | 219                   | 90.9 | 30            | 11.1 |
| QantasLink  | 43      | 30    | 24                  | 80.0 | 24                    | 80.0 | 13            | 30.2 |
| Virgin Australia  | 311     | 279   | 265                 | 95.0 | 265                   | 95.0 | 32            | 10.3 |
| All Airlines  | 625     | 550   | 507                 | 92.2 | 508                   | 92.4 | 75            | 12.0 |
| <b>Adelaide-Melbourne</b>   |         |       |                     |      |                       |      |               |      |
| Jetstar   | 876     | 661   | 589                 | 89.1 | 572                   | 86.5 | 215           | 24.5 |
| Qantas  | 1 348   | 1 039 | 964                 | 92.8 | 948                   | 91.2 | 309           | 22.9 |
| Rex Airlines  | 286     | 228   | 202                 | 88.6 | 203                   | 89.0 | 58            | 20.3 |
| Virgin Australia  | 1 386   | 1 063 | 939                 | 88.3 | 888                   | 83.5 | 323           | 23.3 |
| All Airlines  | 3 896   | 2 991 | 2 694               | 90.1 | 2 611                 | 87.3 | 905           | 23.2 |
| <b>Adelaide-Perth</b>   |         |       |                     |      |                       |      |               |      |
| Jetstar   | 258     | 226   | 205                 | 90.7 | 208                   | 92.0 | 32            | 12.4 |
| Qantas  | 866     | 796   | 684                 | 85.9 | 693                   | 87.1 | 70            | 8.1  |
| Virgin Australia  | 417     | 392   | 337                 | 86.0 | 334                   | 85.2 | 25            | 6.0  |
| Virgin Australia Regional Airlines  | 49      | 45    | 41                  | 91.1 | 35                    | 77.8 | 4             | 8.2  |
| All Airlines  | 1 590   | 1 459 | 1 267               | 86.8 | 1 270                 | 87.0 | 131           | 8.2  |
| <b>Adelaide-Port Lincoln</b>  |         |       |                     |      |                       |      |               |      |
| QantasLink  | 1 035   | 972   | 872                 | 89.7 | 857                   | 88.2 | 63            | 6.1  |
| Rex Airlines  | 1 780   | 1 748 | 1 536               | 87.9 | 1 578                 | 90.3 | 32            | 1.8  |
| All Airlines  | 2 815   | 2 720 | 2 408               | 88.5 | 2 435                 | 89.5 | 95            | 3.4  |
| <b>Adelaide-Sydney</b>  |         |       |                     |      |                       |      |               |      |
| Jetstar   | 778     | 630   | 563                 | 89.4 | 570                   | 90.5 | 148           | 19.0 |
| Qantas  | 1 156   | 1 040 | 897                 | 86.3 | 947                   | 91.1 | 116           | 10.0 |
| Virgin Australia  | 779     | 710   | 623                 | 87.7 | 627                   | 88.3 | 69            | 8.9  |
| All Airlines  | 2 713   | 2 380 | 2 083               | 87.5 | 2 144                 | 90.1 | 333           | 12.3 |

|                               | Sectors |       | Arrivals<br>On Time |      | Departures<br>On Time |      | Cancellations |      |
|-------------------------------|---------|-------|---------------------|------|-----------------------|------|---------------|------|
|                               | Sched.  | Flown | No.                 | %    | No.                   | %    | No.           | %    |
| <b>Albury-Sydney</b>          |         |       |                     |      |                       |      |               |      |
| QantasLink                    | 795     | 740   | 666                 | 90.0 | 650                   | 87.8 | 55            | 6.9  |
| Rex Airlines                  | 385     | 375   | 350                 | 93.3 | 353                   | 94.1 | 10            | 2.6  |
| All Airlines                  | 1 180   | 1 115 | 1 016               | 91.1 | 1 003                 | 90.0 | 65            | 5.5  |
| <b>Alice Springs-Adelaide</b> |         |       |                     |      |                       |      |               |      |
| Qantas                        | 268     | 259   | 207                 | 79.9 | 200                   | 77.2 | 9             | 3.4  |
| QantasLink                    | 139     | 123   | 73                  | 59.3 | 62                    | 50.4 | 16            | 11.5 |
| Virgin Australia              | 161     | 161   | 144                 | 89.4 | 133                   | 82.6 | 0             | 0.0  |
| All Airlines                  | 568     | 543   | 424                 | 78.1 | 395                   | 72.7 | 25            | 4.4  |
| <b>Armidale-Sydney</b>        |         |       |                     |      |                       |      |               |      |
| QantasLink                    | 612     | 559   | 460                 | 82.3 | 456                   | 81.6 | 53            | 8.7  |
| Rex Airlines                  | 302     | 294   | 225                 | 76.5 | 229                   | 77.9 | 8             | 2.6  |
| All Airlines                  | 914     | 853   | 685                 | 80.3 | 685                   | 80.3 | 61            | 6.7  |
| <b>Ballina-Sydney</b>         |         |       |                     |      |                       |      |               |      |
| Jetstar                       | 793     | 725   | 571                 | 78.8 | 541                   | 74.6 | 68            | 8.6  |
| Qantas                        | 113     | 112   | 97                  | 86.6 | 93                    | 83.0 | 1             | 0.9  |
| QantasLink                    | 730     | 679   | 515                 | 75.8 | 534                   | 78.6 | 51            | 7.0  |
| Rex Airlines                  | 122     | 122   | 99                  | 81.1 | 99                    | 81.1 | 0             | 0.0  |
| Virgin Australia              | 546     | 519   | 455                 | 87.7 | 434                   | 83.6 | 27            | 4.9  |
| All Airlines                  | 2 304   | 2 157 | 1 737               | 80.5 | 1 701                 | 78.9 | 147           | 6.4  |
| <b>Brisbane-Adelaide</b>      |         |       |                     |      |                       |      |               |      |
| Jetstar                       | 361     | 309   | 244                 | 79.0 | 226                   | 73.1 | 52            | 14.4 |
| Qantas                        | 998     | 933   | 837                 | 89.7 | 852                   | 91.3 | 65            | 6.5  |
| Virgin Australia              | 1 016   | 889   | 813                 | 91.5 | 768                   | 86.4 | 127           | 12.5 |
| All Airlines                  | 2 375   | 2 131 | 1 894               | 88.9 | 1 846                 | 86.6 | 244           | 10.3 |
| <b>Brisbane-Cairns</b>        |         |       |                     |      |                       |      |               |      |
| Jetstar                       | 1 137   | 1 084 | 870                 | 80.3 | 870                   | 80.3 | 53            | 4.7  |
| Qantas                        | 1 464   | 1 415 | 1 263               | 89.3 | 1 321                 | 93.4 | 49            | 3.3  |
| QantasLink                    | 130     | 128   | 108                 | 84.4 | 112                   | 87.5 | 2             | 1.5  |
| Virgin Australia              | 1 545   | 1 455 | 1 218               | 83.7 | 1 226                 | 84.3 | 90            | 5.8  |
| All Airlines                  | 4 276   | 4 082 | 3 459               | 84.7 | 3 529                 | 86.5 | 194           | 4.5  |
| <b>Brisbane-Canberra</b>      |         |       |                     |      |                       |      |               |      |
| Qantas                        | 338     | 299   | 284                 | 95.0 | 281                   | 94.0 | 39            | 11.5 |
| QantasLink                    | 997     | 911   | 820                 | 90.0 | 810                   | 88.9 | 86            | 8.6  |
| Virgin Australia              | 680     | 619   | 555                 | 89.7 | 523                   | 84.5 | 61            | 9.0  |
| All Airlines                  | 2 015   | 1 829 | 1 659               | 90.7 | 1 614                 | 88.2 | 186           | 9.2  |
| <b>Brisbane-Darwin</b>        |         |       |                     |      |                       |      |               |      |
| Jetstar                       | 278     | 253   | 191                 | 75.5 | 215                   | 85.0 | 25            | 9.0  |
| Qantas                        | 469     | 442   | 335                 | 75.8 | 408                   | 92.3 | 27            | 5.8  |
| Virgin Australia              | 399     | 373   | 332                 | 89.0 | 332                   | 89.0 | 26            | 6.5  |
| All Airlines                  | 1 146   | 1 068 | 858                 | 80.3 | 955                   | 89.4 | 78            | 6.8  |
| <b>Brisbane-Emerald</b>       |         |       |                     |      |                       |      |               |      |
| QantasLink                    | 1 426   | 1 324 | 1 230               | 92.9 | 1 232                 | 93.1 | 102           | 7.2  |
| Virgin Australia              | 296     | 293   | 272                 | 92.8 | 271                   | 92.5 | 3             | 1.0  |
| All Airlines                  | 1 722   | 1 617 | 1 502               | 92.9 | 1 503                 | 92.9 | 105           | 6.1  |
| <b>Brisbane-Gladstone</b>     |         |       |                     |      |                       |      |               |      |
| QantasLink                    | 1 301   | 1 175 | 1 082               | 92.1 | 1 097                 | 93.4 | 126           | 9.7  |
| Virgin Australia              | 585     | 553   | 507                 | 91.7 | 527                   | 95.3 | 32            | 5.5  |
| All Airlines                  | 1 886   | 1 728 | 1 589               | 92.0 | 1 624                 | 94.0 | 158           | 8.4  |

|                                 | <i>Sectors</i> |              | <i>Arrivals<br/>On Time</i> |          | <i>Departures<br/>On Time</i> |          | <i>Cancellations</i> |          |
|---------------------------------|----------------|--------------|-----------------------------|----------|-------------------------------|----------|----------------------|----------|
|                                 | <i>Sched.</i>  | <i>Flown</i> | <i>No.</i>                  | <i>%</i> | <i>No.</i>                    | <i>%</i> | <i>No.</i>           | <i>%</i> |
| <b>Brisbane-Hamilton Island</b> |                |              |                             |          |                               |          |                      |          |
| Qantas                          | 426            | 412          | 348                         | 84.5     | 392                           | 95.1     | 14                   | 3.3      |
| QantasLink                      | 25             | 25           | 23                          | 92.0     | 23                            | 92.0     | 0                    | 0.0      |
| Virgin Australia                | 506            | 495          | 450                         | 90.9     | 454                           | 91.7     | 11                   | 2.2      |
| All Airlines                    | 957            | 932          | 821                         | 88.1     | 869                           | 93.2     | 25                   | 2.6      |
| <b>Brisbane-Hobart</b>          |                |              |                             |          |                               |          |                      |          |
| Jetstar                         | 353            | 342          | 311                         | 90.9     | 301                           | 88.0     | 11                   | 3.1      |
| Qantas                          | 83             | 73           | 69                          | 94.5     | 70                            | 95.9     | 10                   | 12.0     |
| QantasLink                      | 260            | 248          | 208                         | 83.9     | 204                           | 82.3     | 12                   | 4.6      |
| Virgin Australia                | 519            | 481          | 444                         | 92.3     | 416                           | 86.5     | 38                   | 7.3      |
| All Airlines                    | 1 215          | 1 144        | 1 032                       | 90.2     | 991                           | 86.6     | 71                   | 5.8      |
| <b>Brisbane-Mackay</b>          |                |              |                             |          |                               |          |                      |          |
| Jetstar                         | 357            | 351          | 309                         | 88.0     | 297                           | 84.6     | 6                    | 1.7      |
| Qantas                          | 1 038          | 969          | 873                         | 90.1     | 906                           | 93.5     | 69                   | 6.6      |
| QantasLink                      | 244            | 229          | 203                         | 88.6     | 207                           | 90.4     | 15                   | 6.1      |
| Virgin Australia                | 1 126          | 1 060        | 929                         | 87.6     | 910                           | 85.8     | 66                   | 5.9      |
| All Airlines                    | 2 765          | 2 609        | 2 314                       | 88.7     | 2 320                         | 88.9     | 156                  | 5.6      |
| <b>Brisbane-Melbourne</b>       |                |              |                             |          |                               |          |                      |          |
| Jetstar                         | 1 312          | 864          | 724                         | 83.8     | 671                           | 77.7     | 448                  | 34.1     |
| Qantas                          | 1 966          | 1 534        | 1 381                       | 90.0     | 1 385                         | 90.3     | 432                  | 22.0     |
| Virgin Australia                | 1 717          | 1 256        | 942                         | 75.0     | 875                           | 69.7     | 461                  | 26.8     |
| All Airlines                    | 4 995          | 3 654        | 3 047                       | 83.4     | 2 931                         | 80.2     | 1 341                | 26.8     |
| <b>Brisbane-Mount Isa</b>       |                |              |                             |          |                               |          |                      |          |
| Qantas                          | 456            | 441          | 405                         | 91.8     | 429                           | 97.3     | 15                   | 3.3      |
| QantasLink                      | 158            | 149          | 131                         | 87.9     | 129                           | 86.6     | 9                    | 5.7      |
| Virgin Australia                | 185            | 181          | 159                         | 87.8     | 174                           | 96.1     | 4                    | 2.2      |
| All Airlines                    | 799            | 771          | 695                         | 90.1     | 732                           | 94.9     | 28                   | 3.5      |
| <b>Brisbane-Newcastle</b>       |                |              |                             |          |                               |          |                      |          |
| Jetstar                         | 511            | 450          | 396                         | 88.0     | 397                           | 88.2     | 61                   | 11.9     |
| QantasLink                      | 563            | 512          | 446                         | 87.1     | 451                           | 88.1     | 51                   | 9.1      |
| Virgin Australia                | 403            | 377          | 350                         | 92.8     | 340                           | 90.2     | 26                   | 6.5      |
| All Airlines                    | 1 477          | 1 339        | 1 192                       | 89.0     | 1 188                         | 88.7     | 138                  | 9.3      |
| <b>Brisbane-Perth</b>           |                |              |                             |          |                               |          |                      |          |
| Jetstar                         | 24             | 24           | 18                          | 75.0     | 16                            | 66.7     | 0                    | 0.0      |
| Qantas                          | 918            | 749          | 572                         | 76.4     | 659                           | 88.0     | 169                  | 18.4     |
| Virgin Australia                | 552            | 492          | 387                         | 78.7     | 357                           | 72.6     | 60                   | 10.9     |
| All Airlines                    | 1 494          | 1 265        | 977                         | 77.2     | 1 032                         | 81.6     | 229                  | 15.3     |
| <b>Brisbane-Proserpine</b>      |                |              |                             |          |                               |          |                      |          |
| Jetstar                         | 413            | 409          | 323                         | 79.0     | 346                           | 84.6     | 4                    | 1.0      |
| QantasLink                      | 141            | 133          | 126                         | 94.7     | 126                           | 94.7     | 8                    | 5.7      |
| Virgin Australia                | 486            | 470          | 417                         | 88.7     | 429                           | 91.3     | 16                   | 3.3      |
| All Airlines                    | 1 040          | 1 012        | 866                         | 85.6     | 901                           | 89.0     | 28                   | 2.7      |
| <b>Brisbane-Rockhampton</b>     |                |              |                             |          |                               |          |                      |          |
| QantasLink                      | 1 763          | 1 641        | 1 483                       | 90.4     | 1 511                         | 92.1     | 122                  | 6.9      |
| Virgin Australia                | 1 052          | 997          | 820                         | 82.2     | 855                           | 85.8     | 55                   | 5.2      |
| All Airlines                    | 2 815          | 2 638        | 2 303                       | 87.3     | 2 366                         | 89.7     | 177                  | 6.3      |
| <b>Brisbane-Sydney</b>          |                |              |                             |          |                               |          |                      |          |
| Jetstar                         | 1 028          | 771          | 689                         | 89.4     | 641                           | 83.1     | 257                  | 25.0     |
| Qantas                          | 2 881          | 2 506        | 2 295                       | 91.6     | 2 267                         | 90.5     | 375                  | 13.0     |
| Virgin Australia                | 1 949          | 1 684        | 1 457                       | 86.5     | 1 366                         | 81.1     | 265                  | 13.6     |
| All Airlines                    | 5 858          | 4 961        | 4 441                       | 89.5     | 4 274                         | 86.2     | 897                  | 15.3     |



|                                    | Sectors  |       | Arrivals<br>On Time |       | Departures<br>On Time |       | Cancellations |      |
|------------------------------------|--|-------|---------------------|-------|-----------------------|-------|---------------|------|
|                                    | Sched.   | Flown | No.                 | %     | No.                   | %     | No.           | %    |
| <b>Brisbane-Townsville</b>         |  |       |                     |       |                       |       |               |      |
| Jetstar                            | 673  | 660   | 544                 | 82.4  | 547                   | 82.9  | 13            | 1.9  |
| Qantas                             | 1 310  | 1 239 | 1 083               | 87.4  | 1 145                 | 92.4  | 71            | 5.4  |
| QantasLink                         | 17   | 14    | 12                  | 85.7  | 14                    | 100.0 | 3             | 17.6 |
| Virgin Australia                   | 1 155  | 1 074 | 921                 | 85.8  | 910                   | 84.7  | 81            | 7.0  |
| All Airlines                       | 3 155  | 2 987 | 2 560               | 85.7  | 2 616                 | 87.6  | 168           | 5.3  |
| <b>Broome-Perth</b>                |  |       |                     |       |                       |       |               |      |
| Qantas                             | 279  | 274   | 246                 | 89.8  | 239                   | 87.2  | 5             | 1.8  |
| QantasLink                         | 831  | 797   | 644                 | 80.8  | 636                   | 79.8  | 34            | 4.1  |
| Virgin Australia                   | 437  | 430   | 387                 | 90.0  | 334                   | 77.7  | 7             | 1.6  |
| Virgin Australia Regional Airlines | 156  | 150   | 118                 | 78.7  | 101                   | 67.3  | 6             | 3.8  |
| All Airlines                       | 1 703  | 1 651 | 1 395               | 84.5  | 1 310                 | 79.3  | 52            | 3.1  |
| <b>Cairns-Brisbane</b>             |  |       |                     |       |                       |       |               |      |
| Jetstar                            | 1 141  | 1 087 | 927                 | 85.3  | 929                   | 85.5  | 54            | 4.7  |
| Qantas                             | 1 458  | 1 410 | 1 257               | 89.1  | 1 293                 | 91.7  | 48            | 3.3  |
| QantasLink                         | 130  | 127   | 93                  | 73.2  | 104                   | 81.9  | 3             | 2.3  |
| Virgin Australia                   | 1 543  | 1 454 | 1 335               | 91.8  | 1 241                 | 85.4  | 89            | 5.8  |
| All Airlines                       | 4 272  | 4 078 | 3 612               | 88.6  | 3 567                 | 87.5  | 194           | 4.5  |
| <b>Cairns-Melbourne</b>            |  |       |                     |       |                       |       |               |      |
| Jetstar                            | 793  | 654   | 570                 | 87.2  | 545                   | 83.3  | 139           | 17.5 |
| Qantas                             | 299  | 260   | 219                 | 84.2  | 232                   | 89.2  | 39            | 13.0 |
| Virgin Australia                   | 399  | 347   | 308                 | 88.8  | 303                   | 87.3  | 52            | 13.0 |
| All Airlines                       | 1 491  | 1 261 | 1 097               | 87.0  | 1 080                 | 85.6  | 230           | 15.4 |
| <b>Cairns-Sydney</b>               |  |       |                     |       |                       |       |               |      |
| Jetstar                            | 536  | 442   | 391                 | 88.5  | 369                   | 83.5  | 94            | 17.5 |
| Qantas                             | 347  | 303   | 257                 | 84.8  | 269                   | 88.8  | 44            | 12.7 |
| Virgin Australia                   | 391  | 348   | 325                 | 93.4  | 319                   | 91.7  | 43            | 11.0 |
| All Airlines                       | 1 274  | 1 093 | 973                 | 89.0  | 957                   | 87.6  | 181           | 14.2 |
| <b>Cairns-Townsville</b>           |  |       |                     |       |                       |       |               |      |
| QantasLink                         | 1 350  | 1 334 | 1 208               | 90.6  | 1 198                 | 89.8  | 16            | 1.2  |
| Rex Airlines                       | 173  | 169   | 156                 | 92.3  | 157                   | 92.9  | 4             | 2.3  |
| All Airlines                       | 1 523  | 1 503 | 1 364               | 90.8  | 1 355                 | 90.2  | 20            | 1.3  |
| <b>Canberra-Adelaide</b>           |  |       |                     |       |                       |       |               |      |
| Qantas                             | 334  | 308   | 271                 | 88.0  | 261                   | 84.7  | 26            | 7.8  |
| QantasLink                         | 15   | 15    | 11                  | 73.3  | 9                     | 60.0  | 0             | 0.0  |
| Virgin Australia                   | 222  | 216   | 195                 | 90.3  | 193                   | 89.4  | 6             | 2.7  |
| All Airlines                       | 571  | 539   | 477                 | 88.5  | 463                   | 85.9  | 32            | 5.6  |
| <b>Canberra-Brisbane</b>           |  |       |                     |       |                       |       |               |      |
| Qantas                             | 336  | 298   | 280                 | 94.0  | 281                   | 94.3  | 38            | 11.3 |
| QantasLink                         | 990  | 906   | 795                 | 87.7  | 798                   | 88.1  | 84            | 8.5  |
| Virgin Australia                   | 687  | 622   | 524                 | 84.2  | 513                   | 82.5  | 65            | 9.5  |
| All Airlines                       | 2 013  | 1 826 | 1 599               | 87.6  | 1 592                 | 87.2  | 187           | 9.3  |
| <b>Canberra-Melbourne</b>          |  |       |                     |       |                       |       |               |      |
| Qantas                             | 108  | 82    | 74                  | 90.2  | 75                    | 91.5  | 26            | 24.1 |
| QantasLink                         | 1 462  | 1 199 | 975                 | 81.3  | 988                   | 82.4  | 263           | 18.0 |
| Virgin Australia                   | 670  | 589   | 520                 | 88.3  | 499                   | 84.7  | 81            | 12.1 |
| All Airlines                       | 2 240  | 1 870 | 1 569               | 83.9  | 1 562                 | 83.5  | 370           | 16.5 |
| <b>Canberra-Sydney</b>             |  |       |                     |       |                       |       |               |      |
|                                    | (April 2021 to July 2021, November 2021 and December 2021) |       |                     |       |                       |       |               |      |
| Qantas                             | 41   | 30    | 30                  | 100.0 | 30                    | 100.0 | 11            | 26.8 |
| QantasLink                         | 1 361  | 1 094 | 909                 | 83.1  | 914                   | 83.5  | 267           | 19.6 |
| Rex Airlines                       | 695  | 635   | 517                 | 81.4  | 544                   | 85.7  | 60            | 8.6  |
| All Airlines                       | 2 097  | 1 759 | 1 456               | 82.8  | 1 488                 | 84.6  | 338           | 16.1 |

|                                    | Sectors  |       | Arrivals<br>On Time |      | Departures<br>On Time |      | Cancellations |      |
|------------------------------------|--|-------|---------------------|------|-----------------------|------|---------------|------|
|                                    | Sched.   | Flown | No.                 | %    | No.                   | %    | No.           | %    |
| <b>Coffs Harbour-Sydney</b>        | (January 2021 to July 2021, November 2021 and December 2021)   |       |                     |      |                       |      |               |      |
| QantasLink                         | 882  | 814   | 717                 | 88.1 | 706                   | 86.7 | 68            | 7.7  |
| Rex Airlines                       | 406  | 391   | 343                 | 87.7 | 359                   | 91.8 | 15            | 3.7  |
| Virgin Australia                   | 113  | 111   | 96                  | 86.5 | 88                    | 79.3 | 2             | 1.8  |
| All Airlines                       | 1 401  | 1 316 | 1 156               | 87.8 | 1 153                 | 87.6 | 85            | 6.1  |
| <b>Darwin-Brisbane</b>             |  |       |                     |      |                       |      |               |      |
| Jetstar                            | 278  | 252   | 150                 | 59.5 | 150                   | 59.5 | 26            | 9.4  |
| Qantas                             | 448  | 425   | 284                 | 66.8 | 290                   | 68.2 | 23            | 5.1  |
| Virgin Australia                   | 397  | 372   | 321                 | 86.3 | 274                   | 73.7 | 25            | 6.3  |
| All Airlines                       | 1 123  | 1 049 | 755                 | 72.0 | 714                   | 68.1 | 74            | 6.6  |
| <b>Darwin-Melbourne</b>            | (June 2021 to September 2021, November 2021 and December 2021) |       |                     |      |                       |      |               |      |
| Jetstar                            | 70   | 39    | 26                  | 66.7 | 23                    | 59.0 | 31            | 44.3 |
| Qantas                             | 223  | 186   | 148                 | 79.6 | 147                   | 79.0 | 37            | 16.6 |
| Virgin Australia                   | 133  | 94    | 75                  | 79.8 | 69                    | 73.4 | 39            | 29.3 |
| All Airlines                       | 426  | 319   | 249                 | 78.1 | 239                   | 74.9 | 107           | 25.1 |
| <b>Darwin-Perth</b>                |  |       |                     |      |                       |      |               |      |
| Qantas                             | 446  | 420   | 325                 | 77.4 | 351                   | 83.6 | 26            | 5.8  |
| QantasLink                         | 6  | 5     | 4                   | 80.0 | 3                     | 60.0 | 1             | 16.7 |
| Virgin Australia                   | 124  | 122   | 91                  | 74.6 | 87                    | 71.3 | 2             | 1.6  |
| Virgin Australia Regional Airlines | 124  | 118   | 84                  | 71.2 | 83                    | 70.3 | 6             | 4.8  |
| All Airlines                       | 700  | 665   | 504                 | 75.8 | 524                   | 78.8 | 35            | 5.0  |
| <b>Dubbo-Sydney</b>                |  |       |                     |      |                       |      |               |      |
| QantasLink                         | 746  | 677   | 609                 | 90.0 | 598                   | 88.3 | 69            | 9.2  |
| Rex Airlines                       | 553  | 538   | 467                 | 86.8 | 474                   | 88.1 | 15            | 2.7  |
| All Airlines                       | 1 299  | 1 215 | 1 076               | 88.6 | 1 072                 | 88.2 | 84            | 6.5  |
| <b>Emerald-Brisbane</b>            |  |       |                     |      |                       |      |               |      |
| QantasLink                         | 1 424  | 1 321 | 1 234               | 93.4 | 1 227                 | 92.9 | 103           | 7.2  |
| Virgin Australia                   | 297  | 294   | 271                 | 92.2 | 269                   | 91.5 | 3             | 1.0  |
| All Airlines                       | 1 721  | 1 615 | 1 505               | 93.2 | 1 496                 | 92.6 | 106           | 6.2  |
| <b>Gladstone-Brisbane</b>          |  |       |                     |      |                       |      |               |      |
| QantasLink                         | 1 298  | 1 174 | 1 067               | 90.9 | 1 053                 | 89.7 | 124           | 9.6  |
| Virgin Australia                   | 585  | 553   | 482                 | 87.2 | 512                   | 92.6 | 32            | 5.5  |
| All Airlines                       | 1 883  | 1 727 | 1 549               | 89.7 | 1 565                 | 90.6 | 156           | 8.3  |
| <b>Gold Coast-Adelaide</b>         | (January 2021 to September 2021 and December 2021)             |       |                     |      |                       |      |               |      |
| Jetstar                            | 271  | 241   | 218                 | 90.5 | 210                   | 87.1 | 30            | 11.1 |
| QantasLink                         | 43   | 30    | 25                  | 83.3 | 21                    | 70.0 | 13            | 30.2 |
| Virgin Australia                   | 311  | 278   | 258                 | 92.8 | 253                   | 91.0 | 33            | 10.6 |
| All Airlines                       | 625  | 549   | 501                 | 91.3 | 484                   | 88.2 | 76            | 12.2 |
| <b>Gold Coast-Melbourne</b>        | (January 2021 to August 2021 and December 2021)                |       |                     |      |                       |      |               |      |
| Jetstar                            | 1 455  | 1 122 | 992                 | 88.4 | 956                   | 85.2 | 333           | 22.9 |
| Qantas                             | 444  | 394   | 353                 | 89.6 | 354                   | 89.8 | 50            | 11.3 |
| QantasLink                         | 12   | 11    | 6                   | 54.5 | 6                     | 54.5 | 1             | 8.3  |
| Rex Airlines                       | 263  | 215   | 144                 | 67.0 | 157                   | 73.0 | 48            | 18.3 |
| Virgin Australia                   | 1 558  | 1 158 | 999                 | 86.3 | 916                   | 79.1 | 400           | 25.7 |
| All Airlines                       | 3 732  | 2 900 | 2 494               | 86.0 | 2 389                 | 82.4 | 832           | 22.3 |
| <b>Gold Coast-Sydney</b>           | (January 2021 to July 2021 and December 2021)                  |       |                     |      |                       |      |               |      |
| Jetstar                            | 1 439  | 1 164 | 1 032               | 88.7 | 1 013                 | 87.0 | 275           | 19.1 |
| Qantas                             | 540  | 490   | 429                 | 87.6 | 425                   | 86.7 | 50            | 9.3  |
| Rex Airlines                       | 234  | 210   | 193                 | 91.9 | 192                   | 91.4 | 24            | 10.3 |
| Virgin Australia                   | 1 333  | 1 153 | 987                 | 85.6 | 923                   | 80.1 | 180           | 13.5 |
| All Airlines                       | 3 546  | 3 017 | 2 641               | 87.5 | 2 553                 | 84.6 | 529           | 14.9 |

|   | <i>Sectors</i> |              | <i>Arrivals<br/>On Time</i> |          | <i>Departures<br/>On Time</i> |          | <i>Cancellations</i> |          |
|---|----------------|--------------|-----------------------------|----------|-------------------------------|----------|----------------------|----------|
|   | <i>Sched.</i>  | <i>Flown</i> | <i>No.</i>                  | <i>%</i> | <i>No.</i>                    | <i>%</i> | <i>No.</i>           | <i>%</i> |
| <b>Hamilton Island-Brisbane</b>   |                |              |                             |          |                               |          |                      |          |
| Qantas  | 425            | 410          | 345                         | 84.1     | 346                           | 84.4     | 15                   | 3.5      |
| QantasLink  | 25             | 25           | 23                          | 92.0     | 22                            | 88.0     | 0                    | 0.0      |
| Virgin Australia  | 505            | 494          | 439                         | 88.9     | 423                           | 85.6     | 11                   | 2.2      |
| All Airlines  | 955            | 929          | 807                         | 86.9     | 791                           | 85.1     | 26                   | 2.7      |
| <b>Hamilton Island-Sydney</b> (January 2021 to August 2021 and December 2021) |                |              |                             |          |                               |          |                      |          |
| Jetstar   | 125            | 97           | 73                          | 75.3     | 69                            | 71.1     | 28                   | 22.4     |
| Qantas  | 208            | 171          | 145                         | 84.8     | 143                           | 83.6     | 37                   | 17.8     |
| Virgin Australia  | 192            | 182          | 163                         | 89.6     | 159                           | 87.4     | 10                   | 5.2      |
| All Airlines  | 525            | 450          | 381                         | 84.7     | 371                           | 82.4     | 75                   | 14.3     |
| <b>Hobart-Brisbane</b>  |                |              |                             |          |                               |          |                      |          |
| Jetstar   | 352            | 341          | 285                         | 83.6     | 284                           | 83.3     | 11                   | 3.1      |
| Qantas  | 83             | 73           | 64                          | 87.7     | 65                            | 89.0     | 10                   | 12.0     |
| QantasLink  | 260            | 246          | 200                         | 81.3     | 200                           | 81.3     | 14                   | 5.4      |
| Virgin Australia  | 519            | 479          | 382                         | 79.7     | 388                           | 81.0     | 40                   | 7.7      |
| All Airlines  | 1 214          | 1 139        | 931                         | 81.7     | 937                           | 82.3     | 75                   | 6.2      |
| <b>Hobart-Melbourne</b>   |                |              |                             |          |                               |          |                      |          |
| Jetstar   | 1 249          | 1 041        | 888                         | 85.3     | 866                           | 83.2     | 208                  | 16.7     |
| Qantas  | 16             | 11           | 11                          | 100.0    | 11                            | 100.0    | 5                    | 31.3     |
| QantasLink  | 745            | 633          | 493                         | 77.9     | 504                           | 79.6     | 112                  | 15.0     |
| Virgin Australia  | 711            | 603          | 502                         | 83.3     | 515                           | 85.4     | 108                  | 15.2     |
| All Airlines  | 2 721          | 2 288        | 1 894                       | 82.8     | 1 896                         | 82.9     | 433                  | 15.9     |
| <b>Hobart-Sydney</b>  |                |              |                             |          |                               |          |                      |          |
| Jetstar   | 548            | 469          | 391                         | 83.4     | 391                           | 83.4     | 79                   | 14.4     |
| Qantas  | 120            | 111          | 93                          | 83.8     | 92                            | 82.9     | 9                    | 7.5      |
| QantasLink  | 284            | 254          | 205                         | 80.7     | 210                           | 82.7     | 30                   | 10.6     |
| Virgin Australia  | 418            | 389          | 348                         | 89.5     | 349                           | 89.7     | 29                   | 6.9      |
| All Airlines  | 1 370          | 1 223        | 1 037                       | 84.8     | 1 042                         | 85.2     | 147                  | 10.7     |
| <b>Kalgoorlie-Perth</b>   |                |              |                             |          |                               |          |                      |          |
| Qantas  | 149            | 146          | 119                         | 81.5     | 113                           | 77.4     | 3                    | 2.0      |
| QantasLink  | 732            | 701          | 581                         | 82.9     | 560                           | 79.9     | 31                   | 4.2      |
| Virgin Australia  | 291            | 287          | 185                         | 64.5     | 170                           | 59.2     | 4                    | 1.4      |
| Virgin Australia Regional Airlines  | 393            | 388          | 325                         | 83.8     | 317                           | 81.7     | 5                    | 1.3      |
| All Airlines  | 1 565          | 1 522        | 1 210                       | 79.5     | 1 160                         | 76.2     | 43                   | 2.7      |
| <b>Karratha-Perth</b>   |                |              |                             |          |                               |          |                      |          |
| Qantas  | 384            | 369          | 335                         | 90.8     | 332                           | 90.0     | 15                   | 3.9      |
| QantasLink  | 1 301          | 1 216        | 994                         | 81.7     | 995                           | 81.8     | 85                   | 6.5      |
| Virgin Australia  | 423            | 422          | 371                         | 87.9     | 339                           | 80.3     | 1                    | 0.2      |
| Virgin Australia Regional Airlines  | 212            | 212          | 156                         | 73.6     | 144                           | 67.9     | 0                    | 0.0      |
| All Airlines  | 2 320          | 2 219        | 1 856                       | 83.6     | 1 810                         | 81.6     | 101                  | 4.4      |
| <b>Launceston-Melbourne</b>   |                |              |                             |          |                               |          |                      |          |
| Jetstar   | 786            | 633          | 552                         | 87.2     | 537                           | 84.8     | 153                  | 19.5     |
| QantasLink  | 646            | 536          | 442                         | 82.5     | 445                           | 83.0     | 110                  | 17.0     |
| Virgin Australia  | 571            | 502          | 453                         | 90.2     | 454                           | 90.4     | 69                   | 12.1     |
| All Airlines  | 2 003          | 1 671        | 1 447                       | 86.6     | 1 436                         | 85.9     | 332                  | 16.6     |
| <b>Launceston-Sydney</b>  |                |              |                             |          |                               |          |                      |          |
| Jetstar   | 347            | 315          | 248                         | 78.7     | 233                           | 74.0     | 32                   | 9.2      |
| QantasLink  | 122            | 111          | 71                          | 64.0     | 89                            | 80.2     | 11                   | 9.0      |
| Virgin Australia  | 264            | 256          | 229                         | 89.5     | 231                           | 90.2     | 8                    | 3.0      |
| All Airlines  | 733            | 682          | 548                         | 80.4     | 553                           | 81.1     | 51                   | 7.0      |

|  | Sectors |       | Arrivals<br>On Time |       | Departures<br>On Time |       | Cancellations |      |
|--|---------|-------|---------------------|-------|-----------------------|-------|---------------|------|
|  | Sched.  | Flown | No.                 | %     | No.                   | %     | No.           | %    |
| <b>Mackay-Brisbane</b>   |         |       |                     |       |                       |       |               |      |
| Jetstar  | 357     | 349   | 314                 | 90.0  | 293                   | 84.0  | 8             | 2.2  |
| Qantas   | 1 036   | 963   | 864                 | 89.7  | 867                   | 90.0  | 73            | 7.0  |
| QantasLink   | 282     | 266   | 247                 | 92.9  | 244                   | 91.7  | 16            | 5.7  |
| Virgin Australia   | 1 126   | 1 059 | 970                 | 91.6  | 934                   | 88.2  | 67            | 6.0  |
| All Airlines   | 2 801   | 2 637 | 2 395               | 90.8  | 2 338                 | 88.7  | 164           | 5.9  |
| <b>Melbourne-Adelaide</b>  |         |       |                     |       |                       |       |               |      |
| Jetstar  | 876     | 663   | 592                 | 89.3  | 560                   | 84.5  | 213           | 24.3 |
| Qantas   | 1 353   | 1 045 | 961                 | 92.0  | 970                   | 92.8  | 308           | 22.8 |
| Rex Airlines   | 293     | 227   | 190                 | 83.7  | 186                   | 81.9  | 66            | 22.5 |
| Virgin Australia   | 1 390   | 1 063 | 921                 | 86.6  | 912                   | 85.8  | 327           | 23.5 |
| All Airlines   | 3 912   | 2 998 | 2 664               | 88.9  | 2 628                 | 87.7  | 914           | 23.4 |
| <b>Melbourne-Brisbane</b>  |         |       |                     |       |                       |       |               |      |
| Jetstar  | 1 310   | 867   | 697                 | 80.4  | 685                   | 79.0  | 443           | 33.8 |
| Qantas   | 1 956   | 1 529 | 1 327               | 86.8  | 1 376                 | 90.0  | 427           | 21.8 |
| Virgin Australia   | 1 705   | 1 253 | 1 021               | 81.5  | 1 019                 | 81.3  | 452           | 26.5 |
| All Airlines   | 4 971   | 3 649 | 3 045               | 83.4  | 3 080                 | 84.4  | 1 322         | 26.6 |
| <b>Melbourne-Cairns</b>  |         |       |                     |       |                       |       |               |      |
| Jetstar  | 793     | 657   | 546                 | 83.1  | 493                   | 75.0  | 136           | 17.2 |
| Qantas   | 299     | 258   | 222                 | 86.0  | 224                   | 86.8  | 41            | 13.7 |
| Virgin Australia   | 398     | 347   | 314                 | 90.5  | 309                   | 89.0  | 51            | 12.8 |
| All Airlines   | 1 490   | 1 262 | 1 082               | 85.7  | 1 026                 | 81.3  | 228           | 15.3 |
| <b>Melbourne-Canberra</b>  |         |       |                     |       |                       |       |               |      |
| Qantas   | 110     | 84    | 77                  | 91.7  | 76                    | 90.5  | 26            | 23.6 |
| QantasLink   | 1 462   | 1 204 | 954                 | 79.2  | 975                   | 81.0  | 258           | 17.6 |
| Virgin Australia   | 672     | 590   | 522                 | 88.5  | 516                   | 87.5  | 82            | 12.2 |
| All Airlines   | 2 244   | 1 878 | 1 553               | 82.7  | 1 567                 | 83.4  | 366           | 16.3 |
| <b>Melbourne-Darwin</b> (June 2021 to September 2021, November 2021 and December 2021) |         |       |                     |       |                       |       |               |      |
| Jetstar  | 69      | 39    | 28                  | 71.8  | 32                    | 82.1  | 30            | 43.5 |
| Qantas   | 231     | 187   | 160                 | 85.6  | 173                   | 92.5  | 44            | 19.0 |
| Virgin Australia   | 129     | 94    | 76                  | 80.9  | 86                    | 91.5  | 35            | 27.1 |
| All Airlines   | 429     | 320   | 264                 | 82.5  | 291                   | 90.9  | 109           | 25.4 |
| <b>Melbourne-Gold Coast</b> (January 2021 to August 2021 and December 2021)            |         |       |                     |       |                       |       |               |      |
| Jetstar  | 1 455   | 1 120 | 920                 | 82.1  | 902                   | 80.5  | 335           | 23.0 |
| Qantas   | 449     | 394   | 355                 | 90.1  | 359                   | 91.1  | 55            | 12.2 |
| QantasLink   | 12      | 11    | 6                   | 54.5  | 6                     | 54.5  | 1             | 8.3  |
| Rex Airlines   | 264     | 217   | 163                 | 75.1  | 161                   | 74.2  | 47            | 17.8 |
| Virgin Australia   | 1 573   | 1 165 | 990                 | 85.0  | 955                   | 82.0  | 408           | 25.9 |
| All Airlines   | 3 753   | 2 907 | 2 434               | 83.7  | 2 383                 | 82.0  | 846           | 22.5 |
| <b>Melbourne-Hobart</b>  |         |       |                     |       |                       |       |               |      |
| Jetstar  | 1 246   | 1 040 | 911                 | 87.6  | 883                   | 84.9  | 206           | 16.5 |
| Qantas   | 16      | 11    | 11                  | 100.0 | 11                    | 100.0 | 5             | 31.3 |
| QantasLink   | 763     | 637   | 473                 | 74.3  | 498                   | 78.2  | 126           | 16.5 |
| Virgin Australia   | 715     | 603   | 528                 | 87.6  | 528                   | 87.6  | 112           | 15.7 |
| All Airlines   | 2 740   | 2 291 | 1 923               | 83.9  | 1 920                 | 83.8  | 449           | 16.4 |
| <b>Melbourne-Launceston</b>  |         |       |                     |       |                       |       |               |      |
| Jetstar  | 784     | 632   | 544                 | 86.1  | 531                   | 84.0  | 152           | 19.4 |
| QantasLink   | 653     | 546   | 434                 | 79.5  | 449                   | 82.2  | 107           | 16.4 |
| Virgin Australia   | 577     | 501   | 429                 | 85.6  | 434                   | 86.6  | 76            | 13.2 |
| All Airlines   | 2 014   | 1 679 | 1 407               | 83.8  | 1 414                 | 84.2  | 335           | 16.6 |

|   | Sectors |       | Arrivals<br>On Time |      | Departures<br>On Time |      | Cancellations |      |
|---|---------|-------|---------------------|------|-----------------------|------|---------------|------|
|   | Sched.  | Flown | No.                 | %    | No.                   | %    | No.           | %    |
| <b>Melbourne-Mildura</b>  |         |       |                     |      |                       |      |               |      |
| QantasLink  | 919     | 812   | 637                 | 78.4 | 621                   | 76.5 | 107           | 11.6 |
| Rex Airlines  | 488     | 460   | 392                 | 85.2 | 400                   | 87.0 | 28            | 5.7  |
| All Airlines  | 1 407   | 1 272 | 1 029               | 80.9 | 1 021                 | 80.3 | 135           | 9.6  |
| <b>Melbourne-Newcastle</b>  |         |       |                     |      |                       |      |               |      |
| Jetstar   | 559     | 459   | 381                 | 83.0 | 385                   | 83.9 | 100           | 17.9 |
| QantasLink  | 256     | 198   | 135                 | 68.2 | 153                   | 77.3 | 58            | 22.7 |
| Virgin Australia  | 278     | 261   | 236                 | 90.4 | 235                   | 90.0 | 17            | 6.1  |
| All Airlines  | 1 093   | 918   | 752                 | 81.9 | 773                   | 84.2 | 175           | 16.0 |
| <b>Melbourne-Perth</b>  |         |       |                     |      |                       |      |               |      |
| Jetstar   | 298     | 146   | 125                 | 85.6 | 120                   | 82.2 | 152           | 51.0 |
| Qantas  | 736     | 592   | 429                 | 72.5 | 471                   | 79.6 | 144           | 19.6 |
| Virgin Australia  | 580     | 471   | 398                 | 84.5 | 381                   | 80.9 | 109           | 18.8 |
| All Airlines  | 1 614   | 1 209 | 952                 | 78.7 | 972                   | 80.4 | 405           | 25.1 |
| <b>Melbourne-Sunshine Coast</b> (January 2021 to August 2021 and December 2021) |         |       |                     |      |                       |      |               |      |
| Jetstar   | 579     | 475   | 365                 | 76.8 | 396                   | 83.4 | 104           | 18.0 |
| Qantas  | 31      | 30    | 29                  | 96.7 | 29                    | 96.7 | 1             | 3.2  |
| QantasLink  | 289     | 249   | 186                 | 74.7 | 206                   | 82.7 | 40            | 13.8 |
| Virgin Australia  | 564     | 456   | 413                 | 90.6 | 408                   | 89.5 | 108           | 19.1 |
| All Airlines  | 1 463   | 1 210 | 993                 | 82.1 | 1 039                 | 85.9 | 253           | 17.3 |
| <b>Melbourne-Sydney</b>   |         |       |                     |      |                       |      |               |      |
| Jetstar   | 2 338   | 1 677 | 1 446               | 86.2 | 1 395                 | 83.2 | 661           | 28.3 |
| Qantas  | 4 762   | 3 680 | 3 393               | 92.2 | 3 396                 | 92.3 | 1 082         | 22.7 |
| Rex Airlines  | 897     | 705   | 653                 | 92.6 | 649                   | 92.1 | 192           | 21.4 |
| Virgin Australia  | 3 460   | 2 708 | 2 349               | 86.7 | 2 340                 | 86.4 | 752           | 21.7 |
| All Airlines  | 11 457  | 8 770 | 7 841               | 89.4 | 7 780                 | 88.7 | 2 687         | 23.5 |
| <b>Mildura-Melbourne</b>  |         |       |                     |      |                       |      |               |      |
| QantasLink  | 916     | 810   | 602                 | 74.3 | 613                   | 75.7 | 106           | 11.6 |
| Rex Airlines  | 482     | 460   | 411                 | 89.3 | 419                   | 91.1 | 22            | 4.6  |
| All Airlines  | 1 398   | 1 270 | 1 013               | 79.8 | 1 032                 | 81.3 | 128           | 9.2  |
| <b>Mount Isa-Brisbane</b>   |         |       |                     |      |                       |      |               |      |
| Qantas  | 455     | 438   | 407                 | 92.9 | 390                   | 89.0 | 17            | 3.7  |
| QantasLink  | 156     | 147   | 134                 | 91.2 | 135                   | 91.8 | 9             | 5.8  |
| Virgin Australia  | 185     | 181   | 160                 | 88.4 | 161                   | 89.0 | 4             | 2.2  |
| All Airlines  | 796     | 766   | 701                 | 91.5 | 686                   | 89.6 | 30            | 3.8  |
| <b>Newcastle-Brisbane</b>   |         |       |                     |      |                       |      |               |      |
| Jetstar   | 512     | 448   | 388                 | 86.6 | 392                   | 87.5 | 64            | 12.5 |
| QantasLink  | 554     | 510   | 455                 | 89.2 | 447                   | 87.6 | 44            | 7.9  |
| Virgin Australia  | 405     | 378   | 357                 | 94.4 | 358                   | 94.7 | 27            | 6.7  |
| All Airlines  | 1 471   | 1 336 | 1 200               | 89.8 | 1 197                 | 89.6 | 135           | 9.2  |
| <b>Newcastle-Melbourne</b>  |         |       |                     |      |                       |      |               |      |
| Jetstar   | 558     | 456   | 389                 | 85.3 | 367                   | 80.5 | 102           | 18.3 |
| QantasLink  | 256     | 202   | 174                 | 86.1 | 166                   | 82.2 | 54            | 21.1 |
| Virgin Australia  | 273     | 261   | 226                 | 86.6 | 226                   | 86.6 | 12            | 4.4  |
| All Airlines  | 1 087   | 919   | 789                 | 85.9 | 759                   | 82.6 | 168           | 15.5 |
| <b>Newman-Perth</b>   |         |       |                     |      |                       |      |               |      |
| Qantas  | 260     | 246   | 188                 | 76.4 | 182                   | 74.0 | 14            | 5.4  |
| QantasLink  | 1 118   | 1 056 | 855                 | 81.0 | 861                   | 81.5 | 62            | 5.5  |
| Virgin Australia  | 464     | 452   | 349                 | 77.2 | 341                   | 75.4 | 12            | 2.6  |
| Virgin Australia Regional Airlines  | 211     | 210   | 179                 | 85.2 | 180                   | 85.7 | 1             | 0.5  |
| All Airlines  | 2 053   | 1 964 | 1 571               | 80.0 | 1 564                 | 79.6 | 89            | 4.3  |

|                                    | Sectors |       | Arrivals<br>On Time |       | Departures<br>On Time |       | Cancellations |      |
|------------------------------------|---------|-------|---------------------|-------|-----------------------|-------|---------------|------|
|                                    | Sched.  | Flown | No.                 | %     | No.                   | %     | No.           | %    |
| <b>Perth-Adelaide</b>              |         |       |                     |       |                       |       |               |      |
| Jetstar                            | 257     | 225   | 179                 | 79.6  | 150                   | 66.7  | 32            | 12.5 |
| Qantas                             | 866     | 796   | 684                 | 85.9  | 699                   | 87.8  | 70            | 8.1  |
| Virgin Australia                   | 413     | 393   | 344                 | 87.5  | 361                   | 91.9  | 20            | 4.8  |
| Virgin Australia Regional Airlines | 49      | 45    | 41                  | 91.1  | 42                    | 93.3  | 4             | 8.2  |
| All Airlines                       | 1 585   | 1 459 | 1 248               | 85.5  | 1 252                 | 85.8  | 126           | 7.9  |
| <b>Perth-Brisbane</b>              |         |       |                     |       |                       |       |               |      |
| Jetstar                            | 24      | 24    | 13                  | 54.2  | 15                    | 62.5  | 0             | 0.0  |
| Qantas                             | 915     | 750   | 535                 | 71.3  | 617                   | 82.3  | 165           | 18.0 |
| Virgin Australia                   | 565     | 490   | 397                 | 81.0  | 332                   | 67.8  | 75            | 13.3 |
| All Airlines                       | 1 504   | 1 264 | 945                 | 74.8  | 964                   | 76.3  | 240           | 16.0 |
| <b>Perth-Broome</b>                |         |       |                     |       |                       |       |               |      |
| Qantas                             | 278     | 274   | 263                 | 96.0  | 256                   | 93.4  | 4             | 1.4  |
| QantasLink                         | 826     | 800   | 652                 | 81.5  | 670                   | 83.8  | 26            | 3.1  |
| Virgin Australia                   | 435     | 430   | 396                 | 92.1  | 366                   | 85.1  | 5             | 1.1  |
| Virgin Australia Regional Airlines | 156     | 150   | 132                 | 88.0  | 127                   | 84.7  | 6             | 3.8  |
| All Airlines                       | 1 695   | 1 654 | 1 443               | 87.2  | 1 419                 | 85.8  | 41            | 2.4  |
| <b>Perth-Darwin</b>                |         |       |                     |       |                       |       |               |      |
| Qantas                             | 448     | 422   | 366                 | 86.7  | 385                   | 91.2  | 26            | 5.8  |
| QantasLink                         | 6       | 5     | 5                   | 100.0 | 5                     | 100.0 | 1             | 16.7 |
| Virgin Australia                   | 123     | 121   | 106                 | 87.6  | 108                   | 89.3  | 2             | 1.6  |
| Virgin Australia Regional Airlines | 125     | 119   | 104                 | 87.4  | 105                   | 88.2  | 6             | 4.8  |
| All Airlines                       | 702     | 667   | 581                 | 87.1  | 603                   | 90.4  | 35            | 5.0  |
| <b>Perth-Kalgoorlie</b>            |         |       |                     |       |                       |       |               |      |
| Qantas                             | 149     | 147   | 134                 | 91.2  | 135                   | 91.8  | 2             | 1.3  |
| QantasLink                         | 732     | 707   | 587                 | 83.0  | 594                   | 84.0  | 25            | 3.4  |
| Virgin Australia                   | 291     | 287   | 272                 | 94.8  | 273                   | 95.1  | 4             | 1.4  |
| Virgin Australia Regional Airlines | 393     | 388   | 346                 | 89.2  | 351                   | 90.5  | 5             | 1.3  |
| All Airlines                       | 1 565   | 1 529 | 1 339               | 87.6  | 1 353                 | 88.5  | 36            | 2.3  |
| <b>Perth-Karratha</b>              |         |       |                     |       |                       |       |               |      |
| Qantas                             | 386     | 372   | 344                 | 92.5  | 350                   | 94.1  | 14            | 3.6  |
| QantasLink                         | 1 284   | 1 213 | 960                 | 79.1  | 1 035                 | 85.3  | 71            | 5.5  |
| Virgin Australia                   | 424     | 423   | 386                 | 91.3  | 402                   | 95.0  | 1             | 0.2  |
| Virgin Australia Regional Airlines | 211     | 211   | 176                 | 83.4  | 187                   | 88.6  | 0             | 0.0  |
| All Airlines                       | 2 305   | 2 219 | 1 866               | 84.1  | 1 974                 | 89.0  | 86            | 3.7  |
| <b>Perth-Melbourne</b>             |         |       |                     |       |                       |       |               |      |
| Jetstar                            | 298     | 144   | 101                 | 70.1  | 90                    | 62.5  | 154           | 51.7 |
| Qantas                             | 735     | 594   | 419                 | 70.5  | 469                   | 79.0  | 141           | 19.2 |
| Virgin Australia                   | 585     | 476   | 346                 | 72.7  | 300                   | 63.0  | 109           | 18.6 |
| All Airlines                       | 1 618   | 1 214 | 866                 | 71.3  | 859                   | 70.8  | 404           | 25.0 |
| <b>Perth-Newman</b>                |         |       |                     |       |                       |       |               |      |
| Qantas                             | 259     | 248   | 229                 | 92.3  | 232                   | 93.5  | 11            | 4.2  |
| QantasLink                         | 1 120   | 1 063 | 957                 | 90.0  | 961                   | 90.4  | 57            | 5.1  |
| Virgin Australia                   | 464     | 453   | 413                 | 91.2  | 422                   | 93.2  | 11            | 2.4  |
| Virgin Australia Regional Airlines | 211     | 210   | 194                 | 92.4  | 195                   | 92.9  | 1             | 0.5  |
| All Airlines                       | 2 054   | 1 974 | 1 793               | 90.8  | 1 810                 | 91.7  | 80            | 3.9  |
| <b>Perth-Port Hedland</b>          |         |       |                     |       |                       |       |               |      |
| Qantas                             | 507     | 496   | 455                 | 91.7  | 471                   | 95.0  | 11            | 2.2  |
| QantasLink                         | 957     | 906   | 737                 | 81.3  | 810                   | 89.4  | 51            | 5.3  |
| Virgin Australia                   | 91      | 90    | 77                  | 85.6  | 80                    | 88.9  | 1             | 1.1  |
| Virgin Australia Regional Airlines | 535     | 530   | 482                 | 90.9  | 488                   | 92.1  | 5             | 0.9  |
| All Airlines                       | 2 090   | 2 022 | 1 751               | 86.6  | 1 849                 | 91.4  | 68            | 3.3  |

|   | <i>Sectors</i> |              | <i>Arrivals<br/>On Time</i> |          | <i>Departures<br/>On Time</i> |          | <i>Cancellations</i> |          |
|---|----------------|--------------|-----------------------------|----------|-------------------------------|----------|----------------------|----------|
|   | <i>Sched.</i>  | <i>Flown</i> | <i>No.</i>                  | <i>%</i> | <i>No.</i>                    | <i>%</i> | <i>No.</i>           | <i>%</i> |
| <b>Perth-Sydney</b>   |                |              |                             |          |                               |          |                      |          |
| Jetstar   | 188            | 139          | 87                          | 62.6     | 68                            | 48.9     | 49                   | 26.1     |
| Qantas  | 862            | 794          | 597                         | 75.2     | 645                           | 81.2     | 68                   | 7.9      |
| Virgin Australia  | 474            | 436          | 381                         | 87.4     | 322                           | 73.9     | 38                   | 8.0      |
| All Airlines  | 1 524          | 1 369        | 1 065                       | 77.8     | 1 035                         | 75.6     | 155                  | 10.2     |
| <b>Port Hedland-Perth</b>   |                |              |                             |          |                               |          |                      |          |
| Qantas  | 506            | 493          | 406                         | 82.4     | 422                           | 85.6     | 13                   | 2.6      |
| QantasLink  | 958            | 899          | 639                         | 71.1     | 726                           | 80.8     | 59                   | 6.2      |
| Virgin Australia  | 91             | 89           | 58                          | 65.2     | 49                            | 55.1     | 2                    | 2.2      |
| Virgin Australia Regional Airlines  | 535            | 527          | 406                         | 77.0     | 407                           | 77.2     | 8                    | 1.5      |
| All Airlines  | 2 090          | 2 008        | 1 509                       | 75.1     | 1 604                         | 79.9     | 82                   | 3.9      |
| <b>Port Lincoln-Adelaide</b>  |                |              |                             |          |                               |          |                      |          |
| QantasLink  | 1 034          | 970          | 855                         | 88.1     | 859                           | 88.6     | 64                   | 6.2      |
| Rex Airlines  | 1 779          | 1 749        | 1 478                       | 84.5     | 1 490                         | 85.2     | 30                   | 1.7      |
| All Airlines  | 2 813          | 2 719        | 2 333                       | 85.8     | 2 349                         | 86.4     | 94                   | 3.3      |
| <b>Port Macquarie-Sydney</b> (March 2021 to July 2021, November 2021 and December 2021) |                |              |                             |          |                               |          |                      |          |
| QantasLink  | 643            | 566          | 511                         | 90.3     | 513                           | 90.6     | 77                   | 12.0     |
| Rex Airlines  | 376            | 364          | 305                         | 83.8     | 331                           | 90.9     | 12                   | 3.2      |
| All Airlines  | 1 019          | 930          | 816                         | 87.7     | 844                           | 90.8     | 89                   | 8.7      |
| <b>Proserpine-Brisbane</b>  |                |              |                             |          |                               |          |                      |          |
| Jetstar   | 417            | 410          | 315                         | 76.8     | 312                           | 76.1     | 7                    | 1.7      |
| QantasLink  | 140            | 131          | 123                         | 93.9     | 118                           | 90.1     | 9                    | 6.4      |
| Virgin Australia  | 491            | 470          | 405                         | 86.2     | 375                           | 79.8     | 21                   | 4.3      |
| All Airlines  | 1 048          | 1 011        | 843                         | 83.4     | 805                           | 79.6     | 37                   | 3.5      |
| <b>Rockhampton-Brisbane</b>   |                |              |                             |          |                               |          |                      |          |
| QantasLink  | 1 765          | 1 634        | 1 370                       | 83.8     | 1 410                         | 86.3     | 131                  | 7.4      |
| Virgin Australia  | 1 051          | 996          | 904                         | 90.8     | 865                           | 86.8     | 55                   | 5.2      |
| All Airlines  | 2 816          | 2 630        | 2 274                       | 86.5     | 2 275                         | 86.5     | 186                  | 6.6      |
| <b>Sunshine Coast-Melbourne</b> (January 2021 to August 2021 and December 2021)         |                |              |                             |          |                               |          |                      |          |
| Jetstar   | 580            | 472          | 365                         | 77.3     | 345                           | 73.1     | 108                  | 18.6     |
| Qantas  | 31             | 30           | 28                          | 93.3     | 28                            | 93.3     | 1                    | 3.2      |
| QantasLink  | 291            | 247          | 197                         | 79.8     | 191                           | 77.3     | 44                   | 15.1     |
| Virgin Australia  | 560            | 456          | 364                         | 79.8     | 371                           | 81.4     | 104                  | 18.6     |
| All Airlines  | 1 462          | 1 205        | 954                         | 79.2     | 935                           | 77.6     | 257                  | 17.6     |
| <b>Sunshine Coast-Sydney</b> (January 2021 to July 2021 and December 2021)              |                |              |                             |          |                               |          |                      |          |
| Jetstar   | 453            | 383          | 317                         | 82.8     | 319                           | 83.3     | 70                   | 15.5     |
| Qantas  | 38             | 32           | 29                          | 90.6     | 30                            | 93.8     | 6                    | 15.8     |
| QantasLink  | 306            | 274          | 217                         | 79.2     | 211                           | 77.0     | 32                   | 10.5     |
| Virgin Australia  | 378            | 343          | 253                         | 73.8     | 274                           | 79.9     | 35                   | 9.3      |
| All Airlines  | 1 175          | 1 032        | 816                         | 79.1     | 834                           | 80.8     | 143                  | 12.2     |
| <b>Sydney-Adelaide</b>  |                |              |                             |          |                               |          |                      |          |
| Jetstar   | 777            | 630          | 569                         | 90.3     | 535                           | 84.9     | 147                  | 18.9     |
| Qantas  | 1 161          | 1 043        | 943                         | 90.4     | 925                           | 88.7     | 118                  | 10.2     |
| Virgin Australia  | 783            | 713          | 633                         | 88.8     | 616                           | 86.4     | 70                   | 8.9      |
| All Airlines  | 2 721          | 2 386        | 2 145                       | 89.9     | 2 076                         | 87.0     | 335                  | 12.3     |
| <b>Sydney-Albury</b>  |                |              |                             |          |                               |          |                      |          |
| QantasLink  | 801            | 743          | 682                         | 91.8     | 657                           | 88.4     | 58                   | 7.2      |
| Rex Airlines  | 393            | 383          | 348                         | 90.9     | 340                           | 88.8     | 10                   | 2.5      |
| All Airlines  | 1 194          | 1 126        | 1 030                       | 91.5     | 997                           | 88.5     | 68                   | 5.7      |

|  | Sectors |       | Arrivals<br>On Time |       | Departures<br>On Time |       | Cancellations |      |
|--|---------|-------|---------------------|-------|-----------------------|-------|---------------|------|
|  | Sched.  | Flown | No.                 | %     | No.                   | %     | No.           | %    |
| <b>Sydney-Armidale</b>   |         |       |                     |       |                       |       |               |      |
| QantasLink   | 614     | 564   | 458                 | 81.2  | 456                   | 80.9  | 50            | 8.1  |
| Rex Airlines   | 302     | 294   | 227                 | 77.2  | 227                   | 77.2  | 8             | 2.6  |
| All Airlines   | 916     | 858   | 685                 | 79.8  | 683                   | 79.6  | 58            | 6.3  |
| <b>Sydney-Ballina</b>  |         |       |                     |       |                       |       |               |      |
| Jetstar  | 793     | 726   | 619                 | 85.3  | 625                   | 86.1  | 67            | 8.4  |
| Qantas   | 113     | 112   | 99                  | 88.4  | 103                   | 92.0  | 1             | 0.9  |
| QantasLink   | 739     | 686   | 526                 | 76.7  | 590                   | 86.0  | 53            | 7.2  |
| Rex Airlines   | 121     | 121   | 108                 | 89.3  | 108                   | 89.3  | 0             | 0.0  |
| Virgin Australia   | 546     | 521   | 461                 | 88.5  | 475                   | 91.2  | 25            | 4.6  |
| All Airlines   | 2 312   | 2 166 | 1 813               | 83.7  | 1 901                 | 87.8  | 146           | 6.3  |
| <b>Sydney-Brisbane</b>   |         |       |                     |       |                       |       |               |      |
| Jetstar  | 1 028   | 773   | 659                 | 85.3  | 645                   | 83.4  | 255           | 24.8 |
| Qantas   | 2 904   | 2 517 | 2 225               | 88.4  | 2 258                 | 89.7  | 387           | 13.3 |
| Virgin Australia   | 1 942   | 1 668 | 1 459               | 87.5  | 1 447                 | 86.8  | 274           | 14.1 |
| All Airlines   | 5 874   | 4 958 | 4 343               | 87.6  | 4 350                 | 87.7  | 916           | 15.6 |
| <b>Sydney-Cairns</b>   |         |       |                     |       |                       |       |               |      |
| Jetstar  | 536     | 446   | 382                 | 85.7  | 362                   | 81.2  | 90            | 16.8 |
| Qantas   | 346     | 303   | 246                 | 81.2  | 246                   | 81.2  | 43            | 12.4 |
| Virgin Australia   | 393     | 350   | 333                 | 95.1  | 323                   | 92.3  | 43            | 10.9 |
| All Airlines   | 1 275   | 1 099 | 961                 | 87.4  | 931                   | 84.7  | 176           | 13.8 |
| <b>Sydney-Canberra</b> (April 2021 to July 2021, November 2021 and December 2021)        |         |       |                     |       |                       |       |               |      |
| Qantas   | 43      | 30    | 30                  | 100.0 | 30                    | 100.0 | 13            | 30.2 |
| QantasLink   | 1 365   | 1 109 | 915                 | 82.5  | 918                   | 82.8  | 256           | 18.8 |
| Rex Airlines   | 699     | 640   | 494                 | 77.2  | 539                   | 84.2  | 59            | 8.4  |
| All Airlines   | 2 107   | 1 779 | 1 439               | 80.9  | 1 487                 | 83.6  | 328           | 15.6 |
| <b>Sydney-Coffs Harbour</b> (January 2021 to July 2021, November 2021 and December 2021) |         |       |                     |       |                       |       |               |      |
| QantasLink   | 883     | 815   | 702                 | 86.1  | 702                   | 86.1  | 68            | 7.7  |
| Rex Airlines   | 409     | 393   | 361                 | 91.9  | 358                   | 91.1  | 16            | 3.9  |
| Virgin Australia   | 113     | 111   | 93                  | 83.8  | 93                    | 83.8  | 2             | 1.8  |
| All Airlines   | 1 405   | 1 319 | 1 156               | 87.6  | 1 153                 | 87.4  | 86            | 6.1  |
| <b>Sydney-Dubbo</b>  |         |       |                     |       |                       |       |               |      |
| QantasLink   | 751     | 681   | 618                 | 90.7  | 604                   | 88.7  | 70            | 9.3  |
| Rex Airlines   | 556     | 540   | 476                 | 88.1  | 465                   | 86.1  | 16            | 2.9  |
| All Airlines   | 1 307   | 1 221 | 1 094               | 89.6  | 1 069                 | 87.6  | 86            | 6.6  |
| <b>Sydney-Gold Coast</b> (January 2021 to July 2021 and December 2021)                   |         |       |                     |       |                       |       |               |      |
| Jetstar  | 1 439   | 1 164 | 1 015               | 87.2  | 1 019                 | 87.5  | 275           | 19.1 |
| Qantas   | 548     | 494   | 446                 | 90.3  | 439                   | 88.9  | 54            | 9.9  |
| Rex Airlines   | 234     | 209   | 185                 | 88.5  | 191                   | 91.4  | 25            | 10.7 |
| Virgin Australia   | 1 335   | 1 153 | 948                 | 82.2  | 958                   | 83.1  | 182           | 13.6 |
| All Airlines   | 3 556   | 3 020 | 2 594               | 85.9  | 2 607                 | 86.3  | 536           | 15.1 |
| <b>Sydney-Hamilton Island</b> (January 2021 to August 2021 and December 2021)            |         |       |                     |       |                       |       |               |      |
| Jetstar  | 125     | 97    | 81                  | 83.5  | 78                    | 80.4  | 28            | 22.4 |
| Qantas   | 207     | 170   | 153                 | 90.0  | 150                   | 88.2  | 37            | 17.9 |
| Virgin Australia   | 192     | 182   | 168                 | 92.3  | 169                   | 92.9  | 10            | 5.2  |
| All Airlines   | 524     | 449   | 402                 | 89.5  | 397                   | 88.4  | 75            | 14.3 |
| <b>Sydney-Hobart</b>   |         |       |                     |       |                       |       |               |      |
| Jetstar  | 549     | 470   | 410                 | 87.2  | 388                   | 82.6  | 79            | 14.4 |
| Qantas   | 120     | 111   | 107                 | 96.4  | 108                   | 97.3  | 9             | 7.5  |
| QantasLink   | 290     | 257   | 206                 | 80.2  | 200                   | 77.8  | 33            | 11.4 |
| Virgin Australia   | 420     | 390   | 363                 | 93.1  | 355                   | 91.0  | 30            | 7.1  |
| All Airlines   | 1 379   | 1 228 | 1 086               | 88.4  | 1 051                 | 85.6  | 151           | 10.9 |



|   | <i>Sectors</i> |              | <i>Arrivals<br/>On Time</i> |          | <i>Departures<br/>On Time</i> |          | <i>Cancellations</i> |          |
|---|----------------|--------------|-----------------------------|----------|-------------------------------|----------|----------------------|----------|
|   | <i>Sched.</i>  | <i>Flown</i> | <i>No.</i>                  | <i>%</i> | <i>No.</i>                    | <i>%</i> | <i>No.</i>           | <i>%</i> |
| <b>Sydney-Launceston</b>  |                |              |                             |          |                               |          |                      |          |
| Jetstar   | 354            | 315          | 256                         | 81.3     | 253                           | 80.3     | 39                   | 11.0     |
| QantasLink  | 122            | 111          | 97                          | 87.4     | 89                            | 80.2     | 11                   | 9.0      |
| Virgin Australia  | 263            | 256          | 228                         | 89.1     | 222                           | 86.7     | 7                    | 2.7      |
| All Airlines  | 739            | 682          | 581                         | 85.2     | 564                           | 82.7     | 57                   | 7.7      |
| <b>Sydney-Melbourne</b>   |                |              |                             |          |                               |          |                      |          |
| Jetstar   | 2 339          | 1 676        | 1 460                       | 87.1     | 1 346                         | 80.3     | 663                  | 28.3     |
| Qantas  | 4 668          | 3 595        | 3 327                       | 92.5     | 3 248                         | 90.3     | 1 073                | 23.0     |
| Rex Airlines  | 882            | 695          | 635                         | 91.4     | 637                           | 91.7     | 187                  | 21.2     |
| Virgin Australia  | 3 460          | 2 717        | 2 340                       | 86.1     | 2 131                         | 78.4     | 743                  | 21.5     |
| All Airlines  | 11 349         | 8 683        | 7 762                       | 89.4     | 7 362                         | 84.8     | 2 666                | 23.5     |
| <b>Sydney-Perth</b>   |                |              |                             |          |                               |          |                      |          |
| Jetstar   | 185            | 141          | 115                         | 81.6     | 95                            | 67.4     | 44                   | 23.8     |
| Qantas  | 866            | 796          | 588                         | 73.9     | 606                           | 76.1     | 70                   | 8.1      |
| Virgin Australia  | 470            | 436          | 370                         | 84.9     | 350                           | 80.3     | 34                   | 7.2      |
| All Airlines  | 1 521          | 1 373        | 1 073                       | 78.2     | 1 051                         | 76.5     | 148                  | 9.7      |
| <b>Sydney-Port Macquarie</b> (March 2021 to July 2021, November 2021 and December 2021) |                |              |                             |          |                               |          |                      |          |
| QantasLink  | 645            | 563          | 495                         | 87.9     | 483                           | 85.8     | 82                   | 12.7     |
| Rex Airlines  | 375            | 363          | 326                         | 89.8     | 320                           | 88.2     | 12                   | 3.2      |
| All Airlines  | 1 020          | 926          | 821                         | 88.7     | 803                           | 86.7     | 94                   | 9.2      |
| <b>Sydney-Sunshine Coast</b> (January 2021 to July 2021 and December 2021)              |                |              |                             |          |                               |          |                      |          |
| Jetstar   | 452            | 388          | 324                         | 83.5     | 328                           | 84.5     | 64                   | 14.2     |
| Qantas  | 37             | 32           | 30                          | 93.8     | 31                            | 96.9     | 5                    | 13.5     |
| QantasLink  | 311            | 276          | 197                         | 71.4     | 212                           | 76.8     | 35                   | 11.3     |
| Virgin Australia  | 379            | 345          | 284                         | 82.3     | 298                           | 86.4     | 34                   | 9.0      |
| All Airlines  | 1 179          | 1 041        | 835                         | 80.2     | 869                           | 83.5     | 138                  | 11.7     |
| <b>Sydney-Townsville</b> (June 2021 only)   |                |              |                             |          |                               |          |                      |          |
| Jetstar   | 27             | 19           | 16                          | 84.2     | 15                            | 78.9     | 8                    | 29.6     |
| Virgin Australia  | 4              | 4            | 3                           | 75.0     | 4                             | 100.0    | 0                    | 0.0      |
| All Airlines  | 31             | 23           | 19                          | 82.6     | 19                            | 82.6     | 8                    | 25.8     |
| <b>Sydney-Wagga Wagga</b>   |                |              |                             |          |                               |          |                      |          |
| QantasLink  | 810            | 746          | 676                         | 90.6     | 655                           | 87.8     | 64                   | 7.9      |
| Rex Airlines  | 398            | 390          | 344                         | 88.2     | 339                           | 86.9     | 8                    | 2.0      |
| All Airlines  | 1 208          | 1 136        | 1 020                       | 89.8     | 994                           | 87.5     | 72                   | 6.0      |
| <b>Townsville-Brisbane</b>  |                |              |                             |          |                               |          |                      |          |
| Jetstar   | 672            | 657          | 532                         | 81.0     | 522                           | 79.5     | 15                   | 2.2      |
| Qantas  | 1 302          | 1 235        | 1 065                       | 86.2     | 1 097                         | 88.8     | 67                   | 5.1      |
| QantasLink  | 17             | 14           | 8                           | 57.1     | 14                            | 100.0    | 3                    | 17.6     |
| Virgin Australia  | 1 157          | 1 074        | 952                         | 88.6     | 892                           | 83.1     | 83                   | 7.2      |
| All Airlines  | 3 148          | 2 980        | 2 557                       | 85.8     | 2 525                         | 84.7     | 168                  | 5.3      |
| <b>Townsville-Cairns</b>  |                |              |                             |          |                               |          |                      |          |
| QantasLink  | 1 349          | 1 323        | 1 213                       | 91.7     | 1 174                         | 88.7     | 26                   | 1.9      |
| Rex Airlines  | 173            | 169          | 157                         | 92.9     | 157                           | 92.9     | 4                    | 2.3      |
| All Airlines  | 1 522          | 1 492        | 1 370                       | 91.8     | 1 331                         | 89.2     | 30                   | 2.0      |
| <b>Townsville-Sydney</b> (June 2021 only)   |                |              |                             |          |                               |          |                      |          |
| Jetstar   | 27             | 24           | 21                          | 87.5     | 20                            | 83.3     | 3                    | 11.1     |
| Virgin Australia  | 4              | 4            | 3                           | 75.0     | 4                             | 100.0    | 0                    | 0.0      |
| All Airlines  | 31             | 28           | 24                          | 85.7     | 24                            | 85.7     | 3                    | 9.7      |

|                           | <i>Sectors</i> |              | <i>Arrivals<br/>On Time</i> |          | <i>Departures<br/>On Time</i> |          | <i>Cancellations</i> |          |
|---------------------------|----------------|--------------|-----------------------------|----------|-------------------------------|----------|----------------------|----------|
|                           | <i>Sched.</i>  | <i>Flown</i> | <i>No.</i>                  | <i>%</i> | <i>No.</i>                    | <i>%</i> | <i>No.</i>           | <i>%</i> |
| <b>Wagga Wagga-Sydney</b> |                |              |                             |          |                               |          |                      |          |
| QantasLink                | 806            | 745          | 687                         | 92.2     | 678                           | 91.0     | 61                   | 7.6      |
| Rex Airlines              | 406            | 397          | 346                         | 87.2     | 358                           | 90.2     | 9                    | 2.2      |
| All Airlines              | 1 212          | 1 142        | 1 033                       | 90.5     | 1 036                         | 90.7     | 70                   | 5.8      |

## Airports

The following data reports by airport against flights operated on published routes only. Some routes were not reported on for all months in 2021 - refer to "Individual Routes" for information on periods of operation. In 2021, 8 major city airports and 28 regional city airports are covered.

| Airport                            | Arrivals |         |      | Departures |         |      |
|------------------------------------|----------|---------|------|------------|---------|------|
|                                    | Sectors  | On Time |      | Sectors    | On Time |      |
|                                    | Flown    | No.     | %    | Flown      | No.     | %    |
| <b>Adelaide</b>                    |          |         |      |            |         |      |
| Jetstar                            | 2 068    | 1 802   | 87.1 | 2 067      | 1 839   | 89.0 |
| Qantas                             | 4 384    | 3 903   | 89.0 | 4 378      | 3 943   | 90.1 |
| QantasLink                         | 1 138    | 964     | 84.7 | 1 141      | 985     | 86.3 |
| Rex Airlines                       | 1 976    | 1 668   | 84.4 | 1 976      | 1 781   | 90.1 |
| Virgin Australia                   | 3 713    | 3 308   | 89.1 | 3 710      | 3 214   | 86.6 |
| Virgin Australia Regional Airlines | 45       | 41      | 91.1 | 45         | 35      | 77.8 |
| All Airlines                       | 13 324   | 11 686  | 87.7 | 13 317     | 11 797  | 88.6 |

Relates to services to and from Alice Springs, Brisbane, Canberra, Gold Coast, Melbourne, Perth, Port Lincoln and Sydney only.

### Albury

|              |       |       |      |       |       |      |
|--------------|-------|-------|------|-------|-------|------|
| QantasLink   | 743   | 682   | 91.8 | 740   | 650   | 87.8 |
| Rex Airlines | 383   | 348   | 90.9 | 375   | 353   | 94.1 |
| All Airlines | 1 126 | 1 030 | 91.5 | 1 115 | 1 003 | 90.0 |

Relates to services to and from Sydney only.

### Alice Springs

|                  |     |     |      |     |     |      |
|------------------|-----|-----|------|-----|-----|------|
| Qantas           | 259 | 230 | 88.8 | 259 | 200 | 77.2 |
| QantasLink       | 124 | 83  | 66.9 | 123 | 62  | 50.4 |
| Virgin Australia | 161 | 135 | 83.9 | 161 | 133 | 82.6 |
| All Airlines     | 544 | 448 | 82.4 | 543 | 395 | 72.7 |

Relates to services to and from Adelaide only.

### Armidale

|              |     |     |      |     |     |      |
|--------------|-----|-----|------|-----|-----|------|
| QantasLink   | 564 | 458 | 81.2 | 559 | 456 | 81.6 |
| Rex Airlines | 294 | 227 | 77.2 | 294 | 229 | 77.9 |
| All Airlines | 858 | 685 | 79.8 | 853 | 685 | 80.3 |

Relates to services to and from Sydney only.

### Ballina

|                  |       |       |      |       |       |      |
|------------------|-------|-------|------|-------|-------|------|
| Jetstar          | 726   | 619   | 85.3 | 725   | 541   | 74.6 |
| Qantas           | 112   | 99    | 88.4 | 112   | 93    | 83.0 |
| QantasLink       | 686   | 526   | 76.7 | 679   | 534   | 78.6 |
| Rex Airlines     | 121   | 108   | 89.3 | 122   | 99    | 81.1 |
| Virgin Australia | 521   | 461   | 88.5 | 519   | 434   | 83.6 |
| All Airlines     | 2 166 | 1 813 | 83.7 | 2 157 | 1 701 | 78.9 |

Relates to services to and from Sydney only.

### Brisbane

|                  |        |        |      |        |        |      |
|------------------|--------|--------|------|--------|--------|------|
| Jetstar          | 5 517  | 4 553  | 82.5 | 5 517  | 4 527  | 82.1 |
| Qantas           | 10 984 | 9 508  | 86.6 | 11 012 | 10 115 | 91.9 |
| QantasLink       | 6 501  | 5 749  | 88.4 | 6 489  | 5 916  | 91.2 |
| Virgin Australia | 12 726 | 11 182 | 87.9 | 12 749 | 10 733 | 84.2 |
| All Airlines     | 35 728 | 30 992 | 86.7 | 35 767 | 31 291 | 87.5 |

Relates to services to and from Adelaide, Cairns, Canberra, Darwin, Emerald, Gladstone, Hamilton Island, Hobart, Mackay, Melbourne, Mount Isa, Newcastle, Perth, Proserpine, Rockhampton, Sydney and Townsville only.

| Airport  | Arrivals   |         |       | Departures |         |      |
|--|--|---------|-------|------------|---------|------|
|  | Sectors  | On Time |       | Sectors    | On Time |      |
|  | Flown  | No.     | %     | Flown      | No.     | %    |
| <b>Broome</b>  |  |         |       |            |         |      |
| Qantas   | 274  | 263     | 96.0  | 274        | 239     | 87.2 |
| QantasLink   | 800  | 652     | 81.5  | 797        | 636     | 79.8 |
| Virgin Australia   | 430  | 396     | 92.1  | 430        | 334     | 77.7 |
| Virgin Australia Regional Airlines   | 150  | 132     | 88.0  | 150        | 101     | 67.3 |
| All Airlines   | 1 654  | 1 443   | 87.2  | 1 651      | 1 310   | 79.3 |
| Relates to services to and from Perth only.                                      |  |         |       |            |         |      |
| <b>Cairns</b>  |  |         |       |            |         |      |
| Jetstar  | 2 187  | 1 798   | 82.2  | 2 183      | 1 843   | 84.4 |
| Qantas   | 1 976  | 1 731   | 87.6  | 1 973      | 1 794   | 90.9 |
| QantasLink   | 1 451  | 1 321   | 91.0  | 1 461      | 1 302   | 89.1 |
| Rex Airlines   | 169  | 157     | 92.9  | 169        | 157     | 92.9 |
| Virgin Australia   | 2 152  | 1 865   | 86.7  | 2 149      | 1 863   | 86.7 |
| All Airlines   | 7 935  | 6 872   | 86.6  | 7 935      | 6 959   | 87.7 |
| Relates to services to and from Brisbane, Melbourne, Sydney and Townsville only. |  |         |       |            |         |      |
| <b>Canberra</b>  |  |         |       |            |         |      |
| Qantas   | 721  | 659     | 91.4  | 718        | 647     | 90.1 |
| QantasLink   | 3 239  | 2 700   | 83.4  | 3 214      | 2 709   | 84.3 |
| Rex Airlines   | 640  | 494     | 77.2  | 635        | 544     | 85.7 |
| Virgin Australia   | 1 425  | 1 278   | 89.7  | 1 427      | 1 205   | 84.4 |
| All Airlines   | 6 025  | 5 131   | 85.2  | 5 994      | 5 105   | 85.2 |
| Relates to services to and from Adelaide, Brisbane, Melbourne and Sydney only.   |  |         |       |            |         |      |
| <b>Coffs Harbour</b>   |  |         |       |            |         |      |
|  | (January 2021 to July 2021, November 2021 and December 2021) |         |       |            |         |      |
| QantasLink   | 815  | 702     | 86.1  | 814        | 706     | 86.7 |
| Rex Airlines   | 393  | 361     | 91.9  | 391        | 359     | 91.8 |
| Virgin Australia   | 111  | 93      | 83.8  | 111        | 88      | 79.3 |
| All Airlines   | 1 319  | 1 156   | 87.6  | 1 316      | 1 153   | 87.6 |
| Relates to services to and from Sydney only.                                     |  |         |       |            |         |      |
| <b>Darwin</b>  |  |         |       |            |         |      |
| Jetstar  | 292  | 219     | 75.0  | 291        | 173     | 59.5 |
| Qantas   | 1 051  | 861     | 81.9  | 1 031      | 788     | 76.4 |
| QantasLink   | 5  | 5       | 100.0 | 5          | 3       | 60.0 |
| Virgin Australia   | 588  | 514     | 87.4  | 588        | 430     | 73.1 |
| Virgin Australia Regional Airlines   | 119  | 104     | 87.4  | 118        | 83      | 70.3 |
| All Airlines   | 2 055  | 1 703   | 82.9  | 2 033      | 1 477   | 72.7 |
| Relates to services to and from Brisbane, Melbourne and Perth only.              |  |         |       |            |         |      |
| <b>Dubbo</b>   |  |         |       |            |         |      |
| QantasLink   | 681  | 618     | 90.7  | 677        | 598     | 88.3 |
| Rex Airlines   | 540  | 476     | 88.1  | 538        | 474     | 88.1 |
| All Airlines   | 1 221  | 1 094   | 89.6  | 1 215      | 1 072   | 88.2 |
| Relates to services to and from Sydney only.                                     |  |         |       |            |         |      |
| <b>Emerald</b>   |  |         |       |            |         |      |
| QantasLink   | 1 324  | 1 230   | 92.9  | 1 321      | 1 227   | 92.9 |
| Virgin Australia   | 293  | 272     | 92.8  | 294        | 269     | 91.5 |
| All Airlines   | 1 617  | 1 502   | 92.9  | 1 615      | 1 496   | 92.6 |
| Relates to services to and from Brisbane only.                                   |  |         |       |            |         |      |

| Airport  | Arrivals   |         |      | Departures       |         |      |
|--|--|---------|------|------------------|---------|------|
|  | Sectors<br>Flown                                   | On Time |      | Sectors<br>Flown | On Time |      |
|  |  | No.     | %    |                  | No.     | %    |
| <b>Gladstone</b>   |  |         |      |                  |         |      |
| QantasLink   | 1 175  | 1 082   | 92.1 | 1 174            | 1 053   | 89.7 |
| Virgin Australia   | 553  | 507     | 91.7 | 553              | 512     | 92.6 |
| All Airlines   | 1 728  | 1 589   | 92.0 | 1 727            | 1 565   | 90.6 |
| Relates to services to and from Brisbane only.                       |  |         |      |                  |         |      |
| <b>Gold Coast</b>  | (January 2021 to September 2021 and December 2021) |         |      |                  |         |      |
| Jetstar  | 2 525  | 2 153   | 85.3 | 2 527            | 2 179   | 86.2 |
| Qantas   | 888  | 801     | 90.2 | 884              | 779     | 88.1 |
| QantasLink   | 41   | 30      | 73.2 | 41               | 27      | 65.9 |
| Rex Airlines   | 426  | 348     | 81.7 | 425              | 349     | 82.1 |
| Virgin Australia   | 2 597  | 2 203   | 84.8 | 2 589            | 2 092   | 80.8 |
| All Airlines   | 6 477  | 5 535   | 85.5 | 6 466            | 5 426   | 83.9 |
| Relates to services to and from Adelaide, Melbourne and Sydney only. |  |         |      |                  |         |      |
| <b>Hamilton Island</b>   |  |         |      |                  |         |      |
| Jetstar  | 97   | 81      | 83.5 | 97               | 69      | 71.1 |
| Qantas   | 582  | 501     | 86.1 | 581              | 489     | 84.2 |
| QantasLink   | 25   | 23      | 92.0 | 25               | 22      | 88.0 |
| Virgin Australia   | 677  | 618     | 91.3 | 676              | 582     | 86.1 |
| All Airlines   | 1 381  | 1 223   | 88.6 | 1 379            | 1 162   | 84.3 |
| Relates to services to and from Brisbane and Sydney only.            |  |         |      |                  |         |      |
| <b>Hobart</b>  |  |         |      |                  |         |      |
| Jetstar  | 1 852  | 1 632   | 88.1 | 1 851            | 1 541   | 83.3 |
| Qantas   | 195  | 187     | 95.9 | 195              | 168     | 86.2 |
| QantasLink   | 1 142  | 887     | 77.7 | 1 133            | 914     | 80.7 |
| Virgin Australia   | 1 474  | 1 335   | 90.6 | 1 471            | 1 252   | 85.1 |
| All Airlines   | 4 663  | 4 041   | 86.7 | 4 650            | 3 875   | 83.3 |
| Relates to services to and from Brisbane, Melbourne and Sydney only. |  |         |      |                  |         |      |
| <b>Kalgoorlie</b>  |  |         |      |                  |         |      |
| Qantas   | 147  | 134     | 91.2 | 146              | 113     | 77.4 |
| QantasLink   | 707  | 587     | 83.0 | 701              | 560     | 79.9 |
| Virgin Australia   | 287  | 272     | 94.8 | 287              | 170     | 59.2 |
| Virgin Australia Regional Airlines                                   | 388  | 346     | 89.2 | 388              | 317     | 81.7 |
| All Airlines   | 1 529  | 1 339   | 87.6 | 1 522            | 1 160   | 76.2 |
| Relates to services to and from Perth only.                          |  |         |      |                  |         |      |
| <b>Karratha</b>  |  |         |      |                  |         |      |
| Qantas   | 372  | 344     | 92.5 | 369              | 332     | 90.0 |
| QantasLink   | 1 213  | 960     | 79.1 | 1 216            | 995     | 81.8 |
| Virgin Australia   | 423  | 386     | 91.3 | 422              | 339     | 80.3 |
| Virgin Australia Regional Airlines                                   | 211  | 176     | 83.4 | 212              | 144     | 67.9 |
| All Airlines   | 2 219  | 1 866   | 84.1 | 2 219            | 1 810   | 81.6 |
| Relates to services to and from Perth only.                          |  |         |      |                  |         |      |
| <b>Launceston</b>  |  |         |      |                  |         |      |
| Jetstar  | 947  | 800     | 84.5 | 948              | 770     | 81.2 |
| QantasLink   | 657  | 531     | 80.8 | 647              | 534     | 82.5 |
| Virgin Australia   | 757  | 657     | 86.8 | 758              | 685     | 90.4 |
| All Airlines   | 2 361  | 1 988   | 84.2 | 2 353            | 1 989   | 84.5 |
| Relates to services to and from Melbourne and Sydney only.           |  |         |      |                  |         |      |

| Airport          | Arrivals |         |      | Departures |         |      |
|------------------|----------|---------|------|------------|---------|------|
|                  | Sectors  | On Time |      | Sectors    | On Time |      |
|                  | Flown    | No.     | %    | Flown      | No.     | %    |
| <b>Mackay</b>    |          |         |      |            |         |      |
| Jetstar          | 351      | 309     | 88.0 | 349        | 293     | 84.0 |
| Qantas           | 969      | 873     | 90.1 | 963        | 867     | 90.0 |
| QantasLink       | 229      | 203     | 88.6 | 266        | 244     | 91.7 |
| Virgin Australia | 1 060    | 929     | 87.6 | 1 059      | 934     | 88.2 |
| All Airlines     | 2 609    | 2 314   | 88.7 | 2 637      | 2 338   | 88.7 |

Relates to services to and from Brisbane only.

### Melbourne

|                  |        |        |      |        |        |      |
|------------------|--------|--------|------|--------|--------|------|
| Jetstar          | 7 762  | 6 656  | 85.8 | 7 775  | 6 382  | 82.1 |
| Qantas           | 7 725  | 6 924  | 89.6 | 7 810  | 7 085  | 90.7 |
| QantasLink       | 3 638  | 2 889  | 79.4 | 3 657  | 2 908  | 79.5 |
| Rex Airlines     | 1 598  | 1 392  | 87.1 | 1 609  | 1 396  | 86.8 |
| Virgin Australia | 9 522  | 8 014  | 84.2 | 9 512  | 8 123  | 85.4 |
| All Airlines     | 30 245 | 25 875 | 85.6 | 30 363 | 25 894 | 85.3 |

Relates to services to and from Adelaide, Brisbane, Cairns, Canberra, Darwin, Gold Coast, Hobart, Launceston, Mildura, Newcastle, Perth, Sunshine Coast and Sydney only.

### Mildura

|              |       |       |      |       |       |      |
|--------------|-------|-------|------|-------|-------|------|
| QantasLink   | 812   | 637   | 78.4 | 810   | 613   | 75.7 |
| Rex Airlines | 460   | 392   | 85.2 | 460   | 419   | 91.1 |
| All Airlines | 1 272 | 1 029 | 80.9 | 1 270 | 1 032 | 81.3 |

Relates to services to and from Melbourne only.

### Mount Isa

|                  |     |     |      |     |     |      |
|------------------|-----|-----|------|-----|-----|------|
| Qantas           | 441 | 405 | 91.8 | 438 | 390 | 89.0 |
| QantasLink       | 149 | 131 | 87.9 | 147 | 135 | 91.8 |
| Virgin Australia | 181 | 159 | 87.8 | 181 | 161 | 89.0 |
| All Airlines     | 771 | 695 | 90.1 | 766 | 686 | 89.6 |

Relates to services to and from Brisbane only.

### Newcastle

|                  |       |       |      |       |       |      |
|------------------|-------|-------|------|-------|-------|------|
| Jetstar          | 909   | 777   | 85.5 | 904   | 759   | 84.0 |
| QantasLink       | 710   | 581   | 81.8 | 712   | 613   | 86.1 |
| Virgin Australia | 638   | 586   | 91.8 | 639   | 584   | 91.4 |
| All Airlines     | 2 257 | 1 944 | 86.1 | 2 255 | 1 956 | 86.7 |

Relates to services to and from Brisbane and Melbourne only.

### Newman

|                                    |       |       |      |       |       |      |
|------------------------------------|-------|-------|------|-------|-------|------|
| Qantas                             | 248   | 229   | 92.3 | 246   | 182   | 74.0 |
| QantasLink                         | 1 063 | 957   | 90.0 | 1 056 | 861   | 81.5 |
| Virgin Australia                   | 453   | 413   | 91.2 | 452   | 341   | 75.4 |
| Virgin Australia Regional Airlines | 210   | 194   | 92.4 | 210   | 180   | 85.7 |
| All Airlines                       | 1 974 | 1 793 | 90.8 | 1 964 | 1 564 | 79.6 |

Relates to services to and from Perth only.

### Perth

|                                    |        |        |      |        |        |      |
|------------------------------------|--------|--------|------|--------|--------|------|
| Jetstar                            | 537    | 463    | 86.2 | 532    | 323    | 60.7 |
| Qantas                             | 4 881  | 3 892  | 79.7 | 4 893  | 4 259  | 87.0 |
| QantasLink                         | 4 674  | 3 717  | 79.5 | 4 694  | 4 075  | 86.8 |
| Virgin Australia                   | 3 593  | 2 933  | 81.6 | 3 599  | 2 966  | 82.4 |
| Virgin Australia Regional Airlines | 1 650  | 1 309  | 79.3 | 1 653  | 1 495  | 90.4 |
| All Airlines                       | 15 335 | 12 314 | 80.3 | 15 371 | 13 118 | 85.3 |

Relates to services to and from Adelaide, Brisbane, Broome, Darwin, Kalgoorlie, Karratha, Melbourne, Newman, Port Hedland and Sydney only.

| Airport  | Arrivals |         |      | Departures |         |      |
|--|----------|---------|------|------------|---------|------|
|  | Sectors  | On Time |      | Sectors    | On Time |      |
|  | Flown    | No.     | %    | Flown      | No.     | %    |
| <b>Port Hedland</b>  |          |         |      |            |         |      |
| Qantas   | 496      | 455     | 91.7 | 493        | 422     | 85.6 |
| QantasLink   | 906      | 737     | 81.3 | 899        | 726     | 80.8 |
| Virgin Australia   | 90       | 77      | 85.6 | 89         | 49      | 55.1 |
| Virgin Australia Regional Airlines   | 530      | 482     | 90.9 | 527        | 407     | 77.2 |
| All Airlines   | 2 022    | 1 751   | 86.6 | 2 008      | 1 604   | 79.9 |
| Relates to services to and from Perth only.  |          |         |      |            |         |      |
| <b>Port Lincoln</b>  |          |         |      |            |         |      |
| QantasLink   | 972      | 872     | 89.7 | 970        | 859     | 88.6 |
| Rex Airlines   | 1 748    | 1 536   | 87.9 | 1 749      | 1 490   | 85.2 |
| All Airlines   | 2 720    | 2 408   | 88.5 | 2 719      | 2 349   | 86.4 |
| Relates to services to and from Adelaide only.   |          |         |      |            |         |      |
| <b>Port Macquarie</b>  |          |         |      |            |         |      |
| (March 2021 to July 2021, November 2021 and December 2021)   |          |         |      |            |         |      |
| QantasLink   | 563      | 495     | 87.9 | 566        | 513     | 90.6 |
| Rex Airlines   | 363      | 326     | 89.8 | 364        | 331     | 90.9 |
| All Airlines   | 926      | 821     | 88.7 | 930        | 844     | 90.8 |
| Relates to services to and from Sydney only.   |          |         |      |            |         |      |
| <b>Proserpine</b>  |          |         |      |            |         |      |
| Jetstar  | 409      | 323     | 79.0 | 410        | 312     | 76.1 |
| QantasLink   | 133      | 126     | 94.7 | 131        | 118     | 90.1 |
| Virgin Australia   | 470      | 417     | 88.7 | 470        | 375     | 79.8 |
| All Airlines   | 1 012    | 866     | 85.6 | 1 011      | 805     | 79.6 |
| Relates to services to and from Brisbane only.   |          |         |      |            |         |      |
| <b>Rockhampton</b>   |          |         |      |            |         |      |
| QantasLink   | 1 641    | 1 483   | 90.4 | 1 634      | 1 410   | 86.3 |
| Virgin Australia   | 997      | 820     | 82.2 | 996        | 865     | 86.8 |
| All Airlines   | 2 638    | 2 303   | 87.3 | 2 630      | 2 275   | 86.5 |
| Relates to services to and from Brisbane only.   |          |         |      |            |         |      |
| <b>Sunshine Coast</b>  |          |         |      |            |         |      |
| (January 2021 to August 2021 and December 2021)  |          |         |      |            |         |      |
| Jetstar  | 863      | 689     | 79.8 | 855        | 664     | 77.7 |
| Qantas   | 62       | 59      | 95.2 | 62         | 58      | 93.5 |
| QantasLink   | 525      | 383     | 73.0 | 521        | 402     | 77.2 |
| Virgin Australia   | 801      | 697     | 87.0 | 799        | 645     | 80.7 |
| All Airlines   | 2 251    | 1 828   | 81.2 | 2 237      | 1 769   | 79.1 |
| Relates to services to and from Melbourne and Sydney only.   |          |         |      |            |         |      |
| <b>Sydney</b>  |          |         |      |            |         |      |
| Jetstar  | 6 836    | 5 829   | 85.3 | 6 845      | 5 689   | 83.1 |
| Qantas   | 9 269    | 8 262   | 89.1 | 9 203      | 8 144   | 88.5 |
| QantasLink   | 6 513    | 5 567   | 85.5 | 6 551      | 5 566   | 85.0 |
| Rex Airlines   | 4 031    | 3 498   | 86.8 | 4 028      | 3 524   | 87.5 |
| Virgin Australia   | 8 843    | 7 669   | 86.7 | 8 846      | 7 441   | 84.1 |
| All Airlines   | 35 492   | 30 825  | 86.9 | 35 473     | 30 364  | 85.6 |
| Relates to services to and from Adelaide, Albury, Armidale, Ballina, Brisbane, Cairns, Canberra, Coffs Harbour, Dubbo, Gold Coast, Hamilton Island, Hobart, Launceston, Melbourne, Perth, Port Macquarie, Sunshine Coast, Townsville and Wagga Wagga only. |          |         |      |            |         |      |

| <i>Airport</i>    | <i>Arrivals</i> |                |          | <i>Departures</i> |                |          |
|-------------------|-----------------|----------------|----------|-------------------|----------------|----------|
|                   | <i>Sectors</i>  | <i>On Time</i> |          | <i>Sectors</i>    | <i>On Time</i> |          |
|                   | <i>Flown</i>    | <i>No.</i>     | <i>%</i> | <i>Flown</i>      | <i>No.</i>     | <i>%</i> |
| <b>Townsville</b> |                 |                |          |                   |                |          |
| Jetstar           | 679             | 560            | 82.5     | 681               | 542            | 79.6     |
| Qantas            | 1 239           | 1 083          | 87.4     | 1 235             | 1 097          | 88.8     |
| QantasLink        | 1 348           | 1 220          | 90.5     | 1 337             | 1 188          | 88.9     |
| Rex Airlines      | 169             | 156            | 92.3     | 169               | 157            | 92.9     |
| Virgin Australia  | 1 078           | 924            | 85.7     | 1 078             | 896            | 83.1     |
| All Airlines      | 4 513           | 3 943          | 87.4     | 4 500             | 3 880          | 86.2     |

Relates to services to and from Brisbane, Cairns and Sydney only.

**Wagga Wagga**

|              |       |       |      |       |       |      |
|--------------|-------|-------|------|-------|-------|------|
| QantasLink   | 746   | 676   | 90.6 | 745   | 678   | 91.0 |
| Rex Airlines | 390   | 344   | 88.2 | 397   | 358   | 90.2 |
| All Airlines | 1 136 | 1 020 | 89.8 | 1 142 | 1 036 | 90.7 |

Relates to services to and from Sydney only.



## Definitions

---

|                              |  |
|------------------------------|--|
| On time arrival              | A flight arrival is counted as "on time" if it arrived at the gate before 15 minutes after the scheduled arrival time shown in the carriers' schedule.<br>Neither diverted nor cancelled flights count as on time. |
| On time departure            | A flight departure is counted as "on time" if it departs the gate before 15 minutes after the scheduled departure time shown in the carriers' schedule.  |
| Cancellation                 | A flight removed from service within 7 days of scheduled departure is regarded as a cancellation.  |
| On time departure percentage | The percentage of on time departures is measured against the number of departures <i>operated</i> on any particular sector.  |
| On time arrival percentage   | The percentage of on time arrivals is measured against the number of arrivals <i>operated</i> on any particular sector.  |
| Cancellation percentage      | The percentage of cancellations is measured against the number of services <i>scheduled</i> on any particular sector.  |

---