



Australian Government

Department of Infrastructure, Transport, Regional Development and Communications

Bureau of Infrastructure and Transport Research Economics

STATISTICAL REPORT



Aviation

Domestic airline on time performance
December 2021

© Commonwealth of Australia 2022

ISSN: 1832-0759

Ownership of intellectual property rights in this publication

Unless otherwise noted, copyright (and any other intellectual property rights, if any) in this publication is owned by the Commonwealth of Australia (referred to below as the Commonwealth).

Disclaimer

The material contained in this publication is made available on the understanding that the Commonwealth is not providing professional advice, and that users exercise their own skill and care with respect to its use, and seek independent advice if necessary.

The Commonwealth makes no representations or warranties as to the contents or accuracy of the information contained in this publication. To the extent permitted by law, the Commonwealth disclaims liability to any person or organisation in respect of anything done, or omitted to be done, in reliance upon information contained in this publication.

Creative Commons licence

With the exception of (a) the Coat of Arms; and (b) the Department of Infrastructure, Transport, Regional Development and Communications' photos and graphics, copyright in this publication is licensed under a Creative Commons Attribution 3.0 Australia Licence.

Creative Commons Attribution 3.0 Australia Licence is a standard form licence agreement that allows you to copy, communicate and adapt this publication provided that you attribute the work to the Commonwealth and abide by the other licence terms. A summary of the licence terms is available from <http://creativecommons.org/licenses/by/3.0/au/deed.en>. The full licence terms are available from <http://creativecommons.org/licenses/by/3.0/au/legalcode>.

Use of the Coat of Arms

The Department of the Prime Minister and Cabinet sets the terms under which the Coat of Arms is used. Please refer to the Department's Commonwealth Coat of Arms and Government branding web page <http://www.dpmc.gov.au/guidelines/index.cfm#brand> and, in particular, the Guidelines on the use of the Commonwealth Coat of Arms publication.

An appropriate citation for this report is:

Bureau of Infrastructure and Transport Research Economics (BITRE), 2022, Domestic airline on time performance, Statistical Report, BITRE, Canberra ACT.

Contact us

This publication is available in PDF format. All other rights are reserved, including in relation to any Departmental logos or trade marks which may exist. For enquiries regarding the licence and any use of this publication, please contact:

Bureau of Infrastructure and Transport Research Economics (BITRE)
Department of Infrastructure, Transport, Regional Development and Communications
GPO Box 501, Canberra ACT 2601, Australia
Telephone: (international) +61 2 6274 7210
Fax: (international) +61 2 6274 6855
Email: bitre@infrastructure.gov.au
Website: www.bitre.gov.au

Inquiries

Should you require additional information about the statistics contained in this publication:

Telephone (02) 6274 7790 or Facsimile (02) 6274 7727

Electronic mail: AVSTATS@infrastructure.gov.au

Web site: <http://www.bitre.gov.au/statistics/aviation/otphome.aspx>

Foreword

The Bureau of Infrastructure and Transport Research Economics (BITRE) monitors the punctuality and reliability of major domestic airlines operating between Australian airports. The purpose of this is to allow for evaluation of overall industry and individual airline performance, so that consumers of air travel can make informed decisions.

The following domestic airlines currently report this information monthly to the BITRE: Jetstar, Qantas, QantasLink, Rex Airlines, Virgin Australia and Virgin Australia Regional Airlines.

Data has been gathered since November 2003, although some airlines commenced reporting at a later date, including Jetstar which first reported in May 2004, MacAir in July 2005, Tigerair Australia in April 2008 and Virgin Australia Regional Airlines in May 2013. MacAir ceased operations in February 2009 and data was not received for December 2008 onwards. Tigerair Australia ceased operations in March 2020 and data was not received for that month.

Virgin Blue was rebranded as Virgin Australia in May 2011 and Tiger Airways was rebranded as Tigerair Australia in July 2013 and time series data in Microsoft Excel spread sheet format on the BITRE website have been revised to reflect these changes. With effect from July 2021, Regional Express is reported as Rex Airlines.

Services operated by Skywest on behalf of Virgin Australia using ATR/F100 aircraft commenced in November 2011 and were shown separately as Virgin Australia – ATR/F100 Operations. Virgin Australia Regional Airlines commenced operations in May 2013. It was formed after the acquisition of Skywest by Virgin Australia and represented a combination of operations previously reported under Skywest and Virgin Australia – ATR/F100 Operations. In January 2016, Virgin Australia transferred their ATR fleet from Virgin Australia Regional Airlines to Virgin Australia.

Information presented in this report is for Australian domestic routes for which the passenger load averaged 8 000 or more passengers per month over the previous six months and where two or more airlines operated in competition on those routes. In order to present data for more routes during the period impacted by COVID-19, the passenger load restriction is not being applied. Data are presented for 57 routes in December 2021. Over time, routes which meet these criteria change as airline networks and traffic levels vary.

Participating airlines report their overall monthly network performance where this is possible.

Total industry figures encompass all services operated by reporting airlines only. These airlines collectively carried over 95 per cent of total domestic passengers (regular public transport only) in 2019.

The method of capturing on time performance varies between airlines utilising different recording systems. Jetstar and Qantas jet aircraft use Aircraft Communication Addressing and Reporting System (ACARS) to electronically measure on time performance. Rex Airlines, Virgin Australia, Virgin Australia Regional Airlines and the Qantas non-jet fleet record on time performance manually using records from pilots, gate agents and/or ground crews.

After initial data is collected, aggregate reports are reviewed by participating airlines prior to publication.

Reports and detailed time series data in Microsoft Excel spreadsheet format are available from the BITRE website at: <http://www.bitre.gov.au/statistics/aviation/otphome.aspx>

Contents

	Page
Industry performance	1
Individual routes	9
Airports.....	21
Definitions	27

Industry performance

For December 2021, on time performance over all routes operated by participating airlines (Jetstar, Qantas, QantasLink, REX Airlines, Virgin Australia and Virgin Australia Regional Airlines) averaged 84.2 per cent for on time arrivals and 83.2 per cent for on time departures. The cancellation rate for the month was 7.6 per cent. The equivalent figures for December 2020 were 83.1 per cent for on time arrivals, 82.4 per cent for on time departures and 9.2 per cent for cancellations.

This month's on time arrivals figure was higher than the long term average performance for all routes (82.3 per cent) and the on time departures figure was lower than the long term average (83.6 per cent). The rate of cancellations was higher than the long term average of 2.0 per cent.

The Qantas network (Qantas and QantasLink combined operations) recorded 89.2 per cent for on time arrivals while the Virgin Australia network (Virgin Australia and Virgin Australia Regional Airlines combined operations) recorded 79.6 per cent. Qantas achieved the highest on time arrivals among the major domestic airlines at 91.6 per cent followed by Virgin Australia at 79.3 per cent and Jetstar at 74.4 per cent. Of the regional airlines, REX Airlines recorded 87.8 per cent for on time arrivals, followed by QantasLink at 87.6 per cent and Virgin Australia Regional Airlines at 85.7 per cent.

The Qantas network recorded 88.9 per cent for on time departures while the Virgin Australia network recorded 77.6 per cent. Qantas achieved the highest level of on time departures among the major domestic airlines for December 2021 at 91.9 per cent, followed by Virgin Australia at 77.3 per cent and Jetstar at 70.7 per cent. Of the regional airlines, REX Airlines recorded 89.3 per cent for on time departures, followed by QantasLink at 86.9 per cent and Virgin Australia Regional Airlines at 84.9 per cent.

Virgin Australia recorded the highest percentage of cancellations (at 11.0 per cent) during the month, followed by Jetstar (at 10.4 per cent), Qantas (at 8.6 per cent), QantasLink (at 5.6 per cent), Virgin Australia Regional Airlines (at 5.5 per cent) and REX Airlines (at 0.4 per cent).

Airlines' on time performance varies across the routes they serve. Individual route data by specific airline for 57 routes are shown on pages 9-20.

Of the 57 routes which met the criteria for on time performance reporting in December 2021, the Albury-Sydney route had the highest percentage of on time arrivals (96.0 per cent) and the Adelaide-Alice Springs route had the highest percentage of on time departures (96.8 per cent). The Perth-Melbourne route had the lowest percentage of on time arrivals (58.5 per cent) and the Darwin-Brisbane route had the lowest percentage of on time departures (61.6 per cent).

Cancellations were highest on the Perth-Adelaide route at 42.0 per cent, followed by the Adelaide-Perth route at 40.3 per cent, the Darwin-Melbourne route at 25.6 per cent, the Darwin-Perth route at 25.0 per cent and the Perth-Darwin route also at 25.0 per cent. COVID-19 related requirements continue to impact the cancellation rate.

Port Hedland Airport recorded the highest percentage of on time arrivals (94.2 per cent) and Albury Airport recorded the highest percentage of on time departures (94.7 per cent). Sunshine Coast Airport recorded the lowest percentage of on time arrivals (70.2 per cent) and Proserpine Airport recorded the lowest percentage of on time departures (62.4 per cent). These figures only refer to reported routes and do not cover all flights at these airports.

Table 1 On time performance for December 2021 — Total Industry

	<i>Sectors</i>		<i>Arrivals On Time</i>		<i>Departures On Time</i>		<i>Cancellations</i>	
	<i>Scheduled</i>	<i>Flown</i>	<i>No.</i>	<i>%</i>	<i>No.</i>	<i>%</i>	<i>No.</i>	<i>%</i>
Jetstar	5 752	5 152	3 833	74.4	3 642	70.7	600	10.4
Qantas - all QF designated services	15 054	14 023	12 507	89.2	12 461	88.9	1 031	6.8
REX Airlines	5 015	4 996	4 388	87.8	4 462	89.3	19	0.4
Virgin Australia - all VA designated services	9 355	8 346	6 642	79.6	6 480	77.6	1 009	10.8
All Airlines	35 176	32 517	27 370	84.2	27 045	83.2	2 659	7.6
Individual operating entities								
Qantas	6 115	5 588	5 119	91.6	5 133	91.9	527	8.6
QantasLink	8 939	8 435	7 388	87.6	7 328	86.9	504	5.6
Virgin Australia	8 934	7 948	6 301	79.3	6 142	77.3	986	11.0
Virgin Australia Regional Airlines	421	398	341	85.7	338	84.9	23	5.5

Total airline network data (including routes not shown in this report).

Airlines' on time performance varies across the routes they serve. Individual route data by specific airline for 57 routes are shown on pages 9-20.

Table 2 Top ten routes for on time performance for December 2021 (participating airlines only)

<i>Arrivals</i>		<i>Departures</i>	
<i>Route</i>	<i>On Time (%)</i>	<i>Route</i>	<i>On Time (%)</i>
Albury-Sydney	96.0	Adelaide-Alice Springs	96.8
Dubbo-Sydney	94.8	Perth-Port Hedland	95.3
Adelaide-Canberra	94.5	Albury-Sydney	94.7
Canberra-Adelaide	94.4	Canberra-Adelaide	94.4
Perth-Port Hedland	94.2	Brisbane-Hamilton Island	94.3
Sydney-Albury	94.0	Wagga Wagga-Sydney	94.0
Perth-Darwin	93.9	Perth-Darwin	93.9
Sydney-Wagga Wagga	93.9	Perth-Newman	93.8
Adelaide-Alice Springs	93.5	Perth-Karratha	93.7
Alice Springs-Adelaide	93.5	Adelaide-Gold Coast	93.6

Table 3 Top ten airports for on time performance for December 2021 (participating airlines and reported routes only)

<i>Arrivals</i>		<i>Departures</i>	
<i>Airport</i>	<i>On Time (%)</i>	<i>Airport</i>	<i>On Time (%)</i>
Port Hedland	94.2	Albury	94.7
Albury	94.0	Wagga Wagga	94.0
Wagga Wagga	93.9	Gladstone	92.6
Alice Springs	93.5	Dubbo	92.2
Newman	93.2	Port Macquarie	91.6
Karratha	92.1	Rockhampton	91.4
Broome	92.0	Emerald	90.8
Emerald	91.6	Port Lincoln	89.6
Kalgoorlie	91.1	Adelaide	89.4
Gladstone	90.7	Perth	89.2

Total industry on time performance

Figure 1 On time performance (by month from December 2018)—Total Industry

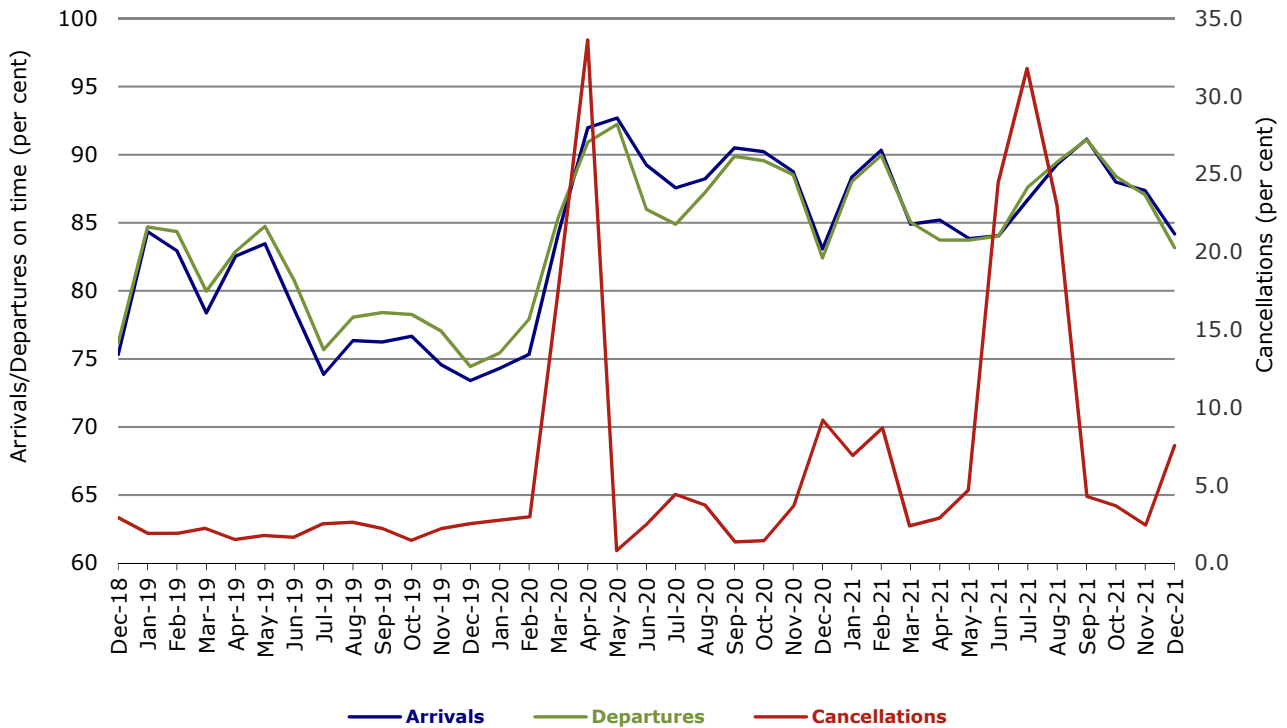
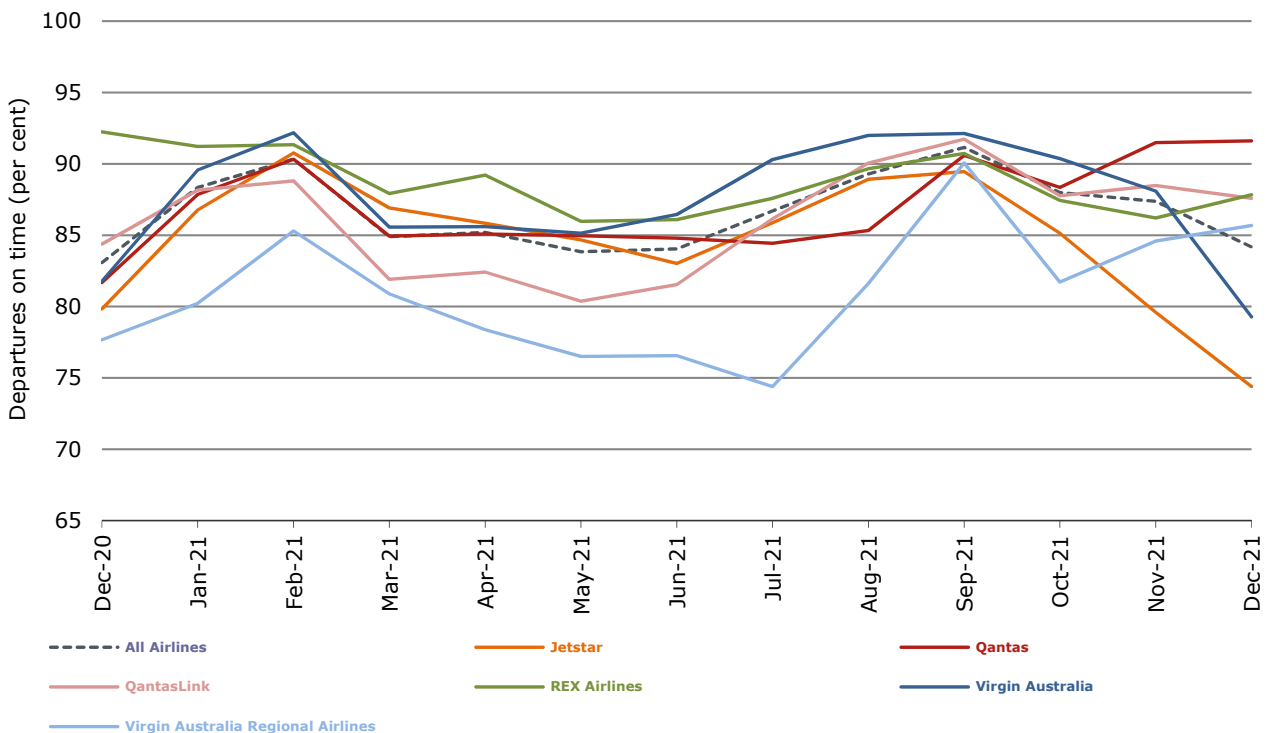
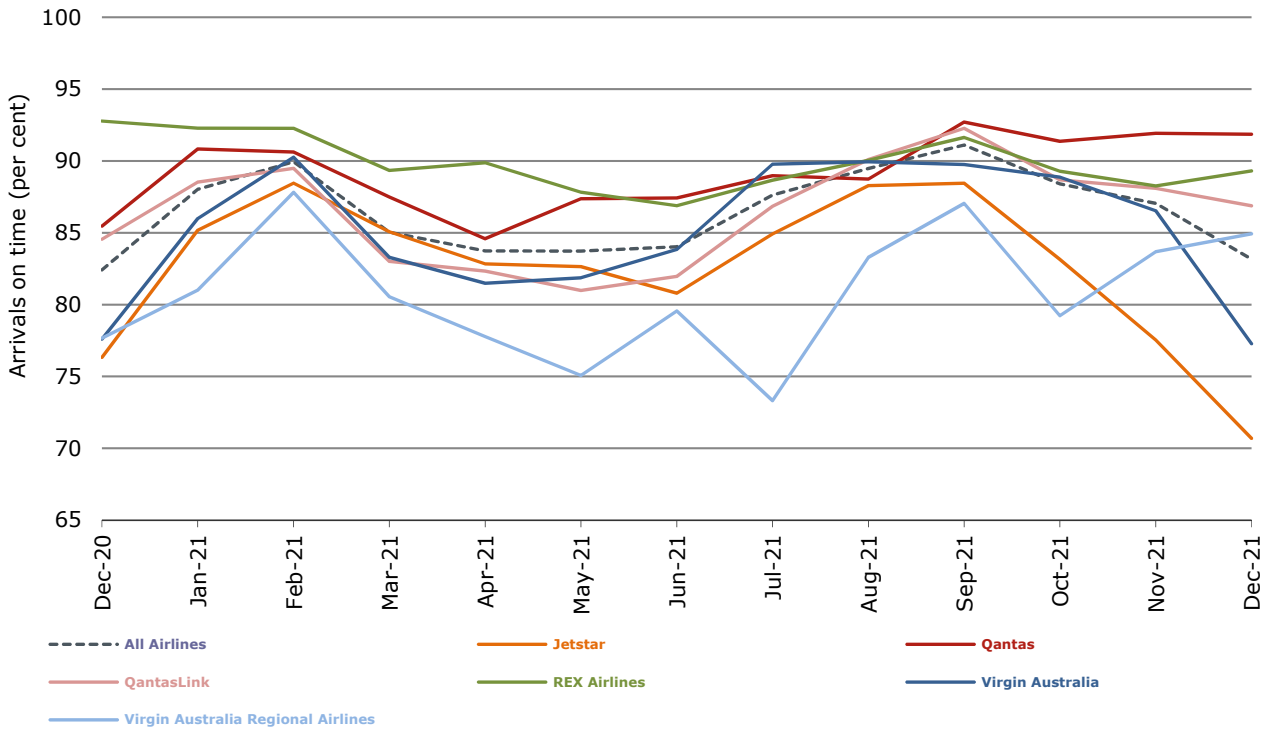


Figure 2 Arrivals on time (by month from December 2020)



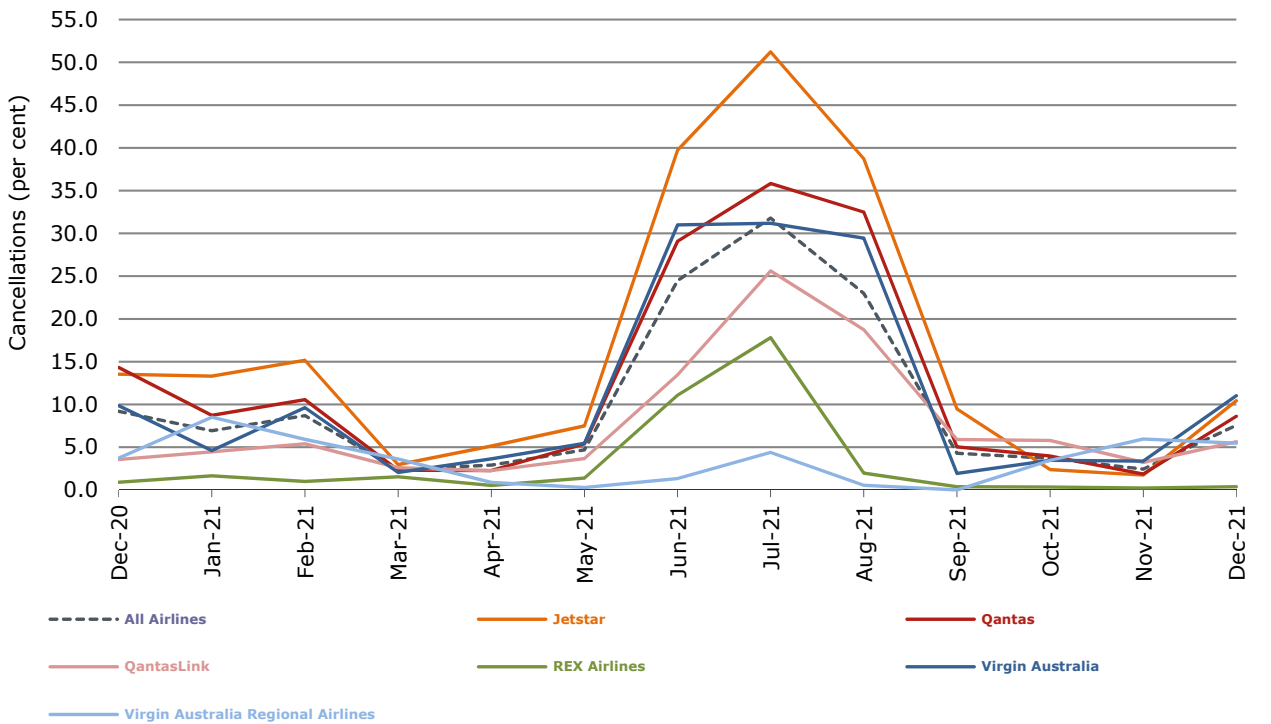
With effect from July 2021, Regional Express is reported as Rex Airlines

Figure 3 Departures on time (by month from December 2020)



With effect from July 2021, Regional Express is reported as Rex Airlines

Figure 4 Cancellations (by month from December 2020)



With effect from July 2021, Regional Express is reported as Rex Airlines

Major domestic airlines on time performance

Figure 5 On time performance (by month from December 2018)—Jetstar

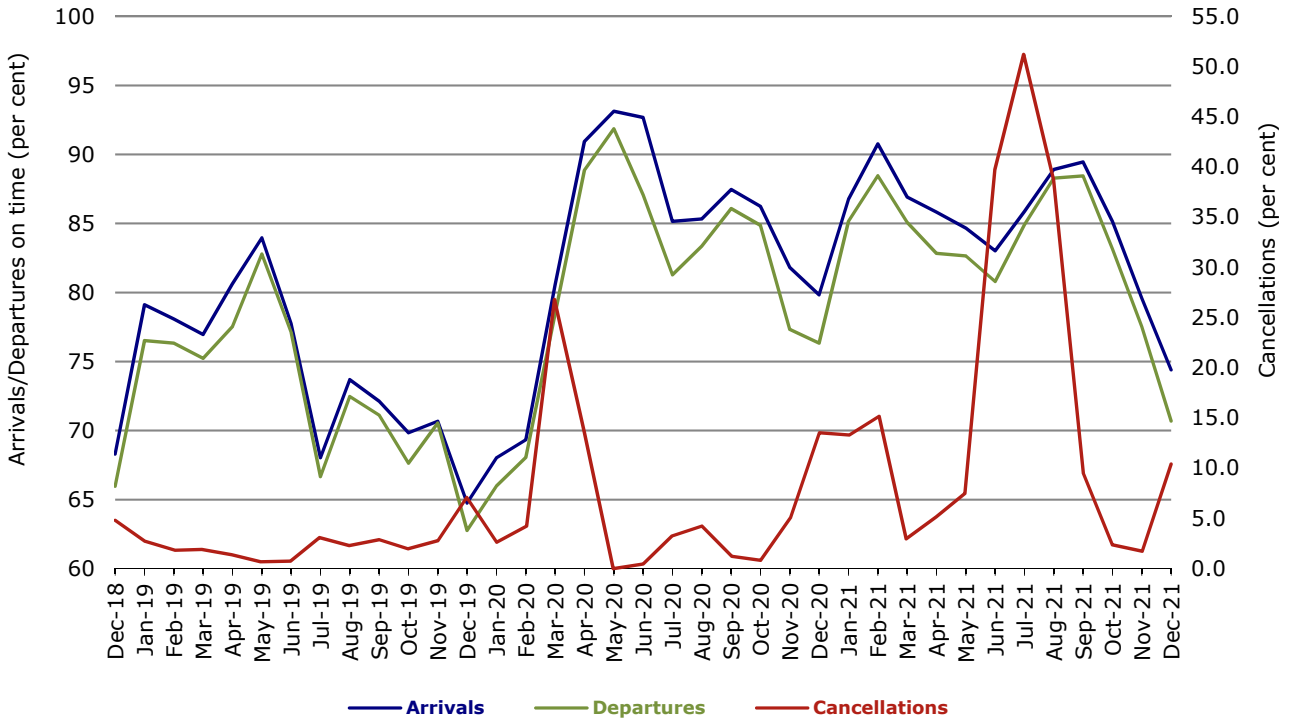


Figure 6 On time performance (by month from December 2018)—Qantas

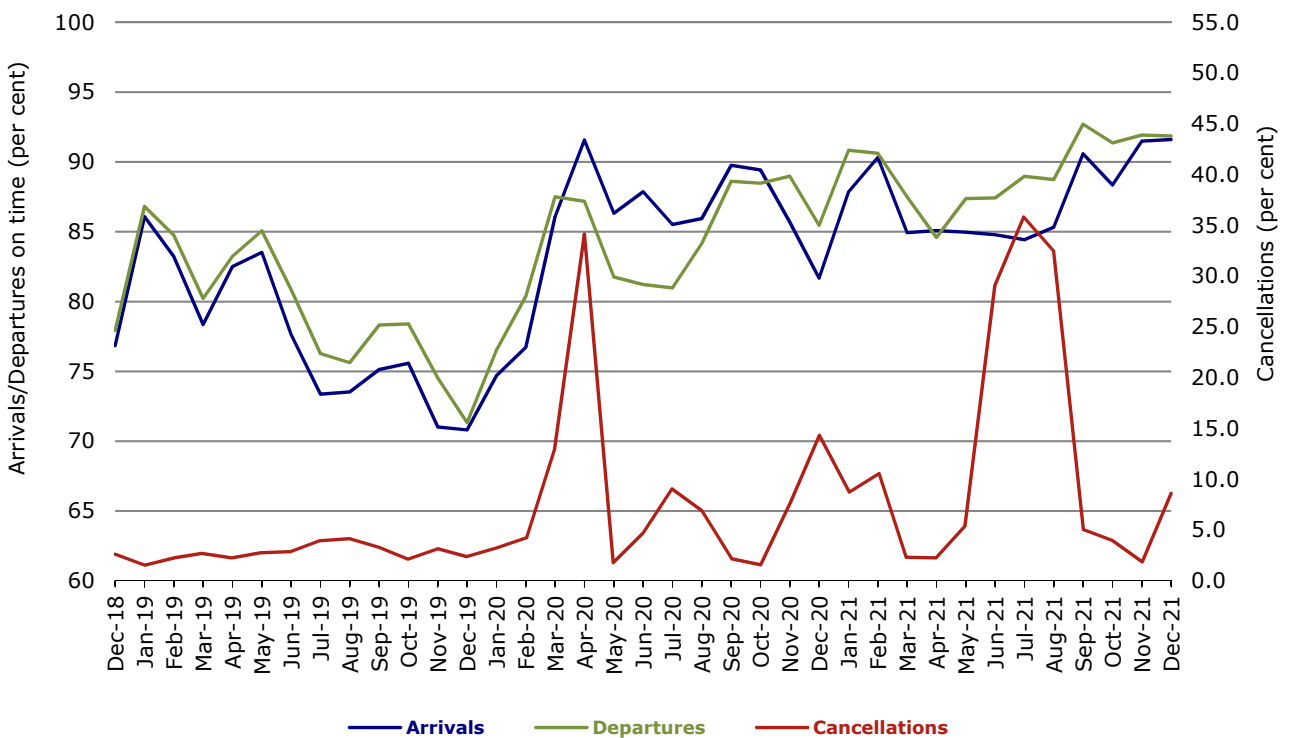
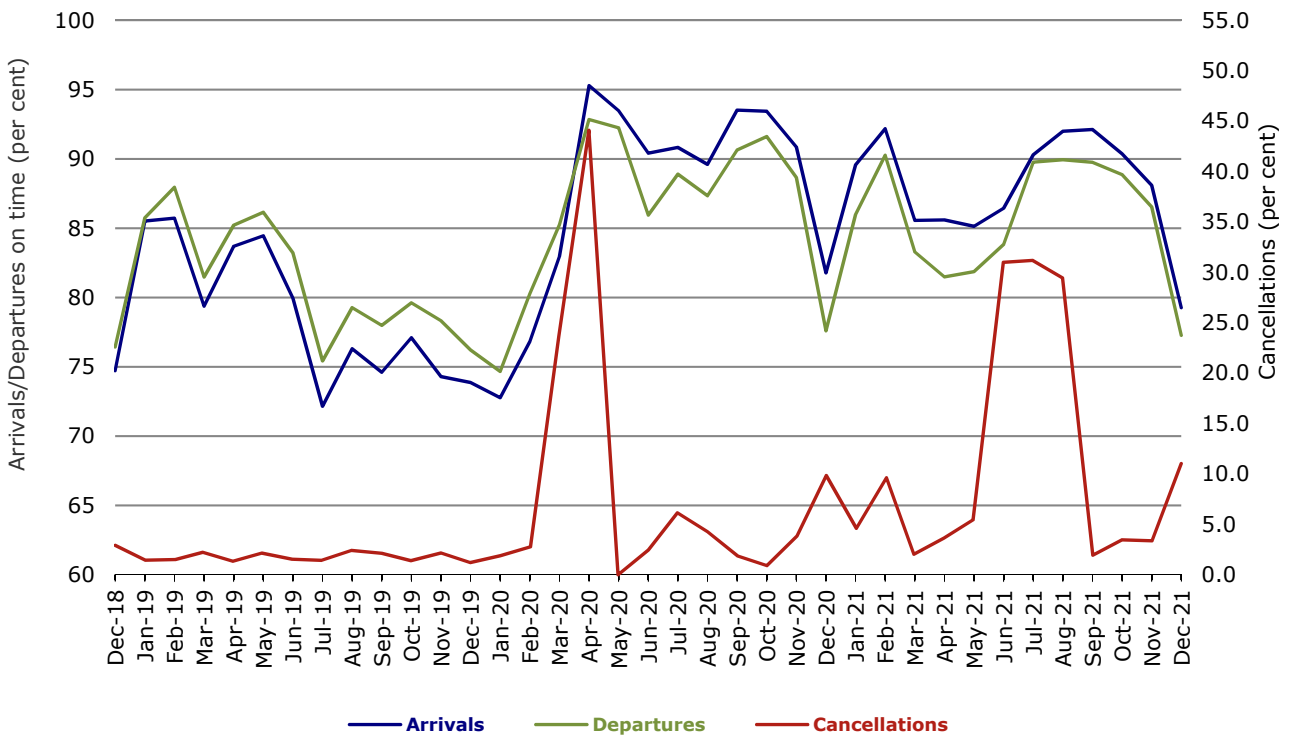


Figure 7 On time performance (by month from December 2018)—Virgin Australia



Major regional airlines on time performance

Figure 8 On time performance (by month from December 2018)—QantasLink

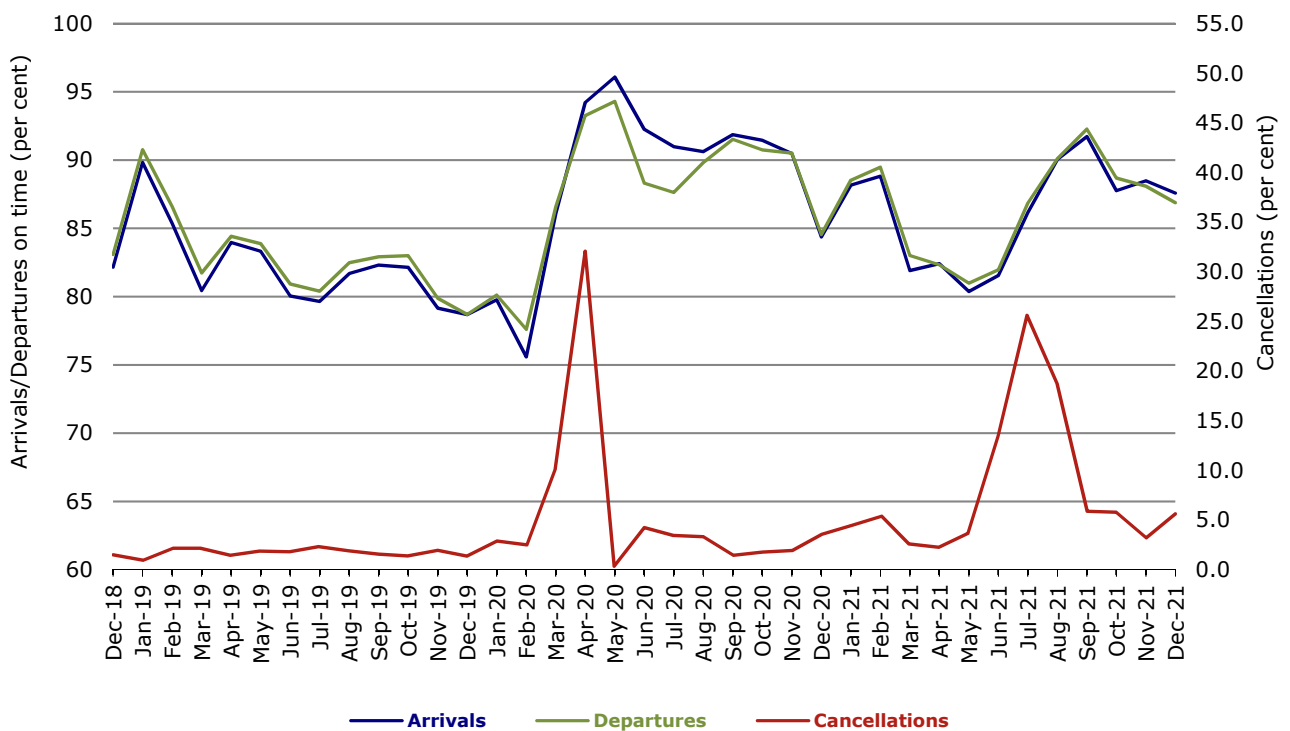
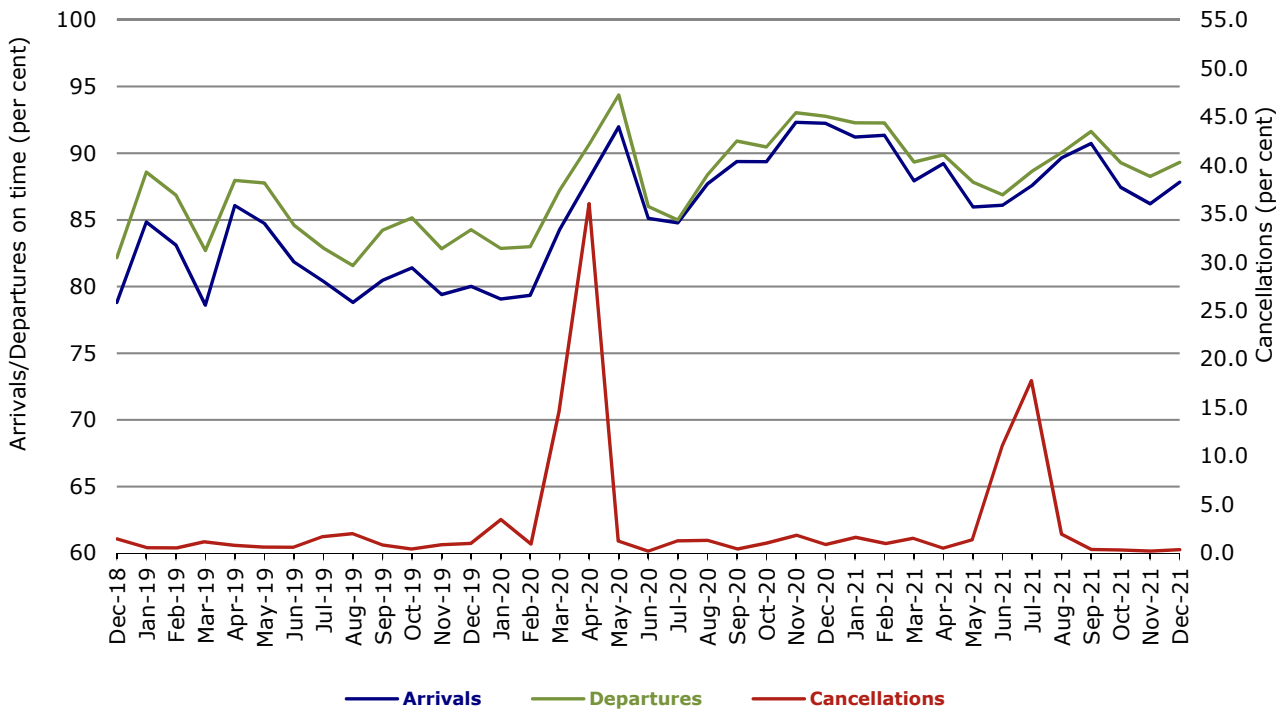
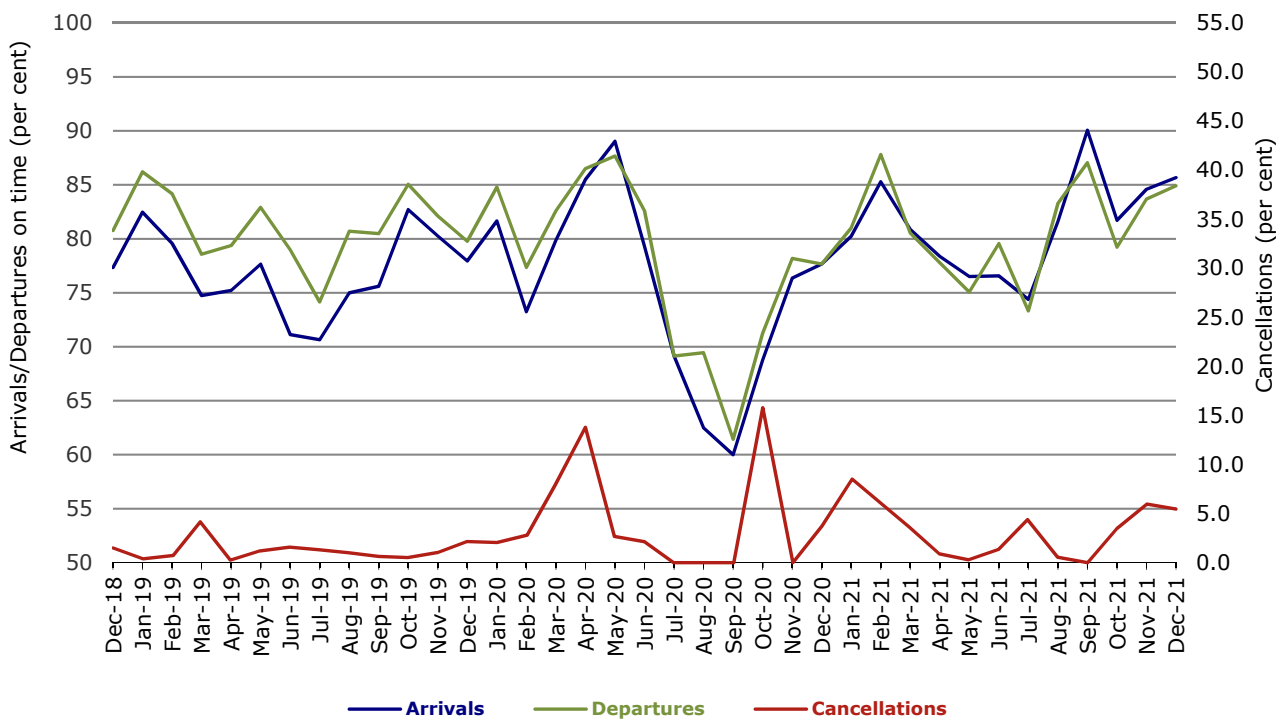


Figure 9 On time performance (by month from December 2018)—Rex Airlines



With effect from July 2021, Regional Express is reported as Rex Airlines

Figure 10 On time performance (by month from December 2018) Virgin Australia Regional Airlines



Individual routes

On time performance is reported for all routes where the passenger load averages over 8000 passengers per month over the previous six months, and where two or more airlines operate in competition on those routes. In order to present data for more routes during the period impacted by COVID-19, the passenger load restriction is not being applied. There are now 57 routes for which data are presented.

	Sectors		Arrivals On Time		Departures On Time		Cancellations	
	Sched.	Flown	No.	%	No.	%	No.	%
Adelaide-Alice Springs								
Qantas	19	17	16	94.1	16	94.1	2	10.5
Virgin Australia	14	14	13	92.9	14	100.0	0	0.0
All Airlines	33	31	29	93.5	30	96.8	2	6.1
Adelaide-Brisbane								
Jetstar	38	33	28	84.8	30	90.9	5	13.2
Qantas	88	86	78	90.7	79	91.9	2	2.3
Virgin Australia	120	99	87	87.9	86	86.9	21	17.5
All Airlines	246	218	193	88.5	195	89.4	28	11.4
Adelaide-Canberra								
Qantas	31	30	28	93.3	28	93.3	1	3.2
Virgin Australia	25	25	24	96.0	23	92.0	0	0.0
All Airlines	56	55	52	94.5	51	92.7	1	1.8
Adelaide-Gold Coast								
Jetstar	36	29	29	100.0	29	100.0	7	19.4
QantasLink	14	13	8	61.5	9	69.2	1	7.1
Virgin Australia	45	36	34	94.4	35	97.2	9	20.0
All Airlines	95	78	71	91.0	73	93.6	17	17.9
Adelaide-Melbourne								
Jetstar	88	86	73	84.9	71	82.6	2	2.3
Qantas	191	160	154	96.3	156	97.5	31	16.2
REX Airlines	51	51	49	96.1	48	94.1	0	0.0
Virgin Australia	239	220	188	85.5	177	80.5	19	7.9
All Airlines	569	517	464	89.7	452	87.4	52	9.1
Adelaide-Perth								
Qantas	46	22	21	95.5	21	95.5	24	52.2
Virgin Australia	16	13	9	69.2	7	53.8	3	18.8
Virgin Australia Regional Airlines	5	5	5	100.0	3	60.0	0	0.0
All Airlines	67	40	35	87.5	31	77.5	27	40.3
Adelaide-Port Lincoln								
QantasLink	123	113	101	89.4	98	86.7	10	8.1
REX Airlines	176	176	154	87.5	156	88.6	0	0.0
All Airlines	299	289	255	88.2	254	87.9	10	3.3
Adelaide-Sydney								
Jetstar	113	96	83	86.5	87	90.6	17	15.0
Qantas	160	149	145	97.3	142	95.3	11	6.9
Virgin Australia	109	98	87	88.8	89	90.8	11	10.1
All Airlines	382	343	315	91.8	318	92.7	39	10.2
Albury-Sydney								
QantasLink	90	89	86	96.6	82	92.1	1	1.1
REX Airlines	61	61	58	95.1	60	98.4	0	0.0
All Airlines	151	150	144	96.0	142	94.7	1	0.7

	Sectors		Arrivals On Time		Departures On Time		Cancellations	
	Sched.	Flown	No.	%	No.	%	No.	%
Alice Springs-Adelaide								
Qantas	19	17	15	88.2	11	64.7	2	10.5
Virgin Australia	14	14	14	100.0	11	78.6	0	0.0
All Airlines	33	31	29	93.5	22	71.0	2	6.1
Armidale-Sydney								
QantasLink	103	94	82	87.2	85	90.4	9	8.7
REX Airlines	50	50	36	72.0	37	74.0	0	0.0
All Airlines	153	144	118	81.9	122	84.7	9	5.9
Ballina-Sydney								
Jetstar	104	98	64	65.3	54	55.1	6	5.8
Qantas	24	24	18	75.0	15	62.5	0	0.0
QantasLink	74	74	62	83.8	58	78.4	0	0.0
REX Airlines	25	25	19	76.0	19	76.0	0	0.0
Virgin Australia	102	98	80	81.6	78	79.6	4	3.9
All Airlines	329	319	243	76.2	224	70.2	10	3.0
Brisbane-Adelaide								
Jetstar	38	33	29	87.9	27	81.8	5	13.2
Qantas	86	84	78	92.9	77	91.7	2	2.3
Virgin Australia	121	100	88	88.0	82	82.0	21	17.4
All Airlines	245	217	195	89.9	186	85.7	28	11.4
Brisbane-Cairns								
Jetstar	120	117	76	65.0	77	65.8	3	2.5
Qantas	146	145	134	92.4	133	91.7	1	0.7
QantasLink	19	18	16	88.9	14	77.8	1	5.3
Virgin Australia	187	177	137	77.4	151	85.3	10	5.3
All Airlines	472	457	363	79.4	375	82.1	15	3.2
Brisbane-Canberra								
Qantas	23	21	20	95.2	20	95.2	2	8.7
QantasLink	61	56	45	80.4	45	80.4	5	8.2
Virgin Australia	62	50	44	88.0	41	82.0	12	19.4
All Airlines	146	127	109	85.8	106	83.5	19	13.0
Brisbane-Darwin								
Jetstar	29	28	21	75.0	20	71.4	1	3.4
Qantas	39	37	35	94.6	37	100.0	2	5.1
Virgin Australia	30	22	19	86.4	20	90.9	8	26.7
All Airlines	98	87	75	86.2	77	88.5	11	11.2
Brisbane-Emerald								
QantasLink	113	104	98	94.2	98	94.2	9	8.0
Virgin Australia	27	27	22	81.5	23	85.2	0	0.0
All Airlines	140	131	120	91.6	121	92.4	9	6.4
Brisbane-Gladstone								
QantasLink	123	114	103	90.4	104	91.2	9	7.3
Virgin Australia	36	36	33	91.7	35	97.2	0	0.0
All Airlines	159	150	136	90.7	139	92.7	9	5.7
Brisbane-Hamilton Island								
Qantas	46	43	42	97.7	43	100.0	3	6.5
Virgin Australia	62	62	54	87.1	56	90.3	0	0.0
All Airlines	108	105	96	91.4	99	94.3	3	2.8

	<i>Sectors</i>		<i>Arrivals On Time</i>		<i>Departures On Time</i>		<i>Cancellations</i>	
	<i>Sched.</i>	<i>Flown</i>	<i>No.</i>	<i>%</i>	<i>No.</i>	<i>%</i>	<i>No.</i>	<i>%</i>
Brisbane-Hobart								
Jetstar	45	45	41	91.1	35	77.8	0	0.0
Qantas	7	6	4	66.7	5	83.3	1	14.3
QantasLink	48	44	36	81.8	33	75.0	4	8.3
Virgin Australia	81	73	68	93.2	68	93.2	8	9.9
All Airlines	181	168	149	88.7	141	83.9	13	7.2
Brisbane-Mackay								
Jetstar	31	31	21	67.7	19	61.3	0	0.0
Qantas	104	102	99	97.1	98	96.1	2	1.9
QantasLink	3	2	2	100.0	2	100.0	1	33.3
Virgin Australia	118	110	84	76.4	85	77.3	8	6.8
All Airlines	256	245	206	84.1	204	83.3	11	4.3
Brisbane-Melbourne								
Jetstar	129	111	79	71.2	70	63.1	18	14.0
Qantas	206	195	177	90.8	176	90.3	11	5.3
Virgin Australia	204	179	96	53.6	84	46.9	25	12.3
All Airlines	539	485	352	72.6	330	68.0	54	10.0
Brisbane-Mount Isa								
Qantas	38	37	34	91.9	35	94.6	1	2.6
QantasLink	15	15	13	86.7	13	86.7	0	0.0
Virgin Australia	17	17	15	88.2	16	94.1	0	0.0
All Airlines	70	69	62	89.9	64	92.8	1	1.4
Brisbane-Newcastle								
Jetstar	35	35	32	91.4	30	85.7	0	0.0
QantasLink	38	37	33	89.2	32	86.5	1	2.6
Virgin Australia	38	38	34	89.5	35	92.1	0	0.0
All Airlines	111	110	99	90.0	97	88.2	1	0.9
Brisbane-Perth								
Jetstar	11	11	10	90.9	8	72.7	0	0.0
Qantas	92	78	65	83.3	72	92.3	14	15.2
Virgin Australia	72	61	44	72.1	44	72.1	11	15.3
All Airlines	175	150	119	79.3	124	82.7	25	14.3
Brisbane-Proserpine								
Jetstar	40	40	20	50.0	27	67.5	0	0.0
QantasLink	46	39	37	94.9	37	94.9	7	15.2
Virgin Australia	57	55	43	78.2	48	87.3	2	3.5
All Airlines	143	134	100	74.6	112	83.6	9	6.3
Brisbane-Rockhampton								
QantasLink	164	152	133	87.5	140	92.1	12	7.3
Virgin Australia	106	105	80	76.2	90	85.7	1	0.9
All Airlines	270	257	213	82.9	230	89.5	13	4.8
Brisbane-Sydney								
Jetstar	106	89	76	85.4	71	79.8	17	16.0
Qantas	301	264	244	92.4	242	91.7	37	12.3
Virgin Australia	213	167	124	74.3	106	63.5	46	21.6
All Airlines	620	520	444	85.4	419	80.6	100	16.1
Brisbane-Townsville								
Jetstar	59	59	33	55.9	37	62.7	0	0.0
Qantas	133	131	119	90.8	124	94.7	2	1.5
Virgin Australia	123	115	82	71.3	87	75.7	8	6.5
All Airlines	315	305	234	76.7	248	81.3	10	3.2

BITRE | Domestic Airline On Time Performance December 2021 - Individual routes

	<i>Sectors</i>		<i>Arrivals On Time</i>		<i>Departures On Time</i>		<i>Cancellations</i>	
	<i>Sched.</i>	<i>Flown</i>	<i>No.</i>	<i>%</i>	<i>No.</i>	<i>%</i>	<i>No.</i>	<i>%</i>
Broome-Perth								
Qantas	26	23	22	95.7	22	95.7	3	11.5
QantasLink	58	56	49	87.5	46	82.1	2	3.4
Virgin Australia	29	29	27	93.1	26	89.7	0	0.0
Virgin Australia Regional Airlines	32	30	24	80.0	24	80.0	2	6.3
All Airlines	145	138	122	88.4	118	85.5	7	4.8
Cairns-Brisbane								
Jetstar	120	117	96	82.1	96	82.1	3	2.5
Qantas	147	145	139	95.9	138	95.2	2	1.4
QantasLink	19	18	15	83.3	15	83.3	1	5.3
Virgin Australia	187	177	157	88.7	133	75.1	10	5.3
All Airlines	473	457	407	89.1	382	83.6	16	3.4
Cairns-Melbourne								
Jetstar	51	51	43	84.3	39	76.5	0	0.0
Qantas	32	27	22	81.5	24	88.9	5	15.6
Virgin Australia	55	49	33	67.3	34	69.4	6	10.9
All Airlines	138	127	98	77.2	97	76.4	11	8.0
Cairns-Sydney								
Jetstar	67	53	50	94.3	49	92.5	14	20.9
Qantas	39	34	29	85.3	30	88.2	5	12.8
Virgin Australia	55	39	35	89.7	34	87.2	16	29.1
All Airlines	161	126	114	90.5	113	89.7	35	21.7
Cairns-Townsville								
QantasLink	141	136	124	91.2	121	89.0	5	3.5
REX Airlines	19	19	17	89.5	17	89.5	0	0.0
All Airlines	160	155	141	91.0	138	89.0	5	3.1
Canberra-Adelaide								
Qantas	30	29	28	96.6	28	96.6	1	3.3
Virgin Australia	25	25	23	92.0	23	92.0	0	0.0
All Airlines	55	54	51	94.4	51	94.4	1	1.8
Canberra-Brisbane								
Qantas	23	21	18	85.7	18	85.7	2	8.7
QantasLink	61	56	46	82.1	48	85.7	5	8.2
Virgin Australia	61	51	35	68.6	33	64.7	10	16.4
All Airlines	145	128	99	77.3	99	77.3	17	11.7
Canberra-Melbourne								
QantasLink	151	140	107	76.4	109	77.9	11	7.3
Virgin Australia	118	116	91	78.4	82	70.7	2	1.7
All Airlines	269	256	198	77.3	191	74.6	13	4.8
Canberra-Sydney								
QantasLink	227	183	161	88.0	163	89.1	44	19.4
REX Airlines	147	146	131	89.7	137	93.8	1	0.7
All Airlines	374	329	292	88.8	300	91.2	45	12.0
Coffs Harbour-Sydney								
QantasLink	115	106	91	85.8	90	84.9	9	7.8
REX Airlines	78	78	71	91.0	74	94.9	0	0.0
Virgin Australia	32	31	23	74.2	21	67.7	1	3.1
All Airlines	225	215	185	86.0	185	86.0	10	4.4

	Sectors		Arrivals On Time		Departures On Time		Cancellations	
	Sched.	Flown	No.	%	No.	%	No.	%
Darwin-Brisbane								
Jetstar	29	27	14	51.9	12	44.4	2	6.9
Qantas	38	37	29	78.4	26	70.3	1	2.6
Virgin Australia	29	22	19	86.4	15	68.2	7	24.1
All Airlines	96	86	62	72.1	53	61.6	10	10.4
Darwin-Melbourne								
Qantas	19	19	15	78.9	12	63.2	0	0.0
Virgin Australia	24	13	9	69.2	8	61.5	11	45.8
All Airlines	43	32	24	75.0	20	62.5	11	25.6
Darwin-Perth								
Qantas	26	17	16	94.1	13	76.5	9	34.6
Virgin Australia	3	3	3	100.0	3	100.0	0	0.0
Virgin Australia Regional Airlines	15	13	11	84.6	11	84.6	2	13.3
All Airlines	44	33	30	90.9	27	81.8	11	25.0
Dubbo-Sydney								
QantasLink	90	87	83	95.4	78	89.7	3	3.3
REX Airlines	67	67	63	94.0	64	95.5	0	0.0
All Airlines	157	154	146	94.8	142	92.2	3	1.9
Emerald-Brisbane								
QantasLink	112	104	96	92.3	96	92.3	8	7.1
Virgin Australia	27	27	24	88.9	23	85.2	0	0.0
All Airlines	139	131	120	91.6	119	90.8	8	5.8
Gladstone-Brisbane								
QantasLink	122	113	102	90.3	103	91.2	9	7.4
Virgin Australia	36	36	30	83.3	35	97.2	0	0.0
All Airlines	158	149	132	88.6	138	92.6	9	5.7
Gold Coast-Adelaide								
Jetstar	36	29	28	96.6	25	86.2	7	19.4
QantasLink	14	13	9	69.2	5	38.5	1	7.1
Virgin Australia	45	36	35	97.2	31	86.1	9	20.0
All Airlines	95	78	72	92.3	61	78.2	17	17.9
Gold Coast-Melbourne								
Jetstar	137	121	96	79.3	88	72.7	16	11.7
Qantas	58	52	46	88.5	47	90.4	6	10.3
REX Airlines	30	30	25	83.3	23	76.7	0	0.0
Virgin Australia	197	159	103	64.8	95	59.7	38	19.3
All Airlines	422	362	270	74.6	253	69.9	60	14.2
Gold Coast-Sydney								
Jetstar	186	147	114	77.6	107	72.8	39	21.0
Qantas	55	51	41	80.4	44	86.3	4	7.3
REX Airlines	28	27	26	96.3	27	100.0	1	3.6
Virgin Australia	194	146	112	76.7	101	69.2	48	24.7
All Airlines	463	371	293	79.0	279	75.2	92	19.9
Hamilton Island-Brisbane								
Qantas	45	42	41	97.6	40	95.2	3	6.7
Virgin Australia	62	62	56	90.3	51	82.3	0	0.0
All Airlines	107	104	97	93.3	91	87.5	3	2.8

	Sectors		Arrivals On Time		Departures On Time		Cancellations	
	Sched.	Flown	No.	%	No.	%	No.	%
Hamilton Island-Sydney								
Jetstar	15	15	7	46.7	5	33.3	0	0.0
Qantas	18	17	17	100.0	16	94.1	1	5.6
Virgin Australia	9	9	9	100.0	8	88.9	0	0.0
All Airlines	42	41	33	80.5	29	70.7	1	2.4
Hobart-Brisbane								
Jetstar	45	45	35	77.8	37	82.2	0	0.0
Qantas	7	6	4	66.7	5	83.3	1	14.3
QantasLink	48	43	35	81.4	33	76.7	5	10.4
Virgin Australia	81	72	50	69.4	59	81.9	9	11.1
All Airlines	181	166	124	74.7	134	80.7	15	8.3
Hobart-Melbourne								
Jetstar	106	95	64	67.4	58	61.1	11	10.4
QantasLink	58	55	45	81.8	45	81.8	3	5.2
Virgin Australia	78	67	32	47.8	36	53.7	11	14.1
All Airlines	242	217	141	65.0	139	64.1	25	10.3
Hobart-Sydney								
Jetstar	65	57	33	57.9	33	57.9	8	12.3
Qantas	25	23	19	82.6	17	73.9	2	8.0
QantasLink	23	21	15	71.4	16	76.2	2	8.7
Virgin Australia	55	47	37	78.7	38	80.9	8	14.5
All Airlines	168	148	104	70.3	104	70.3	20	11.9
Kalgoorlie-Perth								
Qantas	11	10	8	80.0	7	70.0	1	9.1
QantasLink	56	54	47	87.0	46	85.2	2	3.6
Virgin Australia	30	30	23	76.7	21	70.0	0	0.0
Virgin Australia Regional Airlines	30	29	20	69.0	20	69.0	1	3.3
All Airlines	127	123	98	79.7	94	76.4	4	3.1
Karratha-Perth								
Qantas	41	41	39	95.1	38	92.7	0	0.0
QantasLink	101	95	88	92.6	89	93.7	6	5.9
Virgin Australia	33	33	28	84.8	26	78.8	0	0.0
Virgin Australia Regional Airlines	21	21	18	85.7	16	76.2	0	0.0
All Airlines	196	190	173	91.1	169	88.9	6	3.1
Launceston-Melbourne								
Jetstar	70	68	43	63.2	41	60.3	2	2.9
QantasLink	56	50	40	80.0	41	82.0	6	10.7
Virgin Australia	59	54	41	75.9	38	70.4	5	8.5
All Airlines	185	172	124	72.1	120	69.8	13	7.0
Launceston-Sydney								
Jetstar	49	45	30	66.7	28	62.2	4	8.2
QantasLink	19	19	15	78.9	14	73.7	0	0.0
Virgin Australia	25	24	21	87.5	22	91.7	1	4.0
All Airlines	93	88	66	75.0	64	72.7	5	5.4
Mackay-Brisbane								
Jetstar	31	31	22	71.0	14	45.2	0	0.0
Qantas	105	102	98	96.1	99	97.1	3	2.9
QantasLink	8	6	5	83.3	4	66.7	2	25.0
Virgin Australia	118	110	88	80.0	83	75.5	8	6.8
All Airlines	262	249	213	85.5	200	80.3	13	5.0

	<i>Sectors</i>		<i>Arrivals On Time</i>		<i>Departures On Time</i>		<i>Cancellations</i>	
	<i>Sched.</i>	<i>Flown</i>	<i>No.</i>	<i>%</i>	<i>No.</i>	<i>%</i>	<i>No.</i>	<i>%</i>
Melbourne-Adelaide								
Jetstar	88	86	70	81.4	66	76.7	2	2.3
Qantas	193	160	153	95.6	153	95.6	33	17.1
REX Airlines	51	51	48	94.1	47	92.2	0	0.0
Virgin Australia	240	220	174	79.1	178	80.9	20	8.3
All Airlines	572	517	445	86.1	444	85.9	55	9.6
Melbourne-Brisbane								
Jetstar	129	112	69	61.6	66	58.9	17	13.2
Qantas	207	198	166	83.8	184	92.9	9	4.3
Virgin Australia	201	173	89	51.4	100	57.8	28	13.9
All Airlines	537	483	324	67.1	350	72.5	54	10.1
Melbourne-Cairns								
Jetstar	51	51	34	66.7	28	54.9	0	0.0
Qantas	32	27	23	85.2	22	81.5	5	15.6
Virgin Australia	55	49	36	73.5	34	69.4	6	10.9
All Airlines	138	127	93	73.2	84	66.1	11	8.0
Melbourne-Canberra								
QantasLink	152	143	110	76.9	113	79.0	9	5.9
Virgin Australia	119	117	94	80.3	96	82.1	2	1.7
All Airlines	271	260	204	78.5	209	80.4	11	4.1
Melbourne-Darwin								
Qantas	19	19	16	84.2	19	100.0	0	0.0
Virgin Australia	19	13	9	69.2	10	76.9	6	31.6
All Airlines	38	32	25	78.1	29	90.6	6	15.8
Melbourne-Gold Coast								
Jetstar	137	121	72	59.5	69	57.0	16	11.7
Qantas	58	52	50	96.2	49	94.2	6	10.3
REX Airlines	30	30	25	83.3	26	86.7	0	0.0
Virgin Australia	199	162	103	63.6	98	60.5	37	18.6
All Airlines	424	365	250	68.5	242	66.3	59	13.9
Melbourne-Hobart								
Jetstar	105	94	70	74.5	59	62.8	11	10.5
QantasLink	59	56	48	85.7	48	85.7	3	5.1
Virgin Australia	78	67	52	77.6	51	76.1	11	14.1
All Airlines	242	217	170	78.3	158	72.8	25	10.3
Melbourne-Launceston								
Jetstar	70	68	47	69.1	41	60.3	2	2.9
QantasLink	56	52	39	75.0	42	80.8	4	7.1
Virgin Australia	60	54	38	70.4	37	68.5	6	10.0
All Airlines	186	174	124	71.3	120	69.0	12	6.5
Melbourne-Mildura								
QantasLink	113	113	95	84.1	93	82.3	0	0.0
REX Airlines	53	53	41	77.4	42	79.2	0	0.0
All Airlines	166	166	136	81.9	135	81.3	0	0.0
Melbourne-Newcastle								
Jetstar	70	68	43	63.2	47	69.1	2	2.9
QantasLink	39	34	23	67.6	25	73.5	5	12.8
Virgin Australia	40	39	36	92.3	35	89.7	1	2.5
All Airlines	149	141	102	72.3	107	75.9	8	5.4

	<i>Sectors</i>		<i>Arrivals On Time</i>		<i>Departures On Time</i>		<i>Cancellations</i>	
	<i>Sched.</i>	<i>Flown</i>	<i>No.</i>	<i>%</i>	<i>No.</i>	<i>%</i>	<i>No.</i>	<i>%</i>
Melbourne-Perth								
Qantas	24	22	20	90.9	18	81.8	2	8.3
Virgin Australia	19	18	15	83.3	14	77.8	1	5.3
All Airlines	43	40	35	87.5	32	80.0	3	7.0
Melbourne-Sunshine Coast								
Jetstar	55	48	21	43.8	29	60.4	7	12.7
Qantas	31	30	29	96.7	29	96.7	1	3.2
QantasLink	12	10	7	70.0	8	80.0	2	16.7
Virgin Australia	83	76	53	69.7	52	68.4	7	8.4
All Airlines	181	164	110	67.1	118	72.0	17	9.4
Melbourne-Sydney								
Jetstar	339	275	208	75.6	200	72.7	64	18.9
Qantas	688	632	589	93.2	595	94.1	56	8.1
REX Airlines	114	113	109	96.5	109	96.5	1	0.9
Virgin Australia	702	626	521	83.2	517	82.6	76	10.8
All Airlines	1 843	1 646	1 427	86.7	1 421	86.3	197	10.7
Mildura-Melbourne								
QantasLink	113	111	94	84.7	94	84.7	2	1.8
REX Airlines	53	53	46	86.8	46	86.8	0	0.0
All Airlines	166	164	140	85.4	140	85.4	2	1.2
Mount Isa-Brisbane								
Qantas	37	36	32	88.9	31	86.1	1	2.7
QantasLink	15	15	13	86.7	13	86.7	0	0.0
Virgin Australia	17	17	11	64.7	15	88.2	0	0.0
All Airlines	69	68	56	82.4	59	86.8	1	1.4
Newcastle-Brisbane								
Jetstar	35	35	28	80.0	29	82.9	0	0.0
QantasLink	37	36	34	94.4	33	91.7	1	2.7
Virgin Australia	38	38	34	89.5	35	92.1	0	0.0
All Airlines	110	109	96	88.1	97	89.0	1	0.9
Newcastle-Melbourne								
Jetstar	70	68	53	77.9	44	64.7	2	2.9
QantasLink	41	37	28	75.7	25	67.6	4	9.8
Virgin Australia	40	39	36	92.3	37	94.9	1	2.5
All Airlines	151	144	117	81.3	106	73.6	7	4.6
Newman-Perth								
Qantas	13	12	8	66.7	8	66.7	1	7.7
QantasLink	98	95	79	83.2	81	85.3	3	3.1
Virgin Australia	27	27	20	74.1	22	81.5	0	0.0
Virgin Australia Regional Airlines	28	28	21	75.0	22	78.6	0	0.0
All Airlines	166	162	128	79.0	133	82.1	4	2.4
Perth-Adelaide								
Qantas	46	22	21	95.5	20	90.9	24	52.2
Virgin Australia	18	13	11	84.6	12	92.3	5	27.8
Virgin Australia Regional Airlines	5	5	5	100.0	5	100.0	0	0.0
All Airlines	69	40	37	92.5	37	92.5	29	42.0
Perth-Brisbane								
Jetstar	11	11	6	54.5	8	72.7	0	0.0
Qantas	93	80	71	88.8	74	92.5	13	14.0
Virgin Australia	70	60	45	75.0	36	60.0	10	14.3
All Airlines	174	151	122	80.8	118	78.1	23	13.2

	<i>Sectors</i>		<i>Arrivals On Time</i>		<i>Departures On Time</i>		<i>Cancellations</i>	
	<i>Sched.</i>	<i>Flown</i>	<i>No.</i>	<i>%</i>	<i>No.</i>	<i>%</i>	<i>No.</i>	<i>%</i>
Perth-Broome								
Qantas	26	24	23	95.8	21	87.5	2	7.7
QantasLink	56	55	50	90.9	49	89.1	1	1.8
Virgin Australia	29	29	27	93.1	25	86.2	0	0.0
Virgin Australia Regional Airlines	32	30	27	90.0	26	86.7	2	6.3
All Airlines	143	138	127	92.0	121	87.7	5	3.5
Perth-Darwin								
Qantas	26	17	16	94.1	17	100.0	9	34.6
Virgin Australia	3	3	3	100.0	3	100.0	0	0.0
Virgin Australia Regional Airlines	15	13	12	92.3	11	84.6	2	13.3
All Airlines	44	33	31	93.9	31	93.9	11	25.0
Perth-Kalgoorlie								
Qantas	11	10	9	90.0	9	90.0	1	9.1
QantasLink	56	54	47	87.0	47	87.0	2	3.6
Virgin Australia	30	30	30	100.0	30	100.0	0	0.0
Virgin Australia Regional Airlines	30	29	26	89.7	27	93.1	1	3.3
All Airlines	127	123	112	91.1	113	91.9	4	3.1
Perth-Karratha								
Qantas	41	41	40	97.6	41	100.0	0	0.0
QantasLink	102	96	84	87.5	86	89.6	6	5.9
Virgin Australia	33	33	32	97.0	32	97.0	0	0.0
Virgin Australia Regional Airlines	21	21	20	95.2	20	95.2	0	0.0
All Airlines	197	191	176	92.1	179	93.7	6	3.0
Perth-Melbourne								
Qantas	24	21	15	71.4	21	100.0	3	12.5
Virgin Australia	22	20	9	45.0	8	40.0	2	9.1
All Airlines	46	41	24	58.5	29	70.7	5	10.9
Perth-Newman								
Qantas	13	12	11	91.7	12	100.0	1	7.7
QantasLink	98	95	90	94.7	89	93.7	3	3.1
Virgin Australia	27	27	26	96.3	26	96.3	0	0.0
Virgin Australia Regional Airlines	28	28	24	85.7	25	89.3	0	0.0
All Airlines	166	162	151	93.2	152	93.8	4	2.4
Perth-Port Hedland								
Qantas	38	38	38	100.0	38	100.0	0	0.0
QantasLink	88	80	74	92.5	76	95.0	8	9.1
Virgin Australia	14	14	14	100.0	14	100.0	0	0.0
Virgin Australia Regional Airlines	40	40	36	90.0	36	90.0	0	0.0
All Airlines	180	172	162	94.2	164	95.3	8	4.4
Perth-Sydney								
Qantas	22	19	13	68.4	16	84.2	3	13.6
Virgin Australia	15	14	8	57.1	7	50.0	1	6.7
All Airlines	37	33	21	63.6	23	69.7	4	10.8
Port Hedland-Perth								
Qantas	38	38	32	84.2	32	84.2	0	0.0
QantasLink	88	80	72	90.0	68	85.0	8	9.1
Virgin Australia	14	14	9	64.3	10	71.4	0	0.0
Virgin Australia Regional Airlines	40	40	33	82.5	33	82.5	0	0.0
All Airlines	180	172	146	84.9	143	83.1	8	4.4

	<i>Sectors</i>		<i>Arrivals On Time</i>		<i>Departures On Time</i>		<i>Cancellations</i>	
	<i>Sched.</i>	<i>Flown</i>	<i>No.</i>	<i>%</i>	<i>No.</i>	<i>%</i>	<i>No.</i>	<i>%</i>
Port Lincoln-Adelaide								
QantasLink	123	112	102	91.1	102	91.1	11	8.9
REX Airlines	177	177	155	87.6	157	88.7	0	0.0
All Airlines	300	289	257	88.9	259	89.6	11	3.7
Port Macquarie-Sydney								
QantasLink	96	93	84	90.3	87	93.5	3	3.1
REX Airlines	73	73	60	82.2	65	89.0	0	0.0
All Airlines	169	166	144	86.7	152	91.6	3	1.8
Proserpine-Brisbane								
Jetstar	39	39	17	43.6	12	30.8	0	0.0
QantasLink	46	39	38	97.4	36	92.3	7	15.2
Virgin Australia	57	55	39	70.9	35	63.6	2	3.5
All Airlines	142	133	94	70.7	83	62.4	9	6.3
Rockhampton-Brisbane								
QantasLink	165	152	132	86.8	137	90.1	13	7.9
Virgin Australia	106	105	98	93.3	98	93.3	1	0.9
All Airlines	271	257	230	89.5	235	91.4	14	5.2
Sunshine Coast-Melbourne								
Jetstar	55	46	25	54.3	22	47.8	9	16.4
Qantas	31	30	28	93.3	28	93.3	1	3.2
QantasLink	12	10	9	90.0	8	80.0	2	16.7
Virgin Australia	83	76	43	56.6	44	57.9	7	8.4
All Airlines	181	162	105	64.8	102	63.0	19	10.5
Sunshine Coast-Sydney								
Jetstar	60	46	25	54.3	25	54.3	14	23.3
Qantas	38	32	29	90.6	30	93.8	6	15.8
Virgin Australia	70	60	38	63.3	41	68.3	10	14.3
All Airlines	168	138	92	66.7	96	69.6	30	17.9
Sydney-Adelaide								
Jetstar	113	96	84	87.5	75	78.1	17	15.0
Qantas	160	150	141	94.0	135	90.0	10	6.3
Virgin Australia	110	100	91	91.0	89	89.0	10	9.1
All Airlines	383	346	316	91.3	299	86.4	37	9.7
Sydney-Albury								
QantasLink	90	89	85	95.5	79	88.8	1	1.1
REX Airlines	61	61	56	91.8	54	88.5	0	0.0
All Airlines	151	150	141	94.0	133	88.7	1	0.7
Sydney-Armidale								
QantasLink	103	96	81	84.4	79	82.3	7	6.8
REX Airlines	50	50	41	82.0	40	80.0	0	0.0
All Airlines	153	146	122	83.6	119	81.5	7	4.6
Sydney-Ballina								
Jetstar	104	98	83	84.7	80	81.6	6	5.8
Qantas	24	24	22	91.7	23	95.8	0	0.0
QantasLink	75	75	61	81.3	61	81.3	0	0.0
REX Airlines	24	24	21	87.5	21	87.5	0	0.0
Virgin Australia	102	99	85	85.9	88	88.9	3	2.9
All Airlines	329	320	272	85.0	273	85.3	9	2.7

	<i>Sectors</i>		<i>Arrivals On Time</i>		<i>Departures On Time</i>		<i>Cancellations</i>	
	<i>Sched.</i>	<i>Flown</i>	<i>No.</i>	<i>%</i>	<i>No.</i>	<i>%</i>	<i>No.</i>	<i>%</i>
Sydney-Brisbane								
Jetstar	106	89	70	78.7	70	78.7	17	16.0
Qantas	297	256	230	89.8	227	88.7	41	13.8
Virgin Australia	211	164	126	76.8	126	76.8	47	22.3
All Airlines	614	509	426	83.7	423	83.1	105	17.1
Sydney-Cairns								
Jetstar	67	53	41	77.4	39	73.6	14	20.9
Qantas	39	34	29	85.3	31	91.2	5	12.8
Virgin Australia	55	39	37	94.9	36	92.3	16	29.1
All Airlines	161	126	107	84.9	106	84.1	35	21.7
Sydney-Canberra								
QantasLink	227	184	167	90.8	163	88.6	43	18.9
REX Airlines	147	147	125	85.0	134	91.2	0	0.0
All Airlines	374	331	292	88.2	297	89.7	43	11.5
Sydney-Coffs Harbour								
QantasLink	111	103	85	82.5	87	84.5	8	7.2
REX Airlines	78	78	74	94.9	74	94.9	0	0.0
Virgin Australia	32	31	22	71.0	22	71.0	1	3.1
All Airlines	221	212	181	85.4	183	86.3	9	4.1
Sydney-Dubbo								
QantasLink	90	87	78	89.7	74	85.1	3	3.3
REX Airlines	69	69	59	85.5	55	79.7	0	0.0
All Airlines	159	156	137	87.8	129	82.7	3	1.9
Sydney-Gold Coast								
Jetstar	186	147	104	70.7	104	70.7	39	21.0
Qantas	55	51	47	92.2	47	92.2	4	7.3
REX Airlines	28	27	24	88.9	25	92.6	1	3.6
Virgin Australia	195	147	104	70.7	100	68.0	48	24.6
All Airlines	464	372	279	75.0	276	74.2	92	19.8
Sydney-Hamilton Island								
Jetstar	15	15	9	60.0	10	66.7	0	0.0
Qantas	18	17	16	94.1	16	94.1	1	5.6
Virgin Australia	9	9	9	100.0	9	100.0	0	0.0
All Airlines	42	41	34	82.9	35	85.4	1	2.4
Sydney-Hobart								
Jetstar	66	58	43	74.1	33	56.9	8	12.1
Qantas	25	23	21	91.3	22	95.7	2	8.0
QantasLink	23	23	10	43.5	13	56.5	0	0.0
Virgin Australia	56	47	40	85.1	38	80.9	9	16.1
All Airlines	170	151	114	75.5	106	70.2	19	11.2
Sydney-Launceston								
Jetstar	49	45	30	66.7	27	60.0	4	8.2
QantasLink	19	19	16	84.2	15	78.9	0	0.0
Virgin Australia	25	24	22	91.7	22	91.7	1	4.0
All Airlines	93	88	68	77.3	64	72.7	5	5.4
Sydney-Melbourne								
Jetstar	340	275	217	78.9	188	68.4	65	19.1
Qantas	669	621	581	93.6	576	92.8	48	7.2
REX Airlines	111	110	104	94.5	103	93.6	1	0.9
Virgin Australia	701	626	520	83.1	474	75.7	75	10.7
All Airlines	1 821	1 632	1 422	87.1	1 341	82.2	189	10.4

	<i>Sectors</i>		<i>Arrivals On Time</i>		<i>Departures On Time</i>		<i>Cancellations</i>	
	<i>Sched.</i>	<i>Flown</i>	<i>No.</i>	<i>%</i>	<i>No.</i>	<i>%</i>	<i>No.</i>	<i>%</i>
Sydney-Perth								
Qantas	21	18	13	72.2	9	50.0	3	14.3
Virgin Australia	13	10	7	70.0	9	90.0	3	23.1
All Airlines	34	28	20	71.4	18	64.3	6	17.6
Sydney-Port Macquarie								
QantasLink	96	93	85	91.4	83	89.2	3	3.1
REX Airlines	72	72	59	81.9	62	86.1	0	0.0
All Airlines	168	165	144	87.3	145	87.9	3	1.8
Sydney-Sunshine Coast								
Jetstar	60	46	26	56.5	30	65.2	14	23.3
Qantas	37	32	30	93.8	31	96.9	5	13.5
Virgin Australia	70	60	46	76.7	49	81.7	10	14.3
All Airlines	167	138	102	73.9	110	79.7	29	17.4
Sydney-Wagga Wagga								
QantasLink	85	84	79	94.0	75	89.3	1	1.2
REX Airlines	48	48	45	93.8	45	93.8	0	0.0
All Airlines	133	132	124	93.9	120	90.9	1	0.8
Townsville-Brisbane								
Jetstar	59	59	34	57.6	30	50.8	0	0.0
Qantas	133	131	123	93.9	118	90.1	2	1.5
Virgin Australia	123	116	82	70.7	74	63.8	7	5.7
All Airlines	315	306	239	78.1	222	72.5	9	2.9
Townsville-Cairns								
QantasLink	141	135	128	94.8	120	88.9	6	4.3
REX Airlines	19	19	15	78.9	15	78.9	0	0.0
All Airlines	160	154	143	92.9	135	87.7	6	3.8
Wagga Wagga-Sydney								
QantasLink	87	86	82	95.3	82	95.3	1	1.1
REX Airlines	48	48	41	85.4	44	91.7	0	0.0
All Airlines	135	134	123	91.8	126	94.0	1	0.7

Airports

The following data reports by airport against flights operated on published routes only. This month, 8 major city airports and 28 regional city airports are covered.

Airport	Arrivals			Departures		
	Sectors	On Time		Sectors	On Time	
	Flown	No.	%	Flown	No.	%
Adelaide						
Jetstar	244	211	86.5	244	217	88.9
Qantas	462	436	94.4	464	442	95.3
QantasLink	125	111	88.8	126	107	84.9
REX Airlines	228	203	89.0	227	204	89.9
Virgin Australia	508	436	85.8	505	431	85.3
Virgin Australia Regional Airlines	5	5	100.0	5	3	60.0
All Airlines	1 572	1 402	89.2	1 571	1 404	89.4

Relates to services to and from Alice Springs, Brisbane, Canberra, Gold Coast, Melbourne, Perth, Port Lincoln and Sydney only.

Albury						
QantasLink	89	85	95.5	89	82	92.1
REX Airlines	61	56	91.8	61	60	98.4
All Airlines	150	141	94.0	150	142	94.7

Relates to services to and from Sydney only.

Alice Springs						
Qantas	17	16	94.1	17	11	64.7
Virgin Australia	14	13	92.9	14	11	78.6
All Airlines	31	29	93.5	31	22	71.0

Relates to services to and from Adelaide only.

Armidale						
QantasLink	96	81	84.4	94	85	90.4
REX Airlines	50	41	82.0	50	37	74.0
All Airlines	146	122	83.6	144	122	84.7

Relates to services to and from Sydney only.

Ballina						
Jetstar	98	83	84.7	98	54	55.1
Qantas	24	22	91.7	24	15	62.5
QantasLink	75	61	81.3	74	58	78.4
REX Airlines	24	21	87.5	25	19	76.0
Virgin Australia	99	85	85.9	98	78	79.6
All Airlines	320	272	85.0	319	224	70.2

Relates to services to and from Sydney only.

Brisbane						
Jetstar	598	419	70.1	599	421	70.3
Qantas	1 140	1 029	90.3	1 143	1 062	92.9
QantasLink	582	516	88.7	581	518	89.2
Virgin Australia	1 384	1 070	77.3	1 394	1 071	76.8
All Airlines	3 704	3 034	81.9	3 717	3 072	82.6

Relates to services to and from Adelaide, Cairns, Canberra, Darwin, Emerald, Gladstone, Hamilton Island, Hobart, Mackay, Melbourne, Mount Isa, Newcastle, Perth, Proserpine, Rockhampton, Sydney and Townsville only.

Airport	Arrivals			Departures		
	Sectors	On Time		Sectors	On Time	
	Flown	No.	%	Flown	No.	%
Broome						
Qantas	24	23	95.8	23	22	95.7
QantasLink	55	50	90.9	56	46	82.1
Virgin Australia	29	27	93.1	29	26	89.7
Virgin Australia Regional Airlines	30	27	90.0	30	24	80.0
All Airlines	138	127	92.0	138	118	85.5
Relates to services to and from Perth only.						
Cairns						
Jetstar	221	151	68.3	221	184	83.3
Qantas	206	186	90.3	206	192	93.2
QantasLink	153	144	94.1	154	136	88.3
REX Airlines	19	15	78.9	19	17	89.5
Virgin Australia	265	210	79.2	265	201	75.8
All Airlines	864	706	81.7	865	730	84.4
Relates to services to and from Brisbane, Melbourne, Sydney and Townsville only.						
Canberra						
Qantas	51	48	94.1	50	46	92.0
QantasLink	383	322	84.1	379	320	84.4
REX Airlines	147	125	85.0	146	137	93.8
Virgin Australia	192	162	84.4	192	138	71.9
All Airlines	773	657	85.0	767	641	83.6
Relates to services to and from Adelaide, Brisbane, Melbourne and Sydney only.						
Coffs Harbour						
QantasLink	103	85	82.5	106	90	84.9
REX Airlines	78	74	94.9	78	74	94.9
Virgin Australia	31	22	71.0	31	21	67.7
All Airlines	212	181	85.4	215	185	86.0
Relates to services to and from Sydney only.						
Darwin						
Jetstar	28	21	75.0	27	12	44.4
Qantas	73	67	91.8	73	51	69.9
Virgin Australia	38	31	81.6	38	26	68.4
Virgin Australia Regional Airlines	13	12	92.3	13	11	84.6
All Airlines	152	131	86.2	151	100	66.2
Relates to services to and from Brisbane, Melbourne and Perth only.						
Dubbo						
QantasLink	87	78	89.7	87	78	89.7
REX Airlines	69	59	85.5	67	64	95.5
All Airlines	156	137	87.8	154	142	92.2
Relates to services to and from Sydney only.						
Emerald						
QantasLink	104	98	94.2	104	96	92.3
Virgin Australia	27	22	81.5	27	23	85.2
All Airlines	131	120	91.6	131	119	90.8
Relates to services to and from Brisbane only.						

Airport	Arrivals			Departures		
	Sectors Flown	On Time		Sectors Flown	On Time	
		No.	%		No.	%
Gladstone						
QantasLink	114	103	90.4	113	103	91.2
Virgin Australia	36	33	91.7	36	35	97.2
All Airlines	150	136	90.7	149	138	92.6
Relates to services to and from Brisbane only.						
Gold Coast						
Jetstar	297	205	69.0	297	220	74.1
Qantas	103	97	94.2	103	91	88.3
QantasLink	13	8	61.5	13	5	38.5
REX Airlines	57	49	86.0	57	50	87.7
Virgin Australia	345	241	69.9	341	227	66.6
All Airlines	815	600	73.6	811	593	73.1
Relates to services to and from Adelaide, Melbourne and Sydney only.						
Hamilton Island						
Jetstar	15	9	60.0	15	5	33.3
Qantas	60	58	96.7	59	56	94.9
Virgin Australia	71	63	88.7	71	59	83.1
All Airlines	146	130	89.0	145	120	82.8
Relates to services to and from Brisbane and Sydney only.						
Hobart						
Jetstar	197	154	78.2	197	128	65.0
Qantas	29	25	86.2	29	22	75.9
QantasLink	123	94	76.4	119	94	79.0
Virgin Australia	187	160	85.6	186	133	71.5
All Airlines	536	433	80.8	531	377	71.0
Relates to services to and from Brisbane, Melbourne and Sydney only.						
Kalgoorlie						
Qantas	10	9	90.0	10	7	70.0
QantasLink	54	47	87.0	54	46	85.2
Virgin Australia	30	30	100.0	30	21	70.0
Virgin Australia Regional Airlines	29	26	89.7	29	20	69.0
All Airlines	123	112	91.1	123	94	76.4
Relates to services to and from Perth only.						
Karratha						
Qantas	41	40	97.6	41	38	92.7
QantasLink	96	84	87.5	95	89	93.7
Virgin Australia	33	32	97.0	33	26	78.8
Virgin Australia Regional Airlines	21	20	95.2	21	16	76.2
All Airlines	191	176	92.1	190	169	88.9
Relates to services to and from Perth only.						
Launceston						
Jetstar	113	77	68.1	113	69	61.1
QantasLink	71	55	77.5	69	55	79.7
Virgin Australia	78	60	76.9	78	60	76.9
All Airlines	262	192	73.3	260	184	70.8
Relates to services to and from Melbourne and Sydney only.						

Airport	Arrivals			Departures		
	Sectors Flown	On Time		Sectors Flown	On Time	
		No.	%		No.	%
Mackay						
Jetstar	31	21	67.7	31	14	45.2
Qantas	102	99	97.1	102	99	97.1
QantasLink	2	2	100.0	6	4	66.7
Virgin Australia	110	84	76.4	110	83	75.5
All Airlines	245	206	84.1	249	200	80.3

Relates to services to and from Brisbane only.

Melbourne

Jetstar	921	693	75.2	923	605	65.5
Qantas	1 125	1 038	92.3	1 140	1 069	93.8
QantasLink	403	323	80.1	408	329	80.6
REX Airlines	244	224	91.8	247	224	90.7
Virgin Australia	1 618	1 201	74.2	1 614	1 222	75.7
All Airlines	4 311	3 479	80.7	4 332	3 449	79.6

Relates to services to and from Adelaide, Brisbane, Cairns, Canberra, Darwin, Gold Coast, Hobart, Launceston, Mildura, Newcastle, Perth, Sunshine Coast and Sydney only.

Mildura

QantasLink	113	95	84.1	111	94	84.7
REX Airlines	53	41	77.4	53	46	86.8
All Airlines	166	136	81.9	164	140	85.4

Relates to services to and from Melbourne only.

Mount Isa

Qantas	37	34	91.9	36	31	86.1
QantasLink	15	13	86.7	15	13	86.7
Virgin Australia	17	15	88.2	17	15	88.2
All Airlines	69	62	89.9	68	59	86.8

Relates to services to and from Brisbane only.

Newcastle

Jetstar	103	75	72.8	103	73	70.9
QantasLink	71	56	78.9	73	58	79.5
Virgin Australia	77	70	90.9	77	72	93.5
All Airlines	251	201	80.1	253	203	80.2

Relates to services to and from Brisbane and Melbourne only.

Newman

Qantas	12	11	91.7	12	8	66.7
QantasLink	95	90	94.7	95	81	85.3
Virgin Australia	27	26	96.3	27	22	81.5
Virgin Australia Regional Airlines	28	24	85.7	28	22	78.6
All Airlines	162	151	93.2	162	133	82.1

Relates to services to and from Perth only.

Perth

Jetstar	11	10	90.9	11	8	72.7
Qantas	281	244	86.8	284	269	94.7
QantasLink	380	335	88.2	380	347	91.3
Virgin Australia	238	185	77.7	243	193	79.4
Virgin Australia Regional Airlines	166	132	79.5	166	150	90.4
All Airlines	1 076	906	84.2	1 084	967	89.2

Relates to services to and from Adelaide, Brisbane, Broome, Darwin, Kalgoorlie, Karratha, Melbourne, Newman, Port Hedland and Sydney only.

Airport	Arrivals			Departures		
	Sectors	On Time		Sectors	On Time	
	Flown	No.	%	Flown	No.	%
Port Hedland						
Qantas	38	38	100.0	38	32	84.2
QantasLink	80	74	92.5	80	68	85.0
Virgin Australia	14	14	100.0	14	10	71.4
Virgin Australia Regional Airlines	40	36	90.0	40	33	82.5
All Airlines	172	162	94.2	172	143	83.1
Relates to services to and from Perth only.						
Port Lincoln						
QantasLink	113	101	89.4	112	102	91.1
REX Airlines	176	154	87.5	177	157	88.7
All Airlines	289	255	88.2	289	259	89.6
Relates to services to and from Adelaide only.						
Port Macquarie						
QantasLink	93	85	91.4	93	87	93.5
REX Airlines	72	59	81.9	73	65	89.0
All Airlines	165	144	87.3	166	152	91.6
Relates to services to and from Sydney only.						
Proserpine						
Jetstar	40	20	50.0	39	12	30.8
QantasLink	39	37	94.9	39	36	92.3
Virgin Australia	55	43	78.2	55	35	63.6
All Airlines	134	100	74.6	133	83	62.4
Relates to services to and from Brisbane only.						
Rockhampton						
QantasLink	152	133	87.5	152	137	90.1
Virgin Australia	105	80	76.2	105	98	93.3
All Airlines	257	213	82.9	257	235	91.4
Relates to services to and from Brisbane only.						
Sunshine Coast						
Jetstar	94	47	50.0	92	47	51.1
Qantas	62	59	95.2	62	58	93.5
QantasLink	10	7	70.0	10	8	80.0
Virgin Australia	136	99	72.8	136	85	62.5
All Airlines	302	212	70.2	300	198	66.0
Relates to services to and from Melbourne and Sydney only.						
Sydney						
Jetstar	921	690	74.9	922	656	71.1
Qantas	1 245	1 144	91.9	1 226	1 117	91.1
QantasLink	852	761	89.3	853	729	85.5
REX Airlines	688	614	89.2	686	613	89.4
Virgin Australia	1 359	1 095	80.6	1 356	1 062	78.3
All Airlines	5 065	4 304	85.0	5 043	4 177	82.8

Relates to services to and from Adelaide, Albury, Armidale, Ballina, Brisbane, Cairns, Canberra, Coffs Harbour, Dubbo, Gold Coast, Hamilton Island, Hobart, Launceston, Melbourne, Perth, Port Macquarie, Sunshine Coast and Wagga Wagga only.

<i>Airport</i>	<i>Arrivals</i>			<i>Departures</i>		
	<i>Sectors</i>	<i>On Time</i>		<i>Sectors</i>	<i>On Time</i>	
	<i>Flown</i>	<i>No.</i>	<i>%</i>	<i>Flown</i>	<i>No.</i>	<i>%</i>
Townsville						
Jetstar	59	33	55.9	59	30	50.8
Qantas	131	119	90.8	131	118	90.1
QantasLink	136	124	91.2	135	120	88.9
REX Airlines	19	17	89.5	19	15	78.9
Virgin Australia	115	82	71.3	116	74	63.8
All Airlines	460	375	81.5	460	357	77.6

Relates to services to and from Brisbane and Cairns only.

Wagga Wagga

QantasLink	84	79	94.0	86	82	95.3
REX Airlines	48	45	93.8	48	44	91.7
All Airlines	132	124	93.9	134	126	94.0

Relates to services to and from Sydney only.

Definitions

On time arrival	A flight arrival is counted as "on time" if it arrived at the gate before 15 minutes after the scheduled arrival time shown in the carriers' schedule. Neither diverted nor cancelled flights count as on time.
On time departure	A flight departure is counted as "on time" if it departs the gate before 15 minutes after the scheduled departure time shown in the carriers' schedule.
Cancellation	A flight removed from service within 7 days of scheduled departure is regarded as a cancellation.
On time departure percentage	The percentage of on time departures is measured against the number of departures <i>operated</i> on any particular sector.
On time arrival percentage	The percentage of on time arrivals is measured against the number of arrivals <i>operated</i> on any particular sector.
Cancellation percentage	The percentage of cancellations is measured against the number of services <i>scheduled</i> on any particular sector.
