



Australian Government

Department of Infrastructure, Transport, Regional Development and Communications

Bureau of Infrastructure and Transport Research Economics

STATISTICAL REPORT



Aviation

Domestic airline on time performance
February 2022

© Commonwealth of Australia 2022

ISSN: 1832-0759

Ownership of intellectual property rights in this publication

Unless otherwise noted, copyright (and any other intellectual property rights, if any) in this publication is owned by the Commonwealth of Australia (referred to below as the Commonwealth).

Disclaimer

The material contained in this publication is made available on the understanding that the Commonwealth is not providing professional advice, and that users exercise their own skill and care with respect to its use, and seek independent advice if necessary.

The Commonwealth makes no representations or warranties as to the contents or accuracy of the information contained in this publication. To the extent permitted by law, the Commonwealth disclaims liability to any person or organisation in respect of anything done, or omitted to be done, in reliance upon information contained in this publication.

Creative Commons licence

With the exception of (a) the Coat of Arms; and (b) the Department of Infrastructure, Transport, Regional Development and Communications' photos and graphics, copyright in this publication is licensed under a Creative Commons Attribution 3.0 Australia Licence.

Creative Commons Attribution 3.0 Australia Licence is a standard form licence agreement that allows you to copy, communicate and adapt this publication provided that you attribute the work to the Commonwealth and abide by the other licence terms. A summary of the licence terms is available from <http://creativecommons.org/licenses/by/3.0/au/deed.en>. The full licence terms are available from <http://creativecommons.org/licenses/by/3.0/au/legalcode>.

Use of the Coat of Arms

The Department of the Prime Minister and Cabinet sets the terms under which the Coat of Arms is used. Please refer to the Department's Commonwealth Coat of Arms and Government branding web page <http://www.dpmc.gov.au/guidelines/index.cfm#brand> and, in particular, the Guidelines on the use of the Commonwealth Coat of Arms publication.

An appropriate citation for this report is:

Bureau of Infrastructure and Transport Research Economics (BITRE), 2022, Domestic airline on time performance, Statistical Report, BITRE, Canberra ACT.

Contact us

This publication is available in PDF format. All other rights are reserved, including in relation to any Departmental logos or trade marks which may exist. For enquiries regarding the licence and any use of this publication, please contact:

Bureau of Infrastructure and Transport Research Economics (BITRE)
Department of Infrastructure, Transport, Regional Development and Communications
GPO Box 501, Canberra ACT 2601, Australia
Telephone: (international) +61 2 6274 7210
Fax: (international) +61 2 6274 6855
Email: bitre@infrastructure.gov.au
Website: www.bitre.gov.au

Inquiries

Should you require additional information about the statistics contained in this publication:

Telephone (02) 6274 7790 or Facsimile (02) 6274 7727

Electronic mail: AVSTATS@infrastructure.gov.au

Web site: <http://www.bitre.gov.au/statistics/aviation/otphome.aspx>

Foreword

The Bureau of Infrastructure and Transport Research Economics (BITRE) monitors the punctuality and reliability of major domestic airlines operating between Australian airports. The purpose of this is to allow for evaluation of overall industry and individual airline performance, so that consumers of air travel can make informed decisions.

The following domestic airlines currently report this information monthly to the BITRE: Jetstar, Qantas, QantasLink, Rex Airlines, Virgin Australia and Virgin Australia Regional Airlines.

Data has been gathered since November 2003, although some airlines commenced reporting at a later date, including Jetstar which first reported in May 2004, MacAir in July 2005, Tigerair Australia in April 2008 and Virgin Australia Regional Airlines in May 2013. MacAir ceased operations in February 2009 and data was not received for December 2008 onwards. Tigerair Australia ceased operations in March 2020 and data was not received for that month.

Virgin Blue was rebranded as Virgin Australia in May 2011 and Tiger Airways was rebranded as Tigerair Australia in July 2013 and time series data in Microsoft Excel spread sheet format on the BITRE website have been revised to reflect these changes. With effect from July 2021, Regional Express is reported as Rex Airlines.

Services operated by Skywest on behalf of Virgin Australia using ATR/F100 aircraft commenced in November 2011 and were shown separately as Virgin Australia – ATR/F100 Operations. Virgin Australia Regional Airlines commenced operations in May 2013. It was formed after the acquisition of Skywest by Virgin Australia and represented a combination of operations previously reported under Skywest and Virgin Australia – ATR/F100 Operations. In January 2016, Virgin Australia transferred their ATR fleet from Virgin Australia Regional Airlines to Virgin Australia.

Information presented in this report is for Australian domestic routes for which the passenger load averaged 8 000 or more passengers per month over the previous six months and where two or more airlines operated in competition on those routes. In order to present data for more routes during the period impacted by COVID-19, the passenger load restriction is not being applied. Data are presented for 56 routes in February 2022. Over time, routes which meet these criteria change as airline networks and traffic levels vary.

Participating airlines report their overall monthly network performance where this is possible.

Total industry figures encompass all services operated by reporting airlines only. These airlines collectively carried over 95 per cent of total domestic passengers (regular public transport only) in 2019.

The method of capturing on time performance varies between airlines utilising different recording systems. Jetstar and Qantas jet aircraft use Aircraft Communication Addressing and Reporting System (ACARS) to electronically measure on time performance. Rex Airlines, Virgin Australia, Virgin Australia Regional Airlines and the Qantas non-jet fleet record on time performance manually using records from pilots, gate agents and/or ground crews.

After initial data is collected, aggregate reports are reviewed by participating airlines prior to publication.

Reports and detailed time series data in Microsoft Excel spreadsheet format are available from the BITRE website at: <http://www.bitre.gov.au/statistics/aviation/otphome.aspx>

Contents

	Page
Industry performance	1
Individual routes	9
Airports.....	21
Definitions	27

Industry performance

For February 2022, on time performance over all routes operated by participating airlines (Jetstar, Qantas, QantasLink, Rex Airlines, Virgin Australia and Virgin Australia Regional Airlines) averaged 83.6 per cent for on time arrivals and 82.7 per cent for on time departures. The cancellation rate for the month was 3.6 per cent. The equivalent figures for February 2021 were 90.3 per cent for on time arrivals, 89.9 per cent for on time departures and 8.7 per cent for cancellations.

This month's on time arrivals figure was higher than the long term average performance for all routes (82.4 per cent) and the on time departures figure was lower than the long term average (83.6 per cent). The rate of cancellations was higher than the long term average of 2.0 per cent.

The Qantas network (Qantas and QantasLink combined operations) recorded 86.0 per cent for on time arrivals while the Virgin Australia network (Virgin Australia and Virgin Australia Regional Airlines combined operations) recorded 79.3 per cent. Qantas achieved the highest on time arrivals among the major domestic airlines at 89.0 per cent followed by Virgin Australia at 79.1 per cent and Jetstar at 76.9 per cent. Of the regional airlines, Rex Airlines recorded 88.7 per cent for on time arrivals, followed by QantasLink at 83.8 per cent and Virgin Australia Regional Airlines at 82.6 per cent.

The Qantas network recorded 85.3 per cent for on time departures while the Virgin Australia network recorded 77.1 per cent. Qantas achieved the highest level of on time departures among the major domestic airlines for February 2022 at 88.9 per cent, followed by Virgin Australia at 76.8 per cent and Jetstar at 73.6 per cent. Of the regional airlines, Rex Airlines recorded 90.5 per cent for on time departures, followed by QantasLink at 82.6 per cent and Virgin Australia Regional Airlines at 82.0 per cent.

Qantas recorded the highest percentage of cancellations (at 6.2 per cent) during the month, followed by QantasLink (at 5.1 per cent), Virgin Australia Regional Airlines and Virgin Australia (at 2.5 per cent), Jetstar (at 2.4 per cent) and Rex Airlines (at 0.5 per cent).

Airlines' on time performance varies across the routes they serve. Individual route data by specific airline for 56 routes are shown on pages 9-20.

Of the 56 routes which met the criteria for on time performance reporting in February 2022, the Canberra-Adelaide route had the highest percentage of on time arrivals (93.4 per cent) and the Perth-Darwin route had the highest percentage of on time departures (100.0 per cent). The Perth-Melbourne route had the lowest percentage of on time arrivals (47.6 per cent) and the Melbourne-Perth route had the lowest percentage of on time departures (31.9 per cent).

Cancellations were highest on the Canberra-Sydney route at 15.9 per cent, followed by the Sydney-Canberra route at 14.8 per cent, the Mount Isa-Brisbane and Sydney-Ballina routes at 8.3 per cent, the Ballina-Sydney route at 7.7 per cent and the Emerald-Brisbane route at 7.5 per cent.

Albury Airport recorded the highest percentage of on time arrivals (92.8 per cent) and Karratha Airport recorded the highest percentage of on time departures (94.0 per cent). Mackay Airport recorded the lowest percentage of on time arrivals (71.7 per cent) and Hamilton Island Airport recorded the lowest percentage of on time departures (62.8 per cent). These figures only refer to reported routes and do not cover all flights at these airports.

Table 1 On time performance for February 2022 — Total Industry

	<i>Sectors</i>		<i>Arrivals On Time</i>		<i>Departures On Time</i>		<i>Cancellations</i>	
	<i>Scheduled</i>	<i>Flown</i>	<i>No.</i>	<i>%</i>	<i>No.</i>	<i>%</i>	<i>No.</i>	<i>%</i>
Jetstar	3 712	3 623	2 785	76.9	2 665	73.6	89	2.4
Qantas - all QF designated services	12 737	12 029	10 348	86.0	10 265	85.3	708	5.6
Rex Airlines	4 422	4 400	3 903	88.7	3 982	90.5	22	0.5
Virgin Australia - all VA designated services	6 225	6 068	4 812	79.3	4 678	77.1	157	2.5
All Airlines	27 096	26 120	21 848	83.6	21 590	82.7	976	3.6
Individual operating entities								
Qantas	5 500	5 158	4 592	89.0	4 588	88.9	342	6.2
QantasLink	7 237	6 871	5 756	83.8	5 677	82.6	366	5.1
Virgin Australia	5 872	5 724	4 528	79.1	4 396	76.8	148	2.5
Virgin Australia Regional Airlines	353	344	284	82.6	282	82.0	9	2.5

Total airline network data (including routes not shown in this report).

Airlines' on time performance varies across the routes they serve. Individual route data by specific airline are shown on page 9 and onwards.

Table 2 Top ten routes for on time performance for February 2022 (participating airlines only)

<i>Arrivals</i>		<i>Departures</i>	
<i>Route</i>	<i>On Time (%)</i>	<i>Route</i>	<i>On Time (%)</i>
Canberra-Adelaide	93.4	Perth-Darwin	100.0
Cairns-Townsville	93.1	Adelaide-Gold Coast	95.3
Sydney-Albury	92.8	Perth-Karratha	94.5
Adelaide-Port Lincoln	92.5	Karratha-Perth	94.0
Brisbane-Hobart	92.0	Perth-Port Hedland	93.3
Albury-Sydney	91.3	Perth-Kalgoorlie	92.7
Wagga Wagga-Sydney	91.1	Perth-Broome	92.1
Brisbane-Emerald	91.1	Wagga Wagga-Sydney	91.9
Adelaide-Melbourne	90.5	Emerald-Brisbane	91.9
Adelaide-Alice Springs	90.3	Canberra-Adelaide	91.8

Table 3 Top ten airports for on time performance for February 2022 (participating airlines and reported routes only)

<i>Arrivals</i>		<i>Departures</i>	
<i>Airport</i>	<i>On Time (%)</i>	<i>Airport</i>	<i>On Time (%)</i>
Albury	92.8	Karratha	94.0
Port Lincoln	92.5	Wagga Wagga	91.9
Emerald	91.1	Emerald	91.9
Alice Springs	90.3	Port Lincoln	89.6
Mildura	90.1	Mildura	89.1
Karratha	87.9	Adelaide	88.5
Adelaide	87.0	Albury	88.4
Hobart	86.5	Broome	88.1
Wagga Wagga	86.3	Dubbo	87.8
Dubbo	86.0	Kalgoorlie	87.1

Total industry on time performance

Figure 1 On time performance (by month from February 2019)—Total Industry

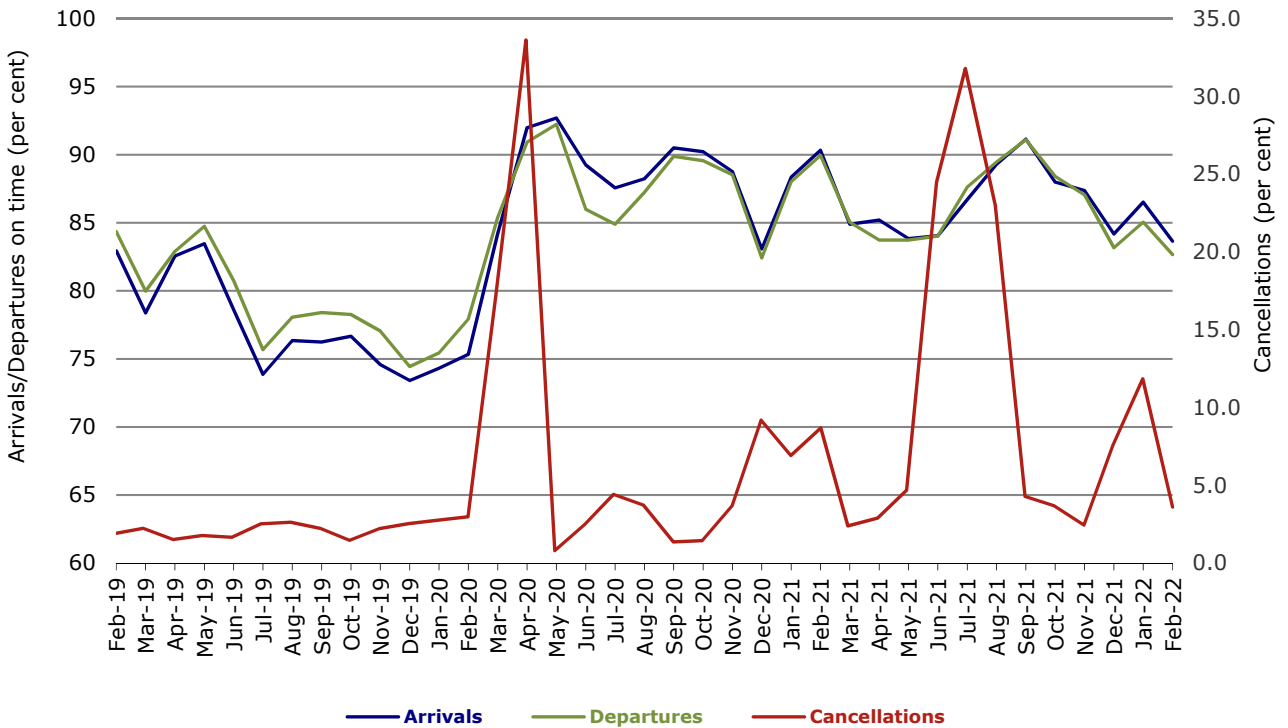
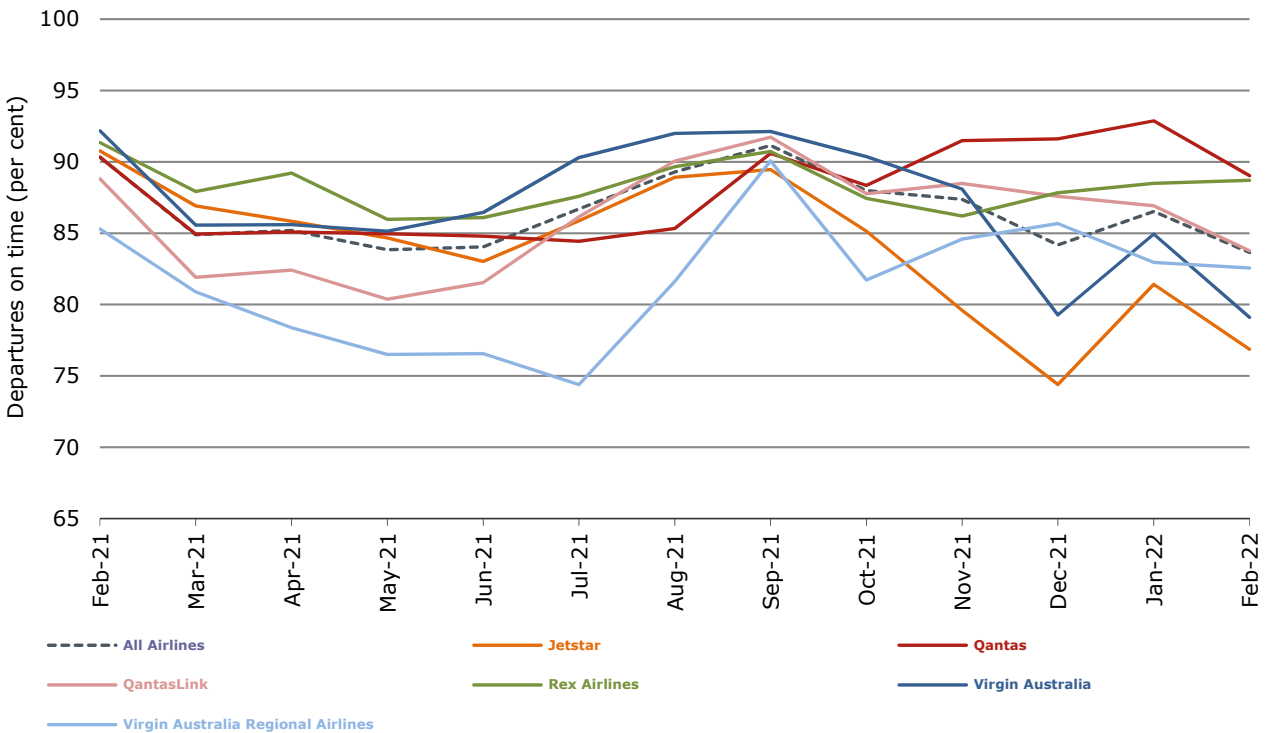
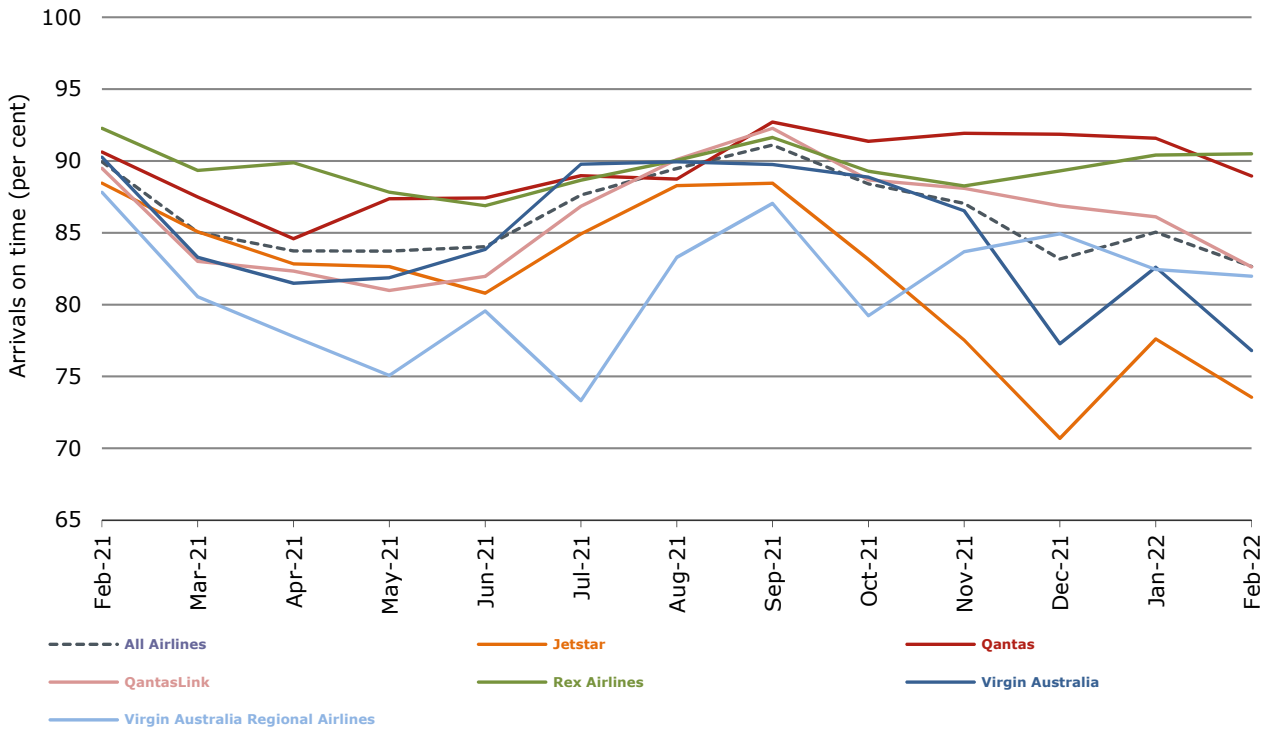


Figure 2 Arrivals on time (by month from February 2021)



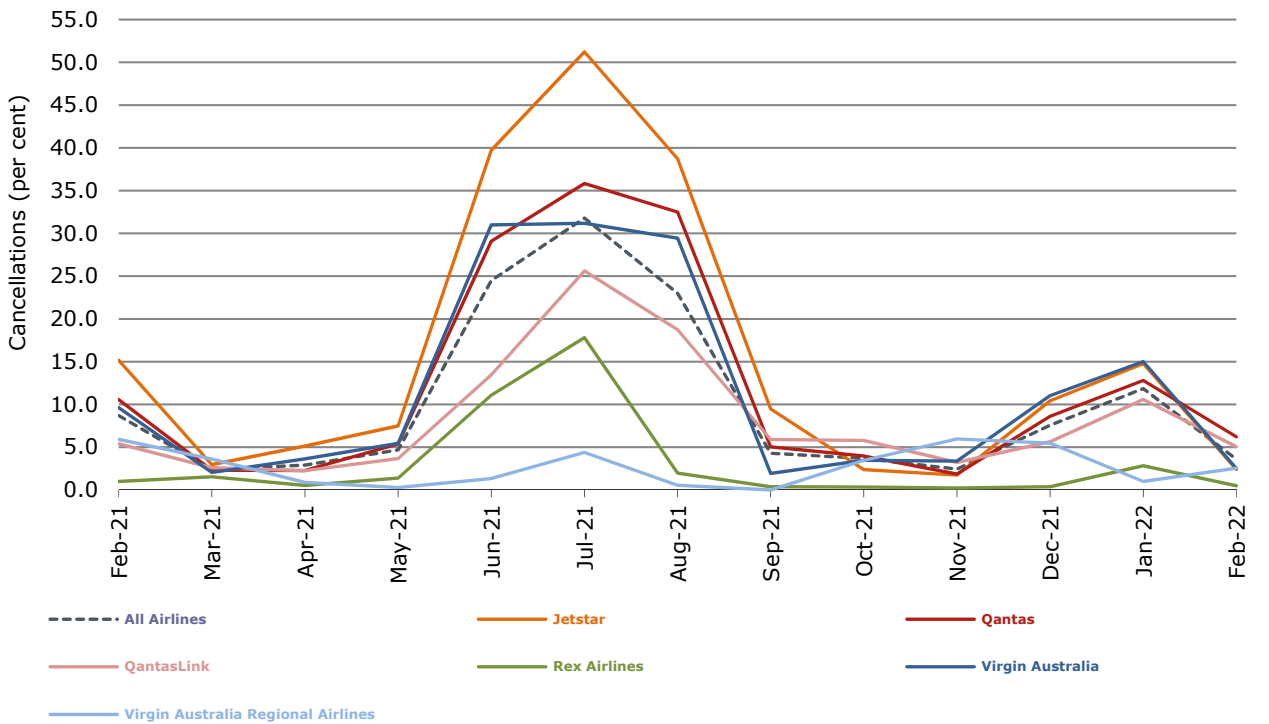
With effect from July 2021, Regional Express is reported as Rex Airlines

Figure 3 Departures on time (by month from February 2021)



With effect from July 2021, Regional Express is reported as Rex Airlines

Figure 4 Cancellations (by month from February 2021)



With effect from July 2021, Regional Express is reported as Rex Airlines

Major domestic airlines on time performance

Figure 5 On time performance (by month from February 2019)—Jetstar

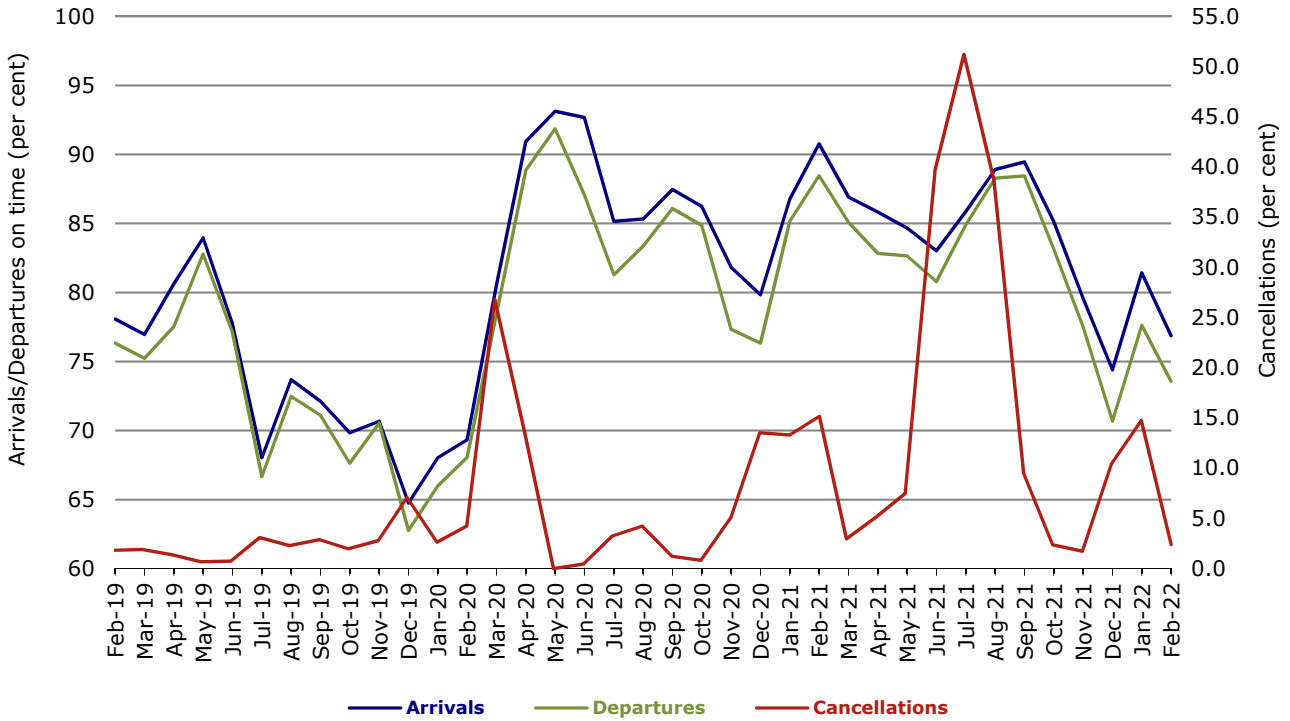


Figure 6 On time performance (by month from February 2019)—Qantas

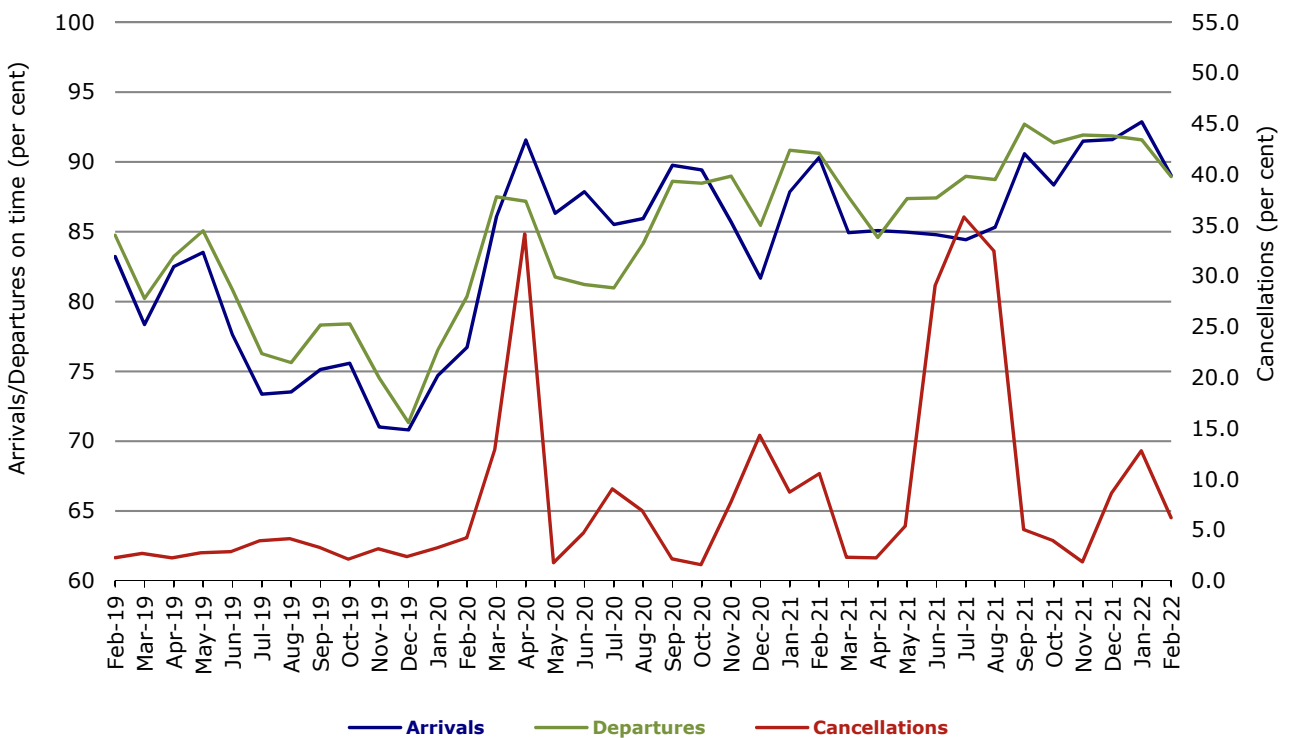
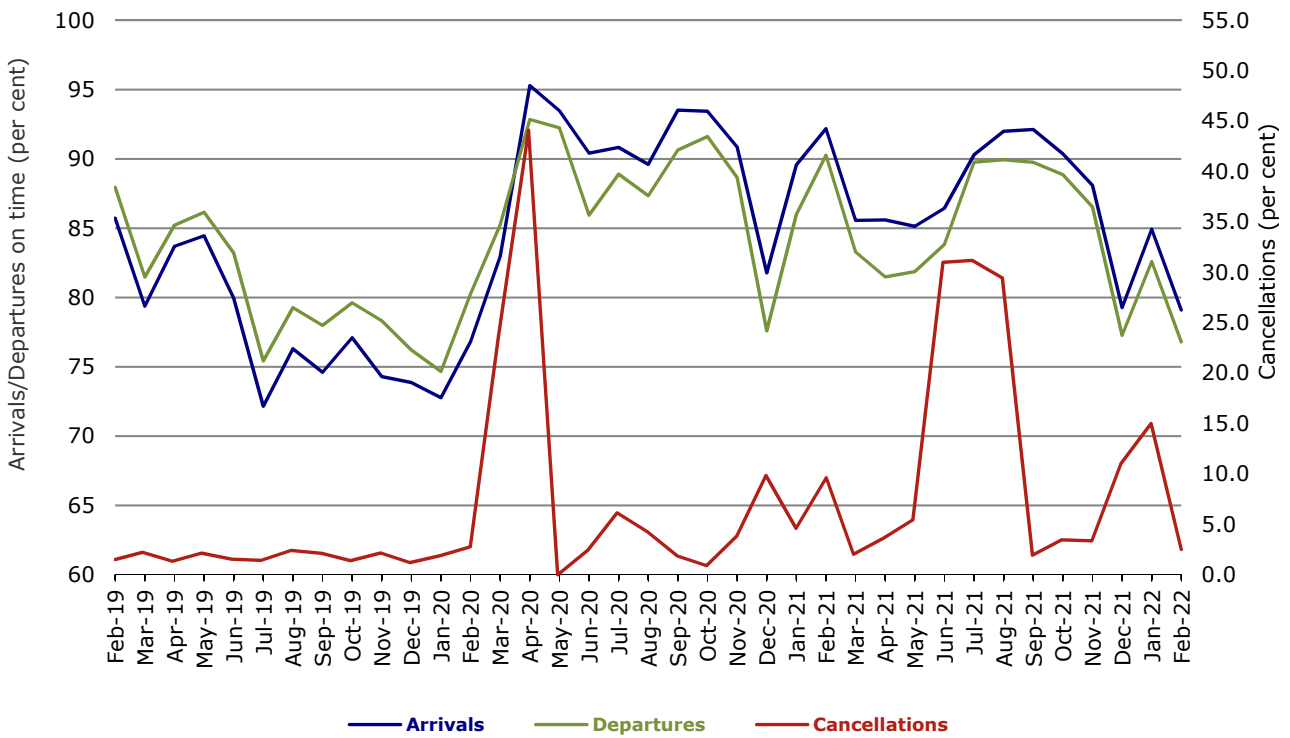


Figure 7 On time performance (by month from February 2019)—Virgin Australia



Major regional airlines on time performance

Figure 8 On time performance (by month from February 2019)—QantasLink

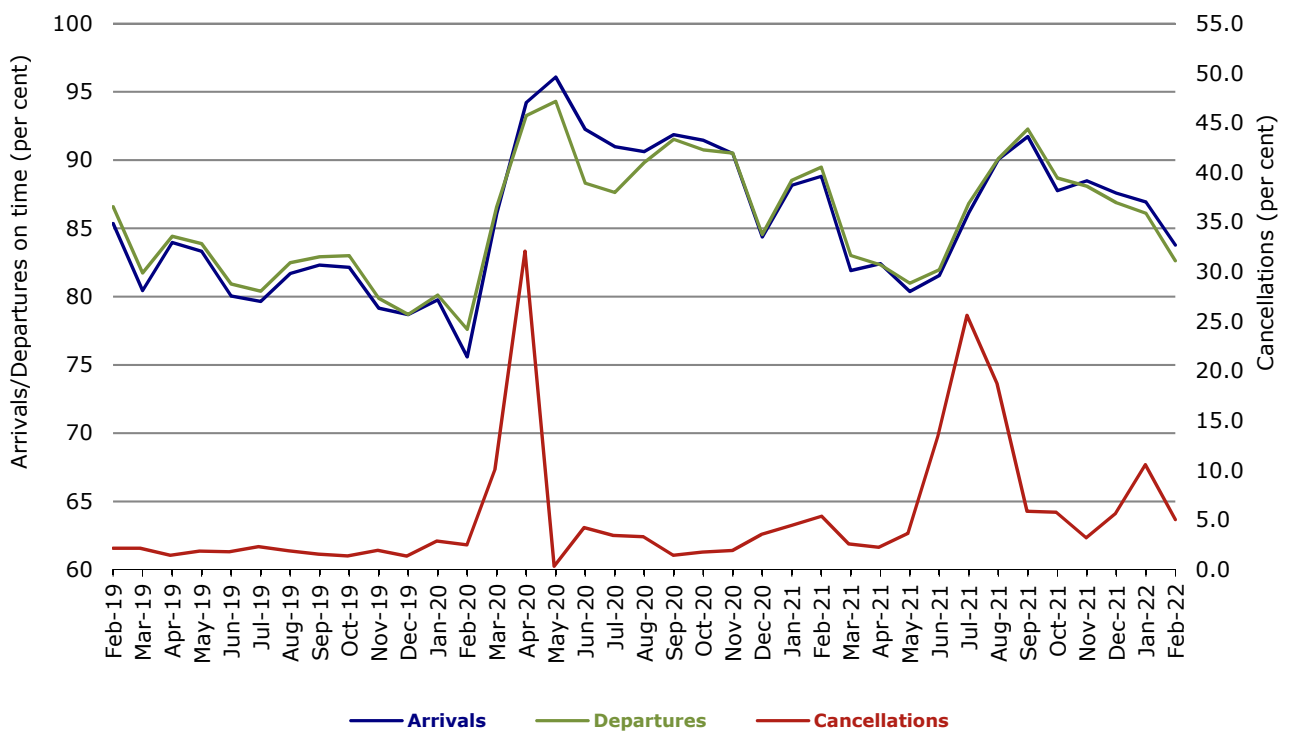
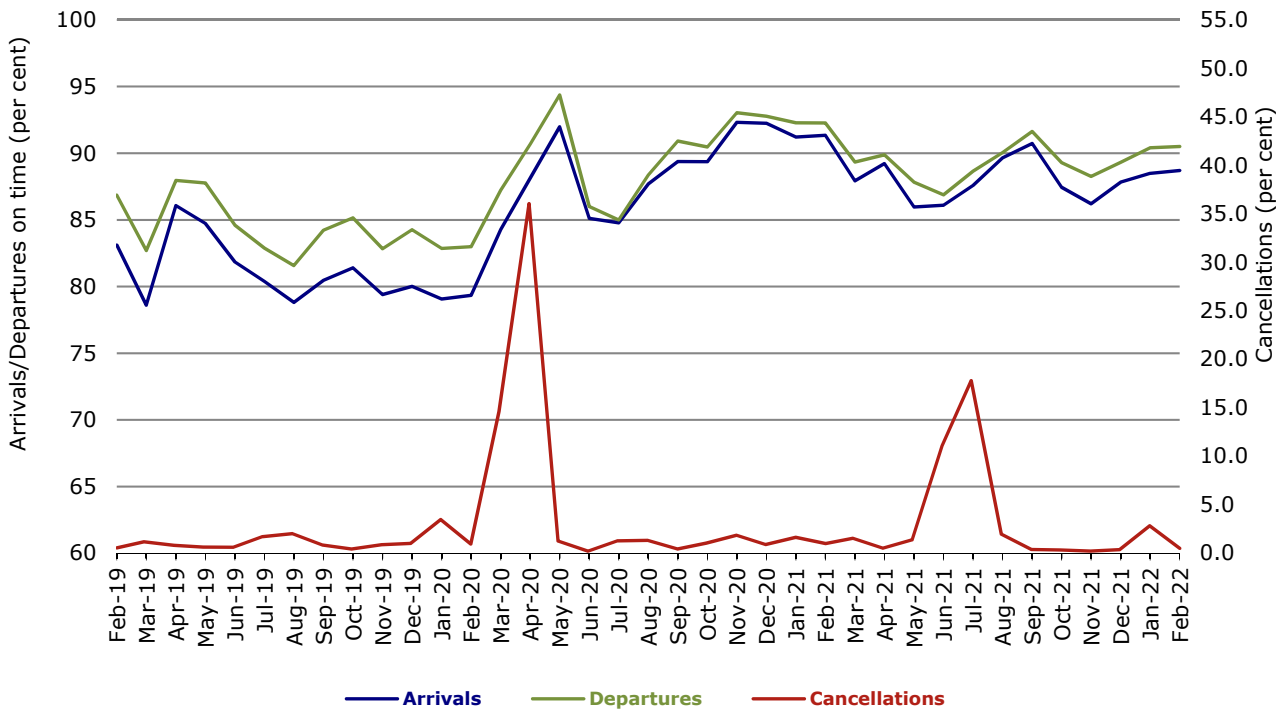
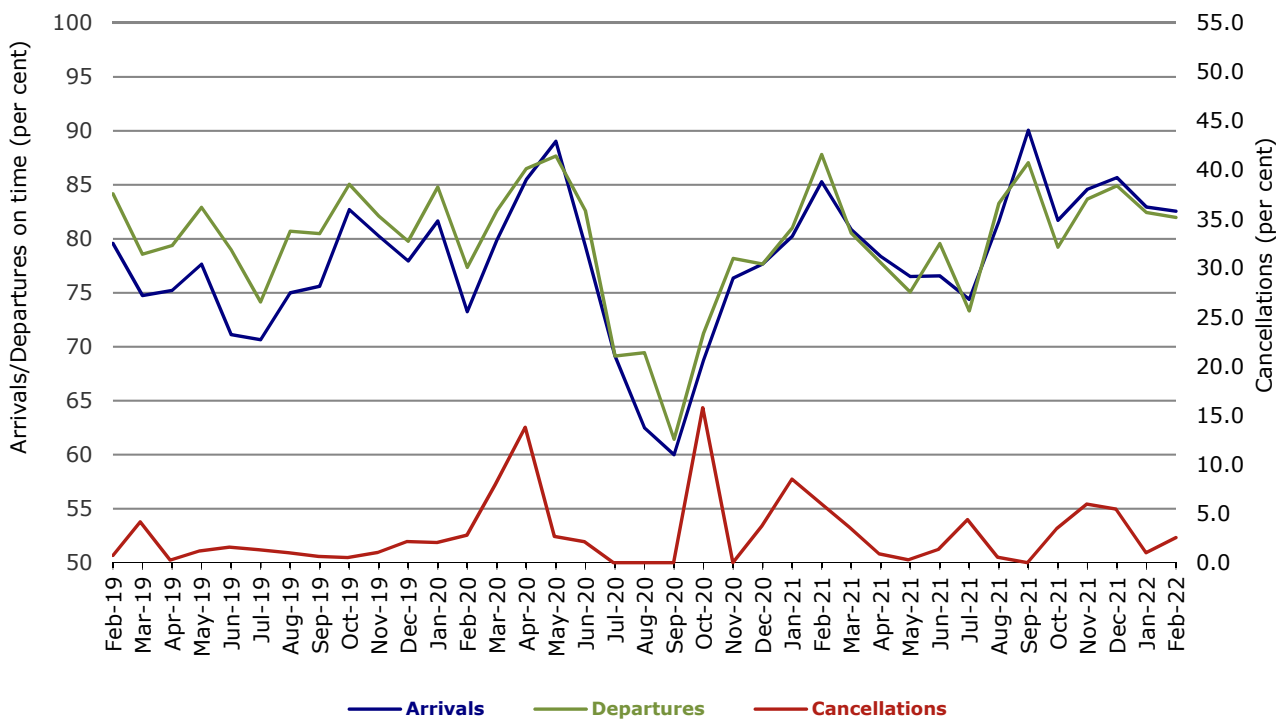


Figure 9 On time performance (by month from February 2019)—Rex Airlines



With effect from July 2021, Regional Express is reported as Rex Airlines

Figure 10 On time performance (by month from February 2019) Virgin Australia Regional Airlines



Individual routes

On time performance is reported for all routes where the passenger load averages over 8000 passengers per month over the previous six months, and where two or more airlines operate in competition on those routes. In order to present data for more routes during the period impacted by COVID-19, the passenger load restriction is not being applied. There are now 56 routes for which data are presented.

	<i>Sectors</i>		<i>Arrivals On Time</i>		<i>Departures On Time</i>		<i>Cancellations</i>	
	<i>Sched.</i>	<i>Flown</i>	<i>No.</i>	<i>%</i>	<i>No.</i>	<i>%</i>	<i>No.</i>	<i>%</i>
Adelaide-Alice Springs								
QantasLink	23	23	20	87.0	19	82.6	0	0.0
Virgin Australia	8	8	8	100.0	7	87.5	0	0.0
All Airlines	31	31	28	90.3	26	83.9	0	0.0
Adelaide-Brisbane								
Jetstar	17	17	11	64.7	13	76.5	0	0.0
Qantas	55	54	45	83.3	52	96.3	1	1.8
Virgin Australia	63	63	56	88.9	56	88.9	0	0.0
All Airlines	135	134	112	83.6	121	90.3	1	0.7
Adelaide-Canberra								
QantasLink	49	46	40	87.0	41	89.1	3	6.1
Virgin Australia	15	15	14	93.3	14	93.3	0	0.0
All Airlines	64	61	54	88.5	55	90.2	3	4.7
Adelaide-Gold Coast								
Jetstar	20	19	17	89.5	18	94.7	1	5.0
QantasLink	7	6	6	100.0	6	100.0	1	14.3
Virgin Australia	18	18	15	83.3	17	94.4	0	0.0
All Airlines	45	43	38	88.4	41	95.3	2	4.4
Adelaide-Melbourne								
Jetstar	46	46	33	71.7	27	58.7	0	0.0
Qantas	146	141	136	96.5	136	96.5	5	3.4
Rex Airlines	31	31	31	100.0	31	100.0	0	0.0
Virgin Australia	140	140	124	88.6	113	80.7	0	0.0
All Airlines	363	358	324	90.5	307	85.8	5	1.4
Adelaide-Perth								
Qantas	15	15	11	73.3	8	53.3	0	0.0
Virgin Australia	4	3	1	33.3	1	33.3	1	25.0
Virgin Australia Regional Airlines	3	3	2	66.7	0	0.0	0	0.0
All Airlines	22	21	14	66.7	9	42.9	1	4.5
Adelaide-Port Lincoln								
QantasLink	90	87	76	87.4	77	88.5	3	3.3
Rex Airlines	129	127	122	96.1	119	93.7	2	1.6
All Airlines	219	214	198	92.5	196	91.6	5	2.3
Adelaide-Sydney								
Jetstar	51	51	37	72.5	41	80.4	0	0.0
Qantas	150	139	137	98.6	136	97.8	11	7.3
Virgin Australia	73	73	62	84.9	64	87.7	0	0.0
All Airlines	274	263	236	89.7	241	91.6	11	4.0
Albury-Sydney								
QantasLink	64	63	57	90.5	53	84.1	1	1.6
Rex Airlines	75	75	69	92.0	69	92.0	0	0.0
All Airlines	139	138	126	91.3	122	88.4	1	0.7

	<i>Sectors</i>		<i>Arrivals On Time</i>		<i>Departures On Time</i>		<i>Cancellations</i>	
	<i>Sched.</i>	<i>Flown</i>	<i>No.</i>	<i>%</i>	<i>No.</i>	<i>%</i>	<i>No.</i>	<i>%</i>
Alice Springs-Adelaide								
QantasLink	23	23	16	69.6	17	73.9	0	0.0
Virgin Australia	8	8	6	75.0	6	75.0	0	0.0
All Airlines	31	31	22	71.0	23	74.2	0	0.0
Armidale-Sydney								
QantasLink	60	58	46	79.3	43	74.1	2	3.3
Rex Airlines	51	51	37	72.5	41	80.4	0	0.0
All Airlines	111	109	83	76.1	84	77.1	2	1.8
Ballina-Sydney								
Jetstar	50	44	21	47.7	20	45.5	6	12.0
QantasLink	64	60	49	81.7	48	80.0	4	6.3
Rex Airlines	26	26	22	84.6	23	88.5	0	0.0
Virgin Australia	41	37	31	83.8	29	78.4	4	9.8
All Airlines	181	167	123	73.7	120	71.9	14	7.7
Brisbane-Adelaide								
Jetstar	16	16	11	68.8	9	56.3	0	0.0
Qantas	54	51	46	90.2	43	84.3	3	5.6
Virgin Australia	63	63	55	87.3	49	77.8	0	0.0
All Airlines	133	130	112	86.2	101	77.7	3	2.3
Brisbane-Cairns								
Jetstar	44	43	24	55.8	26	60.5	1	2.3
Qantas	79	76	60	78.9	62	81.6	3	3.8
QantasLink	28	26	22	84.6	22	84.6	2	7.1
Virgin Australia	85	81	50	61.7	60	74.1	4	4.7
All Airlines	236	226	156	69.0	170	75.2	10	4.2
Brisbane-Canberra								
Jetstar	15	15	15	100.0	13	86.7	0	0.0
Qantas	6	5	4	80.0	5	100.0	1	16.7
QantasLink	110	100	80	80.0	77	77.0	10	9.1
Virgin Australia	57	57	45	78.9	43	75.4	0	0.0
All Airlines	188	177	144	81.4	138	78.0	11	5.9
Brisbane-Darwin								
Jetstar	12	11	10	90.9	9	81.8	1	8.3
Qantas	28	28	26	92.9	25	89.3	0	0.0
Virgin Australia	20	19	14	73.7	14	73.7	1	5.0
All Airlines	60	58	50	86.2	48	82.8	2	3.3
Brisbane-Emerald								
QantasLink	83	78	70	89.7	70	89.7	5	6.0
Virgin Australia	24	23	22	95.7	20	87.0	1	4.2
All Airlines	107	101	92	91.1	90	89.1	6	5.6
Brisbane-Gladstone								
QantasLink	94	88	72	81.8	73	83.0	6	6.4
Virgin Australia	36	33	29	87.9	30	90.9	3	8.3
All Airlines	130	121	101	83.5	103	85.1	9	6.9
Brisbane-Hamilton Island								
Qantas	20	20	17	85.0	18	90.0	0	0.0
Virgin Australia	29	29	20	69.0	21	72.4	0	0.0
All Airlines	49	49	37	75.5	39	79.6	0	0.0

	Sectors		Arrivals On Time		Departures On Time		Cancellations	
	Sched.	Flown	No.	%	No.	%	No.	%
Brisbane-Hobart								
Jetstar	24	24	23	95.8	18	75.0	0	0.0
QantasLink	20	20	17	85.0	14	70.0	0	0.0
Virgin Australia	32	31	29	93.5	22	71.0	1	3.1
All Airlines	76	75	69	92.0	54	72.0	1	1.3
Brisbane-Mackay								
Jetstar	16	16	7	43.8	6	37.5	0	0.0
Qantas	77	69	62	89.9	65	94.2	8	10.4
QantasLink	7	3	2	66.7	2	66.7	4	57.1
Virgin Australia	79	78	48	61.5	53	67.9	1	1.3
All Airlines	179	166	119	71.7	126	75.9	13	7.3
Brisbane-Melbourne								
Jetstar	81	80	62	77.5	50	62.5	1	1.2
Qantas	265	249	221	88.8	209	83.9	16	6.0
Rex Airlines	27	27	22	81.5	20	74.1	0	0.0
Virgin Australia	208	204	148	72.5	138	67.6	4	1.9
All Airlines	581	560	453	80.9	417	74.5	21	3.6
Brisbane-Mount Isa								
Qantas	33	33	30	90.9	30	90.9	0	0.0
QantasLink	15	12	12	100.0	11	91.7	3	20.0
Virgin Australia	12	12	7	58.3	8	66.7	0	0.0
All Airlines	60	57	49	86.0	49	86.0	3	5.0
Brisbane-Newcastle								
Jetstar	28	27	16	59.3	14	51.9	1	3.6
QantasLink	55	50	43	86.0	45	90.0	5	9.1
Virgin Australia	64	61	49	80.3	47	77.0	3	4.7
All Airlines	147	138	108	78.3	106	76.8	9	6.1
Brisbane-Perth								
Qantas	20	20	16	80.0	9	45.0	0	0.0
Virgin Australia	25	25	18	72.0	6	24.0	0	0.0
All Airlines	45	45	34	75.6	15	33.3	0	0.0
Brisbane-Proserpine								
Jetstar	26	24	12	50.0	18	75.0	2	7.7
QantasLink	20	20	17	85.0	18	90.0	0	0.0
Virgin Australia	28	28	25	89.3	25	89.3	0	0.0
All Airlines	74	72	54	75.0	61	84.7	2	2.7
Brisbane-Rockhampton								
QantasLink	108	102	77	75.5	81	79.4	6	5.6
Virgin Australia	68	67	53	79.1	58	86.6	1	1.5
All Airlines	176	169	130	76.9	139	82.2	7	4.0
Brisbane-Sydney								
Jetstar	66	64	49	76.6	42	65.6	2	3.0
Qantas	392	356	315	88.5	311	87.4	36	9.2
Rex Airlines	30	30	25	83.3	26	86.7	0	0.0
Virgin Australia	231	227	161	70.9	142	62.6	4	1.7
All Airlines	719	677	550	81.2	521	77.0	42	5.8
Brisbane-Townsville								
Jetstar	24	24	21	87.5	23	95.8	0	0.0
Qantas	88	82	71	86.6	74	90.2	6	6.8
QantasLink	13	13	8	61.5	10	76.9	0	0.0
Virgin Australia	73	70	50	71.4	53	75.7	3	4.1
All Airlines	198	189	150	79.4	160	84.7	9	4.5

	<i>Sectors</i>		<i>Arrivals On Time</i>		<i>Departures On Time</i>		<i>Cancellations</i>	
	<i>Sched.</i>	<i>Flown</i>	<i>No.</i>	<i>%</i>	<i>No.</i>	<i>%</i>	<i>No.</i>	<i>%</i>
Broome-Perth								
Qantas	74	72	67	93.1	65	90.3	2	2.7
Virgin Australia	3	3	3	100.0	3	100.0	0	0.0
Virgin Australia Regional Airlines	27	26	3	11.5	21	80.8	1	3.7
All Airlines	104	101	73	72.3	89	88.1	3	2.9
Cairns-Brisbane								
Jetstar	42	42	35	83.3	35	83.3	0	0.0
Qantas	78	75	68	90.7	69	92.0	3	3.8
QantasLink	28	26	24	92.3	24	92.3	2	7.1
Virgin Australia	85	81	68	84.0	59	72.8	4	4.7
All Airlines	233	224	195	87.1	187	83.5	9	3.9
Cairns-Melbourne								
Jetstar	36	36	29	80.6	24	66.7	0	0.0
Qantas	24	24	23	95.8	22	91.7	0	0.0
Virgin Australia	32	31	23	74.2	19	61.3	1	3.1
All Airlines	92	91	75	82.4	65	71.4	1	1.1
Cairns-Sydney								
Jetstar	36	35	29	82.9	28	80.0	1	2.8
Qantas	31	31	30	96.8	30	96.8	0	0.0
Virgin Australia	28	28	24	85.7	24	85.7	0	0.0
All Airlines	95	94	83	88.3	82	87.2	1	1.1
Cairns-Townsville								
QantasLink	93	93	86	92.5	83	89.2	0	0.0
Rex Airlines	8	8	8	100.0	8	100.0	0	0.0
All Airlines	101	101	94	93.1	91	90.1	0	0.0
Canberra-Adelaide								
QantasLink	49	46	43	93.5	42	91.3	3	6.1
Virgin Australia	15	15	14	93.3	14	93.3	0	0.0
All Airlines	64	61	57	93.4	56	91.8	3	4.7
Canberra-Brisbane								
Jetstar	16	16	12	75.0	13	81.3	0	0.0
Qantas	6	5	3	60.0	5	100.0	1	16.7
QantasLink	110	101	77	76.2	81	80.2	9	8.2
Virgin Australia	57	57	49	86.0	50	87.7	0	0.0
All Airlines	189	179	141	78.8	149	83.2	10	5.3
Canberra-Melbourne								
Qantas	9	8	6	75.0	7	87.5	1	11.1
QantasLink	146	137	121	88.3	122	89.1	9	6.2
Rex Airlines	19	19	17	89.5	16	84.2	0	0.0
Virgin Australia	68	67	55	82.1	52	77.6	1	1.5
All Airlines	242	231	199	86.1	197	85.3	11	4.5
Canberra-Sydney								
QantasLink	298	242	194	80.2	195	80.6	56	18.8
Rex Airlines	54	54	44	81.5	50	92.6	0	0.0
All Airlines	352	296	238	80.4	245	82.8	56	15.9
Coffs Harbour-Sydney								
QantasLink	70	68	47	69.1	52	76.5	2	2.9
Rex Airlines	71	71	58	81.7	59	83.1	0	0.0
Virgin Australia	16	16	14	87.5	14	87.5	0	0.0
All Airlines	157	155	119	76.8	125	80.6	2	1.3

	<i>Sectors</i>		<i>Arrivals On Time</i>		<i>Departures On Time</i>		<i>Cancellations</i>	
	<i>Sched.</i>	<i>Flown</i>	<i>No.</i>	<i>%</i>	<i>No.</i>	<i>%</i>	<i>No.</i>	<i>%</i>
Darwin-Brisbane								
Jetstar	12	11	8	72.7	5	45.5	1	8.3
Qantas	28	28	20	71.4	21	75.0	0	0.0
Virgin Australia	20	19	15	78.9	13	68.4	1	5.0
All Airlines	60	58	43	74.1	39	67.2	2	3.3
Darwin-Perth								
Qantas	13	13	13	100.0	12	92.3	0	0.0
Virgin Australia Regional Airlines	3	3	0	0.0	2	66.7	0	0.0
All Airlines	16	16	13	81.3	14	87.5	0	0.0
Dubbo-Sydney								
QantasLink	62	62	54	87.1	51	82.3	0	0.0
Rex Airlines	85	85	71	83.5	78	91.8	0	0.0
All Airlines	147	147	125	85.0	129	87.8	0	0.0
Emerald-Brisbane								
QantasLink	83	76	68	89.5	69	90.8	7	8.4
Virgin Australia	24	23	21	91.3	22	95.7	1	4.2
All Airlines	107	99	89	89.9	91	91.9	8	7.5
Gladstone-Brisbane								
QantasLink	93	89	75	84.3	76	85.4	4	4.3
Virgin Australia	36	33	26	78.8	29	87.9	3	8.3
All Airlines	129	122	101	82.8	105	86.1	7	5.4
Gold Coast-Adelaide								
Jetstar	20	19	17	89.5	16	84.2	1	5.0
QantasLink	7	6	5	83.3	3	50.0	1	14.3
Virgin Australia	18	17	14	82.4	12	70.6	1	5.6
All Airlines	45	42	36	85.7	31	73.8	3	6.7
Gold Coast-Melbourne								
Jetstar	133	127	107	84.3	96	75.6	6	4.5
Qantas	40	38	29	76.3	26	68.4	2	5.0
QantasLink	5	5	3	60.0	1	20.0	0	0.0
Rex Airlines	50	48	45	93.8	45	93.8	2	4.0
Virgin Australia	218	203	179	88.2	149	73.4	15	6.9
All Airlines	446	421	363	86.2	317	75.3	25	5.6
Gold Coast-Sydney								
Jetstar	151	143	114	79.7	114	79.7	8	5.3
Qantas	85	80	55	68.8	59	73.8	5	5.9
Rex Airlines	42	39	38	97.4	38	97.4	3	7.1
Virgin Australia	192	177	134	75.7	125	70.6	15	7.8
All Airlines	470	439	341	77.7	336	76.5	31	6.6
Hamilton Island-Brisbane								
Qantas	20	20	16	80.0	17	85.0	0	0.0
Virgin Australia	29	29	16	55.2	11	37.9	0	0.0
All Airlines	49	49	32	65.3	28	57.1	0	0.0
Hamilton Island-Sydney								
Jetstar	20	20	13	65.0	11	55.0	0	0.0
Qantas	24	24	23	95.8	21	87.5	0	0.0
Virgin Australia	20	20	11	55.0	11	55.0	0	0.0
All Airlines	64	64	47	73.4	43	67.2	0	0.0

	Sectors		Arrivals On Time		Departures On Time		Cancellations	
	Sched.	Flown	No.	%	No.	%	No.	%
Hobart-Brisbane								
Jetstar	23	23	18	78.3	18	78.3	0	0.0
QantasLink	20	20	13	65.0	15	75.0	0	0.0
Virgin Australia	32	31	20	64.5	22	71.0	1	3.1
All Airlines	75	74	51	68.9	55	74.3	1	1.3
Hobart-Melbourne								
Jetstar	82	81	69	85.2	62	76.5	1	1.2
QantasLink	80	78	66	84.6	63	80.8	2	2.5
Virgin Australia	79	79	58	73.4	60	75.9	0	0.0
All Airlines	241	238	193	81.1	185	77.7	3	1.2
Hobart-Sydney								
Jetstar	52	52	39	75.0	38	73.1	0	0.0
Qantas	43	38	31	81.6	33	86.8	5	11.6
QantasLink	2	1	0	0.0	0	0.0	1	50.0
Virgin Australia	47	47	37	78.7	40	85.1	0	0.0
All Airlines	144	138	107	77.5	111	80.4	6	4.2
Kalgoorlie-Perth								
Qantas	20	20	18	90.0	18	90.0	0	0.0
QantasLink	48	48	40	83.3	40	83.3	0	0.0
Virgin Australia	30	30	27	90.0	27	90.0	0	0.0
Virgin Australia Regional Airlines	26	26	3	11.5	23	88.5	0	0.0
All Airlines	124	124	88	71.0	108	87.1	0	0.0
Karratha-Perth								
Qantas	60	59	55	93.2	57	96.6	1	1.7
QantasLink	76	75	72	96.0	72	96.0	1	1.3
Virgin Australia	30	30	28	93.3	27	90.0	0	0.0
Virgin Australia Regional Airlines	18	18	3	16.7	15	83.3	0	0.0
All Airlines	184	182	158	86.8	171	94.0	2	1.1
Launceston-Melbourne								
Jetstar	53	53	38	71.7	37	69.8	0	0.0
QantasLink	54	48	34	70.8	31	64.6	6	11.1
Virgin Australia	56	56	50	89.3	54	96.4	0	0.0
All Airlines	163	157	122	77.7	122	77.7	6	3.7
Launceston-Sydney								
Jetstar	35	35	25	71.4	27	77.1	0	0.0
QantasLink	16	16	14	87.5	12	75.0	0	0.0
Virgin Australia	17	17	13	76.5	13	76.5	0	0.0
All Airlines	68	68	52	76.5	52	76.5	0	0.0
Mackay-Brisbane								
Jetstar	16	16	6	37.5	6	37.5	0	0.0
Qantas	76	69	63	91.3	62	89.9	7	9.2
QantasLink	11	6	5	83.3	5	83.3	5	45.5
Virgin Australia	79	78	62	79.5	56	71.8	1	1.3
All Airlines	182	169	136	80.5	129	76.3	13	7.1
Melbourne-Adelaide								
Jetstar	46	46	37	80.4	37	80.4	0	0.0
Qantas	146	140	134	95.7	132	94.3	6	4.1
Rex Airlines	31	31	31	100.0	31	100.0	0	0.0
Virgin Australia	140	139	109	78.4	114	82.0	1	0.7
All Airlines	363	356	311	87.4	314	88.2	7	1.9

	<i>Sectors</i>		<i>Arrivals On Time</i>		<i>Departures On Time</i>		<i>Cancellations</i>	
	<i>Sched.</i>	<i>Flown</i>	<i>No.</i>	<i>%</i>	<i>No.</i>	<i>%</i>	<i>No.</i>	<i>%</i>
Melbourne-Brisbane								
Jetstar	81	80	58	72.5	62	77.5	1	1.2
Qantas	264	251	208	82.9	231	92.0	13	4.9
Rex Airlines	27	27	24	88.9	25	92.6	0	0.0
Virgin Australia	207	202	154	76.2	164	81.2	5	2.4
All Airlines	579	560	444	79.3	482	86.1	19	3.3
Melbourne-Cairns								
Jetstar	36	36	24	66.7	21	58.3	0	0.0
Qantas	24	24	22	91.7	23	95.8	0	0.0
Virgin Australia	32	31	22	71.0	20	64.5	1	3.1
All Airlines	92	91	68	74.7	64	70.3	1	1.1
Melbourne-Canberra								
Qantas	10	9	6	66.7	8	88.9	1	10.0
QantasLink	147	139	119	85.6	121	87.1	8	5.4
Rex Airlines	19	19	18	94.7	18	94.7	0	0.0
Virgin Australia	68	68	55	80.9	55	80.9	0	0.0
All Airlines	244	235	198	84.3	202	86.0	9	3.7
Melbourne-Gold Coast								
Jetstar	132	126	89	70.6	87	69.0	6	4.5
Qantas	40	38	34	89.5	36	94.7	2	5.0
QantasLink	5	5	4	80.0	4	80.0	0	0.0
Rex Airlines	49	47	46	97.9	46	97.9	2	4.1
Virgin Australia	218	204	157	77.0	166	81.4	14	6.4
All Airlines	444	420	330	78.6	339	80.7	24	5.4
Melbourne-Hobart								
Jetstar	82	81	68	84.0	60	74.1	1	1.2
QantasLink	80	78	65	83.3	61	78.2	2	2.5
Virgin Australia	79	79	66	83.5	64	81.0	0	0.0
All Airlines	241	238	199	83.6	185	77.7	3	1.2
Melbourne-Launceston								
Jetstar	53	53	43	81.1	41	77.4	0	0.0
QantasLink	54	50	41	82.0	45	90.0	4	7.4
Virgin Australia	56	56	52	92.9	49	87.5	0	0.0
All Airlines	163	159	136	85.5	135	84.9	4	2.5
Melbourne-Mildura								
QantasLink	89	88	81	92.0	71	80.7	1	1.1
Rex Airlines	43	43	37	86.0	40	93.0	0	0.0
All Airlines	132	131	118	90.1	111	84.7	1	0.8
Melbourne-Newcastle								
Jetstar	40	40	25	62.5	30	75.0	0	0.0
QantasLink	25	24	20	83.3	20	83.3	1	4.0
Virgin Australia	19	19	14	73.7	15	78.9	0	0.0
All Airlines	84	83	59	71.1	65	78.3	1	1.2
Melbourne-Perth								
Qantas	31	31	14	45.2	10	32.3	0	0.0
Virgin Australia	39	38	27	71.1	12	31.6	1	2.6
All Airlines	70	69	41	59.4	22	31.9	1	1.4

	<i>Sectors</i>		<i>Arrivals On Time</i>		<i>Departures On Time</i>		<i>Cancellations</i>	
	<i>Sched.</i>	<i>Flown</i>	<i>No.</i>	<i>%</i>	<i>No.</i>	<i>%</i>	<i>No.</i>	<i>%</i>
Melbourne-Sunshine Coast								
Jetstar	54	54	43	79.6	45	83.3	0	0.0
Qantas	35	35	33	94.3	32	91.4	0	0.0
QantasLink	3	3	2	66.7	2	66.7	0	0.0
Virgin Australia	69	67	54	80.6	59	88.1	2	2.9
All Airlines	161	159	132	83.0	138	86.8	2	1.2
Melbourne-Sydney								
Jetstar	185	180	144	80.0	138	76.7	5	2.7
Qantas	661	601	564	93.8	573	95.3	60	9.1
Rex Airlines	66	66	63	95.5	65	98.5	0	0.0
Virgin Australia	388	382	320	83.8	319	83.5	6	1.5
All Airlines	1 300	1 229	1 091	88.8	1 095	89.1	71	5.5
Mildura-Melbourne								
QantasLink	89	88	73	83.0	75	85.2	1	1.1
Rex Airlines	42	41	40	97.6	40	97.6	1	2.4
All Airlines	131	129	113	87.6	115	89.1	2	1.5
Mount Isa-Brisbane								
Qantas	33	32	28	87.5	28	87.5	1	3.0
QantasLink	15	11	11	100.0	11	100.0	4	26.7
Virgin Australia	12	12	8	66.7	8	66.7	0	0.0
All Airlines	60	55	47	85.5	47	85.5	5	8.3
Newcastle-Brisbane								
Jetstar	28	28	13	46.4	14	50.0	0	0.0
QantasLink	53	47	41	87.2	40	85.1	6	11.3
Virgin Australia	64	61	43	70.5	50	82.0	3	4.7
All Airlines	145	136	97	71.3	104	76.5	9	6.2
Newcastle-Melbourne								
Jetstar	40	40	33	82.5	25	62.5	0	0.0
QantasLink	26	24	21	87.5	21	87.5	2	7.7
Virgin Australia	19	19	15	78.9	14	73.7	0	0.0
All Airlines	85	83	69	83.1	60	72.3	2	2.4
Newman-Perth								
Qantas	13	12	11	91.7	11	91.7	1	7.7
QantasLink	96	94	69	73.4	67	71.3	2	2.1
Virgin Australia	22	22	19	86.4	17	77.3	0	0.0
Virgin Australia Regional Airlines	30	30	6	20.0	23	76.7	0	0.0
All Airlines	161	158	105	66.5	118	74.7	3	1.9
Perth-Adelaide								
Qantas	15	15	12	80.0	11	73.3	0	0.0
Virgin Australia	3	3	1	33.3	1	33.3	0	0.0
Virgin Australia Regional Airlines	3	3	1	33.3	2	66.7	0	0.0
All Airlines	21	21	14	66.7	14	66.7	0	0.0
Perth-Brisbane								
Qantas	19	19	13	68.4	16	84.2	0	0.0
Virgin Australia	24	24	15	62.5	15	62.5	0	0.0
All Airlines	43	43	28	65.1	31	72.1	0	0.0
Perth-Broome								
Qantas	73	72	67	93.1	68	94.4	1	1.4
Virgin Australia	3	3	3	100.0	3	100.0	0	0.0
Virgin Australia Regional Airlines	27	26	3	11.5	22	84.6	1	3.7
All Airlines	103	101	73	72.3	93	92.1	2	1.9

	Sectors		Arrivals On Time		Departures On Time		Cancellations	
	Sched.	Flown	No.	%	No.	%	No.	%
Perth-Darwin								
Qantas	13	13	13	100.0	13	100.0	0	0.0
Virgin Australia Regional Airlines	3	3	0	0.0	3	100.0	0	0.0
All Airlines	16	16	13	81.3	16	100.0	0	0.0
Perth-Kalgoorlie								
Qantas	20	20	19	95.0	19	95.0	0	0.0
QantasLink	48	48	42	87.5	43	89.6	0	0.0
Virgin Australia	30	30	29	96.7	28	93.3	0	0.0
Virgin Australia Regional Airlines	26	26	2	7.7	25	96.2	0	0.0
All Airlines	124	124	92	74.2	115	92.7	0	0.0
Perth-Karratha								
Qantas	61	60	58	96.7	56	93.3	1	1.6
QantasLink	75	74	71	95.9	73	98.6	1	1.3
Virgin Australia	30	30	28	93.3	27	90.0	0	0.0
Virgin Australia Regional Airlines	18	18	3	16.7	16	88.9	0	0.0
All Airlines	184	182	160	87.9	172	94.5	2	1.1
Perth-Melbourne								
Qantas	26	25	14	56.0	15	60.0	1	3.8
Virgin Australia	39	38	16	42.1	14	36.8	1	2.6
All Airlines	65	63	30	47.6	29	46.0	2	3.1
Perth-Newman								
Qantas	14	13	12	92.3	11	84.6	1	7.1
QantasLink	96	94	84	89.4	83	88.3	2	2.1
Virgin Australia	22	22	19	86.4	20	90.9	0	0.0
Virgin Australia Regional Airlines	30	30	3	10.0	27	90.0	0	0.0
All Airlines	162	159	118	74.2	141	88.7	3	1.9
Perth-Port Hedland								
Qantas	48	48	44	91.7	48	100.0	0	0.0
QantasLink	71	68	59	86.8	63	92.6	3	4.2
Virgin Australia	12	12	10	83.3	11	91.7	0	0.0
Virgin Australia Regional Airlines	36	36	5	13.9	31	86.1	0	0.0
All Airlines	167	164	118	72.0	153	93.3	3	1.8
Perth-Sydney								
Qantas	37	35	27	77.1	26	74.3	2	5.4
Virgin Australia	13	13	11	84.6	8	61.5	0	0.0
All Airlines	50	48	38	79.2	34	70.8	2	4.0
Port Hedland-Perth								
Qantas	49	49	38	77.6	36	73.5	0	0.0
QantasLink	71	66	57	86.4	55	83.3	5	7.0
Virgin Australia	12	12	8	66.7	7	58.3	0	0.0
Virgin Australia Regional Airlines	36	36	12	33.3	29	80.6	0	0.0
All Airlines	168	163	115	70.6	127	77.9	5	3.0
Port Lincoln-Adelaide								
QantasLink	89	87	74	85.1	76	87.4	2	2.2
Rex Airlines	126	124	111	89.5	113	91.1	2	1.6
All Airlines	215	211	185	87.7	189	89.6	4	1.9
Port Macquarie-Sydney								
QantasLink	57	57	49	86.0	46	80.7	0	0.0
Rex Airlines	71	71	54	76.1	64	90.1	0	0.0
All Airlines	128	128	103	80.5	110	85.9	0	0.0

	<i>Sectors</i>		<i>Arrivals On Time</i>		<i>Departures On Time</i>		<i>Cancellations</i>	
	<i>Sched.</i>	<i>Flown</i>	<i>No.</i>	<i>%</i>	<i>No.</i>	<i>%</i>	<i>No.</i>	<i>%</i>
Proserpine-Brisbane								
Jetstar	27	24	14	58.3	12	50.0	3	11.1
QantasLink	21	21	16	76.2	16	76.2	0	0.0
Virgin Australia	28	28	20	71.4	19	67.9	0	0.0
All Airlines	76	73	50	68.5	47	64.4	3	3.9
Rockhampton-Brisbane								
QantasLink	108	101	85	84.2	83	82.2	7	6.5
Virgin Australia	68	67	55	82.1	55	82.1	1	1.5
All Airlines	176	168	140	83.3	138	82.1	8	4.5
Sunshine Coast-Melbourne								
Jetstar	54	54	44	81.5	41	75.9	0	0.0
Qantas	36	36	33	91.7	30	83.3	0	0.0
QantasLink	3	3	3	100.0	1	33.3	0	0.0
Virgin Australia	69	67	42	62.7	37	55.2	2	2.9
All Airlines	162	160	122	76.3	109	68.1	2	1.2
Sunshine Coast-Sydney								
Jetstar	51	47	31	66.0	32	68.1	4	7.8
Qantas	33	32	27	84.4	26	81.3	1	3.0
Virgin Australia	44	44	22	50.0	23	52.3	0	0.0
All Airlines	128	123	80	65.0	81	65.9	5	3.9
Sydney-Adelaide								
Jetstar	51	51	34	66.7	29	56.9	0	0.0
Qantas	153	144	141	97.9	137	95.1	9	5.9
Virgin Australia	72	72	61	84.7	57	79.2	0	0.0
All Airlines	276	267	236	88.4	223	83.5	9	3.3
Sydney-Albury								
QantasLink	65	64	57	89.1	55	85.9	1	1.5
Rex Airlines	75	75	72	96.0	72	96.0	0	0.0
All Airlines	140	139	129	92.8	127	91.4	1	0.7
Sydney-Armidale								
QantasLink	60	58	48	82.8	49	84.5	2	3.3
Rex Airlines	51	51	41	80.4	44	86.3	0	0.0
All Airlines	111	109	89	81.7	93	85.3	2	1.8
Sydney-Ballina								
Jetstar	50	44	35	79.5	34	77.3	6	12.0
QantasLink	64	60	47	78.3	47	78.3	4	6.3
Rex Airlines	26	25	21	84.0	22	88.0	1	3.8
Virgin Australia	41	37	29	78.4	30	81.1	4	9.8
All Airlines	181	166	132	79.5	133	80.1	15	8.3
Sydney-Brisbane								
Jetstar	66	64	48	75.0	49	76.6	2	3.0
Qantas	387	350	300	85.7	310	88.6	37	9.6
Rex Airlines	31	31	24	77.4	26	83.9	0	0.0
Virgin Australia	233	229	181	79.0	185	80.8	4	1.7
All Airlines	717	674	553	82.0	570	84.6	43	6.0
Sydney-Cairns								
Jetstar	35	35	24	68.6	25	71.4	0	0.0
Qantas	31	31	28	90.3	30	96.8	0	0.0
Virgin Australia	28	28	24	85.7	25	89.3	0	0.0
All Airlines	94	94	76	80.9	80	85.1	0	0.0

	<i>Sectors</i>		<i>Arrivals On Time</i>		<i>Departures On Time</i>		<i>Cancellations</i>	
	<i>Sched.</i>	<i>Flown</i>	<i>No.</i>	<i>%</i>	<i>No.</i>	<i>%</i>	<i>No.</i>	<i>%</i>
Sydney-Canberra								
QantasLink	299	247	199	80.6	189	76.5	52	17.4
Rex Airlines	52	52	39	75.0	45	86.5	0	0.0
All Airlines	351	299	238	79.6	234	78.3	52	14.8
Sydney-Coffs Harbour								
QantasLink	70	68	52	76.5	54	79.4	2	2.9
Rex Airlines	71	71	57	80.3	56	78.9	0	0.0
Virgin Australia	16	16	14	87.5	15	93.8	0	0.0
All Airlines	157	155	123	79.4	125	80.6	2	1.3
Sydney-Dubbo								
QantasLink	63	62	50	80.6	52	83.9	1	1.6
Rex Airlines	88	88	79	89.8	77	87.5	0	0.0
All Airlines	151	150	129	86.0	129	86.0	1	0.7
Sydney-Gold Coast								
Jetstar	151	145	108	74.5	111	76.6	6	4.0
Qantas	86	82	66	80.5	72	87.8	4	4.7
Rex Airlines	42	39	39	100.0	39	100.0	3	7.1
Virgin Australia	192	178	136	76.4	143	80.3	14	7.3
All Airlines	471	444	349	78.6	365	82.2	27	5.7
Sydney-Hamilton Island								
Jetstar	20	20	13	65.0	16	80.0	0	0.0
Qantas	24	24	23	95.8	23	95.8	0	0.0
Virgin Australia	20	20	16	80.0	18	90.0	0	0.0
All Airlines	64	64	52	81.3	57	89.1	0	0.0
Sydney-Hobart								
Jetstar	52	52	46	88.5	41	78.8	0	0.0
Qantas	45	39	35	89.7	38	97.4	6	13.3
QantasLink	3	2	0	0.0	0	0.0	1	33.3
Virgin Australia	47	47	43	91.5	42	89.4	0	0.0
All Airlines	147	140	124	88.6	121	86.4	7	4.8
Sydney-Launceston								
Jetstar	36	36	29	80.6	32	88.9	0	0.0
QantasLink	16	16	14	87.5	14	87.5	0	0.0
Virgin Australia	17	17	13	76.5	12	70.6	0	0.0
All Airlines	69	69	56	81.2	58	84.1	0	0.0
Sydney-Melbourne								
Jetstar	185	180	151	83.9	124	68.9	5	2.7
Qantas	643	586	555	94.7	527	89.9	57	8.9
Rex Airlines	66	66	62	93.9	61	92.4	0	0.0
Virgin Australia	387	380	310	81.6	276	72.6	7	1.8
All Airlines	1 281	1 212	1 078	88.9	988	81.5	69	5.4
Sydney-Perth								
Qantas	33	32	19	59.4	11	34.4	1	3.0
Virgin Australia	13	13	9	69.2	4	30.8	0	0.0
All Airlines	46	45	28	62.2	15	33.3	1	2.2
Sydney-Port Macquarie								
QantasLink	57	57	48	84.2	48	84.2	0	0.0
Rex Airlines	71	71	61	85.9	61	85.9	0	0.0
All Airlines	128	128	109	85.2	109	85.2	0	0.0

	<i>Sectors</i>		<i>Arrivals On Time</i>		<i>Departures On Time</i>		<i>Cancellations</i>	
	<i>Sched.</i>	<i>Flown</i>	<i>No.</i>	<i>%</i>	<i>No.</i>	<i>%</i>	<i>No.</i>	<i>%</i>
Sydney-Sunshine Coast								
Jetstar	49	49	38	77.6	41	83.7	0	0.0
Qantas	36	35	30	85.7	28	80.0	1	2.8
Virgin Australia	44	44	34	77.3	37	84.1	0	0.0
All Airlines	129	128	102	79.7	106	82.8	1	0.8
Sydney-Wagga Wagga								
QantasLink	63	62	55	88.7	48	77.4	1	1.6
Rex Airlines	62	62	52	83.9	51	82.3	0	0.0
All Airlines	125	124	107	86.3	99	79.8	1	0.8
Townsville-Brisbane								
Jetstar	24	24	9	37.5	12	50.0	0	0.0
Qantas	89	82	74	90.2	70	85.4	7	7.9
QantasLink	13	13	8	61.5	7	53.8	0	0.0
Virgin Australia	72	69	55	79.7	53	76.8	3	4.2
All Airlines	198	188	146	77.7	142	75.5	10	5.1
Townsville-Cairns								
QantasLink	93	91	81	89.0	78	85.7	2	2.2
Rex Airlines	8	8	7	87.5	7	87.5	0	0.0
All Airlines	101	99	88	88.9	85	85.9	2	2.0
Wagga Wagga-Sydney								
QantasLink	62	62	58	93.5	58	93.5	0	0.0
Rex Airlines	62	62	55	88.7	56	90.3	0	0.0
All Airlines	124	124	113	91.1	114	91.9	0	0.0

Airports

The following data reports by airport against flights operated on published routes only. This month, 8 major city airports and 28 regional city airports are covered.

Airport	Arrivals			Departures		
	Sectors Flown	On Time No.	%	Sectors Flown	On Time No.	%
Adelaide						
Jetstar	132	99	75.0	133	99	74.4
Qantas	350	333	95.1	349	332	95.1
QantasLink	162	138	85.2	162	143	88.3
Rex Airlines	155	142	91.6	158	150	94.9
Virgin Australia	317	260	82.0	320	272	85.0
Virgin Australia Regional Airlines	3	1	33.3	3	0	0.0
All Airlines	1 119	973	87.0	1 125	996	88.5
Relates to services to and from Alice Springs, Brisbane, Canberra, Gold Coast, Melbourne, Perth, Port Lincoln and Sydney only.						
Albury						
QantasLink	64	57	89.1	63	53	84.1
Rex Airlines	75	72	96.0	75	69	92.0
All Airlines	139	129	92.8	138	122	88.4
Relates to services to and from Sydney only.						
Alice Springs						
QantasLink	23	20	87.0	23	17	73.9
Virgin Australia	8	8	100.0	8	6	75.0
All Airlines	31	28	90.3	31	23	74.2
Relates to services to and from Adelaide only.						
Armidale						
QantasLink	58	48	82.8	58	43	74.1
Rex Airlines	51	41	80.4	51	41	80.4
All Airlines	109	89	81.7	109	84	77.1
Relates to services to and from Sydney only.						
Ballina						
Jetstar	44	35	79.5	44	20	45.5
QantasLink	60	47	78.3	60	48	80.0
Rex Airlines	25	21	84.0	26	23	88.5
Virgin Australia	37	29	78.4	37	29	78.4
All Airlines	166	132	79.5	167	120	71.9
Relates to services to and from Sydney only.						
Brisbane						
Jetstar	345	232	67.2	344	228	66.3
Qantas	985	838	85.1	989	851	86.0
QantasLink	511	423	82.8	512	423	82.6
Rex Airlines	58	48	82.8	57	46	80.7
Virgin Australia	1 106	864	78.1	1 108	789	71.2
All Airlines	3 005	2 405	80.0	3 010	2 337	77.6
Relates to services to and from Adelaide, Cairns, Canberra, Darwin, Emerald, Gladstone, Hamilton Island, Hobart, Mackay, Melbourne, Mount Isa, Newcastle, Perth, Proserpine, Rockhampton, Sydney and Townsville only.						

Airport	Arrivals			Departures		
	Sectors Flown	On Time		Sectors Flown	On Time	
		No.	%		No.	%
Broome						
Qantas	72	67	93.1	72	65	90.3
Virgin Australia	3	3	100.0	3	3	100.0
Virgin Australia Regional Airlines	26	3	11.5	26	21	80.8
All Airlines	101	73	72.3	101	89	88.1
Relates to services to and from Perth only.						
Cairns						
Jetstar	114	72	63.2	113	87	77.0
Qantas	131	110	84.0	130	121	93.1
QantasLink	117	103	88.0	119	107	89.9
Rex Airlines	8	7	87.5	8	8	100.0
Virgin Australia	140	96	68.6	140	102	72.9
All Airlines	510	388	76.1	510	425	83.3
Relates to services to and from Brisbane, Melbourne, Sydney and Townsville only.						
Canberra						
Jetstar	15	15	100.0	16	13	81.3
Qantas	14	10	71.4	13	12	92.3
QantasLink	532	438	82.3	526	440	83.7
Rex Airlines	71	57	80.3	73	66	90.4
Virgin Australia	140	114	81.4	139	116	83.5
All Airlines	772	634	82.1	767	647	84.4
Relates to services to and from Adelaide, Brisbane, Melbourne and Sydney only.						
Coffs Harbour						
QantasLink	68	52	76.5	68	52	76.5
Rex Airlines	71	57	80.3	71	59	83.1
Virgin Australia	16	14	87.5	16	14	87.5
All Airlines	155	123	79.4	155	125	80.6
Relates to services to and from Sydney only.						
Darwin						
Jetstar	11	10	90.9	11	5	45.5
Qantas	41	39	95.1	41	33	80.5
Virgin Australia	19	14	73.7	19	13	68.4
Virgin Australia Regional Airlines	3	0	0.0	3	2	66.7
All Airlines	74	63	85.1	74	53	71.6
Relates to services to and from Brisbane and Perth only.						
Dubbo						
QantasLink	62	50	80.6	62	51	82.3
Rex Airlines	88	79	89.8	85	78	91.8
All Airlines	150	129	86.0	147	129	87.8
Relates to services to and from Sydney only.						
Emerald						
QantasLink	78	70	89.7	76	69	90.8
Virgin Australia	23	22	95.7	23	22	95.7
All Airlines	101	92	91.1	99	91	91.9
Relates to services to and from Brisbane only.						

Airport	Arrivals			Departures		
	Sectors Flown	On Time		Sectors Flown	On Time	
		No.	%		No.	%
Gladstone						
QantasLink	88	72	81.8	89	76	85.4
Virgin Australia	33	29	87.9	33	29	87.9
All Airlines	121	101	83.5	122	105	86.1
Relates to services to and from Brisbane only.						
Gold Coast						
Jetstar	290	214	73.8	289	226	78.2
Qantas	120	100	83.3	118	85	72.0
QantasLink	11	10	90.9	11	4	36.4
Rex Airlines	86	85	98.8	87	83	95.4
Virgin Australia	400	308	77.0	397	286	72.0
All Airlines	907	717	79.1	902	684	75.8
Relates to services to and from Adelaide, Melbourne and Sydney only.						
Hamilton Island						
Jetstar	20	13	65.0	20	11	55.0
Qantas	44	40	90.9	44	38	86.4
Virgin Australia	49	36	73.5	49	22	44.9
All Airlines	113	89	78.8	113	71	62.8
Relates to services to and from Brisbane and Sydney only.						
Hobart						
Jetstar	157	137	87.3	156	118	75.6
Qantas	39	35	89.7	38	33	86.8
QantasLink	100	82	82.0	99	78	78.8
Virgin Australia	157	138	87.9	157	122	77.7
All Airlines	453	392	86.5	450	351	78.0
Relates to services to and from Brisbane, Melbourne and Sydney only.						
Kalgoorlie						
Qantas	20	19	95.0	20	18	90.0
QantasLink	48	42	87.5	48	40	83.3
Virgin Australia	30	29	96.7	30	27	90.0
Virgin Australia Regional Airlines	26	2	7.7	26	23	88.5
All Airlines	124	92	74.2	124	108	87.1
Relates to services to and from Perth only.						
Karratha						
Qantas	60	58	96.7	59	57	96.6
QantasLink	74	71	95.9	75	72	96.0
Virgin Australia	30	28	93.3	30	27	90.0
Virgin Australia Regional Airlines	18	3	16.7	18	15	83.3
All Airlines	182	160	87.9	182	171	94.0
Relates to services to and from Perth only.						
Launceston						
Jetstar	89	72	80.9	88	64	72.7
QantasLink	66	55	83.3	64	43	67.2
Virgin Australia	73	65	89.0	73	67	91.8
All Airlines	228	192	84.2	225	174	77.3
Relates to services to and from Melbourne and Sydney only.						

Airport	Arrivals			Departures		
	Sectors	On Time		Sectors	On Time	
	Flown	No.	%	Flown	No.	%
Mackay						
Jetstar	16	7	43.8	16	6	37.5
Qantas	69	62	89.9	69	62	89.9
QantasLink	3	2	66.7	6	5	83.3
Virgin Australia	78	48	61.5	78	56	71.8
All Airlines	166	119	71.7	169	129	76.3

Relates to services to and from Brisbane only.

Melbourne

Jetstar	697	566	81.2	696	521	74.9
Qantas	1 107	1 017	91.9	1 129	1 045	92.6
QantasLink	383	321	83.8	387	324	83.7
Rex Airlines	232	217	93.5	233	225	96.6
Virgin Australia	1 284	1 020	79.4	1 285	1 037	80.7
All Airlines	3 703	3 141	84.8	3 730	3 152	84.5

Relates to services to and from Adelaide, Brisbane, Cairns, Canberra, Gold Coast, Hobart, Launceston, Mildura, Newcastle, Perth, Sunshine Coast and Sydney only.

Mildura

QantasLink	88	81	92.0	88	75	85.2
Rex Airlines	43	37	86.0	41	40	97.6
All Airlines	131	118	90.1	129	115	89.1

Relates to services to and from Melbourne only.

Mount Isa

Qantas	33	30	90.9	32	28	87.5
QantasLink	12	12	100.0	11	11	100.0
Virgin Australia	12	7	58.3	12	8	66.7
All Airlines	57	49	86.0	55	47	85.5

Relates to services to and from Brisbane only.

Newcastle

Jetstar	67	41	61.2	68	39	57.4
QantasLink	74	63	85.1	71	61	85.9
Virgin Australia	80	63	78.8	80	64	80.0
All Airlines	221	167	75.6	219	164	74.9

Relates to services to and from Brisbane and Melbourne only.

Newman

Qantas	13	12	92.3	12	11	91.7
QantasLink	94	84	89.4	94	67	71.3
Virgin Australia	22	19	86.4	22	17	77.3
Virgin Australia Regional Airlines	30	3	10.0	30	23	76.7
All Airlines	159	118	74.2	158	118	74.7

Relates to services to and from Perth only.

Perth

Qantas	323	262	81.1	320	283	88.4
QantasLink	283	238	84.1	284	262	92.3
Virgin Australia	176	140	79.5	175	127	72.6
Virgin Australia Regional Airlines	142	29	20.4	142	126	88.7
All Airlines	924	669	72.4	921	798	86.6

Relates to services to and from Adelaide, Brisbane, Broome, Darwin, Kalgoorlie, Karratha, Melbourne, Newman, Port Hedland and Sydney only.

Airport	Arrivals			Departures		
	Sectors Flown	On Time		Sectors Flown	On Time	
		No.	%		No.	%
Port Hedland						
Qantas	48	44	91.7	49	36	73.5
QantasLink	68	59	86.8	66	55	83.3
Virgin Australia	12	10	83.3	12	7	58.3
Virgin Australia Regional Airlines	36	5	13.9	36	29	80.6
All Airlines	164	118	72.0	163	127	77.9
Relates to services to and from Perth only.						
Port Lincoln						
QantasLink	87	76	87.4	87	76	87.4
Rex Airlines	127	122	96.1	124	113	91.1
All Airlines	214	198	92.5	211	189	89.6
Relates to services to and from Adelaide only.						
Port Macquarie						
QantasLink	57	48	84.2	57	46	80.7
Rex Airlines	71	61	85.9	71	64	90.1
All Airlines	128	109	85.2	128	110	85.9
Relates to services to and from Sydney only.						
Proserpine						
Jetstar	24	12	50.0	24	12	50.0
QantasLink	20	17	85.0	21	16	76.2
Virgin Australia	28	25	89.3	28	19	67.9
All Airlines	72	54	75.0	73	47	64.4
Relates to services to and from Brisbane only.						
Rockhampton						
QantasLink	102	77	75.5	101	83	82.2
Virgin Australia	67	53	79.1	67	55	82.1
All Airlines	169	130	76.9	168	138	82.1
Relates to services to and from Brisbane only.						
Sunshine Coast						
Jetstar	103	81	78.6	101	73	72.3
Qantas	70	63	90.0	68	56	82.4
QantasLink	3	2	66.7	3	1	33.3
Virgin Australia	111	88	79.3	111	60	54.1
All Airlines	287	234	81.5	283	190	67.1
Relates to services to and from Melbourne and Sydney only.						
Sydney						
Jetstar	671	502	74.8	676	502	74.3
Qantas	1 336	1 209	90.5	1 323	1 176	88.9
QantasLink	689	568	82.4	696	556	79.9
Rex Airlines	630	536	85.1	631	554	87.8
Virgin Australia	1 081	840	77.7	1 081	844	78.1
All Airlines	4 407	3 655	82.9	4 407	3 632	82.4

Relates to services to and from Adelaide, Albury, Armidale, Ballina, Brisbane, Cairns, Canberra, Coffs Harbour, Dubbo, Gold Coast, Hamilton Island, Hobart, Launceston, Melbourne, Perth, Port Macquarie, Sunshine Coast and Wagga Wagga only.

<i>Airport</i>	<i>Arrivals</i>			<i>Departures</i>		
	<i>Sectors Flown</i>	<i>On Time</i>		<i>Sectors Flown</i>	<i>On Time</i>	
		<i>No.</i>	<i>%</i>		<i>No.</i>	<i>%</i>
Townsville						
Jetstar	24	21	87.5	24	12	50.0
Qantas	82	71	86.6	82	70	85.4
QantasLink	106	94	88.7	104	85	81.7
Rex Airlines	8	8	100.0	8	7	87.5
Virgin Australia	70	50	71.4	69	53	76.8
All Airlines	290	244	84.1	287	227	79.1

Relates to services to and from Brisbane and Cairns only.

Wagga Wagga

QantasLink	62	55	88.7	62	58	93.5
Rex Airlines	62	52	83.9	62	56	90.3
All Airlines	124	107	86.3	124	114	91.9

Relates to services to and from Sydney only.

Definitions

On time arrival	A flight arrival is counted as "on time" if it arrived at the gate before 15 minutes after the scheduled arrival time shown in the carriers' schedule. Neither diverted nor cancelled flights count as on time.
On time departure	A flight departure is counted as "on time" if it departs the gate before 15 minutes after the scheduled departure time shown in the carriers' schedule.
Cancellation	A flight removed from service within 7 days of scheduled departure is regarded as a cancellation.
On time departure percentage	The percentage of on time departures is measured against the number of departures <i>operated</i> on any particular sector.
On time arrival percentage	The percentage of on time arrivals is measured against the number of arrivals <i>operated</i> on any particular sector.
Cancellation percentage	The percentage of cancellations is measured against the number of services <i>scheduled</i> on any particular sector.
