



Australian Government

Department of Infrastructure, Transport, Regional Development and Communications

Bureau of Infrastructure and Transport Research Economics

STATISTICAL REPORT



Aviation

Domestic airline on time performance
March 2022

© Commonwealth of Australia 2022

ISSN: 1832-0759

Ownership of intellectual property rights in this publication

Unless otherwise noted, copyright (and any other intellectual property rights, if any) in this publication is owned by the Commonwealth of Australia (referred to below as the Commonwealth).

Disclaimer

The material contained in this publication is made available on the understanding that the Commonwealth is not providing professional advice, and that users exercise their own skill and care with respect to its use, and seek independent advice if necessary.

The Commonwealth makes no representations or warranties as to the contents or accuracy of the information contained in this publication. To the extent permitted by law, the Commonwealth disclaims liability to any person or organisation in respect of anything done, or omitted to be done, in reliance upon information contained in this publication.

Creative Commons licence

With the exception of (a) the Coat of Arms; and (b) the Department of Infrastructure, Transport, Regional Development and Communications' photos and graphics, copyright in this publication is licensed under a Creative Commons Attribution 3.0 Australia Licence.

Creative Commons Attribution 3.0 Australia Licence is a standard form licence agreement that allows you to copy, communicate and adapt this publication provided that you attribute the work to the Commonwealth and abide by the other licence terms. A summary of the licence terms is available from <http://creativecommons.org/licenses/by/3.0/au/deed.en>. The full licence terms are available from <http://creativecommons.org/licenses/by/3.0/au/legalcode>.

Use of the Coat of Arms

The Department of the Prime Minister and Cabinet sets the terms under which the Coat of Arms is used. Please refer to the Department's Commonwealth Coat of Arms and Government branding web page <http://www.dpmc.gov.au/guidelines/index.cfm#brand> and, in particular, the Guidelines on the use of the Commonwealth Coat of Arms publication.

An appropriate citation for this report is:

Bureau of Infrastructure and Transport Research Economics (BITRE), 2022, Domestic airline on time performance, Statistical Report, BITRE, Canberra ACT.

Contact us

This publication is available in PDF format. All other rights are reserved, including in relation to any Departmental logos or trade marks which may exist. For enquiries regarding the licence and any use of this publication, please contact:

Bureau of Infrastructure and Transport Research Economics (BITRE)
Department of Infrastructure, Transport, Regional Development and Communications
GPO Box 501, Canberra ACT 2601, Australia
Telephone: (international) +61 2 6274 7210
Fax: (international) +61 2 6274 6855
Email: bitre@infrastructure.gov.au
Website: www.bitre.gov.au

Inquiries

Should you require additional information about the statistics contained in this publication:

Telephone (02) 6274 7790 or Facsimile (02) 6274 7727

Electronic mail: AVSTATS@infrastructure.gov.au

Web site: <http://www.bitre.gov.au/statistics/aviation/otphome.aspx>

Foreword

The Bureau of Infrastructure and Transport Research Economics (BITRE) monitors the punctuality and reliability of major domestic airlines operating between Australian airports. The purpose of this is to allow for evaluation of overall industry and individual airline performance, so that consumers of air travel can make informed decisions.

The following domestic airlines currently report this information monthly to the BITRE: Jetstar, Qantas, QantasLink, Rex Airlines, Virgin Australia and Virgin Australia Regional Airlines.

Data has been gathered since November 2003, although some airlines commenced reporting at a later date, including Jetstar which first reported in May 2004, MacAir in July 2005, Tigerair Australia in April 2008 and Virgin Australia Regional Airlines in May 2013. MacAir ceased operations in February 2009 and data was not received for December 2008 onwards. Tigerair Australia ceased operations in March 2020 and data was not received for that month.

Virgin Blue was rebranded as Virgin Australia in May 2011 and Tiger Airways was rebranded as Tigerair Australia in July 2013 and time series data in Microsoft Excel spread sheet format on the BITRE website have been revised to reflect these changes. With effect from July 2021, Regional Express is reported as Rex Airlines.

Services operated by Skywest on behalf of Virgin Australia using ATR/F100 aircraft commenced in November 2011 and were shown separately as Virgin Australia – ATR/F100 Operations. Virgin Australia Regional Airlines commenced operations in May 2013. It was formed after the acquisition of Skywest by Virgin Australia and represented a combination of operations previously reported under Skywest and Virgin Australia – ATR/F100 Operations. In January 2016, Virgin Australia transferred their ATR fleet from Virgin Australia Regional Airlines to Virgin Australia.

Information presented in this report is for Australian domestic routes for which the passenger load averaged 8 000 or more passengers per month over the previous six months and where two or more airlines operated in competition on those routes. In order to present data for more routes during the period impacted by COVID-19, the passenger load restriction is not being applied. Data are presented for 55 routes in March 2022. Over time, routes which meet these criteria change as airline networks and traffic levels vary.

Participating airlines report their overall monthly network performance where this is possible.

Total industry figures encompass all services operated by reporting airlines only. These airlines collectively carried over 95 per cent of total domestic passengers (regular public transport only) in 2019.

The method of capturing on time performance varies between airlines utilising different recording systems. Jetstar and Qantas jet aircraft use Aircraft Communication Addressing and Reporting System (ACARS) to electronically measure on time performance. Rex Airlines, Virgin Australia, Virgin Australia Regional Airlines and the Qantas non-jet fleet record on time performance manually using records from pilots, gate agents and/or ground crews.

After initial data is collected, aggregate reports are reviewed by participating airlines prior to publication.

Reports and detailed time series data in Microsoft Excel spreadsheet format are available from the BITRE website at: <http://www.bitre.gov.au/statistics/aviation/otphome.aspx>

Contents

	Page
Industry performance	1
Individual routes	9
Airports.....	21
Definitions	27

Industry performance

For March 2022, on time performance over all routes operated by participating airlines (Jetstar, Qantas, QantasLink, Rex Airlines, Virgin Australia and Virgin Australia Regional Airlines) averaged 78.2 per cent for on time arrivals and 77.5 per cent for on time departures. The cancellation rate for the month was 2.5 per cent. The equivalent figures for March 2021 were 84.9 per cent for on time arrivals, 85.0 per cent for on time departures and 2.4 per cent for cancellations.

This month's on time arrivals figure was lower than the long term average performance for all routes (82.3 per cent) and the on time departures figure was also lower than the long term average (83.6 per cent). The rate of cancellations was higher than the long term average of 2.0 per cent.

The Qantas network (Qantas and QantasLink combined operations) recorded 81.5 per cent for on time arrivals while the Virgin Australia network (Virgin Australia and Virgin Australia Regional Airlines combined operations) recorded 74.1 per cent. Qantas achieved the highest on time arrivals among the major domestic airlines at 85.6 per cent followed by Virgin Australia at 73.6 per cent and Jetstar at 70.5 per cent. Of the regional airlines, Virgin Australia Regional Airlines recorded 85.7 per cent for on time arrivals, followed by Rex Airlines at 82.1 per cent and QantasLink at 78.3 per cent.

The Qantas network recorded 81.1 per cent for on time departures while the Virgin Australia network recorded 72.2 per cent. Qantas achieved the highest level of on time departures among the major domestic airlines for March 2022 at 85.6 per cent, followed by Virgin Australia at 71.6 per cent and Jetstar at 67.6 per cent. Of the regional airlines, Virgin Australia Regional Airlines recorded 85.7 per cent for on time departures, followed by Rex Airlines at 84.8 per cent and QantasLink at 77.6 per cent.

QantasLink recorded the highest percentage of cancellations (at 4.3 per cent) during the month, followed by Jetstar (at 2.4 per cent), Qantas (at 2.2 per cent), Rex Airlines (at 1.5 per cent) and Virgin Australia and Virgin Australia Regional Airlines (at 1.4 per cent).

Airlines' on time performance varies across the routes they serve. Individual route data by specific airline for 55 routes are shown on pages 9-20.

Of the 55 routes which met the criteria for on time performance reporting in March 2022, the Townsville-Cairns route had the highest percentage of on time arrivals (93.1 per cent) and the highest percentage of on time departures (also 93.1 per cent). The Armidale-Sydney route had the lowest percentage of on time arrivals (47.0 per cent) and the Proserpine-Brisbane route had the lowest percentage of on time departures (43.0 per cent).

Cancellations were highest on the Ballina-Sydney route at 22.9 per cent, followed by the Sydney-Ballina route at 21.8 per cent, the Broome-Perth route at 8.5 per cent, the Perth-Broome route at 7.7 per cent and the Coffs Harbour-Sydney and Armidale-Sydney routes at 6.3 per cent.

Newman Airport recorded the highest percentage of on time arrivals (92.3 per cent) and Karratha Airport recorded the highest percentage of on time departures (91.6 per cent). Armidale Airport recorded the lowest percentage of on time arrivals (56.3 per cent) and Proserpine Airport recorded the lowest percentage of on time departures (43.0 per cent). These figures only refer to reported routes and do not cover all flights at these airports.

Table 1 On time performance for March 2022 — Total Industry

	<i>Sectors</i>		<i>Arrivals On Time</i>		<i>Departures On Time</i>		<i>Cancellations</i>	
	<i>Scheduled</i>	<i>Flown</i>	<i>No.</i>	<i>%</i>	<i>No.</i>	<i>%</i>	<i>No.</i>	<i>%</i>
Jetstar	5 222	5 096	3 593	70.5	3 445	67.6	126	2.4
Qantas - all QF designated services	16 818	16 245	13 238	81.5	13 173	81.1	573	3.4
Rex Airlines	5 905	5 818	4 775	82.1	4 933	84.8	87	1.5
Virgin Australia - all VA designated services	9 289	9 156	6 783	74.1	6 609	72.2	133	1.4
All Airlines	37 234	36 315	28 389	78.2	28 160	77.5	919	2.5
Individual operating entities								
Qantas	7 324	7 163	6 128	85.6	6 129	85.6	161	2.2
QantasLink	9 494	9 082	7 110	78.3	7 044	77.6	412	4.3
Virgin Australia	8 927	8 799	6 477	73.6	6 303	71.6	128	1.4
Virgin Australia Regional Airlines	362	357	306	85.7	306	85.7	5	1.4

Total airline network data (including routes not shown in this report).

Airlines' on time performance varies across the routes they serve. Individual route data by specific airline are shown on page 9 and onwards.

Table 2 Top ten routes for on time performance for March 2022 (participating airlines only)

<i>Arrivals</i>		<i>Departures</i>	
<i>Route</i>	<i>On Time (%)</i>	<i>Route</i>	<i>On Time (%)</i>
Townsville-Cairns	93.1	Townsville-Cairns	93.1
Perth-Newman	92.3	Perth-Newman	92.9
Perth-Kalgoorlie	91.9	Brisbane-Hamilton Island	92.8
Perth-Karratha	91.2	Perth-Kalgoorlie	91.9
Karratha-Perth	91.1	Karratha-Perth	91.6
Perth-Broome	89.8	Adelaide-Port Lincoln	91.3
Broome-Perth	89.7	Perth-Karratha	91.2
Gold Coast-Adelaide	89.5	Adelaide-Brisbane	90.7
Brisbane-Emerald	89.4	Albury-Sydney	88.2
Cairns-Townsville	89.3	Perth-Broome	88.0

Table 3 Top ten airports for on time performance for March 2022 (participating airlines and reported routes only)

<i>Arrivals</i>		<i>Departures</i>	
<i>Airport</i>	<i>On Time (%)</i>	<i>Airport</i>	<i>On Time (%)</i>
Newman	92.3	Karratha	91.6
Kalgoorlie	91.9	Albury	88.2
Karratha	91.2	Mount Isa	87.9
Broome	89.8	Port Lincoln	86.8
Emerald	89.4	Emerald	85.4
Port Lincoln	89.3	Wagga Wagga	84.6
Albury	88.1	Adelaide	84.5
Mount Isa	87.9	Perth	84.0
Hamilton Island	85.2	Broome	83.2
Port Hedland	85.2	Dubbo	82.9

Total industry on time performance

Figure 1 On time performance (by month from March 2019)—Total Industry

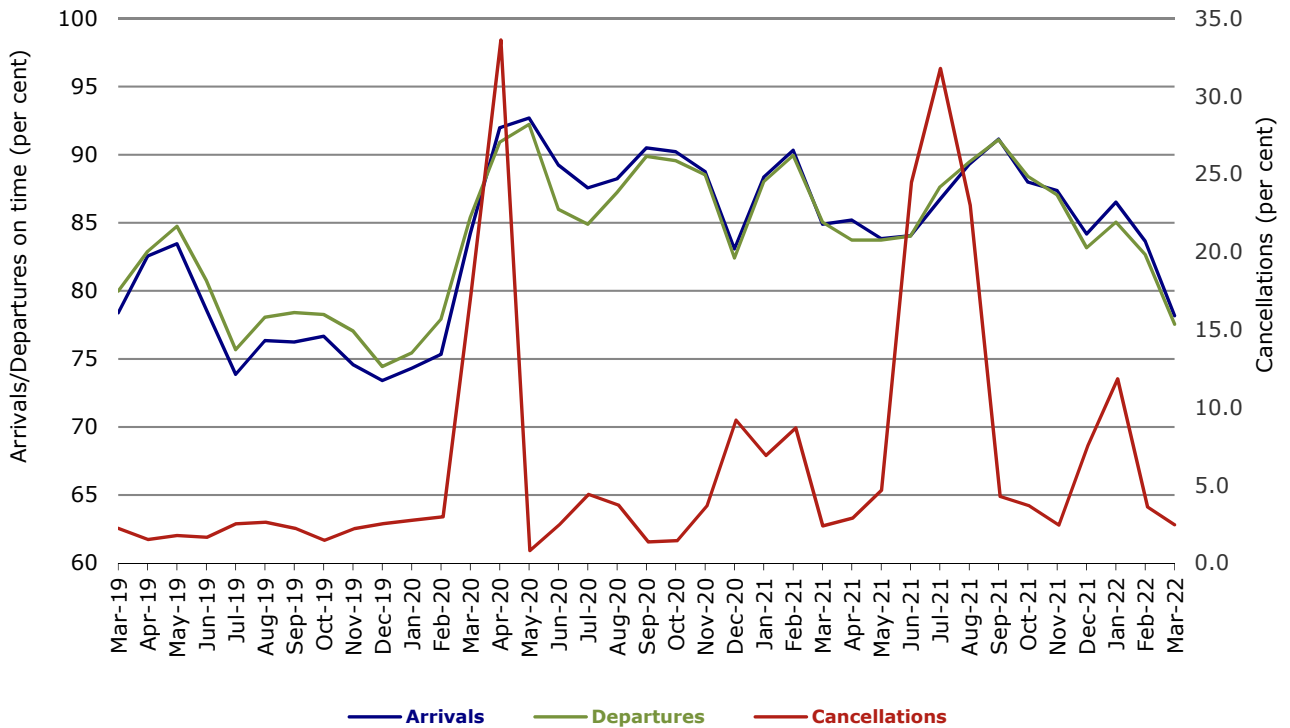
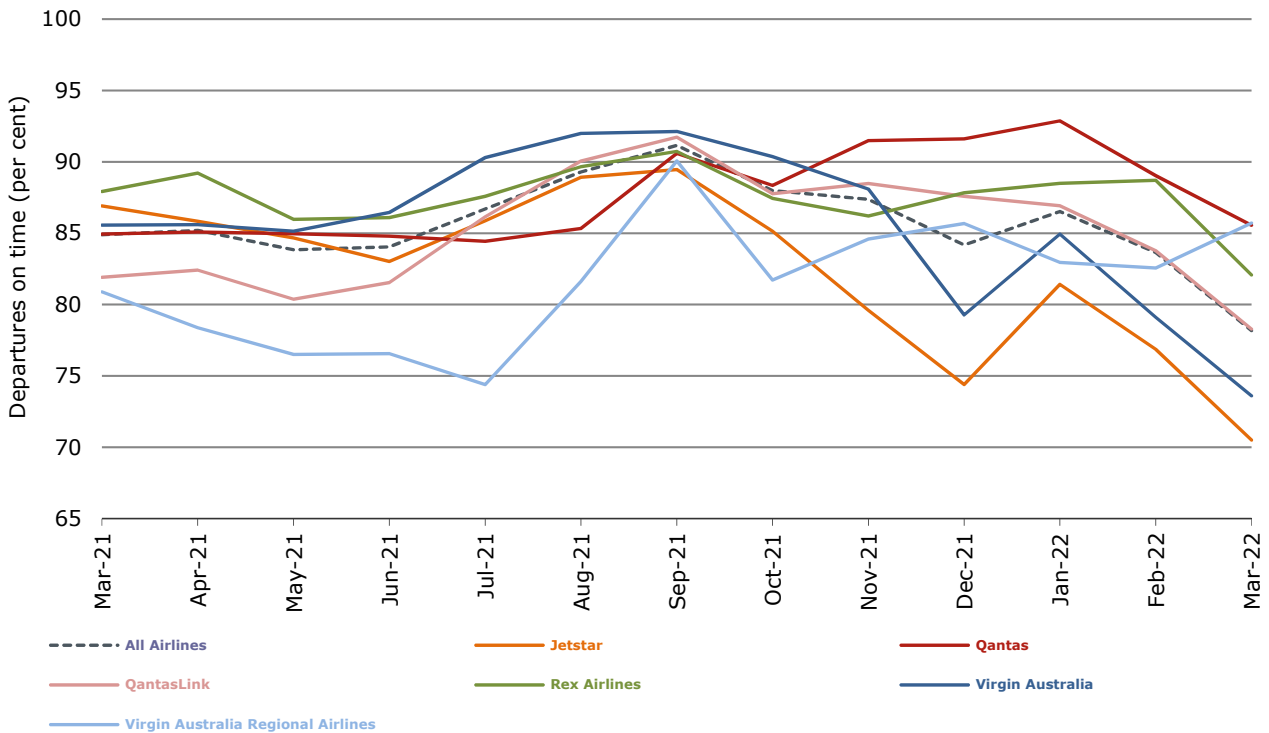
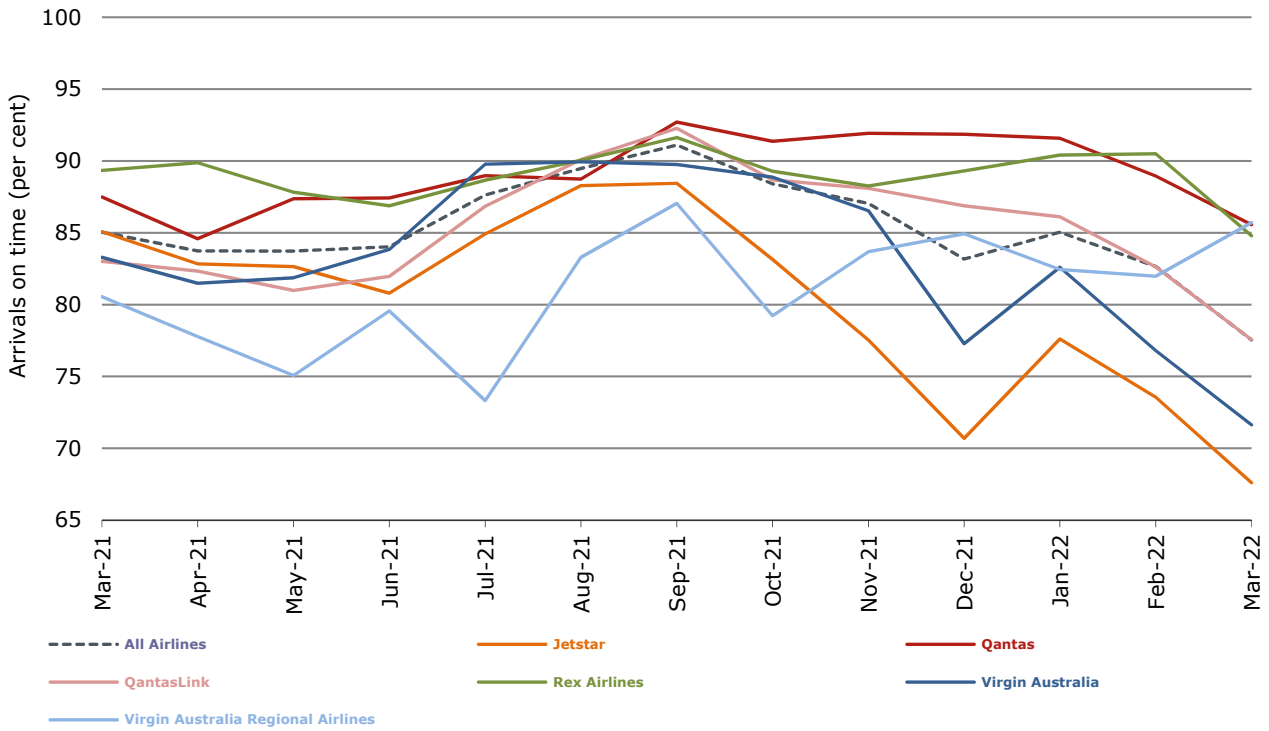


Figure 2 Arrivals on time (by month from March 2021)



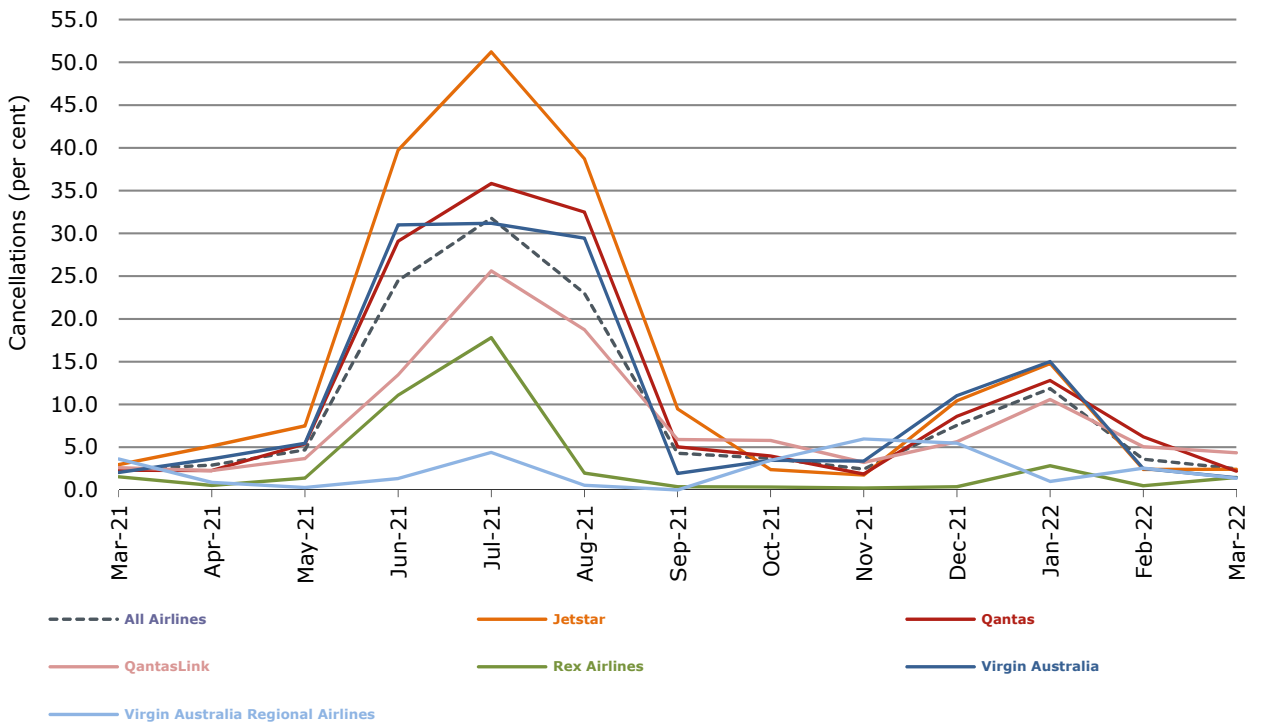
With effect from July 2021, Regional Express is reported as Rex Airlines

Figure 3 Departures on time (by month from March 2021)



With effect from July 2021, Regional Express is reported as Rex Airlines

Figure 4 Cancellations (by month from March 2021)



With effect from July 2021, Regional Express is reported as Rex Airlines

Major domestic airlines on time performance

Figure 5 On time performance (by month from March 2019)—Jetstar

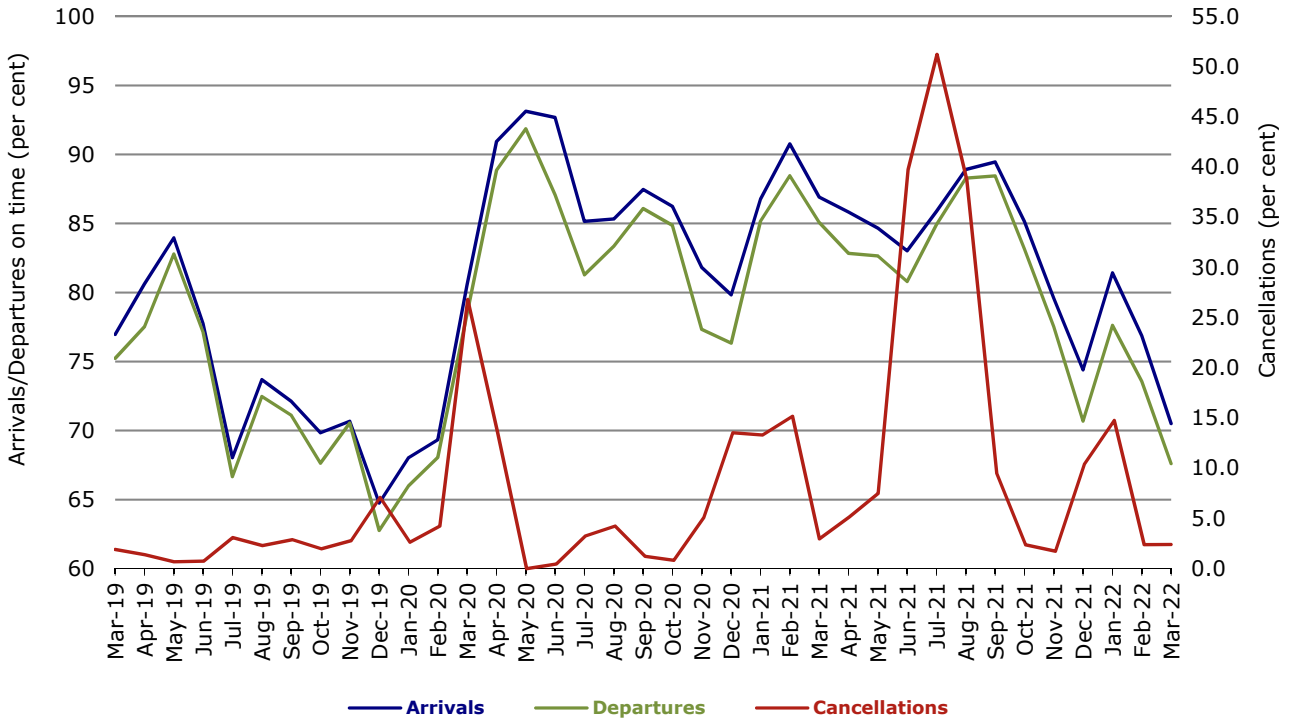


Figure 6 On time performance (by month from March 2019)—Qantas

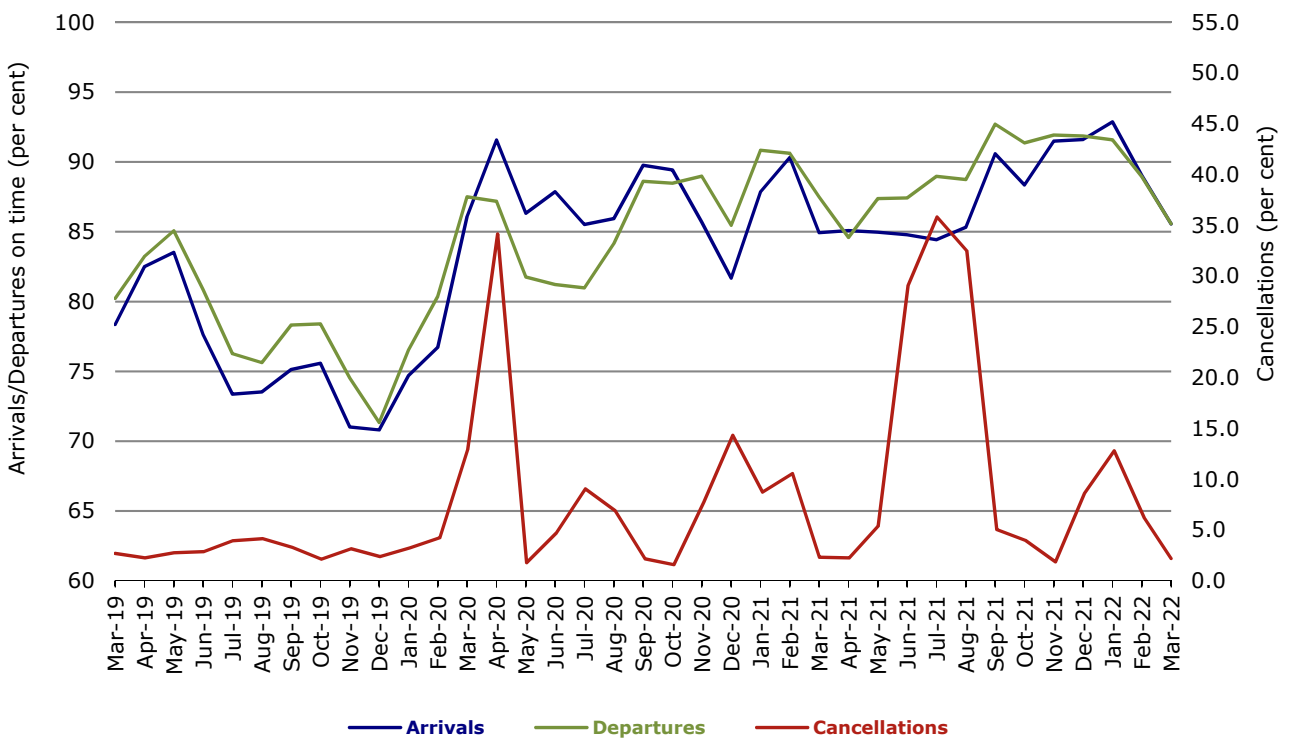
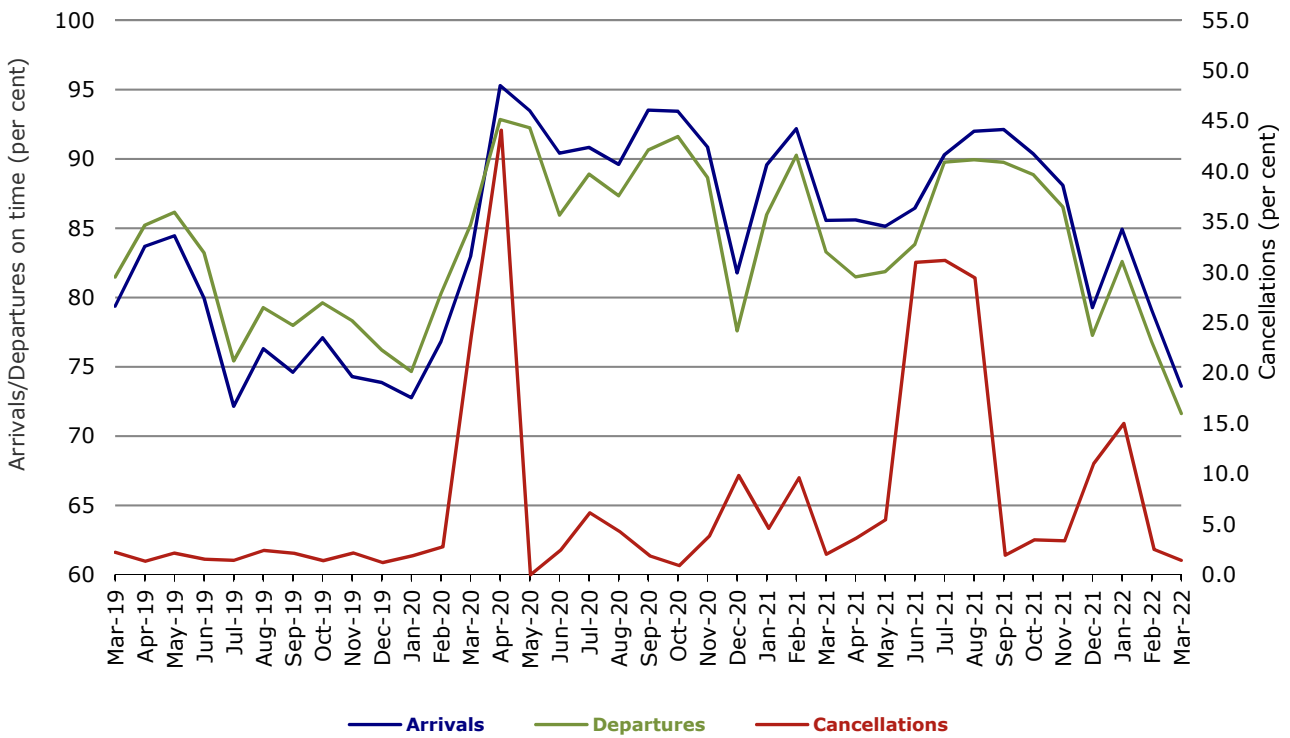


Figure 7 On time performance (by month from March 2019)—Virgin Australia



Major regional airlines on time performance

Figure 8 On time performance (by month from March 2019)—QantasLink

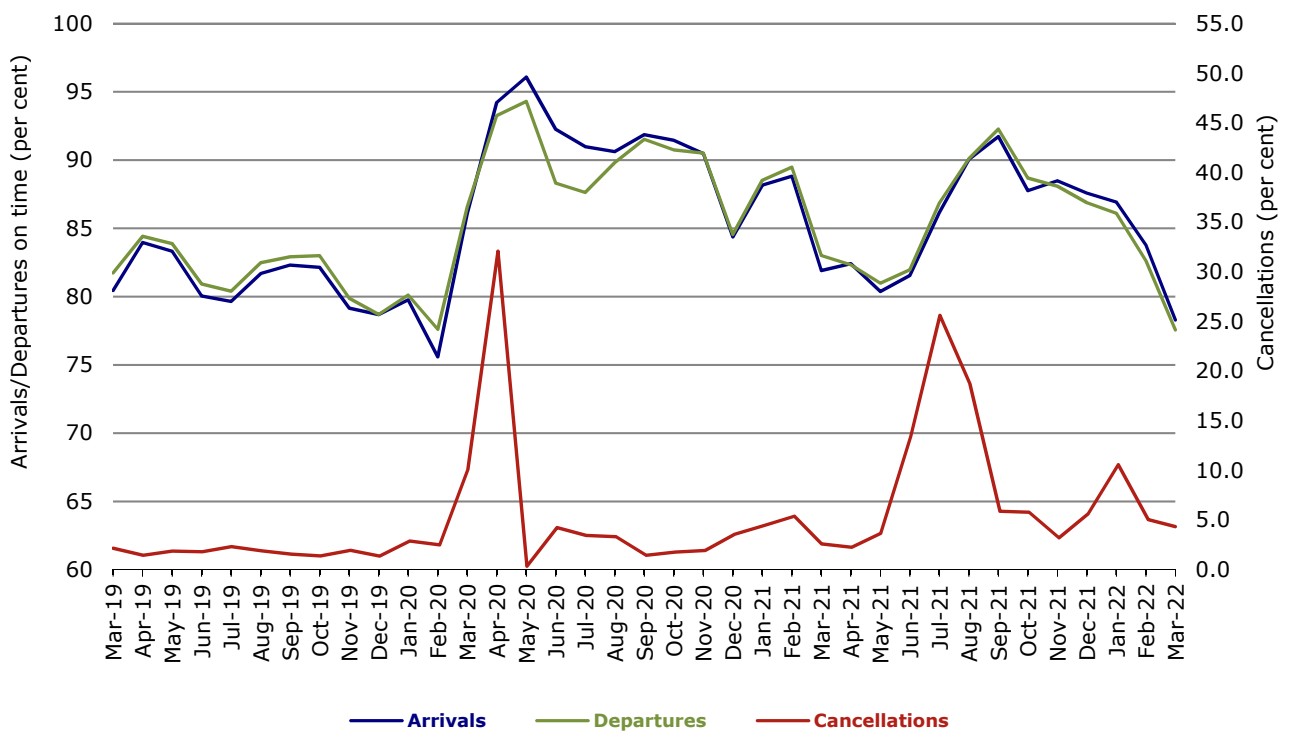
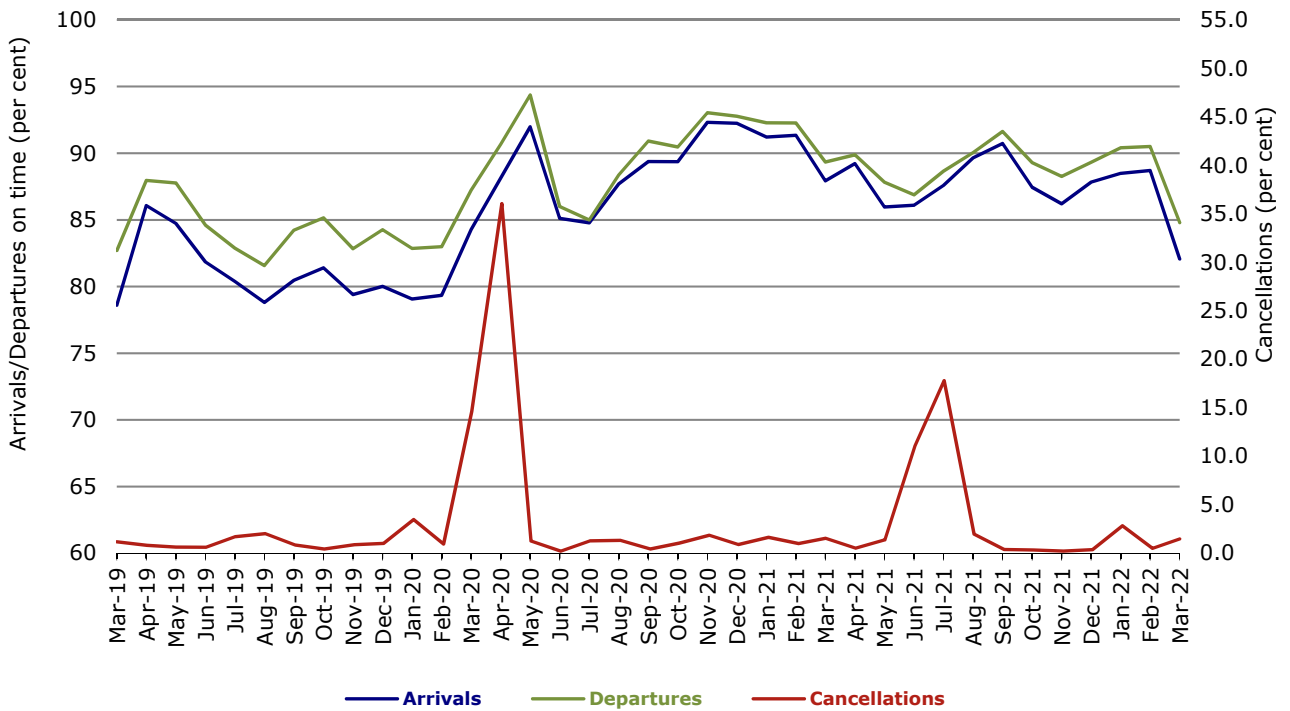
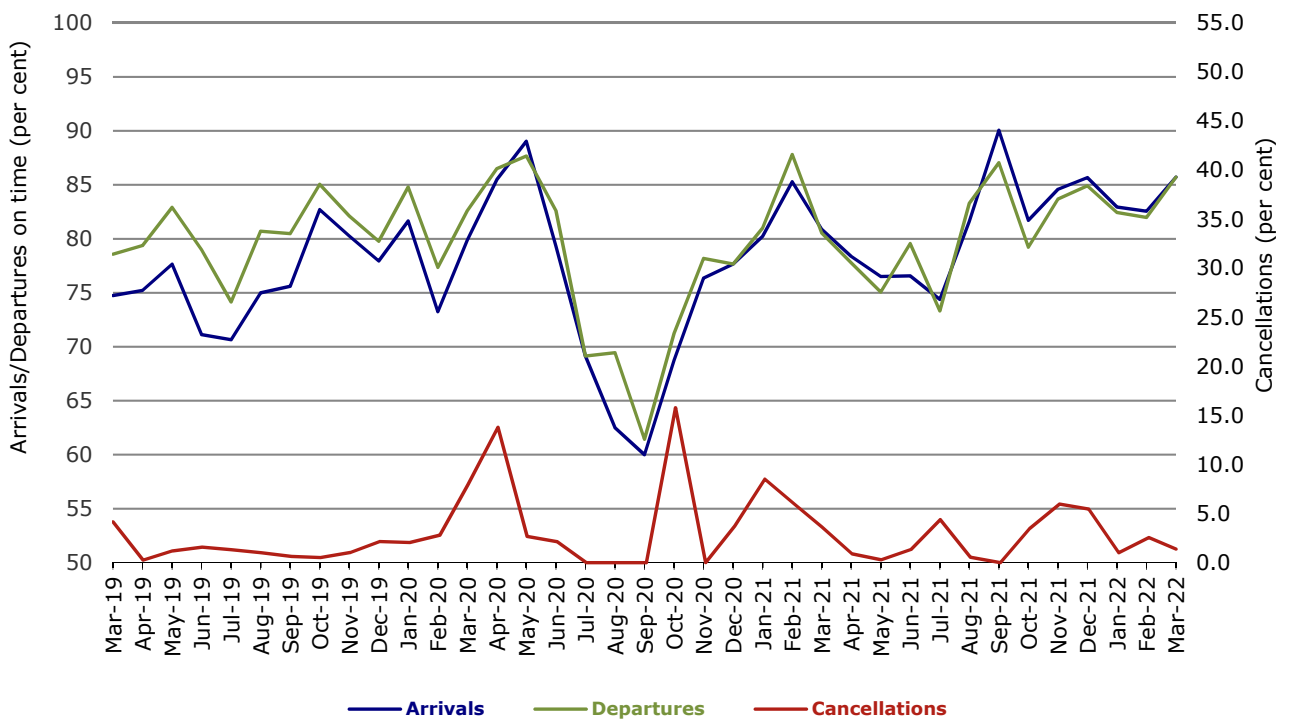


Figure 9 On time performance (by month from March 2019)—Rex Airlines



With effect from July 2021, Regional Express is reported as Rex Airlines

Figure 10 On time performance (by month from March 2019) Virgin Australia Regional Airlines



Individual routes

On time performance is reported for all routes where the passenger load averages over 8000 passengers per month over the previous six months, and where two or more airlines operate in competition on those routes. In order to present data for more routes during the period impacted by COVID-19, the passenger load restriction is not being applied. There are now 55 routes for which data are presented.

	Sectors		Arrivals On Time		Departures On Time		Cancellations	
	Sched.	Flown	No.	%	No.	%	No.	%
Adelaide-Alice Springs								
QantasLink	34	34	29	85.3	30	88.2	0	0.0
Virgin Australia	8	8	6	75.0	6	75.0	0	0.0
All Airlines	42	42	35	83.3	36	85.7	0	0.0
Adelaide-Brisbane								
Jetstar	23	23	13	56.5	18	78.3	0	0.0
Qantas	88	88	80	90.9	81	92.0	0	0.0
Virgin Australia	83	83	78	94.0	77	92.8	0	0.0
All Airlines	194	194	171	88.1	176	90.7	0	0.0
Adelaide-Canberra								
QantasLink	59	59	46	78.0	48	81.4	0	0.0
Virgin Australia	16	16	13	81.3	14	87.5	0	0.0
All Airlines	75	75	59	78.7	62	82.7	0	0.0
Adelaide-Gold Coast								
Jetstar	23	23	21	91.3	21	91.3	0	0.0
QantasLink	8	8	7	87.5	7	87.5	0	0.0
Virgin Australia	27	27	21	77.8	23	85.2	0	0.0
All Airlines	58	58	49	84.5	51	87.9	0	0.0
Adelaide-Melbourne								
Jetstar	76	76	51	67.1	46	60.5	0	0.0
Qantas	204	201	188	93.5	189	94.0	3	1.5
Rex Airlines	48	47	43	91.5	43	91.5	1	2.1
Virgin Australia	214	211	163	77.3	147	69.7	3	1.4
All Airlines	542	535	445	83.2	425	79.4	7	1.3
Adelaide-Perth								
Jetstar	17	17	17	100.0	13	76.5	0	0.0
Qantas	49	49	43	87.8	38	77.6	0	0.0
Virgin Australia	6	6	6	100.0	6	100.0	0	0.0
Virgin Australia Regional Airlines	10	10	5	50.0	4	40.0	0	0.0
All Airlines	82	82	71	86.6	61	74.4	0	0.0
Adelaide-Port Lincoln								
QantasLink	131	125	115	92.0	115	92.0	6	4.6
Rex Airlines	173	173	151	87.3	157	90.8	0	0.0
All Airlines	304	298	266	89.3	272	91.3	6	2.0
Adelaide-Sydney								
Jetstar	76	74	55	74.3	58	78.4	2	2.6
Qantas	205	204	166	81.4	178	87.3	1	0.5
Virgin Australia	112	111	92	82.9	94	84.7	1	0.9
All Airlines	393	389	313	80.5	330	84.8	4	1.0
Albury-Sydney								
QantasLink	89	89	74	83.1	73	82.0	0	0.0
Rex Airlines	89	89	78	87.6	84	94.4	0	0.0
All Airlines	178	178	152	85.4	157	88.2	0	0.0

	Sectors		Arrivals On Time		Departures On Time		Cancellations	
	Sched.	Flown	No.	%	No.	%	No.	%
Alice Springs-Adelaide								
QantasLink	34	34	22	64.7	24	70.6	0	0.0
Virgin Australia	8	8	4	50.0	4	50.0	0	0.0
All Airlines	42	42	26	61.9	28	66.7	0	0.0
Armidale-Sydney								
QantasLink	85	77	39	50.6	42	54.5	8	9.4
Rex Airlines	58	57	24	42.1	33	57.9	1	1.7
All Airlines	143	134	63	47.0	75	56.0	9	6.3
Ballina-Sydney								
Jetstar	70	59	36	61.0	34	57.6	11	15.7
QantasLink	86	61	45	73.8	48	78.7	25	29.1
Rex Airlines	28	20	14	70.0	15	75.0	8	28.6
Virgin Australia	61	49	38	77.6	35	71.4	12	19.7
All Airlines	245	189	133	70.4	132	69.8	56	22.9
Brisbane-Adelaide								
Jetstar	23	23	9	39.1	6	26.1	0	0.0
Qantas	88	88	81	92.0	71	80.7	0	0.0
Virgin Australia	82	81	71	87.7	68	84.0	1	1.2
All Airlines	193	192	161	83.9	145	75.5	1	0.5
Brisbane-Cairns								
Jetstar	63	59	33	55.9	31	52.5	4	6.3
Qantas	90	90	68	75.6	74	82.2	0	0.0
QantasLink	37	36	28	77.8	24	66.7	1	2.7
Virgin Australia	122	122	75	61.5	88	72.1	0	0.0
All Airlines	312	307	204	66.4	217	70.7	5	1.6
Brisbane-Canberra								
Jetstar	18	18	15	83.3	11	61.1	0	0.0
Qantas	13	13	11	84.6	10	76.9	0	0.0
QantasLink	130	124	96	77.4	95	76.6	6	4.6
Virgin Australia	74	74	56	75.7	49	66.2	0	0.0
All Airlines	235	229	178	77.7	165	72.1	6	2.6
Brisbane-Darwin								
Jetstar	15	15	10	66.7	13	86.7	0	0.0
Qantas	39	35	31	88.6	29	82.9	4	10.3
Virgin Australia	32	32	25	78.1	28	87.5	0	0.0
All Airlines	86	82	66	80.5	70	85.4	4	4.7
Brisbane-Emerald								
QantasLink	102	97	87	89.7	85	87.6	5	4.9
Virgin Australia	27	26	23	88.5	23	88.5	1	3.7
All Airlines	129	123	110	89.4	108	87.8	6	4.7
Brisbane-Gladstone								
QantasLink	116	115	95	82.6	98	85.2	1	0.9
Virgin Australia	40	38	31	81.6	31	81.6	2	5.0
All Airlines	156	153	126	82.4	129	84.3	3	1.9
Brisbane-Hamilton Island								
Qantas	27	27	26	96.3	26	96.3	0	0.0
Virgin Australia	42	42	34	81.0	38	90.5	0	0.0
All Airlines	69	69	60	87.0	64	92.8	0	0.0

	Sectors		Arrivals On Time		Departures On Time		Cancellations	
	Sched.	Flown	No.	%	No.	%	No.	%
Brisbane-Hobart								
Jetstar	27	27	24	88.9	22	81.5	0	0.0
QantasLink	17	17	15	88.2	15	88.2	0	0.0
Virgin Australia	48	47	40	85.1	28	59.6	1	2.1
All Airlines	92	91	79	86.8	65	71.4	1	1.1
Brisbane-Mackay								
Jetstar	23	23	13	56.5	8	34.8	0	0.0
Qantas	88	88	79	89.8	80	90.9	0	0.0
QantasLink	28	25	17	68.0	17	68.0	3	10.7
Virgin Australia	107	107	73	68.2	74	69.2	0	0.0
All Airlines	246	243	182	74.9	179	73.7	3	1.2
Brisbane-Melbourne								
Jetstar	128	125	89	71.2	79	63.2	3	2.3
Qantas	338	330	303	91.8	283	85.8	8	2.4
Rex Airlines	43	39	33	84.6	32	82.1	4	9.3
Virgin Australia	300	294	162	55.1	131	44.6	6	2.0
All Airlines	809	788	587	74.5	525	66.6	21	2.6
Brisbane-Mount Isa								
Qantas	36	36	35	97.2	33	91.7	0	0.0
QantasLink	18	17	13	76.5	13	76.5	1	5.6
Virgin Australia	13	13	10	76.9	12	92.3	0	0.0
All Airlines	67	66	58	87.9	58	87.9	1	1.5
Brisbane-Newcastle								
Jetstar	34	33	26	78.8	28	84.8	1	2.9
QantasLink	86	83	64	77.1	66	79.5	3	3.5
Virgin Australia	79	79	61	77.2	62	78.5	0	0.0
All Airlines	199	195	151	77.4	156	80.0	4	2.0
Brisbane-Perth								
Jetstar	21	19	15	78.9	9	47.4	2	9.5
Qantas	64	64	60	93.8	52	81.3	0	0.0
Virgin Australia	25	25	21	84.0	18	72.0	0	0.0
All Airlines	110	108	96	88.9	79	73.1	2	1.8
Brisbane-Proserpine								
Jetstar	29	29	10	34.5	13	44.8	0	0.0
QantasLink	23	21	16	76.2	18	85.7	2	8.7
Virgin Australia	36	36	26	72.2	28	77.8	0	0.0
All Airlines	88	86	52	60.5	59	68.6	2	2.3
Brisbane-Rockhampton								
QantasLink	141	134	114	85.1	112	83.6	7	5.0
Virgin Australia	83	83	54	65.1	64	77.1	0	0.0
All Airlines	224	217	168	77.4	176	81.1	7	3.1
Brisbane-Sydney								
Jetstar	98	96	70	72.9	63	65.6	2	2.0
Qantas	502	492	430	87.4	429	87.2	10	2.0
Rex Airlines	60	55	52	94.5	52	94.5	5	8.3
Virgin Australia	371	366	269	73.5	247	67.5	5	1.3
All Airlines	1 031	1 009	821	81.4	791	78.4	22	2.1

	Sectors		Arrivals On Time		Departures On Time		Cancellations	
	Sched.	Flown	No.	%	No.	%	No.	%
Brisbane-Townsville								
Jetstar	41	39	34	87.2	32	82.1	2	4.9
Qantas	99	99	78	78.8	82	82.8	0	0.0
QantasLink	21	20	13	65.0	14	70.0	1	4.8
Virgin Australia	107	107	89	83.2	92	86.0	0	0.0
All Airlines	268	265	214	80.8	220	83.0	3	1.1
Broome-Perth								
Qantas	58	52	51	98.1	49	94.2	6	10.3
QantasLink	20	18	16	88.9	15	83.3	2	10.0
Virgin Australia	15	13	7	53.8	7	53.8	2	13.3
Virgin Australia Regional Airlines	24	24	22	91.7	18	75.0	0	0.0
All Airlines	117	107	96	89.7	89	83.2	10	8.5
Cairns-Brisbane								
Jetstar	63	59	44	74.6	44	74.6	4	6.3
Qantas	91	91	85	93.4	78	85.7	0	0.0
QantasLink	37	36	23	63.9	25	69.4	1	2.7
Virgin Australia	122	122	105	86.1	94	77.0	0	0.0
All Airlines	313	308	257	83.4	241	78.2	5	1.6
Cairns-Melbourne								
Jetstar	49	49	34	69.4	29	59.2	0	0.0
Qantas	37	36	31	86.1	32	88.9	1	2.7
Virgin Australia	60	60	43	71.7	40	66.7	0	0.0
All Airlines	146	145	108	74.5	101	69.7	1	0.7
Cairns-Sydney								
Jetstar	56	55	42	76.4	41	74.5	1	1.8
Qantas	44	44	36	81.8	34	77.3	0	0.0
Virgin Australia	52	52	48	92.3	42	80.8	0	0.0
All Airlines	152	151	126	83.4	117	77.5	1	0.7
Cairns-Townsville								
QantasLink	118	118	105	89.0	102	86.4	0	0.0
Rex Airlines	13	13	12	92.3	12	92.3	0	0.0
All Airlines	131	131	117	89.3	114	87.0	0	0.0
Canberra-Adelaide								
QantasLink	59	58	49	84.5	48	82.8	1	1.7
Virgin Australia	16	16	14	87.5	12	75.0	0	0.0
All Airlines	75	74	63	85.1	60	81.1	1	1.3
Canberra-Brisbane								
Jetstar	19	18	13	72.2	10	55.6	1	5.3
Qantas	13	13	11	84.6	10	76.9	0	0.0
QantasLink	129	124	86	69.4	92	74.2	5	3.9
Virgin Australia	74	74	54	73.0	58	78.4	0	0.0
All Airlines	235	229	164	71.6	170	74.2	6	2.6
Canberra-Melbourne								
Qantas	16	16	14	87.5	14	87.5	0	0.0
QantasLink	192	180	124	68.9	124	68.9	12	6.3
Rex Airlines	31	31	23	74.2	23	74.2	0	0.0
Virgin Australia	96	96	72	75.0	62	64.6	0	0.0
All Airlines	335	323	233	72.1	223	69.0	12	3.6

	Sectors		Arrivals On Time		Departures On Time		Cancellations	
	Sched.	Flown	No.	%	No.	%	No.	%
Canberra-Sydney								
QantasLink	364	335	256	76.4	280	83.6	29	8.0
Rex Airlines	77	77	55	71.4	70	90.9	0	0.0
Virgin Australia	89	89	68	76.4	76	85.4	0	0.0
All Airlines	530	501	379	75.6	426	85.0	29	5.5
Coffs Harbour-Sydney								
QantasLink	103	93	69	74.2	67	72.0	10	9.7
Rex Airlines	83	80	61	76.3	65	81.3	3	3.6
Virgin Australia	19	19	15	78.9	13	68.4	0	0.0
All Airlines	205	192	145	75.5	145	75.5	13	6.3
Darwin-Brisbane								
Jetstar	14	14	9	64.3	6	42.9	0	0.0
Qantas	39	35	26	74.3	27	77.1	4	10.3
Virgin Australia	32	32	28	87.5	22	68.8	0	0.0
All Airlines	85	81	63	77.8	55	67.9	4	4.7
Dubbo-Sydney								
QantasLink	93	91	75	82.4	76	83.5	2	2.2
Rex Airlines	128	126	93	73.8	104	82.5	2	1.6
All Airlines	221	217	168	77.4	180	82.9	4	1.8
Emerald-Brisbane								
QantasLink	102	97	83	85.6	80	82.5	5	4.9
Virgin Australia	27	26	25	96.2	25	96.2	1	3.7
All Airlines	129	123	108	87.8	105	85.4	6	4.7
Gladstone-Brisbane								
QantasLink	116	113	95	84.1	92	81.4	3	2.6
Virgin Australia	40	38	24	63.2	29	76.3	2	5.0
All Airlines	156	151	119	78.8	121	80.1	5	3.2
Gold Coast-Adelaide								
Jetstar	23	23	22	95.7	16	69.6	0	0.0
QantasLink	8	7	4	57.1	3	42.9	1	12.5
Virgin Australia	27	27	25	92.6	16	59.3	0	0.0
All Airlines	58	57	51	89.5	35	61.4	1	1.7
Gold Coast-Melbourne								
Jetstar	145	144	117	81.3	110	76.4	1	0.7
Qantas	68	68	57	83.8	56	82.4	0	0.0
QantasLink	8	6	4	66.7	3	50.0	2	25.0
Rex Airlines	48	42	35	83.3	34	81.0	6	12.5
Virgin Australia	309	301	222	73.8	174	57.8	8	2.6
All Airlines	578	561	435	77.5	377	67.2	17	2.9
Gold Coast-Sydney								
Jetstar	193	185	135	73.0	124	67.0	8	4.1
Qantas	110	110	76	69.1	76	69.1	0	0.0
QantasLink	6	5	4	80.0	3	60.0	1	16.7
Rex Airlines	47	41	34	82.9	33	80.5	6	12.8
Virgin Australia	279	272	200	73.5	185	68.0	7	2.5
All Airlines	635	613	449	73.2	421	68.7	22	3.5
Hamilton Island-Brisbane								
Qantas	27	27	25	92.6	22	81.5	0	0.0
Virgin Australia	42	42	31	73.8	27	64.3	0	0.0
All Airlines	69	69	56	81.2	49	71.0	0	0.0

	Sectors		Arrivals On Time		Departures On Time		Cancellations	
	Sched.	Flown	No.	%	No.	%	No.	%
Hamilton Island-Sydney								
Jetstar	24	24	16	66.7	16	66.7	0	0.0
Qantas	27	27	23	85.2	22	81.5	0	0.0
Virgin Australia	22	22	18	81.8	15	68.2	0	0.0
All Airlines	73	73	57	78.1	53	72.6	0	0.0
Hobart-Brisbane								
Jetstar	27	27	20	74.1	22	81.5	0	0.0
QantasLink	17	17	11	64.7	12	70.6	0	0.0
Virgin Australia	48	46	27	58.7	33	71.7	2	4.2
All Airlines	92	90	58	64.4	67	74.4	2	2.2
Hobart-Melbourne								
Jetstar	115	114	68	59.6	67	58.8	1	0.9
QantasLink	108	106	78	73.6	74	69.8	2	1.9
Virgin Australia	107	106	64	60.4	68	64.2	1	0.9
All Airlines	330	326	210	64.4	209	64.1	4	1.2
Hobart-Sydney								
Jetstar	63	61	42	68.9	51	83.6	2	3.2
Qantas	22	22	19	86.4	21	95.5	0	0.0
QantasLink	60	59	28	47.5	41	69.5	1	1.7
Virgin Australia	67	67	48	71.6	55	82.1	0	0.0
All Airlines	212	209	137	65.6	168	80.4	3	1.4
Kalgoorlie-Perth								
Qantas	32	31	29	93.5	28	90.3	1	3.1
QantasLink	46	40	33	82.5	30	75.0	6	13.0
Virgin Australia	36	36	29	80.6	26	72.2	0	0.0
Virgin Australia Regional Airlines	27	27	20	74.1	22	81.5	0	0.0
All Airlines	141	134	111	82.8	106	79.1	7	5.0
Karratha-Perth								
Qantas	93	90	85	94.4	86	95.6	3	3.2
QantasLink	60	58	50	86.2	48	82.8	2	3.3
Virgin Australia	38	38	35	92.1	36	94.7	0	0.0
Virgin Australia Regional Airlines	16	16	14	87.5	15	93.8	0	0.0
All Airlines	207	202	184	91.1	185	91.6	5	2.4
Launceston-Melbourne								
Jetstar	75	73	44	60.3	39	53.4	2	2.7
QantasLink	98	89	59	66.3	52	58.4	9	9.2
Virgin Australia	77	77	51	66.2	52	67.5	0	0.0
All Airlines	250	239	154	64.4	143	59.8	11	4.4
Launceston-Sydney								
Jetstar	40	40	21	52.5	19	47.5	0	0.0
QantasLink	13	13	12	92.3	9	69.2	0	0.0
Virgin Australia	27	27	21	77.8	21	77.8	0	0.0
All Airlines	80	80	54	67.5	49	61.3	0	0.0
Mackay-Brisbane								
Jetstar	23	23	10	43.5	10	43.5	0	0.0
Qantas	87	84	74	88.1	75	89.3	3	3.4
QantasLink	34	30	24	80.0	23	76.7	4	11.8
Virgin Australia	107	107	93	86.9	88	82.2	0	0.0
All Airlines	251	244	201	82.4	196	80.3	7	2.8

	<i>Sectors</i>		<i>Arrivals On Time</i>		<i>Departures On Time</i>		<i>Cancellations</i>	
	<i>Sched.</i>	<i>Flown</i>	<i>No.</i>	<i>%</i>	<i>No.</i>	<i>%</i>	<i>No.</i>	<i>%</i>
Melbourne-Adelaide								
Jetstar	77	77	49	63.6	41	53.2	0	0.0
Qantas	204	202	191	94.6	187	92.6	2	1.0
Rex Airlines	48	47	35	74.5	34	72.3	1	2.1
Virgin Australia	215	213	142	66.7	144	67.6	2	0.9
All Airlines	544	539	417	77.4	406	75.3	5	0.9
Melbourne-Brisbane								
Jetstar	127	124	79	63.7	88	71.0	3	2.4
Qantas	340	334	260	77.8	296	88.6	6	1.8
Rex Airlines	43	39	34	87.2	34	87.2	4	9.3
Virgin Australia	300	294	168	57.1	196	66.7	6	2.0
All Airlines	810	791	541	68.4	614	77.6	19	2.3
Melbourne-Cairns								
Jetstar	49	49	21	42.9	22	44.9	0	0.0
Qantas	37	36	28	77.8	28	77.8	1	2.7
Virgin Australia	60	60	47	78.3	45	75.0	0	0.0
All Airlines	146	145	96	66.2	95	65.5	1	0.7
Melbourne-Canberra								
Qantas	16	16	14	87.5	14	87.5	0	0.0
QantasLink	192	180	119	66.1	119	66.1	12	6.3
Rex Airlines	31	31	25	80.6	25	80.6	0	0.0
Virgin Australia	96	95	62	65.3	62	65.3	1	1.0
All Airlines	335	322	220	68.3	220	68.3	13	3.9
Melbourne-Gold Coast								
Jetstar	145	144	95	66.0	100	69.4	1	0.7
Qantas	68	68	60	88.2	64	94.1	0	0.0
QantasLink	8	6	3	50.0	4	66.7	2	25.0
Rex Airlines	48	42	37	88.1	38	90.5	6	12.5
Virgin Australia	310	301	195	64.8	213	70.8	9	2.9
All Airlines	579	561	390	69.5	419	74.7	18	3.1
Melbourne-Hobart								
Jetstar	113	113	83	73.5	80	70.8	0	0.0
QantasLink	108	106	76	71.7	69	65.1	2	1.9
Virgin Australia	107	106	75	70.8	70	66.0	1	0.9
All Airlines	328	325	234	72.0	219	67.4	3	0.9
Melbourne-Launceston								
Jetstar	74	73	51	69.9	50	68.5	1	1.4
QantasLink	99	91	61	67.0	73	80.2	8	8.1
Virgin Australia	77	77	47	61.0	47	61.0	0	0.0
All Airlines	250	241	159	66.0	170	70.5	9	3.6
Melbourne-Mildura								
QantasLink	108	108	80	74.1	64	59.3	0	0.0
Rex Airlines	89	89	78	87.6	78	87.6	0	0.0
All Airlines	197	197	158	80.2	142	72.1	0	0.0
Melbourne-Newcastle								
Jetstar	51	51	31	60.8	35	68.6	0	0.0
QantasLink	37	35	22	62.9	26	74.3	2	5.4
Virgin Australia	31	31	22	71.0	23	74.2	0	0.0
All Airlines	119	117	75	64.1	84	71.8	2	1.7

	<i>Sectors</i>		<i>Arrivals On Time</i>		<i>Departures On Time</i>		<i>Cancellations</i>	
	<i>Sched.</i>	<i>Flown</i>	<i>No.</i>	<i>%</i>	<i>No.</i>	<i>%</i>	<i>No.</i>	<i>%</i>
Melbourne-Perth								
Jetstar	34	33	26	78.8	23	69.7	1	2.9
Qantas	83	81	63	77.8	47	58.0	2	2.4
Virgin Australia	84	84	70	83.3	49	58.3	0	0.0
All Airlines	201	198	159	80.3	119	60.1	3	1.5
Melbourne-Sunshine Coast								
Jetstar	68	68	35	51.5	50	73.5	0	0.0
Qantas	38	37	35	94.6	35	94.6	1	2.6
QantasLink	18	18	11	61.1	13	72.2	0	0.0
Virgin Australia	115	114	74	64.9	74	64.9	1	0.9
All Airlines	239	237	155	65.4	172	72.6	2	0.8
Melbourne-Sydney								
Jetstar	271	264	183	69.3	192	72.7	7	2.6
Qantas	811	779	644	82.7	695	89.2	32	3.9
Rex Airlines	118	113	89	78.8	92	81.4	5	4.2
Virgin Australia	626	619	438	70.8	463	74.8	7	1.1
All Airlines	1 826	1 775	1 354	76.3	1 442	81.2	51	2.8
Mildura-Melbourne								
QantasLink	108	108	62	57.4	72	66.7	0	0.0
Rex Airlines	89	89	72	80.9	76	85.4	0	0.0
All Airlines	197	197	134	68.0	148	75.1	0	0.0
Mount Isa-Brisbane								
Qantas	37	36	33	91.7	33	91.7	1	2.7
QantasLink	18	17	15	88.2	14	82.4	1	5.6
Virgin Australia	13	13	9	69.2	11	84.6	0	0.0
All Airlines	68	66	57	86.4	58	87.9	2	2.9
Newcastle-Brisbane								
Jetstar	34	33	19	57.6	27	81.8	1	2.9
QantasLink	86	83	65	78.3	66	79.5	3	3.5
Virgin Australia	79	79	57	72.2	65	82.3	0	0.0
All Airlines	199	195	141	72.3	158	81.0	4	2.0
Newcastle-Melbourne								
Jetstar	52	51	29	56.9	25	49.0	1	1.9
QantasLink	36	36	31	86.1	30	83.3	0	0.0
Virgin Australia	31	31	23	74.2	22	71.0	0	0.0
All Airlines	119	118	83	70.3	77	65.3	1	0.8
Newman-Perth								
Qantas	19	17	14	82.4	15	88.2	2	10.5
QantasLink	107	105	85	81.0	86	81.9	2	1.9
Virgin Australia	23	23	18	78.3	20	87.0	0	0.0
Virgin Australia Regional Airlines	37	37	28	75.7	28	75.7	0	0.0
All Airlines	186	182	145	79.7	149	81.9	4	2.2
Perth-Adelaide								
Jetstar	17	17	15	88.2	14	82.4	0	0.0
Qantas	49	49	43	87.8	42	85.7	0	0.0
Virgin Australia	7	7	7	100.0	7	100.0	0	0.0
Virgin Australia Regional Airlines	10	10	7	70.0	8	80.0	0	0.0
All Airlines	83	83	72	86.7	71	85.5	0	0.0

	<i>Sectors</i>		<i>Arrivals On Time</i>		<i>Departures On Time</i>		<i>Cancellations</i>	
	<i>Sched.</i>	<i>Flown</i>	<i>No.</i>	<i>%</i>	<i>No.</i>	<i>%</i>	<i>No.</i>	<i>%</i>
Perth-Brisbane								
Jetstar	21	19	5	26.3	7	36.8	2	9.5
Qantas	65	65	55	84.6	63	96.9	0	0.0
Virgin Australia	25	25	13	52.0	14	56.0	0	0.0
All Airlines	111	109	73	67.0	84	77.1	2	1.8
Perth-Broome								
Qantas	58	53	51	96.2	50	94.3	5	8.6
QantasLink	20	18	17	94.4	16	88.9	2	10.0
Virgin Australia	15	13	7	53.8	7	53.8	2	13.3
Virgin Australia Regional Airlines	24	24	22	91.7	22	91.7	0	0.0
All Airlines	117	108	97	89.8	95	88.0	9	7.7
Perth-Kalgoorlie								
Qantas	32	31	31	100.0	30	96.8	1	3.1
QantasLink	46	41	36	87.8	36	87.8	5	10.9
Virgin Australia	36	36	32	88.9	33	91.7	0	0.0
Virgin Australia Regional Airlines	27	27	25	92.6	25	92.6	0	0.0
All Airlines	141	135	124	91.9	124	91.9	6	4.3
Perth-Karratha								
Qantas	93	92	87	94.6	87	94.6	1	1.1
QantasLink	60	59	46	78.0	46	78.0	1	1.7
Virgin Australia	38	38	38	100.0	38	100.0	0	0.0
Virgin Australia Regional Airlines	16	16	16	100.0	16	100.0	0	0.0
All Airlines	207	205	187	91.2	187	91.2	2	1.0
Perth-Melbourne								
Jetstar	34	33	8	24.2	13	39.4	1	2.9
Qantas	85	82	54	65.9	67	81.7	3	3.5
Virgin Australia	84	84	58	69.0	64	76.2	0	0.0
All Airlines	203	199	120	60.3	144	72.4	4	2.0
Perth-Newman								
Qantas	19	17	15	88.2	16	94.1	2	10.5
QantasLink	107	105	98	93.3	97	92.4	2	1.9
Virgin Australia	23	23	22	95.7	22	95.7	0	0.0
Virgin Australia Regional Airlines	37	37	33	89.2	34	91.9	0	0.0
All Airlines	186	182	168	92.3	169	92.9	4	2.2
Perth-Port Hedland								
Qantas	46	46	45	97.8	44	95.7	0	0.0
QantasLink	91	90	66	73.3	70	77.8	1	1.1
Virgin Australia	19	19	18	94.7	19	100.0	0	0.0
Virgin Australia Regional Airlines	35	34	32	94.1	32	94.1	1	2.9
All Airlines	191	189	161	85.2	165	87.3	2	1.0
Perth-Sydney								
Jetstar	30	29	18	62.1	9	31.0	1	3.3
Qantas	95	92	68	73.9	75	81.5	3	3.2
Virgin Australia	23	23	16	69.6	15	65.2	0	0.0
All Airlines	148	144	102	70.8	99	68.8	4	2.7
Port Hedland-Perth								
Qantas	46	46	42	91.3	40	87.0	0	0.0
QantasLink	90	89	63	70.8	62	69.7	1	1.1
Virgin Australia	19	19	13	68.4	15	78.9	0	0.0
Virgin Australia Regional Airlines	35	34	28	82.4	30	88.2	1	2.9
All Airlines	190	188	146	77.7	147	78.2	2	1.1

	Sectors		Arrivals On Time		Departures On Time		Cancellations	
	Sched.	Flown	No.	%	No.	%	No.	%
Port Lincoln-Adelaide								
QantasLink	131	124	114	91.9	114	91.9	7	5.3
Rex Airlines	172	172	145	84.3	143	83.1	0	0.0
All Airlines	303	296	259	87.5	257	86.8	7	2.3
Port Macquarie-Sydney								
QantasLink	90	86	63	73.3	63	73.3	4	4.4
Rex Airlines	82	82	51	62.2	68	82.9	0	0.0
All Airlines	172	168	114	67.9	131	78.0	4	2.3
Proserpine-Brisbane								
Jetstar	29	29	10	34.5	9	31.0	0	0.0
QantasLink	23	21	14	66.7	13	61.9	2	8.7
Virgin Australia	36	36	21	58.3	15	41.7	0	0.0
All Airlines	88	86	45	52.3	37	43.0	2	2.3
Rockhampton-Brisbane								
QantasLink	141	134	113	84.3	112	83.6	7	5.0
Virgin Australia	83	83	63	75.9	61	73.5	0	0.0
All Airlines	224	217	176	81.1	173	79.7	7	3.1
Sunshine Coast-Melbourne								
Jetstar	67	65	47	72.3	39	60.0	2	3.0
Qantas	38	37	32	86.5	30	81.1	1	2.6
QantasLink	18	18	14	77.8	9	50.0	0	0.0
Virgin Australia	115	114	64	56.1	65	57.0	1	0.9
All Airlines	238	234	157	67.1	143	61.1	4	1.7
Sunshine Coast-Sydney								
Jetstar	58	56	33	58.9	35	62.5	2	3.4
Qantas	49	49	42	85.7	40	81.6	0	0.0
Virgin Australia	82	82	49	59.8	59	72.0	0	0.0
All Airlines	189	187	124	66.3	134	71.7	2	1.1
Sydney-Adelaide								
Jetstar	76	75	55	73.3	33	44.0	1	1.3
Qantas	206	205	174	84.9	165	80.5	1	0.5
Virgin Australia	112	112	99	88.4	92	82.1	0	0.0
All Airlines	394	392	328	83.7	290	74.0	2	0.5
Sydney-Albury								
QantasLink	89	89	74	83.1	62	69.7	0	0.0
Rex Airlines	88	88	82	93.2	80	90.9	0	0.0
All Airlines	177	177	156	88.1	142	80.2	0	0.0
Sydney-Armidale								
QantasLink	81	78	41	52.6	40	51.3	3	3.7
Rex Airlines	58	57	35	61.4	38	66.7	1	1.7
All Airlines	139	135	76	56.3	78	57.8	4	2.9
Sydney-Ballina								
Jetstar	69	58	46	79.3	50	86.2	11	15.9
QantasLink	86	62	47	75.8	47	75.8	24	27.9
Rex Airlines	27	20	17	85.0	17	85.0	7	25.9
Virgin Australia	61	50	39	78.0	41	82.0	11	18.0
All Airlines	243	190	149	78.4	155	81.6	53	21.8

	Sectors		Arrivals On Time		Departures On Time		Cancellations	
	Sched.	Flown	No.	%	No.	%	No.	%
Sydney-Brisbane								
Jetstar	99	97	59	60.8	61	62.9	2	2.0
Qantas	503	490	380	77.6	391	79.8	13	2.6
Rex Airlines	61	56	50	89.3	50	89.3	5	8.2
Virgin Australia	370	363	282	77.7	289	79.6	7	1.9
All Airlines	1 033	1 006	771	76.6	791	78.6	27	2.6
Sydney-Cairns								
Jetstar	56	55	37	67.3	41	74.5	1	1.8
Qantas	44	44	28	63.6	31	70.5	0	0.0
Virgin Australia	52	52	47	90.4	50	96.2	0	0.0
All Airlines	152	151	112	74.2	122	80.8	1	0.7
Sydney-Canberra								
QantasLink	362	331	257	77.6	242	73.1	31	8.6
Rex Airlines	78	78	52	66.7	62	79.5	0	0.0
Virgin Australia	89	89	75	84.3	71	79.8	0	0.0
All Airlines	529	498	384	77.1	375	75.3	31	5.9
Sydney-Coffs Harbour								
QantasLink	107	97	68	70.1	71	73.2	10	9.3
Rex Airlines	82	81	60	74.1	63	77.8	1	1.2
Virgin Australia	19	19	16	84.2	16	84.2	0	0.0
All Airlines	208	197	144	73.1	150	76.1	11	5.3
Sydney-Dubbo								
QantasLink	93	92	68	73.9	62	67.4	1	1.1
Rex Airlines	132	132	109	82.6	100	75.8	0	0.0
All Airlines	225	224	177	79.0	162	72.3	1	0.4
Sydney-Gold Coast								
Jetstar	193	187	127	67.9	130	69.5	6	3.1
Qantas	111	111	78	70.3	85	76.6	0	0.0
QantasLink	6	5	5	100.0	5	100.0	1	16.7
Rex Airlines	46	41	30	73.2	35	85.4	5	10.9
Virgin Australia	279	272	201	73.9	213	78.3	7	2.5
All Airlines	635	616	441	71.6	468	76.0	19	3.0
Sydney-Hamilton Island								
Jetstar	24	24	19	79.2	19	79.2	0	0.0
Qantas	27	27	23	85.2	22	81.5	0	0.0
Virgin Australia	22	22	19	86.4	21	95.5	0	0.0
All Airlines	73	73	61	83.6	62	84.9	0	0.0
Sydney-Hobart								
Jetstar	62	62	56	90.3	51	82.3	0	0.0
Qantas	22	22	21	95.5	21	95.5	0	0.0
QantasLink	61	60	39	65.0	38	63.3	1	1.6
Virgin Australia	67	67	58	86.6	47	70.1	0	0.0
All Airlines	212	211	174	82.5	157	74.4	1	0.5
Sydney-Launceston								
Jetstar	39	39	27	69.2	26	66.7	0	0.0
QantasLink	13	13	12	92.3	9	69.2	0	0.0
Virgin Australia	27	27	21	77.8	20	74.1	0	0.0
All Airlines	79	79	60	75.9	55	69.6	0	0.0

	<i>Sectors</i>		<i>Arrivals On Time</i>		<i>Departures On Time</i>		<i>Cancellations</i>	
	<i>Sched.</i>	<i>Flown</i>	<i>No.</i>	<i>%</i>	<i>No.</i>	<i>%</i>	<i>No.</i>	<i>%</i>
Sydney-Melbourne								
Jetstar	272	263	216	82.1	177	67.3	9	3.3
Qantas	793	759	702	92.5	654	86.2	34	4.3
Rex Airlines	115	114	90	78.9	89	78.1	1	0.9
Virgin Australia	626	618	449	72.7	353	57.1	8	1.3
All Airlines	1 806	1 754	1 457	83.1	1 273	72.6	52	2.9
Sydney-Perth								
Jetstar	30	29	25	86.2	7	24.1	1	3.3
Qantas	95	92	62	67.4	47	51.1	3	3.2
Virgin Australia	23	23	18	78.3	14	60.9	0	0.0
All Airlines	148	144	105	72.9	68	47.2	4	2.7
Sydney-Port Macquarie								
QantasLink	91	88	64	72.7	56	63.6	3	3.3
Rex Airlines	81	81	54	66.7	59	72.8	0	0.0
All Airlines	172	169	118	69.8	115	68.0	3	1.7
Sydney-Sunshine Coast								
Jetstar	58	57	40	70.2	44	77.2	1	1.7
Qantas	50	50	41	82.0	44	88.0	0	0.0
Virgin Australia	82	82	64	78.0	68	82.9	0	0.0
All Airlines	190	189	145	76.7	156	82.5	1	0.5
Sydney-Wagga Wagga								
QantasLink	82	82	69	84.1	63	76.8	0	0.0
Rex Airlines	76	76	49	64.5	42	55.3	0	0.0
All Airlines	158	158	118	74.7	105	66.5	0	0.0
Townsville-Brisbane								
Jetstar	41	39	25	64.1	23	59.0	2	4.9
Qantas	99	99	89	89.9	84	84.8	0	0.0
QantasLink	21	19	10	52.6	10	52.6	2	9.5
Virgin Australia	107	107	92	86.0	88	82.2	0	0.0
All Airlines	268	264	216	81.8	205	77.7	4	1.5
Townsville-Cairns								
QantasLink	118	117	109	93.2	109	93.2	1	0.8
Rex Airlines	14	14	13	92.9	13	92.9	0	0.0
All Airlines	132	131	122	93.1	122	93.1	1	0.8
Wagga Wagga-Sydney								
QantasLink	82	81	71	87.7	73	90.1	1	1.2
Rex Airlines	75	75	46	61.3	59	78.7	0	0.0
All Airlines	157	156	117	75.0	132	84.6	1	0.6

Airports

The following data reports by airport against flights operated on published routes only. This month, 8 major city airports and 28 regional city airports are covered.

Airport	Arrivals			Departures		
	Sectors	On Time		Sectors	On Time	
	Flown	No.	%	Flown	No.	%
Adelaide						
Jetstar	215	150	69.8	213	156	73.2
Qantas	544	489	89.9	542	486	89.7
QantasLink	223	189	84.8	226	200	88.5
Rex Airlines	219	180	82.2	220	200	90.9
Virgin Australia	464	362	78.0	462	367	79.4
Virgin Australia Regional Airlines	10	7	70.0	10	4	40.0
All Airlines	1 675	1 377	82.2	1 673	1 413	84.5
Relates to services to and from Alice Springs, Brisbane, Canberra, Gold Coast, Melbourne, Perth, Port Lincoln and Sydney only.						
Albury						
QantasLink	89	74	83.1	89	73	82.0
Rex Airlines	88	82	93.2	89	84	94.4
All Airlines	177	156	88.1	178	157	88.2
Relates to services to and from Sydney only.						
Alice Springs						
QantasLink	34	29	85.3	34	24	70.6
Virgin Australia	8	6	75.0	8	4	50.0
All Airlines	42	35	83.3	42	28	66.7
Relates to services to and from Adelaide only.						
Armidale						
QantasLink	78	41	52.6	77	42	54.5
Rex Airlines	57	35	61.4	57	33	57.9
All Airlines	135	76	56.3	134	75	56.0
Relates to services to and from Sydney only.						
Ballina						
Jetstar	58	46	79.3	59	34	57.6
QantasLink	62	47	75.8	61	48	78.7
Rex Airlines	20	17	85.0	20	15	75.0
Virgin Australia	50	39	78.0	49	35	71.4
All Airlines	190	149	78.4	189	132	69.8
Relates to services to and from Sydney only.						
Brisbane						
Jetstar	505	306	60.6	506	315	62.3
Qantas	1 362	1 118	82.1	1 362	1 169	85.8
QantasLink	691	539	78.0	689	557	80.8
Rex Airlines	95	84	88.4	94	84	89.4
Virgin Australia	1 570	1 170	74.5	1 572	1 081	68.8
All Airlines	4 223	3 217	76.2	4 223	3 206	75.9
Relates to services to and from Adelaide, Cairns, Canberra, Darwin, Emerald, Gladstone, Hamilton Island, Hobart, Mackay, Melbourne, Mount Isa, Newcastle, Perth, Proserpine, Rockhampton, Sydney and Townsville only.						

Airport	Arrivals			Departures		
	Sectors Flown	On Time		Sectors Flown	On Time	
		No.	%		No.	%
Broome						
Qantas	53	51	96.2	52	49	94.2
QantasLink	18	17	94.4	18	15	83.3
Virgin Australia	13	7	53.8	13	7	53.8
Virgin Australia Regional Airlines	24	22	91.7	24	18	75.0
All Airlines	108	97	89.8	107	89	83.2
Relates to services to and from Perth only.						
Cairns						
Jetstar	163	91	55.8	163	114	69.9
Qantas	170	124	72.9	171	144	84.2
QantasLink	153	137	89.5	154	127	82.5
Rex Airlines	14	13	92.9	13	12	92.3
Virgin Australia	234	169	72.2	234	176	75.2
All Airlines	734	534	72.8	735	573	78.0
Relates to services to and from Brisbane, Melbourne, Sydney and Townsville only.						
Canberra						
Jetstar	18	15	83.3	18	10	55.6
Qantas	29	25	86.2	29	24	82.8
QantasLink	694	518	74.6	697	544	78.0
Rex Airlines	109	77	70.6	108	93	86.1
Virgin Australia	274	206	75.2	275	208	75.6
All Airlines	1 124	841	74.8	1 127	879	78.0
Relates to services to and from Adelaide, Brisbane, Melbourne and Sydney only.						
Coffs Harbour						
QantasLink	97	68	70.1	93	67	72.0
Rex Airlines	81	60	74.1	80	65	81.3
Virgin Australia	19	16	84.2	19	13	68.4
All Airlines	197	144	73.1	192	145	75.5
Relates to services to and from Sydney only.						
Darwin						
Jetstar	15	10	66.7	14	6	42.9
Qantas	35	31	88.6	35	27	77.1
Virgin Australia	32	25	78.1	32	22	68.8
All Airlines	82	66	80.5	81	55	67.9
Relates to services to and from Brisbane only.						
Dubbo						
QantasLink	92	68	73.9	91	76	83.5
Rex Airlines	132	109	82.6	126	104	82.5
All Airlines	224	177	79.0	217	180	82.9
Relates to services to and from Sydney only.						
Emerald						
QantasLink	97	87	89.7	97	80	82.5
Virgin Australia	26	23	88.5	26	25	96.2
All Airlines	123	110	89.4	123	105	85.4
Relates to services to and from Brisbane only.						

Airport	Arrivals			Departures		
	Sectors Flown	On Time		Sectors Flown	On Time	
		No.	%		No.	%
Gladstone						
QantasLink	115	95	82.6	113	92	81.4
Virgin Australia	38	31	81.6	38	29	76.3
All Airlines	153	126	82.4	151	121	80.1
Relates to services to and from Brisbane only.						
Gold Coast						
Jetstar	354	243	68.6	352	250	71.0
Qantas	179	138	77.1	178	132	74.2
QantasLink	19	15	78.9	18	9	50.0
Rex Airlines	83	67	80.7	83	67	80.7
Virgin Australia	600	417	69.5	600	375	62.5
All Airlines	1 235	880	71.3	1 231	833	67.7
Relates to services to and from Adelaide, Melbourne and Sydney only.						
Hamilton Island						
Jetstar	24	19	79.2	24	16	66.7
Qantas	54	49	90.7	54	44	81.5
Virgin Australia	64	53	82.8	64	42	65.6
All Airlines	142	121	85.2	142	102	71.8
Relates to services to and from Brisbane and Sydney only.						
Hobart						
Jetstar	202	163	80.7	202	140	69.3
Qantas	22	21	95.5	22	21	95.5
QantasLink	183	130	71.0	182	127	69.8
Virgin Australia	220	173	78.6	219	156	71.2
All Airlines	627	487	77.7	625	444	71.0
Relates to services to and from Brisbane, Melbourne and Sydney only.						
Kalgoorlie						
Qantas	31	31	100.0	31	28	90.3
QantasLink	41	36	87.8	40	30	75.0
Virgin Australia	36	32	88.9	36	26	72.2
Virgin Australia Regional Airlines	27	25	92.6	27	22	81.5
All Airlines	135	124	91.9	134	106	79.1
Relates to services to and from Perth only.						
Karratha						
Qantas	92	87	94.6	90	86	95.6
QantasLink	59	46	78.0	58	48	82.8
Virgin Australia	38	38	100.0	38	36	94.7
Virgin Australia Regional Airlines	16	16	100.0	16	15	93.8
All Airlines	205	187	91.2	202	185	91.6
Relates to services to and from Perth only.						
Launceston						
Jetstar	112	78	69.6	113	58	51.3
QantasLink	104	73	70.2	102	61	59.8
Virgin Australia	104	68	65.4	104	73	70.2
All Airlines	320	219	68.4	319	192	60.2
Relates to services to and from Melbourne and Sydney only.						

Airport	Arrivals			Departures		
	Sectors Flown	On Time		Sectors Flown	On Time	
		No.	%		No.	%
Mackay						
Jetstar	23	13	56.5	23	10	43.5
Qantas	88	79	89.8	84	75	89.3
QantasLink	25	17	68.0	30	23	76.7
Virgin Australia	107	73	68.2	107	88	82.2
All Airlines	243	182	74.9	244	196	80.3

Relates to services to and from Brisbane only.

Melbourne

Jetstar	993	703	70.8	996	681	68.4
Qantas	1 529	1 381	90.3	1 553	1 366	88.0
QantasLink	543	372	68.5	544	368	67.6
Rex Airlines	362	296	81.8	361	301	83.4
Virgin Australia	1 992	1 371	68.8	1 994	1 386	69.5
All Airlines	5 419	4 123	76.1	5 448	4 102	75.3

Relates to services to and from Adelaide, Brisbane, Cairns, Canberra, Gold Coast, Hobart, Launceston, Mildura, Newcastle, Perth, Sunshine Coast and Sydney only.

Mildura

QantasLink	108	80	74.1	108	72	66.7
Rex Airlines	89	78	87.6	89	76	85.4
All Airlines	197	158	80.2	197	148	75.1

Relates to services to and from Melbourne only.

Mount Isa

Qantas	36	35	97.2	36	33	91.7
QantasLink	17	13	76.5	17	14	82.4
Virgin Australia	13	10	76.9	13	11	84.6
All Airlines	66	58	87.9	66	58	87.9

Relates to services to and from Brisbane only.

Newcastle

Jetstar	84	57	67.9	84	52	61.9
QantasLink	118	86	72.9	119	96	80.7
Virgin Australia	110	83	75.5	110	87	79.1
All Airlines	312	226	72.4	313	235	75.1

Relates to services to and from Brisbane and Melbourne only.

Newman

Qantas	17	15	88.2	17	15	88.2
QantasLink	105	98	93.3	105	86	81.9
Virgin Australia	23	22	95.7	23	20	87.0
Virgin Australia Regional Airlines	37	33	89.2	37	28	75.7
All Airlines	182	168	92.3	182	149	81.9

Relates to services to and from Perth only.

Perth

Jetstar	98	83	84.7	98	43	43.9
Qantas	522	449	86.0	527	474	89.9
QantasLink	310	247	79.7	313	265	84.7
Virgin Australia	267	217	81.3	268	219	81.7
Virgin Australia Regional Airlines	148	117	79.1	148	137	92.6
All Airlines	1 345	1 113	82.8	1 354	1 138	84.0

Relates to services to and from Adelaide, Brisbane, Broome, Kalgoorlie, Karratha, Melbourne, Newman, Port Hedland and Sydney only.

Airport	Arrivals			Departures		
	Sectors Flown	On Time		Sectors Flown	On Time	
		No.	%		No.	%
Port Hedland						
Qantas	46	45	97.8	46	40	87.0
QantasLink	90	66	73.3	89	62	69.7
Virgin Australia	19	18	94.7	19	15	78.9
Virgin Australia Regional Airlines	34	32	94.1	34	30	88.2
All Airlines	189	161	85.2	188	147	78.2
Relates to services to and from Perth only.						
Port Lincoln						
QantasLink	125	115	92.0	124	114	91.9
Rex Airlines	173	151	87.3	172	143	83.1
All Airlines	298	266	89.3	296	257	86.8
Relates to services to and from Adelaide only.						
Port Macquarie						
QantasLink	88	64	72.7	86	63	73.3
Rex Airlines	81	54	66.7	82	68	82.9
All Airlines	169	118	69.8	168	131	78.0
Relates to services to and from Sydney only.						
Proserpine						
Jetstar	29	10	34.5	29	9	31.0
QantasLink	21	16	76.2	21	13	61.9
Virgin Australia	36	26	72.2	36	15	41.7
All Airlines	86	52	60.5	86	37	43.0
Relates to services to and from Brisbane only.						
Rockhampton						
QantasLink	134	114	85.1	134	112	83.6
Virgin Australia	83	54	65.1	83	61	73.5
All Airlines	217	168	77.4	217	173	79.7
Relates to services to and from Brisbane only.						
Sunshine Coast						
Jetstar	125	75	60.0	121	74	61.2
Qantas	87	76	87.4	86	70	81.4
QantasLink	18	11	61.1	18	9	50.0
Virgin Australia	196	138	70.4	196	124	63.3
All Airlines	426	300	70.4	421	277	65.8
Relates to services to and from Melbourne and Sydney only.						
Sydney						
Jetstar	943	651	69.0	946	639	67.5
Qantas	1 819	1 504	82.7	1 800	1 460	81.1
QantasLink	990	736	74.3	997	695	69.7
Rex Airlines	815	597	73.3	824	635	77.1
Virgin Australia	1 798	1 320	73.4	1 796	1 295	72.1
All Airlines	6 365	4 808	75.5	6 363	4 724	74.2

Relates to services to and from Adelaide, Albury, Armidale, Ballina, Brisbane, Cairns, Canberra, Coffs Harbour, Dubbo, Gold Coast, Hamilton Island, Hobart, Launceston, Melbourne, Perth, Port Macquarie, Sunshine Coast and Wagga Wagga only.

<i>Airport</i>	<i>Arrivals</i>			<i>Departures</i>		
	<i>Sectors</i>	<i>On Time</i>		<i>Sectors</i>	<i>On Time</i>	
	<i>Flown</i>	<i>No.</i>	<i>%</i>	<i>Flown</i>	<i>No.</i>	<i>%</i>
Townsville						
Jetstar	39	34	87.2	39	23	59.0
Qantas	99	78	78.8	99	84	84.8
QantasLink	138	118	85.5	136	119	87.5
Rex Airlines	13	12	92.3	14	13	92.9
Virgin Australia	107	89	83.2	107	88	82.2
All Airlines	396	331	83.6	395	327	82.8

Relates to services to and from Brisbane and Cairns only.

Wagga Wagga

QantasLink	82	69	84.1	81	73	90.1
Rex Airlines	76	49	64.5	75	59	78.7
All Airlines	158	118	74.7	156	132	84.6

Relates to services to and from Sydney only.

Definitions

On time arrival	A flight arrival is counted as "on time" if it arrived at the gate before 15 minutes after the scheduled arrival time shown in the carriers' schedule. Neither diverted nor cancelled flights count as on time.
On time departure	A flight departure is counted as "on time" if it departs the gate before 15 minutes after the scheduled departure time shown in the carriers' schedule.
Cancellation	A flight removed from service within 7 days of scheduled departure is regarded as a cancellation.
On time departure percentage	The percentage of on time departures is measured against the number of departures <i>operated</i> on any particular sector.
On time arrival percentage	The percentage of on time arrivals is measured against the number of arrivals <i>operated</i> on any particular sector.
Cancellation percentage	The percentage of cancellations is measured against the number of services <i>scheduled</i> on any particular sector.
