



Australian Government

Department of Infrastructure, Transport, Regional Development and Communications

Bureau of Infrastructure and Transport Research Economics

STATISTICAL REPORT



Aviation

Domestic airline on time performance
September 2021

© Commonwealth of Australia 2021

ISSN: 1832-0759

Ownership of intellectual property rights in this publication

Unless otherwise noted, copyright (and any other intellectual property rights, if any) in this publication is owned by the Commonwealth of Australia (referred to below as the Commonwealth).

Disclaimer

The material contained in this publication is made available on the understanding that the Commonwealth is not providing professional advice, and that users exercise their own skill and care with respect to its use, and seek independent advice if necessary.

The Commonwealth makes no representations or warranties as to the contents or accuracy of the information contained in this publication. To the extent permitted by law, the Commonwealth disclaims liability to any person or organisation in respect of anything done, or omitted to be done, in reliance upon information contained in this publication.

Creative Commons licence

With the exception of (a) the Coat of Arms; and (b) the Department of Infrastructure, Transport, Regional Development and Communications' photos and graphics, copyright in this publication is licensed under a Creative Commons Attribution 3.0 Australia Licence.

Creative Commons Attribution 3.0 Australia Licence is a standard form licence agreement that allows you to copy, communicate and adapt this publication provided that you attribute the work to the Commonwealth and abide by the other licence terms. A summary of the licence terms is available from <http://creativecommons.org/licenses/by/3.0/au/deed.en>. The full licence terms are available from <http://creativecommons.org/licenses/by/3.0/au/legalcode>.

Use of the Coat of Arms

The Department of the Prime Minister and Cabinet sets the terms under which the Coat of Arms is used. Please refer to the Department's Commonwealth Coat of Arms and Government branding web page <http://www.dpmc.gov.au/guidelines/index.cfm#brand> and, in particular, the Guidelines on the use of the Commonwealth Coat of Arms publication.

An appropriate citation for this report is:

Bureau of Infrastructure and Transport Research Economics (BITRE), 2021, Domestic airline on time performance, Statistical Report, BITRE, Canberra ACT.

Contact us

This publication is available in PDF format. All other rights are reserved, including in relation to any Departmental logos or trade marks which may exist. For enquiries regarding the licence and any use of this publication, please contact:

Bureau of Infrastructure and Transport Research Economics (BITRE)
Department of Infrastructure, Transport, Regional Development and Communications
GPO Box 501, Canberra ACT 2601, Australia
Telephone: (international) +61 2 6274 7210
Fax: (international) +61 2 6274 6855
Email: bitre@infrastructure.gov.au
Website: www.bitre.gov.au

Inquiries

Should you require additional information about the statistics contained in this publication:

Telephone (02) 6274 7790 or Facsimile (02) 6274 7727

Electronic mail: AVSTATS@infrastructure.gov.au

Web site: <http://www.bitre.gov.au/statistics/aviation/otphome.aspx>

Foreword

The Bureau of Infrastructure and Transport Research Economics (BITRE) monitors the punctuality and reliability of major domestic airlines operating between Australian airports. The purpose of this is to allow for evaluation of overall industry and individual airline performance, so that consumers of air travel can make informed decisions.

The following domestic airlines currently report this information monthly to the BITRE: Jetstar, Qantas, QantasLink, Rex Airlines, Virgin Australia and Virgin Australia Regional Airlines.

Data has been gathered since November 2003, although some airlines commenced reporting at a later date, including Jetstar which first reported in May 2004, MacAir in July 2005, Tigerair Australia in April 2008 and Virgin Australia Regional Airlines in May 2013. MacAir ceased operations in February 2009 and data was not received for December 2008 onwards. Tigerair Australia ceased operations in March 2020 and data was not received for that month.

Virgin Blue was rebranded as Virgin Australia in May 2011 and Tiger Airways was rebranded as Tigerair Australia in July 2013 and time series data in Microsoft Excel spreadsheet format on the BITRE website have been revised to reflect these changes. With effect from July 2021, Regional Express is reported as Rex Airlines.

Services operated by Skywest on behalf of Virgin Australia using ATR/F100 aircraft commenced in November 2011 and were shown separately as Virgin Australia – ATR/F100 Operations. Virgin Australia Regional Airlines commenced operations in May 2013. It was formed after the acquisition of Skywest by Virgin Australia and represented a combination of operations previously reported under Skywest and Virgin Australia – ATR/F100 Operations. In January 2016, Virgin Australia transferred their ATR fleet from Virgin Australia Regional Airlines to Virgin Australia.

Information presented in this report is for Australian domestic routes for which the passenger load averaged 8 000 or more passengers per month over the previous six months and where two or more airlines operated in competition on those routes. In order to present data for more routes during the period impacted by COVID-19, the passenger load restriction is not being applied. Data are presented for 49 routes in September 2021. Over time, routes which meet these criteria change as airline networks and traffic levels vary.

Participating airlines report their overall monthly network performance where this is possible.

Total industry figures encompass all services operated by reporting airlines only. These airlines collectively carried over 95 per cent of total domestic passengers (regular public transport only) in 2019.

The method of capturing on time performance varies between airlines utilising different recording systems. Jetstar and Qantas jet aircraft use Aircraft Communication Addressing and Reporting System (ACARS) to electronically measure on time performance. Rex Airlines, Virgin Australia, Virgin Australia Regional Airlines and the Qantas non-jet fleet record on time performance manually using records from pilots, gate agents and/or ground crews.

After initial data is collected, aggregate reports are reviewed by participating airlines prior to publication.

Reports and detailed time series data in Microsoft Excel spreadsheet format are available from the BITRE website at: <http://www.bitre.gov.au/statistics/aviation/otphome.aspx>

Contents

	Page
Industry performance	1
Individual routes	9
Airports.....	19
Definitions	24

Industry performance

For September 2021, on time performance over all routes operated by participating airlines (Jetstar, Qantas, QantasLink, REX Airlines, Virgin Australia and Virgin Australia Regional Airlines) averaged 91.1 per cent for on time arrivals and for on time departures. The cancellation rate for the month was 4.3 per cent. The equivalent figures for September 2020 were 90.5 per cent for on time arrivals, 89.9 per cent for on time departures and 1.4 per cent for cancellations.

This month's on time arrivals figure was higher than the long term average performance for all routes (82.3 per cent) and the on time departures figure was also higher than the long term average (83.6 per cent). The rate of cancellations was higher than the long term average of 1.9 per cent.

The Virgin Australia network (Virgin Australia and Virgin Australia Regional Airlines combined operations) recorded 91.9 per cent for on time arrivals while the Qantas network (Qantas and QantasLink combined operations) recorded 91.3 per cent. Virgin Australia achieved the highest on time arrivals among the major domestic airlines at 92.1 per cent followed by Qantas at 90.6 per cent and Jetstar at 89.5 per cent. Of the regional airlines, QantasLink recorded 91.7 per cent for on time arrivals, followed by REX Airlines at 90.7 per cent and Virgin Australia Regional Airlines at 90.1 per cent.

The Qantas network recorded 92.4 per cent for on time departures while the Virgin Australia network recorded 89.5 per cent. Qantas achieved the highest level of on time departures among the major domestic airlines for September 2021 at 92.7 per cent, followed by Virgin Australia at 89.8 per cent and Jetstar at 88.4 per cent. Of the regional airlines, QantasLink recorded 92.3 per cent for on time departures, followed by REX Airlines at 91.6 per cent and Virgin Australia Regional Airlines at 87.0 per cent.

Jetstar recorded the highest percentage of cancellations (at 9.5 per cent) during the month, followed by QantasLink (at 5.9 per cent), Qantas (at 5.0 per cent), Virgin Australia (at 1.9 per cent), REX Airlines (at 0.4 per cent) and Virgin Australia Regional Airlines did not have any cancelled flights.

Airlines' on time performance varies across the routes they serve. Individual route data by specific airline for 49 routes are shown on pages 9-18.

Of the 49 routes which met the criteria for on time performance reporting in September 2021, the Adelaide-Canberra, Brisbane-Newcastle, Cairns-Sydney, Canberra-Adelaide, Hobart-Sydney, Newcastle-Brisbane, Sydney-Cairns and Sydney-Hobart routes had the highest percentage of on time arrivals (100.0 per cent). The Brisbane-Newcastle, Cairns-Sydney, Canberra-Adelaide, Hobart-Sydney, Newcastle-Brisbane, Sydney-Albury and Sydney-Hobart routes had the highest percentage of on time departures (100.0 per cent). The Brisbane-Melbourne and Perth-Melbourne routes had the lowest percentage of on time arrivals (74.4 per cent) and the Perth-Melbourne route had the lowest percentage of on time departures (62.8 per cent).

Cancellations were highest on the Brisbane-Perth route at 39.2 per cent, followed by the Perth-Brisbane route at 38.5 per cent, the Brisbane-Gladstone route at 20.6 per cent, the Gladstone-Brisbane route at 20.1 per cent and the Cairns-Melbourne and Melbourne-Cairns routes at 15.2 per cent.

Gold Coast Airport recorded the highest percentage of on time arrivals (97.8 per cent) and Gladstone Airport recorded the highest percentage of on time departures (96.9 per cent). Perth Airport recorded the lowest percentage of on time arrivals (85.7 per cent) and Kalgoorlie Airport recorded the lowest percentage of on time departures (76.3 per cent). These figures only refer to reported routes and do not cover all flights at these airports.

Table 1 On time performance for September 2021 — Total Industry

	<i>Sectors</i>		<i>Arrivals On Time</i>		<i>Departures On Time</i>		<i>Cancellations</i>	
	<i>Scheduled</i>	<i>Flown</i>	<i>No.</i>	<i>%</i>	<i>No.</i>	<i>%</i>	<i>No.</i>	<i>%</i>
Jetstar	1 740	1 575	1 409	89.5	1 393	88.4	165	9.5
Qantas - all QF designated services	6 729	6 353	5 801	91.3	5 872	92.4	376	5.6
REX Airlines	2 339	2 330	2 114	90.7	2 135	91.6	9	0.4
Virgin Australia - all VA designated services	3 428	3 368	3 096	91.9	3 014	89.5	60	1.8
All Airlines	14 236	13 626	12 420	91.1	12 414	91.1	610	4.3
Individual operating entities								
Qantas	2 440	2 317	2 099	90.6	2 148	92.7	123	5.0
QantasLink	4 289	4 036	3 702	91.7	3 724	92.3	253	5.9
Virgin Australia	3 096	3 036	2 797	92.1	2 725	89.8	60	1.9
Virgin Australia Regional Airlines	332	332	299	90.1	289	87.0	0	0.0

Total airline network data (including routes not shown in this report).

Airlines' on time performance varies across the routes they serve. Individual route data by specific airline for 49 routes are shown on pages 9-18.

Table 2 Top ten routes for on time performance for September 2021 (participating airlines only)

<i>Arrivals</i>		<i>Departures</i>	
<i>Route</i>	<i>On Time (%)</i>	<i>Route</i>	<i>On Time (%)</i>
Adelaide-Canberra	100.0	Brisbane-Newcastle	100.0
Brisbane-Newcastle	100.0	Cairns-Sydney	100.0
Cairns-Sydney	100.0	Canberra-Adelaide	100.0
Canberra-Adelaide	100.0	Hobart-Sydney	100.0
Hobart-Sydney	100.0	Newcastle-Brisbane	100.0
Newcastle-Brisbane	100.0	Sydney-Albury	100.0
Sydney-Cairns	100.0	Sydney-Hobart	100.0
Sydney-Hobart	100.0	Brisbane-Gladstone	98.4
Adelaide-Gold Coast	97.8	Perth-Port Hedland	97.7
Hobart-Melbourne	97.7	Hobart-Melbourne	97.7

Table 3 Top ten airports for on time performance for September 2021 (participating airlines and reported routes only)

<i>Arrivals</i>		<i>Departures</i>	
<i>Airport</i>	<i>On Time (%)</i>	<i>Airport</i>	<i>On Time (%)</i>
Gold Coast	97.8	Gladstone	96.9
Gladstone	97.6	Emerald	96.7
Broome	97.1	Newcastle	96.4
Emerald	96.7	Gold Coast	95.6
Hobart	96.5	Dubbo	95.5
Mackay	96.4	Launceston	95.2
Dubbo	95.5	Mackay	94.6
Alice Springs	95.1	Mildura	94.4
Newman	94.7	Hobart	94.2
Kalgoorlie	94.7	Armidale	94.1

Total industry on time performance

Figure 1 On time performance (by month from September 2018)—Total Industry

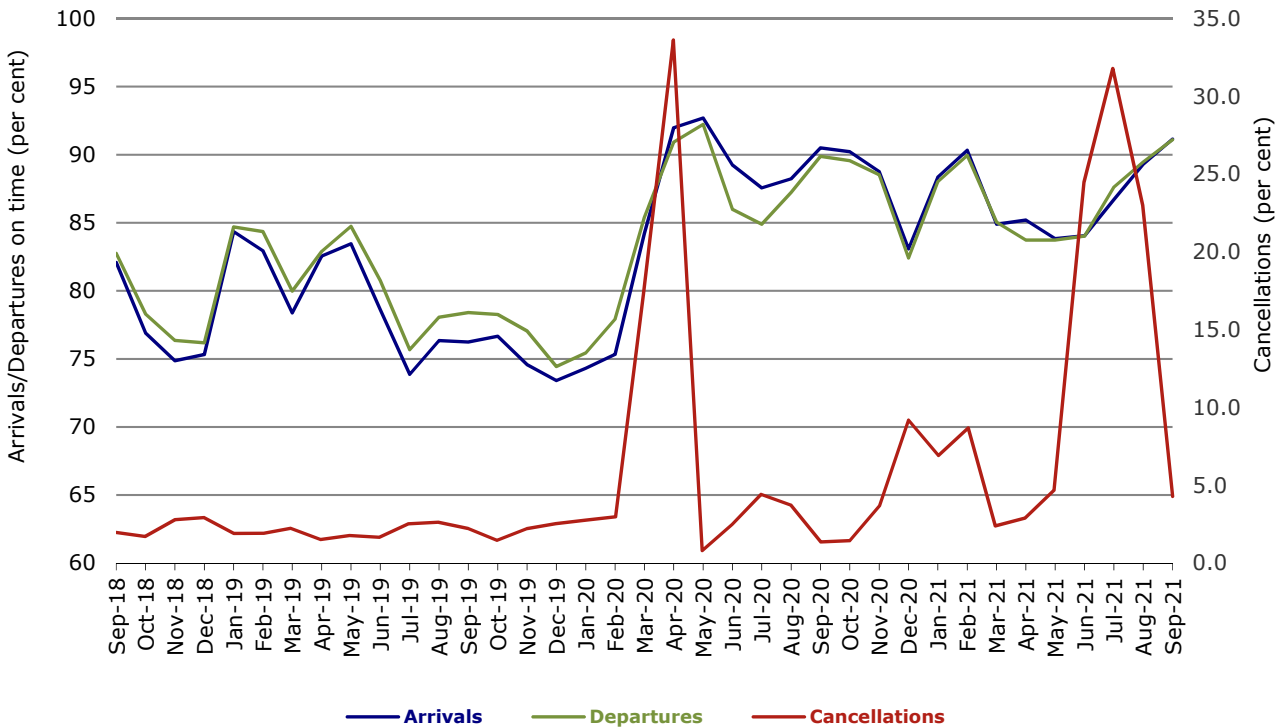
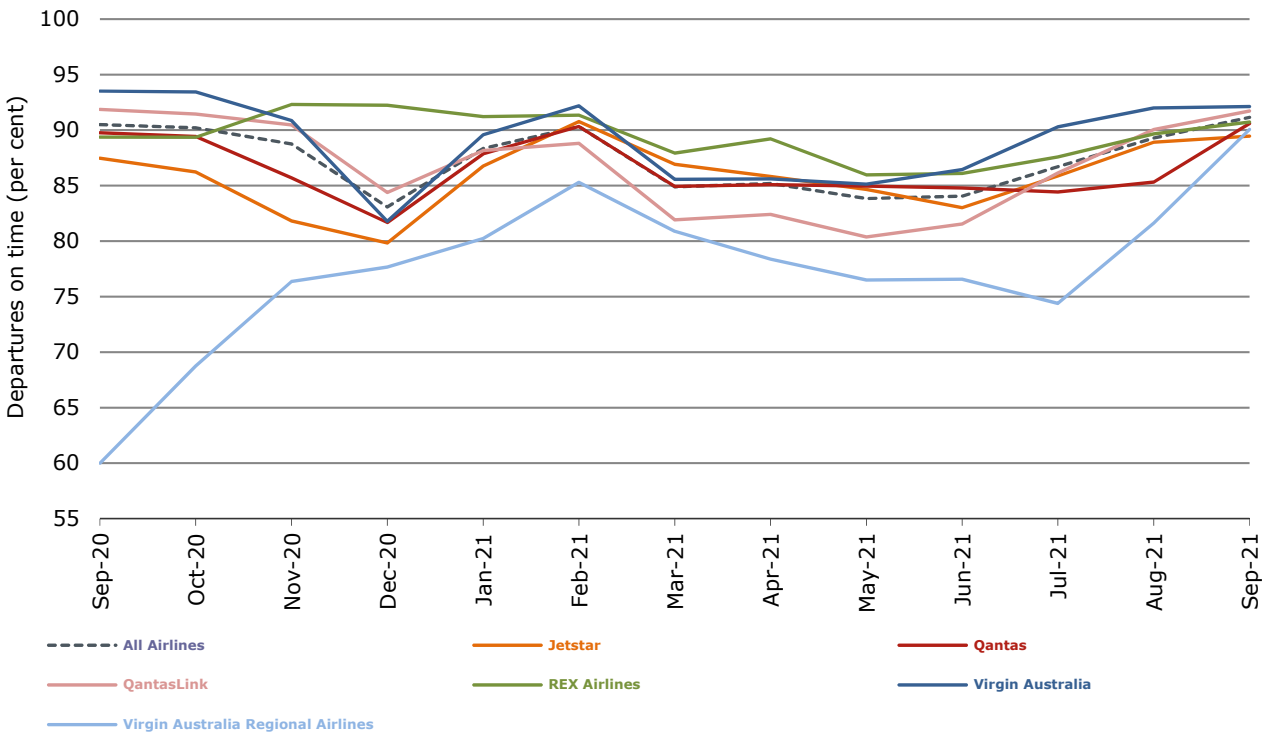
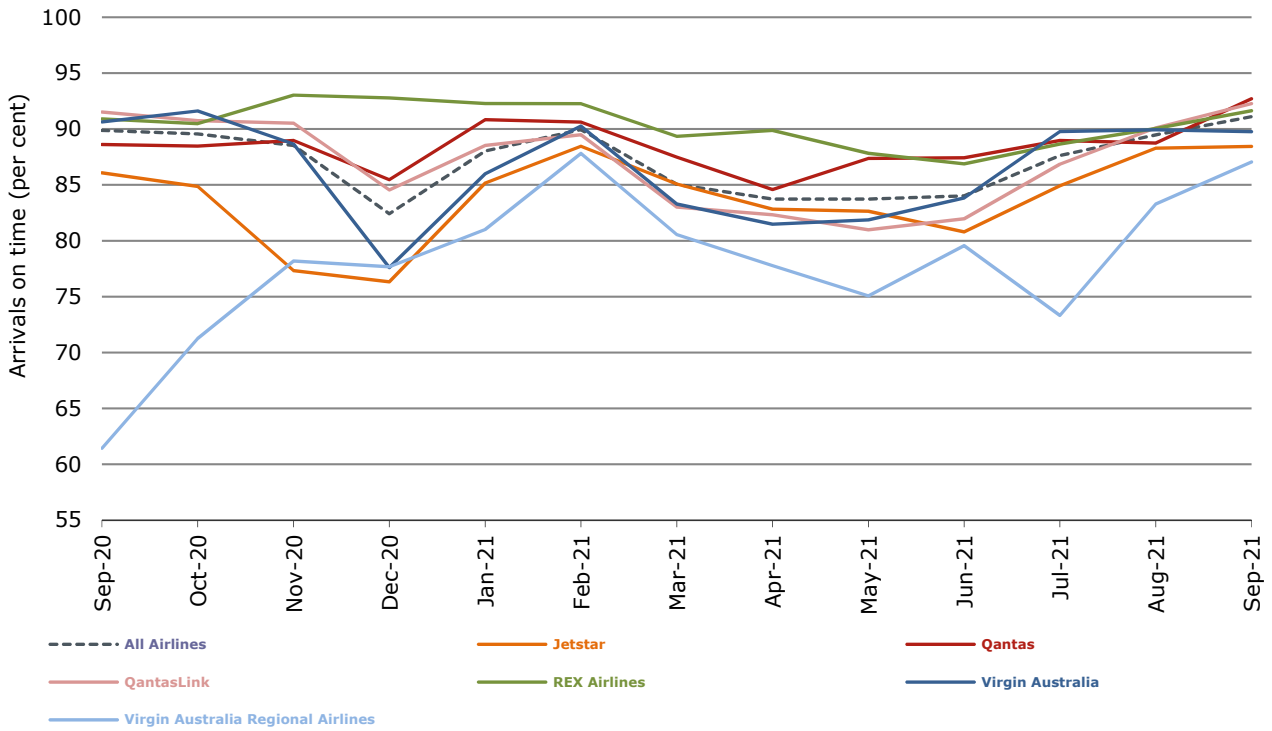


Figure 2 Arrivals on time (by month from September 2020)



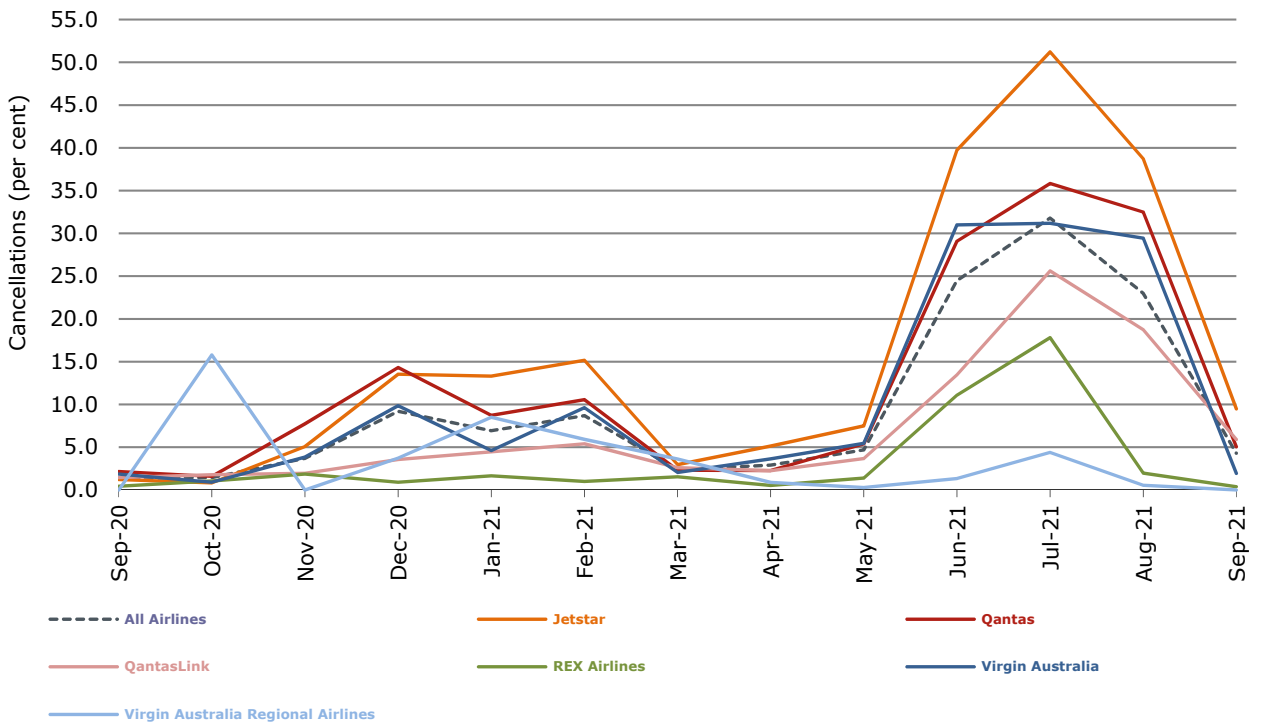
With effect from July 2021, Regional Express is reported as Rex Airlines

Figure 3 Departures on time (by month from September 2020)



With effect from July 2021, Regional Express is reported as Rex Airlines

Figure 4 Cancellations (by month from September 2020)



With effect from July 2021, Regional Express is reported as Rex Airlines

Major domestic airlines on time performance

Figure 5 On time performance (by month from September 2018)—Jetstar

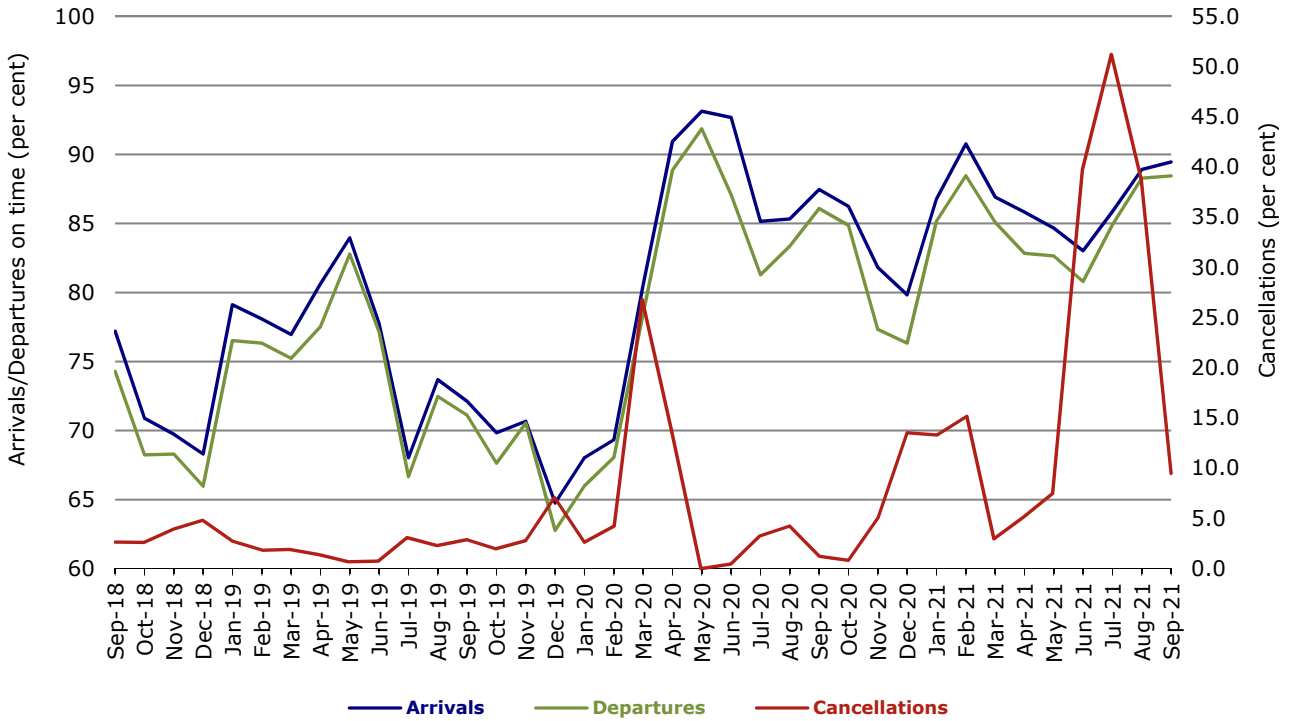


Figure 6 On time performance (by month from September 2018)—Qantas

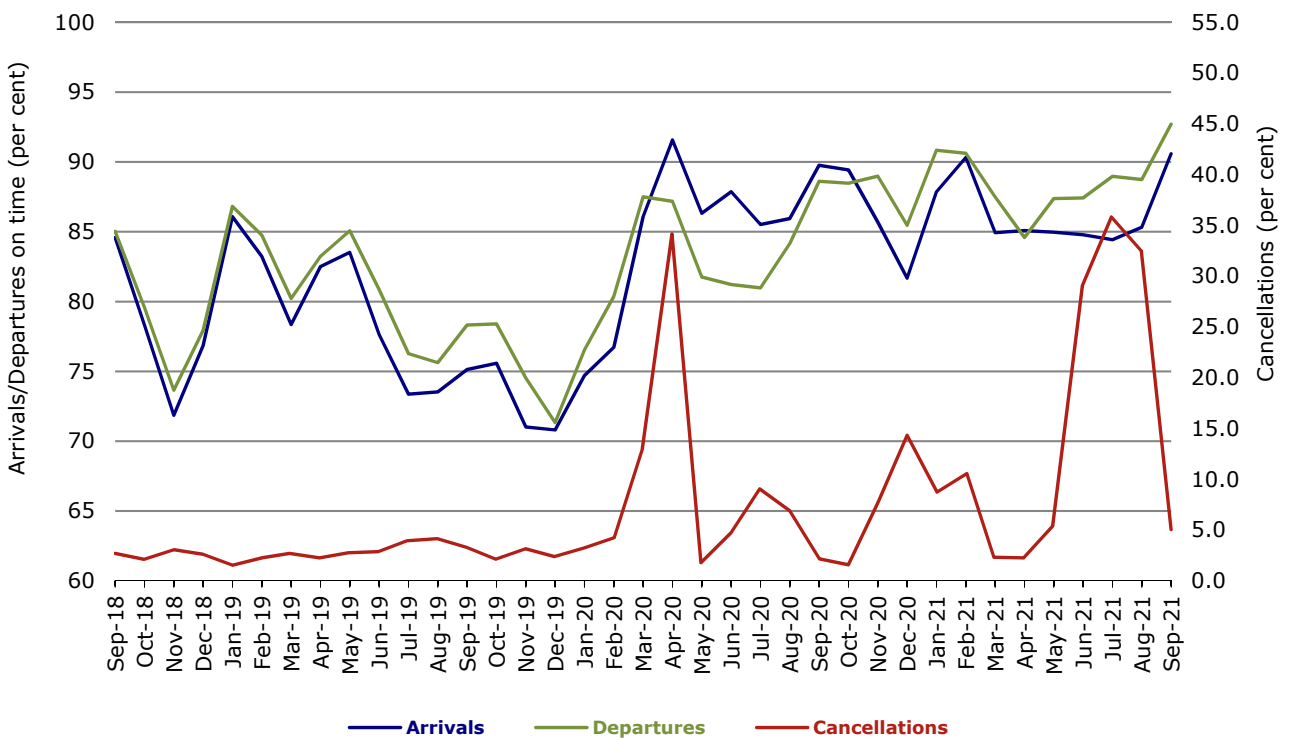
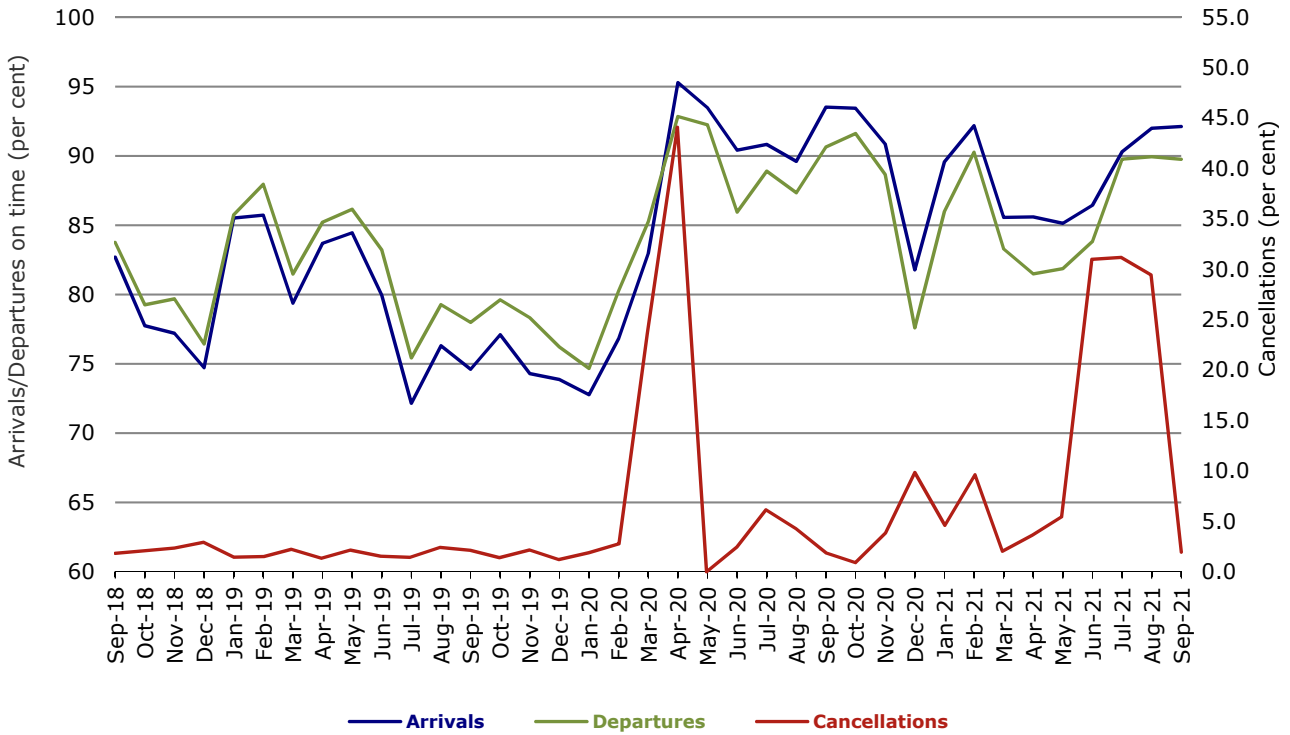


Figure 7 On time performance (by month from September 2018)—Virgin Australia



Major regional airlines on time performance

Figure 8 On time performance (by month from September 2018)—QantasLink

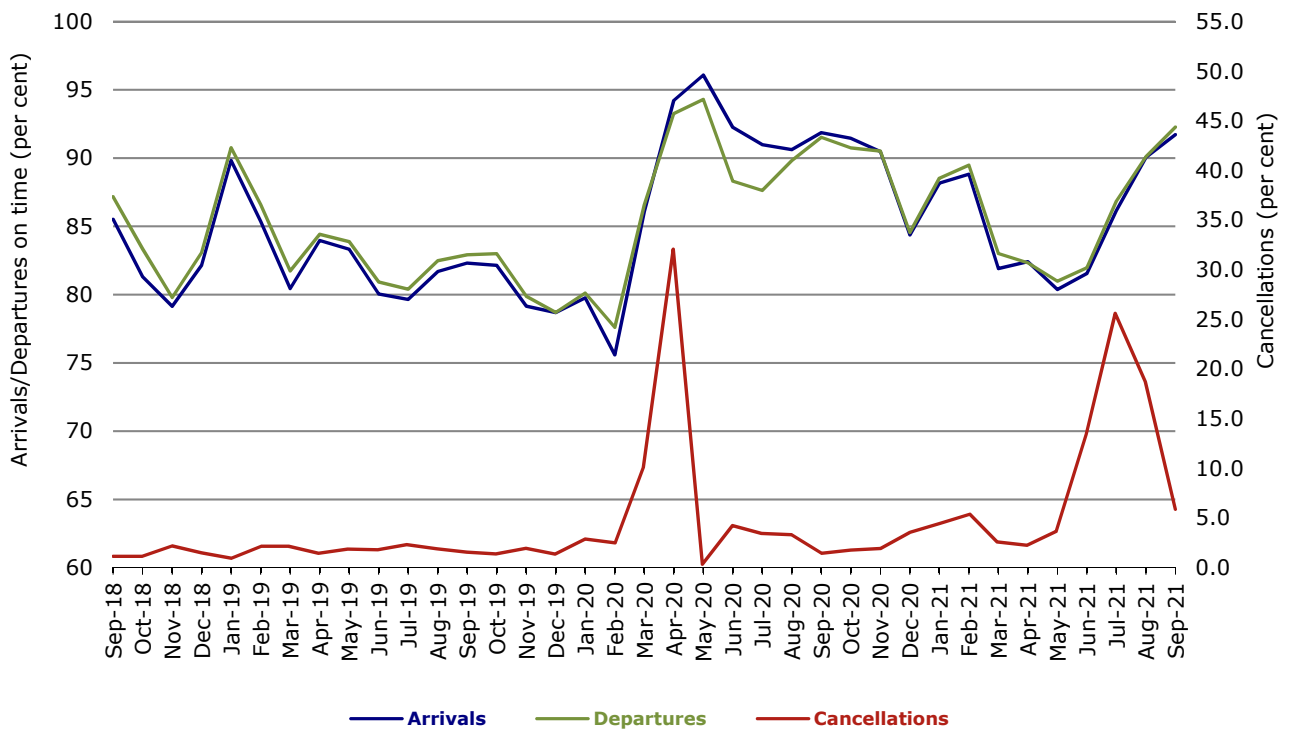
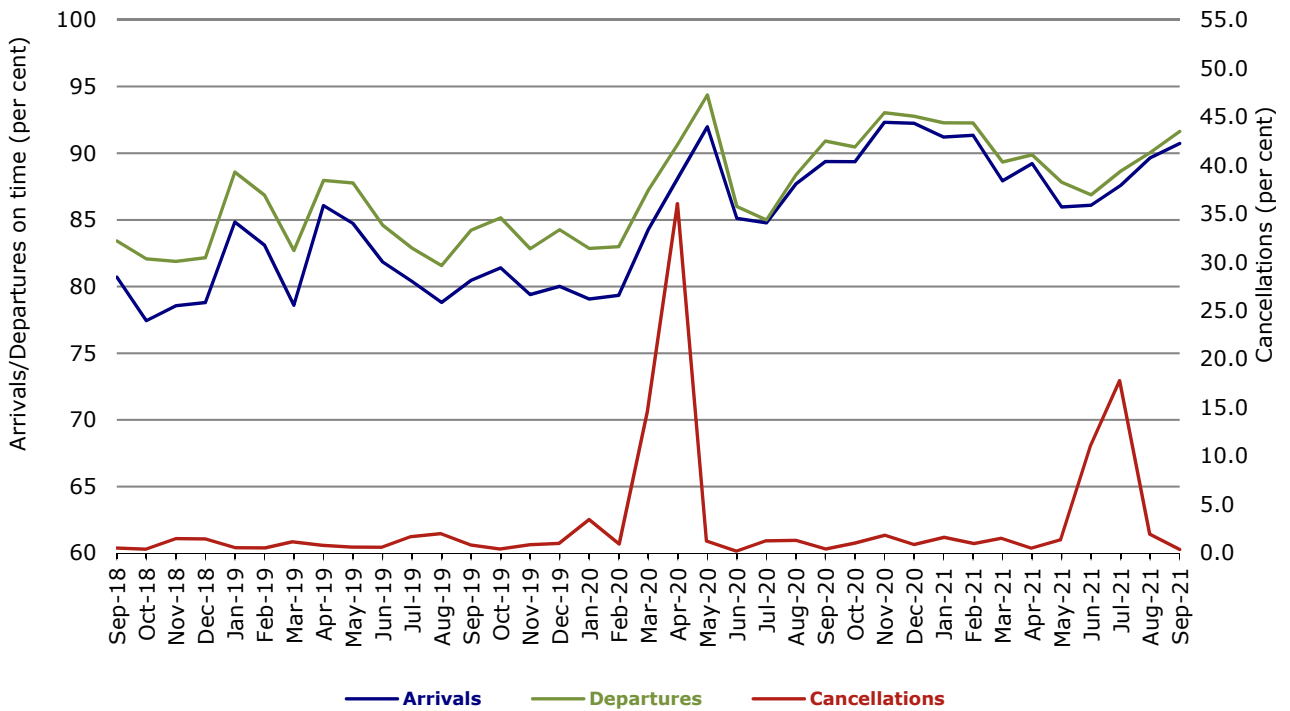
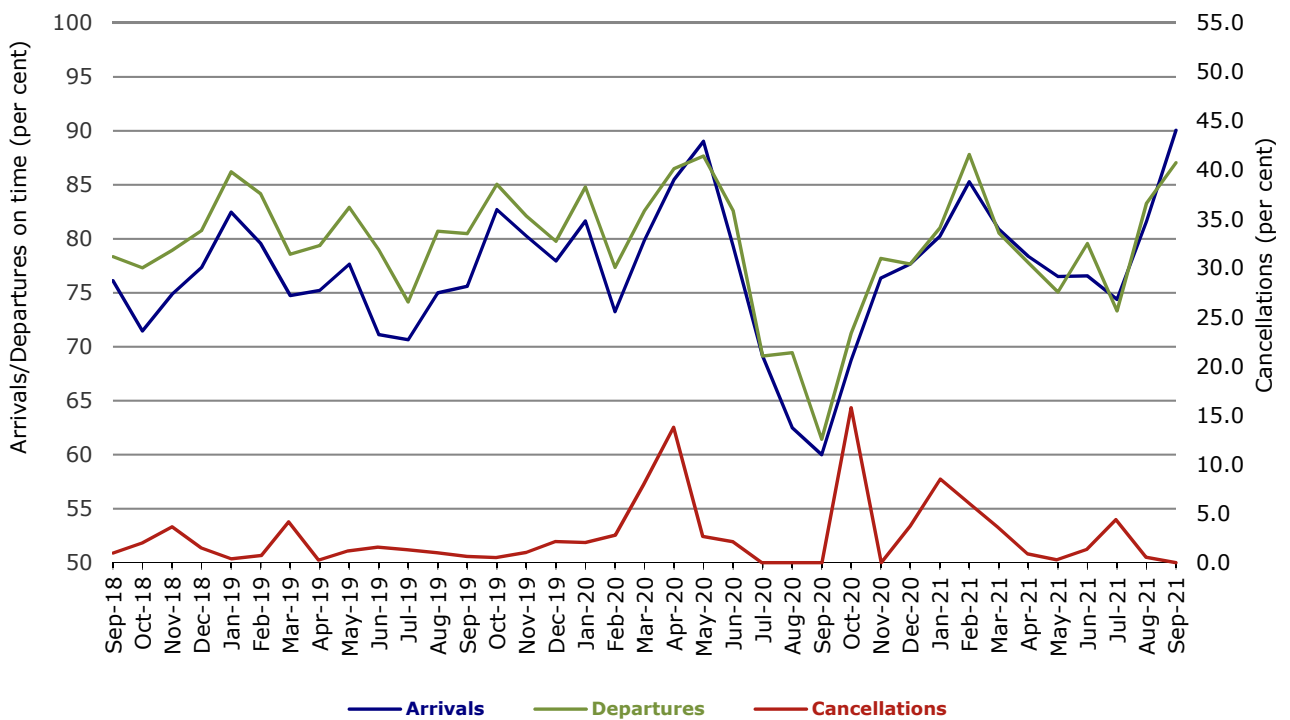


Figure 9 On time performance (by month from September 2018)—Rex Airlines



With effect from July 2021, Regional Express is reported as Rex Airlines

Figure 10 On time performance (by month from September 2018) Virgin Australia Regional Airlines



Individual routes

On time performance is reported for all routes where the passenger load averages over 8000 passengers per month over the previous six months, and where two or more airlines operate in competition on those routes. In order to present data for more routes during the period impacted by COVID-19, the passenger load restriction is not being applied. There are now 49 routes for which data are presented.

	<i>Sectors</i>		<i>Arrivals On Time</i>		<i>Departures On Time</i>		<i>Cancellations</i>	
	<i>Sched.</i>	<i>Flown</i>	<i>No.</i>	<i>%</i>	<i>No.</i>	<i>%</i>	<i>No.</i>	<i>%</i>
Adelaide-Alice Springs								
Qantas	30	28	28	100.0	28	100.0	2	6.7
Virgin Australia	13	13	11	84.6	10	76.9	0	0.0
All Airlines	43	41	39	95.1	38	92.7	2	4.7
Adelaide-Brisbane								
Jetstar	32	29	29	100.0	28	96.6	3	9.4
Qantas	63	61	57	93.4	56	91.8	2	3.2
Virgin Australia	59	57	54	94.7	48	84.2	2	3.4
All Airlines	154	147	140	95.2	132	89.8	7	4.5
Adelaide-Canberra								
Qantas	17	16	16	100.0	15	93.8	1	5.9
Virgin Australia	12	12	12	100.0	12	100.0	0	0.0
All Airlines	29	28	28	100.0	27	96.4	1	3.4
Adelaide-Gold Coast								
Jetstar	25	25	25	100.0	25	100.0	0	0.0
QantasLink	4	4	3	75.0	2	50.0	0	0.0
Virgin Australia	22	16	16	100.0	16	100.0	6	27.3
All Airlines	51	45	44	97.8	43	95.6	6	11.8
Adelaide-Melbourne								
Jetstar	22	17	16	94.1	15	88.2	5	22.7
Virgin Australia	21	21	20	95.2	19	90.5	0	0.0
All Airlines	43	38	36	94.7	34	89.5	5	11.6
Adelaide-Perth								
Jetstar	26	26	24	92.3	25	96.2	0	0.0
Qantas	68	66	53	80.3	60	90.9	2	2.9
Virgin Australia	55	53	48	90.6	47	88.7	2	3.6
Virgin Australia Regional Airlines	6	6	6	100.0	5	83.3	0	0.0
All Airlines	155	151	131	86.8	137	90.7	4	2.6
Adelaide-Port Lincoln								
QantasLink	30	30	29	96.7	29	96.7	0	0.0
REX Airlines	168	167	150	89.8	153	91.6	1	0.6
All Airlines	198	197	179	90.9	182	92.4	1	0.5
Adelaide-Sydney								
Jetstar	16	16	15	93.8	14	87.5	0	0.0
Virgin Australia	22	21	19	90.5	18	85.7	1	4.5
All Airlines	38	37	34	91.9	32	86.5	1	2.6
Albury-Sydney								
QantasLink	8	8	7	87.5	7	87.5	0	0.0
REX Airlines	7	7	7	100.0	7	100.0	0	0.0
All Airlines	15	15	14	93.3	14	93.3	0	0.0

	Sectors		Arrivals On Time		Departures On Time		Cancellations	
	Sched.	Flown	No.	%	No.	%	No.	%
Alice Springs-Adelaide								
Qantas	30	28	24	85.7	26	92.9	2	6.7
Virgin Australia	13	13	8	61.5	9	69.2	0	0.0
All Airlines	43	41	32	78.0	35	85.4	2	4.7
Armidale-Sydney								
QantasLink	8	8	8	100.0	8	100.0	0	0.0
REX Airlines	9	9	8	88.9	8	88.9	0	0.0
All Airlines	17	17	16	94.1	16	94.1	0	0.0
Ballina-Sydney								
QantasLink	8	8	6	75.0	6	75.0	0	0.0
REX Airlines	8	8	8	100.0	7	87.5	0	0.0
Virgin Australia	17	17	14	82.4	14	82.4	0	0.0
All Airlines	33	33	28	84.8	27	81.8	0	0.0
Brisbane-Adelaide								
Jetstar	32	29	24	82.8	21	72.4	3	9.4
Qantas	64	62	57	91.9	58	93.5	2	3.1
Virgin Australia	62	58	57	98.3	55	94.8	4	6.5
All Airlines	158	149	138	92.6	134	89.9	9	5.7
Brisbane-Cairns								
Jetstar	102	102	88	86.3	87	85.3	0	0.0
Qantas	118	114	110	96.5	112	98.2	4	3.4
QantasLink	22	22	16	72.7	17	77.3	0	0.0
Virgin Australia	123	122	117	95.9	115	94.3	1	0.8
All Airlines	365	360	331	91.9	331	91.9	5	1.4
Brisbane-Canberra								
Qantas	3	0	0	na	0	na	3	100.0
QantasLink	19	17	14	82.4	15	88.2	2	10.5
Virgin Australia	17	17	16	94.1	16	94.1	0	0.0
All Airlines	39	34	30	88.2	31	91.2	5	12.8
Brisbane-Darwin								
Jetstar	27	27	24	88.9	25	92.6	0	0.0
Qantas	48	48	39	81.3	46	95.8	0	0.0
Virgin Australia	31	31	30	96.8	27	87.1	0	0.0
All Airlines	106	106	93	87.7	98	92.5	0	0.0
Brisbane-Emerald								
QantasLink	110	95	93	97.9	93	97.9	15	13.6
Virgin Australia	26	26	24	92.3	24	92.3	0	0.0
All Airlines	136	121	117	96.7	117	96.7	15	11.0
Brisbane-Gladstone								
QantasLink	110	84	84	100.0	83	98.8	26	23.6
Virgin Australia	50	43	40	93.0	42	97.7	7	14.0
All Airlines	160	127	124	97.6	125	98.4	33	20.6
Brisbane-Hamilton Island								
Qantas	35	35	32	91.4	34	97.1	0	0.0
Virgin Australia	38	38	37	97.4	36	94.7	0	0.0
All Airlines	73	73	69	94.5	70	95.9	0	0.0
Brisbane-Hobart								
Jetstar	25	25	23	92.0	23	92.0	0	0.0
Qantas	32	32	30	93.8	31	96.9	0	0.0
Virgin Australia	42	42	41	97.6	40	95.2	0	0.0
All Airlines	99	99	94	94.9	94	94.9	0	0.0

	<i>Sectors</i>		<i>Arrivals On Time</i>		<i>Departures On Time</i>		<i>Cancellations</i>	
	<i>Sched.</i>	<i>Flown</i>	<i>No.</i>	<i>%</i>	<i>No.</i>	<i>%</i>	<i>No.</i>	<i>%</i>
Brisbane-Mackay								
Jetstar	30	30	28	93.3	26	86.7	0	0.0
Qantas	80	76	76	100.0	76	100.0	4	5.0
QantasLink	29	29	26	89.7	27	93.1	0	0.0
Virgin Australia	87	85	82	96.5	81	95.3	2	2.3
All Airlines	226	220	212	96.4	210	95.5	6	2.7
Brisbane-Melbourne								
Jetstar	23	18	15	83.3	15	83.3	5	21.7
Virgin Australia	21	21	14	66.7	12	57.1	0	0.0
All Airlines	44	39	29	74.4	27	69.2	5	11.4
Brisbane-Mount Isa								
Qantas	43	42	37	88.1	40	95.2	1	2.3
Virgin Australia	16	16	15	93.8	16	100.0	0	0.0
All Airlines	59	58	52	89.7	56	96.6	1	1.7
Brisbane-Newcastle								
Jetstar	8	8	8	100.0	8	100.0	0	0.0
Virgin Australia	15	15	15	100.0	15	100.0	0	0.0
All Airlines	23	23	23	100.0	23	100.0	0	0.0
Brisbane-Perth								
Qantas	56	26	22	84.6	25	96.2	30	53.6
Virgin Australia	23	22	18	81.8	18	81.8	1	4.3
All Airlines	79	48	40	83.3	43	89.6	31	39.2
Brisbane-Proserpine								
Jetstar	36	36	32	88.9	32	88.9	0	0.0
QantasLink	14	14	13	92.9	13	92.9	0	0.0
Virgin Australia	44	44	43	97.7	43	97.7	0	0.0
All Airlines	94	94	88	93.6	88	93.6	0	0.0
Brisbane-Rockhampton								
QantasLink	126	110	102	92.7	103	93.6	16	12.7
Virgin Australia	80	76	73	96.1	72	94.7	4	5.0
All Airlines	206	186	175	94.1	175	94.1	20	9.7
Brisbane-Sydney								
Qantas	27	27	25	92.6	24	88.9	0	0.0
Virgin Australia	25	25	19	76.0	16	64.0	0	0.0
All Airlines	52	52	44	84.6	40	76.9	0	0.0
Brisbane-Townsville								
Jetstar	60	59	48	81.4	47	79.7	1	1.7
Qantas	112	109	104	95.4	105	96.3	3	2.7
Virgin Australia	87	86	83	96.5	79	91.9	1	1.1
All Airlines	259	254	235	92.5	231	90.9	5	1.9
Broome-Perth								
Qantas	67	67	62	92.5	59	88.1	0	0.0
QantasLink	31	30	27	90.0	27	90.0	1	3.2
Virgin Australia	63	63	59	93.7	54	85.7	0	0.0
Virgin Australia Regional Airlines	15	15	15	100.0	13	86.7	0	0.0
All Airlines	176	175	163	93.1	153	87.4	1	0.6

	Sectors		Arrivals On Time		Departures On Time		Cancellations	
	Sched.	Flown	No.	%	No.	%	No.	%
Cairns-Brisbane								
Jetstar	102	102	93	91.2	95	93.1	0	0.0
Qantas	116	113	105	92.9	109	96.5	3	2.6
QantasLink	22	21	7	33.3	12	57.1	1	4.5
Virgin Australia	122	121	119	98.3	113	93.4	1	0.8
All Airlines	362	357	324	90.8	329	92.2	5	1.4
Cairns-Melbourne								
Jetstar	17	12	11	91.7	11	91.7	5	29.4
Virgin Australia	16	16	15	93.8	15	93.8	0	0.0
All Airlines	33	28	26	92.9	26	92.9	5	15.2
Cairns-Sydney								
Jetstar	12	12	12	100.0	12	100.0	0	0.0
Virgin Australia	17	16	16	100.0	16	100.0	1	5.9
All Airlines	29	28	28	100.0	28	100.0	1	3.4
Cairns-Townsville								
QantasLink	117	114	109	95.6	108	94.7	3	2.6
REX Airlines	13	13	13	100.0	13	100.0	0	0.0
All Airlines	130	127	122	96.1	121	95.3	3	2.3
Canberra-Adelaide								
Qantas	17	16	16	100.0	16	100.0	1	5.9
Virgin Australia	12	12	12	100.0	12	100.0	0	0.0
All Airlines	29	28	28	100.0	28	100.0	1	3.4
Canberra-Brisbane								
Qantas	3	0	0	na	0	na	3	100.0
QantasLink	18	17	13	76.5	12	70.6	1	5.6
Virgin Australia	17	17	17	100.0	17	100.0	0	0.0
All Airlines	38	34	30	88.2	29	85.3	4	10.5
Canberra-Melbourne								
QantasLink	23	22	19	86.4	20	90.9	1	4.3
Virgin Australia	17	17	17	100.0	17	100.0	0	0.0
All Airlines	40	39	36	92.3	37	94.9	1	2.5
Darwin-Brisbane								
Jetstar	26	26	20	76.9	21	80.8	0	0.0
Qantas	47	47	35	74.5	39	83.0	0	0.0
Virgin Australia	31	31	27	87.1	24	77.4	0	0.0
All Airlines	104	104	82	78.8	84	80.8	0	0.0
Darwin-Melbourne								
Qantas	21	19	17	89.5	18	94.7	2	9.5
Virgin Australia	16	16	10	62.5	10	62.5	0	0.0
All Airlines	37	35	27	77.1	28	80.0	2	5.4
Darwin-Perth								
Qantas	58	58	48	82.8	52	89.7	0	0.0
Virgin Australia	18	18	14	77.8	14	77.8	0	0.0
Virgin Australia Regional Airlines	15	15	12	80.0	11	73.3	0	0.0
All Airlines	91	91	74	81.3	77	84.6	0	0.0
Dubbo-Sydney								
QantasLink	8	8	8	100.0	8	100.0	0	0.0
REX Airlines	14	14	13	92.9	13	92.9	0	0.0
All Airlines	22	22	21	95.5	21	95.5	0	0.0

	Sectors		Arrivals On Time		Departures On Time		Cancellations	
	Sched.	Flown	No.	%	No.	%	No.	%
Emerald-Brisbane								
QantasLink	110	95	93	97.9	93	97.9	15	13.6
Virgin Australia	26	26	24	92.3	24	92.3	0	0.0
All Airlines	136	121	117	96.7	117	96.7	15	11.0
Gladstone-Brisbane								
QantasLink	109	84	82	97.6	83	98.8	25	22.9
Virgin Australia	50	43	39	90.7	40	93.0	7	14.0
All Airlines	159	127	121	95.3	123	96.9	32	20.1
Gold Coast-Adelaide								
Jetstar	25	25	24	96.0	24	96.0	0	0.0
QantasLink	4	4	3	75.0	3	75.0	0	0.0
Virgin Australia	22	16	16	100.0	16	100.0	6	27.3
All Airlines	51	45	43	95.6	43	95.6	6	11.8
Hamilton Island-Brisbane								
Qantas	35	35	27	77.1	27	77.1	0	0.0
Virgin Australia	38	38	35	92.1	35	92.1	0	0.0
All Airlines	73	73	62	84.9	62	84.9	0	0.0
Hobart-Brisbane								
Jetstar	25	25	24	96.0	24	96.0	0	0.0
Qantas	32	32	30	93.8	29	90.6	0	0.0
Virgin Australia	42	42	38	90.5	37	88.1	0	0.0
All Airlines	99	99	92	92.9	90	90.9	0	0.0
Hobart-Melbourne								
Jetstar	25	22	22	100.0	22	100.0	3	12.0
Virgin Australia	21	21	20	95.2	20	95.2	0	0.0
All Airlines	46	43	42	97.7	42	97.7	3	6.5
Hobart-Sydney								
Jetstar	12	12	12	100.0	12	100.0	0	0.0
Virgin Australia	17	17	17	100.0	17	100.0	0	0.0
All Airlines	29	29	29	100.0	29	100.0	0	0.0
Kalgoorlie-Perth								
Qantas	17	17	14	82.4	14	82.4	0	0.0
QantasLink	57	57	50	87.7	49	86.0	0	0.0
Virgin Australia	27	27	16	59.3	11	40.7	0	0.0
Virgin Australia Regional Airlines	30	30	26	86.7	26	86.7	0	0.0
All Airlines	131	131	106	80.9	100	76.3	0	0.0
Karratha-Perth								
Qantas	47	47	44	93.6	42	89.4	0	0.0
QantasLink	93	93	79	84.9	81	87.1	0	0.0
Virgin Australia	32	32	26	81.3	20	62.5	0	0.0
Virgin Australia Regional Airlines	20	20	13	65.0	10	50.0	0	0.0
All Airlines	192	192	162	84.4	153	79.7	0	0.0
Launceston-Melbourne								
Jetstar	4	0	0	na	0	na	4	100.0
QantasLink	19	17	15	88.2	15	88.2	2	10.5
Virgin Australia	17	17	17	100.0	17	100.0	0	0.0
All Airlines	40	34	32	94.1	32	94.1	6	15.0
Launceston-Sydney								
Jetstar	11	11	11	100.0	11	100.0	0	0.0
Virgin Australia	17	17	16	94.1	16	94.1	0	0.0
All Airlines	28	28	27	96.4	27	96.4	0	0.0

	Sectors		Arrivals On Time		Departures On Time		Cancellations	
	Sched.	Flown	No.	%	No.	%	No.	%
Mackay-Brisbane								
Jetstar	30	29	27	93.1	24	82.8	1	3.3
Qantas	80	76	74	97.4	74	97.4	4	5.0
QantasLink	34	34	32	94.1	32	94.1	0	0.0
Virgin Australia	86	84	83	98.8	81	96.4	2	2.3
All Airlines	230	223	216	96.9	211	94.6	7	3.0
Melbourne-Adelaide								
Jetstar	22	17	12	70.6	13	76.5	5	22.7
Virgin Australia	21	21	21	100.0	21	100.0	0	0.0
All Airlines	43	38	33	86.8	34	89.5	5	11.6
Melbourne-Brisbane								
Jetstar	22	17	13	76.5	12	70.6	5	22.7
Virgin Australia	21	21	21	100.0	21	100.0	0	0.0
All Airlines	43	38	34	89.5	33	86.8	5	11.6
Melbourne-Cairns								
Jetstar	17	12	12	100.0	10	83.3	5	29.4
Virgin Australia	16	16	14	87.5	14	87.5	0	0.0
All Airlines	33	28	26	92.9	24	85.7	5	15.2
Melbourne-Canberra								
QantasLink	23	22	20	90.9	21	95.5	1	4.3
Virgin Australia	17	17	17	100.0	17	100.0	0	0.0
All Airlines	40	39	37	94.9	38	97.4	1	2.5
Melbourne-Darwin								
Qantas	22	20	17	85.0	19	95.0	2	9.1
Virgin Australia	16	16	13	81.3	15	93.8	0	0.0
All Airlines	38	36	30	83.3	34	94.4	2	5.3
Melbourne-Hobart								
Jetstar	25	22	22	100.0	22	100.0	3	12.0
Virgin Australia	21	21	20	95.2	19	90.5	0	0.0
All Airlines	46	43	42	97.7	41	95.3	3	6.5
Melbourne-Launceston								
Jetstar	4	0	0	na	0	na	4	100.0
QantasLink	19	17	16	94.1	15	88.2	2	10.5
Virgin Australia	17	17	16	94.1	16	94.1	0	0.0
All Airlines	40	34	32	94.1	31	91.2	6	15.0
Melbourne-Mildura								
QantasLink	31	28	26	92.9	28	100.0	3	9.7
REX Airlines	8	8	7	87.5	6	75.0	0	0.0
All Airlines	39	36	33	91.7	34	94.4	3	7.7
Melbourne-Newcastle								
Jetstar	17	16	15	93.8	15	93.8	1	5.9
Virgin Australia	17	17	15	88.2	14	82.4	0	0.0
All Airlines	34	33	30	90.9	29	87.9	1	2.9
Melbourne-Perth								
Qantas	25	22	20	90.9	19	86.4	3	12.0
Virgin Australia	21	21	18	85.7	16	76.2	0	0.0
All Airlines	46	43	38	88.4	35	81.4	3	6.5

	<i>Sectors</i>		<i>Arrivals On Time</i>		<i>Departures On Time</i>		<i>Cancellations</i>	
	<i>Sched.</i>	<i>Flown</i>	<i>No.</i>	<i>%</i>	<i>No.</i>	<i>%</i>	<i>No.</i>	<i>%</i>
Melbourne-Sydney								
Jetstar	14	10	10	100.0	9	90.0	4	28.6
Qantas	43	43	41	95.3	41	95.3	0	0.0
Virgin Australia	26	26	24	92.3	24	92.3	0	0.0
All Airlines	83	79	75	94.9	74	93.7	4	4.8
Mildura-Melbourne								
QantasLink	30	28	27	96.4	26	92.9	2	6.7
REX Airlines	8	8	7	87.5	8	100.0	0	0.0
All Airlines	38	36	34	94.4	34	94.4	2	5.3
Mount Isa-Brisbane								
Qantas	43	41	36	87.8	35	85.4	2	4.7
Virgin Australia	16	16	16	100.0	16	100.0	0	0.0
All Airlines	59	57	52	91.2	51	89.5	2	3.4
Newcastle-Brisbane								
Jetstar	8	8	8	100.0	8	100.0	0	0.0
Virgin Australia	15	15	15	100.0	15	100.0	0	0.0
All Airlines	23	23	23	100.0	23	100.0	0	0.0
Newcastle-Melbourne								
Jetstar	17	16	16	100.0	16	100.0	1	5.9
Virgin Australia	17	17	14	82.4	15	88.2	0	0.0
All Airlines	34	33	30	90.9	31	93.9	1	2.9
Newman-Perth								
Qantas	14	14	11	78.6	10	71.4	0	0.0
QantasLink	103	101	92	91.1	95	94.1	2	1.9
Virgin Australia	43	43	37	86.0	37	86.0	0	0.0
Virgin Australia Regional Airlines	13	13	13	100.0	13	100.0	0	0.0
All Airlines	173	171	153	89.5	155	90.6	2	1.2
Perth-Adelaide								
Jetstar	26	26	21	80.8	17	65.4	0	0.0
Qantas	68	66	60	90.9	57	86.4	2	2.9
Virgin Australia	54	53	46	86.8	46	86.8	1	1.9
Virgin Australia Regional Airlines	6	6	6	100.0	6	100.0	0	0.0
All Airlines	154	151	133	88.1	126	83.4	3	1.9
Perth-Brisbane								
Qantas	55	26	22	84.6	26	100.0	29	52.7
Virgin Australia	23	22	21	95.5	16	72.7	1	4.3
All Airlines	78	48	43	89.6	42	87.5	30	38.5
Perth-Broome								
Qantas	65	65	64	98.5	64	98.5	0	0.0
QantasLink	31	30	29	96.7	28	93.3	1	3.2
Virgin Australia	63	63	60	95.2	60	95.2	0	0.0
Virgin Australia Regional Airlines	15	15	15	100.0	15	100.0	0	0.0
All Airlines	174	173	168	97.1	167	96.5	1	0.6
Perth-Darwin								
Qantas	58	58	51	87.9	56	96.6	0	0.0
Virgin Australia	18	18	17	94.4	17	94.4	0	0.0
Virgin Australia Regional Airlines	15	15	14	93.3	14	93.3	0	0.0
All Airlines	91	91	82	90.1	87	95.6	0	0.0

	Sectors		Arrivals On Time		Departures On Time		Cancellations	
	Sched.	Flown	No.	%	No.	%	No.	%
Perth-Kalgoorlie								
Qantas	17	17	16	94.1	15	88.2	0	0.0
QantasLink	57	57	53	93.0	53	93.0	0	0.0
Virgin Australia	27	27	27	100.0	27	100.0	0	0.0
Virgin Australia Regional Airlines	30	30	28	93.3	28	93.3	0	0.0
All Airlines	131	131	124	94.7	123	93.9	0	0.0
Perth-Karratha								
Qantas	48	48	44	91.7	44	91.7	0	0.0
QantasLink	88	88	77	87.5	79	89.8	0	0.0
Virgin Australia	32	32	27	84.4	29	90.6	0	0.0
Virgin Australia Regional Airlines	20	20	18	90.0	18	90.0	0	0.0
All Airlines	188	188	166	88.3	170	90.4	0	0.0
Perth-Melbourne								
Qantas	25	22	22	100.0	21	95.5	3	12.0
Virgin Australia	21	21	10	47.6	6	28.6	0	0.0
All Airlines	46	43	32	74.4	27	62.8	3	6.5
Perth-Newman								
Qantas	14	14	14	100.0	14	100.0	0	0.0
QantasLink	103	101	93	92.1	91	90.1	2	1.9
Virgin Australia	43	43	42	97.7	42	97.7	0	0.0
Virgin Australia Regional Airlines	13	13	13	100.0	13	100.0	0	0.0
All Airlines	173	171	162	94.7	160	93.6	2	1.2
Perth-Port Hedland								
Qantas	45	45	42	93.3	45	100.0	0	0.0
QantasLink	78	78	70	89.7	75	96.2	0	0.0
Virgin Australia	15	15	14	93.3	15	100.0	0	0.0
Virgin Australia Regional Airlines	37	37	36	97.3	36	97.3	0	0.0
All Airlines	175	175	162	92.6	171	97.7	0	0.0
Perth-Sydney								
Qantas	20	20	17	85.0	19	95.0	0	0.0
Virgin Australia	22	21	19	90.5	12	57.1	1	4.5
All Airlines	42	41	36	87.8	31	75.6	1	2.4
Port Hedland-Perth								
Qantas	44	44	40	90.9	41	93.2	0	0.0
QantasLink	78	77	57	74.0	67	87.0	1	1.3
Virgin Australia	15	15	11	73.3	8	53.3	0	0.0
Virgin Australia Regional Airlines	37	37	30	81.1	28	75.7	0	0.0
All Airlines	174	173	138	79.8	144	83.2	1	0.6
Port Lincoln-Adelaide								
QantasLink	30	30	29	96.7	30	100.0	0	0.0
REX Airlines	168	167	143	85.6	147	88.0	1	0.6
All Airlines	198	197	172	87.3	177	89.8	1	0.5
Proserpine-Brisbane								
Jetstar	37	36	33	91.7	32	88.9	1	2.7
QantasLink	14	14	13	92.9	12	85.7	0	0.0
Virgin Australia	44	44	43	97.7	43	97.7	0	0.0
All Airlines	95	94	89	94.7	87	92.6	1	1.1
Rockhampton-Brisbane								
QantasLink	126	110	98	89.1	101	91.8	16	12.7
Virgin Australia	78	75	71	94.7	72	96.0	3	3.8
All Airlines	204	185	169	91.4	173	93.5	19	9.3

	Sectors		Arrivals On Time		Departures On Time		Cancellations	
	Sched.	Flown	No.	%	No.	%	No.	%
Sydney-Adelaide								
Jetstar	16	16	15	93.8	15	93.8	0	0.0
Virgin Australia	23	23	20	87.0	21	91.3	0	0.0
All Airlines	39	39	35	89.7	36	92.3	0	0.0
Sydney-Albury								
QantasLink	8	8	7	87.5	8	100.0	0	0.0
REX Airlines	9	9	9	100.0	9	100.0	0	0.0
All Airlines	17	17	16	94.1	17	100.0	0	0.0
Sydney-Armidale								
QantasLink	8	8	7	87.5	7	87.5	0	0.0
REX Airlines	9	9	8	88.9	8	88.9	0	0.0
All Airlines	17	17	15	88.2	15	88.2	0	0.0
Sydney-Ballina								
QantasLink	8	8	7	87.5	8	100.0	0	0.0
REX Airlines	8	8	8	100.0	8	100.0	0	0.0
Virgin Australia	17	17	14	82.4	15	88.2	0	0.0
All Airlines	33	33	29	87.9	31	93.9	0	0.0
Sydney-Brisbane								
Qantas	33	32	31	96.9	30	93.8	1	3.0
Virgin Australia	25	25	24	96.0	24	96.0	0	0.0
All Airlines	58	57	55	96.5	54	94.7	1	1.7
Sydney-Cairns								
Jetstar	12	12	12	100.0	12	100.0	0	0.0
Virgin Australia	17	17	17	100.0	16	94.1	0	0.0
All Airlines	29	29	29	100.0	28	96.6	0	0.0
Sydney-Dubbo								
QantasLink	8	8	8	100.0	8	100.0	0	0.0
REX Airlines	14	14	13	92.9	13	92.9	0	0.0
All Airlines	22	22	21	95.5	21	95.5	0	0.0
Sydney-Hobart								
Jetstar	12	12	12	100.0	12	100.0	0	0.0
Virgin Australia	17	17	17	100.0	17	100.0	0	0.0
All Airlines	29	29	29	100.0	29	100.0	0	0.0
Sydney-Launceston								
Jetstar	11	11	11	100.0	11	100.0	0	0.0
Virgin Australia	17	17	14	82.4	13	76.5	0	0.0
All Airlines	28	28	25	89.3	24	85.7	0	0.0
Sydney-Melbourne								
Jetstar	14	10	9	90.0	8	80.0	4	28.6
Qantas	30	30	30	100.0	30	100.0	0	0.0
Virgin Australia	26	26	23	88.5	23	88.5	0	0.0
All Airlines	70	66	62	93.9	61	92.4	4	5.7
Sydney-Perth								
Qantas	21	19	18	94.7	19	100.0	2	9.5
Virgin Australia	22	22	19	86.4	20	90.9	0	0.0
All Airlines	43	41	37	90.2	39	95.1	2	4.7
Sydney-Wagga Wagga								
QantasLink	8	8	7	87.5	8	100.0	0	0.0
REX Airlines	7	7	6	85.7	6	85.7	0	0.0
All Airlines	15	15	13	86.7	14	93.3	0	0.0

BITRE | Domestic Airline On Time Performance September 2021 - Individual routes

	<i>Sectors</i>		<i>Arrivals On Time</i>		<i>Departures On Time</i>		<i>Cancellations</i>	
	<i>Sched.</i>	<i>Flown</i>	<i>No.</i>	<i>%</i>	<i>No.</i>	<i>%</i>	<i>No.</i>	<i>%</i>
Townsville-Brisbane								
Jetstar	60	59	49	83.1	47	79.7	1	1.7
Qantas	111	110	98	89.1	102	92.7	1	0.9
Virgin Australia	86	85	82	96.5	81	95.3	1	1.2
All Airlines	257	254	229	90.2	230	90.6	3	1.2
Townsville-Cairns								
QantasLink	117	113	107	94.7	104	92.0	4	3.4
REX Airlines	13	13	12	92.3	12	92.3	0	0.0
All Airlines	130	126	119	94.4	116	92.1	4	3.1
Wagga Wagga-Sydney								
QantasLink	8	8	7	87.5	7	87.5	0	0.0
REX Airlines	9	9	7	77.8	7	77.8	0	0.0
All Airlines	17	17	14	82.4	14	82.4	0	0.0

Airports

The following data reports by airport against flights operated on published routes only. This month, 7 major city airports and 26 regional city airports are covered.

Airport	Arrivals			Departures		
	Sectors	On Time		Sectors	On Time	
	Flown	No.	%	Flown	No.	%
Adelaide						
Jetstar	113	96	85.0	113	107	94.7
Qantas	172	157	91.3	171	159	93.0
QantasLink	34	32	94.1	34	31	91.2
REX Airlines	167	143	85.6	167	153	91.6
Virgin Australia	196	180	91.8	193	170	88.1
Virgin Australia Regional Airlines	6	6	100.0	6	5	83.3
All Airlines	688	614	89.2	684	625	91.4

Relates to services to and from Alice Springs, Brisbane, Canberra, Gold Coast, Melbourne, Perth, Port Lincoln and Sydney.

Albury

QantasLink	8	7	87.5	8	7	87.5
REX Airlines	9	9	100.0	7	7	100.0
All Airlines	17	16	94.1	15	14	93.3

Relates to services to and from Sydney only.

Alice Springs

Qantas	28	28	100.0	28	26	92.9
Virgin Australia	13	11	84.6	13	9	69.2
All Airlines	41	39	95.1	41	35	85.4

Relates to services to and from Adelaide only.

Armidale

QantasLink	8	7	87.5	8	8	100.0
REX Airlines	9	8	88.9	9	8	88.9
All Airlines	17	15	88.2	17	16	94.1

Relates to services to and from Sydney only.

Ballina

QantasLink	8	7	87.5	8	6	75.0
REX Airlines	8	8	100.0	8	7	87.5
Virgin Australia	17	14	82.4	17	14	82.4
All Airlines	33	29	87.9	33	27	81.8

Relates to services to and from Sydney only.

Brisbane

Jetstar	331	296	89.4	334	284	85.0
Qantas	573	515	89.9	571	551	96.5
QantasLink	375	338	90.1	371	351	94.6
Virgin Australia	762	729	95.7	767	707	92.2
All Airlines	2 041	1 878	92.0	2 043	1 893	92.7

Relates to services to and from Adelaide, Cairns, Canberra, Darwin, Emerald, Gladstone, Hamilton Island, Hobart, Mackay, Melbourne, Mount Isa, Newcastle, Perth, Proserpine, Rockhampton, Sydney and Townsville.

Airport	Arrivals			Departures		
	Sectors Flown	On Time		Sectors Flown	On Time	
		No.	%		No.	%
Broome						
Qantas	65	64	98.5	67	59	88.1
QantasLink	30	29	96.7	30	27	90.0
Virgin Australia	63	60	95.2	63	54	85.7
Virgin Australia Regional Airlines	15	15	100.0	15	13	86.7
All Airlines	173	168	97.1	175	153	87.4
Relates to services to and from Perth only.						
Cairns						
Jetstar	126	112	88.9	126	118	93.7
Qantas	114	110	96.5	113	109	96.5
QantasLink	135	123	91.1	135	120	88.9
REX Airlines	13	12	92.3	13	13	100.0
Virgin Australia	155	148	95.5	153	144	94.1
All Airlines	543	505	93.0	540	504	93.3
Relates to services to and from Brisbane, Melbourne, Sydney and Townsville.						
Canberra						
Qantas	16	16	100.0	16	16	100.0
QantasLink	39	34	87.2	39	32	82.1
Virgin Australia	46	45	97.8	46	46	100.0
All Airlines	101	95	94.1	101	94	93.1
Relates to services to and from Adelaide, Brisbane and Melbourne only.						
Darwin						
Jetstar	27	24	88.9	26	21	80.8
Qantas	126	107	84.9	124	109	87.9
Virgin Australia	65	60	92.3	65	48	73.8
Virgin Australia Regional Airlines	15	14	93.3	15	11	73.3
All Airlines	233	205	88.0	230	189	82.2
Relates to services to and from Brisbane, Melbourne and Perth.						
Dubbo						
QantasLink	8	8	100.0	8	8	100.0
REX Airlines	14	13	92.9	14	13	92.9
All Airlines	22	21	95.5	22	21	95.5
Relates to services to and from Sydney only.						
Emerald						
QantasLink	95	93	97.9	95	93	97.9
Virgin Australia	26	24	92.3	26	24	92.3
All Airlines	121	117	96.7	121	117	96.7
Relates to services to and from Brisbane only.						
Gladstone						
QantasLink	84	84	100.0	84	83	98.8
Virgin Australia	43	40	93.0	43	40	93.0
All Airlines	127	124	97.6	127	123	96.9
Relates to services to and from Brisbane only.						
Gold Coast						
Jetstar	25	25	100.0	25	24	96.0
QantasLink	4	3	75.0	4	3	75.0
Virgin Australia	16	16	100.0	16	16	100.0
All Airlines	45	44	97.8	45	43	95.6
Relates to services to and from Adelaide only.						

Airport	Arrivals			Departures		
	Sectors Flown	On Time		Sectors Flown	On Time	
		No.	%		No.	%
Hamilton Island						
Qantas	35	32	91.4	35	27	77.1
Virgin Australia	38	37	97.4	38	35	92.1
All Airlines	73	69	94.5	73	62	84.9
Relates to services to and from Brisbane only.						
Hobart						
Jetstar	59	57	96.6	59	58	98.3
Qantas	32	30	93.8	32	29	90.6
Virgin Australia	80	78	97.5	80	74	92.5
All Airlines	171	165	96.5	171	161	94.2
Relates to services to and from Brisbane, Melbourne and Sydney.						
Kalgoorlie						
Qantas	17	16	94.1	17	14	82.4
QantasLink	57	53	93.0	57	49	86.0
Virgin Australia	27	27	100.0	27	11	40.7
Virgin Australia Regional Airlines	30	28	93.3	30	26	86.7
All Airlines	131	124	94.7	131	100	76.3
Relates to services to and from Perth only.						
Karratha						
Qantas	48	44	91.7	47	42	89.4
QantasLink	88	77	87.5	93	81	87.1
Virgin Australia	32	27	84.4	32	20	62.5
Virgin Australia Regional Airlines	20	18	90.0	20	10	50.0
All Airlines	188	166	88.3	192	153	79.7
Relates to services to and from Perth only.						
Launceston						
Jetstar	11	11	100.0	11	11	100.0
QantasLink	17	16	94.1	17	15	88.2
Virgin Australia	34	30	88.2	34	33	97.1
All Airlines	62	57	91.9	62	59	95.2
Relates to services to and from Melbourne and Sydney.						
Mackay						
Jetstar	30	28	93.3	29	24	82.8
Qantas	76	76	100.0	76	74	97.4
QantasLink	29	26	89.7	34	32	94.1
Virgin Australia	85	82	96.5	84	81	96.4
All Airlines	220	212	96.4	223	211	94.6
Relates to services to and from Brisbane only.						
Melbourne						
Jetstar	95	89	93.7	94	81	86.2
Qantas	71	69	97.2	85	79	92.9
QantasLink	67	61	91.0	67	64	95.5
REX Airlines	8	7	87.5	8	6	75.0
Virgin Australia	193	160	82.9	193	177	91.7
All Airlines	434	386	88.9	447	407	91.1
Relates to services to and from Adelaide, Brisbane, Cairns, Canberra, Darwin, Hobart, Launceston, Mildura, Newcastle, Perth, and Sydney.						

Airport	Arrivals			Departures		
	Sectors Flown	On Time		Sectors Flown	On Time	
		No.	%		No.	%
Mildura						
QantasLink	28	26	92.9	28	26	92.9
REX Airlines	8	7	87.5	8	8	100.0
All Airlines	36	33	91.7	36	34	94.4
Relates to services to and from Melbourne only.						
Mount Isa						
Qantas	42	37	88.1	41	35	85.4
Virgin Australia	16	15	93.8	16	16	100.0
All Airlines	58	52	89.7	57	51	89.5
Relates to services to and from Brisbane only.						
Newcastle						
Jetstar	24	23	95.8	24	24	100.0
Virgin Australia	32	30	93.8	32	30	93.8
All Airlines	56	53	94.6	56	54	96.4
Relates to services to and from Brisbane and Melbourne.						
Newman						
Qantas	14	14	100.0	14	10	71.4
QantasLink	101	93	92.1	101	95	94.1
Virgin Australia	43	42	97.7	43	37	86.0
Virgin Australia Regional Airlines	13	13	100.0	13	13	100.0
All Airlines	171	162	94.7	171	155	90.6
Relates to services to and from Perth only.						
Perth						
Jetstar	26	24	92.3	26	17	65.4
Qantas	380	332	87.4	381	361	94.8
QantasLink	358	305	85.2	354	326	92.1
Virgin Australia	316	266	84.2	315	270	85.7
Virgin Australia Regional Airlines	136	115	84.6	136	130	95.6
All Airlines	1 216	1 042	85.7	1 212	1 104	91.1
Relates to services to and from Adelaide, Brisbane, Broome, Darwin, Kalgoorlie, Karratha, Melbourne, Newman, Port Hedland and Sydney.						
Port Hedland						
Qantas	45	42	93.3	44	41	93.2
QantasLink	78	70	89.7	77	67	87.0
Virgin Australia	15	14	93.3	15	8	53.3
Virgin Australia Regional Airlines	37	36	97.3	37	28	75.7
All Airlines	175	162	92.6	173	144	83.2
Relates to services to and from Perth only.						
Port Lincoln						
QantasLink	30	29	96.7	30	30	100.0
REX Airlines	167	150	89.8	167	147	88.0
All Airlines	197	179	90.9	197	177	89.8
Relates to services to and from Adelaide only.						
Proserpine						
Jetstar	36	32	88.9	36	32	88.9
QantasLink	14	13	92.9	14	12	85.7
Virgin Australia	44	43	97.7	44	43	97.7
All Airlines	94	88	93.6	94	87	92.6
Relates to services to and from Brisbane only.						

Airport	Arrivals			Departures		
	Sectors Flown	On Time		Sectors Flown	On Time	
		No.	%		No.	%
Rockhampton						
QantasLink	110	102	92.7	110	101	91.8
Virgin Australia	76	73	96.1	75	72	96.0
All Airlines	186	175	94.1	185	173	93.5
Relates to services to and from Brisbane only.						
Sydney						
Jetstar	61	60	98.4	61	58	95.1
Qantas	90	83	92.2	81	79	97.5
QantasLink	40	36	90.0	40	39	97.5
REX Airlines	47	43	91.5	47	44	93.6
Virgin Australia	160	144	90.0	164	149	90.9
All Airlines	398	366	92.0	393	369	93.9
Relates to services to and from Adelaide, Albury, Armidale, Ballina, Brisbane, Cairns, Dubbo, Hobart, Launceston, Melbourne, Perth, and Wagga Wagga.						
Townsville						
Jetstar	59	48	81.4	59	47	79.7
Qantas	109	104	95.4	110	102	92.7
QantasLink	114	109	95.6	113	104	92.0
REX Airlines	13	13	100.0	13	12	92.3
Virgin Australia	86	83	96.5	85	81	95.3
All Airlines	381	357	93.7	380	346	91.1
Relates to services to and from Brisbane and Cairns.						
Wagga Wagga						
QantasLink	8	7	87.5	8	7	87.5
REX Airlines	7	6	85.7	9	7	77.8
All Airlines	15	13	86.7	17	14	82.4
Relates to services to and from Sydney only.						

Definitions

On time arrival	A flight arrival is counted as "on time" if it arrived at the gate before 15 minutes after the scheduled arrival time shown in the carriers' schedule. Neither diverted nor cancelled flights count as on time.
On time departure	A flight departure is counted as "on time" if it departs the gate before 15 minutes after the scheduled departure time shown in the carriers' schedule.
Cancellation	A flight removed from service within 7 days of scheduled departure is regarded as a cancellation.
On time departure percentage	The percentage of on time departures is measured against the number of departures <i>operated</i> on any particular sector.
On time arrival percentage	The percentage of on time arrivals is measured against the number of arrivals <i>operated</i> on any particular sector.
Cancellation percentage	The percentage of cancellations is measured against the number of services <i>scheduled</i> on any particular sector.
