



Australian Government

Department of Infrastructure, Transport, Regional Development and Communications

Bureau of Infrastructure and Transport Research Economics

STATISTICAL REPORT



Aviation

Domestic aviation activity
2021

© Commonwealth of Australia 2022

ISSN: 1832 - 1968

Ownership of intellectual property rights in this publication

Unless otherwise noted, copyright (and any other intellectual property rights, if any) in this publication is owned by the Commonwealth of Australia (referred to below as the Commonwealth).

Disclaimer

The material contained in this publication is made available on the understanding that the Commonwealth is not providing professional advice, and that users exercise their own skill and care with respect to its use, and seek independent advice if necessary.

The Commonwealth makes no representations or warranties as to the contents or accuracy of the information contained in this publication. To the extent permitted by law, the Commonwealth disclaims liability to any person or organisation in respect of anything done, or omitted to be done, in reliance upon information contained in this publication.

Creative Commons licence

With the exception of (a) the Coat of Arms; and (b) the Department of Infrastructure, Transport, Regional Development and Communications' photos and graphics, copyright in this publication is licensed under a Creative Commons Attribution 3.0 Australia Licence.

Creative Commons Attribution 3.0 Australia Licence is a standard form licence agreement that allows you to copy, communicate and adapt this publication provided that you attribute the work to the Commonwealth and abide by the other licence terms. A summary of the licence terms is available from <http://creativecommons.org/licenses/by/3.0/au/deed.en>.

The full licence terms are available from <http://creativecommons.org/licenses/by/3.0/au/legalcode>.

Use of the Coat of Arms

The Department of the Prime Minister and Cabinet sets the terms under which the Coat of Arms is used. Please refer to the Department's Commonwealth Coat of Arms and Government branding web page <http://www.dpmc.gov.au/guidelines/index.cfm#brand> and, in particular, the Guidelines on the use of the Commonwealth Coat of Arms publication.

An appropriate citation for this report is:

Bureau of Infrastructure and Transport Research Economics (BITRE), 2022, Domestic aviation activity, Statistical Report, BITRE, Canberra ACT.

Contact us

This publication is available in PDF format. All other rights are reserved, including in relation to any Departmental logos or trade marks which may exist. For enquiries regarding the licence and any use of this publication, please contact:

Bureau of Infrastructure and Transport Research Economics (BITRE)
Department of Infrastructure, Transport, Regional Development and Communications
GPO Box 501, Canberra ACT 2601, Australia
Telephone: (international) +61 2 6274 7210
Fax: (international) +61 2 6274 6855
Email: bitre@infrastructure.gov.au
Website: www.bitre.gov.au

Inquiries

Should you require additional information about the statistics contained in this publication:

Nebojsa Pavlovic

Telephone (02) 6274 6817 or Facsimile (02) 6274 7727

Electronic mail: AVSTATS@infrastructure.gov.au

Nebojsa.Pavlovic@infrastructure.gov.au

Web site: <http://www.bitre.gov.au/statistics/aviation/domestic.aspx>

FOREWORD

This report provides an overview of domestic (including charter) commercial aviation activity in Australia for the year ending December 2021.

The data cover revenue passengers carried by Australian-registered operators of scheduled regular public transport services over Australian flight stages and fixed-wing charter operators. These estimates include passengers carried between domestic airports on international flights operated by these carriers. The passengers carried refer to traffic on board by stages.

Estimates of passengers and aircraft movements for charter aviation are included in this publication, where BITRE confidentiality standards are met.

Individual routes shown are restricted to those exceeding 8 000 passengers per month where two or more airlines operate in competition. However, from November 2021 the major airlines (Qantas Group, Virgin Australia and Rex Airlines) have agreed to publication of the top 35 routes based on pre-COVID activity (December 2019) whether or not they currently meet the above criteria. With these approvals, there were 56 routes published for the year ending December 2021.

Information on both the total network and the Regular Public Transport (RPT) network for the year ending December 2021 is presented on page 2.

Detailed information on the 56 individual routes can be found in the RPT summary pages 3–10 of this publication.

The top ten airports in terms of RPT passenger movements are shown on page 11.

Data on domestic RPT cargo movements at the top five cargo airports are provided on page 12. The table includes cargo carried on passenger flights operated by the Qantas group (including Jetstar), Virgin Australia, Air North and Skippers as well as the cargo carried by dedicated freighter aircraft operated by Qantas Freight and Toll.

The long-term trends for the top twenty competitive RPT routes are presented graphically on pages 13–22.

Domestic RPT passenger movements at the top 50 regional airports are presented on page 23.

Tables providing estimates of domestic charter aviation activity are shown on page 24. BITRE confidentiality standards restrict publication of detailed airport-level estimates for any Australian airport, with the exception of Perth Airport.

A list of definitions can be found on page 25.

This report was prepared by the Aviation Statistics Section of the Bureau of Infrastructure and Transport Research Economics with data provided by airlines.

Estimates are included where data were not available and data presented in this publication may contain revisions to previously published data.

Where figures have been rounded, discrepancies may occur between sums of component items and totals, and in percentage changes which are derived from figures prior to rounding.

CONTENTS

Highlights	1
RPT network.....	2
Top competitive routes.....	3
Top ten airports – passenger movements	11
Top five airports – cargo movements.....	12
Top twenty routes	13
1. Melbourne – Sydney	13
2. Brisbane – Sydney.....	13
3. Brisbane – Cairns	14
4. Gold Coast – Melbourne.....	14
5. Brisbane – Melbourne.....	15
6. Gold Coast – Sydney	15
7. Brisbane – Townsville.....	16
8. Adelaide – Melbourne.....	16
9. Brisbane – Mackay	17
10. Adelaide – Sydney.....	17
11. Hobart – Melbourne	18
12. Adelaide – Brisbane.....	18
13. Karratha – Perth	19
14. Ballina – Sydney.....	19
15. Broome – Perth	20
16. Brisbane – Rockhampton.....	20
17. Perth – Port Hedland	21
18. Adelaide – Perth.....	21
19. Newman – Perth.....	22
20. Perth – Sydney	22
Top fifty regional airports.....	23
Domestic charter activity.....	24
Definitions	25

This page is intentionally left blank.

HIGHLIGHTS

Domestic aviation activity started to recover at the end of 2021, however, revenue passenger numbers were still 61.7 per cent below the year ending December 2019 levels.

There were 26.88 million passengers carried on Australian domestic commercial aviation (including charter operations) in the year ending December 2021, an increase of 18.9 per cent compared with the year ending December 2020 and a decrease of 58.1 per cent compared to the year ending December 2019.

In the year ending December 2021 there were 430.7 thousand aircraft trips, an increase of 23.9 per cent compared to the previous year and 37.0 per cent less compared to the year ending December 2019.

23.52 million passengers were carried on RPT flights in the year ending December 2021, an increase of 20.9 per cent compared with the year ending December 2020 and 61.7 per cent less compared to the year ending December 2019.

RPT revenue passenger kilometres (RPKs) performed were 27.30 billion, an increase of 22.4 per cent compared with the year ending December 2020.

Capacity, measured by available seat kilometres (ASKs), increased by 34.4 per cent compared with the year ending December 2020, to a total of 39.17 billion.

The industry wide load factor (RPKs/ASKs) decreased from 67.9 per cent in the year ending December 2020 to 60.8 per cent in the year ending December 2021.

In the year ending December 2021, most published routes recorded increases in the number of passengers carried compared with year ending December 2020.

For the year ending December 2021, Melbourne – Sydney remained Australia's busiest RPT route with 2.12 million passengers, a decrease of 5.8 per cent compared with the previous calendar year. It was followed by Brisbane – Sydney with 1.09 million passengers (down 15.9 per cent) and Brisbane – Cairns with 1.01 million passengers (up 38.9 per cent).

In the year ending December 2021, Brisbane was Australia's busiest domestic airport with 7.64 million passenger movements, up 19.6 per cent compared with the year ending December 2020, followed by Sydney with 7.18 million passenger movements (down 3.8 per cent) and Melbourne with 6.77 million passenger movements (up 4.1 per cent).

Total cargo movements at Australian airports on domestic RPT flights were 415.4 thousand tonnes in the year ending December 2021, an increase of 6.7 per cent compared to the year ending December 2020.

In the year ending December 2021, the number of domestic aviation passengers travelling through regional airports was 14.71 million, up 43.4 per cent compared to the year ending December 2020 and 41.3 per cent less compared to the year ending December 2019.

Fixed-wing charter operators carried 3.36 million passengers in the year ending December 2021, an increase of 6.4 per cent compared with the year ending December 2020 and 23.5 per cent more than in the year ending December 2019. Perth airport accounted for 37.8 per cent of all charter passengers in Australia.

TOTAL NETWORK

Summary of annual commercial aviation activity

	YE Dec 2020	YE Dec 2021	% Change
Total passengers carried (millions)	22.61	26.88	18.9
Aircraft trips (000s)	347.7	430.7	23.9

Note: Regular Public Transport and charter aviation activity, Helicopter, joyflights and sightseeing charter flights not included.

RPT NETWORK

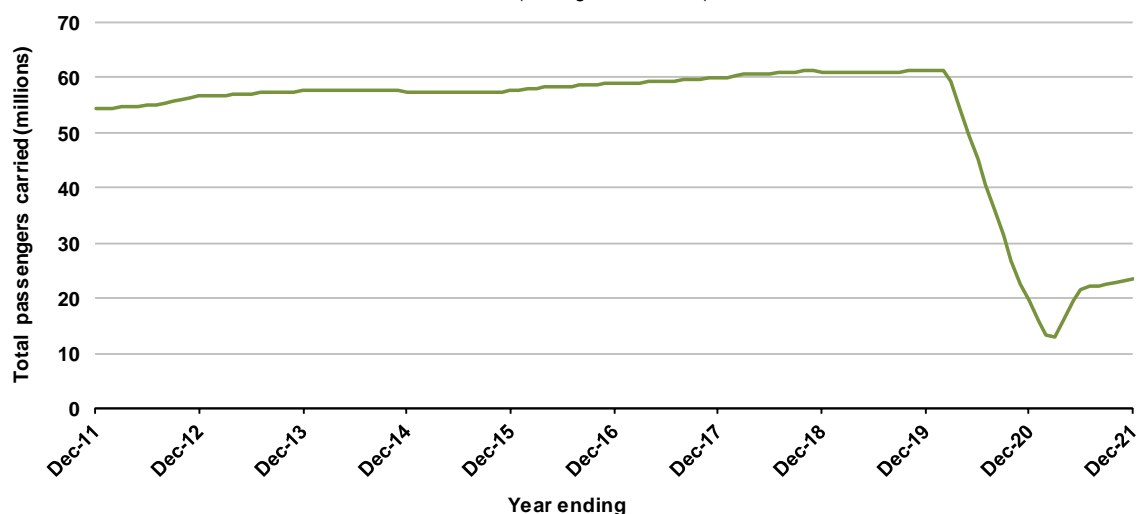
Summary of annual RPT activity

	YE Dec 2020	YE Dec 2021	% Change
Total passengers carried (millions)	19.45	23.52	20.9
Revenue passenger kilometres (billions)	22.30	27.30	22.4
Available seats (millions)	29.14	39.17	34.4
Available seat kilometres (billions)	32.86	44.93	36.8
Load factor %	67.9	60.8	-7.1 *
Aircraft trips (000s)	282.6	367.2	29.9

* percentage point difference

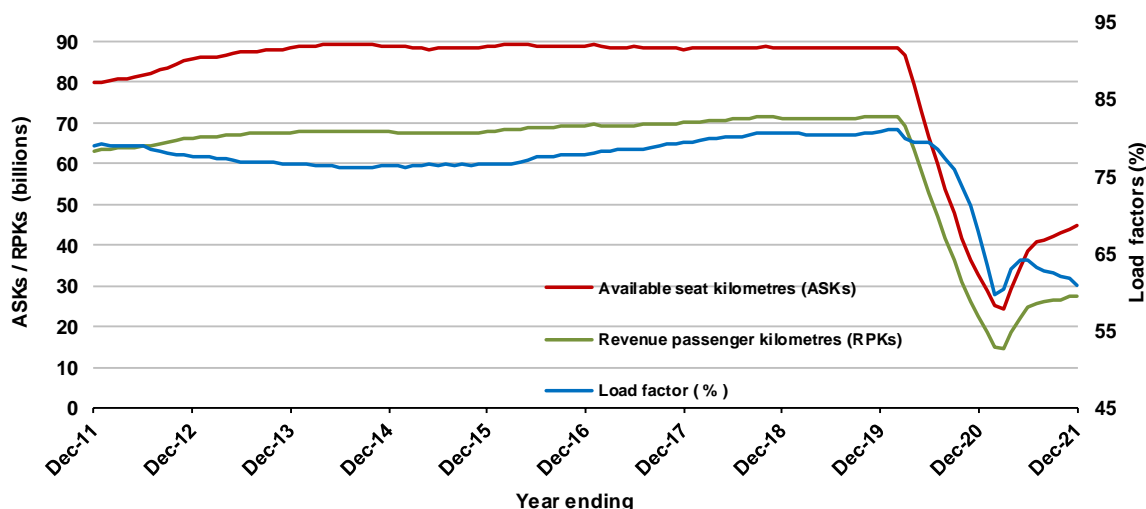
Domestic RPT passenger traffic

(moving annual totals)



RPT Network utilisation

(moving annual totals)



TOP COMPETITIVE ROUTES

Table 1: Passengers carried (000s) — annual activity

	City-Pair	YE Dec 2020	YE Dec 2021	% Change
1	Melbourne - Sydney	2 249.8	2 119.8	-5.8
2	Brisbane - Sydney	1 299.7	1 093.2	-15.9
3	Brisbane - Cairns	728.8	1 012.5	38.9
4	Gold Coast - Melbourne	514.3	794.7	54.5
5	Brisbane - Melbourne	928.8	787.4	-15.2
6	Gold Coast - Sydney	711.3	755.2	6.2
7	Brisbane - Townsville	509.6	689.1	35.2
8	Adelaide - Melbourne	614.1	641.0	4.4
9	Brisbane - Mackay	395.4	536.5	35.7
10	Adelaide - Sydney	589.4	524.7	-11.0
11	Hobart - Melbourne	466.4	459.3	-1.5
12	Adelaide - Brisbane	362.4	451.4	24.6
13	Karratha - Perth	272.3	420.9	54.6
14	Ballina - Sydney	354.4	408.7	15.3
15	Broome - Perth	224.5	375.6	67.3
16	Brisbane - Rockhampton	255.4	361.4	41.5
17	Perth - Port Hedland	209.7	360.2	71.7
18	Adelaide - Perth	167.5	318.6	90.2
19	Newman - Perth	166.8	318.1	90.7
20	Perth - Sydney	437.7	313.7	-28.3
21	Cairns - Melbourne	161.8	312.7	93.2
22	Launceston - Melbourne	273.7	304.9	11.4
23	Brisbane - Canberra	249.1	292.7	17.5
24	Brisbane - Perth	301.6	287.2	-4.8
25	Canberra - Melbourne	275.3	280.7	2.0
26	Melbourne - Sunshine Coast	134.4	270.6	101.4
27	Melbourne - Perth	552.2	261.4	-52.7
28	Brisbane - Darwin	164.2	260.5	58.6
29	Brisbane - Hobart	108.0	257.5	138.5
30	Hobart - Sydney	236.5	256.5	8.5
31	Kalgoorlie - Perth	157.4	254.7	61.8
32	Cairns - Sydney	249.1	249.8	0.3
33	Brisbane - Proserpine	165.2	244.2	47.8
34	Sunshine Coast - Sydney	155.9	227.2	45.7
35	Brisbane - Newcastle	189.6	212.3	12.0
36	Brisbane - Hamilton Island	110.0	205.2	86.5
37	Canberra - Sydney	..	166.5	NA
38	Melbourne - Newcastle	128.3	157.8	23.0
39	Brisbane - Launceston	..	143.7	NA
40	Adelaide - Gold Coast	86.3	143.2	65.9
41	Adelaide - Port Lincoln	89.2	141.9	59.0
42	Brisbane - Gladstone	105.8	140.1	32.4
43	Brisbane - Emerald	98.8	136.8	38.5
44	Launceston - Sydney	103.5	123.9	19.7
45	Darwin - Melbourne	..	121.8	NA
46	Coffs Harbour - Sydney	108.2	113.0	4.5
47	Brisbane - Mount Isa	88.4	108.0	22.2
48	Adelaide - Cairns	..	107.3	NA
49	Ballina - Melbourne	..	106.9	NA
50	Adelaide - Hobart	..	104.4	NA

(continued)

Table 1: (continued) Passengers carried (000s) — annual activity

	City-Pair	YE Dec 2020	YE Dec 2021	% Change
51	Adelaide - Canberra	68.8	87.2	26.7
52	Dubbo - Sydney	..	69.5	NA
53	Albury - Sydney	..	65.4	NA
54	Melbourne - Mildura	..	63.2	NA
55	Port Macquarie - Sydney	..	54.5	NA
56	Cairns - Gold Coast	..	13.8	NA (a)
Total domestic network		19 445.6	23 519.1	20.9

.. Data not available for release.

(a) Cairns - Gold Coast route included from December 2021, prior data not shown.

Table 2: Available seats (000s) — annual activity

	City-Pair	YE Dec 2020	YE Dec 2021	% Change
1	Melbourne - Sydney	3 072.2	3 394.1	10.5
2	Brisbane - Sydney	1 809.5	1 758.3	-2.8
3	Brisbane - Cairns	937.1	1 431.3	52.7
4	Gold Coast - Melbourne	615.5	1 175.4	91.0
5	Brisbane - Melbourne	1 279.1	1 317.7	3.0
6	Gold Coast - Sydney	893.2	1 123.1	25.7
7	Brisbane - Townsville	712.2	1 042.2	46.3
8	Adelaide - Melbourne	906.4	1 073.9	18.5
9	Brisbane - Mackay	593.8	852.0	43.5
10	Adelaide - Sydney	825.2	851.8	3.2
11	Hobart - Melbourne	676.4	760.9	12.5
12	Adelaide - Brisbane	512.3	735.5	43.6
13	Karratha - Perth	508.6	725.9	42.7
14	Ballina - Sydney	444.9	598.6	34.6
15	Broome - Perth	329.2	539.7	63.9
16	Brisbane - Rockhampton	406.5	585.2	43.9
17	Perth - Port Hedland	381.5	613.1	60.7
18	Adelaide - Perth	269.0	513.6	90.9
19	Newman - Perth	338.2	669.7	98.0
20	Perth - Sydney	662.2	569.6	-14.0
21	Cairns - Melbourne	211.6	502.6	137.6
22	Launceston - Melbourne	371.2	533.7	43.8
23	Brisbane - Canberra	369.9	520.6	40.7
24	Brisbane - Perth	428.1	465.6	8.8
25	Canberra - Melbourne	477.1	522.2	9.5
26	Melbourne - Sunshine Coast	161.2	428.8	166.0
27	Melbourne - Perth	814.7	494.9	-39.2
28	Brisbane - Darwin	228.9	393.5	71.9
29	Brisbane - Hobart	148.7	377.8	154.1
30	Hobart - Sydney	343.0	433.0	26.2
31	Kalgoorlie - Perth	295.6	422.7	43.0
32	Cairns - Sydney	360.3	422.8	17.4
33	Brisbane - Proserpine	217.7	335.6	54.1
34	Sunshine Coast - Sydney	210.5	372.3	76.9
35	Brisbane - Newcastle	299.0	374.8	25.4
36	Brisbane - Hamilton Island	159.4	321.3	101.6
37	Canberra - Sydney	..	325.3	NA
38	Melbourne - Newcastle	171.8	309.7	80.3
39	Brisbane - Launceston	..	208.2	NA
40	Adelaide - Gold Coast	114.8	230.3	100.6
41	Adelaide - Port Lincoln	130.2	212.6	63.3
42	Brisbane - Gladstone	202.4	268.2	32.5
43	Brisbane - Emerald	166.6	249.2	49.5
44	Launceston - Sydney	160.0	233.5	45.9
45	Darwin - Melbourne	..	222.6	NA
46	Coffs Harbour - Sydney	171.3	205.1	19.7
47	Brisbane - Mount Isa	162.7	227.2	39.6
48	Adelaide - Cairns	..	159.1	NA
49	Ballina - Melbourne	..	162.3	NA
50	Adelaide - Hobart	..	147.3	NA

(continued)

Table 2: (continued) Available seats (000s) — annual activity

	City-Pair	YE Dec 2020	YE Dec 2021	% Change
51	Adelaide - Canberra	120.7	184.5	52.9
52	Dubbo - Sydney	..	131.4	NA
53	Albury - Sydney	..	130.0	NA
54	Melbourne - Mildura	..	113.1	NA
55	Port Macquarie - Sydney	..	123.6	NA
56	Cairns - Gold Coast	..	22.5	NA (a)
	Total domestic network	29 139.9	39 171.0	34.4

.. Data not available for release.

(a) Cairns - Gold Coast route included from December 2021, prior data not shown.

Table 3: Load factors (%) — annual activity

	City-Pair	YE Dec 2020	YE Dec 2021	% Change
1	Melbourne - Sydney	73.3	62.5	-10.8
2	Brisbane - Sydney	71.8	62.2	-9.6
3	Brisbane - Cairns	77.8	70.7	-7.0
4	Gold Coast - Melbourne	83.6	67.6	-15.9
5	Brisbane - Melbourne	72.6	59.8	-12.9
6	Gold Coast - Sydney	79.6	67.2	-12.4
7	Brisbane - Townsville	71.5	66.1	-5.4
8	Adelaide - Melbourne	67.7	59.7	-8.1
9	Brisbane - Mackay	66.6	63.0	-3.6
10	Adelaide - Sydney	71.4	61.6	-9.8
11	Hobart - Melbourne	68.9	60.4	-8.6
12	Adelaide - Brisbane	70.7	61.4	-9.4
13	Karratha - Perth	53.5	58.0	4.4
14	Ballina - Sydney	79.7	68.3	-11.4
15	Broome - Perth	68.2	69.6	1.4
16	Brisbane - Rockhampton	62.8	61.8	-1.1
17	Perth - Port Hedland	55.0	58.8	3.8
18	Adelaide - Perth	62.3	62.0	-0.2
19	Newman - Perth	49.3	47.5	-1.8
20	Perth - Sydney	66.1	55.1	-11.0
21	Cairns - Melbourne	76.5	62.2	-14.3
22	Launceston - Melbourne	73.7	57.1	-16.6
23	Brisbane - Canberra	67.3	56.2	-11.1
24	Brisbane - Perth	70.5	61.7	-8.8
25	Canberra - Melbourne	57.7	53.9	-3.8
26	Melbourne - Sunshine Coast	83.3	63.1	-20.2
27	Melbourne - Perth	67.8	52.8	-15.0
28	Brisbane - Darwin	71.7	66.2	-5.5
29	Brisbane - Hobart	72.6	68.2	-4.4
30	Hobart - Sydney	68.9	59.3	-9.7
31	Kalgoorlie - Perth	53.2	60.3	7.0
32	Cairns - Sydney	69.1	59.1	-10.1
33	Brisbane - Proserpine	75.9	49.8	-26.1
34	Sunshine Coast - Sydney	74.1	61.0	-13.1
35	Brisbane - Newcastle	63.4	56.6	-6.8
36	Brisbane - Hamilton Island	69.0	63.8	-5.2
37	Canberra - Sydney	..	51.2	NA
38	Melbourne - Newcastle	74.7	50.9	-23.7
39	Brisbane - Launceston	..	69.0	NA
40	Adelaide - Gold Coast	75.1	62.2	-13.0
41	Adelaide - Port Lincoln	68.5	66.7	-1.8
42	Brisbane - Gladstone	52.3	52.4	0.1
43	Brisbane - Emerald	59.3	54.9	-4.4
44	Launceston - Sydney	64.7	53.1	-11.6
45	Darwin - Melbourne	..	54.7	NA
46	Coffs Harbour - Sydney	63.2	55.1	-8.0
47	Brisbane - Mount Isa	54.3	47.6	-6.8
48	Adelaide - Cairns	..	67.5	NA
49	Ballina - Melbourne	..	65.8	NA
50	Adelaide - Hobart	..	70.9	NA

(continued)

Table 3: (continued) Load factors (%) — annual activity

	City-Pair	YE Dec 2020	YE Dec 2021	% Change
51	Adelaide - Canberra	57.0	47.2	-9.8
52	Dubbo - Sydney	..	52.9	NA
53	Albury - Sydney	..	50.3	NA
54	Melbourne - Mildura	..	55.9	NA
55	Port Macquarie - Sydney	..	44.1	NA
56	Cairns - Gold Coast	..	61.4	NA (a)
	Total domestic network	67.9	60.8	-7.1

.. Data not available for release.

(a) Cairns - Gold Coast route included from December 2021, prior data not shown.

Table 4: Aircraft trips ^(a) — annual activity

	City-Pair	YE Dec 2020	YE Dec 2021	% Change
1	Melbourne - Sydney	19 050	21 589	13.3
2	Brisbane - Sydney	12 608	12 264	-2.7
3	Brisbane - Cairns	6 791	8 975	32.2
4	Gold Coast - Melbourne	3 260	6 269	92.3
5	Brisbane - Melbourne	8 649	8 975	3.8
6	Gold Coast - Sydney	5 132	6 590	28.4
7	Brisbane - Townsville	4 756	6 309	32.7
8	Adelaide - Melbourne	6 356	7 198	13.2
9	Brisbane - Mackay	4 570	5 672	24.1
10	Adelaide - Sydney	5 243	5 342	1.9
11	Hobart - Melbourne	3 900	4 764	22.2
12	Adelaide - Brisbane	3 081	4 471	45.1
13	Karratha - Perth	3 420	4 484	31.1
14	Ballina - Sydney	3 098	4 333	39.9
15	Broome - Perth	2 374	3 336	40.5
16	Brisbane - Rockhampton	4 411	5 697	29.2
17	Perth - Port Hedland	2 717	4 351	60.1
18	Adelaide - Perth	2 026	3 328	64.3
19	Newman - Perth	2 230	4 075	82.7
20	Perth - Sydney	3 095	3 097	0.1
21	Cairns - Melbourne	1 106	2 520	127.8
22	Launceston - Melbourne	3 606	4 679	29.8
23	Brisbane - Canberra	2 825	3 689	30.6
24	Brisbane - Perth	2 386	2 545	6.7
25	Canberra - Melbourne	3 316	3 907	17.8
26	Melbourne - Sunshine Coast	912	2 549	179.5
27	Melbourne - Perth	4 745	3 723	-21.5
28	Brisbane - Darwin	1 602	2 370	47.9
29	Brisbane - Hobart	849	2 292	170.0
30	Hobart - Sydney	2 065	2 460	19.1
31	Kalgoorlie - Perth	2 260	3 151	39.4
32	Cairns - Sydney	1 924	2 233	16.1
33	Brisbane - Proserpine	1 295	2 045	57.9
34	Sunshine Coast - Sydney	1 324	2 247	69.7
35	Brisbane - Newcastle	2 119	2 691	27.0
36	Brisbane - Hamilton Island	1 136	1 867	64.3
37	Canberra - Sydney	..	4 687	NA
38	Melbourne - Newcastle	941	1 836	95.1
39	Brisbane - Launceston	..	1 172	NA
40	Adelaide - Gold Coast	638	1 317	106.4
41	Adelaide - Port Lincoln	3 354	5 439	62.2
42	Brisbane - Gladstone	2 658	3 460	30.2
43	Brisbane - Emerald	2 731	3 727	36.5
44	Launceston - Sydney	900	1 356	50.7
45	Darwin - Melbourne	..	1 215	NA
46	Coffs Harbour - Sydney	2 354	3 238	37.6
47	Brisbane - Mount Isa	1 170	1 911	63.3
48	Adelaide - Cairns	..	919	NA
49	Ballina - Melbourne	..	894	NA
50	Adelaide - Hobart	..	907	NA

(continued)

Table 4: (continued) Aircraft trips ^(a) — annual activity

	City-Pair	YE Dec 2020	YE Dec 2021	% Change
51	Adelaide - Canberra	747	1 080	44.6
52	Dubbo - Sydney	..	2 933	NA
53	Albury - Sydney	..	2 245	NA
54	Melbourne - Mildura	..	2 546	NA
55	Port Macquarie - Sydney	..	2 632	NA
56	Cairns - Gold Coast	..	124	NA (b)
	Total domestic network	282 577	367 190	29.9

.. Data not available for release.

(a) Includes RPT Cargo flights.

(b) Cairns - Gold Coast route included from December 2021, prior data not shown.

TOP TEN AIRPORTS – PASSENGER MOVEMENTS

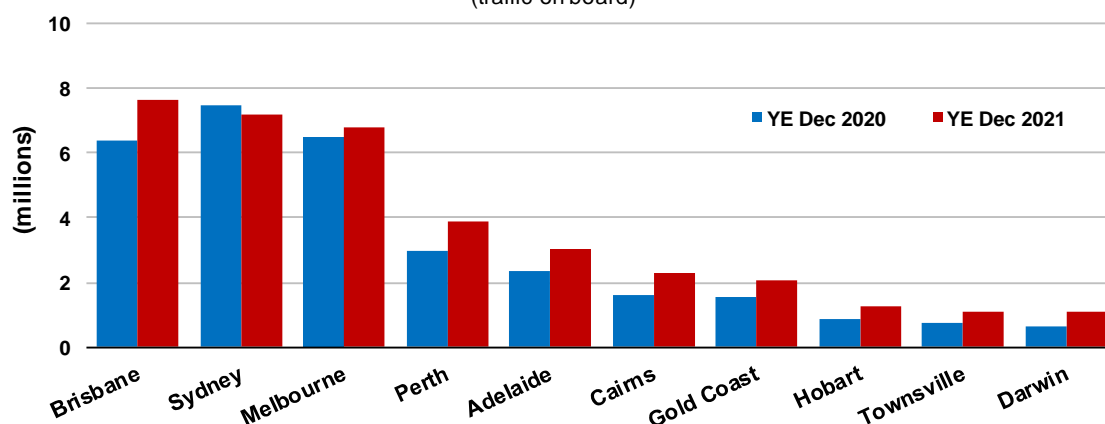
Table 5: Top ten airports, RPT passenger movements (000s) — annual activity

Airport	YE Dec 2020	YE Dec 2021	% Change	% of Total
1 Brisbane	6 387.6	7 637.3	19.6	16.2
2 Sydney	7 462.5	7 178.3	-3.8	15.3
3 Melbourne	6 501.5	6 768.5	4.1	14.4
4 Perth	2 977.4	3 854.3	29.5	8.2
5 Adelaide	2 348.6	3 034.4	29.2	6.5
6 Cairns	1 588.7	2 312.5	45.6	4.9
7 Gold Coast	1 529.4	2 038.8	33.3	4.3
8 Hobart	879.7	1 261.3	43.4	2.7
9 Townsville	766.9	1 097.9	43.2	2.3
10 Darwin	657.4	1 088.9	65.6	2.3
Total top ten airports	31 099.7	36 272.2	16.6	80.0
Total domestic network	38 891.1	47 038.2	20.9	100.0

Note: Airport passenger movement numbers are the sum of passenger arrivals and departures at each airport.

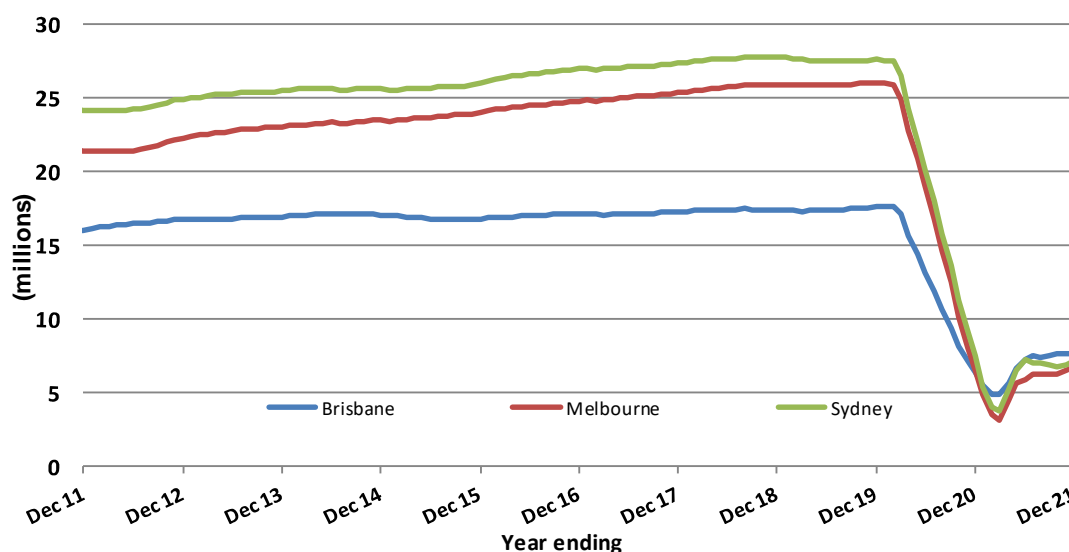
Top ten airports, RPT passenger movements

(traffic on board)



Top three airports, domestic passenger movements

(moving annual totals - traffic on board)



TOP FIVE AIRPORTS – CARGO MOVEMENTS

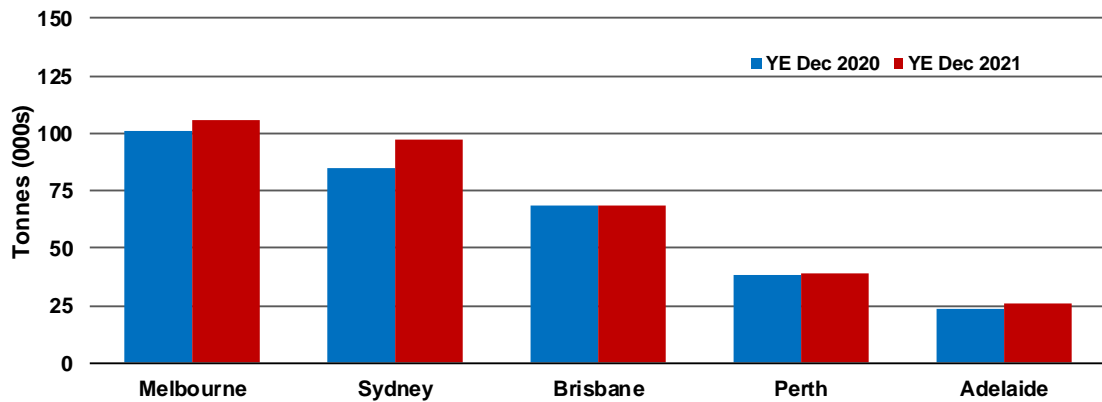
Table 6: Top five airports, domestic RPT cargo movements (000s tonnes) - annual activity

Airport	YE Dec 2020	YE Dec 2021	% Change	% of Total
1 Melbourne	101.1	105.5	-14.0	24.7
2 Sydney	84.4	96.8	-1.0	22.8
3 Brisbane	68.3	68.1	-3.9	17.2
4 Perth	38.1	38.8	-33.3	8.8
5 Adelaide	23.8	25.9	-9.1	6.0
Total top five airports	315.7	335.2	6.2	80.7
Total domestic network	389.2	415.4	6.7	100.0

Note: Airport cargo tonnes are the sum of cargo tonnes on arrivals and departures at each airport.

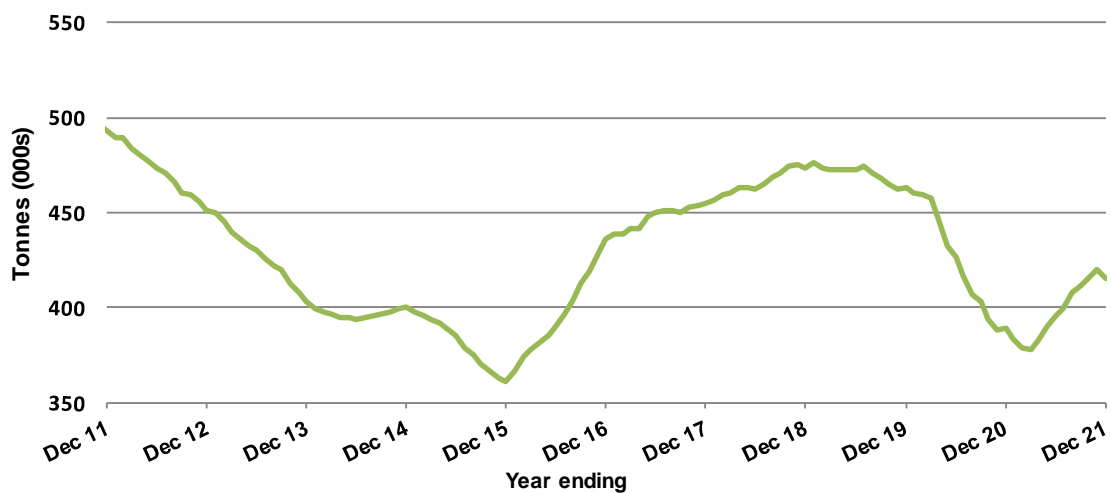
Top five airports, cargo movements

(Domestic cargo traffic - traffic on board)



Total domestic network - cargo movements

(moving annual totals - traffic on board)



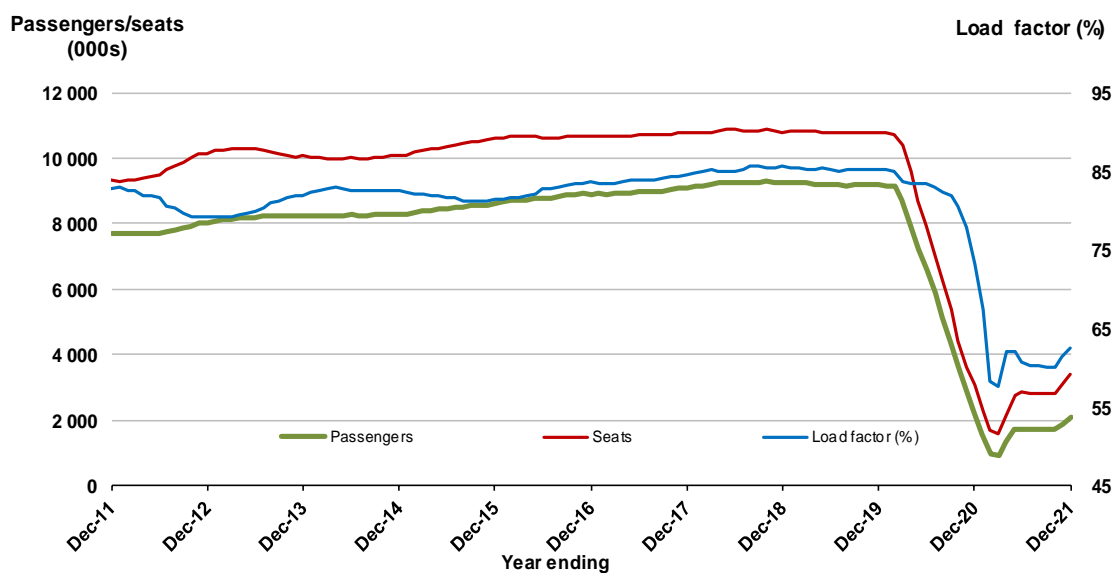
TOP TWENTY ROUTES

1. Melbourne - Sydney

Moving annual data

	YE Dec 2020	YE Dec 2021	% Change
Passengers carried (000s)	2 249.8	2 119.8	-5.8
Seats (000s)	3 072.2	3 394.1	10.5
Load factor %	73.3	62.5	-10.8 *
Aircraft trips	19 050	21 589	13.3

* percentage point difference

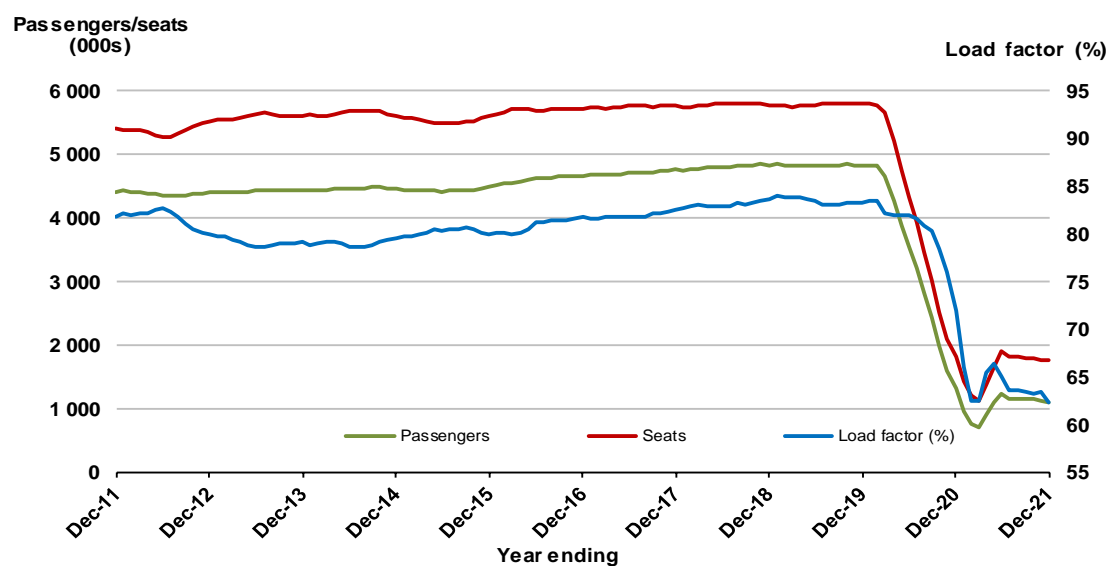


2. Brisbane - Sydney

Moving annual data

	YE Dec 2020	YE Dec 2021	% Change
Passengers carried (000s)	1 299.7	1 093.2	-15.9
Seats (000s)	1 809.5	1 758.3	-2.8
Load factor %	71.8	62.2	-9.6 *
Aircraft trips	12 608	12 264	-2.7

* percentage point difference

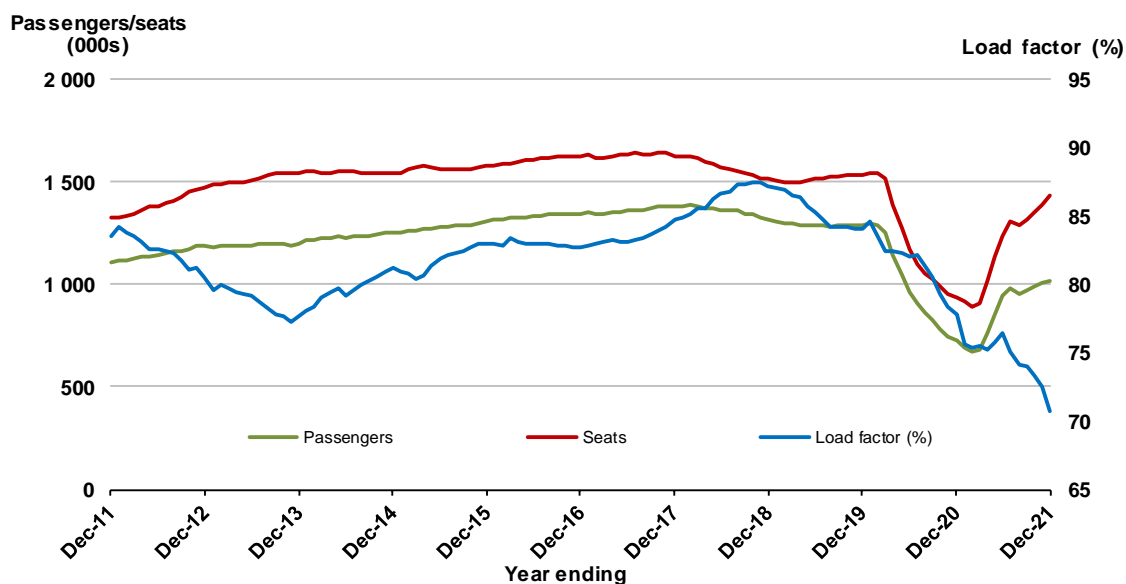


3. Brisbane - Cairns

Moving annual data

	YE Dec 2020	YE Dec 2021	% Change
Passengers carried (000s)	728.8	1 012.5	38.9
Seats (000s)	937.1	1 431.3	52.7
Load factor %	77.8	70.7	-7.0 *
Aircraft trips	6 791	8 975	32.2

* percentage point difference

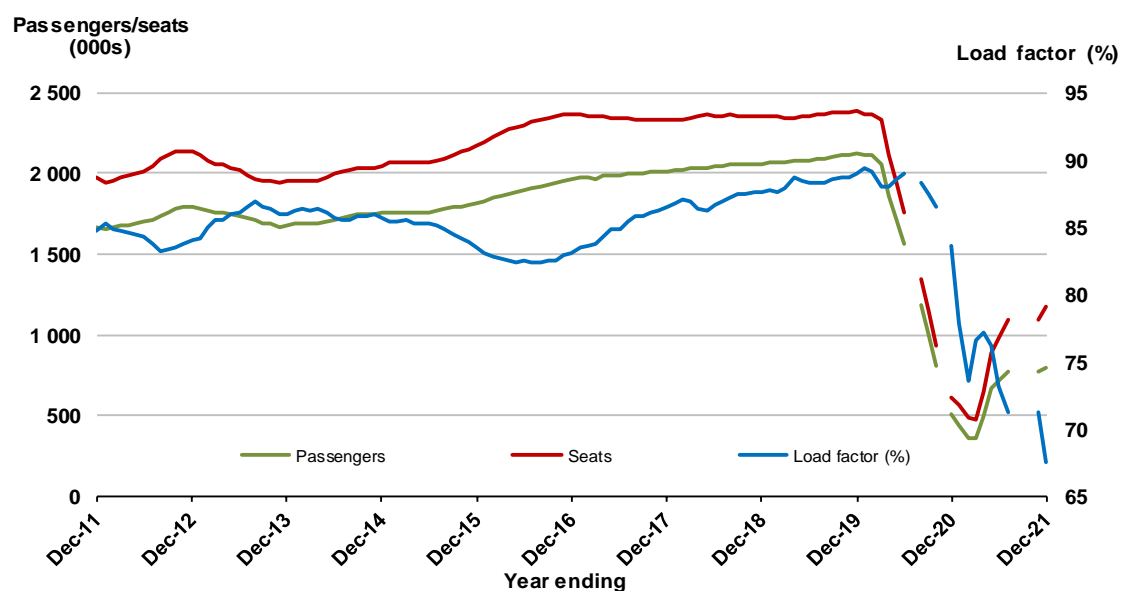


4. Gold Coast - Melbourne ^(a)

Moving annual data

	YE Dec 2020	YE Dec 2021	% Change
Passengers carried (000s)	514.3	794.7	54.5
Seats (000s)	615.5	1 175.4	91.0
Load factor %	83.6	67.6	-15.9 *
Aircraft trips	3 260	6 269	92.3

* percentage point difference



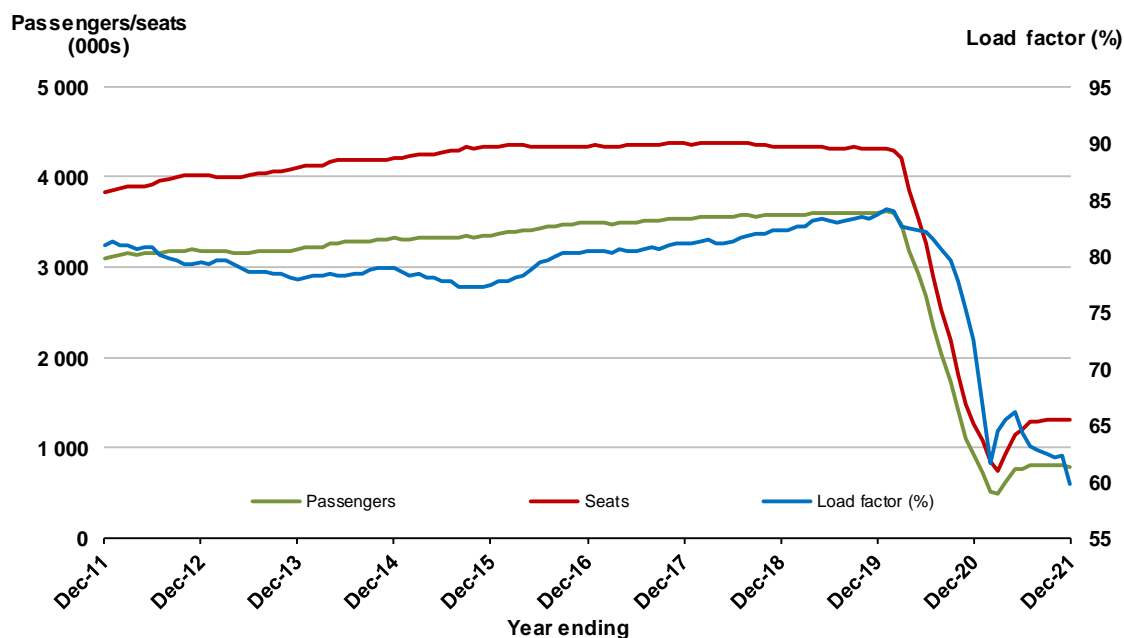
(a) July and November 2020 and August to November 2021 moving annuals are not available for release.

5. Brisbane - Melbourne

Moving annual data

	YE Dec 2020	YE Dec 2021	% Change
Passengers carried (000s)	928.8	787.4	-15.2
Seats (000s)	1 279.1	1 317.7	3.0
Load factor %	72.6	59.8	-12.9 *
Aircraft trips	8 649	8 975	3.8

* percentage point difference

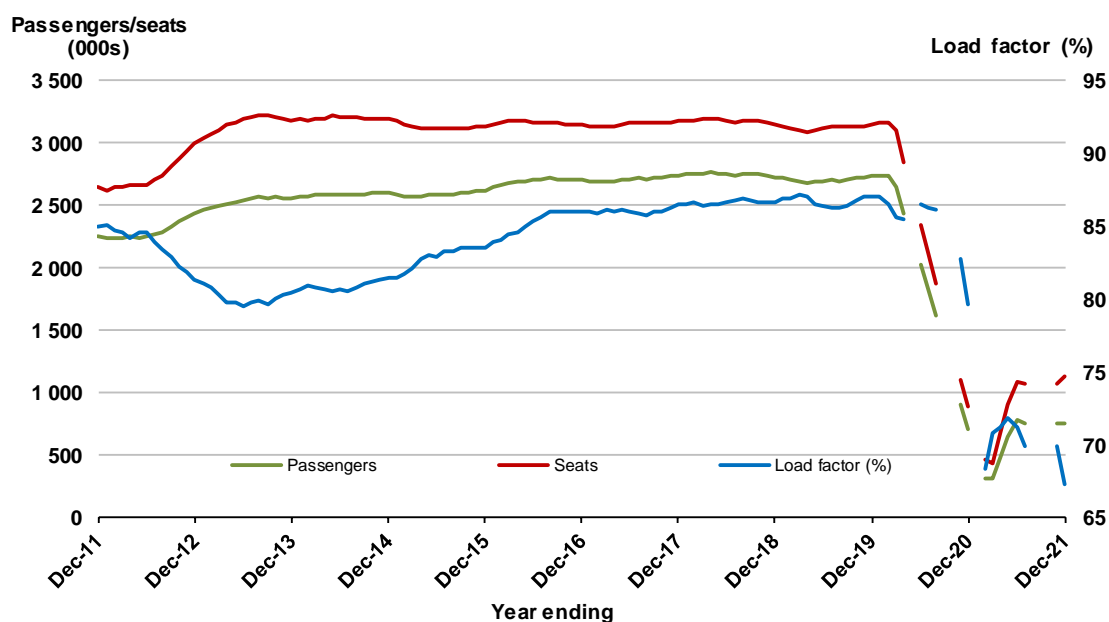


6. Gold Coast - Sydney (a)

Moving annual data

	YE Dec 2020	YE Dec 2021	% Change
Passengers carried (000s)	711.3	755.2	6.2
Seats (000s)	893.2	1 123.1	25.7
Load factor %	79.6	67.2	-12.4 *
Aircraft trips	5 132	6 590	28.4

* percentage point difference



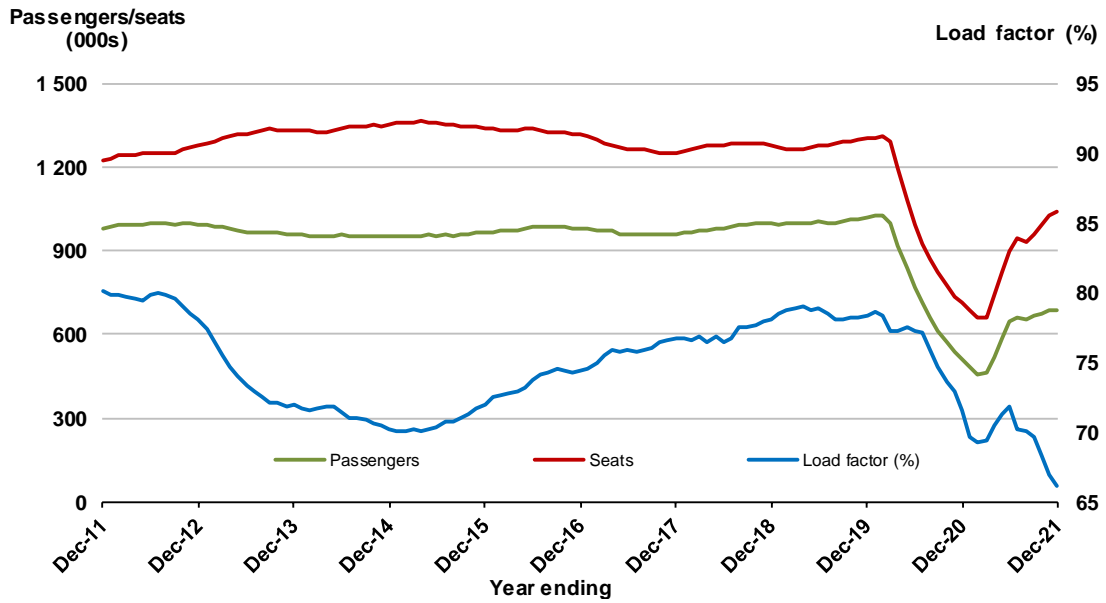
(a) May and September to October 2020 and August to November 2021 moving annuals are not available for release.

7. Brisbane - Townsville

Moving annual data

	YE Dec 2020	YE Dec 2021	% Change
Passengers carried (000s)	509.6	689.1	35.2
Seats (000s)	712.2	1 042.2	46.3
Load factor %	71.5	66.1	-5.4 *
Aircraft trips	4 756	6 309	32.7

* percentage point difference

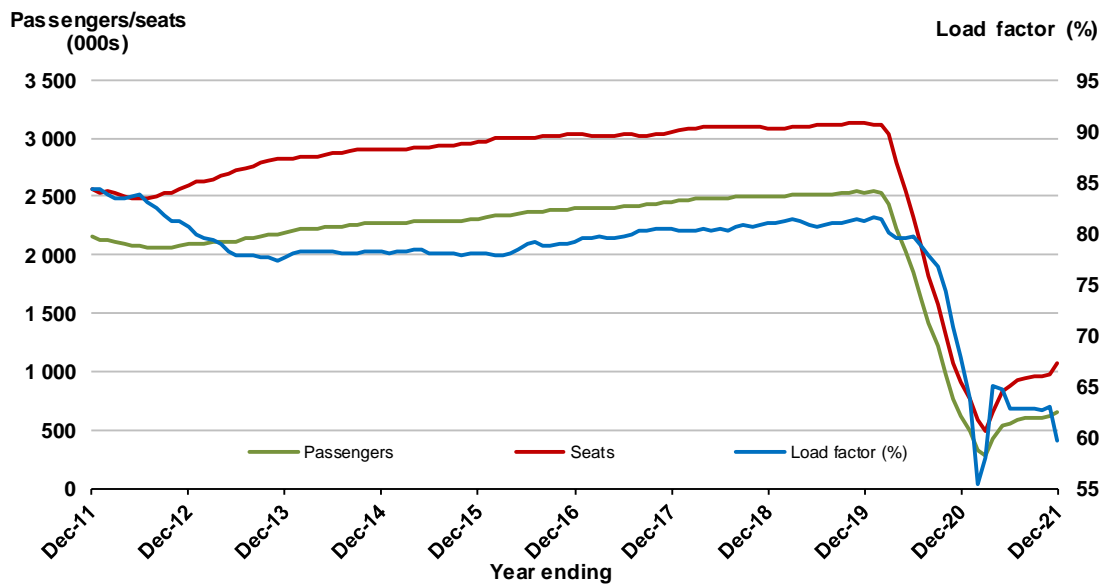


8. Adelaide - Melbourne

Moving annual data

	YE Dec 2020	YE Dec 2021	% Change
Passengers carried (000s)	614.1	641.0	4.4
Seats (000s)	906.4	1 073.9	18.5
Load factor %	67.7	59.7	-8.1 *
Aircraft trips	6 356	7 198	13.2

* percentage point difference

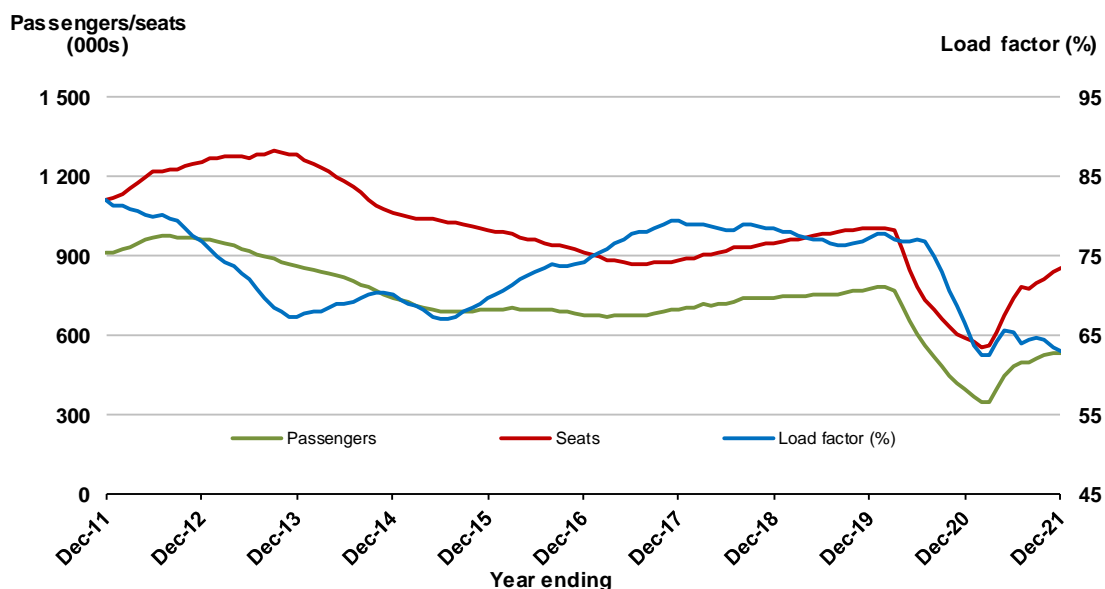


9. Brisbane - Mackay

Moving annual data

	YE Dec 2020	YE Dec 2021	% Change
Passengers carried (000s)	395.4	536.5	35.7
Seats (000s)	593.8	852.0	43.5
Load factor %	66.6	63.0	-3.6 *
Aircraft trips	4 570	5 672	24.1

* percentage point difference

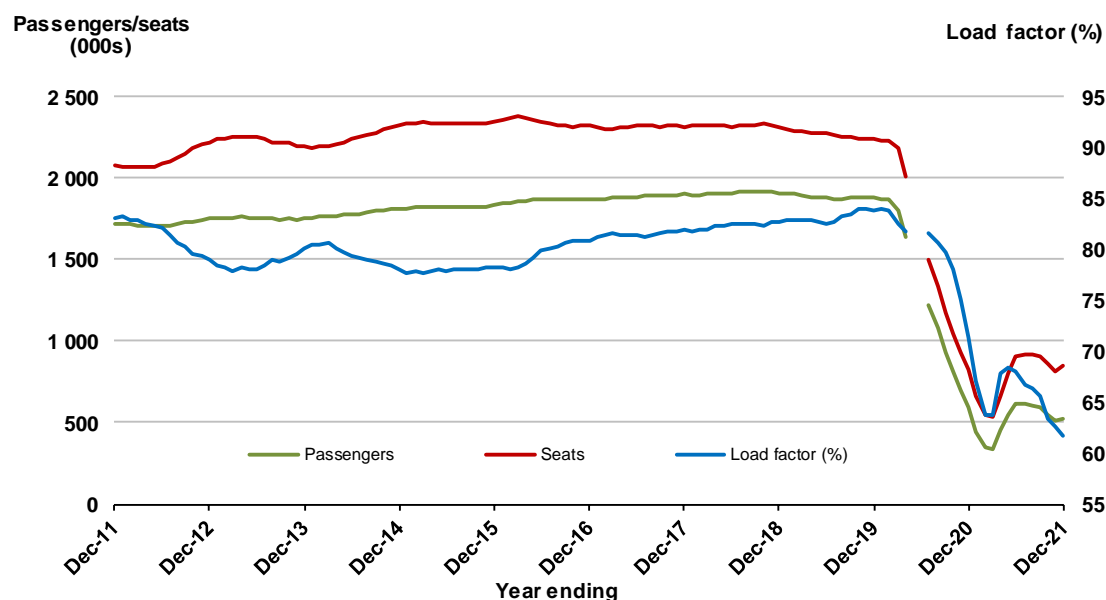


10. Adelaide - Sydney (a)

Moving annual data

	YE Dec 2020	YE Dec 2021	% Change
Passengers carried (000s)	589.4	524.7	-11.0
Seats (000s)	825.2	851.8	3.2
Load factor %	71.4	61.6	-9.8 *
Aircraft trips	5 243	5 342	1.9

* percentage point difference



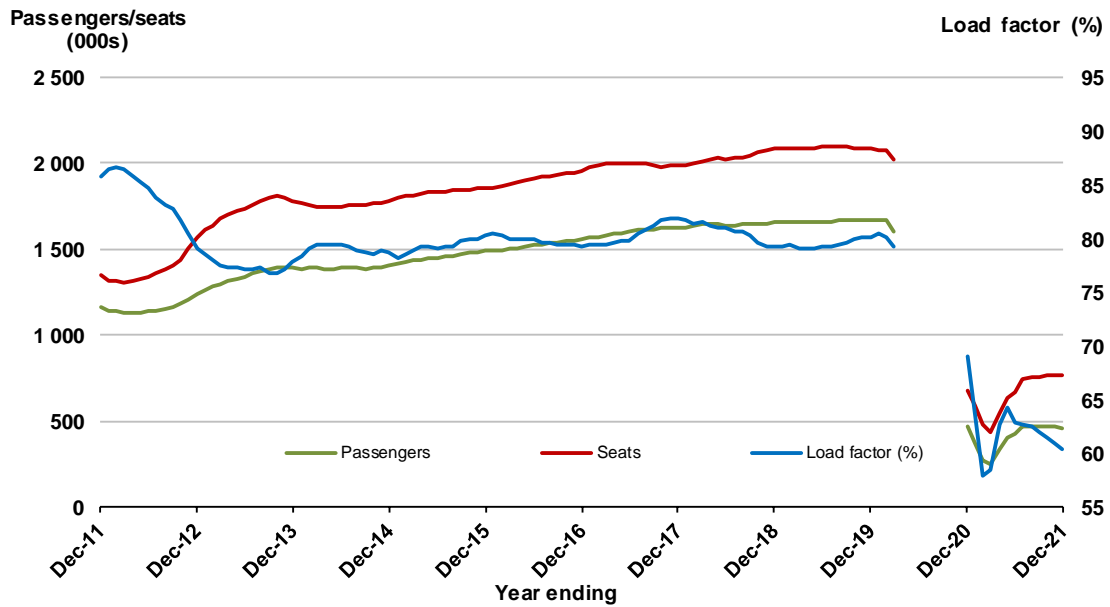
(a) May and June 2020 moving annuals are not available for release.

11. Hobart - Melbourne ^(a)

Moving annual data

	YE Dec 2020	YE Dec 2021	% Change
Passengers carried (000s)	466.4	459.3	-1.5
Seats (000s)	676.4	760.9	12.5
Load factor %	68.9	60.4	-8.6 *
Aircraft trips	3 900	4 764	22.2

* percentage point difference



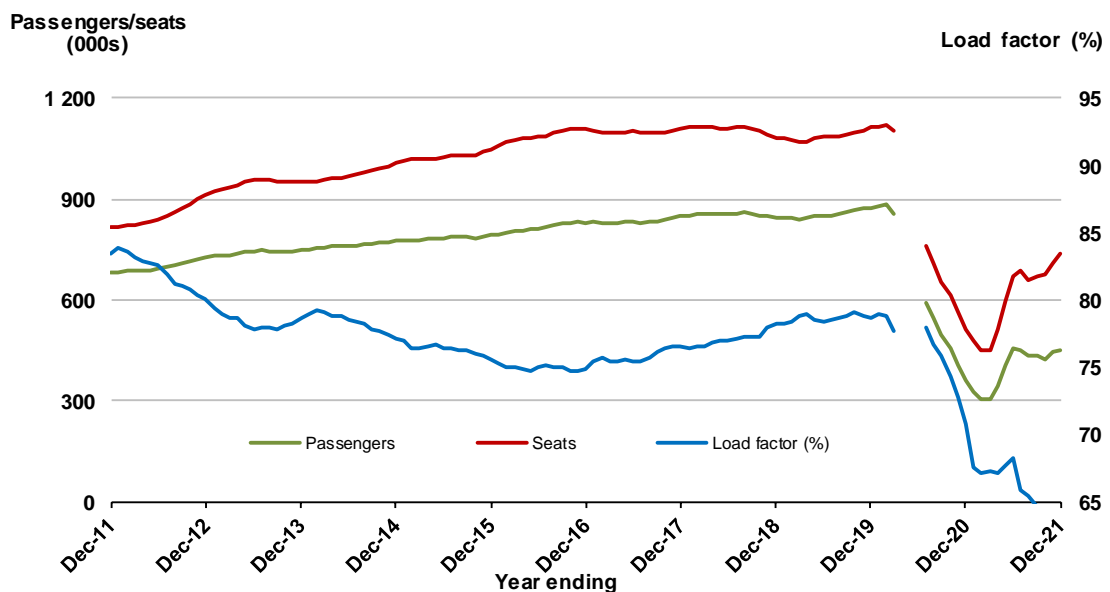
(a) April to November 2020 moving annuals are not available for release.

12. Adelaide - Brisbane ^(a)

Moving annual data

	YE Dec 2020	YE Dec 2021	% Change
Passengers carried (000s)	362.4	451.4	24.6
Seats (000s)	512.3	735.5	43.6
Load factor %	70.7	61.4	-9.4 *
Aircraft trips	3 081	4 471	45.1

* percentage point difference



(a) April to June 2020 moving annuals are not available for release.

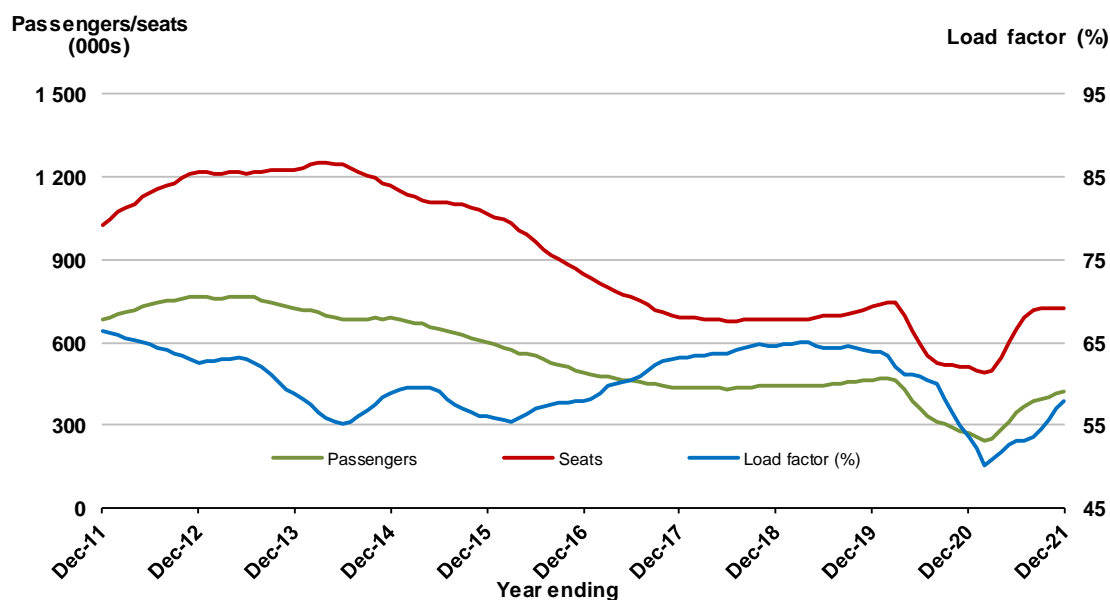
13. Karratha - Perth

Moving annual data

	YE Dec 2020	YE Dec 2021	% Change
Passengers carried (000s)	272.3	420.9	54.6
Seats (000s)	508.6	725.9	42.7
Load factor %	53.5	58.0	4.4 *
Aircraft trips	3 420	4 484	31.1

* percentage point difference

.. data not available for release.

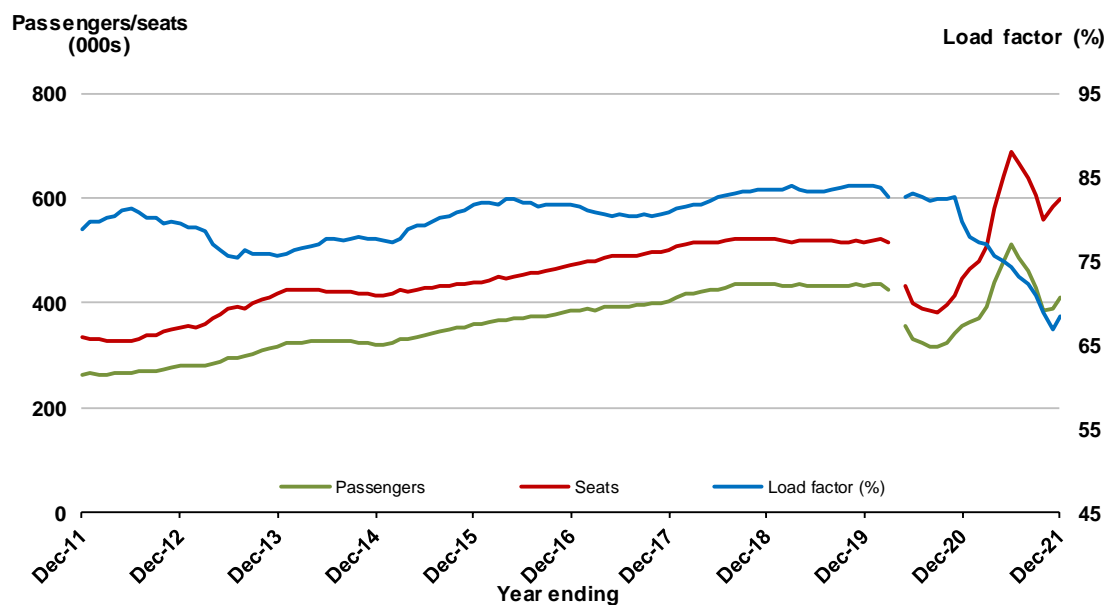


14. Ballina - Sydney ^(a)

Moving annual data

	YE Dec 2020	YE Dec 2021	% Change
Passengers carried (000s)	354.4	408.7	15.3
Seats (000s)	444.9	598.6	34.6
Load factor %	79.7	68.3	-11.4 *
Aircraft trips	3 098	4 333	39.9

* percentage point difference



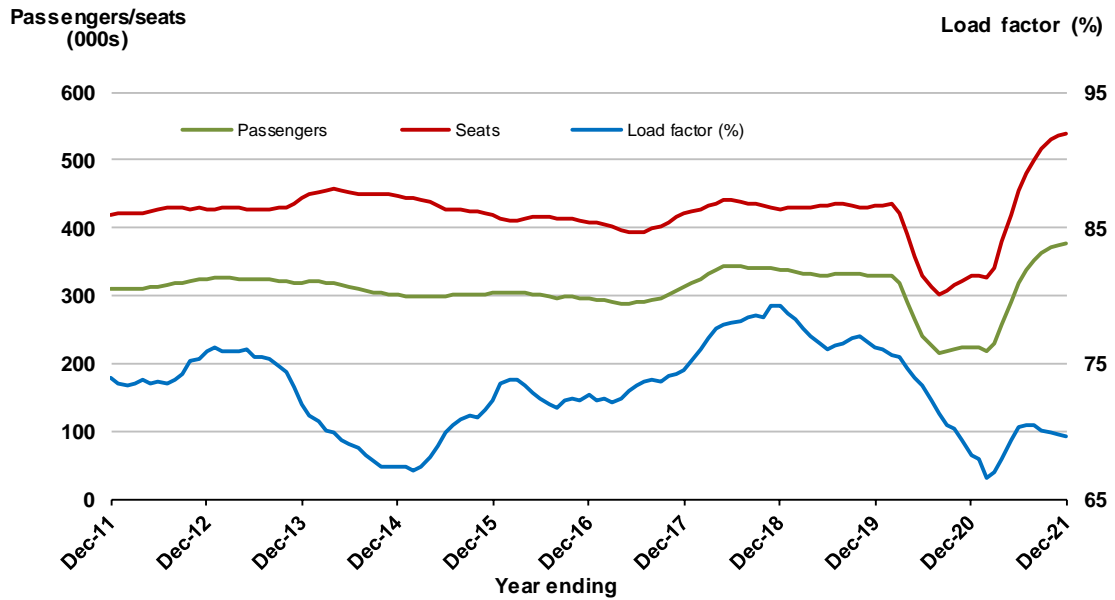
(a) April 2020 moving annual is not available for release.

15. Broome - Perth

Moving annual data

	YE Dec 2020	YE Dec 2021	% Change
Passengers carried (000s)	224.5	375.6	67.3
Seats (000s)	329.2	539.7	63.9
Load factor %	68.2	69.6	1.4 *
Aircraft trips	2 374	3 336	40.5

* percentage point difference

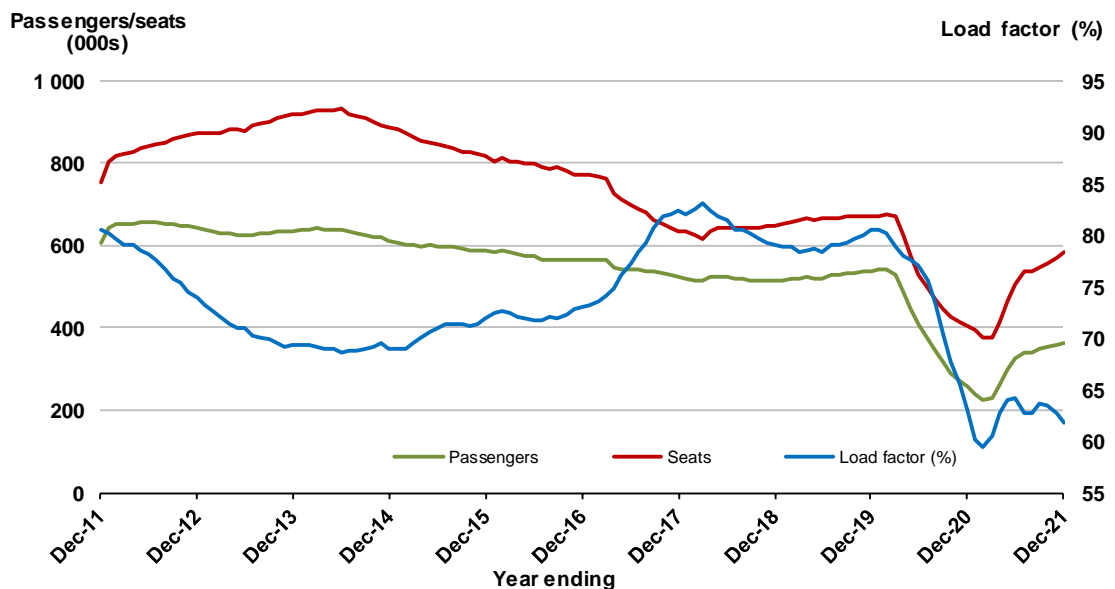


16. Brisbane - Rockhampton

Moving annual data

	YE Dec 2020	YE Dec 2021	% Change
Passengers carried (000s)	255.4	361.4	41.5
Seats (000s)	406.5	585.2	43.9
Load factor %	62.8	61.8	-1.1 *
Aircraft trips	4 411	5 697	29.2

* percentage point difference

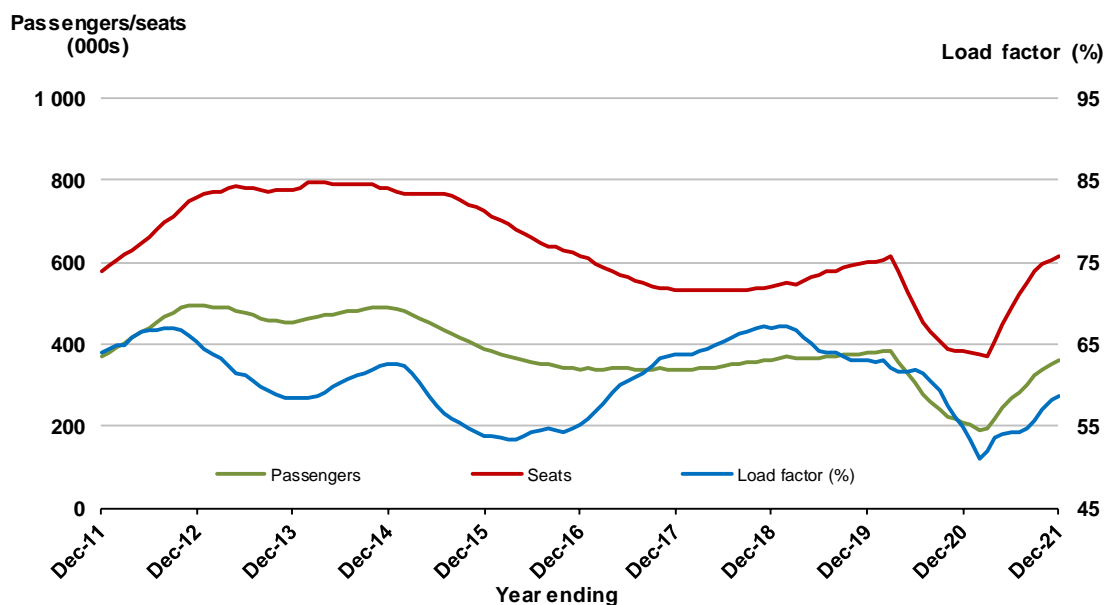


17. Perth - Port Hedland

Moving annual data

	YE Dec 2020	YE Dec 2021	% Change
Passengers carried (000s)	209.7	360.2	71.7
Seats (000s)	381.5	613.1	60.7
Load factor %	55.0	58.8	3.8 *
Aircraft trips	2 717	4 351	60.1

* percentage point difference

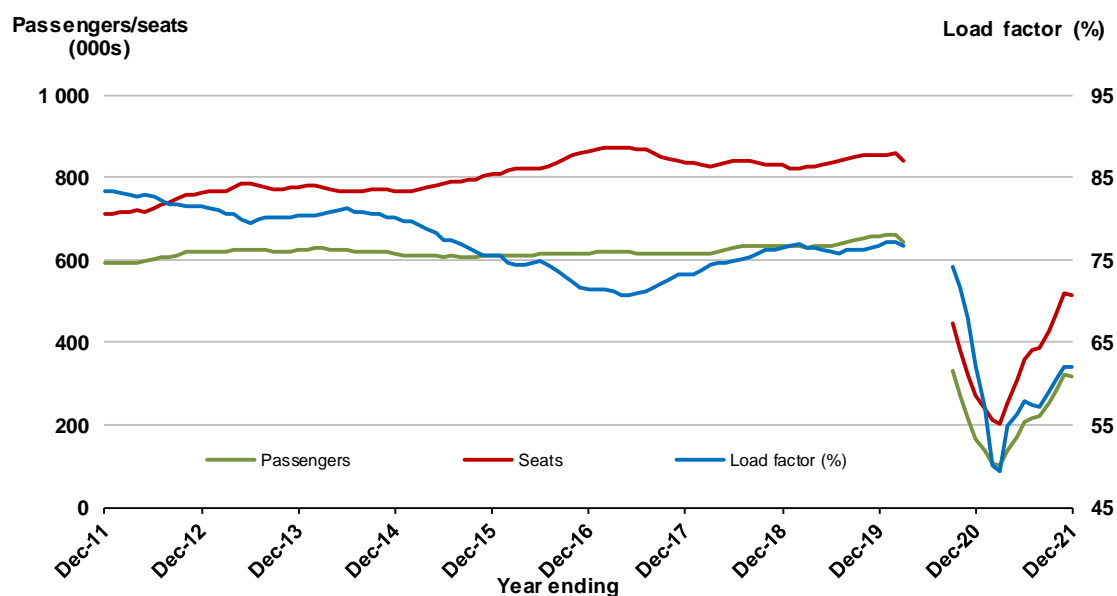


18. Adelaide - Perth

Moving annual data

	YE Dec 2020	YE Dec 2021	% Change
Passengers carried (000s)	167.5	318.6	90.2
Seats (000s)	269.0	513.6	90.9
Load factor %	62.3	62.0	-0.2 *
Aircraft trips	2 026	3 328	64.3

* percentage point difference

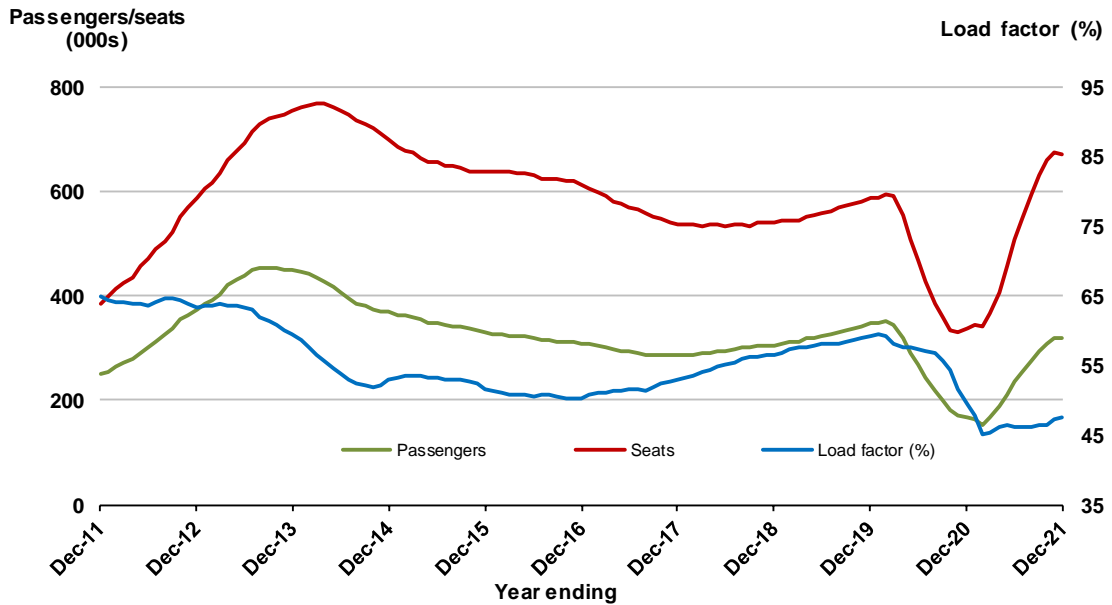


19. Newman - Perth

Moving annual data

	YE Dec 2020	YE Dec 2021	% Change
Passengers carried (000s)	166.8	318.1	90.7
Seats (000s)	338.2	669.7	98.0
Load factor %	49.3	47.5	-1.8 *
Aircraft trips	2 230	4 075	82.7

* percentage point difference



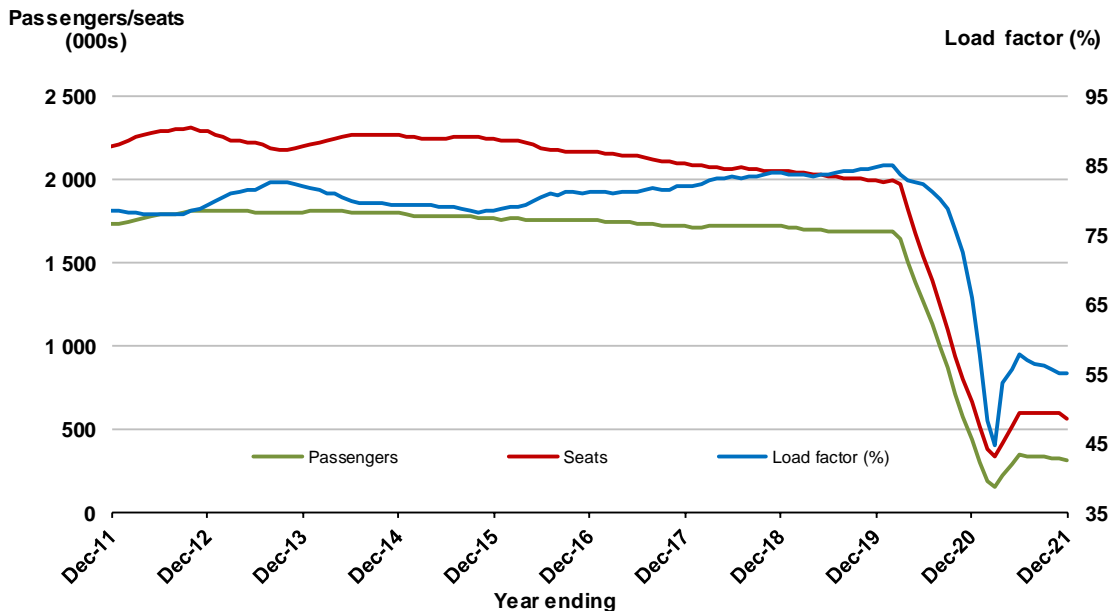
20. Perth - Sydney

Moving annual data

	YE Dec 2020	YE Dec 2021	% Change
Passengers carried (000s)	437.7	313.7	-28.3
Seats (000s)	662.2	569.6	-14.0
Load factor %	66.1	55.1	-11.0 *
Aircraft trips	3 095	3 097	0.1

* percentage point difference

.. data not available for release.



TOP FIFTY REGIONAL AIRPORTS

Table 7: Top fifty regional airports (000s) — passenger movements, annual

Airport	YE Dec 2020	YE Dec 2021	% Change
1 Cairns	1 588.7	2 312.5	45.6
2 Hobart	879.7	1 261.3	43.4
3 Townsville	766.9	1 097.9	43.2
4 Darwin	657.4	1 088.9	65.6
5 Mackay	455.5	647.5	42.1
6 Launceston	452.4	622.5	37.6
7 Ballina	407.3	524.1	28.7
8 Newcastle	381.4	458.8	20.3
9 Karratha	273.4	422.9	54.7
10 Broome	242.0	412.9	70.6
11 Rockhampton	275.9	400.1	45.0
12 Port Hedland	213.6	361.6	69.3
13 Hamilton Island	188.8	327.2	73.3
14 Newman	167.2	319.0	90.8
15 Proserpine	205.7	305.0	48.3
16 Alice Springs	209.2	259.5	24.0
17 Kalgoorlie	160.0	255.1	59.4
18 Paraburdoo	110.7	192.4	73.8
19 Mount Isa	146.8	186.8	27.2
20 Emerald	98.9	145.1	46.7
21 Port Lincoln	89.3	141.9	58.8
22 Gladstone	110.1	140.9	27.9
23 Coffs Harbour	124.1	140.4	13.2
24 Kununurra	56.9	106.5	87.0
25 Dubbo	82.6	99.8	20.8
26 Learmonth	57.4	93.8	63.4
27 Thursday Island	59.8	93.3	55.9
28 Olympic Dam	38.4	86.7	125.9
29 Moranbah	47.5	80.5	69.4
30 Mildura	64.4	77.2	19.8
31 Albury	65.9	76.4	15.9
32 Weipa	42.1	75.9	80.3
33 Geraldton	42.3	75.1	77.4
34 Bundaberg	56.4	72.0	27.5
35 Ayers Rock	92.4	70.2	-24.0
36 Wagga Wagga	61.3	68.3	11.4
37 Port Macquarie	61.7	66.9	8.4
38 Tamworth	55.2	57.9	5.0
39 Gove	50.4	55.3	9.7
40 Hervey Bay	42.4	51.1	20.4
41 Cloncurry	28.9	50.4	74.0
42 Roma	39.4	48.5	22.9
43 Albany	33.5	48.4	44.8
44 Whyalla	28.2	47.9	69.5
45 Esperance	31.9	46.0	43.9
46 King Island	29.2	43.4	48.8
47 Armidale	36.2	42.2	16.8
48 Groote Eylandt	16.8	41.5	146.9
49 Orange	26.0	40.4	55.6
50 Mount Gambier	24.4	39.4	61.6
Total top 50 regional airports	9 476.6	13 779.0	45.4
Total regional airports	10 256.4	14 705.2	43.4
Total domestic network	38 891.1	47 038.2	20.9

Note: Airport passenger movement numbers are the sum of passenger arrivals and departures at each airport. Regional airports are defined as airports which are, according to the Australian Bureau of Statistics "The Australian Statistical Geography Standard (ASGS)", not based in Major Urban areas.

DOMESTIC CHARTER ACTIVITY

Table 8: Charter passengers carried and aircraft trips - annual activity

	YE Dec 2020	YE Dec 2021	% Change
Total domestic charter passengers	3 159 483	3 362 744	6.4
Total domestic charter aircraft trips	65 157	63 519	-2.5

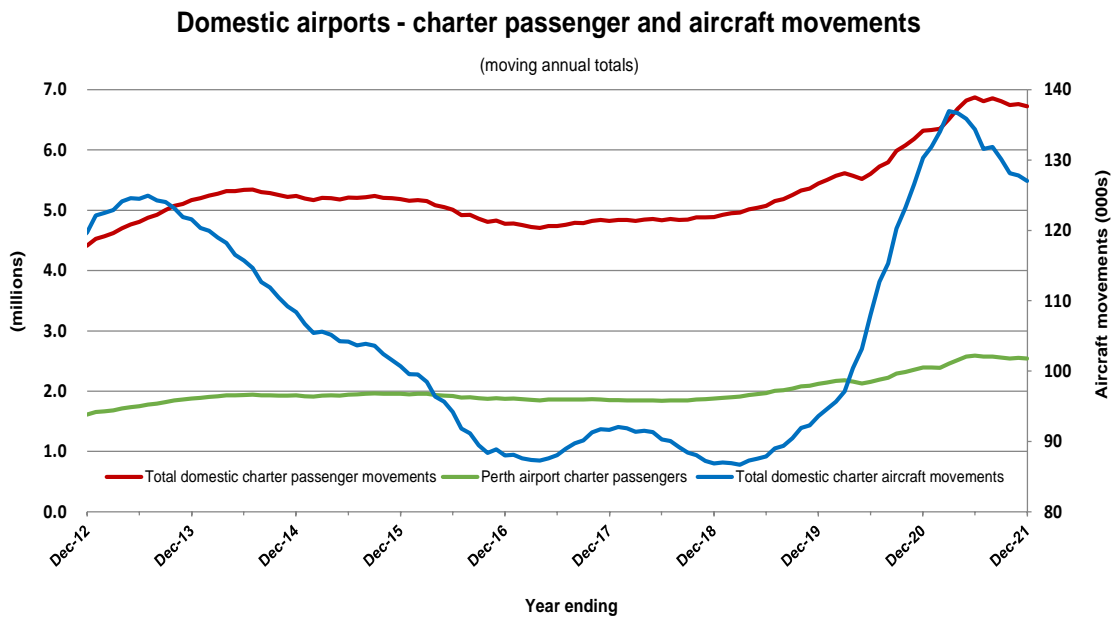
Note: Helicopter, joyflights and sightseeing charter flights not included.

Table 9: Domestic airports - charter activity - annual activity

	YE Dec 2020	YE Dec 2021	% Change
Total domestic charter passenger movements	6 318 966	6 725 488	6.4
Total domestic charter aircraft movements	130 314	127 038	-2.5
Perth airport charter passenger movements	2 393 699	2 541 883	6.2
Perth airport charter aircraft movements	43 428	43 366	-0.1

Note: Helicopter, joyflights and sightseeing charter flights not included.

Charter passenger and aircraft movement numbers are the sum of arrivals and departures at each airport.



DEFINITIONS

Aircraft Trips	The number of flight stages. A return flight counts as two aircraft trips.
Airport Movements	Airport movements (passenger and cargo) are measured once on arrival and once on departure. Each domestic trip generates two movements at airports. For example, a trip from Melbourne to Sydney will be counted twice, as a departure at Melbourne and as an arrival at Sydney. At the national level, the sum of all domestic airport traffic will therefore be equal to twice the number of trips undertaken.
Available Seat Kilometres (ASKs)	Calculated by multiplying the number of seats available on each flight stage, by the distance in kilometres between the ports. The distances used are Great Circle Distances.
City-Pair	The ports shown make up the city-pair route. Passenger movements shown for a city pair reflect total traffic in both directions.
Flight Stage	The operation of an aircraft from take-off to landing.
Load Factor	The total revenue passenger kilometres performed as a percentage of the total available seat kilometres.
Passengers Carried	Revenue passengers carried.
Regular Public Transport Services (RPT)	All air service operations in which aircraft are available for the transport of members of the public and are conducted in accordance with fixed schedules. It does not include charter or other non-scheduled operations.
Revenue Passengers	All passengers paying any fare. Frequent flyer redemption travellers are regarded as revenue passengers.
Revenue Passenger Kilometres (RPKs)	Calculated by multiplying the number of revenue passengers travelling on each flight stage, by the distance in kilometres between the ports. The distances used are Great Circle Distances.
Traffic on board by stages	The total of all traffic (revenue passengers) on each flight stage between two directly connected airports.
..	Not available for confidentiality or other reasons.
NA	Not applicable.