



Australian Government

**Department of Infrastructure, Transport,
Regional Development, Communications and the Arts**
Bureau of Infrastructure and Transport Research Economics

STATISTICAL REPORT



bitre

Aviation

**Domestic aviation activity
2023**

The Department of Infrastructure, Transport, Regional Development, Communications and the Arts acknowledges the Traditional Custodians of Country of the land on which we work and live.

We recognise and respect the continuing connections to land, waters and communities.

We pay our respects to them and their cultures and to their Elders both past and present and to all Aboriginal and Torres Strait Islander people.

© Commonwealth of Australia 2024

ISSN: 1832 - 1968

Ownership of intellectual property rights in this publication

Unless otherwise noted, copyright (and any other intellectual property rights, if any) in this publication is owned by the Commonwealth of Australia (referred to below as the Commonwealth).

Disclaimer

The material contained in this publication is made available on the understanding that the Commonwealth is not providing professional advice, and that users exercise their own skill and care with respect to its use, and seek independent advice if necessary.

The Commonwealth makes no representations or warranties as to the contents or accuracy of the information contained in this publication. To the extent permitted by law, the Commonwealth disclaims liability to any person or organisation in respect of anything done, or omitted to be done, in reliance upon information contained in this publication.

Creative Commons licence

With the exception of (a) the Coat of Arms; and (b) the Department of Infrastructure, Transport, Regional Development, Communications and the Arts' photos and graphics, copyright in this publication is licensed under a Creative Commons Attribution 3.0 Australia Licence.

Creative Commons Attribution 3.0 Australia Licence is a standard form licence agreement that allows you to copy, communicate and adapt this publication provided that you attribute the work to the Commonwealth and abide by the other licence terms. A summary of the licence terms is available from <http://creativecommons.org/licenses/by/3.0/au/deed.en>.

The full licence terms are available from <http://creativecommons.org/licenses/by/3.0/au/legalcode>.

Use of the Coat of Arms

The Department of the Prime Minister and Cabinet sets the terms under which the Coat of Arms is used. Please refer to the Department's Commonwealth Coat of Arms and Government branding web page <http://www.dpmc.gov.au/guidelines/index.cfm#brand> and, in particular, the Guidelines on the use of the Commonwealth Coat of Arms publication.

An appropriate citation for this report is:

Bureau of Infrastructure and Transport Research Economics (BITRE), 2024, Domestic aviation activity, Statistical Report, BITRE, Canberra ACT.

Contact us

This publication is available in PDF format. All other rights are reserved, including in relation to any Departmental logos or trade marks which may exist. For enquiries regarding the licence and any use of this publication, please contact:

Bureau of Infrastructure and Transport Research Economics (BITRE)
Department of Infrastructure, Transport, Regional Development, Communications and the Arts
GPO Box 501, Canberra ACT 2601, Australia

Inquiries

Telephone: +61 2 6136 8282
Email: AVSTATS@infrastructure.gov.au
Website: www.bitre.gov.au/statistics/aviation

FOREWORD

This report provides an overview of domestic (including charter) commercial aviation activity in Australia for the year ending December 2023.

The data covers revenue passengers carried by Australian-registered operators of scheduled regular public transport services over Australian flight stages and fixed-wing charter operators. These estimates include passengers carried between domestic airports on international flights operated by these carriers. The passengers carried refer to traffic on board by stages.

Estimates of passengers and aircraft movements for charter aviation are included in this publication, where BITRE confidentiality standards are met.

Individual routes shown are restricted to those with an average exceeding 8,000 passengers per month over the previous six months where two or more airlines operate in competition. In November 2021 the major airlines (Qantas Group, Virgin Australia and Rex Airlines) agreed to publication of the top 35 routes based on pre-COVID activity (December 2019) whether or not they were meeting the above criteria. From January 2023, the passenger load and dual competition requirements were reinstated due to the continued recovery of passenger numbers.

Information on both the total network and the Regular Public Transport (RPT) network for the year ending December 2023 is presented on page 2.

Detailed information on the 61 individual routes can be found in the RPT summary pages on pages 3-10.

The top ten airports in terms of RPT passenger movements are shown on page 11.

Data on domestic RPT cargo movements at the top five cargo airports are provided on page 12. The table includes cargo carried on passenger flights operated by the Qantas group (including Jetstar), Virgin Australia, Air North and Skippers as well as the cargo carried by dedicated freighter aircraft operated by Qantas Freight and Team Global Express (formerly Toll Priority).

The long-term trends for the top twenty competitive RPT routes are presented graphically on pages 13–22.

Domestic RPT passenger movements at the top 50 regional airports are presented on page 23

Tables providing estimates of domestic charter aviation activity are shown on page 24. BITRE confidentiality standards restrict publication of detailed airport-level estimates for any Australian airport, with the exception of Perth Airport.

A list of definitions can be found on page 25.

This report was prepared by the Aviation Statistics Section of the Bureau of Infrastructure and Transport Research Economics with data provided by airlines.

Estimates are included where data were not available and data presented in this publication may contain revisions to previously published data.

Where figures have been rounded, discrepancies may occur between sums of component items and totals, and in percentage changes which are derived from figures prior to rounding.

CONTENTS

Highlights	1
RPT network.....	2
Top competitive routes.....	3
Top ten airports – passenger movements	11
Top five airports – cargo movements.....	12
Top twenty routes	13
1. Melbourne – Sydney	13
2. Brisbane – Sydney.....	13
3. Brisbane – Melbourne	14
4. Gold Coast – Sydney.....	14
5. Adelaide – Melbourne.....	15
6. Gold Coast – Melbourne.....	15
7. Melbourne – Perth	16
8. Adelaide – Sydney.....	16
9. Perth – Sydney	17
10. Hobart – Melbourne	17
11. Brisbane – Cairns	18
12. Brisbane – Perth.....	18
13. Canberra – Melbourne.....	19
14. Cairns – Sydney	19
15. Brisbane – Townsville	20
16. Adelaide – Brisbane.....	20
17. Launceston – Melbourne	21
18. Cairns – Melbourne	21
19. Sunshine Coast – Sydney.....	22
20. Melbourne – Sunshine Coast.....	22
Top fifty regional airports.....	23
Domestic charter activity.....	24
Definitions	25

This page is intentionally left blank.

HIGHLIGHTS

There were 61.32 million passengers carried on Australian domestic commercial aviation (including charter operations) in the year ending December 2023, an increase of 14.1 per cent compared with the year ending December 2022.

57.27 million passengers were carried on RPT flights in the year ending December 2023, an increase of 14.1 per cent compared with the year ending December 2022.

In the year ending December 2023 there were 612.2 thousand RPT aircraft trips compared to 558.2 thousand in the previous year, an increase of 9.7 per cent.

RPT revenue passenger kilometres (RPKs) performed were 68.42 billion, an increase of 15.6 per cent compared with the year ending December 2022.

Capacity, measured by available seat kilometres (ASKs), increased by 13.3 per cent compared with the year ending December 2022, to a total of 85.01 billion.

The industry wide load factor (RPKs/ASKs) increased from 78.8 per cent in the year ending December 2022 to 80.5 per cent in the year ending December 2023.

For the year ending December 2023, Melbourne – Sydney remained Australia's busiest RPT route with 7.62 million passengers, an increase of 15.9 per cent compared with the previous calendar year. It was followed by Brisbane – Sydney with 4.25 million passengers (up 18.3 per cent) and Brisbane – Melbourne with 3.31 million passengers (up 18.0 per cent).

In the year ending December 2023, Sydney was Australia's busiest domestic airport with 24.14 million passenger movements, up 15.0 per cent compared with the year ending December 2022, followed by Melbourne with 23.40 million passenger movements (up 14.4 per cent) and Brisbane with 16.35 million passenger movements (up 13.7 per cent).

Total cargo movements at Australian airports on domestic RPT flights were 335.0 tonnes in the year ending December 2023, a decrease of 9.5 per cent compared to the year ending December 2022.

In the year ending December 2023, the number of domestic aviation passengers travelling through regional airports was 24.40 million, up 10.3 per cent compared to the year ending December 2022.

Fixed-wing charter operators carried 4.05 million passengers in the year ending December 2023, an increase of 14.2 per cent compared with the year ending December 2022. Perth airport accounted for 37.2 per cent of all charter passengers in Australia.

TOTAL NETWORK

Summary of annual commercial aviation activity

	YE Dec 2022	YE Dec 2023	% Change
Total passengers carried (millions)	53.74	61.32	14.1
Aircraft trips (000s)	623.8	682.0	9.3

Note: Regular Public Transport and charter aviation activity, Helicopter, joyflights and sightseeing charter flights not included.

RPT NETWORK

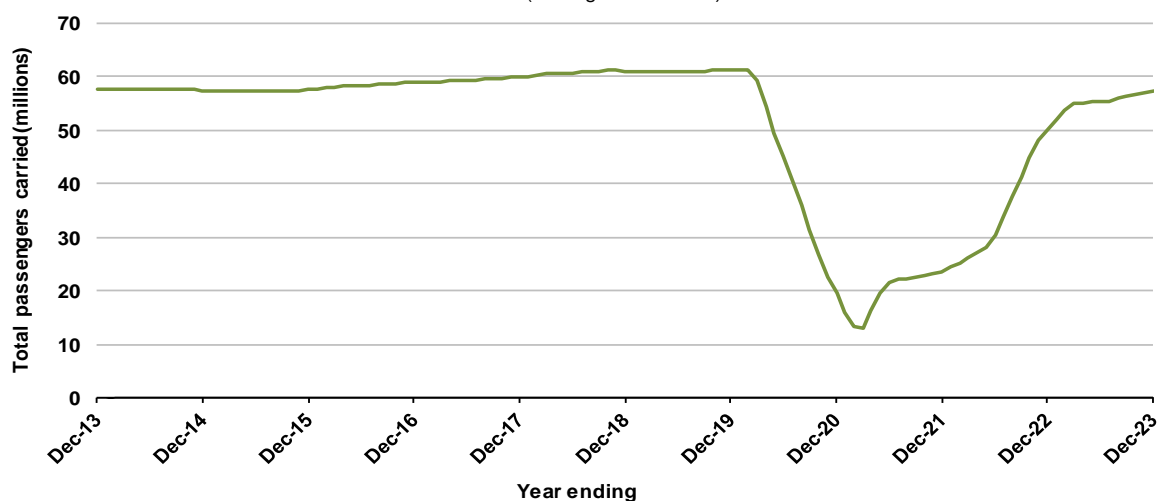
Summary of annual RPT activity

	YE Dec 2022	YE Dec 2023	% Change
Total passengers carried (millions)	50.20	57.27	14.1
Revenue passenger kilometres (billions)	59.17	68.42	15.6
Available seats (millions)	65.64	73.18	11.5
Available seat kilometres (billions)	75.06	85.01	13.3
Load factor %	78.8	80.5	1.6
Aircraft trips (000s)	558.2	612.2	9.7

* percentage point difference

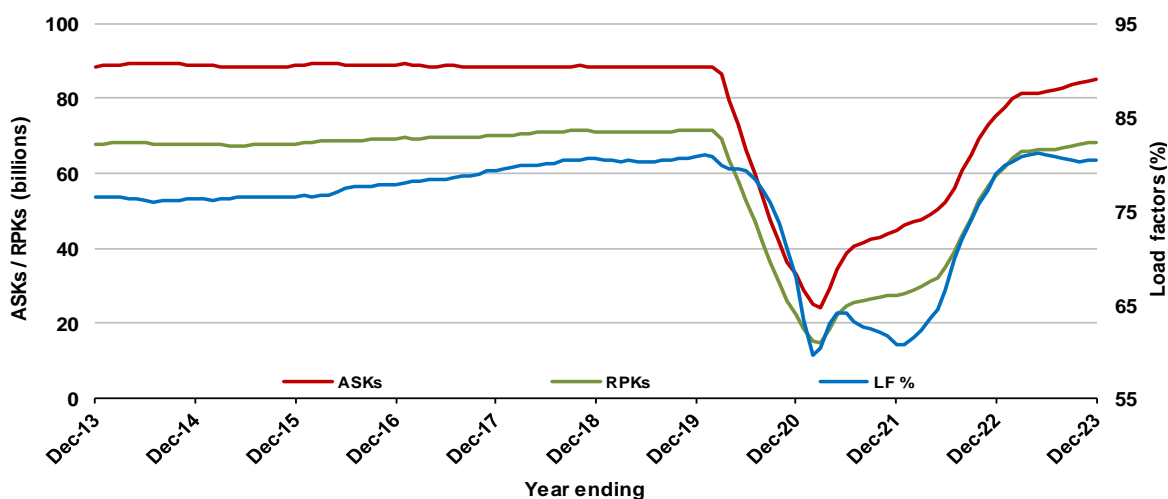
Domestic RPT passenger traffic

(moving annual totals)



RPT Network utilisation

(moving annual totals)



TOP COMPETITIVE ROUTES

Table 1: Passengers carried (000s) — annual activity

	City-Pair	YE Dec 2022	YE Dec 2023	% Change
1	Melbourne - Sydney	6,576.2	7,624.6	15.9
2	Brisbane - Sydney	3,594.3	4,250.6	18.3
3	Brisbane - Melbourne	2,806.5	3,311.8	18.0
4	Gold Coast - Sydney	2,298.5	2,436.6	6.0
5	Adelaide - Melbourne	1,964.7	2,284.0	16.3
6	Gold Coast - Melbourne	2,291.7	2,219.7	-3.1
7	Melbourne - Perth	1,347.8	1,915.8	42.1
8	Adelaide - Sydney	1,410.6	1,743.2	23.6
9	Perth - Sydney	1,118.8	1,586.8	41.8
10	Hobart - Melbourne	1,086.4	1,294.8	19.2
11	Brisbane - Cairns	1,136.6	1,243.8	9.4
12	Brisbane - Perth	737.3	1,009.4	36.9
13	Canberra - Melbourne	850.0	997.4	17.3
14	Cairns - Sydney	822.6	879.5	6.9
15	Brisbane - Townsville	818.3	872.8	6.7
16	Adelaide - Brisbane	713.2	819.2	14.9
17	Launceston - Melbourne	679.2	815.0	20.0
18	Cairns - Melbourne	815.1	811.0	-0.5
19	Sunshine Coast - Sydney	684.8	756.8	10.5
20	Melbourne - Sunshine Coast	724.3	747.8	3.2
21	Hobart - Sydney	649.8	734.9	13.1
22	Brisbane - Mackay	698.4	728.4	4.3
23	Adelaide - Perth	485.9	654.1	34.6
24	Brisbane - Canberra	593.4	630.4	6.2
25	Canberra - Sydney	536.5	602.6	12.3
26	Karratha - Perth	491.8	543.7	10.6
27	Ballina - Sydney	504.5	534.6	6.0
28	Brisbane - Rockhampton	443.1	509.5	15.0
29	Brisbane - Newcastle	450.2	499.8	11.0
30	Perth - Port Hedland	448.3	479.4	6.9
31	Melbourne - Newcastle	382.0	421.3	10.3
32	Newman - Perth	341.8	371.2	8.6
33	Broome - Perth	366.2	363.8	-0.7
34	Kalgoorlie - Perth	301.9	359.3	19.0
35	Launceston - Sydney	274.8	330.9	20.4
36	Brisbane - Darwin	328.8	321.5	-2.2
37	Brisbane - Hobart	291.2	293.8	0.9
38	Darwin - Melbourne	304.3	283.4	-6.9
39	Brisbane - Proserpine	293.5	274.7	-6.4
40	Adelaide - Gold Coast	223.3	260.2	16.6
41	Hamilton Island - Sydney	233.4	246.2	5.5
42	Brisbane - Gladstone	193.1	214.0	10.8
43	Coffs Harbour - Sydney	208.8	213.8	2.4
44	Adelaide - Canberra	154.0	193.4	25.6
45	Brisbane - Emerald	169.7	184.3	8.6
46	Dubbo - Sydney	147.4	177.7	20.6
47	Canberra - Gold Coast	144.3	175.8	21.8
48	Adelaide - Port Lincoln	170.3	173.9	2.1
49	Darwin - Perth	149.9	171.2	14.2
50	Melbourne - Mildura	139.7	166.6	19.3

(continued)

Table 1: (continued) Passengers carried (000s) — annual activity

	City-Pair	YE Dec 2022	YE Dec 2023	% Change
51	Port Macquarie - Sydney	142.8	166.5	16.6
52	Albury - Sydney	151.0	165.7	9.8
53	Brisbane - Hamilton Island	175.0	164.2	-6.1
54	Sydney - Wagga Wagga	136.6	154.0	12.7
55	Brisbane - Launceston	169.4	152.6	-9.9
56	Brisbane - Mount Isa	136.1	143.7	5.6
57	Brisbane - Bundaberg	..	121.3	NA
58	Devonport - Melbourne	97.6	121.2	24.2
59	Adelaide - Alice Springs	100.1	116.5	16.5
60	Brisbane - Moranbah	97.9	109.1	11.5
61	Geraldton - Perth	..	92.9	NA
	Total domestic network	50,197.5	57,273.5	14.1

.. Data not available for release.

Table 2: Available seats (000s) — annual activity

	City-Pair	YE Dec 2022	YE Dec 2023	% Change
1	Melbourne - Sydney	8,047.1	9,304.1	15.6
2	Brisbane - Sydney	4,520.0	5,246.5	16.1
3	Brisbane - Melbourne	3,416.2	4,020.3	17.7
4	Gold Coast - Sydney	2,799.8	2,851.1	1.8
5	Adelaide - Melbourne	2,488.1	2,789.6	12.1
6	Gold Coast - Melbourne	2,826.3	2,493.9	-11.8
7	Melbourne - Perth	1,592.9	2,300.2	44.4
8	Adelaide - Sydney	1,721.1	2,119.0	23.1
9	Perth - Sydney	1,296.5	1,883.2	45.3
10	Hobart - Melbourne	1,385.9	1,589.5	14.7
11	Brisbane - Cairns	1,352.3	1,415.3	4.7
12	Brisbane - Perth	872.8	1,190.6	36.4
13	Canberra - Melbourne	1,197.7	1,402.4	17.1
14	Cairns - Sydney	991.2	998.8	0.8
15	Brisbane - Townsville	1,065.8	1,086.8	2.0
16	Adelaide - Brisbane	875.0	1,006.0	15.0
17	Launceston - Melbourne	896.9	1,036.3	15.5
18	Cairns - Melbourne	956.0	924.7	-3.3
19	Sunshine Coast - Sydney	941.7	943.5	0.2
20	Melbourne - Sunshine Coast	906.0	881.6	-2.7
21	Hobart - Sydney	855.0	924.8	8.2
22	Brisbane - Mackay	964.6	947.1	-1.8
23	Adelaide - Perth	587.6	778.8	32.5
24	Brisbane - Canberra	829.3	896.1	8.1
25	Canberra - Sydney	849.1	917.1	8.0
26	Karratha - Perth	722.1	775.3	7.4
27	Ballina - Sydney	693.2	666.8	-3.8
28	Brisbane - Rockhampton	578.9	669.1	15.6
29	Brisbane - Newcastle	617.8	687.2	11.2
30	Perth - Port Hedland	628.8	695.5	10.6
31	Melbourne - Newcastle	480.8	534.3	11.1
32	Newman - Perth	614.4	629.7	2.5
33	Broome - Perth	507.6	471.5	-7.1
34	Kalgoorlie - Perth	466.8	558.9	19.7
35	Launceston - Sydney	348.2	409.5	17.6
36	Brisbane - Darwin	410.7	390.2	-5.0
37	Brisbane - Hobart	372.0	360.4	-3.1
38	Darwin - Melbourne	382.5	351.4	-8.1
39	Brisbane - Proserpine	364.9	334.5	-8.3
40	Adelaide - Gold Coast	261.9	294.2	12.3
41	Hamilton Island - Sydney	337.1	345.2	2.4
42	Brisbane - Gladstone	301.7	355.9	18.0
43	Coffs Harbour - Sydney	297.8	283.0	-5.0
44	Adelaide - Canberra	217.3	311.5	43.3
45	Brisbane - Emerald	265.8	261.2	-1.7
46	Dubbo - Sydney	252.5	281.4	11.4
47	Canberra - Gold Coast	179.8	212.2	18.0
48	Adelaide - Port Lincoln	269.0	269.1	0.0
49	Darwin - Perth	197.3	230.5	16.9
50	Melbourne - Mildura	196.5	236.9	20.6

(continued)

Table 2: (continued) Available seats (000s) — annual activity

	City-Pair	YE Dec 2022	YE Dec 2023	% Change
51	Port Macquarie - Sydney	238.2	257.9	8.3
52	Albury - Sydney	237.8	250.5	5.4
53	Brisbane - Hamilton Island	273.9	239.7	-12.5
54	Sydney - Wagga Wagga	220.8	253.9	15.0
55	Brisbane - Launceston	222.8	188.7	-15.3
56	Brisbane - Mount Isa	215.9	233.6	8.2
57	Brisbane - Bundaberg	..	197.1	NA
58	Devonport - Melbourne	143.6	173.4	20.8
59	Adelaide - Alice Springs	142.7	162.1	13.6
60	Brisbane - Moranbah	203.3	194.1	-4.5
61	Geraldton - Perth	..	169.5	NA
	Total domestic network	65,639.2	73,182.8	11.5

.. Data not available for release.

Table 3: Load factors (%) — annual activity

	City-Pair	YE Dec 2022	YE Dec 2023	% Change
1	Melbourne - Sydney	81.7	82.0	0.3
2	Brisbane - Sydney	79.5	81.0	1.5
3	Brisbane - Melbourne	82.2	82.4	0.2
4	Gold Coast - Sydney	82.1	85.5	3.4
5	Adelaide - Melbourne	79.0	81.9	2.9
6	Gold Coast - Melbourne	85.5	89.0	3.5
7	Melbourne - Perth	85.6	83.3	-2.3
8	Adelaide - Sydney	82.0	82.3	0.3
9	Perth - Sydney	86.3	84.3	-2.0
10	Hobart - Melbourne	78.4	81.5	3.1
11	Brisbane - Cairns	84.1	87.9	3.8
12	Brisbane - Perth	84.5	84.8	0.3
13	Canberra - Melbourne	71.0	71.1	0.1
14	Cairns - Sydney	83.0	88.1	5.1
15	Brisbane - Townsville	76.8	80.3	3.5
16	Adelaide - Brisbane	81.5	81.4	-0.1
17	Launceston - Melbourne	75.7	78.6	2.9
18	Cairns - Melbourne	85.3	87.7	2.4
19	Sunshine Coast - Sydney	72.7	80.2	7.5
20	Melbourne - Sunshine Coast	79.9	85.1	5.2
21	Hobart - Sydney	76.0	79.5	3.5
22	Brisbane - Mackay	72.4	76.9	4.5
23	Adelaide - Perth	82.7	84.0	1.3
24	Brisbane - Canberra	71.6	70.4	-1.2
25	Canberra - Sydney	63.2	65.7	2.5
26	Karratha - Perth	68.1	70.1	2.0
27	Ballina - Sydney	72.8	80.2	7.4
28	Brisbane - Rockhampton	76.5	76.2	-0.4
29	Brisbane - Newcastle	72.9	72.7	-0.1
30	Perth - Port Hedland	71.3	68.9	-2.4
31	Melbourne - Newcastle	79.4	78.9	-0.6
32	Newman - Perth	55.6	58.9	3.3
33	Broome - Perth	72.1	77.2	5.0
34	Kalgoorlie - Perth	64.7	64.3	-0.4
35	Launceston - Sydney	78.9	80.8	1.9
36	Brisbane - Darwin	80.1	82.4	2.3
37	Brisbane - Hobart	78.3	81.5	3.2
38	Darwin - Melbourne	79.6	80.6	1.1
39	Brisbane - Proserpine	80.4	82.1	1.7
40	Adelaide - Gold Coast	85.2	88.5	3.2
41	Hamilton Island - Sydney	69.2	71.3	2.1
42	Brisbane - Gladstone	64.0	60.1	-3.9
43	Coffs Harbour - Sydney	70.1	75.6	5.5
44	Adelaide - Canberra	70.9	62.1	-8.8
45	Brisbane - Emerald	63.8	70.5	6.7
46	Dubbo - Sydney	58.4	63.2	4.8
47	Canberra - Gold Coast	80.3	82.9	2.6
48	Adelaide - Port Lincoln	63.3	64.6	1.3
49	Darwin - Perth	76.0	74.2	-1.8
50	Melbourne - Mildura	71.1	70.3	-0.8

(continued)

Table 3: (continued) Load factors (%) — annual activity

	City-Pair	YE Dec 2022	YE Dec 2023	% Change
51	Port Macquarie - Sydney	60.0	64.6	4.6
52	Albury - Sydney	63.5	66.1	2.7
53	Brisbane - Hamilton Island	63.9	68.5	4.6
54	Sydney - Wagga Wagga	61.9	60.6	-1.2
55	Brisbane - Launceston	76.0	80.9	4.8
56	Brisbane - Mount Isa	63.1	61.5	-1.5
57	Brisbane - Bundaberg	..	61.5	NA
58	Devonport - Melbourne	68.0	69.9	1.9
59	Adelaide - Alice Springs	70.1	71.9	1.7
60	Brisbane - Moranbah	48.2	56.2	8.1
61	Geraldton - Perth	..	54.8	NA
	Total domestic network	78.8	80.5	1.6

.. Data not available for release.

Table 4: Aircraft trips ^(a) — annual activity

	City-Pair	YE Dec 2022	YE Dec 2023	% Change
1	Melbourne - Sydney	46,866	53,921	15.1
2	Brisbane - Sydney	27,927	32,233	15.4
3	Brisbane - Melbourne	20,882	24,355	16.6
4	Gold Coast - Sydney	16,190	16,395	1.3
5	Adelaide - Melbourne	15,239	17,150	12.5
6	Gold Coast - Melbourne	14,740	13,505	-8.4
7	Melbourne - Perth	9,045	12,817	41.7
8	Adelaide - Sydney	10,528	12,957	23.1
9	Perth - Sydney	6,807	9,737	43.0
10	Hobart - Melbourne	8,491	9,268	9.2
11	Brisbane - Cairns	8,855	9,555	7.9
12	Brisbane - Perth	4,986	6,902	38.4
13	Canberra - Melbourne	8,663	10,128	16.9
14	Cairns - Sydney	5,149	5,175	0.5
15	Brisbane - Townsville	7,204	7,967	10.6
16	Adelaide - Brisbane	5,689	8,380	47.3
17	Launceston - Melbourne	7,549	8,803	16.6
18	Cairns - Melbourne	5,000	4,755	-4.9
19	Sunshine Coast - Sydney	5,310	5,385	1.4
20	Melbourne - Sunshine Coast	5,226	4,797	-8.2
21	Hobart - Sydney	5,180	5,683	9.7
22	Brisbane - Mackay	6,500	7,384	13.6
23	Adelaide - Perth	3,654	4,446	21.7
24	Brisbane - Canberra	5,987	6,982	16.6
25	Canberra - Sydney	13,920	14,954	7.4
26	Karratha - Perth	4,591	4,706	2.5
27	Ballina - Sydney	5,209	4,852	-6.9
28	Brisbane - Rockhampton	6,104	7,773	27.3
29	Brisbane - Newcastle	5,512	6,134	11.3
30	Perth - Port Hedland	4,148	4,372	5.4
31	Melbourne - Newcastle	3,024	3,414	12.9
32	Newman - Perth	3,912	3,970	1.5
33	Broome - Perth	3,286	3,121	-5.0
34	Kalgoorlie - Perth	3,290	3,770	14.6
35	Launceston - Sydney	2,103	2,555	21.5
36	Brisbane - Darwin	2,810	2,660	-5.3
37	Brisbane - Hobart	2,255	2,276	0.9
38	Darwin - Melbourne	2,088	2,149	2.9
39	Brisbane - Proserpine	2,311	2,293	-0.8
40	Adelaide - Gold Coast	1,506	1,613	7.1
41	Hamilton Island - Sydney	1,915	1,961	2.4
42	Brisbane - Gladstone	3,710	4,298	15.8
43	Coffs Harbour - Sydney	5,333	5,129	-3.8
44	Adelaide - Canberra	1,927	2,849	47.8
45	Brisbane - Emerald	3,913	3,927	0.4
46	Dubbo - Sydney	5,161	5,325	3.2
47	Canberra - Gold Coast	1,123	1,193	6.2
48	Adelaide - Port Lincoln	6,683	6,555	-1.9
49	Darwin - Perth	1,132	1,342	18.6
50	Melbourne - Mildura	4,616	5,072	9.9

(continued)

Table 4: (continued) Aircraft trips ^(a) — annual activity

	City-Pair	YE Dec 2022	YE Dec 2023	% Change
51	Port Macquarie - Sydney	4,656	4,563	-2.0
52	Albury - Sydney	4,591	4,790	4.3
53	Brisbane - Hamilton Island	1,582	1,401	-11.4
54	Sydney - Wagga Wagga	4,297	4,672	8.7
55	Brisbane - Launceston	1,280	1,087	-15.1
56	Brisbane - Mount Isa	2,029	2,046	0.8
57	Brisbane - Bundaberg	..	3,208	NA
58	Devonport - Melbourne	3,021	3,829	26.7
59	Adelaide - Alice Springs	1,651	1,935	17.2
60	Brisbane - Moranbah	2,692	2,578	-4.2
61	Geraldton - Perth	..	1,600	NA
	Total domestic network	558,169	612,234	9.7

(a) Includes RPT Cargo flights.

.. Data not available for release.

TOP TEN AIRPORTS – PASSENGER MOVEMENTS

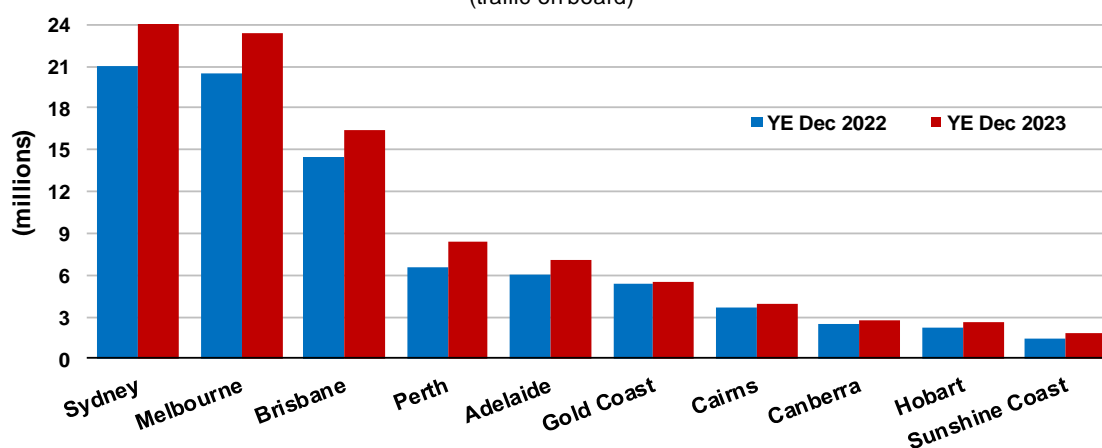
Table 5: Top ten airports, RPT passenger movements (000s) — annual activity

Airport	YE Dec 2022	YE Dec 2023	% Change	% of Total
1 Sydney	20,979.4	24,136.5	15.0	21.1
2 Melbourne	20,457.7	23,397.2	14.4	20.4
3 Brisbane	14,380.9	16,353.8	13.7	14.3
4 Perth	6,626.8	8,403.5	26.8	7.3
5 Adelaide	6,029.6	7,116.9	18.0	6.2
6 Gold Coast	5,336.5	5,459.1	2.3	4.8
7 Cairns	3,686.2	3,970.5	7.7	3.5
8 Canberra	2,438.0	2,759.1	13.2	2.4
9 Hobart	2,289.0	2,579.5	12.7	2.3
10 Sunshine Coast	1,495.6	1,854.6	24.0	1.6
Total top ten airports	83,719.8	96,030.6	14.7	83.8
Total domestic network	100,395.1	114,547.1	14.1	100.0

Note: Airport passenger movement numbers are the sum of passenger arrivals and departures at each airport.

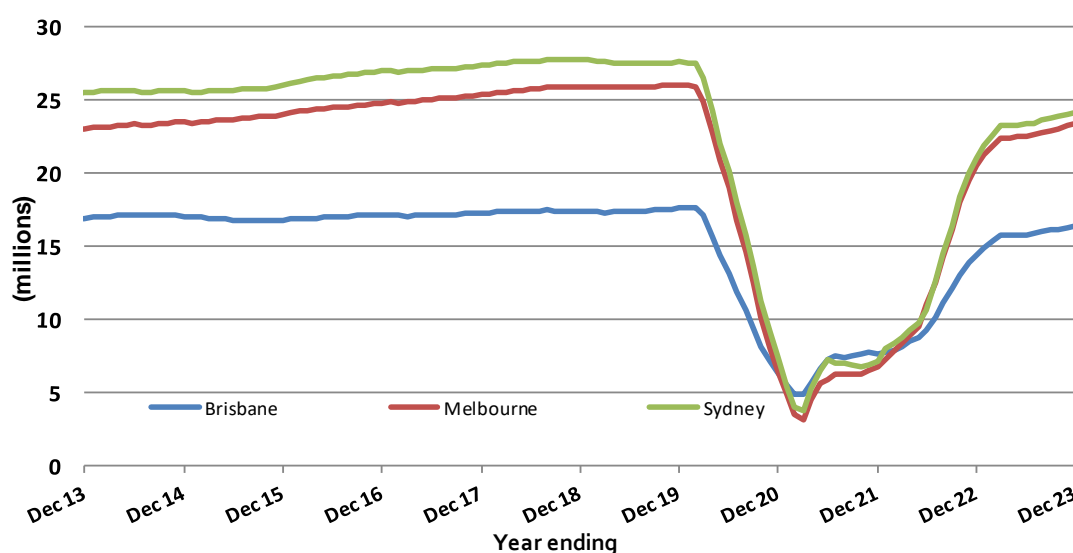
Top ten airports, RPT passenger movements

(traffic on board)



Top three airports, domestic passenger movements

(moving annual totals - traffic on board)



TOP FIVE AIRPORTS – CARGO MOVEMENTS

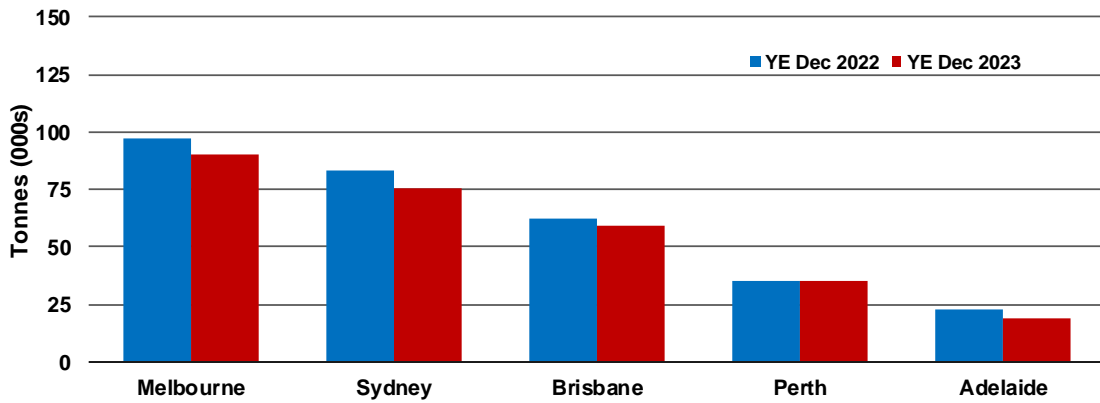
Table 6: Top five airports, domestic RPT cargo movements (000s tonnes) - annual activity

Airport	YE Dec 2022	YE Dec 2023	% Change	% of Total
1 Melbourne	96.8	89.8	-7.2	26.8
2 Sydney	82.9	75.4	-9.0	22.5
3 Brisbane	62.4	59.3	-5.0	17.7
4 Perth	35.2	34.7	-1.5	10.4
5 Adelaide	22.5	18.9	-15.8	5.6
Total top five airports	299.7	278.1	-7.2	83.0
Total domestic network	370.0	335.0	-9.5	100.0

Note: Airport cargo tonnes are the sum of cargo tonnes on arrivals and departures at each airport.

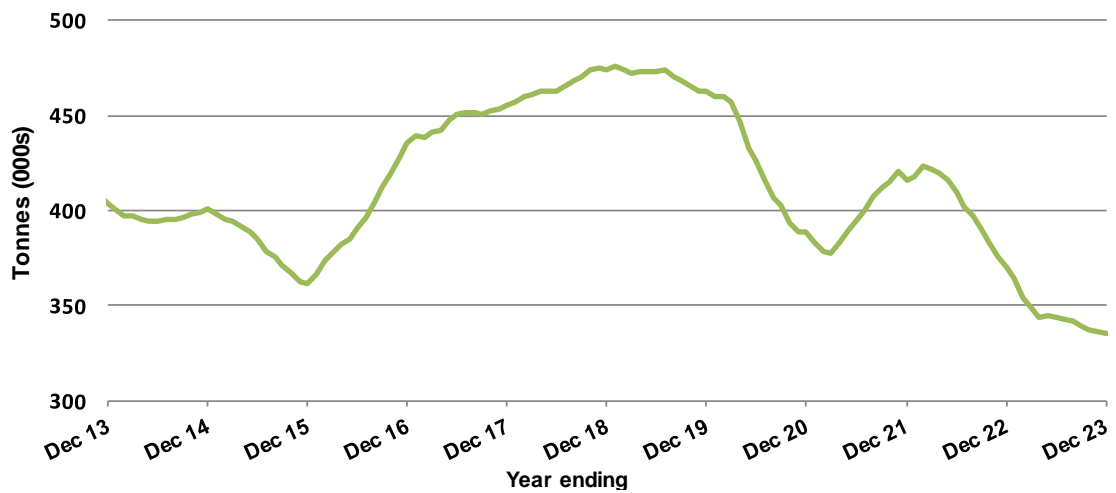
Top five airports, cargo movements

(Domestic cargo traffic - traffic on board)



Total domestic network - cargo movements

(moving annual totals - traffic on board)



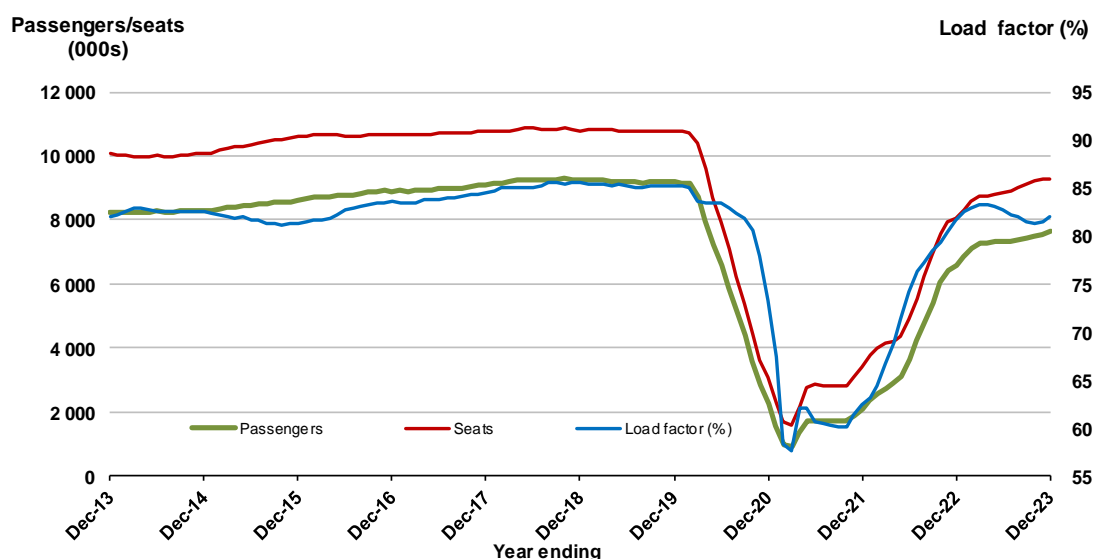
TOP TWENTY ROUTES

1. Melbourne - Sydney

Moving annual data

	YE Dec 2022	YE Dec 2023	% Change
Passengers carried (000s)	6,576.2	7,624.6	15.9
Seats (000s)	8,047.1	9,304.1	15.6
Load factor %	81.7	82.0	0.3 *
Aircraft trips	46,866	53,921	15.1

* percentage point difference

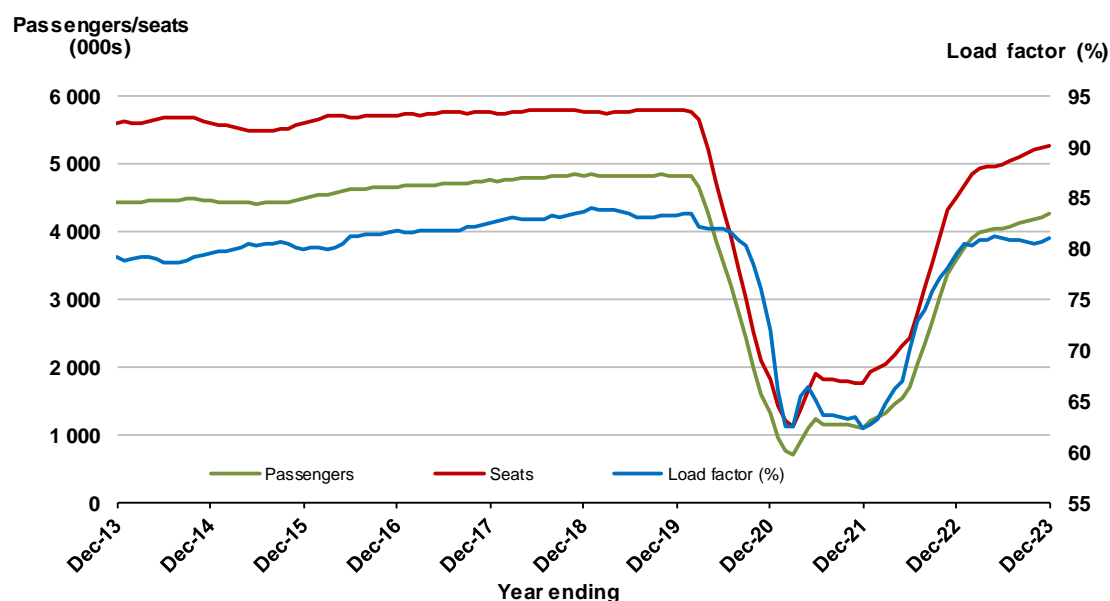


2. Brisbane - Sydney

Moving annual data

	YE Dec 2022	YE Dec 2023	% Change
Passengers carried (000s)	3,594.3	4,250.6	18.3
Seats (000s)	4,520.0	5,246.5	16.1
Load factor %	79.5	81.0	1.5 *
Aircraft trips	27,927	32,233	15.4

* percentage point difference

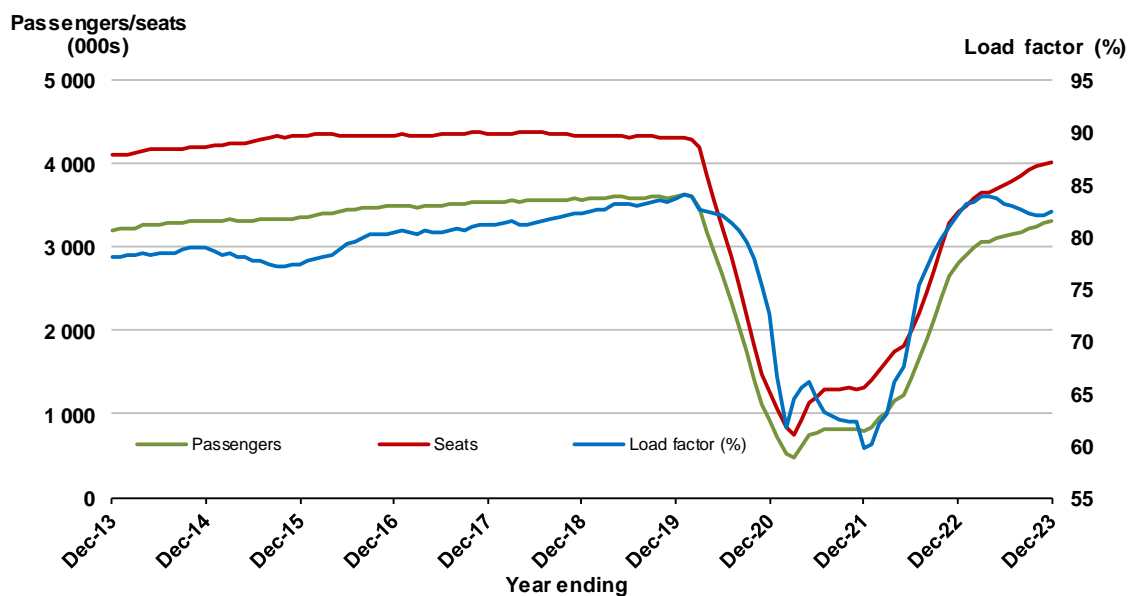


3. Brisbane - Melbourne

Moving annual data

	YE Dec 2022	YE Dec 2023	% Change
Passengers carried (000s)	2,806.5	3,311.8	18.0
Seats (000s)	3,416.2	4,020.3	17.7
Load factor %	82.2	82.4	0.2 *
Aircraft trips	20,882	24,355	16.6

* percentage point difference

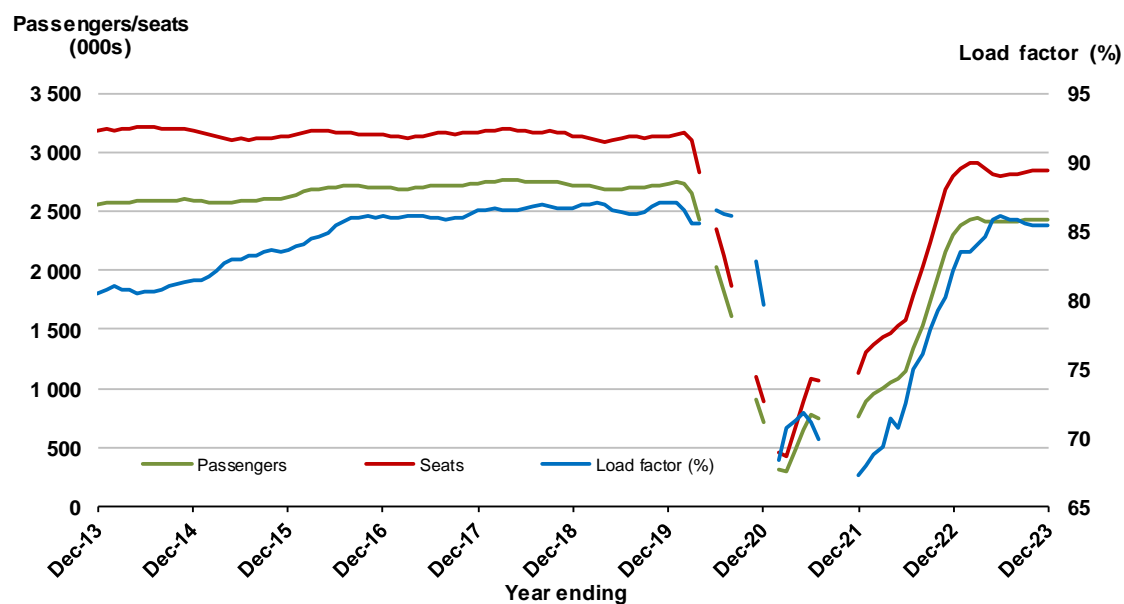


4. Gold Coast - Sydney (a)

Moving annual data

	YE Dec 2022	YE Dec 2023	% Change
Passengers carried (000s)	2,298.5	2,436.6	6.0
Seats (000s)	2,799.8	2,851.1	1.8
Load factor %	82.1	85.5	3.4 *
Aircraft trips	16,190	16,395	1.3

* percentage point difference



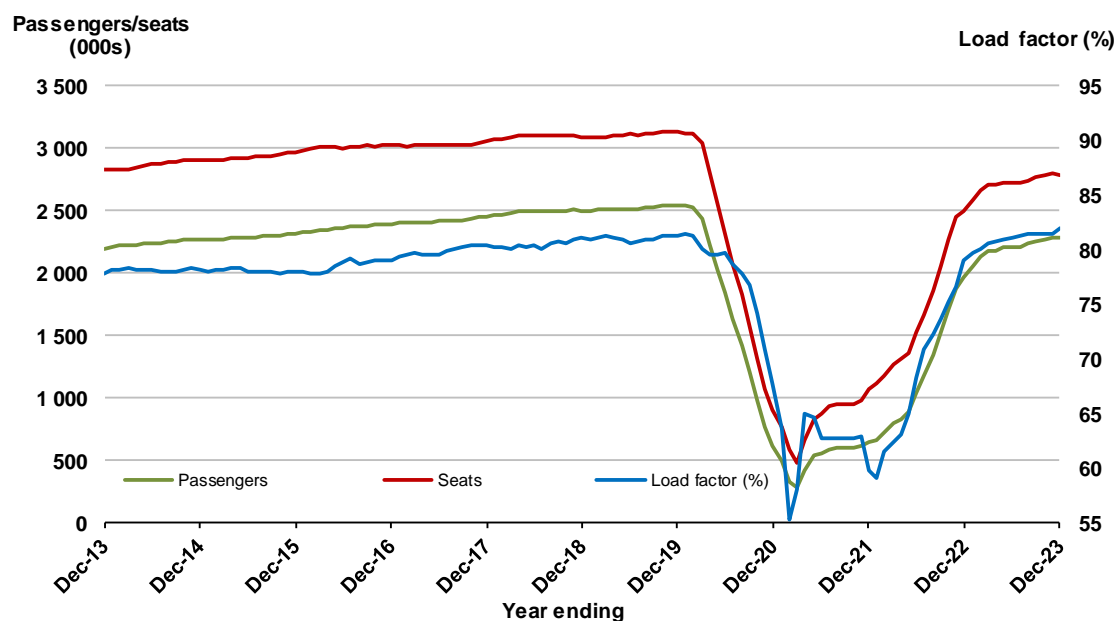
(a) May, September and October 2020 and January and August to November 2021 moving annual totals not available for release.

5. Adelaide - Melbourne

Moving annual data

	YE Dec 2022	YE Dec 2023	% Change
Passengers carried (000s)	1,964.7	2,284.0	16.3
Seats (000s)	2,488.1	2,789.6	12.1
Load factor %	79.0	81.9	2.9 *
Aircraft trips	15,239	17,150	12.5

* percentage point difference

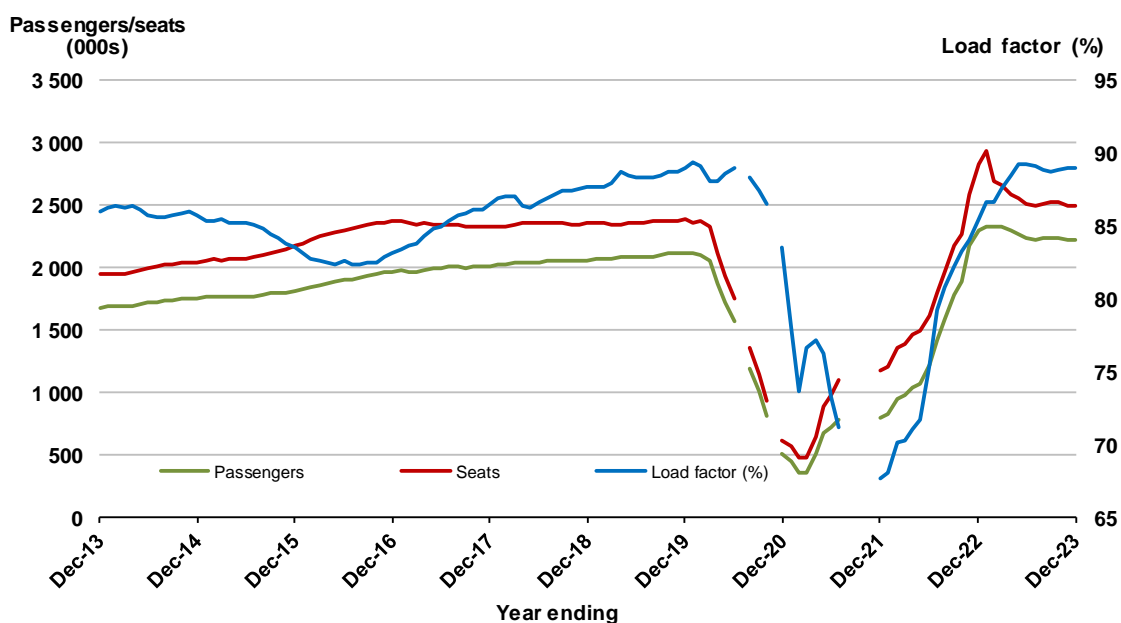


6. Gold Coast - Melbourne ^(a)

Moving annual data

	YE Dec 2022	YE Dec 2023	% Change
Passengers carried (000s)	2,291.7	2,219.7	-3.1
Seats (000s)	2,826.3	2,493.9	-11.8
Load factor %	85.5	89.0	3.5 *
Aircraft trips	14,740	13,505	-8.4

* percentage point difference



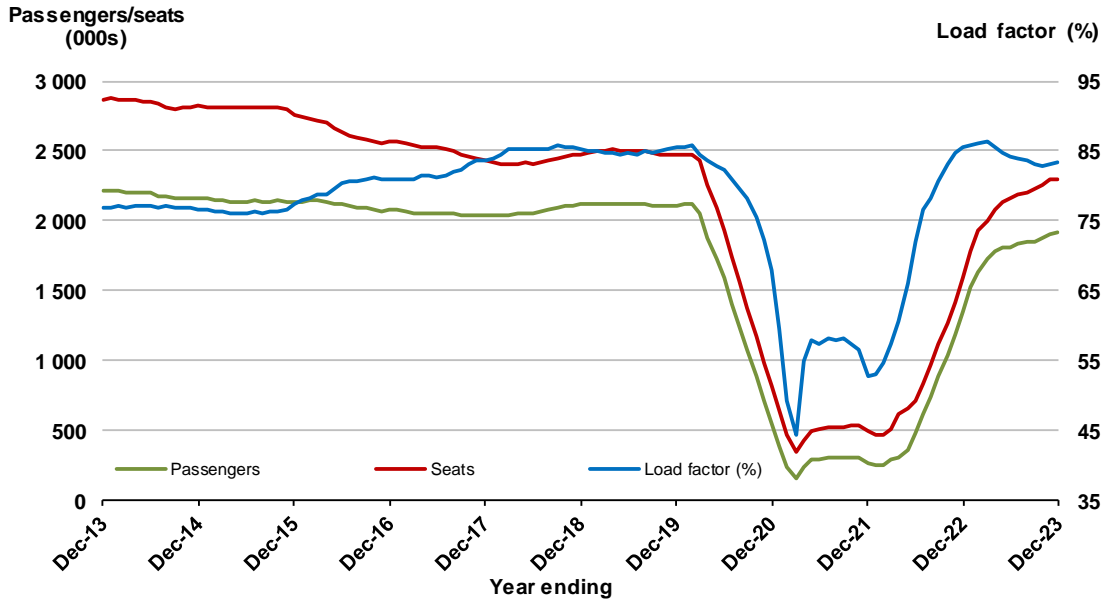
(a) April to November 2020 and August to November 2021 moving annuals are not available for release.

7. Melbourne - Perth

Moving annual data

	YE Dec 2022	YE Dec 2023	% Change
Passengers carried (000s)	1,347.8	1,915.8	42.1
Seats (000s)	1,592.9	2,300.2	44.4
Load factor %	85.6	83.3	-2.3*
Aircraft trips	9,045	12,817	41.7

* percentage point difference

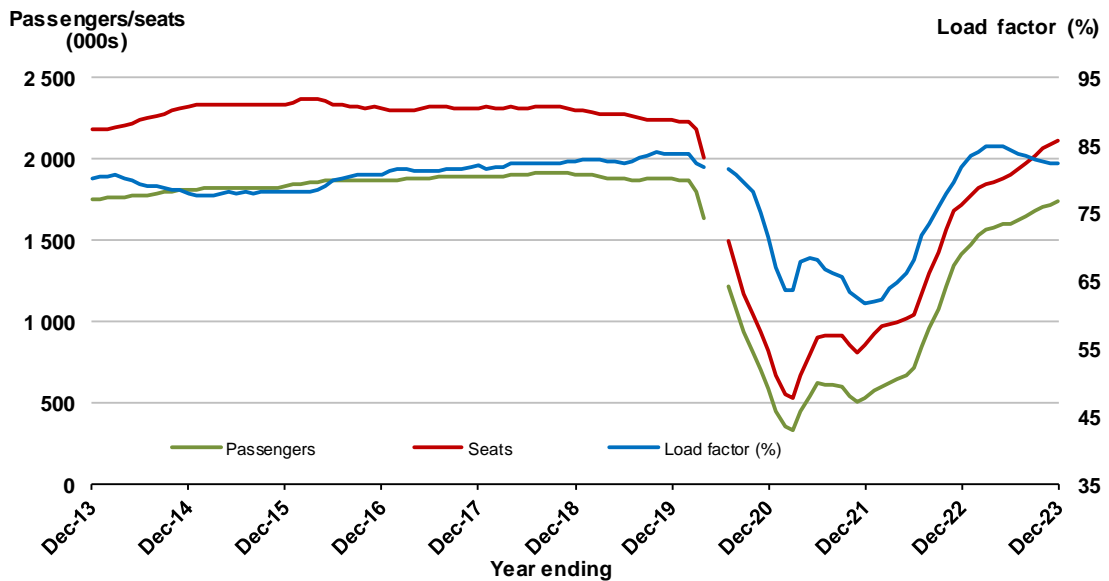


8. Adelaide - Sydney ^(a)

Moving annual data

	YE Dec 2022	YE Dec 2023	% Change
Passengers carried (000s)	1,410.6	1,743.2	23.6
Seats (000s)	1,721.1	2,119.0	23.1
Load factor %	82.0	82.3	0.3*
Aircraft trips	10,528	12,957	23.1

* percentage point difference



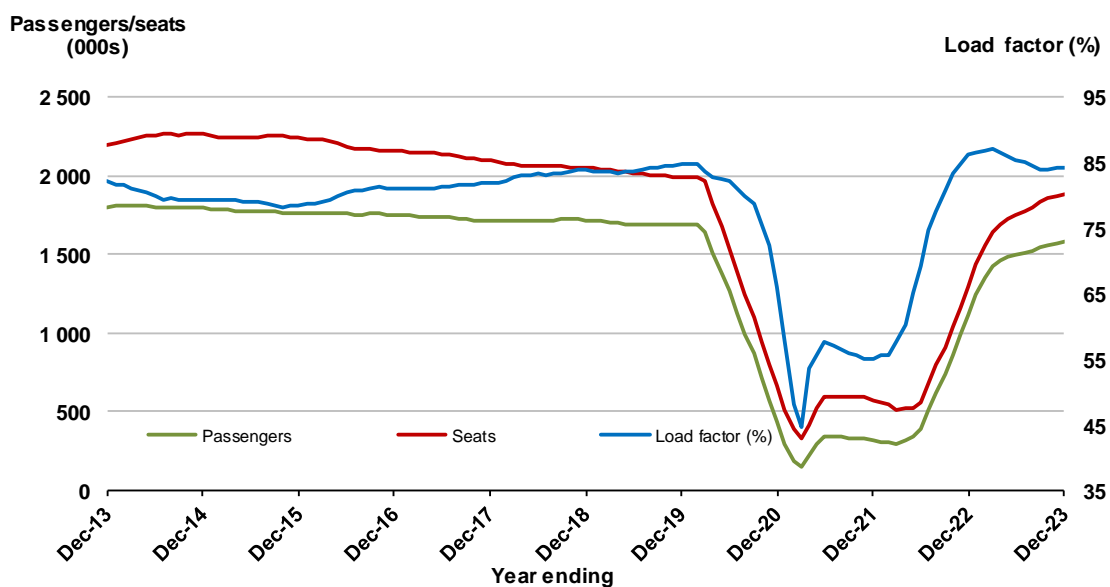
(a) May and June 2020 moving annuals are not available for release.

9. Perth - Sydney

Moving annual data

	YE Dec 2022	YE Dec 2023	% Change
Passengers carried (000s)	1,118.8	1,586.8	41.8
Seats (000s)	1,296.5	1,883.2	45.3
Load factor %	86.3	84.3	-2.0*
Aircraft trips	6,807	9,737	43.0

* percentage point difference

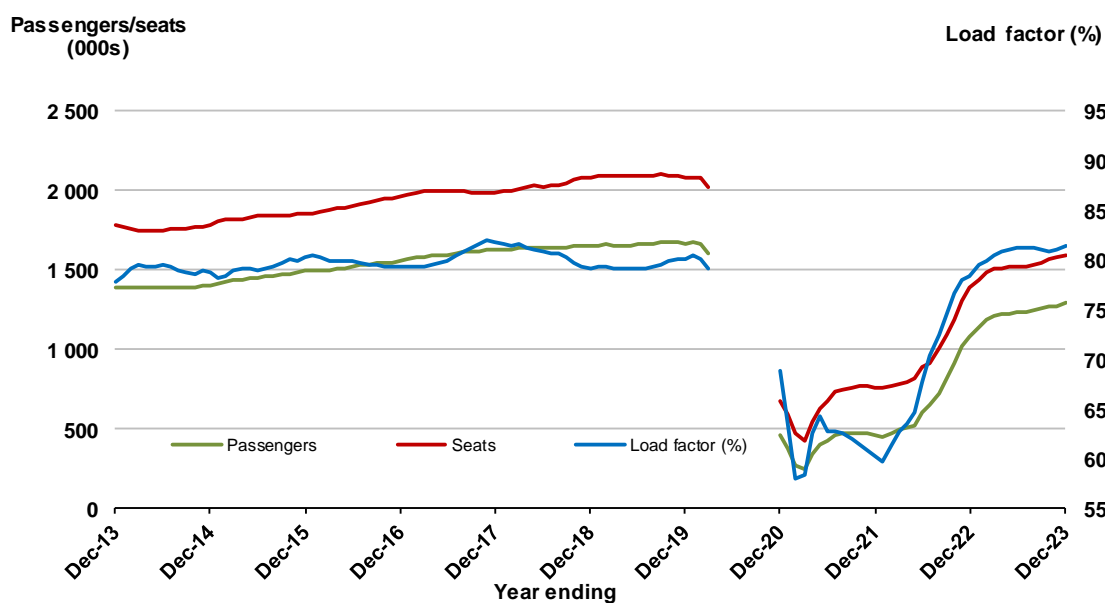


10. Hobart - Melbourne ^(a)

Moving annual data

	YE Dec 2022	YE Dec 2023	% Change
Passengers carried (000s)	1,086.4	1,294.8	19.2
Seats (000s)	1,385.9	1,589.5	14.7
Load factor %	78.4	81.5	3.1*
Aircraft trips	8,491	9,268	9.2

* percentage point difference



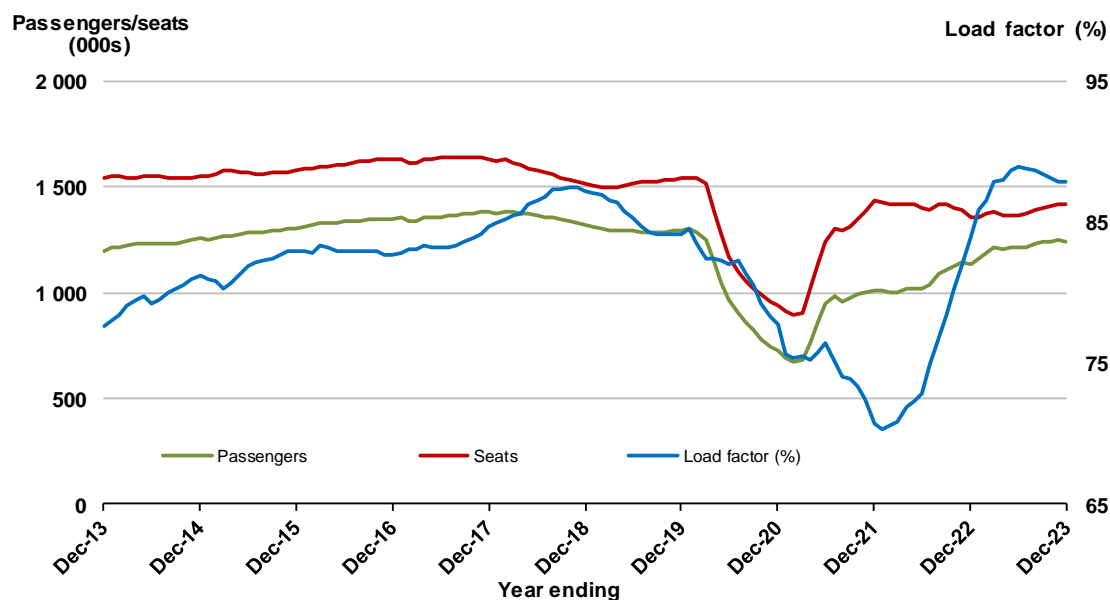
(a) April to November 2020 moving annuals are not available for release.

11. Brisbane - Cairns

Moving annual data

	YE Dec 2022	YE Dec 2023	% Change
Passengers carried (000s)	1,136.6	1,243.8	9.4
Seats (000s)	1,352.3	1,415.3	4.7
Load factor %	84.1	87.9	3.8*
Aircraft trips	8,855	9,555	7.9

* percentage point difference



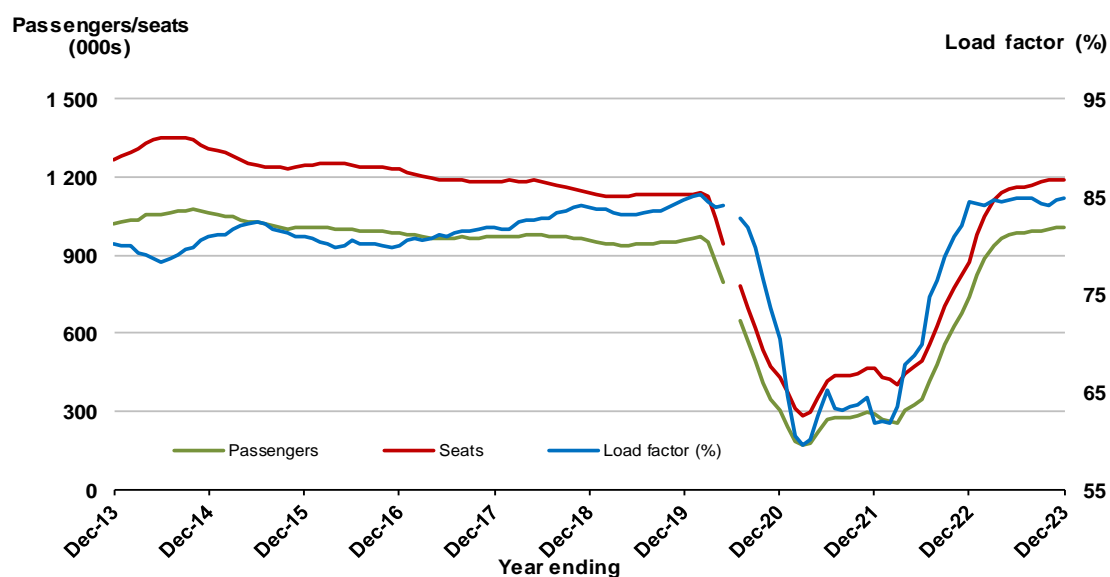
(a) January 2022 moving annual totals are not available for release.

12. Brisbane - Perth (a)

Moving annual data

	YE Dec 2022	YE Dec 2023	% Change
Passengers carried (000s)	737.3	1,009.4	36.9
Seats (000s)	872.8	1,190.6	36.4
Load factor %	84.5	84.8	0.3*
Aircraft trips	4,986	6,902	38.4

* percentage point difference



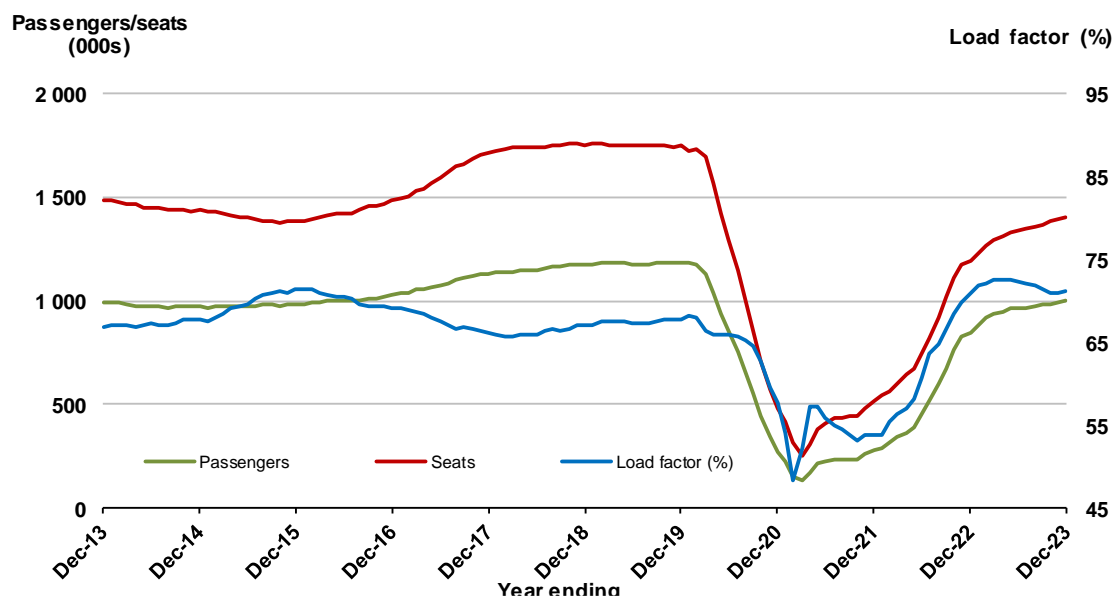
(a) June 2020 moving annuals are not available for release.

13. Canberra - Melbourne

Moving annual data

	YE Dec 2022	YE Dec 2023	% Change
Passengers carried (000s)	850.0	997.4	17.3
Seats (000s)	1,197.7	1,402.4	17.1
Load factor %	71.0	71.1	0.1 *
Aircraft trips	8,663	10,128	16.9

* percentage point difference

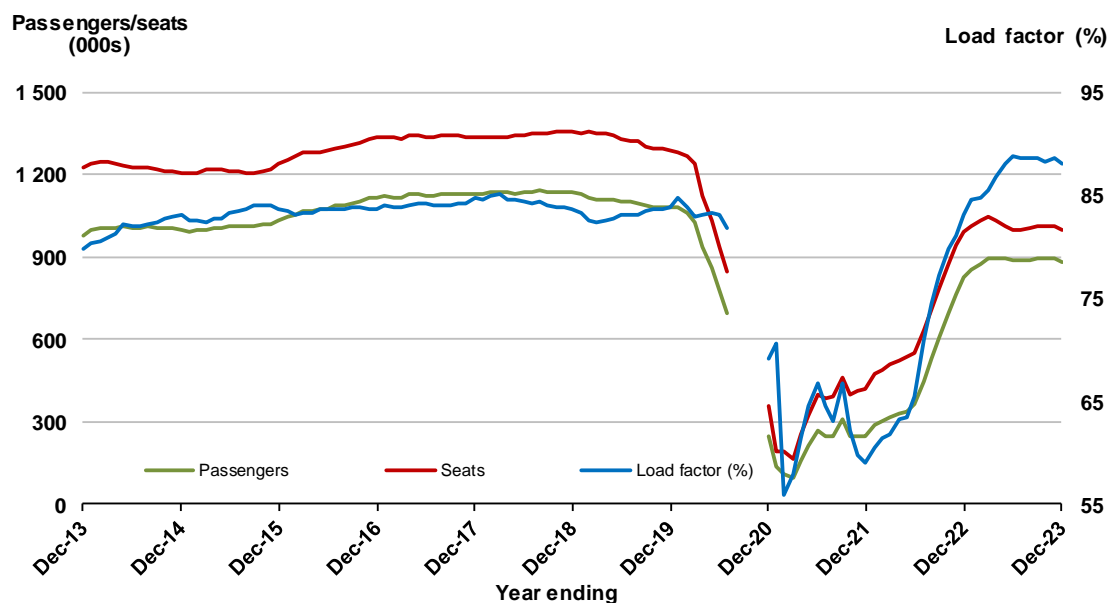


14. Cairns - Sydney (a)

Moving annual data

	YE Dec 2022	YE Dec 2023	% Change
Passengers carried (000s)	822.6	879.5	6.9
Seats (000s)	991.2	998.8	0.8
Load factor %	83.0	88.1	5.1 *
Aircraft trips	5,149	5,175	0.5

* percentage point difference



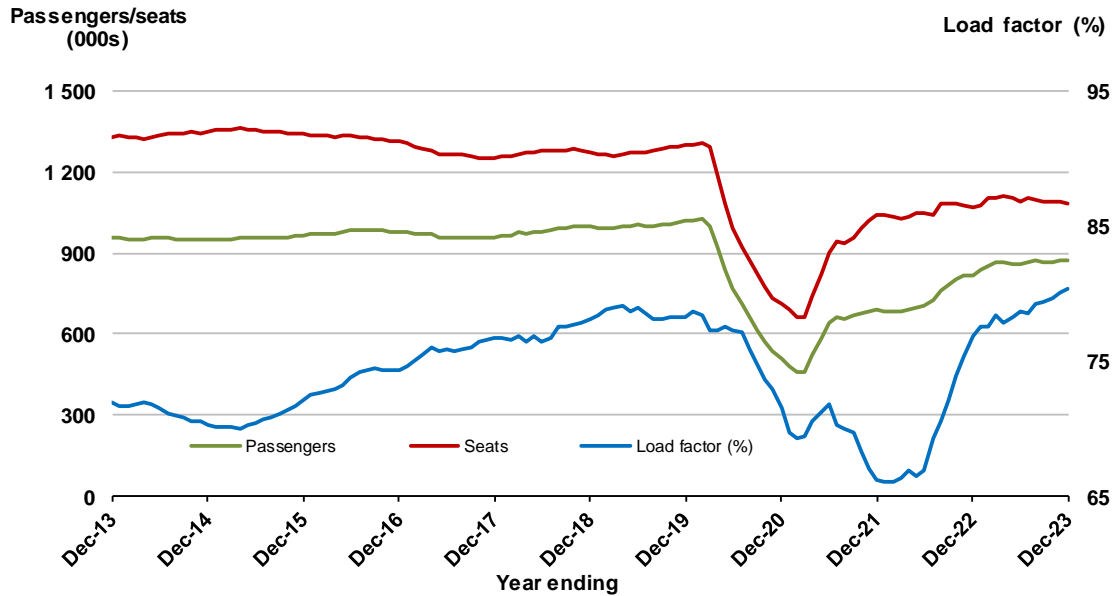
(a) August to November 2020 moving annuals are not available for release.

15. Brisbane - Townsville

Moving annual data

	YE Dec 2022	YE Dec 2023	% Change
Passengers carried (000s)	818.3	872.8	6.7
Seats (000s)	1,065.8	1,086.8	2.0
Load factor %	76.8	80.3	3.5*
Aircraft trips	7,204	7,967	10.6

* percentage point difference

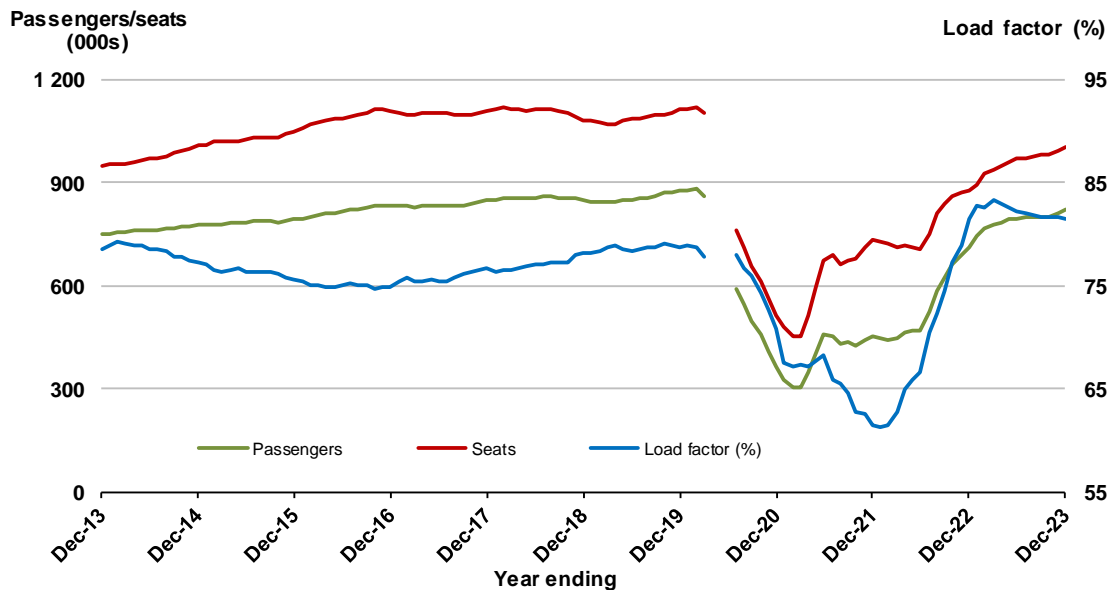


16. Adelaide - Brisbane (a)

Moving annual data

	YE Dec 2022	YE Dec 2023	% Change
Passengers carried (000s)	713.2	819.2	14.9
Seats (000s)	875.0	1,006.0	15.0
Load factor %	81.5	81.4	-0.1*
Aircraft trips	5,689	8,380	47.3

* percentage point difference



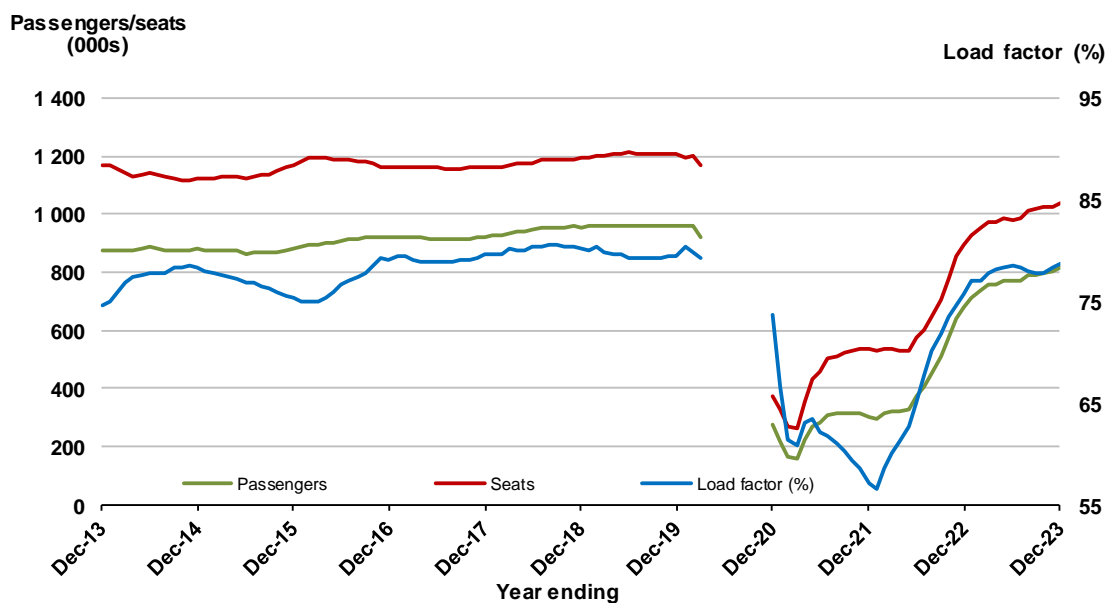
(a) April to June 2020 moving annuals are not available for release.

17. Launceston - Melbourne ^(a)

Moving annual data

	YE Dec 2022	YE Dec 2023	% Change
Passengers carried (000s)	679.2	815.0	20.0
Seats (000s)	896.9	1,036.3	15.5
Load factor %	75.7	78.6	2.9 *
Aircraft trips	7,549	8,803	16.6

* percentage point difference



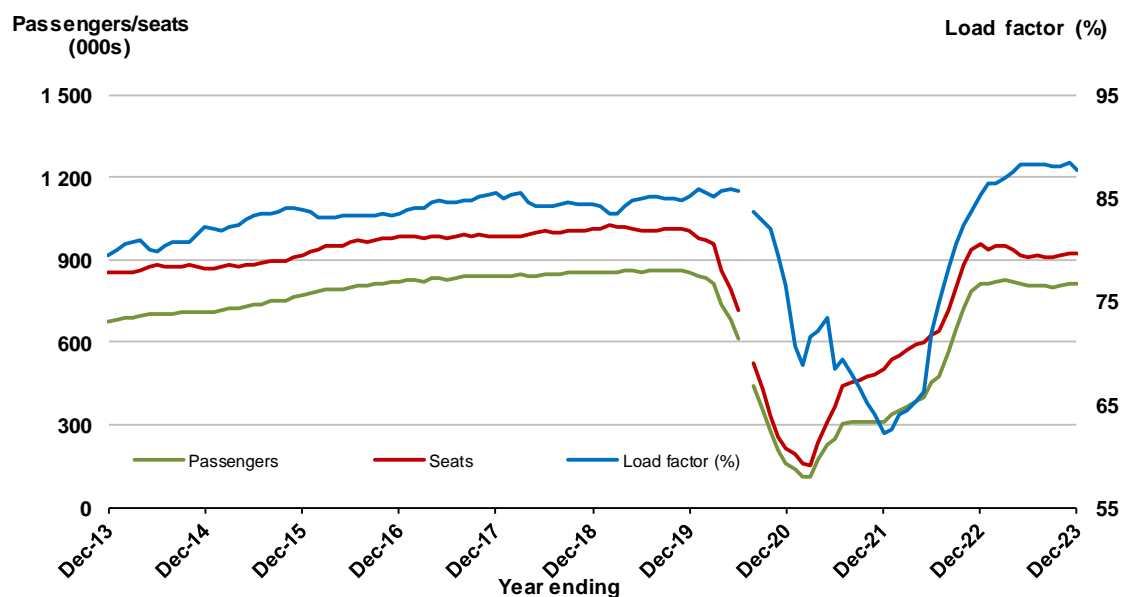
(a) April to November 2020 moving annuals are not available for release.

18. Cairns- Melbourne ^(a)

Moving annual data

	YE Dec 2022	YE Dec 2023	% Change
Passengers carried (000s)	815.1	811.0	-0.5
Seats (000s)	956.0	924.7	-3.3
Load factor %	85.3	87.7	2.4 *
Aircraft trips	5,000	4,755	-4.9

* percentage point difference



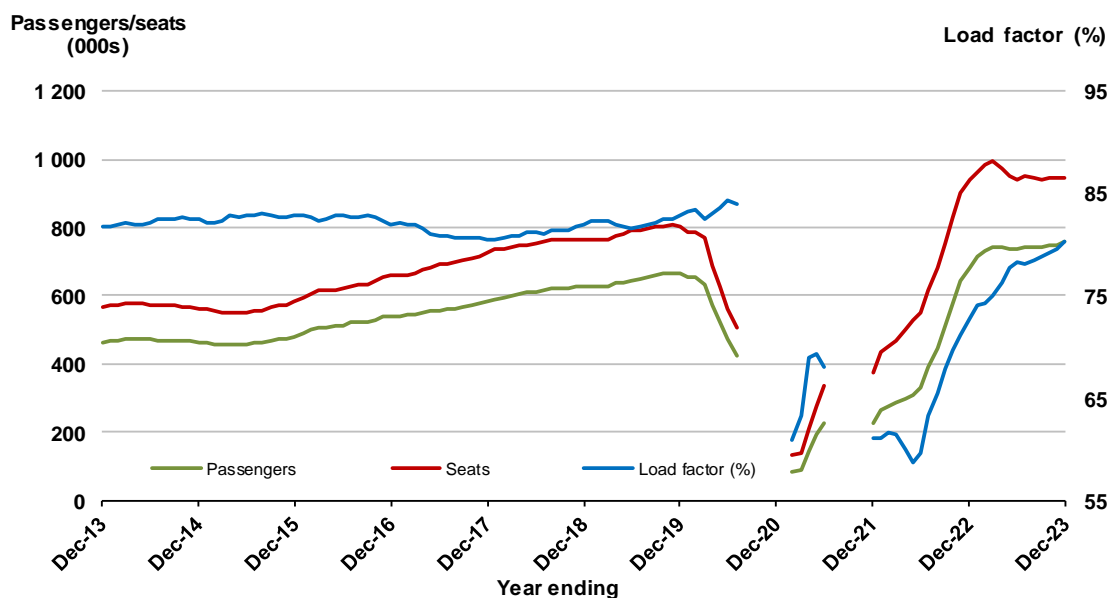
(a) July 2020 moving annuals are not available for release

19. Sunshine Coast - Sydney

Moving annual data

	YE Dec 2022	YE Dec 2023	% Change
Passengers carried (000s)	684.8	756.8	10.5
Seats (000s)	941.7	943.5	0.2
Load factor %	72.7	80.2	7.5 *
Aircraft trips	5,310	5,385	1.4

* percentage point difference



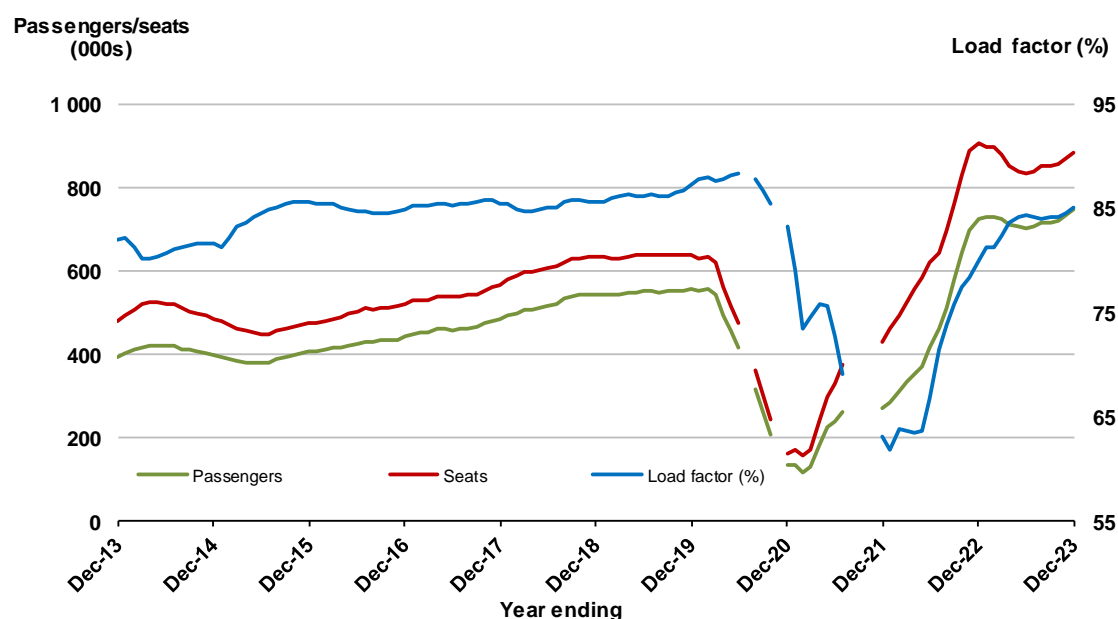
(a) August 2020 to January 2021 and August to November 2021 moving annuals are not available for release.

20. Melbourne - Sunshine Coast ^(a)

Moving annual data

	YE Dec 2022	YE Dec 2023	% Change
Passengers carried (000s)	724.3	747.8	3.2
Seats (000s)	906.0	881.6	-2.7
Load factor %	79.9	85.1	5.2 *
Aircraft trips	5,226	4,797	-8.2

* percentage point difference



(a) July and November 2020 and August to November 2021 moving annuals are not available for release.

TOP FIFTY REGIONAL AIRPORTS

Table 7: Top fifty regional airports (000s) — passenger movements, annual

	Airport	YE Dec 2022	YE Dec 2023	% Change
1	Cairns	3 686.2	3 970.5	7.7
2	Hobart	2 289.0	2 579.5	12.7
3	Townsville	1 527.4	1 691.3	10.7
4	Darwin	1 636.4	1 602.7	-2.1
5	Launceston	1 165.8	1 365.2	17.1
6	Newcastle	1 023.3	1 161.4	13.5
7	Mackay	824.7	909.4	10.3
8	Ballina	639.3	639.2	0.0
9	Rockhampton	484.7	632.8	30.5
10	Karratha	494.0	548.9	11.1
11	Proserpine	464.5	510.2	9.8
12	Hamilton Island	500.1	496.6	-0.7
13	Port Hedland	449.5	485.2	8.0
14	Broome	436.5	437.3	0.2
15	Newman	343.7	371.7	8.2
16	Kalgoorlie	302.3	359.7	19.0
17	Alice Springs	344.2	354.1	2.9
18	Coffs Harbour	276.3	282.5	2.3
19	Ayers Rock	207.9	263.2	26.6
20	Albury	208.9	258.9	23.9
21	Paraburdoo	210.8	246.0	16.7
22	Mount Isa	221.2	230.9	4.4
23	Gladstone	193.5	227.3	17.5
24	Mildura	180.3	224.8	24.7
25	Port Macquarie	164.8	219.2	33.0
26	Dubbo	183.9	212.6	15.6
27	Wagga Wagga	173.4	197.6	14.0
28	Emerald	168.9	195.0	15.4
29	Port Lincoln	170.4	173.9	2.1
30	Tamworth	133.7	167.5	25.3
31	Bundaberg	103.1	151.8	47.3
32	Hervey Bay	125.0	147.1	17.6
33	Kununurra	121.9	137.9	13.1
34	Devonport	97.7	121.5	24.4
35	Armidale	99.5	112.0	12.5
36	Moranbah	98.0	109.3	11.5
37	Thursday Island	96.0	107.0	11.5
38	Orange	91.4	105.6	15.6
39	Learmonth	97.0	104.1	7.4
40	Olympic Dam	89.2	103.2	15.7
41	Geraldton	80.2	95.3	18.8
42	Gove	83.0	88.9	7.2
43	Weipa	83.1	87.2	4.9
44	Burnie	73.7	82.5	11.9
45	Toowoomba Wellcamp	48.3	76.8	59.0
46	Griffith	69.8	73.7	5.7
47	Mount Gambier	73.5	73.1	-0.6
48	Merimbula	62.8	72.1	15.0
49	Norfolk Island	67.0	69.0	3.0
50	Roma	54.0	63.6	17.7
	Total top 50 regional airpo	20,819.7	22,996.8	10.5
	Total regional airports	22,128.8	24,398.5	10.3
	Total domestic network	100,395.1	114,547.1	14.1

Note: Airport passenger movement numbers are the sum of passenger arrivals and departures at each airport. Regional airports are defined as airports which are, according to the Australian Bureau of Statistics "The Australian Statistical Geography Standard (ASGS)", not based in Major Urban areas.

DOMESTIC CHARTER ACTIVITY

Table 8: Charter passengers carried and aircraft trips - annual activity (000s)

	YE Dec 2022	YE Dec 2023	% Change
Total domestic charter passengers	3 544.5	4 046.5	14.2
Total domestic charter aircraft trips	65.7	69.8	6.2

Note: Helicopter, joyflights and sightseeing charter flights not included.

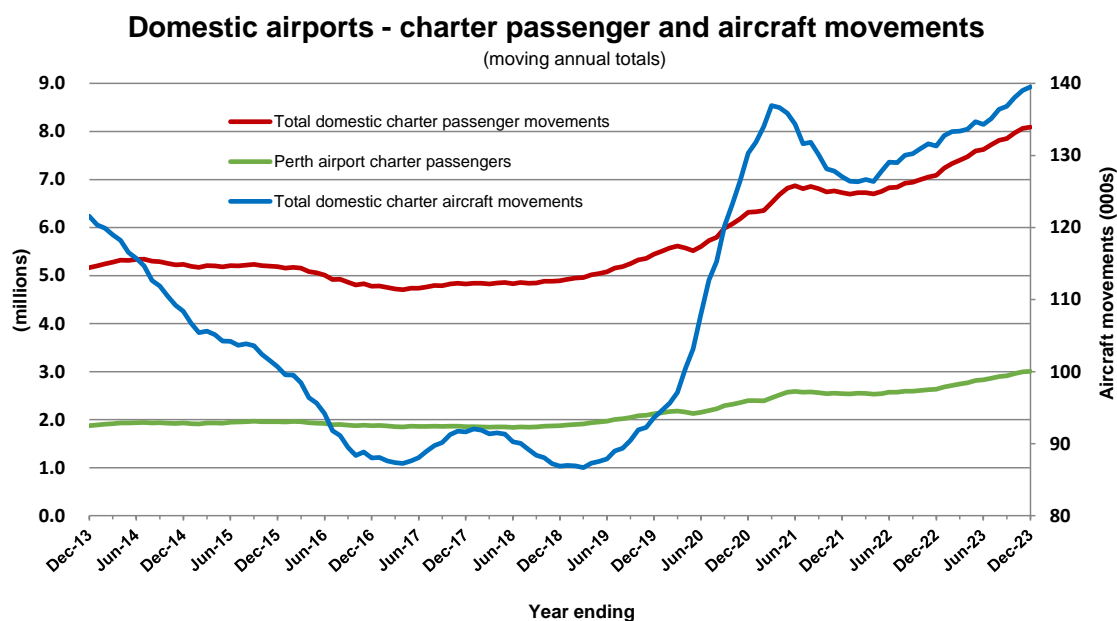
Table 9: Domestic airports - charter activity - annual activity (000s)

	YE Dec 2022	YE Dec 2023	% Change
Total domestic charter passenger movements	7 089.1	8 093.0	14.2
Total domestic charter aircraft movements	131.3	139.5	6.2

Perth airport charter passenger movements	2 634.5	3 007.0	14.1
Perth airport charter aircraft movements	44.4	47.2	6.3

Note: Helicopter, joyflights and sightseeing charter flights not included.

Charter passenger and aircraft movement numbers are the sum of arrivals and departures at each airport.



DEFINITIONS

Aircraft Trips	The number of flight stages. A return flight counts as two aircraft trips.
Airport Movements	Airport movements (passenger and cargo) are measured once on arrival and once on departure. Each domestic trip generates two movements at airports. For example, a trip from Melbourne to Sydney will be counted twice, as a departure at Melbourne and as a arrival at Sydney. At the national level, the sum of all domestic airport traffic will therefore be equal to twice the number of trips undertaken.
Available Seat Kilometres (ASKs)	Calculated by multiplying the number of seats available on each flight stage, by the distance in kilometres between the ports. The distances used are Great Circle Distances.
City-Pair	The ports shown make up the city-pair route. Passenger movements shown for a city pair reflect total traffic in both directions.
Flight Stage	The operation of an aircraft from take-off to landing.
Load Factor	The total revenue passenger kilometres performed as a percentage of the total available seat kilometres.
Passengers Carried	Revenue passengers carried.
Regular Public Transport Services (RPT)	All air service operations in which aircraft are available for the transport of members of the public and are conducted in accordance with fixed schedules. It does not include charter or other non-scheduled operations.
Revenue Passengers	All passengers paying any fare. Frequent flyer redemption travellers are regarded as revenue passengers.
Revenue Passenger Kilometres (RPKs)	Calculated by multiplying the number of revenue passengers travelling on each flight stage, by the distance in kilometres between the ports. The distances used are Great Circle Distances.
Traffic on board by stages	The total of all traffic (revenue passengers) on each flight stage between two directly connected airports.
..	Not available for confidentiality or other reasons.
NA	Not applicable.