



Australian Government

**Department of Infrastructure, Transport,
Regional Development, Communications and the Arts**
Bureau of Infrastructure and Transport Research Economics

STATISTICAL REPORT



bitre

Aviation

**Domestic aviation activity
April 2024**

The Department of Infrastructure, Transport, Regional Development, Communications and the Arts acknowledges the Traditional Custodians of Country of the land on which we work and live.

We recognise and respect the continuing connections to land, waters and communities.

We pay our respects to them and their cultures and to their Elders both past and present and to all Aboriginal and Torres Strait Islander people.

© Commonwealth of Australia 2024

ISSN: 1832 - 1968

Ownership of intellectual property rights in this publication

Unless otherwise noted, copyright (and any other intellectual property rights, if any) in this publication is owned by the Commonwealth of Australia (referred to below as the Commonwealth).

Disclaimer

The material contained in this publication is made available on the understanding that the Commonwealth is not providing professional advice, and that users exercise their own skill and care with respect to its use, and seek independent advice if necessary.

The Commonwealth makes no representations or warranties as to the contents or accuracy of the information contained in this publication. To the extent permitted by law, the Commonwealth disclaims liability to any person or organisation in respect of anything done, or omitted to be done, in reliance upon information contained in this publication.

Creative Commons licence

With the exception of (a) the Coat of Arms; and (b) the Department of Infrastructure, Transport, Regional Development, Communications and the Arts' photos and graphics, copyright in this publication is licensed under a Creative Commons Attribution 3.0 Australia Licence.

Creative Commons Attribution 3.0 Australia Licence is a standard form licence agreement that allows you to copy, communicate and adapt this publication provided that you attribute the work to the Commonwealth and abide by the other licence terms. A summary of the licence terms is available from <http://creativecommons.org/licenses/by/3.0/au/deed.en>.

The full licence terms are available from <http://creativecommons.org/licenses/by/3.0/au/legalcode>.

Use of the Coat of Arms

The Department of the Prime Minister and Cabinet sets the terms under which the Coat of Arms is used. Please refer to the Department's Commonwealth Coat of Arms and Government branding web page <http://www.dpmc.gov.au/guidelines/index.cfm#brand> and, in particular, the Guidelines on the use of the Commonwealth Coat of Arms publication.

An appropriate citation for this report is:

Bureau of Infrastructure and Transport Research Economics (BITRE), 2024, Domestic aviation activity, Statistical Report, BITRE, Canberra ACT.

Contact us

This publication is available in PDF format. All other rights are reserved, including in relation to any Departmental logos or trade marks which may exist. For enquiries regarding the licence and any use of this publication, please contact:

Bureau of Infrastructure and Transport Research Economics (BITRE)
Department of Infrastructure, Transport, Regional Development, Communications and the Arts
GPO Box 501, Canberra ACT 2601, Australia

Email: bitre@infrastructure.gov.au

Website: www.bitre.gov.au

Inquiries

Nebojsa.Pavlovic@infrastructure.gov.au (02) 6136 8282

FOREWORD

This report provides an overview of domestic (including charter) commercial aviation activity in Australia for the month of April 2024.

The data covers revenue passengers carried by Australian-registered operators of scheduled regular public transport services over Australian flight stages and fixed-wing charter operators. These estimates include passengers carried between domestic airports on international flights operated by these carriers. The passengers carried refer to traffic on board by stages.

Estimates of passengers and aircraft movements for charter aviation are included in this publication, where BITRE confidentiality standards are met.

Individual routes shown are restricted to those with an average exceeding 8,000 passengers per month over the previous six months where two or more airlines operate in competition. However, for the period from December 2021 through to December 2022, the major airlines (Qantas Group, Virgin Australia and Rex Airlines) agreed to publication of the top 35 routes based on pre-COVID activity (December 2019) whether or not they were meeting the above criteria. From January 2023, the passenger load and dual competition requirements were reinstated due to the continued recovery of passenger numbers.

Information on the total network for the month of April 2024 and on the Regular Public Transport (RPT) network for the month of April 2024 is presented on page 2, with estimates for the year ended April 2024 presented on page 3.

Detailed information on individual routes can be found in the RPT summary pages 4-13 of this publication. For the month of April 2024, there are 61 individual routes published.

The top ten airports in terms of RPT passenger movements are shown on page 14.

Data on domestic RPT cargo movements at the top five cargo airports are provided on page 15. The table includes cargo carried on passenger flights operated by the Qantas group (including Jetstar), Virgin Australia, Air North and Skippers as well as the cargo carried by dedicated freighter aircraft operated by Qantas Freight and Team Global Express (formerly Toll).

The long-term trends for the top ten competitive RPT routes are presented graphically on pages 16-25.

Domestic RPT passenger movements at regional airports are shown on pages 26-27.

Tables providing estimates of domestic charter aviation activity are shown on page 28. BITRE confidentiality standards restrict publication of detailed estimates for individual Australian airports, with the exception of Perth Airport.

A list of definitions can be found on page 29.

This report was prepared by the Aviation Statistics Section of the Bureau of Infrastructure and Transport Research Economics with data provided by airlines.

Estimates are included where data were not available and data presented in this publication may contain revisions to previously published data.

Where figures have been rounded, discrepancies may occur between sums of component items and totals, and in percentage changes which are derived from figures prior to rounding.

CONTENTS

Highlights	1
Total network.....	2
RPT network	2
Top competitive routes.....	4
Top ten airports – passenger movements.....	14
Top five airports – cargo movements.....	15
Top ten routes	16
1. Melbourne – Sydney	16
2. Brisbane – Sydney.....	17
3. Brisbane – Melbourne	18
4. Gold Coast – Sydney	19
5. Adelaide – Melbourne	20
6. Gold Coast - Melbourne	21
7. Melbourne – Perth	22
8. Adelaide – Sydney	23
9. Perth – Sydney	24
10. Hobart – Melbourne	25
Top fifty regional airports	26
Domestic charter activity.....	28
Definitions	29

This page is intentionally left blank.

HIGHLIGHTS

There were 5.29 million passengers carried on Australian domestic commercial aviation (including charter operations) in April 2024, an increase of 5.7 per cent on April 2023.

4.93 million passengers were carried on RPT flights in April 2024, an increase of 4.8 per cent compared to April 2023.

For the month of April 2024, there were 52.6 thousand RPT aircraft trips, an increase of 4.9 per cent compared to April 2023.

For the year ending April 2024 there were 58.51 million RPT passengers, an increase of 6.5 per cent on the year ending April 2023.

RPT revenue passenger kilometres (RPKs) performed were 5.90 billion for the month, compared with 5.68 billion in April 2023 (up 4.0 per cent).

Capacity, measured by available seat kilometres (ASKs), increased to 7.61 billion in April 2024 compared to 7.13 billion in April 2023 (up 6.8 per cent).

The industry wide load factor (RPKs/ASKs) decreased from 79.7 per cent in April 2023 to 77.6 per cent in April 2024. The lowest load factor (47.3 per cent) was recorded on the Geraldton – Perth route while the highest load factor (89.2 per cent) was recorded on the Adelaide – Gold Coast route.

For the month of April 2024, Melbourne – Sydney was Australia's busiest RPT route with 641.5 thousand passengers, followed by Brisbane – Sydney with 336.5 thousand passengers and Brisbane – Melbourne with 277.3 thousand passengers.

Sydney was Australia's busiest domestic airport with 2.05 million passenger movements in April 2024, followed by Melbourne with 2.01 million passenger movements and Brisbane with 1.35 million passenger movements.

Total cargo movements at Australian airports on domestic RPT flights were 24.9 thousand tonnes in April 2024, an increase of 4.9 per cent compared with April 2023.

In April 2024, there were 2.11 million domestic passenger movements through regional airports, compared to 2.00 million in April 2023, an increase of 5.4 per cent. Out of the top 50 regional airports, the strongest increase was recorded at Busselton Airport (up 54.9 per cent on April 2023), while the largest decrease was recorded at Coffs Harbour Airport (down 14.0 per cent on April 2023).

Fixed-wing charter operators carried 364.3 thousand passengers in April 2024, an increase of 19.9 per cent compared with April 2023. Perth Airport accounted for 35.4 per cent of all charter passengers in Australia.

TOTAL NETWORK

Summary of monthly commercial aviation activity

	Apr 2023	Apr 2024	% Change
Total passengers carried (millions)	5.00	5.29	5.7
Aircraft trips (000s)	55.5	58.8	6.1

Note: Regular Public Transport and charter aviation activity
Helicopter, joy flights and sightseeing charter flights not included.

RPT NETWORK

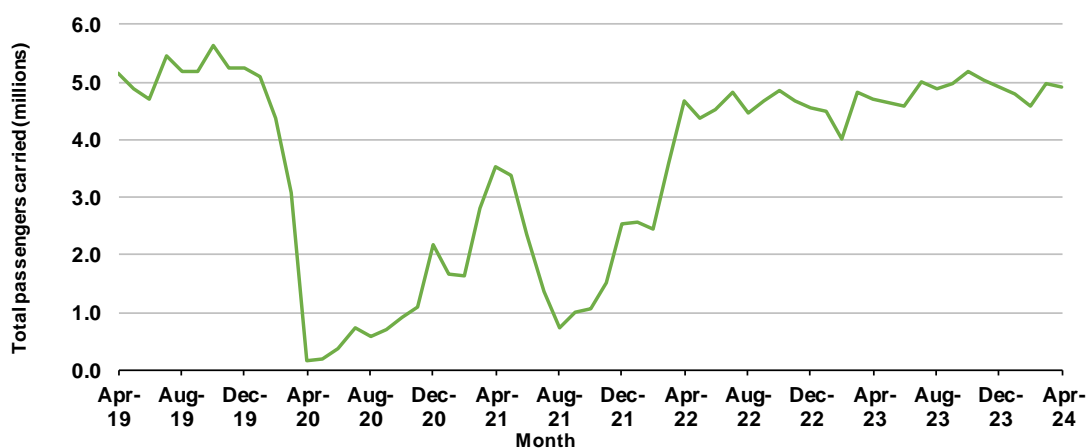
Summary of monthly RPT activity

	Apr 2023	Apr 2024	% Change
Total passengers carried (millions)	4.70	4.93	4.8
Revenue passenger kilometres (billions)	5.68	5.90	4.0
Available seats (millions)	6.08	6.50	6.9
Available seat kilometres (billions)	7.13	7.61	6.8
Load factor %	79.7	77.6	-2.1 *
Aircraft trips (000s)	50.1	52.6	4.9

* percentage point difference

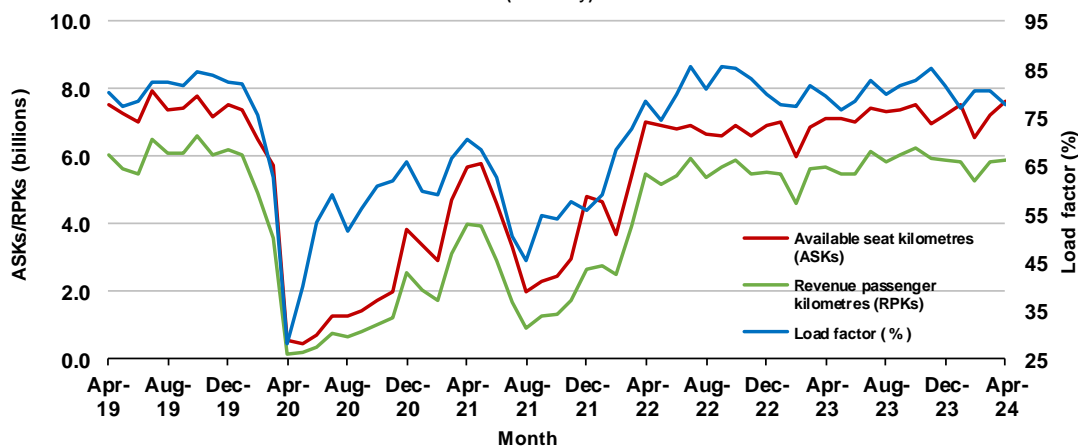
Domestic RPT passenger traffic

(monthly)



RPT Network utilisation

(monthly)



TOTAL NETWORK

Summary of annual commercial aviation activity

	YE Apr 2023	YE Apr 2024	% Change
Total passengers carried (millions)	58.70	62.72	6.8
Aircraft trips (000s)	659.6	690.7	4.7

Note: Regular Public Transport and charter aviation activity
Helicopter, joy flights and sightseeing charter flights not included.

RPT NETWORK

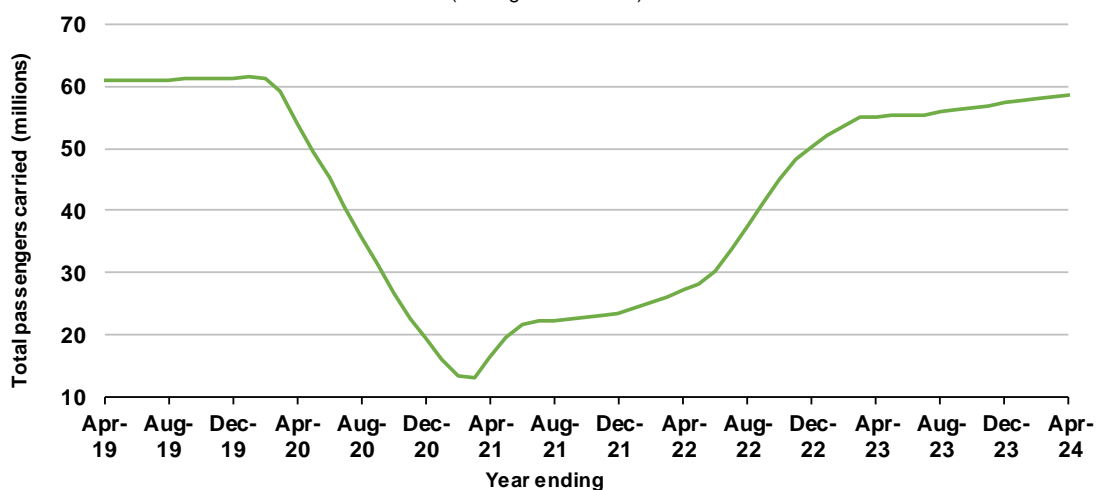
Summary of annual RPT activity

	YE Apr 2023	YE Apr 2024	% Change
Total passengers carried (millions)	54.96	58.51	6.5
Revenue passenger kilometres (billions)	65.89	69.83	6.0
Available seats (millions)	69.94	74.74	6.9
Available seat kilometres (billions)	81.37	86.91	6.8
Load factor %	81.0	80.3	-0.6 *
Aircraft trips (000s)	592.8	618.6	4.4

* percentage point difference

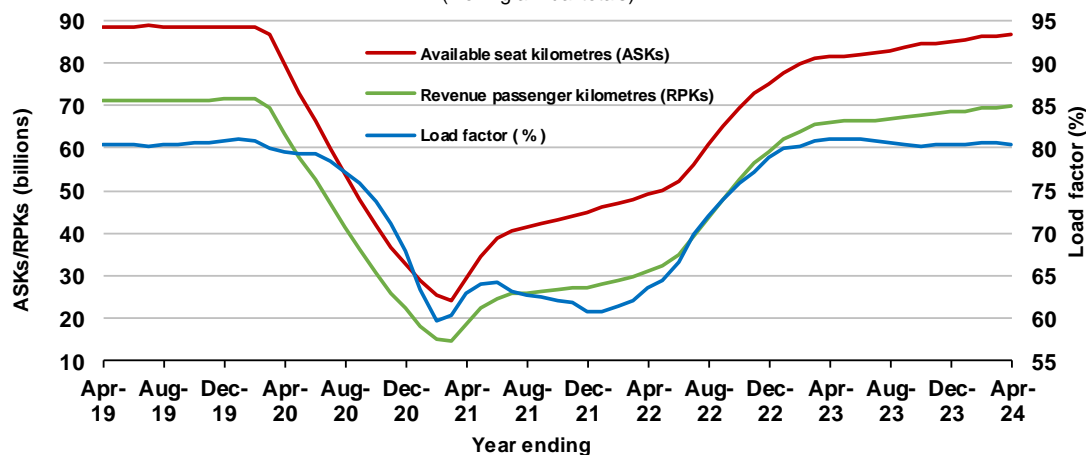
Domestic RPT passenger traffic

(moving annual totals)



RPT Network utilisation

(moving annual totals)



TOP COMPETITIVE ROUTES

Table 1: Passengers carried (000s) — annual activity

	City-Pair	YE Apr 2023	YE Apr 2024	%Change
1	Melbourne - Sydney	7 274.7	7 862.1	8.1
2	Brisbane - Sydney	4 000.4	4 309.4	7.7
3	Brisbane - Melbourne	3 066.9	3 356.8	9.5
4	Gold Coast - Sydney	2 419.0	2 507.9	3.7
5	Adelaide - Melbourne	2 181.7	2 334.1	7.0
6	Gold Coast - Melbourne	2 290.4	2 244.4	-2.0
7	Melbourne - Perth	1 783.5	1 958.2	9.8
8	Adelaide - Sydney	1 580.9	1 837.3	16.2
9	Perth - Sydney	1 463.8	1 614.6	10.3
10	Hobart - Melbourne	1 219.7	1 342.2	10.0
11	Brisbane - Cairns	1 205.0	1 255.7	4.2
12	Brisbane - Perth	964.8	1 024.5	6.2
13	Canberra - Melbourne	949.5	1 020.9	7.5
14	Cairns - Sydney	893.9	901.1	0.8
15	Brisbane - Townsville	862.9	875.5	1.5
16	Adelaide - Brisbane	784.7	858.3	9.4
17	Launceston - Melbourne	759.9	851.7	12.1
18	Cairns - Melbourne	820.4	834.5	1.7
19	Melbourne - Sunshine Coast	710.2	782.0	10.1
20	Sunshine Coast - Sydney	740.6	770.0	4.0
21	Hobart - Sydney	707.0	759.8	7.5
22	Brisbane - Mackay	745.8	727.5	-2.4
23	Adelaide - Perth	626.5	668.4	6.7
24	Brisbane - Canberra	631.0	629.7	-0.2
25	Canberra - Sydney	597.9	613.0	2.5
26	Karratha - Perth	521.1	563.4	8.1
27	Ballina - Sydney	531.8	523.2	-1.6
28	Brisbane - Rockhampton	476.7	521.3	9.4
29	Brisbane - Newcastle	489.4	502.0	2.6
30	Perth - Port Hedland	471.8	474.3	0.5
31	Melbourne - Newcastle	396.9	434.6	9.5
32	Newman - Perth	359.9	370.9	3.1
33	Kalgoorlie - Perth	327.8	362.7	10.7
34	Broome - Perth	370.5	362.5	-2.2
35	Launceston - Sydney	303.1	336.8	11.1
36	Brisbane - Darwin	334.2	313.3	-6.3
37	Brisbane - Hobart	301.9	292.0	-3.3
38	Darwin - Melbourne	295.3	283.3	-4.1
39	Brisbane - Proserpine	287.8	271.9	-5.5
40	Adelaide - Gold Coast	242.5	268.9	10.9
41	Hamilton Island - Sydney	251.6	243.1	-3.4
42	Brisbane - Gladstone	205.4	218.0	6.2
43	Coffs Harbour - Sydney	216.0	210.9	-2.4
44	Adelaide - Canberra	175.5	191.8	9.3
45	Brisbane - Emerald	175.6	185.4	5.6
46	Canberra - Gold Coast	158.3	181.9	14.9
47	Dubbo - Sydney	160.1	179.5	12.1
48	Melbourne - Mildura	149.0	176.9	18.8
49	Adelaide - Port Lincoln	179.7	172.5	-4.0
50	Darwin - Perth	175.3	170.6	-2.6

continued

Table 1: (continued) Passengers carried (000s) — annual activity

	City-Pair	YE Apr 2023	YE Apr 2024	% Change
51	Port Macquarie - Sydney	158.2	167.5	5.9
52	Albury - Sydney	163.7	164.7	0.6
53	Brisbane - Hamilton Island	171.1	163.8	-4.3
54	Sydney - Wagga Wagga	147.9	156.3	5.7
55	Brisbane - Launceston	173.2	146.7	-15.3
56	Brisbane - Mount Isa	143.0	142.4	-0.5
57	Brisbane - Bundaberg	111.9	133.2	19.0
58	Devonport - Melbourne	161.5	120.6	-25.3
59	Adelaide - Alice Springs	108.0	117.4	8.7
60	Brisbane - Moranbah	104.6	111.4	6.5
61	Geraldton - Perth	..	51.7	NA
Total domestic network		54 963.8	58 511.6	6.5

.. Data not available for release.

Table 2: Passengers carried (000s) — monthly activity

	City-Pair	Apr 2023	Apr 2024	% Change
1	Melbourne - Sydney	609.9	641.5	5.2
2	Brisbane - Sydney	338.9	336.5	-0.7
3	Brisbane - Melbourne	274.6	277.3	1.0
4	Gold Coast - Sydney	201.9	217.4	7.7
5	Adelaide - Melbourne	194.5	206.0	5.9
6	Gold Coast - Melbourne	187.6	185.6	-1.1
7	Melbourne - Perth	163.2	170.5	4.5
8	Adelaide - Sydney	142.2	170.4	19.9
9	Perth - Sydney	130.1	131.1	0.7
10	Hobart - Melbourne	105.4	111.9	6.2
11	Brisbane - Cairns	96.7	104.0	7.5
12	Brisbane - Perth	84.6	88.0	4.1
13	Canberra - Melbourne	80.9	85.2	5.3
14	Adelaide - Brisbane	66.7	76.9	15.2
15	Launceston - Melbourne	70.9	75.4	6.3
16	Cairns - Sydney	78.6	74.9	-4.7
17	Brisbane - Townsville	69.0	72.9	5.6
18	Melbourne - Sunshine Coast	62.3	67.7	8.7
19	Hobart - Sydney	60.8	67.2	10.6
20	Cairns - Melbourne	72.3	66.1	-8.5
21	Sunshine Coast - Sydney	63.5	63.7	0.2
22	Adelaide - Perth	56.6	61.7	8.9
23	Brisbane - Mackay	56.8	59.7	5.0
24	Karratha - Perth	41.8	49.3	17.8
25	Canberra - Sydney	42.9	49.2	14.7
26	Brisbane - Canberra	51.4	49.1	-4.5
27	Brisbane - Rockhampton	38.8	45.6	17.4
28	Ballina - Sydney	43.6	43.2	-0.9
29	Brisbane - Newcastle	40.7	41.7	2.5
30	Perth - Port Hedland	35.2	40.0	13.6
31	Melbourne - Newcastle	34.8	38.9	11.7
32	Newman - Perth	29.8	34.0	13.9
33	Launceston - Sydney	28.7	29.6	3.3
34	Kalgoorlie - Perth	27.0	29.6	9.5
35	Broome - Perth	28.0	28.3	0.8
36	Darwin - Melbourne	23.9	24.3	1.9
37	Brisbane - Hobart	27.0	23.9	-11.3
38	Brisbane - Proserpine	25.7	23.2	-9.8
39	Adelaide - Gold Coast	23.7	23.0	-3.1
40	Hamilton Island - Sydney	21.6	21.3	-1.4
41	Brisbane - Darwin	26.9	20.8	-22.7
42	Brisbane - Gladstone	16.7	18.3	9.9
43	Canberra - Gold Coast	14.3	17.0	18.5
44	Coffs Harbour - Sydney	17.2	16.9	-1.7
45	Adelaide - Canberra	16.7	15.2	-8.9
46	Brisbane - Emerald	14.3	15.1	5.2
47	Adelaide - Port Lincoln	14.8	15.0	1.1
48	Melbourne - Mildura	12.1	14.9	23.4
49	Dubbo - Sydney	13.0	13.9	7.6
50	Sydney - Wagga Wagga	11.8	13.7	15.9

continued

Table 2: (continued) Passengers carried (000s) — monthly activity

	City-Pair	Apr 2023	Apr 2024	% Change
51	Port Macquarie - Sydney	13.2	13.4	1.8
52	Darwin - Perth	13.6	13.3	-1.7
53	Brisbane - Launceston	12.7	13.0	3.0
54	Brisbane - Hamilton Island	13.5	13.0	-3.4
55	Albury - Sydney	13.7	12.5	-8.8
56	Brisbane - Mount Isa	11.0	11.4	3.8
57	Brisbane - Bundaberg	9.9	11.3	13.2
58	Devonport - Melbourne	10.4	10.6	2.2
59	Adelaide - Alice Springs	10.1	9.3	-8.1
60	Brisbane - Moranbah	8.1	9.0	11.1
61	Geraldton - Perth	..	8.9	NA
	Total domestic network	4 701.1	4 926.3	4.8

.. Data not available for release.

Table 3: Available seats (000s) — monthly activity

	City-Pair	Apr 2023	Apr 2024	% Change
1	Melbourne - Sydney	752.8	825.3	9.6
2	Brisbane - Sydney	431.5	434.9	0.8
3	Brisbane - Melbourne	341.7	368.9	8.0
4	Gold Coast - Sydney	233.5	263.2	12.7
5	Adelaide - Melbourne	242.8	247.4	1.9
6	Gold Coast - Melbourne	213.4	218.7	2.5
7	Melbourne - Perth	194.9	213.0	9.3
8	Adelaide - Sydney	172.1	211.2	22.7
9	Perth - Sydney	155.0	157.1	1.4
10	Hobart - Melbourne	128.8	136.9	6.3
11	Brisbane - Cairns	112.2	141.3	26.0
12	Brisbane - Perth	97.2	107.0	10.1
13	Canberra - Melbourne	118.2	117.1	-0.9
14	Adelaide - Brisbane	81.9	97.3	18.9
15	Launceston - Melbourne	87.2	93.9	7.7
16	Cairns - Sydney	93.3	97.1	4.1
17	Brisbane - Townsville	93.2	97.6	4.8
18	Melbourne - Sunshine Coast	74.2	82.6	11.3
19	Hobart - Sydney	74.5	84.8	13.8
20	Cairns - Melbourne	90.5	83.6	-7.6
21	Sunshine Coast - Sydney	79.5	76.2	-4.1
22	Adelaide - Perth	64.8	73.9	14.1
23	Brisbane - Mackay	75.9	78.8	3.8
24	Karratha - Perth	57.6	72.9	26.6
25	Canberra - Sydney	69.9	88.4	26.6
26	Brisbane - Canberra	77.0	70.0	-9.2
27	Brisbane - Rockhampton	53.8	61.2	13.8
28	Ballina - Sydney	54.1	52.1	-3.6
29	Brisbane - Newcastle	59.1	52.6	-10.9
30	Perth - Port Hedland	49.2	63.9	29.8
31	Melbourne - Newcastle	43.5	47.1	8.3
32	Newman - Perth	48.8	55.6	13.9
33	Launceston - Sydney	35.4	35.9	1.6
34	Kalgoorlie - Perth	38.7	56.0	44.7
35	Broome - Perth	37.0	43.7	18.1
36	Darwin - Melbourne	30.2	31.4	4.0
37	Brisbane - Hobart	33.7	29.7	-12.0
38	Brisbane - Proserpine	34.6	27.7	-20.0
39	Adelaide - Gold Coast	27.5	25.8	-6.2
40	Hamilton Island - Sydney	30.2	28.0	-7.4
41	Brisbane - Darwin	34.2	24.2	-29.2
42	Brisbane - Gladstone	30.4	27.8	-8.4
43	Canberra - Gold Coast	16.3	19.7	20.4
44	Coffs Harbour - Sydney	24.6	22.4	-9.0
45	Adelaide - Canberra	29.0	21.0	-27.6
46	Brisbane - Emerald	20.5	22.7	10.4
47	Adelaide - Port Lincoln	21.5	23.4	8.6
48	Melbourne - Mildura	17.2	20.2	17.8
49	Dubbo - Sydney	22.1	24.0	8.3
50	Sydney - Wagga Wagga	20.7	21.6	4.6

continued

Table 3: (continued) Available seats (000s) — monthly activity

	City-Pair	Apr 2023	Apr 2024	% Change
51	Port Macquarie - Sydney	21.2	19.9	-6.3
52	Darwin - Perth	17.8	18.1	1.5
53	Brisbane - Launceston	15.3	15.8	3.0
54	Brisbane - Hamilton Island	20.8	17.0	-18.3
55	Albury - Sydney	21.6	19.0	-11.7
56	Brisbane - Mount Isa	18.7	19.6	4.8
57	Brisbane - Bundaberg	17.2	18.5	7.4
58	Devonport - Melbourne	14.3	14.3	0.1
59	Adelaide - Alice Springs	13.6	14.5	6.8
60	Brisbane - Moranbah	14.5	16.8	15.7
61	Geraldton - Perth	..	18.8	NA
	Total domestic network	6 077.4	6 496.1	6.9

.. Data not available for release.

Table 4: Load factors (%) — monthly activity

	City-Pair	Apr 2023	Apr 2024	% Point diff
1	Melbourne - Sydney	81.0	77.8	-3.2
2	Brisbane - Sydney	78.5	77.4	-1.1
3	Brisbane - Melbourne	80.4	75.2	-5.2
4	Gold Coast - Sydney	86.5	82.6	-3.9
5	Adelaide - Melbourne	80.1	83.3	3.2
6	Gold Coast - Melbourne	87.9	84.8	-3.1
7	Melbourne - Perth	83.7	80.0	-3.7
8	Adelaide - Sydney	82.6	80.7	-1.9
9	Perth - Sydney	84.0	83.4	-0.6
10	Hobart - Melbourne	81.9	81.8	-0.1
11	Brisbane - Cairns	86.2	73.6	-12.6
12	Brisbane - Perth	87.1	82.3	-4.8
13	Canberra - Melbourne	68.4	72.7	4.3
14	Adelaide - Brisbane	81.5	79.0	-2.5
15	Launceston - Melbourne	81.3	80.3	-1.0
16	Cairns - Sydney	84.2	77.1	-7.1
17	Brisbane - Townsville	74.1	74.6	0.5
18	Melbourne - Sunshine Coast	84.0	82.0	-2.0
19	Hobart - Sydney	81.5	79.3	-2.2
20	Cairns - Melbourne	79.8	79.1	-0.7
21	Sunshine Coast - Sydney	79.9	83.5	3.6
22	Adelaide - Perth	87.4	83.5	-3.9
23	Brisbane - Mackay	74.9	75.7	0.8
24	Karratha - Perth	72.6	67.5	-5.1
25	Canberra - Sydney	61.4	55.6	-5.8
26	Brisbane - Canberra	66.8	70.2	3.4
27	Brisbane - Rockhampton	72.2	74.4	2.2
28	Ballina - Sydney	80.6	82.9	2.3
29	Brisbane - Newcastle	69.0	79.3	10.3
30	Perth - Port Hedland	71.6	62.6	-9.0
31	Melbourne - Newcastle	79.9	82.5	2.6
32	Newman - Perth	61.1	61.1	0.0
33	Launceston - Sydney	81.0	82.4	1.4
34	Kalgoorlie - Perth	69.8	52.8	-17.0
35	Broome - Perth	75.7	64.6	-11.1
36	Darwin - Melbourne	79.0	77.4	-1.6
37	Brisbane - Hobart	80.1	80.7	0.6
38	Brisbane - Proserpine	74.2	83.7	9.5
39	Adelaide - Gold Coast	86.4	89.2	2.8
40	Hamilton Island - Sydney	71.6	76.2	4.6
41	Brisbane - Darwin	78.6	85.8	7.2
42	Brisbane - Gladstone	54.8	65.8	11.0
43	Canberra - Gold Coast	87.8	86.4	-1.4
44	Coffs Harbour - Sydney	69.8	75.4	5.6
45	Adelaide - Canberra	57.7	72.7	15.0
46	Brisbane - Emerald	69.8	66.5	-3.3
47	Adelaide - Port Lincoln	68.7	63.9	-4.8
48	Melbourne - Mildura	70.5	73.8	3.3
49	Dubbo - Sydney	58.6	58.2	-0.4
50	Sydney - Wagga Wagga	57.3	63.5	6.2

continued

Table 4: (continued) Load factors (%) — monthly activity

	City-Pair	Apr 2023	Apr 2024	% Point diff
51	Port Macquarie - Sydney	62.1	67.5	5.4
52	Darwin - Perth	76.2	73.7	-2.5
53	Brisbane - Launceston	82.6	82.5	-0.1
54	Brisbane - Hamilton Island	64.9	76.8	11.9
55	Albury - Sydney	63.8	65.8	2.0
56	Brisbane - Mount Isa	58.9	58.3	-0.6
57	Brisbane - Bundaberg	57.8	60.9	3.1
58	Devonport - Melbourne	72.6	74.1	1.5
59	Adelaide - Alice Springs	74.5	64.1	-10.4
60	Brisbane - Moranbah	55.9	53.7	-2.2
61	Geraldton - Perth	..	47.3	NA
	Total domestic network	79.7	77.6	-2.1

.. Data not available for release.

Table 5: Aircraft trips ^(a) — monthly activity

	City-Pair	Apr 2023	Apr 2024	% Change
1	Melbourne - Sydney	4 331	4 719	9.0
2	Brisbane - Sydney	2 599	2 620	0.8
3	Brisbane - Melbourne	2 044	2 205	7.9
4	Gold Coast - Sydney	1 325	1 468	10.8
5	Adelaide - Melbourne	1 472	1 493	1.4
6	Gold Coast - Melbourne	1 156	1 204	4.2
7	Melbourne - Perth	1 051	1 144	8.8
8	Adelaide - Sydney	1 029	1 234	19.9
9	Perth - Sydney	791	840	6.2
10	Hobart - Melbourne	744	857	15.2
11	Brisbane - Cairns	771	943	22.3
12	Brisbane - Perth	565	619	9.6
13	Canberra - Melbourne	860	799	-7.1
14	Adelaide - Brisbane	690	734	6.4
15	Launceston - Melbourne	721	698	-3.2
16	Cairns - Sydney	493	508	3.0
17	Brisbane - Townsville	671	705	5.1
18	Melbourne - Sunshine Coast	401	444	10.7
19	Hobart - Sydney	462	480	3.9
20	Cairns - Melbourne	459	439	-4.4
21	Sunshine Coast - Sydney	435	425	-2.3
22	Adelaide - Perth	373	407	9.1
23	Brisbane - Mackay	573	573	0.0
24	Karratha - Perth	364	443	21.7
25	Canberra - Sydney	1 133	1 235	9.0
26	Brisbane - Canberra	589	563	-4.4
27	Brisbane - Rockhampton	610	683	12.0
28	Ballina - Sydney	408	354	-13.2
29	Brisbane - Newcastle	517	438	-15.3
30	Perth - Port Hedland	317	396	24.9
31	Melbourne - Newcastle	277	308	11.2
32	Newman - Perth	308	344	11.7
33	Launceston - Sydney	220	222	0.9
34	Kalgoorlie - Perth	286	377	31.8
35	Broome - Perth	246	274	11.4
36	Darwin - Melbourne	183	178	-2.7
37	Brisbane - Hobart	208	182	-12.5
38	Brisbane - Proserpine	242	172	-28.9
39	Adelaide - Gold Coast	164	138	-15.9
40	Hamilton Island - Sydney	172	158	-8.1
41	Brisbane - Darwin	208	205	-1.4
42	Brisbane - Gladstone	353	332	-5.9
43	Canberra - Gold Coast	92	110	19.6
44	Coffs Harbour - Sydney	468	400	-14.5
45	Adelaide - Canberra	264	193	-26.9
46	Brisbane - Emerald	303	342	12.9
47	Adelaide - Port Lincoln	521	567	8.8
48	Melbourne - Mildura	404	414	2.5
49	Dubbo - Sydney	419	453	8.1
50	Sydney - Wagga Wagga	385	392	1.8

continued

Table 5: (continued) Aircraft trips ^(a) — monthly activity

	City-Pair	Apr 2023	Apr 2024	% Change
51	Port Macquarie - Sydney	376	324	-13.8
52	Darwin - Perth	104	102	-1.9
53	Brisbane - Launceston	88	92	4.5
54	Brisbane - Hamilton Island	124	120	-3.2
55	Albury - Sydney	425	362	-14.8
56	Brisbane - Mount Isa	158	169	7.0
57	Brisbane - Bundaberg	276	300	8.7
58	Devonport - Melbourne	317	312	-1.6
59	Adelaide - Alice Springs	156	168	7.7
60	Brisbane - Moranbah	193	224	16.1
61	Geraldton - Perth	..	206	NA
	Total domestic network	50 114	52 585	4.9

(a) Includes RPT cargo flights.

.. Data not available for release.

TOP TEN AIRPORTS – PASSENGER MOVEMENTS

Table 6: Top ten airports, RPT passenger movements (000s) - monthly activity

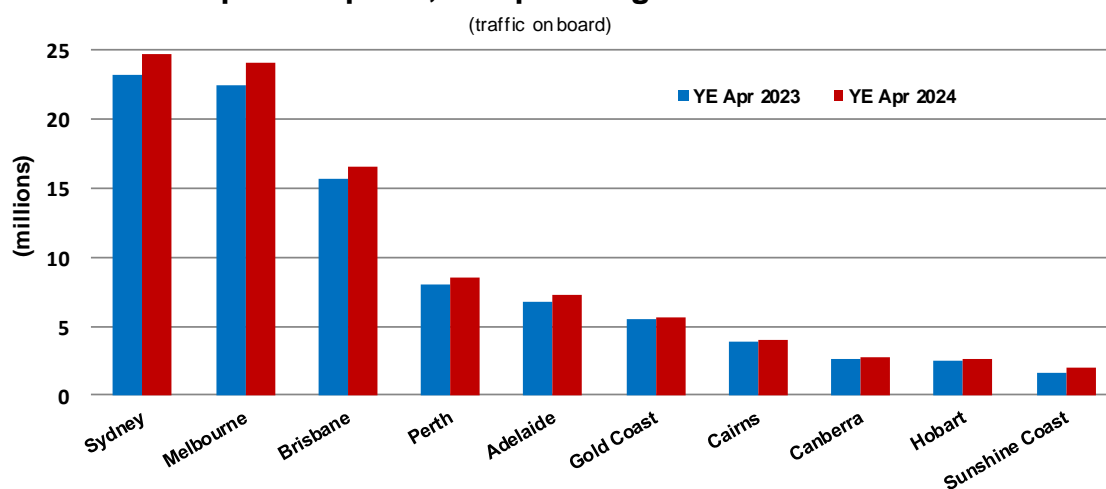
Airport	Apr 2023	Apr 2024	% Change	% of Total
1 Sydney	1 963.0	2 052.7	4.6	20.8
2 Melbourne	1 934.6	2 006.2	3.7	20.4
3 Brisbane	1 322.5	1 350.9	2.2	13.7
4 Perth	689.3	739.5	7.3	7.5
5 Adelaide	600.5	651.9	8.6	6.6
6 Gold Coast	458.3	491.1	7.2	5.0
7 Cairns	334.5	336.8	0.7	3.4
8 Hobart	215.6	228.7	6.1	2.3
9 Canberra	219.1	228.0	4.1	2.3
10 Sunshine Coast	164.8	162.7	-1.2	1.7
Total top ten airports	7 902.0	8 248.5	4.4	83.7
Total domestic network	9 402.2	9 852.6	4.8	100.0

Table 7: Top ten airports, RPT passenger movements (000s) - annual activity

Airport	YE Apr 2023	YE Apr 2024	% Change	% of Total
1 Sydney	23 217.4	24 685.5	6.3	21.1
2 Melbourne	22 374.3	24 017.3	7.3	20.5
3 Brisbane	15 708.6	16 530.4	5.2	14.1
4 Perth	7 973.1	8 543.6	7.2	7.3
5 Adelaide	6 751.6	7 303.9	8.2	6.2
6 Gold Coast	5 491.0	5 610.9	2.2	4.8
7 Cairns	3 893.8	4 050.2	4.0	3.5
8 Canberra	2 684.6	2 793.8	4.1	2.4
9 Hobart	2 499.2	2 654.9	6.2	2.3
10 Sunshine Coast	1 580.2	1 956.0	23.8	1.7
Total top ten airports	92 173.9	98 146.7	6.5	83.9
Total domestic network	109 927.7	117 023.3	6.5	100.0

Note: Airport passenger movement numbers are the sum of passenger arrivals and departures at each airport.

Top ten airports, RPT passenger movements



TOP FIVE AIRPORTS – CARGO MOVEMENTS

Table 8: Top five airports, domestic RPT cargo movements (000s tonnes) - monthly activity

Airport	Apr 2023	Apr 2024	% Change	% of Total
1 Melbourne	6.3	6.8	9.2	27.4
2 Sydney	5.3	5.1	-3.0	20.5
3 Brisbane	4.1	4.7	15.0	18.8
4 Perth	2.5	2.9	14.1	11.6
5 Adelaide	1.3	1.4	4.5	5.6
Total top five airports	19.5	20.9	7.4	83.8
Total domestic network	23.8	24.9	4.9	100.0

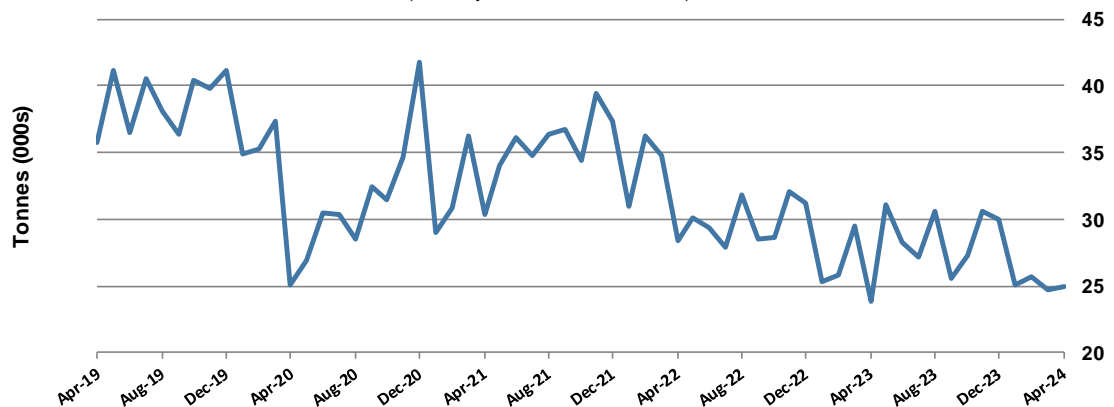
Table 9: Top five airports, domestic RPT cargo movements (000s tonnes) - annual activity

Airport	YE Apr 2023	YE Apr 2024	% Change	% of Total
1 Melbourne	91.8	89.5	-2.5	27.0
2 Sydney	75.8	73.7	-2.7	22.3
3 Brisbane	59.4	59.5	0.2	18.0
4 Perth	35.4	35.2	-0.8	10.6
5 Adelaide	19.9	18.6	-6.2	5.6
Total top five airports	282.3	276.5	-2.0	83.6
Total domestic network	344.0	331.0	-3.8	100.0

Note: Airport cargo tonnes are the sum of cargo tonnes on arrivals and departures at each airport.

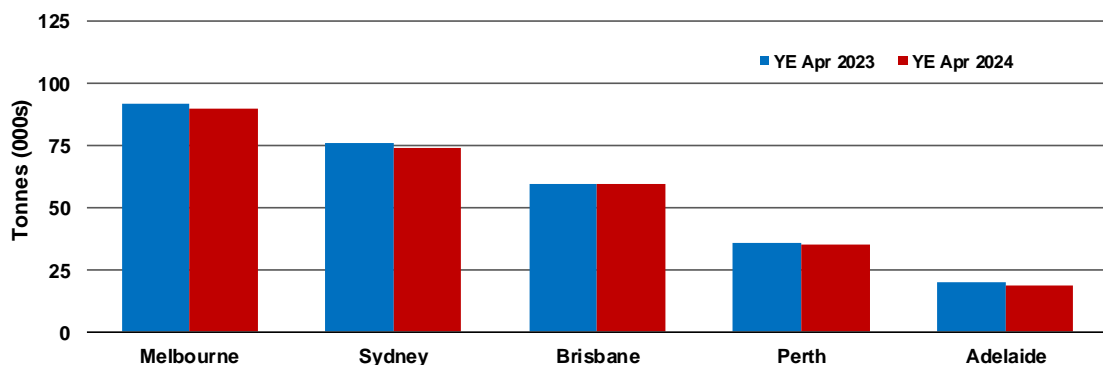
Total domestic network - cargo movement

(monthly totals - traffic on board)



Top five airports, cargo movements

(Domestic cargo traffic - traffic on board)



Note: Airport cargo tonnes are the sum of cargo tonnes on arrivals and departures at each airport.

TOP TEN ROUTES

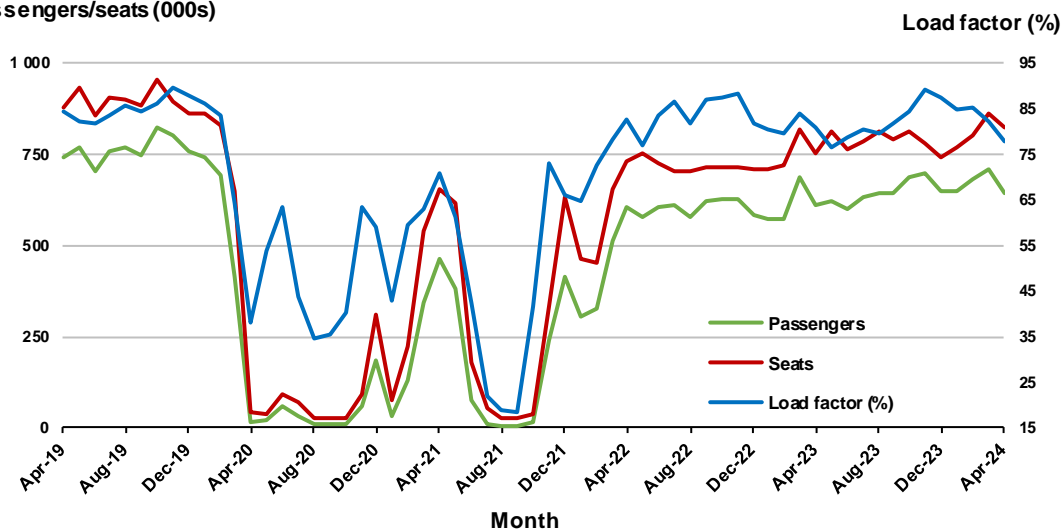
1. Melbourne - Sydney

Monthly data

	Apr 2023	Apr 2024	% Change
Passengers carried (000s)	609.9	641.5	5.2
Seats (000s)	752.8	825.3	9.6
Load factor %	81.0	77.8	-3.2 *
Aircraft trips	4 331	4 719	9.0

* percentage point difference

Passengers/seats (000s)

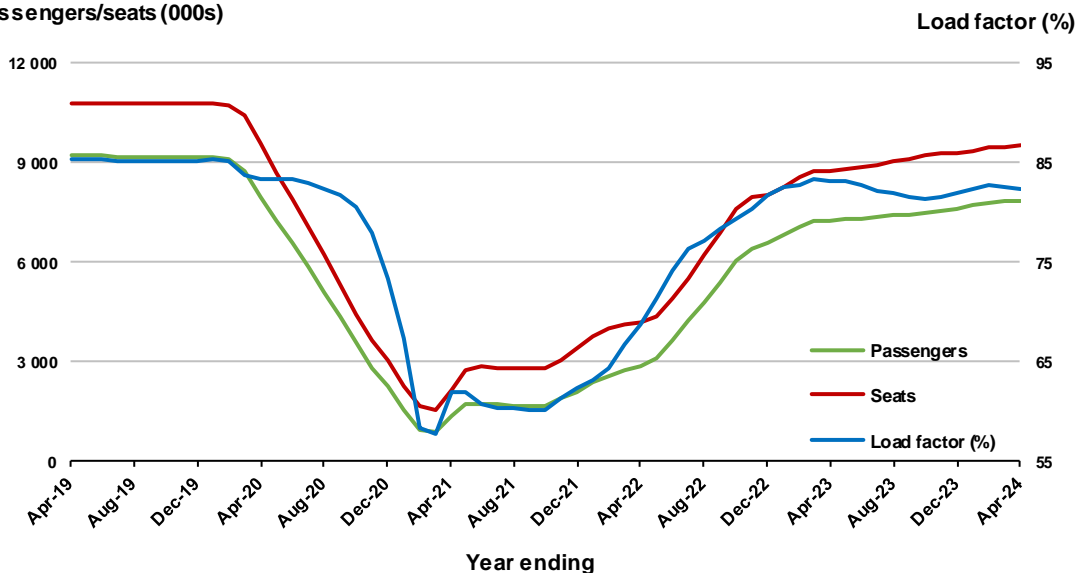


Moving annual data

	YE Apr 2023	YE Apr 2024	% Change
Passengers carried (000s)	7 274.7	7 862.1	8.1
Seats (000s)	8 745.7	9 554.2	9.2
Load factor %	83.2	82.3	-0.9 *
Aircraft trips	50 382	55 414	10.0

* percentage point difference

Passengers/seats (000s)

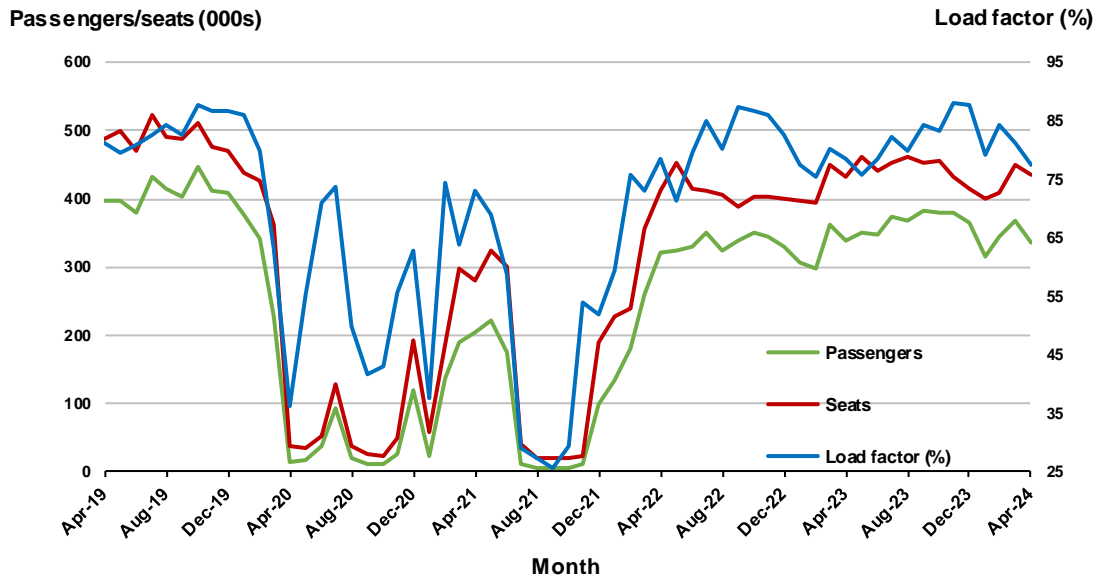


2. Brisbane - Sydney

Monthly data

	Apr 2023	Apr 2024	% Change
Passengers carried (000s)	338.9	336.5	-0.7
Seats (000s)	431.5	434.9	0.8
Load factor %	78.5	77.4	-1.1 *
Aircraft trips	2 599	2 620	0.8

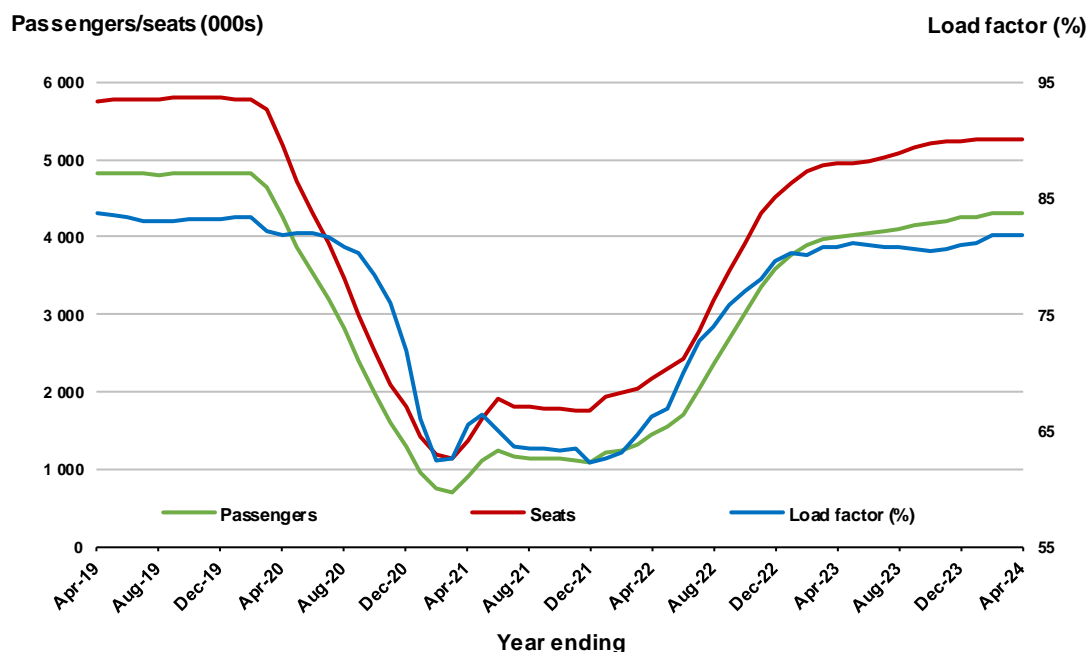
* percentage point difference



Moving annual data

	YE Apr 2023	YE Apr 2024	% Change
Passengers carried (000s)	4 000.4	4 309.4	7.7
Seats (000s)	4 956.1	5 269.6	6.3
Load factor %	80.7	81.8	1.1 *
Aircraft trips	30 462	32 353	6.2

* percentage point difference

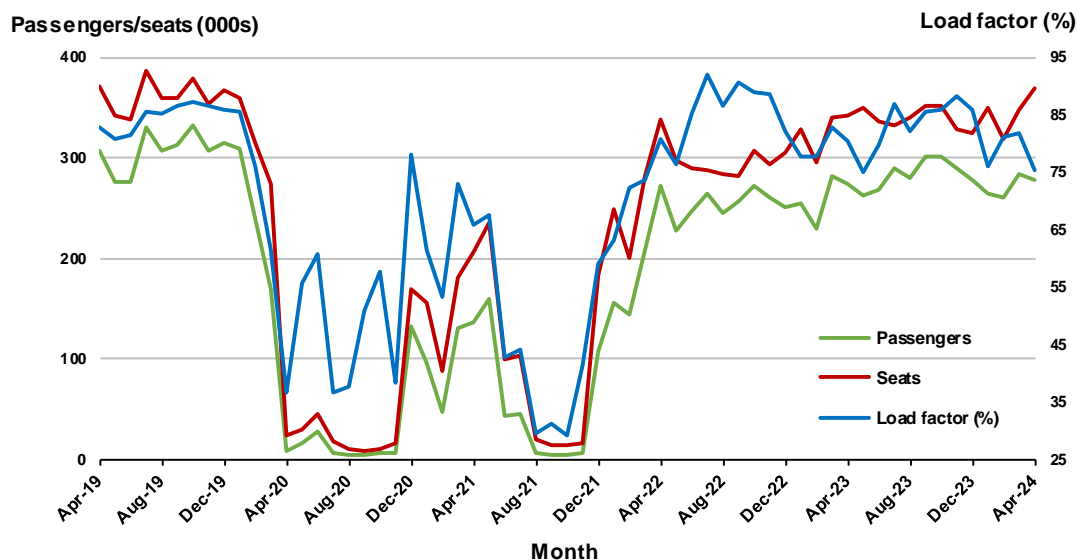


3. Brisbane - Melbourne

Monthly data

	Apr 2023	Apr 2024	% Change
Passengers carried (000s)	274.6	277.3	1.0
Seats (000s)	341.7	368.9	8.0
Load factor %	80.4	75.2	-5.2 *
Aircraft trips	2 044	2 205	7.9

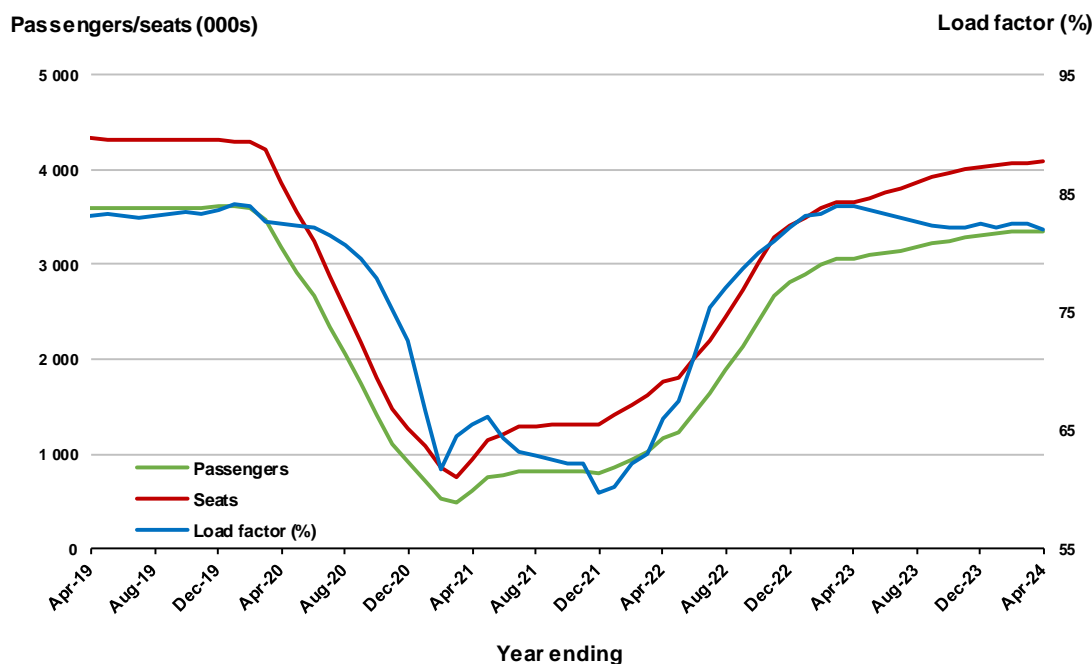
* percentage point difference



Moving annual data

	YE Apr 2023	YE Apr 2024	% Change
Passengers carried (000s)	3 066.9	3 356.8	9.5
Seats (000s)	3 655.3	4 099.1	12.1
Load factor %	83.9	81.9	-2.0 *
Aircraft trips	22 294	24 690	10.7

* percentage point difference



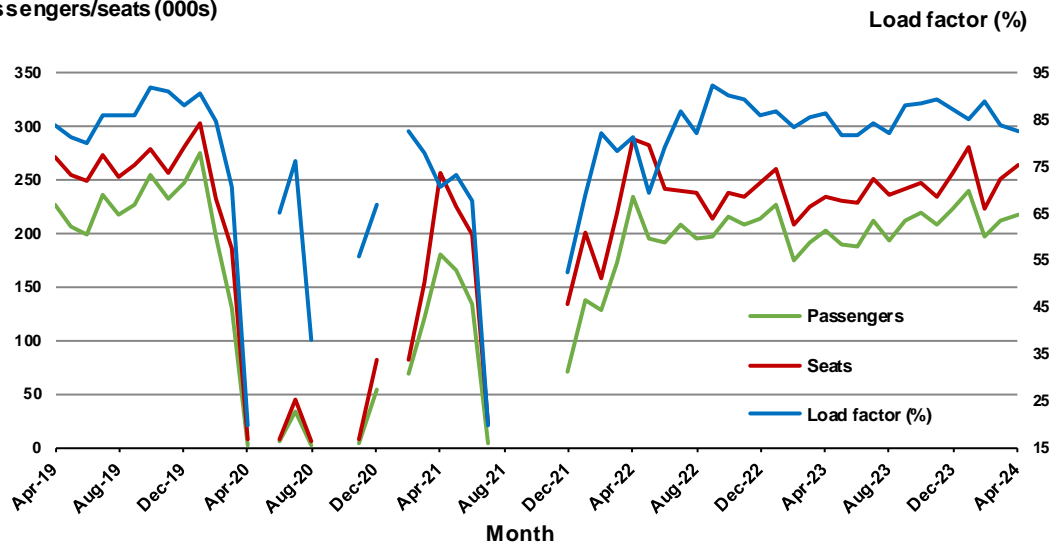
4. Gold Coast - Sydney ^(a)

Monthly data

	Apr 2023	Apr 2024	% Change
Passengers carried (000s)	201.9	217.4	7.7
Seats (000s)	233.5	263.2	12.7
Load factor %	86.5	82.6	-3.9 *
Aircraft trips	1 325	1 468	10.8

* percentage point difference

Passengers/seats (000s)



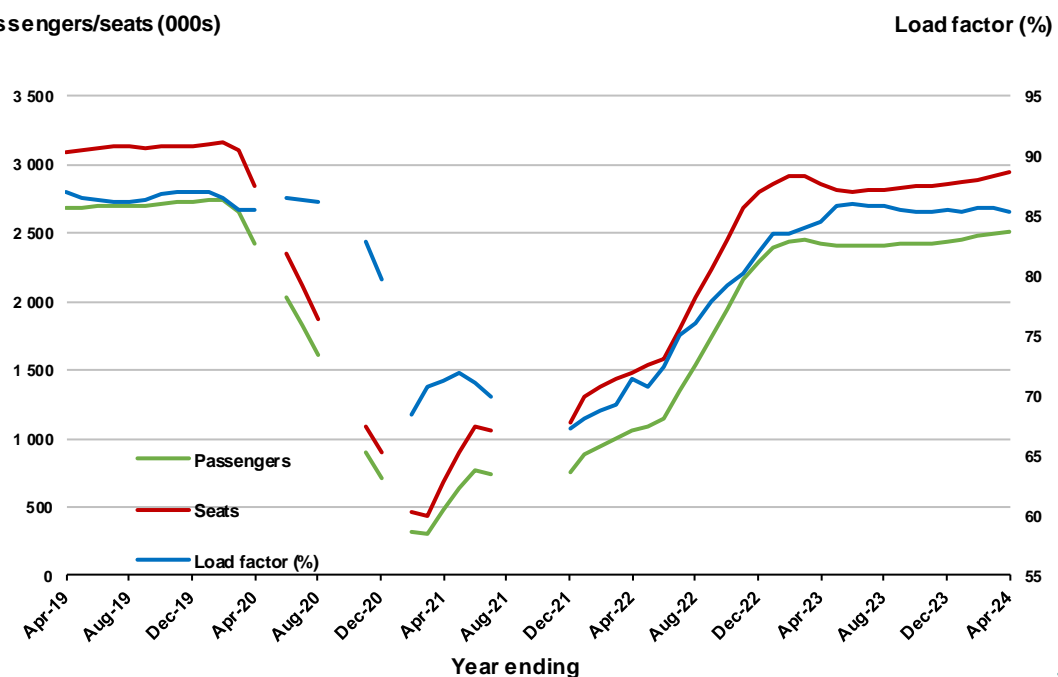
(a) May, September and October 2020 and January and August to November 2021 data not available for release.

Moving annual data

	YE Apr 2023	YE Apr 2024	% Change
Passengers carried (000s)	2 419.0	2 507.9	3.7
Seats (000s)	2 862.2	2 941.6	2.8
Load factor %	84.5	85.3	0.7 *
Aircraft trips	16 595	16 718	0.7

* percentage point difference

Passengers/seats (000s)



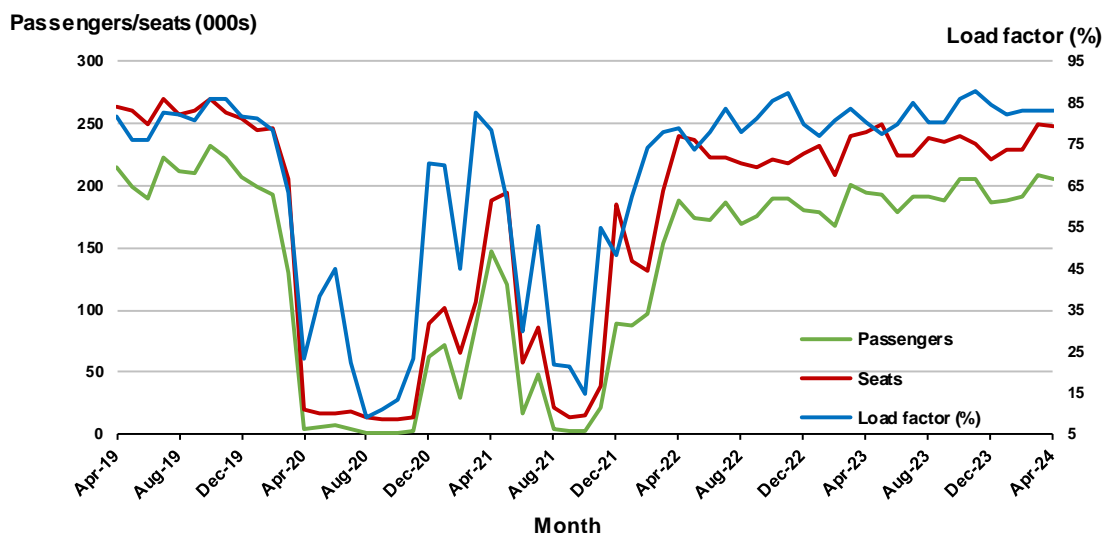
(a) May, September and October 2020 and January and August to November 2021 moving annual totals not available for release.

5. Adelaide - Melbourne

Monthly data

	Apr 2023	Apr 2024	% Change
Passengers carried (000s)	194.5	206.0	5.9
Seats (000s)	242.8	247.4	1.9
Load factor %	80.1	83.3	3.2 *
Aircraft trips	1 472	1 493	1.4

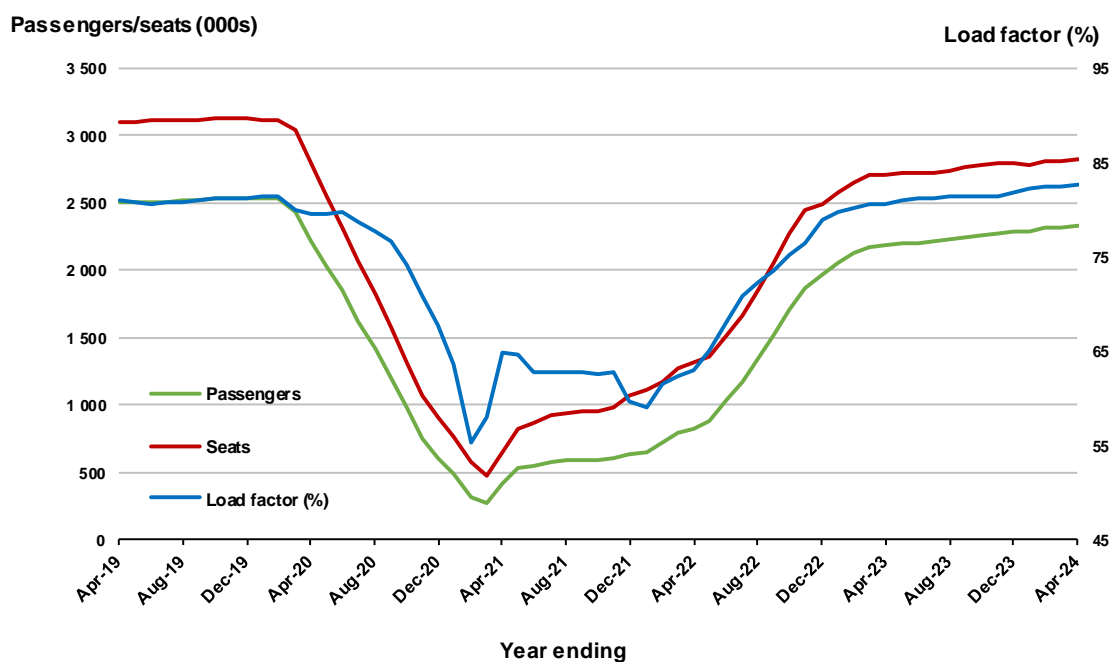
* percentage point difference



Moving annual data

	YE Apr 2023	YE Apr 2024	% Change
Passengers carried (000s)	2 181.7	2 334.1	7.0
Seats (000s)	2 704.7	2 821.8	4.3
Load factor %	80.7	82.7	2.1 *
Aircraft trips	16 597	17 248	3.9

* percentage point difference

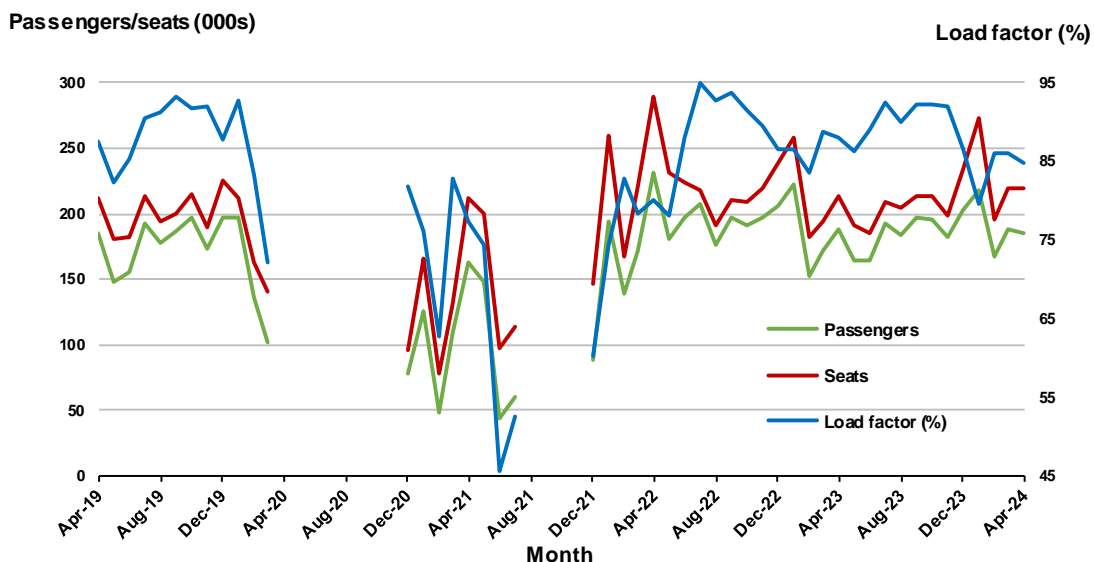


6. Gold Coast - Melbourne ^(a)

Monthly data

	Apr 2023	Apr 2024	% Change
Passengers carried (000s)	187.6	185.6	-1.1
Seats (000s)	213.4	218.7	2.5
Load factor %	87.9	84.8	-3.1 *
Aircraft trips	1 156	1 204	4.2

* percentage point difference

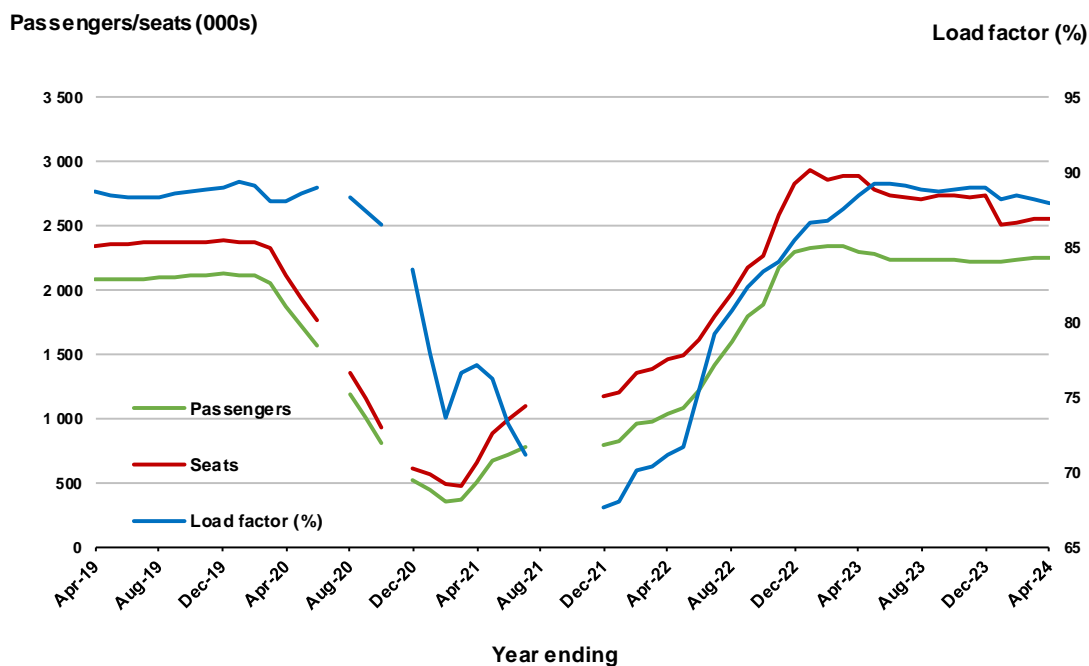


(a) April to November 2020 and August to November 2021 moving annuals are not available for release.

Moving annual data

	YE Apr 2023	YE Apr 2024	% Change
Passengers carried (000s)	2 290.4	2 244.4	-2.0
Seats (000s)	2 879.5	2 553.0	-11.3
Load factor %	88.4	87.9	-0.5 *
Aircraft trips	14 367	13 899	-3.3

* percentage point difference



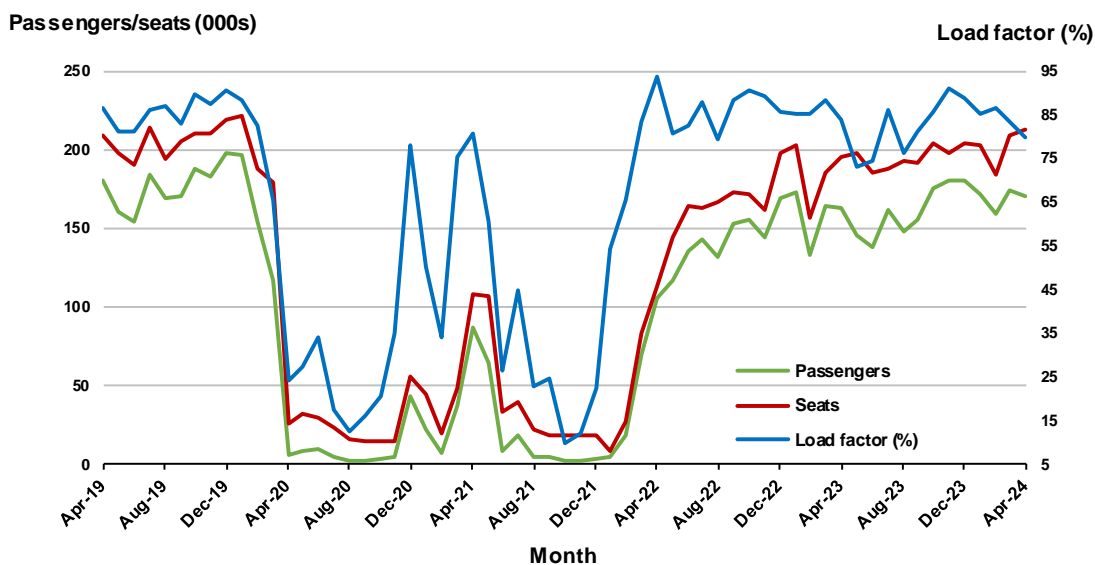
(a) July and November 2020 and August to November 2021 moving annuals are not available for release.

7. Melbourne - Perth

Monthly data

	Apr 2023	Apr 2024	% Change
Passengers carried (000s)	163.2	170.5	4.5
Seats (000s)	194.9	213.0	9.3
Load factor %	83.7	80.0	-3.7 *
Aircraft trips	1 051	1 144	8.8

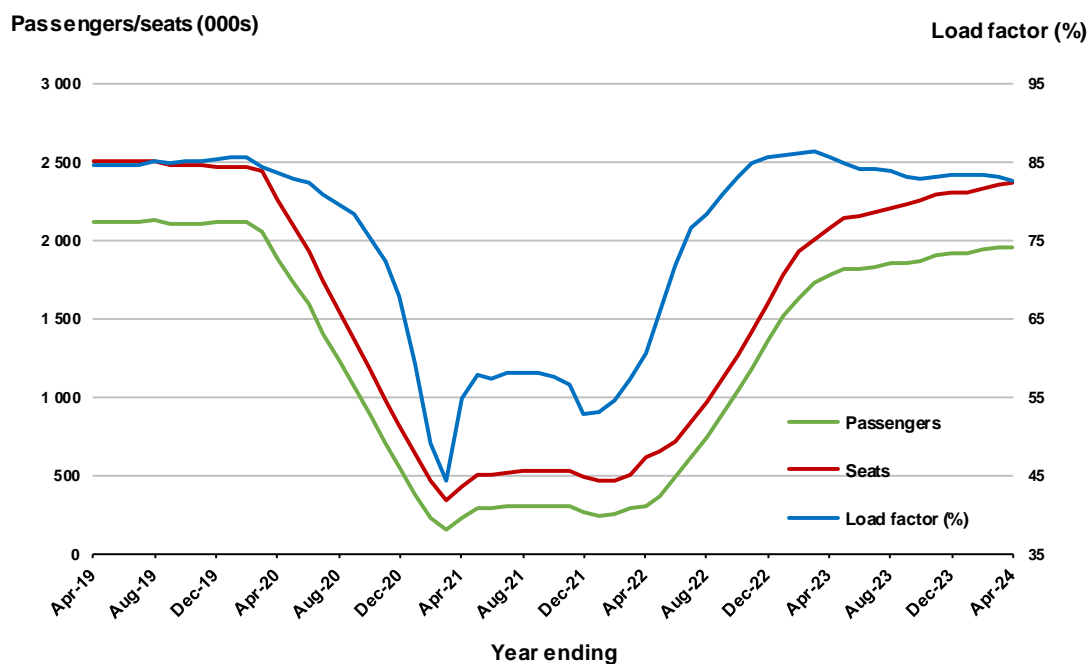
* percentage point difference



Moving annual data

	YE Apr 2023	YE Apr 2024	% Change
Passengers carried (000s)	1 783.5	1 958.2	9.8
Seats (000s)	2 082.4	2 368.9	13.8
Load factor %	85.6	82.7	-3.0 *
Aircraft trips	11 685	13 171	12.7

* percentage point difference



8. Adelaide - Sydney ^(a)

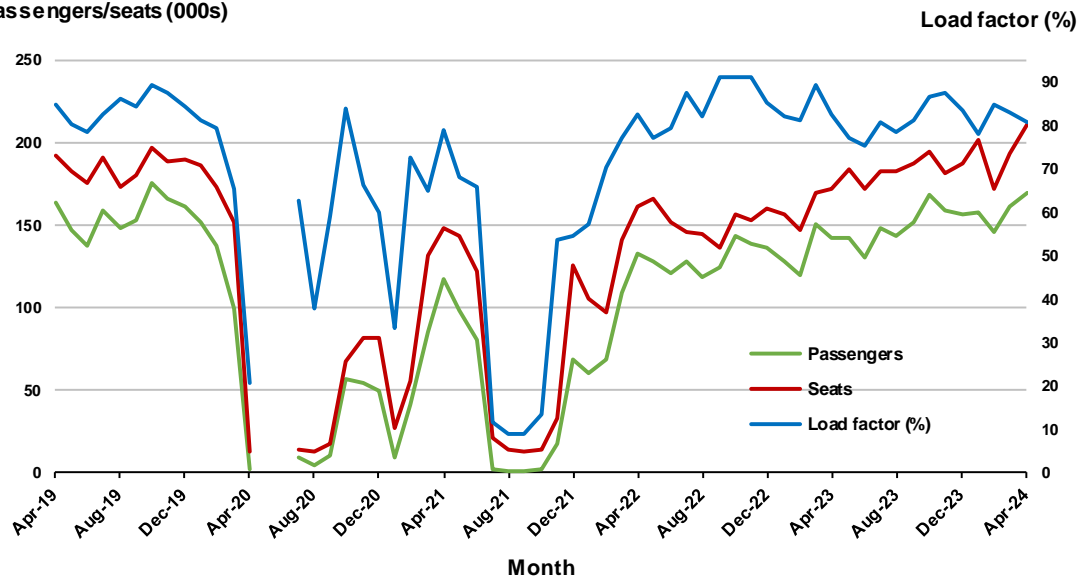
Monthly data

	Apr 2023	Apr 2024	% Change
Passengers carried (000s)	142.2	170.4	19.9
Seats (000s)	172.1	211.2	22.7
Load factor %	82.6	80.7	-1.9 *
Aircraft trips	1 029	1 234	19.9

.. Data not available for release.

* percentage point difference

Passengers/seats (000s)



(a) May and June 2020 data not available for release.

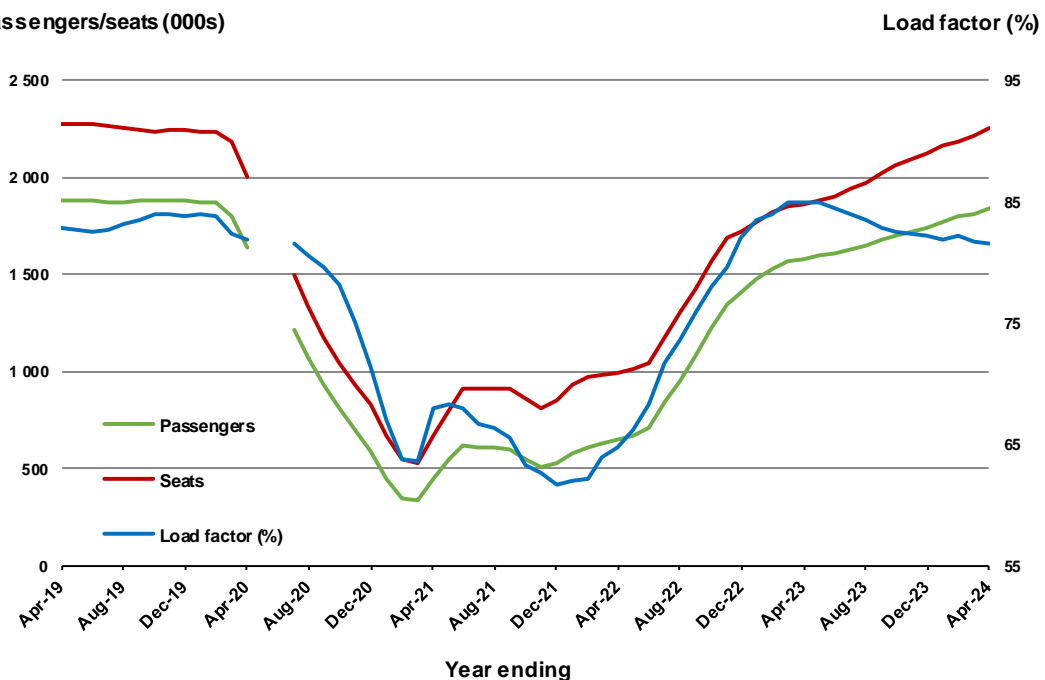
Moving annual data

	YE Apr 2023	YE Apr 2024	% Change
Passengers carried (000s)	1 580.9	1 837.3	16.2
Seats (000s)	1 861.4	2 253.1	21.0
Load factor %	84.9	81.5	-3.4 *
Aircraft trips	11 404	13 745	20.5

.. Data not available for release.

* percentage point difference

Passengers/seats (000s)



(a) May and June 2020 moving annual totals are not available for release.

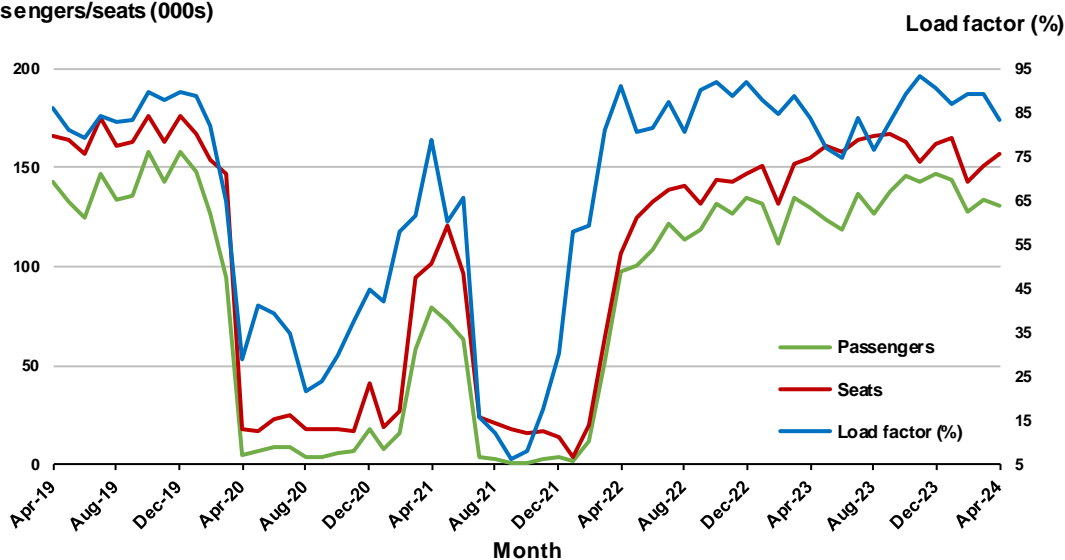
9. Perth - Sydney

Monthly data

	Apr 2023	Apr 2024	% Change
Passengers carried (000s)	130.1	131.1	0.7
Seats (000s)	155.0	157.1	1.4
Load factor %	84.0	83.4	-0.6 *
Aircraft trips	791	840	6.2

* percentage point difference

Passengers/seats (000s)

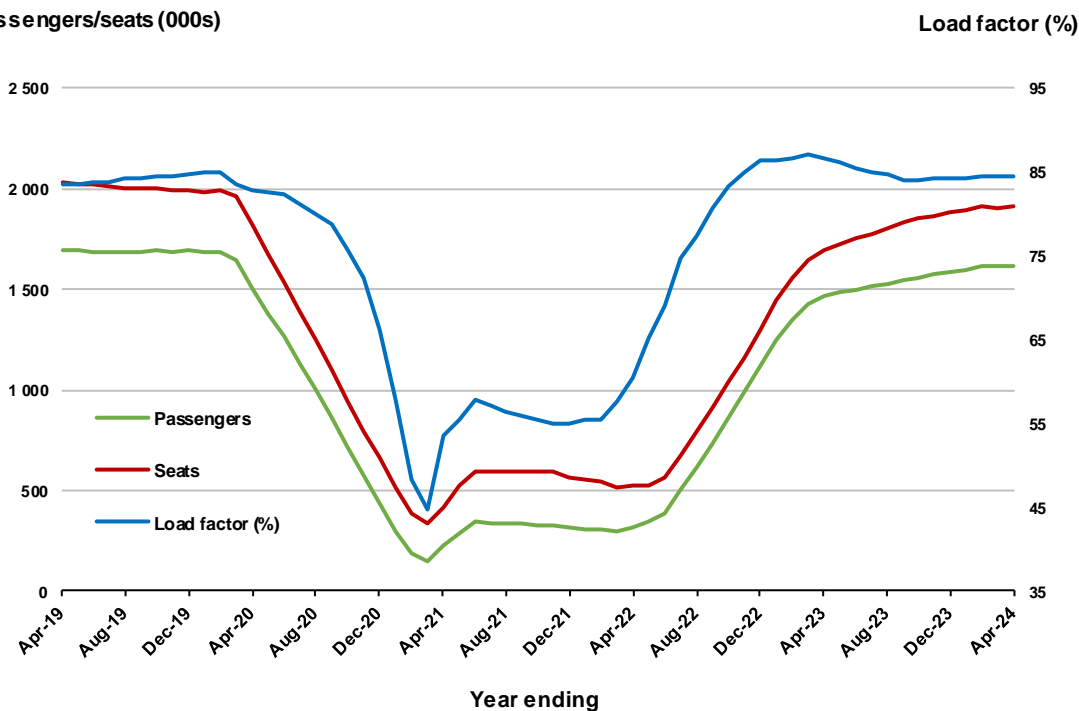


Moving annual data

	YE Apr 2023	YE Apr 2024	% Change
Passengers carried (000s)	1 463.8	1 614.6	10.3
Seats (000s)	1 690.9	1 910.1	13.0
Load factor %	86.6	84.5	-2.0 *
Aircraft trips	8 888	9 879	11.1

* percentage point difference

Passengers/seats (000s)

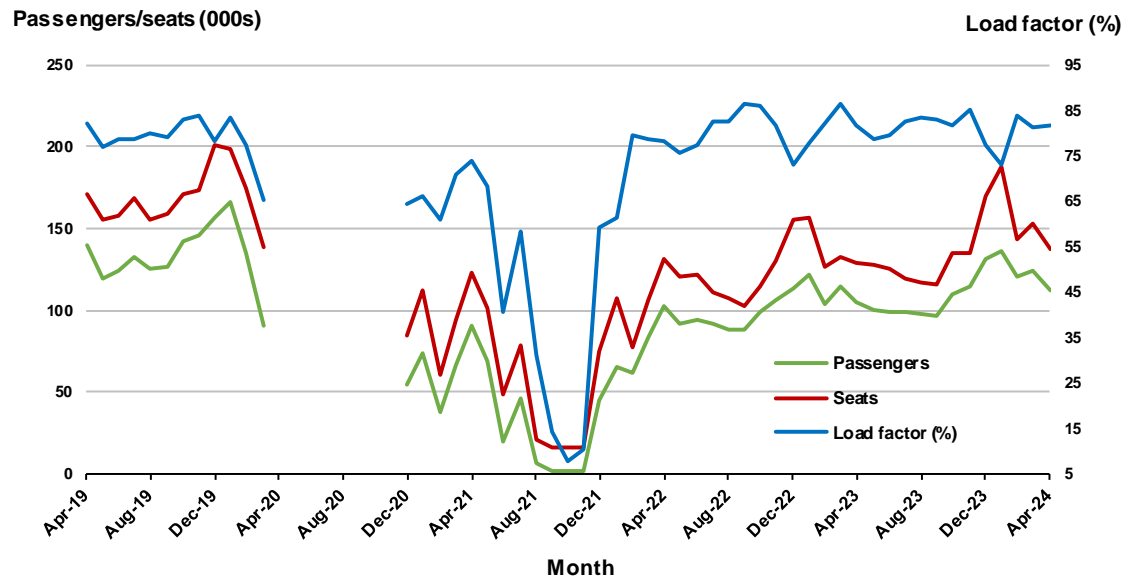


10. Hobart - Melbourne ^(a)

Monthly data

	Apr 2023	Apr 2024	% Change
Passengers carried (000s)	105.4	111.9	6.2
Seats (000s)	128.8	136.9	6.3
Load factor %	81.9	81.8	-0.1 *
Aircraft trips	744	857	15.2

* percentage point difference

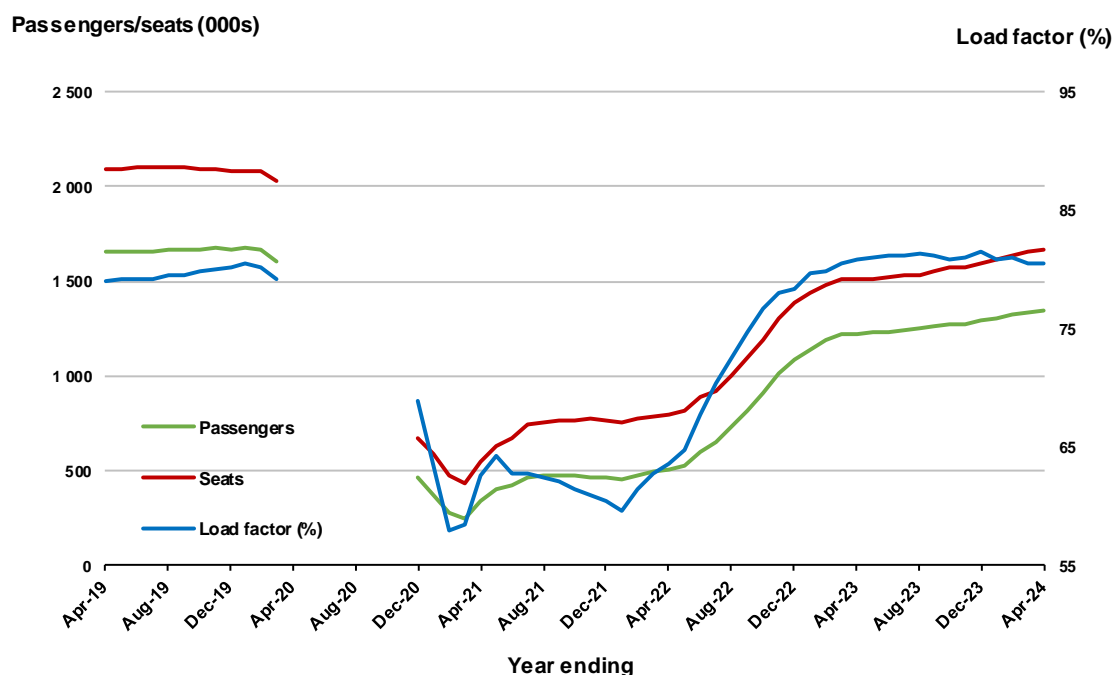


(a) April to November 2020 data not available for release.

Moving annual data

	YE Apr 2023	YE Apr 2024	% Change
Passengers carried (000s)	1 219.7	1 342.2	10.0
Seats (000s)	1 509.0	1 665.9	10.4
Load factor %	80.8	80.6	-0.3 *
Aircraft trips	9 035	9 729	7.7

* percentage point difference



(a) April to November 2020 moving annual totals are not available for release.

TOP FIFTY REGIONAL AIRPORTS

Table 10: Top fifty regional airports (000s) — passenger movements, monthly

Airport	Apr 2023	Apr 2024	% Change
1 Cairns	334.5	336.8	0.7
2 Hobart	215.6	228.7	6.1
3 Townsville	135.6	136.9	1.0
4 Darwin	131.8	127.8	-3.0
5 Launceston	120.2	127.2	5.8
6 Newcastle	96.6	104.1	7.7
7 Mackay	71.5	73.8	3.2
8 Rockhampton	51.9	57.0	9.8
9 Ballina	52.4	52.4	0.1
10 Karratha	41.8	50.1	19.8
11 Proserpine	49.2	45.0	-8.4
12 Port Hedland	35.4	40.9	15.7
13 Hamilton Island	42.9	40.0	-6.8
14 Newman	29.8	34.0	13.9
15 Broome	34.4	33.4	-2.9
16 Alice Springs	31.7	33.2	4.8
17 Kalgoorlie	27.0	29.6	9.5
18 Albury	21.6	24.8	14.4
19 Ayers Rock	20.9	24.2	15.7
20 Paraburdoo	18.0	23.7	31.7
21 Mildura	18.8	21.0	11.6
22 Gladstone	16.7	21.0	25.9
23 Coffs Harbour	24.1	20.7	-14.0
24 Mount Isa	17.6	19.5	11.2
25 Port Macquarie	15.9	18.9	19.0
26 Wagga Wagga	16.0	17.6	9.6
27 Dubbo	15.3	17.0	11.5
28 Emerald	15.1	16.2	7.2
29 Port Lincoln	14.8	15.0	1.1
30 Tamworth	11.6	14.9	28.5
31 Hervey Bay	11.2	14.1	26.2
32 Bundaberg	9.9	13.9	39.3
33 Kununurra	11.9	11.6	-2.8
34 Devonport	10.4	10.6	2.4
35 Learmonth	10.2	10.2	-0.5
36 Orange	8.1	9.5	17.7
37 Thursday Island	8.4	9.4	11.8
38 Geraldton	6.7	9.3	39.4
39 Armidale	10.0	9.1	-8.9
40 Moranbah	8.2	9.0	10.6
41 Olympic Dam	7.6	8.9	16.5
42 Toowoomba Wellcamp	6.1	8.3	36.8
43 Weipa	6.7	8.0	20.4
44 Busselton	4.9	7.6	54.9
45 Gove	6.4	7.4	14.8
46 Burnie	7.1	6.7	-4.9
47 Norfolk Island	6.2	6.4	4.5
48 Mount Gambier	5.5	6.1	12.2
49 Griffith	5.9	5.8	-2.4
50 Merimbula	6.2	5.6	-8.6
Total top 50 regional airports	1 886.3	1 983.1	5.1
Total regional airports	1 998.7	2 107.1	5.4
Total domestic network	9 402.2	9 852.6	4.8

Note: Airport passenger movement numbers are the sum of passenger arrivals and departures at each airport. Regional airports are defined as airports which are, according to Australian Statistical Geography Standard (ASGS), not based in Major Cities.

Table 11: Top fifty regional airports (000s) — passenger movements, annual

Airport	YE Apr 2023	YE Apr 2024	% Change
1 Cairns	3 893.8	4 050.2	4.0
2 Hobart	2 499.2	2 654.9	6.2
3 Townsville	1 632.9	1 695.2	3.8
4 Darwin	1 670.8	1 605.9	-3.9
5 Launceston	1 297.3	1 407.1	8.5
6 Newcastle	1 085.0	1 199.4	10.5
7 Mackay	887.0	913.9	3.0
8 Rockhampton	535.3	658.8	23.1
9 Ballina	642.3	626.9	-2.4
10 Karratha	522.8	571.7	9.3
11 Proserpine	471.9	517.1	9.6
12 Hamilton Island	512.8	493.1	-3.8
13 Port Hedland	473.0	485.1	2.6
14 Broome	445.2	436.4	-2.0
15 Newman	361.5	371.6	2.8
16 Alice Springs	366.7	367.5	0.2
17 Kalgoorlie	328.4	363.0	10.5
18 Albury	228.7	281.4	23.0
19 Coffs Harbour	285.0	274.7	-3.6
20 Ayers Rock	244.8	272.0	11.1
21 Paraburdoo	220.1	257.5	17.0
22 Gladstone	205.9	240.8	17.0
23 Mildura	201.1	236.3	17.5
24 Port Macquarie	183.3	234.7	28.1
25 Mount Isa	231.4	231.8	0.2
26 Dubbo	194.3	215.1	10.7
27 Wagga Wagga	191.8	201.1	4.8
28 Emerald	185.8	196.9	6.0
29 Tamworth	146.5	177.3	21.0
30 Port Lincoln	179.8	172.5	-4.0
31 Bundaberg	112.2	166.6	48.5
32 Hervey Bay	134.7	152.4	13.2
33 Kununurra	131.5	138.6	5.4
34 Devonport	114.7	120.8	5.3
35 Moranbah	104.7	111.5	6.5
36 Thursday Island	100.9	109.1	8.1
37 Armidale	109.5	108.6	-0.8
38 Orange	99.1	108.2	9.1
39 Geraldton	81.8	105.9	29.5
40 Learmonth	101.5	104.4	2.9
41 Olympic Dam	95.8	104.2	8.7
42 Toowoomba Wellcamp	48.8	92.9	90.6
43 Gove	88.5	90.8	2.5
44 Weipa	85.9	89.6	4.3
45 Burnie	82.1	81.0	-1.3
46 Mount Gambier	78.0	72.8	-6.6
47 Griffith	75.4	71.0	-5.9
48 Merimbula	75.4	70.7	-6.3
49 Norfolk Island	71.2	69.8	-2.0
50 Roma	58.5	64.6	10.5
Total top 50 regional airports	22 174.6	23 443.6	5.7
Total regional airports	23 559.0	24 864.9	5.5
Total domestic network	109 927.7	117 023.3	6.5

Note: Airport passenger movement numbers are the sum of passenger arrivals and departures at each airport. Regional airports are defined as airports which are, according to Australian Statistical Geography Standard (ASGS), not based in Major Cities.

DOMESTIC CHARTER ACTIVITY

Table 12: Charter passengers carried and aircraft trips - monthly activity (000s)

	Apr 2023	Apr 2024	% Change
Total domestic charter passengers	303.7	364.3	19.9
Total domestic charter aircraft trips	5.3	6.2	17.0

Note: Helicopter, joyflights and sightseeing charter flights not included.

Table 13: Charter passengers carried and aircraft trips - annual activity (000s)

	YE Apr 2023	YE Apr 2024	% Change
Total domestic charter passengers	3 737.5	4 210.4	12.7
Total domestic charter aircraft trips	66.8	72.1	7.9

Note: Helicopter, joyflights and sightseeing charter flights not included.

Table 14: Domestic airports - charter activity - monthly (000s)

	Apr 2023	Apr 2024	% Change
Total domestic charter passenger movements	607.5	728.5	19.9
Total domestic charter aircraft movements	10.7	12.5	17.0
Perth airport charter passenger movements	225.5	257.7	14.3
Perth airport charter aircraft movements	3.6	3.9	8.6

Note: Helicopter, joyflights and sightseeing charter flights not included.

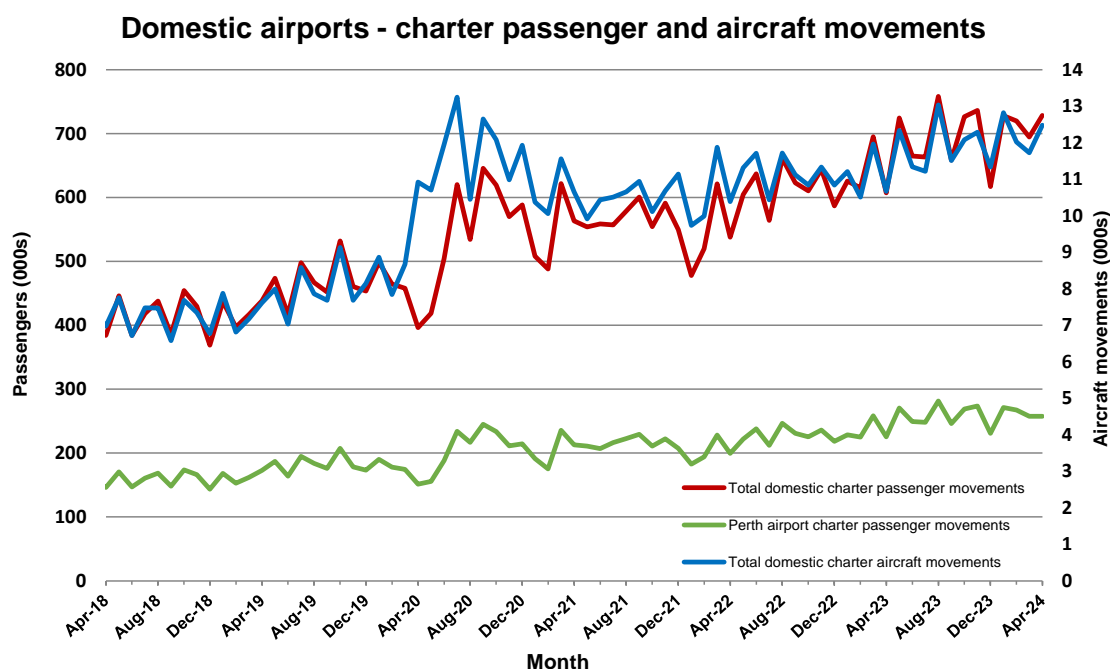
Charter passenger and aircraft movement numbers are the sum of arrivals and departures at each airport.

Table 15: Domestic airports - charter activity - annual (000s)

	YE Apr 2023	YE Apr 2024	% Change
Total domestic charter passenger movements	7 475.0	8 420.9	12.7
Total domestic charter aircraft movements	133.7	144.2	7.9
Perth airport charter passenger movements	2 767.8	3 123.5	12.9
Perth airport charter aircraft movements	44.9	48.3	7.8

Note: Helicopter, joyflights and sightseeing charter flights not included.

Charter passenger and aircraft movement numbers are the sum of arrivals and departures at each airport.



DEFINITIONS

Aircraft Trips	The number of flight stages. A return flight counts as two aircraft trips.
Airport Movements	Airport movements (passenger and cargo) are measured once on arrival and once on departure. Each domestic trip generates two movements at airports. For example, a trip from Melbourne to Sydney will be counted twice, as a departure at Melbourne and as an arrival at Sydney. At the national level, the sum of all domestic airport traffic will therefore be equal to twice the number of trips undertaken.
Available Seat Kilometres (ASKs)	Calculated by multiplying the number of seats available on each flight stage, by the distance in kilometres between the ports. The distances used are Great Circle Distances.
City-Pair	The ports shown make up the city-pair route. Passenger movements shown for a city pair reflect total traffic in both directions.
Flight Stage	The operation of an aircraft from take-off to landing.
Load Factor	The total revenue passenger kilometres performed as a percentage of the total available seat kilometres.
Passengers Carried	Revenue passengers carried.
Regular Public Transport Services (RPT)	All air service operations in which aircraft are available for the transport of members of the public and are conducted in accordance with fixed schedules. It does not include charter or other non-scheduled operations.
Revenue Passengers	All passengers paying any fare. Frequent flyer redemption travellers are regarded as revenue passengers.
Revenue Passenger Kilometres (RPKs)	Calculated by multiplying the number of revenue passengers travelling on each flight stage, by the distance in kilometres between the ports. The distances used are Great Circle Distances.
Traffic on board by stages (TOB)	The total of all traffic (revenue passengers) on each flight stage between two directly connected airports.
..	Not available for confidentiality or other reasons.
NA	Not applicable.