



Australian Government

Department of Infrastructure, Transport, Regional Development and Communications

Bureau of Infrastructure and Transport Research Economics

STATISTICAL REPORT



Aviation

Domestic aviation activity

August 2021

© Commonwealth of Australia 2021

ISSN: 1832 - 1968

Ownership of intellectual property rights in this publication

Unless otherwise noted, copyright (and any other intellectual property rights, if any) in this publication is owned by the Commonwealth of Australia (referred to below as the Commonwealth).

Disclaimer

The material contained in this publication is made available on the understanding that the Commonwealth is not providing professional advice, and that users exercise their own skill and care with respect to its use, and seek independent advice if necessary.

The Commonwealth makes no representations or warranties as to the contents or accuracy of the information contained in this publication. To the extent permitted by law, the Commonwealth disclaims liability to any person or organisation in respect of anything done, or omitted to be done, in reliance upon information contained in this publication.

Creative Commons licence

With the exception of (a) the Coat of Arms; and (b) the Department of Infrastructure, Transport, Regional Development and Communications' photos and graphics, copyright in this publication is licensed under a Creative Commons Attribution 3.0 Australia Licence.

Creative Commons Attribution 3.0 Australia Licence is a standard form licence agreement that allows you to copy, communicate and adapt this publication provided that you attribute the work to the Commonwealth and abide by the other licence terms. A summary of the licence terms is available from <http://creativecommons.org/licenses/by/3.0/au/deed.en>.

The full licence terms are available from <http://creativecommons.org/licenses/by/3.0/au/legalcode>.

Use of the Coat of Arms

The Department of the Prime Minister and Cabinet sets the terms under which the Coat of Arms is used. Please refer to the Department's Commonwealth Coat of Arms and Government branding web page <http://www.dpmc.gov.au/guidelines/index.cfm#brand> and, in particular, the Guidelines on the use of the Commonwealth Coat of Arms publication.

An appropriate citation for this report is:

Bureau of Infrastructure and Transport Research Economics (BITRE), 2021, Domestic aviation activity, Statistical Report, BITRE, Canberra ACT.

Contact us

This publication is available in PDF format. All other rights are reserved, including in relation to any Departmental logos or trade marks which may exist. For enquiries regarding the licence and any use of this publication, please contact:

Bureau of Infrastructure and Transport Research Economics (BITRE)
Department of Infrastructure, Transport, Regional Development and Communications
GPO Box 501, Canberra ACT 2601, Australia
Telephone: (international) +61 2 6274 7210
Fax: (international) +61 2 6274 6855
Email: bitre@infrastructure.gov.au
Website: www.bitre.gov.au

Inquiries

Should you require additional information about the statistics contained in this publication:

Nebojsa Pavlovic

Telephone (02) 6274 6817 or Facsimile (02) 6274 7727

Electronic mail: AVSTATS@infrastructure.gov.au

Nebojsa.Pavlovic@infrastructure.gov.au

Web site: <http://www.bitre.gov.au/statistics/aviation/domestic.aspx>

FOREWORD

This report provides an overview of domestic (including charter) commercial aviation activity in Australia for the month of August 2021.

The data cover revenue passengers carried by Australian-registered operators of scheduled regular public transport services over Australian flight stages and fixed-wing charter operators. These estimates include passengers carried between domestic airports on international flights operated by these carriers. The passengers carried refer to traffic on board by stages.

Individual routes shown are restricted to those exceeding 8 000 passengers per month where two or more airlines operate in competition. For the month of August 2021, there were 18 such routes compared to 27 published in August 2020.

Information on the total network for the month of August 2021 and on the Regular Public Transport (RPT) network for the month of August 2021 is presented on page 2, with estimates for the year ended August 2021 presented on page 3.

Detailed information on individual routes can be found in the RPT summary pages 4-8 of this publication.

The top ten airports in terms of RPT passenger movements are shown on page 10.

Data on domestic RPT cargo movements at the top five cargo airports are provided on page 11. The table includes cargo carried on passenger flights operated by the Qantas group (including Jetstar), Virgin Australia, Air North, Rex Airlines and Skippers as well as the cargo carried by dedicated freighter aircraft operated by Qantas Freight and Toll Aviation.

The long-term trends for the top ten competitive RPT routes are presented graphically on pages 12-21.

Domestic RPT passenger movements at regional airports are presented on pages 22-23.

Tables providing estimates of domestic charter aviation activity are shown on page 24. BITRE confidentiality standards restrict publication of detailed estimates for individual Australian airports, with the exception of Perth Airport. For the month of August Alliance Airlines charter and RPT data have been estimated and included in this publication.

A list of definitions can be found on page 25.

This report was prepared by the Aviation Statistics Section of the Bureau of Infrastructure and Transport Research Economics with data provided by airlines.

Estimates are included where data were not available and data presented in this publication may contain revisions to previously published data.

Where figures have been rounded, discrepancies may occur between sums of component items and totals, and in percentage changes which are derived from figures prior to rounding.

CONTENTS

Highlights	1
Total network	2
RPT network	2
Top competitive routes	4
Top ten airports – passenger movements	10
Top five airports – cargo movements	11
Top ten routes	12
1. Brisbane – Cairns	12
2. Broome – Perth.....	13
3. Karratha – Perth.....	14
4. Perth – Port Hedland.....	15
5. Brisbane – Townsville	16
6. Newman – Perth	17
7. Brisbane – Mackay	18
8. Kalgoorlie – Perth	19
9. Darwin – Perth	20
10. Brisbane – Rockhampton	21
Top fifty regional airports	22
Domestic charter activity	24
Definitions	25

This page is intentionally left blank.

HIGHLIGHTS

The impact of COVID-19 and additional domestic travel restrictions continued to defer recovery of the domestic aviation industry in August 2021. The number of revenue passenger was 86 per cent below the pre-COVID-19 level in August 2019.

There were 1.02 million passengers carried on Australian domestic commercial aviation (including charter operations) in August 2021, compared to 0.85 million in August 2020 and 5.43 million in August 2019.

For the month of August 2021, there were 24.6 thousand aircraft trips, compared to 19.5 thousand in August 2020 and 53.5 thousand in August 2019.

729.3 thousand passengers were carried on RPT flights in August 2021, compared to 579.8 thousand reported in August 2020 and 5.20 million reported in August 2019.

For the year ending August 2021 there were 22.31 million RPT passengers, a decrease of 37.9 per cent on the year ending August 2020.

RPT revenue passenger kilometres (RPKs) performed were 0.90 billion for the month, compared with 0.65 billion in August 2020.

Capacity, measured by available seat kilometres (ASKs), increased to 1.61 billion in August 2021 compared to 1.10 billion in August 2020.

The industry wide load factor (RPKs/ASKs) decreased from 51.7 per cent in August 2020 to 45.6 per cent in August 2021. Load factors decreased on most routes for which data is available for publishing in both years. The highest load factor (82.3 per cent) was recorded on the Adelaide – Port Lincoln route while the lowest load factor (45.6 per cent) was recorded on the Cairns – Townsville route.

In August 2021, most published routes recorded significant increases in the number of passengers carried compared to August 2020.

For the month of August 2021, Brisbane – Cairns was Australia's busiest RPT route with 44.5 thousand passengers, followed by Broome – Perth with 39.1 thousand passengers and Karratha – Perth with 38.7 thousand passengers.

Perth was Australia's busiest domestic airport with 269.2 thousand passenger movements in August 2021, followed by Brisbane with 241.9 thousand passenger movements and Cairns with 89.2 thousand passenger movements.

Total cargo movements at Australian airports on domestic RPT flights were 30.6 thousand tonnes in August 2021, an increase of 7.1 per cent compared with August 2020.

In August 2021, there were 754.6 thousand domestic passenger movements through regional airports, compared to 543.9 thousand in August 2020 and 2.18 million in August 2019. Most regional airports for which data is available for publishing recorded increases in August 2021 compared to August 2020.

Fixed-wing charter operators carried 289.5 thousand passengers in August 2021, an increase of 8.4 per cent on August 2020. Perth Airport accounted for 38.5 per cent of all charter passengers in Australia.

TOTAL NETWORK

Summary of monthly commercial aviation activity

	Aug 2020	Aug 2021	% Change
Total passengers carried (millions)	0.85	1.02	20.3
Aircraft trips (000s)	19.5	24.6	26.4

Note: Regular Public Transport and charter aviation activity
Helicopter, joyflights and sightseeing charter flights not included.

RPT NETWORK

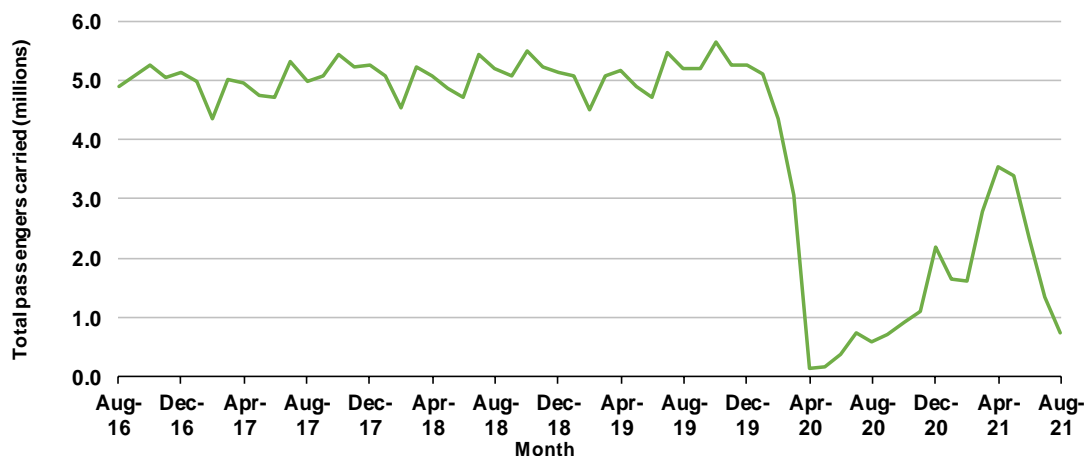
Summary of monthly RPT activity

	Aug 2020	Aug 2021	% Change
Total passengers carried (millions)	0.58	0.73	25.8
Revenue passenger kilometres (billions)	0.65	0.90	39.3
Available seats (millions)	1.10	1.61	45.8
Available seat kilometres (billions)	1.26	1.98	57.9
Load factor %	51.7	45.6	- 6.1 *
Aircraft trips (000s)	14.3	19.3	35.3

* percentage point difference

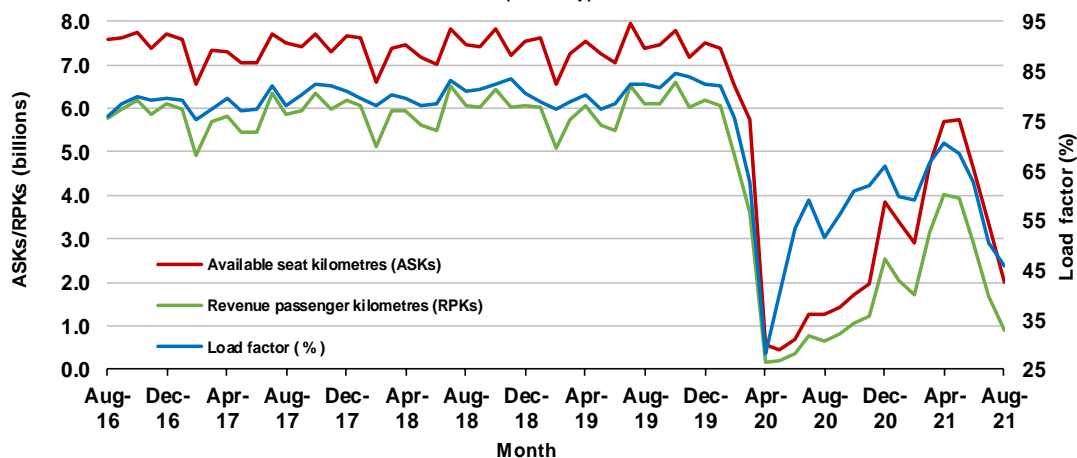
Domestic RPT passenger traffic

(monthly)



RPT Network utilisation

(monthly)



TOTAL NETWORK

Summary of annual commercial aviation activity

	YE Aug 2020	YE Aug 2021	% Change
Total passengers carried (millions)	38.80	25.73	-33.7
Aircraft trips (000s)	469.3	409.7	-12.7

Note: Regular Public Transport and charter aviation activity
Helicopter, joyflights and sightseeing charter flights not included.

RPT NETWORK

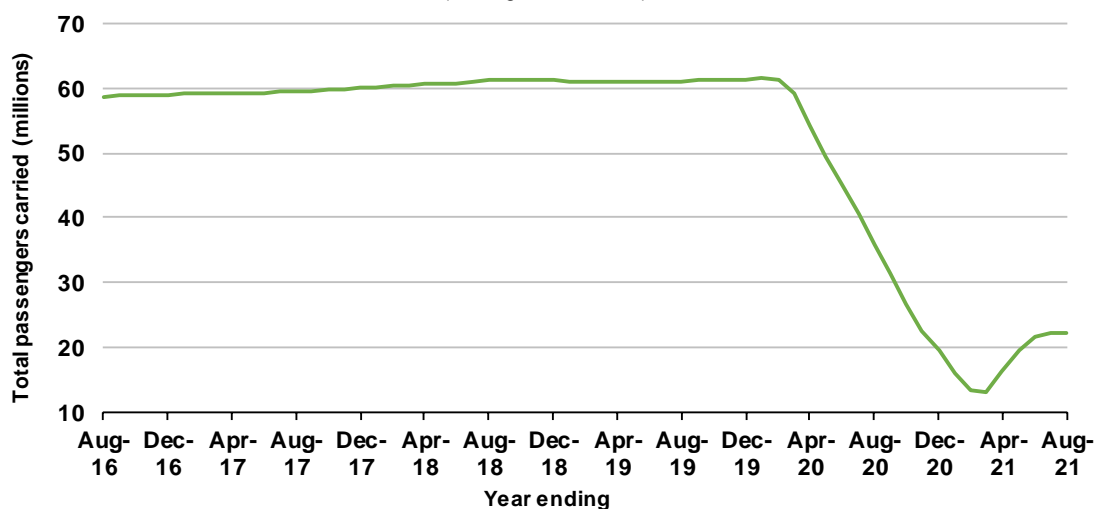
Summary of annual RPT activity

	YE Aug 2020	YE Aug 2021	% Change
Total passengers carried (millions)	35.90	22.31	-37.9
Revenue passenger kilometres (billions)	41.58	25.93	-37.6
Available seats (millions)	47.42	36.21	-23.6
Available seat kilometres (billions)	53.81	41.37	-23.1
Load factor %	77.3	62.7	-14.6 *
Aircraft trips (000s)	411.6	343.8	-16.5

* percentage point difference

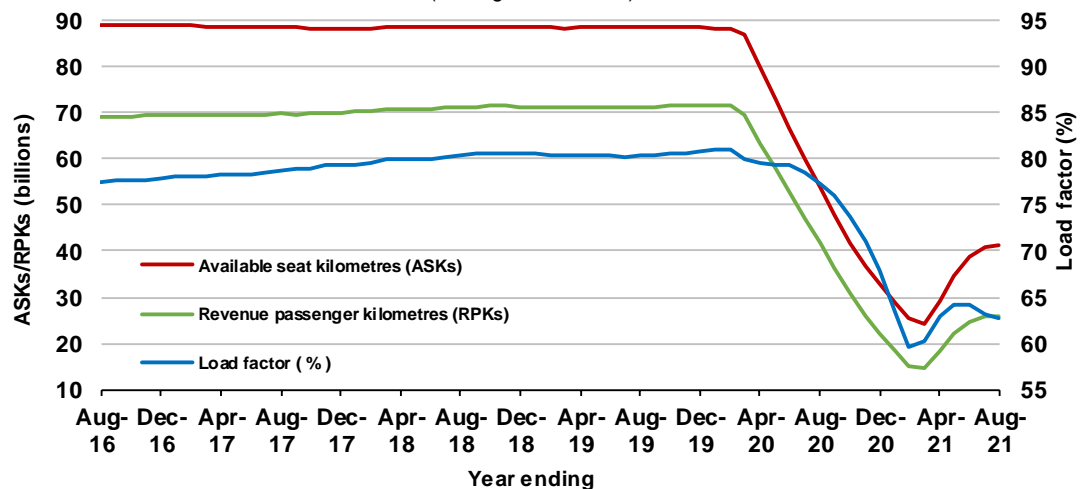
Domestic RPT passenger traffic

(moving annual totals)



RPT Network utilisation

(moving annual totals)



TOP COMPETITIVE ROUTES

Table 1: Passengers carried (000s) — annual activity

	City-Pair	YE Aug 2020	YE Aug 2021	% Change
1	Brisbane - Cairns	858.7	954.9	11.2
2	Brisbane - Townsville	661.7	653.7	-1.2
3	Brisbane - Mackay	522.2	499.1	-4.4
4	Karratha - Perth	314.0	385.1	22.7
5	Broome - Perth	215.4	352.9	63.8
6	Brisbane - Rockhampton	343.3	337.8	-1.6
7	Perth - Port Hedland	258.9	302.7	16.9
8	Newman - Perth	218.6	275.5	26.0
9	Brisbane - Darwin	203.8	251.3	23.3
10	Kalgoorlie - Perth	183.1	228.9	25.0
11	Brisbane - Proserpine	180.6	221.4	22.6
12	Brisbane - Hamilton Island	..	192.2	NA
13	Brisbane - Hobart	..	191.6	NA
14	Brisbane - Emerald	..	125.2	NA
15	Adelaide - Port Lincoln	..	124.8	NA
16	Darwin - Melbourne	..	117.8	NA
17	Cairns - Townsville	..	106.3	NA
18	Darwin - Perth	..	105.2	NA
19	Melbourne - Sydney	5 115.7	..	NA (a)
20	Brisbane - Sydney	2 802.2	..	NA (a)
21	Brisbane - Melbourne	2 044.6	..	NA (a)
22	Gold Coast - Sydney	1 612.7	..	NA (a)
23	Melbourne - Perth	1 237.7	..	NA (a)
24	Adelaide - Sydney	1 074.4	..	NA (a)
25	Perth - Sydney	998.0	..	NA (a)
26	Adelaide - Brisbane	544.3	..	NA (a)
27	Brisbane - Canberra	389.1	..	NA (a)
28	Brisbane - Newcastle	353.3	..	NA (a)
29	Ballina - Sydney	315.4	..	NA (a)
	Total domestic network	35 903.2	22 308.1	-37.9

.. Data not available for release.

(a) City pairs published in August 2020, data not available for release in August 2021.

Table 2: Passengers carried (000s) — monthly activity

	City-Pair	Aug 2020	Aug 2021	% Change
1	Brisbane - Cairns	69.6	44.5	-36.1
2	Broome - Perth	24.1	39.1	62.3
3	Karratha - Perth	20.6	38.7	88.3
4	Perth - Port Hedland	12.7	32.6	156.7
5	Brisbane - Townsville	40.6	32.0	-21.2
6	Newman - Perth	6.0	29.0	381.8
7	Brisbane - Mackay	27.7	26.9	-3.0
8	Kalgoorlie - Perth	12.4	24.7	99.2
9	Darwin - Perth	..	18.7	NA
10	Brisbane - Rockhampton	16.9	16.9	-0.2
11	Darwin - Melbourne	..	13.4	NA
12	Brisbane - Darwin	11.1	13.0	17.9
13	Brisbane - Proserpine	12.9	11.7	-9.3
14	Brisbane - Hobart	..	10.0	NA
15	Adelaide - Port Lincoln	..	9.9	NA
16	Cairns - Townsville	..	9.0	NA
17	Brisbane - Hamilton Island	..	8.9	NA
18	Brisbane - Emerald	..	8.7	NA
19	Adelaide - Brisbane	27.2	..	NA (a)
20	Ballina - Sydney	26.6	..	NA (a)
21	Brisbane - Sydney	18.9	..	NA (a)
22	Melbourne - Sydney	9.9	..	NA (a)
23	Brisbane - Canberra	6.2	..	NA (a)
24	Adelaide - Sydney	5.1	..	NA (a)
25	Brisbane - Newcastle	4.2	..	NA (a)
26	Perth - Sydney	3.9	..	NA (a)
27	Brisbane - Melbourne	3.7	..	NA (a)
28	Gold Coast - Sydney	2.4	..	NA (a)
29	Melbourne - Perth	2.0	..	NA (a)
	Total domestic network	579.8	729.3	25.8

.. Data not available for release.

(a) City pairs published in August 2020, data not available for release in August 2021.

Table 3: Available seats (000s) — monthly activity

	City-Pair	Aug 2020	Aug 2021	% Change
1	Brisbane - Cairns	89.1	73.7	-17.3
2	Broome - Perth	30.5	51.1	67.4
3	Karratha - Perth	32.5	61.8	90.1
4	Perth - Port Hedland	23.4	54.1	130.8
5	Brisbane - Townsville	61.2	52.0	-15.1
6	Newman - Perth	10.9	57.9	430.2
7	Brisbane - Mackay	51.0	44.1	-13.6
8	Kalgoorlie - Perth	21.0	40.0	90.3
9	Darwin - Perth	..	26.4	NA
10	Brisbane - Rockhampton	29.7	29.9	0.8
11	Darwin - Melbourne	..	28.6	NA
12	Brisbane - Darwin	17.3	28.3	63.2
13	Brisbane - Proserpine	18.9	21.3	12.6
14	Brisbane - Hobart	..	17.6	NA
15	Adelaide - Port Lincoln	..	12.0	NA
16	Cairns - Townsville	..	19.7	NA
17	Brisbane - Hamilton Island	..	18.5	NA
18	Brisbane - Emerald	..	17.9	NA
19	Adelaide - Brisbane	44.9	..	NA (a)
20	Ballina - Sydney	35.3	..	NA (a)
21	Brisbane - Sydney	37.8	..	NA (a)
22	Melbourne - Sydney	28.5	..	NA (a)
23	Brisbane - Canberra	13.3	..	NA (a)
24	Adelaide - Sydney	13.5	..	NA (a)
25	Brisbane - Newcastle	10.6	..	NA (a)
26	Perth - Sydney	18.2	..	NA (a)
27	Brisbane - Melbourne	9.7	..	NA (a)
28	Gold Coast - Sydney	6.3	..	NA (a)
29	Melbourne - Perth	16.2	..	NA (a)
	Total domestic network	1 104.3	1 609.7	45.8

.. Data not available for release.

(a) City pairs published in August 2020, data not available for release in August 2021.

Table 4: Load factors (%) — monthly activity

	City-Pair	Aug 2020	Aug 2021	% Point diff
1	Brisbane - Cairns	78.1	60.3	-17.8
2	Broome - Perth	78.9	76.4	-2.5
3	Karratha - Perth	63.2	62.6	-0.6
4	Perth - Port Hedland	54.2	60.3	6.1
5	Brisbane - Townsville	66.3	61.5	-4.8
6	Newman - Perth	55.1	50.1	-5.0
7	Brisbane - Mackay	54.2	60.9	6.7
8	Kalgoorlie - Perth	59.0	61.7	2.7
9	Darwin - Perth	..	70.7	NA
10	Brisbane - Rockhampton	56.8	56.3	-0.5
11	Darwin - Melbourne	..	46.8	NA
12	Brisbane - Darwin	63.8	46.1	-17.7
13	Brisbane - Proserpine	67.9	54.6	-13.3
14	Brisbane - Hobart	..	56.9	NA
15	Adelaide - Port Lincoln	..	82.3	NA
16	Cairns - Townsville	..	45.6	NA
17	Brisbane - Hamilton Island	..	48.4	NA
18	Brisbane - Emerald	..	48.4	NA
19	Adelaide - Brisbane	60.6	..	NA (a)
20	Ballina - Sydney	75.4	..	NA (a)
21	Brisbane - Sydney	50.0	..	NA (a)
22	Melbourne - Sydney	34.7	..	NA (a)
23	Brisbane - Canberra	46.9	..	NA (a)
24	Adelaide - Sydney	37.8	..	NA (a)
25	Brisbane - Newcastle	39.0	..	NA (a)
26	Perth - Sydney	21.5	..	NA (a)
27	Brisbane - Melbourne	37.8	..	NA (a)
28	Gold Coast - Sydney	38.1	..	NA (a)
29	Melbourne - Perth	12.4	..	NA (a)
	Total domestic network	51.7	45.6	-6.1

.. Data not available for release.

(a) City pairs published in August 2020, data not available for release in August 2021.

Table 5: Aircraft trips ^(a) — monthly activity

	City-Pair	Aug 2020	Aug 2021	% Change
1	Brisbane - Cairns	642	496	-22.7
2	Broome - Perth	186	308	65.6
3	Karratha - Perth	220	382	73.6
4	Perth - Port Hedland	152	384	152.6
5	Brisbane - Townsville	381	338	-11.3
6	Newman - Perth	68	350	414.7
7	Brisbane - Mackay	363	308	-15.2
8	Kalgoorlie - Perth	142	293	106.3
9	Darwin - Perth	..	167	NA
10	Brisbane - Rockhampton	326	334	2.5
11	Darwin - Melbourne	..	146	NA
12	Brisbane - Darwin	130	171	31.5
13	Brisbane - Proserpine	117	120	2.6
14	Brisbane - Hobart	..	100	NA
15	Adelaide - Port Lincoln	..	340	NA
16	Cairns - Townsville	..	321	NA
17	Brisbane - Hamilton Island	..	106	NA
18	Brisbane - Emerald	..	270	NA
19	Adelaide - Brisbane	270	..	NA (b)
20	Ballina - Sydney	268	..	NA (b)
21	Brisbane - Sydney	421	..	NA (b)
22	Melbourne - Sydney	292	..	NA (b)
23	Brisbane - Canberra	110	..	NA (b)
24	Adelaide - Sydney	130	..	NA (b)
25	Brisbane - Newcastle	72	..	NA (b)
26	Perth - Sydney	100	..	NA (b)
27	Brisbane - Melbourne	138	..	NA (b)
28	Gold Coast - Sydney	36	..	NA (b)
29	Melbourne - Perth	132	..	NA (b)
	Total domestic network	14 250	19 284	35.3

(a) Includes RPT cargo flights

(b) City pairs published in August 2020, data not available for release in August 2021.

.. Data not available for release.

This page is intentionally left blank.

TOP TEN AIRPORTS – PASSENGER MOVEMENTS

Table 6: Top ten airports, RPT passenger movements (000s) - monthly activity

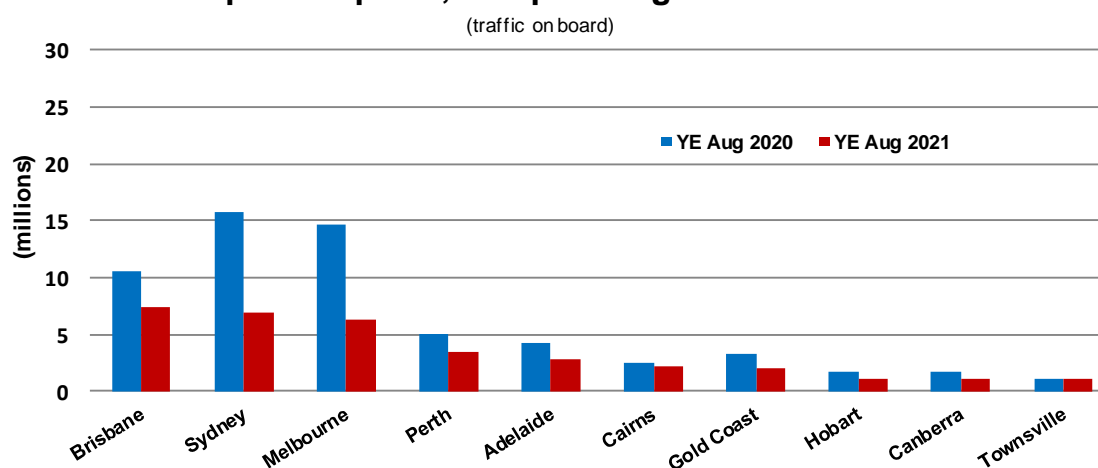
Airport	Aug 2020	Aug 2021	% Change	% of Total
1 Perth	117.2	269.2	129.8	18.5
2 Brisbane	287.2	241.9	-15.8	16.6
3 Cairns	97.8	89.2	-8.8	6.1
4 Darwin	38.4	84.6	120.6	5.8
5 Adelaide	74.6	79.1	6.1	5.4
6 Townsville	55.2	59.7	8.1	4.1
7 Melbourne	20.3	58.7	189.0	4.0
8 Broome	25.4	42.4	67.3	2.9
9 Karratha	20.6	39.0	89.7	2.7
10 Mackay	31.4	36.4	15.8	2.5
Total top ten airports	768.0	1 000.2	30.2	68.6
Total domestic network	1 159.6	1 458.7	25.8	100.0

Table 7: Top ten airports, RPT passenger movements (000s) - annual activity

Airport	YE Aug 2020	YE Aug 2021	% Change	% of Total
1 Brisbane	10 613.7	7 411.0	-30.2	16.6
2 Sydney	15 782.3	6 991.8	-55.7	15.7
3 Melbourne	14 624.8	6 276.5	-57.1	14.1
4 Perth	5 027.7	3 489.3	-30.6	7.8
5 Adelaide	4 273.1	2 805.9	-34.3	6.3
6 Cairns	2 446.8	2 193.8	-10.3	4.9
7 Gold Coast	3 223.2	2 023.6	-37.2	4.5
8 Hobart	1 661.7	1 143.4	-31.2	2.6
9 Canberra	1 773.7	1 088.9	-38.6	2.4
10 Townsville	1 052.5	1 022.0	-2.9	2.3
Total top ten airports	60 479.5	34 446.1	-43.0	77.2
Total domestic network	71 806.5	44 616.2	-37.9	100.0

Note: Airport passenger movement numbers are the sum of passenger arrivals and departures at each airport.

Top ten airports, RPT passenger movements



TOP FIVE AIRPORTS – CARGO MOVEMENTS

Table 8: Top five airports, domestic RPT cargo movements (000s tonnes) - monthly activity ^(a)

Airport	Aug 2020	Aug 2021	% Change	% of Total
1 Melbourne	6.5	7.8	18.6	25.4
2 Sydney	6.1	7.3	19.4	23.8
3 Brisbane	5.4	4.8	-11.3	15.6
4 Perth	2.3	2.5	9.2	8.2
5 Adelaide	1.8	2.0	11.2	6.6
Total top five airports	22.1	24.3	10.0	79.6
Total domestic network	28.6	30.6	7.1	100.0

(a) August month data are incomplete, estimates not included.

Table 9: Top five airports, domestic RPT cargo movements (000s tonnes) - annual activity ^(a)

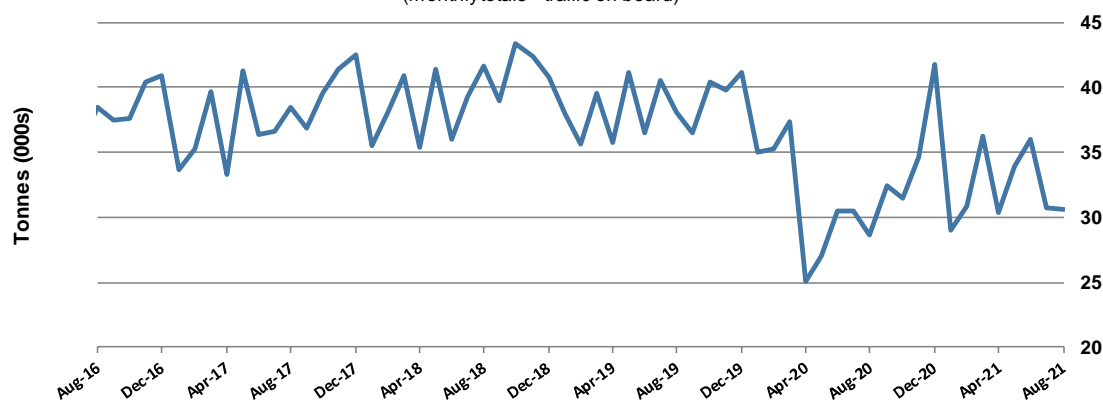
Airport	YE Aug 2020	YE Aug 2021	% Change	% of Total
1 Melbourne	110.8	98.0	-11.6	24.6
2 Sydney	88.9	90.4	1.7	22.7
3 Brisbane	69.8	67.1	-3.8	16.9
4 Perth	49.6	35.3	-28.8	8.9
5 Adelaide	25.6	24.1	-6.2	6.0
Total top five airports	344.9	315.0	-8.7	79.1
Total domestic network	406.8	397.9	-2.2	100.0

Note: Airport cargo tonnes are the sum of cargo tonnes on arrivals and departures at each airport.

(a) July and August months 2021 data are incomplete, estimates not included.

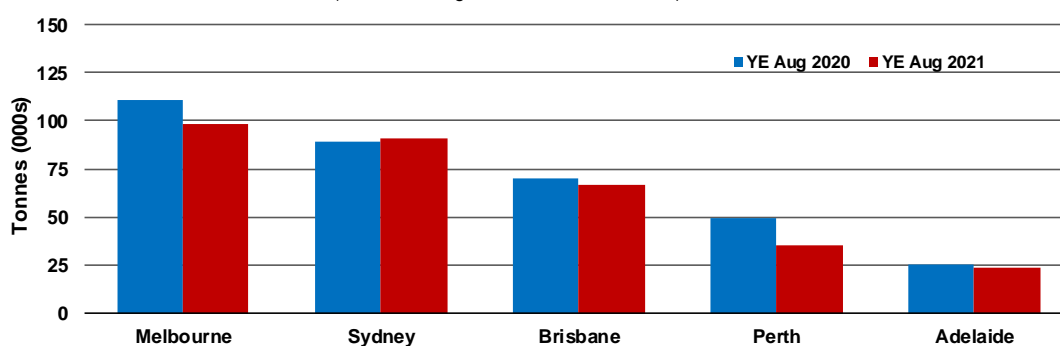
Total domestic network - cargo movement

(monthly totals - traffic on board)



Top five airports, cargo movements

(Domestic cargo traffic - traffic on board)



TOP TEN ROUTES

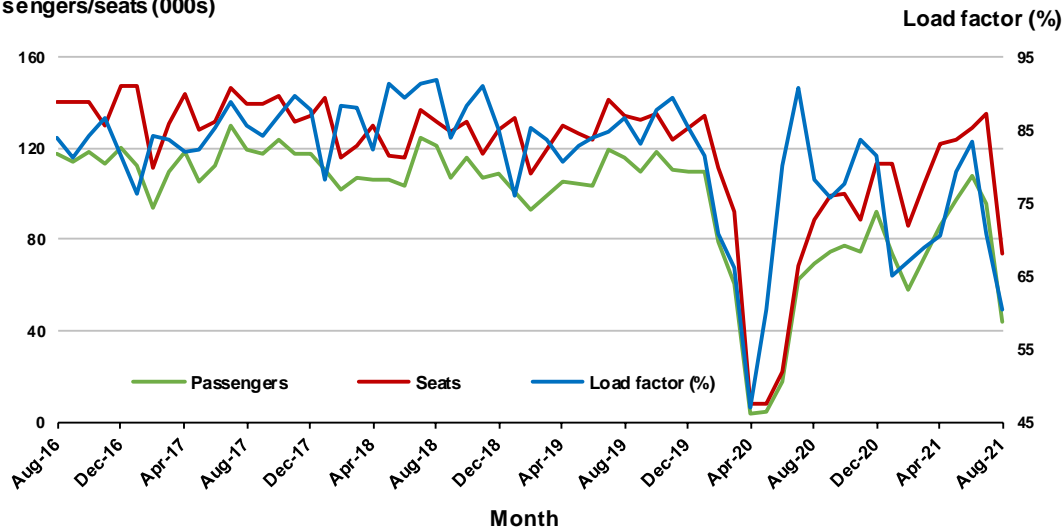
1. Brisbane - Cairns

Monthly data

	Aug 2020	Aug 2021	% Change
Passengers carried (000s)	69.6	44.5	- 36.1
Seats (000s)	89.1	73.7	- 17.3
Load factor %	78.1	60.3	-17.8 *
Aircraft trips	642	496	-22.7

* percentage point difference

Passengers/seats (000s)

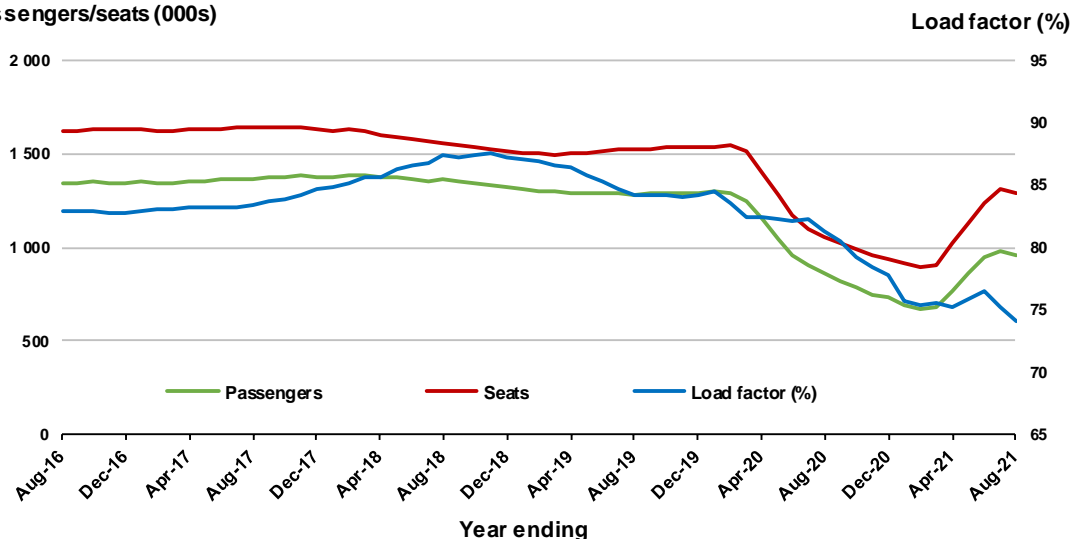


Moving annual data

	YE Aug 2020	YE Aug 2021	% Change
Passengers carried (000s)	858.7	954.9	11.2
Seats (000s)	1 055.9	1 289.2	22.1
Load factor %	81.3	74.1	-7.2 *
Aircraft trips	7 540	8 408	11.5

* percentage point difference

Passengers/seats (000s)

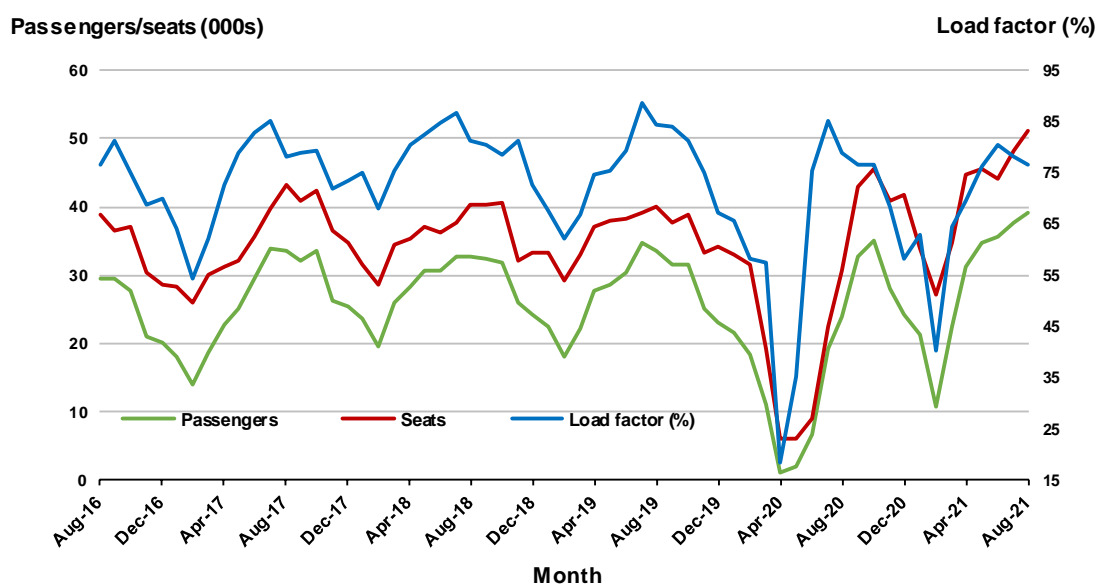


2. Broome - Perth

Monthly data

	Aug 2020	Aug 2021	% Change
Passengers carried (000s)	24.1	39.1	62.3
Seats (000s)	30.5	51.1	67.4
Load factor %	78.9	76.4	-2.5 *
Aircraft trips	186	308	NA

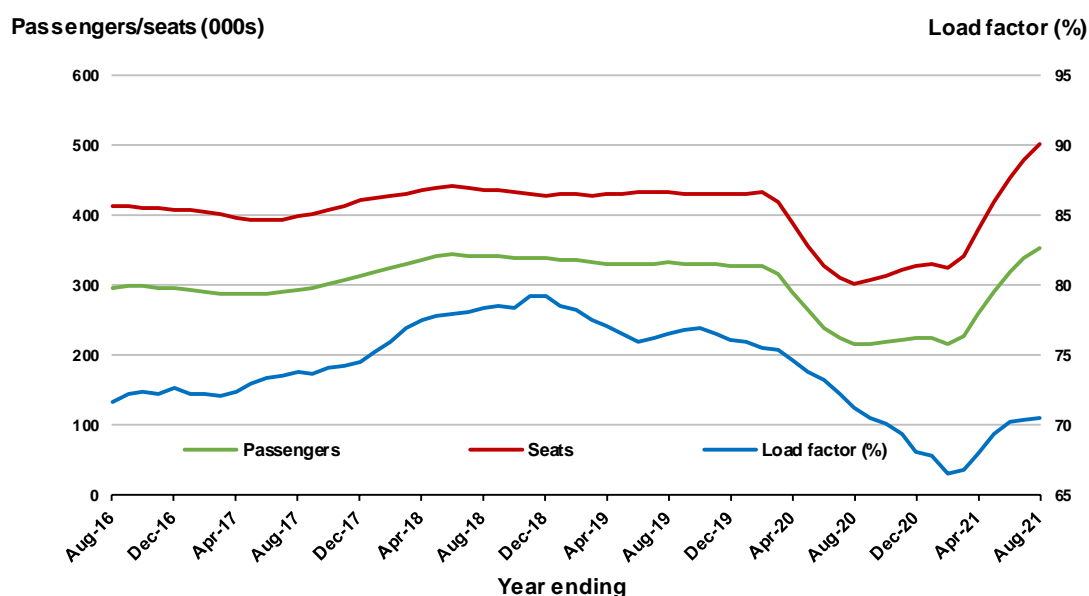
* percentage point difference



Moving annual data

	YE Aug 2020	YE Aug 2021	% Change
Passengers carried (000s)	215.4	352.9	63.8
Seats (000s)	302.1	500.5	65.7
Load factor %	71.3	70.5	-0.8 *
Aircraft trips	2 467	3 226	30.8

* percentage point difference

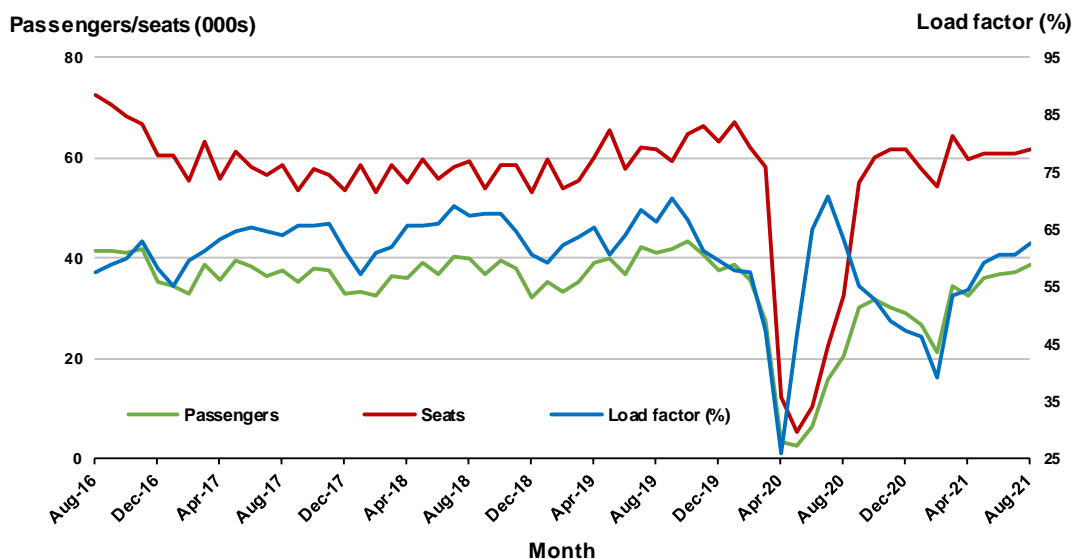


3. Karratha - Perth

Monthly data

	Aug 2020	Aug 2021	% Change
Passengers carried (000s)	20.6	38.7	88.3
Seats (000s)	32.5	61.8	90.1
Load factor %	63.2	62.6	-0.6 *
Aircraft trips	220	382	73.6

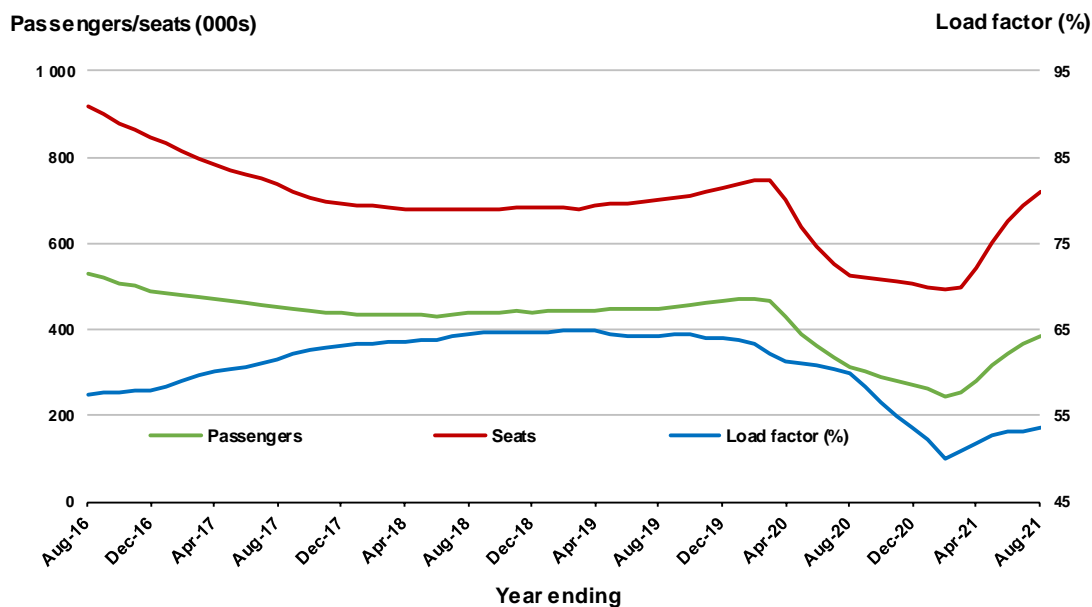
* percentage point difference



Moving annual data

	YE Aug 2020	YE Aug 2021	% Change
Passengers carried (000s)	314.0	385.1	22.7
Seats (000s)	523.7	718.4	37.2
Load factor %	59.9	53.6	-6.3 *
Aircraft trips	3 920	4 434	13.1

* percentage point difference



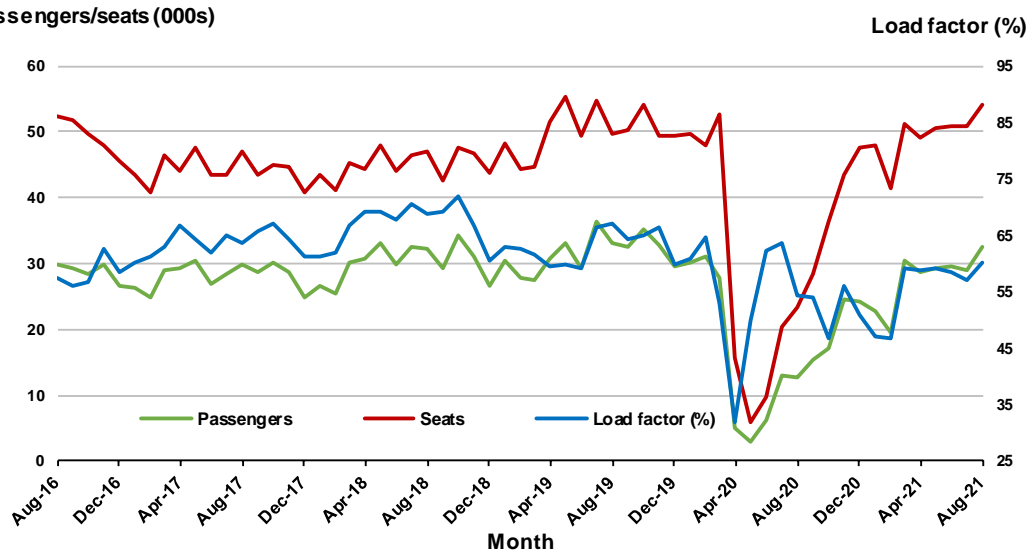
4. Perth - Port Hedland

Monthly data

	Aug 2020	Aug 2021	% Change
Passengers carried (000s)	12.7	32.6	156.7
Seats (000s)	23.4	54.1	130.8
Load factor %	54.2	60.3	6.1 *
Aircraft trips	152	384	152.6

* percentage point difference

Passengers/seats (000s)

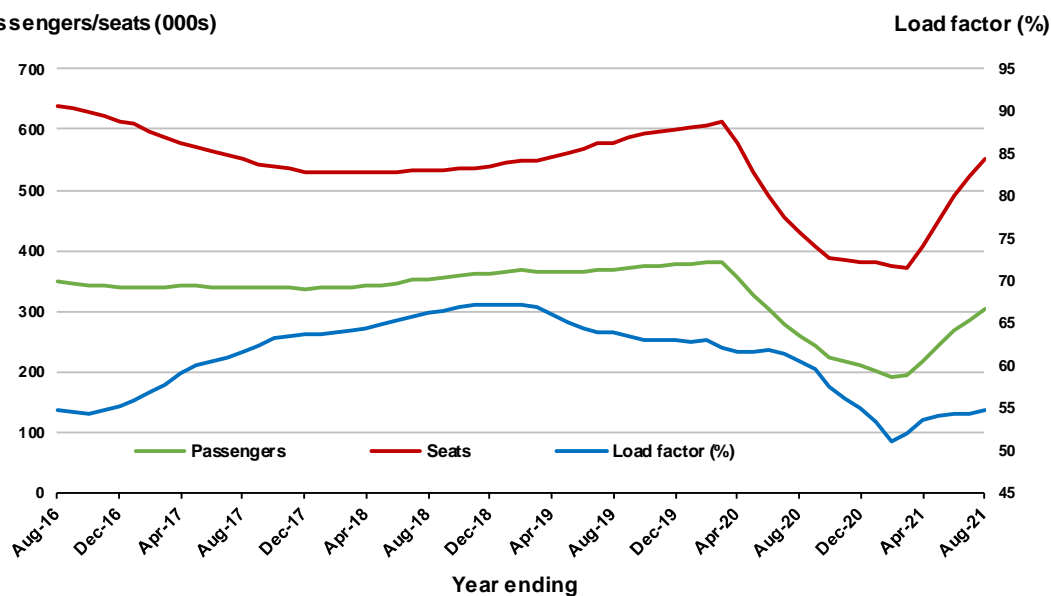


Moving annual data

	YE Aug 2020	YE Aug 2021	% Change
Passengers carried (000s)	258.9	302.7	16.9
Seats (000s)	428.7	552.3	28.8
Load factor %	60.4	54.8	-5.6 *
Aircraft trips	3 220	3 924	21.9

* percentage point difference

Passengers/seats (000s)

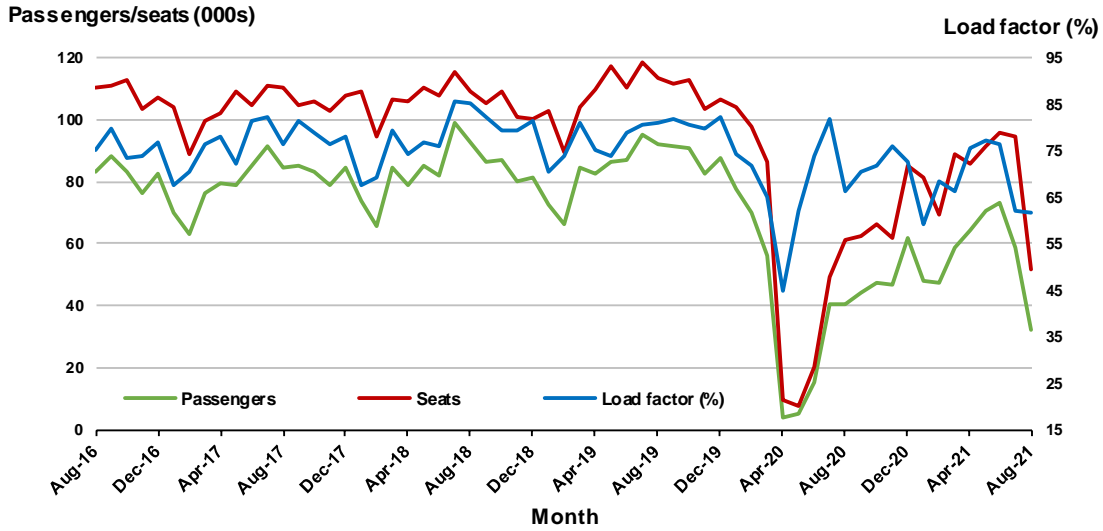


5. Brisbane - Townsville

Monthly data

	Aug 2020	Aug 2021	% Change
Passengers carried (000s)	40.6	32.0	-21.2
Seats (000s)	61.2	52.0	-15.1
Load factor %	66.3	61.5	-4.8 *
Aircraft trips	381	338	-11.3

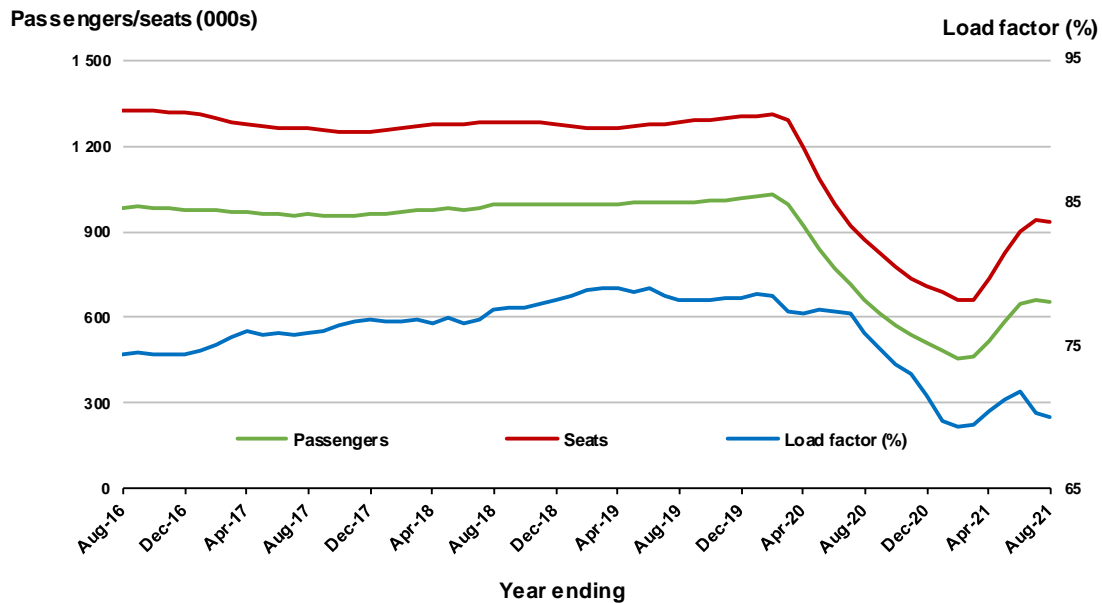
* percentage point difference



Moving annual data

	YE Aug 2020	YE Aug 2021	% Change
Passengers carried (000s)	661.7	653.7	-1.2
Seats (000s)	871.8	933.7	7.1
Load factor %	75.9	70.0	-5.9 *
Aircraft trips	5 921	5 727	-3.3

* percentage point difference



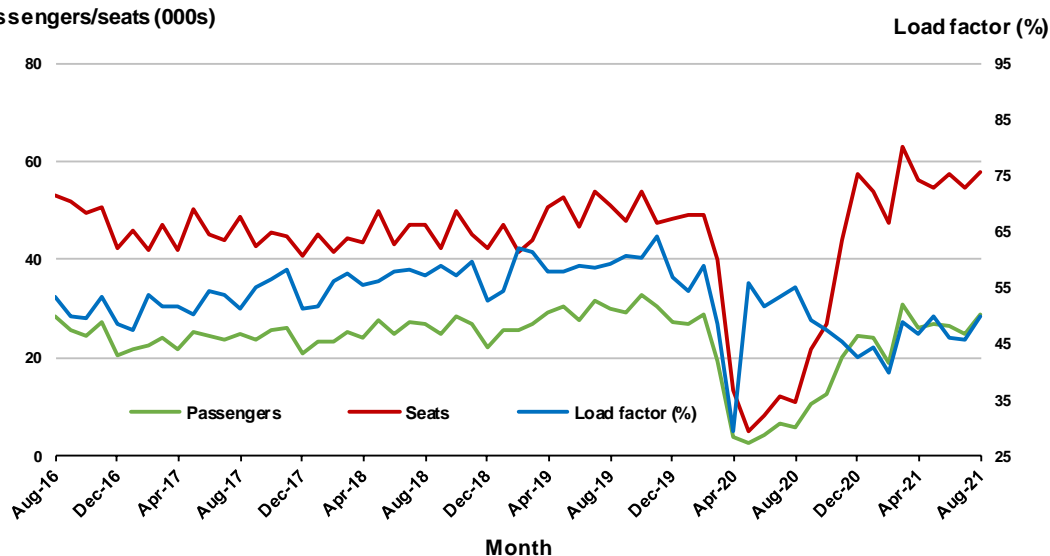
6. Newman - Perth

Monthly data

	Aug 2020	Aug 2021	% Change
Passengers carried (000s)	6.0	29.0	381.8
Seats (000s)	10.9	57.9	430.2
Load factor %	55.1	50.1	-5.0 *
Aircraft trips	68	350	414.7

* percentage point difference

Passengers/seats (000s)



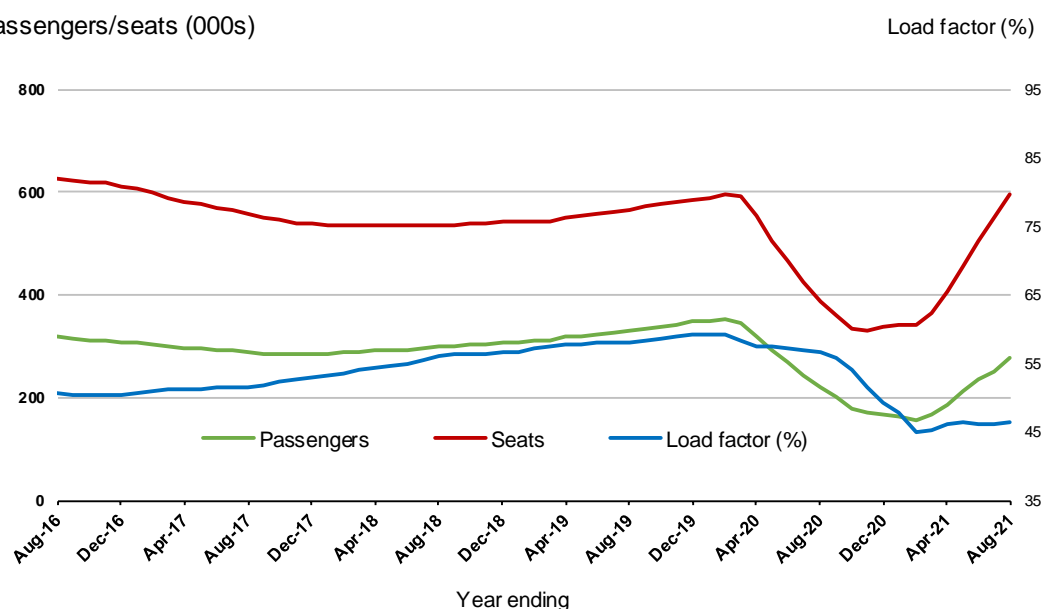
Moving annual data

	YE Aug 2020	YE Aug 2021	% Change
Passengers carried (000s)	218.6	275.5	26.0
Seats (000s)	386.0	595.5	54.3
Load factor %	56.6	46.3	-10.4 *
Aircraft trips	2 693	3 638	35.1

* percentage point difference

.. data not available for release.

Passengers/seats (000s)



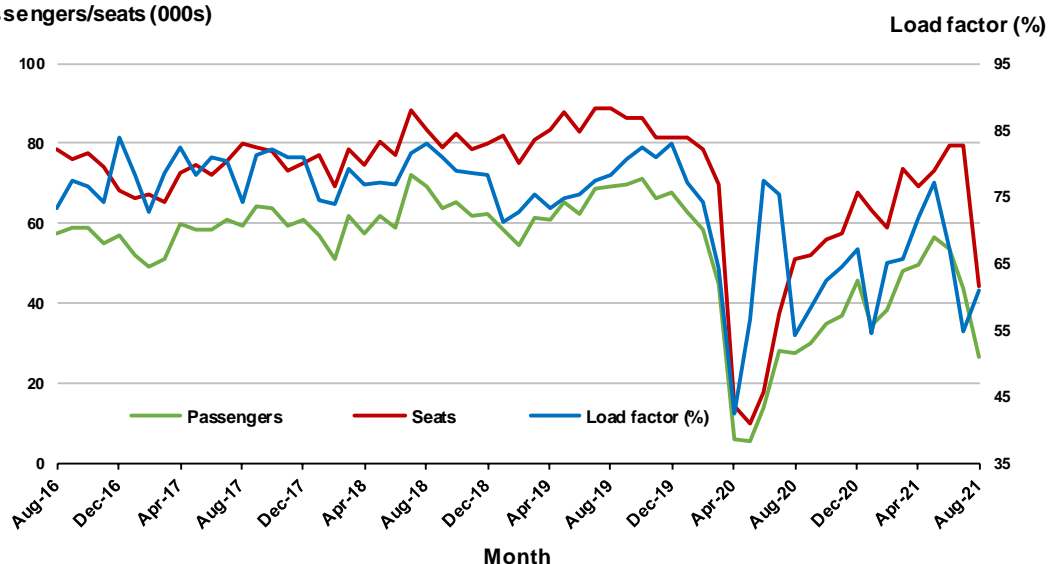
7. Brisbane - Mackay

Monthly data

	Aug 2020	Aug 2021	% Change
Passengers carried (000s)	27.7	26.9	-3.0
Seats (000s)	51.0	44.1	-13.6
Load factor %	54.2	60.9	6.7 *
Aircraft trips	363	308	-15.2

* percentage point difference

Passengers/seats (000s)

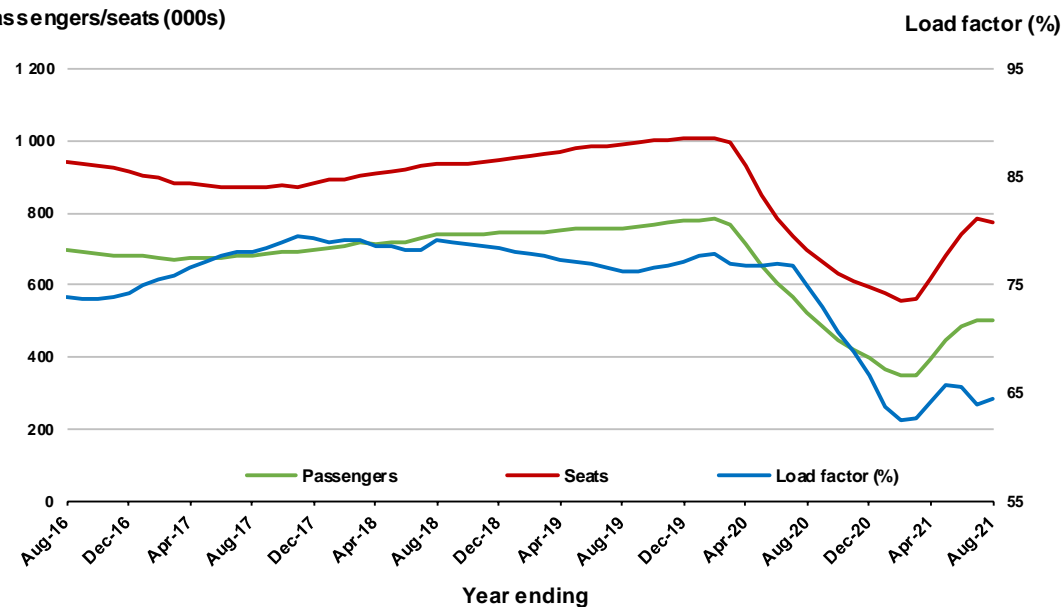


Moving annual data

	YE Aug 2020	YE Aug 2021	% Change
Passengers carried (000s)	522.2	499.1	-4.4
Seats (000s)	696.6	774.8	11.2
Load factor %	75.0	64.4	-10.5 *
Aircraft trips	5 559	5 279	-5.0

* percentage point difference

Passengers/seats (000s)

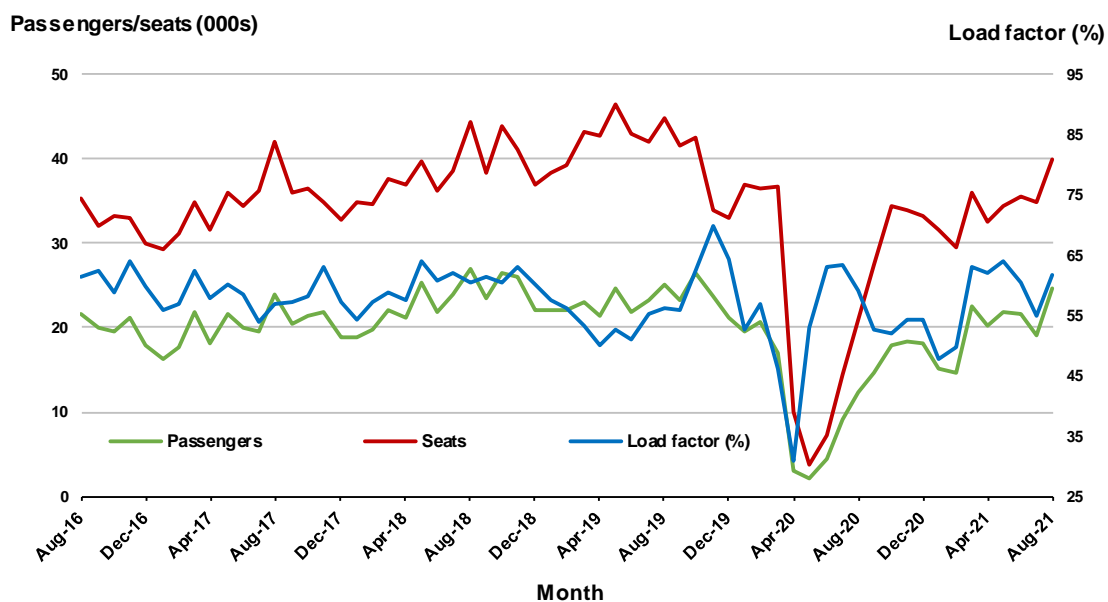


8. Kalgoorlie - Perth

Monthly data

	Aug 2020	Aug 2021	% Change
Passengers carried (000s)	12.4	24.7	99.2
Seats (000s)	21.0	40.0	90.3
Load factor %	59.0	61.7	2.7 *
Aircraft trips	142	293	106.3

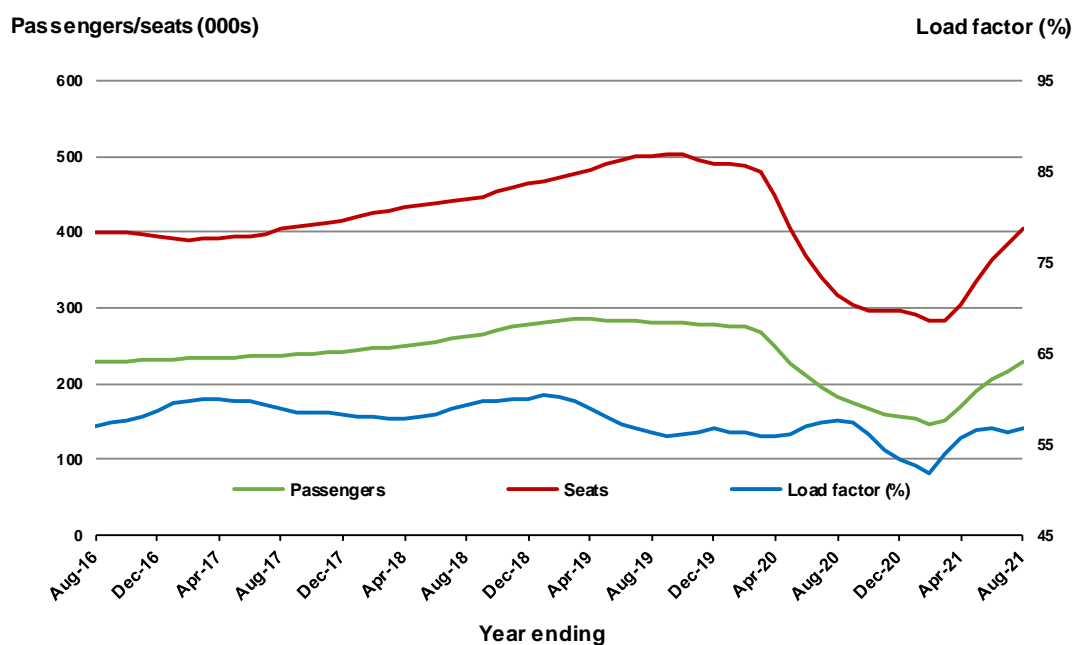
* percentage point difference



Moving annual data

	YE Aug 2020	YE Aug 2021	% Change
Passengers carried (000s)	183.1	228.9	25.0
Seats (000s)	317.5	403.5	27.1
Load factor %	57.7	56.8	-0.9 *
Aircraft trips	2 571	2 998	16.6

* percentage point difference



9. Darwin - Perth

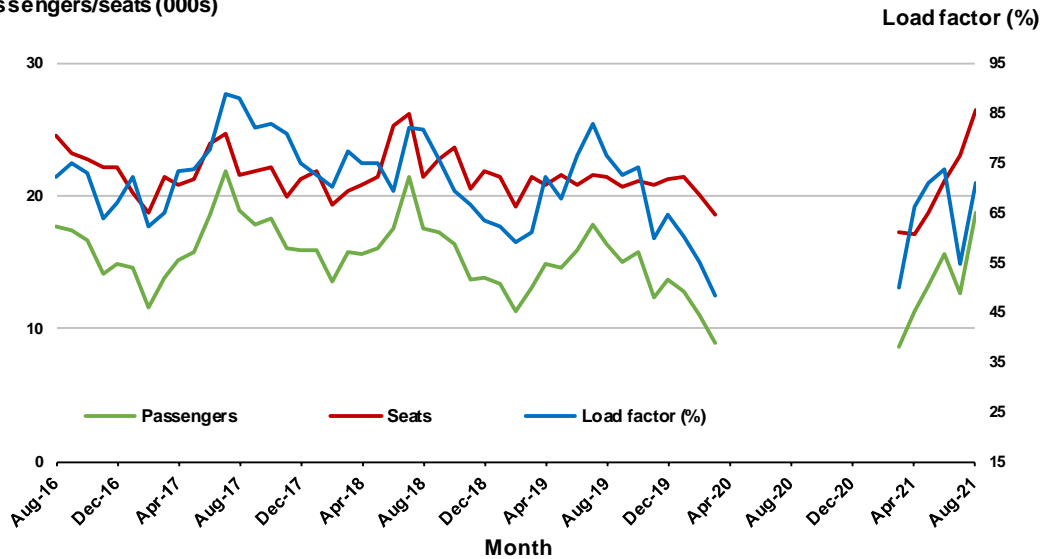
Monthly data

	Aug 2020	Aug 2021	% Change
Passengers carried (000s)	..	18.7	NA
Seats (000s)	..	26.4	NA
Load factor %	..	70.7	NA *
Aircraft trips	..	167	NA

* percentage point difference

.. Data not available for release.

Passengers/seats (000s)



(a) April 2020 to February 2021 data not available for release.

.. Data not available for release.

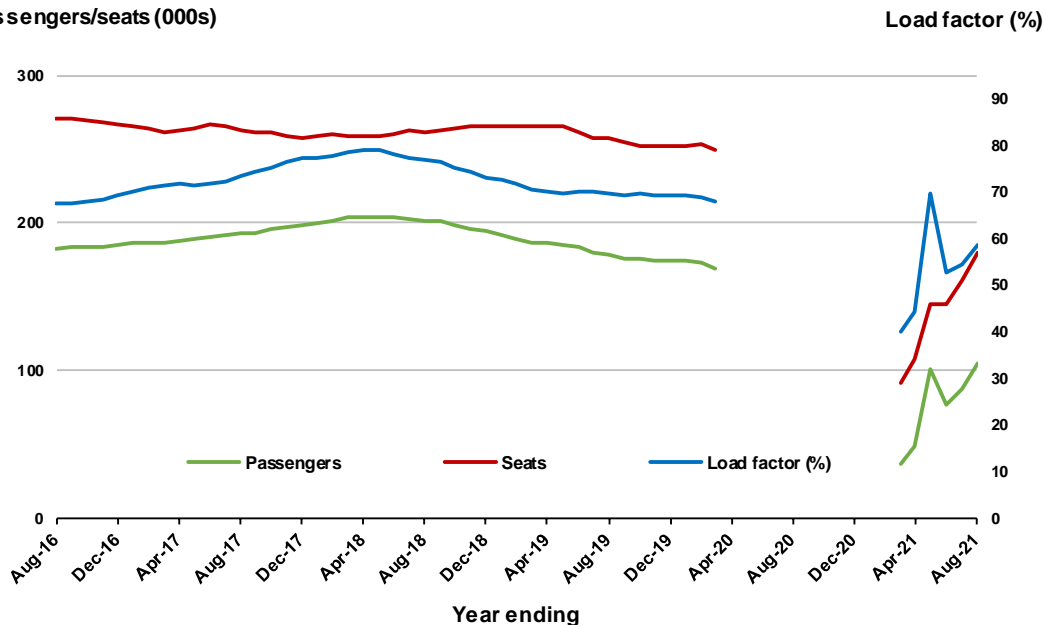
Moving annual data

	YE Aug 2020	YE Aug 2021	% Change
Passengers carried (000s)	..	105.2	NA
Seats (000s)	..	179.7	NA
Load factor %	..	58.5	NA *
Aircraft trips	..	1 159	NA

* percentage point difference

.. Data not available for release.

Passengers/seats (000s)



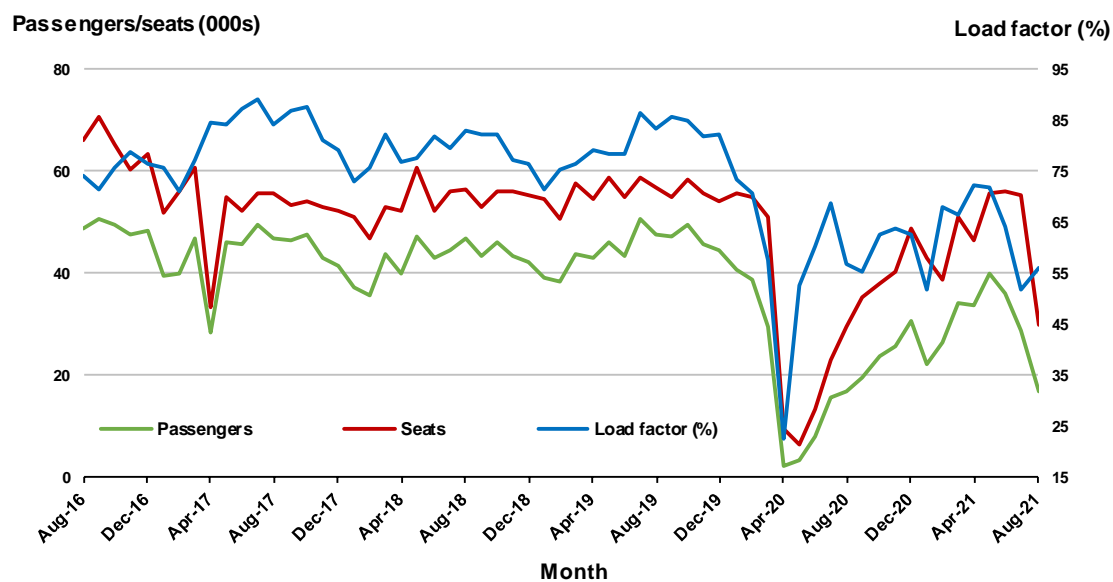
(a) April 2020 to February 2021 moving annual totals are not available for release.

10. Brisbane - Rockhampton

Monthly data

	Aug 2020	Aug 2021	% Change
Passengers carried (000s)	16.9	16.9	-0.2
Seats (000s)	29.7	29.9	0.8
Load factor %	56.8	56.3	-0.5 *
Aircraft trips	326	334	2.5

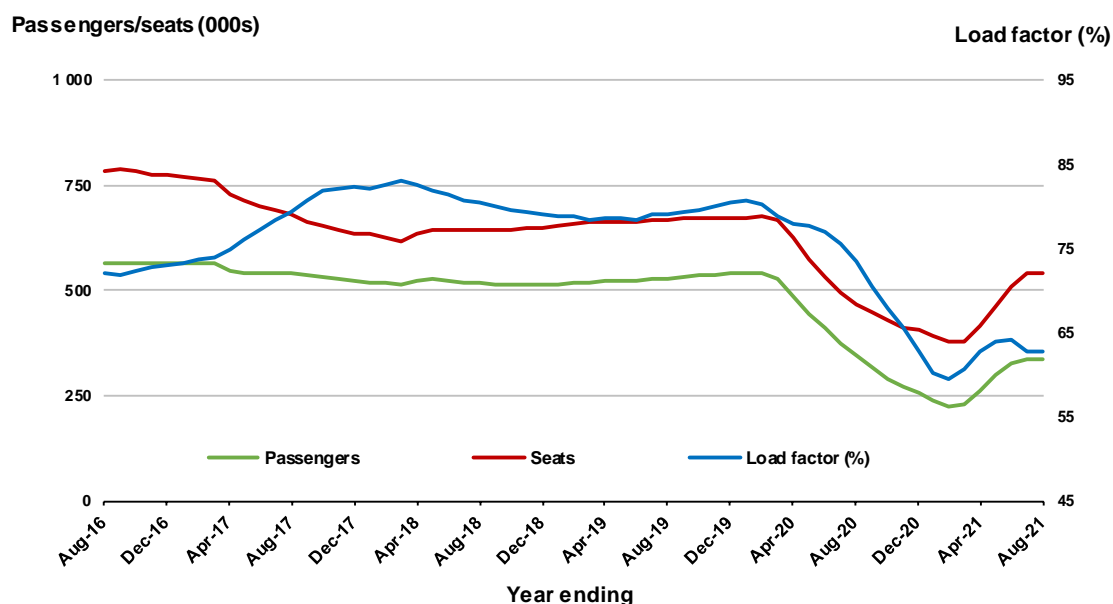
* percentage point difference



Moving annual data

	YE Aug 2020	YE Aug 2021	% Change
Passengers carried (000s)	343.3	337.8	-1.6
Seats (000s)	467.7	539.4	15.3
Load factor %	73.4	62.6	-10.8 *
Aircraft trips	5 410	5 374	-0.7

* percentage point difference



TOP FIFTY REGIONAL AIRPORTS

Table 10: Top fifty regional airports (000s) — passenger movements, monthly

Airport	Aug 2020	Aug 2021	% Change
1 Cairns	97.8	89.2	- 8.8
2 Darwin	38.4	84.6	120.6
3 Townsville	55.2	59.7	8.1
4 Broome	25.4	42.4	67.3
5 Karratha	20.6	39.0	89.7
6 Mackay	31.4	36.4	15.8
7 Hobart	5.5	35.5	551.0
8 Port Hedland	12.7	32.7	157.9
9 Newman	6.0	29.0	381.8
10 Kalgoorlie	12.4	24.7	99.2
11 Rockhampton	18.2	20.1	10.5
12 Paraburdoo	4.0	17.4	336.8
13 Alice Springs	17.0	16.9	- 0.3
14 Mount Isa	11.6	13.7	17.8
15 Proserpine	13.4	12.1	- 9.9
16 Launceston	3.9	11.0	180.3
17 Kununurra	5.4	10.9	100.8
18 Port Lincoln	5.9	9.9	68.3
19 Emerald	6.8	9.7	41.2
20 Hamilton Island	8.2	9.0	10.1
21 Learmonth	6.8	9.0	31.6
22 Olympic Dam	0.2	8.2	3 821.5
23 Geraldton	1.5	7.0	351.5
24 Gladstone	7.6	6.5	- 13.5
25 Moranbah	1.8	6.4	259.1
26 Thursday Island	5.7	6.1	6.9
27 Cloncurry	3.0	5.4	81.7
28 Weipa	3.2	5.2	63.7
29 Esperance	2.3	4.4	92.5
30 Albany	2.2	4.3	96.7
31 Groote Eylandt	1.7	3.7	121.8
32 Whyalla	1.8	3.6	101.8
33 Gove	4.7	3.4	- 28.8
34 Roma	1.7	2.8	65.5
35 Bundaberg	2.7	2.8	3.6
36 Mount Gambier	0.7	2.6	285.5
37 Camarvon	1.8	2.6	46.4
38 Mildura	0.4	2.4	452.7
39 Ballina	27.2	2.4	- 91.1
40 Onslow	..	2.2	NA
41 King Island	1.4	2.2	52.5
42 Ayers Rock	..	2.1	NA
43 Toowoomba Wellcamp	1.9	2.1	10.2
44 Christmas Island	1.0	2.0	104.0
45 Newcastle	5.4	2.0	- 63.0
46 Longreach	1.9	1.9	0.4
47 Palm Island	2.3	1.9	- 18.8
48 Cocos Island	0.8	1.7	105.9
49 Doomadgee	1.7	1.6	- 7.7
50 Monkey Mia	0.9	1.6	77.6
Total top 50 regional airports	493.7	713.6	44.5
Total regional airports	543.9	754.6	38.7
Total domestic network	1 159.6	1 458.7	25.8

Note: Airport passenger movement numbers are the sum of passenger arrivals and departures at each airport.

Regional airports are defined as airports which are, according to Australian Statistical Geography

Standard (ASGS), not based in Major Cities.

.. Data not available for release.

Table 11: Top fifty regional airports (000s) — passenger movements, annual

Airport	YE Aug 2020	YE Aug 2021	% Change
1 Cairns	2 446.8	2 193.8	-10.3
2 Hobart	1 661.7	1 143.4	-31.2
3 Townsville	1 052.5	1 022.0	-2.9
4 Darwin	957.3	1 020.1	6.6
5 Mackay	589.8	597.2	1.3
6 Launceston	824.1	579.9	-29.6
7 Ballina	384.5	541.0	40.7
8 Newcastle	727.6	484.7	-33.4
9 Karratha	315.1	386.8	22.7
10 Broome	248.5	385.0	54.9
11 Rockhampton	365.3	371.9	1.8
12 Hamilton Island	285.1	310.7	9.0
13 Port Hedland	265.6	303.7	14.4
14 Proserpine	278.0	278.4	0.1
15 Alice Springs	301.4	278.1	-7.7
16 Newman	219.5	276.4	25.9
17 Kalgoorlie	189.9	229.3	20.8
18 Mount Isa	168.7	178.8	6.0
19 Paraburdoo	124.3	178.8	43.8
20 Gladstone	158.0	132.1	-16.4
21 Emerald	133.8	130.1	-2.7
22 Coffs Harbour	232.6	128.5	-44.8
23 Port Lincoln	118.6	124.8	5.3
24 Dubbo	126.9	106.0	-16.4
25 Kununurra	69.9	94.1	34.6
26 Learmonth	57.0	88.6	55.6
27 Thursday Island	64.8	87.1	34.3
28 Ayers Rock	240.0	75.3	-68.6
29 Albany	140.8	74.3	-47.2
30 Olympic Dam	45.4	70.3	54.8
31 Wagga Wagga	119.5	69.5	-41.9
32 Mildura	141.9	67.8	-52.2
33 Weipa	47.8	67.6	41.5
34 Port Macquarie	124.2	64.5	-48.0
35 Bundaberg	95.1	63.6	-33.2
36 Moranbah	71.8	62.6	-12.9
37 Geraldton	63.3	61.7	-2.5
38 Tamworth	110.3	57.2	-48.1
39 Gove	57.6	56.9	-1.2
40 Roma	59.2	44.2	-25.4
41 Hervey Bay	96.4	44.2	-54.2
42 Albany	41.3	43.9	6.2
43 King Island	34.3	43.0	25.4
44 Esperance	36.3	41.5	14.3
45 Devonport	84.1	40.7	-51.7
46 Armidale	73.8	40.5	-45.1
47 Whyalla	46.1	40.4	-12.4
48 Cloncurry	36.5	39.5	8.2
49 Orange	48.4	39.3	-18.8
50 Groote Eylandt	19.5	32.3	65.4
Total top 50 regional airports	14 201.1	12 892.2	-9.2
Total regional airports	15 271.6	13 786.3	-9.7
Total domestic network	71 806.5	44 616.2	-37.9

Note: Airport passenger movement numbers are the sum of passenger arrivals and departures at each airport. Regional airports are defined as airports which are, according to Australian Statistical Geography Standard (ASGS), not based in Major Cities.

DOMESTIC CHARTER ACTIVITY

Table 12: Charter passengers carried and aircraft trips - monthly activity

	Aug 2020	Aug 2021	% Change
Total domestic charter passengers	267 185	289 495	8.4
Total domestic charter aircraft trips	5 224	5 335	2.1

Note: Helicopter, joyflights and sightseeing charter flights not included.

Table 13: Charter passengers carried and aircraft trips - annual activity

	YE Aug 2020	YE Aug 2021	% Change
Total domestic charter passengers	2 896 842	3 426 425	18.3
Total domestic charter aircraft trips	57 649	65 903	14.3

Note: Helicopter, joyflights and sightseeing charter flights not included.

Table 14: Domestic airports - charter activity - monthly

	Aug 2020	Aug 2021	% Change
Total domestic charter passenger movements	534 370	578 990	8.4
Total domestic charter aircraft movements	10 448	10 670	2.1
Perth airport charter passenger movements	216 980	222 781	2.7
Perth airport charter aircraft movements	3 623	3 717	2.6

Note: Helicopter, joyflights and sightseeing charter flights not included.

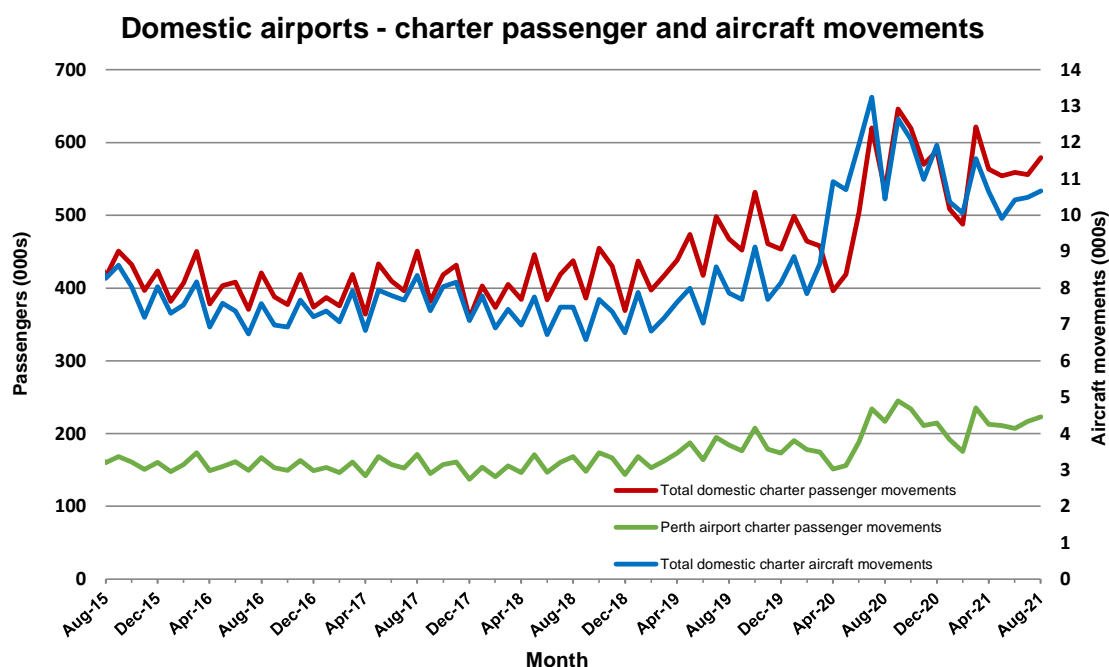
Charter passenger and aircraft movement numbers are the sum of arrivals and departures at each airport.

Table 15: Domestic airports - charter activity - annual

	YE Aug 2020	YE Aug 2021	% Change
Total domestic charter passenger movements	5 793 684	6 852 850	18.3
Total domestic charter aircraft movements	115 298	131 806	14.3
Perth airport charter passenger movements	2 224 175	2 576 574	15.8
Perth airport charter aircraft movements	39 752	43 784	10.1

Note: Helicopter, joyflights and sightseeing charter flights not included.

Charter passenger and aircraft movement numbers are the sum of arrivals and departures at each airport.



DEFINITIONS

Aircraft Trips	The number of flight stages. A return flight counts as two aircraft trips.
Airport Movements	Airport movements (passenger and cargo) are measured once on arrival and once on departure. Each domestic trip generates two movements at airports. For example, a trip from Melbourne to Sydney will be counted twice, as a departure at Melbourne and as an arrival at Sydney. At the national level, the sum of all domestic airport traffic will therefore be equal to twice the number of trips undertaken.
Available Seat Kilometres (ASKs)	Calculated by multiplying the number of seats available on each flight stage, by the distance in kilometres between the ports. The distances used are Great Circle Distances.
City-Pair	The ports shown make up the city-pair route. Passenger movements shown for a city pair reflect total traffic in both directions.
Flight Stage	The operation of an aircraft from take-off to landing.
Load Factor	The total revenue passenger kilometres performed as a percentage of the total available seat kilometres.
Passengers Carried	Revenue passengers carried.
Regular Public Transport Services (RPT)	All air service operations in which aircraft are available for the transport of members of the public and are conducted in accordance with fixed schedules. It does not include charter or other non-scheduled operations.
Revenue Passengers	All passengers paying any fare. Frequent flyer redemption travellers are regarded as revenue passengers.
Revenue Passenger Kilometres (RPKs)	Calculated by multiplying the number of revenue passengers travelling on each flight stage, by the distance in kilometres between the ports. The distances used are Great Circle Distances.
Traffic on board by stages	The total of all traffic (revenue passengers) on each flight stage between two directly connected airports.
..	Not available for confidentiality or other reasons.
NA	Not applicable.