



Australian Government

**Department of Infrastructure, Transport,
Regional Development, Communications and the Arts**
Bureau of Infrastructure and Transport Research Economics

STATISTICAL REPORT



bitre

Aviation

**Domestic aviation activity
December 2022**

© Commonwealth of Australia 2023

ISSN: 1832 - 1968

Ownership of intellectual property rights in this publication

Unless otherwise noted, copyright (and any other intellectual property rights, if any) in this publication is owned by the Commonwealth of Australia (referred to below as the Commonwealth).

Disclaimer

The material contained in this publication is made available on the understanding that the Commonwealth is not providing professional advice, and that users exercise their own skill and care with respect to its use, and seek independent advice if necessary.

The Commonwealth makes no representations or warranties as to the contents or accuracy of the information contained in this publication. To the extent permitted by law, the Commonwealth disclaims liability to any person or organisation in respect of anything done, or omitted to be done, in reliance upon information contained in this publication.

Creative Commons licence

With the exception of (a) the Coat of Arms; and (b) the Department of Infrastructure, Transport, Regional Development, Communications and the Arts' photos and graphics, copyright in this publication is licensed under a Creative Commons Attribution 3.0 Australia Licence.

Creative Commons Attribution 3.0 Australia Licence is a standard form licence agreement that allows you to copy, communicate and adapt this publication provided that you attribute the work to the Commonwealth and abide by the other licence terms. A summary of the licence terms is available from <http://creativecommons.org/licenses/by/3.0/au/deed.en>.

The full licence terms are available from <http://creativecommons.org/licenses/by/3.0/au/legalcode>.

Use of the Coat of Arms

The Department of the Prime Minister and Cabinet sets the terms under which the Coat of Arms is used. Please refer to the Department's Commonwealth Coat of Arms and Government branding web page <http://www.dpmc.gov.au/guidelines/index.cfm#brand> and, in particular, the Guidelines on the use of the Commonwealth Coat of Arms publication.

An appropriate citation for this report is:

Bureau of Infrastructure and Transport Research Economics (BITRE), 2023, Domestic aviation activity, Statistical Report, BITRE, Canberra ACT.

Contact us

This publication is available in PDF format. All other rights are reserved, including in relation to any Departmental logos or trade marks which may exist. For enquiries regarding the licence and any use of this publication, please contact:

Bureau of Infrastructure and Transport Research Economics (BITRE)
Department of Infrastructure, Transport, Regional Development, Communications and the Arts
GPO Box 501, Canberra ACT 2601, Australia
Telephone: (international) +61 2 6274 7210
Email: bitre@infrastructure.gov.au
Website: www.bitre.gov.au

Inquiries

Should you require additional information about the statistics contained in this publication:

Nebojsa Pavlovic

Telephone (02) 6274 6817

Electronic mail: AVSTATS@infrastructure.gov.au

Nebojsa.Pavlovic@infrastructure.gov.au

Web site: <http://www.bitre.gov.au/statistics/aviation/domestic.aspx>

FOREWORD

This report provides an overview of domestic (including charter) commercial aviation activity in Australia for the month of December 2022.

The data cover revenue passengers carried by Australian-registered operators of scheduled regular public transport services over Australian flight stages and fixed-wing charter operators. These estimates include passengers carried between domestic airports on international flights operated by these carriers. The passengers carried refer to traffic on board by stages.

Estimates of passengers and aircraft movements for charter aviation are included in this publication, where BITRE confidentiality standards are met.

Individual routes shown are restricted to those exceeding 8 000 passengers per month where two or more airlines operate in competition. However, from November 2021 the major airlines (Qantas Group, Virgin Australia and Rex Airlines) have agreed to publication of the top 35 routes based on pre-COVID activity (December 2019) whether or not they currently meet the above criteria. With these approvals, there were 60 routes published for the month of December 2022 compared to 56 published in December 2021.

Information on the total network for the month of December 2022 and on the Regular Public Transport (RPT) network for the month of December 2022 is presented on page 2, with estimates for the year ended December 2022 presented on page 3.

Detailed information on individual routes can be found in the RPT summary pages 4-13 of this publication.

The top ten airports in terms of RPT passenger movements are shown on page 14.

Data on domestic RPT cargo movements at the top five cargo airports are provided on page 15. The table includes cargo carried on passenger flights operated by the Qantas group (including Jetstar), Virgin Australia, Air North and Skippers as well as the cargo carried by dedicated freighter aircraft operated by Qantas Freight and Toll.

The long-term trends for the top ten competitive RPT routes are presented graphically on pages 16-25.

Domestic RPT passenger movements at regional airports are shown on pages 26-27.

Tables providing estimates of domestic charter aviation activity are shown on page 28. BITRE confidentiality standards restrict publication of detailed estimates for individual Australian airports, with the exception of Perth Airport.

A list of definitions can be found on page 29.

This report was prepared by the Aviation Statistics Section of the Bureau of Infrastructure and Transport Research Economics with data provided by airlines.

Estimates are included where data were not available and data presented in this publication may contain revisions to previously published data.

Where figures have been rounded, discrepancies may occur between sums of component items and totals, and in percentage changes which are derived from figures prior to rounding.

CONTENTS

Highlights	1
Total network.....	2
RPT network	2
Top competitive routes.....	4
Top ten airports – passenger movements.....	14
Top five airports – cargo movements.....	15
Top ten routes	16
1. Melbourne – Sydney	16
2. Brisbane – Sydney.....	17
3. Brisbane – Melbourne	18
4. Gold Coast – Sydney	19
5. Gold Coast – Melbourne	20
6. Adelaide – Melbourne	21
7. Melbourne – Perth	22
8. Adelaide – Sydney	23
9. Perth – Sydney	24
10. Hobart – Melbourne	25
Top fifty regional airports	26
Domestic charter activity.....	28
Definitions	29

This page is intentionally left blank.

HIGHLIGHTS

The domestic aviation industry continued to recover in December 2022. Revenue passenger numbers were 79.0 per cent higher than December 2021 levels but still 13.2 per cent below pre-COVID December 2019.

There were 4.87 million passengers carried on Australian domestic commercial aviation (including charter operations) in December 2022, compared to 2.82 million in December 2021 and 5.48 million in pre-COVID December 2019.

For the month of December 2022, there were 49,602 aircraft trips, compared to 39,695 in December 2021 and 52,112 in pre-COVID December 2019.

4.56 million passengers were carried on RPT flights in December 2022, compared to 2.55 million reported in December 2021 and 5.26 million reported in pre-COVID December 2019.

For the year ending December 2022 there were 50.2 million RPT passengers, an increase of 113.1 per cent on the year ending December 2021 and a decrease of 18.2 per cent on the year ending December 2019.

RPT revenue passenger kilometres (RPKs) performed were 5.53 billion for the month, compared with 2.68 billion in December 2021.

Capacity, measured by available seat kilometres (ASKs), increased to 6.92 billion in December 2022 compared to 4.80 billion in December 2021.

The industry wide load factor (RPKs/ASKs) increased from 55.8 per cent in December 2021 to 79.9 per cent in December 2022. The highest load factor (91.8 per cent) was recorded on the Perth - Sydney route while the lowest load factor (47.3 per cent) was recorded on the Brisbane - Moranbah route.

For the month of December 2022, Melbourne – Sydney was Australia’s busiest RPT route with 582,027 passengers, followed by Brisbane – Sydney with 328,879 passengers and Brisbane – Melbourne with 250,883 passengers.

Sydney was Australia’s busiest domestic airport with 1.94 million passenger movements in December 2022, followed by Melbourne with 1.87 million passenger movements and Brisbane with 1.30 million passenger movements.

Total cargo movements at Australian airports on domestic RPT flights were 31,248 tonnes in December 2022, a decrease of 16.3 per cent compared with December 2021.

In December 2022, there were 1.88 million domestic passenger movements through regional airports, compared to 1.44 million in December 2021 and 2.10 million in pre-COVID December 2019. Most regional airports for which data is available for publishing recorded large increases in December 2022 compared to December 2021.

Fixed-wing charter operators carried 302,115 passengers in December 2022, compared to 274,778 in December 2021 and 226,803 in pre-COVID December 2019. Perth Airport accounted for 36.1 per cent of all charter passengers in Australia.

TOTAL NETWORK

Summary of monthly commercial aviation activity

	Dec 2021	Dec 2022	% Change
Total passengers carried (millions)	2.82	4.87	72.2
Aircraft trips (000s)	45.3	55.1	21.8

Note: Regular Public Transport and charter aviation activity
Helicopter, joy flights and sightseeing charter flights not included.

RPT NETWORK

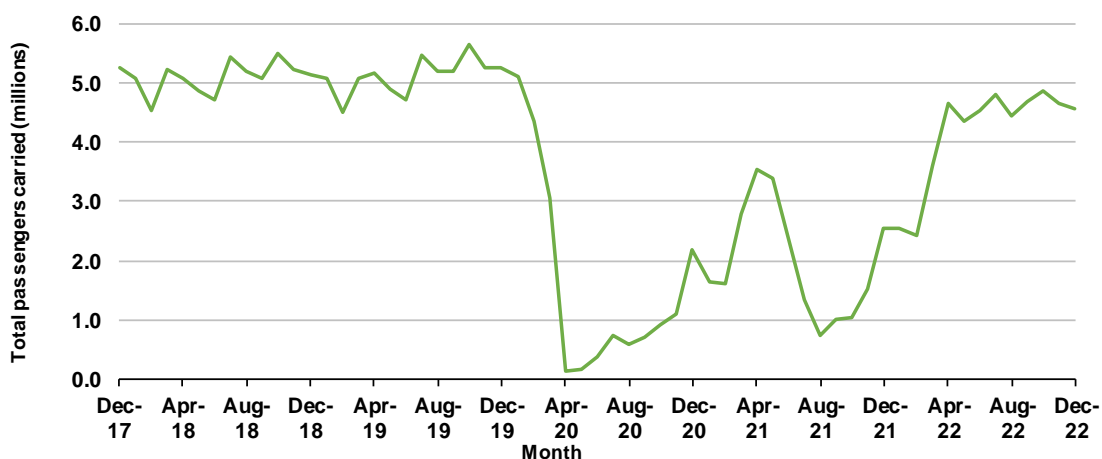
Summary of monthly RPT activity

	Dec 2021	Dec 2022	% Change
Total passengers carried (millions)	2.55	4.56	79.0
Revenue passenger kilometres (billions)	2.68	5.53	106.6
Available seats (millions)	4.53	5.90	30.3
Available seat kilometres (billions)	4.80	6.92	44.2
Load factor %	55.8	79.9	24.1
Aircraft trips (000s)	39.7	49.6	25.0

* percentage point difference

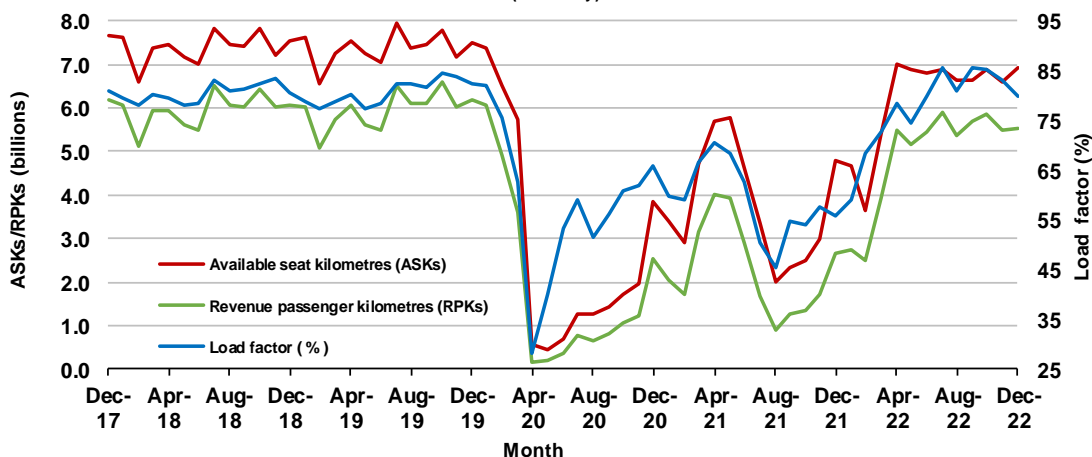
Domestic RPT passenger traffic

(monthly)



RPT Network utilisation

(monthly)



TOTAL NETWORK

Summary of annual commercial aviation activity

	YE Dec 2021	YE Dec 2022	% Change
Total passengers carried (millions)	26.91	53.77	99.8
Aircraft trips (000s)	431.2	624.2	44.8

Note: Regular Public Transport and charter aviation activity
Helicopter, joy flights and sightseeing charter flights not included.

RPT NETWORK

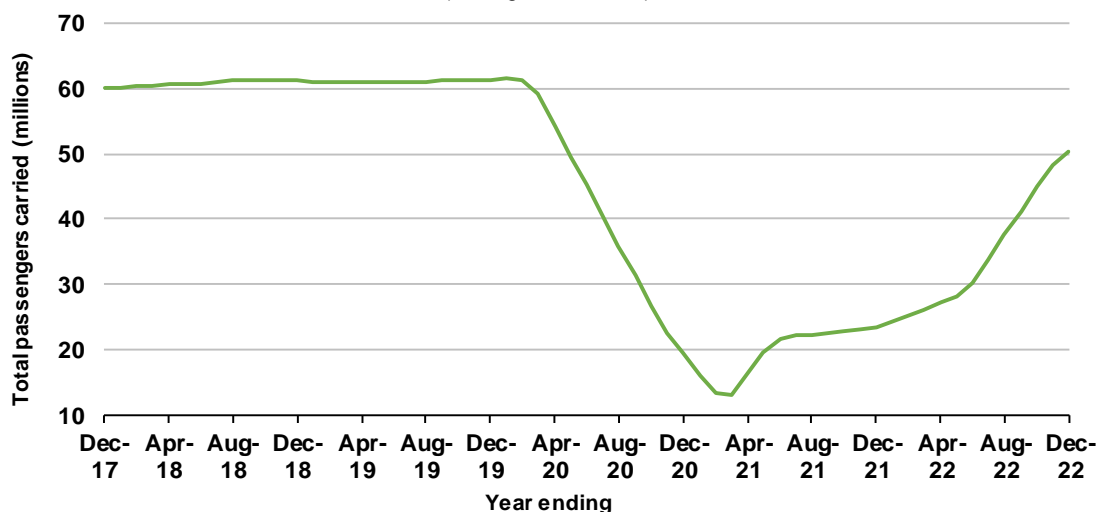
Summary of annual RPT activity

	YE Dec 2021	YE Dec 2022	% Change
Total passengers carried (millions)	23.55	50.19	113.1
Revenue passenger kilometres (billions)	27.35	59.15	116.3
Available seats (millions)	39.23	65.62	67.3
Available seat kilometres (billions)	45.02	75.04	66.7
Load factor %	60.7	78.8	18.1 *
Aircraft trips (000s)	367.7	558.1	51.8

* percentage point difference

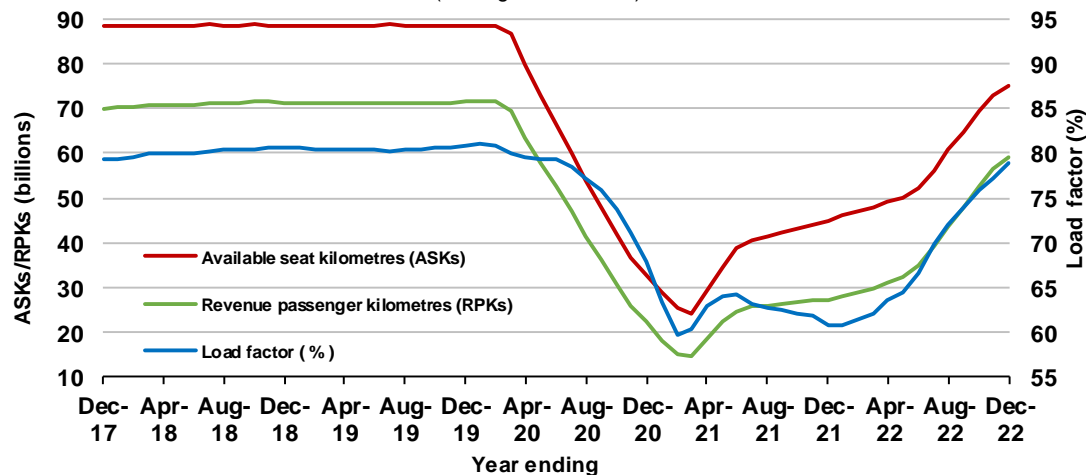
Domestic RPT passenger traffic

(moving annual totals)



RPT Network utilisation

(moving annual totals)



TOP COMPETITIVE ROUTES

Table 1: Passengers carried (000s) — annual activity

	City-Pair	YE Dec 2021	YE Dec 2022	%Change
1	Melbourne - Sydney	2,119.8	6,989.6	229.7
2	Brisbane - Sydney	1,093.2	3,594.2	228.8
3	Brisbane - Melbourne	787.4	2,806.5	256.4
4	Gold Coast - Sydney	755.2	2,365.6	213.2
5	Gold Coast - Melbourne	794.7	2,291.1	188.3
6	Adelaide - Melbourne	641.0	2,053.7	220.4
7	Adelaide - Sydney	524.7	1,410.6	168.8
8	Melbourne - Perth	261.4	1,347.8	415.5
9	Brisbane - Cairns	1,012.5	1,136.6	12.3
10	Hobart - Melbourne	459.3	1,130.8	146.2
11	Perth - Sydney	313.7	1,118.8	256.6
12	Canberra - Melbourne	280.7	850.0	202.8
13	Cairns - Sydney	249.8	844.9	238.3
14	Brisbane - Townsville	689.1	818.3	18.8
15	Cairns - Melbourne	312.7	814.5	160.5
16	Brisbane - Perth	287.2	737.3	156.7
17	Melbourne - Sunshine Coast	270.6	724.3	167.7
18	Adelaide - Brisbane	451.4	713.2	58.0
19	Brisbane - Mackay	536.5	698.4	30.2
20	Sunshine Coast - Sydney	227.2	684.8	201.4
21	Launceston - Melbourne	304.9	679.2	122.8
22	Hobart - Sydney	256.5	649.8	153.3
23	Brisbane - Canberra	292.7	593.4	102.7
24	Canberra - Sydney	166.5	536.5	222.2
25	Ballina - Sydney	408.7	504.5	23.4
26	Karratha - Perth	420.9	491.9	16.9
27	Adelaide - Perth	318.6	486.3	52.6
28	Brisbane - Newcastle	212.3	450.2	112.0
29	Perth - Port Hedland	360.2	448.2	24.4
30	Brisbane - Rockhampton	361.4	443.1	22.6
31	Broome - Perth	375.6	392.1	4.4
32	Melbourne - Newcastle	157.8	382.0	142.1
33	Darwin - Sydney	..	349.5	NA
34	Newman - Perth	318.1	341.8	7.5
35	Brisbane - Darwin	260.5	328.8	26.2
36	Darwin - Melbourne	121.8	304.3	150.0
37	Kalgoorlie - Perth	254.7	301.9	18.5
38	Brisbane - Proserpine	244.2	293.5	20.2
39	Brisbane - Hobart	257.5	291.2	13.1
40	Launceston - Sydney	123.9	274.8	121.7
41	Hamilton Island - Sydney	..	233.4	NA
42	Adelaide - Gold Coast	143.2	223.3	55.9
43	Coffs Harbour - Sydney	113.0	208.8	84.7
44	Brisbane - Gladstone	140.1	193.1	37.8
45	Brisbane - Hamilton Island	205.2	175.0	-14.7
46	Adelaide - Port Lincoln	141.9	170.3	20.0
47	Brisbane - Launceston	143.7	169.4	17.9
48	Brisbane - Emerald	136.8	158.8	16.1
49	Adelaide - Canberra	87.2	154.0	76.6
50	Albury - Sydney	65.4	151.0	130.7

continued

Table 1: (continued) Passengers carried (000s) — annual activity

	City-Pair	YE Dec 2021	YE Dec 2022	% Change
51	Darwin - Perth	..	149.9	NA
52	Dubbo - Sydney	69.5	147.4	112.1
53	Canberra - Gold Coast	..	144.3	NA
54	Port Macquarie - Sydney	54.5	142.8	162.2
55	Melbourne - Mildura	63.2	139.7	121.0
56	Sydney - Wagga Wagga	..	136.6	NA
57	Brisbane - Mount Isa	108.0	136.1	26.0
58	Brisbane - Moranbah	..	97.9	NA
59	Devonport - Melbourne	..	97.6	NA
60	Adelaide - Alice Springs	..	95.9	NA
61	Armidale - Sydney	..	93.0	NA
	Total domestic network	23,551.2	50,186.6	113.1

.. Data not available for release.

Table 2: Passengers carried (000s) — monthly activity

	City-Pair	Dec 2021	Dec 2022	% Change
1	Melbourne - Sydney	416.9	582.0	39.6
2	Brisbane - Sydney	98.2	328.9	234.8
3	Brisbane - Melbourne	108.0	250.9	132.3
4	Gold Coast - Sydney	70.0	213.2	204.8
5	Gold Coast - Melbourne	88.0	206.6	134.8
6	Adelaide - Melbourne	88.9	180.5	103.1
7	Melbourne - Perth	4.0	169.7	4,162.5
8	Adelaide - Sydney	68.3	136.5	99.7
9	Perth - Sydney	4.3	135.0	3,071.2
10	Hobart - Melbourne	44.4	113.3	155.5
11	Brisbane - Cairns	102.0	97.5	-4.5
12	Brisbane - Perth	30.2	90.4	199.0
13	Cairns - Sydney	22.6	80.2	255.2
14	Canberra - Melbourne	50.3	76.2	51.5
15	Launceston - Melbourne	29.9	71.8	140.4
16	Brisbane - Townsville	65.9	71.0	7.8
17	Adelaide - Brisbane	40.1	66.6	65.8
18	Hobart - Sydney	27.7	66.5	140.1
19	Sunshine Coast - Sydney	23.3	64.7	177.7
20	Brisbane - Mackay	49.8	61.7	23.9
21	Melbourne - Sunshine Coast	31.5	60.0	90.8
22	Cairns - Melbourne	28.0	60.0	113.8
23	Adelaide - Perth	5.1	55.3	989.4
24	Brisbane - Canberra	24.7	54.0	118.1
25	Ballina - Sydney	71.7	47.1	-34.4
26	Canberra - Sydney	20.5	43.1	110.9
27	Brisbane - Rockhampton	33.9	38.6	14.1
28	Karratha - Perth	35.3	38.6	9.4
29	Brisbane - Newcastle	12.3	38.0	209.8
30	Perth - Port Hedland	31.5	34.4	9.1
31	Melbourne - Newcastle	28.9	33.3	15.3
32	Launceston - Sydney	14.5	30.2	108.8
33	Brisbane - Hobart	34.5	29.4	-14.9
34	Newman - Perth	24.8	25.9	4.6
35	Kalgoorlie - Perth	21.6	24.3	12.3
36	Brisbane - Darwin	21.1	24.1	14.1
37	Brisbane - Proserpine	27.3	24.0	-12.0
38	Broome - Perth	25.9	23.9	-7.7
39	Adelaide - Gold Coast	12.9	22.8	76.7
40	Darwin - Sydney	..	22.0	NA
41	Hamilton Island - Sydney	..	21.7	NA
42	Darwin - Melbourne	10.8	20.8	93.5
43	Coffs Harbour - Sydney	18.7	18.4	-1.3
44	Brisbane - Launceston	20.0	17.1	-14.5
45	Adelaide - Canberra	8.8	15.9	79.9
46	Brisbane - Hamilton Island	22.4	15.4	-31.0
47	Brisbane - Gladstone	12.3	15.3	24.3
48	Adelaide - Port Lincoln	12.2	14.9	22.6
49	Canberra - Gold Coast	..	14.9	NA
50	Port Macquarie - Sydney	8.8	13.6	54.6

continued

Table 2: (continued) Passengers carried (000s) — monthly activity

	City-Pair	Dec 2021	Dec 2022	% Change
51	Brisbane - Emerald	10.8	13.0	20.3
52	Darwin - Perth	..	12.9	NA
53	Albury - Sydney	8.3	12.6	52.6
54	Dubbo - Sydney	8.4	12.4	47.2
55	Sydney - Wagga Wagga	..	12.0	NA
56	Melbourne - Mildura	8.8	11.5	31.3
57	Brisbane - Mount Isa	9.7	10.9	12.8
58	Devonport - Melbourne	..	10.7	NA
59	Armidale - Sydney	..	8.3	NA
60	Brisbane - Moranbah	..	7.7	NA
	Total domestic network	2,549.9	4,563.3	79.0

.. Data not available for release.

Table 3: Available seats (000s) — monthly activity

	City-Pair	Dec 2021	Dec 2022	% Change
1	Melbourne - Sydney	632.1	711.1	12.5
2	Brisbane - Sydney	189.1	398.7	110.8
3	Brisbane - Melbourne	182.5	305.8	67.6
4	Gold Coast - Sydney	133.7	247.6	85.1
5	Gold Coast - Melbourne	145.9	238.8	63.7
6	Adelaide - Melbourne	185.0	226.1	22.2
7	Melbourne - Perth	17.9	197.9	1,006.6
8	Adelaide - Sydney	125.7	160.2	27.4
9	Perth - Sydney	14.0	147.0	949.9
10	Hobart - Melbourne	74.8	155.4	107.7
11	Brisbane - Cairns	159.8	118.4	-25.9
12	Brisbane - Perth	54.3	102.0	88.0
13	Cairns - Sydney	48.4	96.9	100.4
14	Canberra - Melbourne	82.8	101.4	22.5
15	Launceston - Melbourne	54.2	97.4	79.6
16	Brisbane - Townsville	104.1	90.5	-13.1
17	Adelaide - Brisbane	74.5	79.6	6.8
18	Hobart - Sydney	52.7	85.8	62.8
19	Sunshine Coast - Sydney	49.6	87.4	76.4
20	Brisbane - Mackay	82.4	83.9	1.8
21	Melbourne - Sunshine Coast	58.6	77.1	31.4
22	Cairns - Melbourne	51.7	72.3	39.8
23	Adelaide - Perth	13.9	64.9	368.7
24	Brisbane - Canberra	42.7	77.9	82.5
25	Ballina - Sydney	92.9	60.4	-35.1
26	Canberra - Sydney	35.3	68.0	92.8
27	Brisbane - Rockhampton	62.4	55.1	-11.7
28	Karratha - Perth	60.6	55.0	-9.3
29	Brisbane - Newcastle	29.6	54.8	85.2
30	Perth - Port Hedland	53.9	47.7	-11.5
31	Melbourne - Newcastle	47.2	42.5	-10.0
32	Launceston - Sydney	30.5	37.1	21.6
33	Brisbane - Hobart	54.1	40.5	-25.1
34	Newman - Perth	53.6	45.5	-15.0
35	Kalgoorlie - Perth	36.5	37.5	2.7
36	Brisbane - Darwin	31.0	31.0	0.3
37	Brisbane - Proserpine	39.6	32.5	-18.1
38	Broome - Perth	45.2	33.8	-25.2
39	Adelaide - Gold Coast	25.6	27.4	7.1
40	Darwin - Sydney	..	30.9	NA
41	Hamilton Island - Sydney	..	28.9	NA
42	Darwin - Melbourne	17.2	28.7	67.1
43	Coffs Harbour - Sydney	33.7	24.5	-27.3
44	Brisbane - Launceston	33.3	23.1	-30.6
45	Adelaide - Canberra	19.0	23.5	23.8
46	Brisbane - Hamilton Island	36.5	22.4	-38.7
47	Brisbane - Gladstone	26.2	25.7	-1.9
48	Adelaide - Port Lincoln	22.9	20.3	-11.6
49	Canberra - Gold Coast	..	18.5	NA
50	Port Macquarie - Sydney	18.3	22.0	20.0

continued

Table 3: (continued) Available seats (000s) — monthly activity

	City-Pair	Dec 2021	Dec 2022	% Change
51	Brisbane - Emerald	20.7	20.6	-0.3
52	Darwin - Perth	..	18.2	NA
53	Albury - Sydney	17.3	20.8	20.2
54	Dubbo - Sydney	17.0	23.0	34.8
55	Sydney - Wagga Wagga	..	21.8	NA
56	Melbourne - Mildura	14.8	15.5	4.4
57	Brisbane - Mount Isa	18.9	18.3	-3.0
58	Devonport - Melbourne	..	16.0	NA
59	Armidale - Sydney	..	15.3	NA
60	Brisbane - Moranbah	..	16.2	NA
	Total domestic network	4,531.5	5,904.1	30.3

.. Data not available for release.

Table 4: Load factors (%) — monthly activity

	City-Pair	Dec 2021	Dec 2022	% Point diff
1	Melbourne - Sydney	65.9	81.8	15.9
2	Brisbane - Sydney	51.9	82.5	30.6
3	Brisbane - Melbourne	59.2	82.1	22.9
4	Gold Coast - Sydney	52.3	86.1	33.8
5	Gold Coast - Melbourne	60.3	86.5	26.2
6	Adelaide - Melbourne	48.0	79.8	31.8
7	Melbourne - Perth	22.3	85.8	63.5
8	Adelaide - Sydney	54.4	85.2	30.8
9	Perth - Sydney	30.4	91.8	61.4
10	Hobart - Melbourne	59.3	72.9	13.6
11	Brisbane - Cairns	63.8	82.3	18.5
12	Brisbane - Perth	55.7	88.6	32.9
13	Cairns - Sydney	46.7	82.8	36.1
14	Canberra - Melbourne	60.8	75.2	14.4
15	Launceston - Melbourne	55.1	73.7	18.6
16	Brisbane - Townsville	63.3	78.4	15.1
17	Adelaide - Brisbane	53.9	83.6	29.7
18	Hobart - Sydney	52.5	77.5	25.0
19	Sunshine Coast - Sydney	47.0	74.1	27.1
20	Brisbane - Mackay	60.5	73.6	13.1
21	Melbourne - Sunshine Coast	53.6	77.9	24.3
22	Cairns - Melbourne	54.2	82.9	28.7
23	Adelaide - Perth	36.7	85.2	48.5
24	Brisbane - Canberra	57.9	69.2	11.3
25	Ballina - Sydney	77.2	78.0	0.8
26	Canberra - Sydney	58.0	63.5	5.5
27	Brisbane - Rockhampton	54.3	70.1	15.8
28	Karratha - Perth	58.3	70.2	11.9
29	Brisbane - Newcastle	41.5	69.4	27.9
30	Perth - Port Hedland	58.4	72.0	13.6
31	Melbourne - Newcastle	61.1	78.3	17.2
32	Launceston - Sydney	47.4	81.4	34.0
33	Brisbane - Hobart	63.8	72.5	8.7
34	Newman - Perth	46.3	57.0	10.7
35	Kalgoorlie - Perth	59.3	64.8	5.5
36	Brisbane - Darwin	68.1	77.5	9.4
37	Brisbane - Proserpine	68.9	74.0	5.1
38	Broome - Perth	57.4	70.9	13.5
39	Adelaide - Gold Coast	50.5	83.3	32.8
40	Darwin - Sydney	..	71.3	NA
41	Hamilton Island - Sydney	..	75.2	NA
42	Darwin - Melbourne	62.7	72.6	9.9
43	Coffs Harbour - Sydney	55.4	75.2	19.8
44	Brisbane - Launceston	60.3	74.2	13.9
45	Adelaide - Canberra	46.4	67.5	21.1
46	Brisbane - Hamilton Island	61.3	68.9	7.6
47	Brisbane - Gladstone	47.0	59.5	12.5
48	Adelaide - Port Lincoln	53.1	73.6	20.5
49	Canberra - Gold Coast	..	80.6	NA
50	Port Macquarie - Sydney	48.1	61.9	13.8

continued

Table 4: (continued) Load factors (%) — monthly activity

	City-Pair	Dec 2021	Dec 2022	% Point diff
51	Brisbane - Emerald	52.5	63.3	10.8
52	Darwin - Perth	..	71.0	NA
53	Albury - Sydney	47.9	60.7	12.8
54	Dubbo - Sydney	49.3	53.9	4.6
55	Sydney - Wagga Wagga	..	55.1	NA
56	Melbourne - Mildura	59.3	74.5	15.2
57	Brisbane - Mount Isa	51.3	59.7	8.4
58	Devonport - Melbourne	..	67.1	NA
59	Armidale - Sydney	..	54.4	NA
60	Brisbane - Moranbah	..	47.3	NA
	Total domestic network	55.8	79.9	24.1

.. Data not available for release.

Table 5: Aircraft trips ^(a) — monthly activity

	City-Pair	Dec 2021	Dec 2022	% Change
1	Melbourne - Sydney	3,754	4,100	9.2
2	Brisbane - Sydney	1,290	2,486	92.7
3	Brisbane - Melbourne	1,233	1,889	53.2
4	Gold Coast - Sydney	774	1,436	85.5
5	Gold Coast - Melbourne	757	1,305	72.4
6	Adelaide - Melbourne	1,144	1,391	21.6
7	Melbourne - Perth	226	1,129	399.6
8	Adelaide - Sydney	783	1,001	27.8
9	Perth - Sydney	107	796	643.9
10	Hobart - Melbourne	453	910	100.9
11	Brisbane - Cairns	982	782	-20.4
12	Brisbane - Perth	302	589	95.0
13	Cairns - Sydney	252	509	102.0
14	Canberra - Melbourne	577	710	23.1
15	Launceston - Melbourne	464	786	69.4
16	Brisbane - Townsville	654	647	-1.1
17	Adelaide - Brisbane	455	630	38.5
18	Hobart - Sydney	300	512	70.7
19	Sunshine Coast - Sydney	276	545	97.5
20	Brisbane - Mackay	538	623	15.8
21	Melbourne - Sunshine Coast	326	445	36.5
22	Cairns - Melbourne	254	383	50.8
23	Adelaide - Perth	118	393	233.1
24	Brisbane - Canberra	277	567	104.7
25	Ballina - Sydney	645	447	-30.7
26	Canberra - Sydney	664	1,181	77.9
27	Brisbane - Rockhampton	549	622	13.3
28	Karratha - Perth	381	360	-5.5
29	Brisbane - Newcastle	219	499	127.9
30	Perth - Port Hedland	359	327	-8.9
31	Melbourne - Newcastle	285	271	-4.9
32	Launceston - Sydney	176	230	30.7
33	Brisbane - Hobart	334	245	-26.6
34	Newman - Perth	331	302	-8.8
35	Kalgoorlie - Perth	260	278	6.9
36	Brisbane - Darwin	198	241	21.7
37	Brisbane - Proserpine	268	216	-19.4
38	Broome - Perth	278	241	-13.3
39	Adelaide - Gold Coast	156	156	0.0
40	Darwin - Sydney	..	175	NA
41	Hamilton Island - Sydney	..	166	NA
42	Darwin - Melbourne	94	162	72.3
43	Coffs Harbour - Sydney	471	461	-2.1
44	Brisbane - Launceston	195	134	-31.3
45	Adelaide - Canberra	109	206	89.0
46	Brisbane - Hamilton Island	209	131	-37.3
47	Brisbane - Gladstone	302	333	10.3
48	Adelaide - Port Lincoln	578	498	-13.8
49	Canberra - Gold Coast	..	104	NA
50	Port Macquarie - Sydney	370	393	6.2

continued

Table 5: (continued) Aircraft trips ^(a) — monthly activity

	City-Pair	Dec 2021	Dec 2022	% Change
51	Brisbane - Emerald	304	309	1.6
52	Darwin - Perth	..	104	NA
53	Albury - Sydney	300	388	29.3
54	Dubbo - Sydney	349	434	24.4
55	Sydney - Wagga Wagga	..	405	NA
56	Melbourne - Mildura	330	369	11.8
57	Brisbane - Mount Isa	177	166	-6.2
58	Devonport - Melbourne	..	358	NA
59	Armidale - Sydney	..	306	NA
60	Brisbane - Moranbah	..	216	NA
	Total domestic network	39,695	49,602	25.0

(a) Includes RPT cargo flights.

.. Data not available for release.

TOP TEN AIRPORTS – PASSENGER MOVEMENTS

Table 6: Top ten airports, RPT passenger movements (000s) - monthly activity

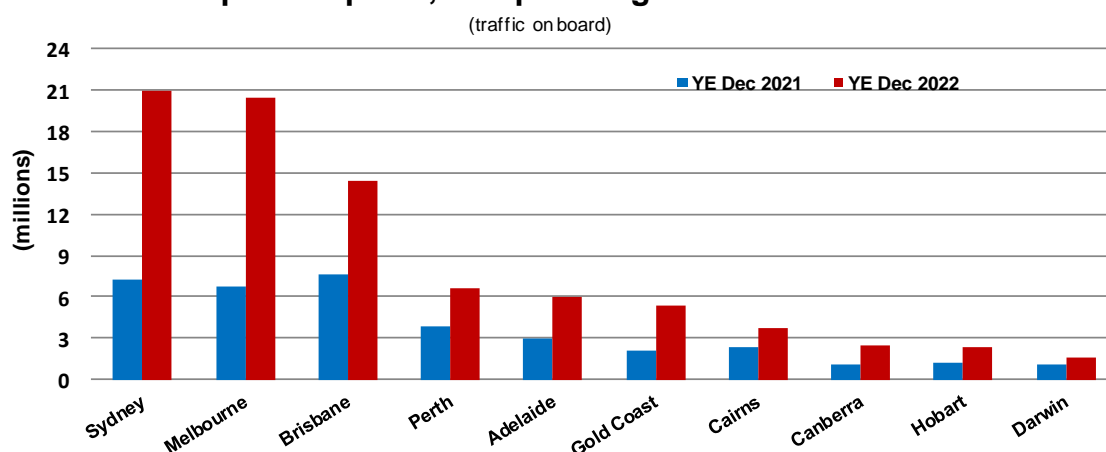
Airport	Dec 2021	Dec 2022	% Change	% of Total
1 Sydney	960.0	1,941.3	102.2	21.3
2 Melbourne	978.3	1,872.3	91.4	20.5
3 Brisbane	762.1	1,300.5	70.6	14.2
4 Perth	249.4	679.6	172.5	7.4
5 Adelaide	298.0	568.4	90.7	6.2
6 Gold Coast	204.9	483.3	135.9	5.3
7 Cairns	215.9	310.3	43.7	3.4
8 Hobart	139.7	233.0	66.8	2.6
9 Canberra	117.1	220.2	88.1	2.4
10 Sunshine Coast	61.9	130.5	110.8	1.4
Total top ten airports	3,987.3	7,739.4	94.1	84.8
Total domestic network	5,099.9	9,126.6	79.0	100.0

Table 7: Top ten airports, RPT passenger movements (000s) - annual activity

Airport	YE Dec 2021	YE Dec 2022	% Change	% of Total
1 Sydney	7,187.3	20,972.7	191.8	20.9
2 Melbourne	6,768.5	20,453.0	202.2	20.4
3 Brisbane	7,658.7	14,380.9	87.8	14.3
4 Perth	3,854.3	6,627.0	71.9	6.6
5 Adelaide	3,034.4	6,029.6	98.7	6.0
6 Gold Coast	2,038.8	5,329.7	161.4	5.3
7 Cairns	2,312.5	3,682.1	59.2	3.7
8 Canberra	1,023.9	2,438.0	138.1	2.4
9 Hobart	1,261.3	2,289.0	81.5	2.3
10 Darwin	1,088.9	1,636.4	50.3	1.6
Total top ten airports	36,228.5	83,838.5	131.4	83.5
Total domestic network	47,102.4	100,373.2	113.1	100.0

Note: Airport passenger movement numbers are the sum of passenger arrivals and departures at each airport.

Top ten airports, RPT passenger movements



TOP FIVE AIRPORTS – CARGO MOVEMENTS

Table 8: Top five airports, domestic RPT cargo movements (000s tonnes) - monthly activity

Airport	Dec 2021	Dec 2022	% Change	% of Total
1 Melbourne	9.4	8.5	-9.6	27.1
2 Sydney	8.8	6.6	-25.1	21.0
3 Brisbane	6.5	5.4	-16.5	17.3
4 Perth	3.3	3.6	6.9	11.4
5 Adelaide	2.6	2.0	-21.3	6.6
Total top five airports	30.5	26.1	-14.7	83.4
Total domestic network	37.3	31.2	-16.3	100.0

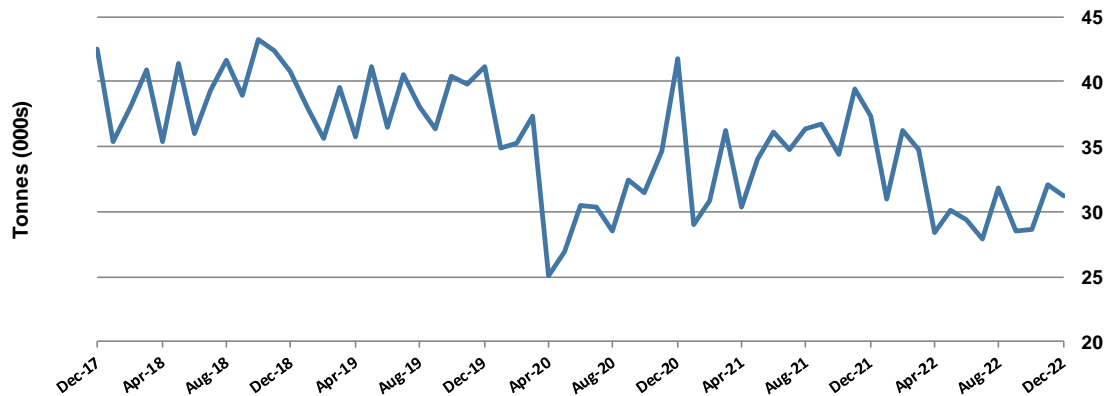
Table 9: Top five airports, domestic RPT cargo movements (000s tonnes) - annual activity

Airport	YE Dec 2021	YE Dec 2022	% Change	% of Total
1 Melbourne	105.5	96.8	-8.2	26.1
2 Sydney	96.9	82.9	-14.5	22.4
3 Brisbane	68.2	62.4	-8.6	16.9
4 Perth	38.8	35.2	-9.3	9.5
5 Adelaide	25.9	22.5	-13.3	6.1
Total top five airports	335.3	299.7	-10.6	81.0
Total domestic network	415.7	370.0	-11.0	100.0

Note: Airport cargo tonnes are the sum of cargo tonnes on arrivals and departures at each airport.

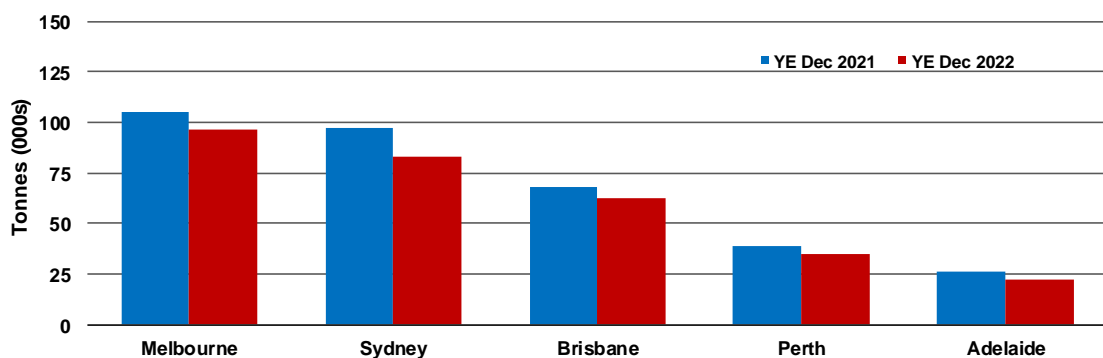
Total domestic network - cargo movement

(monthly totals - traffic on board)



Top five airports, cargo movements

(Domestic cargo traffic - traffic on board)



Note: Airport cargo tonnes are the sum of cargo tonnes on arrivals and departures at each airport.

TOP TEN ROUTES

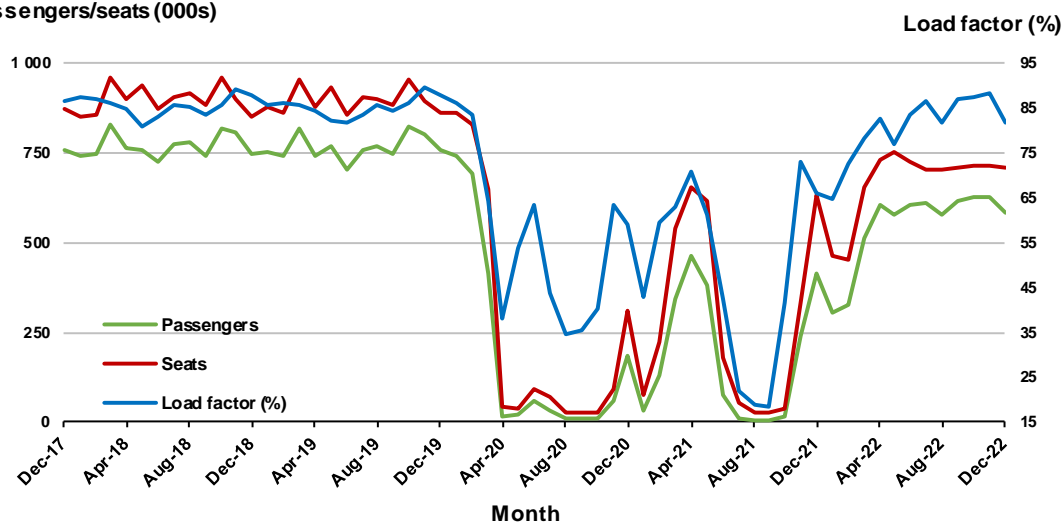
1. Melbourne - Sydney

Monthly data

	Dec 2021	Dec 2022	% Change
Passengers carried (000s)	416.9	582.0	39.6
Seats (000s)	632.1	711.1	12.5
Load factor %	65.9	81.8	15.9 *
Aircraft trips	3,754	4,100	9.2

* percentage point difference

Passengers/seats (000s)

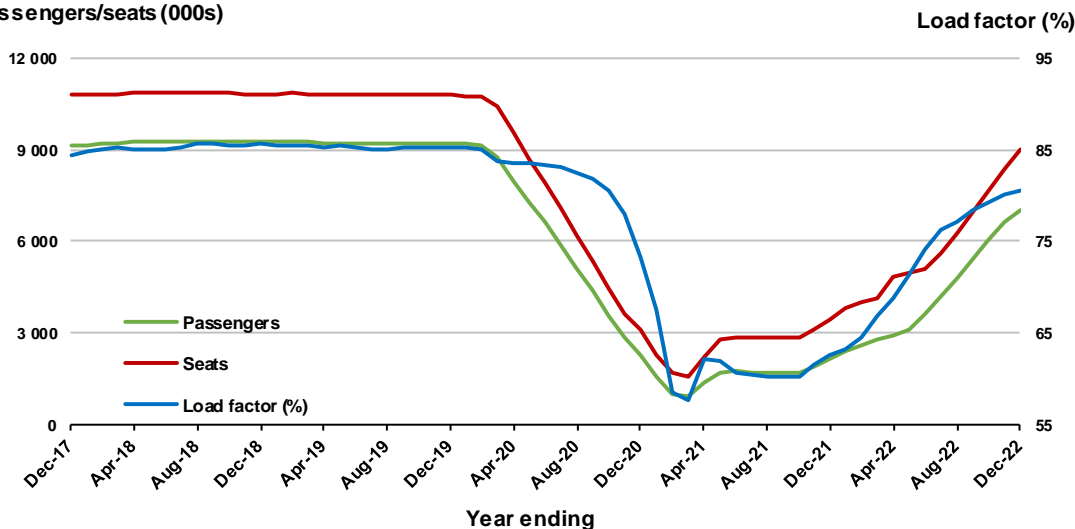


Moving annual data

	YE Dec 2021	YE Dec 2022	% Change
Passengers carried (000s)	2,119.8	6,989.6	229.7
Seats (000s)	3,394.1	9,007.3	165.4
Load factor %	62.5	80.6	18.1 *
Aircraft trips	21,589	50,607	134.4

* percentage point difference

Passengers/seats (000s)

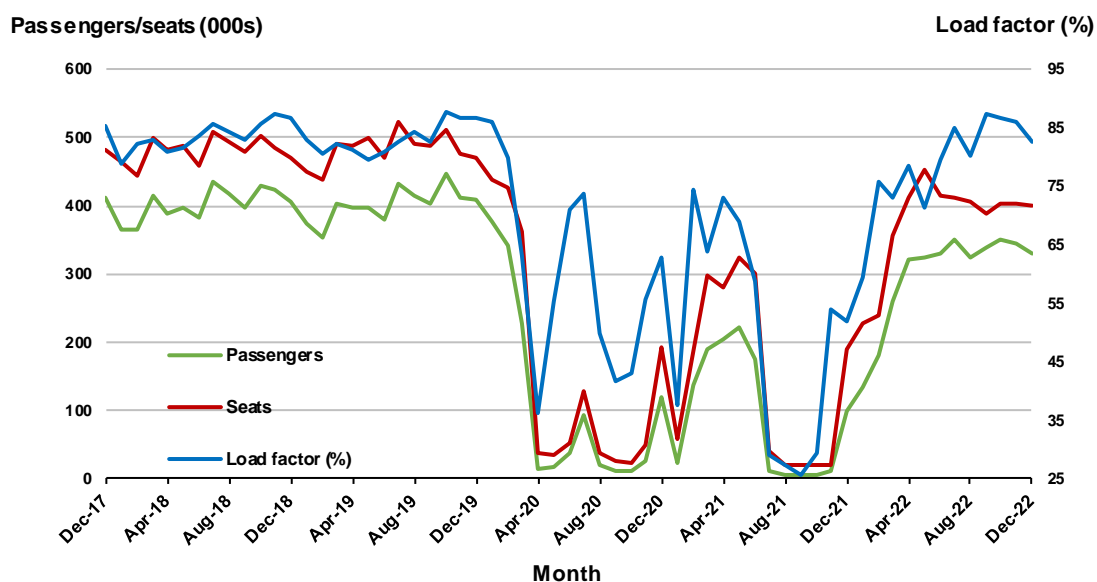


2. Brisbane - Sydney

Monthly data

	Dec 2021	Dec 2022	% Change
Passengers carried (000s)	98.2	328.9	234.8
Seats (000s)	189.1	398.7	110.8
Load factor %	51.9	82.5	30.6 *
Aircraft trips	1,290	2,486	92.7

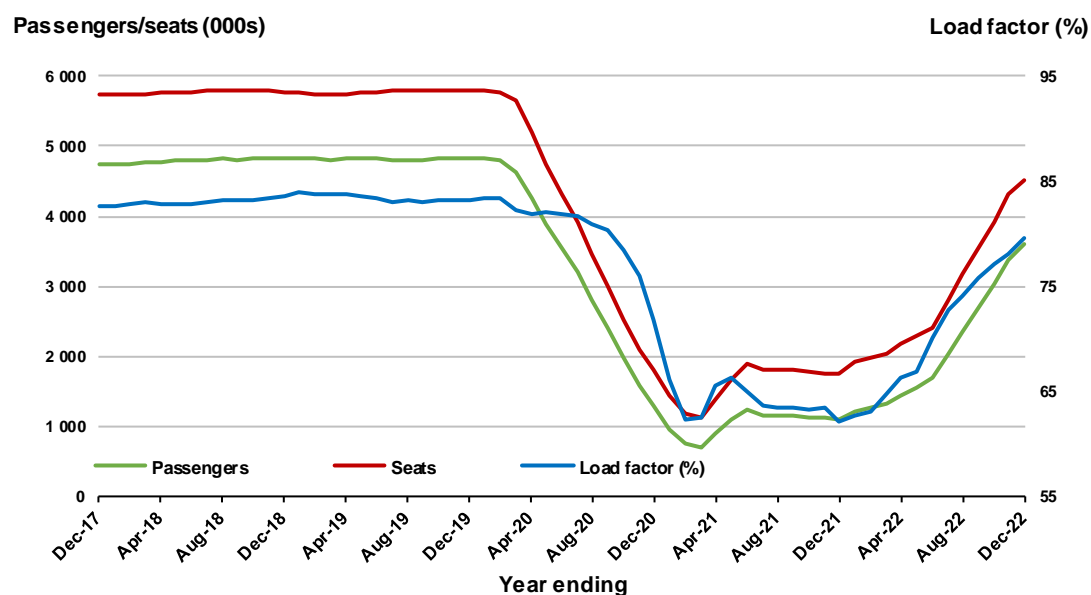
* percentage point difference



Moving annual data

	YE Dec 2021	YE Dec 2022	% Change
Passengers carried (000s)	1,093.2	3,594.2	228.8
Seats (000s)	1,758.3	4,519.8	157.1
Load factor %	62.2	79.5	17.3 *
Aircraft trips	12,264	27,926	127.7

* percentage point difference

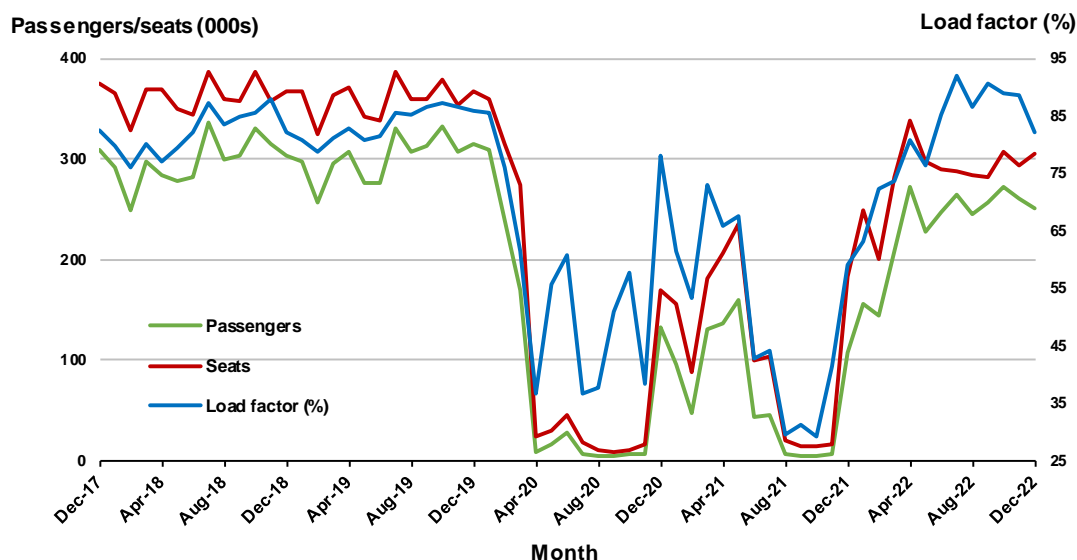


3. Brisbane - Melbourne

Monthly data

	Dec 2021	Dec 2022	% Change
Passengers carried (000s)	108.0	250.9	132.3
Seats (000s)	182.5	305.8	67.6
Load factor %	59.2	82.1	22.9 *
Aircraft trips	1,233	1,889	53.2

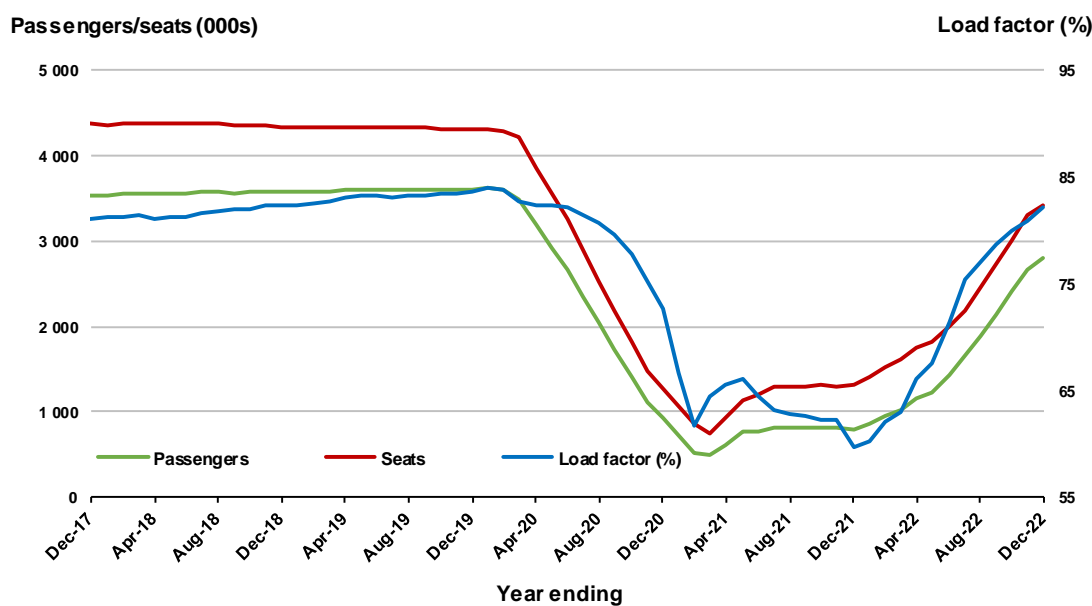
* percentage point difference



Moving annual data

	YE Dec 2021	YE Dec 2022	% Change
Passengers carried (000s)	787.4	2,806.5	256.4
Seats (000s)	1,317.7	3,416.2	159.3
Load factor %	59.8	82.2	22.4 *
Aircraft trips	8,975	20,882	132.7

* percentage point difference



4. Gold Coast - Sydney ^(a)

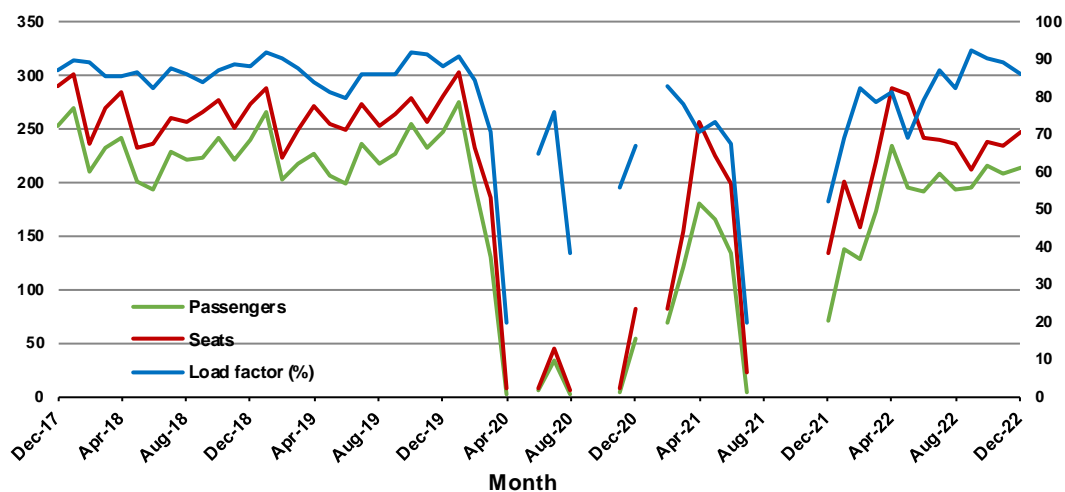
Monthly data

	Dec 2021	Dec 2022	% Change
Passengers carried (000s)	70.0	213.2	204.8
Seats (000s)	133.7	247.6	85.1
Load factor %	52.3	86.1	33.8 *
Aircraft trips	774	1,436	85.5

.. Data not available for release

Passengers/seats (000s)

Load factor (%)



(a) May, September and October 2020 and January and August to November 2021 data not available for release.

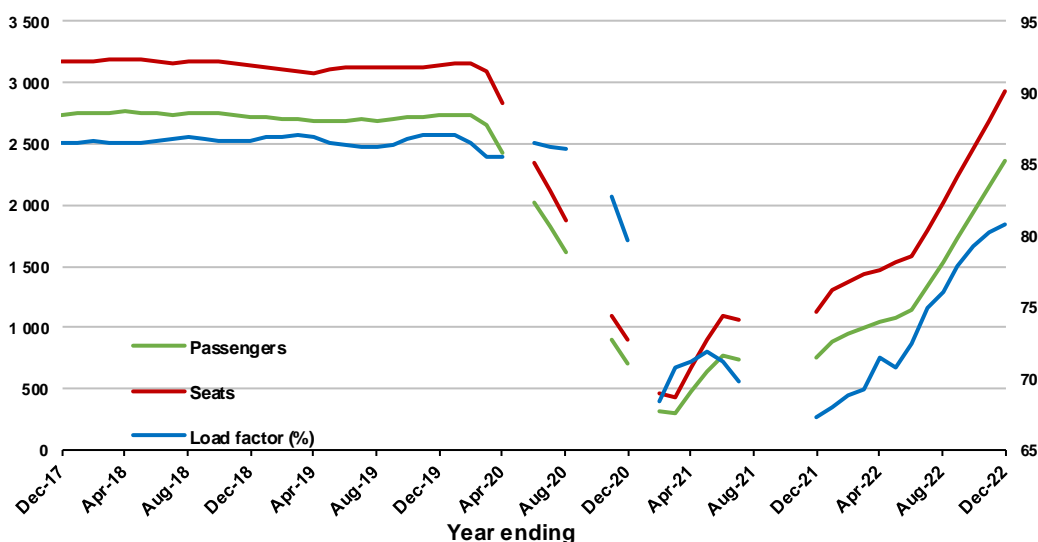
Moving annual data

	YE Dec 2021	YE Dec 2022	% Change
Passengers carried (000s)	755.2	2,365.6	213.2
Seats (000s)	1,123.1	2,928.7	160.8
Load factor %	67.2	80.8	13.5 *
Aircraft trips	6,590	16,950	157.2

.. Data not available for release

Passengers/seats (000s)

Load factor (%)



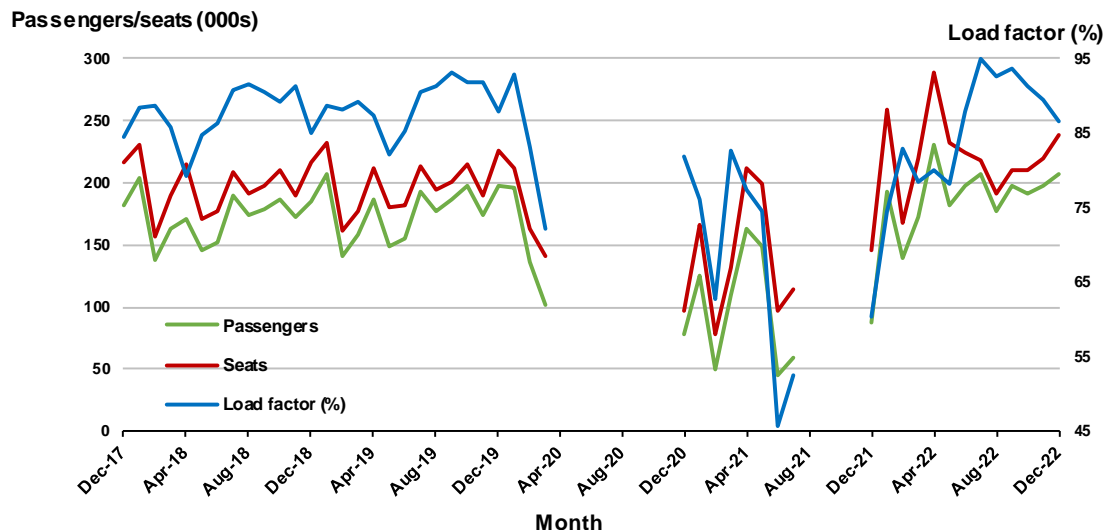
(a) May, September and October 2020 and January and August to November 2021 moving annual totals not available for release.

5. Gold Coast - Melbourne ^(a)

Monthly data

	Dec 2021	Dec 2022	% Change
Passengers carried (000s)	88.0	206.6	134.8
Seats (000s)	145.9	238.8	63.7
Load factor %	60.3	86.5	26.2 *
Aircraft trips	757	1,305	72.4

.. Data not available for release

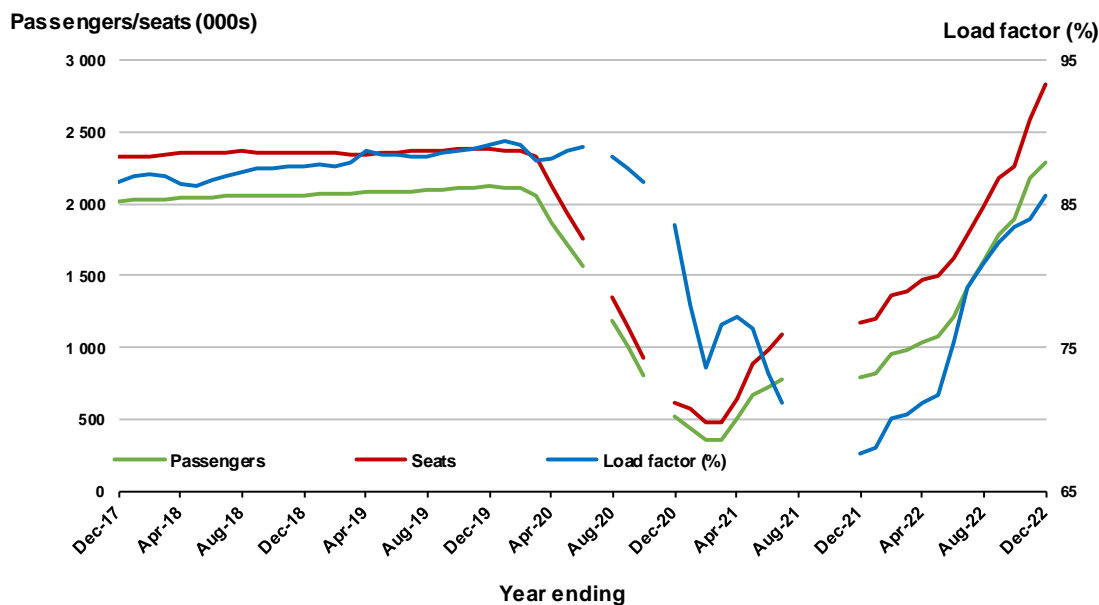


(a) April to November 2020 and August to November 2021 data not available for release.

Moving annual data

	YE Dec 2021	YE Dec 2022	% Change
Passengers carried (000s)	794.7	2,291.1	188.3
Seats (000s)	1,175.4	2,825.7	140.4
Load factor %	67.6	85.5	17.9 *
Aircraft trips	6,269	14,738	135.1

.. Data not available for release



(a) July and November 2020 and August to November 2021 moving annuals are not available for release.

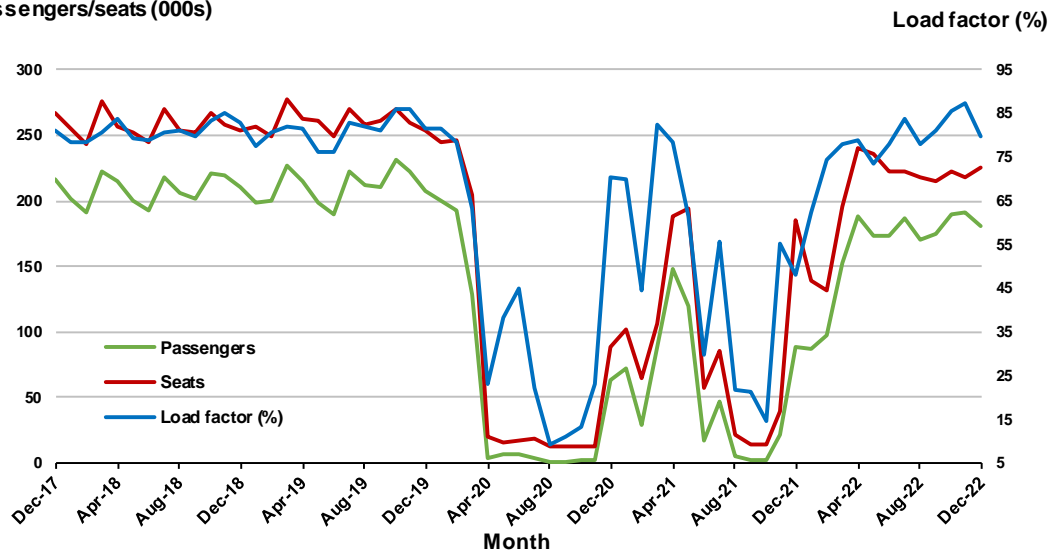
6. Adelaide - Melbourne

Monthly data

	Dec 2021	Dec 2022	% Change
Passengers carried (000s)	88.9	180.5	103.1
Seats (000s)	185.0	226.1	22.2
Load factor %	48.0	79.8	31.8 *
Aircraft trips	1,144	1,391	21.6

* percentage point difference

Passengers/seats (000s)

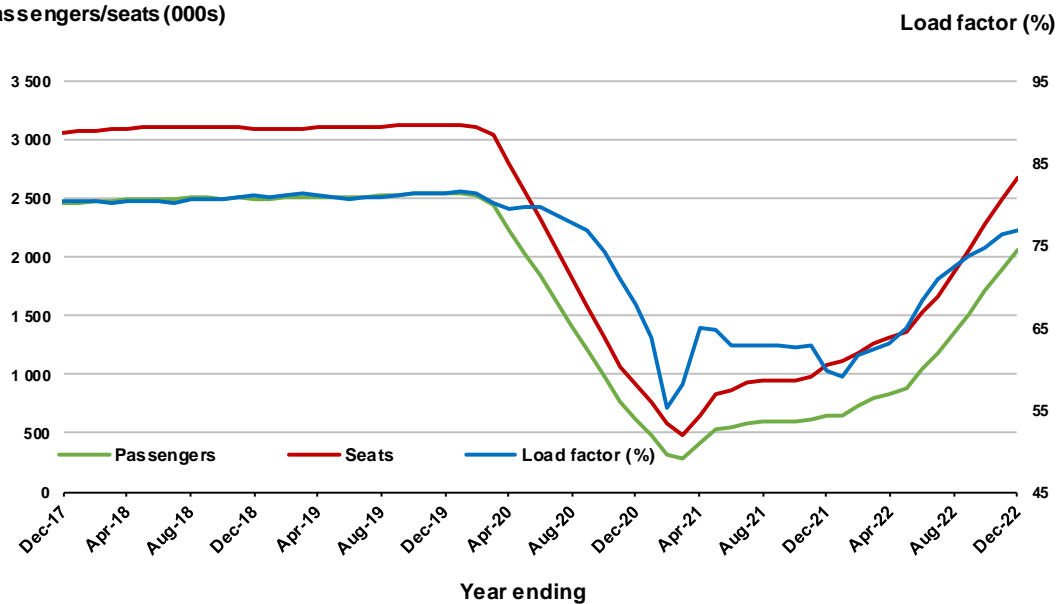


Moving annual data

	YE Dec 2021	YE Dec 2022	% Change
Passengers carried (000s)	641.0	2,053.7	220.4
Seats (000s)	1,073.9	2,673.3	148.9
Load factor %	59.7	76.8	17.1 *
Aircraft trips	7,198	16,383	127.6

* percentage point difference

Passengers/seats (000s)



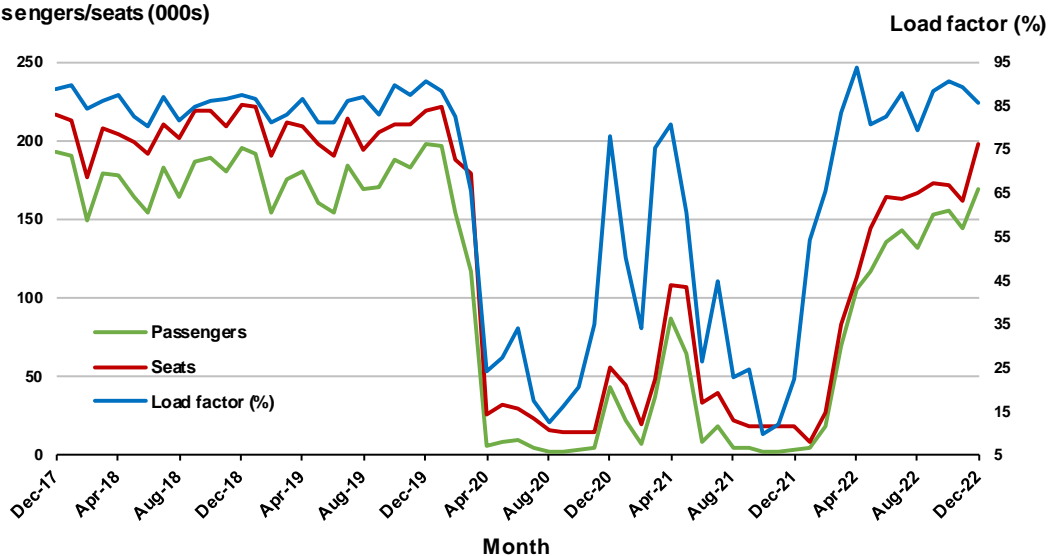
7. Melbourne - Perth

Monthly data

	Dec 2021	Dec 2022	% Change
Passengers carried (000s)	4.0	169.7	4 162.5
Seats (000s)	17.9	197.9	1 006.6
Load factor %	22.3	85.8	63.5 *
Aircraft trips	226	1,129	400

* percentage point difference

Passengers/seats (000s)

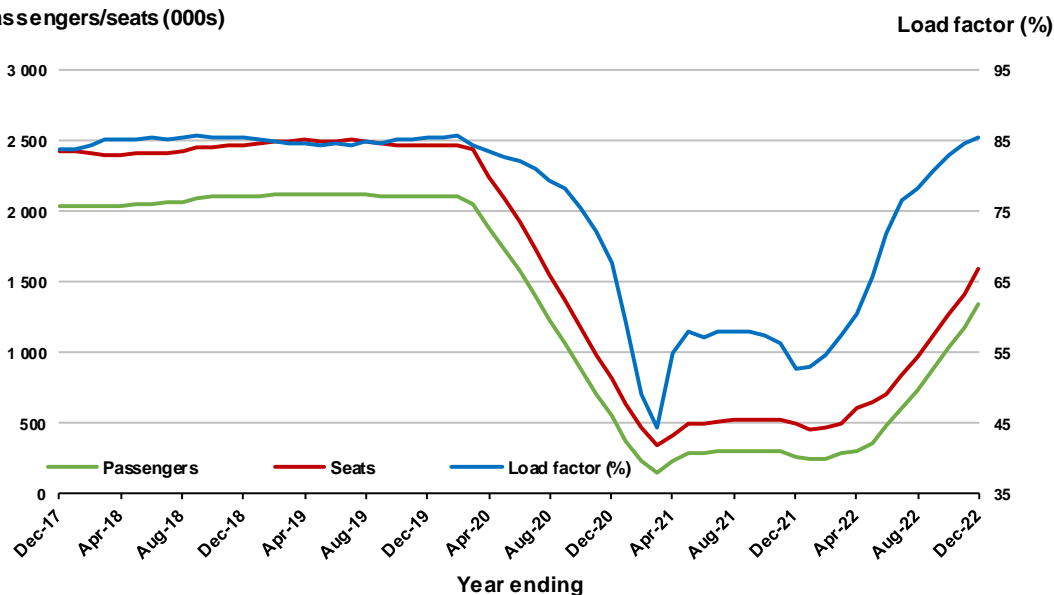


Moving annual data

	YE Dec 2021	YE Dec 2022	% Change
Passengers carried (000s)	261.4	1,347.8	415.5
Seats (000s)	494.9	1,592.9	221.8
Load factor %	52.8	85.6	32.8 *
Aircraft trips	3,723	9,045	142.9

* percentage point difference

Passengers/seats (000s)

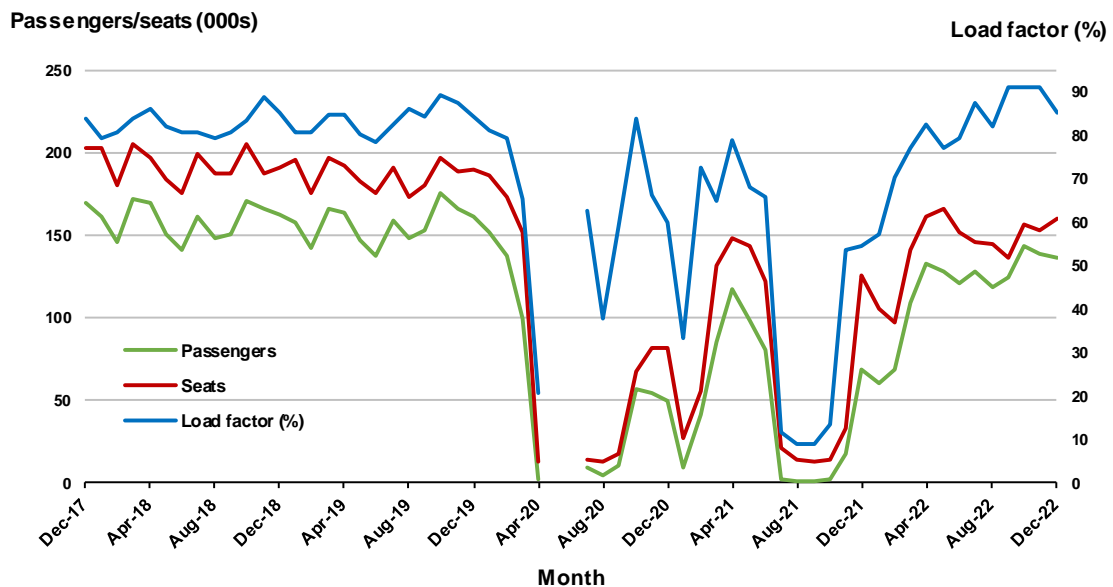


8. Adelaide - Sydney ^(a)

Monthly data

	Dec 2021	Dec 2022	% Change
Passengers carried (000s)	68.3	136.5	99.7
Seats (000s)	125.7	160.2	27.4
Load factor %	54.4	85.2	30.8 *
Aircraft trips	783	1,001	27.8

* percentage point difference

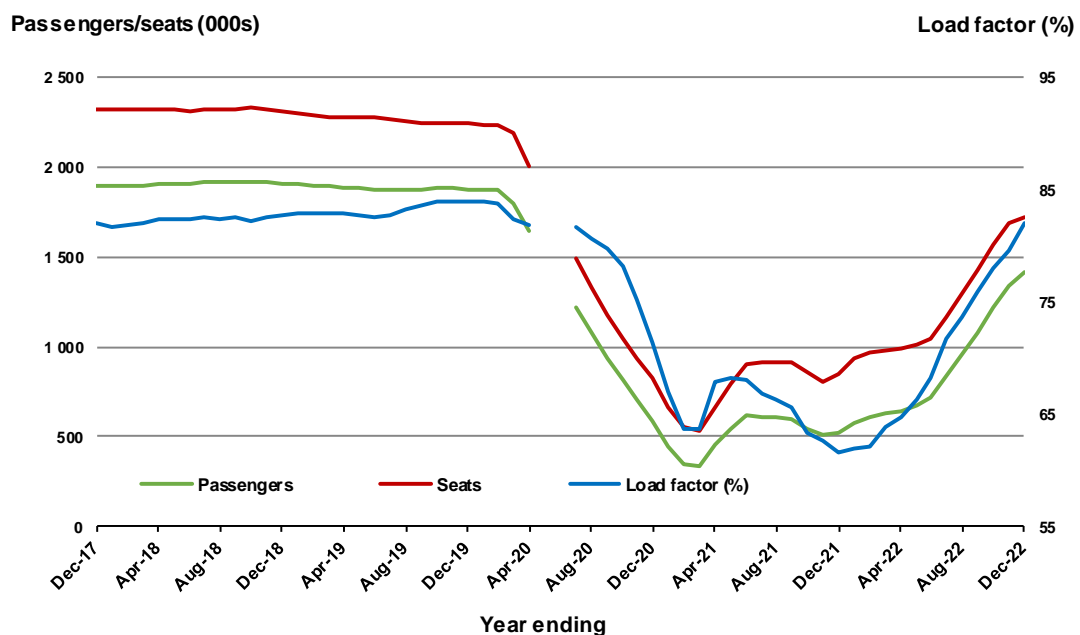


(a) May and June 2020 data not available for release.

Moving annual data

	YE Dec 2021	YE Dec 2022	% Change
Passengers carried (000s)	524.7	1,410.6	168.8
Seats (000s)	851.8	1,721.1	102.1
Load factor %	61.6	82.0	20.4 *
Aircraft trips	5,398	10,528	95.0

* percentage point difference



(a) May and June 2020 moving annual totals are not available for release.

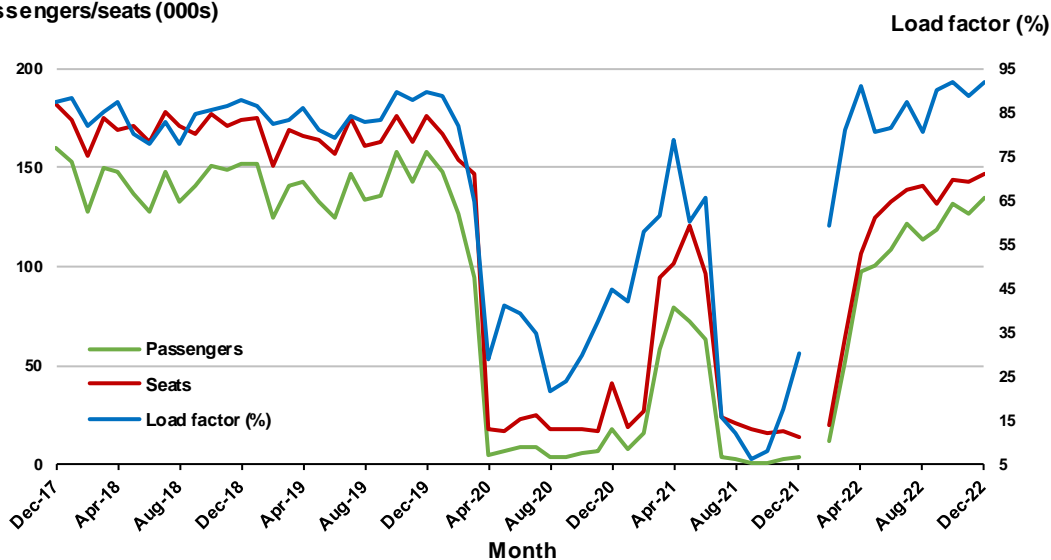
9. Perth - Sydney ^(a)

Monthly data

	Dec 2021	Dec 2022	% Change
Passengers carried (000s)	4.3	135.0	3,071.2
Seats (000s)	14.0	147.0	949.9
Load factor %	30.4	91.8	61.4 *
Aircraft trips	107	796	643.9

* percentage point difference

Passengers/seats (000s)



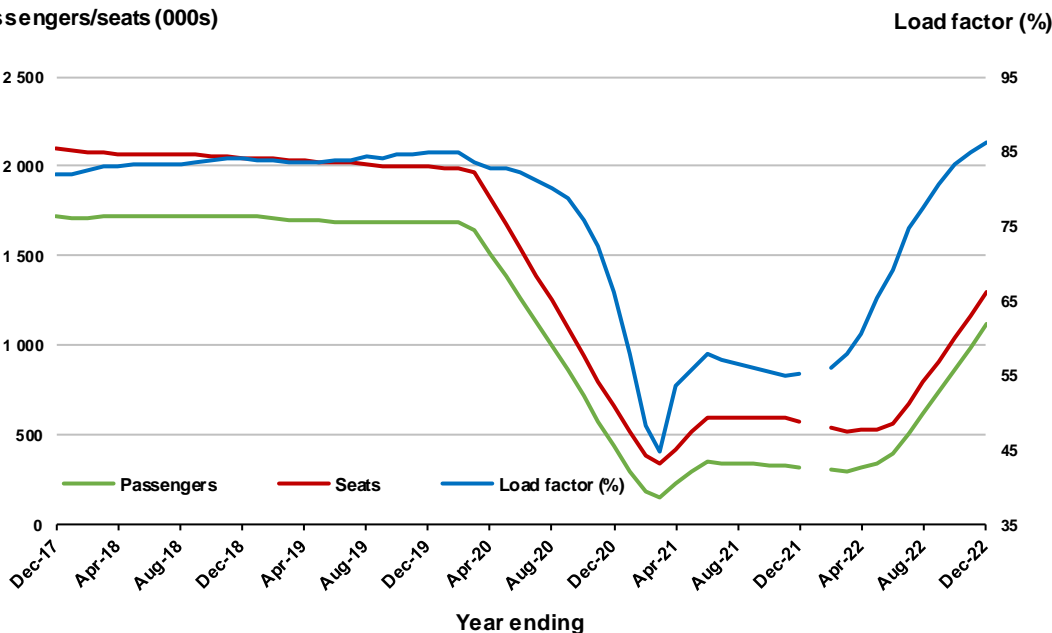
(a) January 2022 data not available for release.

Moving annual data

	YE Dec 2021	YE Dec 2022	% Change
Passengers carried (000s)	313.7	1,118.8	256.6
Seats (000s)	569.6	1,296.5	127.6
Load factor %	55.1	86.3	31.2 *
Aircraft trips	3,097	6,807	119.8

* percentage point difference

Passengers/seats (000s)



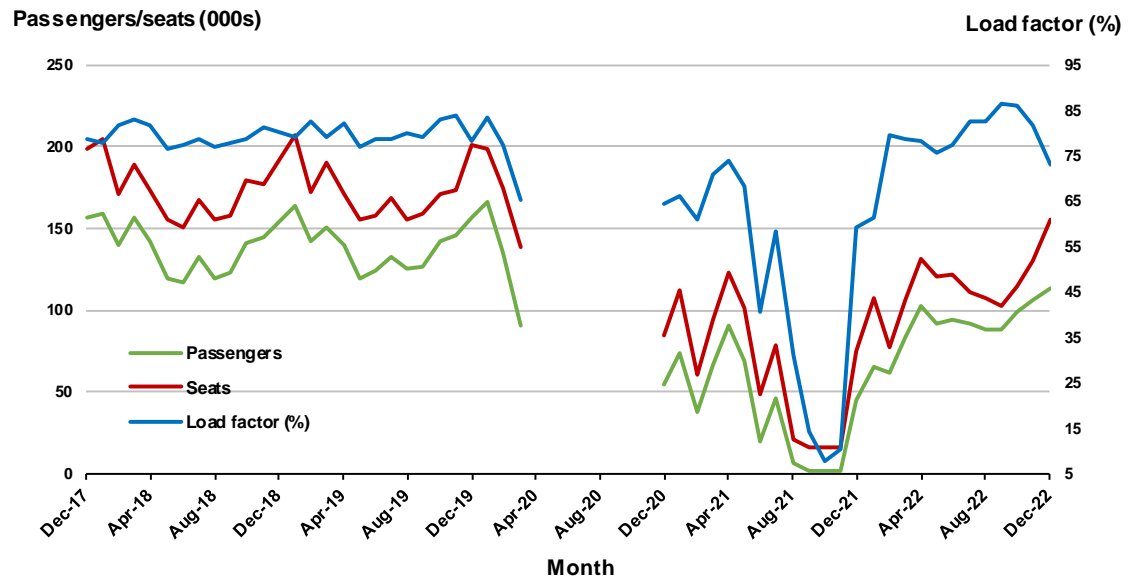
(a) January 2022 moving annual totals are not available for release.

10. Hobart - Melbourne ^(a)

Monthly data

	Dec 2021	Dec 2022	% Change
Passengers carried (000s)	44.4	113.3	155.5
Seats (000s)	74.8	155.4	107.7
Load factor %	59.3	72.9	13.6 *
Aircraft trips	453	910	100.9

* percentage point difference

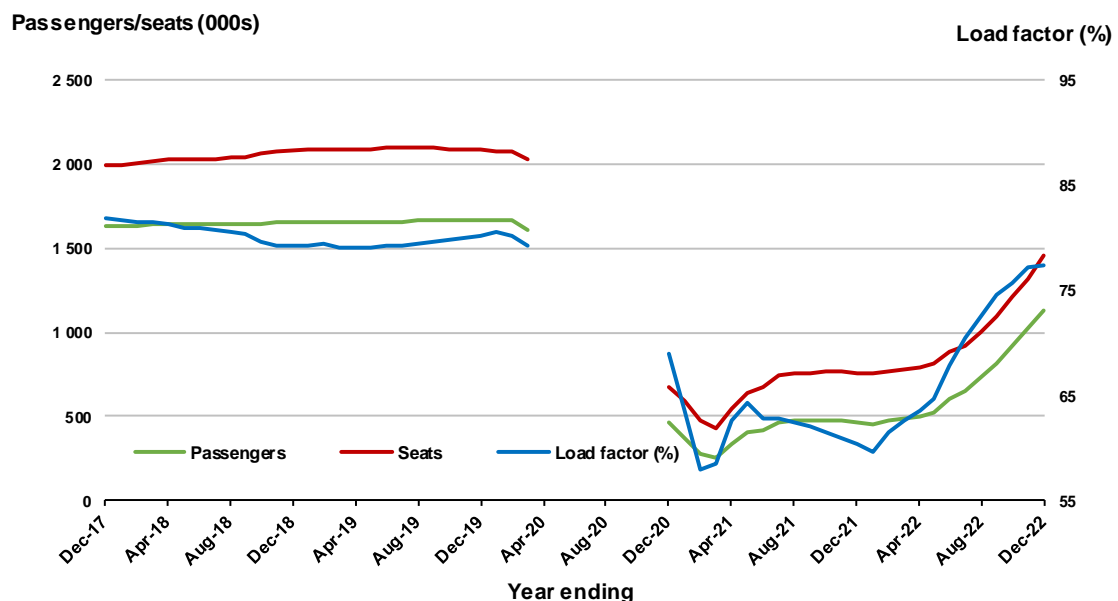


(a) April to November 2020 data are not available for release.

Moving annual data

	YE Dec 2021	YE Dec 2022	% Change
Passengers carried (000s)	459.3	1,130.8	146.2
Seats (000s)	760.9	1,460.7	92.0
Load factor %	60.4	77.4	17.1 *
Aircraft trips	4,764	8,944	87.7

* percentage point difference



(a) April to November 2020 moving annual totals are not available for release.

TOP FIFTY REGIONAL AIRPORTS

Table 10: Top fifty regional airports (000s) — passenger movements, monthly

Airport	Dec 2021	Dec 2022	% Change
1 Cairns	215.9	310.3	43.7
2 Hobart	139.7	233.0	66.8
3 Townsville	106.7	130.0	21.8
4 Launceston	76.0	125.2	64.8
5 Darwin	75.9	117.4	54.7
6 Newcastle	47.8	85.4	78.8
7 Mackay	59.7	71.1	19.1
8 Ballina	106.4	56.7	-46.7
9 Hamilton Island	31.7	44.2	39.5
10 Rockhampton	37.0	41.8	12.7
11 Proserpine	35.2	38.7	10.1
12 Karratha	35.4	38.6	9.2
13 Port Hedland	31.6	34.4	8.9
14 Broome	27.3	26.0	-5.0
15 Newman	24.8	25.9	4.6
16 Kalgoorlie	21.6	24.3	12.3
17 Coffs Harbour	26.1	23.4	-10.0
18 Alice Springs	13.2	22.9	73.9
19 Albury	10.6	18.4	73.0
20 Mount Isa	16.1	17.2	6.9
21 Mildura	10.7	16.1	51.3
22 Port Macquarie	10.1	16.0	58.4
23 Paraburdoo	14.7	15.8	7.6
24 Wagga Wagga	7.8	15.4	98.9
25 Gladstone	12.3	15.4	25.2
26 Dubbo	11.6	15.0	29.4
27 Port Lincoln	12.2	14.9	22.6
28 Ayers Rock	1.3	14.9	1,067.6
29 Emerald	11.6	13.8	19.0
30 Tamworth	7.0	11.9	68.7
31 Hervey Bay	6.1	11.4	86.1
32 Devonport	3.3	10.7	222.5
33 Armidale	6.2	8.9	42.2
34 Bundaberg	7.6	8.8	16.3
35 Thursday Island	8.2	8.2	-0.1
36 Moranbah	7.1	7.7	7.9
37 Orange	5.0	7.4	47.8
38 Burnie	3.3	7.2	120.8
39 Olympic Dam	6.6	7.2	8.9
40 Merimbula	6.0	6.8	13.6
41 Weipa	6.6	6.8	2.7
42 Kununurra	5.6	6.8	20.2
43 Norfolk Island	5.6	6.3	12.7
44 Learmonth	5.1	6.0	17.4
45 Mount Gambier	4.0	5.9	48.9
46 Geraldton	6.6	5.9	-9.3
47 Gove	4.4	5.9	33.5
48 Griffith	4.1	5.8	42.0
49 King Island	4.1	5.3	28.9
50 Albany	4.4	5.1	16.5
Total top 50 regional airports	1,347.8	1,778.5	32.0
Total regional airports	1,441.6	1,881.8	30.5
Total domestic network	5,099.9	9,126.6	79.0

Note: Airport passenger movement numbers are the sum of passenger arrivals and departures at each airport. Regional airports are defined as airports which are, according to Australian Statistical Geography Standard (ASGS), not based in Major Cities.

Table 11: Top fifty regional airports (000s) — passenger movements, annual

Airport	YE Dec 2021	YE Dec 2022	% Change
1 Cairns	2,312.5	3,682.1	59.2
2 Hobart	1,261.3	2,289.0	81.5
3 Darwin	1,088.9	1,636.4	50.3
4 Townsville	1,097.9	1,527.4	39.1
5 Launceston	622.5	1,165.8	87.3
6 Newcastle	460.3	1,023.3	122.3
7 Mackay	647.5	824.7	27.4
8 Ballina	524.7	639.3	21.9
9 Hamilton Island	327.2	500.1	52.8
10 Karratha	422.9	494.0	16.8
11 Rockhampton	400.1	484.7	21.2
12 Proserpine	305.0	464.5	52.3
13 Port Hedland	361.6	449.5	24.3
14 Broome	412.9	436.5	5.7
15 Alice Springs	259.5	344.2	32.6
16 Newman	319.0	343.7	7.7
17 Kalgoorlie	255.1	302.3	18.5
18 Coffs Harbour	140.4	276.3	96.7
19 Mount Isa	186.8	221.2	18.4
20 Paraburdoo	192.4	210.8	9.6
21 Albury	76.4	208.9	173.3
22 Ayers Rock	70.2	207.9	196.1
23 Gladstone	140.9	193.5	37.3
24 Dubbo	100.2	183.9	83.5
25 Mildura	77.2	180.3	133.7
26 Wagga Wagga	68.3	173.4	153.8
27 Port Lincoln	141.9	170.4	20.1
28 Emerald	145.1	168.9	16.4
29 Port Macquarie	67.1	164.8	145.6
30 Tamworth	57.9	133.7	130.8
31 Hervey Bay	51.1	125.0	144.6
32 Kununurra	106.5	121.9	14.5
33 Bundaberg	72.0	103.1	43.2
34 Armidale	42.2	99.5	135.7
35 Moranbah	80.5	98.0	21.8
36 Devonport	39.2	97.7	148.9
37 Learmonth	93.8	97.0	3.4
38 Thursday Island	93.3	96.0	2.8
39 Orange	40.4	91.4	126.2
40 Olympic Dam	86.7	89.2	3.0
41 Weipa	75.9	83.1	9.5
42 Gove	55.3	83.0	50.1
43 Geraldton	75.1	80.2	6.9
44 Burnie	24.9	73.7	196.3
45 Mount Gambier	39.4	73.5	86.5
46 Griffith	27.7	69.8	152.0
47 Norfolk Island	50.7	67.0	32.3
48 Merimbula	34.1	62.8	83.9
49 Cloncurry	50.4	58.7	16.5
50 King Island	43.4	57.1	31.5
Total top 50 regional airports	13,726.0	20,828.9	51.7
Total regional airports	14,740.2	22,127.0	50.1
Total domestic network	47,102.4	100,373.2	113.1

Note: Airport passenger movement numbers are the sum of passenger arrivals and departures at each airport. Regional airports are defined as airports which are, according to Australian Statistical Geography Standard (ASGS), not based in Major Cities.

DOMESTIC CHARTER ACTIVITY

Table 12: Charter passengers carried and aircraft trips - monthly activity

	Dec 2021	Dec 2022	% Change
Total domestic charter passengers	274,778	302,115	9.9
Total domestic charter aircraft trips	5,572	5,522	-0.9

Note: Helicopter, joyflights and sightseeing charter flights not included.

Table 13: Charter passengers carried and aircraft trips - annual activity

	YE Dec 2021	YE Dec 2022	% Change
Total domestic charter passengers	3,363,018	3,586,962	6.7
Total domestic charter aircraft trips	63,530	66,031	3.9

Note: Helicopter, joyflights and sightseeing charter flights not included.

Table 14: Domestic airports - charter activity - monthly

	Dec 2021	Dec 2022	% Change
Total domestic charter passenger movements	549,556	604,230	9.9
Total domestic charter aircraft movements	11,144	11,044	-0.9
Perth airport charter passenger movements	207,368	218,400	5.3
Perth airport charter aircraft movements	3,774	3,729	-1.2

Note: Helicopter, joyflights and sightseeing charter flights not included.

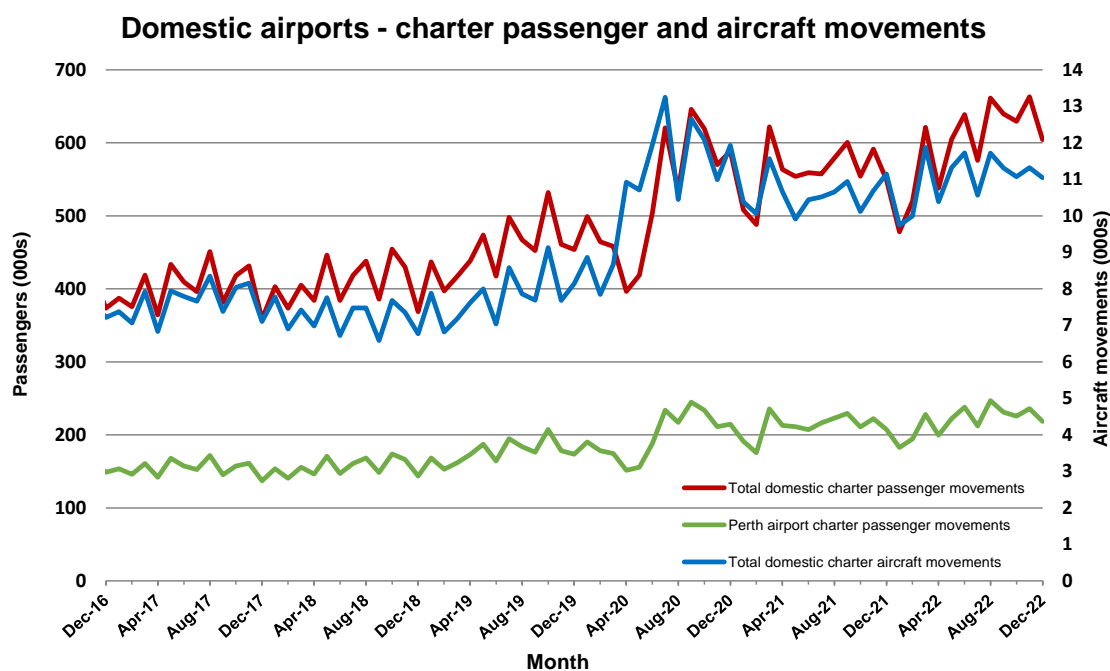
Charter passenger and aircraft movement numbers are the sum of arrivals and departures at each airport.

Table 15: Domestic airports - charter activity - annual

	YE Dec 2021	YE Dec 2022	% Change
Total domestic charter passenger movements	6,726,036	7,173,924	6.7
Total domestic charter aircraft movements	127,060	132,062	3.9
Perth airport charter passenger movements	2,542,064	2,634,505	3.6
Perth airport charter aircraft movements	43,372	44,380	2.3

Note: Helicopter, joyflights and sightseeing charter flights not included.

Charter passenger and aircraft movement numbers are the sum of arrivals and departures at each airport.



DEFINITIONS

Aircraft Trips	The number of flight stages. A return flight counts as two aircraft trips.
Airport Movements	Airport movements (passenger and cargo) are measured once on arrival and once on departure. Each domestic trip generates two movements at airports. For example, a trip from Melbourne to Sydney will be counted twice, as a departure at Melbourne and as an arrival at Sydney. At the national level, the sum of all domestic airport traffic will therefore be equal to twice the number of trips undertaken.
Available Seat Kilometres (ASKs)	Calculated by multiplying the number of seats available on each flight stage, by the distance in kilometres between the ports. The distances used are Great Circle Distances.
City-Pair	The ports shown make up the city-pair route. Passenger movements shown for a city pair reflect total traffic in both directions.
Flight Stage	The operation of an aircraft from take-off to landing.
Load Factor	The total revenue passenger kilometres performed as a percentage of the total available seat kilometres.
Passengers Carried	Revenue passengers carried.
Regular Public Transport Services (RPT)	All air service operations in which aircraft are available for the transport of members of the public and are conducted in accordance with fixed schedules. It does not include charter or other non-scheduled operations.
Revenue Passengers	All passengers paying any fare. Frequent flyer redemption travellers are regarded as revenue passengers.
Revenue Passenger Kilometres (RPKs)	Calculated by multiplying the number of revenue passengers travelling on each flight stage, by the distance in kilometres between the ports. The distances used are Great Circle Distances.
Traffic on board by stages	The total of all traffic (revenue passengers) on each flight stage between two directly connected airports.
..	Not available for confidentiality or other reasons.
NA	Not applicable.