



Australian Government

Department of Infrastructure, Transport, Regional Development and Communications

Bureau of Infrastructure, Transport and Regional Economics

STATISTICAL REPORT



Aviation

Domestic aviation activity
January 2022

© Commonwealth of Australia 2022

ISSN: 1832 - 1968

Ownership of intellectual property rights in this publication

Unless otherwise noted, copyright (and any other intellectual property rights, if any) in this publication is owned by the Commonwealth of Australia (referred to below as the Commonwealth).

Disclaimer

The material contained in this publication is made available on the understanding that the Commonwealth is not providing professional advice, and that users exercise their own skill and care with respect to its use, and seek independent advice if necessary.

The Commonwealth makes no representations or warranties as to the contents or accuracy of the information contained in this publication. To the extent permitted by law, the Commonwealth disclaims liability to any person or organisation in respect of anything done, or omitted to be done, in reliance upon information contained in this publication.

Creative Commons licence

With the exception of (a) the Coat of Arms; and (b) the Department of Infrastructure, Transport, Regional Development and Communications' photos and graphics, copyright in this publication is licensed under a Creative Commons Attribution 3.0 Australia Licence.

Creative Commons Attribution 3.0 Australia Licence is a standard form licence agreement that allows you to copy, communicate and adapt this publication provided that you attribute the work to the Commonwealth and abide by the other licence terms. A summary of the licence terms is available from <http://creativecommons.org/licenses/by/3.0/au/deed.en>.

The full licence terms are available from <http://creativecommons.org/licenses/by/3.0/au/legalcode>.

Use of the Coat of Arms

The Department of the Prime Minister and Cabinet sets the terms under which the Coat of Arms is used. Please refer to the Department's Commonwealth Coat of Arms and Government branding web page <http://www.dpmc.gov.au/guidelines/index.cfm#brand> and, in particular, the Guidelines on the use of the Commonwealth Coat of Arms publication.

An appropriate citation for this report is:

Bureau of Infrastructure and Transport Research Economics (BITRE), 2022, Domestic aviation activity, Statistical Report, BITRE, Canberra ACT.

Contact us

This publication is available in PDF format. All other rights are reserved, including in relation to any Departmental logos or trade marks which may exist. For enquiries regarding the licence and any use of this publication, please contact:

Bureau of Infrastructure and Transport Research Economics (BITRE)
Department of Infrastructure, Transport, Regional Development and Communications
GPO Box 501, Canberra ACT 2601, Australia
Telephone: (international) +61 2 6274 7210
Fax: (international) +61 2 6274 6855
Email: bitre@infrastructure.gov.au
Website: www.bitre.gov.au

Inquiries

Should you require additional information about the statistics contained in this publication:

Nebojsa Pavlovic

Telephone (02) 6274 6817 or Facsimile (02) 6274 7727

Electronic mail: AVSTATS@infrastructure.gov.au

Nebojsa.Pavlovic@infrastructure.gov.au

Web site: <http://www.bitre.gov.au/statistics/aviation/domestic.aspx>

FOREWORD

This report provides an overview of domestic (including charter) commercial aviation activity in Australia for the month of January 2022.

The data cover revenue passengers carried by Australian-registered operators of scheduled regular public transport services over Australian flight stages and fixed-wing charter operators. These estimates include passengers carried between domestic airports on international flights operated by these carriers. The passengers carried refer to traffic on board by stages.

Individual routes shown are restricted to those exceeding 8 000 passengers per month where two or more airlines operate in competition. However, from November 2021 the major airlines (Qantas Group, Virgin Australia and Rex Airlines) have agreed to publication of the top 35 routes based on pre-COVID activity (December 2019) whether or not they currently meet the above criteria. With these approvals, there were 45 routes published for the month of January 2022 compared to 38 published in January 2021.

Information on the total network for the month of January 2022 and on the Regular Public Transport (RPT) network for the month of January 2022 is presented on page 2, with estimates for the year ended January 2022 presented on page 3.

Detailed information on individual routes can be found in the RPT summary pages 4-8 of this publication.

The top ten airports in terms of RPT passenger movements are shown on page 10.

Data on domestic RPT cargo movements at the top five cargo airports are provided on page 11. The table includes cargo carried on passenger flights operated by the Qantas Group (including Jetstar), Virgin Australia, Air North, Rex Airlines and Skippers as well as the cargo carried by dedicated freighter aircraft operated by Qantas Freight and Toll Aviation.

The long-term trends for the top ten competitive RPT routes are presented graphically on pages 12-21.

Domestic RPT passenger movements at regional airports are presented on pages 22-23.

Tables providing estimates of domestic charter aviation activity are shown on page 24. BITRE confidentiality standards restrict publication of detailed estimates for individual Australian airports, with the exception of Perth Airport.

A list of definitions can be found on page 25.

This report was prepared by the Aviation Statistics Section of the Bureau of Infrastructure and Transport Research Economics with data provided by airlines.

Estimates are included where data were not available and data presented in this publication may contain revisions to previously published data.

Where figures have been rounded, discrepancies may occur between sums of component items and totals, and in percentage changes which are derived from figures prior to rounding.

CONTENTS

Highlights	1
Total network	2
RPT network	2
Top competitive routes	4
Top ten airports – passenger movements	10
Top five airports – cargo movements	11
Top ten routes	12
1. Melbourne – Sydney	12
2. Gold Coast – Melbourne	13
3. Brisbane – Melbourne	14
4. Gold Coast – Sydney	15
5. Brisbane – Sydney.....	16
6. Adelaide – Melbourne	17
7. Brisbane – Cairns	18
8. Hobart – Melbourne	19
9. Melbourne – Sunshine Coast.....	20
10. Cairns – Melbourne.....	21
Top fifty regional airports	22
Domestic charter activity	24
Definitions	25

This page is intentionally left blank.

HIGHLIGHTS

The domestic aviation industry continued to recover in January 2022. However, revenue passenger numbers were still 49.9 per cent below January 2020 levels.

There were 2.79 million passengers carried on Australian domestic commercial aviation (including charter operations) in January 2022, compared to 1.90 million in January 2021 and 5.35 million in January 2020.

For the month of January 2022, there were 41.6 thousand aircraft trips, compared to 31.1 thousand in January 2021 and 54.7 thousand in January 2020.

2.55 million passengers were carried on RPT flights in January 2022, compared to 1.65 million reported in January 2021 and 5.10 million reported in January 2020.

For the year ending January 2022 there were 24.42 million RPT passengers, an increase of 52.7 per cent on the year ending January 2021 and a decrease of 60.2 per cent on the year ending January 2020.

RPT revenue passenger kilometres (RPKs) performed were 2.75 billion for the month, compared with 2.03 billion in January 2021.

Capacity, measured by available seat kilometres (ASKs), increased to 4.64 billion in January 2022 compared to 3.38 billion in January 2021.

The industry wide load factor (RPKs/ASKs) decreased from 59.9 per cent in January 2021 to 59.3 per cent in January 2022. The highest load factor (74.5 per cent) was recorded on the Gold Coast – Melbourne route while the lowest load factor (42.4 per cent) was recorded on the Canberra – Sydney route.

For the month of January 2022, Melbourne – Sydney was Australia's busiest RPT route with 302.3 thousand passengers, followed by Gold Coast – Melbourne with 193.5 thousand passengers and Brisbane – Melbourne with 156.8 thousand passengers.

Melbourne was Australia's busiest domestic airport with 1.09 million passenger movements in January 2022, followed by Sydney with 960.7 thousand passenger movements and Brisbane with 698.0 thousand passenger movements.

Total cargo movements at Australian airports on domestic RPT flights were 30.9 thousand tonnes in January 2022, an increase of 6.3 per cent compared with January 2021.

In January 2022, there were 1.29 million domestic passenger movements through regional airports, compared to 1.08 million in January 2021 and 2.05 million in January 2020. Most regional airports for which data is available for publishing recorded large increases in January 2022 compared to January 2021.

Fixed-wing charter operators carried 239.0 thousand passengers in January 2022, a decrease of 6.0 per cent on January 2021. Perth Airport accounted for 38.2 per cent of all charter passengers in Australia.

TOTAL NETWORK

Summary of monthly commercial aviation activity

	Jan 2021	Jan 2022	% Change
Total passengers carried (millions)	1.90	2.79	46.7
Aircraft trips (000s)	31.1	41.6	33.7

Note: Regular Public Transport and charter aviation activity
Helicopter, joyflights and sightseeing charter flights not included.

RPT NETWORK

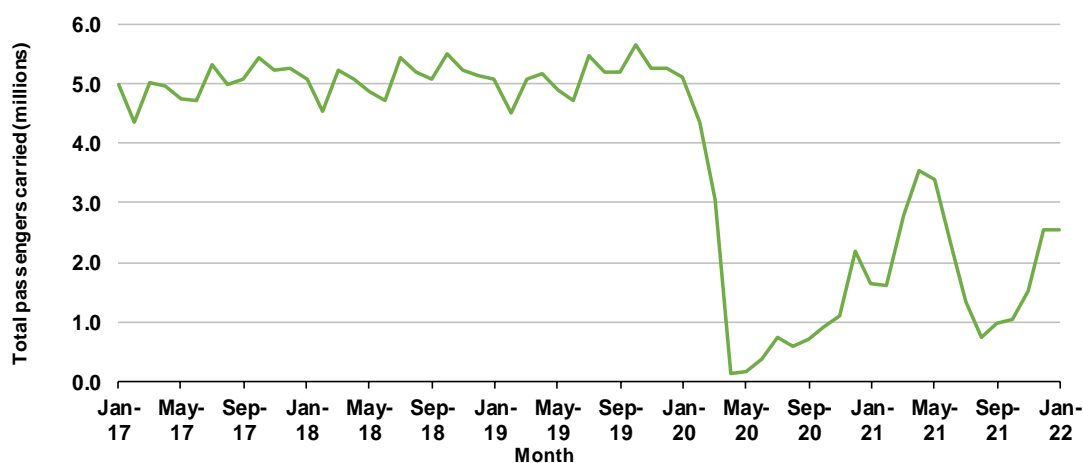
Summary of monthly RPT activity

	Jan 2021	Jan 2022	% Change
Total passengers carried (millions)	1.65	2.55	54.8
Revenue passenger kilometres (billions)	2.03	2.75	35.6
Available seats (millions)	2.85	4.40	54.5
Available seat kilometres (billions)	3.38	4.64	37.0
Load factor %	59.9	59.3	-0.6 *
Aircraft trips (000s)	25.9	36.8	41.6

* percentage point difference

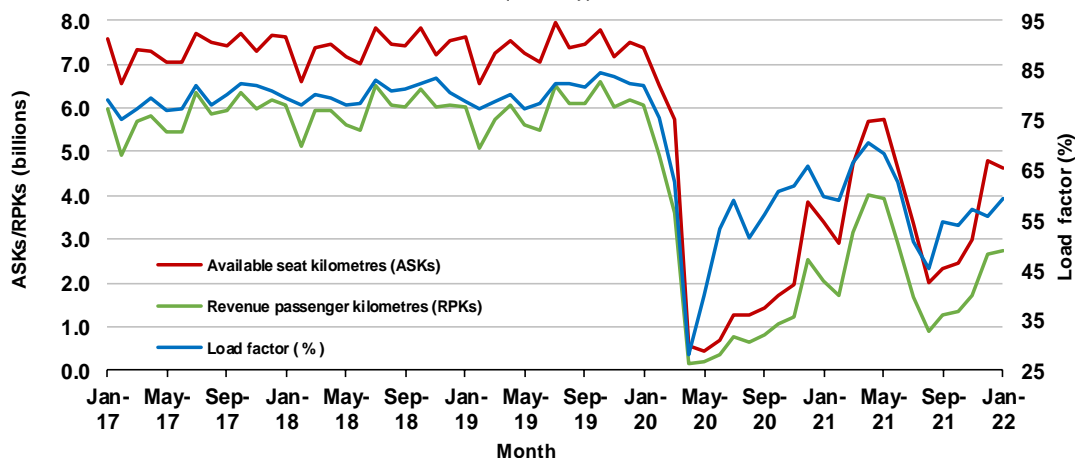
Domestic RPT passenger traffic

(monthly)



RPT Network utilisation

(monthly)



TOTAL NETWORK

Summary of annual commercial aviation activity

	YE Jan 2021	YE Jan 2022	% Change
Total passengers carried (millions)	19.16	27.77	44.9
Aircraft trips (000s)	324.2	437.1	34.8

Note: Regular Public Transport and charter aviation activity
Helicopter, joyflights and sightseeing charter flights not included.

RPT NETWORK

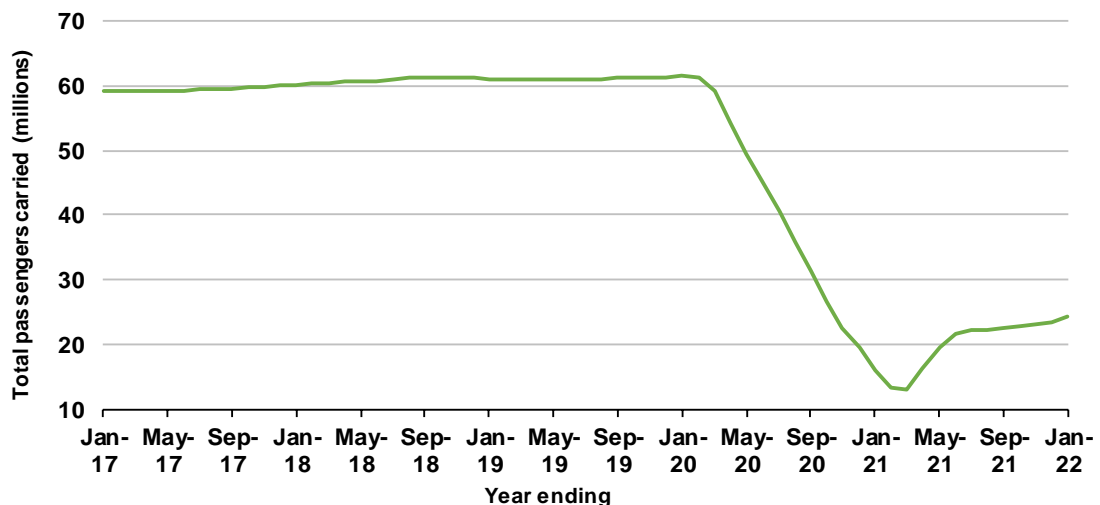
Summary of annual RPT activity

	YE Jan 2021	YE Jan 2022	% Change
Total passengers carried (millions)	16.00	24.42	52.7
Revenue passenger kilometres (billions)	18.28	28.02	53.3
Available seats (millions)	25.62	40.72	58.9
Available seat kilometres (billions)	28.87	46.18	60.0
Load factor %	63.3	60.7	-2.6 *
Aircraft trips (000s)	258.3	373.9	44.8

* percentage point difference

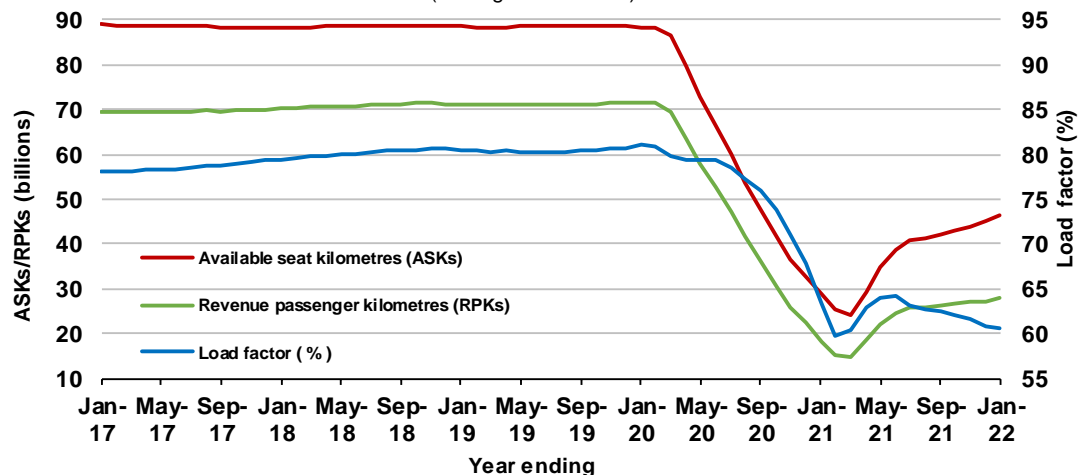
Domestic RPT passenger traffic

(moving annual totals)



RPT Network utilisation

(moving annual totals)



TOP COMPETITIVE ROUTES

Table 1: Passengers carried (000s) — annual activity

	City-Pair	YE Jan 2021	YE Jan 2022	% Change
1	Melbourne - Sydney	1 540.4	2 388.6	55.1
2	Brisbane - Sydney	944.1	1 206.6	27.8
3	Brisbane - Cairns	692.9	1 005.6	45.1
4	Gold Coast - Sydney	..	886.0	NA
5	Brisbane - Melbourne	715.9	848.2	18.5
6	Gold Coast - Melbourne	443.2	820.5	85.1
7	Brisbane - Townsville	480.3	686.4	42.9
8	Adelaide - Melbourne	486.2	656.0	34.9
9	Adelaide - Sydney	446.7	576.0	29.0
10	Brisbane - Mackay	367.2	536.7	46.2
11	Hobart - Melbourne	373.9	451.0	20.6
12	Adelaide - Brisbane	324.9	446.9	37.5
13	Karratha - Perth	260.4	425.9	63.6
14	Ballina - Sydney	361.7	402.6	11.3
15	Broome - Perth	224.1	378.0	68.7
16	Perth - Port Hedland	202.1	366.0	81.1
17	Brisbane - Rockhampton	236.9	362.2	52.9
18	Cairns - Melbourne	137.0	335.5	144.9
19	Newman - Perth	164.0	317.9	93.8
20	Launceston - Melbourne	220.4	298.2	35.3
21	Hobart - Sydney	167.1	293.8	75.9
22	Canberra - Melbourne	224.7	292.5	30.2
23	Brisbane - Canberra	227.9	290.9	27.6
24	Cairns - Sydney	137.0	288.3	110.4
25	Melbourne - Sunshine Coast	134.6	286.4	112.7
26	Sunshine Coast - Sydney	..	264.7	NA
27	Brisbane - Hobart	103.3	259.6	151.2
28	Brisbane - Darwin	156.9	258.9	65.0
29	Kalgoorlie - Perth	153.0	258.1	68.7
30	Brisbane - Proserpine	157.3	250.3	59.2
31	Melbourne - Perth	378.6	243.7	-35.6
32	Brisbane - Newcastle	160.3	212.4	32.5
33	Brisbane - Hamilton Island	118.1	197.9	67.5
34	Melbourne - Newcastle	94.4	174.2	84.5
35	Canberra - Sydney	..	172.8	NA
36	Brisbane - Launceston	..	145.5	NA
37	Adelaide - Port Lincoln	84.2	141.2	67.7
38	Brisbane - Gladstone	95.1	140.8	48.0
39	Adelaide - Gold Coast	84.2	140.3	66.5
40	Launceston - Sydney	..	140.3	NA
41	Ballina - Melbourne	..	126.5	NA
42	Coffs Harbour - Sydney	..	119.2	NA
43	Hamilton Island - Sydney	..	101.1	NA
44	Canberra - Gold Coast	..	82.3	NA
45	Cairns - Gold Coast	..	27.1	NA (a)
46	Perth - Sydney	297.7	..	NA (b)
47	Brisbane - Perth	242.0	..	NA (b)
48	Adelaide - Perth	137.6	..	NA (b)
49	Adelaide - Canberra	66.0	..	NA (b)
50	Adelaide - Alice Springs	64.3	..	NA (b)
51	Darwin - Perth	43.5	..	NA (b)
	Total domestic network	15 998.7	24 424.0	52.7

.. Data not available for release.

(a) Cairns - Gold Coast route included from December 2021, prior data not shown.

(b) City pairs published in January 2021, data not available for release in January 2022.

Table 2: Passengers carried (000s) — monthly activity

	City-Pair	Jan 2021	Jan 2022	% Change
1	Melbourne - Sydney	33.4	302.3	804.2
2	Gold Coast - Melbourne	125.7	193.5	54.0
3	Brisbane - Melbourne	96.0	156.8	63.4
4	Gold Coast - Sydney	..	138.1	NA
5	Brisbane - Sydney	22.3	135.7	507.2
6	Adelaide - Melbourne	71.6	86.7	21.0
7	Brisbane - Cairns	73.9	67.0	-9.3
8	Hobart - Melbourne	73.9	65.6	-11.2
9	Melbourne - Sunshine Coast	45.8	61.6	34.5
10	Cairns - Melbourne	37.7	60.5	60.4
11	Adelaide - Sydney	9.1	60.4	567.0
12	Ballina - Sydney	54.2	48.1	-11.4
13	Brisbane - Townsville	48.1	45.4	-5.6
14	Hobart - Sydney	7.4	44.7	500.7
15	Cairns - Sydney	4.3	42.8	907.1
16	Launceston - Melbourne	47.3	40.6	-14.1
17	Sunshine Coast - Sydney	..	40.1	NA
18	Canberra - Melbourne	24.1	35.9	48.9
19	Brisbane - Mackay	34.6	34.8	0.5
20	Adelaide - Brisbane	37.7	33.1	-12.1
21	Karratha - Perth	26.8	31.9	18.7
22	Brisbane - Canberra	31.5	29.7	-5.8
23	Perth - Port Hedland	22.6	28.4	25.4
24	Brisbane - Hobart	22.4	24.5	9.3
25	Ballina - Melbourne	..	23.9	NA
26	Brisbane - Proserpine	17.7	23.8	34.7
27	Newman - Perth	24.0	23.8	-0.8
28	Melbourne - Newcastle	7.2	23.6	228.6
29	Broome - Perth	21.3	23.6	11.1
30	Brisbane - Rockhampton	22.4	23.2	3.5
31	Launceston - Sydney	..	21.1	NA
32	Brisbane - Newcastle	19.9	20.0	0.5
33	Brisbane - Darwin	21.0	19.4	-7.5
34	Kalgoorlie - Perth	15.1	18.6	22.8
35	Adelaide - Gold Coast	17.7	14.8	-16.3
36	Brisbane - Launceston	..	13.9	NA
37	Coffs Harbour - Sydney	..	13.7	NA
38	Cairns - Gold Coast	..	13.3	NA
39	Hamilton Island - Sydney	..	13.3	NA
40	Brisbane - Hamilton Island	19.8	12.5	-36.8
41	Canberra - Gold Coast	..	11.3	NA
42	Canberra - Sydney	..	9.9	NA
43	Adelaide - Port Lincoln	9.9	9.3	-6.4
44	Brisbane - Gladstone	8.3	8.9	7.6
45	Melbourne - Perth	22.4	4.7	-79.2
46	Adelaide - Alice Springs	8.6	..	NA (a)
47	Adelaide - Canberra	9.5	..	NA (a)
48	Adelaide - Perth	26.6	..	NA (a)
49	Brisbane - Perth	24.8	..	NA (a)
50	Darwin - Perth	8.1	..	NA (a)
51	Perth - Sydney	8.1	..	NA (a)
	Total domestic network	1 649.9	2 554.8	54.8

.. Data not available for release.

(a) City pairs published in January 2021, data not available for release in January 2022.

Table 3: Available seats (000s) — monthly activity

	City-Pair	Jan 2021	Jan 2022	% Change
1	Melbourne - Sydney	77.6	466.1	500.7
2	Gold Coast - Melbourne	165.4	259.6	56.9
3	Brisbane - Melbourne	155.8	248.2	59.3
4	Gold Coast - Sydney	..	200.0	NA
5	Brisbane - Sydney	59.4	229.0	285.7
6	Adelaide - Melbourne	102.2	139.3	36.2
7	Brisbane - Cairns	113.6	112.1	-1.3
8	Hobart - Melbourne	111.7	107.1	-4.1
9	Melbourne - Sunshine Coast	59.1	93.8	58.7
10	Cairns - Melbourne	50.9	85.5	68.0
11	Adelaide - Sydney	27.3	105.4	286.6
12	Ballina - Sydney	74.7	77.8	4.2
13	Brisbane - Townsville	81.1	78.8	-2.8
14	Hobart - Sydney	16.1	76.5	376.1
15	Cairns - Sydney	16.0	69.7	336.7
16	Launceston - Melbourne	79.2	73.4	-7.3
17	Sunshine Coast - Sydney	..	69.9	NA
18	Canberra - Melbourne	45.0	68.5	52.3
19	Brisbane - Mackay	63.4	62.2	-1.9
20	Adelaide - Brisbane	64.4	58.8	-8.7
21	Karratha - Perth	57.8	63.5	9.8
22	Brisbane - Canberra	52.5	55.9	6.3
23	Perth - Port Hedland	48.0	54.1	12.7
24	Brisbane - Hobart	36.1	41.4	14.6
25	Ballina - Melbourne	..	43.9	NA
26	Brisbane - Proserpine	25.7	37.7	47.0
27	Newman - Perth	53.9	51.3	-4.8
28	Melbourne - Newcastle	16.5	38.1	130.5
29	Broome - Perth	33.8	38.7	14.5
30	Brisbane - Rockhampton	43.2	46.4	7.5
31	Launceston - Sydney	..	40.6	NA
32	Brisbane - Newcastle	39.6	38.6	-2.5
33	Brisbane - Darwin	31.6	33.2	5.1
34	Kalgoorlie - Perth	31.5	38.4	21.8
35	Adelaide - Gold Coast	23.7	27.9	17.8
36	Brisbane - Launceston	..	26.2	NA
37	Coffs Harbour - Sydney	..	29.4	NA
38	Cairns - Gold Coast	..	23.2	NA
39	Hamilton Island - Sydney	..	25.9	NA
40	Brisbane - Hamilton Island	35.5	26.9	-24.0
41	Canberra - Gold Coast	..	18.6	NA
42	Canberra - Sydney	..	23.5	NA
43	Adelaide - Port Lincoln	13.3	17.0	28.0
44	Brisbane - Gladstone	19.9	20.7	4.2
45	Melbourne - Perth	44.4	8.6	-80.6
46	Adelaide - Alice Springs	15.3	..	NA (a)
47	Adelaide - Canberra	19.4	..	NA (a)
48	Adelaide - Perth	38.8	..	NA (a)
49	Brisbane - Perth	42.4	..	NA (a)
50	Darwin - Perth	11.9	..	NA (a)
51	Perth - Sydney	19.2	..	NA (a)
	Total domestic network	2 846.2	4 397.7	54.5

.. Data not available for release.

(a) City pairs published in January 2021, data not available for release in January 2022.

Table 4: Load factors (%) — monthly activity

	City-Pair	Jan 2021	Jan 2022	% Point diff
1	Melbourne - Sydney	43.1	64.8	21.7
2	Gold Coast - Melbourne	76.0	74.5	-1.5
3	Brisbane - Melbourne	61.6	63.2	1.6
4	Gold Coast - Sydney	..	69.0	NA
5	Brisbane - Sydney	37.6	59.3	21.7
6	Adelaide - Melbourne	70.1	62.2	-7.9
7	Brisbane - Cairns	65.0	59.8	-5.2
8	Hobart - Melbourne	66.2	61.3	-4.9
9	Melbourne - Sunshine Coast	77.4	65.7	-11.7
10	Cairns - Melbourne	74.2	70.8	-3.4
11	Adelaide - Sydney	33.2	57.3	24.1
12	Ballina - Sydney	72.6	61.8	-10.8
13	Brisbane - Townsville	59.3	57.6	-1.7
14	Hobart - Sydney	46.4	58.5	12.1
15	Cairns - Sydney	26.6	61.4	34.8
16	Launceston - Melbourne	59.7	55.3	-4.4
17	Sunshine Coast - Sydney	..	57.3	NA
18	Canberra - Melbourne	53.5	52.3	-1.2
19	Brisbane - Mackay	54.6	55.9	1.3
20	Adelaide - Brisbane	58.5	56.3	-2.2
21	Karratha - Perth	46.4	50.2	3.8
22	Brisbane - Canberra	59.9	53.1	-6.8
23	Perth - Port Hedland	47.2	52.5	5.3
24	Brisbane - Hobart	61.9	59.1	-2.8
25	Ballina - Melbourne	..	54.4	NA
26	Brisbane - Proserpine	68.9	63.2	-5.7
27	Newman - Perth	44.5	46.4	1.9
28	Melbourne - Newcastle	43.5	62.0	18.5
29	Broome - Perth	62.9	61.1	-1.8
30	Brisbane - Rockhampton	51.9	49.9	-2.0
31	Launceston - Sydney	..	52.1	NA
32	Brisbane - Newcastle	50.3	51.8	1.5
33	Brisbane - Darwin	66.3	58.4	-7.9
34	Kalgoorlie - Perth	47.9	48.3	0.4
35	Adelaide - Gold Coast	74.4	52.9	-21.5
36	Brisbane - Launceston	..	53.0	NA
37	Coffs Harbour - Sydney	..	46.5	NA
38	Cairns - Gold Coast	..	57.4	NA
39	Hamilton Island - Sydney	..	51.2	NA
40	Brisbane - Hamilton Island	55.8	46.5	-9.3
41	Canberra - Gold Coast	..	61.0	NA
42	Canberra - Sydney	..	42.4	NA
43	Adelaide - Port Lincoln	74.3	54.3	-20.0
44	Brisbane - Gladstone	41.7	43.1	1.4
45	Melbourne - Perth	50.4	54.1	3.7
46	Adelaide - Alice Springs	56.3	..	NA (a)
47	Adelaide - Canberra	48.9	..	NA (a)
48	Adelaide - Perth	68.6	..	NA (a)
49	Brisbane - Perth	58.5	..	NA (a)
50	Darwin - Perth	68.7	..	NA (a)
51	Perth - Sydney	42.1	..	NA (a)
	Total domestic network	59.9	59.3	-0.6

.. Data not available for release.

(a) City pairs published in January 2021, data not available for release in January 2022.

Table 5: Aircraft trips ^(a) — monthly activity

	City-Pair	Jan 2021	Jan 2022	% Change
1	Melbourne - Sydney	633	2 834	347.7
2	Gold Coast - Melbourne	865	1 350	56.1
3	Brisbane - Melbourne	972	1 495	53.8
4	Gold Coast - Sydney	..	1 118	NA
5	Brisbane - Sydney	496	1 471	196.6
6	Adelaide - Melbourne	658	860	30.7
7	Brisbane - Cairns	707	704	-0.4
8	Hobart - Melbourne	673	640	-4.9
9	Melbourne - Sunshine Coast	352	531	50.9
10	Cairns - Melbourne	269	433	61.0
11	Adelaide - Sydney	196	630	221.4
12	Ballina - Sydney	468	517	10.5
13	Brisbane - Townsville	483	504	4.3
14	Hobart - Sydney	98	433	341.8
15	Cairns - Sydney	97	360	271.1
16	Launceston - Melbourne	573	580	1.2
17	Sunshine Coast - Sydney	..	392	NA
18	Canberra - Melbourne	345	483	40.0
19	Brisbane - Mackay	442	427	-3.4
20	Adelaide - Brisbane	391	361	-7.7
21	Karratha - Perth	365	395	8.2
22	Brisbane - Canberra	384	356	-7.3
23	Perth - Port Hedland	339	355	4.7
24	Brisbane - Hobart	222	255	14.9
25	Ballina - Melbourne	..	246	NA
26	Brisbane - Proserpine	146	247	69.2
27	Newman - Perth	332	324	-2.4
28	Melbourne - Newcastle	91	230	152.7
29	Broome - Perth	245	255	4.1
30	Brisbane - Rockhampton	427	432	1.2
31	Launceston - Sydney	..	234	NA
32	Brisbane - Newcastle	253	305	20.6
33	Brisbane - Darwin	191	214	12.0
34	Kalgoorlie - Perth	248	270	8.9
35	Adelaide - Gold Coast	132	167	26.5
36	Brisbane - Launceston	..	154	NA
37	Coffs Harbour - Sydney	..	394	NA
38	Cairns - Gold Coast	..	128	NA
39	Hamilton Island - Sydney	..	146	NA
40	Brisbane - Hamilton Island	220	154	-30.0
41	Canberra - Gold Coast	..	126	NA
42	Canberra - Sydney	..	420	NA
43	Adelaide - Port Lincoln	330	431	30.6
44	Brisbane - Gladstone	260	238	-8.5
45	Melbourne - Perth	265	130	-50.9
46	Adelaide - Alice Springs	126	..	NA (b)
47	Adelaide - Canberra	120	..	NA (b)
48	Adelaide - Perth	248	..	NA (b)
49	Brisbane - Perth	256	..	NA (b)
50	Darwin - Perth	76	..	NA (b)
51	Perth - Sydney	101	..	NA (b)
	Total domestic network	25 948	36 751	41.6

.. Data not available for release.

(a) Includes RPT cargo flights

(b) City pairs published in January 2021, data not available for release in January 2022.

This page is intentionally left blank.

TOP TEN AIRPORTS – PASSENGER MOVEMENTS

Table 6: Top ten airports, RPT passenger movements (000s) - monthly activity

Airport	Jan 2021	Jan 2022	% Change	% of Total
1 Melbourne	625.0	1 094.6	75.1	21.4
2 Sydney	196.8	960.7	388.2	18.8
3 Brisbane	551.8	698.0	26.5	13.7
4 Gold Coast	193.0	385.5	99.8	7.5
5 Adelaide	233.5	261.7	12.0	5.1
6 Cairns	176.3	221.2	25.5	4.3
7 Perth	254.6	182.0	-28.5	3.6
8 Hobart	130.2	156.3	20.1	3.1
9 Sunshine Coast	57.7	108.3	87.8	2.1
10 Canberra	96.7	99.6	3.0	1.9
Total top ten airports	2 515.6	4 168.0	65.7	81.6
Total domestic network	3 299.8	5 109.5	54.8	100.0

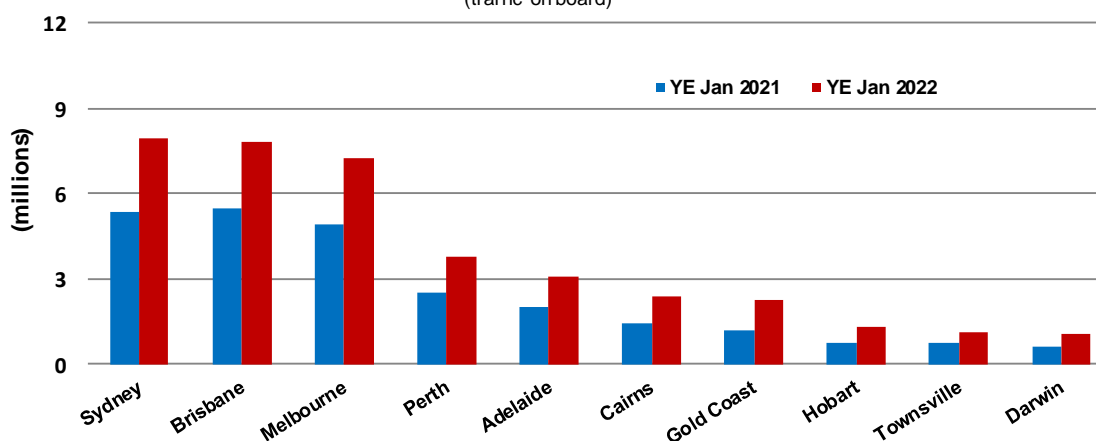
Table 7: Top ten airports, RPT passenger movements (000s) - annual activity

Airport	YE Jan 2021	YE Jan 2022	% Change	% of Total
1 Sydney	5 378.7	7 942.2	47.7	16.3
2 Brisbane	5 496.5	7 783.5	41.6	15.9
3 Melbourne	4 939.8	7 238.1	46.5	14.8
4 Perth	2 523.9	3 781.7	49.8	7.7
5 Adelaide	1 989.0	3 062.6	54.0	6.3
6 Cairns	1 416.5	2 357.4	66.4	4.8
7 Gold Coast	1 175.8	2 231.3	89.8	4.6
8 Hobart	724.8	1 287.4	77.6	2.6
9 Townsville	715.0	1 105.0	54.6	2.3
10 Darwin	615.0	1 086.8	76.7	2.2
Total top ten airports	24 974.9	37 876.1	51.7	77.5
Total domestic network	31 997.3	48 847.6	52.7	100.0

Note: Airport passenger movement numbers are the sum of passenger arrivals and departures at each airport.

Top ten airports, RPT passenger movements

(traffic on board)



TOP FIVE AIRPORTS – CARGO MOVEMENTS

Table 8: Top five airports, domestic RPT cargo movements (000s tonnes) - monthly activity

Airport	Jan 2021	Jan 2022	% Change	% of Total
1 Melbourne	7.3	8.3	14.8	27.0
2 Sydney	6.5	7.5	14.1	24.2
3 Brisbane	4.7	4.5	-4.1	14.6
4 Perth	2.4	2.0	-17.4	6.5
5 Adelaide	1.8	2.0	9.8	6.4
Total top five airports	22.8	24.3	6.8	78.7
Total domestic network	29.0	30.9	6.3	100.0

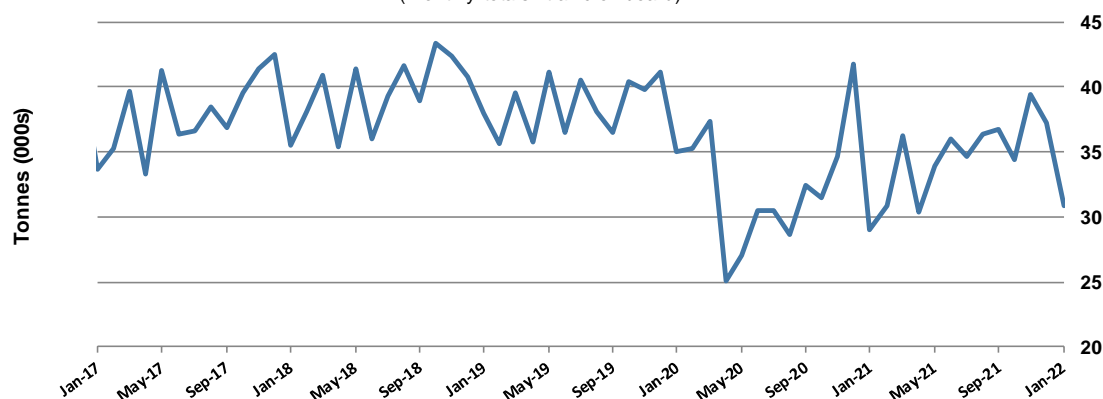
Table 9: Top five airports, domestic RPT cargo movements (000s tonnes) - annual activity

Airport	YE Jan 2021	YE Jan 2022	% Change	% of Total
1 Melbourne	99.4	106.5	7.2	25.5
2 Sydney	83.6	97.7	17.0	23.4
3 Brisbane	67.5	68.0	0.7	16.3
4 Perth	35.7	38.4	7.6	9.2
5 Adelaide	23.4	26.1	11.6	6.3
Total top five airports	309.5	336.7	8.8	80.7
Total domestic network	383.3	417.2	8.9	100.0

Note: Airport cargo tonnes are the sum of cargo tonnes on arrivals and departures at each airport.

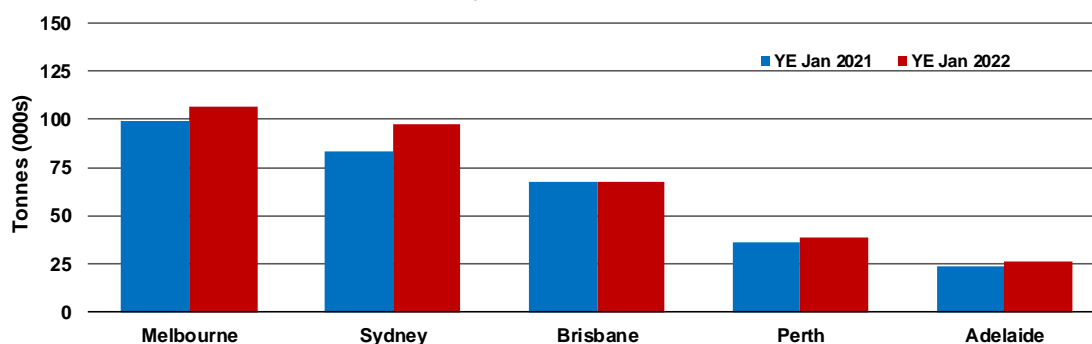
Total domestic network - cargo movement

(monthly totals - traffic on board)



Top five airports, cargo movements

(Domestic cargo traffic - traffic on board)



TOP TEN ROUTES

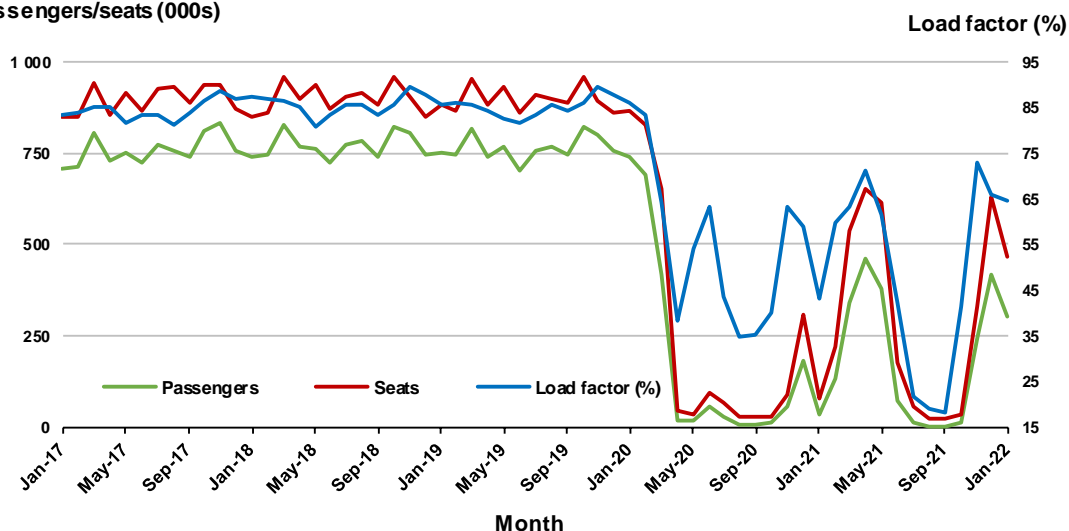
1. Melbourne - Sydney

Monthly data

	Jan 2021	Jan 2022	% Change
Passengers carried (000s)	33.4	302.3	804.2
Seats (000s)	77.6	466.1	500.7
Load factor %	43.1	64.8	21.7 *
Aircraft trips	633	2 834	347.7

* percentage point difference

Passengers/seats (000s)

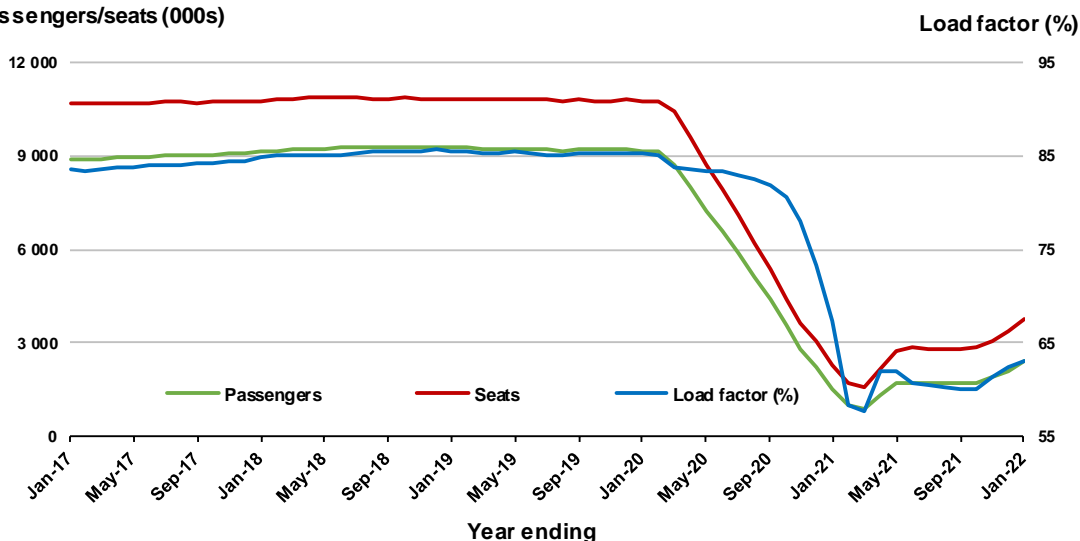


Moving annual data

	YE Jan 2021	YE Jan 2022	% Change
Passengers carried (000s)	1 540.4	2 388.6	55.1
Seats (000s)	2 286.3	3 782.6	65.4
Load factor %	67.4	63.1	-4.3 *
Aircraft trips	14 814	23 790	60.6

* percentage point difference

Passengers/seats (000s)

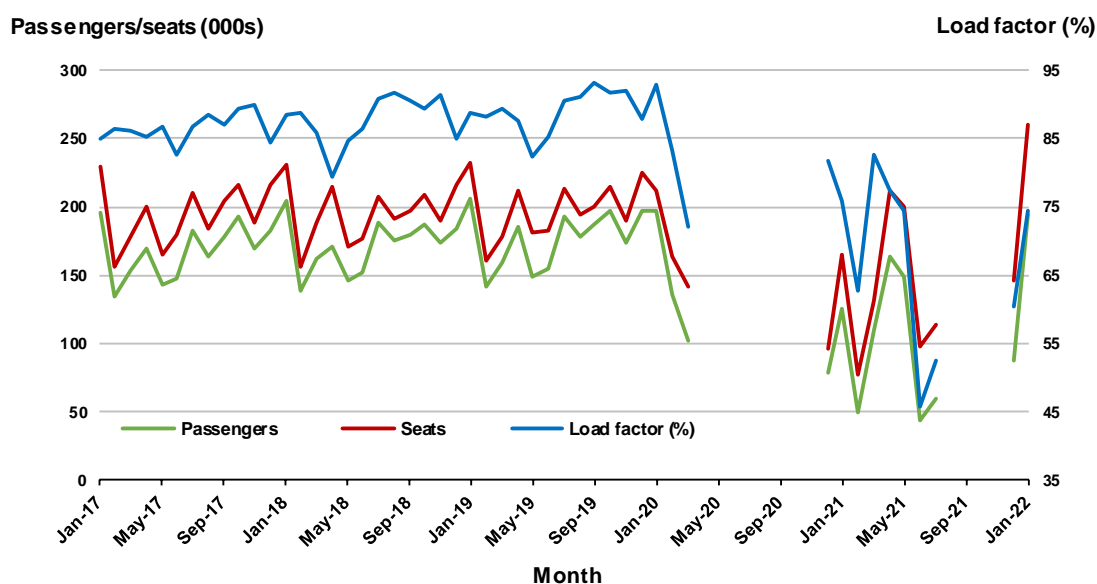


2. Gold Coast - Melbourne ^(a)

Monthly data

	Jan 2021	Jan 2022	% Change
Passengers carried (000s)	125.7	193.5	54.0
Seats (000s)	165.4	259.6	56.9
Load factor %	76.0	74.5	-1.5 *
Aircraft trips	865	1 350	56.1

* percentage point difference

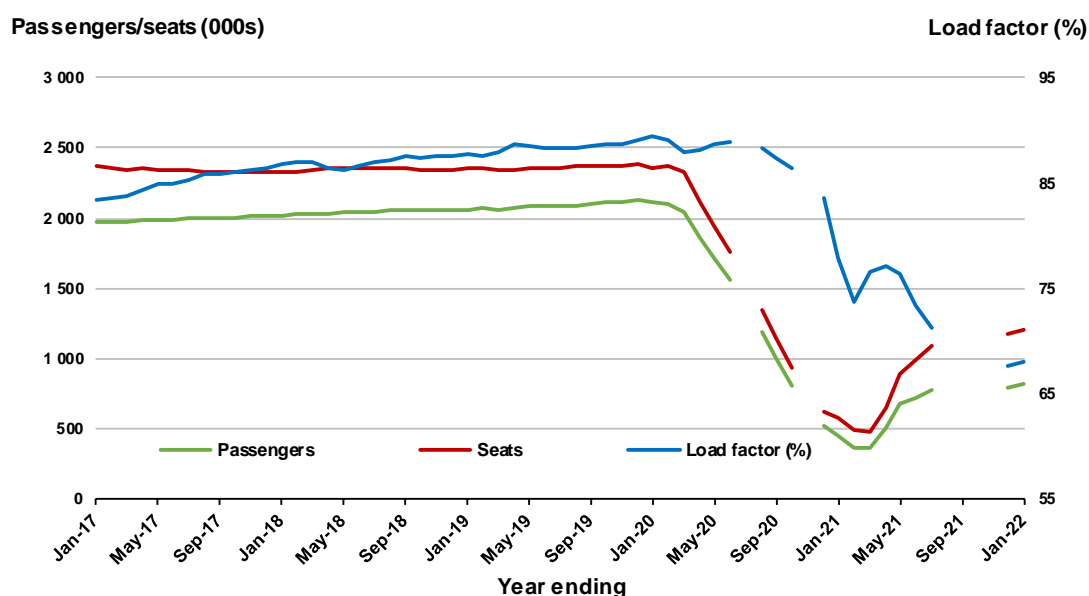


(a) April to November 2020 and August to December 2021 2020 data not available for release

Moving annual data

	YE Jan 2021	YE Jan 2022	% Change
Passengers carried (000s)	443.2	820.5	85.1
Seats (000s)	568.9	1 205.5	111.9
Load factor %	77.9	68.1	-9.8 *
Aircraft trips	3 002	6 406	113.4

* percentage point difference



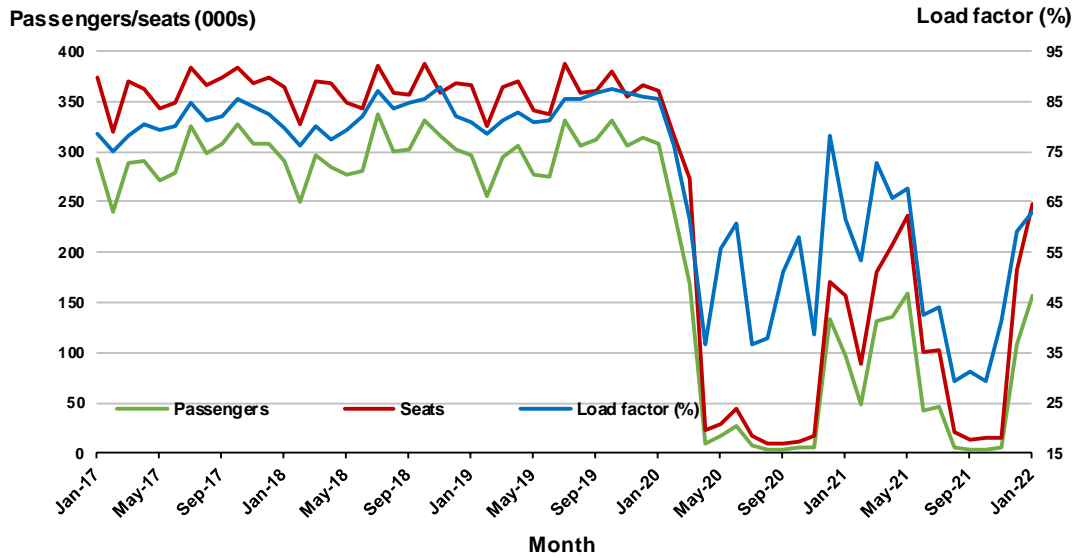
(a) April and November 2020 and August to December 2021 moving annuals are not available for release

3. Brisbane - Melbourne

Monthly data

	Jan 2021	Jan 2022	% Change
Passengers carried (000s)	96.0	156.8	63.4
Seats (000s)	155.8	248.2	59.3
Load factor %	61.6	63.2	1.6 *
Aircraft trips	972	1 495	53.8

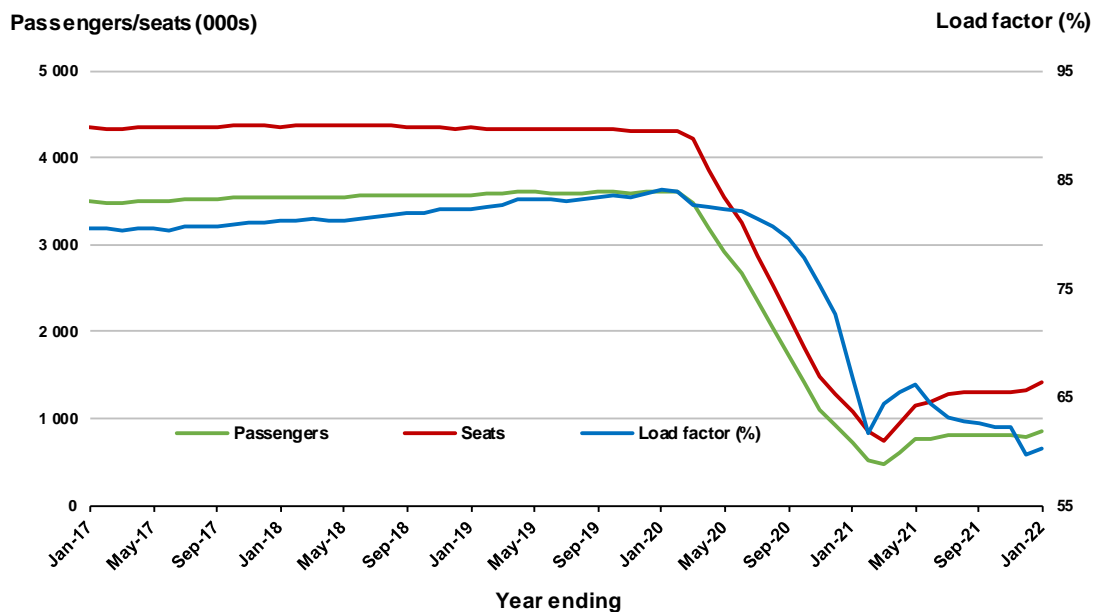
* percentage point difference



Moving annual data

	YE Jan 2021	YE Jan 2022	% Change
Passengers carried (000s)	715.9	848.2	18.5
Seats (000s)	1 074.7	1 410.1	31.2
Load factor %	66.6	60.2	-6.5 *
Aircraft trips	7 489	9 498	26.8

* percentage point difference



4. Gold Coast - Sydney ^(a)

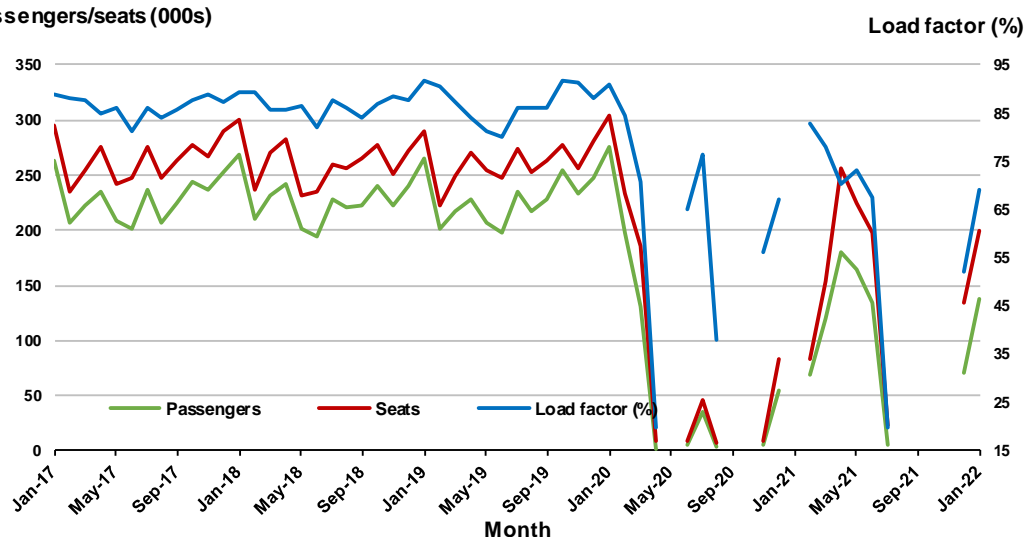
Monthly data

	Jan 2021	Jan 2022	% Change
Passengers carried (000s)	..	138.1	NA
Seats (000s)	..	200.0	NA
Load factor %	..	69.0	NA *
Aircraft trips	..	1 118	NA

* percentage point difference

.. Data not available for release

Passengers/seats (000s)



(a) May, September and October 2020 and January and August to November 2021 data not available for release

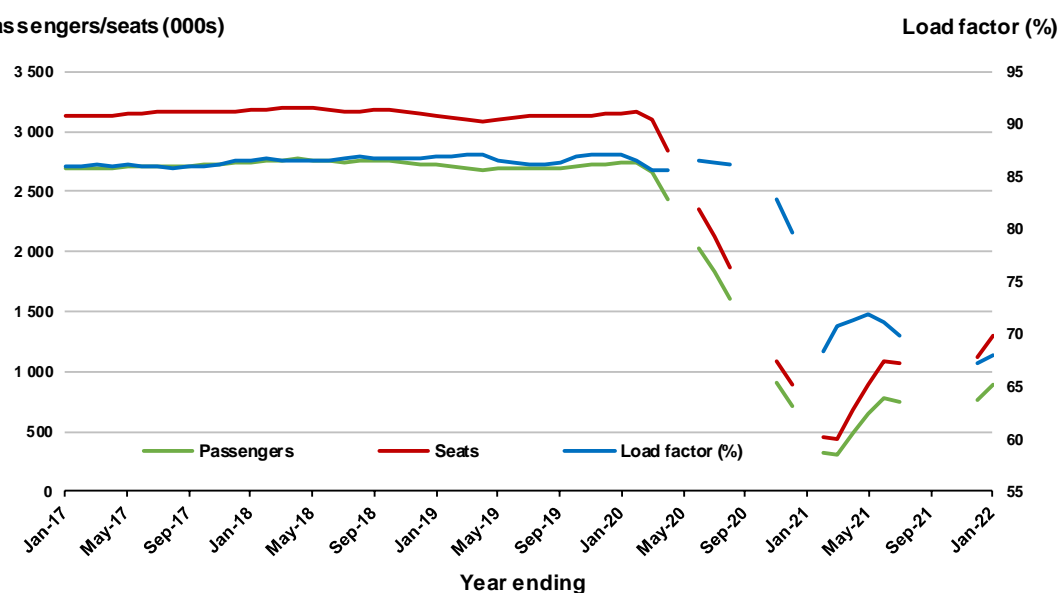
Moving annual data

	YE Jan 2021	YE Jan 2022	% Change
Passengers carried (000s)	..	886.0	NA
Seats (000s)	..	1 302.5	NA
Load factor %	..	68.0	NA *
Aircraft trips	..	7 563	NA

* percentage point difference

.. Data not available for release

Passengers/seats (000s)



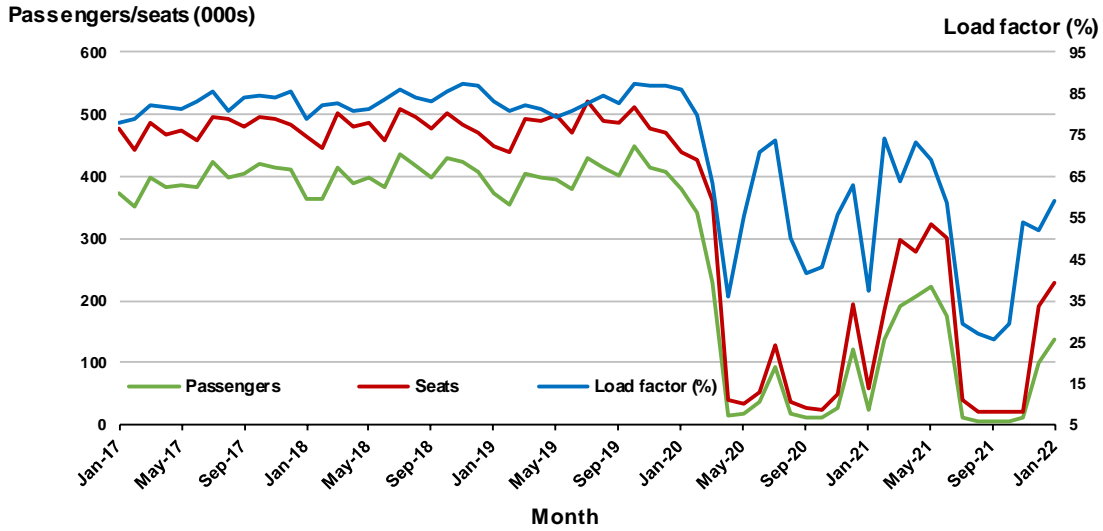
(a) May, September and October 2020 and January and August to November 2021 moving annual totals not available for release

5. Brisbane - Sydney

Monthly data

	Jan 2021	Jan 2022	% Change
Passengers carried (000s)	22.3	135.7	507.2
Seats (000s)	59.4	229.0	285.7
Load factor %	37.6	59.3	21.7 *
Aircraft trips	496	1 471	196.6

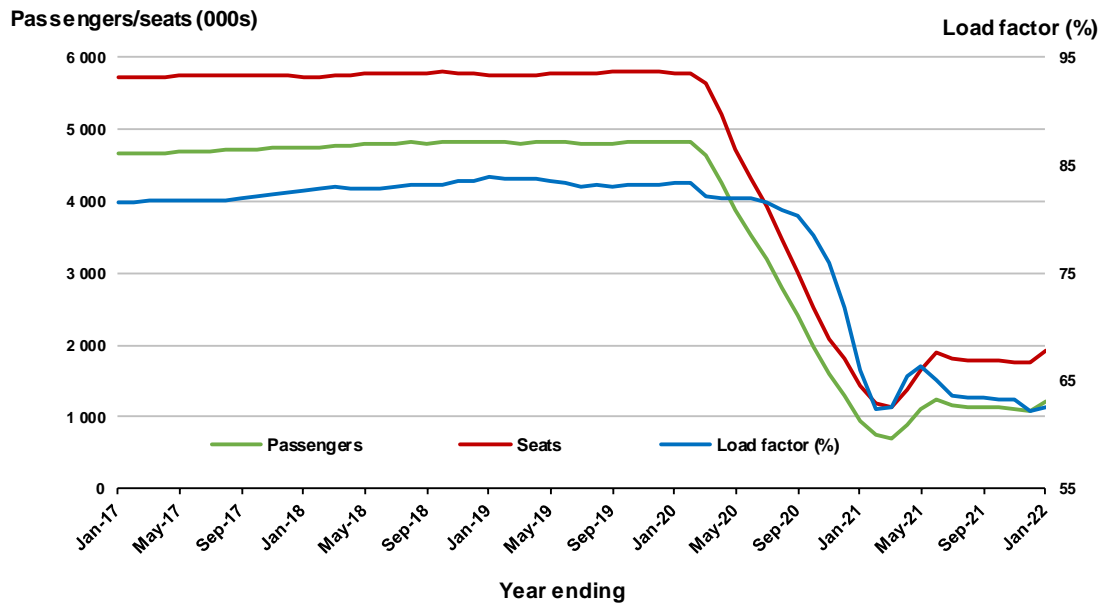
* percentage point difference



Moving annual data

	YE Jan 2021	YE Jan 2022	% Change
Passengers carried (000s)	944.1	1 206.6	27.8
Seats (000s)	1 429.6	1 927.8	34.9
Load factor %	66.0	62.6	-3.5 *
Aircraft trips	10 415	13 239	27.1

* percentage point difference



6. Adelaide - Melbourne

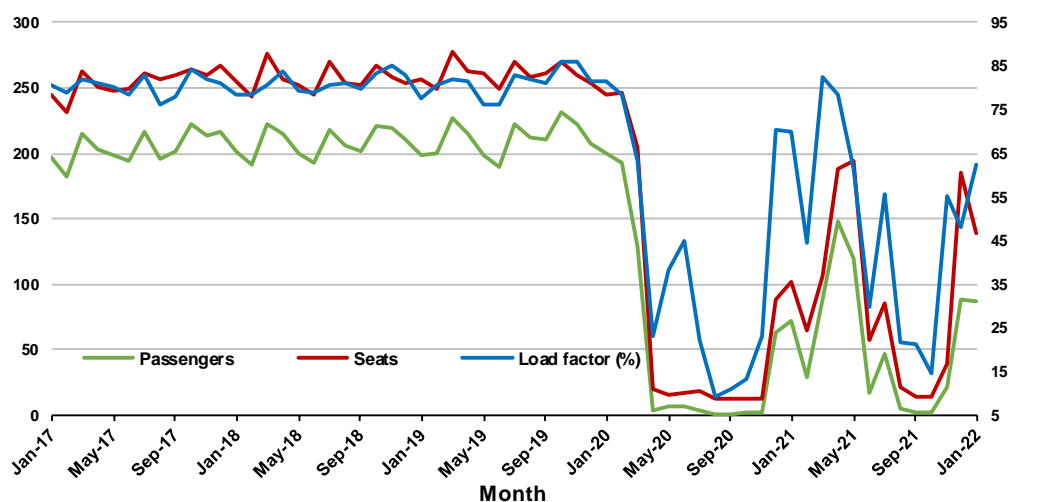
Monthly data

	Jan 2021	Jan 2022	% Change
Passengers carried (000s)	71.6	86.7	21.0
Seats (000s)	102.2	139.3	36.2
Load factor %	70.1	62.2	-7.9 *
Aircraft trips	658	860	30.7

* percentage point difference

Passengers/seats (000s)

Load factor (%)



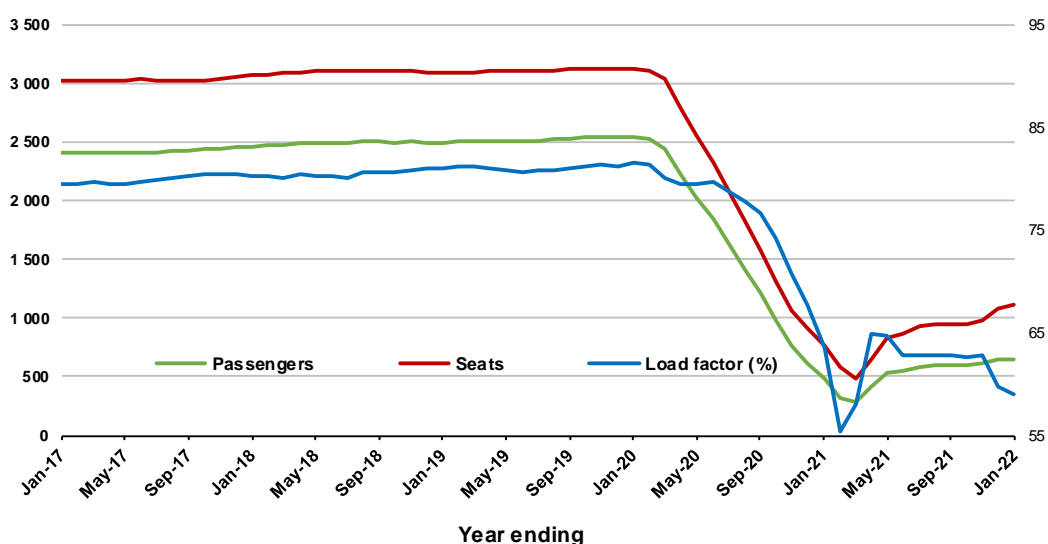
Moving annual data

	YE Jan 2021	YE Jan 2022	% Change
Passengers carried (000s)	486.2	656.0	34.9
Seats (000s)	763.9	1 110.9	45.4
Load factor %	63.6	59.0	-4.6 *
Aircraft trips	5 531	7 400	33.8

* percentage point difference

Passengers/seats (000s)

Load factor (%)

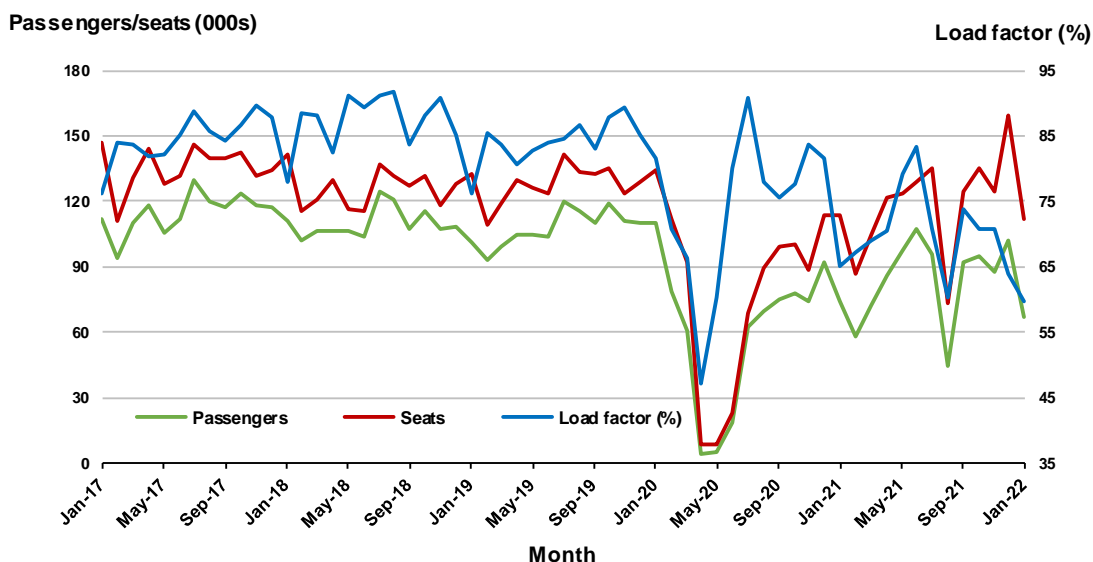


7. Brisbane - Cairns

Monthly data

	Jan 2021	Jan 2022	% Change
Passengers carried (000s)	73.9	67.0	-9.3
Seats (000s)	113.6	112.1	-1.3
Load factor %	65.0	59.8	-5.2 *
Aircraft trips	707	704	-0.4

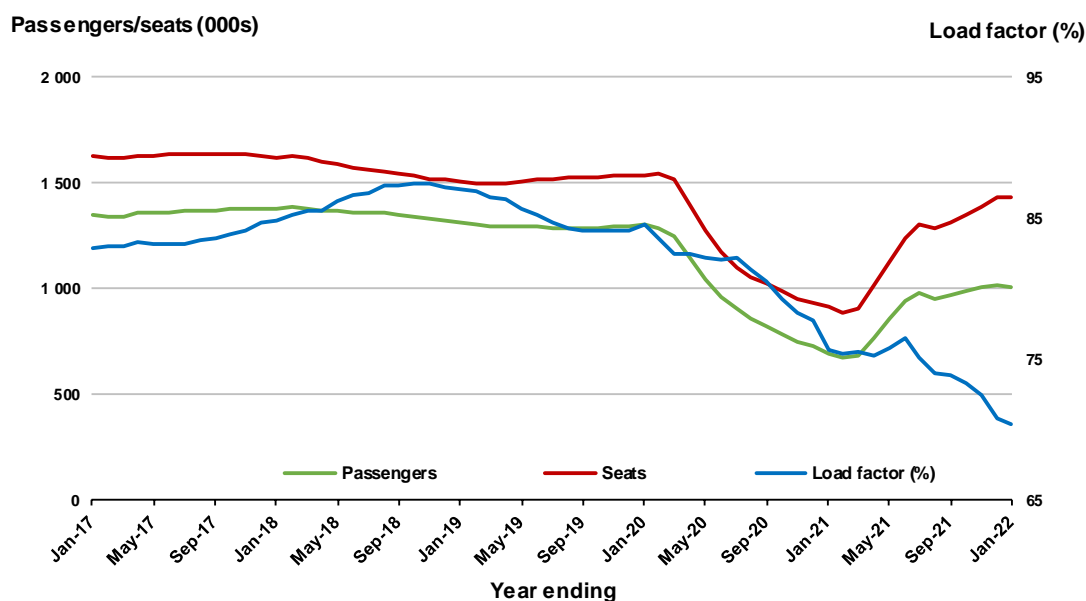
* percentage point difference



Moving annual data

	YE Jan 2021	YE Jan 2022	% Change
Passengers carried (000s)	692.9	1 005.6	45.1
Seats (000s)	916.1	1 429.8	56.1
Load factor %	75.6	70.3	-5.3 *
Aircraft trips	6 565	8 972	36.7

* percentage point difference

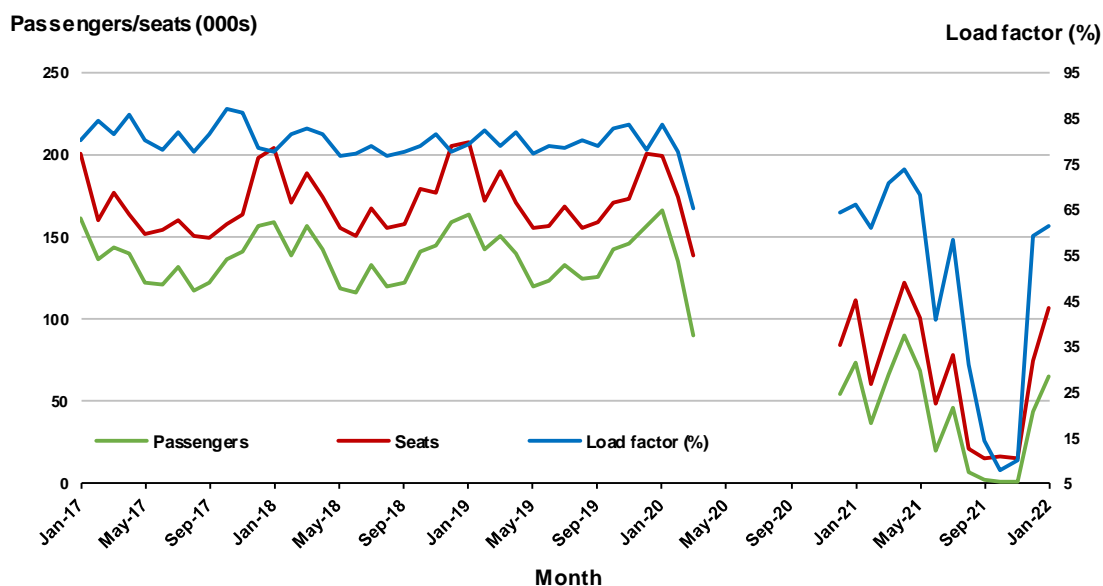


8. Hobart - Melbourne ^(a)

Monthly data

	Jan 2021	Jan 2022	% Change
Passengers carried (000s)	73.9	65.6	-11.2
Seats (000s)	111.7	107.1	-4.1
Load factor %	66.2	61.3	-4.9 *
Aircraft trips	673	640	-4.9

* percentage point difference

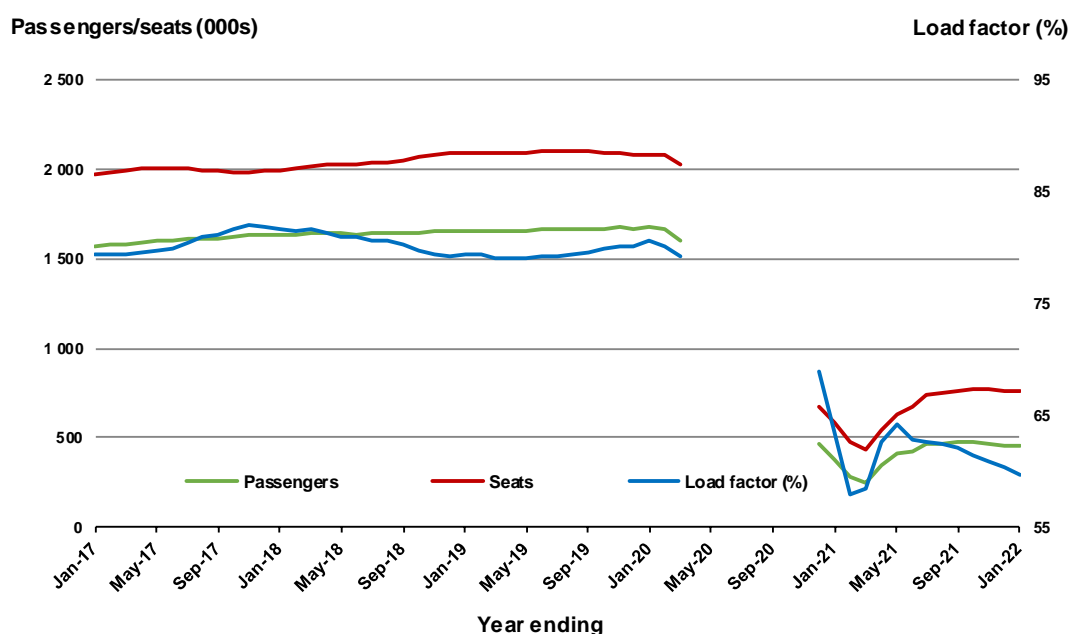


(a) April to November 2020 data not available for release

Moving annual data

	YE Jan 2021	YE Jan 2022	% Change
Passengers carried (000s)	373.9	451.0	20.6
Seats (000s)	589.0	756.4	28.4
Load factor %	63.5	59.6	-3.9 *
Aircraft trips	3 478	4 731	36.0

* percentage point difference



(a) April to November 2020 moving annual totals are not available for release

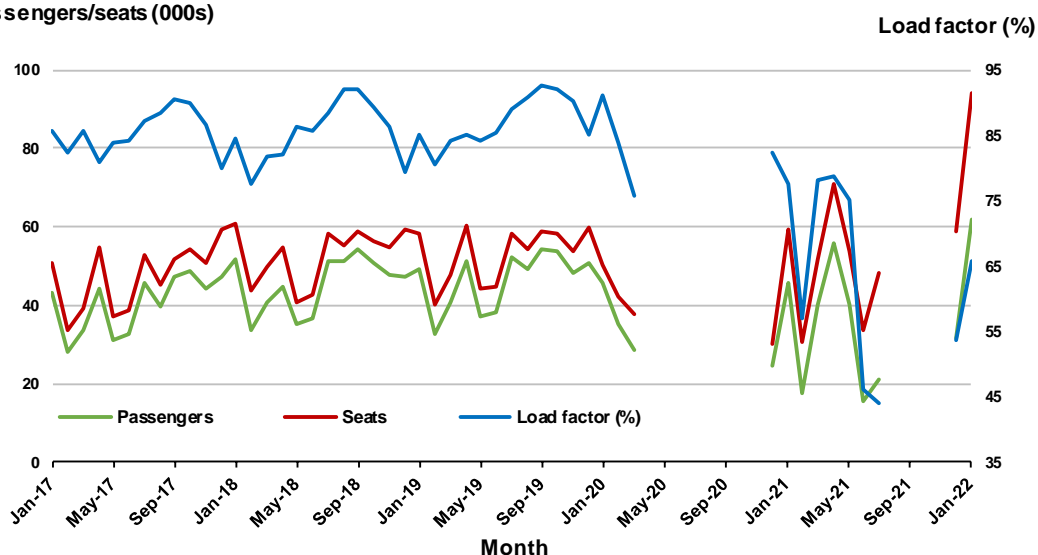
9. Melbourne - Sunshine Coast ^(a)

Monthly data

	Jan 2021	Jan 2022	% Change
Passengers carried (000s)	45.8	61.6	34.5
Seats (000s)	59.1	93.8	58.7
Load factor %	77.4	65.7	-11.7 *
Aircraft trips	352	531	50.9

* percentage point difference

Passengers/seats (000s)



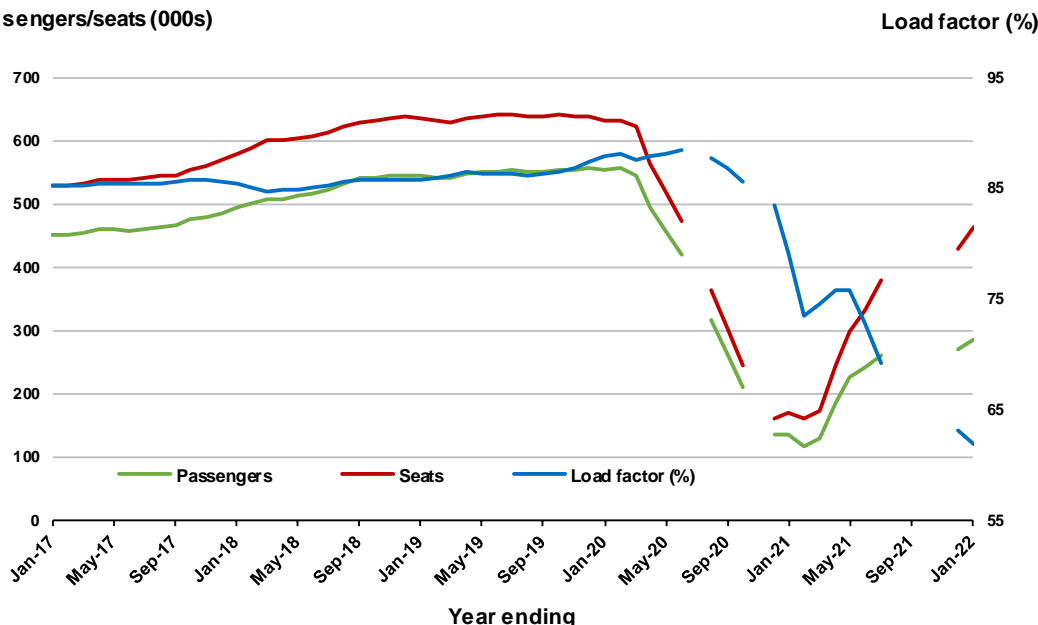
(a) April to November 2020 and August to November 2021 data not available for release

Moving annual data

	YE Jan 2021	YE Jan 2022	% Change
Passengers carried (000s)	134.6	286.4	112.7
Seats (000s)	170.3	463.5	172.2
Load factor %	79.1	61.8	-17.3 *
Aircraft trips	982	2 728	177.8

* percentage point difference

Passengers/seats (000s)



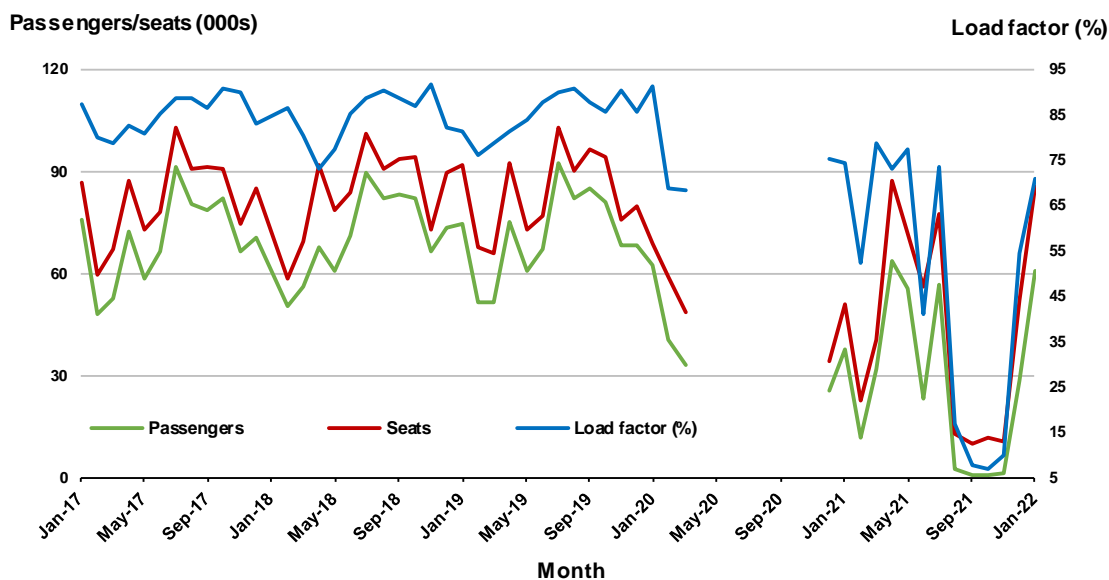
(a) April to November 2020 and August to November 2021 moving annual totals not available for release

10. Cairns - Melbourne ^(a)

Monthly data

	Jan 2021	Jan 2022	% Change
Passengers carried (000s)	37.7	60.5	60.4
Seats (000s)	50.9	85.5	68.0
Load factor %	74.2	70.8	-3.4 *
Aircraft trips	269	433	61.0

* percentage point difference

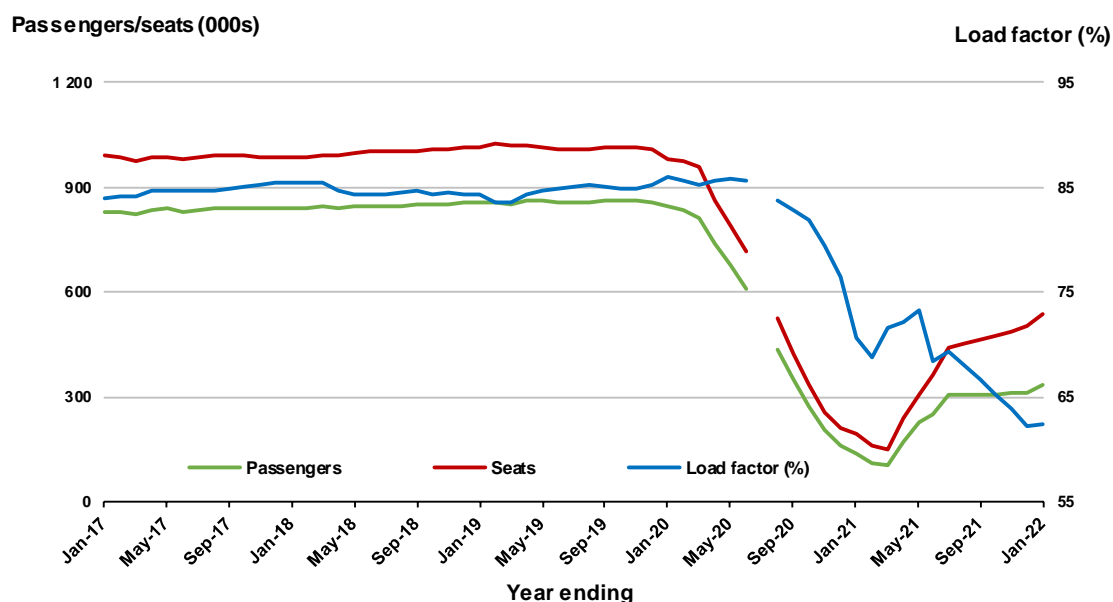


(a) April to November 2020 data not available for release

Moving annual data

	YE Jan 2021	YE Jan 2022	% Change
Passengers carried (000s)	137.0	335.5	144.9
Seats (000s)	194.0	537.2	177.0
Load factor %	70.7	62.5	-8.2 *
Aircraft trips	1 009	2 684	166.0

* percentage point difference



(a) April to November 2020 moving annual totals are not available for release

TOP FIFTY REGIONAL AIRPORTS

Table 10: Top fifty regional airports (000s) — passenger movements, monthly

Airport	Jan 2021	Jan 2022	% Change
1 Cairns	176.3	221.2	25.5
2 Hobart	130.2	156.3	20.1
3 Townsville	73.8	81.0	9.7
4 Launceston	66.5	79.8	20.0
5 Darwin	78.8	76.8	- 2.6
6 Ballina	59.6	72.6	21.8
7 Newcastle	36.6	53.5	46.4
8 Mackay	41.1	41.8	1.7
9 Proserpine	23.6	39.7	68.0
10 Karratha	27.2	32.3	18.6
11 Hamilton Island	22.6	30.8	35.9
12 Port Hedland	22.7	28.4	25.0
13 Rockhampton	24.6	25.0	1.4
14 Broome	22.7	24.6	8.5
15 Newman	24.1	24.0	- 0.3
16 Kalgoorlie	15.1	18.6	22.8
17 Coffs Harbour	7.8	18.4	136.0
18 Paraburdoo	13.6	14.5	6.1
19 Mount Isa	12.4	12.1	- 2.4
20 Alice Springs	22.0	12.0	- 45.3
21 Port Lincoln	9.9	9.3	- 6.0
22 Gladstone	8.3	8.9	7.6
23 Emerald	7.7	8.6	11.7
24 Albury	3.2	8.6	166.4
25 Dubbo	5.9	8.5	42.9
26 Mildura	4.7	8.2	73.6
27 Hervey Bay	2.6	7.7	199.2
28 Port Macquarie	4.1	7.4	79.6
29 Moranbah	3.1	5.9	86.7
30 Bundaberg	4.1	5.7	38.8
31 Wagga Wagga	3.4	5.6	66.1
32 Olympic Dam	4.3	5.6	28.5
33 Merimbula	1.8	5.3	188.7
34 Tamworth	2.1	5.2	146.5
35 Geraldton	3.5	5.0	43.7
36 Kununurra	5.1	4.7	- 6.4
37 Thursday Island	7.0	4.7	- 32.6
38 Learmonth	4.9	4.6	- 5.9
39 Devonport	3.9	4.5	17.1
40 Weipa	5.0	4.3	- 13.3
41 Narrandera	1.4	4.2	195.0
42 King Island	3.9	3.9	0.2
43 Armidale	1.8	3.9	121.1
44 Gove	4.6	3.8	- 17.7
45 Ayers Rock	3.5	3.8	7.7
46 Cloncurry	1.6	3.7	131.3
47 Orange	1.9	3.7	95.7
48 Esperance	2.4	3.5	45.1
49 Moruya	0.6	3.5	475.8
50 Burnie	1.6	3.4	109.0
Total top 50 regional airports	1 019.2	1 228.8	20.6
Total regional airports	1 082.6	1 291.3	19.3
Total domestic network	3 299.8	5 109.5	54.8

Note: Airport passenger movement numbers are the sum of passenger arrivals and departures at each airport.

Regional airports are defined as airports which are, according to Australian Statistical Geography

Standard (ASGS), not based in Major Cities.

Table 11: Top fifty regional airports (000s) — passenger movements, annual

Airport	YE Jan 2021	YE Jan 2022	% Change
1 Cairns	1 416.5	2 357.4	66.4
2 Hobart	724.8	1 287.4	77.6
3 Townsville	715.0	1 105.0	54.6
4 Darwin	615.0	1 086.8	76.7
5 Mackay	427.9	648.2	51.5
6 Launceston	372.9	635.8	70.5
7 Ballina	409.3	537.1	31.2
8 Newcastle	312.7	475.8	52.2
9 Karratha	261.8	428.0	63.5
10 Broome	240.1	414.8	72.8
11 Rockhampton	258.0	400.4	55.2
12 Port Hedland	205.1	367.3	79.1
13 Hamilton Island	163.2	335.3	105.5
14 Proserpine	187.7	321.1	71.0
15 Newman	164.4	318.9	94.0
16 Kalgoorlie	154.5	258.5	67.4
17 Alice Springs	200.4	249.6	24.5
18 Paraburdoo	108.6	193.2	77.8
19 Mount Isa	141.3	186.5	32.0
20 Coffs Harbour	98.4	151.0	53.5
21 Emerald	90.7	146.0	60.9
22 Gladstone	99.4	141.5	42.3
23 Port Lincoln	84.3	141.3	67.6
24 Kununurra	55.7	106.1	90.4
25 Dubbo	75.1	102.3	36.2
26 Learmonth	57.1	93.5	63.6
27 Thursday Island	59.9	91.0	52.0
28 Olympic Dam	38.8	87.9	126.3
29 Moranbah	41.8	83.2	99.3
30 Albury	55.1	81.8	48.5
31 Mildura	51.1	80.6	57.8
32 Geraldton	38.5	76.6	98.8
33 Weipa	41.3	75.2	82.1
34 Bundaberg	49.4	73.5	48.9
35 Wagga Wagga	52.0	70.5	35.6
36 Ayers Rock	66.0	70.5	6.8
37 Port Macquarie	48.7	70.2	44.1
38 Tamworth	42.9	61.0	42.1
39 Hervey Bay	31.3	56.3	80.0
40 Gove	48.8	54.5	11.6
41 Cloncurry	27.2	52.5	92.6
42 Albany	31.4	49.0	56.0
43 Roma	35.6	48.2	35.4
44 Whyalla	26.3	47.5	80.7
45 Esperance	29.9	47.1	57.3
46 Armidale	29.6	44.4	49.8
47 King Island	28.7	43.4	51.4
48 Groote Eylandt	17.2	42.5	147.6
49 Orange	23.1	42.2	83.1
50 Mount Gambier	20.0	40.8	104.3
Total top 50 regional airports	8 574.3	13 979.3	63.0
Total regional airports	9 290.4	14 913.9	60.5
Total domestic network	31 997.3	48 847.6	52.7

Note: Airport passenger movement numbers are the sum of passenger arrivals and departures at each airport. Regional airports are defined as airports which are, according to Australian Statistical Geography Standard (ASGS), not based in Major Cities.

DOMESTIC CHARTER ACTIVITY

Table 12: Charter passengers carried and aircraft trips - monthly activity

	Jan 2021	Jan 2022	% Change
Total domestic charter passengers	254 156	238 966	-6.0
Total domestic charter aircraft trips	5 188	4 863	-6.3

Note: Helicopter, joyflights and sightseeing charter flights not included.

Table 13: Charter passengers carried and aircraft trips - annual activity

	YE Jan 2021	YE Jan 2022	% Change
Total domestic charter passengers	3 164 209	3 347 478	5.8
Total domestic charter aircraft trips	65 913	63 187	-4.1

Note: Helicopter, joyflights and sightseeing charter flights not included.

Table 14: Domestic airports - charter activity - monthly

	Jan 2021	Jan 2022	% Change
Total domestic charter passenger movements	508 312	477 932	-6.0
Total domestic charter aircraft movements	10 376	9 726	-6.3
Perth airport charter passenger movements	191 333	182 757	-4.5
Perth airport charter aircraft movements	3 449	3 336	-3.3

Note: Helicopter, joyflights and sightseeing charter flights not included.

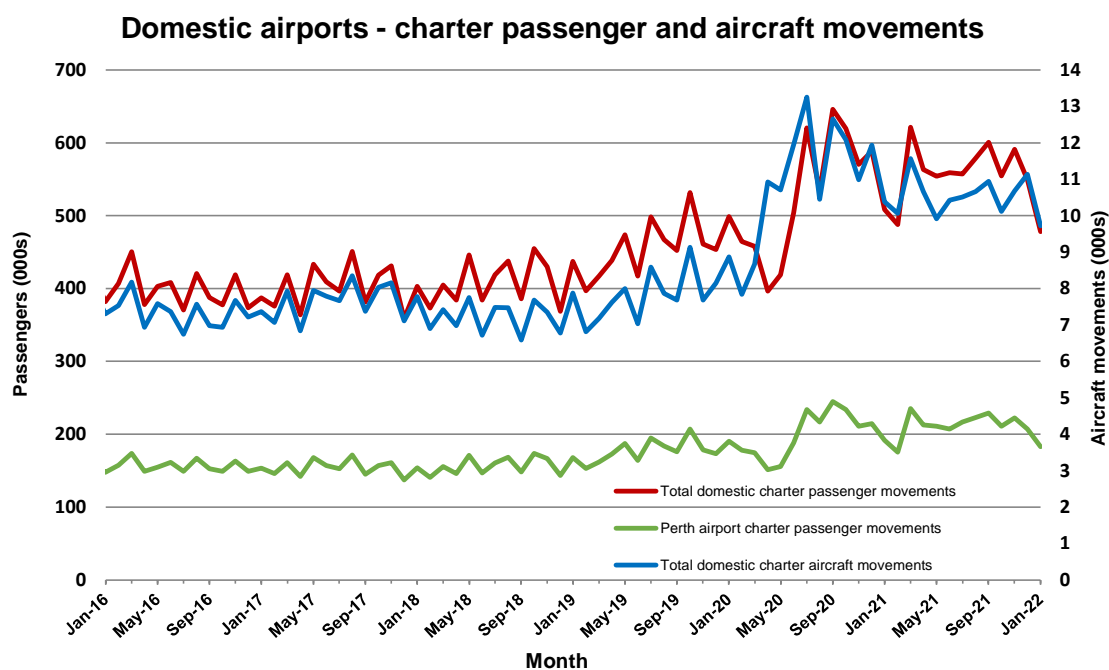
Charter passenger and aircraft movement numbers are the sum of arrivals and departures at each airport.

Table 15: Domestic airports - charter activity - annual

	YE Jan 2021	YE Jan 2022	% Change
Total domestic charter passenger movements	6 328 418	6 694 956	5.8
Total domestic charter aircraft movements	131 826	126 374	-4.1
Perth airport charter passenger movements	2 394 700	2 533 307	5.8
Perth airport charter aircraft movements	43 772	43 253	-1.2

Note: Helicopter, joyflights and sightseeing charter flights not included.

Charter passenger and aircraft movement numbers are the sum of arrivals and departures at each airport.



DEFINITIONS

Aircraft Trips	The number of flight stages. A return flight counts as two aircraft trips.
Airport Movements	Airport movements (passenger and cargo) are measured once on arrival and once on departure. Each domestic trip generates two movements at airports. For example, a trip from Melbourne to Sydney will be counted twice, as a departure at Melbourne and as an arrival at Sydney. At the national level, the sum of all domestic airport traffic will therefore be equal to twice the number of trips undertaken.
Available Seat Kilometres (ASKs)	Calculated by multiplying the number of seats available on each flight stage, by the distance in kilometres between the ports. The distances used are Great Circle Distances.
City-Pair	The ports shown make up the city-pair route. Passenger movements shown for a city pair reflect total traffic in both directions.
Flight Stage	The operation of an aircraft from take-off to landing.
Load Factor	The total revenue passenger kilometres performed as a percentage of the total available seat kilometres.
Passengers Carried	Revenue passengers carried.
Regular Public Transport Services (RPT)	All air service operations in which aircraft are available for the transport of members of the public and are conducted in accordance with fixed schedules. It does not include charter or other non-scheduled operations.
Revenue Passengers	All passengers paying any fare. Frequent flyer redemption travellers are regarded as revenue passengers.
Revenue Passenger Kilometres (RPKs)	Calculated by multiplying the number of revenue passengers travelling on each flight stage, by the distance in kilometres between the ports. The distances used are Great Circle Distances.
Traffic on board by stages	The total of all traffic (revenue passengers) on each flight stage between two directly connected airports.
..	Not available for confidentiality or other reasons.
NA	Not applicable.