



**Australian Government**

**Department of Infrastructure, Transport,  
Regional Development, Communications and the Arts**  
Bureau of Infrastructure and Transport Research Economics

STATISTICAL REPORT



bitre

Aviation

**Domestic aviation activity  
June 2024**

The Department of Infrastructure, Transport, Regional Development, Communications and the Arts acknowledges the Traditional Custodians of Country of the land on which we work and live.

We recognise and respect the continuing connections to land, waters and communities.

We pay our respects to them and their cultures and to their Elders both past and present and to all Aboriginal and Torres Strait Islander people.

---

© Commonwealth of Australia 2024

ISSN: 1832 – 1968

BITRE Reference: 2024-1174

### **Ownership of intellectual property rights in this publication**

Unless otherwise noted, copyright (and any other intellectual property rights, if any) in this publication is owned by the Commonwealth of Australia (referred to below as the Commonwealth).

### **Disclaimer**

The material contained in this publication is made available on the understanding that the Commonwealth is not providing professional advice, and that users exercise their own skill and care with respect to its use, and seek independent advice if necessary.

The Commonwealth makes no representations or warranties as to the contents or accuracy of the information contained in this publication. To the extent permitted by law, the Commonwealth disclaims liability to any person or organisation in respect of anything done, or omitted to be done, in reliance upon information contained in this publication.

### **Creative Commons licence**

With the exception of (a) the Coat of Arms; and (b) the Department of Infrastructure, Transport, Regional Development, Communications and the Arts' photos and graphics, copyright in this publication is licensed under a Creative Commons Attribution 3.0 Australia Licence.

Creative Commons Attribution 3.0 Australia Licence is a standard form licence agreement that allows you to copy, communicate and adapt this publication provided that you attribute the work to the Commonwealth and abide by the other licence terms. A summary of the licence terms is available from <http://creativecommons.org/licenses/by/3.0/au/deed.en>.

The full licence terms are available from <http://creativecommons.org/licenses/by/3.0/au/legalcode>.

### **Use of the Coat of Arms**

The Department of the Prime Minister and Cabinet sets the terms under which the Coat of Arms is used. Please refer to the Department's Commonwealth Coat of Arms and Government branding web page <http://www.dpmc.gov.au/guidelines/index.cfm#brand> and, in particular, the Guidelines on the use of the Commonwealth Coat of Arms publication.

An appropriate citation for this report is:

Bureau of Infrastructure and Transport Research Economics (BITRE), 2024, Domestic aviation activity, Statistical Report, BITRE, Canberra ACT.

### **Contact us**

This publication is available in PDF format. All other rights are reserved, including in relation to any Departmental logos or trade marks which may exist. For enquiries regarding the licence and any use of this publication, please contact:

Bureau of Infrastructure and Transport Research Economics (BITRE)  
Department of Infrastructure, Transport, Regional Development, Communications and the Arts  
GPO Box 501, Canberra ACT 2601, Australia

Email: [bitre@infrastructure.gov.au](mailto:bitre@infrastructure.gov.au)

Website: [www.bitre.gov.au](http://www.bitre.gov.au)

Inquiries: [Nebojsa.Pavlovic@infrastructure.gov.au](mailto:Nebojsa.Pavlovic@infrastructure.gov.au) (02) 6136 8282

## FOREWORD

This report provides an overview of domestic (including charter) commercial aviation activity in Australia for the month of June 2024.

The data covers revenue passengers carried by Australian-registered operators of scheduled regular public transport services over Australian flight stages and fixed-wing charter operators. These estimates include passengers carried between domestic airports on international flights operated by these carriers. The passengers carried refer to traffic on board by stages.

Estimates of passengers and aircraft movements for charter aviation are included in this publication, where BITRE confidentiality standards are met.

Individual routes shown are restricted to those with an average exceeding 8,000 passengers per month over the previous six months where two or more airlines operate in competition. However, for the period from December 2021 through to December 2022, the major airlines (Qantas Group, Virgin Australia and Rex Airlines) agreed to publication of the top 35 routes based on pre-COVID activity (December 2019) whether or not they were meeting the above criteria. From January 2023, the passenger load and dual competition requirements were reinstated due to the continued recovery of passenger numbers.

Information on the total network for the month of June 2024 and on the Regular Public Transport (RPT) network for the month of June 2024 is presented on page 2, with estimates for the year ended June 2024 presented on page 3.

Detailed information on individual routes can be found in the RPT summary pages 4-13 of this publication. For the month of June 2024, there are 61 individual routes published.

The top ten airports in terms of RPT passenger movements are shown on page 14.

Data on domestic RPT cargo movements at the top five cargo airports are provided on page 15. The table includes cargo carried on passenger flights operated by the Qantas group (including Jetstar), Virgin Australia, Air North and Skippers as well as the cargo carried by dedicated freighter aircraft operated by Qantas Freight and Team Global Express (formerly Toll).

The long-term trends for the top ten competitive RPT routes are presented graphically on pages 16-25.

Domestic RPT passenger movements at regional airports are shown on pages 26-27.

Tables providing estimates of domestic charter aviation activity are shown on page 28. BITRE confidentiality standards restrict publication of detailed estimates for individual Australian airports, with the exception of Perth Airport.

A list of definitions can be found on page 29.

This report was prepared by the Aviation Statistics Section of the Bureau of Infrastructure and Transport Research Economics with data provided by airlines.

Estimates are included where data were not available and data presented in this publication may contain revisions to previously published data.

Where figures have been rounded, discrepancies may occur between sums of component items and totals, and in percentage changes which are derived from figures prior to rounding.

# CONTENTS

<b>Highlights .....</b>	<b>1</b>
<b>Total network.....</b>	<b>2</b>
<b>RPT network .....</b>	<b>2</b>
<b>Top competitive routes.....</b>	<b>4</b>
<b>Top ten airports – passenger movements.....</b>	<b>14</b>
<b>Top five airports – cargo movements.....</b>	<b>15</b>
<b>Top ten routes .....</b>	<b>16</b>
1. Melbourne – Sydney .....	16
2. Brisbane – Sydney.....	17
3. Brisbane – Melbourne .....	18
4. Gold Coast – Sydney .....	19
5. Adelaide – Melbourne .....	20
6. Gold Coast – Melbourne .....	21
7. Melbourne – Perth .....	22
8. Adelaide – Sydney .....	23
9. Brisbane – Cairns .....	24
10. Perth – Sydney .....	25
<b>Top fifty regional airports .....</b>	<b>26</b>
<b>Domestic charter activity.....</b>	<b>28</b>
<b>Definitions .....</b>	<b>29</b>

This page is intentionally left blank.

## HIGHLIGHTS

There were 4.93 million passengers carried on Australian domestic commercial aviation (including charter operations) in June 2024, compared with 4.92 million in June 2023 (up 0.2 per cent). This is also an increase of 0.3 per cent on pre-COVID June 2019 passenger numbers (4.92 million).

4.60 million passengers were carried on RPT flights in June 2024, an increase of 0.2 per cent compared to June 2023.

For the month of June 2024, there were 49.3 thousand RPT aircraft trips, a decrease of 2.3 per cent change on June 2023

For the year ending June 2024 there were 58.63 million RPT passengers, an increase of 6.0 per cent on the year ending June 2023.

RPT revenue passenger kilometres (RPKs) performed were 5.51 billion for the month, compared with 5.47 billion in June 2023 (up 0.6 per cent).

Capacity, measured by available seat kilometres (ASKs), decreased to 6.98 billion in June 2024 compared to 6.99 billion in June 2023 (down 0.1 per cent).

The industry wide load factor (RPKs/ASKs) increased from 78.3 per cent in June 2023 to 78.8 per cent in June 2024. The highest load factor (92.6 per cent) was recorded on the Cairns – Melbourne route while the lowest load factor (46.8 per cent) was recorded on the Geraldton – Perth route.

For the month of June 2024, Melbourne – Sydney was Australia's busiest RPT route with 615.3 thousand passengers, followed by Brisbane – Sydney with 355.1 thousand passengers and Brisbane – Melbourne with 285.9 thousand passengers.

Sydney was Australia's busiest domestic airport with 1.92 million passenger movements in June 2024, followed by Melbourne with 1.84 million passenger movements and Brisbane with 1.41 million passenger movements.

Total cargo movements at Australian airports on domestic RPT flights were 25.0 thousand tonnes in June 2024, a decrease of 11.7 per cent compared with June 2023.

In June 2024, there were 2.00 million domestic passenger movements through regional airports, compared to 2.05 million in June 2023, a decrease of 2.8 per cent. Out of the top 50 regional airports, the strongest increase was recorded at Busselton Airport (up 104.9 per cent on June 2023), while the largest decrease was recorded at Port Macquarie Airport (down 17.7 per cent on June 2023).

Fixed-wing charter operators carried 336.8 thousand passengers in June 2024, an increase of 1.3 per cent compared with June 2023. Perth Airport accounted for 37.2 per cent of all charter passengers in Australia.

## TOTAL NETWORK

### Summary of monthly commercial aviation activity

	Jun 2023	Jun 2024	% Change
Total passengers carried (millions)	4.92	4.93*	0.2
Aircraft trips (000s)	56.1	55.0	-2.1

Note: Regular Public Transport and charter aviation activity are included.

Helicopter, joy flights and sightseeing charter flights are not included.

\* June 2024 figure exceeds pre-COVID corresponding month figures, joining May, March and February months 2024.

## RPT NETWORK

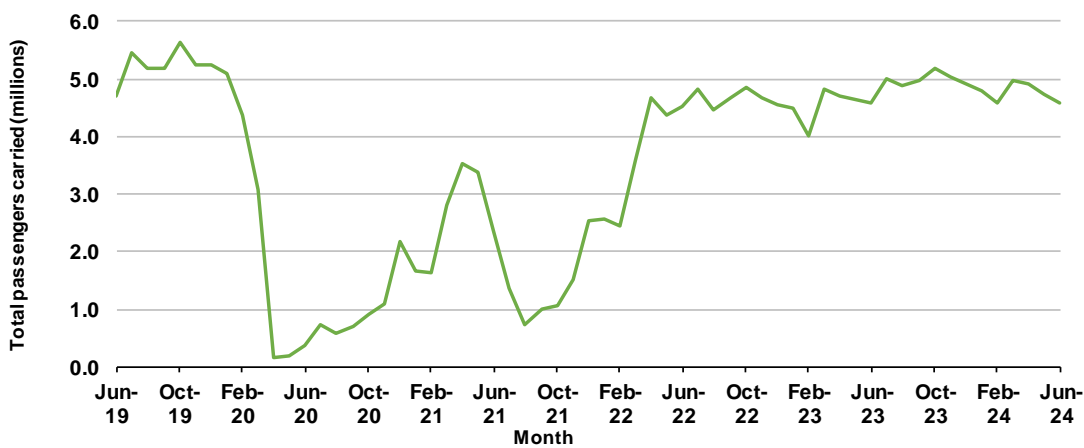
### Summary of monthly RPT activity

	Jun 2023	Jun 2024	% Change
Total passengers carried (millions)	4.59	4.60	0.2
Revenue passenger kilometres (billions)	5.47	5.51	0.6
Available seats (millions)	6.02	5.98	-0.6
Available seat kilometres (billions)	6.99	6.98	-0.1
Load factor %	78.3	78.8	0.5 *
Aircraft trips (000s)	50.5	49.3	-2.3

\* percentage point difference

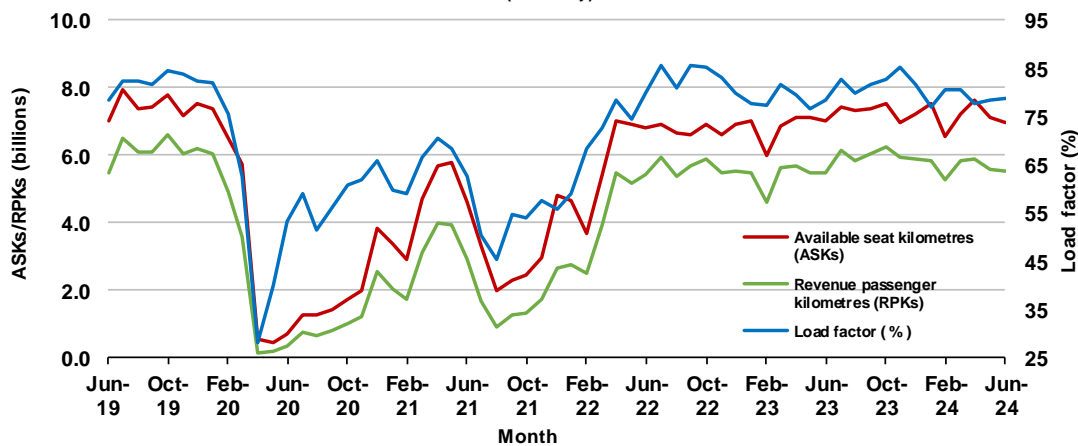
### Domestic RPT passenger traffic

(monthly)



### RPT Network utilisation

(monthly)





## TOTAL NETWORK

### Summary of annual commercial aviation activity

	YE Jun 2023	YE Jun 2024	% Change
Total passengers carried (millions)	59.11	62.87	6.4
Aircraft trips (000s)	662.4	689.9	4.1

Note: Regular Public Transport and charter aviation activity are included.  
Helicopter, joy flights and sightseeing charter flights are not included.

## RPT NETWORK

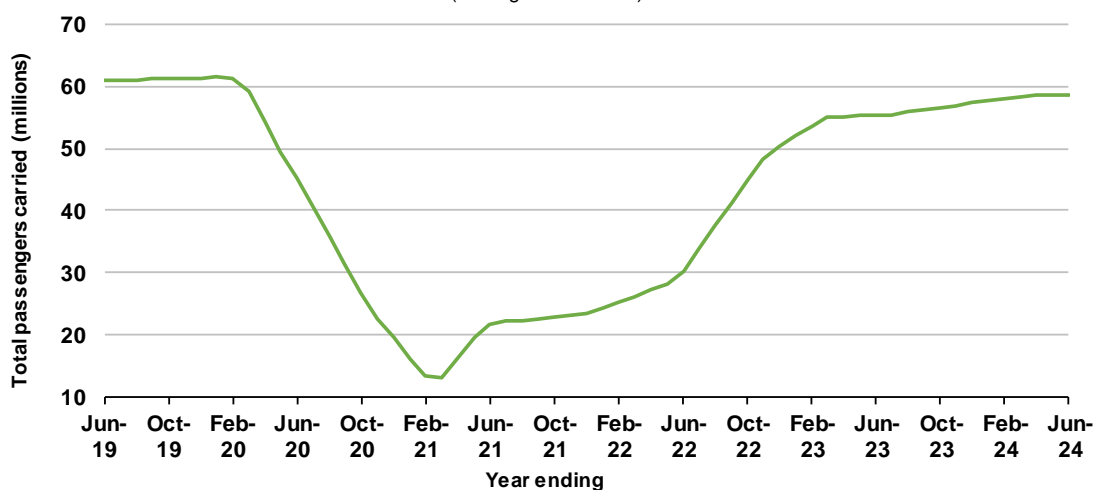
### Summary of annual RPT activity

	YE Jun 2023	YE Jun 2024	% Change
Total passengers carried (millions)	55.30	58.63	6.0
Revenue passenger kilometres (billions)	66.23	69.98	5.7
Available seats (millions)	70.29	74.73	6.3
Available seat kilometres (billions)	81.76	86.92	6.3
Load factor %	81.0	80.5	-0.5 *
Aircraft trips (000s)	595.3	617.4	3.7

\* percentage point difference

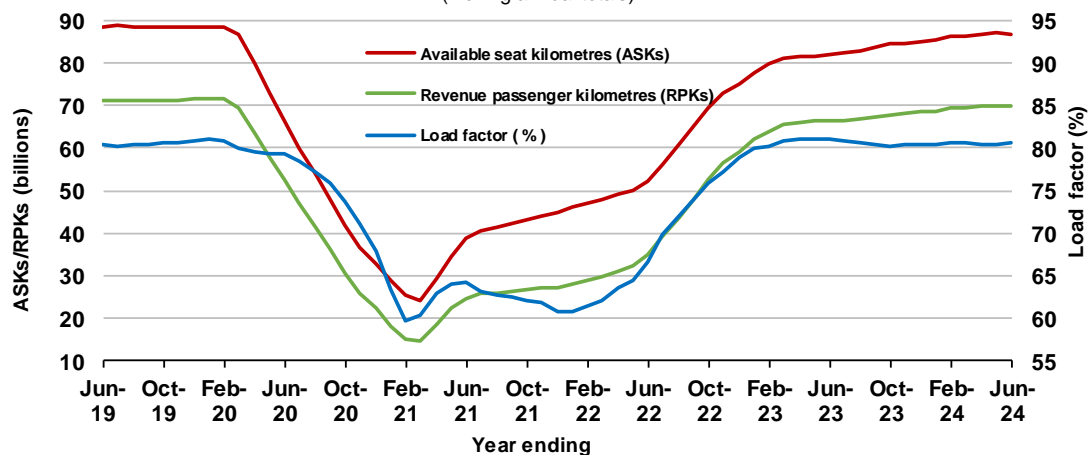
### Domestic RPT passenger traffic

(moving annual totals)



### RPT Network utilisation

(moving annual totals)



## TOP COMPETITIVE ROUTES

**Table 1: Passengers carried (000s) — annual activity**

	City-Pair	YE Jun 2023	YE Jun 2024	%Change
1	Melbourne - Sydney	7 314.0	7 920.0	8.3
2	Brisbane - Sydney	4 043.7	4 325.1	7.0
3	Brisbane - Melbourne	3 124.3	3 389.9	8.5
4	Gold Coast - Sydney	2 407.9	2 518.6	4.6
5	Adelaide - Melbourne	2 206.8	2 332.0	5.7
6	Gold Coast - Melbourne	2 240.8	2 236.2	-0.2
7	Melbourne - Perth	1 813.6	1 976.9	9.0
8	Adelaide - Sydney	1 604.8	1 844.0	14.9
9	Perth - Sydney	1 496.8	1 610.6	7.6
10	Hobart - Melbourne	1 233.6	1 337.2	8.4
11	Brisbane - Cairns	1 213.4	1 279.3	5.4
12	Brisbane - Perth	982.5	1 034.4	5.3
13	Canberra - Melbourne	968.3	1 020.1	5.4
14	Cairns - Sydney	884.8	910.8	2.9
15	Brisbane - Townsville	860.0	888.9	3.4
16	Adelaide - Brisbane	795.3	863.7	8.6
17	Launceston - Melbourne	770.3	853.1	10.8
18	Cairns - Melbourne	803.4	821.6	2.3
19	Melbourne - Sunshine Coast	703.7	779.3	10.7
20	Sunshine Coast - Sydney	737.1	772.8	4.8
21	Hobart - Sydney	708.7	765.5	8.0
22	Brisbane - Mackay	739.2	737.2	-0.3
23	Adelaide - Perth	633.5	673.6	6.3
24	Brisbane - Canberra	630.6	630.5	0.0
25	Canberra - Sydney	594.2	618.3	4.0
26	Karratha - Perth	529.9	572.9	8.1
27	Brisbane - Rockhampton	481.0	537.2	11.7
28	Ballina - Sydney	525.7	517.5	-1.5
29	Brisbane - Newcastle	492.6	499.9	1.5
30	Perth - Port Hedland	475.9	472.6	-0.7
31	Melbourne - Newcastle	392.7	440.1	12.1
32	Newman - Perth	364.7	371.6	1.9
33	Kalgoorlie - Perth	338.3	361.3	6.8
34	Broome - Perth	368.3	360.2	-2.2
35	Launceston - Sydney	303.9	339.5	11.7
36	Brisbane - Darwin	323.7	315.7	-2.5
37	Brisbane - Hobart	299.0	292.7	-2.1
38	Darwin - Melbourne	280.4	284.7	1.5
39	Adelaide - Gold Coast	242.6	272.7	12.4
40	Brisbane - Proserpine	280.1	270.8	-3.3
41	Hamilton Island - Sydney	247.4	240.9	-2.6
42	Brisbane - Gladstone	204.8	219.6	7.3
43	Coffs Harbour - Sydney	218.2	208.6	-4.4
44	Adelaide - Canberra	183.8	187.4	1.9
45	Canberra - Gold Coast	165.4	185.7	12.3
46	Brisbane - Emerald	179.0	184.5	3.1
47	Dubbo - Sydney	165.7	177.9	7.4
48	Melbourne - Mildura	153.4	174.3	13.6
49	Darwin - Perth	175.2	173.9	-0.8
50	Adelaide - Port Lincoln	178.6	171.7	-3.9

continued

**Table 1: (continued) Passengers carried (000s) — annual activity**

	<b>City-Pair</b>	<b>YE Jun 2023</b>	<b>YE Jun 2024</b>	<b>% Change</b>
51	Port Macquarie - Sydney	161.7	167.4	3.6
52	Albury - Sydney	165.5	165.1	-0.3
53	Brisbane - Hamilton Island	167.5	162.4	-3.0
54	Sydney - Wagga Wagga	150.3	157.1	4.6
55	Brisbane - Launceston	163.2	148.7	-8.9
56	Brisbane - Mount Isa	142.5	143.0	0.3
57	Brisbane - Bundaberg	112.7	136.1	20.7
58	Devonport - Melbourne	119.4	121.5	1.8
59	Adelaide - Alice Springs	111.8	113.0	1.0
60	Brisbane - Moranbah	106.5	111.0	4.2
61	Geraldton - Perth	..	104.7	NA
	<b>Total domestic network</b>	<b>55 295.8</b>	<b>58 627.9</b>	<b>6.0</b>

.. Data not available for release.

**Table 2: Passengers carried (000s) — monthly activity**

	<b>City-Pair</b>	<b>Jun 2023</b>	<b>Jun 2024</b>	<b>% Change</b>
1	Melbourne - Sydney	601.5	615.3	2.3
2	Brisbane - Sydney	346.9	355.1	2.4
3	Brisbane - Melbourne	269.2	285.9	6.2
4	Gold Coast - Sydney	186.9	190.8	2.1
5	Adelaide - Melbourne	179.1	175.8	-1.8
6	Gold Coast - Melbourne	164.3	164.0	-0.2
7	Melbourne - Perth	137.9	143.8	4.3
8	Adelaide - Sydney	130.1	135.0	3.8
9	Brisbane - Cairns	108.5	121.4	11.9
10	Perth - Sydney	118.2	113.1	-4.3
11	Hobart - Melbourne	99.5	94.8	-4.7
12	Brisbane - Townsville	77.9	83.3	6.9
13	Brisbane - Perth	74.7	79.9	7.0
14	Canberra - Melbourne	80.8	79.6	-1.5
15	Cairns - Sydney	70.2	74.6	6.2
16	Adelaide - Brisbane	62.5	66.4	6.2
17	Brisbane - Mackay	60.1	63.4	5.5
18	Cairns - Melbourne	70.3	62.7	-10.8
19	Launceston - Melbourne	58.1	57.3	-1.4
20	Hobart - Sydney	53.5	55.1	2.9
21	Melbourne - Sunshine Coast	58.0	55.1	-5.1
22	Sunshine Coast - Sydney	56.0	54.2	-3.1
23	Canberra - Sydney	52.1	52.9	1.6
24	Brisbane - Canberra	52.2	51.8	-0.7
25	Karratha - Perth	46.3	50.4	9.0
26	Adelaide - Perth	46.3	48.9	5.6
27	Brisbane - Rockhampton	43.1	48.7	13.1
28	Brisbane - Newcastle	41.2	40.4	-2.0
29	Perth - Port Hedland	39.3	37.8	-3.7
30	Ballina - Sydney	38.4	35.9	-6.7
31	Brisbane - Darwin	31.3	35.0	12.0
32	Melbourne - Newcastle	31.4	34.5	10.0
33	Broome - Perth	36.3	33.6	-7.4
34	Newman - Perth	30.0	31.1	3.8
35	Kalgoorlie - Perth	30.4	28.3	-6.7
36	Darwin - Melbourne	27.8	27.4	-1.5
37	Brisbane - Hobart	23.3	23.2	-0.7
38	Launceston - Sydney	20.7	21.5	3.7
39	Brisbane - Proserpine	21.7	21.3	-1.8
40	Adelaide - Gold Coast	18.0	19.7	9.4
41	Brisbane - Gladstone	18.3	18.6	1.6
42	Darwin - Perth	15.3	18.2	18.9
43	Coffs Harbour - Sydney	18.3	17.2	-6.1
44	Canberra - Gold Coast	13.6	16.0	17.5
45	Brisbane - Emerald	15.9	15.2	-4.4
46	Hamilton Island - Sydney	16.6	14.8	-11.0
47	Dubbo - Sydney	15.6	14.5	-6.9
48	Adelaide - Canberra	16.2	14.3	-11.8
49	Albury - Sydney	14.2	13.5	-5.0
50	Adelaide - Port Lincoln	13.4	13.4	0.3

continued

**Table 2: (continued) Passengers carried (000s) — monthly activity**

	<b>City-Pair</b>	<b>Jun 2023</b>	<b>Jun 2024</b>	<b>% Change</b>
51	Port Macquarie - Sydney	13.3	13.3	0.2
52	Sydney - Wagga Wagga	12.9	13.0	0.4
53	Melbourne - Mildura	13.7	12.7	-7.1
54	Brisbane - Hamilton Island	12.3	12.5	2.4
55	Brisbane - Mount Isa	12.5	12.4	-1.4
56	Brisbane - Bundaberg	11.0	12.1	9.9
57	Brisbane - Launceston	10.0	11.7	16.5
58	Devonport - Melbourne	9.2	9.6	3.9
59	Adelaide - Alice Springs	11.9	9.3	-21.7
60	Brisbane - Moranbah	9.2	9.0	-2.7
61	Geraldton - Perth	..	8.8	NA
	<b>Total domestic network</b>	<b>4 589.0</b>	<b>4 596.6</b>	<b>0.2</b>

.. Data not available for release.

**Table 3: Available seats (000s) — monthly activity**

	City-Pair	Jun 2023	Jun 2024	% Change
1	Melbourne - Sydney	764.7	801.7	4.8
2	Brisbane - Sydney	441.7	440.4	-0.3
3	Brisbane - Melbourne	337.0	345.7	2.6
4	Gold Coast - Sydney	229.2	229.1	0.0
5	Adelaide - Melbourne	224.1	231.0	3.0
6	Gold Coast - Melbourne	184.7	182.3	-1.3
7	Melbourne - Perth	184.9	190.9	3.2
8	Adelaide - Sydney	172.4	196.4	13.9
9	Brisbane - Cairns	115.1	136.3	18.4
10	Perth - Sydney	158.4	145.0	-8.4
11	Hobart - Melbourne	125.4	119.3	-4.9
12	Brisbane - Townsville	91.5	94.6	3.3
13	Brisbane - Perth	93.9	100.1	6.6
14	Canberra - Melbourne	119.3	112.7	-5.5
15	Cairns - Sydney	75.2	82.5	9.7
16	Adelaide - Brisbane	81.8	90.8	10.9
17	Brisbane - Mackay	75.4	78.0	3.5
18	Cairns - Melbourne	75.2	67.7	-10.0
19	Launceston - Melbourne	75.8	71.7	-5.4
20	Hobart - Sydney	73.8	72.9	-1.2
21	Melbourne - Sunshine Coast	69.1	61.5	-11.0
22	Sunshine Coast - Sydney	74.7	63.8	-14.6
23	Canberra - Sydney	80.2	86.5	7.9
24	Brisbane - Canberra	75.5	69.1	-8.5
25	Karratha - Perth	65.3	71.9	10.0
26	Adelaide - Perth	57.3	65.6	14.5
27	Brisbane - Rockhampton	57.5	61.8	7.5
28	Brisbane - Newcastle	59.9	49.5	-17.4
29	Perth - Port Hedland	59.4	59.3	-0.2
30	Ballina - Sydney	52.6	43.1	-18.1
31	Brisbane - Darwin	35.3	38.9	10.0
32	Melbourne - Newcastle	40.6	43.9	7.9
33	Broome - Perth	45.5	41.0	-9.9
34	Newman - Perth	51.9	51.8	-0.3
35	Kalgoorlie - Perth	45.1	52.3	15.9
36	Darwin - Melbourne	31.8	30.3	-4.8
37	Brisbane - Hobart	29.6	27.5	-7.1
38	Launceston - Sydney	27.0	27.1	0.3
39	Brisbane - Proserpine	25.4	24.0	-5.4
40	Adelaide - Gold Coast	21.3	23.0	8.1
41	Brisbane - Gladstone	31.9	27.4	-14.0
42	Darwin - Perth	19.3	26.4	36.7
43	Coffs Harbour - Sydney	24.5	22.3	-9.1
44	Canberra - Gold Coast	16.7	19.0	13.4
45	Brisbane - Emerald	21.6	23.7	9.4
46	Hamilton Island - Sydney	26.6	21.4	-19.7
47	Dubbo - Sydney	23.5	23.4	-0.4
48	Adelaide - Canberra	28.2	20.6	-26.9
49	Albury - Sydney	21.3	19.7	-7.7
50	Adelaide - Port Lincoln	21.7	22.0	1.3

continued

**Table 3: (continued) Available seats (000s) — monthly activity**

	<b>City-Pair</b>	<b>Jun 2023</b>	<b>Jun 2024</b>	<b>% Change</b>
51	Port Macquarie - Sydney	21.4	19.0	-11.0
52	Sydney - Wagga Wagga	21.3	21.9	2.7
53	Melbourne - Mildura	21.1	16.5	-21.8
54	Brisbane - Hamilton Island	18.7	16.6	-11.3
55	Brisbane - Mount Isa	19.6	18.7	-4.4
56	Brisbane - Bundaberg	18.5	18.2	-2.0
57	Brisbane - Launceston	12.4	13.3	7.6
58	Devonport - Melbourne	13.6	13.7	1.1
59	Adelaide - Alice Springs	14.9	12.7	-14.8
60	Brisbane - Moranbah	15.6	16.2	3.8
61	Geraldton - Perth	..	18.7	NA
	<b>Total domestic network</b>	<b>6 020.7</b>	<b>5 981.6</b>	<b>-0.6</b>

.. Data not available for release.

**Table 4: Load factors (%) — monthly activity**

	<b>City-Pair</b>	<b>Jun 2023</b>	<b>Jun 2024</b>	<b>% Point diff</b>
1	Melbourne - Sydney	78.7	76.8	-1.9
2	Brisbane - Sydney	78.5	80.6	2.1
3	Brisbane - Melbourne	79.9	82.7	2.8
4	Gold Coast - Sydney	81.5	83.3	1.8
5	Adelaide - Melbourne	79.9	76.1	-3.8
6	Gold Coast - Melbourne	89.0	89.9	0.9
7	Melbourne - Perth	74.6	75.4	0.8
8	Adelaide - Sydney	75.5	68.8	-6.7
9	Brisbane - Cairns	94.3	89.1	-5.2
10	Perth - Sydney	74.6	78.0	3.4
11	Hobart - Melbourne	79.4	79.5	0.1
12	Brisbane - Townsville	85.1	88.1	3.0
13	Brisbane - Perth	79.5	79.8	0.3
14	Canberra - Melbourne	67.7	70.6	2.9
15	Cairns - Sydney	93.4	90.4	-3.0
16	Adelaide - Brisbane	76.4	73.1	-3.3
17	Brisbane - Mackay	79.7	81.3	1.6
18	Cairns - Melbourne	93.4	92.6	-0.8
19	Launceston - Melbourne	76.7	79.9	3.2
20	Hobart - Sydney	72.5	75.6	3.1
21	Melbourne - Sunshine Coast	84.6	89.5	4.9
22	Sunshine Coast - Sydney	74.9	84.9	10.0
23	Canberra - Sydney	65.0	61.2	-3.8
24	Brisbane - Canberra	69.1	75.0	5.9
25	Karratha - Perth	70.8	70.2	-0.6
26	Adelaide - Perth	80.8	74.5	-6.3
27	Brisbane - Rockhampton	74.9	78.8	3.9
28	Brisbane - Newcastle	68.8	81.7	12.9
29	Perth - Port Hedland	66.2	63.8	-2.4
30	Ballina - Sydney	73.1	83.2	10.1
31	Brisbane - Darwin	88.5	90.1	1.6
32	Melbourne - Newcastle	77.2	78.7	1.5
33	Broome - Perth	79.6	81.9	2.3
34	Newman - Perth	57.8	60.1	2.3
35	Kalgoorlie - Perth	67.3	54.2	-13.1
36	Darwin - Melbourne	87.3	90.3	3.0
37	Brisbane - Hobart	78.7	84.1	5.4
38	Launceston - Sydney	76.7	79.3	2.6
39	Brisbane - Proserpine	85.4	88.6	3.2
40	Adelaide - Gold Coast	84.3	85.3	1.0
41	Brisbane - Gladstone	57.5	67.9	10.4
42	Darwin - Perth	79.2	68.9	-10.3
43	Coffs Harbour - Sydney	74.6	77.0	2.4
44	Canberra - Gold Coast	81.5	84.4	2.9
45	Brisbane - Emerald	73.6	64.3	-9.3
46	Hamilton Island - Sydney	62.3	69.0	6.7
47	Dubbo - Sydney	66.4	62.1	-4.3
48	Adelaide - Canberra	57.4	69.2	11.8
49	Albury - Sydney	66.7	68.8	2.1
50	Adelaide - Port Lincoln	61.6	61.0	-0.6

continued



**Table 4: (continued) Load factors (%) — monthly activity**

	<b>City-Pair</b>	<b>Jun 2023</b>	<b>Jun 2024</b>	<b>% Point diff</b>
51	Port Macquarie - Sydney	62.2	70.1	7.9
52	Sydney - Wagga Wagga	60.6	59.3	-1.3
53	Melbourne - Mildura	64.9	77.1	12.2
54	Brisbane - Hamilton Island	65.4	75.5	10.1
55	Brisbane - Mount Isa	64.1	66.1	2.0
56	Brisbane - Bundaberg	59.4	66.6	7.2
57	Brisbane - Launceston	81.2	87.9	6.7
58	Devonport - Melbourne	68.1	70.0	1.9
59	Adelaide - Alice Springs	79.6	73.2	-6.4
60	Brisbane - Moranbah	59.0	55.3	-3.7
61	Geraldton - Perth	..	46.8	NA
	<b>Total domestic network</b>	<b>78.3</b>	<b>78.8</b>	<b>0.5</b>

.. Data not available for release.

**Table 5: Aircraft trips <sup>(a)</sup> — monthly activity**

	<b>City-Pair</b>	<b>Jun 2023</b>	<b>Jun 2024</b>	<b>% Change</b>
1	Melbourne - Sydney	4 438	4 619	4.1
2	Brisbane - Sydney	2 705	2 633	-2.7
3	Brisbane - Melbourne	2 043	2 064	1.0
4	Gold Coast - Sydney	1 304	1 292	-0.9
5	Adelaide - Melbourne	1 366	1 383	1.2
6	Gold Coast - Melbourne	998	990	-0.8
7	Melbourne - Perth	1 023	1 028	0.5
8	Adelaide - Sydney	1 046	1 158	10.7
9	Brisbane - Cairns	799	929	16.3
10	Perth - Sydney	800	758	-5.3
11	Hobart - Melbourne	719	761	5.8
12	Brisbane - Townsville	670	720	7.5
13	Brisbane - Perth	546	575	5.3
14	Canberra - Melbourne	869	778	-10.5
15	Cairns - Sydney	400	421	5.3
16	Adelaide - Brisbane	695	675	-2.9
17	Brisbane - Mackay	580	580	0.0
18	Cairns - Melbourne	389	349	-10.3
19	Launceston - Melbourne	676	585	-13.5
20	Hobart - Sydney	432	414	-4.2
21	Melbourne - Sunshine Coast	363	334	-8.0
22	Sunshine Coast - Sydney	408	354	-13.2
23	Canberra - Sydney	1 296	1 216	-6.2
24	Brisbane - Canberra	593	553	-6.7
25	Karratha - Perth	387	429	10.9
26	Adelaide - Perth	329	366	11.2
27	Brisbane - Rockhampton	655	668	2.0
28	Brisbane - Newcastle	522	418	-19.9
29	Perth - Port Hedland	362	373	3.0
30	Ballina - Sydney	403	301	-25.3
31	Brisbane - Darwin	222	271	22.1
32	Melbourne - Newcastle	261	288	10.3
33	Broome - Perth	276	260	-5.8
34	Newman - Perth	328	324	-1.2
35	Kalgoorlie - Perth	309	356	15.2
36	Darwin - Melbourne	195	170	-12.8
37	Brisbane - Hobart	183	170	-7.1
38	Launceston - Sydney	174	171	-1.7
39	Brisbane - Proserpine	177	150	-15.3
40	Adelaide - Gold Coast	121	114	-5.8
41	Brisbane - Gladstone	358	323	-9.8
42	Darwin - Perth	112	147	31.3
43	Coffs Harbour - Sydney	430	399	-7.2
44	Canberra - Gold Coast	94	106	12.8
45	Brisbane - Emerald	328	331	0.9
46	Hamilton Island - Sydney	152	121	-20.4
47	Dubbo - Sydney	445	449	0.9
48	Adelaide - Canberra	260	188	-27.7
49	Albury - Sydney	408	368	-9.8
50	Adelaide - Port Lincoln	525	530	1.0

continued

**Table 5: (continued) Aircraft trips — monthly activity**

	<b>City-Pair</b>	<b>Jun 2023</b>	<b>Jun 2024</b>	<b>% Change</b>
51	Port Macquarie - Sydney	381	311	-18.4
52	Sydney - Wagga Wagga	381	394	3.4
53	Melbourne - Mildura	434	388	-10.6
54	Brisbane - Hamilton Island	108	118	9.3
55	Brisbane - Mount Isa	170	159	-6.5
56	Brisbane - Bundaberg	302	292	-3.3
57	Brisbane - Launceston	70	77	10.0
58	Devonport - Melbourne	298	297	-0.3
59	Adelaide - Alice Springs	174	146	-16.1
60	Brisbane - Moranbah	208	216	3.8
61	Geraldton - Perth	..	201	NA
	<b>Total domestic network</b>	<b>50 479</b>	<b>49 341</b>	<b>-2.3</b>

(a) Includes RPT cargo flights.

.. Data not available for release.

## TOP TEN AIRPORTS – PASSENGER MOVEMENTS

**Table 6: Top ten airports, RPT passenger movements (000s) - monthly activity**

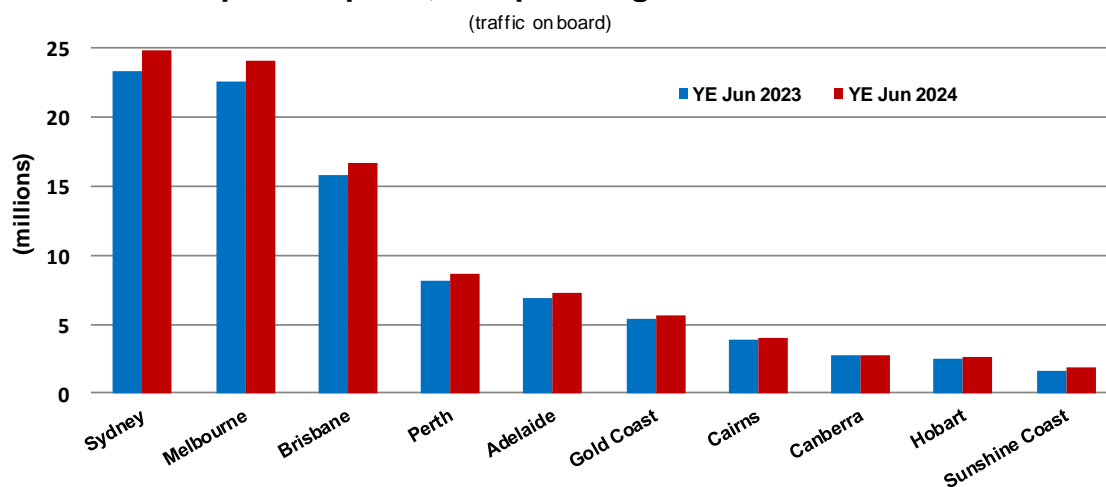
Airport	Jun 2023	Jun 2024	% Change	% of Total
1 Sydney	1 900.7	1 915.8	0.8	20.8
2 Melbourne	1 841.8	1 840.0	-0.1	20.0
3 Brisbane	1 342.8	1 409.7	5.0	15.3
4 Perth	656.8	672.6	2.4	7.3
5 Adelaide	548.5	547.4	-0.2	6.0
6 Gold Coast	412.4	417.5	1.2	4.5
7 Cairns	344.7	343.7	-0.3	3.7
8 Canberra	228.4	224.8	-1.5	2.4
9 Hobart	192.7	187.7	-2.6	2.0
10 Darwin	159.0	152.5	-4.1	1.7
<b>Total top ten airports</b>	<b>7 627.8</b>	<b>7 711.8</b>	<b>1.1</b>	<b>83.9</b>
<b>Total domestic network</b>	<b>9 178.1</b>	<b>9 193.1</b>	<b>0.2</b>	<b>100.0</b>

**Table 7: Top ten airports, RPT passenger movements (000s) - annual activity**

Airport	YE Jun 2023	YE Jun 2024	% Change	% of Total
1 Sydney	23 327.6	24 777.2	6.2	21.1
2 Melbourne	22 494.3	24 061.5	7.0	20.5
3 Brisbane	15 814.8	16 665.5	5.4	14.2
4 Perth	8 098.9	8 598.1	6.2	7.3
5 Adelaide	6 828.6	7 298.2	6.9	6.2
6 Gold Coast	5 425.7	5 620.4	3.6	4.8
7 Cairns	3 905.5	4 052.6	3.8	3.5
8 Canberra	2 713.2	2 795.1	3.0	2.4
9 Hobart	2 499.9	2 651.7	6.1	2.3
10 Sunshine Coast	1 624.6	1 895.6	16.7	1.6
<b>Total top ten airports</b>	<b>92 733.1</b>	<b>98 415.7</b>	<b>6.1</b>	<b>83.9</b>
<b>Total domestic network</b>	<b>110 591.7</b>	<b>117 255.9</b>	<b>6.0</b>	<b>100.0</b>

Note: Airport passenger movement numbers are the sum of passenger arrivals and departures at each airport.

### Top ten airports, RPT passenger movements



## TOP FIVE AIRPORTS – CARGO MOVEMENTS

Table 8: Top five airports, domestic RPT cargo movements (000s tonnes) - monthly activity

Airport	Jun 2023	Jun 2024	% Change	% of Total
1 Melbourne	7.7	6.9	-10.0	27.7
2 Sydney	6.4	5.3	-17.2	21.3
3 Brisbane	5.0	4.6	-7.4	18.5
4 Perth	2.9	2.8	-2.2	11.2
5 Adelaide	1.5	1.4	-9.4	5.4
<b>Total top five airports</b>	<b>23.4</b>	<b>21.0</b>	<b>-10.4</b>	<b>84.1</b>
<b>Total domestic network</b>	<b>28.3</b>	<b>25.0</b>	<b>-11.7</b>	<b>100.0</b>

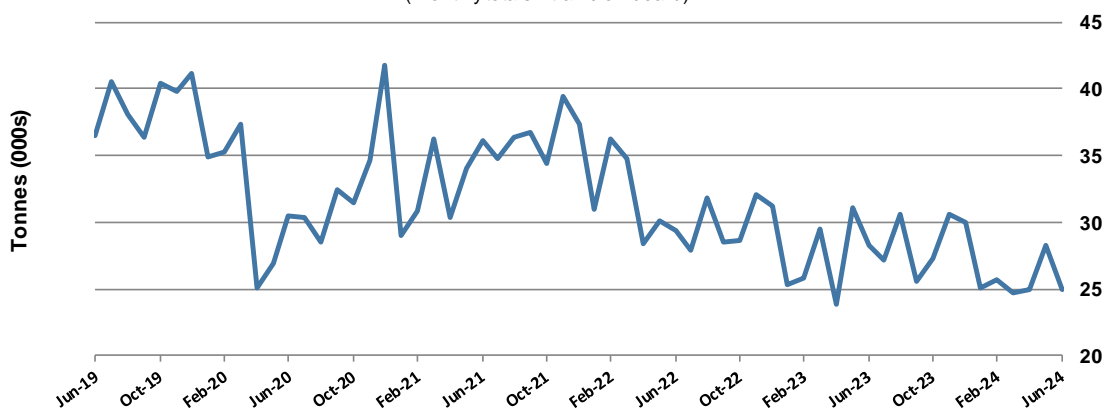
Table 9: Top five airports, domestic RPT cargo movements (000s tonnes) - annual activity

Airport	YE Jun 2023	YE Jun 2024	% Change	% of Total
1 Melbourne	92.8	88.0	-5.2	27.1
2 Sydney	76.5	71.6	-6.4	22.0
3 Brisbane	59.5	59.1	-0.7	18.2
4 Perth	35.8	35.1	-1.9	10.8
5 Adelaide	19.4	18.4	-5.2	5.7
<b>Total top five airports</b>	<b>283.9</b>	<b>272.1</b>	<b>-4.2</b>	<b>83.8</b>
<b>Total domestic network</b>	<b>343.9</b>	<b>324.9</b>	<b>-5.5</b>	<b>100.0</b>

Note: Airport cargo tonnes are the sum of cargo tonnes on arrivals and departures at each airport.

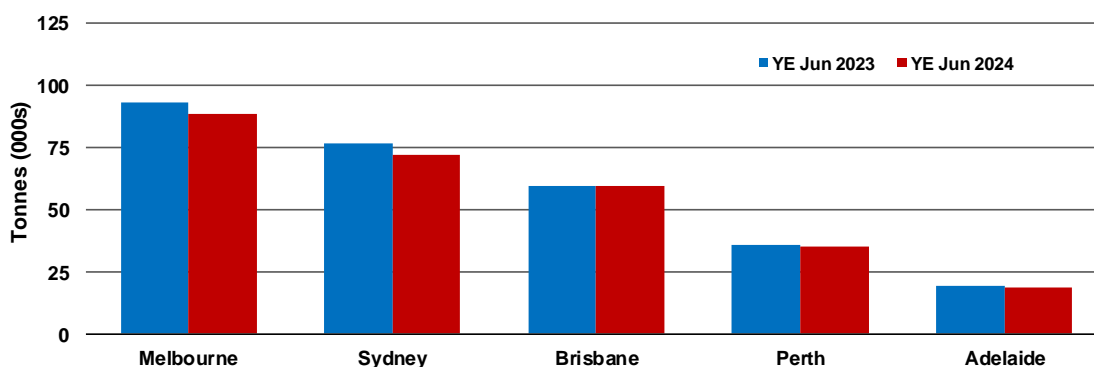
### Total domestic network - cargo movement

(monthly totals - traffic on board)



### Top five airports, cargo movements

(Domestic cargo traffic - traffic on board)



Note: Airport cargo tonnes are the sum of cargo tonnes on arrivals and departures at each airport.

## TOP TEN ROUTES

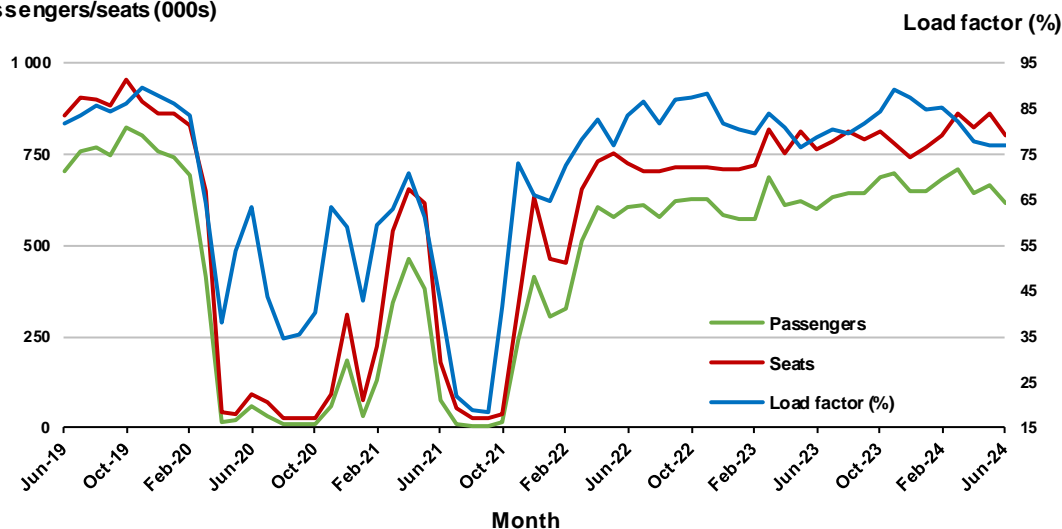
### 1. Melbourne - Sydney

#### Monthly data

	Jun 2023	Jun 2024	% Change
Passengers carried (000s)	601.5	615.3	2.3
Seats (000s)	764.7	801.7	4.8
Load factor %	78.7	76.8	-1.9 *
Aircraft trips	4 438	4 619	4.1

\* percentage point difference

#### Passengers/seats (000s)

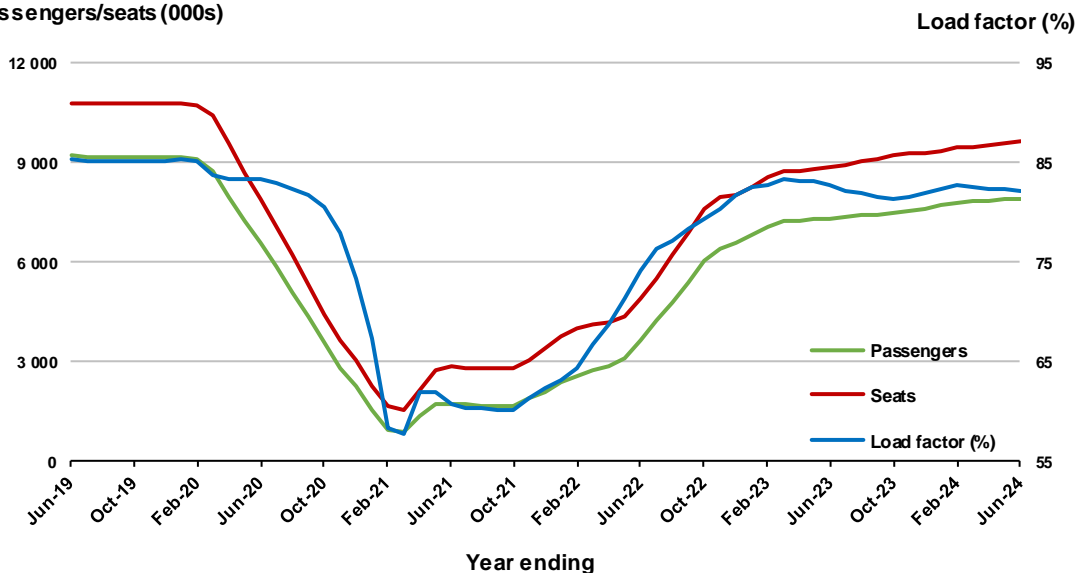


#### Moving annual data

	YE Jun 2023	YE Jun 2024	% Change
Passengers carried (000s)	7 314.0	7 920.0	8.3
Seats (000s)	8 845.5	9 641.6	9.0
Load factor %	82.7	82.2	-0.5 *
Aircraft trips	50 911	55 820	9.6

\* percentage point difference

#### Passengers/seats (000s)

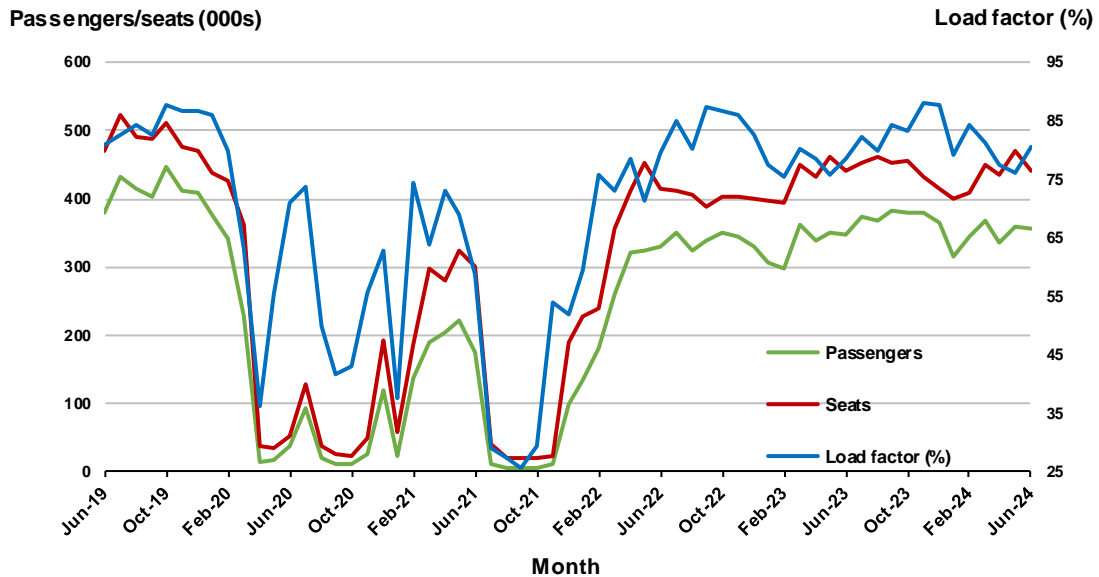


## 2. Brisbane - Sydney

### Monthly data

	Jun 2023	Jun 2024	% Change
Passengers carried (000s)	346.9	355.1	2.4
Seats (000s)	441.7	440.4	-0.3
Load factor %	78.5	80.6	2.1 *
Aircraft trips	2 705	2 633	-2.7

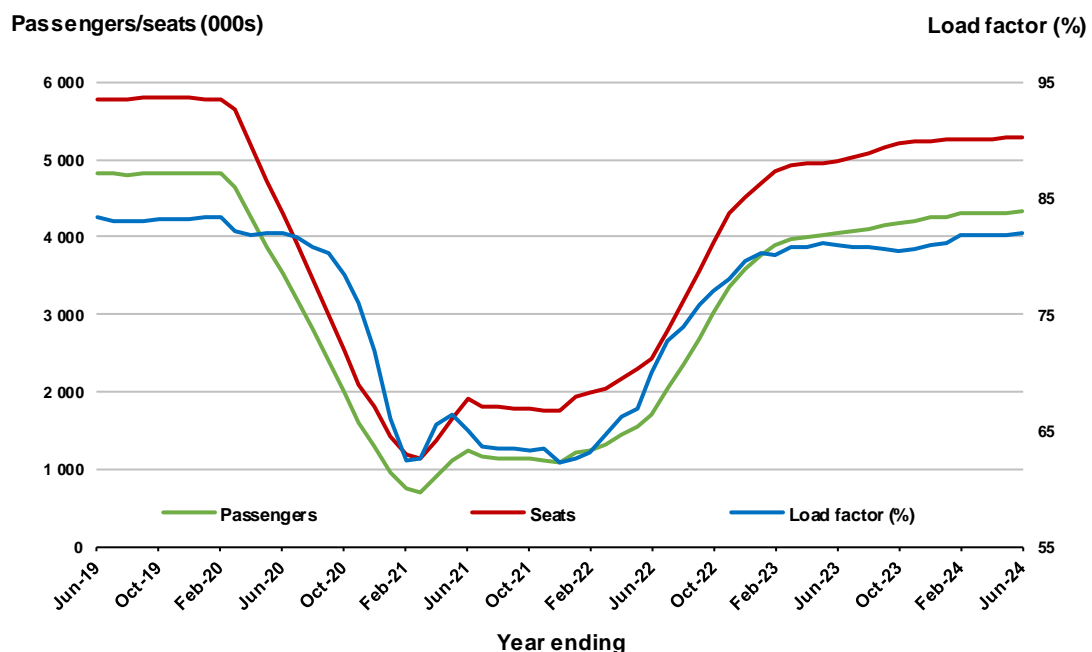
\* percentage point difference



### Moving annual data

	YE Jun 2023	YE Jun 2024	% Change
Passengers carried (000s)	4 043.7	4 325.1	7.0
Seats (000s)	4 989.6	5 277.3	5.8
Load factor %	81.0	82.0	0.9 *
Aircraft trips	30 647	32 310	5.4

\* percentage point difference

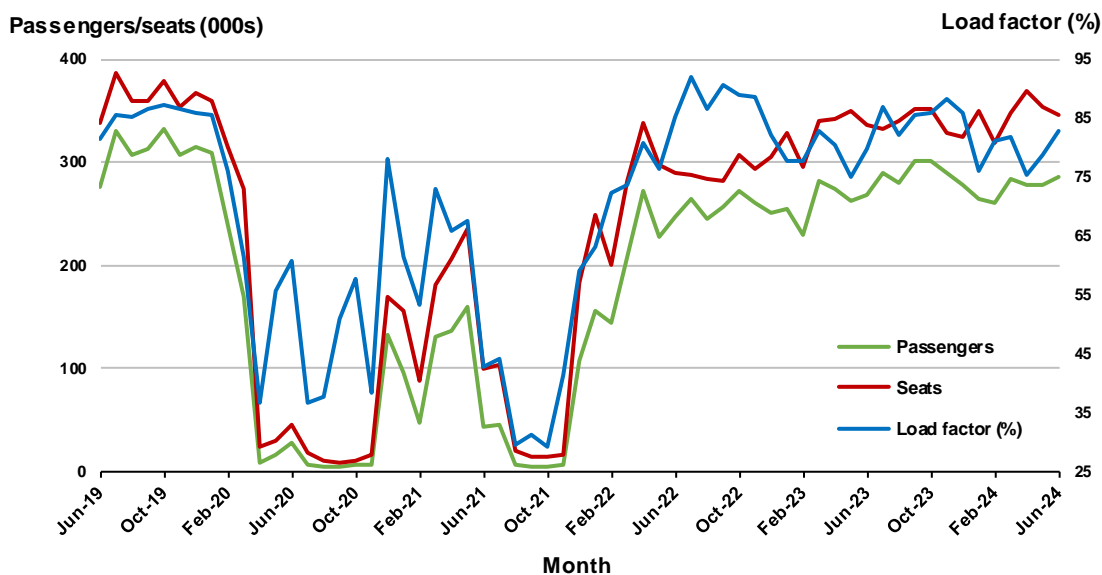


### 3. Brisbane - Melbourne

#### Monthly data

	Jun 2023	Jun 2024	% Change
Passengers carried (000s)	269.2	285.9	6.2
Seats (000s)	337.0	345.7	2.6
Load factor %	79.9	82.7	2.8 *
Aircraft trips	2 043	2 064	1.0

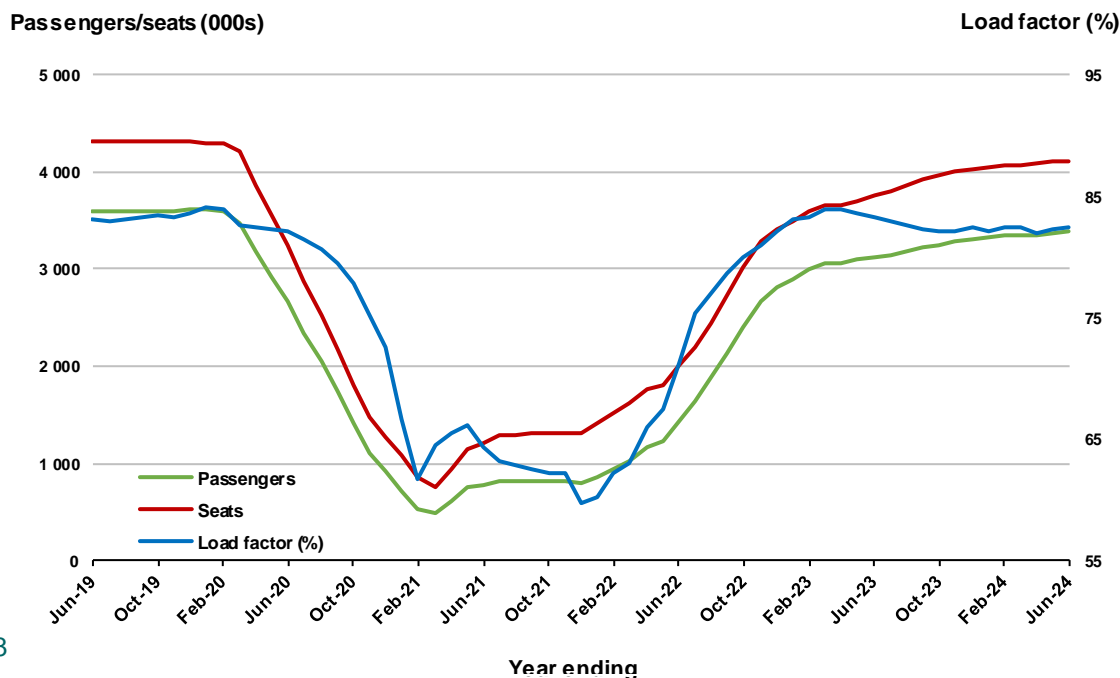
\* percentage point difference



#### Moving annual data

	YE Jun 2023	YE Jun 2024	% Change
Passengers carried (000s)	3 124.3	3 389.9	8.5
Seats (000s)	3 754.1	4 111.7	9.5
Load factor %	83.2	82.4	-0.8 *
Aircraft trips	22 864	24 727	8.1

\* percentage point difference





## 4. Gold Coast - Sydney <sup>(a)</sup>

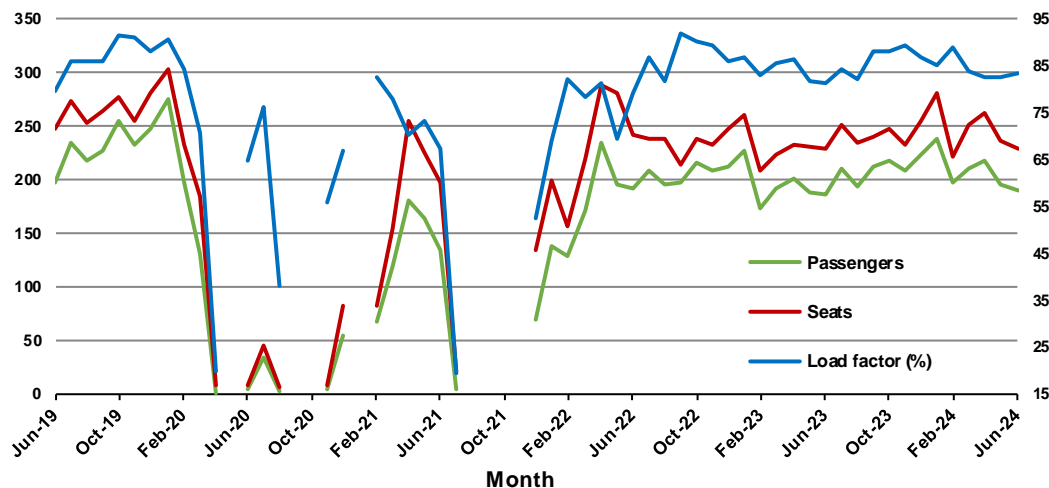
### Monthly data

	Jun 2023	Jun 2024	% Change
Passengers carried (000s)	186.9	190.8	2.1
Seats (000s)	229.2	229.1	0.0
Load factor %	81.5	83.3	1.8 *
Aircraft trips	1 304	1 292	-0.9

\* percentage point difference

### Passengers/seats (000s)

### Load factor (%)



(a) May, September and October 2020 and January and August to November 2021 data not available for release.

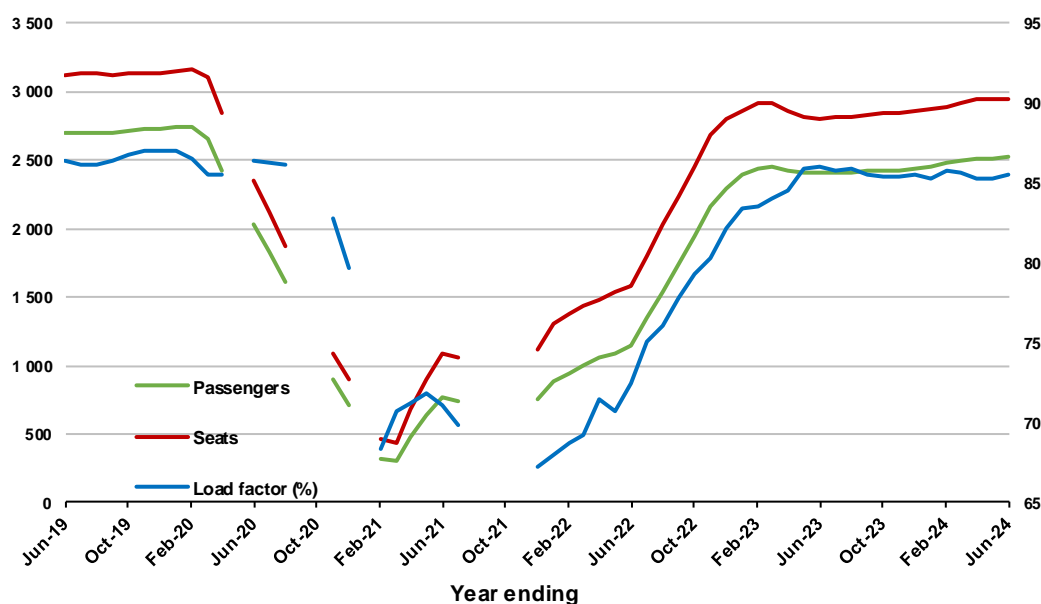
### Moving annual data

	YE Jun 2023	YE Jun 2024	% Change
Passengers carried (000s)	2 407.9	2 518.6	4.6
Seats (000s)	2 798.6	2 947.4	5.3
Load factor %	86.0	85.5	-0.6 *
Aircraft trips	16 177	16 733	3.4

\* percentage point difference

### Passengers/seats (000s)

### Load factor (%)



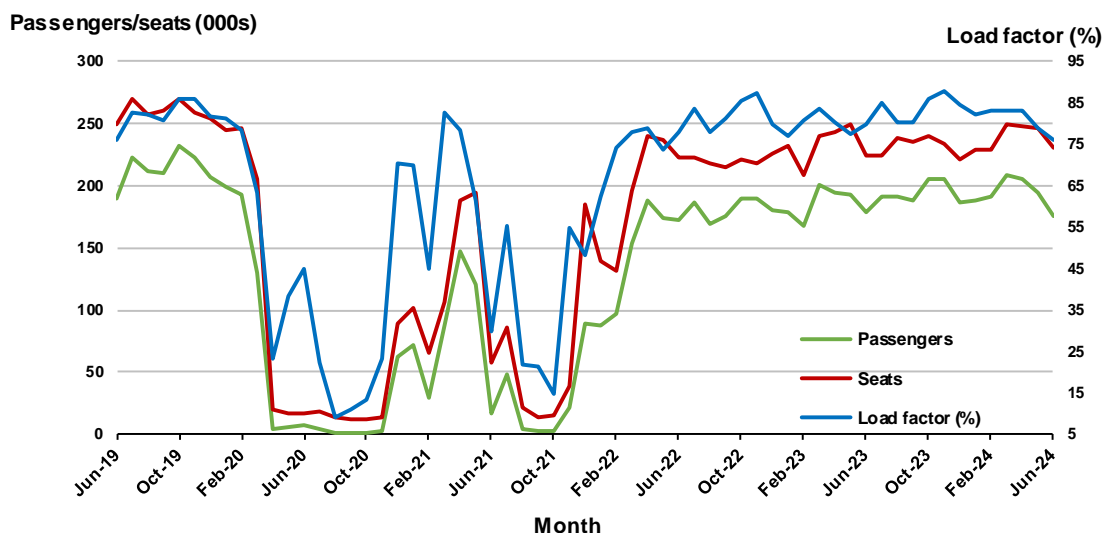
(a) May, September and October 2020 and January and August to November 2021 moving annual totals not available for release.

## 5. Adelaide - Melbourne

### Monthly data

	Jun 2023	Jun 2024	% Change
Passengers carried (000s)	179.1	175.8	-1.8
Seats (000s)	224.1	231.0	3.0
Load factor %	79.9	76.1	-3.8 *
Aircraft trips	1 366	1 383	1.2

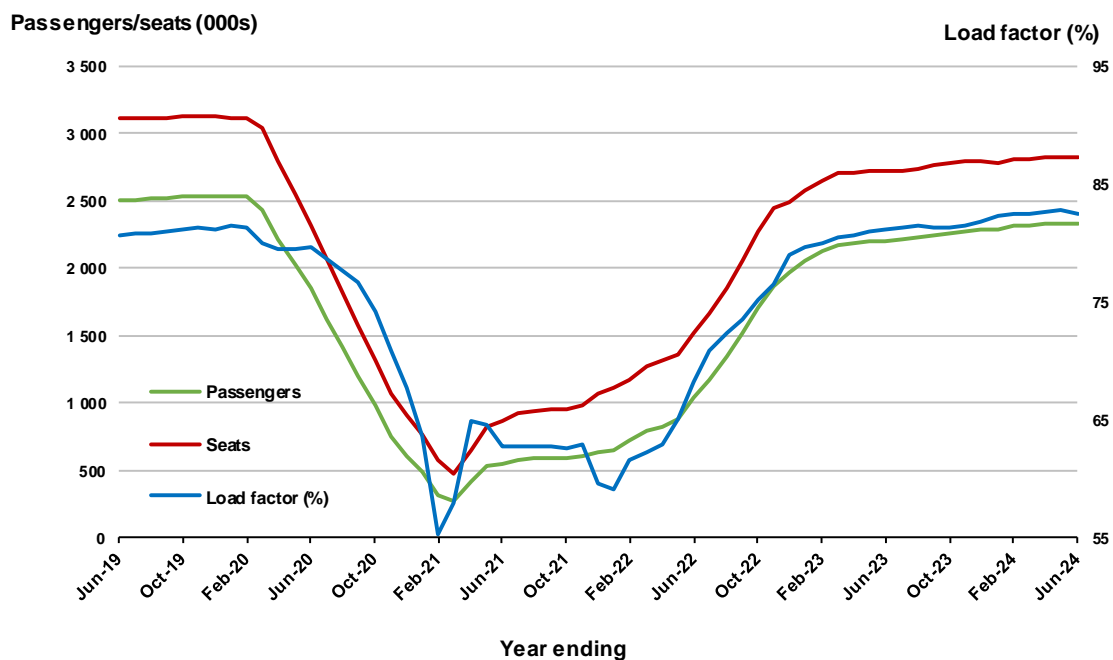
\* percentage point difference



### Moving annual data

	YE Jun 2023	YE Jun 2024	% Change
Passengers carried (000s)	2 206.8	2 332.0	5.7
Seats (000s)	2 719.1	2 825.6	3.9
Load factor %	81.2	82.5	1.4 *
Aircraft trips	16 686	17 232	3.3

\* percentage point difference

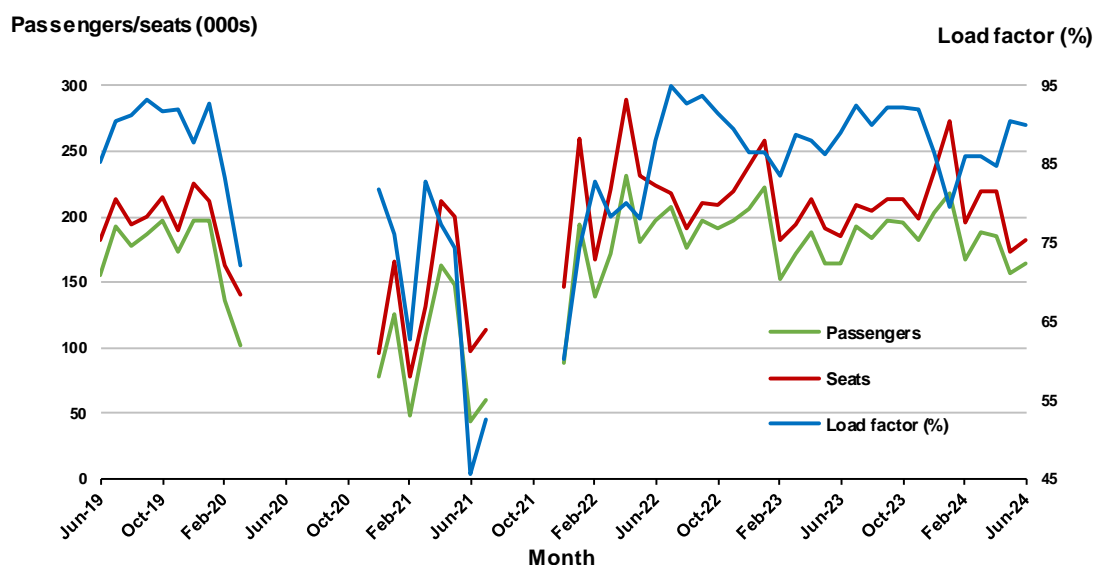


## 6. Gold Coast - Melbourne <sup>(a)</sup>

### Monthly data

	Jun 2023	Jun 2024	% Change
Passengers carried (000s)	164.3	164.0	-0.2
Seats (000s)	184.7	182.3	-1.3
Load factor %	89.0	89.9	0.9 *
Aircraft trips	998	990	-0.8

\* percentage point difference

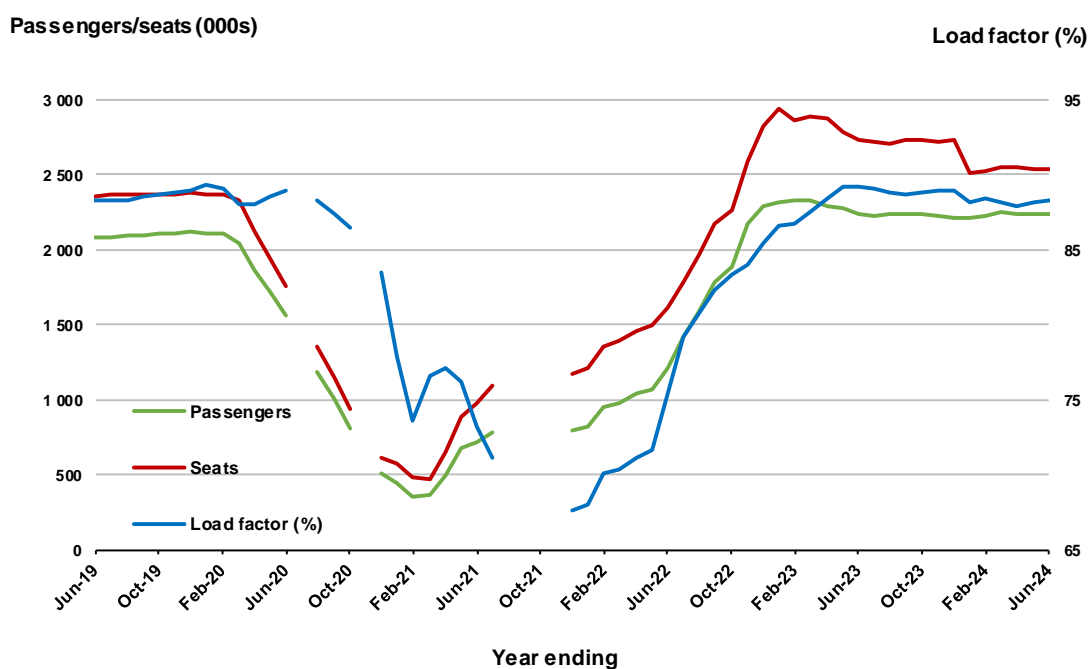


(a) April to November 2020 and August to November 2021 data not available for release.

### Moving annual data

	YE Jun 2023	YE Jun 2024	% Change
Passengers carried (000s)	2 240.8	2 236.2	-0.2
Seats (000s)	2 734.3	2 533.5	-7.3
Load factor %	89.3	88.3	-1.0 *
Aircraft trips	13 809	13 810	0.0

\* percentage point difference



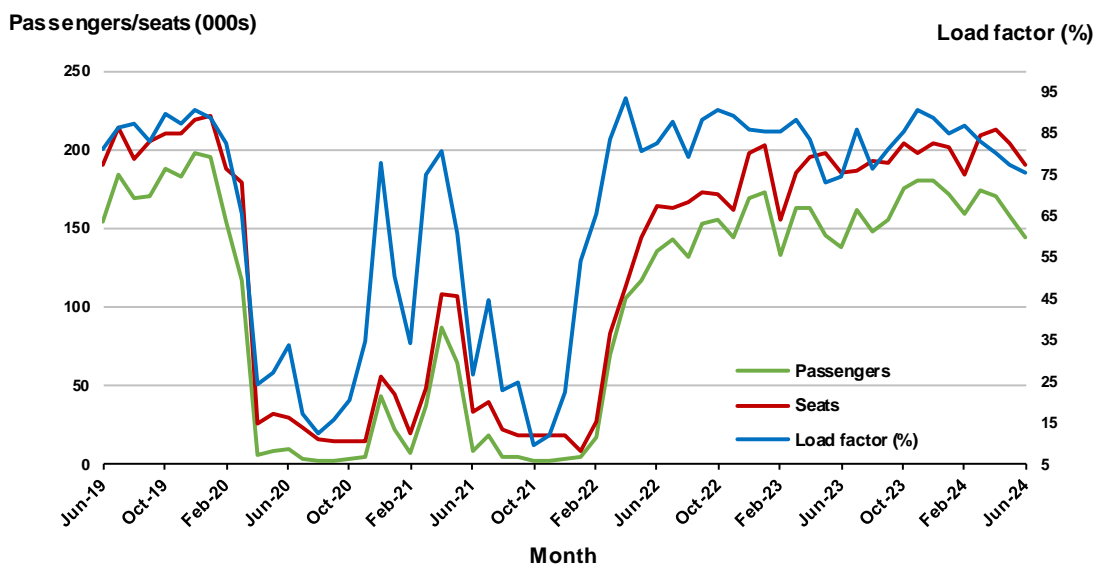
(a) April to November 2020 and August to November 2021 moving annual totals are not available for release.

## 7. Melbourne - Perth

### Monthly data

	Jun 2023	Jun 2024	% Change
Passengers carried (000s)	137.9	143.8	4.3
Seats (000s)	184.9	190.9	3.2
Load factor %	74.6	75.4	0.8 *
Aircraft trips	1 023	1 028	0.5

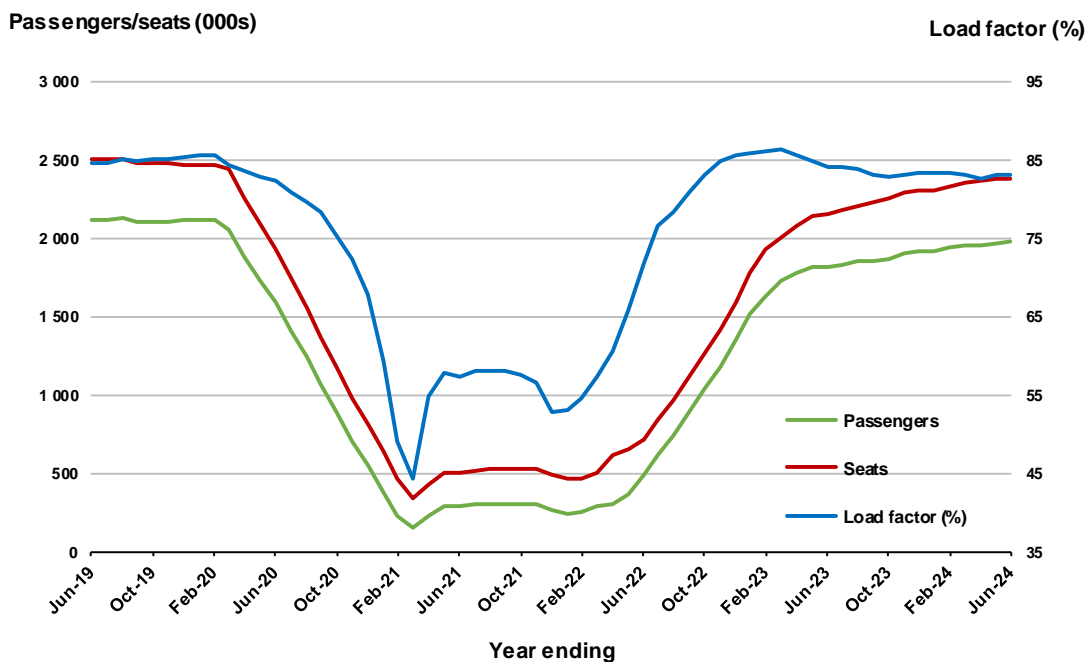
\* percentage point difference



### Moving annual data

	YE Jun 2023	YE Jun 2024	% Change
Passengers carried (000s)	1 813.6	1 976.9	9.0
Seats (000s)	2 156.1	2 380.3	10.4
Load factor %	84.1	83.1	-1.1 *
Aircraft trips	12 027	13 207	9.8

\* percentage point difference

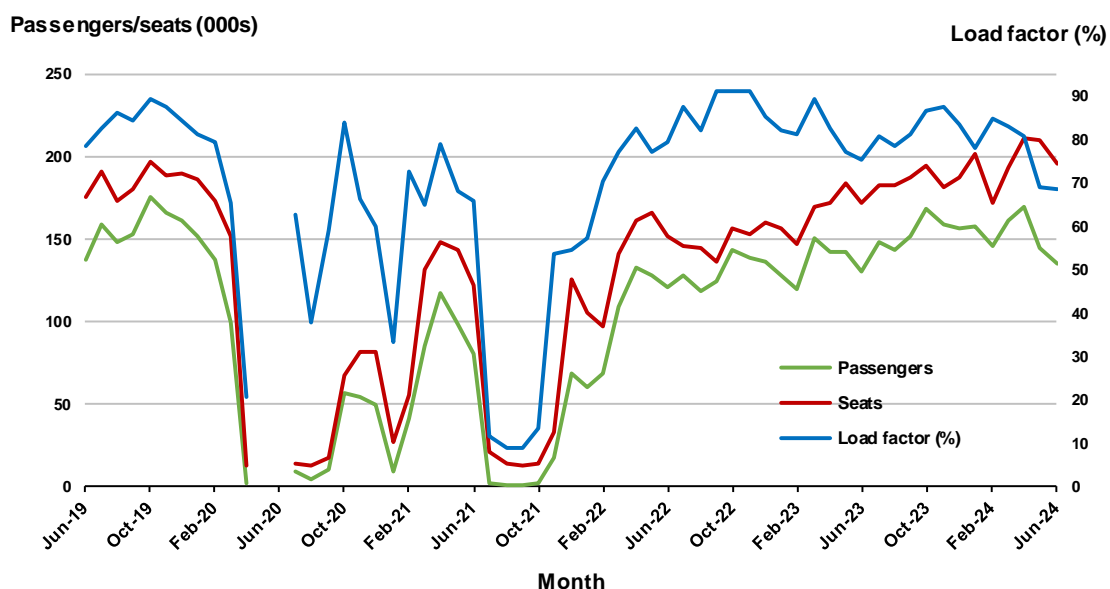


## 8. Adelaide - Sydney <sup>(a)</sup>

### Monthly data

	Jun 2023	Jun 2024	% Change
Passengers carried (000s)	130.1	135.0	3.8
Seats (000s)	172.4	196.4	13.9
Load factor %	75.5	68.8	-6.7 *
Aircraft trips	1 046	1 158	10.7

\* percentage point difference

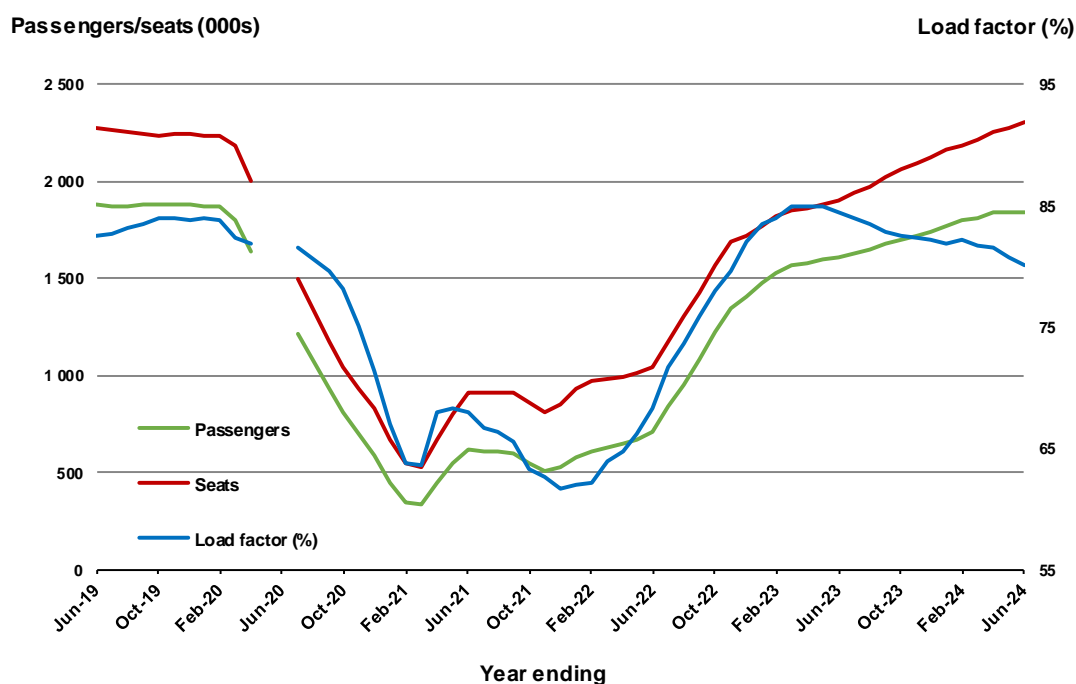


(a) May and June 2020 data not available for release.

### Moving annual data

	YE Jun 2023	YE Jun 2024	% Change
Passengers carried (000s)	1 604.8	1 844.0	14.9
Seats (000s)	1 899.7	2 302.4	21.2
Load factor %	84.5	80.1	-4.4 *
Aircraft trips	11 627	13 984	20.3

\* percentage point difference



(a) May and June 2020 moving annual totals are not available for release.

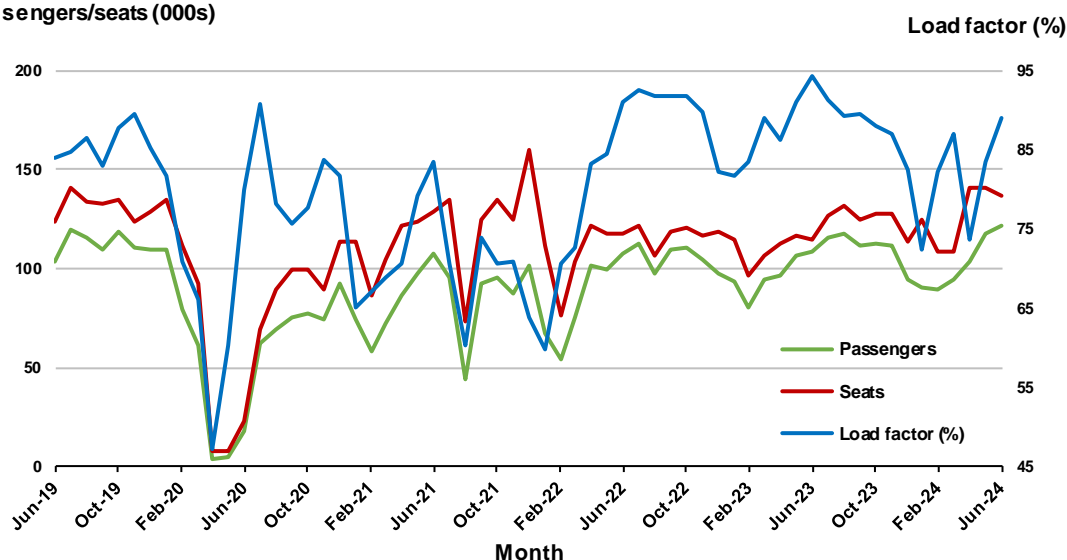
## 9. Brisbane - Cairns

### Monthly data

	Jun 2023	Jun 2024	% Change
Passengers carried (000s)	108.5	121.4	11.9
Seats (000s)	115.1	136.3	18.4
Load factor %	94.3	89.1	-5.2 *
Aircraft trips	799	929	16.3

\* percentage point difference

### Passengers/seats (000s)

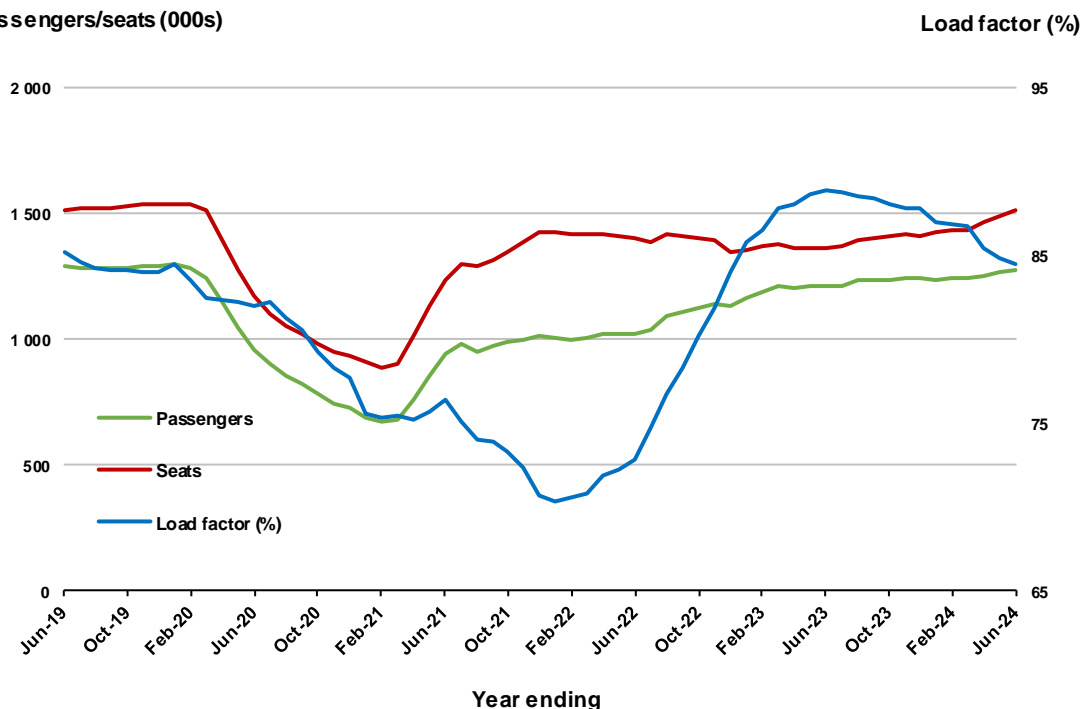


### Moving annual data

	YE Jun 2023	YE Jun 2024	% Change
Passengers carried (000s)	1 213.4	1 279.3	5.4
Seats (000s)	1 365.0	1 513.0	10.8
Load factor %	88.9	84.6	-4.3 *
Aircraft trips	9 069	10 284	13.4

\* percentage point difference

### Passengers/seats (000s)

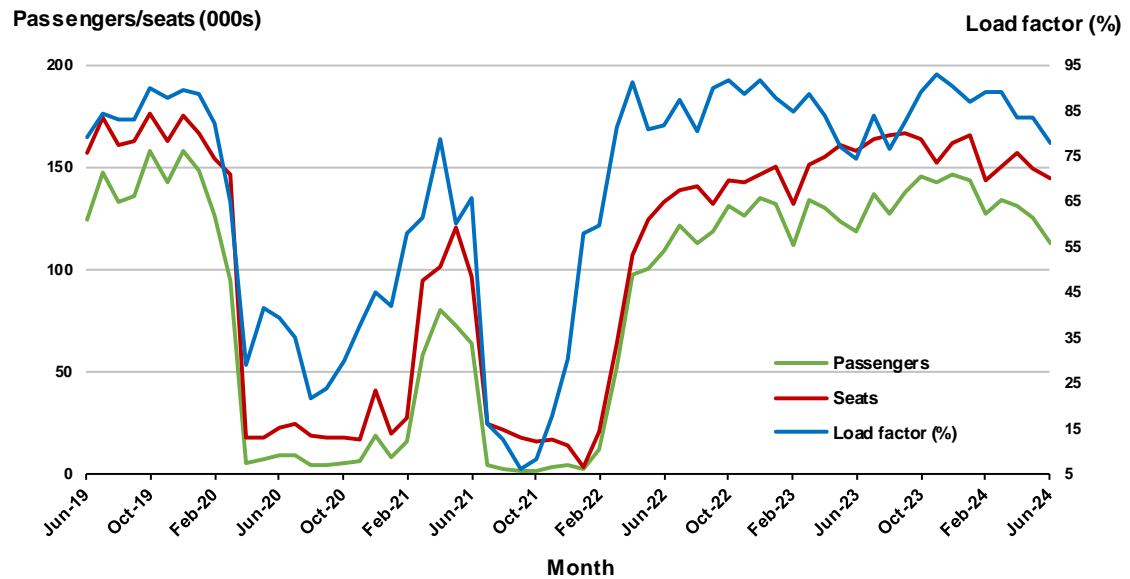


## 10. Perth - Sydney

### Monthly data

	Jun 2023	Jun 2024	% Change
Passengers carried (000s)	118.2	113.1	-4.3
Seats (000s)	158.4	145.0	-8.4
Load factor %	74.6	78.0	3.4 *
Aircraft trips	800	758	-5.3

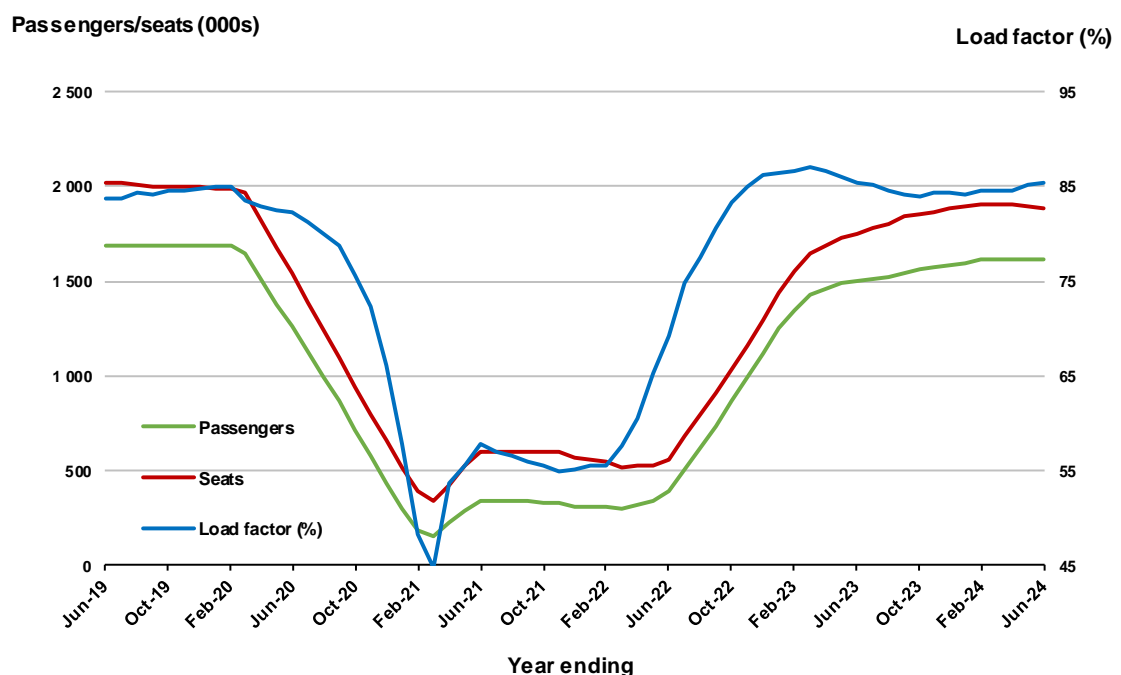
\* percentage point difference



### Moving annual data

	YE Jun 2023	YE Jun 2024	% Change
Passengers carried (000s)	1 496.8	1 610.6	7.6
Seats (000s)	1 753.2	1 885.0	7.5
Load factor %	85.4	85.4	0.1 *
Aircraft trips	9 188	9 818	6.9

\* percentage point difference



## TOP FIFTY REGIONAL AIRPORTS

**Table 10: Top fifty regional airports (000s) — passenger movements, monthly**

Airport	Jun 2023	Jun 2024	% Change
1 Cairns	344.7	343.7	-0.3
2 Hobart	192.7	187.7	-2.6
3 Darwin	159.0	152.5	-4.1
4 Townsville	154.5	139.2	-9.9
5 Launceston	90.4	91.9	1.6
6 Newcastle	91.3	90.8	-0.6
7 Mackay	77.1	73.8	-4.3
8 Rockhampton	56.0	52.3	-6.8
9 Karratha	46.7	51.3	10.0
10 Broome	44.9	46.0	2.5
11 Ballina	45.6	42.7	-6.4
12 Port Hedland	39.4	38.7	-1.7
13 Proserpine	42.1	36.3	-13.8
14 Alice Springs	34.3	34.3	0.0
15 Hamilton Island	35.8	34.1	-4.7
16 Newman	30.0	31.2	4.0
17 Kalgoorlie	30.4	28.3	-6.7
18 Ayers Rock	20.7	28.0	35.6
19 Paraburdoo	20.9	22.0	4.8
20 Coffs Harbour	24.8	20.5	-17.2
21 Mount Isa	20.0	19.6	-2.0
22 Albury	22.2	18.8	-15.4
23 Gladstone	19.4	18.6	-4.0
24 Dubbo	18.3	17.2	-6.1
25 Wagga Wagga	16.6	16.5	-0.3
26 Emerald	16.7	16.1	-3.6
27 Mildura	18.0	16.0	-11.1
28 Port Macquarie	18.6	15.3	-17.7
29 Kununurra	14.2	14.5	2.2
30 Hervey Bay	12.1	13.8	13.2
31 Port Lincoln	13.4	13.4	0.3
32 Tamworth	15.0	12.5	-16.5
33 Bundaberg	13.0	12.1	-6.8
34 Learmonth	11.9	10.7	-10.1
35 Thursday Island	10.1	10.4	2.9
36 Devonport	9.3	9.6	3.4
37 Geraldton	7.6	9.3	22.3
38 Moranbah	9.2	9.0	-2.7
39 Orange	8.7	8.5	-1.4
40 Olympic Dam	8.6	8.2	-4.5
41 Armidale	9.5	8.2	-13.7
42 Gove	7.7	8.2	7.0
43 Weipa	7.9	7.6	-4.2
44 Busselton	3.3	6.9	104.9
45 Burnie	6.2	5.9	-4.9
46 Mount Gambier	6.1	5.8	-3.4
47 Griffith	6.4	5.5	-14.6
48 Albany	5.2	5.4	4.9
49 Merimbula	5.7	5.3	-7.2
50 Roma	5.6	5.2	-7.2
<b>Total top 50 regional airports</b>	<b>1 927.8</b>	<b>1 879.6</b>	<b>- 2.5</b>
<b>Total regional airports</b>	<b>2 052.0</b>	<b>1 995.2</b>	<b>- 2.8</b>
<b>Total domestic network</b>	<b>9 178.1</b>	<b>9 193.1</b>	<b>0.2</b>

Note: Airport passenger movement numbers are the sum of passenger arrivals and departures at each airport. Regional airports are defined as airports which are, according to Australian Statistical Geography Standard (ASGS), not based in Major Cities.



**Table 11: Top fifty regional airports (000s) — passenger movements, annual**

<b>Airport</b>	<b>YE Jun 2023</b>	<b>YE Jun 2024</b>	<b>% Change</b>
1 Cairns	3 905.5	4 052.6	3.8
2 Hobart	2 499.9	2 651.7	6.1
3 Townsville	1 650.1	1 671.7	1.3
4 Darwin	1 636.3	1 593.6	-2.6
5 Launceston	1 294.0	1 413.0	9.2
6 Newcastle	1 090.4	1 201.2	10.2
7 Mackay	890.2	911.7	2.4
8 Rockhampton	557.6	656.2	17.7
9 Ballina	632.6	620.3	-2.0
10 Karratha	531.7	582.5	9.5
11 Proserpine	477.8	506.5	6.0
12 Hamilton Island	500.2	489.7	-2.1
13 Port Hedland	477.0	485.1	1.7
14 Broome	440.8	439.5	-0.3
15 Newman	365.8	372.2	1.7
16 Alice Springs	363.6	367.5	1.1
17 Kalgoorlie	338.9	361.9	6.8
18 Ayers Rock	245.7	283.6	15.4
19 Albury	236.6	276.5	16.9
20 Coffs Harbour	285.9	266.8	-6.7
21 Paraburdoo	226.0	263.4	16.5
22 Gladstone	207.2	240.2	15.9
23 Mount Isa	230.7	232.3	0.7
24 Mildura	207.8	231.9	11.6
25 Port Macquarie	193.2	228.0	18.0
26 Dubbo	199.5	213.7	7.2
27 Wagga Wagga	194.7	201.8	3.6
28 Emerald	189.5	195.9	3.4
29 Tamworth	153.7	173.3	12.7
30 Port Lincoln	178.7	171.7	-3.9
31 Bundaberg	117.2	165.3	41.0
32 Hervey Bay	137.3	154.7	12.7
33 Kununurra	131.9	139.4	5.7
34 Devonport	119.6	121.7	1.8
35 Moranbah	106.6	111.1	4.2
36 Thursday Island	102.7	110.3	7.3
37 Geraldton	82.2	110.0	33.9
38 Orange	100.1	109.3	9.2
39 Armidale	110.7	107.3	-3.1
40 Olympic Dam	98.1	103.6	5.5
41 Learmonth	103.5	103.1	-0.4
42 Gove	88.0	92.4	5.0
43 Weipa	84.9	90.0	6.0
44 Toowoomba Wellcamp	52.1	84.7	62.5
45 Burnie	82.7	80.7	-2.4
46 Mount Gambier	76.7	72.9	-5.0
47 Merimbula	75.0	70.2	-6.4
48 Norfolk Island	70.2	70.0	-0.2
49 Griffith	76.3	69.3	-9.2
50 Busselton	51.0	65.3	28.0
<b>Total top 50 regional airports</b>	<b>22 268.6</b>	<b>23 386.9</b>	<b>5.0</b>
<b>Total regional airports</b>	<b>23 674.8</b>	<b>24 811.0</b>	<b>4.8</b>
<b>Total domestic network</b>	<b>110 591.7</b>	<b>117 255.9</b>	<b>6.0</b>

Note: Airport passenger movement numbers are the sum of passenger arrivals and departures at each airport. Regional airports are defined as airports which are, according to Australian Statistical Geography Standard (ASGS), not based in Major Cities.

## DOMESTIC CHARTER ACTIVITY

**Table 12: Charter passengers carried and aircraft trips - monthly activity (000s)**

	Jun 2023	Jun 2024	% Change
Total domestic charter passengers	332.5	336.8	1.3
Total domestic charter aircraft trips	5.7	5.6	-0.7

Note: Helicopter, joyflights and sightseeing charter flights not included.

**Table 13: Charter passengers carried and aircraft trips - annual activity (000s)**

	YE Jun 2023	YE Jun 2024	% Change
Total domestic charter passengers	3 811.4	4 244.0	11.3
Total domestic charter aircraft trips	67.2	72.4	7.8

Note: Helicopter, joyflights and sightseeing charter flights not included.

**Table 14: Domestic airports - charter activity - monthly (000s)**

	Jun 2023	Jun 2024	% Change
Total domestic charter passenger movements	665.0	673.7	1.3
Total domestic charter aircraft movements	11.3	11.3	-0.7
Perth airport charter passenger movements	249.5	250.5	0.4
Perth airport charter aircraft movements	3.9	3.7	-5.2

Note: Helicopter, joyflights and sightseeing charter flights not included.

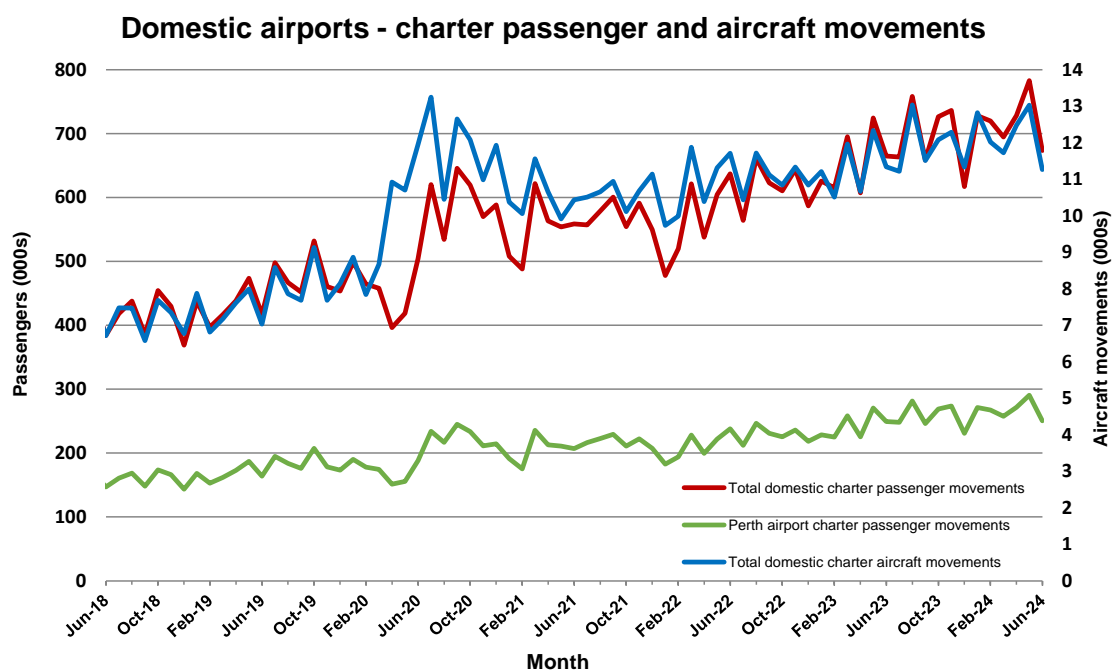
Charter passenger and aircraft movement numbers are the sum of arrivals and departures at each airport.

**Table 15: Domestic airports - charter activity - annual (000s)**

	YE Jun 2023	YE Jun 2024	% Change
Total domestic charter passenger movements	7 622.8	8 488.0	11.3
Total domestic charter aircraft movements	134.3	144.8	7.8
Perth airport charter passenger movements	2 827.9	3 158.7	11.7
Perth airport charter aircraft movements	45.1	48.4	7.3

Note: Helicopter, joyflights and sightseeing charter flights not included.

Charter passenger and aircraft movement numbers are the sum of arrivals and departures at each airport.



## DEFINITIONS

Aircraft Trips	The number of flight stages. A return flight counts as two aircraft trips.
Airport Movements	Airport movements (passenger and cargo) are measured once on arrival and once on departure. Each domestic trip generates two movements at airports. For example, a trip from Melbourne to Sydney will be counted twice, as a departure at Melbourne and as an arrival at Sydney. At the national level, the sum of all domestic airport traffic will therefore be equal to twice the number of trips undertaken.
Available Seat Kilometres (ASKs)	Calculated by multiplying the number of seats available on each flight stage, by the distance in kilometres between the ports. The distances used are Great Circle Distances.
City-Pair	The ports shown make up the city-pair route. Passenger movements shown for a city pair reflect total traffic in both directions.
Flight Stage	The operation of an aircraft from take-off to landing.
Load Factor	The total revenue passenger kilometres performed as a percentage of the total available seat kilometres.
Passengers Carried	Revenue passengers carried.
Regular Public Transport Services (RPT)	All air service operations in which aircraft are available for the transport of members of the public and are conducted in accordance with fixed schedules. It does not include charter or other non-scheduled operations.
Revenue Passengers	All passengers paying any fare. Frequent flyer redemption travellers are regarded as revenue passengers.
Revenue Passenger Kilometres (RPKs)	Calculated by multiplying the number of revenue passengers travelling on each flight stage, by the distance in kilometres between the ports. The distances used are Great Circle Distances.
Traffic on board by stages (TOB)	The total of all traffic (revenue passengers) on each flight stage between two directly connected airports.
..	Not available for confidentiality or other reasons.
NA	Not applicable.