



**Australian Government**

**Department of Infrastructure, Transport,  
Regional Development, Communications and the Arts**  
Bureau of Infrastructure and Transport Research Economics

STATISTICAL REPORT



Aviation

**Domestic aviation activity  
March 2023**

© Commonwealth of Australia 2023

ISSN: 1832 - 1968

### **Ownership of intellectual property rights in this publication**

Unless otherwise noted, copyright (and any other intellectual property rights, if any) in this publication is owned by the Commonwealth of Australia (referred to below as the Commonwealth).

### **Disclaimer**

The material contained in this publication is made available on the understanding that the Commonwealth is not providing professional advice, and that users exercise their own skill and care with respect to its use, and seek independent advice if necessary.

The Commonwealth makes no representations or warranties as to the contents or accuracy of the information contained in this publication. To the extent permitted by law, the Commonwealth disclaims liability to any person or organisation in respect of anything done, or omitted to be done, in reliance upon information contained in this publication.

### **Creative Commons licence**

With the exception of (a) the Coat of Arms; and (b) the Department of Infrastructure, Transport, Regional Development, Communications and the Arts' photos and graphics, copyright in this publication is licensed under a Creative Commons Attribution 3.0 Australia Licence.

Creative Commons Attribution 3.0 Australia Licence is a standard form licence agreement that allows you to copy, communicate and adapt this publication provided that you attribute the work to the Commonwealth and abide by the other licence terms. A summary of the licence terms is available from <http://creativecommons.org/licenses/by/3.0/au/deed.en>.

The full licence terms are available from <http://creativecommons.org/licenses/by/3.0/au/legalcode>.

### **Use of the Coat of Arms**

The Department of the Prime Minister and Cabinet sets the terms under which the Coat of Arms is used. Please refer to the Department's Commonwealth Coat of Arms and Government branding web page <http://www.dpmc.gov.au/guidelines/index.cfm#brand> and, in particular, the Guidelines on the use of the Commonwealth Coat of Arms publication.

An appropriate citation for this report is:

Bureau of Infrastructure and Transport Research Economics (BITRE), 2023, Domestic aviation activity, Statistical Report, BITRE, Canberra ACT.

### **Contact us**

This publication is available in PDF format. All other rights are reserved, including in relation to any Departmental logos or trade marks which may exist. For enquiries regarding the licence and any use of this publication, please contact:

Bureau of Infrastructure and Transport Research Economics (BITRE)  
Department of Infrastructure, Transport, Regional Development, Communications and the Arts  
GPO Box 501, Canberra ACT 2601, Australia  
Telephone: (international) +61 2 6274 7210  
Fax: (international) +61 2 6274 6855  
Email: [bitre@infrastructure.gov.au](mailto:bitre@infrastructure.gov.au)  
Website: [www.bitre.gov.au](http://www.bitre.gov.au)

### **Inquiries**

Should you require additional information about the statistics contained in this publication:

Nebojsa Pavlovic

Telephone (02) 6274 6817

Electronic mail: [AVSTATS@infrastructure.gov.au](mailto:AVSTATS@infrastructure.gov.au)

[Nebojsa.Pavlovic@infrastructure.gov.au](mailto:Nebojsa.Pavlovic@infrastructure.gov.au)

Web site: <http://www.bitre.gov.au/statistics/aviation/domestic.aspx>

## FOREWORD

This report provides an overview of domestic (including charter) commercial aviation activity in Australia for the month of March 2023.

The data covers revenue passengers carried by Australian-registered operators of scheduled regular public transport services over Australian flight stages and fixed-wing charter operators. These estimates include passengers carried between domestic airports on international flights operated by these carriers. The passengers carried refer to traffic on board by stages.

Estimates of passengers and aircraft movements for charter aviation are included in this publication, where BITRE confidentiality standards are met.

Individual routes shown are restricted to those with an average exceeding 8,000 passengers per month over the previous six months where two or more airlines operate in competition. However, for the period from November 2021 through to December 2022, the major airlines (Qantas Group, Virgin Australia and Rex Airlines) agreed to publication of the top 35 routes based on pre-COVID activity (December 2019) whether or not they were meeting the above criteria. From January 2023, the passenger load and dual competition requirements were reinstated due to the continued recovery of passenger numbers.

Information on the total network for the month of March 2023 and on the Regular Public Transport (RPT) network for the month of March 2023 is presented on page 2, with estimates for the year ended March 2023 presented on page 3.

Detailed information on individual routes can be found in the RPT summary pages 4-13 of this publication.

The top ten airports in terms of RPT passenger movements are shown on page 14.

Data on domestic RPT cargo movements at the top five cargo airports are provided on page 15. The table includes cargo carried on passenger flights operated by the Qantas group (including Jetstar), Virgin Australia, Air North and Skippers as well as the cargo carried by dedicated freighter aircraft operated by Qantas Freight and Toll.

The long-term trends for the top ten competitive RPT routes are presented graphically on pages 16-25.

Domestic RPT passenger movements at regional airports are shown on pages 26-27.

Tables providing estimates of domestic charter aviation activity are shown on page 28. BITRE confidentiality standards restrict publication of detailed estimates for individual Australian airports, with the exception of Perth Airport.

A list of definitions can be found on page 29.

This report was prepared by the Aviation Statistics Section of the Bureau of Infrastructure and Transport Research Economics with data provided by airlines.

Estimates are included where data were not available and data presented in this publication may contain revisions to previously published data.

Where figures have been rounded, discrepancies may occur between sums of component items and totals, and in percentage changes which are derived from figures prior to rounding.

# CONTENTS

<b>Highlights .....</b>	<b>1</b>
<b>Total network.....</b>	<b>2</b>
<b>RPT network .....</b>	<b>2</b>
<b>Top competitive routes.....</b>	<b>4</b>
<b>Top ten airports – passenger movements.....</b>	<b>14</b>
<b>Top five airports – cargo movements.....</b>	<b>15</b>
<b>Top ten routes .....</b>	<b>16</b>
1. Melbourne – Sydney .....	16
2. Brisbane – Sydney.....	17
3. Brisbane – Melbourne .....	18
4. Adelaide – Melbourne .....	19
5. Gold Coast – Sydney .....	20
6. Gold Coast – Melbourne .....	21
7. Melbourne – Perth .....	22
8. Adelaide – Sydney .....	23
9. Perth – Sydney .....	24
10. Hobart – Melbourne .....	25
<b>Top fifty regional airports .....</b>	<b>26</b>
<b>Domestic charter activity.....</b>	<b>28</b>
<b>Definitions .....</b>	<b>29</b>

This page is intentionally left blank.

## HIGHLIGHTS

There were 5.16 million passengers carried on Australian domestic commercial aviation (including charter operations) in March 2023, an increase of 31.8 per cent on March 2022.

4.81 million passengers were carried on RPT flights in March 2023, an increase of 33.5 per cent compared to March 2022.

For the month of March 2023, there were 52,472 RPT aircraft trips, compared to 43,880 in March 2022.

For the year ending March 2023 there were 54.89 million RPT passengers, an increase of 110.5 per cent on the year ending March.

RPT revenue passenger kilometres (RPKs) performed were 5.61 billion for the month, compared with 3.93 billion in March 2022.

Capacity, measured by available seat kilometres (ASKs), increased to 6.85 billion in March 2023 compared to 5.41 billion in March 2022.

The industry wide load factor (RPKs/ASKs) increased from 72.7 per cent in March 2022 to 81.9 per cent in March 2023. The highest load factor (92.8 per cent) was recorded on the Adelaide – Gold Coast route while the lowest load factor (56.8 per cent) was recorded on the Armidale – Sydney route.

For the month of March 2023, Melbourne – Sydney was Australia's busiest RPT route with 689,672 passengers, followed by Brisbane – Sydney with 360,823 passengers and Brisbane – Melbourne with 281,636 passengers.

Sydney was Australia's busiest domestic airport with 2.08 million passenger movements in March 2023, followed by Melbourne with 1.99 million passenger movements and Brisbane with 1.38 million passenger movements.

Total cargo movements at Australian airports on domestic RPT flights were 29,506 tonnes in March 2023, a decrease of 15.2 per cent compared with March 2022.

In March 2023, there were 1.99 million domestic passenger movements through regional airports, compared to 1.59 million in March 2022, an increase of 25.1 per cent. Most regional airports for which data is available for publishing recorded large increases in March 2023 compared to March 2022.

Fixed-wing charter operators carried 347,527 passengers in March 2023, an increase of 11.9 per cent compared with March 2022. This was the highest number of passengers recorded since the charter survey commenced in July 2011. Perth Airport accounted for 37.2 per cent of all charter passengers in Australia.

## TOTAL NETWORK

### Summary of monthly commercial aviation activity

	Mar 2022	Mar 2023	% Change
Total passengers carried (millions)	3.91	5.16	31.8
Aircraft trips (000s)	49.8	58.4	17.3

Note: Regular Public Transport and charter aviation activity  
Helicopter, joy flights and sightseeing charter flights not included.

## RPT NETWORK

### Summary of monthly RPT activity

	Mar 2022	Mar 2023	% Change
Total passengers carried (millions)	3.60	4.81	33.5
Revenue passenger kilometres (billions)	3.93	5.61	42.7
Available seats (millions)	5.04	6.05	20.0
Available seat kilometres (billions)	5.41	6.85	26.7
Load factor %	72.7	81.9	9.2 *
Aircraft trips (000s)	43.9	52.5	19.6

\* percentage point difference

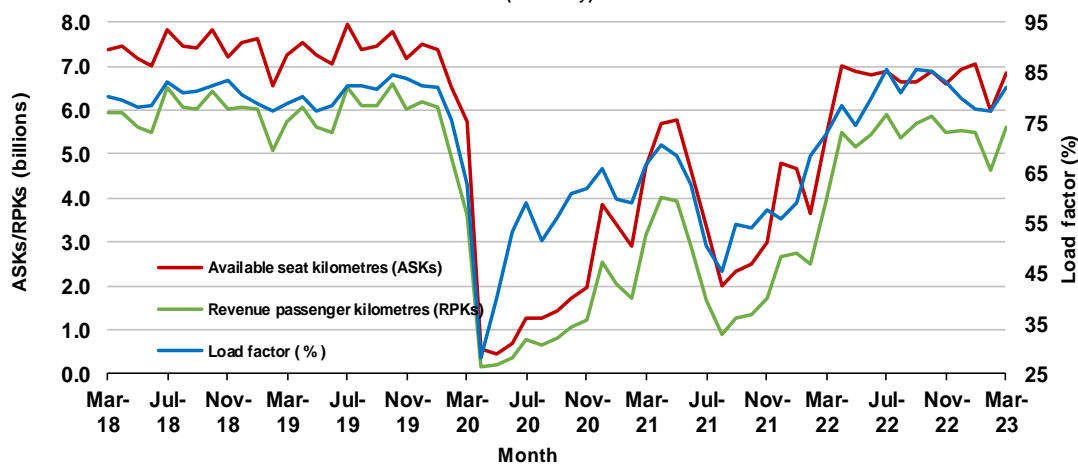
### Domestic RPT passenger traffic

(monthly)



### RPT Network utilisation

(monthly)





## TOTAL NETWORK

### Summary of annual commercial aviation activity

	YE Mar 2022	YE Mar 2023	% Change
Total passengers carried (millions)	29.44	58.64	99.2
Aircraft trips (000s)	454.8	659.7	45.1

Note: Regular Public Transport and charter aviation activity  
Helicopter, joy flights and sightseeing charter flights not included.

## RPT NETWORK

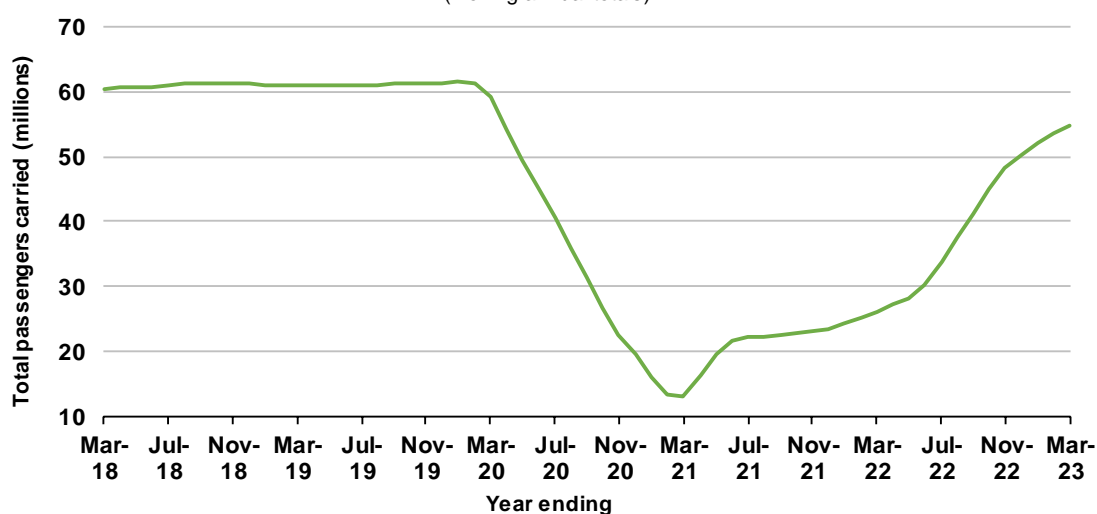
### Summary of annual RPT activity

	YE Mar 2022	YE Mar 2023	% Change
Total passengers carried (millions)	26.08	54.89	110.5
Revenue passenger kilometres (billions)	29.66	65.68	121.5
Available seats (millions)	42.43	69.95	64.9
Available seat kilometres (billions)	47.73	81.20	70.1
Load factor %	62.1	80.9	18.8 *
Aircraft trips (000s)	391.5	592.5	51.4

\* percentage point difference

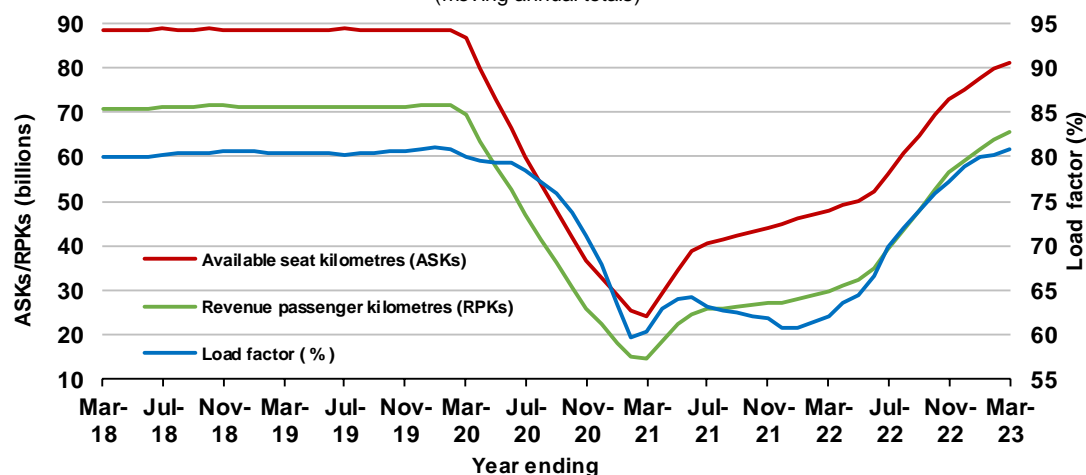
### Domestic RPT passenger traffic

(moving annual totals)



### RPT Network utilisation

(moving annual totals)



## TOP COMPETITIVE ROUTES

**Table 1: Passengers carried (000s) — annual activity**

	City-Pair	YE Mar 2022	YE Mar 2023	% Change
1	Melbourne - Sydney	2,756.9	7,260.3	163.4
2	Brisbane - Sydney	1,321.0	3,983.3	201.5
3	Brisbane - Melbourne	1,021.9	3,064.5	199.9
4	Gold Coast - Sydney	999.0	2,448.5	145.1
5	Gold Coast - Melbourne	975.3	2,329.1	138.8
6	Adelaide - Melbourne	789.5	2,175.9	175.6
7	Melbourne - Perth	287.8	1,726.2	499.8
8	Adelaide - Sydney	626.8	1,572.1	150.8
9	Perth - Sydney	298.0	1,430.9	380.2
10	Hobart - Melbourne	491.8	1,217.1	147.5
11	Brisbane - Cairns	1,005.0	1,209.8	20.4
12	Canberra - Melbourne	340.2	940.9	176.6
13	Brisbane - Perth	256.3	939.2	266.5
14	Cairns - Sydney	313.7	894.7	185.2
15	Brisbane - Townsville	682.0	868.4	27.3
16	Cairns - Melbourne	368.3	827.8	124.8
17	Adelaide - Brisbane	446.2	780.1	74.8
18	Launceston - Melbourne	323.1	755.8	133.9
19	Brisbane - Mackay	537.3	750.3	39.6
20	Sunshine Coast - Sydney	288.2	744.6	158.4
21	Melbourne - Sunshine Coast	333.2	719.6	116.0
22	Hobart - Sydney	312.4	713.3	128.3
23	Brisbane - Canberra	296.0	630.3	113.0
24	Adelaide - Perth	273.7	618.2	125.8
25	Canberra - Sydney	195.3	602.1	208.3
26	Ballina - Sydney	381.8	533.1	39.6
27	Karratha - Perth	437.1	517.1	18.3
28	Brisbane - Newcastle	211.6	492.2	132.6
29	Brisbane - Rockhampton	361.3	476.3	31.9
30	Perth - Port Hedland	382.4	471.6	23.3
31	Melbourne - Newcastle	194.7	406.2	108.7
32	Broome - Perth	378.9	373.9	-1.3
33	Newman - Perth	321.0	354.9	10.6
34	Brisbane - Darwin	259.5	340.9	31.4
35	Kalgoorlie - Perth	263.7	322.7	22.4
36	Darwin - Melbourne	..	305.7	NA
37	Brisbane - Hobart	261.2	305.7	17.0
38	Launceston - Sydney	140.6	303.9	116.2
39	Brisbane - Proserpine	254.1	293.3	15.4
40	Hamilton Island - Sydney	109.7	250.4	128.3
41	Adelaide - Gold Coast	138.9	241.4	73.8
42	Coffs Harbour - Sydney	125.1	215.9	72.6
43	Brisbane - Gladstone	144.0	206.8	43.6
44	Adelaide - Darwin	..	198.8	NA
45	Adelaide - Port Lincoln	144.2	180.0	24.8
46	Brisbane - Launceston	142.6	179.8	26.1
47	Darwin - Perth	..	174.9	NA
48	Brisbane - Emerald	135.3	173.4	28.2
49	Brisbane - Hamilton Island	194.9	172.1	-11.7
50	Adelaide - Canberra	81.0	171.5	111.7

continued

**Table 1: (continued) Passengers carried (000s) — annual activity**

	<b>City-Pair</b>	<b>YE Mar 2022</b>	<b>YE Mar 2023</b>	<b>% Change</b>
51	Albury - Sydney	73.2	162.6	122.1
52	Dubbo - Sydney	77.8	159.2	104.6
53	Port Macquarie - Sydney	..	157.0	NA
54	Canberra - Gold Coast	83.4	155.8	86.9
55	Melbourne - Mildura	73.9	148.3	100.8
56	Sydney - Wagga Wagga	..	147.4	NA
57	Brisbane - Mount Isa	..	143.0	NA
58	Devonport - Melbourne	..	130.9	NA
59	Brisbane - Moranbah	..	104.1	NA
60	Armidale - Sydney	..	101.9	NA
	<b>Total domestic network</b>	<b>26,077.9</b>	<b>54,889.5</b>	<b>110.5</b>

.. Data not available for release.

**Table 2: Passengers carried (000s) — monthly activity**

	<b>City-Pair</b>	<b>Mar 2022</b>	<b>Mar 2023</b>	<b>% Change</b>
1	Melbourne - Sydney	513.6	689.7	34.3
2	Brisbane - Sydney	260.6	360.8	38.5
3	Brisbane - Melbourne	207.7	281.6	35.6
4	Adelaide - Melbourne	152.8	200.9	31.5
5	Gold Coast - Sydney	172.1	191.8	11.4
6	Gold Coast - Melbourne	172.5	172.1	-0.2
7	Melbourne - Perth	69.5	163.6	135.4
8	Adelaide - Sydney	109.1	151.0	38.4
9	Perth - Sydney	52.1	134.4	158.1
10	Hobart - Melbourne	83.2	114.2	37.4
11	Brisbane - Cairns	75.4	94.9	25.8
12	Canberra - Melbourne	63.2	88.5	40.0
13	Brisbane - Perth	33.4	87.3	161.7
14	Brisbane - Townsville	59.5	74.1	24.6
15	Launceston - Melbourne	52.8	72.4	37.1
16	Adelaide - Brisbane	50.6	66.9	32.3
17	Hobart - Sydney	48.2	66.0	36.9
18	Brisbane - Mackay	50.9	63.6	24.8
19	Cairns - Sydney	41.1	62.1	51.1
20	Sunshine Coast - Sydney	47.2	61.1	29.4
21	Canberra - Sydney	39.8	57.8	45.1
22	Adelaide - Perth	22.4	56.8	153.6
23	Melbourne - Sunshine Coast	60.0	52.8	-12.0
24	Brisbane - Canberra	42.1	52.5	24.5
25	Cairns - Melbourne	46.2	51.8	12.0
26	Ballina - Sydney	33.2	49.0	47.5
27	Karratha - Perth	36.2	45.4	25.5
28	Brisbane - Rockhampton	34.7	44.4	27.8
29	Brisbane - Newcastle	32.6	44.3	35.6
30	Perth - Port Hedland	36.5	43.5	19.2
31	Melbourne - Newcastle	31.7	35.9	13.2
32	Kalgoorlie - Perth	23.8	32.5	36.8
33	Newman - Perth	28.4	32.1	12.9
34	Launceston - Sydney	21.3	27.7	30.1
35	Brisbane - Hobart	23.2	26.9	15.8
36	Broome - Perth	20.7	24.8	19.7
37	Brisbane - Darwin	22.0	24.5	11.7
38	Brisbane - Proserpine	21.8	21.6	-0.9
39	Adelaide - Gold Coast	16.9	20.9	23.8
40	Hamilton Island - Sydney	17.3	20.6	18.6
41	Coffs Harbour - Sydney	18.1	20.0	10.7
42	Darwin - Melbourne	..	19.0	NA
43	Brisbane - Gladstone	15.8	18.9	19.7
44	Adelaide - Canberra	11.7	18.0	54.2
45	Adelaide - Port Lincoln	15.3	17.0	11.1
46	Brisbane - Emerald	12.0	16.2	34.4
47	Dubbo - Sydney	13.0	16.2	24.5
48	Adelaide - Darwin	..	16.0	NA
49	Albury - Sydney	11.8	15.5	30.8
50	Port Macquarie - Sydney	..	15.3	NA

continued

**Table 2: (continued) Passengers carried (000s) — monthly activity**

	<b>City-Pair</b>	<b>Mar 2022</b>	<b>Mar 2023</b>	<b>% Change</b>
51	Brisbane - Launceston	12.2	15.0	23.2
52	Melbourne - Mildura	12.3	14.8	20.2
53	Sydney - Wagga Wagga	..	14.3	NA
54	Canberra - Gold Coast	10.9	14.2	30.7
55	Brisbane - Hamilton Island	15.2	13.0	-14.9
56	Darwin - Perth	..	12.8	NA
57	Brisbane - Mount Isa	..	12.6	NA
58	Devonport - Melbourne	..	11.6	NA
59	Brisbane - Moranbah	..	9.9	NA
60	Armidale - Sydney	..	9.8	NA
	<b>Total domestic network</b>	<b>3,603.1</b>	<b>4,809.2</b>	<b>33.5</b>

.. Data not available for release.

**Table 3: Available seats (000s) — monthly activity**

	<b>City-Pair</b>	<b>Mar 2022</b>	<b>Mar 2023</b>	<b>% Change</b>
1	Melbourne - Sydney	655.8	819.3	24.9
2	Brisbane - Sydney	357.4	449.4	25.8
3	Brisbane - Melbourne	281.3	339.9	20.8
4	Adelaide - Melbourne	196.1	240.7	22.7
5	Gold Coast - Sydney	219.1	224.1	2.3
6	Gold Coast - Melbourne	220.2	193.9	-11.9
7	Melbourne - Perth	83.1	185.0	122.8
8	Adelaide - Sydney	141.2	169.3	19.9
9	Perth - Sydney	64.1	151.8	136.7
10	Hobart - Melbourne	105.8	132.4	25.1
11	Brisbane - Cairns	103.8	106.5	2.5
12	Canberra - Melbourne	89.9	116.4	29.5
13	Brisbane - Perth	39.9	98.6	147.5
14	Brisbane - Townsville	86.2	92.1	6.9
15	Launceston - Melbourne	68.9	86.5	25.5
16	Adelaide - Brisbane	66.0	78.8	19.4
17	Hobart - Sydney	69.6	80.9	16.3
18	Brisbane - Mackay	77.5	85.8	10.7
19	Cairns - Sydney	54.6	69.9	27.9
20	Sunshine Coast - Sydney	67.2	75.3	12.1
21	Canberra - Sydney	62.9	82.9	31.8
22	Adelaide - Perth	28.9	63.5	119.6
23	Melbourne - Sunshine Coast	83.4	63.9	-23.4
24	Brisbane - Canberra	64.9	80.1	23.5
25	Cairns - Melbourne	59.7	61.0	2.2
26	Ballina - Sydney	49.9	58.9	18.1
27	Karratha - Perth	66.1	63.4	-4.2
28	Brisbane - Rockhampton	47.4	58.3	22.9
29	Brisbane - Newcastle	41.0	62.2	51.9
30	Perth - Port Hedland	59.1	57.2	-3.2
31	Melbourne - Newcastle	38.3	44.9	17.2
32	Kalgoorlie - Perth	43.1	46.0	6.8
33	Newman - Perth	59.2	52.3	-11.6
34	Launceston - Sydney	27.1	32.5	19.8
35	Brisbane - Hobart	30.2	32.8	8.6
36	Broome - Perth	35.3	33.7	-4.5
37	Brisbane - Darwin	28.5	29.7	4.3
38	Brisbane - Proserpine	26.9	27.7	2.8
39	Adelaide - Gold Coast	19.5	22.5	15.5
40	Hamilton Island - Sydney	25.8	30.4	17.6
41	Coffs Harbour - Sydney	28.6	26.1	-8.7
42	Darwin - Melbourne	..	25.6	NA
43	Brisbane - Gladstone	25.3	31.1	22.7
44	Adelaide - Canberra	17.3	28.8	66.0
45	Adelaide - Port Lincoln	23.9	24.2	1.0
46	Brisbane - Emerald	19.5	22.6	16.2
47	Dubbo - Sydney	22.0	25.4	15.6
48	Adelaide - Darwin	..	24.3	NA
49	Albury - Sydney	18.7	24.7	31.9
50	Port Macquarie - Sydney	..	23.7	NA

continued

**Table 3: (continued) Available seats (000s) — monthly activity**

	<b>City-Pair</b>	<b>Mar 2022</b>	<b>Mar 2023</b>	<b>% Change</b>
51	Brisbane - Launceston	17.7	17.7	-0.1
52	Melbourne - Mildura	16.9	19.5	15.8
53	Sydney - Wagga Wagga	..	24.4	NA
54	Canberra - Gold Coast	13.6	18.2	33.7
55	Brisbane - Hamilton Island	24.1	18.7	-22.4
56	Darwin - Perth	..	17.7	NA
57	Brisbane - Mount Isa	..	20.9	NA
58	Devonport - Melbourne	..	15.7	NA
59	Brisbane - Moranbah	..	16.4	NA
60	Armidale - Sydney	..	17.2	NA
	<b>Total domestic network</b>	<b>5,039.1</b>	<b>6,048.2</b>	<b>20.0</b>

.. Data not available for release.

**Table 4: Load factors (%) — monthly activity**

	<b>City-Pair</b>	<b>Mar 2022</b>	<b>Mar 2023</b>	<b>% Point diff</b>
1	Melbourne - Sydney	78.4	84.2	5.8
2	Brisbane - Sydney	72.9	80.3	7.4
3	Brisbane - Melbourne	73.8	82.8	9.0
4	Adelaide - Melbourne	77.9	83.5	5.6
5	Gold Coast - Sydney	78.5	85.6	7.1
6	Gold Coast - Melbourne	78.4	88.8	10.4
7	Melbourne - Perth	83.6	88.4	4.8
8	Adelaide - Sydney	77.3	89.2	11.9
9	Perth - Sydney	81.2	88.6	7.4
10	Hobart - Melbourne	78.6	86.3	7.7
11	Brisbane - Cairns	72.6	89.1	16.5
12	Canberra - Melbourne	70.3	76.0	5.7
13	Brisbane - Perth	83.7	88.5	4.8
14	Brisbane - Townsville	69.0	80.5	11.5
15	Launceston - Melbourne	76.6	83.7	7.1
16	Adelaide - Brisbane	76.7	84.9	8.2
17	Hobart - Sydney	69.3	81.6	12.3
18	Brisbane - Mackay	65.7	74.1	8.4
19	Cairns - Sydney	75.3	88.9	13.6
20	Sunshine Coast - Sydney	70.3	81.2	10.9
21	Canberra - Sydney	63.3	69.7	6.4
22	Adelaide - Perth	77.4	89.4	12.0
23	Melbourne - Sunshine Coast	71.9	82.6	10.7
24	Brisbane - Canberra	64.9	65.5	0.6
25	Cairns - Melbourne	77.4	84.8	7.4
26	Ballina - Sydney	66.6	83.2	16.6
27	Karratha - Perth	54.7	71.7	17.0
28	Brisbane - Rockhampton	73.2	76.2	3.0
29	Brisbane - Newcastle	79.6	71.1	-8.5
30	Perth - Port Hedland	61.8	76.1	14.3
31	Melbourne - Newcastle	82.8	80.0	-2.8
32	Kalgoorlie - Perth	55.1	70.6	15.5
33	Newman - Perth	48.0	61.3	13.3
34	Launceston - Sydney	78.5	85.2	6.7
35	Brisbane - Hobart	76.8	81.9	5.1
36	Broome - Perth	58.6	73.4	14.8
37	Brisbane - Darwin	77.0	82.5	5.5
38	Brisbane - Proserpine	80.8	77.9	-2.9
39	Adelaide - Gold Coast	86.5	92.8	6.3
40	Hamilton Island - Sydney	67.2	67.7	0.5
41	Coffs Harbour - Sydney	63.2	76.5	13.3
42	Darwin - Melbourne	..	74.0	NA
43	Brisbane - Gladstone	62.4	60.9	-1.5
44	Adelaide - Canberra	67.3	62.5	-4.8
45	Adelaide - Port Lincoln	63.8	70.2	6.4
46	Brisbane - Emerald	61.8	71.5	9.7
47	Dubbo - Sydney	59.1	63.6	4.5
48	Adelaide - Darwin	..	66.1	NA
49	Albury - Sydney	63.3	62.8	-0.5
50	Port Macquarie - Sydney	..	64.3	NA

continued



**Table 4: (continued) Load factors (%) — monthly activity**

	<b>City-Pair</b>	<b>Mar 2022</b>	<b>Mar 2023</b>	<b>% Point diff</b>
51	Brisbane - Launceston	68.7	84.7	16.0
52	Melbourne - Mildura	73.0	75.8	2.8
53	Sydney - Wagga Wagga	..	58.4	NA
54	Canberra - Gold Coast	79.8	78.0	-1.8
55	Brisbane - Hamilton Island	63.4	69.5	6.1
56	Darwin - Perth	..	72.3	NA
57	Brisbane - Mount Isa	..	60.4	NA
58	Devonport - Melbourne	..	74.1	NA
59	Brisbane - Moranbah	..	60.2	NA
60	Armidale - Sydney	..	56.8	NA
	<b>Total domestic network</b>	<b>72.7</b>	<b>81.9</b>	<b>9.2</b>

.. Data not available for release.

**Table 5: Aircraft trips <sup>(a)</sup> — monthly activity**

	<b>City-Pair</b>	<b>Feb 2022</b>	<b>Feb 2023</b>	<b>% Change</b>
1	Melbourne - Sydney	2,772	4,112	48.3
2	Brisbane - Sydney	1,523	2,430	59.6
3	Brisbane - Melbourne	1,228	1,785	45.4
4	Gold Coast - Sydney	909	1,212	33.3
5	Adelaide - Melbourne	821	1,283	56.3
6	Gold Coast - Melbourne	882	987	11.9
7	Melbourne - Perth	250	909	263.6
8	Adelaide - Sydney	594	899	51.3
9	Perth - Sydney	137	705	414.6
10	Hobart - Melbourne	492	735	49.4
11	Brisbane - Cairns	532	631	18.6
12	Canberra - Melbourne	466	747	60.3
13	Brisbane - Perth	89	515	478.7
14	Brisbane - Townsville	406	578	42.4
15	Launceston - Melbourne	425	654	53.9
16	Hobart - Sydney	280	448	60.0
17	Adelaide - Brisbane	281	608	116.4
18	Brisbane - Mackay	367	574	56.4
19	Sunshine Coast - Sydney	252	416	65.1
20	Adelaide - Perth	..	319	NA
21	Canberra - Sydney	603	1,198	98.7
22	Cairns - Sydney	189	272	43.9
23	Melbourne - Sunshine Coast	319	318	-0.3
24	Brisbane - Canberra	359	515	43.5
25	Ballina - Sydney	333	382	14.7
26	Cairns - Melbourne	208	258	24.0
27	Karratha - Perth	370	355	-4.1
28	Perth - Port Hedland	335	330	-1.5
29	Brisbane - Rockhampton	369	571	54.7
30	Brisbane - Newcastle	276	487	76.4
31	Melbourne - Newcastle	166	235	41.6
32	Newman - Perth	326	303	-7.1
33	Kalgoorlie - Perth	256	284	10.9
34	Launceston - Sydney	138	186	34.8
35	Brisbane - Hobart	150	188	25.3
36	Brisbane - Darwin	142	198	39.4
37	Broome - Perth	202	222	9.9
38	Brisbane - Proserpine	145	152	4.8
39	Hamilton Island - Sydney	128	151	18.0
40	Coffs Harbour - Sydney	348	439	26.1
41	Adelaide - Gold Coast	84	102	21.4
42	Darwin - Melbourne	..	121	NA
43	Brisbane - Gladstone	244	341	39.8
44	Adelaide - Canberra	..	231	NA
45	Brisbane - Emerald	239	302	26.4
46	Adelaide - Port Lincoln	430	513	19.3
47	Brisbane - Launceston	76	104	36.8
48	Dubbo - Sydney	337	431	27.9
49	Adelaide - Darwin	..	168	NA
50	Port Macquarie - Sydney	..	378	NA

continued

**Table 5: (continued) Aircraft trips <sup>(a)</sup> — monthly activity**

	<b>City-Pair</b>	<b>Mar 2022</b>	<b>Mar 2023</b>	<b>% Change</b>
51	Brisbane - Launceston	104	100	-3.8
52	Melbourne - Mildura	395	461	16.7
53	Sydney - Wagga Wagga	..	480	NA
54	Canberra - Gold Coast	89	102	14.6
55	Brisbane - Hamilton Island	138	109	-21.0
56	Darwin - Perth	..	105	NA
57	Brisbane - Mount Isa	..	183	NA
58	Devonport - Melbourne	..	348	NA
59	Brisbane - Moranbah	..	218	NA
60	Armidale - Sydney	..	350	NA
	<b>Total domestic network</b>	<b>43,880</b>	<b>52,472</b>	<b>19.6</b>

(a) Includes RPT cargo flights.

.. Data not available for release.

## TOP TEN AIRPORTS – PASSENGER MOVEMENTS

**Table 6: Top ten airports, RPT passenger movements (000s) - monthly activity**

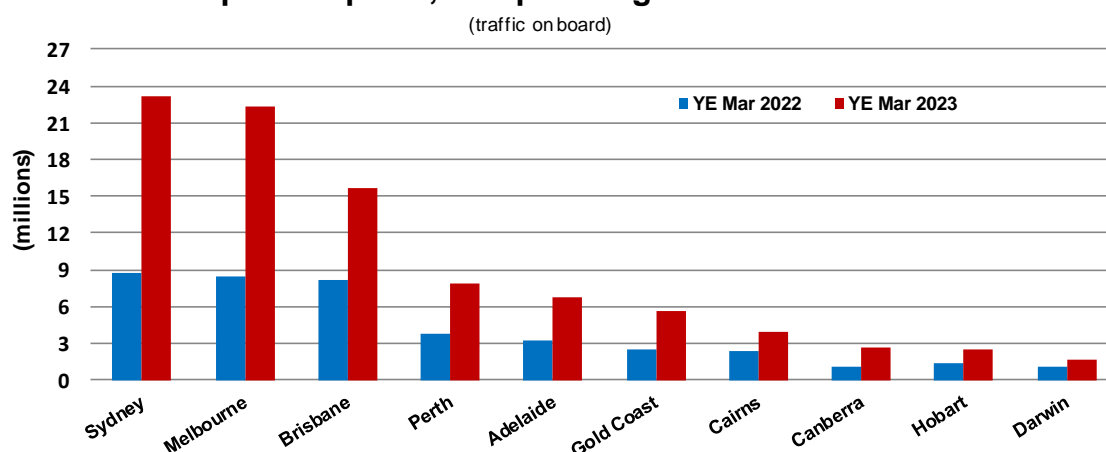
Airport	Mar 2022	Mar 2023	% Change	% of Total
1 Sydney	1,511.3	2,082.7	37.8	21.7
2 Melbourne	1,515.5	1,990.4	31.3	20.7
3 Brisbane	1,032.0	1,380.9	33.8	14.4
4 Perth	387.1	713.7	84.4	7.4
5 Adelaide	447.9	617.2	37.8	6.4
6 Gold Coast	396.2	427.4	7.9	4.4
7 Cairns	222.1	283.4	27.6	2.9
8 Canberra	176.8	243.8	37.9	2.5
9 Hobart	176.0	231.6	31.6	2.4
10 Townsville	106.7	134.9	26.5	1.4
<b>Total top ten airports</b>	<b>5,971.6</b>	<b>8,106.0</b>	<b>35.7</b>	<b>84.3</b>
<b>Total domestic network</b>	<b>7,206.3</b>	<b>9,618.3</b>	<b>33.5</b>	<b>100.0</b>

**Table 7: Top ten airports, RPT passenger movements (000s) - annual activity**

Airport	YE Mar 2022	YE Mar 2023	% Change	% of Total
1 Sydney	8,758.9	23,195.2	164.8	21.1
2 Melbourne	8,383.8	22,370.3	166.8	20.4
3 Brisbane	8,096.7	15,700.0	93.9	14.3
4 Perth	3,811.2	7,838.1	105.7	7.1
5 Adelaide	3,248.6	6,720.4	106.9	6.1
6 Gold Coast	2,489.5	5,565.9	123.6	5.1
7 Cairns	2,420.2	3,901.6	61.2	3.6
8 Canberra	1,092.1	2,676.9	145.1	2.4
9 Hobart	1,342.1	2,516.0	87.5	2.3
10 Darwin	1,119.3	1,695.8	51.5	1.5
<b>Total top ten airports</b>	<b>40,762.5</b>	<b>92,180.1</b>	<b>126.1</b>	<b>84.0</b>
<b>Total domestic network</b>	<b>52,155.7</b>	<b>109,779.0</b>	<b>110.5</b>	<b>100.0</b>

Note: Airport passenger movement numbers are the sum of passenger arrivals and departures at each airport.

### Top ten airports, RPT passenger movements



## TOP FIVE AIRPORTS – CARGO MOVEMENTS

**Table 8: Top five airports, domestic RPT cargo movements (000s tonnes) - monthly activity**

Airport	Mar 2022	Mar 2023	% Change	% of Total
1 Melbourne	8.3	7.8	-6.0	26.4
2 Sydney	8.0	6.7	-16.8	22.7
3 Brisbane	5.6	5.2	-8.3	17.5
4 Perth	2.9	3.0	2.3	10.1
5 Adelaide	2.6	1.6	-36.7	5.6
<b>Total top five airports</b>	<b>27.5</b>	<b>24.3</b>	<b>-11.6</b>	<b>82.2</b>
<b>Total domestic network</b>	<b>34.8</b>	<b>29.5</b>	<b>-15.2</b>	<b>100.0</b>

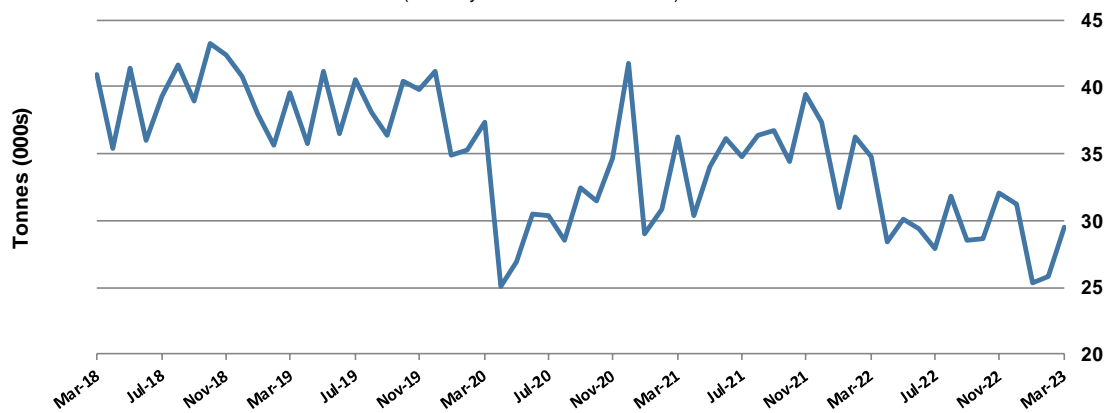
**Table 9: Top five airports, domestic RPT cargo movements (000s tonnes) - annual activity**

Airport	YE Mar 2022	YE Mar 2023	% Change	% of Total
1 Melbourne	107.7	92.4	-14.2	26.5
2 Sydney	98.6	76.8	-22.1	22.0
3 Brisbane	68.1	60.2	-11.6	17.3
4 Perth	38.7	35.6	-8.1	10.2
5 Adelaide	26.8	20.1	-24.9	5.8
<b>Total top five airports</b>	<b>339.9</b>	<b>285.1</b>	<b>-16.1</b>	<b>81.8</b>
<b>Total domestic network</b>	<b>421.6</b>	<b>348.6</b>	<b>-17.3</b>	<b>100.0</b>

Note: Airport cargo tonnes are the sum of cargo tonnes on arrivals and departures at each airport.

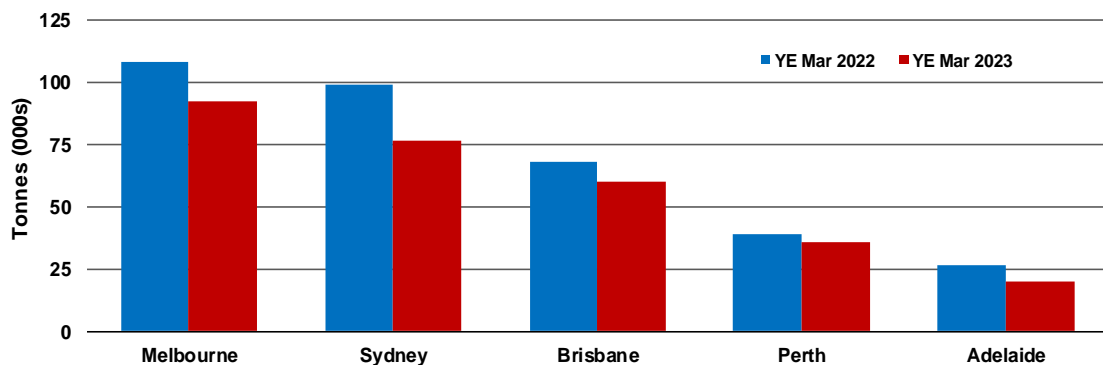
### Total domestic network - cargo movement

(monthly totals - traffic on board)



### Top five airports, cargo movements

(Domestic cargo traffic - traffic on board)



Note: Airport cargo tonnes are the sum of cargo tonnes on arrivals and departures at each airport.

## TOP TEN ROUTES

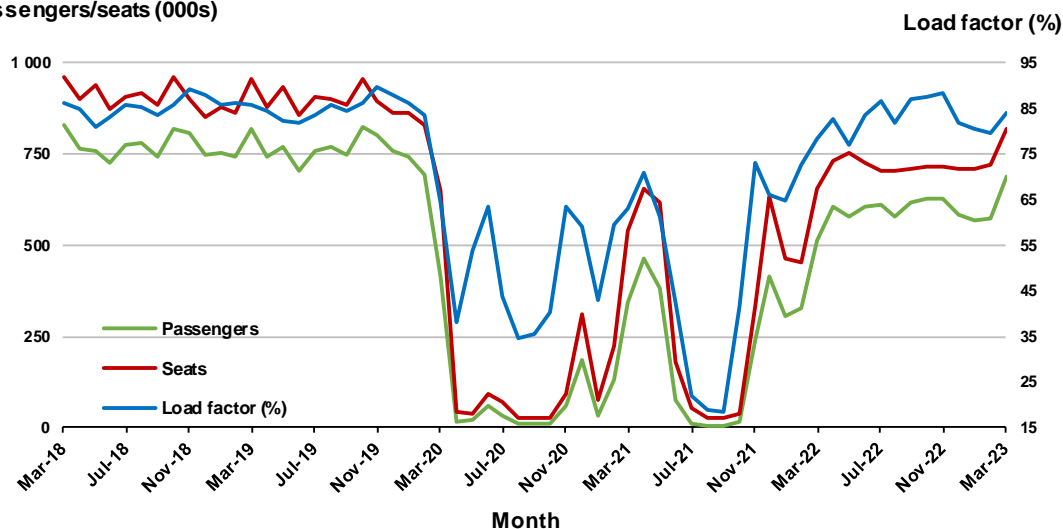
### 1. Melbourne - Sydney

#### Monthly data

	Mar 2022	Mar 2023	% Change
Passengers carried (000s)	513.6	689.7	34.3
Seats (000s)	655.8	819.3	24.9
Load factor %	78.4	84.2	5.8 *
Aircraft trips	3,925	4,749	21.0

\* percentage point difference

#### Passengers/seats (000s)

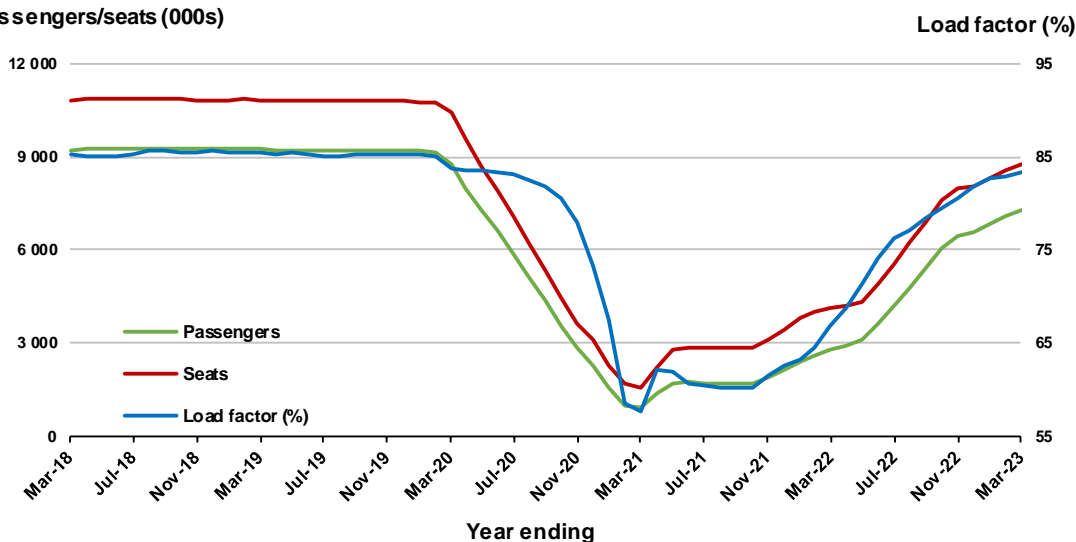


#### Moving annual data

	YE Mar 2022	YE Mar 2023	% Change
Passengers carried (000s)	2,756.9	7,260.3	163.4
Seats (000s)	4,130.2	8,716.2	111.0
Load factor %	66.8	83.3	16.6 *
Aircraft trips	25,771	50,251	95.0

\* percentage point difference

#### Passengers/seats (000s)

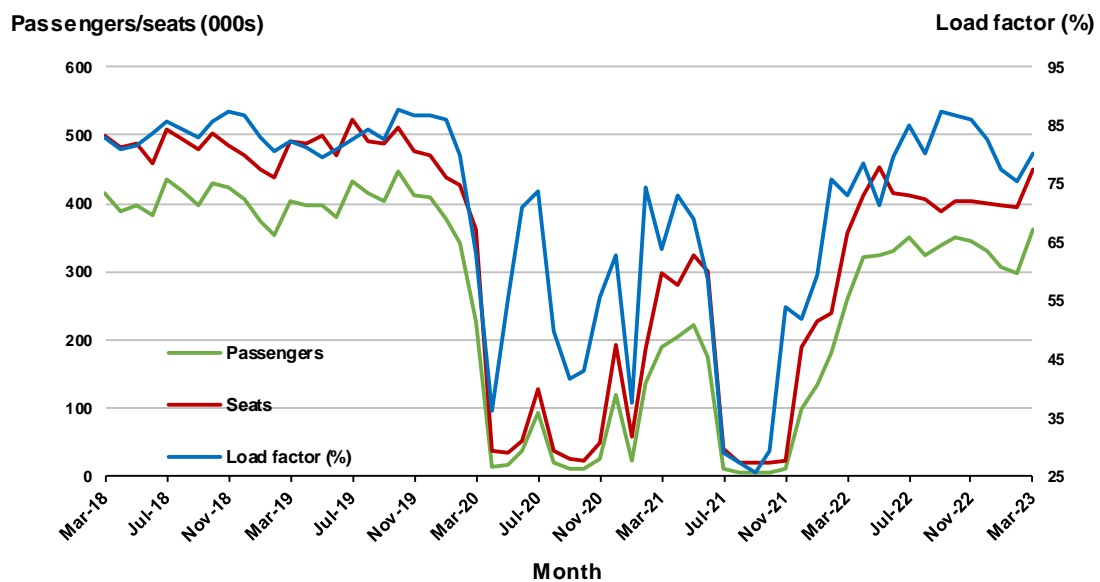


## 2. Brisbane - Sydney

### Monthly data

	Mar 2022	Mar 2023	% Change
Passengers carried (000s)	260.6	360.8	38.5
Seats (000s)	357.4	449.4	25.8
Load factor %	72.9	80.3	7.4 *
Aircraft trips	2,216	2,777	25.3

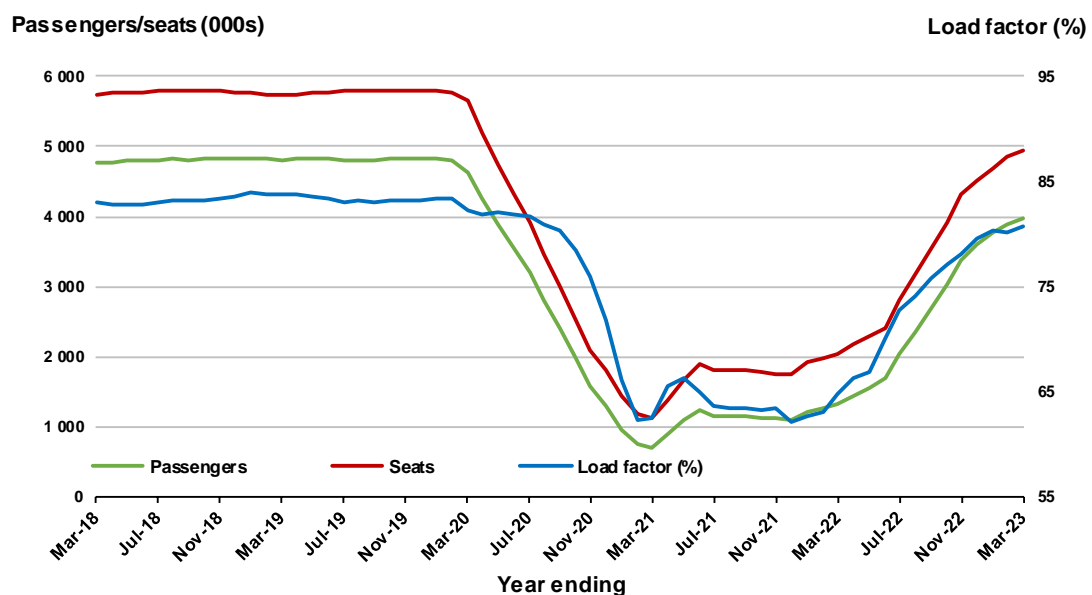
\* percentage point difference



### Moving annual data

	YE Mar 2022	YE Mar 2023	% Change
Passengers carried (000s)	1,321.0	3,983.3	201.5
Seats (000s)	2,041.3	4,935.2	141.8
Load factor %	64.7	80.7	16.0 *
Aircraft trips	13,839	30,331	119.2

\* percentage point difference

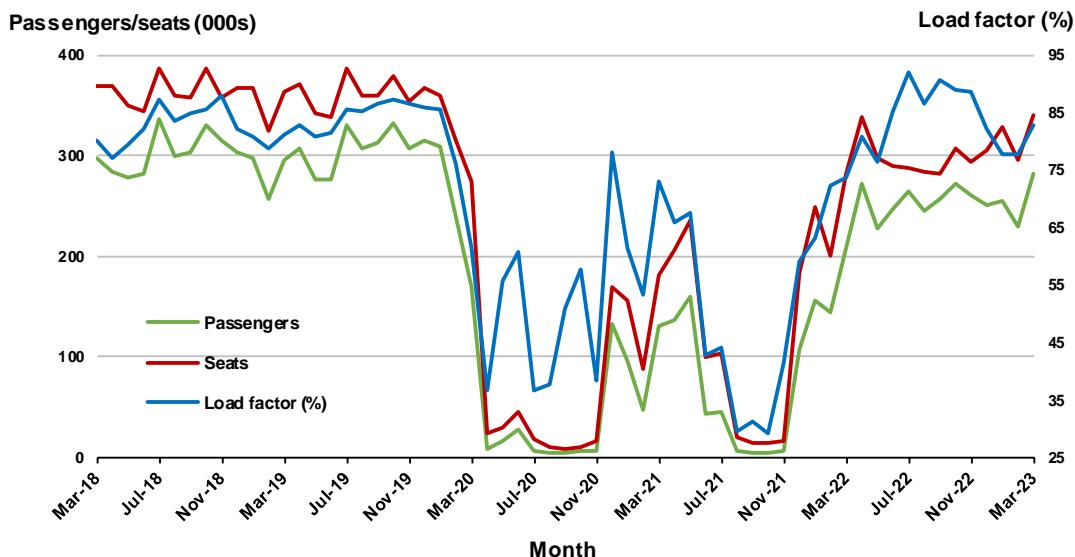


### 3. Brisbane - Melbourne

#### Monthly data

	Mar 2022	Mar 2023	% Change
Passengers carried (000s)	207.7	281.6	35.6
Seats (000s)	281.3	339.9	20.8
Load factor %	73.8	82.8	9.0 *
Aircraft trips	1,704	2,059	20.8

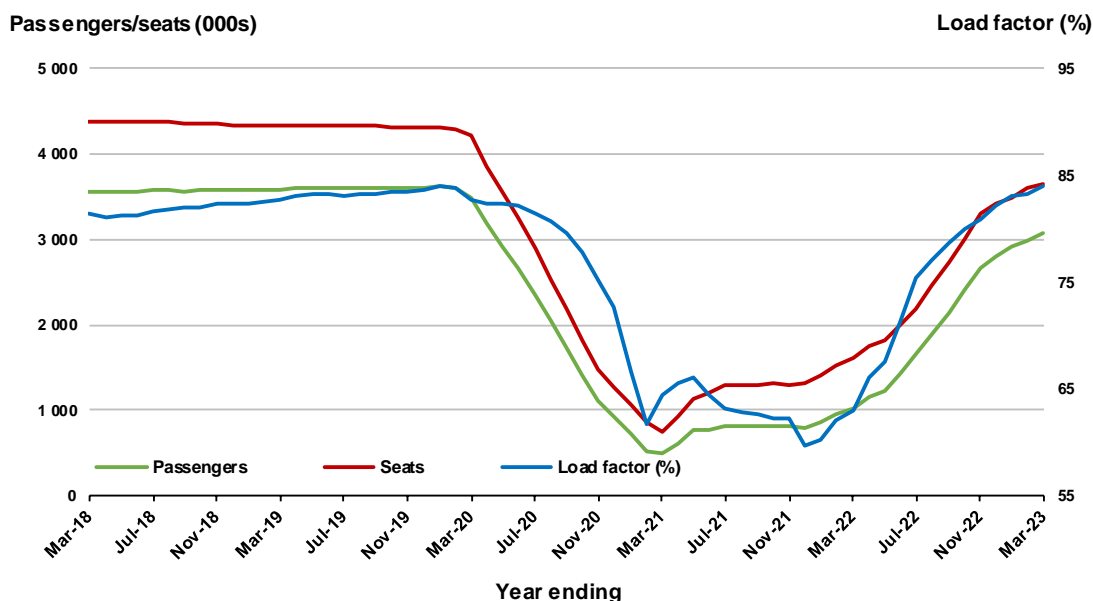
\* percentage point difference



#### Moving annual data

	YE Mar 2022	YE Mar 2023	% Change
Passengers carried (000s)	1,021.9	3,064.5	199.9
Seats (000s)	1,622.7	3,651.0	125.0
Load factor %	63.0	83.9	21.0 *
Aircraft trips	10,712	22,276	108.0

\* percentage point difference





## 4. Adelaide - Melbourne

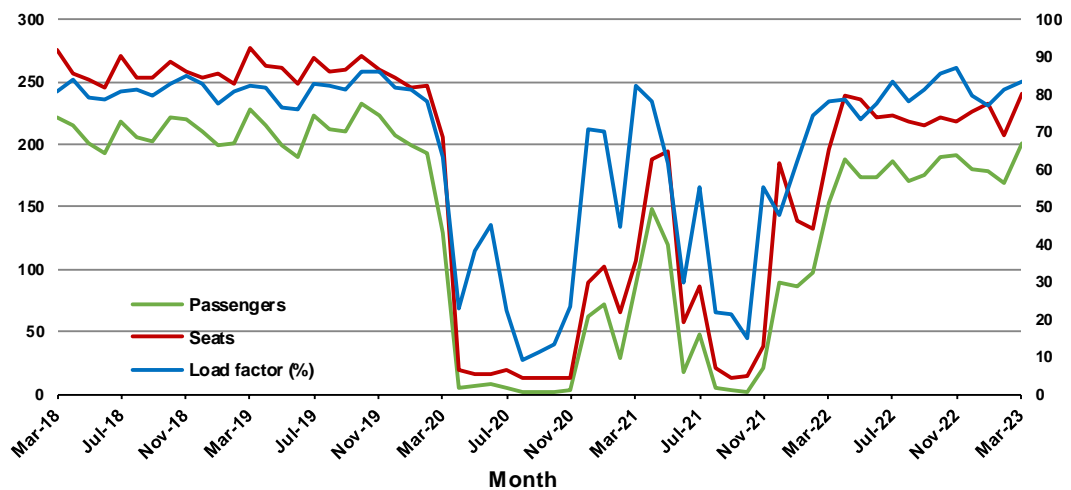
### Monthly data

	Mar 2022	Mar 2023	% Change
Passengers carried (000s)	152.8	200.9	31.5
Seats (000s)	196.1	240.7	22.7
Load factor %	77.9	83.5	5.6 *
Aircraft trips	1,202	1,489	23.9

\* percentage point difference

### Passengers/seats (000s)

### Load factor (%)



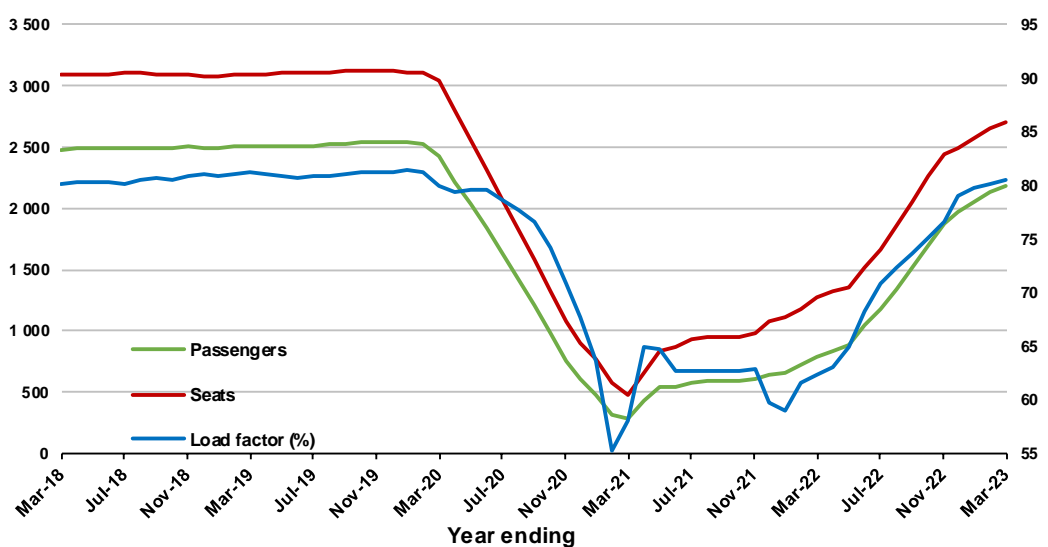
### Moving annual data

	YE Mar 2022	YE Mar 2023	% Change
Passengers carried (000s)	789.5	2,175.9	175.6
Seats (000s)	1,267.1	2,701.8	113.2
Load factor %	62.3	80.5	18.2 *
Aircraft trips	8,258	16,544	100.3

\* percentage point difference

### Passengers/seats (000s)

### Load factor (%)

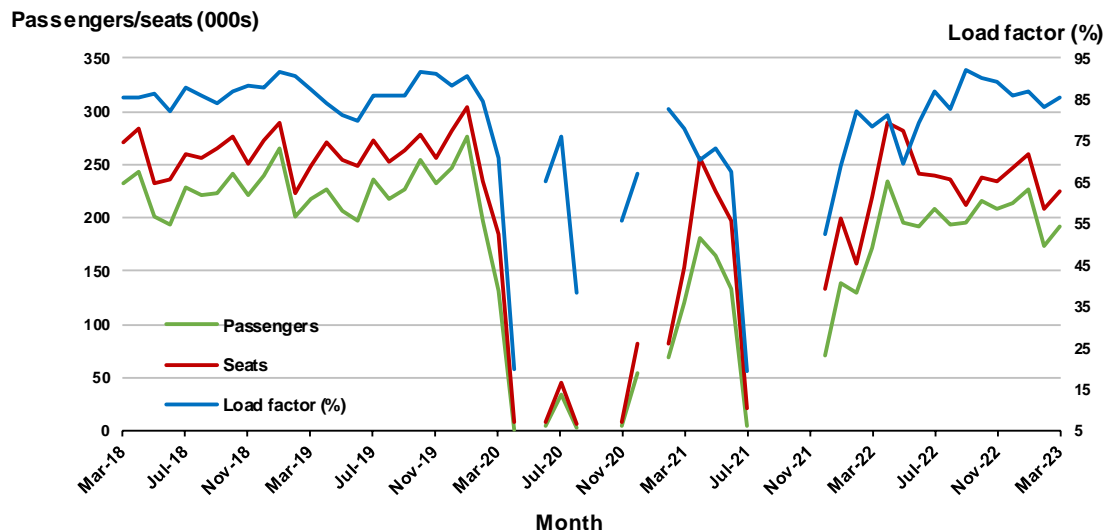


## 5. Gold Coast - Sydney<sup>(a)</sup>

### Monthly data

	Mar 2022	Mar 2023	% Change
Passengers carried (000s)	172.1	191.8	11.4
Seats (000s)	219.1	224.1	2.3
Load factor %	78.5	85.6	7.1 *
Aircraft trips	1,266	1,305	3.1

\* percentage point difference

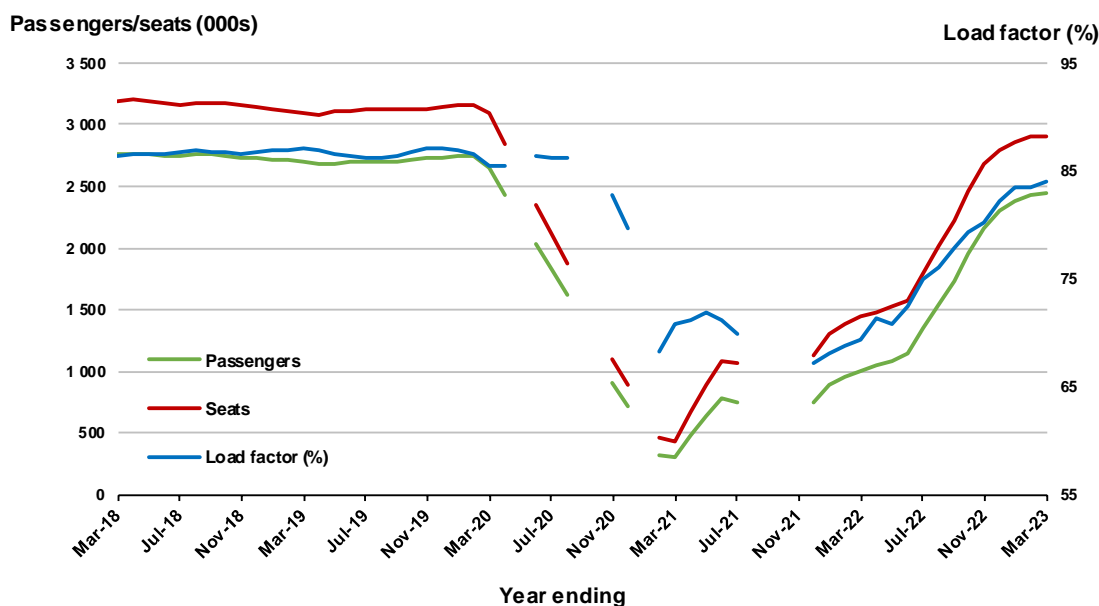


(a) May, September and October 2020 and January and August to November 2021 data not available for release

### Moving annual data

	YE Mar 2022	YE Mar 2023	% Change
Passengers carried (000s)	999.0	2,448.5	145.1
Seats (000s)	1,441.8	2,912.1	102.0
Load factor %	69.3	84.1	14.8 *
Aircraft trips	8,376	16,913	101.9

\* percentage point difference



(a) May, September and October 2020 and January and August to November 2021 moving annual totals not available for release

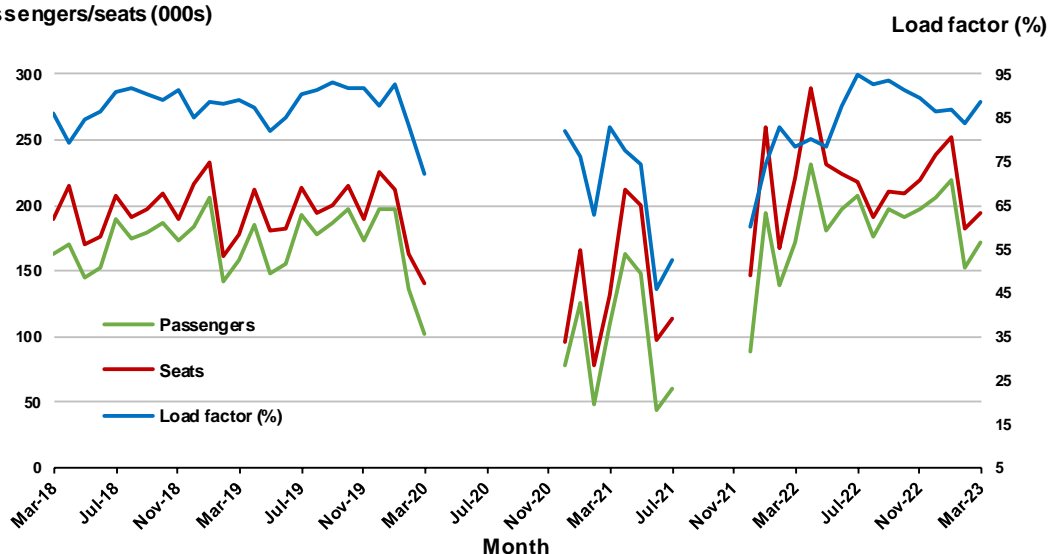
## 6. Gold Coast - Melbourne <sup>(a)</sup>

### Monthly data

	Mar 2022	Mar 2023	% Change
Passengers carried (000s)	172.5	172.1	-0.2
Seats (000s)	220.2	193.9	- 11.9
Load factor %	78.4	88.8	10.4 *
Aircraft trips	1,188	1,059	- 10.9

\* percentage point difference

### Passengers/seats (000s)



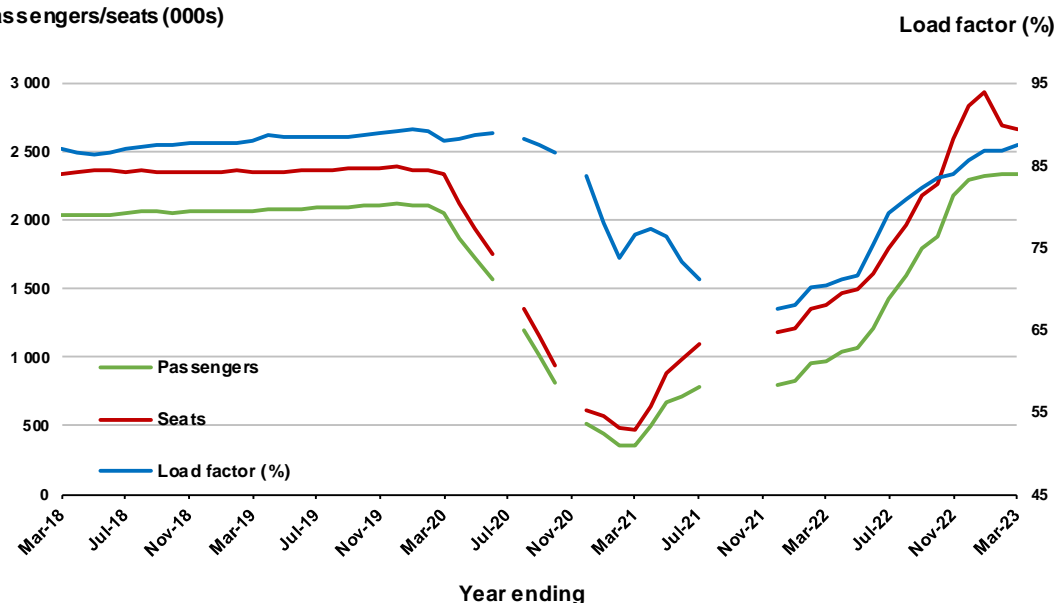
(a) April to November 2020 and August to November 2021 data not available for release.

### Moving annual data

	YE Mar 2022	YE Mar 2023	% Change
Passengers carried (000s)	975.3	2,329.1	138.8
Seats (000s)	1,387.1	2,660.0	91.8
Load factor %	70.3	87.6	17.2 *
Aircraft trips	7,396	14,738	99.3

\* percentage point difference

### Passengers/seats (000s)



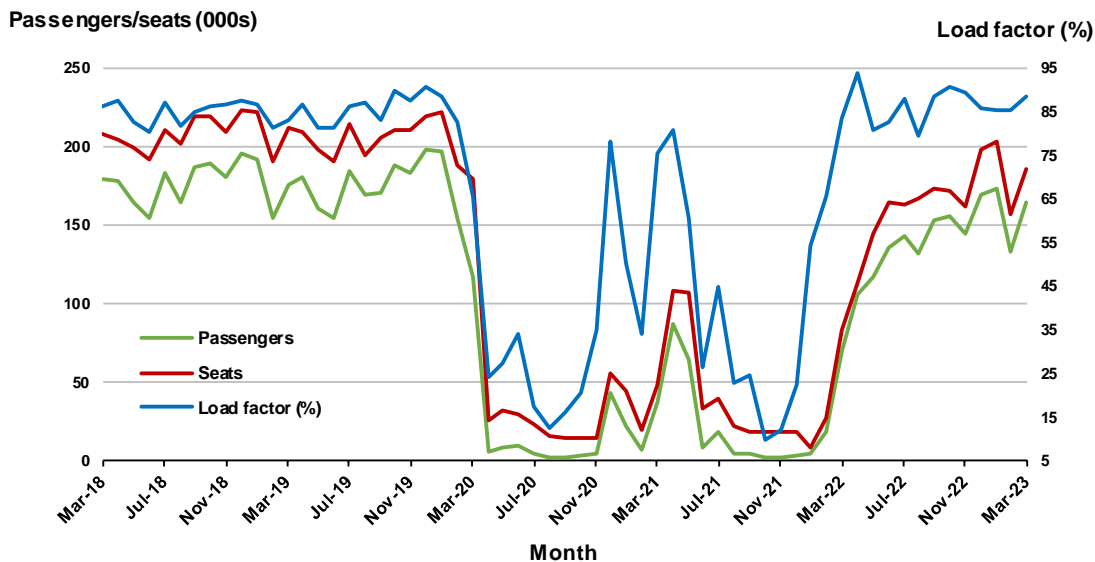
(a) April to November 2020 and August to November 2021 moving annual totals are not available for release.

## 7. Melbourne - Perth

### Monthly data

	Mar 2022	Mar 2023	% Change
Passengers carried (000s)	69.5	163.6	135.4
Seats (000s)	83.1	185.0	122.8
Load factor %	83.6	88.4	4.8 *
Aircraft trips	484	1,066	120.2

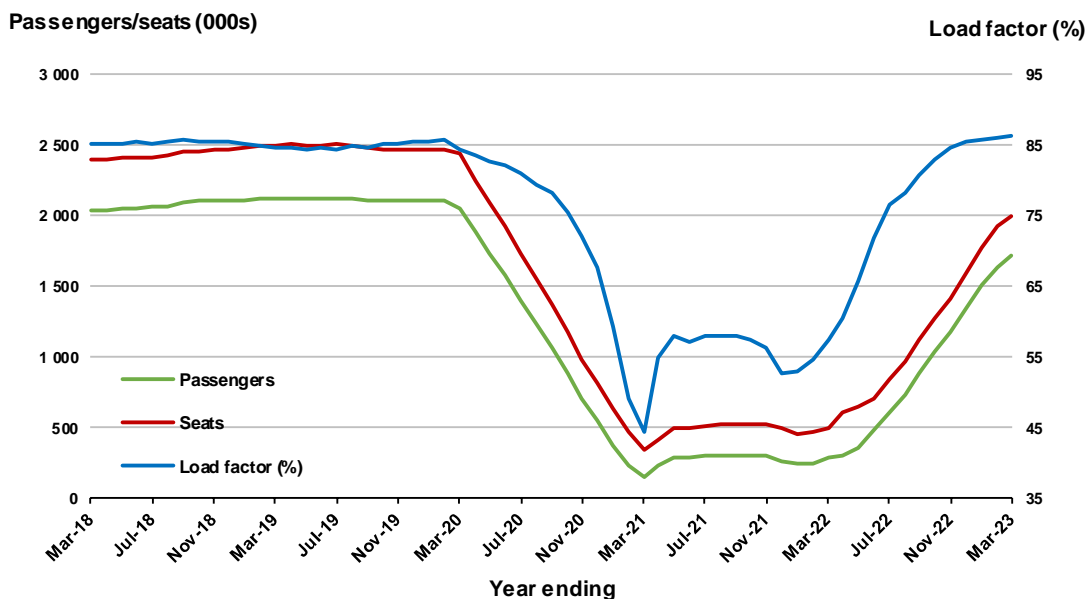
\* percentage point difference



### Moving annual data

	YE Mar 2022	YE Mar 2023	% Change
Passengers carried (000s)	287.8	1,726.2	499.8
Seats (000s)	501.3	2,000.6	299.1
Load factor %	57.4	86.3	28.9 *
Aircraft trips	3,789	11,282	197.8

\* percentage point difference



## 8. Adelaide - Sydney <sup>(a)</sup>

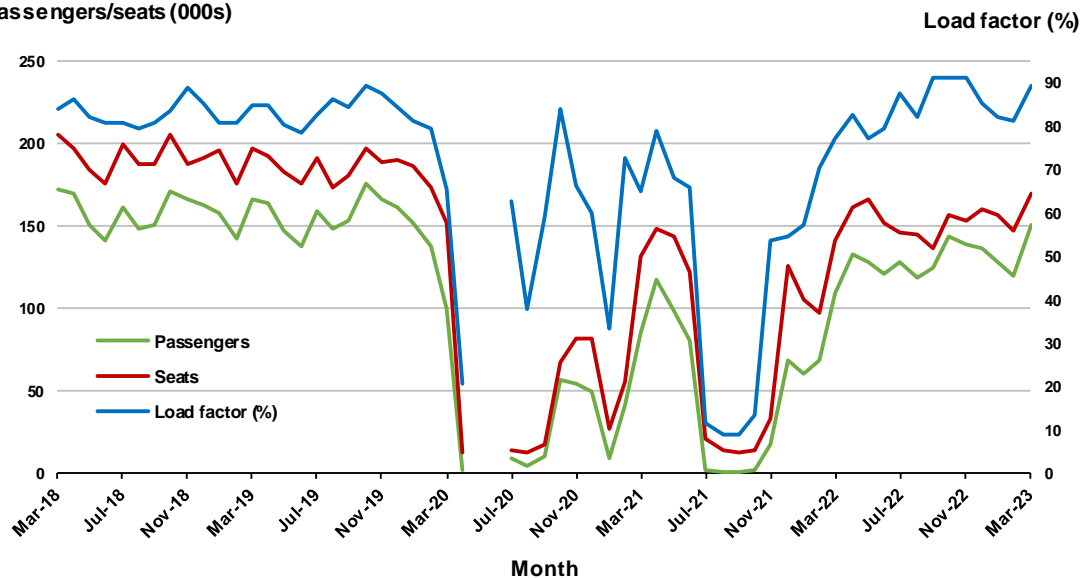
### Monthly data

	Mar 2022	Mar 2023	% Change
Passengers carried (000s)	109.1	151.0	38.4
Seats (000s)	141.2	169.3	19.9
Load factor %	77.3	89.2	11.9 *
Aircraft trips	852	1,025	20.3

.. Data not available for release.

\* percentage point difference

### Passengers/seats (000s)



(a) May and June 2020 data not available for release.

### Moving annual data

	YE Mar 2022	YE Mar 2023	% Change
Passengers carried (000s)	626.8	1,572.1	150.8
Seats (000s)	980.6	1,850.2	88.7
Load factor %	63.9	85.0	21.0 *
Aircraft trips	6,114	11,324	85.2

.. Data not available for release.

\* percentage point difference

### Passengers/seats (000s)



(a) May and June 2020 moving annual totals are not available for release.

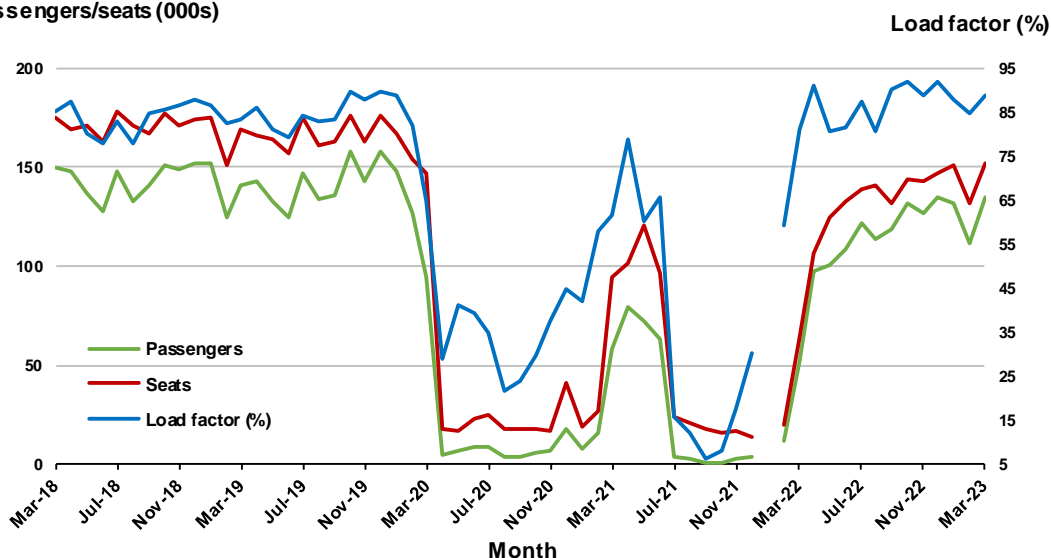
## 9. Perth - Sydney <sup>(a)</sup>

### Monthly data

	Mar 2022	Mar 2023	% Change
Passengers carried (000s)	52.1	134.4	158.1
Seats (000s)	64.1	151.8	136.7
Load factor %	81.2	88.6	7.4 *
Aircraft trips	308	809	162.7

\* percentage point difference

### Passengers/seats (000s)



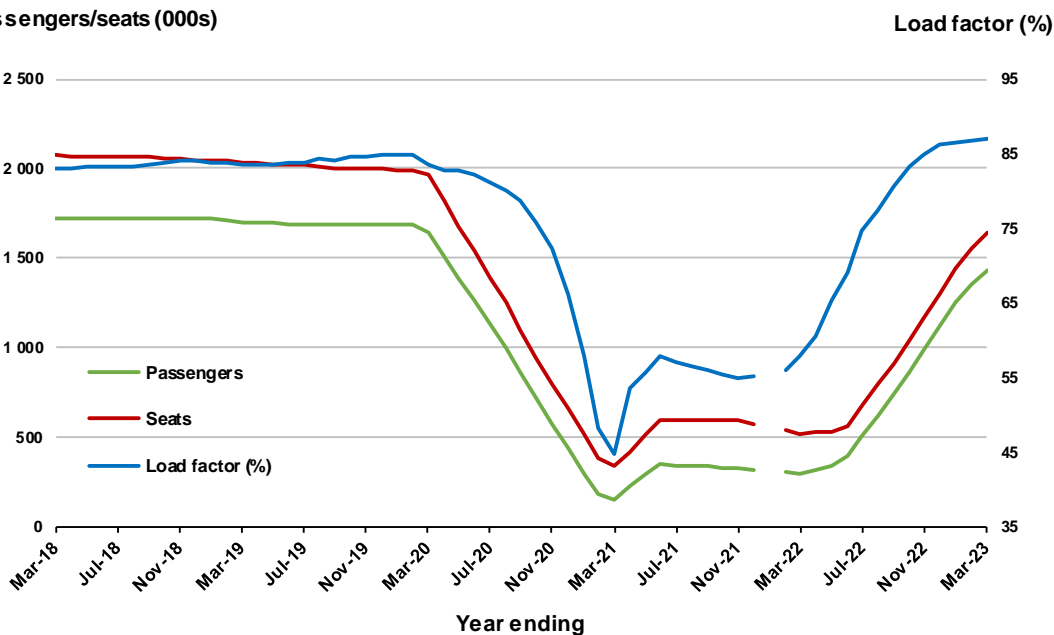
(a) January 2022 data not available for release

### Moving annual data

	YE Mar 2022	YE Mar 2023	% Change
Passengers carried (000s)	298.0	1,430.9	380.2
Seats (000s)	516.5	1,642.8	218.1
Load factor %	57.7	87.1	29.4 *
Aircraft trips	2,845	8,637	203.6

\* percentage point difference

### Passengers/seats (000s)



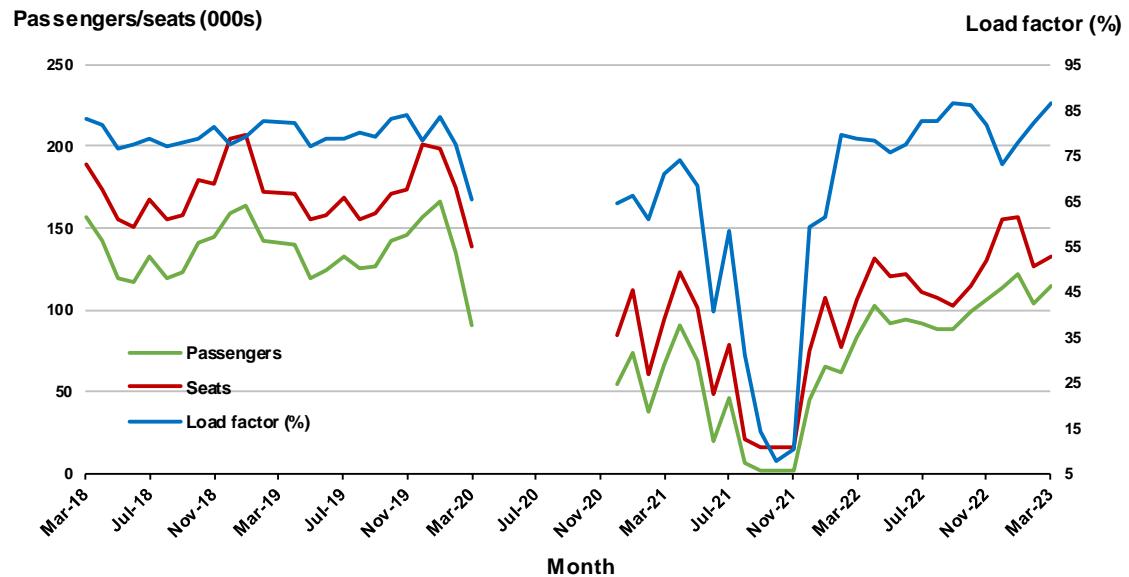
(a) January 2022 moving annual totals are not available for release.

## 10. Hobart - Melbourne <sup>(a)</sup>

### Monthly data

	Mar 2022	Mar 2023	% Change
Passengers carried (000s)	83.2	114.2	37.4
Seats (000s)	105.8	132.4	25.1
Load factor %	78.6	86.3	7.7 *
Aircraft trips	670	771	15.1

\* percentage point difference

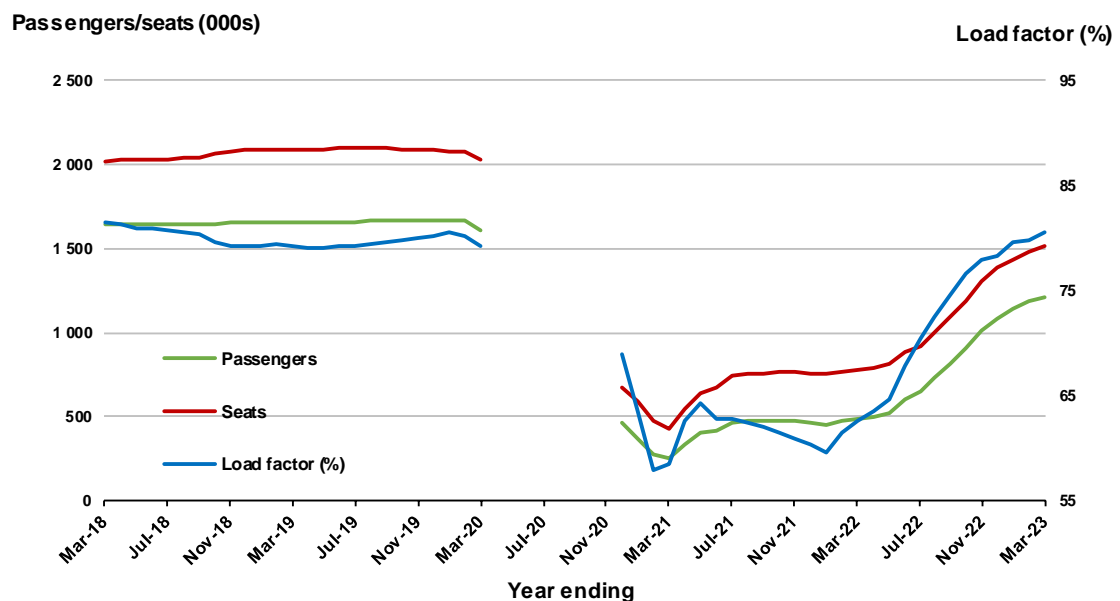


(a) April to November 2020 data are not available for release.

### Moving annual data

	YE Mar 2022	YE Mar 2023	% Change
Passengers carried (000s)	491.8	1,217.1	147.5
Seats (000s)	784.5	1,511.8	92.7
Load factor %	62.7	80.5	17.8 *
Aircraft trips	4,912	9,101	85.3

\* percentage point difference



(a) April to November 2020 moving annual totals are not available for release.

## TOP FIFTY REGIONAL AIRPORTS

**Table 10: Top fifty regional airports (000s) — passenger movements, monthly**

Airport	Mar 2022	Mar 2023	% Change
1 Cairns	222.1	283.4	27.6
2 Hobart	176.0	231.6	31.6
3 Townsville	106.7	134.9	26.5
4 Launceston	90.5	124.2	37.2
5 Darwin	104.1	112.8	8.4
6 Newcastle	78.9	94.8	20.1
7 Mackay	60.1	74.4	23.7
8 Ballina	43.7	58.8	34.6
9 Rockhampton	37.6	47.8	27.1
10 Karratha	36.3	45.4	24.9
11 Port Hedland	36.6	43.6	19.0
12 Hamilton Island	39.1	38.6	-1.3
13 Proserpine	33.8	35.1	3.8
14 Kalgoorlie	23.8	32.7	37.8
15 Newman	28.4	32.1	12.9
16 Alice Springs	18.9	27.9	47.7
17 Broome	22.5	27.8	23.4
18 Coffs Harbour	22.3	25.2	13.0
19 Ayers Rock	11.3	22.4	97.8
20 Mount Isa	17.9	20.8	16.2
21 Albury	16.3	20.7	27.2
22 Paraburdoo	17.3	20.6	19.2
23 Mildura	14.7	19.9	35.7
24 Dubbo	16.9	19.3	14.3
25 Gladstone	15.8	18.9	19.8
26 Wagga Wagga	12.8	18.2	41.9
27 Port Macquarie	11.9	17.5	47.3
28 Emerald	12.9	17.0	32.0
29 Port Lincoln	15.3	17.0	11.1
30 Tamworth	10.9	13.7	25.8
31 Hervey Bay	10.4	12.3	18.6
32 Devonport	6.8	11.6	69.9
33 Bundaberg	9.0	11.3	24.5
34 Armidale	7.6	10.4	37.6
35 Orange	7.9	9.9	25.1
36 Moranbah	8.5	9.9	16.1
37 Kununurra	6.9	9.7	40.0
38 Olympic Dam	7.9	9.1	15.4
39 Thursday Island	7.0	8.3	17.7
40 Burnie	5.9	8.0	35.5
41 Learmonth	5.7	7.7	33.7
42 Geraldton	6.7	7.3	10.2
43 Mount Gambier	6.1	7.2	17.5
44 Weipa	6.9	7.1	2.1
45 Griffith	5.3	7.0	32.2
46 Gove	5.5	6.9	25.2
47 Merimbula	0.9	6.7	636.3
48 Norfolk Island	6.2	6.6	7.0
49 Albany	4.4	5.9	33.2
50 Broken Hill	3.3	5.8	74.7
<b>Total top 50 regional airports</b>	<b>1,484.7</b>	<b>1,865.9</b>	<b>25.7</b>
<b>Total regional airports</b>	<b>1,590.4</b>	<b>1,989.4</b>	<b>25.1</b>
<b>Total domestic network</b>	<b>7,206.3</b>	<b>9,618.3</b>	<b>33.5</b>

Note: Airport passenger movement numbers are the sum of passenger arrivals and departures at each airport. Regional airports are defined as airports which are, according to Australian Statistical Geography Standard (ASGS), not based in Major Cities.



**Table 11: Top fifty regional airports (000s) — passenger movements, annual**

<b>Airport</b>	<b>YE Mar 2022</b>	<b>YE Mar 2023</b>	<b>% Change</b>
1 Cairns	2,420.2	3,901.6	61.2
2 Hobart	1,342.1	2,516.0	87.5
3 Darwin	1,119.3	1,695.8	51.5
4 Townsville	1,120.8	1,625.4	45.0
5 Launceston	659.5	1,297.5	96.7
6 Newcastle	499.7	1,094.6	119.1
7 Mackay	648.2	883.3	36.3
8 Ballina	517.5	650.4	25.7
9 Rockhampton	398.9	520.4	30.5
10 Karratha	439.5	519.0	18.1
11 Hamilton Island	349.2	515.4	47.6
12 Port Hedland	384.0	472.9	23.2
13 Proserpine	333.1	465.8	39.8
14 Broome	415.5	448.0	7.8
15 Alice Springs	239.8	368.6	53.7
16 Newman	321.9	356.6	10.8
17 Kalgoorlie	264.1	324.3	22.8
18 Coffs Harbour	162.7	287.5	76.7
19 Ayers Rock	71.6	243.6	240.0
20 Mount Isa	188.0	232.0	23.4
21 Albury	91.6	225.4	146.1
22 Paraburdoo	195.8	218.8	11.7
23 Gladstone	144.4	207.3	43.6
24 Mildura	91.0	196.9	116.4
25 Dubbo	109.5	194.2	77.3
26 Wagga Wagga	76.9	190.7	148.0
27 Emerald	145.1	183.5	26.4
28 Port Macquarie	78.0	181.8	133.0
29 Port Lincoln	144.2	180.1	24.9
30 Tamworth	64.8	146.7	126.5
31 Hervey Bay	64.8	134.8	107.9
32 Kununurra	106.4	130.6	22.7
33 Bundaberg	75.9	111.9	47.5
34 Devonport	42.4	111.4	162.7
35 Armidale	48.8	108.6	122.8
36 Moranbah	86.3	104.2	20.7
37 Learmonth	92.1	101.6	10.3
38 Thursday Island	91.4	100.9	10.4
39 Orange	46.6	98.4	111.1
40 Olympic Dam	92.1	94.9	3.0
41 Gove	56.1	88.4	57.7
42 Weipa	75.7	87.1	15.0
43 Burnie	32.4	81.9	152.6
44 Geraldton	78.6	81.9	4.3
45 Mount Gambier	46.2	78.8	70.5
46 Griffith	33.6	75.8	125.7
47 Merimbula	32.7	75.5	130.8
48 Norfolk Island	50.6	71.7	41.8
49 Broken Hill	24.1	60.3	150.0
50 Cloncurry	55.4	60.1	8.5
<b>Total top 50 regional airports</b>	<b>14,269.1</b>	<b>22,203.1</b>	<b>55.6</b>
<b>Total regional airports</b>	<b>15,326.9</b>	<b>23,575.8</b>	<b>53.8</b>
<b>Total domestic network</b>	<b>52,155.7</b>	<b>109,779.0</b>	<b>110.5</b>

Note: Airport passenger movement numbers are the sum of passenger arrivals and departures at each airport.

Regional airports are defined as airports which are, according to Australian Statistical Geography Standard (ASGS), not based in Major Cities.

## DOMESTIC CHARTER ACTIVITY

**Table 12: Charter passengers carried and aircraft trips - monthly activity**

	Mar 2022	Mar 2023	% Change
Total domestic charter passengers	310,641	347,527	11.9
Total domestic charter aircraft trips	5,937	5,962	0.4

Note: Helicopter, joyflights and sightseeing charter flights not included.

**Table 13: Charter passengers carried and aircraft trips - annual activity**

	YE Mar 2022	YE Mar 2023	% Change
Total domestic charter passengers	3,363,743	3,751,620	11.5
Total domestic charter aircraft trips	63,335	67,253	6.2

Note: Helicopter, joyflights and sightseeing charter flights not included.

**Table 14: Domestic airports - charter activity - monthly**

	Mar 2022	Mar 2023	% Change
Total domestic charter passenger movements	621,282	695,054	11.9
Total domestic charter aircraft movements	11,874	11,924	0.4
Perth airport charter passenger movements	228,135	258,452	13.3
Perth airport charter aircraft movements	4,075	4,040	-0.9

Note: Helicopter, joyflights and sightseeing charter flights not included.

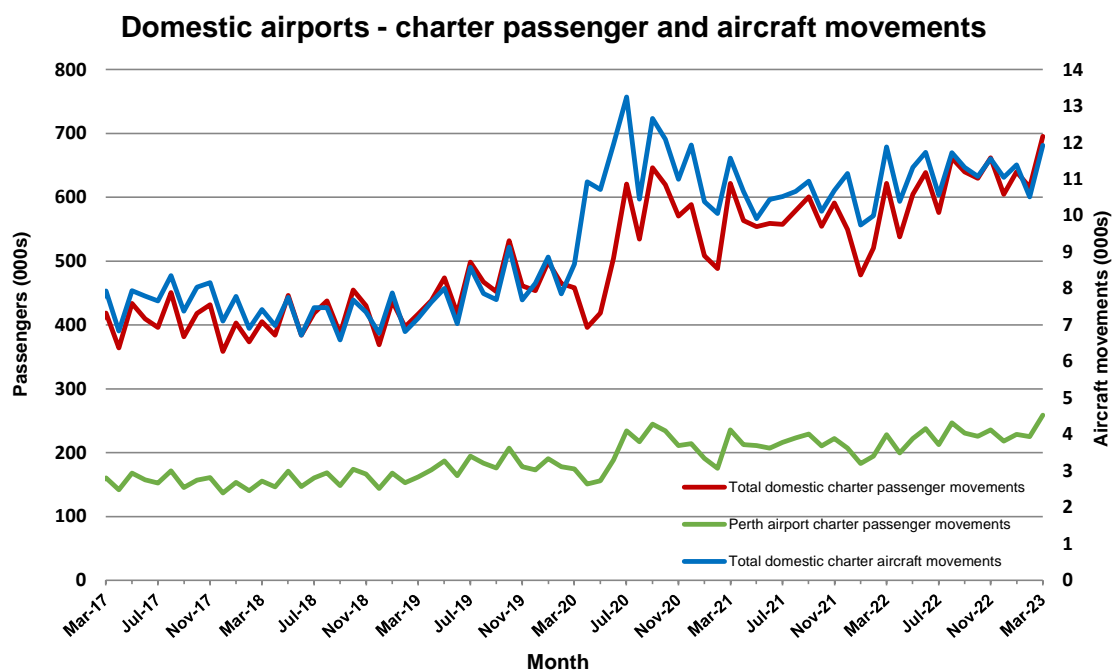
Charter passenger and aircraft movement numbers are the sum of arrivals and departures at each airport.

**Table 15: Domestic airports - charter activity - annual**

	YE Mar 2022	YE Mar 2023	% Change
Total domestic charter passenger movements	6,727,486	7,503,240	11.5
Total domestic charter aircraft movements	126,670	134,506	6.2
Perth airport charter passenger movements	2,544,832	2,741,750	7.7
Perth airport charter aircraft movements	43,634	44,817	2.7

Note: Helicopter, joyflights and sightseeing charter flights not included.

Charter passenger and aircraft movement numbers are the sum of arrivals and departures at each airport.



## DEFINITIONS

Aircraft Trips	The number of flight stages. A return flight counts as two aircraft trips.
Airport Movements	Airport movements (passenger and cargo) are measured once on arrival and once on departure. Each domestic trip generates two movements at airports. For example, a trip from Melbourne to Sydney will be counted twice, as a departure at Melbourne and as an arrival at Sydney. At the national level, the sum of all domestic airport traffic will therefore be equal to twice the number of trips undertaken.
Available Seat Kilometres (ASKs)	Calculated by multiplying the number of seats available on each flight stage, by the distance in kilometres between the ports. The distances used are Great Circle Distances.
City-Pair	The ports shown make up the city-pair route. Passenger movements shown for a city pair reflect total traffic in both directions.
Flight Stage	The operation of an aircraft from take-off to landing.
Load Factor	The total revenue passenger kilometres performed as a percentage of the total available seat kilometres.
Passengers Carried	Revenue passengers carried.
Regular Public Transport Services (RPT)	All air service operations in which aircraft are available for the transport of members of the public and are conducted in accordance with fixed schedules. It does not include charter or other non-scheduled operations.
Revenue Passengers	All passengers paying any fare. Frequent flyer redemption travellers are regarded as revenue passengers.
Revenue Passenger Kilometres (RPKs)	Calculated by multiplying the number of revenue passengers travelling on each flight stage, by the distance in kilometres between the ports. The distances used are Great Circle Distances.
Traffic on board by stages	The total of all traffic (revenue passengers) on each flight stage between two directly connected airports.
..	Not available for confidentiality or other reasons.
NA	Not applicable.