



Australian Government

**Department of Infrastructure, Transport,
Regional Development, Communications and the Arts**
Bureau of Infrastructure and Transport Research Economics

STATISTICAL REPORT



bitre

Aviation

**Domestic aviation activity
March 2024**

The Department of Infrastructure, Transport, Regional Development, Communications and the Arts acknowledges the Traditional Custodians of Country of the land on which we work and live.

We recognise and respect the continuing connections to land, waters and communities.

We pay our respects to them and their cultures and to their Elders both past and present and to all Aboriginal and Torres Strait Islander people.

© Commonwealth of Australia 2024

ISSN: 1832 - 1968

Ownership of intellectual property rights in this publication

Unless otherwise noted, copyright (and any other intellectual property rights, if any) in this publication is owned by the Commonwealth of Australia (referred to below as the Commonwealth).

Disclaimer

The material contained in this publication is made available on the understanding that the Commonwealth is not providing professional advice, and that users exercise their own skill and care with respect to its use, and seek independent advice if necessary.

The Commonwealth makes no representations or warranties as to the contents or accuracy of the information contained in this publication. To the extent permitted by law, the Commonwealth disclaims liability to any person or organisation in respect of anything done, or omitted to be done, in reliance upon information contained in this publication.

Creative Commons licence

With the exception of (a) the Coat of Arms; and (b) the Department of Infrastructure, Transport, Regional Development, Communications and the Arts' photos and graphics, copyright in this publication is licensed under a Creative Commons Attribution 3.0 Australia Licence.

Creative Commons Attribution 3.0 Australia Licence is a standard form licence agreement that allows you to copy, communicate and adapt this publication provided that you attribute the work to the Commonwealth and abide by the other licence terms. A summary of the licence terms is available from <http://creativecommons.org/licenses/by/3.0/au/deed.en>.

The full licence terms are available from <http://creativecommons.org/licenses/by/3.0/au/legalcode>.

Use of the Coat of Arms

The Department of the Prime Minister and Cabinet sets the terms under which the Coat of Arms is used. Please refer to the Department's Commonwealth Coat of Arms and Government branding web page <http://www.dpmc.gov.au/guidelines/index.cfm#brand> and, in particular, the Guidelines on the use of the Commonwealth Coat of Arms publication.

An appropriate citation for this report is:

Bureau of Infrastructure and Transport Research Economics (BITRE), 2024, Domestic aviation activity, Statistical Report, BITRE, Canberra ACT.

Contact us

This publication is available in PDF format. All other rights are reserved, including in relation to any Departmental logos or trade marks which may exist. For enquiries regarding the licence and any use of this publication, please contact:

Bureau of Infrastructure and Transport Research Economics (BITRE)
Department of Infrastructure, Transport, Regional Development, Communications and the Arts
GPO Box 501, Canberra ACT 2601, Australia

Email: bitre@infrastructure.gov.au

Website: www.bitre.gov.au

Inquiries

Nebojsa.Pavlovic@infrastructure.gov.au (02) 6136 8282

FOREWORD

This report provides an overview of domestic (including charter) commercial aviation activity in Australia for the month of March 2024.

The data covers revenue passengers carried by Australian-registered operators of scheduled regular public transport services over Australian flight stages and fixed-wing charter operators. These estimates include passengers carried between domestic airports on international flights operated by these carriers. The passengers carried refer to traffic on board by stages.

Estimates of passengers and aircraft movements for charter aviation are included in this publication, where BITRE confidentiality standards are met.

Individual routes shown are restricted to those with an average exceeding 8,000 passengers per month over the previous six months where two or more airlines operate in competition. However, for the period from December 2021 through to December 2022, the major airlines (Qantas Group, Virgin Australia and Rex Airlines) agreed to publication of the top 35 routes based on pre-COVID activity (December 2019) whether or not they were meeting the above criteria. From January 2023, the passenger load and dual competition requirements were reinstated due to the continued recovery of passenger numbers.

Information on the total network for the month of March 2024 and on the Regular Public Transport (RPT) network for the month of March 2024 is presented on page 2, with estimates for the year ended March 2024 presented on page 3.

Detailed information on individual routes can be found in the RPT summary pages 4-13 of this publication. For the month of March 2024, there are 61 individual routes published.

The top ten airports in terms of RPT passenger movements are shown on page 14.

Data on domestic RPT cargo movements at the top five cargo airports are provided on page 15. The table includes cargo carried on passenger flights operated by the Qantas group (including Jetstar), Virgin Australia, Air North and Skippers as well as the cargo carried by dedicated freighter aircraft operated by Qantas Freight and Team Global Express (formerly Toll).

The long-term trends for the top ten competitive RPT routes are presented graphically on pages 16-25.

Domestic RPT passenger movements at regional airports are shown on pages 26-27.

Tables providing estimates of domestic charter aviation activity are shown on page 28. BITRE confidentiality standards restrict publication of detailed estimates for individual Australian airports, with the exception of Perth Airport.

A list of definitions can be found on page 29.

This report was prepared by the Aviation Statistics Section of the Bureau of Infrastructure and Transport Research Economics with data provided by airlines.

Estimates are included where data were not available and data presented in this publication may contain revisions to previously published data.

Where figures have been rounded, discrepancies may occur between sums of component items and totals, and in percentage changes which are derived from figures prior to rounding.

CONTENTS

Highlights	1
Total network.....	2
RPT network	2
Top competitive routes.....	4
Top ten airports – passenger movements.....	14
Top five airports – cargo movements.....	15
Top ten routes	16
1. Melbourne – Sydney	16
2. Brisbane – Sydney.....	17
3. Brisbane – Melbourne	18
4. Gold Coast – Sydney	19
5. Adelaide – Melbourne	20
6. Gold Coast - Melbourne	21
7. Melbourne – Perth	22
8. Adelaide – Sydney	23
9. Perth – Sydney	24
10. Hobart – Melbourne	25
Top fifty regional airports	26
Domestic charter activity.....	28
Definitions	29

This page is intentionally left blank.

HIGHLIGHTS

There were 5.32 million passengers carried on Australian domestic commercial aviation (including charter operations) in March 2024, an increase of 2.8 per cent on March 2023.

4.98 million passengers were carried on RPT flights in March 2024, an increase of 3.1 per cent compared to March 2023.

For the month of March 2024, there were 52.0 thousand RPT aircraft trips, a decrease of 1.3 per cent compared to March 2023.

For the year ending March 2024 there were 58.29 million RPT passengers, an increase of 6.1 per cent on the year ending March 2023.

RPT revenue passenger kilometres (RPKs) performed were 5.82 billion for the month, compared with 5.63 billion in March 2023 (up 3.3 per cent).

Capacity, measured by available seat kilometres (ASKs), increased to 7.23 billion in March 2024 compared to 6.88 billion in March 2023 (up 5.1 per cent).

The industry wide load factor (RPKs/ASKs) decreased from 81.8 per cent in March 2023 to 80.4 per cent in March 2024. The lowest load factor (49.6 per cent) was recorded on the Geraldton – Perth route while the highest load factor (91.3 per cent) was recorded on the Adelaide – Gold Coast route.

For the month of March 2024, Melbourne – Sydney was Australia's busiest RPT route with 709.7 thousand passengers, followed by Brisbane – Sydney with 366.6 thousand passengers and Brisbane – Melbourne with 284.3 thousand passengers.

Sydney was Australia's busiest domestic airport with 2.14 million passenger movements in March 2024, followed by Melbourne with 2.09 million passenger movements and Brisbane with 1.38 million passenger movements.

Total cargo movements at Australian airports on domestic RPT flights were 24.7 thousand tonnes in March 2024, a decrease of 16.2 per cent compared with March 2023.

In March 2024, there were 2.05 million domestic passenger movements through regional airports, compared to 2.01 million in March 2023, an increase of 2.0 per cent. Out of the top 50 regional airports, the strongest increase was recorded at Toowoomba Wellcamp Airport (up 147.4 per cent on March 2023), while the largest decrease was recorded at Burnie Airport (down 15.6 per cent on March 2023).

Fixed-wing charter operators carried 342.4 thousand passengers in March 2024, a decrease of 1.5 per cent compared with March 2023. Perth Airport accounted for 36.6 per cent of all charter passengers in Australia.

TOTAL NETWORK

Summary of monthly commercial aviation activity

	Mar 2023	Mar 2024	% Change
Total passengers carried (millions)	5.18	5.32	2.8
Aircraft trips (000s)	58.6	57.6	-1.8

Note: Regular Public Transport and charter aviation activity
Helicopter, joy flights and sightseeing charter flights not included.

RPT NETWORK

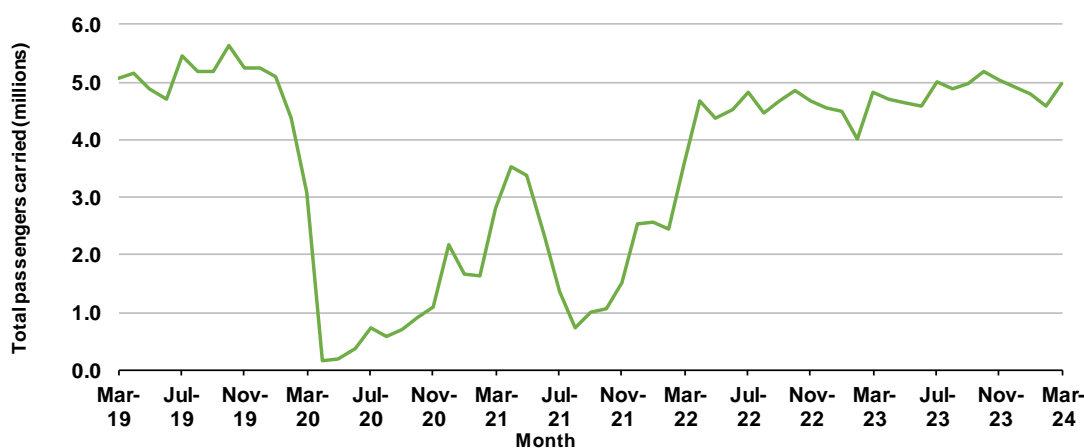
Summary of monthly RPT activity

	Mar 2023	Mar 2024	% Change
Total passengers carried (millions)	4.83	4.98	3.1
Revenue passenger kilometres (billions)	5.63	5.82	3.3
Available seats (millions)	6.08	6.35	4.4
Available seat kilometres (billions)	6.88	7.23	5.1
Load factor %	81.8	80.4	-1.4 *
Aircraft trips (000s)	52.7	52.0	-1.3

* percentage point difference

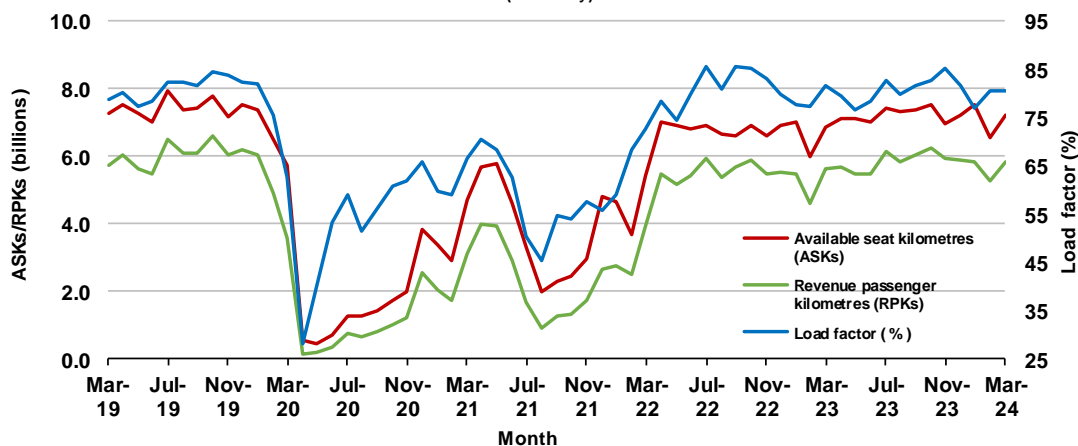
Domestic RPT passenger traffic

(monthly)



RPT Network utilisation

(monthly)



TOTAL NETWORK

Summary of annual commercial aviation activity

	YE Mar 2023	YE Mar 2024	% Change
Total passengers carried (millions)	58.63	62.43	6.5
Aircraft trips (000s)	659.4	687.1	4.2

Note: Regular Public Transport and charter aviation activity
Helicopter, joy flights and sightseeing charter flights not included.

RPT NETWORK

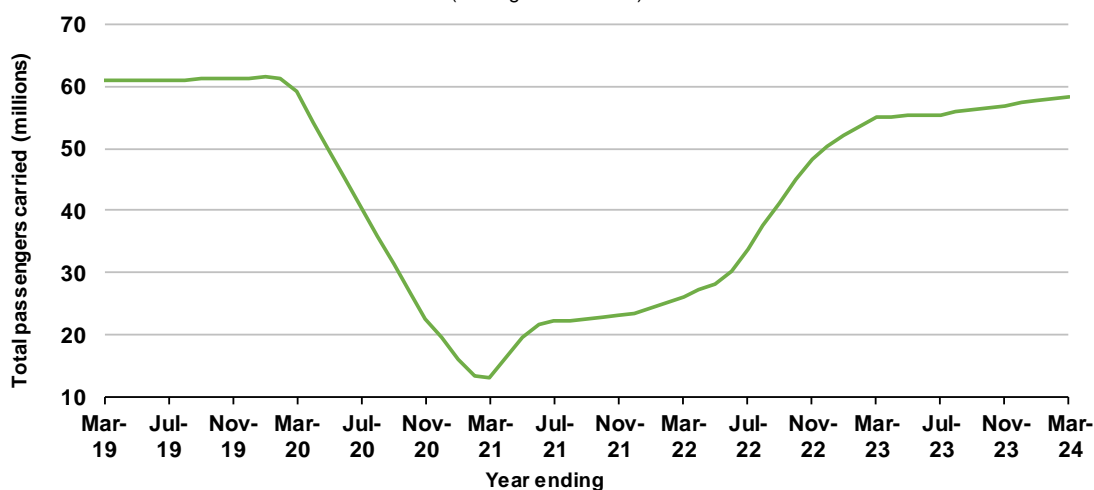
Summary of annual RPT activity

	YE Mar 2023	YE Mar 2024	% Change
Total passengers carried (millions)	54.92	58.29	6.1
Revenue passenger kilometres (billions)	65.71	69.60	5.9
Available seats (millions)	70.00	74.32	6.2
Available seat kilometres (billions)	81.25	86.43	6.4
Load factor %	80.9	80.5	-0.3 *
Aircraft trips (000s)	592.8	616.1	3.9

* percentage point difference

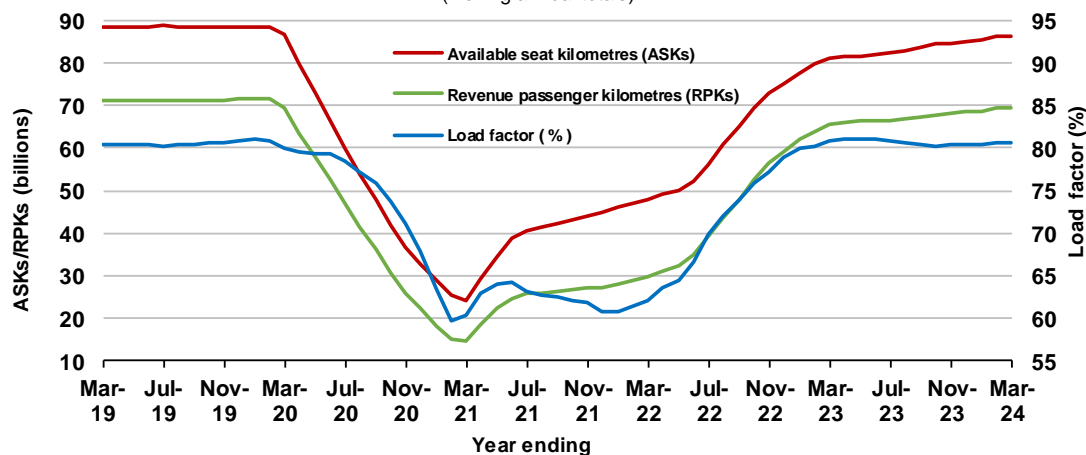
Domestic RPT passenger traffic

(moving annual totals)



RPT Network utilisation

(moving annual totals)



TOP COMPETITIVE ROUTES

Table 1: Passengers carried (000s) — annual activity

	City-Pair	YE Mar 2023	YE Mar 2024	%Change
1	Melbourne - Sydney	7 268.1	7 830.5	7.7
2	Brisbane - Sydney	3 983.3	4 311.8	8.2
3	Brisbane - Melbourne	3 064.5	3 354.1	9.5
4	Gold Coast - Sydney	2 451.4	2 492.4	1.7
5	Adelaide - Melbourne	2 175.8	2 322.6	6.7
6	Gold Coast - Melbourne	2 333.9	2 246.4	-3.7
7	Melbourne - Perth	1 726.2	1 950.9	13.0
8	Adelaide - Sydney	1 572.1	1 809.1	15.1
9	Perth - Sydney	1 430.9	1 613.7	12.8
10	Hobart - Melbourne	1 217.1	1 335.7	9.7
11	Brisbane - Cairns	1 209.8	1 248.4	3.2
12	Brisbane - Perth	939.2	1 021.1	8.7
13	Canberra - Melbourne	940.9	1 016.6	8.0
14	Cairns - Sydney	895.0	904.8	1.1
15	Brisbane - Townsville	868.4	871.7	0.4
16	Adelaide - Brisbane	780.1	848.2	8.7
17	Launceston - Melbourne	755.8	847.2	12.1
18	Cairns - Melbourne	828.5	840.7	1.5
19	Melbourne - Sunshine Coast	724.5	776.6	7.2
20	Sunshine Coast - Sydney	744.6	769.9	3.4
21	Hobart - Sydney	713.3	753.3	5.6
22	Brisbane - Mackay	750.3	724.7	-3.4
23	Adelaide - Perth	618.2	663.4	7.3
24	Brisbane - Canberra	630.3	632.0	0.3
25	Canberra - Sydney	602.1	606.7	0.8
26	Karratha - Perth	517.1	556.0	7.5
27	Ballina - Sydney	533.1	523.5	-1.8
28	Brisbane - Rockhampton	476.3	514.6	8.0
29	Brisbane - Newcastle	492.2	501.0	1.8
30	Perth - Port Hedland	471.6	469.5	-0.4
31	Melbourne - Newcastle	406.2	430.6	6.0
32	Newman - Perth	354.9	366.8	3.3
33	Broome - Perth	373.9	362.3	-3.1
34	Kalgoorlie - Perth	323.8	360.1	11.2
35	Launceston - Sydney	303.9	335.8	10.5
36	Brisbane - Darwin	340.9	319.4	-6.3
37	Brisbane - Hobart	305.7	295.0	-3.5
38	Darwin - Melbourne	305.7	282.8	-7.5
39	Brisbane - Proserpine	293.3	274.4	-6.5
40	Adelaide - Gold Coast	241.4	269.6	11.7
41	Hamilton Island - Sydney	250.4	243.4	-2.8
42	Brisbane - Gladstone	206.8	216.4	4.6
43	Coffs Harbour - Sydney	215.9	211.1	-2.2
44	Adelaide - Canberra	171.5	193.3	12.8
45	Brisbane - Emerald	185.4	184.7	-0.4
46	Canberra - Gold Coast	155.8	179.3	15.1
47	Dubbo - Sydney	159.2	178.5	12.1
48	Melbourne - Mildura	148.3	174.1	17.4
49	Adelaide - Port Lincoln	180.0	172.3	-4.3
50	Darwin - Perth	174.9	170.9	-2.3

continued

Table 1: (continued) Passengers carried (000s) — annual activity

	City-Pair	YE Mar 2023	YE Mar 2024	% Change
51	Port Macquarie - Sydney	157.0	167.3	6.5
52	Albury - Sydney	162.6	165.9	2.0
53	Brisbane - Hamilton Island	172.1	164.2	-4.5
54	Sydney - Wagga Wagga	147.4	154.5	4.8
55	Brisbane - Launceston	179.8	146.3	-18.6
56	Brisbane - Mount Isa	143.0	141.9	-0.8
57	Brisbane - Bundaberg	111.6	131.8	18.1
58	Devonport - Melbourne	169.5	120.3	-29.0
59	Adelaide - Alice Springs	107.4	118.2	10.1
60	Brisbane - Moranbah	104.1	110.5	6.1
61	Geraldton - Perth	..	42.8	NA
	Total domestic network	54 924.8	58 286.5	6.1

.. Data not available for release.

Table 2: Passengers carried (000s) — monthly activity

	City-Pair	Mar 2023	Mar 2024	% Change
1	Melbourne - Sydney	689.7	709.7	2.9
2	Brisbane - Sydney	360.8	366.6	1.6
3	Brisbane - Melbourne	281.6	284.3	1.0
4	Gold Coast - Sydney	191.8	211.3	10.2
5	Adelaide - Melbourne	200.9	208.2	3.6
6	Gold Coast - Melbourne	172.1	188.6	9.6
7	Melbourne - Perth	163.6	173.6	6.2
8	Adelaide - Sydney	151.0	161.4	6.9
9	Perth - Sydney	134.4	134.0	-0.3
10	Hobart - Melbourne	114.2	124.7	9.2
11	Brisbane - Cairns	94.9	94.8	-0.1
12	Canberra - Melbourne	88.5	94.1	6.3
13	Brisbane - Perth	87.3	90.2	3.3
14	Launceston - Melbourne	72.4	79.7	10.1
15	Adelaide - Brisbane	66.9	74.7	11.6
16	Brisbane - Townsville	74.1	72.6	-2.0
17	Cairns - Sydney	62.1	69.6	12.2
18	Hobart - Sydney	66.0	67.6	2.4
19	Sunshine Coast - Sydney	61.1	64.9	6.1
20	Melbourne - Sunshine Coast	56.7	61.8	9.0
21	Brisbane - Mackay	63.6	61.4	-3.3
22	Cairns - Melbourne	51.8	58.1	12.1
23	Adelaide - Perth	56.8	56.5	-0.6
24	Canberra - Sydney	57.8	55.8	-3.4
25	Brisbane - Canberra	52.5	50.8	-3.1
26	Karratha - Perth	45.4	48.3	6.4
27	Ballina - Sydney	49.0	44.4	-9.3
28	Brisbane - Rockhampton	44.4	44.1	-0.7
29	Brisbane - Newcastle	44.3	42.4	-4.3
30	Melbourne - Newcastle	35.9	39.3	9.5
31	Perth - Port Hedland	43.5	36.2	-16.8
32	Launceston - Sydney	27.7	31.1	12.3
33	Newman - Perth	32.1	29.7	-7.4
34	Kalgoorlie - Perth	32.5	29.5	-9.3
35	Brisbane - Hobart	26.9	25.5	-5.2
36	Broome - Perth	24.8	24.4	-1.4
37	Adelaide - Gold Coast	20.9	23.1	10.8
38	Brisbane - Darwin	24.5	22.0	-10.4
39	Brisbane - Proserpine	21.6	20.6	-4.6
40	Hamilton Island - Sydney	20.6	19.6	-4.5
41	Brisbane - Gladstone	18.9	18.3	-3.3
42	Coffs Harbour - Sydney	20.0	17.9	-10.2
43	Darwin - Melbourne	19.0	16.8	-11.5
44	Melbourne - Mildura	14.8	16.1	8.4
45	Adelaide - Canberra	18.0	16.1	-10.7
46	Canberra - Gold Coast	14.2	16.0	12.9
47	Brisbane - Emerald	16.2	15.6	-3.6
48	Dubbo - Sydney	16.2	15.2	-5.9
49	Adelaide - Port Lincoln	17.0	15.1	-11.2
50	Port Macquarie - Sydney	15.3	14.8	-2.9

continued

Table 2: (continued) Passengers carried (000s) — monthly activity

	City-Pair	Mar 2023	Mar 2024	% Change
51	Albury - Sydney	15.5	14.4	-6.9
52	Sydney - Wagga Wagga	14.3	14.0	-2.0
53	Brisbane - Hamilton Island	13.0	13.2	1.9
54	Darwin - Perth	12.8	12.6	-1.2
55	Brisbane - Launceston	15.0	12.5	-16.7
56	Brisbane - Bundaberg	11.3	11.6	3.2
57	Brisbane - Mount Isa	12.6	11.2	-11.5
58	Devonport - Melbourne	11.6	10.6	-8.8
59	Brisbane - Moranbah	9.9	9.4	-4.7
60	Geraldton - Perth	..	9.2	NA
61	Adelaide - Alice Springs	9.1	8.8	-3.5
	Total domestic network	4 828.8	4 976.4	3.1

.. Data not available for release.

Table 3: Available seats (000s) — monthly activity

	City-Pair	Mar 2023	Mar 2024	% Change
1	Melbourne - Sydney	819.3	861.6	5.2
2	Brisbane - Sydney	449.4	451.2	0.4
3	Brisbane - Melbourne	339.9	347.1	2.1
4	Gold Coast - Sydney	224.1	251.5	12.2
5	Adelaide - Melbourne	240.7	250.3	4.0
6	Gold Coast - Melbourne	193.9	219.2	13.1
7	Melbourne - Perth	185.0	208.6	12.7
8	Adelaide - Sydney	169.3	194.0	14.5
9	Perth - Sydney	151.8	150.5	-0.9
10	Hobart - Melbourne	132.4	153.7	16.1
11	Brisbane - Cairns	106.5	109.1	2.5
12	Canberra - Melbourne	116.4	133.1	14.3
13	Brisbane - Perth	98.6	106.4	7.8
14	Launceston - Melbourne	86.5	102.8	18.9
15	Adelaide - Brisbane	78.8	96.1	21.9
16	Brisbane - Townsville	92.1	97.3	5.7
17	Cairns - Sydney	69.9	80.5	15.2
18	Hobart - Sydney	80.9	82.4	1.8
19	Sunshine Coast - Sydney	75.3	78.9	4.8
20	Melbourne - Sunshine Coast	68.7	72.3	5.2
21	Brisbane - Mackay	85.8	82.9	-3.4
22	Cairns - Melbourne	61.0	71.1	16.5
23	Adelaide - Perth	63.5	66.8	5.1
24	Canberra - Sydney	82.9	82.7	-0.3
25	Brisbane - Canberra	80.1	72.2	-9.9
26	Karratha - Perth	63.4	71.2	12.4
27	Ballina - Sydney	58.9	52.4	-11.1
28	Brisbane - Rockhampton	58.3	56.5	-3.0
29	Brisbane - Newcastle	62.2	53.4	-14.2
30	Melbourne - Newcastle	44.9	49.0	9.1
31	Perth - Port Hedland	57.2	60.5	5.8
32	Launceston - Sydney	32.5	37.4	15.2
33	Newman - Perth	52.3	53.0	1.3
34	Kalgoorlie - Perth	46.0	52.3	13.6
35	Brisbane - Hobart	32.8	29.6	-9.9
36	Broome - Perth	33.7	32.5	-3.8
37	Adelaide - Gold Coast	22.5	25.3	12.5
38	Brisbane - Darwin	29.7	26.3	-11.6
39	Brisbane - Proserpine	27.7	25.1	-9.2
40	Hamilton Island - Sydney	30.4	28.4	-6.4
41	Brisbane - Gladstone	31.1	26.0	-16.4
42	Coffs Harbour - Sydney	26.1	22.2	-14.9
43	Darwin - Melbourne	25.6	19.0	-26.0
44	Melbourne - Mildura	19.5	20.0	2.5
45	Adelaide - Canberra	28.8	22.3	-22.6
46	Canberra - Gold Coast	18.2	19.0	4.6
47	Brisbane - Emerald	22.6	21.9	-3.0
48	Dubbo - Sydney	25.4	22.8	-10.2
49	Adelaide - Port Lincoln	24.2	22.4	-7.1
50	Port Macquarie - Sydney	23.7	21.5	-9.2

continued

Table 3: (continued) Available seats (000s) — monthly activity

	City-Pair	Mar 2023	Mar 2024	% Change
51	Albury - Sydney	24.7	19.0	-22.9
52	Sydney - Wagga Wagga	24.4	19.7	-19.3
53	Brisbane - Hamilton Island	18.7	19.5	4.2
54	Darwin - Perth	17.7	18.5	4.4
55	Brisbane - Launceston	17.7	15.6	-11.5
56	Brisbane - Bundaberg	18.9	18.3	-3.2
57	Brisbane - Mount Isa	20.9	20.0	-4.3
58	Devonport - Melbourne	15.7	14.4	-8.2
59	Brisbane - Moranbah	16.4	15.6	-5.2
60	Geraldton - Perth	..	18.5	NA
61	Adelaide - Alice Springs	13.2	13.0	-1.6
	Total domestic network	6 080.2	6 347.3	4.4

.. Data not available for release.

Table 4: Load factors (%) — monthly activity

	City-Pair	Mar 2023	Mar 2024	% Point diff
1	Melbourne - Sydney	84.2	82.4	-1.8
2	Brisbane - Sydney	80.3	81.3	1.0
3	Brisbane - Melbourne	82.8	81.9	-0.9
4	Gold Coast - Sydney	85.6	84.0	-1.6
5	Adelaide - Melbourne	83.5	83.2	-0.3
6	Gold Coast - Melbourne	88.8	86.0	-2.8
7	Melbourne - Perth	88.4	83.2	-5.2
8	Adelaide - Sydney	89.2	83.2	-6.0
9	Perth - Sydney	88.6	89.1	0.5
10	Hobart - Melbourne	86.3	81.2	-5.1
11	Brisbane - Cairns	89.1	86.9	-2.2
12	Canberra - Melbourne	76.0	70.7	-5.3
13	Brisbane - Perth	88.5	84.8	-3.7
14	Launceston - Melbourne	83.7	77.5	-6.2
15	Adelaide - Brisbane	84.9	77.7	-7.2
16	Brisbane - Townsville	80.5	74.6	-5.9
17	Cairns - Sydney	88.9	86.6	-2.3
18	Hobart - Sydney	81.6	82.0	0.4
19	Sunshine Coast - Sydney	81.2	82.2	1.0
20	Melbourne - Sunshine Coast	82.5	85.4	2.9
21	Brisbane - Mackay	74.1	74.1	0.0
22	Cairns - Melbourne	84.8	81.6	-3.2
23	Adelaide - Perth	89.4	84.6	-4.8
24	Canberra - Sydney	69.7	67.5	-2.2
25	Brisbane - Canberra	65.5	70.4	4.9
26	Karratha - Perth	71.7	67.9	-3.8
27	Ballina - Sydney	83.2	84.9	1.7
28	Brisbane - Rockhampton	76.2	78.0	1.8
29	Brisbane - Newcastle	71.1	79.4	8.3
30	Melbourne - Newcastle	80.0	80.3	0.3
31	Perth - Port Hedland	76.1	59.9	-16.2
32	Launceston - Sydney	85.2	83.1	-2.1
33	Newman - Perth	61.3	56.0	-5.3
34	Kalgoorlie - Perth	70.6	56.4	-14.2
35	Brisbane - Hobart	81.9	86.1	4.2
36	Broome - Perth	73.4	75.3	1.9
37	Adelaide - Gold Coast	92.8	91.3	-1.5
38	Brisbane - Darwin	82.5	83.6	1.1
39	Brisbane - Proserpine	77.9	81.9	4.0
40	Hamilton Island - Sydney	67.7	69.1	1.4
41	Brisbane - Gladstone	60.9	70.4	9.5
42	Coffs Harbour - Sydney	76.5	80.8	4.3
43	Darwin - Melbourne	74.0	88.6	14.6
44	Melbourne - Mildura	75.8	80.2	4.4
45	Adelaide - Canberra	62.5	72.1	9.6
46	Canberra - Gold Coast	78.0	84.2	6.2
47	Brisbane - Emerald	71.5	71.1	-0.4
48	Dubbo - Sydney	63.6	66.7	3.1
49	Adelaide - Port Lincoln	70.2	67.1	-3.1
50	Port Macquarie - Sydney	64.3	68.7	4.4

continued

Table 4: (continued) Load factors (%) — monthly activity

	City-Pair	Mar 2023	Mar 2024	% Point diff
51	Albury - Sydney	62.8	75.8	13.0
52	Sydney - Wagga Wagga	58.4	70.8	12.4
53	Brisbane - Hamilton Island	69.5	67.9	-1.6
54	Darwin - Perth	72.3	68.4	-3.9
55	Brisbane - Launceston	84.7	79.7	-5.0
56	Brisbane - Bundaberg	59.5	63.4	3.9
57	Brisbane - Mount Isa	60.4	55.9	-4.5
58	Devonport - Melbourne	74.1	73.6	-0.5
59	Brisbane - Moranbah	60.2	60.5	0.3
60	Geraldton - Perth	..	49.6	NA
61	Adelaide - Alice Springs	69.1	67.7	-1.4
	Total domestic network	81.8	80.4	-1.4

.. Data not available for release.

Table 5: Aircraft trips ^(a) — monthly activity

	City-Pair	Mar 2023	Mar 2024	% Change
1	Melbourne - Sydney	4 749	4 980	4.9
2	Brisbane - Sydney	2 777	2 735	-1.5
3	Brisbane - Melbourne	2 059	2 044	-0.7
4	Gold Coast - Sydney	1 305	1 403	7.5
5	Adelaide - Melbourne	1 489	1 496	0.5
6	Gold Coast - Melbourne	1 059	1 195	12.8
7	Melbourne - Perth	1 066	1 150	7.9
8	Adelaide - Sydney	1 025	1 174	14.5
9	Perth - Sydney	809	776	-4.1
10	Hobart - Melbourne	771	872	13.1
11	Brisbane - Cairns	728	794	9.1
12	Canberra - Melbourne	840	879	4.6
13	Brisbane - Perth	571	626	9.6
14	Launceston - Melbourne	772	800	3.6
15	Adelaide - Brisbane	661	713	7.9
16	Brisbane - Townsville	645	703	9.0
17	Cairns - Sydney	360	420	16.7
18	Hobart - Sydney	500	500	0.0
19	Sunshine Coast - Sydney	464	440	-5.2
20	Melbourne - Sunshine Coast	380	386	1.6
21	Brisbane - Mackay	629	705	12.1
22	Cairns - Melbourne	314	370	17.8
23	Adelaide - Perth	370	391	5.7
24	Canberra - Sydney	1 372	1 313	-4.3
25	Brisbane - Canberra	589	597	1.4
26	Karratha - Perth	397	423	6.5
27	Ballina - Sydney	431	360	-16.5
28	Brisbane - Rockhampton	657	652	-0.8
29	Brisbane - Newcastle	542	496	-8.5
30	Melbourne - Newcastle	283	315	11.3
31	Perth - Port Hedland	367	372	1.4
32	Launceston - Sydney	204	231	13.2
33	Newman - Perth	340	321	-5.6
34	Kalgoorlie - Perth	320	327	2.2
35	Brisbane - Hobart	203	194	-4.4
36	Broome - Perth	254	222	-12.6
37	Adelaide - Gold Coast	126	126	0.0
38	Brisbane - Darwin	235	221	-6.0
39	Brisbane - Proserpine	186	168	-9.7
40	Hamilton Island - Sydney	172	161	-6.4
41	Brisbane - Gladstone	383	323	-15.7
42	Coffs Harbour - Sydney	503	388	-22.9
43	Darwin - Melbourne	146	134	-8.2
44	Melbourne - Mildura	461	409	-11.3
45	Adelaide - Canberra	254	206	-18.9
46	Canberra - Gold Coast	102	106	3.9
47	Brisbane - Emerald	342	326	-4.7
48	Dubbo - Sydney	488	420	-13.9
49	Adelaide - Port Lincoln	596	546	-8.4
50	Port Macquarie - Sydney	435	376	-13.6

continued

Table 5: (continued) Aircraft trips ^(a) — monthly activity

	City-Pair	Mar 2023	Mar 2024	% Change
51	Albury - Sydney	484	328	-32.2
52	Sydney - Wagga Wagga	480	344	-28.3
53	Brisbane - Hamilton Island	109	133	22.0
54	Darwin - Perth	105	105	0.0
55	Brisbane - Launceston	100	92	-8.0
56	Brisbane - Bundaberg	310	296	-4.5
57	Brisbane - Mount Isa	183	168	-8.2
58	Devonport - Melbourne	348	312	-10.3
59	Brisbane - Moranbah	218	208	-4.6
60	Geraldton - Perth	..	203	NA
61	Adelaide - Alice Springs	162	152	-6.2
	Total domestic network	52 660	51 953	-1.3

(a) Includes RPT cargo flights.

.. Data not available for release.

TOP TEN AIRPORTS – PASSENGER MOVEMENTS

Table 6: Top ten airports, RPT passenger movements (000s) - monthly activity

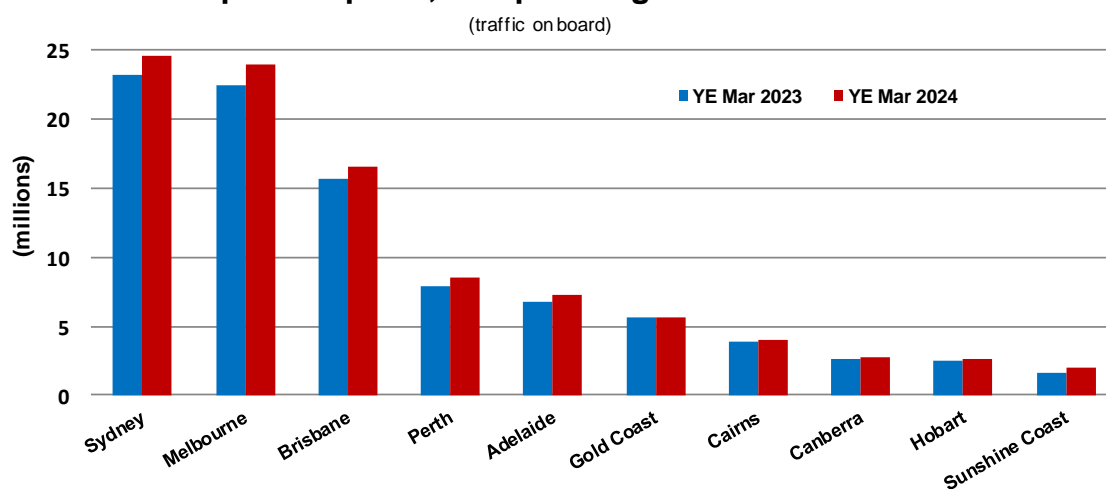
Airport	Mar 2023	Mar 2024	% Change	% of Total
1 Sydney	2 082.9	2 136.5	2.6	21.5
2 Melbourne	1 991.0	2 091.5	5.0	21.0
3 Brisbane	1 380.9	1 380.1	-0.1	13.9
4 Perth	713.7	713.5	0.0	7.2
5 Adelaide	617.2	632.0	2.4	6.4
6 Gold Coast	427.4	479.3	12.1	4.8
7 Cairns	284.6	302.7	6.4	3.0
8 Canberra	243.4	245.0	0.6	2.5
9 Hobart	231.6	243.8	5.3	2.4
10 Sunshine Coast	137.0	159.4	16.4	1.6
Total top ten airports	8 109.7	8 383.8	3.4	84.2
Total domestic network	9 657.6	9 952.7	3.1	100.0

Table 7: Top ten airports, RPT passenger movements (000s) - annual activity

Airport	YE Mar 2023	YE Mar 2024	% Change	% of Total
1 Sydney	23 202.1	24 595.7	6.0	21.1
2 Melbourne	22 375.7	23 945.7	7.0	20.5
3 Brisbane	15 700.0	16 502.0	5.1	14.2
4 Perth	7 838.1	8 493.3	8.4	7.3
5 Adelaide	6 720.4	7 252.5	7.9	6.2
6 Gold Coast	5 572.7	5 578.1	0.1	4.8
7 Cairns	3 907.0	4 047.4	3.6	3.5
8 Canberra	2 676.5	2 785.1	4.1	2.4
9 Hobart	2 516.0	2 641.9	5.0	2.3
10 Sunshine Coast	1 571.0	1 958.1	24.6	1.7
Total top ten airports	92 079.5	97 799.9	6.2	83.9
Total domestic network	109 849.5	116 573.0	6.1	100.0

Note: Airport passenger movement numbers are the sum of passenger arrivals and departures at each airport.

Top ten airports, RPT passenger movements



TOP FIVE AIRPORTS – CARGO MOVEMENTS

Table 8: Top five airports, domestic RPT cargo movements (000s tonnes) - monthly activity

Airport	Mar 2023	Mar 2024	% Change	% of Total
1 Melbourne	7.8	6.6	-15.6	26.6
2 Sydney	6.7	5.4	-19.2	21.9
3 Brisbane	5.2	4.5	-13.8	18.0
4 Perth	3.0	2.9	-1.0	11.9
5 Adelaide	1.6	1.3	-19.4	5.3
Total top five airports	24.3	20.7	-14.7	83.8
Total domestic network	29.5	24.7	-16.2	100.0

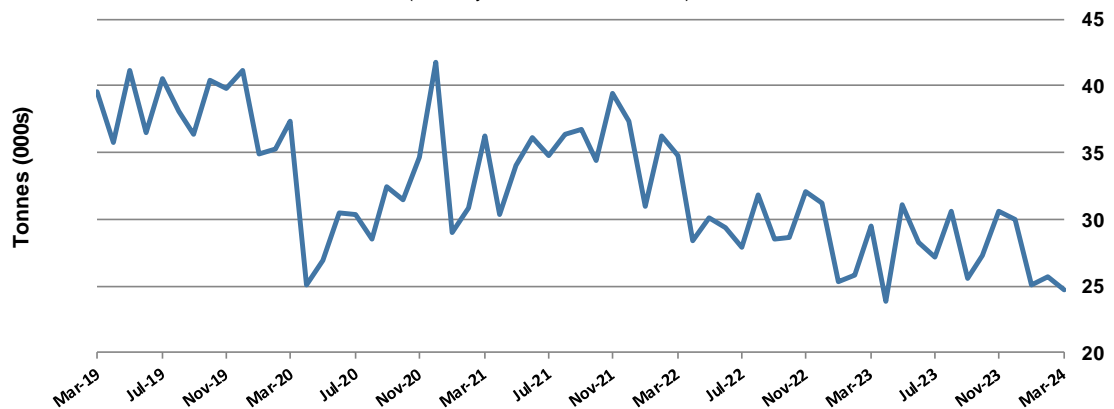
Table 9: Top five airports, domestic RPT cargo movements (000s tonnes) - annual activity

Airport	YE Mar 2023	YE Mar 2024	% Change	% of Total
1 Melbourne	92.4	88.9	-3.8	27.0
2 Sydney	76.8	73.9	-3.8	22.4
3 Brisbane	60.2	58.9	-2.2	17.9
4 Perth	35.6	34.8	-2.1	10.6
5 Adelaide	20.1	18.6	-7.6	5.6
Total top five airports	285.1	275.1	-3.5	83.4
Total domestic network	348.6	329.8	-5.4	100.0

Note: Airport cargo tonnes are the sum of cargo tonnes on arrivals and departures at each airport.

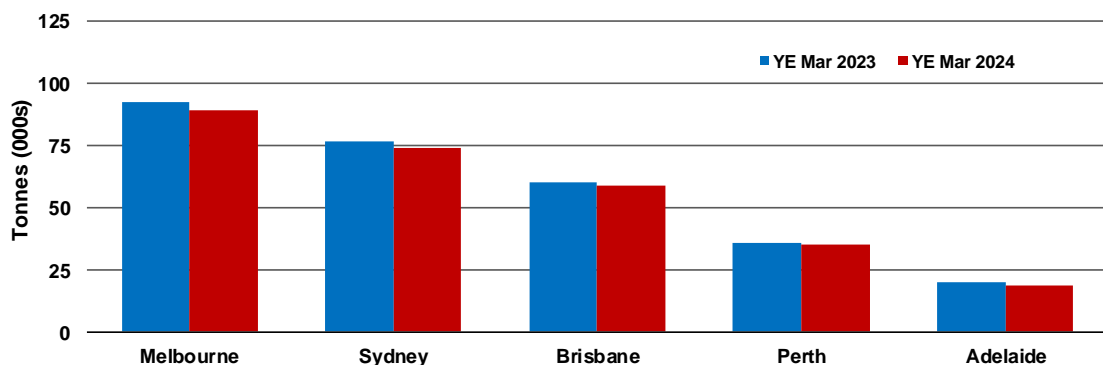
Total domestic network - cargo movement

(monthly totals - traffic on board)



Top five airports, cargo movements

(Domestic cargo traffic - traffic on board)



Note: Airport cargo tonnes are the sum of cargo tonnes on arrivals and departures at each airport.

TOP TEN ROUTES

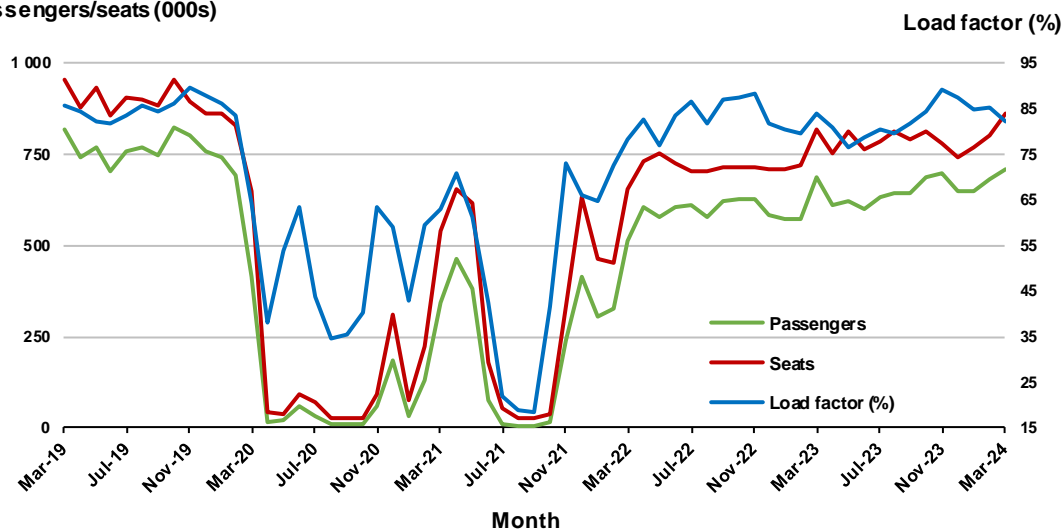
1. Melbourne - Sydney

Monthly data

	Mar 2023	Mar 2024	% Change
Passengers carried (000s)	689.7	709.7	2.9
Seats (000s)	819.3	861.6	5.2
Load factor %	84.2	82.4	-1.8 *
Aircraft trips	4 749	4 980	4.9

* percentage point difference

Passengers/seats (000s)

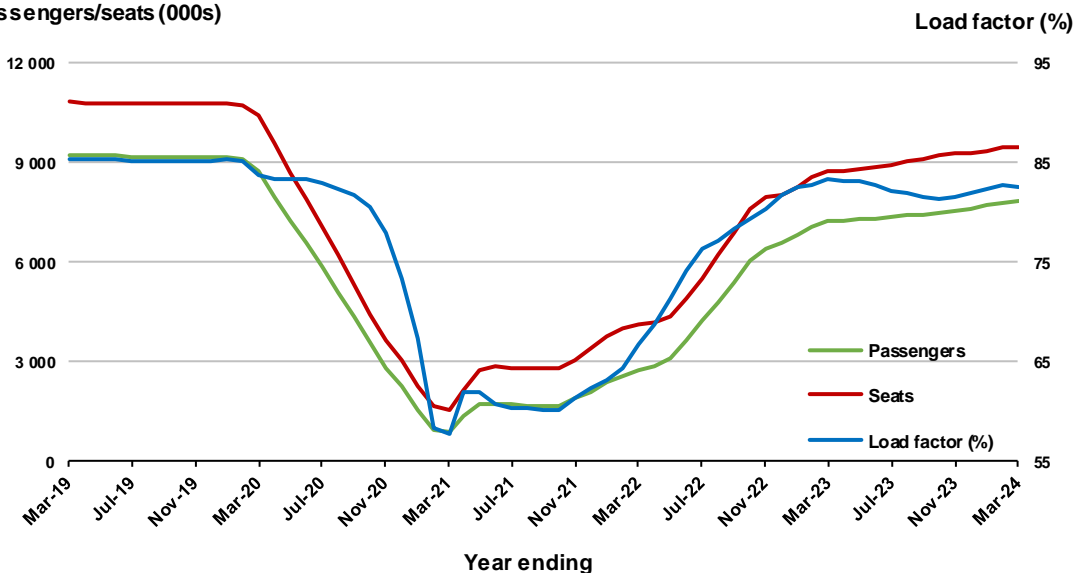


Moving annual data

	YE Mar 2023	YE Mar 2024	% Change
Passengers carried (000s)	7 268.1	7 830.5	7.7
Seats (000s)	8 724.3	9 481.7	8.7
Load factor %	83.3	82.6	-0.7 *
Aircraft trips	50 279	55 026	9.4

* percentage point difference

Passengers/seats (000s)

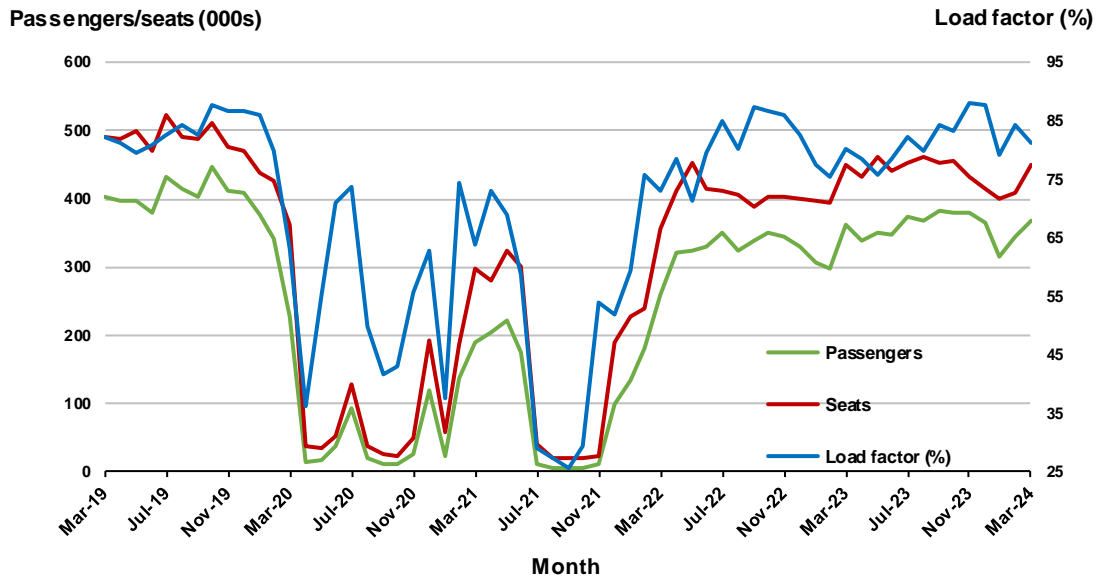


2. Brisbane - Sydney

Monthly data

	Mar 2023	Mar 2024	% Change
Passengers carried (000s)	360.8	366.6	1.6
Seats (000s)	449.4	451.2	0.4
Load factor %	80.3	81.3	1.0 *
Aircraft trips	2 777	2 735	- 1.5

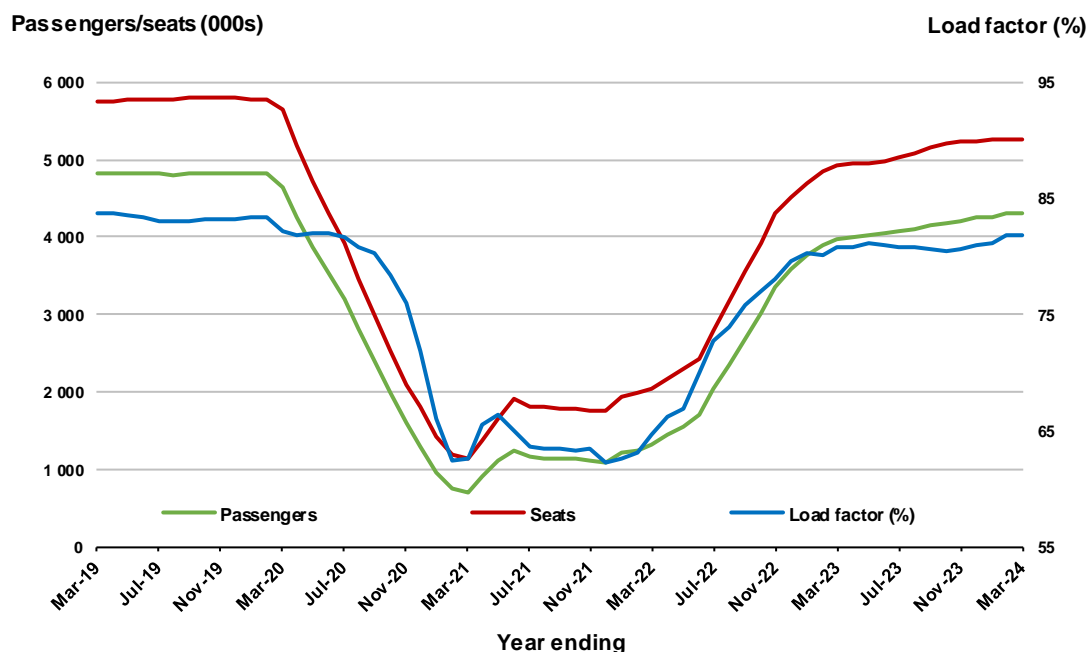
* percentage point difference



Moving annual data

	YE Mar 2023	YE Mar 2024	% Change
Passengers carried (000s)	3 983.3	4 311.8	8.2
Seats (000s)	4 935.2	5 266.2	6.7
Load factor %	80.7	81.9	1.2 *
Aircraft trips	30 331	32 332	6.6

* percentage point difference

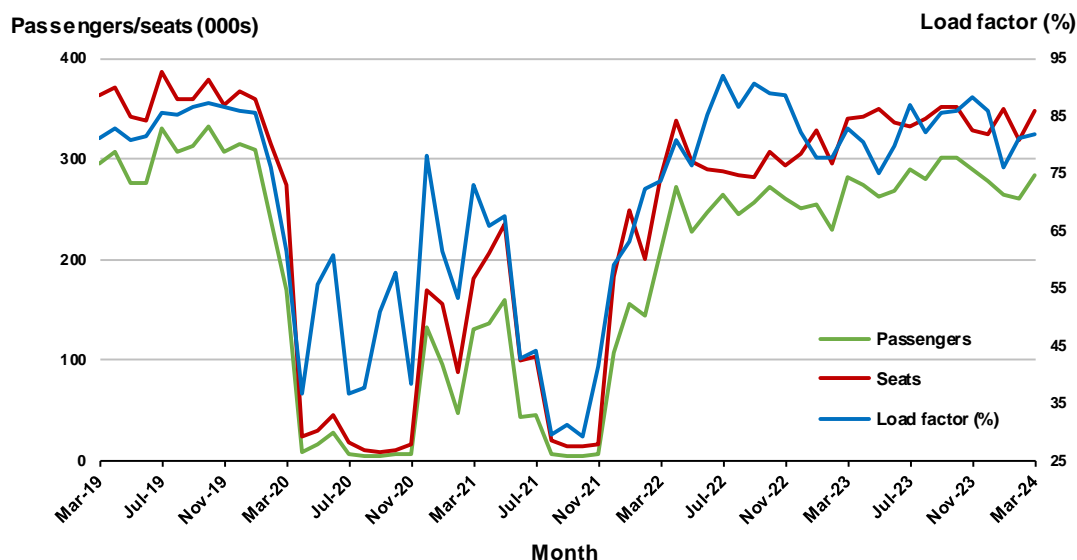


3. Brisbane - Melbourne

Monthly data

	Mar 2023	Mar 2024	% Change
Passengers carried (000s)	281.6	284.3	1.0
Seats (000s)	339.9	347.1	2.1
Load factor %	82.8	81.9	-0.9 *
Aircraft trips	2 059	2 044	-0.7

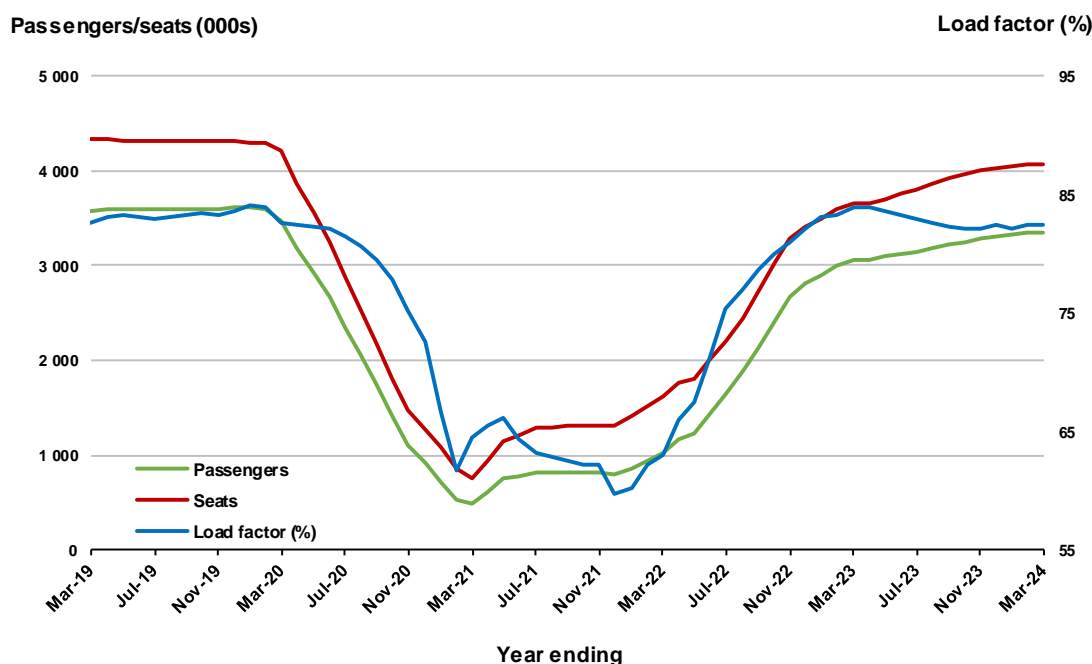
* percentage point difference



Moving annual data

	YE Mar 2023	YE Mar 2024	% Change
Passengers carried (000s)	3 064.5	3 354.1	9.5
Seats (000s)	3 651.0	4 071.9	11.5
Load factor %	83.9	82.4	-1.6 *
Aircraft trips	22 276	24 529	10.1

* percentage point difference



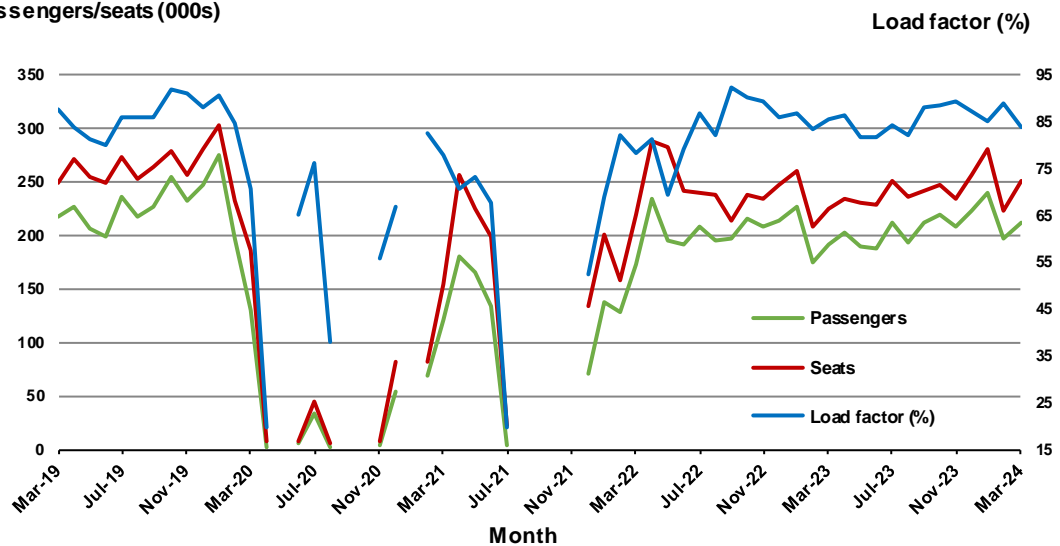
4. Gold Coast - Sydney ^(a)

Monthly data

	Mar 2023	Mar 2024	% Change
Passengers carried (000s)	191.8	211.3	10.2
Seats (000s)	224.1	251.5	12.2
Load factor %	85.6	84.0	-1.6 *
Aircraft trips	1 305	1 403	7.5

* percentage point difference

Passengers/seats (000s)



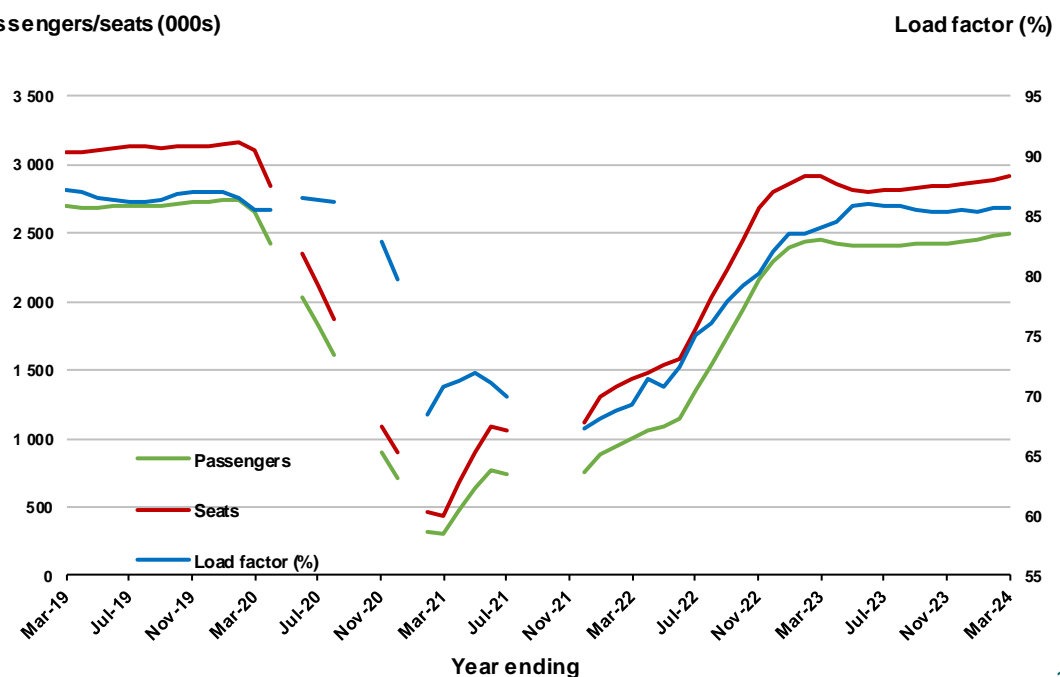
(a) May, September and October 2020 and January and August to November 2021 data not available for release.

Moving annual data

	YE Mar 2023	YE Mar 2024	% Change
Passengers carried (000s)	2 451.4	2 492.4	1.7
Seats (000s)	2 917.1	2 911.9	-0.2
Load factor %	84.0	85.6	1.6 *
Aircraft trips	16 928	16 575	- 2.1

* percentage point difference

Passengers/seats (000s)



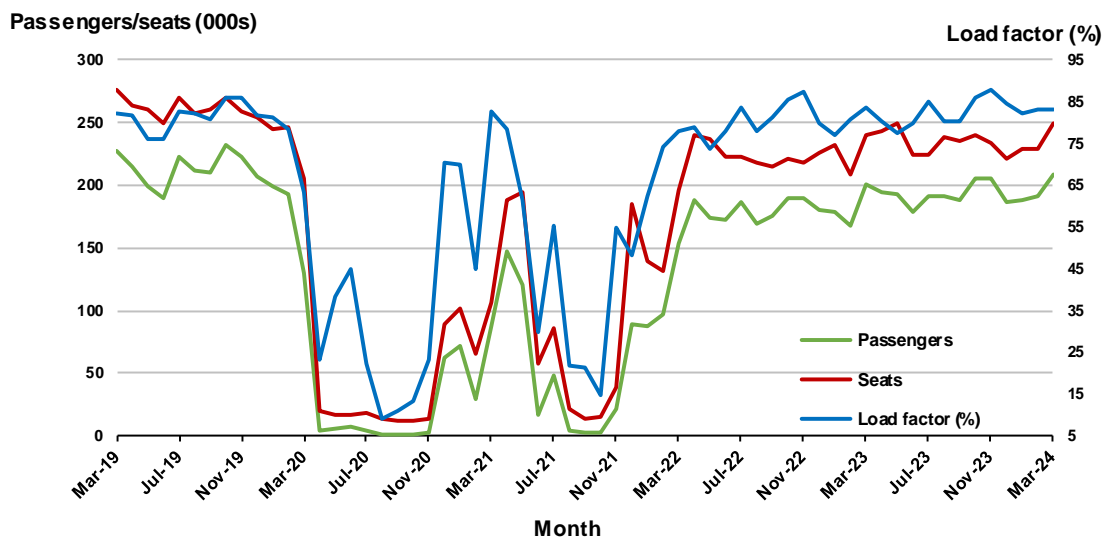
(a) May, September and October 2020 and January and August to November 2021 moving annual totals not available for release.

5. Adelaide - Melbourne

Monthly data

	Mar 2023	Mar 2024	% Change
Passengers carried (000s)	200.9	208.2	3.6
Seats (000s)	240.7	250.3	4.0
Load factor %	83.5	83.2	-0.3 *
Aircraft trips	1 489	1 496	0.5

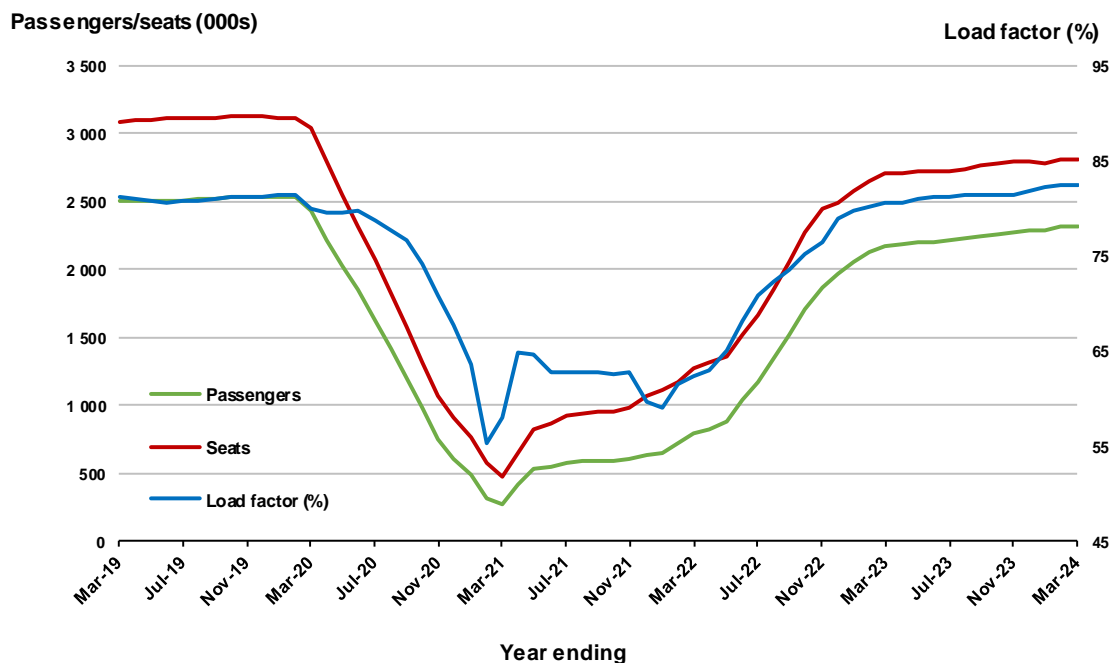
* percentage point difference



Moving annual data

	YE Mar 2023	YE Mar 2024	% Change
Passengers carried (000s)	2 175.8	2 322.6	6.7
Seats (000s)	2 701.6	2 817.2	4.3
Load factor %	80.5	82.4	1.9 *
Aircraft trips	16 544	17 227	4.1

* percentage point difference



6. Gold Coast - Melbourne ^(a)

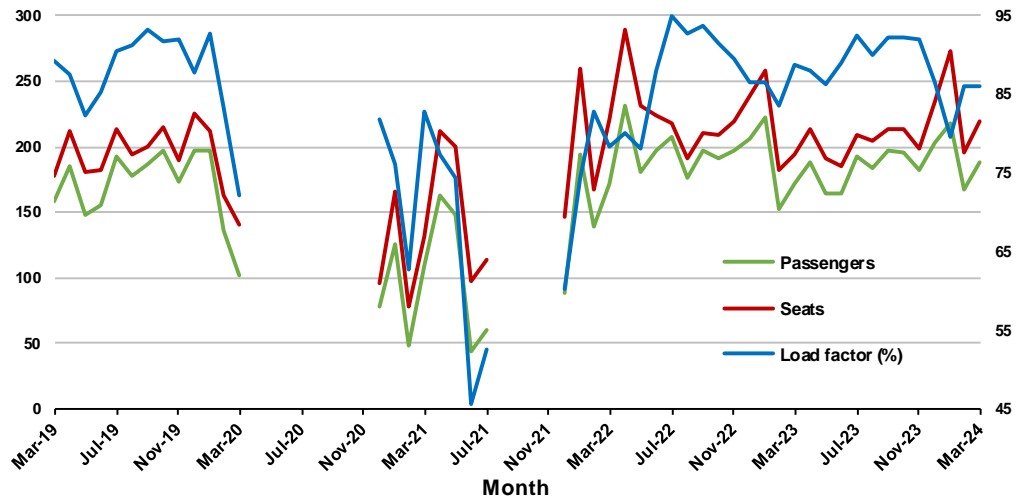
Monthly data

	Mar 2023	Mar 2024	% Change
Passengers carried (000s)	172.1	188.6	9.6
Seats (000s)	193.9	219.2	13.1
Load factor %	88.8	86.0	-2.8 *
Aircraft trips	1 059	1 195	12.8

* percentage point difference

Passengers/seats (000s)

Load factor (%)



(a) April to November 2020 and August to November 2021 moving annuals are not available for release.

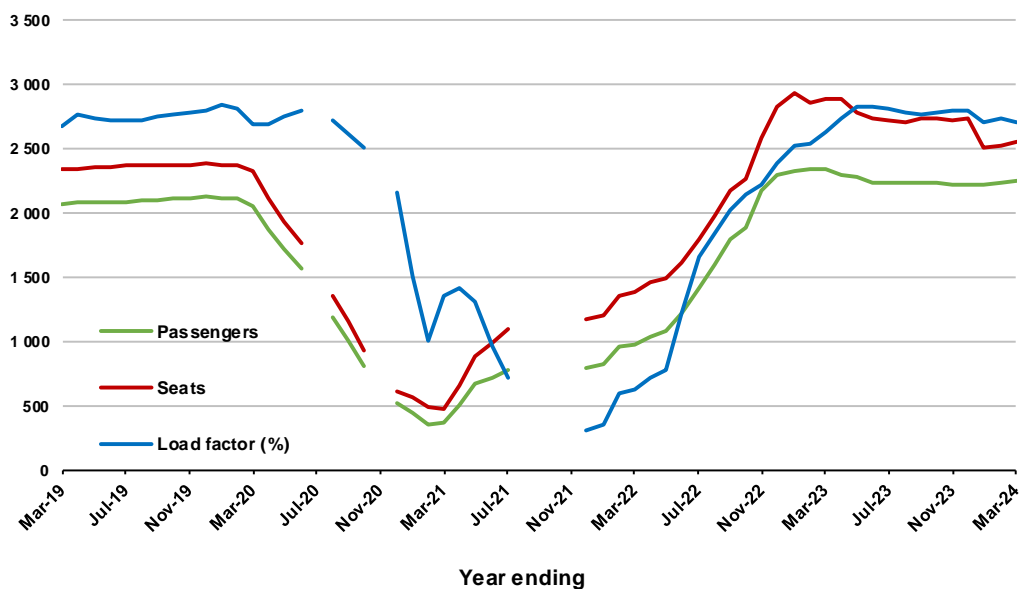
Moving annual data

	YE Mar 2023	YE Mar 2024	% Change
Passengers carried (000s)	2 333.9	2 246.4	-3.7
Seats (000s)	2 886.3	2 547.8	-11.7
Load factor %	87.5	88.2	0.6 *
Aircraft trips	14 756	13 851	-6.1

* percentage point difference

Passengers/seats (000s)

Load factor (%)



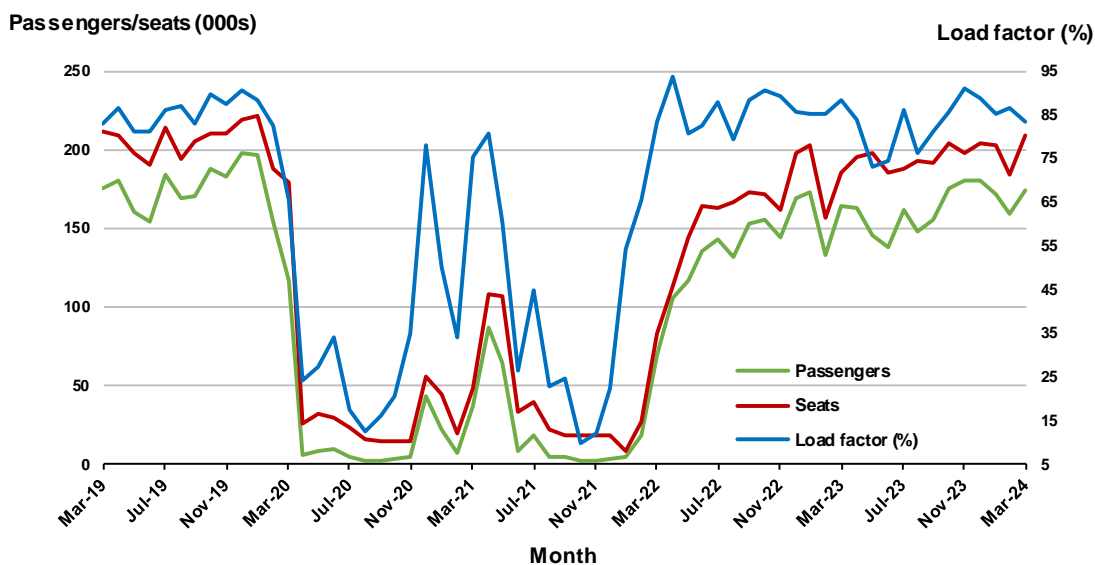
(a) July and November 2020 and August to November 2021 moving annuals are not available for release.

7. Melbourne - Perth

Monthly data

	Mar 2023	Mar 2024	% Change
Passengers carried (000s)	163.6	173.6	6.2
Seats (000s)	185.0	208.6	12.7
Load factor %	88.4	83.2	-5.2 *
Aircraft trips	1 066	1 150	7.9

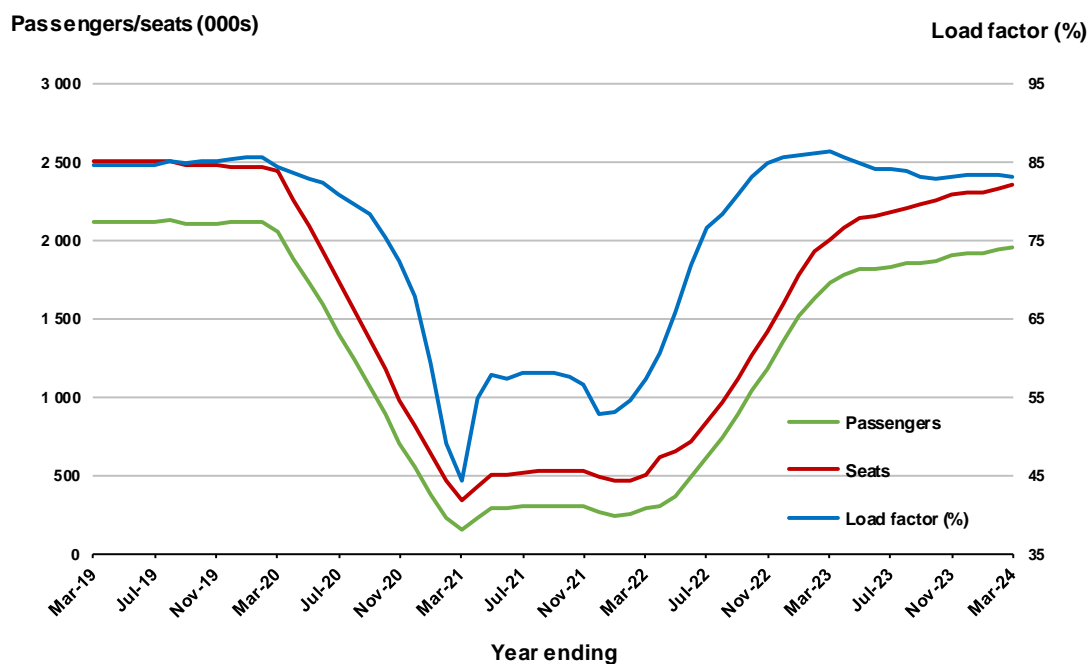
* percentage point difference



Moving annual data

	YE Mar 2023	YE Mar 2024	% Change
Passengers carried (000s)	1 726.2	1 950.9	13.0
Seats (000s)	2 000.6	2 350.7	17.5
Load factor %	86.3	83.0	-3.3 *
Aircraft trips	11 282	13 078	15.9

* percentage point difference



8. Adelaide - Sydney ^(a)

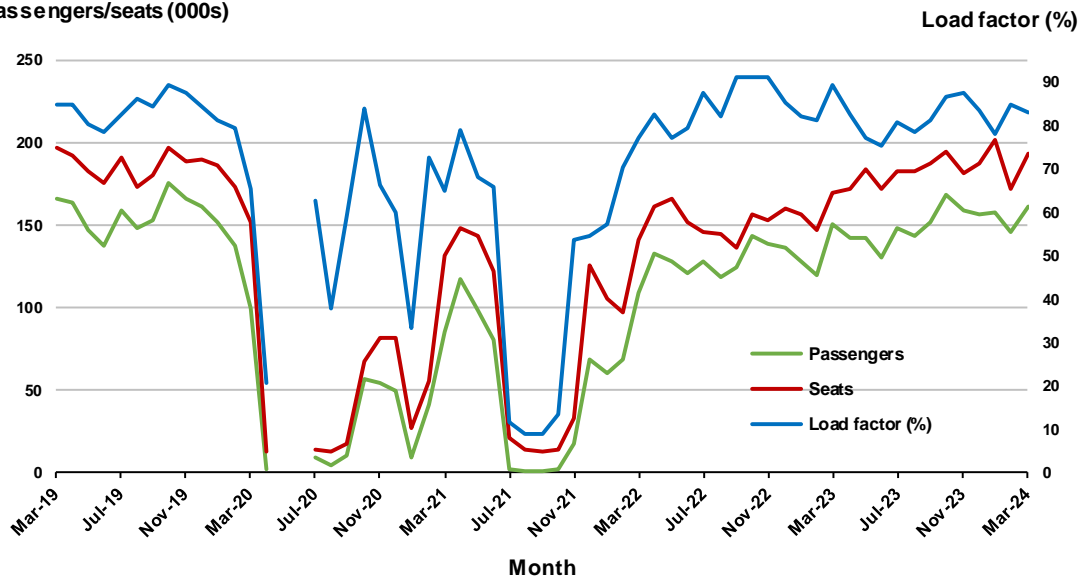
Monthly data

	Mar 2023	Mar 2024	% Change
Passengers carried (000s)	151.0	161.4	6.9
Seats (000s)	169.3	194.0	14.5
Load factor %	89.2	83.2	-6.0 *
Aircraft trips	1 025	1 174	14.5

.. Data not available for release.

* percentage point difference

Passengers/seats (000s)



(a) May and June 2020 data not available for release.

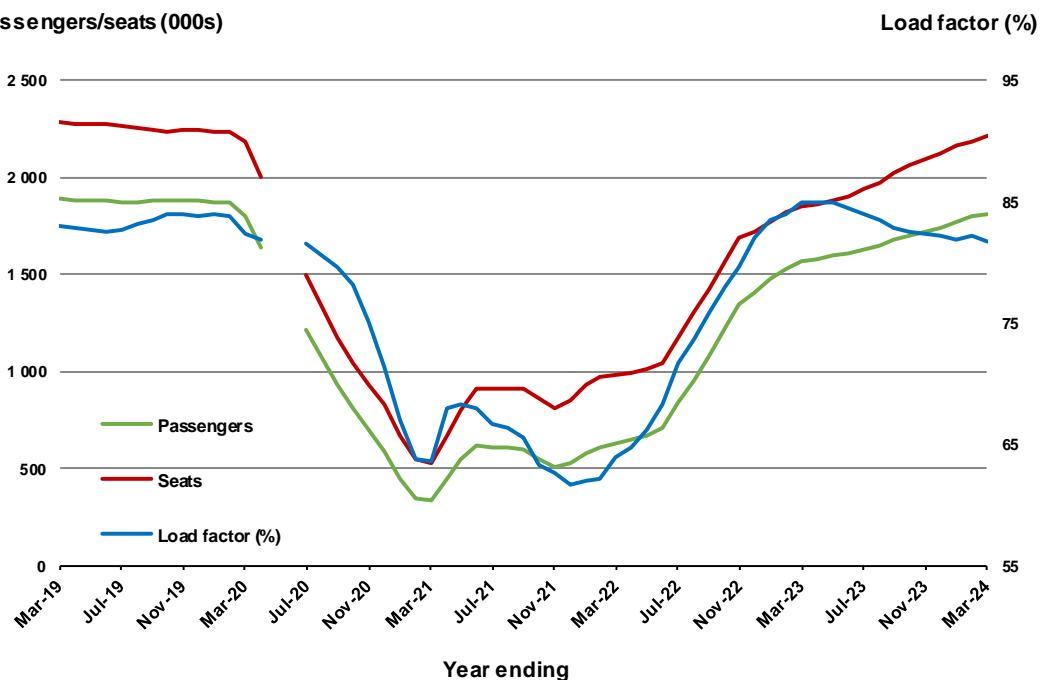
Moving annual data

	YE Mar 2023	YE Mar 2024	% Change
Passengers carried (000s)	1 572.1	1 809.1	15.1
Seats (000s)	1 850.2	2 214.0	19.7
Load factor %	85.0	81.7	-3.3 *
Aircraft trips	11 324	13 540	19.6

.. Data not available for release.

* percentage point difference

Passengers/seats (000s)



(a) May and June 2020 moving annual totals are not available for release.

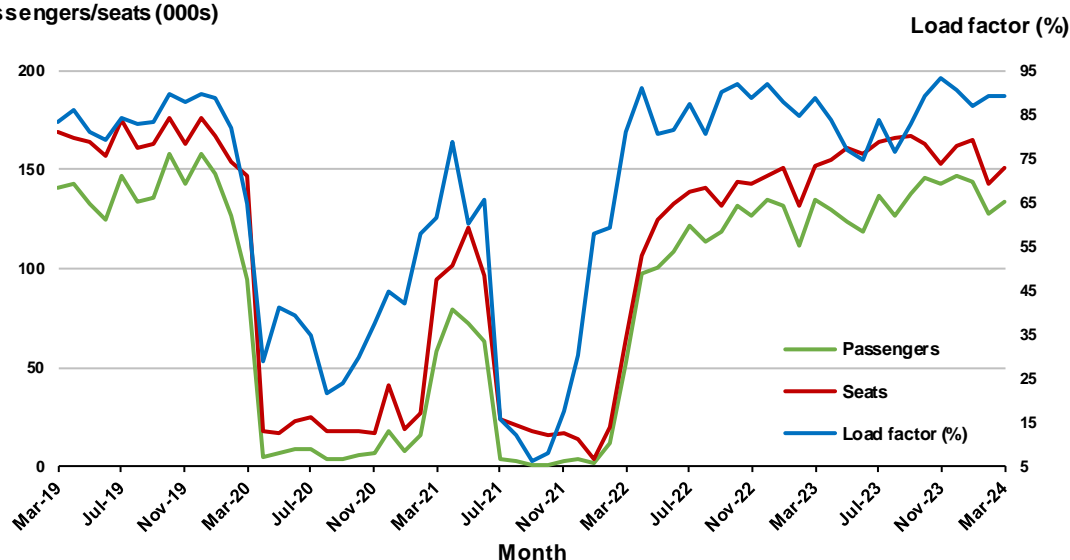
9. Perth - Sydney

Monthly data

	Mar 2023	Mar 2024	% Change
Passengers carried (000s)	134.4	134.0	-.3
Seats (000s)	151.8	150.5	-.9
Load factor %	88.6	89.1	0.5 *
Aircraft trips	809	776	-4.1

* percentage point difference

Passengers/seats (000s)

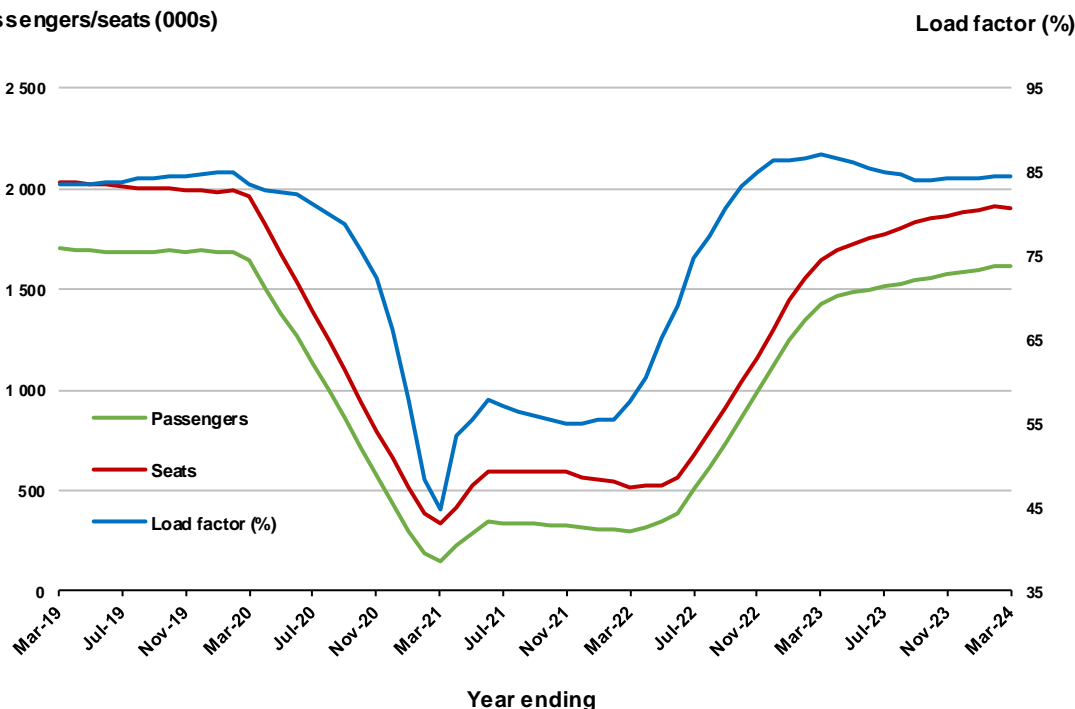


Moving annual data

	YE Mar 2023	YE Mar 2024	% Change
Passengers carried (000s)	1 430.9	1 613.7	12.8
Seats (000s)	1 642.8	1 908.0	16.1
Load factor %	87.1	84.6	-2.5 *
Aircraft trips	8 637	9 830	13.8

* percentage point difference

Passengers/seats (000s)

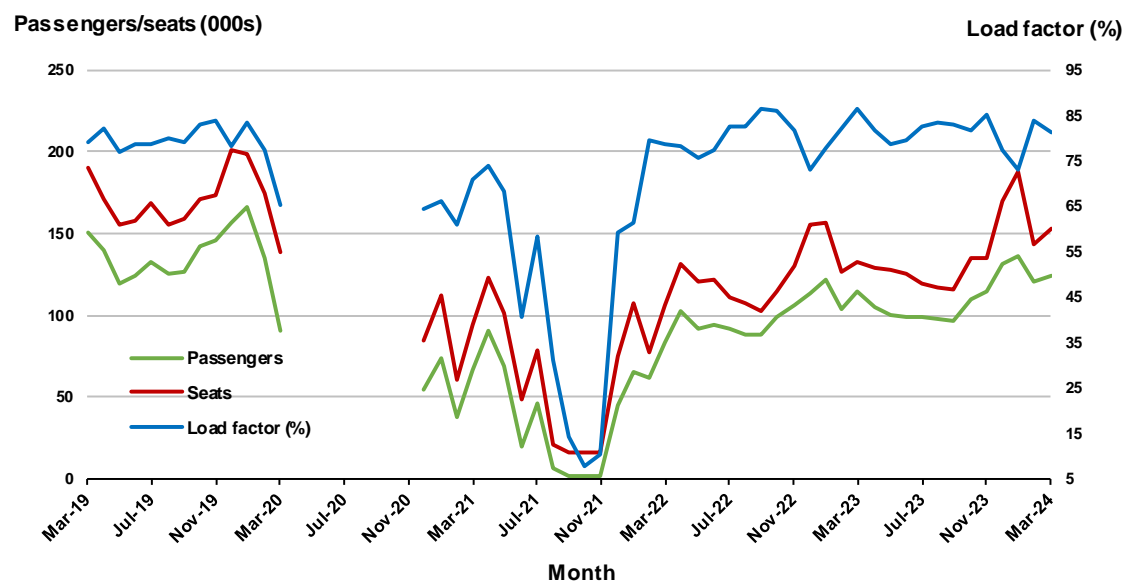


10. Hobart - Melbourne ^(a)

Monthly data

	Mar 2023	Mar 2024	% Change
Passengers carried (000s)	114.2	124.7	9.2
Seats (000s)	132.4	153.7	16.1
Load factor %	86.3	81.2	-5.1 *
Aircraft trips	771	872	13.1

* percentage point difference

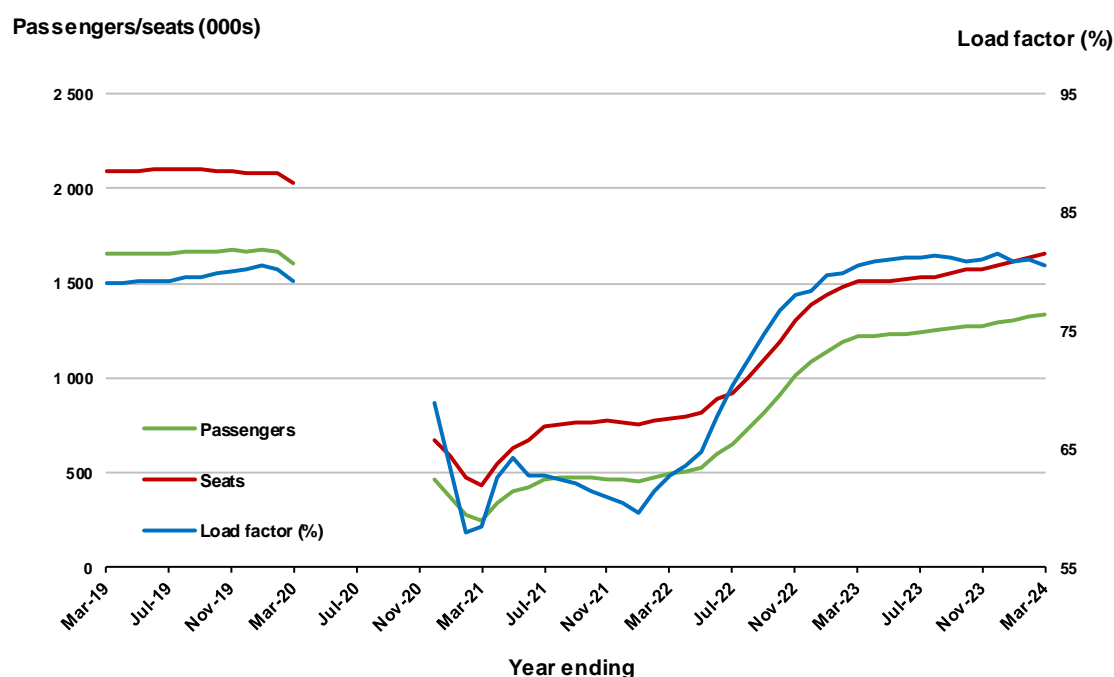


(a) April to November 2020 data not available for release.

Moving annual data

	YE Mar 2023	YE Mar 2024	% Change
Passengers carried (000s)	1 217.1	1 335.7	9.7
Seats (000s)	1 511.8	1 657.8	9.7
Load factor %	80.5	80.6	0.1 *
Aircraft trips	9 101	9 616	5.7

* percentage point difference



(a) April to November 2020 moving annual totals are not available for release.

TOP FIFTY REGIONAL AIRPORTS

Table 10: Top fifty regional airports (000s) — passenger movements, monthly

Airport	Mar 2023	Mar 2024	% Change
1 Cairns	284.6	302.7	6.4
2 Hobart	231.6	243.8	5.3
3 Townsville	140.9	135.6	-3.7
4 Launceston	124.2	135.5	9.1
5 Darwin	112.8	110.0	-2.5
6 Newcastle	95.4	103.2	8.2
7 Mackay	77.5	76.1	-1.7
8 Rockhampton	52.3	56.3	7.5
9 Ballina	58.8	52.8	-10.2
10 Karratha	45.4	49.3	8.6
11 Hamilton Island	38.6	38.9	0.7
12 Proserpine	38.1	38.0	-0.3
13 Port Hedland	43.6	37.9	-13.0
14 Alice Springs	27.9	30.9	10.5
15 Newman	32.1	29.9	-6.8
16 Kalgoorlie	32.7	29.5	-9.9
17 Broome	27.8	28.1	1.1
18 Albury	20.7	26.1	26.0
19 Ayers Rock	22.4	23.1	2.9
20 Mildura	19.9	22.5	12.8
21 Coffs Harbour	25.2	22.4	-11.2
22 Paraburdoo	20.6	21.0	2.1
23 Gladstone	18.9	21.0	10.7
24 Port Macquarie	17.3	20.7	19.1
25 Mount Isa	20.8	19.8	-4.9
26 Dubbo	19.1	18.2	-4.7
27 Wagga Wagga	18.2	17.8	-2.2
28 Emerald	17.0	16.5	-2.9
29 Tamworth	13.7	15.4	12.2
30 Port Lincoln	17.0	15.1	-11.2
31 Bundaberg	11.3	14.5	29.0
32 Hervey Bay	12.3	12.0	-3.0
33 Devonport	11.6	10.6	-8.8
34 Orange	9.9	9.9	0.0
35 Geraldton	7.3	9.7	32.9
36 Moranbah	9.9	9.4	-4.7
37 Armidale	10.4	9.1	-12.2
38 Kununurra	9.7	9.1	-6.6
39 Thursday Island	8.3	8.4	1.5
40 Olympic Dam	9.1	8.3	-8.9
41 Toowoomba Wellcamp	3.3	8.2	147.4
42 Learmonth	7.7	7.9	3.4
43 Norfolk Island	6.6	7.1	7.6
44 Weipa	7.1	7.1	0.5
45 Gove	6.9	7.0	1.2
46 Burnie	8.0	6.7	-15.6
47 Merimbula	6.7	6.4	-5.1
48 Mount Gambier	7.2	6.3	-11.9
49 Busselton	4.3	6.3	47.2
50 Albany	5.9	5.8	-0.8
Total top 50 regional airports	1 878.8	1 928.0	2.6
Total regional airports	2 007.8	2 048.9	2.0
Total domestic network	9 657.6	9 952.7	3.1

Note: Airport passenger movement numbers are the sum of passenger arrivals and departures at each airport. Regional airports are defined as airports which are, according to Australian Statistical Geography Standard (ASGS), not based in Major Cities.

Table 11: Top fifty regional airports (000s) — passenger movements, annual

Airport	YE Mar 2023	YE Mar 2024	% Change
1 Cairns	3 907.0	4 047.4	3.6
2 Hobart	2 516.0	2 641.9	5.0
3 Townsville	1 632.5	1 693.9	3.8
4 Darwin	1 695.8	1 609.9	-5.1
5 Launceston	1 297.5	1 400.1	7.9
6 Newcastle	1 095.2	1 192.1	8.8
7 Mackay	887.5	911.6	2.7
8 Rockhampton	525.3	653.7	24.4
9 Ballina	650.3	626.9	-3.6
10 Karratha	519.0	563.4	8.5
11 Proserpine	470.1	521.2	10.9
12 Hamilton Island	515.4	496.1	-3.8
13 Port Hedland	472.9	479.6	1.4
14 Broome	448.0	437.5	-2.4
15 Newman	356.6	367.4	3.0
16 Alice Springs	368.6	366.0	-0.7
17 Kalgoorlie	324.3	360.5	11.1
18 Albury	225.4	278.4	23.5
19 Coffs Harbour	287.5	278.1	-3.3
20 Ayers Rock	243.6	268.7	10.3
21 Paraburdoo	218.8	251.8	15.1
22 Gladstone	207.3	236.5	14.1
23 Mildura	196.9	234.2	18.9
24 Port Macquarie	181.6	231.7	27.6
25 Mount Isa	232.0	229.9	-0.9
26 Dubbo	194.0	213.4	10.0
27 Wagga Wagga	190.7	199.5	4.6
28 Emerald	183.5	195.8	6.7
29 Tamworth	146.7	174.0	18.6
30 Port Lincoln	180.1	172.4	-4.3
31 Bundaberg	111.9	162.7	45.4
32 Hervey Bay	134.8	149.5	10.9
33 Kununurra	130.6	139.0	6.4
34 Devonport	111.4	120.6	8.2
35 Moranbah	104.2	110.6	6.2
36 Armidale	108.6	109.5	0.8
37 Thursday Island	100.9	108.4	7.4
38 Orange	98.4	106.7	8.5
39 Learmonth	101.6	104.5	2.8
40 Geraldton	81.9	103.2	26.0
41 Olympic Dam	94.9	103.0	8.5
42 Toowoomba Wellcamp	49.2	90.7	84.3
43 Gove	88.4	89.8	1.6
44 Weipa	87.1	88.1	1.2
45 Burnie	81.9	81.3	-0.7
46 Mount Gambier	78.8	72.1	-8.5
47 Merimbula	75.5	71.2	-5.7
48 Griffith	75.8	71.1	-6.2
49 Norfolk Island	71.7	69.5	-3.1
50 Albany	58.9	64.3	9.2
Total top 50 regional airports	22 216.9	23 349.2	5.1
Total regional airports	23 602.1	24 756.4	4.9
Total domestic network	109 849.5	116 573.0	6.1

Note: Airport passenger movement numbers are the sum of passenger arrivals and departures at each airport. Regional airports are defined as airports which are, according to Australian Statistical Geography Standard (ASGS), not based in Major Cities.

DOMESTIC CHARTER ACTIVITY

Table 12: Charter passengers carried and aircraft trips - monthly activity (000s)

	Mar 2023	Mar 2024	% Change
Total domestic charter passengers	347.5	342.4	-1.5
Total domestic charter aircraft trips	6.0	5.6	-5.6

Note: Helicopter, joyflights and sightseeing charter flights not included.

Table 13: Charter passengers carried and aircraft trips - annual activity (000s)

	YE Mar 2023	YE Mar 2024	% Change
Total domestic charter passengers	3 702.7	4 144.9	11.9
Total domestic charter aircraft trips	66.7	71.0	6.4

Note: Helicopter, joyflights and sightseeing charter flights not included.

Table 14: Domestic airports - charter activity - monthly (000s)

	Mar 2023	Mar 2024	% Change
Total domestic charter passenger movements	695.0	684.8	-1.5
Total domestic charter aircraft movements	12.0	11.3	-5.6
Perth airport charter passenger movements	258.5	250.5	-3.1
Perth airport charter aircraft movements	4.0	3.6	-10.7

Note: Helicopter, joyflights and sightseeing charter flights not included.

Charter passenger and aircraft movement numbers are the sum of arrivals and departures at each airport.

Table 15: Domestic airports - charter activity - annual (000s)

	YE Mar 2023	YE Mar 2024	% Change
Total domestic charter passenger movements	7 405.5	8 289.8	11.9
Total domestic charter aircraft movements	133.4	142.0	6.4
Perth airport charter passenger movements	2 741.8	3 084.0	12.5
Perth airport charter aircraft movements	44.8	47.7	6.5

Note: Helicopter, joyflights and sightseeing charter flights not included.

Charter passenger and aircraft movement numbers are the sum of arrivals and departures at each airport.



DEFINITIONS

Aircraft Trips	The number of flight stages. A return flight counts as two aircraft trips.
Airport Movements	Airport movements (passenger and cargo) are measured once on arrival and once on departure. Each domestic trip generates two movements at airports. For example, a trip from Melbourne to Sydney will be counted twice, as a departure at Melbourne and as an arrival at Sydney. At the national level, the sum of all domestic airport traffic will therefore be equal to twice the number of trips undertaken.
Available Seat Kilometres (ASKs)	Calculated by multiplying the number of seats available on each flight stage, by the distance in kilometres between the ports. The distances used are Great Circle Distances.
City-Pair	The ports shown make up the city-pair route. Passenger movements shown for a city pair reflect total traffic in both directions.
Flight Stage	The operation of an aircraft from take-off to landing.
Load Factor	The total revenue passenger kilometres performed as a percentage of the total available seat kilometres.
Passengers Carried	Revenue passengers carried.
Regular Public Transport Services (RPT)	All air service operations in which aircraft are available for the transport of members of the public and are conducted in accordance with fixed schedules. It does not include charter or other non-scheduled operations.
Revenue Passengers	All passengers paying any fare. Frequent flyer redemption travellers are regarded as revenue passengers.
Revenue Passenger Kilometres (RPKs)	Calculated by multiplying the number of revenue passengers travelling on each flight stage, by the distance in kilometres between the ports. The distances used are Great Circle Distances.
Traffic on board by stages (TOB)	The total of all traffic (revenue passengers) on each flight stage between two directly connected airports.
..	Not available for confidentiality or other reasons.
NA	Not applicable.