



Australian Government

Department of Infrastructure, Transport, Regional Development and Communications

Bureau of Infrastructure and Transport Research Economics

STATISTICAL REPORT



Aviation

Domestic aviation activity
May 2021

© Commonwealth of Australia 2021

ISSN: 1832 - 1968

Ownership of intellectual property rights in this publication

Unless otherwise noted, copyright (and any other intellectual property rights, if any) in this publication is owned by the Commonwealth of Australia (referred to below as the Commonwealth).

Disclaimer

The material contained in this publication is made available on the understanding that the Commonwealth is not providing professional advice, and that users exercise their own skill and care with respect to its use, and seek independent advice if necessary.

The Commonwealth makes no representations or warranties as to the contents or accuracy of the information contained in this publication. To the extent permitted by law, the Commonwealth disclaims liability to any person or organisation in respect of anything done, or omitted to be done, in reliance upon information contained in this publication.

Creative Commons licence

With the exception of (a) the Coat of Arms; and (b) the Department of Infrastructure, Transport, Regional Development and Communications' photos and graphics, copyright in this publication is licensed under a Creative Commons Attribution 3.0 Australia Licence.

Creative Commons Attribution 3.0 Australia Licence is a standard form licence agreement that allows you to copy, communicate and adapt this publication provided that you attribute the work to the Commonwealth and abide by the other licence terms. A summary of the licence terms is available from <http://creativecommons.org/licenses/by/3.0/au/deed.en>.

The full licence terms are available from <http://creativecommons.org/licenses/by/3.0/au/legalcode>.

Use of the Coat of Arms

The Department of the Prime Minister and Cabinet sets the terms under which the Coat of Arms is used. Please refer to the Department's Commonwealth Coat of Arms and Government branding web page <http://www.dpmc.gov.au/guidelines/index.cfm#brand> and, in particular, the Guidelines on the use of the Commonwealth Coat of Arms publication.

An appropriate citation for this report is:

Bureau of Infrastructure and Transport Research Economics (BITRE), 2021, Domestic aviation activity, Statistical Report, BITRE, Canberra ACT.

Contact us

This publication is available in PDF format. All other rights are reserved, including in relation to any Departmental logos or trade marks which may exist. For enquiries regarding the licence and any use of this publication, please contact:

Bureau of Infrastructure and Transport Research Economics (BITRE)
Department of Infrastructure, Transport, Regional Development and Communications
GPO Box 501, Canberra ACT 2601, Australia
Telephone: (international) +61 2 6274 7210
Fax: (international) +61 2 6274 6855
Email: bitre@infrastructure.gov.au
Website: www.bitre.gov.au

Inquiries

Should you require additional information about the statistics contained in this publication:

Nebojsa Pavlovic

Telephone (02) 6274 6817 or Facsimile (02) 6274 7727

Electronic mail: AVSTATS@infrastructure.gov.au

Nebojsa.Pavlovic@infrastructure.gov.au

Web site: <http://www.bitre.gov.au/statistics/aviation/domestic.aspx>

FOREWORD

This report provides an overview of domestic (including charter) commercial aviation activity in Australia for the month of May 2021.

The data cover revenue passengers carried by Australian-registered operators of scheduled regular public transport services over Australian flight stages and fixed-wing charter operators. These estimates include passengers carried between domestic airports on international flights operated by these carriers. The passengers carried refer to traffic on board by stages.

Individual routes shown are restricted to those exceeding 8 000 passengers per month where two or more airlines operate in competition. For the month of May 2021, there were 55 such routes compared to 24 published in May 2020.

Information on the total network for the month of May 2021 and on the Regular Public Transport (RPT) network for the month of May 2021 is presented on page 2, with estimates for the year ended May 2021 presented on page 3.

Detailed information on individual routes can be found in the RPT summary pages 4-13 of this publication.

The top ten airports in terms of RPT passenger movements are shown on page 14.

Data on domestic RPT cargo movements at the top five cargo airports are provided on page 15. The table includes cargo carried on passenger flights operated by the Qantas group (including Jetstar), Virgin Australia, Air North, Rex Airlines and Skippers as well as the cargo carried by dedicated freighter aircraft operated by Qantas Freight and Toll Aviation.

The long-term trends for the top ten competitive RPT routes are presented graphically on pages 16-25.

Domestic RPT passenger movements at regional airports are presented on pages 26-27.

Tables providing estimates of domestic charter aviation activity are shown on page 28. BITRE confidentiality standards restrict publication of detailed estimates for individual Australian airports, with the exception of Perth Airport. For the month of May Alliance Airlines charter and RPT data have been estimated and included in this publication.

A list of definitions can be found on page 29.

This report was prepared by the Aviation Statistics Section of the Bureau of Infrastructure and Transport Research Economics with data provided by airlines.

Estimates are included where data were not available and data presented in this publication may contain revisions to previously published data.

Where figures have been rounded, discrepancies may occur between sums of component items and totals, and in percentage changes which are derived from figures prior to rounding.

CONTENTS

Highlights	1
Total network	2
RPT network	2
Top competitive routes	4
Top ten airports – passenger movements	14
Top five airports – cargo movements	15
Top ten routes	16
1. Melbourne – Sydney	16
2. Brisbane – Sydney.....	17
3. Gold Coast – Sydney	18
4. Brisbane – Melbourne	19
5. Gold Coast – Melbourne	20
6. Adelaide – Melbourne	21
7. Adelaide – Sydney	22
8. Brisbane – Cairns	23
9. Perth – Sydney	24
10. Brisbane – Townsville	25
Top fifty regional airports	26
Domestic charter activity	28
Definitions	29

This page is intentionally left blank.

HIGHLIGHTS

The domestic aviation industry continued to recover in May 2021. However, revenue passenger numbers were still 31 per cent below the pre-Covid level in May 2019.

There were 3.67 million passengers carried on Australian domestic commercial aviation (including charter operations) in May 2021, compared to 0.39 million in May 2020 and 5.12 million in May 2019.

For the month of May 2021, there were 48.8 thousand aircraft trips, compared to 13.2 thousand in May 2020 and 58.4 thousand in May 2019.

3.38 million passengers were carried on RPT flights in May 2021, compared to 176 thousand reported in May 2020 and 4.89 million reported in May 2019.

For the year ending May 2021 there were 19.56 million RPT passengers, a decrease of 60.5 per cent on the year ending May 2020.

RPT revenue passenger kilometres (RPKs) performed were 3.92 billion for the month, compared with 0.18 billion in May 2020.

Capacity, measured by available seat kilometres (ASKs), increased to 5.75 billion in May 2021 compared to 0.46 billion in May 2020.

The industry wide load factor (RPKs/ASKs) increased from 40.1 per cent in May 2020 to 68.2 per cent in May 2021. Load factors increased on most RPT routes for which data is available for publishing in both years. The highest load factor (94.5 per cent) was recorded on the Brisbane – Proserpine route while the lowest load factor (46.4 per cent) was recorded on the Port Macquarie – Sydney route.

In May 2021, all published routes recorded significant increases in the number of passengers carried compared to May 2020.

For the month of May 2021, Melbourne – Sydney was Australia's busiest RPT route with 378.7 thousand passengers, followed by Brisbane – Sydney with 223.3 thousand passengers and Gold Coast – Sydney with 164.9 thousand passengers.

Sydney was Australia's busiest domestic airport with 1.34 million passenger movements in May 2021, followed by Melbourne with 1.20 million passenger movements and Brisbane with 1.01 million passenger movements.

Total cargo movements at Australian airports on domestic RPT flights were 33.5 thousand tonnes in May 2021, an increase of 24.4 per cent compared with May 2020.

In May 2021, there were 1.66 million domestic passenger movements through regional airports, compared to 108.6 thousand in May 2020. All regional airports for which data is available for publishing in both years recorded increases in May 2021.

Fixed-wing charter operators carried 288.2 thousand passengers in May 2021, an increase of 37.7 per cent on May 2020. Perth Airport accounted for 37.3 per cent of all charter passengers in Australia.

TOTAL NETWORK

Summary of monthly commercial aviation activity

	May 2020	May 2021	% Change
Total passengers carried (millions)	0.39	3.67	850.6
Aircraft trips (000s)	13.2	48.8	270.2

Note: Regular Public Transport and charter aviation activity
Helicopter, joyflights and sightseeing charter flights not included.

RPT NETWORK

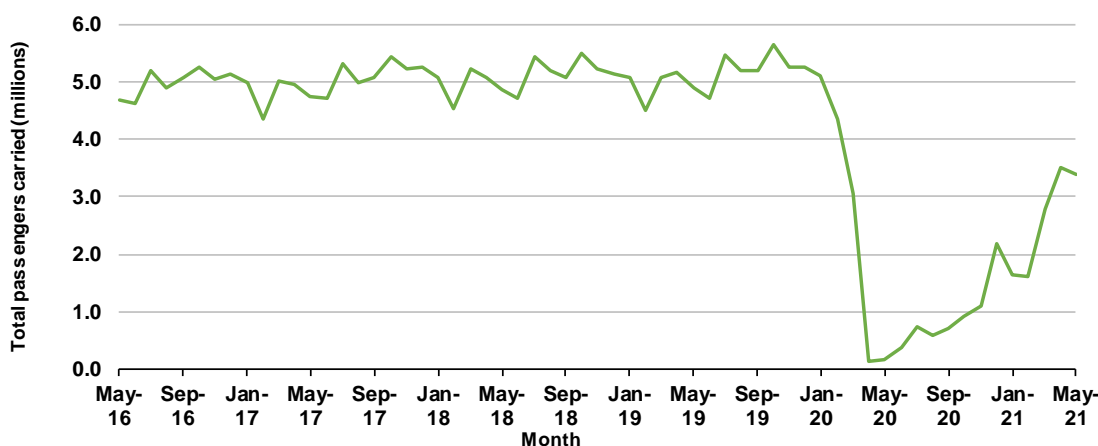
Summary of monthly RPT activity

	May 2020	May 2021	% Change
Total passengers carried (millions)	0.18	3.38	1 815.0
Revenue passenger kilometres (billions)	0.18	3.92	2 044.1
Available seats (millions)	0.44	5.09	1 069.4
Available seat kilometres (billions)	0.46	5.75	1 159.4
Load factor %	40.1	68.2	28.1 *
Aircraft trips (000s)	7.8	43.6	456.2

* percentage point difference

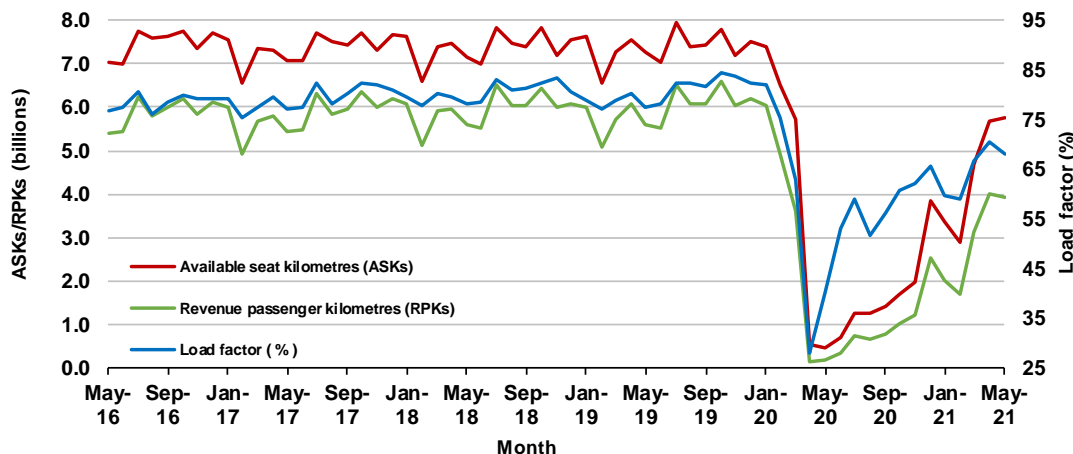
Domestic RPT passenger traffic

(monthly)



RPT Network utilisation

(monthly)



TOTAL NETWORK

Summary of annual commercial aviation activity

	YE May 2020	YE May 2021	% Change
Total passengers carried (millions)	52.33	22.99	-56.1
Aircraft trips (000s)	584.2	368.4	-36.9

Note: Regular Public Transport and charter aviation activity
Helicopter, joyflights and sightseeing charter flights not included.

RPT NETWORK

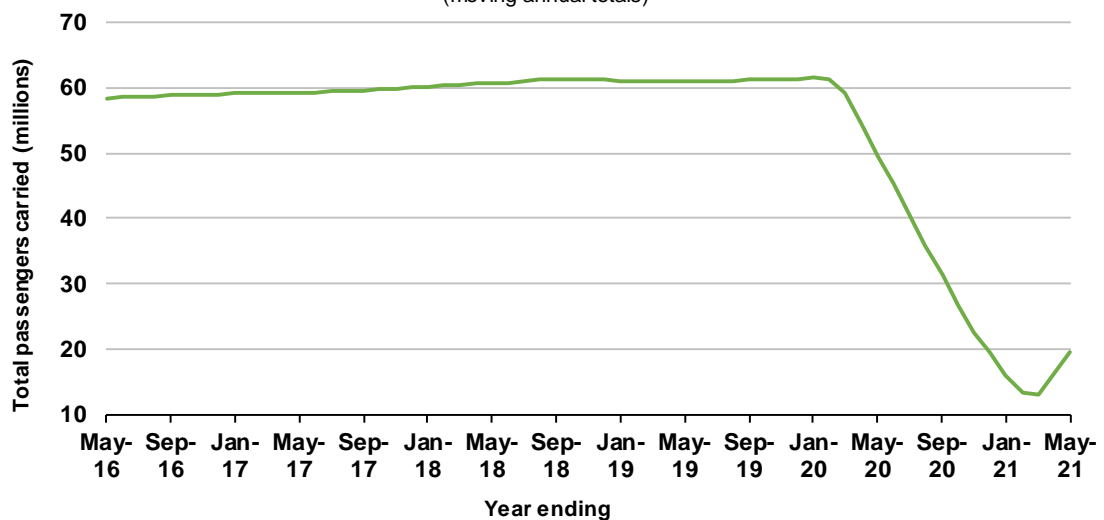
Summary of annual RPT activity

	YE May 2020	YE May 2021	% Change
Total passengers carried (millions)	49.57	19.56	-60.5
Revenue passenger kilometres (billions)	57.93	22.19	-61.7
Available seats (millions)	63.96	30.93	-51.6
Available seat kilometres (billions)	72.94	34.63	-52.5
Load factor %	79.4	64.1	-15.3 *
Aircraft trips (000s)	532.7	300.0	-43.7

* percentage point difference

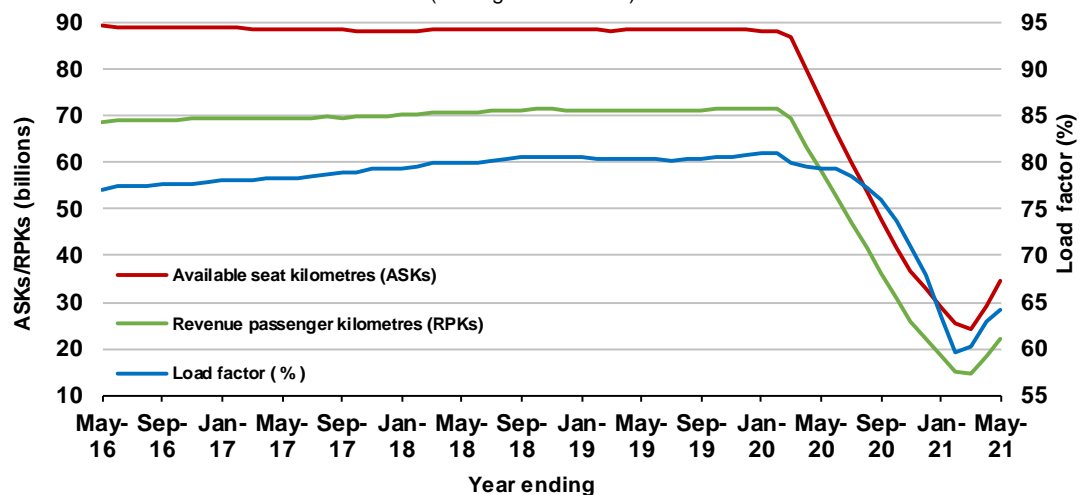
Domestic RPT passenger traffic

(moving annual totals)



RPT Network utilisation

(moving annual totals)



TOP COMPETITIVE ROUTES

Table 1: Passengers carried (000s) — annual activity

	City-Pair	YE May 2020	YE May 2021	% Change
1	Melbourne - Sydney	7 245.1	1 711.5	-76.4
2	Brisbane - Sydney	3 876.4	1 098.1	-71.7
3	Brisbane - Cairns	1 047.8	857.8	-18.1
4	Brisbane - Melbourne	2 919.6	756.9	-74.1
5	Gold Coast - Melbourne	1 716.3	674.8	-60.7
6	Gold Coast - Sydney	..	644.8	NA
7	Brisbane - Townsville	839.3	586.0	-30.2
8	Adelaide - Sydney	..	543.7	NA
9	Adelaide - Melbourne	2 029.7	537.5	-73.5
10	Ballina - Sydney	356.4	478.8	34.3
11	Brisbane - Mackay	653.0	445.0	-31.9
12	Hobart - Melbourne	..	406.5	NA
13	Adelaide - Brisbane	714.4	403.3	-43.6
14	Karratha - Perth	390.9	315.7	-19.2
15	Brisbane - Rockhampton	444.0	297.0	-33.1
16	Brisbane - Canberra	540.7	296.7	-45.1
17	Broome - Perth	264.1	290.8	10.1
18	Perth - Sydney	1 381.7	289.9	-79.0
19	Melbourne - Perth	1 729.3	287.1	-83.4
20	Launceston - Melbourne	..	272.5	NA
21	Perth - Port Hedland	326.0	241.9	-25.8
22	Hobart - Sydney	598.1	236.6	-60.4
23	Cairns - Melbourne	678.9	226.1	-66.7
24	Melbourne - Sunshine Coast	456.6	224.6	-50.8
25	Brisbane - Perth	795.1	220.8	-72.2
26	Canberra - Melbourne	937.3	216.5	-76.9
27	Brisbane - Newcastle	491.6	214.7	-56.3
28	Newman - Perth	291.2	212.2	-27.1
29	Cairns - Sydney	857.6	210.8	-75.4
30	Brisbane - Darwin	..	209.3	NA
31	Brisbane - Proserpine	213.7	204.0	-4.6
32	Sunshine Coast - Sydney	523.7	191.7	-63.4
33	Kalgoorlie - Perth	227.5	189.1	-16.9
34	Adelaide - Perth	..	172.2	NA
35	Brisbane - Hamilton Island	109.7	162.6	48.2
36	Brisbane - Hobart	201.5	147.5	-26.8
37	Canberra - Sydney	..	140.3	NA
38	Melbourne - Newcastle	380.4	128.0	-66.4
39	Launceston - Sydney	232.3	121.2	-47.8
40	Adelaide - Gold Coast	175.4	119.0	-32.1
41	Brisbane - Gladstone	202.7	114.0	-43.8
42	Adelaide - Port Lincoln	144.0	107.8	-25.2
43	Brisbane - Emerald	..	107.4	NA
44	Coffs Harbour - Sydney	..	105.1	NA
45	Darwin - Perth	..	100.3	NA
46	Brisbane - Mount Isa	..	97.3	NA
47	Adelaide - Canberra	155.1	90.0	-42.0
48	Canberra - Gold Coast	..	87.4	NA
49	Adelaide - Alice Springs	111.8	83.4	-25.4
50	Hamilton Island - Sydney	185.5	71.0	-61.7

continued

Table 1: (continued) Passengers carried (000s) — annual activity

	City-Pair	YE May 2020	YE May 2021	% Change
51	Dubbo - Sydney	146.5	68.6	-53.2
52	Sydney - Wagga Wagga	146.1	58.5	-60.0
53	Albury - Sydney	181.8	57.8	-68.2
54	Melbourne - Mildura	185.4	47.1	-74.6
55	Port Macquarie - Sydney	..	44.5	NA
	Total domestic network	49 572.9	19 562.2	-60.5

.. Data not available for release.

Table 2: Passengers carried (000s) — monthly activity

	City-Pair	May 2020	May 2021	% Change
1	Melbourne - Sydney	19.0	378.7	1 893.5
2	Brisbane - Sydney	18.7	223.3	1 093.2
3	Gold Coast - Sydney	..	164.9	NA
4	Brisbane - Melbourne	16.1	159.6	889.5
5	Gold Coast - Melbourne	..	148.7	NA
6	Adelaide - Melbourne	6.2	120.1	1 848.6
7	Adelaide - Sydney	..	98.4	NA
8	Brisbane - Cairns	5.0	97.8	1 859.8
9	Perth - Sydney	7.1	72.3	918.5
10	Brisbane - Townsville	4.9	70.4	1 334.7
11	Hobart - Melbourne	..	69.4	NA
12	Melbourne - Perth	8.8	64.9	637.7
13	Adelaide - Brisbane	..	57.8	NA
14	Brisbane - Mackay	5.7	56.5	884.5
15	Cairns - Melbourne	..	55.6	NA
16	Cairns - Sydney	..	52.9	NA
17	Launceston - Melbourne	..	48.5	NA
18	Sunshine Coast - Sydney	..	45.7	NA
19	Hobart - Sydney	..	45.4	NA
20	Brisbane - Canberra	..	45.0	NA
21	Canberra - Melbourne	2.7	44.7	1 526.9
22	Ballina - Sydney	2.4	43.1	1 719.6
23	Brisbane - Perth	..	42.8	NA
24	Melbourne - Sunshine Coast	..	40.3	NA
25	Brisbane - Rockhampton	3.5	40.1	1 054.8
26	Brisbane - Newcastle	..	38.4	NA
27	Karratha - Perth	2.5	36.0	1 328.9
28	Broome - Perth	2.1	34.7	1 545.9
29	Adelaide - Perth	..	33.9	NA
30	Canberra - Sydney	..	32.6	NA
31	Brisbane - Darwin	..	29.6	NA
32	Perth - Port Hedland	2.9	28.6	894.8
33	Newman - Perth	2.9	27.0	840.9
34	Melbourne - Newcastle	..	25.7	NA
35	Kalgoorlie - Perth	2.0	21.6	961.3
36	Brisbane - Proserpine	..	20.3	NA
37	Brisbane - Hobart	..	20.0	NA
38	Hamilton Island - Sydney	..	19.7	NA
39	Launceston - Sydney	..	18.0	NA
40	Adelaide - Gold Coast	..	17.0	NA
41	Brisbane - Hamilton Island	..	16.5	NA
42	Coffs Harbour - Sydney	..	16.3	NA
43	Brisbane - Gladstone	1.3	15.7	1 066.8
44	Adelaide - Canberra	..	14.5	NA
45	Brisbane - Emerald	..	13.8	NA
46	Adelaide - Port Lincoln	0.9	13.6	1 378.4
47	Darwin - Perth	..	13.3	NA
48	Dubbo - Sydney	0.8	12.2	1 347.0
49	Canberra - Gold Coast	0.0	11.7	NA
50	Albury - Sydney	0.4	11.5	2 666.1

continued

Table 2: (continued) Passengers carried (000s) — monthly activity

	City-Pair	May 2020	May 2021	% Change
51	Sydney - Wagga Wagga	0.5	10.9	1 882.9
52	Brisbane - Mount Isa	..	10.4	NA
53	Port Macquarie - Sydney	..	9.9	NA
54	Melbourne - Mildura	0.8	9.6	1 165.7
55	Adelaide - Alice Springs	..	9.2	NA
	Total domestic network	176.4	3 378.2	1815.0

.. Data not available for release.

Table 3: Available seats (000s) — monthly activity

	City-Pair	May 2020	May 2021	% Change
1	Melbourne - Sydney	35.3	617.0	1 649.4
2	Brisbane - Sydney	33.8	324.2	859.1
3	Gold Coast - Sydney	..	224.9	NA
4	Brisbane - Melbourne	29.1	236.3	713.0
5	Gold Coast - Melbourne	..	199.8	NA
6	Adelaide - Melbourne	16.1	194.9	1 109.8
7	Adelaide - Sydney	..	144.1	NA
8	Brisbane - Cairns	8.3	123.5	1 391.8
9	Perth - Sydney	17.2	120.4	600.5
10	Brisbane - Townsville	7.9	91.3	1 051.6
11	Hobart - Melbourne	..	101.4	NA
12	Melbourne - Perth	32.5	107.2	229.4
13	Adelaide - Brisbane	..	80.7	NA
14	Brisbane - Mackay	10.1	73.3	624.3
15	Cairns - Melbourne	..	71.8	NA
16	Cairns - Sydney	..	69.3	NA
17	Launceston - Melbourne	..	74.5	NA
18	Sunshine Coast - Sydney	..	65.1	NA
19	Hobart - Sydney	..	63.1	NA
20	Brisbane - Canberra	..	71.7	NA
21	Canberra - Melbourne	7.6	81.1	963.5
22	Ballina - Sydney	3.8	63.3	1 559.3
23	Brisbane - Perth	..	57.0	NA
24	Melbourne - Sunshine Coast	..	53.6	NA
25	Brisbane - Rockhampton	6.6	55.8	749.4
26	Brisbane - Newcastle	..	55.2	NA
27	Karratha - Perth	5.4	60.7	1 023.6
28	Broome - Perth	6.0	45.5	661.1
29	Adelaide - Perth	..	54.5	NA
30	Canberra - Sydney	..	66.1	NA
31	Brisbane - Darwin	..	35.0	NA
32	Perth - Port Hedland	5.8	48.3	735.9
33	Newman - Perth	5.2	54.2	951.1
34	Melbourne - Newcastle	..	41.7	NA
35	Kalgoorlie - Perth	3.9	33.8	779.0
36	Brisbane - Proserpine	..	21.5	NA
37	Brisbane - Hobart	..	23.9	NA
38	Hamilton Island - Sydney	..	27.6	NA
39	Launceston - Sydney	..	22.1	NA
40	Adelaide - Gold Coast	..	20.7	NA
41	Brisbane - Hamilton Island	..	23.7	NA
42	Coffs Harbour - Sydney	..	25.7	NA
43	Brisbane - Gladstone	3.4	26.7	682.9
44	Adelaide - Canberra	..	22.8	NA
45	Brisbane - Emerald	..	23.0	NA
46	Adelaide - Port Lincoln	1.6	22.4	1 338.7
47	Darwin - Perth	..	18.7	NA
48	Dubbo - Sydney	2.0	19.8	887.1
49	Canberra - Gold Coast	..	17.7	NA
50	Albury - Sydney	1.8	19.5	1 012.8

continued

Table 3: (continued) Available seats (000s) — monthly activity

	City-Pair	May 2020	May 2021	% Change
51	Sydney - Wagga Wagga	2.0	20.1	918.2
52	Brisbane - Mount Isa	..	19.5	NA
53	Port Macquarie - Sydney	..	21.4	NA
54	Melbourne - Mildura	1.8	16.3	807.2
55	Adelaide - Alice Springs	..	15.1	NA
	Total domestic network	435.1	5 088.6	1 069.4

Table 4: Load factors (%) — monthly activity

	City-Pair	May 2020	May 2021	% Point diff
1	Melbourne - Sydney	53.9	61.4	7.5
2	Brisbane - Sydney	55.4	68.9	13.5
3	Gold Coast - Sydney	..	73.3	NA
4	Brisbane - Melbourne	55.5	67.5	12.0
5	Gold Coast - Melbourne	..	74.4	NA
6	Adelaide - Melbourne	38.3	61.6	23.3
7	Adelaide - Sydney	..	68.3	NA
8	Brisbane - Cairns	60.3	79.2	18.9
9	Perth - Sydney	41.3	60.1	18.8
10	Brisbane - Townsville	61.9	77.1	15.2
11	Hobart - Melbourne	..	68.4	NA
12	Melbourne - Perth	27.1	60.6	33.5
13	Adelaide - Brisbane	..	71.6	NA
14	Brisbane - Mackay	56.7	77.1	20.4
15	Cairns - Melbourne	..	77.4	NA
16	Cairns - Sydney	..	76.3	NA
17	Launceston - Melbourne	..	65.1	NA
18	Sunshine Coast - Sydney	..	70.3	NA
19	Hobart - Sydney	..	71.8	NA
20	Brisbane - Canberra	..	62.8	NA
21	Canberra - Melbourne	36.0	55.1	19.1
22	Ballina - Sydney	62.1	68.1	6.0
23	Brisbane - Perth	..	75.0	NA
24	Melbourne - Sunshine Coast	..	75.2	NA
25	Brisbane - Rockhampton	52.8	71.8	19.0
26	Brisbane - Newcastle	..	69.6	NA
27	Karratha - Perth	46.7	59.3	12.6
28	Broome - Perth	35.3	76.3	41.0
29	Adelaide - Perth	..	62.1	NA
30	Canberra - Sydney	..	49.4	NA
31	Brisbane - Darwin	..	84.6	NA
32	Perth - Port Hedland	49.8	59.2	9.4
33	Newman - Perth	55.7	49.9	-5.8
34	Melbourne - Newcastle	..	61.6	NA
35	Kalgoorlie - Perth	52.9	63.9	11.0
36	Brisbane - Proserpine	..	94.5	NA
37	Brisbane - Hobart	..	83.7	NA
38	Hamilton Island - Sydney	..	71.4	NA
39	Launceston - Sydney	..	81.6	NA
40	Adelaide - Gold Coast	..	82.2	NA
41	Brisbane - Hamilton Island	..	69.4	NA
42	Coffs Harbour - Sydney	..	63.4	NA
43	Brisbane - Gladstone	39.3	58.6	19.3
44	Adelaide - Canberra	..	63.5	NA
45	Brisbane - Emerald	..	60.3	NA
46	Adelaide - Port Lincoln	59.0	60.6	1.6
47	Darwin - Perth	..	71.0	NA
48	Dubbo - Sydney	42.1	61.7	19.6
49	Canberra - Gold Coast	..	66.3	NA
50	Albury - Sydney	23.7	58.9	35.2

continued

Table 4: (continued) Load factors (%) — monthly activity

	City-Pair	May 2020	May 2021	% Point diff
51	Sydney - Wagga Wagga	27.8	54.2	26.4
52	Brisbane - Mount Isa	..	53.4	NA
53	Port Macquarie - Sydney	..	46.4	NA
54	Melbourne - Mildura	42.1	58.8	16.7
55	Adelaide - Alice Springs	..	60.7	NA
	Total domestic network	40.1	68.2	28.1

.. Data not available for release.

Table 5: Aircraft trips ^(a) — monthly activity

	City-Pair	May 2020	May 2021	% Change
1	Melbourne - Sydney	377	3 613	858.4
2	Brisbane - Sydney	353	2 004	467.7
3	Gold Coast - Sydney	..	1 266	NA
4	Brisbane - Melbourne	267	1 456	445.3
5	Gold Coast - Melbourne	..	1 093	NA
6	Adelaide - Melbourne	192	1 184	516.7
7	Adelaide - Sydney	..	846	NA
8	Brisbane - Cairns	119	764	542.0
9	Perth - Sydney	62	608	880.6
10	Brisbane - Townsville	82	539	557.3
11	Hobart - Melbourne	..	644	NA
12	Melbourne - Perth	232	669	188.4
13	Adelaide - Brisbane	..	480	NA
14	Brisbane - Mackay	108	482	346.3
15	Cairns - Melbourne	..	352	NA
16	Cairns - Sydney	..	356	NA
17	Launceston - Melbourne	..	568	NA
18	Sunshine Coast - Sydney	..	393	NA
19	Hobart - Sydney	..	364	NA
20	Brisbane - Canberra	..	512	NA
21	Canberra - Melbourne	70	601	758.6
22	Ballina - Sydney	32	474	1 381.3
23	Brisbane - Perth	..	302	NA
24	Melbourne - Sunshine Coast	..	330	NA
25	Brisbane - Rockhampton	85	517	508.2
26	Brisbane - Newcastle	..	424	NA
27	Karratha - Perth	44	373	747.7
28	Broome - Perth	46	275	497.8
29	Adelaide - Perth	..	343	NA
30	Canberra - Sydney	..	961	NA
31	Brisbane - Darwin	..	213	NA
32	Perth - Port Hedland	47	354	653.2
33	Newman - Perth	42	325	673.8
34	Melbourne - Newcastle	..	260	NA
35	Kalgoorlie - Perth	34	255	650.0
36	Brisbane - Proserpine	..	120	NA
37	Brisbane - Hobart	..	148	NA
38	Hamilton Island - Sydney	..	156	NA
39	Launceston - Sydney	..	138	NA
40	Adelaide - Gold Coast	..	116	NA
41	Brisbane - Hamilton Island	..	136	NA
42	Coffs Harbour - Sydney	..	444	NA
43	Brisbane - Gladstone	44	352	700.0
44	Adelaide - Canberra	..	131	NA
45	Brisbane - Emerald	..	338	NA
46	Adelaide - Port Lincoln	38	559	1 371.1
47	Darwin - Perth	..	120	NA
48	Dubbo - Sydney	58	395	581.0
49	Canberra - Gold Coast	..	123	NA
50	Albury - Sydney	33	322	875.8

continued

Table 5: (continued) Aircraft trips ^(a) — monthly activity

	City-Pair	May 2020	May 2021	% Change
51	Sydney - Wagga Wagga	37	335	805.4
52	Brisbane - Mount Isa	..	168	NA
53	Port Macquarie - Sydney	..	418	NA
54	Melbourne - Mildura	34	378	1 011.8
55	Adelaide - Alice Springs	..	135	NA
	Total domestic network	7 840	43 608	456.2

(a) Includes RPT cargo flights

.. Data not available for release.

TOP TEN AIRPORTS – PASSENGER MOVEMENTS

Table 6: Top ten airports, RPT passenger movements (000s) - monthly activity

Airport	May 2020	May 2021	% Change	% of Total
1 Sydney	62.3	1 344.3	2 059	19.9
2 Melbourne	58.2	1 201.6	1 963	17.8
3 Brisbane	65.3	1 011.5	1 449	15.0
4 Perth	33.7	452.0	1 242	6.7
5 Adelaide	15.7	417.4	2 552	6.2
6 Gold Coast	2.3	371.6	16 078	5.5
7 Cairns	8.8	273.0	3 009	4.0
8 Canberra	5.7	163.7	2 763	2.4
9 Hobart	3.3	153.6	4 603	2.3
10 Darwin	5.8	127.4	NA	1.9
Total top ten airports	261.0	5 516.1	2,013	81.6
Total domestic network	352.8	6 756.3	1815.0	100.0

.. No flights in April 2020, Sunshine Coast Airport was under expansion.

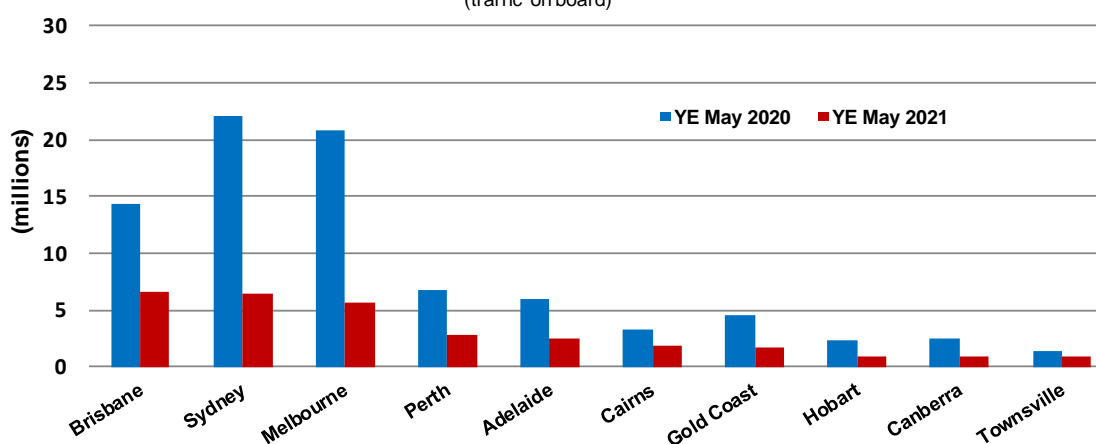
Table 7: Top ten airports, RPT passenger movements (000s) - annual activity

Airport	YE May 2020	YE May 2021	% Change	% of Total
1 Brisbane	14 334.8	6 601.1	-54.0	16.9
2 Sydney	22 062.4	6 501.2	-70.5	16.6
3 Melbourne	20 816.4	5 691.3	-72.7	14.5
4 Perth	6 808.1	2 831.3	-58.4	7.2
5 Adelaide	5 938.7	2 444.5	-58.8	6.2
6 Cairns	3 335.4	1 841.6	-44.8	4.7
7 Gold Coast	4 518.3	1 735.5	-61.6	4.4
8 Hobart	2 270.1	933.9	-58.9	2.4
9 Canberra	2 531.7	921.8	-63.6	2.4
10 Townsville	1 370.2	890.9	-35.0	2.3
Total top ten airports	1 370.2	30 393.2	2118.1	77.7
Total domestic network	99 145.9	39 124.4	-60.5	100.0

Note: Airport passenger movement numbers are the sum of passenger arrivals and departures at each airport.

Top ten airports, RPT passenger movements

(traffic on board)



TOP FIVE AIRPORTS – CARGO MOVEMENTS

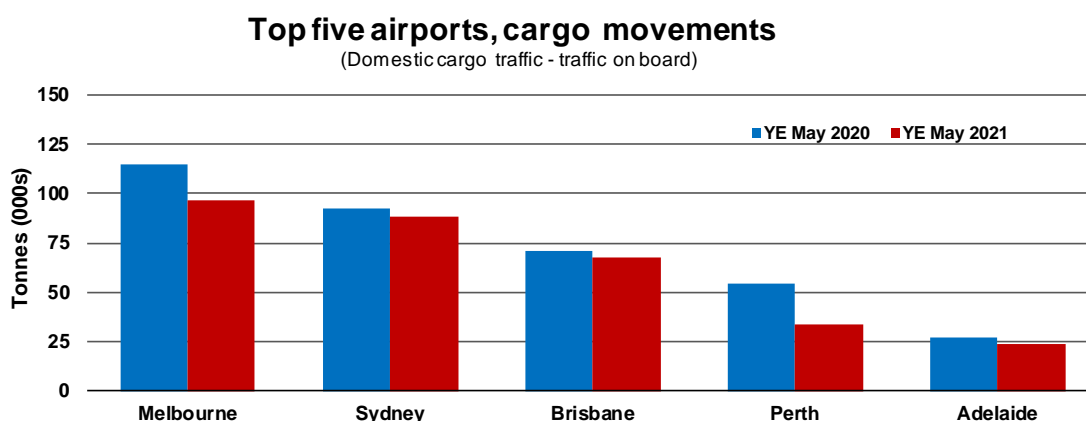
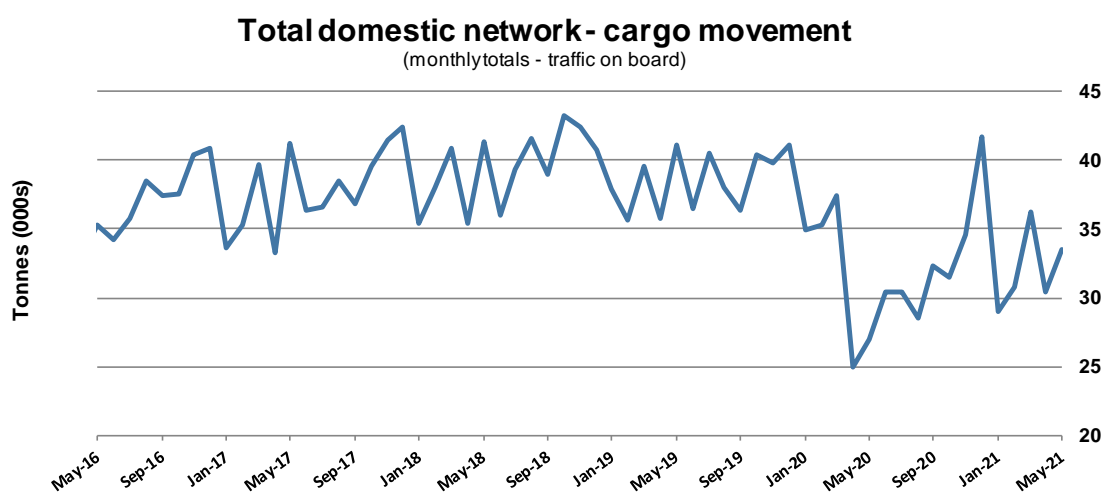
Table 8: Top five airports, domestic RPT cargo movements (000s tonnes) - monthly activity

Airport	May 2020	May 2021	% Change	% of Total
1 Melbourne	7.8	8.1	3.7	24.0
2 Sydney	5.3	7.8	47.4	23.2
3 Brisbane	5.0	5.4	7.0	16.0
4 Perth	2.4	3.3	36.3	9.9
5 Adelaide	1.6	2.0	20.3	5.9
Total top five airports	22.2	26.5	19.7	79.0
Total domestic network	27.0	33.5	24.4	100.0

Table 9: Top five airports, domestic RPT cargo movements (000s tonnes) - annual activity

Airport	YE May 2020	YE May 2021	% Change	% of Total
1 Melbourne	114.6	96.8	-15.6	24.8
2 Sydney	92.7	88.5	-4.4	22.7
3 Brisbane	70.8	67.8	-4.3	17.4
4 Perth	54.6	33.7	-38.3	8.7
5 Adelaide	26.8	23.5	-12.2	6.0
Total top five airports	359.5	310.3	-13.7	79.6
Total domestic network	432.4	389.6	-9.9	100.0

Note: Airport cargo tonnes are the sum of cargo tonnes on arrivals and departures at each airport.



TOP TEN ROUTES

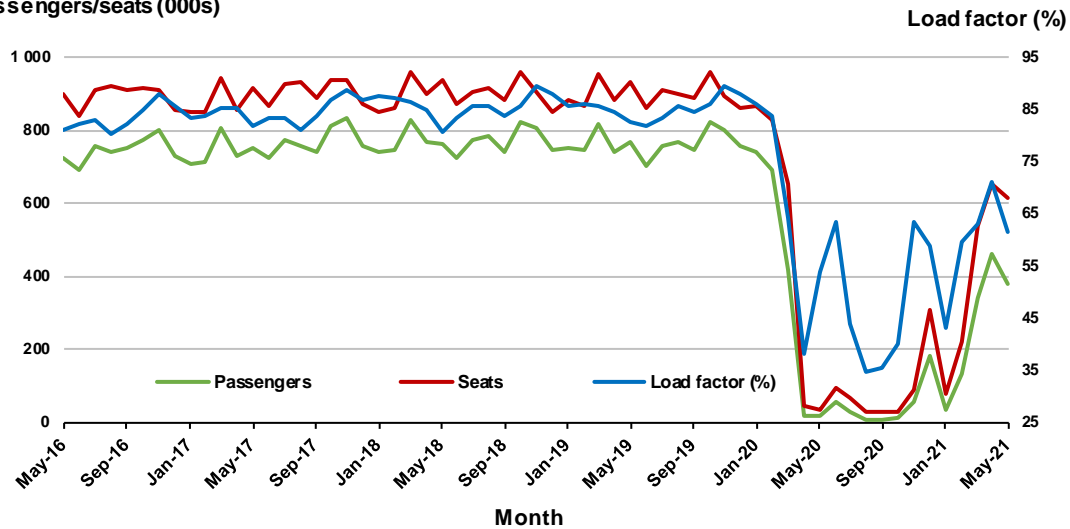
1. Melbourne - Sydney

Monthly data

	May 2020	May 2021	% Change
Passengers carried (000s)	19.0	378.7	1 893.5
Seats (000s)	35.3	617.0	1 649.4
Load factor %	53.9	61.4	7.5 *
Aircraft trips	377	3 613	858.4

* percentage point difference

Passengers/seats (000s)

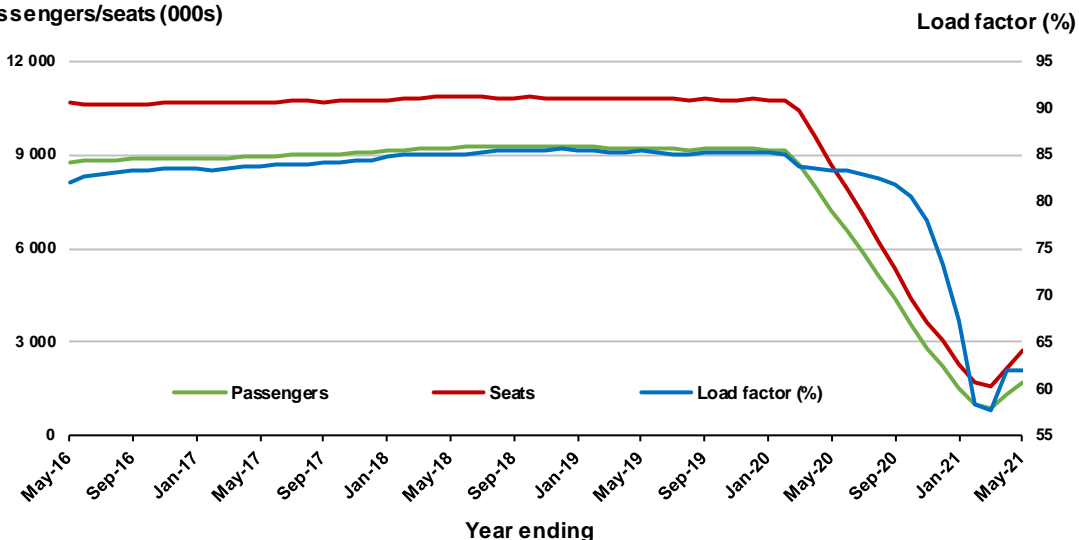


Moving annual data

	YE May 2020	YE May 2021	% Change
Passengers carried (000s)	7 245.1	1 711.5	-76.4
Seats (000s)	8 685.7	2 759.3	-68.2
Load factor %	83.4	62.0	-21.4 *
Aircraft trips	49 318	17 697	-64.1

* percentage point difference

Passengers/seats (000s)

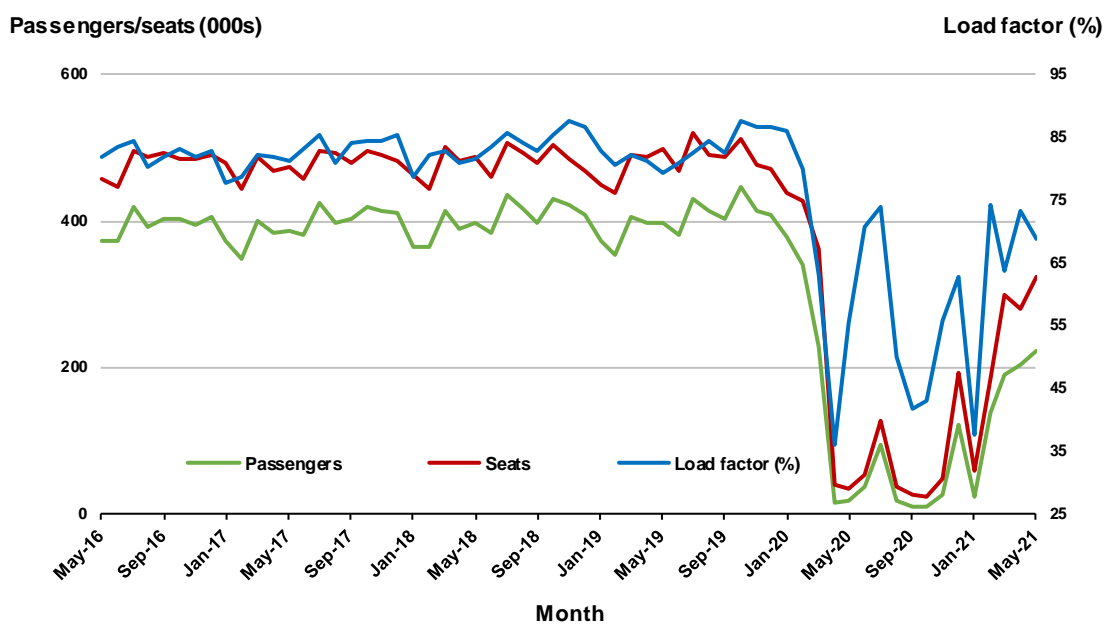


2. Brisbane - Sydney

Monthly data

	May 2020	May 2021	% Change
Passengers carried (000s)	18.7	223.3	1 093.2
Seats (000s)	33.8	324.2	859.1
Load factor %	55.4	68.9	13.5 *
Aircraft trips	353	2 004	467.7

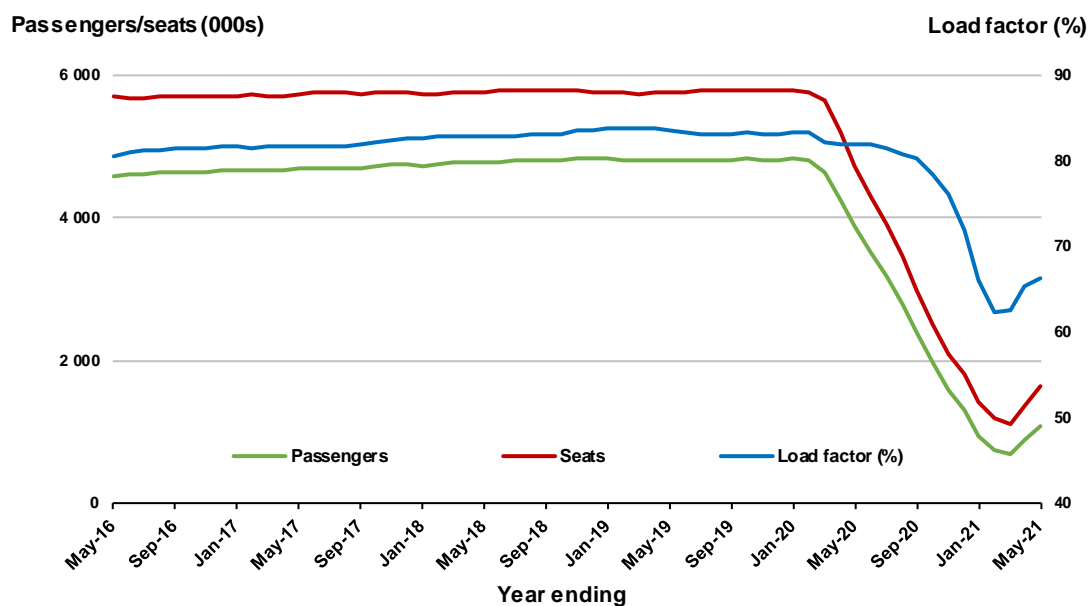
* percentage point difference



Moving annual data

	YE May 2020	YE May 2021	% Change
Passengers carried (000s)	3 876.4	1 098.1	-71.7
Seats (000s)	4 729.1	1 655.6	-65.0
Load factor %	82.0	66.3	-15.6 *
Aircraft trips	29 116	11 662	-59.9

* percentage point difference



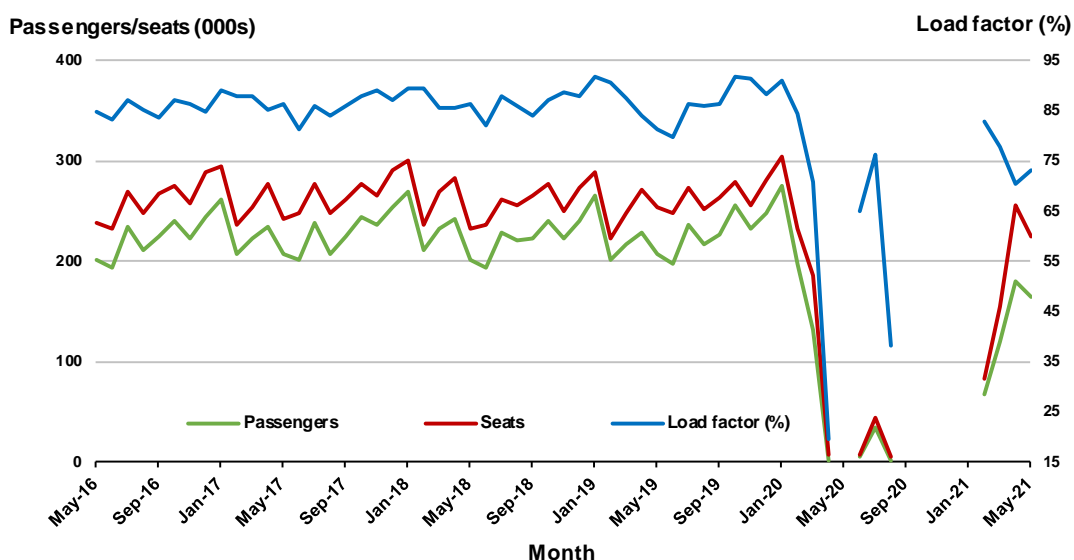
3. Gold Coast - Sydney ^(a)

Monthly data

	May 2020	May 2021	% Change
Passengers carried (000s)	..	164.9	NA
Seats (000s)	..	224.9	NA
Load factor %	..	73.3	NA *
Aircraft trips	..	1 266	NA

* percentage point difference

.. data not available for release.



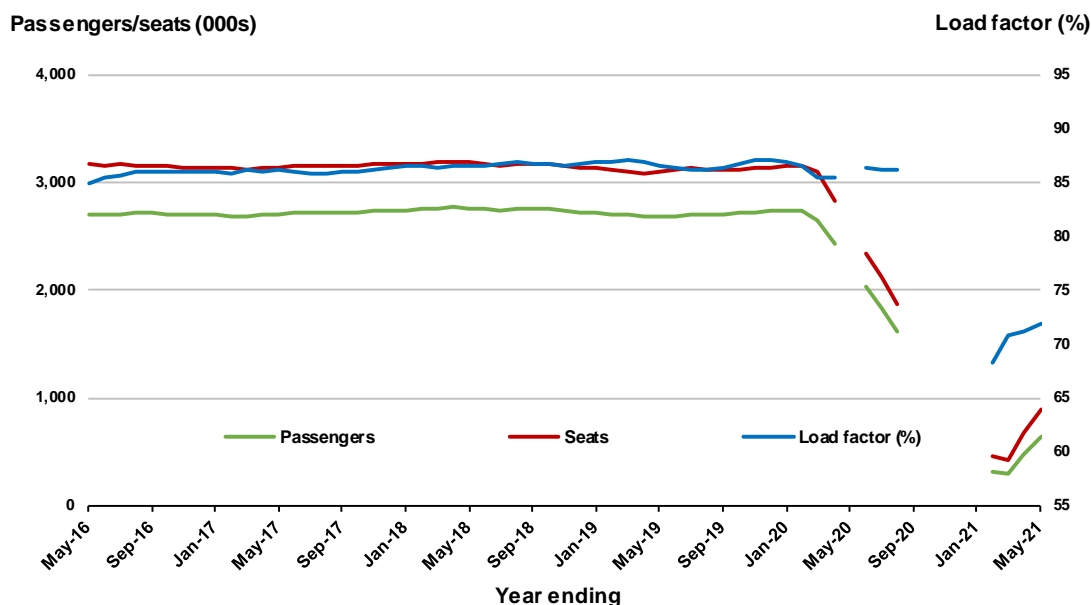
(a) May, September to November 2020 and January 2021 data not available for release

Moving annual data

	YE May 2020	YE May 2021	% Change
Passengers carried (000s)	..	644.8	NA
Seats (000s)	..	897.3	NA
Load factor %	..	71.9	NA *
Aircraft trips	..	5 190	NA

* percentage point difference

.. data not available for release.



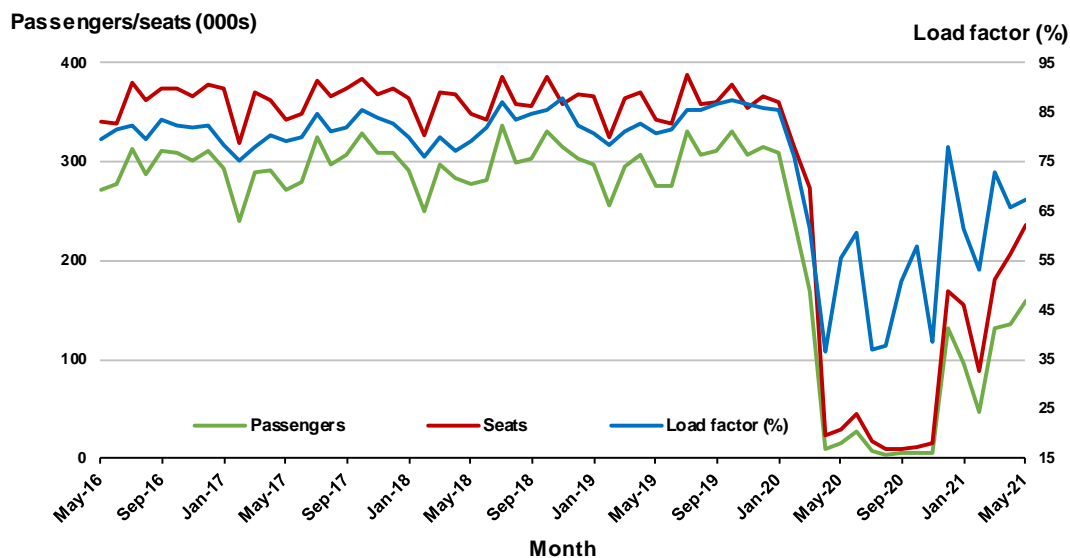
(a) May, September to November 2020 and January 2021 moving annuals are not available for release

4. Brisbane - Melbourne

Monthly data

	May 2020	May 2021	% Change
Passengers carried (000s)	16.1	159.6	889.5
Seats (000s)	29.1	236.3	713.0
Load factor %	55.5	67.5	12.0 *
Aircraft trips	267	1 456	445.3

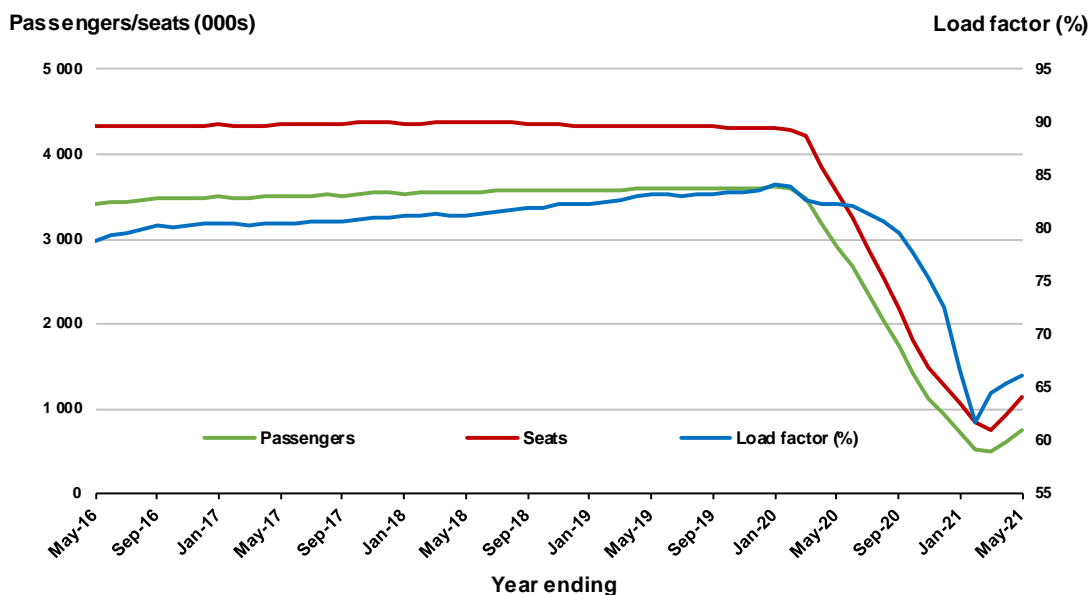
* percentage point difference



Moving annual data

	YE May 2020	YE May 2021	% Change
Passengers carried (000s)	2 919.6	756.9	-74.1
Seats (000s)	3 546.8	1 144.4	-67.7
Load factor %	82.3	66.1	-16.2 *
Aircraft trips	21 172	7 853	-62.9

* percentage point difference



5. Gold Coast - Melbourne ^(a)

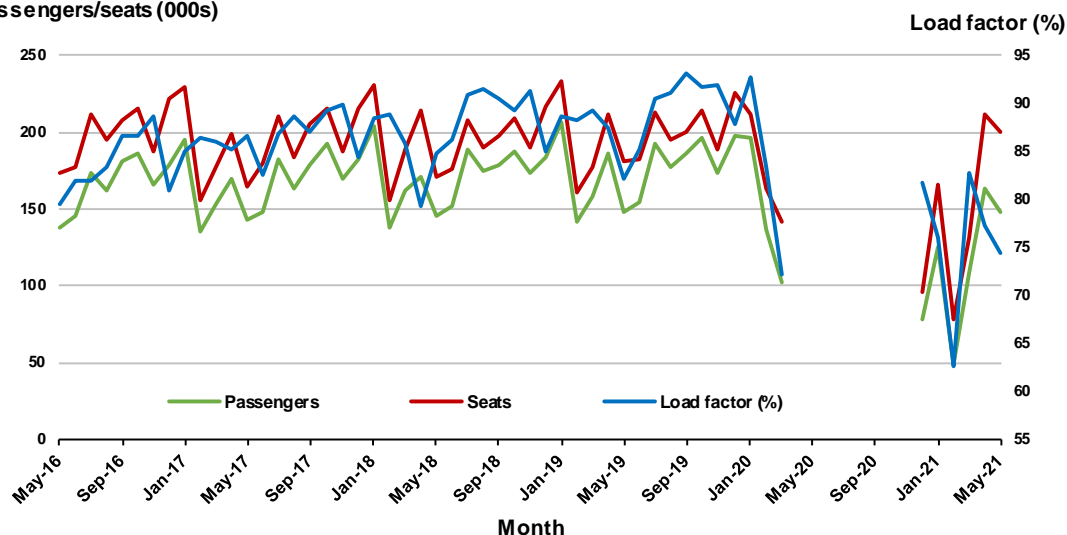
Monthly data

	May 2020	May 2021	% Change
Passengers carried (000s)	..	148.7	NA
Seats (000s)	..	199.8	NA
Load factor %	..	74.4	NA *
Aircraft trips	..	1 093	NA

* percentage point difference

.. data not available for release.

Passengers/seats (000s)



(a) April to November 2020 data not available for release

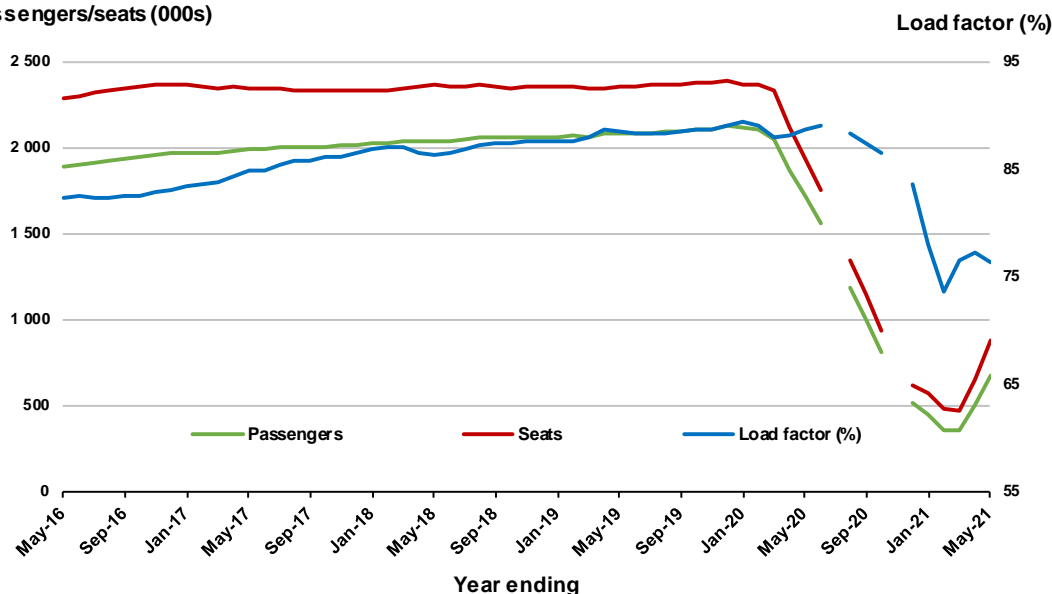
Moving annual data

	YE May 2020	YE May 2021	% Change
Passengers carried (000s)	1 716.3	674.8	-60.7
Seats (000s)	1 936.7	884.8	-54.3
Load factor %	88.6	76.3	-12.4 *
Aircraft trips	10 233	4 725	-53.8

* percentage point difference

(a) April to November 2020 data not available for release

Passengers/seats (000s)



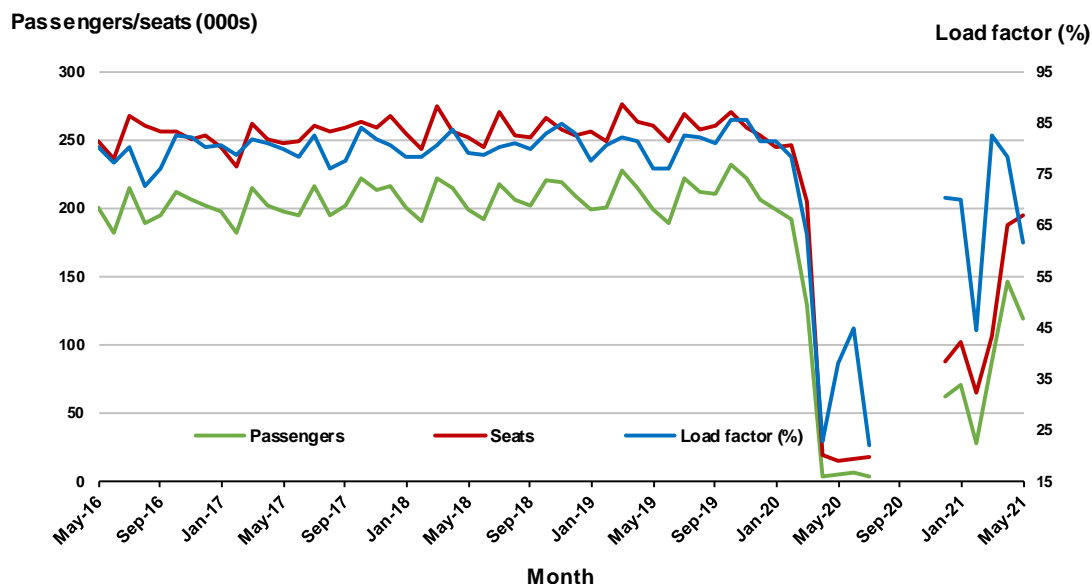
(a) July and November 2020 moving annual totals are not available for release

6. Adelaide - Melbourne ^(a)

Monthly data

	May 2020	May 2021	% Change
Passengers carried (000s)	6.2	120.1	1 848.6
Seats (000s)	16.1	194.9	1 109.8
Load factor %	38.3	61.6	23.3 *
Aircraft trips	192	1 184	516.7

* percentage point difference

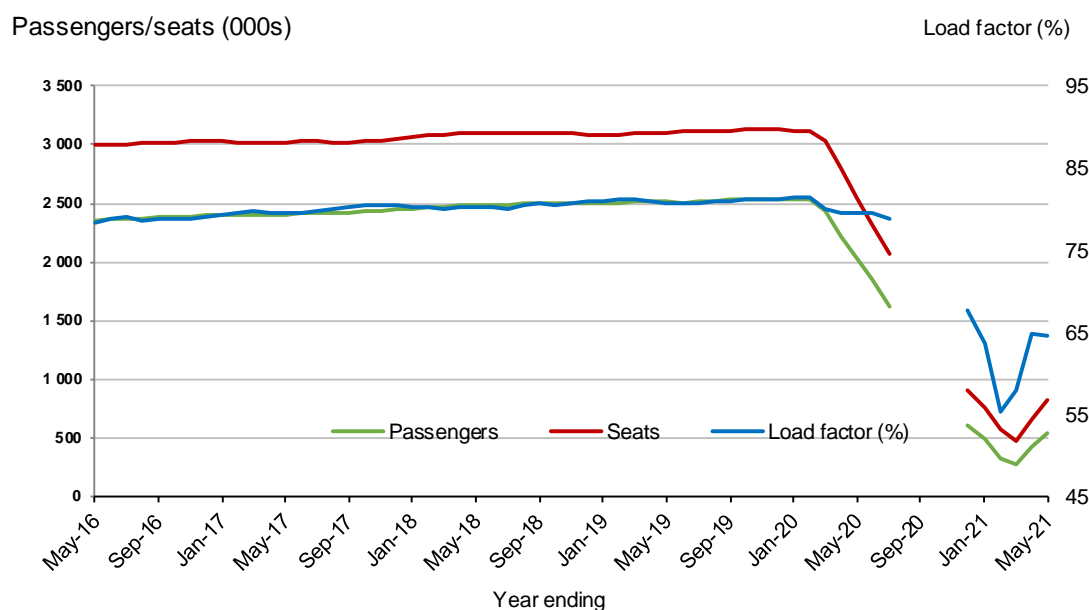


(a) August to November 2020 data not available for release

Moving annual data

	YE May 2020	YE May 2021	% Change
Passengers carried (000s)	2 029.7	537.5	-73.5
Seats (000s)	2 551.9	831.2	-67.4
Load factor %	79.5	64.7	-14.9 *
Aircraft trips	15 781	5 819	-63.1

* percentage point difference



(a) August to November 2020 moving annual totals are not available for release

7. Adelaide - Sydney ^(a)

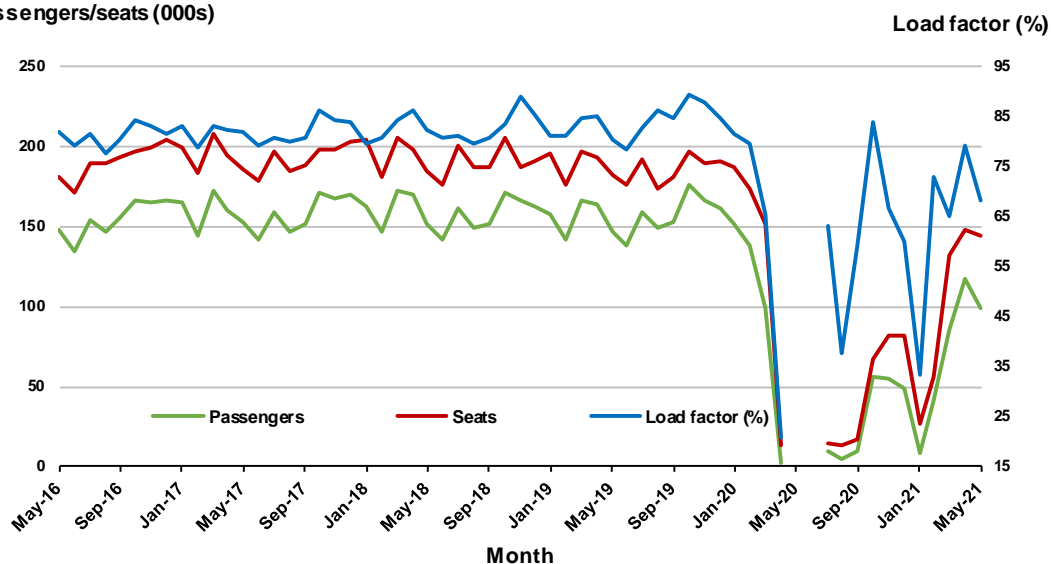
Monthly data

	May 2020	May 2021	% Change
Passengers carried (000s)	..	98.4	NA
Seats (000s)	..	144.1	NA
Load factor %	..	68.3	NA *
Aircraft trips	..	846	NA

* percentage point difference

.. data not available for release.

Passengers/seats (000s)



(a) May and June 2020 data not available for release

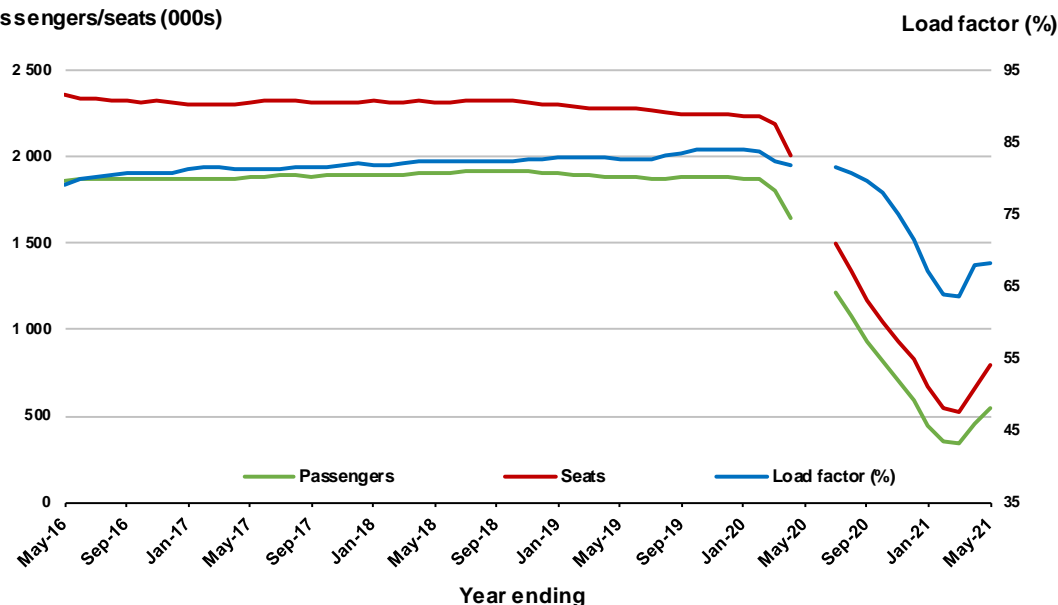
Moving annual data

	YE May 2020	YE May 2021	% Change
Passengers carried (000s)	..	543.7	NA
Seats (000s)	..	796.2	NA
Load factor %	..	68.3	NA *
Aircraft trips	..	5 052	NA

* percentage point difference

.. data not available for release.

Passengers/seats (000s)



(a) May and June 2020 moving annual totals are not available for release

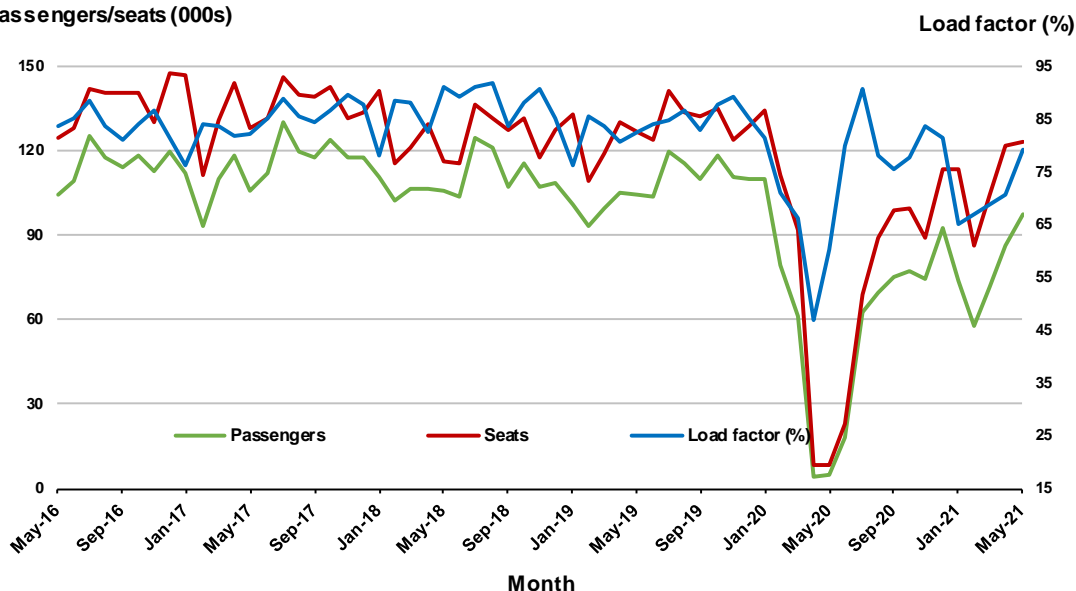
8. Brisbane - Cairns

Monthly data

	May 2020	May 2021	% Change
Passengers carried (000s)	5.0	97.8	1 859.8
Seats (000s)	8.3	123.5	1 391.8
Load factor %	60.3	79.2	18.9 *
Aircraft trips	119	764	542.0

* percentage point difference

Passengers/seats (000s)

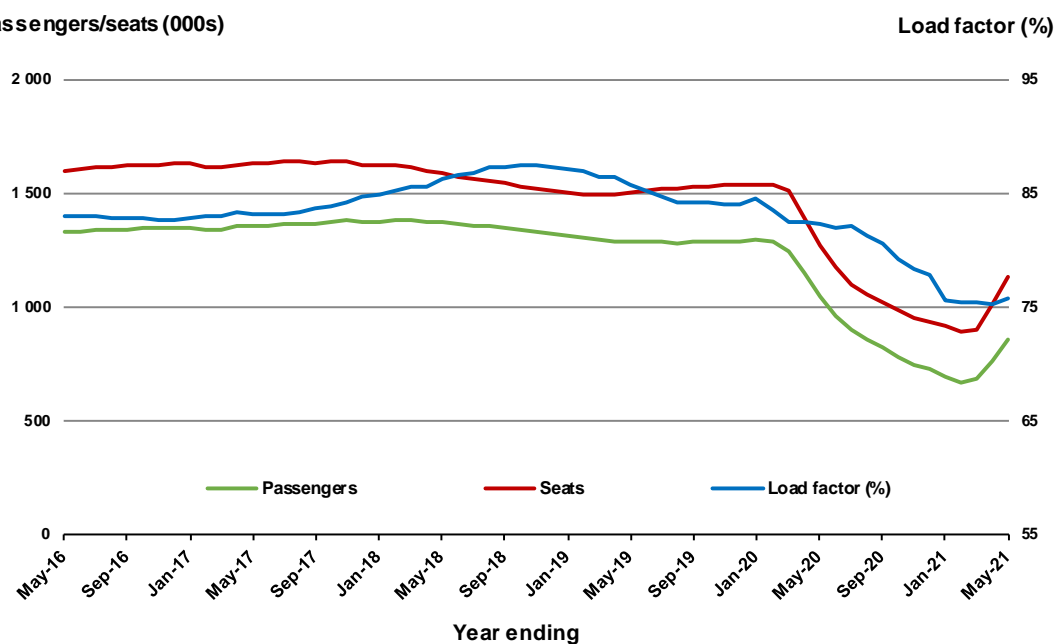


Moving annual data

	YE May 2020	YE May 2021	% Change
Passengers carried (000s)	1 047.8	857.8	- 18.1
Seats (000s)	1 274.0	1 132.1	- 11.1
Load factor %	82.2	75.8	-6.5 *
Aircraft trips	9 019	7 599	-15.7

* percentage point difference

Passengers/seats (000s)



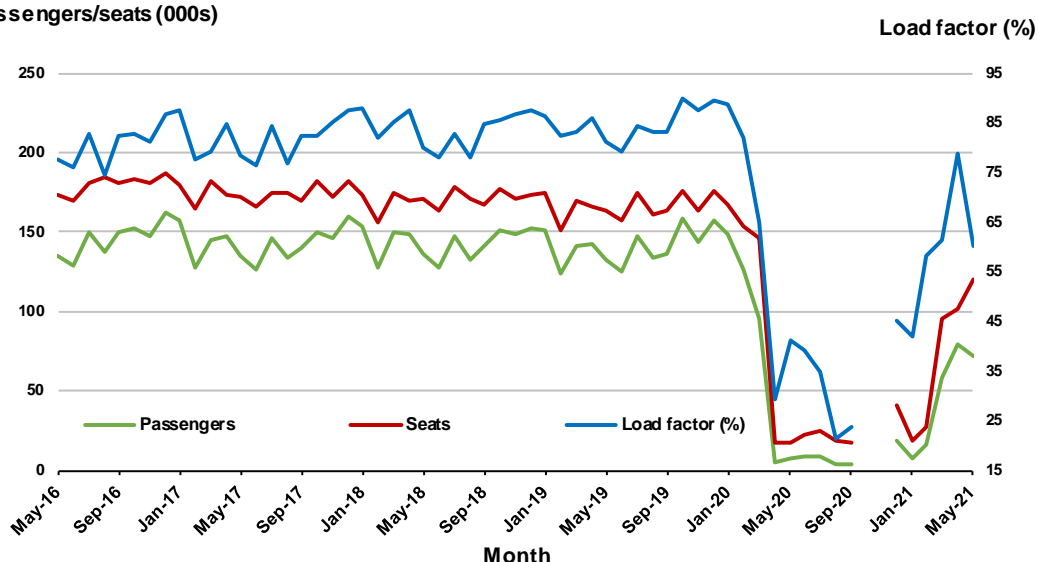
9. Perth - Sydney ^(a)

Monthly data

	May 2020	May 2021	% Change
Passengers carried (000s)	7.1	72.3	918.5
Seats (000s)	17.2	120.4	600.5
Load factor %	41.3	60.1	18.8 *
Aircraft trips	62	608	880.6

* percentage point difference

Passengers/seats (000s)



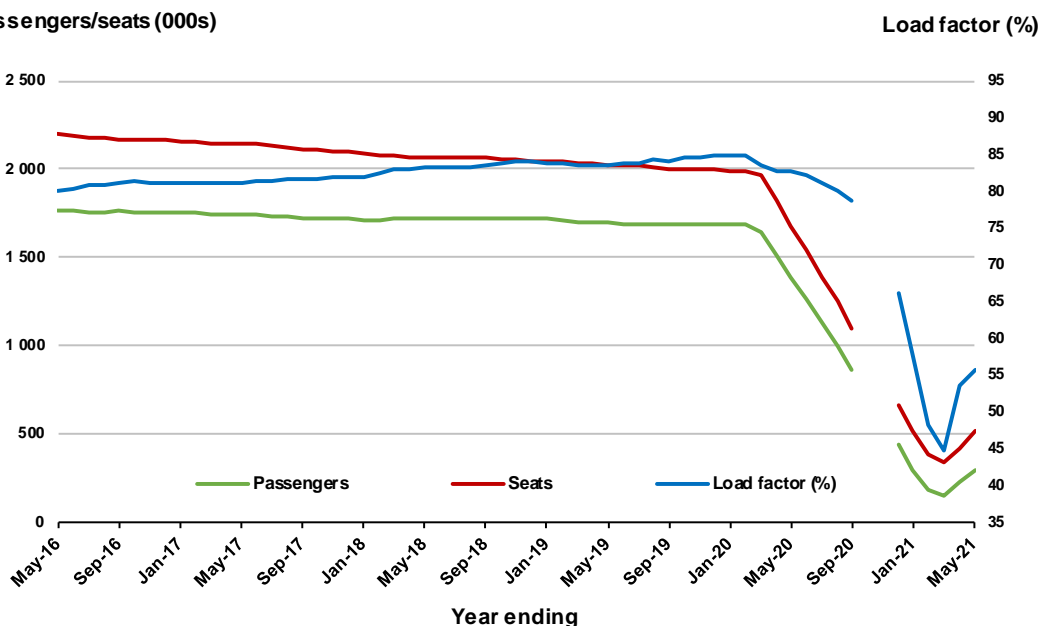
(a) October to November 2020 data not available for release

Moving annual data

	YE May 2020	YE May 2021	% Change
Passengers carried (000s)	1 381.7	289.9	-79.0
Seats (000s)	1 673.5	521.9	-68.8
Load factor %	82.6	55.6	-27.0 *
Aircraft trips	7 515	2 702	-64.0

* percentage point difference

Passengers/seats (000s)



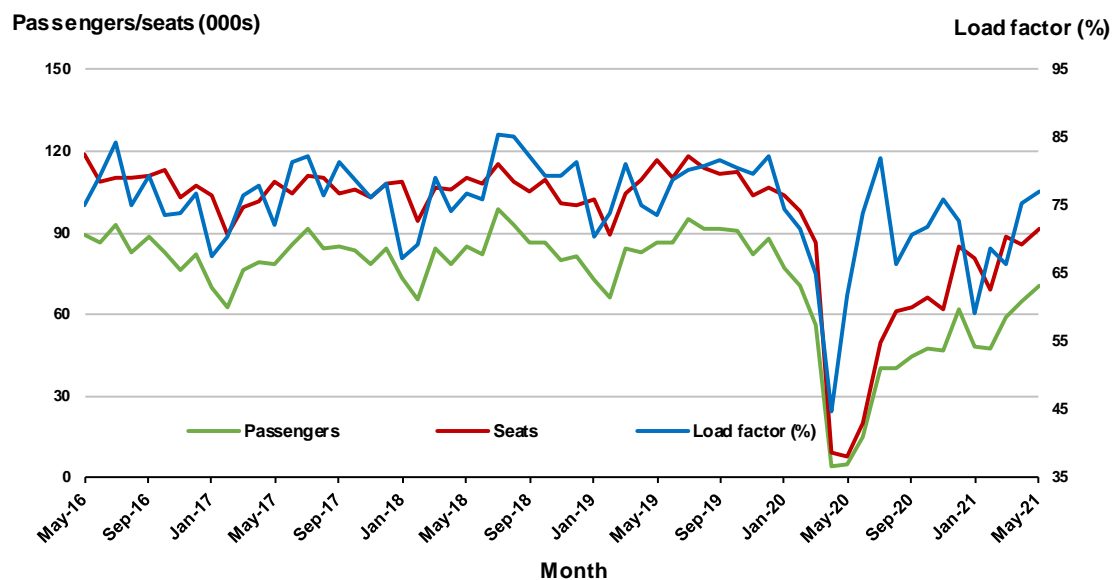
(a) October to November 2020 moving annual totals are not available for release

10. Brisbane - Townsville

Monthly data

	May 2020	May 2021	% Change
Passengers carried (000s)	4.9	70.4	1 334.7
Seats (000s)	7.9	91.3	1 051.6
Load factor %	61.9	77.1	15.2 *
Aircraft trips	82	539	557.3

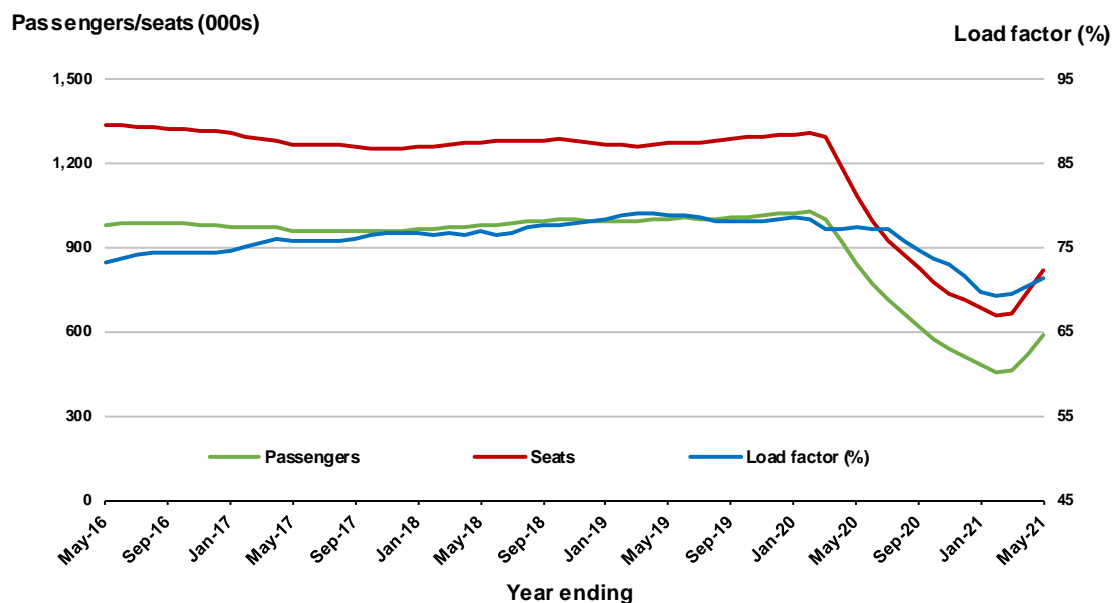
* percentage point difference



Moving annual data

	YE May 2020	YE May 2021	% Change
Passengers carried (000s)	839.3	586.0	-30.2
Seats (000s)	1 082.9	822.1	-24.1
Load factor %	77.5	71.3	-6.2 *
Aircraft trips	7 358	5 098	-30.7

* percentage point difference



TOP FIFTY REGIONAL AIRPORTS

Table 10: Top fifty regional airports (000s) — passenger movements, monthly

Airport	May 2020	May 2021	% Change
1 Cairns	8.8	273.0	3 009.1
2 Hobart	3.3	153.6	4 603.3
3 Darwin	5.8	127.4	2 115.5
4 Townsville	9.2	113.3	1 124.8
5 Newcastle	0.4	77.1	18 932.3
6 Launceston	0.7	76.2	10 638.2
7 Mackay	7.2	66.4	823.3
8 Ballina	2.5	51.1	1 920.3
9 Rockhampton	4.2	43.6	949.2
10 Hamilton Island	..	41.0	NA
11 Broome	2.6	40.3	1 477.7
12 Karratha	2.7	36.1	1 260.7
13 Alice Springs	3.3	32.8	880.4
14 Proserpine	..	28.8	NA
15 Port Hedland	3.5	28.6	724.1
16 Newman	2.9	27.1	844.9
17 Kalgoorlie	2.0	21.6	961.3
18 Coffs Harbour	0.7	21.4	3 089.1
19 Mount Isa	4.4	17.1	284.8
20 Paraburdoo	1.2	16.9	1 254.6
21 Dubbo	1.4	16.4	1 107.2
22 Gladstone	2.1	15.7	640.0
23 Emerald	0.7	14.8	2 002.6
24 Ayers Rock	..	13.7	NA
25 Port Lincoln	0.9	13.6	1 378.4
26 Albury	0.7	13.2	1 694.4
27 Wagga Wagga	0.6	12.5	1 844.2
28 Mildura	0.8	12.3	1 524.1
29 Kununurra	1.9	11.9	515.1
30 Port Macquarie	0.3	11.6	3 369.8
31 Learmonth	1.2	10.4	775.7
32 Tamworth	0.5	10.3	2 139.4
33 Bundaberg	1.6	8.9	470.4
34 Moranbah	1.0	8.0	723.0
35 Thursday Island	0.8	7.4	778.5
36 Orange	0.2	7.3	3 099.6
37 Geraldton	0.4	7.3	1 590.5
38 Hervey Bay	..	7.3	NA
39 Weipa	0.5	7.2	1 395.2
40 Armidale	0.2	7.0	2 700.0
41 Devonport	..	6.6	NA
42 Merimbula	0.3	5.8	1 710.6
43 Gove	0.8	5.7	592.2
44 Olympic Dam	2.0	5.6	187.0
45 Mount Gambier	0.3	5.5	2 036.6
46 Narrandera	0.3	5.2	1 650.2
47 Whyalla	0.4	5.1	1 284.5
48 King Island	0.7	5.0	641.9
49 Albany	0.6	4.7	746.8
50 Roma	0.9	4.7	448.3
Total top 50 regional airports	87.4	1 564.2	1 690.3
Total regional airports	108.6	1 657.9	1 426.2
Total domestic network	352.8	6 756.3	1 815.0

Note: Airport passenger movement numbers are the sum of passenger arrivals and departures at each airport.

Regional airports are defined as airports which are, according to Australian Statistical Geography

Standard (ASGS), not based in Major Cities.

.. Data not available for release.

Table 11: Top fifty regional airports (000s) — passenger movements, annual

Airport	YE May 2020	YE May 2021	% Change
1 Cairns	3 335.4	1 841.6	-44.8
2 Hobart	2 270.1	933.9	-58.9
3 Townsville	1 370.2	890.9	-35.0
4 Darwin	1 409.2	802.0	-43.1
5 Ballina	439.0	553.1	26.0
6 Mackay	738.1	525.0	-28.9
7 Launceston	1 112.8	499.2	-55.1
8 Newcastle	1 017.6	425.3	-58.2
9 Rockhampton	471.1	325.1	-31.0
10 Karratha	392.0	316.8	-19.2
11 Broome	326.8	313.2	-4.2
12 Hamilton Island	385.6	252.0	-34.6
13 Proserpine	352.1	251.9	-28.4
14 Alice Springs	424.8	248.4	-41.5
15 Port Hedland	334.2	243.2	-27.2
16 Newman	292.1	213.0	-27.1
17 Kalgoorlie	237.7	189.1	-20.4
18 Mount Isa	198.5	163.0	-17.9
19 Paraburdoo	164.5	137.9	-16.2
20 Coffs Harbour	317.1	118.8	-62.5
21 Gladstone	203.8	117.4	-42.4
22 Emerald	171.0	109.3	-36.1
23 Port Lincoln	144.1	107.8	-25.2
24 Dubbo	170.4	98.3	-42.3
25 Learmonth	67.3	75.6	12.2
26 Thursday Island	79.1	75.4	-4.7
27 Kununurra	95.1	73.0	-23.2
28 Albury	202.5	65.7	-67.6
29 Wagga Wagga	167.9	63.1	-62.4
30 Ayers Rock	381.7	58.9	-84.6
31 Bundaberg	125.7	56.5	-55.1
32 Mildura	202.8	56.2	-72.3
33 Port Macquarie	175.7	55.5	-68.4
34 Weipa	58.8	55.0	-6.4
35 Gove	69.6	55.0	-21.1
36 Tamworth	153.0	51.3	-66.5
37 Geraldton	84.8	46.8	-44.8
38 Olympic Dam	59.4	46.6	-21.5
39 Moranbah	93.7	46.5	-50.3
40 King Island	38.6	39.4	2.3
41 Roma	79.4	37.9	-52.3
42 Albany	51.2	36.9	-27.9
43 Armidale	103.5	36.1	-65.1
44 Esperance	43.2	35.0	-19.1
45 Orange	67.4	33.5	-50.3
46 Whyalla	63.5	33.2	-47.8
47 Norfolk Island	49.1	32.9	-32.9
48 Hervey Bay	137.7	32.9	-76.1
49 Devonport	121.0	32.8	-72.9
50 Cloncurry	40.2	31.8	-20.9
Total top 50 regional airports	19 090.0	10 939.8	-42.7
Total regional airports	20 406.8	11 746.7	-42.4
Total domestic network	99 145.9	39 124.4	-60.5

Note: Airport passenger movement numbers are the sum of passenger arrivals and departures at each airport. Regional airports are defined as airports which are, according to Australian Statistical Geography Standard (ASGS), not based in Major Cities.

DOMESTIC CHARTER ACTIVITY

Table 12: Charter passengers carried and aircraft trips - monthly activity

	May 2020	May 2021	% Change
Total domestic charter passengers	209 301	288 240	37.7
Total domestic charter aircraft trips	5 353	5 226	-2.4

Note: Helicopter, joyflights and sightseeing charter flights not included.

Table 13: Charter passengers carried and aircraft trips - annual activity

	YE May 2020	YE May 2021	% Change
Total domestic charter passengers	2 758 635	3 426 965	24.2
Total domestic charter aircraft trips	51 565	68 460	32.8

Note: Helicopter, joyflights and sightseeing charter flights not included.

Table 14: Domestic airports - charter activity - monthly

	May 2020	May 2021	% Change
Total domestic charter passenger movements	418 602	576 480	37.7
Total domestic charter aircraft movements	10 706	10 452	-2.4
Perth airport charter passenger movements	155 679	215 126	38.2
Perth airport charter aircraft movements	3 591	3 527	-1.8

Note: Helicopter, joyflights and sightseeing charter flights not included.

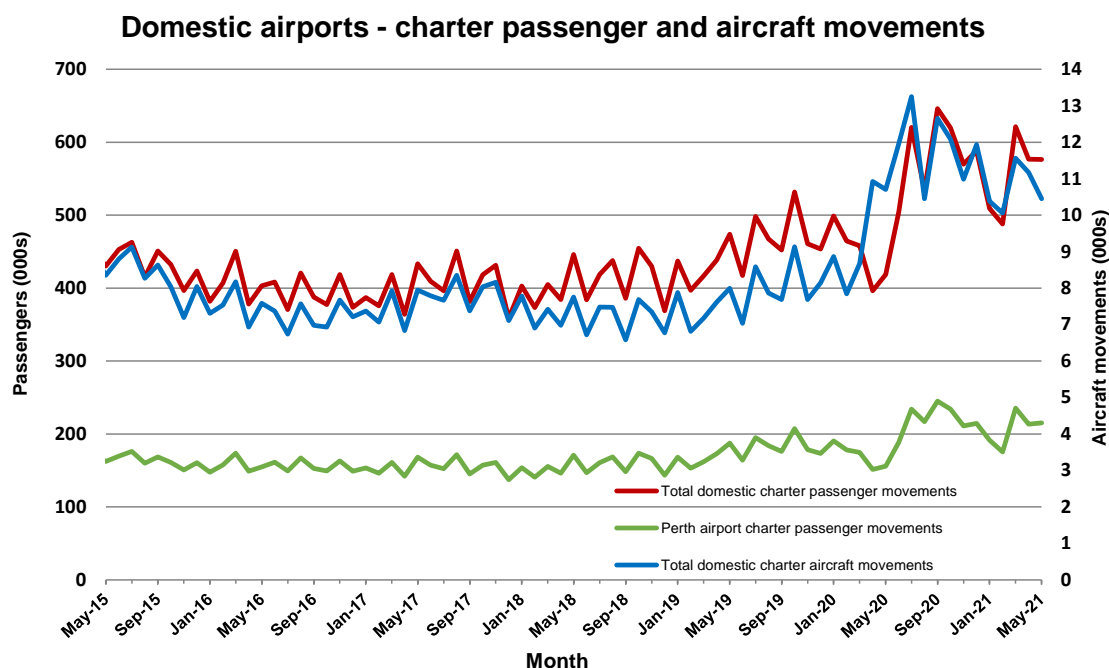
Charter passenger and aircraft movement numbers are the sum of arrivals and departures at each airport.

Table 15: Domestic airports - charter activity - annual

	YE May 2020	YE May 2021	% Change
Total domestic charter passenger movements	5 517 270	6 853 930	24.2
Total domestic charter aircraft movements	103 130	136 920	32.8
Perth airport charter passenger movements	2 127 490	2 574 232	21.0
Perth airport charter aircraft movements	36 203	44 876	24.0

Note: Helicopter, joyflights and sightseeing charter flights not included.

Charter passenger and aircraft movement numbers are the sum of arrivals and departures at each airport.



DEFINITIONS

Aircraft Trips	The number of flight stages. A return flight counts as two aircraft trips.
Airport Movements	Airport movements (passenger and cargo) are measured once on arrival and once on departure. Each domestic trip generates two movements at airports. For example, a trip from Melbourne to Sydney will be counted twice, as a departure at Melbourne and as an arrival at Sydney. At the national level, the sum of all domestic airport traffic will therefore be equal to twice the number of trips undertaken.
Available Seat Kilometres (ASKs)	Calculated by multiplying the number of seats available on each flight stage, by the distance in kilometres between the ports. The distances used are Great Circle Distances.
City-Pair	The ports shown make up the city-pair route. Passenger movements shown for a city pair reflect total traffic in both directions.
Flight Stage	The operation of an aircraft from take-off to landing.
Load Factor	The total revenue passenger kilometres performed as a percentage of the total available seat kilometres.
Passengers Carried	Revenue passengers carried.
Regular Public Transport Services (RPT)	All air service operations in which aircraft are available for the transport of members of the public and are conducted in accordance with fixed schedules. It does not include charter or other non-scheduled operations.
Revenue Passengers	All passengers paying any fare. Frequent flyer redemption travellers are regarded as revenue passengers.
Revenue Passenger Kilometres (RPKs)	Calculated by multiplying the number of revenue passengers travelling on each flight stage, by the distance in kilometres between the ports. The distances used are Great Circle Distances.
Traffic on board by stages	The total of all traffic (revenue passengers) on each flight stage between two directly connected airports.
..	Not available for confidentiality or other reasons.
NA	Not applicable.