



Australian Government

**Department of Infrastructure, Transport,
Regional Development, Communications and the Arts**
Bureau of Infrastructure and Transport Research Economics

STATISTICAL REPORT



bitre

Aviation

**Domestic aviation activity
May 2023**

The Department of Infrastructure, Transport, Regional Development, Communications and the Arts acknowledges the Traditional Custodians of Country of the land on which we work and live.

We recognise and respect the continuing connections to land, waters and communities.

We pay our respects to them and their cultures and to their Elders both past and present and to all Aboriginal and Torres Strait Islander people.

© Commonwealth of Australia 2023

ISSN: 1832 - 1968

Ownership of intellectual property rights in this publication

Unless otherwise noted, copyright (and any other intellectual property rights, if any) in this publication is owned by the Commonwealth of Australia (referred to below as the Commonwealth).

Disclaimer

The material contained in this publication is made available on the understanding that the Commonwealth is not providing professional advice, and that users exercise their own skill and care with respect to its use, and seek independent advice if necessary.

The Commonwealth makes no representations or warranties as to the contents or accuracy of the information contained in this publication. To the extent permitted by law, the Commonwealth disclaims liability to any person or organisation in respect of anything done, or omitted to be done, in reliance upon information contained in this publication.

Creative Commons licence

With the exception of (a) the Coat of Arms; and (b) the Department of Infrastructure, Transport, Regional Development, Communications and the Arts' photos and graphics, copyright in this publication is licensed under a Creative Commons Attribution 3.0 Australia Licence.

Creative Commons Attribution 3.0 Australia Licence is a standard form licence agreement that allows you to copy, communicate and adapt this publication provided that you attribute the work to the Commonwealth and abide by the other licence terms. A summary of the licence terms is available from <http://creativecommons.org/licenses/by/3.0/au/deed.en>.

The full licence terms are available from <http://creativecommons.org/licenses/by/3.0/au/legalcode>.

Use of the Coat of Arms

The Department of the Prime Minister and Cabinet sets the terms under which the Coat of Arms is used. Please refer to the Department's Commonwealth Coat of Arms and Government branding web page <http://www.dpmc.gov.au/guidelines/index.cfm#brand> and, in particular, the Guidelines on the use of the Commonwealth Coat of Arms publication.

An appropriate citation for this report is:

Bureau of Infrastructure and Transport Research Economics (BITRE), 2023, Domestic aviation activity, Statistical Report, BITRE, Canberra ACT.

Contact us

This publication is available in PDF format. All other rights are reserved, including in relation to any Departmental logos or trade marks which may exist. For enquiries regarding the licence and any use of this publication, please contact:

Bureau of Infrastructure and Transport Research Economics (BITRE)
Department of Infrastructure, Transport, Regional Development, Communications and the Arts
GPO Box 501, Canberra ACT 2601, Australia
Telephone: (international) +61 2 6274 7210
Email: bitre@infrastructure.gov.au
Website: www.bitre.gov.au

Inquiries

Nebojsa.Pavlovic@infrastructure.gov.au (02) 6274 6817

FOREWORD

This report provides an overview of domestic (including charter) commercial aviation activity in Australia for the month of May 2023.

The data covers revenue passengers carried by Australian-registered operators of scheduled regular public transport services over Australian flight stages and fixed-wing charter operators. These estimates include passengers carried between domestic airports on international flights operated by these carriers. The passengers carried refer to traffic on board by stages.

Estimates of passengers and aircraft movements for charter aviation are included in this publication, where BITRE confidentiality standards are met.

Individual routes shown are restricted to those with an average exceeding 8,000 passengers per month over the previous six months where two or more airlines operate in competition. However, for the period from November 2021 through to December 2022, the major airlines (Qantas Group, Virgin Australia and Rex Airlines) agreed to publication of the top 35 routes based on pre-COVID activity (December 2019) whether or not they were meeting the above criteria. From January 2023, the passenger load and dual competition requirements were reinstated due to the continued recovery of passenger numbers.

Information on the total network for the month of May 2023 and on the Regular Public Transport (RPT) network for the month of May 2023 is presented on page 2, with estimates for the year ended May 2023 presented on page 3.

Detailed information on individual routes can be found in the RPT summary pages 4-13 of this publication.

The top ten airports in terms of RPT passenger movements are shown on page 14.

Data on domestic RPT cargo movements at the top five cargo airports are provided on page 15. The table includes cargo carried on passenger flights operated by the Qantas group (including Jetstar), Virgin Australia, Air North and Skippers as well as the cargo carried by dedicated freighter aircraft operated by Qantas Freight and Toll.

The long-term trends for the top ten competitive RPT routes are presented graphically on pages 16-25.

Domestic RPT passenger movements at regional airports are shown on pages 26-27.

Tables providing estimates of domestic charter aviation activity are shown on page 28. BITRE confidentiality standards restrict publication of detailed estimates for individual Australian airports, with the exception of Perth Airport.

A list of definitions can be found on page 29.

This report was prepared by the Aviation Statistics Section of the Bureau of Infrastructure and Transport Research Economics with data provided by airlines.

Estimates are included where data were not available and data presented in this publication may contain revisions to previously published data.

Where figures have been rounded, discrepancies may occur between sums of component items and totals, and in percentage changes which are derived from figures prior to rounding.

CONTENTS

Highlights	1
Total network.....	2
RPT network	2
Top competitive routes.....	4
Top ten airports – passenger movements.....	14
Top five airports – cargo movements.....	15
Top ten routes	16
1. Melbourne – Sydney	16
2. Brisbane – Sydney.....	17
3. Brisbane – Melbourne	18
4. Adelaide – Melbourne	19
5. Gold Coast – Sydney	20
6. Gold Coast – Melbourne	21
7. Melbourne – Perth	22
8. Adelaide – Sydney	23
9. Perth – Sydney	24
10. Brisbane – Cairns	25
Top fifty regional airports	26
Domestic charter activity.....	28
Definitions	29

This page is intentionally left blank.

HIGHLIGHTS

There were 4.99 million passengers carried on Australian domestic commercial aviation (including charter operations) in May 2023, an increase of 7.0 per cent on May 2022.

4.63 million passengers were carried on RPT flights in May 2023, an increase of 6.2 per cent compared to May 2022.

For the month of May 2023, there were 52,413 RPT aircraft trips, compared to 50,989 in May 2022 (up 2.8 per cent).

For the year ending May 2023 there were 55.22 million RPT passengers, an increase of 95.9 per cent on the year ending May 2022.

RPT revenue passenger kilometres (RPKs) performed were 5.45 billion for the month, compared with 5.15 billion in May 2022 (up 6.0 per cent).

Capacity, measured by available seat kilometres (ASKs), increased to 7.11 billion in May 2023 compared to 6.90 billion in May 2022 (up 3.0 per cent).

The industry wide load factor (RPKs/ASKs) increased from 74.5 per cent in May 2022 to 76.7 per cent in May 2023. The highest load factor (92.9 per cent) was recorded on the Cairns – Sydney route while the lowest load factor (54.6 per cent) was recorded on the Brisbane – Gladstone route.

For the month of May 2023, Melbourne – Sydney was Australia's busiest RPT route with 620,569 passengers, followed by Brisbane – Sydney with 350,551 passengers and Brisbane – Melbourne with 262,427 passengers.

Sydney was Australia's busiest domestic airport with 1.93 million passenger movements in May 2023, followed by Melbourne with 1.86 million passenger movements and Brisbane with 1.34 million passenger movements.

Total cargo movements at Australian airports on domestic RPT flights were 31,068 tonnes in May 2023, an increase of 3.1 per cent compared with May 2022.

In May 2023, there were 2.02 million domestic passenger movements through regional airports, compared to 1.94 million in May 2022, an increase of 4.1 per cent. Out of the top 50 regional airports, the strongest increase was recorded at Port Macquarie Airport (up 38.8 per cent on May 2022), while the largest decrease was recorded at Hamilton Island Airport (down 18.1 per cent on May 2022).

Fixed-wing charter operators carried 360,367 passengers in May 2023, an increase of 19.2 per cent compared with May 2022. Perth Airport accounted for 37.5 per cent of all charter passengers in Australia.

TOTAL NETWORK

Summary of monthly commercial aviation activity

	May 2022	May 2023	% Change
Total passengers carried (millions)	4.67	4.99	7.0
Aircraft trips (000s)	56.6	58.5	3.3

Note: Regular Public Transport and charter aviation activity
Helicopter, joy flights and sightseeing charter flights not included.

RPT NETWORK

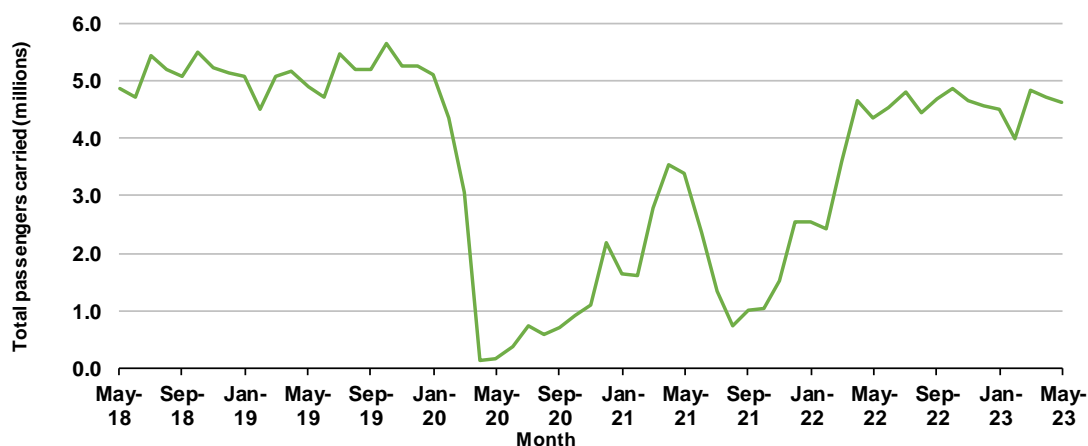
Summary of monthly RPT activity

	May 2022	May 2023	% Change
Total passengers carried (millions)	4.37	4.63	6.2
Revenue passenger kilometres (billions)	5.15	5.45	6.0
Available seats (millions)	6.05	6.20	2.5
Available seat kilometres (billions)	6.90	7.11	3.0
Load factor %	74.5	76.7	2.2 *
Aircraft trips (000s)	51.0	52.4	2.8

* percentage point difference

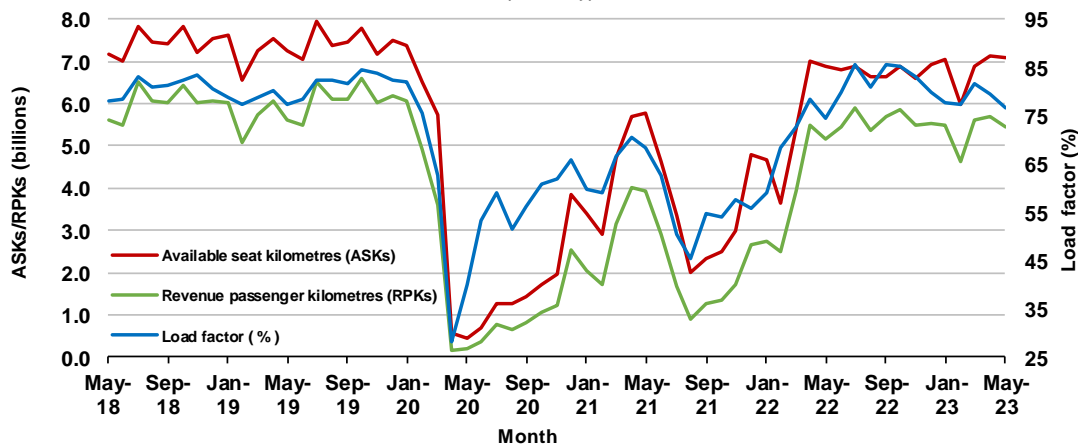
Domestic RPT passenger traffic

(monthly)



RPT Network utilisation

(monthly)



TOTAL NETWORK

Summary of annual commercial aviation activity

	YE May 2022	YE May 2023	% Change
Total passengers carried (millions)	31.54	58.96	87.0
Aircraft trips (000s)	469.2	661.0	40.9

Note: Regular Public Transport and charter aviation activity
Helicopter, joy flights and sightseeing charter flights not included.

RPT NETWORK

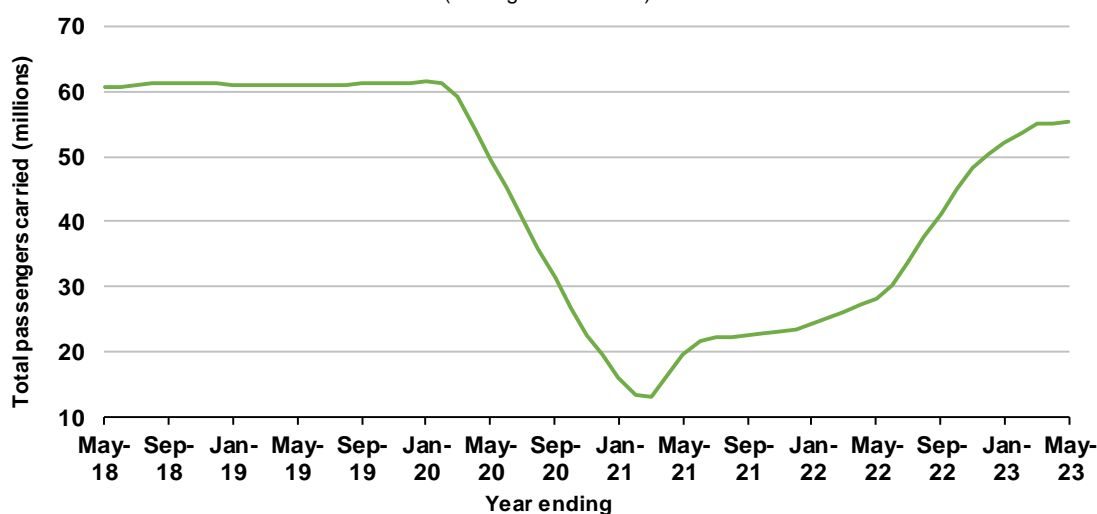
Summary of annual RPT activity

	YE May 2022	YE May 2023	% Change
Total passengers carried (millions)	28.18	55.22	95.9
Revenue passenger kilometres (billions)	32.34	66.19	104.6
Available seats (millions)	44.41	69.96	57.6
Available seat kilometres (billions)	50.19	81.56	62.5
Load factor %	64.4	81.2	16.7 *
Aircraft trips (000s)	406.0	594.2	46.4

* percentage point difference

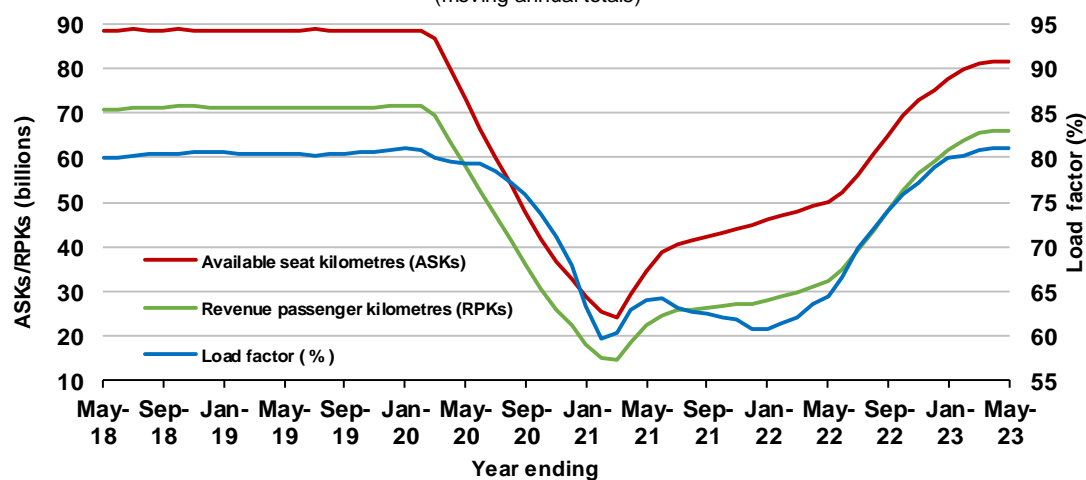
Domestic RPT passenger traffic

(moving annual totals)



RPT Network utilisation

(moving annual totals)



TOP COMPETITIVE ROUTES

Table 1: Passengers carried (000s) — annual activity

	City-Pair	YE May 2022	YE May 2023	% Change
1	Melbourne - Sydney	3,097.0	7,308.7	136.0
2	Brisbane - Sydney	1,537.9	4,027.6	161.9
3	Brisbane - Melbourne	1,225.3	3,102.5	153.2
4	Gold Coast - Sydney	1,083.3	2,409.6	122.4
5	Gold Coast - Melbourne	1,071.9	2,269.1	111.7
6	Adelaide - Melbourne	884.2	2,200.8	148.9
7	Melbourne - Perth	358.5	1,811.7	405.3
8	Adelaide - Sydney	672.7	1,595.7	137.2
9	Perth - Sydney	343.4	1,487.5	333.2
10	Hobart - Melbourne	526.1	1,228.6	133.5
11	Brisbane - Cairns	1,022.1	1,212.3	18.6
12	Brisbane - Perth	326.8	978.8	199.5
13	Canberra - Melbourne	392.6	963.0	145.3
14	Cairns - Sydney	339.3	893.0	163.1
15	Brisbane - Townsville	695.7	862.1	23.9
16	Cairns - Melbourne	397.2	811.0	104.2
17	Adelaide - Brisbane	467.6	791.3	69.2
18	Launceston - Melbourne	330.6	768.8	132.5
19	Brisbane - Mackay	553.8	744.5	34.4
20	Sunshine Coast - Sydney	309.4	738.0	138.5
21	Hobart - Sydney	328.6	707.1	115.2
22	Melbourne - Sunshine Coast	371.9	688.5	85.1
23	Adelaide - Perth	293.7	633.3	115.6
24	Brisbane - Canberra	316.4	631.0	99.4
25	Canberra - Sydney	241.1	596.2	147.3
26	Karratha - Perth	446.7	528.1	18.2
27	Ballina - Sydney	382.4	527.9	38.1
28	Brisbane - Newcastle	226.1	490.3	116.8
29	Brisbane - Rockhampton	366.9	479.3	30.7
30	Perth - Port Hedland	398.5	476.0	19.5
31	Melbourne - Newcastle	214.9	395.3	84.0
32	Broome - Perth	378.1	369.9	-2.2
33	Newman - Perth	322.0	364.8	13.3
34	Kalgoorlie - Perth	269.7	333.3	23.6
35	Brisbane - Darwin	272.5	329.2	20.8
36	Launceston - Sydney	144.5	302.9	109.6
37	Brisbane - Hobart	277.1	298.8	7.8
38	Darwin - Melbourne	181.0	285.0	57.4
39	Brisbane - Proserpine	268.6	283.2	5.4
40	Hamilton Island - Sydney	109.2	248.3	127.4
41	Adelaide - Gold Coast	147.0	242.3	64.8
42	Coffs Harbour - Sydney	127.7	217.3	70.1
43	Adelaide - Darwin	..	209.0	NA
44	Brisbane - Gladstone	151.2	205.2	35.7
45	Adelaide - Canberra	79.6	179.9	126.0
46	Adelaide - Port Lincoln	146.8	179.3	22.2
47	Brisbane - Emerald	135.2	177.7	31.4
48	Darwin - Perth	139.0	175.4	26.2
49	Brisbane - Hamilton Island	194.5	169.4	-12.9
50	Brisbane - Launceston	157.6	167.8	6.5

continued

Table 1: (continued) Passengers carried (000s) — annual activity

	City-Pair	YE May 2022	YE May 2023	% Change
51	Albury - Sydney	76.7	164.4	114.4
52	Dubbo - Sydney	80.3	163.1	103.1
53	Canberra - Gold Coast	81.8	161.7	97.8
54	Port Macquarie - Sydney	72.1	160.7	122.9
55	Adelaide - Cairns	..	154.6	NA
56	Melbourne - Mildura	78.6	151.8	93.0
57	Sydney - Wagga Wagga	71.9	149.4	108.0
58	Brisbane - Mount Isa	113.0	142.8	26.4
59	Brisbane - Moranbah	..	106.2	NA
60	Armidale - Sydney	48.8	103.4	111.9
61	Devonport - Melbourne	..	71.5	NA
	Total domestic network	28,184.8	55,221.4	95.9

.. Data not available for release.

Table 2: Passengers carried (000s) — monthly activity

	City-Pair	May 2022	May 2023	% Change
1	Melbourne - Sydney	578.8	620.6	7.2
2	Brisbane - Sydney	323.3	350.6	8.4
3	Brisbane - Melbourne	226.9	262.4	15.7
4	Adelaide - Melbourne	173.8	192.8	10.9
5	Gold Coast - Sydney	195.4	188.9	-3.3
6	Gold Coast - Melbourne	181.2	164.6	-9.2
7	Melbourne - Perth	116.8	145.0	24.1
8	Adelaide - Sydney	128.1	142.9	11.5
9	Perth - Sydney	100.3	123.9	23.6
10	Brisbane - Cairns	99.4	106.7	7.3
11	Hobart - Melbourne	91.7	100.7	9.7
12	Canberra - Melbourne	71.4	84.9	18.9
13	Brisbane - Perth	67.1	81.1	20.8
14	Brisbane - Townsville	74.0	73.2	-1.2
15	Adelaide - Brisbane	59.9	66.5	11.0
16	Launceston - Melbourne	55.4	64.3	16.1
17	Cairns - Sydney	63.0	62.3	-1.0
18	Brisbane - Mackay	61.4	60.2	-2.0
19	Cairns - Melbourne	67.5	58.8	-12.9
20	Sunshine Coast - Sydney	56.1	53.5	-4.6
21	Canberra - Sydney	54.9	53.2	-3.1
22	Hobart - Sydney	52.7	52.8	0.4
23	Adelaide - Perth	44.9	51.7	15.1
24	Brisbane - Canberra	50.8	50.8	0.1
25	Melbourne - Sunshine Coast	58.4	49.6	-15.1
26	Karratha - Perth	40.4	47.4	17.2
27	Brisbane - Newcastle	43.1	44.0	2.1
28	Brisbane - Rockhampton	40.9	43.5	6.4
29	Perth - Port Hedland	39.0	43.3	10.9
30	Ballina - Sydney	44.7	40.9	-8.6
31	Newman - Perth	29.4	34.3	16.8
32	Melbourne - Newcastle	35.2	33.6	-4.6
33	Broome - Perth	33.7	33.1	-1.8
34	Kalgoorlie - Perth	25.1	31.7	26.5
35	Brisbane - Darwin	33.7	28.7	-14.9
36	Darwin - Melbourne	33.5	23.2	-30.7
37	Brisbane - Proserpine	25.5	20.9	-17.9
38	Adelaide - Darwin	..	20.5	NA
39	Brisbane - Hobart	23.2	20.1	-13.3
40	Launceston - Sydney	20.3	20.1	-1.1
41	Coffs Harbour - Sydney	17.8	19.0	7.1
42	Adelaide - Gold Coast	18.9	18.6	-1.3
43	Brisbane - Gladstone	18.6	18.4	-1.0
44	Adelaide - Canberra	13.3	17.8	33.6
45	Brisbane - Emerald	14.2	16.3	14.8
46	Dubbo - Sydney	13.3	16.3	22.7
47	Hamilton Island - Sydney	19.3	15.9	-17.5
48	Melbourne - Mildura	12.7	15.5	22.4
49	Port Macquarie - Sydney	12.6	15.1	19.6
50	Adelaide - Port Lincoln	15.1	14.8	-2.1

continued

Table 2: (continued) Passengers carried (000s) — monthly activity

	City-Pair	May 2022	May 2023	% Change
51	Darwin - Perth	14.3	14.5	1.1
52	Sydney - Wagga Wagga	12.3	13.8	12.7
53	Albury - Sydney	13.0	13.7	5.6
54	Canberra - Gold Coast	10.1	13.5	34.0
55	Brisbane - Hamilton Island	15.0	13.3	-11.6
56	Adelaide - Cairns	..	13.1	NA
57	Brisbane - Mount Isa	12.1	12.2	0.9
58	Devonport - Melbourne	..	9.9	NA
59	Brisbane - Moranbah	..	9.7	NA
60	Armidale - Sydney	8.4	9.1	7.7
61	Brisbane - Launceston	14.4	9.0	-37.1
	Total domestic network	4,365.1	4,633.7	6.2

.. Data not available for release.

Table 3: Available seats (000s) — monthly activity

	City-Pair	May 2022	May 2023	% Change
1	Melbourne - Sydney	753.3	812.6	7.9
2	Brisbane - Sydney	454.0	461.9	1.7
3	Brisbane - Melbourne	297.2	349.7	17.7
4	Adelaide - Melbourne	236.5	248.9	5.2
5	Gold Coast - Sydney	281.9	230.7	-18.2
6	Gold Coast - Melbourne	231.6	190.7	-17.7
7	Melbourne - Perth	144.8	198.2	36.9
8	Adelaide - Sydney	166.3	184.5	11.0
9	Perth - Sydney	124.2	161.4	29.9
10	Brisbane - Cairns	117.8	117.1	-0.6
11	Hobart - Melbourne	121.1	127.9	5.6
12	Canberra - Melbourne	115.4	132.6	14.9
13	Brisbane - Perth	86.4	98.9	14.5
14	Brisbane - Townsville	102.5	95.8	-6.6
15	Adelaide - Brisbane	72.9	85.7	17.5
16	Launceston - Melbourne	72.5	81.6	12.5
17	Cairns - Sydney	83.8	67.1	-20.0
18	Brisbane - Mackay	91.0	79.4	-12.8
19	Cairns - Melbourne	81.2	64.0	-21.2
20	Sunshine Coast - Sydney	93.6	71.1	-24.1
21	Canberra - Sydney	98.4	83.1	-15.6
22	Hobart - Sydney	70.3	70.8	0.7
23	Adelaide - Perth	62.2	60.8	-2.2
24	Brisbane - Canberra	73.3	79.9	9.1
25	Melbourne - Sunshine Coast	80.9	64.0	-20.8
26	Karratha - Perth	59.6	66.2	11.2
27	Brisbane - Newcastle	58.4	63.4	8.6
28	Brisbane - Rockhampton	55.0	60.6	10.2
29	Perth - Port Hedland	53.7	59.6	11.0
30	Ballina - Sydney	74.8	50.9	-31.9
31	Newman - Perth	53.2	56.9	6.9
32	Melbourne - Newcastle	48.2	44.2	-8.4
33	Broome - Perth	49.0	41.7	-15.0
34	Kalgoorlie - Perth	38.0	46.4	22.2
35	Brisbane - Darwin	42.3	34.1	-19.5
36	Darwin - Melbourne	43.0	29.5	-31.3
37	Brisbane - Proserpine	29.7	26.1	-12.1
38	Adelaide - Darwin	..	25.4	NA
39	Brisbane - Hobart	29.6	26.3	-11.1
40	Launceston - Sydney	23.8	24.5	3.2
41	Coffs Harbour - Sydney	23.6	24.4	3.4
42	Adelaide - Gold Coast	20.4	20.7	1.6
43	Brisbane - Gladstone	29.7	33.7	13.5
44	Adelaide - Canberra	19.1	30.7	60.5
45	Brisbane - Emerald	23.0	22.0	-4.3
46	Dubbo - Sydney	20.5	24.9	21.5
47	Hamilton Island - Sydney	28.2	23.3	-17.3
48	Melbourne - Mildura	17.4	22.5	29.2
49	Port Macquarie - Sydney	20.4	22.3	9.2
50	Adelaide - Port Lincoln	24.3	23.9	-1.7

continued

Table 3: (continued) Available seats (000s) — monthly activity

	City-Pair	May 2022	May 2023	% Change
51	Darwin - Perth	20.2	18.2	-10.0
52	Sydney - Wagga Wagga	18.6	21.5	15.3
53	Albury - Sydney	20.9	20.5	-1.9
54	Canberra - Gold Coast	13.7	17.4	27.3
55	Brisbane - Hamilton Island	25.6	18.5	-27.9
56	Adelaide - Cairns	..	15.9	NA
57	Brisbane - Mount Isa	17.8	20.4	14.7
58	Devonport - Melbourne	..	14.0	NA
59	Brisbane - Moranbah	..	17.0	NA
60	Armidale - Sydney	14.8	16.1	8.7
61	Brisbane - Launceston	18.4	10.7	-42.1
	Total domestic network	6,048.6	6,199.3	2.5

.. Data not available for release.

Table 4: Load factors (%) — monthly activity

	City-Pair	May 2022	May 2023	% Point diff
1	Melbourne - Sydney	76.9	76.4	-0.5
2	Brisbane - Sydney	71.2	75.9	4.7
3	Brisbane - Melbourne	76.3	75.1	-1.2
4	Adelaide - Melbourne	73.5	77.5	4.0
5	Gold Coast - Sydney	69.3	81.9	12.6
6	Gold Coast - Melbourne	78.2	86.3	8.1
7	Melbourne - Perth	80.6	73.1	-7.5
8	Adelaide - Sydney	77.1	77.4	0.3
9	Perth - Sydney	80.7	76.8	-3.9
10	Brisbane - Cairns	84.4	91.1	6.7
11	Hobart - Melbourne	75.8	78.7	2.9
12	Canberra - Melbourne	61.8	64.0	2.2
13	Brisbane - Perth	77.7	82.0	4.3
14	Brisbane - Townsville	72.2	76.4	4.2
15	Adelaide - Brisbane	82.3	77.7	-4.6
16	Launceston - Melbourne	76.4	78.8	2.4
17	Cairns - Sydney	75.1	92.9	17.8
18	Brisbane - Mackay	67.4	75.8	8.4
19	Cairns - Melbourne	83.1	91.9	8.8
20	Sunshine Coast - Sydney	59.9	75.3	15.4
21	Canberra - Sydney	55.8	64.1	8.3
22	Hobart - Sydney	74.9	74.6	-0.3
23	Adelaide - Perth	72.2	84.9	12.7
24	Brisbane - Canberra	69.3	63.5	-5.8
25	Melbourne - Sunshine Coast	72.3	77.5	5.2
26	Karratha - Perth	67.8	71.5	3.7
27	Brisbane - Newcastle	73.8	69.4	-4.4
28	Brisbane - Rockhampton	74.3	71.8	-2.5
29	Perth - Port Hedland	72.6	72.6	0.0
30	Ballina - Sydney	59.8	80.3	20.5
31	Newman - Perth	55.2	60.3	5.1
32	Melbourne - Newcastle	72.9	75.9	3.0
33	Broome - Perth	68.7	79.3	10.6
34	Kalgoorlie - Perth	66.0	68.4	2.4
35	Brisbane - Darwin	79.6	84.1	4.5
36	Darwin - Melbourne	78.0	78.7	0.7
37	Brisbane - Proserpine	85.8	80.2	-5.6
38	Adelaide - Darwin	..	80.8	NA
39	Brisbane - Hobart	78.6	76.7	-1.9
40	Launceston - Sydney	85.3	81.7	-3.6
41	Coffs Harbour - Sydney	75.3	78.0	2.7
42	Adelaide - Gold Coast	92.7	90.0	-2.7
43	Brisbane - Gladstone	62.6	54.6	-8.0
44	Adelaide - Canberra	69.4	57.8	-11.6
45	Brisbane - Emerald	61.8	74.2	12.4
46	Dubbo - Sydney	64.7	65.3	0.6
47	Hamilton Island - Sydney	68.3	68.1	-0.2
48	Melbourne - Mildura	72.8	69.0	-3.8
49	Port Macquarie - Sydney	61.9	67.8	5.9
50	Adelaide - Port Lincoln	62.2	61.9	-0.3

continued

Table 4: (continued) Load factors (%) — monthly activity

	City-Pair	May 2022	May 2023	% Point diff
51	Darwin - Perth	70.9	79.6	8.7
52	Sydney - Wagga Wagga	66.0	64.5	-1.5
53	Albury - Sydney	61.9	66.6	4.7
54	Canberra - Gold Coast	73.7	77.6	3.9
55	Brisbane - Hamilton Island	58.6	71.8	13.2
56	Adelaide - Cairns	..	82.1	NA
57	Brisbane - Mount Isa	67.8	59.6	-8.2
58	Devonport - Melbourne	..	70.2	NA
59	Brisbane - Moranbah	..	57.1	NA
60	Armidale - Sydney	56.8	56.3	-0.5
61	Brisbane - Launceston	78.0	84.8	6.8
	Total domestic network	74.5	76.7	2.2

.. Data not available for release.

Table 5: Aircraft trips ^(a) — monthly activity

	City-Pair	May 2022	May 2023	% Change
1	Melbourne - Sydney	4,424	4,743	7.2
2	Brisbane - Sydney	2,779	2,830	1.8
3	Brisbane - Melbourne	1,841	2,137	16.1
4	Adelaide - Melbourne	1,433	1,521	6.1
5	Gold Coast - Sydney	1,615	1,311	-18.8
6	Gold Coast - Melbourne	1,292	1,019	-21.1
7	Melbourne - Perth	843	1,089	29.2
8	Adelaide - Sydney	1,016	1,128	11.0
9	Perth - Sydney	634	818	29.0
10	Brisbane - Cairns	771	828	7.4
11	Hobart - Melbourne	757	737	-2.6
12	Canberra - Melbourne	858	958	11.7
13	Brisbane - Perth	495	572	15.6
14	Brisbane - Townsville	659	695	5.5
15	Adelaide - Brisbane	501	720	43.7
16	Launceston - Melbourne	648	725	11.9
17	Cairns - Sydney	442	362	-18.1
18	Brisbane - Mackay	589	607	3.1
19	Cairns - Melbourne	426	329	-22.8
20	Sunshine Coast - Sydney	518	389	-24.9
21	Canberra - Sydney	1,623	1,348	-16.9
22	Hobart - Sydney	451	428	-5.1
23	Adelaide - Perth	396	350	-11.6
24	Brisbane - Canberra	567	629	10.9
25	Melbourne - Sunshine Coast	490	340	-30.6
26	Karratha - Perth	378	404	6.9
27	Brisbane - Newcastle	520	550	5.8
28	Brisbane - Rockhampton	536	684	27.6
29	Perth - Port Hedland	349	380	8.9
30	Ballina - Sydney	567	375	-33.9
31	Newman - Perth	333	356	6.9
32	Melbourne - Newcastle	298	283	-5.0
33	Broome - Perth	303	273	-9.9
34	Kalgoorlie - Perth	267	320	19.9
35	Brisbane - Darwin	276	212	-23.2
36	Darwin - Melbourne	227	185	-18.5
37	Brisbane - Proserpine	182	187	2.7
38	Adelaide - Darwin	..	193	NA
39	Brisbane - Hobart	180	164	-8.9
40	Launceston - Sydney	144	160	11.1
41	Coffs Harbour - Sydney	435	451	3.7
42	Adelaide - Gold Coast	114	116	1.8
43	Brisbane - Gladstone	353	378	7.1
44	Adelaide - Canberra	168	275	63.7
45	Brisbane - Emerald	334	335	0.3
46	Dubbo - Sydney	439	484	10.3
47	Hamilton Island - Sydney	160	132	-17.5
48	Melbourne - Mildura	410	466	13.7
49	Port Macquarie - Sydney	412	406	-1.5
50	Adelaide - Port Lincoln	606	583	-3.8

continued

Table 5: (continued) Aircraft trips (a) — monthly activity

	City-Pair	May 2022	May 2023	% Change
51	Darwin - Perth	114	106	-7.0
52	Sydney - Wagga Wagga	351	394	12.3
53	Albury - Sydney	398	407	2.3
54	Canberra - Gold Coast	88	98	11.4
55	Brisbane - Hamilton Island	147	106	-27.9
56	Adelaide - Cairns	..	88	NA
57	Brisbane - Mount Isa	174	180	3.4
58	Devonport - Melbourne	..	313	NA
59	Brisbane - Moranbah	..	226	NA
60	Armidale - Sydney	312	305	-2.2
61	Brisbane - Launceston	104	60	-42.3
	Total domestic network	50,989	52,413	2.8

(a) Includes RPT cargo flights.

.. Data not available for release.

TOP TEN AIRPORTS – PASSENGER MOVEMENTS

Table 6: Top ten airports, RPT passenger movements (000s) - monthly activity

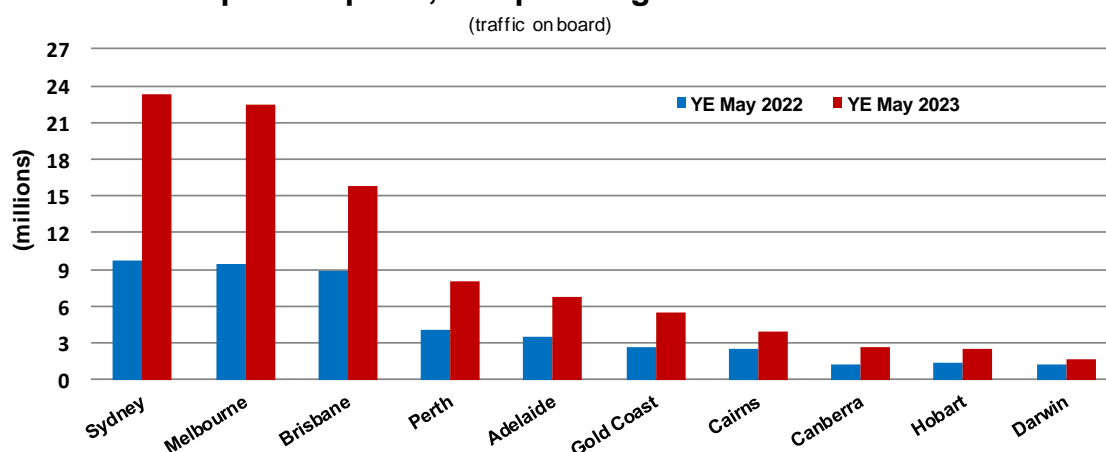
Airport	May 2022	May 2023	% Change	% of Total
1 Sydney	1,842.4	1,934.5	5.0	20.9
2 Melbourne	1,740.8	1,860.6	6.9	20.1
3 Brisbane	1,263.5	1,339.7	6.0	14.5
4 Perth	585.4	687.4	17.4	7.4
5 Adelaide	535.4	587.5	9.7	6.3
6 Gold Coast	438.6	413.1	-5.8	4.5
7 Cairns	304.8	317.3	4.1	3.4
8 Canberra	211.8	231.0	9.1	2.5
9 Hobart	190.6	190.0	-0.3	2.1
10 Townsville	135.3	144.2	6.6	1.6
Total top ten airports	7,248.5	7,705.3	6.3	83.1
Total domestic network	8,730.3	9,267.4	6.2	100.0

Table 7: Top ten airports, RPT passenger movements (000s) - annual activity

Airport	YE May 2022	YE May 2023	% Change	% of Total
1 Sydney	9,712.4	23,302.8	139.9	21.1
2 Melbourne	9,464.9	22,489.4	137.6	20.4
3 Brisbane	8,792.6	15,784.8	79.5	14.3
4 Perth	4,060.2	8,075.2	98.9	7.3
5 Adelaide	3,474.8	6,803.7	95.8	6.2
6 Gold Coast	2,698.9	5,458.7	102.3	4.9
7 Cairns	2,520.8	3,901.8	54.8	3.5
8 Canberra	1,203.6	2,703.8	124.6	2.4
9 Hobart	1,421.2	2,498.6	75.8	2.3
10 Darwin	1,194.5	1,651.4	38.2	1.5
Total top ten airports	44,544.1	92,670.2	108.0	83.9
Total domestic network	56,369.6	110,442.9	95.9	100.0

Note: Airport passenger movement numbers are the sum of passenger arrivals and departures at each airport.

Top ten airports, RPT passenger movements



TOP FIVE AIRPORTS – CARGO MOVEMENTS

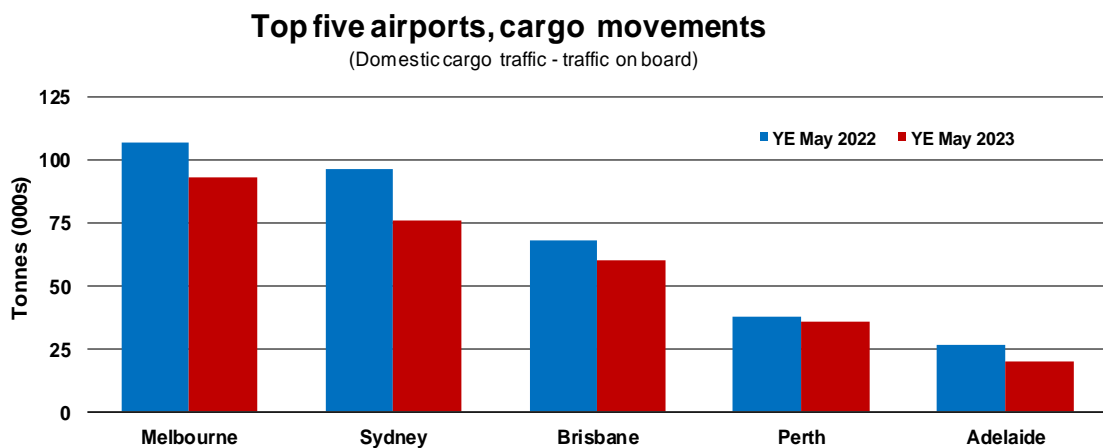
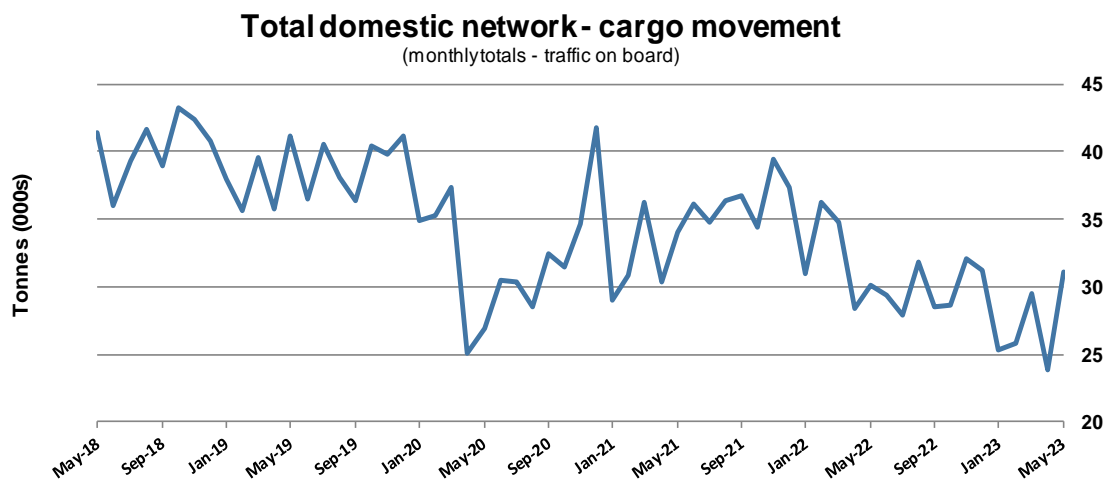
Table 8: Top five airports, domestic RPT cargo movements (000s tonnes) - monthly activity

Airport	May 2022	May 2023	% Change	% of Total
1 Melbourne	7.6	8.5	11.7	27.2
2 Sydney	6.7	7.0	4.4	22.4
3 Brisbane	5.1	5.5	7.0	17.7
4 Perth	2.7	3.1	13.1	9.9
5 Adelaide	1.8	1.6	-10.8	5.3
Total top five airports	23.9	25.6	7.1	82.5
Total domestic network	30.1	31.1	3.1	100.0

Table 9: Top five airports, domestic RPT cargo movements (000s tonnes) - annual activity

Airport	YE May 2022	YE May 2023	% Change	% of Total
1 Melbourne	106.8	92.7	-13.2	26.9
2 Sydney	96.3	76.1	-21.0	22.1
3 Brisbane	68.0	59.8	-12.1	17.3
4 Perth	37.9	35.8	-5.5	10.4
5 Adelaide	26.3	19.7	-25.3	5.7
Total top five airports	335.3	284.0	-15.3	82.3
Total domestic network	415.8	345.0	-17.0	100.0

Note: Airport cargo tonnes are the sum of cargo tonnes on arrivals and departures at each airport.



Note: Airport cargo tonnes are the sum of cargo tonnes on arrivals and departures at each airport.

TOP TEN ROUTES

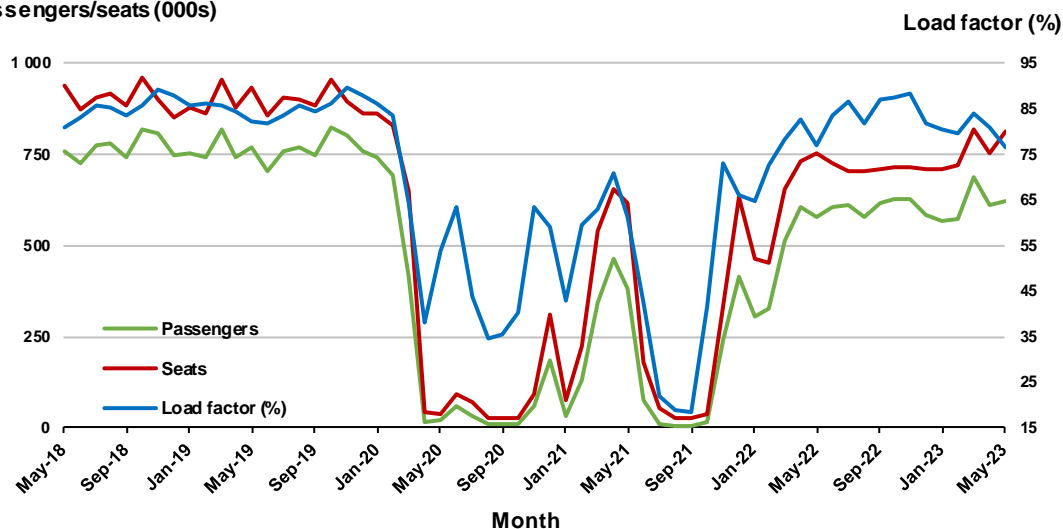
1. Melbourne - Sydney

Monthly data

	May 2022	May 2023	% Change
Passengers carried (000s)	578.8	620.6	7.2
Seats (000s)	753.3	812.6	7.9
Load factor %	76.9	76.4	-0.5 *
Aircraft trips	4,424	4,743	7.2

* percentage point difference

Passengers/seats (000s)

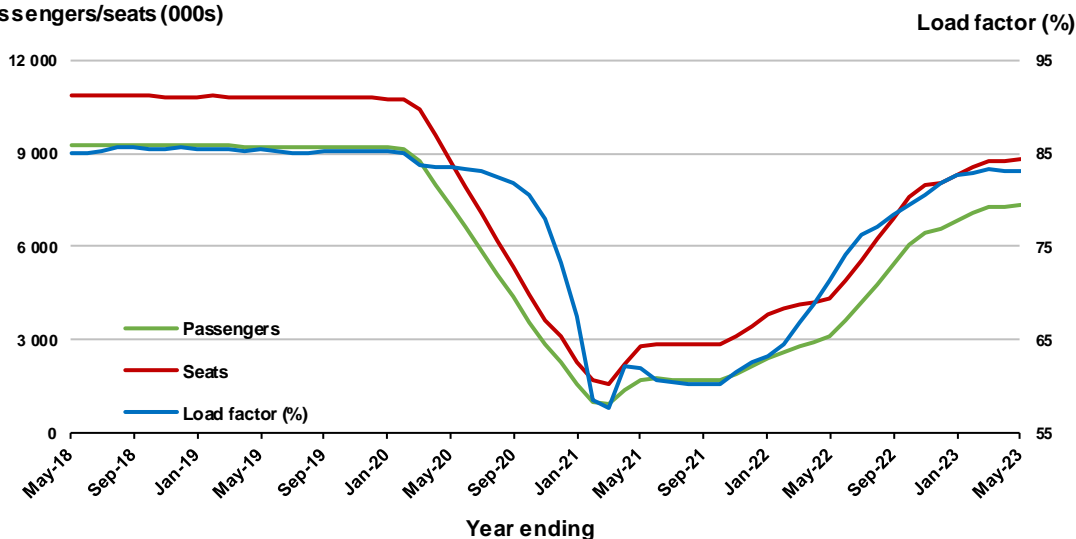


Moving annual data

	YE May 2022	YE May 2023	% Change
Passengers carried (000s)	3,097.0	7,308.7	136.0
Seats (000s)	4,345.2	8,796.9	102.5
Load factor %	71.3	83.1	11.8 *
Aircraft trips	27,031	50,673	87.5

* percentage point difference

Passengers/seats (000s)

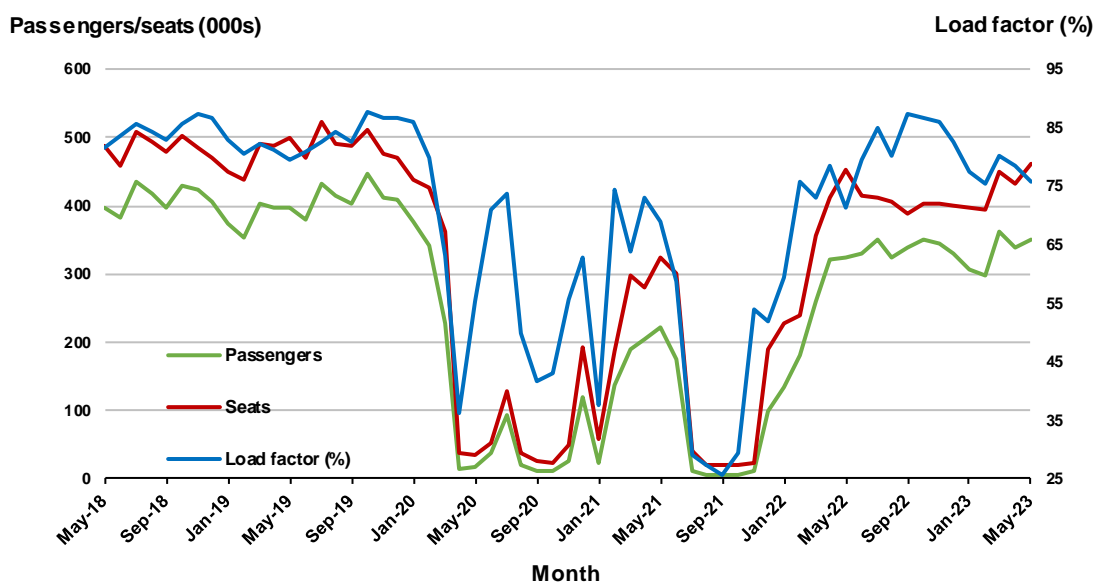


2. Brisbane - Sydney

Monthly data

	May 2022	May 2023	% Change
Passengers carried (000s)	323.3	350.6	8.4
Seats (000s)	454.0	461.9	1.7
Load factor %	71.2	75.9	4.7 *
Aircraft trips	2,779	2,830	1.8

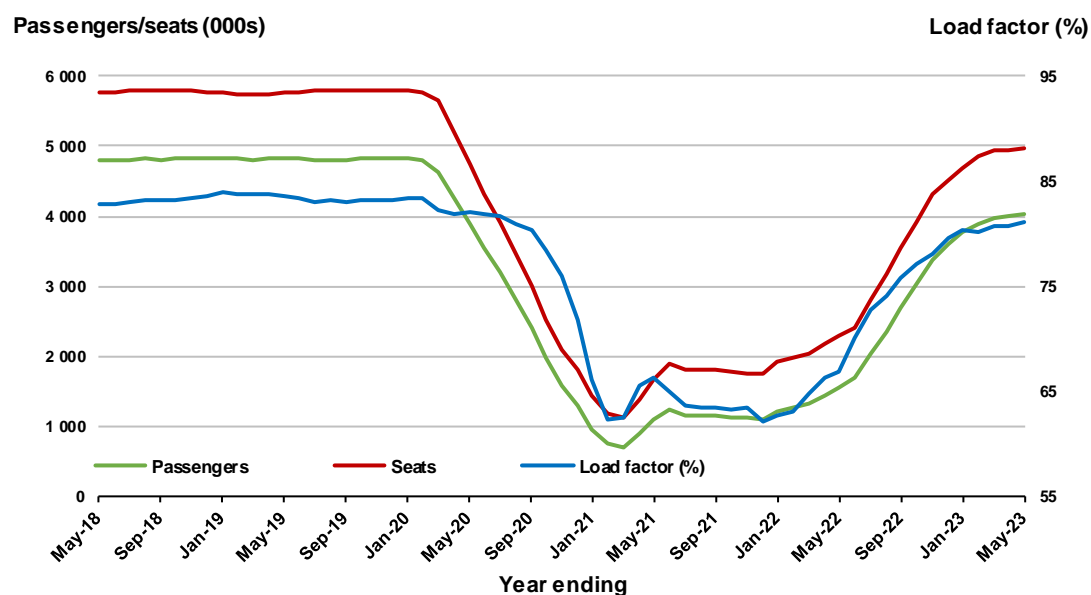
* percentage point difference



Moving annual data

	YE May 2022	YE May 2023	% Change
Passengers carried (000s)	1,537.9	4,027.6	161.9
Seats (000s)	2,301.9	4,964.0	115.6
Load factor %	66.8	81.1	14.3 *
Aircraft trips	15,353	30,513	98.7

* percentage point difference

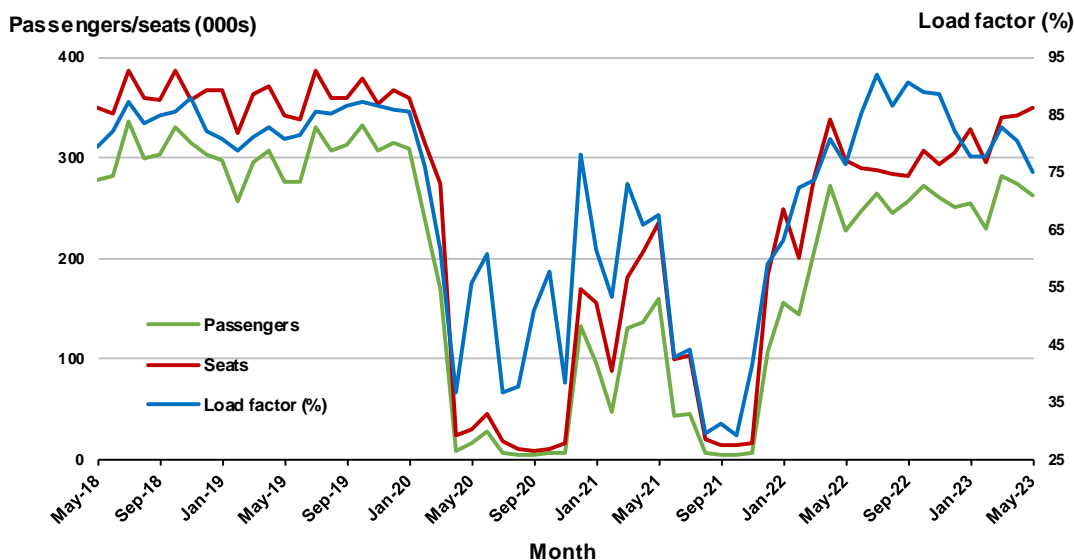


3. Brisbane - Melbourne

Monthly data

	May 2022	May 2023	% Change
Passengers carried (000s)	226.9	262.4	15.7
Seats (000s)	297.2	349.7	17.7
Load factor %	76.3	75.1	-1.2 *
Aircraft trips	1,841	2,137	16.1

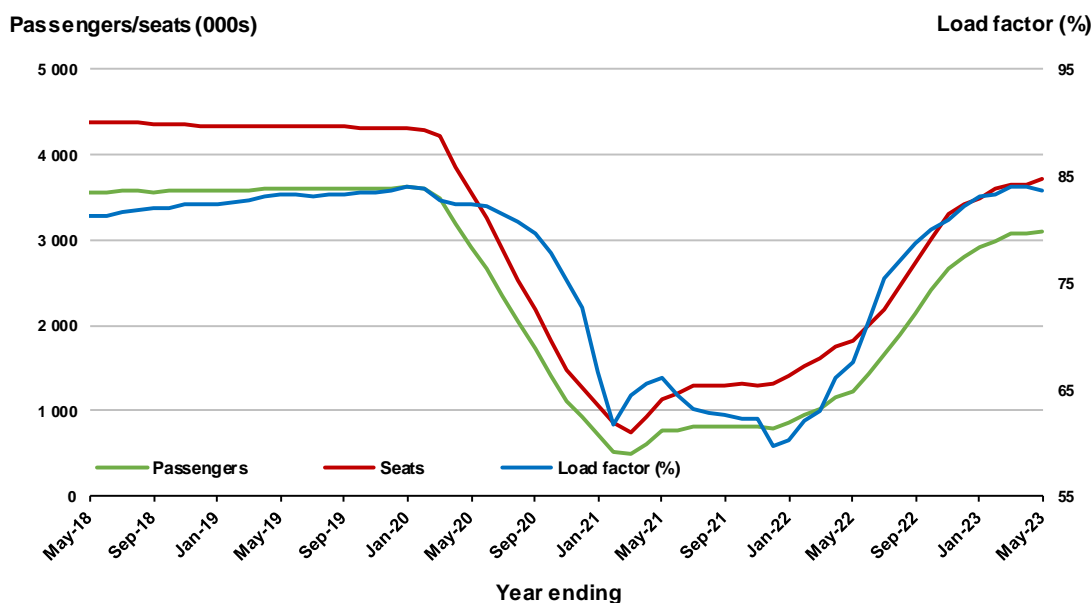
* percentage point difference



Moving annual data

	YE May 2022	YE May 2023	% Change
Passengers carried (000s)	1,225.3	3,102.5	153.2
Seats (000s)	1,814.6	3,707.7	104.3
Load factor %	67.5	83.7	16.1 *
Aircraft trips	11,855	22,590	90.6

* percentage point difference



4. Adelaide - Melbourne

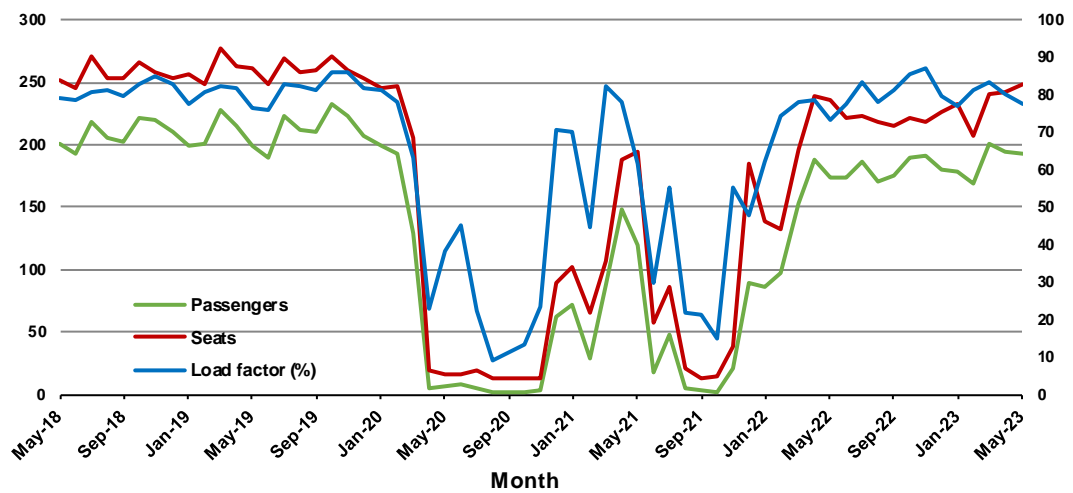
Monthly data

	May 2022	May 2023	% Change
Passengers carried (000s)	173.8	192.8	10.9
Seats (000s)	236.5	248.9	5.2
Load factor %	73.5	77.5	4.0 *
Aircraft trips	1,433	1,521	6.1

* percentage point difference

Passengers/seats (000s)

Load factor (%)



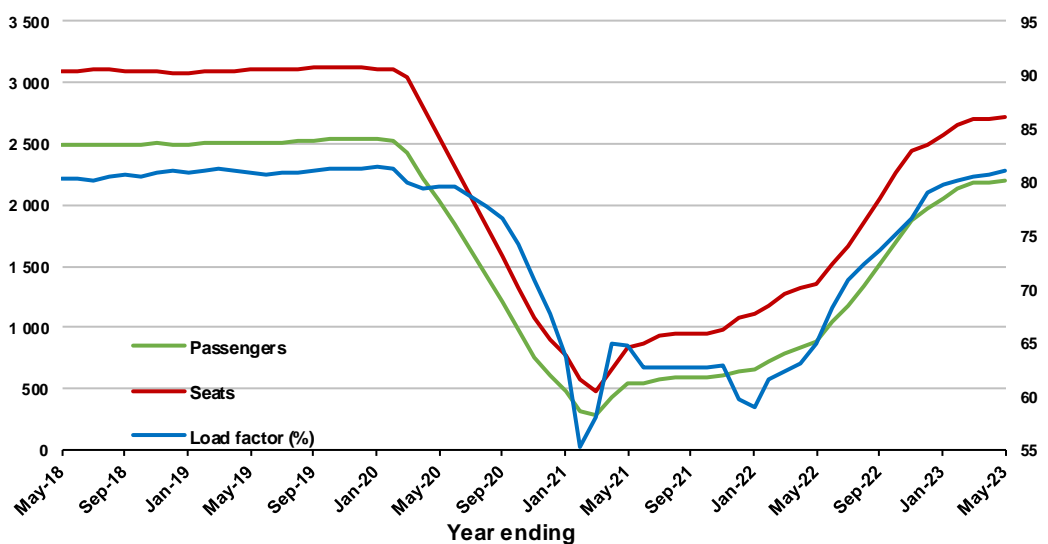
Moving annual data

	YE May 2022	YE May 2023	% Change
Passengers carried (000s)	884.2	2,200.8	148.9
Seats (000s)	1,360.2	2,717.3	99.8
Load factor %	65.0	81.0	16.0 *
Aircraft trips	8,786	16,685	89.9

* percentage point difference

Passengers/seats (000s)

Load factor (%)

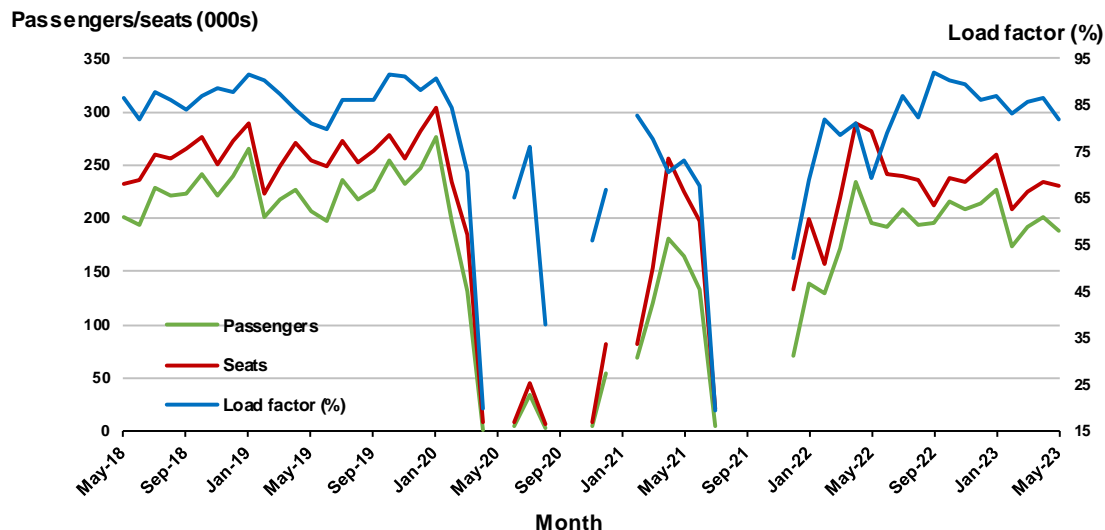


5. Gold Coast - Sydney^(a)

Monthly data

	May 2022	May 2023	% Change
Passengers carried (000s)	195.4	188.9	- 3.3
Seats (000s)	281.9	230.7	- 18.2
Load factor %	69.3	81.9	12.6 *
Aircraft trips	1,615	1,311	- 18.8

* percentage point difference

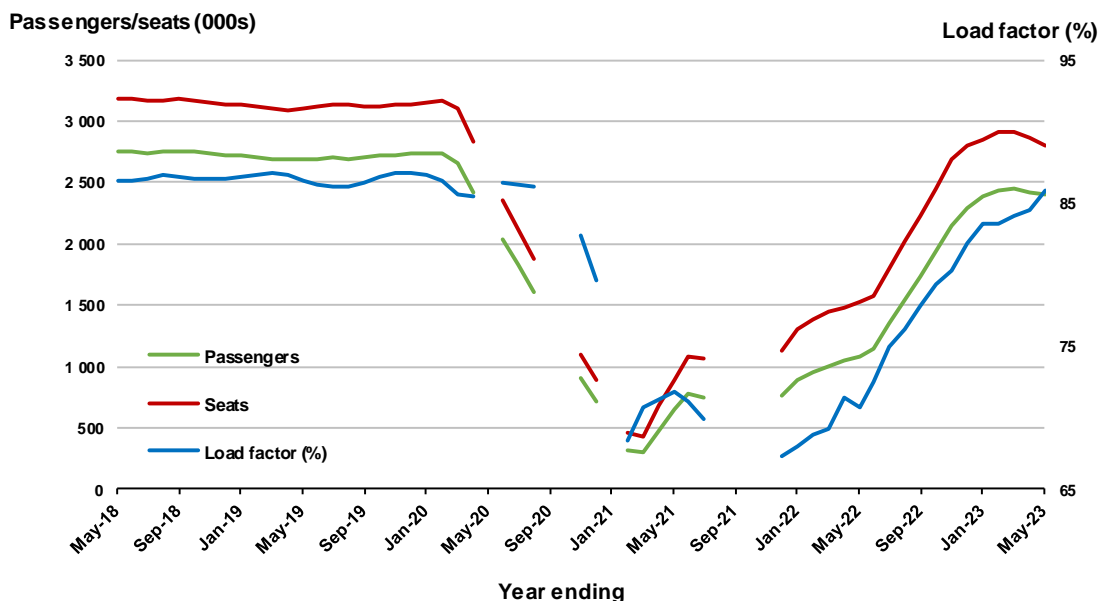


(a) May, September and October 2020 and January and August to November 2021 data not available for release.

Moving annual data

	YE May 2022	YE May 2023	% Change
Passengers carried (000s)	1,083.3	2,409.6	122.4
Seats (000s)	1,531.4	2,806.0	83.2
Load factor %	70.7	85.9	15.1 *
Aircraft trips	8,937	16,276	82.1

* percentage point difference



(a) May, September and October 2020 and January and August to November 2021 moving annual totals not available for release.

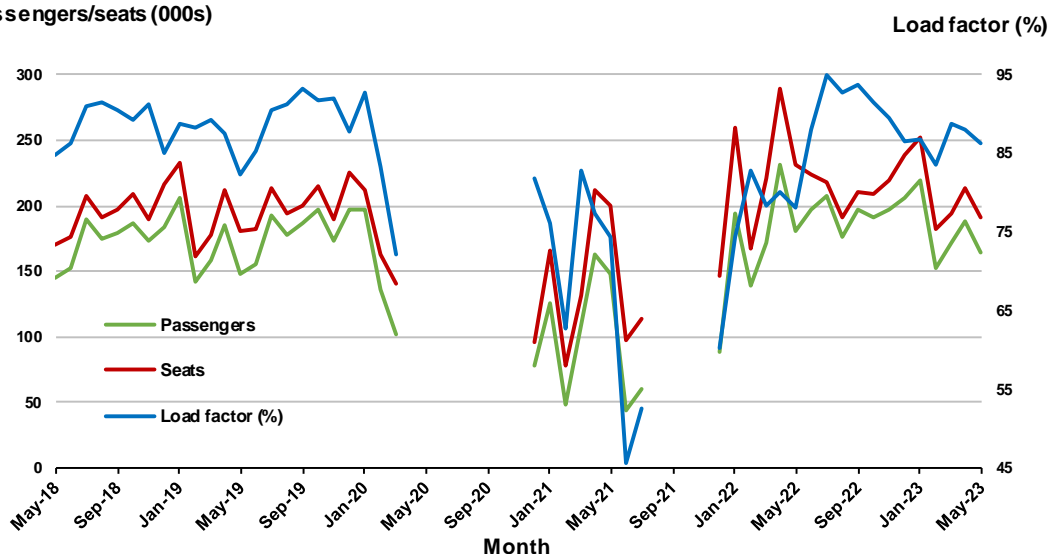
6. Gold Coast - Melbourne ^(a)

Monthly data

	May 2022	May 2023	% Change
Passengers carried (000s)	181.2	164.6	-9.2
Seats (000s)	231.6	190.7	- 17.7
Load factor %	78.2	86.3	8.1 *
Aircraft trips	1,292	1,019	- 21.1

* percentage point difference

Passengers/seats (000s)



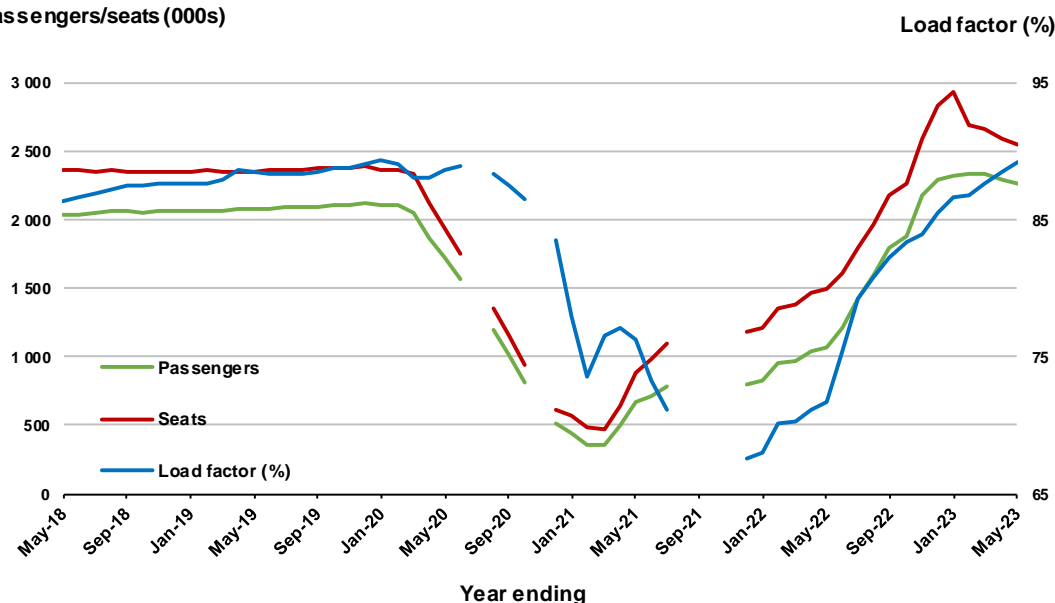
(a) April to November 2020 and August to November 2021 data not available for release.

Moving annual data

	YE May 2022	YE May 2023	% Change
Passengers carried (000s)	1,071.9	2,269.1	111.7
Seats (000s)	1,495.6	2,543.6	70.1
Load factor %	71.7	89.2	17.5 *
Aircraft trips	7,989	14,076	76.2

* percentage point difference

Passengers/seats (000s)



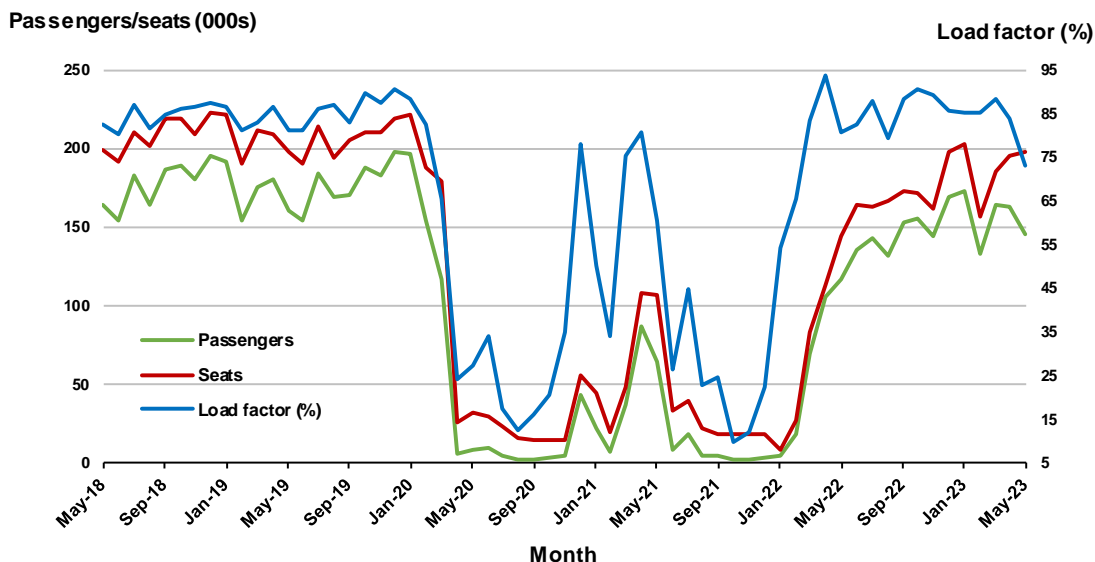
(a) April to November 2020 and August to November 2021 moving annual totals are not available for release.

7. Melbourne - Perth

Monthly data

	May 2022	May 2023	% Change
Passengers carried (000s)	116.8	145.0	24.1
Seats (000s)	144.8	198.2	36.9
Load factor %	80.6	73.1	-7.5 *
Aircraft trips	843	1,089	29.2

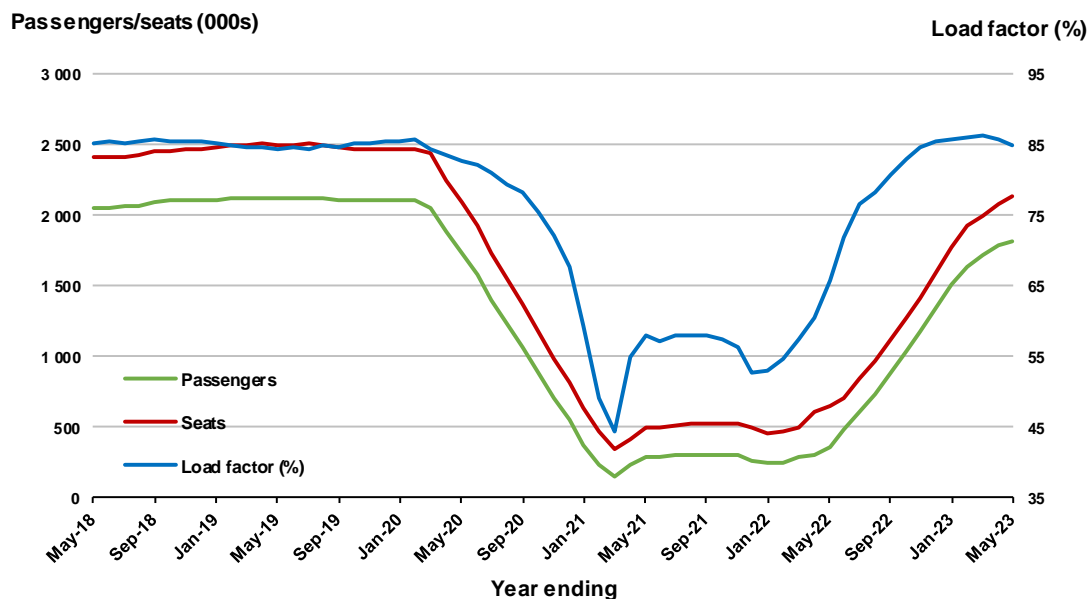
* percentage point difference



Moving annual data

	YE May 2022	YE May 2023	% Change
Passengers carried (000s)	358.5	1,811.7	405.3
Seats (000s)	651.4	2,135.8	227.9
Load factor %	65.9	84.8	18.9 *
Aircraft trips	3,962	11,931	201.1

* percentage point difference



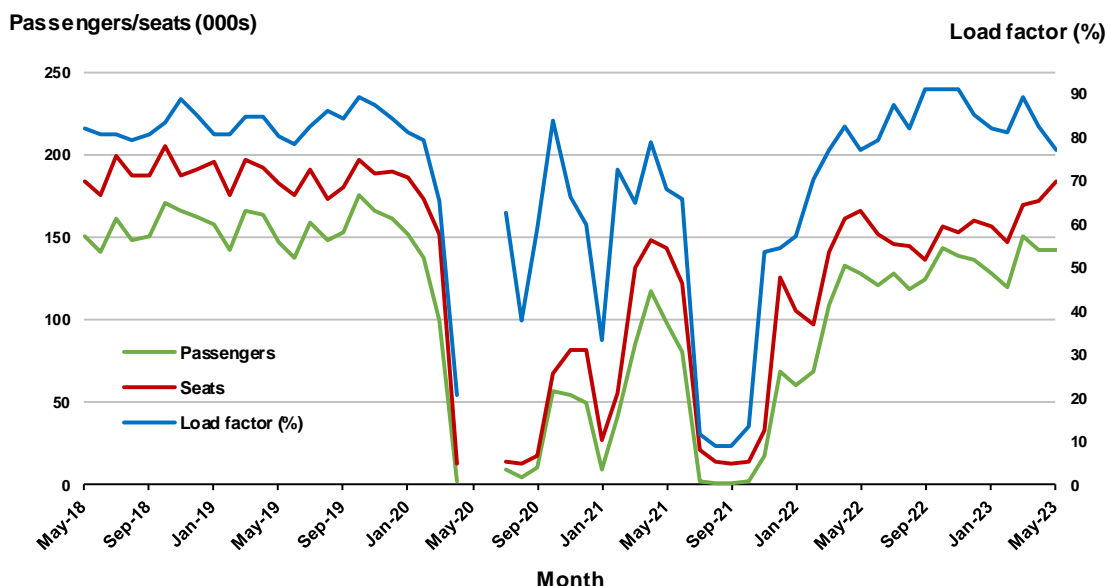
8. Adelaide - Sydney ^(a)

Monthly data

	May 2022	May 2023	% Change
Passengers carried (000s)	128.1	142.9	11.5
Seats (000s)	166.3	184.5	11.0
Load factor %	77.1	77.4	0.3 *
Aircraft trips	1 016	1,128	11.0

.. Data not available for release.

* percentage point difference



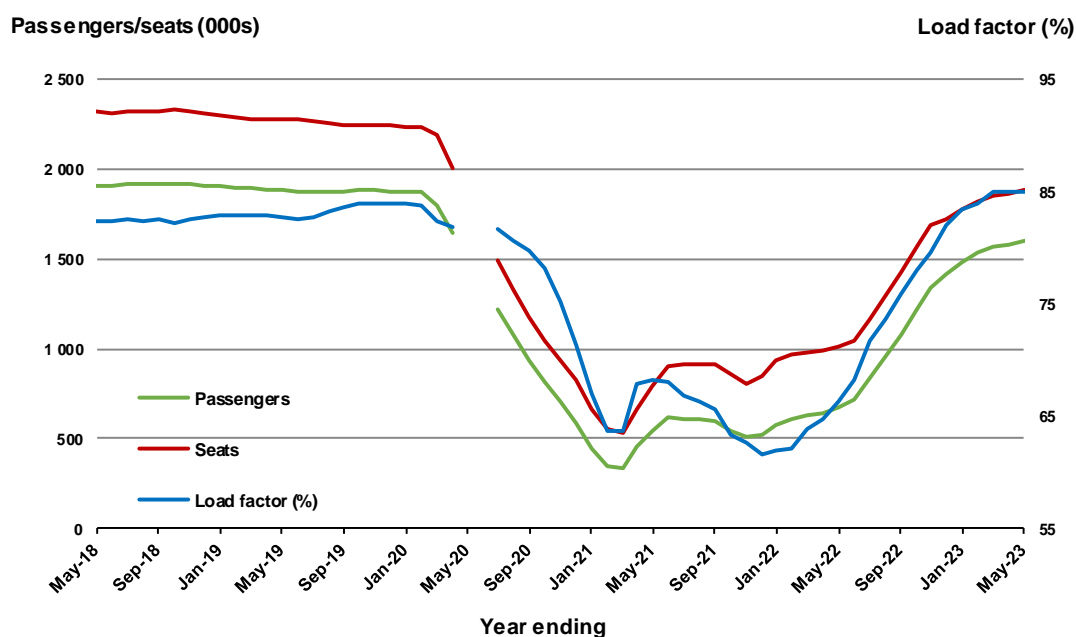
(a) May and June 2020 data not available for release.

Moving annual data

	YE May 2022	YE May 2023	% Change
Passengers carried (000s)	672.7	1,595.7	137.2
Seats (000s)	1,015.5	1,879.7	85.1
Load factor %	66.2	84.9	18.6 *
Aircraft trips	6,382	11,516	80.4

.. Data not available for release.

* percentage point difference



(a) May and June 2020 moving annual totals are not available for release.

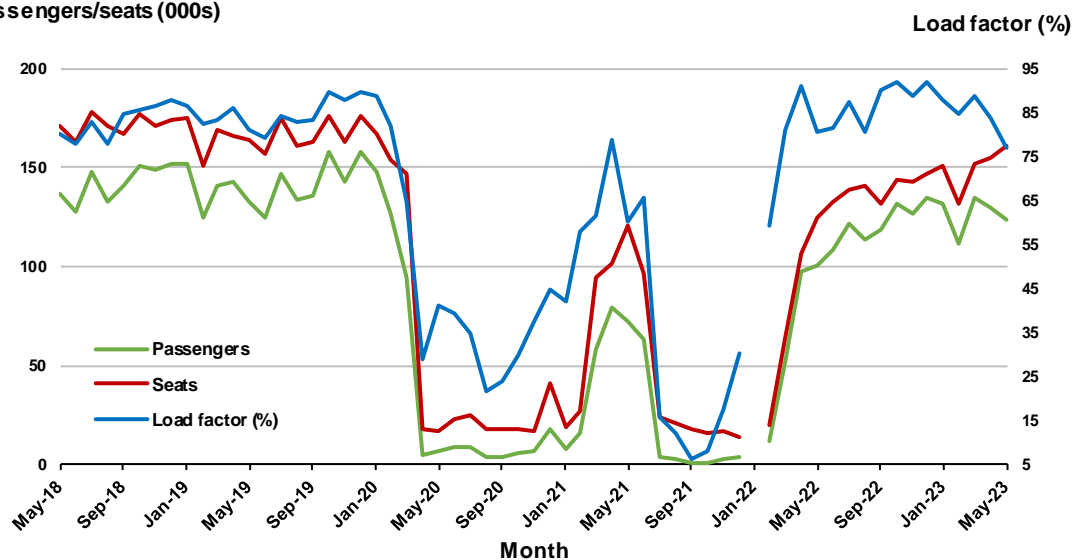
9. Perth - Sydney ^(a)

Monthly data

	May 2022	May 2023	% Change
Passengers carried (000s)	100.3	123.9	23.6
Seats (000s)	124.2	161.4	29.9
Load factor %	80.7	76.8	-3.9 *
Aircraft trips	634	818	29.0

* percentage point difference

Passengers/seats (000s)



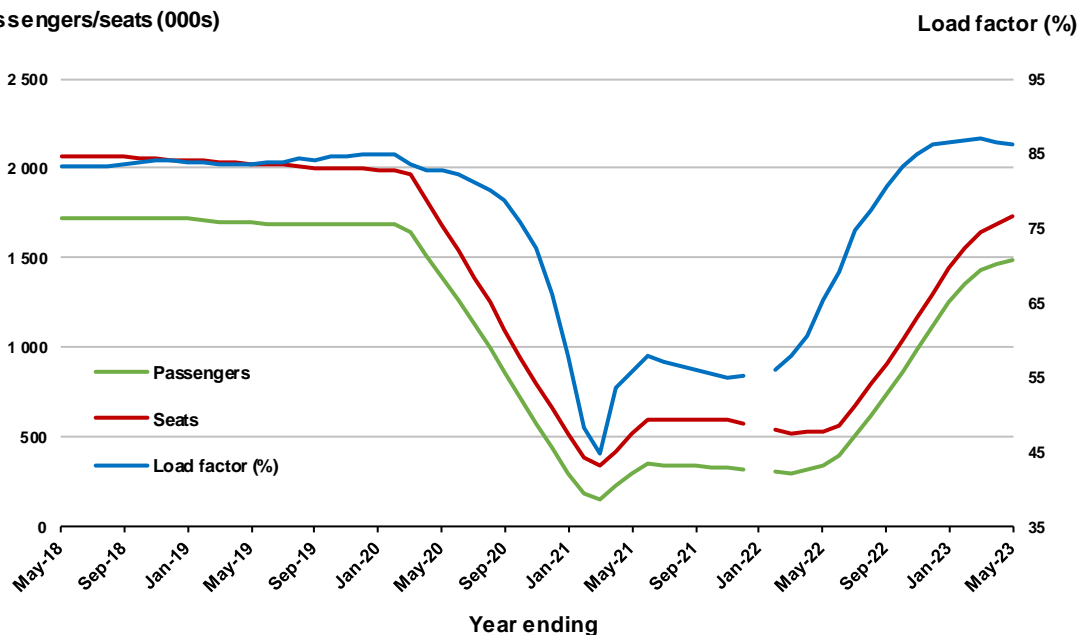
(a) January 2022 data not available for release.

Moving annual data

	YE May 2022	YE May 2023	% Change
Passengers carried (000s)	343.4	1,487.5	333.2
Seats (000s)	525.9	1,728.1	228.6
Load factor %	65.3	86.1	20.8 *
Aircraft trips	2,886	9,072	214.3

* percentage point difference

Passengers/seats (000s)



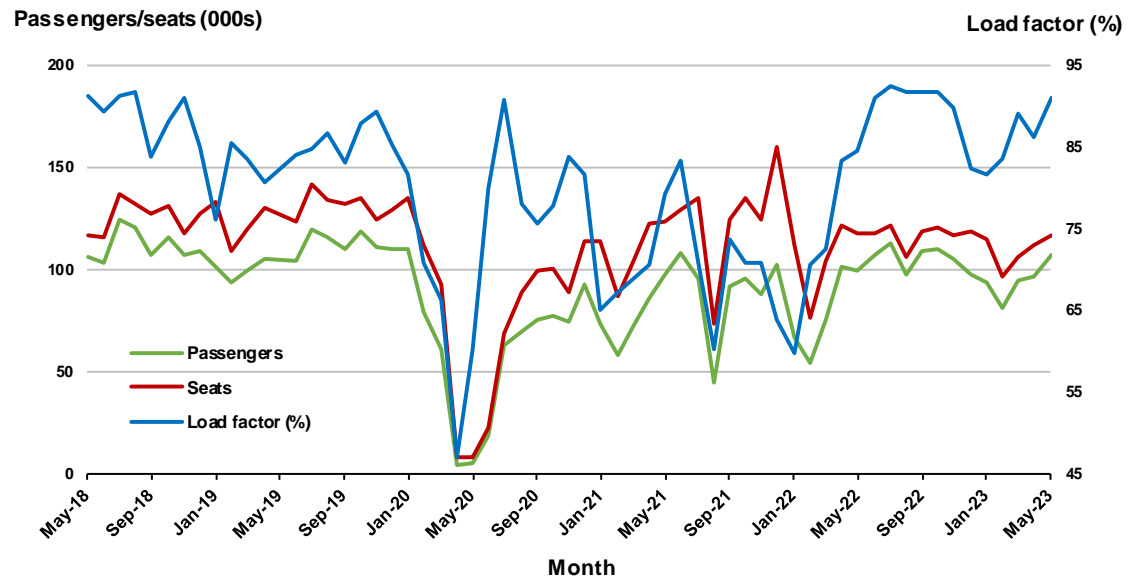
(a) January 2022 moving annual totals are not available for release.

10. Brisbane - Cairns

Monthly data

	May 2022	May 2023	% Change
Passengers carried (000s)	99.4	106.7	7.3
Seats (000s)	117.8	117.1	-0.6
Load factor %	84.4	91.1	6.7 *
Aircraft trips	771	828	7.4

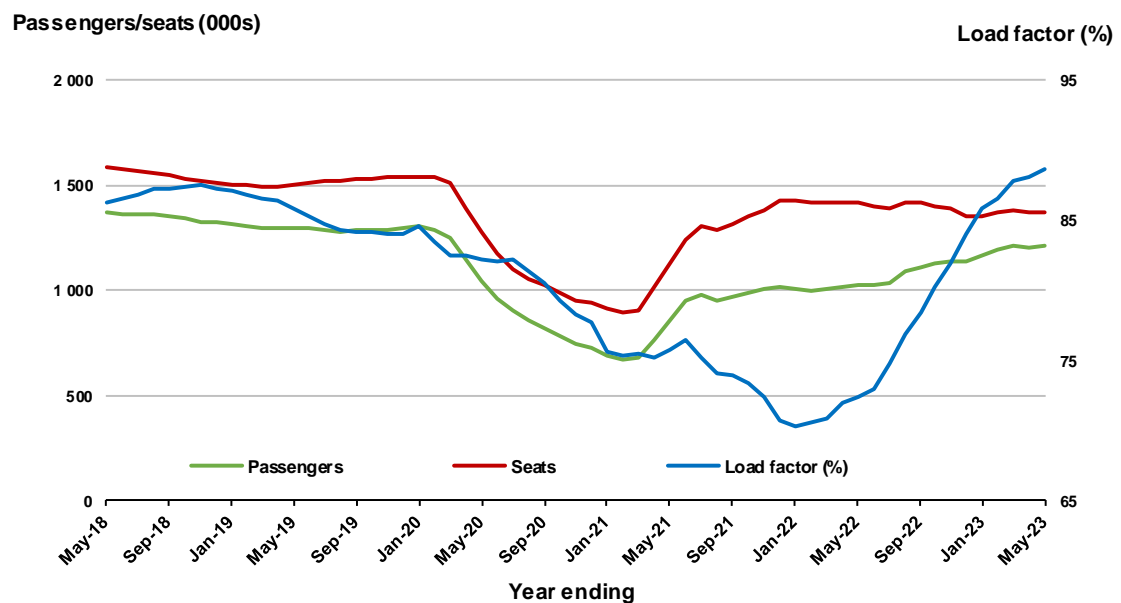
* percentage point difference



Moving annual data

	YE May 2022	YE May 2023	% Change
Passengers carried (000s)	1,022.1	1,212.3	18.6
Seats (000s)	1,413.5	1,367.8	-3.2
Load factor %	72.3	88.6	16.3 *
Aircraft trips	9,048	9,047	0.0

* percentage point difference



TOP FIFTY REGIONAL AIRPORTS

Table 10: Top fifty regional airports (000s) — passenger movements, monthly

Airport	May 2022	May 2023	% Change
1 Cairns	304.8	317.3	4.1
2 Hobart	190.6	190.0	-0.3
3 Townsville	135.3	144.2	6.6
4 Darwin	161.8	142.4	-12.0
5 Launceston	94.2	95.1	0.9
6 Newcastle	92.9	94.8	2.0
7 Mackay	72.9	76.7	5.1
8 Rockhampton	44.8	56.5	26.0
9 Ballina	53.7	48.0	-10.6
10 Karratha	40.8	47.6	16.7
11 Port Hedland	39.2	43.3	10.5
12 Proserpine	37.6	39.5	4.8
13 Broome	40.4	39.1	-3.2
14 Newman	29.6	34.5	16.5
15 Hamilton Island	42.2	34.5	-18.1
16 Alice Springs	33.5	31.8	-5.1
17 Kalgoorlie	25.1	31.7	26.5
18 Coffs Harbour	25.2	25.8	2.4
19 Albury	18.5	21.7	17.3
20 Paraburdoo	17.4	21.0	20.6
21 Port Macquarie	14.8	20.6	38.8
22 Mount Isa	20.0	20.0	0.0
23 Mildura	15.8	20.0	26.5
24 Gladstone	18.7	19.4	4.1
25 Dubbo	16.3	19.1	17.3
26 Ayers Rock	19.1	18.5	-3.1
27 Wagga Wagga	15.8	17.8	12.8
28 Emerald	15.2	17.4	14.9
29 Tamworth	11.9	15.5	30.0
30 Port Lincoln	15.1	14.9	-1.7
31 Kununurra	12.9	13.6	5.4
32 Bundaberg	10.8	13.2	22.0
33 Hervey Bay	11.2	12.1	8.7
34 Learmonth	10.0	11.2	11.4
35 Devonport	7.4	9.9	34.4
36 Moranbah	8.2	9.8	19.8
37 Armidale	9.0	9.6	6.8
38 Olympic Dam	7.8	9.3	19.4
39 Orange	8.8	9.0	2.9
40 Thursday Island	7.9	8.3	6.0
41 Geraldton	7.7	8.1	4.5
42 Toowoomba Wellcamp	6.4	7.9	24.1
43 Weipa	8.6	7.6	-12.1
44 Gove	7.5	7.2	-3.3
45 Griffith	6.3	6.7	6.9
46 Mount Gambier	6.8	6.5	-4.8
47 Burnie	6.2	6.4	3.8
48 Roma	4.7	5.9	24.6
49 Merimbula	6.0	5.8	-4.0
50 Albany	4.7	5.7	22.0
Total top 50 regional airports	1,822.0	1,892.3	3.9
Total regional airports	1,941.7	2,020.7	4.1
Total domestic network	8,730.3	9,267.4	6.2

Note: Airport passenger movement numbers are the sum of passenger arrivals and departures at each airport. Regional airports are defined as airports which are, according to Australian Statistical Geography Standard (ASGS), not based in Major Cities.

Table 11: Top fifty regional airports (000s) — passenger movements, annual

Airport	YE May 2022	YE May 2023	% Change
1 Cairns	2,520.8	3,901.8	54.8
2 Hobart	1,421.2	2,498.6	75.8
3 Darwin	1,194.5	1,651.4	38.2
4 Townsville	1,167.9	1,641.8	40.6
5 Launceston	691.1	1,298.2	87.8
6 Newcastle	543.2	1,086.9	100.1
7 Mackay	667.8	890.7	33.4
8 Ballina	521.4	636.6	22.1
9 Rockhampton	405.2	546.9	35.0
10 Karratha	449.5	529.6	17.8
11 Hamilton Island	354.6	505.1	42.5
12 Port Hedland	400.0	477.2	19.3
13 Proserpine	356.8	473.4	32.7
14 Broome	417.6	443.9	6.3
15 Newman	323.0	366.4	13.4
16 Alice Springs	242.1	365.0	50.7
17 Kalgoorlie	270.1	335.0	24.1
18 Coffs Harbour	171.9	285.6	66.2
19 Ayers Rock	84.0	244.2	190.8
20 Albury	102.2	231.9	127.0
21 Mount Isa	192.9	231.4	20.0
22 Paraburdoo	196.6	223.7	13.8
23 Gladstone	151.6	206.6	36.3
24 Mildura	96.7	205.3	112.2
25 Dubbo	110.0	197.1	79.2
26 Wagga Wagga	83.8	193.8	131.2
27 Port Macquarie	84.1	189.0	124.7
28 Emerald	145.4	188.1	29.4
29 Port Lincoln	146.8	179.5	22.3
30 Tamworth	68.5	150.1	119.2
31 Hervey Bay	73.7	135.6	83.9
32 Kununurra	108.5	132.2	21.8
33 Devonport	42.8	117.3	174.1
34 Bundaberg	79.7	114.6	43.8
35 Armidale	53.3	110.1	106.3
36 Moranbah	88.2	106.3	20.5
37 Learmonth	93.6	102.7	9.7
38 Thursday Island	92.3	101.2	9.6
39 Orange	49.3	99.4	101.6
40 Olympic Dam	91.4	97.4	6.5
41 Gove	58.9	88.3	49.8
42 Weipa	77.7	85.0	9.5
43 Burnie	38.1	82.3	116.0
44 Geraldton	79.7	82.1	3.0
45 Mount Gambier	49.1	77.6	58.2
46 Griffith	37.1	75.9	104.4
47 Merimbula	33.1	75.2	126.7
48 Norfolk Island	50.2	70.7	40.8
49 Broken Hill	26.2	61.7	135.0
50 Albany	50.9	60.5	18.8
Total top 50 regional airports	14,855.2	22,251.1	49.8
Total regional airports	15,950.0	23,634.4	48.2
Total domestic network	56,369.6	110,442.9	95.9

Note: Airport passenger movement numbers are the sum of passenger arrivals and departures at each airport. Regional airports are defined as airports which are, according to Australian Statistical Geography Standard (ASGS), not based in Major Cities.

DOMESTIC CHARTER ACTIVITY

Table 12: Charter passengers carried and aircraft trips - monthly activity

	May 2022	May 2023	% Change
Total domestic charter passengers	302,271	360,367	19.2
Total domestic charter aircraft trips	5,658	6,105	7.9

Note: Helicopter, joyflights and sightseeing charter flights not included.

Table 13: Charter passengers carried and aircraft trips - annual activity

	YE May 2022	YE May 2023	% Change
Total domestic charter passengers	3,351,011	3,735,976	11.5
Total domestic charter aircraft trips	63,200	66,779	5.7

Note: Helicopter, joyflights and sightseeing charter flights not included.

Table 14: Domestic airports - charter activity - monthly

	May 2022	May 2023	% Change
Total domestic charter passenger movements	604,542	720,734	19.2
Total domestic charter aircraft movements	11,316	12,210	7.9
Perth airport charter passenger movements	222,012	270,473	21.8
Perth airport charter aircraft movements	3,831	4,185	9.2

Note: Helicopter, joyflights and sightseeing charter flights not included.

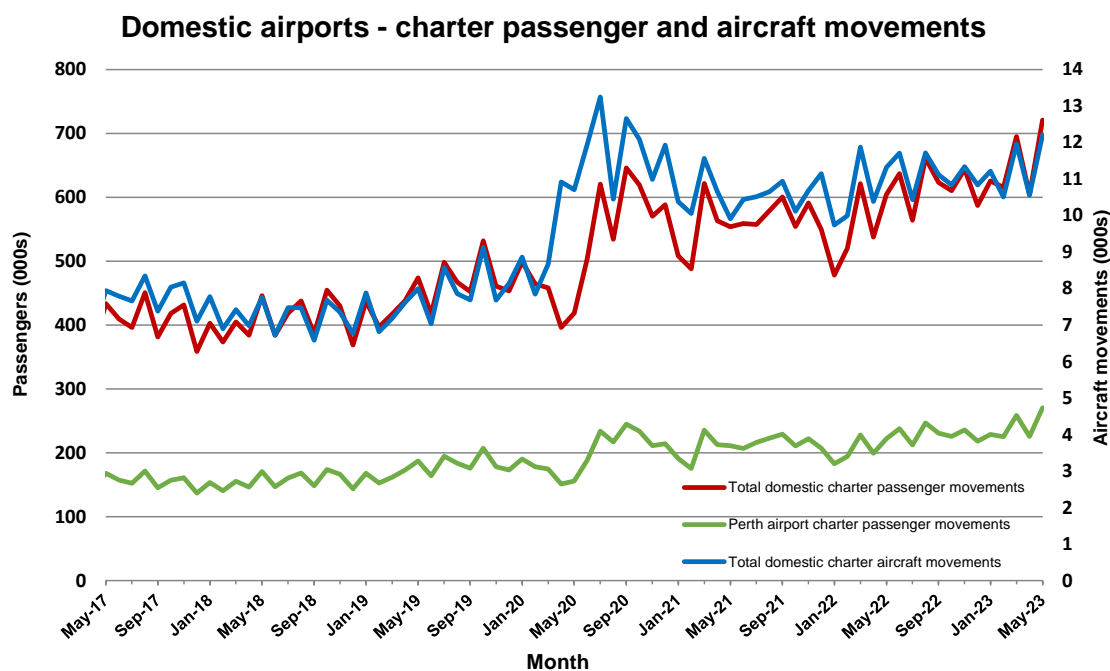
Charter passenger and aircraft movement numbers are the sum of arrivals and departures at each airport.

Table 15: Domestic airports - charter activity - annual

	YE May 2022	YE May 2023	% Change
Total domestic charter passenger movements	6,702,022	7,471,952	11.5
Total domestic charter aircraft movements	126,400	133,558	5.7
Perth airport charter passenger movements	2,531,537	2,767,794	9.3
Perth airport charter aircraft movements	43,584	44,867	2.9

Note: Helicopter, joyflights and sightseeing charter flights not included.

Charter passenger and aircraft movement numbers are the sum of arrivals and departures at each airport.



DEFINITIONS

Aircraft Trips	The number of flight stages. A return flight counts as two aircraft trips.
Airport Movements	Airport movements (passenger and cargo) are measured once on arrival and once on departure. Each domestic trip generates two movements at airports. For example, a trip from Melbourne to Sydney will be counted twice, as a departure at Melbourne and as an arrival at Sydney. At the national level, the sum of all domestic airport traffic will therefore be equal to twice the number of trips undertaken.
Available Seat Kilometres (ASKs)	Calculated by multiplying the number of seats available on each flight stage, by the distance in kilometres between the ports. The distances used are Great Circle Distances.
City-Pair	The ports shown make up the city-pair route. Passenger movements shown for a city pair reflect total traffic in both directions.
Flight Stage	The operation of an aircraft from take-off to landing.
Load Factor	The total revenue passenger kilometres performed as a percentage of the total available seat kilometres.
Passengers Carried	Revenue passengers carried.
Regular Public Transport Services (RPT)	All air service operations in which aircraft are available for the transport of members of the public and are conducted in accordance with fixed schedules. It does not include charter or other non-scheduled operations.
Revenue Passengers	All passengers paying any fare. Frequent flyer redemption travellers are regarded as revenue passengers.
Revenue Passenger Kilometres (RPKs)	Calculated by multiplying the number of revenue passengers travelling on each flight stage, by the distance in kilometres between the ports. The distances used are Great Circle Distances.
Traffic on board by stages	The total of all traffic (revenue passengers) on each flight stage between two directly connected airports.
..	Not available for confidentiality or other reasons.
NA	Not applicable.