



Australian Government

**Department of Infrastructure, Transport,
Regional Development, Communications and the Arts**
Bureau of Infrastructure and Transport Research Economics

STATISTICAL REPORT



bitre

Aviation

**Domestic aviation activity
May 2024**

The Department of Infrastructure, Transport, Regional Development, Communications and the Arts acknowledges the Traditional Custodians of Country of the land on which we work and live.

We recognise and respect the continuing connections to land, waters and communities.

We pay our respects to them and their cultures and to their Elders both past and present and to all Aboriginal and Torres Strait Islander people.

© Commonwealth of Australia 2024

ISSN: 1832 - 1968

Ownership of intellectual property rights in this publication

Unless otherwise noted, copyright (and any other intellectual property rights, if any) in this publication is owned by the Commonwealth of Australia (referred to below as the Commonwealth).

Disclaimer

The material contained in this publication is made available on the understanding that the Commonwealth is not providing professional advice, and that users exercise their own skill and care with respect to its use, and seek independent advice if necessary.

The Commonwealth makes no representations or warranties as to the contents or accuracy of the information contained in this publication. To the extent permitted by law, the Commonwealth disclaims liability to any person or organisation in respect of anything done, or omitted to be done, in reliance upon information contained in this publication.

Creative Commons licence

With the exception of (a) the Coat of Arms; and (b) the Department of Infrastructure, Transport, Regional Development, Communications and the Arts' photos and graphics, copyright in this publication is licensed under a Creative Commons Attribution 3.0 Australia Licence.

Creative Commons Attribution 3.0 Australia Licence is a standard form licence agreement that allows you to copy, communicate and adapt this publication provided that you attribute the work to the Commonwealth and abide by the other licence terms. A summary of the licence terms is available from <http://creativecommons.org/licenses/by/3.0/au/deed.en>.

The full licence terms are available from <http://creativecommons.org/licenses/by/3.0/au/legalcode>.

Use of the Coat of Arms

The Department of the Prime Minister and Cabinet sets the terms under which the Coat of Arms is used. Please refer to the Department's Commonwealth Coat of Arms and Government branding web page <http://www.dpmc.gov.au/guidelines/index.cfm#brand> and, in particular, the Guidelines on the use of the Commonwealth Coat of Arms publication.

An appropriate citation for this report is:

Bureau of Infrastructure and Transport Research Economics (BITRE), 2024, Domestic aviation activity, Statistical Report, BITRE, Canberra ACT.

Contact us

This publication is available in PDF format. All other rights are reserved, including in relation to any Departmental logos or trade marks which may exist. For enquiries regarding the licence and any use of this publication, please contact:

Bureau of Infrastructure and Transport Research Economics (BITRE)
Department of Infrastructure, Transport, Regional Development, Communications and the Arts
GPO Box 501, Canberra ACT 2601, Australia

Email: bitre@infrastructure.gov.au

Website: www.bitre.gov.au

Inquiries

Nebojsa.Pavlovic@infrastructure.gov.au (02) 6136 8282

FOREWORD

This report provides an overview of domestic (including charter) commercial aviation activity in Australia for the month of May 2024.

The data covers revenue passengers carried by Australian-registered operators of scheduled regular public transport services over Australian flight stages and fixed-wing charter operators. These estimates include passengers carried between domestic airports on international flights operated by these carriers. The passengers carried refer to traffic on board by stages.

Estimates of passengers and aircraft movements for charter aviation are included in this publication, where BITRE confidentiality standards are met.

Individual routes shown are restricted to those with an average exceeding 8,000 passengers per month over the previous six months where two or more airlines operate in competition. However, for the period from December 2021 through to December 2022, the major airlines (Qantas Group, Virgin Australia and Rex Airlines) agreed to publication of the top 35 routes based on pre-COVID activity (December 2019) whether or not they were meeting the above criteria. From January 2023, the passenger load and dual competition requirements were reinstated due to the continued recovery of passenger numbers.

Information on the total network for the month of May 2024 and on the Regular Public Transport (RPT) network for the month of May 2024 is presented on page 2, with estimates for the year ended May 2024 presented on page 3.

Detailed information on individual routes can be found in the RPT summary pages 4-13 of this publication. For the month of May 2024, there are 61 individual routes published.

The top ten airports in terms of RPT passenger movements are shown on page 14.

Data on domestic RPT cargo movements at the top five cargo airports are provided on page 15. The table includes cargo carried on passenger flights operated by the Qantas group (including Jetstar), Virgin Australia, Air North and Skippers as well as the cargo carried by dedicated freighter aircraft operated by Qantas Freight and Team Global Express (formerly Toll).

The long-term trends for the top ten competitive RPT routes are presented graphically on pages 16-25.

Domestic RPT passenger movements at regional airports are shown on pages 26-27.

Tables providing estimates of domestic charter aviation activity are shown on page 28. BITRE confidentiality standards restrict publication of detailed estimates for individual Australian airports, with the exception of Perth Airport.

A list of definitions can be found on page 29.

This report was prepared by the Aviation Statistics Section of the Bureau of Infrastructure and Transport Research Economics with data provided by airlines.

Estimates are included where data were not available and data presented in this publication may contain revisions to previously published data.

Where figures have been rounded, discrepancies may occur between sums of component items and totals, and in percentage changes which are derived from figures prior to rounding.

CONTENTS

Highlights	1
Total network.....	2
RPT network	2
Top competitive routes.....	4
Top ten airports – passenger movements.....	14
Top five airports – cargo movements.....	15
Top ten routes	16
1. Melbourne – Sydney	16
2. Brisbane – Sydney.....	17
3. Brisbane – Melbourne	18
4. Gold Coast – Sydney	19
5. Adelaide – Melbourne	20
6. Melbourne – Perth	21
7. Gold Coast – Melbourne	22
8. Adelaide – Sydney	23
9. Perth – Sydney	24
10. Brisbane – Cairns	25
Top fifty regional airports	26
Domestic charter activity.....	28
Definitions	29

This page is intentionally left blank.

HIGHLIGHTS

There were 5.13 million passengers carried on Australian domestic commercial aviation (including charter operations) in May 2024, an increase of 2.8 per cent on May 2023.

4.74 million passengers were carried on RPT flights in May 2024, an increase of 2.3 per cent compared to May 2023.

For the month of May 2024, there were 52.5 thousand RPT aircraft trips, no significant change from May 2023.

For the year ending May 2024 there were 58.62 million RPT passengers, an increase of 6.1 per cent on the year ending May 2023.

RPT revenue passenger kilometres (RPKs) performed were 5.57 billion for the month, compared with 5.45 billion in May 2023 (up 2.2 per cent).

Capacity, measured by available seat kilometres (ASKs), increased to 7.12 billion in May 2024 compared to 7.11 billion in May 2023 (up 0.2 per cent).

The industry wide load factor (RPKs/ASKs) increased from 76.7 per cent in May 2023 to 78.3 per cent in May 2024. The lowest load factor (47.8 per cent) was recorded on the Geraldton – Perth route while the highest load factor (92.1 per cent) was recorded on the Brisbane – Launceston route.

For the month of May 2024, Melbourne – Sydney was Australia's busiest RPT route with 664.7 thousand passengers, followed by Brisbane – Sydney with 358.0 thousand passengers and Brisbane – Melbourne with 278.9 thousand passengers.

Sydney was Australia's busiest domestic airport with 2.01 million passenger movements in May 2024, followed by Melbourne with 1.91 million passenger movements and Brisbane with 1.41 million passenger movements.

Total cargo movements at Australian airports on domestic RPT flights were 28.3 thousand tonnes in May 2024, a decrease of 9.0 per cent compared with May 2023.

In May 2024, there were 2.024 million domestic passenger movements through regional airports, compared to 2.022 million in May 2023, an increase of 0.1 per cent. Out of the top 50 regional airports, the strongest increase was recorded at Busselton Airport (up 78.6 per cent on May 2023), while the largest decrease was recorded at Port Macquarie Airport (down 16.7 per cent on May 2023).

Fixed-wing charter operators carried 391.4 thousand passengers in May 2024, an increase of 8.1 per cent compared with May 2023. Perth Airport accounted for 37.1 per cent of all charter passengers in Australia.

TOTAL NETWORK

Summary of monthly commercial aviation activity

	May 2023	May 2024	% Change
Total passengers carried (millions)	5.00	5.13	2.8
Aircraft trips (000s)	58.7	59.0	0.6

Note: Regular Public Transport and charter aviation activity
Helicopter, joy flights and sightseeing charter flights not included.

RPT NETWORK

Summary of monthly RPT activity

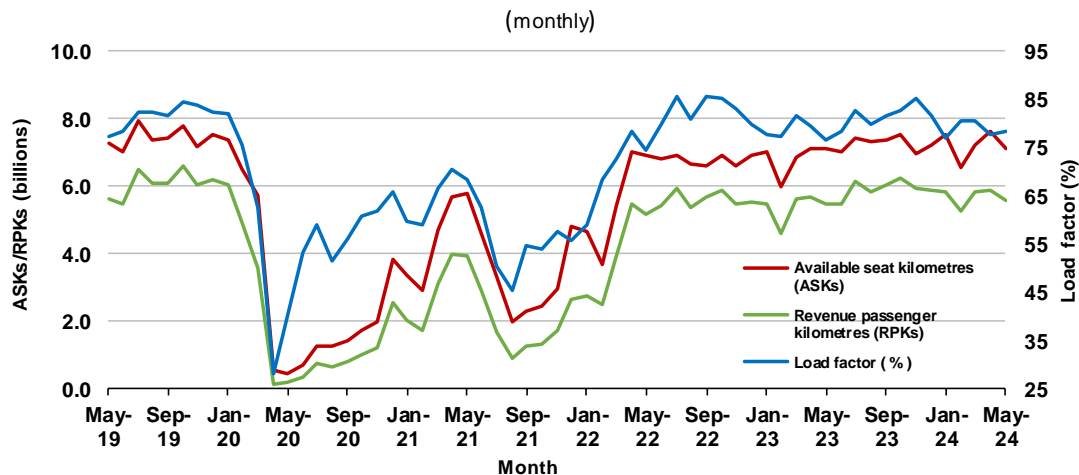
	May 2023	May 2024	% Change
Total passengers carried (millions)	4.63	4.74	2.3
Revenue passenger kilometres (billions)	5.45	5.57	2.2
Available seats (millions)	6.20	6.24	0.6
Available seat kilometres (billions)	7.11	7.12	0.2
Load factor %	76.7	78.3	1.6 *
Aircraft trips (000s)	52.5	52.5	0.0

* percentage point difference

Domestic RPT passenger traffic



RPT Network utilisation



TOTAL NETWORK

Summary of annual commercial aviation activity

	YE May 2023	YE May 2024	% Change
Total passengers carried (millions)	59.03	62.86	6.5
Aircraft trips (000s)	661.6	691.0	4.4

Note: Regular Public Transport and charter aviation activity
Helicopter, joy flights and sightseeing charter flights not included.

RPT NETWORK

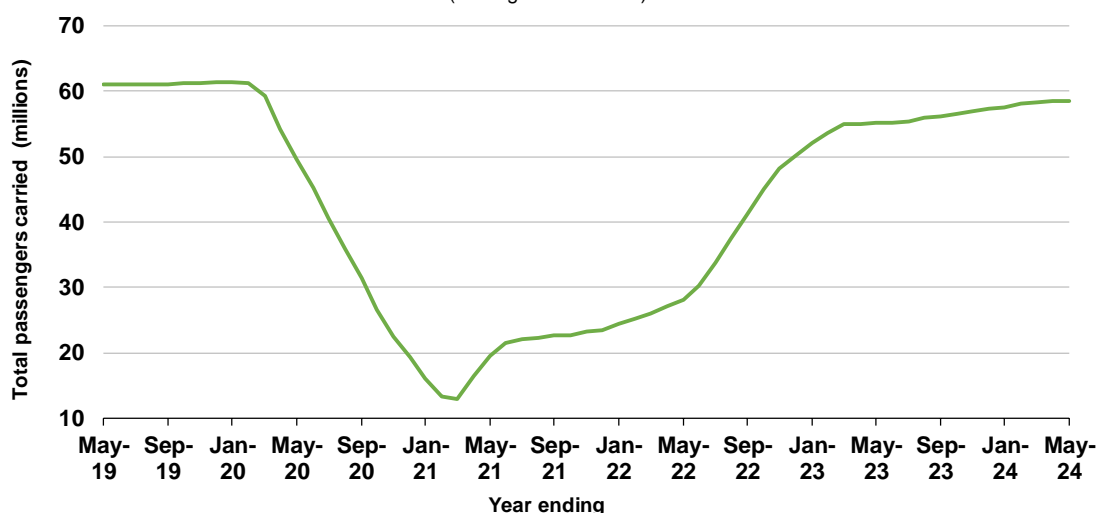
Summary of annual RPT activity

	YE May 2023	YE May 2024	% Change
Total passengers carried (millions)	55.23	58.62	6.1
Revenue passenger kilometres (billions)	66.20	69.95	5.7
Available seats (millions)	70.09	74.77	6.7
Available seat kilometres (billions)	81.58	86.92	6.6
Load factor %	81.2	80.5	-0.7 *
Aircraft trips (000s)	594.3	618.6	4.1

* percentage point difference

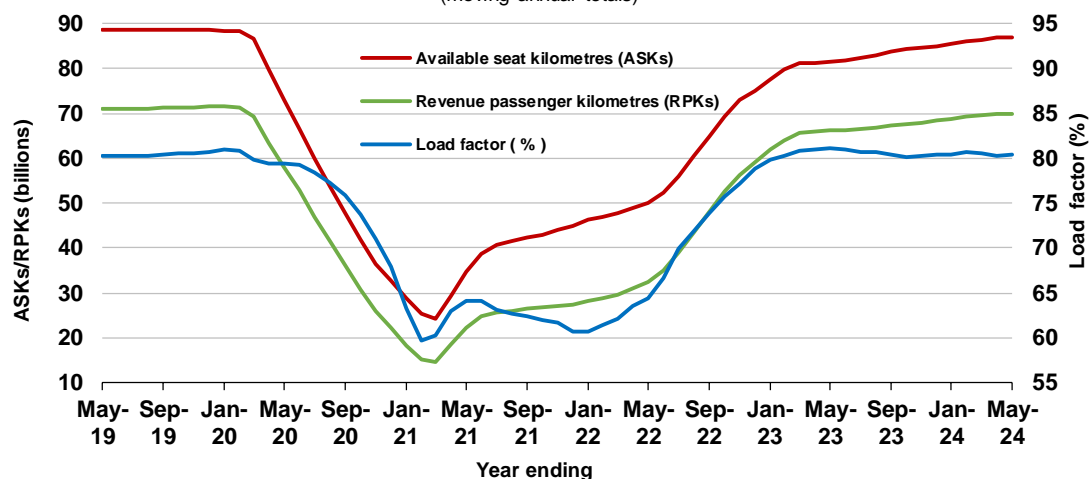
Domestic RPT passenger traffic

(moving annual totals)



RPT Network utilisation

(moving annual totals)



TOP COMPETITIVE ROUTES

Table 1: Passengers carried (000s) — annual activity

	City-Pair	YE May 2023	YE May 2024	% Change
1	Melbourne - Sydney	7 316.5	7 906.2	8.1
2	Brisbane - Sydney	4 027.6	4 316.8	7.2
3	Brisbane - Melbourne	3 102.5	3 373.2	8.7
4	Gold Coast - Sydney	2 412.5	2 514.7	4.2
5	Adelaide - Melbourne	2 200.7	2 335.2	6.1
6	Gold Coast - Melbourne	2 273.8	2 236.6	-1.6
7	Melbourne - Perth	1 811.7	1 970.9	8.8
8	Adelaide - Sydney	1 595.7	1 839.1	15.3
9	Perth - Sydney	1 487.5	1 615.7	8.6
10	Hobart - Melbourne	1 228.6	1 341.9	9.2
11	Brisbane - Cairns	1 212.3	1 266.4	4.5
12	Brisbane - Perth	978.8	1 029.2	5.2
13	Canberra - Melbourne	963.0	1 021.3	6.1
14	Cairns - Sydney	893.3	906.5	1.5
15	Brisbane - Townsville	862.1	883.4	2.5
16	Adelaide - Brisbane	791.3	859.8	8.7
17	Launceston - Melbourne	768.8	853.9	11.1
18	Cairns - Melbourne	811.6	829.2	2.2
19	Melbourne - Sunshine Coast	705.0	782.2	10.9
20	Sunshine Coast - Sydney	738.0	774.6	5.0
21	Hobart - Sydney	707.1	763.9	8.0
22	Brisbane - Mackay	744.5	733.9	-1.4
23	Adelaide - Perth	633.3	671.0	6.0
24	Brisbane - Canberra	631.0	630.9	0.0
25	Canberra - Sydney	596.2	617.5	3.6
26	Karratha - Perth	528.1	568.7	7.7
27	Brisbane - Rockhampton	479.3	531.6	10.9
28	Ballina - Sydney	527.9	520.1	-1.5
29	Brisbane - Newcastle	490.3	500.8	2.1
30	Perth - Port Hedland	476.0	474.1	-0.4
31	Melbourne - Newcastle	395.3	437.0	10.5
32	Newman - Perth	364.8	370.5	1.6
33	Kalgoorlie - Perth	334.4	363.4	8.7
34	Broome - Perth	369.9	362.8	-1.9
35	Launceston - Sydney	302.9	338.8	11.8
36	Brisbane - Darwin	329.2	312.0	-5.2
37	Brisbane - Hobart	298.8	292.8	-2.0
38	Darwin - Melbourne	285.0	285.1	0.0
39	Brisbane - Proserpine	283.2	271.2	-4.2
40	Adelaide - Gold Coast	242.3	271.0	11.9
41	Hamilton Island - Sydney	248.3	242.7	-2.2
42	Brisbane - Gladstone	205.2	219.3	6.9
43	Coffs Harbour - Sydney	217.3	209.7	-3.5
44	Adelaide - Canberra	179.9	189.3	5.2
45	Brisbane - Emerald	177.7	185.2	4.2
46	Canberra - Gold Coast	161.7	183.3	13.3
47	Dubbo - Sydney	163.1	179.0	9.7
48	Melbourne - Mildura	151.8	175.3	15.5
49	Adelaide - Port Lincoln	179.3	171.6	-4.3
50	Darwin - Perth	175.4	171.0	-2.5

continued

Table 1: (continued) Passengers carried (000s) — annual activity

	City-Pair	YE May 2023	YE May 2024	% Change
51	Port Macquarie - Sydney	160.7	167.4	4.2
52	Albury - Sydney	164.4	165.8	0.8
53	Brisbane - Hamilton Island	169.4	162.2	-4.3
54	Sydney - Wagga Wagga	149.4	157.1	5.1
55	Brisbane - Launceston	167.8	147.0	-12.4
56	Brisbane - Mount Isa	142.8	143.2	0.3
57	Brisbane - Bundaberg	112.0	135.0	20.5
58	Devonport - Melbourne	117.1	121.2	3.5
59	Adelaide - Alice Springs	109.5	115.6	5.6
60	Brisbane - Moranbah	106.2	111.3	4.8
61	Geraldton - Perth	..	61.6	NA
	Total domestic network	55 232.9	58 620.4	6.1

.. Data not available for release.

Table 2: Passengers carried (000s) — monthly activity

	City-Pair	May 2023	May 2024	% Change
1	Melbourne - Sydney	620.6	664.7	7.1
2	Brisbane - Sydney	350.6	358.0	2.1
3	Brisbane - Melbourne	262.4	278.9	6.3
4	Gold Coast - Sydney	188.9	195.8	3.6
5	Adelaide - Melbourne	192.8	193.9	0.6
6	Melbourne - Perth	145.0	157.7	8.8
7	Gold Coast - Melbourne	164.6	156.9	-4.7
8	Adelaide - Sydney	142.9	144.6	1.2
9	Perth - Sydney	123.9	124.9	0.8
10	Brisbane - Cairns	106.7	117.4	10.0
11	Hobart - Melbourne	100.7	100.4	-0.3
12	Brisbane - Perth	81.1	85.8	5.8
13	Canberra - Melbourne	84.9	85.3	0.5
14	Brisbane - Townsville	73.2	81.1	10.8
15	Adelaide - Brisbane	66.5	68.0	2.3
16	Cairns - Sydney	62.3	67.7	8.6
17	Launceston - Melbourne	64.3	66.6	3.5
18	Brisbane - Mackay	60.2	66.5	10.5
19	Sunshine Coast - Sydney	53.5	58.0	8.4
20	Canberra - Sydney	53.2	57.7	8.3
21	Hobart - Sydney	52.8	57.0	7.8
22	Adelaide - Perth	51.7	54.2	5.0
23	Brisbane - Rockhampton	43.5	53.8	23.6
24	Melbourne - Sunshine Coast	53.2	53.4	0.4
25	Cairns - Melbourne	58.8	53.4	-9.1
26	Karratha - Perth	47.4	52.7	11.2
27	Brisbane - Canberra	50.8	51.9	2.3
28	Perth - Port Hedland	43.3	43.1	-0.5
29	Brisbane - Newcastle	44.0	42.7	-2.9
30	Ballina - Sydney	40.9	37.8	-7.5
31	Melbourne - Newcastle	33.6	35.9	6.9
32	Newman - Perth	34.3	33.9	-1.2
33	Broome - Perth	33.1	33.4	0.9
34	Kalgoorlie - Perth	31.7	32.4	2.1
35	Brisbane - Darwin	28.7	27.3	-4.6
36	Darwin - Melbourne	23.2	25.0	7.8
37	Launceston - Sydney	20.1	22.1	9.9
38	Brisbane - Hobart	20.1	21.0	4.3
39	Adelaide - Gold Coast	18.6	20.8	11.5
40	Brisbane - Proserpine	20.9	20.3	-3.1
41	Brisbane - Gladstone	18.4	19.7	6.9
42	Coffs Harbour - Sydney	19.0	17.9	-5.8
43	Brisbane - Emerald	16.3	16.1	-1.4
44	Dubbo - Sydney	16.3	15.8	-3.0
45	Hamilton Island - Sydney	15.9	15.5	-2.6
46	Adelaide - Canberra	17.8	15.2	-14.5
47	Port Macquarie - Sydney	15.1	15.0	-0.7
48	Canberra - Gold Coast	13.5	14.9	10.3
49	Darwin - Perth	14.5	14.9	2.5
50	Albury - Sydney	13.7	14.8	8.1

continued

Table 2: (continued) Passengers carried (000s) — monthly activity

	City-Pair	May 2023	May 2024	% Change
51	Sydney - Wagga Wagga	13.8	14.6	5.4
52	Adelaide - Port Lincoln	14.8	14.0	-5.6
53	Melbourne - Mildura	15.5	13.9	-10.7
54	Brisbane - Mount Isa	12.2	13.0	6.7
55	Brisbane - Bundaberg	10.9	12.7	16.8
56	Brisbane - Hamilton Island	13.3	11.6	-12.3
57	Devonport - Melbourne	9.9	10.5	6.0
58	Geraldton - Perth	..	9.9	NA
59	Brisbane - Moranbah	9.7	9.6	-1.0
60	Brisbane - Launceston	9.0	9.4	3.4
61	Adelaide - Alice Springs	11.0	9.1	-16.9
	Total domestic network	4 634.2	4 742.9	2.3

.. Data not available for release.

Table 3: Available seats (000s) — monthly activity

	City-Pair	May 2023	May 2024	% Change
1	Melbourne - Sydney	812.6	863.0	6.2
2	Brisbane - Sydney	461.9	471.0	2.0
3	Brisbane - Melbourne	349.7	353.5	1.1
4	Gold Coast - Sydney	230.7	236.7	2.6
5	Adelaide - Melbourne	248.9	245.8	-1.2
6	Melbourne - Perth	198.2	203.7	2.8
7	Gold Coast - Melbourne	190.7	173.5	-9.0
8	Adelaide - Sydney	184.5	209.9	13.8
9	Perth - Sydney	161.4	149.6	-7.3
10	Brisbane - Cairns	117.1	140.6	20.1
11	Hobart - Melbourne	127.9	121.8	-4.8
12	Brisbane - Perth	98.9	103.3	4.5
13	Canberra - Melbourne	132.6	123.8	-6.6
14	Brisbane - Townsville	95.8	93.0	-2.9
15	Adelaide - Brisbane	85.7	93.8	9.5
16	Cairns - Sydney	67.1	76.6	14.3
17	Launceston - Melbourne	81.6	78.5	-3.8
18	Brisbane - Mackay	79.4	83.4	5.1
19	Sunshine Coast - Sydney	71.1	70.2	-1.2
20	Canberra - Sydney	83.1	96.1	15.7
21	Hobart - Sydney	70.8	75.1	6.1
22	Adelaide - Perth	60.8	70.4	15.6
23	Brisbane - Rockhampton	60.6	70.1	15.6
24	Melbourne - Sunshine Coast	68.9	60.3	-12.4
25	Cairns - Melbourne	64.0	59.1	-7.6
26	Karratha - Perth	66.2	78.8	19.0
27	Brisbane - Canberra	79.9	74.4	-7.0
28	Perth - Port Hedland	59.6	66.2	10.9
29	Brisbane - Newcastle	63.4	52.1	-17.8
30	Ballina - Sydney	50.9	45.1	-11.3
31	Melbourne - Newcastle	44.2	44.9	1.6
32	Newman - Perth	56.9	56.8	-0.2
33	Broome - Perth	41.7	45.5	9.1
34	Kalgoorlie - Perth	46.4	58.2	25.4
35	Brisbane - Darwin	34.1	30.1	-11.7
36	Darwin - Melbourne	29.5	29.8	1.1
37	Launceston - Sydney	24.5	26.2	6.6
38	Brisbane - Hobart	26.3	25.0	-4.9
39	Adelaide - Gold Coast	20.7	23.4	13.0
40	Brisbane - Proserpine	26.1	22.3	-14.6
41	Brisbane - Gladstone	33.7	28.8	-14.3
42	Coffs Harbour - Sydney	24.4	23.4	-4.1
43	Brisbane - Emerald	22.0	24.4	10.9
44	Dubbo - Sydney	24.9	25.9	4.0
45	Hamilton Island - Sydney	23.3	21.7	-7.0
46	Adelaide - Canberra	30.7	22.7	-26.2
47	Port Macquarie - Sydney	22.3	20.8	-6.6
48	Canberra - Gold Coast	17.4	17.8	2.4
49	Darwin - Perth	18.2	20.3	11.7
50	Albury - Sydney	20.5	20.9	1.9

continued

Table 3: (continued) Available seats (000s) — monthly activity

	City-Pair	May 2023	May 2024	% Change
51	Sydney - Wagga Wagga	21.5	23.0	7.2
52	Adelaide - Port Lincoln	23.9	23.8	-0.6
53	Melbourne - Mildura	22.5	17.5	-22.1
54	Brisbane - Mount Isa	20.4	20.5	0.2
55	Brisbane - Bundaberg	19.2	19.3	0.8
56	Brisbane - Hamilton Island	18.5	15.8	-14.6
57	Devonport - Melbourne	14.0	14.5	3.1
58	Geraldton - Perth	..	20.8	NA
59	Brisbane - Moranbah	17.0	17.5	2.6
60	Brisbane - Launceston	10.7	10.2	-4.9
61	Adelaide - Alice Springs	15.3	14.2	-7.3
	Total domestic network	6 201.4	6 235.5	0.6

.. Data not available for release.

Table 4: Load factors (%) — monthly activity

	City-Pair	May 2023	May 2024	% Point diff
1	Melbourne - Sydney	76.4	77.0	0.6
2	Brisbane - Sydney	75.9	76.0	0.1
3	Brisbane - Melbourne	75.1	78.9	3.8
4	Gold Coast - Sydney	81.9	82.7	0.8
5	Adelaide - Melbourne	77.5	78.9	1.4
6	Melbourne - Perth	73.1	77.4	4.3
7	Gold Coast - Melbourne	86.3	90.4	4.1
8	Adelaide - Sydney	77.4	68.9	-8.5
9	Perth - Sydney	76.8	83.5	6.7
10	Brisbane - Cairns	91.1	83.5	-7.6
11	Hobart - Melbourne	78.7	82.4	3.7
12	Brisbane - Perth	82.0	83.0	1.0
13	Canberra - Melbourne	64.0	68.9	4.9
14	Brisbane - Townsville	76.4	87.2	10.8
15	Adelaide - Brisbane	77.7	72.5	-5.2
16	Cairns - Sydney	92.9	88.4	-4.5
17	Launceston - Melbourne	78.8	84.8	6.0
18	Brisbane - Mackay	75.8	79.7	3.9
19	Sunshine Coast - Sydney	75.3	82.7	7.4
20	Canberra - Sydney	64.1	60.0	-4.1
21	Hobart - Sydney	74.6	75.9	1.3
22	Adelaide - Perth	84.9	77.1	-7.8
23	Brisbane - Rockhampton	71.8	76.7	4.9
24	Melbourne - Sunshine Coast	77.5	88.5	11.0
25	Cairns - Melbourne	91.9	90.3	-1.6
26	Karratha - Perth	71.5	66.8	-4.7
27	Brisbane - Canberra	63.5	69.9	6.4
28	Perth - Port Hedland	72.6	65.1	-7.5
29	Brisbane - Newcastle	69.4	82.0	12.6
30	Ballina - Sydney	80.3	83.8	3.5
31	Melbourne - Newcastle	75.9	79.9	4.0
32	Newman - Perth	60.3	59.7	-0.6
33	Broome - Perth	79.3	73.3	-6.0
34	Kalgoorlie - Perth	68.4	55.7	-12.7
35	Brisbane - Darwin	84.1	90.9	6.8
36	Darwin - Melbourne	78.7	83.9	5.2
37	Launceston - Sydney	81.7	84.3	2.6
38	Brisbane - Hobart	76.7	84.1	7.4
39	Adelaide - Gold Coast	90.0	88.8	-1.2
40	Brisbane - Proserpine	80.2	91.0	10.8
41	Brisbane - Gladstone	54.6	68.2	13.6
42	Coffs Harbour - Sydney	78.0	76.7	-1.3
43	Brisbane - Emerald	74.2	66.0	-8.2
44	Dubbo - Sydney	65.3	60.9	-4.4
45	Hamilton Island - Sydney	68.1	71.3	3.2
46	Adelaide - Canberra	57.8	66.9	9.1
47	Port Macquarie - Sydney	67.8	72.1	4.3
48	Canberra - Gold Coast	77.6	83.6	6.0
49	Darwin - Perth	79.6	73.1	-6.5
50	Albury - Sydney	66.6	70.7	4.1

continued

Table 4: (continued) Load factors (%) — monthly activity

	City-Pair	May 2023	May 2024	% Point diff
51	Sydney - Wagga Wagga	64.5	63.4	-1.1
52	Adelaide - Port Lincoln	61.9	58.8	-3.1
53	Melbourne - Mildura	69.0	79.1	10.1
54	Brisbane - Mount Isa	59.6	63.5	3.9
55	Brisbane - Bundaberg	56.8	65.8	9.0
56	Brisbane - Hamilton Island	71.8	73.7	1.9
57	Devonport - Melbourne	70.2	72.3	2.1
58	Geraldton - Perth	..	47.8	NA
59	Brisbane - Moranbah	57.1	55.1	-2.0
60	Brisbane - Launceston	84.8	92.1	7.3
61	Adelaide - Alice Springs	71.6	64.2	-7.4
	Total domestic network	76.7	78.3	1.6

.. Data not available for release.

Table 5: Aircraft trips ^(a) — monthly activity

	City-Pair	May 2023	May 2024	% Change
1	Melbourne - Sydney	4 743	4 968	4.7
2	Brisbane - Sydney	2 830	2 859	1.0
3	Brisbane - Melbourne	2 137	2 153	0.7
4	Gold Coast - Sydney	1 311	1 338	2.1
5	Adelaide - Melbourne	1 521	1 488	-2.2
6	Melbourne - Perth	1 089	1 120	2.8
7	Gold Coast - Melbourne	1 019	938	-7.9
8	Adelaide - Sydney	1 128	1 255	11.3
9	Perth - Sydney	818	799	-2.3
10	Brisbane - Cairns	828	963	16.3
11	Hobart - Melbourne	737	783	6.2
12	Brisbane - Perth	572	603	5.4
13	Canberra - Melbourne	958	832	-13.2
14	Brisbane - Townsville	695	733	5.5
15	Adelaide - Brisbane	720	707	-1.8
16	Cairns - Sydney	362	391	8.0
17	Launceston - Melbourne	725	652	-10.1
18	Brisbane - Mackay	607	621	2.3
19	Sunshine Coast - Sydney	389	391	0.5
20	Canberra - Sydney	1 348	1 323	-1.9
21	Hobart - Sydney	428	428	0.0
22	Adelaide - Perth	350	397	13.4
23	Brisbane - Rockhampton	684	755	10.4
24	Melbourne - Sunshine Coast	366	321	-12.3
25	Cairns - Melbourne	329	310	-5.8
26	Karratha - Perth	404	469	16.1
27	Brisbane - Canberra	629	589	-6.4
28	Perth - Port Hedland	380	410	7.9
29	Brisbane - Newcastle	550	440	-20.0
30	Ballina - Sydney	375	314	-16.3
31	Melbourne - Newcastle	283	297	4.9
32	Newman - Perth	356	355	-0.3
33	Broome - Perth	273	288	5.5
34	Kalgoorlie - Perth	320	401	25.3
35	Brisbane - Darwin	212	215	1.4
36	Darwin - Melbourne	185	170	-8.1
37	Launceston - Sydney	160	168	5.0
38	Brisbane - Hobart	164	156	-4.9
39	Adelaide - Gold Coast	116	116	0.0
40	Brisbane - Proserpine	187	140	-25.1
41	Brisbane - Gladstone	378	340	-10.1
42	Coffs Harbour - Sydney	451	417	-7.5
43	Brisbane - Emerald	335	360	7.5
44	Dubbo - Sydney	484	493	1.9
45	Hamilton Island - Sydney	132	123	-6.8
46	Adelaide - Canberra	275	206	-25.1
47	Port Macquarie - Sydney	406	340	-16.3
48	Canberra - Gold Coast	98	99	1.0
49	Darwin - Perth	106	113	6.6
50	Albury - Sydney	407	391	-3.9

continued

Table 5: (continued) Aircraft trips — monthly activity

	City-Pair	May 2023	May 2024	% Change
51	Sydney - Wagga Wagga	394	417	5.8
52	Adelaide - Port Lincoln	583	579	-0.7
53	Melbourne - Mildura	466	410	-12.0
54	Brisbane - Mount Isa	180	179	-0.6
55	Brisbane - Bundaberg	312	316	1.3
56	Brisbane - Hamilton Island	106	114	7.5
57	Devonport - Melbourne	313	311	-0.6
58	Geraldton - Perth	..	217	NA
59	Brisbane - Moranbah	226	233	3.1
60	Brisbane - Launceston	60	60	0.0
61	Adelaide - Alice Springs	181	168	-7.2
	Total domestic network	52 491	52 483	0.0

.. Data not available for release.

(a) Includes RPT cargo flights.

TOP TEN AIRPORTS – PASSENGER MOVEMENTS

Table 6: Top ten airports, RPT passenger movements (000s) - monthly activity

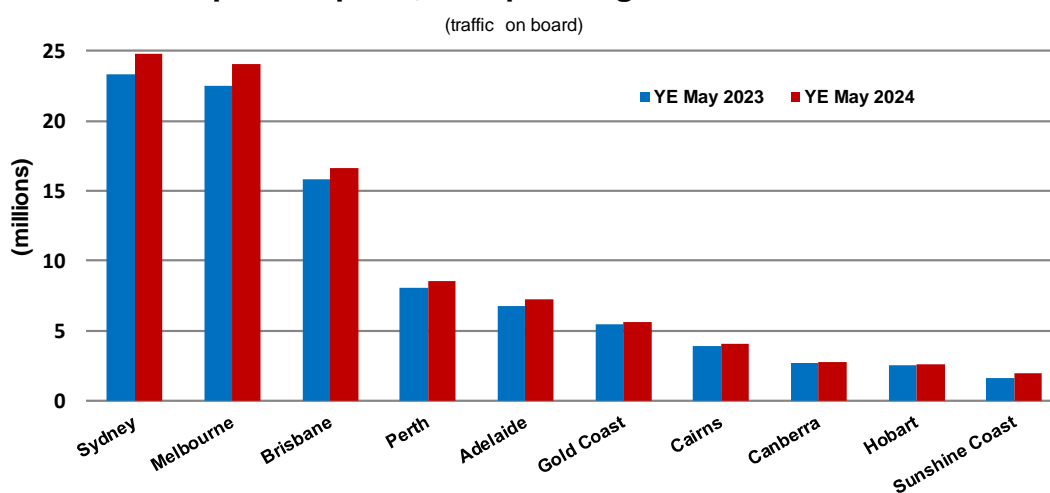
Airport	May 2023	May 2024	% Change	% of Total
1 Sydney	1 934.5	2 011.1	4.0	21.2
2 Melbourne	1 860.6	1 906.7	2.5	20.1
3 Brisbane	1 339.7	1 407.8	5.1	14.8
4 Perth	687.4	726.0	5.6	7.7
5 Adelaide	587.5	582.9	-0.8	6.1
6 Gold Coast	413.1	417.5	1.1	4.4
7 Cairns	317.9	321.2	1.0	3.4
8 Canberra	231.0	235.8	2.1	2.5
9 Hobart	190.0	191.7	0.9	2.0
10 Darwin	142.4	136.6	-4.1	1.4
Total top ten airports	7 704.1	7 937.2	3.0	83.7
Total domestic network	9 268.4	9 485.7	2.3	100.0

Table 7: Top ten airports, RPT passenger movements (000s) - annual activity

Airport	YE May 2023	YE May 2024	% Change	% of Total
1 Sydney	23 309.5	24 762.1	6.2	21.1
2 Melbourne	22 494.1	24 063.4	7.0	20.5
3 Brisbane	15 784.8	16 598.6	5.2	14.2
4 Perth	8 075.2	8 582.3	6.3	7.3
5 Adelaide	6 803.7	7 299.3	7.3	6.2
6 Gold Coast	5 465.5	5 615.3	2.7	4.8
7 Cairns	3 906.9	4 053.5	3.8	3.5
8 Canberra	2 703.8	2 798.6	3.5	2.4
9 Hobart	2 498.6	2 656.6	6.3	2.3
10 Sunshine Coast	1 599.8	1 930.2	20.6	1.6
Total top ten airports	92 642.0	98 359.9	6.2	83.9
Total domestic network	110 465.8	117 240.8	6.1	100.0

Note: Airport passenger movement numbers are the sum of passenger arrivals and departures at each airport.

Top ten airports, RPT passenger movements



TOP FIVE AIRPORTS – CARGO MOVEMENTS

Table 8: Top five airports, domestic RPT cargo movements (000s tonnes) - monthly activity

Airport	May 2023	May 2024	% Change	% of Total
1 Melbourne	8.5	7.8	-7.7	27.6
2 Sydney	7.0	5.9	-15.4	20.9
3 Brisbane	5.5	5.4	-2.0	19.0
4 Perth	3.1	3.1	-0.3	10.9
5 Adelaide	1.6	1.5	-8.2	5.3
Total top five airports	25.6	23.7	-7.7	83.7
Total domestic network	31.1	28.3	-9.0	100.0

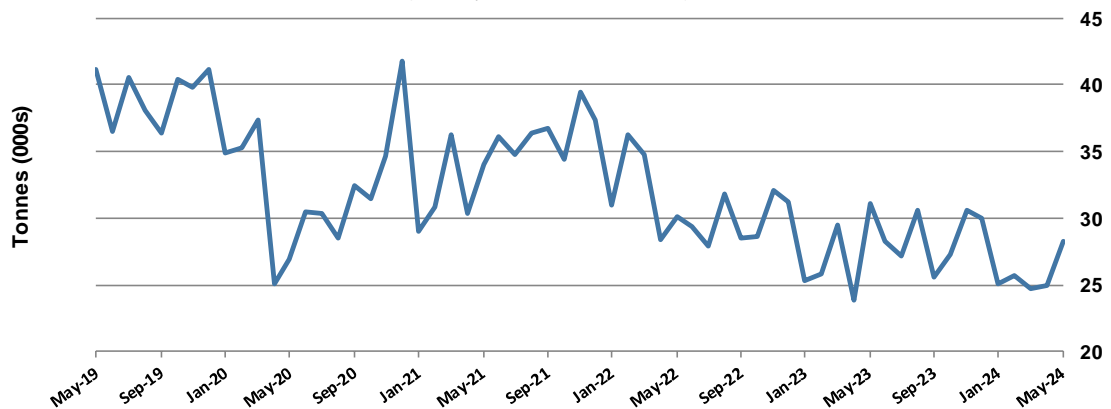
Table 9: Top five airports, domestic RPT cargo movements (000s tonnes) - annual activity

Airport	YE May 2023	YE May 2024	% Change	% of Total
1 Melbourne	92.7	88.8	-4.2	27.1
2 Sydney	76.1	72.7	-4.5	22.1
3 Brisbane	59.8	59.4	-0.6	18.1
4 Perth	35.8	35.1	-1.8	10.7
5 Adelaide	19.7	18.5	-5.9	5.6
Total top five airports	284.0	274.6	-3.3	83.7
Total domestic network	345.0	328.2	-4.9	100.0

Note: Airport cargo tonnes are the sum of cargo tonnes on arrivals and departures at each airport.

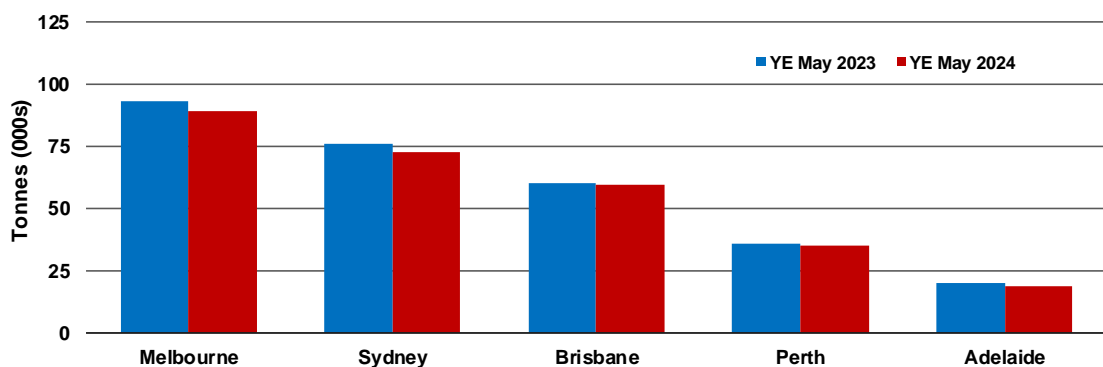
Total domestic network - cargo movement

(monthly totals - traffic on board)



Top five airports, cargo movements

(Domestic cargo traffic - traffic on board)



Note: Airport cargo tonnes are the sum of cargo tonnes on arrivals and departures at each airport.

TOP TEN ROUTES

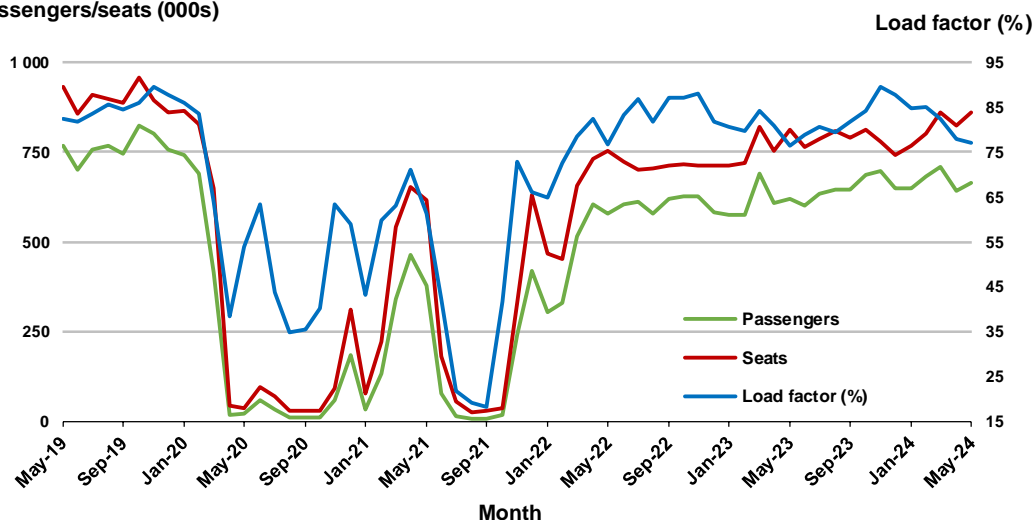
1. Melbourne - Sydney

Monthly data

	May 2023	May 2024	% Change
Passengers carried (000s)	620.6	664.7	7.1
Seats (000s)	812.6	863.0	6.2
Load factor %	76.4	77.0	0.6 *
Aircraft trips	4 743	4 968	4.7

* percentage point difference

Passengers/seats (000s)

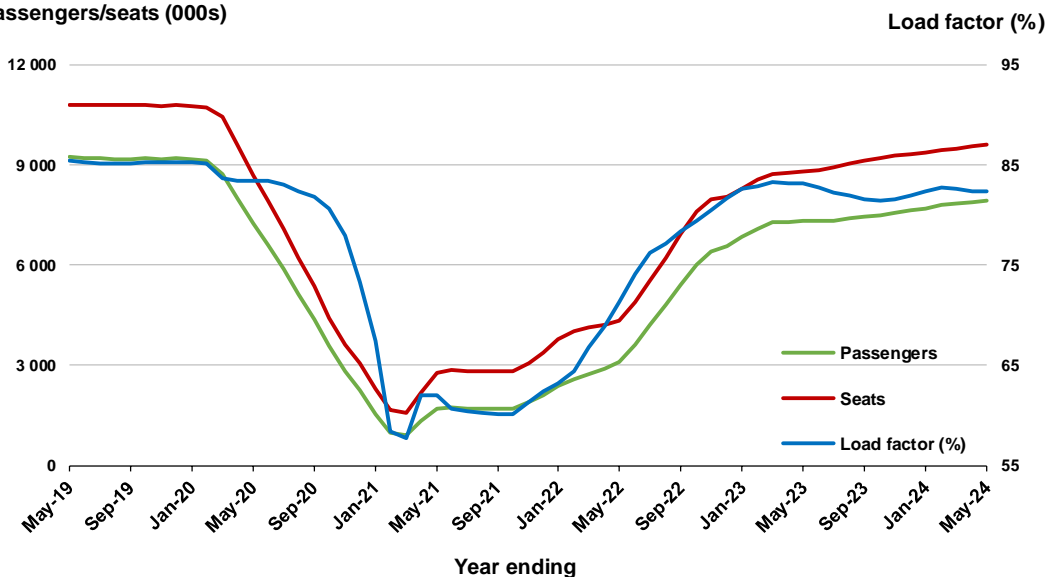


Moving annual data

	YE May 2023	YE May 2024	% Change
Passengers carried (000s)	7 316.5	7 906.2	8.1
Seats (000s)	8 804.9	9 604.6	9.1
Load factor %	83.1	82.3	-0.8 *
Aircraft trips	50 701	55 639	9.7

* percentage point difference

Passengers/seats (000s)

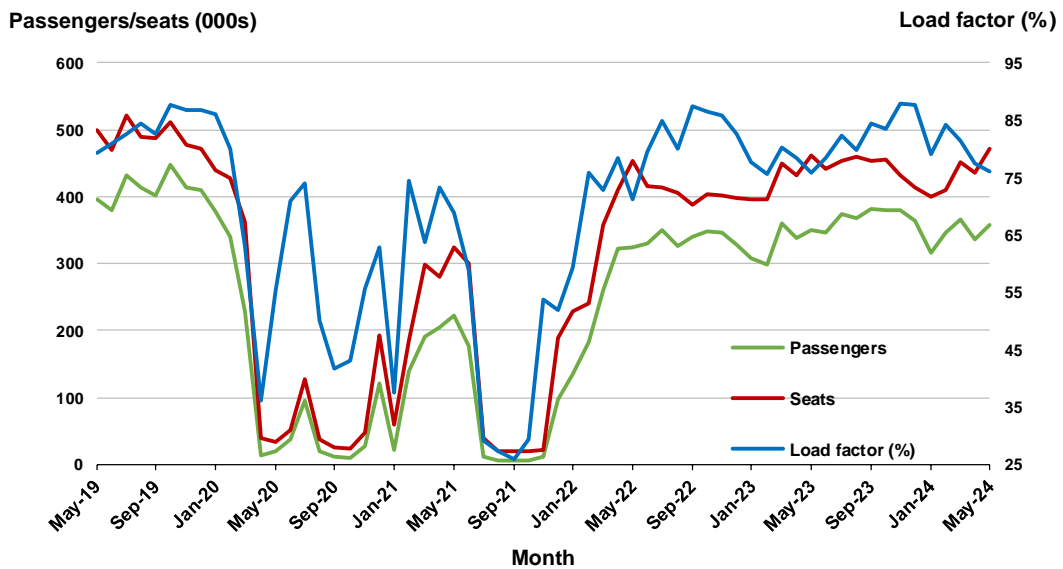


2. Brisbane - Sydney

Monthly data

	May 2023	May 2024	% Change
Passengers carried (000s)	350.6	358.0	2.1
Seats (000s)	461.9	471.0	2.0
Load factor %	75.9	76.0	0.1 *
Aircraft trips	2 830	2 859	1.0

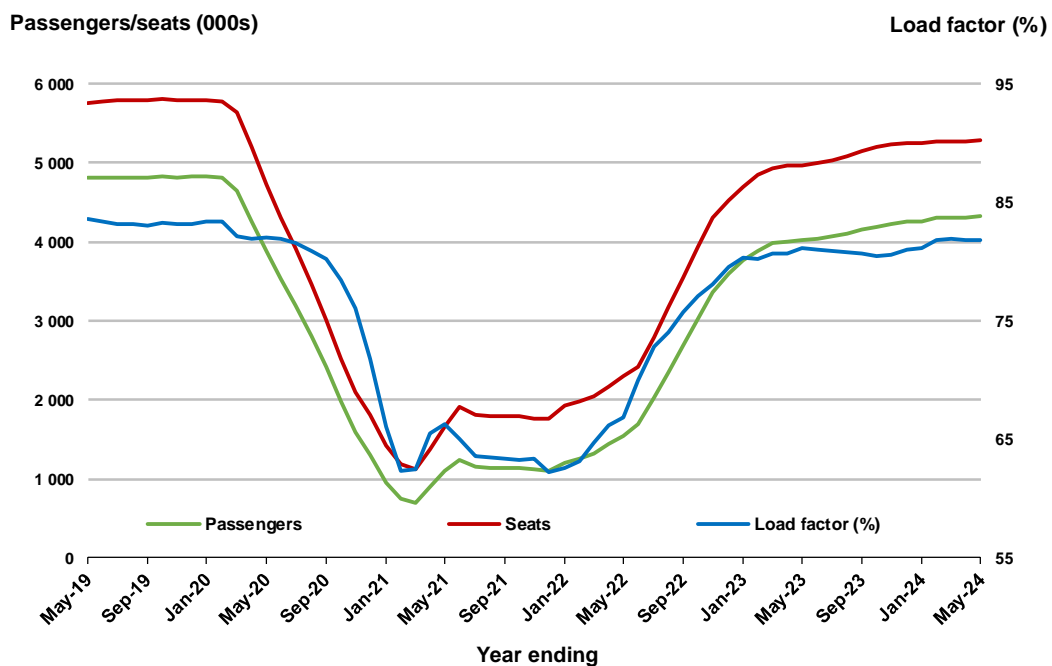
* percentage point difference



Moving annual data

	YE May 2023	YE May 2024	% Change
Passengers carried (000s)	4 027.6	4 316.8	7.2
Seats (000s)	4 964.0	5 278.7	6.3
Load factor %	81.1	81.8	0.6 *
Aircraft trips	30 513	32 382	6.1

* percentage point difference

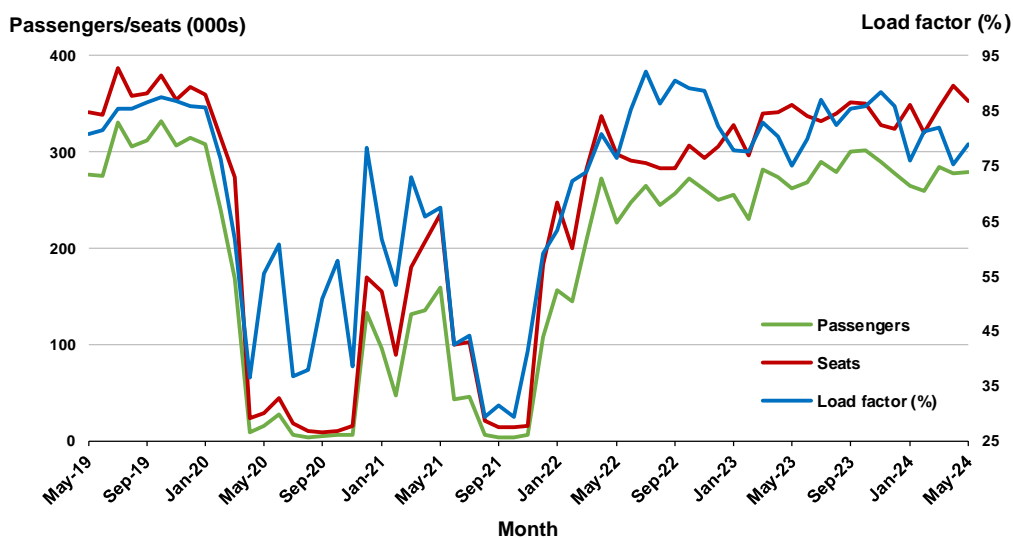


3. Brisbane - Melbourne

Monthly data

	May 2023	May 2024	% Change
Passengers carried (000s)	262.4	278.9	6.3
Seats (000s)	349.7	353.5	1.1
Load factor %	75.1	78.9	3.8 *
Aircraft trips	2 137	2 153	0.7

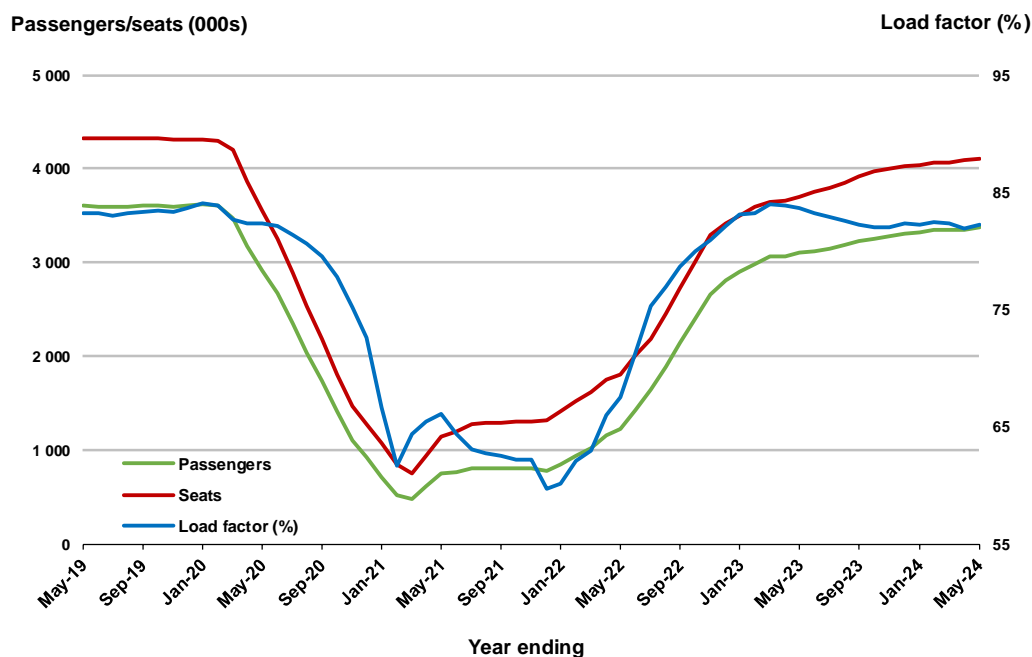
* percentage point difference



Moving annual data

	YE May 2023	YE May 2024	% Change
Passengers carried (000s)	3 102.5	3 373.2	8.7
Seats (000s)	3 707.7	4 103.0	10.7
Load factor %	83.7	82.2	-1.5 *
Aircraft trips	22 590	24 706	9.4

* percentage point difference



4. Gold Coast - Sydney ^(a)

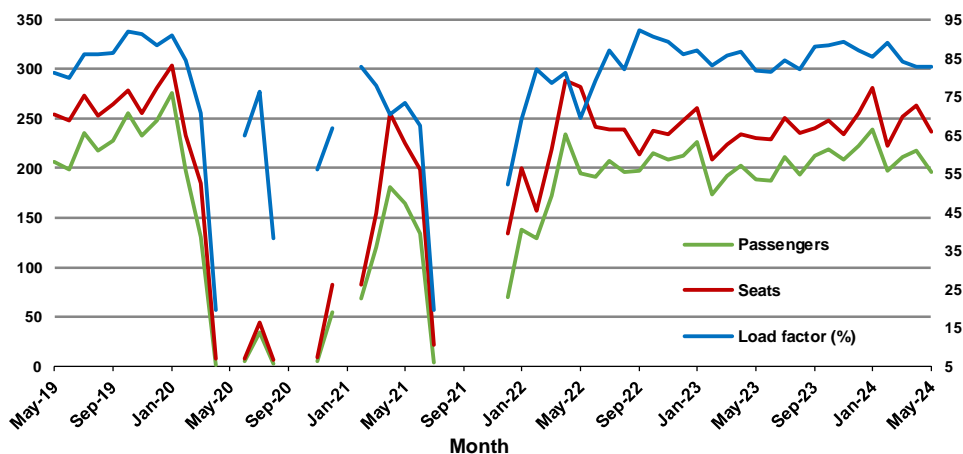
Monthly data

	May 2023	May 2024	% Change
Passengers carried (000s)	188.9	195.8	3.6
Seats (000s)	230.7	236.7	2.6
Load factor %	81.9	82.7	0.8 *
Aircraft trips	1 311	1 338	2.1

* percentage point difference

Passengers/seats (000s)

Load factor (%)



(a) May, September and October 2020 and January and August to November 2021 data not available for release.

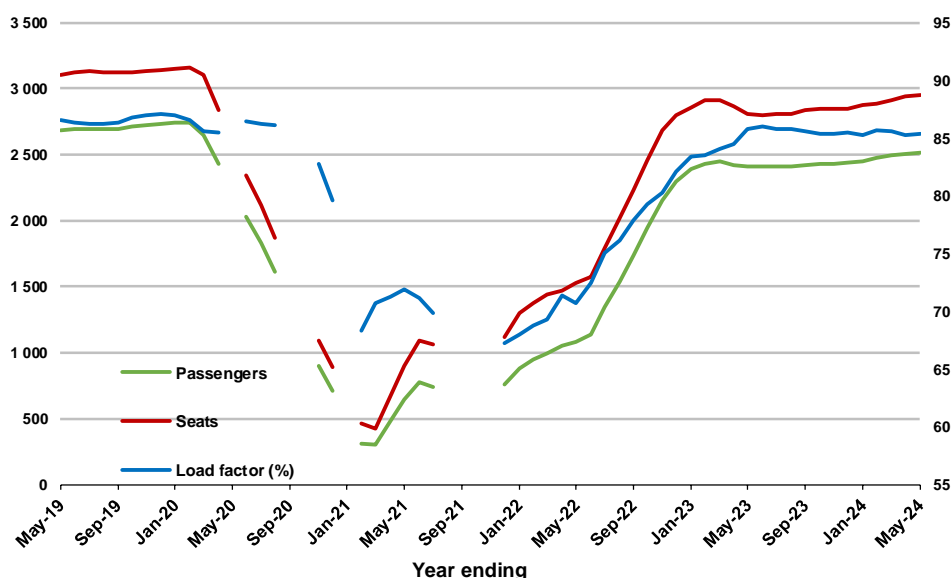
Moving annual data

	YE May 2023	YE May 2024	% Change
Passengers carried (000s)	2 412.5	2 514.7	4.2
Seats (000s)	2 811.0	2 947.5	4.9
Load factor %	85.8	85.3	-0.5 *
Aircraft trips	16 291	16 745	2.8

* percentage point difference

Passengers/seats (000s)

Load factor (%)



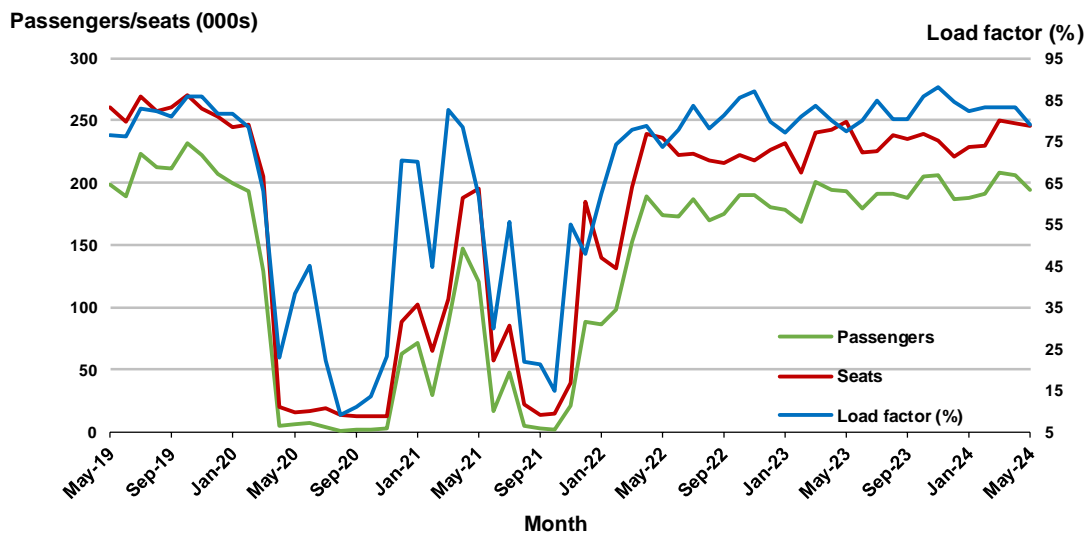
(a) May, September and October 2020 and January and August to November 2021 moving annual totals not available for release.

5. Adelaide - Melbourne

Monthly data

	May 2023	May 2024	% Change
Passengers carried (000s)	192.8	193.9	0.6
Seats (000s)	248.9	245.8	-1.2
Load factor %	77.5	78.9	1.4 *
Aircraft trips	1 521	1 488	-2.2

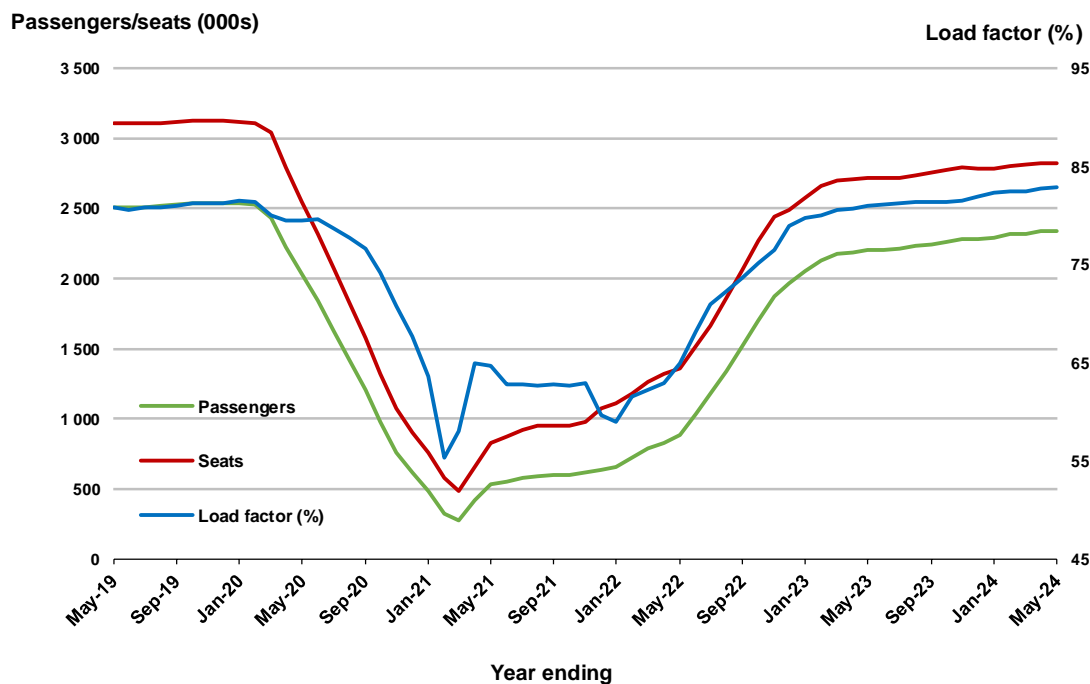
* percentage point difference



Moving annual data

	YE May 2023	YE May 2024	% Change
Passengers carried (000s)	2 200.7	2 335.2	6.1
Seats (000s)	2 717.1	2 818.7	3.7
Load factor %	81.0	82.8	1.9 *
Aircraft trips	16 685	17 215	3.2

* percentage point difference



6. Melbourne - Perth

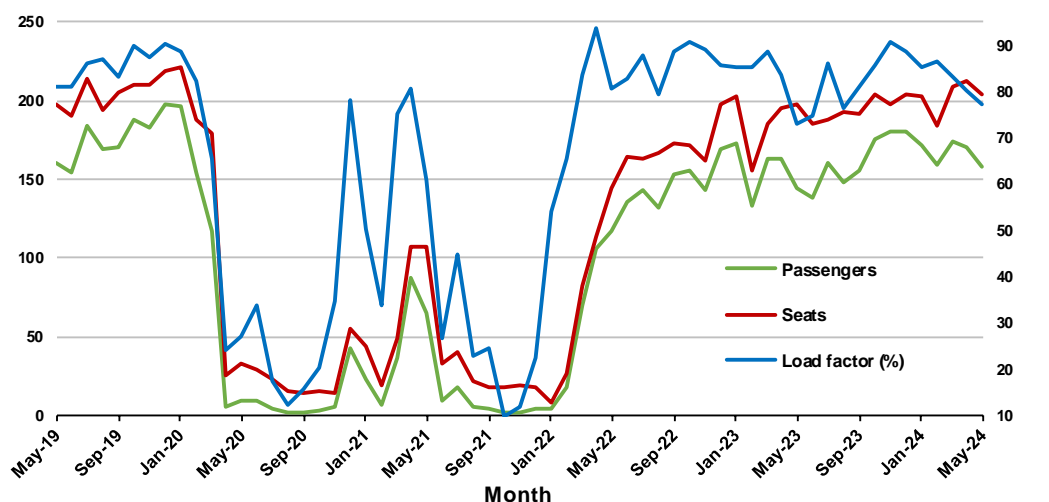
Monthly data

	May 2023	May 2024	% Change
Passengers carried (000s)	145.0	157.7	8.8
Seats (000s)	198.2	203.7	2.8
Load factor %	73.1	77.4	4.3 *
Aircraft trips	1 089	1 120	2.8

* percentage point difference

Passengers/seats (000s)

Load factor (%)



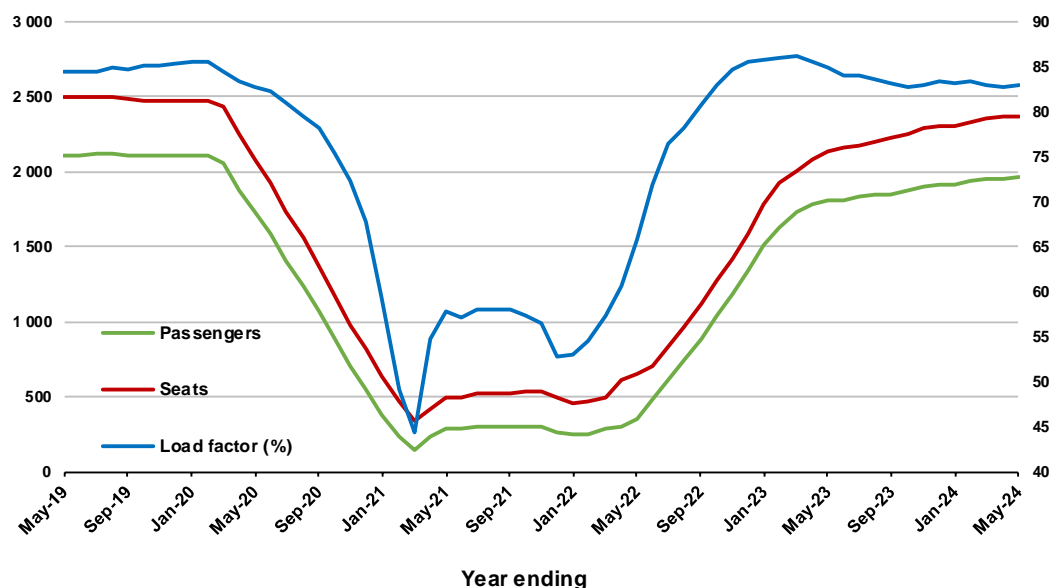
Moving annual data

	YE May 2023	YE May 2024	% Change
Passengers carried (000s)	1 811.7	1 970.9	8.8
Seats (000s)	2 135.8	2 374.3	11.2
Load factor %	84.8	83.0	-1.8 *
Aircraft trips	11 931	13 202	10.7

* percentage point difference

Passengers/seats (000s)

Load factor (%)

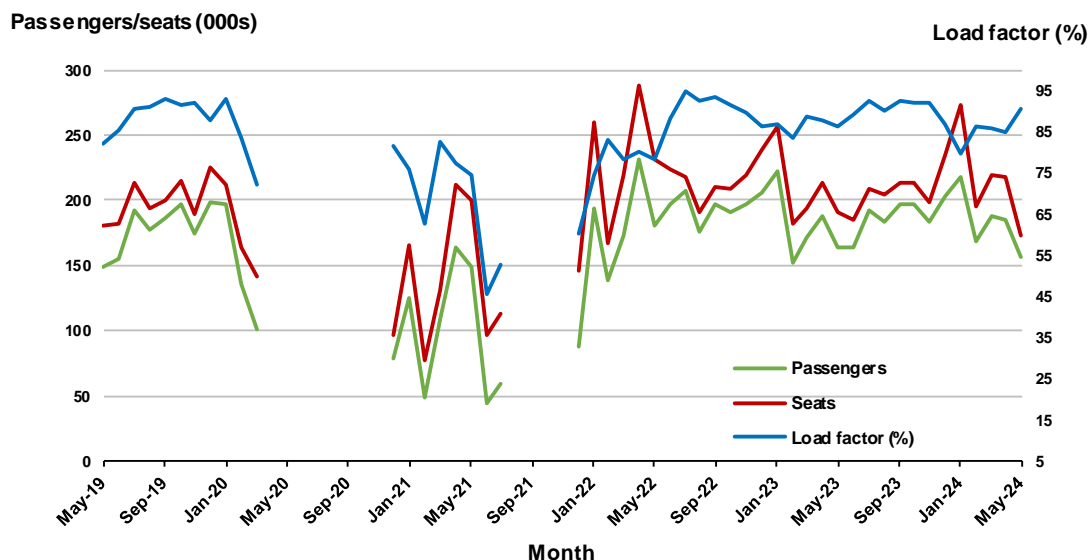


7. Gold Coast - Melbourne ^(a)

Monthly data

	May 2023	May 2024	% Change
Passengers carried (000s)	164.6	156.9	-4.7
Seats (000s)	190.7	173.5	-9.0
Load factor %	86.3	90.4	4.1 *
Aircraft trips	1 019	938	-7.9

* percentage point difference

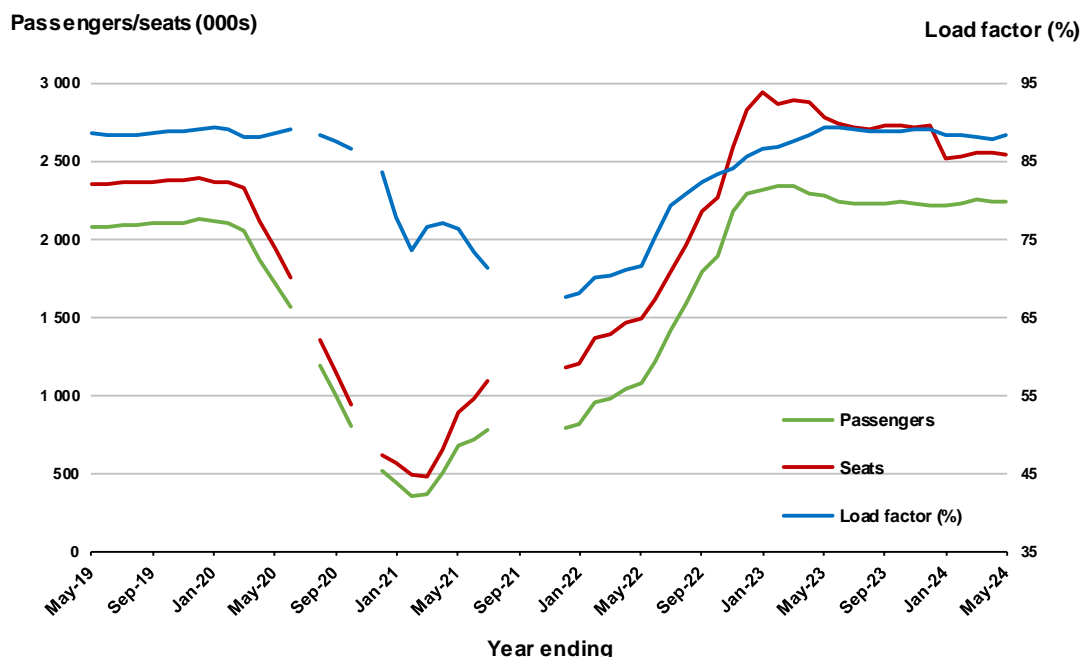


(a) April to November 2020 and August to November 2021 moving annuals are not available for release.

Moving annual data

	YE May 2023	YE May 2024	% Change
Passengers carried (000s)	2 273.8	2 236.6	-1.6
Seats (000s)	2 781.3	2 535.8	-8.8
Load factor %	89.2	88.2	-1.0 *
Aircraft trips	14 094	13 818	-2.0

* percentage point difference



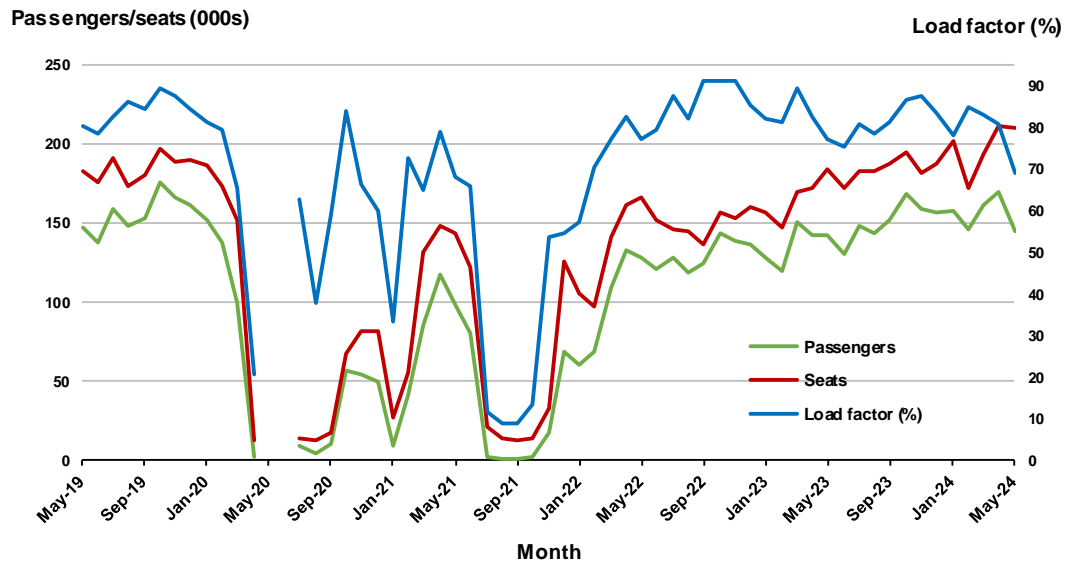
(a) July and November 2020 and August to November 2021 moving annuals are not available for release.

8. Adelaide - Sydney ^(a)

Monthly data

	May 2023	May 2024	% Change
Passengers carried (000s)	142.9	144.6	1.2
Seats (000s)	184.5	209.9	13.8
Load factor %	77.4	68.9	-8.5 *
Aircraft trips	1 128	1 255	11.3

* percentage point difference

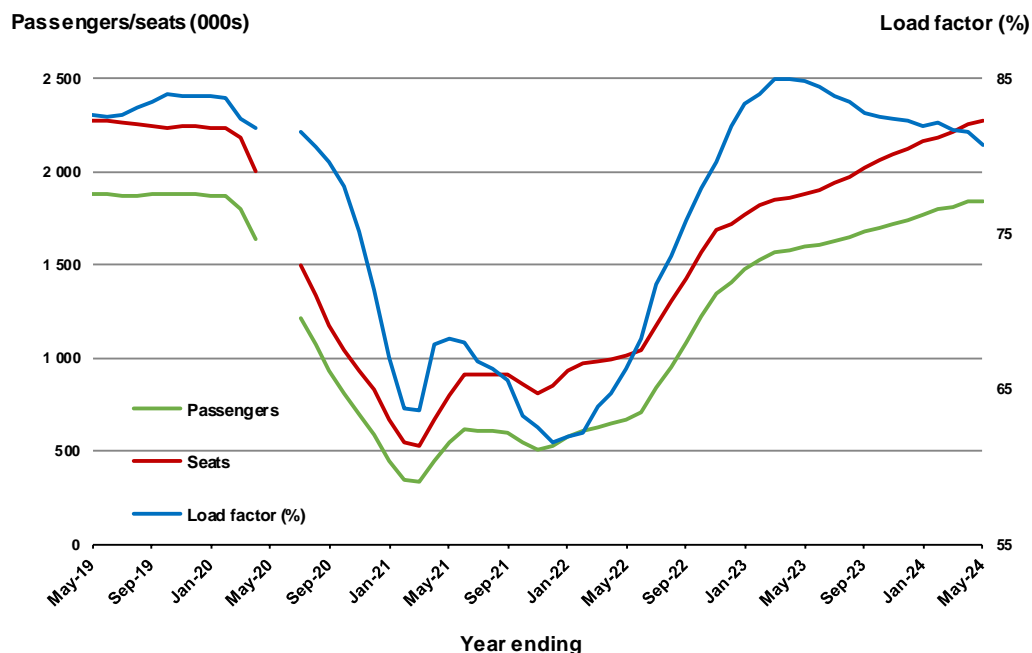


(a) May and June 2020 data not available for release.

Moving annual data

	YE May 2023	YE May 2024	% Change
Passengers carried (000s)	1 595.7	1 839.1	15.3
Seats (000s)	1 879.7	2 278.5	21.2
Load factor %	84.9	80.7	-4.2 *
Aircraft trips	11 516	13 872	20.5

* percentage point difference



(a) May and June 2020 moving annual totals are not available for release.

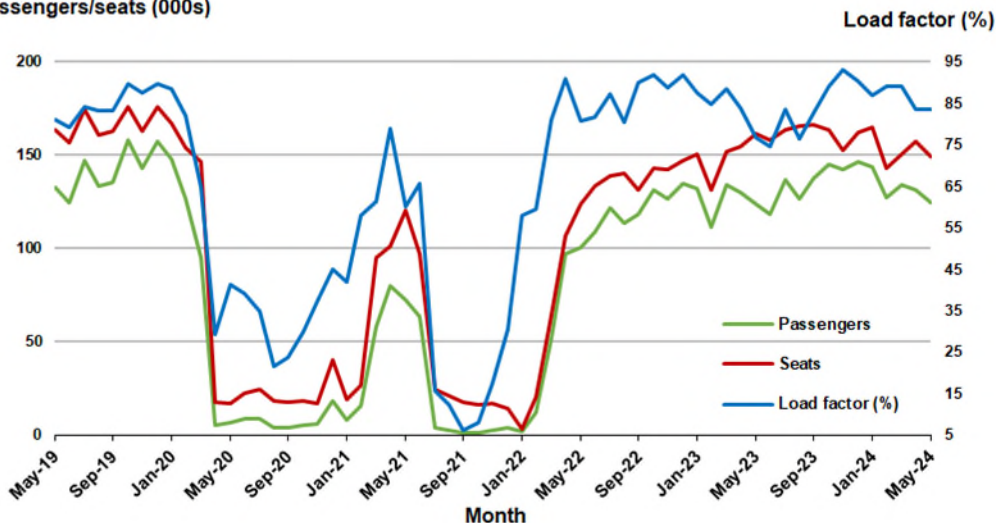
9. Perth - Sydney

Monthly data

	May 2023	May 2024	% Change
Passengers carried (000s)	123.9	124.9	0.8
Seats (000s)	161.4	149.6	- 7.3
Load factor %	76.8	83.5	6.7 *
Aircraft trips	818	799	- 2.3

* percentage point difference

Passengers/seats (000s)

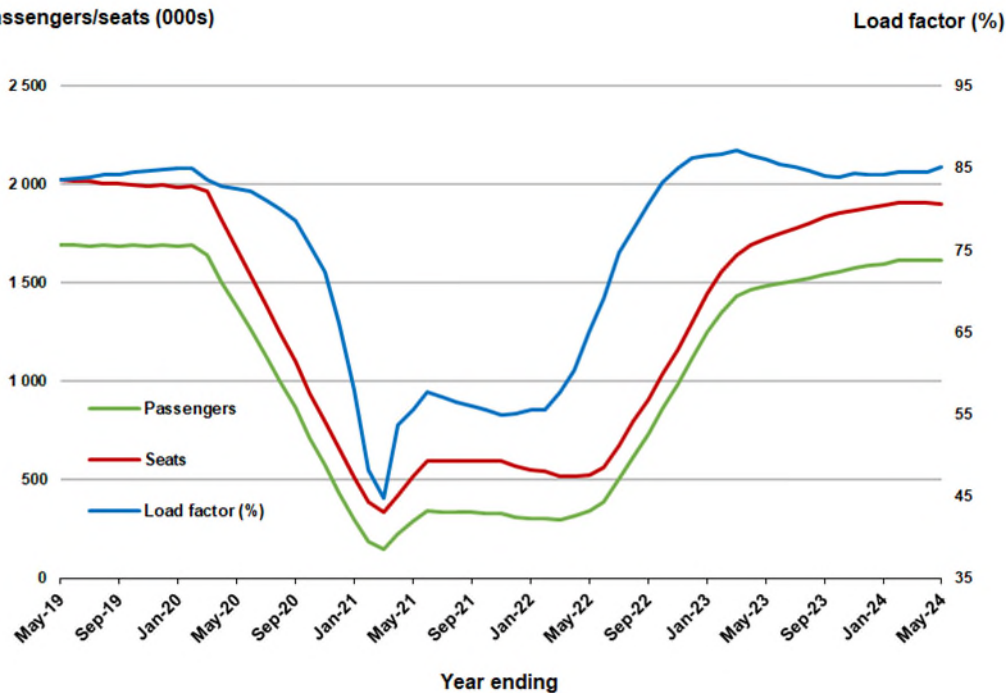


Moving annual data

	YE May 2023	YE May 2024	% Change
Passengers carried (000s)	1 487.5	1 615.7	8.6
Seats (000s)	1 728.1	1 898.3	9.9
Load factor %	86.1	85.1	-1.0 *
Aircraft trips	9 072	9 860	8.7

* percentage point difference

Passengers/seats (000s)

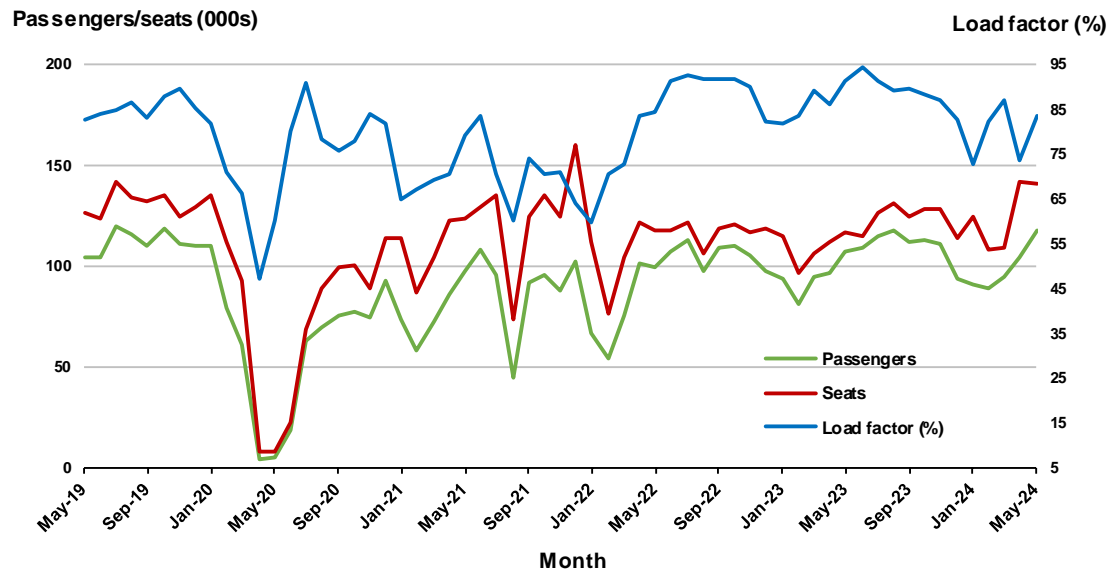


10. Brisbane - Cairns

Monthly data

	May 2023	May 2024	% Change
Passengers carried (000s)	106.7	117.4	10.0
Seats (000s)	117.1	140.6	20.1
Load factor %	91.1	83.5	-7.6 *
Aircraft trips	828	963	16.3

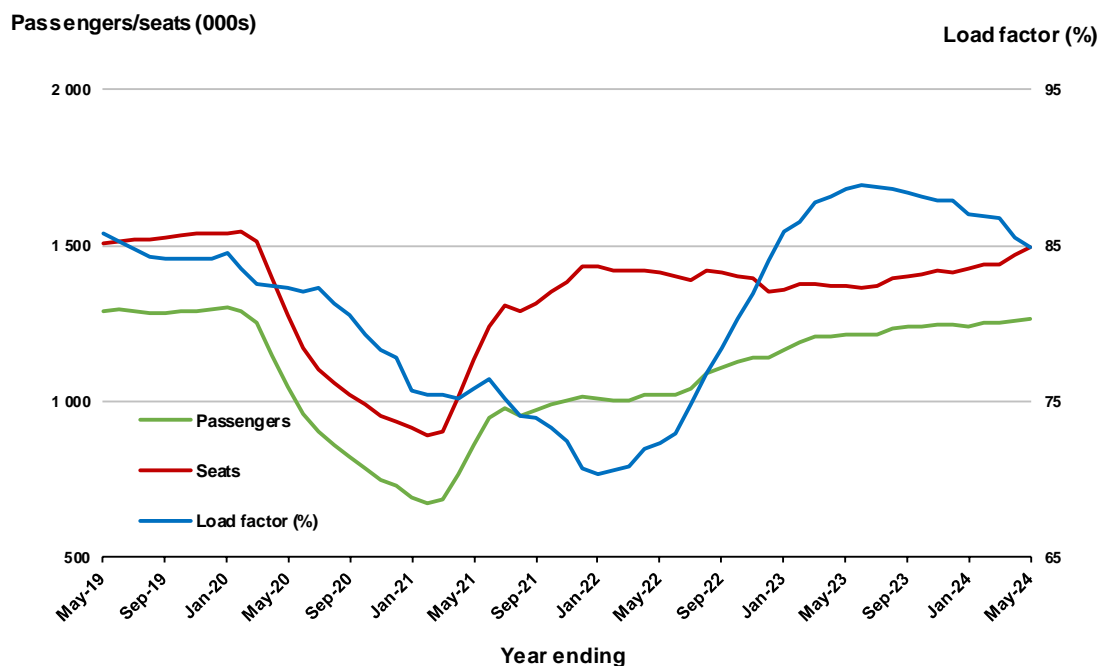
* percentage point difference



Moving annual data

	YE May 2023	YE May 2024	% Change
Passengers carried (000s)	1 212.3	1 266.4	4.5
Seats (000s)	1 367.8	1 491.8	9.1
Load factor %	88.6	84.9	-3.7 *
Aircraft trips	9 047	10 154	12.2

* percentage point difference



TOP FIFTY REGIONAL AIRPORTS

Table 10: Top fifty regional airports (000s) — passenger movements, monthly

Airport	May 2023	May 2024	% Change
1 Cairns	317.9	321.2	1.0
2 Hobart	190.0	191.7	0.9
3 Darwin	142.4	136.6	-4.1
4 Townsville	144.2	135.9	-5.7
5 Launceston	95.1	99.6	4.7
6 Newcastle	94.8	97.1	2.4
7 Mackay	76.7	77.8	1.4
8 Rockhampton	56.5	57.7	2.1
9 Karratha	47.6	53.8	13.0
10 Ballina	48.0	44.2	-7.8
11 Port Hedland	43.3	43.9	1.4
12 Broome	39.1	41.0	4.8
13 Proserpine	39.6	34.8	-12.2
14 Newman	34.5	33.9	-1.8
15 Hamilton Island	34.5	32.8	-5.0
16 Kalgoorlie	31.7	32.5	2.5
17 Alice Springs	31.8	31.7	-0.2
18 Paraburdoo	21.0	25.8	23.3
19 Ayers Rock	18.5	22.7	22.7
20 Coffs Harbour	25.8	22.2	-14.1
21 Mount Isa	20.0	20.9	4.3
22 Albury	21.7	20.2	-6.7
23 Gladstone	19.4	19.7	1.1
24 Dubbo	19.1	18.8	-1.3
25 Wagga Wagga	17.8	18.6	4.2
26 Mildura	20.0	17.5	-12.4
27 Port Macquarie	20.6	17.1	-16.7
28 Emerald	17.4	17.0	-2.3
29 Kununurra	13.6	14.2	4.0
30 Port Lincoln	14.9	14.0	-5.9
31 Tamworth	15.5	14.0	-10.1
32 Hervey Bay	12.1	12.9	6.2
33 Bundaberg	13.2	12.7	-3.6
34 Learmonth	11.2	11.1	-0.9
35 Geraldton	8.1	10.5	30.0
36 Devonport	9.9	10.5	5.8
37 Orange	9.0	10.3	14.4
38 Armidale	9.6	9.6	0.1
39 Thursday Island	8.7	9.6	10.4
40 Moranbah	9.8	9.6	-1.7
41 Olympic Dam	9.3	9.1	-2.6
42 Gove	7.2	8.3	14.9
43 Weipa	7.4	8.2	9.6
44 Busselton	4.2	7.5	78.6
45 Mount Gambier	6.5	6.7	4.3
46 Burnie	6.4	6.4	-0.3
47 Albany	5.7	6.0	4.7
48 Griffith	6.7	5.9	-11.6
49 Roma	5.9	5.8	-1.1
50 Merimbula	5.8	5.7	-1.4
Total top 50 regional airport	1 889.6	1 895.1	0.3
Total regional airports	2 021.7	2 024.0	0.1
Total domestic network	9 268.4	9 485.7	2.3

Note: Airport passenger movement numbers are the sum of passenger arrivals and departures at each airport.

Regional airports are defined as airports which are, according to Australian Statistical Geography Standard (ASGS), not based in Major Cities.

Table 11: Top fifty regional airports (000s) — passenger movements, annual

Airport	YE May 2023	YE May 2024	% Change
1 Cairns	3 906.9	4 053.5	3.8
2 Hobart	2 498.6	2 656.6	6.3
3 Townsville	1 641.8	1 687.0	2.8
4 Darwin	1 651.4	1 600.0	-3.1
5 Launceston	1 298.2	1 411.5	8.7
6 Newcastle	1 086.9	1 201.7	10.6
7 Mackay	890.7	915.0	2.7
8 Rockhampton	546.9	660.0	20.7
9 Ballina	636.6	623.2	-2.1
10 Karratha	529.6	577.8	9.1
11 Proserpine	473.9	512.3	8.1
12 Hamilton Island	505.1	491.4	-2.7
13 Port Hedland	477.2	485.7	1.8
14 Broome	443.9	438.3	-1.3
15 Newman	366.4	371.0	1.3
16 Alice Springs	365.0	367.5	0.7
17 Kalgoorlie	335.0	363.9	8.6
18 Albury	231.9	279.9	20.7
19 Ayers Rock	244.2	276.2	13.1
20 Coffs Harbour	285.6	271.0	-5.1
21 Paraburdoo	223.7	262.4	17.3
22 Gladstone	206.6	241.0	16.6
23 Mildura	205.3	233.9	13.9
24 Mount Isa	231.4	232.7	0.5
25 Port Macquarie	189.0	231.3	22.4
26 Dubbo	197.1	214.9	9.0
27 Wagga Wagga	193.8	201.8	4.1
28 Emerald	188.1	196.5	4.5
29 Tamworth	150.1	175.7	17.1
30 Port Lincoln	179.5	171.7	-4.4
31 Bundaberg	114.6	166.2	45.0
32 Hervey Bay	135.6	153.1	12.9
33 Kununurra	132.2	139.1	5.2
34 Devonport	117.3	121.4	3.5
35 Moranbah	106.3	111.3	4.7
36 Thursday Island	101.7	110.0	8.1
37 Orange	99.4	109.5	10.1
38 Armidale	110.1	108.6	-1.3
39 Geraldton	82.1	108.3	31.9
40 Learmonth	102.7	104.3	1.6
41 Olympic Dam	97.4	104.0	6.8
42 Gove	88.3	91.9	4.0
43 Weipa	84.7	90.3	6.6
44 Toowoomba Wellcamp	50.3	89.0	77.0
45 Burnie	82.3	81.0	-1.6
46 Mount Gambier	77.6	73.1	-5.9
47 Merimbula	75.2	70.6	-6.1
48 Griffith	75.9	70.2	-7.5
49 Norfolk Island	70.7	69.9	-1.2
50 Albany	60.5	64.9	7.2
Total top 50 regional airport	22 245.4	23 442.1	5.4
Total regional airports	23 639.0	24 867.2	5.2
Total domestic network	110 465.8	117 240.8	6.1

Note: Airport passenger movement numbers are the sum of passenger arrivals and departures at each airport. Regional airports are defined as airports which are, according to Australian Statistical Geography Standard (ASGS), not based in Major Cities.

DOMESTIC CHARTER ACTIVITY

Table 12: Charter passengers carried and aircraft trips - monthly activity (000s)

	May 2023	May 2024	% Change
Total domestic charter passengers	362.2	391.4	8.1
Total domestic charter aircraft trips	6.2	6.5	5.6

Note: Helicopter, joyflights and sightseeing charter flights not included.

Table 13: Charter passengers carried and aircraft trips - annual activity (000s)

	YE May 2023	YE May 2024	% Change
Total domestic charter passengers	3 797.4	4 239.7	11.6
Total domestic charter aircraft trips	67.3	72.4	7.6

Note: Helicopter, joyflights and sightseeing charter flights not included.

Table 14: Domestic airports - charter activity - monthly (000s)

	May 2023	May 2024	% Change
Total domestic charter passenger movements	724.4	782.9	8.1
Total domestic charter aircraft movements	12.3	13.0	5.6
Perth airport charter passenger movements	270.5	290.6	7.4
Perth airport charter aircraft movements	4.2	4.2	1.1

Note: Helicopter, joyflights and sightseeing charter flights not included.

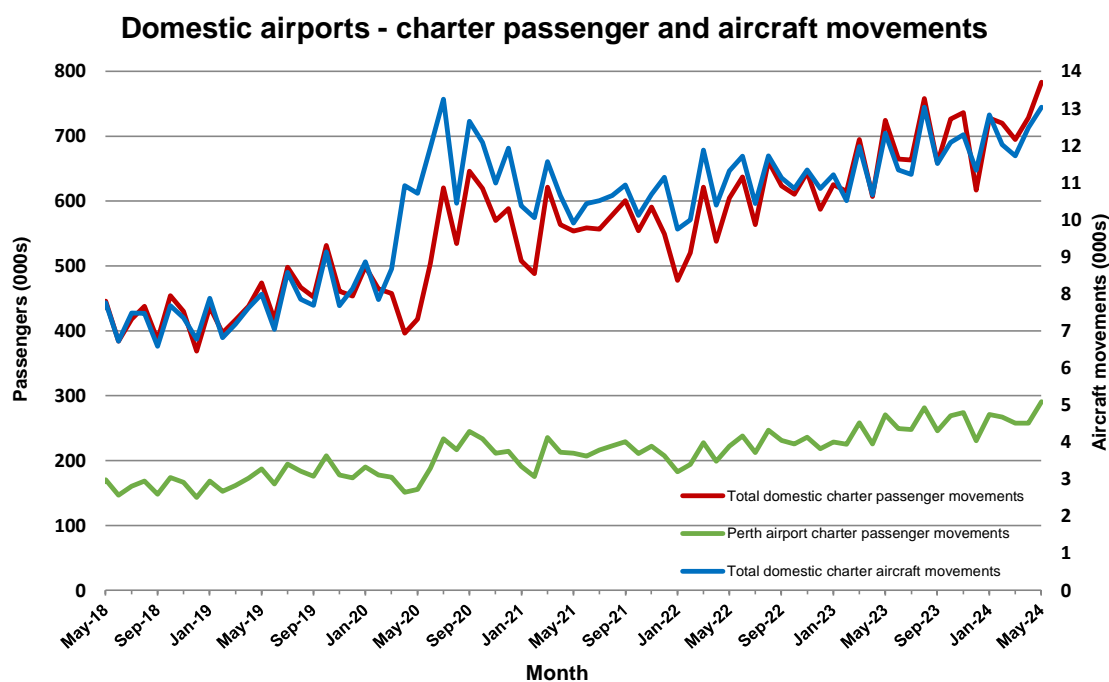
Charter passenger and aircraft movement numbers are the sum of arrivals and departures at each airport.

Table 15: Domestic airports - charter activity - annual (000s)

	YE May 2023	YE May 2024	% Change
Total domestic charter passenger movements	7 594.9	8 479.4	11.6
Total domestic charter aircraft movements	134.7	144.9	7.6
Perth airport charter passenger movements	2 816.3	3 143.6	11.6
Perth airport charter aircraft movements	45.2	48.6	7.5

Note: Helicopter, joyflights and sightseeing charter flights not included.

Charter passenger and aircraft movement numbers are the sum of arrivals and departures at each airport.



DEFINITIONS

Aircraft Trips	The number of flight stages. A return flight counts as two aircraft trips.
Airport Movements	Airport movements (passenger and cargo) are measured once on arrival and once on departure. Each domestic trip generates two movements at airports. For example, a trip from Melbourne to Sydney will be counted twice, as a departure at Melbourne and as an arrival at Sydney. At the national level, the sum of all domestic airport traffic will therefore be equal to twice the number of trips undertaken.
Available Seat Kilometres (ASKs)	Calculated by multiplying the number of seats available on each flight stage, by the distance in kilometres between the ports. The distances used are Great Circle Distances.
City-Pair	The ports shown make up the city-pair route. Passenger movements shown for a city pair reflect total traffic in both directions.
Flight Stage	The operation of an aircraft from take-off to landing.
Load Factor	The total revenue passenger kilometres performed as a percentage of the total available seat kilometres.
Passengers Carried	Revenue passengers carried.
Regular Public Transport Services (RPT)	All air service operations in which aircraft are available for the transport of members of the public and are conducted in accordance with fixed schedules. It does not include charter or other non-scheduled operations.
Revenue Passengers	All passengers paying any fare. Frequent flyer redemption travellers are regarded as revenue passengers.
Revenue Passenger Kilometres (RPKs)	Calculated by multiplying the number of revenue passengers travelling on each flight stage, by the distance in kilometres between the ports. The distances used are Great Circle Distances.
Traffic on board by stages (TOB)	The total of all traffic (revenue passengers) on each flight stage between two directly connected airports.
..	Not available for confidentiality or other reasons.
NA	Not applicable.