



Australian Government

**Department of Infrastructure, Transport,
Regional Development, Communications and the Arts**
Bureau of Infrastructure and Transport Research Economics

STATISTICAL REPORT



bitre

Aviation

**Domestic aviation activity
November 2024**

The Department of Infrastructure, Transport, Regional Development, Communications and the Arts acknowledges the Traditional Custodians of Country of the land on which we work and live.

We recognise and respect the continuing connections to land, waters and communities.

We pay our respects to them and their cultures and to their Elders both past and present and to all Aboriginal and Torres Strait Islander people.

© Commonwealth of Australia 2025

ISSN: 1832 – 1968

BITRE Reference: 2025-014

Ownership of intellectual property rights in this publication

Unless otherwise noted, copyright (and any other intellectual property rights, if any) in this publication is owned by the Commonwealth of Australia (referred to below as the Commonwealth).

Disclaimer

The material contained in this publication is made available on the understanding that the Commonwealth is not providing professional advice, and that users exercise their own skill and care with respect to its use, and seek independent advice if necessary.

The Commonwealth makes no representations or warranties as to the contents or accuracy of the information contained in this publication. To the extent permitted by law, the Commonwealth disclaims liability to any person or organisation in respect of anything done, or omitted to be done, in reliance upon information contained in this publication.

Creative Commons licence

With the exception of (a) the Coat of Arms; and (b) the Department of Infrastructure, Transport, Regional Development, Communications and the Arts' photos and graphics, copyright in this publication is licensed under a Creative Commons Attribution 3.0 Australia Licence.

Creative Commons Attribution 3.0 Australia Licence is a standard form licence agreement that allows you to copy, communicate and adapt this publication provided that you attribute the work to the Commonwealth and abide by the other licence terms. A summary of the licence terms is available from <http://creativecommons.org/licenses/by/3.0/au/deed.en>.

The full licence terms are available from <http://creativecommons.org/licenses/by/3.0/au/legalcode>.

Use of the Coat of Arms

The Department of the Prime Minister and Cabinet sets the terms under which the Coat of Arms is used. Please refer to the Department's Commonwealth Coat of Arms and Government branding web page <http://www.dpmc.gov.au/guidelines/index.cfm#brand> and, in particular, the Guidelines on the use of the Commonwealth Coat of Arms publication.

An appropriate citation for this report is:

Bureau of Infrastructure and Transport Research Economics (BITRE), 2025, Domestic aviation activity, Statistical Report, BITRE, Canberra ACT.

Contact us

This publication is available in PDF format. All other rights are reserved, including in relation to any Departmental logos or trademarks which may exist. For enquiries regarding the licence and any use of this publication, please contact:

Bureau of Infrastructure and Transport Research Economics (BITRE)
Department of Infrastructure, Transport, Regional Development, Communications and the Arts
GPO Box 501, Canberra ACT 2601, Australia

Email: bitre@infrastructure.gov.au

Website: www.bitre.gov.au

Inquiries: Marko.Rodic2@infrastructure.gov.au (02) 6136 7995

FOREWORD

This report provides an overview of domestic (including charter) commercial aviation activity in Australia for the month of November 2024.

The data covers revenue passengers carried by Australian-registered operators of scheduled Regular Public Transport (RPT) services over Australian flight stages and fixed-wing charter operators. These estimates include passengers carried between domestic airports on international flights operated by these carriers. The passengers carried refer to traffic on board by stages.

Estimates of passengers and aircraft movements for charter aviation are included in this publication, where BITRE confidentiality standards are met.

Individual routes shown are restricted to those with an average exceeding 8,000 passengers per month over the previous six months where two or more airlines operate in competition. However, for the period from December 2021 through to December 2022, the major airlines (Qantas Group, Virgin Australia and Rex Airlines) agreed to publication of the top 35 routes based on pre-COVID activity (December 2019) whether or not they were meeting the above criteria. From January 2023, the passenger load and dual competition requirements were reinstated due to the continued recovery of passenger numbers.

Information on the total network for the month of November 2024 and on the RPT network for the month of November 2024 is presented on page 2, with estimates for the year ended November 2024 presented on page 3.

Detailed information on individual routes can be found in the RPT summary pages 4-13 of this publication. For the month of November 2024, there are 62 individual routes published.

The top ten airports in terms of RPT passenger movements are shown on page 14.

Data on domestic RPT cargo movements at the top five cargo airports are provided on page 15. The table includes cargo carried on passenger flights operated by the Qantas group (including Jetstar), Virgin Australia, Air North and Skippers as well as the cargo carried by dedicated freighter aircraft operated by Qantas Freight and Team Global Express (formerly Toll).

The long-term trends for the top ten competitive RPT routes are presented graphically on pages 16-25.

Domestic RPT passenger movements at regional airports are shown on pages 26-27.

Tables providing estimates of domestic charter aviation activity are shown on page 28. BITRE confidentiality standards restrict publication of detailed estimates for individual Australian airports, with the exception of Perth Airport.

A list of definitions can be found on page 29.

This report was prepared by the Aviation Statistics Section of the Bureau of Infrastructure and Transport Research Economics with data provided by airlines.

Estimates are included where data were not available and data presented in this publication may contain revisions to previously published data.

Where figures have been rounded, discrepancies may occur between sums of component items and totals, and in percentage changes which are derived from figures prior to rounding.

CONTENTS

Highlights	1
Total network.....	2
RPT network	2
Top competitive routes.....	4
Top ten airports – passenger movements.....	14
Top five airports – cargo movements.....	15
Top ten routes	16
1. Melbourne – Sydney	16
2. Brisbane – Sydney.....	17
3. Brisbane – Melbourne	18
4. Adelaide – Melbourne	19
5. Gold Coast – Sydney	20
6. Melbourne – Perth	21
7. Gold Coast – Melbourne.....	22
8. Adelaide – Sydney	23
9. Perth – Sydney	24
10. Hobart – Melbourne	25
Top fifty regional airports	26
Domestic charter activity.....	28
Definitions	29

This page is intentionally left blank.

HIGHLIGHTS

There were 5.44 million passengers carried on Australian domestic commercial aviation (including charter operations) in November 2024, compared with 5.41 million in November 2023 (up 0.5 per cent). This is also a decrease of 0.9 per cent on pre-COVID November 2019 passenger numbers (5.49 million).

5.09 million passengers were carried on Regular Public Transport (RPT) flights in November 2024 (excluding charter operations), an increase of 1.0 per cent compared to November 2023.

For the month of November 2024, there were 49.7 thousand RPT aircraft trips, a decrease of 3.1 per cent on November 2023.

For the year ending November 2024 there were 59.10 million RPT passengers, an increase of 3.8 per cent on the year ending November 2023.

RPT revenue passenger kilometres (RPKs) performed were 6.04 billion for the month, compared with 5.94 billion in November 2023 (up 1.7 per cent).

Capacity, measured by available seat kilometres (ASKs), decreased to 6.94 billion in November 2024 compared to 6.97 billion in November 2023 (down 0.4 per cent).

The industry wide load factor (RPKs/ASKs) increased from 85.2 per cent in November 2023 to 87.0 per cent in November 2024. The highest load factor (94.1 per cent) was recorded on the Cairns - Sydney route while the lowest load factor (57.7 per cent) was recorded on the Brisbane - Moranbah route.

For the month of November 2024, Melbourne – Sydney was Australia’s busiest RPT route with 704.5 thousand passengers, followed by Brisbane – Sydney with 386.2 thousand passengers and Brisbane – Melbourne with 307.2 thousand passengers.

Sydney was Australia’s busiest domestic airport with 2.19 million passenger movements in November 2024, followed by Melbourne with 2.07 million passenger movements and Brisbane with 1.50 million passenger movements.

Total cargo movements at Australian airports on domestic RPT flights were 28.1 thousand tonnes in November 2024, a decrease of 8.3 per cent compared with November 2023.

In November 2024, there were 2.09 million domestic passenger movements through regional airports, an increase of 0.6 per cent from November 2023. Out of the top 50 regional airports, the strongest increase was recorded at Busselton Airport (up 40.6 per cent on November 2023), while the largest decrease was recorded at Albury Airport (down 18.3 per cent on November 2023).

Fixed-wing charter operators carried 347.8 thousand passengers in November 2024, a decrease of 5.5 per cent compared with November 2023. Perth Airport accounted for 35.7 per cent of all charter passengers in Australia.

TOTAL NETWORK

Summary of monthly commercial aviation activity

	Nov 2023	Nov 2024	% Change
Total passengers carried (millions)	5.41	5.44	0.5
Aircraft trips (000s)	57.4	55.5	-3.4

Note: Regular Public Transport and charter aviation activity
Helicopter, joy flights and sightseeing charter flights not included.

RPT NETWORK

Summary of monthly RPT activity

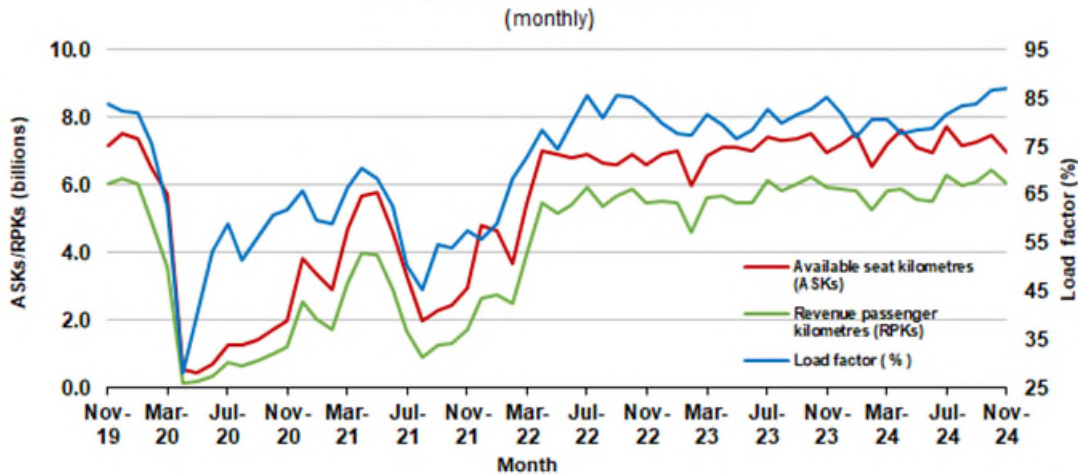
	Nov 2023	Nov 2024	% Change
Total passengers carried (millions)	5.04	5.09	1.0
Revenue passenger kilometres (billions)	5.94	6.04	1.7
Available seats (millions)	6.09	5.94	-2.5
Available seat kilometres (billions)	6.97	6.94	-0.4
Load factor %	85.2	87.0	1.8 *
Aircraft trips (000s)	51.3	49.7	-3.1

* percentage point difference

Domestic RPT passenger traffic



RPT Network utilisation



TOTAL NETWORK

Summary of annual commercial aviation activity

	YE Nov 2023	YE Nov 2024	% Change
Total passengers carried (millions)	60.96	63.42	4.0
Aircraft trips (000s)	681.0	688.5	1.1

Note: Regular Public Transport and charter aviation activity
Helicopter, joy flights and sightseeing charter flights not included.

RPT NETWORK

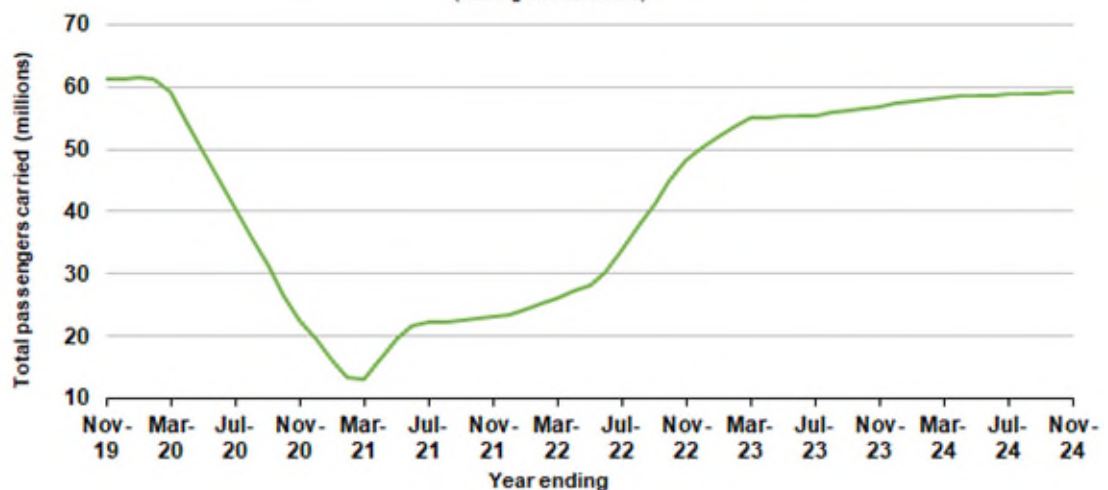
Summary of annual RPT activity

	YE Nov 2023	YE Nov 2024	% Change
Total passengers carried (millions)	56.93	59.10	3.8
Revenue passenger kilometres (billions)	68.06	70.67	3.8
Available seats (millions)	72.94	74.46	2.1
Available seat kilometres (billions)	84.72	86.87	2.5
Load factor %	80.3	81.4	1.0 *
Aircraft trips (000s)	611.5	615.1	0.6

* percentage point difference

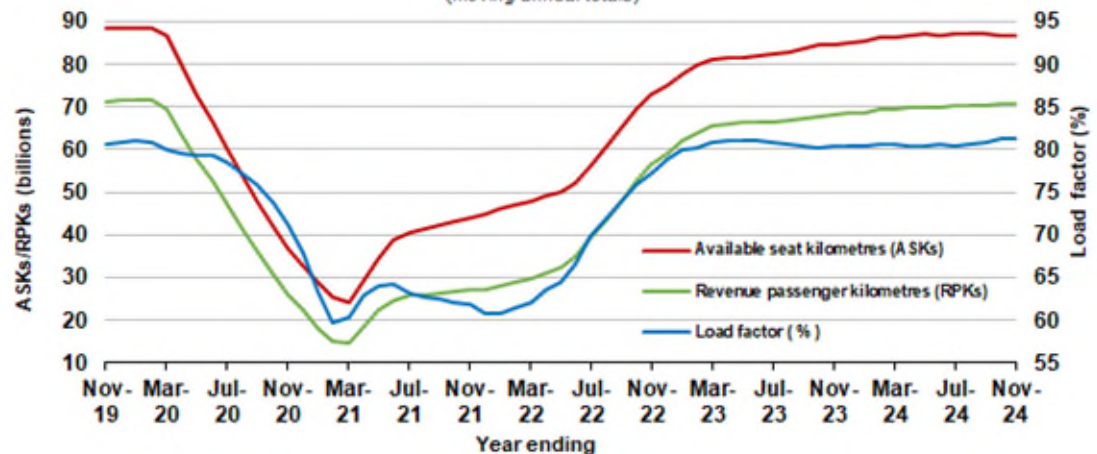
Domestic RPT passenger traffic

(moving annual totals)



RPT Network utilisation

(moving annual totals)



TOP COMPETITIVE ROUTES

Table 1: Passengers carried (000s) — annual activity

	City-Pair	YE Nov 2023	YE Nov 2024	% Change
1	Melbourne - Sydney	7 557.4	8 014.7	6.1
2	Brisbane - Sydney	4 215.8	4 353.1	3.3
3	Brisbane - Melbourne	3 284.3	3 478.2	5.9
4	Gold Coast - Sydney	2 426.9	2 540.5	4.7
5	Adelaide - Melbourne	2 277.2	2 325.0	2.1
6	Gold Coast - Melbourne	2 223.4	2 179.7	-2.0
7	Melbourne - Perth	1 905.0	2 022.1	6.1
8	Adelaide - Sydney	1 723.4	1 872.4	8.6
9	Perth - Sydney	1 575.1	1 630.4	3.5
10	Hobart - Melbourne	1 277.3	1 370.8	7.3
11	Brisbane - Cairns	1 247.2	1 294.7	3.8
12	Brisbane - Perth	1 007.8	1 078.5	7.0
13	Canberra - Melbourne	990.8	1 015.0	2.4
14	Brisbane - Townsville	871.5	933.9	7.2
15	Cairns - Sydney	893.8	905.2	1.3
16	Adelaide - Brisbane	809.5	872.3	7.8
17	Launceston - Melbourne	804.4	861.8	7.1
18	Cairns - Melbourne	813.0	809.2	-0.5
19	Hobart - Sydney	728.8	795.9	9.2
20	Sunshine Coast - Sydney	750.3	776.0	3.4
21	Brisbane - Mackay	730.7	758.5	3.8
22	Melbourne - Sunshine Coast	732.9	744.8	1.6
23	Adelaide - Perth	649.0	695.5	7.2
24	Canberra - Sydney	598.3	639.0	6.8
25	Brisbane - Canberra	632.8	633.7	0.1
26	Karratha - Perth	540.4	605.2	12.0
27	Brisbane - Rockhampton	508.1	576.4	13.4
28	Ballina - Sydney	535.3	520.7	-2.7
29	Brisbane - Newcastle	496.6	509.5	2.6
30	Perth - Port Hedland	479.5	473.9	-1.2
31	Melbourne - Newcastle	416.9	456.1	9.4
32	Newman - Perth	371.3	391.7	5.5
33	Kalgoorlie - Perth	357.3	364.7	2.1
34	Broome - Perth	364.1	353.7	-2.8
35	Launceston - Sydney	326.4	339.1	3.9
36	Brisbane - Darwin	321.5	324.6	1.0
37	Brisbane - Hobart	291.5	303.8	4.2
38	Darwin - Melbourne	283.3	287.2	1.4
39	Brisbane - Proserpine	271.8	277.8	2.2
40	Adelaide - GoldCoast	258.3	276.5	7.1
41	Hamilton Island - Sydney	246.8	245.1	-0.7
42	Brisbane - Gladstone	212.9	223.3	4.9
43	Coffs Harbour - Sydney	215.7	206.8	-4.1
44	Brisbane - Emerald	183.9	186.2	1.2
45	Adelaide - Canberra	194.7	184.8	-5.1
46	Canberra - GoldCoast	174.0	184.1	5.8
47	Darwin - Perth	170.6	181.6	6.5
48	Dubbo - Sydney	176.5	174.0	-1.4
49	Adelaide - PortLincoln	174.3	170.1	-2.4
50	Port Macquarie - Sydney	166.1	165.2	-0.6

continued

Table 1: (continued) Passengers carried (000s) — annual activity

	City-Pair	YE Nov 2023	YE Nov 2024	% Change
51	Albury - Sydney	165.3	162.1	-1.9
52	Melbourne - Mildura	164.5	161.3	-2.0
53	Brisbane - HamiltonIsland	164.1	160.5	-2.2
54	Sydney - WaggaWagga	154.1	159.6	3.6
55	Brisbane - Launceston	153.0	150.9	-1.3
56	Brisbane - Mount Isa	143.7	147.8	2.8
57	Brisbane - Bundaberg	128.2	139.9	9.1
58	Devonport - Melbourne	121.2	124.6	2.8
59	Geraldton - Perth	90.7	112.0	23.5
60	Brisbane - Moranbah	109.2	111.7	2.3
61	Adelaide - AliceSprings	116.2	107.7	-7.3
62	Ayers Rock - Melbourne	..	106.1	NA
	Total domestic network	56 932.4	59 095.5	3.8

.. Data not available for release.

Table 2: Passengers carried (000s) — monthly activity

	City-Pair	Nov 2023	Nov 2024	% Change
1	Melbourne - Sydney	696.9	704.5	1.1
2	Brisbane - Sydney	379.7	386.2	1.7
3	Brisbane - Melbourne	289.8	307.2	6.0
4	Adelaide - Melbourne	206.1	202.3	-1.9
5	Gold Coast - Sydney	208.7	200.1	-4.1
6	Melbourne - Perth	179.8	177.5	-1.3
7	Gold Coast - Melbourne	182.9	175.1	-4.3
8	Adelaide - Sydney	159.6	168.5	5.6
9	Perth - Sydney	142.4	147.2	3.4
10	Hobart - Melbourne	114.6	117.8	2.8
11	Brisbane - Cairns	111.2	107.6	-3.3
12	Brisbane - Perth	91.2	98.7	8.2
13	Canberra - Melbourne	94.1	91.4	-2.9
14	Brisbane - Townsville	70.4	79.3	12.6
15	Adelaide - Brisbane	78.8	78.7	-0.2
16	Hobart - Sydney	63.7	72.4	13.6
17	Sunshine Coast - Sydney	66.6	71.0	6.5
18	Cairns - Sydney	73.6	69.1	-6.1
19	Launceston - Melbourne	71.8	68.6	-4.4
20	Melbourne - Sunshine Coast	68.9	65.9	-4.4
21	Cairns - Melbourne	64.9	65.4	0.8
22	Brisbane - Mackay	64.1	65.2	1.8
23	Canberra - Sydney	60.1	62.6	4.3
24	Adelaide - Perth	62.0	61.5	-0.8
25	Brisbane - Canberra	56.3	59.6	5.9
26	Karratha - Perth	49.5	53.7	8.6
27	Brisbane - Rockhampton	45.2	52.8	16.8
28	Ballina - Sydney	43.0	47.4	10.4
29	Brisbane - Newcastle	43.9	45.0	2.5
30	Melbourne - Newcastle	39.6	41.1	3.8
31	Perth - Port Hedland	42.0	40.5	-3.5
32	Newman - Perth	32.8	35.4	7.9
33	Kalgoorlie - Perth	33.4	31.6	-5.4
34	Launceston - Sydney	32.3	29.4	-9.1
35	Broome - Perth	27.7	26.7	-3.4
36	Brisbane - Hobart	23.3	26.1	11.7
37	Brisbane - Darwin	20.7	23.7	14.4
38	Brisbane - Proserpine	21.8	23.1	5.7
39	Adelaide - GoldCoast	21.3	22.9	7.8
40	Darwin - Melbourne	16.6	21.4	29.0
41	Hamilton Island - Sydney	21.7	20.8	-3.9
42	Brisbane - Gladstone	19.4	19.8	1.8
43	Adelaide - Canberra	17.6	19.1	8.7
44	Coffs Harbour - Sydney	18.0	17.3	-3.7
45	Brisbane - Emerald	16.5	16.0	-2.6
46	Dubbo - Sydney	16.3	15.4	-5.5
47	Port Macquarie - Sydney	15.4	14.8	-4.1
48	Brisbane - HamiltonIsland	15.1	14.2	-6.5
49	Canberra - GoldCoast	15.3	14.0	-8.6
50	Sydney - WaggaWagga	13.6	13.9	1.7

continued

Table 2: (continued) Passengers carried (000s) — monthly activity

	City-Pair	Nov 2023	Nov 2024	% Change
51	Albury - Sydney	14.7	13.8	-6.2
52	Adelaide - PortLincoln	14.8	13.8	-6.5
53	Darwin - Perth	12.9	13.6	5.2
54	Brisbane - Mount Isa	12.6	13.1	3.4
55	Brisbane - Launceston	11.7	13.1	12.0
56	Melbourne - Mildura	15.2	12.7	-16.8
57	Brisbane - Bundaberg	11.7	12.0	2.3
58	Devonport - Melbourne	10.4	10.7	3.4
59	Geraldton - Perth	9.5	10.6	11.7
60	Ayers Rock - Melbourne	..	10.3	NA
61	Brisbane - Moranbah	10.0	9.4	-6.1
62	Adelaide - AliceSprings	9.4	8.9	-5.6
	Total domestic network	5 042.4	5 090.7	1.0

.. Data not available for release.

Table 3: Available seats (000s) — monthly activity

	City-Pair	Nov 2023	Nov 2024	% Change
1	Melbourne - Sydney	779.5	763.2	-2.1
2	Brisbane - Sydney	432.2	411.7	-4.8
3	Brisbane - Melbourne	328.4	338.7	3.2
4	Adelaide - Melbourne	234.3	221.0	-5.7
5	Gold Coast - Sydney	233.7	216.0	-7.5
6	Melbourne - Perth	198.0	197.6	-0.2
7	Gold Coast - Melbourne	198.8	188.7	-5.1
8	Adelaide - Sydney	182.2	184.6	1.3
9	Perth - Sydney	152.7	163.6	7.1
10	Hobart - Melbourne	134.6	130.4	-3.1
11	Brisbane - Cairns	128.1	115.6	-9.8
12	Brisbane - Perth	99.7	113.2	13.6
13	Canberra - Melbourne	119.6	107.8	-9.9
14	Brisbane - Townsville	88.0	94.7	7.7
15	Adelaide - Brisbane	95.0	87.1	-8.3
16	Hobart - Sydney	72.3	83.5	15.5
17	Sunshine Coast - Sydney	78.6	79.8	1.5
18	Cairns - Sydney	81.7	73.5	-10.1
19	Launceston - Melbourne	85.3	76.4	-10.4
20	Melbourne - Sunshine Coast	78.3	72.8	-7.0
21	Cairns - Melbourne	70.2	71.0	1.2
22	Brisbane - Mackay	80.8	75.3	-6.8
23	Canberra - Sydney	80.8	85.0	5.2
24	Adelaide - Perth	69.9	71.1	1.8
25	Brisbane - Canberra	74.2	71.8	-3.2
26	Karratha - Perth	73.5	72.9	-0.8
27	Brisbane - Rockhampton	57.6	61.3	6.6
28	Ballina - Sydney	49.0	51.8	5.7
29	Brisbane - Newcastle	52.0	50.5	-2.8
30	Melbourne - Newcastle	51.8	45.1	-12.8
31	Perth - Port Hedland	64.8	60.8	-6.2
32	Newman - Perth	55.6	53.8	-3.2
33	Kalgoorlie - Perth	56.4	51.3	-9.1
34	Launceston - Sydney	37.2	32.5	-12.5
35	Broome - Perth	36.3	34.6	-4.5
36	Brisbane - Hobart	25.9	29.0	12.1
37	Brisbane - Darwin	24.7	26.9	8.7
38	Brisbane - Proserpine	24.5	25.6	4.6
39	Adelaide - GoldCoast	23.8	24.8	4.2
40	Darwin - Melbourne	19.7	27.0	37.3
41	Hamilton Island - Sydney	28.8	24.8	-13.7
42	Brisbane - Gladstone	29.6	27.9	-5.7
43	Adelaide - Canberra	23.2	23.6	1.5
44	Coffs Harbour - Sydney	21.3	21.1	-1.0
45	Brisbane - Emerald	22.3	24.4	9.1
46	Dubbo - Sydney	24.4	23.6	-3.2
47	Port Macquarie - Sydney	21.5	20.6	-4.1
48	Brisbane - HamiltonIsland	21.1	16.0	-24.1
49	Canberra - GoldCoast	18.0	15.4	-14.6
50	Sydney - WaggaWagga	20.7	20.6	-0.4

continued

Table 3: (continued) Available seats (000s) — monthly activity

	City-Pair	Nov 2023	Nov 2024	% Change
51	Albury - Sydney	20.2	18.5	-8.6
52	Adelaide - PortLincoln	21.9	20.7	-5.7
53	Darwin - Perth	17.4	18.8	7.8
54	Brisbane - Mount Isa	20.2	17.8	-12.1
55	Brisbane - Launceston	13.7	14.5	5.7
56	Melbourne - Mildura	20.0	16.6	-17.4
57	Brisbane - Bundaberg	18.4	18.1	-1.5
58	Devonport - Melbourne	14.4	13.3	-7.5
59	Geraldton - Perth	19.9	18.1	-8.8
60	Ayers Rock - Melbourne	..	12.7	NA
61	Brisbane - Moranbah	17.2	16.2	-6.0
62	Adelaide - AliceSprings	12.8	11.9	-6.8
	Total domestic network	6 093.3	5 943.6	-2.5

.. Data not available for release.

Table 4: Load factors (%) — monthly activity

	City-Pair	Nov 2023	Nov 2024	% Point diff
1	Melbourne - Sydney	89.4	92.3	2.9
2	Brisbane - Sydney	87.9	93.8	5.9
3	Brisbane - Melbourne	88.3	90.7	2.4
4	Adelaide - Melbourne	88.0	91.5	3.5
5	Gold Coast - Sydney	89.3	92.6	3.3
6	Melbourne - Perth	90.8	89.8	-1.0
7	Gold Coast - Melbourne	92.0	92.8	0.8
8	Adelaide - Sydney	87.6	91.3	3.7
9	Perth - Sydney	93.2	90.0	-3.2
10	Hobart - Melbourne	85.1	90.3	5.2
11	Brisbane - Cairns	86.9	93.1	6.2
12	Brisbane - Perth	91.5	87.1	-4.4
13	Canberra - Melbourne	78.7	84.8	6.1
14	Brisbane - Townsville	80.0	83.6	3.6
15	Adelaide - Brisbane	83.0	90.4	7.4
16	Hobart - Sydney	88.2	86.7	-1.5
17	Sunshine Coast - Sydney	84.8	89.0	4.2
18	Cairns - Sydney	90.1	94.1	4.0
19	Launceston - Melbourne	84.1	89.8	5.7
20	Melbourne - Sunshine Coast	89.3	90.5	1.2
21	Cairns - Melbourne	92.4	92.1	-0.3
22	Brisbane - Mackay	79.3	86.6	7.3
23	Canberra - Sydney	74.3	73.7	-0.6
24	Adelaide - Perth	88.7	86.4	-2.3
25	Brisbane - Canberra	75.8	83.0	7.2
26	Karratha - Perth	67.3	73.7	6.4
27	Brisbane - Rockhampton	78.6	86.1	7.5
28	Ballina - Sydney	87.7	91.6	3.9
29	Brisbane - Newcastle	84.6	89.2	4.6
30	Melbourne - Newcastle	76.4	91.1	14.7
31	Perth - Port Hedland	64.7	66.6	1.9
32	Newman - Perth	59.0	65.7	6.7
33	Kalgoorlie - Perth	59.2	61.6	2.4
34	Launceston - Sydney	87.0	90.3	3.3
35	Broome - Perth	76.3	77.2	0.9
36	Brisbane - Hobart	90.2	89.9	-0.3
37	Brisbane - Darwin	83.8	88.2	4.4
38	Brisbane - Proserpine	89.2	90.1	0.9
39	Adelaide - GoldCoast	89.5	92.6	3.1
40	Darwin - Melbourne	84.4	79.3	-5.1
41	Hamilton Island - Sydney	75.2	83.8	8.6
42	Brisbane - Gladstone	65.6	70.7	5.1
43	Adelaide - Canberra	75.7	81.1	5.4
44	Coffs Harbour - Sydney	84.5	82.2	-2.3
45	Brisbane - Emerald	73.7	65.8	-7.9
46	Dubbo - Sydney	66.9	65.3	-1.6
47	Port Macquarie - Sydney	71.6	71.6	0.0
48	Brisbane - HamiltonIsland	71.8	88.4	16.6
49	Canberra - GoldCoast	84.8	90.7	5.9
50	Sydney - WaggaWagga	65.7	67.1	1.4

continued

Table 4: (continued) Load factors (%) — monthly activity

	City-Pair	Nov 2023	Nov 2024	% Point diff
51	Albury - Sydney	72.8	74.7	1.9
52	Adelaide - PortLincoln	67.5	66.9	-0.6
53	Darwin - Perth	74.0	72.3	-1.7
54	Brisbane - Mount Isa	62.5	73.5	11.0
55	Brisbane - Launceston	84.9	90.0	5.1
56	Melbourne - Mildura	75.9	76.4	0.5
57	Brisbane - Bundaberg	64.0	66.5	2.5
58	Devonport - Melbourne	72.1	80.6	8.5
59	Geraldton - Perth	47.7	58.4	10.7
60	Ayers Rock - Melbourne	..	81.0	NA
61	Brisbane - Moranbah	57.8	57.7	-0.1
62	Adelaide - AliceSprings	73.7	74.6	0.9
	Total domestic network	85.2	87.0	1.8

.. Data not available for release.

Table 5: Aircraft trips ^(a) — monthly activity

	City-Pair	Nov 2023	Nov 2024	% Change
1	Melbourne - Sydney	4 604	4 407	-4.3
2	Brisbane - Sydney	2 689	2 495	-7.2
3	Brisbane - Melbourne	1 990	2 020	1.5
4	Adelaide - Melbourne	1 443	1 309	-9.3
5	Gold Coast - Sydney	1 336	1 238	-7.3
6	Melbourne - Perth	1 118	1 095	-2.1
7	Gold Coast - Melbourne	1 083	1 016	-6.2
8	Adelaide - Sydney	1 144	1 100	-3.8
9	Perth - Sydney	809	862	6.6
10	Hobart - Melbourne	785	737	-6.1
11	Brisbane - Cairns	825	820	-0.6
12	Brisbane - Perth	575	655	13.9
13	Canberra - Melbourne	861	702	-18.5
14	Brisbane - Townsville	679	734	8.1
15	Adelaide - Brisbane	751	679	-9.6
16	Hobart - Sydney	466	465	-0.2
17	Sunshine Coast - Sydney	438	444	1.4
18	Cairns - Sydney	430	393	-8.6
19	Launceston - Melbourne	737	530	-28.1
20	Melbourne - Sunshine Coast	421	374	-11.2
21	Cairns - Melbourne	368	365	-0.8
22	Brisbane - Mackay	706	607	-14.0
23	Canberra - Sydney	1 297	1 343	3.5
24	Adelaide - Perth	401	400	-0.2
25	Brisbane - Canberra	588	569	-3.2
26	Karratha - Perth	434	447	3.0
27	Brisbane - Rockhampton	685	665	-2.9
28	Ballina - Sydney	343	345	0.6
29	Brisbane - Newcastle	471	423	-10.2
30	Melbourne - Newcastle	323	296	-8.4
31	Perth - Port Hedland	393	371	-5.6
32	Newman - Perth	341	332	-2.6
33	Kalgoorlie - Perth	353	358	1.4
34	Launceston - Sydney	228	193	-15.4
35	Broome - Perth	252	245	-2.8
36	Brisbane - Hobart	175	184	5.1
37	Brisbane - Darwin	179	152	-15.1
38	Brisbane - Proserpine	161	158	-1.9
39	Adelaide - GoldCoast	119	122	2.5
40	Darwin - Melbourne	138	152	10.1
41	Hamilton Island - Sydney	163	141	-13.5
42	Brisbane - Gladstone	355	307	-13.5
43	Adelaide - Canberra	222	216	-2.7
44	Coffs Harbour - Sydney	377	368	-2.4
45	Brisbane - Emerald	338	311	-8.0
46	Dubbo - Sydney	461	456	-1.1
47	Port Macquarie - Sydney	375	361	-3.7
48	Brisbane - HamiltonIsland	121	115	-5.0
49	Canberra - GoldCoast	101	86	-14.9
50	Sydney - WaggaWagga	377	379	0.5

continued

Table 5: (continued) Aircraft trips ^(a) — monthly activity

	City-Pair	Nov 2023	Nov 2024	% Change
51	Albury - Sydney	368	330	-10.3
52	Adelaide - PortLincoln	540	508	-5.9
53	Darwin - Perth	102	107	4.9
54	Brisbane - Mount Isa	173	232	34.1
55	Brisbane - Launceston	78	80	2.6
56	Melbourne - Mildura	417	390	-6.5
57	Brisbane - Bundaberg	300	297	-1.0
58	Devonport - Melbourne	315	292	-7.3
59	Geraldton - Perth	200	202	1.0
60	Ayers Rock - Melbourne	..	70	NA
61	Brisbane - Moranbah	229	216	-5.7
62	Adelaide - AliceSprings	156	143	-8.3
	Total domestic network	51 277	49 676	-3.1

(a) Includes RPT cargo flights.

.. Data not available for release.

TOP TEN AIRPORTS – PASSENGER MOVEMENTS

Table 6: Top ten airports, RPT passenger movements (000s) - monthly activity

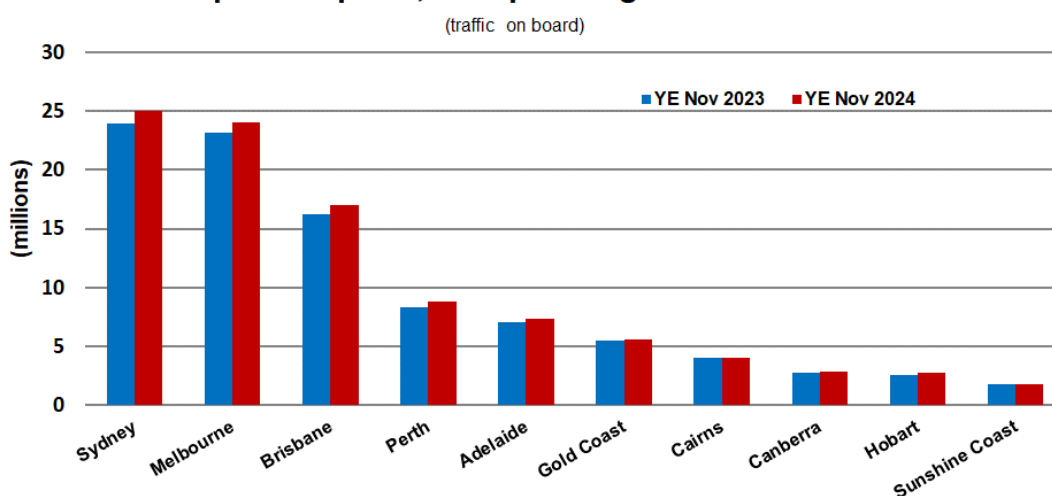
Airport	Nov 2023	Nov 2024	% Change	% of Total
1 Sydney	2 149.6	2 187.7	1.8	21.5
2 Melbourne	2 082.1	2 071.8	-0.5	20.3
3 Brisbane	1 434.8	1 495.2	4.2	14.7
4 Perth	754.4	772.9	2.5	7.6
5 Adelaide	638.5	647.4	1.4	6.4
6 Gold Coast	461.0	436.5	-5.3	4.3
7 Cairns	331.9	320.1	-3.6	3.1
8 Canberra	258.4	261.0	1.0	2.6
9 Hobart	224.5	238.1	6.0	2.3
10 Sunshine Coast	164.3	142.8	-13.1	1.4
Total top ten airports	8 499.5	8 573.4	0.9	84.2
Total domestic network	10 084.8	10 181.5	1.0	100.0

Table 7: Top ten airports, RPT passenger movements (000s) - annual activity

Airport	YE Nov 2023	YE Nov 2024	% Change	% of Total
1 Sydney	23 991.0	25 053.6	4.4	21.2
2 Melbourne	23 223.6	24 102.2	3.8	20.4
3 Brisbane	16 274.7	17 021.2	4.6	14.4
4 Perth	8 361.4	8 833.4	5.6	7.5
5 Adelaide	7 078.3	7 353.4	3.9	6.2
6 Gold Coast	5 441.6	5 570.7	2.4	4.7
7 Cairns	3 994.7	4 038.7	1.1	3.4
8 Canberra	2 752.4	2 798.8	1.7	2.4
9 Hobart	2 550.8	2 716.2	6.5	2.3
10 Sunshine Coast	1 804.8	1 723.2	-4.5	1.5
Total top ten airports	95 473.2	99 211.3	3.9	83.9
Total domestic network	113 864.8	118 191.0	3.8	100.0

Note: Airport passenger movement numbers are the sum of passenger arrivals and departures at each airport.

Top ten airports, RPT passenger movements



TOP FIVE AIRPORTS – CARGO MOVEMENTS

Table 8: Top five airports, domestic RPT cargo movements (000s tonnes) - monthly activity

Airport	Nov 2023	Nov 2024	% Change	% of Total
1 Melbourne	8.3	7.7	-7.9	27.2
2 Sydney	6.8	6.1	-10.4	21.8
3 Brisbane	5.7	4.9	-14.0	17.4
4 Perth	3.3	3.3	-1.2	11.7
5 Adelaide	1.9	1.6	-16.6	5.6
Total top five airports	26.0	23.5	-9.6	83.7
Total domestic network	30.6	28.1	-8.3	100.0

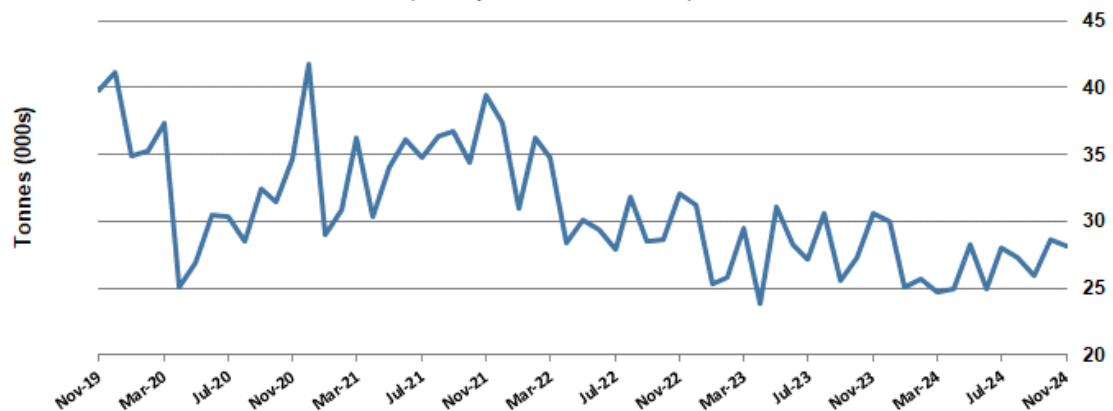
Table 9: Top five airports, domestic RPT cargo movements (000s tonnes) - annual activity

Airport	YE Nov 2023	YE Nov 2024	% Change	% of Total
1 Melbourne	90.6	87.4	-3.5	27.2
2 Sydney	75.1	69.3	-7.8	21.5
3 Brisbane	59.3	58.4	-1.5	18.1
4 Perth	35.2	36.1	2.4	11.2
5 Adelaide	18.6	18.2	-2.2	5.7
Total top five airports	278.8	269.3	-3.4	83.7
Total domestic network	336.3	321.6	-4.4	100.0

Note: Airport cargo tonnes are the sum of cargo tonnes on arrivals and departures at each airport.

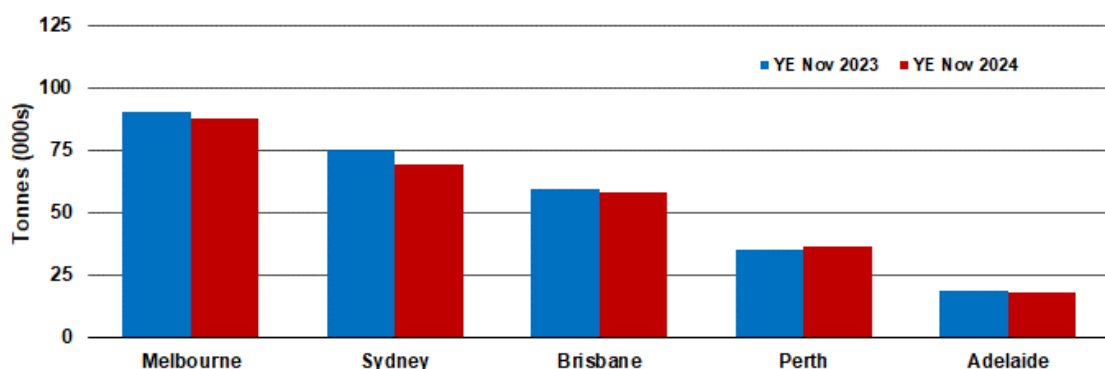
Total domestic network - cargo movement

(monthly totals - traffic on board)



Top five airports, cargo movements

(Domestic cargo traffic - traffic on board)



Note: Airport cargo tonnes are the sum of cargo tonnes on arrivals and departures at each airport.

TOP TEN ROUTES

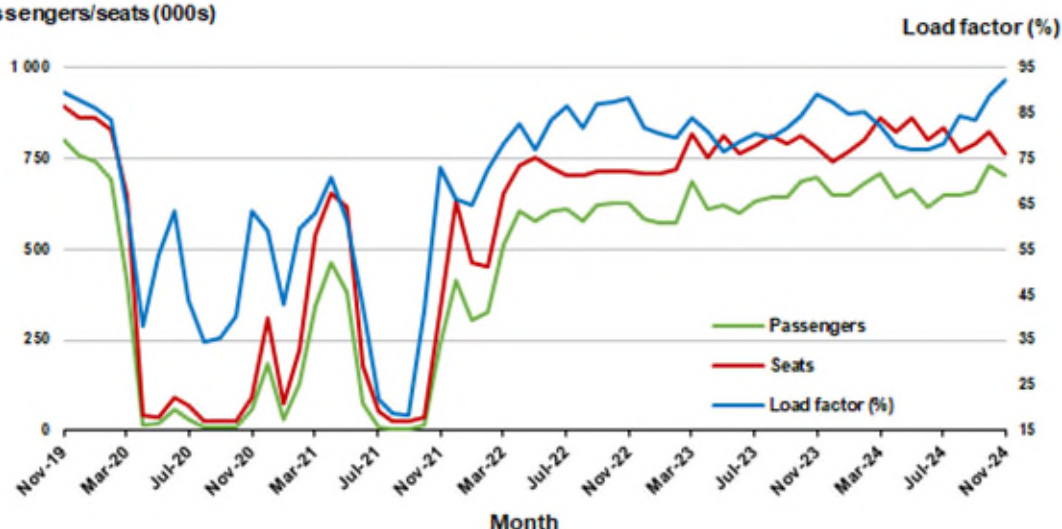
1. Melbourne - Sydney

Monthly data

	Nov 2023	Nov 2024	% Change
Passengers carried (000s)	696.9	704.5	1.1
Seats (000s)	779.5	763.2	-2.1
Load factor %	89.4	92.3	2.9 *
Aircraft trips	4 604	4 407	-4.3

* percentage point difference

Passengers/seats (000s)

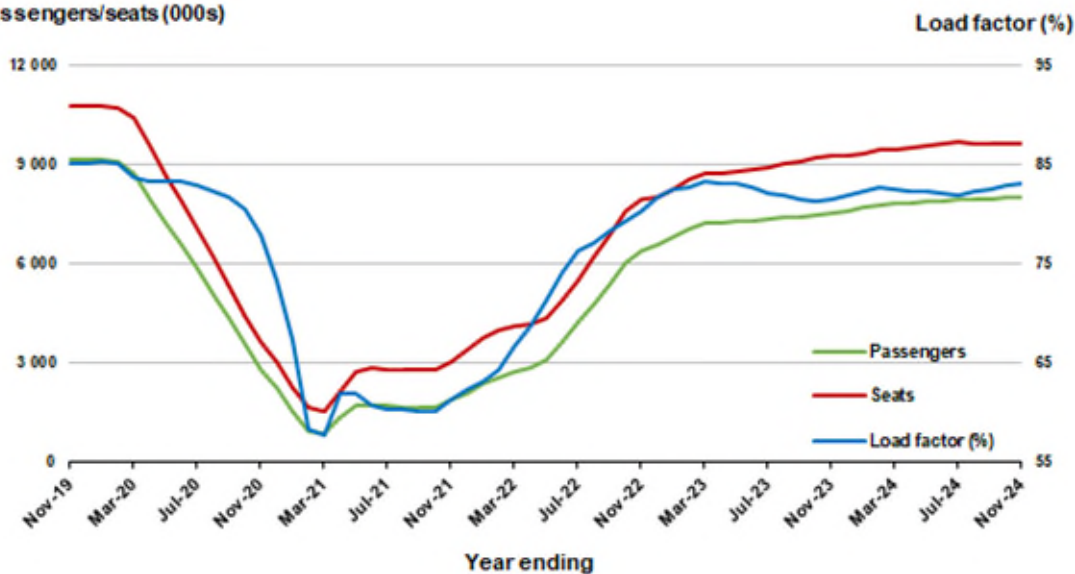


Moving annual data

	YE Nov 2023	YE Nov 2024	% Change
Passengers carried (000s)	7 557.4	8 014.7	6.1
Seats (000s)	9 274.6	9 647.3	4.0
Load factor %	81.5	83.1	1.6 *
Aircraft trips	53 691	55 697	3.7

* percentage point difference

Passengers/seats (000s)

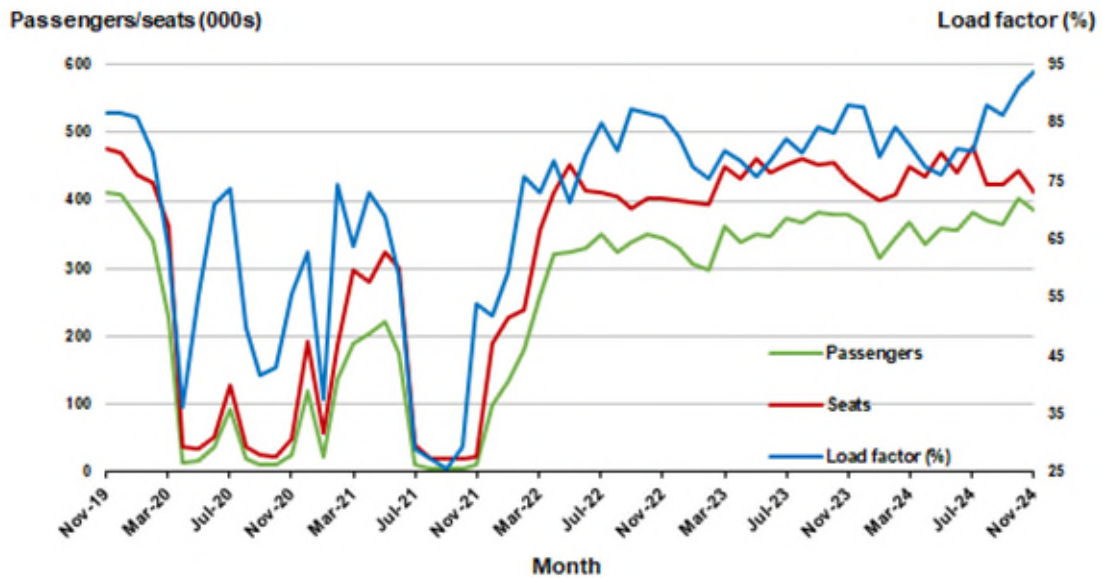


2. Brisbane - Sydney

Monthly data

	Nov 2023	Nov 2024	% Change
Passengers carried (000s)	379.7	386.2	1.7
Seats (000s)	432.2	411.7	-4.8
Load factor %	87.9	93.8	5.9 *
Aircraft trips	2 689	2 495	-7.2

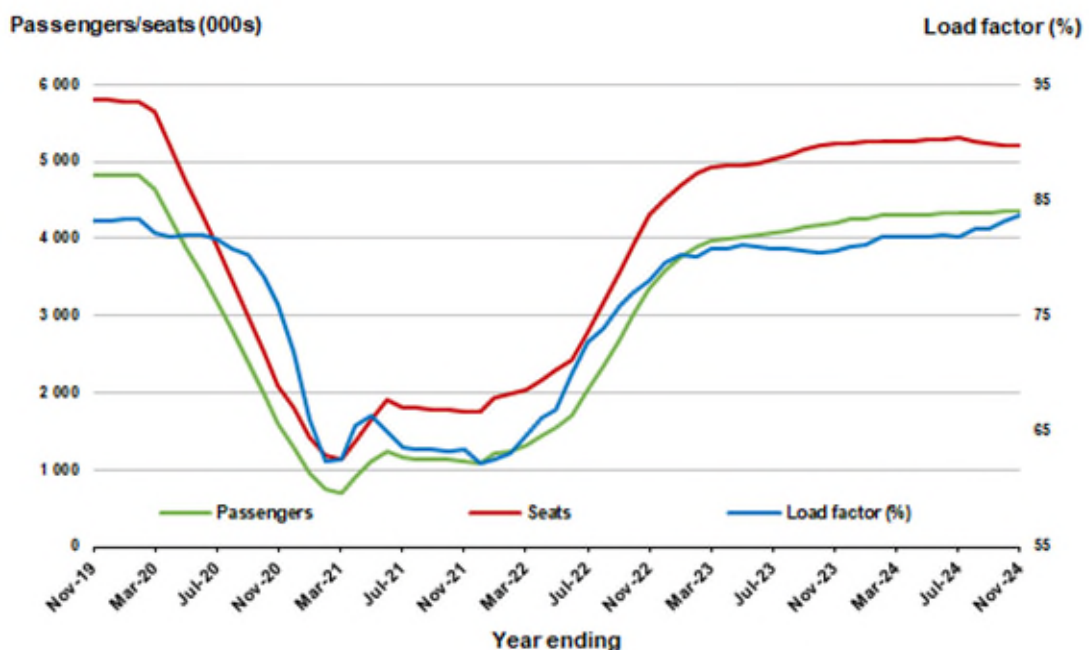
* percentage point difference



Moving annual data

	YE Nov 2023	YE Nov 2024	% Change
Passengers carried (000s)	4 215.8	4 353.1	3.3
Seats (000s)	5 230.6	5 201.0	-0.6
Load factor %	80.6	83.7	3.1 *
Aircraft trips	32 082	31 619	-1.4

* percentage point difference

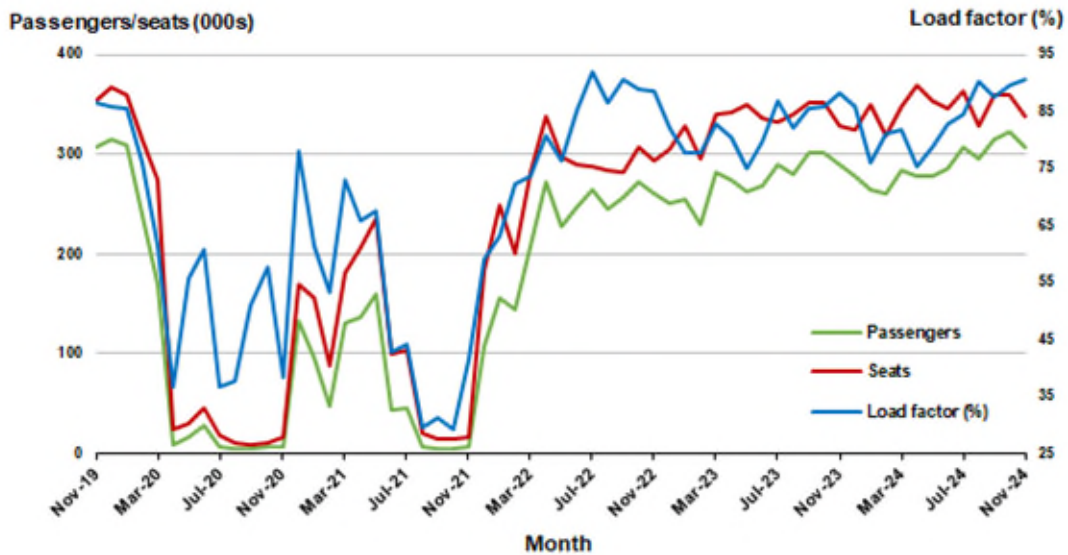


3. Brisbane - Melbourne

Monthly data

	Nov 2023	Nov 2024	% Change
Passengers carried (000s)	289.8	307.2	6.0
Seats (000s)	328.4	338.7	3.2
Load factor %	88.3	90.7	2.4 *
Aircraft trips	1 990	2 020	1.5

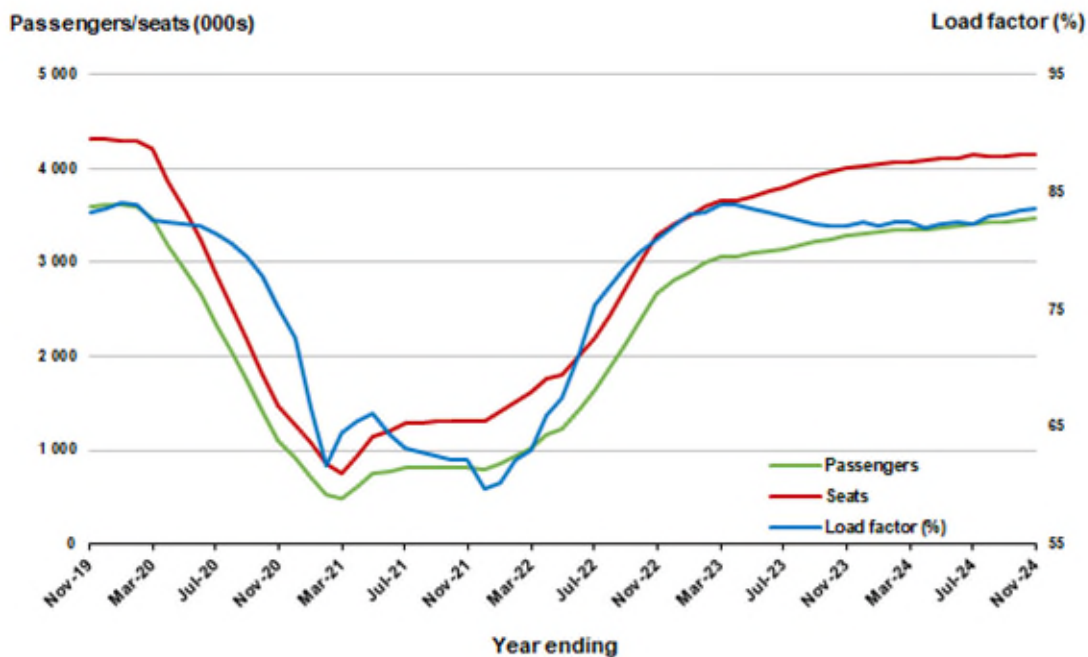
* percentage point difference



Moving annual data

	YE Nov 2023	YE Nov 2024	% Change
Passengers carried (000s)	3 284.3	3 478.2	5.9
Seats (000s)	4 001.7	4 159.3	3.9
Load factor %	82.1	83.6	1.6 *
Aircraft trips	24 269	24 889	2.6

* percentage point difference



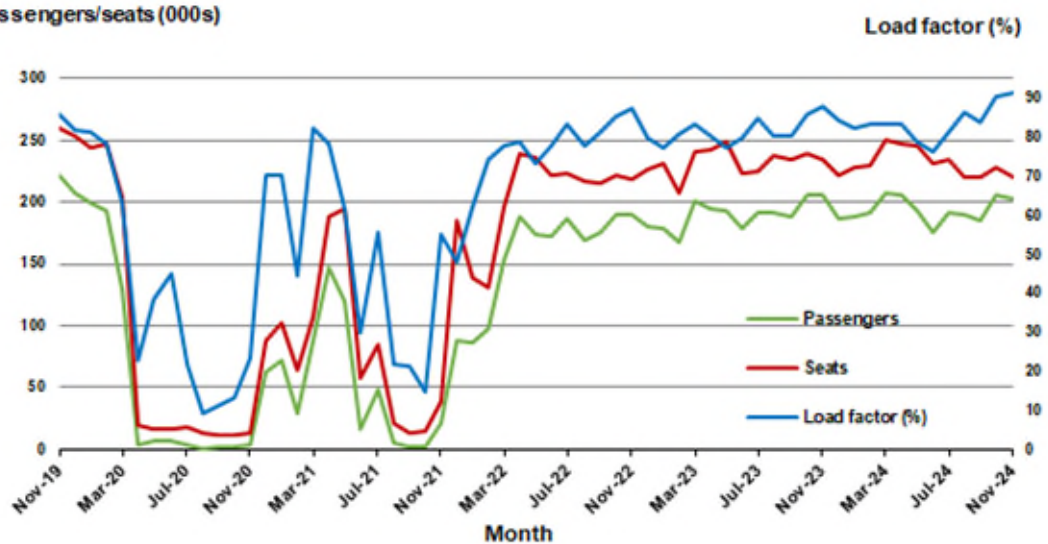
4. Adelaide - Melbourne

Monthly data

	Nov 2023	Nov 2024	% Change
Passengers carried (000s)	206.1	202.3	-1.9
Seats (000s)	234.3	221.0	-5.7
Load factor %	88.0	91.5	3.5 *
Aircraft trips	1 443	1 309	-9.3

* percentage point difference

Passengers/seats (000s)

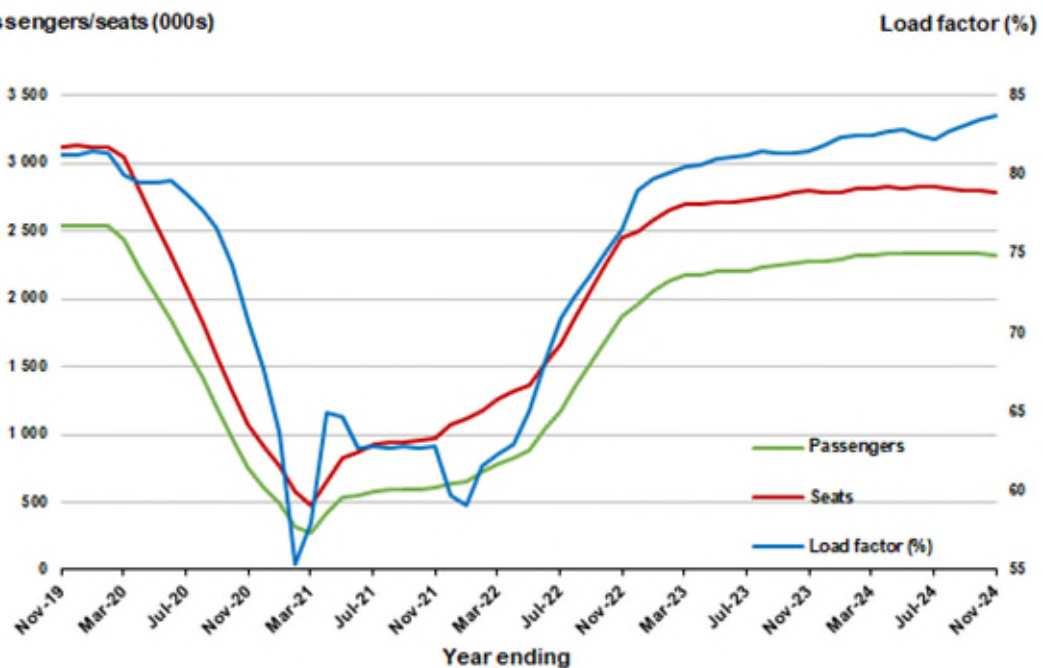


Moving annual data

	YE Nov 2023	YE Nov 2024	% Change
Passengers carried (000s)	2 277.2	2 325.0	2.1
Seats (000s)	2 794.4	2 778.7	-0.6
Load factor %	81.5	83.7	2.2 *
Aircraft trips	17 162	16 795	-2.1

* percentage point difference

Passengers/seats (000s)

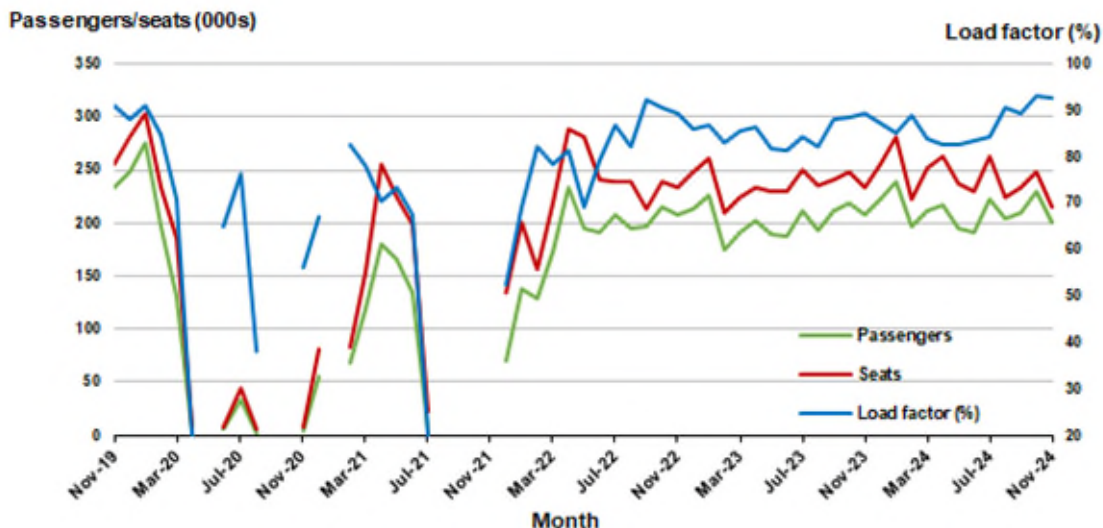


5. Gold Coast - Sydney^(a)

Monthly data

	Nov 2023	Nov 2024	% Change
Passengers carried (000s)	208.7	200.1	-4.1
Seats (000s)	233.7	216.0	-7.5
Load factor %	89.3	92.6	3.3 *
Aircraft trips	1 336	1 238	-7.3

* percentage point difference

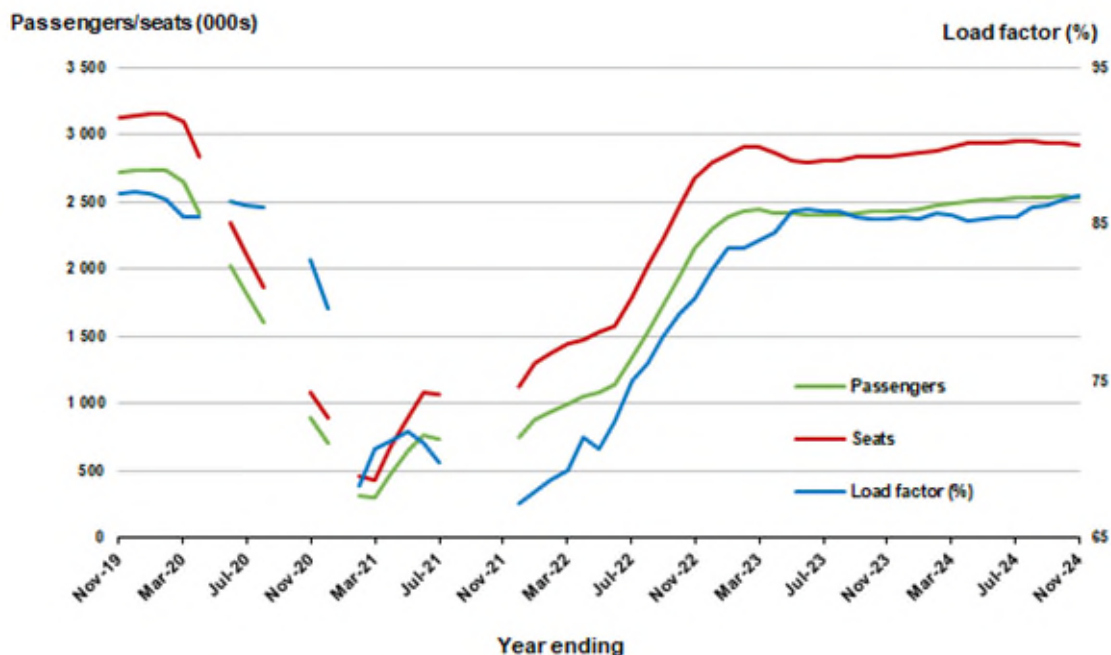


(a) May, September and October 2020 and January and August to November 2021 data not available for release

Moving annual data

	YE Nov 2023	YE Nov 2024	% Change
Passengers carried (000s)	2 426.9	2 540.5	4.7
Seats (000s)	2 842.7	2 926.3	2.9
Load factor %	85.4	86.8	1.4 *
Aircraft trips	16 355	16 503	0.9

* percentage point difference



(a) May, September and October 2020 and January and August to November 2021 moving annual totals

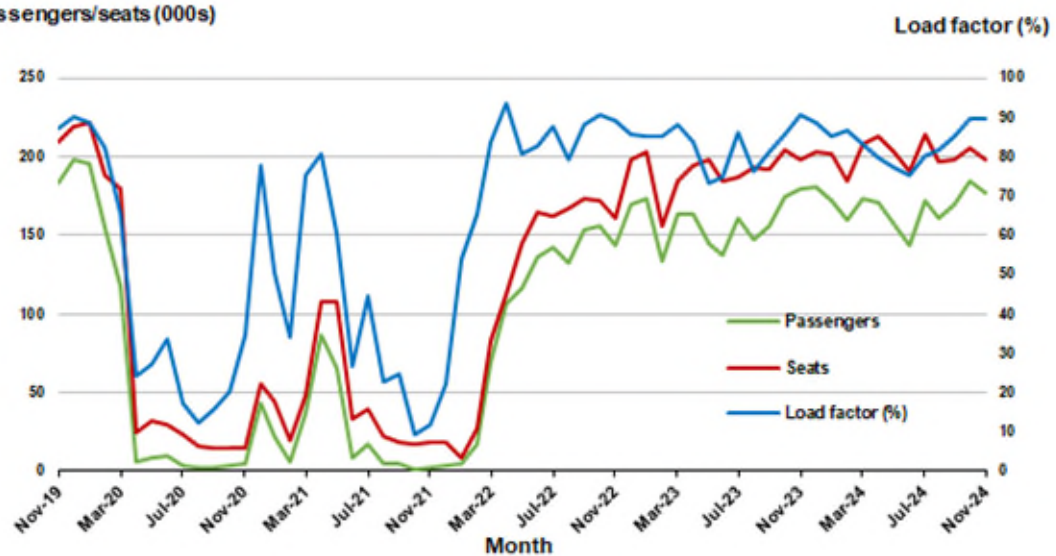
6. Melbourne - Perth

Monthly data

	Nov 2023	Nov 2024	% Change
Passengers carried (000s)	179.8	177.5	-1.3
Seats (000s)	198.0	197.6	-0.2
Load factor %	90.8	89.8	-1.0 *
Aircraft trips	1 118	1 095	-2.1

* percentage point difference

Passengers/seats (000s)

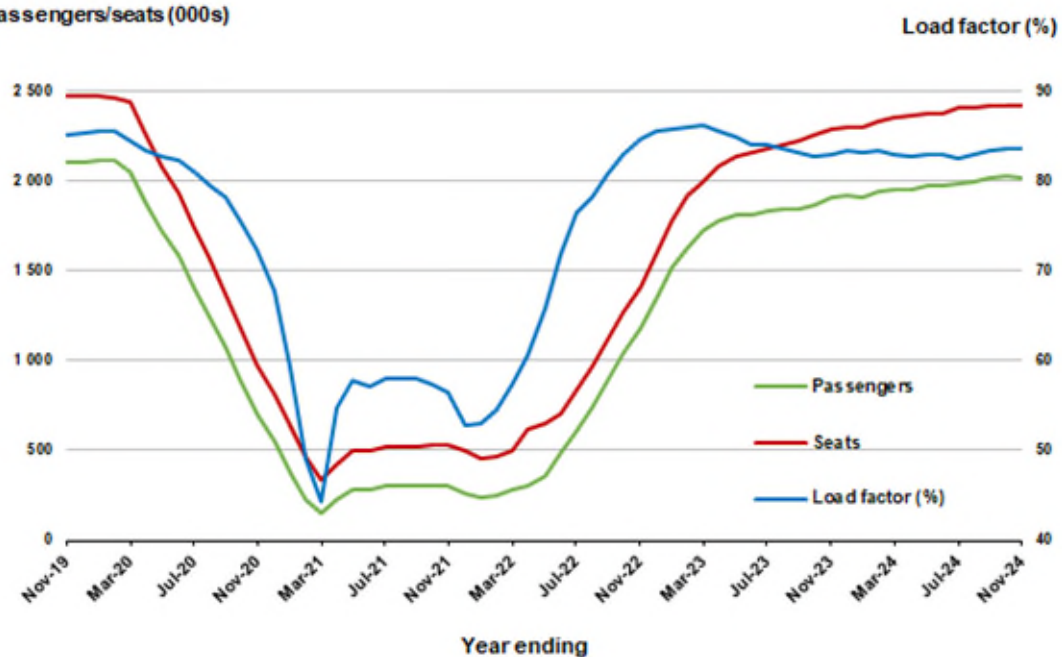


Moving annual data

	YE Nov 2023	YE Nov 2024	% Change
Passengers carried (000s)	1 905.0	2 022.1	6.1
Seats (000s)	2 294.5	2 420.0	5.5
Load factor %	83.0	83.6	0.5 *
Aircraft trips	12 781	13 389	4.8

* percentage point difference

Passengers/seats (000s)

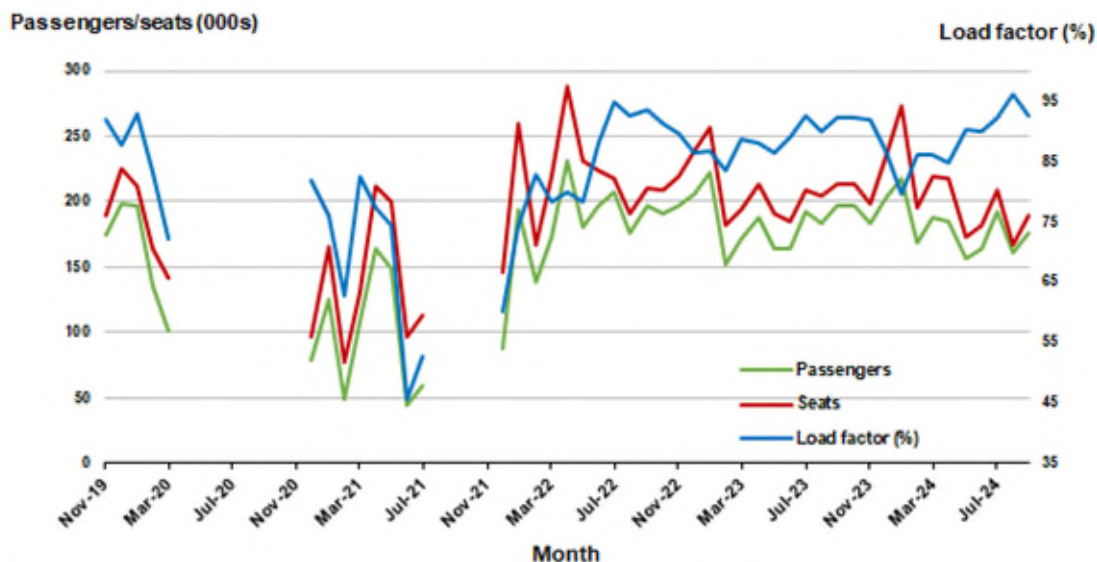


7. Gold Coast - Melbourne ^(a)

Monthly data

	Nov 2023	Nov 2024	% Change
Passengers carried (000s)	182.9	175.1	-4.3
Seats (000s)	198.8	188.7	-5.1
Load factor %	92.0	92.8	0.8 *
Aircraft trips	1 083	1 016	-6.2

* percentage point difference

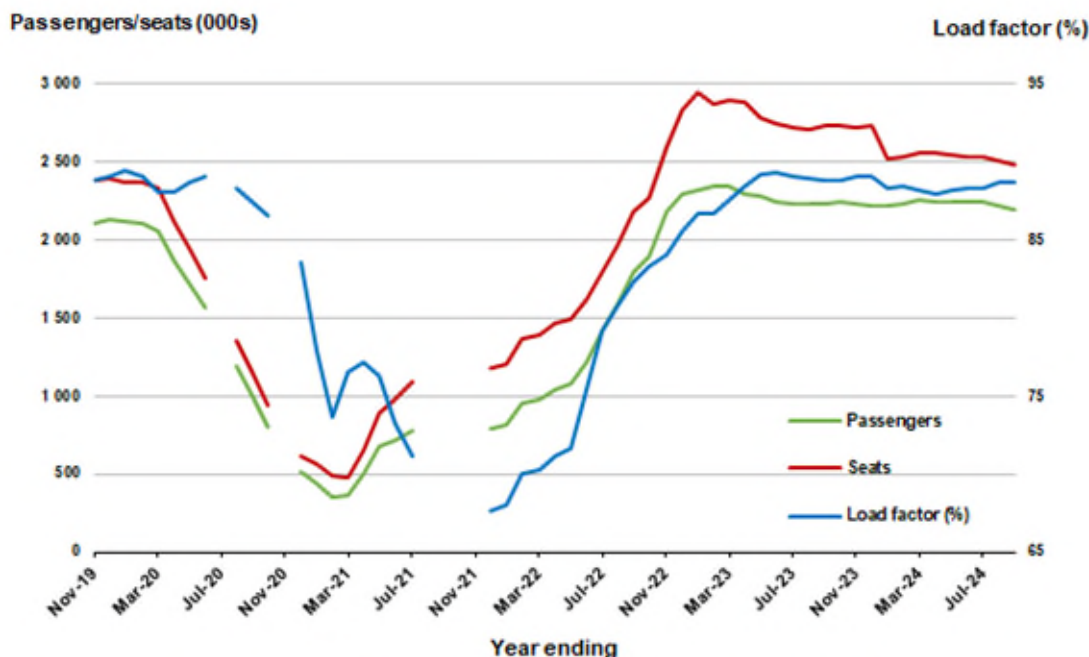


(a) April to November 2020 and August to November 2021 data not available for release.

Moving annual data

	YE Nov 2023	YE Nov 2024	% Change
Passengers carried (000s)	2 223.4	2 179.7	-2.0
Seats (000s)	2 718.5	2 453.8	-9.7
Load factor %	89.0	88.8	-0.2 *
Aircraft trips	13 513	13 369	-1.1

* percentage point difference



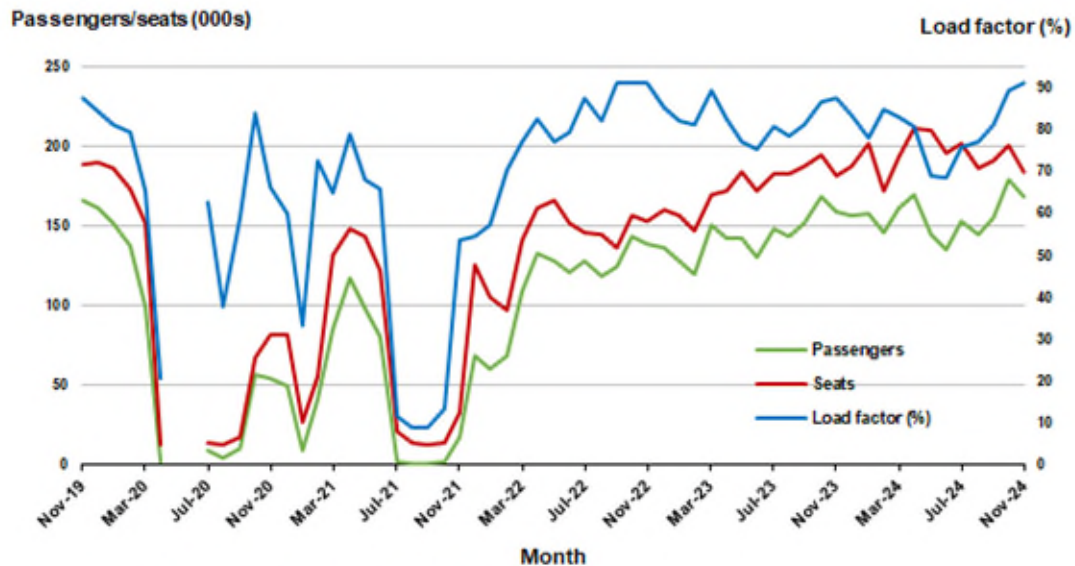
(a) April to November 2020 and August to November 2021 moving annuals are not available for release.

8. Adelaide - Sydney ^(a)

Monthly data

	Nov 2023	Nov 2024	% Change
Passengers carried (000s)	159.6	168.5	5.6
Seats (000s)	182.2	184.6	1.3
Load factor %	87.6	91.3	3.7 *
Aircraft trips	1 144	1 100	-3.8

* percentage point difference

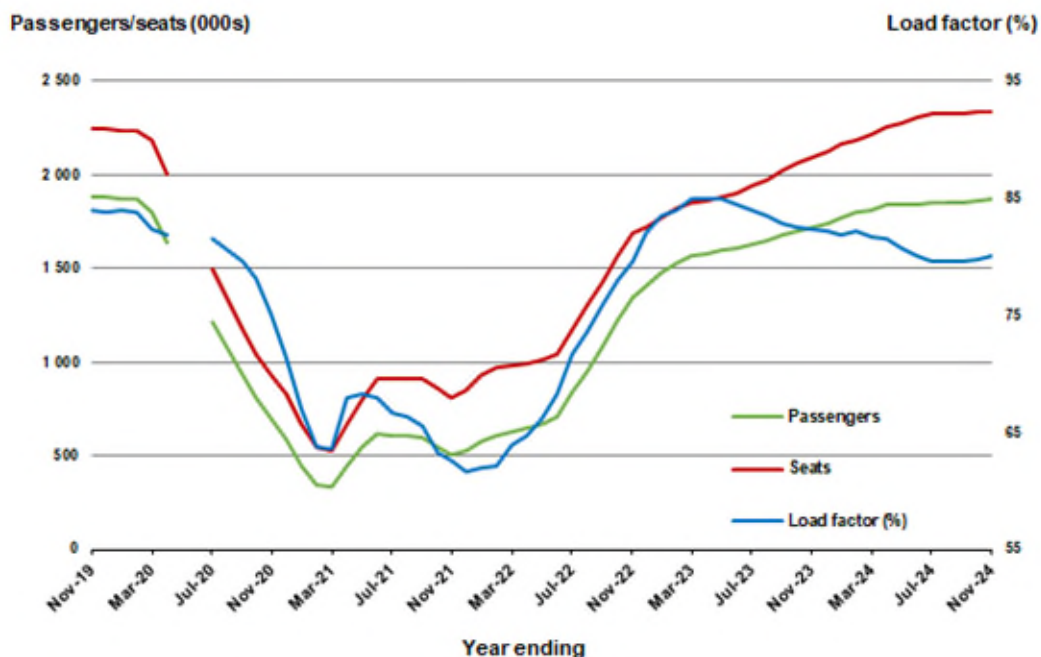


(a) May and June 2020 data not available for release.

Moving annual data

	YE Nov 2023	YE Nov 2024	% Change
Passengers carried (000s)	1 723.4	1 872.4	8.6
Seats (000s)	2 091.9	2 338.2	11.8
Load factor %	82.4	80.1	-2.3 *
Aircraft trips	12 745	14 046	10.2

* percentage point difference



(a) May and June 2020 moving annual totals are not available for release.

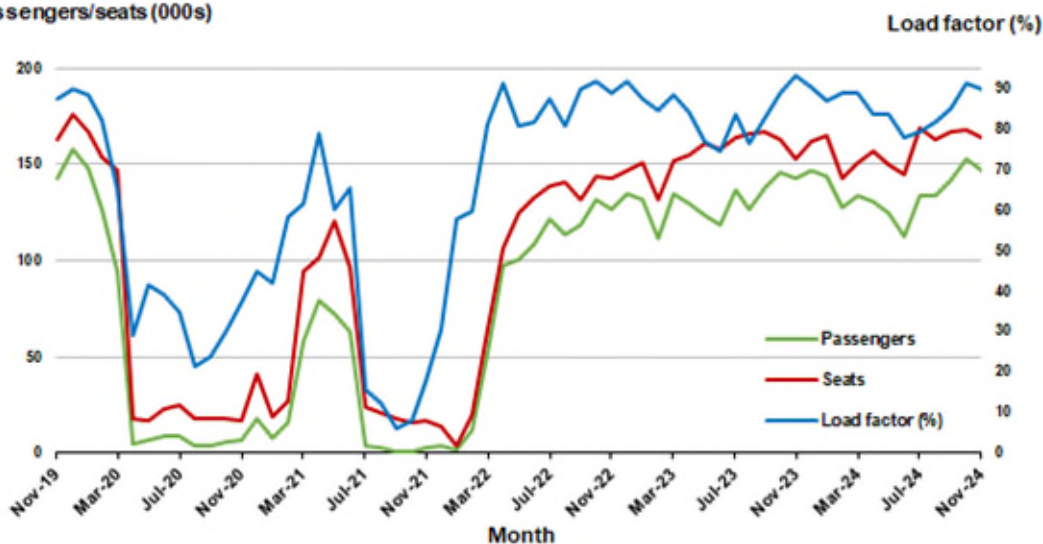
9. Perth - Sydney

Monthly data

	Nov 2023	Nov 2024	% Change
Passengers carried (000s)	142.4	147.2	3.4
Seats (000s)	152.7	163.6	7.1
Load factor %	93.2	90.0	-3.2 *
Aircraft trips	809	862	6.6

* percentage point difference

Passengers/seats (000s)

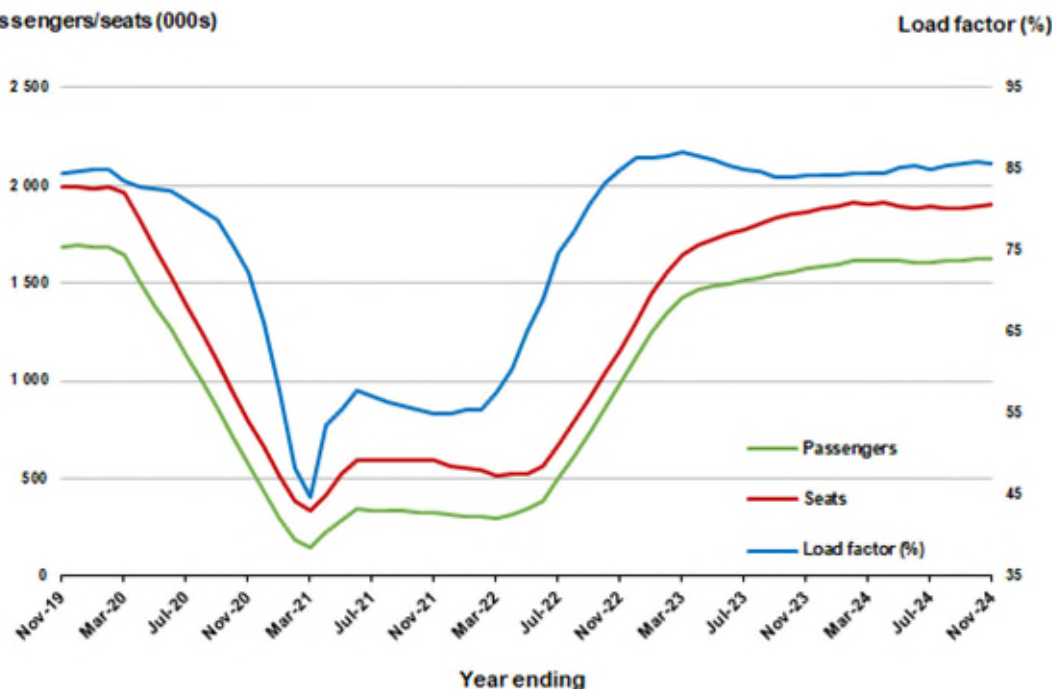


Moving annual data

	YE Nov 2023	YE Nov 2024	% Change
Passengers carried (000s)	1 575.1	1 630.4	3.5
Seats (000s)	1 868.0	1 902.7	1.9
Load factor %	84.3	85.7	1.4 *
Aircraft trips	9 664	10 038	3.9

* percentage point difference

Passengers/seats (000s)

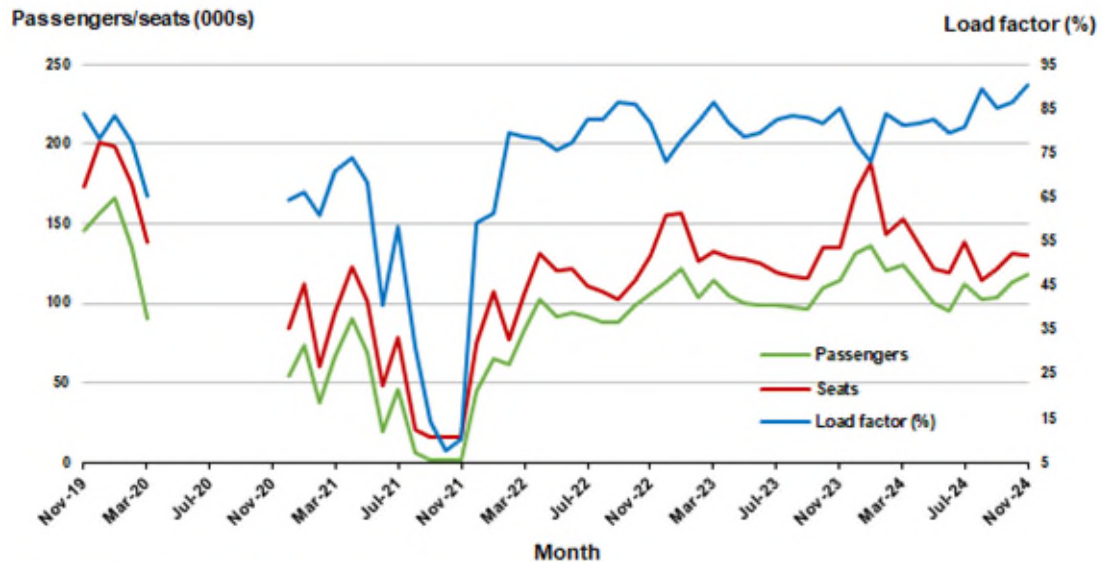


10. Hobart - Melbourne (a)

Monthly data

	Nov 2023	Nov 2024	% Change
Passengers carried (000s)	114.6	117.8	2.8
Seats (000s)	134.6	130.4	-3.1
Load factor %	85.1	90.3	5.2 *
Aircraft trips	785	737	-6.1

* percentage point difference

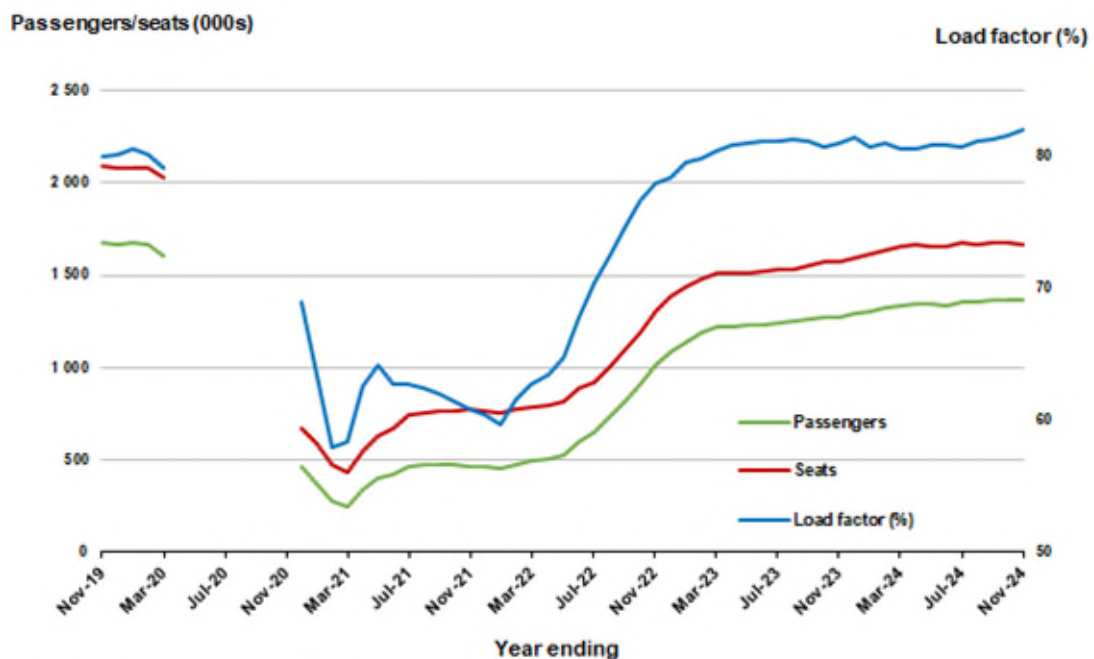


(a) April to November 2020 data not available for release.

Moving annual data

	YE Nov 2023	YE Nov 2024	% Change
Passengers carried (000s)	1 277.3	1 370.8	7.3
Seats (000s)	1 575.5	1 670.2	6.0
Load factor %	81.1	82.1	1.0 *
Aircraft trips	9 195	9 929	8.0

* percentage point difference



(a) April to November 2020 moving annual totals are not available for release

TOP FIFTY REGIONAL AIRPORTS

Table 10: Top fifty regional airports (000s) — passenger movements, monthly

Airport	Nov 2023	Nov 2024	% Change
1 Cairns	331.9	320.1	-3.6
2 Hobart	224.5	238.1	6.0
3 Townsville	139.3	138.3	-0.7
4 Launceston	124.4	120.3	-3.3
5 Darwin	109.3	119.7	9.5
6 Newcastle	104.7	102.4	-2.3
7 Mackay	80.2	75.9	-5.3
8 Ballina	53.2	57.5	8.0
9 Rockhampton	55.2	56.5	2.4
10 Karratha	50.1	54.7	9.2
11 Proserpine	41.8	43.9	4.9
12 Hamilton Island	43.3	42.1	-2.7
13 Port Hedland	43.1	41.3	-4.1
14 Newman	32.8	35.4	7.9
15 Kalgoorlie	33.4	31.6	-5.4
16 Broome	31.1	30.4	-2.3
17 Alice Springs	28.8	29.7	3.0
18 Ayers Rock	21.5	29.0	34.8
19 Paraburdoo	24.0	24.3	1.6
20 Coffs Harbour	22.7	22.0	-3.2
21 Mount Isa	20.1	20.5	2.0
22 Gladstone	20.9	19.8	-5.5
23 Albury	23.7	19.4	-18.3
24 Dubbo	19.8	18.7	-5.2
25 Wagga Wagga	17.5	17.9	2.4
26 Hervey Bay	13.1	17.1	30.9
27 Emerald	17.4	17.0	-2.4
28 Port Macquarie	20.6	17.0	-17.9
29 Mildura	19.3	15.8	-18.1
30 Tamworth	14.6	14.7	0.6
31 Port Lincoln	14.8	13.8	-6.7
32 Bundaberg	14.4	12.1	-15.9
33 Geraldton	9.8	11.1	13.3
34 Thursday Island	9.4	11.0	17.5
35 Devonport	10.4	10.8	3.6
36 Orange	10.1	10.1	-0.5
37 Kununurra	10.4	9.9	-4.7
38 Armidale	9.7	9.9	1.9
39 Moranbah	10.0	9.4	-5.5
40 Olympic Dam	8.9	8.2	-8.3
41 Busselton	5.8	8.1	40.6
42 Weipa	7.3	7.7	5.9
43 Learmonth	6.5	7.6	16.0
44 Gove	8.7	7.5	-13.8
45 Burnie	6.7	7.2	7.2
46 Norfolk Island	6.6	7.0	5.5
47 Griffith	5.8	6.6	13.4
48 Mount Gambier	6.7	6.3	-6.4
49 Albany	5.8	5.9	2.8
50 Merimbula	6.0	5.9	-1.7
Total top 50 regional airports	1 956.1	1 966.9	0.6
Total regional airports	2 079.7	2 092.8	0.6
Total domestic network	10 084.8	10 181.5	1.0

Note: Airport passenger movement numbers are the sum of passenger arrivals and departures at each airport. Regional airports are defined as airports which are, according to Australian Statistical Geography Standard (ASGS), not based in Major Cities.

Table 11: Top fifty regional airports (000s) — passenger movements, annual

Airport	YE Nov 2023	YE Nov 2024	% Change
1 Cairns	3 994.7	4 038.7	1.1
2 Hobart	2 550.8	2 716.2	6.5
3 Townsville	1 682.4	1 667.6	-0.9
4 Darwin	1 605.2	1 600.9	-0.3
5 Launceston	1 347.6	1 422.0	5.5
6 Newcastle	1 147.3	1 201.2	4.7
7 Mackay	906.1	903.5	-0.3
8 Rockhampton	624.2	654.7	4.9
9 Ballina	639.2	625.9	-2.1
10 Karratha	544.8	617.3	13.3
11 Proserpine	500.9	507.5	1.3
12 Port Hedland	484.3	487.6	0.7
13 Hamilton Island	496.3	486.2	-2.0
14 Broome	436.7	437.7	0.2
15 Newman	371.8	392.7	5.6
16 Alice Springs	352.0	372.3	5.8
17 Kalgoorlie	357.7	366.6	2.5
18 Ayers Rock	260.1	313.1	20.4
19 Paraburdoo	243.2	274.7	12.9
20 Albury	253.9	258.6	1.9
21 Coffs Harbour	283.7	250.9	-11.6
22 Mount Isa	230.7	238.8	3.5
23 Gladstone	224.1	235.1	4.9
24 Mildura	222.7	212.9	-4.4
25 Port Macquarie	215.1	209.5	-2.6
26 Dubbo	211.3	209.1	-1.0
27 Wagga Wagga	197.7	206.4	4.4
28 Emerald	194.7	197.6	1.5
29 Hervey Bay	144.4	179.3	24.2
30 Port Lincoln	174.4	170.1	-2.4
31 Tamworth	165.9	166.3	0.2
32 Bundaberg	147.4	154.4	4.8
33 Kununurra	135.6	140.2	3.4
34 Devonport	121.4	124.7	2.7
35 Geraldton	92.7	118.6	27.8
36 Thursday Island	107.0	115.2	7.7
37 Moranbah	109.3	111.9	2.3
38 Orange	104.6	110.3	5.4
39 Learmonth	104.5	105.5	1.0
40 Armidale	112.8	104.2	-7.6
41 Olympic Dam	103.3	102.0	-1.2
42 Gove	88.4	93.6	5.9
43 Weipa	87.6	91.7	4.8
44 Busselton	50.2	83.6	66.4
45 Burnie	82.5	79.2	-4.0
46 Mount Gambier	73.6	71.5	-2.9
47 Norfolk Island	68.9	70.8	2.8
48 Merimbula	72.5	69.3	-4.5
49 Griffith	74.6	69.0	-7.4
50 Albany	63.3	66.9	5.8
Total top 50 regional airports	22 863.8	23 503.7	2.8
Total regional airports	24 287.6	24 946.4	2.7
Total domestic network	113 864.8	118 191.0	3.8

Note: Airport passenger movement numbers are the sum of passenger arrivals and departures at each airport. Regional airports are defined as airports which are, according to Australian Statistical Geography Standard (ASGS), not based in Major Cities.

DOMESTIC CHARTER ACTIVITY

Table 12: Charter passengers carried and aircraft trips - monthly activity (000s)

	Nov 2023	Nov 2024	% Change
Total domestic charter passengers	368.2	347.8	-5.5
Total domestic charter aircraft trips	6.1	5.8	-5.5

Note: Helicopter, joyflights and sightseeing charter flights not included.

Table 13: Charter passengers carried and aircraft trips - annual activity (000s)

	YE Nov 2023	YE Nov 2024	% Change
Total domestic charter passengers	4 031.5	4 324.8	7.3
Total domestic charter aircraft trips	69.5	73.4	5.5

Note: Helicopter, joyflights and sightseeing charter flights not included.

Table 14: Domestic airports - charter activity - monthly (000s)

	Nov 2023	Nov 2024	% Change
Total domestic charter passenger movements	736.4	695.5	-5.5
Total domestic charter aircraft movements	12.3	11.6	-5.5
Perth airport charter passenger movements	273.9	248.1	-9.4
Perth airport charter aircraft movements	4.2	3.6	-13.2

Note: Helicopter, joyflights and sightseeing charter flights not included.

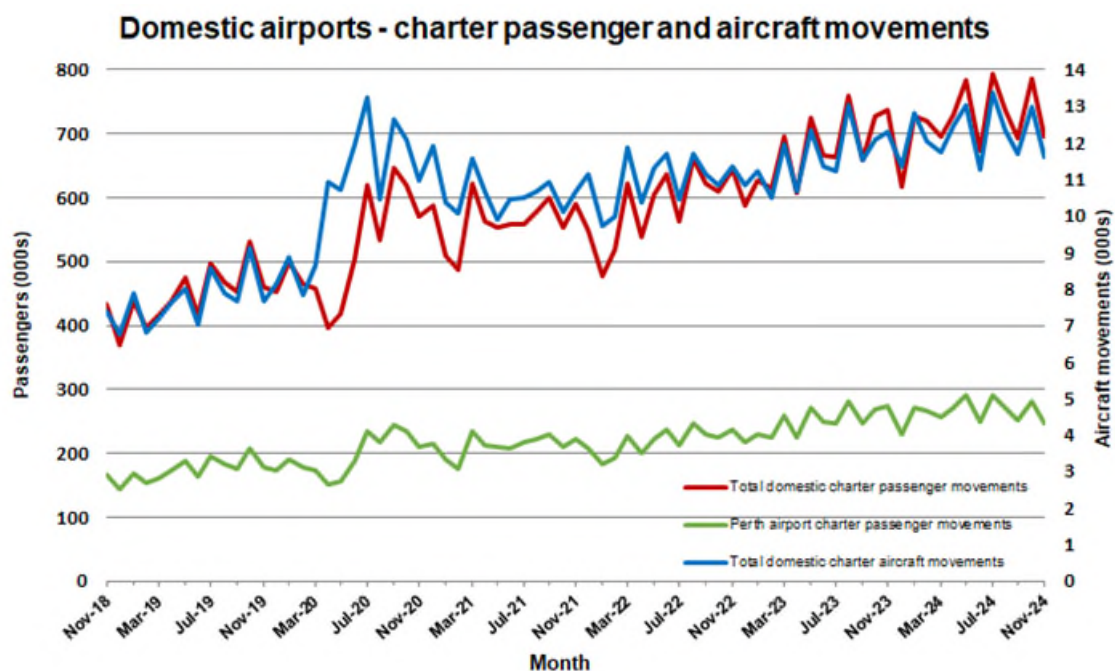
Charter passenger and aircraft movement numbers are the sum of arrivals and departures at each airport.

Table 15: Domestic airports - charter activity - annual (000s)

	YE Nov 2023	YE Nov 2024	% Change
Total domestic charter passenger movements	8 063.1	8 649.6	7.3
Total domestic charter aircraft movements	139.0	146.7	5.5
Perth airport charter passenger movements	2 994.6	3 182.6	6.3
Perth airport charter aircraft movements	47.1	47.7	1.3

Note: Helicopter, joyflights and sightseeing charter flights not included.

Charter passenger and aircraft movement numbers are the sum of arrivals and departures at each airport.



DEFINITIONS

Aircraft Trips	The number of flight stages. A return flight counts as two aircraft trips.
Airport Movements	Airport movements (passenger and cargo) are measured once on arrival and once on departure. Each domestic trip generates two movements at airports. For example, a trip from Melbourne to Sydney will be counted twice, as a departure at Melbourne and as an arrival at Sydney. At the national level, the sum of all domestic airport traffic will therefore be equal to twice the number of trips undertaken.
Available Seat Kilometres (ASKs)	Calculated by multiplying the number of seats available on each flight stage, by the distance in kilometres between the ports. The distances used are Great Circle Distances.
City-Pair	The ports shown make up the city-pair route. Passenger movements shown for a city pair reflect total traffic in both directions.
Flight Stage	The operation of an aircraft from take-off to landing.
Load Factor	The total revenue passenger kilometres performed as a percentage of the total available seat kilometres.
Passengers Carried	Revenue passengers carried.
Regular Public Transport Services (RPT)	All air service operations in which aircraft are available for the transport of members of the public and are conducted in accordance with fixed schedules. It does not include charter or other non-scheduled operations.
Revenue Passengers	All passengers paying any fare. Frequent flyer redemption travellers are regarded as revenue passengers.
Revenue Passenger Kilometres (RPKs)	Calculated by multiplying the number of revenue passengers travelling on each flight stage, by the distance in kilometres between the ports. The distances used are Great Circle Distances.
Traffic on board by stages (TOB)	The total of all traffic (revenue passengers) on each flight stage between two directly connected airports.
..	Not available for confidentiality or other reasons.
NA	Not applicable.