



Australian Government

**Department of Infrastructure, Transport,
Regional Development, Communications and the Arts**
Bureau of Infrastructure and Transport Research Economics

STATISTICAL REPORT



bitre

Aviation

**Domestic aviation activity
October 2024**

The Department of Infrastructure, Transport, Regional Development, Communications and the Arts acknowledges the Traditional Custodians of Country of the land on which we work and live.

We recognise and respect the continuing connections to land, waters and communities.

We pay our respects to them and their cultures and to their Elders both past and present and to all Aboriginal and Torres Strait Islander people.

© Commonwealth of Australia 2024

ISSN: 1832 – 1968

BITRE Reference: 2024-1226

Ownership of intellectual property rights in this publication

Unless otherwise noted, copyright (and any other intellectual property rights, if any) in this publication is owned by the Commonwealth of Australia (referred to below as the Commonwealth).

Disclaimer

The material contained in this publication is made available on the understanding that the Commonwealth is not providing professional advice, and that users exercise their own skill and care with respect to its use, and seek independent advice if necessary.

The Commonwealth makes no representations or warranties as to the contents or accuracy of the information contained in this publication. To the extent permitted by law, the Commonwealth disclaims liability to any person or organisation in respect of anything done, or omitted to be done, in reliance upon information contained in this publication.

Creative Commons licence

With the exception of (a) the Coat of Arms; and (b) the Department of Infrastructure, Transport, Regional Development, Communications and the Arts' photos and graphics, copyright in this publication is licensed under a Creative Commons Attribution 3.0 Australia Licence.

Creative Commons Attribution 3.0 Australia Licence is a standard form licence agreement that allows you to copy, communicate and adapt this publication provided that you attribute the work to the Commonwealth and abide by the other licence terms. A summary of the licence terms is available from <http://creativecommons.org/licenses/by/3.0/au/deed.en>.

The full licence terms are available from <http://creativecommons.org/licenses/by/3.0/au/legalcode>.

Use of the Coat of Arms

The Department of the Prime Minister and Cabinet sets the terms under which the Coat of Arms is used. Please refer to the Department's Commonwealth Coat of Arms and Government branding web page <http://www.dpmc.gov.au/guidelines/index.cfm#brand> and, in particular, the Guidelines on the use of the Commonwealth Coat of Arms publication.

An appropriate citation for this report is:

Bureau of Infrastructure and Transport Research Economics (BITRE), 2024, Domestic aviation activity, Statistical Report, BITRE, Canberra ACT.

Contact us

This publication is available in PDF format. All other rights are reserved, including in relation to any Departmental logos or trademarks which may exist. For enquiries regarding the licence and any use of this publication, please contact:

Bureau of Infrastructure and Transport Research Economics (BITRE)
Department of Infrastructure, Transport, Regional Development, Communications and the Arts
GPO Box 501, Canberra ACT 2601, Australia

Email: bitre@infrastructure.gov.au

Website: www.bitre.gov.au

Inquiries: Marko.Rodic2@infrastructure.gov.au (02) 6136 7995

FOREWORD

This report provides an overview of domestic (including charter) commercial aviation activity in Australia for the month of October 2024.

The data covers revenue passengers carried by Australian-registered operators of scheduled Regular Public Transport (RPT) services over Australian flight stages and fixed-wing charter operators. These estimates include passengers carried between domestic airports on international flights operated by these carriers. The passengers carried refer to traffic on board by stages.

Estimates of passengers and aircraft movements for charter aviation are included in this publication, where BITRE confidentiality standards are met.

Individual routes shown are restricted to those with an average exceeding 8,000 passengers per month over the previous six months where two or more airlines operate in competition. However, for the period from December 2021 through to December 2022, the major airlines (Qantas Group, Virgin Australia and Rex Airlines) agreed to publication of the top 35 routes based on pre-COVID activity (December 2019) whether or not they were meeting the above criteria. From January 2023, the passenger load and dual competition requirements were reinstated due to the continued recovery of passenger numbers.

Information on the total network for the month of October 2024 and on the RPT network for the month of October 2024 is presented on page 2, with estimates for the year ended October 2024 presented on page 3.

Detailed information on individual routes can be found in the RPT summary pages 4-13 of this publication. For the month of October 2024, there are 62 individual routes published.

The top ten airports in terms of RPT passenger movements are shown on page 14.

Data on domestic RPT cargo movements at the top five cargo airports are provided on page 15. The table includes cargo carried on passenger flights operated by the Qantas group (including Jetstar), Virgin Australia, Air North and Skippers as well as the cargo carried by dedicated freighter aircraft operated by Qantas Freight and Team Global Express (formerly Toll).

The long-term trends for the top ten competitive RPT routes are presented graphically on pages 16-25.

Domestic RPT passenger movements at regional airports are shown on pages 26-27.

Tables providing estimates of domestic charter aviation activity are shown on page 28. BITRE confidentiality standards restrict publication of detailed estimates for individual Australian airports, with the exception of Perth Airport.

A list of definitions can be found on page 29.

This report was prepared by the Aviation Statistics Section of the Bureau of Infrastructure and Transport Research Economics with data provided by airlines.

Estimates are included where data were not available and data presented in this publication may contain revisions to previously published data.

Where figures have been rounded, discrepancies may occur between sums of component items and totals, and in percentage changes which are derived from figures prior to rounding.

CONTENTS

Highlights	1
Total network.....	2
RPT network	2
Top competitive routes.....	4
Top ten airports – passenger movements.....	14
Top five airports – cargo movements.....	15
Top ten routes	16
1. Melbourne – Sydney	16
2. Brisbane – Sydney.....	17
3. Brisbane – Melbourne	18
4. Gold Coast – Sydney	19
5. Adelaide – Melbourne	20
6. Gold Coast – Melbourne	21
7. Melbourne – Perth	22
8. Adelaide – Sydney	23
9. Perth – Sydney	24
10. Brisbane - Cairns	25
Top fifty regional airports	26
Domestic charter activity.....	28
Definitions	29

This page is intentionally left blank.

HIGHLIGHTS

There were 5.77 million passengers carried on Australian domestic commercial aviation (including charter operations) in October 2024, compared with 5.55 million in October 2023 (up 3.9 per cent). This is also a decrease of 2.5 per cent on pre-COVID October 2019 passenger numbers (5.91 million).

5.37 million passengers were carried on Regular Public Transport (RPT) flights in October 2024 (excluding charter operations), an increase of 3.6 per cent compared to October 2023.

For the month of October 2024, there were 53.0 thousand RPT aircraft trips, a decrease of 0.1 per cent on October 2023.

For the year ending October 2024 there were 59.05 million RPT passengers, an increase of 4.4 per cent on the year ending October 2023.

RPT revenue passenger kilometres (RPKs) performed were 6.46 billion for the month, compared with 6.23 billion in October 2023 (up 3.7 per cent).

Capacity, measured by available seat kilometres (ASKs), decreased to 7.47 billion in October 2024 compared to 7.55 billion in October 2023 (down 1.1 per cent).

The industry wide load factor (RPKs/ASKs) increased from 82.6 per cent in October 2023 to 86.6 per cent in October 2024. The highest load factor (94.2 per cent) was recorded on the Gold Coast - Melbourne route while the lowest load factor (55.7 per cent) was recorded on the Geraldton – Perth route.

For the month of October 2024, Melbourne – Sydney was Australia's busiest RPT route with 732.0 thousand passengers, followed by Brisbane – Sydney with 404.2 thousand passengers and Brisbane – Melbourne with 322.1 thousand passengers.

Sydney was Australia's busiest domestic airport with 2.31 million passenger movements in October 2024, followed by Melbourne with 2.15 million passenger movements and Brisbane with 1.57 million passenger movements.

Total cargo movements at Australian airports on domestic RPT flights were 28.7 thousand tonnes in October 2024, an increase of 4.9 per cent compared with October 2023.

In October 2024, there were 2.26 million domestic passenger movements through regional airports, an increase of 2.2 per cent from October 2023. Out of the top 50 regional airports, the strongest increase was recorded at Busselton Airport (up 103.9 per cent on October 2023), while the largest decrease was recorded at Mildura Airport (down 18.8 per cent on October 2023).

Fixed-wing charter operators carried 393.5 thousand passengers in October 2024, an increase of 8.3 per cent compared with October 2023. Perth Airport accounted for 35.6 per cent of all charter passengers in Australia.

TOTAL NETWORK

Summary of monthly commercial aviation activity

	Oct 2023	Oct 2024	% Change
Total passengers carried (millions)	5.55	5.77	3.9
Aircraft trips (000s)	59.1	59.5	0.7

Note: Regular Public Transport and charter aviation activity
Helicopter, joy flights and sightseeing charter flights not included.

RPT NETWORK

Summary of monthly RPT activity

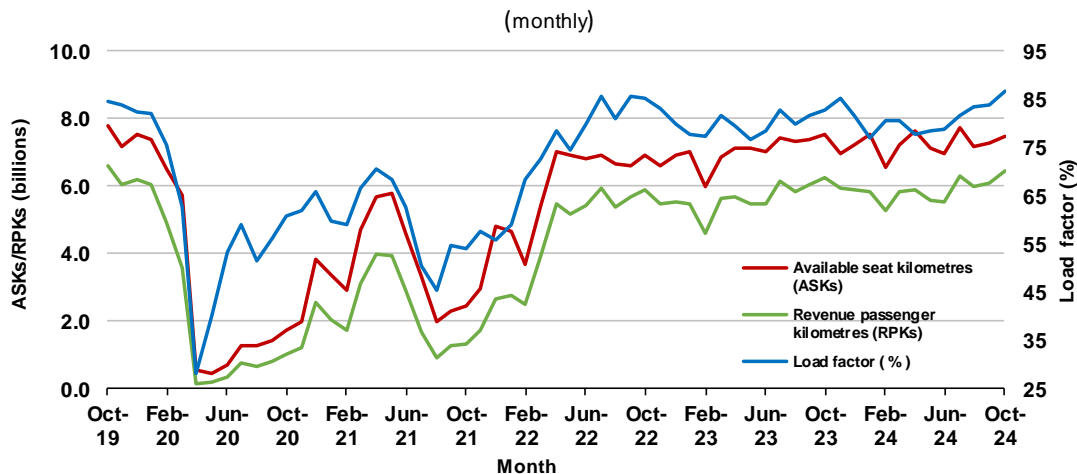
	Oct 2023	Oct 2024	% Change
Total passengers carried (millions)	5.19	5.37	3.6
Revenue passenger kilometres (billions)	6.23	6.46	3.7
Available seats (millions)	6.43	6.36	-1.1
Available seat kilometres (billions)	7.55	7.47	-1.1
Load factor %	82.6	86.6	4.0 *
Aircraft trips (000s)	53.0	53.0	-0.1

* percentage point difference

Domestic RPT passenger traffic



RPT Network utilisation



TOTAL NETWORK

Summary of annual commercial aviation activity

	YE Oct 2023	YE Oct 2024	% Change
Total passengers carried (millions)	60.54	63.39	4.7
Aircraft trips (000s)	678.5	690.4	1.7

Note: Regular Public Transport and charter aviation activity
Helicopter, joy flights and sightseeing charter flights not included.

RPT NETWORK

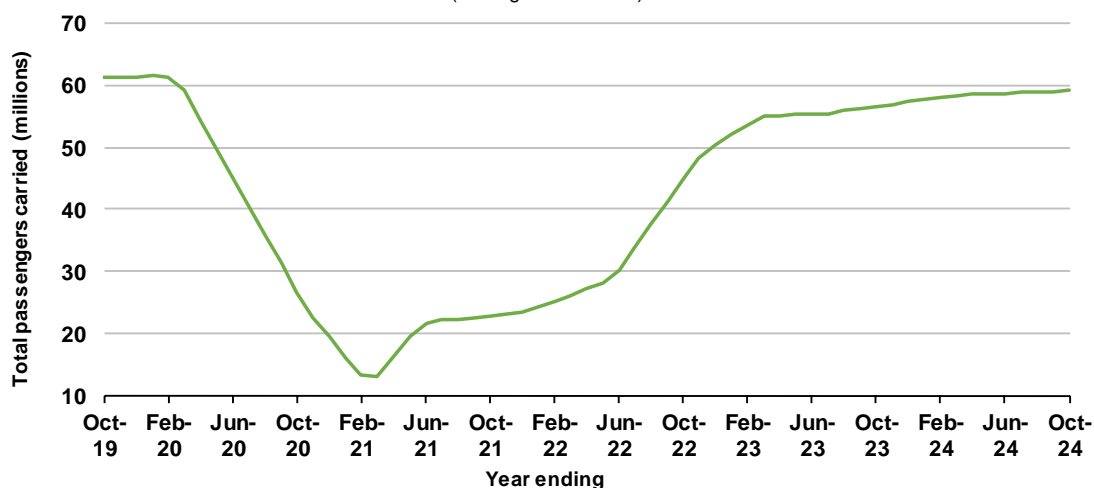
Summary of annual RPT activity

	YE Oct 2023	YE Oct 2024	% Change
Total passengers carried (millions)	56.56	59.05	4.4
Revenue passenger kilometres (billions)	67.60	70.57	4.4
Available seats (millions)	72.56	74.61	2.8
Available seat kilometres (billions)	84.34	86.89	3.0
Load factor %	80.1	81.2	1.1 *
Aircraft trips (000s)	609.5	616.7	1.2

* percentage point difference

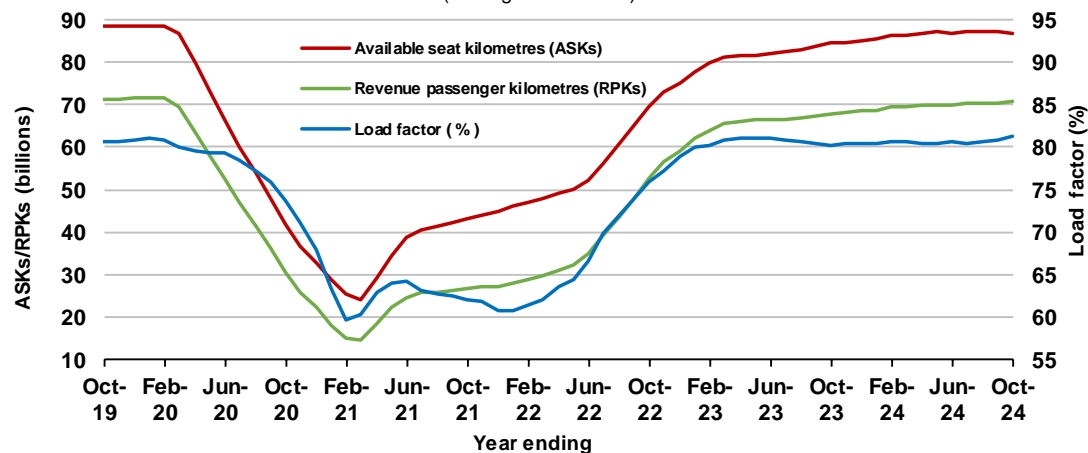
Domestic RPT passenger traffic

(moving annual totals)



RPT Network utilisation

(moving annual totals)



TOP COMPETITIVE ROUTES

Table 1: Passengers carried (000s) — annual activity

	City-Pair	YE Oct 2023	YE Oct 2024	% Change
1	Melbourne - Sydney	7 489.0	8 007.2	6.9
2	Brisbane - Sydney	4 182.1	4 346.6	3.9
3	Brisbane - Melbourne	3 255.3	3 460.8	6.3
4	Gold Coast - Sydney	2 426.9	2 549.1	5.0
5	Adelaide - Melbourne	2 261.6	2 328.8	3.0
6	Gold Coast - Melbourne	2 237.9	2 187.5	-2.2
7	Melbourne - Perth	1 868.9	2 024.5	8.3
8	Adelaide - Sydney	1 703.2	1 863.5	9.4
9	Perth - Sydney	1 559.3	1 625.5	4.2
10	Hobart - Melbourne	1 269.1	1 367.6	7.8
11	Brisbane - Cairns	1 240.7	1 298.4	4.6
12	Brisbane - Perth	1 000.6	1 071.0	7.0
13	Canberra - Melbourne	985.1	1 017.8	3.3
14	Brisbane - Townsville	869.1	925.0	6.4
15	Cairns - Sydney	891.8	909.7	2.0
16	Adelaide - Brisbane	800.1	872.4	9.0
17	Launceston - Melbourne	797.4	864.9	8.5
18	Cairns - Melbourne	806.8	808.7	0.2
19	Hobart - Sydney	727.4	787.2	8.2
20	Sunshine Coast - Sydney	747.7	771.7	3.2
21	Brisbane - Mackay	732.4	757.4	3.4
22	Melbourne - Sunshine Coast	718.2	747.8	4.1
23	Adelaide - Perth	640.6	696.0	8.6
24	Canberra - Sydney	594.2	636.5	7.1
25	Brisbane - Canberra	630.2	630.3	0.0
26	Karratha - Perth	537.6	601.0	11.8
27	Brisbane - Rockhampton	504.1	568.8	12.8
28	Ballina - Sydney	540.1	516.2	-4.4
29	Brisbane - Newcastle	496.7	508.4	2.4
30	Perth - Port Hedland	480.0	475.3	-1.0
31	Melbourne - Newcastle	413.0	454.5	10.1
32	Newman - Perth	371.4	389.1	4.8
33	Kalgoorlie - Perth	352.5	366.5	4.0
34	Broome - Perth	364.5	354.7	-2.7
35	Launceston - Sydney	317.9	342.1	7.6
36	Brisbane - Darwin	323.8	321.7	-0.7
37	Brisbane - Hobart	293.5	301.1	2.6
38	Darwin - Melbourne	285.8	282.4	-1.2
39	Brisbane - Proserpine	272.4	276.6	1.6
40	Adelaide - Gold Coast	258.5	274.8	6.3
41	Hamilton Island - Sydney	247.5	245.9	-0.6
42	Brisbane - Gladstone	210.9	223.0	5.7
43	Coffs Harbour - Sydney	216.0	207.4	-4.0
44	Brisbane - Emerald	182.8	186.6	2.1
45	Canberra - Gold Coast	173.1	185.4	7.1
46	Adelaide - Canberra	194.0	183.3	-5.5
47	Darwin - Perth	169.9	180.9	6.5
48	Dubbo - Sydney	174.5	174.9	0.2
49	Adelaide - Port Lincoln	174.8	171.1	-2.1
50	Port Macquarie - Sydney	165.1	165.8	0.4

continued

Table 1: (continued) Passengers carried (000s) — annual activity

	City-Pair	YE Oct 2023	YE Oct 2024	% Change
51	Melbourne - Mildura	162.2	163.9	1.0
52	Albury - Sydney	164.7	163.0	-1.1
53	Brisbane - Hamilton Island	162.7	161.5	-0.7
54	Sydney - Wagga Wagga	154.1	159.4	3.4
55	Brisbane - Launceston	154.7	149.5	-3.3
56	Brisbane - Mount Isa	143.5	147.4	2.7
57	Brisbane - Bundaberg	124.9	139.6	11.8
58	Devonport - Melbourne	120.9	124.3	2.8
59	Brisbane - Moranbah	108.9	112.3	3.1
60	Geraldton - Perth	..	110.9	NA
61	Adelaide - Alice Springs	114.8	108.2	-5.7
62	Ayers Rock - Melbourne	..	103.1	NA
	Total domestic network	56 557.0	59 047.2	4.4

.. Data not available for release.

Table 2: Passengers carried (000s) — monthly activity

	City-Pair	Oct 2023	Oct 2024	% Change
1	Melbourne - Sydney	686.8	732.0	6.6
2	Brisbane - Sydney	380.5	404.2	6.2
3	Brisbane - Melbourne	301.1	322.1	7.0
4	Gold Coast - Sydney	218.5	230.3	5.4
5	Adelaide - Melbourne	205.5	206.2	0.3
6	Gold Coast - Melbourne	196.3	192.2	-2.1
7	Melbourne - Perth	175.0	184.4	5.4
8	Adelaide - Sydney	168.6	179.3	6.3
9	Perth - Sydney	145.4	153.0	5.2
10	Brisbane - Cairns	112.7	118.9	5.5
11	Hobart - Melbourne	109.9	113.9	3.7
12	Brisbane - Perth	90.8	102.8	13.2
13	Canberra - Melbourne	92.3	88.6	-4.0
14	Cairns - Sydney	86.5	87.2	0.9
15	Brisbane - Townsville	75.9	84.7	11.6
16	Cairns - Melbourne	85.5	79.0	-7.6
17	Adelaide - Brisbane	76.2	77.1	1.1
18	Hobart - Sydney	67.7	74.0	9.3
19	Sunshine Coast - Sydney	72.0	71.5	-0.8
20	Launceston - Melbourne	72.0	71.0	-1.4
21	Brisbane - Mackay	65.3	67.4	3.2
22	Adelaide - Perth	60.4	64.1	6.1
23	Canberra - Sydney	53.8	58.6	8.8
24	Melbourne - Sunshine Coast	67.5	58.6	-13.2
25	Brisbane - Canberra	55.5	57.7	4.0
26	Karratha - Perth	49.2	56.4	14.7
27	Brisbane - Rockhampton	45.8	56.0	22.4
28	Ballina - Sydney	47.0	49.2	4.7
29	Brisbane - Newcastle	45.4	47.3	4.3
30	Perth - Port Hedland	43.1	44.5	3.3
31	Melbourne - Newcastle	38.3	42.5	11.0
32	Newman - Perth	31.9	39.5	23.9
33	Kalgoorlie - Perth	33.7	35.6	5.7
34	Broome - Perth	36.6	32.3	-11.7
35	Launceston - Sydney	27.9	29.8	6.7
36	Brisbane - Darwin	28.3	28.1	-0.8
37	Darwin - Melbourne	26.1	27.5	5.3
38	Brisbane - Hobart	22.4	26.6	18.7
39	Brisbane - Proserpine	24.8	26.3	6.0
40	Adelaide - Gold Coast	25.9	24.8	-4.4
41	Hamilton Island - Sydney	22.1	24.7	11.9
42	Brisbane - Gladstone	20.1	20.1	0.0
43	Coffs Harbour - Sydney	19.1	18.3	-4.3
44	Adelaide - Canberra	18.2	17.9	-2.0
45	Brisbane - Emerald	16.4	17.4	5.7
46	Dubbo - Sydney	16.2	15.9	-1.6
47	Brisbane - Hamilton Island	15.9	15.8	-0.8
48	Darwin - Perth	14.9	15.4	3.4
49	Sydney - Wagga Wagga	14.0	15.3	9.5
50	Canberra - Gold Coast	15.2	15.2	-0.2

continued

Table 2: (continued) Passengers carried (000s) — monthly activity

	City-Pair	Oct 2023	Oct 2024	% Change
51	Adelaide - Port Lincoln	15.0	15.0	0.2
52	Port Macquarie - Sydney	14.7	14.7	-0.6
53	Brisbane - Mount Isa	12.5	14.0	11.9
54	Albury - Sydney	14.3	14.0	-2.3
55	Brisbane - Launceston	12.0	12.9	7.5
56	Brisbane - Bundaberg	12.0	12.9	6.7
57	Melbourne - Mildura	15.6	12.8	-17.6
58	Ayers Rock - Melbourne	..	11.3	NA
59	Devonport - Melbourne	10.5	11.1	5.6
60	Geraldton - Perth	..	11.0	NA
61	Brisbane - Moranbah	9.5	10.1	6.7
62	Adelaide - Alice Springs	9.9	9.0	-8.9
	Total domestic network	5 188.6	5 374.0	3.6

.. Data not available for release.

Table 3: Available seats (000s) — monthly activity

	City-Pair	Oct 2023	Oct 2024	% Change
1	Melbourne - Sydney	814.5	825.7	1.4
2	Brisbane - Sydney	456.5	443.8	-2.8
3	Brisbane - Melbourne	350.8	359.2	2.4
4	Gold Coast - Sydney	247.4	248.0	0.3
5	Adelaide - Melbourne	239.6	228.1	-4.8
6	Gold Coast - Melbourne	212.8	204.0	-4.2
7	Melbourne - Perth	204.4	206.1	0.8
8	Adelaide - Sydney	194.2	200.7	3.4
9	Perth - Sydney	163.4	167.5	2.6
10	Brisbane - Cairns	127.9	128.8	0.7
11	Hobart - Melbourne	134.7	131.6	-2.2
12	Brisbane - Perth	103.2	113.9	10.4
13	Canberra - Melbourne	124.8	110.1	-11.8
14	Cairns - Sydney	98.5	95.3	-3.2
15	Brisbane - Townsville	93.2	98.5	5.8
16	Cairns - Melbourne	95.1	85.4	-10.2
17	Adelaide - Brisbane	86.1	83.3	-3.2
18	Hobart - Sydney	85.6	85.6	0.0
19	Sunshine Coast - Sydney	86.4	78.9	-8.6
20	Launceston - Melbourne	90.6	82.6	-8.9
21	Brisbane - Mackay	81.9	78.1	-4.7
22	Adelaide - Perth	69.6	73.0	4.8
23	Canberra - Sydney	83.9	91.7	9.4
24	Melbourne - Sunshine Coast	76.1	63.8	-16.2
25	Brisbane - Canberra	73.9	71.1	-3.8
26	Karratha - Perth	68.8	80.6	17.1
27	Brisbane - Rockhampton	56.0	66.6	18.8
28	Ballina - Sydney	54.8	54.2	-1.1
29	Brisbane - Newcastle	59.1	53.2	-10.1
30	Perth - Port Hedland	62.1	64.0	3.0
31	Melbourne - Newcastle	47.2	47.2	0.1
32	Newman - Perth	56.0	58.5	4.6
33	Kalgoorlie - Perth	50.9	59.5	16.7
34	Broome - Perth	44.3	41.8	-5.6
35	Launceston - Sydney	33.4	32.1	-3.7
36	Brisbane - Darwin	37.8	32.2	-14.9
37	Darwin - Melbourne	36.7	33.2	-9.4
38	Brisbane - Hobart	26.2	29.1	11.3
39	Brisbane - Proserpine	28.4	28.1	-1.1
40	Adelaide - Gold Coast	28.4	26.6	-6.2
41	Hamilton Island - Sydney	28.4	27.6	-2.7
42	Brisbane - Gladstone	30.7	29.3	-4.4
43	Coffs Harbour - Sydney	23.0	23.1	0.4
44	Adelaide - Canberra	27.4	23.6	-13.8
45	Brisbane - Emerald	23.2	26.9	16.0
46	Dubbo - Sydney	24.2	25.5	5.4
47	Brisbane - Hamilton Island	21.7	18.0	-17.3
48	Darwin - Perth	22.2	21.1	-5.0
49	Sydney - Wagga Wagga	21.0	23.0	9.4
50	Canberra - Gold Coast	17.3	16.8	-2.9

continued

Table 3: (continued) Available seats (000s) — monthly activity

	City-Pair	Oct 2023	Oct 2024	% Change
51	Adelaide - Port Lincoln	22.5	23.4	4.0
52	Port Macquarie - Sydney	21.5	20.7	-3.4
53	Brisbane - Mount Isa	20.4	20.2	-0.8
54	Albury - Sydney	19.8	19.1	-3.8
55	Brisbane - Launceston	14.2	14.6	3.3
56	Brisbane - Bundaberg	17.6	19.3	9.2
57	Melbourne - Mildura	20.6	16.6	-19.5
58	Ayers Rock - Melbourne	..	14.3	NA
59	Devonport - Melbourne	13.8	14.4	4.5
60	Geraldton - Perth	..	19.7	NA
61	Brisbane - Moranbah	16.3	17.9	9.9
62	Adelaide - Alice Springs	14.5	13.4	-7.4
	Total domestic network	6 433.2	6 361.2	-1.1

.. Data not available for release.

Table 4: Load factors (%) — monthly activity

	City-Pair	Oct 2023	Oct 2024	% Point diff
1	Melbourne - Sydney	84.3	88.7	4.4
2	Brisbane - Sydney	83.4	91.1	7.7
3	Brisbane - Melbourne	85.8	89.7	3.9
4	Gold Coast - Sydney	88.3	92.9	4.6
5	Adelaide - Melbourne	85.8	90.4	4.6
6	Gold Coast - Melbourne	92.2	94.2	2.0
7	Melbourne - Perth	85.6	89.5	3.9
8	Adelaide - Sydney	86.8	89.3	2.5
9	Perth - Sydney	89.0	91.3	2.3
10	Brisbane - Cairns	88.1	92.3	4.2
11	Hobart - Melbourne	81.6	86.5	4.9
12	Brisbane - Perth	88.0	90.2	2.2
13	Canberra - Melbourne	74.0	80.5	6.5
14	Cairns - Sydney	87.7	91.5	3.8
15	Brisbane - Townsville	81.5	85.9	4.4
16	Cairns - Melbourne	90.0	92.6	2.6
17	Adelaide - Brisbane	88.6	92.6	4.0
18	Hobart - Sydney	79.1	86.4	7.3
19	Sunshine Coast - Sydney	83.4	90.6	7.2
20	Launceston - Melbourne	79.4	86.0	6.6
21	Brisbane - Mackay	79.7	86.3	6.6
22	Adelaide - Perth	86.8	87.8	1.0
23	Canberra - Sydney	64.2	63.9	-0.3
24	Melbourne - Sunshine Coast	90.4	91.9	1.5
25	Brisbane - Canberra	75.1	81.2	6.1
26	Karratha - Perth	71.5	70.0	-1.5
27	Brisbane - Rockhampton	81.7	84.2	2.5
28	Ballina - Sydney	85.7	90.7	5.0
29	Brisbane - Newcastle	76.7	89.0	12.3
30	Perth - Port Hedland	69.3	69.5	0.2
31	Melbourne - Newcastle	81.2	90.1	8.9
32	Newman - Perth	57.0	67.5	10.5
33	Kalgoorlie - Perth	66.1	59.8	-6.3
34	Broome - Perth	82.7	77.4	-5.3
35	Launceston - Sydney	83.6	92.6	9.0
36	Brisbane - Darwin	74.9	87.3	12.4
37	Darwin - Melbourne	71.2	82.8	11.6
38	Brisbane - Hobart	85.6	91.3	5.7
39	Brisbane - Proserpine	87.4	93.6	6.2
40	Adelaide - Gold Coast	91.5	93.2	1.7
41	Hamilton Island - Sydney	77.8	89.4	11.6
42	Brisbane - Gladstone	65.5	68.5	3.0
43	Coffs Harbour - Sydney	82.8	78.9	-3.9
44	Adelaide - Canberra	66.6	75.7	9.1
45	Brisbane - Emerald	70.9	64.6	-6.3
46	Dubbo - Sydney	67.0	62.5	-4.5
47	Brisbane - Hamilton Island	73.3	88.0	14.7
48	Darwin - Perth	67.0	73.0	6.0
49	Sydney - Wagga Wagga	66.6	66.7	0.1
50	Canberra - Gold Coast	87.9	90.3	2.4

continued

Table 4: (continued) Load factors (%) — monthly activity

	City-Pair	Oct 2023	Oct 2024	% Point diff
51	Adelaide - Port Lincoln	66.7	64.3	-2.4
52	Port Macquarie - Sydney	68.7	70.7	2.0
53	Brisbane - Mount Isa	61.4	69.2	7.8
54	Albury - Sydney	72.0	73.1	1.1
55	Brisbane - Launceston	84.8	88.3	3.5
56	Brisbane - Bundaberg	68.3	66.7	-1.6
57	Melbourne - Mildura	75.7	77.5	1.8
58	Ayers Rock - Melbourne	..	79.0	NA
59	Devonport - Melbourne	75.9	76.7	0.8
60	Geraldton - Perth	..	55.7	NA
61	Brisbane - Moranbah	58.4	56.7	-1.7
62	Adelaide - Alice Springs	68.5	67.3	-1.2
	Total domestic network	82.6	86.6	4.0

.. Data not available for release.

Table 5: Aircraft trips ^(a) — monthly activity

	City-Pair	Oct 2023	Oct 2024	% Change
1	Melbourne - Sydney	4 680	4 776	2.1
2	Brisbane - Sydney	2 776	2 672	-3.7
3	Brisbane - Melbourne	2 116	2 173	2.7
4	Gold Coast - Sydney	1 426	1 405	-1.5
5	Adelaide - Melbourne	1 507	1 373	-8.9
6	Gold Coast - Melbourne	1 143	1 104	-3.4
7	Melbourne - Perth	1 117	1 130	1.2
8	Adelaide - Sydney	1 178	1 182	0.3
9	Perth - Sydney	832	881	5.9
10	Brisbane - Cairns	890	877	-1.5
11	Hobart - Melbourne	798	752	-5.8
12	Brisbane - Perth	599	656	9.5
13	Canberra - Melbourne	901	717	-20.4
14	Cairns - Sydney	502	514	2.4
15	Brisbane - Townsville	703	779	10.8
16	Cairns - Melbourne	471	444	-5.7
17	Adelaide - Brisbane	700	655	-6.4
18	Hobart - Sydney	520	482	-7.3
19	Sunshine Coast - Sydney	483	440	-8.9
20	Launceston - Melbourne	762	632	-17.1
21	Brisbane - Mackay	626	689	10.1
22	Adelaide - Perth	394	407	3.3
23	Canberra - Sydney	1 304	1 335	2.4
24	Melbourne - Sunshine Coast	406	343	-15.5
25	Brisbane - Canberra	604	574	-5.0
26	Karratha - Perth	414	482	16.4
27	Brisbane - Rockhampton	679	710	4.6
28	Ballina - Sydney	382	364	-4.7
29	Brisbane - Newcastle	534	446	-16.5
30	Perth - Port Hedland	390	398	2.1
31	Melbourne - Newcastle	306	310	1.3
32	Newman - Perth	351	363	3.4
33	Kalgoorlie - Perth	338	403	19.2
34	Broome - Perth	275	275	0.0
35	Launceston - Sydney	208	194	-6.7
36	Brisbane - Darwin	245	213	-13.1
37	Darwin - Melbourne	215	181	-15.8
38	Brisbane - Hobart	176	178	1.1
39	Brisbane - Proserpine	194	172	-11.3
40	Adelaide - Gold Coast	150	136	-9.3
41	Hamilton Island - Sydney	161	156	-3.1
42	Brisbane - Gladstone	378	338	-10.6
43	Coffs Harbour - Sydney	401	406	1.2
44	Adelaide - Canberra	250	219	-12.4
45	Brisbane - Emerald	346	356	2.9
46	Dubbo - Sydney	447	487	8.9
47	Brisbane - Hamilton Island	127	128	0.8
48	Darwin - Perth	131	120	-8.4
49	Sydney - Wagga Wagga	383	407	6.3
50	Canberra - Gold Coast	98	94	-4.1

continued

Table 5: (Continued) Aircraft trips ^(a) — monthly activity

	City-Pair	Oct 2023	Oct 2024	% Change
51	Adelaide - Port Lincoln	548	568	3.6
52	Port Macquarie - Sydney	375	345	-8.0
53	Brisbane - Mount Isa	172	192	11.6
54	Albury - Sydney	373	358	-4.0
55	Brisbane - Launceston	82	82	0.0
56	Brisbane - Bundaberg	286	315	10.1
57	Melbourne - Mildura	423	399	-5.7
58	Ayers Rock - Melbourne	..	80	NA
59	Devonport - Melbourne	301	322	7.0
60	Geraldton - Perth	..	213	NA
61	Brisbane - Moranbah	216	238	10.2
62	Adelaide - Alice Springs	172	162	-5.8
	Total domestic network	53 011	52 960	-0.1

.. Data not available for release.

(a) Includes RPT cargo flights.

TOP TEN AIRPORTS – PASSENGER MOVEMENTS

Table 6: Top ten airports, RPT passenger movements (000s) - monthly activity

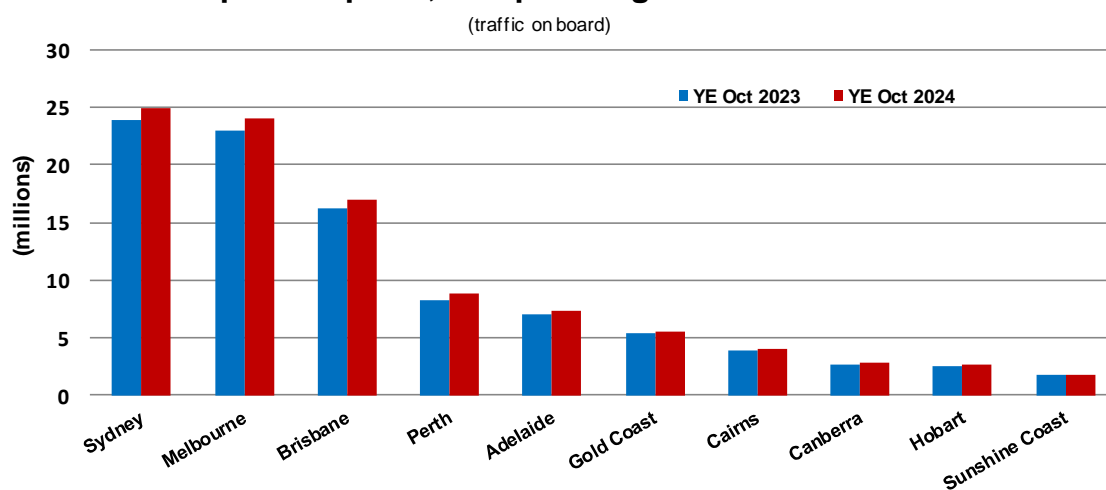
Airport	Oct 2023	Oct 2024	% Change	% of Total
1 Sydney	2 189.0	2 313.9	5.7	21.5
2 Melbourne	2 118.0	2 153.0	1.7	20.0
3 Brisbane	1 468.3	1 571.3	7.0	14.6
4 Perth	767.5	823.1	7.3	7.7
5 Adelaide	658.8	676.0	2.6	6.3
6 Gold Coast	487.3	492.0	1.0	4.6
7 Cairns	381.5	380.5	-0.2	3.5
8 Canberra	248.5	250.5	0.8	2.3
9 Hobart	224.8	235.0	4.5	2.2
10 Townsville	146.6	149.0	1.6	1.4
Total top ten airports	8 690.2	9 044.3	4.1	84.1
Total domestic network	10 377.3	10 748.0	3.6	100.0

Table 7: Top ten airports, RPT passenger movements (000s) - annual activity

Airport	YE Oct 2023	YE Oct 2024	% Change	% of Total
1 Sydney	23 844.1	25 015.6	4.9	21.2
2 Melbourne	23 037.1	24 112.5	4.7	20.4
3 Brisbane	16 177.3	16 960.8	4.8	14.4
4 Perth	8 280.9	8 814.9	6.4	7.5
5 Adelaide	7 019.0	7 344.5	4.6	6.2
6 Gold Coast	5 449.0	5 595.3	2.7	4.7
7 Cairns	3 973.0	4 050.5	2.0	3.4
8 Canberra	2 740.0	2 796.2	2.1	2.4
9 Hobart	2 539.6	2 702.6	6.4	2.3
10 Sunshine Coast	1 764.5	1 744.7	-1.1	1.5
Total top ten airports	94 824.5	99 137.5	4.5	83.9
Total domestic network	113 114.0	118 094.3	4.4	100.0

Note: Airport passenger movement numbers are the sum of passenger arrivals and departures at each airport.

Top ten airports, RPT passenger movements



TOP FIVE AIRPORTS – CARGO MOVEMENTS

Table 8: Top five airports, domestic RPT cargo movements (000s tonnes) - monthly activity

Airport	Oct 2023	Oct 2024	% Change	% of Total
1 Melbourne	7.5	7.8	4.4	27.3
2 Sydney	6.2	6.0	-2.2	21.0
3 Brisbane	4.8	5.0	3.9	17.5
4 Perth	2.8	3.4	19.7	11.8
5 Adelaide	1.4	1.6	9.0	5.5
Total top five airports	22.8	23.8	4.7	83.1
Total domestic network	27.3	28.7	4.9	100.0

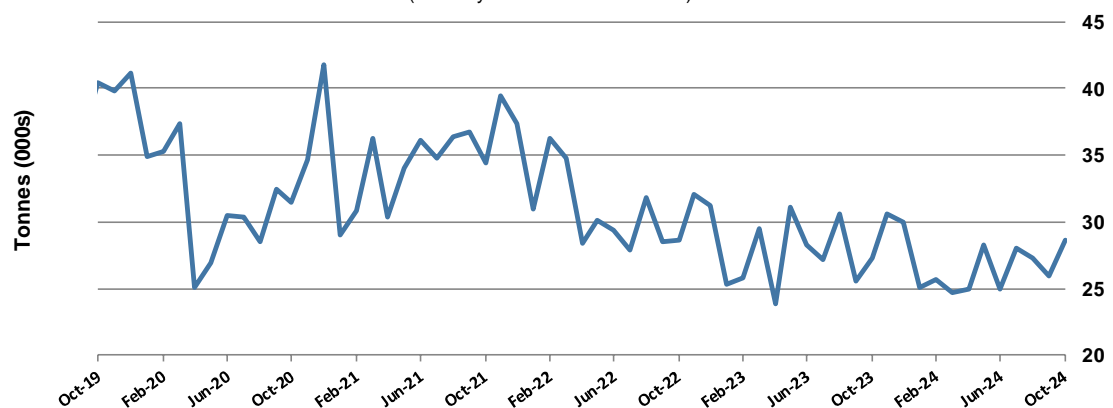
Table 9: Top five airports, domestic RPT cargo movements (000s tonnes) - annual activity

Airport	YE Oct 2023	YE Oct 2024	% Change	% of Total
1 Melbourne	90.9	88.1	-3.1	27.2
2 Sydney	75.4	70.0	-7.3	21.6
3 Brisbane	59.2	59.2	-0.1	18.3
4 Perth	35.3	36.1	2.3	11.1
5 Adelaide	18.7	18.5	-0.8	5.7
Total top five airports	279.6	271.8	-2.8	83.9
Total domestic network	337.7	324.2	-4.0	100.0

Note: Airport cargo tonnes are the sum of cargo tonnes on arrivals and departures at each airport.

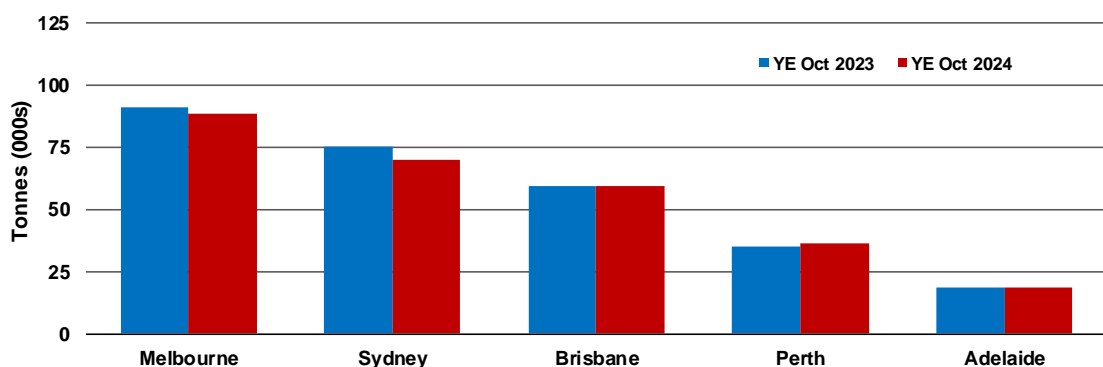
Total domestic network - cargo movement

(monthly totals - traffic on board)



Top five airports, cargo movements

(Domestic cargo traffic - traffic on board)



Note: Airport cargo tonnes are the sum of cargo tonnes on arrivals and departures at each airport.

TOP TEN ROUTES

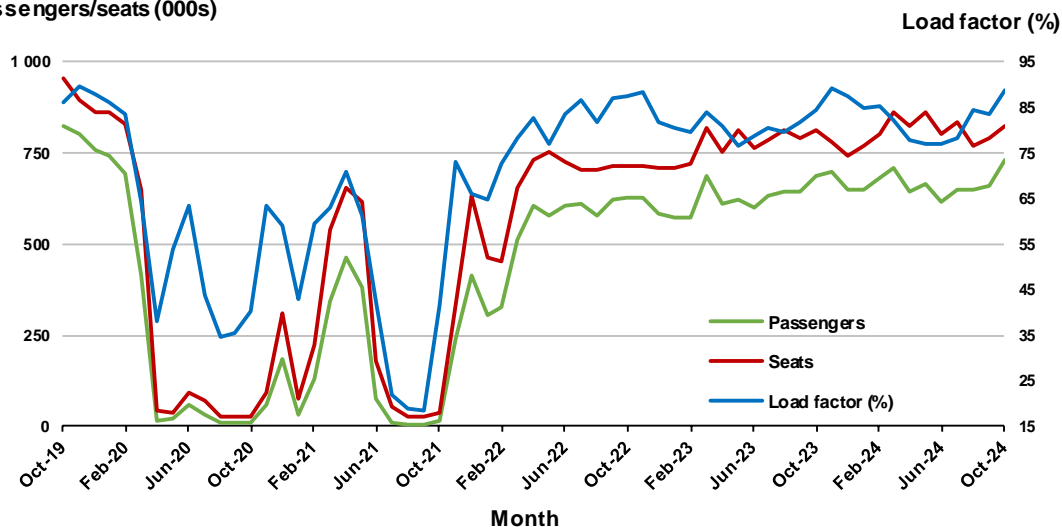
1. Melbourne - Sydney

Monthly data

	Oct 2023	Oct 2024	% Change
Passengers carried (000s)	686.8	732.0	6.6
Seats (000s)	814.5	825.7	1.4
Load factor %	84.3	88.7	4.4 *
Aircraft trips	4 680	4 776	2.1

* percentage point difference

Passengers/seats (000s)

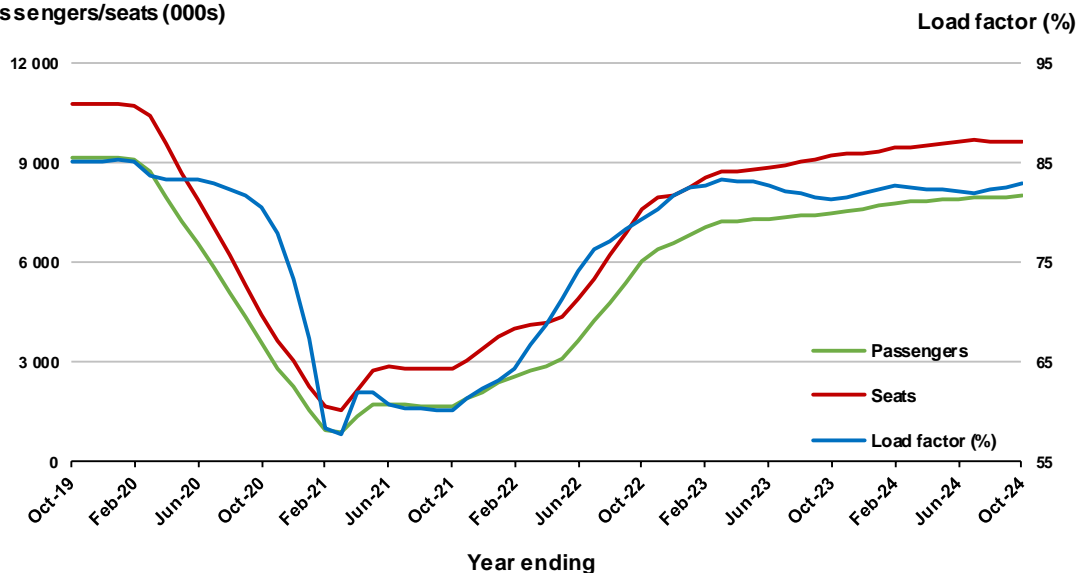


Moving annual data

	YE Oct 2023	YE Oct 2024	% Change
Passengers carried (000s)	7 489.0	8 007.2	6.9
Seats (000s)	9 208.0	9 663.6	4.9
Load factor %	81.3	82.9	1.5 *
Aircraft trips	53 211	55 894	5.0

* percentage point difference

Passengers/seats (000s)

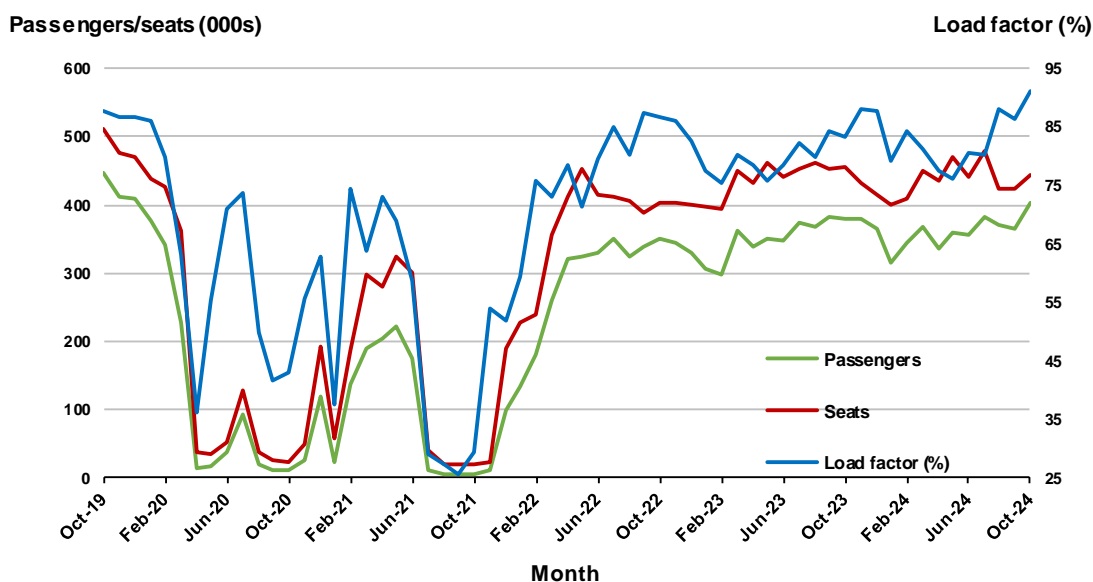


2. Brisbane - Sydney

Monthly data

	Oct 2023	Oct 2024	% Change
Passengers carried (000s)	380.5	404.2	6.2
Seats (000s)	456.5	443.8	-2.8
Load factor %	83.4	91.1	7.7 *
Aircraft trips	2 776	2 672	-3.7

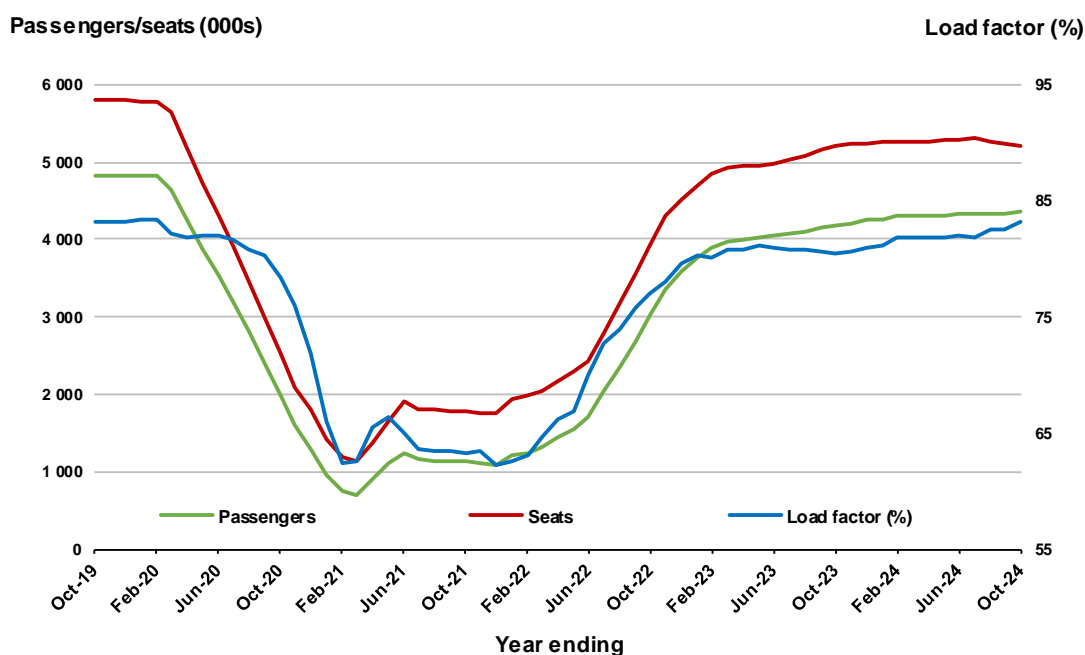
* percentage point difference



Moving annual data

	YE Oct 2023	YE Oct 2024	% Change
Passengers carried (000s)	4 182.1	4 346.6	3.9
Seats (000s)	5 201.2	5 221.6	0.4
Load factor %	80.4	83.2	2.8 *
Aircraft trips	31 929	31 813	-0.4

* percentage point difference

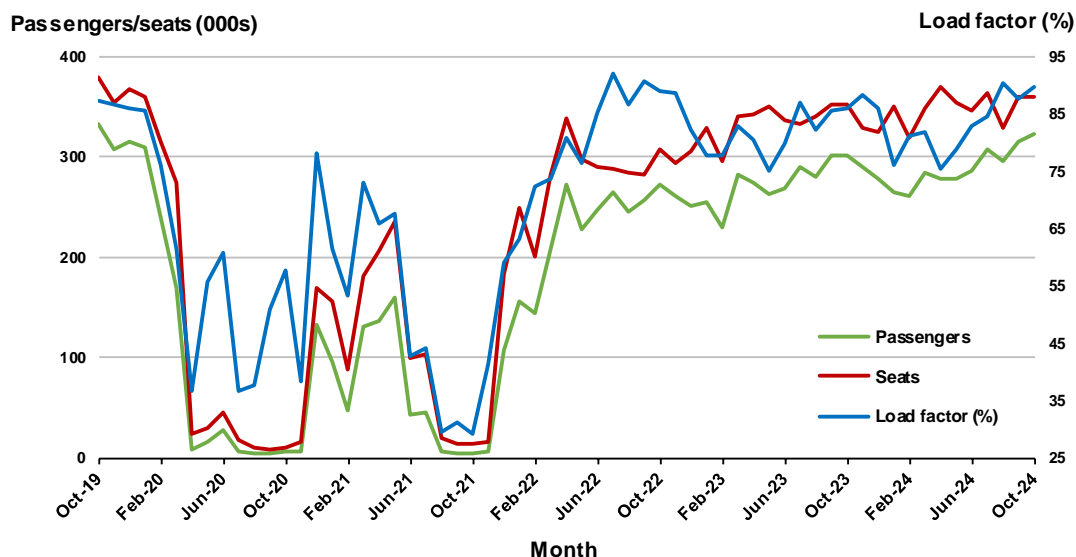


3. Brisbane - Melbourne

Monthly data

	Oct 2023	Oct 2024	% Change
Passengers carried (000s)	301.1	322.1	7.0
Seats (000s)	350.8	359.2	2.4
Load factor %	85.8	89.7	3.9 *
Aircraft trips	2 116	2 173	2.7

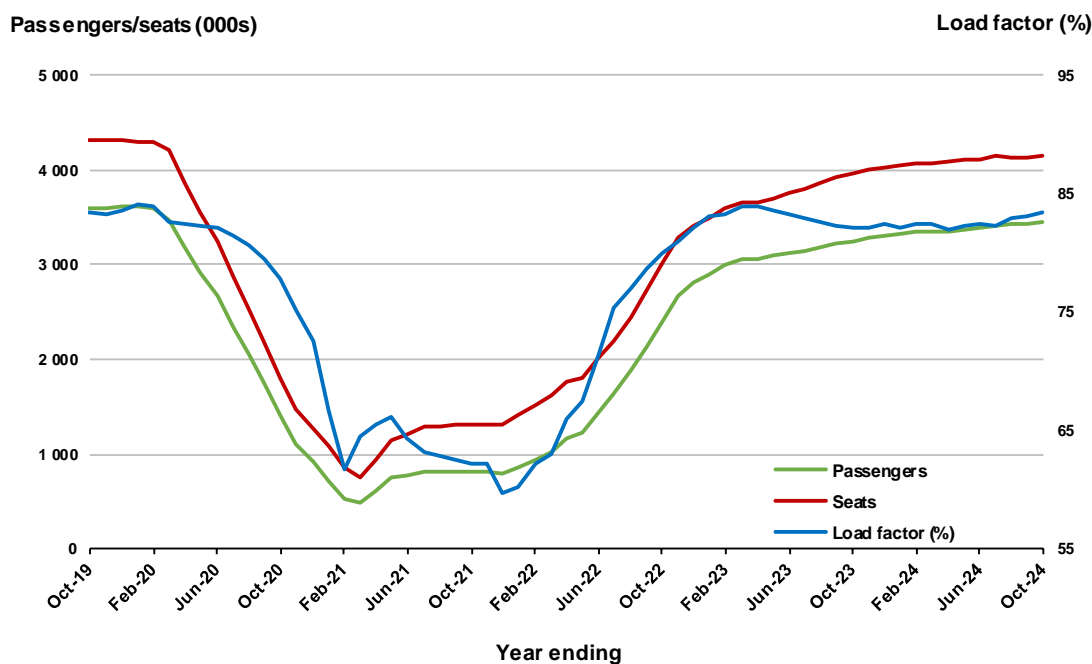
* percentage point difference



Moving annual data

	YE Oct 2023	YE Oct 2024	% Change
Passengers carried (000s)	3 255.3	3 460.8	6.3
Seats (000s)	3 967.7	4 148.9	4.6
Load factor %	82.0	83.4	1.4 *
Aircraft trips	24 118	24 859	3.1

* percentage point difference



4. Gold Coast - Sydney ^(a)

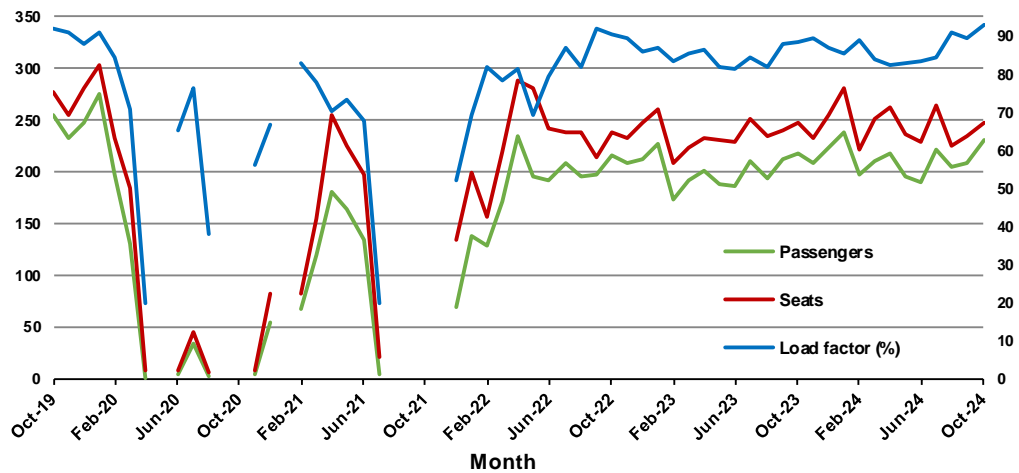
Monthly data

	Oct 2023	Oct 2024	% Change
Passengers carried (000s)	218.5	230.3	5.4
Seats (000s)	247.4	248.0	0.3
Load factor %	88.3	92.9	4.6 *
Aircraft trips	1 426	1 405	-1.5

* percentage point difference

Passengers/seats (000s)

Load factor (%)



(a) May, September and October 2020 and January and August to November 2021 data not available for release.

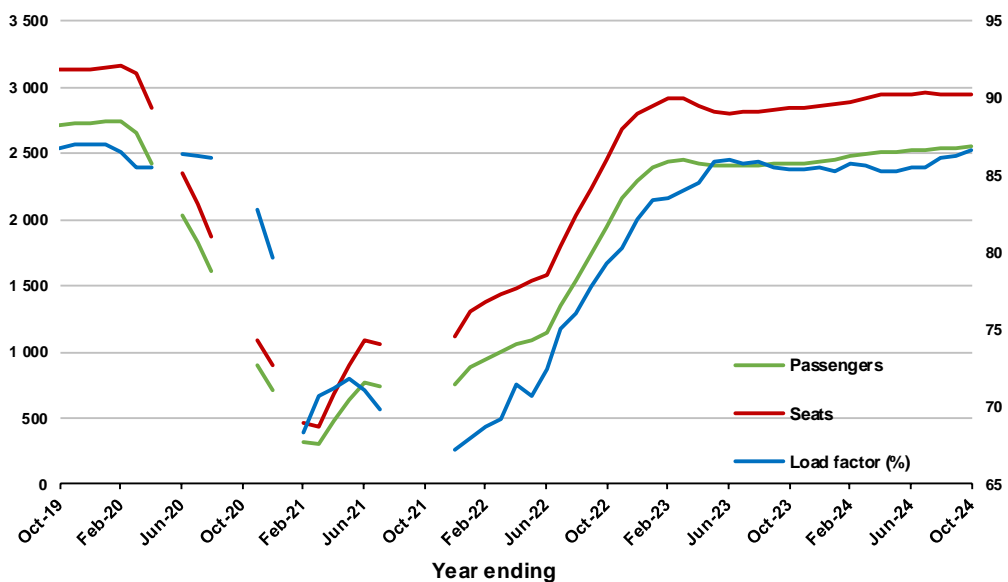
Moving annual data

	YE Oct 2023	YE Oct 2024	% Change
Passengers carried (000s)	2 426.9	2 549.1	5.0
Seats (000s)	2 842.6	2 943.9	3.6
Load factor %	85.4	86.6	1.2 *
Aircraft trips	16 376	16 601	1.4

* percentage point difference

Passengers/seats (000s)

Load factor (%)



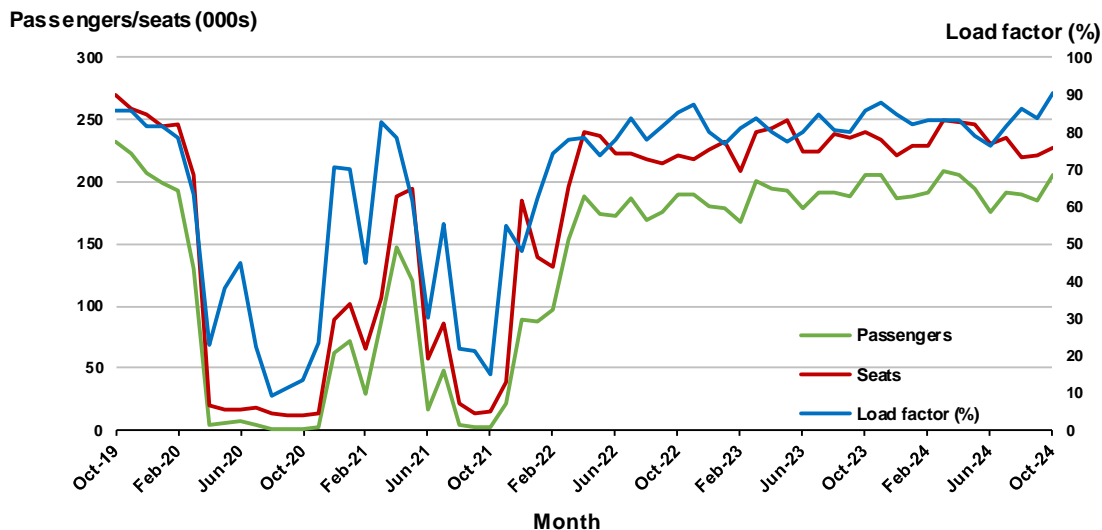
(a) May, September and October 2020 and January and August to November 2021 moving annual totals not available for release.

5. Adelaide - Melbourne

Monthly data

	Oct 2023	Oct 2024	% Change
Passengers carried (000s)	205.5	206.2	0.3
Seats (000s)	239.6	228.1	-4.8
Load factor %	85.8	90.4	4.6 *
Aircraft trips	1 507	1 373	-8.9

* percentage point difference

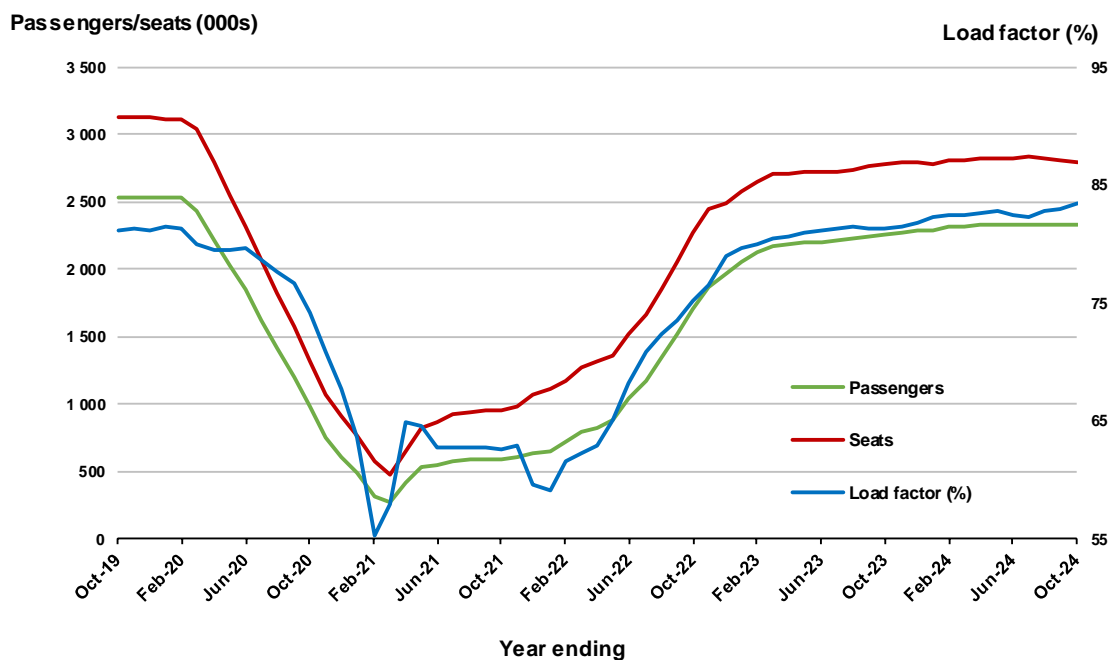


(a) April to November 2020 and August to November 2021 data not available for release.

Moving annual data

	YE Oct 2023	YE Oct 2024	% Change
Passengers carried (000s)	2 261.6	2 328.8	3.0
Seats (000s)	2 778.4	2 792.1	0.5
Load factor %	81.4	83.4	2.0 *
Aircraft trips	17 072	16 929	-0.8

* percentage point difference

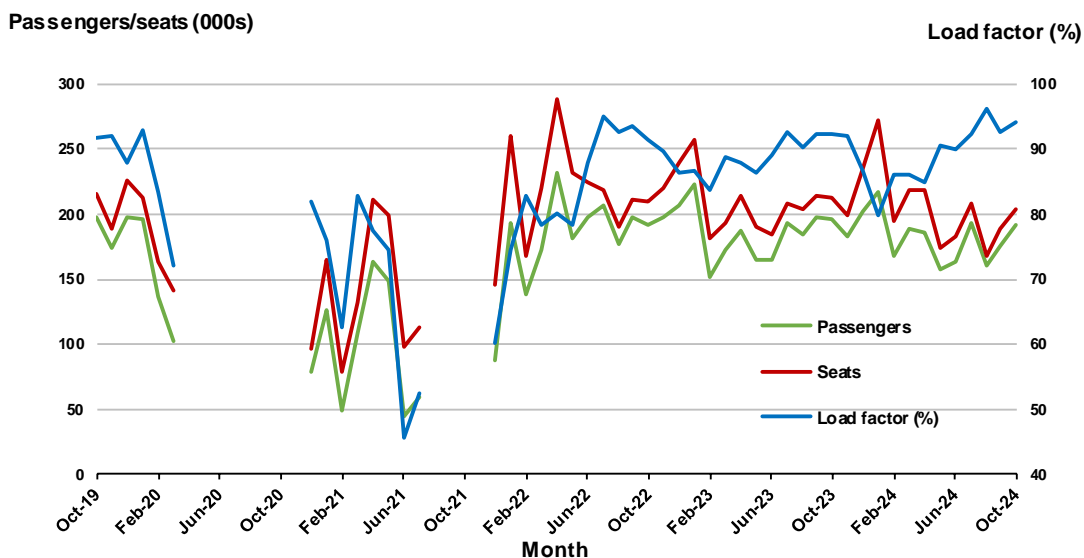


6. Gold Coast - Melbourne ^(a)

Monthly data

	Oct 2023	Oct 2024	% Change
Passengers carried (000s)	196.3	192.2	-2.1
Seats (000s)	212.8	204.0	-4.2
Load factor %	92.2	94.2	2.0 *
Aircraft trips	1 143	1 104	-3.4

* percentage point difference

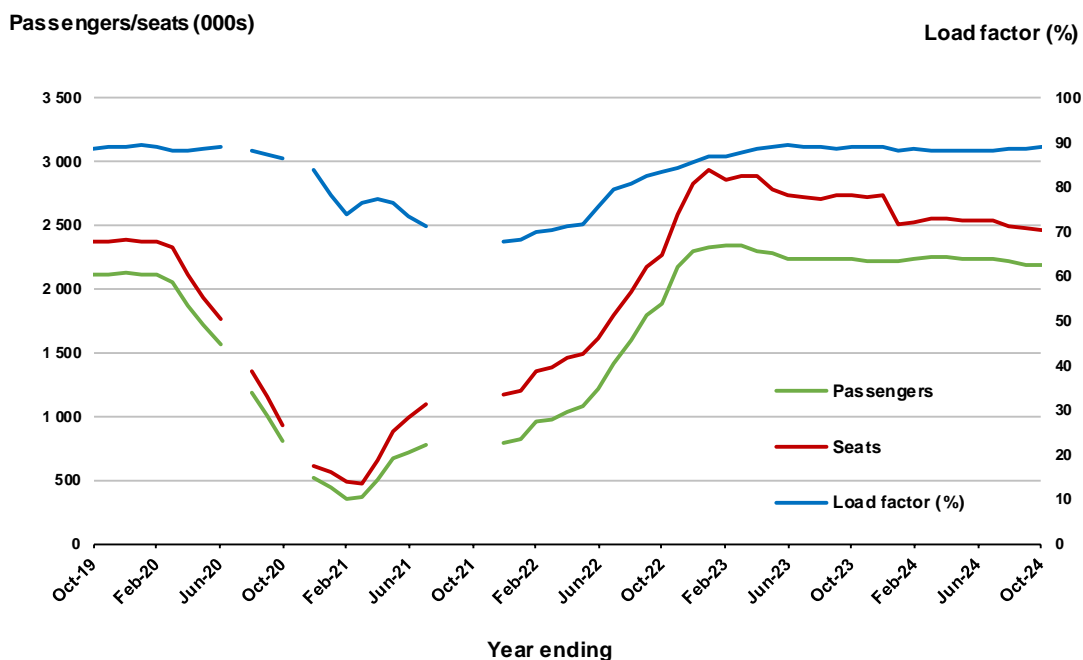


(a) April to November 2020 and August to November 2021 moving annual totals are not available for release

Moving annual data

	YE Oct 2023	YE Oct 2024	% Change
Passengers carried (000s)	2 237.9	2 187.5	-2.2
Seats (000s)	2 729.4	2 463.9	-9.7
Load factor %	88.8	88.8	0.0 *
Aircraft trips	13 630	13 436	-1.4

* percentage point difference



(a) July 2020, November 2020 and August to November 2021 moving annual totals are not available for release

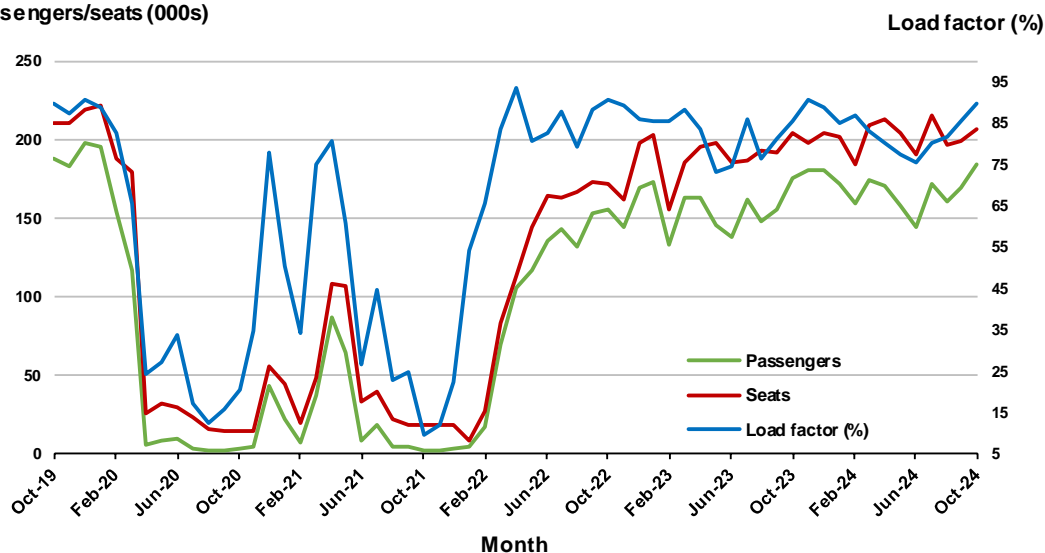
7. Melbourne - Perth

Monthly data

	Oct 2023	Oct 2024	% Change
Passengers carried (000s)	175.0	184.4	5.4
Seats (000s)	204.4	206.1	0.8
Load factor %	85.6	89.5	3.9 *
Aircraft trips	1 117	1 130	1.2

* percentage point difference

Passengers/seats (000s)

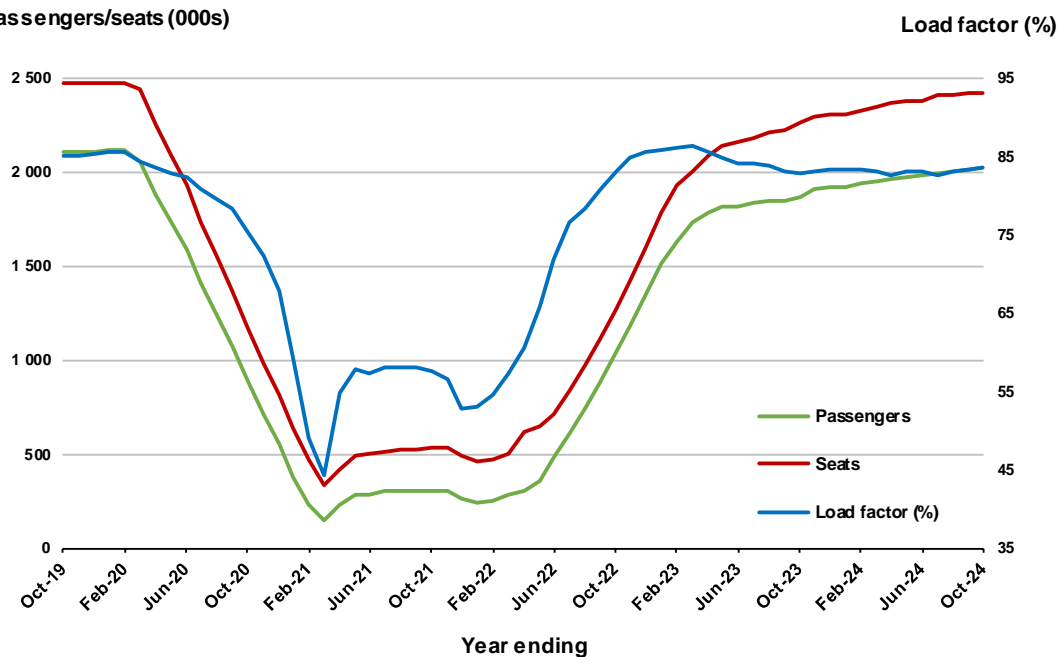


Moving annual data

	YE Oct 2023	YE Oct 2024	% Change
Passengers carried (000s)	1 868.9	2 024.5	8.3
Seats (000s)	2 257.8	2 420.4	7.2
Load factor %	82.8	83.6	0.9 *
Aircraft trips	12 581	13 412	6.6

* percentage point difference

Passengers/seats (000s)

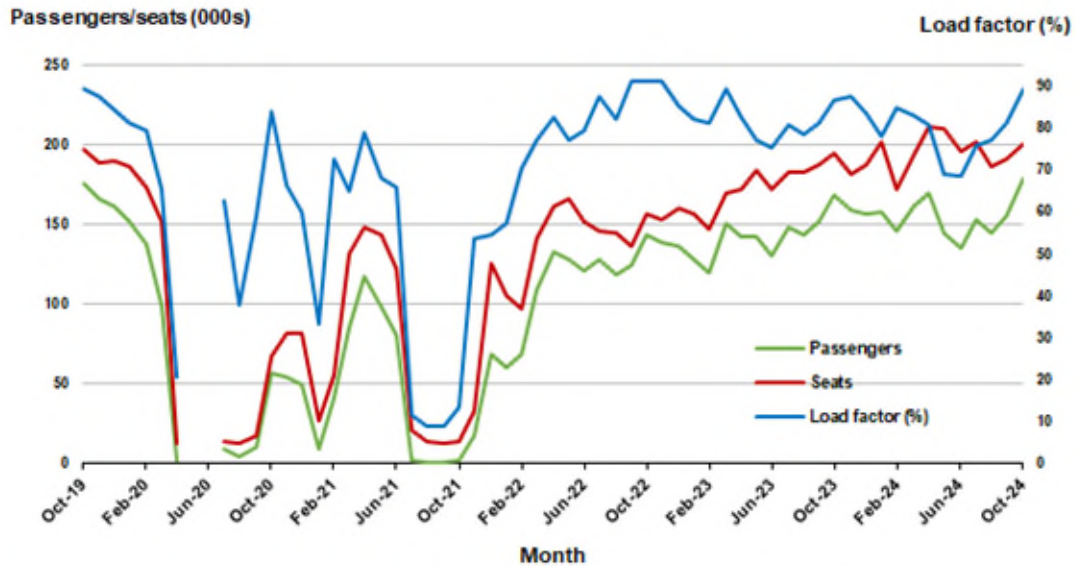


8. Adelaide - Sydney ^(a)

Monthly data

	Oct 2023	Oct 2024	% Change
Passengers carried (000s)	168.6	179.3	6.3
Seats (000s)	194.2	200.7	3.4
Load factor %	86.8	89.3	2.5 *
Aircraft trips	1 178	1 182	0.3

* percentage point difference

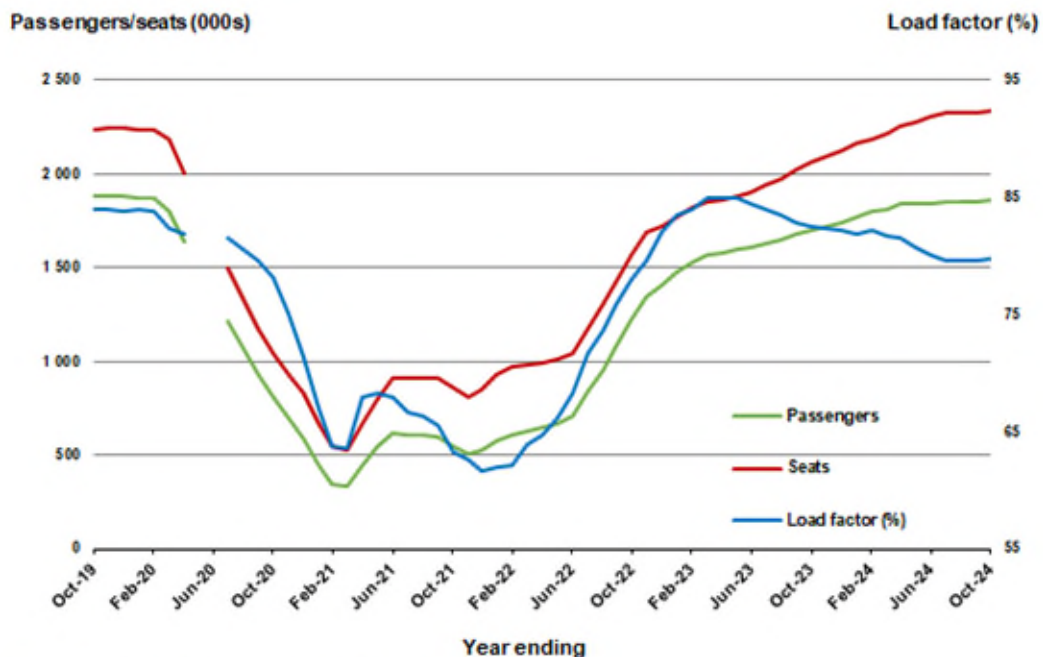


(a) May and June 2020 data not available for release.

Moving annual data

	YE Oct 2023	YE Oct 2024	% Change
Passengers carried (000s)	1 703.2	1 863.5	9.4
Seats (000s)	2 062.9	2 335.8	13.2
Load factor %	82.6	79.8	-2.8 *
Aircraft trips	12 559	14 090	12.2

* percentage point difference



(a) May and June 2020 moving annual totals are not available for release.

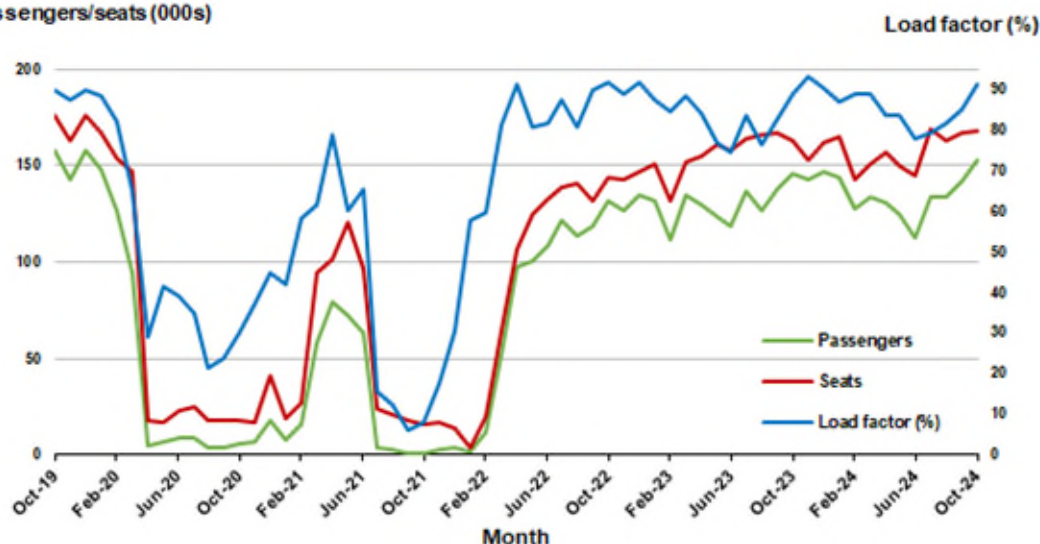
9. Perth - Sydney

Monthly data

	Oct 2023	Oct 2024	% Change
Passengers carried (000s)	145.4	153.0	5.2
Seats (000s)	163.4	167.5	2.6
Load factor %	89.0	91.3	2.3 *
Aircraft trips	832	881	5.9

* percentage point difference

Passengers/seats (000s)

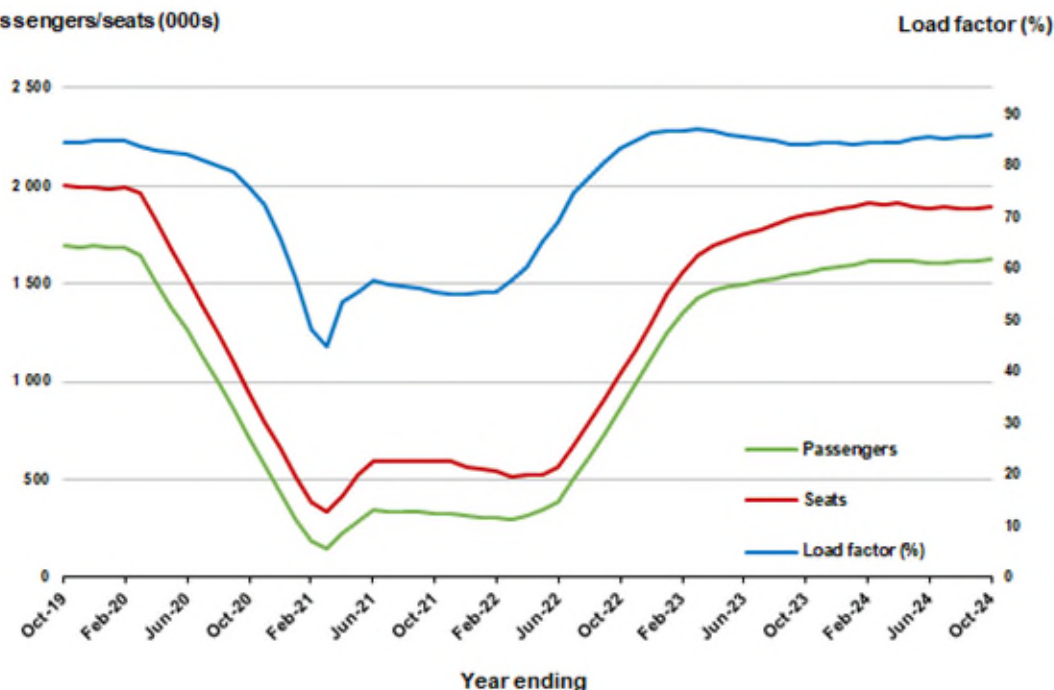


Moving annual data

	YE Oct 2023	YE Oct 2024	% Change
Passengers carried (000s)	1 559.3	1 625.5	4.2
Seats (000s)	1 857.9	1 891.9	1.8
Load factor %	83.9	85.9	2.0 *
Aircraft trips	9 618	9 985	3.8

* percentage point difference

Passengers/seats (000s)

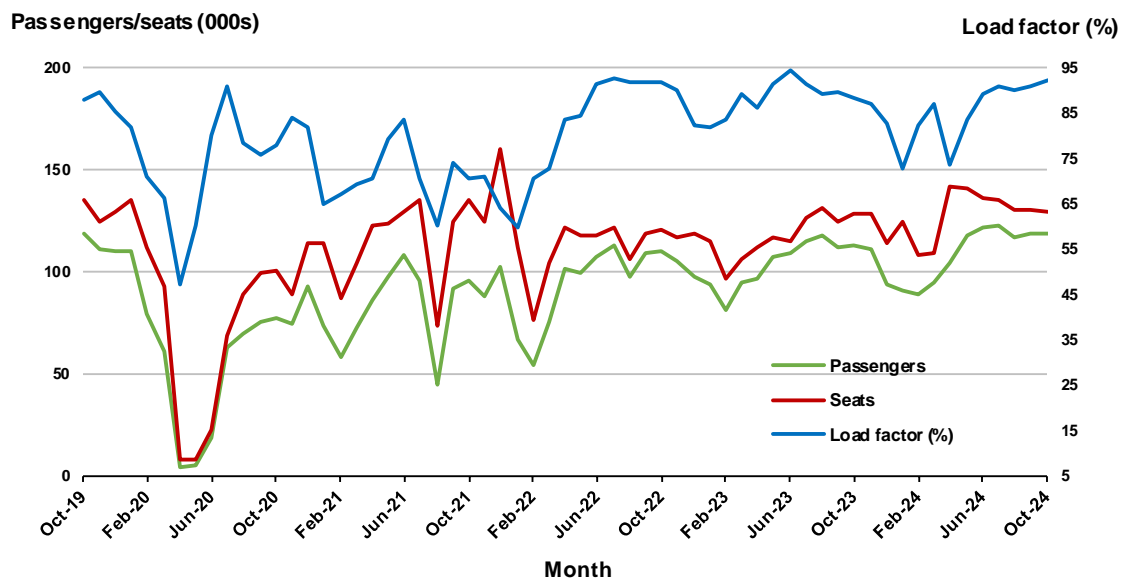


10. Brisbane - Cairns

Monthly data

	Oct 2023	Oct 2024	% Change
Passengers carried (000s)	112.7	118.9	5.5
Seats (000s)	127.9	128.8	0.7
Load factor %	88.1	92.3	4.2 *
Aircraft trips	890	877	-1.5

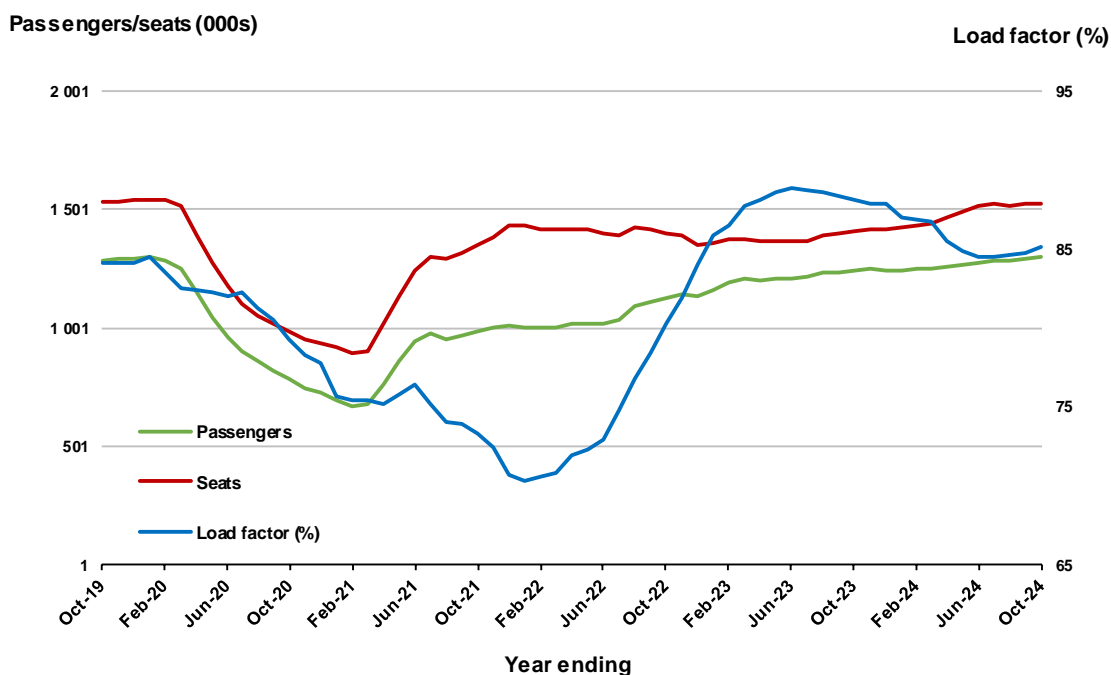
* percentage point difference



Moving annual data

	YE Oct 2023	YE Oct 2024	% Change
Passengers carried (000s)	1 240.7	1 298.4	4.6
Seats (000s)	1 408.2	1 525.9	8.4
Load factor %	88.1	85.1	-3.0 *
Aircraft trips	9 543	10 448	9.5

* percentage point difference



TOP FIFTY REGIONAL AIRPORTS

Table 10: Top fifty regional airports (000s) — passenger movements, monthly

Airport	Oct 2023	Oct 2024	% Change
1 Cairns	381.5	380.5	-0.2
2 Hobart	224.8	235.0	4.5
3 Townsville	146.6	149.0	1.6
4 Darwin	141.1	141.0	-0.1
5 Launceston	119.3	119.3	0.0
6 Newcastle	108.8	110.1	1.2
7 Mackay	81.0	78.6	-2.9
8 Rockhampton	57.0	60.3	5.8
9 Ballina	55.7	59.0	5.9
10 Karratha	49.9	57.6	15.5
11 Proserpine	46.5	49.0	5.5
12 Hamilton Island	46.0	47.1	2.3
13 Port Hedland	43.9	45.5	3.7
14 Newman	31.9	39.7	24.6
15 Broome	41.1	38.0	-7.5
16 Kalgoorlie	33.7	35.6	5.7
17 Ayers Rock	26.8	32.8	22.3
18 Alice Springs	30.6	31.6	3.5
19 Paraburdoo	22.6	26.3	16.4
20 Mount Isa	20.0	22.2	10.8
21 Albury	23.1	20.4	-11.9
22 Coffs Harbour	24.0	20.3	-15.4
23 Gladstone	21.7	20.1	-7.6
24 Wagga Wagga	18.2	19.9	9.5
25 Dubbo	19.4	19.3	-0.6
26 Emerald	17.6	18.3	4.3
27 Hervey Bay	13.0	17.8	36.5
28 Port Macquarie	20.7	16.9	-18.1
29 Mildura	20.8	16.9	-18.8
30 Port Lincoln	15.0	15.0	0.2
31 Tamworth	15.4	14.3	-7.1
32 Bundaberg	15.0	12.9	-14.2
33 Geraldton	9.5	11.5	21.1
34 Kununurra	11.5	11.2	-2.9
35 Devonport	10.5	11.1	5.6
36 Thursday Island	10.0	10.2	2.1
37 Moranbah	9.5	10.1	6.7
38 Orange	9.8	10.1	2.7
39 Learmonth	8.9	9.8	10.3
40 Armidale	9.6	9.5	-1.1
41 Gove	8.1	8.6	5.8
42 Weipa	8.1	8.3	2.1
43 Busselton	4.1	8.3	103.9
44 Olympic Dam	9.0	8.1	-10.1
45 Burnie	7.3	7.3	-0.5
46 Norfolk Island	6.8	6.9	0.8
47 Griffith	6.4	6.9	7.5
48 Albany	5.8	6.1	6.1
49 Mount Gambier	6.5	6.1	-6.1
50 Merimbula	6.0	6.0	-0.1
Total top 50 regional airports	2 080.1	2 126.6	2.2
Total regional airports	2 207.1	2 256.3	2.2
Total domestic network	10 377.3	10 748.0	3.6

Note: Airport passenger movement numbers are the sum of passenger arrivals and departures at each airport. Regional airports are defined as airports which are, according to Australian Statistical Geography Standard (ASGS), not based in Major Cities.

Table 11: Top fifty regional airports (000s) — passenger movements, annual

Airport	YE Oct 2023	YE Oct 2024	% Change
1 Cairns	3 973.0	4 050.5	2.0
2 Hobart	2 539.6	2 702.6	6.4
3 Townsville	1 673.7	1 668.6	-0.3
4 Darwin	1 614.3	1 590.5	-1.5
5 Launceston	1 329.9	1 426.2	7.2
6 Newcastle	1 137.2	1 203.6	5.8
7 Mackay	903.0	907.8	0.5
8 Rockhampton	614.0	653.4	6.4
9 Ballina	644.7	621.6	-3.6
10 Karratha	541.4	612.7	13.2
11 Proserpine	494.2	505.5	2.3
12 Port Hedland	483.7	489.4	1.2
13 Hamilton Island	496.5	487.4	-1.8
14 Broome	436.2	438.4	0.5
15 Newman	372.0	390.1	4.9
16 Alice Springs	350.9	371.5	5.9
17 Kalgoorlie	353.0	368.4	4.4
18 Ayers Rock	259.5	305.6	17.8
19 Paraburdoo	238.3	274.3	15.1
20 Albury	249.6	262.9	5.3
21 Coffs Harbour	284.9	251.6	-11.7
22 Mount Isa	230.9	238.4	3.3
23 Gladstone	220.7	236.2	7.0
24 Mildura	220.8	216.3	-2.0
25 Port Macquarie	211.2	213.2	1.0
26 Dubbo	209.1	210.1	0.5
27 Wagga Wagga	197.8	206.0	4.2
28 Emerald	193.5	198.1	2.3
29 Hervey Bay	142.1	175.3	23.4
30 Port Lincoln	174.8	171.1	-2.1
31 Tamworth	164.1	166.2	1.3
32 Bundaberg	141.5	156.7	10.8
33 Kununurra	133.6	140.7	5.3
34 Devonport	121.1	124.4	2.7
35 Geraldton	89.9	117.3	30.4
36 Thursday Island	105.8	113.6	7.4
37 Moranbah	109.0	112.4	3.1
38 Orange	103.9	110.4	6.3
39 Learmonth	104.6	104.5	-0.1
40 Armidale	112.6	104.0	-7.6
41 Olympic Dam	103.0	102.7	-0.3
42 Gove	87.5	94.8	8.3
43 Weipa	86.3	91.3	5.8
44 Busselton	48.8	81.2	66.3
45 Burnie	83.1	78.7	-5.3
46 Mount Gambier	73.8	71.9	-2.5
47 Norfolk Island	68.9	70.4	2.3
48 Merimbula	73.0	69.4	-4.9
49 Toowoomba Wellcamp	67.7	68.9	1.7
50 Griffith	75.7	68.3	-9.8
Total top 50 regional airports	22 744.4	23 495.0	3.3
Total regional airports	24 160.5	24 933.4	3.2
Total domestic network	113 114.0	118 094.3	4.4

Note: Airport passenger movement numbers are the sum of passenger arrivals and departures at each airport. Regional airports are defined as airports which are, according to Australian Statistical Geography Standard (ASGS), not based in Major Cities.

DOMESTIC CHARTER ACTIVITY

Table 12: Charter passengers carried and aircraft trips - monthly activity (000s)

	Oct 2023	Oct 2024	% Change
Total domestic charter passengers	363.4	393.5	8.3
Total domestic charter aircraft trips	6.0	6.5	7.6

Note: Helicopter, joyflights and sightseeing charter flights not included.

Table 13: Charter passengers carried and aircraft trips - annual activity (000s)

	YE Oct 2023	YE Oct 2024	% Change
Total domestic charter passengers	3 985.4	4 345.3	9.0
Total domestic charter aircraft trips	69.0	73.7	6.8

Note: Helicopter, joyflights and sightseeing charter flights not included.

Table 14: Domestic airports - charter activity - monthly (000s)

	Oct 2023	Oct 2024	% Change
Total domestic charter passenger movements	726.7	786.9	8.3
Total domestic charter aircraft movements	12.1	13.0	7.6
Perth airport charter passenger movements	268.9	280.4	4.3
Perth airport charter aircraft movements	4.1	4.0	-0.4

Note: Helicopter, joyflights and sightseeing charter flights not included.

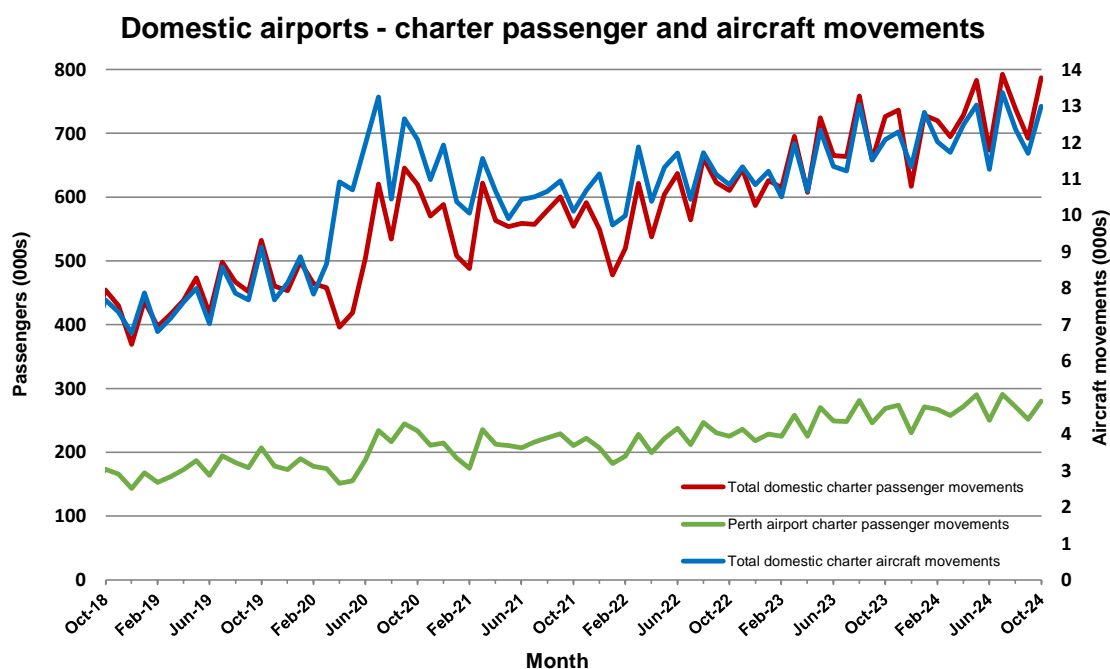
Charter passenger and aircraft movement numbers are the sum of arrivals and departures at each airport.

Table 15: Domestic airports - charter activity - annual (000s)

	YE Oct 2023	YE Oct 2024	% Change
Total domestic charter passenger movements	7 970.7	8 690.5	9.0
Total domestic charter aircraft movements	138.1	147.4	6.8
Perth airport charter passenger movements	2 956.8	3 208.4	8.5
Perth airport charter aircraft movements	46.6	48.2	3.5

Note: Helicopter, joyflights and sightseeing charter flights not included.

Charter passenger and aircraft movement numbers are the sum of arrivals and departures at each airport.



DEFINITIONS

Aircraft Trips	The number of flight stages. A return flight counts as two aircraft trips.
Airport Movements	Airport movements (passenger and cargo) are measured once on arrival and once on departure. Each domestic trip generates two movements at airports. For example, a trip from Melbourne to Sydney will be counted twice, as a departure at Melbourne and as an arrival at Sydney. At the national level, the sum of all domestic airport traffic will therefore be equal to twice the number of trips undertaken.
Available Seat Kilometres (ASKs)	Calculated by multiplying the number of seats available on each flight stage, by the distance in kilometres between the ports. The distances used are Great Circle Distances.
City-Pair	The ports shown make up the city-pair route. Passenger movements shown for a city pair reflect total traffic in both directions.
Flight Stage	The operation of an aircraft from take-off to landing.
Load Factor	The total revenue passenger kilometres performed as a percentage of the total available seat kilometres.
Passengers Carried	Revenue passengers carried.
Regular Public Transport Services (RPT)	All air service operations in which aircraft are available for the transport of members of the public and are conducted in accordance with fixed schedules. It does not include charter or other non-scheduled operations.
Revenue Passengers	All passengers paying any fare. Frequent flyer redemption travellers are regarded as revenue passengers.
Revenue Passenger Kilometres (RPKs)	Calculated by multiplying the number of revenue passengers travelling on each flight stage, by the distance in kilometres between the ports. The distances used are Great Circle Distances.
Traffic on board by stages (TOB)	The total of all traffic (revenue passengers) on each flight stage between two directly connected airports.
..	Not available for confidentiality or other reasons.
NA	Not applicable.