



Australian Government

**Department of Infrastructure, Transport,
Regional Development, Communications and the Arts**
Bureau of Infrastructure and Transport Research Economics

STATISTICAL REPORT



bitre

Aviation

**Domestic aviation activity
September 2024**

The Department of Infrastructure, Transport, Regional Development, Communications and the Arts acknowledges the Traditional Custodians of Country of the land on which we work and live.

We recognise and respect the continuing connections to land, waters and communities.

We pay our respects to them and their cultures and to their Elders both past and present and to all Aboriginal and Torres Strait Islander people.

© Commonwealth of Australia 2024

ISSN: 1832 – 1968

BITRE Reference: 2024-1214

Ownership of intellectual property rights in this publication

Unless otherwise noted, copyright (and any other intellectual property rights, if any) in this publication is owned by the Commonwealth of Australia (referred to below as the Commonwealth).

Disclaimer

The material contained in this publication is made available on the understanding that the Commonwealth is not providing professional advice, and that users exercise their own skill and care with respect to its use, and seek independent advice if necessary.

The Commonwealth makes no representations or warranties as to the contents or accuracy of the information contained in this publication. To the extent permitted by law, the Commonwealth disclaims liability to any person or organisation in respect of anything done, or omitted to be done, in reliance upon information contained in this publication.

Creative Commons licence

With the exception of (a) the Coat of Arms; and (b) the Department of Infrastructure, Transport, Regional Development, Communications and the Arts' photos and graphics, copyright in this publication is licensed under a Creative Commons Attribution 3.0 Australia Licence.

Creative Commons Attribution 3.0 Australia Licence is a standard form licence agreement that allows you to copy, communicate and adapt this publication provided that you attribute the work to the Commonwealth and abide by the other licence terms. A summary of the licence terms is available from <http://creativecommons.org/licenses/by/3.0/au/deed.en>.

The full licence terms are available from <http://creativecommons.org/licenses/by/3.0/au/legalcode>.

Use of the Coat of Arms

The Department of the Prime Minister and Cabinet sets the terms under which the Coat of Arms is used. Please refer to the Department's Commonwealth Coat of Arms and Government branding web page <http://www.dpmc.gov.au/guidelines/index.cfm#brand> and, in particular, the Guidelines on the use of the Commonwealth Coat of Arms publication.

An appropriate citation for this report is:

Bureau of Infrastructure and Transport Research Economics (BITRE), 2024, Domestic aviation activity, Statistical Report, BITRE, Canberra ACT.

Contact us

This publication is available in PDF format. All other rights are reserved, including in relation to any Departmental logos or trademarks which may exist. For enquiries regarding the licence and any use of this publication, please contact:

Bureau of Infrastructure and Transport Research Economics (BITRE)
Department of Infrastructure, Transport, Regional Development, Communications and the Arts
GPO Box 501, Canberra ACT 2601, Australia

Email: bitre@infrastructure.gov.au

Website: www.bitre.gov.au

Inquiries: Marko.Rodic2@infrastructure.gov.au (02) 6136 7995

FOREWORD

This report provides an overview of domestic (including charter) commercial aviation activity in Australia for the month of September 2024.

The data covers revenue passengers carried by Australian-registered operators of scheduled regular public transport services over Australian flight stages and fixed-wing charter operators. These estimates include passengers carried between domestic airports on international flights operated by these carriers. The passengers carried refer to traffic on board by stages.

Estimates of passengers and aircraft movements for charter aviation are included in this publication, where BITRE confidentiality standards are met.

Individual routes shown are restricted to those with an average exceeding 8,000 passengers per month over the previous six months where two or more airlines operate in competition. However, for the period from December 2021 through to December 2022, the major airlines (Qantas Group, Virgin Australia and Rex Airlines) agreed to publication of the top 35 routes based on pre-COVID activity (December 2019) whether or not they were meeting the above criteria. From January 2023, the passenger load and dual competition requirements were reinstated due to the continued recovery of passenger numbers.

Information on the total network for the month of September 2024 and on the Regular Public Transport (RPT) network for the month of September 2024 is presented on page 2, with estimates for the year ended September 2024 presented on page 3.

Detailed information on individual routes can be found in the RPT summary pages 4-13 of this publication. For the month of September 2024, there are 61 individual routes published.

The top ten airports in terms of RPT passenger movements are shown on page 14.

Data on domestic RPT cargo movements at the top five cargo airports are provided on page 15. The table includes cargo carried on passenger flights operated by the Qantas group (including Jetstar), Virgin Australia, Air North and Skippers as well as the cargo carried by dedicated freighter aircraft operated by Qantas Freight and Team Global Express (formerly Toll).

The long-term trends for the top ten competitive RPT routes are presented graphically on pages 16-25.

Domestic RPT passenger movements at regional airports are shown on pages 26-27.

Tables providing estimates of domestic charter aviation activity are shown on page 28. BITRE confidentiality standards restrict publication of detailed estimates for individual Australian airports, with the exception of Perth Airport.

A list of definitions can be found on page 29.

This report was prepared by the Aviation Statistics Section of the Bureau of Infrastructure and Transport Research Economics with data provided by airlines.

Estimates are included where data were not available and data presented in this publication may contain revisions to previously published data.

Where figures have been rounded, discrepancies may occur between sums of component items and totals, and in percentage changes which are derived from figures prior to rounding.

CONTENTS

Highlights	1
Total network.....	2
RPT network	2
Top competitive routes.....	4
Top ten airports – passenger movements.....	14
Top five airports – cargo movements.....	15
Top ten routes	16
1. Melbourne – Sydney	16
2. Brisbane – Sydney.....	17
3. Brisbane – Melbourne	18
4. Gold Coast – Sydney	19
5. Adelaide – Melbourne	20
6. Gold Coast – Melbourne	21
7. Melbourne – Perth	22
8. Adelaide – Sydney	23
9. Perth – Sydney	24
10. Brisbane - Cairns	25
Top fifty regional airports	26
Domestic charter activity.....	28
Definitions	29

This page is intentionally left blank.

HIGHLIGHTS

There were 5.36 million passengers carried on Australian domestic commercial aviation (including charter operations) in September 2024, compared with 5.31 million in September 2023 (up 0.9 per cent). This is also a decrease of 1.1 per cent on pre-COVID September 2019 passenger numbers (5.42 million).

5.02 million passengers were carried on RPT flights in September 2024, an increase of 0.6 per cent compared to September 2023.

For the month of September 2024, there were 51.0 thousand RPT aircraft trips, a decrease of 1.1 per cent on September 2023.

For the year ending September 2024 there were 58.86 million RPT passengers, an increase of 4.7 per cent on the year ending September 2023.

RPT revenue passenger kilometres (RPKs) performed were 6.10 billion for the month, compared with 6.02 billion in September 2023 (up 1.4 per cent).

Capacity, measured by available seat kilometres (ASKs), decreased to 7.29 billion in September 2024 compared to 7.37 billion in September 2023 (down 1.2 per cent).

The industry wide load factor (RPKs/ASKs) increased from 81.6 per cent in September 2023 to 83.8 per cent in September 2024. The highest load factor (94.1 per cent) was recorded on the Brisbane - Proserpine route while the lowest load factor (53.0 per cent) was recorded on the Geraldton – Perth route.

For the month of September 2024, Melbourne – Sydney was Australia's busiest RPT route with 662.1 thousand passengers, followed by Brisbane – Sydney with 365.0 thousand passengers and Brisbane – Melbourne with 314.9 thousand passengers.

Sydney was Australia's busiest domestic airport with 2.10 million passenger movements in September 2024, followed by Melbourne with 2.01 million passenger movements and Brisbane with 1.50 million passenger movements.

Total cargo movements at Australian airports on domestic RPT flights were 25.9 thousand tonnes in September 2024, an increase of 1.3 per cent compared with September 2023.

In September 2024, there were 2.16 million domestic passenger movements through regional airports, an increase of 0.5 per cent from September 2023. Out of the top 50 regional airports, the strongest increase was recorded at Busselton Airport (up 127.7 per cent on September 2023), while the largest decrease was recorded at Mildura Airport (down 23.2 per cent on September 2023).

Fixed-wing charter operators carried 346.0 thousand passengers in September 2024, an increase of 5.1 per cent compared with September 2023. Perth Airport accounted for 36.4 per cent of all charter passengers in Australia.

TOTAL NETWORK

Summary of monthly commercial aviation activity

	Sep 2023	Sep 2024	% Change
Total passengers carried (millions)	5.31	5.36	0.9
Aircraft trips (000s)	57.4	56.9	-0.8

Note: Regular Public Transport and charter aviation activity
Helicopter, joy flights and sightseeing charter flights not included.

RPT NETWORK

Summary of monthly RPT activity

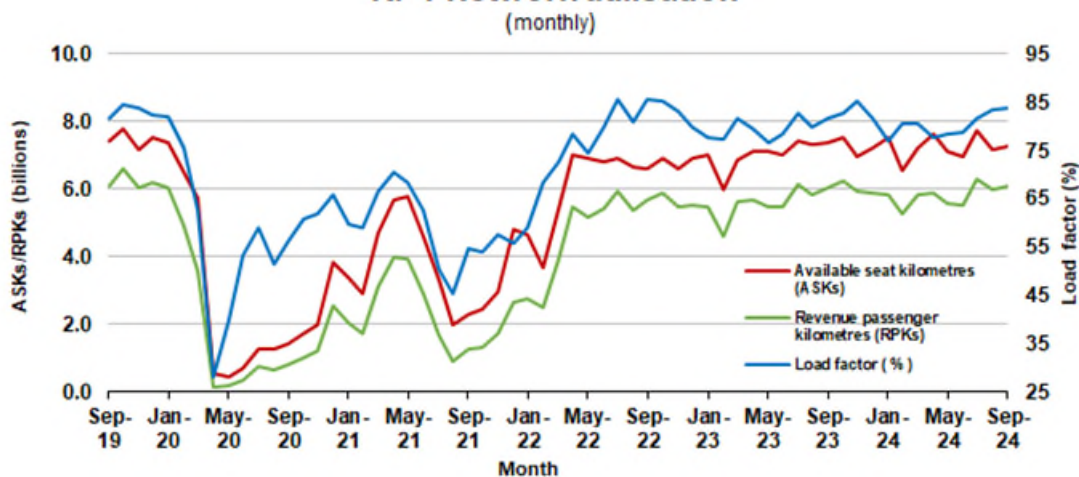
	Sep 2023	Sep 2024	% Change
Total passengers carried (millions)	4.99	5.02	0.6
Revenue passenger kilometres (billions)	6.02	6.10	1.4
Available seats (millions)	6.23	6.16	-1.2
Available seat kilometres (billions)	7.37	7.29	-1.2
Load factor %	81.6	83.8	2.2 *
Aircraft trips (000s)	51.6	51.0	-1.1

* percentage point difference

Domestic RPT passenger traffic



RPT Network utilisation



TOTAL NETWORK

Summary of annual commercial aviation activity

	YE Sep 2023	YE Sep 2024	% Change
Total passengers carried (millions)	60.15	63.17	5.0
Aircraft trips (000s)	673.8	690.0	2.4

Note: Regular Public Transport and charter aviation activity
Helicopter, joy flights and sightseeing charter flights not included.

RPT NETWORK

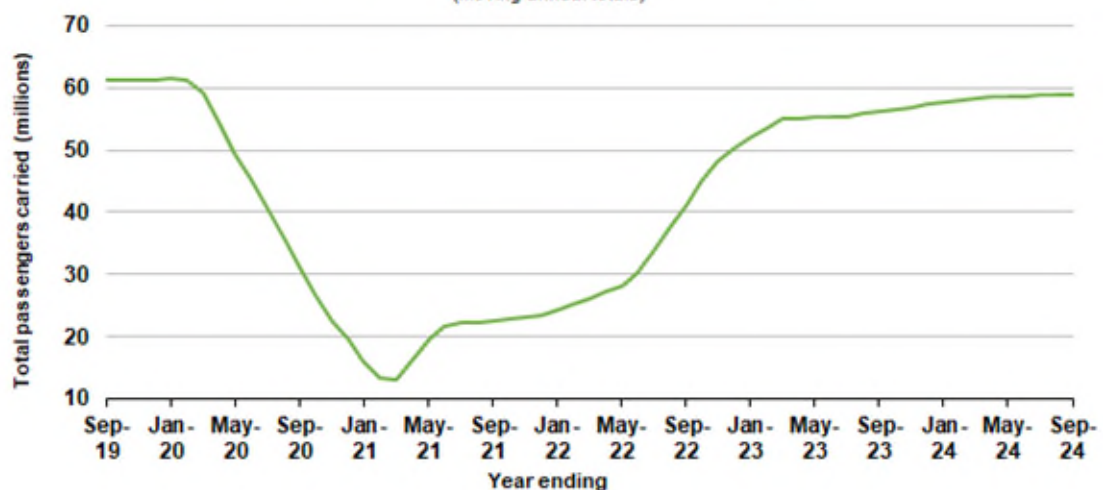
Summary of annual RPT activity

	YE Sep 2023	YE Sep 2024	% Change
Total passengers carried (millions)	56.22	58.86	4.7
Revenue passenger kilometres (billions)	67.25	70.34	4.6
Available seats (millions)	71.96	74.68	3.8
Available seat kilometres (billions)	83.69	86.97	3.9
Load factor %	80.3	80.9	0.5 *
Aircraft trips (000s)	605.4	616.8	1.9

* percentage point difference

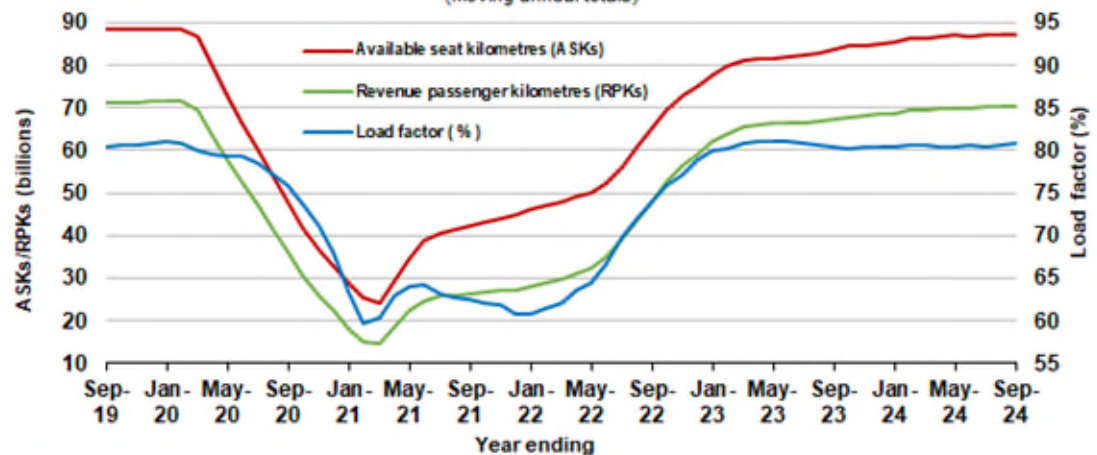
Domestic RPT passenger traffic

(moving annual totals)



RPT Network utilisation

(moving annual totals)



TOP COMPETITIVE ROUTES

Table 1: Passengers carried (000s) — annual activity

	City-Pair	YE Sep 2023	YE Sep 2024	% Change
1	Melbourne - Sydney	7 428.1	7 962.0	7.2
2	Brisbane - Sydney	4 150.7	4 322.9	4.1
3	Brisbane - Melbourne	3 227.2	3 439.8	6.6
4	Gold Coast - Sydney	2 423.7	2 537.3	4.7
5	Adelaide - Melbourne	2 245.6	2 328.1	3.7
6	Gold Coast - Melbourne	2 233.3	2 191.6	-1.9
7	Melbourne - Perth	1 849.5	2 015.0	8.9
8	Adelaide - Sydney	1 677.9	1 852.8	10.4
9	Perth - Sydney	1 545.4	1 618.0	4.7
10	Hobart - Melbourne	1 258.0	1 363.6	8.4
11	Brisbane - Cairns	1 238.3	1 292.2	4.4
12	Brisbane - Perth	994.5	1 059.1	6.5
13	Canberra - Melbourne	980.3	1 021.5	4.2
14	Brisbane - Townsville	867.5	916.2	5.6
15	Cairns - Sydney	895.6	908.9	1.5
16	Adelaide - Brisbane	801.3	871.6	8.8
17	Launceston - Melbourne	791.4	865.9	9.4
18	Cairns - Melbourne	801.8	815.2	1.7
19	Hobart - Sydney	719.9	780.9	8.5
20	Sunshine Coast - Sydney	743.4	772.3	3.9
21	Melbourne - Sunshine Coast	715.8	756.7	5.7
22	Brisbane - Mackay	733.0	755.3	3.0
23	Adelaide - Perth	637.2	692.3	8.6
24	Canberra - Sydney	592.6	631.7	6.6
25	Brisbane - Canberra	632.4	628.1	-0.7
26	Karratha - Perth	534.7	593.8	11.1
27	Brisbane - Rockhampton	497.2	558.6	12.3
28	Ballina - Sydney	539.4	514.1	-4.7
29	Brisbane - Newcastle	495.9	506.4	2.1
30	Perth - Port Hedland	478.3	473.9	-0.9
31	Melbourne - Newcastle	408.8	450.3	10.2
32	Newman - Perth	370.0	381.5	3.1
33	Kalgoorlie - Perth	346.2	364.6	5.3
34	Broome - Perth	363.2	359.0	-1.2
35	Launceston - Sydney	314.7	340.2	8.1
36	Brisbane - Darwin	324.1	321.9	-0.7
37	Brisbane - Hobart	296.2	296.9	0.3
38	Darwin - Melbourne	284.7	281.0	-1.3
39	Adelaide - Gold Coast	254.5	276.0	8.4
40	Brisbane - Proserpine	274.6	275.1	0.2
41	Hamilton Island - Sydney	250.2	243.3	-2.8
42	Brisbane - Gladstone	208.1	223.0	7.2
43	Coffs Harbour - Sydney	216.1	208.3	-3.6
44	Brisbane - Emerald	181.3	185.7	2.4
45	Canberra - Gold Coast	173.3	185.4	7.0
46	Adelaide - Canberra	191.8	183.6	-4.3
47	Darwin - Perth	171.0	180.4	5.5
48	Dubbo - Sydney	172.2	175.1	1.7
49	Adelaide - Port Lincoln	175.7	171.1	-2.6
50	Melbourne - Mildura	161.1	166.6	3.5

continued

Table 1: (continued) Passengers carried (000s) — annual activity

	City-Pair	YE Sep 2023	YE Sep 2024	% Change
51	Port Macquarie - Sydney	164.7	165.9	0.7
52	Albury - Sydney	164.6	163.3	-0.8
53	Brisbane - Hamilton Island	163.5	161.6	-1.1
54	Sydney - Wagga Wagga	152.9	158.1	3.4
55	Brisbane - Launceston	158.0	148.6	-5.9
56	Brisbane - Mount Isa	143.5	145.9	1.6
57	Brisbane - Bundaberg	121.5	138.8	14.2
58	Devonport - Melbourne	120.9	123.7	2.3
59	Brisbane - Moranbah	108.5	111.7	2.9
60	Adelaide - Alice Springs	114.2	109.1	-4.4
61	Geraldton - Perth	..	109.0	NA
	Total domestic network	56 219.7	58 861.8	4.7

.. Data not available for release.

Table 2: Passengers carried (000s) — monthly activity

	City-Pair	Sep 2023	Sep 2024	% Change
1	Melbourne - Sydney	645.7	662.1	2.5
2	Brisbane - Sydney	382.0	365.0	-4.5
3	Brisbane - Melbourne	300.4	314.9	4.8
4	Gold Coast - Sydney	212.1	208.8	-1.6
5	Adelaide - Melbourne	188.3	185.1	-1.7
6	Gold Coast - Melbourne	197.2	175.6	-11.0
7	Melbourne - Perth	155.4	169.2	8.9
8	Adelaide - Sydney	152.3	155.1	1.8
9	Perth - Sydney	137.7	141.4	2.6
10	Brisbane - Cairns	111.9	118.2	5.6
11	Hobart - Melbourne	96.8	104.3	7.8
12	Brisbane - Perth	84.5	94.2	11.5
13	Canberra - Melbourne	85.3	86.6	1.5
14	Brisbane - Townsville	74.4	85.5	14.9
15	Cairns - Sydney	84.6	79.1	-6.5
16	Cairns - Melbourne	83.5	78.7	-5.7
17	Adelaide - Brisbane	68.3	70.2	2.9
18	Brisbane - Mackay	65.6	68.6	4.6
19	Launceston - Melbourne	60.1	65.2	8.5
20	Sunshine Coast - Sydney	66.0	63.3	-4.0
21	Hobart - Sydney	59.8	62.1	3.9
22	Adelaide - Perth	53.6	60.8	13.5
23	Melbourne - Sunshine Coast	65.4	59.5	-9.0
24	Canberra - Sydney	52.4	56.4	7.7
25	Brisbane - Canberra	56.8	55.9	-1.5
26	Brisbane - Rockhampton	45.5	54.3	19.3
27	Karratha - Perth	46.7	52.4	12.2
28	Ballina - Sydney	46.1	44.0	-4.5
29	Brisbane - Newcastle	43.0	44.0	2.4
30	Perth - Port Hedland	39.2	40.2	2.6
31	Melbourne - Newcastle	36.9	39.6	7.2
32	Broome - Perth	35.8	35.7	-0.3
33	Newman - Perth	31.2	33.3	6.6
34	Kalgoorlie - Perth	30.7	30.7	0.2
35	Brisbane - Darwin	29.3	29.4	0.5
36	Darwin - Melbourne	28.2	28.9	2.6
37	Launceston - Sydney	26.8	26.2	-2.1
38	Brisbane - Proserpine	23.3	25.4	9.1
39	Brisbane - Hobart	22.1	24.3	10.1
40	Adelaide - Gold Coast	22.6	23.6	4.3
41	Hamilton Island - Sydney	22.5	23.1	2.7
42	Brisbane - Gladstone	19.0	19.3	1.3
43	Darwin - Perth	16.4	18.4	11.8
44	Coffs Harbour - Sydney	18.4	17.6	-4.0
45	Adelaide - Canberra	17.4	16.5	-4.9
46	Brisbane - Emerald	15.7	16.2	2.7
47	Brisbane - Hamilton Island	16.1	15.7	-2.1
48	Canberra - Gold Coast	15.2	15.2	0.1
49	Dubbo - Sydney	15.9	14.8	-6.9
50	Brisbane - Mount Isa	12.9	14.1	9.4

continued

Table 2: (continued) Passengers carried (000s) — monthly activity

	City-Pair	Sep 2023	Sep 2024	% Change
51	Sydney - Wagga Wagga	13.9	14.0	1.0
52	Adelaide - Port Lincoln	14.3	13.7	-3.8
53	Port Macquarie - Sydney	14.3	13.3	-7.1
54	Brisbane - Launceston	13.1	13.3	1.6
55	Albury - Sydney	14.4	13.2	-8.0
56	Brisbane - Bundaberg	11.8	12.4	4.6
57	Melbourne - Mildura	15.1	12.1	-19.7
58	Devonport - Melbourne	9.1	10.0	9.8
59	Geraldton - Perth	..	9.8	NA
60	Brisbane - Moranbah	8.9	9.4	5.6
61	Adelaide - Alice Springs	10.6	9.4	-11.6
	Total domestic network	4 985.3	5 017.3	0.6

.. Data not available for release.

Table 3: Available seats (000s) — monthly activity

	City-Pair	Sep 2023	Sep 2024	% Change
1	Melbourne - Sydney	788.9	793.9	0.6
2	Brisbane - Sydney	452.7	422.9	-6.6
3	Brisbane - Melbourne	351.4	359.7	2.4
4	Gold Coast - Sydney	241.0	234.0	-2.9
5	Adelaide - Melbourne	234.8	220.9	-5.9
6	Gold Coast - Melbourne	213.8	189.4	-11.4
7	Melbourne - Perth	191.4	198.5	3.7
8	Adelaide - Sydney	187.5	191.0	1.9
9	Perth - Sydney	166.5	166.5	0.0
10	Brisbane - Cairns	124.8	130.0	4.2
11	Hobart - Melbourne	116.4	122.4	5.2
12	Brisbane - Perth	102.6	106.6	3.9
13	Canberra - Melbourne	117.8	108.4	-7.9
14	Brisbane - Townsville	84.5	98.1	16.0
15	Cairns - Sydney	94.0	94.1	0.1
16	Cairns - Melbourne	92.9	86.7	-6.7
17	Adelaide - Brisbane	80.6	79.8	-1.0
18	Brisbane - Mackay	76.6	79.9	4.4
19	Launceston - Melbourne	78.3	80.4	2.7
20	Sunshine Coast - Sydney	75.9	72.9	-4.0
21	Hobart - Sydney	78.1	79.9	2.3
22	Adelaide - Perth	67.2	71.5	6.5
23	Melbourne - Sunshine Coast	71.9	63.9	-11.1
24	Canberra - Sydney	83.0	89.8	8.2
25	Brisbane - Canberra	72.2	68.9	-4.5
26	Brisbane - Rockhampton	54.5	64.5	18.4
27	Karratha - Perth	64.4	75.8	17.7
28	Ballina - Sydney	55.7	50.7	-8.9
29	Brisbane - Newcastle	54.3	51.5	-5.1
30	Perth - Port Hedland	59.2	61.1	3.2
31	Melbourne - Newcastle	45.5	46.6	2.4
32	Broome - Perth	44.7	41.4	-7.3
33	Newman - Perth	53.6	53.5	-0.2
34	Kalgoorlie - Perth	48.6	56.5	16.4
35	Brisbane - Darwin	36.4	32.0	-11.9
36	Darwin - Melbourne	35.3	33.3	-5.6
37	Launceston - Sydney	35.9	31.3	-12.8
38	Brisbane - Proserpine	25.2	27.0	7.2
39	Brisbane - Hobart	25.8	27.8	7.6
40	Adelaide - Gold Coast	24.9	25.2	1.3
41	Hamilton Island - Sydney	29.7	27.8	-6.3
42	Brisbane - Gladstone	28.5	28.7	1.0
43	Darwin - Perth	22.4	24.6	9.9
44	Coffs Harbour - Sydney	23.6	22.0	-6.8
45	Adelaide - Canberra	25.6	24.0	-5.9
46	Brisbane - Emerald	21.5	25.5	18.8
47	Brisbane - Hamilton Island	20.7	18.0	-13.4
48	Canberra - Gold Coast	17.1	16.5	-3.8
49	Dubbo - Sydney	23.0	23.8	3.5
50	Brisbane - Mount Isa	19.1	19.1	0.1

continued

Table 3: (continued) Available seats (000s) — monthly activity

	City-Pair	Sep 2023	Sep 2024	% Change
51	Sydney - Wagga Wagga	20.9	21.1	1.0
52	Adelaide - Port Lincoln	22.3	23.1	3.8
53	Port Macquarie - Sydney	20.6	18.5	-10.4
54	Brisbane - Launceston	15.3	14.9	-2.6
55	Albury - Sydney	20.1	19.2	-4.5
56	Brisbane - Bundaberg	17.6	18.9	7.5
57	Melbourne - Mildura	21.1	17.5	-17.3
58	Devonport - Melbourne	13.1	14.5	10.9
59	Geraldton - Perth	..	18.4	NA
60	Brisbane - Moranbah	15.5	16.6	7.3
61	Adelaide - Alice Springs	14.3	14.5	1.3
	Total domestic network	6 231.3	6 156.3	-1.2

.. Data not available for release.

Table 4: Load factors (%) — monthly activity

	City-Pair	Sep 2023	Sep 2024	% Point diff
1	Melbourne - Sydney	81.9	83.4	1.5
2	Brisbane - Sydney	84.4	86.3	1.9
3	Brisbane - Melbourne	85.5	87.5	2.0
4	Gold Coast - Sydney	88.0	89.2	1.2
5	Adelaide - Melbourne	80.2	83.8	3.6
6	Gold Coast - Melbourne	92.3	92.7	0.4
7	Melbourne - Perth	81.2	85.2	4.0
8	Adelaide - Sydney	81.2	81.2	0.0
9	Perth - Sydney	82.7	84.9	2.2
10	Brisbane - Cairns	89.6	90.9	1.3
11	Hobart - Melbourne	83.2	85.2	2.0
12	Brisbane - Perth	82.3	88.3	6.0
13	Canberra - Melbourne	72.4	79.8	7.4
14	Brisbane - Townsville	88.1	87.2	-0.9
15	Cairns - Sydney	90.0	84.1	-5.9
16	Cairns - Melbourne	89.9	90.8	0.9
17	Adelaide - Brisbane	84.6	88.0	3.4
18	Brisbane - Mackay	85.6	85.8	0.2
19	Launceston - Melbourne	76.7	81.0	4.3
20	Sunshine Coast - Sydney	86.9	86.9	0.0
21	Hobart - Sydney	76.6	77.8	1.2
22	Adelaide - Perth	79.7	85.0	5.3
23	Melbourne - Sunshine Coast	92.1	93.1	1.0
24	Canberra - Sydney	63.2	62.9	-0.3
25	Brisbane - Canberra	78.7	81.2	2.5
26	Brisbane - Rockhampton	83.6	84.2	0.6
27	Karratha - Perth	72.5	69.1	-3.4
28	Ballina - Sydney	82.8	86.8	4.0
29	Brisbane - Newcastle	79.1	85.3	6.2
30	Perth - Port Hedland	66.2	65.8	-0.4
31	Melbourne - Newcastle	81.2	85.0	3.8
32	Broome - Perth	80.2	86.2	6.0
33	Newman - Perth	58.3	62.2	3.9
34	Kalgoorlie - Perth	63.1	54.3	-8.8
35	Brisbane - Darwin	80.5	91.8	11.3
36	Darwin - Melbourne	79.7	86.7	7.0
37	Launceston - Sydney	74.6	83.7	9.1
38	Brisbane - Proserpine	92.4	94.1	1.7
39	Brisbane - Hobart	85.5	87.5	2.0
40	Adelaide - Gold Coast	90.8	93.6	2.8
41	Hamilton Island - Sydney	75.8	83.0	7.2
42	Brisbane - Gladstone	66.9	67.0	0.1
43	Darwin - Perth	73.3	74.5	1.2
44	Coffs Harbour - Sydney	77.8	80.1	2.3
45	Adelaide - Canberra	67.9	68.7	0.8
46	Brisbane - Emerald	73.3	63.3	-10.0
47	Brisbane - Hamilton Island	77.5	87.6	10.1
48	Canberra - Gold Coast	88.7	92.2	3.5
49	Dubbo - Sydney	69.2	62.2	-7.0
50	Brisbane - Mount Isa	67.6	73.9	6.3

continued

Table 4: (continued) Load factors (%) — monthly activity

	City-Pair	Sep 2023	Sep 2024	% Point diff
51	Sydney - Wagga Wagga	66.5	66.5	0.0
52	Adelaide - Port Lincoln	64.1	59.4	-4.7
53	Port Macquarie - Sydney	69.5	72.1	2.6
54	Brisbane - Launceston	85.5	89.2	3.7
55	Albury - Sydney	71.7	69.1	-2.6
56	Brisbane - Bundaberg	67.4	65.6	-1.8
57	Melbourne - Mildura	71.4	69.2	-2.2
58	Devonport - Melbourne	69.6	68.9	-0.7
59	Geraldton - Perth	..	53.0	NA
60	Brisbane - Moranbah	57.5	56.6	-0.9
61	Adelaide - Alice Springs	73.9	64.5	-9.4
	Total domestic network	81.6	83.8	2.2

.. Data not available for release.

Table 5: Aircraft trips ^(a) — monthly activity

	City-Pair	Sep 2023	Sep 2024	% Change
1	Melbourne - Sydney	4 548	4 548	0.0
2	Brisbane - Sydney	2 766	2 550	-7.8
3	Brisbane - Melbourne	2 122	2 151	1.4
4	Gold Coast - Sydney	1 393	1 311	-5.9
5	Adelaide - Melbourne	1 436	1 332	-7.2
6	Gold Coast - Melbourne	1 152	1 025	-11.0
7	Melbourne - Perth	1 043	1 089	4.4
8	Adelaide - Sydney	1 130	1 126	-0.4
9	Perth - Sydney	832	869	4.4
10	Brisbane - Cairns	863	897	3.9
11	Hobart - Melbourne	700	713	1.9
12	Brisbane - Perth	595	612	2.9
13	Canberra - Melbourne	858	705	-17.8
14	Brisbane - Townsville	670	764	14.0
15	Cairns - Sydney	475	501	5.5
16	Cairns - Melbourne	468	455	-2.8
17	Adelaide - Brisbane	694	626	-9.8
18	Brisbane - Mackay	589	618	4.9
19	Launceston - Melbourne	683	657	-3.8
20	Sunshine Coast - Sydney	426	407	-4.5
21	Hobart - Sydney	488	453	-7.2
22	Adelaide - Perth	372	400	7.5
23	Melbourne - Sunshine Coast	391	356	-9.0
24	Canberra - Sydney	1 324	1 221	-7.8
25	Brisbane - Canberra	588	561	-4.6
26	Brisbane - Rockhampton	650	693	6.6
27	Karratha - Perth	385	452	17.4
28	Ballina - Sydney	394	341	-13.5
29	Brisbane - Newcastle	502	435	-13.3
30	Perth - Port Hedland	366	382	4.4
31	Melbourne - Newcastle	299	306	2.3
32	Broome - Perth	278	277	-0.4
33	Newman - Perth	331	335	1.2
34	Kalgoorlie - Perth	324	382	17.9
35	Brisbane - Darwin	227	237	4.4
36	Darwin - Melbourne	213	180	-15.5
37	Launceston - Sydney	222	194	-12.6
38	Brisbane - Proserpine	182	168	-7.7
39	Brisbane - Hobart	168	172	2.4
40	Adelaide - Gold Coast	128	127	-0.8
41	Hamilton Island - Sydney	168	158	-6.0
42	Brisbane - Gladstone	348	334	-4.0
43	Darwin - Perth	128	141	10.2
44	Coffs Harbour - Sydney	419	393	-6.2
45	Adelaide - Canberra	237	222	-6.3
46	Brisbane - Emerald	324	346	6.8
47	Brisbane - Hamilton Island	120	128	6.7
48	Canberra - Gold Coast	96	92	-4.2
49	Dubbo - Sydney	438	458	4.6
50	Brisbane - Mount Isa	169	169	0.0

continued

Table 5: (Continued) Aircraft trips ^(a) — monthly activity

	City-Pair	Sep 2023	Sep 2024	% Change
51	Sydney - Wagga Wagga	380	382	0.5
52	Adelaide - Port Lincoln	540	563	4.3
53	Port Macquarie - Sydney	361	305	-15.5
54	Brisbane - Launceston	88	88	0.0
55	Albury - Sydney	392	362	-7.7
56	Brisbane - Bundaberg	290	308	6.2
57	Melbourne - Mildura	432	414	-4.2
58	Devonport - Melbourne	284	319	12.3
59	Geraldton - Perth	..	202	NA
60	Brisbane - Moranbah	206	222	7.8
61	Adelaide - Alice Springs	170	171	0.6
	Total domestic network	51 596	51 033	-1.1

(a) Includes RPT cargo flights.

.. Data not available for release.

TOP TEN AIRPORTS – PASSENGER MOVEMENTS

Table 6: Top ten airports, RPT passenger movements (000s) - monthly activity

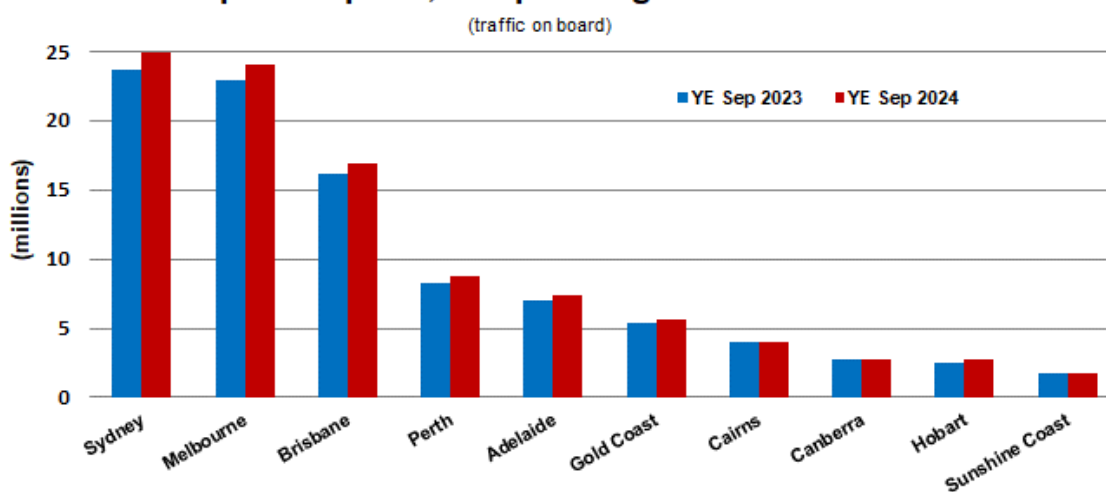
Airport	Sep 2023	Sep 2024	% Change	% of Total
1 Sydney	2 100.6	2 099.4	-0.1	20.9
2 Melbourne	2 005.6	2 006.9	0.1	20.0
3 Brisbane	1 450.2	1 496.9	3.2	14.9
4 Perth	715.4	768.8	7.5	7.7
5 Adelaide	597.7	607.8	1.7	6.1
6 Gold Coast	483.3	455.5	-5.7	4.5
7 Cairns	378.0	372.4	-1.5	3.7
8 Canberra	242.3	242.2	0.0	2.4
9 Hobart	197.9	207.6	4.9	2.1
10 Darwin	153.5	151.4	-1.4	1.5
Total top ten airports	8 324.5	8 409.0	1.0	83.8
Total domestic network	9 970.6	10 034.5	0.6	100.0

Table 7: Top ten airports, RPT passenger movements (000s) - annual activity

Airport	YE Sep 2023	YE Sep 2024	% Change	% of Total
1 Sydney	23 708.0	24 890.8	5.0	21.1
2 Melbourne	22 875.5	24 077.5	5.3	20.5
3 Brisbane	16 102.2	16 857.8	4.7	14.3
4 Perth	8 218.3	8 757.7	6.6	7.4
5 Adelaide	6 965.4	7 327.3	5.2	6.2
6 Gold Coast	5 439.8	5 590.6	2.8	4.7
7 Cairns	3 961.7	4 051.3	2.3	3.4
8 Canberra	2 736.5	2 794.2	2.1	2.4
9 Hobart	2 521.6	2 692.4	6.8	2.3
10 Sunshine Coast	1 731.1	1 780.4	2.8	1.5
Total top ten airports	94 260.1	98 819.9	4.8	83.9
Total domestic network	112 439.4	117 723.6	4.7	100.0

Note: Airport passenger movement numbers are the sum of passenger arrivals and departures at each airport.

Top ten airports, RPT passenger movements



TOP FIVE AIRPORTS – CARGO MOVEMENTS

Table 8: Top five airports, domestic RPT cargo movements (000s tonnes) - monthly activity

Airport	Sep 2023	Sep 2024	% Change	% of Total
1 Melbourne	6.9	7.0	1.8	27.0
2 Sydney	5.8	5.6	-2.1	21.7
3 Brisbane	4.5	4.6	2.2	17.7
4 Perth	2.7	2.9	6.8	11.3
5 Adelaide	1.4	1.4	0.7	5.3
Total top five airports	21.2	21.5	1.4	83.0
Total domestic network	25.6	25.9	1.3	100.0

Table 9: Top five airports, domestic RPT cargo movements (000s tonnes) - annual activity

Airport	YE Sep 2023	YE Sep 2024	% Change	% of Total
1 Melbourne	91.3	87.7	-3.9	27.2
2 Sydney	75.9	70.1	-7.7	21.7
3 Brisbane	59.2	59.0	-0.5	18.3
4 Perth	35.3	35.6	0.6	11.0
5 Adelaide	18.8	18.4	-2.0	5.7
Total top five airports	280.6	270.8	-3.5	83.9
Total domestic network	339.0	322.8	-4.8	100.0

Note: Airport cargo tonnes are the sum of cargo tonnes on arrivals and departures at each airport.

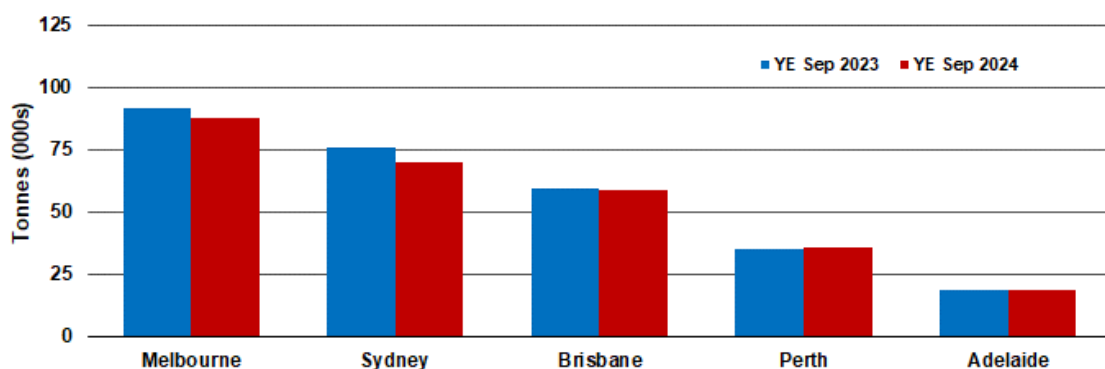
Total domestic network - cargo movement

(monthly totals - traffic on board)



Top five airports, cargo movements

(Domestic cargo traffic - traffic on board)



Note: Airport cargo tonnes are the sum of cargo tonnes on arrivals and departures at each airport.

TOP TEN ROUTES

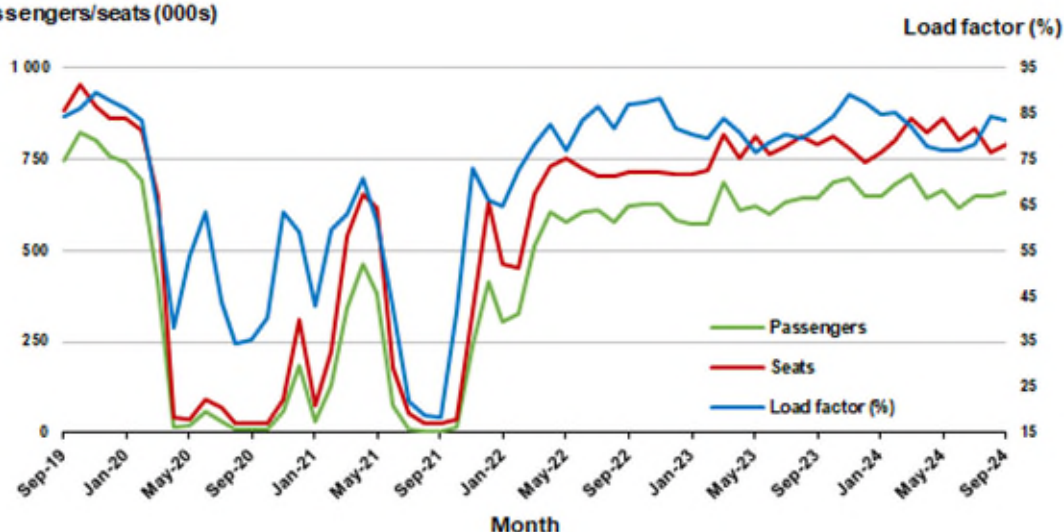
1. Melbourne - Sydney

Monthly data

	Sep 2023	Sep 2024	% Change
Passengers carried (000s)	645.7	662.1	2.5
Seats (000s)	788.9	793.9	0.6
Load factor %	81.9	83.4	1.5 *
Aircraft trips	4 548	4 548	0.0

* percentage point difference

Passengers/seats (000s)

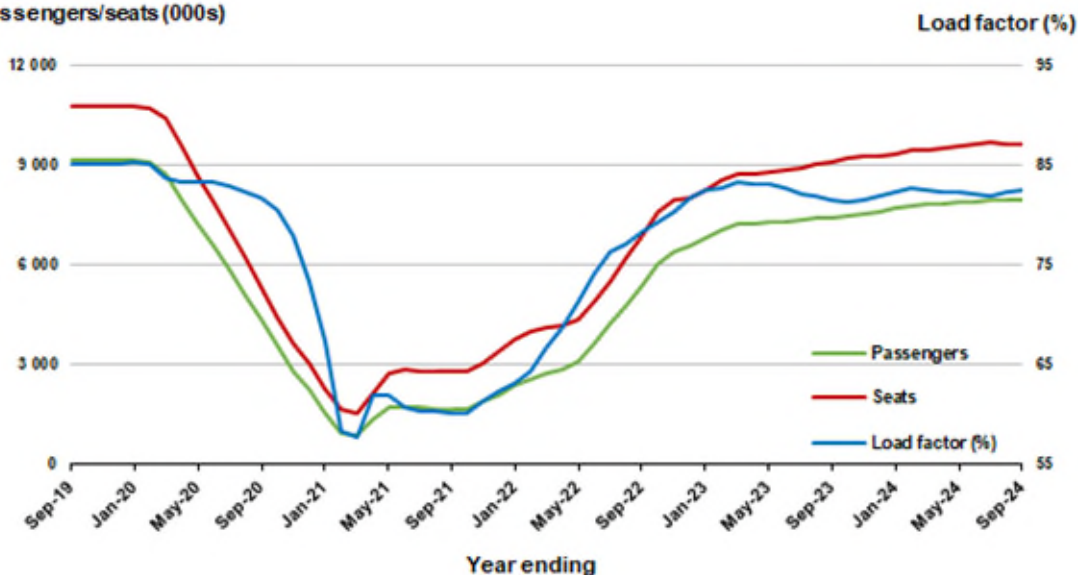


Moving annual data

	YE Sep 2023	YE Sep 2024	% Change
Passengers carried (000s)	7 428.1	7 962.0	7.2
Seats (000s)	9 110.8	9 652.4	5.9
Load factor %	81.5	82.5	1.0 *
Aircraft trips	52 614	55 798	6.1

* percentage point difference

Passengers/seats (000s)

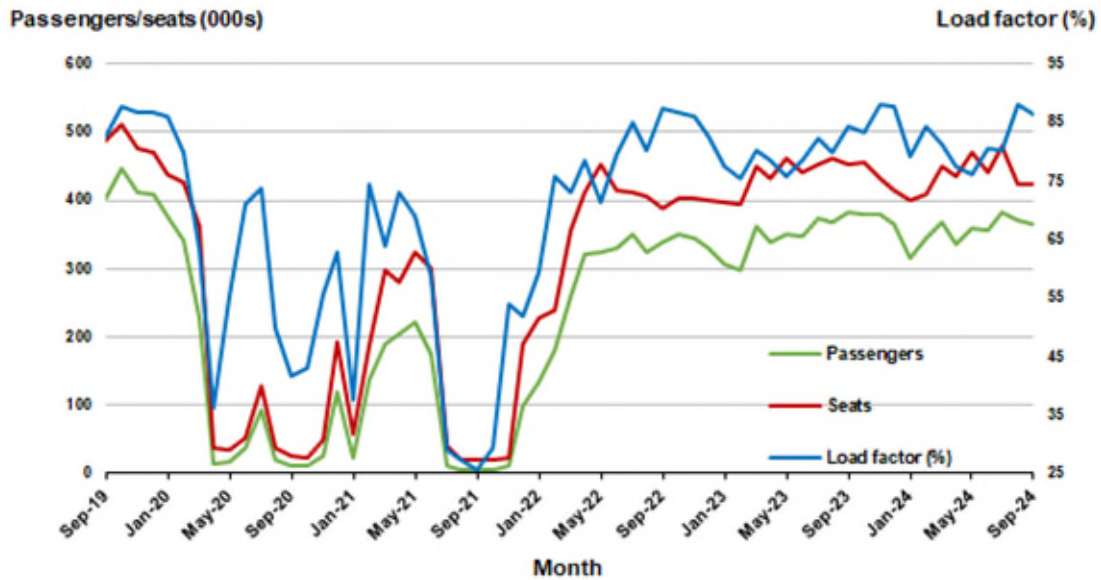


2. Brisbane - Sydney

Monthly data

	Sep 2023	Sep 2024	% Change
Passengers carried (000s)	382.0	365.0	-4.5
Seats (000s)	452.7	422.9	-6.6
Load factor %	84.4	86.3	1.9 *
Aircraft trips	2 766	2 550	-7.8

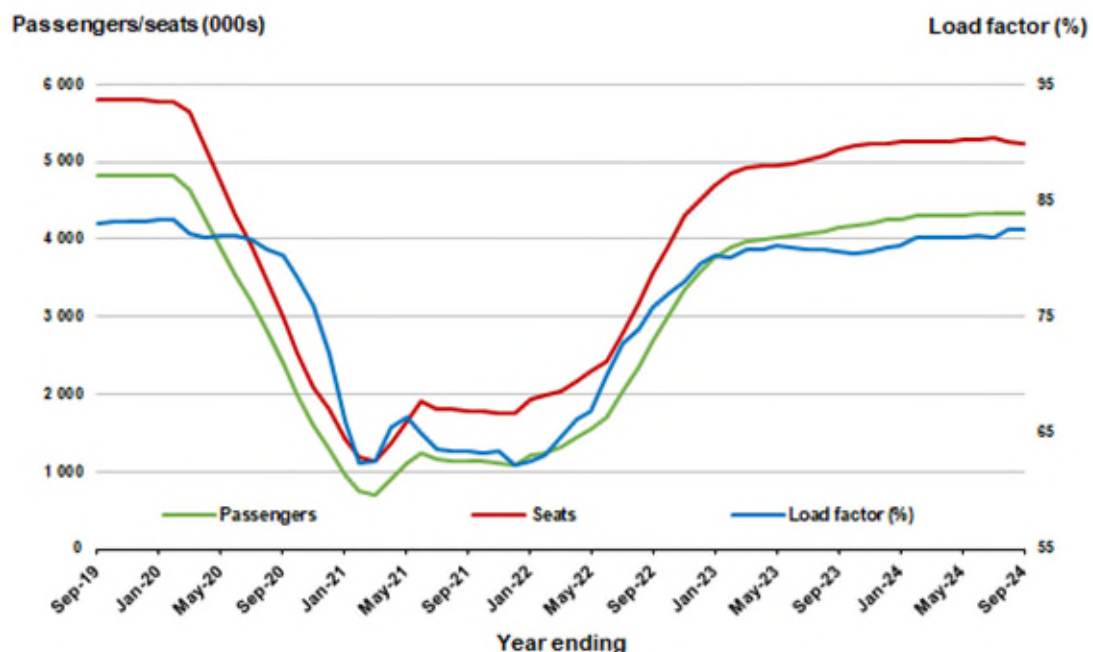
* percentage point difference



Moving annual data

	YE Sep 2023	YE Sep 2024	% Change
Passengers carried (000s)	4 150.7	4 322.9	4.1
Seats (000s)	5 147.6	5 234.3	1.7
Load factor %	80.6	82.6	2.0 *
Aircraft trips	31 610	31 917	1.0

* percentage point difference

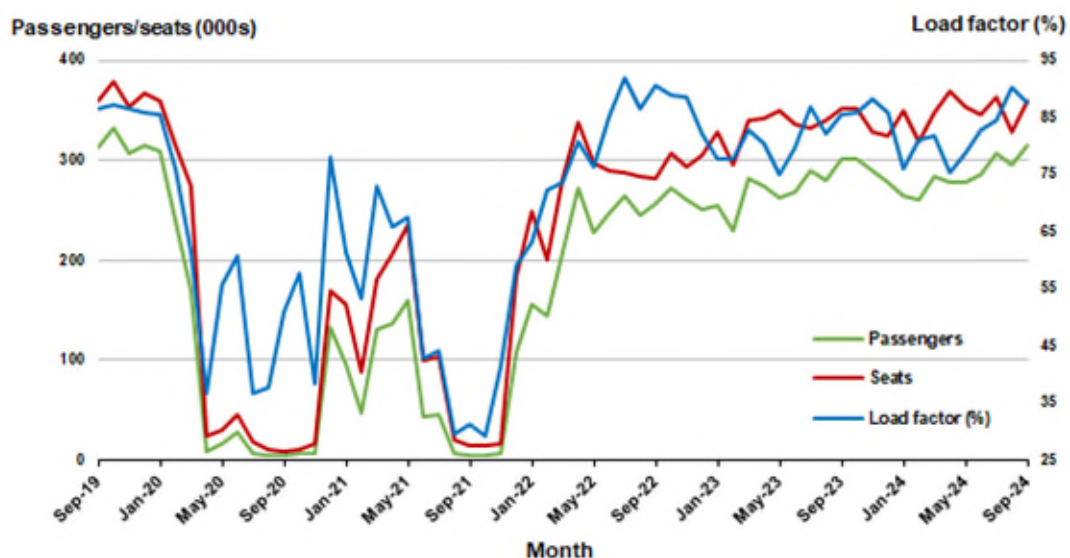


3. Brisbane - Melbourne

Monthly data

	Sep 2023	Sep 2024	% Change
Passengers carried (000s)	300.4	314.9	4.8
Seats (000s)	351.4	359.7	2.4
Load factor %	85.5	87.5	2.0 *
Aircraft trips	2 122	2 151	1.4

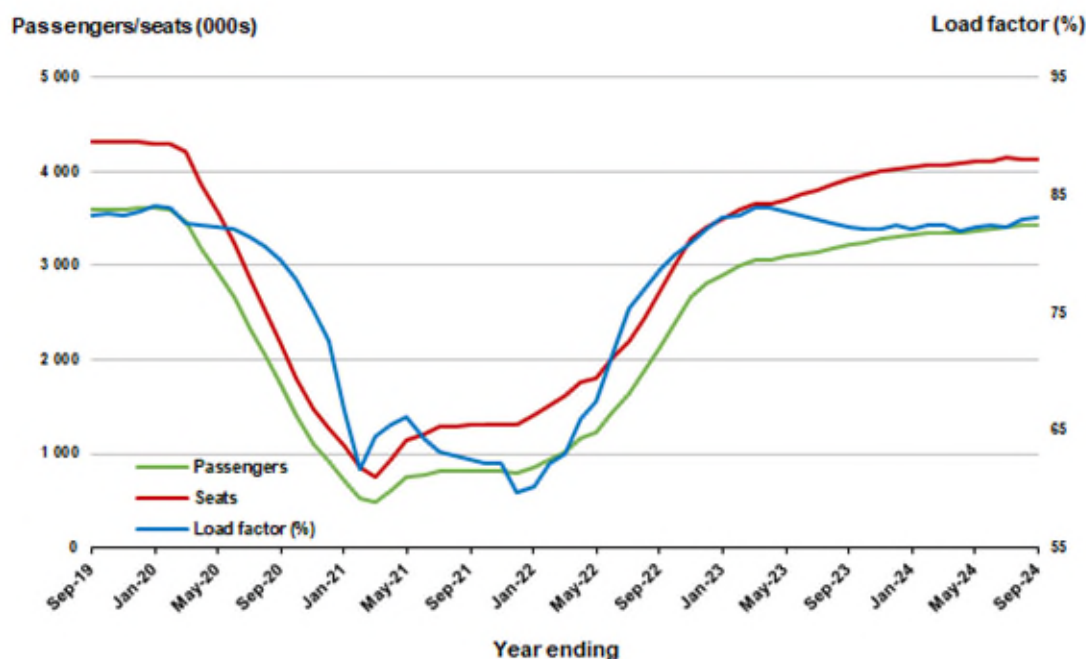
* percentage point difference



Moving annual data

	YE Sep 2023	YE Sep 2024	% Change
Passengers carried (000s)	3 227.2	3 439.8	6.6
Seats (000s)	3 923.3	4 140.6	5.5
Load factor %	82.3	83.1	0.8 *
Aircraft trips	23 869	24 802	3.9

* percentage point difference



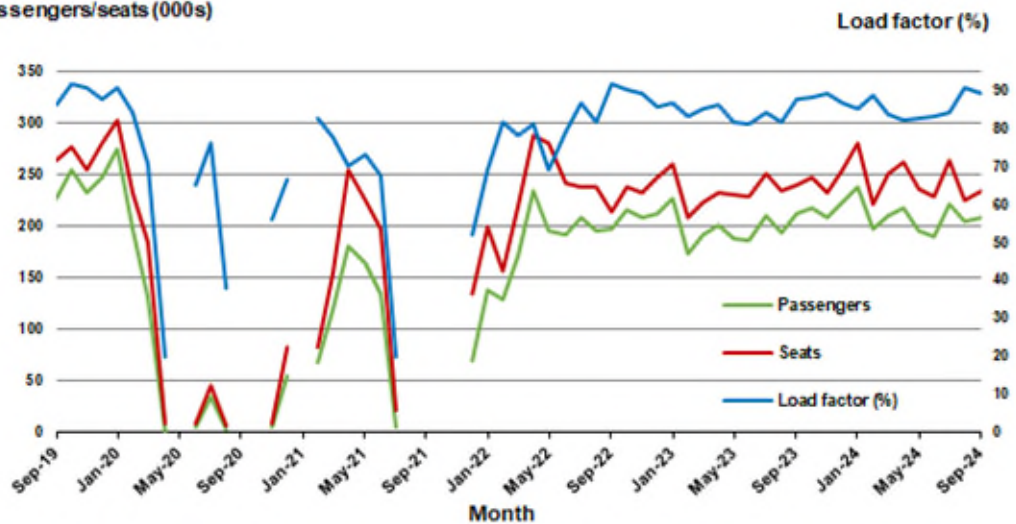
4. Gold Coast - Sydney ^(a)

Monthly data

	Sep 2023	Sep 2024	% Change
Passengers carried (000s)	212.1	208.8	-1.6
Seats (000s)	241.0	234.0	-2.9
Load factor %	88.0	89.2	1.2 *
Aircraft trips	1 393	1 311	-5.9

* percentage point difference

Passengers/seats (000s)



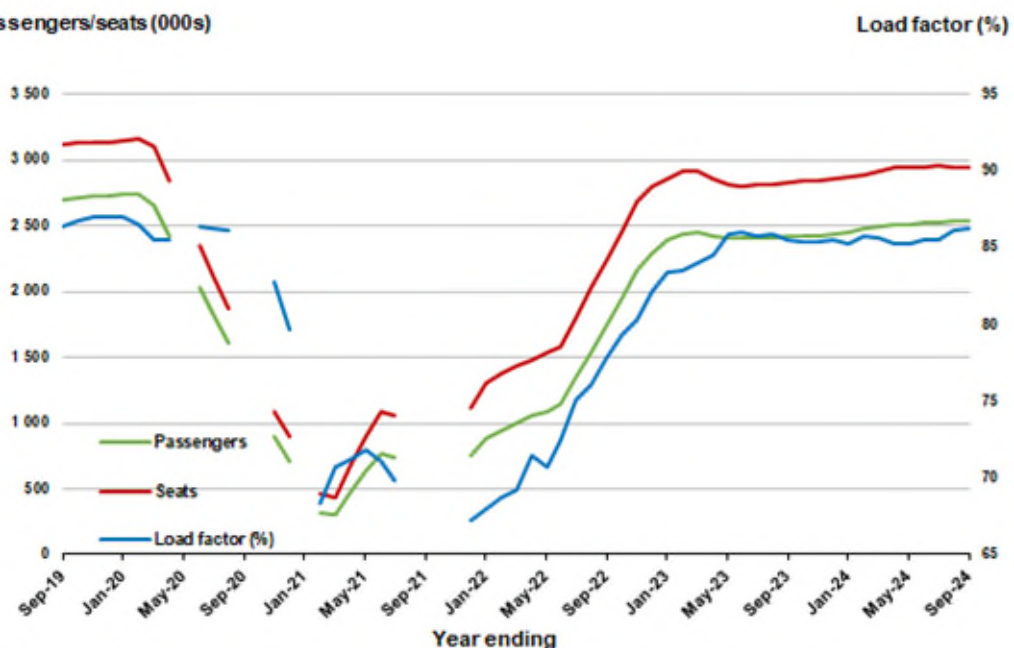
(a) May, September and October 2020 and January and August to November 2021 data not available for release.

Moving annual data

	YE Sep 2023	YE Sep 2024	% Change
Passengers carried (000s)	2 423.7	2 537.3	4.7
Seats (000s)	2 833.5	2 943.2	3.9
Load factor %	85.5	86.2	0.7 *
Aircraft trips	16 334	16 622	1.8

* percentage point difference

Passengers/seats (000s)



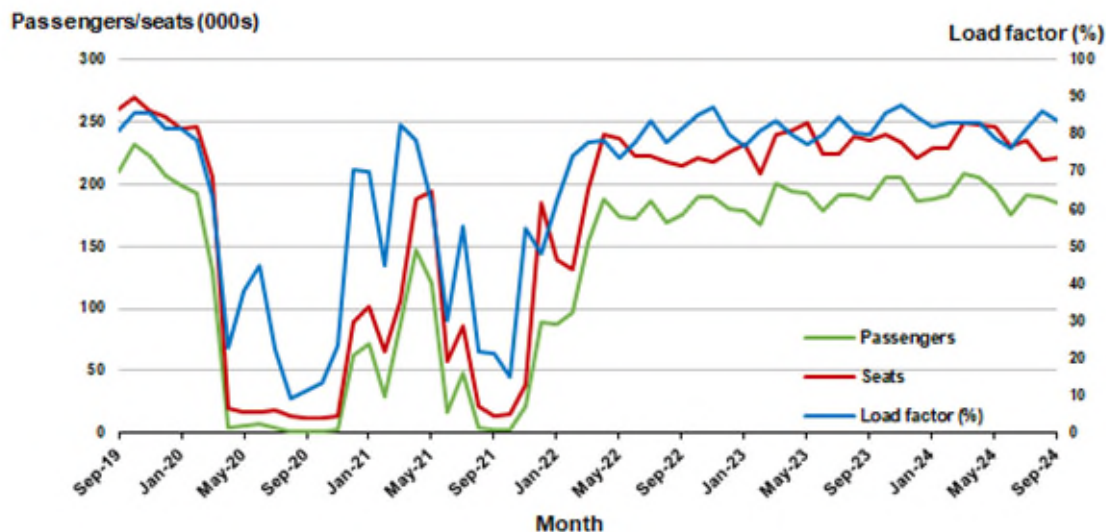
(a) May, September and October 2020 and January and August to November 2021 moving annual totals not available for release.

5. Adelaide - Melbourne

Monthly data

	Sep 2023	Sep 2024	% Change
Passengers carried (000s)	188.3	185.1	-1.7
Seats (000s)	234.8	220.9	-5.9
Load factor %	80.2	83.8	3.6 *
Aircraft trips	1 436	1 332	-7.2

* percentage point difference

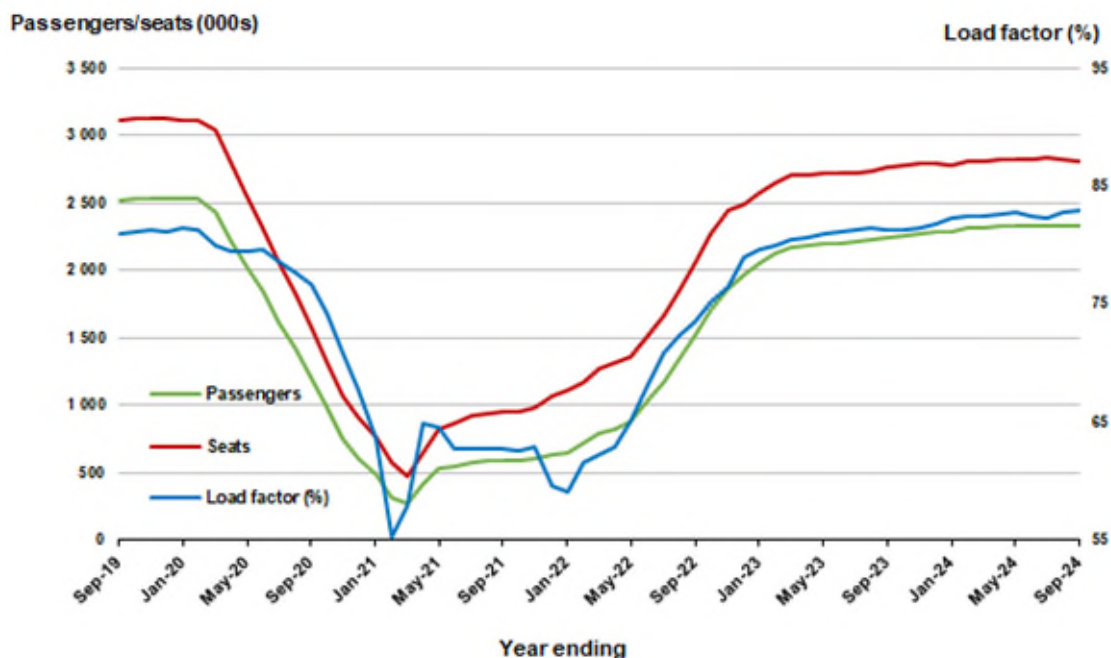


(a) April to November 2020 and August to November 2021 data not available for release.

Moving annual data

	YE Sep 2023	YE Sep 2024	% Change
Passengers carried (000s)	2 245.6	2 328.1	3.7
Seats (000s)	2 760.8	2 803.6	1.6
Load factor %	81.3	83.0	1.7 *
Aircraft trips	16 923	17 063	0.8

* percentage point difference

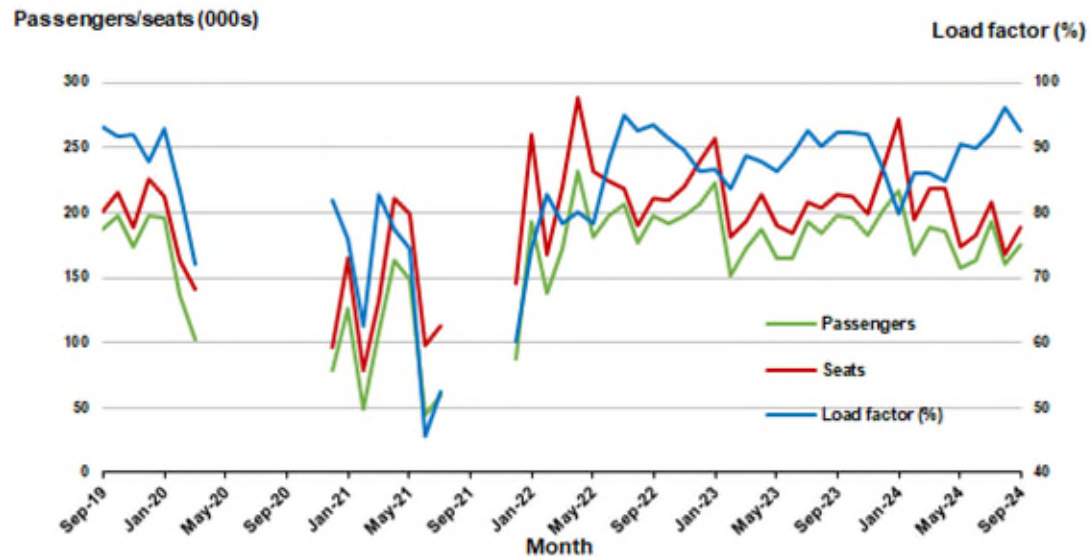


6. Gold Coast - Melbourne ^(a)

Monthly data

	Sep 2023	Sep 2024	% Change
Passengers carried (000s)	197.2	175.6	-11.0
Seats (000s)	213.8	189.4	-11.4
Load factor %	92.3	92.7	0.4 *
Aircraft trips	1 152	1 025	-11.0

* percentage point difference

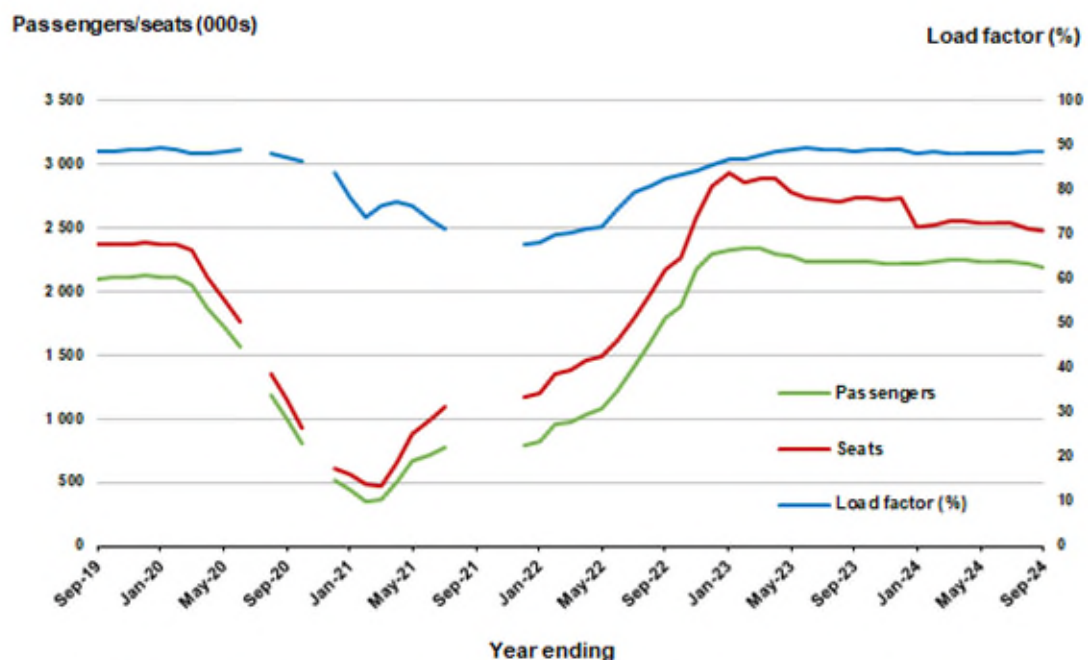


(a) April to November 2020 and August to November 2021 moving annual totals are not available for release

Moving annual data

	YE Sep 2023	YE Sep 2024	% Change
Passengers carried (000s)	2 233.3	2 191.6	-1.9
Seats (000s)	2 727.6	2 472.8	-9.3
Load factor %	88.7	88.6	-0.1 *
Aircraft trips	13 672	13 475	-1.4

* percentage point difference



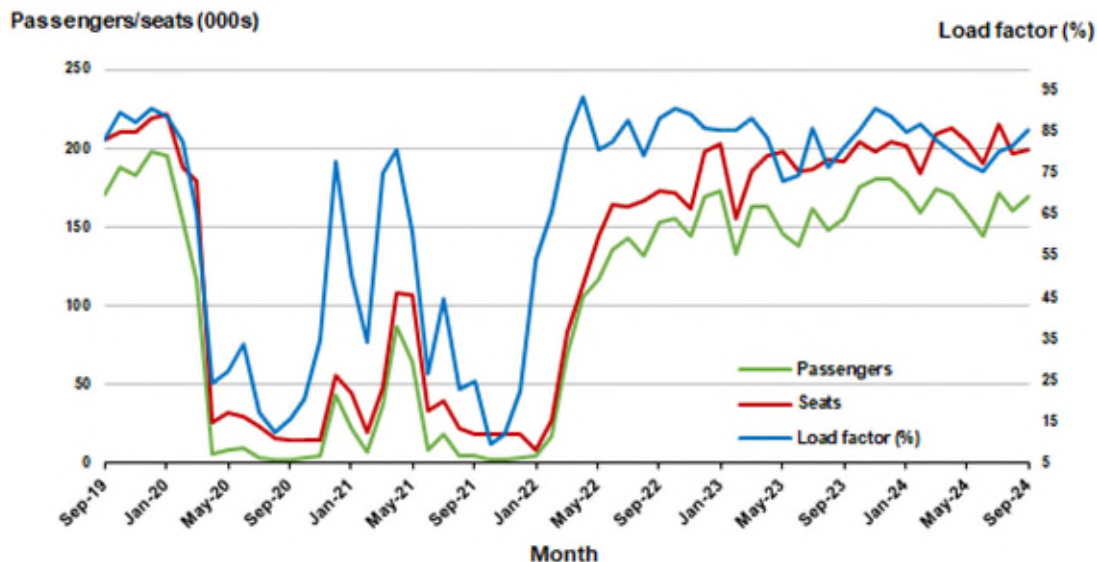
(a) July 2020, November 2020 and August to November 2021 moving annual totals are not available for release

7. Melbourne - Perth

Monthly data

	Sep 2023	Sep 2024	% Change
Passengers carried (000s)	155.4	169.2	8.9
Seats (000s)	191.4	198.5	3.7
Load factor %	81.2	85.2	4.0 *
Aircraft trips	1 043	1 089	4.4

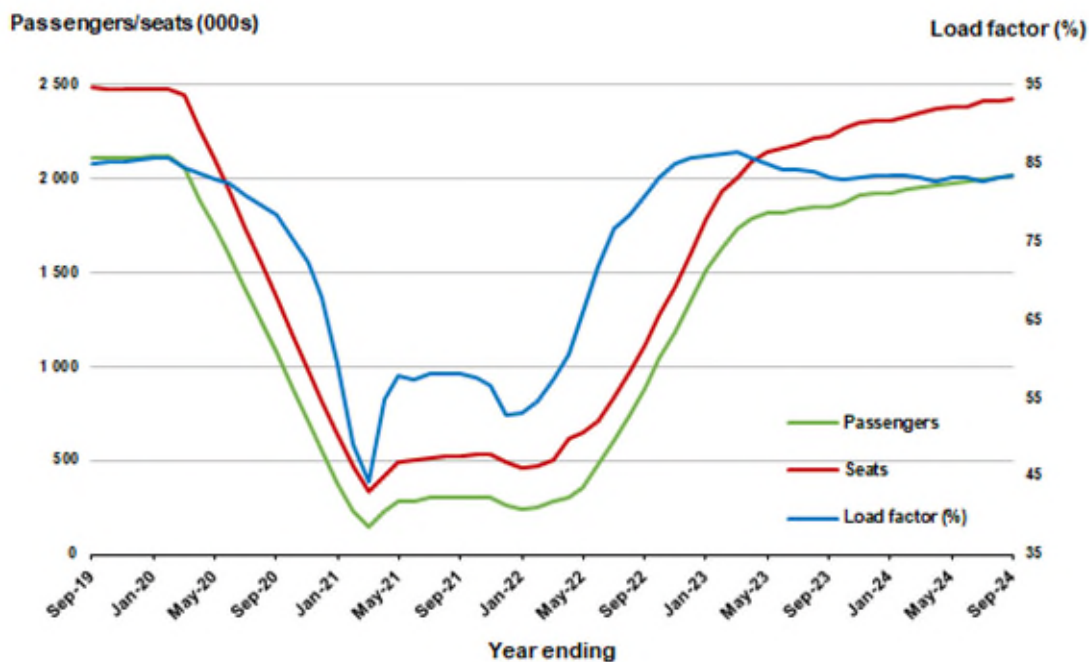
* percentage point difference



Moving annual data

	YE Sep 2023	YE Sep 2024	% Change
Passengers carried (000s)	1 849.5	2 015.0	8.9
Seats (000s)	2 225.4	2 418.7	8.7
Load factor %	83.1	83.3	0.2 *
Aircraft trips	12 404	13 399	8.0

* percentage point difference

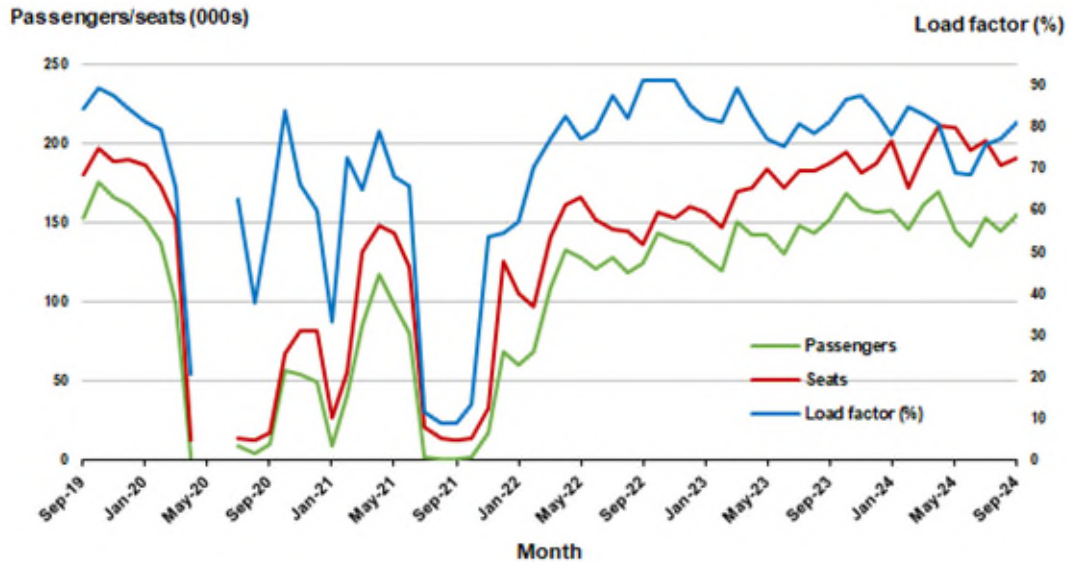


8. Adelaide - Sydney ^(a)

Monthly data

	Sep 2023	Sep 2024	% Change
Passengers carried (000s)	152.3	155.1	1.8
Seats (000s)	187.5	191.0	1.9
Load factor %	81.2	81.2	0.0 *
Aircraft trips	1 130	1 126	-0.4

* percentage point difference

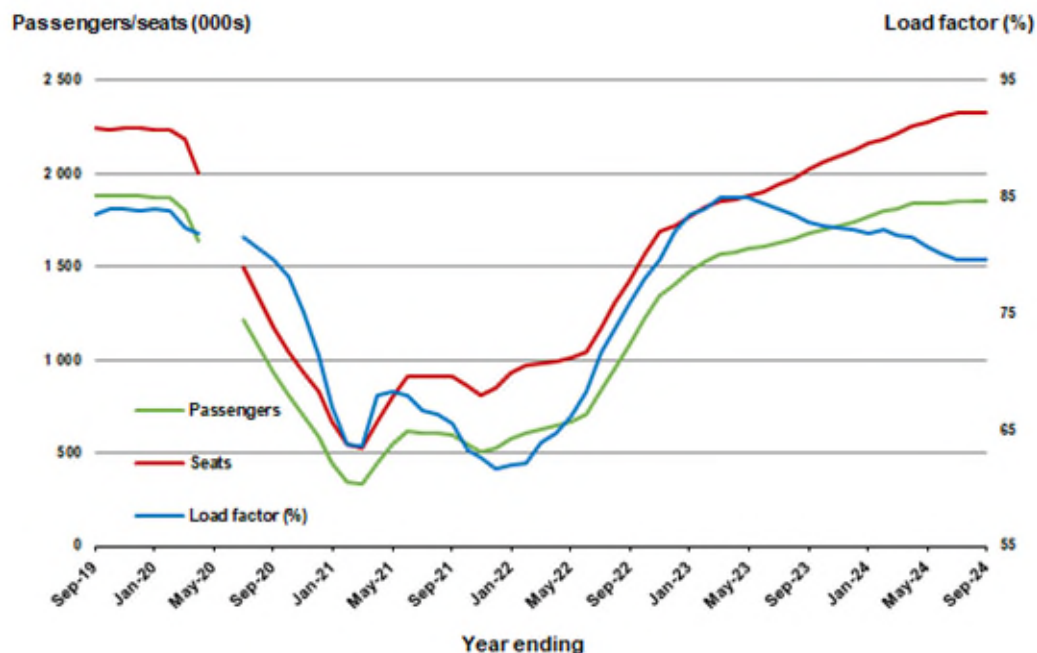


(a) May and June 2020 data not available for release.

Moving annual data

	YE Sep 2023	YE Sep 2024	% Change
Passengers carried (000s)	1 677.9	1 852.8	10.4
Seats (000s)	2 026.0	2 329.3	15.0
Load factor %	82.8	79.5	-3.3 *
Aircraft trips	12 336	14 086	14.2

* percentage point difference



(a) May and June 2020 moving annual totals are not available for release.

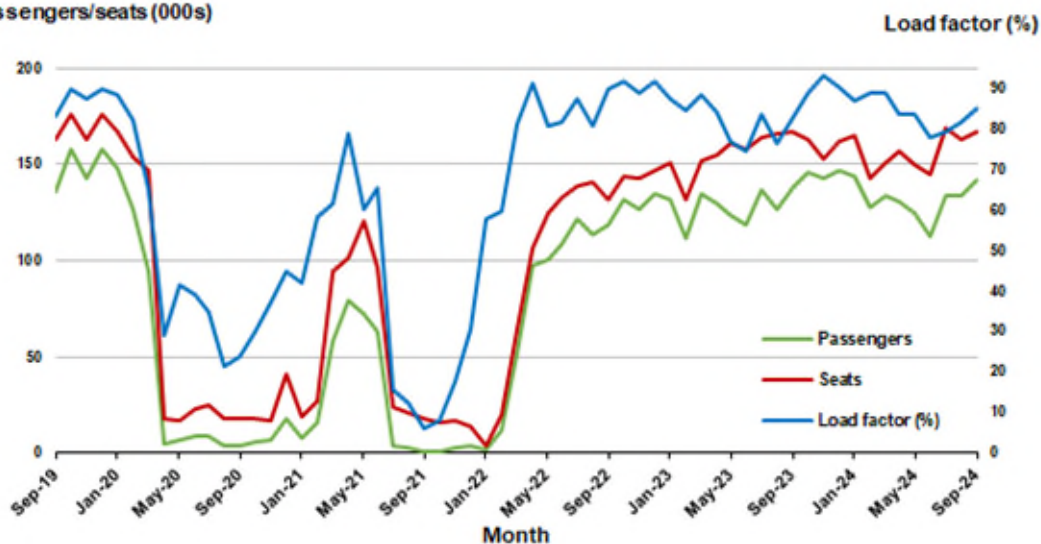
9. Perth - Sydney

Monthly data

	Sep 2023	Sep 2024	% Change
Passengers carried (000s)	137.7	141.4	2.6
Seats (000s)	166.5	166.5	0.0
Load factor %	82.7	84.9	2.2 *
Aircraft trips	832	869	4.4

* percentage point difference

Passengers/seats (000s)

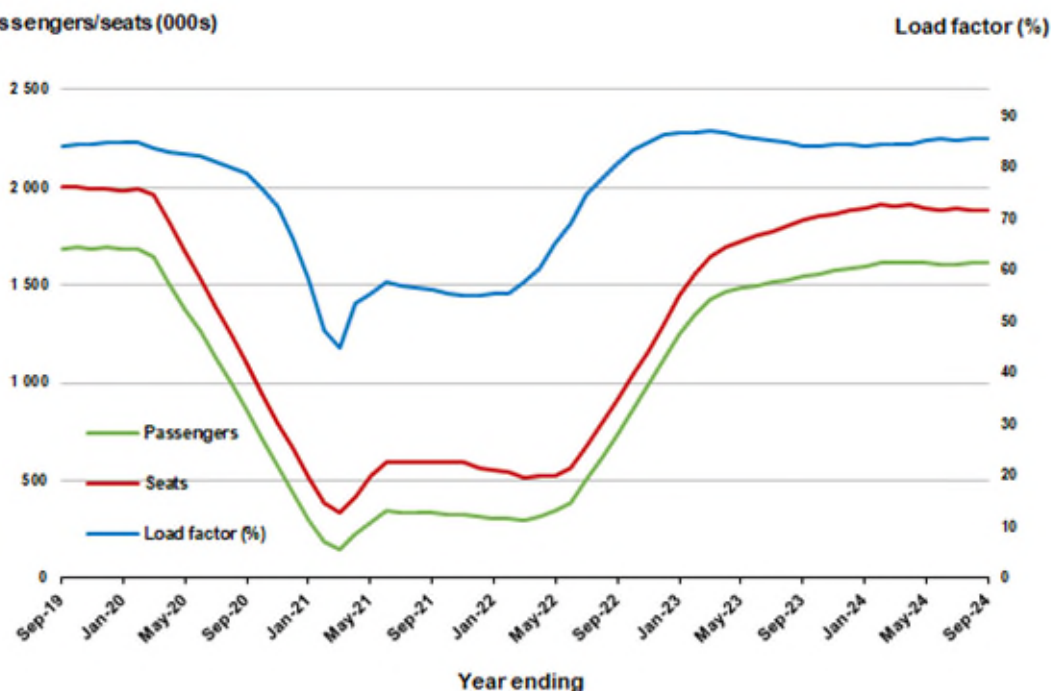


Moving annual data

	YE Sep 2023	YE Sep 2024	% Change
Passengers carried (000s)	1 545.4	1 618.0	4.7
Seats (000s)	1 837.9	1 887.7	2.7
Load factor %	84.1	85.7	1.6 *
Aircraft trips	9 532	9 936	4.2

* percentage point difference

Passengers/seats (000s)

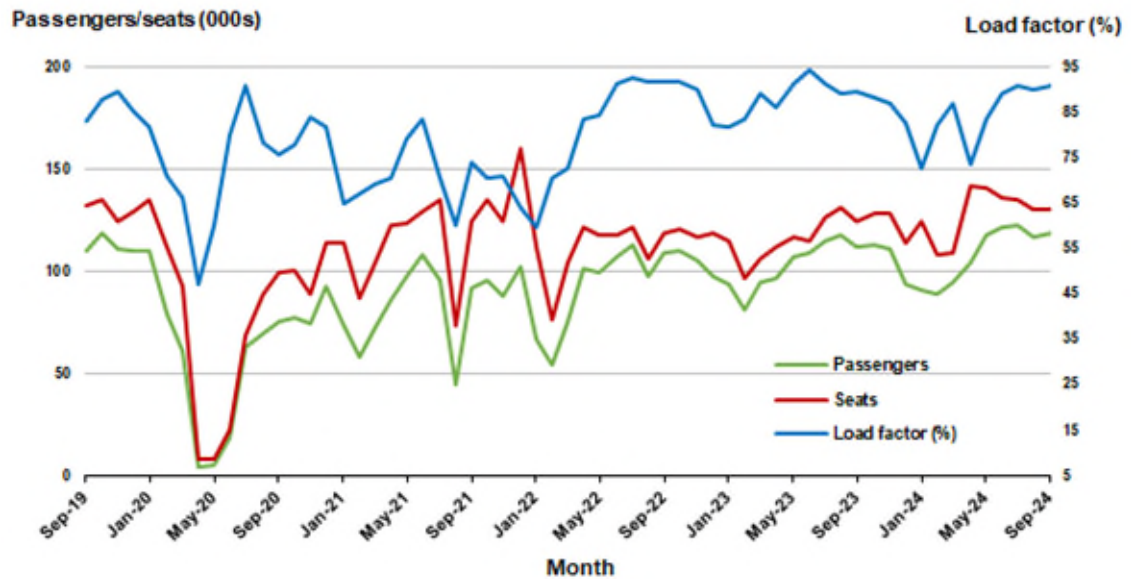


10. Brisbane - Cairns

Monthly data

	Sep 2023	Sep 2024	% Change
Passengers carried (000s)	111.9	118.2	5.6
Seats (000s)	124.8	130.0	4.2
Load factor %	89.6	90.9	1.3 *
Aircraft trips	863	897	3.9

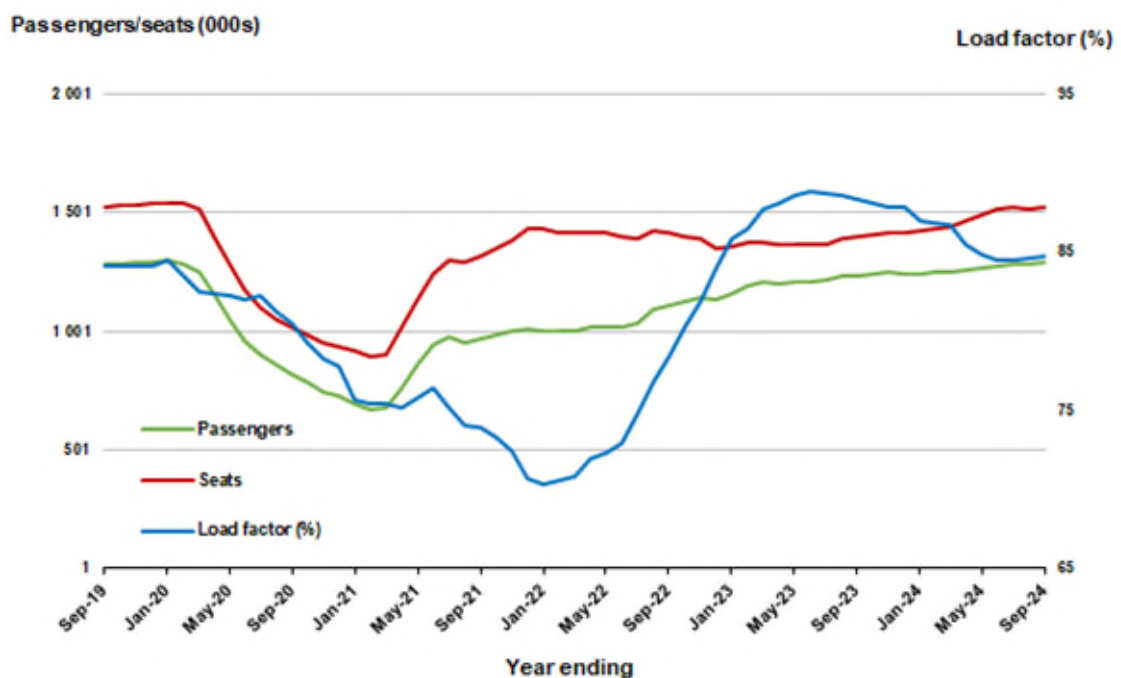
* percentage point difference



Moving annual data

	YE Sep 2023	YE Sep 2024	% Change
Passengers carried (000s)	1 238.3	1 292.2	4.4
Seats (000s)	1 400.5	1 525.0	8.9
Load factor %	88.4	84.7	-3.7 *
Aircraft trips	9 421	10 461	11.0

* percentage point difference



TOP FIFTY REGIONAL AIRPORTS

Table 10: Top fifty regional airports (000s) — passenger movements, monthly

Airport	Sep 2023	Sep 2024	% Change
1 Cairns	378.0	372.4	-1.5
2 Hobart	197.9	207.6	4.9
3 Darwin	153.5	151.4	-1.4
4 Townsville	145.3	148.1	1.9
5 Launceston	101.6	106.1	4.5
6 Newcastle	104.7	103.5	-1.1
7 Mackay	82.1	79.2	-3.6
8 Rockhampton	57.7	58.1	0.7
9 Ballina	55.0	53.7	-2.5
10 Karratha	47.4	53.6	13.0
11 Proserpine	44.8	46.7	4.2
12 Hamilton Island	48.0	45.7	-4.8
13 Broome	45.2	44.6	-1.2
14 Port Hedland	40.2	41.1	2.2
15 Newman	31.4	33.4	6.3
16 Alice Springs	32.4	33.3	2.9
17 Ayers Rock	26.0	31.8	22.7
18 Kalgoorlie	30.7	30.7	0.0
19 Paraburdoo	21.6	23.4	8.1
20 Mount Isa	20.2	22.0	8.9
21 Coffs Harbour	23.6	19.7	-16.4
22 Gladstone	21.3	19.3	-9.5
23 Albury	23.5	19.1	-18.6
24 Wagga Wagga	17.6	18.3	3.8
25 Dubbo	19.0	17.7	-6.7
26 Hervey Bay	12.5	17.4	39.1
27 Emerald	16.6	17.1	3.1
28 Mildura	20.6	15.8	-23.2
29 Port Macquarie	19.5	15.6	-20.1
30 Port Lincoln	14.3	13.7	-3.8
31 Kununurra	13.0	13.3	2.2
32 Tamworth	15.2	13.1	-14.2
33 Bundaberg	14.6	12.4	-15.5
34 Thursday Island	10.8	11.4	5.0
35 Learmonth	9.9	10.4	5.0
36 Geraldton	9.3	10.3	11.3
37 Devonport	9.2	10.0	9.2
38 Moranbah	8.9	9.4	5.6
39 Orange	9.3	9.3	-0.4
40 Armidale	9.9	8.9	-10.1
41 Olympic Dam	8.4	8.8	4.7
42 Gove	7.7	8.6	11.6
43 Weipa	7.6	8.1	7.0
44 Busselton	3.5	8.0	127.7
45 Burnie	6.5	6.3	-2.4
46 Norfolk Island	6.1	6.2	1.9
47 Griffith	6.4	6.2	-3.0
48 Mount Gambier	6.1	6.1	-0.7
49 Albany	5.0	5.6	11.7
50 Merimbula	5.9	5.4	-8.8
Total top 50 regional airports	2 025.4	2 037.8	0.6
Total regional airports	2 149.0	2 158.9	0.5
Total domestic network	9 970.6	10 034.5	0.6

Note: Airport passenger movement numbers are the sum of passenger arrivals and departures at each airport. Regional airports are defined as airports which are, according to Australian Statistical Geography Standard (ASGS), not based in Major Cities.

Table 11: Top fifty regional airports (000s) — passenger movements, annual

Airport	YE Sep 2023	YE Sep 2024	% Change
1 Cairns	3 961.7	4 051.3	2.3
2 Hobart	2 521.6	2 692.4	6.8
3 Townsville	1 671.1	1 666.0	-0.3
4 Darwin	1 623.1	1 590.7	-2.0
5 Launceston	1 318.9	1 426.1	8.1
6 Newcastle	1 126.7	1 202.3	6.7
7 Mackay	899.6	910.1	1.2
8 Rockhampton	600.0	650.1	8.4
9 Ballina	644.0	618.3	-4.0
10 Karratha	537.8	604.8	12.5
11 Proserpine	489.7	503.0	2.7
12 Port Hedland	481.2	487.7	1.3
13 Hamilton Island	499.9	486.3	-2.7
14 Broome	435.4	441.5	1.4
15 Newman	370.6	382.2	3.2
16 Alice Springs	352.7	370.4	5.0
17 Kalgoorlie	346.7	365.3	5.4
18 Ayers Rock	257.8	299.6	16.2
19 Paraburdoo	234.5	270.6	15.4
20 Albury	246.0	265.7	8.0
21 Coffs Harbour	285.3	255.3	-10.5
22 Gladstone	216.2	237.9	10.0
23 Mount Isa	230.8	236.3	2.4
24 Mildura	218.7	220.2	0.7
25 Port Macquarie	206.7	216.9	5.0
26 Dubbo	206.7	210.3	1.7
27 Wagga Wagga	196.8	204.3	3.8
28 Emerald	191.9	197.3	2.8
29 Port Lincoln	175.7	171.1	-2.6
30 Hervey Bay	139.5	170.5	22.3
31 Tamworth	161.8	167.3	3.4
32 Bundaberg	135.1	158.8	17.6
33 Kununurra	132.6	141.1	6.4
34 Devonport	121.2	123.8	2.2
35 Geraldton	87.7	114.8	30.9
36 Thursday Island	104.9	113.4	8.0
37 Moranbah	108.6	111.8	2.9
38 Orange	102.9	110.1	7.0
39 Armidale	112.6	104.1	-7.5
40 Olympic Dam	102.1	103.6	1.6
41 Learmonth	104.3	103.6	-0.7
42 Gove	87.6	94.3	7.6
43 Weipa	85.5	91.1	6.6
44 Burnie	83.2	78.7	-5.4
45 Busselton	49.6	77.0	55.1
46 Toowoomba Wellcamp	63.1	73.1	15.9
47 Mount Gambier	74.3	72.3	-2.7
48 Norfolk Island	69.4	70.4	1.4
49 Merimbula	73.4	69.4	-5.5
50 Griffith	76.2	67.8	-11.0
Total top 50 regional airports	22 623.4	23 451.3	3.7
Total regional airports	24 034.7	24 882.4	3.5
Total domestic network	112 439.4	117 723.6	4.7

Note: Airport passenger movement numbers are the sum of passenger arrivals and departures at each airport. Regional airports are defined as airports which are, according to Australian Statistical Geography Standard (ASGS), not based in Major Cities.

DOMESTIC CHARTER ACTIVITY

Table 12: Charter passengers carried and aircraft trips - monthly activity (000s)

	Sep 2023	Sep 2024	% Change
Total domestic charter passengers	329.3	346.0	5.1
Total domestic charter aircraft trips	5.8	5.9	1.6

Note: Helicopter, joyflights and sightseeing charter flights not included.

Table 13: Charter passengers carried and aircraft trips - annual activity (000s)

	YE Sep 2023	YE Sep 2024	% Change
Total domestic charter passengers	3 927.2	4 309.8	9.7
Total domestic charter aircraft trips	68.4	73.2	7.1

Note: Helicopter, joyflights and sightseeing charter flights not included.

Table 14: Domestic airports - charter activity - monthly (000s)

	Sep 2023	Sep 2024	% Change
Total domestic charter passenger movements	658.6	691.9	5.1
Total domestic charter aircraft movements	11.5	11.7	1.6
Perth airport charter passenger movements	246.1	251.6	2.2
Perth airport charter aircraft movements	3.9	3.7	-5.2

Note: Helicopter, joyflights and sightseeing charter flights not included.

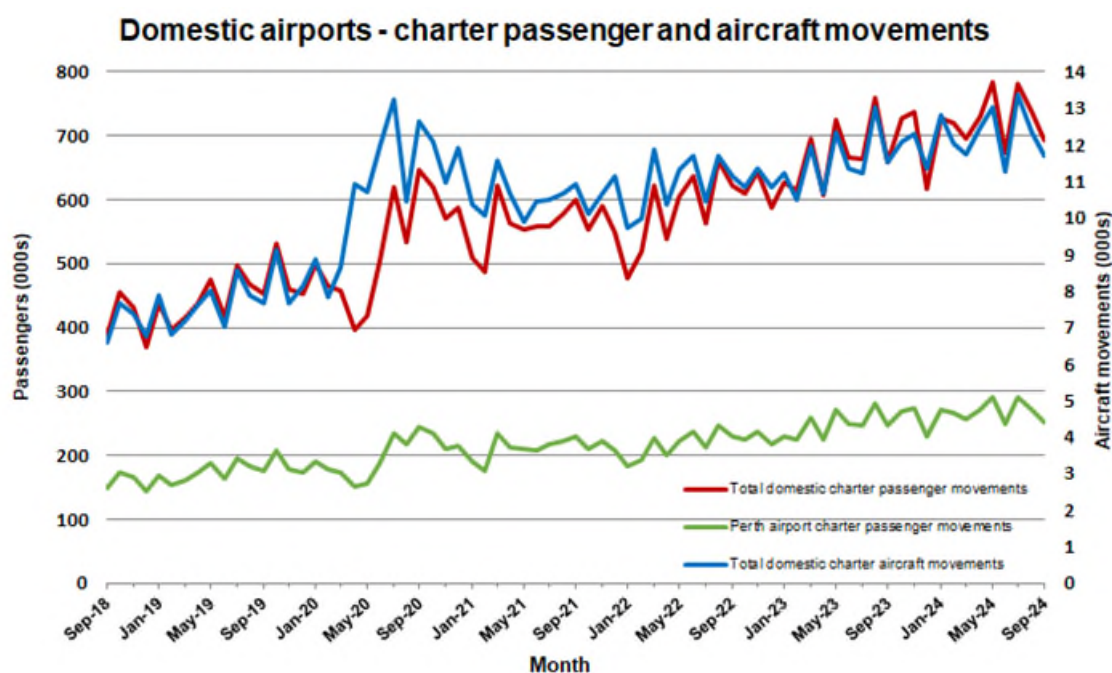
Charter passenger and aircraft movement numbers are the sum of arrivals and departures at each airport.

Table 15: Domestic airports - charter activity - annual (000s)

	YE Sep 2023	YE Sep 2024	% Change
Total domestic charter passenger movements	7 854.4	8 619.7	9.7
Total domestic charter aircraft movements	136.8	146.5	7.1
Perth airport charter passenger movements	2 913.5	3 196.9	9.7
Perth airport charter aircraft movements	46.1	48.3	4.7

Note: Helicopter, joyflights and sightseeing charter flights not included.

Charter passenger and aircraft movement numbers are the sum of arrivals and departures at each airport.



DEFINITIONS

Aircraft Trips	The number of flight stages. A return flight counts as two aircraft trips.
Airport Movements	Airport movements (passenger and cargo) are measured once on arrival and once on departure. Each domestic trip generates two movements at airports. For example, a trip from Melbourne to Sydney will be counted twice, as a departure at Melbourne and as an arrival at Sydney. At the national level, the sum of all domestic airport traffic will therefore be equal to twice the number of trips undertaken.
Available Seat Kilometres (ASKs)	Calculated by multiplying the number of seats available on each flight stage, by the distance in kilometres between the ports. The distances used are Great Circle Distances.
City-Pair	The ports shown make up the city-pair route. Passenger movements shown for a city pair reflect total traffic in both directions.
Flight Stage	The operation of an aircraft from take-off to landing.
Load Factor	The total revenue passenger kilometres performed as a percentage of the total available seat kilometres.
Passengers Carried	Revenue passengers carried.
Regular Public Transport Services (RPT)	All air service operations in which aircraft are available for the transport of members of the public and are conducted in accordance with fixed schedules. It does not include charter or other non-scheduled operations.
Revenue Passengers	All passengers paying any fare. Frequent flyer redemption travellers are regarded as revenue passengers.
Revenue Passenger Kilometres (RPKs)	Calculated by multiplying the number of revenue passengers travelling on each flight stage, by the distance in kilometres between the ports. The distances used are Great Circle Distances.
Traffic on board by stages (TOB)	The total of all traffic (revenue passengers) on each flight stage between two directly connected airports.
..	Not available for confidentiality or other reasons.
NA	Not applicable.