



Australian Government

Department of Infrastructure, Transport, Regional Development and Communications

Bureau of Infrastructure, Transport and Regional Economics

STATISTICAL REPORT



Aviation

Domestic aviation activity
January 2020

© Commonwealth of Australia 2020

ISSN: 1832 - 1968

Ownership of intellectual property rights in this publication

Unless otherwise noted, copyright (and any other intellectual property rights, if any) in this publication is owned by the Commonwealth of Australia (referred to below as the Commonwealth).

Disclaimer

The material contained in this publication is made available on the understanding that the Commonwealth is not providing professional advice, and that users exercise their own skill and care with respect to its use, and seek independent advice if necessary.

The Commonwealth makes no representations or warranties as to the contents or accuracy of the information contained in this publication. To the extent permitted by law, the Commonwealth disclaims liability to any person or organisation in respect of anything done, or omitted to be done, in reliance upon information contained in this publication.

Creative Commons licence

With the exception of (a) the Coat of Arms; and (b) the Department of Infrastructure, Transport, Regional Development and Communications' photos and graphics, copyright in this publication is licensed under a Creative Commons Attribution 3.0 Australia Licence.

Creative Commons Attribution 3.0 Australia Licence is a standard form licence agreement that allows you to copy, communicate and adapt this publication provided that you attribute the work to the Commonwealth and abide by the other licence terms. A summary of the licence terms is available from <http://creativecommons.org/licenses/by/3.0/au/deed.en>.

The full licence terms are available from <http://creativecommons.org/licenses/by/3.0/au/legalcode>.

Use of the Coat of Arms

The Department of the Prime Minister and Cabinet sets the terms under which the Coat of Arms is used. Please refer to the Department's Commonwealth Coat of Arms and Government branding web page <http://www.dpmc.gov.au/guidelines/index.cfm#brand> and, in particular, the Guidelines on the use of the Commonwealth Coat of Arms publication.

An appropriate citation for this report is:

Bureau of Infrastructure, Transport and Regional Economics (BITRE), 2020, Domestic aviation activity, Statistical Report, BITRE, Canberra ACT.

Contact us

This publication is available in PDF format. All other rights are reserved, including in relation to any Departmental logos or trade marks which may exist. For enquiries regarding the licence and any use of this publication, please contact:

Bureau of Infrastructure, Transport and Regional Economics (BITRE)
Department of Infrastructure, Transport, Regional Development and Communications
GPO Box 501, Canberra ACT 2601, Australia
Telephone: (international) +61 2 6274 7210
Fax: (international) +61 2 6274 6855
Email: bitre@infrastructure.gov.au
Website: www.bitre.gov.au

Inquiries

Should you require additional information about the statistics contained in this publication:

Nebojsa Pavlovic

Telephone (02) 6274 6817 or Facsimile (02) 6274 7727

Electronic mail: AVSTATS@infrastructure.gov.au

Nebojsa.Pavlovic@infrastructure.gov.au

Web site: <http://www.bitre.gov.au/statistics/aviation/domestic.aspx>

FOREWORD

This report provides an overview of domestic (including charter) commercial aviation activity in Australia for the month of January 2020.

The data cover revenue passengers carried by Australian-registered operators of scheduled regular public transport services over Australian flight stages and fixed-wing charter operators. These estimates include passengers carried between domestic airports on international flights operated by these carriers. The passengers carried refer to traffic on board by stages.

Estimates of passengers and aircraft movements for charter aviation are included in this publication, where BITRE confidentiality standards are met.

Individual routes shown are restricted to those with an average exceeding 8 000 passengers per month over the previous six months where two or more airlines operate in competition. For the month of January 2020, there were 65 such routes.

Information on the total network for the month of January 2020 and on the Regular Public Transport (RPT) network for the month of January 2020 is presented on page 2, with estimates for the year ended January 2020 presented on page 3.

Detailed information on the 65 individual routes can be found in the RPT summary pages 4-13 of this publication.

The top ten airports in terms of RPT passenger movements are shown on page 14.

Data on domestic RPT cargo movements at the top five cargo airports are provided on page 15. The table includes cargo carried on passenger flights operated by the Qantas group (including Jetstar), Virgin Australia, Air North and Skippers as well as the cargo carried by dedicated freighter aircraft operated by Qantas Freight, Toll Aviation and Virgin Australia Cargo.

The long-term trends for the top ten competitive RPT routes are presented graphically on pages 16-25.

Domestic RPT passenger movements at the top 50 regional airports are presented on pages 26-27.

Tables providing estimates of domestic charter aviation activity are shown on page 28. BITRE confidentiality standards restrict publication of detailed estimates for individual Australian airports, with the exception of Perth Airport.

A list of definitions can be found on page 29.

This report was prepared by the Aviation Statistics Section of the Bureau of Infrastructure, Transport and Regional Economics with data provided by airlines.

Estimates are included where data were not available and data presented in this publication may contain revisions to previously published data.

Where figures have been rounded, discrepancies may occur between sums of component items and totals, and in percentage changes which are derived from figures prior to rounding.

CONTENTS

Highlights	1
Total network.....	2
RPT network.....	2
Top competitive routes.....	4
Top ten airports – passenger movements.....	14
Top five airports – cargo movements.....	15
Top ten routes	16
1. Melbourne – Sydney	16
2. Brisbane – Sydney.....	17
3. Brisbane – Melbourne.....	18
4. Gold Coast – Sydney	19
5. Adelaide – Melbourne	20
6. Gold Coast – Melbourne	21
7. Melbourne – Perth	22
8. Hobart – Melbourne	23
9. Adelaide – Sydney.....	24
10. Perth – Sydney	25
Top fifty regional airports	26
Domestic charter activity.....	28
Definitions	29

This page is intentionally left blank.

HIGHLIGHTS

There were 5.35 million passengers carried on Australian domestic commercial aviation (including charter operations) in January 2020, an increase of 1.1 per cent on January 2019. For the month of January 2020 there were 54.6 thousand aircraft trips, a decrease of 1.6 per cent compared to January 2019.

5.09 million passengers were carried on RPT flights in January 2020, an increase of 0.5 per cent on January 2019.

For the year ending January 2020 there were 61.38 million RPT passengers, an increase of 0.5 per cent on the year ending January 2019.

RPT revenue passenger kilometres (RPKs) performed were 6.05 billion for the month, up 0.5 per cent compared with January 2019. Capacity, measured by available seat kilometres (ASKs), decreased by 3.3 per cent compared with January 2019 to a total of 7.37 billion.

The industry wide load factor (RPKs/ASKs) increased from 78.9 per cent in January 2019 to 82.0 per cent in January 2020. Load factors on individual routes increased on 52 of the 64 RPT routes for which data is available for publishing in both years.

For the month of January 2020, Melbourne – Sydney remained Australia's busiest RPT route with 742.8 thousand passengers, a decrease of 1.4 per cent compared with January 2019. It was followed by Brisbane – Sydney with 378.0 thousand passengers (up 1.2 per cent) and Brisbane – Melbourne with 308.8 thousand passengers (up 4.1 per cent).

The greatest percentage increase in RPT passenger numbers, compared to January 2019, was on the Brisbane – Hamilton Island route (up 27.1 per cent). There were large increases on a number of other routes, including Brisbane – Mount Isa (up 22.2 per cent), Hamilton Island – Sydney (up 18.1 per cent) and Brisbane – Proserpine (up 15.6 per cent).

Routes with traffic decreases in January 2020 compared with January 2019 included Albury – Sydney (down 19.1 per cent), Launceston – Sydney (down 18.8 per cent), Sunshine Coast – Sydney (down 17.1 per cent) and Adelaide – Alice Springs (down 16.2 per cent).

In January 2020, Sydney remained Australia's busiest domestic airport with 2.28 million passenger movements, followed by Melbourne with 2.19 million passenger movements and Brisbane with 1.44 million passenger movements.

Total cargo movements at Australian airports on domestic RPT flights were 34.9 thousand tonnes in January 2020, a decrease of 7.9 per cent compared with January 2019.

In January 2020, there were 2.04 million domestic passenger movements through regional airports, 0.9 per cent higher than in January 2019. Out of the top 50 regional airports, the strongest increase was at Hamilton Island airport (up 20.8 per cent on January 2019), while the largest decrease was recorded at Alice Springs airport (down 23.4 per cent on January 2019).

Fixed-wing charter operators carried 252.3 thousand passengers in January 2020, an increase of 14.0 per cent on January 2019. Perth Airport accounted for 37.7 per cent of all charter passengers in Australia.

TOTAL NETWORK

Summary of monthly commercial aviation activity

	Jan 2019	Jan 2020	% Change
Total passengers carried (millions)	5.29	5.35	1.1
Aircraft trips (000s)	55.5	54.6	-1.6

Note: Regular Public Transport and charter aviation activity
Helicopter, joyflights and sightseeing charter flights not included.

RPT NETWORK

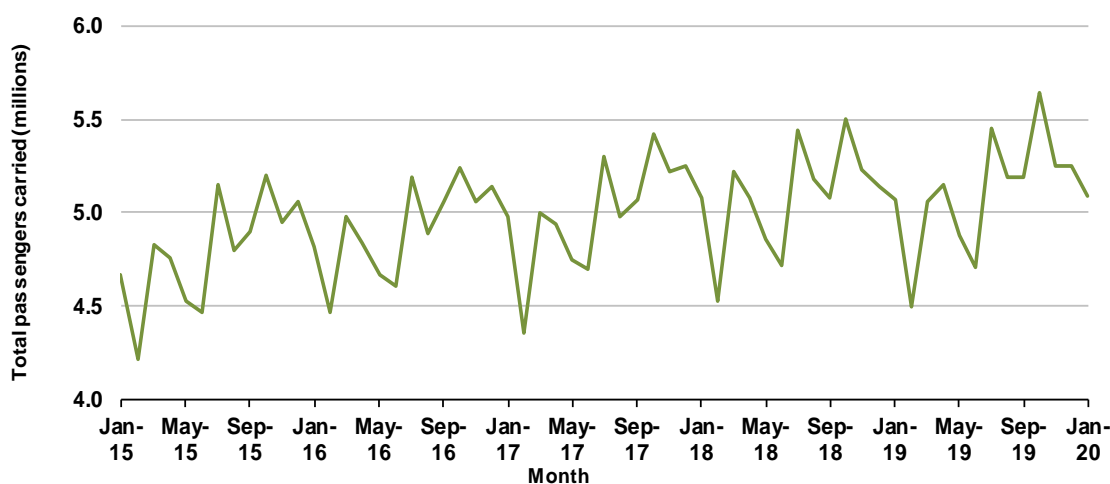
Summary of monthly RPT activity

	Jan 2019	Jan 2020	% Change
Total passengers carried (millions)	5.07	5.09	0.5
Revenue passenger kilometres (billions)	6.01	6.05	0.5
Available seats (millions)	6.55	6.36	-3.0
Available seat kilometres (billions)	7.62	7.37	-3.3
Load factor %	78.9	82.0	3.1 *
Aircraft trips (000s)	51.5	50.1	-2.7

* percentage point difference

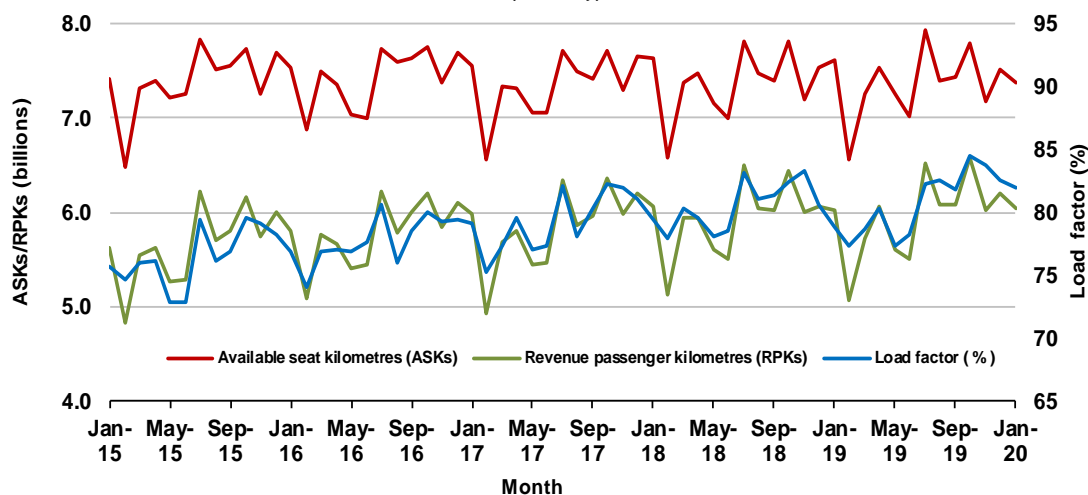
Domestic RPT passenger traffic

(monthly)



RPT Network utilisation

(monthly)



TOTAL NETWORK

Summary of annual commercial aviation activity

	YE Jan 2019	YE Jan 2020	% Change
Total passengers carried (millions)	63.56	64.17	1.0
Aircraft trips (000s)	673.6	682.6	1.3

Note: Regular Public Transport and charter aviation activity
Helicopter, joyflights and sightseeing charter flights not included.

RPT NETWORK

Summary of annual RPT activity

	YE Jan 2019	YE Jan 2020	% Change
Total passengers carried (millions)	61.07	61.38	0.5
Revenue passenger kilometres (billions)	71.21	71.51	0.4
Available seats (millions)	77.34	77.50	0.2
Available seat kilometres (billions)	88.44	88.26	-0.2
Load factor %	80.5	81.0	0.5 *
Aircraft trips (000s)	629.4	634.7	0.8

* percentage point difference

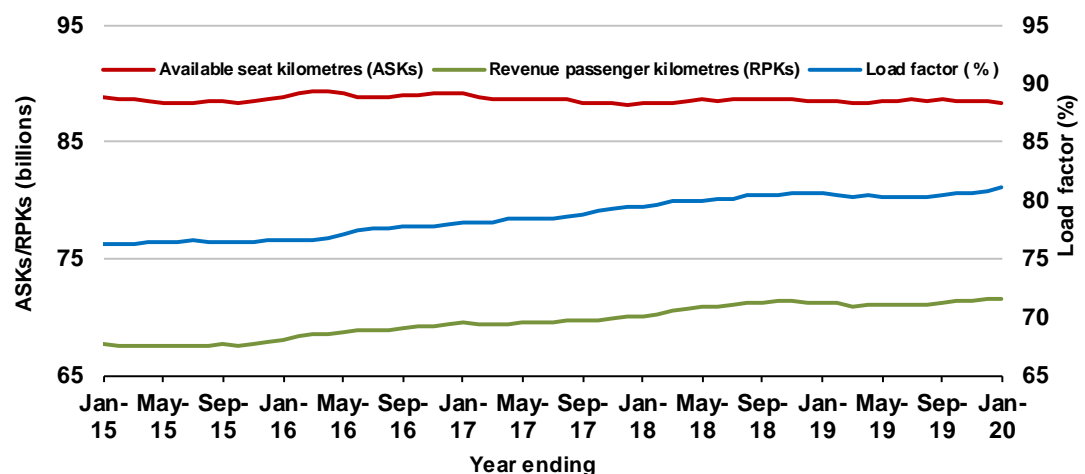
Domestic RPT passenger traffic

(moving annual totals)



RPT Network utilisation

(moving annual totals)



TOP COMPETITIVE ROUTES

Table 1: Passengers carried (000s) — annual activity

	City-Pair	YE Jan 2019	YE Jan 2020	%Change
1	Melbourne - Sydney	9 250.3	9 171.6	-0.9
2	Brisbane - Sydney	4 834.4	4 825.1	-0.2
3	Brisbane - Melbourne	3 574.7	3 620.7	1.3
4	Gold Coast - Sydney	2 718.9	2 744.0	0.9
5	Adelaide - Melbourne	2 496.3	2 538.6	1.7
6	Melbourne - Perth	2 114.5	2 114.1	0.0
7	Gold Coast - Melbourne	2 063.0	2 112.4	2.4
8	Adelaide - Sydney	1 902.8	1 872.4	-1.6
9	Perth - Sydney	1 715.2	1 688.6	-1.6
10	Hobart - Melbourne	1 657.7	1 672.4	0.9
11	Brisbane - Cairns	1 310.6	1 301.3	-0.7
12	Canberra - Melbourne	1 177.7	1 179.9	0.2
13	Cairns - Sydney	1 125.8	1 081.8	-3.9
14	Brisbane - Townsville	994.9	1 022.9	2.8
15	Brisbane - Perth	950.3	965.7	1.6
16	Launceston - Melbourne	957.7	962.0	0.4
17	Canberra - Sydney	952.8	933.3	-2.0
18	Adelaide - Brisbane	845.6	879.3	4.0
19	Cairns - Melbourne	855.1	843.9	-1.3
20	Brisbane - Mackay	744.5	780.1	4.8
21	Hobart - Sydney	706.0	730.7	3.5
22	Brisbane - Canberra	644.4	664.3	3.1
23	Adelaide - Perth	632.5	660.3	4.4
24	Sunshine Coast - Sydney	628.8	654.0	4.0
25	Brisbane - Newcastle	584.0	607.6	4.0
26	Melbourne - Sunshine Coast	542.7	554.1	2.1
27	Brisbane - Rockhampton	515.5	541.2	5.0
28	Melbourne - Newcastle	491.1	478.9	-2.5
29	Karratha - Perth	442.6	469.6	6.1
30	Ballina - Sydney	435.9	434.4	-0.3
31	Perth - Port Hedland	366.1	378.3	3.3
32	Brisbane - Darwin	373.4	355.2	-4.9
33	Newman - Perth	308.1	348.6	13.1
34	Broome - Perth	337.6	328.0	-2.8
35	Coffs Harbour - Sydney	339.8	326.7	-3.9
36	Darwin - Melbourne	306.7	310.6	1.3
37	Darwin - Sydney	309.4	308.8	-0.2
38	Launceston - Sydney	287.4	287.6	0.1
39	Kalgoorlie - Perth	281.4	275.7	-2.0
40	Brisbane - Proserpine	246.2	260.6	5.8
41	Brisbane - Gladstone	251.3	248.9	-1.0
42	Brisbane - Hobart	231.2	242.7	5.0
43	Melbourne - Mildura	226.2	231.8	2.5
44	Albury - Sydney	226.5	227.2	0.3
45	Hamilton Island - Sydney	205.2	217.2	5.9
46	Adelaide - Gold Coast	219.9	213.6	-2.9
47	Brisbane - Emerald	194.8	202.9	4.2
48	Adelaide - Canberra	194.7	195.9	0.6
49	Ayers Rock - Sydney	194.0	194.4	0.2
50	Port Macquarie - Sydney	186.3	191.3	2.7

continued

Table 1: (continued) Passengers carried (000s) — annual activity

	City-Pair	YE Jan 2019	YE Jan 2020	% Change
51	Dubbo - Sydney	188.2	182.1	-3.2
52	Sydney - Wagga Wagga	181.2	181.0	-0.1
53	Sydney - Tamworth	174.3	174.5	0.2
54	Darwin - Perth	191.8	173.7	-9.4
55	Adelaide - Port Lincoln	169.2	173.5	2.5
56	Sydney - Townsville	170.2	172.7	1.5
57	Brisbane - Bundaberg	161.0	153.7	-4.6
58	Brisbane - Mount Isa	130.3	143.1	9.8
59	Adelaide - Alice Springs	130.7	143.0	9.4
60	Cairns - Townsville	149.6	142.4	-4.8
61	Brisbane - Hamilton Island	124.4	134.9	8.5
62	Armidale - Sydney	121.6	124.7	2.6
63	Proserpine - Sydney	132.1	112.7	-14.7
64	Alice Springs - Darwin	109.6	109.3	-0.2
65	Hamilton Island - Melbourne	..	25.7	NA (a)
	Total domestic network	61 070.5	61 384.0	0.5

(a) Hamilton Island - Melbourne route included from November 2019, prior data not shown.

Table 2: Passengers carried (000s) — monthly activity

	City-Pair	Jan 2019	Jan 2020	% Change
1	Melbourne - Sydney	753.1	742.8	-1.4
2	Brisbane - Sydney	373.5	378.0	1.2
3	Brisbane - Melbourne	296.6	308.8	4.1
4	Gold Coast - Sydney	265.0	275.6	4.0
5	Adelaide - Melbourne	199.0	199.5	0.3
6	Gold Coast - Melbourne	206.5	196.7	-4.7
7	Melbourne - Perth	192.0	196.0	2.1
8	Hobart - Melbourne	164.2	166.4	1.3
9	Adelaide - Sydney	158.1	151.8	-4.0
10	Perth - Sydney	151.5	148.0	-2.3
11	Brisbane - Cairns	101.2	109.7	8.5
12	Launceston - Melbourne	97.7	100.6	2.9
13	Cairns - Sydney	95.7	99.4	3.9
14	Brisbane - Perth	79.4	84.4	6.3
15	Brisbane - Townsville	72.5	77.3	6.7
16	Hobart - Sydney	75.1	76.8	2.3
17	Adelaide - Brisbane	71.2	75.2	5.5
18	Canberra - Melbourne	79.5	74.7	-6.1
19	Brisbane - Mackay	58.4	62.9	7.7
20	Cairns - Melbourne	74.5	62.5	-16.0
21	Adelaide - Perth	53.1	56.5	6.5
22	Sunshine Coast - Sydney	64.1	53.2	-17.1
23	Brisbane - Canberra	48.4	52.6	8.6
24	Canberra - Sydney	47.4	49.3	4.1
25	Brisbane - Newcastle	46.3	49.2	6.3
26	Ballina - Sydney	45.8	47.0	2.5
27	Melbourne - Sunshine Coast	49.4	45.5	-7.9
28	Melbourne - Newcastle	45.6	41.1	-9.9
29	Brisbane - Rockhampton	39.2	40.9	4.4
30	Karratha - Perth	35.4	38.8	9.6
31	Launceston - Sydney	37.5	30.4	-18.8
32	Perth - Port Hedland	30.4	30.3	-0.4
33	Brisbane - Darwin	27.8	28.2	1.5
34	Brisbane - Hobart	25.7	27.0	5.2
35	Coffs Harbour - Sydney	26.6	26.8	0.6
36	Newman - Perth	25.7	26.7	4.2
37	Brisbane - Proserpine	22.2	25.7	15.6
38	Hamilton Island - Sydney	21.4	25.3	18.1
39	Darwin - Melbourne	22.7	22.4	-1.6
40	Broome - Perth	22.5	21.7	-3.4
41	Darwin - Sydney	20.8	20.1	-3.2
42	Adelaide - Gold Coast	21.3	19.7	-7.5
43	Kalgoorlie - Perth	22.0	19.5	-11.4
44	Brisbane - Gladstone	17.9	19.0	6.0
45	Melbourne - Mildura	15.8	16.3	3.1
46	Brisbane - Emerald	14.4	15.8	9.9
47	Adelaide - Port Lincoln	13.7	14.9	8.7
48	Port Macquarie - Sydney	14.3	14.8	3.1
49	Sydney - Townsville	15.1	14.4	-5.2
50	Sydney - Tamworth	13.2	13.4	1.9

continued

Table 2: (continued) Passengers carried (000s) — monthly activity

	City-Pair	Jan 2019	Jan 2020	% Change
51	Darwin - Perth	13.3	12.8	-3.9
52	Albury - Sydney	15.7	12.7	-19.1
53	Adelaide - Canberra	11.9	12.3	3.5
54	Brisbane - Hamilton Island	9.2	11.7	27.1
55	Dubbo - Sydney	11.6	11.7	0.5
56	Ayers Rock - Sydney	13.2	11.5	-13.2
57	Brisbane - Mount Isa	9.2	11.2	22.2
58	Sydney - Wagga Wagga	10.8	11.2	3.2
59	Brisbane - Bundaberg	11.1	11.1	0.1
60	Proserpine - Sydney	10.7	10.1	-5.3
61	Hamilton Island - Melbourne	..	9.4	NA (a)
62	Cairns - Townsville	9.6	8.8	-8.4
63	Adelaide - Alice Springs	10.3	8.6	-16.2
64	Armidale - Sydney	8.3	8.1	-3.1
65	Alice Springs - Darwin	5.1	4.7	-7.2
	Total domestic network	5 067.5	5 094.0	0.5

(a) Hamilton Island - Melbourne route included from November 2019, prior data not shown.

Table 3: Available seats (000s) — monthly activity

	City-Pair	Jan 2019	Jan 2020	% Change
1	Melbourne - Sydney	879.8	863.4	-1.9
2	Brisbane - Sydney	450.2	439.2	-2.4
3	Brisbane - Melbourne	366.7	360.3	-1.7
4	Gold Coast - Sydney	289.1	303.5	5.0
5	Adelaide - Melbourne	256.3	244.8	-4.5
6	Gold Coast - Melbourne	232.8	212.0	-8.9
7	Melbourne - Perth	222.1	221.3	-0.3
8	Hobart - Melbourne	207.3	199.1	-3.9
9	Adelaide - Sydney	195.4	186.4	-4.6
10	Perth - Sydney	175.2	167.1	-4.6
11	Brisbane - Cairns	132.9	134.5	1.2
12	Launceston - Melbourne	129.8	119.6	-7.9
13	Cairns - Sydney	120.2	111.9	-6.9
14	Brisbane - Perth	93.9	95.3	1.5
15	Brisbane - Townsville	102.7	103.9	1.2
16	Hobart - Sydney	90.4	87.5	-3.3
17	Adelaide - Brisbane	94.6	95.4	0.8
18	Canberra - Melbourne	125.7	106.8	-15.0
19	Brisbane - Mackay	81.9	81.5	-0.5
20	Cairns - Melbourne	91.8	68.5	-25.4
21	Adelaide - Perth	67.2	66.7	-0.7
22	Sunshine Coast - Sydney	74.8	57.9	-22.6
23	Brisbane - Canberra	70.6	72.7	3.0
24	Canberra - Sydney	67.2	66.8	-0.7
25	Brisbane - Newcastle	62.8	67.5	7.6
26	Ballina - Sydney	53.5	55.4	3.6
27	Melbourne - Sunshine Coast	58.1	50.0	-13.9
28	Melbourne - Newcastle	55.1	46.9	-14.9
29	Brisbane - Rockhampton	54.7	55.7	1.9
30	Karratha - Perth	59.7	66.9	12.2
31	Launceston - Sydney	44.4	33.8	-23.9
32	Perth - Port Hedland	48.3	49.8	3.1
33	Brisbane - Darwin	38.8	37.7	-2.9
34	Brisbane - Hobart	31.8	31.1	-2.1
35	Coffs Harbour - Sydney	38.0	37.1	-2.3
36	Newman - Perth	47.2	49.0	3.6
37	Brisbane - Proserpine	30.7	31.0	0.9
38	Hamilton Island - Sydney	30.2	30.2	0.1
39	Darwin - Melbourne	31.1	29.5	-5.0
40	Broome - Perth	33.3	33.1	-0.6
41	Darwin - Sydney	32.3	27.8	-13.7
42	Adelaide - Gold Coast	27.7	22.8	-17.5
43	Kalgoorlie - Perth	38.3	37.0	-3.4
44	Brisbane - Gladstone	26.7	30.3	13.3
45	Melbourne - Mildura	26.2	25.1	-4.2
46	Brisbane - Emerald	24.3	23.6	-3.0
47	Adelaide - Port Lincoln	22.9	22.0	-4.3
48	Port Macquarie - Sydney	20.5	19.2	-6.0
49	Sydney - Townsville	19.3	18.0	-6.9
50	Sydney - Tamworth	22.7	21.6	-4.9

continued

Table 3: (continued) Available seats (000s) — monthly activity

	City-Pair	Jan 2019	Jan 2020	% Change
51	Darwin - Perth	21.4	21.4	-0.3
52	Albury - Sydney	22.9	18.5	-19.2
53	Adelaide - Canberra	20.2	19.9	-1.7
54	Brisbane - Hamilton Island	14.8	15.6	5.2
55	Dubbo - Sydney	18.1	17.6	-2.7
56	Ayers Rock - Sydney	20.6	20.2	-1.8
57	Brisbane - Mount Isa	14.5	15.8	9.1
58	Sydney - Wagga Wagga	16.4	15.9	-3.0
59	Brisbane - Bundaberg	18.0	16.6	-7.8
60	Proserpine - Sydney	12.5	11.7	-6.7
61	Hamilton Island - Melbourne	..	13.1	NA (a)
62	Cairns - Townsville	20.5	21.1	2.7
63	Adelaide - Alice Springs	15.4	13.9	-9.8
64	Armidale - Sydney	12.9	12.3	-4.5
65	Alice Springs - Darwin	11.4	8.5	-25.5
	Total domestic network	6 552.9	6 357.8	-3.0

(a) Hamilton Island - Melbourne route included from November 2019, prior data not shown.

Table 4: Load factors (%) — monthly activity

	City-Pair	Jan 2019	Jan 2020	% Point diff
1	Melbourne - Sydney	85.6	86.1	0.5
2	Brisbane - Sydney	83.0	86.0	3.0
3	Brisbane - Melbourne	80.9	85.7	4.8
4	Gold Coast - Sydney	91.7	90.8	-0.9
5	Adelaide - Melbourne	77.7	81.5	3.8
6	Gold Coast - Melbourne	88.7	92.8	4.1
7	Melbourne - Perth	86.5	88.5	2.0
8	Hobart - Melbourne	79.2	83.6	4.4
9	Adelaide - Sydney	80.9	81.4	0.5
10	Perth - Sydney	86.5	88.6	2.1
11	Brisbane - Cairns	76.1	81.6	5.5
12	Launceston - Melbourne	75.3	84.1	8.8
13	Cairns - Sydney	79.6	88.8	9.2
14	Brisbane - Perth	84.5	88.6	4.1
15	Brisbane - Townsville	70.6	74.4	3.8
16	Hobart - Sydney	83.0	87.8	4.8
17	Adelaide - Brisbane	75.3	78.8	3.5
18	Canberra - Melbourne	63.3	69.9	6.6
19	Brisbane - Mackay	71.2	77.1	5.9
20	Cairns - Melbourne	81.1	91.3	10.2
21	Adelaide - Perth	79.0	84.7	5.7
22	Sunshine Coast - Sydney	85.8	91.9	6.1
23	Brisbane - Canberra	68.6	72.3	3.7
24	Canberra - Sydney	70.6	73.9	3.3
25	Brisbane - Newcastle	73.7	72.8	-0.9
26	Ballina - Sydney	85.7	84.9	-0.8
27	Melbourne - Sunshine Coast	85.0	91.0	6.0
28	Melbourne - Newcastle	82.8	87.6	4.8
29	Brisbane - Rockhampton	71.6	73.3	1.7
30	Karratha - Perth	59.3	57.9	-1.4
31	Launceston - Sydney	84.3	90.0	5.7
32	Perth - Port Hedland	62.9	60.8	-2.1
33	Brisbane - Darwin	71.6	74.9	3.3
34	Brisbane - Hobart	80.8	86.8	6.0
35	Coffs Harbour - Sydney	70.1	72.2	2.1
36	Newman - Perth	54.3	54.6	0.3
37	Brisbane - Proserpine	72.4	82.9	10.5
38	Hamilton Island - Sydney	70.9	83.6	12.7
39	Darwin - Melbourne	73.1	75.7	2.6
40	Broome - Perth	67.5	65.6	-1.9
41	Darwin - Sydney	64.4	72.3	7.9
42	Adelaide - Gold Coast	77.0	86.3	9.3
43	Kalgoorlie - Perth	57.5	52.7	-4.8
44	Brisbane - Gladstone	67.0	62.7	-4.3
45	Melbourne - Mildura	60.3	64.9	4.6
46	Brisbane - Emerald	59.1	67.0	7.9
47	Adelaide - Port Lincoln	59.7	67.8	8.1
48	Port Macquarie - Sydney	70.1	76.8	6.7
49	Sydney - Townsville	78.4	79.8	1.4
50	Sydney - Tamworth	57.9	62.0	4.1

continued

Table 4: (continued) Load factors (%) — monthly activity

	City-Pair	Jan 2019	Jan 2020	% Point diff
51	Darwin - Perth	62.3	60.0	-2.3
52	Albury - Sydney	68.3	68.4	0.1
53	Adelaide - Canberra	58.6	61.8	3.2
54	Brisbane - Hamilton Island	62.0	74.9	12.9
55	Dubbo - Sydney	64.2	66.3	2.1
56	Ayers Rock - Sydney	64.1	56.7	-7.4
57	Brisbane - Mount Isa	63.1	70.7	7.6
58	Sydney - Wagga Wagga	66.2	70.5	4.3
59	Brisbane - Bundaberg	61.7	67.0	5.3
60	Proserpine - Sydney	85.3	86.6	1.3
61	Hamilton Island - Melbourne	..	71.5	NA (a)
62	Cairns - Townsville	46.6	41.6	-5.0
63	Adelaide - Alice Springs	66.6	61.9	-4.7
64	Armidale - Sydney	64.7	65.6	0.9
65	Alice Springs - Darwin	44.5	55.5	11.0
	Total domestic network	78.9	82.0	3.1

(a) Hamilton Island - Melbourne route included from November 2019, prior data not shown.

Table 5: Aircraft trips ^(a) — monthly activity

	City-Pair	Jan 2019	Jan 2020	% Change
1	Melbourne - Sydney	4 892	4 869	-0.5
2	Brisbane - Sydney	2 749	2 689	-2.2
3	Brisbane - Melbourne	2 216	2 132	-3.8
4	Gold Coast - Sydney	1 609	1 696	5.4
5	Adelaide - Melbourne	1 546	1 483	-4.1
6	Gold Coast - Melbourne	1 236	1 123	-9.1
7	Melbourne - Perth	1 103	1 072	-2.8
8	Hobart - Melbourne	1 128	1 095	-2.9
9	Adelaide - Sydney	1 162	1 096	-5.7
10	Perth - Sydney	790	755	-4.4
11	Brisbane - Cairns	869	933	7.4
12	Launceston - Melbourne	903	861	-4.7
13	Cairns - Sydney	627	585	-6.7
14	Brisbane - Perth	501	513	2.4
15	Brisbane - Townsville	691	705	2.0
16	Hobart - Sydney	530	539	1.7
17	Adelaide - Brisbane	585	545	-6.8
18	Canberra - Melbourne	799	699	-12.5
19	Brisbane - Mackay	622	627	0.8
20	Cairns - Melbourne	475	366	-22.9
21	Adelaide - Perth	453	434	-4.2
22	Sunshine Coast - Sydney	443	372	-16.0
23	Brisbane - Canberra	527	530	0.6
24	Canberra - Sydney	933	914	-2.0
25	Brisbane - Newcastle	487	474	-2.7
26	Ballina - Sydney	304	311	2.3
27	Melbourne - Sunshine Coast	326	282	-13.5
28	Melbourne - Newcastle	304	257	-15.5
29	Brisbane - Rockhampton	656	648	-1.2
30	Karratha - Perth	524	510	-2.7
31	Launceston - Sydney	246	187	-24.0
32	Perth - Port Hedland	368	378	2.7
33	Brisbane - Darwin	234	230	-1.7
34	Brisbane - Hobart	179	174	-2.8
35	Coffs Harbour - Sydney	399	398	-0.3
36	Newman - Perth	343	340	-0.9
37	Brisbane - Proserpine	172	174	1.2
38	Hamilton Island - Sydney	182	184	1.1
39	Darwin - Melbourne	176	166	-5.7
40	Broome - Perth	293	278	-5.1
41	Darwin - Sydney	186	161	-13.4
42	Adelaide - Gold Coast	155	128	-17.4
43	Kalgoorlie - Perth	302	311	3.0
44	Brisbane - Gladstone	348	401	15.2
45	Melbourne - Mildura	327	299	-8.6
46	Brisbane - Emerald	355	350	-1.4
47	Adelaide - Port Lincoln	585	559	-4.4
48	Port Macquarie - Sydney	307	299	-2.6
49	Sydney - Townsville	108	104	-3.7
50	Sydney - Tamworth	346	349	0.9

continued

Table 5: (continued) Aircraft trips ^(a) — monthly activity

	City-Pair	Jan 2019	Jan 2020	% Change
51	Darwin - Perth	124	124	0.0
52	Albury - Sydney	384	323	-15.9
53	Adelaide - Canberra	122	120	-1.6
54	Brisbane - Hamilton Island	117	123	5.1
55	Dubbo - Sydney	383	370	-3.4
56	Ayers Rock - Sydney	116	114	-1.7
57	Brisbane - Mount Isa	132	148	12.1
58	Sydney - Wagga Wagga	280	290	3.6
59	Brisbane - Bundaberg	278	271	-2.5
60	Proserpine - Sydney	69	64	-7.2
61	Hamilton Island - Melbourne	..	76	NA (b)
62	Cairns - Townsville	311	330	6.1
63	Adelaide - Alice Springs	115	113	-1.7
64	Armidale - Sydney	295	285	-3.4
65	Alice Springs - Darwin	99	88	-11.1
	Total domestic network	51 494	50 125	-2.7

(a) Includes RPT Cargo flights.

(b) Hamilton Island - Melbourne route included from November 2019, prior data not shown.

TOP TEN AIRPORTS – PASSENGER MOVEMENTS

Table 6: Top ten airports, RPT passenger movements (000s) - monthly activity

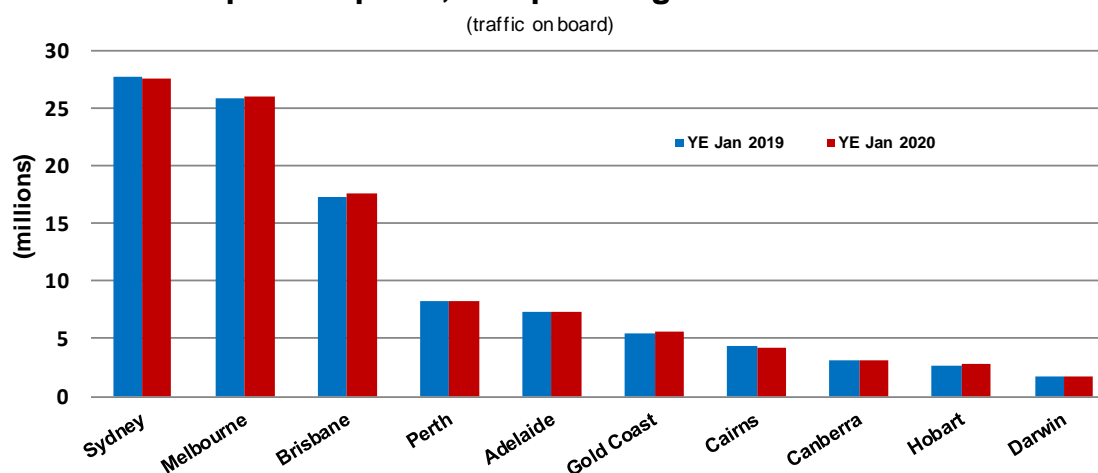
Airport	Jan 2019	Jan 2020	% Change	% of Total
1 Sydney	2 295.3	2 280.6	-0.6	22.4
2 Melbourne	2 205.9	2 186.7	-0.9	21.5
3 Brisbane	1 375.5	1 442.9	4.9	14.2
4 Perth	699.6	708.2	1.2	7.0
5 Adelaide	593.0	593.1	0.0	5.8
6 Gold Coast	544.3	546.6	0.4	5.4
7 Cairns	350.4	348.5	-0.5	3.4
8 Hobart	278.2	285.1	2.5	2.8
9 Canberra	201.7	205.5	1.9	2.0
10 Launceston	149.8	146.1	-2.5	1.4
Total top ten airports	8 693.7	8 743.4	0.6	85.8
Total domestic network	10 135.0	10 187.9	0.5	100.0

Table 7: Top ten airports, RPT passenger movements (000s) - annual activity

Airport	YE Jan 2019	YE Jan 2020	% Change	% of Total
1 Sydney	27 705.8	27 561.0	-0.5	22.4
2 Melbourne	25 896.5	25 977.3	0.3	21.2
3 Brisbane	17 356.1	17 651.9	1.7	14.4
4 Perth	8 228.4	8 294.8	0.8	6.8
5 Adelaide	7 309.0	7 387.9	1.1	6.0
6 Gold Coast	5 487.8	5 573.4	1.6	4.5
7 Cairns	4 291.8	4 153.6	-3.2	3.4
8 Canberra	3 156.2	3 158.2	0.1	2.6
9 Hobart	2 688.3	2 788.7	3.7	2.3
10 Darwin	1 733.3	1 694.0	-2.3	1.4
Total top ten airports	103 853.2	104 240.7	0.4	84.9
Total domestic network	122 140.9	122 767.9	0.5	100.0

Note: Airport passenger movement numbers are the sum of passenger arrivals and departures at each airport.

Top ten airports, RPT passenger movements



TOP FIVE AIRPORTS – CARGO MOVEMENTS

Table 8: Top five airports, domestic RPT cargo movements (000s tonnes) - monthly activity

Airport	Jan 2019	Jan 2020	% Change	% of Total
1 Melbourne	10.5	9.0	-14.0	25.8
2 Sydney	8.2	7.4	-9.6	21.2
3 Brisbane	5.6	5.5	-1.8	15.9
4 Perth	5.2	4.8	-7.9	13.7
5 Adelaide	2.3	2.2	-4.7	6.3
Total top five airports	31.8	29.0	-9.0	82.9
Total domestic network	37.9	34.9	-7.9	100.0

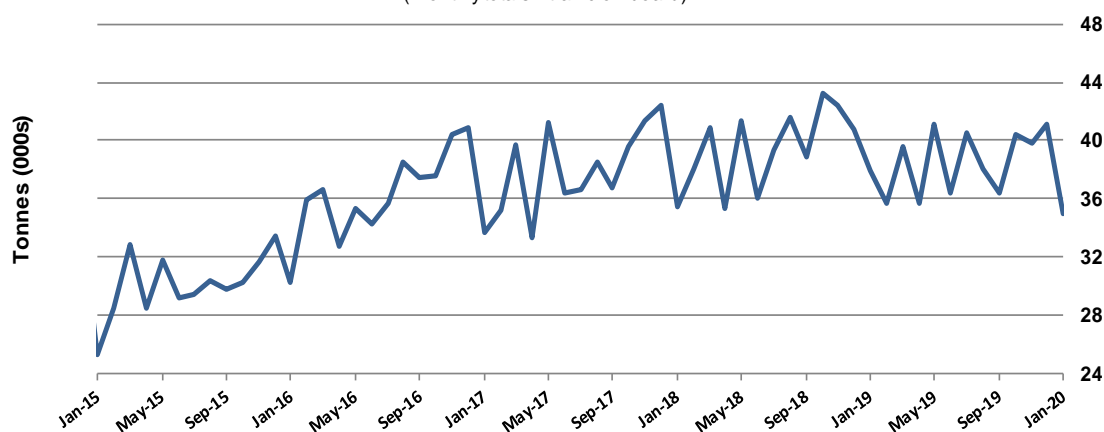
Table 9: Top five airports, domestic RPT cargo movements (000s tonnes) - annual activity

Airport	YE Jan 2019	YE Jan 2020	% Change	% of Total
1 Melbourne	133.4	120.7	-9.5	26.3
2 Sydney	107.3	99.5	-7.3	21.6
3 Brisbane	73.5	72.9	-0.8	15.9
4 Perth	67.3	61.1	-9.2	13.3
5 Adelaide	28.7	28.3	-1.3	6.2
Total top five airports	410.2	382.6	-6.7	83.2
Total domestic network	476.0	459.7	-3.4	100.0

Note: Airport cargo tonnes are the sum of cargo tonnes on arrivals and departures at each airport.

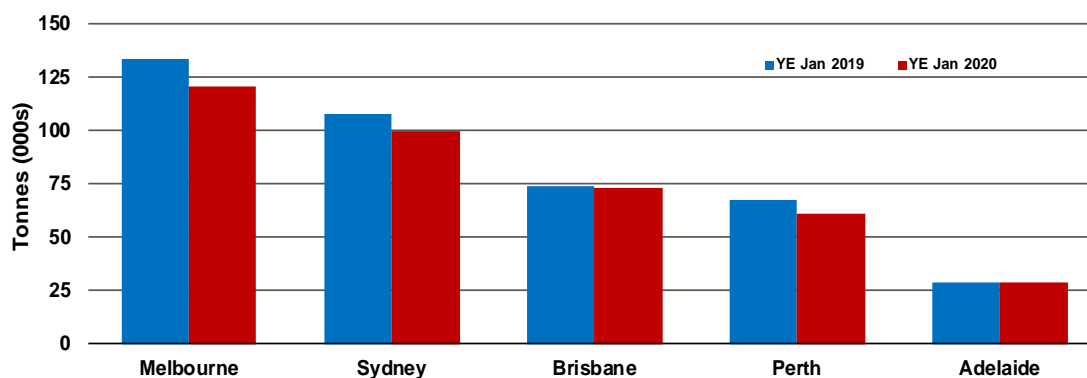
Total domestic network - cargo movement

(monthly totals - traffic on board)



Top five airports, cargo movements

(Domestic cargo traffic - traffic on board)



TOP TEN ROUTES

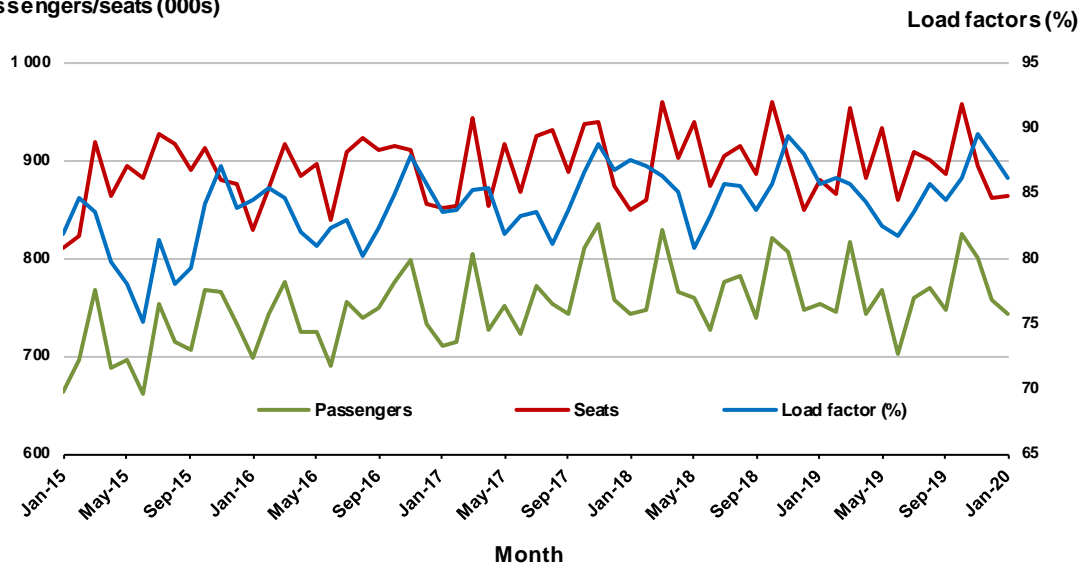
1. Melbourne - Sydney

Monthly data

	Jan 2019	Jan 2020	% Change
Passengers carried (000s)	753.1	742.8	-1.4
Seats (000s)	879.8	863.4	-1.9
Load factor %	85.6	86.1	0.5 *
Aircraft trips	4 892	4 869	-0.5

* percentage point difference

Passengers/seats (000s)

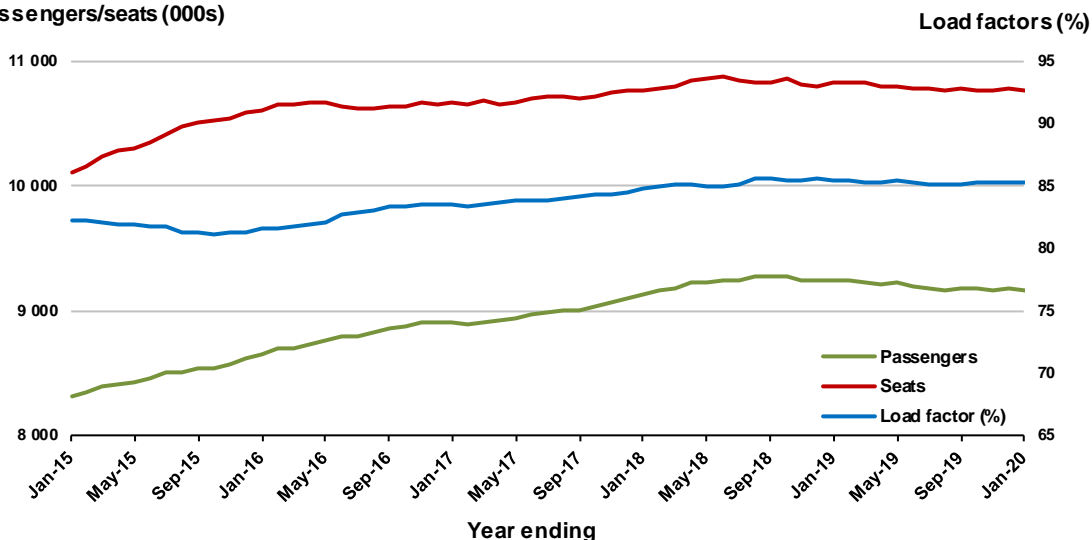


Moving annual data

	YE Jan 2019	YE Jan 2020	% Change
Passengers carried (000s)	9 250.3	9 171.6	-0.9
Seats (000s)	10 824.9	10 759.1	-0.6
Load factor %	85.5	85.3	-0.2 *
Aircraft trips	60 012	60 401	0.6

* percentage point difference

Passengers/seats (000s)

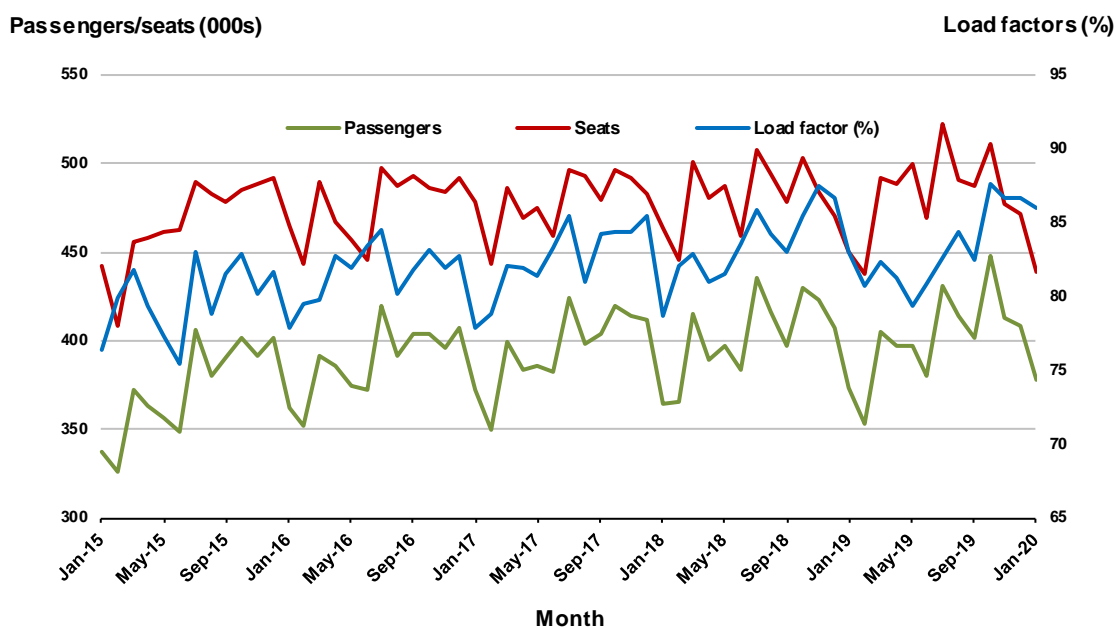


2. Brisbane - Sydney

Monthly data

	Jan 2019	Jan 2020	% Change
Passengers carried (000s)	373.5	378.0	1.2
Seats (000s)	450.2	439.2	-2.4
Load factor %	83.0	86.0	3.0 *
Aircraft trips	2 749	2 689	-2.2

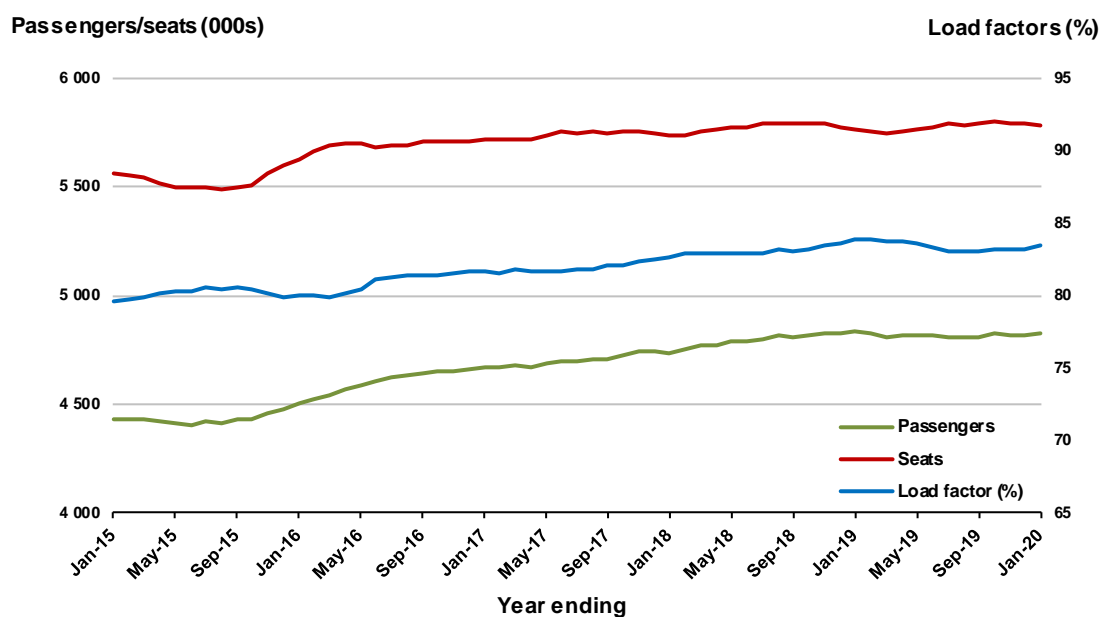
* percentage point difference



Moving annual data

	YE Jan 2019	YE Jan 2020	% Change
Passengers carried (000s)	4 834.4	4 825.1	-0.2
Seats (000s)	5 761.0	5 784.5	0.4
Load factor %	83.9	83.4	-0.5 *
Aircraft trips	34 966	35 287	0.9

* percentage point difference

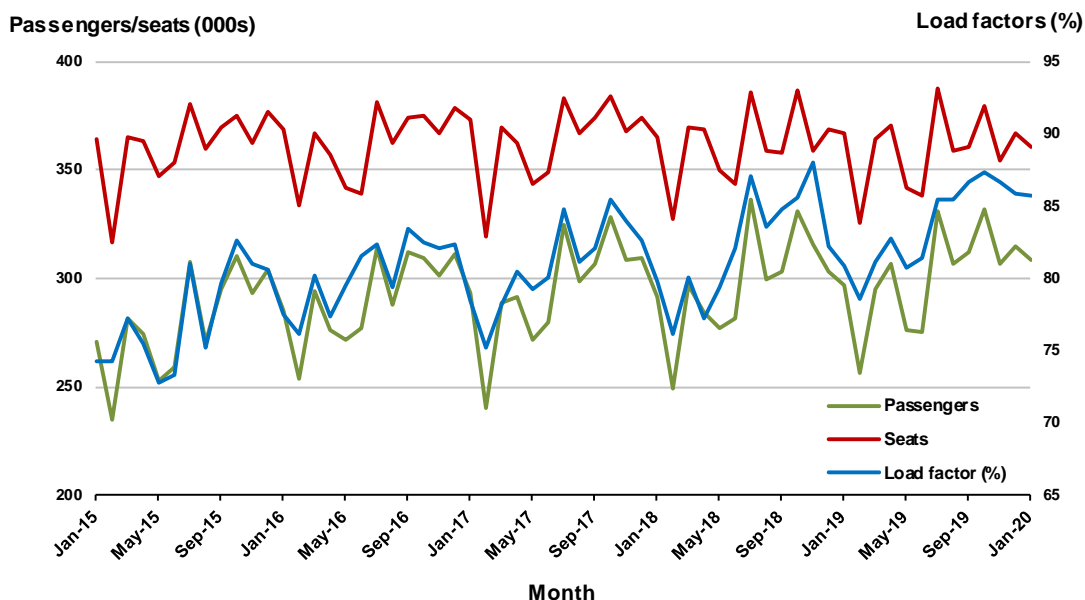


3. Brisbane - Melbourne

Monthly data

	Jan 2019	Jan 2020	% Change
Passengers carried (000s)	296.6	308.8	4.1
Seats (000s)	366.7	360.3	-1.7
Load factor %	80.9	85.7	4.8 *
Aircraft trips	2 216	2 132	-3.8

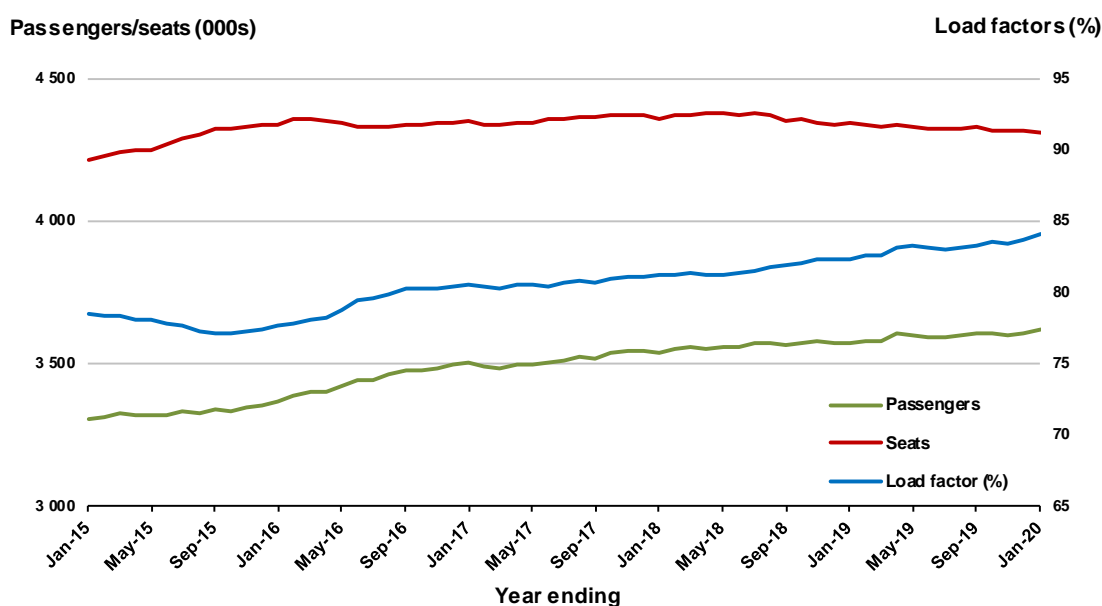
* percentage point difference



Moving annual data

	YE Jan 2019	YE Jan 2020	% Change
Passengers carried (000s)	3 574.7	3 620.7	1.3
Seats (000s)	4 340.5	4 306.8	-0.8
Load factor %	82.4	84.1	1.7 *
Aircraft trips	25 568	25 336	-0.9

* percentage point difference



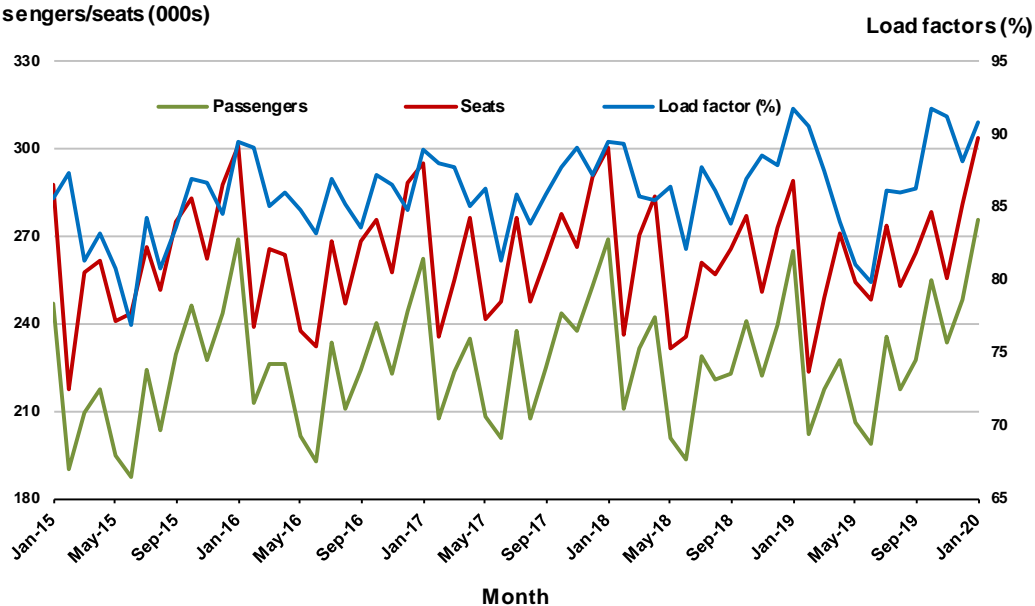
4. Gold Coast - Sydney

Monthly data

	Jan 2019	Jan 2020	% Change
Passengers carried (000s)	265.0	275.6	4.0
Seats (000s)	289.1	303.5	5.0
Load factor %	91.7	90.8	-0.9 *
Aircraft trips	1 609	1 696	5.4

* percentage point difference

Passengers/seats (000s)

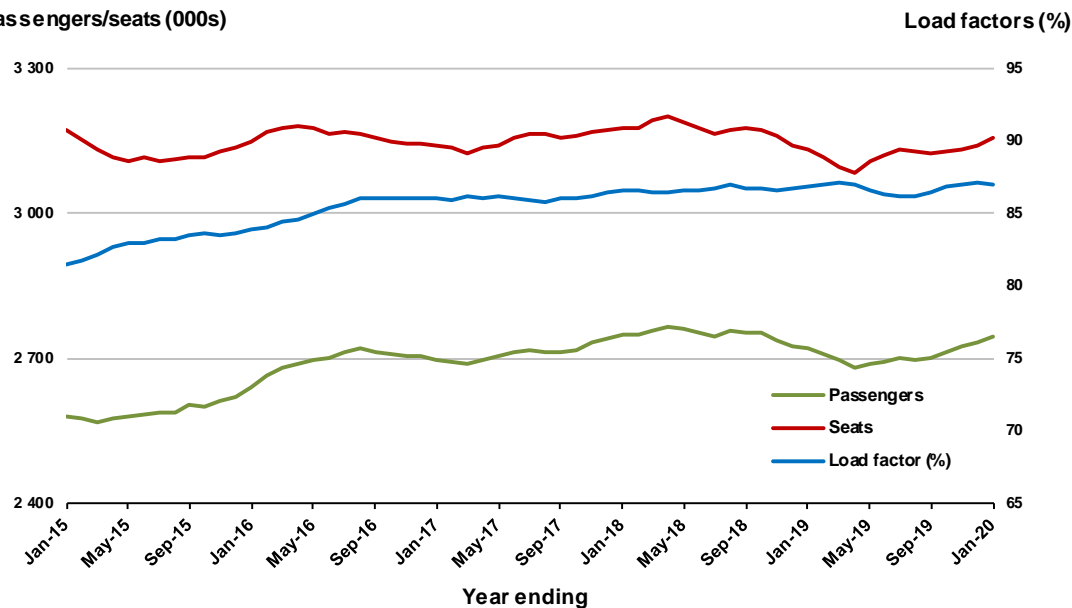


Moving annual data

	YE Jan 2019	YE Jan 2020	% Change
Passengers carried (000s)	2 718.9	2 744.0	0.9
Seats (000s)	3 129.9	3 154.3	0.8
Load factor %	86.9	87.0	0.1 *
Aircraft trips	17 770	18 059	1.6

* percentage point difference

Passengers/seats (000s)



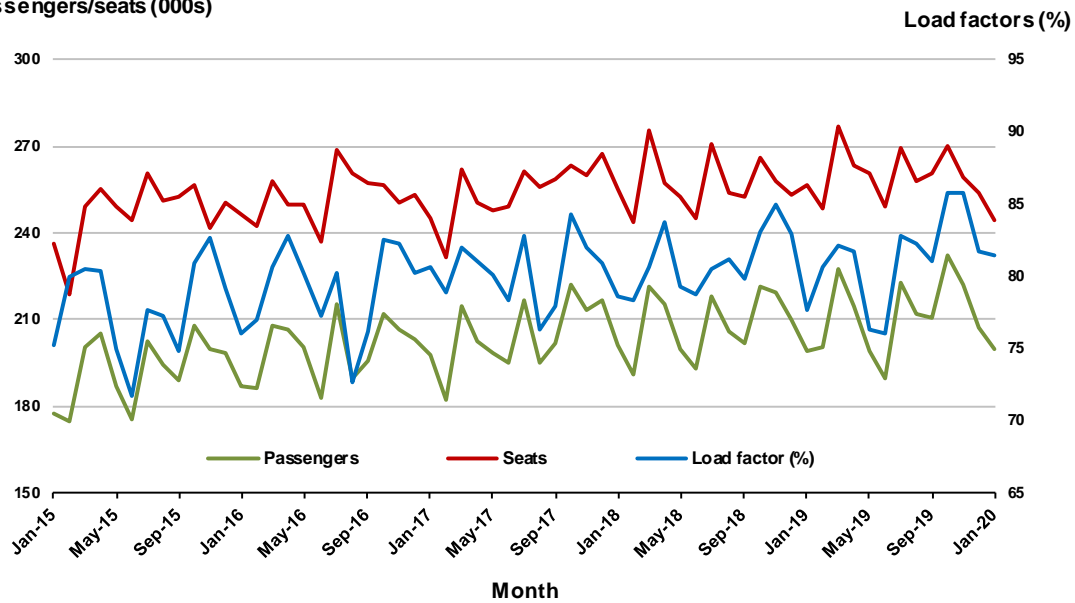
5. Adelaide - Melbourne

Monthly data

	Jan 2019	Jan 2020	% Change
Passengers carried (000s)	199.0	199.5	0.3
Seats (000s)	256.3	244.8	-4.5
Load factor %	77.7	81.5	3.8 *
Aircraft trips	1 546	1 483	-4.1

* percentage point difference

Passengers/seats (000s)

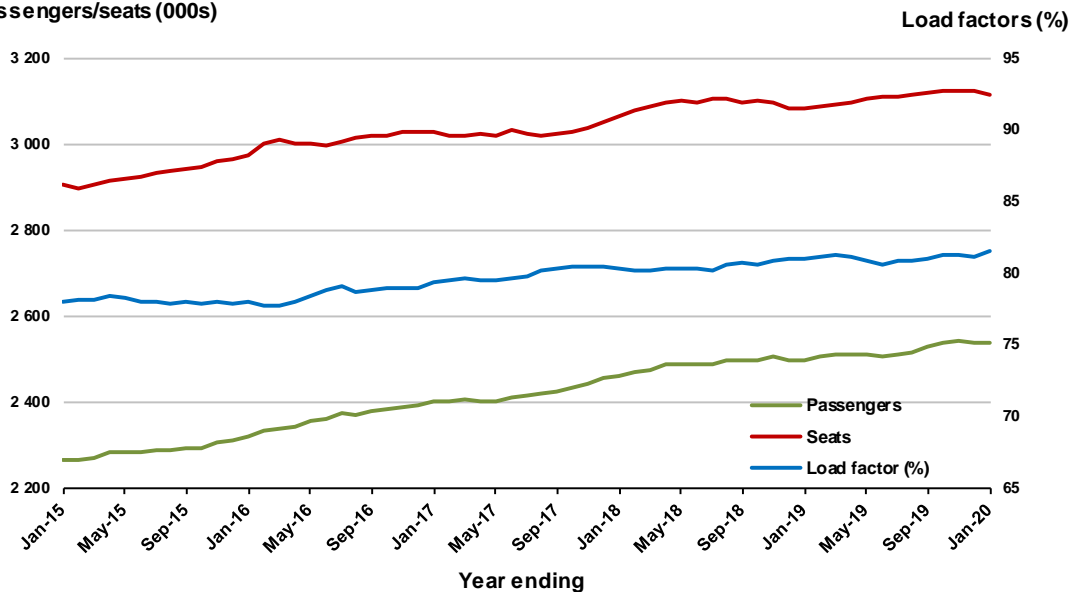


Moving annual data

	YE Jan 2019	YE Jan 2020	% Change
Passengers carried (000s)	2 496.3	2 538.6	1.7
Seats (000s)	3 084.3	3 114.3	1.0
Load factor %	80.9	81.5	0.6 *
Aircraft trips	19 007	18 956	-0.3

* percentage point difference

Passengers/seats (000s)



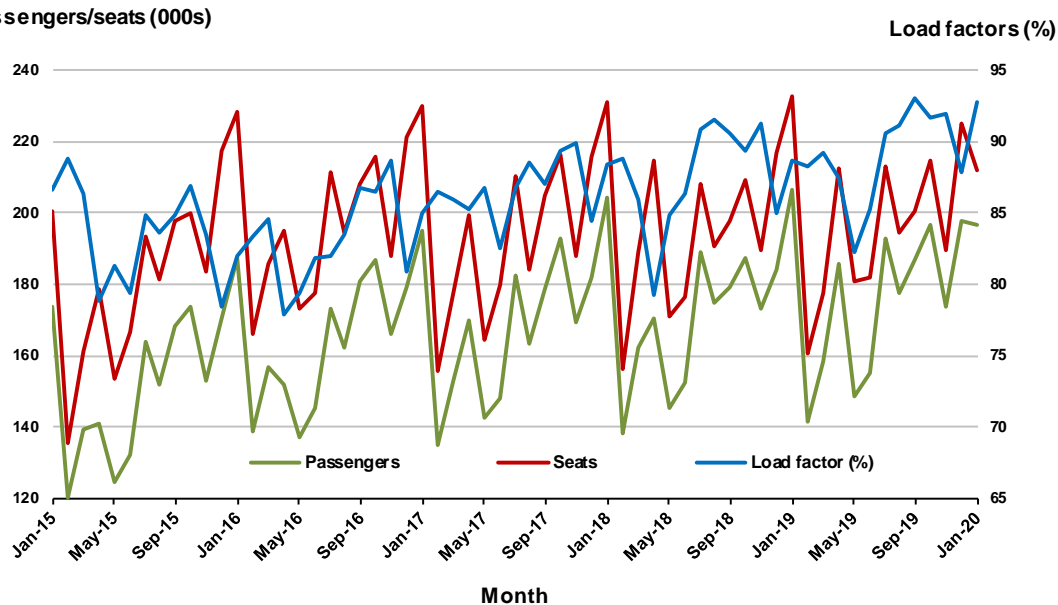
6. Gold Coast - Melbourne

Monthly data

	Jan 2019	Jan 2020	% Change
Passengers carried (000s)	206.5	196.7	-4.7
Seats (000s)	232.8	212.0	-8.9
Load factor %	88.7	92.8	4.1 *
Aircraft trips	1 236	1 123	-9.1

* percentage point difference

Passengers/seats (000s)

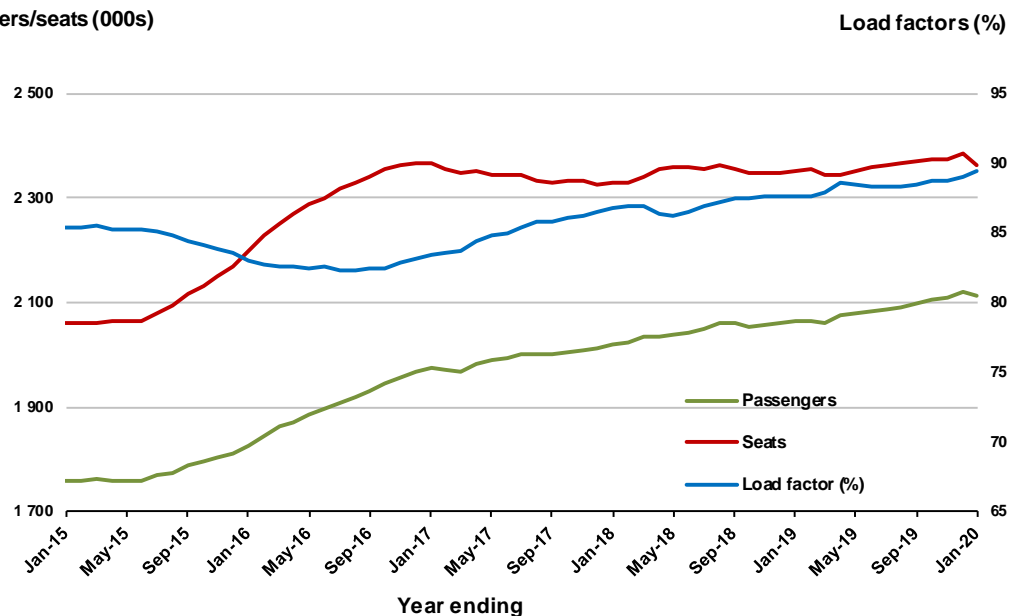


Moving annual data

	YE Jan 2019	YE Jan 2020	% Change
Passengers carried (000s)	2 063.0	2 112.4	2.4
Seats (000s)	2 351.6	2 363.3	0.5
Load factor %	87.7	89.4	1.7 *
Aircraft trips	12 435	12 484	0.4

* percentage point difference

Passengers/seats (000s)



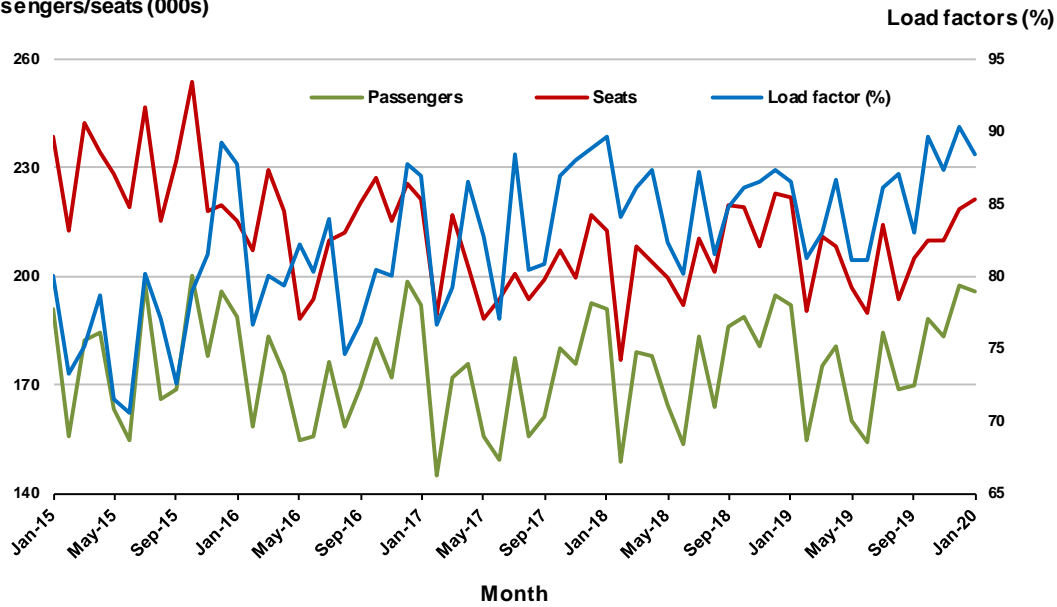
7. Melbourne - Perth

Monthly data

	Jan 2019	Jan 2020	% Change
Passengers carried (000s)	192.0	196.0	2.1
Seats (000s)	222.1	221.3	-0.3
Load factor %	86.5	88.5	2.0 *
Aircraft trips	1 103	1 072	-2.8

* percentage point difference

Passengers/seats (000s)

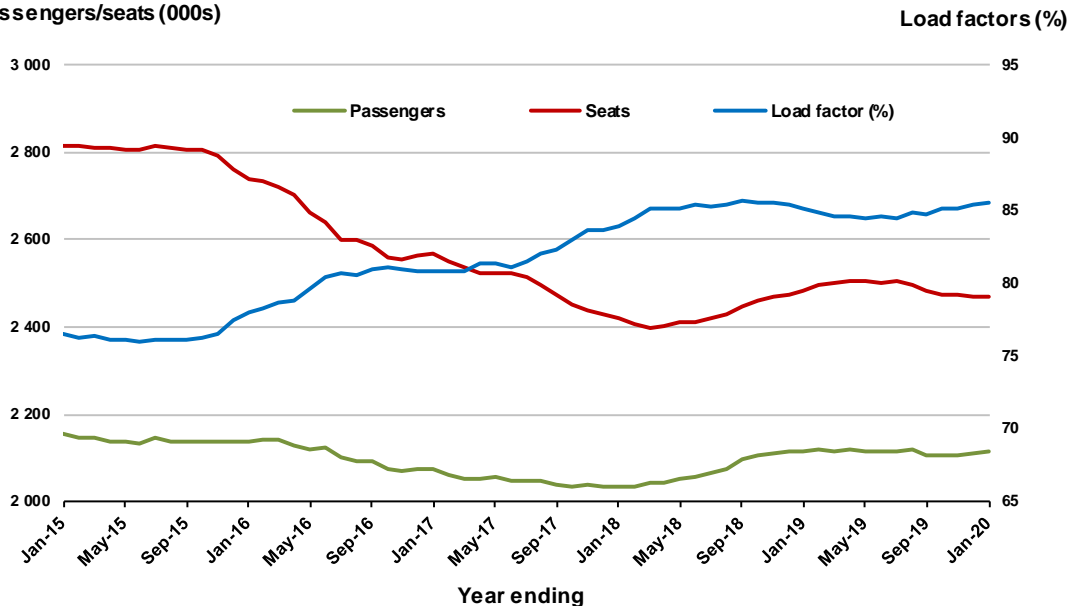


Moving annual data

	YE Jan 2019	YE Jan 2020	% Change
Passengers carried (000s)	2 114.5	2 114.1	0.0
Seats (000s)	2 484.8	2 470.0	-0.6
Load factor %	85.1	85.6	0.5 *
Aircraft trips	11 846	12 243	3.4

* percentage point difference

Passengers/seats (000s)



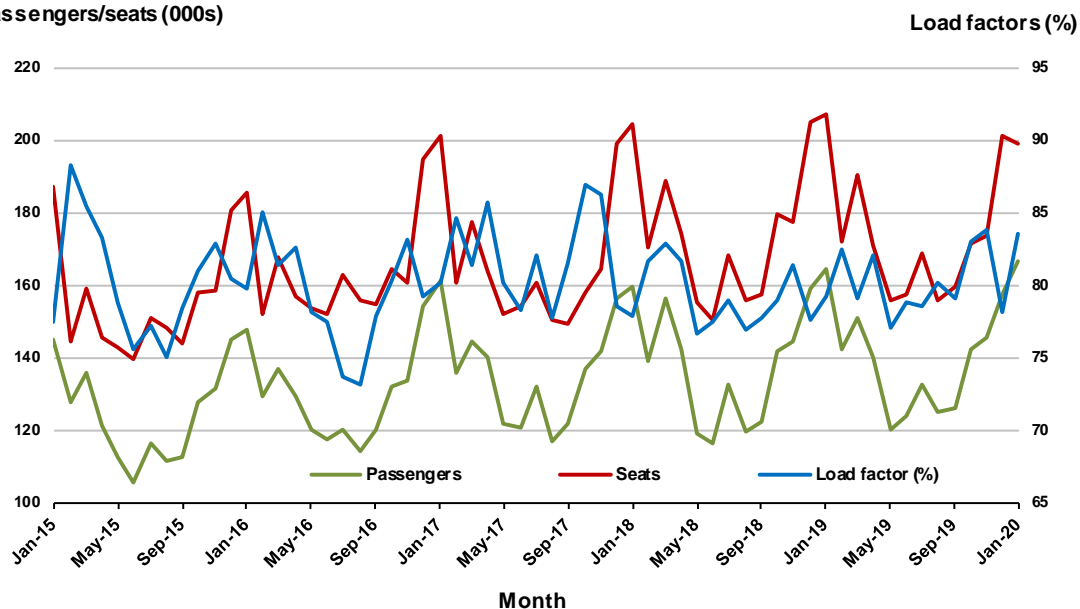
8. Hobart - Melbourne

Monthly data

	Jan 2019	Jan 2020	% Change
Passengers carried (000s)	164.2	166.4	1.3
Seats (000s)	207.3	199.1	-3.9
Load factor %	79.2	83.6	4.4 *
Aircraft trips	1 128	1 095	-2.9

* percentage point difference

Passengers/seats (000s)

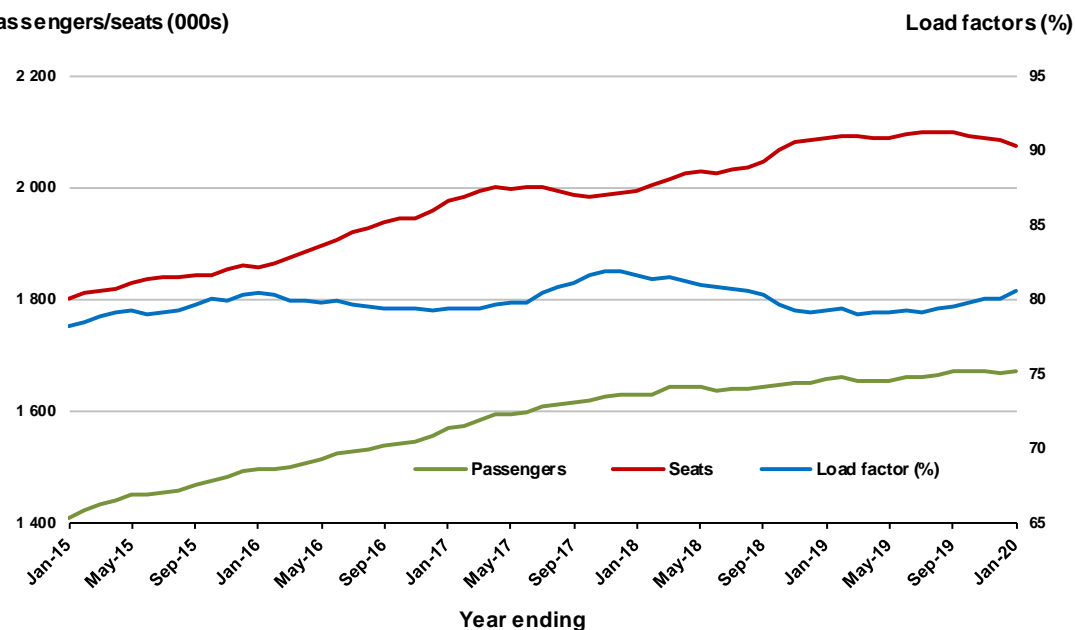


Moving annual data

	YE Jan 2019	YE Jan 2020	% Change
Passengers carried (000s)	1 657.7	1 672.4	0.9
Seats (000s)	2 089.6	2 076.4	-0.6
Load factor %	79.3	80.5	1.2 *
Aircraft trips	11 612	11 368	-2.1

* percentage point difference

Passengers/seats (000s)



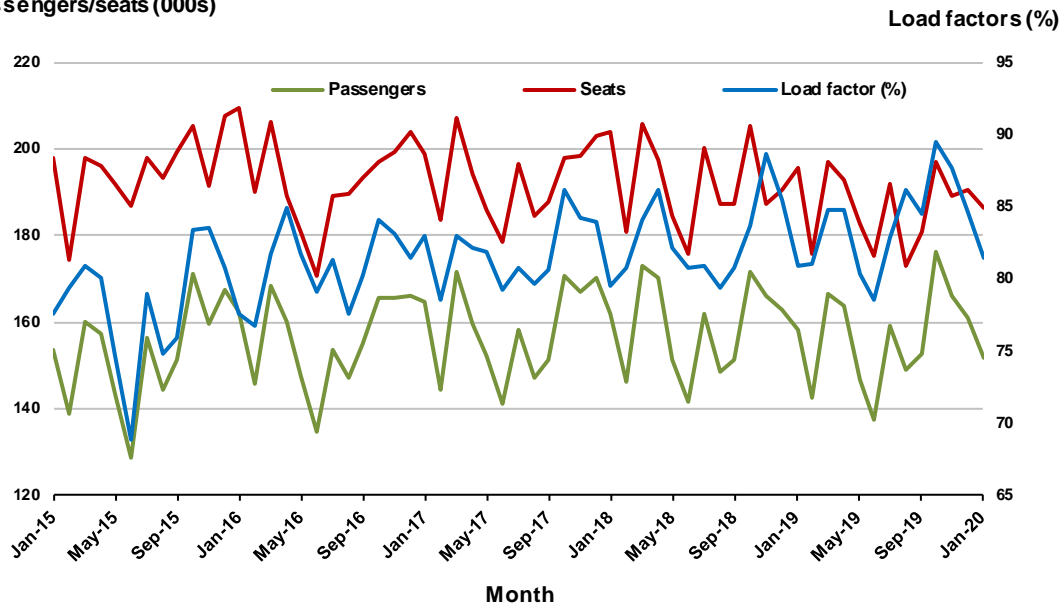
9. Adelaide - Sydney

Monthly data

	Jan 2019	Jan 2020	% Change
Passengers carried (000s)	158.1	151.8	-4.0
Seats (000s)	195.4	186.4	-4.6
Load factor %	80.9	81.4	0.5 *
Aircraft trips	1 162	1 096	-5.7

* percentage point difference

Passengers/seats (000s)

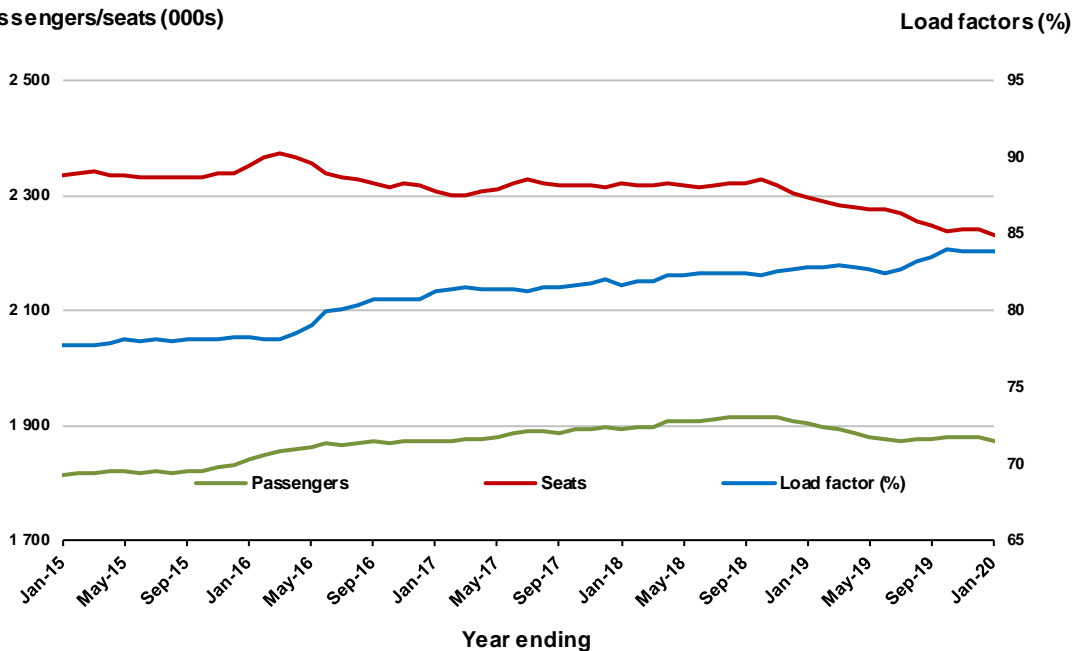


Moving annual data

	YE Jan 2019	YE Jan 2020	% Change
Passengers carried (000s)	1 902.8	1 872.4	-1.6
Seats (000s)	2 296.6	2 231.8	-2.8
Load factor %	82.9	83.9	1.0 *
Aircraft trips	13 828	13 150	-4.9

* percentage point difference

Passengers/seats (000s)



10. Perth - Sydney

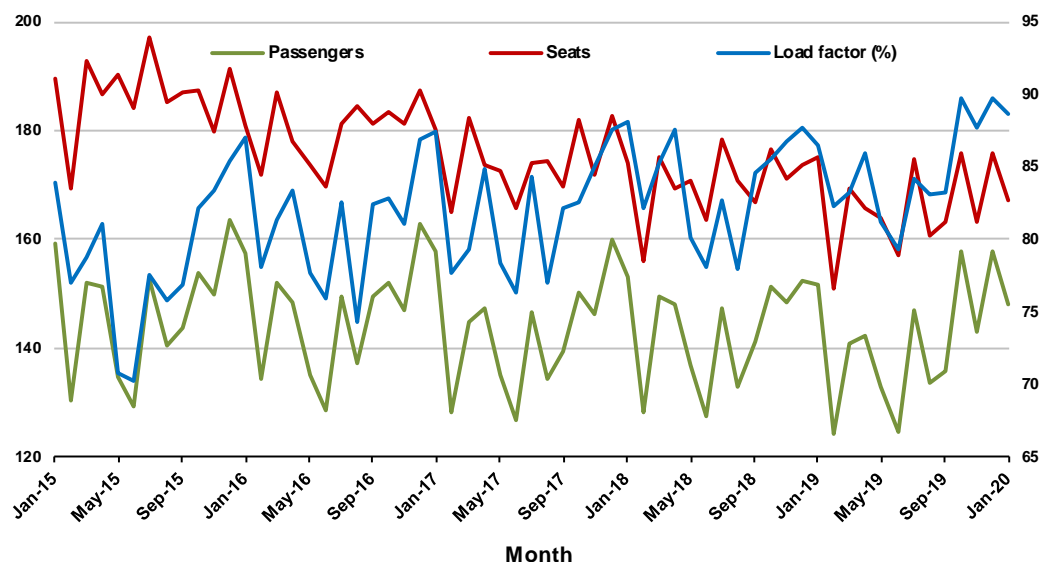
Monthly data

	Jan 2019	Jan 2020	% Change
Passengers carried (000s)	151.5	148.0	-2.3
Seats (000s)	175.2	167.1	-4.6
Load factor %	86.5	88.6	2.1 *
Aircraft trips	790	755	-4.4

* percentage point difference

Passengers/seats (000s)

Load factors (%)



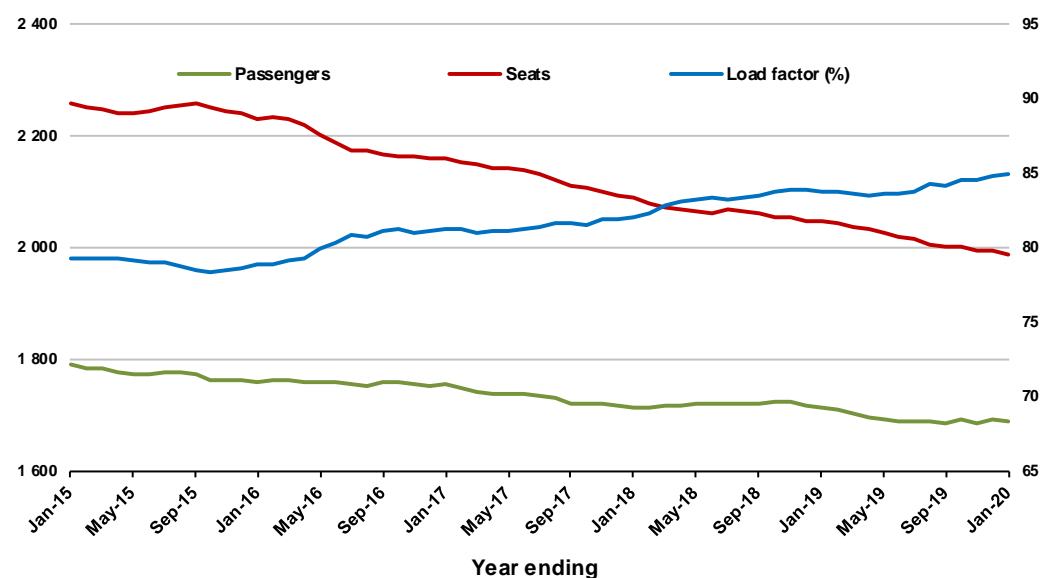
Moving annual data

	YE Jan 2019	YE Jan 2020	% Change
Passengers carried (000s)	1 715.2	1 688.6	-1.6
Seats (000s)	2 047.5	1 987.6	-2.9
Load factor %	83.8	85.0	1.2 *
Aircraft trips	9 107	8 971	-1.5

* percentage point difference

Passengers/seats (000s)

Load factors (%)



TOP FIFTY REGIONAL AIRPORTS

Table 10: Top fifty regional airports (000s) — passenger movements, monthly

Airport	Jan 2019	Jan 2020	% Change
1 Cairns	350.4	348.5	-0.5
2 Hobart	278.2	285.1	2.5
3 Launceston	149.8	146.1	-2.5
4 Townsville	121.6	125.8	3.4
5 Darwin	118.9	118.4	-0.3
6 Newcastle	107.0	105.3	-1.6
7 Mackay	64.6	68.8	6.6
8 Ballina	56.5	57.6	2.0
9 Hamilton Island	39.9	48.2	20.8
10 Rockhampton	40.9	42.6	4.0
11 Proserpine	38.3	41.5	8.4
12 Karratha	35.7	38.8	8.6
13 Coffs Harbour	32.2	33.5	3.9
14 Port Hedland	31.2	31.2	-0.2
15 Alice Springs	40.3	30.8	-23.4
16 Ayers Rock	31.3	29.9	-4.4
17 Newman	25.8	26.9	4.5
18 Broome	25.4	24.6	-3.2
19 Kalgoorlie	22.9	20.7	-9.7
20 Gladstone	17.9	19.0	6.0
21 Mildura	17.8	18.0	1.0
22 Mount Isa	15.4	17.9	16.6
23 Port Macquarie	16.7	17.1	2.4
24 Emerald	14.4	15.8	10.2
25 Paraburdoo	14.3	15.7	9.1
26 Port Lincoln	13.7	14.9	8.7
27 Tamworth	14.0	14.3	2.4
28 Albury	17.2	14.1	-18.4
29 Hervey Bay	13.3	13.8	3.4
30 Dubbo	13.5	13.4	-0.6
31 Devonport	11.9	13.0	9.3
32 Wagga Wagga	12.2	12.7	3.4
33 Bundaberg	11.1	11.1	0.1
34 Toowoomba Wellcamp	8.2	9.3	13.2
35 Moranbah	8.7	8.9	2.1
36 Armidale	8.5	8.3	-2.4
37 Geraldton	7.6	7.3	-3.7
38 Thursday Island	7.1	6.9	-3.1
39 Roma	6.2	6.5	5.8
40 Griffith	6.0	6.4	6.7
41 Kununurra	6.1	6.2	1.7
42 Gove	5.9	6.1	4.8
43 Burnie	5.9	6.1	3.4
44 Weipa	6.6	5.8	-12.7
45 Norfolk Island	5.6	5.6	0.0
46 Mount Gambier	5.2	5.5	6.8
47 Merimbula	6.4	5.2	-17.9
48 Learmonth	5.3	5.1	-4.5
49 Orange	4.2	4.8	13.9
50 Narrandera	4.4	4.8	8.5
Total top 50 regional airports	1 922.4	1 944.1	1.1
Total regional airports	2 024.4	2 043.0	0.9
Total domestic network	10 135.0	10 187.9	0.5

Note: Airport passenger movement numbers are the sum of passenger arrivals and departures at each airport.

Regional airports are defined as airports which are, according to the Australian Bureau of Statistics

"The Australian Statistical Geography Standard (ASGS)", not based in Major Urban areas.

Table 11: Top fifty regional airports (000s) — passenger movements, annual

Airport	YE Jan 2019	YE Jan 2020	% Change
1 Cairns	4 291.8	4 153.6	-3.2
2 Hobart	2 688.3	2 788.7	3.7
3 Darwin	1 733.3	1 694.0	-2.3
4 Townsville	1 646.9	1 670.2	1.4
5 Launceston	1 384.5	1 391.6	0.5
6 Newcastle	1 256.5	1 272.3	1.3
7 Mackay	848.8	883.2	4.0
8 Rockhampton	552.2	573.3	3.8
9 Alice Springs	619.6	545.1	-12.0
10 Ballina	538.0	534.4	-0.7
11 Ayers Rock	419.3	488.2	16.4
12 Karratha	443.9	471.3	6.2
13 Hamilton Island	428.4	460.8	7.6
14 Proserpine	442.0	436.6	-1.2
15 Broome	416.0	403.0	-3.1
16 Coffs Harbour	402.7	396.9	-1.4
17 Port Hedland	375.5	387.4	3.2
18 Newman	308.6	349.8	13.4
19 Kalgoorlie	292.0	287.5	-1.5
20 Mildura	269.4	254.3	-5.6
21 Albury	258.6	252.4	-2.4
22 Gladstone	251.6	249.0	-1.0
23 Mount Isa	212.7	229.3	7.8
24 Port Macquarie	214.1	219.0	2.3
25 Dubbo	217.8	211.4	-2.9
26 Wagga Wagga	214.8	208.6	-2.9
27 Emerald	194.9	203.0	4.2
28 Paraburdoo	179.0	192.3	7.5
29 Tamworth	188.6	189.8	0.6
30 Port Lincoln	169.5	173.5	2.4
31 Hervey Bay	162.4	167.3	3.0
32 Bundaberg	161.1	153.7	-4.6
33 Devonport	146.9	149.5	1.8
34 Armidale	128.7	132.6	3.0
35 Toowoomba Wellcamp	133.9	121.1	-9.6
36 Kununurra	107.6	113.9	5.9
37 Moranbah	104.9	110.0	4.9
38 Geraldton	113.8	106.4	-6.5
39 Roma	88.2	97.0	10.0
40 Thursday Island	100.8	96.9	-3.9
41 Griffith	81.1	94.5	16.5
42 Mount Gambier	80.2	85.7	6.8
43 Learmonth	88.6	84.5	-4.6
44 Orange	77.6	83.2	7.1
45 Gove	83.6	81.9	-2.1
46 Whyalla	76.3	78.9	3.3
47 Olympic Dam	75.4	73.8	-2.1
48 Burnie	71.9	72.7	1.1
49 Weipa	81.0	71.4	-11.8
50 Merimbula	68.8	66.4	-3.4
Total top 50 regional airports	23 492.1	23 611.9	0.5
Total regional airports	24 901.8	25 013.6	0.4
Total domestic network	122 140.9	122 767.9	0.5

Note: Airport passenger movement numbers are the sum of passenger arrivals and departures at each airport. Regional airports are defined as airports which are, according to the Australian Bureau of Statistics "The Australian Statistical Geography Standard (ASGS)", not based in Major Urban areas.

DOMESTIC CHARTER ACTIVITY

Table 12: Charter passengers carried and aircraft trips - monthly activity

	Jan 2019	Jan 2020	% Change
Total domestic charter passengers	221 225	252 253	14.0
Total domestic charter aircraft trips	3 998	4 488	12.3

Note: Helicopter, joyflights and sightseeing charter flights not included.

Table 13: Charter passengers carried and aircraft trips - annual activity

	YE Jan 2019	YE Jan 2020	% Change
Total domestic charter passengers	2 494 306	2 785 792	11.7
Total domestic charter aircraft trips	44 140	47 925	8.6

Note: Helicopter, joyflights and sightseeing charter flights not included.

Table 14: Domestic airports - charter activity - monthly

	Jan 2019	Jan 2020	% Change
Total domestic charter passenger movements	442 450	504 506	14.0
Total domestic charter aircraft movements	7 996	8 976	12.3
Perth airport charter passenger movements	168 190	190 332	13.2
Perth airport charter aircraft movements	2 726	3 105	13.9

Note: Helicopter, joyflights and sightseeing charter flights not included.

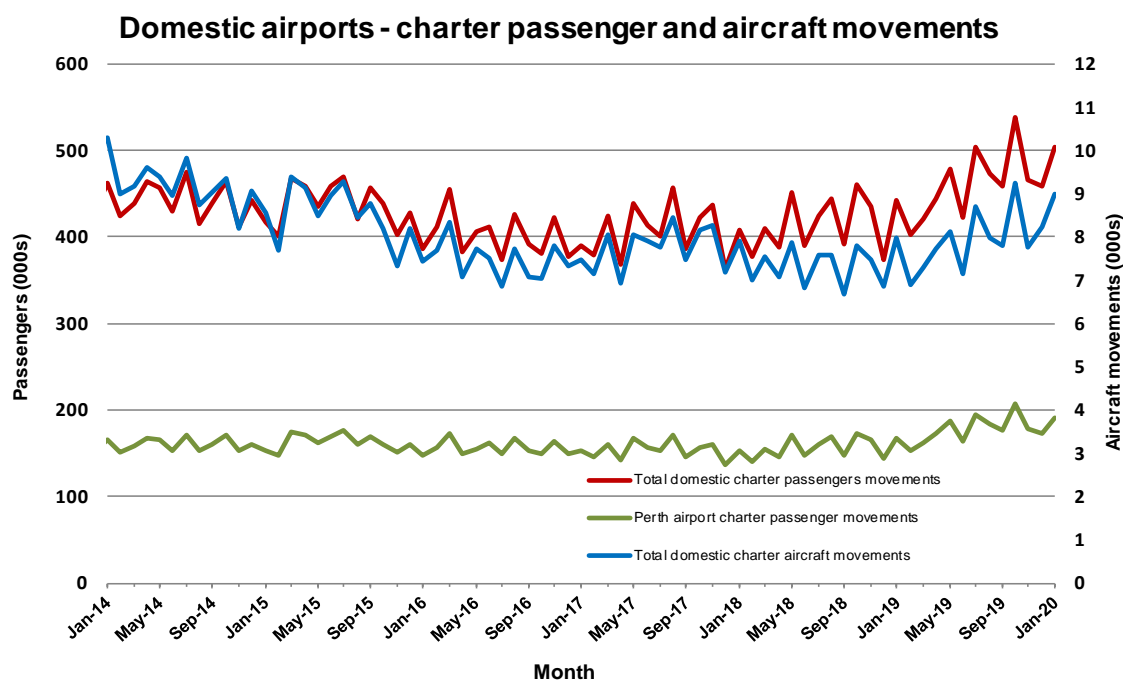
Charter passenger and aircraft movement numbers are the sum of arrivals and departures at each airport.

Table 15: Domestic airports - charter activity - annual

	YE Jan 2019	YE Jan 2020	% Change
Total domestic charter passenger movements	4 988 612	5 571 584	11.7
Total domestic charter aircraft movements	88 280	95 850	8.6
Perth airport charter passenger movements	1 889 310	2 142 844	13.4
Perth airport charter aircraft movements	30 067	33 537	11.5

Note: Helicopter, joyflights and sightseeing charter flights not included.

Charter passenger and aircraft movement numbers are the sum of arrivals and departures at each airport.



DEFINITIONS

Aircraft Trips	The number of flight stages. A return flight counts as two aircraft trips.
Airport Movements	Airport movements (passenger and cargo) are measured once on arrival and once on departure. Each domestic trip generates two movements at airports. For example, a trip from Melbourne to Sydney will be counted twice, as a passenger departure at Melbourne and as a passenger arrival at Sydney. At the national level, the sum of all domestic airport traffic will therefore be equal to twice the number of trips undertaken.
Available Seat Kilometres (ASKs)	Calculated by multiplying the number of seats available on each flight stage, by the distance in kilometres between the ports. The distances used are Great Circle Distances.
City-Pair	The ports shown make up the city-pair route. Passenger movements shown for a city pair reflect total traffic in both directions.
Flight Stage	The operation of an aircraft from take-off to landing.
Load Factor	The total revenue passenger kilometres performed as a percentage of the total available seat kilometres.
Passengers Carried	Revenue passengers carried.
Regular Public Transport Services (RPT)	All air service operations in which aircraft are available for the transport of members of the public and are conducted in accordance with fixed schedules. It does not include charter or other non-scheduled operations.
Revenue Passengers	All passengers paying any fare. Frequent flyer redemption travellers are regarded as revenue passengers.
Revenue Passenger Kilometres (RPKs)	Calculated by multiplying the number of revenue passengers travelling on each flight stage, by the distance in kilometres between the ports. The distances used are Great Circle Distances.
Traffic on board by stages	The total of all traffic (revenue passengers) on each flight stage between two directly connected airports.
..	Data not included
NA	Not applicable