



Australian Government

**Department of Infrastructure, Transport,
Regional Development and Local Government**
Bureau of Infrastructure, Transport and Regional Economics



bitre

AVIATION STATISTICS

Australian Domestic Airline Activity

2008-2009

Domestic Annual 158

© Commonwealth of Australia 2009

ISSN 1832-1968

Released September 2009

This work is copyright and the data contained in this publication should not be reproduced or used in any form without acknowledgement.

Enquiries

Bureau of Infrastructure, Transport and Regional Economics

GPO Box 501

Canberra ACT 2601

Telephone: 02 6274 6817

Facsimile: 02 6274 7727

Website: www.bitre.gov.au

Email: avstats@infrastructure.gov.au

This publication can be downloaded from the BITRE website. A spreadsheet format of the time-series data is also available at:

<http://www.bitre.gov.au/info.aspx?ResourceId=225&NodeId=101>

Disclaimers

BITRE seeks to publish its work to the highest professional standards. However, it cannot accept responsibility for any consequences arising from the use of information herein. Readers should rely on their own skill and judgment in applying any information or analysis to particular issues or circumstances.

FOREWORD

This report provides an overview of domestic (including regional) airline activity in Australia for the year ending June 2009.

The data covers revenue passengers carried by Australian-registered operators of scheduled regular public transport services over Australian flight stages, including passengers carried between domestic airports on international flights operated by these carriers. The passengers carried refer to traffic on board by stages. These statistics may not match the passenger numbers shown in other spreadsheets available for download from the BITRE web site where passengers carried between domestic airports on international flights are excluded.

Charter aircraft flights are not included in these statistics.

Individual routes shown are restricted to those with an average exceeding 8 000 passengers per month where two or more airlines operate in competition. For the year ending June 2009 there were 53 such routes: 46 routes met these criteria for all twelve months of the year while seven routes did so for a period shorter than one year.

Information on the total network for the year ending June 2009 is presented on page 2. Detailed information on the 53 individual routes can be found in the summary pages 4 - 7 of this publication. Top ten airport passenger movements are shown on page 8 and long-term trends for the top ten of these presented graphically on pages 9 – 33. A list of definitions can be found on page 35.

The report was prepared by the Aviation Statistics Section of the Bureau of Infrastructure, Transport and Regional Economics with data provided by airlines.

Estimates are included where data is not available and data presented in this publication may contain revisions to previously published data.

Where figures have been rounded, discrepancies may occur between sums of component items and totals, and in percentage changes which are derived from figures prior to rounding.

CONTENTS

| | |
|-------------------------------------|----------|
| Highlights | 1 |
| Total network | 2 |
| Top Competitive Routes | 4 |
| Top Ten Airports | 8 |
| Top Routes | 9 |
| 1. Melbourne – Sydney | 9 |
| 2. Brisbane – Sydney..... | 9 |
| 3. Brisbane – Melbourne..... | 10 |
| 4. Adelaide – Melbourne | 10 |
| 5. Gold Coast – Sydney | 11 |
| 6. Melbourne – Perth | 11 |
| 7. Gold Coast - Melbourne..... | 12 |
| 8. Adelaide - Sydney..... | 12 |
| 9. Perth – Sydney | 13 |
| 10. Hobart – Melbourne | 13 |
| 11. Brisbane – Cairns | 14 |
| 12. Canberra – Melbourne..... | 14 |
| 13. Canberra – Sydney | 15 |
| 14. Brisbane – Townsville..... | 15 |
| 15. Cairns – Sydney | 16 |
| 16. Launceston – Melbourne | 16 |
| 17. Brisbane – Mackay | 17 |
| 18. Brisbane – Perth..... | 17 |
| 19. Adelaide – Brisbane..... | 18 |
| 20. Brisbane – Canberra..... | 18 |
| 21. Adelaide – Perth | 19 |
| 22. Brisbane – Rockhampton..... | 19 |
| 23. Brisbane – Newcastle | 20 |
| 24. Maroochydore – Sydney | 20 |
| 25. Hobart – Sydney | 21 |
| 26. Cairns – Melbourne | 21 |
| 27. Maroochydore – Melbourne | 22 |

| | |
|-------------------------------------|-----------|
| 28. Melbourne – Newcastle | 22 |
| 29. Brisbane – Darwin | 23 |
| 30. Karratha – Perth | 23 |
| 31. Broome – Perth | 24 |
| 32. Coffs Harbour – Sydney..... | 24 |
| 33. Ballina – Sydney | 25 |
| 34. Darwin – Melbourne..... | 25 |
| 35. Adelaide – Gold Coast..... | 26 |
| 36. Albury – Sydney | 26 |
| 37. Brisbane – Proserpine | 27 |
| 38. Kalgoorlie – Perth | 27 |
| 39. Launceston – Sydney | 28 |
| 40. Adelaide – Canberra..... | 28 |
| 41. Brisbane – Hamilton Island..... | 29 |
| 42. Port Macquarie – Sydney..... | 29 |
| 43. Melbourne – Mildura | 30 |
| 44. Sydney – Wagga Wagga | 30 |
| 45. Dubbo – Sydney | 31 |
| 46. Sydney – Townsville | 31 |
| 47. Cairns – Townsville..... | 32 |
| 48. Hervey Bay – Sydney | 32 |
| 49. Alice Springs – Melbourne | 33 |
| 50. Newman – Perth..... | 33 |
| 51. Gold Coast – Newcastle | 33 |
| 52. Adelaide – Alice Springs..... | 33 |
| 53. Darwin – Perth..... | 33 |
| Definitions | 35 |

This page is intentionally left blank

HIGHLIGHTS

There were 50.24 million passengers carried on Australian domestic airlines (including regional operations) in the year ending June 2009, an increase of 2.0 per cent on the year ending June 2008. The industry grew at a slower rate compared with the previous few years, with a marked slowdown in the second half of the financial year.

Revenue passenger kilometres (RPKs) were 57.56 billion for the year, up 2.4 per cent on the year ending June 2008.

Airlines continued to introduce additional seats through the year, with the number of available seats rising to 65.49 million, an increase of 2.5 per cent compared to the previous year.

Capacity, measured by available seat kilometres (ASKs), increased by 3.0 per cent to a total of 73.19 billion.

Capacity grew at a slightly faster rate than passenger traffic in 2008-09 resulting in a decrease in the industry wide load factor (RPKs/ASKs), to 78.6 per cent compared with 79.1 in the previous year.

The number of aircraft trips increased by 0.1 per cent, from 549 511 for the year ending June 2008 to 550 324 for the year ending June 2009.

For the year ending June 2009, Melbourne – Sydney remained Australia's busiest route with 6.81 million passengers, a decrease of 2.5 per cent compared with the year ending June 2008. It was followed by Brisbane – Sydney with 4.26 million passengers (up 0.4 per cent) and Brisbane – Melbourne with 2.70 million passengers (no change).

The greatest percentage increase in air traffic, compared to the year ending June 2008, was on the Albury – Sydney route (up 22.7 per cent). There was strong traffic growth on a number of other routes, including Adelaide – Gold Coast (up 15.7 per cent), Maroochydore – Sydney (up 13.7 per cent), Melbourne – Mildura (up 13.5 per cent) and Brisbane – Mackay (up 12.5 per cent).

Routes with traffic decreases this year included Kalgoorlie – Perth (down 10.1 per cent), Dubbo – Sydney (down 8.3 per cent) and Hervey Bay – Sydney (down 8.1 per cent).

For the year ending June 2009, Sydney remained the busiest Australian domestic airport with 22.34 million passenger movements, a decrease of 0.6 per cent compared to the previous year, followed by Melbourne with 19.80 million passenger movements (up 2.2 per cent) and Brisbane with 14.79 million passenger movements (up 2.3 per cent).

TOTAL NETWORK

Summary of activity - annual

| | YE June 2008 | YE June 2009 | % Change |
|---|--------------|--------------|----------|
| Total passenger movements (millions) | 49.28 | 50.24 | 2.0 |
| Revenue passenger kilometres (billions) | 56.19 | 57.56 | 2.4 |
| Available seats (millions) | 63.87 | 65.49 | 2.5 |
| Available seat kilometres (billions) | 71.07 | 73.19 | 3.0 |
| Load factor % | 79.1 | 78.6 | -0.4* |
| Aircraft trips (000s) | 549.5 | 550.3 | 0.1 |

* percentage point difference

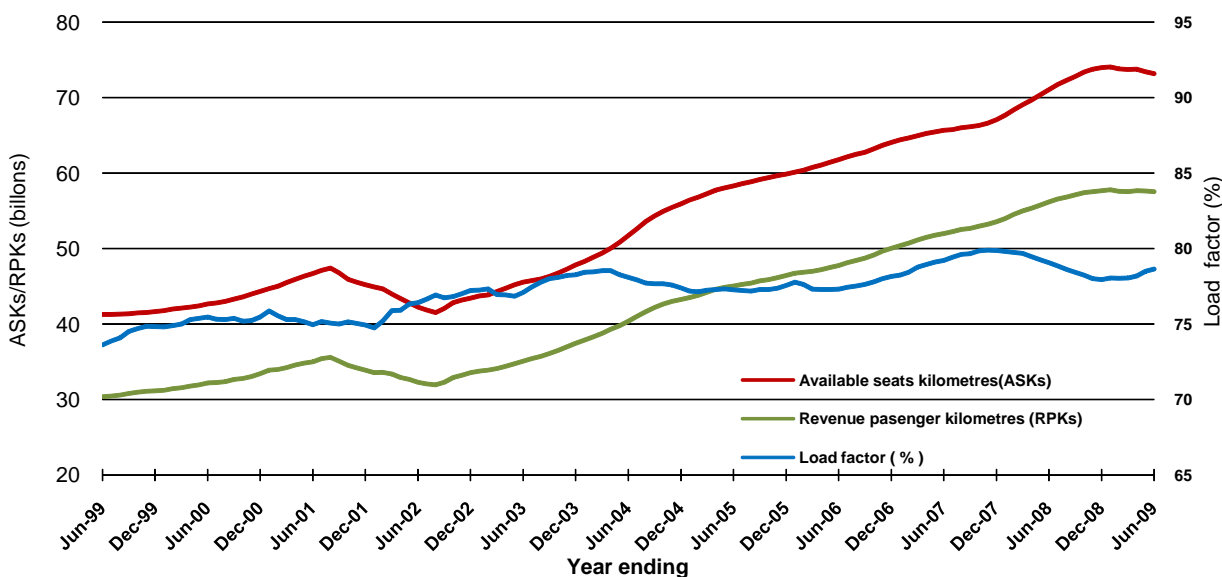
Domestic passenger traffic

(Domestic and regional passenger traffic - moving annual totals)



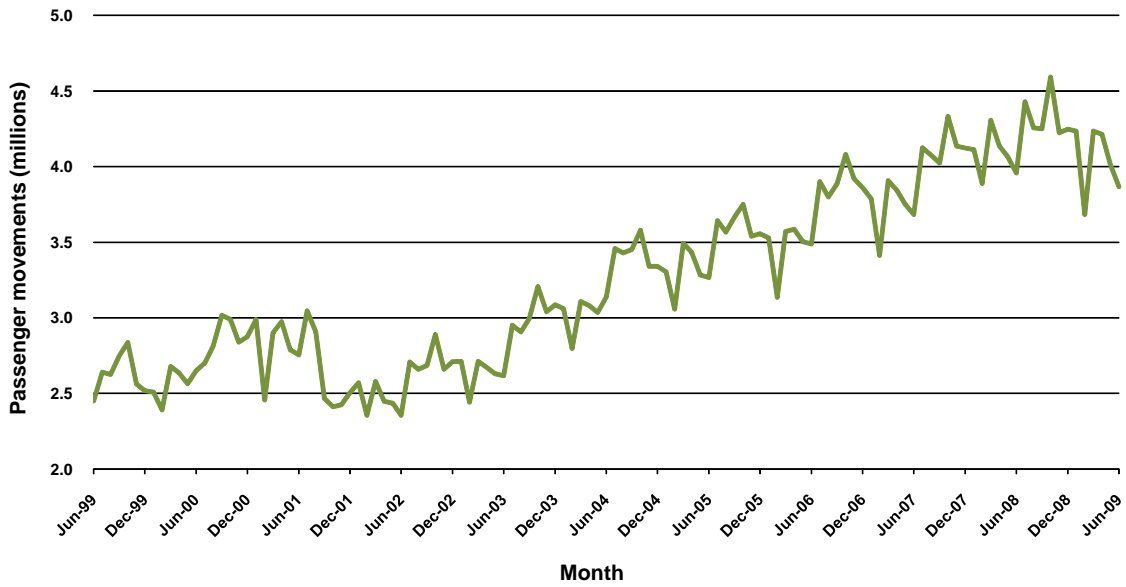
Network utilisation

(Domestic and regional passenger traffic - moving annual totals)

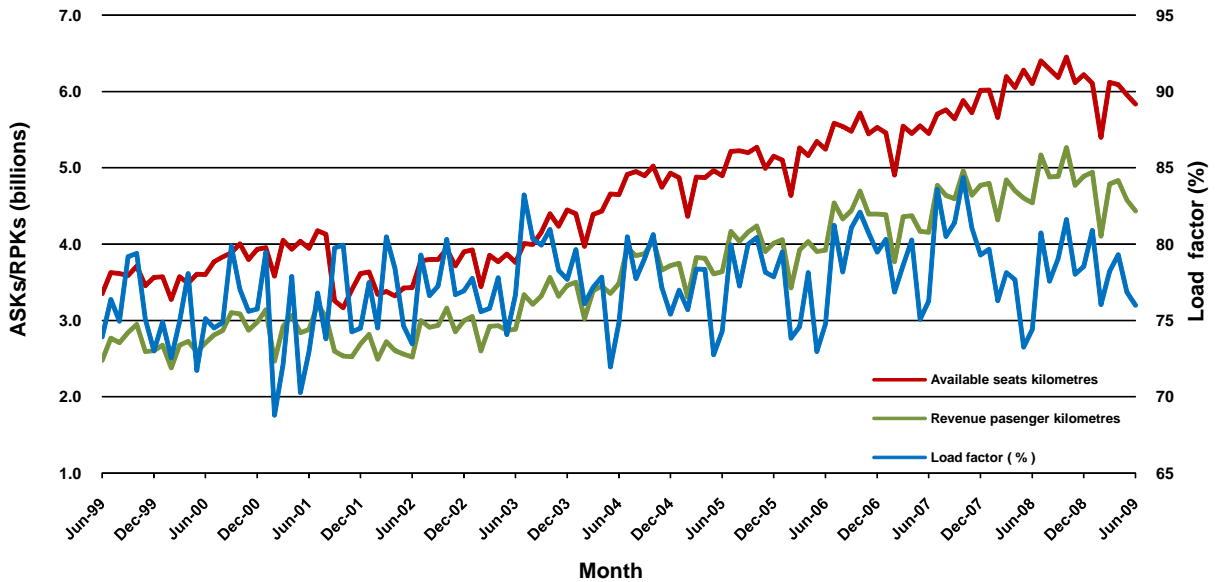


Note: Moving annual totals

Monthly domestic passenger traffic



Monthly network utilisation



TOP COMPETITIVE ROUTES

Table 1: Passenger movements (000s) — annual activity

| | City-Pair | YE June 2008 | YE June 2009 | % Change |
|----|-------------------------------|-----------------|-----------------|------------|
| 1 | Melbourne - Sydney | 6 992.8 | 6 814.7 | -2.5 |
| 2 | Brisbane - Sydney | 4 246.4 | 4 262.8 | 0.4 |
| 3 | Brisbane - Melbourne | 2 699.0 | 2 699.2 | 0.0 |
| 4 | Adelaide - Melbourne | 1 988.5 | 2 183.3 | 9.8 |
| 5 | Gold Coast - Sydney | 2 181.7 | 2 138.5 | -2.0 |
| 6 | Melbourne - Perth | 1 737.3 | 1 749.0 | 0.7 |
| 7 | Gold Coast - Melbourne | 1 566.5 | 1 608.3 | 2.7 |
| 8 | Adelaide - Sydney | 1 576.6 | 1 552.0 | -1.6 |
| 9 | Perth - Sydney | 1 405.0 | 1 446.8 | 3.0 |
| 10 | Hobart - Melbourne | 1 074.6 | 1 199.4 | 11.6 |
| 11 | Brisbane - Cairns | 1 194.7 | 1 186.8 | -0.7 |
| 12 | Canberra - Melbourne | 1 008.2 | 1 097.2 | 8.8 |
| 13 | Canberra - Sydney | 887.4 | 983.5 | 10.8 |
| 14 | Brisbane - Townsville | 916.1 | 974.0 | 6.3 |
| 15 | Cairns - Sydney | 938.8 | 883.2 | -5.9 |
| 16 | Launceston - Melbourne | 820.6 | 828.2 | 0.9 |
| 17 | Brisbane - Mackay | 673.0 | 756.8 | 12.5 |
| 18 | Brisbane - Perth | 642.2 | 711.4 | 10.8 |
| 19 | Adelaide - Brisbane | 664.1 | 652.7 | -1.7 |
| 20 | Brisbane - Canberra | 619.8 | 611.9 | -1.3 |
| 21 | Adelaide - Perth | 584.9 | 595.0 | 1.7 |
| 22 | Brisbane - Rockhampton | 571.8 | 589.3 | 3.1 |
| 23 | Brisbane - Newcastle | 499.0 | 557.7 | 11.7 |
| 24 | Maroochydore - Sydney | 437.6 | 497.4 | 13.7 |
| 25 | Hobart - Sydney | 443.2 | 478.6 | 8.0 |
| 26 | Cairns - Melbourne | 459.8 | 459.6 | -0.1 |
| 27 | Maroochydore - Melbourne | 444.3 | 419.0 | -5.7 |
| 28 | Melbourne - Newcastle | 392.1 | 400.8 | 2.2 |
| 29 | Brisbane - Darwin | 333.9 | 367.4 | 10.0 |
| 30 | Karratha - Perth | .. | 350.8 | NA (a) |
| 31 | Broome - Perth | 286.8 | 309.6 | 8.0 |
| 32 | Coffs Harbour - Sydney | 314.9 | 299.7 | -4.8 |
| 33 | Ballina - Sydney | 277.8 | 264.1 | -4.9 |
| 34 | Darwin - Melbourne | 228.2 | 239.2 | 4.8 |
| 35 | Adelaide - Gold Coast | 203.4 | 235.3 | 15.7 |
| 36 | Albury - Sydney | 190.1 | 233.2 | 22.7 |
| 37 | Brisbane - Proserpine | 211.0 | 226.2 | 7.2 |
| 38 | Kalgoorlie - Perth | 248.5 | 223.5 | -10.1 |
| 39 | Launceston - Sydney | 212.3 | 205.9 | -3.0 |
| 40 | Adelaide - Canberra | 206.5 | 194.2 | -6.0 |
| 41 | Brisbane - Hamilton Island | 175.6 | 186.2 | 6.0 |
| 42 | Port Macquarie - Sydney | 65.0 | 178.9 | NA (b) |
| 43 | Melbourne - Mildura | 155.7 | 176.8 | 13.5 |
| 44 | Sydney - Wagga Wagga | 185.3 | 174.6 | -5.7 |
| 45 | Dubbo - Sydney | 188.3 | 172.7 | -8.3 |
| 46 | Sydney - Townsville | 168.7 | 169.4 | 0.5 |
| 47 | Cairns - Townsville | 145.6 | 149.3 | 2.5 |
| 48 | Hervey Bay - Sydney | 155.4 | 142.9 | -8.1 |
| 49 | Alice Springs - Melbourne | 21.8 | 137.0 | NA (c) |
| 50 | Newman - Perth | .. | 134.2 | NA (d) |
| 51 | Gold Coast - Newcastle | .. | 132.8 | NA (e) |
| 52 | Adelaide - Alice Springs | .. | 30.0 | NA (f) |
| 53 | Darwin - Perth | .. | 27.4 | NA (g) |
| | Total top routes | 42 517.6 | 43 298.4 | 1.8 |
| | Total domestic network | 49 278.7 | 50 242.9 | 2.0 |

(a) Karratha - Perth route included from October 2008, prior data not shown.

(b) Port Macquarie - Sydney route included from February 2008, prior data not shown.

(c) Alice Springs - Melbourne route included from May 2008, prior data not shown.

(d) Newman - Perth route included from October 2008, prior data not shown.

(e) Gold Coast - Newcastle route included from August 2008, prior data not shown.

(f) Adelaide - Alice Springs route included from April 2009, prior data not shown.

(g) Darwin - Perth route included from May 2009, prior data not shown.

Table 2: Available seats (000s) — annual activity

| | City-Pair | YE June 2008 | YE June 2009 | % Change |
|----|-------------------------------|---------------------|---------------------|-----------------|
| 1 | Melbourne - Sydney | 8 723.9 | 8 463.8 | -3.0 |
| 2 | Brisbane - Sydney | 5 484.1 | 5 329.1 | -2.8 |
| 3 | Brisbane - Melbourne | 3 319.1 | 3 373.6 | 1.6 |
| 4 | Adelaide - Melbourne | 2 618.9 | 2 755.4 | 5.2 |
| 5 | Gold Coast - Sydney | 2 671.1 | 2 539.9 | -4.9 |
| 6 | Melbourne - Perth | 2 143.3 | 2 137.6 | -0.3 |
| 7 | Gold Coast - Melbourne | 1 891.7 | 1 861.5 | -1.6 |
| 8 | Adelaide - Sydney | 2 007.5 | 1 932.4 | -3.7 |
| 9 | Perth - Sydney | 1 623.8 | 1 775.1 | 9.3 |
| 10 | Hobart - Melbourne | 1 349.0 | 1 512.1 | 12.1 |
| 11 | Brisbane - Cairns | 1 530.9 | 1 451.8 | -5.2 |
| 12 | Canberra - Melbourne | 1 407.0 | 1 667.5 | 18.5 |
| 13 | Canberra - Sydney | 1 403.0 | 1 703.8 | 21.4 |
| 14 | Brisbane - Townsville | 1 117.6 | 1 315.0 | 17.7 |
| 15 | Cairns - Sydney | 1 213.1 | 1 081.0 | -10.9 |
| 16 | Launceston - Melbourne | 1 029.9 | 1 046.9 | 1.6 |
| 17 | Brisbane - Mackay | 843.8 | 961.8 | 14.0 |
| 18 | Brisbane - Perth | 756.3 | 873.0 | 15.4 |
| 19 | Adelaide - Brisbane | 813.2 | 774.6 | -4.7 |
| 20 | Brisbane - Canberra | 880.8 | 864.1 | -1.9 |
| 21 | Adelaide - Perth | 726.9 | 803.4 | 10.5 |
| 22 | Brisbane - Rockhampton | 746.2 | 762.4 | 2.2 |
| 23 | Brisbane - Newcastle | 610.5 | 734.3 | 20.3 |
| 24 | Maroochydore - Sydney | 529.1 | 591.9 | 11.9 |
| 25 | Hobart - Sydney | 555.8 | 590.8 | 6.3 |
| 26 | Cairns - Melbourne | 567.3 | 551.5 | -2.8 |
| 27 | Maroochydore - Melbourne | 537.4 | 494.5 | -8.0 |
| 28 | Melbourne - Newcastle | 490.0 | 496.3 | 1.3 |
| 29 | Brisbane - Darwin | 419.6 | 463.4 | 10.4 |
| 30 | Karratha - Perth | .. | 597.4 | NA (a) |
| 31 | Broome - Perth | 380.6 | 444.3 | 16.7 |
| 32 | Coffs Harbour - Sydney | 391.8 | 371.6 | -5.2 |
| 33 | Ballina - Sydney | 343.0 | 319.9 | -6.7 |
| 34 | Darwin - Melbourne | 287.7 | 286.2 | -0.5 |
| 35 | Adelaide - Gold Coast | 241.8 | 276.5 | 14.4 |
| 36 | Albury - Sydney | 269.4 | 345.0 | 28.0 |
| 37 | Brisbane - Proserpine | 250.9 | 254.7 | 1.5 |
| 38 | Kalgoorlie - Perth | 340.0 | 369.1 | 8.6 |
| 39 | Launceston - Sydney | 268.1 | 248.9 | -7.2 |
| 40 | Adelaide - Canberra | 280.3 | 273.5 | -2.4 |
| 41 | Brisbane - Hamilton Island | 239.9 | 239.7 | -0.1 |
| 42 | Port Macquarie - Sydney | 81.1 | 262.2 | NA (b) |
| 43 | Melbourne - Mildura | 206.6 | 244.0 | 18.1 |
| 44 | Sydney - Wagga Wagga | 241.1 | 235.4 | -2.3 |
| 45 | Dubbo - Sydney | 245.6 | 231.8 | -5.6 |
| 46 | Sydney - Townsville | 209.4 | 212.3 | 1.4 |
| 47 | Cairns - Townsville | 220.2 | 226.8 | 3.0 |
| 48 | Hervey Bay - Sydney | 192.0 | 168.3 | -12.3 |
| 49 | Alice Springs - Melbourne | 29.6 | 179.3 | NA (c) |
| 50 | Newman - Perth | .. | 233.1 | NA (d) |
| 51 | Gold Coast - Newcastle | .. | 163.2 | NA (e) |
| 52 | Adelaide - Alice Springs | .. | 44.6 | NA (f) |
| 53 | Darwin - Perth | .. | 45.9 | NA (g) |
| | Total top routes | 53 891.3 | 55 182.3 | 2.4 |
| | Total domestic network | 63 873.1 | 65 492.6 | 2.5 |

(a) Karratha - Perth route included from October 2008, prior data not shown.

(b) Port Macquarie - Sydney route included from February 2008, prior data not shown.

(c) Alice Springs - Melbourne route included from May 2008, prior data not shown.

(d) Newman - Perth route included from October 2008, prior data not shown.

(e) Gold Coast - Newcastle route included from August 2008, prior data not shown.

(f) Adelaide - Alice Springs route included from April 2009, prior data not shown.

(g) Darwin - Perth route included from May 2009, prior data not shown.

Table 3: Load factors (%) — annual activity

| | City-Pair | YE June 2008 | YE June 2009 | % Point diff |
|----|-------------------------------|--------------|--------------|--------------|
| 1 | Melbourne - Sydney | 80.2 | 80.5 | 0.3 |
| 2 | Brisbane - Sydney | 77.4 | 80.0 | 2.6 |
| 3 | Brisbane - Melbourne | 81.3 | 80.0 | -1.3 |
| 4 | Adelaide - Melbourne | 76.0 | 79.2 | 3.3 |
| 5 | Gold Coast - Sydney | 81.7 | 84.2 | 2.5 |
| 6 | Melbourne - Perth | 81.1 | 81.8 | 0.7 |
| 7 | Gold Coast - Melbourne | 82.8 | 86.4 | 3.6 |
| 8 | Adelaide - Sydney | 78.5 | 80.3 | 1.8 |
| 9 | Perth - Sydney | 86.5 | 81.5 | -5.0 |
| 10 | Hobart - Melbourne | 79.7 | 79.3 | -0.3 |
| 11 | Brisbane - Cairns | 78.0 | 81.7 | 3.7 |
| 12 | Canberra - Melbourne | 71.7 | 65.8 | -5.9 |
| 13 | Canberra - Sydney | 63.3 | 57.7 | -5.5 |
| 14 | Brisbane - Townsville | 82.0 | 74.1 | -7.9 |
| 15 | Cairns - Sydney | 77.4 | 81.7 | 4.3 |
| 16 | Launceston - Melbourne | 79.7 | 79.1 | -0.6 |
| 17 | Brisbane - Mackay | 79.8 | 78.7 | -1.1 |
| 18 | Brisbane - Perth | 84.9 | 81.5 | -3.4 |
| 19 | Adelaide - Brisbane | 81.7 | 84.3 | 2.6 |
| 20 | Brisbane - Canberra | 70.4 | 70.8 | 0.4 |
| 21 | Adelaide - Perth | 80.5 | 74.1 | -6.4 |
| 22 | Brisbane - Rockhampton | 76.6 | 77.3 | 0.7 |
| 23 | Brisbane - Newcastle | 81.7 | 75.9 | -5.8 |
| 24 | Maroochydore - Sydney | 82.7 | 84.0 | 1.3 |
| 25 | Hobart - Sydney | 79.7 | 81.0 | 1.3 |
| 26 | Cairns - Melbourne | 81.1 | 83.3 | 2.3 |
| 27 | Maroochydore - Melbourne | 82.7 | 84.7 | 2.0 |
| 28 | Melbourne - Newcastle | 80.0 | 80.8 | 0.7 |
| 29 | Brisbane - Darwin | 79.6 | 79.3 | -0.3 |
| 30 | Karratha - Perth | .. | 58.7 | NA (a) |
| 31 | Broome - Perth | 75.3 | 69.7 | -5.7 |
| 32 | Coffs Harbour - Sydney | 80.4 | 80.7 | 0.3 |
| 33 | Ballina - Sydney | 81.0 | 82.6 | 1.6 |
| 34 | Darwin - Melbourne | 79.3 | 83.6 | 4.2 |
| 35 | Adelaide - Gold Coast | 84.1 | 85.1 | 1.0 |
| 36 | Albury - Sydney | 70.6 | 67.6 | -2.9 |
| 37 | Brisbane - Proserpine | 84.1 | 88.8 | 4.7 |
| 38 | Kalgoorlie - Perth | 73.1 | 60.5 | -12.5 |
| 39 | Launceston - Sydney | 79.2 | 82.7 | 3.6 |
| 40 | Adelaide - Canberra | 73.7 | 71.0 | -2.7 |
| 41 | Brisbane - Hamilton Island | 73.2 | 77.7 | 4.5 |
| 42 | Port Macquarie - Sydney | 80.1 | 68.2 | NA (b) |
| 43 | Melbourne - Mildura | 75.4 | 72.5 | -2.9 |
| 44 | Sydney - Wagga Wagga | 76.9 | 74.2 | -2.7 |
| 45 | Dubbo - Sydney | 76.6 | 74.5 | -2.1 |
| 46 | Sydney - Townsville | 80.5 | 79.8 | -0.7 |
| 47 | Cairns - Townsville | 66.1 | 65.8 | -0.3 |
| 48 | Hervey Bay - Sydney | 80.9 | 84.9 | 4.0 |
| 49 | Alice Springs - Melbourne | 73.7 | 76.4 | NA (c) |
| 50 | Newman - Perth | .. | 57.6 | NA (d) |
| 51 | Gold Coast - Newcastle | .. | 81.4 | NA (e) |
| 52 | Adelaide - Alice Springs | .. | 67.2 | NA (f) |
| 53 | Darwin - Perth | .. | 59.6 | NA (g) |
| | Total top routes | 80.3 | 79.7 | -0.5 |
| | Total domestic network | 79.1 | 78.6 | -0.4 |

(a) Karratha - Perth route included from October 2008, prior data not shown.

(b) Port Macquarie - Sydney route included from February 2008, prior data not shown.

(c) Alice Springs - Melbourne route included from May 2008, prior data not shown.

(d) Newman - Perth route included from October 2008, prior data not shown.

(e) Gold Coast - Newcastle route included from August 2008, prior data not shown.

(f) Adelaide - Alice Springs route included from April 2009, prior data not shown.

(g) Darwin - Perth route included from May 2009, prior data not shown.

Table 4: Aircraft movements — annual activity

| | City-Pair | YE June 2008 | YE June 2009 | % Change |
|-------------------------------|----------------------------|----------------|----------------|------------|
| 1 | Melbourne - Sydney | 44 326 | 44 472 | 0.3 |
| 2 | Brisbane - Sydney | 30 022 | 29 615 | -1.4 |
| 3 | Brisbane - Melbourne | 19 819 | 20 291 | 2.4 |
| 4 | Adelaide - Melbourne | 16 252 | 17 499 | 7.7 |
| 5 | Gold Coast - Sydney | 15 947 | 14 751 | -7.5 |
| 6 | Melbourne - Perth | 9 467 | 10 400 | 9.9 |
| 7 | Gold Coast - Melbourne | 10 899 | 10 332 | -5.2 |
| 8 | Adelaide - Sydney | 12 250 | 11 779 | -3.8 |
| 9 | Perth - Sydney | 6 209 | 8 114 | 30.7 |
| 10 | Hobart - Melbourne | 7 977 | 8 819 | 10.6 |
| 11 | Brisbane - Cairns | 9 062 | 8 576 | -5.4 |
| 12 | Canberra - Melbourne | 10 698 | 12 149 | 13.6 |
| 13 | Canberra - Sydney | 17 008 | 18 897 | 11.1 |
| 14 | Brisbane - Townsville | 6 979 | 8 432 | 20.8 |
| 15 | Cairns - Sydney | 6 715 | 6 088 | -9.3 |
| 16 | Launceston - Melbourne | 7 201 | 7 252 | 0.7 |
| 17 | Brisbane - Mackay | 5 925 | 6 911 | 16.6 |
| 18 | Brisbane - Perth | 3 675 | 4 368 | 18.9 |
| 19 | Adelaide - Brisbane | 5 099 | 5 380 | 5.5 |
| 20 | Brisbane - Canberra | 6 309 | 6 909 | 9.5 |
| 21 | Adelaide - Perth | 4 388 | 5 341 | 21.7 |
| 22 | Brisbane - Rockhampton | 7 065 | 7 856 | 11.2 |
| 23 | Brisbane - Newcastle | 4 110 | 5 304 | 29.1 |
| 24 | Maroochydore - Sydney | 3 050 | 3 413 | 11.9 |
| 25 | Hobart - Sydney | 3 341 | 3 504 | 4.9 |
| 26 | Cairns - Melbourne | 3 118 | 3 032 | -2.8 |
| 27 | Maroochydore - Melbourne | 3 128 | 2 846 | -9.0 |
| 28 | Melbourne - Newcastle | 3 708 | 2 882 | -22.3 |
| 29 | Brisbane - Darwin | 2 085 | 2 341 | 12.3 |
| 30 | Karratha - Perth | .. | 4 270 | NA (a) |
| 31 | Broome - Perth | 2 858 | 3 581 | 25.3 |
| 32 | Coffs Harbour - Sydney | 4 669 | 4 327 | -7.3 |
| 33 | Ballina - Sydney | 3 895 | 3 432 | -11.9 |
| 34 | Darwin - Melbourne | 1 619 | 1 618 | -0.1 |
| 35 | Adelaide - Gold Coast | 1 452 | 1 692 | 16.5 |
| 36 | Albury - Sydney | 6 062 | 6 642 | 9.6 |
| 37 | Brisbane - Proserpine | 1 450 | 1 458 | 0.6 |
| 38 | Kalgoorlie - Perth | 2 879 | 2 869 | -0.3 |
| 39 | Launceston - Sydney | 1 537 | 1 456 | -5.3 |
| 40 | Adelaide - Canberra | 1 865 | 1 993 | 6.9 |
| 41 | Brisbane - Hamilton Island | 1 459 | 1 455 | -0.3 |
| 42 | Port Macquarie - Sydney | 1 496 | 4 033 | NA (b) |
| 43 | Melbourne - Mildura | 5 608 | 5 319 | -5.2 |
| 44 | Sydney - Wagga Wagga | 5 984 | 5 687 | -5.0 |
| 45 | Dubbo - Sydney | 6 926 | 6 030 | -12.9 |
| 46 | Sydney - Townsville | 1 255 | 1 251 | -0.3 |
| 47 | Cairns - Townsville | 4 614 | 3 825 | -17.1 |
| 48 | Hervey Bay - Sydney | 1 146 | 1 144 | -0.2 |
| 49 | Alice Springs - Melbourne | 174 | 1 048 | NA (c) |
| 50 | Newman - Perth | .. | 2 082 | NA (d) |
| 51 | Gold Coast - Newcastle | .. | 943 | NA (e) |
| 52 | Adelaide - Alice Springs | .. | 260 | NA (f) |
| 53 | Darwin - Perth | .. | 265 | NA (g) |
| Total top routes | | 352 379 | 364 233 | 3.4 |
| Total domestic network | | 549 511 | 550 324 | 0.1 |

(a) Karratha - Perth route included from October 2008, prior data not shown.

(b) Port Macquarie - Sydney route included from February 2008, prior data not shown.

(c) Alice Springs - Melbourne route included from May 2008, prior data not shown.

(d) Newman - Perth route included from October 2008, prior data not shown.

(e) Gold Coast - Newcastle route included from August 2008, prior data not shown.

(f) Adelaide - Alice Springs route included from April 2009, prior data not shown.

(g) Darwin - Perth route included from May 2009, prior data not shown.

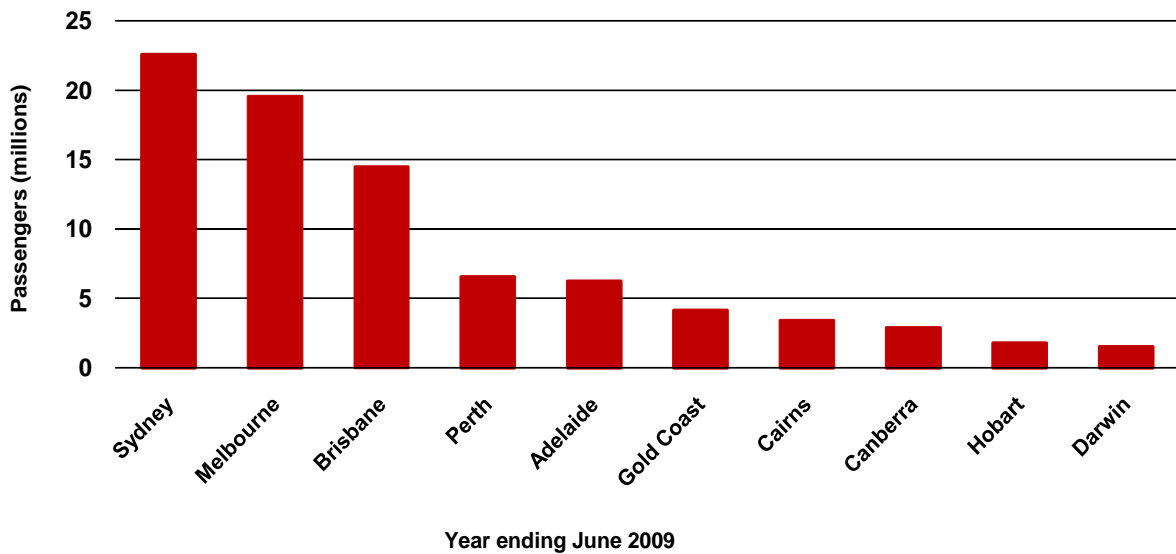
TOP TEN AIRPORTS

Table 5: Top ten airport passenger movements (000s) — annual activity

| | Airport | YE June 2008 | YE June 2009 | % Change | % of Total |
|-------------------------------|----------------|---------------------|---------------------|-----------------|-------------------|
| 1 | Sydney | 22 473.3 | 22 338.6 | -0.6 | 22.2 |
| 2 | Melbourne | 19 380.1 | 19 803.6 | 2.2 | 19.7 |
| 3 | Brisbane | 14 459.0 | 14 790.6 | 2.3 | 14.7 |
| 4 | Perth | 6 479.6 | 6 759.4 | 4.3 | 6.7 |
| 5 | Adelaide | 6 206.0 | 6 347.2 | 2.3 | 6.3 |
| 6 | Gold Coast | 4 062.7 | 4 204.5 | 3.5 | 4.2 |
| 7 | Cairns | 3 367.8 | 3 358.0 | -0.3 | 3.3 |
| 8 | Canberra | 2 853.7 | 3 062.8 | 7.3 | 3.0 |
| 9 | Hobart | 1 758.2 | 1 869.3 | 6.3 | 1.9 |
| 10 | Darwin | 1 473.1 | 1 673.3 | 13.6 | 1.7 |
| Total top ten airports | | 82 513.5 | 84 207.2 | 2.1 | 83.8 |
| Total domestic network | | 98 557.4 | 100 485.8 | 2.0 | 100.0 |

Top ten airport passenger movements

(Domestic and regional passenger traffic - traffic on board)



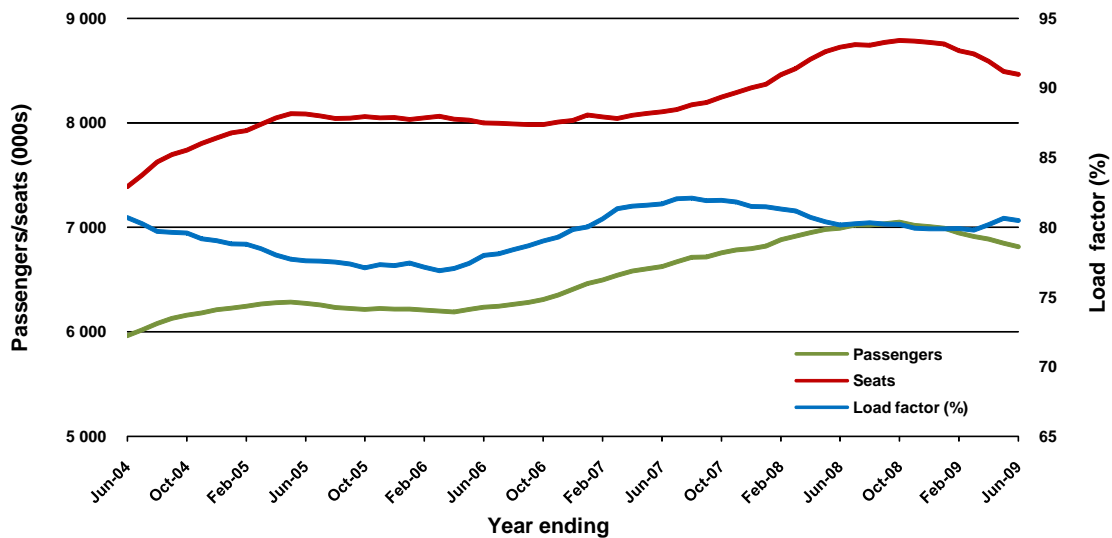
TOP COMPETITIVE ROUTES

1. Melbourne - Sydney

| | YE June 2008 | YE June 2009 | % Change |
|----------------------------|--------------|--------------|----------|
| Passenger movements (000s) | 6 992.8 | 6 814.7 | -2.5 |
| Seats (000s) | 8 723.9 | 8 463.8 | -3.0 |
| Load factor % | 80.2 | 80.5 | 0.3 |
| Aircraft trips | 44 326 | 44 472 | 0.3 |

* percentage point difference

Passenger traffic and load factors

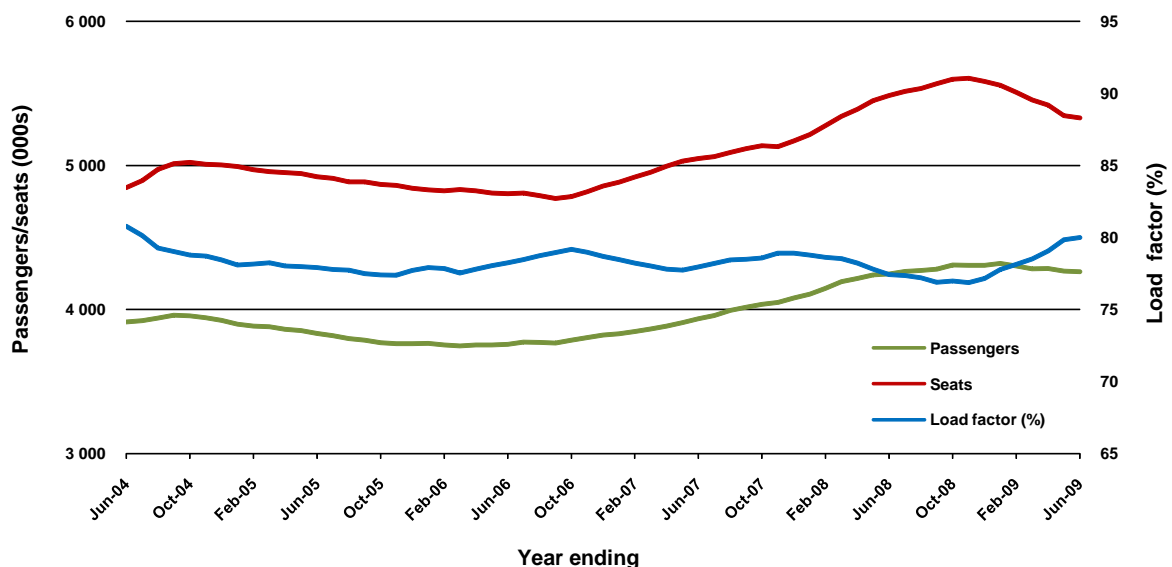


2. Brisbane - Sydney

| | YE June 2008 | YE June 2009 | % Change |
|----------------------------|--------------|--------------|----------|
| Passenger movements (000s) | 4 246.4 | 4 262.8 | 0.4 |
| Seats (000s) | 5 484.1 | 5 329.1 | -2.8 |
| Load factor % | 77.4 | 80.0 | 2.6 |
| Aircraft trips | 30 022 | 29 615 | -1.4 |

* percentage point difference

Passenger traffic and load factors

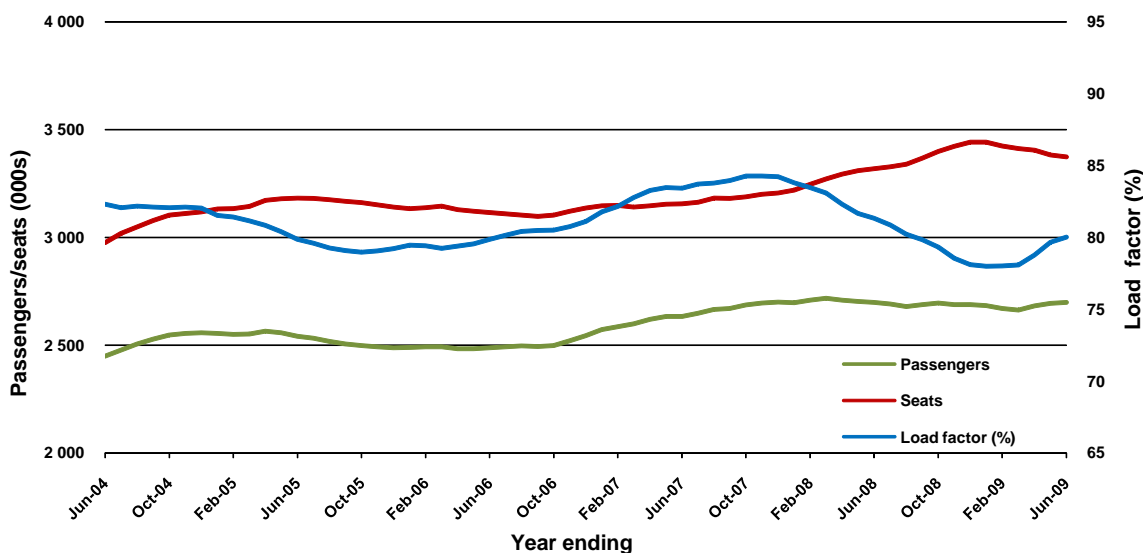


3. Brisbane - Melbourne

| | YE June 2008 | YE June 2009 | % Change |
|----------------------------|--------------|--------------|----------|
| Passenger movements (000s) | 2 699.0 | 2 699.2 | 0.0 |
| Seats (000s) | 3 319.1 | 3 373.6 | 1.6 |
| Load factor % | 81.3 | 80.0 | -1.3 |
| Aircraft trips | 19 819 | 20 291 | 2.4 |

* percentage point difference

Passenger traffic and load factors

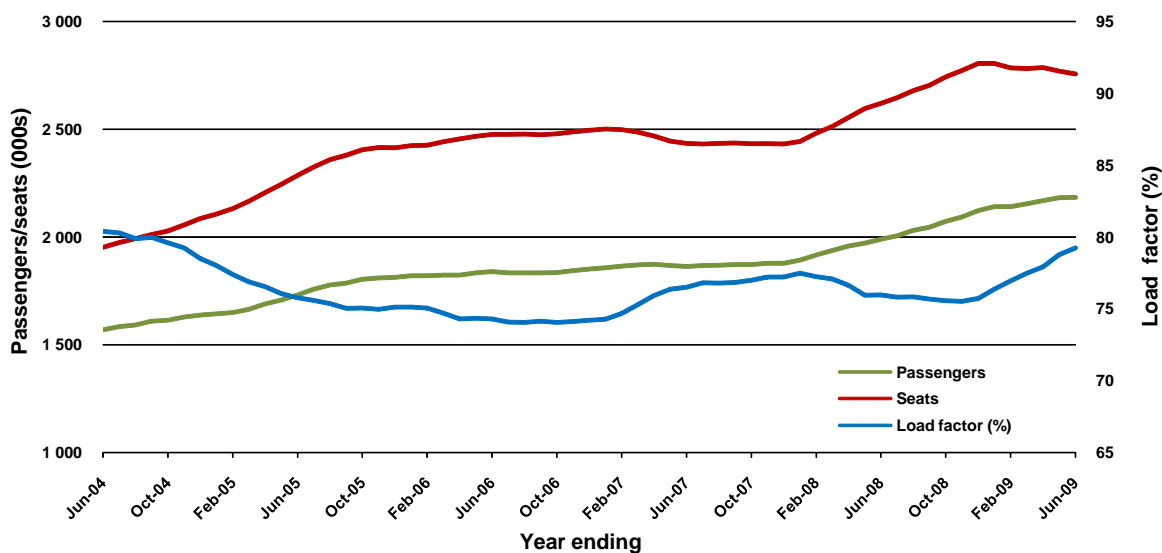


4. Adelaide - Melbourne

| | YE June 2008 | YE June 2009 | % Change |
|----------------------------|--------------|--------------|----------|
| Passenger movements (000s) | 1 988.5 | 2 183.3 | 9.8 |
| Seats (000s) | 2 618.9 | 2 755.4 | 5.2 |
| Load factor % | 76.0 | 79.2 | 3.3 |
| Aircraft trips | 16 252 | 17 499 | 7.7 |

* percentage point difference

Passenger traffic and load factors

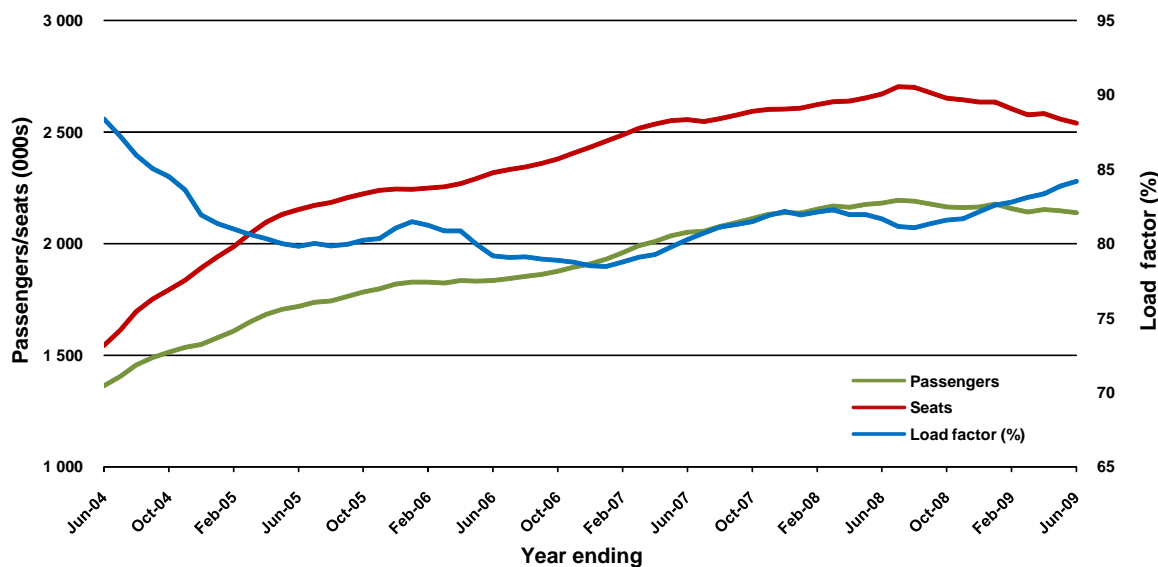


5. Gold Coast - Sydney

| | YE June 2008 | YE June 2009 | % Change |
|----------------------------|--------------|--------------|----------|
| Passenger movements (000s) | 2 181.7 | 2 138.5 | -2.0 |
| Seats (000s) | 2 671.1 | 2 539.9 | -4.9 |
| Load factor % | 81.7 | 84.2 | 2.5 |
| Aircraft trips | 15 947 | 14 751 | -7.5 |

* percentage point difference

Passenger traffic and load factors

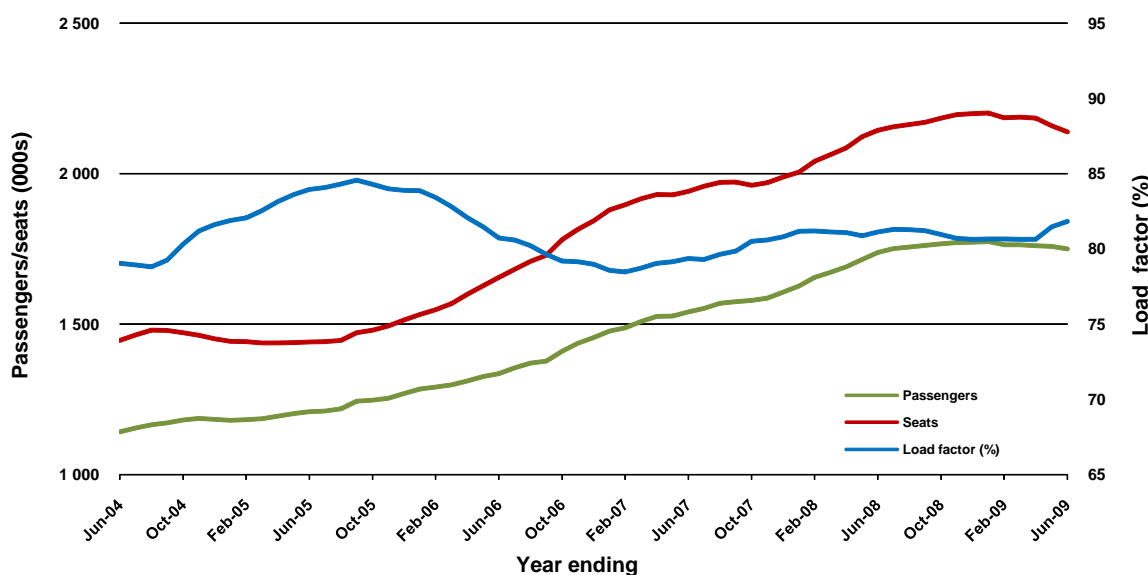


6. Melbourne - Perth

| | YE June 2008 | YE June 2009 | % Change |
|----------------------------|--------------|--------------|----------|
| Passenger movements (000s) | 1 737.3 | 1 749.0 | 0.7 |
| Seats (000s) | 2 143.3 | 2 137.6 | -0.3 |
| Load factor % | 81.1 | 81.8 | 0.7 |
| Aircraft trips | 9 467 | 10 400 | 9.9 |

* percentage point difference

Passenger traffic and load factors

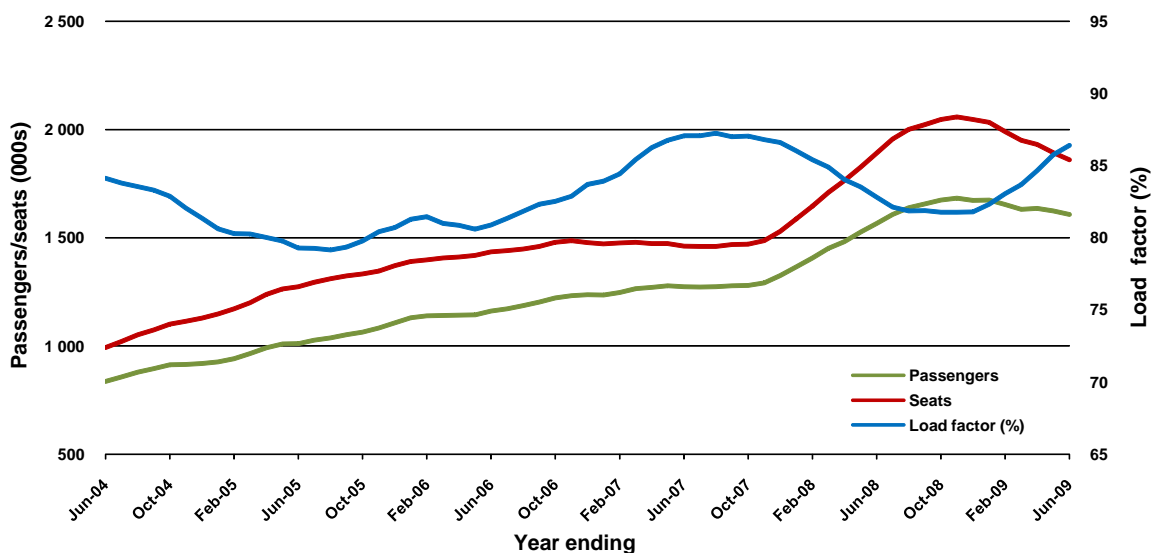


7. Gold Coast - Melbourne

| | YE June 2008 | YE June 2009 | % Change |
|----------------------------|--------------|--------------|----------|
| Passenger movements (000s) | 1 566.5 | 1 608.3 | 2.7 |
| Seats (000s) | 1 891.7 | 1 861.5 | -1.6 |
| Load factor % | 82.8 | 86.4 | 3.6 |
| Aircraft trips | 10 899 | 10 332 | -5.2 |

* percentage point difference

Passenger traffic and load factors

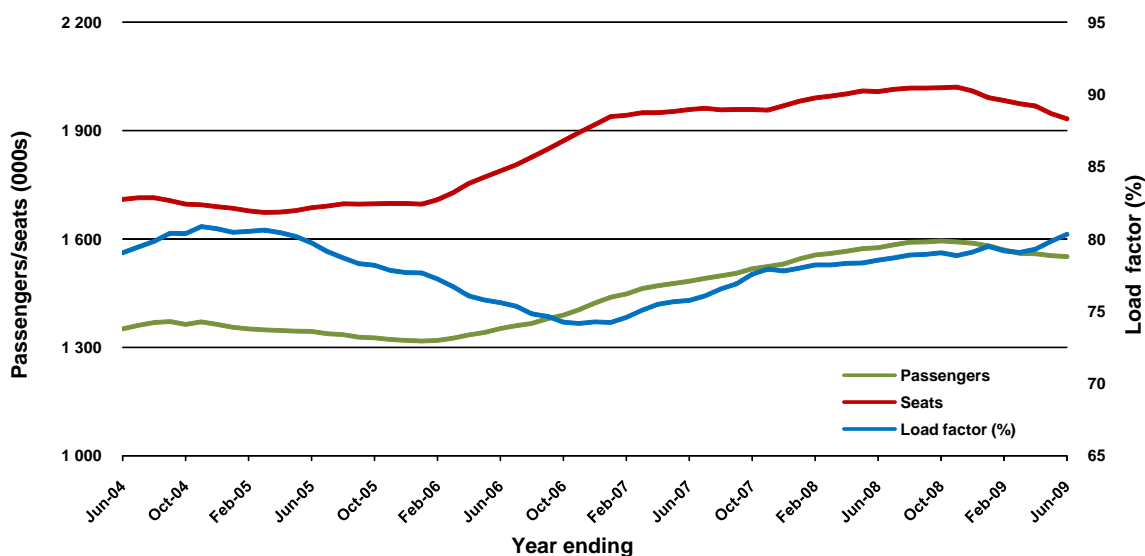


8. Adelaide - Sydney

| | YE June 2008 | YE June 2009 | % Change |
|----------------------------|--------------|--------------|----------|
| Passenger movements (000s) | 1 576.6 | 1 552.0 | -1.6 |
| Seats (000s) | 2 007.5 | 1 932.4 | -3.7 |
| Load factor % | 78.5 | 80.3 | 1.8 |
| Aircraft trips | 12 250 | 11 779 | -3.8 |

* percentage point difference

Passenger traffic and load factors

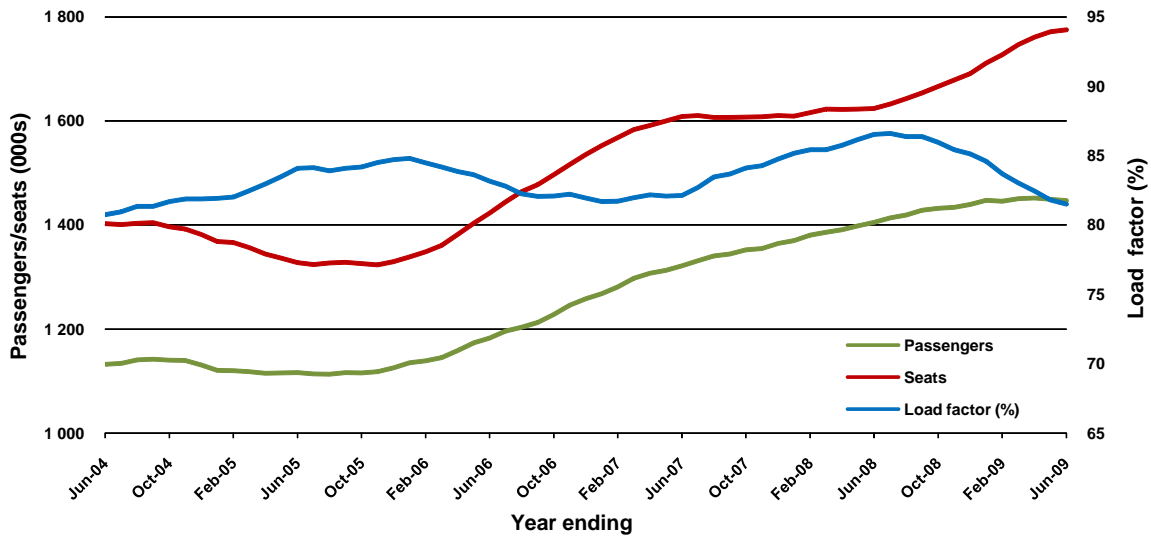


9. Perth - Sydney

| | YE June 2008 | YE June 2009 | % Change |
|----------------------------|--------------|--------------|----------|
| Passenger movements (000s) | 1 405.0 | 1 446.8 | 3.0 |
| Seats (000s) | 1 623.8 | 1 775.1 | 9.3 |
| Load factor % | 86.5 | 81.5 | -5.0 |
| Aircraft trips | 6 209 | 8 114 | 30.7 |

* percentage point difference

Passenger traffic and load factors

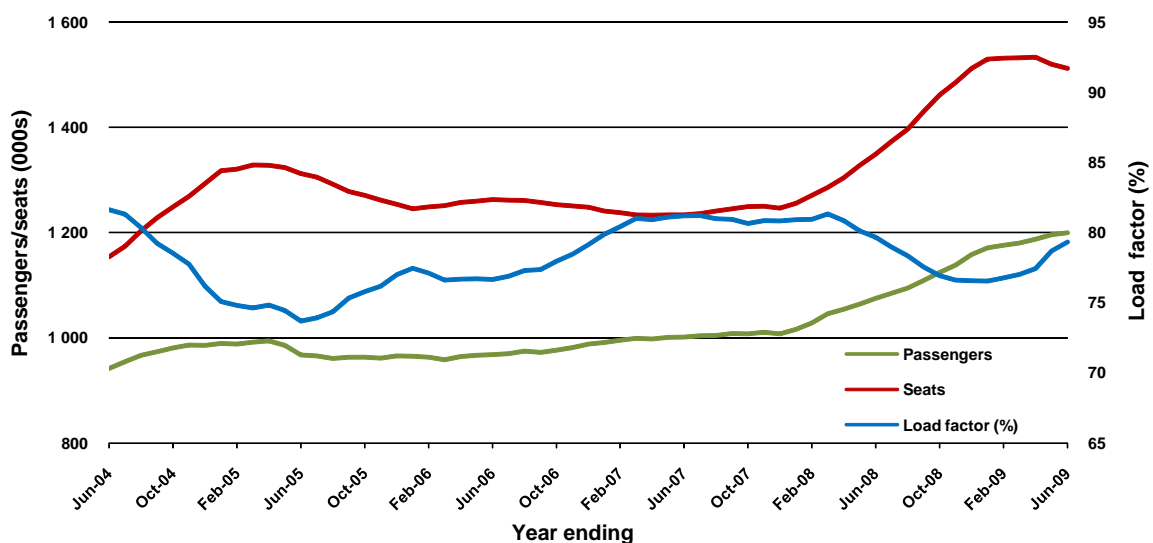


10. Hobart - Melbourne

| | YE June 2008 | YE June 2009 | % Change |
|----------------------------|--------------|--------------|----------|
| Passenger movements (000s) | 1 074.6 | 1 199.4 | 11.6 |
| Seats (000s) | 1 349.0 | 1 512.1 | 12.1 |
| Load factor % | 79.7 | 79.3 | -0.3 |
| Aircraft trips | 7 977 | 8 819 | 10.6 |

* percentage point difference

Passenger traffic and load factors

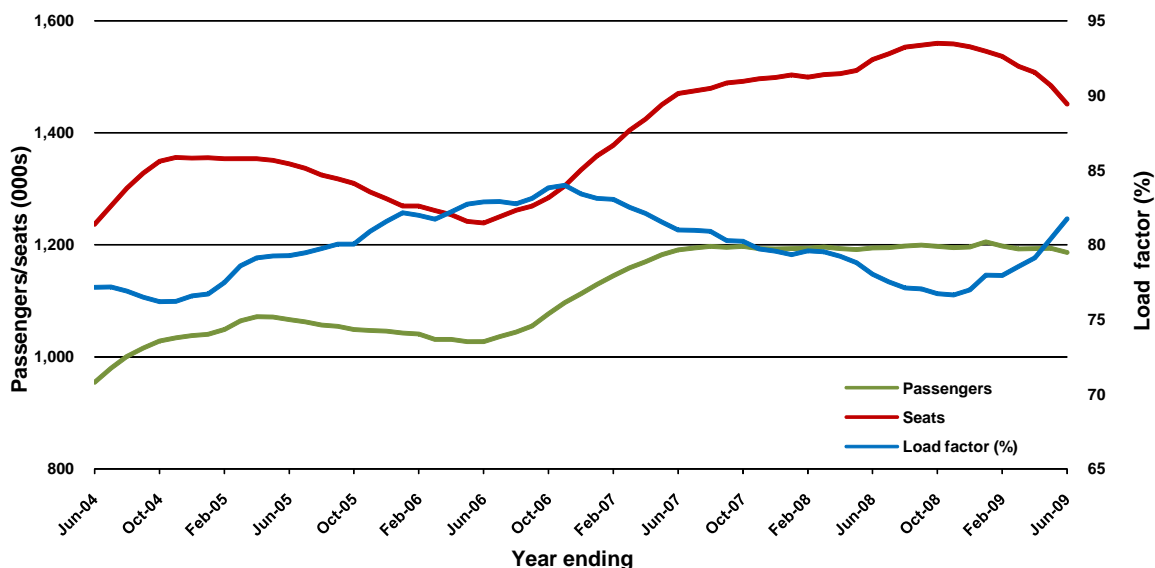


11. Brisbane - Cairns

| | YE June 2008 | YE June 2009 | % Change |
|----------------------------|--------------|--------------|----------|
| Passenger movements (000s) | 1 194.7 | 1 186.8 | -0.7 |
| Seats (000s) | 1 530.9 | 1 451.8 | -5.2 |
| Load factor % | 78.0 | 81.7 | 3.7 |
| Aircraft trips | 9 062 | 8 576 | -5.4 |

* percentage point difference

Passenger traffic and load factors

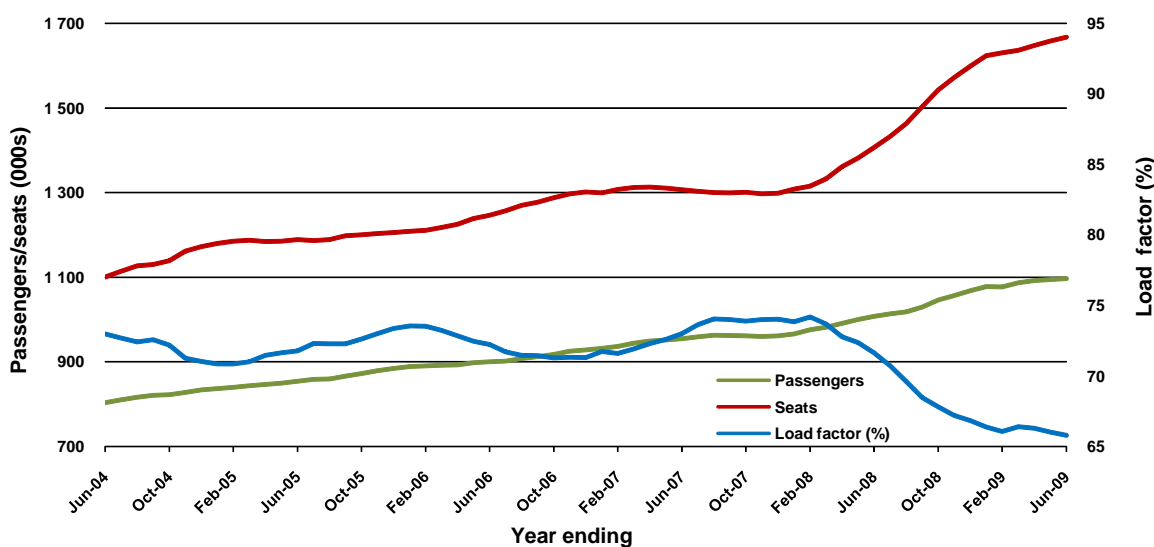


12. Canberra - Melbourne

| | YE June 2008 | YE June 2009 | % Change |
|----------------------------|--------------|--------------|----------|
| Passenger movements (000s) | 1 008.2 | 1 097.2 | 8.8 |
| Seats (000s) | 1 407.0 | 1 667.5 | 18.5 |
| Load factor % | 71.7 | 65.8 | -5.9 |
| Aircraft trips | 10 698 | 12 149 | 13.6 |

* percentage point difference

Passenger traffic and load factors

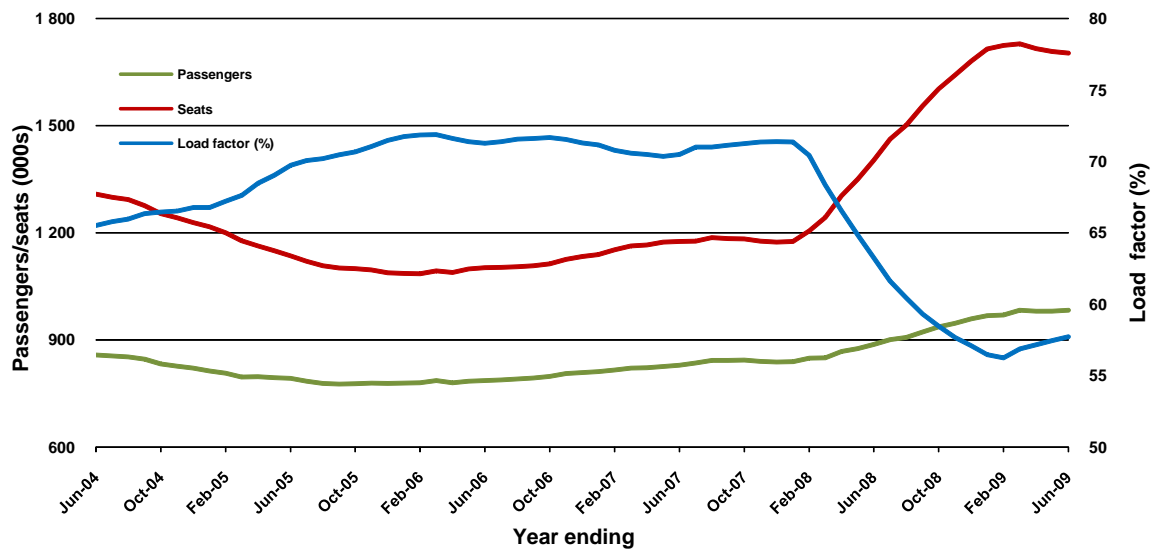


13. Canberra - Sydney

| | YE June 2008 | YE June 2009 | % Change |
|----------------------------|--------------|--------------|----------|
| Passenger movements (000s) | 887.4 | 983.5 | 10.8 |
| Seats (000s) | 1 403.0 | 1 703.8 | 21.4 |
| Load factor % | 63.3 | 57.7 | -5.5 |
| Aircraft trips | 17 008 | 18 897 | 11.1 |

* percentage point difference

Passenger traffic and load factors

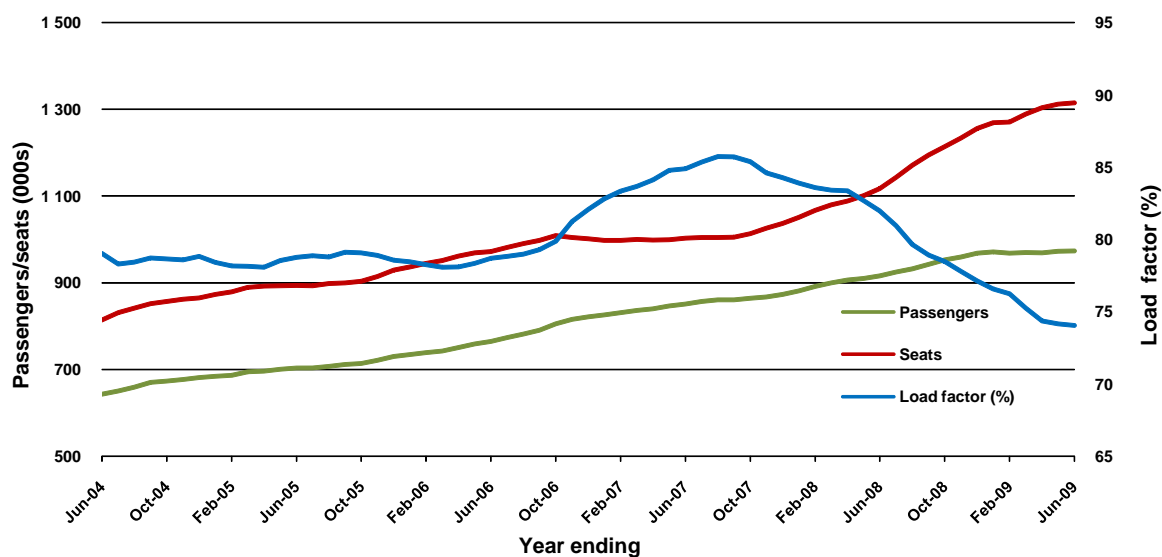


14. Brisbane - Townsville

| | YE June 2008 | YE June 2009 | % Change |
|----------------------------|--------------|--------------|----------|
| Passenger movements (000s) | 916.1 | 974.0 | 6.3 |
| Seats (000s) | 1 117.6 | 1 315.0 | 17.7 |
| Load factor % | 82.0 | 74.1 | -7.9 |
| Aircraft trips | 6 979 | 8 432 | 20.8 |

* percentage point difference

Passenger traffic and load factors

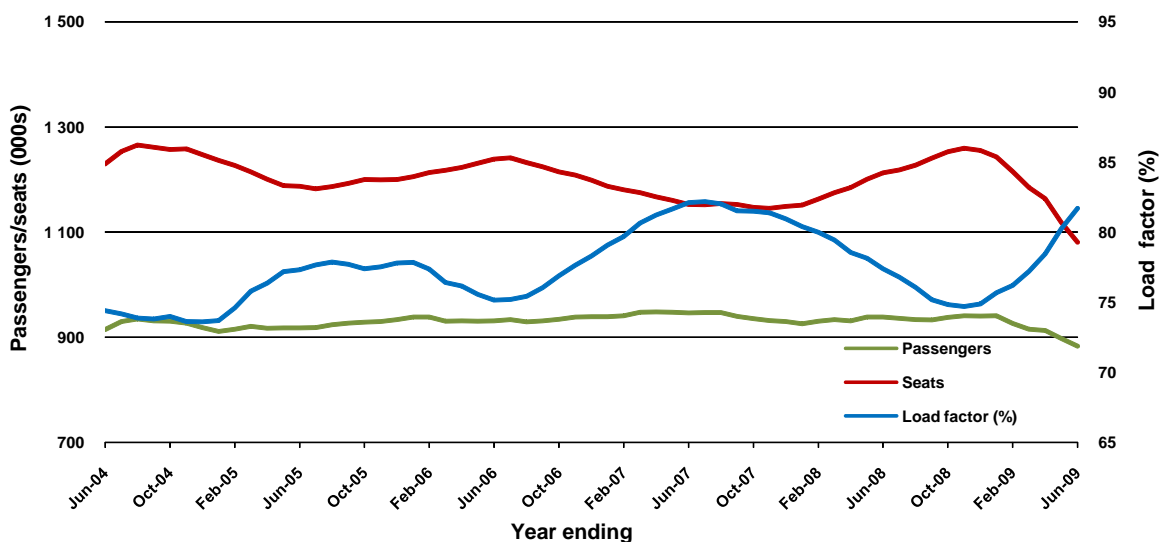


15. Cairns - Sydney

| | YE June 2008 | YE June 2009 | % Change |
|----------------------------|--------------|--------------|----------|
| Passenger movements (000s) | 938.8 | 883.2 | -5.9 |
| Seats (000s) | 1 213.1 | 1 081.0 | -10.9 |
| Load factor % | 77.4 | 81.7 | 4.3 |
| Aircraft trips | 6 715 | 6 088 | -9.3 |

* percentage point difference

Passenger traffic and load factors

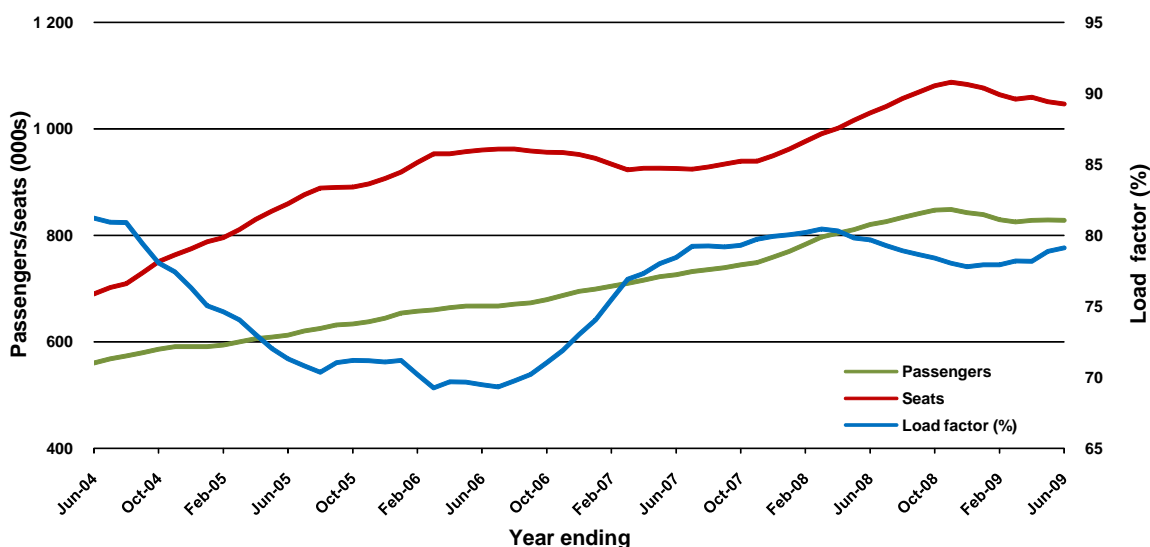


16. Launceston - Melbourne

| | YE June 2008 | YE June 2009 | % Change |
|----------------------------|--------------|--------------|----------|
| Passenger movements (000s) | 820.6 | 828.2 | 0.9 |
| Seats (000s) | 1 029.9 | 1 046.9 | 1.6 |
| Load factor % | 79.7 | 79.1 | -0.6 |
| Aircraft trips | 7 201 | 7 252 | 0.7 |

* percentage point difference

Passenger traffic and load factors

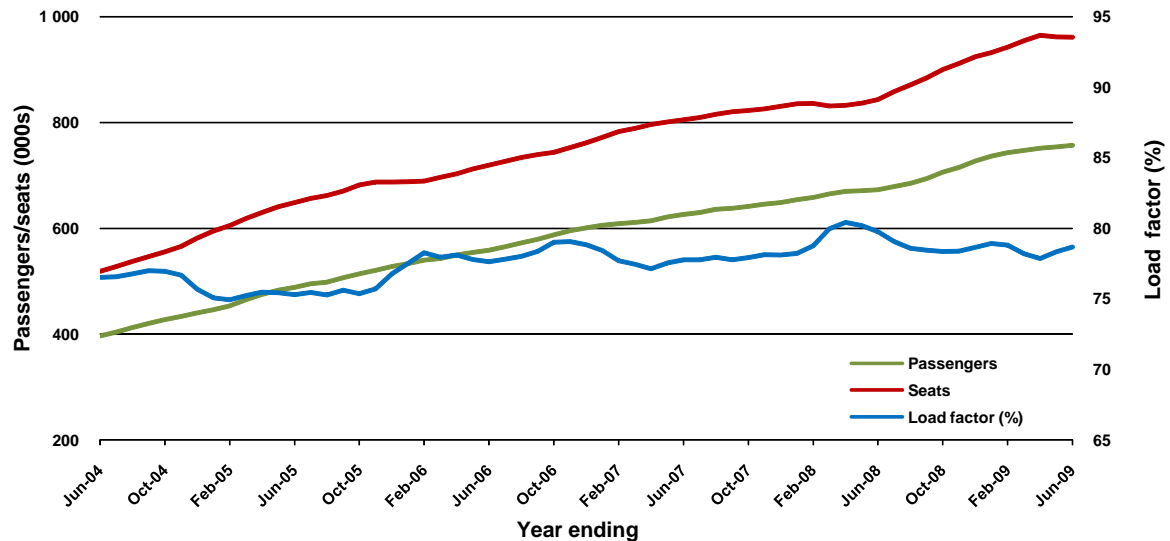


17. Brisbane - Mackay

| | YE June 2008 | YE June 2009 | % Change |
|----------------------------|--------------|--------------|----------|
| Passenger movements (000s) | 673.0 | 756.8 | 12.5 |
| Seats (000s) | 843.8 | 961.8 | 14.0 |
| Load factor % | 79.8 | 78.7 | -1.1 |
| Aircraft trips | 5 925 | 6 911 | 16.6 |

* percentage point difference

Passenger traffic and load factors

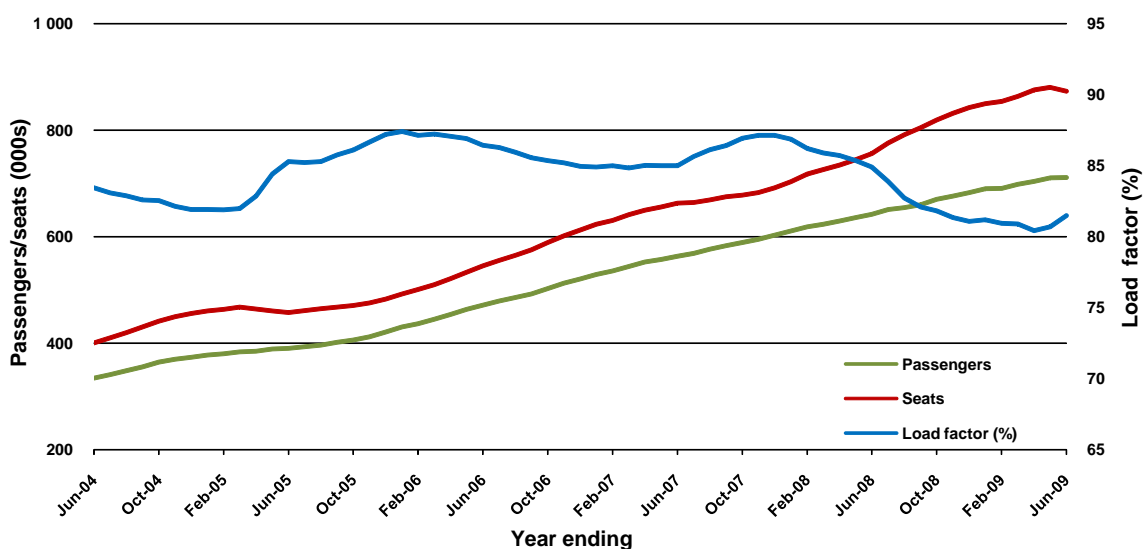


18. Brisbane - Perth

| | YE June 2008 | YE June 2009 | % Change |
|----------------------------|--------------|--------------|----------|
| Passenger movements (000s) | 642.2 | 711.4 | 10.8 |
| Seats (000s) | 756.3 | 873.0 | 15.4 |
| Load factor % | 84.9 | 81.5 | -3.4 |
| Aircraft trips | 3 675 | 4 368 | 18.9 |

* percentage point difference

Passenger traffic and load factors

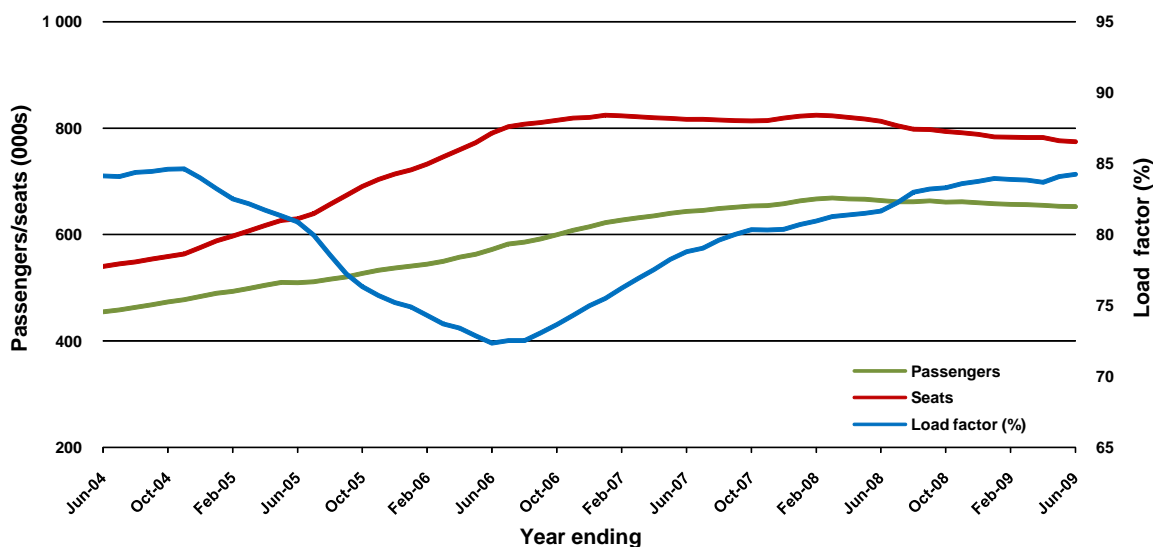


19. Adelaide - Brisbane

| | YE June 2008 | YE June 2009 | % Change |
|----------------------------|--------------|--------------|----------|
| Passenger movements (000s) | 664.1 | 652.7 | -1.7 |
| Seats (000s) | 813.2 | 774.6 | -4.7 |
| Load factor % | 81.7 | 84.3 | 2.6 |
| Aircraft trips | 5 099 | 5 380 | 5.5 |

* percentage point difference

Passenger traffic and load factors

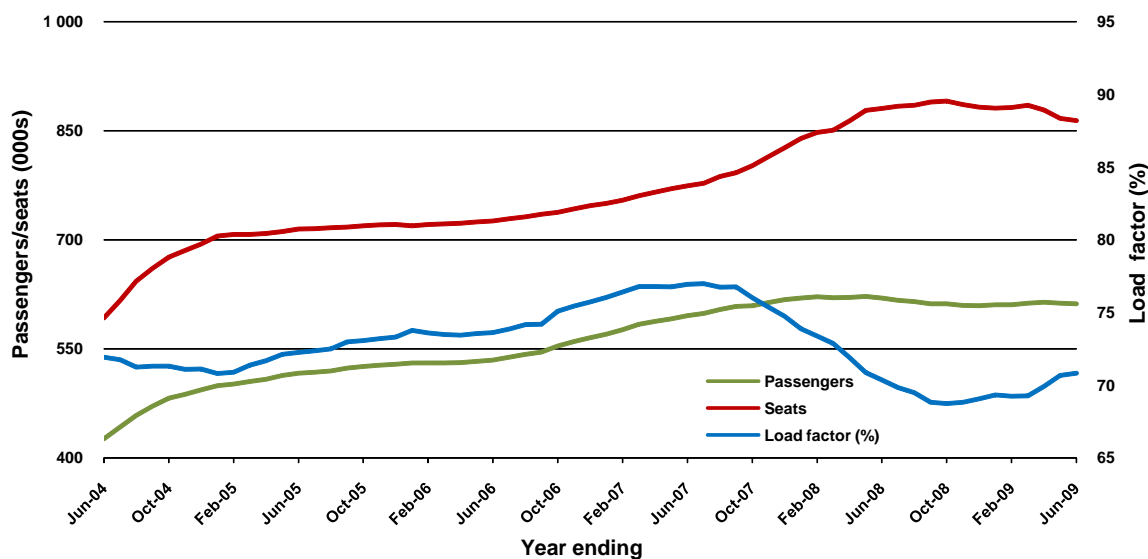


20. Brisbane - Canberra

| | YE June 2008 | YE June 2009 | % Change |
|----------------------------|--------------|--------------|----------|
| Passenger movements (000s) | 619.8 | 611.9 | -1.3 |
| Seats (000s) | 880.8 | 864.1 | -1.9 |
| Load factor % | 70.4 | 70.8 | 0.4 |
| Aircraft trips | 6 309 | 6 909 | 9.5 |

* percentage point difference

Passenger traffic and load factors

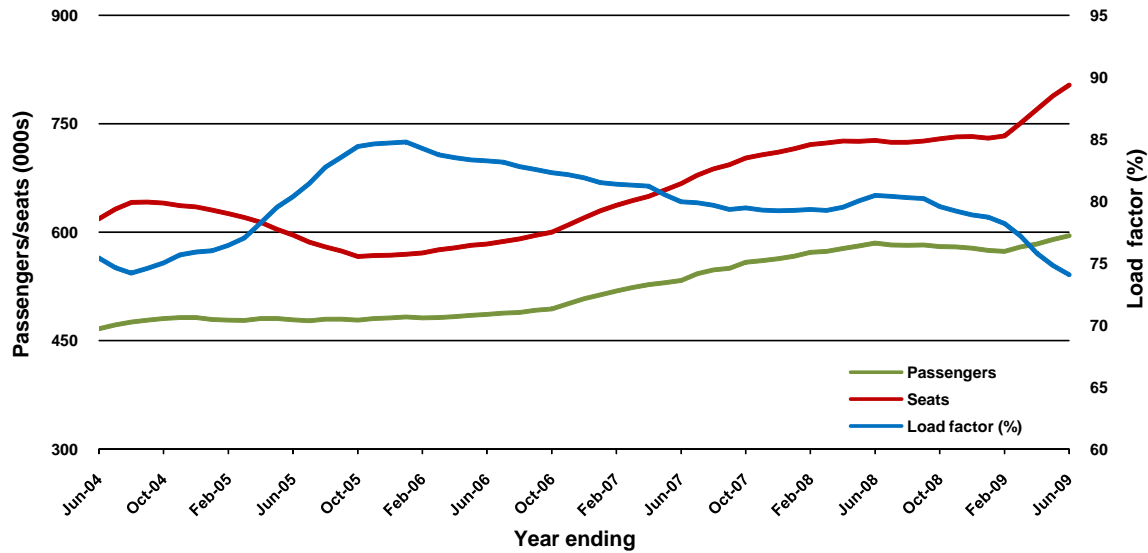


21. Adelaide - Perth

| | YE June 2008 | YE June 2009 | % Change |
|----------------------------|--------------|--------------|----------|
| Passenger movements (000s) | 584.9 | 595.0 | 1.7 |
| Seats (000s) | 726.9 | 803.4 | 10.5 |
| Load factor % | 80.5 | 74.1 | -6.4 |
| Aircraft trips | 4 388 | 5 341 | 21.7 |

* percentage point difference

Passenger traffic and load factors

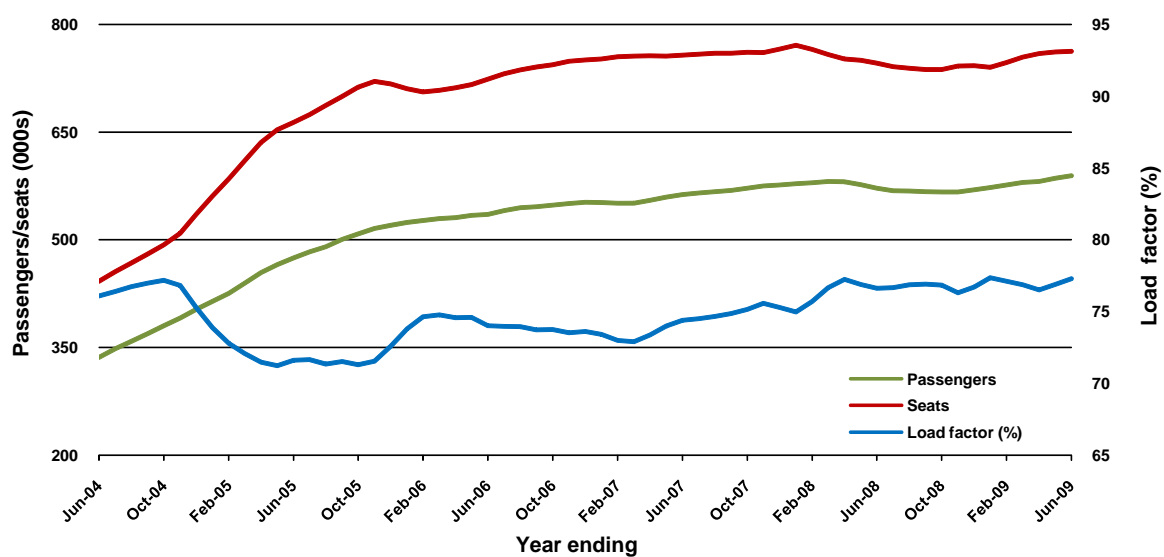


22. Brisbane - Rockhampton

| | YE June 2008 | YE June 2009 | % Change |
|----------------------------|--------------|--------------|----------|
| Passenger movements (000s) | 571.8 | 589.3 | 3.1 |
| Seats (000s) | 746.2 | 762.4 | 2.2 |
| Load factor % | 76.6 | 77.3 | 0.7 |
| Aircraft trips | 7 065 | 7 856 | 11.2 |

* percentage point difference

Passenger traffic and load factors

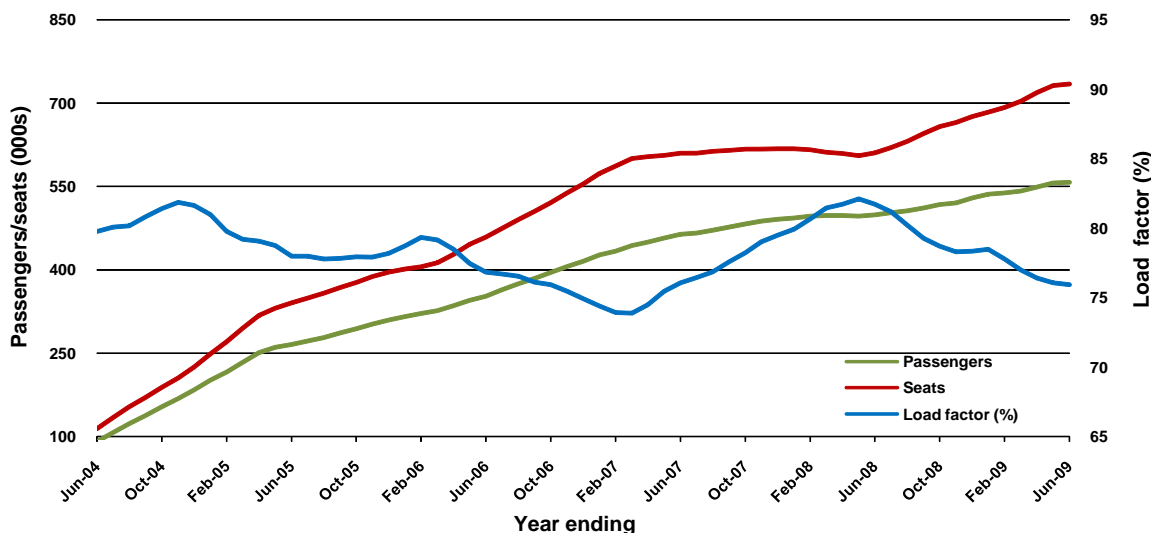


23. Brisbane - Newcastle

| | YE June 2008 | YE June 2009 | % Change |
|----------------------------|--------------|--------------|----------|
| Passenger movements (000s) | 499.0 | 557.7 | 11.7 |
| Seats (000s) | 610.5 | 734.3 | 20.3 |
| Load factor % | 81.7 | 75.9 | -5.8 |
| Aircraft trips | 4 110 | 5 304 | 29.1 |

* percentage point difference

Passenger traffic and load factors

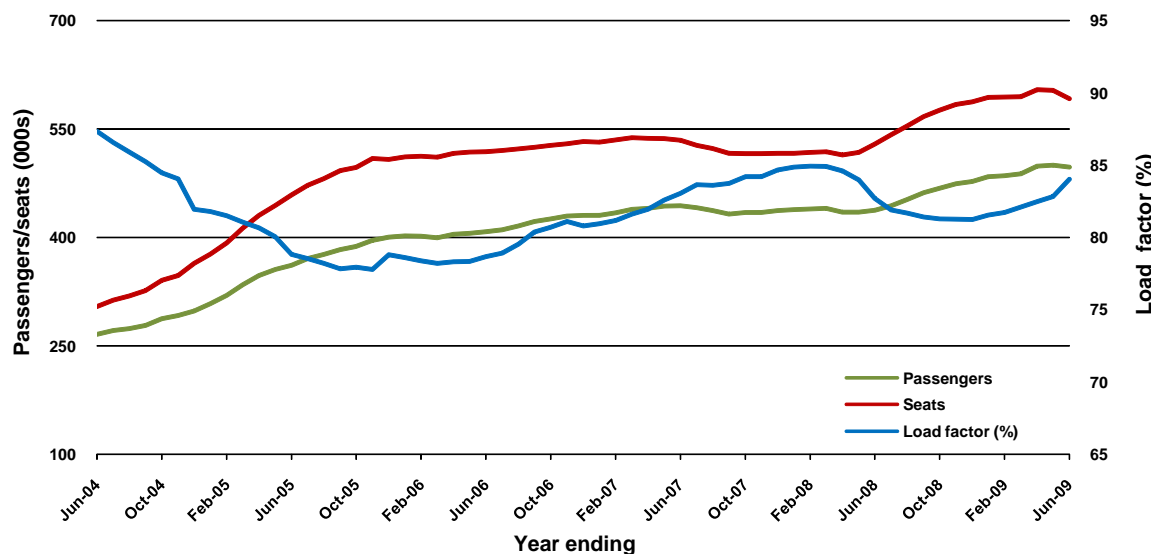


24. Maroochydore - Sydney

| | YE June 2008 | YE June 2009 | % Change |
|----------------------------|--------------|--------------|----------|
| Passenger movements (000s) | 437.6 | 497.4 | 13.7 |
| Seats (000s) | 529.1 | 591.9 | 11.9 |
| Load factor % | 82.7 | 84.0 | 1.3 |
| Aircraft trips | 3 050 | 3 413 | 11.9 |

* percentage point difference

Passenger traffic and load factors

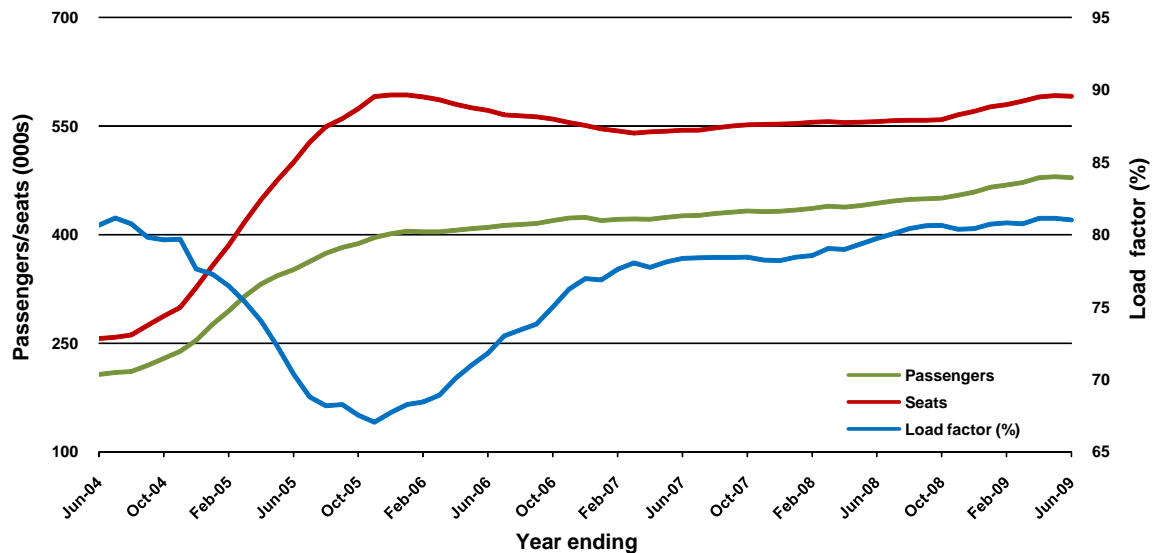


25. Hobart - Sydney

| | YE June 2008 | YE June 2009 | % Change |
|----------------------------|--------------|--------------|----------|
| Passenger movements (000s) | 443.2 | 478.6 | 8.0 |
| Seats (000s) | 555.8 | 590.8 | 6.3 |
| Load factor % | 79.7 | 81.0 | 1.3 |
| Aircraft trips | 3 341 | 3 504 | 4.9 |

* percentage point difference

Passenger traffic and load factors

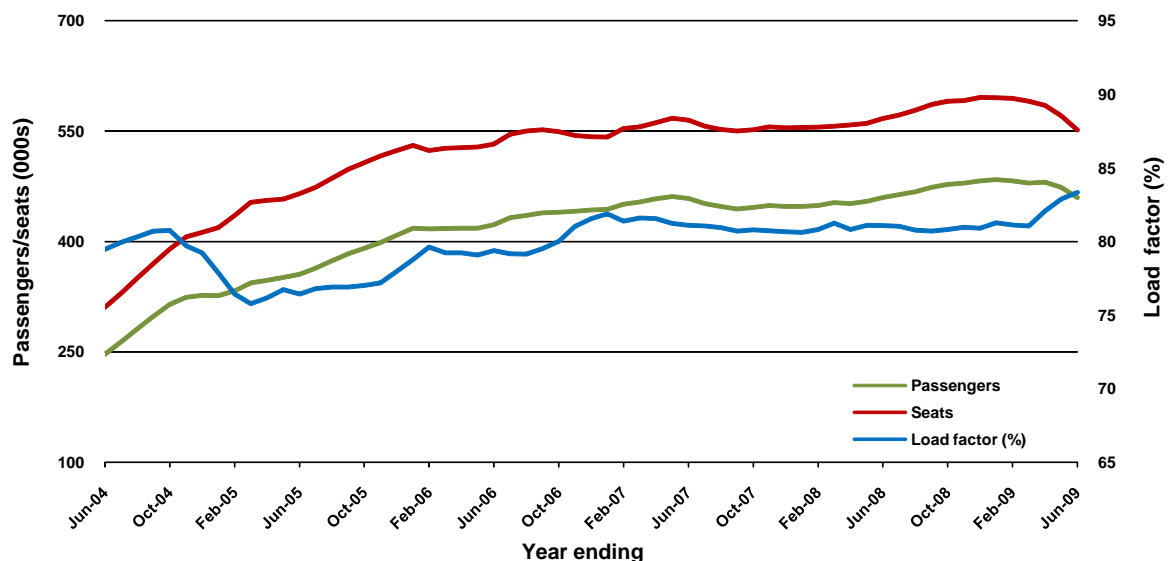


26. Cairns - Melbourne

| | YE June 2008 | YE June 2009 | % Change |
|----------------------------|--------------|--------------|----------|
| Passenger movements (000s) | 459.8 | 459.6 | -0.1 |
| Seats (000s) | 567.3 | 551.5 | -2.8 |
| Load factor % | 81.1 | 83.3 | 2.3 |
| Aircraft trips | 3 118 | 3 032 | -2.8 |

* percentage point difference

Passenger traffic and load factors

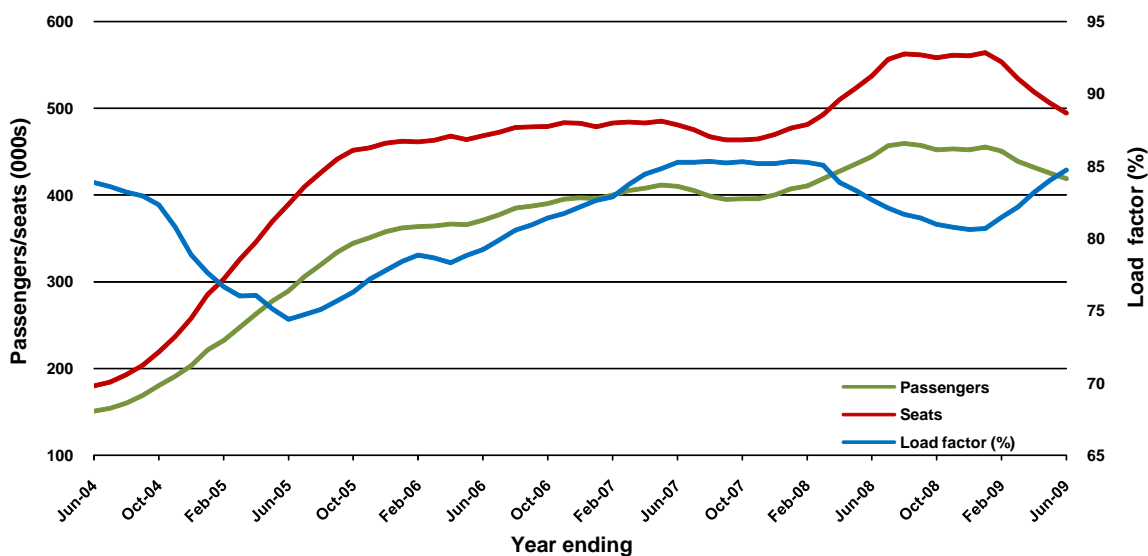


27. Maroochydore - Melbourne

| | YE June 2008 | YE June 2009 | % Change |
|----------------------------|--------------|--------------|----------|
| Passenger movements (000s) | 444.3 | 419.0 | -5.7 |
| Seats (000s) | 537.4 | 494.5 | -8.0 |
| Load factor % | 82.7 | 84.7 | 2.0 |
| Aircraft trips | 3 128 | 2 846 | -9.0 |

* percentage point difference

Passenger traffic and load factors

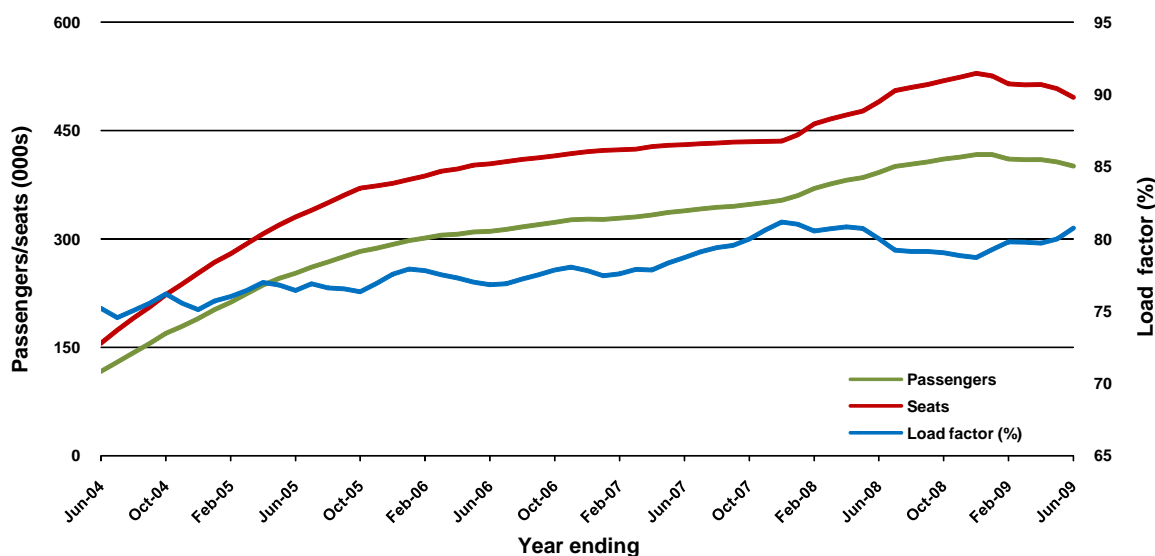


28. Melbourne - Newcastle

| | YE June 2008 | YE June 2009 | % Change |
|----------------------------|--------------|--------------|----------|
| Passenger movements (000s) | 392.1 | 400.8 | 2.2 |
| Seats (000s) | 490.0 | 496.3 | 1.3 |
| Load factor % | 80.0 | 80.8 | 0.7 |
| Aircraft trips | 3 708 | 2 882 | -22.3 |

* percentage point difference

Passenger traffic and load factors

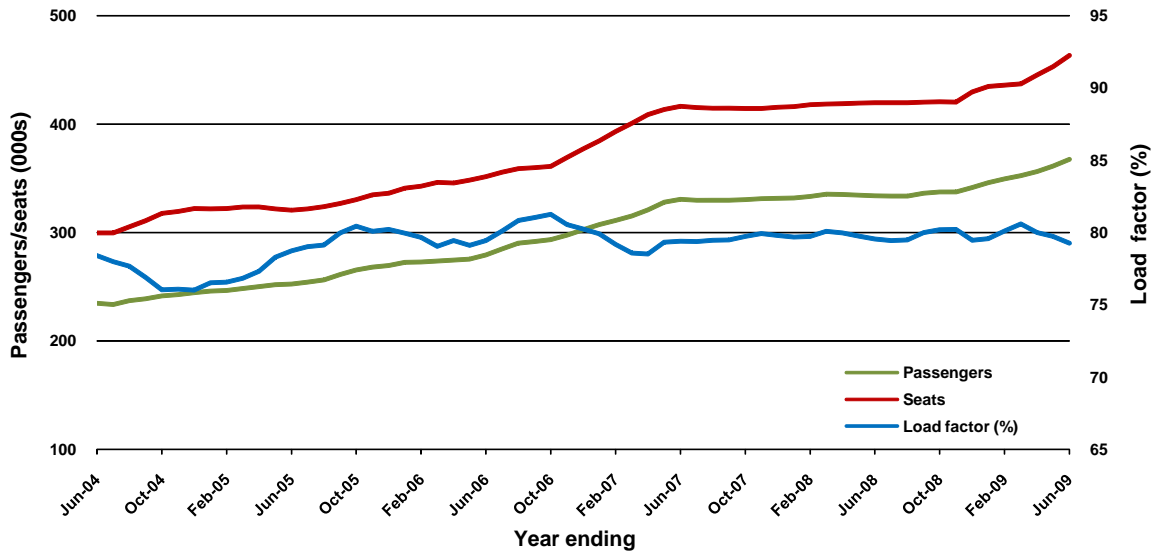


29. Brisbane - Darwin

| | YE June 2008 | YE June 2009 | % Change |
|----------------------------|--------------|--------------|----------|
| Passenger movements (000s) | 333.9 | 367.4 | 10.0 |
| Seats (000s) | 419.6 | 463.4 | 10.4 |
| Load factor % | 79.6 | 79.3 | -0.3 |
| Aircraft trips | 2 085 | 2 341 | 12.3 |

* percentage point difference

Passenger traffic and load factors



30. Karratha - Perth*

| | YE June 2008 | YE June 2009 | % Change |
|----------------------------|--------------|--------------|----------|
| Passenger movements (000s) | .. | 350.8 | NA |
| Seats (000s) | .. | 597.4 | NA |
| Load factor % | .. | 58.7 | NA |
| Aircraft trips | .. | 4 270 | NA |

* Karratha - Perth route included from October 2008, prior data not shown.

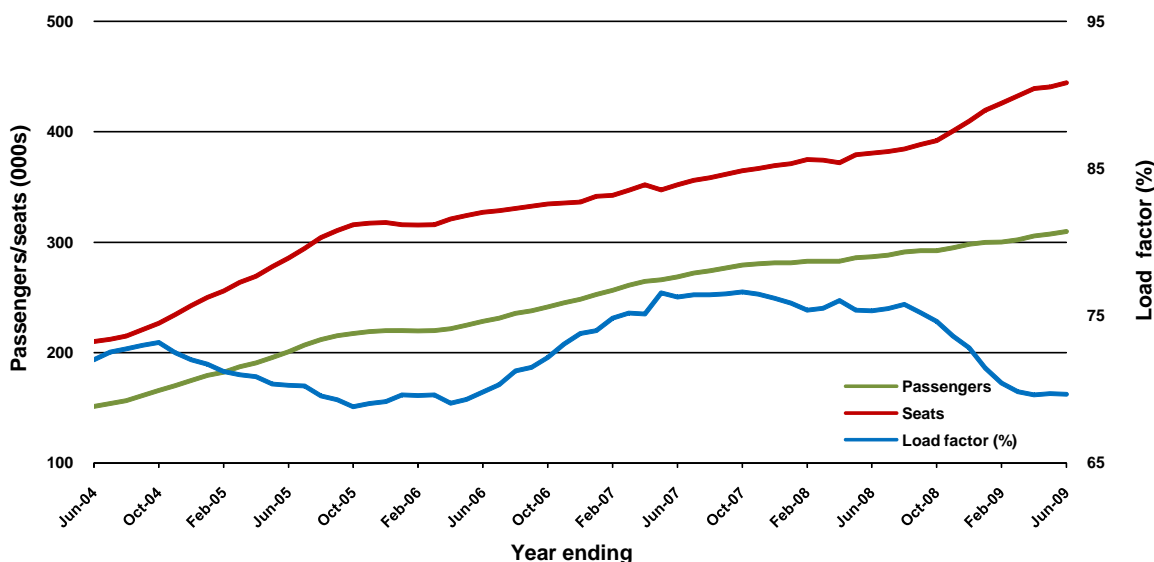
* percentage point difference

31. Broome - Perth

| | YE June 2008 | YE June 2009 | % Change |
|----------------------------|--------------|--------------|----------|
| Passenger movements (000s) | 286.8 | 309.6 | 8.0 |
| Seats (000s) | 380.6 | 444.3 | 16.7 |
| Load factor % | 75.3 | 69.7 | -5.7* |
| Aircraft trips | 2 858 | 3 581 | 25.3 |

* percentage point difference

Passenger traffic and load factors

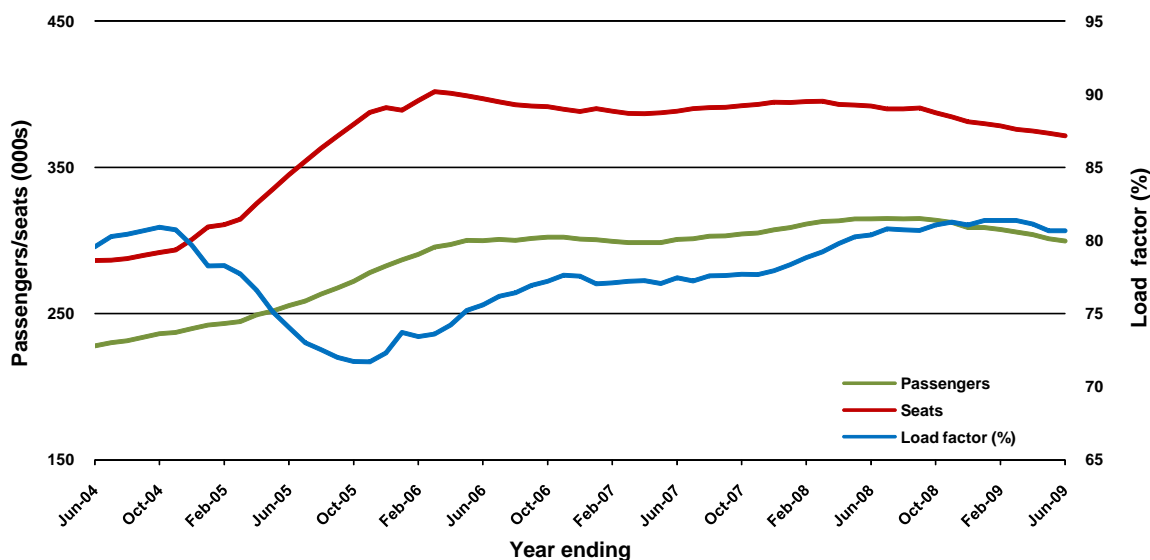


32. Coffs Harbour - Sydney

| | YE June 2008 | YE June 2009 | % Change |
|----------------------------|--------------|--------------|----------|
| Passenger movements (000s) | 314.9 | 299.7 | -4.8 |
| Seats (000s) | 391.8 | 371.6 | -5.2 |
| Load factor % | 80.4 | 80.7 | 0.3* |
| Aircraft trips | 4 669 | 4 327 | -7.3 |

* percentage point difference

Passenger traffic and load factors

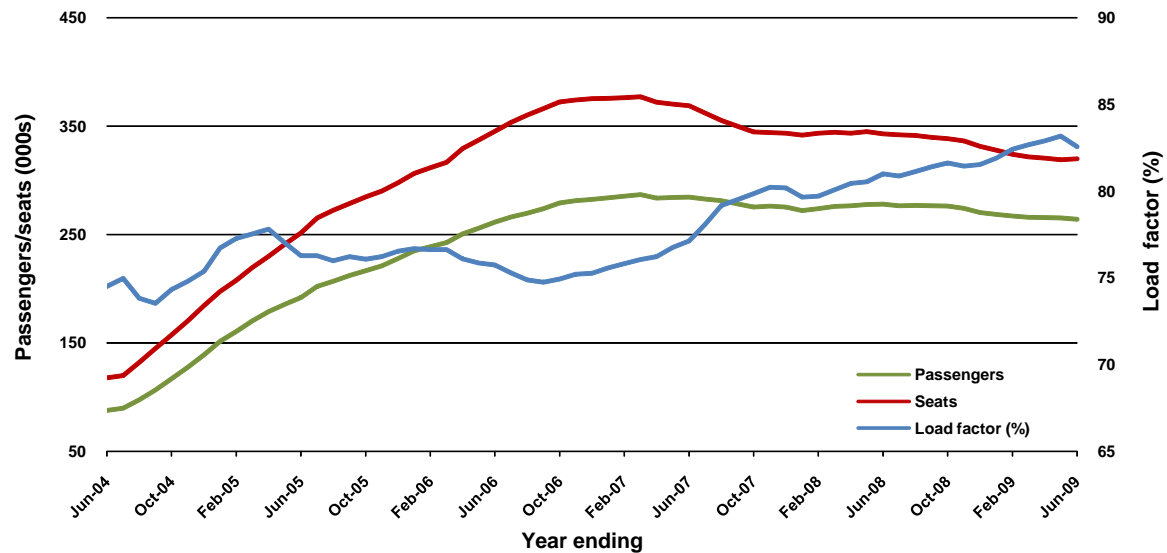


33. Ballina - Sydney

| | YE June 2008 | YE June 2009 | % Change |
|----------------------------|--------------|--------------|----------|
| Passenger movements (000s) | 277.8 | 264.1 | -4.9 |
| Seats (000s) | 343.0 | 319.9 | -6.7 |
| Load factor % | 81.0 | 82.6 | 1.6 |
| Aircraft trips | 3 895 | 3 432 | -11.9 |

* percentage point difference

Passenger traffic and load factors

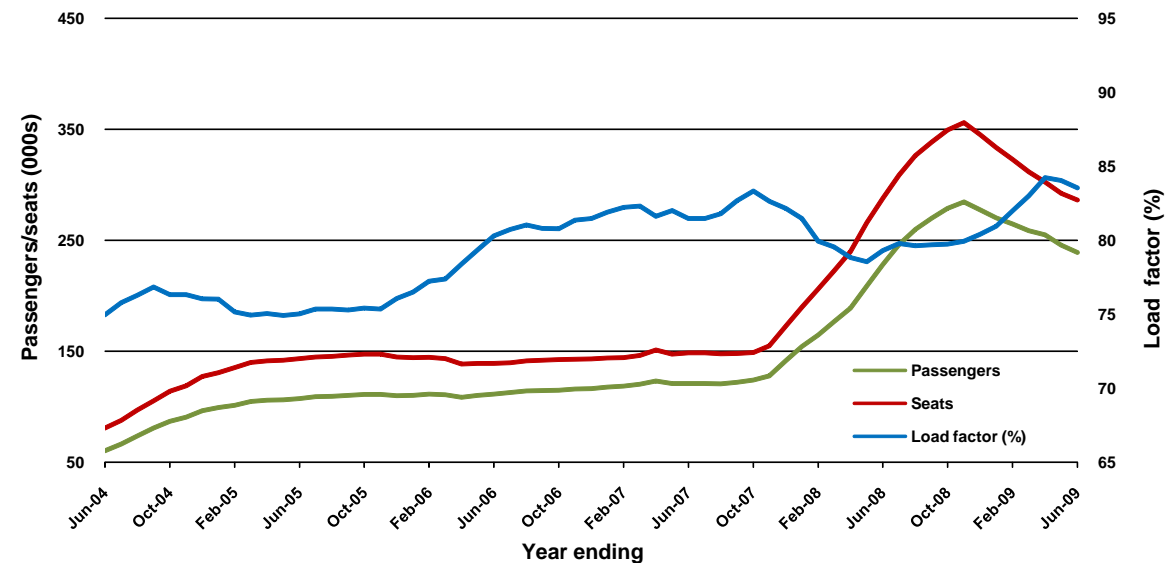


34. Darwin - Melbourne

| | YE June 2008 | YE June 2009 | % Change |
|----------------------------|--------------|--------------|----------|
| Passenger movements (000s) | 228.2 | 239.2 | 4.8 |
| Seats (000s) | 287.7 | 286.2 | -0.5 |
| Load factor % | 79.3 | 83.6 | 4.2 |
| Aircraft trips | 1 619 | 1 618 | -0.1 |

* percentage point difference

Passenger traffic and load factors

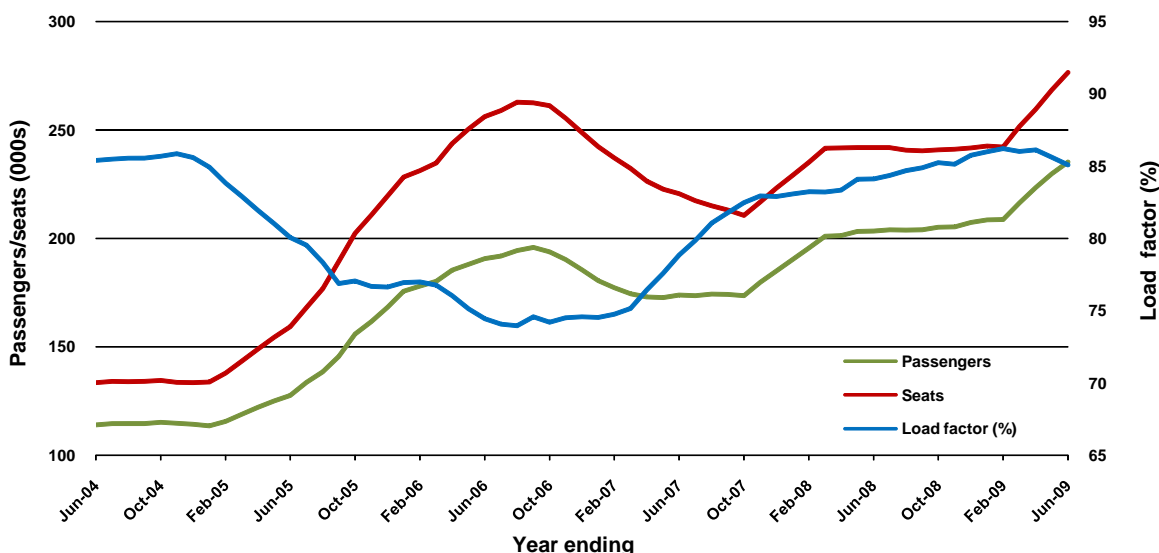


35. Adelaide - Gold Coast

| | YE June 2008 | YE June 2009 | % Change |
|----------------------------|--------------|--------------|----------|
| Passenger movements (000s) | 203.4 | 235.3 | 15.7 |
| Seats (000s) | 241.8 | 276.5 | 14.4 |
| Load factor % | 84.1 | 85.1 | 1.0 |
| Aircraft trips | 1 452 | 1 692 | 16.5 |

* percentage point difference

Passenger traffic and load factors

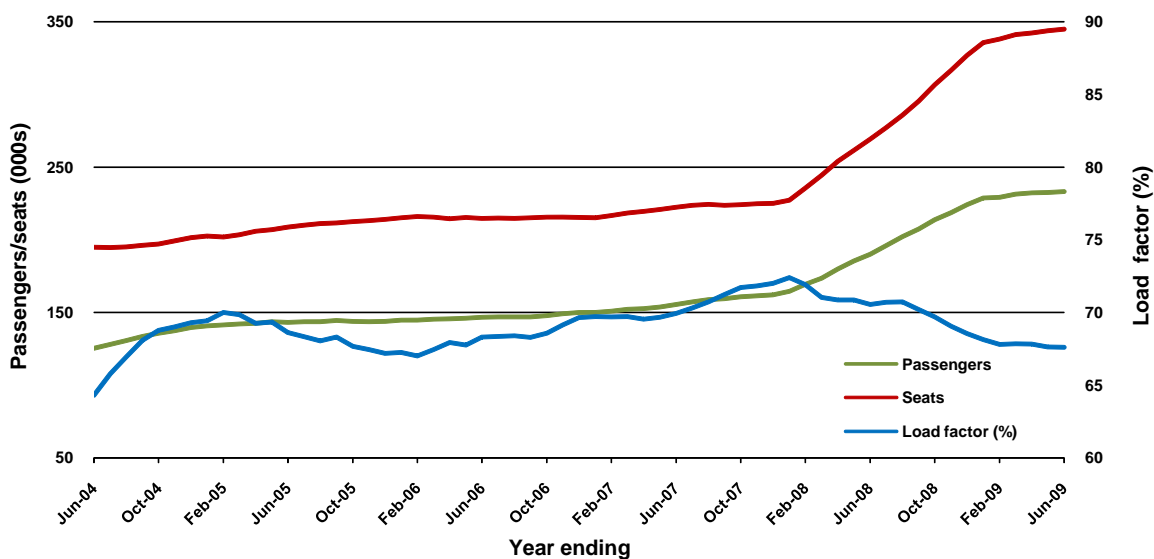


36. Albury - Sydney

| | YE June 2008 | YE June 2009 | % Change |
|----------------------------|--------------|--------------|----------|
| Passenger movements (000s) | 190.1 | 233.2 | 22.7 |
| Seats (000s) | 269.4 | 345.0 | 28.0 |
| Load factor % | 70.6 | 67.6 | -2.9 |
| Aircraft trips | 6 062 | 6 642 | 9.6 |

* percentage point difference

Passenger traffic and load factors

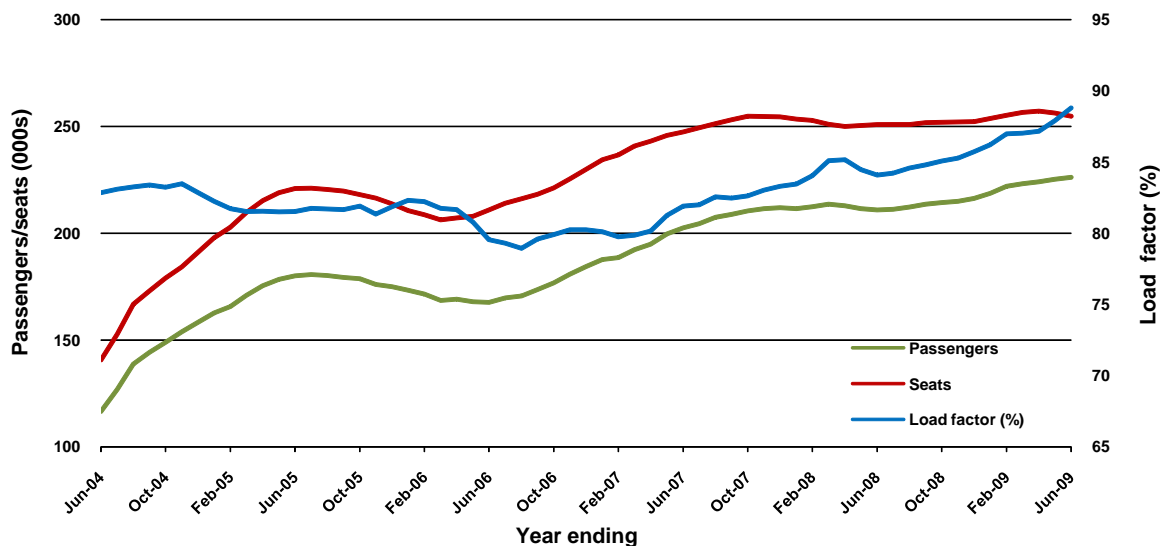


37. Brisbane - Proserpine

| | YE June 2008 | YE June 2009 | % Change |
|----------------------------|--------------|--------------|----------|
| Passenger movements (000s) | 211.0 | 226.2 | 7.2 |
| Seats (000s) | 250.9 | 254.7 | 1.5 |
| Load factor % | 0.1 | 88.8 | 4.7 * |
| Aircraft trips | 1.5 | 1 458 | 0.6 |

* percentage point difference

Passenger traffic and load factors

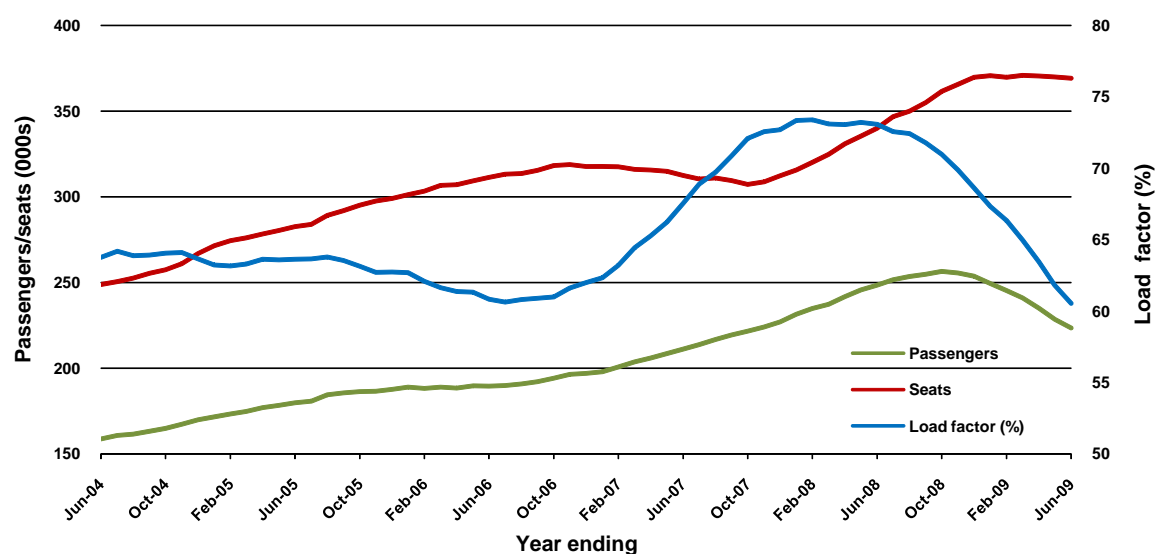


38. Kalgoorlie - Perth

| | YE June 2008 | YE June 2009 | % Change |
|----------------------------|--------------|--------------|----------|
| Passenger movements (000s) | 248.5 | 223.5 | -10.1 |
| Seats (000s) | 340.0 | 369.1 | 8.6 |
| Load factor % | 73.1 | 60.5 | -12.5 * |
| Aircraft trips | 2 879 | 2 869 | -0.3 |

* percentage point difference

Passenger traffic and load factors

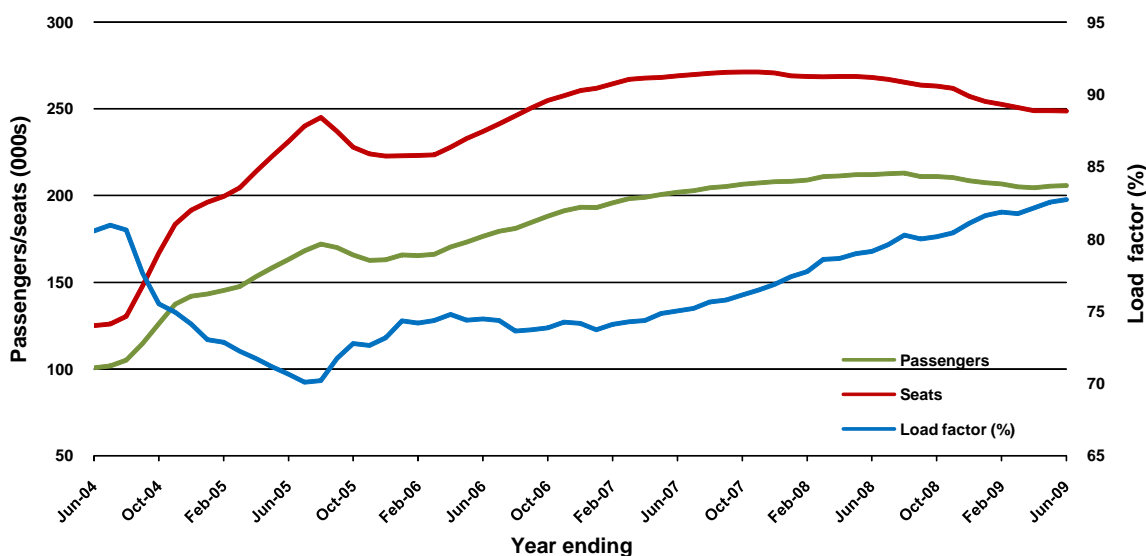


39. Launceston - Sydney

| | YE June 2008 | YE June 2009 | % Change |
|----------------------------|--------------|--------------|----------|
| Passenger movements (000s) | 212.3 | 205.9 | -3.0 |
| Seats (000s) | 268.1 | 248.9 | -7.2 |
| Load factor % | 79.2 | 82.7 | 3.6 |
| Aircraft trips | 1 537 | 1 456 | -5.3 |

* percentage point difference

Passenger traffic and load factors

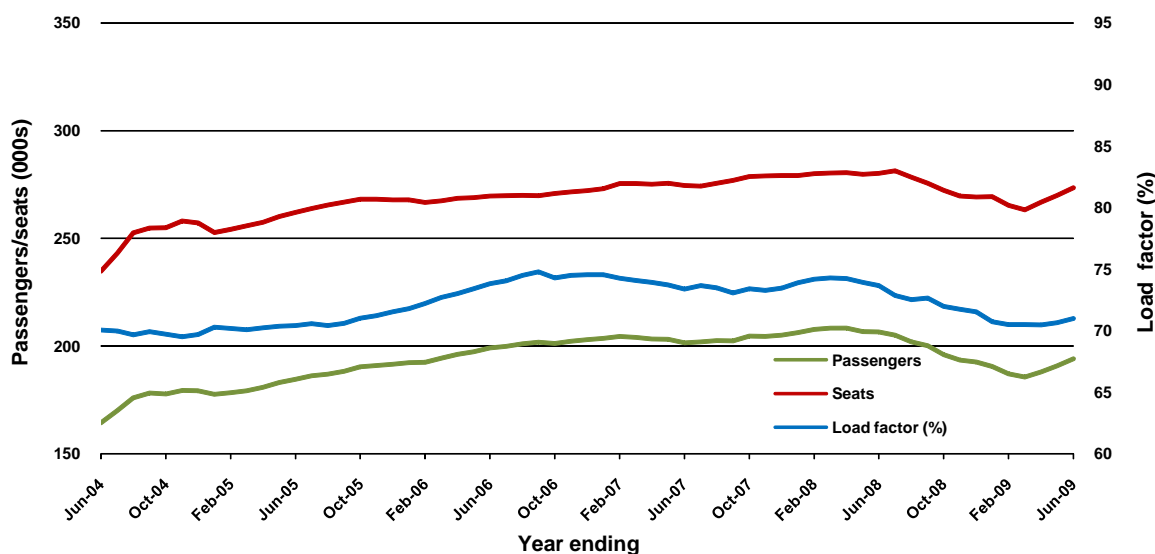


40. Adelaide - Canberra

| | YE June 2008 | YE June 2009 | % Change |
|----------------------------|--------------|--------------|----------|
| Passenger movements (000s) | 206.5 | 194.2 | -6.0 |
| Seats (000s) | 280.3 | 273.5 | -2.4 |
| Load factor % | 73.7 | 71.0 | -2.7 |
| Aircraft trips | 1 865 | 1 993 | 6.9 |

* percentage point difference

Passenger traffic and load factors

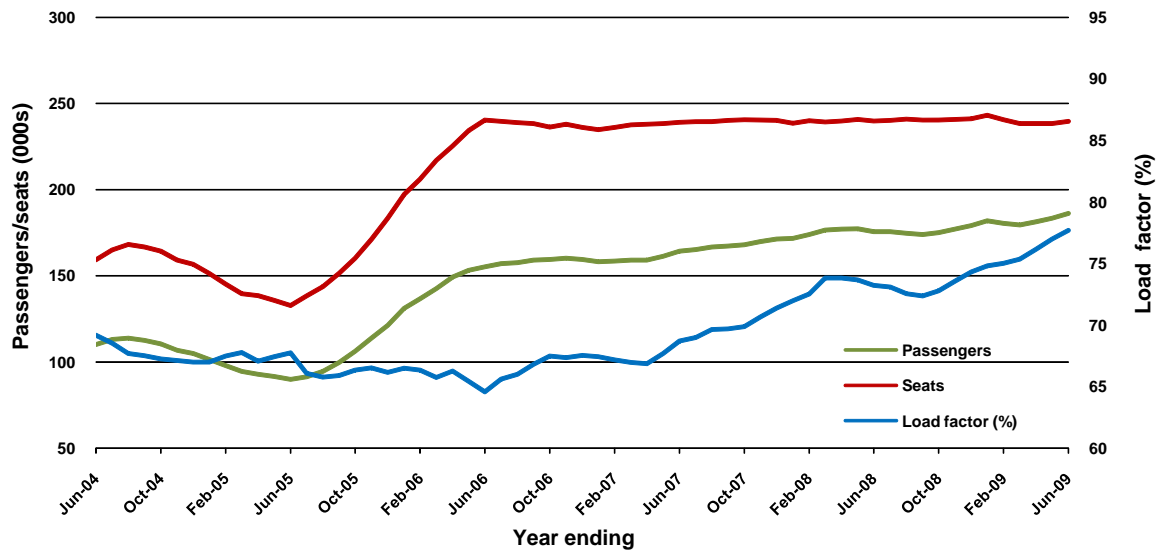


41. Brisbane - Hamilton Island

| | YE June 2008 | YE June 2009 | % Change |
|----------------------------|--------------|--------------|----------|
| Passenger movements (000s) | 175.6 | 186.2 | 6.0 |
| Seats (000s) | 239.9 | 239.7 | -0.1 |
| Load factor % | 73.2 | 77.7 | 4.5 |
| Aircraft trips | 1 459 | 1 455 | -0.3 |

* percentage point difference

Passenger traffic and load factors



42. Port Macquarie - Sydney*

| | YE June 2008 | YE June 2009 | % Change |
|----------------------------|--------------|--------------|----------|
| Passenger movements (000s) | 65.0 | 178.9 | NA |
| Seats (000s) | 81.1 | 262.2 | NA |
| Load factor % | 80.1 | 68.2 | NA ** |
| Aircraft trips | 1 496 | 4 033 | NA |

* Port Macquarie - Sydney route included from February 2008, prior data not shown.

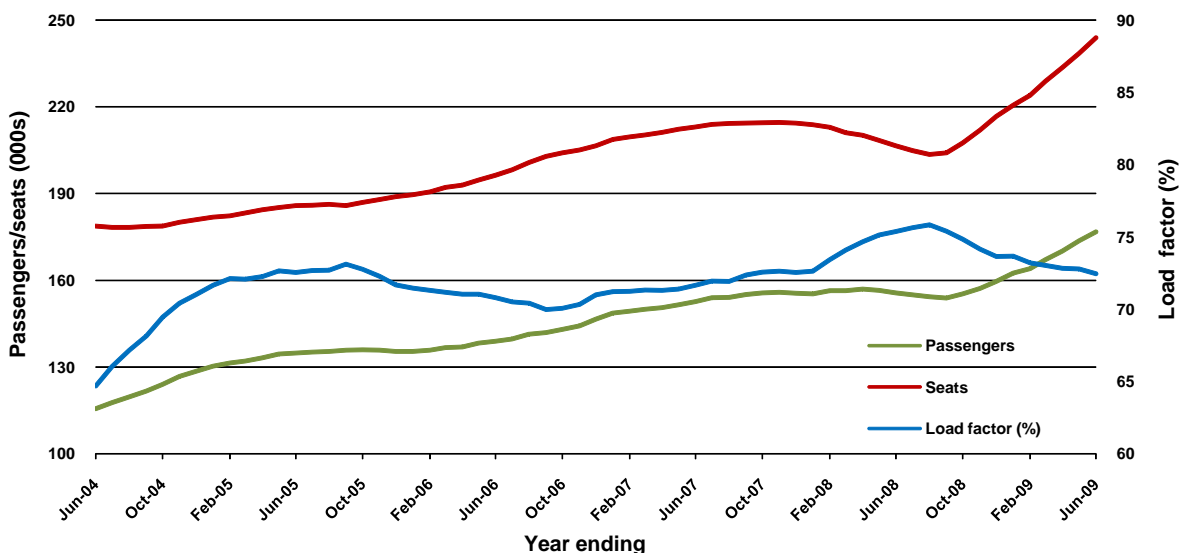
** percentage point difference

43. Melbourne - Mildura

| | YE June 2008 | YE June 2009 | % Change |
|----------------------------|--------------|--------------|----------|
| Passenger movements (000s) | 155.7 | 176.8 | 13.5 |
| Seats (000s) | 206.6 | 244.0 | 18.1 |
| Load factor % | 75.4 | 72.5 | -2.9 |
| Aircraft trips | 5 608 | 5 319 | -5.2 |

* percentage point difference

Passenger traffic and load factors

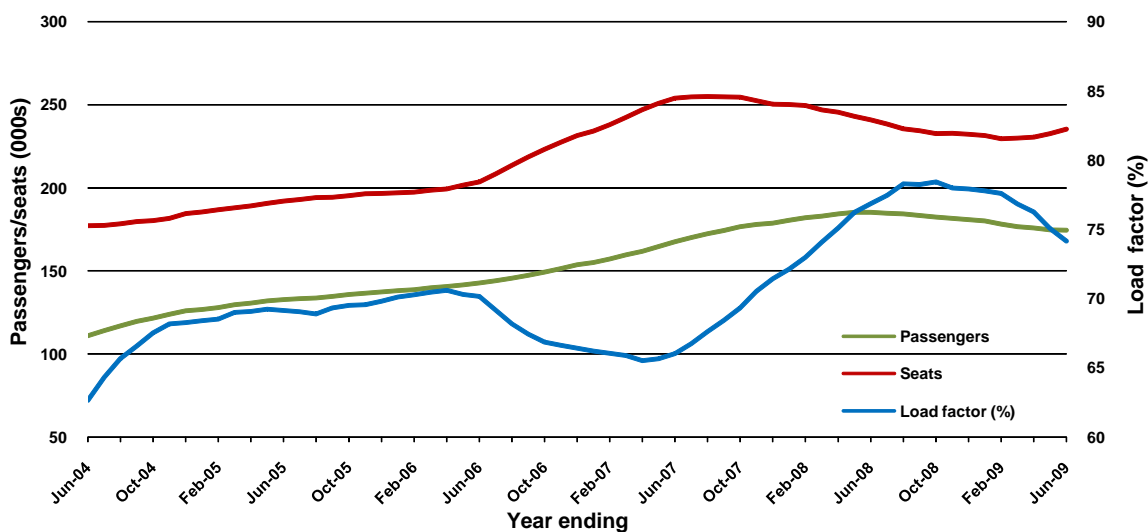


44. Sydney - Wagga Wagga

| | YE June 2008 | YE June 2009 | % Change |
|----------------------------|--------------|--------------|----------|
| Passenger movements (000s) | 185.3 | 174.6 | -5.7 |
| Seats (000s) | 241.1 | 235.4 | -2.3 |
| Load factor % | 76.9 | 74.2 | -2.7 |
| Aircraft trips | 5 984 | 5 687 | -5.0 |

* percentage point difference

Passenger traffic and load factors

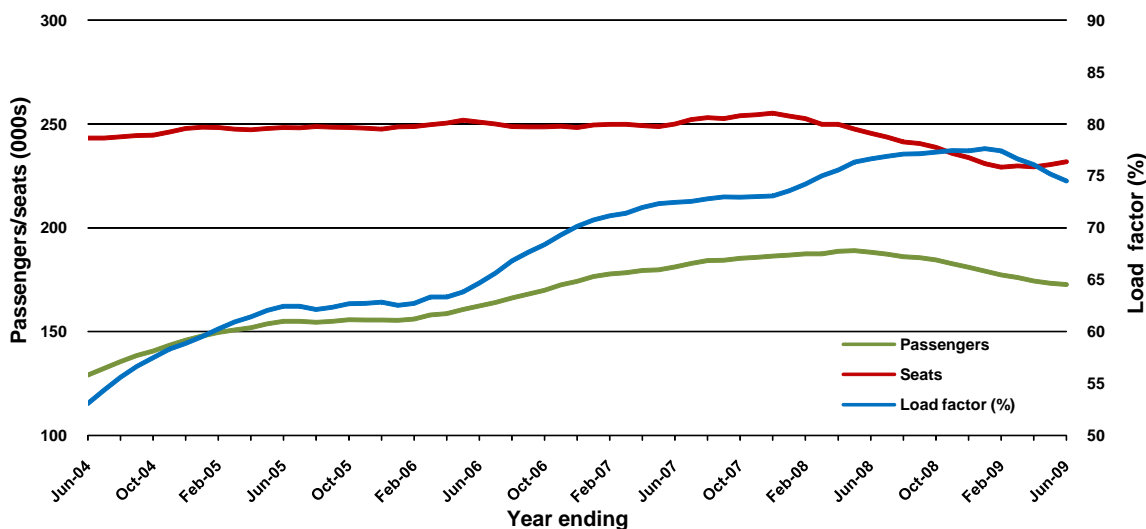


45. Dubbo - Sydney

| | YE June 2008 | YE June 2009 | % Change |
|----------------------------|--------------|--------------|----------|
| Passenger movements (000s) | 188.3 | 172.7 | -8.3 |
| Seats (000s) | 245.6 | 231.8 | -5.6 |
| Load factor % | 76.6 | 74.5 | -2.1 |
| Aircraft trips | 6 926 | 6 030 | -12.9 |

* percentage point difference

Passenger traffic and load factors

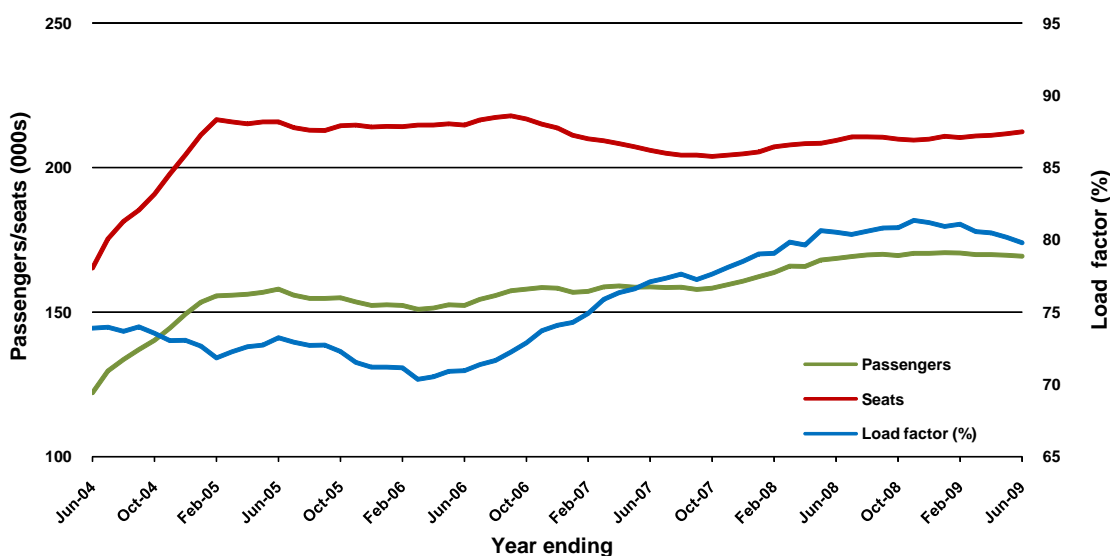


46. Sydney - Townsville

| | YE June 2008 | YE June 2009 | % Change |
|----------------------------|--------------|--------------|----------|
| Passenger movements (000s) | 168.7 | 169.4 | 0.5 |
| Seats (000s) | 209.4 | 212.3 | 1.4 |
| Load factor % | 80.5 | 79.8 | -0.7 |
| Aircraft trips | 1 255 | 1 251 | -0.3 |

* percentage point difference

Passenger traffic and load factors

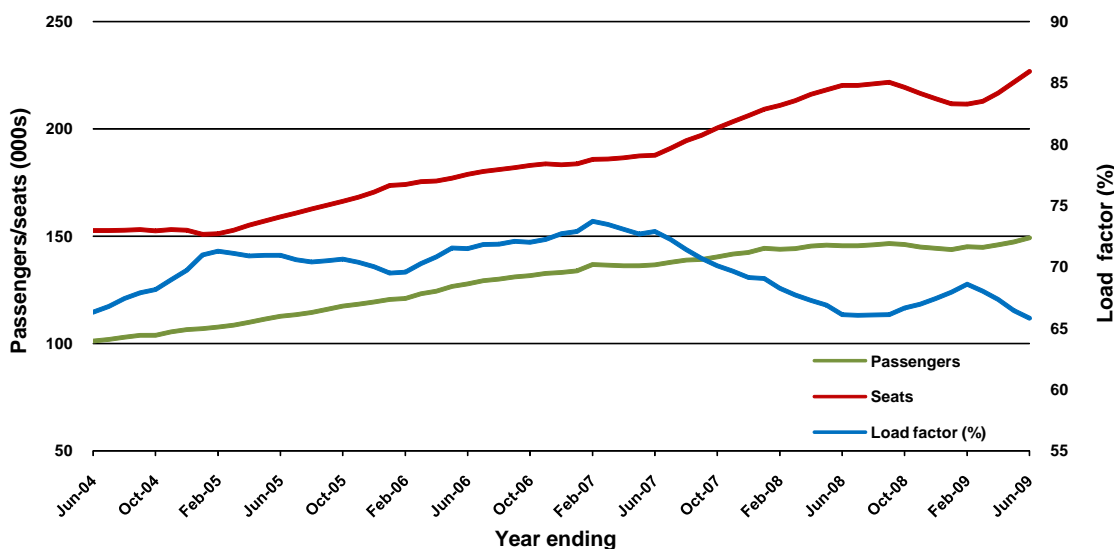


47. Cairns - Townsville

| | YE June 2008 | YE June 2009 | % Change |
|----------------------------|--------------|--------------|----------|
| Passenger movements (000s) | 145.6 | 149.3 | 2.5 |
| Seats (000s) | 220.2 | 226.8 | 3.0 |
| Load factor % | 66.1 | 65.8 | -0.3 |
| Aircraft trips | 4 614 | 3 825 | -17.1 |

* percentage point difference

Passenger traffic and load factors

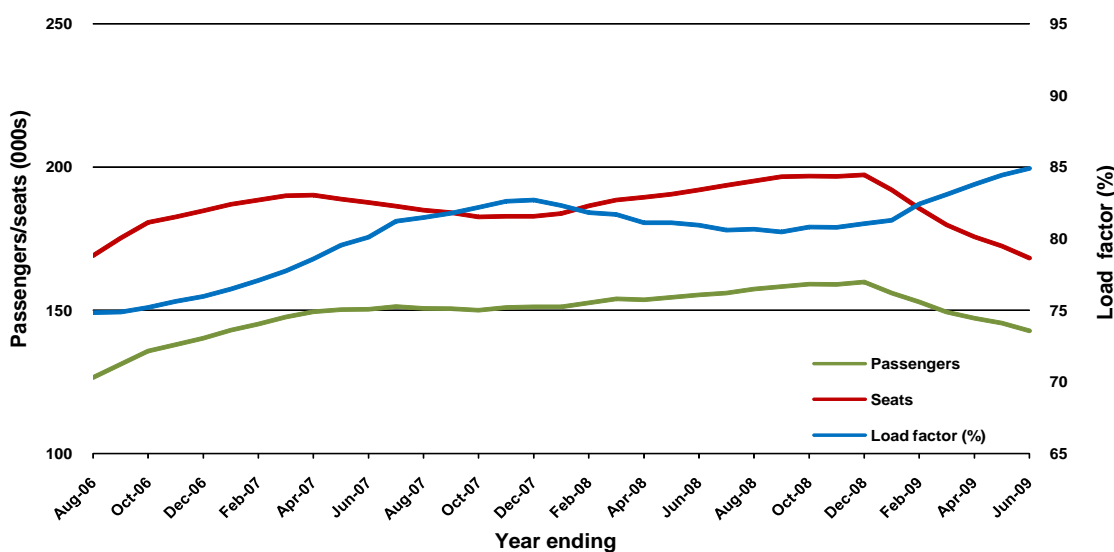


48. Hervey Bay - Sydney

| | YE June 2008 | YE June 2009 | % Change |
|----------------------------|--------------|--------------|----------|
| Passenger movements (000s) | 155.4 | 142.9 | -8.1 |
| Seats (000s) | 192.0 | 168.3 | -12.3 |
| Load factor % | 80.9 | 84.9 | 4.0 |
| Aircraft trips | 1 146 | 1 144 | -0.2 |

* percentage point difference

Passenger traffic and load factors



* flights commenced July 2005

49. Alice Springs - Melbourne*

| | YE June 2008 | YE June 2009 | % Change |
|----------------------------|--------------|--------------|----------|
| Passenger movements (000s) | 21.8 | 137.0 | NA |
| Seats (000s) | 29.6 | 179.3 | NA |
| Load factor % | 73.7 | 76.4 | NA ** |
| Aircraft trips | 174 | 1 048 | NA |

* Alice Springs - Melbourne route included from May 2008, prior data not shown.

** percentage point difference

50. Newman - Perth*

| | YE June 2008 | YE June 2009 | % Change |
|----------------------------|--------------|--------------|----------|
| Passenger movements (000s) | .. | 134.2 | NA |
| Seats (000s) | .. | 233.1 | NA |
| Load factor % | .. | 57.6 | NA ** |
| Aircraft trips | .. | 2 082 | NA |

* Newman - Perth route included from October 2008, prior data not included, prior data not shown.

** percentage point difference

51. Gold Coast - Newcastle*

| | YE June 2008 | YE June 2009 | % Change |
|----------------------------|--------------|--------------|----------|
| Passenger movements (000s) | .. | 132.8 | NA |
| Seats (000s) | .. | 163.2 | NA |
| Load factor % | .. | 81.4 | NA ** |
| Aircraft trips | .. | 943 | NA |

* Gold Coast - Newcastle route included from August 2008, prior data not shown.

not available for publishing.

** percentage point difference

52. Adelaide - Alice Springs*

| | YE June 2008 | YE June 2009 | % Change |
|----------------------------|--------------|--------------|----------|
| Passenger movements (000s) | .. | 30.0 | NA |
| Seats (000s) | .. | 44.6 | NA |
| Load factor % | .. | 67.2 | NA ** |
| Aircraft trips | .. | 260 | NA |

* Adelaide - Alice Springs route included from April 2009, prior data not shown.

** percentage point difference

53. Darwin - Perth*

| | YE June 2008 | YE June 2009 | % Change |
|----------------------------|--------------|--------------|----------|
| Passenger movements (000s) | .. | 27.4 | NA |
| Seats (000s) | .. | 45.9 | NA |
| Load factor % | .. | 59.6 | NA ** |
| Aircraft trips | .. | 265 | NA |

* Darwin - Perth route included from May 2009, prior data not shown.

** percentage point difference

DEFINITIONS

| | |
|-------------------------------------|---|
| Aircraft Trips | The number of flight stages. A return flight counts as two aircraft trips. |
| Available Seat Kilometres (ASKs) | Calculated by multiplying the number of seats available on each flight stage, by the distance in kilometres between the ports. The distances used are Great Circle Distances. |
| City Pair | The ports shown make up the city pair route. Passenger movements shown for a city pair reflect total traffic in both directions. |
| Flight Stage | The operation of an aircraft from take-off to landing. |
| Load Factor | The total revenue passenger kilometres performed as a percentage of the total available seat kilometres. |
| Passenger Carried | Revenue passengers carried. |
| Revenue Passengers | All passengers paying any fare. Frequent flyer redemption travellers are regarded as revenue passengers. |
| Revenue Passenger Kilometres (RPKs) | Calculated by multiplying the number of revenue passengers travelling on each flight stage, by the distance in kilometres between the ports. The distances used are Great Circle Distances. |
| Traffic on board by stages | The total of all traffic (revenue passengers) on each flight stage between two directly connected airports. |
| .. | Data not included |