



Australian Government

Department of Infrastructure and Transport

Bureau of Infrastructure, Transport and Regional Economics

STATISTICAL REPORT



Aviation

Domestic airline activity
Annual 2010 - 2011

© Commonwealth of Australia 2011

ISSN 1832-1968

Released September 2011

This work is copyright and the data contained in this publication should not be reproduced or used in any form without acknowledgement.

Enquiries:

Nebojsa Pavlovic

Bureau of Infrastructure, Transport and Regional Economics

GPO Box 501

Canberra ACT 2601

Telephone: 02 6274 6817

Facsimile: 02 6274 7727

Website: www.bitre.gov.au

Email: avstats@infrastructure.gov.au

Nebojsa.Pavlovic@infrastructure.gov.au

This publication can be downloaded from the BITRE website. A spreadsheet format of the time-series data is also available at:

<http://www.bitre.gov.au/info.aspx?ResourceId=225&NodeId=101>

Disclaimers

BITRE seeks to publish its work to the highest professional standards. However, it cannot accept responsibility for any consequences arising from the use of information herein. Readers should rely on their own skill and judgment in applying any information or analysis to particular issues or circumstances.

FOREWORD

This report provides an overview of domestic (including regional) airline activity in Australia for the year ending June 2011.

The data covers revenue passengers carried by Australian-registered operators of scheduled regular public transport services over Australian flight stages, including passengers carried between domestic airports on international flights operated by these carriers. The passengers carried refer to traffic on board by stages. These statistics may not match the passenger numbers shown in other spreadsheets available for download from the BITRE web site where passengers carried between domestic airports on international flights are excluded.

Charter flights are not included in these statistics.

Individual routes shown are restricted to those with an average exceeding 8 000 passengers per month where two or more airlines operate in competition. For the year ending June 2011 there were 55 such routes: 53 routes met these criteria for all twelve months of the year while two routes did so for a period shorter than one year.

Information on the total network for the year ending June 2011 is presented on page 2. Detailed information on the top 55 individual routes can be found in the summary pages 3 –10 of this publication.

The top ten airport passenger movements are shown on page 11. Data on domestic cargo movements at the top five cargo airports is provided on page 12.

The data includes cargo carried on passenger flights operated by the Qantas group (including Jetstar), Virgin Blue, Air North, Strategic Airline and Alliance as well as the cargo carried by dedicated freighter aircraft operated by Australian Air Express and Toll Priority.

The long-term trends for the top 20 competitive routes are presented graphically on pages 13–22. A list of definitions can be found on page 23.

The report was prepared by the Aviation Statistics Section of the Bureau of Infrastructure, Transport and Regional Economics with data provided by airlines.

Estimates are included where data is not available and data presented in this publication may contain revisions to previously published data.

Where figures have been rounded, discrepancies may occur between sums of component items and totals, and in percentage changes which are derived from figures prior to rounding.

This page is intentionally left blank.

CONTENTS

Highlights	1
Total network.....	2
Top competitive routes.....	3
Top ten airports - passenger movements.....	11
Top five airports – cargo movements	12
Top twenty routes	13
1. Melbourne – Sydney	13
2. Brisbane – Sydney	13
3. Brisbane – Melbourne	14
4. Adelaide – Melbourne	14
5. Gold Coast – Sydney	15
6. Melbourne – Perth	15
7. Adelaide – Sydney	16
8. Gold Coast – Melbourne	16
9. Perth – Sydney	17
10. Hobart – Melbourne	17
11. Brisbane – Cairns	18
12. Canberra – Melbourne	18
13. Canberra – Sydney	19
14. Brisbane – Townsville.....	19
15. Cairns – Sydney.....	20
16. Brisbane – Mackay	20
17. Launceston – Melbourne	21
18. Brisbane – Perth	21
19. Adelaide – Brisbane.....	22
20. Karratha – Perth	22
Definitions	23

This page is intentionally left blank.

HIGHLIGHTS

There were 54.75 million passengers carried on Australian domestic airlines (including regional operations) in the year ending June 2011, an increase of 5.8 per cent on the year ending June 2010.

Revenue passenger kilometres (RPKs) were 63.15 billion for the year, up 7.0 per cent on the year ending June 2010. Capacity, measured by available seat kilometres (ASKs), increased 8.2 per cent compared with year ending June 2010 to a total of 80.27 billion.

The number of available seats rose to 70.62 million, an increase of 6.0 per cent compared to the previous year.

The number of aircraft trips increased by 6.5 per cent, from 573 525 for the year ending June 2010 to 610 830 for the year ending June 2011.

With capacity increasing at a faster rate than passenger traffic, the industry wide load factor (RPKs/ASKs) decreased from 79.5 per cent for the year ending June 2010 to 78.7 per cent for the year ending June 2011. Seat utilisation on individual routes decreased on 28 of the 50 routes for which data is available in both years.

For the year ending June 2011, Melbourne – Sydney remained Australia's busiest route with 7.91 million passengers, an increase of 3.5 per cent compared with the year ending June 2010. It was followed by Brisbane – Sydney with 4.45 million passengers (up 2.7 per cent) and Brisbane – Melbourne with 3.11 million passengers (up 11.3 per cent).

The greatest percentage increase in passenger traffic, compared with the year ending June 2010, was on the Cairns – Melbourne route (up 30.2 per cent). There were large increases on a number of other routes, including Newman – Perth (up 20.6 per cent), Melbourne – Newcastle (up 17.6 per cent), Sunshine Coast – Sydney (up 16.7 per cent) and Brisbane – Mackay (up 16.4 per cent).

Routes with traffic decreases for the year ending June 2011 included Adelaide – Gold Coast (down 24.0 per cent), Adelaide – Canberra (down 11.4 per cent) and Brisbane – Hamilton Island (down 4.6 per cent).

For the year ending June 2011, Sydney remained Australia's busiest domestic airport with 24.59 million passenger movements, followed by Melbourne with 21.95 million passenger movements and Brisbane with 15.77 million passenger movements.

The highest percentage increases in passenger movements among the top ten airports, for the year ending June 2011, were recorded at Perth airport (up 9.1 per cent), Cairns (up 7.6 per cent), Melbourne (up 6.3 per cent) and Brisbane (up 6.1 per cent).

Total cargo movement at Australian airports reached 503.67 thousand tonnes for the year ending June 2011, an increase of 6.6 per cent compared to the previous year.

Sydney was the busiest domestic airport in terms of cargo movement (135.00 tonnes, down 1.0 per cent compared to the year ending June 2010), followed by Melbourne (128.20 tonnes, down 1.5 per cent) and Brisbane (81.96 tonnes, up 5.3 per cent).

TOTAL NETWORK

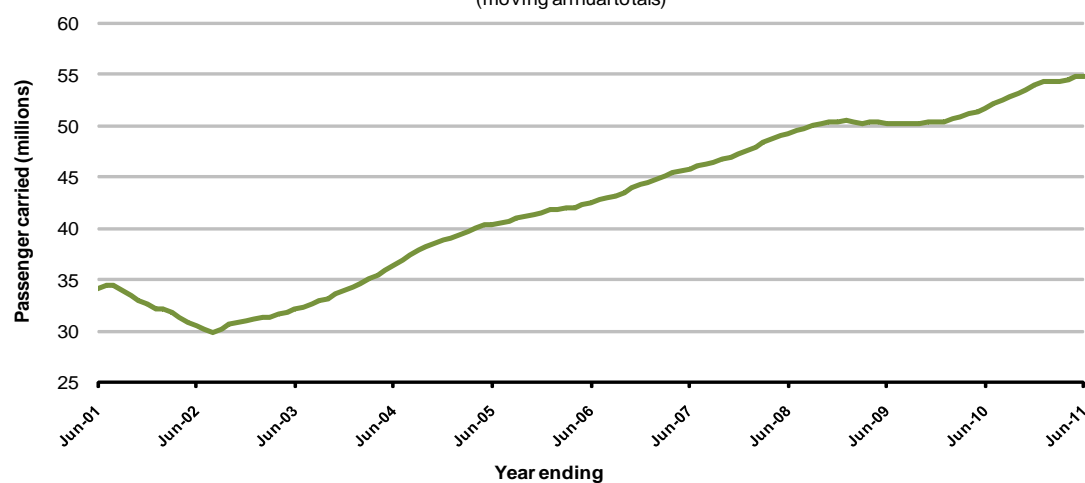
Summary of annual activity

	YE June 2010	YE June 2011	% Change
Total passengers carried (millions)	51.76	54.75	5.8
Revenue passenger kilometres (billions)	59.03	63.15	7.0
Available seats (millions)	66.60	70.62	6.0
Available seat kilometres (billions)	74.22	80.27	8.2
Load factor %	79.5	78.7	-0.9 *
Aircraft trips (000s)	573.5	610.8	6.5

* percentage point difference

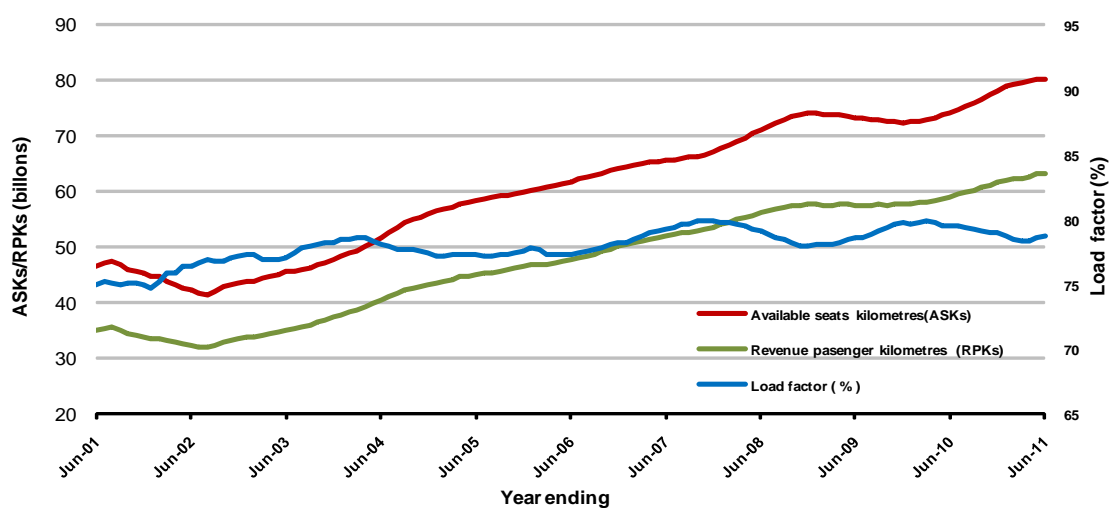
Domestic passenger traffic

(moving annual totals)



Network utilisation

(moving annual totals)



TOP COMPETITIVE ROUTES

Table 1: Passengers carried (000s) — annual activity

	City-Pair	YE June 2010	YE June 2011	% Change
1	Melbourne - Sydney	7 640.5	7 907.3	3.5
2	Brisbane - Sydney	4 333.1	4 449.0	2.7
3	Brisbane - Melbourne	2 795.9	3 110.7	11.3
4	Adelaide - Melbourne	2 097.4	2 343.0	11.7
5	Gold Coast - Sydney	2 295.9	2 328.0	1.4
6	Melbourne - Perth	1 685.1	1 837.5	9.0
7	Adelaide - Sydney	1 721.0	1 778.6	3.4
8	Gold Coast - Melbourne	1 645.9	1 764.9	7.2
9	Perth - Sydney	1 525.2	1 682.2	10.3
10	Hobart - Melbourne	1 203.1	1 234.0	2.6
11	Brisbane - Cairns	1 131.2	1 144.8	1.2
12	Canberra - Melbourne	1 119.0	1 106.7	-1.1
13	Canberra - Sydney	1 073.8	1 085.3	1.1
14	Brisbane - Townsville	929.9	957.7	3.0
15	Cairns - Sydney	844.2	891.3	5.6
16	Brisbane - Mackay	733.1	853.4	16.4
17	Launceston - Melbourne	832.9	817.6	-1.8
18	Brisbane - Perth	731.5	795.1	8.7
19	Adelaide - Brisbane	657.7	708.2	7.7
20	Karratha - Perth	564.9	615.7	9.0
21	Brisbane - Rockhampton	617.7	604.3	-2.2
22	Brisbane - Canberra	607.3	600.7	-1.1
23	Adelaide - Perth	613.2	596.7	-2.7
24	Brisbane - Newcastle	577.1	570.6	-1.1
25	Hobart - Sydney	488.0	503.4	3.1
26	Cairns - Melbourne	384.2	500.0	30.2
27	Sunshine Coast - Sydney	420.5	490.7	16.7
28	Melbourne - Sunshine Coast	391.9	423.4	8.0
29	Melbourne - Newcastle	347.9	409.0	17.6
30	Brisbane - Darwin	369.5	366.4	-0.8
31	Perth - Port Hedland	273.5	339.2	NA (a)
32	Broome - Perth	324.4	322.2	-0.7
33	Coffs Harbour - Sydney	299.2	308.9	3.2
34	Darwin - Melbourne	262.1	303.7	15.9
35	Ballina - Sydney	267.1	270.4	1.3
36	Albury - Sydney	241.4	243.5	0.9
37	Kalgoorlie - Perth	212.3	237.1	11.7
38	Launceston - Sydney	208.6	223.8	7.3
39	Newman - Perth	182.2	219.6	20.6
40	Adelaide - Gold Coast	280.9	213.6	-24.0
41	Port Macquarie - Sydney	201.5	212.8	5.6
42	Brisbane - Proserpine	213.6	205.4	-3.8
43	Adelaide - Port Lincoln	66.2	199.6	NA (b)
44	Melbourne - Mildura	191.7	198.6	3.6
45	Cairns - Townsville	170.5	186.5	9.4

(continued)

Table 1 (continued): Passengers carried (000s) — annual activity

	City-Pair	YE June 2010	YE June 2011	% Change
46	Adelaide - Canberra	209.9	186.1	-11.4
47	Sydney - Wagga Wagga	177.9	185.2	4.1
48	Dubbo - Sydney	175.1	181.1	3.4
49	Hamilton Island - Sydney	181.3	180.1	NA (c)
50	Sydney - Townsville	168.3	177.7	5.5
51	Brisbane - Hamilton Island	178.6	170.4	-4.6
52	Darwin - Perth	151.6	147.2	-2.9
53	Alice Springs - Melbourne	141.7	144.5	2.0
54	Ayers Rock - Sydney	..	121.4	NA (d)
55	Brisbane - Gladstone	..	48.0	NA (e)
	Total domestic network	51 756.7	54 754.6	5.8

(a) Perth - Port Hedland route included from August 2009, prior data not shown.

(b) Adelaide - Port Lincoln route included from March 2010, prior data not shown.

(c) Hamilton Island - Sydney route included from July 2009, prior data not shown.

(d) Ayers Rock - Sydney route included from September 2010, prior data not shown.

(e) Brisbane - Gladstone route included from May 2011, prior data not shown.

Table 2: Available seats (000s) — annual activity

	City-Pair	YE June 2010	YE June 2011	% Change
1	Melbourne - Sydney	9 335.8	9 553.1	2.3
2	Brisbane - Sydney	5 266.1	5 513.9	4.7
3	Brisbane - Melbourne	3 360.7	3 865.3	15.0
4	Adelaide - Melbourne	2 491.4	2 823.4	13.3
5	Gold Coast - Sydney	2 742.6	2 751.4	0.3
6	Melbourne - Perth	2 003.7	2 244.3	12.0
7	Adelaide - Sydney	2 094.0	2 147.1	2.5
8	Gold Coast - Melbourne	1 943.5	2 130.9	9.6
9	Perth - Sydney	1 844.8	2 124.9	15.2
10	Hobart - Melbourne	1 455.3	1 483.6	1.9
11	Brisbane - Cairns	1 367.5	1 375.6	0.6
12	Canberra - Melbourne	1 581.7	1 556.6	-1.6
13	Canberra - Sydney	1 675.0	1 607.1	-4.1
14	Brisbane - Townsville	1 176.9	1 193.3	1.4
15	Cairns - Sydney	1 020.3	1 096.5	7.5
16	Brisbane - Mackay	918.0	1 054.2	14.8
17	Launceston - Melbourne	1 066.8	1 019.4	-4.4
18	Brisbane - Perth	868.0	961.8	10.8
19	Adelaide - Brisbane	792.0	855.8	8.1
20	Karratha - Perth	891.3	956.2	7.3
21	Brisbane - Rockhampton	805.4	767.1	-4.8
22	Brisbane - Canberra	818.2	811.5	-0.8
23	Adelaide - Perth	755.5	716.3	-5.2
24	Brisbane - Newcastle	731.6	701.7	-4.1
25	Hobart - Sydney	594.0	621.7	4.7
26	Cairns - Melbourne	450.9	607.0	34.6
27	Sunshine Coast - Sydney	532.3	648.7	21.9
28	Melbourne - Sunshine Coast	468.7	535.8	14.3
29	Melbourne - Newcastle	431.9	522.5	21.0
30	Brisbane - Darwin	468.4	460.1	-1.8
31	Perth - Port Hedland	410.4	526.1	NA (a)
32	Broome - Perth	443.8	434.9	-2.0
33	Coffs Harbour - Sydney	386.2	419.4	8.6
34	Darwin - Melbourne	344.9	404.0	17.2
35	Ballina - Sydney	345.8	357.4	3.3
36	Albury - Sydney	347.1	356.4	2.7
37	Kalgoorlie - Perth	312.3	339.7	8.8
38	Launceston - Sydney	250.5	281.9	12.6
39	Newman - Perth	326.9	347.3	6.2
40	Adelaide - Gold Coast	343.7	259.2	-24.6
41	Port Macquarie - Sydney	277.6	298.2	7.4
42	Brisbane - Proserpine	252.2	244.5	-3.0
43	Adelaide - Port Lincoln	125.0	340.6	NA (b)
44	Melbourne - Mildura	263.3	278.7	5.9
45	Cairns - Townsville	289.0	291.4	0.8

(continued)

Table 2 (continued): Available seats (000s) — annual activity

	City-Pair	YE June 2010	YE June 2011	% Change
46	Adelaide - Canberra	281.8	250.4	-11.2
47	Sydney - Wagga Wagga	264.8	280.6	6.0
48	Dubbo - Sydney	244.5	256.1	4.7
49	Hamilton Island - Sydney	243.5	239.5	NA (c)
50	Sydney - Townsville	206.0	219.3	6.5
51	Brisbane - Hamilton Island	244.4	228.8	-6.4
52	Darwin - Perth	241.6	206.7	-14.5
53	Alice Springs - Melbourne	178.3	184.7	3.6
54	Ayers Rock - Sydney	..	168.1	NA (d)
55	Brisbane - Gladstone	..	90.0	NA (e)
	Total domestic network	66 599.6	70 615.5	6.0

(a) Perth - Port Hedland route included from August 2009, prior data not shown.

(b) Adelaide - Port Lincoln route included from March 2010, prior data not shown.

(c) Hamilton Island - Sydney route included from July 2009, prior data not shown.

(d) Ayers Rock - Sydney route included from September 2010, prior data not shown.

(e) Brisbane - Gladstone route included from May 2011, prior data not shown.

Table 3: Load factors (%) — annual activity

	City-Pair	YE June 2010	YE June 2011	% Change
1	Melbourne - Sydney	81.8	82.8	0.9
2	Brisbane - Sydney	82.3	80.7	-1.6
3	Brisbane - Melbourne	83.2	80.5	-2.7
4	Adelaide - Melbourne	84.2	83.0	-1.2
5	Gold Coast - Sydney	83.7	84.6	0.9
6	Melbourne - Perth	84.1	81.9	-2.2
7	Adelaide - Sydney	82.2	82.8	0.7
8	Gold Coast - Melbourne	84.7	82.8	-1.9
9	Perth - Sydney	82.7	79.2	-3.5
10	Hobart - Melbourne	82.7	83.2	0.5
11	Brisbane - Cairns	82.7	83.2	0.5
12	Canberra - Melbourne	70.7	71.1	0.3
13	Canberra - Sydney	64.1	67.5	3.4
14	Brisbane - Townsville	79.0	80.3	1.2
15	Cairns - Sydney	82.7	81.3	-1.5
16	Brisbane - Mackay	79.9	81.0	1.1
17	Launceston - Melbourne	78.1	80.2	2.1
18	Brisbane - Perth	84.3	82.7	-1.6
19	Adelaide - Brisbane	83.0	82.7	-0.3
20	Karratha - Perth	63.4	64.4	1.0
21	Brisbane - Rockhampton	76.7	78.8	2.1
22	Brisbane - Canberra	74.2	74.0	-0.2
23	Adelaide - Perth	81.2	83.3	2.2
24	Brisbane - Newcastle	78.9	81.3	2.4
25	Hobart - Sydney	82.2	81.0	-1.2
26	Cairns - Melbourne	85.2	82.4	-2.8
27	Sunshine Coast - Sydney	79.0	75.6	-3.4
28	Melbourne - Sunshine Coast	83.6	79.0	-4.6
29	Melbourne - Newcastle	80.6	78.3	-2.3
30	Brisbane - Darwin	78.9	79.6	0.7
31	Perth - Port Hedland	66.7	64.5	NA (a)
32	Broome - Perth	73.1	74.1	1.0
33	Coffs Harbour - Sydney	77.5	73.6	-3.8
34	Darwin - Melbourne	76.1	75.1	-1.0
35	Ballina - Sydney	77.2	75.7	-1.6
36	Albury - Sydney	69.6	68.3	-1.2
37	Kalgoorlie - Perth	68.0	69.8	1.8
38	Launceston - Sydney	83.3	79.4	-3.9
39	Newman - Perth	55.7	63.2	7.5
40	Adelaide - Gold Coast	81.7	82.4	0.7
41	Port Macquarie - Sydney	72.6	71.4	-1.2
42	Brisbane - Proserpine	84.7	84.0	-0.7
43	Adelaide - Port Lincoln	53.0	58.6	NA (b)
44	Melbourne - Mildura	72.8	71.3	-1.6
45	Cairns - Townsville	59.0	64.0	5.0

(continued)

Table 3 (continued): Load factors (%) — annual activity

	City-Pair	YE June 2010	YE June 2011	% Change
46	Adelaide - Canberra	74.5	74.3	-0.2
47	Sydney - Wagga Wagga	67.2	66.0	-1.2
48	Dubbo - Sydney	71.6	70.7	-0.9
49	Hamilton Island - Sydney	74.4	75.2	NA (c)
50	Sydney - Townsville	81.8	81.0	-0.7
51	Brisbane - Hamilton Island	73.1	74.5	1.4
52	Darwin - Perth	62.8	71.2	8.5
53	Alice Springs - Melbourne	79.5	78.3	-1.2
54	Ayers Rock - Sydney	..	72.2	NA (d)
55	Brisbane - Gladstone	..	53.4	NA (e)
	Total domestic network	79.5	78.7	-0.9

(a) Perth - Port Hedland route included from August 2009, prior data not shown.

(b) Adelaide - Port Lincoln route included from March 2010, prior data not shown.

(c) Hamilton Island - Sydney route included from July 2009, prior data not shown.

(d) Ayers Rock - Sydney route included from September 2010, prior data not shown.

(e) Brisbane - Gladstone route included from May 2011, prior data not shown.

Table 4: Aircraft movements — annual activity

	City-Pair	YE June 2010	YE June 2011	% Change
1	Melbourne - Sydney	49 896	50 623	1.5
2	Brisbane - Sydney	29 899	30 444	1.8
3	Brisbane - Melbourne	20 850	23 489	12.7
4	Adelaide - Melbourne	16 332	18 026	10.4
5	Gold Coast - Sydney	15 550	16 193	4.1
6	Melbourne - Perth	10 581	11 266	6.5
7	Adelaide - Sydney	13 118	13 095	-0.2
8	Gold Coast - Melbourne	10 581	11 806	11.6
9	Perth - Sydney	8 824	9 692	9.8
10	Hobart - Melbourne	8 674	8 734	0.7
11	Brisbane - Cairns	8 536	8 647	1.3
12	Canberra - Melbourne	12 021	11 472	-4.6
13	Canberra - Sydney	18 590	17 673	-4.9
14	Brisbane - Townsville	7 944	7 963	0.2
15	Cairns - Sydney	5 476	6 125	11.9
16	Brisbane - Mackay	7 434	8 320	11.9
17	Launceston - Melbourne	8 183	7 770	-5.0
18	Brisbane - Perth	4 373	4 663	6.6
19	Adelaide - Brisbane	5 315	5 575	4.9
20	Karratha - Perth	6 310	6 672	5.7
21	Brisbane - Rockhampton	8 740	8 334	-4.6
22	Brisbane - Canberra	6 507	6 483	-0.4
23	Adelaide - Perth	5 134	4 871	-5.1
24	Brisbane - Newcastle	5 543	5 631	1.6
25	Hobart - Sydney	3 771	4 221	11.9
26	Cairns - Melbourne	2 405	3 291	36.8
27	Sunshine Coast - Sydney	3 186	3 894	22.2
28	Melbourne - Sunshine Coast	2 716	3 108	14.4
29	Melbourne - Newcastle	2 523	3 011	19.3
30	Brisbane - Darwin	2 353	2 286	-2.8
31	Perth - Port Hedland	3 151	3 865	NA (a)
32	Broome - Perth	3 640	3 540	-2.7
33	Coffs Harbour - Sydney	4 581	4 887	6.7
34	Darwin - Melbourne	1 806	2 132	18.1
35	Ballina - Sydney	3 615	3 608	-0.2
36	Albury - Sydney	6 576	6 670	1.4
37	Kalgoorlie - Perth	2 547	2 460	-3.4
38	Launceston - Sydney	1 457	1 643	12.8
39	Newman - Perth	2 928	2 984	1.9
40	Adelaide - Gold Coast	2 166	1 671	-22.9
41	Port Macquarie - Sydney	4 112	4 549	10.6
42	Brisbane - Proserpine	1 454	1 419	-2.4
43	Adelaide - Port Lincoln	2 784	7 313	NA (b)
44	Melbourne - Mildura	5 031	4 854	-3.5
45	Cairns - Townsville	4 648	4 848	4.3

(continued)

Table 4 (continued): Aircraft movements — annual activity

	City-Pair	YE June 2010	YE June 2011	% Change
46	Adelaide - Canberra	2 073	1 849	-10.8
47	Sydney - Wagga Wagga	5 980	5 713	-4.5
48	Dubbo - Sydney	6 132	6 414	4.6
49	Hamilton Island - Sydney	1 443	1 416	NA (c)
50	Sydney - Townsville	1 250	1 315	5.2
51	Brisbane - Hamilton Island	1 425	1 365	-4.2
52	Darwin - Perth	1 483	1 299	-12.4
53	Alice Springs - Melbourne	1 040	1 076	3.5
54	Ayers Rock - Sydney	..	1 216	NA (d)
55	Brisbane - Gladstone	..	1 021	NA (e)
	Total domestic network	573 525	610 830	6.5

(a) Perth - Port Hedland route included from August 2009, prior data not shown.

(b) Adelaide - Port Lincoln route included from March 2010, prior data not shown.

(c) Hamilton Island - Sydney route included from July 2009, prior data not shown.

(d) Ayers Rock - Sydney route included from September 2010, prior data not shown.

(e) Brisbane - Gladstone route included from May 2011, prior data not shown.

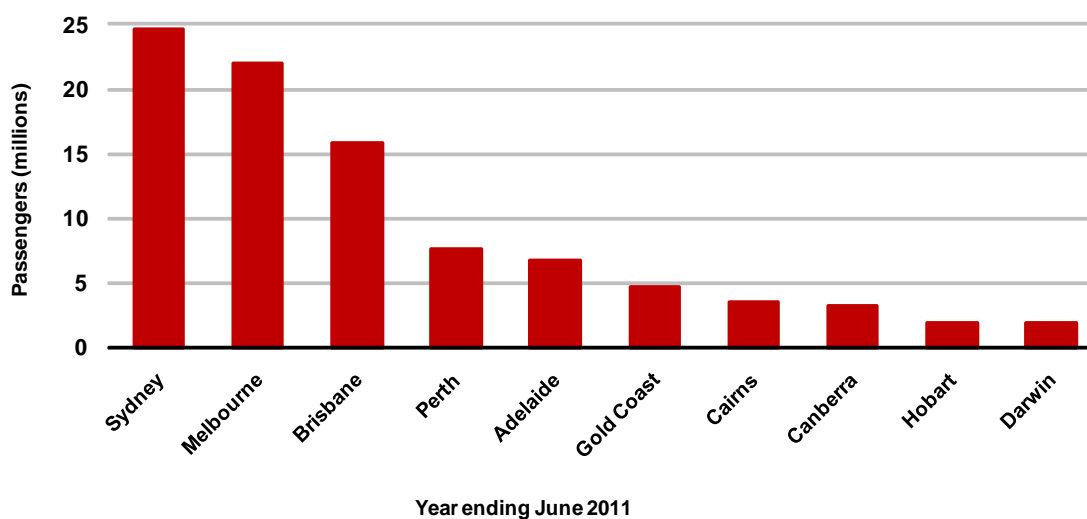
TOP TEN AIRPORTS – PASSENGER MOVEMENTS

Table 5: Top ten airport domestic passenger movements (000s) — annual activity

Airport	YE June 2010	YE June 2011	% Change	% of Total
1 Sydney	23 638.1	24 590.4	4.0	22.5
2 Melbourne	20 648.3	21 954.2	6.3	20.0
3 Brisbane	14 857.9	15 766.3	6.1	14.4
4 Perth	7 011.5	7 648.8	9.1	7.0
5 Adelaide	6 528.0	6 746.6	3.3	6.2
6 Gold Coast	4 520.9	4 717.6	4.4	4.3
7 Cairns	3 248.0	3 495.8	7.6	3.2
8 Canberra	3 258.9	3 241.1	-0.5	3.0
9 Hobart	1 856.0	1 903.3	2.5	1.7
10 Darwin	1 792.3	1 873.6	4.5	1.7
Total top ten airports	87 359.9	91 937.6	5.2	84.0
Total domestic network	103 513.4	109 509.3	5.8	100.0

Top ten airport passenger movements

(Domestic and regional passenger traffic - traffic on board)



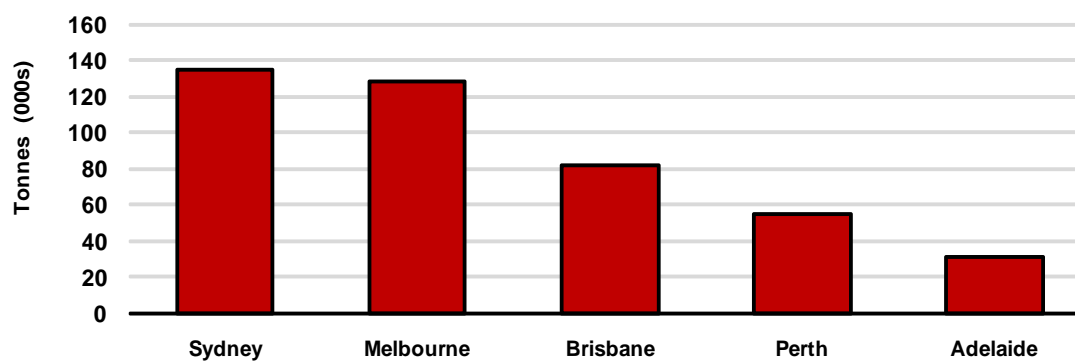
TOP FIVE AIRPORTS – CARGO MOVEMENTS

Table 6: Top five airport cargo movements (000s tonnes) - annual activity ^(a)

Airport	YE June 2010	YE June 2011	% Change	% of Total
1 Sydney	136.3	135.0	-1.0	26.8
2 Melbourne	130.2	128.2	-1.5	25.5
3 Brisbane	77.8	82.0	5.3	16.3
4 Perth	51.5	55.1	7.1	10.9
5 Adelaide	31.1	31.0	-0.5	6.1
Total top five airports	427.0	431.3	1.0	85.6
Total domestic network	472.4	503.7	6.6	100

Top five airport cargo movements ^(a)

(Domestic and regional cargo traffic - traffic on board)



Year ending June 2011

(a) - provisional data, includes estimates

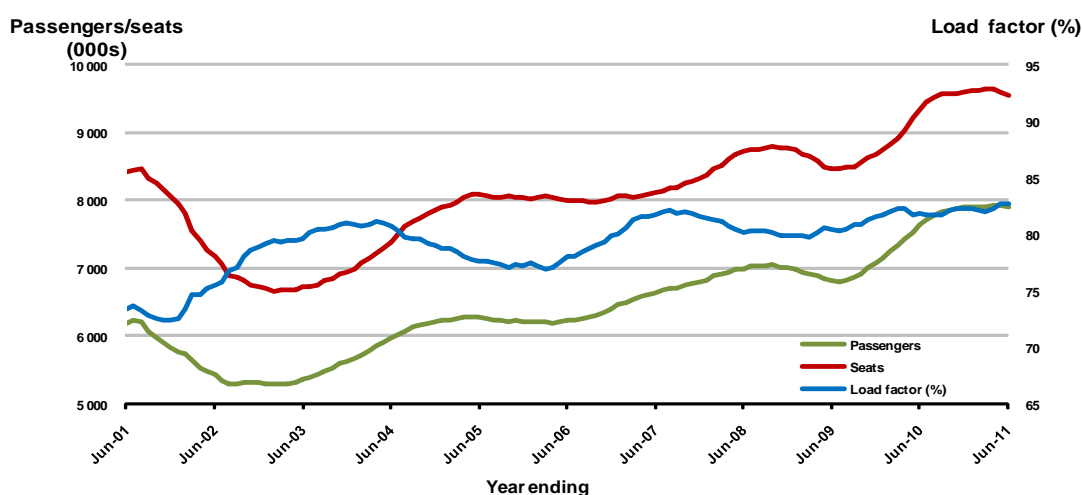
TOP TWENTY ROUTES

1. Melbourne - Sydney

Moving annual data

	YE June 2010	YE June 2011	% Change
Passengers carried (000s)	7 640.5	7 907.3	3.5
Seats (000s)	9 335.8	9 553.1	2.3
Load factor %	81.8	82.8	0.9 *
Aircraft trips	49 896	50 623	1.5

* percentage point difference

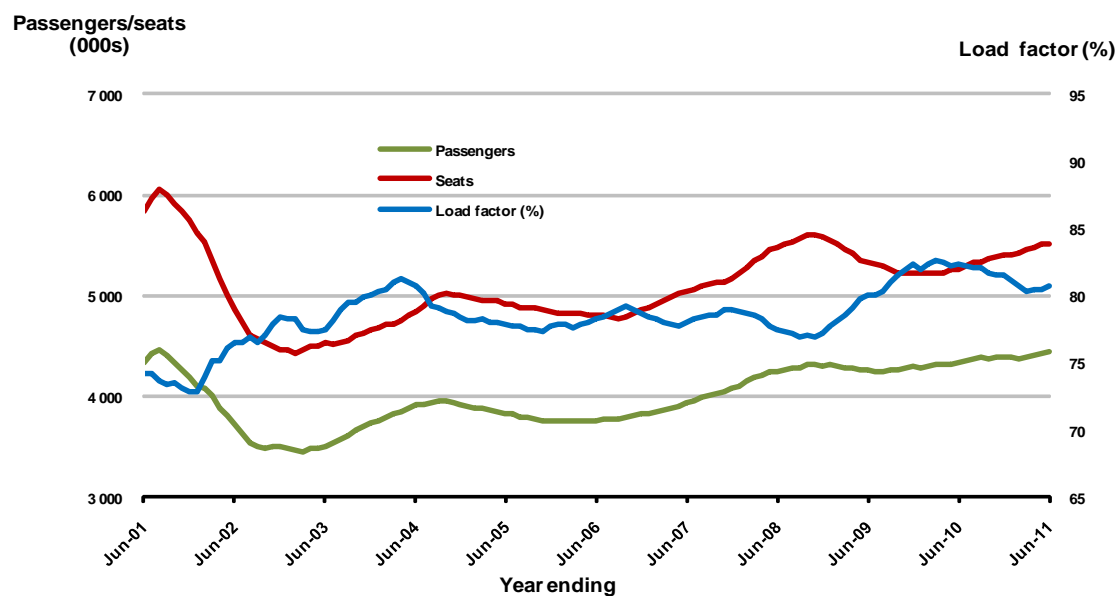


2. Brisbane - Sydney

Moving annual data

	YE June 2010	YE June 2011	% Change
Passengers carried (000s)	4 333.1	4 449.0	2.7
Seats (000s)	5 266.1	5 513.9	4.7
Load factor %	82.3	80.7	-1.6 *
Aircraft trips	29 899	30 444	1.8

* percentage point difference

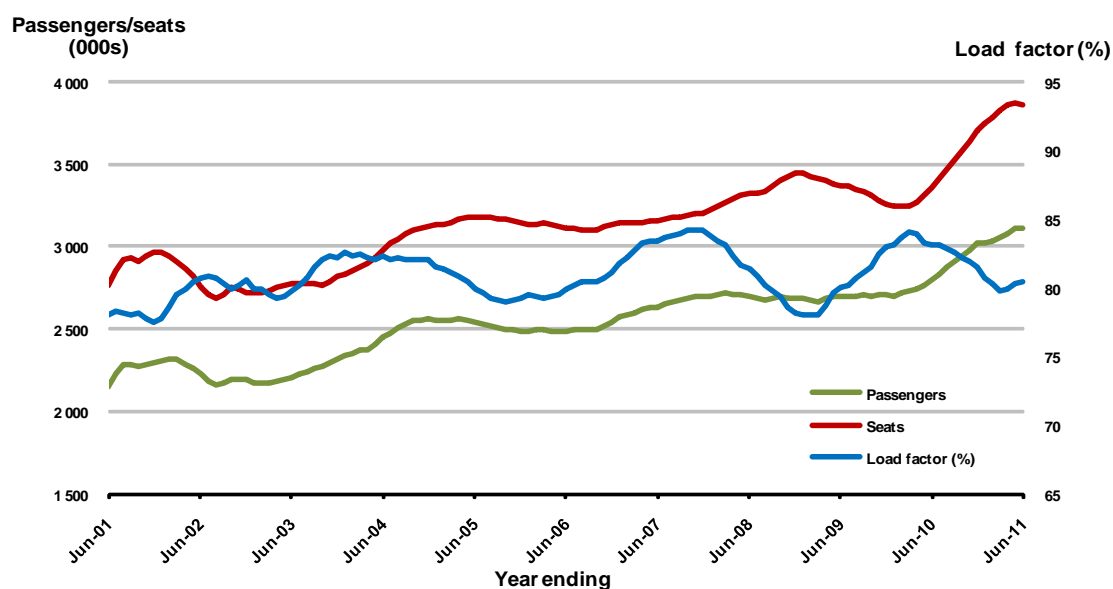


3. Brisbane - Melbourne

Moving annual data

	YE June 2010	YE June 2011	% Change
Passengers carried (000s)	2 795.9	3 110.7	11.3
Seats (000s)	3 360.7	3 865.3	15.0
Load factor %	83.2	80.5	-2.7 *
Aircraft trips	20 850	23 489	12.7

* percentage point difference

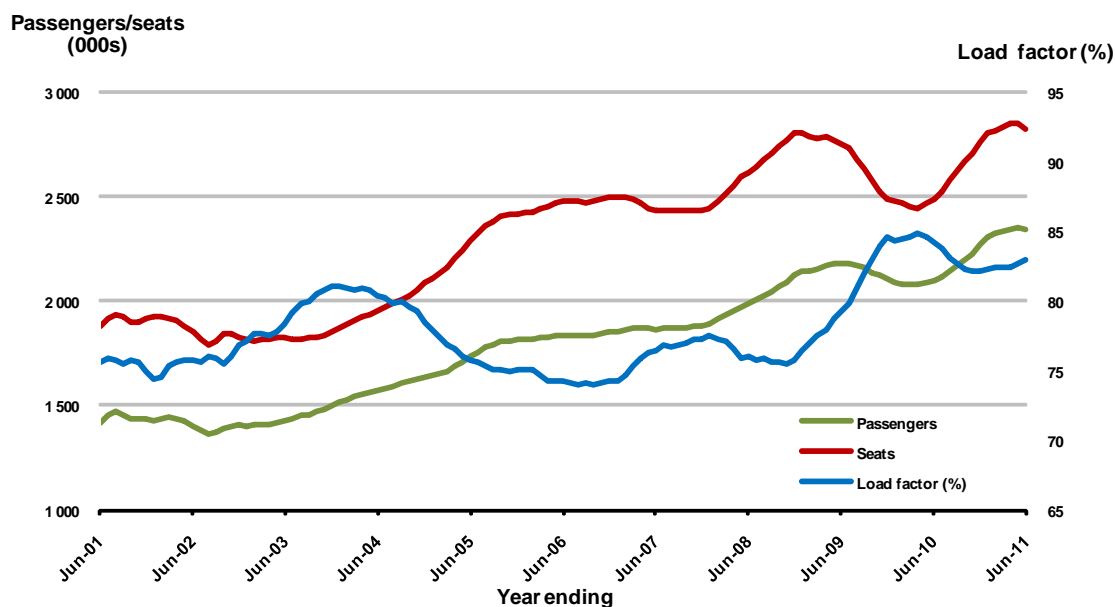


4. Adelaide - Melbourne

Moving annual data

	YE June 2010	YE June 2011	% Change
Passengers carried (000s)	2 097.4	2 343.0	11.7
Seats (000s)	2 491.4	2 823.4	13.3
Load factor %	84.2	83.0	-1.2 *
Aircraft trips	16 332	18 026	10.4

* percentage point difference

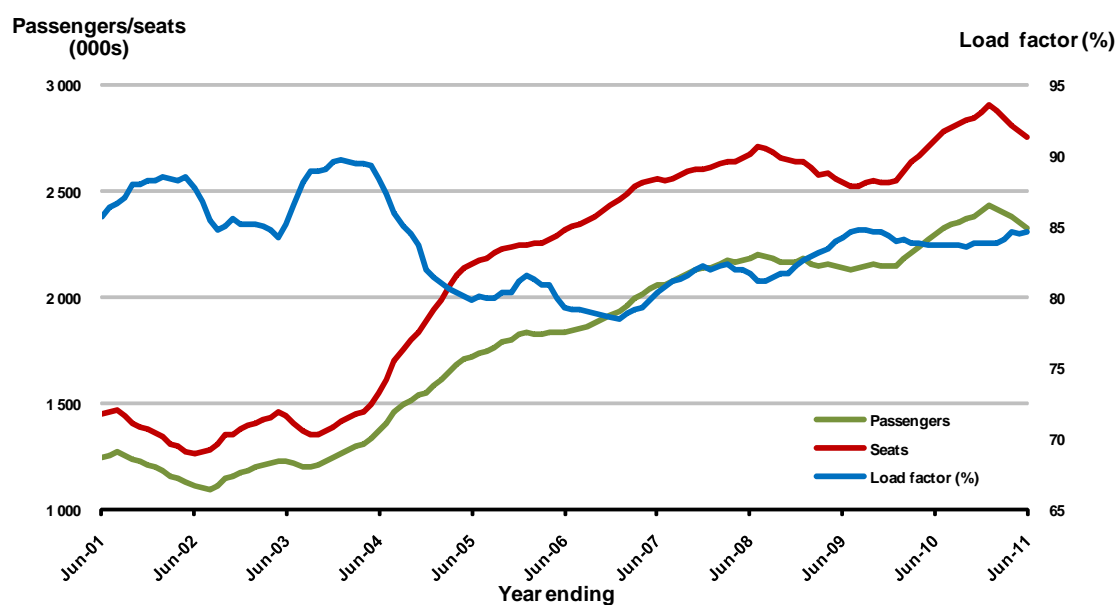


5. Gold Coast - Sydney

Moving annual data

	YE June 2010	YE June 2011	% Change
Passengers carried (000s)	2 295.9	2 328.0	1.4
Seats (000s)	2 742.6	2 751.4	0.3
Load factor %	83.7	84.6	0.9*
Aircraft trips	15 550	16 193	4.1

* percentage point difference

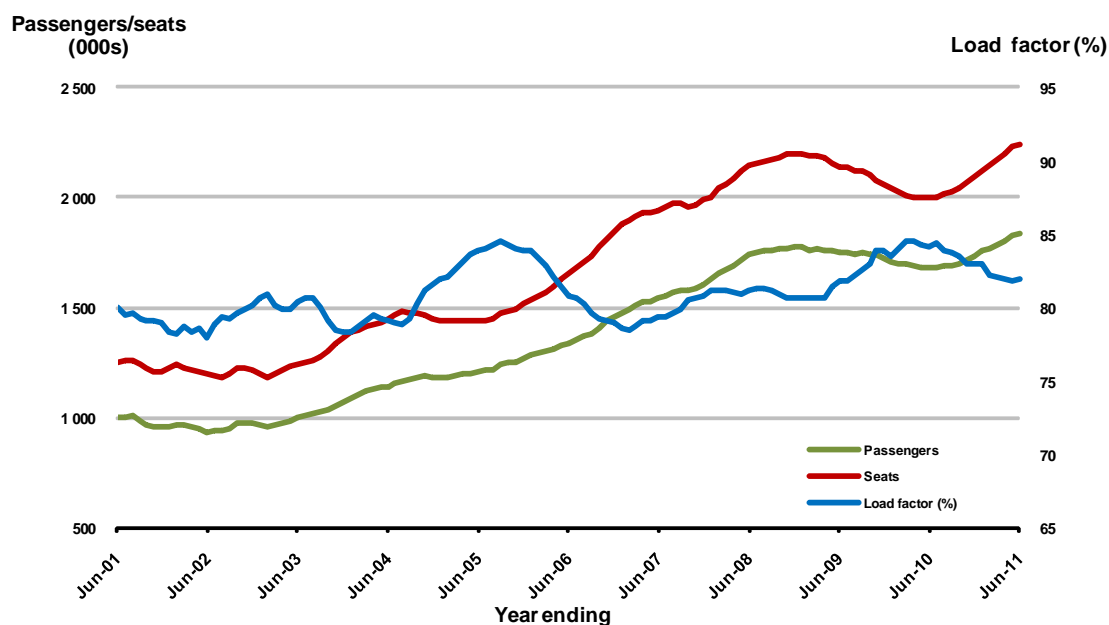


6. Melbourne - Perth

Moving annual data

	YE June 2010	YE June 2011	% Change
Passengers carried (000s)	1 685.1	1 837.5	9.0
Seats (000s)	2 003.7	2 244.3	12.0
Load factor %	84.1	81.9	-2.2*
Aircraft trips	10 581	11 266	6.5

* percentage point difference

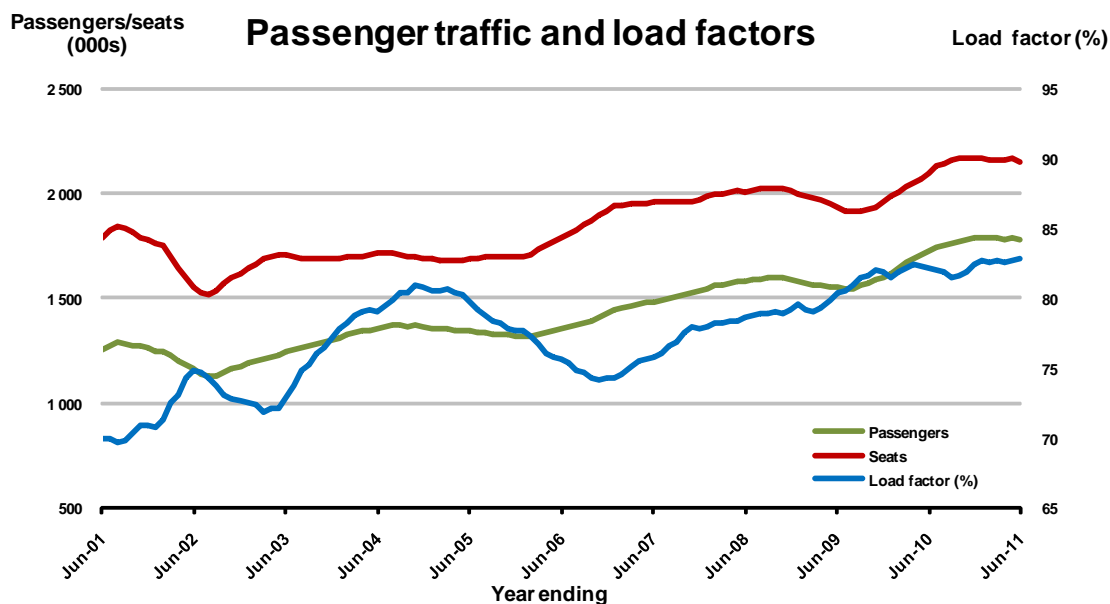


7. Adelaide - Sydney

Moving annual data

	YE June 2010	YE June 2011	% Change
Passengers carried (000s)	1 721.0	1 778.6	3.4
Seats (000s)	2 094.0	2 147.1	2.5
Load factor %	82.2	82.8	0.7 *
Aircraft trips	13 118	13 095	-0.2

* percentage point difference

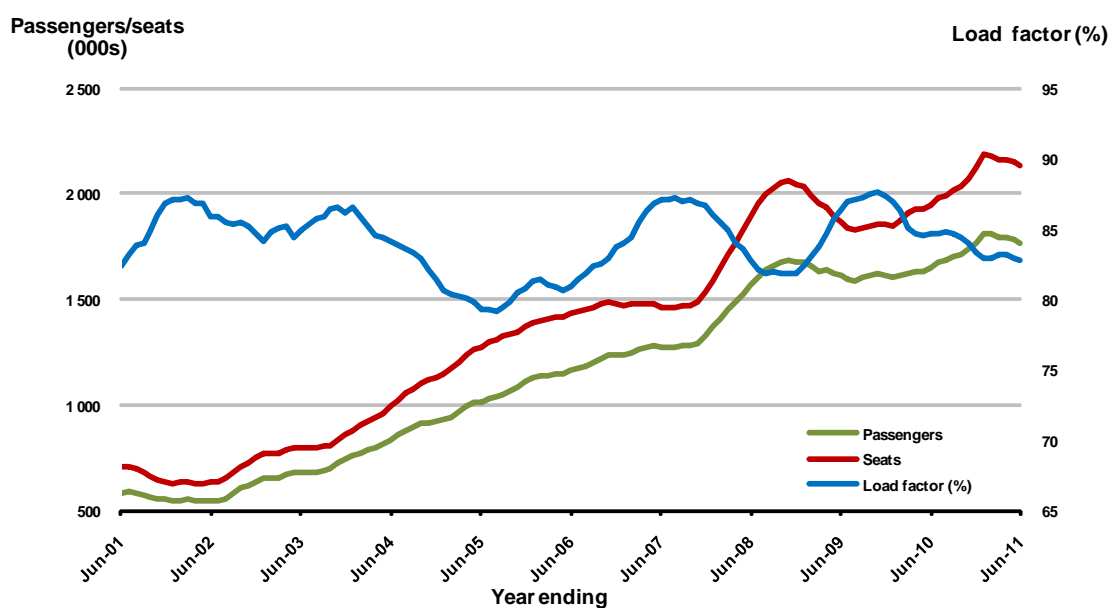


8. Gold Coast - Melbourne

Moving annual data

	YE June 2010	YE June 2011	% Change
Passengers carried (000s)	1 645.9	1 764.9	7.2
Seats (000s)	1 943.5	2 130.9	9.6
Load factor %	84.7	82.8	-1.9 *
Aircraft trips	10 581	11 806	11.6

* percentage point difference

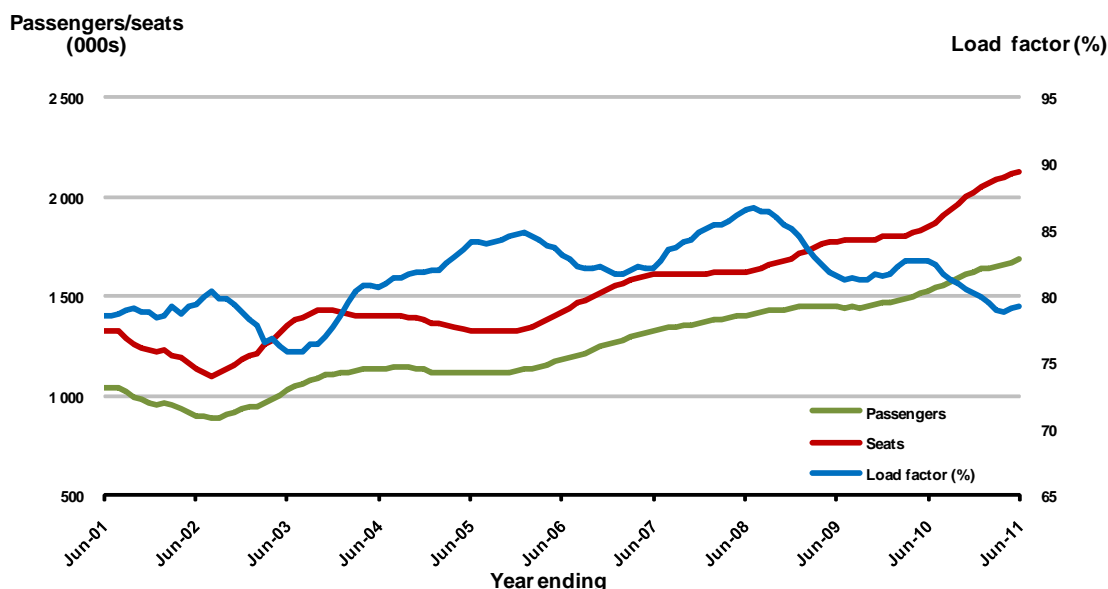


9. Perth - Sydney

Moving annual data

	YE June 2010	YE June 2011	% Change
Passengers carried (000s)	1 525.2	1 682.2	10.3
Seats (000s)	1 844.8	2 124.9	15.2
Load factor %	82.7	79.2	-3.5 *
Aircraft trips	8 824	9 692	9.8

* percentage point difference

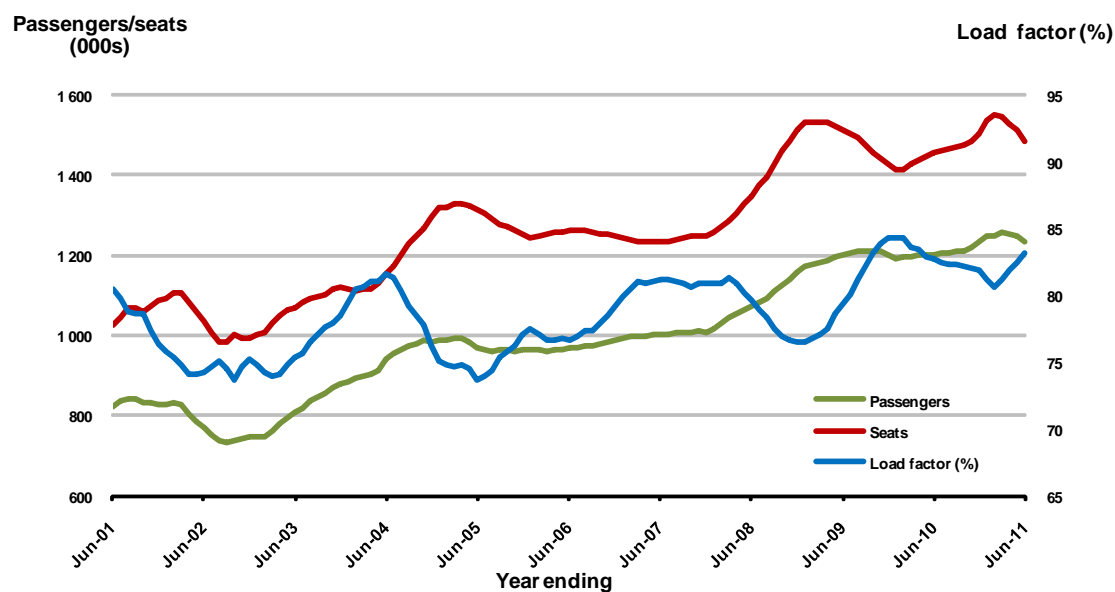


10. Hobart - Melbourne

Moving annual data

	YE June 2010	YE June 2011	% Change
Passengers carried (000s)	1 203.1	1 234.0	2.6
Seats (000s)	1 455.3	1 483.6	1.9
Load factor %	82.7	83.2	0.5 *
Aircraft trips	8 674	8 734	0.7

* percentage point difference

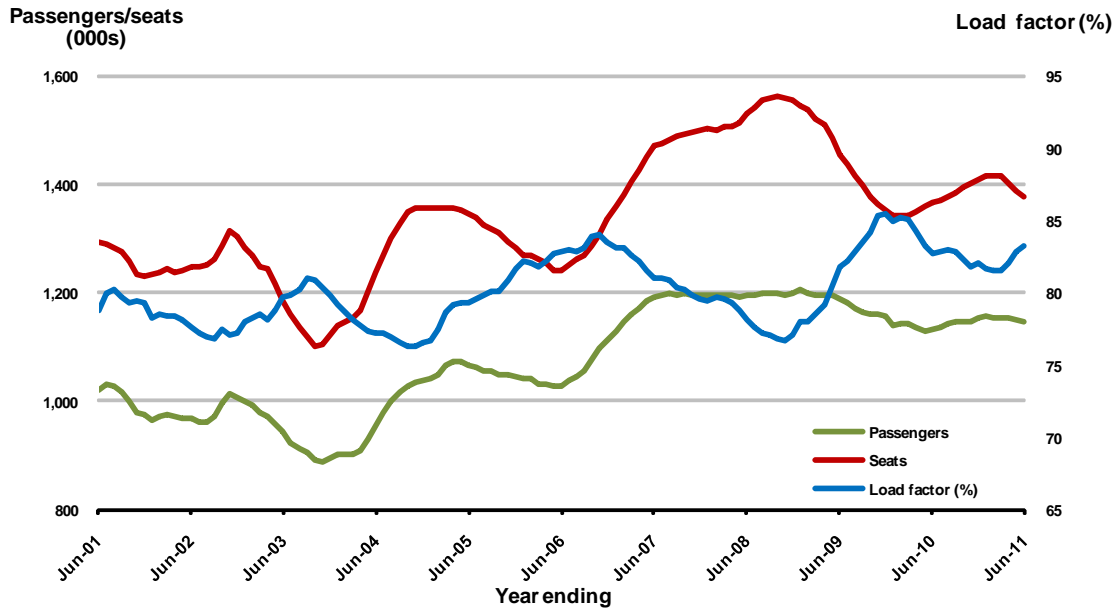


11. Brisbane - Cairns

Moving annual data

	YE June 2010	YE June 2011	% Change
Passengers carried (000s)	1 131.2	1 144.8	1.2
Seats (000s)	1 367.5	1 375.6	0.6
Load factor %	82.7	83.2	0.5*
Aircraft trips	8 536	8 647	1.3

* percentage point difference

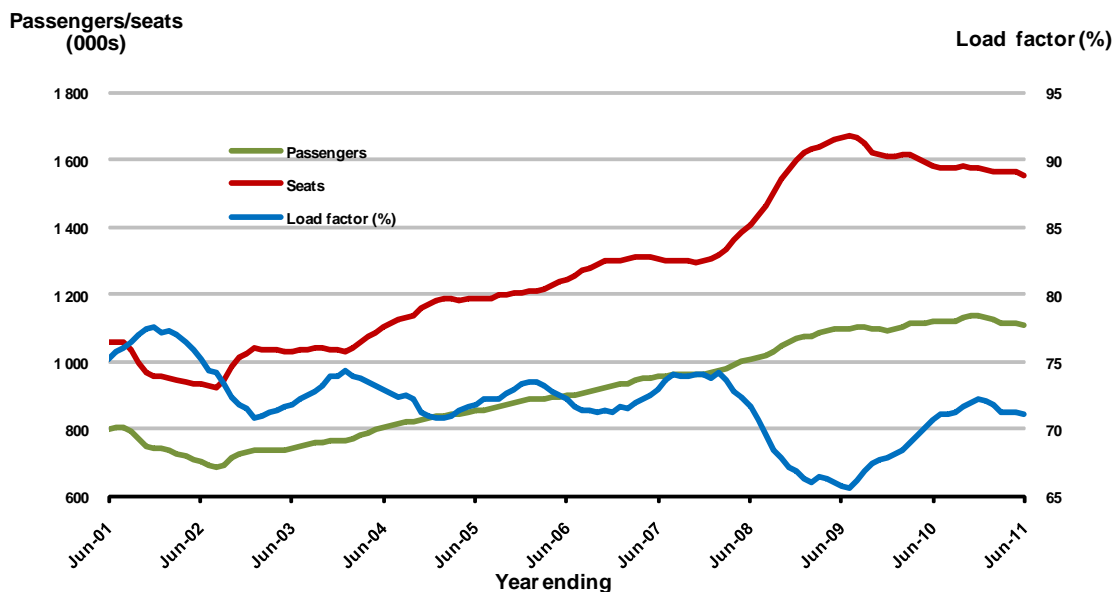


12. Canberra - Melbourne

Moving annual data

	YE June 2010	YE June 2011	% Change
Passengers carried (000s)	1 119.0	1 106.7	-1.1
Seats (000s)	1 581.7	1 556.6	-1.6
Load factor %	70.7	71.1	0.3*
Aircraft trips	12 021	11 472	-4.6

* percentage point difference

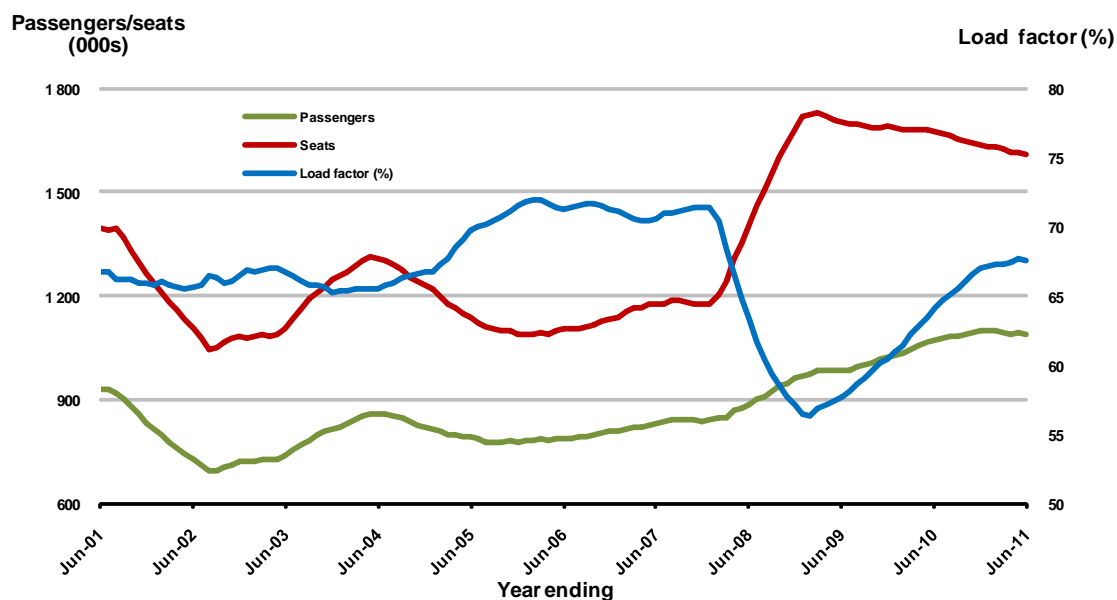


13. Canberra - Sydney

Moving annual data

	YE June 2010	YE June 2011	% Change
Passengers carried (000s)	1 073.8	1 085.3	1.1
Seats (000s)	1 675.0	1 607.1	-4.1
Load factor %	64.1	67.5	3.4 *
Aircraft trips	18 590	17 673	-4.9

* percentage point difference

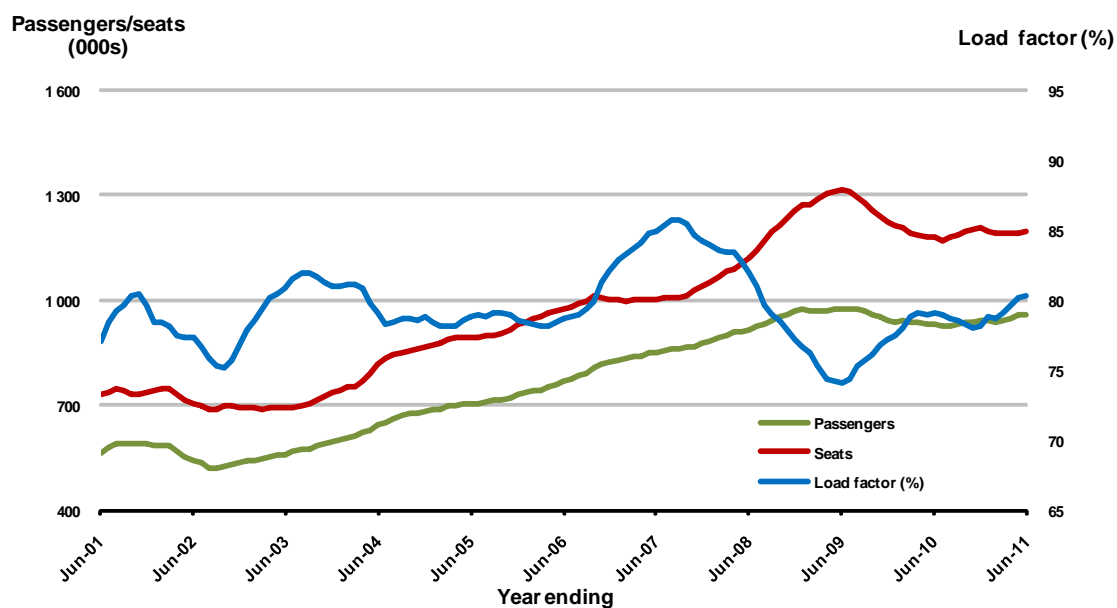


14. Brisbane - Townsville

Moving annual data

	YE June 2010	YE June 2011	% Change
Passengers carried (000s)	929.9	957.7	3.0
Seats (000s)	1 176.9	1 193.3	1.4
Load factor %	79.0	80.3	1.2 *
Aircraft trips	7 944	7 963	0.2

* percentage point difference

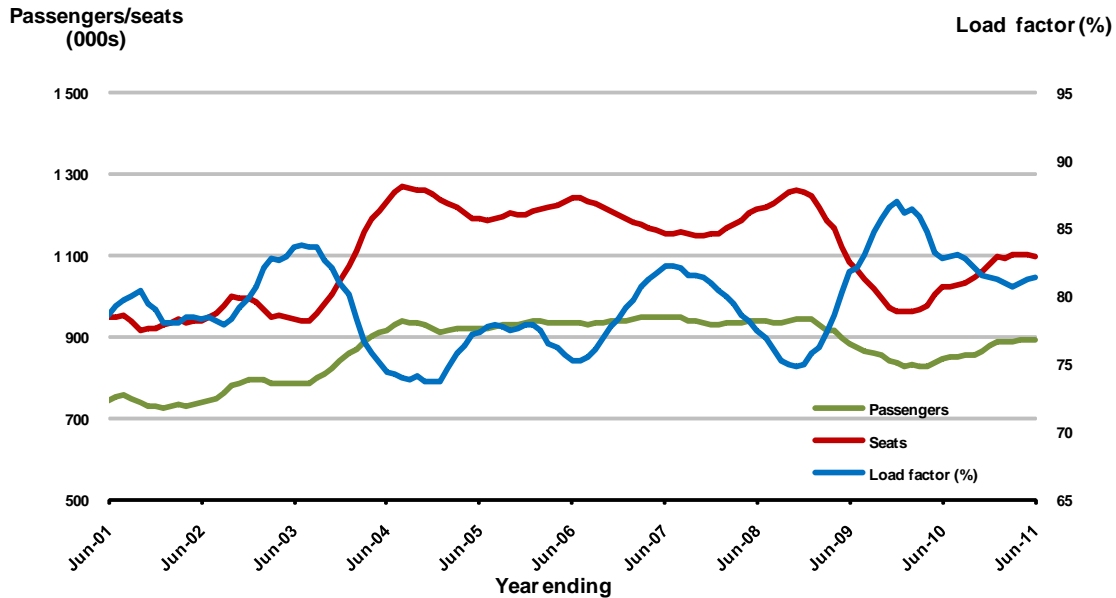


15. Cairns - Sydney

Moving annual data

	YE June 2010	YE June 2011	% Change
Passengers carried (000s)	844.2	891.3	5.6
Seats (000s)	1 020.3	1 096.5	7.5
Load factor %	82.7	81.3	-1.5 *
Aircraft trips	5 476	6 125	11.9

* percentage point difference

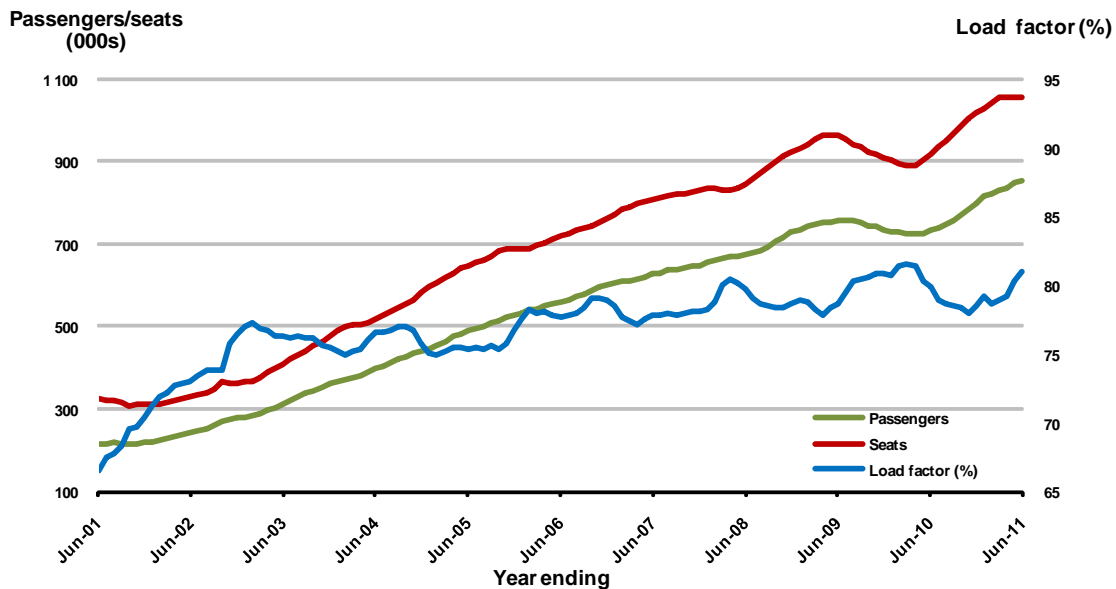


16. Brisbane - Mackay

Moving annual data

	YE June 2010	YE June 2011	% Change
Passengers carried (000s)	733.1	853.4	16.4
Seats (000s)	918.0	1 054.2	14.8
Load factor %	79.9	81.0	1.1 *
Aircraft trips	7 434	8 320	11.9

* percentage point difference

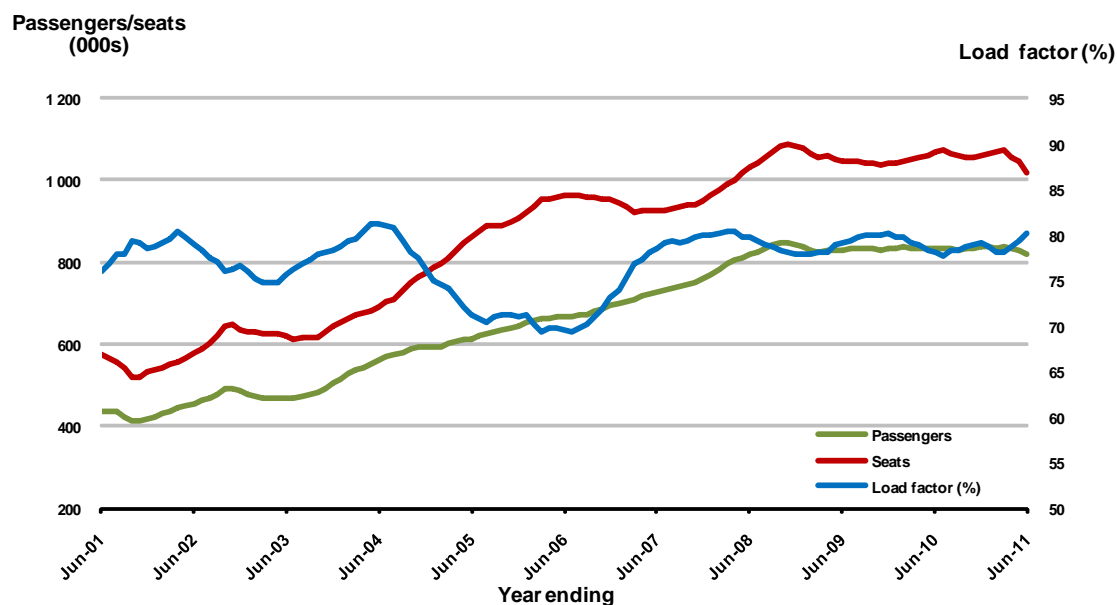


17. Launceston - Melbourne

Moving annual data

	YE June 2010	YE June 2011	% Change
Passengers carried (000s)	832.9	817.6	-1.8
Seats (000s)	1 066.8	1 019.4	-4.4
Load factor %	78.1	80.2	2.1 *
Aircraft trips	8 183	7 770	-5.0

* percentage point difference

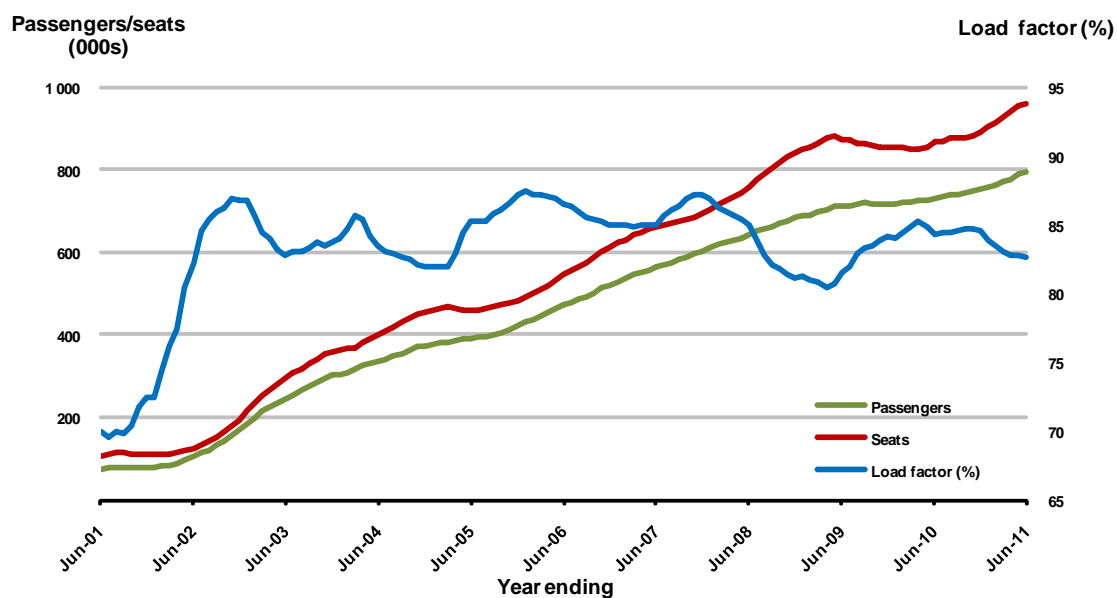


18. Brisbane - Perth

Moving annual data

	YE June 2010	YE June 2011	% Change
Passengers carried (000s)	731.5	795.1	8.7
Seats (000s)	868.0	961.8	10.8
Load factor %	84.3	82.7	-1.6 *
Aircraft trips	4 373	4 663	6.6

* percentage point difference

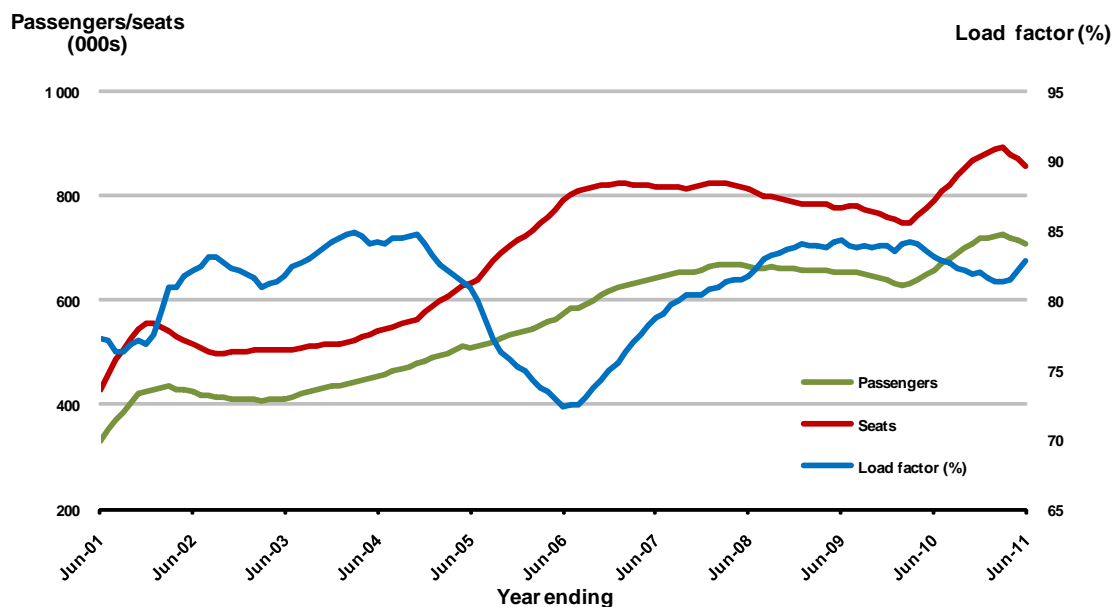


19. Adelaide - Brisbane

Moving annual data

	YE June 2010	YE June 2011	% Change
Passengers carried (000s)	657.7	708.2	7.7
Seats (000s)	792.0	855.8	8.1
Load factor %	83.0	82.7	-0.3 *
Aircraft trips	5 315	5 575	4.9

* percentage point difference

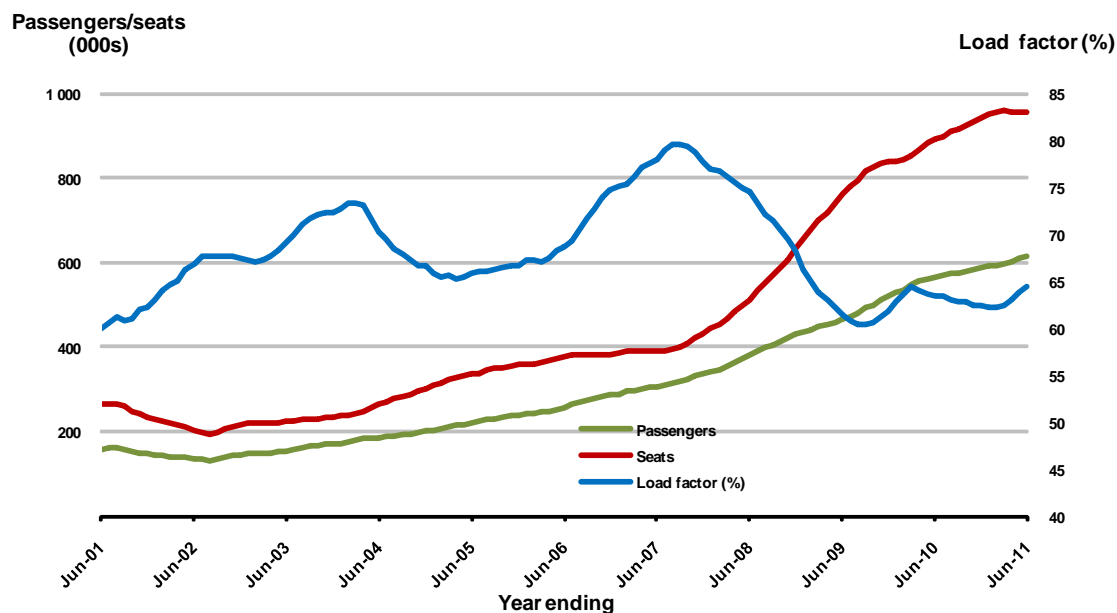


20. Karratha - Perth

Moving annual data

	YE June 2010	YE June 2011	% Change
Passengers carried (000s)	564.9	615.7	9.0
Seats (000s)	891.3	956.2	7.3
Load factor %	63.4	64.4	1.0 *
Aircraft trips	6 310	6 672	5.7

* percentage point difference



DEFINITIONS

Aircraft Trips	The number of flight stages. A return flight counts as two aircraft trips.
Available Seat Kilometres (ASKs)	Calculated by multiplying the number of seats available on each flight stage, by the distance in kilometres between the ports. The distances used are Great Circle Distances.
City-Pair	The ports shown make up the city-pair route. Passenger movements shown for a city pair reflect total traffic in both directions.
Flight Stage	The operation of an aircraft from take-off to landing.
Load Factor	The total revenue passenger kilometres performed as a percentage of the total available seat kilometres.
Passenger Carried	Revenue passengers carried.
Revenue Passengers	All passengers paying any fare. Frequent flyer redemption travellers are regarded as revenue passengers.
Revenue Passenger Kilometres (RPKs)	Calculated by multiplying the number of revenue passengers travelling on each flight stage, by the distance in kilometres between the ports. The distances used are Great Circle Distances.
Traffic on board by stages	The total of all traffic (revenue passengers) on each flight stage between two directly connected airports.
..	Data not included
NA	Not applicable