



Australian Government

Department of Infrastructure and Regional Development

Bureau of Infrastructure, Transport and Regional Economics

STATISTICAL REPORT



Aviation

Domestic aviation activity
2016-17

© Commonwealth of Australia 2017

ISSN: 1832 - 1968

Ownership of intellectual property rights in this publication

Unless otherwise noted, copyright (and any other intellectual property rights, if any) in this publication is owned by the Commonwealth of Australia (referred to below as the Commonwealth).

Disclaimer

The material contained in this publication is made available on the understanding that the Commonwealth is not providing professional advice, and that users exercise their own skill and care with respect to its use, and seek independent advice if necessary.

The Commonwealth makes no representations or warranties as to the contents or accuracy of the information contained in this publication. To the extent permitted by law, the Commonwealth disclaims liability to any person or organisation in respect of anything done, or omitted to be done, in reliance upon information contained in this publication.

Creative Commons licence

With the exception of (a) the Coat of Arms; and (b) the Department of Infrastructure's photos and graphics, copyright in this publication is licensed under a Creative Commons Attribution 3.0 Australia Licence.

Creative Commons Attribution 3.0 Australia Licence is a standard form licence agreement that allows you to copy, communicate and adapt this publication provided that you attribute the work to the Commonwealth and abide by the other licence terms. A summary of the licence terms is available from <http://creativecommons.org/licenses/by/3.0/au/deed.en>. The full licence terms are available from <http://creativecommons.org/licenses/by/3.0/au/legalcode>.

Use of the Coat of Arms

The Department of the Prime Minister and Cabinet sets the terms under which the Coat of Arms is used. Please refer to the Department's Commonwealth Coat of Arms and Government branding web page <http://www.dpmc.gov.au/guidelines/index.cfm#brand> and, in particular, the Guidelines on the use of the Commonwealth Coat of Arms publication.

An appropriate citation for this report is:

Bureau of Infrastructure, Transport and Regional Economics (BITRE), 2017, Domestic aviation activity, Statistical Report, BITRE, Canberra ACT.

Contact us

This publication is available in PDF format. All other rights are reserved, including in relation to any Departmental logos or trade marks which may exist. For enquiries regarding the licence and any use of this publication, please contact:

Bureau of Infrastructure, Transport and Regional Economics (BITRE)
Department of Infrastructure and Transport
GPO Box 501, Canberra ACT 2601, Australia
Telephone: (international) +61 2 6274 7210
Fax: (international) +61 2 6274 7727
Email: bitre@infrastructure.gov.au
Website: www.bitre.gov.au

Inquiries

Should you require additional information about the statistics contained in this publication:

Nebojsa Pavlovic

Telephone (02) 6274 6817 or Facsimile (02) 6274 7727

Electronic mail: AVSTATS@infrastructure.gov.au

Nebojsa.Pavlovic@infrastructure.gov.au

Web site: <http://www.bitre.gov.au/statistics/aviation/domestic.aspx>

FOREWORD

This report provides an overview of domestic (including charter) commercial aviation activity in Australia for the year ending June 2017.

The data cover revenue passengers carried by Australian-registered operators of scheduled regular public transport services over Australian flight stages and fixed-wing charter operators. These estimates include passengers carried between domestic airports on international flights operated by these carriers. The passengers carried refer to traffic on board by stages.

Estimates of passengers and aircraft movements for charter aviation are included in this publication, where BITRE confidentiality standards are met.

Individual routes shown are restricted to those with an average exceeding 8 000 passengers per month where two or more airlines operate in competition. For the year ending June 2017 there were 65 such routes.

Information on both the total network and the Regular Public Transport (RPT) network for the year ending June 2017 is presented on page 2.

Detailed information on the 65 individual routes can be found in the RPT summary pages 3–10 of this publication.

The top ten airports in terms of RPT passenger movements are shown on page 11.

Data on domestic RPT cargo movements at the top five cargo airports are provided on page 12. The table includes cargo carried on passenger flights operated by the Qantas group (including Jetstar), Virgin Australia, Air North and Skippers as well as the cargo carried by dedicated freighter aircraft operated by Qantas Freight, Toll Priority and Virgin Australia Cargo.

The long-term trends for the top twenty competitive RPT routes are presented graphically on pages 13–22.

Domestic RPT passenger movements at the top 50 regional airports are presented on page 23.

Tables providing estimates of domestic charter aviation activity are shown on page 24. BITRE confidentiality standards restrict publication of detailed airport-level estimates for any Australian airport, with the exception of Perth Airport.

A list of definitions can be found on page 25.

This report was prepared by the Aviation Statistics Section of the Bureau of Infrastructure, Transport and Regional Economics with data provided by airlines.

Estimates are included where data were not available and data presented in this publication may contain revisions to previously published data.

Where figures have been rounded, discrepancies may occur between sums of component items and totals, and in percentage changes which are derived from figures prior to rounding.

CONTENTS

Highlights	1
RPT network	2
Top competitive routes	3
Top ten airports – passenger movements	11
Top five airports – cargo movements	12
Top twenty routes	13
1. Melbourne – Sydney	13
2. Brisbane – Sydney	13
3. Brisbane – Melbourne	14
4. Gold Coast – Sydney	14
5. Adelaide – Melbourne	15
6. Melbourne – Perth	15
7. Gold Coast – Melbourne	16
8. Adelaide – Sydney	16
9. Perth – Sydney	17
10. Hobart – Melbourne	17
11. Brisbane – Cairns	18
12. Cairns – Sydney	18
13. Canberra – Melbourne	19
14. Brisbane – Perth	19
15. Brisbane – Townsville	20
16. Canberra – Sydney	20
17. Launceston – Melbourne	21
18. Adelaide – Brisbane	21
19. Cairns – Melbourne	22
20. Brisbane – Mackay	22
Top fifty regional airports	23
Domestic charter activity	24
Definitions	25

This page is intentionally left blank.

HIGHLIGHTS

There were 61.65 million passengers carried on Australian domestic commercial aviation (including charter operations) in the year ending June 2017, an increase of 1.2 per cent compared with the year ending June 2016. In the year ending June 2017 there were 681 thousand aircraft trips, a decrease of 0.5 per cent compared to the previous year.

59.26 million passengers were carried on RPT flights in the year ending June 2017, an increase of 1.5 per cent compared with the year ending June 2016.

RPT revenue passenger kilometres (RPKs) performed were 69.47 billion in the year, up 0.9 per cent on the year ending June 2016.

Capacity, measured by available seat kilometres (ASKs), decreased 0.3 per cent compared with the year ending June 2016, to a total of 88.65 billion.

With RPT passenger traffic increasing and capacity decreasing, the industry wide load factor (RPKs/ASKs) increased from 77.4 per cent in the year ending June 2016 to 78.4 per cent in the year ending June 2017. Load factors on individual routes increased on 41 of the 65 RPT routes for which data is available in both years.

In the year ending June 2017, Melbourne – Sydney remained Australia's busiest RPT route with 8.97 million passengers, an increase of 2.0 per cent compared with the year ending June 2016. It was followed by Brisbane – Sydney with 4.70 million passengers (up 1.9 per cent) and Brisbane – Melbourne with 3.50 million passengers (up 1.8 per cent).

The greatest percentage increase in RPT passenger numbers, compared to the year ending June 2016, was on the Ayers Rock (Uluru) – Sydney route (up 11.4 per cent). There were large increases on a number of other routes, including Sydney – Tamworth (up 9.4 per cent), Sunshine Coast – Sydney and Hobart – Sydney (up 8.7 per cent) and Canberra – Melbourne (up 7.8 per cent).

RPT routes with traffic decreases in the year ending June 2017, compared with the year ending June 2016, included Brisbane – Gladstone (down 17.6 per cent), Karratha – Perth (down 16.0 per cent), Newman – Perth (down 8.4 per cent) and Hamilton Island – Sydney (down 6.3 per cent).

In the year ending June 2017, Sydney remained Australia's busiest domestic airport with 27 million passenger movements, followed by Melbourne with 25 million passenger movements and Brisbane with 17 million passenger movements.

Total cargo movements at Australian airports on domestic RPT flights were 450 thousand tonnes in the year ending June 2017, an increase of 15.3 per cent compared to the year ending June 2016.

In the year ending June 2017, the number of domestic aviation passengers travelling through regional airports was 24.17 million, 1.3 per cent higher than for the year ending June 2016. Out of the top 50 regional airports, the strongest growth was at Wellcamp airport (up 57.6 per cent on year ending June 2016), while the largest decrease was at Roma airport (down 22.2 per cent on year ending June 2016).

Fixed-wing charter operators carried 2.39 million passengers in the year ending June 2017, a decrease of 5.6 per cent compared with the year ending June 2016. Perth airport accounted for 38.8 per cent of all charter passengers in Australia.

TOTAL NETWORK

Summary of annual commercial aviation activity

	YE Jun 2016	YE Jun 2017	% Change
Total passengers carried (millions)	60.94	61.65	1.2
Aircraft trips (000s)	684.8	681.2	-0.5

Note: Regular Public Transport and charter aviation activity
Helicopter, joyflights and sightseeing charter flights not included.

RPT NETWORK

Summary of annual RPT activity

	YE Jun 2016	YE Jun 2017	% Change
Total passengers carried (millions)	58.40	59.26	1.5
Revenue passenger kilometres (billions)	68.83	69.47	0.9
Available seats (millions)	77.14	77.16	0.0
Available seat kilometres (billions)	88.87	88.65	-0.3
Load factor %	77.4	78.4	0.9 *
Aircraft trips (000s)	636.8	636.6	0.0

* percentage point difference

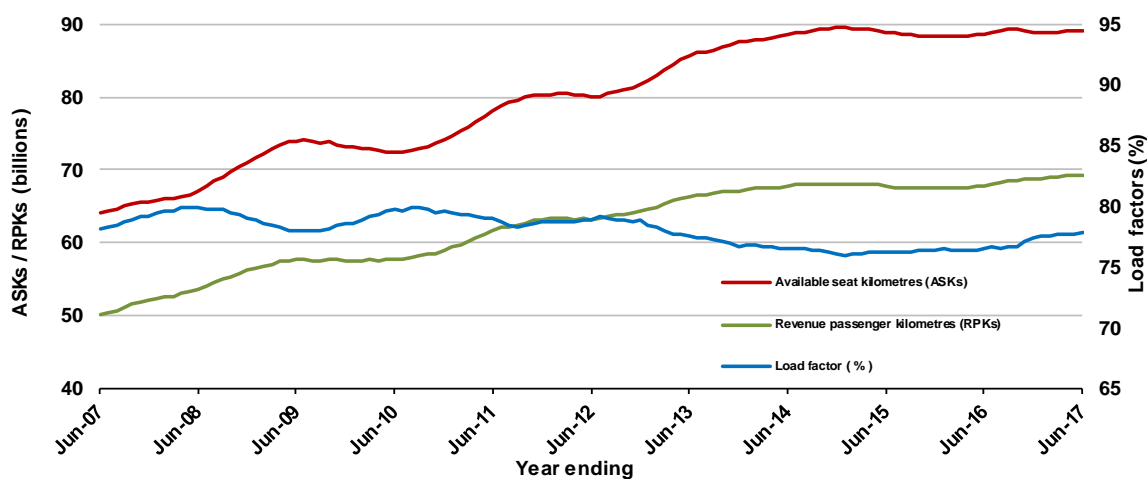
Domestic RPT passenger traffic

(moving annual totals)



RPT Network utilisation

(moving annual totals)



TOP COMPETITIVE ROUTES

Table 1: Passengers carried (000s) — annual activity

	City-Pair	YE Jun 2016	YE Jun 2017	% Change
1	Melbourne - Sydney	8 796.2	8 974.4	2.0
2	Brisbane - Sydney	4 608.0	4 695.7	1.9
3	Brisbane - Melbourne	3 438.7	3 500.5	1.8
4	Gold Coast - Sydney	2 702.3	2 712.7	0.4
5	Adelaide - Melbourne	2 362.7	2 413.2	2.1
6	Melbourne - Perth	2 121.9	2 048.1	-3.5
7	Gold Coast - Melbourne	1 898.6	1 992.2	4.9
8	Adelaide - Sydney	1 869.8	1 886.5	0.9
9	Perth - Sydney	1 760.0	1 737.8	-1.3
10	Hobart - Melbourne	1 526.1	1 598.7	4.8
11	Brisbane - Cairns	1 333.8	1 359.6	1.9
12	Cairns - Sydney	1 075.7	1 124.8	4.6
13	Canberra - Melbourne	1 000.6	1 078.7	7.8
14	Brisbane - Perth	1 000.7	964.8	-3.6
15	Brisbane - Townsville	983.9	958.6	-2.6
16	Canberra - Sydney	949.3	955.0	0.6
17	Launceston - Melbourne	908.8	912.9	0.4
18	Adelaide - Brisbane	813.9	831.0	2.1
19	Cairns - Melbourne	802.2	830.0	3.5
20	Brisbane - Mackay	700.0	675.1	-3.6
21	Hobart - Sydney	583.5	634.4	8.7
22	Adelaide - Perth	616.6	615.2	-0.2
23	Brisbane - Newcastle	556.6	587.0	5.5
24	Brisbane - Canberra	562.0	585.5	4.2
25	Sunshine Coast - Sydney	513.6	558.5	8.7
26	Brisbane - Rockhampton	572.3	540.3	-5.6
27	Melbourne - Newcastle	439.2	469.1	6.8
28	Karratha - Perth	549.5	461.5	-16.0
29	Melbourne - Sunshine Coast	427.1	458.1	7.2
30	Brisbane - Darwin	402.8	408.7	1.5
31	Ballina - Sydney	370.4	393.9	6.4
32	Perth - Port Hedland	358.0	344.1	-3.9
33	Coffs Harbour - Sydney	337.0	342.2	1.6
34	Darwin - Sydney	318.6	320.1	0.5
35	Darwin - Melbourne	291.0	306.3	5.3
36	Brisbane - Gladstone	367.9	303.0	-17.6
37	Newman - Perth	319.5	292.5	-8.4
38	Launceston - Sydney	288.9	290.6	0.6
39	Broome - Perth	301.6	289.2	-4.1
40	Kalgoorlie - Perth	225.9	235.6	4.3
41	Hamilton Island - Sydney	249.2	233.5	-6.3
42	Brisbane - Proserpine	236.8	228.8	-3.4
43	Albury - Sydney	221.8	224.4	1.2
44	Adelaide - Gold Coast	222.8	216.5	-2.8
45	Melbourne - Mildura	202.1	207.4	2.6
46	Brisbane - Hobart	202.8	207.1	2.1
47	Brisbane - Emerald	204.6	197.3	-3.5
48	Port Macquarie - Sydney	190.7	192.9	1.1
49	Darwin - Perth	182.7	190.4	4.2
50	Ayers Rock - Sydney	171.0	190.4	11.4

(continued)

Table 1: (continued): Passengers carried (000s) — annual activity

	City-Pair	YE Jun 2016	YE Jun 2017	% Change
51	Dubbo - Sydney	187.7	189.4	0.9
52	Sydney - Wagga Wagga	188.5	186.6	-1.0
53	Sydney - Tamworth	165.8	181.3	9.4
54	Adelaide - Canberra	169.5	175.3	3.4
55	Adelaide - Port Lincoln	182.4	175.2	-3.9
56	Brisbane - Bundaberg	167.1	174.4	4.4
57	Sydney - Townsville	158.9	158.1	-0.5
58	Brisbane - Hamilton Island	142.0	141.7	-0.2
59	Cairns - Townsville	138.3	139.9	1.1
60	Armidale - Sydney	127.3	126.8	-0.4
61	Adelaide - Alice Springs	120.9	122.1	1.0
62	Brisbane - Mount Isa	124.4	121.2	-2.5
63	Brisbane - Moranbah	124.5	119.1	-4.4
64	Alice Springs - Darwin	119.9	116.4	-2.9
65	Geraldton - Perth	117.7	114.1	-3.1
	Total domestic network	58 404.6	59 256.7	1.5

Table 2: Available seats (000s) — annual activity

	City-Pair	YE Jun 2016	YE Jun 2017	% Change
1	Melbourne - Sydney	10 634.2	10 700.3	0.6
2	Brisbane - Sydney	5 681.9	5 750.4	1.2
3	Brisbane - Melbourne	4 329.9	4 354.7	0.6
4	Gold Coast - Sydney	3 164.4	3 155.0	-0.3
5	Adelaide - Melbourne	2 995.4	3 032.1	1.2
6	Melbourne - Perth	2 638.1	2 523.4	-4.3
7	Gold Coast - Melbourne	2 299.3	2 346.1	2.0
8	Adelaide - Sydney	2 339.9	2 319.4	-0.9
9	Perth - Sydney	2 189.3	2 139.0	-2.3
10	Hobart - Melbourne	1 908.1	2 002.3	4.9
11	Brisbane - Cairns	1 607.3	1 634.7	1.7
12	Cairns - Sydney	1 285.7	1 336.5	3.9
13	Canberra - Melbourne	1 419.9	1 597.9	12.5
14	Brisbane - Perth	1 243.1	1 191.3	-4.2
15	Brisbane - Townsville	1 335.2	1 263.5	-5.4
16	Canberra - Sydney	1 357.6	1 337.5	-1.5
17	Launceston - Melbourne	1 185.1	1 158.5	-2.2
18	Adelaide - Brisbane	1 084.7	1 101.7	1.6
19	Cairns - Melbourne	962.8	980.8	1.9
20	Brisbane - Mackay	959.7	868.2	-9.5
21	Hobart - Sydney	707.0	770.4	9.0
22	Adelaide - Perth	823.5	868.0	5.4
23	Brisbane - Newcastle	736.1	787.4	7.0
24	Brisbane - Canberra	764.3	829.2	8.5
25	Sunshine Coast - Sydney	619.9	690.9	11.4
26	Brisbane - Rockhampton	797.2	699.6	-12.2
27	Melbourne - Newcastle	550.9	598.7	8.7
28	Karratha - Perth	962.4	761.4	-20.9
29	Melbourne - Sunshine Coast	503.8	536.9	6.6
30	Brisbane - Darwin	515.5	516.5	0.2
31	Ballina - Sydney	452.2	489.1	8.2
32	Perth - Port Hedland	661.3	567.5	-14.2
33	Coffs Harbour - Sydney	448.7	458.8	2.3
34	Darwin - Sydney	431.6	442.0	2.4
35	Darwin - Melbourne	371.4	382.2	2.9
36	Brisbane - Gladstone	658.3	474.9	-27.9
37	Newman - Perth	632.3	568.3	-10.1
38	Launceston - Sydney	358.5	345.8	-3.5
39	Broome - Perth	417.1	394.1	-5.5
40	Kalgoorlie - Perth	403.4	394.6	-2.2
41	Hamilton Island - Sydney	308.3	312.0	1.2
42	Brisbane - Proserpine	288.7	278.2	-3.6
43	Albury - Sydney	340.0	345.9	1.8
44	Adelaide - Gold Coast	282.1	270.9	-4.0
45	Melbourne - Mildura	312.4	323.8	3.6
46	Brisbane - Hobart	244.9	245.9	0.4
47	Brisbane - Emerald	384.6	339.9	-11.6
48	Port Macquarie - Sydney	269.6	263.9	-2.1
49	Darwin - Perth	268.5	266.1	-0.9
50	Ayers Rock - Sydney	218.7	245.6	12.3

(continued)

Table 2: (continued): Available seats (000s) — annual activity

	City-Pair	YE Jun 2016	YE Jun 2017	% Change
51	Dubbo - Sydney	295.4	293.1	-0.8
52	Sydney - Wagga Wagga	294.4	294.5	0.0
53	Sydney - Tamworth	264.3	294.0	11.2
54	Adelaide - Canberra	248.0	267.6	7.9
55	Adelaide - Port Lincoln	292.1	288.0	-1.4
56	Brisbane - Bundaberg	246.2	231.7	-5.9
57	Sydney - Townsville	200.7	209.5	4.4
58	Brisbane - Hamilton Island	179.6	190.7	6.2
59	Cairns - Townsville	297.1	285.8	-3.8
60	Armidale - Sydney	201.8	190.8	-5.4
61	Adelaide - Alice Springs	178.8	181.1	1.2
62	Brisbane - Mount Isa	254.2	202.6	-20.3
63	Brisbane - Moranbah	286.5	238.1	-16.9
64	Alice Springs - Darwin	214.4	212.1	-1.1
65	Geraldton - Perth	228.3	234.1	2.5
	Total domestic network	77 139.6	77 159.1	0.0

Table 3: Load factors (%) — annual activity

	City-Pair	YE Jun 2016	YE Jun 2017	% Change
1	Melbourne - Sydney	82.7	83.9	1.2
2	Brisbane - Sydney	81.1	81.7	0.6
3	Brisbane - Melbourne	79.4	80.4	1.0
4	Gold Coast - Sydney	85.4	86.0	0.6
5	Adelaide - Melbourne	78.9	79.6	0.7
6	Melbourne - Perth	80.4	81.2	0.7
7	Gold Coast - Melbourne	82.6	84.9	2.3
8	Adelaide - Sydney	79.9	81.3	1.4
9	Perth - Sydney	80.4	81.2	0.8
10	Hobart - Melbourne	80.0	79.8	-0.1
11	Brisbane - Cairns	83.0	83.2	0.2
12	Cairns - Sydney	83.7	84.2	0.5
13	Canberra - Melbourne	70.5	67.5	-3.0
14	Brisbane - Perth	80.5	81.0	0.5
15	Brisbane - Townsville	73.7	75.9	2.2
16	Canberra - Sydney	69.9	71.4	1.5
17	Launceston - Melbourne	76.7	78.8	2.1
18	Adelaide - Brisbane	75.0	75.4	0.4
19	Cairns - Melbourne	83.3	84.6	1.3
20	Brisbane - Mackay	72.9	77.8	4.8
21	Hobart - Sydney	82.5	82.4	-0.2
22	Adelaide - Perth	74.9	70.9	-4.0
23	Brisbane - Newcastle	75.6	74.5	-1.1
24	Brisbane - Canberra	73.5	70.6	-2.9
25	Sunshine Coast - Sydney	82.9	80.8	-2.0
26	Brisbane - Rockhampton	71.8	77.2	5.4
27	Melbourne - Newcastle	79.7	78.3	-1.4
28	Karratha - Perth	57.1	60.6	3.5
29	Melbourne - Sunshine Coast	84.8	85.3	0.5
30	Brisbane - Darwin	78.1	79.1	1.0
31	Ballina - Sydney	81.9	80.5	-1.4
32	Perth - Port Hedland	54.1	60.6	6.5
33	Coffs Harbour - Sydney	75.1	74.6	-0.5
34	Darwin - Sydney	73.8	72.4	-1.4
35	Darwin - Melbourne	78.3	80.1	1.8
36	Brisbane - Gladstone	55.9	65.0	9.1
37	Newman - Perth	50.5	51.5	1.0
38	Launceston - Sydney	80.6	84.0	3.4
39	Broome - Perth	72.3	73.5	1.2
40	Kalgoorlie - Perth	56.0	59.7	3.7
41	Hamilton Island - Sydney	80.8	74.8	-6.0
42	Brisbane - Proserpine	82.0	82.2	0.2
43	Albury - Sydney	65.2	64.9	-0.4
44	Adelaide - Gold Coast	79.0	79.9	0.9
45	Melbourne - Mildura	64.7	64.1	-0.7
46	Brisbane - Hobart	82.8	84.2	1.4
47	Brisbane - Emerald	53.2	58.1	4.9
48	Port Macquarie - Sydney	70.7	73.1	2.3
49	Darwin - Perth	68.0	71.6	3.5
50	Ayers Rock - Sydney	78.2	77.5	-0.7

(continued)

Table 3: (continued): Load factors (%) — annual activity

	City-Pair	YE Jun 2016	YE Jun 2017	% Change
51	Dubbo - Sydney	63.5	64.6	1.1
52	Sydney - Wagga Wagga	64.0	63.4	-0.7
53	Sydney - Tamworth	62.7	61.7	-1.0
54	Adelaide - Canberra	68.4	65.5	-2.9
55	Adelaide - Port Lincoln	62.4	60.8	-1.6
56	Brisbane - Bundaberg	67.9	75.3	7.4
57	Sydney - Townsville	79.2	75.5	-3.7
58	Brisbane - Hamilton Island	79.0	74.3	-4.8
59	Cairns - Townsville	46.6	49.0	2.4
60	Armidale - Sydney	63.1	66.4	3.3
61	Adelaide - Alice Springs	67.6	67.4	-0.1
62	Brisbane - Mount Isa	48.9	59.8	10.9
63	Brisbane - Moranbah	43.5	50.0	6.6
64	Alice Springs - Darwin	55.9	54.9	-1.0
65	Geraldton - Perth	51.5	48.7	-2.8
	Total domestic network	77.4	78.4	0.9

Table 4: Aircraft trips ^(a) — annual activity

	City-Pair	YE Jun 2016	YE Jun 2017	% Change
1	Melbourne - Sydney	59 593	59 598	0.0
2	Brisbane - Sydney	35 656	35 508	-0.4
3	Brisbane - Melbourne	26 007	25 757	-1.0
4	Gold Coast - Sydney	18 421	18 250	-0.9
5	Adelaide - Melbourne	19 195	19 230	0.2
6	Melbourne - Perth	11 898	11 432	-3.9
7	Gold Coast - Melbourne	12 344	12 549	1.7
8	Adelaide - Sydney	14 300	14 036	-1.8
9	Perth - Sydney	9 147	9 098	-0.5
10	Hobart - Melbourne	12 047	12 377	2.7
11	Brisbane - Cairns	10 037	10 246	2.1
12	Cairns - Sydney	7 467	7 496	0.4
13	Canberra - Melbourne	10 742	10 908	1.5
14	Brisbane - Perth	5 801	5 721	-1.4
15	Brisbane - Townsville	9 018	8 938	-0.9
16	Canberra - Sydney	17 427	16 514	-5.2
17	Launceston - Melbourne	8 937	8 958	0.2
18	Adelaide - Brisbane	6 748	6 710	-0.6
19	Cairns - Melbourne	5 154	5 188	0.7
20	Brisbane - Mackay	7 764	7 414	-4.5
21	Hobart - Sydney	4 363	4 833	10.8
22	Adelaide - Perth	5 725	5 510	-3.8
23	Brisbane - Newcastle	6 094	6 323	3.8
24	Brisbane - Canberra	5 885	6 004	2.0
25	Sunshine Coast - Sydney	3 594	4 191	16.6
26	Brisbane - Rockhampton	9 524	8 599	-9.7
27	Melbourne - Newcastle	3 115	3 362	7.9
28	Karratha - Perth	7 478	6 625	-11.4
29	Melbourne - Sunshine Coast	2 832	3 038	7.3
30	Brisbane - Darwin	3 133	3 148	0.5
31	Ballina - Sydney	3 093	3 289	6.3
32	Perth - Port Hedland	4 634	4 598	-0.8
33	Coffs Harbour - Sydney	5 327	5 244	-1.6
34	Darwin - Sydney	2 591	2 616	1.0
35	Darwin - Melbourne	2 145	2 177	1.5
36	Brisbane - Gladstone	7 825	6 289	-19.6
37	Newman - Perth	4 436	4 139	-6.7
38	Launceston - Sydney	2 071	2 004	-3.2
39	Broome - Perth	3 329	3 321	-0.2
40	Kalgoorlie - Perth	3 398	3 374	-0.7
41	Hamilton Island - Sydney	1 788	1 877	5.0
42	Brisbane - Proserpine	1 796	1 581	-12.0
43	Albury - Sydney	6 113	6 291	2.9
44	Adelaide - Gold Coast	1 601	1 532	-4.3
45	Melbourne - Mildura	4 825	4 886	1.3
46	Brisbane - Hobart	1 438	1 417	-1.5
47	Brisbane - Emerald	5 304	4 526	-14.7
48	Port Macquarie - Sydney	4 638	4 532	-2.3
49	Darwin - Perth	1 695	1 608	-5.1
50	Ayers Rock - Sydney	1 386	1 395	0.6

(continued)

Table 4: (continued): Aircraft trips ^(a)— annual activity

	City-Pair	YE Jun 2016	YE Jun 2017	% Change
51	Dubbo - Sydney	6 407	6 394	-0.2
52	Sydney - Wagga Wagga	5 666	5 658	-0.1
53	Sydney - Tamworth	4 239	4 705	11.0
54	Adelaide - Canberra	1 715	1 712	-0.2
55	Adelaide - Port Lincoln	7 488	7 408	-1.1
56	Brisbane - Bundaberg	4 013	3 875	-3.4
57	Sydney - Townsville	1 334	1 331	-0.2
58	Brisbane - Hamilton Island	1 349	1 544	14.5
59	Cairns - Townsville	4 975	4 836	-2.8
60	Armidale - Sydney	4 753	4 521	-4.9
61	Adelaide - Alice Springs	1 144	1 139	-0.4
62	Brisbane - Mount Isa	1 946	1 847	-5.1
63	Brisbane - Moranbah	4 015	3 400	-15.3
64	Alice Springs - Darwin	1 734	1 719	-0.9
65	Geraldton - Perth	2 841	2 341	-17.6
	Total domestic network	636 805	636 614	0.0

(a) Includes RPT Cargo flights.

TOP TEN AIRPORTS – PASSENGER MOVEMENTS

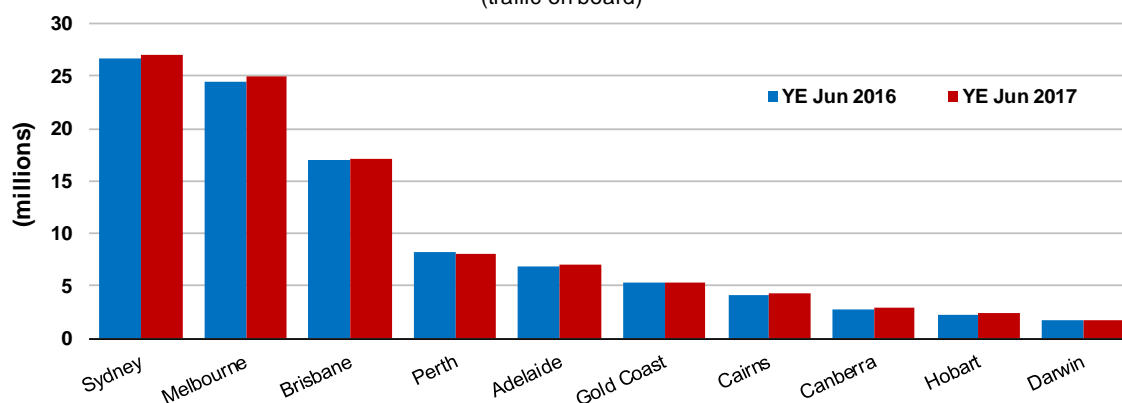
Table 5: Top ten airports, RPT passenger movements (000s) — annual activity

Airport	YE Jun 2016	YE Jun 2017	% Change	% of Total
1 Sydney	26 587.0	27 077.7	1.8	22.8
2 Melbourne	24 482.7	24 996.8	2.1	21.0
3 Brisbane	17 013.2	17 102.6	0.5	14.6
4 Perth	8 285.9	8 029.5	-3.1	7.1
5 Adelaide	6 922.0	7 049.2	1.8	5.9
6 Gold Coast	5 256.4	5 362.8	2.0	4.5
7 Cairns	4 141.8	4 283.3	3.4	3.5
8 Canberra	2 816.0	2 932.8	4.1	2.4
9 Hobart	2 312.9	2 440.8	5.5	2.0
10 Darwin	1 783.7	1 809.4	1.4	1.5
Total top ten airports	99 601.6	101 085.0	1.5	85.3
Total domestic network	116 809.1	118 513.4	1.5	100.0

Note: Airport passenger movement numbers are the sum of passenger arrivals and departures at each airport.

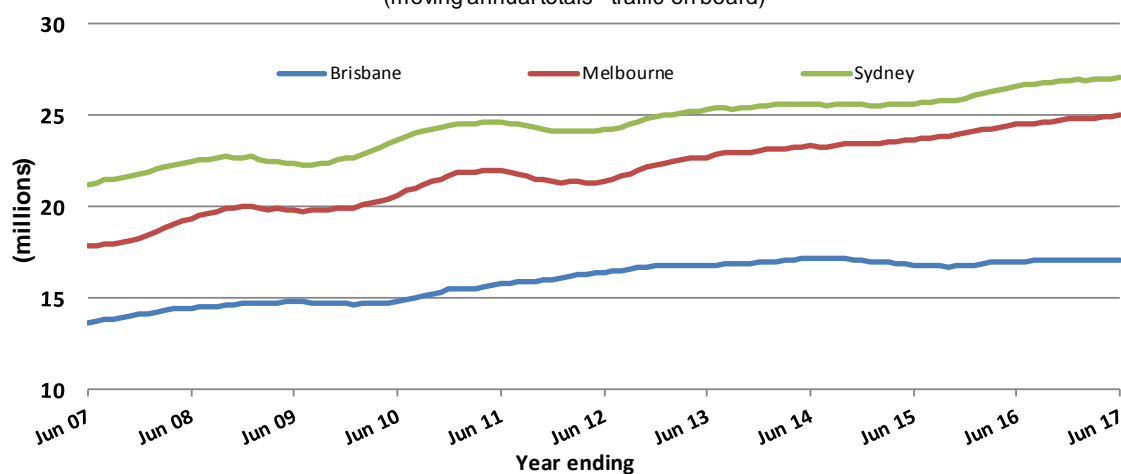
Top ten airports, RPT passenger movements

(traffic on board)



Top three airports, domestic passenger movements

(moving annual totals - traffic on board)

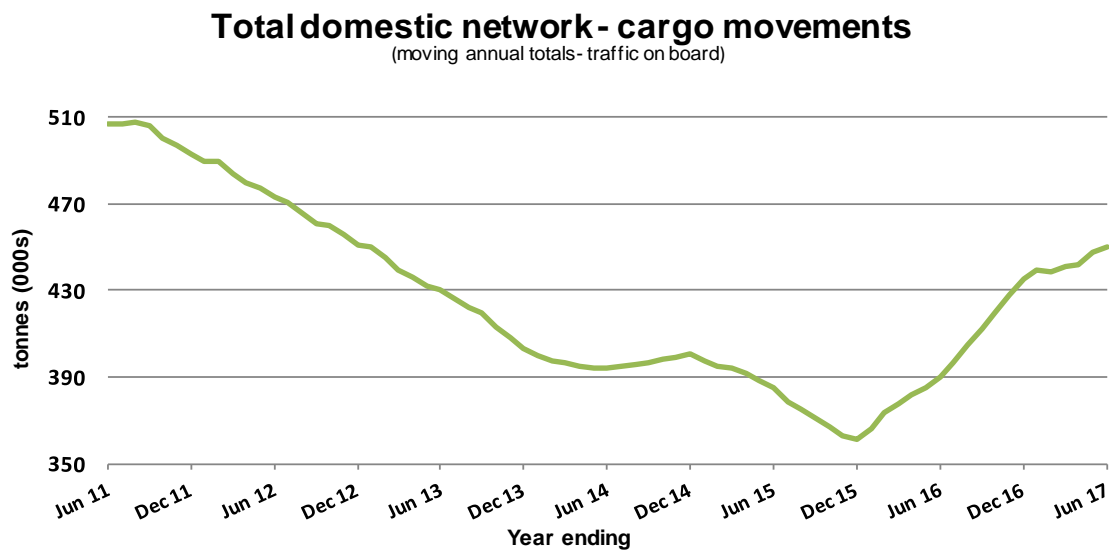
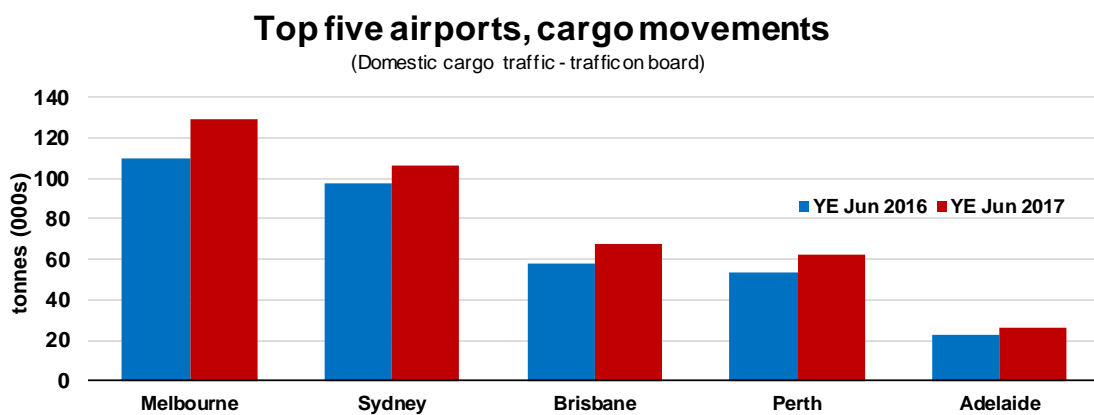


TOP FIVE AIRPORTS – CARGO MOVEMENTS

Table 6: Top five airports, domestic RPT cargo movements (000s tonnes) - annual activity

Airport	YE Jun 2016	YE Jun 2017	% Change	% of Total
1 Melbourne	110.2	129.0	17.0	28.7
2 Sydney	97.4	106.3	9.1	23.6
3 Brisbane	58.0	67.4	16.2	15.0
4 Perth	53.5	62.0	15.8	13.8
5 Adelaide	22.5	25.9	15.0	5.8
Total top five airports	341.8	390.6	14.3	86.8
Total domestic network	390.3	450.0	15.3	100.0

Note: Airport cargo tonnes are the sum of cargo tonnes on arrivals and departures at each airport.



Note: Airport cargo tonnes are the sum of cargo tonnes on arrivals and departures at each airport. The cargo statistics not available prior January 2010.

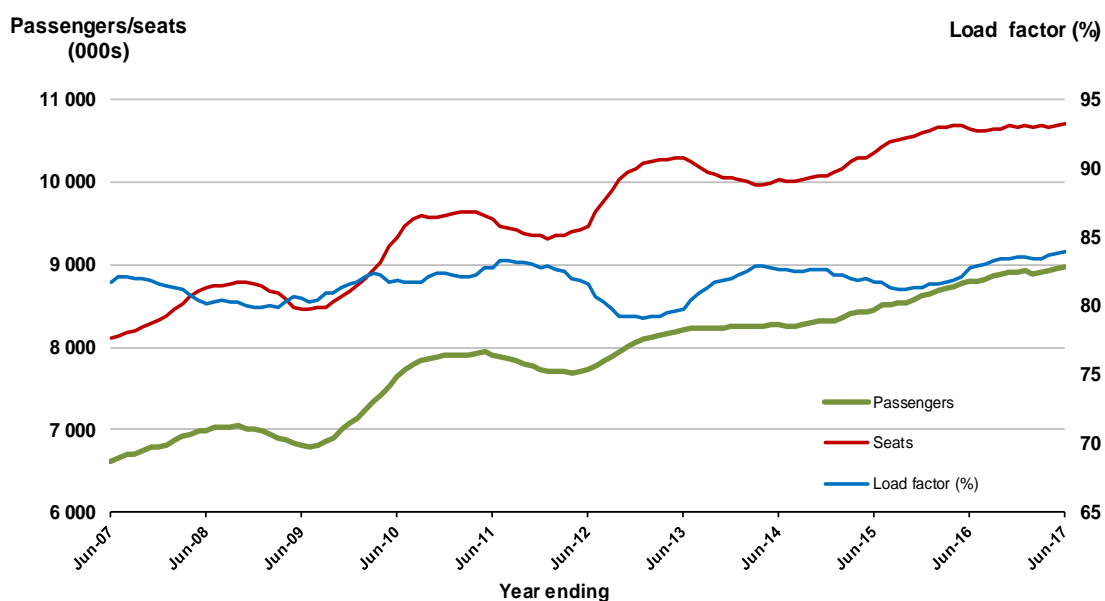
TOP TWENTY ROUTES

1. Melbourne - Sydney

Moving annual data

	YE Jun 2016	YE Jun 2017	% Change
Passengers carried (000s)	8 796.2	8 974.4	2.0
Seats (000s)	10 634.2	10 700.3	0.6
Load factor %	82.7	83.9	1.2 *
Aircraft trips	59 593	59 598	0.0

* percentage point difference

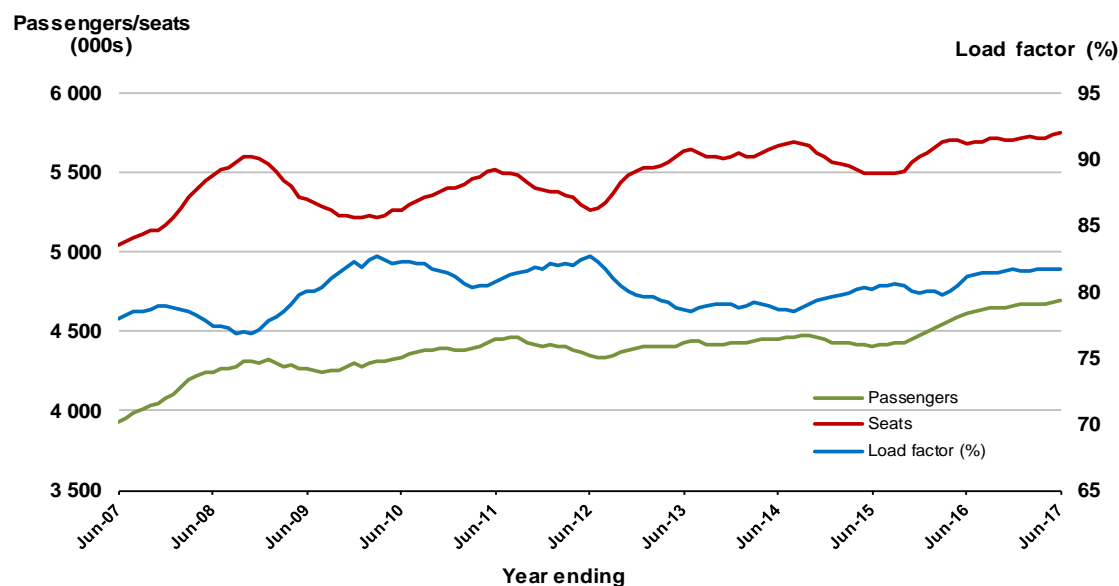


2. Brisbane - Sydney

Moving annual data

	YE Jun 2016	YE Jun 2017	% Change
Passengers carried (000s)	4 608.0	4 695.7	1.9
Seats (000s)	5 681.9	5 750.4	1.2 *
Load factor %	81.1	81.7	0.6 *
Aircraft trips	35 656	35 508	-0.4

* percentage point difference

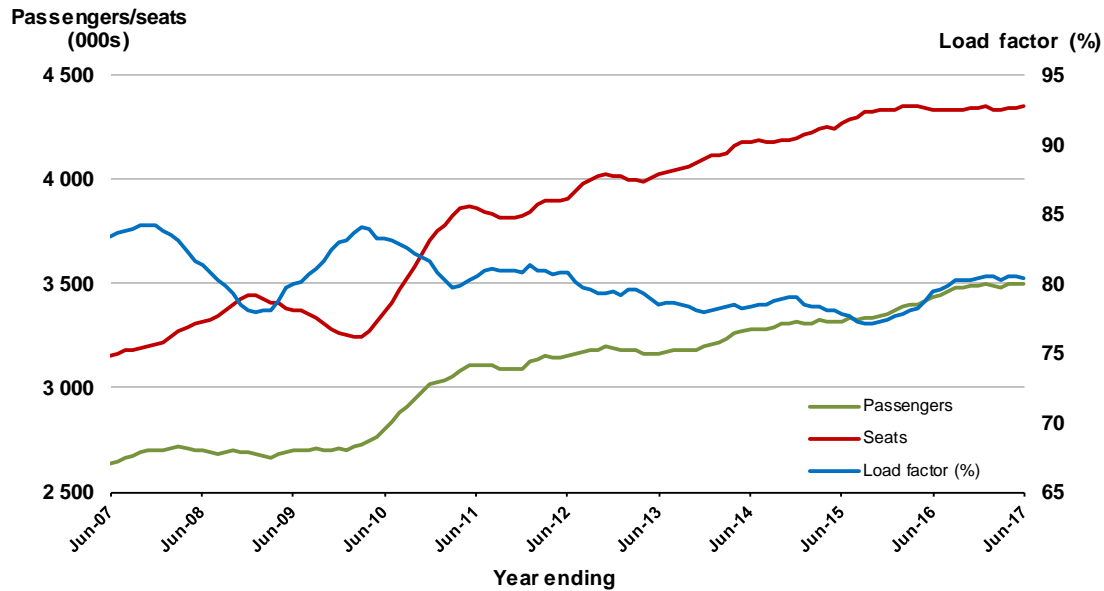


3. Brisbane - Melbourne

Moving annual data

	YE Jun 2016	YE Jun 2017	% Change
Passengers carried (000s)	3 438.7	3 500.5	1.8
Seats (000s)	4 329.9	4 354.7	0.6
Load factor %	79.4	80.4	1.0*
Aircraft trips	26 007	25 757	-1.0

* percentage point difference

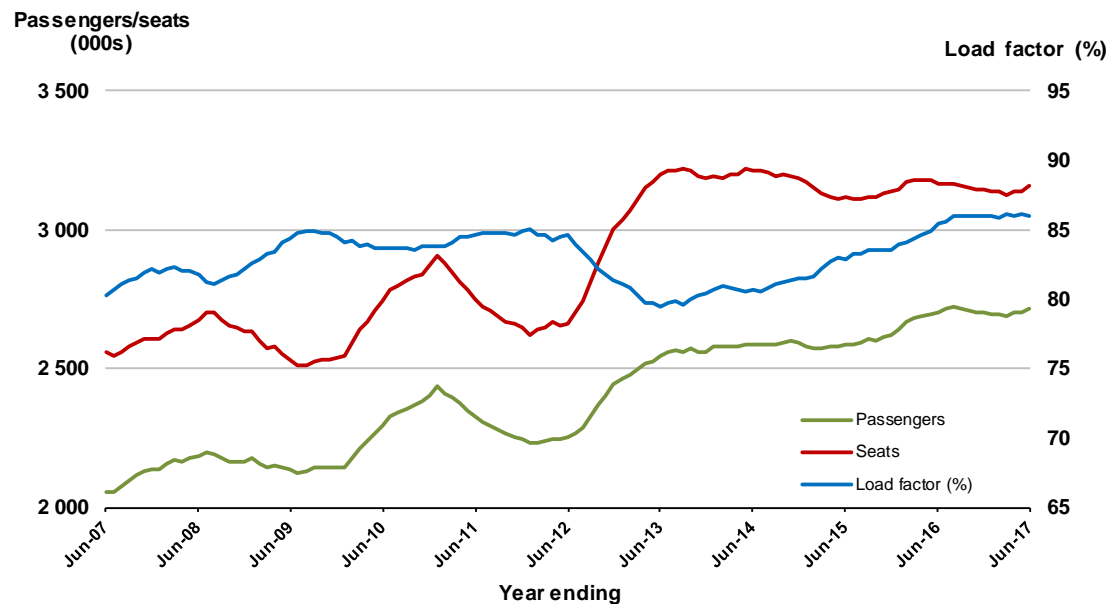


4. Gold Coast - Sydney

Moving annual data

	YE Jun 2016	YE Jun 2017	% Change
Passengers carried (000s)	2 702.3	2 712.7	0.4
Seats (000s)	3 164.4	3 155.0	-0.3
Load factor %	85.4	86.0	0.6*
Aircraft trips	18 421	18 250	-0.9

* percentage point difference

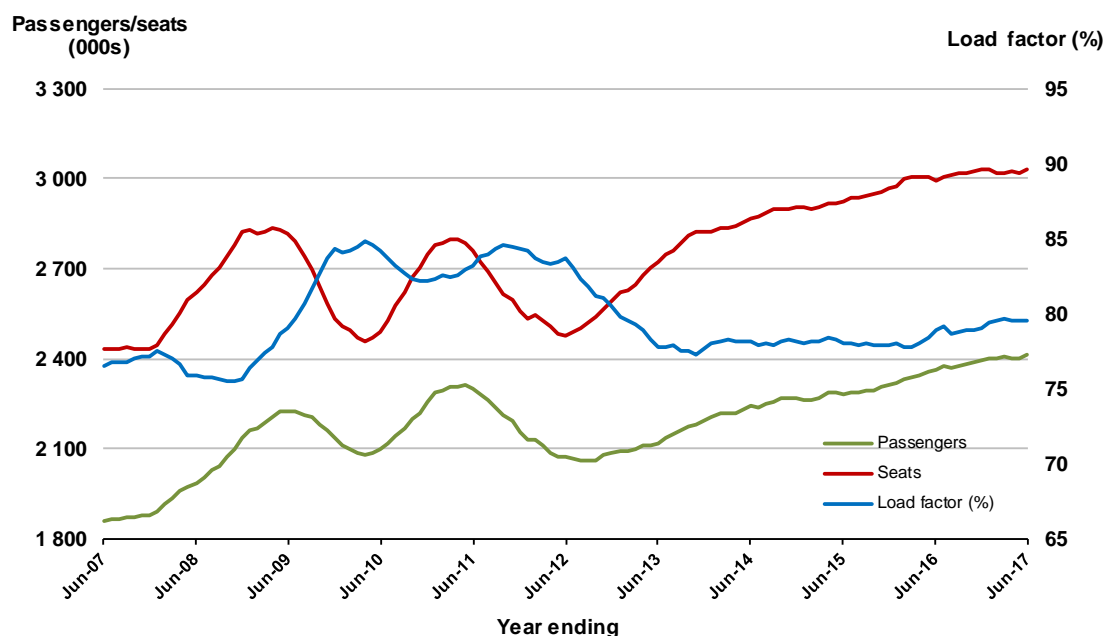


5. Adelaide - Melbourne

Moving annual data

	YE Jun 2016	YE Jun 2017	% Change
Passengers carried (000s)	2 362.7	2 413.2	2.1
Seats (000s)	2 995.4	3 032.1	1.2
Load factor %	78.9	79.6	0.7 *
Aircraft trips	19 195	19 230	0.2

* percentage point difference

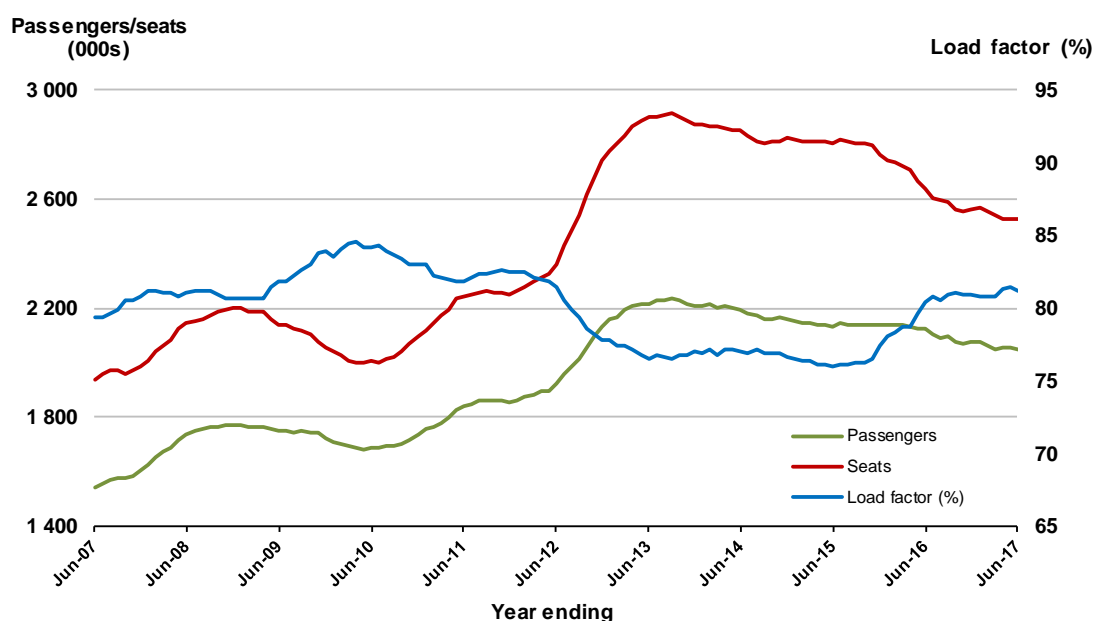


6. Melbourne - Perth

Moving annual data

	YE Jun 2016	YE Jun 2017	% Change
Passengers carried (000s)	2 121.9	2 048.1	-3.5
Seats (000s)	2 638.1	2 523.4	-4.3
Load factor %	80.4	81.2	0.7 *
Aircraft trips	11 898	11 432	-3.9

* percentage point difference

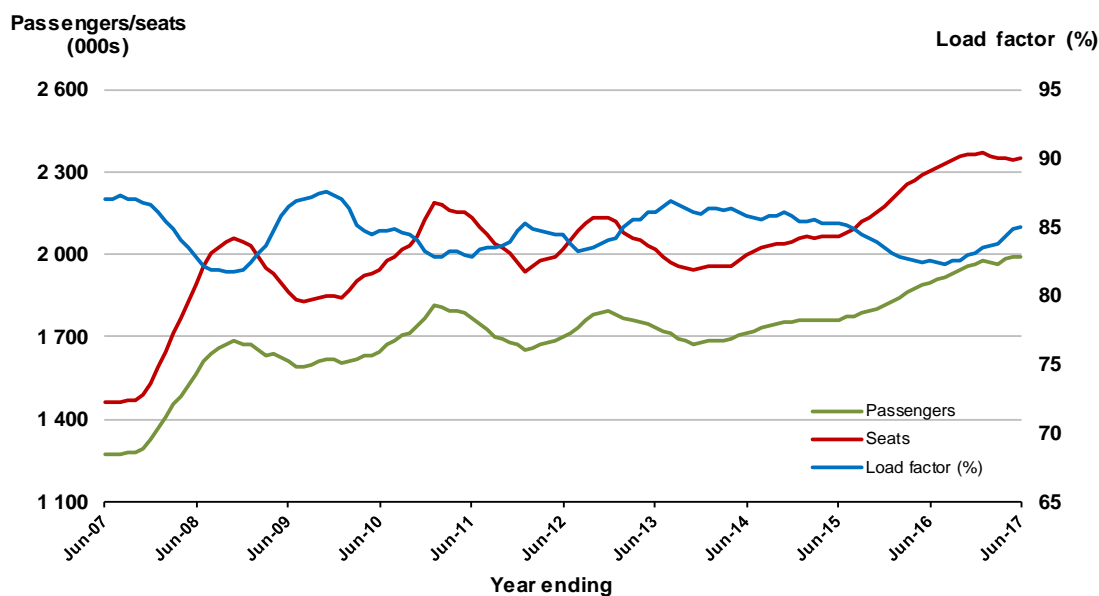


7. Gold Coast - Melbourne

Moving annual data

	YE Jun 2016	YE Jun 2017	% Change
Passengers carried (000s)	1 898.6	1 992.2	4.9
Seats (000s)	2 299.3	2 346.1	2.0
Load factor %	82.6	84.9	2.3*
Aircraft trips	12 344	12 549	1.7

* percentage point difference

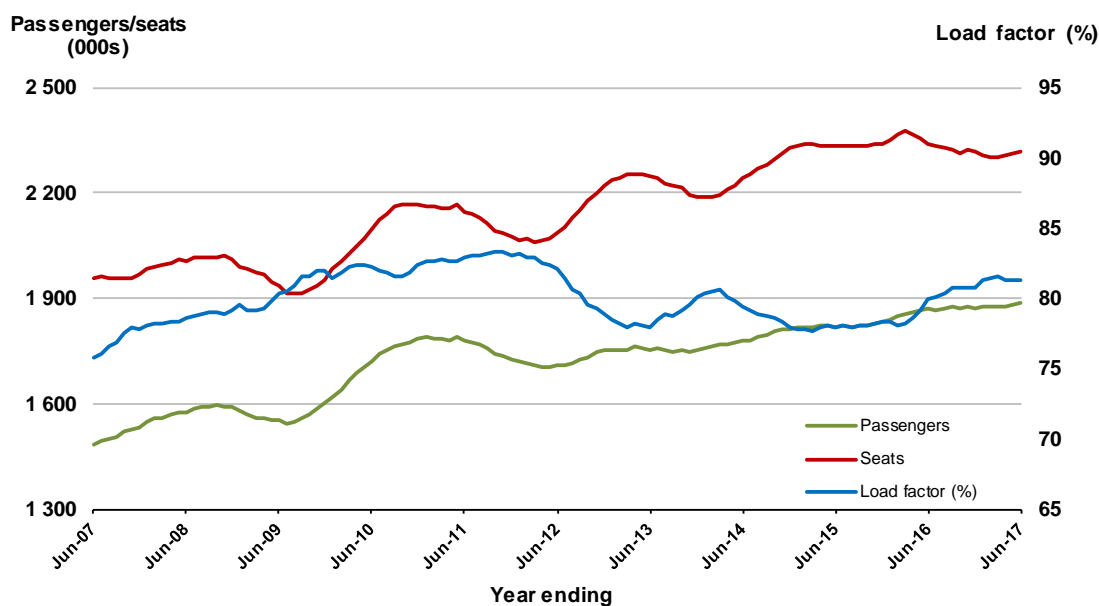


8. Adelaide - Sydney

Moving annual data

	YE Jun 2016	YE Jun 2017	% Change
Passengers carried (000s)	1 869.8	1 886.5	0.9
Seats (000s)	2 339.9	2 319.4	-0.9
Load factor %	79.9	81.3	1.4*
Aircraft trips	14 300	14 036	-1.8

* percentage point difference

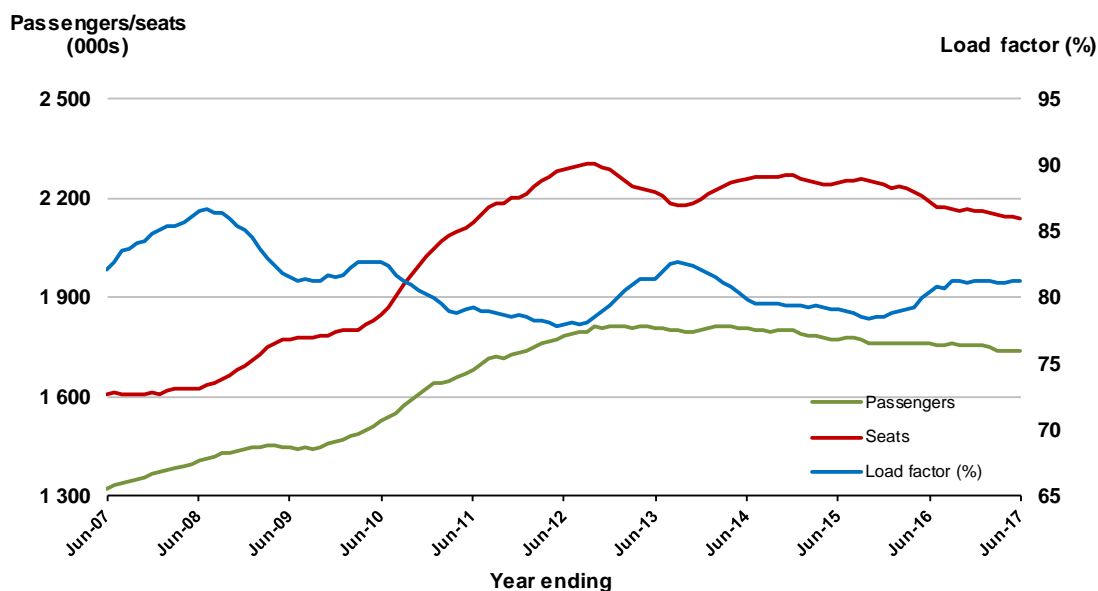


9. Perth - Sydney

Moving annual data

	YE Jun 2016	YE Jun 2017	% Change
Passengers carried (000s)	1 760.0	1 737.8	-1.3
Seats (000s)	2 189.3	2 139.0	-2.3
Load factor %	80.4	81.2	0.8 *
Aircraft trips	9 147	9 098	-0.5

* percentage point difference

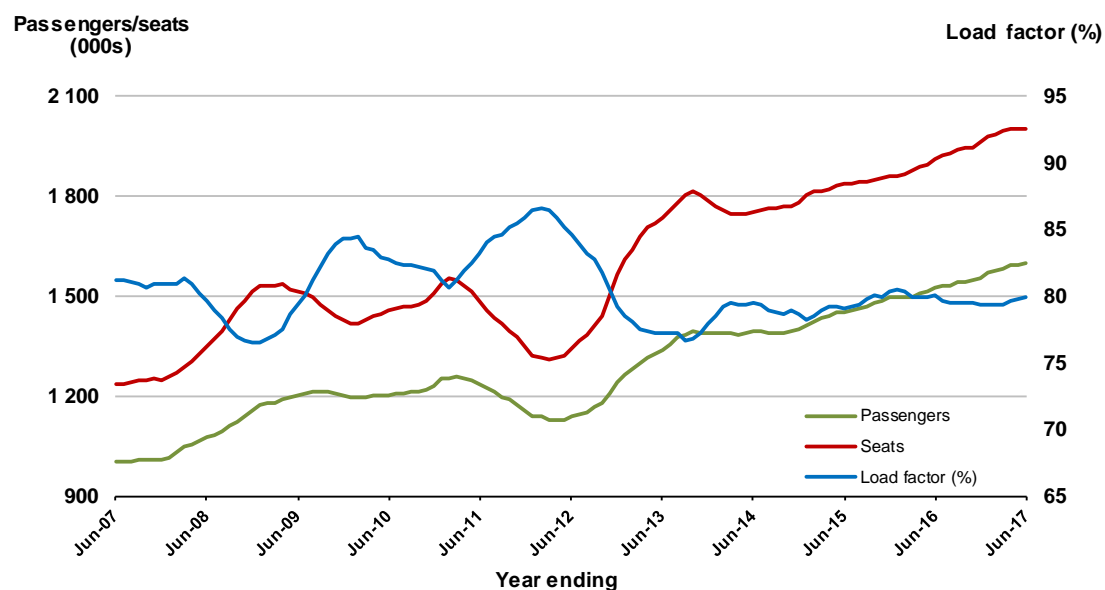


10. Hobart - Melbourne

Moving annual data

	YE Jun 2016	YE Jun 2017	% Change
Passengers carried (000s)	1 526.1	1 598.7	4.8
Seats (000s)	1 908.1	2 002.3	4.9
Load factor %	80.0	79.8	-0.1 *
Aircraft trips	12 047	12 377	2.7

* percentage point difference

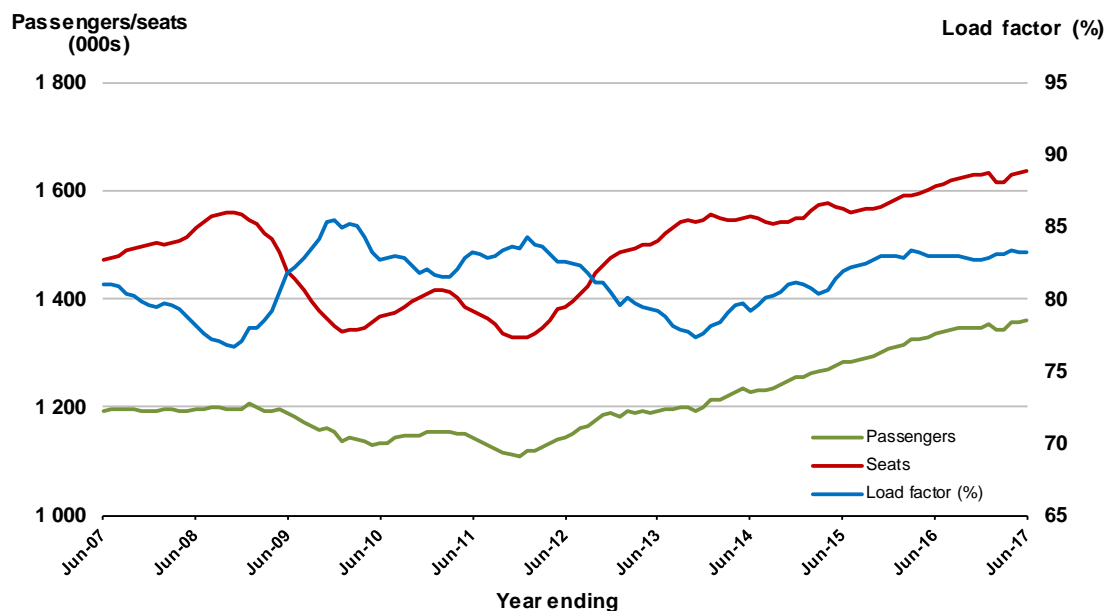


11. Brisbane - Cairns

Moving annual data

	YE Jun 2016	YE Jun 2017	% Change
Passengers carried (000s)	1 333.8	1 359.6	1.9
Seats (000s)	1 607.3	1 634.7	1.7
Load factor %	83.0	83.2	0.2*
Aircraft trips	10 037	10 246	2.1

* percentage point difference

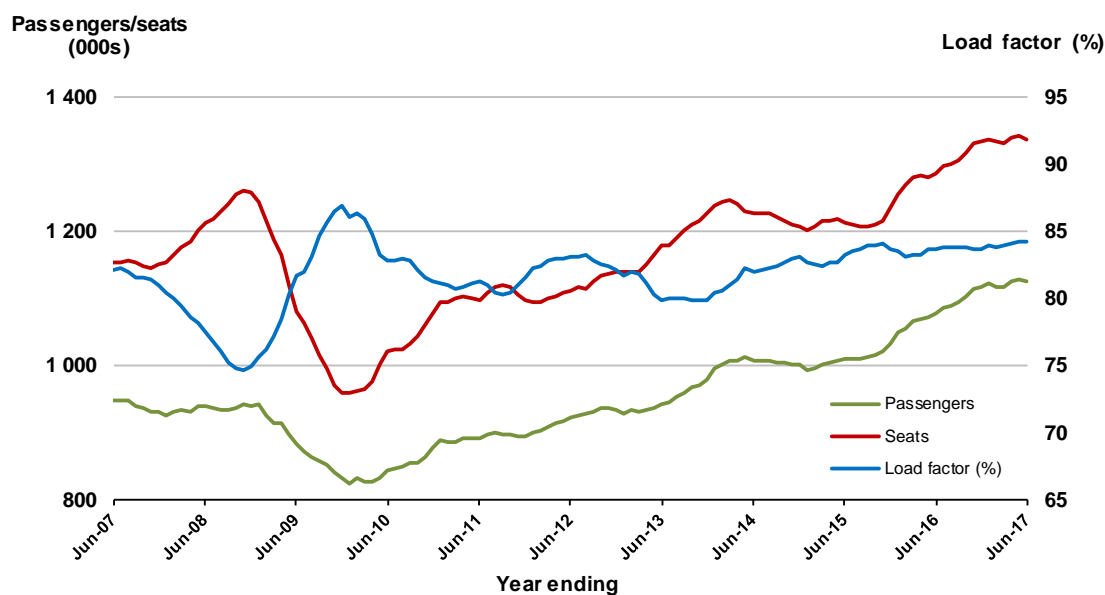


12. Cairns - Sydney

Moving annual data

	YE Jun 2016	YE Jun 2017	% Change
Passengers carried (000s)	1 075.7	1 124.8	4.6
Seats (000s)	1 285.7	1 336.5	3.9
Load factor %	83.7	84.2	0.5*
Aircraft trips	7 467	7 496	0.4

* percentage point difference

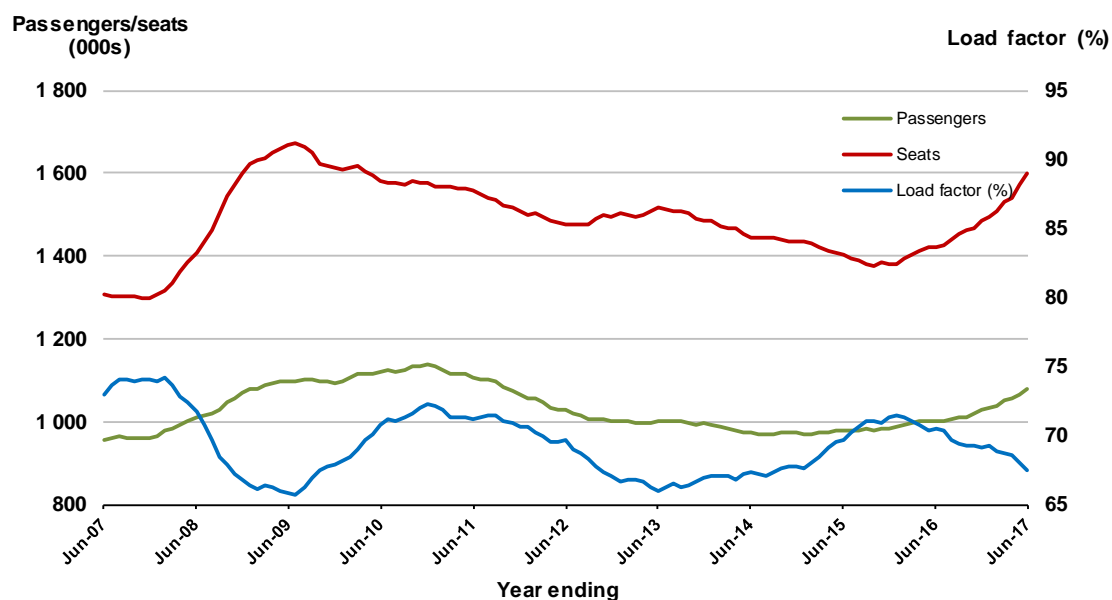


13. Canberra - Melbourne

Moving annual data

	YE Jun 2016	YE Jun 2017	% Change
Passengers carried (000s)	1 000.6	1 078.7	7.8
Seats (000s)	1 419.9	1 597.9	12.5
Load factor %	70.5	67.5	-3.0 *
Aircraft trips	10 742	10 908	1.5

* percentage point difference

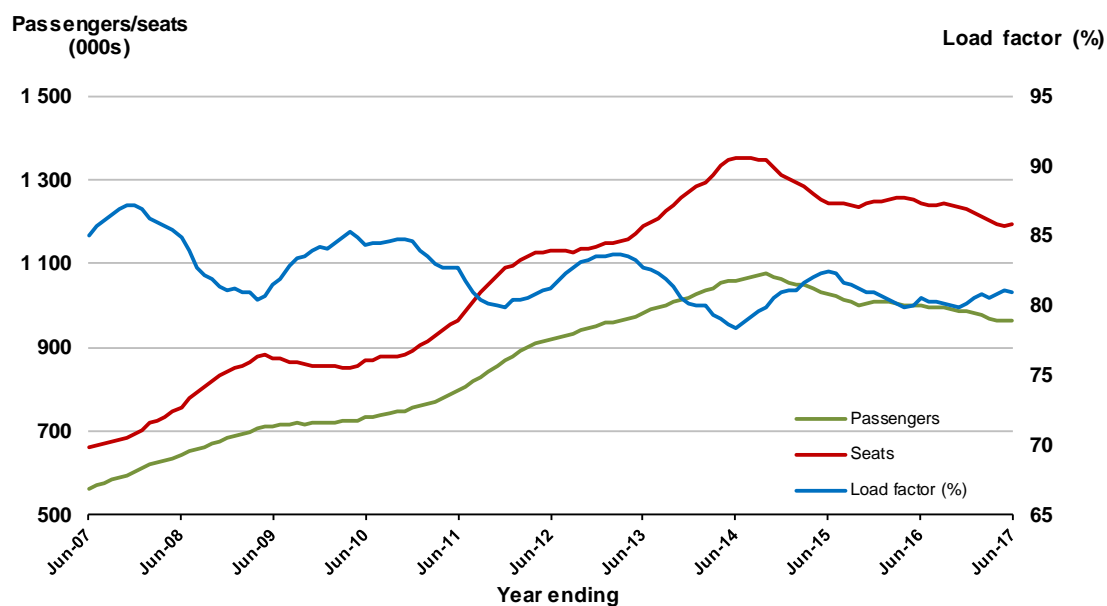


14. Brisbane - Perth

Moving annual data

	YE Jun 2016	YE Jun 2017	% Change
Passengers carried (000s)	1 000.7	964.8	-3.6
Seats (000s)	1 243.1	1 191.3	-4.2
Load factor %	80.5	81.0	0.5 *
Aircraft trips	5 801	5 721	-1.4

* percentage point difference

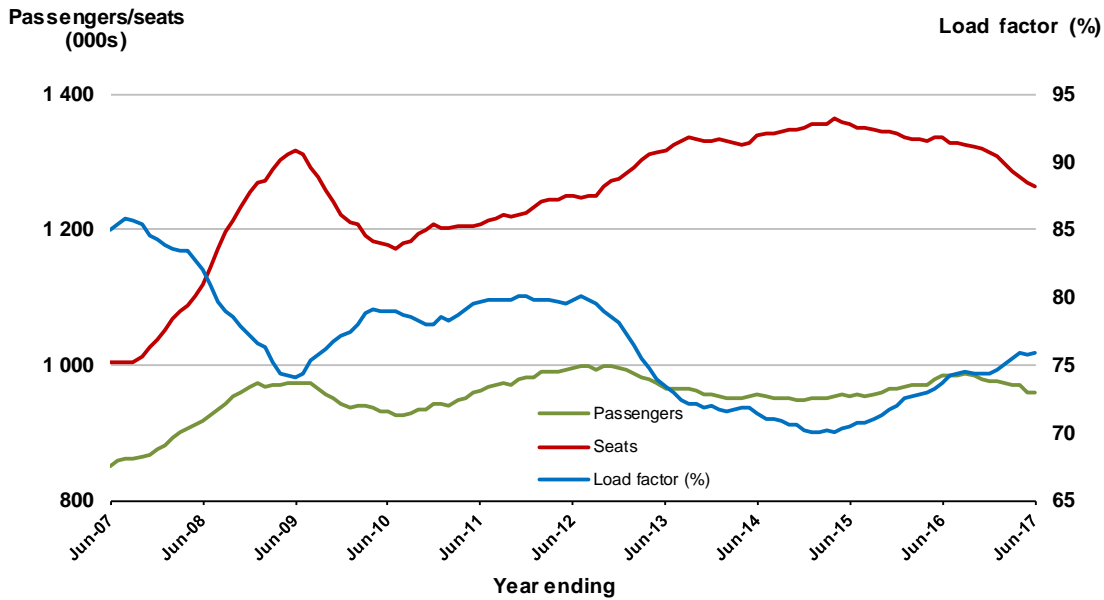


15. Brisbane - Townsville

Moving annual data

	YE Jun 2016	YE Jun 2017	% Change
Passengers carried (000s)	983.9	958.6	-2.6
Seats (000s)	1 335.2	1 263.5	-5.4
Load factor %	73.7	75.9	2.2*
Aircraft trips	9 018	8 938	-0.9

* percentage point difference

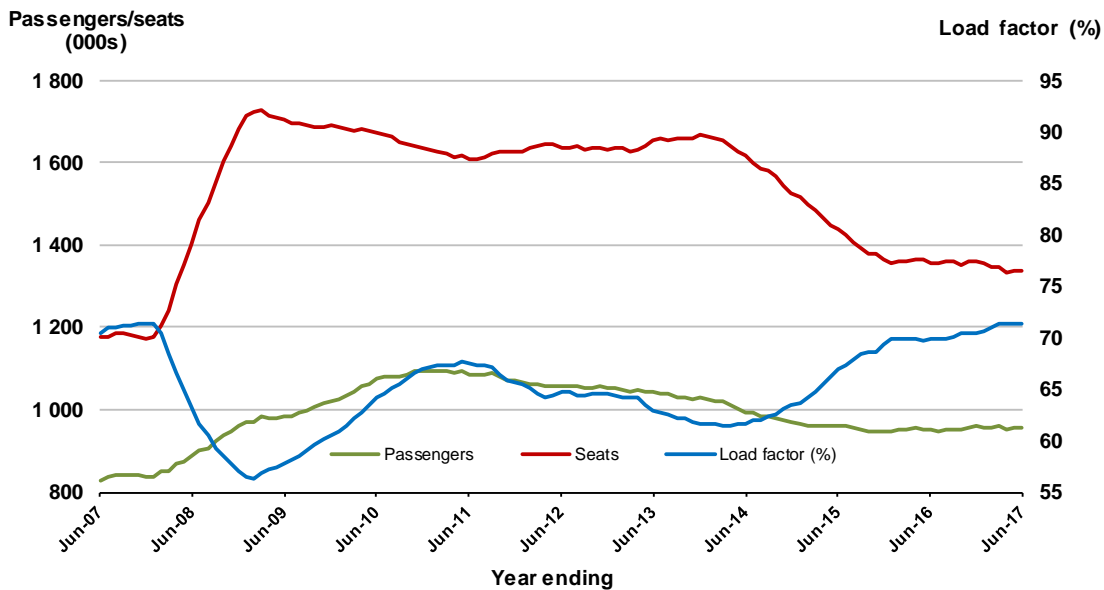


16. Canberra - Sydney

Moving annual data

	YE Jun 2016	YE Jun 2017	% Change
Passengers carried (000s)	949.3	955.0	0.6
Seats (000s)	1 357.6	1 337.5	-1.5
Load factor %	69.9	71.4	1.5*
Aircraft trips	17 427	16 514	-5.2

* percentage point difference

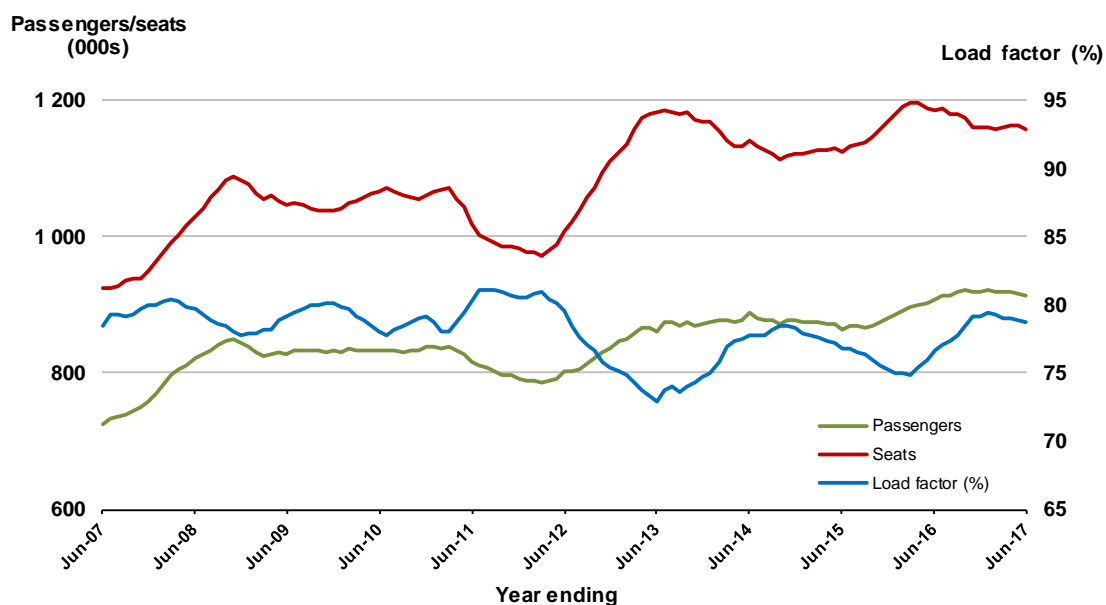


17. Launceston - Melbourne

Moving annual data

	YE Jun 2016	YE Jun 2017	% Change
Passengers carried (000s)	908.8	912.9	0.4
Seats (000s)	1 185.1	1 158.5	-2.2
Load factor %	76.7	78.8	2.1 *
Aircraft trips	8 937	8 958	0.2

* percentage point difference

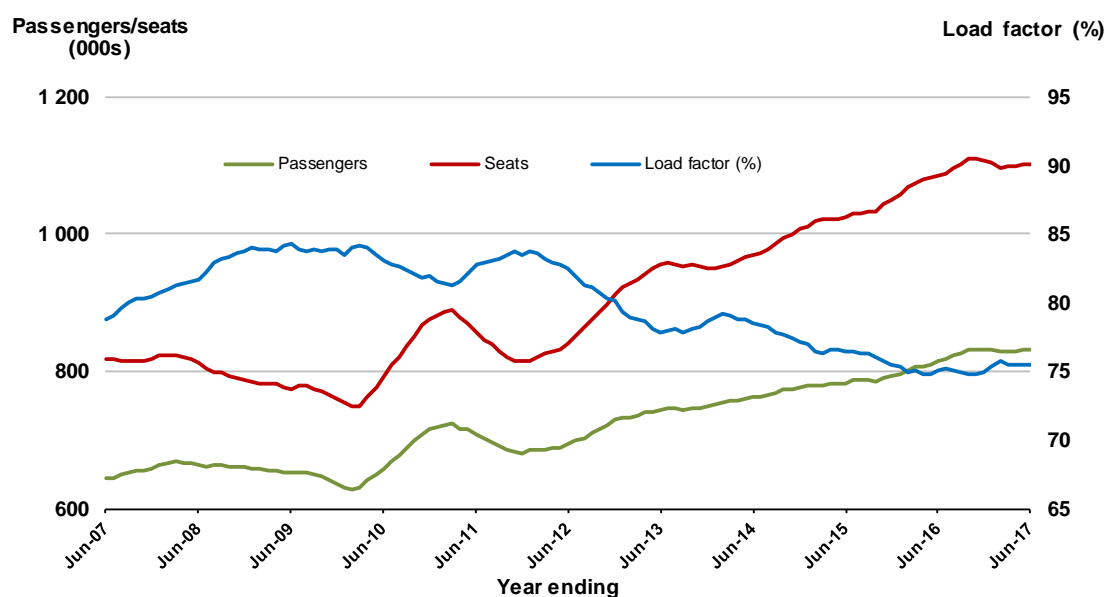


18. Adelaide - Brisbane

Moving annual data

	YE Jun 2016	YE Jun 2017	% Change
Passengers carried (000s)	813.9	831.0	2.1
Seats (000s)	1 084.7	1 101.7	1.6
Load factor %	75.0	75.4	0.4 *
Aircraft trips	6 748	6 710	-0.6

* percentage point difference

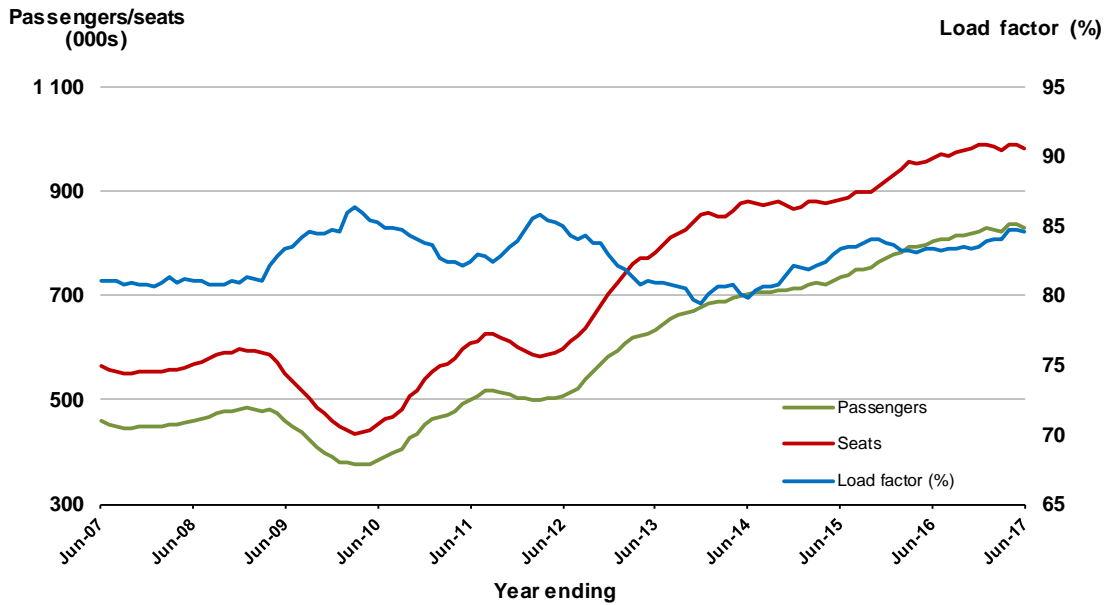


19. Cairns - Melbourne

Moving annual data

	YE Jun 2016	YE Jun 2017	% Change
Passengers carried (000s)	802.2	830.0	3.5
Seats (000s)	962.8	980.8	1.9
Load factor %	83.3	84.6	1.3*
Aircraft trips	5 154	5 188	0.7

* percentage point difference

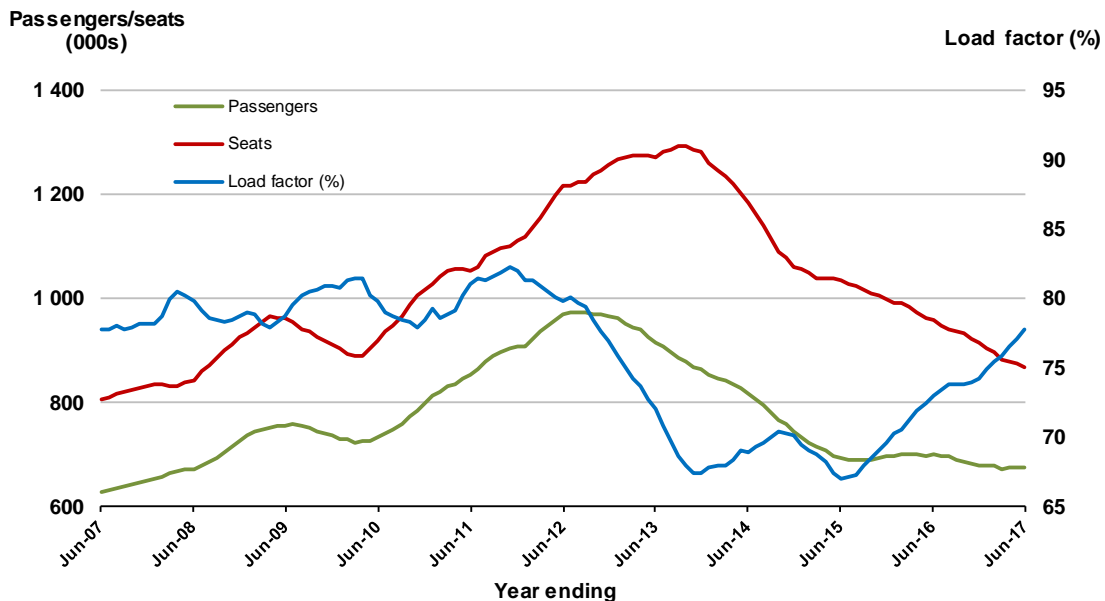


20. Brisbane - Mackay

Moving annual data

	YE Jun 2016	YE Jun 2017	% Change
Passengers carried (000s)	700.0	675.1	-3.6
Seats (000s)	959.7	868.2	-9.5
Load factor %	72.9	77.8	4.8*
Aircraft trips	7 764	7 414	-4.5

* percentage point difference



TOP FIFTY REGIONAL AIRPORTS

Table 6: Top fifty regional airports (000s) — passenger movements, annual

	Airport	YE Jun 2016	YE Jun 2017	% Change
1	Cairns	4 141.8	4 283.3	3.4
2	Hobart	2 312.9	2 440.8	5.5
3	Darwin	1 783.7	1 809.4	1.4
4	Townsville	1 546.6	1 533.5	-0.8
5	Launceston	1 322.3	1 335.9	1.0
6	Williamstown	1 171.8	1 240.4	5.9
7	Mackay	841.5	772.3	-8.2
8	Alice Springs	602.8	617.2	2.4
9	Rockhampton	593.2	566.1	-4.6
10	Hamilton Island	515.3	496.6	-3.6
11	Ballina	465.4	496.0	6.6
12	Karratha	556.8	464.0	-16.7
13	Coffs Harbour	375.8	403.4	7.3
14	Ayers Rock	338.9	364.8	7.6
15	Broome	384.0	364.1	-5.2
16	Port Hedland	381.9	353.6	-7.4
17	Proserpine	348.0	353.1	1.4
18	Gladstone	368.4	303.7	-17.6
19	Newman	320.6	294.2	-8.2
20	Albury	246.7	261.0	5.8
21	Mildura	243.4	249.6	2.6
22	Kalgoorlie	234.5	244.5	4.3
23	Port Macquarie	224.0	226.6	1.2
24	Dubbo	201.0	219.8	9.4
25	Wagga Wagga	214.4	217.7	1.6
26	Emerald	204.9	197.8	-3.5
27	Mount Isa	193.4	193.1	-0.2
28	Tamworth	167.3	192.7	15.2
29	Port Lincoln	182.4	175.4	-3.9
30	Bundaberg	167.3	174.8	4.5
31	Hervey Bay	169.6	170.7	0.7
32	Paraburdoo	163.3	166.6	2.0
33	Devonport	145.8	146.1	0.2
34	Wellcamp	89.2	140.5	57.6
35	Armidale	129.0	130.3	1.0
36	Moranbah	124.6	119.6	-4.0
37	Geraldton	118.8	115.9	-2.4
38	Kununurra	106.3	103.8	-2.4
39	Thursday Island	95.6	101.5	6.2
40	Gove	73.0	84.3	15.5
41	Roma	107.1	83.3	-22.2
42	Learmonth	86.1	80.6	-6.4
43	Mount Gambier	77.2	78.3	1.4
44	Weipa	76.3	78.2	2.5
45	Griffith	68.6	71.5	4.3
46	Merimbula	61.7	65.1	5.5
47	Whyalla	66.8	61.4	-8.1
48	Burnie	62.0	59.9	-3.5
49	Norfolk Island	51.2	57.5	12.2
50	Narrandera	46.9	56.8	21.0
	Total top 50 regional airports	22 570.0	22 817.4	1.1
	Total regional airports	23 873.1	24 174.5	1.3
	Total domestic network	116 809.1	118 513.4	1.5

Note: Airport passenger movement numbers are the sum of passenger arrivals and departures at each airport.

DOMESTIC CHARTER ACTIVITY

Table 7: Charter passengers carried and aircraft trips - annual activity

	YE Jun 2016	YE Jun 2017	% Change
Total domestic charter passengers	2 534 210	2 391 750	-5.6
Total domestic charter aircraft trips	47 991	44 537	-7.2

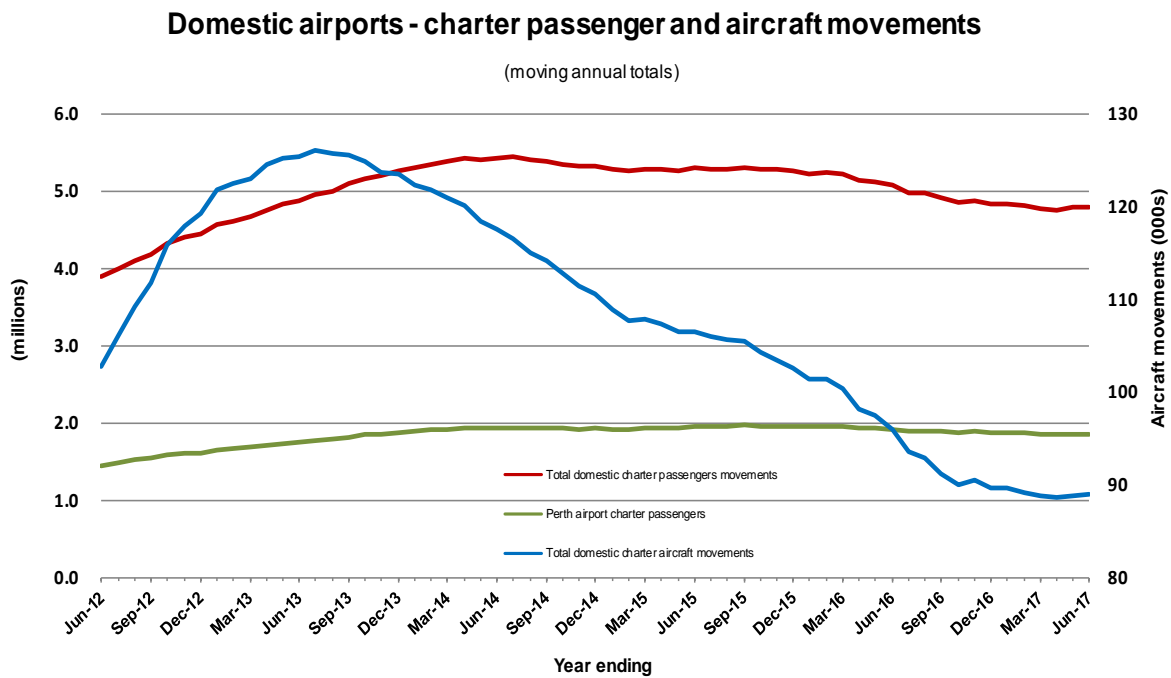
Note: Helicopter, joyflights and sightseeing charter flights not included.

Table 8: Domestic airports - charter activity - annual activity

	YE Jun 2016	YE Jun 2017	% Change
Total domestic charter passenger movements	5 068 420	4 783 500	-5.6
Total domestic charter aircraft movements	95 982	89 074	-7.2
Perth airport charter passenger movements	1 919 574	1 855 452	-3.3
Perth airport charter aircraft movements	32 405	31 432	-3.0

Note: Helicopter, joyflights and sightseeing charter flights not included.

Charter passenger and aircraft movement numbers are the sum of arrivals and departures at each airport.



Note: data prior July 2011 not available.

DEFINITIONS

Aircraft Trips	The number of flight stages. A return flight counts as two aircraft trips.
Airport Movements	Airport movements (passenger and cargo) are measured once on arrival and once on departure. Each domestic trip generates two movements at airports. For example, a trip from Melbourne to Sydney will be counted twice, as a passenger departure at Melbourne and as a passenger arrival at Sydney. At the national level, the sum of all domestic airport traffic will therefore be equal to twice the number of trips undertaken.
Available Seat Kilometres (ASKs)	Calculated by multiplying the number of seats available on each flight stage, by the distance in kilometres between the ports. The distances used are Great Circle Distances.
City-Pair	The ports shown make up the city-pair route. Passenger movements shown for a city pair reflect total traffic in both directions.
Flight Stage	The operation of an aircraft from take-off to landing.
Load Factor	The total revenue passenger kilometres performed as a percentage of the total available seat kilometres.
Passengers Carried	Revenue passengers carried.
Regular Public Transport Services (RPT)	All air service operations in which aircraft are available for the transport of members of public and are conducted in accordance with fixed schedules. It does not include charter or other non-scheduled operations.
Revenue Passengers	All passengers paying any fare. Frequent flyer redemption travellers are regarded as revenue passengers.
Revenue Passenger Kilometres (RPKs)	Calculated by multiplying the number of revenue passengers travelling on each flight stage, by the distance in kilometres between the ports. The distances used are Great Circle Distances.
Traffic on board by stages	The total of all traffic (revenue passengers) on each flight stage between two directly connected airports.
..	Data not included
NA	Not applicable